

JOHN L. STROUB, Auctioneer

conducts

# 81ST AUCTION SALE

## UNITED STATES U. S. COVERS FOREIGN U. S. WHOLESALE

•

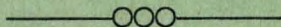
AUCTION SALE TO BE HELD

Thursday, June 18th, 1942

at 2 P. M.

AT ROOM 802

505 FIFTH AVENUE



ROBERT A. SIEGEL

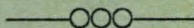
505 Fifth Avenue

New York, N. Y.

Telephone: VAnDerbilt 6 - 5217



# Terms of Sale



1. All bids are per lot and not per piece.
2. All lots are sold for CASH and must be taken up not later than three (3) days after the sale. Payment may be made in unused U. S. Postage Stamps in denominations from the 1c to 5c if 5% extra is added to cover cost of brokerage. All stamps must have full original gum and not be mutilated.
3. The bidding will be made in the following units — 5c below \$1.00; 10c from \$1.00 to \$5.00 and 25c above \$5.00.
4. Successful mail bidders, unless they are well known to us or send references, will be notified of the amount of the lots secured for them, and are expected to send payment in full, including registration or insurance, before lots are forwarded.
5. No lots can be returned after three (3) days for any reason. Claims will positively not be entertained after this time. Lot containing 5 or more stamps cannot be returned at any time. Floor bidders cannot return any lots purchased. Lots are on display for one full week before the sale.
6. We reserve the right to withdraw any lot prior to sale, or to act on behalf of the seller.
7. Stamps sent to buyers remain the property of Robert A. Siegel until paid for in full.
8. If you do not buy for resale and you live in New York City the 2% sales tax must be paid.

In sending bids, always state the highest price you are prepared to pay for the lot. Your limit will not be used as a starting bid unless absolutely necessary. No charges will be made for executing bids at our sale.

We solicit fine material for future sales.

## SYMBOLS USED

★—Mint; ○—Used; ▣—Block; SE—Straight Edge; OG—Original Gum; NH—Never Hinged; C—Centered; R—Right; L—Left; T—Top; B—Bottom; Canc—Cancelled or Cancellation; Perf—Perforations; OC—Off Center; NG—No Gum.

Scott's 1940 Specialized United States Catalogue used for cataloging our lots of United States.

## DESCRIPTIONS

Superb—the finest condition for noteworthy, outstanding copies.

Very Fine (VF)—means that there is a slight deviation from the above.

Fine (F)—means that the perforations do not touch the design on issues after 1890, but in some cases may just touch in earlier issues; if used, fairly lightly cancelled.

Very Good (VG)—means that the appearance is generally fine but that the perforations cut the design slightly.

Good (G)—means average off-centering; or fairly attractive with slight defects.

Original gum isn't to be expected on 19th Century stamps up to 1890 unless so stated.

## WHOLESALE LOTS

Although we cannot possibly examine every stamp in this category, we will make every effort to describe the general appearance of each lot as best as possible. Unless otherwise stated on wholesale lots, good average wholesale condition can be expected.

## BID SHEET

## 81st SALE

ROBERT A. SIEGEL

505 Fifth Avenue, New York, N. Y.

Please purchase for me at your Auction to be held in New York, **June 18th, 1942**, the lots named below, the prices annexed being my limit on each lot. I agree to remit for purchases in accordance with the terms of the sale and to return no lots later than two days after receipt.

### References :

Yours truly,

[illegible][illegible]

**When Time Is Short (especially from the West) please send bids by Airmail.**

[illegible]



# CATALOGUE

## UNITED STATES COVERS

### STAMPLESS COVERS

1	✠	J. TYLER Free franked envelope from Wash. D. D., Scarce frank of 10th President, Fine, Scarce .....	—
2	✠	ALBERT GALLATIN Free franked envelope,, Early Sec. of Treasury, and J. W. STEELE frank, Comptroller Office, Fine .....	—
3	✠	ALBANY, N. Y., Str. line cancel, Fine (1801) .....	—
4	✠	SCHOHARIE CH., N. Y., Str. line cancel, Very fine (1840) .....	—
5	✠	NEW YORK, N. Y., Str. line cancel, Fine (1797) .....	—
6	✠	WHITEHALL, N. Y., Str. line cancel in red, Fine (1832) .....	—
7	✠	Stampless, Thirteen covers, Includes, Steam, Ship, etc., Fine lot .....	—
8	✠	Stampless, Thirty covers, Misc., includes two local company markings, Very good lot .....	—
9	✠	Stampless, Two hundred eighty covers, mostly N. Y. State, few Ship, Steamboat, etc. ....	—
10	✠	Confederate Stampless, Red "10" Petersburg, Va. on Patriotic envelope, Scarce <b>(Photo)</b> .....	—
11	✠	Confederate Stampless, Ten covers, Fine lot .....	—

### 1847-1869 ON COVER

12	✠	1847	5c Brown (28), Three large margins, close left, Tied with red grid from Boston, Fine cover .....	12.00
13	✠		5c Red brown (28), Tied with red St. Louis, Mo. cancel, Close at right, Fine cover .....	12.00
14	✠		10c Black (29), Sheet margin at left, Pen cancel and blue cancel from Philadelphia, Slightly cut in at right, Very good .....	45.00
15	✠		<b>10c Black (29), Tied with red grid from New York, Three large margin, Fine (Photo)</b> .....	<b>45.00</b>
16	✠	1851	1c Blue, Type II (31), Two tied on cover, close at top, otherwise fine .....	20.00
17	✠		1c Blue, Type IV (32d), Recut, once at top, twice at bottom, Tied with blue Cincinnati cancel, Fine .....	12.00
18	✠		1c Blue, Type IV (32d), Tied on illustrated circular, Fine .....	8.00
19	✠		1c Blue, Type IV (32d), Pair, mms. cancel, Handstamped, printed circular per steamer .....	16.50
20	✠		1c Blue, Type IV (32d), Pair and single, Tied, from Scottsville, Va. cancel, Fine .....	18.50
21	✠		1c Blue, 3c Dull red, (32d, 33 (strip of 3) ), Tied, from Free-town, Mass., also mms. marking, to California, Very good cover .....	—
22	✠		3c Dull red (33), Tied with red cancel and neat red strike of Boston & Fall River R. R. on small embossed envelope, Fine cover <b>(Photo)</b> .....	—
23	✠		3c Dull red (33), Missent and forwarded, with neat postmark "Tyne River Warehouse, Va.," Very fine .....	—

24	3c Orange brown (33b), With red "New Orleans" and "Way 1", Fine	—
25	3c Dull red (33), Two covers from Boston with July 4th and December 25th postmarks, Fine	—
26	3c Dull red (33), Three covers, Forwarded; illustrated corner card; and nice tie of "Way" cancel, Very good	—
27	3c Dull red (33), Two railroad covers, N. Y. & N. H. and N. Y. & Phila., Both tied, Very good	—
28	3c Orange brown (33b), Tied, from Norfolk, Va., Very fine	—
29	3c Orange brown (33b), Two covers, one mms. cancel with black "Way", other U. S. Express Mail, Very good	—
30	3c Dull red (33), Includes two with "Blood's", also N. Y. & N. H. R. R. canc., Eighteen covers, Fine lot	—
31	3c Dull red (33), Twenty covers, all with red town cancels, mostly diff., Good average condition	—
32	3c Dull red (33), Forty-six covers, Fair lot	18.40
33	3c Dull red (33), Fifty-two covers, Fair lot	20.80
34	10c Green, Type III (35b), Tied with blue town cancel, To Havana, With "NA 1", Very good	—
35	10c Green, Type III (35b), Fine stamp, Tied, From Phila. to Nova Scotia	12.50
36	1851-57 3c Dull red (33 (2), 44) Fronts only, with Steam; Blood's N. Y. & Boston Steamboat, cancels; Fine	—
37	3c Dull red (33, 44), Two covers, To Canada, with various markings, Very good	—
38	1851-1933 1c-10c, Twenty-eight covers, Misc. lot, includes com-mems., Very good	—
39	1857 1c Blue, Type Ia (40b), Perfs, partly clipped at bottom, cancelled with pen stroke, Scarce	200.00
40	1c Blue, Type IV (42d), Cracked plate variety, perfs. partly clipped, Tied, Scarce	—
41	3c Red (44) Mms. cancel, Illustrated corner card, Farmer's High School, Pa., Very good	—
42	3c Red (44), Tied, From Washington, with 1c Blue Eagle, (LO2), not tied, Fine	—
43	3c Red, 12c Black (44, 51), Tied on legal cover, From Houston, Texas, with 1860 year date, Very good	12.50
44	10c Green, Type II (49a), Very fine stamp, mms. cancel, From Canton Centre, Ct.	—
45	1857-79 1c-10c, Nice lot of twenty misc. covers, Includes early Cin-cinnati Exposition cover	—
46	1857-63 Twelve interesting covers, Includes three Confederates, Nice lot	—
47	1857-1928 1c-10c, Eight misc. covers, Fine lot	—
48	1861-62 1c Blue, 2c Black (63, 73), Two covers, includes very small ladies cover, Fine	—
49	1861 3c Rose (65), Tied with fancy four line "Steamer Jul. 11, 1864 Montpelier", Fine strike, Cover a little ragged, Scarce (Photo)	—
50	3c Rose (65), Fancy shield cancel on small cover, Fine	—
51	3c Rose (65), Two Patriotics, One on large cover with strip of three, Very good	—
52	3c Rose (65), Three Patriotics, Scarce designs, Includes two colored letter sheets, Covers slightly torn	—
53	1862 2c Black (73), Four covers, Two have two stamps on each, Very good to very fine	—



54	24c Lilac (78), Tied, From Red Bank, N. J. to England, Nice stamp, Cover torn	—
55	Patriotic Envelopes, Twenty-five diff., Unused, All characters, includes scarce designs, Very fine	—
56	1867 1c Blue grilled (92), Two covers from Morrison, Ill., Tied in blue, Each has str. edge, Very good	—
57	12c Black (97), Tied, Sent to England, Transit markings, Very good	8.00
58	1869 10c Yellow (116), Tied, From Watertown, Mass. to France, Transit markings, Fine	17.50
59	10c Yellow (116), Pair, Tied on cover, with postmark "P. O. D. U. S. Con. Gen. Shanghai", Scarce marking, Fine pair, Cover slightly torn (Photo)	—

### 1870 TO DATE ON COVER

60	1870-83 1c-10c Bank Notes, Eight covers, Fine lot	—
61	1870-88 1c-5c Bank Notes, Thirty-nine covers, Includes some fancy cancels, Nice lot	—
62	1870-73 2c, 10c Brown, on cover to England, with various markings, Also 1c and 10c on registered cover, Fine.	—
63	Twelve interesting covers of Bank Note period, Cancellations and corner cards, Includes three St. Thomas bi-sects	—
64	1870-82 3c Greens, One hundred fifty-nine covers, Average	—
65	1c-10c Bank Notes, Eight registered covers, Very good to fine	—
66	1879 2c Vermilion (183), Tied with fine strike of face from Providence, R. I. Scarce (Photo)	—
67	5c Blue (179), Tied, From Atlantic City, N. J., with very fine illustrated hotel corner card	—
68	1887 1c Ultramarine (214), Corner card of Polar Union Telegraph Co., Contains telegram from Santa Claus who was then residing at Deer Lodge, Mont.	—
69	1883 4c Blue Green (211), Two fine covers, one legal size, with corner cards	—
70	1879 5c Blue (179), Tied, Sent to England and then forwarded, with four diff. colored markings on front, Fine attractive cover	—
71	1885-1901 10c Special Delivery, Six covers, Includes E1 and E2, Fine lot	8.00
72	1893 Two registered covers, Three 3c Columbians on one, and 8c Columbian on other, Very fine	—
73	3c, 4c, 6c, 8c, 10c Columbians, In various combinations on four registered covers, Fine	16.85
74	10c Columbian, (237), Six registered covers, Fine	24.00
75	1893-1904 1c-2c, Eight covers, mostly commems., Includes Spanish-American Patriotics, and attractive corner cards, Fine lot	—
76	1898 1c Trans-Miss. (285), On Spanish-American Patriotic, Very fine	—
77	5c Trans-Miss., (288), Pair on registered cover, From Seattle, Very fine	8.00
78	2c, 8c Trans-Miss. (286, 289), Tied on registered cover, on many colored very attractive Spanish-American Patriotic cover, Very fine Scarce (Photo)	—

79	8c Trans-Miss. (289), On registered envelope, Tied, Fine	12.50
80	1898-1927 1c-6c, Twelve covers, Includes Spanish Patriotics, Com- mems with Exhibition cancels and foreign, Fine lot	—
81	1901 1c, 8c Pan-American, (294 (2), 298), Tied on very fine registered cover	10.20
82	1908 2c Shield, Tied with 1908 Red Cross seal, Fine	—
83	1908-11 Five early Red Cross seals, Tied on postal cards, includes three of 1908, Fine	—
84	1904 1c Louisiana (323) Precancelled on envelope and stamp "Edella, Pa.", Fine	—
85	1912 5c Pan-Pacific, (399), Tied with San Francisco Exposit- tion cancel, Fine cover	—
85a	1917 <b>2c Carmine No. 519, Very fine stamp tied from New York City, Oct. 14, 1917, only four days after issued, A very scarce cover</b>	50.00 +
86	1923-37 First Day Covers, Commems, Etc., Sixteen covers, Mostly diff., Fine lot	18.85
87	1929 2c Carmine, Type II (599a, 643b), Forty-two covers, Fine lot	50.00
88	1911 10c Registry (F1) Three fine registered covers	—
89	1c, 2c, 10c, Postal Savings, Three covers. Various com- binations on official envelopes, Fine lot	—
90	1c Dark Violet, Postal Savings, On 1c Green Postal Savings Env. Five covers, O124, UO74), Nice lot	8.00
91	1861 3c Pink on White (U34), Tied with "Steamboat," Scarce Red "Steamer City of Newport Sept. 24, 1864," Cover defective but fine strikes	—
92	1874 2c Vermilion on Amber (U143), Fine strike of KICKING MULE, From Ft. Townsend, Wash., Cover ragged at one end (Photo)	—
92A	U. S. Official Imprint Envelopes, lot of 271 Agriculture, Census, Interior, Post Office, War etc. many used, fine lot	—
92B	As previous, 89 covers mostly diff. all small covers	—
92C	U. S. Official Imprinted Envelopes, 21 various covers all Specimens, scarce, fine, unused	—
93	1842 3c Blue, U. S. City Despatch Post (6LB5) With red City Despatch cancel, Fine	50.00
94	1849 1c Rose, U. S. Mail (6LB9), Not tied but red N. Y. cancel	40.00
95	1849 2c Red, Swarts Local (136L4), Nicely tied with red N. Y. Paid cancel, Front only, Very fine (Photo)	25.00
96	1850 1c Gold on black, Stringer & Morton's City Despatch, On small cover, Not tied, Very good, Rare local	125.00
97	1861 Confederate, 5c Green, Tied on legal size official env., addressed to Major Gen. T. J. Jackson, Cover a little ragged	10.00
97A	1862 Confederate, 5c Blue (205) Pair tied with Clinton, Miss. postmark, scarce blue caricature "The lament of Miss South Carolina", cover slightly ragged (Photo)	—
98	1859 Canada, 10c Red lilac, (17), Tied, Fine, Sent to U. S.	—
99	1898-99 Canada, 2c, 3c, Eight diff. covers, All with illustrated corner cards of Fairs, some with exposition cancels, Fine to very fine	—
100	Foreign Covers, Includes several Canada, Fine lot of ten	—
101	1854 Great Britain, 1sh. Green, On attractive illustrated Ocean Penny Postage cover, Mailed to America with various transit markings, Stamp is questionable as to having been mailed on this cover (Photo)	—
102	Cover album, Large size, Good used condition	—



## CALIFORNIA AND WESTERN COVERS

103	✉	1851	3c Dull red (33), Pair, Cut in bottom, Tied with Nevada City, Cal., Very good .....	—
104	✉		10c Green (35b), Tied with Columbia, Cal. and 1856 year date, Fine cover .....	—
105	✉	1857	5c Red brown (46), Two on small cover, with mms. cancel, From Don Pedro Bar, Cal., one stamp defective, other fine .....	—
106	✉		10c Green, Type III (49b), Superb stamp, Tied with Columbia, Cal. Cancel .....	—
107	✉	1857-69	1c-10c, Oregon cancellations, Thirteen covers, includes No. 50, 68, 73, 92, etc., Scarce lot, but covers or stamps slightly defective .....	—
108	✉	1861	3c Rose (65), Tied with Mountain City, C. T., Cover very fine, stamp defective, Scarce territorial .....	—
109	✉		3c Rose (65), Pmkd. Empire City, C. T., Very good territorial .....	—
110	✉		3c Rose (65), Tied, Spanish Bar, Col. postmark, Good territorial .....	—
111	✉		3c Rose (65), Tied, Virginia City Montano, Fine, Scarce territorial .....	—
112	✉		12c Black (69), Pair, From Sacramento, Cal. to England, with transit markings, Fine .....	15.00
113	✉	1861-73	3c Greens, Three covers, From Nevada City, Cal., Also ragged 10c Green Entire, (U40), From San Francisco .....	—
114	✉	1869	15c Brown & blue, 3c Green (119, 147), With San Francisco, Cal. registry postmark in circle, Scarce cover .....	40.00
115	✉	1873	2c Brown, 7c Vermilion, (157, 160), Tied on cover, From San Francisco to France, Very good .....	45.00
116	✉	1875	2c Vermilion, 3c Green, Tied on cover with Beards & Shaw. Agt., Scarce western railroad cancel, mailed to England, Fine cover .....	—
117	✉	1873	3c Green, Tied with Silver Reef, Utah postmark, with hotel corner card, Fine .....	—
118	✉	1873-79	3c Greens and 3c Envelopes, Seven diff. Utah postmarks, Very good lot of territorials .....	—
119	✉	1873	6c Dull pink (159), With blue boxed Lemonte, California 1877 year date, Cover slightly soiled, to Canada, Scarce marking .....	—
120	✉	1879	10c Brown on 3c Envelope, Tied with San Francisco postmark, to New Granada, Fine .....	—
121	✉		2c Vermilion, Tied with red Halleok, San Bernardino Co., Cal. postmark, and forwarded with Watsonville, Cal. postmark, Stamp has str. edge, Fine cover .....	—
122	✉		2c Vermilion on 3c Entire. With Livingston, M. T. postmark Mailed to Germany, Very good territorial .....	—
123	✉	1883	2c Red brown (210) Two Colorado R. R. covers, Col. & Atchison and Col. & Walhalla, Very good .....	—
124	✉	1879-87	1c, 2c, Six diff. Montana postmarks, Very good territorial lot .....	—
125	✉	1887	1c, 2c, (212, 214), Two covers from Deer Lodge City, Mont., With college corner cards, Very good .....	—
126	✉	1853	10c Green Entire (U18), Postmark in mms. Woods Ferry, Cal., Very good .....	—
127	✉		10c Green Entire (U16), Tied with San Francisco, Cal. postmark, Fine .....	—

128	1861	3c Pink Entire with Wells Fargo imprint, Tied with blue Virginia City, N. T., Very good, Scarce	—
129	1874	3c Green Entire, Three diff. fancy Montana town cancels in color Wickes, Terminus and Missoula, Fine lot of territorials	—
130		3c Green Entire, Two diff. Salt Creek, Utah fancy cancels in red and purple, Fine	—
131	1875	1c Black Postal Cards, (UX5), Two fancy cancels in purple, From Franklin and Molad City, Idaho, Very fine territorial	—
132		1c Black Postal Cards, (UX5), Three diff. Montana Territorials, Missoula, Terminus and Butte City, Fine	—
133		1c Black Postal Card, (UX5), Postmark in large circle, Payson, Utah Co., Utah, 1882 J. T. Hardy, P. M., Very fine	—
134		1c Black Postal Card (UX5), Purple oval, Parowan, Iron Co., Utah, Very fine	—
135		1c Black Postal Card (UX5), Collection of eighteen diff. Utah towns, Fine, Scarce lot of territorials	—

## UNITED STATES OFF COVER

### NINETEENTH CENTURY

136★	1845	5c Red, New Haven (8XU1), Early reprint, Thin, Looks very fine, Scarce	—
137		5c New York (8X1), Two proofs, in black and green, latter cancelled, Fine	—
138	1847	5c Brown (28), Margins all around, Very fine except minute corner crease	10.00
139		5c Red brown (28), Trifle close in one corner, Red grid cancel, Fine	10.00
140		5c Brown (28), Looks unused but has been cleaned, Very fine	10.00
141		5c Brown (28), Sheet margin copy, Cut in trifle at tip of one corner, Fine, Blue cancel	11.00
142		5c Brown (28), Large margins all around, mms. cancel, Very fine	4.5c
143		5c Dark brown (28), Blue "Paid" in box, Fine	17.00
144		5c Brown (28), Double strike of blue "Paid" cancel, Close at B, Fine	17.00
145★		5c Red brown (28), Nice margins, Very fine except slight thin (Photo)	40.00
146		10c Black (29), Lightly cancelled, Fine (Photo)	35.00
147		10c Black (29), Large margins all around, Light red cancel, Very fine (Photo)	35.00
148		10 Black (29), Bright red grid cancel, Fine	35.00
149		10c Black (29), Good looking space filler, Repaired	35.00
150★	1875	5c Red brown, 10c Black, Reprints, (29d, 29e) Very fine	22.00
151	1847-1917	Collection of Stitch Watermarks, 112 varieties, includes No. 28, 49d, 191, 208, etc., Stamps as normal Cat. over \$60, A very nice and scarce lot	—
152★	1851	1c Blue, Type II (31), Thin spot, Very good, o. g.	13.50
153		1c Blue, Type II (31), Horiz. Strip of 3, Very good	30.00
154		1c Blue, Type II (31), Cracked plate variety, Pretty blue "Paid" cancel, cut in at bottom	60.00
155		1c Blue, Type III (32), A scarce stamp, Looks fine but one corner repaired	125.00



156		1c Blue, Type IIIa (32b), Slight thin, Looks very fine .....	35.00
157		1c Blue, Type IV (32d), Horiz, pair, Extra large margins all around, Cancellation has been cleaned, Very fine <b>(Photo)</b>	13.50
158		3c Dull red (33), Five copies, all with diff. plate varieties, Very good to fine .....	—
159		3c Dull red (33), Line through "Three Cent" variety, Fine	20.00
160		3c Dull red (33), Line through "Three Cents" variety, Fine	20.00
161		3c Claret, Dull red, Orange brown, (33, 33a, 33b), Very fine	4.05
162		3c Orange brown (33b), Three shades, Fine to very fine ....	8.25
163		10c Green, Type II (35a), Large margins, Superb <b>(Photo)</b>	7.50
164		10c Green, Type III (35b), Very good .....	8.00
165		10c Green, Type III (35b), Fine .....	8.00
166★		10c Green, Type III (35b), Slightly soiled, Very good, o. g.	60.00
167		<b>10c Green, Type III, IV, in horiz. pair, (35b, 35c), Slight crease, Looks fine, Scarce</b> .....	<b>93.00+</b>
168		12c Black (36), Very good .....	12.50
169		12c Black (36), Very good .....	12.50
170		12c Black (36), Horiz. Pair, Cuts at B, Very good .....	30.00
171		<b>12c Black (36), Horiz, pair, Fine</b> .....	<b>30.00</b>
172		<b>12c Black (36), Horiz. pair, Fine (Photo)</b> .....	<b>30.00</b>
173★		3c Blue Essay, Small thin, Scarce .....	—
174	1857	<b>1c Blue, Type Ia (40b), Perfs, cut in B, Very good, Scarce (Photo)</b> .....	<b>125.00</b>
175		1c Blue, Type II (41), Vert, strip of 3, Fine except perfs, on bottom stamp are clipped at B, "Paid" cancel .....	52.50
176		1c Blue, Type IV (42d), Fine .....	20.00
177		1c Blue, Type IV (42d), Very fine <b>(Photo)</b> .....	20.00
178		1c Blue, Type IV (42d), Horiz. pair, Fine .....	50.00
179		1c Blue, Type V (42f), Horiz, pair, with "U. S. City Delivery" cancel. Very fine .....	—
180		1c Blue, Type V (42f), Irregular block of 3, Tied on small piece, Fine .....	—
181★田		1c Blue, Type V (42f), Block, Fine, o. g. ....	8.50
182★田		1c Pale blue, Type V (42f), Block, Very fine except crease, o. g. ....	8.50
183★田		3c Red (44), Block, Fine, o. g. ....	5.00
184★田		3c Red (44), Block, Fine, o. g. ....	5.00
185		5c Brown (47), Very fine .....	12.50
186		5c Brown (48a), Red cancel, Fine .....	12.00
187		5c Brown (48a), Blue cancel, Very good .....	20.00
188		10c Green, Type II, III, In vert. pair (49a, 49b), Fine .....	15.00+
189		10c Green, Type III (49b), Slight crease, Looks fine .....	7.00
190		10c Green, Type III (49b), Fine .....	7.00
191		10c Green, Type IV (49c), Recut at top, Neat numeral "10" cancel, Looks very fine but closed tear .....	75.00+
192★		12c Black (51), Fine except two perfs, short, o. g. ....	17.50
193		12c Black (51), Black grid cancel, Fine .....	6.00
194		30c Orange (53), Well centered, Very fine .....	22.50
195		30c Orange (53), Red cancel, Very good .....	25.00
196★		<b>90c Blue (54), Fine (Photo)</b> .....	<b>45.00</b>
197★	1875	<b>3c Scarlet, Reprint (54b), Fine, Scarce (Photo)</b> .....	<b>75.00</b>
198★		5c Orange brown, Reprint (54c), Fine <b>(Photo)</b> .....	20.00
199	1861	1c Blue, 3c Rose, (63 (4) 65 (2) ), Tied on small pieces with boxed "Paid" cancels .....	12.30
200		3c Rose (65), Nice strike of Heart cancel .....	—
201		5c Buff (67), Small thin spot, Nicely centered, Very good	30.00
202		24c Brown lilac (70a), Fine .....	10.00

203		24c Brown lilac (70a), Purple bar cancel, Fine .....	15.00
204		90c Blue (72), Boxed "Paid" cancel, Looks fine, tiny thin .....	50.00
205★		90c Blue (72), Looks very fine, tiny closed tear .....	50.00
206★		90c Blue (72), Very good .....	50.00
207★		90c Pale blue (72a), Very good, o. g. ....	75.00
208★	1861-95	1c-10c, Thirteen diff. 19th century, Very good .....	27.95
209	1861-98	1c-10c, 19th Century, 282 stamps, includes some nice cancellations .....	—
210	1861-1908	1c-90c, Eightly misc., includes Revenues and Depts., mostly diff., Fair .....	250.00
211	1862	2c Black (73), Four with diff. type "Paid" cancels, Very good .....	8.00
212★		2c Black (73), Fine .....	3.00
213★		2c Black (73), Four, Very good to fine, Two o. g. ....	12.00
214★		2c Jackson (73), Black proof on India, Trial color in green .....	12.50
215		5c Brown (76), Horiz. pair, Vrey good .....	8.50
216★		24c Gray (78), Very good, o. g. ....	10.00
217	1867	3c Rose, Grilled (83), Very good .....	18.00
218★		<b>2c Black, Grilled (85b), Very good, Fresh, Scarce .....</b>	<b>50.00</b>
219★		2c Black, Grilled (87), Very good .....	15.00
220★		<b>2c Black, Double grill (87b), Very good, o. g., Scarce .....</b>	<b>75.00</b>
221		10c Green, Grilled (89), Fine .....	6.00
222		10c Green, Grilled (89), Fine .....	6.00
223		12c Black, Grilled (90), Blue cancel, Very good .....	8.00
224		15c Black, Grilled (91), Very good .....	12.00
225★		2c Black, Grilled (93), Fine .....	10.00
226★		2c Black, Grilled (93), Fine, o. g. ....	10.00
227★		2c Black, Grilled (93), Horiz. pair, Very good, o. g. ....	25.00
228★		2c Black, Grilled (93), Stitch watermark, Very good .....	10.00+
229★田		<b>2c Black, Grilled (93), Block, Perfs. in B, Very good, o. g. Scarce .....</b>	<b>75.00</b>
230★田		<b>2c Black, Grilled (93), Block of 6, Slight creases, Looks fine, o. g. (Photo) .....</b>	<b>100.00</b>
231★田		3c Red, Grilled (94), Block, Fine, o. g. ....	17.50
232		15c Black, Grilled (98), Fine .....	6.00
233		30c Orange, Grilled (100), Very good .....	17.50
234		30c Orange, Double grill (100a), Looks very good, Defective .....	50.00
235		90c Blue, Grilled (101), Perfs. in at R, Very good .....	50.00
236	1869	3c Ultramarine (114), Five pairs, three singles, some with fancy cancels, Nice lot .....	—
237★田		3c Ultramarine (114), Block of 6, Slightly defective, Looks nice .....	22.50
238★		6c Ultramarine (115), Fine, Fresh .....	13.50
239		6c Ultramarine (115), Nice strike of SKULL AND CROSS BONES cancel, Scarce (Photo) .....	—
240		6c Ultramarine (115), Bright red cancel, Very good .....	10.00
241		6c Ultramarine (115), Red target cancel, Fine .....	10.00
242a		6c Ultramarine, 10c Yellow, (115-116), Very good .....	10.00
242b		10c Yellow (116). Superb .....	5.00
242c		10c Yellow (116), Very fine .....	5.00
242d		10c Yellow (116), Red cancel, Very good .....	9.00
243★		10c Yellow (116), Very good, o. g. ....	15.00
244		12c Green (117), Very fine .....	5.00
245★		12c Green (117), Fine, o. g. ....	12.00
245a		15c Brown & blue, Type I, (118), Very good .....	17.50
245b		15c Brown & blue, Type I, (118), Thin spot, looks fine .....	17.50
245c		15c Brown & blue, (119), Odd cancel in circle, Fine .....	5.50+



245d		15c Brown & blue, (119), Barely cancelled Very good	5.50
245e		24c Green & Violet (120), Red cancel, Very fine	20.00
246		30c Blue & carmine (121), Slight thin, Very good	10.00
247★		<b>30c Blue &amp; carmine (121), Fine, (Photo)</b>	<b>60.00</b>
248★		30c Blue & carmine (121), Stain, Very good, o.g.	60.00
249		90c Carmine & black (122), Grill point thin spot, Looks fine	50.00
250		90c Carmine & black (122), Slightly heavy cancel, Nicely centered	50.00
251★		<b>90c Carmine &amp; black (122), Very good, Fresh, (Photo)</b>	<b>175.00</b>
252★	1875	1c Buff, Re-issue (123), Tiny thin, Well centered	9.00
253★田		1c Buff, Re-issue (133), Block, Hinge Re-inforced, Very fine, o.g.	25.00
254	1870	6c Carmine, No. 137, Grilled, Well centered, Foreign Mail Cancel, fine	12.00 +
255		7c Vermilion, No. 138, Grilled, Fine strike Foreign Mail Cancel very good	11.00 +
256★		7c Vermilion, No. 138, Grilled, very good	60.00
257★		7c Vermilion, No. 138, Grilled, Well centered tiny closed tear	60.00
258		<b>30c Black, No. 143, Grilled, Perfs. in T., Red cancel, very good (Photo)</b>	<b>85.00</b>
259		3c Green, No. 147, Large cracked plate variety at B	—
260★		10c Brown, No. 150, very good	15.00
261★		12c Dull violet, No. 151, very good	20.00
262		24c Purple, No. 153, very good	6.50
263		24c Purple, No. 153, very fine	6.50
264		24c Purple, No. 153, fine fancy red foreign mail cancel, very good	9.00 +
265★		<b>24c Purple, No. 153, fine</b>	<b>40.00</b>
266		30c Dull black, No. 154, red cancel, fine	9.00
267	1870-1917	1c-10c, 290 stamps all show parts of corner arrow positions, interesting lot	—
268★田	1873	3c Green, No. 158, Block, very good, o.g.	10.00
269★		6c Dull pink, No. 159b, Grill variety, very good, o.g.	50.00
270	1871-79	15c Bank notes, 5 diff. star canc., nice lot	—
271	1873	90c Rose carmine, No. 166, Blue cancel, very good	11.00
271A★		90c Rose carmine, No. 166, Fresh, o.g., very good	30.00
272★	1875	2c Vermilion, 5c Blue, No. 178, 179, fine	14.00
273★	1879	5c Blue, No. 185, very fine	7.00
273A★		5c Blue, No. 185, very fine	7.00
274★		10c Brown, No. 188, fine, o.g.	12.00
275★		15c Red brown, No. 189, fine, o.g. strip of 3	9.00
276★	1879-85	1c-50c, No. 189-211, E1, J15-21SD, 1c-90c Specimen, 18 different, fine	150.00
277	1879	90c Carmine, No. 191, very good	9.00
278★	1880	<b>7c Scarlet vermilion, Special printing, well centered, very fine except slightly thin, Rare (Photo)</b>	<b>325.00</b>
279★	1881	1c Gray blue, No. 206P, Die Proof, very fine	5.00
280★	1882	6c Rose, No. 208, very good, thin spot	8.00
281★田	1887	3c Vermilion, No. 213, Block, fine, o.g.	12.00
282★田		3c Vermilion, No. 213, Block, fine except one stamp thin, o.g.	12.00
283★田	1888	4c Carmine, No. 215, Block, fine, o.g.	15.00
284★		90c Purple, No. 218, fine, o.g.	22.50
285★田	1890	2c Lake, No. 219D, Block, fine, o.g.	10.00
286★田		6c Brown red, No. 224, Block, very fine, o.g.	11.00
287	1890-1922	1c-10c, 525 stamps, selected for interesting cancellations	—





— 560 —

525



230







145



146



147



157



163



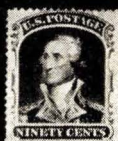
172



174



177



196



197



198



239



247



251



258



278



314



315



329



330



651



355



434



543



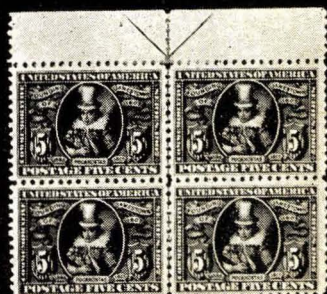
571



328



435



392



# COLUMBIANS

(Unused stamps after 1888 are all with original gum unless otherwise stated.)

288★	1893	1c Columbian, No. 230, Pane of 50, very fine .....	31.00
289★		2c Columbian, No. 231, Block of 25, very fine .....	13.15 +
290		2c Columbian, No. 231, 160 diff. selected for cancellations, Stars, colored, etc., nice lot .....	—
291★	田	3c Columbian, No. 232, Imprint plate no. block of 6, Fine .....	12.00
292★	田	3c Columbian, 232, Two blocks and two singles, very good .....	13.00
293★	田	4c Columbian, No. 233, Block, very good .....	12.00
294★	田	4c Columbian, No. 233, Imprint block of 8, very good .....	24.00 +
295★	田	6c Columbian, No. 235, Block, very good .....	11.00
296★		6c Columbian, No. 235, Imprint plate no. strip of 4, very fine .....	20.00
297★	田	15c Columbian, No. 238, Block, perfs. in at B, very good .....	30.00
298★		<b>15c Columbian, No. 238, Imprint plate no. strip of 4, fine</b> .....	<b>50.00</b>
299★		30c Columbian, No. 239, very fine .....	8.00
300★		30c Columbian, No. 239, thin spot .....	8.00
301★		50c Columbian, No. 240, fine .....	10.00
302★		50c Columbian, No. 240, thin spot, looks fine .....	10.00
303★		50c Columbian, No. 240, Vertical row of holes perforating stamp, may be a form of precancel, no gum, Oddity .....	10.00
304★	田	50c Columbian, No. 240, Block with vertical row of holes perforating stamps, no gum, Oddity .....	50.00
305★		\$1.00 Columbian, No. 241, fine .....	25.00
306★		\$1.00 Columbian, No. 241, well centered, thin spot .....	25.00
307★		\$1.00 Columbian, No. 241, Centered to B., fine .....	25.00
308★		\$1.00 Columbian, No. 241, slightly Defective, looks fine .....	25.00
309★		\$1.00 Columbian, No. 241, small thin, nicely centered .....	25.00
310★		\$2.00 Columbian, No. 242, no gum, tiny closed tear, well centered .....	25.00
311		\$2.00 Columbian, No. 242, fine .....	14.00
312★		\$3.00 Columbian, No. 243, very good .....	45.00
313★		\$4.00 Columbian, No. 244, small closed tear, no gum, looks fine .....	55.00
314★		<b>\$5.00 Columbian, No. 245, slightly stained, looks fine (Photo)</b> .....	<b>65.00</b>
315★		<b>\$5.00 Columbian, No. 245, very finely centered, tiny thin spot, (Photo)</b> .....	<b>65.00</b>
316★		<b>\$5.00 Columbian, No. 245, thin, looks fine</b> .....	<b>65.00</b>
317		<b>\$5.00 Columbian, No. 245, fine</b> .....	<b>45.00</b>
318	1894-98	2c Carmine, 160, selected for cancellations, stars, colored etc., very nice lot .....	—
319★	田 1894	2c Carmine lake No. 249, Block, fine .....	15.00
320		<b>2c Essay in blue, Two on card with &amp; without triangle, Rare</b> .....	—
321★		4c Dark brown, No. 254, Imprint plate no. strip of 3, no gum, very fine .....	9.00
322★	田	5c Chocolate, No. 255, Block, fine .....	10.00
323★	田	6c Dull brown, No. 256, Block, very good .....	12.50
324★		15c Dark blue, No. 259, small thin spot, very finely centered .....	9.00
325★		15c Dark blue, No. 259, very good .....	9.00
326★		\$1.00 Black, No. 261, very good .....	27.50
327★		\$1.00 Black, No. 261, perfs. in T., very good .....	27.50
328★	田	<b>\$1.00 Black, No. 261, Block, fine, scarce (Photo)</b> .....	<b>150.00</b>
329★		<b>\$2.00 Dark blue, No. 262, very fine, (Photo)</b> .....	<b>65.00</b>
330★		<b>\$5.00 Dark green, No. 263, fine, (Photo)</b> .....	<b>85.00</b>
331★		3c-6c, No. 268, 269, 281, 282, two of each, fine lot .....	13.30



332★田 1895	6c Dull brown, No. 271, Block, very fine .....	17.50
333	8c Violet brown, No. 272a, Revenue Wmkd. "I", fine .....	25.00
334★	15c Dark blue, No. 274, fine .....	5.00
335★	50c Red orange, No. 257a, very good .....	12.00
336★	\$1.00 Black, No. 276, fine .....	17.50
337★	\$1.00 Black, No. 276, fine, no gum .....	17.50
338★	\$1.00 Black, No. 276, small thin, otherwise fine .....	17.50
339★	<b>\$2.00 Dark blue, No. 277, very fine .....</b>	<b>25.00</b>
340	\$5.00 Dark green, No. 278, looks very fine, tiny closed tear .....	16.00
341★田 1898	2c Rose carmine, No. 279c, Block, very good .....	50.00
342★田	4c Lilac brown, No. 280a, Block, fine .....	6.00
343★	10c Brown, No. 282c, very good .....	7.00
344★	10c Brown, No. 282c, fine .....	7.00
345★田	10c Orange brown, No. 283, Block, very good .....	35.00
346○田	10c Orange brown, No. 283, Used Block, very good .....	12.00
347★	15c Olive green, No. 284, fine .....	6.00
348★田	1c Trans-Mississippi, No. 285, Imprint plate no. block of 4, fine .....	5.50
349★	2c Trans-Mississippi, No. 286, Imprint plate no. block of 25, fine to very fine .....	18.60
350★田	4c Trans-Mississippi, No. 287, Block, fine .....	18.00
351★	5c Commems., No. 288, 326, 330, very good .....	12.75
352★	10c Trans-Mississippi, No. 290, Imprint plate no. pair, very fine .....	15.00
353★	50c Trans-Mississippi, No. 291, Small thin spot, otherwise fine .....	20.00
354★	50c Trans-Mississippi, No. 291, fine .....	20.00
355★	<b>\$2.00 Trans-Mississippi, No. 293, Tiny thin, otherwise fine (Photo) .....</b>	<b>55.00</b>
356★	<b>\$2.00 Trans-Mississippi, No. 293, Perfs, in top, no gum .....</b>	<b>55.00</b>
357★	\$2.00 Trans-Mississippi, No. 293, Tiny thin spot, very good .....	55.00
358	\$2.00 Trans-Mississippi, No. 293, small closed tear, nicely centered .....	35.00

## TWENTIETH CENTURY

359★ 1901	1c-10c Pan-American, No. 294-99, very good to fine set .....	14.30
360★田	1c, 2c Pan-American, No. 294-95, Blocks, very fine .....	4.50
361★田	4c Pan-American, No. 296, Block, very fine .....	15.00
362★田	5c Pan-American, No. 297, Block, fine .....	15.00
363★田	10c Pan-American, No. 298, Block, fine .....	22.50
364★ 1902	1c-13c, No. 300, 303-306, 308, All with sheet margins signed by Wm. N. Meridith, Director, Apparently Presentation or Specimen Set, Fine .....	10.55+
365★	3c-10c, No. 302-05, 307, Imprint plate no. strips of 3, fine .....	45.50
366★	3c Bright violet, No. 302SE, Overprinted "Specimen", fine .....	10.00
367★田	3c Bright violet, No. 302, Block, fine .....	10.00
368★田	4c Brown, No. 303, Block, fine .....	6.50
369★田	4c Brown, No. 303, Block, very good .....	6.50
370★田	4c Brown, 8c Violet black, No. 303, 306, Blocks, very good .....	12.00
371★田	6c Claret, No. 305, Block, fine .....	11.00
372★	50c Orange, No. 310, fine .....	11.00
373★	\$1.00 Black, No. 311, fine .....	25.00
374★	\$1.00 Black, No. 311, Perf. initaled, well centered .....	25.00
375	\$2.00 Dark blue, No. 312, fine .....	10.00
376★田 1906	1c Blue green, No. 314, Imperf. block, fine .....	8.00
377★ 1906	2c Lake, No. 320a, Imperf. Horiz. pair, very fine .....	12.00

378★田	1904	1c, 2c Louisiana, No. 323-24, Left Arrow Blocks, fine .....	21.00
379★田		2c Louisiana, No. 324, Block, very good .....	6.00
380★田		2c Louisiana, No. 324, Block, fine .....	6.00
381★田		3c Louisiana, No. 325, Block, fine .....	15.00
382★		5c, 10c Louisiana, No. 326-27, very good .....	14.00
383★		10c Louisiana, No. 327, fine .....	9.00
384★		10c Louisiana, No. 327, thin spot, otherwise fine .....	9.00
385★		10c Louisiana, No. 327, small thin spot, otherwise very fine .....	9.00
386★		10c Louisiana, No. 327, very good .....	9.00
387★		10c Louisiana, No. 327, Tiny thin spot, nicely centered .....	9.00
388★田	1907	1c Jamestown, No. 328, Bottom arrow block, very good ....	5.00
389★田		2c Jamestown, No. 329, Bottom arrow block, very fine .....	7.00
390★田		2c Jamestown, No. 329, Left corner block, fine .....	3.50
391★		5c Jamestown, No. 330, Superb .....	5.00
392★田		<b>5c Jamestown, No. 330, Very Fine Top Arrow Block, (PHOTO) .....</b>	<b>55.00</b>
393田		5c Jamestown, No. 330, Used block, very good .....	18.00
394田	1908	3c Deep violet, No. 333, used block of 6, very good .....	18.00
395★田		6c Red orange, No. 336, Block, fine .....	12.50
396★		50c Violet, No. 341, Small closed tear, looks fine .....	10.00
397★	1909	50c Violet, No. 341, Thin spot, looks fine .....	10.00
398★		50c Violet, No. 341, fine .....	10.00
399★		\$1.00 Violet brown, No. 342, Small closed tear, otherwise fine .....	15.00
400★田		1c Green, No. 343, 408, Imperf. arrow blocks, fine .....	4.75
401★田		2c Carmine, No. 344, Imperf. right arrow block, very fine .....	10.00
402田		2c Carmine, No. 344, Imperf. used Center-line block, very fine except tiny thin .....	15.00
403		2c Carmine, 5c Blue, No. 344, 347, Auto-vending perf. pairs, very fine .....	9.75
404★田		3c Deep violet, No. 345, Imperf. block very fine .....	8.00
405★田		3c Deep violet No. 345, Imperf. Top Imprint plate no. block of 6, very fine .....	17.50
406田		4c Orange brown, No. 346, Imperf., used block, Fine .....	7.00
407★田		5c Blue, No. 347, Imperf., Imprint block, very fine .....	16.00+
408★田		5c Blue, No. 347, Imperf. block, very fine .....	16.00
409		1c-3c Imperfs. all with private perforations, 77 stamps, few unused some pairs nice lot, High cat. value, est. net \$15.00 .....	—
410★		4c Orange brown, Coil Pair, No. 354, fine .....	20.00
411★		1c Green, Bluish paper No. 357, fine .....	5.00
412★田		<b>1c Green, Bluish paper No. 357, Set of four diff. corner blocks showing split arrows and lines, very good, scarce .....</b>	<b>100.00</b>
413★田		<b>1c Green, Bluish paper, No. 357, Fine block with 2<sup>3</sup>/<sub>4</sub>mm spacing, scarce (3mm lists \$500.00) .....</b>	<b>—</b>
414		2c Carmine, Bluish paper, No. 358, very fine .....	5.00
415田		2c Lincoln, No. 368, Imperf., used block, Small thin spot looks very fine .....	11.00
416★		2c Lincoln, Bluish paper, No. 369, fine .....	15.00
417★田		<b>2c Lincoln, Bluish paper, No. 369, Block, very good .....</b>	<b>65.00</b>
418★田		2c Alaska-Yukon, No. 370, Two blocks, very good to fine .....	6.00
419田		2c Alaska-Yukon, No. 371, Imperf. used block, small thin spot, looks very fine .....	11.00
420田		2c Hudson-Fulton, No. 373, Imperf. used block, small closed tear, looks very fine .....	12.00
421★田	1910	1c Green, No. 374, Two diff. Star Imprint plate no. blocks of 6, fine to very fine .....	4.00



422★田		4c Brown, No. 377, Block, fine .....	3.75
423★	1911	1c Green, No. 383, Imperf., Set of 4 positions Imprint "A" plate no. strips of 3, very fine .....	As blocks 120.00
424★		2c Carmine, Coil pair, No. 388, fine .....	70.00
425★田	1912	5c Pan-Pacific, No. 399, Plate no. block of 4, fine .....	22.50
426★田		10c Pan-Pacific, No. 400, Very fine block except for gum crease .....	40.00
427★田		10c Pan-Pacific, No. 400, Block, fine .....	40.00
428★田		10c Pan-Pacific, No. 400, Block, fine .....	40.00
429★		10c Pan-Pacific, No. 400a, very fine .....	10.00
430★		10c Pan-Pacific No. 400a, very good .....	10.00
431★田		<b>10c Pan-Pacific, No. 400a, Block, fine</b> .....	<b>60.00</b>
432★田	1915	2c Pan-Pacific, No. 402, Block, very good .....	35.00
433田		5c Pan-Pacific, \$2.00 Blue, No. 403, 572, used Blocks of 6 and 10 Perf. Initialed, otherwise fine .....	22.00
434★		10c Pan-Pacific, No. 404, Centered to B., v. good (Photo) .....	40.00
435★田		<b>10c Pan-Pacific, No. 404, Block, Very fine, scarce (Photo)</b> .....	<b>200.00</b>
436★	1912	7c Black, No. 407, fine .....	5.00
437★田		7c Black, No. 407, Block, fine .....	25.00
438★田		7c Black, No. 407, Block, very fine .....	25.00
439★田		1c Green, 2c Carmine, No. 408-09, Kansas City Roulettes, Blocks, fine .....	—
440★		12c-20c, No. 417-19, very good .....	11.50
441★田		12c Claret brown, No. 417, Block, fine .....	7.00
442★田		15c Gray, No. 418, Plate no. block of 4, fine .....	20.00
443★		50c Violet, No. 421, fine .....	20.00
444★		50c Violet, No. 422, very good .....	13.50
445★		50c Violet, No. 422 slightly defective, looks fine .....	13.50
446★		\$1.00 Violet brown, No. 423, very fine .....	20.00
447★	1914-15	1c-15c, No. 424-37 very good .....	21.65
448★田		10c Orange yellow, No. 433, Block, fine .....	10.00
449★田		10 Orange yellow, No. 433, Block, fine .....	10.00
450★		30c Orange red, No. 439, fine .....	10.00
451★		30c Orange red, No. 439, fine .....	10.00
452★		<b>50c Violet, No. 440, fine</b> .....	<b>30.00</b>
453★		2c Carmine, Coil No. 444, Line pair, very fine .....	9.00
454★		2c Carmine, Coil No. 444, Line pair, very fine .....	9.00
455★		3c Violet, Coil No. 445, Centered to top, fine .....	12.50
456		3c Violet, Coil No. 445, fine .....	9.00
457★		4c Brown, Coil No. 446, very fine pair .....	14.00
458★		4c Brown, Coil No. 446, Paste-up pair, fine .....	14.00
459★	1916	3c Violet, Coil No. 456, Very fine pair .....	25.00
460★		4c-9c, No. 465-71, fine .....	17.25
461田		\$1.00 Violet brown, No. 478, Used block, closed tear looks fine .....	7.00
462★		\$5.00 Light green, No. 480, very fine .....	12.00
463田	1917-36	1c-\$5.00, Lot of used blocks of 4 and larger, includes a number of commems., 1247 stamps, very good to very fine .....	—
464★	1917	1c-30c, No. 498-516, very good .....	11.62
465★田		2c Deep rose, No. 499d, Block Type I, very good .....	10.00
466★		5c Rose (Error), No. 499h, very good .....	25.00
467★		3c Violet, No. 501, Sheet of 100, fine .....	50.00
468★田		15c Gray, No. 514, Block, tiny thin otherwise fine .....	15.00
469★田		20c Deep ultramarine, No. 515, Block, very good .....	10.00
470★田		50c Red violet, No. 517, Block, very good .....	7.00
471★田		\$1.00 Violet brown, No. 518, Imprint plate no. block of 6, fine .....	22.50

472★	1920	2c Carmine, No. 526, Block of 8 Imperf. between showing blind perfs., very good, Scarce oddity .....	—
473		1c Green, No. 531, Used Imperf. block, fine .....	8.00
474★		1c-3c, No. 531-35, Imperf. blocks, very fine .....	20.00
475★		2c Carmine, No. 532, Imperf. block, very fine .....	5.00
476★		2c Carmine, No. 532, Imperf. block, very fine .....	5.00
477★		2c Carmine, No. 532, Imperf. block, very fine .....	5.00
478★		2c Carmine, No. 532, Imperf. plate no. block of 6, very fine .....	10.00
479★		2c Carmine, No. 532a Type V, Imperf. Vertical pair, very fine .....	12.50
480		3c Violet, No. 535, Used Imperf. block, Slight corner crease, otherwise very fine .....	7.00
481★	1919	1c Gray green, No. 536, Block, very fine .....	8.00
482★		1c Gray green, No. 536, Block, very fine .....	8.00
483★		1c Gray green, No. 536, Plate no. block of 6, fine .....	17.50
484★		3c Victory No. 537, Bottom plate no. block of 6, very fine for this .....	5.00
485		3c Victory, No. 537, Used block of 40, fine piece .....	17.50
486★		1c-2c, No. 538-39, 543, Blocks, fine to very fine .....	11.25
487★		1c Green, No. 538a, Pair Imperf. horizontally, very fine .....	4.00
488★		2c Carmine rose, No. 539b, Block Imperf. horizontally thin spot .....	8.00
489★		3c Violet, No. 541, Block, very fine .....	17.50
490★		3c Violet, No. 541, Block, fine .....	17.50
491★		3c Violet, No. 541, Block, fine except one stamp has small ink stain .....	17.50
492★	1920	1c Green, No. 545, very fine .....	8.50
493		8c-\$2.00, No. 547, 572, C2, C3 (4), C4, C5 (2), All diff. pre-cancels, very fine .....	15.00
494★		<b>\$2.00 Carmine &amp; black, No. 547, Plate no. block of 4, very fine</b> .....	<b>30.00+</b>
495★		\$2.00 Carmine & black, No. 547, Top arrow block, very fine .....	42.50
496★		5c Pilgrim, No. 550, Block, fine .....	12.50
497★		5c Pilgrim, No. 550, Very Fine Top plate no. block of 6 .....	22.50
498★		5c Pilgrim, No. 550, Bottom plate no. block of 6, very good .....	22.50
499★	1922	12c Brown violet, No. 564, Plate no. star block of 6, very fine .....	10.00
500		12c-50c, No. 564, Block of 40. No. 567 Block of 63, No. 569 Block of 32, No. 570 Block of 32, fine lot of used blocks .....	12.05
501		30c Olive brown, No. 569, Double transfer big shift, Pair precanceled Worcester, Mass. ....	—
502		50c-\$1.00, No. 570 (Block of 49), No. 571 (Block of 40), fine used blocks .....	7.50
503		\$1.00 Violet Black, No. 571, Half sheet of 50, fine used block .....	5.00
504		\$2.00 Deep blue, No. 572, very fine used block of 10 .....	10.00+
505		\$2.00 Deep blue, No. 572, fine used block .....	4.00
506		\$5.00 Carmine & Dark blue, No. 573, very fine used block .....	4.00
507★	1923	1c Green No. 575, Imperf. plate no. block of 6, very fine .....	10.00
508★		2c Carmine, No. 577, Imperf. blocks, four diff. corner blocks, very fine .....	12.00
509★		2c Carmine, No. 579, Bottom margin block, fine .....	9.00
510		2c Carmine, No. 599, 634B, 2 line pairs Type II, 3 line pairs with Type I & II, 4 blocks 634B, all used .....	★ 346.00
511★	1924	1c Hug-Walloon, No. 614, Sheet of 50, very good to fine .....	11.00
512★		2c Hug-Walloon, No. 615, Sheet of 50, very good to fine .....	22.00
513★		5c Hug-Walloon, No. 616, Two blocks,, fine .....	20.00
514★		5c Hug-Walloon, No. 616, Plate no. block of 6, fine .....	15.00



515田		5c Hug-Walloon, No. 616, used block, fine .....	7.00
516★	1925	1c Lex-Concord, No. 617, Sheet of 50, fine .....	12.50
517★		1c Lex-Concord, No. 617, Sheet of 50, fine .....	12.50
518★		5c Lex-Concord, No. 619, Sheet of 50, very good .....	55.00
519★田		2c Norse-American, No. 620, Top plate no. block of 10, fine .....	6.80
520★	1926	2c Sesquicentennial, No. 627, Sheet of 50, very good .....	9.00
521田		5c Aeronautic, 5c Ericsson, No. 628 Block of 9 with 3 s.e., No. 650 Block of 10, fine used blocks .....	7.10
522		2c White Plains, No. 630, Three fine miniature sheets of 25, First Day Cancels from New York, Philadelphia, & Washington, D. C., scarce .....	21.00+
523★田		1½c Yellow brown, No. 631, Imperf. Center line block of 16, very fine .....	22.30
524★		2c Carmine, Type II, No. 634B, very good .....	15.00
525★田		<b>6c Red orange, No. 638, Freak block of 8 with gutter be- tween, Rare (Photo)</b> .....	—
526★	1928	2c Molly Pitcher, No. 646, Block of 56, fine .....	5.60
527田		5c Hawaii, No. 648, Used block of 10, very good .....	6.20
528★田	1929	1c-10c Kansas, No. 658-668, Complete set of Plate no. blocks, very good to fine .....	63.05
529★	1930	2c Charleston, No. 683, Sheet of 100, very good to fine .....	13.75
530★	1931	20c Carmine rose, No. 698, Block of 9 with double trans- fer on one stamp, very fine .....	—
531★		2c Yorktown, No. 703, Sheet of 50 Perf. all around, fine .....	—
532★田	1932	½c-10c Wash. Bicent., No. 704-15, Fine set of blocks .....	7.24
533★		1½c Wash. Bicent., No. 706, Sheet of 100, very good .....	8.75
534★		3c Wash. Bicent., No. 708, Sheet of 100, fine .....	17.50
535★		5c Wash. Bicent., No. 710, Half sheet of 50, fine .....	7.20
536★	1933	3c Byrd, No. 733, Sheet of 50, fine .....	4.30
537★田	1934	1c-10c National Parks, No. 740-49, Set of plate no. blocks of 6, very fine .....	10.80
538★	1937	5c Virginia Dare, No. 796, Sheet of 48, very fine .....	5.40
539★田	1938	\$1.00 Presidential, No. 832, Top arrow and double plate no. block of 4, very fine .....	7.50
540★		3c Small Northwest, No. 837, Sheet of 100, very fine except 3 stamps creased .....	11.25
541★田	1940	2c National Defense, No. 900, Block of 20, 10 showing very dry plate barely showing design, scarce .....	—
542★田		2c National Defense, No. 900, Sheet of 100, 10 stamps dry plate barely showing design, balance of sheet normal, scarce variety .....	—
543★		<b>3c National Defense, No. 901, Horizontal Pair Imperf. be- tween, SUPERB, Rare (Photo)</b> .....	—

#### AIRMAILS

544★田	1918	6c Orange, No. C1, Top arrow block, very fine .....	7.50
545田		16c Green, No. C2, Used Center line block, very fine ★ .....	40.00
546★田		16c Green, No. C2, Top arrow plate no. block of 6, fine .....	30.00
547★田		16c Green, No. C2, Top arrow plate no. block of 8, fine .....	38.00
548★田		24c Carmine rose and blue, No. C3, Top arrow plate no. block of 8, slight gum crease which doesn't show on face, fine .....	30.00
549★	1923	8c-24c Airmails, No. C4-6, fine .....	6.10
550		16c Dark blue, No. C5, Two used str. edge pairs, very good .....	8.00
551★田		16c Dark blue, No. C5, Block, fine .....	12.50

552	16c Dark blue, No. C5, Used Block, small thin, otherwise fine	10.00
553★	16c Dark blue, No. C5, Right plate no. block of 6, fine	25.00
554★	16c Dark blue, No. C5, Left plate no. block of 6, fine	25.00
555★	24c Carmine, No. C6, Block, fine	15.00
556★	24c Carmine, No. C6, Left plate no. block of 6, fine	25.00
557★ 1930	65c Graf-Zeppelin, No. C13, very fine	8.00
558	<b>65-\$2.60 Graf-Zeppelin, No. C13-15, very fine set.</b>	<b>42.00</b>
559	\$1.30 Graf-Zeppelin, No. C14, very fine	12.00
560★	<b>65c-2.60 Graf-Zeppelin, No. C13-15, Fine to very fine set of blocks (Photo)</b>	<b>225.00</b>
561★	\$2.60 Graf-Zeppelin, No. C15, fine	22.00
562★ 1885	10c Special Delivery, No. E1, Block, very good	20.00
563★ 1894	10c Special Delivery, No. E4, very fine	8.00
564★ 1902	10c Special Delivery, No. E6, Left arrow block, very good	7.00
565★ 1908	10c Special Delivery, No. E7, Block, very fine	7.50
566★ 1914	10c Special Delivery, No. E9, Block, fine except for tiny thin	13.50
567★ 1914	10c Special Delivery, No. E9, Plate no. block of 4, very fine	13.50
568★ 1916	2c Postage due, No. J60, Plate no. block of 6 with 3mm spacing, very good	26.25+
569 1930	\$5.00 Postage due, No. J78, Used blocks of 48, 24 and 18 fine	5.40
570★ 1919	<b>2c-60c Shanghai, No. K1-K14, Blocks, fine to very fine</b>	<b>80.00</b>

## DEPARTMENTS

571★ 1873	<b>2c Executive, No. O11, very fine (Photo)</b>	<b>20.00</b>
572	3c Executive, No. O12, fine	15.00
573★	10c Executive, No. O14, very good	25.00
574★	3c Interior, No. O17, very good	5.00
575★	3c Interior, Overprinted "Specimen", No. O17SD, very good	50.00
576★	24c Justice, No. O32, very good	30.00
577	24c Justice, No. O32, fine	20.00
578★	30c Justice, No. O33, fine	30.00
579	90c Navy, No. O45, tiny thin spot, centered	15.00
580★	90c Navy, No. O45, very good	27.50
581★	10c Post Office, Overprinted "Specimen", No. O51SD, very fine	20.00
582★	\$2.00 State, No. O68, very good	50.00
583★	24c Treasury, No. O80, fine	12.00
584★	24c Treasury, No. O80, fine	12.00
585★	1c War, No. O83, very fine	10.00
586★	2c War, No. O84, very good	10.00
587★	3c War, No. O85, fine	10.00
588★	12c War, No. O89, fine	8.00
589★	3c Agriculture, No. O95, thin spot, otherwise very good	10.00
590	30c Treasury, No. O112, very fine	7.50
591 1911	50c Postal Savings, No. O122, fine	6.00
592	50c Postal Savings, No. O122, very good used block	30.00
593★	\$1.00 Postal Savings, No. O123, very fine	6.00
594★ 1901	Post Office Seal, Imperf. No. OX10, Block, very fine	4.00+
595★ 1875	10c, 25c Newspapers, No. PR6-7, very fine	5.00
596★ 1883	<b>2c Newspaper, No. PR80, fine</b>	<b>30.00</b>
597★ 1895	<b>\$100.00 Newspaper, No. PR113, very fine</b>	<b>45.00</b>
598★	1c-\$100.00 Newspaper, No. PR114-120, 126-130, fine set	9.45
599★ 1909	Postal Telegraph, No. 15TO3, very good, scarce	25.00



600★	1913	3c Parcel Post, No. Q3, Complete sheet of 45, fine .....	21.20
601	1853	6c Green on Buff, Cut Square No. U14, very good .....	9.00
602	1855	10c Green on White, Cut Square No. U15, fine .....	8.00
603	1860	3c & 1c Red & Blue on Buff, Cut Square No. U29, defective .....	22.50
603A ★	1861	3c Pink on Blue, Letter sheet No. U36, Unfolded, very fine .....	7.00
603B ★		3c Pink on Blue, Letter sheet No. U36, Unfolded, very fine .....	7.00
604★	1861	24c Green & red on buff, Cut Square No. U44, Small thin looks fine .....	12.00
605★	1853	6c Green on White, Cut Square No. U13, very good .....	12.00
606	1884	2c Red on White, Cut Square No. U247, Cut close otherwise fine .....	20.00

## REVENUES

607	1862-71	1c Playing Cards, No. R2c, Extra row of perfs. at bottom, fine .....	10.00
608		1c Playing Cards, No. R2c, Fine vertical pair .....	25.00
609		9 Photographs with Civil War revenues on back, fine lot .....	—
610		4c Playing Cards, No. R21c, Repaired looks fine .....	20.00
611		25c Protest, Part perf. No. R49b, fine .....	8.00
612		30c Foreign Exchange, No. R51c, Extra row of perfs horizontally and vertically, fine .....	12.00
613		30c Foreign Exchange, No. R51c, very good .....	12.00
614		40c Foreign Exchange, No. R53a, Imperf. cut in R, very good .....	100.00
615		50c Passage Ticket, No. R61a, Vertical Imperf. pair, very good .....	30.00
616		30-\$1.90, No. R64b, R80c, R140, fine lot .....	7.75
617		\$1.00 Mortgage, No. R73c, small thin, otherwise very fine .....	12.00
618		\$1.00 Mortgage, No. R73c, closed tear, otherwise very good .....	12.00
619		\$1.00 Passage Ticket, No. R74c, very good .....	10.00
620		\$1.30 Foreign Exchange, No. R77a, Imperf. Small margins sold "As is" .....	250.00
621		<b>\$200.00 Internal Revenue, No. R102a, Imperf., Three large margins, cuts slightly at bottom, very nice copy of scarce stamp .....</b>	<b>125.00</b>
622		<b>\$200.00 Internal Revenue, No. R102c, fine .....</b>	<b>50.00</b>
623		\$10.00 Internal Revenue, Second Issue, No. R128, very fine .....	6.00
624		\$25.00 Internal Revenue, Second Issue, No. R130, small thin spot, very finely centered .....	40.00
625		<b>\$25.00 Internal Revenue, Second Issue, No. R130, Extra row of perfs. running diagonally across stamp, very fine .....</b>	<b>40.00</b>
626		\$10.00 Internal Revenue, Third Issue, No. R149, very fine .....	8.00
627		<b>\$20.00 Orange &amp; black, Third Issue, No. R150, two extra rows of perfs. running vertically through stamp, very fine .....</b>	<b>35.00</b>
628		\$5.00 Newspaper stamp surcharged "Int. Rev. \$5.00 Documentary" No. R159, small thin otherwise very fine .....	13.50
629		\$30.00 Documentary, No. R177, Slightly defective, look very fine .....	8.00
630		\$3.00 Documentary, No. R183, Uncancelled, fine .....	10.00+
631		\$10.00 Documentary, No. R193, Cut cancelled, fine .....	9.00
632		\$30.00 Documentary, No. R246, Strip of 4, very fine .....	5.00
633★		2c-10c Documentary, No. R260-62, fine .....	—
634★		3c Proprietary, No. RB3TC, Trial Color Proof on Bond Paper, Block, very fine .....	10.00

635★		3c Proprietary, No. RB3TC, Trial Color Proof on Bond Paper, Block of 15, very fine .....	37.50+
636	1914	3¾c Proprietary, No. RB57, Block, very good .....	10.00
637	1933	Large Wines 10c-50c, RE65 Block of 4, RE70 Block of 12, RE73 Block of 20, fine lot .....	—
638	1934	\$1.00-\$10.00 Silver Tax, No. RG13-18, fine, mostly cut cancelled .....	—
639		\$30.00 Silver Tax, No. RG19, cut cancel, Fine, scarce .....	—
640		\$60.00 Silver Tax, No. RG20, cut cancel, fine, scarce .....	—
641		\$100.00 Silver Tax, No. RG21, punch cancel, very fine, scarce .....	—
642		<b>\$500.00 Silver Tax, No. RG22, cut cancel, very fine, rare</b> .....	—
643		<b>\$1000.00 Silver Tax, No. RG23, small punch cancel, very fine scarce</b> .....	—
644		100 Class A Cigarettes, Blue, used sheet of 20, very fine .....	—
645	1857	1c Black Carrier, No. 1LB8, Blue cancel, fine .....	10.00
646	1851	2c Carrier, No. 4LB13, very good .....	65.00
647	1861-63	Confederate, 5c-10c, No. 200, 201, 203, very good to fine .....	21.00
648		Confederate, 5c-20c, No. 200, 205, 210, 212, Pair of each, very good to very fine, two unused .....	21.45
649		Confederate, 5c-20c, No. 200 (3), 201, 204, 212, fair to fine, Two stamps defective .....	62.50
650		Confederate, 10c Rose, No. 204, fine .....	35.00
651★		<b>Confederate, 10c Blue, With outer frame line, No. 209, line shows on two sides, Scarce (Photo)</b> .....	200.00

#### FOREIGN

652		<b>Argentine Republic</b> , 1862, 10c Green, No. 6, fine .....	12.00
653		—1864, 5c Brown rose, No. 8, very good .....	35.00
654		—1864, 15c Blue, No. 13, fine .....	12.50
655		—1864, 5c Lake, 10c Green, No. 11B, 12, fine .....	7.00
656		<b>Austria, Lombardy Venetia</b> , 1850-59, Austria No. 10, Lombardy Venetia, Strip of 3 of No. 4, fine .....	5.30+
657		<b>Austria</b> , 1850, 5kr Brown, No. PR4, small thin spot, very good .....	25.00
658		<b>Azores</b> , 1868, 50r Green, No. 4, small thin spot, looks very fine .....	25.00
659★		<b>Azores</b> , 1869, 25r Rose, No. 16, fine .....	15.00
660		<b>Belgium</b> , 1849, 10c Brown, 20c Blue, No. 1-2, fine .....	8.00
661		<b>Buenos Aires</b> , 1860, 4c Green, No. 9, very fine .....	15.00
662		—1860, 2p Vermilion, No. 11, fine .....	25.00
663★		<b>Canada</b> , 1868, 6c Dark brown, No. 25, very good .....	10.00
664★	田	—1890, 6c Red brown, No. 39, Block of 10, very good .....	27.50+
665★	田	—1890, 5c Gray, 6c Red brown, No. 39, 44, Blocks, very good .....	15.00
666★	田	—1893, 8c Gray, No. 48, Block, very good .....	12.00
667★		<b>Foreign</b> , 88 Foreign Airmails, unused, very fine lot .....	23.70
668★	田	<b>Canal Zone</b> , 1925, 10c Orange, No. 87, Block, fine .....	17.50
669★		—1931, 5c-\$1.00 Airmails, No. C5-C10, Complete set, fine to very fine .....	3.80
670		<b>Cape of Good Hope</b> , 1853, 1p Red triangle, No. 1, fine .....	11.00
671		—1855, 1p Red triangle, No. 3a, fine .....	13.50
672		—1855, 1p Red, 4p Blue, triangles, No. 3a, 4, very good .....	16.50
673		—1855, 1sh Dark green, triangle, No. 6a, very good .....	20.00
674		<b>Denmark</b> , 1851, 2rs Blue, No. 1, very good .....	22.50
675		1864, 4s Red, No. 13, Two strips of 3 and one pair, very fine .....	—
676		<b>Egypt</b> , Collection of 80 different Egypt .....	—
677		<b>Germany</b> 1872, ¼sgr-1sgr, No. 8, 9, 10, All tied on small piece .....	6.50



678★	<b>Great Britain</b> , 1841, 1p Red brown, 1p Lake red, No. 3, 3a, four stamps, one used .....	17.60
679	—Over 600 stamps, about half #33, good for plating, examine .....	—
680★	—1937, Two sets of British Coronations without Newfoundland, very fine .....	—
681	<b>Hawaii</b> , 1859, 1c Black, small tear in margin, looks fine .....	20.00
682	—1890, 3 Bisepts tied on small pieces from Kahului, Maui, No. 52, very fine .....	—
683	—1893, 12c Red lilac, No. 63, very fine .....	5.00
684	—1893, 50c Red, \$1.00 Rose red, No. 72-73, first has thin spot, other very fine .....	7.50
685★	<b>Helvetia</b> , 1891, 1fr Carmine, 3fr Yellow brown, No. 96-97, fine .....	7.25
686★	<b>Hong Kong</b> , 1862, 12c Blue, No. 3, very good .....	7.00
687★	—1862, 48c Rose, No. 6, very good .....	22.50
688★	—1863, 30c Vermilion, No. 19, very good .....	15.00
689★	<b>Luxembourg</b> , 1872, 1fr on 37½c Bistre, No. 26, very fine .....	17.50
690	<b>Netherlands</b> , 1852-64, 5c-15c, No. 1-6, very good .....	17.35
691	<b>New Brunswick</b> , 1851 3p Red, No. 1, very good .....	15.00
692	1851, 3p Red, No. 1, Looks very fine, thin spot .....	15.00
693	—1851, 3p Red, No. 1, very good .....	15.00
694	—1851, 3p Red, No. 1, 2 Bisepts off cover, fine .....	—
695	—1851, 6p Olive green, No 2, very good .....	45.00
696	—1851, 6p Olive green, No. 2, repaired, looks fine .....	45.00
697	<b>Newfoundland</b> , 1857, 2p Orange, No. 11, fine .....	35.00
698★	—1866-94, 5c Brown No. 25, fine .....	40.00
699	—1866-94, 5c Brown, No. 25, very good .....	25.00
700	—1866-94, 5c Brown, No. 25, very good, thin spot .....	25.00
701	—1866-94, 5c Brown, No. 25, very good .....	25.00
702	<b>Newfoundland</b> , 1866-94, 5c Brown, No. 25, very good .....	25.00
703	—1866-94, 5c Black, No. 26, very good .....	15.00
704★	—1868-94, 3c Vermilion, No. 33, very good .....	13.50
705★	—1897, 1c on 3c Gray lilac, No. 77, fine .....	40.00
706★田	—1937, 1c-48c, No. 233-243, Fine set of Coronation blocks .....	14.92
707	<b>New South Wales</b> , 1852, 3p Emerald, No. 17a, thin, otherwise very good .....	12.00
708	<b>Nova Scotia</b> , 1851, 3p Blue, No. 2, fine .....	7.00
709★	<b>Philippines</b> , 1899, 50c Orange, No. 212, 219, One stamp has thin spot, other has no gum .....	23.50
710★	—1914, 10c Blue, No. 280, (2) perfs. in L., very good .....	9.00
711★	—1926, 2c-24c, No. 319-24, fine to very fine .....	4.05
712★	—1899, 2c-10c, No. J2, 3, 4 (2), Postage Dues, fine .....	3.50
713★	<b>Roman States</b> , 1867, 80c Dull pink, No. 21, Two periods after "80" variety, very fine .....	4.00+
714	<b>South Australia</b> , 1856-69, 6p-1sh, No. 13, 20, 25, 26, very good .....	14.00
715田	<b>Spain</b> , 1856-62, 4c Rose, 4c Dark Brown, No. 45 Block of 9, No. 56 Block of 4, very fine used blocks .....	—
716	—1874 16m Rose, No. X4, Tied on small piece, Superb .....	20.00
717	<b>St. Vincent</b> , 1863, 6p Deep green, No. 8, very good .....	15.00
718	<b>Switzerland</b> , 1850, 10r Black & red on yellow, No. 21a, very fine .....	12.00
719	<b>Uruguay</b> , 1859, 240c Vermilion, No. 12, very good .....	25.00
720	—1864, 6c Pale red, 10c Ochre, No. 19, 22a, very good .....	20.00
721★	—1866, 20c Rose, No. 33, fine .....	12.00

#### U. S. WHOLESALE

722	1851	1c Blue, No. 32D (10), 4 with slight defects, very good lot	50.00
723	1851	3c Dull red, No. 33 (41), very good .....	12.30

724	1857	1c Blue, No. 42F (10), very good .....	10.00
725	1857	3c Dull red Type I, No. 43 (10), very good .....	17.50
726	1857-67	3c Red, No. 44 (86), 94 (74) .....	27.10
727	1861	1c Blue, No. 63 (15), very good .....	18.75
728	1861	10c Yellow green, No. 68 (15), very good .....	18.75
729	1862	2c Black, No. 73 (25), very good to fine .....	25.00
730		Stock Book of U. S., Mostly early some unused and a few foreign, .....	100.00
731	1867	3c Red, No. 94 (100) many fancy cancellations, nice lot ....	25.00
732	1871	12c Dull violet, No. 151 (8), very good .....	16.00
733	1873	15c Yellow orange, No. 163 (8), very good .....	28.00
734	1873-79	15c Orange, No. 163 (3), 189 (9) .....	21.00
735	1875	5c Blue, No. 179 (40), very good to fine .....	30.00
736	1879	1c Dark ultramarine, No. 182 (400) very good to fine .....	48.00
737	1879	30c Full black, No. 190 (10), very good .....	20.00
738	1882	6c Rose, No. 208 (4), fine .....	11.00
739★	1893	2c Columbian, No. 231 (50) with broken Frame lines, very good to very fine .....	37.50
740★	1893	2c Columbian, No. 231 (7 blocks), very good to fine .....	17.50
741★	1893	2c Columbian, No. 231 (40), very good to fine .....	14.00
742	1893	5c Columbian, No. 234 (50), fine lot .....	15.00
743★	1893	15c Columbian, No. 238 (4), very good to fine .....	18.00
744	1895	8c Violet Brown, No. 272 (375), very good to very fine ....	22.50
745	1898	4c Trans-Mississippi, No. 287 (7), fine .....	12.25
746★	1903	3c Bright violet, No. 302 (10), fine .....	20.00
747	1903	3c Bright violet, No. 302 (100), very good to very fine ....	30.00
748	1903	50c Orange, No. 310 (15), very good .....	22.50
749	1904	1c Louisiana-Purchase, No. 323 (40), very good .....	12.00
750	1907-09	1c-2c Jamestown, 2c Alaska-Yukon, No. 328-29, 370 (50 each) .....	18.00
751	1907	1c-5c Jamestown, No. 327-30 (10 sets), very good .....	22.60
752	1907	5c Jamestown, No. 330 (10) Very good .....	20.00
753	1908	\$1.00 Violet brown, No. 342 (5), fine except each str. edge	22.50
754	1909	2c Lincoln, No. 367 (100), very good .....	10.00
755★	1909	2c Hudson-Fulton, No. 372 (30), very good .....	10.50
756★	1909	2c Hudson-Fulton, No. 372 (40), fine .....	14.00
757★	1910	1c Green Coil, No. 385 (12) in pairs, very good .....	18.00
758	1912	7c Black, No. 407 (25), very good to fine .....	18.75
759	1912	50c Violet, No. 421 (20), very good .....	30.00
760★	1914	10c Orange yellow, No. 433 (7), very good .....	14.00
761★	1916	4c Orange brown, No. 465 (16), very good .....	32.00
762	1916	20c Light ultramarine, No. 476 (3 blocks), fine .....	24.00
763	1916	20c Light ultramarine, No. 476 (3 blocks), very good .....	24.00
764★	1916	2c Carmine, Coil No. 491 (25 pairs), very fine .....	10.00
765	1917	\$1.00 Violet brown, No. 517 (22 blocks), very good .....	16.50
765	1917	\$1.00 Violet brown, No. 517 (22 blocks), very good .....	16.50
767	1922	\$5.00 Carmine & blue, No. 573 (10), very fine .....	6.50
768★	1923	4c Yellow brown, No. 585 (30), mostly blocks, fine .....	16.25
769★	1927	2c Burgoyne, No. 644 (40), fine .....	10.00
770★	1928	5c Aeronautics, No. 650 (40), fine .....	14.00
771★	1928	5c Aeronautics, No. 650 (40), fine .....	14.00
772★	1932	5c Olympics, No. 719 (8 blocks), very fine .....	4.40
773	1934	10c National Parks, No. 749 (220), fine .....	10.00
774★	1936	3c Tipex, No. 778 (50 sheets), very fine .....	12.00
775★	1936	3c Tipex, No. 778 (100 sheets), very fine .....	24.00
776	1923	8c-24c Airmails, No. C4-C6, (5 sets), fine .....	19.25
777	1927	20c Airmail, No. C9, (100), very good .....	12.00



778★	1873	2c Dept. of Interior, No. O97 (20), some blocks, very good	8.00
779★	1913	3c Parcel Post, No. Q3 (40), Includes some blocks, fine lot	18.80
780★	1913	4c Parcel Post, No. Q4 (16) includes 3 blocks, very good	19.00
781★	1913	15c, 20c Parcel Post, No. Q7 (2), Q8 (3), very good to fine	12.50
782	1862-71	\$1.30 Foreign exchange, No. R77c (4), very good	16.00
783	1898	80c Battleship, No. R172 (100) cut cancel, very good	10.00

### FOREIGN WHOLESALE

784	<b>Chile</b> , 1938, 5p Dark Slate green, No. 208 (30), very fine	9.00
785★	<b>Czechoslovakia</b> , 1938, 2k+3k Black, No. 152 (8), very fine	6.00
786	<b>Cuba</b> , 1899, 2c Surcharged on 2c Carmine No. 222 (100), very good to very fine	15.00
787	<b>Cuba</b> , 1899, 2c Surcharged on 2c Carmine, No. 222 (100), very good to very fine	15.00
788	—1900-37, Dominican Republic No. 303 (30), Nicaragua No. O144 (30), Paraguay No. 343 (40), fine	11.50
789★	<b>Guatemala</b> , 1938, Miniature sheets, No. C92 (10), very fine	7.00
790★	<b>Newfoundland</b> , 1866, 2c Green, No. 24 (4), No. 24a (20), very good	22.00
791	<b>Newfoundland</b> , 1866, 2c Green, No. 24 (6), very good	15.00
792★	<b>Panama</b> , 1906, No. 183 (8), No. 192 (4), fine	6.20
793	<b>Philippines</b> , 1909, 1p Pale violet, No. 260 (20), fine	22.00
794	—1909, 1p Pale violet, No. 260 (20), fine	22.00
795	—1909, 1p Pale violet, No. 260 (20), very good	22.00
796	—1909, 1p Pale violet, No. 260 (20), very good	22.00
797	—1909, 1p Pale violet, No. 260 (20), very good	22.00
798	—1914, 2c Green, No. 276 (1000), very good to very fine	100.00
799★	—1926, 4c Carmine & black, No. 320 (30), mostly blocks, very fine	10.50
800★	<b>Thrace</b> , 1920, Green No. N26a (20), Inverted surcharge, fine	10.00

END OF SALE — MAIL BIDS EARLY



*DON'T FORGET*  
"BUDDY BAZAAR"

*For the Benefit of*

**U. S. O.**

June 12th and 13th, 1942

Under the Auspices of the  
AMERICAN STAMP DEALERS ASS'N.

To be held at the  
**GEORGE WASHINGTON HOTEL**  
23rd ST. & LEXINGTON AVE.  
NEW YORK, N. Y.

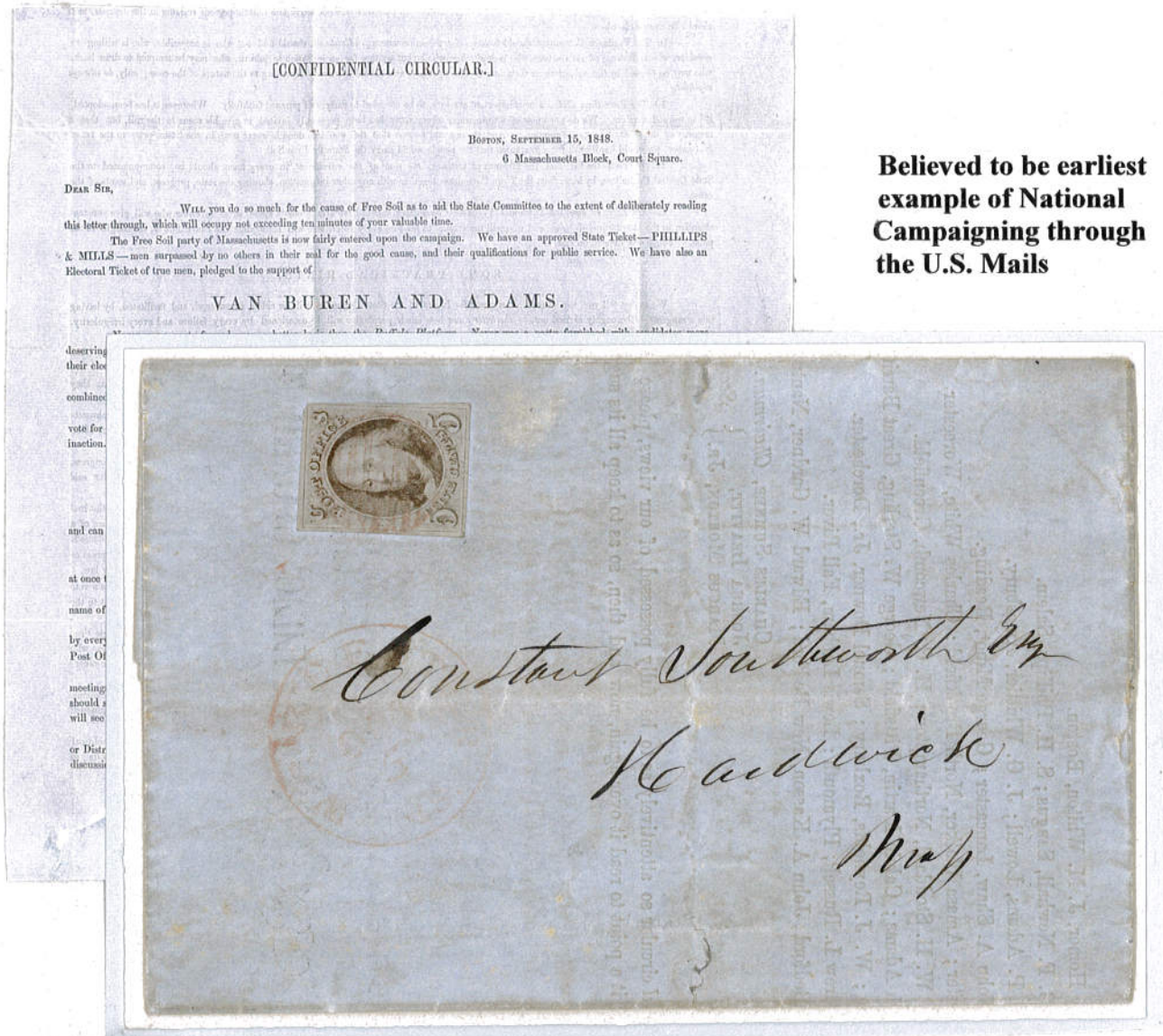


## MAINSTREAM ACCEPTANCE OF THE 1847 ISSUE

The purpose of this frame is to illustrate how quickly, and how deeply, adhesive stamps became part of American society. The covers shown on these pages reflect the most important political event of the era (the Presidential election of 1848 and the subsequent accession of Millard Fillmore to the Presidency), as well as some of the alternative ways the new stamps were treated at the local post office level.

Having demonstrated that letters using postage stamps were operationally and logistically equivalent to stampless mail, this frame shows that there were also no apparent cultural barriers to prevent their full integration into society; they were accepted by those who sent mail, as well as by those who processed it.

### 1848 PRESIDENTIAL ELECTION AND THE ACCESSION OF MILLARD FILLMORE



**Believed to be earliest  
example of National  
Campaigning through  
the U.S. Mails**

In 1848, the Whig party candidates for President/Vice President were Zachary Taylor, a hero of the recent Mexican-American War, and Millard Fillmore, Comptroller of the State of New York. When the Democratic Party nominated Lewis Cass for President, a dissident faction put forth their own "Free-Soil candidate," Martin Van Buren; Van Buren had previously been President (1837-1841).

This "confidential circular" in support of the Van Buren candidacy shows a printed dateline at Boston, September 15, 1848, but bears a lightly-struck "WORCESTER/MS./OCT 5" circular datestamp at left center. The five cent adhesive paid the postage to nearby Hardwick, MS.