

91st Public Sale

GREGORY MOZIAN, Auctioneer

**UNITED STATES
& FOREIGN
U. S. WHOLESALE**

SALE TO BE HELD

WEDNESDAY, APRIL 21st, 1943

at 2 P. M.

ROBERT A. SIEGEL

AUCTIONS

505 FIFTH AVENUE

NEW YORK, N. Y.

CONDITIONS OF SALE

1. The terms of sale are strictly cash to the highest bidder. All buyers are expected to pay for lots within three days of receipt, unless special arrangements have been made prior to the sale.
2. All bids are per lot as numbered in the catalogue and not per piece, unless otherwise announced by the auctioneer at the time of sale.
3. Any lot the description of which is incorrect is returnable only within three days of receipt. All disputed lots must be returned intact as received. Lots containing five or more stamps are not returnable at any time. No lots may be returned by purchasers who have had the opportunity to examine them before the sale.
4. Successful mail bidders, unless they are known to us or supply acceptable references, will be notified of the amount of the lots secured for them, and are expected to send payment in full before the lots are forwarded.
5. If the purchase price has not been paid within the time limit, or lots taken up within seven days from date of sale, they may be resold and any losses arising from such sale charged to the defaulter.
6. All stamps are sold as genuine, except where sold "As Is". Claims for any lot proving otherwise, must be made within two weeks from date of sale.
7. The right is reserved to group two or more lots, also withdraw any lot or lots from the sale, or to act on behalf of the seller.
8. Until paid for in full all lots remain the property of Robert A. Siegel.
9. No commission is charged for buying at our sales, but all forwarding charges will be added to the purchase price.
10. In addition to the purchase price, the buyer will be required to pay the one (1) percent New York City sales tax, unless he is exempt from the payment thereof.
11. Lots will be sent for inspection, provided such lots are returned to us the same day as received. Postage and registration both ways will be charged. Approximate values of lots will be given on request.
12. The placing of a bid shall constitute acceptance of the foregoing conditions of sale.

Lots are on display one full week before the sale.

In sending bids, always state the highest price you are prepared to pay for the lot. Your limit will not be used as a starting bid unless absolutely necessary.

DESCRIPTIONS

Superb—the finest condition for noteworthy, outstanding copies.

Very Fine (VF)—means that there is a slight deviation from the above.

Fine (F)—means that the perforations do not touch the design on issues after 1890, but in some cases may just touch in earlier issues; if used, fairly lightly cancelled.

Very Good (VG)—means that the appearance is generally fine but that the perforations cut the design slightly.

Good (G)—means average off-centering; or fairly attractive with slight defects. Original gum is not to be expected on 19th Century stamps up to 1888 unless so stated.

Scott's 1943 Specialized United States Catalogue is used for cataloging our lots of United States.

WE SOLICIT FINE MATERIAL FOR FUTURE SALES

CATALOGUE

STAMPLESS COVERS

(all circles unless otherwise stated)

- 1 **ALABAMA**, collection of 82, various towns few ms., many rates
Good for specialist
- 2 **ALEXANDRIA, Va.**, 1859, and **FREE** on Very fine fancy "Machinist"
corner card in blue **(Photo)**
- 3 **BALTIMORE RAIL ROAD**, red **FREE** and franking signature. Very
good
- 4 **BOSTON PAID**, fine black strike on "Massasoit Salve" corner card,
scarce Very fine **(Photo)**
- 5 **CHATANOOGA, TENN.**, dated, Boxed, "Due 3" circle, both blue, Sol-
dier's envelope. Good
- 6 **CINCINNATI, 3 PAID**, Red and "Paid" on very fine "John Wagner
etc." in blue corner card
- 7 **CONNECTICUT**, New Jersey, N. Y., Penna. etc, various rates, some
ms. Good lot of 24
- 8 **HELENA, ARK.**, and 5 Red 1852. Small envelope. V. F.
- 9 **HONESDALE, PA.**, and "PAID 3," black strikes on N. York and Erie
Telegraph Line "corner card, cover mended"
- 10 **HUNTSVILLE, AL.** and "5" in five pointed star. Very fine strikes in blue
on front
- 11 As previous, 1848 full letter, Fine. **(Photo)**
- 12 As previous, 1850, full letter, Fine
- 13 As previous, 1853, but in scarce black, V. G.
- 14 As previous, 1848 and 1851, both good strikes
- 15 As previous, but fancy starred "10" blue circle on 1848 full letter scarce,
V. good
- 16 **INDIANA & ILLINOIS**, nine covers from each state, nice lot of 18
- 17 **MAINE (4)**, N. H. (Hanover oval) **CONN (2)**, fine lot of seven
- 18 **MISSISSIPPI**, nine includes Hernando 1842, two ms. Good lot
- 19 **MISSOURI (4)**, **MISS. (6)**, **LA (3)**, thirteen nice covers
- 20 **NATCZ. MT.**, Very fine strike on 1814 folded letter to Providence, 25
ms rate **(Photo)**
- 21 **NEW JERSEY (4)**, N. Y. (Seneca Falls 1828-30), Md. (9) Very fine lot
- 22 **NEW ORLEANS**, 1839-52, Various rates Very good lot of twenty four
covers
- 23 **NEW YORK CONFERENCE SEMINARY**, school calendar on white
with "PAID" handstamp. Scarce
- 24 **NEW YORK FREE**, red, Stafford Olive Tar Co." corner card, with in-
teresting illustrated **medical** circular. Very fine **(Photo)**

STAMPLESS COVERS (Continued)

25	NEW YORK , eleven includes five ovals, N. Y. steam ship, also Nesbit imprint, Fine lot	_____
26	OHIO , forty covers includes Cleveland 1833, Elyria 1839, both red. Str. lines, Zanesville 1832-33 are ovals, other circles, Various rates fine lot	_____
27	RICHMOND , 1792 "FREE", stained otherwise, fine, Straight line	_____
28	SOUTHERN , Thirty, Ala., Ga., Ky., La., Miss., Tenn., Va., includes Mobile "Drop 1ct." and "Sir John's Run, Va." Fine lot	_____
29	SOUTHERN , Twenty four, includes Ark., Ga., N. C., and Va. Very good lot	_____
30	STEAMER 5 OREGON , red oval, 1846 Very fine (Photo)	_____
31	TALLAHASSEE, FLO. , black oval 1840 year dated, desirable Territorial, good strike	_____
32	TELEGRAPHS , fine lot of eighteen corner cards various Telegraph companies	_____
33	TENNESSEE , Various towns, few ms. nice lot twenty two good for specialist	_____
34	TENNESSEE , Three soldiers envelopes, all different "DUE 3" hand stamps and Bureau Med. & Surgery, free (Washington). Very good	_____
35	U. S. CITY DESPATCH POST , 1843, 44 (New York) both on American Land Co. meeting notices. Very fine	_____
36	VARIOUS , twenty-four, includes Boyd's Ships, Letter Mail, etc., etc. Very good lot	_____

1847-51 ISSUES ON COVER

37	1847	5c Red brown (28), tied red grid, close at R. Very good	13.50
38	—	5c Red brown (28), tied, defective	13.50
39	1851	1c Blue, Type III A (32B), tied with Boston "PAID", cut in R. and T., Very good	50.00
40	—	1c Blue, Type IV (32d), three singles, one defective others. Fine	24.00
41	—	1c Blue, Type IV (32d), top margin vertical pair town tied and single ms cancel, Fine	21.50+
42	—	3c Dull Red (33), Tied bisect "Henderson Tex" circle and Due 5 in ms. Fine curiosity (Photo)	_____
43	—	3c Dull Red (33), tied Pittsburg, on Very fine "Taylor & Co." wire factory blue corner card	_____
44	—	3c Dull Red (33), tied Wheeling, Va. on "Crescent Iron Works" corner card in blue V.F.	_____
45	—	3c Orange Brown (33b), Eastern R. R. in blue, margin copy cut in at top	_____
46	—	3c Dull Red (33), tied black town, "Due 5" handstamped. Very good	_____
47	—	3c Orange Brown (33b), tied New York four Bar cancel, Fine	_____

1851 ISSUES ON COVER (Continued)

48	—	3c Orange Brown (33b), tied small Boston "PAID". Fine.....	—
49	—	3c Dull Red (33), tied N. Y. on illustrated gold phrenology corner card. V. good	—
50	—	3c Dull Red (33), three colored corner cards. Very good lot	—
51	—	3c Dull Red (33, 33b), eight covers includes two orange browns, colored cancels. Nice lot	—
52	—	3c Dull Red (33), Ten covers all with interesting town cancels includes fancy Lady's envelope	—
53	—	3c Dull Red (33), Fourteen covers all colored cancels, blue, red, brown, Very good	—
54	—	3c Dull Red (33), Fifteen covers all Mississippi towns, includes 6ms Very good	—
55	—	3c Dull Red (33), Twenty-eight covers contained, margin copy, redtowns, Very good lot	—
56	—	3c Dull Red (33), Forty-eight covers, includes Steam, R R., Red town cancels etc. Average condition	—
57	—	3c Dull Red (33), Sixty-six covers, various towns, Very good lot	26.40
58	—	10c Green, Type II (35A), tied with red Providence, close at top. V. good	12.00
59	—	10c Green, Type II (35A), tied large Boston "PAID" to Vancouver, has "United States" oval in red. Very good	12.00
60	—	10c Green, Type III (35B), tied St. Charles, Ill. Very fine stamp, cover bit ragged	12.50
61	1851-75	1c-3c Eight odd shaped covers. 'Unused and interesting. Very fine lot	—
62	1851-69	3c Eight covers includes fancy cancels. Fine lot	—
63	1851-61	Seventeen covers (33, 44, 65), various cancels, Fair	—
64	1851-70	Ninety five covers (33, 44, 65, 3c greens), various towns. Good lot	—
65	1851-98	1c-10c Misc. covers, includes Confed. Banknotes, Stampless some interesting cancels and illustrated. Very good lot	—
66	1857-1906	1c-3c Ten covers with Religious Inst. corner cards. Fine lot	—
67	1853-1917	1c-10c Twenty eight entires, mostly illustrated corner cards, Fine lot	—

1857 ISSUES ON COVER

68	1857	1c Blue, Type IIIa, V, 10c Yellow Green (41, 42f, 68), all town tied, last San. F. Fine lot	20.50
69	—	1c Blue, Type IIIa (42G) with 3c (44), tied, first is cut in, V. good	20.00
70	—	1c Blue, Type IIIa (42B) with 2 copies 43 on 3c envelopes, to Canada has "U. States Paid" in red. Stamps town tied, Very good	20.00+
71	—	1c Blue, 3c Red, three (42f, 44), 10c Rate to Cal. tied Waterbury, Ct., Very good	—

1857 ISSUES ON COVER (Continued)

72	—	1c Blue (42f) tied Red Carrier on front	—
73	—	3c Red (44), tied on Fancy "Harrison Perfumery and Ink" illustrated cover. Very fine (Photo)	—
74	—	3c Red (44), tied large "Strawberry Point, Iowa" fine	—
75	—	3c Red (44), tied Albany on illustrated "Delavan Hotel" cover, Very fine	—
76	—	3c Red (44), tied in frame on interesting University of Mississippi cover, Very fine (Photo)	—
77	—	3c Red (44), tied Mobile has "New Orleans U. S. City Post" (carrier), scarce, Very good	—
78	—	3c Red (44), Chicopee Star, fine strike (Photo)	—
79	—	3c Red (44), two covers as previous	—
80	—	3c Red (44), tied Boston "Paid", addressed "Capt. John Brown at the prison in Charlestown, Va." Pmk. dated Nov 29, 1859. Brown was hanged Dec 7, 1859. Very Fine historical cover	—
81	—	3c Red (44), fifteen covers, mostly tied, includes Madison Ga., red. Good lot	—
82	—	3c Red (44), Sixty six covers various towns, Very good lot	—
83	1857-94	1c, 2c, 3c, Sixty covers, various towns, some fancy, some illustrated, Very good lot	—
84	1857-69	1c, 3c, 10c (42f, 43, 44, 65) Thirteen covers including two Confederates, Nice lot	—
85	1861	3c Rose (65), tied Masonic, Very fine (Photo)	—
86	—	3c Rose (65), tied Masonic, from Greenfield Ms. Very fine strike (Photo)	—
87	—	3c Rose (65), tied blue. Masonic from Brattleboro Vt., Stamp defective	—
88	—	3c Rose (65), tied black "Morris & Essex R. R." sealed with 1c blue (63), Fine (Photo)	—
89	—	3c Rose (65), tied Nashville also has "Advertised Jul 21 Due 1" (four lines blue), Very good	—
90	—	3c Rose (65), eight covers all tied, various corner cards, includes "Home Washer", Very good lot	—
91	—	5c Brown, 10c Yellow Green (68, 76), ms and N. Y. Pkt. tied, from Lyme N. H. to Paris, Fine	—

CIVIL WAR PATRIOTICS

92	1861	1c Dark Blue (63b), three singles tied on colored "UNION" cover, Fine (Photo)	—
93	—	3c Rose (65), tied Baltimore blue on "The Patriot" Washington red. Fine cover (Photo)	—
94	—	3c Rose (65, 88), two covers tied, one Flag with verse other N. Y. Zouaves. Very good	—

CIVIL WAR PATRIOTICS (Continued)

95	—	Magnus "The Union Rose East and West." with fan shaped enclosure, Scarce	—
96	—	Magnus "Song Book" containing six accordian type sheets. Elaborately colored. Very fine	—
97	—	Magnus and others, sixty different song sheets all in color. Very fine	—
98	1861-96	2c-3c Illustrated covers showing State Seals etc. Nine different, fine	—
99	1861	3c Red (65), Seven covers "Internal Revenue" and "Custom House" imprints, Very good	—
100	1867	3c Red (94), tied Utica star on Very fine red "Early Rose Potato" illustrated cover	—
101	1867-94	1c-6c, Hotel Covers, fifteen different corner cards, includes 6c Brown from Canada and two 1c Jamestowns, Very good lot	—
102	1867-1908	2c-3c, Twelve covers containing Official Washington corner cards, one State Dept. Free Franked. Good lot	—
103	1863-98	Twenty miscellaneous covers and cards, also 20 Revenue Bank checks, and 3 pieces Stamp Currency. Good lot	—

1869 TO DATE — ON COVER

104	1869	1c Buff (112), tied Northampton, Ms. with 1869 Year Date. Very good	8.50
105	—	3c Ultramarine (114), tied Masonic from Nashua, N. H. Very fine (Photo)	—
106	—	3c Ultramarine (114), tied Masonic from Painted Post, N. Y. blue, Very fine (Photo)	—
107	1869-83	2c-3c, Ninety eight covers, all with Hotel corner cards, some illustrated, some fronts only. Very good lot	—
108	1870-71	1c Ultramarine (145), Nineteen covers, includes several corner cards. Very good	—
109	1872	2c Brown (146, 157), Twenty covers with corner cards. Good lot	—
110	1870-84	1c-6c Banknotes, forty covers includes corner cards various cancellations, rail roads fancy etc. Very good lot	—
111	—	1c-6c Banknotes, seventy nine covers includes various cancels corner cards, also 3c & 6c P. O. Dept. on cover. Good lot	—
112	1870-79	1c-6c Banknotes, ten covers includes fancy cancels, corner cards. Fine lot	—
113	1883-1910	1c-3c Eight different illustrated Medical imprint. Nice lot	—
114	1886-1902	2c-3c Entires with various illustrated corner cards. Fine	—
115	1886-1918	1c-3c Musical instruments, corner cards. Twenty nine covers, fine scarce lot	—
116	1887	2c Green (212), tied on Natural Gas Well illustrated, blue, Fine, scarce (Photo)	—

1888 TO DATE — ON COVER (Continued)

117	1888-96	1c-3c Eleven covers illustrating bicycles, Interesting, Very Fine	—
118	1890-1918	1c-50c Twenty six covers, various cancels, combinations, corner cards nice lot	—
119	1891	1c Dull Blue (219), cancelled on illustrated "Central College Academy" cover, and "Central College O. 1891" pmk. Very fine	—
120	1893	1c Columbian (230), Nine different California Exhibition 1904 SOUVENIR CARDS, Complete Set	—
121	—	2c Columbian (23), Nineteen interesting illustrated corner cards, Very good	—
122	—	2c, 3c, 4c, 6c Columbians (231-233, 236) three covers, all used in 1893, Fine lot	10.00
123	—	2c Columbian entires (U349), ten illustrated corner cards, Very fine	—
124	1893-1901	Pictorial covers, Guns & Rifles, eight different illustrated. Fine lot	—
125	1894	1c Blue (246), tied with special cancel for "Congres. Postal Universel" (Washington 1897) Scarce item	—
126	—	Two registry fronts (253, 256, 259, 260) combination rate, Very good	—
127	1894-95	1c Blues, twelve illustrated corner cards, Nice interesting lot	—
128	1894-1907	1c-2c Illustrated corner cards, thirty-two different. Fine lot	—
129	1895-1912	1c-2c Multi colored business covers. Seventeen different, good lot	—
130	1898	2c Red, tied Chicago on "National Peace Jubilee 1898" red on illustrated Chicago Beach Hotel, very fine	—
131	—	2c Trans-Miss. (2886), Thirteen covers with interesting illustrated corner cards. Fine lot	—
132	1898-1915	1c-4c A very interesting collection of eight covers relating to early Autos and Motorcycles. Fine lot	—
133	1901-26	1c-2c Commems. Thirty-three covers, used in proper periods Fine lot	—
134	1904	2c Louisiana Purch (324), Six illustrated corner cards, one World's Fair cancel. Very fine lot	—
135	—	3c Louisiana Purch. (325), Strip of three, 1904 usage on Registry, on entire, Fine	11.00
136	—	3c Louisiana Purch. (325(2)), has 1c-3c (300-302) 1902, Fine registered cover	—
137	1907	5c Jamestown (330), pair one SE on registered cover used in year of issue. Very fine	10.00
138	1908	15c Ultramarine, 50c Violet, (340 (2), 341 (4)) on two large pieces	—
139	1909	2c Lincoln Imperf (368), tied N. Y. 1909 year date on colored business card, Very fine	12.50

1909 TO DATE — ON COVER (Continued)

140	—	2c Hudson-Fulton (373, 345), Strip of 3 and pair of 3c on registered cover used one month after issue in 1909	12.50+
141	1913-15	1c Souvenir Postal Cards from Pan-Pacific Exposition, mostly used from San Diego twelve cards, Fine lot	—
142	1917	2c carmine (499), interesting vertical pair oddity, looks imperf	—
143	1918	3c, 10c, 50c Postage and Revenues on pieces all postally cancelled, interesting lot	—
144	1923	2c Carmine (595), perf 11, Rotary tied on cover, Scarce item, Very good	50.00
145	1923-25	First Day covers Coil Stamps in pairs (597, 598, 604-606), last is single. Very fine and scarce	14.75
146	1926	2c White Plains (629), a group of thirteen covers with unusual town names as Evening Shade, Midnight, etc., Interesting lot	—
147	1932	Roosevelt Campaign covers, seven interesting varieties town cancels. Nice lot	—
148	1932-33	3c Commems, 29 covers all with U. S. Frigate Constitution cancels, fine lot with cachets	—
149	1940	Presidential campaign covers, three are comics. Very timely lot	—
150	1938	\$1.00 Presidential (832), First Day Cover, Very fine	8.00
151	—	\$2.00 Presidential (833), First Day Cover, Very fine	4.00
152	1918	16c Air Mail (C2), tied on cover, 1st Cleveland-Chicago service delayed, Fine	—
153	—	24c Red & Blue (C3), Tied July 24, 1918 Very fine	—
154	1929	Round the World "Zeppelin" flight card with cachets, various stamps used for postage \$1.81 Very fine	—
155	—	Round the world "Zeppelin" flight with cachets, Fine 10 diff. stamps on legal cover with face value \$3.71	—
156	—	Round the world "Zeppelin" flight with cachets, Very Fine total stamps used \$4.07	—
157	—	Same, very Fine total stamps \$3.56	—
158	—	"Zeppelin" covers and cards, nine flights with cachets. Very Fine lot postage used varies from 46c to \$1.90	—
159	1863	2c Black entire (U20) Cancelled Washington, D. C. has embossed Masonic emblem, Very fine	—
160	1861	PULASKI, TEN., Stampless Confederate PAID 5 in black very good	—
161	—	KNOXVILLE, TEN., "5 PAID", Confederate Postmaster Provisional, listed by Dietz at \$75.00. Handstamped, Fine	—
162	—	5c Green (200), three covers 2 are town tied, Very good Confederates	—
163	—	Three Confederate covers, two covers tied (210) and one with pair (206) Very good	—

- 164 1925 1c **Canal Zone** Postage Due (J18) used on cover as regular postage _____
- 165 1898-99 Eleven illustrated **Canadian** covers Fine _____

CALIFORNIA AND WESTERN COVERS

- 166 — Sacramento Cal., Stampless in black oval, "40" in ms, Very good, scarce **(Photo)** _____
- 167 — San Francisco, Cal., stampless, "40" in box, Fine _____
- 168 1851 3c Dull red (33), two covers tied "Lawrence K. T," diff type postmarks. Very good territorials _____
- 169 — 10c Yellow green (35B), tied San Francisco, Cal., Very good _____
- 170 1857 1c, 3c, 10c (42f (2), 44, 50) tied with Alleghany Cal. Stamps cut into. 15c Rate to Nova Scotia, red "U States" in curve, transit markings, good _____
- 171 1857-61 3c, 10c, (44, 49B, 68), Three covers, from Shaws Flat, Napa City, Michigan City, All Calif., First is front, good lot _____
- 172 1857-1870 3c Reds, California cancels, eight covers two are ms. Very desirable lot _____
- 173 1861 3c Rose (65), tied black target "Prescott Arizona" pmk territorial, interesting enclosure refers to Indians. Scarce, Fine _____
- 174 — 3c Rose (65), tied black target, large "Prescott Arizona" pmk. Scarce, Fine **(Photo)** _____
- 175 — 3c Rose (65), tied with blue "ADV MAR 17", "PRESCOTT ARIZONA" pmk., scarce territorial, Fine _____
- 176 — 3c Rose (65), forty one covers all California mostly San Francisco, Fair _____
- 177 — 3c Rose, 3c greens, Thirty-five covers, four are entires, stamps damaged on most, Fair lot _____
- 178 1861-83 Mostly Western, ninety covers, includes poor Wells Fargo stamps missing on many, good only for Specialist _____
- 179 — 3c Greens, twelve Western covers includes Col. (6), Utah (2), Dak. (4) Stamps poor _____
- 181 1873 3c Green (158), tied with black target, "Deadwood Dak" pmk. Fine territorial _____
- 182 1875 1c Ultramarine (182), two stamps tied "Spearfish Dak" pmk. Fine territorial _____
- 183 1864 3c Entire (U59), unused has "Pacific Union Express" imprint Fine _____

NINETEENTH CENTURY

OFF COVER

1847 ISSUE

211	1847	5c Dark Brown (28), Very fine (Photo)	10.00
212	—	5c Brown (28), Blue grid, Very fine (Photo)	11.00
213	—	5c Brown (28), Blue "PAID," Very fine (Photo)	17.00+
214	—	5c Red Brown (28), Numeral "5" in Red, Fine	35.00
215	—	5c Red Brown (28), Two copies, Both, Defective	20.00
216	—	10c Black (29), Light red cancel, Fine (Photo)	35.00
217	—	10c Black (29), Blue grid cancel, Very fine (Photo)	45.00
218★	—	10c Black (29), Pair with good portion of third stamp, one stamp small thin, light creases, Fine fresh appearance, Rare piece, (not priced in catalogue) (Photo)	—

1851-61 ISSUES

219	1851	1c Blue, two and 12c Black, pair one Bisected (31, 36) on small piece, Ms cancel, 20c rate probably double rate to Canada, Rare piece (Photo)	700.00+
220	—	1c Blue (32D), Reconstructed pair. Very good	10.00
221	—	3c Brownish carmine (33), Line thru "Three Cents" and rosettes doubled. Creased and close at right	20.00
222	—	3c Orange Brown, 3c Green (33b, 158) first has small Boston "PAID other Chicago" "CHECKER BOARD" on piece Fine lot	—
223	—	12c Black (36), Blue cancel, light crease, Very good	17.50
224★	—	12c Black (36), Very good, O. G. (Photo)	125.00
225	1857	1c Blue, Type 1a (40B), Lightly cancel, Very good (Photo)	125.00
226	—	3c Red (44), Three Shades, Very fine & fresh O. G.	—
227	—	3c Red (44), Twelve different "PAID" cancels, V. G. to F.	—
228★	—	5c Dark Brown (48A), Fresh copy, close at B. O. G. (Photo)	15.00
229★	—	10c Green (50), Dark shade, Very fine O. G.	6.00
230★	—	12c Black (51), Left corner pair has S. E. perfs cut at top Very good, part O. G.	25.00
231★	1851-1895	1c-90c (Bet. 52 & 282) A group of 13 Stamps and block of 18 No. 248. Mostly O. G., includes used No. 52, Average	41.00
232★	1875	1c Bright blue, Reprint, Plate proof on opaque stamp paper (See Ashbrook, Vol. 1. Page 57) (54a Imperforate) Scarce, Fine	—
233	1861	3c Rose (65), Mittineague, Mass. Masonic tied on piece, Fine strike	—
234★	—	5c Buff (67), Defective, Very good appearance, O. G.	200.00

1861 ISSUES (Continued)

235	—	5c Buff (67), Red cancel, repaired Fine appearance	35.00
236★	—	10c Yellow Green (68), Very good	8.00
237★	—	10c Yellow Green (68), Very fine, O. G.	8.00
238★	—	30c Orange (71), Fine	17.50
239	—	90c Blue (72), Very good	15.00
240	—	90c Blue (72), Tiny thin. Fine appearance	15.00
241★	—	5c Black brown (76a), Tiny thin, Very good	35.00
242	1861-1909	Lot of U. S. "Seconds" 51 stamps includes revenues parcel post all defective	119.02
243★	1867	2c Black grilled (87), Centered to lower left. Very good	15.00
244★田	—	2c Black, grilled (87), Block of 6, perfs cut in at top and left, Part of imprint at B. O. G., Scarce	165.00+
245	—	2c, 12c Black, grilled (87, 90), Very good copies	12.00
246	—	3c Rose grilled (85), Centered to left target cancel Very good	12.00
247★	—	12c Black grilled (90), Fine (Photo)	60.00
248★	—	12c Black with "Z" grills, Eight essays all in different trial colors, a very good and scarce lot estimate net \$40.00	—
249	1869	1c Buff (112), Very fine strike of 3 leaf clover, stamp off center str. edge at left	—
250★	—	10c Yellow (116), Fine	15.00
251	—	10c Yellow, 15c Brown & blue (116, 119), Very good	10.50
252	—	30c Blue & Carmine (121), Fine appearance, close tear	11.00
253★	1870	2c Red brown (135), Very fine, O. G.	10.00
254★	—	3c Green (136), Very fine O. G.	6.00
255★田	—	2c Red brown (146), Block, Fine, lightly reinforced, O. G.	30.00
256	—	90c Carmine (155), Very good	7.50
257	—	90c Carmine (155), Fine	7.50
258★	1873	2c Brown, Double paper variety (157B), Very good	50.00
259★	—	10c Brown (161), Very Fine. O. G.	12.50
260★	—	90c Rose Carmine (166), Very fine O. G. (Photo)	30.00
261★田	1879	5c Blue (185), Block, Very good O. G.	50.00
262★	—	1870-1937, 1c-10c Postage, many commems., ninety-four stamps Very good lot	18.10
263★田	1881	1c Gray Blue (206), Block of twelve, centered to L, Very good O. G.	28.00+
264★	—	10c Brown (209), Imprint plate strip of six, Very fine, O. G.	25.00
265★	1887-1916	3c, 7c, 30c (217, 445, 469), Each have slight defects	22.50

266★	1887	90c Purple (218), corner perf off, fine appearance	22.50
267★	—	90c Purple (218), Well centered, slight defects, part O. G.	22.50
268	1893-1940 Collections of Commemoratives mounted in Scott Loose Leaf Album. Contains singles and blocks, used and unused		110.00+

COLUMBIANS

269★田	1893	3c Columbian & 10c Orange Special Delivery (232, E3), Blocks Very good	12.50
270	1893-94	30c Columbian, 50c Orange (239, 260), both look Very fine, but each have small tear	15.50
271★田	1893	50c Columbian (240), Block, one stamp creased. Very good	60.00
272★	—	\$3.00 Columbian (243), Very fine appearance. Slight thin	45.00
273★	—	\$4.00 Columbian (244), Cuts in at top, small scrape on face, no gum	60.00
274★	—	\$5.00 Columbian (245), Small thin, perfs cut in top, regummed. Good	65.00
275	—	\$5.00 Columbian (245), Well centered, V. F. appearance, repaired	45.00
276★	1893-1917	1c-15c (230 Black, 238, 326, 537 pr, 531 pr.), Very good lot	15.45
277★	1895	4c Dark brown, 5c chocolate (269, 270), Imprint Plate No. Strips of 3, Fine	11.00
278	—	\$2.00 Dk Blue (277), Small thin centered to R., Good	15.00
279★田	1898	2c Rose Carmine (279c), Block, Very good	50.00
280田	—	6c Lake (282), Block. Fine, Hinge-reinforced	16.00
281★	1895-1923	½c-3c (Bet 279B & 611), 15 plate # singles, some dups. Very good to very fine	7.04+
282	1898	1c-10c Trans-Miss. (283, 285-289) Includes block of 283. V. G. to F.	16.75
283 ★	—	2c, 5c Trans-Miss. (286SE, 288SE), SPECIMEN, Slight thin on each, perfs. cut in at Top on first. Very good	20.00
284 ★	—	\$2.00 Trans-Miss (293), Defects, Very good appearance	55.00
285 ★	—	\$2.00 Trans-Miss (293), Large closed tear, str. edge at left	55.00

TWENTIETH CENTURY

286 ★	1901	10c Pan-American (299), Very fine	4.00
287 ★田	1902	2c Carmine (301C), Booklet Pane in original booklet. Very fine	8.00
288 ★田	—	3c Violet (302), Two blocks, shades, Very good	20.00
289 ★田	—	3c Violet (302), Block of 4. Fine	10.00
290 ★	—	\$5.00 Green (313), Crease, Fine appearance (Photo)	60.00

TWENTIETH CENTURY (Continued)

291	1903	1c Green Imperf (314), Margin block of 6, Imprint & Plate No., Fine	17.50
292	1904	1c-10c Louisiana Purchase (323-327), Very good set, 3c and 5c mint Latter thin	9.36
293	★田 1907	1c-5c Jamestown (328-30), Set of Blocks, perfs cut in. V. G.	26.00
294	★ 1908	50c Violet (341), Perfs cut in at right, Very good	10.00
295	田 —	50c Violet (341), Block of 6, Scarce item. Very good	45.00
296	★ —	2c Carmine Imperforate (344E), 3 pairs includes paste up & line pair. Fine	9.00
297	★田 1909	2c Lincoln, perf & Imperf (367, 368), Block of each, Fine	13.00
298	★ —	2c Lincoln, Alaska-Yukon, Imperf. (368, 371), Horiz. pairs, Fine	11.50
299	★田 —	2c Lincoln Bluish (369), Block, str. edge at top, one stamp has light crease, 2mm. spacing, Very good	75.00
300	★田 1910-14	6c, 9c, 12c (379, 415, 417), Blocks, Very good	22.00
301	★田 1912	1c Pan Pacific (397), Complete pane of 70. Plate #6131 V. good to Fine	36.80+
302	★田 —	2c Pan Pacific (398), Complete pane of 70. Plate #6309, V. good to Fine	46.00+
303	★田 —	7c Black (407), Block, Fine	22.50
304	★田 —	15c Gray (418), Block, Very good, Perfs cut in R.	20.00
305	—	50c Violet, \$1.00 Violet Brown (423, 477), Fine	10.00
306	★田 1914	3c Violet, 4c Brown (426-427), Blocks, Fine	14.00
307	★ 1914-16	1c-8c (426, 427, 437, 462, 464, 469-70) Very good to Fine	20.75
308	★田 1914	6c Orange, 7c Black (429-430), Blocks, Very good	20.50
309	★田 —	10c Orange Yellow (433), Block, Fine	10.00
310	★田 —	15c Gray (437), Block, Fine	25.00
311	田 —	\$2.00 Dark blue (479), Block and single, Crease, Very good	18.00
312	★ —	Unprinted Coil Stamps, strip of six mint with rotary press gum breaks and piece of paste up tape from end of roller, interesting oddity, very fine	—
313	★ 1917	2c Rose, Strip of ten containing a pair completely Imperforate Between, Very good, Rare piece (499c)	400.00

Bids will also be accepted for this exceedingly rare set of five position blocks included in lots 314 to 318 inclusive. See Lot 318A.

314	★田 1918	\$2.00 Orange & Black (523), Top Margin block of ten with plate numbers 8177, 8179 and arrow. Very fine (Photo)	435.00+
315	★田 —	\$2.00 Orange & Black (523), CENTERLINE BLOCK. Very fine (Photo)	225.00

1918 POSITION BLOCKS (Continued)

316 ★田	—	\$2.00 Orange & Black (523), LEFT ARROW BLOCK Very fine (Photo)	150.00
317★田	—	\$2.00 Orange & Black (523), RIGHT ARROW BLOCK Very fine (Photo)	150.00
318★田	—	\$2.00 Orange Black (523), BOTTOM ARROW BLOCK fine (Photo)	150.00
318A★田	—	\$2.00 Orange & Black (523), The complete set position blocks as described above and as illustrated. Very Rare	1110.00+
319★	—	\$5.00 Deep green & black (524), Tiny scrape on face, fine	10.00

Bids also will be accepted for this exceedingly scarce set of five position blocks included in Lots 320 to 324 inclusive. See Lot 324A.

320★田	—	\$5.00 Green & Black (524), Top Margin block of eight with plate numbers 8179, 8178 and arrow. Very fine (Photo)	110.00
321★田	—	\$5.00 Green & Black, (524), CENTERLINE BLOCK, Very fine (Photo)	65.00
322★田	—	\$5.00 Green & Black (524), LEFT ARROW BLOCK Very fine (Photo)	60.00
323★田	—	\$5.00 Green & Black (524), RIGHT ARROW BLOCK Very fine (Photo)	60.00
324★田	—	\$5.00 Green Black (524), BOTTOM ARROW BLOCK Very fine (Photo)	60.00
324A★田	—	\$5.00 Green & Black (524) The complete set position blocks as described above and as illustrated. Very scarce	355.00
325★	—	2c Offset Imperf, Type V (532A), Vertical Pair, Very fine	10.00
326田	1919	3c Violet type II (541), Block, perfs cut in at L. Very good	17.50
327★田	1920	2c Pilgrim (549), Top & Bottom Plate Blocks of 6 of each, Nos. 12432, 12445, Very good	20.00
328★田	1922	6c Red orange (558), Block of 6, pl.#14169 shows double transfer recut, Very good	11.50
329田	—	\$2.00 Deep Blue (572), Block of 8 with Plate No. 14306. Very good	8.00+
330★田	—	1c Green, 2c Carmine (575 (2), 577 (2)) Bottom arrow blocks and a Plate block of six on two cent. Very fine	23.50
331★田	—	2c Carmine, Imperf (577), Centerline block of 64, Very fine	21.50
332★	1922-24	1c-\$5.00 Mounted collection in Souvenir Booklet issued for Universal Postal Congress at Stockholm 1925 Contains 28 stamps. (551-573, 614-16, C4-6) Scarce Est. net \$25.00	—

1925 TO DATE (Continued)

333★田	1925	5c Norse-American (621), Centerline block. Fine	22.50
334★田	1926	2c White Plains (630), Exhibition Sheet of 25, Plate 18774 with dot over "S" variety. Very fine	10.00
335★田	—	2c White Plains (630) Exhibition Sheet of 25. Plate 18774 with dot over "S" variety. Very fine	10.00
336★田	—	2c White Plains (630), Exhibition Sheet of 25 Plate 18773 with dot over "S" variety. Very fine	10.00
337★	1935	1c-16c Farleys, misc singles and blocks, face value \$2.93, Very fine	—
338★田	1938-42	Specialized collection of ELECTRIC EYE in blocks. Includes early two cent experimentals; 2c-50c Presidentials and Commemoratives (857-906), mounted in two Rapkin type albums with cases. Very fine lot for the specialist. Immaculate condition. Hard to duplicate should be a very worthwhile property in the future. Contains 2180 stamps face value over \$170.00	—
339★田	1940	1c Defense (899), Block of eight contains block of 6 Imperforate Between with one perf blind on top pair, Very fine	—
340★田	—	2c Defense (900), Block. Interesting dry plate variety, PINK shade, rare Very fine (Photo)	—
341★田	—	2c Defense (900), Block. Interesting dry plate variety PINK shade, as above Very fine	—
342★田	1918	6c Orange (C1), Block has S. E. Fine	5.00
343★田	1887	5c Red brown, Due (J18), Block, Very fine, O. G.	4.00
344★	1930	\$5.00 Deep Carmine, Postage Due (J78), Fine	7.50
345★	—	\$5.00 Deep carmine, Postage Due (J78), Very fine	7.50

DEPARTMENTS

346★	1873	1c-30c Agriculture (O1, 4, 6, 9), Very good	26.50
347★	—	30c Agriculture (O9), Centered to top, Very good O. G.	10.00
348	—	2c Executive (O11), Fine appearance, reperfed	20.00
349★田	—	1c Interior (O15), Imprint & Plate No block of 12. Very good O. G.	15.00+
350★	—	3c Interior (O17SA), S. E. at right SPECIMEN, Fine	50.00
351★	—	90c Navy (O45), Perf short at top otherwise Very fine O. G.	27.50
352★	—	1c-15c, 30c, 90c Treasury (O72-79, 81, 82) Very good to fine	28.00
353★田	—	2c Treasury (O73), Block. Fine, O. G.	10.00
354★	—	3c-15c Treasury (O74, 76, 77, 79), Very good to fine	8.25
355田	1911	50c Postal Savings (O122), Block 2mm. Very good	30.00
356田	—	\$1.00 Postal Savings (O123), Block of 6 with Imp & Plate No., Very good	12.50
357★田	—	10c Postal Savings (O126) Block 3mm spacing, Very good	6.00



FREE

Mr. B. C. Newman, P.M.



11

20

Aug 6

Thomas S. Jackson
Rhode Island

30

Dec 24



Rhode Island
Mr. A. D. Oxford
Lumberton, N.C.

73

UNIVERSITY OF MISSISSIPPI
Literary Department



75



24



Harbin, N.H.



P. S. Jackson Esq.
87 1/2 Boston St.
Brooklyn, N.Y.

78

85



86

88



95

UNION!



92

105



174



106

116



John Peters
Greenfield
Ind

166

Miss Anna Brown
107 Lawrence St.
New York City
Care of Robert Rogers

\$2.00 ORANGE AND BLACK POSITION BLOCKS

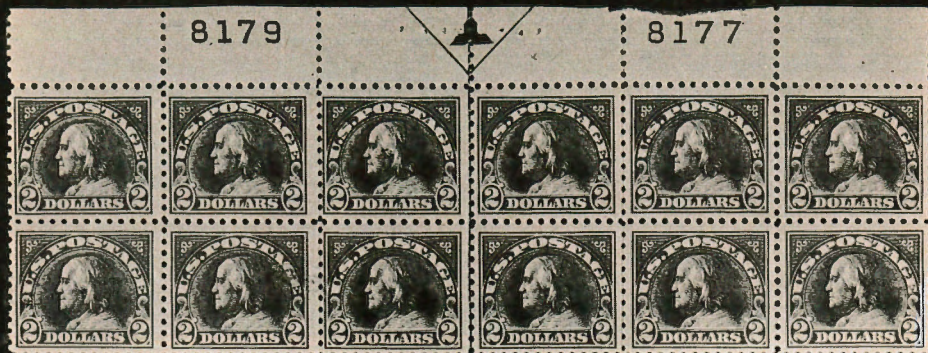


PLATE NUMBER & ARROW BLOCK 314



CENTER LINE BLOCK 315



LEFT ARROW BLOCK 316



RIGHT ARROW BLOCK 317



BOTTOM ARROW BLOCK 318



211



212



213



216



217



218



219



224



225



228



247



26



290



459



462



545



506



606



700



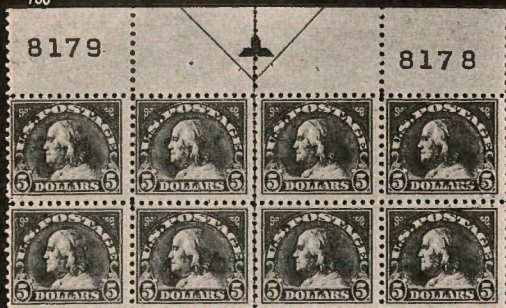
706



516



729



320



321



322



324



323

DEPARTMENTS (Continued)

358	1873	1c-90c Departments (Bet O18-120), Many unused and O. G. a lot of 34 stamps. Good to fine	77.00
359★田	1892	Post Office Seal (OX9), Block of 4, Fine	20.00
360★	1865	NEWSPAPERS 5c Blue, 10c green (PR2, 4), V. good	9.00
361★	—	5c Newspaper (PR4), Fine copy, cliché variety	—
362	—	Newspapers 5c Blue (PR4-5) two very good copies	6.00
363	1879	48c Newspaper (PR66), centered to left Very good	—
364★	1879	\$48.00 Newspaper (PR78), Small thin, Very good	35.00
365★	—	Newspapers, Collection of 18 stamps (PR4, 57, 58, 59), includes reprints and facsimilies from 48c to \$50.00	—
366★	1912	1c-\$1.00 Parcel Post (Q1-9, 11, 12), All but 50c Very good	27.13
367★田	—	15c Parcel Post (Q7), Block of 4. Fine	15.00
368★	1875	1c Franklin Carrier reprint (LO3), Vertical margins strip 3, Very fine	6.00
369★	1861	10c, 25c \$1.00 Pony Express (143L1, 7, 9), Very good	15.00
370	1874	3c Green on amber (U169), Fine	8.00
371★	1861-64	3c Red, 30c green, V. F. Nesbitt reproductions	—

REVENUES

372	1862	1c Express Imperforate (R1a) BOARDWALK Margins all around, slight thin	2.75
373	—	2c Express Imperf (R9a), Large margin copy. Double transfer, Very fine	—
374	—	3c Playing Cards (R17c) Very good	10.00
375	—	4c-25c Part perfs (R22b, 33b, 34b, 44b), Two are hand stamped, 25c has crease. Very good to fine	16.00
376	—	4c-50c Part Perf. (R22, 34, 53, 58), one thin V. G.	16.50
377	—	4c Proprietary (R22b), Part perf Fine	6.00
378	—	5c Agreement, Certificate, Proprietary (R3c, 23c, 24c), Collection of Blocks, Very good to fine	9.34
379	—	10c Certificate, 10c Contract (R23b, 34b), Part perfed nice handstamp cancels, Very fine	9.00
380	—	5c Express Part perf (R25b), vertical pair, left side cut in. Brilliant red "Adams & Co." dated hand stamp in red. Very attractive	—
381	—	6c Proprietary (R31c), Slight thin, Fine appearance, uncancelled, Rare	300.00
382	—	10c Bill of Lading part perf (R32b), Partly clipped at right V. G.	25.00
383	—	10c Power of Atty. Imperf. (R37a), Fine	40.00
384	—	25c Bond Imperf. (R43a), Fine	6.00

REVENUES (Continued)

385	—	25c Entry of Goods and Protest Part perf (R45b, 49b), first has light crease other fine	14.00
386	—	25c Protest, Part perf (R49b), Fine	8.00
387	—	25c Protest and Warehouse, Part perf (R49b, 50b), latter has crease, Very good	14.00
388	—	30c Inland Ex. (R52), Imperforate pair, light crease otherwise V. F. large margins	15.00
389	—	40c Inland Exchange Imperf (R53a), Cut in at right nice handstamp cancel. Very good	100.00
390	—	40c Inland Exchange (R53A), cut close at corner, Very good	100.00
391	—	50c Passage and \$1.00 Conveyance, Part perf (R61b, 66b), minor defects	24.00
392	—	\$1.00 Conveyance, Part perf (R66b), Very good	20.00
393	—	\$1.00 Conveyance (R66a), Sheet margin pair, corner cut in, Very good	10.00
394	田	\$1.00 Foreign Exch. (R66c), Block of eight, Very good	—
395	—	\$1.30 Foreign Exch. \$5.00 Manifest (R77c, 90c), Handstamp cancel. Very good	10.00
396	—	\$1.60 Foreign Exch., \$2.50 Inland Exch. (R79a, 84a), Both defective, close margins	380.00
397	—	\$1.60 Foreign Exchange (R79c), Very good	10.00
398	田	\$2.00 Conveyance (R81c), Block of 4 Fine, centered to left	10.00
399	—	\$15.00 Mortgage (R97c), Very good	12.00
400	—	\$20.00 Probate of Will (R99c), Very fine appearance, light corner crease, scarce	60.00
401	—	\$50.00 Intern. Rev. (R101a), Beautiful pair, full margins, Very fine appearance, tiny thin	30.00
402	—	2c, 3c Civil War Revenues on backs of five old photographs, interesting	—
403	—	1862-1918 1c-\$20.00 Revenues, 181 stamps, fair lot	43.13
404	—	1862-98 1c-\$1.00 Revenues (bet. R24c-R152), Includes various blocks and varieties, Good lot	23.50+
405	田	1871 25c Blue & Black, Second Issue (R112), Block of 12, Fine	12.00
406	田	— 25c Blue & Black, Second Issue (R112), Block of 15, Very fine piece	12.00+
407	—	25c Blue & Black Second Issue (R112b), Sewing machine perf. Fine	8.00
408	—	50c Blue & Black Second Issue (R115a), Sewing machine perf. Filled in punched hole, V. G. appearance	15.00
409	—	50c Blue & Black Second Issue, INVERTED CENTER (R115b), Fine	65.00

REVENUES (Continued)

410	—	50c Blue & Black, Second Issue Invert. (R115c) Punch hole cancel, Fine	15.00
411	—	50c Blue & Black, Second Issue, Invert. (R115c), Punched holes, cancel on piece	15.00
412	—	\$50.00 Blue & black, Second Issue (R131), Close at top, Fine	30.00
413	—	4c Proprietary (RB4a), Block of 16, Very good	24.00
414	—	6c Blue & Black, Second Issue (R108), Neat Handstamp cancel, Very good	7.00
415	—	50c Proprietary on violet (RB8a), Bright fresh color, Very fine	60.00
416	—	50c Proprietary (RB8b), Two pin holes, Very fine appearance	75.00
417	—	50c Proprietary (RB8b), Handstamp cancel, soiled, Very good	75.00
418	1875	1c Proprietary (RB11a), Block of 12 with imprint, V.G. to F.	4.50+
419	1898	Collection of Revenues (Bet. R155 and RB31), Contains Strips pairs and blocks. Fine lot	28.70
420	—	1c-3c Surcharged Postage for Revenue (279, 279B, 268), Dr. K & Co., Fine	—
421	1899	\$1000 Green & black (R181), Superb	60.00
422	1914	1½c Cordial (RE19), thin spot, cuts in at left, Rare	—
423★	1918	\$30.00 Future Delivery (RC16), Very fine	—
424★	—	\$50.00 Future Delivery (RC17), Very fine	—
425★	1934	10c Tobacco Sales Tax, Inverted Surcharge (RJ4a), Fine	—
426	1924	Consular Service Fee, \$1.00-\$5.00 (Bet. RK22 & 35), On 24 documents and pieces, 24 stamps, Fine lot	11.75

MATCH AND MEDICINES

427	1862	3c Blacks, American Match, Barber & Peckham (RO11b, 21a), fine appearance, both have defects	17.50
428	—	1c Matches (RO29a; 122a; 137a; 137e), Very good to fine	16.50
429	—	1c Black, 1c Ultramarine, Matches (RO49i, 66u), Slightly defective, V.G.	20.00
430	—	12c Blue, San Francisco Match Co. (RO165), Very good	7.50
431	—	1c Vermilion, Schmitt & Schmittiel (RO166c), Crease, otherwise V.F.	8.00
432	—	1c Black, Wilmington Parlor Match (RO182a), Very good	7.50
433	—	1c Black, Wilmington Parlor Match (RO182e), Experimental Silk, Fine	10.00
434	—	1c Black, WISE & CO. (RO183), Fine appearance, faint crease on back, Scarce	75.00
435	—	2c Medicines; D. L. Barnes, J. F. Henry (RS16, 112), Fine appearance slight defects	25.00

MATCH AND MEDICINES (Continued)

436	—	4c Blacks, J. W. Campion; Crook Oliver (RS48d, 65b), Very good to Fine	7.50
437	—	2c Lake; Davis Perry & Son (RS76b), tiny thin, Very good	7.50
438	—	1c-2c Medicines & Perfumery (RS86(3), 151(2), 206(2), 207(3), RT7(1)), Good to fine	12.25
439	—	1c Red, Herrick's Plasters (RS118c), Minute crease otherwise Very Fine	12.50
440	—	3c Green, Home Bitters; 4c Green, Jackson (RS129c; 143b), Looks very fine, slight defects	13.00
441	—	4c Black on pink, Hostetter & Smith (RS132c), Fine	8.00
442	—	2c Green on pink Merchant's Gargling Oil (RS179c), Looks fine has close tear S. E., scarce	30.00

CONFEDERATES

443	1861	5c Green (200), Tied on piece, Black Richmond, Very good	8.00
444	—	5c Green (200), Black town cancel, Very fine	6.00
445	—	10c Blue (201), Tied on small piece with Black Town cancel, Very fine	8.00
446	—	10c Blue (201), Black town, full margins, has a tiny thin. Very fine appearance	8.00
447	—	10c Lt. Blue (201a), Black town, Very fine	8.00

FOREIGN

451★	ALLENSTEIN, 1920, Country compl. (1-28), Fine to very fine	5.90
452	— Country complete used (1-28), light cancel, Very fine	5.90
453★	ANTIGUA, 1921, 2sh Violet & ultramarine on blue (54(2)), Very fine Pair	3.00
454★	— 1921, 3p-5sh (58-63), Very fine	8.30
455★	ASCENSION, 1934, ½p-5sh (23-32), Scarce set, Very fine	12.05
456	AUSTRIA, 19th-20th Century, Regular postage, Semi-Postal, etc., collection of 430 Varieties, Good to fine	43.71
457	— Semi-Postals 1922-8, Austrians and Musicians compl. sets (B31-37, 58-61), fine O. G.	7.10
458★田	BAHAMAS, 1882, 1sh Blue Green (23), Corner Block of 8 with Plate no. Very good	20.00+

BAVARIA

459	—	1849, 6kr broken circle (4), nice cancel, large margins, Very fine (Photo)	10.00
460	—	1850-62, 1kr to 12kr (5, 12, 15, 17-21), Lot of 8, all full margins, fine to very fine	23.95

BAVARIA (Continued)

461	—	1867-8, 12kr (21), large even margins, nice town cancel and exceptionally fine	8.00
462	—	1870-3, 12kr (29), lightly canc. and fine, V. rare (Photo)	35.00
463★田	—	1875, 1kr Green, 3kr Rose (33, 34), In complete panes of 30 each, Very fine scarce in panes	—
464★	—	1911, Luitpold Set compl. (77-91), Very fine	17.04
465	—	1849, Fine lot, picked for shades, cancels, etc. Very good to very fine (63 stamps)	50.77
466★	—	1849-95, Lot includes shades, pane of 30 (34), types, etc. Good to very fine (136 stamps)	71.98
467	—	1849-95, All different, 54 stamps, Very good to very fine	75.80
468	—	1870-1900, A collection of 172 stamps of the perforated issues, picked for shades, cancellations, etc. Very good to Very Fine	43.46
469★	—	1903-20, Collection of 256 stamps all mint, mostly complete sets, Very fine lot	24.67
470	—	1903-20, Collection of 264 all different, Includes complete sets. Fine to V. Fine	22.35
471	—	1910-1920, A special selection of 793 stamps picked for shades, etc. Includes dups. Fine lot	43.99
472★	—	BELGIUM , 1936, 70c+30c; 2.45fr+55c (B178, 179), Two SOUVENIR SHEETS, Superb	3.50
473★	—	1939, 10c-5f SEMI-POSTAL (B233-240), Very fine set	4.65
474★	—	Occupation 1914-6, Set and high value, (N1-9, 23), Very fine	7.77
475★	—	BERMUDA , 1917, 2sh Ultramarine & Dull Violet (49(2)), Very fine pair	3.00
476★	—	1936, ½-3p (105-112), 10 sets, 1sh-1sh6p (113-114), 2 sts, Fine to very fine	13.50
477★田	—	1936, ½p-1sh6p (105-108, 110-114), Blocks, Very fine	9.00
478★田	—	½p-1sh6p (105-108, 110-114), Blocks, Very fine set	9.00
479★田	—	½-1sh6p (105-114), 10 sets in Blocks (no 109, 109A), Very fine	22.50
480★田	—	½-1sh6p (105-114), 10 sets in Blocks (no 109, 109A), Very fine	22.50
481★	—	BRITISH COLONIES , 78 different West Indies only, Very fine	21.24
482★	—	127 Different 20th Century Mint Colonials, Selected copies from 45 colonies	34.95
483	—	BRITISH GUIANA , 1860-63, 2c-24c (20, 25, 31, 32, 65), Very good to Very fine	30.50
484★	—	1931, 1c-\$1.00 COMMEMORATIVES (205-209), Very fine set	6.65
485★	—	1934, 1c-60c (210-219), Very fine	6.05
486★田	—	BURMA , 1940, 1a Commemoration Postage Stamps (34), Block, fine	4.00
487☒	—	CANADA , Nine stampless, various all with "Free", Very fine lot	—
488★	—	1908, 50c Purple (95), Fine copy	15.00

489	✉	CANAL ZONE , 1925, 1c Postage Due (J18), Used on cover as regular postage, Scarce	—
490		CAPE OF GOOD HOPE , 1855, 1c-1s (3, 4, 6), Very good to Fine	28.00
491	★	CAYMAN ISLANDS , 1921, ¼p-10sh (50-63), Very fine	19.24
492	★	CYPRUS , 1928, 9pi Violet Brown & 18pi Brown & Black (120, 121), V. F.	4.50
493	★	DANISH WEST INDIES , 1873, 7c Lilac & Yellow (9b), Inverted frame, Fine	5.00
494	—	1873-1917, 21 stamps (Bet. 5-58), 13 mint and 8 used. Very good lot	8.42

DANZIG

495		1920, 60pf on 30pf (22a), Double surcharge, 1 strong, 1 faint, Very fine, Unused cat. \$12.00	—
496	★	— 50pf (43), centered, scarce, Very fine	12.00
497		1922, 50m, gold & red (94a), Mint copy with Vert. watermark, used copy with horiz. watermark (Michel RM. 63)	6.00+
498	★	1923, Red Provisional (156-67), 5pf to 5gld complete set, Fine to very fine	16.70
499	—	Same (156-67) compl. set used, last 2 values with normal and Parcel Post cancel, Fine	16.26
500	★	1924-38, Coat of Arms (168-92, 211-5), Compl. set incl. Provisionals, scarce, Very fine	12.28
501	★	1924-25, High values (193-99), 1gld to 10gld, complete set, V. F.	37.00
502	—	1gld (193), centered, nice cancel, Very fine	8.50
503	—	1gld (193), well centered, light cancel, Very fine	8.50
504	—	1gld (193); centered, fine copy	8.50
505	—	1gld (193), centered, cancel town and parcel post canc., Very fine	8.50
506	—	2gld (195), well centered, light cancel, very rare used , Very fine (Photo)	12.00
507	—	3gld to 10gld (197-9), well centered, fine copies	7.00
508	★	1930, November Commem. Lot compl. (200-10), 5pf to 1gld, majority very fine	29.85
509	—	5pf to 75pf (200-1, 3-7, 209), lot of 8 values, 2 mint, Fine	13.85
510		1938-9, Wmk. Swastika (225-33), Compl. set, 3pf to 1gr, scarce used , worth full cat.	5.05
511	★	1939, Overprint "Deutsches Reich" (241-54), First and second printings, 2 sets complete, Very fine	7.96+
512		Semi-P. 1921-38 (B 1-2, 6-8, 12-14, 20-21, 23-32), 6 sets compl. includes scarce Artushof, all light cancel, Very fine	8.95
513	★	1929-32 (B6-8, 12-21, 23-32), 6 sets complete incl. scarce Artushof, Very fine	10.60
514	★	1934, Winterhelp (B9-11), Complete set, scarce, Very fine	13.00
515		Air Post , 1920-35 (C1-3, 22-5, 25a, 26-30, 36-40), 4 compl. sets include the error of chiche, used sets (San. 6, 14), Very fine	7.57

DANZIG, AIR POST (Continued)

516★	—	1923, 50000m (San. 22a), Imperforate horiz. pair, Very fine San. (Photo)	24.00
517★田	—	1923, 250000m (San. 24, 29d) variety "Q" instead of "O", block of 4, Error of cliché (San. 27a) in center of block of 9	San. 7.50
518★	—	1924-35 (C26-30, 36-40, 42-5), 3 complete sets (San. 6.75), Very fine	8.20
519★	—	1932 Luposta (C31-5) complete set (San. 10.00), Very fine	10.25
520★	—	Postage Due 1923-39, (J30-47), 3 complete sets. Very fine	12.17
521★	—	Officials 1924-5, (O42-52), Complete set, scarce, Fine to V.F.	14.45
522	—	Same (O42-52), complete set used, Fine	10.28
523	—	1920-32, Collection of 292 used stamps all different (Bet. 1 and J42), Very fine lot	55.39
524	—	1920-23, Collection of 314 stamps all used. Includes shades, dups. Some complete sets, Fine lot	35.79
525★	—	1920-39, 256 stamps all mint and different, including many complete sets, commems, etc. excellent lot	43.46
526★	—	1920-23, Collection of 446 stamps includes complete sets shades, etc. Fine lot	42.15
527	✉	DENMARK, stampless, P. HAMBORG 1812 two straight lines, Very nice dated backstamp	—
528	—	FINLAND, 1860, 5k-20p (4-9), Very good appearance	20.25
529★	—	FRANCE, 1870, 5c Green Imperf (41), Very fine	4.00
530★	—	FRENCH INDIA, 1903, 5c on 25c; 40 on 50c (20, 23), Fine	32.00
531★	—	GAMBIA, 1922, 4sh Brown & Black (118), Superb	3.00

GERMANY

We are pleased to draw your attention to this fine lot of GERMANY and COLONIES. We believe this collection merits the attention of the dealer and specialist alike.

532★	—	1872, Small Eagles (1-5, 7, 8a, 9, 11), O.G. Fine appearance but usual thin spots	97.00
533	—	Small and Large eagles. Complete except #22. Good to very fine	70.69
534★	—	Large eagles and high values (12-18, 20-8), Fine looking but some have thin spots	47.10
535★	—	Large & Small eagles 21 stamps, includes shades & duplicates, majority fine & fresh	44.75
536	—	1872-1900, Collection of 268 stamps all used, includes nice range of Eagles, many duplicates collected for shades & cancellations. Very good to V.F.	79.76
537★	—	1875-77, 25pf, 50pf (2) (33, 34, 35), All fine appearance, but slight thin- nings or imperfections	60.00
538★田	—	1880, 25pf (41a), Mint block of 4 in a beautiful and rare early dark shade	24.00+

GERMANY (Continued)

539★田	1900, 2pf Error "Reichspost" (45a) in center of block of 9, Superb condition	7.48+
540★	1900, 2m, 3m Reichspost (63-4), Fine to Very fine	9.50
541★	1900-02, 3m Reichspost, 2m Gothic (64, 76) centered, V. F.	9.00
542	1900, 5m Reichspost (65A), Nicely canc. with R. R. cancel, minute thin spot in one corner, Scarce, Fine	15.00
543★	1906, Pre War Issue, 2pf to 5m (80-9, 91-5 var.) Compl. set as issued, (Michel Rm. 213), Very fine	—
544★	1920, 2.50 on 2m (117, 117a, 117b), Interesting shades of this scarce stamp, Fine to very fine	8.50
545★	1923, 800th on 100m violet (262a), scarcest of all Inflation stamps, Very fine (Photo)	25.00
546★	— 800th on 300m, 500m (264a, 266a), Very fine	6.00
547★	1924-30, Castles compl. (337-9, 350, 387), lot of high values Very fine	7.75
548★	1926-29, Famous men and T. A. A. compl. (351-65), the 2 sets complete, Very fine	8.70
549★	1928-32, Hindenburg & Ebert (366-84, 91-7), 2 sets complete, Very fine	10.93
550★	1933-36, Frederick, Hindenburg, Network & Swastika compl. (398-431), few slight stains, majority fine to very fine	9.85

Se Tenants, Tete Beches, Booklet Panes

551★	Horiz. Se tenant X+5pf (67) and X+10pf (68), Very rare (Michel Rm. 77-)	—
552★	Horiz. Se tenant X+5pf (67) and X+10pf (68), Very rare (Michel Rm. 77-)	—
553★	1927, Hindenburg, Booklet pane (Michel Block 52, cat. Rm. 38.00)	—
554★	1927-32, Semi-postals, Lot of se-tenants, tete beche pair, blocks, four used, 39 stamps (Michel Rm. 135.50)	—
555★	1928, Semi P., Scarce booklet pane (with St. Andrews Cross, Michel Block 56, cat. Rm. 50.00)	—
556★	1928, Semi Postal, Scarce booklet pane (with Advert. label), (Michel Block 57, cat. Rm. 50-)	—
557★	1928, Semi P., same description (Block 57, cat. Per 17.50)	—
558★	1929-32, Semi P. 4 different booklet panes (Michel blocks 60, 61, 72, 73 cat. val. Rm. 78-)	—
559★	1933 Wagner, the 2 different booklet panes (Michel Block 79 and 80, cat. val. Michel Rm. 90.00)	—
560	1933-34, Wagner and Workers, Lot of 11 se tenant pairs and strips, 25 stamps, all used (listed in Michel, priced at Rm. 92-)	—
561★	Geramnia type, lot of se-tenants, tete beches, pairs, strips, blocks, 63 pieces, 3 used, 157 stamps, listed by Michel, priced at Rm. 112.70	—
562★	1933-34, Wagner and Workers, lot of 14 se-tenant pairs, strips, blocks, 42 stamps, listed in Michel, priced at Rm. 119.75	—

GERMANY (Continued)

SEMI POSTALS

563	1935-38, Hindenburg, Medallion, lot of se-tenants, tete beche pairs, strips, blocks, 99 pieces, 18 used (316 stamps), listed by Michel, priced at Rm. 259.70	_____
564★	1924-7, 4 compl. sets (B8-22), Very fine	17.45
565★	1928, complete set (B23-27), Very fine	5.90
566★田	1925, Complete set (B12-14), blocks of 4, Very fine	6.20+
567★	1929-30, 2 complete sets (B28-32, 34-7), Very fine	9.80
568	Same used (B28-32, 34-7), Fine to very fine	9.80
569★	1930, Iposta, the 4 singles from the sheet (B33a-d), Very fine	16.00
570	Same used (B38-43), Fine to very fine	9.45
571★	1931, 2 complete sets (B38-41), scarce, Very fine	9.65
572★	1932-4, Castles and Workers (B44-48), Very fine	10.30
573	Same used (B44-48, 59-67) compl. set, light cancel, Very fine	10.30
574	1933, Wagner set, used (B49-57), Very fine	12.65
575★	— Wagner set complete (B49-57), Very fine	13.60
576☒	1933, Ten Year Plan (B58) on Registry cover to N. Y., Very rare item	22.50+
577★	— Ten Year Plan (B58), Souvenir Sheet V.F.	22.50
578☒	1935 Ostropa Sheet (B68), on reg. cover to Vienna with special cancel, Very fine	5.00+
579	Ostropa Sheet, (B68, a, b, c, d), V.F.	11.00
580	1935-41 (Bet. B69-191) complete in sets, Fine lot	32.67
581★	— (B69-B192), Complete in sets, 148 stamps, Fine to very fine	36.75
582★	1937, (B107-15), Complete set in blocks of 4, Very fine	4.92+
583	— Lot of 83 stamps, 40 unused, includes complete sets, shades and blocks, Fine lot	26.45

AIR POST

584	Airmails 20th, includes complete sets, blocks, singles (41, 43 used), 255 stamps, 131 used, Fine lot	31.95
585	1920, complete set (C20-6), some trifle heavy, otherwise fine (San. 8.10)	8.75
586★	1924, Gold Currency, 5pf to 300pf complete (C20-26), (San. 10.00), Fine to very fine	11.40
587★	1926-34, 2 complete sets (C27-34, 46-56) (San. 6.50), Very fine	9.72
588★	1930, South America Flight complete (C38-9), the 2m may be regummed, Centered and fine (San. 11.50)	13.00
589	Same, complete set used (C38-9) tied to large part of flown cover (San. 8.00), Very fine	8.00
590★	1931, Polar Flight (C40-2), Complete set, Very rare (San. 30.00), Very fine	31.00

GERMANY (Continued)

591	✉	1931 Polar Flight (C40-2), complete set, tied to 3 separate flown Polar Flight cards and covers, (San. 25.00), Very fine	25.00
592	★	1933 Chicago Flight compl. (C43-5), (San. 10.00), Very fine	11.00
593	✉	— 1-2m Chicago Zeppelins on flight card (C43-44), Very fine	5.25+
594		Early flight cover and two occupation covers from Poland and Roumania, Very fine	—
595	★	OCCUPATION, 1919-21, Allemagne—Deutschland (N10-12, 14-17), 7 high values, Very fine	10.53
596	★	— 1920 Overprint Eupen complete set (N25-41), Very fine	12.38
597	★	— 1919 Polish Occupation, Normal and Invtd. Surcharges (N106-7, 106a-7a), Very fine	9.00
598		GERMANY, 20th Century occupied PLEBISCITE countries, etc., collection of 438 stamps, 218 mint. Includes many complete sets, etc., a few unlisted items. Very fine lot	50.76

OFFICES ABROAD

599	✉	German offices abroad and colonies, Lot of 28 covers with 53 stamps, include nice cancels majority fine, interesting lot	23.70+
600	★	OFFICES IN CHINA 1898-1900, Lot of 16 (1-3, 4a, 5, 6a, 24-32, 34), Very fine	13.40
601	★	— 1898, 5pf-50pf (Type 1) (2a-6a) Fine	13.75
602	★	— 1898, 25pf (T. I.) (5a), Fine and fresh	8.00
603	—	— 1900, 3pf to 3m (24-32, 36), Light cancel, Fine to V.F.	9.65
604	★	— 1905, 1c to 1.50 (37-44, 46), Very fine	11.95
605	—	— Same used (37-44, 46), Very fine	10.75
606	★	— 1905, 2½d (45) centered to R.B., otherwise very fine and fresh (Photo)	15.00
607	★	— 1906-13, 1c to 2½d compl. (47-56), Fine	8.17
608	—	— 1906-13, 1c to 1½d (47-54, 56), fine to v. f.	15.13
609		OFFICES IN MOROCCO 1899-1900, 3c, to 1p (1-15), light cancel, Fine to very fine	15.15
610	—	— 1900, 1p 25c on 1m (16), nice cancel, V.F.	7.50
611	—	— 1905, Lot of 7 (23-8, 32), light cancel, Very fine	15.25
612	★	— 1911, 3c to 6p 25c compl. (45-57), Very fine	6.90
613	—	— 1p 25c on 1m, 2p 50c on 2m (54, 55), Centered, Very fine	7.25
614		OFFICES IN TURKEY, 1884, 1¼pi on 25pf (4), centered light cancel, Very good	12.50
615	★	— 1884, 2½pi on 50pf (6), Centered to L, otherwise fine	12.50
616	★	— 1889-1900, 10pa to 5pi (8-21), Very fine	9.55

GERMANY (Continued)

617	—	1903-05, 5pi on 1m (28), centered, Very fine	6.00
618★	—	1898-1908, Offices in China, Morocco, Turkish Empire 67 mint stamps a few duplicates. Fine lot	42.81
619	—	1898-1912, Offices in China, Morocco, Turkish Empire. Collection of 126 Stamps a few dups. V.G. to V.F.	71.61

BALANCE OF COLLECTION

620		1852-1867, Prussia, Thurn & Taxis collection of 89 stamps, 28 unused. Fair to fine	74.52
621		1868-70, North German Postal District, 80 stamps including duplicates. V. good to Fine	48.14
622★		1875-1900, Collection, 82 stamps, all unused, includes shades, blocks, nice range of "Reichspost", etc. Fine & desirable lot	41.15
623		19th Century lot of 106 stamps, 68 used, 38 unused, includes cancellations and minor varieties, Fair to fine	62.71
624		19th Century lot of 61 stamps, Fair to Fine	35.76
625★		Collection, Postage only, 599 stamps, includes many complete sets, shades and blocks, Fine to very fine	71.26
626		1902-39, Collection of 1016 Stamps mounted. Includes complete sets, blocks, shades, many duplicates, fine range of used inflation stamps. Fine lot	40.39
627		20th Century Collection 616 varieties 270 unused includes complete sets fine to V.F.	50.54
628		Collection of 470 stamps, 233 used, practically all 20th, includes nice varieties as error (4, 342), on chalky paper, and others, also nice range of Railroad cancels, Est. net value 15.00	—
629		Small stock book with modern sets, mostly Occupation stamps, also some Baden Officials, and small mint sheet album, includes 8 strips of 11 from coils, Est. net value 8.50	—
630		1920-39 Officials, 679 Stamps includes, shades blocks, many complete sets, also scarce used inflation stamps. Fine to Very fine	40.67
631☒		Lot of 31 covers, post cards and entires, 19th and 20th, Air Mail covers, Special cancels, etc. Est. net value 7.50	—
632☒		Lot of 278 inflation covers with 746 stamps, none of the late period, nothing scarce but interesting for specialist	—
633		Two medium stock books, one small album, with 8000 stamps, majority very cheap stamps, duplicates, used and unused, Should be examined. Cat. value over \$180.00	—
634		GERMANY, DANZIG, all 20th, lot of 167 stamps, majority unused, includes "Cog" and other varieties, Very fine lot, Est. value 12.50	—
635		GERMANY, DANZIG, MEMEL, etc. mostly 20th, lot of 264 stamps, 170 unused, 94 used, includes minor varieties, Est. net value 10.00	—
636	—	Notes and other reference material (no stamps), also Stock-book, No. 5 Supplement, Specialty album for Germany and colonies, Should be Examined	—

637	✉	GERMAN NEW GUIANA 1897, 3pf (1), 10 copies tied to Reg. cover to Germany, rare, Fine	17.50+
638	★	GIBRALTAR 1922, 10sh Ultramarine & Black (91), Very fine	6.00
639	★	— 1921, 2sh, 2sh6p (85, 87), Very fine	3.00
640		GREAT BRITAIN Mortgage dated 1786 with various embossed revenues ranging from 3p to 1sh6p. Interesting document, fine	—
641	—	Will dated 1828 embellished on parchment with embossed revenue stamps tied on 10sh. Very fine condition	—
642	—	Mortgage as previous with £4 revenue, Very fine	—
643	—	Lease 1833 as previous with £1, 10sh embossed revenue, V.F.	—
644	—	Lease 1859 as previous with £2 embossed revenue, V.F.	—
645	✉	— Stampless cover, London to New York 1841 various markings including "Forwarded by Gates & Co., London" in blue	—
646	—	1840, 1p Black (1), Black Maltese Cross cancel, Fine	3.00
647	★	— Moroccos, 1935, George V. Photogravures Complete, 26 Stamps. Scarce (Kenmore (9, 18), Very fine	10.17
648	★	GREECE 1896, 1L-10d Olympic Games (117-128), Complete Set scarce, Very good to fine	17.27
649	★	— 1906 1L-5d Second Olympic Games (184-197), Complete set, Fine	10.81
650	★田	GRENADA 1921, 1sh on Emerald (106), Superb Block	4.00
651		HONG KONG 1862, 12c, 18c, 96c (3, 4, 7), Have B62 Cancels, Very good	12.00
652	★田	— 1901, 30c Brown (48), Very fine Block	4.00
653	★	ICELAND 1930, 3a-10k Parliament Commemorative (152-166), Complete set, Very fine	12.01
654	★	— 1928-34, 10a-2k Airmails (C1-3; C15-20), Very fine sets	2.30
655	★	IRISH FREE STATE 1925, 5sh Rose Red (78), Very fine	4.50
656	★田	ITALY 1932, Fascist Commem. Issue (290-305, C40-1, E16-17), Complete set in blocks of 4, Fine to V.F.	12.96
657	★	JAMAICA 1872, ½p12sh (13, 14, 16, 16a, 18, 21-23), Very good to Fine	6.50
658	★	— 1889, 1p-2sh (24-27, 29), Very good	9.00
659	★	— 1905-06 ½p-4p (31, 37, 39, 40, 46-48, 58-59), V.G. to V. fine	8.75
660	★	— 1905-11, 2p to 2sh (Bet. 42-44c, 60), Fine to Very fine	10.15
661	★	— 1911, 1p-2sh (61-69, 71-73), Very good to Very fine	8.90
662	★	— 1921-32 ½p-2sh (88-94, 96-97, 103-108), Fine to Very fine	4.18
663	★	— 1916-19 ½p-3p WAR STAMPS (MR1-11), Collection of 13 Stamps, shades, varieties, Fine lot	4.00+
664	★田	— 1916-19 ½p-3p WAR STAMPS (MR4-11), Singles & Blocks of 4 complete, Very good to Fine	4.50+
665	★田	LAGOS 1904, 2p, 6p (43, 52, 54, 55), Blocks never hinged, Very fine	13.40
666	★田	LEEWARD ISLANDS 1921, 2½p Orange (69), Very fine Block	8.00

667★	LIECHTENSTEIN 1921, 2rp-70rp (51-61; 90-94), Fine to Very fine	5.10
668★	— 1921, 20rp-1fr (62-69) Complete, Very fine	11.60
669★	— 1925-28, 10rp-30rp Semi-Postals (B1-10) Three Very fine sets	6.60
670★	— 1930-34, 15rp-1fr Airmails (C1-6, 9-13), Very fine Sets	5.85
671☒	— 1936, 1fr-2fr Airs (C15-16) On cover First flight. Von Hindenburg	—
672★	— 1928, 5rp-50rp Dues (J13-20), Very fine set	2.30
673★	LUNDY ISLAND, LOCALS , ½p-12p, 10th Anniversary overprints, twenty sets, retail \$1.50 per set, Fine	—
674	— Semi official Airs Sanabria #306-09, first is used, Very fine	30.00
675★	LUXEMBOURG , 1921-29, Semi-postals (B1-3, 11-19, 30-39), Five complete sets. Very fine	8.50
676★	— 1930, 10c-1¼fr Semi-postals (B40-44) Very fine set	8.75
677★	— 1931, 10c-1¼fr Semi-Postal (B45-49), Very fine set	8.75
678	— 19th & 20th Century Mounted collection of 207 Varieties, 73 mint, Fine lot	23.23

MEMEL

679★	1920 5pf to 2.50m (1-17), complete set, Very fine	9.68
680	— Same used set (1-17), complete, Very fine	9.68
681★	1920-1 3m, (2), 4m Type I and II (29, 30, 31, 31a), last in pair, very fine	16.06
682	— 3m on 5fr, 3m on 2fr (29, 30), with cancel, centered, Very fine	10.00
683★	AIR POST 1921, complete set 60pf to 3m (C1-7) scarce (San. 7.50), Very fine	7.75
684	— Same, complete used (C1-7), light cancel scarce (San. 10), Very fine	13.25
685	LITHUANIAN OCCUPATION 1923, 2 complete sets include Memel Comems (N28-43), desirable set, Very fine	5.40
686★	— 1923, 2 complete sets, Memel, Unsurcharged (N31-43, 70-82), Very fine to fine	8.40
687★	— Provisionals, 3 sets compl. (N44-59, 87-90), scarce, Very fine	13.05
688★	— 1923 thick figures, 2c to £1 (N60-69), complete set, scarce, Fine to very fine	17.35
689★	— 1924 Provisionals complete set (N91-114), scarce, Very fine	21.75
690★	— 1920-23, Collection of 162 mint stamps including complete sets a few duplicates. Fine lot	22.68
691	— 1920-24, Collection 162 used stamps. includes Airmails and Lithuanian occupation V.F. lot	36.89
692★	MARIENWERDER , 1920, 4 compl. sets (1-14, 32-53), Very fine	15.90
693	— Same, 4 complete sets used (1-14, 32-53), light cancel, Very fine	15.90
694★	— 1920, Rare set 5pf to 1m (24-31), Very fine	20.95
695	— Same set used (24-31), light, cancel, scarce, Very fine	20.95

696★	MONTSERRAT, 1922, 3sh-4sh (72, 73), Very fine	5.50
697★	MOROCCO AGENCIES 1935, 25c Spanish (75), 4p British (32), V. G. to fine	8.00
698	NEW BRUNSWICK 1851, 6p Olive Yellow (2), close one side, lightly cancelled, Very good	45.00
699★田	NEWFOUNDLAND 1880, 1c Brown (43) Block touches at left, V. good	6.00
700★	— 1897 ½c Olive green Imperf (78a) Full margins, Very fine (Photo)	30.00
701★	— 1911 3c-9c GEO. V CORONATION (106-109, 111), Good to Fine	12.75
702★田	— 1928, 9c Myrtle green (152), Block, Very good	8.00
703★	— 1937, 1c-48c CORONATIONS (230-243), Complete set, Very fine	4.89
704★	NEW ZEALAND 1899, 6p Blue, Pigeon Post (Sanabria 5), Fine	7.50
705★	NICARAGUA 1937, 10c-\$1.00 Constitution Commemoratives (C203-214), Complete Airmail set, Very fine	10.00
706	NOVA SCOTIA 1851, 6p Dark green (5), Lightly cancelled close at one corner otherwise Fine (Photo)	55.00
707★	PANAMA, 1904, 10c Yellow (79c), Pair, error double overprint, Fine	20.00
708★	PHILIPPINES, 1906, 1p Orange (251), Centered to right, Very good	8.00
709★	— 2p Black (252), Centered to Right, Very good	7.00
710★	— 4p Dark Blue (253) Fine appearance has thin spot	10.00
711★	1917 16c Lt. Olive Green (296), Fine	5.50
712★	1917 16c Olive Green (296), Touches at right, two copies, V. good	11.00
713★田	— 16c Lt. Olive green (296), Block of 4 with part imprint, V. fine	27.50
714★	— 4p Blue (302), Very fine	7.00
715★	— 1925, 4p Deep Blue Imperforate (352), Fine	25.00
716★田	— 1925, 1p Light Violet Imperforate (350), Block, Very fine	30.00
717★	POLAND, German Occupation 1939-41, Complete sets (341-93 except Amundsen, B36-9, J103-06, O36-44), few slight rub or thin in 1 set, balance very fine	21.27
718★	— Officials 1940, Complete set (O21-35), scarce set, Very fine	7.77
719	ROMANIA 1866-70, 2p-18b (29, 29a, 33, 36, 36a), Fine	18.50
720☒	RUSSIA 1889-23, Six covers with 142 stamps (45, 62, 75-77, 81, 220), interesting lot	—
721★	ST. HELENA, 1922 ½p-5sh (79-91), Very fine	8.84
722★	ST. KITTS-NEVIS, 1920, 2s6p Red & Black on blue (33 (2)), Very fine pair	5.00
723★	— 1920, 10sh Red & Green on green (35), Very fine	6.00
724★	— 1921, 6p-5sh (47-51), Very fine	8.40
725★田	ST. LUCIA 1921, 2½p Orange (82), Very fine Block	4.00
726★	SAMOA 1926, 2sh Dark Blue & 3sh (154a, 155), Very fine	4.50

727★	SIERRA LEONE 1932, 10sh Deep green (151), Fine	6.00
728★	SOMALILAND PROTECTORATE 1942, ½c-5r (96-107), new set, complete, Geo VI, scarce, Very fine	—
729★	SOUTH WEST AFRICA, 1924, £1 Lt. Red & Gray Green (79a, 80a), PAIR Very fine (Photo)	30.00
730	SWEDEN 1916, 5o-10o SEMI-POSTALS (B12-20), Postage Due stamps surcharged, a few duplicates, Nice lot	6.85
731★	TURKS & CAICOS 1921, 1sh Brown Orange (43), Very fine	7.50
732★	VIRGIN ISLANDS 1922, 5sh Green & Red on Yellow (52), Very fine	8.00
733	WURTEMBERG, 1861, 18kr (29), slight marginal repair, fine and neat looking copy, scarce	40.00
734☒	— 1867, 9k Bistre (45b), Creased paper, Variety on cover, Fine	—
735	— 1875-1900, 2m yellow (69), green cancel corner perf off, otherwise fine, 2m red on yellow (70) heavy cancel but sound copy	36.00
736	— 1851-1900, Collection of 102 Stamps, 24 mint includes shades and duplicates. Fair to Fine	75.86
737	— 1875-1920 Officials, 553 Stamps, 245 unused. Includes shades and duplicates Fine lot	39.44
738	Four Scott Specialty Binders and two cases, used but good condition	—
739	One new "Progressive" illustrated United States Album, hinged post style, complete with Slip Case, retails for \$5.00	—

UNITED STATES WHOLESALE

740★	1893	3c Columbian No. 232 (10, 2 blocks) Good lot	21.00
741★	1895	2c Carmine, Type III, No. 267 (1700) With and without gum, in singles, pairs, strips, etc., Good lot	170.00
742★田	1898	1c Green, No. 279 (10 Blocks) perfs. cut in	10.00
743★	—	2c Trans-Miss., No. 286 (17) plate no. singles, Very good to fine	6.80
744	1907	5c Jamestown, No. 330, (10), Good to very good	20.00
745	1908	3c Violet, No. 333 (100) Good to fine, a few have s. e.	40.00
746	—	6c Red orange, No. 336 (100) Very good, a few s. e.	40.00
747	—	10c Yellow, No. 338 (220) Very good	20.00
748	1912	50c Violet, No. 421 (20), Very good	30.00
749★	1916	2c Carmine, Type II, No. 487A (25 pairs), Very fine	12.50
750★	—	2c Carmine, Type II, No. 487A (25 pairs), Very fine	12.50
751	1919	3c Victory, No. 537 (50), Very good	15.00
752★田	—	1c Green, No. 538 (15 blocks), with Plate No. & "S30", perfs. cut in	52.50
753	1922	7c Black, No. 559 (400) Very good	28.00
754	—	25c Green, No. 568 (400) Very good	20.00

UNITED STATES WHOLESALE (Continued)

755	1925	17c Black, No. 623 (600) Very good	18.00
756	1918	6c Orange, Air, No. C1 (10) Fine	7.50
757	—	24c Air, No. C3 (10) Fine	17.50
758	1862	Civil War Revenues, 2c-\$2.00 (270) Misc. lot	28.00+
759	—	2c Bank Check Imp., No. R5a (136) Very good to fine	27.20
760	—	2c Revenues, R5 (96), R6 (83), R9 (59), R11 (10), R13 (35), R15 (235), Very good to fine	28.17
761	—	25c Revenues, R43, 47, 49, 50, (12 stamps) two to four of each, Very good	8.30
762	—	25c Certificate, No. R44 (600), Very good	18.00
763	—	25c, 25c, 50c Part Perf., R44b (3), R46b (10), R54b (5), Very good	9.00
764	—	25c-50c Silk Papers, No. R44d (25), R45d (5), R46d (25), R54d (20), R60d (10), Very good	23.25
765	—	25c Entry of Goods, No. R45 (50) Very good	25.00
766	—	50c Conveyance, 50c Entry of Goods, No. R54-55 (100 ea.) Very good	15.00
767	—	50c Ultramarine, R54e (30), Very good	9.00
768	—	50 Entry of Goods, silk paper, No. R55d (15), Very good	37.50
769	—	50c Life Insurance, R58a (4), Fine	12.00
770★	1898	5c-80c Battleships, No. R167-172 (10 each) no gum, Very good ...	31.60
771★	—	5c-80c Battleships, No. R167-172 (10 each) no gum. Very good	31.60
772	—	5c-80c Battleships, No. R167-69 (100 each) R170 (45), R171 (100), R172 (75), R173 (100), Very good	48.75
773	—	8c Battleship, No. R172 (200), cut cancels, Very good	20.00
774	—	80c Battleship, No. R172 (200), Cut cancels, Very good	20.00
775★	—	80c Battleship, No. R172 (35), no gum, Fine	28.00
776★	—	80c Battleship, No. R172 (70), no gum, Very good	56.00
777	—	Misc. lot of Post Office Seals, Cut Squares, State Tax stamps, (160 stamps)	—
778★	1906	PHILIPPINES 2c Yellow green, No. 241 (77), Very good to fine	19.25
779★	—	4c Carmine lake, No. 242 (36), Very good to very fine	9.00
780★	1911	2c Green, No. 261 (70), Good to fine, a few s.e.	21.00
781	1906-25	2c Green, Mixed perfs. (1,000)	—
782	1922	NORWAY 20ore Plum, No. 101 (1,000)	—
783	1920	SWEDEN 50ore Green, No. 116 (1,000)	20.00
784	1925	150ore Rose, No. 168 (1,000)	20.00

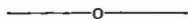
END OF SALE — THANK YOU

PRICED CATALOGUE OF THIS SALE \$1.00
ORDER YOUR COPY NOW

WANTED

Good U.S. single pieces, collections and
lots for future Auction Sales.

Liberal advances made. Write for terms.



ROBERT A. SIEGEL
AUCTIONS

505 Fifth Avenue

New York, N. Y.