

88
455
N
g Mozan
98th SALE

United States Covers and Stamps



PUBLIC AUCTION

Wednesday, March 29th, 1944

AT 2:00 P. M.

GREGORY MOZIAN, Auctioneer



Robert A. Siegel
AUCTIONS

505 FIFTH AVENUE

NEW YORK 17

CONDITIONS OF SALE

1. The terms of sale are strictly cash to the highest bidder. All buyers are expected to pay for lots within three days of receipt, unless special arrangements have been made prior to the sale.
 2. All bids are per lot as numbered in the catalogue and not per piece, unless otherwise announced by the auctioneer at the time of sale.
 3. Any lot the description of which is incorrect is returnable only within three days of receipt. All disputed lots must be returned intact as received. Lots containing five or more stamps are not returnable at any time. No lots may be returned by purchasers who have had the opportunity to examine them before the sale.
 4. Successful mail bidders, unless they are known to us or supply acceptable references, will be notified of the amount of the lots secured for them, and are expected to send payment in full before the lots are forwarded.
 5. If the purchase price has not been paid within the time limit, or lots taken up within seven days from date of sale, they may be resold and any losses arising from such sale charged to the defaulter.
 6. All stamps are sold as genuine, except where sold "As Is". Claims for any lot proving otherwise, must be made within two weeks from date of sale.
 7. The right is reserved to group two or more lots, also withdraw any lot or lots from the sale, or to act on behalf of the seller.
 8. Until paid for in full all lots remain the property of Robert A. Siegel.
 9. No commission is charged for buying at our sales, but all forwarding charges will be added to the purchase price.
 10. In addition to the purchase price, the buyer will be required to pay the one (1) percent New York City sales tax, unless he is exempt from the payment thereof.
 11. Lots will be sent for inspection, provided such lots are returned to us the same day as received. Postage and registration both ways will be charged. Approximate values of lots will be given on request.
 12. The placing of a bid shall constitute acceptance of the foregoing conditions of sale.
-

Lots are on display at our office one full week before the sale.

In sending bids, always state the highest price you are prepared to pay for the lot. Your limit will not be used as a starting bid unless absolutely necessary.

DESCRIPTIONS

Superb—the finest condition for noteworthy, outstanding copies.

Very Fine (VF)—means that there is a slight deviation from the above.

Fine (F)—means that the perforations do not touch the design on issues after 1890, but in some cases may just touch in earlier issues; if used, fairly lightly cancelled.

Very Good (VG)—means that the appearance is generally fine but that the perforations cut the design slightly.

Good (G)—means average off-centering; or fairly attractive with slight defects. Original gum is not to be expected on 19th Century stamps up to 1888 unless so stated.

Scott's 1944 Specialized United States Catalogue is used for cataloging our lots of United States.

WE SOLICIT FINE MATERIAL FOR FUTURE SALES
--

98th Sale

Wednesday, March 29th, 1944

BID SHEET

ROBERT A. SIEGEL

505 Fifth Avenue, New York 17, N. Y.

Phone, MUrray Hill 2-8084

Please purchase for me at your Auction to be held in New York, **March 29th, 1944**, the lots named below, the prices annexed being my limit on each lot. I agree to remit for purchases in accordance with the **Conditions of Sale** and to return no lots later than three days after receipt.

REFERENCES PLEASE
(if unknown to us)

SIGNED

[illegible]

PRICED CATALOGUE OF THIS SALE \$1.00
ORDER YOUR COPY NOW

[illegible]

CATALOGUE

UNITED STATES COVERS

STAMPLESS COVERS

3	1	ALPHA, CAL. PAID 10, Cover bit ragged. Good	—
20	2	Burlington, I. T., in red circle, "18¾", 1844. Very good, scarce territorial	160
8	3	Claiborne, A. T. in circle, "12½", 1833, late use of Alabama Ty. Very, fine, scarce	335 17
3	4	CLEVELAND, O., Oct. 22, Straight line in red box. Very fine	—
200	5	Collinsville, Conn. AX, Very fine strike, scarce	22.00 17 (Photo)
125	6	Fort Madison, Ioa. "5", Fine	—
3.00	7	Hotel Imprints, Three diff. from New York, Phila. and Charleston. Fine	—
375	8	HUDSON RIV. MAIL N. Y. "5", red circle. Very fine	—
475	9	Huntsville, Al., Fancy "10" in circle of stars in blue. Fine	—
475	10	Naugatuck R. R., 5, in red circle. Very fine	—
40	11	Northern R. R., 5 in green circle. Fine	—
150	12	Northampton, Mass., Slanting hand and Paid, "10". Fine	—
275	13	RAILROADS, Five different, all rather faint	—
150	14	Rochester, N. Y., in red oval, Hand and "Paid" in red box. Very fine	—
375	15	Sacramento, Cal. 40, in black circle. Very good, scarce	—
100	16	SACRAMENTO, CAL., Ms "10". Very good	—
140	17	San Francisco "40", in red circle, bit faint, scarce. Very good	—
7.00	18	SHIP, San Francisco, Ms 6, from Olaheite Society Islands, 1876. Fine, scarce	—
30	19	STEAMER 5, in red oval. Very fine	—
1.00	20	Soldiers Letters, Two from Baltimore and Wash. D. C.	—
3.25	21	U. S. Express Mail "5", also two Express Mail cancels on 3c entires on buff. Very good	—
575	22	Wells Fargo Express Co. cancel from San Francisco, "Paid" in oval. Very fine	—
f	23	Tallahassee, Flo. in oval with 1841 year date. Fine	—
50	24	WEST FARMS, N. Y., Red circle (Now part of N. Y. C.). Very fine	—

- ✓ 25 **Stampless**, Three diff. attractive **advert. corner cards**. Fine —
- ✓ 26 **Stampless**, Six covers includes fancy "Paid III" and circular printed "Paid". Fine —

1847 ISSUE

- ✓ 27 **5c Red brown (28)**. Tied with red grid from New York. Very fine copy
..... **(Photo)** —
- ✓ 28 **5c Red brown (28)**. Tied with attractive blue Troy, N. Y. postmark, stamp close at top and bottom **(Photo)** 17.50
- ✓ 28A **5c Red brown (28)**. Fine copy, ms. cancel. Blue Elmira cancel, **Turned Cover**. Stampless on other side from Jordan, N. Y. Scarce —
- ✓ 29 **5c Red brown (28)**. Tied with red grid, red Richmond, Va. pmkd. Fine 17.50
- ✓ 30 **5c Red brown (28)**. Fine copy with red numeral "5" cancel 35.00
- ✓ 31 **5c Red brown (28)**. Fine copy with red cancel from New Haven, Ct. 17.50
- ✓ 32 **5c Red brown (28)**. Tied with black grid from Boston, stamp cut in B., three margins. Very good 20.00
- ✓ 33 **5c Red brown (28)**. Tied with red numeral "5", blue Baltimore pmkd., stamp cut close. Very good 35.00
- ✓ 34 **5c Red brown (28)**. Red grid, from Marietta, Ohio, full margins, creased 17.50
- ✓ 35 **5c Red brown (28)**. Tied with pen cancel, red Rochester, N. Y. pmkd., stamp has four margins but creased 17.50
- ✓ 36 **5c Red brown (28)**. Tied with red grid from Cincinnati, three fine margins, cut partly at right 17.50
- ✓ 37 **5c Red brown (28)**. Blue cancel, from Philadelphia. **Horiz. Pair**, fine except crease through one stamp 45.00+
- ✓ 38 **5c Brown (28)**. Horiz. pair with red grid, blue oval Buffalo cancel, cut close two sides. Very good **(Photo)** 45.00+
- ✓ 39 **10c Black (29)**. Tied with red grid from New York, three fine margins, cut in left **(Photo)** 60.00
- ✓ 40 **10c Black (29)**. Tied with red grid from New York. Very fine margins, light crease **(Photo)** 60.00
- ✓ 41 **10c Black (29)**. Red grid cancel, from Rochester, N. Y. Three fine margins, close at B 60.00

1c 1851 ISSUES

- ✓ 42 **1c Blue, Type II (31)**. Tied from Richmond. Very good 13.50

4.75 43	1c Blue, Type II (31). Tied from Richmond, Va. Very good	13.50
1.50 44	1c Blue, Type II (31). Fine. Tied	13.50
7.50 45	1c Blue, Type II (31). Horiz. Strip of three. Fine each stamp has single pen stroke and grid from Augusta, Ky. Fine	35.00
2.00 46	1c Blue, Type IV (32d). Tied on circular, from Chicago. Very good	9.00
9.25 47	1c Blue, Type IV (32d). On circular, scarce early Precancel . Fine	—
4.75 48	1c Blue, Type IV (32d). Tied with New Haven 1856 year date cancel. Very fine	17.00
9.50 49	1c Blue, 3c Dull red, Strip of 3 (32d, 33). Very fine tied with Lowell, Mass. pmkd. to Cal. (Photo)	—

3c ORANGE BROWNS #33b

1.50 50	3c Orange brown (33b). Tied with neat Rising Sun, Ind. pmkd. Fine	—
9.50 51	3c Orange brown (33b). Horiz. pair, tied with black grid, from New York to Cal. Fine, scarce (Photo)	—
4.75 52	3c Orange brown (33b). Tied with neat green cancel of Plainfield, Ct. Very fine	—
4.75 53	3c Orange brown (33b). Tied with blue grid, "Lowell, Mass 3 cts Paid" pmkd. Fine B.V.S.	—
2.00 54	3c Orange brown (33b). Tied with small Boston "Paid". Fine	—
2.00 55	3c Orange brown (33b). Tied with small Boston "Paid". Fine	—
1.75 56	3c Orange brown (33b). Tied with small Boston "Paid". Inner line right only variety. Fine	—
8.50 57	3c Orange brown (33b). Horiz. pair, tied from Newark, N. J. Fine, scarce B.V.S.	—
4.25 58	3c Orange brown (33b). Tied with square grid from New York, used July 20, 1851. Very fine	—
1.50 59	3c Orange brown (33b). Tied from New Orleans, with paper fold . Fine	—
4.75 60	3c Orange brown (33b). Tied with odd blue grid composed of dashes from Cambridge Port, Mass. Fine	—
4.75 61	3c Orange brown (33b). Tied with red grid, red U. S. Express Mail cancel, used July 23, 1851. Fine	—
3.25 62	3c Orange brown (33b). Red N. Y. Express Mail cancel, used July 10, 1851. Fine	—
8.25 63	3c Orange brown (33b). Four very fine margins, tied B.V.S.	—
4.00 64	3c Orange brown (33b). Tied from Baltimore. Very fine	—

4-65	3c Orange brown (33b). Very fine copy tied with blue. Utica oval	—
✓ 70-66	3c Orange brown (33b). Two from New York with three and four bar cancels. Very fine	—
3-75-67	3c Orange brown (33b). Two from New York with three and four bar cancels. Fine	—
2-25-68	3c Orange brown (33b). Three covers each tied with small Boston "Paid". Very good	—
2-50-69	3c Orange brown (33b). Three covers each has small Boston "Paid". Very good	—
6.00-70	3c Orange brown (33b). Three Maine covers, Ellsworth, Lubec and Norridgewood, all tied. Fine	8.25
3-75-71	3c Orange brown (33b). Three covers each with square grid from New York used July 25, 30, 31, 1851 . Fine lot	—
3-25-72	3c Orange brown (33b). Three covers each with U. S. Express Mail cancel. Very good	—
8-75-73	3c Orange brown (33b). Four covers each tied with diff. red town pmkd. Fine	—
3-74	3c Orange brown (33b). Four covers each with New York four bar cancel. Fine	11.00
6-50-75	3c Orange brown (33b). Five covers, each tied with diff. Mass. town. Fine	13.75
6.00-76	3c Orange brown (33b). Eight covers, each tied in black with diff. red town pmkds. on cover	22.00
21-77	3c Orange brown (33b). Seven diff. town cancels, BVS each tied. Fine	19.25
3-25-78	3c Orange brown (33b). Eight diff. towns all Ms. cancels, includes R. R. Very good	22.00
6-25-79	3c Orange brown (33b). Nine diff. towns each tied by town cancel. V. G.-Fine	24.75
6-25-80	3c Orange brown (33b). Ten covers, all tied. V. G.-Fine	27.50
6-81	3c Orange brown (33b). Twelve covers, all tied. V. G.-Fine	33.00
10-82	3c Orange brown (33b). Twenty covers, each tied with diff. town cancel. Very good lot	55.00

3c 1851 ISSUE

5-83	3c Red (33). Rosettes Doubled and Line through cents variety. Tied on cover from Baltimore. Fine	20.00
------	--	-------

84	3c Dull red (33). Two on cover to Cal. from New Bedford. One is Line through Cents variety. Fine <i>Part</i>	20.00
85	3c Red (33). Pair with GENTS for CENTS variety. Fine <i>600 Part</i>	10.00+
86	3c Claret (33a). Gents for Cents variety. Tied from Middlebury, Vt. Fine	10.00
87	3c Dull red (33). Tied, Paper Fold variety. Fine	—
88	3c Red (33). Sheet corner copy tied from Troy, N. Y. Fine	—
89	3c Red (33). Two diff. corner sheet margin copies , both tied. Fine	—
90	3c Red (33). Three corner sheet margin copies and two imprint copies. Five covers, stamps cut in one side. V. G. scarce lot	—
91	3c Orange red (33). Very fine pair tied from Cincinnati in blue	—
92	3c Red (33). Very fine pair used from Boston to Calif. <i>BVS</i>	—
93	3c Red (33). Vertical guide line sheet margin pair. Tied. Fine	—
94	3c Red (33). Two horiz. pairs, shades, tied from Boston to Calif. Fine	7.00
95	3c Red (33). Three covers each with pair to Calif. Fine	10.50
96	3c Red (33). Three covers each with pair, two tied San Francisco other Sacramento, Cal. Very good	10.50
97	3c Red (33). Six covers each with horiz. pair to California. Very good	21.00
98	3c Red (33). Six pairs tied on covers, various town cancels. Very good	21.00
99	3c Red (33). Twenty-seven covers, includes three pairs each with wide sheet margin copy , various pmkds. Very good	—
100	3c Red (33). Twenty-three covers, each with wide sheet margin copy , various pmkds. Fine to V. F.	—
101	3c Red (33). 119 Covers, PLATE VARIETIES , Recuts, gashes, Worn, Extra lines, double transfers, etc. Fine lot for specialist	—
102	3c Red (33). New York Ship 7 cancel, stamp ms. cancel with "Due 4", to Maine. Fine	—
103	3c Red (33). Straight line Steamboat ties stamp. Fine	7.50
104	3c Red (33). Very fine Paid tied with blue Packet Natchez , also blue oval Route 7309 . Scarce <i>(Photo)</i>	20.00
105	3c Dull red (33). Two covers each with Steamboat , one creased. Very good	—
106	3c Red (33). Neat Paid 3 on stamp, red Ipswich, Mass. pmkd. Fine	—
107	3c Red (33). Tied with Canton, Miss. Cross . Fine, scarce <i>(Photo)</i> <i>800 Part</i>	—
108	3c Red (33). Tied with large double line Canton, Mass. circle. Fine, attractive <i>500 Part</i>	—

109	3c Red (33). Tied with neat "Paid 3" in circle from Washburn, Ill. Fine	—
110	3c Red (33). Tied with fine fancy Chicopee Star	—
111	3c Red (33). Tied with fine negative blue fancy "Paid" from Norwich, Ct., stamp creased <i>350 Phil</i>	—
112	3c Red (33). Tied with brown balloon strike Waterford, Vt. Fine	—
113	3c Dull red (33). Tied with bright green Lancaster, Pa. cancel. Fine	—
114	3c Red (33). Tied with bright green Saltsburgh, Pa. cancel, advertising corner card. Fine	—
115	3c Dull red (33). Beautiful green York, Pa. ties the stamp. Superb	—
116	3c Red (33). Tied with attractive blue Star in circle from Charlottesville, Va. Fine (Photo)	—
117	3c Dull red (33). Tied with odd pin wheel cancel from Woodville, Miss. Fine <i>300 Phil</i>	—
118	3c Dull red (33). Tied with blue Delaware Water Gap, Pa cancel, gash variety. Fine	—
119	3c Claret (33a). Tied with pretty blue Troy, N. Y. Fine	—
120	3c Claret (33a). Tied with Utica single bar and slug, rich color. Very fine	BVS
121	3c Red (33). Attractively tied in blue July 4th from Lawrence, Mass. Very fine	—
122	3c Red (33). Two covers from Jacksonville and Apalachicola Florida . Very good <i>200 Phil</i>	—
123	3c Red (33). Two covers from Lyme, Ct., one tied with "Paid 3" in circle other blue slug in town cancel. Very good	—
124	3c Red (33). Three covers dated Jan. 1, July 4, Dec. 25 . Fine	—
125	3c Red (33). Three covers, tied, Fort Covington, Ft. Edwards, Ft. Plains, N. Y. Fine	—
126	3c Red (33). Three covers tied in blue University of Va. Very good	—
127	3c Red (33). Two covers, tied with July 4 and Dec. 25 dates. Fine	—
128	3c Red (33). Each tied with fancy pin wheel strike, two covers from Norwich, Ct. Fine	—
129	3c Red (33). Four covers, each with diff. type PAID cancel. Fine lot	—
130	3c Red (33). Two covers each tied with diff. shade green cancel from New Hampton, N. H. Fine	8.00
131	3c Red (33). Five covers, each with diff. type fancy grid. Fine lot	—

75 132	3c Red (33). Three horiz. pairs each from Chelsea, Mass. to Calif., each tied with diff. type cancel. Fine	10.50
75 133	3c Red (33). Four covers each with green cancel, three tied other pen cancel. Very good	—
25 134	3c Red (33). Attractive lot of six diff. covers each tied from Taunton, Ms. , fancy types in blue, green and olive green. Fine	—
00 135	3c Red (33). Six covers each with diff. green town cancel. Very good lot	24.00
25 136	3c Red (33). Eight covers all tied with diff. red town pmks. V.G.-Fine	—
50 137	3c Red (33). Fifteen covers, all diff. towns each tied in black or blue with red town pmkds. on cover. V.G.-V.F.	—
25 138	3c Red (33). Nine diff. large balloon strikes . Very good	—
25 139	3c Red (33). Five diff. Maine towns each tied to small embossed cover. Fine	—
60 140	3c Red (33). Four diff. large balloon strikes , each tied. Fine lot	—
75 141	3c Red (33). Twenty-eight covers, each tied with PAID in town cancel, mostly diff. towns. Fine lot	42.00
65 142	3c Red (33). Twenty-two covers, all odd or fancy cancels , paid, double circles, express, slugs, pin wheel, etc. Very good lot	—
25 143	3c Red (33). Twenty-six covers, all odd or fancy cancels , green, free, express, slugs, pin wheel, etc. Very good lot	—
45 144	3c Red (33). Collection of twenty-six covers all from Worcester, Mass. , mostly diff. type cancels includes all sorts of odd grids. Interesting fine lot	—
50 145	3c Red (33). Start on a CALENDAR , 133 covers each with different date hitting on the stamp. Excellent start for a calendar on cover, generally fine, mounted	—
05 146	3c Orange red (33). Tied with neat Ohio & Pa. R. R. Very fine (Photo)	—
75 147	3c Red (33). Boston & Burlington R. R. , tied. Very good	7.50
00 148	3c Dull red (33). Tied, Boston & Albany R. R. Very good	7.50
37 149	3c Dull red (33). Tied with Eastern R. R. Fine	7.50
25 150	3c Dull red (33). Tied with Eastern R. R. on small embossed cover. Very good	7.50
00 151	3c Red (33). Tied with blue grid, Eastern R. R. cancel, fine except crease in stamp	7.50
25 152	3c Red (33). Tied with Eastern R. R. cancel. V.G.	7.50
50 153	3c Dull red (33). Tied blue grid, Eastern R. R. cancel in blue. Fine	7.50

50 154	3c Red (33). Tied with very fine strike of N. York & Phila. R. R.	7.50
155	3c Dull red (33). Three covers each tied with New York & Phila. R. R. Fair	22.50
50 156	3c Red (33). Four diff. Railroad cancels. Very good	30.00
75 157	3c Red (33). Five covers, each tied with U. S. Express Mail cancel. Fine lot	—
25 158	3c Red (33). Tied with Jacksonville, Florida cancel to corner sheet margin copy on embossed cover. Very fine	—
75 159	3c Red (33). Sent to Boston and forwarded to Me. from England with various transit markings. Scarce, fine	—
25 160	3c Red (33). Two covers to Nova Scotia, one has single stamp and other two, Fine transit markings	—
75 161	3c Red (33). Bisected copy tied on small embossed cover, no apparent use for split. Interesting oddity	—
162	3c Dull red (33). Tied from New York, Turned Cover. Stampless from Brandon, Vt. on inside. V. G.	—
0. 163	3c Red (33). Four covers each has two stamps, diff. towns all to Calif. with 6c rate. Fine	—
75 164	3c Red (33). Four covers, Due 5 and Missent and Forwarded. Interesting markings one orange brown	—
25 165	3c Red (33). Eight covers, Various markings, Missent, Advertised One Cent, Due 5cts., etc. Interesting lot	—
025 166	3c Dull red (33). Tied with neat "1853" year date, scarce. Very fine cover (Photo)	30.00
W 167	3c Red (33). Tied with Washington, D. C. Free and 1855 year date. Very good	10.00
275 168	3c Red (33). Tied with New Haven 1855 year date. Very fine	10.00
1.50 169	3c Red (33). Eighteen covers each tied with year date cancel from 1856-59, various towns. V. G.-Fine	—
25 170	3c Claret (33a). Tied from New York with Boyds Local cut to shape (20L13). Fine cover	15.00
1.00 171	3c Red (33). Tied from Boston, rare handstamp in red Libbey & Co's City Post, 10 Court Square. Very good	—
4. 172	3c Dull red with Teese & Co. Penny Post (33, 137L1). Stamp tied with Philadelphia, local not tied, Very good	125.00
50 173	3c Red (33). Three covers all tied from Philadelphia with Bloods locals and company handstamps. Fine	—

174	3c Red (33). Five covers all tied from Philadelphia with Bloods locals and company handstamps. Very good	—
175	3c Red (33). Two covers, one tied with U. S. Express Mail cancel, other tied with Blood's local from Phila. Fine	—
176	3c Red (33). Twenty-five covers all Conn. State town postmarks, mostly diff. V. G.-V. F.	—
177	3c Red (33). Fifteen covers, 10 Illinois and 5 Iowa postmarks. V. G.-Fine	—
178	3c Red (33). Seven covers, Indiana postmarks. Fine lot	—
179	3c Red (33). Twenty-two covers all Maine State town postmarks, mostly diff., many small towns. Fine lot	—
180	3c Red (33). Ninety-seven covers, all Mass. State town postmarks, mostly diff., many small towns. V. G.-V. F.	—
181	3c Red (33). Eight covers, 7 diff. all Michigan postmarks. V. G.-Fine	—
182	3c Red (33). Ten covers, 5 Missouri , 5 Rhode Island , mainly St. Louis and Providence. V. G.-Fine	—
183	3c Red (33). Fifty-seven covers all New Hampshire State town postmarks, mostly diff. many small towns. V. G.-V. F.	—
184	3c Red (33). Eleven covers, all New Jersey postmarks, mostly diff., fine lot	—
185	3c Red (33). Forty-eight covers, all New York State town postmarks, mostly diff., many small towns. Fine lot	—
186	3c Red (33). Twenty-one covers all Ohio State town postmarks, mostly diff., many small towns. V. G.-V. F.	—
187	3c Red (33). Fifteen covers all Penn. State postmarks, mostly diff. Fine lot	—
188	3c Red (33). Twenty-five covers all Southern State postmarks, Texas, La., Ala., Md., Tenn., etc. V. G.-Fine lot	950 Cent
189	3c Red (33). Twenty covers, all Vermont State town postmarks, mostly diff., many small towns. V. G.-V. F.	—
190	3c Red (33). Seventeen covers, all Virginia postmarks. V. G.-Fine	—
191	3c Red (33). Eight covers, 7 diff. Wisconsin postmarks. V. G.-Fine	—
192	3c Red (33). Eight covers each used on 3c Entire, various town pmkds. Fine lot	—
193	3c Red (33). Twelve covers, plate varieties, shades, etc. Fine-Very fine	—
194	3c Dull red (33). Thirteen covers, mostly tied, various towns, shades, V. G.-Fine	—

310	195	3c Red (33). Fifteen small embossed covers, various town cancels. Fine lot	—
250	196	3c Claret (33a). Fifteen covers, various postmarks. V.G.-Fine	15.00
375	197	3c Red (33). Eighteen covers, shades, tied various towns. Very fine copies	—
3	198	3c Red (33). Twenty-three covers, all small embossed covers, various pmkds. V.G.-Fine	—
100	199	3c Red (33). Twenty-three covers, all pen cancel	—
375	200	3c Dull red (33). Thirty-nine covers, many pen cancels, various town cancels. Fair to good	17.55
525	201	3c Claret (33a). Thirty-six covers, various town pmkds. V.G.-Fine	36.00
1025	202	3c Red (33). Fifty-one covers, shades, mostly tied. V.G.-Fine	22.95
775	203	3c Red (33). Sixty-seven covers, shades, mostly tied, various towns. V.G.-Fine	30.15

3c 1851, ADVERTISING CORNER CARDS

510	204	3c Dull red (33). Tied from Sandusky. Attractive illustrated corner card (Photo)	—
325	205	3c Dull red (33). Tied from Milwaukee. Neat little illustration of cat in lower left corner. V.F. cover	—
325	206	3c Red (33). Tied from N. Y., Gold advert. corner card. Fine	—
625	207	3c Red (33). Tied from Newark, N. J., attractive illustrated corner card in green. Fine <i>2.50 JH</i> <i>260 Phil</i>	—
325	208	3c Claret (33a). Tied from Troy, N. Y., illustrated corner card of provision Co. Fine	—
75	209	3c Red (33). Tied from Louisville. Illustrated corner card of Odd Fellows. Fine <i>2.50 JH</i> <i>3 Phil</i> (Photo)	—
25	210	3c Claret (33a). Two tied from Kensington, Pa., illustrated corner card. Fine	—
375	211	3c Dull red (33). Interesting illustrated corner card of Phrenologists. Fine <i>3.00 Phil</i> (Photo)	—
5	212	3c Red (33). Attractive illustrated corner card of Lamp Co. Very fine	—
350	213	3c Red (33). Tied from Albany. Illustrated corner card, adv. vegetable pills. V.G. <i>as is</i>	—
525	214	3c Red (33). Illustrated corner card showing Melodeon. Very fine	—
200	215	3c Red (33). Illustrated corner card from Boston, attractive. Fine	—

- 4- 216 3c Red (33). Tied from Boston, illustrated corner card of Melodeon Co. Attractive —
- 3- 217 3c Red (33). Tied from Phila. Attractive illustrated corner card of factory. Fine —
- 3- 218 3c Dull red (33). Attractive illustrated cover of Boston American Union Newspaper —
- 2- 219 3c Red (33). Tied from Milwaukee. Illustrated corner card of Liquor Co. Fine —
- 5- 220 3c Dull red (33). Tied, attractive illustrated cover on pink envelope. Fine (Photo) —
- 4- 221 3c Red (33). Tied, from Worcester, Mass. Red illustrated corner card, attractive. Fine —
- 1- 222 3c Red (33). Inside has illustrated picture of canal boat on bill of lading. Tied with Portsmouth, O. pmkd. Very fine —
- 4- 223 3c Red (33). Two diff. Boston illustrated Insurance Co. corner cards. V. G. to Fine —
- 2- 224 3c Red (33). Two diff. illustrated corner cards of Fairbanks Scale Co. Fine, attractive —
- 4- 225 3c Red (33). Two diff. Railroad Co. corner cards. Fine —
- 3- 226 3c Dull red (33). Two both tied. Corner cards of Baltimore & Ohio and Penna. Railroad. Very good —
- 6- 227 3c Red (33). Two diff. illustrated advertising corner cards. Fine —
- 7- 228 3c Red (33). Three illustrated corner cards of Drug, Paint & Oil Co., same design in red, blue and green. Fine, attractive —
- 6- 229 3c Red (33). Three diff. illustrated corner cards. Fine lot —
- 1- 230 3c Dull red (33). Four diff. illustrated corner cards. Good —
- 3- 231 3c Dull red (33). Four diff. illustrated corner cards, diff. colors. Fine lot —
- 8- 232 3c Red (33). Four diff. illustrated corner cards. Fine lot —
- 9- 233 3c Red (33). Eight diff. advertising corner cards. Fine lot —
- 5- 234 3c Dull red (33). Nine diff. advertising corner cards. Fine lot —
- 5- 235 3c Red (33). Eleven diff. advertising corner cards. Fine lot —
- 4- 236 3c Red (33). Thirteen diff. advertising covers, five illustrated, all ads on backs. Fine lot —
- 17- 237 3c Red (33). Twenty-one advertising corner cards all diff. fourteen printed and seven embossed. Fine lot —

3c 1851 HOTEL & SCHOOL CORNER CARDS

471	238	3c Dull red (33). Attractive illustrated corner card of Howard Hotel , New York. Fine	—
471	239	3c Dull red (33). Townsend Female Seminary corner card, stamp ms. cancel, West Townsend, Mass. pmkd. Fine	—
244	240	3c Red (33). Tied from New Haven, embossed corner card Yale College Class of '60 . Fine	—
325	241	3c Dull red (33). Tied, corner card of New Hampton Institution. Illustrated on back. Very good	—
8	242	3c Red (33). Tied from Syracuse, N. Y. Attractive corner card. Fine	—
571	243	3c Red (33). Tied N. Y. City, Red corner card of Judson's Hotel. Fine	—
550	244	3c Red (33). Two copies tied from Alton, Ill. with blue corner card of Franklin House. Fine	—
150	245	3c Red (33). Stamp tied from Rochester, N. Y., advertising corner card of Central Medical College, stamp torn	—
550	246	3c Red (33). Two school corner cards, Irving Institute and Freehold Young Ladies Seminary. Fine	—
771	247	3c Red (33). Tied from Freehold, N. J., corner card of Freehold Young Ladies Seminary. Two diff. types. Very fine	—
271	248	3c Red (33). Six diff. Boston Hotel corner cards. V. G. to Fine	—
871	249	3c Red (33). Ten different Hotel corner cards . Fine lot	—
1271	250	10c Green, Type III (35b). Tied with fine Shasta, Cal. pmkd. (Photo)	13.50
20	251	3c Red, 10c Green, Type IV (33, 35c). Tied with Huntington, N. Y. cancel to Cuba, 10c cut in slightly at B, Transit markings, attractive, scarce (Photo)	150.00+
371	252	Hotel Corner Cards , 1851-93. Nine diff. mostly illustrated. Fine lot	—
10	253	2c-3c 1851-98 period. Seventeen covers illustrated with State Seals. Very good lot	—
13	254	Illustrated Advertising Corner Cards , 47 diff. Fine lot, 1851-93 period	—
1	255	1c, 2c, 3c 1851-95. Twelve misc. covers. V. G. lot	—

1857 ISSUE

4	256	1c Blue, Type V (42F). Tied with neat " Balto. Paid ". Very fine (Photo)	—
271	257	1c Blue, Type V (42F). Tied with red City Delivery on tiny cover. Fine	—

1-258	1c Blue, 3c Red (42F, 44). Six covers, one with 1c and 3c on cover others 3c value, all tied. Fine	—
175-259	1c Blue, 3c Red (42F, 44). Two of first and thirteen of latter, various pmkds. Fine lot	—
3-260	3c Red, Type I (43). Three covers, Pair on one ms. cancel. all tied. Fine	15.00
5-261	3c Red (44). Tied with fancy star in broken circle from Canton, Miss. Very fine strike <i>3.15 M</i> <i>200 JH</i> (Photo)	—
8-262	3c Red (44). Two red ovals From Steamer M. Relf and From Geo. Hitte, New Orleans , stamp pen cancel. Fine, scarce <i>3.75 M</i>	—
3.50-263	3c Red (44). Tied with straight line Steamboat . Fine	—
2.50-264	3c Red (44). Tied with very fine strike of fancy Stoneham, Mass. Rare (Photo)	—
1.25-265	3c Red (44). Tied with blue Eastern R. R. Very good	—
3.25-266	3c Red (44). Tied from Batavia, N. Y., sent to Plattsburgh and forwarded and transit markings. Very fine (Photo)	—
1.25-267	3c Red (44). Brown Charlotte C. H. Va. pmkd. on small cover. Fine	—
1.75-268	3c Red (44). Tied with bright green town cancel. Very good	—
8-269	3c Red (44). Beautiful strike of Canton, Miss. LYRE . Very fine, scarce <i>3.75 M</i> <i>900 JH</i> (Photo)	—
1.50-270	3c Red (44). Nicholasville, Ky. pmkd. with tiny 1860 year date in circle. Very fine strike	—
2-271	3c Red (44). Tied with University of Va. blue pmkd. Fine	—
3.75-272	3c Red (44). Tied with blue grid, University of Virginia, Va. cancel. Very fine	—
5.50-273	3c Red (44). Tied with octagon Killingly, Ct. cancel. Very fine, scarce <i>3.35 M</i> (Photo)	—
4.25-274	3c Red (44). Tied with straight line Baltimore R. R. Fine (Photo)	—
1.25-275	3c Red (44). Tied with "Paid 12" in circle from Norwich, N. Y. Fine <i>3.35 M</i> (Photo)	—
4.25-276	3c Red (44). Tied with N. Y. & Boston Steamb. R. R. cancel. Fine	—
4.75-277	3c Red (44). Tied from Washington with attractive illustrated National Hotel corner card. Fine (Photo)	—
4.25-278	3c Red (44). Tied with Steamboat , Illustrated corner card. Very fine <i>3.15 M</i> (Photo)	—
6.25-279	3c Red (44). Tied from Albany, attractive illustrated corner card. Very fine	—

375 280	3c Red (44). Tied with Paid from Providence corner card of Insurance Company. Very fine	—
4- 281	3c Red (44). Tied from Boston, attractive illustrated corner card. Fine	—
375 282	3c Red (44). Tied Phelps, N. Y. with attractive corner card of merchant. Fine	—
325 283	3c Red (44). Tied from Louisville Ky. with attractive corner card of hotel. Fine	—
4- 284	3c Red (44). Tied from N. Y. Attractive illustrated corner card in brown. Fine	—
250 285	3c Red (44). Two diff. illustrated corner cards of Bell Co's., both tied from Troy, N. Y. Fine	—
4- 286	3c Red (44). Three diff. illustrated corner cards. Fine	—
600 287	3c Red (44). Six diff. advertising corner cards. Fine lot	—
1775 288	10c Green. Type V (50). Tied with blue Chicago, Ill. cancel to Canada with "U. States 10 Paid" in red circle. Fine	—

1861 ISSUE

225 289	1c Blue (63). Pair and single on cover, single and 3c tied on cover. Fine	9.00
225 290	1c Blue, 3c Rose (63, 65). Tied on illustrated advert. cover. Very good	—
225 291	3c Rose (65). Tied with fine strike of Phila. Fez	—
400 292	3c Rose (65). Tied with attractive Star in Circle . Very fine (Photo)	—
300 293	3c Rose (65). Tied with Free . Fine	—
325 294	3c Rose (65). Tied with U. S. Ship in circle. Fine, scarce	—
450 295	3c Rose (65). Tied with two line Steam Ship , "Due 7". Scarce (Photo)	—
450 296	3c Rose (65). Tied with Steamboat , "Due 1" in circle. Scarce (Photo)	—
4- 297	3c Rose (65). Tied with large "V" from Valparaiso, Ind. Fine, scarce (Photo)	—
450 298	3c Rose (65). Tied in black oval Monrovia Jun 22, 1864, B. & O. R. R. Fine, scarce	—
625 299	3c Rose (65). Very decorative hand drawn addressing (Photo)	—
200 300	3c Rose (65). Tied, with New Haven Missent in circle. Very fine	—
350 301	3c Rose (65). Tied with fancy star from Chester, Ct. Fine	—
4- 302	3c Rose (65). Neatly tied " Chi to Burlington R. P. O. ", illustrated corner corner card in red. Attractive fine cover	—
4- 303	3c Rose (65). Dub. to Sioux City R. P. O. cancel, scarce, good	—

2.50	304	3c Rose (65). Tied from Philadelphia, "U. S. Ship". Very good	—
1.75	305	3c Rose (65). Two tied from Philadelphia, "Ship", U. S. Legation, Venezuela embossed on back, good	—
6.25	306	3c Rose (65). Tied with scarce "NIX" from Wonsocket Falls, R.I. Fine (Photo)	—
6.50	307	3c Rose (65). Tied with blue octagon Freemont, Ill., Due 3, Very attractive. Very fine	(Photo) —
8.50	308	3c Rose (65). Tied. Interesting illustrated cover of early velocipede. Fine (Photo)	—
2.75	309	3c Rose (65). Two diff. attractive illustrated corner cards. Fine	—
6.50	310	3c Rose (65). Nine diff. illustrated advertising corner cards. Fine lot	—
6.75	311	3c Rose (65). Fourteen covers, includes "Free", Patriotic and fancy. Very good lot	—
40.50	312	5c Buff (67). Tied with black grid to Patriotic cover from South Bend, Ind. In ms. "Via private ship from N. Y.", to Australia with Ship-letter Sydney and Melbourne backstamps. Fine. Rare	(Photo) 200.00
3.10	313	10c Green (68). Tied with fancy star in circle from Union Springs, N. Y. to Canada. Fine	(Photo) —
3.75	314	10c Green (68). Tied with attractive red cancel, to Cuba. Fine	—
7.75	315	2c Black (73), from Albany with black carrier cancel. Very good	8.00
3.10	316	2c Black (73). Tied with Phila. Station G cancel. Fine	—
2.50	317	2c Black, 2c Buff (93, 113). Two covers both tied. Fine	6.50
1.25	318	1c-10c 1861-1937 period, twenty-five misc. covers. Very good lot, some early and commems.	—
1.00	319	Misc. Covers, Nine diff. includes P. M. Last Forks, Ill. oval on entire, V. G. lot	—
5.50	320	1c-3c, 1861-98 period. Fifteen diff. illustrated corner cards of wagons and buggies. Fine lot	—

PATRIOTIC COVERS

5.50	321	3c Red (44). Patriotic eagle and flag in blue, tied with fancy grid from Plainfield, Ind. Very fine	400 J. H. (Photo) —
4.50	322	3c Rose (65). Patriotic, tied from Memphis, Purple Oval "Sixth Regiment Inf. Minn. Volunteers". Fine	—
2.25	323	3c Rose (65), Patriotic cover, Washington and flag with part of his Farewell Address, from Miamiville, O. Very good	—

50-324	3c Rose (65), Patriotic cover, tied from Springfield, Ill. Shows three riflemen in diff. positons, scarce. Very good	—
75-325	3c Rose (65). Tied from Old Point Comfort, Va., Patriotic, flag design Fast Colors, artistic addressing of cover. Fine	—
W-326	3c Rose (65). Soldiers letter, "G. B. D." handstamp. Fine	—
W-327	3c Rose (65). Tied, Camp Dennison pmkd. Fine	—
328	3c Rose (65), Prisoners Letter in blue oval, stamp tied from Nashville. Very good	—
W-329	Patriotic Letterheads. 11 different designs, Civil War letters, interesting attractive lot	—

1869 ISSUE

0-330	1c Buff (112). Cancelled with a Cross from South Norwalk, Conn. Fine	8.50
00-331	2c Brown BISECT (113). Single and Vertical Split tied on cover from Plymouth, Pa. to Phila., "Due 1" marking. Fine. Rare (Photo)	250.00
0-332	2c Brown (113). Pair with star cancel, from St. Louis. Fine	—
75-333	2c Brown (113). Tied with blue grid, Albany Carrier cancel. Very fine	—
W-334	2c Brown (113). Two covers one with Beaver Female Seminary corner card other from Boston with "Held for Postage". Fine	—
W-335	3c Ultramarine (114). Fine strike of negative Arrowhead from Whitehall, N. Y. 150 y 18 (Photo)	—
W-336	3c Ultramarine (114), Cross in circle cancel, from Ilion, N. Y. Fine (Photo)	—
W-337	3c Ultramarine (114). Tied, Worcester and Nashua R. R. cancel. Very good	—
W-338	3c Ultramarine (114). Pair tied on cover from Saratoga with corner card of hotel. Fine	—
00-339	2c Brown, 3c Ultramarine (113-14). Three covers of latter, includes PAID and Temperance corner card. V. G.	—
W-340	6c Ultramarine (115). Tied from Oak Park, Ill. Very good	12.00
W-341	6c Ultramarine (115). Tied from Little Rock, Ark. on legal size cover, Map on back shows R. R. connections with surrounding country. Very good	—
1-342	15c Brown and Blue on 3c Pink Entire (119), on registered cover, Very good (Photo)	60.00



539



540



550



551



552



552A



556



564



566



570



573



592



618



619



620



630



631



632



633



634



635



636



637



638



639



669



665

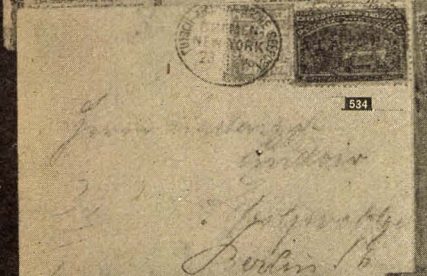
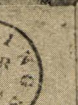


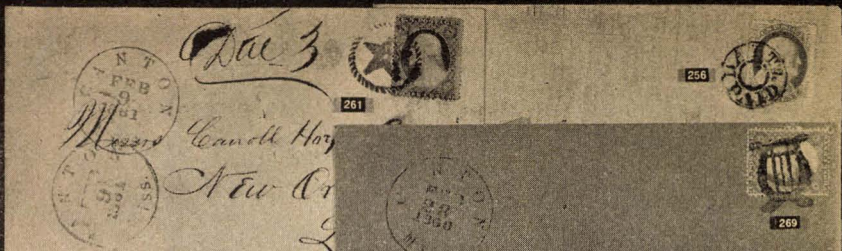
654



655

4860







27



priority

28



Collins

Martha Sarah

Mount Pleasant

Long Island

Catharine M. Stie

38



39



Frederick Brown Esq.

J. H. Brown Esq.



J. C. Brown

49



Mr. David D. Brown

San Francisco

Morgan



104



107



146



116



166



Miss Mary A. B. B. B.

TERMS OF MEMBERSHIP, THREE DOLLARS A YEAR



EASTERN OFFICE—50 Broadway, New York
WESTERN OFFICE—100 West St., San Francisco

204



207



C. D. Barker Esq.

Cor. 11th & 12th Sts.

Philadelphia



209



220



Mr. S. W. Harris

Mechanics' Fair

211



Wm. R. Block



251



Mr. S. W. Harris
Philadelphia
Pa.

250



275

A. Stanley Kellogg
Vernon
Connecticut

and
ington Co
N.Y.

BANKNOTES ON COVER

125 343	2c Red brown, Grilled (135). Tied with Star in circle on green advertising cover. Very fine	—
45 344	3c Green (147). On illustrated PEACE cover. Fine (Photo)	—
275 345	6c Carmine (148). Tied from N. Y. to Hungary, various transit markings. Fine	—
55 346	24c Purple, 30c Black (153-54). Tied on large cover from New York to Providence. Very good, scarce	84.00
35 347	3c Green (158). Tied with fine Shield in circle, scarce	—
200 348	3c Green (158). Tied with Lafayette Bloomington & Miss. R. R. cancel. Fine, scarce	—
35 349	3c Green (158). Sun Valley R. R. cancel, scarce. Fine	—
35 350	3c Green (158), Grand Trunk R. R. cancel. Fine	—
275 351	6c Pink (159). Tied with N. Y. Foreign Mail cancel, Type 41, cover ragged, stamp fine	—
75 352	6c Pink (159). Tied with attractive Foreign Mail cancel on mourning cover. Fine (Photo)	—
35 353	1c Blue, Banknote. Tied with neat year date "83" from Nashville, Tenn. Fine, scarce	—
175 354	3c Green (184). Tied from Poughkeepsie, Multi-colored corner card of Eastman Business College. Attractive	—
200 355	3c Green on 3c Entire both tied with fancy geometric from Waterbury . Fine	—
35 356	5c Blue (185). Tied with large "E", "Keno. & R'kd Agt." cancel to Japan with transit markings. Fine (Photo)	—
50 357	5c Blue (185). Tied from Morris, Ill. to Japan, with various transit markings. Fine	—
25 358	4c Green, 5c Brown on 3c Entire (205, 211). Tied on registered cover in blue. Fine	—
35 359	1c Gray blue (206). Block of ten on back of small registered cover. Very good	—
35 360	1c Blue, 2c Red brown. Three diff. multi-color illustrated advertising covers. Fine	—
200 361	3c Green (207). Tied with cross, "Claremont, Minn, F. W. Doe P. M." cancel in purple. Fine, attractive	—
275 362	3c Green (207). Attractive flaming star cancel from Ilion, N. Y. Fine	—

7.5	363	3c Green (207). Illustrated corner card of Bunnell's Museum, from N. Y. City. Fine	_____
2.5	364	3c Green (207). Tied from Geneva, N. Y. illustrated corner card of Geneva Hyg. Institute, Fine	_____
3.25	365	3c Green (207). Illustrated corner card of Ft. Edward Collegiate Institute. Fine	_____
5.5	366	3c Green (207). Tied from Wilberforce, O., Illustrated corner card of Wilberforce University. Fine (Photo) _____	_____
1.25	367	2c, 10c Banknotes (209-10). Tied, fancy registered cancel from Norwalk, Ohio. Fine	_____
3.25	368	2c Red brown (210). Attractive illustrated corner card of ship on green envelope. Fine	_____
2.75	369	2c Red brown (210). Tied, Fancy oval Broadway, Warren Co., N. J. Fine	_____
4.75	370	2c Red brown (210). Used in frame advertising City Hotel, Portland, Me. Very good	_____
2.25	371	2c Green (212). Eight copies used on registered cover, each cancelled with fancy cross. Fine	_____
10.50	372	3c Vermilion used on 2c Entire (213). Tied to London. Fine, scarce on cover (Photo) 15.00	_____
2.10	373	1c-10c Banknotes. Eighteen covers includes registers, fancy etc. Very good lot	_____
8.75	374	Illustrated Covers. Sixteen diff. 1870-1908 period. V.G. lot	_____
2.75	375	1c-3c, 1870-98. Eight illustrated covers of musical instruments. Fine lot	_____
3.00	376	1c-3c Banknotes. Nine covers with diff. R. P. O. cancels. Very good lot	_____
3.50	377	1c-3c 1870-03 period. Eleven diff. illustrated corner cards of farm equipment. Fine lot	_____
5.50	378	1c-3c 1870-1903 period. Forty-three illustrated advert. corner cards. Fine lot	_____
5.50	379	2c 1883-98 period. Seven covers with illustrated corner cards of ships. Fine lot	_____
1.75	380	2c 1883-1908 period. Ten diff. illustrated corner cards with farm animals, three colored. Very fine	_____
2.00	381	Railroad Cancels. Reno & Virginia City (2). Philippines surcharge, Dacupan & Manila. Fair	_____

1890 TO DATE

382	2c Carmine (220). Tied with neat maltese cross , from Iron Mountain, Wyo. Fine	—
383	2c Carmine (220). Illustrated corner card of Washington Hotel with scene. Washington crossing the Delaware . Attractive	—
384	2c Carmine, 1890-98 period. Ten diff. illustrated corner cards of guns . Fine attractive lot	—
385	2c Carmine, 1890-98 period. Nine diff. illustrated corner cards of tools. Fine lot	—
386	1c, 4c, 5c Columbians (230, 33, 34). Tied on small cover to South Africa, used in 1893. Fine	—
387	3c, 5c Columbian (223, 232, 234). Tied on registered cover to Germany used in 1893. Fine	6.00
388	3c, 5c Columbian on 2c Entire (232, 234). Tied on registered cover, used in 1893. Fine	6.00
389	5c Columbian (234). Tied on neat mourning cover to Germany, used in 1893. Fine	—
390	Commems. (236, 285, 294, 327), on legal size registered cover to Germany. Fine, used in 1904	25.00+
391	World's Fair . Eight diff. illustrated cards, 1893-1912 period. Fine lot, two unused	—
392	1c Blue (264). Tied on with Universal Postal Congress flag pmkd, from Wash. 1897. Very fine, scarce	—
393	1c Blue (264). Five copies tied, to Japan with transit markings. Very fine	—
394	2c Carmine (267). Attractive multi-colored corner card of Grand Army Encampment . Very fine	—
395	2c Carmine (267). Tied on with fancy star. Hotel Champlain, Clinton Co. N. Y. pmkd. Executive Mansion corner imprint. Very fine	—
396	2c Carmine pair used with 1c Battleship revenue , tied from N. Y. to Germany. Very fine	—
397	2c Carmine (267). Used from St. Louis with illustrated corner card of World's Fair in orange. Fine	—
398	2c-13c (267-68, 287 imprint plate pair, 288, 308), on legal registered cover cover to Germany, used in 1903. Very good	18.00+
399	3c Purple (268). Tied with Mil. Sta. No. 1 from San Francisco. Very fine	—
400	3c Purple , 15c Olive green (268, 284). Tied on neat registered cover to Hungary. Fine	—

4.25	401	5c Brown (270). Tied with U. S. Postal Agency Shanghai. Very fine	—
2.50	402	5c Brown, 10c Green (270, 273). Tied on cover to Amoy, China, marked via Vancouver. Fine	—
3.50	403	5c Blue, 8c Violet brown (27, 281). On registered cover to Japan, various markings. Fine	—
2.50	404	2c-10c (279b, 281, 283, 287, 290). Tied on legal size registered cover to Germany. Very good	—
2.75	405	5c Blue on 5c Entire (281). Tied on with Supplementary Mail cancel, to Germany. Fine	—
1.25	406	5c Blue (281). Tied to England with Stevens U. S. Despatch in oval and forwarded to Manila. Fine. Scarce	—
2.50	407	5c Blue, 10c Brown (281, 283). Tied on cover to Amoy, China. Fine	—
2.25	408	15c Olive green (284). Tied on cover, University of Washington corner imprint. Fine	—
2.50	409	Spanish-American War Patriotics. Three diff. flag designs. Fine	—
2.00	410	Flag Cancels. 99 diff. covers. Very good lot of 1898-1914 period	—
4.50	411	19th & 20th Century, 290 misc. covers, includes entires	—
3.75	412	5c Pan-American (297). Tied on cover to Australia, used in 1901. Fine	6.00
2.75	413	5c Pan-American (297). Two tied on cover to New South Wales, used in 1901	7.50
2.50	414	1c Green Imperfs. (314, three covers; 531 pair). All tied on covers of proper period. Very fine	13.50
4.25	415	2c Carmine, 1903-08 period. Five diff. illustrated covers of early Autos. Fine interesting lot	—
2.25	416	1c Louisiana-Purchase (323). Attractive multi color official souvenir postal from St. Louis	—
4.50	417	2c Louisiana-Purch. (324). Tied on St. Louis Fair cancel. Attractive multi-colored illustrated corner card of Ship. Fine	—
4.75	418	1c-3c Commems. Thirteen covers, 1904-35 period all with exposition cancels. Fine lot	—
4.25	419	Exposition Cancels, 1904-38 period, twenty-seven covers and cards. Very good lot	—
3.75	420	1c-5c Jamestown (328-30). Set used on postal card to Europe in 1907. Very fine	10.00+
1.75	421	2c Lincoln, Shermack Perf. (368). Tied from Chicago in 1909. Fine	5.00
2.00	422	2c Hudson-Fulton Imperf. (373). Very fine copy tied on cover used in 1910	12.50

275 423	Hudson Fulton Celebration , attractive multi-color postal card mailed from Peekamo, N. Y. Oct. 12, 1909	—
3 50 424	2c Carmine (376) . Eight diff Fraternal corner cards in color with flags and patriotic designs. Very fine attractive lot	—
ut 425	2c Pan-Pacific (402) . Tied with exposit. cancel, on large colored card. Very good	—
2.10 426	Vera Cruz, Mexico, U. S. Mail Agency , Seven diff. stamps used on registered cover to France. Fine	—
75 427	World War I . Eighty-one covers and cards, mostly censored including early No. 1 & 4, also association material, most interesting lot	—
50 428	Naval Covers . Forty-three different all used in foreign countries, all have U. S. commems., Very fine and attractive lot	—
25 429	U. S. S. Naval Covers , 24 diff. Very good lot	—
8.50 430	1c-5c Lex-Concord, 2c-5c Hawaii (617-19, 647-48) . Five First Day Covers. Very fine	6.25
9.50 431	2c-5c Hawaii (647-48) . Blocks of each on two First Day covers. Very fine	—
5.50 432	First Day Covers . 34 covers 1928-39, singles and blocks, face value \$4.57. V. fine lot	—
5.75 433	50c Graf Zeppelin (C18) . Pair and single on two covers. Fine	12.00
6.00 434	50c Graf Zeppelin (C18) . Block on cachet flight cover. Very fine	15.00
4. 435	Zeppelin Covers , various flights with cachets includes one local Germany trip others U. S. Seven diff. includes 50c C18. Fine lot	—
7.50 436	Air Flights . 51 covers, wide variety of commems and airmails used including block #576, 648 etc., mostly first flights, face value \$4.59. Very fine lot	—
1.50 437	1c-10c Postage Dues , Six covers all used with regular stamps, 1875-90 period. Very good lot	—
4.00 438	2c Shanghai (K2) . Tied, with U. S. Shanghai, China cancel, corner card Fine	—
3.30 439	2c War Dept (O84) . Tied on small neat cover from Lebanon, Mo. Fine	—
2.50 440	Packet Frolic in blue oval on 3c Pink entire (U58). Fine 23.5 17	—
2. 441	3c Pink Entire (U59) . Negative "U. S." cancel, from Augusta, Ga. Fine	—
7. 442	2c Brown on white Entire (U277) , San Francisco Co. advertising around stamps. Fine, scarce 21.5 17 (Photo)	—
50 443	1c-5c Entires , 35 covers, many early ones fine lot	—

875-444	1c Brown on buff (UX3). Fine strike of "Used Up" from Traverse City, Mich., Scarce cancel 155M (Photo) —
3-445	Postal Cards with views, 147 diff., 1904-12 period, few foreign —
100-446	Bloods Local (15L17). Red straight line Philada. Railroad cancel. Very good —
225-447	2c Boyd Local (20L7). Tied, with red New York, Fine 5.00
550-448	1c Proprietary, Civil War revenue used as postage. Tied on drop letter. Very fine, odd usage —

WESTERN AND TERRITORIALS

2-449	3c Red (33). Tied with Saint Paul Min. Ter., Very good —
150-450	3c Red (33). Omaha City, N. T. pmkd, stamp cut in right, pen cancel. Very good —
50-451	3c Red (33). St. Anthonys Falls, M. T. pmkd., Stamp pen cancel. Very good —
452	3c Claret (33a). Tied with Nebraska City N. T. pmkd., Very good, scarce 5.00
453	3c Red (33). Pair tied from San Francisco to Boston with Due 10. Fine —
454	3c Red (33). Three stamps on cover each tied with faint St. Paul, M. T. cancel. Very good —
455	3c Red (33). Strip of four tied Forest City, Cal. Paid 8, stamps cut in B., Good, scarce 4.50 only if at least 2 H
456	3c Red (44). Tied in blue, Very fine strike of Hastings M. T. (Photo) 2.00 H
457	3c Red (44). Tied with box with dots enclosed with large ballon strike Plattsmouth N. T. cancel. Fine territorial, Scarce 4.50 H (Photo) —
458	3c Red (44). Tied with Minneapolis M. T. Fine territorial —
459	3c Red (44). Tied with red Reg Wing M. T. Very fine territorial (Photo) 2.00 H
460	3c Red (44). Red Strawberry Valley, Cal. pmkd. stamp pen cancel. Very good 3.00 coll H
461	3c Red (44). Tied with Saint Paul M. T. cancel, cover soiled —
390-462	3c Red (44). Tied with Faribault, M. T. cancel. Very good territorial —
463	3c Red (44). Tied with fine strike Omaha City. N. T., stamp slightly defective —
464	3c Red (44). Tied with fine strike of Leavenworth City. K. T. (Photo) 2.50 H
465	3c Red, 10c Green (44, 50). From San Francisco and forwarded. Fine —

466	10c Green, Type III (49b). Attractively tied with Columbia, Cal. pmkd. Very fine (Photo)	10.00
467	3c Rose (65.) Brownville, N. T. pmkd. Good territorial	—
468	3c Rose (65). Tied. Boise City, Idaho pmkd, Very good territorial	—
469	3c Rose (65). Tied with Mazeppa M. T. pmkd. small cover with poem printed at left. Fine (Photo)	—
470	3c Rose (65). Desoto, N. T. pmkd., stamp has str. edge, scarce territorial, Very good	—
471	3c Rose, 10c Green on 3c Entire with Wells Fargo Imprint (65, 68, U35). Tied with New York fancy star, sent to Canada West, Scarce (Photo)	—
472	3c Green (158). Tied with Camp Thomas, A. T. cancel. Fine territorial, scarce	—
473	3c Green (184). Tied with oval Wells Fargo & Co. Express Beaumont, Cal., stamp also ms. cancel. Fine cover. Rare use	—
474	Forts, 1851-98. Twelve diff. Fort Bidwell, Deposif. Scott, Defiance, Mason etc, V. G. lot	—
475	Territorials, Salesville, Mont., Bismarck, D. T. Collinsville, Ind. T., Nogales, Ariz. Very good	—
476	2c Green (212). Tied from East Pasadena, Cal. illustrated corner card of Raymond Hotel. Fine	—
477	3c Red on buff Entire (U10). Neatly tied Lawrence K. T., Fine (Photo)	—
478	3c Red on buff Entire (U10). Tied with Quindaro, K. T. pmkd., scarce territorial. Fine	—
479	3c Red on buff Entire (U27). Tied with large Wells Fargo Express Co. cancel. Fine	—
480	2c Green Entire with Bicycle Mail Route Local (12LU2). Fresno, Cal. pmkd. Very fine, scarce used (Photo)	—

WESTERN FRANKS

481	3c Red on white Entire (U9). Each Wells Fargo Imprint, Five diff. Calif. towns. Fine lot	—
482	3c Red, Pink Entires (U9, 34, 59). Three Wells Fargo Imprints each pmkd. Carson City, Fine lot	—
483	3c Entires (U9, 10, 34, 35, 59, 277). Fifteen covers each with Wells Fargo Imprint. Mostly Calif. towns. Very good lot	—

- 484 3c Red on buff Entire (U10). Nine covers with Wells Fargo Imprints, each diff. town Calif town, Sonora, Sac. City, Nevada, Portland etc. Fine lot
- 485 3c Pink, Entire (U34, 35) Wells Fargo Imprints, Austin, N. T. and Virginia City, N. T. cancels. Very good
- 486 3c Pink on buff Entire (U35). Wells Fargo Imprint, Jenny Lind pmkd. Fine, scarce
- 487 3c Pink Entires (U35, U59). Wells Fargo Imprints, two Virginia City, N. T. and Virginia City, Nev. cancels. Fine
- 488 10c Yellow green Entire (U40). Red Wells Fargo Imprint. Tied with fancy cancel from New York. Very good
- 489 10c Yellow green Entire (U40). Red Wells Fargo Imprint. San Francisco pmkd., bit ragged, good
- 490 3c Pink Entire (U58). Pacific Union Express Co. Imprint, with Advertising from San Francisco. Fine scarce
- 491 3c Pink, Entire (U58). Wells Fargo Imprints with advertising Both from Roseburg, Oregon. Very good
- 492 3c Pink on white Entire (U58). Six covers with Wells Fargo Imprints, Diff. Calif towns Downieville, Sonora, Elko, Dixon, Roseburg, Oregon. Fine lot
- 493 3c Entires (U58, U82). Four covers with Wells Fargo Imprints each with diff. advertising includes one with anchor. Fine lot
- 494 3c Pink on buff Entire (U59). Wells Fargo Imprint, Salt Lake City U. T. cancel Very fine
- 495 3c Pink on buff Entire (U59). Wells Fargo Imprint. Tied with fancy star in circle from New York. Very fine
- 496 3c Pink on buff Entire (U59). Eight Wells Fargo Imprints, all diff. Calif. towns Lakeport, Napa, Coulterville, Nevada, Virginia City etc. Fine lot
- 497 3c Green on white Entire (U82). Wells Fargo Imprint, pmkd. Salt Lake City, U. T. Fine
- 498 3c Green on white Entire (U82). Eleven covers will Wells Fargo Imprints. Very good lot
- 499 3c Green on white Entire (U82). Seventeen covers each with Wells Fargo Imprints, all diff. Calif. towns, Bodis, Merced, Shasta, Colfax, Roseburg, Visolia, Anaheim etc. Fine lot
- 500 3c Green on amber Entire (U83). Wells Fargo Imprint, Union Pacific R. R. cancel. Fine

- 3-25 501 2c Red on amber Entire (U232) Wells Fargo Imprint, Dayton, Nevada pmkd. Very fine
- 1-5 502 2c Brown, Entire (U277). Two diff. type Northern Pacific Express Imprints both from Ulen, Minn. Fine
- 3- 503 2c Columbian Entire (U349). Wells Fargo Imprint, San Francisco cancel. Very fine
- 1-10 504 2c Columbian Entire (U349). Two diff. Wells Fargo Imprint, used from Los Angeles and San Francisco. Very fine
- 8- 505 2c-3c Entires, Thirteen diff. entires each with Wells Fargo Imprint, mostly tied with Calif. towns. Fine lot
- 1-20 506 3c Entires, Eight covers all with Wells Fargo Imprints, Calif: town pmkd., Very good lot 6-R
- 4-0 507 Mexican Wells Fargo, Four on U. S. entires used in Texas or Mexico. Fine lot
- 1-10 508 Mexican Wells Fargo. Six covers all Mexico entires used in Mexico. Fine lot
- 4-10 509 ★ 12c Plum on white with Wells Fargo & Co. Imprint (U93). Very fine unused
- 4- 510 ★ 2c Brown Entire (U277). Pacific Express Co. Imprint illustration of Globe. Very fine unused
- 4- 511 ★ 2c Brown Entire (U277). Pacific Express Co. Imprint, illustration of railroad car, Very fine unused, scarce
- 2-25 512 ★ 2c Brown Entire (U277). Three Northern Pacific Express Co. Imprints two types. Very fine unused
- 4-10 513 ★ 2c Columbian Entire (U349). Eureka Express Co. Imprint, Very fine unused
- 4-10 514 ★ 2c-6c Entires, Nine diff. Wells Fargo Imprints. Very fine lot, unused
- 2-25 515 ★ 3c Entires. Six covers all Wells Fargo Imprints. Fine lot, one soiled, unused

CONFEDERATE

- 6- 516 Canton, Miss, "Paid 5," Fine Confederate handstamp
- 5-0 517 DARLINGTON, C. H. S. C. PAID 5, Small neat Confederate handstamp, Very fine 2-50 JH (Photo)
- 4-25 518 ELIZABETHTOWN, N. C. PAID 5, Handstamp. Very fine
- 4- 519 EUFAULA, ALA, PAID 5, Handstamp. Fine
- 5- 520 Homer, C. H. La. "Pa 5." Fine, scarce

4/5 521	LINTON, GA., PAID 5; MANNING, S. C. PAID 10, Handstamps, latter a front. Fine	—
27/5 522	MURFRESBOROUGH, N. C. PAID 5, Handstamp. Very fine	—
57/5 523	OSYKA, MISS. PAID 5 Cents. Handstamp. Fine	—
6/5 524	5c New Orleans (62X4). Tied with New Orleans cancel. Fine (Photo)	20.00
27/5 525	5c Green, 5c, 10c Blue (200, 206 two, 210 two). Five covers, pairs on first two, 5c green pair is damaged, all tied	23.00

CANADIAN COVERS

77/5 526	CANADA, STAMPLESS, twenty-six covers, Very good lot	—
57/5 527	CANADA, 1852, 3p Red (4). Fine copy tied on small cover, cover stained slightly	—
37/5 528	CANADA, 1859, 1c Rose (14). Tied on cover, attractive hotel corner card. Fine	—
47/5 529	CANADA, 1859-02, 1/2c-6c, Eight misc. covers. Fine lot	—
37/5 530	CANADA, 1897, 3c Jubilee on attractive water scene illustrated cover, Very fine	—
67/5 531	CANADA, 2c, 3c. Four attractive illustrated exposition covers. Very good	—
37/5 532	Tasmania, Victoria and other "down under" countries; 29 covers. Nice lot around 1900 period	—
27/5 533	FOREIGN, 17 covers, 19th and 20th Century. Very good lot	—

COMBINATION COVERS

1050 534	5c Columbian (234), used with 20pf. blue Germany to Berlin, both tied with Bremen New York Seapost cancel. Very fine, scarce (Photo)	12.75 JT
17/5 535	GREAT BRITAIN, 1881, 1p Lilac, strip of 3 (89), used with U. S. 2c red brown (210), Forwarded in this country. Fine	—
27/5 536	U. S. 5c Blue (281) to England with Great Britain 3p Violet (115). Very fine, scarce combination	—
27/5 537	GREAT BRITAIN & URUGUAY stamps on cover to U. S. Hand-stamped Posted on the High Seas. Fine	—
17/5 538	ITALY, 1891, 5c blue tied on cover with U. S. 2c carmine #220. Fine	—

UNITED STATES STAMPS

OFF COVER

1847 ISSUE

539	5c Red brown (28). Red grid cancel. Fine	(Photo)	13.50
540	5c Orange brown (28). Blue cancel. Fine	(Photo)	17.00
541	5c Red brown (28). Red grid cancel, thin spot. Fine appearance		13.50
542	5c Red brown (28). Lightly cancel, small closed tear. Fine appearance		13.50
543	5c Red brown (28). Four margins, tear at top		13.50
544	5c Red brown (28). Red cancel, four fine margins, thin spot		13.50
545	5c Red brown (28). Red grid, two small tears, nice appearing		13.50
546	5c Brown (28). Close all sides. Very good		13.50
547	5c Red brown (28). Red grid cancel, small thin. Fine appearance		13.50
548	5c Red brown (28). Large bottom sheet margin copy, blue grid, cut in slightly at top, ironed out crease		17.00
549	5c Red brown (28). Neat blue "Paid" in box, tiny thin. Very good		20.00
550	5c Red brown (28). Neat blue "Paid" cancel, cut slightly at right. Fine	(Photo)	20.00
551	10c Black (29). Light red cancel. Fine	(Photo)	42.50
552	10c Black (29). Four margins, thin spot. Very fine appearance	(Photo)	42.50
552A	10c Black (29). Four margins, thin spot. Very fine appearance	(Photo)	42.50

1851-57 ISSUES

553	1c Blue, Type II (31). Red carrier cancel. Fine		17.50
554	1c Blue (31, 32d). Very good		15.00
555	1c Blue, Type IV (32d). Recut once at top and twice at bottom. Fine		12.00
556	5c Red brown (34). Small thin. Very fine appearance	(Photo)	45.00
557	12c Black (36). Light ironed out crease. Fine appearance		13.50
558	12c Black (36). Horiz. Pair, light crease. Very good appearance		40.00
559	1c Blue, Type I (40). Tiny closed tear, Ms. cancel. Nicely centered		27.50
560	1c Blue, Type II (41). Fine		10.00

275	561	1c Blue, Type II (41). Fine	10.00
275	562	1c Blue, Type II (41). Centered to left. Fine	10.00
425	563	1c Blue, Type IIIa (42B). Very good	20.00
95	564	1c Blue, Type IIIa (42B). Very fine (Photo)	20.00
475	565	5c Brown (48A). Fine	11.00
3050	566	10c Green, Type IV (49c). Stitch wmkd., Recut top, Thin spot. Fine appearance (Photo)	85.00
185	567	10c Green, Type V (50). Very fine	2.50
320	568	10c Green (50, 96). Horiz. Pair of each, str. edge on former. Very good	17.00
375	569	12c Black (51). Horiz. Pair tied on small piece. Fine	17.50
1075	570 ★	24c Gray lilac (52). Very fine (Photo)	13.50
650	571	24c Gray lilac (52). Red grid cancel, few perfs. trifle short at B. Very good	20.00
650	572	30c Orange (53). Red grid cancel. Very good	27.50
240	573	30c Orange (53). Blue town cancel. Fine (Photo)	27.50

1861-69 ISSUES

675	574	5c Buff (67). Small tears, nice appearing	30.00
625	575	10c Green, 30c Orange (68, 71). Very fine	8.25
400	576	10c-30c (68-71). Very good	21.50
550	577	24c Red lilac (70). Fine	10.00
725	578	30c Orange (71). Reconstructed horiz. pair, pen cancel removed. Very fine appearance	14.00
45	579	5c Red brown (75). Very good	13.50
375	580	5c, 15c, 24c (76-78). Very good	17.00
800	581	2c Black, Double Grill (87). Very good	20.00
1525	582 ★	12c Black (90). Very good	60.00
650	583	24c Gray (99). Well centered, cancel hides face	35.00
675	584	30c Orange (100). Perfs. in at B. Very good	20.00
200	585	30c Orange (100). Tiny closed tear. V.G. appearance	20.00
1525	586	90c Blue (101). Closed tear. Fine appearing	55.00
520	587	1c-15c Pictorials (112-115, 117, 119). 6c and 15c defective. Good	22.50

588	6c Ultramarine (115). Very fine	6.00
589	6c Ultramarine (115). Double Transfer, blue cancel, ironed out crease, fine appearance, scarce	75.00
590	10c Yellow (116). Blue cancel, well centered, tiny corner crease	7.00
591	15c Brown & blue (119). Horiz. Pair, lightly cancel, perfs. cut in at B. Very good	30.00
592	90c Carmine & black (122). Trivial corner crease. Fine appearance (Photo)	60.00
593	90c Carmine & black (122). Margin added at left. Nice appearing	60.00
594 ★	1c Buff, Re-issue (133). Well centered, thin spot, o.g.	6.00

BANKNOTES

595	1c-3c Grilled Banknotes (134-36). 2c is split grill. Very fine	5.55
596	7c Vermilion (137). Fine	13.50
597	10c Brown (139). Very fine	20.00
598	90c Carmine (144). Thin. Fine appearance	35.00
599	6c, 10c Banknotes, Four fancy cancels, two are Foreign mails. Fine	—
600	24c Purple (153). Very fine	7.50
601	24c Purple (153). Fine appearance, two perfs. short	7.50
602	90c Carmine (155). Light crease, well centered	9.00
603	7c, 15c, 30c Banknotes (160, 63, 65). Fine	9.25
604	90c Rose carmine (166). Well centered, slight defects	10.00
605	90c Rose carmine (166). Supplementary Mail cancel, small thin. Fine appearance	25.00
606	Balance U. S. Collection, Postage only 1851-1935, used and unused, 262 different. Very nice lot	100.13
607	19th & 20th Century. 20 diff., used and unused. All defective	85.00

COLUMBIANS

608	1c-50c Colombian (230-40). Very good, few slight defects	17.55
609 ★	15c Colombian (238). Imprint Plate No. Strip of 4. Very good	40.00
610 ★	50c Colombian (240). Fine, part o.g.	10.00
611 ★	50c Colombian (240). Slight thin. Very fine appearance	10.00

4-612 ★	50c Columbian (240). Well centered, thin spot	10.00
8.75-613	\$1.00 Columbian (241). Thin. Fine appearing	20.00
11.50-614 ★	\$1.00 Columbian (241). Perfs just touch at B. Very good	27.50
9.50-615 ★	\$1.00 Columbian (241). Well centered, thin spot, no gum	27.50
6.75-616	\$2.00 Columbian (242). Large thin spot. Fine appearance	15.00
9.50-617	\$2.00 Columbian (242). One perf short. Very fine appearance	15.00
3.50-618	\$3.00 Columbian (243). Very fine (Photo)	35.00
2.25-619 ★	\$3.00 Columbian (243). Two corner perfs short. Fine appearance (Photo)	50.00
18.50-620	\$4.00 Columbian (244). Thin. Fine appearing (Photo)	50.00
5.25-621	1c-10c Columbians, Pan-Americans (230-37, 294-99). Very good	10.46
3.50-622 ★	1c Commems. (230, 294, 328). Blocks. Fine	7.50
3.00-623 ★	3c-5c Commems. (232, 287-8, 296, 325). Fine appearing but each has str. edge	13.25
3.00-624	\$1.00 Black (276A). Tiny tear. Very fine appearance	7.50
6.25-625	\$5.00 Green (278). One perf short, tiny closed tear. Nice appearing	16.00

TRANS-MISSISSIPPI

4.25-626 ★	1c-10c Trans-Miss (285-90). 4c and 5c is used. Fine	12.50
2.90-627	50c Trans-Miss (291). Thin spot	7.00
1.45-628 ★	50c Trans-Miss (291). Fine	22.50
7.50-629 ★	50c Trans-Miss (291). Fine	22.50
20.50-630	\$1.00 Trans-Miss (292). Fine, lightly cancelled (Photo)	25.00
21.00-631	\$1.00 Trans-Miss (292). Very fine (Photo)	25.00
22.25-632	\$1.00 Trans-Miss (292). Very fine (Photo)	25.00
29.00-633 ★	\$1.00 Trans-Miss (292). Fine (Photo)	45.00
33.50-634 ★	\$1.00 Trans-Miss (292). Very fine, no gum (Photo)	45.00
32.50-635 ★	\$1.00 Trans-Miss (292). Very fine (Photo)	45.00
41.00-636 ★	\$1.00 Trans-Miss (292). Very fine (Photo)	45.00
48.00-637 ★	\$1.00 Trans-Miss (292). Very fine (Photo)	45.00
20.50-638	\$2.00 Trans-Miss (293). Small thin. Very fine appearance (Photo)	40.00
32.25-639	\$2.00 Trans-Miss (293). Very fine 32 1/4 R (Photo)	40.00

TWENTIETH CENTURY

640	1c-10c Pan-American (294-99). Fine set	7.19
641	1c-10c Commems. (294-96, 327 also ten diff. late unused plate blocks). V. G.-V. F.	8.16
642	\$1.00 Black, \$1.00 Violet brown (311, 342). Fine	8.50
643	\$2.00 Dark blue (312). Several perfs short at left	12.00
644 ★	1c-2c Imperforates (314, 320). Horiz. Pairs. Very fine	7.50
645 ★	1c-2c Commems. (Bet. 324-617). No gum, V. G.	10.40
646	3c-10c Louisiana-Purchase (325-27). First is unused. Fine	7.00
647 ★	5c Jamestown, 5c Pilgrim (330, 550). Fine	6.50
648 ★	1c-5c Imperforates (343-47). Set of horiz. pairs. Very fine	15.90
649 ★	1c-10c Coils (348, 396, 410-13, 448-53, 486-97). Pairs. Fine lot	9.76
650	1c-4c Coils (348, 54, 445, 456). Good average	18.00
651 ★	2c Carmine, bluish (358). Very fine	5.00
652 ★田	2c Carmine, bluish (358). Block. Very fine	25.00
653 ★田	2c Carmine, bluish (358). Lower right corner block. Very good	25.00
654 ★田	2c Carmine, bluish (358). Bottom Plate Imprint Block of six. Very fine (Photo)	75.00
655 ★田	2c Carmine, bluish (358). Right Plate Imprint Block of six. Very fine (Photo)	75.00
656 ★田	2c Carmine, bluish (358). Block of forty, fourteen str. edges. V. G.-V. Fine	250.00
657 ★	2c Commems. Imperf. (368, 71, 73). Horiz. Pairs. Very fine except slight thin on first	16.50
658 ★田	1c-5c Commems. (Bet. 370-690). Twenty-one diff. blocks. Fine lot	14.15
659 ★田	2c Hudson-Fulton Imperf. (373). Block. Very fine	13.50
660 ★田	4c Brown (377). Imprint plate block of 6. V. G.	8.50
661	1c-5c Coils (396, 413, 443-44). Pairs. Very good	7.50
662	1c-10c Pan-Pacific (397-404), three low values unused. Fine	9.35
663	1c-5c Pan-Pacific Precancelled, ten diff. all str. edge	—
664 ★	10c Orange, Pan-Pacific (400A). Perfs. touch R. Very good	10.00
665 ★	10c Pan-Pacific (404). Very fine <u>44 50 R</u> (Photo)	50.00
666	3c Violet, Coil (445). Tied on small piece. Fine	9.00

✓ 667	\$2.00, \$5.00 (479-80, 524, 47). Fine	9.00
7.10 668 ★	1c-3c Imperforates (481-83, 531-35, 575-77). Horiz. Pairs. Very fine	13.20
15.50 669 ★	5c Rose, Error (499h). Freak double perfs. at top <i>1875 R</i> (Photo)	25.00
15.50 670 ★	5c Rose, Error (499h). Freak double perfs at top	25.00
5.90 671 ★田	1c-3c Commems. (537, 548-49, 611-12). Blocks. Very fine	10.00
1.25 672 田	2c, 3c, 5c Commems. (537, 611, 627, 628) Blocks all precancelled, two with str. edge	—
2.75 673 ★	2c Carmine Rose (546). Fine	4.00
4.25 674 ★田	1c-2c Pilgrim (548-49). Bottom Plate Blocks of 6, V.G.	7.25
8.75 675 ★田	2c-5c Commems. (549, 628, 44, 47-50). Blocks, V.G.-Fine	12.45
5.24 676 ★	1/2c-\$1.00 (551-56, 58-61, 63-67, 70-71). Fine	10.86
4.25 677 ★田	1 1/2c-13c (576, three blocks; 623, two blocks; 640-41). Blocks. Fine	7.95
4.75 678 ★	1c-10c Rotary (581-91). Very fine set	5.90
4.75 679 ★	1c-5c Commems. (611-621), two used. Very fine	8.52
1.50 680	1c-5c Commems. Precancelled (Bet. 611-734). 22 diff. all Conn. towns	—
3.25 681	5c Walloon, 5c Lex-Concord (616, 619). Precancelled, four diff towns of each, six have str. edges	10.00
4.45 682 ★田	1c-5c Lex-Concord (617-19). Set of Blocks. Fine	7.85
5.75 683 ★田	2c-5c Norse-American (620-21). Blocks. Fine	10.00
4.5 684 ★田	5c Ericsson, 2c-5c Hawaii (628, 647-48). Blocks. Very fine	6.10
4.5 685 ★田	5c Ericsson, 5c Aeronautics (628, 650). Plate Blocks of 6. Fine	6.25
15.50 686 ★田	1c-8c Commemoratives in Blocks, 1926-1935, many varieties, face value \$10.26. Fine lot	—
11.5 687 ★	1c-10c Kans. & Nebr. (658-679). Complete set, V.G.-V.F.	19.90
9.25 688 ★田	11c-25c, 50c (692-99, 701). Blocks. Very fine	16.26
3.75 689 ★田	1/2c-10c Bicentennials (704-15). Set of blocks. Fine-V.F.	7.24
3.10 690 ★田	1c-10c Parks (740-49). Set of blocks. Very fine	5.60
5.10 691 ★田	1c-10c Parks (740-49). Set of Plate Blocks of 6. F.-V.F.	10.90
2.75 692 ★	1c-10c, 16c Farleys (756-65, 771). Set of singles and pairs. Very fine	5.23
3.25 693 ★	1c-16c Farleys (752-771). Complete set line or gutter pairs. Very fine	—
36.5 694 ★田	1c-16c Farleys (752-65, 771). Set of complete fifteen different Center Line Blocks. Very fine	74.00

695 ★	1c-3c Farleys (766-70). Five diff. Cross gutter Blocks. Very fine	10.45
696 ★	3c Byrd Souvenir. Eight sheets also misc. Farleys including gutter blocks. Very fine	7.30
697	3c Conn. (772). Precancels, 15 diff. Fine lot	—

AIRS, OFFICIALS, REVENUES, ETC.

698	6c-24c, 8c-24c Airs (C1-6). Three unused. Very fine	9.15
699 ★	6c-30c Airmails (Bet. C4-24). Fifteen stamps includes block C4. Fine	6.28
700 ★	65c-\$2.60 Graf Zeppelin (C13-15). Well centered set, latter has paper crease	60.00
701 ★	50c Graf Zeppelin (C18). Very fine	3.00
702 ★	2c-40c Shanghai (K1-K13). Fine	14.95
703 ★	1c Rose, Due (J59). Perfs cut in left. Very good, scarce	32.50
704 ★	30c Agriculture (O9). Very good	12.00
705	3c Executive (O12). Perfs in at left. Very good	20.00
706 ★	24c Justice (O32). Very good	30.00
707 ★	1c-90c Post Office (O47-56). Latter used. Very good	18.05
708	1c-90c Treasury (O72-82). Good set	20.50
709	Departments. 24 different. V. G.-Fine	15.30
710	1c-\$1.00 Parcel Post, 1c-25c Parcel Post Dues (Q1-12, JQ1-5). Two have str. edge. Good	11.51
711 ★	1c-25c Parcel Posts (Q1-4, 6, 9). Fifteen misc. Very good	16.25
712	50c Parcel Post (Q10). Block, perfs in at top. Very good	17.50
713 ★	\$1.00 Parcel Post (Q12). Very fine	15.00
714	Parcel Post Precancels. Ten different	—
715 ★	5c Blue, Newspaper (PR5). Fine	3.00
716	1c Playing Card (R2c). Handstamp cancel. Very fine	10.00
717	10c-\$1.00 Civil War Revenues. Eleven diff. pairs. Fine lot	11.50
718	\$2.00 Mortgage Imperf. (R82a). Four margins. Very fine	5.00
719	\$500.00 Red and Black (R180). Cut cancel. Very fine, scarce	60.00
720	\$2.00, \$9.00 Consular Fee (RK31, 34). Fine	8.50
721	Freaks and Oddities. 21 diff. mostly revenues, interesting lot	—

25c	Revenue Stamped Paper (RNT3-4), on illustrated Boston & Worcester R. R. certificate. Very fine	8.00
Revenue Stamp Paper.	Eight diff. on checks. Fine	7.50
Match & Medicines.	Seventeen diff. Fine lot	—
Match & Medicine Proofs (R0173, RS274).	Two each on india and card on latter. Very fine	—
Bloods Locals (15L12-15).	Fine	19.50
Locals, Bloods, Swarts (15L18, 136L9).	Fine	7.50
Carnes City Letter Express, Locals (35L1-2).	Very fine	12.50
Locals.	Nine diff., Bloods, Teese, Boyds, Westown, etc. Fine lot	15.00+
Xmas Seals, 1909 with surcharge New Hampshire (5A).	Block, str. edge. Fine	20.00

END OF SALE — MAIL BIDS EARLY

FOR VICTORY



**BUY
UNITED
STATES
WAR
BONDS
STAMPS**

WANTED

**Good U.S. single pieces, collections and
lots for future Auction Sales.**

Liberal advances made. Write for terms.