

104TH SALE

UNITED STATES STAMPS

Includes

COVERS, U. S. POSSESSIONS & WHOLESALE



AT PUBLIC AUCTION

FIRST SESSION

Tuesday, February 13th, at 7:45 P. M.

SECOND SESSION

Wednesday, February 14th, at 2 P. M.

AT THE COLLECTORS CLUB
22 East 35th Street, New York City

GREGORY MOZIAN, Auctioneer



Robert A. Siegel
SAUGERTIES AUCTIONS

SAUGERTIES

NEW YORK

CONDITIONS OF SALE

1. The terms of sale are strictly cash to the highest bidder. All buyers are expected to pay for lots within three days of receipt, unless special arrangements have been made prior to the sale.
2. All bids are per lot as numbered in the catalogue and not per piece, unless otherwise announced by the auctioneer at the time of sale.
3. Any lot the description of which is incorrect is returnable only within three days of receipt. All disputed lots must be returned intact as received. Lots containing five or more stamps are not returnable at any time. No lots may be returned by purchasers who have had the opportunity to examine them before the sale.
4. Successful mail bidders, unless they are known to us or supply acceptable references, will be notified of the amount of the lots secured for them, and are expected to send payment in full before the lots are forwarded.
5. If the purchase price has not been paid within the time limit, or lots taken up within seven days from date of sale, they may be resold and any losses arising from such sale charged to the defaulter.
6. All stamps are sold as genuine, except where sold "As Is". Claims for any lot proving otherwise, must be made within two weeks from date of sale.
7. The right is reserved to group two or more lots, also withdraw any lot or lots from the sale, or to act on behalf of the seller.
8. Until paid for in full all lots remain the property of Robert A. Siegel.
9. No commission is charged for buying at our sales, but all forwarding charges will be added to the purchase price.
10. In addition to the purchase price, the buyer will be required to pay the one (1) percent New York City sales tax, unless he is exempt from the payment thereof.
11. Lots will be sent for inspection, provided such lots are returned to us the same day as received. Postage and registration both ways will be charged. Approximate values of lots will be given on request.
12. The placing of a bid shall constitute acceptance of the foregoing conditions of sale.

Lots are on display at our office one full week before the sale in Saugerties, N. Y. In sending bids, always state the highest price you are prepared to pay for the lot. Your limit will not be used as a starting bid unless absolutely necessary.

DESCRIPTIONS

Superb—the finest condition for noteworthy, outstanding copies.

Very Fine (VF)—means that there is a slight deviation from the above.

Fine (F)—means that the perforations do not touch the design on issues after 1890, but in some cases may just touch in earlier issues; if used, fairly lightly cancelled.

Very Good (VG)—means that the appearance is generally fine but that the perforations cut the design slightly.

Good (G)—means average off-centering; or fairly attractive with slight defects. Original gum is not to be expected on 19th Century stamps up to 1888 unless so stated.

Scott's 1944 Specialized United States Catalogue is used for cataloging our lots of United States.

WE SOLICIT FINE MATERIAL FOR FUTURE SALES
--

- 16 **Litchfield, Apl. 26**, Arched straight line (1824). Fine —
- 17 **Maine, New Hampshire, Vermont**, ten diff. covers. Fine —
- 18 **Mass.**, 50 stampless mostly different, no Boston. Fine lot includes fancy
"Paid 3's" greens, magenta, Ships —
- 19 **Packet Swamp Fox**, red oval, "Steam 5" black circle and New Orleans
mkd. Fine —
- 20 **Port** rate. —
V. G. —
- 21 **Saco** —
- 22 **San** ama". —
Fine —
- 23 **Shal** vice in —
smal —
- 24 **Ship, Ship 5, Ship 6, Ship 7, Ship 12**, eight diff. stampless. Fine lot —
- 25 **So. Framingham, Mass.** in double bright green circle. Fine —
- 26 **Southern States**, 15 different, Fine lot —
- 27 **Steam**, Louisville, Ky. and Norfolk, Va. two diff. Fine —
- 28 **Steamer 5**, in red oval. Very fine —
- 29 **U. S. Express Mail**, five covers, each diff. rate. Fine —
- 30 **Washington, D. C.**, five diff. including green. Fine —
- 31 **Wilmington, Del.**, "5" in green circle. Fine —
- 32 **Stampless**, eight diff. fancy circles, ovals, Way 11. Fine lot —

FOREIGN STAMPLESS COVERS

- 33 **Foreign Straight Lines**, 4 diff. Vapor Chile, Santiago, Callao, Valparaiso.
Fine —
- 34 **Forwarders Markings**, five diff. covers to **Canton, China**. Fine lot —
- 35 **Forwarders Markings**, Panama, Lima, Rio de Janeiro and N. Y. for-
warders. Fine lot of 4 diff. —
- 36 **Macao**, two diff., black str. line and red oval, to **China**. Very fine —
- 37 **Manila, Filipe Isls.**, black circle to Hong Kong. Fine —
- 38 **Manila to Boston**, seven diff. transit markings. Very fine cover —
- 39 **Manila Forwarder**, Ship 6 to Boston. Fine —
- 40 **To China**, nine covers, N. Y., Boston, London, Bombay, Calcutta and other
transit markings, all diff. Fine lot —
- 41 **English Embossed Revenue Paper**, two diff. 1785, 1791. Very fine —

IMPORTANT — PLEASE NOTE

Mail bids to Robert A. Siegel, Saugerties, N. Y. or last minute bids to Robert A. Siegel, c/o Collectors Club, 22 East 35th St., New York City.

Lots may be inspected on days of sale at the Collectors Club from 11 A.M. until sale time.

STAMPLESS COVERS

- | | | |
|----|---|---|
| 1 | Angels, Cal., Paid 10, in blue circle. Fine, scarce | — |
| 2 | Augusta, Maine in horn of plenty. V. G. | — |
| 3 | Beaties Parairie, Ark., three covers with ms. markings used 1843-46 | — |
| 4 | B. F. Stevens, U. S. Dispatch Agent, red oval, dated 1868, early use, U. S. Consulate, Dubin corner card. Fine | — |
| 5 | Boston, straight line (1800). Fine | — |
| 6 | Boston, addressed to P. M. at Farmingdale, Me., circular (illustr.) regarding gilt & buttons for P. O. Officers and Clearks, interesting | — |
| 7 | Boys City Express in black oval also "Paid J. T. B.", embossed corner card. Fine | — |
| 8 | Conn., 7 diff. includes green and large "R". Fine lot | — |
| 9 | Exeter, N. H. Apr. 28, red straight line. Very fine | — |
| 10 | Hanover, N. H., in fancy red oval. Fine | — |
| 11 | Hardwick, Vt., fancy Paid III, 3c silver coin design..... | — |
| 12 | Honolulu, Hawaiian Islands (red circle) San Francisco Ship 12 in black. V. G., scarce | — |
| 13 | Honolulu, Hawaiian Islands (red circle) San Francisco "12" in black, fine markings, cover torn, scarce | — |
| 14 | Hudson Riv. Mail, N. Y., red circle. Fine | — |
| 15 | Hussey 50 Wm. St. 1ct Paid in black circle, attractive corner card. V. F. | — |

U. S. 1847 ISSUE ON COVER

42	5c Red Brown (28). Tied red grid. Fine	30.00
43	5c Red Brown (28). Tied in red grid, from New York. Very fine, nice margins (Photo)	30.00
44	5c Red Brown (28). Very fine copy tied with red grid, U. S. Express Mail pmkd (Photo)	60.00
45	5c Red Brown (28). Pair tied with red grid from New York. Very fine, nice margins (Photo)	70.00
46	5c Red Brown (28). Horiz. Pair, one fine other creased from Phila.	70.00
47	10c Black (29). Sheet margin copy tied with blue cancel. Very fine (Photo)	70.00

1851 ISSUE ON COVER

48	1c Blue (31). Tied with New Haven cancel, sheet margin at B. Triple inverted transfer. Fine	80.00
49	1c Blue (31). Strip of 3, ms. cancel, Round Pond (Me). V. G.	35.00
50	1c Blue, Type IIIa (32B). Tied with Boston "Paid". Cut in T. and R. Very good	60.00
51	1c Blue, 3c Red, three (32d, 33). 10c rate to Canada West, tied from Buffalo with transit markings. Fine	—
52	1c Blue (32d). Fine copy tied on N. Y. Medical Journal of 1852-53, part of cover torn	—
53	1c Blue (32d). Strip of 3, tied. Fine cover	35.00
54	1c Blue (32d). Three copies, tied on neat large Valentine cover , valentine enclosed. Fine	24.00
55	3c Red (33). Attractive illustrated cover Dr. Vail's Granite State Water-Cure Institute. V. F. (Photo)	—
56	3c Red (33), "Paid 3" in circle on stamp, East Wilton, N. H. double circle pmkd. Fine	—
57	3c Red (33). Tied with Jacksonville, Flor. pmkd. Fine	—
58	3c Red (33). Pretty strike Petersham, Mass. tied in blue. V. F.	—
59	3c Red (33). Fancy "Paid" in oval from Livigston, Texas. Fine strike (Photo)	—
60	3c Red (33). Corner sheet margin copy , tied. Fine	—
61	3c Red (33). Tied with green Tauton, Mass. Fine	—
62	3c Red (33). Tied with New London, N. H. oval , Literary & Scientific Institution corner card. Fine	—

63	3c Orange Brown (33b). Tied with Bloods local from Phila. V. G.	—
64	3c Red (33). Tied with faint strike of Canton, Miss. Odd Fellows Links. Scarce	—
65	3c Red (33). Very fine Pair tied with San Francisco pmkd.	—
66	3c Red (33). Pair to So. Boston, cancelled New York, " Via Nicaragua ahead of the Mails " in red box, latter marking bit faint but legible. Scarce (Photo)	—
67	3c Red, Orange brown (33, 33b). Theo. Seminary, Va. pmkd and Utica blue oval. Fine	—
68	3c Orange Brown (33b). Superb Pair, tied from San Francisco, Cal. (Photo)	—
69	3c Orange Brown (33b). Very fine Pair , large oval grid cancel on pair, San Francisco pmkd.	—
70	3c Orange Browns (33b). Two Very Fine Pairs , tied from San Francisco to So. Boston. Scarce piece	(Photo) —
71	3c Orange Browns (33b). Two fine pairs overlapping, tied from San Fran- cisco to So. Boston. Scarce piece	—
72	3c Red, 3c Or. brown (33, 33b). Four covers each tied with U. S. Express Mail cancel, one orange brown. Fine	—
73	3c Orange Browns (33b). Three covers all tied, one U. S. Express Mail cancel. Fine	8.25
74	10c Green, Type I (35). Tied to Cal. from Boston, close left. Very good	75.00
75	10c Green, Type II (35A). Superb copy tied with excellent strike " Yankee Jims, Cal. ", cover a bit soiled	(Photo) —
76	10c Green, Type III (35B). Tied from San Francisco large margins. Very fine	15.00
77	10c Green, Type III (35B). Superb copy, doubly tied by " Steamship 10 " "N. York Steamship". V.F. and rare cover	(Photo) —
78	12c Black Bisect (36a). Diagonal half used as 6c , tied with faint San Fran- cisco pmkd. Scarce piece	(Photo) 350.00

1857 ISSUE ON COVER

79	1c Blue, Type II (41). Tied Fredonia, N. Y. 1857. Fine	12.50
80	1c Blue, Type II (41). Very fine copy tied with neat town cancel	12.50
81	1c Blue, Type IV (42D). Tied with blue town cancel. Fine	35.00

- 82 **1c Blue, Type V (42F).** "U. S. Mail Delivery 1 P. M." in box, stamp has double transfer at top. V. G. —
- 83 **1c Blue, Type V (42F). Block of nine,** Woodville Mi. pmkd, block has pmkd. and ms. cancel on large cover, one stamp defective. Scarce piece 100.00+
- 84 **1c Blue, 3c Red. 10c Green, Pair types II and III (42F, 44, 49A, 49B).** All tied, the combination 10c pair is **superb**, to Europe with interesting transit markings **(Photo)** —
- 85 **1c Blue, 3c Red (42F, 44).** Three covers, latter has religious corner imprint and other tied with "Steam". V. G. —
- 86 **3c Red, Type I (43).** Fine stamp with recut inner frame lines 6.00
- 87 **3c Red (44).** Tied with large **shield** with Shabona Grove, Dekalb Co. Ill. inside shield. Rare pmkd., fine cover **(Photo)** —
- 88 **3c Red (44).** Tied with "N. Y. & Boston Steamb. & R. R. R." pmkd. Fine —
- 89 **3c Red (44).** Cancelled with Canton, Miss. **Triangle**, Fine strike, scarce —
- 90 **3c Red (44).** Pretty illustr. cover, Lighthouse with K.K.K. (Dartmouth Tri-Kap. Soc.). Fine **(Photo)** —
- 91 **3c Red (44).** Three covers from Johnson's Mills, N. C., small town where P. M. showed his artistry by altering Washington's face with pen, interesting —
- 92 **3c Red, 3c Rose (44, 65).** Two embossed **school** corner cards, Williams College and Music Vale Seminary. Fine —
- 93 **3c Red, 10c Green, Strip of 3 (44, 49B).** From Providence to Australia, each tied with light red Paid, stamps are very fine, cover trifle soiled **(Photo)** 40.50
- 94 **10c Green, Type III (49B).** Tied from Bristol, R. I. to Cuba with transit markings. Neat, V. G. 12.00
- 95 **10c Green, Type III (49B).** Tied with **Sarcamento City, Cal.** pmkd, V. G. 12.00
- 96 **10c Green (50).** Tied to New Brunswick with red "U. States" marking, V. F. —
- 97 **10c Green (50).** Tied, "**Marysville, Cal. Paid By Stamps**". Fine —
- 98 **12c Black (51).** Pair tied, to Liverpool, transit markings also ms. "Steamer Niagara". Fine 20.00
- 99 **12c Black (51).** Two pairs tied to England, transit marks. Fine **(Photo)** 40.00
- 100 **3c, 12c, 30c (44, 51, 53).** Tied on cover to Australia from East Cambridge, transit markings. Fine cover, scarce **(Photo)** 98.15

1861 ISSUE ON COVER

- 101 **1c Blue on 2c Black Entire**, tied in blue from Keene, N. H. stamp has str. edge, pretty combination —

102	1c Blue (63). Pair and single tied. Fine	6.50
103	1c Blue (63). Tied "Phila. U. S. Dispatch" pmkd, attractive illustr. corner card, bit ragged at top	—
104	1c Blue (63). Three covers tied, bright colors. Fine	14.00
105	1c Blue, 3c Rose (63, 65), on neat small cover, tied, 1c is superb	—
106	3c Rose (65). Tied with very fine strike of Yale Fraternity (Delta, Omega, Chi), North Haven, Conn. pmkd. Rare cancel (Photo)	—
107	3c Red (65). Tied with N. Y. negative Anchor , illustr. state corner card, nice strike but stamp has one corner short	—
108	3c Rose (65). Very fine strike of Putnam, Con. fancy Star (Photo)	—
109	3c Rose (65). Tied with blue "24" in circle from Belvidere, Ill. Fine, scarce	—
110	3c Rose (65). Tied from Old Point Comfort, Va. Very fine strike " Per U. S. Steamer Guide " in black circle. Fine and scarce (Photo)	—
111	3c Rose (65). Tied with fine Shield from Attleboro, Mass.	—
112	3c Rose (65). Fine strike of Masonic from Charlestown, N. H. (Photo)	—
113	3c Rose (65). Greenfield, Ms. Masonic cancel on small cover, V. G.	—
114	3c Rose (65). Strip of 3 tied with Boston "Paid" on registered cover with Registered marking, legal size. Fine, scarce	—
115	3c Rose (65). Two covers, Ft. Hamilton, Fort Schuyler pmkds.	—
116	3c Rose (65). Four diff. Long Island covers, Cold Spring, Williamsburgh, Cold Spring Harbor, V. G.	—
117	3c Rose, C. R. M. Phole's Patent Envelope, unused, includes U. S. Patent Office description. Rare	—
118	10c Green (68). Tied with large strike Wyandott, Mich. to Canada with red box "U. S. Paid". Very fine	—
119	5c Brown, 10c Green (68, 76). Tied on cover to France, with various transit markings. V. G.	—
120	5c Brown, 10c Green (68, 76). Tied on cover to France with various transit markings, frayed at one end. V. G.	—
121	24c Red Lilac (70): Tied with blue grid to Ireland, transit mark in red. Fine	30.00
122	2c Black (73). A very fine stamp tied on small neat cover	—
123	2c Black (73). Very fine vertical pair tied with town cancel	—
124	2c Black (73), on attractive illustr. cover in purple of grape vine grower, also contents illustr.	—
125	15c Black (77). Very fine copy tied on small neat cover to France, transit markings	15.00

126	3c Rose, C. Grill (83). Tied with geometric cancel from N. Y. Fine	30.00
127	3c Red (94). Tied with fine strike Cambridge Padlock on small cover (Photo)	—
128	10c Green (96). Very fine stamp not tied, Shanghai pmkd also San Francisco pmkd. Scarce	—
129	3c Ultramarine (114). Tied from Wadsworth , Nev. V. G.	—
130	6c Ultramarine (115). Tied on small cover, perfs cut in two sides. V. G.	15.00

PATRIOTIC COVERS

131	1c Blue, Type I, 3c Red (40, 44). Tied from New York, Patriotic , Pirates Flag, stamps fine cover a bit soiled. Scarce patriotic	40.00
132	1c Blue, Type V (42F), Patriotic , Flag design, nicely tied. V. F.	—
133	3c Red (44). Lincoln Rail Splitter , stamp not tied, New Canaan, Ct. pmkd. Scarce, V. G.	(Photo) —
134	3c Red (44). Patriotic , scarce design "Remember Ellsworth" with soldier fighting scene, tied. V. G.	—
135	3c Red (44). Patriotic , Flag & Female Figure, tied. Fine	—
136	3c Red (44). Patriotic , Flag on Globe. Fine	—
137	10c Green (50). Patriotic (Flag & Cannon) from San Francisco, Calif. , stamp tied, cover has repaired tear. Fine appearance	(Photo) —
138	3c Rose (65). Tied, Patriotic "Maintain The Government" design. Very Fine	—
139	3c Rose (65). Tied Patriotic , Camp, soldier & flag design. Fine	—
140	3c Rose (65). Tied, Patriotic , Flag design on yellow cover. Fine	—
141	3c Rose (65). Patriotic , Illustrated history of Stars & Stripes design, stamp tied & has str. edge, fine cover, scarce design	—
142	3c Rose (65). Patriotic , "Sweet Flag of our Country" design. Fine	—
143	3c Rose (65). Patriotic , Eagle & Shield, States in Stars design, tied. Fine	—
144	3c Rose (65). Pair on legal cover, interesting illustr. war nursing scene "Soldiers' and Sailors' Home", trifle soiled. Rare	—
145	3c Rose (65). Miamiville P. O. Camp Dennison, O. pmkd, Army Field Post. V. G.	—
146	Soldiers Letter , handstamped "E. F. Jones, Colonel 26th", "Due 3 cents", small neat cover	—
147	Recruiting Poster , 7th N. H. Regiment, large flag, etc. interesting Civil War item, fine condition	—

- 148 **The Stamps Galop.** Sheet music composed by Arthur O'Leary in 1864, the entire cover has postage stamps U. S. & Foreign in colors. Fine condition, attractive
- 149 **Spanish-American War Patriotics**, three diff. flag designs one has Union Jack. Fine
- 150 **Spanish-Amer. War Patriotics**, "Remeber the Maine", Uncle Sam socking Spain design. Fine
- 151 **Spanish-Amer. War Patriotic**, Uncle Sam chasing Spaniard design. Fine
- 152 **Span'sh-Amer. War Patriotic**, "Grit, Gumption, Gunnery", Uncle Sam with Spaniard on Bayonet design. Fine

BANKNOTES ON COVER

- 153 **1c, 6c Banknotes (145, 148).** Both tied one with **Yokohama, Japan** pmkd, also San Francisco pmkd. Fine, scarce used in Japan
- 154 **3c Green, Campaign Cover**, embossed front and back Bell and Everett for Pres. and V. P., Fine, scarce
- 155 **7c Vermilion (149).** Tied fine strike large **Paid** from New Orleans to Hamburg, transit marks 40.00
- 156 **1c Blue (156).** Imprint copy tied on illustr. cover of **1776 Memorial Bldg.**, Philadelphia. Fine exhibition item
- 157 **3c Green (158).** Tied with fine **Pumpkin Head** cancel, stamp has str. edge
- 158 **3c Green**, tied with very fine **Waterbury Ct. Flower** (Photo)
- 159 **3c Greens**, twelve covers all with diff. fancy cancels from **Worcester, Mass.** Fine lot
- 160 **6c Dull Pink (159).** Block and single tied in blue on legal size cover from Charleston, S. C., block has str. edge one side, one stamp defective, nice appearing cover 30.00
- 161 **10c Brown (161).** Tied, "**U. S. Postal Agency, Shanghai**" and **San Francisco, Cal. St. Shp**" pmkds. Fine scarce cover
- 162 **5c Blue (179).** Irregular Block of 3, tied on **registered** cover from San Francisco, Cal. to Switzerland with various markings. Fine
- 163 **5c Blue (179).** Tied, to Turkey in Asia. Fine
- 164 **5c Blue, Taylor tied with Peru 10c (17)**, with New York pmkd, also Panama Transit, "12", "Due 14" markings. Fine and rare combination cover (Photo)
- 165 **10c Brown tied with Peru 10c (17)**, with N. York Steamship pmkd, also "Panama Transit", "Due 9" and "12" markings. Fine and rare combination (Photo)

166	6c Pink (186). Tied with Lockport, N. Y. "L". Very fine (Photo)	—
167	5c Brown, 5c Blue (205, 216). Two covers of each, includes pair of former on registered others to foreign countries. Fine	—
168	2c Red Brown (210), two covers used on 2nd and 3rd day after issue. V. G.	—
169	Texas Hotel Corner Cards some illustrated, ten diff. 1883-98 period. Fine lot	—

1890 TO DATE ON COVER

170	2c Carmine, 10c Green (220, 226). Tied with oval fancy county pmkd, illust. Calif. Hot Springs. V. F.	—
171	5c Blue, 8c Violet Brown (272, 281). Tied on registered cover from Honolulu. Very fine	—
172	2c Carmine (279b). Cancelled with very fine strike Kicking Mule from Port Townsend, Wash. (Photo)	—
173	2c Carmine. Tied from Chicago on illustr. hotel cover with large red circle of National Peace Jubilee, 1898. Fine	—
174	2c Carmine, Bluish Paper (358). Tied, 1909 usage. Very fine	20.00
175	2c Lincoln (367), First Day Cover. Tied from Boston, Feb. 12, 1909. Superb	25.00
176	2c Lincoln, Bluish (369). A Superb copy tied lightly, used in 1917	35.00
177	2c Alaska-Yukon (370) First Day Cover. Tied from Boston, June 1, 1909. Very fine, rare	—
178	1c Pan-Pacific (397, 401). Two cards with exposition cancels, scenes from fair	—
179	10c Pan-Pacific (400, 406). Tied on registered cover. Very fine	10.00
180	10c Orange, Pan-Pacific (400a, 425). Tied on registered cover. Very fine	12.50
181	1c-20c First Day Covers (552, 56, 57, 59, 63-64, 66-67, 604). Nine covers. Fine	21.50
182	1c-15c First Day Covers (552, 54, 56, 57 seven, 564, 66). 12 covers. Fine	31.50
183	1c Green (578). Pair tied on cover, 1924 usage. Very fine	24.50
184	2c Carmine (579). Tied, 1924 usage. Very fine	10.00
185	1c-5c Lex-Concord (617-19). Four sets on 4 First Day Covers. Fine, two 5c have str. edges	16.00
186	16c Green Air (C2). Two covers tied with purple airmail pmkd. Fine	6.00
187	24c Air (C3). First Day Cover from Phila. May 15, 1918. Very fine	20.00
188	20c, 50c Clippers (C21-22). Three First Day Covers of each, plus 5 first flights to Asia with cachets, various points, total \$4.75 postage on covers. V. F.	—
189	Zeppelin First Round World Flight Cover, \$3.55 postage with cachets. V. F.	—

ENTIRES, WESTERN FRANKS

190	3c Red, Entire (U10). "Due 6c" in circle, also red "6" pencancel over stamp "Not Recognized". V. G.	—
191	3c Red Entire (U10). Wells Fargo Frank, tied from Stockton, business imprint on back, Fine	—
192	10c Green, Entires (U17-18). Each tied with very fine strikes of Yankee Jims, Cal.	14.00
193	3c Pink, Entire (U59). Tied with very fine Masonic from Charleston, N. H., scarce	(Photo) —
194	3c Pink, Entire (U59). Pacific Union Express Co. frank tied with company marking. Fine	—
195	3c Pink, Entire (U59). Bamber & Co's Express frank, tied with company pmkd. V. G.	—
196	3c Pink, Entire (U59). Bamber & Co's Express frank, tied with company pmkd. V. G.	—
197	3c Pink, Entire (U59). Wells Fargo Frank with company cancel also ms. "Steamer" another 3c plain entire pasted on back with co. cancel. V. G.	—
198 ★	2c Brown, Entire (U277). Pacific Express Co. frank with railroad car in brown. Very fine, unused	—
199	2c Certificate Imperf. Revenue (R7a). Tied from Walpole, N. H. Very fine, used local	—
200	Curriers Gloucester and Boston Express, orange label. V. F. cover	—
201	Gillet & Co's Newburyport Express, orange label on legal cover	—

CONFEDERATE STATES

202	Mobile, Ala. 5c Blue (58X2). Tied with Mobile pmkd. Very fine (Photo)	40.00
203	Mobile, Ala., 5c Blue (58X2). Two fine copies tied	(Photo) 65.00
204	Charleston, S. C. "Paid 5" handstamp, Patriotic (Flag, 7 stars). V. G.	—
205	5c Green (200). Very fine copy tied with Charlotte, C. H. Va. pmkd in blue	8.00
206	5c Green (200). Tied with blue grid from Charlottesville, Va. Fine	8.00
207	10c Light Milky Blue (201). Town tied. Very fine	12.00
208	10c Blue (201). Very fine, large margins, tied	10.00
209	10c Blue (209). Frame line complete on two sides, tiny parts show on other sides tied from Mobile on small cover. V. fine	(Photo) 100.00
210	10c Rose (204). Tied Savannah, Paid pmkd. Very fine, large margins	(Photo) 45.00

- 211 **10c Rose (204).** Large margins, attractive tied with blue Emory, Va. pmkd on small cover. Very fine **(Photo)** 45.00
- 212 **5c Blue (205-06).** Pair of each tied with town cancels on 2 home made covers from printed matter. Fine, interesting —
- 213 **10c Blue (211).** Attractive **Patriotic** (Jeff Davis, Flags, scene & verse in brown) stamps tied with boxed Paid and ms. cancel. Very fine, scarce **(Photo)** —

FLAG OF TRUCE COVERS

- 214 **3c Rose (65). Tied with Confederate 10c Blue (210).** Ms. "Flag of Truce via Fortress Monroe", Old Point Comfort, Va. pmkd, also "Prisoners Letter Johnson's Island" oval on back. Very fine, scarce **(Photo)** —
- 215 **3c Rose (65). Tied with Confederate 10c Blue (210).** Ms. "Flag of Truce Via Fortress Monroe" Old Point Comfort, Va. pmkd also "Prisoners Letter Johnson's Island" oval on back, interesting. Fine, scarce —
- 216 **3c Rose (65). "Prisoners Letter Examined Fort Delaware, Del."** in oval, Delaware City pmkd, large "10" and Charleston pmkd. Very fine, nice markings, scarce **(Photo)** —

UNITED STATES OFF COVER

1847 ISSUE

- 217 **5c Red Brown (28).** Top sheet margin copy fat margins, light red grid. **Superb** **(Photo)** 20.00
- 218 **5c Red Brown (28).** Blue grid cancel, **Stitch Wmkd.** Very fine **(Photo)** 27.50+
- 219 **5c Red Brown (28).** Three margins, close left. Fine **(Photo)** 20.00
- 220 **5c Red Brown (28).** Four small margins. Fine **(Photo)** 20.00
- 221 **5c Brown (28).** Black grid cancel. Very fine **(Photo)** 35.00
- 222 **5c Orange Brown (28b).** Red cancel. Fine **(Photo)** 30.00
- 223 **5c Red Brown (28).** Pen cancel, large margins. Very fine 10.00
- 224 **10c Black (29).** Attractive red grid cancel, four margins. Very fine **(Photo)** 45.00

1851 ISSUE

- 225 ★ **1c Blue, type II (31).** Very fine **(Photo)** 20.00
- 226 **1c Blue (31).** Very fine 10.00
- 227 **1c Blue (31).** Bright color. Fine 10.00
- 228 **1c Blue (32d).** Very fine 7.00

229	1c Blue, Type IV (32d). Blue town cancel. Fine	8.00
230	1c Blue (32d). Recut top, double transfer. Fine	9.00
231	1c Blue (32d). Tiny corner crease. V. F. appearance (981L1).....	9.00
232	1c Blue, Type IV (32d). Fine (5R1L)	17.50
233	1c Blue (32d). Three copies, shades. Fine	21.00

1c IMPERF. 1851 ISSUE #32d**Complete Reconstructed Pane of Plate 1, Late State**

(Position of stamps on plate are given after each lot. Various plate varieties are not listed but can be checked in Ashbrook's book on these interesting stamps. All lots are catalogued as the common type.)

LEFT PANE

234	1c Blue (32d). Strip of 5, three stamps have tears, fine appearing (1-5)	50.00+
235	1c Blue (32d). Strip of 3, one stamp ms. cancel, others town cancel. V. G. (6-8)	30.00
236	1c Blue (32d). Sheet margin at top. Fine (9)	7.00
237	1c Blue (32d). Horiz. Pair, ms. cancel. Fine (11-12)	20.00
238	1c Blue (32d). Strip of 3. Fine margins except in at top, town cancel (13-15)	30.00
239	1c Blue (32d). Strip of 3, ms. and town cancel. Fine (16-18)	30.00
240	田 1c Blue (32d). Block of 4, Black grid and red town, cut in bit at B. Fine piece (19-20, 29-30)	(Photo) 125.00
241	1c Blue (32d). Light town cancel. Fine (21)	7.00
242	1c Blue (32d). Horiz. Pair. Very fine (22-23)	(Photo) 20.00
243	1c Blue (32d). Vertical strip of 3, ms. cancel. Fine (22, 32, 42)	30.00
244	1c Blue (32d). Strip of 3, blue grid. V. G. (24-26)	33.00
245	1c Blue (32d). Pair, ms. cancel. Fine (27-28)	20.00
246	1c Blue (32d). Strip of 3, town cancel. Very good (31-33)	30.00
247	★ 1c Blue (32d). Pair, tiny thin. Fine appearance (35-36)	30.00
248	1c Blue (32d). Light "Paid" cancel. Very fine margins (37)	(Photo) 8.50
249	1c Blue (32d). Reconstructed strip of 3, pair and single, pair has "stitch wmkd" corner copy shows crack plainly (38-40)	—
250	1c Blue (32d). Corner copy "U. S. Mail, City Delivery" cancel, pretty item (40)	(Photo) —

251	1c Blue (32d). Strip of 3, ms. cancel. Fine-V. F. (43-45)	30.00
252	1c Blue (32d). Pair, town cancel. Fine-V. F. (47-48)	20.00
253	1c Blue (32d). Strip of 3, large margins all around, crease and tear in one stamp (48-50)	30.00
254	1c Blue (32d). Strip of 3, ms. cancel. V. G. (51-53)	30.00
255	1c Blue (32d). Strip of 3, ms. cancel. Very good (53-55)	30.00
256	1c Blue (32d). Strip of 3, cut in at top. V. G. (57-59)	30.00
257	1c Blue (32d). Irregular block of 3, light ms. cancel. Very fine appearance, scissor cut in margin (59-60, 69)	—
258	1c Blue (32d). Very fine margins, light corner crease (61)	7.00
259	1c Blue (32d). Two shades. Fine (62, 68)	14.00
260	1c Blue (32d). Strip of 3, ms. cancel. Fine margins (64-66)	30.00
261	1c Blue (32d). Strip of 3, town cancel, two cut in. Good (74-76)	30.00
262	1c Blue (32d). Four copies. V. G.-Fine (72, 77-8, 80)	28.00
263 ★	1c Blue (32d). Fine (84)	11.00
264	1c Blue (32d). Strip of 3, ms. cancel. V. G.-Fine (87-89)	30.00
265	1c Blue (32d). Strip of 3, town cancel. Fine (92-94)	30.00
266	1c Blue (32d). Strip of 3, ms. cancel. Fine (94-96)	30.00
267	1c Blue (32d). Strip of 3, light town cancel. Fine (98-100)	30.00
268	1c Blue (32d). Strip of 3, two pairs and three singles. Fair (9-10, 46, 63-4, 73, 83, 93)	91.00
269	1c Blue (32d). Eleven copies, shades. V. G.-Fine, balance of pane	77.00

RIGHT PANE

270 ★	1c Blue (32d). Pair, sheet margin copy very fine other has nick at B (1-2)	30.00
271	1c Blue (32d). Fine (2)	7.00
272	1c Blue (32d). Six copies, shades. V. G.-Fine (3, 34, 54, 60, 76, 97)	42.00
273	1c Blue, Type II (31). Large margins, crease. V. F. appearance (4)	10.00
274	1c Blue (32d). Strip of 3, ms. cancel. Very fine margins (5-7)	30.00
275 田	1c Blue (32d). Block, ms. cancel "\$5" several times. Very good piece (9-10, 19-20) (Photo)	125.00
276	1c Blue (32d). Five copies, shades. V. G. (8, 21, 29, 31, 33)	35.00

277	1c Blue (32d). Strip of 3, center stamp V.F. others have corners cut (11-13)	30.00
278	1c Blue (32d). Strip of 3, cut in at top. V. G. (14-16)	30.00
279	1c Blue (32d). Strip of 3, cut in three sides. Good (17-19)	30.00
280	1c Blue (32d). Pair, town cancel, closed tear one stamp. Fine appearance (22-23)	20.00
281	1c Blue (32d). Strip of 3, ms. and town cancel. Very good (24-26)	30.00
282	田 1c Blue (32d). Block , slight thins. Fine appearance (27-28, 37-38) (Photo)	125.00
283	1c Blue (32d). Two vertical strips of 3, cut into design, one ms. cancel. Fair (30, 40, 50, 78, 88, 98, 70, 80, 90)	90.00
284	1c Blue (32d). Pair, one fine other in at top (31-32)	20.00
285	1c Blue (32d). Pair. Very fine (35-36)	(Photo) 20.00
286	1c Blue (32d). Strip of 3, V. G.-Fine, town cancel (38-40)	30.00
287	1c Blue (32d). Strip of 4 , ms. cancel, cut in B. Very good (41-44)	40.00
288	1c Blue (32d). Vertical strip of 3. Very good (41, 51, 61)	30.00
289	1c Blue (32d). Vertical pair, ms. cancel. Very fine margins (45-55)	20.00
290	1c Blue (32d). Lightly cancel. Very fine (46)	7.00
291	1c Blue (32d). Pair, town cancel, cut in top. V. G. (49-50)	20.00
292	1c Blue (32d). Pair, red grid cancel. V. G. (52-53)	20.00
293	1c Blue (32d). Strip of 3, middle stamp cut in at top others very fine (56-58)	30.00
294	1c Blue (32d). Very fine (59)	7.00
295	★ 1c Blue (32d). Pair, cut in top, portion of two other stamps at B., V. G. (61-62)	30.00
296	1c Blue (32d). Pair, Boston "Paid" cancel, tiny nick in margin. Fine (63-64)	20.00
297	1c Blue (32d). Vertical strip of 3, ms. and town cancel. Fine (67, 77, 87)	30.00
298	1c Blue (32d). Strip of 3, bar cancel, maybe early precancel, one stamp slight defects (68-70)	30.00
299	1c Blue (32d). Strip of 3, one stamp creased. Good (71-73)	30.00
300	1c Blue (32d). Pair, town cancel. Fine (74-75)	20.00
301	1c Blue (32d). Vertical strip of 3, bottom stamp has crease. V. G. (79, 89, 99)	30.00
302	1c Blue (32d). Strip of 3, town cancel. Fine (81-83)	30.00
303	田 1c Blue (32d). Block , one stamp slightly defective. Fine appearance (85-86, 95-96)	(Photo) 125.00

304	1c Blue (32d). Strip of 4 , corner stamp has light crease. Fine piece (91-94) (Photo)	40.00
305	1c Blue (32d). Sheet corner copy , light crease in margin. Fine piece (100) (Photo)	7.00
306	1c Blue (32d), two pairs and four singles, defective, nice appearing. Balance of plate	68.00
307 ★	3c Red (33). Two shades. Fine, one O. G.	8.00
308	3c Red (33). Large margins showing parts of 5 adjacent stamps	—
309	3c Red (33). Recut Button . Very fine	10.00
310	3c Red (33). " Line through three cents " variety, three fine margins, in at top	20.00
311	3c " Plum " shade (33). Recut Bust, Chicopee Star cancel. Very fine (Photo)	—
312	3c Red (33). Cracked Plate . Fine	35.00
313	3c Red (33). Two diff. large Cracked Plates . V. G.	70.00
314 ★	3c Claret (33a). Extra line at left variety. Very fine	12.00
315	3c Orange brown (33b). " Copper " shade, looks unused, pen cancel removed. Fine	—
316	10c Green (35A). Ms. cancel. Very fine	10.00
317	10c Green, Type II (35A). Tiny tear. V. F. appearance	10.00
318	10c Green, Type II (35A). Light corner crease. V. F. appearance	10.00
319	10c Green, Type II (35A). Pair , San Francisco pmkd. Very fine margins, trivial corner crease	(Photo) 30.00
320	10c Green, Type III (35B). Very fine	(Photo) 10.00
321	10c Green, Type III (35B). Very good	10.00
322	10c Green, Type III (35B). Pair . Very fine	(Photo) 32.50
323	12c Black (36). Fine	17.50
324	1c-24c (35b, 42f, 50, 68-9, 77-8, 87, 90, 112-13). all have defects, nice appear- ing	52.75

1857 ISSUE

325 ★	1c Blue, Type I (40). Tiny thin. Fine appearance	35.00
326	1c Blue, Type II (41). Guide line copy, closed tear. V. F. appearance	10.00
327	1c Blue, Type IIIa (42B). Very fine	(Photo) 20.00
328	1c Blue, Type IV (42D). Blue cancel. Very fine	(Photo) 25.00

329	1c Blue, Type V (42F). Double Transfer. Very fine	12.00
330	1c Blue, Type V (42F). Superb fat margin pair tied on piece, guide line sheet margin at left	—
331	3c Rose, Type I (43). Recut inner frame lines. Fine	6.00
332	3c Rose, Type I (43). Cracked plate variety, creased. Very fine appearance, scarce	60.00
333 ★	3c Red (44). Dash in margin flaw. V. F., scarce unused	—
334	3c Red (44). "Paid 3" in circle. Fine	—
335	3c Red (44). Inner line recut at right. V. F.	10.00
336	3c Red (44). Big Crack, excellent example. V. G.	50.00
337	3c Red (44). Rosettes Doubled and line through three cents, neat "Paid" cancel. Very fine, scarce	—
338	3c Red (44). Four plate flaws, scarce. Fine	—
339	5c Henna Brown (46). Tear. Fine appearance	65.00
340 ★	5c Brown, Type I (47). Centered to left. Fine O. G. (Photo)	85.00
341	5c Brown (47). Red cancel. Fine	17.50
342	10c Green, Type III (49B). Very fine	8.00
343 ★	12c Black (51). Light gum crease. Fine appearance, O. G.	12.50
344	12c Black (51). Two copies, tiny tear in each. Fine appearance	16.00
345	24c Lilac (52). Red grid cancel. Fine	20.00
346	30c Orange (53). Three, Blue town, Red Paid, Boston Paid, each defective	102.50

1861-1867 ISSUES

347	24c violet (60). Red grid cancel, centered to B. Fine (Photo)	60.00
348	1c Indigo (63). Brilliant red town cancel, perfs in T. & R.	—
349	1c Blue (63). 13 copies includes shades, pair and strip. Good-fine	20.50
350	3c Red (65). "U. S." in circle. Fine	—
351	3c Red (94). Very fine strike of Masonic in circle (Photo)	—
352	3c Rose (65). Tied on small piece New York Ship. Fine	—
353	3c Rose (65). Nice strike of Corey Eagle, scarce	—
354	3c Rose (65). Very fine strike of Cannon, stamp is repaired. Rare cancel (Photo)	—
355	3c Rose (65). Two on small piece in blue circle "Post Office Boston, Mass. Wm. L. Murt, P. M.," rare marking. Fine	—

356	3c Rose (65). Strip of three tied on piece Steamship Cts. in circle. Fine, scarce	—
357	3c Rose (65). "Free", Banks Division and "B. C. & M. R. R.". Fine strikes	—
358	3c Rose (65). Three numerals "5", "10" and "X". Very good	—
359	3c Rose (65). Five diff. Shields , fine strikes	—
360	3c Rose (65). Fine lot of 8 diff. fancy cancels, Checkerboard, Putnam fancy, Star and Paid, "W", etc.	—
361	3c Rose (65). Ten diff. Paid cancels includes Paid All, Paid 3 and fancy Paid. Fine strikes	—
362	3c Rose (65). Fourteen diff. fancy Geometrics . Fine lot	—
363	3c Rose (65), includes a few grills, 342 stamps selected for cancellations, includes nice variety of fancy pmkds (Est. Net 17.50)	—
364 ★	3c Essay backed on card	—
365 ★	10c Yellow Green (68). Very fine	8.00
366	24c Red Lilac, 24c Brown Lilac (70, 70a). First has tiny tear other fine	20.00
367	24c Red Lilac, 24c Brown Lilac (70, 70a). Tiny tear in each. Fine appearing	20.00
368	30c Orange (71). Three copies. V. G.—Fine	27.00
369 ★	90c Blue (72): Small thin. Very fine appearance, O. G. (Photo)	50.00
370	90c Blue (72). Light crease. Very fine appearance	17.50
371 ★	2c Black (73). Two shades. Fine, one O. G.	10.00
372	2c Black (73). Stitch Wmkd. Very fine	—
373	2c Black (73). Three copies Paid, red and blue town. Attractive lot	—
374	5c Black Brown (76a). Very fine	9.00
375	15c Black (77). Beautifully centered. Very fine (Photo)	7.50
376	15c Black (77). Barely cancelled. V. G.	7.50
377 ★	24c Lilac (78). Fine	10.00
378	24c Lilac (78). Nine copies, shades. Very good—fine	54.00
379	3c Rose (83). Light crease, well centered	22.50
380	3c Rose (83). Corner crease. Fine appearing	22.50
381	1c Blue, Grilled (86). Pair, light ms. cancel, one stamp superb other has few perfs short at top	40.00
382	1c Blue, 2c Black (86-87). Very good	19.50
383	1c Blue, 2c Black (86-87). Very good	19.50

384 ★	12c Black (90). Very fine O. G.	(Photo)	60.00
385	1c Blue, 12c Black (92, 97). Two of latter. V. G.		17.00
386	1c Blue, Pair; 3c Red (92, 94). Tied on piece. Very good		15.25
387	15c Black (98). Two, both cleaned, look unused, 2 perfs short on one other fine		14.00

1869 ISSUE

388 ★	1c Buff (112). Very good		9.00
389	1c Buff (112). Three copies. Very good		15.00
390 ★	2c Brown (113). Two, one O. G. other has small thin		10.00
391	3c Ultramarine (114). Fine green target cancel		5.00
392 ★	3c Ultramarine (114). End Roller Grill in sheet margin. V. F. O. G. scarce		—
393 ★	6c Ultramarine (115). Very fine	(Photo)	17.50
394	6c, 12c two, 15c Pictorials (115, 117, 119). Very good		27.00
395	10c Yellow (116). Blue town cancel. Very fine		8.50
396 ★	12c Green (117). Tiny grill thin, well centered. V. F. appearance		20.00
397	15c Brown & Blue, Type I (118). Very light cancel, perfs in top. V. G.		25.00
398 ★	15c Brown & Blue (119). Centered to top. Fine, regummed		25.00
399	15c Brown & Blue (119). Light blue grid. V. G.		9.00
400	24c Green & Violet (120). Fine		30.00
401	1c Buff, Re-issue (123). Centered to right. Fine		11.00

BANKNOTE ISSUES

402	12c Dull Violet (140). Faint grill, finely centered, small thin. Scarce	(Photo)	100.00
403	1c Ultramarine (145). Glastonbury Precancel, large "G", scarce (Photo)		—
404 ★	2c, 3c, 6c Banknotes (146-47, 208), last two O. G. V. G.		18.50
405 ★	6c Carmine (148). Very fine, mostly O. G.		12.00
406	10c Brown (150, 161). N. Y. Steamship and red London Paid cancels		—
407	12c, 15c Banknotes (151-52), two of each. V. G.		14.50
408	15c Bright Orange (152). Magenta cancel. Very fine		7.00
409	24c Purple (153). Two, minor defects. Very fine appearing		15.00

410	30c Black (154). Very good	10.00
411	90c Carmine (155). Tiny tear at top, well centered	10.00
412	1c-10c Mostly Banknotes, 29 fancy cancels includes foreign mails, reds, shileds, etc. (Est. \$7.00), nice lot	—
413 ★	1c Blue, Banknotes (156, 182). Very fine	7.50
414 ★田	2c Brown (157). Block of ten. Fine	59.00
415	3c green (158). "77" year date cancel. Fine	—
416	6c Dull Pink (159). Strip of 9, one stamp defective, town cancel with "78" year date, scarce in lonk strip, attractive piece	—
417	7c Vermilion (160). Double Transfer, str. edge at L.	15.00
418 ★	10c Brown (161). Fine	15.00
419 ★	10c Brown (161). Very fine	15.00
420 ★	12c Blackish Violet (162). Rich shade, V. G.	35.00
421	12c, 15c Banknotes (162, 163). Two of first, all have blue cancels. V. G.-fine	13.00
422 ★	90c Rose Carmine (166). Fine O. G. (Photo)	40.00
423	90c Rose Carmine (166). Reperfed at R. Fine appearing	12.50
424	2c Vermilion (178). Double Paper variety "78" year date. Very fine, scarce	—
425 ★	5c Blue (179). Very good ,part O. G.	9.00
426	2c Vermilion (183), three Patent cancellations. V. Fine	—
427	3c Green (184). Very fine strike of man's head from Fairview, Ill. Rare cancel	(Photo) —
428	3c Green (184), with part of American Bank imprint at top, appears to be hard paper	—
429	3c Greens, six copies each with big fat margins. V. F.	—
430 ★	5c Blue (185). Fine O. G.	12.50
431 ★	10c Brown, Strip of three, left stamp without secret mark others have it (187-188). Very fine piece. Rare	(Photo) 70.00+
432	10c Brown (187-188). Horiz. Pair with both types, scarce. Very fine	—
433	10c Brown (187-188). Ten fancy cancels. Fine lot	—
434	10c Black Brown (188b), thin spot. V. F. appearance	12.00
435 ★田	1c Gray Blue (206). Two blocks. Fine O. G.	14.00
436	3c Green (207). Very fine strike of Leaf	—
437 ★	6c Rose (208). Very fine	12.00

438	10c Brown (209), Cameo Head cancel. Fine, scarce	—
439	★田 4c Carmine (215). Block. Very fine (Photo)	20.00
440	5c Indigo (216). Strip of 5, one str. edge. Fine	—
441	30c Orange Brown (217). Two, both thin, nice appearing	8.00
442	90c Purple (218). Black and red cancel. Very fine	12.00
443	90c Purple (218). Very fine	12.00
443A	CANCELLATION COLLECTION, over 4500 stamps and 50 covers, 19th Century, strong in Banknotes, mounted on pages and selected for cancellation interest with little reference to condition which runs from damaged to very fine. Includes hundreds of cancels retailing from 25c-\$1.00 plus. Includes fancy, colored, paid, railroad, stars, crosses, Masonics, shields, letters, geometrics, numerals, plate vars., multiples, etc. (Est. \$175.00 net)	—

1890 ISSUE

444	★田 6c Brown Red (224). Block. Fine	12.00
445	★田 15c Indigo (227). Block with imprint. Fine (Photo)	25.00
446	★田 30c Black (228). Block. Fine	30.00
447	★田 90c Orange (229), tiny thin on one stamp balance of block, very fine (Photo)	45.00

COLUMBIAN ISSUE

448	田 3c Columbian (232). Imprint Block, reenforced. Fine, also Plate Pair of 2c with Broken Hat variety, no gum	6.50
449	8c Columbian (236). On small piece with two strikes of Kicking Mule, one on stamp. Very fine	—
450	★ 15c Columbian (238). Very fine	6.00
451	15c-30c Columbian (238-39). Very good	8.75
452	30c Columbian (239). Fine	5.00
453	★ 50c Columbian (240). Fine	10.00
454	★ \$1.00 Columbian (241). Small thin. Very fine appearance (Photo)	35.00
455	1c-30c Commems. Between No. 230-298 (74 stamps), fair average, few defects, four unused	62.87

1894-95 ISSUES

456	★ 2c Carmine Lake (249). Imprint Plate No. Strip of 3 (#20). Fine	12.00
-----	---	-------

457	★田	2c Carmine Lake (249). Block. Fine	15.00
458	★田	3c Purple (253). Two blocks, diff. shades. V. G.	18.00
459	★	10c Green (258). Top imprint Plate No. Strip of 3. Fine	20.00
460	★	50c Orange (260). Imprint Plate No. Strip of 3. Fine	(Photo) 40.00
461	★	\$2.00 Dark Blue (262). Very fine	(Photo) 65.00
462	★田	2c Carmine (266). Block. Fine	13.50
463	★田	2c Carmine (266). Block. Very fine	13.50
464	★田	2c Carmine (266). Block with split arrow and str. edge at B. Very fine	13.50
465	★田	2c Carmine (266). Right Imprint Plate No. Block of 6. Very fine	25.00
466	★田	2c Carmine, Block of 6 showing types II & III, (266-67). Very fine	15.00
467	★田	2c Orange Red, Booklet Pane of 6 (279B). Very fine	15.00
468	★田	2c Orange Red, Booklet Pane of 6 (279B). Very fine	15.00
469	★	2c Rose Carmine (279Bc). Fine	7.50
470	★	2c Rose Carmine (279Bc). Very fine	7.50
471	★	2c Rose Carmine (279Bc). Two, perfs cut in top. V. G.	15.00
472	★田	4c Rose Brown (280). Block. Very fine	7.00
473	田	10c Brown (282C). Block, lightly cancel. Fine	10.00

TRANS-MISSISSIPPI ISSUE

474	★	1c-10c Trans-Miss (285-290). Very fine	17.35
475	★田	5c Trans-Miss (288). Reenforced block. Very good	25.00
476	★	8c Trans-Miss (289). Imprint Plate No. Pair. Very fine.....	15.00
477	★	50c Trans-Miss (291). Very fine	(Photo) 27.50
478	★	50c Trans-Miss (291). Fine	27.50
479		50c Trans-Miss (291). Lightly cancelled. Very fine	(Photo) 9.00
480		50c Trans-Miss (291). Two both with small tears, nice appearing	18.00
481		50c, \$1.00 Trans-Miss (291-92). First unused both thinned latter badly	57.50
482	★	\$1.00 Trans-Miss (292). Very fine	(Photo) 50.00
483		\$1.00 Trans-Miss (292). Very fine	(Photo) 30.00
484	★	\$2.00 Trans-Miss (293). Top imprint Plate No. Pair. Very fine, beautiful piece	(Photo on Front Cover) 200.00

TWENTIETH CENTURY

PAN-AMERICAN ISSUE

485 ★	1c-10c Pan-American Specimen set (294SE-299SE). Complete. Fine, scarce set	60.00
486 ★田	1c Pan-American (294). Top & Bottom Arrow blocks of 4. Fine	9.00
487 ★田	1c Pan-American (294). Top Plate Imprint block of 8 with numerous engravers initials. V. G.	4.50
488 ★田	1c Pan-American (294). Bot. Plate Imprint Block of 8. Fine	5.80
489 ★田	2c Pan-American (295). Top & Bottom Arrow blocks of 4. Very fine	9.00
490 ★田	2c Pan-American (295). Top Plate Imprint Block of 6. Fine	5.00
491 ★田	4c Pan-American (296). Block. Fine	17.50
492 ★田	4c Pan-American (296). Bottom Arrow Block of 4. Fine	28.00
493 ★田	5c Pan-American (297). Top Arrow Block. Fine	28.00
494 ★田	5c Pan-American (297). Bottom Arrow Block. Very fine	28.00
495 ★田	5c Pan-American (297). Top Imprint Plate No. Block of 6. Very fine	35.00
496 ★田	5c Pan-American (297). Bottom Imprint Plate No. Block of 6. Very fine	35.00
497 ★田	10c Pan-American (299). Bottom Imprint Plate No. Block of 6. Fine	45.00
498 ★田	1c Green, Booklet Pane of 6 (300b). Fine	10.00
499 ★田	2c Carmine, Booklet Pane of 6 (301c). Very fine, with guide line	10.00
500 ★田	2c Carmine, Booklet Pane of 6 (301c). Superb, with guide line	10.00
501 田	3c Violet (302). Block, lightly cancel. Very fine	6.00
502 ★	3c-4c, 10c, 15c (302-03, 307, 309). Very fine except last has small thin	11.50
503 ★	4c Brown (303). Freak perfs running thru center	—
504 ★田	4c Brown (303). Block. Very fine	6.50
505 ★田	5c Blue (304). Block. Very fine	7.50
506 ★田	5c Blue (304). Odd Print, block. Fine	7.50
507 ★田	6c Claret (305). Block. Very fine	12.50
508 ★田	13c Purple Black (308). Block. Very fine	6.50
509 ★	1c Green, Shermack III (314). Strip of 4. V. F.	6.00
510 田	1c Green, Imperf. (314). Bot. Imprint Plate Block of 6, light crease on one stamp, town cancel	12.00+

511	田	1c Green, 2c Shield Imperf (314, 320). Blocks. Very fine	17.00
512	★田	2c Shield, Imperf. (320). Block, light gum crease. Fine	9.00
513	★田	2c Scarlet, Imperf. (320b). Upper left corner block, one stamp has small thin. V. F. appearance	25.00

LOUISIANA PURCHASE AND JAMESTOWN ISSUES

514		1c-10c Louisiana-Purch. (323-27). Fine set	8.65
515	★	1c Louisiana-Purch. (323). Diagonal line through left "1" variety, V. F.	10.00
516	★田	1c Louisiana-Purch. (323). Right & Left arrow blocks. Fine	18.00
517	★田	2c Louisiana-Purch. (324). Left arrow block. Very fine	12.00
518	★田	2c Louisiana-Purch. (324). Top imprint plate block of 6. Fine	8.30
519	★田	3c Louisiana-Purch. (325). Block. Very good	20.00
520	★田	3c Louisiana-Purch. (325). Left arrow block. Fine	40.00
521	★	5c Louisiana-Purch. (326). Imprint plate No. pair, centered bit to left. Fine	12.50
522	★	10c Louisiana-Purch. (327). Corner sheet margin copy, V. G.	8.00
523	★田	1c Jamestown (328). Bot. imprint plate block of 6, top arrow block. Fine	10.00
524	★田	2c Jamestown (329). Pale shade, block. Very fine	—
525	★田	5c Jamestown (330). Block. Fine	30.00

1908 ISSUE

526	★	1c-15c (331-340). V. G.-V. F.	16.15
527	田	1c Green (331). Block precancelled with freak fold over	—
528	★田	3c Violet (333). Block. Very fine	7.00
529	★田	3c Violet (333). Block, 3mm spacing. Very fine	20.00
530	田	3c, 5c (333, 335). Blocks, lightly cancel. V. F.	6.25
531	★田	4c Brown (334). Block, 3mm spacing. Very fine	12.00
532	★田	6c Red Orange (336). Left imprint plate block of 6. Very fine	25.00
533	★田	10c Yellow (338). Block. Very fine	13.50
534	★	13c Blue Green (339). Two both showing line through "Tag" of "Postage" , one thin other fine	25.00
535	★田	15c Ultramarine (340). Block. Very fine	15.00
536	★	\$1.00 Violet Brown (342). Imprint plate No. strip of 3. Fine (Photo)..	52.50+

537	★田	1c Green, Imperf. (343). Center line & set of four diff. arrow blocks. Fine	20.00
538	★田	1c Green, Imperf. (343). Right & left imprint plate blocks of 6, bottom, right & left imprint star plate blocks of 6. Very fine	26.00
539	★田	2c Carmine, Imperf. (344). Right imprint Star Plate No. Block of 6. Very fine	10.00
540	★田	2c Carmine, Imperf. (344). Right & left imprint Star plate No. blocks of 6. Fine	20.00
541	★田	2c Carmine, Imperf. (344). Top, bot., right imprint plate blocks of 6. Fine	21.00
542	★	2c Carmine, Imperf. Coil (344). Strip of 10 with cracked plate . V. F.	—
543	田	2c-5c Imperfs (344-347). Blocks, nicely cancelled. Very fine	31.00
544	★田	3c Violet, Imperf. (345). Lower left corner block. V. F.	10.00
545	★田	3c Violet, Imperf. (345). Top imprint plate block of 6. Very fine	17.50
546	★田	3c Violet, Imperf. (345). Set of four diff. positions in Imprint Plate Blocks of 6. Very fine	70.00
547	★田	4c Brown, Imperf. (346). Block. Very fine	9.00
548	★田	5c Blue, Imperf. (347). Top Imprint Plate block of 6. Very fine	30.00
549	★田	5c Blue, Imperf. (347). Bot. Imprint Plate block of 6, rather heavy hinging. Fine	30.00
550	★田	5c Blue, Imperf. (347). Right Imprint Plate block of 6, one stamp has gum crease balance V. F.	30.00
551	★	4c Orange Brown, Coil (350). Fine	10.00
552	★	4c Orange Brown, Coil (350). Pair, Fine	20.00
553	★	4c Orange Brown, Coil (350). Pair. Very fine	20.00
554		4c Orange Brown, Coil (350). Pair, lightly cancel. Very fine	20.00
555	★	5c Blue, Coil (351). Pair. Fine	15.00
556	★	5c Blue, Coil (351). Guide line pair. Fine	18.00
557	★	1c Green, Coil (352). Pair. Fine	7.00
558	★	1c Green, Coil (352). Paste up pair and pair with joint at end. Fine	14.00
559	★	1c-2c Coils (352-53). Fine	6.00
560	★	2c Carmine, Coil (353). Guide line strip of 4. Very fine	17.00
561	★	4c Orange brown, Coil (354). Pair, hinge reenforced. Fine	18.00
562	★	4c Orange Brown, Coil (354). Pair. Fine	18.00
563	★	4c Orange Brown, Coil (354). Guide line pair. Fine	22.50

564 ★	4c Orange Brown, Coil (354). Guide line pair. Very fine	(Photo)	22.50
565 ★	4c Orange Brown, Coil (354). Guide line strip of 4. Very fine		40.50
566	4c Orange Brown, Coil (354). Pair, lightly cancel. Very fine		15.00
567 ★	4c-5c Coils (354-55). Very fine		14.00
568 ★	5c Blue, Coil (355). Pair. Fine		10.00
569 ★	5c Blue, Coil (355). Pair. Fine		10.00
570 ★	5c Blue, Coil (355). Paste up pair. Fine		10.00
571 ★	5c Blue, Coil (355). Guide line pair. Fine		13.00
572	10c Yellow, Coil (356). Strip of 3, right stamp thin leaving very fine pair. Rare in used multiple	(Photo)	200.00

END OF FIRST SESSION



SECOND SESSION

WEDNESDAY, FEBRUARY 14th, 1945 — 2 P. M.

BLUISH PAPERS

573 ★田	1c Green, Bluish (357). Block. Very fine		25.00
574 ★	2c Carmine, Bluish (358). Cracked plate. Fine		—
575 ★田	2c Carmine, Bluish (358). Block. Very fine		25.00
576 ★田	2c Carmine, Bluish (358). Imprint Plate No block of 6. Fine		75.00
577	2c Carmine, Bluish (358). Fine		5.00
578 ★	3c Deep Violet, Bluish (359). Very fine	(Photo)	60.00
579	13c Blue Green, Bluish Paper (365). Superb	(Photo)	65.00

1909 COMMEMORATIVES

580 ★田	2c Lincoln (367). Blocks, both spacings. V. F.		4.50
581 ★	2c Lincoln, Imperf. (368). Four diff. bottom imprint Star plate strips of 4. Very fine		40.00+
582 ★田	2c Lincoln, Imperf. (368). Left imprint Star plate block of 6. Fine		22.50

583	★田	2c Lincoln, Imperf. (368). Bot. imprint Star plate block of 6. Fine	22.50
584	★田	2c Lincoln, Imperf. (368). Corner blocks, L. left and U. right. Very fine	30.00
585	田	2c Lincoln, Imperf. (368). Block, precancelled Benton Harbor, Mich. V. F.	11.00
586	田	2c Lincoln, Imperf. (368). Center line block , lightly cancel. Superb	35.00
587	★	2c Lincoln, Imperf. (368E). Coil pair, Very fine	10.00
588	★	2c Lincoln, Auto Vending Perf. (368). Strip of 6. V. F.	15.00
589	★	2c Lincoln, Imperf. Experimental Private Perf. similar to U. S. Auto Vend. Type III but with 12 holes (368), pair. V. F.	—
590	★	2c Lincoln, Bluish (369). Very fine	12.50
591	★	2c Lincoln, Bluish (369). Very fine	12.50
592	田	2c Alaska-Yukon (370). Two used blocks. Fine	5.00
593	★田	2c Alaska-Yukon Imperf. (371), Matched set of 4 diff. Plate No. Imprint Blocks of 6 , Very Fine	90.00
594		2c Hudson-Fulton (372), Double Transfer , Fine	—
595	★	2c Hudson-Fulton (372), Imprint Plate #5394 Strip of 3 showing two large Double Transfers , V. F.	20.00
596	★	2c Hudson-Fulton (373), Imprint Plate #5394 Strip of 3 showing two big Double Transfers , V. F.	23.00
597	★田	2c Hudson-Fulton (373), Top Imprint Plate Block of 6, Very Fine	23.00
598	★田	2c Hudson-Fulton (373), Right Imprint Plate Block of 6, Very Fine	23.00
599	★田	2c Hudson-Fulton (373), Left Imprint Plate Block of 6, Very Fine	23.00
600	★田	2c Hudson-Fulton (373), Top, Bot. and Left Arrow Blocks , Very Fine	54.00
601	★田	2c Hudson-Fulton (373), Top Arrow Block of 8 showing Double Transfer , Very Fine	34.00
602	田	2c Hudson-Fulton (373), Block, "1909" year date, V. F.	12.00
603	田	2c Hudson-Fulton (373). Block. Fine	12.00

1910 ISSUE

604	★田	1c Green, Booklet Pane, 4c Brown, Block (374a, 377) . Very fine	7.25
605	★田	2c Carmine (375). Bot. Imprint "A" Plate block of 6. Very fine	7.50
606	田	3c-5c, 10c (376-78, 81). Blocks, lightly cancel. V. F.	6.75
607	★田	1c Green, Imperf. (383). Complete set of position blocks , center line, 4 diff. arrows, corners and plate nos. blocks. Fine-V. F.	41.00



43

Dr. Vail

45



44



ANK
NOV 12
1858
DR. VAIL'S
Grand State College for the
Deaf and Dumb
PRINCETON, N. J.



55



47

Robinson
Bedford
Hingham Co
Vt.



59

J. Mars
Warrenton
Tanguish
Va



68



66



70



Miss Margarette A. Moody
Care of Mr. Daniel Moody
No. 66 Silver Street
South Boston
Mass.



75



90

Arthur Little Esq.
North Haven
Conn.

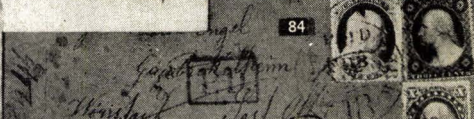


78

Madison
East Baldwin
Maine



93



84

Forrestal
Monmouth
N. J.

W. H. H. H. H.



106

Ezra G. Abot, Esq.



77

Y. B. B. B.



87



100



99

Mr. Lewis B. Parker
No 105 Lit
Me
Lewis B. Parker
Ship Dock
Capt. Staler
Liverpool
England
(In care of American Consul.)





217



218



219



220



221



222



224



225



242



248



250



285



304



305



311



319



320



322



327



328



340



347



351



354



369



375



384



393



402



403



422



427



431



454



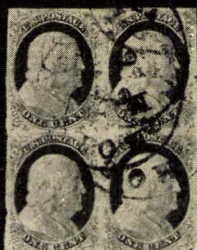
461



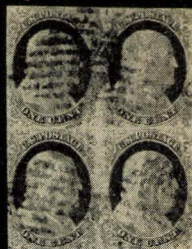
240



275



282



303



439



445



447



648



645



718



1138



691



724



864



913



892



921



477



479



482



483



460



536



564



572



578



579



631



570



671



672



680



685



690



745



753



930



931



937



1104



1151



1158



1161



1163



1165



1166



1175



1193

608	★	田	1c Green, Imperf. (383). Set of four diff. positions, Imprint "A" Plate No. Blocks of 6. Very fine, scarce	120.00
609	★		1c Green, Imperf. (383). Matched set of Imprint "A" Plate No. Strips of 3. Very fine (Cat. \$120.00 as blocks). Scarce	—
610	★	田	2c Carmine, Imperf (384). Block. Very fine	7.00
611	★	田	2c Carmine, Imperf. (384). Center line block. Very fine	40.00
612	★	田	2c Carmine, Imperf. (384). Left imprint Star plate block of 6. Very fine	20.00
613	★	田	2c Carmine, Imperf. (384). Top imprint Star plate block of 6. Very fine	20.00
614	★	田	2c Carmine, Imperf. (384). Imprint "A" plate block of 6, thinned	40.00
615	★	田	2c Carmine, Imperf. (384). Right arrow and upper right corner blocks. Very fine	28.00
616	田		2c Carmine, Imperf. (384). Block of 6, lightly cancel. V. F.	7.40
617	★		1c Green, 2c Carmine, Coils (387, 393). Pairs. Fine	10.50
618	★		1c Green, 3c Violet, Coils (387, 394). Joint pairs. V. G.-V. F.	12.50
619	★		1c-5c Coils (392-96). Fine set	7.50
620	★		3c Violet, Coil (394). Pair. Very fine	5.00
621	★		3c Violet, Coil (394). Joint strip of 4. Very fine	9.00
622	★		3c Coil, Joint Strip of 6 (394). 3 violet shade and other 3 red violet, interesting contrast. Fine	13.50
623	★		3c-4c Coils (394-95). Joint pairs. Very fine	7.50
624	★		5c Blue, Coil (396). Two strips of 4. Fine-V. F.	10.00

PANAMA-PACIFIC ISSUE

625	★		5c Pan-Pacific (399). Very fine	5.00
626	★		5c, 10c Pan-Pacific (399, 400a). Fine	15.00
627	田		1c Green, 5c Blue (399, 401). Blocks, lightly cancel. Very fine	14.00
628	★		10c Pan-Pacific (400a). Very fine	10.00
629	★		10c Orange, Pan-Pacific (400a). Fine	10.00
630	★	田	2c Pan-Pacific (402). Block. Very fine	40.00
631	★		10c Pan-Pacific (404). Fine (Photo)	50.00
632			10c Pan-Pacific (404). Fine	4.50
633	★		2c Lake shade (406). Fine	15.00
634	★		2c Carmine (406). Block and pair with freak perfs	—

635	田	7c Black (407). Block. Fine, lightly cancel	15.00
636	★田	1c-2c Imperfs., Kansas City Roulette (408-09). Blocks, latter has small thin, other V. F.	—
637	★田	1c Green, 2c Carmine, Imperf. (408-09). Right plate No. "A" block of 6 on 1c, Three diff. positions of plate No. "A" blocks of 6 on 2c, one has small thin balance. V. F.	27.75
638	★田	2c Carmine, Imperf. (409). Block, interesting Dry Plate variety	—
639	★田	2c Carmine, Imperf. (409). Set of 4 diff. positions imprint "A" plate blocks of 6. Fine	15.00
640	★	2c Carmine, Imperf. (409). Center line and 4 diff. arrow and 4 diff. corner blocks. Fine-V. F.	23.00
641	★	2c Carmine, Coil (413). Pair and joint pair. Fine	5.00
642	★	8c-12c, 20c (414-17, 419). Fine-V. F.	13.75
643	★田	8c Olive Green (414). Block. Very fine	5.00
644	★	50c Violet (422). Very fine	15.00
645	★田	\$1.00 Violet Brown (423). Top imprint "A" plate block of 6. Very fine (Photo)	175.00

1914-1916 ISSUES

646	★	1c-7c, 11c-12c (424-30, 434-35). Fine-V. F.	12.65
647	★	1c Green (424). Bottom strip of 10, error no plate number . V. F.	—
648	★田	1c Green, Imperf. Horiz. (424c). Block, only a few blocks known and about as well centered as they come. Rare	(Photo) 400.00
649	田	2c-20c Used Blocks (425, 27-28, 33-34, 38). Fine lot	6.45
650	★田	3c Deep Violet (426,a, b). Four blocks, each diff. shade. Very fine	20.00
651	★田	4c Brown (427). Block. Fine	10.00
652	★田	9c Salmon Pink (432). Block. Very fine	11.50
653	★田	10c Orange Yellow (433). Block. Superb	10.00
654	★	12c Copper Red (435a). Very fine	6.00
655	★	12c Copper Red (435a). Pink back. Very fine	6.00
656	★	12c Copper Red (435a). Fine	6.00
657	★田	12c Copper Red (435a). Block. Very fine	35.00
658	★田	12c Pale Copper Red (435a). Block. Fine	35.00
659		1c-2c Coils (443-44). Guide line strips of 4. Fine used	11.00

660	★	2c Carmine, Coil (444). Joint pair showing plate No. V. F.	7.00
661	★	2c Carmine, Coil (444). Guide line pair. Fine	9.00
662	★	2c Carmine, Coil (444). Guide line pair. Fine	9.00
663	★	2c Carmine, Coil (444). Two joint pairs showing diff. plate nos. V. G.	14.00
664		3c Violet, Coil (445). Very fine	9.00
665		3c Violet, Coil (445). Used pair. Very fine	18.00+
666		3c Violet, Coil (445). Used joint pair showing plate no. Very fine	18.00+
667	★	4c Brown, Coil (446). Very fine	8.00
668		4c Brown, Coil (446). Used joint pair. V. F.	7.00
669		4c Brown, Coil (446). Guide line pair, lightly cancel. V. F.	12.00
670	★	2c Carmine, Coil, Type I (449a). Pair. Very fine, scarce (Photo)	100.00
671	★	2c Carmine, Coil, Type I (449a). Pair. Fine, scarce (Photo)	100.00
672	★	2c Carmine, Coil, Type I (449a). Pair, Very good, scarce (Photo)	100.00
673		2c Carmine, Type I (449a). Line pair. Fine, scarce (Cat. \$125.00 unused)	—
674	★	2c Carmine, Coil, Type I (453a). Very fine pair	6.00
675		2c Carmine, Coil, Type I (453a). Fine pair and V. F. strip of 3	—
676	★	3c Red Violet, Coil (456). Very fine	12.50
677	★	3c Red Violet, Coil (456). Fine	12.50
678	★	3c Red Violet, Coil (456). Fine	12.50
679	★	3c Red Violet, Coil (456). Pair. Very fine	25.00
680	★	3c Red Violet, Coil (456). Guide line pair. Very fine (Photo)	30.00
681	★	3c Red Violet, Coil (456). Strip of 4. Fine	50.00
682		3c Violet, Coil (456). Strip of 5, lightly cancel. Very fine	25.00+
683	★	4c Brown, Coil (457). Line pair with cracked plate. V. F.	5.75
684	★	4c Brown, Coil (457). Line strip of 6 with cracked plate. Superb	8.75
685	★	2c Carmine, Imperf. (459). Superb pair (Photo)	100.00
686	田	\$1.00 Violet Black (460). Block, lightly cancelled. Very fine	16.00
687	★	2c Carmine (461). Finely centered, part gum	8.50
688	★田	2c Carmine (461). Block. Fine	37.50
689	★	2c Carmine (461). Bottom plate block of 6. Very fine	75.00
690	★	5c Carmine Error (463B). Centered to left (Photo)	50.00

691	★田	3c Violet (464). Very fine block	(Photo)	35.00
692	★田	4c Brown (465). Block. Very fine		10.00
694	★田	4c Brown (465). Block. Very fine		10.00
694	田	4c-5c, 10c Used Blocks (465-66, 472). Very fine		7.50
695	★田	5c Blue (466). Block. Fine		12.00
696	★田	8c Olive Green (470). Right imprint "A" plate block of 6. Fine		20.00
697	★	15c Gray (475). Plate no. single, thin. Fine appearance		8.00
698	田	\$5.00 Light Green (480). Fine used block		12.00
699	★田	1c Green, Imperf. (481). Center line and 4 diff. arrow blocks also R. & L. plate blocks of 6. V. F.		13.00
700	★田	2c Carmine, Imperf. (482). Center line and 4 diff. arrow blocks. Fine		16.00
701	★田	3c Violet, Imperf. (483). Matched set of 4 diff. positions of plate blocks of 6. Very fine		30.00
702	★田	3c Violet, Imperf. (483). Set of 4 diff. corner blocks and 4 diff. arrow blocks. Very fine		54.00
703	★田	3c Violet, Imperf. Type II (483a). Center line and 4 diff. arrow blocks. Very fine		44.00
704	★	2c Carmine, Coil (487). Cracked plate. V. G. pair		7.00
705	★	4c Brown, Coil (495). Guide line strip of 4 with cracked plate		—

1917 ISSUE

706	★	1c-\$1.00 (498-518). Complete set. Fine-V. F.		16.92
707	★	1c-\$1.00 (498-518). Complete set. Fine-V. F.		16.92
708	★田	1c War booklet pane of 30 (498F). Very fine		30.00
709	★田	Same as above. V. G.-V. F. centering		30.00
710	★田	2c "Boston" Lake (499). Block & single. Fine		—
711	★田	2c "Boston" Lake (499). Block of 20 with shade variations of lake. Fine, scarce		—
712	★田	2c Carmine (499). Block of 16, freak perfs running thru middle of stamps		—
713	★田	2c Rose (499). Block of 60 with three blocks having misplaced perfs. giving appearance of imperf. between. V. F.		—
714	★田	2c Deep Rose, Type Ia (499d). Top plate block of 6. Very fine		20.00
715	★田	2c Deep Rose, Type Ia (499d). Top plate block of 6. Very fine centering, one stamp has hinge thin		20.00

716	★田	2c Deep Rose (499d). Top plate block of 6. Fine	20.00
717	★田	2c Deep Rose (499d). Top plate block of 6. Fine	20.00
718	★田	2c Deep Rose Combination Types I & Ia (499, 499d). Bottom plate No. 10208 block of 6 which contains two combination pairs. Very fine, very rare piece (Photo) 200.00+	
719	★	3c Violet, booklet pane of 6 (501h). 12 panes, various positions. V. G.-V. F.	24.00
720	★田	3c Violet (501, a). two blocks and plate block of 6, all with freak perfs	—
721	★田	3c Light Violet (501b). Two diff. top plate blocks of 6. V. F.	9.00
722	★	3c Violet, Imperf. Horiz. (501E). Horiz. sheet margin pair. V. F.	—
723	★田	3c Violet. Block, two stamps with Double Print (501F), one corner perf. off. V. G.	100.00
724	★田	3c Violet, light double print (501F). Block. Very fine (Photo) 200.00	
725	★	3c Violet, booklet panes of 6 (501g). 5 panes, includes plate and arrow positions. Fine	15.00
726	★田	4c Brown (503). Plate block of 6. Very fine	7.00
727	田	4c-15c, 30c, 50c used blocks (503-14, 516-17). Very fine	11.20
728	★田	5c Blue, 6c Orange (504, 06). Block and single of 5c and two blocks of 6c, all with Freak perfs down center of stamps	—
729	★	7c Black (507). Plate no. pair with scarce Double Transfer . Fine	—
730	★田	8c Olive Bistre (508). Bot. imprint "A" plate block of 6. Fine	10.00
731	★	10c "Straw" (510). Scarce shade. Very fine	—
732	★田	10c "Straw" (510). Block, scarce shade. V. G.	—
733		11c Green, pair, perf. 10 at bottom (511). Fine, scarce	—
734	★田	12c Brown Carmine (512). Block, Dry Plate variety. Fine	—
735	★田	12c Brown Carmine (512a). Top block of 20, error no plate number. Fine 12.00+	
736	★田	12c-13c (512a-513). Plate no. blocks of 6. Very fine	8.00
737	★田	20c Deep Ultramarine (515). Block. Fine	12.00
738	★田	30c Orange Red (516). Two blocks. Fine	10.00
739	★田	50c Light Violet (517a). Block. Fine	16.00
740	★田	50c Light Violet (517a). Block. Fine	16.00
741	★田	50c Light Violet (517a). Block. Fine	16.00
742	★	50c Light Violet, \$1.00 Deep Brown Black (517a, 518).. Very fine	7.00
743	★田	\$1.00 Violet Brown (518). Block. Fine	15.00

744 ★	\$1.00 Black Brown (518a). Very fine centered, tiny paper flaw	13.50
745 ★	2c Carmine (519). Very fine (Photo)	20.00

1918-1920 ISSUES

746 ★	1c Gray Green (525). Double print. V. G.	10.00
747 ★	2c Offset "CRNTS" variety (526). Fine	12.50
748 ★田	2c Offset "CRNTS" variety in plate block of 6 (526). V. G.	12.50+
749 ★田	2c Offset (526e). Split arrow block with rare gash on neck variety on one. V. G.	—
750 ★	3c Purple (529). Plate no. single both clear double prints. Fine	—
751 ★田	1c Offset, Imperf. (531). Block. Very fine	8.00
752 田	2c Offset, Imperf. Type VI (532b). Block. Very fine	8.00
753 ★	2c Offset, Type VII Imperf. (532d). Trifle thin. Very fine appearance, scarce (Photo)	50.00
754 ★田	1c Gray Green (536). Block. Fine	8.00
755 ★田	1c Gray Green (536). Block. Very fine	8.00
756	3c Red Violet, Victory (537a). Precancelled. Fine	7.00
757 ★田	1c Green (538). Superb margin block of 8, plate no. & "S30"	5.50
758 ★田	1c-2c (538-39). Plate no. & "S30" blocks of 6, perfs cut in R. V. G.	13.50
759 田	1c-2c Used blocks (538-39). Very fine	6.25
760 ★	1c-2c Pairs Imperf. Between (538a, 539b). Very fine	6.00
761 ★田	1c-2c Blocks Imperf. Between (538a, 539b). Blocks. Fine	12.00
762 ★田	1c Green (538a). Plate block of 6 imperf. between. Very fine	9.00+
763 田	1c-2c Blocks Imperf. Between (538a, 539b), lightly cancel. V. F.	12.00
764 ★田	2c Carmine (539). Plate no. blocks of 6, str. edge at R., well centered	10.00
765 ★田	2c Carmine (539). Plate block of 6. Very fine	10.00
766 ★田	2c Carmine (539). Two diff. blocks of 6 with Star & Plate No. Fine	20.00
767 ★田	3c Gray Violet (541a). Plate no. block of 6. Very fine	45.00
768 ★田	1c Green (543). Two diff. plate blocks of 6. Very fine	24.00
769 ★田	1c Green (545). Block, one stamp small thin others fine	50.00
770 ★田	2c Carmine Rose (546). Block. Very fine	20.00
771 ★田	2c Carmine Rose (546). Block. Fine	20.00

772	★	2c Carmine Rose (546). Block. Fine	20.00
773	★	2c Carmine Rose (546). Block. Fine	20.00
774	★	1c-2c Pilgrims (548-49). Top and bottom plate blocks of 6 of each. Very fine	14.50
775	★	2c Pilgrim (549). Strip of 5, unusual fat margins. V. F.	—
776	★	5c Pilgrim (550). Block. Very good	12.50

1922 ISSUE

777	★	½c-\$1.00 (551-571). Fine-very fine	15.24
778	★	½c-\$2.00 (551-572). Fine-very fine	19.74
779	★	2c Carmine (554). Plate no. star block of 6. V. F.	5.00
780	★	2c, 12c Star plate blocks of 4 (554, 564). Two of each, 5 and top 6 pointed stars on 2c. Fine-V. F.	—
781	★	8c Olive Green (560). Top plate block of 6. Very fine	9.00
782	★	11c-30c (563-69). Blocks. Fine-V. F.	18.35
783	★	12c Brown Violet (564). Right plate blocks of 6, two, one 5 pointed star other 6 pointed. Very fine	17.00
784	★	14c Dark Blue (565). Block, Dry Plate variety. Fine	—
785	★	14c-15c (565-66). Top plate no. blocks of 6. Very fine	9.50
786	★	15c-20c Star plate no. blocks of 6 (566-67). V. G.-Fine	24.00
787	★	30c Olive Brown (569). Top plate block of 6. Very fine	7.00
788	★	50c Lilac (570). Left plate block of 6. Very fine	13.00
789	★	\$1.00 Violet Black (571). Block. Fine	9.50
790	★	\$1.00 Violet Black (571). Block. Fine	9.50
791	★	\$1.00 Violet Black (571). Bottom arrow block. Very fine	12.00
792	★	\$1.00 Violet Black (571). Bottom plate no. block of 6. Fine	16.50
793	★	\$1.00 Violet Black (571). Bottom plate no. block of 6. Fine	16.50
794	★	\$2.00 Deep Blue (572). Bottom arrow block of 4. Very fine	22.50
795	★	\$2.00 Deep Blue (572). Bottom plate block of 6. Very fine	31.50
796	★	\$2.00 Deep Blue (572). Three blocks. Fine	12.00
797	★	\$5.00 Carmine & Dark Blue (573). Corner block. Very fine	45.00
798	★	\$5.00 Carmine & Dark Blue (573). Two Blocks. Very fine	8.00

799	★田 1c Green, Imperf. (575). Center line block, very fine though heavy hinge on back	20.00
800	★田 1c Green, Imperf. (575). Top plate block of 6. Fine	10.00
801	★田 1c Green, Imperf. (575). R. & L. plate blocks of 6, minor thins	20.00
802	★田 1½c Yellow Brown, Imperf. (576). Center line and 4 diff. arrow blocks. Very fine	14.00
803	田 1½c Yellow Brown, Imperf. (576). Five blocks with colored town cancels. V. F.	5.00
804	★田 2c Carmine, Imperf. (577). Center line block. Very fine	5.00
805	★田 2c Carmine, Imperf. (577). Five plate blocks of 6, 2 left, 2 bot. and 1 top. Very fine	11.25
806	★田 2c Carmine, Imperf. (577). Center line & 4 diff. arrow blocks. V. F.	15.00
807	★田 2c Carmine, Imperf. (577). Center line, 4 diff. arrows and 4 diff. plate blocks of 6. Very fine	24.00
808	★ 1c Green (578). Very fine	4.50
809	★田 1c Green (578). Block, perfs touch at top. V. G.	25.00
810	★田 1c Green (578). Block, perfs. touch at top. V. G.	25.00
811	★田 2c Carmine (579). Block, centered to B. Fine	11.00
812	★田 2c Carmine (579). Block, imperf. sheet margin at B. Fine.....	11.00
813	★田 2c Carmine (579). Star plate block of 4. Fine	20.00
814	田 2c Carmine (579). Very fine used block	11.00
815	★ 1c-10c Perf. 10 (581-591). Complete set. F.-V. F.	5.95
816	1c Green, Double Paper variety (581b). Fine, scarce	—
817	★田 2c Carmine (583). Block, badly smeared print	—
818	★田 3c Violet (584). Plate block of 6, "kissed" impression. Fine	13.00
819	★田 5c, 8c-9c (586, 589-90). Plate blocks of 4. Very fine	13.00
820	★ 2c Carmine (595). Centered to right. Fine	10.00
821	★ 2c Carmine (595). Perfs touch R. Very good	10.00
822	★ 2c Carmine, Coil Type II (599a). Pair. Very fine	6.00

1923 TO DATE

823	★ 2c Harding (611). Very fine example of Dry Plate variety	—
824	★田 2c Harding, Imperf. (612). Matched set of 4 diff. plate blocks of 6, one has crease others fine	20.00

825	★田	2c Harding, Imperf. (612). Center line and 4 diff. arrow blocks. Very fine	36.00
826	★田	5c Hug-Walloon (616). Block. Fine	10.00
827	★田	5c Hug-Walloon (616). Block with two Broken Circles. Fine	19.50
828	田	5c Hug-Walloon (616). Light cancel block. Very fine	9.00
829		5c Hug-Walloon (616). Tied on cover with Shanghai pmkd and "Paquebot". Fine	—
830	★田	5c Lex-Concord (619). Bottom plate no. block of 6. Fine	8.00
831	★田	5c Lex-Concord (619). Bottom plate block of 10, variety line over "head". Fine	13.50
832	田	5c Lex-Concord (619). Plate block of 4 used. Fine	6.00
833	★田	2c Norse-American (620). Four diff. arrow blocks, top block is 8 with plate nos. V. F.	15.00
834	★田	5c Norse-American (621). Center line block. Very fine	22.50
835	★田	13c Green (622). Bot. & left plate blocks of 6. V. F.	7.00
836	★	2c White Plains Exhibition sheet of 25 (630). Fine	12.50
837	★	Same as above. Fine	12.50
838	★	Same as above. Fine	12.50
839	★田	1½c Yellow Brown (631). Gutter block of 16. V. F.	7.00
840	★田	1½c Yellow Brown (631). Center line block with 4 diff. arrow blocks. V. F.	37.50
841	★田	1½c Yellow Brown Imperf. (631). Block, Uncreased Paper. V. F.	—
842	★田	1½c Yellow Brown, Imperf. (631). Plate block of 4. Uncreased Paper. V. F.	—
843	★田	1½c Yellow Brown, Imperf. (631). Bot. arrow block, Uncreased Paper. V. F.	—
844	★	2c Carmine, Type II (634b). Very fine	15.00
845	★	2c Carmine, Type II (634b). Perfs in R. V. G.	15.00
846	★田	2c Burgoyne (644). R. & L. plate blocks of 6 also 2c Harding Imperf. (612). Plate block of 6. V. F.	10.00
847	★田	2c Molly Pitcher (646). Block of 10 showing one block with Wide spacing. Fine	20.60
848	★田	2c Molly Pitcher (646). Plate block of 6, one row shows tall "Pitcher" variety. Fine	—
849	★	1c-10c Kans. (658-68). Complete. V. G.-V. F.	9.57
850	★	1c-10c Kans. (658-68). Complete. V. G.-V. F.	9.57

851	★	1c-10c Kans. (658-68). Complete. V. G.-V. F.	9.57
852	★	1c-10c Kans. (658-68). Complete. V. G.-V. F.	9.57
853	田	1c-10c Kans. & Nebr. (658-679). Complete set of used blocks . Very fine	62.45
854	★田	1c Kans, 1c Nebr. (658, 69). Blocks of 6 each showing row with stretched or tall overprint	—
855	★	1c-10c Nebr. (669-79). Complete. Very fine	10.78
856	★	1c-10c Nebr. (669 79). Complete. Very fine	10.78
857	★田	2c Nebr. (671). Block of 20 with various stretched overprints (2 especially tall). Fine	—
858	★田	10c Nebr. (679). Block. Very good	16.00
859	★	2c Pulaski (690). Sheet of 100. Fine	6.00
860	★田	11c Light Blue (692). Block of 6 with Retouched forehead variety. Fine	—
861	★田	12c Shades (693). 5 blocks. Very fine	4.80
862	★田	½c-10c Bicent. (704-15). Set of plate blocks. Fine-V. F.	11.05
863	★田	½c-10c Bicent. (704-15). Set of matched plate no. blocks of 4, all four positions. Fine-very fine	44.20+
864	★田	3c Deep Violet (720). Block full horiz. gutter between. Scarce (Photo)	—
865	★田	5c-7c Farleys, 1c-3c Miniature Sheets (735, 750-51, 760-62) includes two arrow and center line block. V. F.	10.74
866	★田	3c Byrd, 3c Newburgh Farleys (752-53). Center line, 4 diff. arrows and plate no. blocks. Very fine	16.50
867	★田	Mothers Day, Farley (754) . Four plate no. blocks of 6 and 4 diff. arrow blocks. Very fine	8.00
868	★田	3c Wisconsin, Farley (755). Center line, 4 diff. arrow blocks and top & bot. plate blocks of 6. V. F.	9.00
869	★田	1c-10c Park, Farleys (756-765). Complete set of center lines and 4 diff. arrow blocks . Very fine	91.00
870	★田	1c-10c Park Farleys (756-65). Top and bottom plate no. blocks of 6 of each. Very fine	29.40
871	★田	1½c Bistre Brown (805). Block of 20 containing one pair Imperf. Between and others partly imperf. V. F.	—
872	★	Purple Booklet Pane of 6 , solid squares of color instead of Presidential design, issued in error similar to British "Poached Egg" variety. Rare (Est. \$25.00)	—
873	田	50c-\$2.00 President (831 three plate blocks, 832 two arrow blocks, 833 arrow plate block of 4). Fine	—

874	田	\$1.00-\$5.00	Presidentials (832-34). Top arrow plate no. blocks of 4. Fine	—
875	田	\$2.00	Presidential (833). Block of 8. Very fine	8.50
876	田	\$2.00-\$5.00	Presidentials (833-34). Used Cener line blocks of each. V. F.	—
877	田	\$5.00	Presidential (834). Block of 8. Very fine	8.00
878	★田	2c	Defense (900). Block of 20 with 8 Double Paper , partially printed on transparent adhesive tape. Fine, scarce	—
879	★田		Same as above	—
880	★田	2c	Defense (900a). Block of 6, one pair Imperf. between , one has only 1 perf. and other pair perforated. Fine	—
881	★田	2c	Defense(900a). Block one pair Imperf. Between other has only one blind perf. V. F.	—
882	★田	2c	Defense (900a). Block of 20 with one pair Imperf. Between . Very fine	—
883	田	2c	Defense (900a). Used block one pair imperf. between . V. F.	—
884	★田	3c	Defense (901a). Two blocks Imperforate Between . Fine	14.00
885	★田	3c	Defense (901a). Two blocks, one has imperf. between pair, other has 3 perfs. only vertical row. V. F.	—
886	★田	5c	France (915). Block, one Doubled Name . V. F.	—
887	★田	5c	Greece (916). Block, two with double flag pole . V. F.	—
888	★田	10c	War Savings. Block, very badly smeared	—

AIR MAILS

889	★田	6c	Orange, Air (C1). Left arrow block. Very fine	10.00
890	★田	6c	Orange, Air (C1). Center line block. Fine	17.50
891	★田	16c	Green, Air (C2). Left arrow block. Very fine	37.50
892	★田	16c	Green, Air (C2). Center line block. Superb (Photo)	50.00
893	★田	16c	Green, Air (C2). Center line block. Very fine	50.00
894	田	16c	Green, Air (C2). Block. Superb used	10.00
895	田	16c	Green, Air (C2). Used center line block. Very fine	—
896	★田	8c	Dark Green (C4). Right plate no. block of 6. V. F.	7.00
897	田	8c-16c	Airs (C4-C5). Blocks. Very fine used	16.25
898	田	8c-24c	Airs (C4-C6). Set of used blocks. Very fine	23.25
899	★	24c	Carmine, Air (C6). Plate no. pair with Double Transfer . Very fine	19.00

900	★田 10c Map, Air (C7). Plate block of 24 with Double Transfer (#11 on plate) V. F.	—
901	★田 15c, 20c, 25c Airs (C8-9, C20). Two diff. plate no. blocks of 6 of each. Very fine	18.50
902	★田 5c Beacon, Air (C11). Three diff. top plate no. blocks of 10 all with Double "TOP" . Fine	13.80
903	★田 5c Beacon, Air (C11). Five diff. top plate no. blocks of 10 all with Double "TOP" . V. G.	23.00
904	65c-\$2.60 Graf Zeppelins (C13-C15). Very fine set used	65.00

SPECIAL DELIVERIES, DUES

905	★田 10c Special Delivery (E6). Top imprint plate no. 5243-09 block of 6. Superb	10.00
906	★田 10c Green, Special (E7). Block. Fine	10.00
907	★田 10c Green, Special (E7). Block. Fine	10.00
908	★田 10c Special Delivery (E11). Two diff. plate blocks of 6. V. F.	6.00
909	★田 10c Registry (F1). Block. Fine	10.00
910	★田 10c Registry (F1). Block. Fine	10.00
911	★ 30c-50c Dues (J27-28). Fine	8.50
912	★ 1c Vermilion, Due (J29). Fine	12.50
913	★田 1c Vermilion, Due (J29). Block, perfs just touch at B. Very good. Scarce (Photo)	70.00
914	★ 30c-50c Dues (J36-37). Fine	14.00
915	★ 3c Dull Rose, Due (J54a). Very good	10.00
916	★田 2c Rose, Due (J60). Block, 3mm spacing. Fine	17.50
917	★ \$1.00, \$5.00 Dues (J77-78). Very fine	9.00
918	★ 2c-60c Shanghai (K1-14). Very fine	21.05
919	★ \$1.00 Shanghai (K15). Centered to R. Fine	12.50
920	3c Parcel Post. Recut corner variety; 5c Parcel Post, Double Transfer (Q3, 5). Fine	—
921	★田 \$1.00 Parcel Post (Q12). Block. Very fine (Photo)	85.00
922	田 10c-25c Special Handlings (QE1-4a). Used blocks. Very fine	—
923	★田 25c Deep Green, Spec. Handling (QE4a). Three plate no. blocks of 6. Very fine	22.50

924 ★	1c Blue, Eagle Carrier (LO2). Superb o. g. pair	4.00
925 ★	5c Black, American Letter Mail Co. (5L1). Sheet of 20. Very fine	10.00+

OFFICIALS

926 ★	1c Agriculture (O1). Very fine, no gum	7.00
927 ★	3c, 15c Agriculture (O3, 7). Very good	10.50
928 ★	12c Agriculture (O6). Fine, no gum	15.00
929 ★	24c Agriculture (O8). Fine, no gum	8.00
930 ★	6c Executive (O13). Fine, no gum (Photo)	35.00
931 ★	10c Executive (O14). Very fine (Photo)	27.50
932 ★	15c, 30c Interior (O21, 23). Very fine	9.50
933 ★	7c, 24c, 24c Depts (O22, 54, 76). Very fine	8.75
934 ★	10c, 30c Interior (O23, O100). Fine-V. F.	8.50
935 ★	1c, 2c, 6c, 10c Justice (O25-26, 28-29). Fine, no gum	17.00
936 ★	10c-12c Justice (O29-30). V. G.-Fine	10.50
937 ★	15c Justice (O31). Very fine (Photo)	14.00
938 ★	30c Justice (O33). One perf. short. Very fine appearance	30.00
939	30c Justice (O33). Very good	15.00
940	6c Navy (O38). Line through "N" of "Navy", two copies. V. F.	10.00
941	7c Navy (O39). Fine, lightly cancelled	12.50
942	12c Navy (O41). Double Transfer. Fine	9.00
943 ★	24c-30c Navy (O43-44). Fine, one o. g.	15.00
944	30c Navy, 90c Treasury (O44; 113). Fine	13.50
945 ★	1c-2c, 10c State (O57-8, 62). Fine	10.25
946 ★	7c Navy (O61). Fat margin copy. Very fine	3.50
947 ★	7c, 30c State (O61, 66). Very fine	11.50
948 ★	12c State (O63). Very fine	7.00
949 ★	15c State (O64). Fine	5.00
950 ★	24c State (O65). Very fine, no gum	13.50
951 ★	24c State (O65). Very fine	13.50
952 ★	90c State (O67). Fine	17.50

953	2c Treasury (O73). Cracked plate, tiny tear. V. F. appearance	—
954 ★	7c, 15c Treasury (O76, 79). Very fine	5.75
955 ★	2c War (O84). Very fine, part o. g.	10.00
956 ★	7c, 12c War (O87, 89). Fine, latter without gum	11.50
957	10c War (O88). "Number 2 Detroit" in circle. Very fine strike	—
958 ★	12c War (O89). Very fine	8.00
959 ★	10c-12c Interior (O100-01). Very fine	7.00
960 ★	15c Interior (O102). Tiny thin. Fine appearance	12.00
961	30c Interior, Soft Paper (O104). Well centered, appears reperfed at R. Scarce	—
962 ★	3c Justice (O106). Fine	6.00
963 ★	6c-10c Treasury (O110-111). Very good	15.00
964	90c Treasury (O113). Very fine	10.00
965	50c Postal Savings (O122). Very fine	6.00
966	50c, \$1.00 Postal Savings (O122-23). Fine	7.50
967	1c-90c Depts., 24 misc., good average	—
968 ★	Brown, "Post Obitum" (OX3). Very fine	7.50
969 ★	Brown, "Post Obitum" (OX3). Very fine	7.50
970 ★	Brown, "Post Obitum" (OX3). V. F., no gum	7.50
971	Brown, "Post Obitum" (OX3). Blue town cancel. Very fine	7.50
972	Brown, "Post Obitum" (OX3). Three copies, two unused, one thin others fine	22.50
973 ★	Blue Post Office Seal Imperf. (OX11i). Double Impression, two pairs. V. F.	12.00

NEWSPAPER STAMPS

974 ★	5c Dark Blue (PR1). Fine	20.00
975 ★	5c Light Blue (PR1a). Fine	25.00
976 ★	10c, 25c Newspapers (PR2-3). Fine	13.50
977 ★	10c, 25c Newspapers (PR2-3) str. edge at top of each. Well centered	13.50
978 ★	5c Blue (PR4, a), two shades. Fine	10.00
979 ★	5c-25c Newspapers (PR6-8). 25c has defective corner, others fine	10.50

980 ★	72c-\$5.00 Newspapers (PR21, 72, 87, 95, 109), all have minor defects, nice appearing	48.50
981	1c-\$100.00 Newspapers (PR114-125). Very fine used set	18.80
982 ★	1c-\$100.00 Newspapers (PR114-120, 126-130). Fine set	9.40
983 ★	1c-\$100.00 Newspapers (PR114-120, 126-130). Fine set	9.40
984 ★	\$2.00-\$100.00 Newspapers (PR120, 126-30). V. G., also Specimens PR68s, 74s	16.50
985 ★	Collection of Unused Cut Squares from 1853 to date. Superb condition, 266 Diff.	128.00
985A ★	Entires, 23 covers freaks, albinos, offsets, folds, etc. (Est. \$11.50 net)	—

REVENUES

986	1c, 25c, 50c Part Perfs. (R1b, 46b, 63b). Pairs. Fine	15.00
987 ★	1c Playing Card (R2c). Very fine, uncanceled	12.50+
988	2c Bank Check, Double Transfer (R5a). Small thin. V. F. appearance	7.00
989	2c Express Imperf. (R9a). Very fine horiz. strip of 4	—
990 ☐	2c Playing Card (R11c). Block, handstamped. Very fine	6.00
991	2c Proprietary (R14c). Double Transfer (T12a). Very fine, scarce	—
992	2c Civil War Revenues, Mounted Collection 1700 stamps all handstamped cancels forming partly completed calendars for years 1863-1870, over 100 are red cancels all diff. dates or years. Fine lot	—
993	3c Playing Card (R17c). Corner crease. V. G. appearance	12.50
994	3c Telegraph, Imperf. (R19a). Stitch wmkd. Very fine	—
995 ☐	10c Blue (R32-33c). Blocks. Fine	4.00
996 ☐	10c Blue (R32c-33c). Blocks. Fine	4.00
997	10c Certificate, Imperf. (R33a). Very fine	10.00
998	10c Power of Atty, Part Perf. (R37b). Vert. strip of 4. V. F.	10.00
999	15c-25c Imperf. Rev. (R40a, 42a, 44a, 46-7a, 50a). Very fine	10.50
1000	25c Bond, Part Perf. (R43b). Vert. pair. Very fine	10.00
1001	25c Protest, Imperf. (R49a). Horiz. pair. Very fine	10.00
1002	30c Foreign Exch. Imperf. (R51a). Two, each has small thin. V. F. appearance	14.00
1003	30c Foreign Exch. (R51c). Pin hole. V. F. appearance	6.00

1004	30c Foreign Exch. (R51c). Two copies. Very good	12.00
1005	田 30c Inland Exch. (R52c). Block. Very fine	15.00
1006	50c-\$5.00 Imperfs. (R54a, 58-9a, 91a). Fine-V. F.	11.25
1007	★ 50c Mortgage (59c). Pair o. g. with crack in bot. stamp. Fine	—
1008	50c Mortgage (R59c). Reconstructed pair showing cracked plate. V. F.	10.00
1009	50c Orig. Process (R60c). Strong Double Transfer in U. S. and through- out most of stamps. V. F.	—
1010	50c Probate (R62c). Horiz. pair. Very fine	5.00
1011	\$1.00 Imperf. Revs. (R66a, 69a). Horiz. pairs. Fine	14.00
1012	\$1.00 Imperf. Revs. (R67a, 69a, 70a, 72-3a). Fine-V. F.	9.00
1013	\$1.00 Entry of Goods, Imperf. (R67a). Horiz. pair. V. F.	10.00
1014	田 \$1.00 Foreign Exch. (R68c). Block of 9. Very fine	—
1015	\$1.00 Ind. Exchange, Imperf. (R69a). Horiz. sheet margin strip of 5, V. F. margins, several creases, nice appearing piece	—
1016	\$1.00 Probate, Imperf. (R76a). Very fine	5.00
1017	★ \$1.30 Foreign Exchange (R77c). Very good o. g.	—
1018	\$2.00 Mortgage, Imperf. (R82a). Very fine	5.00
1019	\$2.00 Probate, Imperf. (R83a). Nice margins, tiny pinhole. Very fine ap- pearance	200.00
1020	\$3.50 Inland Exch. (R87c). Very fine	4.00
1021	\$3.50, \$10.00 (R87c, 95c). Fine, two of latter	10.00
1022	\$5.00 Manifest (R90c). Handstamp cancel. V. F.	6.00
1023	\$10.00 Mortgage Imperf. (R95a). Horiz. strip of 3, left stamp has small thin leaving very fine pair. Pretty piece	125.00+
1024	\$10.00 Probate, \$25.00 Mortgage (R96c, 100c). Fine	12.00
1025	\$20.00 Conveyance (R98d). Silk paper. Very fine	8.00
1026	\$25.00 Mortgage (R100c). Very fine	9.00
1027	\$25.00 Mortgage (R100c). Crease, good	9.00
1028	\$50.00 Green (R101c). Very fine	8.00
1029	\$50.00 Green (R101c). Small crease. Good	8.00
1030	\$50.00 Green (R101c). Horiz. strip of 3, centered to B. Very fine piece	30.50+
1031	1c-\$3.00 Civil War Revenues, 68 misc., some defective	—

1032	\$1.00 Yellow U. S. I. R. with Wash. head, large Essay . Fine	—
1033	30c, \$5.00, \$10.00 Blue & Black (R113, 127-28). Very fine	11.00
1034	\$1.90 Blue & Black (R122). Fine	8.00
1035	\$3.00, \$5.00, \$10.00 Third Issue (R147-49). Fine	13.00
1036	\$5.00 Dark Blue, Red Surcharge (R159). Very fine	17.50
1037 ★	\$5.00 Dark Blue, Red Surcharge (R160). Very fine	12.50
1038 ★	¾c, 1c, 10c (R163a, 168a, RB22a). Imperf. Between, pair, two strips and two blocks. Fine	14.00
1039 ★	\$1.00, \$5.00 Doc. (R173, 175). Fine, o. g.	—
1040 田	\$1.00, \$5.00, \$50.00 (R175, 178, 182). Blocks. Fine	10.50
1041 ★	½c-80c Doc. (R195-205). Complete set. Fine-V. F.	15.63
1042 ★	½c-80c Doc. (R195-205). Complete set. Fine-V. F.	15.63
1043 ★	½c-80c Documentary (R206-16). Complete set. V. G.-V. F.	11.99
1044 ★	½c-80c Doc. (R206-16). Complete set. V. G.-V. F.	11.99
1045 ★	1c-8c Documentaries Series 1940 (R264-269). Fine	—
1046 ★田	1c-3c Doc. Series of 1940 (R264-66). Blocks. Fine	—
1047 ★田	3c Doc. Series of 1940 (R266). Plate block of 8. Fine	—
1048	1c Black, \$1.00 cut cancel Series of 1940 (R288, 300). Experimental sur- surcharges	—
1049 ★	\$2.00 Documentary, Series of 1940 (R301). Very fine	—
1050 ★田	\$2.00 Doc. Series of 1940 (R301). Block. Fine	—
1051 ★田	1c Doc. Series 1941 (R311). Block. V. G.	—
1052 ★	2c, 3c, \$1.00 Doc. Series of 1941 (R312-13, 323). V. G.-V. F.	—
1053 ★	\$1.00, \$2.00 Series of 1942 (R348-49). Very fine	—
1054 ★田	\$1.00, \$2.00 Doc. Series of 1942 (R348-49). Blocks. Very fine	—
1055	6c, 10c Proprietary (RB6b-7b). Very good	9.00
1056 ★	6c Violet Blue, Proprietary Rouletted (RB17c). Very fine	25.00
1057 ★	3⅞c Black, Proprietary (RB39). Fine	12.00
1058	3⅞c Black, Proprietary (RB39). Very fine	10.00
1059	3¾c, 10c Black (RB40, 63). Fine, latter unused	6.00
1060 ★	4c Black, Proprietary (RB41). Three shades. Fine-V. F.	18.00
1061 ★	6c-8c Black, Proprietary (RB61-62). Fine-V. F.	13.50

1062	★	8c, 10c, 20c Black (RB62-64). Fine-V. F.	12.00
1063	田	10c Black Proprietary (RB63). Block, red precancel. Fine	10.00+
1064	★	1c Dark Blue (RB65a). Very fine Double Impression	—
1065	★	1c-40c Dark Blue (RB65-73). Very fine set	10.18
1066		\$30.00-\$1000.00 Future Del. (RC16-18, 20-21). Cut cancels. Fine	8.70
1067	★	\$20.00 Stock Transfer (RD18). Fine, o. g.	5.00+
1068	★	\$1.00, \$2.00 Stock Transfers, Series of 1940 (RD54-55). Fine	—
1069	★	1c-40c, 80c Stock Transfers, Series of 1941 (RD92-101, 103). Fine	—
1070	★	\$1.00, \$2.00, \$3.00 Series of 1941 (RD104-106). Very fine	—
1071	★	\$4.00, \$5.00, \$10.00 Series of 1941 (RD107-109). Very fine	—
1072	★田	4c Stock Transfer, Series of 1942 (RD119). Three blocks. Fine	—
1073	★	80c Stock Transfer, Series of 1942 (RD126). Fine	—
1074	★	\$1.00-\$5.00 Stock Transfer, Series of 1942 (RD127-29, 131). Fine-V. F.	—
1075	★田	\$1.00-\$3.00 Stock Transfer, Series of 1942 (RD127-129). Blocks. V. F.	—
1076	★	2c Wine, Perf. 11 (RE31). Fine (sells for \$6.50)	—
1077	★	Same as above. V. G.	—
1078		Same as above used. Fine	—
1079	★田	2c Wine, Perf. 11 (RE31). Block. Very good (sells for \$26.00)	—
1080	★田	2c Wine Perf. 11 (RE31). Block. Fine (sells for \$26.00), scarce centered	—
1081		1c-\$1.20 Large Wines (Between RE32-49), 15 diff. Very fine uncanceled (sells over \$10.00)	—
1082		17c, 7c Playing Cards (RF6, 9). First has tear	—
1083	★	10c Playing Card, Perf. (RF21). Pair & single. V. F.	—
1084	★田	10c Playing Card, Perf. (RF21). Block. Very fine	—
1085	★	¾c-\$1.50 Potato Tax (RI1-13). Complete set. V. F.	—
1086	★	1c-\$1.00 Tobacco Sales Tax (RJ1-7). Fine	—
1087	★	\$1.00 Blue, Duck (RW1). Very fine	7.50
1088	★	\$1.00 Blue, Duck (RW1). Very fine	7.50
1089	★	\$1.00 Hunting Stamps (RW1-2, 6-8). Fine, no gum	19.00
1090	★	\$1.00 Hunting Stamps (RW1, 4, 6, 7, 8). V. G.-V. F., no gum	17.00
1091		\$1.00 Hunting Stamps (RW1, 4, 5 two, 9), first uncanceled. V. G.-V. F.	12.15

1092 ★	\$1.00 Hunting Stamps (RW3, 5, 6). V. G.—V. F.	10.00
1093	Match & Medicines, 210 mostly diff. mounted, nice condition for these interesting issues	151.00

TELEGRAPHS

1094 ★	Calif. State Telegraph (5T4), corner crease, well centered	12.00
1095	10c-50c Pacific Postal Telegraph (14T1-T5). Fine set	14.50
1096 ★	Postal Telegraph (15T16). Thin spot. V. F. appearance	22.50
1097 ★	Postal Telegraph (15T27-29). Very fine	11.00
1098 ★	Postal Telegraph (15T29, 31-33). Very fine	19.00
1099 ★	Postal Telegraph (15T34-35, 40-41). Very fine	23.00
1100 ★	Postal Telegraph (15T43-46). Fine	29.00
1101 ★	Western Union (16T1-2, 4-8). V. G.—V. F.	34.00
1102 ★	Western Union (16T9-13). Fine	15.50
1103	Submarine Launchings, 32 covers 1936-39 period, attractive printed cachets. V. F.	—
1104 ★	Confederate States, 5c New Orleans (62X4). Very fine (Photo)	27.50
1105	Confederate States, 5c Green (200), Varieties, Spur on upper left scroll and unused copy with acid flaw. V. G.	27.50

U. S. POSSESSIONS

CANAL ZONE

1106 ★	5c Blue (2). Fine	6.50
1107 ★	5c Blue (2). Fine	6.50
1108 ★	10c Yellow (3). Fine	10.00
1109 ★	2c Rose, Inverted Overprint (10b). Fine	15.00
1110 ★田	2c Rose (10). Block, one stamp has wider spacing between "A" and "L" of "Canal", part gum. Fine	—
1111 ★	1c Green & Black (32). Pair one "CANAI" other normal. Very fine	—
1112 ★	2c Scarlet & Black (33c). Double Overprint, fine example, one perf. off	25.00
1113 ★	2c Vermilion & Black Booklet Pane of 6 (42i). Very fine	8.50
1114 ★	1c Green, Booklet Pane of 6 (57f). Very fine, tropical gum, scarce	30.00
1115 ★	1c Deep Green, Booklet Pane of 6 (67e). Fine	5.00

1116	★	1c Deep Green, Booklet Pane of 6 (67e). Very fine	5.00
1117	★	1c Deep Green Inverted "Zone" in full sheet of 100 (67, 67b), Error fine balance of sheet V. G.-V. F., only 200 issued	55.00
1118	★	Same as above different plate number	55.00
1119	★	Same as above different plate number	55.00
1120	★	Same as above different plate number	55.00
1121	★	1c, 2c, 5c, 10c (67, 69, 71-2), each perforated with large "P". Fine	—
1122	★田	1c, 2c, 5c, 10c (67, 69, 71-2). Blocks each stamp perforated with large "P". Fine	—
1123	★	30c Olive Brown, 50c Lilac (78-79). Fine	6.00
1124	★	30c Olive Brown, 50c Lilac (78-79). Fine	6.00
1125	★	\$1.00 Violet Brown (80). Fine	15.00
1126	★	3c-30c Surcharges (85-87, 89-91, 93). Fine-V. F.	8.35
1127	★田	15c Gray (90). Block one overprint partly doubled. Very fine	—
1128		First Flight Covers, 1925-29 with cachets (contains 71 blocks, 72 two, 73-74 two each, 85 block). Very fine, 5 covers	20.50+
1129	★田	25c Airpost (C2). Plate no. block of 6. Very fine	5.00
1130		1c-10c Postage Dues (J1-3). Fine	6.50
1131		1c-10c Postage Dues (J1-3). Fine	6.50
1132	★	2c Rose Carmine, Due (J2). Fine	6.00
1133	田	2c-10c Olive Brown, Dues (J5-6). Blocks. Fine-V. F.	8.00
1134	★	1c-10c Postage Dues (J12-14). V. G.-Fine	19.00
1135	★	1c-10c Postage Dues (J12-14). Fine, scarce	19.00
1136		2c Deep Claret, Dues (J13), two unused, three used. Fine-V. F.	10.50
1137	★	10c Deep Claret, Due (J14). Superb	12.00
1138	★田	10c Deep Claret, Due (J14). Plate block of 4. Superb, scarce (Photo)	60.00
1139	★	2c-10c Postage Dues (J16-17). Very fine	4.25
1140	★	1c-10c Postage Dues (J18-20). Fine	8.25
1141		1c-10c Postage Dues (J18-20). Fine	3.60
1142	★田	1c Deep Green, Postage Due (J18). Bottom plate block of 6. Fine	40.00
1143	★田	10c Orange, Postage Due (J20). Block, "E" of "Postage" on one faint, str. edge at B	10.00+

1144	★田	Post Office Seal, Ultramarine (OX1). Block. Very fine	28.00+
1145	★	Post Office Seal, Blue (OX2). Very fine	5.00
1146	★	Post Office Seal, Blue (OX2). Pair. Very fine	10.00
1147	★	CUBA, 10c Special Delivery (E1). Three copies. Fine, one without gum	15.00

GUAM

1148	★	4c Lilac Brown, 6c Lake (4, 6). Fine-V. F.	14.00
1149		4c Lilac Brown, 8c Lake (4, 6). One small thin other fine	14.00
1150	★	10c Brown, 15c Olive Green (8, 10). Small thin spot on latter other fine	12.50
1151	★	10c Brown, Type II (9). Trivial hinge thin. Fine appearance. Rare (Photo)	400.00
1152	★	\$1.00 Black (12). Trivial thin. Fine appearance	16.50
1153	★	1c-\$1.00 Set all with "Specimen" (1-8, 10-12, E1). V. G.-V. F. Rare set of specimens	(81.25)
1154		HAWAII, 5c Blue (5), Red town cancel, slight thin. Fine appearance	40.00
1155		—5c Blue (9), Black grid cancel. Very fine	15.00
1156	★	—5c Blue (9A). Very fine, large margins	4.00

PHILIPPINES

1157	★	50c Orange (212). Fine	20.00
1158	★	\$1.00 Black (223). Fine	(Photo) 30.00
1159	★	2P Black (252). Very fine	7.00
1160	★	4P Dark Blue (253). Very fine	11.00
1161	★	10P Dark Green (254). Very fine	(Photo) 25.00
1162	★	1P Pale Violet (260). Very good, perfs. just touch	8.00
1163	★	2P Violet Brown (260A). Very fine	(Photo) 12.50
1164	★	2P Violet Brown (272). Very fine	6.00
1165	★	4P Deep Blue (273). Fine	(Photo) 50.00
1166	★	10P Deep Green (274). Fine	(Photo) 30.00
1167	★	6c Deep Violet (278). Very fine	10.00
1168	★	8c Brown, 30c Gray (279, 289c). Well centered, tiny stain on first, small thin latter	12.00
1169	★	10c Dark Blue, 20c Orange (280, 283). Fine	9.50

1170 ★	16c Olive Green (282). Very fine	12.50
1171 ★	30c Gray (284). Trivial thin. V. F. appearance.....	9.00
1172 ★	10c Dark Blue, 20c Orange (288, 289A). Fine	11.00
1173 ★	16c Light Olive Green (296). Fine	5.50
1174 ★	2P Violet Brown (301). Very fine	7.00
1175 ★	10P Deep Green (304). Very fine (Photo)	15.00
1176 ★	2c-1P Legislative Palace (319-25). Complete. F.-V. F.	9.55
1177 ★	2c Green, Coil (326). Pair. Very fine	5.00
1178 ★	2c-32c Von Gronau (361-67). Very fine set	8.90
1179 ★	1P, 2P Surcharges (368, 368a, 369 two), Very fine	9.25
1180 ★	2c-5P Complete set (383-396). Very fine	16.09
1181 ★	2c-5P Commonwealth (411-424). Complete set. Very fine	16.99
1182 ★	10P Gray (431). Very fine	15.00
1183 ★	8c-1P Air Mail Exhibit (447-48). Very fine	3.10
1184 ★	10c Special Delivery (E1). Well centered, no gum	5.00
1185 ★	20c Special Deliveries (E2-3). Fine	6.50
1186 ★	20c Spec. Delivery Imperf. (E6). Horiz. pair. Very fine	10.00
1187	1c-50c Dues (J1-5). Complete, fine set	9.75
1188 ★	50c Deep Claret, Due (J5). Very fine	7.00
1189 ★	2c-30c, 2c-30c Officials (O15-O36). Complete sets. V. F.	4.36
1190 ★	Post Office Seal (OX3). Very fine	3.50
1191 ★	Balance of Collection, 62 diff. (Between 213-440). Nice lot	38.23
1192 ★	PORTO RICO, 1c Deep Claret, Due (J1a). Fine	6.00
1193	—10c Deep Claret, Due (J3a). Overprint at 25° angle. Very fine, scarce (Photo)	50.00
1194	AIRPOST COLLECTION, 2330 Different Airmail stamps, all used, mounted in 2 volumes Scott Airpost Album, all Scott listed varieties. Fine collection with many difficult items to obtain used (Est. net \$400.00+)	over 900.00
1195	FOREIGN COLLECTION, over 10,000 different mounted in Inter- national Junior Album, appears to contain only commoner varieties (Est. net \$110.00)	—
1196	FOREIGN, Wholesale, a box containing used recent issues many Air- mails and pictorials assorted in glassine envelopes several thousand ,Est. \$50.00 net)	—

U. S. WHOLESALE

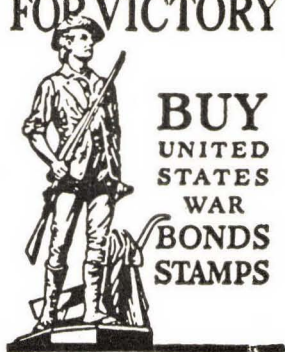
1197	3c Red No. 33 (12), No. 43 (5), No. 44 (48). Fair average	19.65
1198	1c-3c No. 63 (11), No. 65 (26), No. 88 (3), No. 94 (10). Average	22.70
1199	3c Rose No. 65 (300). Very good	15.00
1200	2c Black No. 73 (15), No. 87 (2), No. 93 (11), all defective	64.50
1201	2c Brown, 3c Ultramarine No. 113 (4), No. 114 (56). Average	20.00
1202	3c Ultramarine No. 114 (150). Very good	37.50
1203	1c-3c Banknotes, Grilled No. 134 (7), 135 (1), 136 (8), includes 9 str. edges. V. G.	24.90
1204	1c Ultramarine No. 145 (50). Very good	37.50
1205	2c Red Brown No. 146 (100). Very good	30.00
1206	2c Brown No. 157 (100). Very good	30.00
1207	2c Vermilion No. 178 (100). Very good	25.00
1208	5c Blue Taylor No. 179, 185 (24 mixed), good average	—
1209	6c Pink No. 186 (30). V. good average	37.50
1210	10c Brown No. 188 (10) each with magenta cancel. Fine lot	10.00
1211	10c Brown No. 188 (50). Good-V. fine	37.50
1212	2c, 10c Banknotes, 1870-79 (28 of each mixed). Good average	—
1213	6c Banknotes, 1870-79 (22 stamps mixed). V. G.	—
1214	15c Banknotes, 1870-79(14 stamps mixed). Average	—
1215 ★	1c Gray Blue No. 206 (5 pairs). V. G.-V. F., o. g.	15.00
1216	1c Gray Blue No. 206 (200). Very good	10.00
1217	6c Rose No. 208 (6). Fair	16.50
1218	10c Brown No. 209 (50), some interesting cancels. Fine	5.00
1219	10c Brown No. 209 (100). Very good-V. F.	10.00
1220	3c-5c Banknotes No. 211 (19), 213 (7), 215 (4), 216 (5), Average	28.50
1221 ★田	2c Columbian No. 231 (4 Blocks), perfs in R., V. G.	11.00
1222	3c Columbian No. 232 (20), some reperfed, V. G.	17.00
1223	4c-5c Columbian No. 233 (50), 234 (30), some are reperfed. Good-fine	23.00
1224	6c Columbian No. 235 (20), some reperfed, Good-fine	30.00
1225	8c-10c Columbian No. 236-37 (20 of each). Fair-fine	17.00

1226	2c Triangles 1894-98, large carton containing many thousands of these issues on paper, should run over 25,000	—
1227	4c Trans-Miss No. 287 (15). Fair-fine	22.50
1228	5c Trans-Miss No. 288 (10). Fair-fine	15.00
1229	8c-10c Trans-Miss. No. 289-90 (6 each). Very good	22.50
1230	5c-10c Louisiana-Purch. No. 326 (8), 327 (2). Good average	21.50
1231 ★	2c 1909 Commems. No. 367 (10), 370 (10), 372 (20). Fine	17.00
1232	4c Brown No. 377 (500). Fine	20.00
1233	10c Yellow No. 381 (50). V. G.-V. F.	25.00
1234	2c Carmine, Coil No. 393 (30 each on cover). Fine	90.00
1235	5c Pan-Pacific No. 399, 403 (10 of each). Very good	25.00
1236	2c Carmine, Coil No. 413 (100). Fine	8.00
1237 ★	2c Carmine, Coil No. 444 (5 Joint Pairs showing Plate Nos.). V. G.	35.00
1238	10c Orange Yellow No. 472 (50). V. G.-V. F.	12.50
1239 ★田	2c Offset No. 526 (15 Blocks and 4 Plate Blocks of 6). V. G.-V. F.	46.00
1240	3c Victory No. 537 (50). Good average	15.00
1241 ★	2c Carmine Rose No. 546 (10). Fine	40.00
1242 ★	2c Carmine Rose No. 546 (20). Fine	80.00
1243	5c Pilgrim No. 550 (10). Fair-fine	12.50
1244	\$1.00 Violet Black No. 571 (100). Fine	5.00
1245	\$2.00 Blue No. 572 (75), some reperfed generally fine	30.00
1246	\$5.00 Carmine & Dark Blue No. 573 (60). Fine	45.00
1247 ★田	2c Carmine, Imperf. No. 577 (250) all in blocks. Very fine	67.50
1248 ★	1c Green, 2c Carmine No. 578-79 (3 of each). V. G.-Fine	20.25
1249	2c Hug-Walloon No. 615 (50). Fair-fine	7.50
1250 ★	5c Hug-Walloon No. 616 (20), four blocks & 4 singles, some reperfed. Fine centering	48.00
1251	2c-5c Lex-Concord No. 618 (30), 619 (12), some reperfed. V. G.	24.00
1252 ★田	2c Norse-Amer. No. 620 (4 Blocks). Fine	8.00
1253 田	5c Norse-American No. 621 (3 Blocks). V. G.-fine	24.00
1254 ★	2c White Plains No. 629 (50), mostly blocks. V. G.-fine	7.50
1255 ★田	9c Salmon Rose No. 641a (10 Blocks). Very fine	20.00

1256	2c Burgoyne No. 644 (40). V. G.-V. F.	12.00
1257 ★	2c Burgoyne No. 644 (50). V. G.-V. F., few blocks	17.50
1258 ★	2c Valley Forge No. 645 (100). Some blocks. Fine	10.00
1259 ★田	5c Hawaii No. 648 (15 Blocks). V. G.-Fine	37.50
1260 ★	2c-5c Commems. No. 649 (50), 650 (20), 651 (50) some blocks. V. G.-V. F.	22.00
1261 ★田	30c Brown No. 700 (8 Blocks). Fine	24.00
1262 田	10c Bicent. No. 715 (95 Blocks). Fine	9.50
1263 田	3c Olympics No. 718 (20 Blocks). Fine	5.00
1264 ★田	3c Newburgh Farley No. 752 (15 Plate No. Blocks of 4). Fine	11.25
1265 ★田	3c Newburgh Farley No. 752 (24 Plate No. Blocks of 4) forming six sets of 4 diff. positions. Fine	18.00
1266 ★田	3c Byrd, Farley No. 753 (5 Center Line Blocks). Very fine)	15.00
1267	22c Presidentials No. 827 (50) mostly blocks. V. G.	9.60
1268 田	\$2.00 Presidential No. 833 (15 Blocks). Fine	63.75
1269 田	\$5.00 Presidential No. 834 (15 Blocks). Fine blocks	75.00
1270 田	1c-3c Famous Americans No. 869 (15 Blox), 870 (45 Blox), 889 (15 Blox), 890 (20 Blox), 891 (15 Blox). Fine-V. F.	9.50
1271 田	5c Flags (30 mixed Blocks). Fine used	—
1272 田	5c Flags (30 mixed Name Blocks). Fine used	—
1273	10c Special Delivery No E4 (10). Very good	20.00
1274 ★田	10c Special Del. No. E11 (4 Blocks with "pink backs"). Fine-V. F.	—
1275	3c Brown, Dues No. J3 (200). Very good, some attractive cancels	36.00
1276	3c Carmine Error, Entires No. U436b (14 Entires)	21.00
1277	Revenues 1st, 2nd & 3rd Issues, Wholesale lot with a good variety of numbers. Fair-very fine	over 300.00
1278	Misc. U. S., 142 stamps, majority damaged, 19th & 20th, considerable cat. value, also a few Canada	—

END OF SALE — MAIL BIDS EARLY

FOR VICTORY



**BUY
UNITED
STATES
WAR
BONDS
STAMPS**

U. S. COVER COLLECTION

I am breaking up for private sale a fine collection of 19th Century Covers, from 1847 Issue through the Banknotes. Selections gladly submitted on approval.

ROBERT A. SIEGEL