

106th SALE

# UNITED STATES STAMPS

19th CENTURY ONLY

Includes Collection of NEW YORK POSTMASTERS,  
SPECIALIZED 1c 1851-57 ISSUES,  
FANCY CANCELLATIONS AND COVERS



AT PUBLIC AUCTION

Wednesday, April 25th, 1945

AT 7:45 P. M.

AT THE COLLECTORS CLUB

22 East 35th Street, New York City

GREGORY MOZIAN, Auctioneer



*Robert A. Siegel*  
**SAUGERTIES AUCTIONS**

SAUGERTIES

NEW YORK



## CONDITIONS OF SALE

---

1. The terms of sale are strictly cash to the highest bidder. All buyers are expected to pay for lots within three days of receipt, unless special arrangements have been made prior to the sale.
2. All bids are per lot as numbered in the catalogue and not per piece, unless otherwise announced by the auctioneer at the time of sale.
3. Any lot the description of which is incorrect is returnable only within three days of receipt. All disputed lots must be returned intact as received. Lots containing five or more stamps are not returnable at any time. No lots may be returned by purchasers who have had the opportunity to examine them before the sale.
4. Successful mail bidders, unless they are known to us or supply acceptable references, will be notified of the amount of the lots secured for them, and are expected to send payment in full before the lots are forwarded.
5. If the purchase price has not been paid within the time limit, or lots taken up within seven days from date of sale, they may be resold and any losses arising from such sale charged to the defaulter.
6. All stamps are sold as genuine, except where sold "As Is". Claims for any lot proving otherwise, must be made within two weeks from date of sale.
7. The right is reserved to group two or more lots, also withdraw any lot or lots from the sale, or to act on behalf of the seller.
8. Until paid for in full all lots remain the property of Robert A. Siegel.
9. No commission is charged for buying at our sales, but all forwarding charges will be added to the purchase price.
10. In addition to the purchase price, the buyer will be required to pay the one (1) percent New York City sales tax, unless he is exempt from the payment thereof.
11. Lots will be sent for inspection, provided such lots are returned to us the same day as received. Postage and registration both ways will be charged. Approximate values of lots will be given on request.
12. The placing of a bid shall constitute acceptance of the foregoing conditions of sale.

---

Lots are on display at our office one full week before the sale in Saugerties, N. Y. In sending bids, always state the highest price you are prepared to pay for the lot. Your limit will not be used as a starting bid unless absolutely necessary.

### DESCRIPTIONS

Superb—the finest condition for noteworthy, outstanding copies.

Very Fine (VF)—means that there is a slight deviation from the above.

Fine (F)—means that the perforations do not touch the design on issues after 1890, but in some cases may just touch in earlier issues; if used, fairly lightly cancelled.

Very Good (VG)—means that the appearance is generally fine but that the perforations cut the design slightly.

Good (G)—means average off-centering; or fairly attractive with slight defects. Original gum is not to be expected on 19th Century stamps up to 1888 unless so stated.

Scott's 1944 Specialized United States Catalogue is used for cataloging our lots of United States.

<b>WE SOLICIT FINE MATERIAL FOR FUTURE SALES</b>
--



106th SALE, WEDNESDAY, APRIL 25th - 7:45 P.M.

# BID SHEET

ROBERT A. SIEGEL

Saugerties, New York

Please purchase for me at your Auction to be held in New York, **April 25th, 1945**, the lots named below, the prices annexed being my limit on each lot. I agree to remit for purchases in accordance with the **Conditions of Sale** and to return no lots later than three days after receipt.

REFERENCES PLEASE  
(if unknown to us)

SIGNED

---

---

---

---

[illegible]



[illegible]

1. The  
exp  
me

2. All  
oth

3. And  
da  
co  
be  
be

4. Su  
re  
an

5. If  
w  
f

6. A

7. 1  
f

8.

9. 1

10.

11.

12.

Lot

In

Su

Ve

Fi

V

G.

O

5



# CATALOGUE

## UNITED STATES COVERS

### STAMPLESS COVERS

Amly 1	Baltimore R. R., red straight line. Very fine .....	—
B- 2	Buenos Ayres, via Southhampton to Salem, Mass. Various markings including "90", "80 cents", "U. S. Notes 111". Very fine .....	—
B- 3	City Despatch Post, N. Y. 19 Mar., 9 o'clock, in red circle. Fine, scarce .....	—
A 4	Forwarded by Geo. and John Laurie, New York in red oval. Via Halifax to N. Y. ....	125
A 5	Oxford-Village, N. H., red arched str. line. Very fine .....	—
A 6	Philada. Railroad, red str. line. Fine .....	—
7	Philadelphia, Ms. "1.80" rate; Middleburg, Vt. Ms. "1.00" rate. Fine .....	—
A 8	Prov. and Wor, R. R., "5", blue circle. Very fine .....	—
B 9	Stampless. Five diff. includes Ship marking, St. Louis, fancy Gettysburg. Fine lot .....	AA 325
B+ 10	Stampless, 12 diff. includes drop letter, oval. Fort, fancy. Very fine lot .....	525

### 1847 ISSUE ON COVER

F 11	5c Red Brown (28). Tied with attractice blue Troy, N. Y. pmkd. on small Valentine cover dated Feb. 14, stamp cut in two sides .....	30.00+ 1550
F 12	5c Red Brown (28). Tied with red cancel from New York, cut in two sides. Fair .....	30.00 1350
Z 13	5c Red Brown (28). Horiz. Pair, tied with red town cancel. Margins all around. Very fine .....	(Photo) 70.00 65-

### 1851 ISSUE ON COVER

14	1c Blue, Type IB (30B). Top margin strip of 3 tied from Montgomery, Ala., right two fine though trifle close at B, left stamp creased and cut in B. Rare cover (4-5-6R1E) .....	Spence And (Photo) 600.00+ 100-
B 15	1c Blue, Type II (31). Tied with blue town on small neat cover .....	15.00
B 16	1c Blue, Type II (31). Top sheet margin copy. Tied, close at B. Fine (3L2) .....	15.00 425
E 17	1c Blue, Type II (31). Strip of 3 tied on small cover, V. G. .....	35.00 7-
18	1c Blue, Type IIIa, II two (31, 32B). Tied, from Wilmington, N. C., one type II cut in others fine. Scarce cover .....	(Photo) 80.00 20-



E	19	1c Blue, Type IIIa (32B). Tied with black grid, red Huntington, N. Y. pmkd. Very fine stamp, full margins ..... (Photo)	60.00	33
E	20	1c Blue, Type IIIa (32B). Tied with Paid cancel. Close top, V. G. <i>John</i>	60.00	6
B	21	1c Blue, Type IV (32D). Very fine. Tied .....	10.00	9
B+	22	1c Blue, Type IV (32d). Tied with excellent strike of red U. S. Mail City Delivery. Fine (99L1) .....	10.00+	
B	23	1c Blue, Type IV (32d). Tied. Fine .....	10.00	
B	24	1c Blue, Type IV (32d). Recut twice at B, tied from Salem, Iowa, V. G. (1L1L) .....	15.00	
B	25	1c Blue, Type IV (32d). Tied with blue cancel, three fine margins, close at R. (58RIL) .....	—	2.25
E	26	1c Blue, Type IV (32d). Three singles tied. Fine .....	24.00	6.25
E	27	1c Blue, Type IV (32d). Strip of 3 tied with Dleys Station pmkd., cut in B. Very good .....	30.00	4.25
B	28	1c Blue, 3c Orange Brown (32d, 33b). Two covers, both tied, V. G. <i>B.H.H.</i>	12.75	2.25
	29	3c Red (33). Corner sheet margin copy tied from Dubuque, Iowa. Fine	—	
	30	3c Red (33). Tied with Jacksonville, Flor. pmkd. Fine <i>John</i>	—	2.25
B+	31	3c Dull Red (33). Tied with blue oval "Route 7309". Scarce, V. G. ....	—	8.75
F	32	3c Red (33). Tied with boxed str. line Killingly, Ct. Fine .....	—	6.50
E	33	3c Red (33). Very fine strike of Odd Fellows Links tying, from Canton, Mi., on front, scarce <i>Sheer</i>	—	7.25
B	34	3c Red (33). Tied with Utica, N. Y. oval with July 4 postmark. Fine <i>Sy</i>	—	5
B	35	3c Red (33). Two stamps one in each corner each nicely tied with diff. town pmkd. when forwarded. Fine .....	—	
	36	3c Orange Brown (33b). Three covers tied, V. G.-fine <i>Sy</i>	8.25	2.25
	37	3c Red (33). Eight covers, includes several diff. Paid cancels. Jacksonville, Flor. pmkd. etc. nice lot .....	—	
	38	3c Red (33, 44). Three diff. attractive advert. corner cards, V. F. <i>AA</i>	—	4.50
D	39	3c Red (33, 44). Three covers all with Blood's Locals, V. G.-Fine <i>John</i>	—	4
	40	3c Red, 3c Rose (33, 65). Two diff. very attractive illustr. Hotel covers, illustr. on back V. F. ....	—	2.50
	41	3c Red, 3c Ultramarine (33, 114). Both tied from Fort Plain, N. Y. Fine <i>AA</i>	—	2.25
C	42	3c Red (33, 43, 44). Sixteen covers, all tied with diff. pmkds., few corner cards. Fine lot <i>John</i>	—	4.50



- 43 **10c Green, Type III (35B).** Tied with blue town Concord, N. H., cut in at B. Very good ..... 15.00

## 1857 ISSUE ON COVER

- 44 **1c Blue, Type II (41).** Pair and single, Ms. cancel, from Brimfield, Ms. Fine ..... 35.00
- 45 **1c Blue, Type IIIa (42B).** Ms. cancel, str. edge at top. Illustr. anatomy adv. corner card ..... 25.00
- 46 **1c Blue, Type V (42F).** Three covers, two strips of 3 and single. V. G. .... 11.00
- 47 **1c Blue and Pair 10c Green (42F, 50).** Tied on large cover, stamps fine ..... 9.25
- 48 **3c Red, Type I (43).** Six covers all tied includes pair and varieties, V. G.—Fine ..... 33.00
- 49 **3c Red (44).** Tied with Canton, Mi. **Star**, stamp has str. edge, cover fine ..... —
- 50 **3c Red (44).** Tied. Double Transfer, **Rosettes Doubled and line through postage.** Fine. Scarce ..... 75.00
- 51 **3c Red (44).** Tied, attractive **illustrated** Phrenology cover. Fine ..... —
- 52 **3c Red (44).** Six covers each with diff. type **PAID** cancel. Good average ..... —
- 53 **3c Red, 3c Rose (44, 65).** Three diff. Attractive illustrated advertising covers. Fine ..... —
- 54 **3c Red, 3c Rose (44, 65).** Two **religious corner cards**, one illustr. V. G. .... —
- 55 **3c Red, Rose (44, 65, 94).** Each cancelled with diff. type **SHIELD** cancel. Fair ..... —
- 56 **3c Red, 3c Rose (44, 65).** Nine diff. **PATRIOTICS**, nice lot ..... —
- 57 **10c Green, Type I (49).** Tied on with San Francisco pmkd., perfs cut in left, interesting contents, V. G. .... 50.00
- 58 **10c Green, Type III (49B).** Tied on small neat mourning cover to Cuba, transit marks, stamps slightly defective ..... 12.00
- 59 **10c Green, Type III, IV (49B two, 49C).** Tied on cover from San Francisco to London, transit marks one of type II has several perfs off. Very good scarce ..... (Photo) 141.00

## 1861 ISSUE ON COVER

- 60 **1c Blue (63).** Eight covers, 16 stamps includes pairs and strip and one used with 2c Blackjack, V. G. lot ..... 31.00
- 61 **1c Blue, 3c Rose (63, 65).** Three covers making 10c rate to Canada and 4c Carrier rate, V. G. .... 12.00



62	3c Rose (65). Tied with attractive fancy geometric. Fine	6.25
E+M 63	3c Rose (65). Tied with fancy attractive geometric. Fine (Photo)	5.25
A- 64	3c Rose (65). Tied with large "V" from Valparriso, Ind., V.F. strike, stamp has str. edge	—
A 65	3c Rose (65). Tied with Heart within a Heart cancel from Humphrey, N. Y. Very good. Scarce	5-
B 66	3c Rose (65). Tied with Roman numeral three in circle from Past Plainfield, N. H. Very good	1.75
B 67	3c Rose (65). Tied with str. line Chattanooga, Tenn., partly faint, V. G.	3.25
B 68	3c Rose (65). Tied with "Post Office Business, Free" in circle, scarce, V. G.	5.00
A 69	3c Rose (65). On Patented Lattice Window Envelope, ms. cancel. Scarce	4-
B+ 70	3c Rose (65). Three covers, "U. S.", B. & O. R. R. and Quaker Date, nice markings, stamps slightly defective	3.00
A 71	3c Rose (65). Eight diff. Civil War Official corner cards, V. G.	4.75
B+ 72	3c Rose (65). 13 diff. covers includes fancy cancels, patent punch, corner cards. Fine lot	4.75
B 73	3c Rose (65). Fourteen covers, nice lot of cancels	3.25
B 74	5c, 10c, 12c (68, 69, 76). Three covers, V. G. lot	22.00
S 75	1c Blue, 15c Black, Grilled (86, 98). Two covers, former not tied. V. G.	37.50
D 76	10c Green, Grilled (89, 96). Two covers from New Orleans to Bremen, various transit markings, stamps only fair, covers nice	24.00
77	Collection of Illustrated Covers, 1861-88, each illustration covering entire front of cover, many in color, a beautiful lot including scenes, train, battle scene, cartoon, map, ship etc. (Est. \$35.00)	37.50
V+only 78	Waterbury, Conn. Fancy Cancels. Collection of 12 diff. covers, 1861 and Banknotes. Includes large "W". Shields, Leafs, Geometrics. Fine lot. Est. \$85.00 net	41-
C 79	Territorials. 1861-93 period. Eight diff. includes Nevada, Dak., Wyo., Ariz. and N. Mexico. Fair average	4.25
A 80	3c Ultramarine (114). Pair from Gibsonville, Cal. to Nova Scotia, V. G.	3-

## BANKNOTES ON COVER

F 81	1c-10c Banknotes. Nine covers, nice lot includes two #134	5.00
D 82	1c-2c Banknotes. Attractive lot of 7 diff. Illustrated covers. Fine	4.50
B+ 83	1c-5c Banknotes, 10 covers includes fancy cancels and territorial. Fine	3.75



C	84	1c-3c Banknotes. 13 diff. covers all with advert. corner cards, mostly illustr. Fine lot	4.25
F	85	7c Vermilion (149). Boston, Mass. Paid All pmkd. in red, to Germany. V. G.	40.00 4.25
C	86	7c Vermilion used with 1c Banknote on 3c Entire (149). Tied from Ashland, Neb. V. G.	40.00 12-
A	87	3c Green used in combination pair 5kr Austria, all tied, numerous markings. Fine	4-
A	88	5c Taylor (179). Brimfield, Hampden Co. Mass. pmkd. to London and forwarded to Venice and Florence, numerous markings. Fine	1.50
D	89	5c Blue, Banknote. Two covers, one to Japan, other has pair to France, transit marks. Fine	4.25
A+	90	3c Green (184). Tied, large West Gardener, Mass. Shield. Fine	4.25
B	91	2c Red Brown (210). Four covers. Numeral 5. Three Leaf Clover, and two fancy county cancels. V. G. lot	3.50
	92	2c Green (212). Illustr. cover of Cushing Academy. Fine	2.25
C	93	5c Indigo (216) used in combination 2 1/2p Great Britain both tied; also cover from Monaco with 1c U. S. Due. Fine	4-

## 1890-1898 ISSUES, FRANKS, CARRIERS

C+	94	Maps, 1890-95 period. 3 illustr. covers with maps. V. G.	3.25
F+	95	Illustrated Covers. 1c-8c 1890-01 period, very attractive lot of 7 diff.	5.25
C	96	1c-2c 1890-98 Period. 26 diff. covers with illustrated advert. corner cards. Fine attractive lot	4.50
A	97	2c Carmine (267). Tied from Wheeling, W. Va. with colorful illustr. cover of Carnival and Mardi Gras. Fine	2.25
A	98	2c Carmine (267). Spanish-American Patriotic, attractive in colors of Flags. Maine and Soldier	3.25
	98A	2c Carmine (267). Tied, illustr. adv. around stamp V. G.	4.25
A	99	2c Red (279B). Tied, attractive patriotic illustr. cover of Soldiers Home	1.75
	100	1c-2c Coils (Bet. 411-487). 7 varieties on 30 covers, V. G.	29.00 2.50
C	101	3c Pink, Entire (U58). Pacific Union Express Co. Frank. Advertising imprint, tied with Wells Fargo pmkd. part of envelope cut away at left	3.25
	102	3c Pink, Entire (U59). Bamber & Co's. Express Frank, no pmkd. Good	3.00
A	103	3c Green, Entire (U82). Tied with "U. S." from Jefferson Barracks, Mo. V. G.	1.25



- 104 **Wells Fargo Franks. Three Territorial** postmarks, rather faint markings, Tombstone Ariz., Tacoma and Walla Walla, Wash. V. G. ..... 10.50
- 105 **Wells Fargo & Co. Franks.** Six diff. entires, various company postmarks. V. G. lot ..... 2.50
- 106 ★ 2c Brown, Entire (U277). **Pacific Express Co. pictorial frank** "Mail Car", Superb. Scarce, unused ..... 3.50
- 107 ★ 2 Green, Entire (U311). **Denver and Rio Grande Express Frank.** V. F. unused. Scarce ..... 3.25
- 108 ★ 2c Green, Entire (U311). **River Express Frank.** Superb. Scarce, unused ..... 4-
- 109 ★ 2c Green, Entire (U311). **Pacific Express Co. Frank.** Superb, unused ..... 5- 1-
- 110 **U. S. City Despatch Post. 3c Blue Carrier (6LB5).** Very fine margins but slightly defective, ragged cover, contents complains of service from local to main office to Galena, Ill. ..... 50.00 5-
- 111 **U. S. City Despatch Post. 3c Green Carrier (6LB6).** Very fine margins Company postmark and red octagon "U. S." on front ..... (Photo) 60.00 10.50
- 112 **City Despatch Post, 2c Green (40L2).** Ms. cancel, red company pmkd. and blue oval forwarders marking, V. G. ..... 65.00 7.25
- 113 **City Despatch Post, 2c Green (40L4).** Very fine margins, tiny scuffs on surface, red "New York 2 cts." pmkd. Scarce ..... 80.00 10-

## 5c NEW YORK POSTMASTER STAMP EXHIBITION COLLECTION

- 114 A collection of 101 of the 5c New York Postmaster stamps (9x1), beautifully mounted in Oriel Album and expertly written up. Contains two complete reconstructed panes of forty each. Collection includes 31 vertical or horiz. pairs, nine covers, six with pairs. One cover used on July 17, 1845, the third day of issue. Collection includes pelure paper, ribbed paper, without signature, double transfers, frame line doubled etc. Condition of stamps run from fair to very fine. Catalogues between \$7,000-\$8,000, some items unpriced in catalogue. An excellent opportunity to obtain a choice and desirable collection of these classics. (See page of photos also frontispiece showing part of collection) ..... —



# UNITED STATES STAMPS

## OFF COVER

### 1847 ISSUE

- |     |  |       |
|-----|--|-------|
| 115 | <b>5c Red Brown (28).</b> Blue Grid cancel. Nice margins all around. Superb<br>(Photo) | 27.50 |
| 116 | <b>10c Black (29).</b> Blue Grid. Nice margins all around. Superb ..... (Photo)        | 50.00 |

### 1851 ISSUE

## 1c BLUE IMPERFORATES

(The following lots consist of a specialized collection of these interesting stamps. All types but one are represented as well as many varieties. The same applies to the perforated issue of 1857. Numbers in ( ) indicates plate positions.)

- |     |   |         |
|-----|---|---------|
| 117 | <b>1c Blue, Type Ia (30B).</b> Blue grid cancel. Very fine though just touches at right. Scarce ..... (Photo)         | 200.00  |
| 118 | <b>1c Blue, Type Ia (30B).</b> Small closed tear. Bit cut in at top, nice appearing. Scarce ..... (Photo)             | 175.00  |
| 119 | <b>1c Blue, Type Ib (30B).</b> Trifle close top. Fine (9R1E) ..... (Photo)  | 60.00   |
| 120 | <b>1c Blue, Type Ib (30B).</b> Sheet margin copy, three nice margins, cut in at left, thin spot (3R1E) ..... (Photo)  | 60.00   |
| 121 | <b>1c Blue, Type Ib (30B).</b> Light ms. cancel. Fine. Scarce (8R1E) (Photo)  | 175.00  |
| 122 | <b>1c Blue, Type Ib (30B).</b> Pretty red grid, nice margins, light crease. Very fine appearance (8R1E) ..... (Photo) | 175.00+ |
| 123 | <b>1c Blue, Type II (31).</b> Very fine (93L2) .....  | 10.00   |
| 124 | <b>1c Blue, Type II (31).</b> Light town cancel. Very fine (93R2) .....   | 10.00   |
| 125 | <b>1c Blue, Type II (31).</b> Very fine .....   | 10.00   |
| 126 | <b>1c Blue, Type II (31).</b> Sheet margin copy from plate four, bit close at B. Fine .....                           | 10.00   |
| 127 | <b>1c Blue, Type II (31).</b> Ms. cancel. Fine appearance, from Plate one late, shows recut on stamp below .....      | 10.00   |
| 128 | <b>1c Blue, Type II (31).</b> Blue town cancel. Fine .....  | 11.00   |
| 129 | <b>1c Blue, Type II (31).</b> Fine example <b>Stitch Watermark</b> .....  | 10.00+  |
| 130 | <b>1c Blue, Type II (31).</b> Blue town cancel. Very fine .....   | 11.00   |



131	<b>1c Blue, Type II (31).</b> Light <b>Paid</b> cancel. Fine .....	12.00
132	<b>1c Blue, Type II (31).</b> <b>Blue Paid cancel</b> , very fine margins, light crease .....	12.00
133	<b>1c Blue, Type II (31).</b> Red grid cancel, three large margins, cut in top (100R2) .....	12.00
134	<b>1c Blue, Type II (31).</b> Red and black cancel, cut in top, V. G. ....	12.00
135	<b>1c Blue, Type II (31).</b> Fine example of Double Transfer, three large margins, cut in at top (89R2) .....	12.50
136	<b>1c Dark Blue, Type II (31).</b> Horiz. Pair, thin spot, V. F. appearance .....	25.00
137	<b>1c Blue, Type II (31).</b> Strip of three, cut in a little one side, V. G. ....	35.00
138	<b>1c Blue, Type II (31).</b> Strip of three, one heavy creased, others V. G. ....	35.00
139	<b>1c Blue, Type II (31).</b> Three copies, slight defects. Fine appearing .....	30.00
140	<b>1c Blue, Type II (31).</b> <b>Reconstruction of the Cracked Plate</b> (Positions 2-4L2, 12-13L2, 23L2). Fine and scarce item .....	(Photo) 265.00+
141	<b>1c Blue, Type II (31).</b> <b>Cracked Plate (2L2)</b> , cut in slightly at top. V. G. (Photo) .....	60.00
142	<b>1c Blue, Type II (31).</b> <b>Cracked Plate (2L2).</b> Thin lightly cancel. Fine appearing .....	60.00
143	<b>1c Blue, Type II (31).</b> <b>Cracked Plate (13L2)</b> , red ms. cancel. Very good .....	60.00
144	<b>1c Blue, Combination Strip of 3, two Type II and one IIIa (31, 32B).</b> Light blue cancel. Very fine early impression, right stamp bit close others very fine (18-20R1E) .....	(Photo) 65.00+
145 ★	<b>1c Blue, Type III (32).</b> Slight thins. Very fine appearing. Scarce (Photo) .....	300.00
146 ★	<b>1c Blue, Type III (32).</b> <b>The rare 99R2</b> , three large margins, cut in at right, part O. G. Very rare unused .....	(Photo) 2500.00
147	<b>1c Blue, Type III (32).</b> <b>Clear example of 99R2.</b> Large margins all around, ms. cancel, crease. Rare .....	(Photo) 600.00
148	<b>1c Blue, Type III and IIIa (32, 32B).</b> <b>Combination in horiz. Pair</b> , first has small closed tear. Very fine appearance .....	(Photo) 190.00
149 ★	<b>1c Blue, Type IIIa (32B).</b> Light crease. Very fine appearance, O. G. (Photo) .....	150.00
150	<b>1c Blue, Type IIIa (32B).</b> Very fine .....	(Photo) 40.00
151	<b>1c Blue, Type IIIa (32B).</b> Barely cancelled. <b>Stitch Wmkd.</b> Very fine (Photo) .....	40.00+
152	<b>1c Blue, Type IIIa (32B).</b> Fine .....	(Photo) 40.00
153	<b>1c Blue, Type IIIa (32B).</b> Very fine .....	(Photo) 40.00
154	<b>1c Blue, Type IIIa (32B).</b> Fine .....	(Photo) 40.00









14

*Mr. J. W. Carroll.  
New Orleans.*

13



*Mr. P. Deuker Esq.  
Mr. Wm. Bunker Schreyer & Co.  
Matanzas  
Camp Lopez, Pinar del Rio  
New York*



19



18



*Miss Sarah Knell  
Great Hall  
Duty  
Penn*

*Mr. Carpenter Lord & Co.  
New York*

59



*Mr. P. Morison Esq.  
Ct. Great, Portsmouth  
London*



111

*L. B. Van Dusen Esq.  
Messrs Van Dusen & Smith  
Philadelphia*

63



*FORD,  
Connecticut.*

RECONSTRUCTION OF THE CRACKED PLATE

2L2

4L2

12L2

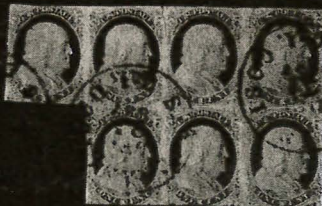
13L2

23L2

140



226



227





115



116



117



118



119



121



122



141



144



145



146



147



148



149



150



151



152



153



154



155



157



158



159



165



170



197



198



239



241



242



248



249



251



257



258



400



402



403



404





283



285



289



290



291



292



293



294



302



305



306



307



310



311



312



316



319



320



322



326



334



335



336



337



338



339



340



342



343



344



365



367



368



369



370



371



372



373



375



376



388



393



155	1c Blue, Type IIIa (32B). Very fine .....	(Photo)	40.00
156	1c Blue, Type IIIa (32B). Nice margins, large closed tear .....		40.00
157	1c Blue, Type IIIa (32B). Attractive blue grid cancel. Very fine (100R1E)	(Photo)	45.00
158	1c Blue, Type IIIa (32B). Horiz. Pair, one stamp has tiny tear other very fine .....	(Photo)	150.00

### 1c BLUE IMPERF #32D, TYPE IV

All from Plate one late numbers in ( ) indicate positions in Plate.

159 ★	1c Blue, Type IV (32d). Very fine .....	(Photo)	11.00
160	1c Blue, Type IV (32d). Sheet margin copy. Very fine (31R) .....		7.00
161	1c Blue, Type IV (32d). Very fine (31R) .....		7.00
162	1c Blue, Type IV (32d). Very fine (89L) .....		7.00
163	1c Blue, Type IV (32d). Attractive red grid cancel. Very fine (29L) .....		10.00
164	1c Blue, Type IV (32d). Nice red carrier cancel, V. G. ....		10.00
165	1c Blue, Type IV (32d). Neat Free cancel. Very fine (62R) .....	(Photo)	15.00
166	1c Blue, Type IV (32d). Red Paid cancel, light creases (42L) .....		—
167	1c Blue, Type IV (32d). So called N. Y. Clipper cancel, scarce on 1c. Fine (44L) .....		—
168	1c Blue, Type IV (32d). Red and black cancel. Very fine .....		10.00
169	1c Blue, Type IV (32d). Collection of all seven varieties of RECUTS, mounted on large mats showing enlargements of recuts. Fine and interesting lot .....		113.50
170 ★	1c Blue, Type IV (32d). Recut once at bottom. Fine though cut in bit at R (8L) .....	(Photo)	50.00
171	1c Blue, Type IV (32d). Recut once at B. Large margins, creased (1R) .....		17.50
172	1c Blue, Type IV (32d). Recut once at B. Fine (8R) .....		17.50
173	1c Blue, Type IV (32d). Recut twice at B. Fine (1L) .....		15.00
174	1c Blue, Type IV (32d). Recut twice at bottom. Fine (3R) .....		15.00
175	1c Blue, Type IV (32d). Recut twice at B. Fine (8R) .....		15.00
176	1c Blue, Type IV (32d). Recut twice at top and once at bottom, V. G. (60L) .....		20.00
177	1c Blue, Type IV (32d). Recut twice at top, once at bottom, V. G. (51L) .....		20.00
178	1c Blue, Type IV (32d). Recut twice at top and bottom, defective, nice appearing, ms. cancel (52L) .....		35.00



179	<b>1c Blue, Type IV (32d).</b> Recut twice at T and B, V. G. (79L) .....	35.00
180 ★	<b>1c Blue, Type IV (32d). Triple Transfer, one inverted,</b> small tear, very fine appearance (91L) .....	100.00
181	<b>1c Blue, Type IV (32d).</b> Ms. cancel, <b>Triple Transfer, one inverted.</b> Very fine margins (91L) .....	40.00
182	<b>1c Blue, Type IV (32d). Triple Transfer, one inverted,</b> creased, nice appearance (91L) .....	40.00
183	<b>1c Blue, Type IV (32d).</b> Recut once at top, twice at B, two, V. G. (24R, 72R) .....	24.00
184	<b>1c Blue, Type (32d).</b> Two. Recut once at top, twice at bottom. V. G.—fine (24, 90L) .....	24.00
185	<b>1c Blue, Type IV V(32d).</b> Two copies each recut once at B. Very good (5-6R) .....	35.00
186	<b>1c Blue, Type IV (32d).</b> Two recut once at bottom and two recut twice at bottom. Very good (3-6L) .....	65.00
187	<b>1c Blue, Type IV (32d).</b> Two shades, one blue town cancel. Fine .....	15.00
188	<b>1c Blue, Type IV (32d).</b> Bottom sheet margin copies V. G.—fine (92-93L) .....	18.00
189	<b>1c Blue, Type IV (32d). Four copies.</b> Fine—very fine .....	28.00
190	<b>1c Blue, Type IV (32d). Five copies.</b> Fine (29, 35, 67, 95, 99R) .....	35.00
191	<b>1c Blue, Type IV (32d). Five copies,</b> three diff. blue cancels and two red cancels, V. G. ....	44.00
192	<b>1c Blue, Type IV (32d).</b> Six copies, all with <b>Double Transfers,</b> V. G.—Fine .....	60.00
193	<b>1c Blue, Type IV (32d). Six copies,</b> V. G.—Fine .....	42.00
194	<b>1c Blue, Type IV (32d). Six copies.</b> Fine .....	42.00
195	<b>1c Blue, Type IV (32d).</b> Eight copies, V. G.—Fine .....	56.00
196	<b>1c Blue, Type IV (32d). Nine copies,</b> good to fine .....	63.00
197 ★	<b>1c Blue, Type IV (32d). Vertical Pair.</b> Fine (45, 55R) ..... <b>(Photo)</b>	30.00
198	<b>1c Blue, Type IV (32d). Horiz. Pair.</b> Very fine (68-69L) ..... <b>(Photo)</b>	20.00
199	<b>1c Blue, Type IV (32d). Vertical Pair.</b> Top stamp superb and bottom stamp fine (10, 20L) .....	20.00
200	<b>1c Blue, Type IV (32d). Horiz. Pair,</b> three large margins, cut in at top (31-32L) .....	20.00
201	<b>1c Blue, Type IV (32d). Vertical Pair.</b> Very fine except light crease on lower stamp (16, 26R) .....	20.00
202	<b>1c Blue, Type IV (32d). Horiz. Pair.</b> Blue town cancel. Fine—very fine (68-69R) .....	20.00



203	<b>1c Blue, Type IV (32d). Horiz. Pair</b> , one stamp cut in at B. other very fine (85-86R) .....	20.00
204	<b>1c Blue, Type IV (32d). Horiz. Pair</b> , one fine other has small closed tear (31-32L) .....	20.00
205	<b>1c Blue, Type IV (32d). Horiz. Pair.</b> Ms. cancel. Very fine margins (68-69L) .....	20.00
206	<b>1c Blue, Type IV (32d). Horiz. Pair</b> , close bit R. Fine .....	20.00
207	<b>1c Blue, Type IV (32d). Vertical Pair</b> , top stamp creased bottom stamp very fine .....	20.00
208	<b>1c Blue, Type IV (32d).</b> Attractive bright red town cancel on horiz. <b>Pair.</b> Fine .....	20.00+
209	<b>1c Blue, Type IV (32d). Horiz. Pair.</b> Recut once and twice at B., cut in B. V. G. (7-8R) .....	32.50
210	<b>1c Blue, Type IV (32d). Horiz. Pair</b> , combination recut once and twice at bottom. Fine (1-2R) .....	32.50
211	<b>1c Blue, Type IV (32d). Vertical Pair</b> , combination of recuts. Fine (60, 70L) .....	32.00
212	<b>1c Blue, Type IV (32d). Pair</b> , left stamp recut twice at top and B., cut in at B. Good (79-80L) .....	42.00
213	<b>1c Blue, Type IV (32d). Pair</b> , right stamp Double Transfer, one inverted, close left otherwise fine (71-72L) .....	47.00
214	<b>1c Blue, Type IV (32d). Two horiz. Pairs</b> , one with blue grid, V. G. (45-46, 97-98R) .....	40.00
215	<b>1c Blue, Type IV (32d).</b> Six horiz. Pairs. Fair average .....	120.00
216	<b>1c Blue, Type IV (32d). Margin vertical strip of 3.</b> Blue town cancel, one stamp thin, large margins. Very fine appearance (11, 21, 31R) .....	30.00
217	<b>1c Blue, Type IV (32d). Horiz. Strip of 3.</b> Very good (21-23L) .....	30.00
218	<b>1c Blue, Type IV (32d).</b> Top sheet margin strip of 3, cut in at B. (6-8L) .....	30.00
219	<b>1c Blue, Type IV (32d). Horiz. strip of 3.</b> Cleaned, looks unused, closed tear in one stamp, nice appearing (68-70L) .....	30.00
220	<b>1c Blue, Type IV (32d).</b> Horiz. strip of 3. Tied on piece. Fine margins, light crease (85-87R) .....	30.00
221	<b>1c Blue, Type IV (32d).</b> Vert. strip of 3. Tied on small piece with New Haven, Conn. and 1855 year date, cut in R, V. G. (25, 35, 45L) .....	30.00+
222	<b>1c Blue, Type IV (32d).</b> Strip of 3, three diff. recuts, cut in top. Good (77-79L) .....	62.00
223	<b>1c Blue, Type IV (32d). Three strips of 3.</b> Good average (27-29, 61-71-81, 88-90R) .....	90.00



224	<b>1c Blue, Type IV (32d).</b> Seven strips of three. Fair average .....	210.00
225	<b>1c Blue, Type IV (32d).</b> Horiz. strip of four, left stamp defective balance fine (55-58R) .....	40.00
226	★田 <b>1c Blue, Type IV (32d).</b> Sheet margin block of 5, creased along margins, cut in top, nice appearing piece (79-80, 88-90R) ..... (Photo)	161.00
227	田 <b>1c Blue, Type IV (32d).</b> Block of 7, minor defects on back, nice appearing piece. Scarce (53-56, 64-66R) ..... (Photo)	155.00+
228	<b>1c Blue, Type IV (32d).</b> Nine copies also two #41 and one #42B, several defective. Fair .....	121.50
229	<b>3c Orange Brown (33b).</b> Small Boston "Paid". Superb stamp and cancel .....	—
230	<b>3c Orange Brown (33b).</b> Four copies, V. G.-Fine .....	11.00
231	<b>3c Red (33).</b> Way, Steam, Dates, Express Mail, Pairs, Green etc., thirteen diff. cancels, V. G. lot .....	— 8 —

## 1857 ISSUE, 1c BLUES PERFORATED

232	<b>1c Blue, Type I (40).</b> Very fine .....	30.00
233	<b>1c Blue, Type I (40).</b> Fine .....	30.00
234	<b>1c Blue, Type I (40).</b> Trifle thin, lightly cancel, well centered .....	30.00
235	<b>1c Blue, Type I (40).</b> Red cancel. Fine .....	35.00
236	<b>1c Blue, Type I (40).</b> Red Carrier cancel, light corner crease. Fine appearance .....	35.00
237	<b>1c Blue, Type I (40).</b> Horiz. Pair, str. edge guide line stamp at left, town cancel. Fine .....	75.00
238	<b>1c Blue. Two Type I and Type II</b> in combination strip of 3 (40, 41). Straight edge at right, V. F. piece .....	80.00
239	<b>1c Blue, Type Ia (40B).</b> Barely cancelled. Fine. Scarce ..... (Photo)	125.00
240	<b>1c Blue, Type Ia (40B).</b> Blue grid cancel, perfs. clipped at B., nice example of this scarce type .....	125.00
241	<b>1c Blue, Type Ia (40B).</b> Tiny corner crease. Centered slightly to top. Fine appearance ..... (Photo)	125.00
242	<b>1c Blue, Vertical Pair showing two very scarce types Ic and Ia,</b> light blue cancel. Fine appearing piece though bottom stamp thin and top stamp has corner crease. Very rare combination ..... (Photo)	—
243	<b>1c Blue, Type II (41).</b> Fine .....	10.00
244	<b>1c Blue, Type II (41).</b> Attractive blue grid cancel, thin spot .....	12.00
245	<b>1c Blue, Type II (41).</b> Red and black cancel, well centered, 3 perfs short .....	15.00



246	1c Blue, Type II (41). Red town cancel, thin spot, V.F. appearing .....	15.00	
247	1c Blue, Type II (41). Red carrier cancel, small stains, V.G. ....	13.50	
248	1c Blue, Type III (42). Fine ..... <b>(Photo)</b>	60.00	
249	1c Blue, Type III (42). Nice example of rare 99R2. Centered to left, light crease not visible on face. Fine appearance. Very rare <b>(Photo)</b>	800.00	
250	1c Blue, Type IIIa (42B). Fine .....	20.00	
251	1c Blue, Type IIIa (42B). Very fine ..... <b>(Photo)</b>	20.00	
252	1c Blue, Type IIIa (42B). Very fine .....	20.00	
253	1c Blue, Type IIIa (42B). Fine .....	20.00	
254	1c Blue, Type IIIa (42B). Very fine .....	20.00	
255	1c Blue, Type IIIa (42B). Fine .....	20.00	
256	1c Blue, Type IIIa (42B). Very fine .....	20.00	
257	1c Blue, Type IIIa (42B). Superb ..... <b>(Photo)</b>	20.00	27-
258	1c Blue, Type IIIa (42B). Just about perfect centering, light crease <b>(Photo)</b>	20.00	20.50
259	1c Blue, Type IIIa (42B). Lightly cancel, well centered, corner perf. pulled	20.00	
260	1c Blue, Type IIIa (42B). Red cancel. Fine .....	22.50	
261	1c Blue, Type IIIa (42B). Double small boxed Paid cancel, 2 perfs short	25.00	
262	1c Blue, Type IIIa (42B). Pretty red Carrier cancel. Very fine .....	22.50	26-
263	1c Blue, Type IIIa (42B). Horiz. Pair. Fine .....	50.00	
264	1c Blue, Type IIIa (42B). Horiz. Pair, town cancel, one very fine other has few perfs. short .....	50.00	
265	1c Blue, Type IV (42d). Very fine .....	20.00	
266	1c Blue, Type IV (42d). Few perfs short at B. Very fine appearance (100LII) .....	20.00	
267	1c Blue, Type IV (42d). Horiz. Pair, blue town cancel, freak extra row of perfs on right stamp, nicely centered, both have thin spot .....	60.00	
268	★田 1c Blue, Type V (42F). Block. Very fine O.G. ....	10.00	
269	★田 1c Dark Blue, Type V (42F). Block. Well centered, tiny scuffs on one stamp, O.G. ....	10.00	
270	★田 1c Blue (42F). Blocks, two shades, both slightly defective, nicely centered, O.G. ....	20.00	
271	1c Blue (42F). Eight copies. Shades. Very fine .....	10.00	



272	1c Blue, Type V (42F). Seventeen cancels includes reds, city delivery, paid, colored etc. Fine lot .....	30.50+
273	1c Blue, Type V (42F). Curl on Shoulder variety, pretty "socked on the nose" blue town cancel, one perf. short, V.F. appearance .....	15.00
274	1c Blue (42F). LAID paper. Fine .....	10.00
275	1c Blue, Type V (42F). Used and unused copy of Plate Flaw (10L9). Fine .....	—
276 ★	1c Blue (42F). Vert. Pair, wide imperf. margins vertically. Fine, O.G. .....	—
277	1c Blue (42F). Horiz. Pair with odd blue cancel of circle of dashes on each. Fine .....	—
278	1c Blue (42F). Horiz. and vertical pairs. Very fine .....	6.00
279	1c Blue (42F). Four pairs, red, blue and black town cancels. Paid. Fine lot .....	14.50
280	1c Blue (42F). Three strips of three. Shades. Fine .....	13.50
281	1c Blue (42F). Four strips of three. Shades. Fine-V.F. ....	18.00
282	1c Blue (42F). Nine copies, includes pairs and two unused, V.G.-Fine .....	13.25
C 283	3c Rose, Type I (43). Neat numeral "3" cancel. Very fine ..... (Photo)	7.75
B 284	3c Red (44). Scarce delicate small Leaf cancel. Fine strike, stamp has straight edge .....	4.50
F 285	3c Red (44). Superb strike of "55", stamp centered to B ..... (Photo)	5.25
B 286	3c Red (44). Tied with V.F. Shakopee M. T. pmkd. on small piece .....	2.50
B 287	10c Green (50). Light blue FREE, small thin .....	2.50

## 1861 ISSUE

C 288	1c Blue (63). Four cancels Paid, blue grid and two geometrics, nice lot .....	4.25
F 289	3c Rose (65). Very fine strike of "U. S." in Shield, stamp centered to B. Scarce .....	6.75
D 290	3c Rose (65). Attractive geometric design. Very fine ..... (Photo)	5.75
2 291	3c Rose (65). Very fine strike of Flag and "Union" ties on small piece. Rare cancel .....	25.50
D 292	3c Rose (65). Very fine strike of Masonic .....	5.75
C 293	3c Rose (65). Heart within Heart cancel. Very fine. Scarce ..... (Photo)	8.00
B 294	3c Rose (65). Blue str. line Registered. Very fine .....	2.75
C 295	3c Rose (65). Two diff. scarce 6 point stars and one large star in square frame. Fine lot .....	7.75
B+ 296	3c Rose (65). Shield, Paid in points of fancy star, blue Paid 3. Railroad, four fine cancels .....	13.00



C 297	3c Rose (65). Six diff. scarce type fancy <b>Stars</b> , nice lot .....	10 35
D 298	3c Rose (65). Nine colored cancels includes red, blue and ultra. towns and rare <b>bright yellow Paid</b> . Fine lot .....	9 50
C 299	3c Shades (65, 88, 94). Fifteen very fine-superb copies .....	2.25
B 300	3c Rose (65). Twenty-four in pairs and strips, shades V.G.-V.F. ....	2 -
D 301	3c Rose (65). Ninety-three copies, nice range of shades. Fine-V.F. ....	4 -
F 302	5c Buff (67). Neat <b>Paid</b> in box. Very fine ..... (Photo)	60.00 34 50
C 303	30c Yellow (71). Red cancel. Fine .....	10.00 7 25
E 304	30c Yellow (71). Fancy grid. Fine .....	2 -
C 305	30c Yellow (71). Eight point fancy star in circle. Fine ..... (Photo)	2 -
F 306	30c Yellow (71). Very fine strike of Pittsburgh <b>SHIELD</b> , stamp has corner crease ..... (Photo)	6 25
E 307	30c Yellow (71). Very striking <b>Shield</b> , stamp has tiny tear " " (Photo)	5 25
D 308	30c Yellow (71). Fancy blue <b>SHIELD</b> with Stars from Newark, Ohio. Fine strike, stamp off center. Scarce .....	4 25
B 309	30c Yellow (71). Unusual fancy <b>SHIELD</b> , V.G. Scarce .....	3 50
K 310	30c Yellow (71). Very fine strike of <b>HORSES HEAD</b> . Perfs. in T and R. Very rare ..... (Photo)	12 50
2K 311	30c Yellow (71). Civil War <b>SOLDIER'S HEAD</b> . Very fine and very rare strike, stamp centered to left ..... (Photo)	20 00
E 312	30c Yellow (71). Very fancy <b>Star in circle</b> cancel, scarce. Fine (Photo)	4 25
D 313	30c Yellow (71). Two, fancy geometric and four diagonal bars. Fine strikes .....	5 -
D 314	2c Black (73). Two, striking red rosette and bold negative star, latter has defect .....	3 25
D 315	3c Red (88). Cambridge, Mass. <b>Padlock</b> . Fine strike. Perfs. cut in R	1 25
C 316	3c Red (88). Negative <b>Masonic</b> . Fine ..... (Photo)	4 25
B 317	3c Red (88). <b>Whiskbroom</b> cancel. Very fine .....	2 25
A 318	3c Red (88). Pair with pretty Jersey Shore, Pa. fancy blue <b>Star</b> . Fine	12 25
H 319	3c Red (94). Superb strike of Corry, Pa. <b>Eagle</b> , stamp centered to B. .... (Photo)	16 00
E 320	3c Red (94). Lovely strike of <b>Waterbury Shield</b> . Fine ..... (Photo)	9 50
A 321	3c Red (94). <b>Red Leaf</b> . Fine. Scarce .....	3 25



## 3c 1869 ISSUE

- |   |     |   |                 |
|---|-----|---|-----------------|
| D | 322 | 3c Ultramarine (114). Excellent strike of <b>Shield</b> , perfs. cut in top (Photo)                               | 8 <sup>50</sup> |
| E | 323 | 3c Ultramarine (114). Large cluster of <b>Stars</b> in black circle. Fine, scarce                                 | 2 <sup>25</sup> |
| B | 324 | 3c Ultramarine (114). Blue oval <b>C. &amp; L. R. R. Sparta</b> , V. G.   | 2 <sup>-</sup>  |
| E | 325 | 3c Ultramarine (114). Scarce fancy <b>Masonic triangle</b> with small heart in center V. F.                       | 7 <sup>-</sup>  |
| F | 326 | 3c Ultramarine (114). Fine strike of <b>Two Hearts Entwined</b> , stamp has str. edge. Rare strike                | 3 <sup>75</sup> |
| B | 327 | 3c Ultramarine (114). Tied on small piece in blue <b>Clarenceville, Queens Co. N. Y.</b> and 1871 year date. Fine | 2 <sup>-</sup>  |
| B | 328 | 3c Ultramarine (114). Green cancel, blue rosette, red target, black star in circle. Fine lot                      | 3 <sup>-</sup>  |
| E | 329 | 3c Ultramarine (114). Four diff. numerals <b>3, 5, 6, 10</b> . Fine lot   | 5 <sup>25</sup> |
| F | 330 | 3c Ultramarine (114). Heart, Masonic, Star, Cross and Leaf, nice lot of cancels                                   | 4 <sup>75</sup> |
| C | 331 | 3c Ultramarine (114). Six cancels, nice lot   | 3 <sup>-</sup>  |

## BANKNOTE ISSUES

- |    |     |   |                  |
|----|-----|---|------------------|
| A  | 332 | 1c Banknotes. Five fancy cancels. Paid 3. Large 5. Green target, reds V. G.   | 1 <sup>25</sup>  |
| B+ | 333 | 1c Banknotes. 56 copies, wide variety of shades, strips, pairs (none reengraved). Very fine lot                     | 5 <sup>60</sup>  |
| K  | 334 | 3c Green. Nice strike of famous Pittsburgh <b>Skull and Bones in Coffin</b> . Fine                                  | 10 <sup>50</sup> |
| C  | 335 | 3c Green, <b>Masonic</b> in circle. Fine  | 4 <sup>25</sup>  |
| E  | 336 | 3c Green. Very fine negative <b>Anchor</b>  | 4 <sup>25</sup>  |
| F  | 337 | 3c Green. Very fine <b>Flag</b> . Scarce  | 13 <sup>25</sup> |
| B  | 338 | 3c Green. Large year date " <b>78</b> ". Fine   | 2 <sup>50</sup>  |
| C  | 339 | 3c Green. <b>Mortar and Pestle</b> ties to small piece from Groton, N. Y. Very fine strike stamp clipped at B. Rare | 10 <sup>25</sup> |
| B+ | 340 | 3c Green. Scarce <b>Mask</b> cancel, three perfs short on stamp   | 4 <sup>25</sup>  |
| B  | 341 | 3c Green. Negative <b>Derby Hat</b> from Danbury, Conn. Fine strike, stamp has tear                                 | 2 <sup>25</sup>  |
| C  | 342 | 3c Green. Attractive <b>LEAF</b> cancel, probably from Waterbury, perfs in top                                      | 4 <sup>-</sup>   |



K	343	3c Green. Corry, Pa. <b>Pig</b> . Very fine strike, perfs in left. Rare (Photo)	21-
F	344	3c Green. Harrisburgh <b>Skull and Cross Bones in Coffin</b> . Fine strike, perfs in top. Scarce (Photo)	10 <sup>50</sup>
B	345	3c Green. "USED UP" cancel from Traverse City, Mich. Fine	5 <sup>25</sup>
B	346	3c Green. Fine strike of <b>DUCK</b> , perfs. in top. Scarce	5 <sup>25</sup>
C	347	3c Green. Purple <b>Skull and Cross Bones</b> , distinct but light strike, stamp reperfed at R	6 <sup>25</sup>
A	348	3c Green. <b>Mans Head</b> , stamp off center, scarce, V. G. CT	2 <sup>25</sup>
E	349	3c Green. <b>Waterbury Animal</b> (Type A-7). Fine. Scarce	7 <sup>75</sup>
B	350	3c Green. <b>Man with Broad Brim Hat</b> . Fine strike. Scarce	8 <sup>75</sup>
A	351	3c Green. Pair each with Waterbury <b>Leaf</b> cancel. Fine Moore	3 <sup>25</sup>
C+	352	3c Green. Two, startling <b>red pinwheel</b> in circle, <b>red N. Y. Br. Transit</b>	6 <sup>25</sup>
D	353	3c Greens. Blue Chicago <b>Shield</b> and Black <b>Pumpkin Face</b> , latter grilled. Fine Moore	3 <sup>25</sup>
F	354	3c Greens. Anchor in circle, outline leaf, O. K. in circle, first two bit faint, nice lot	3 <sup>25</sup>
D	355	3c Greens. <b>Grilled</b> . Numeral 5, fancy red, Mortar and Pestle, nice lot Moore	4-
B	356	3c Greens. Housatonic R. R. Numeral 5. Pair with pointing head. Fine lot	6 <sup>50</sup>
A	357	3c Greens. Striking Leaf. Cross with arrow points, fancy cross, VT and POD monograms. Fine lot of 5 diff. Moore	7-
B	358	3c Greens. Waterbury Leaf, O. K. N. Y. Foreign Mail, Patent punch, fancy geometric. Fine lot of 5 diff.	7-
B+	359	3c Greens. Fine lot of 14 cancels including monograms, scarce numerals fancy letters etc.	5 <sup>50</sup>
B'	360	3c Greens. Strip of 3, 4 and 6. Block of 4. Fine-V. F.	6 <sup>50</sup>
C	361	3c Greens. Nineteen V. F.-Superb copies, some have jumbo margins, shades	2-
C	362	3c Greens. Twenty copies, minor varieties and cancels. Fine	2-
D	363	3c Greens. 103 stamps in pairs, strips of 3 and 4 and one block, shades, V. G.-V. F.	2-
E	364	6c Banknotes #148(10), #159(10), #186(20), includes some fancy cancels. Fair-Fine	38.00 9 <sup>50</sup>
B	365	15c Bright Orange (152). Excellent strike of odd geometric. Fine (Photo)	2 <sup>25</sup>
D	366	24c Purple (153). N. Y. Foreign Mail cancel, Type 20 in red. Fine	3 <sup>75</sup>



F	367	24c Purple (153). New York Foreign Mail cancel, type 20, V. F. strike, tiny tear ..... (Photo)	325
H	368	24c Purple (153). New York Foreign Mail cancel, Type 16. Fine (Photo)	8.75
H	369	24c Purple (153). New York Foreign Mail cancel, Type 64. Fine. Rare (Photo)	10.25
E	370	6c Dull Pink (159). N. Y. Foreign Mail. Type 21 in red. Scarce. V. F. except light crease ..... (Photo)	13.50
B	371	6c Dull Pink (159). N. Y. Foreign Mail cancel. Type 62, scarce. Very fine (Photo)	4.75
C	372	6c Dull Pink (159). N. Y. Foreign Mail cancel. Type 51. Very fine (Photo)	5.25
E	373	6c Dull Pink (159). Elephant. Fine. Scarce ..... (Photo)	10.00
D	374	6c Dull Pink (159). Pittsburgh Skull and Bones in Coffin. Scarce, V. G.	5.25
C	375	6c Dull Pink (159). Waterbury Leaf. Very fine ..... (Photo)	6.25
D	376	6c Dull Pink (159). Diff. type Waterbury Leaf. Very fine ..... (Photo)	4.25
E	377	6c Dull Pink (159). Red ANCHOR in circle. Fine. Rare	6.25
B	378	6c Dull Pink (159). Waterbury Shield. Fine	5.25
C	379	6c Dull Pink. Three leaf clover, fancy geometric and ultramarine grid. Fine lot	8.50
C	380	6c Dull Pink (159). Forty copies, includes colored, stars, numerals etc. Fair-Fine	18.00 12.50
C	381	10c Banknotes (161, 187, 209). Ten of each. Fancy cancels. Fair-Fine	8.50
C	382	10c Banknotes #161(20), 209(23). Some fancy cancels. Fair-Fine	3.25
C	383	2c Vermilion (178, 183 mixed), 220 copies selected for cancellations	21.00
C	384	5c Blue (179, 185). Fat margin copy of first. Strip of 3 of latter. Very fine	2.50
B+	385	1c Blue (182). 100 copies includes Stars, colors, letters, numerals, etc. Good-Fine	6.00
C	386	6c Pink (186). Thirty-four copies, incldes variety of numeral and letter cancels. Fair-Fine	42.50
C	387	10c Brown (187). Twenty copies includes stars, "10" in circle, cross etc. Fair-Fine	17.00
A'	388	15c Orange (189). Nine strike of Shield, perfs cut in B ..... (Photo)	2.00
A'	389	15c Red Orange (189). Fat jumbo margins, centered, small corner crease	1.00
C	390	5c Garfield (205, 216). Forty stamps includes Crosses, Stars, numerals, letters etc. Fair-Fine	6.00





283



285



289



290



291



292



293



294



302



305



306



307



310



311



312



316



319



320



322



326



334



335



336



337



338



339



340



342



343



344



365



367



368



369



370



371



372



373



375



376



388



393





115



116



117



118



119



121



122



141



144



145



146



147



148



149



150



151



152



153



154



155



157



158



159



165



170



197



198



239



241



242



248



249



251



257



258



400



402



403



404



- 391 1c Blue (206). Very fine strike "I Am H. N." Scarce cancel ..... 5.00  
 392 1c Banknotes # 206(120), # 214(30), includes some nice cancels, V.G. lot ..... 5.25  
 393 2c Red Brown (210). Very fine strike of attractive **Shield** ..... (Photo) 5.25  
 394 2c Red Brown (210). Pretty blue **SHIELD** in circle, V.F. .... 5.25  
 395 2c Red Brown (210). Large **MB** from Mystic Bridge, Conn. V.F. .... 8.25  
 396 2c Red Brown (210). Purple **str. line** Chicago Lawn, Ill. March 17, 1884, V.F. Scarce ..... 8.25  
 397 **CANCELLATION Collection**, mounted over 500 stamps, strong in Banknotes, includes colored shields, crosses, fancy stars, Masonic, multiples etc. (Est. \$75.00 net) ..... 22.25  
 398 ★ 田 **Blank White Paper**, perforated and double line wmkd. Block of 6, partly gummed, interesting ..... 12.50

## CARRIERS, U. S. CITY DESPATCH POST

- 399 ★ 3c Blue, Carrier (6LB5), part O.G., large margins, defective, V.F. appearance ..... 25.00  
 400 3c Blue, Carrier (6LB5). Red octagon "U. S." cancel. Very fine (Photo) 25.00  
 401 3c Blue, Carrier (6LB5). Red octagon "U. S." cancel, tiny thin. Very fine appearance ..... 25.00  
 402 ★ 3c Green, Carrier (6LB6). Light creases, large margins. Very fine appearance ..... (Photo) 75.00  
 403 3c Green, Carrier (6LB6). Red octagon "U. S." cancel, nice margins. Fine ..... (Photo) 40.00  
 404 3c Green, Carrier (6LB6). Red octagon "U. S." cancel. Very fine margins, on small piece ..... (Photo) 40.00

END OF SALE — THANK YOU

PLEASE MAIL BIDS EARLY

105  
 155  
 103  
 136  
 112  
 616