

107th SALE

UNITED STATES

STAMPS & COVERS,
BRITISH COLONIES
& FOREIGN STAMPS

AT PUBLIC AUCTION

Thursday, June 21st, 1945

AT 2 P.M.

AT THE COLLECTORS CLUB
22 East 35th Street, New York City

GREGORY MOZIAN, Auctioneer



Robert A. Siegel
AUCTIONS

SAUGERTIES

NEW YORK

CONDITIONS OF SALE

1. The terms of sale are strictly cash to the highest bidder. All buyers are expected to pay for lots within three days of receipt, unless special arrangements have been made prior to the sale.
 2. All bids are per lot as numbered in the catalogue and not per piece, unless otherwise announced by the auctioneer at the time of sale.
 3. Any lot the description of which is incorrect is returnable only within three days of receipt. All disputed lots must be returned intact as received. Lots containing five or more stamps are not returnable at any time. No lots may be returned by purchasers who have had the opportunity to examine them before the sale.
 4. Successful mail bidders, unless they are known to us or supply acceptable references, will be notified of the amount of the lots secured for them, and are expected to send payment in full before the lots are forwarded.
 5. If the purchase price has not been paid within the time limit, or lots taken up within seven days from date of sale, they may be resold and any losses arising from such sale charged to the defaulter.
 6. All stamps are sold as genuine, except where sold "As Is". Claims for any lot proving otherwise, must be made within two weeks from date of sale.
 7. The right is reserved to group two or more lots, also withdraw any lot or lots from the sale, or to act on behalf of the seller.
 8. Until paid for in full all lots remain the property of Robert A. Siegel.
 9. No commission is charged for buying at our sales, but all forwarding charges will be added to the purchase price.
 10. In addition to the purchase price, the buyer will be required to pay the one (1) percent New York City sales tax, unless he is exempt from the payment thereof.
 11. Lots will be sent for inspection, provided such lots are returned to us the same day as received. Postage and registration both ways will be charged. Approximate values of lots will be given on request.
 12. The placing of a bid shall constitute acceptance of the foregoing conditions of sale.
-

Lots are on display at our office one full week before the sale in Saugerties, N. Y. In sending bids, always state the highest price you are prepared to pay for the lot. Your limit will not be used as a starting bid unless absolutely necessary.

DESCRIPTIONS

Superb—the finest condition for noteworthy, outstanding copies.

Very Fine (VF)—means that there is a slight deviation from the above.

Fine (F)—means that the perforations do not touch the design on issues after 1890, but in some cases may just touch in earlier issues; if used, fairly lightly cancelled.

Very Good (VG)—means that the appearance is generally fine but that the perforations cut the design slightly.

Good (G)—means average off-centering; or fairly attractive with slight defects. Original gum is not to be expected on 19th Century stamps up to 1888 unless so stated.

Scott's 1944 Specialized United States Catalogue is used for cataloging our lots of United States.

WE SOLICIT FINE MATERIAL FOR FUTURE SALES
--

[illegible]

IMPORTANT — PLEASE NOTE

Mail bids to Robert A. Siegel, Saugerties, N. Y. or last minute bids to Robert A. Siegel, c/o Collectors Club, 22 East 35th St., New York City.

Lots may be inspected on day of sale at the Collectors Club from 10 A. M. until sale time.

CATALOGUE

UNITED STATES COVERS

STAMPLESS COVERS

- | | | |
|----|--|---|
| 1 | Adams Express Co. Brownsville, Texas , in blue straight line, to New Orleans. Fine, rare (Photo) | — |
| 2 | Adams Express Company, N. Y. in blue circle, also "Paid" in blue oval, to New Orleans. Fine, scarce | — |
| 3 | Adams Express Company, N. Y. , same markings as above. V. G. | — |
| 4 | Adams Express San Jose , in blue oval, also blue "Paid", markings rather faint, to San Francisco. Scarce | — |
| 5 | Appalachicola, F. Ty. , red circle "25" (1844). V. G. | — |
| 6 | Bain's Telegraph and Phila., Reading & Pottsville Telegraph, two fine telegraph covers | — |
| 7 | Baldwinville, Mass. in red double circle. Fine | — |
| 8 | Baltimore Am. Pkt., "10" both in black circles from Barcelona to New Orleans. Fine | — |
| 9 | Baltimore R. R. , red str. line also red "Free", corner card of National Hotel, Wash. D. C., cover wrinkled | — |
| 10 | Eastern R. R. , blue circle. V. G. | — |
| 11 | Enfield, Mass. in fancy wreathed oval. Fine | — |
| 12 | Foreign Covers to New Orleans , Fourteen covers with wide variety of markings. Fine lot | — |
| 13 | "Held For Postage" and two diff. type U. S. Notes pmkds., three fine covers | — |
| 14 | Key West, Fla. in circle also "Due 10c" in circle to New Orleans, V. G., scarce | — |

- 15 **Mt. Holly, N. J., Frederick, Md., Cromwell, Ct.,** all with attractive **corner cards.** Fine —
- 16 **New Orleans "5", "Advd. 1 cts." and "Dead Letter Office"** in oval. Fine markings —
- 17 **New Orleans Cit Post,** in blue box, partly faint as usual, also "Car 2", "Adv. 1" and "Not Found" markings. V. G., scarce 1 —
- 18 **New Orleans,** Three covers, "Way 5" and two drop letters "1" and "2". V. G. —
- 19 **New York Due 20 cts** marking, from Havana to New Orleans. V. G., scarce —
- 20 **Philada. Railroad,** red str. line. Fine —
- 21 **St. Augustine, F. Ty.** red circle. Fine —
- 22 **San Francisco, Cal. "Ship 12".** Very good —
- 23 **Ship** in black oval, New Orleans and "Due 5" in black circles on small mourning envelope. Very fine —
- 24 **Ship Five 5c** in blue oval also New Orleans pmkd. V. G., scarce —
- 25 **"Ship", "40 cts."** both in ovals, ms. "Morning Star", to New Orleans. Fine markings. Scarce —
- 26 **Ship 7 cts, Ship 6, Ship, Steamship 10.** Five diff. markings, all to New Orleans. Nice lot —
- 27 **Southern Express Co. Augusta Ga.** in blue double circle also black "Paid 10", to New Orleans. V. F. markings, cover torn slightly at top. Scarce **(Photo)** —
- 28 **Southport, Wis. T.; Racine, Wis. T.,** two territorials, rather faint markings —
- 29 **U. S. City Despatch Post,** red circle. Very fine —
- 30 **"U. S. Mail Steamship Fah Kee 19 May 1866, St. Jago"** in fancy box, also "Steamship 10" in circle, from Cuba to New Orleans. Rare, fine **(Photo)** —
- 31 **"U. S. Mail Steamship Fah Kee Apr. 12, 1866, St. Jago",** same markings as above. Fine —
- 32 **Utica, N. Y.** two fancy ovals and "Paid" in red and blue. Fine —
- 33 **Vera Cruz, Steamship 10,** New Orleans, La. each in black circle. Fine —
- 34 **Vera Cruz,** same markings as above. Fine —
- 35 **Wilmington & Raleigh R. R. "10",** blue circle. Good —
- 36 **Champlain & St. Lawrence R. R. Paper Money,** sheet of 6, three varieties, showing diff. early **railroads** of 1837. Printed by Rawdon, Wright & Hatch. V. F. —

5c NEW YORK, 1847 ISSUE

37	5c New York Postmaster (9X1). Red "Paid" and New York pmkd. on cover, stamp tied with ms. cancel. Fine (Photo)	75.00
38	5c Brown (28). Tied from New York, margins all around. Very fine (Photo)	30.00
39	5c Red Brown (28), PAIR, tied with bright red grids from Boston, partly close. Fine (Photo)	70.00
40	5c Brown (28) used with Bloods Local (15L7). Both fine stamps, former tied ms. cancel, New York & Phila. R. R. pmkd., part of address cut away. Rare combination (Photo)	75.00

1851-1857 ISSUES ON COVER

41	3c Red (33). Tied from Augusta, Ga., attractive brown illustr. corner card. Fine	—
42	3c Red (33), Freemont Campaign Cover, stamps tied. Fine (Photo)	—
43	3c Red (33). Tied from Louisville, green hotel corner card. V. G.	—
44	3c Red (33). Four diff. attractive corner cards , all tied. Fine	—
45	3c Red (33). Seven covers each used with Bloods Local from Phila., some have part of address cut away. V. G. lot	—
46	1c Blue (42F) used with Bloods Local (15L18) from Phila. Fine	—
47	3c Red, Type I (43). Neat "3" cancel from Leominster, Ms., stamp defective	12.50
48	3c Red (44). Tied with attractive fancy star in circle from Portland, Conn., fine markings cover trifle worn (Photo)	—
49	3c Red (33). Tied, blue Norwich & Wor. R. R. Very good	7.50
50	3c Red (44). Illustr. corner card of Hanover College , attractive though cover repaired	—
51	3c Red (44). Tied, attractive illustr. Charter Oak Insurance Co. corner card, stamp has str. edge	—
52	10c Green, Type V (50). Tied from Marysville, Cal. in blue. Very fine	—

1861 ISSUE ON COVER

53	3c Rose (65). On attractive illustr. Honesdale, Pa. School cover	—
54	3c Rose, 24c Lilac on 3c Pink entire (65, 78, U59). Tied on cover to France from New Orleans, fine transit markings, stamps defective	10.00

55	3c Rose (65). Two covers, one tied with " Free " and other large " R ", latter has str. edge. Fine markings	—
56	3c Rose (65). Five diff. illustr. corner cards. Attractive lot	—
57	3c Rose (65). Five diff. attractive corner cards , three illustr.	—
58	3c Rose (65). Tied with " Miamiaville P. O., Camp Dennison, O. " pmkd. Fine	—
59	3c Rose (65), in oval " Prisoner's Letter, Examined, Fort Delaware, Del. " good markings small corner of cover torn	—
60	Patriotic, McClellan framed in stars, 3c Rose (65), tied, cover repaired. Scarce design	—
61	Patriotic, Lincoln, 3c Rose(65), Franklin, Mass. pmkd. Fine, scarce(Photo)	—
62	Patriotic, Scarce Flag design, 3c Rose (65), tied Laurence 2858. Fair	—
63	Patriotic, 3c Rose (65), from Waterloo, Wis. Laurence 2203. Good	—
64	Patriotic, Flag and Col. Coulter's 11th Reg., "Due 3" and Anapolis, Md. pmkd. V. G.	—
65	Patriotics, Five diff. designs, 3c Rose (65), all tied. Nice lot	—
66	Patriotics, three diff. (44, 65), Laurence 2071, 2587, 2822. V. G.—Fine	—
67	10c Green (68), Crescent City, Cal. pmkd., stamp not tied. V. G.	—
68	2c Black (73). Tied from Boston, illustr. adv. corner card. Fine	—
69	5c Brown, Grilled, 1c Blue, Banknote (95, 145), nice combination, Van-couver, W. T. pmkd. to Ireland. V. G., scarce	50.00
70	1c Buff (112). Tied on cover, Waldboro, Me. pmkd. Fine	10.00

BANKNOTES ON COVER

71	2c Brown (157). Tied with fancy blue star from Chicago, illustr. advert. cover showing early baseball. Attractive, fine	—
72	2c—10c Banknotes. Five diff. registered covers. Fine	—
73	3c Green, tied with Centennial, Philada. Pa. pmkd. Scarce, V. G.	—
74	3c Green, White Sulphur Springs, M. T. pmkd. Fine	—
75	3c Green, tied from San Francisco, Cal. with attractive illustration Wood-ward's Gardens. Nice Calif. item	—
76	3c Green, on green illustr. Kansas State Seal from Topeka. V. G.	—
77	2c, 3c Green (147, 212). Two attractive illustr. adv. covers, rifle co. and Seven Sutherland Sisters	—

78	2c Green (121), Woman Suffrage corner card, addressed to Mrs. Catharine Spear. Fine	—
79	2c Columbian (231) , from Chicago with illustr. hotel corner card also 2c Red entire with Pan-American Exposition corner card. Fine	—
80	2c Carmine, Spanish-Amer. Patriotic , Eagle, U. S. and Cuba flags design. Fine	—
81	World War I Censored Soldiers Mail , 55 covers. Good lot	—

ENTIRES

82	3c Pink, Entire (U59) . Tied with Chicopee, Mass. Masonic . V. G.	—
83	3c Green Entire (U82), " Ashton, Spink Co. D. T. " pmkd. inoval. V. G.	—
84	3c Green, Entire (U82), Wells Fargo Frank also advertising corner card from Santa Barbara, V. G., tied wit co. mark	—
85	3c Green, Entire (U82), Bamber & Co. Express Frank, tied. Fine	—
86	2c Brown Entire (U280), Stanwood, Wash. Terr. pmkd. Fair	—
87	Honolulu, Hawaii , four covers each different markins including "Hawaiian Steam Service" in red oval stamps cut off covers but interesting reference material	—

CARRIERS ON COVER

88	1c Blue, Eagle Carrier (L02) . Tied on small piece with red star. V. G.	5.00
89	1c Red, Baltimore Carrier (1LB7) . Ms. tied, stamp. Fine	60.00
90	1c Red, Baltimore Carrier (1LB7) . Ms. tied. Very good	60.00
91	1c Red, Baltimore Carriers (1LB7, 1LB9) . Both cancelled with pencil, part of address cut away on first. Fair	90.00
92	1c Red, Baltimore Carrier (1LB9) . Fine stamp, tied ms. cancel	30.00
93	3c Blue, U. S. City Despatch Post (6LB5) . Cancelled with red "U. S.", red "Paid" and New York pmkd. Very fine (Photo)	50.00
94	1c Rose, U. S. Mail (6LB9) . Not tied. Very good	40.00
95	1c Yellow, U. S. Mail (6LB10) . Tied with pen stroke. Fine	30.00

LOCALS ON COVER

96	5c Black, Amer. Letter Mail Co. (5L1) . Red cancel, not tied. Fine	7.50
97	5c Black, American Letter Mail Co. (5L2) . Ms. cancel, faint company marking in red. V. G.	15.00

98	3c Grayish, Blood Local (15L5). Cancelled with red "Paid", Light cover crease through stamp. Fine appearance (Photo)	40.00
99	Blood's Locals (15L8, 15L16), on small pieces, not tied. V. G.	27.00
100	Bloods (15L14-15, 15L18), on three covers, two used with 3c 1857 Issue. V. G.	17.50
101	Red, Envelope, Blood (15LU9). Company cancel. V. G.	15.00
102	2c Green, Boyd's Local (20L7). Tied with red New York cancel. Fine	5.00
103	2c Green, Boyd's Local (20L10), used with 3c 1857 Issue. V. G.	—
104	2c Orange, Brooklyn City Express (28L6). Pencil cancel, Brooklyn pmkd., stamp missing from cover	50.00
105	3c Grayish, City Despatch Post (40L1). Very fine large margin copy cancelled with neat bright red "Free", City Despatch Post pmkd. in red on front of cover. V. F., scarce (Photo)	150.00
106	1c Orange, Douglas City Despatch (59L4), purple cancel. V. G.	—
107	2c Black, Eagle City Post (61L2), tied with ms. cancel, red "Paid" on cover, stamp is a bit soiled. Good	25.00
108	5c Hale & Co. (75L1), red company cancel. Fine	10.00
109	Black, Hussey's Post (87L47). Tied with purple company cancel. V. F.	—
110	5c Pomeroy's Letter Express (117L1). Red "Cd" cancel, Boyds City Express Post in red octagon and "Free". Very fine (Photo)	25.00
111	1c Pink, Swart's (136L10). Tied with company marking, "Paid" on cover, stamp has corner crease. Fair	15.00

CONFEDERATE STATES ON COVER

192	5c Blue, Mobile (58X2). Tied with Mobile pmkd., Margins all around. Very fine (Photo)	40.00
193	5c New Orleans (62X3). Tied, stamp missing off cover, front only, also has Confederate seal with flag	25.00
194	5c New Orleans (62X4). Tied with town pmkd., close at top. Fine cover	20.00
195	5c Green (200). Tied from Newbern, N. C., Patriotic cover, Flag with eleven stars and poem, stamp cut in at right. Very good	15.00
196	5c Green (200). Two tied on Patriotic cover, Newbern, N. C. pmkd., stamps partly cover Soldier on Horse design. Fine (Photo)	—
197	5c Green (200). Two covers, both tied and diff. shades. Fine	16.00
198	10c Blue (201). Town tied. Fine	10.00

199	10c Blue (201). Tied from Mobile, large margins. Very fine	10.00
200	5c Blue (203). Tied with "Savanah, Ga. Paid" pmkd., on front of homemade cover. Fine stamp	9.00
201	10c Carmine Rose (204a). Tied on small cover with Oxford, N. C. pmkd. Fine though partly close at right. Scarce shade (Photo)	150.00
202	5c Blue (205-06). Five covers each with Pair tied, all diff. pmkds., also single covers of #210-11. Fine lot	12.00
203	5c Blue (206). Pair with ms. cancel, Patriotic Confederate Seal with flag. V. G.	—

UNITED STATES STAMPS

OFF COVER

1851-1857 ISSUES

204	1c Blue, Type Ib (30B). Very light ms. cancel, tiny closed tear. Fine appearance (Photo)	175.00
205 ★	1c Blue, Type III (32). Slight thins. Very fine appearing (Photo)	300.00
206	1c Blue, Type IV (32d). Recut twice at T and B, cut in top. V. G.	35.00
207	1c Blue, Type IV (32d). Recut once at B. Large margins, creased	17.50
208	3c Red (33), Collection of Plate Varieties, 62 stamps, includes some cancels and shades (Est. \$17.50 net)	—
209	10c Green, Type II (35B). Sheet margin at left. Very fine (Photo)	10.00
210	1c Blue, Type Ia (40B). Very light cancel, centered to bottom and right. Fine, scarce (Photo)	125.00
211	1c Blue, Type II (41). Horiz. pair, one stamp has tear. Fair	25.00
212 ★田	3c Red (44), Block of 6. Very fine except perf. pulled out on one stamp. O. G.	6.75
213	3c Red (44), Fifteen Plate varieties, two unused. V. G.	—
214 ★	10c Green, Type V (50), Pair. Very fine, o. g. (Photo)	17.50
215	30c Orange (53). Rather heavy grid cancel. Good	25.00

1861-1869 ISSUES

216 ★田	1c Blue (63), Block. Centered bit to right. Very good, o. g.	40.00
217 ★	12c Black (69). Perf. short. Good, part o. g.	20.00

218 ★	90c Blue (72). Perfs in left. Very good, o. g.	50.00
219 ★	5c Black Brown (76a). Very good	35.00
220 ★	5c Black Brown (76a). Perfs in left. Very good	35.00
221	1c Buff (112). Centered to right. Fine	5.00
222 ★	15c Brown & Blue (119). Fresh, centered to top. Very good	25.00
223 ★	24c Green & Violet (120). Perfs cut in right, tiny hole caused by pierced grill point. O. G.	75.00
224	24c Green & Black INVERTED CENTER (120b). Margins skillfully added, Very fine appearing copy of this rarity (Photo)	1200.00
225 ★	30c Blue & Carmine (121). Well centered, light crease. V. F. appearance (Photo)	85.00
226 ★	2c Brown, Re-Issue (124). Fine, o. g. (Photo)	17.50

BANKNOTES

227 ★	1c-10c Banknotes (157-159, 161, 182, 189). Fair, part o. g.	38.25
228	6c Dull Pink, 7c Vermilion (159-60). Foreign Mail cancels. Very fine	—
229 ★	10c Brown, 5c Blue (161, 185). Good	27.50
230 ★	5c Blue (185). Fine, part o. g.	12.50
231	6c Pink (186). Thirteen copies each with diff. type numeral cancel. Fine	16.25+
232	3c Green. Fine strike of Face in Sun Rays from New York	—
233	3c Greens; two N. Y. Foreign Mail cancels. Types 24N and 81, scarce V. G.	—
234	3c Greens, about 1500 mounted selected for cancellations, includes colored, stars, crosses, numerals, letters, geometrics, etc. Good lot	—
235	6c Banknotes, Collection of fancy cancels. 215 stamps, includes colored shields, crosses, numerals, foreign mails, stars, geometrics, etc. Nice lot (Estimate \$110.00 net)	—
236	Cancellations, 227 stamps mostly 1c-3c Banknotes, mounted mostly commoner type cancels (Est. \$7.50 net)	—
237 ★田	5c Brown (205), Block, one stamp has thin spot. Fine appearing, o. g.	22.50
238 ★田	1c Gray Blue (206). Block. Fine o. g.	7.00
239 ★田	1c Gray Blue, 2c Red Brown (206, 210). Blocks, each has str. edge. O. G.	10.50
240 ★田	10c Brown (209). Block. Very good o. g.	15.00
241 ★田	1c-2c Blocks (210, 219, 231, 279). Very good, o. g.	9.75

242	★田 4c Blue Green (211). Block. Very fine o. g.	(Photo)	30.00
243	★田 1c Ultramarine (214). Block. Fine o. g.		8.00
244	★田 4c Carmine (215). Block. Very good, o. g.		20.00
245	★田 4c Carmine (215). Block. Very good o. g.		20.00
246	★田 5c Indigo (216). Block, centered to top. Very good, o. g.		20.00
247	Arrow and Corner Guide Lines, 555 stamps from 1881-1938 all showing position lines, interesting study lot		

1890-1898 ISSUES

248	★田 1c Blue, 2c Carmine (219, 220). Blocks, two shades of each. Very good		9.00
249	★田 2c Lake Imperforate (219d). Block of 8. Very fine, no gum		32.00
250	★田 2c Carmine, Cap on both "2" (220c). Block, well centered, str. edge at left		48.00
251	★田 4c Dark Brown, 5c Brown (222-23). Blocks. Fine		25.50
252	★田 4c Dark Brown, 8c Lilac (222, 225). Blocks. Fine		22.50
253	★田 6c Brown Red (224). Block, well centered, one stamp has thin spot		12.00
254	★田 6c Brown Red, 8c Lilac (224-25). Blocks. Very good		21.00
255	★田 10c green (226). Block, centered to B. Very good		20.00
256	★田 1c-2c Columbians (230-31). Blocks. Fine		5.50
257	★田 4c Columbian (233). Block, slight scrape on one stamp. Finely centered		14.00
258	★田 4c Columbian (233). Block. Fine		14.00
259	★田 5c Columbian (234). Block. Fine		10.00
260	★田 4c Brown (254). Block, well centered, str. edge at top		15.00
261	★田 5c Chocolate (255). Block. Very fine		12.00
262	★田 6c Dull Brown, 3c Purple (256, 268). Blocks. Very good, light crease on 6c		18.50
263	★田 \$2.00 Dark Blue (262). Bottom Imprint Plate No. Block of Six, Perfs. in T. & L. Rare in any condition	(Photo)	1000.00
264	★ 2c Carmine (267). Imprint Plate No. strips of 3, 38 diff. numbers. V. G.-V. F.		15.20
265	★ 2c Carmine (267). Imprint Plate No. strips of 3, 69 diff. numbers, V. G.-V. F.		27.60
266	★田 15c Olive Green (284). Left Arrow Block. Scarce, unpriced, fine (Photo)		—
267	★ 50c Trans-Miss. (291). Thin spot, no gum. Fine appearance		27.50
268	★ \$1.00 Trans-Miss. (292). Fine	(Photo)	50.00

TWENTIETH CENTURY

269 ★	1c Pan-American (294), Sheet of 100, part of sheet margins off. Fine—very fine centering	64.00
270 田	5c Pan-American (297). Block, town cancel. Fine	12.00
271 ★	10c, 13c, 15c (307-09). Fine—V. F.	9.75
272 ★	50c Orange (310). Reperfed at R. Very fine appearance	15.00
273 ★	50c Orange (310). Well centered, defective at top	15.00
274 ★	\$1.00 Black (311). Very fine (Photo)	30.00
275 ★田	1c Blue Green, Imperf. (314). Block. Very fine	8.00
276 田	1c, 2c Imperforates (314, 320). Used blocks. Fine	17.00
277 田	1c-5c Jamestown (328-30). Set of used blocks, latter block of 6. Very good	30.00
278 ★田	2c Jamestown (329). Two plate blocks of 4. Fine	7.00
279 田	1c-5c Imperforates (343-347). Set of used blocks. Fine	31.50
280 田	3c Deep Violet, Imperf. (345). Block, lightly creased. V. F. appearance	8.00
281 ★	4c Orange Brown, Coil (350). Pair. Very fine	20.00
282 ★	5c Blue, Coil (351). Line pair. Very fine	18.00
283 ★	2c Carmine, Coil (353). Pair. Very fine	5.00
284 田	2c Commems. (367-68, 370-73), Used blocks, three have minor thins, balance fine	39.50
285 ★	2c Lincoln Bluish (369). Centered bit to left. Fine	12.50
286 田	1c-2c Imperfs. (383-84). Used blocks, two of latter, one being arrow block. Fine	15.00
287 田	2c Carmine, Imperf. (384). Block, lightly cancel. Very fine	7.00
288	PRECANCELS, Early issues, high values, commems., several hundred, nice lot	—
289 ★	1c Green, Coil (387). Pair, well centered one stamp has small thin	10.00
290 ★	1c-2c Pan-Pacific (397-98). Sheets of 70 of each. Very good	93.00
291 田	2c-10c Pan-Pacific (398-400). Used blocks, latter a block of 6. V. G.—Fine	22.90
292 ★	2c Pan-Pacific "Lake Shade" (398). Rare shade. V. G.	—
293 田	1c Pan-Pacific, 3c Victory (401, 537). Blocks, light cancels. Fine	6.75

1912 TO DATE

294	田	1c-7c (405-07). Used blocks. V. G.-Fine	16.00
295	田	30c Orange Red (420). Block, lightly cancel. Fine	10.00
296	田	50c Violet (421), Block, Precancelled Seattle, Wash., partly reenforced. Fine	20.00
297	田	2c, 7c, 13c (430, 513, 539). Lightly cancelled blocks. Very fine	15.00
298		3c Violet, Coil No. 456 (5). Fair-Fine	25.00
299	田	\$5.00 Light Green (480). Block of 6, town cancel. Very fine	17.00
300	★	\$5.00 Light tGreen (480). Fine	12.00
301	田	1c-3c Imperfs. (481-83). Used blocks. Fine	5.75
302	★	1c-2c Booklet Panes (498F, 499E). Fifteen panes all showing guide lines. V. G.-V. F.	5.25+
303	★	10c Yellow (510). Set of four diff. positions of plate no. strips of 3. Fine	7.80+
304	★	20c Ultramarine (515). Set of four diff. positoin in plate no. strips of 3. V. G.-Fine	30.00+
305	★	1c-20c Freaks and Oddities, 33 stamps mostly in blocks, 1917-22 issues, in- teresting lot (Est. \$15.00 net)	—
306	★	\$5.00 Deep Green & Black (524). Fine	12.50
307	★	\$5.00 Deep Green & Black (524), Arrow Pair. Very fine centering (Photo)	—
308	★田	\$5.00 Deep Green & Black (524), Center Line Block. Fine	(Photo) 85.00
309	★田	1c Offset Imperf. (531). Set of four diff. corner blocks, faint gum break on one balance. Very fine	36.00
310	★	1c-2c Offset Imperf. Shermack Perf. (531-32, 532c). V. G.-V. F.	13.50
311	田	3c Victory, 2c Hardings (537, 611-13). Used blocks, two of first. V. G.-V. F.	7.95
312	★	3c Victory, Red Violet Shade (537a). Fine	(Photo) 20.00
313	田	\$2.00 Carmine & Black (547). Used block, centered to right. Fine	8.00
314	田	1c-5c Pilgrims (548-550). Set of used blocks. Very fine	9.00
315	★	12c Brown Violet (564). Pair with wide paper fold. Scarce oddity (Photo)	—
316	★	\$5.00 Carmine & Dark Blue (573). Very fine	10.00
317	★田	\$5.00 Carmine & Dark Blue (573). Top margin double plate & arrow block of 12. Very fine mint	(Photo) 145.00
318	田	1c-10c Rotary (581-91). Set used blocks. V. G.-Fine	7.75

319	★	2c Carmine, Coil Type II (599a). Pair. Very fine	6.00
320	田	1c-5c Hug.-Walloon (614-16). Set of used blocks. Very fine	10.65
321	田	1c-5c Lex.-Concord (617-19). Set of used blocks, 2c creased others fine	9.10
322	田	2c-5c Norse-Amer. (620-21). Used blocks, first is Plate Arrow block of 8. V. G.-Fine	12.00
323	田	5c Norse-American (621). Top arrow block, town cancel. Very fine	8.00+
324	★	2c White Plains Exhibit. Sheet (630). Fine	12.50
325	★	1c-10c Kans. (658-668), Set, centered average to very fine	9.57
326	★	1c-10c Kans. & Nebr. (658-679). Complete sets. Fine-V. F.	20.35
327		1c-10c Kans. (658-68), Set. V. G.-Fine	6.91
328	★田	1c-10c Kans. (658-668). Set of blocks, centered average to very fine	44.60
329	田	1c-10c Kans. (658-668), Set of blocks, lightly cancelled. V. G.-Fine	33.45
330	田	1c-10c Kans. (658-668). Set of used blocks, lightly cancel. Fine	33.45
331	★田	3c-7c Kans. (661-65). Blocks. V. G.-Fine	19.50
332	★	1c-10c Nebr. (669-679), Set. Fine	10.78
333	田	1c-10c Nebr. (669-679). Set of used blocks, lightly cancel. Fine	39.00
334	★田	1c-10c Nebr. (669-679). Set of blocks. Fine	52.15
335	★	2c Pulaski (690). Three sheets of 100 each. V. G.-V. F.	18.00
336	★田	3c N.R.A. (732). Block very Dry Plate , design of stamp barely discernible. Scarce oddity	—
337	★田	3c N.R.A. (732). Block of 6 showing graduation of Dry Plate . Scarce	—
338	★	1c-5c Commems. 12 diff. also 50c Zeppelin. Fine	7.70
339	★	1c-2c Parks (740-41). Sheet of 50 of each. Fine	4.00
340	★田	1c-10c Park, 3c Mothers Day, Wisconsin, 16c Air Special, Farleys (754-765, 771). Center line blocks . Very fine	67.00
341	★田	1c Defense (899a). Block of 6 with one pair Imperforate Between others have a few perfs. Fine	—
342	★田	1c Defense (899a). Block of 6 with one pair Imperforate Between others have a few perfs. Fine	—
343	★田	1c Defense (899a). Block of 8 containing one block of 4 Imperforate Between . Fine, scarce	—
344	★田	1c Defense (899a). Block of 10 containing one block of 4 Imperforate Between . Fine, scarce	—

Post

ADAMS EXPRESS CO
BROWNSVILLE
TEXAS

1

as Wendell

30

PAID 10



27

PAID 10



PAID

37

JUN 20

Mrs. Samuel Miller 28

NEW YORK
SEP 28

38



39

PORTLAND
FEB 24
CONN

48



CITY
DESPATCH
PAID
BOSTON

40

Mrs. Emma A. Stearns



NEW YORK
JUN 27

61



*Wm. C. Manning
Hartford*

NEW YORK
JUN 24
N.Y.



69

Post



93

CITY
DESPATCH
PAID
NEW YORK

105

*Henry A. Schercraft Esq.
224 Avenue St.
New York*



98

*Wm. C. Manning
Hartford*



ADAMS EXPRESS CO
FREE

110

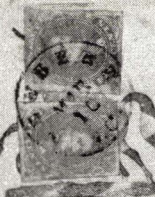
*Mrs. Richard & Co
30 Pine St.
N.Y.*

*M. S. of June 12, 62
vic. 21st July 1862
Apr. 23rd 62
100.00 in 200.00
M. S. sent in a new
book to her*

*Mrs. N. B. Seabury
Lewinsburg*



1201



196

*White banner of freedom with guide I asked thee
For flag of my country, with stars I could the
Globe no longer see in darkness and night
Banner of liberty, symbol of truth
The flag of my country is the flag of the world
The flag of the Southwestern States*

*Mrs. Richard Manning
Fort Washington
Clayton, Pa.
August 1862*



192

*H. Richardson
Hartford
Conn.
Alabama*



204



205



209



210



214



224



225



226



268



274



307



312



315



356



366



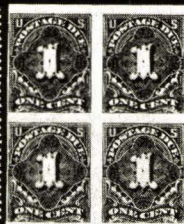
242



263



266



354



308



317



422



423



429



430



432



433



435



436



437



438



441



445



447



458



456



459



460



461



462



467



468



469



470



471



496



497



513



510



521



528



530



532



534



535



536



552



561



563



565



567



570



587



591



594



603



676



677



679

345 ★	1c Defense (899). Ten sheets of 100 each. Fine-Very fine	20.00
346 ★	5c Korea. Sheet of 50. Very fine	—
347	U. S. COLLECTION, Postage only, 467 diff. mounted in album, some unused, average condition	206.87

AIRMAILS, OFFICIALS, ETC.

348 ★	6c Orange, Airmail (C1). Center line block. Fine	17.50
349	6c-24c Airs (C1-C3). Set of used blocks. Fine	25.00
350	8c-24c Airs (C4-C6). Set of used blocks. Fine-V. F.	23.25
351 ★	10c Lindbergh (C10). Plate No. block of 4 with freak perforations running through center of stamps. Scarce oddity	—
352 ★	65c Zeppelin (C13). Fine except no gum	12.50
353	50c Zeppelin (C18). Block, lightly cancel. Fine	15.00
354 ★	1c Claret IMPERFORATE (J31a). Block. Fine	(Photo) 40.00
355	2c Executive (O11). Fine	20.00
356 ★	10c Executive (O14). Very fine	(Photo) 27.50
357 ★	3c Interior (O17). Fine	5.00
358 ★	24c Interior (O103). Perfs. in top. Very good, o. g. Scarce	75.00
359 ★	1c War No. O114 (71) in blocks. V. G.-Fine	16.40
360 ★	1c-6c War (O114-117). Imprint blocks of 6 to 16. V. G.-V. F.	24.10+
361 ★	1c, 6c War (O114, 117). Blocks of 30 of each. Fine	21.40
362 ★	2c-6c War No. O115 (19), O116 (6), O117 (31), in blocks of 4 or larger. V. G.-V. F.	32.70
363 ★	12c War (O119). Plate no. blocks of 12, Very good	18.00
364 ★	\$60.00 Purple, Newspaper (PR79). Fine	45.00
365	3c Green, Carrier (6LB6). Red octagon "U. S." cancel, nice margins. Fine	40.00
366 ★	3c+1c Red and Blue, Cut Square (U29). Fine	(Photo) 20.00
367 ★	5c Blue on Fawn (U176). Fine	15.00

REVENUES

368	6c PROPRIETARY (R31c). Lower left corner rounded. Very good space filler. Scarce	300.00
-----	--	--------

369	5c-25c First Issue Revenues. Five diff. each with red handstamp cancel. Attractive	—
370	15c Inland Exch. Imperf. (R40a). Vertical pair, skillfully repaired. V. F. appearing	20.00
371	50c Surety Bond, Imperf. (R63a). Very fine margins, small tear	20.00
372	70c Foreign Exch. Imperf. (R65a). Attractive handstamp, corner tear. V. F. appearance	25.00
373	\$1.60 Blue & Black. Second Issue (R121), minor defects. Very fine appearance	27.50
374	Battleship Revenues, all with Printed Cancels , 600 stamps, wide variety of values and cancels, interesting and scarce specialist lot	—
375	Battleship Revenues, 18 diff. all with postal cancels from Kennebunk Beach, Me.	—
376	\$1,000 Green & Black (R181). Repaired, good space filler	60.00
377	2c, 3c 1895 Issue, regular postage issue with printed Dr. K. & Co. I. R. cancels, three diff., scarce, fine	—
378	Revenue Stamped Paper (RNT3-4), on two attractive illustr. Boston & Worcester R. R. stock certificate. V. F.	8.00
379	Revenue Stamped Paper, same as above. V. F.	8.00
380	State Revenues, Calif. and Georgia, 18 diff. part unused, priced over \$30.00 in state rev. cat., nice lot	—
381 ★	Confederate States New Orleans, 2c Blue (62X1). Fine o. g.	15.00
382 ★	— New Orleans, 5c Brown (62X5). Very fine, o. g.	15.00
383 ★	—1861-62, 5c Green, 5c Blue (200, 203, 203a). Very good	20.00
384 ★田	—1863-64, 5c, 10c, 20c (205-06, 210, 210a, 11-12). Blocks. Very fine, o. g.	18.65

U. S. WHOLESALE

385	2c Lake No. 219d (500). Very good	30.00
386	1c-2c 1893-1916 No. 231(600), 264(200), 300(600), 319(300), 453(100), 490(300). Very good	54.00
387	2c Pink No. 248 (100). Very good	35.00
388	2c Carmine Lake, 2c Carmine No. 249, 251 (100 of each). Very good	35.00
389	Same as above. V. G.	35.00
390	2c Carmine No. 265 (300). Very good	30.00

391	2c Carmine No. 266 (100). Very good	40.00
392	2c Imperf. Shermack Perf. No. 344, 384 (50 mixed), No. 409, 482 (100 mixed). V. G.	22.50+
393	2c Commems. No. 655-56-57, 690, 702, 716 (50 of each). V. G.-Fine	10.00
394	1c-5c Commems. No. 719, 24, 28-9, 72-3, 82, 99, 800, 38 (50 of each). V. G.- Fine	12.50
395	\$2.00-\$5.00 Presidential No. 833(40), 834(10). Good-Fine	28.50
396	5c-10c Famous Americans , 20 of first and 60 of latter mixed. V. G.	—
397	5c Flags (200 mixed). Fine	—
398	United States , two booklets mounted, mostly 19th Century, priced to sell sometime ago at \$122.00 net, catalogues at least \$300.00	—
399	1c-2c 1890-1917 Issues , about 20,000 stamps some on paper, mostly 2c tri- angles	—

BRITISH COLONIES

400 ★	AITUTAKI , 1903-16, ½p-1/ (1-12). Very fine	12.70
401 ★	—1917-27, ½p-1/ (19-24, 27-36). Very fine	6.25
402 ★	ANTIGUA , 1913, 5/ Violet & Green (41). Very fine	7.50
403 ★	—1938, ½p-5/ George VI (84-93). Complete set. Very fine	4.91
404 ★	ASCENSION , 1922, 8p Dull Violet & Black (6). Very fine	3.00
405 ★	BAHAMAS , 1920, ½p-1/ Peace Commem. (65-69). Complete set. Fine	4.45
406 ★	BARBADOS 1892-03, 5p-2/6 (75-79). Fine-V. F.	8.75
407 ★	—1897, 6p Jubilee (86). Very fine	3.00
408 ★	—1920, 2p-3/ Victory Issue (143-150). Fine	12.55
409 ★	—¼p-3/ (165-179 except 1932-35 values). Very fine	8.41
410 ★	BASUTOLAND , Geo. V, VI, Jubilee and Coronation Sets (1-7, 11-25). Very fine	5.52
411 ★	BECHUANALAND , 1914, 2/6, 5/ (94-95). Very fine	10.00
412 ★	—1925-38, Geo. V, VI, Jubilee and Coronation Sets (96-11, 117-131). Very fine	7.32
413 ★	BERMUDA 1917-20, 2/6, 5/ (50, 52). Fine	5.75
414 ★	BRITISH COLONIES IN AFRICA , Collection mostly 20th Century un- used, some used, mounted on Scott Specialty Sheets in binder. Fine lot	105.40

415 ★	BRIT. EAST AFRICA , 1898, 2R Orange (103). Fine	5.00
416 ★	BRITISH HONDURAS , 1938, 1c-\$5.00 George VI (115-126). Complete set. Very fine	18.30

BRITISH SOLOMON ISLANDS

417 ★	1907, ½p-2½p, 6p (1-4, 6). Fine	8.35
418 ★	1908-11, ½p-1/ (8-15). Very fine	4.20
419 ★	1913-37, ½p-2/, 22 diff. includes Jubilee Set (Bet. 19-66). Very fine	12.73
420 ★	1914-23, ½p-5/ (28-31, 33-39). Very fine	11.33
421 ★	1914-23, 10/ Green & Red (40). Very fine	10.00
422 ★	1914-23, £1 Violet & Black (41). Very fine (Photo)	20.00
423 ★	1925, 10/ Green & Red (56). Very fine (Photo)	15.00
424 ★	1939-43, ½p-10/ George VI (67-79). Complete set. Very fine	9.52
425 ★	BRUNEI , 1906, 1c-10c (1-8). Very fine	12.10
426 ★	—1907-31, 1c-50c, thirty diff. (Bet. 13-61), six used. Very fine lot	17.75
427 ★	—1908, \$5.00 Lake (38). Very fine	6.00
428 ★	—10c Violet, Yellow (42). Very fine, not priced	—

CANADA

429	1851, 3p Red (1). Very fine (Photo)	17.50
430	1851, 6p Violet (2). Very fine, nice margins all around (Photo)	35.00
431	1852-55, 3p Red (4). Grid cancel, bit heavy, V. G.	6.00
432	1852-55, 6p Purple Black (5). Fine (Photo)	35.00
433	1855, 10p Blue (7). Large margins, thin. Very fine appearance (Photo)	60.00
434	1857, ½p Rose (8). Three nice margin, cut in top. V. G.	25.00
435	1857, 7½p Pale Green (9). Neat small even margins. Very fine (Photo)	85.00
436	1857, 6p Dull Violet (10). Sheet margin at left. Fine, scarce (Photo)	150.00
437 ★	1858, ½p Rose (11). Centered trifle right. Very fine for this (Photo)	75.00
438	1858, 3p Red (12). Very fine (Photo)	17.50
439 ★	1859-1926, ½c-50c (Bet. 14-140). Nineteen diff. Good-V. F., five used	12.71
440	1859, 5c Vermilion, 10c Violet (15, 17). Very fine	4.15

441	1859, 10c Black Brown (16) . Lightly cancelled, well centered. Very fine (Photo)	50.00
442 ★	1859, 10c Red Lilac (17). Fine, bright, no gum	15.00
443 ★	1859, 12½c Yellow Green (18). Perfs in at B. V. G.	12.00
444	1859, 17c Blue (19). Fine	8.50
445 ★	1859, 17c Blue IMPERFORATE (19b) . Sheet margin at right. Very fine, o. g. Scarce (similar item recently sold at auction at over catalogue) (Photo)	125.00
446	1864, 2c Rose (20). Well centered, tiny thin spot	10.00
447 ★	1864, 2c Rose IMPERFORATE (20a) . Horiz. pair. Very fine (Photo)	100.00
448 ★	1868-77, ½c Black, 1c Brown red (21-22). Fine, last without gum	11.75
449	1868-77, 1c, 2c, 15c (23, 27-8, 32). V. G.-Fine	8.50
450 ★	1868-77, 3c, 6c, 12½c (24-26). V. G.-Fine, no gum	33.50
451 ★田	1868-77, 15c Gray (28). Block Very good, part o. g.	12.00+
452 ★	1870-93, ½c-20c (33-4, 37, 39, 43, 45-6). Fine	8.75
453 ★	1870, 3c Rose (36a). Very fine part o. g.	8.00
454	1870-90, 5c, 6c, 10c, 10c (38, 40-42). Fine	9.00
455 ★田	1890, 6c Red Brown (39) Block. Very good, o. g.	7.00+
456 ★	1888, 10c Brown Red, Imperforate (41c) . Imprint strip of 4. Very fine ex- cept for light crease on one stamp. Scarce piece (Photo)	40.00+
457 ★	1897, ½c-50c Jubilees (50-60) . Very fine	18.05
458 ★	1897, \$1.00 Lake, Jubilee (61) . Fine (Photo)	15.00
459 ★	1897, \$2.00 Dark Purple, Jubilee (62) . Very fine (Photo)	40.00
460 ★	1897, \$3.00 Yellow Bistre, Jubilee (63) . Well centered, large hinge on back makes only part o. g. (Photo)	40.00
461 ★	1897, \$4.00 Purple, Jubilee (64) . Perfs. just touch at top (Photo)	40.00
462 ★	1897, \$5.00 Olive Green, Jubilee (65) . Very fine (Photo)	40.00
463 ★	1897, 3c-10c (69-73). Fine	6.25
464 ★	1897, 3c Carmine (69). Wide sheet margin copy Imperforate at left , inter- esting variety. V. F.	—
465 ★	1898-02, ½c-20c Victoria (74-84). Complete set. Fine, 5c and 8c are used	14.14
466 ★	1903-08, 1c-20c Edward (89-94). Three without gum. Fine	10.27

467 ★	1908, 50c Purple (95) . Very fine (Photo)	22.50
468 ★	1903-08, 1c Gray Green, Imperforate (89a). Horiz. pair Very fine, no gum (Photo)	25.00
469 ★	1903-08, 5c Blue, Imperforate (91a). Horiz. pair. Very fine no gum (Photo)	40.00
470 ★	1903-08, 7c Olive Bistre, Imperforate (92a). Horiz. pair. Very fine, no gum (Photo)	25.00
471 ★	1903-08, 10c Brown Lilac Imperforate (93a). Horiz. pair. Very fine, no gum (Photo)	30.00
472 ★	1908, ½c-20c Quebec Issue (96-102). Complete, several without gum. Fine	10.10
473 ★	1912-25, 1c-\$1.00 George V (104-122). Complete set. Fine-Very fine	12.75
474 ★	1914-24, 1c-3c Coils (123-134). Complete in Pairs. Very fine	14.10
475 ★	1924, 1c, 2c (126, 128). Pairs, thick paper, first printing. V. F.	—
476 ★	1924, 1c-3c Imperforates (136-38). Horiz. pairs. Very fine	6.00
477 ★	1927-42, 1c-\$1.00 (Bet. 141-259 also Airs and Special Del.), 130 diff. stamps, face value \$13.07. Very fine lot mounted in Roosevelt Album with pages for balance of Canadian stamps	—
478 ★	1928-29, 1c-\$1.00 (149-159). Complete set. Fine-V. F.	6.25
479 ★	1928-37, 1c-\$1.00 (231-36, 241-45, C1, C6, E7) all perforated " O.H.M.S. ". Very fine	—
480 ★	1875-89, 2c Scarlet Registration (F2). Very fine, no gum	5.00
481 ★	1875-89, 8c Blue, Registration (F4). Very fine	12.00
482 ★	1906-35, 1c-10c Dues (J1-J18). Complete. Very fine	3.51
483 ★	1916, 2c+1c War Tax Coils (MR6-7, 7a). Pairs both types on latter. Very fine	9.00
484	CANADIAN REVENUE COLLECTION , 358 different mounted in Roose- velt album. Very fine lot (Est. net \$125.00)	—
485 ★	CAPE OF GOOD HOPE , 1857, 1p Rose, triganglar (3). Fine, no gum	15.00
486	—1857, 1p Rose, triangular (3). Two, creased, fine appearing	20.00
487	—1858, 1/ Yellow Green, triangular (6). Fine	15.00
488 ★	CAYMAN ISLANDS , 1925, 5/ Green (62). Two copies, thick and thin paper. Fine	7.00

COOK ISLAND

489 ★	1892, 1p, 1½p, 10p (4-6). Fine	7.80
490 ★	1893-1902, ½p-1/ (Between 9-47). Twenty-eight diff., three used. Fine lot	14.90
491 ★	1919-20, ½p-1/ (48-66). Very fine sets	10.25
492 ★	1921, 2/-£1 (67-71). Complete set. Very fine	25.00
493 ★	1932-40, ½p-3/, twenty-nine diff. (Bet. 72-115). Very fine	12.25
494 ★	1931, 2/6-£1 (80-83). Complete set. Very fine	20.75
495 ★	1933-36, 2/6-£1 (103-106). Very fine	14.25
496 ★	1933, £3 Light Green (107). Very fine (Photo)	18.00
497 ★	1933, £5 Dark Blue (108). Very fine (Photo)	30.00
498 ★	DOMINICA , 1919-23, 2/, 2/6 (46, 63). Well centered, latter has two perfs. short	8.00
499 ★	—1914, 5/ Green & Scarlet (54). Well centered, crackly gum	7.50
500 ★	—1927, 3/, 5/ (80, 82). Very fine	4.75
501 ★	—1923-33, 3/, 5/ (83-84). Very fine	8.50
502 ★	—1938, ½p-5/ George VI (97-107). Complete set. Very fine	4.93
503 ★	EAST AFRICA & UGANDA , 1907-08, 1c-75c (31-39). Complete set. Very fine	5.83
504 ★	—1912-18, 1c-3R (40-51). Very fine	10.99
505 ★	EGYPT , 5pa-5Pi (29-32, 35-41). V. G.-V. F.	18.91
506 ★	—1921-22, 1m-100m (61-76), 1m used, complete set. Very fine	9.35
507 ★	—1923-24, 50m, 200m (100, 102). Very fine	5.00
508 ★	—1925, 5m-15m Geographical Congress (105-107). Complete set. Very fine	4.50
509 ★	—1926, 50Pi KingFuad (114). Fine	8.00
510 ★	—1926-31, 9 complete Pictorial and Commemorative Sets (115-120, 125-7, 152-8, 163-5, 204-7). Very fine	7.83
511 ★	—1926-43, 13 complete sets of Picts., Comm., Airs, Sp. Del. (208-23, 225-33. B1, C1-2, E1-3). Very fine	9.90
512 ★	—1926-35, 1m-50m Officials (O39-046, O48-O59). Very fine	3.91

FALKLAND ISLANDS

513 ★	1868, The Black Frank . Very fine (Sells for \$15.00 in England) (Photo)	—
514 ★	1868, The Red Frank . Very fine (Sells for \$10.00 in England)	—
515 ★	1878, 1p Claret (1). Wide str. edge at B., nicely centered	15.00
516 ★	1884-86, 1p Claret (5, 7). V. G.—Fine	7.00
517 ★	1891-96, ½p-1/ (9-18). Complete set. Fine	22.50
518 ★	1891-96, ½p-1/ (9-18). Complete set. Fine	22.50
519	1891, ½p on half of 1p Claret (19E). Tied on small piece. Very fine (Photo)	25.00
520	1891, ½p on half of 1p Orange Brown (19G). Tied on small piece with 4p (4). Very fine	17.50
521 ★	1898, 2/6 Dark Blue (20). Very fine (Photo)	15.00
522 ★	1898, 5/ Brown Red (21). Very fine	10.00
523 ★	1904-05, ½p-1/ (22-27). Very fine	6.75
524 ★	1904-05, ½p-1/ (22-27). Fine	6.75
525 ★	1905, 5/ Dull Red (29). Very fine	10.00
526 ★	1912, ½p-5/ (30-37). Very fine	14.95
527 ★	1912-1914, 5/, 10/ (38-39). Very fine	10.50
528 ★	1912, £1 Red (40). Very fine (Photo)	15.00
529 ★	1921-25, ½p-3/ (41-48). Complete set. Very fine	7.15
530 ★	1928, 2½p on 2p Provisional (52). Very fine (Photo)	100.00
531 ★	1929-32, ½p-10/ (54-63). Very fine	17.51
532 ★	1929, £1 Red (64). Very fine (Photo)	20.00
533 ★	1933, ½p-2/6 Centenary Issue (65-73). Very fine	28.85
534 ★	1933, 5/ Centenary Issue (74). Very fine (Photo)	30.00
535 ★	1933, 10/ Centenary Issue (75). Very fine (Photo)	45.00
536 ★	1933, £1 Centenary Issue (76). Very fine (Photo)	90.00
537 ★	1938-41, ½p-£1 George VI Issue (84-95). Complete set. Very fine	20.95
538 ★	1944, ½p-1/ George VI, surcharged "Dependency" (4 diff. sets). Very fine	—
539 ★	Balance of Collection , 32 stamps includes some duplicates and shades, nice lot 19th & 20th Century	57.80
540 ★	GAMBIA , 1880 ½p-3p (5-8). Fine	9.00

541 ★	—1886-87, ½p-1/ (12-19). Complete set. Very fine	6.30
542 ★	—1902, 1/ Bluish Violet and Green (35). Very fine	7.00
543 ★	—1922-27, ½p-5/ (102-110, 112, 114-15, 118-19). Very fine	13.27
544 ★	—1922, 5/ Dark Green and Black (124). Very fine	10.00
545 ★	GOLD COAST 1938-41, ½p-10/ George VI (115-127). Complete set. Very fine	9.83
546 ★	GREAT BRITAIN , British Offices Abroad, 1941-2, M.E.F. (1-9, J1-J5), E.A.F. (1-8). Very fine	5.18
547 ★	—MORR. AGENCY-SP. CUR., 1912, 6p on 5/ (44). Very fine	5.00
548 ☒	—1908, 1p Red tied from London attractive illustr. cover commems. penny postage also unused Mulready Caricature cover. V.F.	—
549 ★	JAMAICA , 1875-90, 1p-2/ (14, 18, 20, 23). Fine	8.00
550 ★	—1920, 3/ Orange & Violet (85). Very fine	8.00
551 ★	LEEWARD ISLANDS , 1890, 1/ Green & Carmine (7). Very fine	4.00

MALTA

552 ★	1860, ½p Buff, Bluish (2),, well centered, no gum. Scarce (Photo)	40.00
553 ★	1863-81, ½p (3, 5-7). Fine, #5 is used	12.75
554 ★	1874, ½p Golden Yellow (4). Very fine	13.50
555 ★	1885-89, ½p-5/ (8-15, 17). Fine-Very fine	14.32
556	1889, 10/ Blue Black (18). Fine used copy	9.00
557 ★	1903-04, ½p-1/ (21-27). Complete set. Very fine	8.60
558 ★	1904-11, 1f-5/ (28-41). Complete set. Very fine	15.99
559 ★	1904-15, 4½p-1/ (42-45, 62-63). Very fine	8.25
560 ★	1914-21, ¼p-2/ (49-60). 2p used. Very fine	10.01
561 ★	1914, 5/ Scarlet and Green on Yellow (61). Very fine (Photo)	18.00
562 ★	1919, 2/6 Olive Green (64). Very fine	12.50
563 ★	1919, 10/ Black (65). Very fine. Rare (Photo)	175.00
564 ★	1921-22, ¼p-2/ (66-74). Very fine	9.01
565 ★	1919, 10/ Black (76) . Very fine (Photo)	50.00
566 ★	1922, ½p-2/6 (77-81, 83). Very fine	9.31
567 ★	1922, 2/ Ultramarine and Dull Violet (82). Very fine (Photo)	17.50

568 ★	1922, 2/6 Olive Green (83). Fine	5.00
569 ★	1922, 5/ Scarlet and Green (84). Very fine	10.00
570 ★	1922, 10/ Blue Black (85) . Fine (Photo)	40.00
571 ★	1922, ¼p-2/ (86-94). Very fine	7.64
572 ★	1922, 10/ Black (96). Very fine	17.50
573 ★	1922-26, ¼p-10/ (98-113). 1½p used. Very fine	15.44
574 ★	1922-26, 2/-10/ (110-113). Very fine	12.50
575 ★	1922, £1 Carmine Red and Black (114). Very fine	10.00
576 ★	1926, ¼p-10/ (116-125, 127-129). Very fine	14.43
577 ★	1926, 2/ Ultramarine and Olive Brown (126). Very fine	10.00
578 ★	1926-27, ¼p-3/ (131-141). Very fine	9.61
579 ★	1926-27, 5/, 10/ (146-147). Fine	10.50
580 ★	1928, ¼p-3/ (148-164). Very fine	9.00
581 ★	1928, 5/, 10/ (165-166). Very fine	10.50
582 ★	1930, ¼p-3/ (167-81). Very fine	7.23
583 ★	1930, 5/, 10/ (182-183). Very fine	10.00
584 ★	1925-37, Jubilee, Coronation, Air Mail and Postage Due Issues (184-190, C1, J1-J20). Complete sets. Very fine	9.07
585 ★	1938-43, 1f-10/ George VI (191-205). Complete set. Very fine	12.15
586 ★	MAURITIUS 1849-59, 6p horiz. pairs (7, 8, 10, 20). Very Fine, one with o. g.	11.80+
587 ★	—1859, 6p Blue (18). Very fine, o. g. (Photo)	25.00
588 ★	MONTSERRAT , 1938, ½p-5/ George VI (92-101). Very fine	4.91
589 ★	NATAL , 1902-03, 5/ Edward (94). Fine	5.00
590 ★	NEVIS , 1867-80, 1p (9, 14, 19). Very fine	12.00
591 ★	NEWFOUNDLAND , 1860, 2p Orange (11). Margins all around. Very fine o. g. (Photo)	35.00
592 ★	NEW GUINEA , 1925-28, ½p-10/ (1-14). Fine	19.35
593 ★	—1931, 1p-10/ Commem. (18-29). Very fine	15.95
594 ★	—1931. £1 Gray, Commem. (30). Very fine (Photo)	15.00
595	NEW ZEALAND , 1862-71, 1p-1/ (23-4, 27, 28b, 29, 39). last unused. Very good	26.00

596 ★	NIGERIA, 1935-37, Jubilee, George V, Coronation Issues (34-45, 50-52). Very fine	3.73
597 ★	—1938-41, ½p-5/ George VI Issue (53-58, 59-64). Very fine	5.51
598	NORTH BORNEO, 1886-88, 2c, \$2.00 (34, 50), latter unused. V. F.	9.00
599 ★	NORTHERN NIGERIA, 1912, 2/6, 5/, 10/ (49-51). Very fine	16.00
600 ★	NORTHERN RHODESIA, 1925-29, 2/, 2/6, 5/ (11, 12, 14). Very fine	7.50
601 ☒	NOVA SCOTIA, 1860, 5c Blue (10). Two covers. Fine	—

PAPUA

602 ★	1901-05, ½p-6p (1-6). Very fine	9.00
603 ★	1901-05, 2/6 Brown and Black (8). Very fine (Photo)	40.00
604 ★	1907, 1p-2/6 (12, 14, 16-18). Very fine	14.85
605 ★	1907, ½p-2/6 (19-26). Complete set. Very fine	10.10
606 ★	1907-10, 1p-1/ (28-33). Complete set. Very fine	8.15
607 ★	1907-10, ½p-2/6 (34-48), # 34-35 used. Two complete sets. Very fine	8.75
608 ★	1911-15, ½p-2/6 (49-59). Complete. Very fine	9.92
609 ★	1916-31, 6p-10/ (69-73). Very fine	9.55
610 ★	1916-31, ½-2/6, twenty-four diff. Very fine	8.02
611 ★	1933-41, ½p-£1 (94-109), Pictorial complete set. Very fine	26.16
612 ★	1934-37, 1p-5p Commems. (110-121). Three complete sets. Fine	4.87
613 ★	1929-41, 3p-1/6 Airpost (C1-C15). Complete. Very fine	6.95
614 ★	PITCAIRN ISLANDS, 1940, ½p-2/6 (1-8). Very fine, complete	2.14
615	RHODESIA, £1 Dark Blue (16). Fine used copy	9.00
616 ★	—1905, 1p-5/ Victorial Falls Comm. Issue (76-81). Complete set. Very fine	10.25
617 ★	ST. HELENA, 1922-27, ½p-2/6 (79-90). Very fine	5.84
618 ★	—1922-27, 4p-5/ (95-98). Very fine	6.00
619 ★	—1935, 1½p-1/ Jubilee Issue (111-114). Complete set. Very fine	4.30
620 ★	ST. KITTS-NEVIS, 1920-22, 2/-10/ (32-35). Very fine	13.00
621 ★	—1923, ½p-1/ Tercentenary (52-59). Very fine	9.80
622 ★	ST. LUCIA, 1938-43, ½p-10/ George VI (110-120). Very fine	9.66

623 ★	ST. VINCENT , 1883, 1/ Orange-Vermilion (39). Very fine	10.00
624 ★	—1938, ½p-£1 (141-151). Complete set George VI. Very fine	13.66
625 ★	SEYCHELLES , 1890-00, 45c, 96c, 1R (15, 18, 19). Fine	13.00
626 ★	SOMALILAND PROT. 1941, ½a-5R George VI (96-107). Complete set. Very fine	10.08
627	SOUTH AUSTRALIA , 1856-72, 1p, 6p (8, 28). V. G.-Fine	25.00
628 ★	SUDAN , 1931-38, Air Post Issues (C1-C3, C16, C31-34). 3 complete sets. Very fine	8.30
629 ★	TANGANYIKA , 1926-31, 5/ Scarlet & Black (42). Very fine	3.00
630	TASMANIA , 1853-57, 4p, 2p-6p (2, 12-14). V. G.-Fine	26.00
631	TOGO , 1916, 20/ Violet & Black (91). Very fine	10.00

TONGA

632 ★	1886-92, 1p-1/ (4-6, 8-12, 14). Fine	12.75
633 ★	1893-95, ½p-7½p surcharges (15, 17-27), one used. Fine lot	17.00
634 ★	1895, ½p-7½p (29-35). Fine	9.85
635 ★	1897-1934, ½p-5/ Pictorials (38-53). Complete set. Fine, two used	11.23
636 ★	1923, 2p surcharges (63-69). Complete set. Very fine	15.00
637 ★	1893, 1p-4p, 10p Officials (O1-3, O10). Good-Fine	11.25
638	TRANSVAAL , 1869-79, 1p, 6p (5, 72), thins. Fine appearing	10.50
639 ★	VIRGIN ISLANDS , 1880, 1p Green (10). Very fine, no gum	5.00
640 ★	—1938, ½p-5/ George VI (76-85). Complete set. Very fine	4.91
641 ★	ZANZIBAR , 1904, 1a-2½a (94-97). Fine	6.50
642 ★	—1914-22, 75c-3R (149-152). Very fine	8.10
643 ★	—1935, 5c-10/ (201-211, 213). Very fine	10.75
644 ★	ZULULAND , ½p-6p (4, 12-14). Very fine	8.60
645 ★	—4/ Green and Carmine Rose (22). Very fine	7.00

GENERAL FOREIGN

646	AUSTRIA , 1908, 10K Franz Joseph Commemorative (127). Fine	12.50
647 ★田	BOLIVIA , 1923, 10c Vermilion (131). Block, one stamp defective others fine	24.00

648 ★	CANAL ZONE, 1928, 50c Lilac (94). Small thin. Fine appearance	15.00
649 ★	CANAL ZONE, 1924-1937, 1c-\$1.00, 20 different, Regular and Air Mail Issues. Very fine	8.13
650 ★	CHILE, 1862, 1c Lemon Yellow (11). Very good	5.00
651 ★	CHINA, 1912, 1c-\$5.00 Revolutionary Issue (149-160). Complete set. V. F.	22.40
652 ★	—1912, 1c-\$5.00 Republic Commemorative Issue (161-172). Comp. set, V. F.	13.30
653 ★	—1929-36, 1c-\$1.00 Commem. sets (236-43, 288-91) three complete sets. Fine	5.89
654 田	COLUMBIA, Cundinamarca, 1870, 10c Red (2), block, creased. V. F. appearance	24.00+
655 ★	CRETE, 1909, 5 I on 20 I Carmine Rose (97). Centered to B. Fine	10.00
656	CUBA, 1881, 2c Lake (95), Bisected half tied on small cover, used locally, cover torn at one end	—
657	DANZIG, 1924, 1G Yellow Green and Black (193). Fine	10.00
658 ★	ERITREA, 1892-99, 1c-5L (1-18), #11 used. Fine lot	16.50
659 ★	FRANCE, 50c, 1Fr, 5Fr. Semi-Postals (B9, B11, B13). Very fine	9.75
660 ★	—1928, 1.50Fr+8.50Fr. Semi-Postal (B27). Very fine	9.00
661 ★	FRENCH COLONIES, 1859-77, 1c-40c (1, 2, 4, 5, 16, 25, 27). Imperf. Pairs. Very fine	22.50+
662 ★	ITALY, 1877, 10c Blue (28). Fine	10.00
663	MONACO, 1885, 5fr Rose (10), corner repaired, fine appearing, scarce	150.00
664	NETHERLANDS, Mounted COLLECTION of 503 different, used and unused, nearly complete including Semi-Postals, Airs, Marine Insurance, Dues, Officials. Fifty-one stamps issued in 1940-41 not included in catalogue value. Fine and worthwhile lot	360.78
665 匣	—1852, 5c, two shades (1). Very fine stamps tied on two covers	—
666 ★	—1876, 2c Olive Yellow Imperforate (36b). Horiz. pair one stamp defective, other fine	24.00
667	NICARAGUA, 1897, 5P Red (O108). Very fine	9.00
668 ★	PERSIA, 1918, 2k-30k (603A-606). Complete set. Very fine	27.85
669 ★	PHILIPPINES, 1926-1940 (319-25, 383-93, 397-401, 447-60, EO1, O5-O14).. Very fine	17.05
670 ★	—1932, 2c-32c Pictorial Issue (354-60). Complete set. Very fine	13.20

671 ★	—1932, 2c-32c Von Gronau Issue (361-367). Complete set. Very fine	8.90
672	ROMANIA , 1862-72, 30pa, 10b-50b (18, 39-44). Very good	22.25
673	RUSSIA , 1913-26, 30k-5R, twelve diff. between #103-325, some unused. Fine lot	18.75
674 ★	—1927-8, 1K-80K (382-400). Complete set. Fine	5.27
675 ★	—1939-40, 3R, 5R, 10R (620-622). Very fine	9.00

SWITZERLAND

676 ★	1850, 5c Black & Red, Geneva (13). Margins all around. Very fine (Photo)	100.00
677	1850, 2½r Black & red (18). Light corner crease. Fine appearance (Photo)	45.00
678	1850-52, 5, 10, 5, 15r (22c, 23, 24, 26). V. G.-V. F.	20.50
679	1852, 15c Red (27). Margins all around. Very fine (Photo)	20.00
680	1854-55, 10, 15, 40r (30-1, 33). Fine	10.50
681 ★	1862, 2r Gray (34). Fine	15.00
682	1855-62, 5r-1fr (35-40a). Fine	17.60
683	1862-63, 2c-1fr (41-50). Complete. V. G.-V. F.	12.90
684	1867-78, 2c Red Brown (51). Fine	6.00
685	1867-1902, Forty-three different (Between 52-97), few unused. V. G.-Fine	33.16
686 ★	1867-78, 30c Blue (57). Very fine, no gum	10.00
687	1881, 50c, 1fr (67-68). Fine	10.00
688	1900-41, Twentieth Century Collection (98-280), lacks three numbers of postage being complete, mounted, many unused. Fine lot	38.17
689 ★	1934, Souvenir Sheet (226). Very fine	10.00
690	1913-39, Semi-Postals (B1-B99) . Complete used and unused. Very fine lot	25.47
691	1920, 30c Airpost (C1). Fine	10.00
692 ★	1919, 50c Airpost (C2). Very fine	3.50
693 ★	1923-25, 15c-50c Airpost (C3-C9), two used. Very fine	5.45
694 ★	1924-38, Airpost (C10-25). Complete. Very fine	9.82
695	1941, 70c-5fr Airpost (C31-35), latter unused. V. F.	3.45
696	1878-1938, Postage Dues (J1-9, J14-18, J20-67), lacks 5 of being complete, some unused. Fine lot	41.60

697 ★	1942, 3c-2fr Officials (O19-O36). Complete. Very fine	8.88
698 ★	1918, 7½c, 20c, 30c War Board of Trade (103, 106, 1016). Very fine	16.25
699	TWO SICILIES , 1859, ½g-20g (10, 12-14, 16-17). Fair lot, some minor defects	91.50
700 ★	FOREIGN , 1938-40, 16 diff. stamps, 4 miniature sheets. V. F.	6.91
701	Foreign , Misc. lot includes some Brit .Col. Revenues est. \$7.50 net	—
702 ☒	FOREIGN COVERS , includes French Colonies, France, Britain, Hong Kong, fourteen covers plus six diff. stampless, all 19th Century. Fair lot	—
703	Foreign Pictorials , about 1000 stamps, wholesale quantities (Est. \$5.00 net)	—

END OF SALE — MAIL BIDS EARLY

FOR VICTORY



BUY
UNITED
STATES
WAR
BONDS
STAMPS

WANTED

**Good U. S. and Foreign single pieces,
collections and lots for future
Auction Sales.**

Liberal advances made. Write for terms.