

112th SALE

BRITISH COLONIES



AT PUBLIC AUCTION
Tuesday and Wednesday
January 22nd and 23rd, 1946
2 P. M. EACH DAY

AT THE COLLECTORS CLUB
22 East 35th Street, New York City

GREGORY MOZIAN, Auctioneer



Robert A. Siegel
AUCTIONS

SAUGERTIES

NEW YORK

IMPORTANT — PLEASE NOTE

Mail bids to Robert A. Siegel, Saugerties, N. Y. or last minute bids to Robert A. Siegel, c/o Collectors Club, 22 East 35th St., New York City.

Lots may be inspected on the Afternoon of January 21st at the offices of Sylvester Colby, 505 Fifth Ave., New York City, or up to sale time at the Collectors Club, on the days of sale, January 22nd and 23rd.

CATALOGUE

FIRST SESSION

TUESDAY, JANUARY 22, 1946 — 2 P.M.

BRITISH COLONIES

ADEN

1 ★	1937, ½a-1R (1-9). Very fine	4.95
2 ★	1937, ½a-5R (1-11). Very fine	18.95
3 ★	1937, 10R Olive Green (12). Very fine	(Photo) 25.00
4 ★	1938, ½a-10R George VI Issue (16-27). Very fine, complete set	14.21
5 ★	KATHIRI STATE, 1942, ½a-5R (1-11). Complete set. Very fine	6.58
6 ★	QU'AITI STATE, 1942, ½a-5R (1-11). Complete set. Very fine	6.58
7 ★	AITUTAKI, 1916-20, Four sets (17-33). Complete. Fine-V. F.	11.10
8 ★	—1916-20, Four sets (17-33). Complete. Fine-V. F.	11.10
9 ★	—1916-20, Four sets (17-33). Complete. Fine-V. F.	11.10
10 ★	—1916-20, Four sets (17-33). Complete. Fine-V. F.	11.10

ANTIGUA

11 ★	1863, 1p, 1p (2-3). First part O. G. Fine-very fine	8.00
12 ★	1863, 6p Blue Green (4). Very fine	10.00

13 ★	1873-79, 1p, 1p (5, 8). Very fine	7.00
14 ★	1879, 4p Blue (10). Very fine	12.00
15 ★	1876, 6p Blue Green (11). V. F., no gum	12.00
16 ★	1882-86, ½p-6p (12, 14, 16, 18-19). Fine-very fine	4.70
17 ★	1882, 2½p Red Brown (13). Very fine	8.00
18 ★	1882, 4p Blue (15). Very fine	10.00
19 ★	1886, 1/ Violet (17). Fine	12.00
20 ★	1903, ½p-2/6 (21-27, 29). Climatized gum showing through on face of 1/ Balance V. F.	10.25
21 ★	1903, 5/ Purple and Gray Green (30). 3 Perfs. short. Very fine appearance	10.00
22 ★	1908-09, ½p-2/ (31-38). Very fine	11.65
23 ★	1913, 5/ Violet and Green (41). Very fine	7.50
24 ★	1913, same as above, V. F.	7.50
25 ★	1913, same as above, V. F.	7.50
26 ★	1913, same as above, V. F.	7.50
27 ★	1921-29, ½p-3/ (42-56). Fine-V. F.	9.18
28 ★	1021-22, 3p-5/ (58-63). Very fine	9.10
29 ★	1922, £1 Violet and Black on Red (64). Fine	(Photo) 15.00
30 ★	1921-22, 3p, 1/ (58, 60). Blocks of 4. Very fine	5.20
31 ★	1921, 2/ Violet and Ultramarine (61). Block of 4. Very fine	8.00
32 ★	1921, 2/6 Black and Red (62). Very fine. Block of 4	7.00
33 ★	1932, ½p-2/6 Tercentenary Issue (67-75). Very fine	32.00
34 ★	1932, 2/6 Tercentenary (75). Very fine	(Photo) 15.00
35 ★	1932, same as above, V. F.	15.00
36 ★	1932, same as above, V. F.	15.00
37 ★	1932, same as above, V. F.	15.00
38 ★	1932, 5/ Tercentenary (76). Very fine	(Photo) 35.00
39 ★	1938, ½p-5/ George VI Issue (84-93). Complete set. Very fine	5.21

ASCENSION

40 ★	1922, ½p-3/ (1-9). Complete set. Very fine	24.70
41 ★	1924-27, ½p-2/ (10-20). 2/ has light crease balance very fine	17.75
42 ★	1934, ½p-5/ George V Pictorial (23-32). Complete set. Very fine	12.05
43 ★	1934, same as above, V. F.	12.05

44 ★	1934, same as above, V. F.	12.05
45 ★	1934, same as above, V. F.	12.05
46 ★	1934, same as above, V. F.	12.05
47 ★	1938-42, ½p-10/ George VI (40-49). Complete. Very fine	11.70

AUSTRALIA

48 ★	1913, ½p-2/ (1-11). Fine-V. F.	9.60
49 ★	1913, 10/ Pink and Gray (13). Very fine	12.00
50 ★	1913-23, ½p-6p (17-36). Fine-V. F.	7.58
51 ★田	1914, 6p Kookaburra (18). Block. Very fine	9.00
52 ★	1915, 2p-2/ (38-43). Fine-V. F.	12.45
53 ★	1915-25, 2/-10/ (52-55). Very fine	12.50
54 ★	1915, 10/ Bright Pink and Gray (55). Very fine	6.00
55 ★	1915, same as above, V. F.	6.00
56 ★	1915, same as above, V. F.	6.00
57 ★	1920, £2 Deep Rose and Black (58). Centered bit to top. Fine (Photo)	25.00
58 ★	1929-30, 6p-10/ (96-101). Very fine	11.40
59 ★	1929-30, 1/-5/ (98-100). Very fine	4.50
60 ★	1931-36, 10/ Pink and Gray (127). Very fine	4.25
61 ★	1932, 2p-5/ Sydney Bridge (130-33). Complete set, V. F.	10.80
62 ★田	1935, 2p-1/ Anzac Commem. (150-51). Complete set in blocks, V. F.	5.80
63 ★	1931-42, 1p-1/, Commems. and Airs (157-65, 184-95, C2-5). Very fine	5.66
64 ★	1937-38, ½p-£1 George VI (166-180). Complete set. Very fine	15.56

BAHAMAS

65 ★	1861, 1p Lake (2). Fine	(Photo) 30.00
66 ★	1883, 4p Violet (26). Fine. No gum	(Photo) 40.00
67 ★	1884-90, 1p-5/ (27-31). Fine-very fine	9.40
68 ★	1884-90, £1 Brown (32). Very fine	(Photo) 17.50
69 ★	1901-03, 1p-3/ (33-36). Complete set. Very fine	7.35
70 ★	1902, £1 Green and Black (43). Very fine	(Photo) 30.00
71 ★	1912-18, ½p-5/ (49-55). Fine-V. F.	7.77
72 ★	1912, £1 Green and Black (56). Very fine	(Photo) 17.50
73 ★	1917-19, 3p-3/ (58-62). Complete set. Very fine	7.60

74 ★	1920, ½p-1/ Peace Issue (65-69). Complete set. Fine-V. F.	5.90
75 ★	1921-34, ½p-5/ (70-83). Very fine	9.59
76 ★	1929, 1p-3/ Commemorative Issue (85-89). Complete set. Very fine	17.75
77 ★	1929, same as above, V. F.	17.75
78 ★	1931-43, 5 Issues (90-1, 96-112 no #104A, 115). Very fine	8.93
79 ★	1942, ½p-5/ Landfall Issue (116-128). Very fine	9.41
80 ★	1942, £1 Yellow Gum, Landfall Issue (129). Very fine	15.00
81 ★	1916-18, Special Delivery Issues complete (E1-3). Very fine	6.30
82 ★	1918-19, War Tax Issues complete (MR1-14). Very fine	15.11
83 ★	1918, 1p War Tax, Double Overprint, One Inverted (MR5b). Part O. G., V. F. (Photo)	100.00
84 ★	BAHRAIN , 3a-5R (1-14). Complete set. Very fine	12.57

BARBADOS

85 ★	1878, 3p Violet (52). Very fine	12.00
86 ★	1875, 6p Chrome Yellow (55). Very fine	9.00
87 ★	1876, 1/ Purple (56). Very fine	10.00
88 ★	1892-96, 1f-2/6 (70-79). Fine-V. F.	10.65
89 ★	1897, 1f-2/6 Jubilee Issue (81-89 no #83). Very fine	17.75
90 ★	1904-10, 1f-2/6 (90-101). Complete set. Very fine	23.77
91 ★	1904-10, 1f-1/ (90-96, 98, 100). Fine	6.77
92 ★	1904-10, same as above, V. F.	6.77
93 ★	1904-10, same as above, V. F.	6.77
94 ★	1904-10, 1f-1/ (91-96, 98, 100). Very fine	6.60
95 ★	1906-07, 1f-1/ Nelson Issue (102-112). Complete set. Fine-V. F.	13.30
96 ★	1906, 1p-1/ Nelson Issue (104-108). Very fine	8.15
97 ★	1906, same as above, V. F.	8.15
98 ★	1906, same as above, V. F.	8.15
99 ★	1906, same as above, V. F.	8.15
100 ★	1912, ¼p-1/ (116-124 no #123). Very fine	9.50
101 ★	1912, 2/ Violet and Ultramarine (125). Very fine	10.50
102 ★	1912, 3/ Green and Violet (126). Very fine	(Photo) 17.50
103 ★	1916-18, ¼p-2/ (127-137). 2/ no gum. Very fine	9.53
104 ★	1916, 3/ Dark Violet (138). Very fine	10.00

105 ★	1914, 3/ Dull Violet and Green (139). Very fine	9.00
106 ★	1920-21, ¼p-3/ Victory Issue (140-151). Complete set. Very fine	13.27
107 ★	1921-24, ¼p-3/ (152-64). Complete sets. Very fine	13.43
108 ★	1921-24, same as above, V. F.	13.43
109 ★	1921-24, same as above, V. F.	13.43
110 ★	1921-24, same as above, V. F.	13.43
111 ★	1921-24, ¼p-3/ (152-158, 160-164). 2p no gum. Very fine	8.43
112 ★	1925-35, ¼p-3/ (165-179). Complete set. Very fine	13.16
113 ★	1925-35, ¼p-3/ (165-67, 169-70, 172-75, 177, 179). Very fine	8.51
114 ★	1925-35, same as above, V. F.	8.51
115 ★	1925-35, same as above, V. F.	8.51
116 ★	1925-35, same as above, V. F.	8.51
117 ★	1937-39, Coronations, George VI, Commem. sets (190-206), no #201A. Very fine	4.17

BARBUDA

118 ★	1922, ½p-5/ (1-11). Complete country. Very fine	31.75
119 ★	1922, same as above, V. F.	31.75
120 ★	1922, same as above, V. F.	31.75
121 ★	1922, same as above, V. F.	31.75
122 ★	1922, same as above, V. F.	31.75

BASUTOLAND

123 ★	1933, ½p-5/ George V (1-9). Very fine	10.65
124 ★	1933, same as above, V. F.	10.65
125 ★	1933, same as above, V. F.	10.65
126 ★	1933, same as above, V. F.	10.65
127 ★	1933, same as above, V. F.	10.65
128 ★	1938, ½p-10/ George VI (18-28). Complete set, V. F.	9.97

BECHUANALAND

129 ★	1886, ½p-4p (1-3). Very fine	8.25
130 ★	1886, ½p, 1p, 6p (5-6, 8). Fine	10.00
131 ★	1887, 1/-5/ Green (16-19). Very fine	20.50

BECHUANALAND PROTECTORATE

132 ★	1889, 1p, 2p, 4p, 6p (60-1, 65-6). Fine-V. F.	16.00
133 ★	1889, 4p Lilac (64). Very fine (Photo)	20.00
134 ★	1889, ½p Black. Double Overprint (67a). Very fine	20.00
135 ★	1910, 6p Brown Orange and Black (81). Very fine	15.00
136 ★	1914-24, ½p-5/ George V (83-93). Complete set. Very fine	13.04
137 ★	1914-24, same as above, V. F.	13.04
138 ★	1914-24, same as above, V. F.	13.04
139 ★	1914-24, same as above, V. F.	13.04
140 ★	1914-24, same as above, V. F.	13.04
141 ★	1914-22, 2/6-5/ (92-93). Very fine	10.00
142 ★	1932, ½p-10/ George V (105-116). Complete set, V. F. *	19.22
143 ★	1932, ½p-5/ George V (105-115). Very fine	11.72
144 ★	1932, same as above. Very fine	11.72
145 ★	1932, same as above. Very fine	11.72
146 ★	1932, same as above. Very fine	11.72
147 ★	1938, ½p-10/ George VI (124-136). Complete set, V. F.	10.97

BERMUDA

148 ★	1865-73, 2p, 3p (2, 5). Latter has crease, no gum	15.00
149 ★	1884-93, 2p, ½p-1/ (18-24). Fine, extra shade on 1p	7.30
150 ★	1901-10, 1f-6p (25-32). 6p thin, balance V. F.	6.35
151 ★	1910-20, ¼p-5/ (40-52). Very fine	15.31
152 ★	1917-20, 10/ Red and Green (53). One corner perf. short, well centered, no gum	15.00
153 ★	1917-20, £1 Black and Violet on Red (54). Very fine (Photo)	15.00
154 ★	1917-20, same as above, V. F.	15.00
155 ★	1917-20, same as above, V. F.	15.00
156 ★	1917-20, same as above, V. F.	15.00
157 ★	1917-20, same as above, V. F.	15.00
158 ★	1920, ¼p-1/ Commem. (55-66). Complete. Very fine	10.15
159 ★	1921, ¼p-1/ Commem. (71-79). Complete. Very fine	10.75
160 ★	1922-34, ¼p-2/6 (81-92, 94-95). Very fine	8.16

161 ★	1924, 10/ Red and Emerald (97). Very fine	7.00
162 ★	1932, 12/6 Ochre and Gray Black (98). Very fine	12.00
163 ★	1936-41, 4 Issues (105-117, 129, C1). Complete sets. Very fine	5.71
164 ★	1938, 1p-£1 George VI Issue (118-128). Complete set. Very fine	26.35
165 ★	BRIT. EAST AFRICA , 1890-94, ½a-5R (14-23, 25, 27-30). Fine-V. F.	7.99
166 ★	—1890-94, same as above. Fine-V. F.	7.99
167 ★	—1890-94, same as above. Fine-V. F.	7.90
168 ★	—1890-94, same as above. Fine-V. F.	7.90
169 ★	—1897, ½a-7½a (88-93). Complete set. Very fine	27.50
170 ★	—1896-1903, ½a-5R (72-3, 75-87). Fine-very fine	31.37

BRITISH GUIANA

171 ★	1882-89, 2 Issues (107-11, 112-116). Fine-very fine. #108-109 no gum	8.75
172 ★	1889, \$5.00 Green (128). Very fine	(Photo) 15.00
173 ★	1889-1903, 1c-48c (130-144). Very fine	15.95
174 ★	1898, 72c, 96c (146-147). Very fine	8.00
175 ★	1890-99, 3 Issues (148-155, 157-159). Fine-very fine	9.10
176 ★	1898, 1-15c Jubilee Issue (152-156). Complete set. Very fine	7.50
177 ★	1898, same as above. Very fine	7.50
178 ★	1898, same as above. Very fine	7.50
179 ★	1898, same as above. Very fine	7.50
180 ★	1905-07, 1c-48c (160-167). Very fine	10.90
181 ★	1905-07, 60c-72c (168-169). Very fine	8.50
182 ★	1905, 48c-60c (167-168). Very fine	6.50
183 ★	1905, same as above. Very fine	6.50
184 ★	1905, same as above. Very fine	6.50
185 ★	1905, same as above. Very fine	6.50
186 ★	1913-15, 1c-72c (178-187). Very fine	9.51
187 ★	1913-16, 48c-96c (185-187, 190). Very fine	10.50
188 ★	1913-16, same as above. Very fine	10.50
189 ★	1913-16, same as above. Very fine	10.50
190 ★	1913-16, same as above. Very fine	10.50
191 ★	1913-16, 96c Normal and Surface Colored Copies (188, 190). Very fine	8.50

192 ★	1921-27, 1c-96c (191-198, 201). Fine-very fine	8.28
193 ★	1934, 1c-60c George V Pictorial Issue (210-219). Very fine	6.05
194 ★	1934, same as above. Very fine	6.05
195 ★	1934, same as above. Very fine	6.05
196 ★	1934, same as above. Very fine	6.05
197 ★	1934, 1c-\$1.00 George V Pictorial Issue (210-222). Complete set, V. F.	13.55
198 ★	1938, 1c-\$1.00 George VI Issue (230-239). Complete set. Very fine	7.76

BRITISH HONDURAS

199 ★	1888-89, 2c-50c* (28-32). Complete set. Fine-very fine	6.10
200 ★	1891, 5c Double Surcharge (35a). Very fine (Photo)	50.00
201 ★	1891-98, 1c-25c (38-46). Complete. Fine-V. F.	12.72
202 ★	1904-06, 1c-50c (62-68). Very fine	7.25
203 ★	1906, \$1.00 Green and Carmine Rose (69). Very fine	5.00
204 ★	1906, \$5.00 Green and Black (71). Very fine (Photo)	32.50
205 ★	1902-11, 2 Issues (58-61, 72-74). Complete sets. Very fine	6.50
206 ★	1913-17, 1c-\$1.00 (75-82). Very fine	8.25
207 ★	1913-17, same as above. Very fine	8.25
208 ★	1913-17, 1c-\$2.00 (75-83). Very fine	20.25
209 ★	1913-17, 1c-\$5.00 (75-84). Complete set. Very fine	40.25
210 ★	1913, \$2.00 Green and Dull Violet. Very fine (Photo)	12.00
211 ★	1913, same as above. Very fine	12.00
212 ★	1913, \$5.00 Violet and Black (84). Very fine (Photo)	20.00
213 ★	1913, same as above. Very fine	20.00
214 ★	1913, same as above. Very fine	20.00
215 ★	1921-33, 1c-\$2.00 (91-102). Complete set. Very fine	9.13
216 ★	1921-25, 25c, \$5.00 (103-104). Very fine	17.00
217 ★	1938, 1c-\$5.00 George VI Issue (115-126). Complete set. Very fine	18.30

BRITISH SOLOMON ISLANDS

218 ★	1907, ½p-1/ (1-7). Complete set. Fine-V. F.	14.85
219 ★	1908-24, ½p-2/6 (8-15, 17, 19-27A). Very fine	12.80
220 ★	1914, ½p-2/ (28-31, 33-37). Very fine	5.33
221 ★	1914, same as above. Very fine	5.33

222 ★	1914, same as above. Very fine	5.33
223 ★	1914, same as above. Very fine	5.33
224 ★	1914, ½p-5/ (28-31, 33-39). Very fine	11.33
225 ★	1914, same as above. Very fine	11.33
226 ★	1914, same as above. Very fine	11.33
227 ★	1914, same as above. Very fine	11.33
228 ★	1914-23, ½p-2/6 (28-38). Very fine	13.33
229 ★	1914, £1 Violet and Black (41). Very fine	(Photo) 18.50
230 ★	1922-31, ½p-2/6 (43-54). Very fine	7.73
231 ★	1925, 10/ Green and Red (56). Very fine	15.00
232 ★	1914, same as above. Very fine	15.00
233 ★	1939-43, George VI Postage and Postage Dues Issues (67-79, J1-J8). Complete sets. Very fine	11.98

BRUNEI

234 ★	1906, 1c Violet and Black, Black Overprint (1a), "T.A." Guarantee Mark on Back. Very fine	(Photo) 125.00
235 ★	1906, 1c-30c (1-10). Very fine	18.60
236 ★	1906, 50c-\$1.00 (11-12). Very fine	11.00
237 ★	1907-21, 1c-\$1.00 (13-16, 18-23, 28, 30-33, 35, 37). Very fine	12.90
238 ★	1907-21, same as above. Very fine	12.90
239 ★	1907-21, same as above. Very fine	12.90
240 ★	1907-21, same as above. Very fine	12.90
241 ★	1907-21, 1c-50c (13-35). Very fine	19.75
242 ★	1907-12, \$1.00-\$5.00 (36-38). Very fine	11.50
243 ★	1907-21, 30c-\$5.00 (31, 33, 35-38). Very fine	15.75
244 ★	1924-37, Two Issues (43-61). Complete sets. Very fine	7.80

BURMA

245 ★	1937, 3p-5R (1-15). Very fine	12.31
246 ★	1937, 15R Olive Green and Ultramarine (17). Very fine	(Photo) 15.00
247 ★	1938, 3p-2R George VI Issues (19-31). Very fine	9.91
248 ★	1937, 3p-10R Official Issue (O1-O14). Complete set. Very fine	20.82
249 ★	1939, 3p-5R George VI Issue (O15-O26). Very fine	21.30

250	★	1939, 10R Gray Green and Brown (O27). Very fine	(Photo)	18.50
251	★	CAMEROONS , 1915, ½p-6p (50-60 plus 52c). Very fine		7.85
252	★	—1915, same as above, V.F.		7.85
253	★	—1915, same as above, V.F.		7.85
254	★	—1915, same as above, V.F.		7.85

CANADA

255		1851, 3p Red (1). Cut in at R. Margins other three sides, V. G.		25.00
256	★	1852-55, 3p Red (4). Cut in at B. Very good, no gum		35.00
257	★	1859, 1c Rose, 5c Vermilion (14-15). First without gum, V. G.		12.50
258	★	1859, 17c Blue (19). Fine	(Photo)	37.50
259	★	2c Rose (20). Small thin spot. Fine appearance		20.00
260	★	1868-77, ½c-2c, 6c-15c (21-3, 25-27). Very good		45.75
261	★	1870-90, 1c-6c (33-34, 36-39). Fine, one without gum		10.10
262	★	1870, 1c Orange (33a). Fine		12.00
263	★	1874-88, 10c Rose Lilac, 10c Brown Red (40-1). Very good		12.50
264	★	1870-93, ½c-50c (43-48). Very good		12.15
265	★	1897, ½c-50c Jubilee (50-60). Fine-very fine		19.80
266	★	1897, 10c-50c Jubilee (57-60). Fine-V.F.		11.50
267	★	1897, \$1.00 Jubilee (61). Very fine	(Photo)	17.50
268	★	1897, \$2.00 Jubilee (62). Fine	(Photo)	45.00
269	★	1897, \$3.00 Jubilee (63). Fine	(Photo)	45.00
270	★	1897, \$4.00 Jubilee (64). Very fine	(Photo)	50.00
271	★	1897, \$5.00 Jubilee (65). Very fine	(Photo)	50.00
272	★	1897, ½c-10c Victoria (66-73). Complete set. Fine		7.37
273	★	1897, 6c Brown (71). Block. Fine		5.00+
274	★	1898-02, ½c-6c Victoria (74-80). Blocks . Fine-very fine		17.84+
275	★	1898-99, 2c Issues (85-88). Blocks . Fine-V.F.		5.20+
276	★	1903-08, 1c-20c Edwards (89-94). Fine		10.27
277	★	1908, 50c Purple, Edward (95). Fine	(Photo)	22.50
278	★	1908, ½c-20c Quebec (96-103). Complete set. Fine-V.F.		12.55
279	★	1908, ½c-20c Quebec (96-103). Complete set of Blocks . Fine-V.F.		50.20+
280	★	1908, 1c-7c, 15c-20c Quebec Tercentenary all in vertical IMPERFORATE PAIRS (97-100, 102-3). Very fine. Scarce (Stanley Gibbons £60, \$240.00)	(Photo)	—

281 ★	1912-25, 1c-\$1.00 (104-122). Complete set, #121 used. Fine	14.22
282 ★	1912-25, 50c Sepia (120a). Fine	10.00
283 ★	1914-26, Coils, Imperfs, Surcharges (125-140). Fine-V. F.	10.50
284 ★	1928-29, 1c-\$1.00 (149-59). Complete set. V. F.	6.50
285 ★	1930-31, 1c-\$1.00 (162-177). Complete set. V. F.	4.77
286 ★	1898 10c Special Delivery. Both Types (E1, E1a). Very fine	4.00
287 ★	1875-89, 8c Blue. Registration (F4). Very fine.	12.00
288 ★	1906-35, Postage Dues. Complete (J1-18). Very fine	3.51
289 ★	1916, 2c+1c Carmine, Type II (MR3a). Very fine	8.50
290 ★	1916, 2c+1c Brown, Type I (MR4a). Very fine	20.00
291 ★	1916, 2c+1c War Tax (MR4b). Imperforate Horiz. Pair. Very fine (Photo)	30.00
292 ★	1916, 2c+1c War Tax (MR6, 7a). Very fine	4.00
293 ★	1898-1935, 1c-12c. Twenty Blocks, mostly diff. Very fine lot. Face value \$3.08	—
294 ★	Balance of Country. 105 diff. on album sheets, face value \$10.96. Very fine	—

CAYMAN ISLANDS

295 ★	1902, ½p-1/ (3-7). Complete set. Very fine	9.65
296 ★	1902, 6p-1/ (6-7). Very fine	7.00
297 ★	1905, ½p-1/ (8-12). Complete set. Very fine	10.00
298 ★	1905, ½p-1/ (8-12). Complete set. Very fine	10.00
299 ★	1905, 2½p-1/- Edwards (10-12). Very fine	8.00
300 ★	1905, same as above. Very fine	8.00
301 ★	1905, same as above. Very fine	8.00
302 ★	1907, 4p-1/ (13-15). Very fine	13.00
303 ★	1907, 5/ Vermilion and Green (16). Very fine	(Photo) 20.00
304 ★	1907, 1p Provisional Issue (19). Very fine	(Photo) 20.00
305 ★	1907-09, ½p-5/ (21-28). Complete set. Very fine	14.95
306 ★	1908, 1/-10/ (29-30). Very fine	15.00
307 ★	1912-16, ¼p-3/ (32-42). Very fine	9.34
308 ★	1914, 5/ Green and Red (43). Very fine	8.00
309 ★	1915, 10/ Green and Red (44). Very fine	8.00
310 ★	1913, 3p-10/ Surface Colored Paper (45-47). Very fine	12.00
311 ★	1913, same as above. Very fine	12.00

312 ★	1913, same as above. Very fine	12.00
313 ★	1913, 10/ Red and Green (47). Very fine	10.00
314 ★	1921-26, ¼p-2/ (50-60). Very fine	4.24
315 ★	1921-26, ¼p-5/ (50-62). Very fine	10.24
316 ★	1921-26, same as above. Very fine	10.24
317 ★	1921-26, ¼p-10/ (50-63). Complete set. Fine-V. F.	16.24
318 ★	1921-26, 3/-5/ (61-62). Very fine	6.00
319 ★	1921, 3p-5/ (64-67). Fine-V. F.	6.25
320 ★	1921, same as above. Fine-V. F.	6.25
321 ★	1921, same as above. Fine-V. F.	6.25
322 ★	1921, same as above. Fine-V. F.	6.25
323 ★	1921, 10/ Carmine and Green (68). Fine	11.00
324 ★	1921, 3p-10/ (64-68). Very fine	17.25
325 ★	1932, ¼p-5/ Centenary Issue (69-79). Very fine	44.35
326 ★	1932, 10/ Centenary Issue (80). Very fine	(Photo) 60.00
327 ★	1935, ¼p-10/ George V Pictorial Issue (85-96). Complete set. Very fine	24.66
328 ★	1938, ¼p-10/ George VI Issue (100-111). Complete set. Very fine	9.68
329 ★	1917, 1½p War Tax Issue (MR3). Very fine	12.50

CEYLON

330 ★	1898, 2R50c Violet on Red (158). Very fine	8.50
331 ★	1900, 1R50c-2R25c (162-163). Very fine	9.00
332 ★	1903-05, 2c-75c (166-175). Very fine	7.20
333 ★	1904, 1R50c Gray (176). Fine	11.00
334 ★	1904, 2R25c Brown and Green (177). Very fine	11.00
335 ★	1904, 1R50c-2R25c (176-177). Fine	22.00
336 ★	1904-10, 2c-2R25c (178-187, 189-194). Very fine	15.91
337 ★	1904-10, 2c-10R (178-196). Complete set. Very fine	41.66
338 ★	1904-10, same as above. Very fine	41.66
339 ★	1904-10, same as above. Very fine	41.66
340 ★	1904-10, 2c-2R25c (178-194). Very fine	16.66
341 ★	1904-10, same as above. Very fine	16.66
342 ★	1910, 5R Green (195). Very fine	10.00

342A ★	1910, same as above. Very fine	10.00
343 ★	1910, 10R Red (196). Very fine	15.00
	(Photo)	
344 ★	1910, same as above. Very fine	15.00
345 ★	1912-25, 1c-5R (200-210, 212). Very fine	9.14
346 ★	1912-25, 1c-5R (200-212). Very fine	10.64
347 ★	1912-21, same as above. Very fine	10.64
348 ★	1912-25, same as above. Very fine	10.64
349 ★	1912-25, same as above. Very fine	10.64
350 ★	1912-25, 1c-10R (200-213). Very fine	20.64
351 ★	1912, 5R Blue Green, Olive back (212a). Very fine	6.00
352 ★	1912, same as above. Very fine	6.00
353 ★	1912, same as above. Very fine	6.00
354 ★	1920, 5R Emerald (212b). Very fine	10.00
355 ★	1920, same as above. Very fine	10.00
356 ★	1920, 10R Violet and Black (213a). Very fine	11.00
357 ★	1925, 1000R Violet on Red (218). Very fine rarity (Photo on Front Cover)	650.00
358 ★	1913-14, 1R, 5R (220, 222). Very fine	6.50
359 ★	1913-14, 1R-5R Surface Colored Issue (220-222). Very fine	9.00
360 ★	1921-33, 1c-5R (225-241, 243). Very fine	11.82
361 ★	1921-33, same as above. Very fine	11.82
362 ★	1921-23, 1c-5R (225-243). Very fine	13.82
363 ★	1921-33, same as above. Very fine	13.82
364 ★	1921, 50R Dull Violet (245). Very fine	35.00
	(Photo)	
365 ★	1927, 100R Ultramarine and Dull Violet (247) . Very fine	60.00
	(Photo)	
366 ★	1927-28, 1R-10R (254-257). Very fine	14.75
367 ★	1927, 20R Ultramarine and Dull Violet ((258). Very fine	15.00
	(Photo)	
368 ★	1935, 2c-1R George V Pictorial Issue (264-274). Complete set. Very fine	4.72
369 ★	1935, same as above. Very fine	4.72
370 ★	1935, same as above. Very fine	4.72
371 ★	1935, same as above. Very fine	4.72
372 ★	1935, same as above. Very fine	4.72
373 ★	1935, same as above. Very fine	4.72
374 ★	1938-42, 2c-5R George VI Issues 278-292). Complete set. Very fine	7.20

375 ★	1869, 3p, 6p (O3, O6). V. G.-F.	8.00
376 ★	1903-04, 2c-30c (O19-O24). Complete set. Very fine	12.75
377 ★	Balance of Country , all 20th Century unused, 418 stamps, some duplication, includes blocks. Mounted on album sheets. Very fine lot	99.18
378 ★	COOK ISLANDS , 1919-20, ½p-1/, ½p-1/ (48-66). Complete sets. V. F.	10.50
379 ★	—1919-20, same as above. Very fine	10.50
380 ★	—1919-20, same as above. Very fine	10.50
381 ★	—1919-20, same as above. Fine-V. F.	10.50

CYPRUS

382 ★	1880, 1p Red "Plate 181" (2). Fine, part gum	7.50
383 ★	1880, 30p "Plate 220" (7). V. F., no gum	12.00
384 ★	1881, ½Pi-2Pi (11-13). Very fine	10.00
385 ★	1882-84, ½Pi-6Pi (19-24). Very fine	7.00
386 ★	1894-96, ½Pi-45Pi (28-37). Complete set. Very fine	15.14
387 ★	1904-07, 5Pa-45Pi (48-59). Complete set. Very fine	14.88
388 ★	1904-07, same as above. Very fine	14.88
389 ★	1912-14, ½Pi-45Pi (61-71). Complete set. Very fine	15.19
390 ★	1921-23, 10Pa-9Pi (72-75, 77-78, 80-81, 83-84). Very fine	7.25
391 ★	1921-23, 10Pa-9Pi (72, 75, 77-78, 80-81, 83-84). Very fine	6.90
392 ★	1921-23, same as above. Very fine	6.90
393 ★	1921-23, same as above. Very fine	6.90
394 ★	1921-23, 10Pa-9Pi (72-84). Very fine	10.05
395 ★	1923, 18Pi Black and Brown (85). Fine	13.50
396 ★	1923, 45Pi Dull Violet and Ultramarine (86). Very fine	(Photo) 35.00
397 ★	1923, 10/ Green and Red (87). Very fine	(Photo) 30.00
398 ★	1923, £1 Violet and Black (88) . Very fine	(Photo) 75.00
399 ★	1924-28, ¼Pi-90Pi (89-108). Very fine	15.36
400 ★	1924, £1 Violet and Black (110). Very fine	12.00
401 ★	1928, ¾Pi-45Pi Commemorative Issue (114-122). Very fine	15.60
402 ★	1928, £1 Commemorative Issue (123). Very fine	(Photo) 30.00
403 ★	1934, ¼Pi-18Pi Pictorial Issue (125-134). Very fine	5.26
404 ★	1934, same as above. Very fine	5.26
405 ★	1934, same as above. Very fine	5.26

406 ★	1934, same as above. Very fine	5.26
407 ★	1934, ¼Pi-45Pi George V Pictorial Issue (125-135). Complete set. Very fine	10.26
408 ★	1938-43, ¼Pi-£1 George VI Issue (143-155). Complete set. Very fine	19.43

DOMINICA

409 ★	1903, ½p-2/6 (25-33). Very fine	14.80
410 ★	1903, 5/ Brown and Black (34). Very fine	(Photo) 16.00
411 ★	1907-10, ½p-1/ (35-40, 42-44). Very fine	10.20
412 ★	1908, 6p Orange Brown and Black (41). Very fine	12.00
413 ★	1908-20, 2/-2/6 (45-48). Very fine	9.50
414 ★	1908, 5/ Brown and Black (49). Very fine	9.00
415 ★	1907-20, 1p-2/6 ((36-37, 40, 43-44, 46, 48). Very fine	10.80
416 ★	1907-20, same as above. Very fine	10.80
417 ★	1907-20, same as above. Very fine	10.80
418 ★	1907-20, same as above. Very fine	10.80
419 ★	1914, 5/ Green and Scarlet (54). Very fine	7.50
420 ★	1923-33, ½p-5/ 65-82). Complete set. Very fine	15.64
421 ★	1923-33, 2p-4/ (70-81). Very fine	11.70
422 ★	1923-33, 2½p-4/ (71, 73, 75-79, 81). Very fine	8.40
423 ★	1923-33, same as above. Very fine	8.40
424 ★	1923-33, same as above. Very fine	8.40
425 ★	1923, 3/-5/ (83-84). Very fine	9.25
426 ★	1923, same as above. Very fine	9.25
427 ★	1923, same as above. Very fine	9.25
428 ★	1923, same as above. Very fine	9.25
429 ★	1923, £1 Violet and Black (85). Very fine	(Photo) 18.50
430 ★	1938-40, ¼p-5/ George VI Issue (97-107). Complete set. Very fine	4.18

EAST AFRICA & UGANDA

431 ★	1903, ½a-8a (1-8). Very fine	13.75
432 ★	1903, 1R, 2R, 3R (9-11). Very fine	14.25
433 ★	1903, 4R Light Green and Black ((12). Very fine	10.00
434 ★	1905, 5R Carmine and Black (13). Very fine	11.00
435 ★	1903, 10R Ultramarine and Black (14). Very fine	18.50

436	★	1903, 20R Olive Gray and Black (15) . Very fine	(Photo)	60.00
437	★	1903, 50R Orange Brown and Black (16) . Very fine	(Photo)	150.00
438	★	1904-07, ½a-2R (17-26). Very fine		10.45
439	★	1904-07, 3R-4R (27-28). Very fine		13.00
440	★	1904, 5R Carmine and Black (29). Very fine		9.00
441	★	1904, 50R Orange Brown and Black (30A) . Very fine	(Photo)	150.00
442	★	1907-08, 1c-75c (31-39). Complete set. Very fine		5.53
443	★	1907-08, same as above. Very fine		5.53
444	★	1907-08, same as above. Very fine		5.53
445	★	1907-08, same as above. Very fine		5.53
446	★	1907-08, same as above. Very fine		5.53
447	★	1912-18, 1c-5R (40-53). Very fine		23.99
448	★	1912-18, same as above. Very fine		23.99
449	★	1912-18, same as above. Very fine		23.99
450	★	1912-18, 1c-3R (40-51). Very fine		10.99
451	★	1912-18, same as above. Very fine		10.99
452	★	1912-18, 3R, 5R (51, 53). Fine-very fine		11.00
453	★	1912-18, same as above. Fine-very fine		11.00
454	★	1912-18, same as above. Fine-very fine		11.00
455	★	1912-18, 4R-5R (52-53). Very fine		13.00
456	★	1912-18, same as above. Very fine		13.00
457	★	1912-18, same as above. Very fine		13.00
458	★	1912, 75c Blue Green, Olive Back (48b). Block of Four. Very fine		12.00
459	★	1912, 1R Emerald (49a). Block of 4. Very fine		12.00

EGYPT

460	★	1879-93, 5pa-5Pi (29-41). Complete set. Fine-V. F.		25.94
461	★	1914, 1m-200m Pictorial Issue (50-59). Complete set. Very fine		9.76
462	★	1914, 1m-200m Pictorial IMPERFORATE (50-59). Complete set each imperf. with colored sheet margin. Very fine, not listed		—
463	★	1914, 5m-10m Imperforate Horiz. Pairs (54-55). Very fine		—
464	★	1921-22, 1m-100m Pictorial Issue (61-72). Complete set. Very fine		10.48
465	★	1921-22, 2m-100m (63, 65, 69-70, 72). Blocks of Four of each. Very fine		23.88+
466	★	1921, 100m Black (72). Block of Four. Very fine		12.00+

467	★	1922, 100m-200m Commemorative Issue (90-91). Very fine	8.00
468	★	1923, 1m-200m King Fuad Issue (92-102). Fine-very fine	8.61
469	★	1924, £1 Ultramarine and Dark Violet (104). Very fine (Photo)	16.00
470	★	1925, 5m-15m Geographical Congress (105-107). Complete set. Fine	5.50
471	★	1926, 5m-200m Agricultural Exposition Issue (108-113). Complete set. Very fine	9.10
472	★	1926-1944, Nineteen complete sets (115-120, 125-127, 150-157, 163-166, 200- 207, 217-223, 225-233, B1, C1-C2, E1-E3). Very fine	18.09
473	★	1936, 5m-20m Treaty Issue (205-207). Complete set in Blocks of Four. Very fine	3.60
474	★	1926, 50Pi Commemorative Issues (114). Very fine	8.00
475	★	1926, 5m-15m Port Fuad Issue (121-123). Very fine	105.00
476	★	1926, 50Pi Port Fuad Issue (124). Very fine (Photo)	150.00
477	★	1927, £1 Dark Green and Orange Brown (149). Well centered, small corner crease. No gum	12.00
478	★	1931, 100m Provisional Issue (167). Very fine (Photo)	50.00
479	★	1933, 5m-20m Railway Congress Issue (168-171). Complete set. Very fine, part gum	9.25
480	★	1933, 5m-20m Aviation Congress Issue (172-176). Complete set. Very fine	10.25
481	★	1934, 1m-50Pi Postal Union Issue ((177-189)) . Fine-V. F.	27.44
482	★	1934, £1 Postal Union Issue (190) . Very fine (Photo)	35.00
483	★	1938, £1 Birthday Issue (224) . Very fine (Photo)	50.00
484	★	Balance of Country , 68 diff. mounted, all unused 20th Century. V. F. lot	18.14

FALKLAND ISLANDS

485	★	1891-92, ½p-2½p (9-10, 14). Fine-very fine	16.25
486	★	1898, 2/6 Dark Blue (20). Very fine (Photo)	16.00
487	★	1898, 5/ Brown Red (21). Very fine	11.00
488	★	1904-05, ½p-3/ (22-28). Fine-V. F.	11.50
489	★	1905, 5/ Dull Red (29). Very fine	11.00
490	★	1912-14, ½p-10/ (30-39). Very fine	25.45
491	★	1912, £1 Red (40). Very fine (Photo)	15.00
492	★	1921-25, ½p-3/ (41-48). Complete set. Very fine	7.15
493	★	1929-32, ½p-2/6 George V Pictorial Issue (54-61). Very fine	6.01
494	★	1921, £1 George V Pictorial Issue (64). Very fine (Photo)	20.00

495 ★	1933, ½p-1/ Centenary Issue (65-72). Very fine	16.85
496 ★	1933, 10/ Centenary Issue (75). Very fine (Photo)	50.00
497 ★	1938-41, ½p-£1 George VI Issue (84-95). Complete set. Very fine	20.95
498 ★	1944, ½p-1/ George VI surcharged "Dependency" (4 diff. sets). Very fine	6.16

FIJI

499 ★	1903, ½p-5/ (59-68). Very fine	12.95
500 ★	1903, £1 Black and Ultramarine (69). Very fine (Photo)	25.00
501 ★	1903, 2½p-1/ (62-67). Very fine	6.75
502 ★	1904-12, ½p-1/ (70-76). Block of Four of each. Very fine	17.80
503 ★	1911, 1/-5/ (76-77). Very fine	8.50
504 ★	1903, £1 Violet and Black (78). Very fine (Photo)	17.50
505 ★	1912-23, ½p-5/ (79-87, 89-90). Very fine	9.13
506 ★	1912-23, ½p-5/ (79-84, 86-87, 89-90). Very fine	8.13
507 ★	1912-23, same as above. Very fine	8.13
508 ★	1912-16, ½p-5/ (79-90). Very fine	10.88
509 ★	1912-23, same as above. Very fine	10.88
510 ★	1912, £1 Violet and Black (91). Very fine (Photo)	15.00
511 ★	1921, £1 Violet and Black, Die II (91a). Very fine	13.50
512 ★	1922-27, ¼p-2/6 (93-105). Very fine	5.78
513 ★	1938-40, ½p-5/ George VI Issues (117-121, 122A-132). Very fine	8.38

GAMBIA

514	1869, 6p Blue (2). Lightly cancelled, Very Fine (Photo)	25.00
515 ★	1880-87, ½p-2p, ½p-1/ Victoria (5-7, 12-19). Fine-V. F.	11.30
516 ★	1898, ½p-1/ Victoria (20-27). Complete set. Fine-V. F.	13.75
517 ★	1902-05, ½p-3/ Edwards (28-39). Complete set. Very Fine	29.10
518 ★	1902-05, ½p-3/ Edwards (28-39). Very Fine, Complete set	29.10
519 ★	1902-05, ½p-3/ Edwards (28-39). Very Fine. Complete set	29.10
520 ★	1902-05, 1p-3/ Edwards (29-31, 33-39). V. F. except #36 creased	27.60
521 ★	1902-05, Same as above. V. F. except #36 creased	27.60
522 ★	1904-09, ½p-10p. Edwards (40-49, 51, 53, 55, 57). Very Fine	16.30
523 ★	1904-09, Same as above. V. F.	16.30

524 ★	1904-09, Same as above. V. F.	16.30
525 ★	1904-09, Same as above. V. F.	16.30
526 ★	1904-09, ½p-10p Edwards (40-2, 44-7, 49, 51-57). Very Fine	20.80
527 ★	1904-09, 2p-2/ Edwards (44-5, 47, 49, 53-5, 62). Very Fine	12.30
528 ★	1904-09, 1/-2/6 Edwards (58-59, 62-63). Fine-V. F.	16.00
529 ★	1904-09, 1/-3/ Edwards (59-60, 62-64). Very Fine	15.00
530 ★	1904-09, Same as above. Very Fine	15.00
531 ★	1904-09, Same as above. V. F.	15.00
532 ★	1904-09, Same as above. V. F.	15.00
533 ★	1912-21, ½p-2/6 George V (70-84). Very Fine	11.15
534 ★	1912-21, Same as above. Very Fine	11.15
535 ★	1912-21, Same as above. Very Fine	11.15
536 ★	1912-21, Same as above. Very Fine	11.15
537 ★	1912-21, ½p-5/ George V (70-86). Complete set. V. F.	20.65
538 ★	1912-21, 6p-3/ George V (78-85). Very Fine	10.95
539 ★	1921, ½p-4/ George V (87-96). Complete set. Very Fine	16.45
540 ★田	1921, 1p-10p George V (88-89, 91-95). Blocks. Very Fine	25.00
541 ★	1922-27, ½p-10/ George V Pictorial (102-120). Complete set. Very Fine	30.62
542 ★	1922-27, ½p-4/ George V Pictorial (102-7, 109-10, 112-18). Very Fine	15.97
543 ★	1922-27, Same as above. Very Fine	15.97
544 ★	1922-27, Same as above. Very Fine	15.97
545 ★	1922-27, Same as above. Very Fine	15.97
546 ★田	1922, 1/, 2/6, 4/ (115-16, 118). Blocks. Fine-V. F.	29.00
547 ★	1922-27, 10/ George V Pictorial (120). Very Fine	8.50
548 ★	1922-27, Same as above. V. F.	8.50
549 ★	1922-27, Same as above. V. F.	8.50
550 ★	1922-27, Same as above. V. F.	8.50
551 ★	1922, 4p-5/ George V Pictorial (121-24). Complete set. Very Fine	13.40
552 ★	1922, 4p-5/ George V Pictorial (121-24). Complete set. V. F.	13.40
553 ★	1922, Same as above. V. F.	13.40
554 ★	1922, Same as above. V. F.	13.40

GERMAN EAST AFRICA

555 ★	1916, 1/ green (N105). Very Fine	10.00
556 ★	1917, 1c-10R George V (N106-120). Very Fine	18.61
557 ★	1917, 1c-10R George V (N106-118, 120). Very Fine	16.21
558 ★	1917, 10R George V (N120). Very Fine	7.00
559 ★	1917, Same as above. V. F.	7.00
560 ★	1917, Same as above. V. F.	7.00
561 ★	1917, 20R George V (N121). Very Fine	15.00
562 ★	1917, 50R George V (N122). Centered trifle to top. Fine(Photo)	50.00

GIBRALTAR

563 ★	1886-98, ½p-1/ Victoria (8-13, 15, 17, 19, 21). Very Fine	11.05
564 ★	1889, 5c-75c (22-28). Complete set. Fine-V. F.	13.50
565 ★	1889-95, 5c-5P Victoria (29-36c). Complete set. Very Fine	11.43
566 ★	1903, ½p-1/ (37-43). Very Fine	6.90
567 ★	1903, £1 Violet and Black (47) . Very Fine.....(Photo)	70.00
568 ★	1904-11, ½p-1/ (48-58). Very Fine	11.80
569 ★	1904-11, Same as above. Very Fine	11.80
570 ★	1905-10, 2/, 2/ (59-60). Very Fine	16.50
571 ★	1904, 4/ Violet and Green (61). Very Fine	15.00
572 ★	1910, 4/ Black and Red (62). Very Fine (Photo)	15.00
573 ★	1911, 8/ Violet and Green (63). Very Fine (Photo)	45.00
574 ★	1912, ½p-4/ (66-73). Very Fine	9.75
575 ★	1912, Same as above. Very Fine	9.75
576 ★	1912, Same as above. Very Fine	9.75
577 ★	1912, Same as above. Very Fine	9.75
578 ★	1912, Same as above. Very Fine	9.75
579 ★	1912, 2/-4/ (72-73). Very Fine	7.25
580 ★	1912, Same as above. Very Fine	7.25
581 ★	1912, Same as above. Very Fine	7.25
582 ★	1912, Same as above. Very Fine	7.25
583 ★	1912, £1 Violet and Black (75). Centered slightly to left. Fine(Photo)	17.50
584 ★	1921-29, ½p-2/6 (76-87). Very Fine	8.96

585 ★	1925, 2/6, 5/, 10/ (87, 89, 91). Very Fine	11.00
586 ★	1925, Same as above. Very Fine	11.00
587 ★	1925, Same as above. Very Fine	11.00
588 ★	1925, Same as above.. Very Fine	11.00
589 ★	1924-25, 4/-5/ (88-89). Very Fine	15.50
590 ★	1924, 8/ Violet and Green (90). Very Fine (Photo)	40.00
591 ★	1925, 10/ Ultramarine and Black (91). Very Fine	6.00
592 ★	1925, Same as above. Very Fine	6.00
593 ★	1927, £1 Orange and Black (92). Very Fine (Photo)	15.00
594 ★	1938-44, ½p-£1 George VI Issue (107-117). Complete set. Very Fine	17.96

GILBERT AND ELLICE

595 ★	1911, ½p, 1/ (1, 7). Very Fine	8.00
596 ★	1911, Same as above. Very Fine	8.00
597 ★	1911, Same as above. Very Fine	8.00
598 ★	1911, Same as above. Very Fine	8.00
599 ★	1911, ½p-2½p (1-4). Very Fine	14.50
600 ★	1911, 5p-1/ (5-7). Very Fine	8.00
601 ★	1912-14, ½p-2/ (14-23). Block of Four of each. Very Fine	14.16
602 ★	1912-19, ½p-5/ (14-25). Very Fine	8.04
603 ★	1924, £1 Violet and Black (26). Very Fine (Photo)	20.00
604 ★	1939-40, George VI Postage and Postage Due Issues (40-51, J1-J8). Complete sets. Very Fine	7.95

GOLD COAST

605 ★	1875, 4p Red Violet (2). Very Fine. No gum.	20.00
606 ★	1898, ½p-2/ (26-33). Very Fine	10.30
607 ★	1900, 10/ Green and Brown (35). Very Fine	10.00
608 ★	1902, ½p-5/ (38-46). Very Fine	13.09
609 ★	1902, ½p-10/ (38-47). Very Fine	19.59
610 ★	1902, Same as above. Very Fine	19.59
611 ★	1902, Same as above. Very Fine	19.59
612 ★	1902, Same as above. Very Fine	19.59
613 ★	1902, 20/ Violet and Black (48). Very Fine (Photo)	16.00

614 ★	1906, 2/6 Green and Yellow (55). Very Fine	7.00
615 ★	1907-11, ½p-2/6 (56-64). 1/ small scrape. Balance Very Fine	8.55
616 ★	1907-13, ½p-2/6 (56-4). Very Fine	8.55
617 ★	1907-13, ½p-5/ (56-65). Complete set. Very Fine	18.55
618 ★	1907-13, Same as above. Very Fine	18.55
619 ★	1910-13, 2/, 2/6, 5/ (63-65). Very Fine	15.00
620 ★	1913, 5/ Green and Red on Yellow (65). Very Fine	10.00
621 ★	1913, Same as above. Very Fine	10.00
622 ★	1913-23, ½p-5/ (69-78). Very Fine	10.75
623 ★	1913-23, ½p-5/ (69-72, 74-77, 81-82). Very Fine	9.25
624 ★	1913-23, Same as above. Very Fine	9.25
625 ★	1913-23, Same as above. Very Fine	9.25
626 ★	1913-23, Same as above. Very Fine	9.25
627 ★	1921-23, 5/ Green and Red, Die II, (78a). Very Fine	10.00
628 ★	1913, 10/ Green and Red on Emerald (79a). Very Fine	10.00
629 ★	1916, Same as above. Very Fine	10.00
630 ★	1916, 20/ Violet and Black (80). Very Fine	(Photo) 17.50
631 ★	1924-25, 2/, 5/ (91, 93). Very Fine	5.50
632 ★	1924-25, Same as above. Very Fine	5.50
633 ★	1924-25, Same as above. Very Fine	5.50
634 ★	1924-25, Same as above. Very Fine	5.50
635 ★	1925, 15/ Dull Violet and Green (95). Very Fine	(Photo) 30.00
636 ★	1921, £2 Green and Orange (97). Very Fine	(Photo) 60.00
637 ★	1928, ½p-5/ George V Pictorial Issue (98-107). Complete set. Very Fine	8.10
638 ★	1938-41, ½p-10/ George VI Issue (115-127). Complete set. Very Fine	9.73

GREAT BRITAIN

639 ★	1856, 6p Lilac (27). Fine	12.00
640 ★	1867, 1/ Green, Plate 5 (54). Fine. No gum	7.00
641 ★	1902, 2/6, 5/ Edwards (139-140). Very Fine	8.00
642 ★	1902, 10/ Edward (141). Very Fine	9.00
643 ★	1912-13, ½p-1/ George V (159-172). Complete set in Blocks. Very Fine	23.60
644 ★	1913-22, 9p, 2/6, 5/ (173, 180, 183). Very Fine	6.75

645 ★	1924-36, Five Sets (185-208, 210-220). Very Fine	8.97
646 ★	1934-36, ½p-1/ (210-220). Complete set in blocks. V. F.	9.54
647 ★	1934, 2/6-10/ (222-224). Complete. Very Fine	8.75
648 ★	OFFICES IN CHINA , 1c-\$1.00 (1-12). Very Fine	7.27
649 ★	1916, Same as above. Very Fine	7.27
650 ★	1916, 1c-\$1.00 (1-5, 7-12). Very Fine	6.97
651 ★	1916, Same as above. Very Fine	6.97

OFFICES IN MOROCCO

652 ★	SP. CURR. , 1903-05, 50c, 2p (24, 26). Very Fine	10.00
653 ★	—1905-06, 5c-1P (27-32). Very Fine	8.40
654 ★	—1907, 6P on 10/ Carmine Rose (44). Very Fine	5.00
655 ★	1907, Same as above. Very Fine	5.00
656 ★	1907, Same as above. Very Fine	5.00
657 ★	1907, Same as above. Very Fine	4.62
658 ★	BR. CURR. , 1907-12, ½p-1/ (1-7). Complete set. Very Fine	7.75
659 ★	FR. CURR. , Three Issues (1-21, 26-35). Complete sets. Very Fine	

OFFICES IN TURKISH EMPIRE

660 ★	1903-05, 12 Pi-24Pi (11-12). Very Fine	7.00
661 ★	1909-10, 30pa-5pia (26-31). Complete set. Very Fine	11.35
662 ★	1921, 30pa-180Pi (55-64). Complete set. Very Fine	9.67
663 ★	1921, Same as above. Very Fine	9.67
664 ★	1921, Same as above. Very Fine	9.67
665 ★	1921, Same as above. Very Fine	9.67

GRENADA

666 ★	1888-91, Provisional Issues (31-32, 34). Fine	6.25
667 ★	1891, 1p-2½p (36-38). Complete set. Very Fine	5.50
668 ★	1895-99, ½p-1/ (39-46). Complete set. Very Fine	9.65
669 ★	1902, ½p-5/ (48-56). Very Fine	19.70
670 ★	1904-06, ½p-1/ (58-64). Very Fine	15.25
671 ★	1904-06, ½p-1/ (58-59, 62-64). Very Fine	6.75

672 ★	1904-06, Same as above. Very Fine	6.75
673 ★	1904-06, Same as above. Very Fine	6.75
674 ★	1902-04, Same as above. Very Fine	6.75
675 ★	1906-11, ½p-1/ (68-74). Very Fine	7.85
676 ★	1906-11, Same as above. Very Fine	7.85
677 ★	1906-11, Same as above. Very Fine	7.85
678 ★	1906-11, Same as above. Very Fine	7.85
679 ★	1906-11, ½p-5/ (68-76). Complete set. Very Fine	18.35
680 ★	1908, 1/-10/ (77-78). Fine	15.50
681 ★	1913, 10/ Green and Red (88). Very Fine	10.00
682 ★	1913, Same as above. Very Fine	10.00
683 ★	1921-26, ½p-5/ (91-108, 110). Very Fine	14.22
684 ★	1937-38, ¼p-10/ George VI Issue (132-142). Complete set. Very Fine	9.67

HONG KONG

685 ★	1862, 18c Lilac (4). No gum. Fine	10.00
686 ★	1863-80, 2c-24c (8, 10, 12-13, 15, 18). Fine	15.25
687 ★	1866, 18c Lilac (17). Fine	10.00
688 ★	1882-1902, 2c-30c (36-41, 44-48). V. G.-V. F.	5.73
689 ★	1885-91, Provisional Issues (52, 54, 64, 66). Fine-Very Fine	7.00
690 ★	1898, 10c-\$1.00 (69-70). Very Fine	6.00
691 ★	1903, 1c-\$3.00 (71-83). Very Fine	24.15
692 ★	1903, \$5.00 Blue Green and Lilac (84). Fine	10.00
693 ★	1903, \$10.00 Orange and Black (85). Very Fine	(Photo) 17.50
694 ★	1904-11, 1c-\$3.00 (86-106). Very Fine	29.13
695 ★	1912-14, 1c-\$3.00 (109-122). Very Fine	17.48
696 ★	1938, 1c-\$5.00 George VI Issue (154-165). Very Fine	19.35
697 ★	1938, \$10.00 Green and Violet (166). Very Fine	(Photo) 20.00
698 ★	1941, 2c-\$1.00 Centenary Issue (168-173). Complete set. Very Fine	3.38

INDIA

699 ★	1882-92, ½a-1R (36-42, 44-48, 55-59), Very Fine	8.58
700 ★	1895, 2R, 3R, 5R (50-52). Very Fine	10.50



3



29



34



38



57



65



66



68



70



72



33



102



133



153



172



200



204



210



212



229



234



246



250



258



267



268



269



270



271



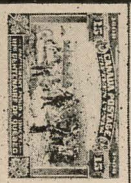
277



291



EX280



EX280



303



304



326



343



364



365



367



396



397



398



402



410



429



436



437



441



469



476 →



478



482



483



486



491



496



494



500



504



514



562



567



572



573



583



590



593



603



613



630



635



636



693



697



707



709



715



716



721



741



765



775



787



789



813



839



845



846



853



856



912



920



923



936



951



953



955



956



959



960



961



962



969



987



1009



1011



1013



1014



1015



1035



1040



1046



1066



1073



1081



1086



1093



1119



1126



1128



1144



1145



1146



1150



1151



1186



1216



1217



1219



1221



1222



1223



1247



1249



1255



1257



1265



1267



1269



1275



1287



1292



1298



1301



1303



1305



1306



1315



1325



1330



1345



1362



1364



1375



1393



1395



1418

701 ★	1902-09, 3p-2R (60-71). Very Fine	8.76
702 ★	1904, 3R-5R (72-73). Very Fine	8.00
703 ★	1909, 15R Olive Gray and Ultramarine (75). Fine	13.50
704 ★	1911, 1R, 2R, 5R (93-95). Very Fine	8.00
705 ★	1911, 10R Carmine Rose and Green (96). Very Fine	9.00
706 ★	1911, 15R Olive Green and Ultramarine (97). Very Fine	12.00
707 ★	1911, 25R Ultramarine and Brown Orange (98). Very Fine	(Photo) 22.50
708 ★	1922, 10R Carmine and Green (123). Very Fine	8.00
709 ★	1929, 25R Blue and Ochre (125). Very Fine	(Photo) 20.00
710 ★	1937-40, 3p-10R George VI Issue (150-165). Very Fine	14.49
711 ★	1929-30, 2a-12a Air Post Issue (C1-C6). Complete set. Fine	3.65
712 ★	1874-1900, ½a-1R (O22-O33, O35-O36). Very Fine	9.22
713 ★	1902-09, 3p-10R Official Issue (O37-O49). Very Fine	16.20
714 ★	1909, 15R Olive Gray and Ultramarine (O50). Fine	12.00
715 ★	1909, 25R Ultramarine and Orange Brown (O51). Fine	(Photo) 17.50
716 ★	1925, 1R on 15R (O67). Double Surcharge. V. F.	(Photo) —
717 ★	1925, 1R on 25R (O68). Double Surcharge, V. F.	—
718 ★	1925, 1R on 25R. Surcharged on Front and Back of stamp (O68a). Very Fine. Unpriced	—
719 ★	1925, 2R on 10R (O69). Double Surcharge. V. F.	—
720 ★	1925, 1R on 15R (O70). Double Surcharge. V. F.	—
721 ★	1925, 1R on 25R (O71). Double Surcharge. V. F.	(Photo) —
722 ★	1937-38, 1R-10R Officials (O100-103). Very Fine	10.80
723 ★	IONIAN IS., 1859, ½p-1p (1-2). Very Fine	9.00
724 ★	IRISH FREE STATE, 1922, 2/6-10/ (12-14). Very Fine	19.00
725 ★	—1922, 2/6-10/ (12-14). Very Fine	19.00
726 ★	—1922, 2/6-10/ (12-14). Very Fine	19.00
727 ★	—1922, 2/6-10/ (12-14), Very Fine	19.00

END OF FIRST SESSION

SECOND SESSION

WEDNESDAY, JANUARY 23, 1946

JAMAICA

728	★	1885, 2p Slate and 2p Gray (20, 20a). Fine	8.50
729	★	1897, 1/-5/ (28-30). Complete set. Very Fine	12.25
730	★	1903-04, ½p-5p (33-36). Complete set. Very Fine	4.00
731	★	1903-04, ½p-5p (33-36). Complete set in Blocks of Four. Very Fine	16.00
732	★	1905-11, ½p-2/ (37-44). Very Fine	16.95
733	★	1905-11, ½p-5/ (37-45). Complete set. Very Fine	20.95
734	★	1905-11, ½p-2/ (37-38, 40, 42-44). Fine-Very Fine	10.20
735	★	1905-11, Same as above. Fine-V. F.	13.15
736	★	1905-11, Same as above. Fine-V. F.	10.20
737	★	1905-11, 2½p-1/ (46-48, 51-54). Very Fine	13.15
738	★	1905-11, Same as above. Very Fine	13.15
739	★	1905-11, Same as above. Very Fine	13.15
740	★	1905-11, 2½p-1/ (46-54). Complete set. Very Fine	17.15
741	★	1908, 2/ Red Brown (56). Very Fine	13.50
742	★	1911, 1p-5/ (61-73). Complete set. Very Fine	16.05
743	★	1912-19, 2p-5/ (63-73). Very Fine	15.70
744	★	1912-19, Same as above. Very Fine	15.70
745	★	1912-19, Same as above. Very Fine	15.70
746	★	1912-19, Same as above. Very Fine	15.70
747	★	1919-21, ½p-5/ (75-86). Very Fine	18.12
748	★	1921-23, ½p-10/ (88-100). Complete set. Very Fine	18.04
749	★	1938, ½p-5/ George VI Issue (116-127). Very Fine	4.43
750	★	1923, ½p-2½ Semi-Postal Issue (B1-B3). Complete set. Fine	5.50

(Photo)

KENYA AND UGANDA

751	★	1921, 1c-2R (1-11). Very Fine	5.46
752	★	1922-27, 1c-5/ (18-34). Very Fine	12.73
753	★	1922-27, 1c-10/ (18-19, 21, 23-30, 32, 34, 36). Very Fine	14.15

754 ★	1922-27, Same as above. Very Fine	14.15
755 ★	1922-27, Same as above. Very Fine	14.15
756 ★	1922-27, Same as above. Very Fine	14.15
757 ★	1922-27, 2/-5/ (30-34). Very Fine	9.25
758 ★	1922-25, 7/50c, 10/ (35-36). Very Fine	11.00
759 ★	1922, £1 Orange and Black (37). Very Fine	12.00
760 ★	1935, 1c-5/ George V Pictorial Issue (46-57). Very Fine	9.75
761 ★	1935, Same as above. Very Fine	9.75
762 ★	1935, Same as above. Very Fine	9.75
763 ★	1935, Same as above. Very Fine	9.75
764 ★	1935, 1c-10/ George V Pictorial Issue (46-58). Very Fine	16.75
765 ★	1935, £1 Black and Scarlet (59). Very Fine	(Photo) 15.00
766 ★	1938-42, George VI and Provisional Issues (63-83). Complete sets. Very Fine	20.29

KUWAIT

767 ★	1923, 5R-10R (15-16). Very Fine	12.50
768 ★	1934, 10R Carmine and Green (34). Very Fine	8.00
769 ★	1923, ½a-2R (O1-O6, O8-O11). Very Fine	6.06
770 ★	1923, Same as above. Very Fine	6.06
771 ★	1923, Same as above. Very Fine	6.06
772 ★	1923, ½a-2R (O1-O11). Very Fine	6.46
773 ★	1923-24, ½a-5R Official Issues (O1-O12). Very Fine	11.36
774 ★	1923, 10R Green and Carmine (O13). Very Fine	10.00
775 ★	11923, 15R Olive Green and Ultramarine (O14). Very Fine	(Photo) 15.00
776 ★	1929-33, 1a-10R Official Issue (O15-O24). Very Fine	15.56
777 ★	1929, 15R Olive Green and Ultramarine (O25). Very Fine	12.50

LAGOS

778 ★	1875, 3p Red Brown (3). Very Fine, no gum	15.00
779 ★	1882-1902, ½p-1/ Victoria (13, 15, 18-21, 24, 26-32). Very Fine	17.10
780 ★	1882-1902, 1p-1/ Victoria (14, 17-18, 21, 24-27, 29-32). Very Fine	17.85
781 ★	1882-1902, Same as above. V.F.	17.85

782 ★	1882-1902, Same as above. Very Fine	17.85
783 ★	1882-1902, Same as above. V. F.	17.85
784 ★	1887-1903, ½p, 6p Victoria (27,39). Blocks. V. F.	8.00
785 ★	1882-1902, 2/6, 5/, 10/ Victoria (34, 36, 38). Very Fine	20.00
786 ★	1904, ½p-1/ Edwards (40-44, 46). Fine-V. F	13.30
787 ★	1904, 2/6 Green & Carmine Rose (47). Very Fine	(Photo) 20.00
788 ★	1904, 5/ Green & Ultramarine (48). Very Fine	13.50
789 ★	1904, 10/ Green & Brown (49). Very Fine	(Photo) 80.00
790 ★	1904-05, ½p-10/ Edwards (50-59). Fine	18.55

LEEWARD ISLANDS

791 ★	1890, ½p-1/ (1-7). Fine.....	9.05
792 ★	1890, 5/ Green and Ultramarine (8). Very Fine	10.00
793 ★	1897, ½p-4p Jubilee Issue (9-12). Very Fine	7.50
794 ★	1897, 7p Jubilee Issue (14). Very Fine	6.00
795 ★	1902, ½p-5/ (20-28). Complete set. Very Fine	13.08
796 ★	1902, Same as above. Very Fine	13.08
797 ★	1902, Same as above. Very Fine	13.08
798 ★	1902, Same as above. Very Fine	13.08
799 ★	1905-11, ½p-1/ (29-32, 34-38). Very Fine	17.85
800 ★	1905-11, Same as above. Very Fine	17.85
801 ★	1905-11, ½p-2/6 (29-32, 34-39). Very Fine	20.85
802 ★	1905-11, Same as above. Very Fine	20.85
803 ★	1905-11, ½p-1/ (29-38). Very Fine	19.35
804 ★	1911, 2/6, 5/ (39-40). Very Fine	9.00
805 ★	1911, Same as above. Very Fine	9.00
806 ★	1911, Same as above. Very Fine	9.00
807 ★	1912-22, ¼p-5/ (46-57). Complete set. Very Fine	7.68
808 ★	1912-22, Same as above. Very Fine	7.68
809 ★	1912-22, Same as above. Very Fine	7.68
810 ★	1912-22, Same as above. Very Fine	7.68
811 ★	1921-32, ¼p-5/ (61-76, 78-81). Very Fine	16.04
812 ★	1928, 10/ Red and Green (82). Very Fine	8.00

813 ★	1928, £1 Black and Violet (83). Very Fine	(Photo)	15.00
814 ★	1938, ¼p-£1 George VI Issue (103-115). Complete set. Very Fine		16.27

MALTA

815 ★	1860-61, ½p Buff (1). Centered to right. Fine		15.00
816 ★	1863-74, ½p Yellow Buff, ½p Buff (3, 3a). Fine		8.00
817 ★	1863-81, ½p Victoria (3, 5-7). Fine		14.50
818 ★	1874, ½p Golden Yellow (4). Very Fine		13.50
819 ★	1886, 5/ Rose (14). Very Fine		7.00
820 ★	1899, 2/6-10/ (17-18). Very Fine		15.00
821 ★	1903-04, ½p-1/ (21-27). Complete set. Very Fine		8.45
822 ★	1903-04, Same as above. Very Fine		8.45
823 ★	1903-04, Same as above. Very Fine		8.45
824 ★	1903-04, Same as above. Very Fine except scrape on 4p		8.45
825 ★	1903-04, ½p-1/ (21-23, 25-27). Very Fine		6.70
826 ★	1903-04, 1p-1/ (22-23, 26-27). Very Fine		5.95
827 ★	1904-11, ½p-1/ (28-40). Very Fine		7.99
828 ★	1904-11, 1f-1/ (28-36, 38, 40, 42-43, 45). Very Fine		8.74
829 ★	1904-11, 4½p-5p (42-45). Complete set. Fine-V. F.		5.25
830 ★	1904-11, Same as above. Fine-V. F.		5.25
831 ★	1904-11, Same as above. Fine-V. F.		5.25
832 ★	1904-11, Same as above. Fine-V. F.		5.25
833 ★	1904-11, Same as above. Fine-V. F.		5.25
834 ★	1914-21, ¼p-1/ (49-59). Very Fine		5.51
835 ★	1914-21, ½p-2/ (49-60). Very Fine		10.51
836 ★	1914-21, Same as above. Very Fine		10.51
837 ★	1914-21, Same as above. Very Fine		10.51
838 ★	1914, 1/ Green (59). Block of Four. Very Fine		8.00
839 ★	1914, 5/ Scarlet and Green (61). Very Fine	(Photo)	18.00
840 ★	1919, 2/6 Olive Green (64). Very Fine		12.50
841 ★	1919, Same as above. Very Fine		12.50
842 ★	1919, Same as above. Very Fine		12.50
843 ★	1919, Same as above. Very Fine		12.50

844 ★	1915, 2/6 Olive Green (64). Well centered. Light crease	12.50
845 ★	1915, 10/ Black (65). Fine	(Photo) 175.00
846 ★	1921, 10/ Black (76) . Very Fine	(Photo) 55.00
847 ★	1922, ½p-1/ (77-81). Very Fine	7.31
848 ★	1922, Same as above. Very Fine	7.31
849 ★	1922, Same as above. Very Fine	7.31
850 ★	1922, Same as above. Very Fine	7.31
851 ★	1922, Same as above. Very Fine	7.31
852 ★	1922, 2/6-5/ (83-84). Very Fine	15.00
853 ★	1922, 10/ Blue Black (85) . Very Fine	(Photo) 40.00
854 ★	1922, ¼p-2/ (86-94). Very Fine	7.64
855 ★	1922, Same as above. Very Fine	7.64
856 ★	1922, 10/ Black (96). Very Fine	(Photo) 17.50
857 ★	1922-26, ¼p-10/ (98-113). Very Fine	15.49
858 ★	1922-26, Same as above. Very Fine	15.49
859 ★	1922-26, Same as above. Very Fine	15.49
860 ★	1922-26, Same as above. Very Fine	15.49
861 ★	1922-26, ¼p-£1 (98-114a). Complete set. Very Fine	30.49
862 ★	1922, 2/, 10/ (110, 113). Very Fine	7.50
863 ★	1926, ¼p-10/ (116-125, 127-129). Very Fine	14.43
864 ★	1926, Same as above. Very Fine	14.43
865 ★	1926, Same as above. Very Fine	14.43
866 ★	1926, Same as above. Very Fine	14.43
867 ★	1926, ¼p-10/ (116-129). Complete set. Very Fine	24.43
868 ★	1926, 10/ Olive Brown and Gray (129). Very Fine	5.00
869 ★	1926-27, ¼p-3/ (131-142, 144-145). Very Fine	8.11
870 ★	1926-27, ¼p-3/ (131-145). Very Fine	9.61
871 ★	1926-27, Same as above. Very Fine	9.61
872 ★	1926-27, 5/-10/ (146-147). Very Fine	10.50
873 ★	1926-27, Same as above. Very Fine	10.50
874 ★	1926-27, ¼p-10/ (131-147). Complete set. Very Fine	20.11
875 ★	1926-27, Same as above. Very Fine	20.11
876 ★	1926-27, Same as above. Very Fine	20.11

877 ★	1928, ¼p-3/ (148-164). Very Fine	9.25
878 ★	1928, Same as above. Very Fine	9.25
879 ★	1928, ¼p-10/ (148-166). Complete set. Very Fine	19.75
880 ★	1928, Same as above. Very Fine	19.75
881 ★	1928, Same as above. Very Fine	19.75
882 ★	1928, 1/-5/ (160-165). Very Fine	10.50
883 ★	1928, 5/-10/ (165-166). Very Fine	10.50
884 ★	1928, Same as above. Very Fine	10.50
885 ★	1930, ¼p-5/ (167-182). Very Fine	10.73
886 ★	1930, Same as above. Very Fine	10.73
887 ★	1930, ¼p-10/ (167-183). Complete set. Very Fine	17.73
888 ★	1930, Same as above. Very Fine	17.73
889 ★	1930, Same as above. Very Fine	17.73
890 ★	1930, 10/ Carmine Rose and Black (183). Very Fine	7.00
891 ★	1930, Same as above. Very Fine	7.00
892 ★	1938-43, 1f-10/ George VI Issue (191-205). Complete set. Very Fine	12.58
893 ★	1925, Postage Due Issues (J1-J20). Two Complete sets. Very Fine	6.03
894 ★	Balance of Country. 223 stamps mounted, all 20th Century unused. Very Fine lot. Some blocks	61.86

MAURITIUS

895 ★	1895-1904, 1c-50c (91-111 minus 94). Very Fine	9.80
896 ★	1895-1907, 1c-50c Coat of Arms (93, 96-7, 100-02, 104-06, 110-11, 128-30, 132-35). Fine-V. F.	8.56
897 ★	1895-1907, Same as above. Fine-V. F.	8.56
898 ★	1895-1907, Same as above. Fine-V. F.	8.56
899 ★	1895-1907, Same as above. Fine-V. F.	8.56
900 ★	1899-1902, Four Issues (114-122). All Blocks of 4. Fine-V. F.	19.40
901 ★	1902, 1R, 2R50c (123-24). Fine	12.50
902 ★	1902, 2R50c-5R (125-26). Fine	12.00
903 ★	1910, 1c-5R Edwards (137-150). Very Fine	16.47
904 ★	1910, 10R Edward (151). Very Fine	15.00
905 ★	1912-22, 5c-10R George V (152-159). Complete set. Very Fine	30.95
906 ★	1912-22, 1R Emerald (156a). Very Fine	5.00

907 ★	1912-22, 10R George V (159). Very Fine	12.00
908 ★	1922-34, 50c-10R George V (195-199). Very Fine	18.10
909 ★	1922-34, 50c-5R George V (195-98). Very Fine	9.10
910 ★	1922-34, Same as above. Very Fine	9.10
911 ★	1922-34, Same as above. Very Fine	9.10
912 ★	1924, 50R Lilac & Green (200) . Very Fine (Photo)	40.00
913 ★	1938-43, 2c-10R George VI (211-222). Complete set. Very Fine	13.55

MONSERRAT

914 ★	1876, 1p-6p (1-2). Very Fine	5.25
915 ★	1880, 4p Blue (4). Very Fine	9.00
916 ★	1903, ½p-1/ (12-18). Very Fine	9.85
917 ★	1903, 2/-2/6 (19-20). Very Fine	10.00
918 ★	1904, ½p-1/ (22-28). Very Fine	9.60
919 ★	1908, 2/-2/6 (29-30). Fine	15.00
920 ★	1907, 5/ Carmine and Black (31). Very Fine (Photo)	15.00
921 ★	1908-10, ½p-2/6 (31A-39). Very Fine	11.90
922 ★	1908, 5/ Green and Scarlet (40). Very Fine	10.00
923 ★	1913, 5/ Green and Scarlet (42). Fine (Photo)	20.00
924 ★	1916-22, ½p-5/ (43-49, 51-53). Very Fine	15.75
925 ★	1916-22, Same as above. Very Fine	15.75
926 ★	1916-22, ½p-2/6 (43-49, 51-52). Very Fine	8.25
927 ★	1916-22, Same as above. Very Fine	8.25
928 ★	1916, 5/ Green and Red (53). Very Fine	7.50
929 ★	1916, Same as above. Very Fine	7.50
930 ★	1922-29, ¼p-5/ (54-56, 58-59, 61-64, 66-74). Very Fine	18.66
931 ★	1922-29, Same as above. Very Fine	18.66
932 ★	1922-29, Same as above. Very Fine	18.66
933 ★	1922-29, Same as above. Very Fine	18.66
934 ★	1922-29, ¼p-5/ (54-74). Complete set. Very Fine	18.97
935 ★	1932, ½p-2/6 Tercentenary Issue (75-83). Very Fine	36.95
936 ★	1932, 5/ Tercentenary Issue (84). Very Fine (Photo)	30.00
937 ★	1938, ½p-5/ George VI Issue (92-101). Complete set. Very Fine	4.91

NATAL

938 ★	1902-03, ½p-5/ Edwards (81-83, 86-90, 92, 94). Fine-V. F.	12.20
939 ★	1902-03, Same as above. Very Fine	12.20
940 ★	1902-03, Same as above. Very Fine	12.20
941 ★	1902-03, Same as above. Very Fine	12.20
942 ★	1904-09, ½p-5p, 6p-2/6 Edwards (101-105, 110-113). Very Fine	13.35
943 ★	1904-09, Same as above. Very Fine	13.35
944 ★	1904-09, Same as above. Very Fine	13.35
945 ★	1904-09, Same as above. Very Fine	13.35

NAURU

946 ★	1916-26, ½p-5/ (1-14). Very Fine	14.63
947 ★	1916-23, ½p-10/ (1-15). Complete set. Very Fine	23.63
948 ★	1916-23, Same as above. Very Fine	23.63
949 ★	1916-23, Same as above. Very Fine	23.63
950 ★	1916-23, Same as above. Very Fine	23.63
951 ★	1916, 10/ INDIGO (15a) . Very Fine (Photo)	250.00
952 ★	1924, ½p-10/ (17-30). Complete set. Very Fine	13.23
953	NEW BRUNSWICK , 1851, 3p Red (1). Fine (Photo)	20.00
954 ★	—1860-63, 1c-17c (5-10, 12). Fine	6.65

NEWFOUNDLAND

955 ★	1857, 5p Brown Violet (5). Very Fine (Photo)	30.00
956 ★	1860, 2p Orange (11) . Very Fine (Photo)	50.00
957 ★	1860, 3p Triangular (11A). Very Fine	7.50
958 ★	1860, 3p Triangular (11A). Very Fine	7.50
959 ★	1860, 3p Triangular (11A). Block of 4 . Very Fine (Photo)	30.00+
960 ★	1860, 3p Triangular (11A). Block of 4 forming a triangle. Very Fine. No gum (Photo)	30.00+
961 ★	1862-3, 1p Violet Brown (15A). Very Fine (Photo)	20.00
962 ★	1862-3, 2p Rose (17). Very Fine (Photo)	30.00
963 ★	1862-3, 4p-5p Imperfs. (18-19). Very Fine	10.00
964 ★	1862-3, 6p Rose (20). Watermarked . Very Fine	—

965	★	1862-3, 6½p Rose (21). Very Fine	10.00
966	★	1862-3, 8p Rose (22). Very Fine	10.00
967	★	1862-3, 1/ Rose (23). Very Fine	5.00
968		1866-94, 5c Brown (25). Shows imprint at right. Very Fine	25.00
969	★	1866-94, 5c Black (26). Fine (Photo)	25.00
970	★	1866-94, 12c-24c (28a-31). Fine	17.50
971	★	1873, 3c Blue (34). Centered to right. Fine	15.00
972	★	1879, 2c Green, Rouletted (38). Very Fine	9.00
973	★	1876, 5c Blue, Rouletted (40). Very Fine	11.00
974	★	1880-96, 1c-2c Shades (41-44, 46-47). Fine-V. F.	9.55
975	★田	1880-96, 2c Yellow Green (46). Block. Fine	8.00+
976	★	1880-96, ½c, 3c, 10c (49, 51, 56-7, 59). Fine-V. F.	9.50
977	★	1880-96, 5c Shades (53-55). Fine	12.75
978	★	1897, 1c-60c Cabot (61-74). Complete set. Fine-V. F.	23.65
979	★田	1897, 1c-24c, 60c Cabot (61-71, 74). Blocks. Very Fine	50.60+
980	★田	1897, 6c, 10c Cabot (66, 68). Blocks. Fine	9.00+
981	★	1897-1908, ½c-5c (75, 78-86). Fine-V. F.	6.23
982	★	1910, 1c-15c Guy (87-97). Complete set. Fine-Very Fine	47.10
983	★田	1910, 1c-6c Guy (87-92A). Blocks. Very Fine	58.40+
984	★田	1910, 2c, 5c Guy (88, 91). Blocks. Fine	7.40+
985	★田	1910, 4c Guy (90), Block. Very Fine	9.00+
986	★	1911, 6c-15c Guy Engraved (98-103). Complete set. Very Fine.....	49.25
987	★田	1911, 15c Guy (103). Block. Very Fine (Photo)	40.00+
988	★	1911, 1c-15c Royal Family (104-114). Complete set. 10c has thin spot. Balance Fine-V. F.	38.24
989	★田	1911, 3c, 5c Royal Family (106, 108). Blocks. Very Fine	19.00+
990	★	1919, 1c-36c Caribou Issue (115-126). Complete set. Very Fine	16.35
991	★	1919, Same as above. Very Fine	16.35
992	★	1919, Same as above. Very Fine	16.35
993	★	1919, Same as above. Very Fine	16.35
994	★	1919, Same as above. Very Fine	16.35
995	★	1923-24, 1c-24c (131-144). Complete set. Very Fine	16.85
996	★	1928, 1c-30c (145-159). Complete set. Very Fine	13.48

997	★田	1928, 5c, 8c, 9c Pictorials (149, 151-2). Blocks. Very Fine	11.00
998	★田	1928, 9c Myrtle Green (152). Block. Very Fine	7.00
999	★	1929-31, 1c-30c (163-171). Complete set 5c, 10c no gum. Very Fine	8.15
1000	★田	1929, 6c, 10c Re-engraved (168-69). Blocks. Very Fine.....	11.00
1001	★	1931, 1c-30c (172-82). Complete set. Very Fine	19.40
1002	★	1931-37, 1c-48c (183-199). Complete set. 4 stamps no gum. Very Fine	9.50
1003	★田	1931-37, 5c-25c (190-197). Blocks. Very Fine	20.00
1004	★	1933, 1c-32c Humphrey Gilbert Issue (212-225). Complete set. Very Fine	23.05
1005	★	1937, 1c-48c Long Coronation (233-243). Complete set. Very Fine	4.64
1006	★	1931, 15c-\$1.00 Air Post Issue (C6-C8). Complete set. Very Fine	7.00

NEW GUINEA

1007	★	1925-28, 1/-10/ (11-14). Very Fine	13.50
1008	★	1931, ½p-10/ Air Post Issue (C1-C12). Very Fine	21.55
1009	★	1931, £1 Air Post Issue (C13). Very Fine	(Photo) 22.50
1010	★	1931, ½p-10/ Commemorative Air Post Issue (C14-C26). Very Fine	23.75
1011	★	1931, £1 Commemorative Air Post Issue (C27). Very Fine (Photo)	25.00
1012	★	1932-34, ½p-10/ Air Post Issue (C28-C42). Very Fine	20.50
1013	★	1932, £1 Air Post Issue (C43). Very Fine	(Photo) 17.50
1014	★	1935, £2 Violet Air Post Issue (C44). Very Fine	(Photo) 45.00
1015	★	1935, £5 Green Air Post Issue (C45). Very Fine	(Photo) 100.00
1016	★	1931-34, Official Issues (O12-O35). Two Complete sets. Very Fine	11.68
1017	★	NEW HEBRIDES , 1911, ½p-5/ (17-25). Complete set. Very Fine	10.26
1018	★	—1911, Same as above. V. F.	10.26
1019	★	—1911, Same as above. V. F.	10.26
1020	★	—1911, Same as above. V. F. except 5/ has light crease	10.26

NEW ZEALAND

1021	★	1898, ½p-5/ Pictorial (70-83). Complete. Very Fine	15.20
1022	★	1906, ½p-6p Christchurch Issue (122-125). Complete set. Fine-V. F.	10.00
1023	★	1909-19. Three Issues (130-164). Complete. Very Fine	12.30
1024	★田	1919, ½p-1/ Victory (165-170). Complete set in blocks. Very Fine	12.56
1025	★	1919-26, Three Issues (165-170, 179-184). Complete sets. Very Fine	9.29

1026 ★	1935, ½p-3/ Pictorial (185-198). Complete set. Very Fine	8.73
1027 ★	1936-41, Three Issues (203-225). Complete sets. Very Fine	5.97
1028 ★	1940, ½p-1/ Centenary. Postage & Officials (229-41, O76-O86). Complete sets. Very Fine	7.63
1029 ★	1933-43, Semi-Postals (B6-B23, E1-2). Very Fine	5.90
1030 ★	1931-35. Airposts, Complete (C1-C8). Very Fine	5.95
1031 ★	NIGER COAST PROT. , 1893, ½p on 2½p (22). Fine	22.50
1032 ★	—1893, 1/ on 2p (29). Centered to left. Fine	30.00
1033 ★	—1897-1900, 10/ Deep Purple (63). Very Fine	8.00

NIGERIA

1034 ★	1914-15, ½p-10/ George V (1-11). Very Fine	16.24
1035 ★	1914-15, 10/ George V. Olive Back (11b). Very Fine (Photo)	25.00
1036 ★	1914-15, £1 George V (12). Very Fine	15.00
1037 ★	1927, £1 George V Die II (12a). Fine	12.00
1038 ★	1914-33, 3p-5/, ½p-5/ George V (13-16, 18-31). Very Fine	11.36
1039 ★	1936-44, ½p-2/6 George V & VI (38-46, 53-63).. No "A" numbers. V. F.	7.44
1040 ★	1936, £1 Orange & Black (49). Very Fine (Photo)	20.00
1041 ★	NORTH BORNEO 1918, 1c+4c-\$2.00+4c Semi-Postals (B31-45). Very Fine	10.68
1042 ★	—1918, Same as above. V. F.	10.68
1043 ★	—1918, Same as above. V. F.	10.68
1044 ★	—1918, Same as above. V. F.	10.68

NORTHERN NIGERIA

1045 ★	1900, ½p-1/ Victoria (1-7). Very Fine	12.40
1046 ★	1900, 10/ Green & Brown (9), Very Fine (Photo)	32.50
1047 ★	1902, ½p-1/ Edwards (10-16). Blocks of 4. Very Fine	18.40
1048 ★	1902, ½p-10/ Edwards (10-18). Complete set. Very Fine.....	15.10
1049 ★	1902, Same as above. Very Fine	15.10
1050 ★	1902, Same as above. Very Fine	15.10
1051 ★	1902, Same as above. Very Fine	15.10
1052 ★	1905, ½p-2/6 Edwards (19-26). Complete set. Very Fine	10.70
1053 ★	1905, Same as above. Very Fine	10.70

1054 ★	1905, Same as above. Very Fine	10.70
1055 ★	1905, Same as above. Very Fine	10.70
1056 ★	1910-11, ½p-5/ Edwards (27-37). Fine	10.73
1057 ★	1910-11, Same as above. Very Fine	10.73
1058 ★	1910-11, Same as above. Very Fine	10.73
1059 ★	1910-11, Same as above. Very Fine	10.73
1060 ★	1910-11, ½p-10/ Edwards (27-38). Complete set. Very Fine	20.73
1061 ★	1912, ½p-10/ George V (39-51). Very Fine	19.97
1062 ★	1912, 1/-5/ George V (48-50). Very Fine	8.00
1063 ★	1912, Same as above. Very Fine	8.00
1064 ★	1912, Same as above. V. F.	8.00
1065 ★	1912, Same as above. V. F.	8.00
1066 ★	1912, £1 George V (52). Very Fine	(Photo) 16.00
1067 ★	1912, £1 George V (52). Very Fine	16.00
1068 ★	1912, Same as above. Very Fine	16.00
1069 ★	1912, Same as above. Very Fine	16.00
1070 ★	1912, Same as above. Very Fine	16.00

NORTHERN RHODESIA

1071 ★	1925-29, ½p-5/ George V (1-14). V. F.	14.69
1072 ★	1925-29, 7/6-10/ George V (15-16). Very Fine	16.00
1073 ★	1925-29, 20/ Rose Lilac & Red (17). Very Fine	(Photo) 17.50
1074 ★	1938-41, ½p-20/ George VI (25-37). Complete set. Very Fine	19.15

NORTHWEST PACIFIC ISLANDS

1075 ★	1915-16, 2p-1/, 10/ (1-9 minus 8). Very Fine	16.25
1076 ★	1915-16, ½p-5/ (11-22, minus 14). Very Fine	10.87
1077 ★	1915-19, £1 Ultramarine & Brown (38). Very Fine	9.00
1078 ★	1915-19, Same as above. Very Fine	9.00
1079 ★	1915-19, Same as above. Very Fine	9.00
1080 ★	1915-19, Same as above. Very Fine	9.00
1081 ★	NOVA SCOTIA, 1851-53, 1p Red Brown (1). Three nice margins, in at left. Fine, Fresh	(Photo) 125.00

1082	—1851-53, 3p Blue (2). Fine	10.00
1083	✉ —1851-53, 3p Blue (2). Tied to cover. Very Fine	10.00+
1084	★ —1860-63, 1c-12½c (8-13). Complete set. Fine-V. F.	14.25

NYASALAND PROTECTORATE

1085	★ 1908, ½p-4/ Edwards (1-2, 4-6, 8). Very Fine. 6p no gum	9.40
1086	★ 1908, £1 Edward (10). Very Fine	(Photo) 25.00
1087	★ 1913-18, ½p-4/ George V (12-21). Very Fine	10.10
1088	★ 1913-18, Same as above. Very Fine	10.10
1089	★ 1913-18, Same as above. Very Fine	10.10
1090	★ 1913-18, Same as above. Very Fine	10.10
1091	★ 1913-18, Same as above. Very Fine	10.10
1092	★ 1918, £1 George V (23). Very Fine	15.00
1093	★ 1914, £10 Ultramarine & Dull Violet (24). Very Fine	(Photo) 80.00
1094	★ 1921-30, ½p-4/, 10/ George V (25-35, 37). 4p is used. Fine-V. F.	13.42
1095	★ 1934-44, ½p-1/ George V & VI (38-46, 54-62). Very Fine	5.57

PAPUA

1096	★ 1901-05, ½p-1/ (1-7). Very Fine	15.00
1097	★田 1901-05, ½p-2½p (1-4). Blocks of 4. Very Fine	12.00
1098	★ 1907, ½p-2/6 (11-18). Complete set. Very Fine	42.45
1099	★田 1907, 1p-1/ (12, 17). Blocks. Very Fine	20.00
1100	★ 1907, ½p-2/6 (19-26). Complete set. Very Fine	10.10
1101	★田 1907-10, 1p, 2½p, 6p (28, 30, 32). Blocks. Very Fine	15.20
1102	★田 1907-10, ½p-1/ (34-40 minus 36). Blocks of 4. Very Fine	12.00
1103	★田 1907-31, ½p-6p, twelve diff. Blocks. Very Fine	14.88
1104	★ 1910-12, ½p-2/6, ½p-1/ (41-48, 50-56). Few are slightly stained, balance V. F.	8.27
1105	★田 1910, 2/6 (48-49). Blocks. Very Fine	17.00
1106	★田 1916-31, 1/-5/ (70-72). Blocks. Very Fine	17.00
1107	★田 1917, 1p Surcharges (74-79 minus 75). Blocks. Very Fine	10.20
1108	★ 1933-41, ½p-5/ Pictorial (94-107). Very Fine	9.16
1109	★ 1929-41, Airposts Complete (C1-C15). Very Fine	7.25

1110 ★	Balance of Country , 45 different unused, Fine-Very Fine	27.97
1111 ★	RHODESIA , 1910, ½p-1/ (101-111). Very Fine	10.75
1112 ★	—1910, 2/6-3/ (113-114). Very Fine	12.00
1113 ★	—1913-19, ½p-3/ George V (119-134 minus 131). Very Fine	13.83
1114	—1913-19, 7/6 George V (136). Lightly cancelled. Very Fine	6.00

ST. HELENA

1115	1873-89, 6p Victoria (3, 5-6). Fine used	23.00
1116 ★	1864-73, 4p Carmine (15). Very Fine. Part gum	10.00
1117 ★	1868-83, 1/, 5/ (24, 31). Very Fine	9.00
1118 ★	1902-08, Three Edward Issues (48-52, 54, 56-58). Very Fine	5.95
1119 ★	1908, 10/ Green and Red (60). Very Fine (Photo)	20.00
1120 ★	1912, ½p-3/ (61-70). Complete set. Very Fine	9.65
1121 ★	1912, Same as above. Very Fine	9.65
1122 ★	1912, Same as above. Very Fine	9.65
1123 ★	1912, Same as above. Very Fine	9.65
1124 ★	1912-22, Four George V Issues (61-69, 71-77). Very Fine	9.37
1125 ★	1922-27, ½p-10/ (79-93). Very Fine	21.34
1126 ★	1922, £1 Red Violet and Black (99). Very Fine (Photo)	15.00
1127 ★	1934, ½p-5/ Centenary Issue (101-109). Very Fine	35.00
1128 ★	1934, 10/ Centenary Issue (110) . Very Fine (Photo)	40.00
1129 ★	1938-40, ½p-10/ George VI Issue (118-127). Complete set. Very Fine	11.09

ST. KITTS-NEVIS

1130 ★	1903, ½p-1/ (1-8). Very Fine	11.60
1131 ★	1903, Same as above. Very Fine	11.60
1132 ★	1903, Same as above. Very Fine	11.60
1133 ★	1903, Same as above. Very Fine	11.60
1134 ★	1903, ½p-5/ (1-10). Complete set. Very Fine	19.60
1135 ★	1905-18, ½p-5/ (11-23). Complete set. Very Fine	14.38
1136 ★	1920-22, ½p-10/ (24-35). Very Fine	15.85
1137 ★	1920-22, Same as above. Very Fine	15.85
1138 ★	1920-22, ½p-5/ (24-34). Very Fine	9.85

1197 ★	1912, 2c-1.50R (63-72). Very Fine	7.90
1198 ★	1917, 75c-2.25R (85, 87-88). Very Fine	6.00
1199	1920, 5R Gray Green and Ultramarine (89). Very Fine Used	10.00
1200 ★	1921-32, 2c-2.25R (91-113). Very Fine	10.71
1201 ★	1938-41, 2c-5R George VI Issue (125-148). Complete set. Very Fine...	18.16

SIERRA LEONE

1202 ★	1896-97, ½p-1/ Victoria (34-43). Fine-V. F.	8.80
1203 ★	1904-05, ½p-5/ Edwards (77-88). Fine-V. F.	17.95
1204 ★	1904-05, Same as above. Fine-V. F.	17.95
1205 ★	1904-05, Same as above. Fine-V. F.	17.95
1206 ★	1904-05, Same as above. Fine-V. F.	17.95
1207 ★	1907-10, ½p-2/ Edwards (90-100). Very Fine	10.20
1208 ★	1907-10, Same as above. Very Fine	10.20
1209 ★	1907-10, Same as above. Very Fine	10.20
1210 ★	1907-10, Same as above. Very Fine	10.20
1211 ★	1912-24, ½p-5/ George V (103-117). Very Fine	11.13
1212 ★	1912-24. Same as above. Very Fine	11.13
1213 ★	1919-24. Same as above. Very Fine	11.13
1214 ★	1912-24. Same as above. Very Fine	11.13
1215 ★	1912-24, ½p-10/ George V (103-118). Very Fine	21.13
1216 ★	1912-14, £1 George V (119). Very Fine	(Photo) 12.00
1217 ★	1912-14, £2 Violet & Ultramarine (120). Very Fine	(Photo) 42.50
1218 ★	1921-27, ½p-10/ George V (122-137). Very Fine	13.46
1219 ★	1921-27, £5 Gray Green & Orange (139). Very Fine	(Photo) 50.00
1220 ★	1933, ½p-2/ Wilberforce (153-162). Very Fine	23.20
1221 ★	1933, 5/ Wilberforce (163). Very Fine	(Photo) 32.50
1222 ★	1933, 10/ Wilberforce (164). Very Fine	(Photo) 40.00
1223 ★	1933, £1 Wilberforce (165). Very Fine	(Photo) 90.00
1224 ★	1938-44, ½p-£1 George VI (173-185). Complete set. Very Fine	19.77

SOMALILAND PROTECTORATE

1225 ★	1902, ½a-5R (1-12). Complete set. Very Fine	19.85
1226 ★	1904, ½a-2R (27-37). Very Fine	14.55

1227 ★	1904, ½a-12a (27-31, 33-35). Very Fine	8.05
1228 ★	1904, Same as above. Very Fine	8.05
1229 ★	1904, Same as above. Very Fine	8.05
1230 ★	1904, Same as above. Very Fine	8.05
1231 ★	1904, 3R-5R (38-39). Very Fine	10.00
1232 ★	1905, ½a-12a (40-48). Complete set. Very Fine	6.35
1233 ★	1905, ½a-12a (40, 42-48). Very Fine	6.10
1234 ★	1905, Same as above. Very Fine	6.10
1235 ★	1905, Same as above. Very Fine	6.10
1236 ★	1905, Same as above. Very Fine	6.10
1237 ★	1912-19, ½a-12a (51-59). Very Fine	5.09
1238 ★	1912-19, ½a-3R (51-62). Fine-V.F.	12.58
1239 ★	1941, 2R-5R George VI Issue (105-107). Very Fine	7.50

SOUTHERN NIGERIA

1240 ★	1901, ½p-2/6 Victoria (1-7). Very Fine	12.65
1241 ★	1901, Same as above. Very Fine	12.65
1242 ★	1901, Same as above. Very Fine	12.65
1243 ★	1901, Same as above. Very Fine	12.65
1244 ★田	1901, ½p-1p, 4p-1/ (1-2, 4-6). Blocks. Fine-V.F.	23.60
1245 ★	1902-04, ½p-10/ Edwards (10-19). Very Fine	25.70
1246 ★田	1902-13, ½p-1/ (10-11, 21, 3, 6-7, 45, 7, 9, 52). Block of each. Very Fine	23.88
1247 ★	1902-04, £1 Purple & Gray Green (20). Centered to right. Fine (Photo)	40.00
1248 ★	1904-07, ½p-5/ Edwards (21-29). Very Fine	15.67
1249 ★	1904-07, £1 Purple & Gray Green (31). Very Fine (Photo)	30.00
1250 ★	1907-10, ½p-5/ Edwards (32-41). Very Fine	14.07
1251 ★	1907-10, ½p-5/ Edwards (32-41). Very Fine	14.07
1252 ★	1907-10, ½p-5/ Edwards (32-41). Very Fine	14.07
1253 ★	1907-10, Same as above. Very Fine	14.07
1254 ★	1907-10, ½p-10/ Edwards (32-42). Very Fine	27.57
1255 ★	1907-10, £1 Edward (43) . Very Fine (Photo)	35.00
1256 ★	1912-13, ½p-10/ George V (45-55). Very Fine	25.95
1257 ★	1912-13, £1 George V (56). Very Fine (Photo)	17.50

1258 ★	SOUTHERN RHODESIA , 1924, ½p-5/ George V (1-14). Complete set Very Fine, no gum on top two	13.57
1259 ★	—1931-34, ½p-5/ George V (16-18, 21-30). Very Fine	11.04
1260 ★	—1935-43, Five Issues (37-64). Complete sets. Very Fine	11.13

SOUTH WEST AFRICA

1261 ★	1923, ½p-2/6 George V (1-18). Fine-V. F. in pairs	10.31
1262 ★	1923, Same as above. Fine-V. F. In pairs	10.31
1263 ★	1923, Same as above in pairs. Fine-V. F.	10.31
1264 ★	1923, 5/ George V (19-20). In pair. Very Fine	20.00
1265 ★	1923, £1 George V (23-24). In Pair. Very Fine (Photo)	70.00
1266 ★	1923, 5/ George V (25-26). In Pair. Fine	24.00
1267 ★	1923, 10/ George V (27-28). In Pair. Very Fine (Photo)	45.00
1268 ★	1923, ½p-10/ George V (33-54). In Pairs. Fine-V. F.	42.36
1269 ★	1923, £1 George V (55-56). In Pair. Very Fine (Photo)	50.00
1270 ★	1924-25, ½p-10/ George V (59-78). In Pairs. Fine-V. F.	29.62
1271 ★	1924-25, 1p-2/6 George V (61-4, 65-74). In pairs. Fine-Very Fine	8.72
1272 ★	1924-25, Same as above in pairs. Fine-V. F.	8.72
1273 ★	1924-25, 10/ Olive Green & Blue (77-78). In pair. Very Fine	12.00
1274 ★	1924-25, Same as above in pair. V. F.	12.00
1275 ★	1924-25, £1 George V (79-80). In Pair. Very Fine (Photo)	30.00
1276 ★	1926-27, ½p-10/ Pictorials (85-104). Complete. Very Fine in pairs	33.46
1277 ★	1927, ½p-10/ Pictorials (107-124). In Pairs. Complete set. Fine-V. F.	19.98
1278 ★	1931, ½p-20/ Pictorials (135-158). In Pairs. Complete set. Very Fine	32.98
1279 ★	1935-39, Commems. & Semi-Postals (163-184, B1-B22). Complete set. V. F.	8.84
1280 ★	1923-31, Postage Dues. 20 diff. plus Officials (O17-O34). Fine-V. F.	11.77

STRAITS SETTLEMENTS

1281 ★	1867, 1½c-2c (1-2). Good	10.00
1282 ★	1867, 4c Provisional Issue (4). Very Good	10.00
1283 ★	1867-72, 4c-24c (11-15). 8c used. Good	15.75
1284 ★	1867, 32c Pale Red (17). No gum. Fine	10.00
1285 ★	1879, 5c-7c (20-21). No gum. Fine	17.00

1286	★	1880, 5c Provisional Issue (29, 31). Fine	19.00
1287	★	1892, 5c on 4c Rose (32). Fine. No gum (Photo)	25.00
1288	★	1881-82, 10c, 5c (34, 38). Fine-Very Fine	6.50
1289	★	1882-99, 2c-96c (41, 43-57). Fine-Very Fine	19.80
1290	★	1883-84, 2c Provisionals (60-61). Fine	9.00
1291	★	1885, 3c on 5c ultramarine (70). Fine	15.00
1292	★	1886, 3c Violet Brown (71). Fine (Photo)	25.00
1293	★	1887-99, Provisional Issues (72-74, 76-82, 89-92). Very Fine	7.08
1294	★	1891, 10c on 24c Green (75a). Narrow "O" in "10" variety. Fine	5.00
1295	★	1892-99, 1c-\$5.00 (83-88). Complete set. Very Fine	18.17
1296	★	1902, 1c-\$2.00 (93-103). Very Fine	17.25
1297	★	1902, 1c-\$2.00 (93-103). Very Fine	17.25
1298	★	1902, \$100.00 Dull Violet and Green (104A). Centered trifle to top. Fine. Very Rare (Photo)	700.00
1299	★	1903-11, Three Issues (105-110-116, 118-120, 122, 124, 126, 129-134). Very Fine	13.06
1300	★	1904-11, 1c-\$2.00 (109-126). Very Fine	24.38
1301	★	1904, \$5.00 Green and Brown Orange (127). Very Fine (Photo)	15.00
1302	★	1910, \$5.00 Green and Red (128). Very Fine	8.00
1303	★	1904, \$25.00 Green and Black "Specimen" (128A). Part O. G. Very Fine (Normal Cat. \$150.00) (Photo)	—
1304	★	1907, 1c-\$1.00 (134A-144). Complete set. Very Fine	15.60
1305	★	1911, \$25.00 Blue and Violet (145). Very Fine (Photo)	100.00
1306	★	1908, \$500.00 Violet and Orange overprinted " Specimen " (146). Tiny scrape at bottom, well centered (Normal cat. \$2500.00) (Photo)	—
1307	★	1912-18, 1c-50c (150-152, 154-164, 169). Very Fine	6.75
1308	★	1912-18, Same as above. Very Fine	6.75
1309	★	1912-18, 1c-\$2.00 (150-152, 154-164, 168-170). Very Fine	9.75
1310	★	1912-18, Same as above. Very Fine	9.75
1311	★	1912-18, 1c-50c (150-164). Very Fine	6.04
1312	★	1915, \$2.00-\$5.00 (166-167). Very Fine	12.00
1313	★	1915, \$5.00 Green and Red on Blue Green, Olive Back (167a). Very Fine	10.00
1314	★	1915, \$25.00 Blue and Violet Overprinted " Specimen " (172). Very Fine (Normal Cat. \$50.00)	—

1315	★	1915, \$500.00 Orange and Dull Violet Overprinted "Specimen" (174). Very Fine (Normal Cat. \$800.00) (Photo)	—
1316	★	1921-32, 1c-\$1.00 (179-186, 188-92, 195-199). Very Fine	7.10
1317	★	1921-32, 1c-\$2.00 (179-200). Very Fine	13.75
1318	★	1922, 1c-\$2.00 Malaya-Borneo Exhibition, ten diff. values with overprint. Fine-V. F.	—
1319	★	1935-36, 1c-\$5.00 (217-234). Complete set. Very Fine	18.22
1320	★	1935-36, 2c-\$2.00 Pictorial Issue (218-230, 232). Very Fine	7.20
1321	★	1935-36, Same as above. Very Fine	7.20
1322	★	1935-36, 2c-\$2.00 (218-230, 233). Blocks of Four. Very Fine	28.80
1323	★	1935-36, Same as above. Very Fine	28.80
1324	★	1937-41, 1c-\$2.00 George VI Issue (238-251). Very Fine	13.15
1325	★	1938, \$5.00 Green and Red George VI (252). Very Fine (Photo)	12.50
1326	★	Balance of Country , Twentieth Century all unused. Mounted on album pages. 281 stamps, some blocks. Very Fine lot	95.46

FEDERATED MALAY STATES

1327	★	1900, 1c-25c (1-3, 5-7, 9). Very Fine	14.60
1328	★	1900, \$1.00-2.00 (11-12). Very Fine	9.00
1329	★	1900 \$1.00-\$2.00 (14-15). Very Fine	8.00
1330	★	1900, \$25.00 Green and Orange (17). Very Fine (Photo)	65.00
1331	★	1901-05, 1c-50c (18-33). Two complete sets. Very Fine	10.00
1332	★	1906-07, \$1.00-\$2.00 (34-35). Very Fine	6.25
1333	★	1906, \$5.00 Green and ultramarine (36). Very Fine	8.00
1334	★	1922-32, 1c-\$1.00 (49-73). Very Fine	8.03
1335	★	1925-26. \$2.00-\$5.00 (74-75). Very Fine	9.00
1336	★	1931-34, \$1.00-\$5.00 (77-79). Complete set. Very Fine	11.00

JOHORE

1337	★	1892-94, 1c-\$1.00 (18-24). Complete set. Very Fine	10.02
1338	★	1894-96, Provisional aand Coronation Issues (26-35). Very Fine	5.35
1339	★	1896, 1c-\$1.00 Coronation Issue (30-36). Complete set. Very Fine	8.35
1340	★	1896, Same as above. Very Fine	8.35
1341	★	1896-99, 1c-\$1.00 (37-47). Very Fine	10.27

1342 ★	1903-04, Provisional Issues (52-56, 58). Very Fine	15.90
1343 ★	1904-08, 1c-\$2.00 (59-69). Very Fine	13.86
1344 ★	1904-08, \$3.00-\$4.00 (71-72). Very Fine	13.00
1345 ★	1921, \$10.00 Green and Black (122). Very Fine (Photo)	15.00

KEDAH

1346 ★	1912-21, 1c-\$3.00 (1-19). Very Fine	18.86
1347 ★	1912-21, Same as above. V. F.	18.86
1348 ★	1912-21, Same as above. V. F.	18.86
1349 ★	1912-21, Same as above. V. F.	18.86
1350 ★	1912-21, Same as above. V. F.	18.86
1351 ★	1919, 50c-\$1.00 Surcharges (21-22). Very Fine	17.00
1352 ★	1921-36, 1c-\$5.00 (23-45). Complete set. Very Fine	20.47
1353 ★	1937, 10c-\$5.00 (46-54). Complete set. Very Fine	20.35

KELANTAN

1354 ★	1911, 1c-\$5.00 (1-12). Very Fine	15.61
1355 ★	1911-15, 3c-\$2.00 (2-5, 7-8, 10-11). Very Fine	6.25
1356 ★	1911-15, Same as above. Very Fine	6.25
1357 ★	1911-15, Same as above. Very Fine	6.25
1358 ★	1911-15, Same as above. Very Fine	6.25
1359 ★	NEGRI SEMBILAN , 1895-99, 2c-50c (6-14). Very Fine	18.75
1360 ★	—1935-41, 1c-\$5.00 (21-35). Complete with exception "A" and "B" numbers. Very Fine	22.58

PAHANG

1361 ★	1898-99, 10c-25c (16-17). Very Fine	6.25
1362 ★	1898, 50c Green and Black (18). Very Fine (Photo)	12.00
1363 ★	1935, 1c-\$5.00 (29-43). Complete set as originally issued. Very Fine	20.02

PERAK

1364 ★	1895-99, \$5.00 Green & Ultramarine (60). Very Fine. Part gum (Photo)	25.00
1365 ★	1935-36, 1c-\$5.00 (69-83). Complete set. Very Fine	14.44

1366 ★	1935-36, 1c-\$2.00 (69-82). Very Fine	7.45
1367 ★	1938-41, 1c-\$5.00 (84-98). Complete set. Very Fine	23.57
1368 ★	SELANGOR , 1935-41, 1c-\$5.00 (45-59). Complete with exception "A" & "B" numbers. Very Fine	19.00
1369 ★	—1935-41, 1c-50c (45-56). No. "A" and "B" numbers. V.F.	4.00
1370 ★	SUNGEI UJONG , 1881-84, 4c Brown (16). Fine	12.00
1371 ★	TRENGGANU , 1910-19, 1c-\$1.00, ten diff. (Bet. 1-16). Very Fine	5.76
1372 ★	—1910-19, 1c-\$1.00 (1, 3, 4, 7, 9, 11-2, 15-6). Very Fine	5.31
1873 ★	—1910-19, Same as above. V.F.	5.31
1374 ★	—1910-19, Same as above. V.F.	5.31
1375 ★	—1910-19, \$5.00 Lilac & Blue Green (18). Very Fine (Photo)	17.50
1376 ★	Balance of St. Settlement States , 94 diff. mounted. All 20th Century un- used. Very Fine lot	33.57

SUDAN

1377 ★	1902-21, 1m-10Pi (17-27). Complete set. Very Fine	6.55
1378 ★	1935-40, 3Pi-20Pi (44-45, 47-48, 50). Very Fine	4.40
1379 ★	1931, Three Air Post Issues (C1-C3, C23-C31, C33-C34). Very Fine	7.10
1380 ★	1931-35, 3m-10Pi Air Post Issue (C4-C15). Complete set. Very Fine	20.05
1381 ★	1935, 15m-10Pi Air Post Issue (C17-C22). Complete set. Very Fine	7.40
1382 ★	1902-06, Three official Issues (O1-O15). Very Fine	7.00
1383 ★	Balance of Country , 47 diff. stamps unused. Mounted. Very Fine lot	17.55
1384 ★	SWAZILAND , 1933, ½p-10/ George V (10-19). Complete set. Very fine	16.27
1385 ★	—1938-42, ½p-10/ George VI (27-37). Complete set. Very Fine	10.00

TANGANYIKA

1386 ★	1922-25, 5c-5/ (10-15, 17-18, 20-26). Very Fine	13.28
1387 ★	1922-25, 5c-5/ (10-26). Very Fine	15.28
1388 ★	1922, 1/-10/ Watermarked Sideways (23a-27a). Very Fine	22.00
1389 ★	1922, Same as above. Very Fine	22.00
1390 ★	1922, Same as above. Very Fine	22.00
1390 ★	1922, Same as above. Very Fine	22.00
1391 ★	1922, Same as above. Very Fine	22.00
1392 ★	1926-31, 5c-10/ (29-43). Very Fine	16.48

1393 ★	1926, £1 Brown Orange and Black (44). Very Fine	(Photo)	12.00
1394 ★	TOGO , 1914, ½p-30pf (51-58). Very Fine		27.00
1395 ★	—1914, 80pf Lake & Black on Rose (61). Very Fine	(Photo)	17.50
1396 ★	—1916, ½p-20/ George V (80-91). Complete set. Very Fine		22.04
1397 ★	—1916, ½p-20/ George V (80-91). Complete set. Very Fine		22.04

TRANSVAAL

1398 ★	1877-79. 1p-6p (71-73, 75). Thins. V. F. appearing		39.50
1399 ★	1877-79, 3p, 6p (79-81). Fine		35.00
1400 ★	1902-03, ½p-10/ Edwards (252-265). Very Fine		20.05
1401 ★	1903, £1 Violet & Green (266). Very Fine		11.00
1402 ★	TRINIDAD & TOBAGO , 1913-14, ½p-1/ (1-9). Complete sets. Fine-V. F.		5.54
1403 ★	—1914, 5/ Dull Violet and Red Violet (10). Very Fine		5.00

TURKS AND CAICOS ISLANDS

1404 ★	1909, ½p-3/ (13-22). Complete set. Very Fine		13.27
1405 ★	1921, ¼p-6p (36-42). Very Fine		5.41
1406 ★	1921, Same as above. Very Fine		5.41
1407 ★	1921, Same as above. Very Fine		5.41
1408 ★	1921, ¼p-1/ (36-41). Complete set. Very Fine		11.41
1409 ★	1923-26, ¼p-3/ (44-55, 57). Very Fine		6.54
1410 ★	1928, ½p-10/ (60-70). Complete set. Very Fine		11.74

UNION OF SOUTH AFRICA

1411 ★	1927, 10/ Olive Brown and Blue, Bi-lingual Pair (39-40). Very Fine		10.00
1412 ★	1927, 3p-5/ Bi-lingual Pairs (53-62). Very Fine		10.00
1413 ★	1936-42, Jipex Sheets and War Effort Issues (75-77, 111-125). Complete sets. Very Fine		4.93
1414 ★	1933-39, Semi-Postal Issues Complete (B1-B22). Very Fine		4.06
1415 ★	1925-29, Air Post Issues Complete (C1-C6). Very Fine		12.61
1416 ★	Balance of Country , 77 different unused 20th Century. Mounted. V. F. lot		21.04

VIRGIN ISLANDS

1417 ★	1866, 1p-6p (1-2). Latter has no gum. Fine	12.00
1418 ★	1867, 1/ Rose and Black (8). Very Fine (Photo)	15.00
1419 ★	1887-89, 4p, 6p, 1/ (16-17, 20). First no gum. Very Fine	15.00
1420 ★	1913, ½p-5/ (38-46). Complete set. Very Fine	10.45
1421 ★	1913, Same as above. Very Fine	10.45
1422 ★	1913, Same as above. Very Fine	10.45
1423 ★	1913, Same as above. Very Fine	10.45
1424 ★	1938, ½p-5/ George VI Issue (76-85). Complete set. Very Fine	4.91

ZANZIBAR

1425 ★	1896, 1R-4R (48-51). Very Fine	10.50
1426 ★	1899, ½a-8a (62-73). Very Fine	5.64
1427 ★	1899, 4R-5R (77-78). Very Fine	18.50
1428 ★	1904, ½a-1R (79-89). Very Fine	7.95
1429 ★	1904, 1a-2½a Provisional Issue (94-98). Complete set. Very Fine	9.00
1430 ★	1908-09, 1c-2R (99-109). Very Fine	10.86
1431 ★	1908, 3R-4R (110-111). Very Fine	14.00
1432 ★	1908, 5R Blue (112). Very Fine	10.00
1433 ★	1914, 1R-5R (150-154). Very Fine	18.75
1434 ★	1914, Same as above. Very Fine	18.75
1435 ★	1914, 1R-3R (150-152). Very Fine	7.25
1436 ★	1914, 1R-4R (150-153). Very Fine	12.25
1437 ★	1914, 4R-5R (153-154). Very Fine	11.50
1438 ★	1914, Same as above. Very Fine	11.50
1439 ★	1921-29, 1c-4R (156-173). Very Fine	10.35
1440 ★	1921, 25c-3R (167-169, 171-172). Fine	5.35
1441 ★	1935, 5c-10/ (201-213). Complete set. Very Fine	13.75
1442 ★	Balance of Country , 47 Different unused 19th & 20th. Mounted. V. F. line	26.30
1443 ★	ZULULAND , 1888-93, 2p-5p (3-5, 7). Fine-V. F.	12.00
1444 ★	—1888-93, 6p, 9p (8-9). Very Fine	11.00
1445 ★	—1894-96, ½p-2/6 Victoria (15-21). Very Fine	8.75

JUBILEES, LARGE LOTS, ETC.

1446 ★	JUBILEE SET, 1935, Complete set. Very Fine	216.41
1447 ★	BRIT. COLONIES IN AFRICA, 312 stamps mounted. Mostly different, All 20th Century unused. Very Fine lot	122.38
1448 ★	BRIT. COLONIES IN ASIA, plus Great Britain, 104 stamps mounted. All 20th Century unused. Very Fine lot	34.96
1449 ★	BRIT. COLONIES IN EUROPE AND OCEANIA, 303 stamps mostly different. All 20th Century unused. Very Fine lot	100.43
1450	BINDERS, Four Brit. Colony Scott Sectional Binders. Also several hundred glassine sheets to fit. Fine condition	---

END OF SALE — THANK YOU

PLEASE MAIL BIDS EARLY

WANTED

**Good U. S. and Foreign single pieces,
collections and lots for future
Auction Sales.**

Liberal advances made. Write for terms.