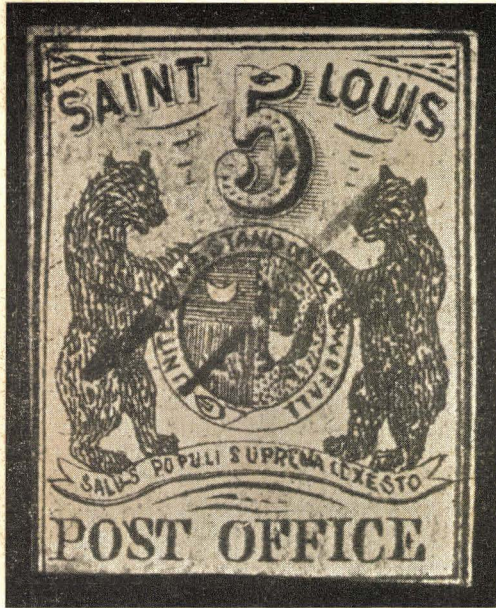


113th SALE

W. B. O'Connor Collection and Other Properties

# U. S. & FOREIGN STAMPS



AT PUBLIC AUCTION

Thursday, February 28th, 1946

EVENING SALE 7:45 P. M.

AT THE COLLECTORS CLUB

22 East 35th Street, New York City

GREGORY MOZIAN, Auctioneer



*Robert A. Siegel*  
**AUCTIONS**

SAUGERTIES

NEW YORK



## CONDITIONS OF SALE

---

1. The terms of sale are strictly cash to the highest bidder. All buyers are expected to pay for lots within three days of receipt, unless special arrangements have been made prior to the sale.
2. All bids are per lot as numbered in the catalogue and not per piece, unless otherwise announced by the auctioneer at the time of sale.
3. Any lot the description of which is incorrect is returnable only within three days of receipt. All disputed lots must be returned intact as received. Lots containing five or more stamps are not returnable at any time. No lots may be returned by purchasers who have had the opportunity to examine them before the sale.
4. Successful mail bidders, unless they are known to us or supply acceptable references, will be notified of the amount of the lots secured for them, and are expected to send payment in full before the lots are forwarded.
5. If the purchase price has not been paid within the time limit, or lots taken up within seven days from date of sale, they may be resold and any losses arising from such sale charged to the defaulter.
6. All stamps are sold as genuine, except where sold "As Is". Claims for any lot proving otherwise, must be made within two weeks from date of sale.
7. The right is reserved to group two or more lots, also withdraw any lot or lots from the sale, or to act on behalf of the seller.
8. Until paid for in full all lots remain the property of Robert A. Siegel.
9. No commission is charged for buying at our sales, but all forwarding charges will be added to the purchase price.
10. In addition to the purchase price, the buyer will be required to pay the one (1) percent New York City sales tax, unless he is exempt from the payment thereof.
11. Lots will be sent for inspection, provided such lots are returned to us the same day as received. Postage and registration both ways will be charged. Approximate values of lots will be given on request.
12. The placing of a bid shall constitute acceptance of the foregoing conditions of sale.

---

Lots are on display at our office one full week before the sale in Saugerties, N. Y. In sending bids, always state the highest price you are prepared to pay for the lot. Your limit will not be used as a starting bid unless absolutely necessary.

### DESCRIPTIONS

Superb—the finest condition for noteworthy, outstanding copies.

Very Fine (VF)—means that there is a slight deviation from the above.

Fine (F)—means that the perforations do not touch the design on issues after 1890, but in some cases may just touch in earlier issues; if used, fairly lightly cancelled.

Very Good (VG)—means that the appearance is generally fine but that the perforations cut the design slightly.

Good (G)—means average off-centering; or fairly attractive with slight defects. Original gum is not to be expected on 19th Century stamps up to 1888 unless so stated.

Scott's 1946 Specialized United States Catalogue is used for cataloging our lots of United States:

<b>WE SOLICIT FINE MATERIAL FOR FUTURE SALES</b>
--



113th SALE, THURSDAY, FEBRUARY 28th - 7:45 P.M.

# BID SHEET

ROBERT A. SIEGEL

Saugerties, New York

Please purchase for me at your Auction to be held in New York, **February 28, 1946**, the lots named below, the prices annexed being my limit on each lot. I agree to remit for purchases in accordance with the **Conditions of Sale** and to return no lots later than three days after receipt.

REFERENCES PLEASE  
(if unknown to us)

**SIGNED**


[illegible]

[illegible]



## IMPORTANT — PLEASE NOTE

Mail bids to Robert A. Siegel, Saugerties, N. Y. or last minute bids to Robert A. Siegel, c/o Collectors Club, 22 East 35th St., New York City.

Lots may be inspected on the Afternoon of February 28th up to sale time at the Collectors Club. Sale commences at 7:45 P. M.

## UNITED STATES COVERS

### STAMPLESS COVERS

1	<b>Augusta, Maine</b> , str. line in Horn of Plenty. Fine for this .....	—
2	<b>Chatham, Canada</b> to N. J., Suspension Bridge, N. Y. and three other transit markings. V. F. ....	—
3	<b>Corups Christi, Tex.</b> "5" in black, forwarded to New Orleans, "Car 2" in blue oval plus faint local marking. Fine .....	—
4	<b>Hudson Riv. Mail, N. Y.</b> "Paid 5", red circle. Fine .....	—
5	<b>Jefferson, O.</b> fancy Paid in scroll and large "3". V. F. ....	—
6	<b>Maysville, Ky.</b> "10", large blue "R". Fine .....	—
7	<b>Peeks-Kill, N. Y.</b> fancy red circle, boxed large red Paid. Fine .....	—
8	<b>Portsmouth, N. H.</b> , in fancy red oval. Fine .....	—
9	<b>"Ship 6", "7"</b> in red circle. Two covers, from Halifax, Nova Scotia to New York, both have five line Halifax marking. Very fine .....	—

### 1847-51 ISSUES ON COVER

10	<b>5c Red Brown (28)</b> . Tied with red grid, New York circle and red "Paid" on cover, stamp has three nice margins, cuts at left .....	35.00
11	<b>5c Red Brown (28)</b> . Tied with red grid from Boston. Very fine .....	35.00
12	<b>1c Blue, Type II (31)</b> . Strip of 3 tied with neat blue town cancel, cut in three sides. V. G. ....	35.00
13	<b>1c Blue, Type II (31)</b> . Pair and single tied with Boston Paid. Very good .....	35.00
14	<b>1c Blue (31, 32d)</b> . Two covers, both tied. Fine .....	27.00
15	<b>1c Blue, Type IV (32d)</b> . Shift, tied. Fine .....	12.00



16	<b>1c Blue, Type IV (32d).</b> Tied with str. line blue "Paid". Fine margins, stamp creased .....	12.00
17	<b>1c Blue, Type IV (32d).</b> Tied from Buffalo. Fine .....	12.00
18	<b>1c Blue, Type IV (32d).</b> Three copies tied on. V. G. ....	28.00
19	<b>1c Blue, Type IV (32d).</b> Horiz. strip of 3, tied from Tonawanda, N. Y. Fine .....	35.00
20	<b>3c Dull Red (33).</b> Tied with very fine green York, Pa. cancel on neat cover .....	—
21	<b>3c Red (33).</b> Tied, unusual artistically embellished addressing. Very attractive .....	—
22	<b>3c Red (33).</b> Tied with Wash. D. C. 1855 year date. Fine .....	10.00
23	<b>3c Red (33).</b> Tied from Baltimore, attractive red illustr. Hotel corner card. Fine .....	—
24	<b>3c Red (33).</b> Tied, "Henry Clay for 1849" embossed on back flap. Fine .....	—
25	<b>3c Red (33).</b> Tied from Detroit, line through "Three Cents" and rosettes double. Fine .....	20.00
26	<b>3c Claret (33a).</b> Tied, large margins all around. Very fine .....	—
27	<b>3c Or. Brown (33b).</b> Tied with red grid from Sing Sing, N. Y. Fine .....	—
28	<b>3c Or. Brown (33b).</b> Tied from Springfield, Ms., attractive illustrated corner card, patriotic theme. Fine .....	—
29	<b>3c Red (33).</b> Fine lot of ten covers includes oval, red, corner card, all tied .....	—
30	<b>10c Green, Type II (35A).</b> Tied from New York. Fine .....	17.50
31	<b>10c Green, Type II (35A).</b> Tied from Philadelphia to San Francisco. Fine .....	17.50
32	<b>10c Green, Type III (35B).</b> Neatly tied from Collinsville, Ct., three large margins, close left. Fine .....	17.50
33	<b>1c-10c Covers (33, 42F(3), 50, 68, 73).</b> Five covers includes Georgetown, Cal. pmkd. on #68 and faint Eastern R. R. on #33. V. G. lot .....	—
34	<b>Long Island, N. Y.</b> Postmarks, 19 covers from stampless to 1861, includes Valentine cover with enclosure, Nice lot .....	—

#### 1857 ISSUE ON COVER

35	<b>3c Red (44).</b> Tied with red Providence, red str. line "Steamboat". Very fine .....	—
36	<b>3c Red (44).</b> Cancelled with odd blue square grid of dots from Unadilla, N. Y. Very fine .....	—
37	<b>3c Red (44).</b> Tied with odd geometric from West Liberty, Ioa. V. F. ....	—



38	<b>3c Red (44).</b> Tied with large balloon strike New Market, N. J., patriotic on back. V. F. ....	—
39	<b>3c Red, 3c Rose (44, 65).</b> Two diff. <b>Patriotics.</b> Fine .....	—
40	<b>10c Green, Type III (49B).</b> Tied from San Francisco, Cal., in Ms. "Golden Gate", stamp has str. edge at top. Fine cover .....	13.50
41	<b>30c Orange (53).</b> Beautifully tied with <b>three diff. RED cancels</b> , red grid, and two transit markings. Very fine cover .....	90.00+

#### 1861-1869 ISSUES ON COVER

42	<b>1c Blue (63).</b> Four covers, six copies includes strip of 3 and two used with 3c as carrier rate. V. G.—Fine .....	15.00
43	<b>3c Rose (65).</b> Tied with pretty <b>Green</b> grid and Toledo, O. pmkd. Fine .....	—
44	<b>3c Rose (65).</b> Tied with very fine <b>Shield</b> cancel from Covington, Ky. ....	—
45	<b>3c Rose (65).</b> Tied with Cambridge, Mass. <b>Shield.</b> Fine .....	—
46	<b>3c Rose (65).</b> Unusual artistically embellished addressing. Very fine .....	—
47	<b>3c Rose (65).</b> Tied with <b>fancy Star</b> from Union Springs, N. Y. Fine .....	—
48	<b>3c Rose (65).</b> Tied with <b>"U. S. Shin"</b> cancel. Fine .....	—
49	<b>3c Rose (65).</b> Tied with 'Pa'id 1' in circle from Ozaukee, Wis. V. G., scarce .....	—
50	<b>3c Rose (65).</b> Double strike of <b>"H. R. R."</b> cancel. V. G. ....	—
51	<b>3c Rose (65).</b> Tied with faint strike of West Meriden, Conn. <b>Devil &amp; Pitchfork.</b> Scarce .....	—
52	<b>3c Rose (65).</b> Tied with neat small <b>U. S. in circle</b> from Keeseville, N. Y. ....	—
53	<b>3c Rose (65).</b> Tied from Worcester, Mass., attractive illustr. corner card. V. F. ....	—
54	<b>3c Rose (65).</b> Tied, attractive illustr. <b>Wesleyan Academy</b> corner card. Fine .....	—
55	<b>10c Green, 12c Black (68-69).</b> Tied on cover from Dobbs' Ferry, N. Y. to Egypt, various transit marks. V. G. ....	13.50
56	<b>12c Black (69).</b> Tied, various transit markings, to Scotland. V. G. ....	12.00
57	<b>24c Red Lilac (70).</b> Tied from Cambridge, Mass. to Germany, various transit markings. Very good .....	30.00
58	<b>2c Black (73).</b> Tied with bright <b>red</b> from New York on small mourning cover. V. G. ....	—
59	<b>2c Black (73).</b> Two covers both tied, San Francisco Stock Brokers corner card on both. Fine .....	—
60	<b>24c Gray Lilac (78).</b> Barely tied, to Scotland, transit markings. V. G. ....	10.00



61	<b>24c Lilac (78).</b> To England on small cover, red str. line "Paid 24" plus six other transit markings, not tied. Fine .....	10.00
62	<b>3c Red (94).</b> Tied, illustr. <b>Roanoke College</b> corner card. V. G. ....	—
63	<b>Patriotic Abraham Lincoln,</b> 3c Rose (65). Stamp has str. edge, tied from Annapolis, slight stains. Scarce design .....	—
64	<b>Patriotic,</b> 3c Rose (65). Tied from Wash. D. C., Blue Cross, "6th Corps, Second Division". Fine .....	—
65	<b>Patriotic,</b> 3c Rose (65). Tied from Seneca Falls, N. Y., Flag and Poem. Very fine .....	—
66	<b>Patriotic, Advertising,</b> 3c Rose (65). Tied. Very good .....	—
67	<b>Patriotic Covers,</b> 39 mostly different includes some scarce designs. Very fine lot .....	—
68	<b>1c Buff (112).</b> Tied, corner card, from Norristown, Pa. Fine .....	10.00
69	<b>1c Buff (112).</b> Tied from Belton, Tex. V. G. ....	10.00
70	<b>3c Ultramarine (114).</b> Tied with <b>Heart</b> from Guilford, Ct. Fine .....	—
71	<b>3c Ultramarine (114).</b> Tied with fancy <b>geometric</b> from Charlottesville, Va. V. F. ....	—
72	<b>3c Ultramarine (114).</b> Tied from Oswego, N. Y. with <b>Green</b> cancel, Central House corner card, Fine .....	—
73	<b>3c Ultramarine (114).</b> Tied with neat <b>Waterbury, Poinsettia.</b> Very fine .....	—

#### BANKNOTES, ETC. ON COVER

74	<b>1c Banknote.</b> Tied with <b>Waterbury Shield.</b> Fine .....	—
75	<b>1c Banknote.</b> Pair from Baltimore, large illustr. <b>Steamer</b> on back. Fine ....	—
76	<b>1c-2c Banknote.</b> Tied on with <b>Waterbury Leaf.</b> V. G. ....	—
77	<b>3c Green,</b> Tied with fine Danbury Conn. <b>Hat.</b> .....	—
78	<b>3c Green.</b> Tied with Danbury Conn. <b>Hat.</b> Fine .....	—
79	<b>3c Green. Waterbury Leaf</b> cancel. Fine .....	—
80	<b>3c Green.</b> Tied with diff. type Waterbury <b>Leaf.</b> V. F. strike, stamp slightly defective .....	—
81	<b>3c Green,</b> cancelled with very fine strike of Boston <b>Man,</b> cover bit ragged at one end. Scarce .....	—
82	<b>3c Green.</b> Tied with Bridgeport " <b>Don't U. S. M.</b> " Very fine .....	—
83	<b>3c Green.</b> Cancelled with very fine strike of <b>Dagger</b> from Los Gatos, Cal. Scarce .....	—



84	<b>3c Green.</b> Tied with neat "Mem. & Lob. R. R. Line" pmkd. and another tied with "K. C. R. R." Fine strikes .....	—
85	<b>3c Green.</b> Two covers both tied with large Star from <b>Yanton, Dak.</b> V. G. territorials .....	—
86	<b>2c Red Brown, 2c Green</b> (210, 212). Each with attractive illustr. corner card of "Seven Sutherland Sisters". Fine .....	—
87	<b>2c Carmine.</b> Two multi-colored covers, National Export Exhibition of 1899 and other Flag covering, entire face .....	—
88	<b>2c Carmine,</b> Two diff. illustr. colored Pan-American covers with Buffalo pmkds. Fine .....	—
89	<b>2c Shield Imperf.</b> (320). Horiz. pair tied on cover in 1907, V. F. ....	5.00
90	<b>2c Hudson-Fulton Imperf.</b> (373). Tied on cover in 1910. V. F. ....	12.50
91	<b>10c Green, Entire (U16).</b> Wells Fargo Frank. Tied from New York, scarce usage. V. G. ....	—
92	<b>3c Red, Entire (U26).</b> Tied with "P. O." in Mail Pouch from Oxford, N. Y. Fine .....	—
93	<b>3c Pink Entire (U59).</b> Very fine strike of <b>Phila. Fez</b> ties .....	—
94	<b>1c Brown, Postal Card (UX3).</b> Three diff. fancy <b>Waterbury cancels.</b> Very fine .....	—
95	<b>CONFEDERATE STATES, 5c Olive Green</b> (200). Vert. <b>pair</b> tied with Tudor Hall, Va. pmkd. Very fine .....	25.00
96	— <b>5c Blue</b> (203). Tied with Thomasville, Ga. pmkd. Very fine .....	9.00

## U. S. OFF COVER

### POSTMASTER'S PROVISIONALS

97	<b>5c Red, New Haven, Conn. Reprint,</b> unsigned. Very fine .....	—
98	<b>5c New York (9X1).</b> Blue pen cancel, cut close all sides. V. G. <b>(Photo)</b> .....	30.00
99 ★	<b>5c Black, Providence (10X1).</b> Slight thin. Fine margins ..... <b>(Photo)</b> .....	25.00
100 ★	<b>10c Black Providence Reprint (10X2).</b> "B" on back. Very fine .....	—
101	<b>5c Gray Lilac ST. LOUIS (11X4).</b> Cut in a trifle at B. Fine copy of this rare postmaster ..... <b>(Photo on Front Cover)</b> .....	500.00

### 1847-51 ISSUES

102	<b>5c Red Brown (28).</b> Red grid cancel. three small margins, close at B <b>(Photo)</b> .....	22.50
-----	---	-------



103	<b>10c Black (29).</b> Red grid cancel, corner crease, margins three sides, cut in at top ..... <b>(Photo)</b>	50.00
104	<b>1c Blue, Type II (31).</b> Blue cancel. Fine .....	11.00
105	<b>1c Blue (31, 32D).</b> First has red carrier cancel, latter has tiny scissor cut	20.00
106	<b>5c Red Brown (34).</b> Corner repaired, cut in partly at top .....	60.00
107	<b>10c Green, Type II (35A).</b> Two tied on piece, one has large margins and V. F. other. Fine .....	25.00
108	<b>10c Green, Type III (35B).</b> Very fine .....	12.50
109	<b>10c Green, Type III (35B).</b> Tied on piece with <b>New York Clipper</b> cancel, also Ms. "per Steamer Illinois". Fine .....	12.50+
110 ★	<b>10c Green, Type III (35B).</b> <b>Horiz. Pair</b> , margins all around. Very fine, bright fresh color ..... <b>(Photo)</b>	250.00
111	<b>12c Black (36).</b> Tiny corner crease. Fine appearance .....	20.00

#### 1857 ISSUES

112	<b>1c Dark Blue, Type II (41a).</b> Fine .....	10.00
113	<b>1c Blue, Type IIIa (42B).</b> Perfs. in at top and R. Very good .....	20.00
114 ★	<b>1c Blue, Type V (42F).</b> Shows imprint at left. Fine .....	—
115	<b>3c Rose, Type I (43).</b> Very fine strike of "V" in double circle <b>(Photo)</b>	—
116	<b>5c Brick Red (45).</b> Perfs. in top. Very good .....	60.00
117	<b>5c Red Brown (46).</b> "Paid" cancel, few perfs. short. Fine appearance .....	50.00
118	<b>5c Red Brown, 5c Browns (46, 47, 48a).</b> All have minor defects. Fine appearing lot .....	60.00
119 ★	<b>5c Brown (48a).</b> Fine centering, few perfs. short .....	15.00
120	<b>10c Green, Type I (49).</b> Perfs. cut in at right. Very good .....	50.00
121	<b>10c Green, Type I (49).</b> Centered to B. Fine ..... <b>(Photo)</b>	50.00
122	<b>10c Green, Type I (49).</b> Blue cancel few perfs. short. Fine appearing .....	55.00
123	<b>10c Green, Type III (49B).</b> Pair tied on piece. Fine .....	25.00
124	<b>10c, 12c, 24c (50-52).</b> All have red cancels, slight defects. Fine appearing	33.50
125 ★	<b>30c Orange (53).</b> Centered to left, tiny thin spot, O. G. Fine appearance	30.00
126 ★	<b>90c Blue (54).</b> Fine ..... <b>(Photo)</b>	60.00
127 ★	<b>90c Blue (54).</b> Straight edge at left otherwise fine ..... <b>(Photo)</b>	60.00
128 ★	<b>90c Blue (54).</b> Str. edge at right otherwise fine ..... <b>(Photo)</b>	60.00



# 1861-67 ISSUES

129	★	1c Indigo "August" India Proof (55P). Fine, an excellent space-filler for a rarity .....	(Photo)	25.00
130	★	3c Brown Red "August" (56). Tear at bottom. O. G. ....		—
131		10c Dark Green "August" (58). Red cancel, centered to left, light corner crease. Fine appearance .....	(Photo)	55.00
132		24c Violet "August" (60). Red grid cancel, centered bit to left. Fine .....	(Photo)	70.00
133		1c Blue (63). Very fine strike <b>fancy geometric</b> , centered to R .....	(Photo)	—
134		3c Rose (65). Two very fine strikes, Waterbury Leaf and fancy geometric .....		—
135	★	3c Lake (66). Centered to top and right, O. G. (Cat. \$70.00 in 1944) .....	(Photo)	—
136	★	3c Lake (66). Perfs. in at top. Fine, O. G. (List \$70.00 in 1944 Cat.) .....	(Photo)	—
137		5c Buff (67). Red grid cancel, repaired. Nice appearance .....		40.00
138		24c Red Lilac (70). Fine .....		10.00
139	★	24c Red Lilac (70). Very fine .....		75.00
140	★	90c Blue (72). Fine .....	(Photo)	60.00
141		15c Black, 90c Blue (72, 77). Tiny defects. Very fine appearance .....		27.50
142		2c Black (73). Pretty <b>red</b> Star in Circle cancel. V. F. strike, stamp centered to B .....		—
143	★	3c Scarlet (74). Appears reperfed at right. Fine appearance, scarce (Lists \$250.00 in 1944 Cat.) .....	(Photo)	—
144		15c Black (77, 91). Very good .....		25.00
145		3c Rose, Grilled (83). Fine .....		22.50
146		3c Rose, Grilled (85). Fine .....		15.00
147	★	2c Black, Grilled (85B). Centered left. Fine .....	(Photo)	50.00
148		1c Blue, Grilled (86). Very good, perfs. in left and B .....		17.50
149		1c Blue (86). Attractive <b>Red Leaf</b> cancel, centered trifle to top. Very fine .....	(Photo)	21.00+
150	★	2c Black, Grilled (87). Centered to B. Fine, O. G. ....		20.00
151	★	2c Black, Grilled (87). Horiz. pair, centered to B. Fine, O. G. ....		50.00
152		2c Black, Grilled (93). Neat large <b>blue</b> Star, well centered, light corner crease .....		4.00
153	★	5c Brown, Grilled (95). Fine .....	(Photo)	100.00
154		30c Orange, Grilled (100). Fine .....		22.50



155	<b>90c Blue, Grilled (101).</b> Perfs. cut in left and B. Very good .....	75.00
156	<b>19th Century Cancellation Collection,</b> 846 stamps, 1c to 10c denominations, 1861-1898, includes a few covers, mounted, nothing rare but many interesting and attractive strikes (Est. \$40.00 net) .....	—

### 1869 ISSUE

157	<b>1c Buff (112).</b> Very fine strike of <b>Three Leaf Clover</b> ..... <b>(Photo)</b>	—
158	<b>1c, 6c-12c Pictorials (112, 115-117).</b> Very good, light cancels .....	28.00
159	<b>12c Green (117).</b> Very fine .....	7.00
160 ★	<b>12c Green (117).</b> Perfs. in at R. Very good .....	22.50
161	<b>15c Brown &amp; Blue (119).</b> Fine .....	8.50
162 ★	<b>15c Brown &amp; Blue (119).</b> Centered to left. Very good .....	25.00
163	<b>24c Green &amp; Violet (120).</b> Perfs. in at R. Very good .....	30.00
164	<b>24c Green &amp; Violet (120).</b> Blue cancel, perfs. cut in at B, small thin in grill .....	40.00
165	<b>30c Blue &amp; Carmine (121).</b> Centered to top. Fine .....	20.00
166 ★	<b>30c Blue &amp; Carmine (121).</b> Perfs. cut in top and R. Fresh O. G. ....	85.00
167	<b>90c Carmine &amp; Black (122).</b> Centered to bottom right. Fine ..... <b>(Photo)</b>	75.00
168 ★	<b>1c Buff, Re-issue (133).</b> Well centered, O. G. heavy hinge .....	6.00

### BANKNOTE ISSUES

169	<b>1c-7c Banknote Grills (134-138).</b> 2c has str. edge, 3c is unused. Very good	47.50
170	<b>10c Brown, Grilled (139).</b> Faint grill. Fine ..... <b>(Photo)</b>	35.00
171	<b>15c Orange, Grilled (141).</b> Black <b>Star</b> in circle cancel, faint grill, centered to B. Fine ..... <b>(Photo)</b>	35.00
172	<b>90c Carmine, Grilled (144).</b> Heavy cancel, otherwise fine .....	50.00
173	<b>1c-24c Banknotes (145-153).</b> 24c has str. edge. V. G.-Fine .....	24.60
174	<b>90c Carmine (155).</b> Well centered, small thin .....	12.50
175	<b>90c Carmine (155).</b> Small thin. V. F. appearance .....	12.50
176	<b>1c-7c Banknotes.</b> Interesting and fancy <b>cancels</b> , twelve stamps includes two 7c .....	—
177	<b>3c Green, Kicking Mule</b> cancel. Very fine strike, scarce ..... <b>(Photo)</b>	—
178	<b>3c Green, Kicking Mule</b> cancel. Fine strike .....	—
179	<b>3c Green, Kicking Mule</b> cancel. Very fine strike, stamp has thin spot .....	—



180	<b>3c Green.</b> Very fine <b>Leaf</b> cancel .....	—
181	<b>3c Greens,</b> Phila. <b>Eagle</b> and real <b>Green</b> crossroads cancel. Fine .....	—
182	<b>3c Greens.</b> Six different <b>Red</b> cancels. Fine .....	—
183	<b>3c Greens, Eleven Fancy Cancels,</b> includes Shield, Masonic, Leaf, "U. S.", Paid in circle, red, brown, etc. Nice strikes .....	—
184 ★	<b>7c Vermilion (160).</b> Perfs. cut in top and R. Good .....	25.00
185	<b>7c, 15c, 90c Banknotes (160, 163, 166).</b> Last reperfed. V. G. ....	24.00
186 ★	<b>2c Vermilion (178).</b> Fine, O. G. ....	7.00
187 ★田	<b>3c Green (184).</b> Block of 12, centered left. Fine, O. G. ....	24.00
188 ★	<b>5c Blue (185).</b> Fine .....	12.50
189	<b>15c-90c Banknotes (189-90, 190a, 191).</b> Latter thin, others fine .....	21.50
190 ★	<b>5c Garfield (205, a, b).</b> Three shades. Fine .....	12.00
191 ★	<b>3c-30c Banknotes (213, 215-17).</b> Latter used, V. G.-Fine .....	13.50
192 ★田	<b>3c Vermilion (213).</b> Block, tiny thin on one stamp, well centered. O. G. ....	12.00
193	<b>90c Purple (218).</b> Fine .....	13.50
194	<b>Arrows and Corner Guide Lines.</b> 205 stamps, 19th & 20th Century, interesting specialist lot .....	—
195	<b>15c-90c (227-229).</b> Fine .....	9.50
196 ★	<b>90c Orange (229).</b> Thin spot. V. G. appearance .....	12.00
197 田	<b>Used Block Collection.</b> ½c-\$5.00, 1890-1943, 121 diff. blocks, many com-mems. V. G.-V. F. ....	97.44
198 田	<b>Used Blocks.</b> 1c-50c, 1894-1928, 37 blocks mostly diff., all str. edge or de-fective .....	78.55
199	<b>Precancels.</b> 130 includes early issues from 1890 to date. Nice lot .....	—

### COLUMBIANS

200 ★	<b>1c-15c Columbians (230-238).</b> No gum on last two. Good-Fine .....	22.30
201	<b>1c-50c Columbians (230-240).</b> All have defects .....	26.25
202	<b>3c-15c Columbian (232-238).</b> Minor defects .....	9.30
203 ★田	<b>5c Columbians (234).</b> Block. Fine, re-enforced .....	11.00
204 ★	<b>8c Columbian (236).</b> Imprint Plate No. strip of 4. Fine .....	20.00
205 ★	<b>10c-50c Columbian (237-240).</b> Each has thinning. Fine appearance .....	31.50
206 ★	<b>30c Columbian (239).</b> Well centered, one perf. short .....	9.00



207 ★	\$1.00	Columbian (241). Thin spot. Fine appearance	(Photo)	40.00
208	\$2.00	Columbian (242). Thin. Fine appearance		22.50
209 ★	\$3.00	Columbian (243). Str. edge at top. Heavy hinge	(Photo)	60.00
210	\$4.00	Columbian (244). Perfs. in at B. Very good	(Photo)	65.00
211 ★	\$5.00	Columbian (245). Part O. G. Fine	(Photo)	80.00
212 ★	\$3, \$4, \$5	Columbians, Card Proofs (243P-245P). Very fine		27.00

#### 1894-95 ISSUE

213 ★田	2c	Carmin Lake (249). Block, part gum. Fine		15.00
214 ★	3c-6c, 15c, 50c	(253-56, 259-60). Mostly thin. Fair		30.50
215 ★	5c	Chocolate (255). Two diff. Imprint Plate No. strips of three. V. F.		16.00
216	\$1.00	Black (261). Tiny thin. V. F. appearance		15.00
217	\$1.00	Black. Type II (261A). Very fine	(Photo)	32.50
218	\$5.00	Dark green (263). Very fine	(Photo)	65.00
219 ★田	2c	Carmin (266). Block. Perfs. cut in R. Good		17.50
220 ★	3c-10c	(268-273). Fine-V. F.		11.50
221 ★	3c-50c	(268-275). V. G.-Fine. 10c has str. edge		31.00
222 ★	5c	Chocolate (270). Five diff. Imprint Plate No. Strips of three, fine		30.00
223 ★	10c	green (273). Imprint Plate No. strip of 3, V. F.		10.00
224 ★	15c	Dark Blue (274). Fine		7.50
225 ★	\$1.00	Black, Type II (276A). Fine centered, creased, nice appearance		60.00
226 ★	\$2.00	Dark Blue (277). Fine	(Photo)	40.00
227 ★	\$2.00	Dark Blue (277). Well centered, a number of perfs. short at top		40.00
228	\$5.00	Dark Green (278). Fine. Lightly cancelled		20.00
229 ★	2c	Booklet Pane of 6 (279e). With guide line, fine		25.00
230 ★	2c	Booklet Pane of 6 (279e). With Guide Line. Very fine		25.00
231 ★	2c	Booklet Pane of 6. Specimen overprint (279B-S). No tab. V. G.		15.00
232 ★	5c-10c	(281-82, 283). 6c no gum, all nicely centered		12.00

#### TRANS-MISSISSIPPI

233 ★	1c-10c	Trans-Miss (285-290). Very fine		21.10
234 ★	8c-10c	Trans-Miss (289-90). Latter has heavy hinge. Fine		11.00





98



99



102



103



110



115



121



126



127



128



129



131



132



133



135



136



140



143



147



149



153



157



167



170



171



177



207



209



210



211



217



218



226



235



237



238



239



244



251



262



375



392



395



400



416



462



466



473



235 ★	50c Trans-Miss (291). Small thin. Very fine appearance .....	(Photo)	35.00
236 ★	50c Trans-Miss (291). Well centered, str. edge at R. No gum .....		35.00
237 ★	\$1.00 Trans-Miss. (292). Very fine centering, no gum .....	(Photo)	60.00
238 ★	\$2.00 Trans-Miss. (293). Fine .....	(Photo)	75.00

## TWENTIETH CENTURY

239 ★	1c Pan-American INVERTED CENTER (294a). Very fine .....	(Photo)	375.00
240 ★	1c-10c Pan-American (294-299). 10c without gum, two have defects .....		18.00
241 ★	3c-\$2.00 (302-313). Last three used, most have minor defects .....		47.25
242 ★田	8c Gray Lilac (306a). Block, fine .....		8.00
243	\$2.00 Dark Blue (312). Perfs in left. Very good .....		20.00
244	\$5.00 Dark Green (313). Centered bit to left. Fine .....	(Photo)	60.00
245 ★	1c-2c Imperfs. (314, 371, 373, 383-4). One without gum. Fine .....		8.20
246 ★	3c-10c Louisiana-Purch. (325-27). Part gum on latter. V. G. ....		20.00
247 ★	3c, 8c, 13c (333, 337, 339). Imprint Plate strips of 3. V. G. ....		14.25
248	1908, 13c-\$1.00, 1c-5c Imperfs. (339-347). Fine .....		19.50
249 ★	1c-5c Coils (348, 385-6, 394, 396, 411-13). V. G.-V. F. ....		11.00
250 ★	1c-2c Bluish Paper (357-58). Fine, first has plate no. ....		10.00
251 ★	15c Bluish Paper (366). Fine .....	(Photo)	60.00
252 ★	2c Lincoln Bluish (369). Well centered, str. dege at B .....		15.00
253	2c Lincoln, Bluish (369). Centered to left. Fine .....		13.50
254 ★田	2c Alaska-Yukon, Imperf. (371), Center Line block. Very fine .....		35.00
255 ★	3c Violet Coil (394). Pair. Very fine .....		5.00
256	50c-\$5.00 (423, 440, 478-80, 524, 547). Fine .....		22.00
257	50c Light Violet (477). Horiz. pair. Fine .....		12.00
258	\$5.00 Horiz. Pair of each (480, 524). Fine .....		11.00
259 ★田	5c Rose Error in Block of 6 (499h). Centered bit to top. Fine .....		25.00
260 ★	20c Deep Ultramarine (515). Set of four positions of Plate No. strips of 3. V. G.-Fine .....		30.00
261 ★田	\$1.00 Black Brown (518a). Block, scarce shade, centered left. V. G. ....		60.00
262 ★	\$2.00 Orange Red & Black (523). Very fine .....	(Photo)	40.00
263	\$2.00 Orange Red & Black (523). Well centered, perf. initialed .....		17.50



264	田	\$5.00 Deep Green & Black (524). Two blocks, one has one stamp torn, other has light crease, 5 fine copies obtainable .....	20.00
265	★田	2c Offset Type V (526). Three diff. Plate No. blocks of 20, V. G.-V. F. ....	32.40
266	★	1c-3c Offset Imperfs. (531, 532, b, c, 535). Very fine .....	8.25
267	★	1c Green (545). Fine .....	11.00
268	★	½c-\$1.00, \$5.00 (551-571, 573). Fine-very fine .....	28.01
269	★	1c-10c Rotary (581-591). Complete set. Fine .....	7.05
270	★	2c Coil, Type II (599a). Pair. Very fine .....	6.00
271	★	1c-5c Commems. (614-621). Complete sets. Fine-V. F. ....	8.85
272	★田	5c Norse-American (621). Block of 6, one stamp has ink on back. Balance fine .....	13.00
273	田	5c Norse-American (621). Used block. Fine .....	9.00
274	★	1c-10c Kans. (658-668). Complete set. Fine .....	13.50
275	★	1c-10c Nebr. (669-679). Complete set. V. G.-V. F. ....	13.77
276		1c-9c Nebr. overprints. 21 diff. Precancels. Fine scarce lot .....	—
277	★	11c-50c Rotary (692-701). Complete set. V. F. ....	5.70
278	★	1c-2c Parks (740-41). Sheet of 50 of each. Fine .....	5.00
279	★田	1c-16c Farleys (752-771). Complete set in Blocks Very fine .....	—
280	田	\$2.00 Presidential (833). Block. Very fine .....	4.25
281	★	1c-2c Defense (899-900). Sheet of 100 each. Very fine .....	7.00
282		BALANCE OF COLLECTION. U. S Postage, 1851-1940, 742 stamps mounted, mostly different, most of the better items have defects, includes a few unused .....	789.17
283		U. S. misc. lot, 37 diff. some defective. Fair plus \$8.63 cat. value in Cuba and Porto Rico .....	52.89

#### AIRES, OFFICIALS, REVENUES

284	★	16c-24c Airpost (C2-C3) First has str. edge, latter fine .....	9.00
285	★	8c-24c Airpost (C4-C6). Fine-V. F. ....	9.25
286	★	50c Zeppelin (C18). Very fine .....	4.50
287	★	2c-20c Shanghai (K1-K10). Fine .....	12.65
288	★	12c Agriculture (O6). Very fine .....	15.00
289		3c Executive (O12). Perfs. in at B. Very good .....	15.00



290	24c Interior. Pumpkin Head cancel (O22). Fine strike. Stamp has slight defects .....	—
291	6c, 10c, 15c Justice (O28-9, 31). Very good .....	14.00
292	30c Justice (O33). Fine .....	15.00
293	90c Justice (034). Perfs. barely touch left. Very good .....	35.00
294	30c, 90c Navy (O44-45). V. G.-Fine .....	16.00
295	1c-90c Post Office (O47-056). Complete set. Good-fine .....	14.45
296 ★	\$5.00-\$20.00 State. Card Proofs (O69P-71P). Fine .....	12.00
297	Officials. Sixty different, mostly used. Many have defects, mounted ....	131.50
298	Officials. 127 stamps. Many duplicates. Some unused. Good-fine .....	85.78
299 ★田	Post Office Seals. Imperf Blocks (OX7g, OX10f). Fine .....	12.00
300	2c Brown, Die 2, Entire (U288). Fine .....	12.00
301	25c Bond, 50c Entry of Goods. Part Perf. (R43b, R55b). Horiz. Pairs. Fine	25.00
302	\$20.00 Probate of Will. Card Proof (R99P). Very fine .....	20.00
303	\$50.00 Green, Imperf. (R101a). Fine margins, thin .....	12.00
304	\$200.00 Green & Red (R102c). Perforations mostly trimmed off on three sides, good space-filler .....	70.00
305	Civil War Revenues. 30 stamps, some duplicates. Fine lot .....	21.65
306 ★田	2c Red Bank Check Revenue, Essay, Block. Fine .....	—
307 ★	¾c-\$1.50 Potato Stamps (RL1-13). Complete set. Fine-V. F. ....	—
308	Revenues, 166 stamps mostly different, many defective, mounted .....	73.33
309 ★	CONFEDERATE STATES. 2c Red New Orleans (62X1). Thin spot, V. F. appearance .....	15.00
310	—1861-63, 1c-20c (200-O1, 203-207, 210-13). 17 stamps, includes extra shades, used and unused. Fair average .....	75.85

## U. S. WHOLESALE

(Contain no straight edges unless mentioned.)

311	2c Banknote No. 146, 157 (100 mixed). V. G.-V. F. ....	30.00
312	2c Banknote No. 146, 157 (100 mixed). V. G.-V. F. ....	30.00
313	2c Banknote No. 146, 157 (200 mixed). All defective .....	60.00
314	2c, 3c Banknotes No. 146 and 157 (50), 147 (100), 184 (100). V. G.-V. F. ....	22.00



315	<b>2c-10c 1870-1910</b> No. 146 and 157 (43), No. 216 (64), No. 306 (220), No. 307 (100), No. 336 (31), No. 338 (444), No. 379 (141), No. 381 (171). All have straight edges .....	225.97
316	<b>3c Green</b> No. 147 (500). V. G.-V. F. ....	30.00
317	<b>3c Greens.</b> A large box, all soaked off, probably contains 25,000-35,000 copies, strong in re-engraved issue. Good average condition .....	—
318	<b>3c Greens.</b> Cigar Box full, all soaked off paper, many thousands condition appears below average .....	—
319	<b>3c Greens.</b> Another Cigar Box full, as above lot .....	—
320	<b>5c, 10c Banknotes</b> No. 187 (8), 188 (2), 205 (35), 209 (100), V. G.-V. F. ....	30.20
321	<b>1c Banknote</b> No. 206 (400). V. G.-V. F. ....	20.00
322	<b>1c Banknote</b> No. 206 (400). V. G.-V. F. ....	20.00
323	<b>3c Green</b> No. 207 (500). V. G.-V. F. ....	30.00
324	<b>3c Green</b> No. 207 (600). V. G.-V. F. ....	36.00
325	<b>2c Red Brown, 2c Green</b> No. 210 (1,000). 212 (1,700), V. G.-V. F. ....	54.00
326	<b>5c Indigo</b> No. 216 (100). V. G.-V. F. ....	60.00
327	<b>5c Indigo</b> No. 216 (200). V. G.-V. F. ....	120.00
328	<b>5c Indigo</b> No. 216 (500). All defective .....	300.00
329	<b>1c Columbian, 2c Columbian "Broken Caps"</b> No. 230 (400), 231 (200). V. G.-V. F. ....	32.00
330	<b>1c-2c Commems.</b> No. 230 (300), 295 (100), 398 (100), 611 (100). V. G.-V. F. ....	19.00
331	<b>2c Columbians</b> No. 231 (2,000). V. G.-V. F. ....	40.00
332 ★	<b>3c Columbian</b> No. 232 (15). No gum, otherwise fine-V. F. ....	22.50
333	<b>3c-15c 1894-95 Issue</b> No 253 (7), 254 (40), 255 (18), 256 (8), 258 (20), 274 (12). V. G.-V. F. ....	39.95
334	<b>3c-6c 1895-1910 Issues</b> No. 256(3), 304(70), 335(50), 376(20), 378(100). V. G.-V. F. ....	25.50
335	<b>5c-10c 1898 Issue</b> No. 281(75), 282(30), 282c and 283 (60 mixed). V. G.-V. F. ....	23.25
336 ★	<b>1c-3c 19th Century</b> (57 stamps). All appear unused though no gum .....	55.75
337	<b>3c-6c 1902 Issue</b> No. 302(30), 303(75), 304(75), 305(40). V. G.-V. F. ....	30.50
338	<b>8c, 13c, 15c 1902 Issue.</b> No. 306(160), 308(6), 309(12). V. G.-V. F. ....	26.50
339	<b>8c Violet Black.</b> No. 306(400).V. G.-V. F. ....	40.00
340	<b>10c Red Brown</b> .No. 307 (500). V. G.-V. F. ....	30.00
341	<b>2c Commems.</b> No. 329(30), 367(90), 370(50). V. G.-V. F. ....	28.50
342	<b>3c-8c 1908 Issue.</b> No. 333(30). 334(60), 335(90), 336(20), 337(20).V. G.-V. F. ....	57.00



343	<b>4c, 10c 1908 Issue.</b> No. 334(100), 338(500). V. G.-V. F. ....	55.00
344	<b>6c Red Orange</b> No. 336(80), V. G.-Fine .....	48.00
345	<b>6c Red Orange</b> No. 336(100). V. G.-Fine .....	60.00
346	<b>8c, 15c 1908 Issue</b> No. 337(35), 340(35). V. G.-Fine .....	36.75
347	<b>10c Yellow</b> No. 338(500). V. G.-V. F. ....	40.00
348	<b>10c Yellow.</b> No. 338(700). V. G.-V. F. ....	56.00
349	<b>15c Ultramarine.</b> No. 340(30). V. G.-V. F. ....	22.50
350	<b>2c-5c Imperfs.</b> No. 345(1), No. 346(4), No. 347(2), 371(1). Fine .....	19.75
351	<b>2c Alaska-Yukon Imperf.</b> No. 371(7). V. F. ....	17.50
352	<b>3c, 4c, 6c, 10c.</b> No. 376(60), 377(200), 379(100), 381(100). V. G.-Fine .....	77.00
353	<b>4-6c, 10c 1910 Issue</b> No. 377-379, 381 (100 each). V. G.-Fine .....	63.00
354	<b>4c-6c, 10c 1910 Issue.</b> No. 377-379, 381 (100 each). V. G.-Fine .....	63.00
355	<b>4c-6c, 10c 1910 Issue.</b> No. 377-379, 381 (100 each). V. G.-Fine .....	63.00
356	<b>10c Yellow.</b> No. 381(200). V. G.-Fine .....	100.00
357	<b>3c-14c.</b> No. 382(5), 394(1), 395(6). 414(100), 416(100), 446(1), 565(100). V. G.-V. F. ....	53.25
358 ★	<b>Coils.</b> No. 383(10), 441(67), 495(4). in strips, F.-V. F. ....	6.55
359	<b>1c-10c Coils.</b> No. 392(6), 413(70), 443(6), 449(30), 487(100), 495(25), 497(20). V. G.-Fine .....	45.05
360	<b>4c-30c</b> No. 414(100), 420(8), 427-29 (50 each), 433(50). V. G.-Fine .....	43.00
361	<b>50c Violet</b> No. 422(12). Fine .....	27.00
362	<b>8c Olive Green.</b> No. 431(75). V. G.-Fine .....	22.50
363	<b>\$1.00 Violet Black</b> No. 460(3), 478(2), two have missing perfs. others fine	13.00
364 ☐	<b>Used Blocks ½c-\$1.00,</b> 1917-40 (146 Blocks). V. G.-V. F. ....	—
365	<b>Commems.</b> No. 714, 736, 737, 741, 772, 775, 776, 795, 798 (100 each) also No. 784(200). V. G.-V. F. ....	32.00
366 ★	<b>Tipex Sheet.</b> No. 778 (50 sheets). Very fine .....	12.00
367 ★☐	<b>5c Korea.</b> No. 926(100), in large blocks. V. F. ....	15.00
368	<b>Postage Dues.</b> 1879-1912, (510 stamps) V. G.-V. F. ....	55.55
369	<b>1c-25c Parcel Post.</b> No. Q1(26), Q3(5), Q4(26), Q5(24), Q6(32), Q9(7), all have str. edges .....	17.14
370	<b>U. S. All with Str. Edges.</b> 147 stamps, mostly 20th Century .....	57.32
371	<b>U. S. All Defective.</b> 235 stamps. 19th & 20th Century .....	155.30
372	<b>BOX OF U.S.</b> Wholesale quantities, containing thousands of stamps, 19th & 20th, most appear damaged (Est. \$10.00) .....	—



## BRITISH COLONIES AND FOREIGN

373	<b>AFGANISTAN</b> , 1870-71, 1sa Black (3), Fine .....	7.50
374 ★	<b>AUSTRALIA</b> , 1917, 10/ Bright Pink and Gray (55). Very fine .....	6.00
375 ★	<b>BAHAMAS</b> , 1861, 1p Carmine Lake (8a). Very fine. No gum <b>(Photo)</b> .....	25.00
376 ★	<b>BASTUOLAND</b> , 1938, ½p-10/ George VI (18-28). Complete set, V. F. ....	9.97
377	<b>BAVARIA</b> , 1854-62, 18kr (13-14). Very good .....	20.00
378 ★	—1867-68, 18kr Red (22). Nice margins. Fine .....	11.00
379 ★	<b>BELGIUM</b> , 1866-67, 10c-20c, 1c-5c (18-19, 24-27). V. G.-Fine. Part no gum .....	21.00
380	—1866-67, 2c-5c, 1Fr (22, 25-27). Very good .....	15.00
381 ★	<b>BOLIVIA</b> , 1930, 1.50B-6B Airpost (C24-26). Complete set, light rust stain on 6B. Balance fine .....	10.50
382	<b>BRAZIL</b> , 1850, 300r Black (27). Very fine .....	8.00
383	—1861, 430r Yellow (40). Dated 1865 town cancel, large margins. V. F. appearance but tiny closed tear in margin .....	18.00
384	<b>BRITISH AMERICA</b> , 35 stamps mostly different, all 19th Century, few unused. Good-V. F. ....	68.13
385	<b>BRITISH COLONIES</b> , 181 stamps mostly different, used and unused. Good average .....	164.58
386	<b>BRITISH COLONIES</b> , Fifty-one stamps mostly diff. all 19th Century, few unused. Good-fine .....	133.52
387 ★	<b>BR. COLUMBIA &amp; VANCOUVER IS.</b> , 1861-65, 2½p, 5c (2, 5). Perfs partly trimmed. Good .....	40.00
388	—1865, 10c Blue (6). Thin. Fine appearance .....	15.00
389 ★	—1867-69, 2c-5c (8-9). Fine .....	13.50
390	—1867-69, 25c Orange (11). Fine .....	10.00
391 ★	—1867-69, 50c Violet (12). Thin. Fine appearance .....	30.00

### CANADA

392	1851, 3p Red (1). Very fine .....	<b>(Photo)</b> 25.00
393	1852-55, 3p Red (4). Fine .....	8.50
394	1852-59, 3p, 12½c (4, 18). First small thin, other fine .....	11.50
395	1852-55, 6p Greenish Black (5b). Three large margins, cut in at top .....	<b>(Photo)</b> 45.00
396	1855, 10p Blue (7). Crease, otherwise fine .....	<b>(Photo)</b> 60.00



397	1859, 17c Blue (19). Centered to left. Fine .....	7.50
398 ★	1868-77, 1c Brown Red (22). Very good, no gum .....	10.00
399 ★	1868-77, 2c Pale Green (23). Very fine, no gum .....	9.00
400 ★	1868-77, 6c Dark Brown (25). Very fine, no gum ..... <b>(Photo)</b>	15.00
401	1868-77, 1c-15c (25-27, 32). Fine .....	11.50
402	1897, \$1.00 Jubilee (61). Fine .....	12.50
403	1897, \$2.00 Jubilee (62). Fine .....	15.00
404 ★	1908, ½c-20c Quebec (96-103). Complete set, perfs. cut in on two. Balance fine .....	12.55
405 ★	1898, 10c Special Delivery, Types I & II (E1, E1a). Fine-V. F. ....	4.00
406	1875-89, 8c Blue Registration (F4). Thin spot. Fine appearance .....	12.00
407	<b>CANADIAN COLLECTION</b> , 258 stamps mounted, mostly used, 19th & 20th Century, average condition .....	133.23
408	<b>CANAL ZONE</b> , 1940, 30c Brown Black (136). Seventy copies. V. G.-V. F. ....	31.50
409	—1931-41, <b>5c-\$1.00 Airposts</b> No. C5(5), C6(30), C7(32), C8(4), C8A(17), C9(12), C10(52). V. G.-V. F. includes str. edges .....	80.05
410 田	—1931, \$1.00 Airpost (C10). Block, town cancel. Fine .....	—
411	—1941, 30c Airpost Official, <b>Type 2A</b> (CO5a). Very fine, unpriced .....	—
412 ★	<b>CANARY ISLANDS</b> , 1937, 30c+30c-1P+5P Airpost (San. 49-55). Complete sets. Fine-V. F. ....	7.40

#### CAPE OF GOOD HOPE

413	1853, 4p Blue, Triangular (2). Margins all around. Very fine .....	8.50
414	1857, 1p Rose, Triangular (3). Fine .....	10.00
415	1857-58, 1p, 6p Triangulars (3, 5). Very good .....	20.00
416 ★	1858, 6p Lilac, Triangular (5). Fine ..... <b>(Photo)</b>	40.00
417	1861, 1p Red, Triangular (7). Small thin spot. Fine appearance .....	125.00
418	1861, 4p Blue, Triangular (9). Thin. Fine appearance .....	50.00
419	1861, 4p Blue, Triangular (9). Light creases, V. G. appearance .....	50.00
420	1863-64, 4p Dark Blue, Triangular (13). Very fine .....	4.00
421	1861, 1/ Emerald, Triangular (15). Light crease. Fine appearance .....	35.00
422 ★	1902-04, ½p-1/ Edwards (63-70). Very fine .....	4.60
423 ★	<b>CHINA</b> , 1878, 1c-5c (1-3). First has str. edge, others fine .....	10.75



424	★	—1921, 30c-90c Airpost (C2-5). No gum, otherwise fine .....	9.25
425		<b>CURACAO</b> , 1886-89, 1.50gld (12). Very fine .....	7.00
426	★田	—1942, 10c-10G <b>Airpost</b> (C18-C32). Complete set in <b>blocks of 4</b> . Very fine .....	102.20
427		<b>DENMARK</b> , 1853-65, 2s-16s, 2s-3s (3-6, 11-12). Fair-fine .....	12.70
428		<b>DUTCH INDIES COLLECTION</b> , 172 different mounted, 19th & 20th Century, used and unused. Fine lot .....	155.62
429	★	<b>ECUADOR</b> , 1938, 2c-2S Airpost (C32-38). Ten complete sets. V. F. ....	9.00
430	★	<b>EGYPT</b> , 1866, 5pa-10pa (1-2). Fine, no gum .....	8.50
431	★	—1872, 2Pi-5Pi (23-25). V. G.-Fine, no gum .....	27.00
432	★	—1872, 5pa, 20pa, 1Pi (16a, 20a, 22a). First has thin. Balance fine .....	16.00
433		<b>EUROPE</b> , 104 stamps mostly diff., all 19th Century, few unused. Fair-very fine .....	196.86
434		<b>FRANCE</b> , 1849-52, 10c-1Fr (2-3, 7, 9-10). Very good-fine .....	43.60
435		—1869, 5Fr Gray Lilac (37). Thin. Fine appearance .....	15.00
436	★田	<b>FR. GUINEA</b> , 1940, 1.90Fr-6.90Fr Airpost (C1-5). Complete set of blocks of 4. V. F. ....	14.00
437	★	—1942, 50c-50Fr Airpost (C6-C13). Complete set. Very fine .....	—
438	★	<b>GAMBIA</b> , 1904-09, ½p-1/6 Edwards (40-60). Fine-very fine .....	39.80
439	★	—1904-09, 2/-3/ Edwards (62-64). Very fine .....	12.00
440	★	—1922, 4p-5/ George V Pictorial (121-124). Complete set. V. F. ....	13.40
441		<b>GERMANY &amp; STATES</b> , 26 diff. stamps, 19th Century. Fair-fine .....	117.15
442	★	<b>GERMANY</b> , 1902-1935, Collection of 63 pairs and strips, all various combinations of Se-Tenant and Tete Beche. V. F. lot, few are used .....	—
443	☒	<b>GREAT BRITAIN</b> , 1840, 1p Black (1). Tied on cover in red, three fine margins, close left .....	5.00+
444	☒	—1841, 2p Blue (4). Horiz. pair tied on cover. Fine .....	—
445		—1841-67, 1p-5/ (4, 27, 40, 42-44, 52, 57). Good-very fine .....	18.85
446	★	—1867-73, 3p, 6p (49, 59). Fine, latter has straight edge, no gum .....	15.00
447	★	—1913-18, 10/ Indigo Blue (175a). Very fine .....	12.00
448	★	—1840, 2p Blue, <b>Letter Sheet</b> (U4). Very fine .....	8.00
449		—OFFICES IN TURKEY, 39 stamps (Between 1-60). Few blocks. Fine lot .....	20.74
450		<b>HONG KONG</b> , 1862, 48c-96c (6-7). Fine .....	16.00



451 ★	<b>LATVIA</b> , 1933, 3S-35S Airpost (San. 45-50). Complete set. Fine .....	5.25
452	<b>LUXEMBOURG</b> , 1859-63, 25c, 37½c (9, 11). Very good .....	28.00
453 ★	—1865-71, 2c-4c (14-15). Each has thin. Fine appearing .....	18.00

### MALTA

454 ★	1860-61, ½p Buff (1). Fine .....	15.00
455 ★	1865, ½p Buff, ½p Yellow Buff (5, 5a). Fine, no gum .....	10.00
456 ★	1904-11, 4½p-5p (42-45). Complete set. Very fine .....	5.25
457 ★	1904-11, Same as above. Very fine .....	5.25
458 ★	1922-26, ¼p-10/ (98-113). Very fine .....	15.49
459 ★	1928, ¼p-10/ (148-166). Complete set. Very fine .....	19.75
460 ★	1930, ¼p-5/ (167-182). Very fine .....	10.73
461 ★田	<b>MAURITANIA</b> , 1940, 1.90Fr-6.90Fr Airpost (C1-5). Complete set of blocks and singles. V. F. ....	10.75
462 ★	<b>MEXICO</b> , 1934, 20c Slate Black, Airpost (San. 83). Very fine <b>(Photo)</b> .....	75.00
463	<b>NETHERLANDS</b> , 1867, 10, 20, 50c (8, 10, 12). First unused. Fine .....	13.25
464	<b>NEW BRUNSWICK &amp; NOVA SCOTIA</b> , 19 stamps, mostly diff., part unused. Fair average .....	54.55
465 ★	<b>NEW CALEDONIA</b> , 1933, 20Fr Paris-Noumea Anniversary (207). <b>Complete sheet of 25</b> (Sanabria #28, \$150.00). Very fine .....	150.00
466	<b>NEWFOUNDLAND</b> , 1860, 4p Orange (12). Light corner crease, V. G. <b>(Photo)</b> .....	150.00
466A ★	—1862-97, 6p-60c (20, 56, 58-60, 74). Fine-V. F. ....	10.15
466B ★	—1910, <b>1c-15c Guy Issue</b> (87-97), 6c is damaged, V. G.-Fine .....	42.10
466E ★	—1910, 1c Guy (87), Variety, First "r" of "charter" looks like "e", Very Fine .....	—
466F ★	—1928-31, 1c-30c Pictorials (145-154, 156-57, 159, 163-67, 169). Fine-Very Fine .....	13.53
466H ★	—1931, 15c-\$1.00 Airpost (C9-C11). Complete set, Very Fine .....	10.85
467 ★	<b>NIUE</b> , 1917, 3p Violet Brown (20). Very fine .....	10.00
468 ★	<b>NORTHERN NIGERIA</b> , 1902, ½p-10/ Edwards (10-18), Complete set. V. F. ....	15.10
469 ★	—1902, ½p-10/ (10-13, 15-18). Very fine .....	14.10
470 ★	—1905, ½p-2/6 Edwards (19-26). Complete. Fine .....	10.70
471 ★	—1912, ½p-2/6 George V (39-49). Very fine .....	5.97



472	<b>NORWAY</b> , 1854-68, 1s-8s (1, 3, 5, 9, 11). Fine lot .....	13.00
473	<b>NOVA SCOTIA</b> , 1851-53, 6p Dark Green (5), Just touches at two points. Fine ..... <b>(Photo)</b>	75.00
474	✉ —1860-63, 5c Blue (10). Two covers, both tied, one addressed to Ragged Islands. Fine .....	—
475	★ <b>NYASALAND PROT.</b> , 1908, 10/ Edward (9). Very fine .....	10.00
476	★ <b>OLDENBURG</b> , 1852-67, Six diff. (1, 17-19, 23-4), two used. V. G. ....	36.25
477	★ —1861, ¼g Orange (9). Hinge thin. V. F. appearance .....	25.00
478	★ <b>PHILIPPINES</b> , 1937, 20p Henna Brown (432). Very fine. Selling below face .....	20.00
479	★ —Same as above. V. F. ....	20.00
480	★ —1898-99, 2c Red, Aguinaldo (Y2). Complete sheet of 192. Fine .....	9.60
481	★ —Same as above only three complete sheets of 192 each. Fine .....	28.80
482	<b>PORTUGAL</b> , 1855-67, 5r-100r (7, 12, 16, 19). Fine .....	12.50
483	★ <b>PRINCE EDWARD IS.</b> , 1862-72, 1p-12p (4-16), three used. Good-fine	38.60
484	★ <b>REUNION</b> , 1938, 3.65Fr-12.65Fr Airpost (C2-5). Complete set. V. F.	—
485	★ <b>ST. HELENA</b> , 1868, 1p Brown Red (18). Part O. G. Fine .....	12.00
486	★ —1912, ½p-3/ (61-70). Complete set. Very fine .....	9.65
487	★田 <b>SALVADOR</b> , 1929, 15c-50c Airpost (C3-6). Complete set in Blocks of 4. V. F. ....	9.00
488	★ <b>SIERRA LEONE</b> , 1903, 4p, 6p Edwards (70, 72). V. F. ....	5.50
489	★ —1903, 5/ Green and Carmine (75). Very fine .....	12.00
490	★ —1907-10, ½p-2/ (90-100). Very fine except 1½p and 1/ have small scrapes .....	10.20
491	<b>SOUTH AMERICA</b> , 26 different, 19th Century, few unused. Average to fine .....	42.67
492	★ <b>SOUTHERN NIGERIA</b> , 1901, ½p-2/6 (1-7). Very fine .....	12.65
493	★ —1912-13, ½p-2/6 (45-50, 52-53). Very fine .....	7.65
494	★ <b>ST. SETTLEMENTS</b> , 1867, 1½c-4c (1-4) latter thin. V. G.-fine .....	26.00
495	<b>SWEDEN</b> , 1858, 5ö-50ö (6-7, 10-12). Fine-V. F. ....	13.70
496	—1866, 17ö Red Violet (14). Fine .....	7.00
497	★ <b>TANGANYIKA</b> , 1922, 1/-10/ Wmkd. Sideways (23a-27a). Very fine .....	22.00
498	★ <b>VIRGIN IS.</b> , 1p Green (1), Nicely centered, straight edge at Right. No gum .....	8.00



499	<b>WURTTEMBERG</b> , 1851-61, 1kr, 18kr (1, 29), both defective .....	47.50
500 ★	<b>ZANZIBAR</b> , 1914, 1R-5R (150-154). Very fine .....	18.75
501	<b>FOREIGN COLLECTION</b> , 6400 diff. mounted in International Junior. Fine lot. Cat. in 1944 .....	360.00
502	<b>FOREIGN COLLECTION</b> , over 10,000 different mounted in International Jr. Album, nice condition. Nothing scarce. (Est. \$100.00 net) .....	—
503	<b>FOREIGN</b> , 79 stamps, 19th Century, misc. odds and ends. (Est. net \$6.00) .....	—

END OF SALE — THANK YOU

MAIL BIDS EARLY







# **W A N T E D**

**Good U. S. and Foreign single pieces,  
collections and lots for future  
Auction Sales.**

**Liberal advances made. Write for terms.**