

117th SALE

20th CENTURY FOREIGN

RETAIL & WHOLESALE LOTS

UNITED STATES

STAMPS, COVERS & SHEETS

AT PUBLIC AUCTION

FIRST SESSION — Friday, Oct. 11th, 2:00 P.M.

SECOND SESSION — Friday, Oct. 11th, 8:00 P.M.

AT THE COLLECTORS CLUB

22 East 35th Street, New York City

GREGORY MOZIAN, Auctioneer



Robert A. Siegel
AUCTIONS

1 EAST POST RD.

WHITE PLAINS, N. Y.

CONDITIONS OF SALE

1. The terms of sale are strictly cash to the highest bidder. All buyers are expected to pay for lots within three days of receipt, unless special arrangements have been made prior to the sale.
2. All bids are per lot as numbered in the catalogue and not per piece, unless otherwise announced by the auctioneer at the time of sale.
3. Any lot the description of which is incorrect is returnable only within three days of receipt. All disputed lots must be returned intact as received. Lots containing five or more stamps are not returnable at any time. No lots may be returned by purchasers who have had the opportunity to examine them before the sale.
4. Successful mail bidders, unless they are known to us or supply acceptable references, will be notified of the amount of the lots secured for them, and are expected to send payment in full before the lots are forwarded.
5. If the purchase price has not been paid within the time limit, or lots taken up within seven days from date of sale, they may be resold and any losses arising from such sale charged to the defaulter.
6. All stamps are sold as genuine, except where sold "As Is". Claims for any lot proving otherwise, must be made within two weeks from date of sale.
7. The right is reserved to group two or more lots, also withdraw any lot or lots from the sale, or to act on behalf of the seller.
8. Until paid for in full all lots remain the property of Robert A. Siegel.
9. No commission is charged for buying at our sales, but all forwarding charges will be added to the purchase price.
10. In addition to the purchase price, the buyer will be required to pay the two (2) percent New York City sales tax, unless he is exempt from the payment thereof.
11. Lots will be sent for inspection, provided such lots are returned to us the same day as received. Postage and registration both ways will be charged. Approximate values of lots will be given on request.
12. The placing of a bid shall constitute acceptance of the foregoing conditions of sale.

Lots are on display at our office one full week before the sale in Saugerties, N. Y. In sending bids, always state the highest price you are prepared to pay for the lot. Your limit will not be used as a starting bid unless absolutely necessary.

DESCRIPTIONS

Superb—the finest condition for noteworthy, outstanding copies.

Very Fine (VF)—means that there is a slight deviation from the above.

Fine (F)—means that the perforations do not touch the design on issues after 1890, but in some cases may just touch in earlier issues; if used, fairly lightly cancelled.

Very Good (VG)—means that the appearance is generally fine but that the perforations cut the design slightly.

Good (G)—means average off-centering; or fairly attractive with slight defects. Original gum is not to be expected on 19th Century stamps up to 1888 unless so stated.

Scott's 1946 Specialized United States Catalogue is used for cataloging our lots of United States:

WE SOLICIT FINE MATERIAL FOR FUTURE SALES
--

[illegible]

IMPORTANT — PLEASE NOTE

Mail bids to Robert A. Siegel, 1 East Post Road, White Plains, N. Y.

Lots may be inspected in my office up to Day of Sale, or on October 11th from 10:30 A. M. until sale time at the Collectors Club, N. Y. City.

FIRST SESSION

FRIDAY, OCTOBER 11th — 2 P. M.

20th CENTURY FOREIGN

(The First Session contains a stock of 20th Century foreign mint. All lots are unhinged. All Wholesale lots have "WH." at end of lot in bold type.

UNITED STATES LOTS ARE IN SECOND SESSION).

ABYSSINIA

1 ★	1919, ½g-\$10.00 Pictorial Issue (120-134), Complete set, Very Fine	6.81
2 ★	1919, Same as above, Very Fine	6.81
3 ★	1919, Pictorial Issue, #120-134 (3 sets), Very Fine, WH.	20.43
4 ★	1930, Two Commem. Issues (180-189, 200-209), Complete sets, Very Fine.	9.77
5 ★	1942, 4c-20c Haile Selassie Issue, #247-249 (10 sets), Very Fine, WH.	13.00
6 ★	1942, 10c "I and T" Variety (248), Two Pairs, Very Fine	—
7 ★	1942-43, 4c-60c, #250-256 (5 sets), #257(4), Very Fine, WH.	17.70
8 ★	1943, 5c-30c Obelisk Issue, #258-262 (5 sets), Very Fine, WH.	—
9 ★	ADEN (Kathiri State) , 1942, ½a-5R (1-11), Complete set, Very Fine	6.58
10 ★	—(Qu' aiti State), 1942, ½a-5R (1-11), Complete set, Very Fine	6.58
11 ★	— —Same as above, Very Fine	6.58
12 ★	AFGHANISTAN , 1939-43, Pictorial Issues, #318-332, No #332, 328, 330A(1), #332A(4), #323(3), #328A(4), #335(3), #336(5), #337-338(3 sets), #339(4), Very Fine, WH.	16.13
13 ★	ALBANIA , 1939, 1q-5FR. National Assembly (299-309), Complete set, Very Fine	14.98

14 ★	—1940, Postage, Sp. Del. & Dues, #310-312 (9 sets), #E1-E2 4 sets), #J40-J44 (1 set), Very Fine, WH.	8.92
15 ★	ALEXANDRETTA , 1938, 2 Issues, #1-9 (4 sets), #10-12 (4 sets), Very Fine, WH.	19.28
16 ★	—1938, Op75-12.50Pi Ataturk Issue (13-17), Complete set, Very Fine.	11.85
17 ★	—1938, Ataturk Issue, #13-17, (3 sets), Very Fine, WH.	35.55
18 ★	—1938, Postage Due Issue #J1-J6 (4 sets), Very Fine, WH.	12.00
19 ★	ALGERIA , 1936-45, 29 different, from 4 to 25 of each, (between #85-184), Very Fine WH.	18.73
20 ★	—1944, 15FR.-200FR. Summer Palace Issue (165-169), Complete set, Very Fine (Wh. \$12.00)	—
21 ★	—1944, Same as above, Very Fine	—

ARGENTINE REPUBLIC

22 ★	1937-42, Four Postage Issues, #430A(60), #447(10), #452-453(5 sets), #454(20), Very Fine, WH.	14.45
23 ★	1939, 5c-5P Postal Union (455-462), Complete set, Very Fine	9.40
24 ★	1939, 5c-5P Postal Union #455-462 (4 sets), Very Fine, WH.	37.60
25 ★	1939, Souvenir Sheets (464a, b, c, d), Very Fine	20.00
26 ★	1939, 1.18P-1.50P Phonograph Records #466-468 (4 sets), Very Fine, WH.	18.00
27 ★	1940-41, Five Issues, #469(20), #471(100), #472(40), #473(20), #474(50), Very Fine, WH.	13.50
28 ★	1941-42, 5 Issues, #475(50), #476(30), #477(50), #478(50), #479(20), Very Fine, WH.	13.60
29 ★	1942-43, 4 Issues, #480(60), #481(50), #482(20), #483-485(15 sets), Very Fine, WH.	16.00
30 ★	1943-44, 5 Issues, #486(50), #488(89), #491-492(50 sets), #O36B(9), #O38-O41, #O43-O45(3 of each), #O46(20), #MCR438(16), Very Fine, WH.	15.71
31 ★田	1944, 3c-1P Postal Employees, (B1-B5) Complete set in Blocks, Very Fine	4.44
32 ★	1944, 3c-1P Postal Employees, #B1-B5 (10 sets), Very Fine, WH.	11.10
33 ★	1944, 3c-1P Postal Employees, #B1-B5 (20 sets), Very Fine, WH.	22.20
34 ★	1944, 5c+10c-5c+20P Earthquake Victims Issue (B6-B9), Complete set, Very Fine	10.89
35 ★	1944, Same as above, Very Fine	10.89
36 ★	1944, 5c+1P Souvenir Sheet, #B10 (50 sheets), Very Fine, WH.	26.50
37 ★	1944, 5c+50P Souvenir Sheet (B11), Very Fine	40.00

38 ★	1944, Same as above, Very Fine	40.00
39 ★	1944, Same as above, Very Fine	40.00
40 ★	ASCENSION , 1938-42, ½p-10/ George VI (40, 41A-43, 44A-49), Very Fine	9.45
41 ★	—1938-42, Same as above, Very Fine	9.45
42 ★	—1938-42, Same as above, very fine	9.45
43 ★	—1938-42, ½p-10/ George VI., (40, 41A-43, 44A-49), Three sets, Very Fine, WH.	28.35

AUSTRALIA

44 ★	1931-37, #111-112(2), #147-149(2), #150-151(1), #157-158(10), #163-165(10), Very Fine, WH.	14.25
45 ★	1935, 2/ Red Brown (125), Ten copies, Fine, WH.	8.00
46 ★田	1935, 2p-2/ Jubilee Issue (152-154), Complete set in Blocks of Four, Very Fine	7.60
47 ★	1935, 2p-2/ Jubilee Issue (152-154), Four Complete sets. Very Fine WH.	7.60
48 ★	1936, 2p-1/ Commem. Issue (159-161), Ten Complete sets, Very Fine, WH.	7.60
49 ★	1937-43, ½p-10/ George VI Issue (166-167, 169-172, 174-179), Very Fine	7.69
50 ★	1937-43, Same as above, Very Fine	7.69
51 ★	1937-43, ½p-£1 George VI Issue (166-167, 169-172, 174-180), Very Fine	15.19
52 ★	1937-43, Same as above, Very Fine	15.19
53 ★	1937-43, George VI Issue, #166(6), #167(6), #169(6), #170(16), #171(6), #172(1), #174(6), #175(6), #176(11), Very Fine, WH.	15.49
54 ★	1941-44, George VI Issues, #181A(20), #181B(20), #182(12), #182A(20), #183A(20), #184-187(5), #191(20), #193(5), #194(20), #196(20), Very Fine WH.	18.55
55 ★	1941, Provisional Issues, #188(5), #189(20), #190(40), Very Fine, WH.	17.00
56 ★	1945, 2½p-5½p Commem. Issue, (197-199), Fifty Complete sets, Very Fine WH.	18.00

AUSTRIA

57 ★	1935, 4 Issues, #375(4), #377(5), #381(5), #388-389 (3 sets), Very Fine, WH.	6.05
58 ★	1928, 10g-40g Hainisch Issue (B58-61), Complete Set, Very Fine	6.00
59 ★	1928, Same as above, Very Fine	6.00
60 ★	1930, 10g-1s Miklas Issue (B62-67), Complete set, Very Fine	12.00

61 ★	1930, Same as above, Very Fine	12.00
62 ★	1936, 12g-64g Inventors Issue (B127-132), Complete set, Very Fine	7.50
63 ★	1936, Same as above, Very Fine	7.50
64 ★	1936, Inventor's Issue, #B127-B132 (3 sets), Very Fine, WH.	22.50
65 ★	BAHAMAS , 1940, 3p Provisional Issue (115), 30 copies, Very Fine, WH.	15.00
66 ★	BARBADOS , 1938-43, George VI Issue, #193A(7), #195(8), #196(8), #197(8), #201A(8), Very Fine, WH.	18.38
67 ★	BASUTOLAND , 1938, ½p-10/ George VI Issue (18-28) Complete set, Very Fine	9.97
68 ★	—1938, Same as above, Very Fine	9.97
69 ★	—1938, George VI Issue, #18(3), #19(3), #20(2), #21(3), #22(2), #23(3), #24(7), #25(7), Very Fine, WH.	6.44
70 ★	BECHUANALAND , 1938, 1p-10/ George VI (125, 127-130, 133-136), Very Fine	9.39
71 ★	—1938, Same as above, Very Fine	9.39
72 ★	—1938, 1p-10/ George VI (125, 127-130, 133-136), Three of each, Very Fine, WH.	28.17
73 ★	BELGIUM EAST AFRICA 1934-42, Three Issues, #55(5), #61-62(2 sets), #64-65 (3 sets), Very Fine, WH.	14.05
74 ★	—1941, 5c-3.25Fr. Provisional Issues (56-59, 63) Complete sets, Very Fine	—
75 ★	—Same as above, Very Fine	—
76 ★	—1942. Provisional Issue #66-67 (7 sets), Very Fine	11.55

BELGIUM

77 ★	1936-46, 1Fr.-5Fr., #276-282 (5 sets), Very Fine, WH.	—
78 ★	1926-35, Semi Postal Issues, #B59-B63 (5 sets), #B163-B165 (5 sets), #B170-B177 (4 sets), Very Fine, WH.	17.45
79 ★	1929, 5c-5fr. Anti Tuberculosis, #B93-B98 (4 sets), Very Fine, WH.	18.00
80 ★	1930, 10c-5FR. Anti-Tuberculosis, #B99-B105 (4 sets), Very Fine, WH.	21.60
81 ★	1935, 10c-35c in Sheets of 10 (B166a-B168a). Complete set, Very Fine	7.50
82 ★	1936-37, 2.45FR., 2.45FR., #B179 (3 sheets), #B188(10). Very Fine WH	10.25
83 ★	1937-38, Semi-Postal Issues, #B189-B196 (4 sets), #B222-224 (5 sets), Very Fine, WH.	11.93
84 ★	1938, 10c-5FR. Prince of Liege, #B225-B232 (4 sets), Very Fine, WH.	21.12

85 ★	1939, 10c-5FR. Red Cross Issue, #B223-B240 (2 sets), Very Fine, WH.	12.36
86 ★	1939, 75c-5FR. Orval Issue (B250-B255), Complete set, Very Fine	9.50
87 ★	1939, Same as above, Very Fine	9.50
88 ★	1939, 75c-5FR. Orval, # B250-B255 (3 sets), Very Fine, WH.	28.50
89 ★	1939, 75c-5FR. Orval, # B250-B255 (5 sets), Very Fine, WH.	47.50
90 ★	1939, 10c-5FR. Tuberculosis, # B256-B263 (3 sets), Very Fine, WH.	14.04
91 ★	1940, 75c-5FR. Musical Foundation #B273-B278 (5 sets), Very Fine, WH.	26.25
92 ★	BERMUDA , ½p-1/6 Pictorial, #105(3), #106(3), #107(3), #108(3), #109A(1), #110(3), #111(3), #112(3), #113(2), #114(2), Very Fine, WH.	6.97
93 ★	—1938-40, 2/6, 5/, 10/ Geo. VI ½p Prov. #122(1), #124(2), #125(1), #126(2), 129(25), Very Fine, WH.	20.50

BOLIVIA

94 ★	1937, 5c-5B Communications Issue, # 233-240 (10 sets), Very Fine, WH.	15.20
95 ★	1938-40, Pictorial and Map Issues, # 242-250 (10 sets), #269(8), Very Fine, WH.	13.80
96 ★	1939, 2c-5B Zoological Issue #251-268, no #256, (10 sets), Very Fine, WH.	15.10
97 ★	1941, 10c-1.50B Murillo Issue, # 270-273 (45 sets), Very Fine, WH.	13.50
98 ★	1943, 2c-5B Battle of Ingavi, #281-287 (25 sets), Very Fine, WH.	34.25
99 ★	1943, 4 Commemorative Souvenir Sheets Perforate and Imperforate (288, 288a, 289, 289a), Very Fine	14.50
100 ★	1943, Same as above, Very Fine	14.50
101 ★	1943, Same as above, Very Fine	14.50
102 ★	1943, Commemorative Souvenir Sheets, #288(5 sheets), #289(5 sheets), Very Fine, WH.	36.25
103 ★	1943, 2 Commemorative Souvenir Sheets #288(10 sheets), #289(10 sheets), Very Fine, WH.	72.50
104 ★	1943, Same as above, Very Fine, WH.	72.50
105 ★	1943, Same as above, Very Fine, WH.	72.50
106 ★	1943, Two Commemorative Souvenir Sheets Imperforate #288a(5 sheets), #289a(5 sheets), Very Fine, WH.	36.25
107 ★	1943, Two Commemorative Imperf. Souvenir Sheets, #288a(10 sheets), #289a(10 sheets), Very Fine, WH.	72.50
108 ★	1943, Same as above, Very Fine, WH.	72.50

109 ★	1943, Same as above, Very Fine, WH.	72.50
110 ★	1943, 15c-3B Mining Industry, #290-296 (20 sets), Very Fine, WH.	21.20
111 ★	1943, 5c-2.10B Cathedral Issue, #297-301 (40 sets), Very Fine, WH.	21.60
112 ★	1944-45, December 20th Issue and Changes of Color, #302-305(30 sets), #306-307(30 sets), Very Fine, WH.	9.90

BRAZIL

113 ★	1920-37, Five Issues, #233(2), #234(4), #443-444(5 sets), #445(10), #451(32), Very Fine, WH.	14.40
114 ★	1936-39, 1,200R, 200R, 400R, All Imperforate (418, 419, 478), not listed in Scotts, Very Fine	—
115 ★	1936-39, 1,200R, 200R, 200R, 400R, 1,200R, 400R All Imperforate (418, 419, 427, 457, 475, 478), Not listed in Scotts, Very Fine	—
116 ★	1936-39, 1,200R, 200R, 400R, 1,200R, 400R, All Imperforate (418, 427, 457, 475, 478) ,Not listed in Scotts, Very Fine	—
117 ★	1936-1939, 1,200R, 200R, 1,200R, 400R all Imperforate (418, 427, 475, 478), Not listed in Scotts, Very Fine	—
118 ★	1936-39, Same as above, Very Fine	—
119 ★	1938-1939, 400R, 1,200R Imperforate Pairs (457, 475), Not listed in Scotts, Very Fine	—
120 ★	1938-40, Three Issues, #452(5), #480-483(10 sets), #488-494 no #489A (15 sets), Very Fine, WH.	16.80
121 ★	1938, 500R, #463B(2), Very Fine, WH.	12.00
122 ★	1940, Map and New York World's Fair, #495(30), #496-498(4 sets), Very Fine, WH.	14.20
123 ★	1940, 1,000r-10,000r Commem. Souvenir Sheets of 10 (496a-498a), Very Fine	32.50
124 ★	1940, Assis, Porto Alegre and Portuguese Issues, #499(50), #500(50), #501(20), Very Fine, WH.	15.00
125 ★	1940-42, Three Issues, #502(35), #503(40), #533-534(10 sets), Very Fine, WH.	12.00
126 ★	1941, 200R-5,400R Pictorial Issue, #504A-506A (10 sets), Very Fine, WH.	13.50
127 ★	1941, 5,400R High Value Commem. #508(15), Very Fine, WH.	15.00
128 ★	1942-43, Three Issues, #535-536(40 sets), #539(30), #609-611(10 sets), Very Fine, WH.	13.50
129 ★	1942, 400R Wmk'd. "Correio Brazil" Multiple in small letters (536A), Very Fine	5.00
130 ★	1942, Same as above, Very Fine	5.00

131 ★	1942, 400R Wmk'd. "Correio Brazil" multiple in small letters, #536A(8), Very Fine, WH.	40.00
132 ★	1942, 400R Eucharistic Congress Wmk'd. "Correos" in Black letters, #539A(10), Very Fine, WH.	—
133 ★	1943, Centenary Souvenir Sheet, #612 (10 sheets), Very Fine, WH.	12.50
134 ★田	1943, 40c Amaral Commem. wmk'd. "Correio Brazil" multiple in small letters (613A), Block of 4, Very Fine	—
135 ★	1943, 40c Amaral, wmk'd. "Correio Brazil" multiple in small letters, #613A(6), Very Fine, WH.	—
136 ★	1943, Lawyers and Americo Commem Issues, #614(25), #618(50), Very Fine, WH.	11.50
137 ★	1944, Carneiro and Baron Issues, #619(36), #620(50), Very Fine, WH.	13.98
138 ★	1940-44, Caxias Commem. and Postage Due Issues, #621(50), #J76-J80 (10 sets), Very Fine, WH.	12.00
139 ★	1945, 20c, 40c, 1cr., 2cr., 5cr. B. E. F. New Issues, 5 values, (10 sets), Very Fine. WH.	—
140 ★	1945, Complete set of 8 Books of Victory Issue , diff. language in each book, Very Fine	—
141 ★	1945, 0.20Cr., 0.40Cr., 1.00Cr., 2.00Cr., 5.00Cr. Victory New Issue, 5 values, (10 sets), Very Fine, WH.	—
142 ★	1942, 10R-5,000R Postage Due Issue, #J81-J90 (25 sets), Very Fine, WH.	30.25
143 ★	BRITISH COLONIES , 1935-44, values to 2/ includes three Jubilee sets, misc. lot includes dupliates (127 stamps), Very Fine	32.15
144 ★	BRITISH COLONIES , 1938-44, George VI mixed values and quantities (294 stamps), Very Fine	49.27
145 ★	BRITISH CORONATIONS , Crown Colonies, two complete sets, Very Fine, WH.	27.00
146 ★	BR. GUIANA , 1938-46, 1c-\$3.00 George VI Issue (230-241), Complete Set, Very Fine	14.76
147 ★	—1946, \$2.00-\$3.00 George VI (240-241), New Issue, Very Fine	—
148 ★	—1946, Same as above, Very Fine	—
149 ★	—1946, Same as above, Very Fine	—
150 ★	—1946, \$3.00 George VI New Issues (241), Two Copies, Very Fine, WH.	—
151 ★	BR. SOLOMON IS. , 1939-43, George VI Postage and Due Issues (67-78, J1-J8), Complete sets, Very Fine	11.98
152 ★	—1939-43, Same as above, Very Fine	11.98
153 ★	—1939-43, Same as above, Very Fine	11.98
154 ★	—1939-43, Same as above, Very Fine	11.98
155 ★	—1939, ½p-5/ George VI (67-78), Two sets, Very Fine, WH.	11.04

BULGARIA

156 ★	1940, 2 Commem. Issues #366-371 (4 sets), #372-373 (10 sets), Very Fine, WH.	8.70
157 ★	1940, 1L-7L Commems. Issue, #386-390 (5 sets), Very Fine, WH.	16.00
158 ★	1939, 1L-14L Macedonia Issue, #B12-B16 (10 sets), Very Fine, WH.	13.50
159 ★	1935-39, Special Del. and Postal Tax Issues #E1-E5 (5 sets), #RA16-RA18 (10 sets) Very Fine, WH.	14.90
160 ★	1941, 1L-30L Parcel Post Issue, #Q1-Q12 (5 sets), Very Fine, WH.	16.25
161 ★田	BURMA , 1940 1A Centenary Issue (34), Block of Four, Very Fine	12.00
162 ★	—1940, 1p Centenary Issue (34), Three Copies, Very Fine, WH.	9.00
163 ★	—1939, 3p-10R George VI official Issue (O15-O27), Complete set Very Fine (Photo)	39.80
164 ★	CAMEROONS , 1941, 1.25Fr.-225Fr. Ambulance (B16-B17), Complete set, Very Fine	18.00

CANADA

165 ★	1912-25, 1c-\$1.00 George V (104-122), Complete set, Fine	15.10
166 ★田	1912-25, 1c-3c Booklet Panes (104a, 105a, b, 106a, 107b, 108b, 109a) Very Fine	12.50
167 ★田	1912-25, Same as above, Very Fine	12.50
168 ★田	1912-25, 1c-3c Booklet Panes (104a, 105b, 106a, 107b, 108b, 109a) Fine	10.50
169 ★田	1912-25, Same as above, Fine	10.50
170 ★田	1912-25, Same as above, Fine	10.50
171 ★田	1922, 2c Yellow Green, Booklet Pane of 6 (107c), Very Fine (Photo)	50.00
172 ★	1914, 1c-2c Coils #123-124 (3 of each), Fine, WH.	9.75
173 ★	1914-24, 1c-3c Coils #125-130 (10 of each, partly in pairs, Fine-V.F. WH.	13.00
174 ★	1914-24, 1c-3c Coils #131-134 (5 of each, some pairs, Fine-V.F. WH.	15.75
175 ★	1924, 1-3c Imperfs. #136-138 (5 sets), Very Fine, WH.	17.50
176 ★	1926, 2c on 3c Carmine #139-140 (5 sets), Very Fine	10.00
177 ★	1927, 1c-12c , 5c-20c Commems. #141-145 (4 sets), #146-148 (9 sets), Fine-V.F. WH.	9.46
178 ★	1928-29, 1c-\$1.00 #149-159 (2 sets), Fine-V.F., WH.	13.00
179 ★田	1928-35, 1c-3c Booklet Panes (149a, 150a, 164a, 165b, 166c, 195b, 196b, 197a, 217b, 218b, 219a), Very Fine	10.35
180 ★	1928-35, Same as above, Fine-V.F.	10.35

181 ★	1928-35, Same as above, Fine-V.F.	10.35
182 ★田	1928-35, 1c-5c Booklet Panes , fourteen diff. (Between #149a-219a), Fine-V.F.	15.60
183 ★	1929-37, 1c-3c Coils #160-61 (10 sets), #178-183 (18 sets), #205-207 (10 sets), #228-230 (10 sets), #238-240 (20 sets), Fine-V.F., WH.	15.96
184 ★	1930-31, 1c-\$1.00 #162-177 (2 sets), Fine-V.F., WH.	9.50
185 ★田	1930-35, 1c-3c Booklet Panes, Nine diff. (Between #164a-219a), Fine	8.10
186 ★田	1930-31, 2c Dark Brown, Booklet Pane of 4. (166a), Very Fine	8.50
187 ★	1932, 3c-13c, 1c-13c #192-194 (10 sets), #195-201 (7 sets), Very Fine, WH.	9.80
188 ★田	1932, 1c-2c Booklet Panes of 4 (195a, 196a), Fine	15.00
189 ★田	1932, 2c Booklet Pane of 4 (196a), Very Fine	7.50
190 ★	1933-34, Commems. #202(15), #203(8), #204(15), #208(15), #209(10), Very Fine, WH.	15.00
191 ★	1935, 1c-13c Jubilees #211-216 (10 sets), Very Fine, WH.	15.00
192 ★田	1935, 1c-\$1.00 (217-227), Set of Blocks except 20c is four singles, Very Fine	17.28
193 ★	1935, 1c-\$1.00 #217-227 (4 sets), Very Fine, WH.	17.28
194 ★田	1935, 1c Green, Booklet Pane of 4 (217a), Very Fine	10.00
195 ★田	1935, 2c Brown, Booklet Pane of 4. (218a), Very Fine	10.00
196 ★田	1935, 2c Brown, Booklet Pane of 4 (218a), Very Fine	10.00
197 ★田	1935, \$1.00 Blue (227), Block of 15 , Very Fine	30.00
198 ★	1935, \$1.00 Light Blue Shade (227 var), four copies, stated only 850 copies exist in this shade, Very Fine, WH.	—
199 ★	1937, 1c-8c, 3c George VI #231-236 (16 sets), #237(15), Very Fine, WH.	8.26
200 ★田	1937, 1c-3c Booklet Panes #231a (5), #231b(40), #232a(5), #232b(40), #233a(45), Fine-V.F., WH.	33.00
201 ★	1938, 10c-\$1.00 #241-245 (7 sets), Very Fine, WH.	27.02
202 ★田	1942-43, 1c-\$1.00 (249-259), Set of Blocks, Very Fine	14.40
203 ★	1942-43, 1c-\$1.00 (249-259), Set of Blocks, except 50c value is four singles, Very Fine	14.40
204 ★	1942-43, 1c-\$1.00 #249-259 (4 sets), Very Fine WH.	14.40
205 ★	1942-43, Same as above, Very Fine, WH.	14.40
206 ★	1922-33, 20c Special Deliveries #E2-E5 (8 of each), Fine-Very Fine, WH.	14.40

207 ★	1935-39, 10c-20c Special Delivery #E6(10), E7-9 (8 each), Very Fine, WH.	10.80
208 ★	1906-34, 1c-10c Postage Dues #J1-J3 (5 each), #J5-J10 (4 each), #J11-J14 (9 each), Fine-V.F., WH.	13.08
209 ★	CAPE JUBY , 1940, 1c-10P Pictorials, #90-105 (8 sets), Very Fine, WH.	44.32
210 ★	—1944, 1c-10P Pictorials, #106-119 (3 sets), Very Fine, WH.	—
211 ★	CAYMAN IS. 1938, ½p-10/ George VI. Issue (101-111), Very Fine	9.66
212 ★	CEYLON 1938-42 , George VI, #279(10), #280(9), #283(7), #284(9), #285(25), #286(6), #288(1), #289(2), #292(20), Very Fine, WH.	18.80
213 ★	—1940-41, 3c Provisionals, #290(20), #291(98), Very Fine, WH.	19.80

CHILE

214 ★	1936, 5c-10P de Almagro Issue, #186-197 (3 sets), Very Fine, WH.	14.10
215 ★	1938-40, 5c-10P Pictorial Issue, #198-209 (6 sets), Very Fine, WH.	15.78
216 ★	1941-43, Santiago and Pictorial Issues, #211-215(10 sets), #217-222(20 sets), Very Fine, WH.	12.00
217 ★	1944-45, Red Cross and Higgins Issues, #238-239(40 sets), #240-243(20 sets), 20c, 30c New Higgins Issue (20 sets), Very Fine, WH.	10.60+
218 ★	1940, 80c-3.60P Semi-Postal Anniversary Issue, #B1-B2 (10 sets), Very Fine, WH.	15.00
219 ★	1941-42, Official Issue, #O44(4), #O45(10), #O46(5), #O48(3), Very Fine, WH.	13.25

CHINA

220 ★	1931, 1c-\$5.00 Sun Yat-Sen, #247-253 (5 sets), Very Fine, WH.	18.80
221 ★	1939-41, High Values and Flags, #310-314 (1 set), #334-337 (10 sets), Very Fine, WH.	15.40
222 ★	1941, ½c-\$20.00 Dr. Sun Yat Sen, #388-403 (5 sets), Very Fine, WH.	30.20
223 ★	1940-41, Postage and Dues Issues, #404-409(5 sets), #411-420(5 sets), #J69-70, J72, J76-79 (5 sets). Very Fine, WH.	—
224 ★	1944-46, \$40.00-\$200.00 #469-471A (10 sets), Very Fine, WH.	—
225 ★	1944, \$2.00-\$10.00 Dr. Sun Yat-Sen #472-475 (30 sets, Very Fine, WH.	—

COLUMBIA

226 ★	1940, 1c-2P Santander Commem. Issue (475-484), Complete set, Very Fine	13.20
227 ★	1940, Same as above, Very Fine	13.20

228 ★	1940, Same as above, Very Fine	13.20
229 ★	1940-44, 5 Issues, # 488(25), # 493(5), # 494(5), # 495(10), # 496(30), Very Fine, WH.	12.05
230 ★	1943, 15c Deep Blue, # 489(100), Very Fine, WH.	18.00
231 ★	1941, 20c Gray Black, # 490(60), Very Fine, WH.	15.00
232 ★	1944, 2c-1P Anniversary Issue # 508-512 (5 sets), Very Fine, WH.	19.00
233 ★	1944, 2c-1P Anniversary Issue in Sheets (508a-512a), Complete set, Very Fine	16.00
234 ★	1944, 1P in Sheet of 2 (512a), Very Fine	5.50
235 ★	1944, 1P in Sheet of 2, # 512a (4 sheets), Very Fine, WH.	22.00
236 ★	1944, 2c-5c Imperforate (508-509), Guaranteed K. F., Very Fine	—
237 ★	1944, Anniversary Souvenir Sheet , # 513 (10 sheets), Very Fine, WH.	35.00
238 ★	1944, 10c, 30c, 50c, # 517-519 (10 sets), Very Fine, WH.	10.20
239 ★	1937, Official Issues, # O1-O5(8 sets), # O10-O13(4 sets), Very Fine, WH.	14.56
240 ★	CONGO , 1937-43, Postage and Dues Issues, # 166(3 sheets), # 184-186 (5 sets), # J8-J12(5 sets), Very Fine, WH.	15.35
241 ★	COOK IS. George VI Issues, # 109-111(10), # 112-114(1), # 120(28), # 121(15), # 122(18), Very Fine, WH.	17.34
242 ★	—New Issues, ½p(9), 1p(21), 2½p(8), 2/(7), 3/(10), Very Fine, WH.	—
243 ★	COSTA RICA , 1931-40, Five Issues # 157(10), # 183(25 sheets), # 189(5), # 190(60), # 191-195(5 sets), Very Fine, WH.	14.60
244 ★	—1936, 4c-5Col # 169-176 (5 sets), Very Fine, WH.	21.85
245 ★	—1941, Two Issues # 196-200(20 sets), # 212-216(10 sets), Very Fine, WH.	16.40
246 ★	—1941, 5c-1Col. Commem. # 201-208(10 sets), Very Fine, WH.	32.00
247 ★	—1942-44, Four Issues # 209(40), # 217-18(25 sets), # 219-223(20 sets), # 233-237(10 sets), Very Fine, WH.	21.70
248 ★	—1943, 1c-2Col. # 224-232 (20 sets), Very Fine, WH.	32.80

CUBA

249 ★	1910-33, Five Issues # 239-246(1 set), # 294-298(3 sets), # 283(5), # 307B (5), # 312-16(3 sets), Very Fine, WH.	18.75
250 ★	1917-18, 1c-2c Booklet Panes (264a-265a), Fine	—
251 ★	1917-18, Same as above, Fine	—
252 ★	1917-18, Same as above, Fine	—
253 ★	1917-18, Same as above, Good	—

254 ★	1917-18, 1c Booklet Pane #264a (4 Panes), Very Good	—
255 ★	1917-28, 2c, 3c Booklet Panes (267b, 275a), Fine	—
256 ★	1917-28, Same as above, Very Good	—
257 ★	1942, 3c Booklet Pane #305Bc (9 Panes), Fine, WH.	11.25
258 ★	1933-37, Revolutionary, Gomez and Centenary Issues, #317-318(30 sets), #332-336(10 sets), #340(5), Very Fine, WH.	11.65
259 ★	1937, April 10th, Artists Issue. 17 values, Complete Postage set, Very Fine	—
260 ★	1942, Democracy and Loynaz Issues #353-357(10 sets), #358-359(10 sets), Very Fine, WH.	10.40
261 ★	1942-44, Democracy Imperf. and Discovery of America Issues, #353a-357a(10 sets), #366-370(10 sets), Very Fine, WH.	14.30
262 ★	1914-43, Semi-Postal and Postage Due Issues, #B4-B6(10 sets), #J5-J7 (5 sets), #J8-J10(4 sets), Very Fine, WH.	10.50
263 ★	CURACAO , 1936-43, Three Issues, #127-131(8 sets), #147-151(5 sets), #170-173(10 sets), Very Fine, WH.	8.35
264 ★	—1941-42, 1c-2½G Wilhelmina Issue (147-163), Complete set, Very Fine	15.77
265 ★	—1941-2, Same as above, Very Fine	15.77
266 ★	—1941-42, Same as above, Very Fine	15.77
267 ★	CZECHOSLOVAKIA-Bohemia & Moravia , 1939, 5h-10k (1-19), Complete set, Very Fine	19.20
268 ★	— —1939-41, 40h-20k #27-41 (3 sets of each), Very Fine, WH.	23.16
269 ★	— —1939-41, Semi-Postals, Dues #B1-2(3 sets), #B3-4(5 sets), #EX1-2(10 sets), #J1-J12(5 sets no "A" var.), Very Fine, WH.	17.25
270 ★	— Slovakia, 1939-41 , Four Issues #1(5), #44(5), #58-60(20 each), #B1(5), Very Fine, WH.	16.50
271 ★	— —1939, 5h-10k (2-22), Very Fine	26.30
272 ★	— —1939, 5h-10k (2-22), Fine-Very Fine	26.30
273 ★	— —1939, 2h-1k Newspaper #P1-P9 (5 sets), Very Fine, WH.	11.40
274 ★	DENMARK , 1934-40, Four Issues #240A(10), #267(5), #271(5), #B9-11 (5 sets), #B12(25), Very Fine, WH.	17.25
275 ★	—1941, 20ö on lö gray (272A), Very Fine	(Photo) 20.00
276 ★	—Same as above, Very Fine	20.00
277 ★	— 1941, 5kr Parcel Post #Q9a(3), Very Fine, WH.	22.50

DOMINICAN REPUBLIC

278 ★	1933, ½c-1p Merino Issue, #266-276 (3 sets), Very Fine, WH.	15.09
-------	--	-------

279 ★	1935-37, Five Issues, #295-298 (5 sets), #304-305 (5 sets), #306-309(5 sets), #323-325(5 sets), #326-328(5 sets), Very Fine, WH.	12.25
280 ★	1935, 3c Horizontal Pair, Imperf. Between #299a (3 pairs), Very Fine, WH.	—
281 ★	1938-39, Five Issues, #332-334 (5 sets), #335-337 (5 sets), #338-341 (5 sets), #342-345 (5 sets), #346-350 (5 sets), Very Fine, WH.	11.15
282 ★	1940, 1c-1P Pan American Congress #351-355 (3 sets), Very Fine, WH.	12.18
283 ★	1940-42, 5 Issues, #356-357 (5 sets), #358-361 (5 sets), #366-78 (5 sets), #379-380 (5 sets), #381-382 (10 sets), Very Fine, WH.	12.50
284 ★	1940, 3c-1P Caribbean Conference Issue #362-364 (5 sets), Very Fine, WH.	12.55
285 ★	1942, ½c-15c Virgin Mary Issue, #383-388 (10 sets), Very Fine, WH.	14.00
286 ★	1946, Homes, Red Cross and Communications Issues, #397(25), #408-411 (20 sets), New 3c, 20c, 50c (10 sets), Very Fine, WH.	7.40 +
287 ★	1944, ½c-50c Independence Issue, #398-406 (6 sets), Very Fine, WH.	11.88
288 ★	1935-42, Sp. Del. Insured Letter and Postage Due Issues #E4-E5 (5 sets), #G1-G5 (2 sets), #J14-J19 (5 sets), Very Fine, WH.	12.75
289 ★	1935, 15c on 10c Inverted Surcharge (G2a), Very Fine	—
290 ★	1940-44, 8c-70c Insured Letter Stamps #G8-G11 (5 sets), Very Fine, WH.	15.30

DUTCH INDIES

291 ★	1941, 2½c, 3c, 5c #228-29, 231 (10 of each), Very Fine, WH.	37.50
292 ★	1941, Same as above, Very Fine, WH.	37.50
293 ★	1941-42, 10c-1gld #233-245 (5 short sets), Very Fine, WH.	78.00
294 ★	1941-42, 10c-2gld. (233-246), Very Fine	21.20
295 ★	1941-42, 10gld. Green (248), Very Fine	(Photo) 25.00
296 ★	1941-42, 25gld. Orange (249), Very Fine	(Photo) 60.00
297 ★	1915-30, Semi-Postals #B1-3 (2 sets), #B4-7 (3 sets), Very Fine, WH.	16.50
298 ★	1935-40, Semi-Postals #B21-24 (3 sets), #B30-31 (5 sets), #B48(5), Very Fine, WH.	19.75
299 ★	1941, Semi-Postal #B52-B56 (5 sets), Very Fine, WH.	14.75
300 ★	1941, 1c-1gld. Dues, Thick Paper (J25a-J42a), Very Fine set	12.45
301 ★	1941, 1c-1gld, Dues, Thick Paper #J25a-J42a (3 sets), Very Fine, WH.	37.37

ECUADOR

302 ★	1908-1937, Four Issues, #174-180 (3 sets), #359-360 (10 sets), #361-365 (6 sets), #400-403 (10 sets), Very Fine, WH.	16.29
303 ★	1935, 5c-5S Bolivar Monument #331-338 (3 sets), Very Fine, WH.	11.70
304 ★	1942, Toral and Alfaro Issues, #404-405 (30 sets), #409-412 (20 sets), Very Fine, WH.	11.20
305 ★	1943, 50c-2S Wallace Visit, #413-415 (10 sets), Very Fine, WH.	21.00
306 ★	1943, Same as above, Very Fine, WH.	21.00
307 ★田	1943, 10c-10S President Arroyo Issue. (417-422), Complete set in Blocks, Very Fine	14.60
308 ★田	1943, Same as above, Very Fine	14.60
309 ★	1943, 10c-10S President Arroyo Issue #417-422 (12 sets), Very Fine, WH.	43.80
310 ★	1944, Three Issues, #423-428 (10 sets), #430-433 (10 sets), #434-435 (30 sets), Very Fine, WH.	26.60
311 ★	1946, 50c, 1S, 2S, New Chile Welcome Issue, 3 values, (20 sets), Very Fine, WH.	—
312 ★	1946, 30c, 1S, 5S, 10S, 80th Anniversary New Issue, 4 values, (20 sets), Very Fine, WH.	—
313 ★	1942, 20c Postal Tax Issue, #RA52(80), Very Fine, WH.	12.00

EGYPT

314 ★	1937-44, 1m-20m, #208-216(14), No #212B, #216A(12), Very Fine, WH.	15.90
315 ★	1937, Two Commem. Issues (217-219, 220-222), Ten complete sets of each, Very Fine, WH.	12.90
316 ★	1939, 30m-£1 King Farouk Issue (234-240), Complete set, Very Fine (Photo)	18.99
317 ★	1939, Same as above, Very Fine	18.99
318 ★	1938-44, Regular and official Issues, #242(19), #243(18), #O51-59(2), Very Fine, WH.	7.26
319 ★	1946, 10m-22m New Congress Issue, Ten copies of both values, Very Fine, WH.	—
320 ★	1946, 10m Issmail Pasha New Issue, 50 copies, Very Fine, WH.	—
321 ★	1943, 5m+5m Semi-Postal Issue (B2), Three Copies, Very Fine, WH.	11.25
322 ★	1943, 5m+5m Semi-Postal Issue (B2), Five copies, Very Fine, WH.	18.75
323 ★	1943-44, Special Delivery Issues, #E3(15), E4(20), Very Fine, WH.	14.30
324 ★	ESTONIA , 1935-40, 1kr, 3kr #116, #149 (3 of each), Very Fine, WH.	12.00

325 ★	—1936, 2k Blue #138 (10), Very Fine, WH.	20.00
326 ★	—1937, Semi-Postal #B32-B35 (5 sets), Very Fine, WH.	14.25
327 ★	—1940, Semi-Postal #B46-B49 (5 sets), Very Fine, WH.	12.50
328 ★	FALKLAND IS. , 1944 Dependencies Issues (1L1-1L8, 2L1-2L8, 3L1-3L8, 4L1-4L8, Complete set, 32 values, Very Fine	6.20
329 ★田	—1944, Dependencies Issues, 32 values in Blocks of Four, Very Fine	24.80
330 ★	—1944, Dependencies Issues, 32 values, Five complete sets, Very Fine, WH.	31.00
331 ★	—1944, Same as above, Very Fine, WH.	31.00
332 ★	FIJI , 1935, Jubilee Issue (110-113), Two complete sets, Very Fine, WH.	4.80
333 ★	—1938-40, 1/ 1/5, George VI (124, 124A, 127), Four copies of each, Very Fine, WH.	12.80
334 ★	—1938-41, George VI Issues, #124(3), #127(3), #131(15), #132(20), Very Fine, WH.	12.00
335 ★	FINLAND , 1930-41, Four Issues #177-79 (5 sets), #214(10), #220(5), #223(5), Very Fine, WH.	20.75

FRANCE

336 ★田	1924-37, Commem. Issues (219, 313-14, 321, 324-28), Block and Single of each, Very Fine	15.00
337 ★	1937-39, Four Commems. #322, 332, 347, 381 (10 each), Very Fine, WH.	12.00
338 ★	1938-40, 1.75Fr-3Fr #335-340 (5 sets), Very Fine, WH.	22.50
339 ★	1938, 2.15Fr-20Fr #349-50, 352-53 (5 each), Very Fine, WH.	34.50
340 ★	1938-41, Six Issues #355-57, 383, 395-97 (5 each), #384B, 385B (10 each), Very Fine, WH.	14.75
341 ★	1940-41, 30c-10Fr #400-411 (5 sets)), Fine-V. F., WH.	15.65
342 ★	1941, 40c, 80c, 2.50Fr Petain #413-14, 416 (35 each), Very Fine, WH.	54.25
343 ★	1941-42, 5Fr-20fr, 15Fr #418-420(5 sets), #421(10), Very Fine, WH.	23.00
344 ★田	1935, Semi-Postals (B42-B43)), Set of Blocks , Very Fine	17.20
345 ★	1936-37, Semi-Postals #B44-45, B47, B59-62(5 each), #B63(10), Very Fine, WH.	16.25
346 ★田	1937-39, Semi-Postals (B64-67), Block and Single of each, Very fine.	14.50
347 ★	1938, Semi-Postals #B68-69, B71-73, B77 (5 each), Very Fine, WH.	18.50
348 ★	1939, Two Semi-Postal Issues #B81, #B86-89A (10 sets each), Very Fine, WH.	14.50
349 ★	1939-40, Semi-Postals #B93-95, B101-102 (5 sets each), Very Fine, WH.	24.50

350 ★	1940-41, Semi-Postals #B104-07(5 sets), #B108-09(10 sets), #B114(15), #B116(5), Very Fine, WH.	26.75
351 ★	1940, 3pf-100pf, German Occ. #N27-N42 (5 sets), Very Fine, WH.	21.35
352 ★	1940, 3pf-100pf, German Occ. #N43-N58 (5 sets), Very Fine, WH.	25.05
353 ★	OFFICES IN MOROCCO , 1933-1940, Postage and Semi-Postal Issues, #136(40), #159A(24), #160A(20), #171A(20), #176A(13 Pr.), #B13-B20 (3 sets), Very Fine, WH.	20.26
354 ★	—1939-42, 10c-1.50FR., #153, #156-157, #159A, #161, #163A, #164, #165, #165A, #168 (30 copies of each), Very Fine, WH.	30.90
355 ★	—1943, 10c-20FR. Tower Issue, #178-196 (5 sets), Very Fine, (Wh. \$4.00 per set), WH.	—

FRENCH EQUATORIAL AFRICA

356 ★	1937-41, Postage and Semi-Postal Issues, #35, #43, #46, #50, #52, #58 (10 copies of each), #60, #62, #67-68 (5 copies of each), #B9(5), Very Fine, WH.	11.15
357 ★	1940, Fr. French Issue, #80-82, #84-88, #91, #93-95, #97, #99, #101-103, #105-106, #108-115, #117-118, #120, #122, #124, (4 of each), Very Fine, WH.	33.25
358 ★	1940, 4c, 75c, 80c-1.50FR. Commem. Issue on Post Cards, (83, 104, 129-132), Very Fine	18.00
359 ★	1940, 80c overprint without "2" (129a), on Post Card, Very Fine	15.00
360 ★	1940, Same as above, Very Fine	15.00
361 ★	1941, 1c-35c Free Fr. Issue, #133-141 (3 sets), all have 2mm. spacing, Very Fine, WH.	13.50
362 ★	1943, 2.25FR.-10FR. Red Cross Issue (B9-B10), Complete Set, Very Fine (Wh. \$10.00)	—
363 ★	1943, Same as above, Very Fine	—
364 ★	FR. GUIANA , 1929-40, 13 diff. values, 5 to 15 of a kind. Bet. #111-147, Very Fine, WH.	10.85
365 ★	—1945, 10c-20Fr, London Prints, 19 values (10 sets), Very Fine, WH.	—

FRENCH INDIA

366 ★	1941, 2Ca-5R Fr. French Issue (117-134, no #123A), Very Fine	26.35
367 ★	1941, Same as above, Very Fine	26.35
368 ★	1941, 8Ca. diagonal "France Libre" (135B), Very Fine	8.00
369 ★	1942, 2Ca-5R Lotus Flowers (143-156), Complete Set, Very Fine	9.46
370 ★田	1942, 2Ca-5R Lotus Flowers (143-156), Complete set in Blocks, Very Fine.	37.84

371 ★	FR. OCEANIA , 1941, 1FR.-20FR. Free French Issue (126-135), Complete set, Very Fine	13.85
372 ★	—1941, Same as above, Very Fine	13.85
373 ★	—1941, Same as above, Very Fine	13.85
374 ★	FR. SUDAN , 1940, Pictorial Issue, #63(10), #71(10), #75(10), #78(10), #80(10), #84(5), #86(10), #87(10), #89(5), #90(5), #92(5), #94(10), #96(6), #97(5), Very Fine, WH.	14.20
375 ★	GAMBIA, 1935-1944 , Jubilee and George VI Issues, #125-128(2), #132(20), #134A(15), #135A(30), #136A(30), Very Fine, WH.	12.60
376 ★	GERMANY , 1934-41, #436-41(5 sets), #452-53(5), #454-455(5), #459-62-(5), #465-66(5), #467-68(5), #473-76(5), #477-78(5), #494-97(8), #498-501(10), #502-505(6), #B121-122(10), All complete sets, Very Fine, WH.	38.60

GIBRALTAR

377 ★	1935-44, Jubilee and George VI Issues, #100-103(2), #108(15), #109A(20), #110(10), #110B(20), #111(10), #112(8), #113(6), Very Fine, WH.	15.56
378 ★田	1938, 1/, 5/ George VI Issue (113, 115), Blocks of Four of each, Very Fine	12.00
379 ★	1938, 5/ George VI Issue (115), Six copies, Very Fine, WH.	15.00
380 ★	1938, 1£ George VI (117), Very Fine	8.00
381 ★	1938, Same as above, Very Fine	8.00
382 ★	1938, 1£ George VI (117), Two Copies, Very Fine, WH.	16.00
383 ★	GILBERT & ELLICE , 1939, ½p-5/ George VI Issue (40-51), Two Complete Sets Very Fine, WH.	9.98
384 ★	—1940, 1p-1/6 Postage Due Issue (J1-J8), Four complete sets, Very Fine, WH.	11.84
385 ★	GOLD COAST , 1938, George VI Issue, #118(6), #119(6), #120(3), #124(5), #127(1), Very Fine, WH.	13.93
386 ★	GR. BRITAIN , 1936-42, George VI Issues, #230-233(4 sets), #235(20), #238(30), #239a(10), #240(10), #249A(5), #J26-32(5 sets), Very Fine, WH.	18.54
387 ★	—1942, 10/ ultramarine #251a(5), Very Fine, WH.	20.00
388 ★	—1942, Same as above, Very Fine, WH.	20.00
389 ★田	— Br. Off. Abroad , 1941-42, MEF Postage and Dues Issues (1-13, J1-5), Complete sets in Blocks of Four, Very Fine	15.92
390 ★	— —1941-42, MEF Issues #1-13 (5 sets), #J1-J5 (5 sets), Very Fine, WH.	19.90
391 ★	— —1941-42, MEF Issues, #1-8(3 sets), #10-13(1 set), #J1-J5 (6 sets), Very Fine, WH.	13.48

392 ★	— —1942, EAF Issue #1-8 (10 sets), Very Fine, WH.	16.20
393 ★	— —1942, Same as above, Very Fine, WH.	16.20
394 ★	GREECE , 1938-39, Three Commem. Issues #414-415(5 sets), #416-420 (3 sets), #421-424(5 sets), Very Fine, WH.	19.64
395 ★	—1940, 3d-100d Sports Issue (427-436), Complete set, Very Fine	10.00
396 ★田	—1940, 3d-100d, Sports Issue (427-436), Complete set in Blocks, Very Fine	40.00
397 ★	—1940, 3d-100d Sports Issue, #427-436 (5 sets), Very Fine, WH.	50.00
398 ★	—1940, 3d-100d Sports Issue #427-436 (10 sets), Very Fine, WH.	100.00
399 ★	GREENLAND , 1945, 1o-5k Commem. Issue #17-25 (5 sets), Very Fine, WH.	—
400 ★	—1945, 10ö-5k overprinted in Blue instead of Carmine (#20a-25a), 6 Values, Very Fine, Scarce	—
401 ★	—1945, Same as above, Very Fine	—
402 ★	—Same as above, Very Fine	—
403 ★	GRENADA , 1938, 2/, 5/ 10 George VI #140-142 (3 of each), Very Fine, WH.	25.50
404 ★	GUADELOUPE , 1928-40, Thirteen values, 5 to 15 each. Bet. #98-133, Very Fine, WH.	19.01
405 ★	—1943, Surcharges #159-160 (5 each), #161(23), #162(5), #163(17), Very Fine, WH.	—
406 ★	—1944, 40c-4Fr Surcharges #164-167 (30 sets), Very Fine, WH.	—
407 ★	—1945, 10c-20Fr, 19 values, (9 sets), Very Fine, WH.	—

GUATEMALA

408 ★	1926, 6c-15P Pictorial Issue, #219-229 (5 sets), Very Fine, WH.	15.45
409 ★	1929-33, 4 Issues, #245-246 (5 sets), #247-251 (3 sets), #252-254 (5 sets), #259-263 (4 sets), Very Fine, WH.	13.55
410 ★	1935, ½c-25c General Barrios #264-272 (5 sets), Very Fine, WH.	12.60
411 ★	1937, ½c-1.50q President Ubico Issue (280-291), Complete Set, Very Fine	12.32
412 ★	1937, Same as above, Very Fine	12.32
413 ★	1937, Same as above, Very Fine	12.32
414 ★	1936-42, Five Issues, #278-279 (10 sets), #292-296 (10 sets), #300a (26 pr.), #301 (50), #304-305 (20 sets), Very Fine, WH.	13.06
415 ★	1940-45, Postage and Special Delivery #306(20), #308(20), New 3c Blue (50), #E1(30), Very Fine, WH.	11.50+

464 ★	ITALIAN SOMALILAND, 1929-35, Commem. Issues #104-110 (3 sets), #B38-51 (1 set), Very Fine, WH.	10.80
465 ★	IVORY COAST, 1936-40, 12 varieties, from 5 to 15 of each (Bet #114-147), Very Fine, WH.	10.30
466 ★	JAMAICA, 1938, 2p-10/ George VI (119-128), Very Fine	8.31
467 ★田	—1944, 1½p-10/ Constitution Issue, Complete set of Blocks , Very Fine	34.00
468 ★	—1944, 1½p-10/ Constitution Issue (3 sets), Very Fine, WH.	25.50
469 ★	—1944, Same as above, (3 sets), Very Fine, WH.	25.50
470 ★	JAPAN, 1937-39, ½s-10y (257-275), Complete set, Very Fine	10.26
471 ★	—1937-40, Three Issues #257-75 (1 set), #276-79 (10 sets), #313-14 (30 sets), Very Fine, WH.	14.76
472 ★	—1938-40, Souvenir Sheets #284 (5 sheets), #307 (5 sheets), #312 (10 sheets), Very Fine, WH.	14.00
473 ★	—1941, Souvenir Sheet #324 (30 sheets), Very Fine, WH.	18.00
474 ★	JUGOSLAVIA, 1938-41, Three Issues #155-58 (5 sets), #B70-73 (5 sets), #B120-123 (6 sets), Very Fine, WH.	22.00

KENYA AND UGANDA

475 ★	1938, 1c-3/ George VI, #63-#65, #68-70, #72 (6 of each). Very Fine, WH.	15.06
476 ★	1938, 2/, 5/, George VI, #71(6), #73(6), Very Fine, WH.	18.00
477 ★	1938, 10/ George VI, #74(8), Very Fine, WH.	32.00
478 ★	1938, 10/-£1 George VI (74-75), Very Fine	13.00
479 ★	1941, 5c-20c Provisionals, #76-#81 (20 sets), Very Fine, WH.	20.00
480 ★	1942, 70c Provisionals, #82-83 (25 sets), Very Fine, WH.	17.50
481 ★	LATVIA, 1940, 30s-35s #225-226 (15 each), Very Fine, WH.	7.50
482 ★	LEBANON, 1937-40, 12½pi-100pi #142A, #143A-143D (10 of each), Very Fine, WH.	41.50
483 ★	—1942, Op50-15pi Commem. (156-159), Complete Set Imperforate , Very Fine	—
484 ★	—1926-44, Three Issues #156-159, #167-68 (10 sets of each), #B1-B12 (3 sets), Very Fine, WH.	14.45
485 ★	—1943, 2pi-10pi #160-162 (10 sets), Very Fine, WH.	15.00
486 ★	LEEWARD IS. 1938, 1/-10/ George VI #111-114 (3 of each), Very Fine, WH.	22.50
487 ★	—1938, Same as above, WH.	22.50



163



171



275



295



296



316 EX



449



455



458



687



542 EX



642 EX



666 EX



766



768



779



780



781



798



803



816



819



826



828



843



852



857



871



872



873



905



914

416 ★	1929-36, Official and Postal Tax Issues #O6-O12 (4 sets), #RA3(50), #RA4(50), #RA5(50), Very Fine, WH.	12.54
417 ★	HAITI , 1920-41, 5 Issues #310-314 (5 sets), #315-318 (5 sets), #322-323 (10 sets), #335-336 (10 sets), #338-339 (15 sets), Very Fine, WH.	16.65
418 ★	—1942, 3c-2.50G Lady of Perpetual Help #340-348 (5 sets), Very Fine, WH.	22.00
419 ★	—1943, 3c-5g Admiral Killick, #349-354 (5 sets), Very Fine, WH.	11.90

HONG KONG

420 ★田	1941, 8c George VI (157A), Block of Four, Very Fine	12.00
421 ★	1941, 8c George VI, #157A(6), Very Fine, WH.	18.00
422 ★田	1941, 2c-\$1.00 Centenary Issue (168-173), Complete set in Blocks of Four, Very Fine	13.52
423 ★田	1941, Same as above, Very Fine	13.52
424 ★田	1941, Same as above, Very Fine	13.52
425 ★	1941, 2c-\$1.00 Centenary Issue, #168-173 (6 sets), Very Fine, WH.	20.28

HUNGARY

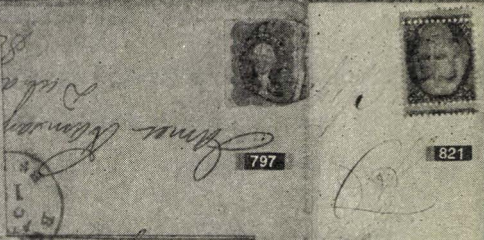
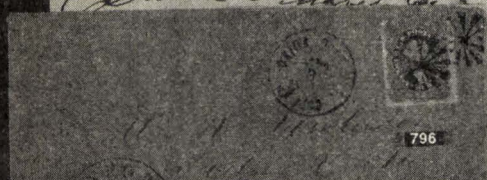
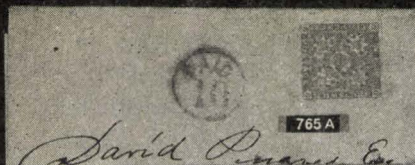
426 ★	1934, 20F Philatelic Ex. Sheet (486), Very Fine	8.00
427 ★	1934, Same as above, Very Fine	8.00
428 ★	1937-38, Three Postage and Semi-Postal Issues, #503-508 (5 sets), #B92-3 (5 sets), #B94 (2 sheets), Very Fine, WH.	10.35
429 ★	1941, 1P-5P Horthy Issue (570-572), Complete set, Very Fine	8.00
430 ★	1941, Same as above, Very Fine	8.00
431 ★	1941, 10F-40F Scechenyi Issue, #573-577 (6 sets), Very Fine, WH.	13.80
432 ★	1938-1939, St. Stephen Sheet and Patriotic Issues, #B97 (2 sheets), #B98-B102 (5 sets), Very Fine, WH.	13.00
433 ★	1940, Floods and King Matthias Issues #B114-B116 (5 sets), #B117-121 (10 sets), B122 (10 sheets), Very Fine, WH.	19.25
434 ★	1941, 2f-40f Postage Due Issue #J140-J150 (15 sets), Very Fine, WH.	13.20
435 ★	ICELAND, 1939, Commem. Issues #209-211, #213-216 (5 sets of each), Very Fine, WH.	14.65
436 ★	—1943-45, 5k-10k #230-31 (5 each), Very Fine, WH.	22.50
437 ★	—1940, 20a-2k World's Fair #232-235 (2 sets), Very Fine, WH.	9.30
438 ★	—1941, 25a on 3a, 25a-1k #236(5), #237-39 (6 sets), Very Fine, WH.	5.92
439 ★	—1944, 10a-10k Commem. #240-245 (3 sets), Very Fine, WH.	15.18
440 ★	—1937, Souvenir Sheet #B5 (Two sheets), Very Fine, WH.	5.00

INDIA

441	★	田	1937, 1a Carmine in Tete beche Blocks of Eight, #153a (10 Blocks), Very Fine, WH.	—
442	★	田	1937, 1a Carmine in Tete beche blocks of eight #153a (12 blocks), Very Fine, WH.	—
443	★		1944, Al Busaid Dynasty Postage and officials (180-194, O113-O122), Complete sets, Very Fine	—
444	★		1944, Same as above, Very Fine	—
445	★		1944, Same as above, Very Fine	—
446	★		1944, Same as above, Very Fine	—
447	★		1944, Same as above, Very Fine	—
448	★		1944, Same as above but missing 14A, Very Fine	—
449	★		JHIND STATE , 25R George VI (150), Very Fine (Photo)	15.00
450	★		INDO CHINA 1938-39, Commem. Issues #200-02 (5 sets), #205-08 (4 sets), Very Fine, WH.	5.55
451	★		ININI , 1932-40, 15 varieties, 4 to 15 of each, (Bet. #3-36). Very Fine, WH.	15.25

IRAQ

452	★		1941-42, 1f-5f #79-83 (20 each), Very Fine, WH.	10.00
453	★		1941-42, 8f-75f #85, 87, 89, 91 (10 each), #90(3), #92(15), #93(10), #95(9), #96-97 (10 each), Very Fine, WH.	30.67
454	★		1942, ½d Light Blue (100), Very Fine	7.50
455	★		1942, ½d-1d (100-101), Complete set, Very Fine (Photo)	22.50
456			1942, 1f-12f ;102-109 (11 sets), Very Fine, WH.	17.93
457	★		1941-42, 1f-5f Officials #O90-O94 (20 each), Very Fine, WH.	—
458	★		1941-42, ½d-1d Officials (O113-O114), Very Fine (Photo)	22.50
459	★		1941-42, Same as above, Very Fine	22.50
460	★		1942, 1f-12f Officials #O115-O122 (11 sets), Very Fine, WH.	17.93
461	★		IRISH FREE STATE , 1929-44, Complete sets, #80-82(6), #85-86(7), #88-89(6), #99-100(10), #101-102((10), #103-104(5), #118-119(4), #120(35), #124-125(14), #126-127(12), #130(25), Very Fine, WH.	25.31
462	★		—1944, ½p-1/ O'Cleary Issue #128-129 (35 sets), Very Fine, WH.	14.70
463			ITALIAN E. AFRICA 1940-41, Commem. Issues #27-33 (5 sets), #34-40 (8 sets), Very Fine, WH.	16.70



488 ★	LIBERIA 1941, Rowland Hill #280-82, #B16-B18, #E1, #F35 (5 of each), Very Fine, WH.	22.50
489 ★	LIBIA , 1937-40, Commem. Issues #67-68, #88-94 (5 sets each), Very Fine, WH.	9.35
490 ★	LIECHTENSTEIN , 1936-38, Souvenir Sheets #151, #B14 (5 Sheets of each), Very Fine, WH.	10.00
491 ★	LITHUANIA , 1940, 2c-35c Russian Occ. #2N9-2N16 (10 sets), Very Fine, WH.	18.80

LUXEMBOURG

492 ★	1935, 10Fr Green #199(3), Very Fine, WH.	6.00
493 ★	1929, Princess Gabrielle, Semi-Postal (B35-39), Complete set, Very Fine	7.50
494 ★	1929, Princess Gabrielle, Semi-Postal (B35-39), Complete set of Blocks , Very Fine	30.00
495 ★	1930, Prince Charles, Semi-Postal (B40-B45), Complete set, Very Fine	9.00
496 ★	1930, Same as above, Very Fine	9.00
497 ★	1933, Count Henry, Semi-Postal (B55-B59), Complete set, Very Fine	12.50
498 ★	1937, Wenceslas II, Semi-Postal #B79-B84 (5 sets), Very Fine, WH.	11.95
499 ★	1938, Grand Duke Sigismond, Semi-Postal #B92-B97 (5 sets), Very Fine, WH.	16.25
500 ★	1940, 3pf-100 pf. German Occ. #N1-N16 (10 sets), Very Fine, WH.	23.50
501 ★	1940, 3rpf.-100fpf. German Occ. #N17-N32 (5 sets), Very Fine, WH.	22.50
502 ★	MADAGASCAR , 1936-40, 14 diff., 5 to 15 of each (Bet #180-208), Very Fine, WH.	15.40
503 ★	MALTA , 1938-43, ½p-4½p George VI #192A, 193A, 194A, 195A, 196A, 197A (20 each), #198(11), Very Fine, WH.	10.58
504 ★	—1938, 1/6, 2/, 5/ #201(12), #203(2), #204(4), Very Fine, WH.	21.50
505 ★	—1938, 5/ George VI #204(8), Very Fine, WH.	20.00
506 ★	MANCHUKO , 1935-41, Seven Issues (#62-65 (4 sets), #127 (30), #128-29, #132-149 (40 sets of each), Very Fine, WH.	22.45
507 ★	MARTINIQUE , 1933-40, 1c-20Fr, 35 diff. (Bet. 133-172), Very Fine	8.00
508 ★	—1933-40, Eleven values, 5 to 15 of each Bet. #135-168, Very Fine, WH.	9.65
509 ★	—10c-20Fr, London Prints, 19 values (10 sets), Very Fine, WH.	—
510 ★	MAURITANIA , 1938-40, 11 diff., from 5 to 15 of each (Bet #86-104), Very Fine, WH.	15.25

MEXICO

511 ★	1913, 1c-1p With Coupon (347a-353a), Complete set, slight stains on some, no gum	32.75
512 ★	1913, Same as above	32.75
513 ★	1913, Same as above	32.75
514 ★	1914, Three Issues #386-93 (5 sets), #401-04 (5 sets), #423-30 (10 sets), Very Fine, WH.	16.75
515 ★	1915, 1c-20c #484-491 (5 each), Very Fine, WH.	11.80
516 ★	1923-34, 5c-50c #646-48 (15 each), #654a(20), #655-56 (25 each, Fine, WH.	19.00
517 ★	1926, 2c-1p #658-665 (5 sets), Very Fine, WH.	18.95
518 ★	1930, 2c-1p #667-674 (5 sets), Fine, WH.	14.25
519 ★	1930, 2c Surcharge Reading Down #667a(2), Very Fine, WH.	10.00
520 ★	1931, 4c-1p (676-682), Complete set, Very Fine	12.30
521 ★	1931, Same as above, Very Fine	12.30
522 ★	1931, 4c-1p #676-682 (3 sets), Very Fine, WH.	36.90
523 ★	1934-40, Five Issues #688-92(5 sets), #707-720(3 sets), #764-66(10 sets), #767(25), #G1, G5-6(10 each), Very Fine, WH.	24.69
524 ★	1940, 5c-5p Penny Postage Commem. #754-758 (4 sets), Very Fine, WH.	26.72
525 ★	1910, 5p Carmine & Black, Official #O74(2), Very Fine, WH.	16.00
526 ★	MONACO , 1939-41, Two Issues #177-81(4 sets), #182-84, 186, 189(10 each), Very Fine, WH.	11.00
527 ★	—1938-41, Semi-Postals (B24-25, B51-60), Complete sets, Blocks of first, Very Fine	12.40
528 ★	—1940-41, Semi-Postals , Two Issues (B36-B60), Complete sets, Very Fine	16.52
529 ★	—1940-41, Same as above, Very Fine	16.52
530 ★	MONTSERRAT , 1938, ½p-5/ George VI #92-101 (4 sets), Very Fine, WH.	19.64
531 ★	NAURU , 1937, 1½p-1/ Coronations #35-38 (12 sets), plus PAPUA , 1p-5p Coronations #118-121 (10 sets), Very Fine, WH.	11.68

NETHERLANDS

532 ★	1934-38, Souvenir of Postal Congress, Buenos Aires 1939 , 60 stamps includes postage semi-postals air and officials specially mounted and in souvenir folder, Very Fine (Est. \$30.00 net)	—
533 ★	1924-25, Semi-Postals #B6-B11 (4 sets each), Very Fine, WH.	8.00

534 ★	1927, Semi-Postal #B16-B20 (4 sets), Very Fine, WH.	8.60
535 ★	1927, Semi-Postal #B21-24 (10 sets), Very Fine, WH.	12.00
536 ★田	1928-29, Semi-Postals (B33-B40), Set of Blocks and Singles of each, Very Fine	11.50
537 ★	1930, Semi-Postals #B41-43(5 sets), #B44-47(4 sets), Very Fine, WH.	13.40
538 ★田	1935, Semi-Postal (B82-B85), Set of Blocks and Singles, Very Fine	8.00
539 ★	1936-37, Semi-Postals, Three Sets, #B90-B102 (5 sets of each), Very Fine, WH.	16.50
540 ★	1938-39, Semi-Postals, Three Issues #B103-B112, B118-122 (4 set of each), Very Fine, WH.	12.60
541 ★	NEW CALEDONIA , 1928-40, Ten diff. from 5 to 15 of each (Bet. #137B-171), Very Fine, WH.	9.15
542 ★	—1941, 1c-20Fr, Free French (217-251), Complete set, Very Fine. (Photo)	30.60
543 ★	—1941, Same as above, Very Fine	30.60
544 ★	—1941, Another set, Fine	30.60

NEWFOUNDLAND

545 ★	1932-35, 7c-24c, 15c, 4c-24c (208-211, 226-229), Four sets of each, Very Fine, WH.	11.68
546 ★	1933, 1c-32c Gilbert (212-225), Complete set, Very Fine	23.05
547 ★	1933, Same as above, Very Fine	23.05
548 ★田	1937, 1c-48c Coronation (233-243), Complete set of Blocks , Very Fine.	18.56
549 ★田	1937, Another set of Blocks , Very Fine	18.56
550 ★	1937, 1c-48c Coronation #233-243 (2 sets), Very Fine, WH.	9.28
551 ★	1938-39, 2c-7c, 5c, 2c-4c #245-249(8 each), #250-251(10 each), Very Fine, WH.	13.20
552 ★	1941, 5c Grenfell #252(75), Very Fine, WH.	15.00
553 ★	1941-43, 2c-7c, 30c #253-256(20 sets), #257(10), Very Fine, WH.	12.40
554 ★田	1941-44, 1c-48c (258-267), Complete set of Blocks , Very Fine	13.60
555 ★	1941-44, 1c-48c #258-267 (5 sets), Very Fine, WH.	17.00
556 ★	1941-44, 1c-48c #258-267 (6 sets), Very Fine, WH.	20.40
557 ★	1939, 1c-10c Postage Dues #J1-J6 (10 sets), Very Fine, WH.	5.00
558 ★	NEW GUINEA , 2p-1/ Coronation #48-51 (10 sets), Very Fine, WH.	9.00

NEW ZEALAND

559 ★	1937, 1p-6p, Coronations #223-225 (20 sets), Very Fine, WH.	7.00
560 ★	1941, 1p-2p, 9p #242-243(50 sets), #245(18), Very Fine, WH.	14.40
561 ★	1944, 1/3-10/ Postal Fiscal (AR75-AR84), Complete set, Very Fine	16.88
562 ★	1944, Same as above, Very Fine	16.88
563 ★	1929, Semi-Postal #B1 (15), Very Fine, WH.	15.00
564 ★	1930, Semi-Postal #B2 (15), Very Fine, WH.	15.00
565 ★田	1932, Semi-Postal (B5) Block , Very Fine	11.00
566 ★	1934, Semi-Postal #B7 (15), Very Fine, WH.	18.75
567 ★	1935-40, Semi-Postals #B8(5), #B13(15), #B16-17(15 sets), Very Fine, WH.	16.50
568 ★	1943-44, Semi-Postals #B22-23(20 sets), #B24-25(50 sets), Very Fine WH.	11.50
569 ★	1940-44, ½p-1/, 9p, 5/ Officials #O76-O86(3 sets), #O90(10), #O91(4), Very Fine, WH.	16.84
570 ★	NICARAGUA , 1944, Commem. 4 values (50 sets), in sheets of 25, Very Fine, WH.	—
571 ★	—1922, Postal Tax #RA12-16 (10 sets), Very Fine, WH.	32.50
572 ★	NIGER , 1926-40, Thirteen diff., from 4 to 15 of each (Bet. #31-68), Very Fine, WH.	10.00
573 ★	NIGERIA , 1938-44, 1p-1/3 George VI #54a(9), #56a(9), #58a(9), #59a(9), #61(10), #62(8), Very Fine, WH.	14.84
574 ★	NIUE , 1937-38, 1p-6p, 1/-3/ #70-72(15 sets), #73-75(2 sets), Very Fine, WH.	10.35
575 ★	—1944, ½p(5), 1p(23), 4p(11), 6p(5), 1/(6), 2/(6), 3/(1), Very Fine, WH.	—
576 ★	NORTH BORNEO , 1941, 1c-2c War Tax #MR1(15), #MR2(18), Very Fine, WH.	5.10
577 ★	NORTHERN RHODESIA , 1p-6p, 2p-3/ #18-21(2 sets), #28A-34(1 each), Very Fine, WH.	7.39
578 ★	—1938-41, ½p-10/ George VI (25-36), Very Fine	11.15
579 ★	NYASALAND PROT. , 1938-44, ½p-1/ George VI #54A, 55A, 56A, 57A (20 each), #58-62(6 each), Very Fine, WH.	12.22
580 ★	—1938, 3p-10/ George VI (58-66), Very Fine	11.12
581 ★	—1938, Same as above, Very Fine	11.12
582 ★	—1938, Same as above, Very Fine	11.12
583 ★	—1938, 3p-10/ George VI #58-66 (3 of each), Very Fine, WH.	33.36

584 ★	—1938, 5/, 10/ #65(3), #66(2), Very Fine, WH.	17.50
585 ★	—1944, ½p-20/ George VI (68-81) Complete set, Very Fine	17.14
586 ★	—1944, Same as above, Very Fine	17.14
587 ★	—1944, Same as above, Very Fine	17.14
588 ★	—1944, Same as above, Very Fine	17.14
589 ★	—1944, ½p-20/ George VI #68-81 (2 sets), Very Fine, WH.	34.28
590 ★	PALESTINE 1927-41, 3m-200m #64, 67, 73, 76-77, 80-81 (7 of each), Very Fine, WH.	24.85
591 ★	—1927-41, 200m-£1 (81-84), Very Fine	18.50
592 ★	—1927-41, 200m Dark Violet #81 (7), Fine, WH.	14.00
593 ★	—1941, 250m-£1 (82-84), Very Fine	16.50
594 ★	PANAMA , 1937-42, Four Issues #298-302 (3 sets), #303-10 (3 sets), #339-40 (20 sets), #G1-G3 (10 sets), Very Fine, WH.	20.85
595 ★	—1941, ½c-1b Commem. #331-338 (8 sets), Very Fine, WH.	36.96

PARAGUAY

596 ★	1933-39, Four Issues #330-337 (5 sets), #341-45 (3 sets), #349-50 (20 each), Very Fine, WH.	15.53
597 ★	1939, Three Commem. Issues #355-61 (6 sets), #362-65 (5 sets), #366-73 (5 sets), Very Fine, WH.	24.73
598 ★	1940, 1p-10p Penny Postage Commem. #378-381 (40 sets), Very Fine, WH.	15.20
599 ★	1940-43, Ten Issues #382-85 (15 sets), #387(25), #388-90 (20 sets), #392-94 (30 each), #395-97(15 sets), #399-402 (15 sets), #B4(5), #B6-B9(6 sets), #B10(20), #O90-O104 (4 sets), Very Fine, WH.	27.20

PERU

600 ★	1921, 1c-1s Commem. #222-231 (3 sets), V.G.-V.F., WH.	17.25
601 ★	1924, 2c-2s Commem. (234-241), Complete set, Fine	9.88
602 ★	1924, Same as above, Fine	9.88
603 ★	1925-44, Seven Issues #252(10), #253(5), #255(10), #263(7), #388(20), #406(20), #407-08 (20 sets), Very Fine, WH.	15.20
604 ★	1930, 2c-50c Commem. #264-267(5 sets), Very Fine, WH.	20.25
605 ★	1930-43, Two Commem. Issues #272-75 (8 sets), #394-405 (3 sets), Very Fine, WH.	20.12
606 ★	1931, Philatelic Exhibit. Issue #283-289 (5 sets), Very Fine, WH.	16.00

607 ★田	1935, 2c-2s Commem. (324-331), Complete set of Blocks , Very Fine	20.80
608 ★	1935-41, Two Issues (324-331, 389-393), Complete sets, Very Fine	12.60
609 ★	1941, 50c-10s #389-393 (3 sets), Very Fine, WH.	22.20
610 ★	1925-31, Postal Tax Issues #RA1-4 (6 sets), #RA7-11 (10 sets), #RA13(10), RA14-16 (6 sets), Fine, WH.	23.30
611 ★田	PITCAIRN IS. , 1940, ½p-2/6 (1-8), Complete country in Blocks , Very Fine	8.96
612 ★	—1940, ½p-2/6 #1-8 (6 sets), Very Fine, WH.	13.44
613 ★	—1940, ½p-2/6 #1-8 (10 sets), Very Fine, WH.	24.40

POLAND

614 ★	1928-32, Three Issues #253(3), #255(5), #267(3), #282-83(3), Very Fine, WH.	12.55
615 ★	1933, Three Commem. Issues #275-278 (3 of each), Very Fine, WH.	10.50
616 ★	1935-39, Commem. Issues #292-93 (5 sets), #312-13 (3 sets), #319(6), #335-38(3), #340(10), Very Fine, WH.	19.20
617 ★	1935-36, 1z, 3z #304(5), #305(3), Very Fine, WH.	13.75
618 ★	1937, Souvenir Sheets #314-316 (2 sets of sheets), Very Fine, WH.	7.00
619 ★	1938, 5g-3z Commem. Issue (320-332), Complete set, Very Fine	10.05
620 ★	1938, 5g-3z Commem. Issue #320-332 (2 sets), Very Fine, WH.	20.10
621 ★	1927-39, Semi-Postals #B26-27 (5 sets), #B32-34 (5 sets), Very Fine, WH.	8.25
622 ★	1939-40, German Occ. Issues #N17-N29 (5 sets), Bet #N56-N72, no 1941 values (10 sets), Very Fine, WH.	28.50
623 ★	1941, 2z, 10z #N73(3), #N74(8), Very Fine, WH.	16.90
624 ★	1940, German Occ. Semi-Postals #NB1-4 (8 sets), #NB8-11 (5 sets), Very Fine, WH.	18.30
625 ★	1940, Occ. Dues, Officials #NJ1-4 (5 sets), #NO16-24 (5 sets), Very Fine, WH.	10.10
626 ★	1940, 6g-5z Occ. Officials (NO1-NO15), Very Fine complete set	12.94
627 ★田	1940, 6g-5z Occ. Officials (NO1-NO15), Complete set of Blocks Very Fine	51.74
628 ★	1941, 5g-1.50z Offices Abroad #3K1-3K8 (10 sets), Very Fine, WH.	20.00
629 ★	PORTUGAL , 1941, 10E-20E #568A-568B (5 each), Very Fine, WH.	15.00
630 ★	—1940, 10c-80c Commem. #599-600 (40 sets), Very Fine, WH.	6.00
631 ★	—1940, Souvenir Sheet #B1 (5 sheets), Very Fine, WH.	25.00

632 ★	—1941, Souvenir Sheets #B2 (10 sheets), #B4 (5 sheets), Very Fine, WH.	22.50
633 ★	—1936-37, 50c-10E Parcel Post #Q18-25 (5 sets), Very Fine, WH.	13.50
634 ★	REUNION , 1933-40, Twelve diff., 5 to 15 copies of each (Bet. #128-162), Very Fine, WH.	8.20
635 ★	—1943, 1c-20Fr., FreeFrench #181-222 (2 sets), Very Fine, WH.	14.50
636 ★	ROMANIA , 1932-38, Semi-Postals #B37-39 (5 sets), #B77-81 (5 sets, #B82(10), #B94-98 (5 sets), Very Fine, WH.	14.10
637 ★	—1940, Semi-Postal Issues #B113-118, #B127-134 (8 sets of each), Very Fine, WH.	20.80
638 ★	—1940-41, Semi-Postals #B138-144 (3 sets) #B145(4), #B149-153 (5 sets), Very Fine, WH.	25.90
639 ★	—1941, Souvenir Sheet (B148), Very Fine	6.00

RUSSIA

640 ★	1933, Philatelic Exhibit. Commems. (485-488), Complete sets, Very Fine	14.50
641 ★	1933-34, Commem. Issues (519-523, 546-550), Complete sets, Very Fine	11.50
642 ★	1934, 20k-40k Imperforate Horiz. Pairs (529a-530a), Very Fine/ complete, not priced	(Photo) —
643 ★	1934, 5k-35k (546-550), Complete set, Very Fine	6.25
644 ★	1939-40, New York Worlds Fair Imperf. (716-717), Set of Blocks and Singles, Very Fine	15.00
645 ★	1940, Three Commem. Issues #776-788 (5 sets of each), Very Fine, WH.	16.65
646 ★	1940, Commem. Perf. and Imperf. #811-816(10 sets), #811a-816a(5 sets), Very Fine, WH.	23.70
647 ★	1941-44, Three Commem. Issues #856, 859(5 each), #921-22(10 sets), Very Fine WH.	23.15
648 ★	ST. HELENA , 1938-40, ½p-10/ George VI (118-127 incl. A's, no #119, 122), Very Fine	10.24
649 ★	—1938-40, Same as above, Very Fine	10.24
650 ★	—1938-40, ½p-10/ George VI, #118-127 incl. A's, no #119, #122 (3 sets), Very Fine WH.	30.72
651 ★	ST. PIERRE & MIQUELON , 1937-42, 38 diff. Bet. #165-252 (110 stamps), Very Fine, WH.	20.56
652 ★	—1942, 5c-20Fr Free French #300-313 (5 sets), Very Fine, WH.	14.05
653 ★	—Semi-Postal #B9-B10 (3 sets), Very Fine, WH.	6.00
654 ★	—1942, Postage Dues #J46a(2), #J58-J66(3 sets), Very Fine, WH.	9.65

655 ★	SALVADOR , 1925-35, Three Issues #507-09, #512-15, #543-47 (5 sets of each), Very Fine, WH.	16.90
656 ★	—1935-42, Eight Issues #554-58(4 sets), #559(65(10 each), #568-71 (10 sets), #572(5), #574-82(8 sets), #583-85(5 sets), #587(20), #589 (20), Very Fine, WH.	31.60
657 ★	—1941, Airpost Souvenir Sheet #C84 (3 sheets), Very Fine, WH.	21.00
658 ★田	SAMOA , 1939, 1p-7p Stevenson Issue (181-184) Complete set in Blocks of Four, Very Fine	14.80
659 ★	—1939, Stevenson Issue, #181-184 (2 sets), Very Fine, WH.	7.40
660 ★	SENEGAL , 1935-40, Ten diff., 5 to 15 of each ,Bet. #144-187), Very Fine, WH.	8.45
661 ★	SEYCHELLES , 1935, 6c-1R Jubilees #118-121 (2 sets), Very Fine, WH.	5.80
662 ★	—1938-41, 2c-1R #125(3), #127(13), #129(13), #131(16), #133(11), #134(11), #136(12), #139(12), #140(3), #141(3), #143(12), #145(11), Very Fine, WH.	24.35
663 ★	—1938, 1.50R-5R George VI #146-147(4 of each), #148(2), Very Fine, WH.	26.00
664 ★	SOMALI COAST , 1938-40, Eleven diff., 5 to 15 of each (Bet. #156-174), Very Fine, WH.	9.75
665 ★	—1943, Free French (183-193, J21-J38), Complete sets, Fine	8.30
666 ★	—1943, 2c-20Fr, Free French (194-223, no #221), Very Fine (Photo)	24.30
667 ★	SOMALILAND PROT. , 1941, ½a-5R George VI (96-107), Complete set, Very Fine	10.08
668 ★	—1941, Same as above, Very Fine	10.08
669 ★	—1941, ½a-5R George VI, #96-107 (3 sets), Very Fine, WH.	30.24
670 ★	SO RHODESIA , 1937 1p-6p Coronation Issue, #38-41 (10 sets), Very Fine, WH.	14.30
671 ★	—1937-40, George VI and Rhodes Issues, #42-50 (2sets), #56-63 (1 set), Very Fine, WH.	5.90

SOUTH-WEST AFRICA

672 ★	1937, ½p-1/ Coronation Issue, #165-180 (10 sets), Very Fine, WH.	24.60
673 ★	1941, ½p-1/ War Effort, #185-198 (7 sets), Very Fine, WH.	21.98
674 ★	1942-44, ½p-1/3, #199-215 (10 sets), Very Fine, WH.	29.40
675 ★	1942-44, Same as above, Very Fine, WH.	29.40
676 ★	1942-44, Same as above, Very Fine, WH.	29.40
677 ★	1942-44, ½p-1/, #199-200(30), #201-202(9), #203-204(10), #205-206(10), #207-208(30), #209(90), #210-211(10), #212-213(10), Very Fine, WH.	35.32

678 ★	SOUVENIR SHEETS , twenty-one sheets, seven varieties, Very Fine, WH.	22.00
679 ★	SPAIN-Offices in Morocco , 1940, 1c-10p #198-213 (5 sets), Very Fine, WH.	21.85

STRAIT SETTLEMENTS

680 ★	1941, 2c, 15c George VI, #239A(3), #245A(2), Very Fine, WH.	5.25
681 ★	JOHORE , 1940, 12c Ultramarine, #111A(5), Very Fine, WH.	5.00
682 ★	KELANTAN , 1940, \$2.00-\$5.00 (42-43), Very Fine	15.00
683 ★	NEGRI SEMBILAN , 1941, 2c-15c, #22A(1), #22B(1), #28A(3), Very Fine, WH.	5.50
684 ★	PAHANG , 1941, 3c-15c, #30A(1), #34A(3), #36A(3), Very Fine, WH.	8.00
685 ★	PERAK , 1938-41, 1c-\$5.00 (84-98, No. #89A), Very Fine	22.57
686 ★	—1940-41, 2c-\$1.00, #85A(6), #91A(2), #96(2), Very Fine, WH.	8.00
687 ★	—1940, \$5.00 Red on Emerald (98), Very Fine (Photo)	10.00
688 ★	—1940, Same as above, Very Fine	10.00
689 ★	SELANGOR , 1941, 2c-\$1.00, #46A(1), #46B(1), #52A(4), #72(2), Very Fine, WH.	12.00
690 ★	SUDAN , 1941, 15m, 3pi, 4pi Palms #69(3), #72(8), #73(3), Very Fine WH.	16.30

SURINAM

691 ★	1925-26, Surcharges (116-122), Complete, Very Fine	7.15
692 ★	1925-26, Surcharges #116-122) (4 sets), Fine, WH.	28.60
693 ★	1927-36, Two Issues (132-138, 142-163), Complete sets, Very Fine	15.35
694 ★	1927-36, Same as above, Very Fine	15.35
695 ★	1936, ½c-2.50gld (142-163), Complete set, Very Fine	11.75
696 ★	1936, ½c-2.50gld. #142-163 (2 sets), Very Fine, WH.	23.50
697 ★	1938-41, Two Issues #164-166 (10 sets), #168-169 (40 sets), Very Fine, WH.	10.50
698 ★	1943, 2½c-40c Commem. #176-179 (20 sets), Very Fine, WH.	20.20
699 ★	1945, ½c-7½c Surcharges, four values (20 each), Very Fine, WH.	—
700 ★	1941, Semi-Postals #B39(20), #B40(30), Very Fine, WH.	30.00
701 ★	1943, Semi-Postals #B41-B46 (10 sets), Very Fine, WH.	—
702 ★	SWAZILAND , 1938-42, ½p-10/ George VI (27-37), Complete set, Very Fine	10.00

703 ★	—1938-42, Same as above, Very Fine	10.00
704 ★	—1938-42, ½p-10/ George VI #27-37 (2 sets), Very Fine, WH.	20.00
705 ★	—1938-42, ½p-10/ George VI #27-37 (3 sets), Very Fine, WH.	30.00
706 ★	SWEDEN , 1935-42, Three Issues #242-247 (5 sets), #313-315 (10 sets), #335-337 (5 sets), Very Fine, WH.	14.30
707 ★	—1941, 15ö-1.20kr #326-328 (10 sets), Very Fine, WH.	12.00
708 ★田	—1916-28, Semi-Postals (B1-B10, B32-B36), Complete set of Blocks and Singles, Very Fine	17.50

SWITZERLAND

709 ★	1936, Souvenir Sheet #B80 (5 Sheets), Very Fine, WH.	8.75
710 ★	1936-40, Three Semi-Postal Issues #B81-84, B91-94, B100-103 (5 sets of each), Very Fine, WH.	13.00
711 ★	1940, Souvenir Sheet (B105), Very Fine	9.00
712 ★	1940-42, Semi-Postals #B106-109 (6 sets). #B116 (3 Sheets), #B119 (2 sheets), Very Fine, WH.	17.40
713 ★	1938, 3c-2Fr, Officials (O1-O18), Complete set, Very Fine	11.03
714 ★	1938-42, 3c-2Fr, Officials, Two Issues (O1-O36), Complete sets, Very Fine	19.93
715 ★	1942, 3c-2Fr, Officials #O19-O36 (2 sets), Very Fine, WH.	17.80
716 ★	SYRIA , 1940, Op10-50pi all Imperforate (272-281 var.) Complete set, Very Fine, not listed	—
717 ★	—1940-42, Three Issuges #272-281 (5 sets), #282-285 (10 sets), #286-287 (6 sets), Very Fine, WH.	20.10
718 ★	—1943, Two Commem. Issues #288-297 (10 sets of each), Very Fine WH.	25.80
719 ★	—1942, Free French, Military Stamps #M1-M3 (5 sets), #M4-M10 (15 sets), Very Fine, WH.	23.10
720 ★	TONGA , 1942, ½p-5/ Pictorials #73-81 (3 sets), Very Fine, WH.	11.76
721 ★	—1943, 1p-1/ #82-86 (30 sets), Very Fine, WH.	19.50
722 ★	TRANS-JORDAN , 1943-44, 1m-£1 (207-220), Complete set, Very Fine	16.98
723 ★	—1943-44, 1m-£1 (207-220), Complete set, Very Fine	16.98
724 ★	—1943-44, 1m-500m #207-219 (4 of each), Very Fine, WH.	34.72
725 ★	—1943-44, 1m-15m #207-213 (22 of each), Very Fine, WH.	15.75
726 ★	—1941-43, 1m-10m Postage Dues #J36-J38 (10 sets), #J39-J42 (12 sets), Very Fine, WH.	18.60
727 ★	TRINIDAD & TOBAGO , 1938-41, 1c-\$1.20 George VI #50, 52A, 53A, 54-58 (5 each), #59(3), Very Fine, WH.	17.80

728 ★	TUNISIA , 1926-43, #85(90), #88A(90), #91(40), #94A(40), #123(90), #128(90), #130(90), #148(10), #163(10), #B78(10), Very Fine, WH.	33.50
729 ★	TURKEY , 1939-40, Commem. Issues #841 (3 Sheets), #848-850 (10 sets), Very Fine, WH.	16.25
730 ★	—1943, 25p-200ku (896-915), Complete set, Very Fine	—
731 ★	—1928-40, Postal Tax Stamps (RA1-RA48), Fine Set	7.40
732 ★	TURKS & CAICOS , 1945, 6p, 1/ George VI #85A, 86A (9 each), Very Fine, WH.	6.66

UNION OF SOUTH AFRICA

733 ★	1936-40, Jipex Sheets, 1½p #75-77 (3 sheets), #79-80 (15 sets), Very Fine, WH.	9.75
734 ★	1937, ½p-1/ Coronations #85-94 (15 sets), Very Fine, WH.	24.60
735 ★	1941-42, ½p-1/ War Effort, #111-12(3), #113-114(4), #115-116(4), #117(14), #119-20(4), #121-122(4), #123-124(4), #125(15), Very Fine, WH.	18.12
736 ★	1942-43, ½p-1/ #128-141 (20 sets), Very Fine, WH.	35.60
737 ★	1942-43, ½p-1/, #128-129(130), #130-131(28), #132-133(20), #136-137(55), #138(100), #139-140(50), #141(20), Very Fine, WH.	73.04
738 ★	1943, 1/3 #142-143 (14 each), Very Fine, WH.	14.00
739 ★	URUGUAY , 1931, Souvenir Sheets #410a-413a (2 sets of Sheets), Very Fine, WH.	12.00
740 ★	—1943-44, Seven Issues #482A(15), #523(30), #524-25 (25 sets), #526-29 (20 sets), #530-32 (15 sets), #533(30), #P2-P4 (4 sets), Very Fine, WH.	17.15
741 ★	—1942, 1c-50c Commem. #518-522 (10 sets), Very Fine, WH.	13.50
742 ★	—1943, 10c-1p Parcel Post #Q57-Q63 (8 sets), Very Fine, WH.	24.80
743 ★	VENEZUELA , 1896, 5c-1B #119-123 (5 sets), Very Good	17.50
744 ★	—1928-38, Five Issues #289 (5), #343-345 (10 each), #349(10), Very Fine, WH.	19.25
745 ★	—1942-43, Six Issues #365-366, 376-377 (15 each), #375(20), #379(30), #B1(10), Very Fine, WH.	17.60
746 ★	WALLIS & FUTUNA IS. , 1930-40, Thirteen diff. from 5 to 15 copies of each (Bet. #45-80), Very Fine, WH.	19.00
747 ★	—1941-43, 3c, 2.50Fr, 3Fr, Free French #96(4), #122(5), #123(1), Very Fine, WH.	37.75
748 ★	—1944, 5c-20Fr, Free French #127-140 (5 sets), Very Fine, WH.	10.00
749 ★	—1943, Dues, Free French #J24-36 (3 sets), Fine-V.F., WH.	15.66

750 ★	ZANZIBAR , 1935, 5c-10/ (201-213), Complete set, Very Fine	13.75
751 ★	—1935, 5c-2/ #201-210 (3 of each, plus 7 extra on 15c, 40c, 2/), Fine-V. F., WH.	17.74
752 ★	—1944, 10c-1/ Al Busaids #218-221 (15 sets), Very Fine, WH.	10.80
753	FOREIGN , Late 20th Century, mostly 1937-1944 Issues, Misc. Wholesale quantities to small to list separately, Very Fine, WH.	78.60

USED 20th CENTURY FOREIGN

754	ARGENTINE REP. , 1944, 5c+10c-5c+20p Earthquake Victims Issue (B6-B9), Complete set, Very Fine (Cat. unused 10.89)	—
755	—1944, Same as above, Very Fine	—
756	AUSTRALIA , 1932, 2p-5/ Sydney Harbor (130-132), Very Fine	6.73
757	—1932, Same as above, Very Fine	6.73
758	BRAZIL , 1943, Centenary Sheet, #612 (10 sheets), Very Fine, WH. (unused 12.50)	—
759	DOMINICAN REP. , 1936, ½c-2p. Library Issue (310-322), Complete Set, Very Fine	12.35
760	HONG KONG , 1941, 2c-\$1.00 Centenary Issue #168-173 (2 sets), Very Fine used, WH.	7.30
761	JAPAN , 1937-39, ½s-1y #257-273 (200 of each), Fine, WH.	90.00
762	LATIN AMERICA , 80 stamps, misc. wholesale quantities	15.86
763	RUSSIA , 1935, 1k-40k Sports Issue #559-568 (2 sets), Very Fine, WH.	12.50
764	—1935, 5k-35k Commem. #569-572 (5 sets), Very Fine, WH.	5.00
765	FOREIGN , 27 misc. First Day Covers, inclludes 12-5c Grenfell, New- foundland, Fine	—

NEW BRUNSWICK COVER

- 765A ☒ 1851, 6p Olive Yellow (2), tied with light grid, red "Paid 10" in circle
to Salem, Mass., margins three sides, touches partly on other Fine
(Photo) 55.00+

END OF FIRST SESSION

SECOND SESSION

FRIDAY EVENING, OCT. 11th — 7.45 P.M.

19th CENTURY UNITED STATES STAMPS & COVERS

1847 ISSUE

766	5c Red Brown (28) , Large margins all around, Red grid, Superb (Photo)	22.50
767	☒ 5c Red Brown (28) , Ms. cancel, stamp lightly creased on letter fold, red "Eastern R. R." pmkd. on cover	60.00
768	10c Black (29) , Blue grid cancel, Margins all around, Very Fine (Photo)	55.00

1851 ISSUE

769	1c Blue, Type II, IV (31, 32d) each has Paid cancel, Very Good	22.00
770	1c, 2c, 1851-67 Issues (32d, 63, 87) , each with Red cancel, Very Good	20.50
771	3c Red (33) , Horiz. Strip of 3, Fine	—
772	3c Red (33) , Vertical Strip of 3, Nice Margins all around, Very Fine	—
773	3c Imperf. (33, a, b) , Mounted Collection of 68 stamps includes pairs, fancy cancels, shades, plate varieties, nice lot	43.10+
774	☒ 3c Red (33) , Tied from Providence, str. line " Steamboat " pmkd., Fine	—
775	☒ 3c Red (33) , Interesting Illustrated cover on Phrenology , stamp ties, Fine	—
776	☒ 3c Red (33) , Tied from Cincinnati, green corner card on Phonetic System, V. G.	—
777	☒ 3c Red (33, 44) , Combination usage of perforated and imperf. issue on forwarded cover, tied, Fine	—
778	☒ 3c Red (33) , Thirteen covers, includes large "3", Railroad, two with large "10," sheet margins etc., Very Good	—
779	5c Red Brown (34) , Large margins, trivial corner crease, Very Fine appearance (Photo)	60.00
780	10c Green, Type II (35A) , Large margins all around, Very Fine (Photo)	12.50
781	10c Green, Type IV (35C) , Recut at top, Margins all around, Very Fine (Photo)	100.00
782	1c-10c, 1851-1883 Issues , 101 stamps includes 16 covers mounted, all have Manuscript Cancellations , showing various kinds of pen cancels	—

1857 ISSUE

783	⊗	1c Blue, Type II (41), Tied with Hallowell, Me. pmkd. on small neat cover, Very Fine	12.50
784	⊗	1c Blue, Types III and IIIa (42, 42B), Strip of three, middle stamp type IIII, tied from Nunda, N.Y. on small cover, Very Fine, Rare (Photo)	140.00
785	⊗	1c Blue, Type IIIa (42B), Tied with Hallowell, Me. pmkd. on small neat cover, Fine	25.00
786	⊗	1c Blue, Type V (42F), Tied with boxed "1 ct", St Louis carrier cancel, Fine cover	—
787		3c Red (44), Excellent strike of Collinsville AX, stamp repaired	—
788		3c Red (44), Three diff. large numeral "3" cancels and one "10", nice strikes, stamps have minor defects	—
789	⊞	3c Red (44), Block, centered to right, Very Good	20.00
790		3c, 1857 Issue (43, 44), Collection of 153 stamps, includes fancy cancellations, plate varieties, shades, multiples, imprints etc., nice lot	—
790A	⊗	3c Red (44), Town tied, Attractive Lincoln Patriotic Cover, Flags in colors, Scarce design, Fine	(Photo) —
791	⊗	3c Red (44), Thirty-six covers, all tied, nice variety of towns, generally Fine, includes multiples	—
792	⊗	5c Brown (48A), Horiz. Pair, str. edge at left, tied from San Francisco on Fine cover.....	(Photo) 37.50
793		10c Green, Type II (49A), Fine	9.00
794		10c Green, Type III (49B), Tied on piece of illustrated cover, Very Fine	9.00
795	⊗	10c Green, Type IV (49C), Recut at top, Tied with Orfordville, N.H. double circle, to Canada, Stamp centered bit to top, Fine	(Photo) 125.00
796	⊗	24c Lilac (52), Tied from Davenport, Iowa to England, transit markings, Fine	(Photo) 85.00
797	⊗	24c Grey Lilac (52a), Tied from Boston, also red "Boston Br. Pkt." postmark, Fine Cover	(Photo) 85.00
798		24c Gray Lilac (52), Very Fine	(Photo) 15.00

1861 ISSUE

799		1c Blue, 10c green (63, 68), Five fancy cancels, Fine strikes	—
800	⊗	1c Blue (63), Horiz. Pair tied from San Francisco paying circular rate to France, scarce usage, Fine cover	—
801	⊗	1c Blue, 3c Rose (63, 65), Four of first and Pair of latter making 10c rate to Canada, Fort Snelling N.T. pmkd. and transit markings, stamps slightly stained, V.G. territorial	—

802	✉	3c Pink (64), from Philadelphia, early use Aug. 23, 1861, oval "New York Post Office Advertised", one perf. short on stamp, nice cover	35.00
803		3c Rose (65), Fine strike of U. S. M. (Photo)	—
804		3c Rose (65), Two diff. Masonic cancels, one in blue, nice strikes, one stamp has tear	—
805	☐	3c Rose (65), Block of 4 each stamp has Trowel in circle cancel, Fine	—
806		3c Rose (65), Four diff U.S. cancels, one in circle of stars, nice strikes	—
807		3c Rose (65), Nine diff. Railroad cancels, Very Good lot, part on pieces	—
808		3c Rose (65), Ten diff. fancy cancels , includes red Shield three leaf clover, Green Mask, Paid 3, boxed str. line etc., Fine lot	—
809		3c Rose (65), Collection of 714 Cancellations , includes Paid all, Green, Reds, fancy geometrics, leafs, floral designs, fancy Stars, Crosses, Shields etc., Very Good lot	—
810	✉	3c Rose (65), Strip of 4 used to France , various transit markings, Fine cover	—
810A	✉	3c Rose (65), Fine strike of Pitchfork on stamp from Unadilla Forks, N. Y., cover ragged at top	—
811	✉	3c Rose, 5c Brown (65, 76), both tied with San Francisco grid large red "Honolulu U. S. Postage Paid" pmkd. from Hawaii to La Salle, Ill., nice markings Very Good, Scarce usage (Photo)	—
811A	✉	3c Rose (65), Two covers from Albany, N. Y. one tied with Shield other with U. S. in circle of stars, both have defects	—
812	✉	3c Rose, 12c Pictorial (65, 117), Both tied with blue " Registered " and town cancel, 12c has corner off, nice markings and combination cover.....	30.00
812A	✉	3c Rose (65), Eight diff. covers with fancy cancels, includes "A," "5" in circle, "3", "B", nice lot	—
813	✉	3c Rose (65), Thirty-seven covers, includes Block of 4 , Patent cancel, Chicago Supplementary, Good average	—
813A	✉	3c Rose (65), 53 covers all from New York City includes fancy geometrics and Shield, nice lot	—
814	★☐	3c LAKE IMPERFORATE (66a). Superb O. G. (Photo) (Priced in 1944 Cat.	400.00
815		10c Green, 2c Black (68, 73). Three of each, includes minor varieties, two red cancels on first	11.00
816		24c Red Lilac (70). Red grid cancel, Very Fine (Photo)	13.50
817		2c, 24c, 30c, 1861-67 Issues (71, 78, 87). The 24c has light O. K. cancel, Very Good	19.50
818		2c, 10c, 30c, 1861-67 Issues (71, 93, 96). Each with odd cancel, Very Good	17.00
819	★	90c Blue (72). Centered to left, Fine, O. G. (Photo)	60.00

820	2c Black (73). Four copies used as revenues on pieces of checks	—
821	☒ 2c Black (73). Unusual Freak Perforations, Double row at top and bottom, tied on cover with blue town (Photo)	—
822	★ 5c Brown (76). Fine, O. G.	10.00
823	☒ 5c Brown (76). Used in Combination with Hawaii (32). Sanfrancisco and red "Honolulu U.S. Postage Paid" postmarks, closed tear in envelope, Very nice combination cover (Photo)	—
824	1c Blue, 2c Black (86-87). Two perfs. short on 1c, Very Good	22.00
825	2c Black (87). Very Fine	4.50
826	15c Black (91). Lightly cancelled, Very Fine (Photo)	17.50
827	☒ 1c Blue, 2c Brown (92, 113). Tied, 3c rate, Very Good cover	14.25
828	2c Black, Grilled (93), Superb (Photo)	3.00
829	☐ 1c-10c, 1861-1887 Issues, Ten diff used Blocks, Fair-Fine	96.00
830	1c-10c, 1867-90 Issues, 36 stamps in strips and blocks, Fair-Fine	21.60
830A	☒ 1c-5c, 1861-93 Issues, Twenty-three covers, contains nice lot of fancy cancels, including 3c Green with Thousand Island Park, Jeff. Co. N. Y. cancel	—
831	☒ G. B. D. (General Banks Division) on small pink embossed Patriotic Cover, Fine	—

1869 ISSUE

832	1c Buff (112). Attractive Blue Grid cancel, Fine	7.00
833	1c Buff, 10c Yellow (112, 116). Both used in Hiogo, Japan, Fine	24.50
834	1c, 6c, 12c Pictorials (112, 115, 117), minor defects, nice appearing	20.50
835	☒ 1c Buff (112). Tied, Washington College commencement program inside, Fine cover	10.00
836	☒ 1c Buff (112). Strip of 3 tied on cover from Cairo, Ill., Very Good	23.50
837	☒ 1c Buff (112). Three covers, one on part of Medical Journal, creased, others Good	30.00
838	☒ 1c-2c Pictorials (112-113). Four covers each making 3c rate with 1c and 2c values, Fair-Fine	47.00
839	2c Horseman (113). Three shades, Very Fine	5.25
840	2c Brown (113). Five diff interesting cancels, Fine lot	9.25
841	2c Brown (113). Five copies each showing part of "Paid All" cancel, one in blue, V. G.-Fine	20.00
842	☒ 2c Brown (113). Ten covers with 13 stamps, includes Carriers, fancy geometric etc., Good-Fine	50.00

843	3c Ultramarine (114). Unusual Heart Shaped Face , Very Fine strike, stamp centered top right (Photo)	—
844	3c Ultramarine (114). Two Shield cancels, Fine	—
845	3c Ultramarine (114). Six fancy cancels includes Shield, large "K", Leaf, "10" in circle, nice lot	—
846	3c Ultramarine (114). Block used on piece with Plate No. 10, Split Arrow Str. Edge at R., off center	15.00
847	3c Ultramarine (114). Mounted collection of 173 stamps, includes fancy cancellations, pairs, strip etc., nice lot	51.90+
848	3c Ultramarine (114). Block of 4 and single, tied from Jacksonville, Fla. on large registered cover, slight defects	15.00
849	3c Ultramarine (114). Twenty-three covers includes corner cards, "5" in circle large "3", "Due 3" and multiples, nice lot	—
850	6c Ultramarine (115). Tied on small piece with blue town cancel, Fine	8.50
851	6c Ultramarine (115). Purple town cancel, Fine	10.00
852	6c Ultramarine (115). Large "W" cancel, stamps centered to R., scarce on this (Photo)	—
853	6c Ultramarine (115). Three covers, all tied, one has str edge, two to England, good average	45.00
854	10c Yellow (116). Two copies N. Y. Steamship and Star cancels, one perf. short on latter	17.50
855	12c Green (117). Two tied on large registered cover, Very Good	37.00
856	12c Green, 3c Green, three (117, 147). Tied on legal size cover, Very Good combination	30.00
857	15c Brown & Blue (118a). Without grill, part O.G. Very Fine (Photo)	175.00
858	15c Brown & Blue (119). Horiz. Strip of 3, Perfs. in at top, Very Good	38.50
859	24c Green & Violet (120). Perfs. in at R., Very Good	30.00
860	30c Blue & Carmine (121). Centered to right, Fine	20.00

BANKNOTE ISSUES

861	Collection of Banknote Cancellations, 937 stamps mounted, includes Leafs, Masonics, Free, Clover, fancy Stars, Shields, Florals, Face, U. S., colored, geometrics etc., Fine lot	—
862	15c Orange, Grilled (141). Single pen stroke cancel, small closed tear, nicely centered	35.00
863	1c Banknote (145). Fine strike of Yokohama, Japan , centered to R., scarce usage	—
864	1c Banknotes, Three diff. type "EAH" cancels, Fine lot	—

865	1c Banknotes. Mounted Collection o 264 Cancellations , includes N.Y. Foreign Mails, florals, shields, colored, crosses, fancy stars, geometrics etc. Fine lot	—
866	1c-6c Banknotes. 13 fancy cancels includes Pumpkin Face "10" in circle, U.S. Mail, Geometrics, Steamship etc., Fine lot	—
867	1c-6c Banknotes. 19 stamps with various Railroad markings, nice lot	—
868	1c-10c Banknotes. Twelve stamps each having " Paid All " cancel, five in red, scarce lot	—
869	2c Brown (135, 146, 157). Mounted Collection of 212 Cancellations , includes N.Y. Foreign Mails, Floral, Leafs, Geometrics, Reds, Crosses, Stars etc., Fine lot	63.60+
870	3c Green, Large Pumpkin Face cancel, Fine	—
871	3c Green, Very Fine strike of Skull and Crossbones in Coffin , one perf. short, Scarce	(Photo) —
872	3c Green. Beautiful fancy star in circle in rich red , most unusual strike, two perfs. short	(Photo) —
873	3c Green. " Paid 8 ", unusual paid cancel, Very Fine	(Photo) —
874	3c Green. Two diff. type Odd Fellows Links , one in circle, Fine	—
875	3c Green. Two diff. Philadelphia Eagles , Fine	—
876	3c Green. Three fancy cancels, Pumpkin Head, St. Louis Sun-face, Head in profile, Fine	—
877	3c GREENS. Three diff. types of numeral " 5 ", Fine	—
878	3c Greens. Nine diff. fancy cancels , includes "10" in circle, "EAH", U.S., N.Y. Devil, Fine lot	—
879	3c Greens. 19 copies each with N. Y. Foreign Mail cancels, twelve are in red, Very Good lot	—
880	3c Greens. Twenty diff. fancy cancels , includes Shields, "Due 6" in circle, Arrowheads, Danbury Hat, Masonic, U. S., Leaf Heart etc., Very Good lot	—
881	3c Greens. Mounted Collection of 659 fancy cancellations , includes Shields, Checkerboards, U.S., fancy geometrics and stars, Danbury Hats, Leafs, fancy Pairs, Colored etc., Fine	—
882	3c Greens. Collection of 280 stamps mounted containing Varieties includes Imprints, Grill varieties, double papers, shades, plate varieties, multiples, paper varieties, worn plates, double transfers, offsets, paper fold, interesting specialist lot	—
883	3c Greens. Mounted collection of 417 cancellations, includes numerals, letters, colored, geometrics, Skull & Crossbones, few covers etc., fair lot	—
884	3c Greens. 280 stamps selected for cancellations , nothing scarce but a nice variety	—

885	✉	3c Greens. 28 covers, includes County, "10" in circle, fancy Monogram, R. R., etc. fair-fine	—
886		6c Carmine (148). Eleven copies, attractive cancels, Fine lot	12.00
887		6c, 10c Banknotes, 9 stamps each with N. Y. Foreign Mail cancel, nice strikes, two have str. edges	—
888		7c Vermilion (149). Checkerboard cancel, Very Good	—
889		7c Vermilion (149, 160). Four diff. N. Y. Foreign Mail cancels, nice strikes, V. G.—Fine	16.00+
890	✉	10c Banknotes, two covers, one to France, other used in Japan , transit markings, Very Good	—
891		12c Violet (151). Six copies includes blues and red cancels, Good-Fine.	17.50
892		2c-10c Banknotes (158, 183-84, 209). Each with O. K. cancel, stamps have defects	—
893	★田	6c Dull Pink (159). Block of 10, Centered to B., Fresh O. G. (Photo)	190.00
894		6c Dull Pink (159). Strips of 3, 4 and 6, latter reenforced, Very Good	11.10
895		6c Dull Pink (159). Twenty-nine copies, includes interesting cancels and pairs, V. G.—V. F.	22.40
896		7c Vermilion, 30c Gray Black (160, 165). Each has N. Y. Foreign Mail cancel, Fine	7.00+
897		15c Banknote (163, 189). Four diff. N. Y. Foreign Mail cancels, nice strikes, Very Good	14.00+
898		30c Banknotes (165, 190). Two of latter, Very Good	8.00
899		2c Vermilion (178). Two diff "U. S." cancels, in purple and blue, nice strikes	—
900		2c Vermilion (178, 183). Nine N. Y. Foreign Mail cancels, mostly diff., three have defects, nice strikes	—
901		2c Vermilions (178, 183). Collection of 384 Cancellations , includes Leafs, fancy geometrics, colored, floral, Crosses, Stars, Patents, etc., Fine lot	—
902		5c Blue (179, 185). Three N. Y. Foreign Mail cancels, one has str. edge, Fine strikes	—
903		5c Blue, Taylors (179, 185). Twenty-five copies interesting cancels, pairs and strip, Fine lot	—
904	✉	5c Blue (179). Tied with " N. York Steamship " cancel, Fine cover	—
905	★	6c Pink (186). Very Fine O. G. (Photo)	17.50
906		6c Pink (186). Eighteen copies, interesting cancels, mostly numerals, Fine	27.00
907		10c Black Browns (188b, 209b). First has thin	14.75
908		Supplementary Mail Cancellations, Collection of 45 stamps of 5c, 10c and 15c Banknotes, nice lot, high catalogue value	—

909	4c-6c Banknotes (205, 208, 211, 215-16). Horiz. Pairs of each, V.G.-Fine	13.00
910	2c Red Brown (210). Fine strike of Enfield, Conn. Flag , stamp has thin spot	—
911	2c Red Brown (210). Fourteen fancy cancels includes "U.S." three leaf clover, geometrics, numerals, Fine lot	—
912	2c Green (212). Two diff. Heart cancels, one formed out of a series of small dashes, Fine	—
913	5c Indigo (216). Strips of 4, 5 and 6, Fine	11.10
914	90c Purple (218). Lightly cancelled. Very Fine (Photo)	13.50
915	Nineteenth Century, Collection of Varieties, 71 stamps, includes Double Papers, Stitch Watermarks, Freak Perfs., Imprints, Paper varieties etc., Interesting specialist lot	—
916	19th Century. 127 stamps mounted all showing guide lines , mostly Banknotes	—
917	Nineteenth Century, Mounted Collection of 401 stamps, showing variations of centering interesting specialist lot	—
918	✉ 19th Century, 109 Covers, 1857-88 Issues, Good average	—
919	✉ Shoebox full of Covers, Misc. from Stampless up, mostly 19th Century (Est. \$30.00 net)	—
920	1c-2c, 1890-98 Issues, Mounted Collection of Cancellations , 830 stamps, includes Fancy Letters, Numerals, Towns, Stars, Colored, Geometrics etc., Fine lot	—
921	2c, 1890 Issue (219d, 220). Specialized Collection of Cancellations , 1680 stamps mounted, includes Stars, Numerals, Letters, Colored, Monograms, etc., Nice lot	—
922	★田 15c Indigo (227). Block of 6, no gum, perfs. in R.,	42.00

COLUMBIANS AND LATER ISSUES

923	1c-2c Columbians (230-31) Specialized Collection of 528 stamps, includes cancellations, plate varieties, multiples etc. Fine specialist lot	—
924	★田 3c Columbian (232). Block, Fine	7.50
925	★田 3c Columbian (232). Imprint Block of 30, Centered to R., Very Good.	54.00
926	3c-15c Columbians (232-238). Very Good-Fine	9.30
927	★田 30c Columbian (239). Bottom Imprint Plate No. Block of 10, lower right stamp thin, upper left stamp damaged, balance Very Fine (Photo)	193.00
928	★ 4c Dark Brown, 5c Chocolate (269-270). Two Imprint Plate No. Strips of 3, Fine	12.00
929	★ 2c Orange Red (279B). Five different Imprint Plate No. Strips of 3, Very Fine	20.00

930 ★	2c Orange Red (279B). Twenty-two Different Imprint Plate No. Strips of 3. Very Good-Fine	88.00
931 ★	2c Orange Red (279B). Thirty Different Imprint Plate No. Strips of 3, Very Good-Fine	120.00
932 ★	5c Blue (281). Two diff. Bot. Imprint Plate No. Strips of 3, Fine	8.00
933 ★	10c Trans-Miss (290). Very Fine	6.00
934 ★	1c Green (300). Thirteen diff. Imprint Plate No. Strips of 3, Good-Fine	15.60
935 ★	10c Red Brown (307). Top Imprint Plate No. Strip of 3, Very Good	9.00
936 ★	2c Shield (319), 147 Imprint Plate No. Strips of 3, Mostly diff. numbers and positions, also shades, Very Good-Very Fine	210.00
937 ★	1c-5c Coils, 1908-10 Issues (348-351, 385-387). Very Good	28.50
938 ★	2c Alaska-Yukon Imperf. (371). Block, Very Fine	13.00
939 ★	2c Carmine Imperf. (482). Block of 120, Very Fine Pane	40.75
940 ★	2c Offset, Type VI (526d). Top Plate No. Block of 6, Fine	10.00
941 ★	1c-2c Rotaries (538-39). Blocks, Very Good	7.25
942 ★	5c Aeronautics (650). Block of 25 with two plate nos., half sheet, Fine	13.75

U. S. SHEETS

943 ★	1c Pan-Pacific (397). Sheet of 70, Very Good	42.50
944 ★	2c Pan-Pacific (398). Sheet of 70, Fine	50.00
945 ★	2c Molly Pitcher (646). Sheet of 100, Fine	14.00
945A ★	2c Kans. (660), Sheet of 100, Very Fine	50.00
946 ★	1c Nebr. (669). Sheet of 100, Shows two rows with stretched or tall overprint, Very Fine	12.50+
947 ★	2c Pulaski (690). Sheet of 100, Very Fine	6.50
948 ★	2c Pulaski (690). Five sheets of 100, Good average	32.50
949 ★	Mothers Day, Flat (738). Sheet of 50 Very Fine	5.50
950 ★	1c Park (740). Five sheets of 50, Fine average	10.00
951 ★	2c Park (741). Five Sheets of 50, Fine	15.00
952 ★	3c Ordinance (795). Sheet of 50, Very Fine	5.50
953 ★	5c Virginia Dare (796). Sheet of 48, Fine	6.60
954 ★	10c S. P. A. Souvenir Sheet (797). 100 sheets, Very Fine	20.00
955 ★	3c Constitution (798). Sheet of 50, Very Fine	4.50
956 ★	3c Constitution Ratification (835). Sheet of 50, Fine	4.25

957 ★	3c Iowa (838). Sheet of 50, Very Fine	4.50
958 ★	3c Golden Gate (852). Sheet of 50, Very Fine	4.50
959 ★	1c Artist, 1c Inventor (884, 889). Sheets of 70 each, Very Fine	6.40
960 ★	2c Inventor, Famous Amer. (890). Sheet of 70. Very Fine	3.85
961 ★	1c-2c Defense (899-900). Sheets of 100 each, Very Fine	7.00
962 ★	Thirteenth Amendment (902). Sheet of 50, Very Fine	4.50
963	1c Four Freedoms, 2c United Nations (907-08). Sheets of 100, two of each, Very Fine	10.00
964 ★	5c Greece, Flag (916). Sheet of 50, Very Fine	8.50
965 ★	3c Telegraph (923). Four sheets of 50, Very Fine	10.00
966 ★	3c Movie (925). Four Sheets of 50, Very Fine	10.00
967 ★	3c Florida (927). Four Sheets of 50, Very Fine	10.00
968 ★	3c Florida (927). Ten Sheets of 50, Very Fine	25.00
969 ★	10c-20c Map Airmails (C7-C9). Set of Sheets of ¹ / ₂ 50, Fine	53.00
970 ★	10c-20c Map Airmails (C7-C9). Set of Sheets of 50, Average	53.00
971 ★	25c Trans-Pacific Air (C20). Sheet of 50, Very Fine	30.00

U. S. WHOLESALE

(Contains no straight edges unless mentioned)

972	10c Green, 3c Ultramarine #68(7), #114(8). Very Good	12.90
973	2c Brown #113(13). Includes 2 pairs V. G.-Fine	25.75
974	10c Yellow #116(5), V. G.-Fine	37.50
975	3c Green, Grilled #136(50). V. G.-V. F.	15.00
976	6c-10c Banknotes #148(15), #150(4). #161(8). V. G.-Fine	26.80
977	6c Dull Pink #159(45), V. G.-V. F.	27.00
978	15c Banknote #163(5). Very Good	25.00
979	5c Blue #179(25), #185(22). V. G.-V. F.	36.00
980	6c Pink #186(50). V. G.-V. F.	75.00
981	10c Banknotes #187(22), #188(15). V. G.-V. F.	34.75
982	15c Red Orange #189(8). V. G.-Fine	16.00
983	5c Garfield #205(50). Includes some pairs and cancels, V. G.-V. F.	15.00
984	6c Rose #208(11). V. G.-Fine	33.00
985	10c Banknote #209(88). Includes some pairs and cancels, V. G.-V. F.	8.80

986	4c Jackson #211(25), #215(12). V. G.-Fine	24.00
987	5c Indigo #216 (37). Includes 8 pairs, V. G.-Fine	24.60
988	2c Columbian, Broken Hat variety (200). V. G.-V. F.	20.00
989	1c Ultramarine, 2c Pink #246, 248 (100 of each). Good-Fine	75.00
990	2c Pink, 2c Carmine Lake #248-49 (100 of each). Good-Fine	50.00
991 ★	2c Orange Red #279B(21), Very Good	21.00
992	3c Violet, 10c Yellow #333(100), 338(27), includes some str. edges, Good-Fine	42.16
993	3c, 6c, 10c 1910 Issue #376(67), 379(45), 381(24), some str. edges, Good-Fine	31.50
994	8c-12c, 1912 Issue #414(18), 416(29), 417(44), some str. edges, Good-Fine.....	20.36
995	3c-7c, 11c, 20c, 1914 Issue #426(60), 427(9), 428(100), 429(17), 430(23), 434(11), 438(6), some str. edges, Good average	38.95
996 ★田	5c Korea Flag #926(100), in large blocks, Very Fine	15.00
997	1c-30c, 1857-83 Issues. (98 stamps), all have str. edges or minor defects	114.00
998	Oriel Binders and Cases. Two nice condition	—
999	Springback Binders. Four, large size, good condition	—
1000	National Album Springback Binder, Deluxe edition, Nice condition	—

END OF SALE

THANK YOU

MAIL BIDS EARLY

SELLING YOUR COLLECTION?

REALIZE IMMEDIATE CASH
AND HAVE ADVANTAGE OF SELLING AT AUCTION.

I will advance on your collection immediate cash up to 75% of my appraisal value of what it should realize at auction.

It will then be sold at one of my coming auction sales. Commission is 20% of the gross and final settlement within thirty days after the sale.

Send collection direct (valued \$500 upwards) or to my bank, The Saugerties National Bank & Trust Co. for appraisal. Auction advance will be sent within 24 hours after receipt. If not entirely pleased, collection will be returned at my expense.



ROBERT A. SIEGEL

1 EAST POST ROAD

WHITE PLAINS, N. Y.

NEW ADDRESS

*Collectors and Dealers are cordially
invited to visit my new office.*

OFFICE HOURS

WEEKDAYS 12:30 P. M. — 6:30 P. M.

SATURDAYS 9:30 A. M. — 5:00 P. M.

OR BY APPOINTMENT

(Ask information for new telephone number.)



ROBERT A. SIEGEL

1 EAST POST ROAD

(Room 12)

WHITE PLAINS, N. Y.