

118th SALE

UNITED STATES
AND
FOREIGN STAMPS

Includes AIRPOSTS & BRITISH COLONIES

AT PUBLIC AUCTION

FIRST SESSION — Friday, Nov. 29th, 8:00 P. M.

SECOND SESSION — Saturday, Nov. 30th, 2:00 P. M.

AT THE COLLECTORS CLUB

22 East 35th Street, New York City

GREGORY MOZIAN, Auctioneer



Robert A. Siegel
AUCTIONS

124 MAMARONECK AVE., WHITE PLAINS, N. Y.

CONDITIONS OF SALE

1. The terms of sale are strictly cash to the highest bidder. All buyers are expected to pay for lots within three days of receipt, unless special arrangements have been made prior to the sale.
2. All bids are per lot as numbered in the catalogue and not per piece, unless otherwise announced by the auctioneer at the time of sale.
3. Any lot the description of which is incorrect is returnable only within three days of receipt. All disputed lots must be returned intact as received. Lots containing five or more stamps are not returnable at any time. No lots may be returned by purchasers who have had the opportunity to examine them before the sale.
4. Successful mail bidders, unless they are known to us or supply acceptable references, will be notified of the amount of the lots secured for them, and are expected to send payment in full before the lots are forwarded.
5. If the purchase price has not been paid within the time limit, or lots taken up within seven days from date of sale, they may be resold and any losses arising from such sale charged to the defaulter.
6. All stamps are sold as genuine, except where sold "As Is". Claims for any lot proving otherwise, must be made within two weeks from date of sale.
7. The right is reserved to group two or more lots, also withdraw any lot or lots from the sale, or to act on behalf of the seller.
8. Until paid for in full all lots remain the property of Robert A. Siegel.
9. No commission is charged for buying at our sales, but all forwarding charges will be added to the purchase price.
10. In addition to the purchase price, the buyer will be required to pay the two (2) percent New York City sales tax, unless he is exempt from the payment thereof.
11. Lots will be sent for inspection, provided such lots are returned to us the same day as received. Postage and registration both ways will be charged. Approximate values of lots will be given on request.
12. The placing of a bid shall constitute acceptance of the foregoing conditions of sale.

Lots are on display at our office one full week before the sale in Saugerties, N. Y. In sending bids, always state the highest price you are prepared to pay for the lot. Your limit will not be used as a starting bid unless absolutely necessary.

DESCRIPTIONS

Superb—the finest condition for noteworthy, outstanding copies.

Very Fine (VF)—means that there is a slight deviation from the above.

Fine (F)—means that the perforations do not touch the design on issues after 1890, but in some cases may just touch in earlier issues; if used, fairly lightly cancelled.

Very Good (VG)—means that the appearance is generally fine but that the perforations cut the design slightly.

Good (G)—means average off-centering; or fairly attractive with slight defects. Original gum is not to be expected on 19th Century stamps up to 1888 unless so stated.

Scott's 1946 Specialized United States Catalogue is used for cataloging our lots of United States and Vol. I, Scott's Standard Catalogue, 1947.

WE SOLICIT FINE MATERIAL FOR FUTURE SALES
--

[illegible]

IMPORTANT — PLEASE NOTE

Mail bids to Robert A. Siegel, 124 Mamaroneck Ave., White Plains, N. Y.

Lots may be inspected in my office up to Day of Sale, or on November 29th and 30th from 11:00 A.M. until sale time at the Collectors Club, N.Y. City.

FIRST SESSION


FRIDAY, NOVEMBER 29th — 7:45 P.M.

UNITED STATES STAMPS

1847 ISSUE

1	5c Red Brown (1). Large margins all around, Blue grid cancel, Very Fine	(Photo) 35.00
2	5c Red Brown (1). Red grid cancel, crease, Fine appearance	25.00
3	5c Red Brown (1). Margins all around, tear at B., nice appearing	25.00
4	10c Black (2). Margins all around, red grid cancel, Very Fine (Photo)	75.00
5	10c Black (2), Red grid cancel, Full margins all around Light ironed out crease, Very Fine appearance	(Photo) 75.00
6	10c Black (2). Margins all around, pencancel, small thin	(Photo) —

1851 ISSUE

7	1c Blue, Type IV (32d), Paper Fold, Fine oddity, ms. cancel	8.00+
8	1c-24c, 1851-67 Issues (32d, 67, 70, 97). All have defects, nice appearing	59.00
9	1c-30c, 1851-69 Issues (32d, 48A, 63, 68-69, 71, 76, 78, 115). Minor defects, nice appearing	47.00
10	1c, 2c 3c 1851-67 Issues (33, 63, 87). Horiz. Pairs, last has small tear, Very Good	19.00
11	 3c Red (33). Tied on legal cover with neat "Ills. Central R.R." pmkd. also 3c Orange Brown (33b), Tied with red grid on small cover	10.25

12	✉	3c, 1851-61 Issues (33, 44, 65). Twenty-seven covers includes Patent cancels, Blood' sLocal, Imprint, corner cards, fancy cancels, nice lot	—
13		10c Green, Type II (35A). Fine.	12.50
14		10c Green, Type II (35A). Thin, Very Fine appearance	12.50
15		10c Green, Type II (35A). Cut in two sides, Very Good	12.50
16		10c Green, Type II (35A). Close right, three large margins, Fine	12.50
17		10c Green, Type IV (35C). Recut at bottom, margins all around, minor faults, Very Fine appearance (Photo)	125.00
18		12c Black (36). Three large margins, barely touches on other. (Photo)	20.00
19		12c Black (36). Cut in at B., Very Good	20.00
20	★	12c Black (36). Sheet margin copy, cut in partly two sides, thin	100.00

1857 ISSUE

21		1c Blue, Type I (40). Paper Fold, corner perf. short, well centered	30.00
22		1c, 5c, 12c, 1857 Issue (42B, 48A, 51). Minor faults, str. edge on last two	40.50
23	★	1c, 3c, 3c (42F, 65, 114). Fine—V.F., last two O.G.	6.25
24	✉	1c Blue (42F, 63). Scarce combination with pair of latter making 3c rate, all tied from Philadelphia, Aug. 22, 1861, early usage of latter, on front, Fine	—
25		5c Brown Type I (47). Lightly cancelled, Fine	15.00
26	★	5c Orange Brown, Type II (48). Fine, O.G.	12.00
27		5c Brown (48A). Part of Imprint at right, one perf. short, Fine appearance	12.00
28		5c Brown (48A). Small tear, red cancel, Very Fine appearance	15.00
29		2c-30c (49B, 71, 113, 151, 165, 189, 297, 327, 330). All have faults, nice appearing	40.25
30		10c Green, Type V (50). Two, Red Paid, part of Imprint on other, Very Fine	6.50+
31		10c Green, Type V (50). Blue Express Co. cancel, Very Fine	10.00
32		12c Black (51). Blue town cancel, Fine	10.00
33	★	30c Orange (53). Centered to left, Fine, O.G. (Photo)	40.00
34	★	90c Blue (54). Centered bottom right, Fine (Photo)	70.00
35	★	90c Blue (54). Closed tear, two perfs. short, nicely centered	70.00
36	★	1c, 5c, 10c, 24c-90c Gummed Proofs (54A, C, D, F, G, H). Several thin	24.00

1861-1867 ISSUES

37	★	3c Red, 10c Green "August," India Proofs (56P, 58P). Fine	19.50
38	★	12c Black, "August," India Proof (59P). Small thin, Very Fine appearance	20.00
39	★	30c Red Orange, "August," India Proof (61P). Fine	30.00
40	★	1c, 2c, 5c, 1861-62 Issues (63, 73, 76). Very Good	20.00
41		3c Rose (65). An Attractive lot of 15 diff. fancy geometric cancels, all excellent strikes, many scarce	—
42	☒	3c Rose (65). Tied on attractive illustr. corner card of Union Business Institute, shows early train and steamboat, Fine cover	—
43	☒	3c Rose (65). Two covers with diff. type "Mountain City Col." pmkds., Good	—
44		5c Buff (67). Red grid cancel, light corner creases, Fine appearance	40.00
45	★	12c Black (69). Very Good	20.00
46		12c-90c, 1861 Issue (69-72). Very Good-Fine	43.00
47		5c Brown, 12c, 15c Black (69, 76-77). Very Good	15.50
48		2c-30c, 1861-67 Issues (70-71, 73, 76, 76a, 77, 90). Very Good	51.00
49		90c Blue (72). Very Fine	20.00
50		2c Black (73). Double Row of Perforations at B.	—
51	★	2c Black (73). Fine	5.00
52	★	5c Red Brown (75). Damaged corner and tear, space filler	70.00
53		5c Brown, 15c Black (76-77). Two of each, defective	23.00
54		10c Green, 15c Black (77, 96). Each has str. edge	12.50
55		3c Rose, Grilled All Over (79). Str. edge at R., two tears	60.00
56		2c Black, Z. Grill (85B). Fine (Photo)	20.00
57		1c Blue (86). Perfs. cut in right, Very Good	17.50
58	★	10c Green, Grilled (89). Centered right, Very Good	50.00
59		10c, 12c, 15c Grills (87, 97, 98). Very Good	19.00
60		1c, 10c-15c, Grills (92, 96-98). Very Good	25.00
61		5c Brown, Grilled (95). Closed tear, Very Good appearance	30.00
62		5c Brown, Grilled (95). Crease, Very Good appearance	30.00
63		15c Black, Grilled (98). Fine	7.00
64		30c Orange, Grilled (100). Creases, Very Good appearance	22.50

1869 ISSUE

65	1c-6c, 12c, 15c Pictorials (112-115, 117, 119). Very Good, first unused	35.05
66	✉ 2c Brown, 3c Ultramarine (113, 114). One cover of first and 12 covers of latter, includes corner cards, nice lot	—
67	12c Green (117). Red cancel, Fine	10.00
68	15c Brown & Blue, Type I (118). Corner crease, Fine appearance	30.00
69	15c Brown & Blue (118-119). Perfs. cut in at top on both, Very Good	38.50
70	24c Green & Violet (120). Perfs touch at B., Very Good	30.00
71	30c Blue & Carmine (121). Light corner creases, Very Fine appearance (Photo)	20.00
72	90c Carmine & Black (122). Centered bit to right, Fine (Photo)	75.00
73	90c Carmine & Black (122). Minor faults, centered to top right	75.00

BANK NOTES

74	1c Ultramarine, Grilled (134). Very Fine	3.50
75	✉ 3c Green, Grilled (136). Tied with neat "Bos. to Ess. Junc. R.R." pmkd.	—
76	6c Carmine, Grilled (137). Faint Grill, Blue cancel, Fine	17.50
77	6c Carmine, 7c Vermilion, Grills (137-138). Very Good	32.50
78	6c, 10c, 15c Banknotes, Grilled (137, 139, 141). Minor defects, nice appearing, light grills	85.00
79	10c Brown, Grilled (139). Str edge left, closed tear	35.00
80	✉ 1c, 2c, 5c Banknotes. Six diff. covers with fancy cancels, three are illustr. Fine lot	—
81	3c Green, Very Fine strike K. K. K. in circle, perfs. in at top (Photo)	—
82	3c Green, Odd FACE cancel, Nice strike, perf short (Photo)	—
83	3c Green, Liberty Bell with "76" in center, Fine strike in blue, Scarce	—
84	3c Green, Star and Crescent in fancy circle, Very Fine	—
85	3c Green. Danbury HAT cancel, Very Fine	—
86	3c Green, Rare North and South, Handclasp cancel, Good strike, stamp has damaged corner	—
87	3c Green, Horiz. Pair struck in the center with attractive New York Foreign Mail type cancel, Very Fine	—
88	3c Green, Two diff HEART cancels, Fine strikes	—
89	3c Green, Three different Anchor cancels, Very Fine strikes, one has str. edge	—

90	3c Green. Four scarce cancels, Crown, Keystone, Roman numeral XIV, N.Y. Devils Head, Fine lot	—
91	3c Green. Seven different U.S. cancels, Fine lot	—
92	3c Green. Fourteen diff. fancy cancels, includes boxed "78", "Don't U.S.M.", Geometrics, reds, etc. nice lot	—
93	☒ 3c Green. Tied with Masonic from Burlington, Vt. Also same strike on envelope, Very Fine, stamp has str. edge	—
94	☒ 3c Green. Pair on cover each tied with New York DEVILS MASK, Very Fine cover	—
95	☒ 3c Green. Tied with Four Boxes within a large Box in blue from Chicago, Very Fine strike and cover	—
96	☒ 3c Green, Tied to most unusual comic illustrated return corner card, Fine cover	—
97	☒ 3c Green. Two Very Fine Railroad cancels, "Mil. & Oshkosh R.R." and "Chi. & G.E. R.R." on covers	—
98	☒ 3c Green. Three covers with diff. numeral "5" cancels, two in circles, one blue, Very Fine lot	—
99	☒ 3c Green. Five covers, Fancy cancels, includes "Paid 3" in circle, tiny Octagon town cancel, crosses, Fine lot	—
100	3c-30c Banknotes (148, 150, 165, 213, 217). V.G.-Fine	12.75
101	7c Vermilion (149). Very Fine	4.00
102	7c-24c Banknotes (149-153). Very Good	22.75
103	12c, 24c, 90c Banknotes (151, 153, 155). Very Good	23.50
104	24c Purple (153). Two copies, trivial defects, Fine appearing	17.00
105	3c-30c Banknotes (153, 162-63, 165, 208, 213, 217). Good-Fine	30.50
106	90c Carmine (155). Perfs just touch right, Very Good	12.50
107	12c Blackish Violet (162). Two shades, V.G.-Fine	8.00
108	12c-30c Banknotes (162,-63, 165). V.G.-Fine	12.00
109	★ 90c Rose Carmine (166). Centered to top, Very Good (Photo)	50.00
110	★田 3c Green (184). Square block of 16, Very Fine O.G.	36.00
111	30c-90c Values (190, 217, 228-29, 275, 310). All have minor defects, nice appearing	20.00
112	90c Purple (218). Fine	13.50
113	☒ Nineteenth Century. 101 Covers (Est. 12.50 net)	—
114	田 Used Blocks. 1883-1946, 73 different includes commems., V.G-V.F.	33.67
115	田 Used Blocks. 39 includes duplicates, one unused, all defective	45.60

116	2c Carmine (220) , a beautiful SPECIALIZED COLLECTION of FANCY CANCELLATIONS with many scarce items. Includes Skull & Crossbones, 14 Pumpkin Faces, 9 U. S. Mail Monograms, pages of fancy numerals and letters, 7 "U. S.," pages of fancy stars, Wheels of Fortune, Geometrics, Maltese Crosses, fancy grids etc. No common letters or numbers. An excellent collection of 1363 stamps nicely mounted in English album with case. (Est. \$185.00 net)	—
117	2c Carmine, 1890 Issue (220) . Specialized mounted collection of 103 stamps showing various plate varieties , interesting specialist lot	—
118	10c Green (226) . Famous Kicking Mule cancel, part of legs don't show, fair strike, scarce on this stamp	—
119	90c Orange, \$1.00 Black (229, 276) . Two copies of first, V.G.—Fine	18.00
120	1c, 2c, 4c, 5c Issues, 1890-98 Issues . Mounted collection of these issues, 129 stamps, V.G.—V.F. few unused	29.56

COLUMBIAN ISSUE

121 ★	1c-10c Columbian (230-237) . Fine-Very Fine	15.30
122	4c-30c Commems. (235, 239, 289, 296-97) . Last two have thin spots, Good	15.00
123 ★	15c Columbian (238) . Very Fine	7.00
124	15c-30c Columbian (238-39) . Each has str. edge otherwise Fine	11.50
125 ★	30c Columbian (239) . Fine	9.00
126 ★	50c Columbian (240) . Fine	12.50
127	50c Columbian (240) . Creased, nicely centered	10.00
128 ★	\$1.00 Columbian (241) . Fine, part gum (Photo)	45.00
129	\$1.00-\$2.00 Columbian (241-42) . Both have defects, first unused	67.50
130 ★	\$2.00 Columbian (242) . Closed tear, nicely centered, part gum, Fine appearance (Photo)	45.00
131 ★	\$3.00 Columbian (243) . Very Fine, no gum (Photo)	70.00
132 ★	\$3.00 Columbian (243) . Str. edge at top, nicely centered, part gum (Photo)	70.00
133 ★	\$4.00 Columbian (244) . Part gum, Fine (Photo)	80.00
134	\$4.00 Columbian (244) . Centered to right, trivial thin, Fine appearance (Photo)	65.00
135 ★	\$5.00 Columbian (245) . Str. edge at top, well centered, part gum (Photo)	90.00
136	\$5.00 Columbian (245) . Lightly cancelled, Fine (Photo)	70.00

1894-98 ISSUES

137 ★	\$2.00 Dark Blue (262). Centered to top, Fine	(Photo)	70.00
138 ★	\$5.00 Dark Green (263). Perfs. touch at left, Very Good	(Photo)	90.00
139	2c Carmine (267). Very Fine strike of FLAG , Scarce	(Photo)	—
140	\$1.00 Black (276, 276A). Light corner crease on first, latter Very Fine		13.50
141	50c, \$1.00, 1895-1912 Issues (276, 342, 421, 440). First has light crease, balance Fine		17.00
142	\$2.00 Dark Blue (277). Light crease, Fine appearance		20.00
143	\$5.00 Dark Green (278). Very Fine	(Photo)	20.00
144 ★	2c Orange Red (279B). Thirteen different Imprint Plate No. Strips of 3 , Very Good-Fine		52.00
145 ★	2c Orange Red (279B). Thirteen Imprint Plate No. Strips of 3, Very Good-Fine		68.00
146 ★	4c-15c, 1898 Issue (280-282, 283-84). Very Good		18.25
147 ★	50c Trans-Miss. (291). Small thin, part O.G., Fine appearance though centered left		35.00
148	50c Trans-Miss. (291). Tied on small piece with clear strike " U. S. Postal Agency, Shanghai ", stamp has closed tear, scarce cancel on this		—
149	\$1.00 Trans-Miss (292). Light crease, Fine appearance	(Photo)	40.00
150	\$1.00 Trans-Miss. (292). Small hinge thin, Fine appearance	(Photo)	40.00
151	\$2.00 Trans-Miss. (293). Perfs. touch at bottom, Lightly cancelled, Very Good	(Photo)	55.00

TWENTIETH CENTURY

152	1c-5c Commems. (296-97, 617-621). Fine		7.35
153 ★	4c-15c, 1902-03 Issue (303-309). Part without gum, V.G.-Fine		17.75
154 ★	\$2.00 Dark Blue (312). Appears reperfed at right, Very Fine appearance	(Photo)	45.00
155 ★	\$5.00 Dark Green (313), Well centered, one perf. short, Very Fine appearance	(Photo)	90.00
156 ★	2c Shield (319). Six diff. Imprint Plate No. Strips of 3, includes shades, Very Fine		7.50
157	1c-10c Louisiana, 1c-5c Jamestown (323-330). Complete sets, Good-Fine		15.05
158 ★	1c-5c Jamestown (328-330). Fine set except no gum on last two		8.30
159 ★田	1c Jamestown (328). Block of 16, Fine		14.00

160	★	1c-5c Jamestown (328-330). Five sets in strips, paper stuck on back on about 20% of each stamp	41.50
161	★田	2c Jamestown (329). Imprint Plate Block of 10 (2x5), Fine	11.00
162	★田	2c Jamestown (329). Block of 10, Paper stuck to most of back	11.00
163	★田	5c Jamestown (330). Block, perfs. touch at B., Very Good	30.00
164	★田	5c Jamestown (330). Block, perfs. touch at B., Very Good	30.00
165	★田	5c Jamestown (330). Block of 10, perfs. just touch at B., Very Good	73.00
166	★田	15c Ultramarine (340). Left Imprint Plate No. Block of 6, Fine	30.00
167	★	4c Orange Brown, Coil (354). Tiny thin in margin, Pair Good	18.00
168	★	6c Red Orange, Bluish (362). Centered to left (Photo)	50.00
169	★	10c Yellow, Bluish (364). Fine (Photo)	60.00
170	★	15c Pale Ultramarine, Bluish (366). Str. edge at left otherwise Fine	60.00

1909 COMMEMORATIVES

171	★田	2c Lincoln (367). Half Sheet of 50, Fine-V.F., has 14 str. edges	26.00
172	★田	2c Lincoln Imperf. (368). Block of 12, no gum, otherwise Very Fine	41.00
173	★	2c Lincoln Imperf. Coil (368E). Strip of 10 with guide line, cuts design at R., four have some paper adhering to back	50.00
174	★田	2c Alaska-Yukon Imperf. (371). Block, Very Fine	16.00
175	★田	2c Alaska-Yukon Imperf. (371). Block, Very Fine	16.00
176	★田	2c Alaska-Yukon Imperf. (371). Block, Fine	16.00
177	★田	2c Hudson-Fulton Imperf. (373). Block, Very Fine	15.00
178	★田	2c Hudson-Fulton Imperf. (373). Left Arrow Block, Very Fine	20.00
179	★	2c Hudson-Fulton Imperf. (373). Vertical Strip of 5, Very Fine	17.50
180	★田	2c Hudson-Fulton Imperf. (373). Block of 24 (6x4), some gum creases, nice appearance	90.00
181	★	1c-5c Coils (390-396). Pairs, three have guide lines, 3c small thin balance Fine	22.35
182		1c-15c, 1908-12 Issues, 92 stamps showing diff. Guide Lines	20.85
183		9c-50c, 3c-\$1.00, 1912-14 Issues (415-21, 426-40, 460). Fine	16.74
184	★田	3c Violet (426). Three Blocks, diff. shades, Very Good	15.00
185	★田	5c Rose, ERROR (499h). Double Error in block of 6, no gum otherwise Very Fine	60.00
186	★田	2c Offset Types (526a, c, d). Two blocks of each, Shades, Fine lot	20.50
187	★	\$2.00 Orange Red & Black (523). Superb (Photo)	45.00

188	\$2.00 Orange Red & Black (523). Well centered, slight thin	17.50
189 ★	\$5.00 Green & Black (524). Very Fine	12.50
190 ★	\$5.00 Green & Black (524). Pair and single, light gum crease on pair, Fine	37.50
191 ★	\$2.00 Carmine & Black (547). Fine	10.00
192 ★田	2-5c Pilgrim (548-550). Blocks, Very Fine	15.50
193	2c White Plains Souvenir Sheet (630). Perfs. touch one row balance Fine	17.50
194 ★	1c-10c Kans. (658-668). Complete set, V. G.-Fine	14.75
195	1c-10c Kans. & Nebr. (658-679). Complete set, V. G.-Fine	20.92
196 ★	1c-10c Nebr. (669-679). Complete set, Fine-Very Fine	15.27
197 ★田	Farleys Complete, 20 varieties (752-771). Blocks includes gutter or cross gutters #752-53, 766-70, Very Fine	—
198 ★	Commems. & Postage, Mostly 20th Century, 165 stamps, some without gum, few blocks, fair-fine	43.25
199	UNITED STATES POSTAGE COLLECTION. 474 stamps mostly diff. from 1847-1934, most of the stamps have defects	690.23
200	Precancels. Approx. 750, some early issues and blocks	—

AIRMAILS

201	6c-24c Airs (C1-C4, C6). Two unused two thin, Very Good	16.00
202 ★	8c-16c Airs (C4-C5). Very Fine	6.50
203 ★	10c-20c Map Airs (C7-C9). Set of Sheets of 50 each, perfs. touch on part	53.00
204 ★	10c Lindbergh Air (C10). Sheet of 50, Very Fine	15.00
205 ★	65c-\$2.60 Graf Zeppelin (C13-C15). Complete set, Very Fine (Photo)	122.50
206 ☒	65c-\$2.60 Graf Zeppelin (C13-C15) Complete set tied on three cachet flight covers, extra 65c value on one, Very Fine	105.00
207	65c-\$2.60 Graf Zeppelin (C13-C15). Complete set, Very Fine	90.00
208 ☒	\$1.30 Graf Zeppelin (C14). Tied on cachet flight card, Very Fine	30.00
209 ★	50c Graf Zeppelin (C18). Very Fine	8.50
210 ☒	50c Graf Zeppelin (C18). On cachet flight cover, Very Fine	7.00
211 ★田	25c Blue, Transpacific (C20). Plate block of 20, Fine-V. F.	11.00
212 ★	16c Blue Air-Special (CE1). Sheet of 50, Fine	18.50
213 ★	2c-60c Shanghai (K1-K14). Fine-Very Fine	25.15

214 ★	2c-\$2.00 Shanghai (K1-K16). Complete set, Fine-Very Fine	48.65
215 ★	\$1.00 Shanghai (K15). Superb (Photo)	15.00
216 ★	\$2.00 Shanghai (K16). Very Fine	8.50
217 ★	2c-4c Shanghai (K17-K18). Each has str. edge, 2c has scratch on face	14.00

OFFICIALS

218 ★	2c-24c Officials (O2, O63-64, O80). Very Good, part O. G.	27.00
219	1c-90c Interior (O15-O24). Complete set, Good-Fine	9.90
220	1c-12c Justice (O25-O30). Very Good	16.50
221	90c Justice (O34). Perf. short, Fine appearance	35.00
222	7c Navy (O39). Small thin, Very Fine appearance	12.50
223 ★	1c-90c Post Office (O47-O56). Complete set, V. G.-Fine	20.55
224	2c, 7c, 10c State (O58, O61-62). Fine	8.50
225	1c-90c Treasury (O72-O82). Complete set, Good-Fine	11.75
226 田	6c Treasury (O75). Block with purple cancel, Very Fine, not priced ...	—
227	Officials, 47 different, some minor defects, Good lot	93.50
228	Officials, 1c-90c values, 57 stamps includes duplicates, V. G.-Fine	53.10
229 ★	Officials, ten diff all with Specimen, includes set of Executive Dept., Very Good	13.50
230	1c-\$1.00 Parcel Post (Q1-Q12). One complete set plus 14 extra mixed values, Good-Fine	15.33
231 ★	50c, 75c Parcel Post (Q10-11). Light hinge thins	15.00
232 ★	\$1.00 Parcel Post (Q12). Perfs. touch at left, Very Good	22.50
233	Eagle, Franklin Carriers (LO2, LO3). Red cancel on first, latter unused, Very Fine	8.00
234	Cut Squares. 153 mostly different (Est. \$7.50 net)	—
235 匣	3c War Dept. Entires (UO53-55). Over 700 Entires, many small and odd town cancels, Fine lot approx.	70.00
236 匣	1c Black, Postal Card (UX5). Blue str. line "Union Pacific Railway, Hillsdale, Wyo.," Fine territorial	—
237	1c Playing Card, Part Perf. (R2b). Ample margins, lower corner at right blank where ink didn't take probably due to foldover, defects	30.00
238	70c Foreign Exch. Part Perf. (R65b). Very Fine	6.00
239	\$200.00 Green & Red (R102c). Centered slightly to left, Fine	70.00
240 ★田	1/8c-5c Battleship Revenues (RB20-25, 27-8, 30-1). Blocks, Fine	10.15

241	Revenues. Majority first three issues, 121 mostly diff. V. G.-V. F.	43.25
242	Revenues, 128 stamps, some duplication, mostly first issue (Est. \$8.00 net)	—
243	Hale & Co. Local, 5c Blue (75L1). Ms. cancel, nice paper fold across stamp	7.50
244	Locals, Carriers, 71 diff. originals and reprints, interesting study lot	—
245	Dues, Telegraphs, Seals, Match & Medicines, Locals, Newspapers etc., 124 stamps	—
246	United States Postage Currency 10c, 25c, 50c (6-8). Fine	5.10

CONFEDERATE STATES

247 ★	1861, 2c Blue, New Orleans (62X1). Thin, Very Fine appearance	15.00
248	1861, 5c Green (200). Lightly cancelled, Fine	6.00
249 ☒	1861, 5c Green (200). Tied on small cover from Amherst C. H., Va., Fine	10.00
250 ☒	1861, 5c Olive Green (200c). Tied on cover, Fine	12.50
251 ★	1861-62, 10c Blue (201). Malformed "T" of "Ten" variety, Superb, O. G. (Photo)	40.00
252 ★	1861-62, 10c Blue (201). Malformed "P" in "Postage" variety, large margins, Very Fine, O. G. (Photo)	30.00
253 ★	1862, 5c Blue (203). Horiz. Pair, Very Fine, O. G.	11.00
254	1862, 5c Dark Blue (203). "C" and "E" of "Cents" joined by flaw, also ear flaw, margins all around, Very Fine	20.00
255	1862, 5c Light Milky Blue, Stone 3 (203). "Jun 26, 1862" year date, Very Fine	17.50
256	1862, 5c Blue, Stone 3 (203). Horiz Pair, creased in margin, one Superb other Fine	40.00
257 ☒	1862, 5c Blue (203). Tied with blue Emory, Va. pmkd. on cover, plate flaw showing a line across stamp, Very Fine	—
258 ☒	1862, 5c Blue, Stone 3 (203). Tied on cover, margins all around, Very Fine	20.00
259 ☒	1863, 2c Brown Red (207). Beautiful four large margin copy tied from Richmond on printed Army General Orders circular, A Superb historical cover	75.00
260 ☒	1863, 2c Brown Red (207). Black grid cancel (not tied to cover), used as local rate in Wilmington, N. C. then turned and sent to Raleigh with pair of 5c (205). Fine, scarce usage	75.00
261	1863, 10c Blue "TEN" (208). Three large margins, cuts design at B., Thin, town cancel	45.00
262 ★	1862-64, Misc. lot of 31 stamps, Fair average seven varieties	23.65

U. S. WHOLESALE

(CONTAINS NO STRAIGHT EDGES UNLESS MENTIONED)

263	UNITED STATES POSTAGE, Stockbook containing selected well centered lightly cancelled copies from 1851-1931, Contains Postage, Airmails and Commemoratives, the owner selected these from thousands over a period of years. As an example the lot includes # 32d(3), 33(30), 73(5), 232(6), 233(28), 235(5), 236(22), 240(1), 287(4), 288(4), 289(3), 296(6), 309(6), 323(28), 327(2), 328(32), 381(43), 370(74), 372(31), 421(19), 440(7), 460(11), 478(4), 524(6), 612(2), 619(4), C6(4), etc, etc., A splendid opportunity to obtain a Very Fine Lot rarely offered in wholesale quantities	1235.63
264	Commemoratives 1932-1945, same Very Fine picked condition as above, includes quantities of Parks and Famous Americans, approx. 3500 com-mems. Very Fine	—
265	3c, 1857-67 Issues # 44(60), 88(5), 94(25), V. G.-Fine	19.25
266	1c-2c Banknotes # 146, 157 (43 mixed). # 182 (200), V. G.-V. F.	36.90
267	1c, 3c Banknotes. # 147(100), 158(100), 184(500), 206(100), 207(100), 214 (100), V. G.-V. F.	33.00
268	6c, 10c Banknotes # 148(5), # 159(25), # 161(25), V. G.-V. F.	35.00
269	1c-10c Banknotes # 156(100), 158(100), 159(12), 161(6), V. G.-V. F.	23.80
270	1c-3c Banknotes # 156, 158, 182, 206, 207, 210 (100 of each), V. G.-V. F.	38.00
271	2c Vermilion # 178(50), V. G.-V. F.	17.50
272	5c, 6c 10c Banknotes # 179(10), # 185(18), # 186(2), # 187(5), # 188(7), Good-Fine	32.95
273	1c Blue # 182(500), V. G.-V. F.	60.00
274	1c, 2c, 10c Banknotes # 182(100), 183(100), 209(75), V. G.-V. F.	29.50
275	4c, 5c, 6c Banknotes # 186(14), 205(12), 211(8), V. G.-V. F.	29.60
276	4c-5c Banknotes # 205(50), 211(14), 215(15), 216(10), V. G.-V. F.	40.65
277	1c-10c, 1881-1926 Issues # 206(100), 219(200), 230(200), 249(100), 264 (100), 416(100), 611(100), 636(100), V. G.-V. F.	37.00
278	6c Rose # 208(11), four minor thins, Good-Fine	33.00
279	2c Red Brown # 210(5000). Good-Fine	100.00
280	2c Green # 212(3,500). Good-Fine	70.00
281	6c, 8c, 15c, 30c, 1890 Issue # 224-25. 227 (5 of each), # 228(2), Good-Fine	18.50
282	3c Columbians # 232(19), Fair-Fine	19.00
283	4c, 5c, 10c Columbians # 233(42), # 234(7), # 237(8), Good-Fine	21.10

284	1c Ultramarine, 2c Pink #246, 248 (100 of each), Good-Fine	75.00
285	1c-2c, 1894 Issue #247(100), 248(100), 249(200), V. G.-V. F.	70.00
286	2c Carmine #251(100), V. G.-V. F.	50.00
287	1c, 2c 1895-98 Issues #264(500), 265(300), 279(400), V. G.-V. F.	68.00
288	2c Carmine, Type II #266(100), V. G.-V. F.	50.00
289	1c-2c, 1895-98 Issues #267, 279, 279B (1,000 of each), Good-Fine	80.00
290	15c, 50c, 15c, 1895-98 Issues #274(11), 275(6), 284(8), V. G.-V. F.	25.35
291	1c-2c Trans-Miss. #285(35), #286(200), V. G.-V. F.	30.00
292	1c-2c Jamestown #328(20), 329(25), V. G.-V. F.	12.25
293	2c Commems. #367(40), #370(20), V. G.-V. F.	9.00
294	1c-2c Pan-Pacific #397(50), 401(10), 402(30), V. G.-V. F.	11.60
295	1c-5c Pilgrim #548(40), 549(100), 550(2), V. G.-V. F.	21.00
296	1c, 3c-9c Rotary #581(15), 584(35), 585(45), 587(65), 588(15), 589 55), 590(40), V. G.-V. F.	34.15
297	2c-5c Commem. #613(30), 628(7), 643(30), 645(50), 649(35), 650(6), 683(40), V. G.-V. F.	28.30
298	1c-5c Commems. #614(10), 615(14), 616(2), 617(7), 618(3), V. G.-V. F.	15.45
299	2c Commems, #651(50), 657(50), 680(30), 681(50), 682(50), V. G.-V. F.	21.50
300	2c-5c Commems. #702(100), 703(40), 704(100), 718-19, (50 sets), 733(30), V. G.-V. F.	14.20
301	3c Commems. #724, 725, 737, 772-774, 776-77, 790, 801, 836 (100 of each), V. G.-V. F.	35.00
302	★田 3c Commems. #773(45), 798(41), 799(48), in large blocks, Fine	10.72
303	★田 5c Virginia Dare #796(46), in blocks, Very Good	9.20
304	1c-10c Famous Americans, Mixed 1c((54), 2c(56), 3c(59), 5c(44), 10c(37), V. G.-V. F.	—
305	田 Used Blocks, (over 600 blocks), 20th Century, few have str. edges, average condition	—
306	Airmails #C2(1), #C4(3), #C6(1), #C8(20), #C9(30), #C10(20), V. G.-V. F.	21.40
307	Special Delivery #E1(2), E3(5), E4(1), E7(2), V. G.-Fine	15.00
308	1c-2c Dues #J15(300), #J16(100), V. G.-V. F.	32.00
309	Parcel Post Dues, Special Handlings (68 stamps), V. G.-V. F.	17.00
310	1908 Xmas Seal #WX3(10). Includes bock, no gum, Fine	60.00
311	U. S. Postage, 21 misc stamps, 19th and 20th, Very Good lot	35.60

312	U. S. Postage, all straight edges, 116 stamps, many commems.	56.29
313	U. S. Straight Edges, 19th & 20th Century (394 stamps)	142.00
314	United States Defectives, 132 stamps mixed, mostly 19th Century	136.00
315	U. S. Defectives, 19th & 20th Century (903 stamps) few unused	786.00
316	U. S. Damaged, 248 stamps, 19th & 20th Century	305.51
317	U. S. Badly Damaged, 56 stamps, about one third are envelopes cut to shape	365.00

CANAL ZONE WHOLESALE

318	1909-21, 1c-2c Surcharges #9(15), 41(80), 42(37), 46(23), 57(22), 58(15), V. G.-V. F.	14.11
319 ★	1917, 12-15c Pictorial #52(10), 53(3), Fine, mostly without gum	16.00
320 ★	1924, 1c Dark Green #64(30), Fine	18.00
321 ★田	1924, 1c Dark Green #64(40), in blocks, Very Fine	30.00
322 ★田	1924, 1c Dark Green #64(60), in blocks, Fine-Very Fine	45.00
323 ★	1915, 1c Olive Brown, Due #J4(60), all without gum, V. G.-Fine	90.00
324	1915, 1c Olive Brown, Due #J4(75), V. G.-V. F.	37.50
325	1920, 2c on 2c Postage Due #J10(60), V. G.-V. F.	15.00
326 ★	1924, 1c Carmine Rose, Due #J12(6), Very Fine, no gum	24.00
327 ★田	1924, 2c Deep Claret, Due #J13(14), Fine, no gum	42.00
328 ★田	1924, 2c Deep Claret, Due #J13(5 Blocks, Fine, no gum	75.00
329 ★	1924, 2c Deep Claret, Due #J13(19), all have str. edge, well centered, no gum	57.00
330	1925, 1c Deep Green, Due #J18(20), V. G.-Fine	30.00
331	1925, 1-10c Postage Dues #J18-20 (10 sets), Fine	36.00
332 ★	1925, 10c Orange, Due #J20(12), V. G.-Fine, no gum	24.00
333 ★田	1925, 10c Orange, Due #J20 (10 Blocks), gum stained, no gum	100.00
334 ★	1925, 10c Orange, Due #J20(50), all gum stained, no gum	100.00

U. S. POSSESSIONS

CANAL ZONE

335 ★	1904, 2c Rose, 5c Blue (1-2). One corner perf. off on first, Very Good	21.50
336 ★	1904, 1c-10c (4-8). Complete set, 8c has str. edge, part no gum. Very Good	27.25

337 ★	1920, 50c Orange & Black (55). Well centered, tropical gum, Very Fine (Photo)	17.50
338 ★	1920, 1b Dark Violet & Black (56). Tropical gum, Very Fine (Photo)	15.00
339	1920, 1b Dark Violet & Black (56). Fine	7.50
340 ★	1921, 1c Green (57). Sheet of 100, Tropical gum, Very Fine	18.75
341 ★田	1924, 1c Dark Green (64). Block of 16, Very Fine	12.00
342 ★田	1924, Same as above, Very Fine	12.00
343 ★	1924-25, 1/2c-12c, 15c-\$1.00 (66-73, 75-80). No gum, Fine appearance	35.15
344 ★	1924-25, 10c, 12c, 15c, 30c (72-73, 75-78). No gum, nicely centered	13.00
345	1924-25, 30c, 50c, \$1.00 (78-80). Fine	14.00
346 ★	1924-25, \$1.00 Violet Brown (80). No gum, Well centered	15.00
347 ★田	\$1.00 Violet Brown (95). Block, Very Fine	37.50
348 ★	1926, 2c Sesqui (96). Sheet of 50, Tropical gum, well centered	32.50
349 ★	1926, 2c Sesqui (96). Sheet of 50, Tropical gum, well centered	32.50
350 ★田	1933, 14c Dark Blue (115). Block of 38, Fine	13.50
351 ★	1939, 1c-50c Anniversary Issue (120-135). Complete set, Very Fine	20.70
352 ★	1931, 5c-\$1.00 Airpost (C5-C10). No "A" numbers, Very Fine	3.80
353 ★	1939, 5c-\$1.00 Anniversary Issue, Airpost (C11-C16). Complete set, Very Fine	17.55
354	1941, 5c-\$1.00 Airpost Officials (CO1-CO7). Complete set, Very Fine	4.40
355 ★田	1915, 1c Olive Brown Due (J4). Blocks of 12, part gum, Fine	21.00
356 ★田	1915-20, 1c, 2c Postage Dues (J4, J10). Blocks, Fine, no gum	17.50
357 田	1915, 1c Olive Brown Due (J4). Blocks of 16, Fine, lightly cancelled	10.00
358 ★田	1920, 4c on 4c Postage Due (J11). Block, Very Fine, no gum	17.50
359 ★	1924 1c-10c Postage Dues (J12-J14). Complete set, Very Fine, no gum	19.00
360 ★田	1924, 1c Carmine Rose (J12). Block, Very Fine, no gum	20.00
361 ★田	1924, 1c Carmine Rose (J12). Block, Well centered, no gum	20.00
362 ★田	1924, 1c Carmine Rose (J12). Block of 12, Well centered, slight gum stains, no gum	56.00
363 ★田	1924, 2c Deep Claret Due (J13). Block, well centered, no gum	15.00
364 ★田	1924, Same as above	15.00
365 ★田	1924, 2c Deep Claret (J13). Block of 8, well centered, no gum	30.00
366 ★	1924, 10c Deep Claret, Due (J14). Fine, no gum	12.00
367 ★	1924, 10c Deep Claret, Due (J14). Pair, no gum, Fine	24.00

368 ★	1924, 10c Deep Claret, Due (J14). Strip of 3 and single, each with str. edge, no gum	48.00
369 ★田	1925, 2c Carmine, 10c Orange, Dues (J19-20). Blocks, Fine, no gum	16.50
370 ★田	1925, Same as above	16.50
371 ★田	1925, 10c Orange, Due (J20). Block, Tropical gum, Very Fine	10.00
372 ★田	1925, 10c Orange, Due (J20). Block of 16, slight gum stains, nicely centered	40.00
373 田	1925, 10c Orange, Due (J20). Block of 9, town cancel, Very Fine	15.00
374 田	CUBA, 50c Gray Bisected (86a). Tied on mourning cover to Philadelphia, transit marks, Very Good, not priced	—
375 ★田	—1910, 1P Slate & Black (246). Block, Very Fine	5.00
376 ★	—1936, Mantanzas Issue, Postage Airmails etc. Imperforate and Perforate (324-31, C18-C21, CE1, E8 plus "a" on each). Complete, Very Fine	10.54
377 ★	—1931-36, 5c-1P Airpost (C4-C11). Complete, Fine	5.60
378	CUBA, HAWAII, 28 stamps, 24 different, Fine lot	16.00
379	DANISH WEST INDIES, 1901-17, Nineteen different, includes #37-39, Fine lot	13.25

PHILIPPINES

380	1926, 2c-1P Legislative Palace (319-325). Complete set, Very Fine	8.85
381 ★	1928, 2c-1P London-Orient Flight (328-338). Complete set, Fine-Very Fine	26.40
382	1932, 2c-32c Pictorials (354-360). Complete set, Very Fine	8.45
383 ★	1932, 2c-32c Von Gronau Flight (361-367). Complete set, Fine	8.90
384 ★	1933, 2c-30c Rein Flight (370-379). Complete set, V. G.-V. F.	6.40
385 ★	1935, 2c-5P Pictorial (383-396). Complete set, Very Fine	15.59
386 ★田	1938-40, 4c-30c Commonwealth (434-442). Plate No. Blocks of 6, Fine-V. F.	24.20
387 ★田	1941, 8c-1P Airpost (C9-C12). Blocks, Complete, Very Fine	7.52
388 ★	JAPANESE OCCUPATION, Complete Collection (N1-N39, NB1-NB8, NO1-NO7). Mounted in special booklet, Sells for \$45.	—
389 ★	1900, Reply Postal Card Unsevered (UY2a). Very Fine	5.00
390 ★	PUERTO RICO, 5c-\$1.00, 5c-\$1.00 Semi-official Airpost (San. 301-315). Complete sets, Very Fine	12.00

BRITISH NORTH AMERICA

BR. COLUMBIA AND VANCOUVER IS.

391	1861, 2½p Dull Rose (2) , Centered top right, Fine	17.50
392	1865, 10c Blue (4) . Small margins, touches design at one point, two pin holes	135.00
393	1865, 5c Rose (5) . Fine	15.00
394	1861, 5c Rose (5) . Fine	15.00
395 ★	1865, 10c Blue (6) . Perfs. in R. & B., Very Good	17.50
396 ★	1867-69, 5c Bright Red (9) . Fine	10.00
397 ★	1867-69, 10c Lilac Rose (10) . Very Fine (Photo)	85.00
398	1867-69, 25c Orange (11) . Very Fine	10.00
399 ★	1867-69, 50c Violet (14) . Fine	30.00
400 ★	1869, 5c Bright Red (14) . Fine (Photo)	75.00
401 ★	1869, 10c Lilac Rose (15) . Fine (Photo)	55.00
402 ★	1869, 25c Orange (16) . Fine, part O. G.	30.00
403	1869, 50c Violet (17) , Fine (Photo)	40.00
404 ★	1869, \$1.00 Green (18) . One perf. short, Fine appearance (Photo)	85.00
405	CANADA , 1852-55, 3P Red (4), Close right, margins three sides	8.50
406	—1859-1908, 1c-50c, 30 mostly diff., (Bet #14-100), V. G.-V. F., some unused	41.42
407	—1868-97, 1c-20c (22-24, 26, 28, 58-59). Very Good	15.00
408 ★	—1897, ½c-50c Jubilee (50-60). Very Good-Very Fine	19.80
409	—1897, \$2.00 Jubilee (62) . Very Fine	15.00
410	—1908, ½c-20c Quebec (96-103). Complete set, 15c has str. edge, V. G.-V. F.	12.15

NEW BRUNSWICK

411	1851, 3p Red (1) . Thin, Fine appearance	20.00
412 ★	1851, Orange, Reprint (1) . Full margins, light crease	—
413	1851, 6p Olive Yellow (2) . Thin, Very Good appearance	55.00
414	1851, 1/ Bright Red Violet (3) . Thin spot, Very Good appearance (Photo)	250.00
415 ★	1860-63, 1c-17c (5-10, 12) . Two used, Very Good	8.35
416 ★田	1860, 5c Connell (11) . Corner Block of India Proof , trivial crease, Very Fine piece (Photo)	—

NEWFOUNDLAND

417	1857, 1p Brown Violet (1). Thin, Very Good appearance	25.00
418	1857, 4p Scarlet Vermilion (4). Very Good (Photo)	300.00
419	1857, 4p Scarlet Vermilion (4). Corner at right cut in, thin spot (Photo)	300.00
420	1857, 8p Scarlet Vermilion (8). Very Good (Photo)	60.00
421 ★	1857, 8p Scarlet Vermilion (8). Fine	30.00
422	1857, 1/ Scarlet Vermilion (9). Very Good (Photo)	400.00
423	1860, 2p Orange (11). Fine (Photo)	75.00
424 ★	1860, 3p Green (11A). Very Fine, full margins	7.50
425	1860, 4p Orange (12). Defective, Good appearance	150.00
426	1860, 6p Orange (13). Close all sides, Very Good (Photo)	80.00
427 ★	1862-63, 1p Violet Brown (15A). Margins all around, Fine (Photo)	20.00
428 ★	1862-63, 2p Rose (17). Full margins, Very Fine (Photo)	30.00
429 ★	1862-63, 5p Reddish Brown (19). Very Fine, full margins	7.50
430 ★	1862-63, 5p Reddish Brown (19). Very Fine	7.50
431	1862-63, 6p Rose (20). Full margins, Very Fine	10.00
432 ★	1862-63, 6p-1/ (20-23). Large margins, Fine-Very Fine	27.50
433	1862-63, 6½p Rose (21). Two tiny cuts in margins, Very Good (Photo)	50.00
434	1862-63, 1/Rose (23). Very Good	25.00
435	1862-96, ½c-10c, Fifteen diff. (Bet. #18-56). V.G.-V.F.	27.70
436	1866-94, 5c Brown (25). Very Good	25.00
437	1866-94, 5c Black (26). Fine	15.00
438	1866-94, 10c Black (27). Fine	9.00
439 ★	1866-94, 12c, 13c, 24c (28a-31). Fine	17.50
440 ★	1868-94, 1c Violet, 1c Brown Violet (32, 32A). Fine, no gum	10.00
441	1880-96, ½c-5c Shades (41-48, 50-57). Very Good-Fine, some unused	18.85
442 ★	1897, 1c-60c Cabot Issue (61-74). Complete set, Very Fine	27.15
443 ★	1897, 1c on 3c Gray Lilac (75-76). Vertical pair showing both types, centered to top	10.50
444	1897, 1c on 3c Gray Lilac (77). Lightly cancelled. minor faults, Fine appearance	45.00
445 ★	1910, 6c, 8c Guy (92, 92A, 93). Very Fine	17.50
446 ★	1910, 10c-12c Guy (95-96). Very Fine	15.00

447 ★	1910, 15c Guy (97) . Well centered, no gum	7.00
448 ★	1911, 6c, 9c Guy (98, 100) . Very Fine	11.50
449 ★	1911, 10c Guy (101) . Part O. G., well centered	15.00
450 ★	1911, 12c Guy (102) . Very Fine	9.00
451 ★	1911, 6c, 8c, 9c Royal Family (109-111) . Fine	20.50
452 ★	1919, 1c-36c Caribou (115-126) . Complete set, Very Fine	21.50
453 ★	1923-24, 1c-24c Pictorials (131-144) . Complete set, Very Fine	21.85
454 ★	1928, 1c-30c Pictorials (145-159) . Complete set, Very Fine	15.20
455 ★	1931-37, 1c-48c Pictorial (183-210) , Complete set, Very Fine	12.89
456 ★	1933, 1c-32c Gilbert (212-225) . Complete set, Very Fine	27.85
457 ★	1933, Same as above, Very Fine	27.85
458 ★	1931, 15c-\$1.00 Airpost (C6-C8) . Complete set, Very Fine	9.50
459 ★	1932, \$1.50 DO-X Air (C12) . Very Fine (Photo)	35.00
460 ☒	1932, \$1.50 DO-X Air (C12) . Tied on flight cover from St. Johns, May 19, 1932, Very Fine	35.00+
461 ★	1933, 5c-75c Labrador, Airpost (C13-C17) . Complete set. Very Fine	22.75
462 ★	1933, \$4.50 Balbo Air (C18) . Very Fine (Photo)	35.00

NOVA SCOTIA

463	1851-53, 1p Red Brown (1) . Touches partly two sides, Fine (Photo)	125.00
464	1851-53, 3p Blue (2) . Very Good	10.00
465	1851-53, 6p Yellow Green (4) . Small thin, Very Fine appearance	40.00
466	1851-53, 6p Dark Green (5) . Close one side, three nice margins, Fine (Photo)	75.00
467 ★	1860-63, 1c-12½c (8-13) . Fine, 5c is used	5.75
468	BRITISH NORTH AMERICA , 101 stamps, mostly different, many defective	101.92

END OF FIRST SESSION

SECOND SESSION

SATURDAY, NOVEMBER 30th — 2 P. M.

FOREIGN

469	ABYSSINIA , 1902, $\frac{3}{4}$ g-16g Post Issue (15-21), Complete set, Fine	10.25
470 ★	—1905, o5-3.20 Surcharged Issue (43-49), Complete set, Fine	14.00
471 ★	—1905, o5-3.20 Menelik Issue (57-63), First Three used, Complete set, Fine	14.00
472	—1917 $\frac{3}{4}$ g-16g Commemorative Issue (101-107), Complete used set, Fine-Very Fine	9.75
473 ★	—1919, 1/8g-\$10.00 Pictorial Issue (120-134), \$1.00, \$2.00 used, Complete set, Very Fine	6.81
474	—1925-26, Two Surcharged Issues (142-147D), Complete used sets, Fine	12.70
475 ★	—1927, 1g on \$3.00 Green & Orange (154), Very Fine	12.00
476 ★	ADEN , 1937, $\frac{1}{2}$ A-10R Dhow Issue (1-11), Very Fine	21.95
477 ★	—1937, 10R Olive Green Dhow Issue (12), Very Fine (Photo)	27.50

ALBANIA

478	1913, 2 $\frac{1}{2}$ Pi Violet Brown (1), Very Fine	25.00
479	1913, 5Pa Ochre (4), Very Fine	15.00
480	1914-17, 25Pa, 1c-1Fr., (53-61), Very Fine	14.00
481	1930, 1q-5Fr. Anniversary Issue (250-260), Complete set, Very Fine	7.17
482 ★	1937, 1q-2Fr. Independence Issue (271-279), Complete set, Very Fine	6.60
483 ★	1937-40, Five Postage and Due Issues (271-278, 281-288, 289, 298, J40-J44), Very Fine	14.15
484 ★	1925-30, Three Air Post Issues (C1-C14, C29-C35), Complete sets, Very Fine	9.50
485 ★	1928, 5q-3Fr. Valona-Bridisi Air Post Issue (C15-C21), Complete set, Very Fine	16.00
486 ★	1931, 5q-3Fr. Tirana-Rome Air Post Issue (C36-C42) Complete set, Very Fine	11.10

487 ★	ANTIGUA, 1912, 2/ Violet & Green (38), Very Fine	9.00
488 ★	—1921-29, ½p-4/ George V (42-57), Complete, Very Fine	14.26
489 ★	—1921-29, 3p-5/ George V (58-63) Very Fine	9.60
490 ★	—1922, £1 George V (64), Fine (Photo)	16.00
491 ★	ARGENTINE, 1939, 5c-5P Postal Union (455-462), Complete set, Very Fine	9.40
492 ★	—1928, 5c-3.60P Airpost (C1-C19), Complete set, Very Fine	19.85
493 ★	—1930, 20c-3.60P Zeppelin Airs C20-C24), Complete set, Very Fine	34.00
494 ★	—1930, Zeppelin Airs (C20-C22, C27), Fine	11.00
495 ★	—1930, 20c-1P Zeppelin Airs (C25-C28), Very Fine	8.00
496 ★	—1930, 1.80P Zeppelin (C29), Very Fine (Photo)	75.00
497 ★	—1931, 18c-3.60P Airpost (C30-C34), Complete, last used, Very Fine	12.00
498 ★	ASCENSION, 1934, ½p-5/ George V (23-32), Complete set, Very Fine	12.05
499 ★	AUSTRALIA, 1913, 10/ Pink & Gray (13), Very Fine	12.00
500 ★	—1913, £1 Ultramarine & Brown (14), Very Fine (Photo)	22.00
501 ★	—1913, £2 Deep Rose & Black (15), Very Fine (Photo)	55.00
502 ★	—1920, £2 Deep Rose & Black (58), Very Fine (Photo)	27.50
503 ★	—1925, £2 Rose & Violet Brown (59), Very Fine (Photo)	30.00
504 ★	—1932, 2p-1/ Sydney Bridge (130-132), Complete set, Very Fine	10.80
505	—1909, ½p-£1 Postage Dues (J39-J49), Complete set, Fine	10.79

AUSTRIA

506	1910, 1h-1k Birthday Jubilee (128-141), six unused, Fine	14.20
507 ★	1910, 2k Birthday Jubilee (142), Very Fine (Photo)	25.00
508 ★	1910, 5k Birthday Jubilee (143), Very Fine (Photo)	25.00
509 ★	1910, 10k Birthday Jubilee (144), Very Fine (Photo)	50.00
510 ★	1910, 10k Birthday Jubilee (144), closed tear in margin, Very Fine appearance (Photo)	50.00
511	1934, 2s Dull Green (371), Light crease, Very Fine appearance	18.50
512 ★	1922, Musicians, Semi-Postals (B31-B37), complete set, Very Fine	5.35
513 ★	1923, Semi-Postal (B38-B46), Complete, Very Fine	6.75
514 ★	1924, Semi-Postal (B47-B51), Complete, Very Fine	12.50
515 ★	1933, Winterhelp Issue (B99-B102), Complete, Very Fine	5.25

516 ★	1936 ,Inventors, Semi-Postal (B127-B132), Complete, Very Fine	7.50
517 ★	1935, 5g-10s Airpost (C32-C46), Complete, Very Fine	10.41
518 ★	BAHAMAS , 1912-18, £1 George V (56) , Centered to top (Photo)	18.50
519 ★	—1920, ½p-1/ Peace (65-69), Complete set, Very Fine	7.55
520 ★	BARBADOS , 1912, 2/ George V (125) , Very Fine	11.50
521 ★	—1912, 3/ George V (126) , Very Fine (Photo)	17.50
522 ★	—1920, ¼p-3/ Victory (140-150), Complete set, Fine	14.37
523 ★	—1921-24, 2/, 3/ (160-61), Fine	6.25
524	—1925-35, 2/, 3/ (177, 179), Very Fine	6.50
525 ★	BASUTOLAND , 1933, ½p-10/ George V (1-10), Complete set, Very Fine	23.65

BELGIUM

526 ★	1919, 1c-10Fr. Helmet Issue (124-137), Complete set, Tiny pin head thin on 2Fr., Balance Very Fine	36.62
527 ★	1925-30, 10c-10Fr. Anniv. & Antwerp Phil. Ex. Sheet (172-184, 221), Complete sets, Very Fine	11.45
528 ★	1928, 5c-10FR. Orval Abbey Issue (B69-B77) Complete set, Corner short on 2FR., Balance Very Fine	11.05
529 ★	1928-29, Two Semi-Postal Issues (B78-83, B93-B98), Complete sets, Very Fine	9.30
530 ★	1930-38, Three Semi-Postal Issues (B99-105, B214-B220, B222-B224), Complete sets, Very Fine	10.58
531 ★	1931, 10c-5FR. Queen Elizabeth Issue (B107-B113), Complete set. Very Fine	11.90
532 ★	1932, 10c-10FR. Cardinal Mercier Issue (B114-B121), Complete set, Very Fine (Photo)	88.95
533 ★	1932, 75c-1.75FR. Infantryman Issue (B123-B124). Complete set, Very Fine	17.00
534 ★	1932, 10c-5FR Sanatorium Issue (B125-B131). Complete set, Very Fine	15.60
535 ★	1933, 5c-10FR. Arval Abbey Issue (B132-B143). Complete set, Very Fine (Photo)	74.00
536 ★	1933, 10c-5FR. Tuberculosis Issue (B144-B150). Complete set, Very Fine	21.17
537 ★	1934, 75c-1FR. Soldiers Relief Fund (B152-B155). Complete set, Very Fine	9.00
538 ★	1934, 10c-5FR. Crusader Issue (B156-B162). Complete set, Very Fine	15.30
539 ★	1935-1937, Eight Semi-Postal Issues, Two Sheets (B151, B163-B168, B170-B196). Complete sets, Very Fine	10.79



1



4



5



6



17



18



33



34



56



71



72



81



82



109



128



130



131



132



133



134



135



136



137



138



139



143



149



150



151



154



155



168



169



187



205



215



251



252



337



338



397



400



401



403



404



414



418



419



420



422



423



426



427



428



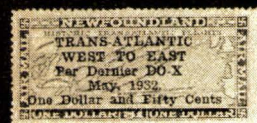
433



462



463



459



466



477



490



496



500



501



502



503



518



521



550



507



508



509



510



599



416



532



535



703



551



557



570



584



627



630 EX



648



661 EX



666



669 EX



674



675



676



685



696



730 EX



738



739



744



762 EX



763 EX



778 EX



791



819



835



883



887 EX



899



913



916



917



935



937 EX



938

540 ★	1936-38, Six Semi-Postal Issues, Three Sheets (B179, B197-B213. Complete sets, Very Fine	8.79
541 ★	1939, 30c-5FR. Red Cross Issue (B233-B240). Complete set, Very Fine	6.18
542 ★	1939, 75c-5FR. Orval Issue (B250-B255). Complete set, Very Fine	9.50
543 ★	1939-40, Two Semi-Postal Issues (B256-B263, B273-B278). Complete sets, Very Fine	9.93
544 ★	1940-41, Four Semi-Postal Issues, Two Sheets (B264-B272, B279-B302). Complete sets, Very Fine	9.60
545 ★	1930-35, Air Post Issues Complete (C1-C7). Very Fine	8.25
546 ★	1939, 20c-10Fr. Parcel Post (Q211-Q215). Complete set, Very Fine	6.75
547 ★	1914-16, 1FR-6F 25c Occupation Issue (N9, N19, N20, N23). Very Fine	7.40
548 ★	BOLIVIA , 1924, 10c-5b Airpost (C1-C7). Complete set, Very Fine	6.25
549 ★	—1930, Zeppelin Airpost (C-12, C14-16). Very Fine	7.50
550 ★	—50c Orange & Black, Red Surcharge, Airpost (C17) . Very Fine (Photo)	150.00
551 ★	—1930, 1b Airpost (C18). Fine	20.00
552 ★	—1930, 1.50b-6b Airpost (C24-C26). Complete set, Very Fine	12.00
553 ★	—1930, 5c-3b Airpost (C27-C34). Complete set, Very Fine	5.25
554 ★	—1932, 5c-1b Airpost (C35-C41). Complete set, Very Fine	10.30
555 ★	—1935-37, Airposts (C42-C62). Complete sets, Very Fine	6.53
556 ★	BOSNIA & HERZEGOVINA , 1912-14, 3K, 5K (83-84). Very Fine	10.00
557 ★	—1914, 10K Dark Ultramarine (85) . Very Fine	25.00
558 ★	—1906, 5K Orange Brown, Trial Color Proof in block of 6 Imperforate, Very Fine	—
559	BRAZIL , 1866-85, Collection of Dom Pedro Issues , Beautifully written up volume, contains 328 stamps and 14 covers, grand range of cancellations (Estimate \$135.00 net)	—
560 ★	—1940, Souvenir Sheets, N. Y. World's Fair (496a-98a). Complete, Very Fine	35.00...
561 ★	—1927, 50c-10,000R Airpost (C1-C16) . Complete set, Fine	12.40
562 ★	—1931-32, Zeppelin Airpost (C26-C30). Complete, Fine	5.10
563 ☒	—1930, 10,000R Zeppelin (San. 221). Tied on flight cover with cachet. Very Fine	8.00
564	BRITISH COLONIES , 18 diff. 19th Century, includes Great Britain No. 1, Fair-Fine	123.25
565	BRIT CORONATIONS , Complete set mounted on special sheets includes long Newfoundland, Very Fine	—

566 ★	BRITISH GUIANA , 1931, \$1.00 Violet, Commem. (209), Fine	8.00
567 ★	—1934, 1c-\$1.00 George V (210-222). Complete set, Very Fine	17.05
568 ★	BRIT. SOLOMON ISLANDS , 1908-11, ½p-2/6 (8-17). Very Fine	13.20
569 ★	—1914-23, 3p, 1/, 2/, 5/ (32, 36-37, 39). Very Fine	13.25
570 ★	—1914-23, £1 George V (41). Very Fine (Photo)	18.50
571 ★	BRUNEI , 1907-31, 1c-\$1.00, 17 different (Bet. #13-61, Very Fine	10.00
572 ★	BULGARIA , 1931, 11-501 Olympic Games (237-243). Complete set, Very Fine	21.80
573 ★	—1933, 11-121 Olympic Games (244-249). Very Fine	12.10
574 ★	—1934, 11-141 Commem. (253-264). Complete sets, Very Fine	10.30
575 ★	—1935, 11-501 Gymnastic Tournament (273-278). Complete set, Very Fine	30.50
576 ★	—1927-31. Airposts (C1-C11). Complete sets, Very Fine	7.00
577 ★	—1931, 11-501 Airpost (C5-C11). Complete set, Very Fine	4.65
578 ★	BURMA , 1937, 3p-2R (1-14). Very Fine	7.06
579 ★	—1937, 3p-10R (1-16). Very Fine	26.06
580 ★	—1938-40, 1p George VI , Penny Postage (18A, 34). Very Fine	3.75
581 ★	CAMEROONS , 1941, 5c-20FR. Free French Issue (282-295). Complete set, Very Fine	3.12
582	CAPE OF GOOD HOPE , 1855-64, 1p, 4p, 6p Triangulars (4, 5, 12). Fine	26.00
583	—1855-58, 1/ Triangular (6). Fine	20.00
584 ★	—1863-64, 6p Violet, Triangular (14). Fine, no gum (Photo)	27.50
585 ★	CAPE JUBY , 1934, 1c-4P (40-52). Complete set, Very Fine	6.76
586 ★	—1937, 1c-10P Commem. (70-85). Complete set, Very Fine	31.72
587 ★	—1926, Semi-Postals (B1-B13, EB1). Complete set, Very Fine	5.45
588 ★	CAYMAN IS. , ¼p-10/ George V Pictorial Issue (85-96). Complete set, Very Fine	35.61
589	CEYLON , 1904, 1R50c-2R25c (176-177). Very Fine	18.50
590	—1904-10, 1R-5R (191-195). Fine	17.00
591 ★	—1912, 1R, 2R, 5R (210-212). Fine	7.75
592 ★	—1935, 2c-1R George V Pictorial Issue (264-274). Complete set, Very Fine	5.22

CHILE

593 ★	1910, 5P Independence Issue (96). Very Fine	12.50
594 ★	1910, 10P Independence Issue (97). Very Fine	10.00

595 ★	1938-40, Three Issues (186-197, 209, B1-B2). Very Fine	7.20
596 ★	1928, 10P Blue Overprint, Airpost (C8). Very Fine	12.00
597	1907, 1c, 5c, 10c, 20c Foreign Postage Official Issue (O9, O11, O12, O14). Fine	33.50
598 ★	1907, 3c Foreign Postage Official Issue (O10). Very Fine	12.00
599	1907, 1P Foreign Postage Official Issue (O16). Very Fine (Photo)	50.00
600	CHINA , 1912, 1c-\$5.00 Dr. Sun Yat-sen Issue (149-160). Complete set, minor faults on four, balance Fine	27.97
601	—1912, 1c-\$5.00 President Yuam Shi-kai Issue (161-172). Complete set, Fine	15.67
602 ★	—1928-29, Three Commemorative Issues (232-243). Complete sets, #242 no gum, Very Fine	7.07
603 ★	—1921-29, Two Air Post Issues (C1-C10). Complete sets, Very Fine	15.65
604 ★	— SZECHWAN PROV. 1933-34, \$1.00, \$2.00 \$5.00 (9-11). Fine	8.00
605 ★	COLOMBIA , 1935, 2P-5P Olympic Games (434-435). Very Fine	18.00
606 ★	—1932-33, Cartagena Issue, Airpost Registration (C17-C20, CF1). Com- plete, Very Fine	6.70
607 ★	—1941, 5c-5P Airpost (C27-C39), Complete set, Very Fine	16.24
608	— Semi-Official Airposts , Scadta etc. 66 stamps, includes duplicates, Fine lot	San. 91.45
609	—1909, ½c Yellow, Inverted Surcharge (L1 var.). Centered left, Fine	—
610 ★	—1909, 10P Dark Brown (L8). Centered right, Fine	17.50
611	— Boyaca , 1910, 5P Buff, Error in Color (16c), Very Fine	—
612 ★	CONGO , 1938-42. Four Issues (166-186). Complete sets, Very Fine	6.56
613 ★	—1939, 1FR.-5FR. Zoological Issue (B27-B31). Complete set, Very Fine	10.25
614 ★	—1920-42, Four Air Post Issues (C1-C6, C16-C17). Complete sets, Very Fine	4.55
615 ★田	COSTA RICA , 1928, 10c Lindbergh (147). Block, Very Fine	4.40
616 ★	—1936-41. Three Issues (169-176, 201-208, 212-216). Complete sets, Very Fine	8.62
617 ★	—1930-32, Airposts (C7-C14). Complete, #C13 has pinholes, balance Very Fine	9.50
618 ★	—1940-41, Four Airpost Issues (C31-45, C55-56, C74-80). Complete sets, Very Fine	10.95
619 ★	—1941, 15c-5 Col Airpost (C57-C66). Complete set, Very Fine	9.25
619A ★	—1941, 5c-10 Col. Airpost (C67-C73). Complete set, Very Fine	10.63

620 ★	—1941, 15c-5 Col. Airpost (C74-C80). Complete, Very Fine	5.73
621 ★	CURACAO , 1936, 1c-2.50G (127-143). Complete set, Very Fine	12.97
622 ★	—1941-42, 1c-2½G (147-163). Complete set, Very Fine	14.27
623 ★	—1929, 50c-2G Air Post Issue (C1-C3). Complete set, Very Fine	27.00
624 ★	—1941, 10c-50c Prince Bernhard Issue (CB1-CB8). Complete set, Very Fine	32.00
625 ★	CYRENAICA , 1933, 3l-20l Zeppelin (C12-C17). Complete, Very Fine	5.20
626 ★	—1933-34, Four Airpost Issues (C18-C29, CB1-CB10). Complete sets, Very Fine	13.40
627 ★	—1934, 25l+2l Official Airpost (San #100). Very Fine (Photo)	100.00
628	CYPRUS , 1923, 18Pi Black and Brown (85). Very Fine	12.00
629 ★	—1924, £1 Violet and Black (110) . Centered bit to R., Fine	12.00
630 ★	—1928, ¾Pi-£1 Anniversary Issue (114-123). Complete set, Very Fine	49.10
631 ★	—1934, ¼pi-45pi George V Pictorial Issue (125-135). Complete set, Very Fine	13.01
632 ★	—1934, 18Pi-45Pi George V Pictorials (134-135). Very Fine	9.75
633 ★	CZECHOSLOVAKIA , 1928-36, Two Issues (142-151, 218-226). Complete sets, Very Fine	6.73
634 ★	—1920, 14kc-28kc Airpost (C1-C3) . Complete, Very Fine	24.00
635 ★	—1920, 14kc-28kc Airpost (C4-C6) . Complete, Very Fine	40.50
636 ★	—1922-39, Three Airpost Issues (C7-C18) . Complete, Fine	9.70
637 ★	DENMARK , 1925-34, Airpost Complete (C1-C10). Very Fine	10.95

DANZIG

638 ★	1925, 1g Orange & Black (194). Very Fine	5.00
639	1924-25, 1g-10g Pictorial (194-199). Several creases, Fine appearing	33.25
640 ★	1938-39, Three Issues (234-37, 241-54, B28-B32). Complete sets, Very Fine	7.79
641 ★	1934, Winterhelp Issue (B9-B11). Complete, Very Fine	18.00
642 ★	1936-37, Semi-Postals (B15-B19, B23-B27). Complete sets, Very Fine	7.80
643 ★	1924, 10pf-2½g Airpost (C26-C30). Complete set, Very Fine	10.00
644 ★	1924-25, 5pf-75pf Officials (O42-O52). Complete set, Very Fine	26.70
645 ★	DOMINICA , 1921-22, ½p-2/ (56-62). Very Fine	7.80
646 ★	—1923-33, ½p-5/ George V (65-82). Complete set, Very Fine	16.89

647 ★	—1923-33, 3/-5/ George V (83-84). Very Fine	10.50
648 ★	—1923-33, £1 George V (85). Very Fine (Photo)	20.00
649 ★	DOMINICAN REPUBLIC , 1936, ½c-2P Library Issue (310-322). Complete, Very Fine	14.09
650 ★	—1931-33, 10c-1P Airpost (C10-C17). C11-12, C14 are used, balance Very Fine unused	11.60
651 ★	—1940-42, Three Airpost Issues (C35-C42). Complete, Very Fine	4.85
652 ★	—1930, 10c Airpost Official (CO1). Very Fine	7.50

DUTCH INDIES

653	1908, 2½G Slate Blue (98). Very Fine	6.00
654 ★	1941, 2½c-7½c Dancers Issue (228-232). Complete set, Very Fine	8.75
655 ★	1930-35, Two Semi-Postal Issues (B4-B7, B21-B24). Complete sets, Very Fine	8.00
656 ★	1936-41, Three Semi-Postal Issues (B25-B29, B37-B41, B52-B56). Complete sets, Very Fine	7.55
657 ★	1941, 5c-1G Royal Air Force Issue (B49-B51). Complete set, Very Fine	9.00
658 ★	1928-38, Three Air Post Issues (C1-C5, C13, CB1-CB2). Complete sets, Very Fine	10.95
659	ECUADOR , 1904, 50c Commem. (165). Lightly cancelled, Very Fine	8.00
660 ★	—1928, 1c-10s National Assembly Commem. (277-292). Complete set, #282 used, Fine	21.83
661 ★	—1929, 2c-10s Airpost (C1-C8). Complete set, Very Fine (Photo)	27.00
662 ★	—1930, 1s-10s Airpost (C9-C11). Very Fine	6.25
663 ★	—1930, 1s-10s Mendez Airpost (C12-C14). Complete, Very Fine	9.00
664 ★	—1936-39, Eight Airpost Issues (C19-C61). Complete, Very Fine	10.43
665 ★	—1929-30, Airpost Officials (CO1-CO7, CO9-CO12). First set without gum, Fine	11.65
666 ★	—1929, 10s Airpost Official (CO8). Very Fine (Photo)	75.00

EGYPT

667 ★	1925, 5m-15m Geographical Congress (105-107). Complete set, Fine	8.50
668 ★	1926, 5m-200m Agricultural Exposition (108-113). Complete, Fine	11.50
669 ★	1926, 5m-15m Port Fuad Issue (121-123). Very Fine (Photo)	105.00
670 ★	1933, 5m-20m Railway Congress (168-171). Complete, Very Fine	10.00

671 ★	1933, 5m-20m Aviation Congress (172-176). Complete, Very Fine	12.50
672	1933, 1m-200m Postal Union Congress (177-188). Very Fine	6.12
673 ★	1934, 1m-50Pi Postal Union Congress (177-189) . Very Fine	32.69
674 ★	1934, £1 Postal Union Congress (190) . Very Fine (Photo)	40.00
675	1933, £1 Postal Union Congress (190) . Lightly cancelled, Very Fine (Photo)	20.00
676 ★	1938, £1 King's Birthday (224) . Very Fine (Photo)	50.00
677 ★	1939, 30m-£1 King Farouk (234-240). Very Fine	18.09
678 ★	1931, 50m-100m Zeppelin Airpost (C3-C4). Complete, Very Fine	15.00
679 ★	1933-38, 1m-200m Airpost (C5-C25). Complete set, Very Fine	18.66
680 ★	1922, 3m Orange Official (O19). Very Fine	6.00
681 ★	1922, 15m, 50m Officials (O28-O29). Fine	18.00
682 ★	ERITREA , 1930-34, Three Issues (158-174, B33-B37). Complete sets, Very Fine	6.65
683 ★	—1934, Airpost Issues (C1-C6, CB1-CB10). Complete sets, Very Fine	5.05
684 ★	—1936, 25c-10l Airpost (C7-C16). Complete, Very Fine	10.50
685 ★	—1934, 25l+2l Official Airpost (San. #100). Very Fine (Photo)	100.00
686 ★	ESTONIA , 1923, Airposts (C4-C8). Complete set, Very Fine	33.50
687 ★	FALKLAND IS. , 1933, ½p-1/ Centenary Issue (65-72). Very Fine	19.85
688	FERNANDO PO , 1901, 1c-10P (89-103). Complete set, Very Fine	14.35
689 ★	FINLAND , 1930, 10m Zeppelin , Airpost (C1). Very Fine	15.00
690 ★	FRANCE , 1930-31, 2Fr. 5Fr (249, 263). Very Fine	8.50
691 ★	—1931, 10Fr Dark Blue (252). Very Fine	6.00
692 ★	—1931, 20Fr Orange Brown (254A). Very Fine	10.00
693 ★	—1934, 1.50Fr Peace Issue (294). Very Fine	7.00
694 ★	—1938-40, 10-20Fr, 50Fr (352-53, 394). Very Fine	8.75
695 ★	—1917-27, Semi-Postals (B6-B8, B10). Very Fine	13.50
696 ★	—1917-27, 1Fr+1Fr Semi-Postal (B12). Very Fine (Photo)	17.50
697	—1922, 5Fr+1Fr Semi-Postal (B23). Very Fine	5.00
698 ★	—1928, 1.50Fr+8.50Fr Semi-Postal (B27). Very Fine	10.00
699 ★	—1928, Same as above, Very Fine	10.00
700 ★	—1930, 1.50Fr+3.50Fr Semi-Postal (B34). Very Fine	7.50
701 ★	—1935-37, Semi-Postals (B42-B62, B66-B67), Complete sets, Very Fine	11.92

702	✉	—1927, 2Fr-5Fr Airpost (C1-C2). Complete set tied on special flight cover, Very Fine	10.00
703	★	— 50Fr Banknote Airpost (C15). Very Fine (Photo)	25.00
704	★	—1936, 1.50Fr-10Fr Airpost (C16-C17). Complete, Very Fine	12.50
705	★	—1936, 10Fr Airpost (C17). Very Fine	12.00
706	★	—1936, 10Fr Airpost (C17). Very Fine	12.00
707	★	— Offices in Morocco , 1933, 1c-20Fr (124-147 except 1934 values #140, 142). Very Fine	10.89
708	★	— Offices in Morocco , 1935-38, Two Semi-Postal Issues (B10-B20). Complete, Very Fine	10.04
709	★	— Offices in Morocco , 1928, Airpost Semi-Postal (CB1-CB20), Complete, Very Fine	9.00
710	★	FRENCH COLONIES , 1937, Paris Exposition Issue for 21 Colonies, Complete, Very Fine	—
711	★	FR. EQUATORIAL AFRICA , 1937, 1c-20FR. (bet. #33-72). Complete set as originally issued, 24 values, Very Fine	9.50
712	★	—1937-41, Four Issues (142-155, B9, C1-C8, J1-J11). Complete sets, Very Fine	11.10
713	★	FRENCH GUIANA , 1935, 40c-10Fr Tercentenary (156-161). Complete, Very Fine	15.25
714	★	GABON , 1932-33, 1c-20FR. Pictorial Issue (124-147). Complete set, Very Fine	27.37
715		GAMBIA , 1904, 2/ Black and Orange (61). Very Fine	9.00
716	★	GERMAN EAST AFRICA , 1906, 60h, 2R (38, 40). Very Fine	7.00
717		GERMANY SOUTH-WEST AFRICA , 1906-12, 30p, 1M, 2M (31-36). Fine	8.50
718		—1906, 5M Slate and Carmine (38). Very Fine	10.00

GERMANY

719	★	1934-41, Twenty One Postage Issues (432-435, 442-445, 448-464, 469-472, 477-480, 484-505). Complete sets, Very Fine	10.58
720	★	1924, 5pf-50pf Semi-Postal Issue (B8-B11). Complete set, Very Fine	8.75
721	★	1925-27, Two Semi-Postal Issues (B12-B14, B19-B22). Complete sets, Very Fine	6.95
722	★	1930-34, Philatelic Ex. and Winterhelp Semi-Postal Issues (B34-B37, B59-B67). Complete sets. Very Fine	12.30
723	★	1933, Souvenir sheet of Four (B58). Very Fine	35.00
724	★	1935-37 Nine Semi-Postal Souvenir Sheets (B68, B90-B92, B102-B106). Very Fine	10.85

725 ★	1935-38, Eleven Semi-Postal Issues (B79-B90, B93-B101, B107-B131). Complete sets, Very Fine	11.13
726 ★	1938-39, Eleven Semi-Postal Issues (B132-B140, B144-B168 no A#). Complete sets, Very Fine	11.10
727 ★	1940-41, Fourteen Semi-Postal Issues (B169-B172, B174-B191, B194-B199). Complete sets, Very Fine	19.12
728 ★	1924, 5pf-300pf Air Post Issue (C20-C26). Complete set, Very Fine	13.90
729 ★	1928-38, Four Air Post Issues (C35-C37, C46-C60). Complete sets, Very Fine	7.32
730 ★	1931, 1M-4M Polar Flight Issue (C40-C42). Complete set, Very Fine (Photo)	52.50
731 ★	1933, 1M-4M Chicago Flight Issue (C43-C45). Complete set, Very Fine	17.00
732 ★	1933, 1M-4M Chicago Flight Issue (C43-C45). 1M used, Complete set, Very Fine	13.00
733 ★田	1933, 1M Chicago Flight Issue (C43). Block of 4 , Very Fine	36.00
734 ★	OFFICES IN CHINA , 1906-13, 40c-2½D (52-56). Very Fine	7.35
735 ★	GIBRALTAR , 1938, ½p-£1 George VI (107-117). Complete set as issued, Very Fine	17.83
736 ★	GOLD COAST , 2/, 2/6p, 2/ Edwards (45, 55, 63). Very Fine	13.50
737 ★	—1913-23, 2/6p-5/ George V (77-78). Very Fine	7.00
738 ★	—1916, 20/ George V (80) , Very Fine	(Photo) 17.50
739	GREAT BRITAIN , 1840, 1p Black (1), Margins all around, Very Fine (Photo)	6.00
740	—1840, 1p Black (1). Margins all around, Very Fine	6.00
741 ★	—1902, 5/ Edward (140). Very Fine	5.50
742	—1902, £1 Edward (142). Very Fine	8.00
743	—1913-18, £1 Green (176). Tiny thin. Very Fine appearance	20.00
744 ★	—1929, £1 Postal Union (209). Very Fine	(Photo) 22.50
745 ★	—1934, 2/6p-10/ (222-224). Very Fine	10.25
746 ★	GREECE , 1937-39, Four Issues (396-408, 414-424). Complete sets. Very Fine	9.00
747 ★	—1940, 3d-100d National Youth (427-436). Complete. Very Fine	10.00
748 ★	—1926-33, Three Airpost Issues (C1-C14). Complete. Very Fine	5.55
749 ★	—1940, 2d-100d Airpost (C38-C47). Complete. Very Fine	10.50
750 ★	— For Use In North Epirus , 1940, Complete (N202-18, NJ27-31, NRA1-3). Very Fine	8.48

751 ★	GRENADA , 1902, ½p-1/ Edward (48-54). Very Fine	8.20
752 ★	—1904-06, ½p-1/ (58-9, 62-64). Very Fine	6.75
753 ★	—1904-06, Same as above. Very Fine	6.75
754 ★	—1906-11, ½p-2/ (68-75, 77). Very Fine	16.10
755 ★	—1913-14, 3p-5/ (86-87, 89-90). Very Fine	6.50
756 ★	—1934, ½p-5/ George V Pictorial Issue (114-123). Complete set. Very Fine	9.50
757 ★	GUADELOUPE , 1935, 40c-10Fr Tercentenary (142-147). Complete. Very Fine	16.00

GUATEMALA

758 ★	1922, 25c on 60c, Inverted Surcharge (181 var.), not listed. Very Fine	—
759 ★	1937, ½c-1.50Q President Ubico Commem. (280-291). Complete. Very Fine	12.32
760 ★	1929-33, Airposts (C1-C16, C20-C25). Complete sets, some used. Fine-V. F.	8.64
761 ★	1934-35, Two Airpost Issues (C26-C31). Complete. Very Fine	7.00
762 ★	1935, 1c-1Q Domestic Airpost , Nine values as issued (Bet. C32-C46). Very Fine	(Photo) 42.95
763 ★	1935, 1c-1Q Foreign Airpost , Eleven values as issued (Bet. C47-C66). Very Fine	(Photo) 45.35
764	1935-37, 2.50Q-5Q Foreign Airpost (C68-C69). Very Fine used	14.00
765 ★	1937, 2c-1Q Domestic Airpost (C70-C79). Complete set. Very Fine	20.00
766 ★	1937, 1c-1.50Q Foreign Airpost (C80-C91). Complete set. Very Fine	22.58
767 ★	HONDURAS , 1920, 2c Silver, 2c Bronze (196-197). Very Fine, part gum	8.00
768 ★	—1930-31, Airposts (C41-C45, C69-C72). Very Fine	7.15
769 ★	—1940-41, Two Airpost Issues (C101-108, C111-C117). Complete. Very Fine	5.70
770	HONG KONG , 1903, \$2.00-\$3.00 (82-83). Fine	15.50
771 ★	HUNGARY , 1938, Four Issues (511-527, 529-36). Complete sets. Very Fine	9.28
772 ★	—1940, Semi-Postals and Souvenir Sheet (B126-B130). Complete. Very Fine	12.00
773 ★	—1927-31, Two Airpost Issues (C12-C25). Complete. Very Fine	14.50
774 ★	—1933, 10f-5p Airpost (C26-C34). Complete set. Very Fine	14.90

775 ★	ICELAND , 1930, 3a-10k Parliament Millenary Issue (152-166). Complete Very Fine	12.57
776 ★	—1938-41, Three Issues and Two Souvenir Sheets (232-239, B5-B6). Complete sets. Very Fine	9.02
777 ★	—1928-34, Six Airpost Issues (C1-C11, C15-C20). Complete sets. Very Fine	9.45
778 ★	—1933, 1k-10k Italy-Iceland Flight (C12-C14). Complete. Very Fine (Photo)	85.00
779 ★	INDIA , 1854, ½a Blue (2). Very Fine, no gum	7.00
780 ★	INDO-CHINA , 1936, 1c-2pi For Use in Annam and Cambodia (171-192). Complete. Very Fine	11.48
781 ★	—1933-38, 1c-10pi Airpost (C1-C17, lacks the three 1941 values). Very Fine	13.79
782 ★	IRAQ , 1924-25, 10R Official (O24). Very fine	6.50
783 ★	IRISH FREE STATE , 1922, 2/6p-10/ (12-14). Very Fine	19.00
784 ★	—1925, 2/6p-10/ (77-79). Very Fine	10.50
785 ★	—1937, 2/6p-10/ (96-98). Very Fine	8.75
786 ★	ITALIAN COLONIES , 1932, 50c-100L Airpost plus Airpost Spec. Deliveries (C1-C7, CE1-CE2). Complete. Very Fine	10.72
787 ★	—1933-34, Three Airpost Issues (C20-C35). Complete sets. Very Fine	10.12
788 ★	ITALIAN SOMALILAND , 1934, Four Issues (156-169, C1-C6, CB1-CB10). Complete sets. Very Fine	8.78
789 ★	—1930-34, Semi-Postals (B33-B51). Complete sets. Very Fine	7.50
790 ★	—1936, 25c-10L Airpost (C7-C16). Complete set. Very Fine	10.35
791 ★	—1934, 25L+2L Airpost Official (San. 501). Very fine (Photo)	100.00

ITALY

792 ★	1924, Two Commemorative Issues (165-174). Complete sets. Very Fine	8.78
793 ★	1928-29, 20L, 5L-50L High Value Commemorative Issues (206, 227-231). Very Fine	9.00
794 ★	1930, 7.70L Trans-Atlantic Squadron (C27). Very Fine	8.00
795 ★	1932-33, Four Airpost Issues (C28-C47). Complete sets. Very Fine	13.96
796 ★	1933, Balbo's Flight , Airpost (C48-C49). Complete. Very Fine	10.00
797 ★	1932-34, Five Airpost Issues (C52-C78). Complete sets. Very Fine	11.87
798 ★	1932-34, Airpost Special Delivery (CE1-4, CE6-9). Very Fine	8.60
799 ★	1934, 10L Airpost Official (CO2). Very Fine	7.50

800 ★	AEGEAN IS. , Caesar Postage and Air Post Commemorative Issues (47-56, C39-C43). Complete sets. Very Fine	6.30
801 ★	—1930-33, Five Air Post Issues (C1-C14, C20-C25). Complete sets. Very Fine	14.01
802 ★	—1932, 50c-5L Garibaldi Commemorative Air Post Issue (C15-C19). Complete set. Very Fine	10.00
803 ★	—1933, Balbo Flight Issue (C26-C27). Complete set. Very Fine	9.00
804 ★	—1932, Air Post Special Delivery Issue (CE1-CE2). Complete set. Very Fine	8.50
805 ★	—1932, Garibaldi Issue, Eleven complete sets from eleven different Islands. Very Fine	33.00
806 ★	JAMAICA , 1905-11, 2/-5/ (44-45). Very Fine	6.00
807 ★	—1920, 10/ George V (87). Very Fine	10.00
808 ★	—1923, ½p-2½p Semi-Postal (B1-B3). Complete set, 1p value has crease others Very Fine	10.00
809 ★	JAPAN , 1937-39, ½s-10y (257-275). Complete set. Very Fine	10.26
810 ★	—1919, 1½s-3s Airpost (C1-C2). Complete. Very Fine	5.00
811 ★	JUBILEES, BRITISH , complete set of 1935 Silver Jubilee, 249 stamps	—
812 ★	JUGOSLAVIA , 1939-40, 25p-30d (142-154). Lacks #148A and 148B. Very Fine	7.84
813 ★	—1938-41. Nine diff., Semi-Postal Issues (Bet. B62-B123). Complete sets. Very Fine	16.85
814 ★	—1937-40, Two Airpost Issues (C7-C16). Complete. Very Fine	10.31
815 ★	—1940, 40d-50d Airpost (C15-C16). Complete. Very Fine	6.00
816 ★	KARELIA , 1922, 5p-25m (1-15). Complete set. Fine	—
817 ★	KIAUCHAU , 1906-10, 1c-\$2½ (24-33). Complete set. Very Fine except no gum	9.30
818 ★	KUWAIT , 1933-34, 1a, 2a, 6a Airpost (C1-2, C4). Very Fine	4.50
819 ★	—1933-34, 4a Airpost (C3). Very Fine (Photo)	40.00
820 ★	LATVIA , 1928-38, Three Semi-Postal (one Souvenir sheet) Issues (B34-B45, B56-B65, B70). Complete sets. Very Fine	10.25
821 ★	—1932, 20S-50s Perf. and Imperf. Air Post Issue (San. #21-26). Complete set. Very Fine	5.50
822 ★	—1940, 1S-5L Occupation Issue (2N45-2N57). Complete sets both used and unused. Very Fine	7.33
823 ★	LEBANON , 1924-28, Airpost Issues (C1-C28). Complete. Very Fine	14.55
824 ★	—1929, Op50-25pi Airpost (C33-C35). Complete. Very Fine	7.75

825 ★	—1929, 15pi on 25pi Airpost (C36). Very Fine	15.00
826 ★	—1930-31, Op50-100pi Airpost (C39-C48). Complete. Very Fine	5.75
827 ★	—1936, Tourist Propaganda Airpost Issue (C49-C56). Very Fine	15.20
828	LIBERIA , 1901-02, 1c green (65). Very Fine	7.00
829 ★田	—1915-16, 10c on 50c (143). Block, surcharge just a blur on two. Very Fine	6.00
830	—1916, 10c on 24c Pair with Inverted Surcharge tied on piece with Registry stamp (159a, F6). Fine	15.15
831 ★	—1941, Postage stamp Centennial complete 16 values (280-82, B16-18, CB1-3, CE1, CF1, E1, F35). Very Fine	11.50
832 ★田	—1920, 4c on 2c Double Surcharge. One Inverted (O112c). Block. Very Fine	8.00

LIECHTENSTEIN

833 ★	1928-39, Three Commemorative Issues (82-85, 132-135, 155-157). Complete sets. Very Fine	6.90
834 ★	1930, 3rp-2Fr. Pictorial Issue (94-107). Complete set. Very Fine	24.35
835	1933, 3FR. Prince Francis I (114). Very Fine (Photo)	17.50
836 ★	1938-42, Souvenir Sheet. Pictorial and Commemorative Issues (151, 166-170, 176-180). Complete sets. Very Fine	7.00
837 ★	1939, 2Fr.-3Fr. Arms Issue (158-159). Complete set. Very Fine	6.00
838 ★	1940, 20rp-3Fr. Prince John Birthday Issue (160-165). Complete set. Very Fine	9.25
839 ★	1925-39, Three Semi-Postal and One Air Post Issue (B1-B6, B14, C17-C23). Complete sets. Very Fine	8.18
840 ★	1930, 15rp-1Fr. Air Post Issue (C1-C6). Complete set. Very Fine	9.40
841 ★	1931, 1Fr.-2Fr. Zeppelin Issue (C7-C8). Complete set. Very Fine	16.00
842 ★	1934-39, Two Air Post Issues (C9-C13, C17-C23). Complete sets. Very Fine	6.28
843 ★	1936-38, Two Air Post Issues (C15-C23). Complete sets. Very Fine	6.83
844 ★	LITHUANIA , 1923, 1C-5L Commemorative Issue (176-188). Complete set. Very Fine	8.10
845	—1924-27, 25c, 5c (207, 216). Very Fine	7.50
846 ★	—1924-40, Three Semi-Postal Issues (2 Souvenir Sheets), and Semi-Postal Air Post Issue (B51-B55, CB1-CB4). Complete sets. Very Fine	7.10
847 ★	—1921-36, Eight Air Post Issues (C8-C30, C32-C35, C37-C46, C53-C55). Seven Complete sets. Very Fine	13.25

LUXEMBOURG

848	1920, 15c Rose Souvenir Sheet of 5 (125a) . Very Fine used	30.00
849 ★	1939, Two Commem. Issues (206-216). Complete sets. Very Fine	8.00
850 ★	1939, Souvenir Sheet (217). Very Fine	5.00
851 ★	1921-28, Semi-Postals (B1-B34). Complete. Fine-Very Fine	9.32
852 ★	1929, Princess Gabrielle, Semi-Postal (B35-B39). Complete. Fine	7.50
853 ★	1930, Prince Charles (B40-B44). Complete set. Fine	9.00
854 ★	1931, Princess Alix (B45-B49). Complete set. Very Fine	9.00
855 ★	1932, Countess Ermesinde (B50-B54). Complete set. Very Fine	12.50
856 ★	1934, John The Blind (B60-B65). Complete set. Very Fine	13.00
857 ★	1935, 5c-20Fr. Intellectuals , complete set of 15 different mounted on special page with Albert Einstein autograph on page, Very Fine	—
858 ★	1938, St. Willibrord (B86-B91). Complete set. Very Fine	6.50
859 ★	1939, Semi-Postal (B98-B103). Complete set. Very Fine	6.55
860 ★	MADAGASCAR , 1935, 50c-20Fr Air Post Issue (betw. C1-C15). Thirteen values, complete set as issued in 1935, Very Fine	39.70
861 ★	MALTA , 1922-26, 2/-10/ (110-113), Fine	14.00
862 ★	—1922-26, £1 Carmine Red & Black (114). Very Fine	12.50
863 ★	—1926, 1/-10/ (125-129). Fine	21.75
864 ★	—1926-27, ¼p-10/ George V Pictorial (131-147). Complete. Very Fine	20.11
865 ★	MANCHUKUO , 1932, ½f-1y (1-18). Complete set. Very Fine	11.43
866 ★	—1933-34, Two Commem. Issues (19-22, 32-35). Complete sets. Very Fine	8.50
867	—1934, 15f Rose (30). Lightly cancelled. Very Fine	10.00
868 ★	MARTINIQUE , 1935, 40c-10Fr Tercentenary Issue (173-178). Complete set. Very Fine	18.00
869 ★	MEMEL , 1920, 5pf-2.50M (1-13, 15-17). Very Fine	7.88
870 ★	—1920, 1M-2.50M (13-17). Very Fine	8.95
871 ★	—5pf-3M (18-29). Complete set. Very Fine	7.93
872	MESOPOTAMIA , 1920-22, Officials (NO1-NO12, NO14-NO22). Three values unused. Fine	20.14

MEXICO

873 ★	1914, 4c Blue Violet (364). Centered left. Fine	25.00
-------	---	-------

874 ★	1914, 20c Yellow Brown (367). Corner crease, Fine appearance	60.00
875	1915, 2c-5c Villa Monogram (440-442). Fine, not priced	—
876 ★	1915, 15c-20c Villa Monogram (444-445). Very Good	15.00
877 ★	1915, 5P Carmine & Black (465). Very Fine, not priced	—
878 ★	1915, 50c-5P Carranza Monogram (492-494), latter used. Fine	14.00
879	1916-20, 1P-5P (627-28). Fine	7.00
880 ★	1940, 5c-5P Penny Postage Commem. Issue (754-758). Complete set. Very Fine	7.68
881 ★	1940, Same as above. Very Fine	7.68
882	1929, 5P-10P Coat of Arms Air Post Issue (C18-C19). Very Fine used	10.75
883 ★	1929, 40c Aviation Week Air Post Issue (C27). Very Fine (Photo)	22.50
884 ★	1932, 5c-50c Carranza Air Post Issue (C40-C44). Complete set. Very Fine	7.25
885	1934, 20c-1P University Air Post Issue (C54-C56, C58). Very Fine used	7.50
886 ★	1936-42, Twelve Air Post Issues (C77-C79, C82-C84, C91-C102, C108-C110, C114-C128). Complete sets. Very Fine	13.55
887 ★	1940, 5c-5P Penny Post Air Post Issue (C103-C107). Complete set. Very Fine (Photo)	26.36
888 ★	1940, Same as above. Very Fine	26.36
889 ★	MIDDLE CONGO , 1933, 1c-20Fr (65-88). Complete set, few thin, balance Very Fine	22.97
890 ★	MONACO , 1920-21, 75c-5Fr (25, 28-29, 32). Fine	11.00
891 ★	—1932-33, 15c-20Fr Pictorial Issue (110-123, 125-126, 128-130). Nineteen values. Very Fine	24.15
892 ★	—1939, 10Fr, 40c-2.25Fr Commemorative Issues (176-181). Complete sets. Very Fine	5.25
893 ★	—1938-40, Cancer and Ambulance Issues (B24-B25, B36-B50). Complete sets. Very Fine	7.87
894	—1940, 20c-20Fr Ambulance Issue (B36-B50). Complete used set. Very Fine	7.12
895 ★	MONGOLIA , 1926-29, 40m-5t (40-44). Very Fine	24.50
896 ★	MONTERRAT , 1922-29, 2/6p-5/ George V (71-74). Very Fine	11.00
897 ★	MOZAMBIQUE CO. , 1935, 5c-20e Air Post Issue (C1-C15). Complete set. Very Fine	8.32
898	NATAL , 1908-09, 2/-10/ Edwards (112-116). Very Fine	25.00
899	—1908-09, £1 Edward (117). Very Fine (Photo)	40.00
900 ★	NAURU , 1916-23, 5/ Carmine (14). Very Fine	5.00

NETHERLANDS

901	1913, 2½c-2½G Jubilee Issue (90-99). Very Fine used	6.05
902 ★	1913, 5G Jubilee Issue (100). Very Fine	8.00
903	1920, 2.50Gld-2.50Gld (104-105). Very Fine used	9.00
904 ★	1940, 5c-40c Wilhelmina Issue (216-225). Complete set. Very Fine	9.40
905 ★	1906-24, Three Semi-Postal Issues (B1-B8). Complete sets. Fine	7.25
906	1926-37, Six Semi-Postal Issues (B12-B15, B21-B24, B73-B76, B81, B86-B89, B98-B102), Complete sets, Very Fine used	5.91
907 ★	1927-38, Seven Semi-Postals Issues (B16-B20, B25-B47, B103-B107). Complete sets. Very Fine	11.25
908 ★	1928-39, Eleven Semi-Postal Issues (B25-B32, B66-B71, B77-B80, B82-B85, B90-B107, B113-B122). Complete sets. Very Fine	16.75
909 ★	1931-33, Four Complete Semi-Postal Issues (B48-B57, B62-B65). Complete sets. Very Fine	11.30
910	1940, 7½c-30c Court of Justice Issue (O16-O19). Complete set. Very Fine	8.00
911 ★	NEW CALEDONIA , 1933, 1c-20Fr Paris-Noumea Commem. Issue (182-207). Complete set. Very Fine	20.95

NEW GUINEA

912 ★	1931, ½p-10/ Air Post Issue (C1-C12). Very Fine	21.55
913 ★	1931, £1 Greenish Gray Air Post (C13). Very Fine (Photo)	22.50
914 ★	1932-34, ½p-1/ Air Post Issue (C28-C39). Very Fine	6.00
915	1932, 5/, 10/, £1 Air Post Issue (C41-C43). Very Fine used	6.00
916 ★	1935, £2 Violet Air Post (C44). Very Fine (Photo)	45.00
917 ★	1935, £5 Green Air Post (C45). Very Fine (Photo)	100.00
918 ★	1939, ½p-10/ Air Post Issue (C46-C58). Very Fine	16.02
919 ★	1939, £1 Greenish Gray Air Post (C59). Very Fine	15.00

NEW ZEALAND

920 ★	1906, ½p-6p Christchurch Ex. Issue (122-125). Complete set. Fine	11.25
921 ★	1935, ½p-3/ Pictorial Issue (185-198). Complete set. Very Fine	8.73
922 ★	1936-41, 1p Booklet Pane of 6 (204a). Very Fine	—
923 ★	1940, ½p-1/ Centenary Issue (229-241). Complete set. Very Fine	6.20
924 ★	1929-42, Twelve Semi-Postal Issues (B1-B2, B7-B21). Complete sets. Very Fine	7.50

925 ★	1931, 1p-2p Laughing Boy Semi-Postal Issue (B3-B4). Complete set. Very Fine	10.00
926 ★田	1932-33, Goddess and Road to Health Semi-Postal Issues (B5-B6). Blocks of each. Very Fine	16.00
927 ★	1931-35, Air Post Issues Complete (C1-C8). Four comp. sets. Very Fine	6.60

NICARAGUA

928 ★	1932, 1c-15c Commem. (575-579). Complete set. Very Fine	7.50
929 ★	1929-37, Nine Airpost Issues (Bet. C9-C202). Complete sets. Very Fine	13.24
930	1931, 15c on 25c Airpost (C9). Closed tear. Very Fine appearing	35.00
931 ★	1931, 15c, 20c Surcharges, Airpost (C12, C14-C15). Very Fine	11.50
932 ★	1932, Two Commem. Airpost Issues (C67-C76). Complete sets. Very Fine	15.00
933 ★	1937, 10c-\$1.00 Constitution Airpost (C203-C214). Complete. Very Fine	12.50
934 ★	1940-41, Four Airpost Issues (C241-C260). Complete sets. Very Fine	5.98
935 ★	1929, 25c Orange, Airpost Official (CO1). Well centered, small spot in paper at top	(Photo) 30.00
936 ★	1932, 25c Black Brown, Airpost Official (CO9). Very Fine	25.00
937 ★	NIGERIA , 1936, ½p-£1 George V Pictorial (38-49). Complete set. Very Fine	(Photo) 37.43
938 ★	NORTHERN RHODESIA , 1925-29, ½p-20/ George V (1-17). Complete set. Very Fine	(Photo) 53.19
939 ★	—1938, ½p-20/ George VI (25-37). Complete set. Very Fine	19.29
940 ★	NORWAY , 1925, 2ö-25ö North Pole Issue (104-110). Complete set. Very Fine	5.40
941	—1925, 2ö-25ö North Pole Issue (104-110). Complete used set. Very Fine	4.95
942 ★	—1935-41, Three Semi-Postal Issues (B5-B8, B15-B19). Complete sets. Very Fine	6.00
943 ★	NYASALAND PROTECT. , 1934-35, ½p-1/ George V (38-46). Complete set. Very Fine	4.15

PANAMA

944 ★	1903-04, 20c Violet (155). Fine. Tropical gum	15.00
945 ★	1903-04, 50c Bistre Brown (156). Fine	(Photo) 30.00
946 ★	1906-07, 8c Purple & Black, Inverted Head (190 var.). Very Fine, tropical gum	—
947 ★田	1915-16, 20c Panama Exposit. Issue (212). Block of 50 . Well centered, no gum	75.00

948 ★	1918, 12c Purple & Black (214). Strips of 10 , tissue paper stuck to back	30.00
949 ★	1919, 2c on 2½c (217). Sheet of 100 , no gum, perfs. broken several places, nicely centered	25.00
950 ★	1920, 50c-1b (218-219). Fine	7.50
951 ★田	1920, 50c-1b (218-219). Blocks . Fine	30.00
952 ★	1921, ½c-50c Centenary of Independence (220-231). Complete, 10c used, tropical gum. Fine	9.54
953 ★	1921, 24c Centenary of Independence (230). Sheet of 100 , nicely centered, tropical gum, ten have light crease	175.00
954 ★	1921, 2c Dark Green (232). Sheet of 100 . Very Fine, tropical gum	25.00
955 ★	1924-26, ½c-1b, ½c-50c (234-255). Complete sets. Very Fine	9.75
956 ★	1928, 2c Lindbergh Issue (256). Sheet of 100 . Very Fine	15.00
957 ★	1928, 5c Lindbergh Issue (257). Pane of 50 . Very Fine	10.00
958 ★	1934, 1c-15c Commem. (268-273). Complete set. Very Fine	4.55
959 ★	1936-37, Three Issues (278-310). Complete sets. Very Fine	20.45
960 ★	1939-42, Two Issues (322-330, 342-349). Complete sets. Very Fine	9.50
961 ☒	1929, 25c on 10c Airpost, Inverted Surcharge (C1a). Tied on cachet flight cover. Very Fine	7.50
962 ★田	1929, 25c on 20c Airpost (C4). Blocks of 40 . Very Fine	24.00
963 ★	1930, 5c on 10c Airpost (C5). Sheet of 100. Very Fine	12.00
964 ★	1930, 1b Airpost (C6). Very Fine	6.00
965 ★	1930, Two Airpost Issues (C7-C14). Fine	6.20
966 ★	1936, 5c-1b Airpost (C21-C26). Complete set. Very Fine	10.30
967 ★	1937, 5c-1b Airpost (C27-C32). Complete set. Very Fine	22.00
968 ★	1938, 7c-1b Constitution, Airpost (C49-C53). Complete set. Very Fine	12.25
969 ★	1939-42, Two Airpost Issues (C54-C61, C74-C79). Complete sets. Very Fine	10.57
970 ★田	1926, 10c-20c Special Delivery (E1-E2). Set of Blocks. Very Fine, no gum	5.80
971 ★	1916, 2½c Inverted "V" for "A" in pair, one normal (H23a). Well centered, no gum, not priced	—
972 ★	1916, 2½c "R.A." for "A.R." pair (H23b). Well centered, no gum	—
973	1916, 2½c Double Period after "A" none after "R" in pair, one normal (H23c). Very Fine	—
974 田	1916, 2½c Double Overprint (H23d). Block. Fine	8.00
975 ★	PAPUA, Air Post Issues Complete (C1-C15). Four Comp. sets. Very Fine	7.30

PARAGUAY

976 ★	1920, 1p Yellow Brown, Double Overprint (229b). Fine, not priced	—
977 ★	1920, 1p Yellow Brown, Double Overprint , one. Inverted (229c). Fine, not priced	—
978 ★	1920, 50c Yellow, Double Surcharge, One Inverted (230a). Very Fine. Not priced	—
979 ★	1920, 50c Yellow Double Surcharge Inverted (230B). Very Fine. Not priced	—
980 ★	1920, 1.75P Greenish Blue. Inverted Surcharge (231a). Very Fine. Not priced	—
981 ★	1920, 1.75P Greenish Blue Double Surcharge (231B). Very Fine. Not priced	—
982 ★	1920, 100c Yellow Brown, Inverted Surcharge (232a). Fine. Not priced	—
983 ★	1920, 100c Yellow Brown, Double Surcharge Inverted , (232B). Very Fine. Not priced	—
984 ★	1921, Two errors, Double surcharge; Double surcharge, one inverted (241 var.). Very Fine, not listed	—
985 ★	1921, Two errors, Double surcharge; Double surcharge, one inverted (242 var.). Very Fine, not listed	—
986 ★	1939-40, Five Commemorative Issues (355-381). Complete sets, Very Fine	7.10
987 ★	1929-32, Eight Air Post Issues (C5-C12, C19-C28, C36-C38, C54-C55, C74-C78). Very Fine	9.51
988 ★	1930, 5c-10P Air Post Issue (C29-C35). Complete set. Very Fine	6.33
989 ★	1933-34, Zeppelin Air Post Issues (C79-C83, C88-C92). Complete sets. Very Fine	6.65
990 ★	1939, 1P-500P Peace Conference Issue (C113-C121). Complete set. Very Fine	10.05
991 ★	1939, Same as above . Very Fine	10.05
992 ★	1939, 28P-90P University Air Post Issue (C122-C123). Complete set. Very Fine	5.00
993 ★	1939, 30P-90P New York World's Fair Issue (C124-C126). Complete set. Very Fine	10.50
994 ★	1940, 20c-500P Pan American Commem. Issue (C127-C130). Complete set. Very Fine	6.90
995 ★	1926, 1p Double Overprint (L10 var.). Very Fine, not listed	—
996 ★	PERSIA , 1927, 1c-30k Airpost (C1-C16). Complete set. Very Fine	54.25
997 ★	—1928, 3k-3t Airpost (C17-C21). Complete set. Very Fine	15.75

998 ★	—1928-29, 1c-30k Airpost (C22-C23). Complete set. Very Fine	14.36
999 ★	—1930, 1c-3t Airpost (C34-C50). Complete set. Very Fine	13.91
1000 ★	—1935, 1c-3t Airpost (C51-C67). Complete set. Very Fine	15.61

PERU

1001 ★	1921-32, Two Commemorative Issues (226-231, 300-301). Very Fine	7.50
1002 ★	1935, 2c-2s Centenary Issue (324-331). Complete set. Very Fine	5.20
1003 ★	1936, 2c-10S Callao Centenary Issue (341-351). Complete set. Very Fine	15.37
1004 ★	1936, 2c-10S Pictorial Issue (bet. #356-373). Ten values, complete set as issued in 1936. Very Fine	17.45
1005 ☒	1927, 50c Violet, First Printing Airpost (C1). Two tied on flight cover. Very Fine (San. \$30.00)	8.00
1006 ★	1935, 5c-10S Lima Centenary Air Post Issue (C6-C12). Complete set. Very Fine	11.60
1007 ★	1936, 5c-10S Air Post Issue (bet. # C16-C39). Thirteen values, complete set as issued in 1936. Very Fine	25.55
1008 ★	1904-11, 10c Special Del., 1c-1c Parcel Post Issues (E2, Q7-Q8). Fine	5.00
1009 ★	POLAND , 1938, Souvenir Sheets (B29, B31). Very Fine	6.50
1010 ★	—1940-41, German Occupation Stamps (N30-N75). Complete sets. Very Fine	22.13
1011 ★	PORTUGAL , 1940-41, Semi-Postal Souvenir Sheets (B1-B3). Very Fine	8.00
1012 ★	—1937-41, 1.50e-50e Airpost (C1-C10). Complete, the 1941 values are used. Very Fine	5.78
1013 ★	SIERRA LEONE , 1932, 10/ George V (151). Very Fine	7.50
1014 ☒	SYRIA , 1920, 1pi-10pi Airpost (C1-C3). Tied on cover with extra copy #C1. Fine	21.00
1015	TOBAGO , 1879, 5/ Slate (5). Fine	20.00
1016 ★	VICTORIA , 1850, 1p Dull Red (1). Part O. G., minor faults, nice appearing	50.00
1017	FOREIGN , Misc. balance of collection includes stamps on approval cards, cover, etc., mostly 20th Century, used and unused (Est. \$50.00 net)	—
1018	FOREIGN , 195 stamps, all defective	405.00
1019	Foreign Defectives , 139 stamps, nice appearing lot	300.00
1020	FOREIGN , 19th Century, 110 stamps, all defective	268.25
1021	FOREIGN , Damaged, 542 stamps, all 19th Century	1133.20

1022	Foreign Damaged , 306 stamps	1125.00
1023	FOREIGN , Locals, Specimens, Reprints, Envelopes, Revenues, etc., 241 stamps	—

20th CENTURY LOTS BY COUNTRY

(These lots contain 20th Century Issues only, on album pages. The lots include many sets and are very desirable.)

1024	ABYSSINIA , 141 different, used and unused. Fine lot	69.11
1025	AFGHANISTAN , 28 different, used and unused. Fine lot	12.09
1026	ALBANIA , 129 different, used and unused. Fine lot	35.22
1027	ALGERIA , 90 different, used and unused. Fine lot	11.67
1028	ANDORRA , 35 different, all unused. Fine lot	14.73
1029	ARGENTINE REP. , 203 different used and unused. Fine lot	22.90
1030	ARGENTINE, Officials , 124 different, used and unused. Fine lot	—
1031	AUSTRALIA , 145 stamps, mostly diff., used and unused. V. G.—V. F.	43.01
1032	AUSTRIA , 383 different, used and unused. Fine lot	29.05
1033	BAHAMAS & BARBADOS , 77 stamps, mostly diff., used and unused. V. G.—V. F.	41.51
1034	BAVARIA , 280 mostly different, used and unused. Fine lot, nearly complete	23.62
1035	BELGIUM , 352 stamps, mostly diff., used and unused. Fine lot	51.50
1036	BOLIVIA , 164 mostly diff., used and unused. Fine lot	26.70
1037	BOSNIA , 166 different, nearly complete country, used and unused. Fine lot	49.41
1038	BRAZIL , 313 stamps, mostly diff., used and unused. V. G.—V. F.	35.44
1039	BULGARIA , 227 different, used and unused. Fine lot	27.21
1040	CANAL ZONE , 68 stamps, mostly diff., used and unused. Very Good lot	55.70
1041	CEYLON , 52 stamps, mostly diff., all used. V. G.—V. F.	15.13
1042	CHAD , 32 different, all unused. Fine lot	11.89
1043	CHILE , 236 stamps, mostly diff., used and unused. Fine lot	41.32
1044	CHINA , 232 stamps, mostly diff., used and unused. Fine lot	39.86
1045	COLOMBIA , 300 stamps, mostly diff., used and unused. Fine lot	92.37
1046	CONGO , 78 mostly diff., used and unused. Fine lot	15.09

1047	COSTA RICA , 184 stamps, mostly diff., used and unused. V. G.-V. F.	52.50
1048	CUBA , 142 stamps, mostly diff., used and unused. V. G.-V. F.	31.15
1049	CURACAO , 43 different, used and unused. Fine lot	17.82
1050	CYPRUS , 48 different, mostly used V. G.-V. F.	17.82
1051	CZECHOSLOVAKIA , 359 stamps, mostly diff., used and unused. Fine lot	46.11
1052	DANZIG , 302 different, mostly unused. Fine lot	50.07
1053	DENMARK , 185 stamps, mostly diff., used and unused. Fine lot	22.20
1054	DOMINICAN REPUBLIC , 233 stamps, mostly diff., used and unused. Fine lot	49.85
1055	DUTCH INDIES , 170 stamps, mostly diff., used and unused. Fine lot	39.81
1056	ECUADOR , 301 stamps, mostly diff., used and unused. Fine lot	87.60
1057	EGYPT , 232 stamps, mostly diff., used and unused. Fine lot	56.61
1058	EPIRUS , 45 diff. plus 25 unlisted items, used and unused. Fine lot	—
1059	ERITREA , 57 diff., used and unused. Fine lot	10.92
1060	ESTONIA , 73 different, used and unused. Fine lot	16.63
1061	FINLAND , 129 stamps, mostly diff., used and unused. Fine lot	27.06
1062	FIUME , 105 different, mostly unused. Fine lot	14.65
1063	FRANCE , 202 stamps, mostly diff., used and unused. Fine lot	53.35
1064	FRANCE - OFFICES ABROAD , 221 different, used and unused. Fine lot	40.20
1065	GABON , 64 different, all unused. Fine lot	10.70
1066	GERMANY , 519 stamps, mostly diff., used and unused. Fine lot	57.18
1067	GOLD COAST , 56 stamps, mostly diff., used and unused. Fine lot	15.52
1068	GREAT BRITAIN , includes Offices Abroad, 195 stamps, mostly diff., used and unused. Fine lot	27.90
1069	GREECE , 281 stamps, mostly diff., used and unused. Fine lot	44.65
1070	GUATEMALA , 155 stamps, mostly diff., used and unused. Fine lot	28.51
1071	HAITI , 200 stamps, mostly diff., used and unused. Fine lot	71.96
1072	HEJAZ , 71 stamps, mostly diff., used and unused. Fine lot	21.06
1073	HONDURAS , 168 stamps, mostly diff., used and unused. Fine lot	51.10
1074	HONG KONG , 52 stamps, mostly diff., used and unused. Fine lot	17.02
1075	HUNGARY , 839 stamps, mostly diff., used and unused. Fine lot	162.39
1076	ICELAND , 138 stamps, mostly diff., used and unused. Fine lot	23.44

SELLING YOUR COLLECTION?

REALIZE IMMEDIATE CASH
AND HAVE ADVANTAGE OF SELLING AT AUCTION.

I will advance on your collection immediate cash up to 75% of my appraisal value of what it should realize at auction.

It will then be sold at one of my coming auction sales. Commission is 20% of the gross and final settlement within thirty days after the sale.

Send collection direct (valued \$500 upwards) or to my bank, The Saugerties National Bank & Trust Co. for appraisal. Auction advance will be sent within 24 hours after receipt. If not entirely pleased, collection will be returned at my expense.



ROBERT A. SIEGEL

124 MAMARONECK AVE.

WHITE PLAINS, N. Y.

MEMORANDUM

1077	INDIA , 157 stamps, mostly diff., used and unused. Fine lot	15.86
1078	INDIAN NATIVE STATES , 140 stamps, mostly diff., used and unused. Fine lot	—
1079	INDO-CHINA , 72 stamps, mostly diff., used and unused. Fine lot	12.42
1080	IRISH FREE STATE , 66 stamps, mostly diff., used and unused. Fine lot	17.77
1081	ITALIAN COLONIES , 110 different, mostly unused. Fine lot	23.27
1082	ITALY , 636 stamps, mostly diff., used and unused. Fine lot	93.99
1083	JAMAICA , 60 stamps, mostly diff., used and unused. Fine lot	22.18
1084	JAPAN , 144 stamps, mostly diff., used and unused. Fine lot	13.64
1085	JUGOSLAVIA , 242 stamps, mostly diff., used and unused. Fine lot	24.85
1086	LATVIA , 103 stamps, mostly diff., used and unused. Fine lot	14.17
1087	LEBANON , 120 Different, used and unused. Fine lot	26.74
1088	LIBERIA , 190 different, used and unused. Fine lot	12.09
1089	LIBIA , 78 stamps, mostly diff., used and unused. Fine lot	11.75
1090	LIECHTENSTEIN , 73 different, unused. Fine lot	11.59
1091	LITHUANIA , 107 stamps, mostly diff., used and unused. Fine lot	13.09
1092	LUXEMBOURG , 163 Different, used and unused. Fine lot	23.46
1093	MADAGASCAR , 81 different, used and unused. Fine lot	15.10
1094	MALTA , 74 stamps, mostly diff., used and unused. Fine lot	12.49
1095	MANCHUKO , 84 stamps, mostly diff., all unused. Fine lot	19.87
1096	MARTINIQUE , 60 different, mostly unused. Fine lot	12.12
1097	MEMEL , 83 different, mostly unused. Fine lot	11.30
1098	MEXICO , 366 stamps, mostly diff., used and unused. Fine lot	138.21
1099	MIDDLE CONGO , 45 different, all unused. Fine lot	10.00
1100	MONACO , 90 different, used and unused. Fine lot	14.07
1101	MOZAMBIQUE & MOZ. COMPANY , 130 different, used and unused. Fine lot	16.15
1102	NETHERLANDS , 102 stamps, mostly diff., used and unused. Fine lot	12.38
1103	NEW ZEALAND , 105 stamps, mostly diff., used and unused. Fine lot	21.55
1104	NICARAGUA , 265 stamps, mostly diff., used and unused. Fine lot	42.60
1105	PALESTINE , 78 stamps, mostly diff., used and unused. Fine lot	19.26
1106	PANAMA , 194 stamps, mostly diff., used and unused. Fine lot	201.85
1107	PARAGUAY , 357 stamps, mostly diff., used and unused. Fine lot	47.01

1108	PERSIA , 246 different, used and unused. Fine lot	20.81
1109	PERU , 208 stamps, mostly diff., used and unused. Fine lot	39.55
1110	PHILIPPINES , 78 stamps, mostly diff., used and unused. V. G.-V. F.	33.68
1111	PORTUGAL , 255 different, used and unused. Fine lot	26.14

END OF SALE

THANK YOU

MAIL BIDS EARLY

NEW ADDRESS

*Collectors and Dealers are cordially
invited to visit my new office.*

OFFICE HOURS

WEEKDAYS 12:30 P.M. — 6:00 P.M.

SATURDAYS 9:30 A.M. — 5:00 P.M.

OR BY APPOINTMENT

(Tel. W. P. 5837)



ROBERT A. SIEGEL

124 MAMARONECK AVE.

(Rooms 6-7)

WHITE PLAINS, N. Y.