

129th SALE

UNITED STATES STAMPS



AT PUBLIC AUCTION
WEDNESDAY, APRIL 14th, 7:45 P. M.
AT OUR OFFICES

GREGORY MOZIAN, Auctioneer

Robert A. Siegel
SAUCTIONS

124 MAMARONECK AVE., WHITE PLAINS, N. Y.

CONDITIONS OF SALE

1. The terms of sale are strictly cash to the highest bidder. All buyers are expected to pay for lots within three days of receipt, unless special arrangements have been made prior to the sale.
2. All bids are per lot as numbered in the catalogue and not per piece, unless otherwise announced by the auctioneer at the time of sale.
3. Any lot the description of which is incorrect is returnable only within three days of receipt. All disputed lots must be returned intact as received. Lots containing five or more stamps are not returnable at any time. No lots may be returned by purchasers who have had the opportunity to examine them before the sale.
4. Successful mail bidders, unless they are known to us or supply acceptable references, will be notified of the amount of the lots secured for them, and are expected to send payment in full before the lots are forwarded.
5. If the purchase price has not been paid within the time limit, or lots taken up within seven days from date of sale, they may be resold and any losses arising from such sale charged to the defaulter.
6. All stamps are sold as genuine, except where sold "As Is". Claims for any lot proving otherwise, must be made within two weeks from date of sale.
7. The right is reserved to group two or more lots, also withdraw any lot or lots from the sale, or to act on behalf of the seller.
8. Until paid for in full all lots remain the property of Robert A. Siegel.
9. No commission is charged for buying at our sales, but all forwarding charges will be added to the purchase price.
10. Lots will be sent for inspection, provided such lots are returned to us the same day as received. Postage and registration both ways will be charged. Approximate values of lots will be given on request.
11. The placing of a bid shall constitute acceptance of the foregoing conditions of sale.

Lots are on display at our office one full week before the sale in White Plains, N. Y.

In sending bids, always state the highest price you are prepared to pay for the lot. Your limit will not be used as a starting bid unless absolutely necessary.

DESCRIPTIONS

Superb—the finest condition for noteworthy, outstanding copies.

Very Fine (VF)—means that there is a slight deviation from the above.

Fine (F)—means that the perforations do not touch the design on issues after 1890, but in some cases may just touch in earlier issues; if used, fairly lightly cancelled.

Very Good (VG)—means that the appearance is generally fine but that the perforations cut the design slightly.

Good (G)—means average off-centering; or fairly attractive with slight defects.

Original gum is not to be expected on 19th Century stamps up to 1888 unless so stated.

Scott's 1947 Specialized United States Catalogue is used for cataloging our lots of United States and Scott's Standard Catalogue, 1947, Vol. II and 1948, Vol. I.

WE SOLICIT FINE MATERIAL FOR FUTURE SALES
--

PLEASE NOTE — IF ATTENDING SALE

This sale will be held at my office, 124 Mamaroneck Ave., White Plains, New York.

My office is easily reached from New York City. Express trains leave frequently from Grand Central Station. There are over a dozen different trains leaving between 5 P. M. and 7 P. M. Traveling time approx. 35 minutes.

For the convenience of our clients we are serving coffee and sandwiches from six o'clock until sale time.

Lots may be inspected in my office until sale time. **New York City Showing** — Mon., April 12th at the offices of **Sylvester Colby, 505 Fifth Ave.**

CATALOGUE

UNITED STATES STAMPS

PROOFS & ESSAYS

W-1	3c 1851 Essay, Set of Five diff. colors on bond paper (Brazier 33E-G). Fine <i>2.50 fine 25P 51.50B</i> (Photo) —
B-2	3c 1851 Essay, Five diff. colors, black, blue, green, brown, scarlet (Brazier 33E-H). Very Fine <i>2.50 fine 51.50B</i> (Photo) —
V-3	3c 1851 Essay. Set of Four diff. colors (Brazier 33E-I). Very Fine (Photo) —
W-4	3c 1851 Essay. Green (Brazier 33E-J). Fine <i>2.50 fine 51.50B 9.00B</i> —
W-5	1c-90c, 1857 Reprints. Complete set of Card Proofs (40P-47P). Very Fine 38.50
W-6	1c-90c, 1861 Issue. Complete set of Card Proofs (63P-72P). Includes both shades of 24c. Very Fine 36.00
W-7	1c-90c, 1861 Issue. India Proofs (63P, 66P-72P). Very Fine 33.00
8	1c Black, 1861 Issue, Trial Color Proof on patent starch coated paper (Brazier 63TC5). Block. Very Fine —
9	Same only Perforated and gummed. Very Fine Block (Brazier 63TC6) ... —
10	1c Red, 1861-66 Essay. Imperf. Pair grilled and gum with coupon (Brazier 63E-Bg). Very Fine <i>1.05</i> (Photo) —
11	1c Blue, 1861-66 Essay, with coupon (Brazier 63E-Bi). Very Fine —
12	2c Black, India & Card Proofs (73P). Very Fine 8.00

41-13	3250 CB 18F	2c Jackson, Trial Color India Proofs (73TC). Five diff. colors gray black, green, vermilion, dull rose, dull red, Fine-V. F.	62.50
22-14		15c Black. Card and India Proofs (77P). Very Fine	5.00
32-15		1c-90c, 1861-66 Designs, Trial Color Atlanta Proofs (102TC-111TC). Complete set in Brown. Very Fine 3250 CB 3150 F	50.00
32-16		1c-90c, 1861-66 Designs, Trial Color Atlanta Proofs (102TC-111TC). Complete set in Blue. Very Fine 3250 CB 3150 F	50.00
65-17		3c 1867 Essays. Seven diff. colors (Brazer 83E-Be). Very Fine (Photo)	—
47-18		3c 1867 Essays. Five diff. colors gummed and perforated (Brazer 83E-Bi). Fine	—
4-19		3c, 1867 Essays, 7 diff. colors on onion skin paper (Brazer 85Ee)	—
44-20		3c Prussian-Blue, 1861 Essay. (Brazer 85E-Eb). Very Fine	—
27-21		1c-90c, 1869 Pictorial Issue. Complete set of India Proofs (112P-122P). Fine-Very Fine 26 CB 21 F	51.75
72-22		1c-90c Banknotes. Set of India Proofs (145P-155P). Several lightly stained, one torn	37.25
9-23		24c Purple, Banknote. India Proof (153P). Block, small scissor cut in margin otherwise Very Fine 10 F	25.00
3150-24		1c-90c Banknote, 1873 Design. Complete set of Atlanta Card Proofs in Scarlet (156TC-166TC). Very Fine 31 CB 3150 F	50.00
140-25		1c-\$2.00 Trans-Miss. (285P-293P). Complete set of large Die Proofs. Very Fine 130 CB 1250 F	225.00
8250-26		1c-\$2.00 Trans-Miss. (285P-293P). Complete set of Small Die Hybrid Die Proofs (Bi-color). Very Fine 76 CB 3150 F	—
52-27		Essays American Bank Note Co. Five diff. colors. Very Fine 6 CB	—

1847 ISSUE

21-28		5c Red Brown (1). Light red grid cancel, Margins all around. Very Fine (Photo)	30.00
15.75-29		5c Red Brown (1). Red grid cancel, Margins all around though small at top. Very Fine (Photo)	30.00
1550-30		5c Red Brown (1). Blue Vermont town cancel, close top, margins three sides. Fine	35.00
142-31		5c Brown (1). Blue grid cancel. Fine	37.50
152-32		5c Red Brown (1). Black grid cancel, margins three sides, close at top. Fine	50.00
14-33		5c Red Brown (1). Neat Numeral "5" cancel in red, margins three sides, barely touches partly at top. Fine (Photo)	50.00

34	5c Orange Brown (1). Red grid, Dot in "S" variety, margins three sides, close top (Photo)	40.00+
35 ★	5c Brown (1). Margins all around. Very Fine (Photo)	60.00
36	10c Black (2). Red grid cancel, close at top and left. Fine (Photo)	80.00
37 ★	5c Red Brown, Reprint (3). Margins all around. Very Fine (Photo)	27.50

1851 ISSUE

38	1c Blue, Type IV (10). Margins all around. Very Fine	8.00
39	1c Blue, Type IV (10). Blue cancel, large margins all around, thin spot. V.F. appearance	9.00
40	1c Blue, Type IV (10). July 4 cancel, Crease. Fine appearance	8.00
41	1c Blue, Type IV (10). Two shades. V.G.-Fine	16.00
42	5c Red Brown (12). Close at right. Fine (Photo)	70.00
43	10c Yellowish Green, Type I (13). Margins all around. Very Fine (Photo)	65.00
44	12c Black (17). Red grid cancel, light crease. Fine appearance	27.50

1857 ISSUE

45	1c Blue, Type I (18). Fine (Photo)	35.00
46	1c Blue, Type II (20). Fine	12.50
47	1c Blue, Type II (20). Attractive red grid cancel. Fine	16.00
48 ★	1c Blue, Type IIIa (22). Very Fine, mostly O.G. (Photo)	30.00
49	1c Blue, Type IIIa (23). Fine	27.50
50	1c Blue, Type V (24). Nine copies includes Pair. July 4, cancel, double perfs., shift etc. good-V.F.	18.00
51	5c Brick Red (27). Centered to right. Fine (Photo)	67.50
52	5c Brown (29). Fine	18.50
53	5c Brown (29, 30a) each lightly creased. Fine appearance	33.50
54	5c Orange Brown (30). Few perfs. short good	40.00
55	10c Green, Type III (33). Superb (Photo)	9.00
56	10c Green, Type IV (34). Tiny closed tear, Fine appearance (Photo)	95.00
57	10c Green, Type V (35). Three copies, includes red cancel, part of im- print. Fine-V.F.	11.50
58	12c Black (36). Small thin, Very Fine appearance.	10.00
59	24c Lilac (37). Red grid, light creases, Very Fine appearance.	22.50

700	60 ★	30c Orange (38). Thin spot, Fine appearance	35.00
2050	61 ★	90c Blue (39). Repaired, Very Fine appearing (Photo)	80.00
16	62	1c-30c, 1851-57 Issues (7, 14, 17, 30a, 31, 33, 36, 38), all have flaws, nice appearing	175.00

1861-1867 ISSUES

775	63	1c Blue (63). Fancy cancel "3" in "C", Very Fine strike, stamp has tiny tear (Photo)	—
500	64	1c Blue (63). Thirteen copies, includes shades, pair, red cancel, paid, Fair-Fine	31.50
2050	65	5c Buff (67). Tiny corner crease. Very Fine appearance (Photo)	40.00
10	66	5c Buff (67). San Francisco Cog Wheel cancel, small closed tear. Fine appearance	40.00
4	67	10c Green (68). Attractive red Spoke cancel. Fine	—
525	68	12c Black, 24c Red Lilac (69-70). Both well centered, latter has light crease	17.00
750	69	12c Black, 30c Orange (69, 71). Fine	14.00
850	70	24c Steel Blue (70b). Two perfs. short, Very Fine appearance.	40.00
875	71	2c Black (73). Five copies includes Star, fancy Red and Patent cancels, nice appearing, some minor flaws	—
8	72	5c Red Brown, 5c Brown (75-76). First has red cancel and tiny corner crease, both Well centered	27.50
800	73	15c Black (77). Lightly cancelled. Very Fine	9.00
1350	74	24c Lilac (78). Blue Masonic cancel in circle. Fine strike, stamp has small closed tear, scarce cancel on this stamp	—
575	75 ★	24c Dark Lilac (78). Well centered, one perf. short	12.00
350	76	24c Lilac (78). Red cancel. Fine	8.00
525	77	24c Lilac (78). Horiz. Pair. Well centered, one perf. short.	17.50
1075	78	24c Lilac, Gray Lilac (78, a, b). Five copies includes pair, Fair-Fine	30.00
1050	79	12c Black, Z. Grill (85E). Crease, two perfs. short, nicely centered	47.50
475	80	10c Green, Grill (89), Horiz. Pair. Fine	25.00
5	81	15c Black, Grill (91). One perf. short, Well centered	20.00
325	82	1c Blue, Grill (92). Centered left, Fine	9.00
700	83	1c Blue, Grill (92). Horiz. Strip of 3, centered to right. Very good	31.50
10	84	5c Brown, Grill (95). Corner crease, Fine appearance	35.00

85	12c-15c Black, Grills (97-98). Fine	15.00
86	24c Gray Lilac, Grill (99). Light crease. Very Fine appearance	50.00
87	30c Orange, Grill (100). Fine	25.00
88	90c Blue, Grill (101). Fine (Photo)	85.00
89	1c-90c, 1861-67 Issues (70, 72, 76, 78, 86-87, 96), all have flaws. Fine appearing	74.00

1869 PICTORIAL ISSUE

90	1c Buff (112), Very Fine	7.00
91	1c Buff, 6c Ultramarine (112, 115) Fine	15.50
92 ★	3c Ultramarine (114), Very Fine	3.00
93	3c Ultramarine (114). Padlock cancel. Fine	—
94	10c-12c Pictorials (116-117). Each has small corner crease, latter red cancel. Fine appearance	18.50
95	12c-15c Pictorials (117, 119). Minor flaws, Very Fine appearance	18.50
96	15c Brown & Blue, Type I (118). Centered to top. Fine	35.00
97	15c Brown & Blue, Type II (119). Very Fine (Photo)	10.00
98	24c Green & Violet (120). Centered to top. Fine (Photo)	37.50
99	30c Blue & Carmine (121). Centered to top. Fine	27.50
100	90c Carmine & Black (122). Well centered, light corner crease. Very Fine appearance (Photo)	100.00

BANKNOTE ISSUES

101	6c Carmine, 7c Vermilion, Grills (137-138). Slight flaws. Very Fine appearance	34.00
102	90c Carmine, Grill (144). Small light crease. Fine appearance (Photo)	55.00
103	3c Green (147). Danbury Hat cancel. Fine strike, several perfs. short on stamp	—
104	3c Green (147), "O.K." in a Heart cancel. Very Fine strike, stamp has short perf.	—
105	6c-90c Banknotes (148-155). Very Good-Very Fine	54.50
106	1c Blue (156), Glen Allen Star precancel. Very Fine strike, stamp centered to R.	—
107	1c Banknotes, 21 copies. Fine range of shades and fancy cancellations	—
108	3c Greens. Five fancy cancels, Anchor, Shield, Skull & Crossbones, "E" in Wreath, Devil's Mask. Very Fine strikes, two have str. edges	—

17	109	3c Greens, 75 fancy cancels, includes Shields, Diamond, Crosses, fancy stars, letters, "Nov.", "P.O.D.", Paid 3, "1876", "Don't U. S. M.", Free, Star & Crescent, etc.	—
185	110	6c-90c Banknotes (159-166). Very Good-Very Fine	35.70
87	111	3c Green (184). With rare Wesson patent punch. Fine (Photo)	—
21	112	1c-90c Banknotes, overprint Specimen (189S-211S). Fine set	100.00
625	113	6c, 30c Banknotes (190, 208, 217). Fine-V. F., latter has Magenta cancel	11.75
175	114	90c Carmine (191). Superb (Photo)	15.00
35	115 ★田	3c Blue Green (207). Margin block of 20 with Imprint & Plate No. 348, Very Good-Very Fine, O. G.	60.00
375	116 ★	10c Black Brown (209b). Well centered, tiny thin spot	20.00
27	117 ★田	30c Orange Brown (217). Block. Fine (Photo)	52.50
115	118	90c Purple (218). Very Fine	15.00
25	119	2c Lake, Carmine (219d-220). Monogram U. S. Mail cancel and Pumpkin Head. Very Fine strikes	—
575	120 ★田	2c Lake, 5c Chocolate (219d, 223). Blocks, both have thins. Fine appearance	26.00
135	121 ★田	2c Carmine, Cap on both "2" (220c). Block, light crease. Good	40.00
8	122 ★田	3c Purple, 4c Dark Brown (221-22). Blocks. Fine	25.50
475	123	30c Black, 90c Orange (228-229). Fine	10.00

COLUMBIAN ISSUE

125	124 ★	1c-30c Columbian (230-239). All without gum. Fine-Very Fine centering	35.45
550	125 ★田	1c Columbian (230). Three Blocks. Shades. Very Fine	8.25
550	126 ★田	1c Columbian (230). Bot. Imprint Plate No. Block of 8. Fine	8.00
450	127 ★田	2c Columbian (231). Bot. Imprint Plate No. Block of 8. Fine, hinge re-enforced	10.00
675	128 ★田	2c Columbian (231). Bot. Imprint Plate No. Block of 8. Very Good	10.00
225	129 ★田	2c Columbian (231). Block of 8 each has Broken Hat , light crease. Fine appearance	10.00
11	130 ★田	2c-4c Columbians (231-233). Blocks. Fine-Very Fine	25.25
625	131 ★田	3c Columbian (232). Bot. Imprint Plate No. Block of 8, one stamp has thin, balance Fine	25.00
85	132 ★田	3c-4c Columbians (232-233). Blocks, first has small thin, latter creased. Both Fine centering	22.50

133	★	4c	Columbian (233). Bot. Imprint Plate No. Block of 8, small thin on one stamp. Balance Fine	50.0
134	★	5c	Columbian (234). Bot. Imprint Plate No. Block of 8. Fine.	40.00
135	★	6c	Columbian (235). Block. Very Fine centering, part gum	12.50
136	★	6c	Columbian (235). Block, perfs just touch at L.	12.50
137	★	6c	Columbian (235). Bot. Imprint Plate No. Block of 8. Fine-V. F.	40.00
138	★	6c-8c	Columbians (235-236). Blocks. Fine <i>10 F</i>	22.50
139	★	6c-8c	Columbians (235-236). Blocks. Fine-Very Fine <i>11 F</i>	22.50
140	★	8c	Columbian (236). Bot. Imprint Plate No. Strip of 4. Very Fine	17.50
141	★	8c	Columbian (236). Bot. Imprint Plate No. Block of 8. Fine	37.50
142	★	15c	Columbian (238). Block, centered to left. Fine	37.50
143	★	15c	Columbian (238). Block, perfs. just touch at L. Very Good	37.50
144	★	30c	Columbian (239). Block. Very Fine	60.00
145	★	50c	Columbian (240). Very Fine centering, no gum	14.00
146	★	50c	Columbian (240). Block. Very Fine	(Photo) 75.00
147	★	\$1.00	Columbian (241). No gum, small thins. Very Fine appearance (Photo)	45.00
148	★	\$1.00	Columbian (241). Block, slightly re-enforced. Fine	(Photo) 300.00
149	★	\$2.00	Columbian (242). Beautiful Flag cancel. Very Fine	(Photo) 30.00
150	★	\$2.00	Columbian (242). Very Fine centering, no gum	(Photo) 45.00
151	★	\$2.00	Columbian (242). Block. Fine	(Photo) 400.00
152	★	\$3.00	Columbian (243). Slight thinning. Very Fine appearance, no gum	(Photo) 70.00
153	★	\$4.00	Columbian (244). Very Fine centering, no gum	(Photo) 80.00
154	★	\$5.00	Columbian (245). Very Fine	(Photo) 90.00

1894-1898 ISSUES

155	★	15c	Dark Blue (259). Very Fine	10.00
156	★	15c	Dark Blue (259). Fine	10.00
157	★	50c	Orange (260). Centered to top	10.00
158	★	50c	Orange (260). Fine	10.00
159	★	\$1.00	Black, Type I (261). Crease. Fine appearance	18.00

14.50	160	\$1.00 Black, Type II (261A). Small thin. Fine appearance	37.50
86	161 ★	\$5.00 Dark Green (263). Plate No. single. Fine (Photo)	110.00
42.50	162	1c-\$5.00, 1895 Issue, overprinted Universal Postal Congress (264S-278S), only one type on \$1.00, three have str. edges balance Very Fine (Photo)	126.00
3	163 ★	2c Carmine, Block containing both types II and III (266-67). Very Good	15.00
17.50	163A ★	2c Carmine, Imprint Plate No. Block of 16 containing both Type II and III (266-267). Centered to left	63.50
9.25	164 ★	50c Orange (275). Fine	14.00
7.75	165	\$1.00 Black, Type II (276A). Very Fine	12.00
20.50	166	\$2.00 Dark Blue (277). Very Fine (Photo)	27.50
19	167	\$5.00 Dark Green (278). Fine (Photo)	27.50
9.25	168 ★	1c-15c, 1898 Issue (279-284). Complete set each with Plate No., V. G.-V. F.	31.10

TRANS-MISS. ISSUE

10.50	169 ★	1c-10c Trans-Miss. (285-290). Three small thins. Fine-V. F. centering	24.50
27.50	170 ★	1c Trans-Miss. (285). Block. Very Fine	5.00
8.25	171 ★	2c Trans-Miss. (286). Imprint Plate No. Block of 20, partly re-enforced. Very Fine centering	20.60
7.75	172 ★	5c Trans-Miss. (288). Strip of three. Very Fine	12.00
6	173 ★	50c Trans-Miss. (291). Large thinning. Fine appearing	37.50
40	174 ★	\$1.00 Trans-Miss. (292). Superb centering, no gum (Photo)	65.00
43	175 ★	\$2.00 Trans-Miss. (293). Small thin. Very Fine appearance (Photo)	85.00

PAN-AMERICAN ISSUE

14.75	176 ★	1c-10c Pan-American (294-299). Complete set. Very Fine	21.50
11	177 ★	1c-10c Pan-American (294-299). Complete set. Fine-V. F.	21.50
10.50	178 ★	1c Pan-American (294). Six diff. Bot. Imprint Double Plate No. Strips of 4, V. G.-V. F.	15.00
41	179 ★	1c Pan-American (294). Sheet of 100, Slight re-enforced. Very Fine centering	61.25
29.00	180 ★	1c Pan-American (294). Sheet of 100. Slightly re-enforced. Fine-V. F. centering	61.25
8.25	181 ★	1c-2c Pan-American (294-295). Blocks of 4 and 6 of each, each has imprint or plate no. Very Fine	13.00
8.75	182 ★	2c Pan-American (295). Eleven Imprint Plate No. Strips of 3 or 4, V. G.- V. F.	23.25

183 ★	2c Pan-American (295). Five diff. Bottom Sheet Margin Strips of 10 with Arrow. Plate Nos. and Imprints, partly re-enforced, V.G.-V.F.	36.25
184 ★	4c Pan-American (296). Bottom Imprint Double Plate No. Strip of 4. Fine	15.75
185 ★	5c Pan-American (297). Top Imprint Plate No. Block of 10. Perfs. touch at R. Very Good	50.00
186 ★	8c Pan-American (298). Bottom Imprint Plate No. Block of 10. Fine	60.00
187 ★	10c Pan-American (299). Top Imprint Plate No. Strip of 9, with Arrow and Double Imprint and Plates. Very Fine, re-enforced	77.50

1902-1903 ISSUES

188 ★	1c-15c, 1902-03 Issue (300-309). V.G.-V.F.	21.70
189 ★	1c-13c 1902-03 Issue (300-308). Block of each, V.G.-V.F.	66.50
190	1c-\$5.00, 1902-03 Issue, overprinted Specimen (300-S-313S). Complete set, 2c str. edge. Fine-Very Fine <i>6.1 F</i> (Photo)	182.00
191 ★	2c Carmine (301). Top and Bot. Imprint Plate No. Blocks of 6. Fine-V.F.	8.00
192 ★	2c Carmine (301). Imprint Plate No. Block of 12. Very Fine	6.40
193 ★	5c Blue (304). Three Blocks, diff. shades, V.G.-V.F.	24.00
194 ★	6c Deep Claret (305). Top Imprint Plate No. Block of 6. Very Fine	20.00
195 ★	6c Garfield (305). Eight Blocks. Diff. Shades, V.G.-V.F.	108.00
196 ★	8c Black, 8c Violet Black (306). Blocks. Very Fine	11.00
197 ★	8c Martha Washington (306). Five Blocks. Diff. shades, V.G.-V.F.	27.50
198 ★	10c Webster (307). Three Blocks. Diff. shades. Fine-Very Fine	36.00
199 ★	13c Brown Violet (308a). Block. Very Fine	8.00
200 ★	13c Purple Black (308). Bottom Imprint Plate No. Block of 6. Very Fine	15.00
201 ★	13c Brown Violet (308a). Top Imprint Plate No. Block of 6. Fine	15.00
202 ★	13c Harrison (308). Four Blocks. Diff. shades. Fine-V.F.	32.00
203 ★	50c Orange (310). Light gum crease. Very Fine appearance	20.00
204 ★	50c Orange (310). Block, centered to left. Fine (Photo)	100.00
205 ★	\$1.00 Black (311). Very Fine (Photo)	42.50
206 ★	\$1.00 Black (311). BLOCK, center hinged. Very Fine <i>OK 130 SA</i> (Photo)	225.00
207	\$2.00 Dark Blue (312). Tiny tear, barely cancelled. Very Fine appearance	22.50

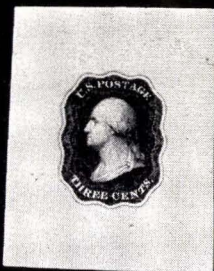
40	208	★	\$5.00 Dark Green (313). Trivial thin. Very Fine appearance (Photo)	95.00
46	209	★	1c Green, Imperf. (314). Complete set of 4 diff. Corner Blocks . Fine-Very Fine	50.00
39	210	★	1c Green Imperf. (314). Complete set of 4 diff. Arrow Blocks , two small thins. Very Fine appearance	90.00
97	211	★	1c Green Imperf. (314). Complete set of 4 diff. Arrow Blocks , each with Round Marker. Very Fine	120.00
71	212	★	1c Green Imperf. (314). Set of 4 diff. positions of Imprint Plate No. Blocks of 6. Fine	80.00
15	213	★	1c-2c Imperforates (314, 320, a, b). Eleven Pairs all with Private Performations of Brinkerhoff, Schermack and U.S. Automatic Vending Co., all different. Fine lot	89.75
26	214	★	5c Blue Imperf. (315). Trivial nick in margin. Very Fine appearance (Photo)	65.00
167	215	★	5c Blue Imperf. (315). Block. Very Fine (Photo)	275.00
302	216	★	5c Blue Imperf. (315). Top Imprint Plate No. Block of 6. Very Fine (Photo on Cover)	500.00
15	217	★	2c Shield (319, a, b, c). Full album page of shades includes 11 blocks of 4 and 6, also 19 singles including strips, excellent range of shades, V.G.-V.F.	40.70
77	218		2c Shield Imperf. (320). Three horiz. pairs. Very Fine	13.50
35	219	★	2c Shield Imperf. (320). Block and horiz. pair, each has thin spot	14.50
115	220	★	2c Shield Imperf. (320, 320b). Blocks, shades. Very Fine	20.00
36	221	★	2c Shield Imperf. (320). Center line block. Fine, though hinged several times (Photo)	85.00
26	222	★	2c Shield Imperf. (320). Complete set of 4 diff. corner blocks , one block has thin spot, others Fine	70.00
15	223	★	2c Shield Imperf. (320). Bottom imprint plate No. 3452 block of 6, hinged several times. Fine	20.00
11	224	★	2c Shield Imperf. (320). Left imprint plate No. 4227 block of 6. Fine, though hinged several times	20.00
12	225	★	2c Shield Imperf. (320). Top imprint plate No. 3452 block of 6. Creased in top margin	20.00
16	226	★	2c Lake Imperf. (320a). Block. Very Fine	30.00
24	227	★	2c Lake Imperf. (320a). Right imprint plate No. 4704 block of 6, one of bottom stamps have small hole, top block Very Fine	85.00



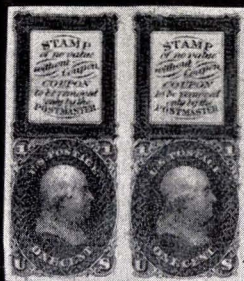
1 EX



2 EX



3 EX



10



17 EX



28



29



33



34



35



36



37



42



43



45



48



151



55



56



61



63



65



88



97



98



100



102



111



114



147



149



150



152



153



154



161



117



146



148



151



204



206



215



221



2105

230



280

239



4977

258



6135

284



285



6129

290



6135

293





162 EX



166



167



174



175



190 EX



205



208



214



4957



250

237



254



255



256



275



276



292



303



319



320



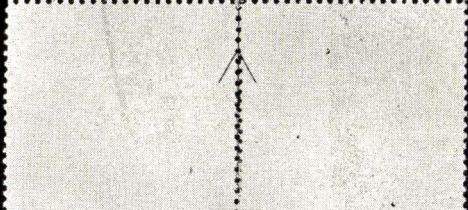
327



328



398



535

228 ★田	1c-5c Louisiana-Purchase (323-326). Block of each, small thin on one stamp of each block except 2c	68.00
229 ★	3c Louisiana-Purchase (325). Top plate no. single. Very Fine	5.00
230 ★田	10c Louisiana-Purchase (327). Imprint plate No. block of 4. Fine (Photo)	90.00
231 ★	10c Louisiana-Purchase (327). Tiny thin. Very Fine appearance	13.50
232 ★	10c Louisiana-Purchase (327). Pair, str. edge at R., otherwise Fine	27.00
233 ★	1c-5c Jamestown (328-330). Set each with plate No. at B. Fine	8.40
234 ★	5c Jamestown (330). Very Fine <u>OK</u> <u>Q</u>	6.50

1908 ISSUE

235 ★	1c-15c, 1908 Issue (331-340). Fine-Very Fine	16.80
236 ★	50c Violet (341). Very Fine	15.00
237 ★	\$1.00 Violet Brown (342). Plate No. single. Very Fine <u>OK</u> <u>Q</u> (Photo)	22.50
238 ★田	1c Green Imperf. (343). Two imprint plate No. blocks of 6, one with star. Fine	10.00
<hr/>		
239 ★田	1c Green Imperf. (343). Top imprint plate No. blocks of 6 with small solid Star . Very Fine, rare	350.00 (Photo)
<hr/>		
240 ★田	2c Carmine, Imperf. (344). Top imprint plate No. Star block of 6. Very Fine	10.00
241 田	2c Carmine, Imperf. (344). Used imprint plate No. block of 6. Very Fine	—
242 田	3c Violet, Imperf. (345). Used block. Very Fine	10.00
243 ★田	4c Brown, Imperf. (346). Block, 3mm spacing. Very Fine	17.50
244 ★田	5c Blue, Imperf. (347). Left arrow block. Very Fine	40.00
245 ★	1c-2c Coils (348-49, 352-53). Pair. Fine	20.50
246 ★	4c Orange Brown, Coil (350). Pair. Very Fine	17.00
247 ★	4c Orange Brown, Coil (350). Paste-up pair, top stamp has crease, other Very Fine	17.00
248 ★	5c Blue, Coil (351). Pair, close at left. Very Good	20.00
249 ★	5c Blue, Coil (355). Pair. Very Fine	11.00
250 ★	10c Yellow Coil (356). Very Fine	90.00 (Photo)
251 ★	1c-2c Bluish Papers (357-358). Very Fine	10.00
252 ★田	1c Green, Bluish (357). Bottom imprint plate No. block of 10. Very Fine	95.00
253 ★田	2c Carmine, Bluish (358). Bottom imprint plate No. block of 10. Very Fine	95.00

46-	254 ★	10c Yellow, Bluish (364). Fine	(Photo)	60.00
127-50	255 ★	13c Blue Green, Bluish (365). Fine	(Photo)	150.00
47-50	256 ★	15c Pale Ultramarine, Bluish (366). Very Fine	(Photo)	60.00
303, 319, 359				
1909-1910 ISSUES				
750	257 □	2c Lincoln Imperf. (368). Used block. Very Fine		11.00
72-50	258 ★□	2c Lincoln Bluish (369) Imprint plate No. block of 8. Very Fine		155.00
72-50	259 ★□	2c Alaska-Yukon, Hudson-Fulton (370, 372). Imprint plate No. blocks of 6. Fine-V. F.		10.50
265-50	260 ★□	2c Alaska-Yukon Imperf. (371). Bot. imprint plate No. block of 6. Very Fine		37.50
42-	261 ★	2c Alaska-Yukon, Hudson-Fulton (371, 373). Fine		9.50
172-50	262 ★□	2c Hudson-Fulton Imperf. (373). Left imprint plate No. 5392 block of 6. Very Fine		27.50
15-	263 □	2c Hudson-Fulton Imperf. (373). Used block of 8. Very Fine		27.00
1050	264 ★	1c-15c, 1910 Issue (374-382). Complete set. Fine-Very Fine		23.45
550	265 ★	1c-8c, 1910 Issue (374-380). Plate no. singles. Very Fine		10.95
132-	266 ★□	1c Green, Imperf. (383). Imprint Plate No. Star Blocks of 6. Set of 4 diff. positions. Very Fine		18.00
37-	267 ★□	1c Green, Imperf. (383). Imprint Plate No. "A" Blocks of 6. Set of 4 diff. positions. Very Fine		120.00
14-	268 □	1c Green Imperf. (383). Used Center Line, 3 diff. Arrow Blocks of 4 and 2 Imprint Plate Star Blocks of 6. Fine-Very Fine		24.50
1450	269 ★□	2c Carmine, Imperf. (384). Top Imprint Plate No. "A" 5688 Block of 6. Very Fine		40.00
142-	270 ★□	2c Carmine, Imperf. (384). Bottom Imprint Plate No. "A" 5688 Block of 6. Very Fine		40.00
14-	271 ★□	2c Carmine, Imperf. (384). Right Imprint Plate No. "A" 5687 Block of 6. Very Fine		40.00
950	272 ★□	2c Carmine, Imperf. (384). Left Imprint Plate No. "A" 5687 Block of 6, one stamp has thin		40.00
450	273 ★	1c-2c Coils (385-386). Pairs. Fine-Very Fine	O.K. O 3.10	8.00
3-	274 ★	1c Green, Coil (387). Pair, well centered, one stamp has thin		9.00
24-	275 ★	2c Carmine, Coil (388). Pair, 3mm spacing. Very Fine	(Photo)	80.00

276	3c Orangeburg Coil (389). Close at top, trivial thin, accompanying lot 2c Coil #393 used on cover with Bell Co. corner card from Orangeburg, N. Y., the users of this rare coil (Photo)	250.00
-----	---	--------

277 ★	1c-2c Coils (391-92). Guide Line Pairs. Very Fine	7.50
278 ★	2c, 4c-5c Coils (393, 395-96). Pairs. Fine-Very Fine	10.00
279	3c Violet, Coil (394). Used strip of 4. Very Fine	8.00

PANAMA-PACIFIC ISSUE

280 ★	1c-10c Pan-Pacific (397-399, 400a). Fine-Very Fine	17.60
281 ★田	1c-2c Pan-Pacific (397-398). Plate No. Block of 6 of each. Fine	9.00
282 ★田	5c Pan-Pacific (399). Block of 4 with plate no. Very Fine	27.50
283 ★田	10c Pan-Pacific (400). Block. Fine	37.50
284 ★田	10c Pan-Pacific (400). Block of 4 with plate no. Very Fine (Photo)	37.50
285 ★田	10c Pan-Pacific, Orange (400a). Block. Very Fine (Photo)	50.00
286 ★田	1c Pan-Pacific (401). Top Plate No. Block of 6. Very Fine	12.50
287 ★	1c-5c Pan-Pacific (401-403). Fine-Very Fine	21.75
288 ★田	2c Pan-Pacific (402). Block. Fine	30.00
289 ★田	2c Pan-Pacific (402). Block of 4 with plate no. Fine	30.00
290 ★田	5c Pan-Pacific (403). Block of 4 with plate no. Very Fine ^{OK} (Photo)	57.50
291 ★田	5c Pan-Pacific (403). Block, centered to left. Fine	57.50
292 ★	10c Pan-Pacific (404). Fine ^{22 F} (Photo)	52.50

293 ★田	10c Pan-Pacific (404). Block of Four, plate no. at B. Very Fine (Photo)	300.00
294 ★田	10c Pan-Pacific (404). Right Plate No. Block of 6. Fine (Photo)	450.00

1912-1914 ISSUES

295 ★	1c-7c, 1912 Issue (405-407). Very Fine	4.32
296 ★田	1c-2c Imperf. Kansas City Roulettes (408-409 var.). Blocks attached to sworn affidavit. Very Fine ¹¹²⁵ <i>Museyde</i> ^{5F}	—
297 ★田	2c Carmine, Imperf. (409). Two Plate No. Blocks of 6, one with Imprint and "A" and other with "A". Fine	12.00
298 ★	2c Carmine, Coil (413). Line Strip of four. Fine	6.50
299 ★	8c-15c, 1912 Issue (414-418). Fine-Very Fine	11.85

850	300	★	20c Ultramarine, 30c Orange Red (419-20). Very Fine	13.50
1600	301	★	50c Violet (421). Very Fine	30.00
1375	302	★	50c Violet (422). Very Fine centering, part gum	17.50
175	303	★	\$1.00 Violet Brown (423). Very Fine (Photo)	25.00
1075	304	★	1c-12c, 1914 Issue (424-435). Fine-Very Fine	19.75
900	305		1c Green, Perf. 10x12 (424b). Precancelled Dayton, Ohio, only way this variety exists, perfs. touch at top. Good	35.00
775	306	★	1c Green (424). Block of ten with imprint "Coil Stamps" and plate no. 6581. Fine	17.50
700	307	★	Same as above with plate no. 6582. Fine	17.50
700	308	★	Same as above with plate no. 6585. Fine	17.50
675	309	★	Same as above with plate no. 6589. Fine	17.50
850	310	★	2c Carmine (425). Block of ten with imprint "Coil Stamps" and plate no. 6572. Fine	17.50
1175	311	★	Same as above. Fine	17.50
950	312	★	15c Gray, 20c Ultramarine (437-438). Very Fine <i>no 89</i>	14.00
675	313	★	30c Orange Red (439). Plate No. single. Fine	13.50
19	314	★	50c Violet (440). Plate No. single, hinge thinning. Fine appearance	45.00
1275	315	★	1c-5c Coils (441-444, 447-52, 457-58). Pairs. Good-Very Fine	21.66
2050	316	★	3c Violet, Coil (445). Pair. Fine	40.00
875	317	★	4c Brown, Coil (446). Pair. Fine	18.00
1550	318	★	3c Violet, Coil (456). Pair. Very Fine	24.00
70	319	★	2c Carmine Imperf. (459). Pair. Very Fine <i>OK</i> (Photo)	100.00
3050	320	★	\$1.00 Violet Black (460). Very Fine (Photo)	40.00
450	321	★	2c Carmine (461). Plate no. single. Fine	8.00

1916-1918 ISSUES

1850	322	★	1c-15c, 1916 Issue (462-475). Fine-Very Fine	48.40
41	323	★	5c Carmine Error (463b). Block of 9 middle stamp the error. Fine	80.00
1100	324	★	5c Carmine, Double Error in full sheet of 100 (463b). Errors Very Fine, balance of sheet Fine-V.F.	175.00
2250	325	★	3c Violet (464). Bottom Plate No. Block of 6. Very Fine	45.00
750	326	★	20c Ultramarine (476). Very Fine	12.00

327	★	50c Light Violet (477). Plate no. single. Very Fine	(Photo)	75.00
328	★	\$1.00 Violet Black (478). Very Fine	(Photo)	55.00
329	★	\$2.00 Dark Blue (479). Very Fine		16.00
330	★	\$5.00 Light Green (480). Very Fine		16.00
331	★	\$5.00 Light Green (480). Top Plate No. Block of 6. Very Fine	(Photo)	100.00
332	★	1c-2c Imperfs. (481-482). Center Line Blocks of 8. Very Fine		16.00
333	田	2c Carmine Imperf. (482). Four plate no. blocks of 6 used, Four diff positions. Very Fine except one has small tear		
334	★	3c Violet Imperf. (483). Matched Set of 4 diff. Plate No. 8121 Blocks of 6. Very Fine		32.00
335	★	3c Violet Imperf. Type II (483a). Matched Set of 4 diff. Plate No. 8355 Blocks of 6, one stamp small thin, balance Very Fine		32.00
336	★	1c-\$1.00, 1917 Issue (498-518). Complete set. Fine-V.F.		21.36
337	★	1c-13c, 1917 Issue (498-513). Blocks. Fine-Very Fine, includes block #499d		44.20
338	★	5c Rose Error (499h). In full sheet of 100 of 2c. Very Fine	(cut)	57.50
339	★	5c Rose Error (499h). Double Error in full sheet of 100. Errors are Very Fine		90.00
340	★	15c Gray (514). Block. Very Fine		16.00
341	★	20c, 30c, 50c, 1917 Issue (515-517). Blocks, Fine-V.F.		26.50
342	★	\$1.00 Violet Brown (518). Plate No. Block of 4. Fine		17.50
343	★	\$1.00 Violet Brown (518). Top Imprint "A" Plate No. Block of 6. Very Fine		25.00
344	★	2c Carmine (519). Block. Str. edge at top, otherwise Very Fine		100.00
345	★	2c Carmine (519). Left Imprint Plate No. 4905 Block of 6, centered to left. Scarce	(Photo)	175.00
346	★	\$2.00 Orange Red & Black (523). Center Line Block. Very Fine, hinged once in center, Scarce	(Photo)	350.00
347	★	\$2.00 Orange Red & Black (523). Top Block of 8 with two Plate Nos. and Arrow, light gum crease on 3 stamps, a Fine Showpiece	(Photo)	500.00
348	★	\$5.00 Deep Green & Black (524). Center Line Block. Very Fine	(Photo)	85.00
349	★	\$5.00 Deep Green & Black (524). Top Block of 8 with two Plate Nos. and Arrow. Very Fine	(Photo)	140.00

OFFSET ISSUE

6.50	350	★	2c Offset (526, a, c, d, e). 62 stamps in blocks of 4 to 16, some plates. V. G.-V. F.	33.00
10.50	351	★	3c Offset, Both Types (529, a). 19 Plate No. Blocks of 6, wide variety of shades. V. G.-V. F.	20.50
4.50	352	★	3c Offset, Clear Double Print (529f). Fine	6.00
23 =	353	★	1c Green, Offset (531). Center Line Block. Very Fine <u>①</u>	32.50
36 =	354	★	1c Green, Offset (531). Set of 4 diff. Arrow Blocks. Very Fine <u>OK ②</u>	56.00
12 =	355	★	2c Carmine, Offset, Type V (532a). Block. Very Fine	25.00
8.25	356	★	2c Carmine, Offset, Type Va, VI (532, 532b). Blocks, both have light gum creases. Very Fine appearance	19.50
✓	357	★	2c Carmine, Offset, Type VI (532b). Block, slight album impression on back. V. F. appearance	13.00
✓ 5.50	358	★	2c Carmine, Offset, Type IV (532c). Block. Very Fine	10.00

19.50	359	★	2c Carmine, Offset, Type VII (532d). Plate No. Block of 4. Very Fine. Rare	250.00
-------	-----	---	--	--------

9.50	360	★	3c Violet, Offset (535). Block of 4 and 6. Shades. Very Fine	19.50
30 =	361	★	3c Violet, Offset (535). Center Line Block of 16. Very Fine <u>②</u>	59.00
4.75	362	★	1c Gray Green (536). Block. Very Fine	9.00
✓	363	★	1c Gray Green (536). Bottom Plate No. Block of 6. Fine	17.50

VICTORY ISSUE TO DATE

9.25	364	★	3c Victory, Violet, Pale Red Violet (537, b). Blocks. Very Fine <u>② OK</u>	12.25
46.00	365	★	3c Victory, Red Violet Shade (537a). Block. Very Fine	80.00
47.50	366	★	3c Victory (537). Block, interesting oddity showing one pair diff. shade than other. Fine	—
20 =	367	★	3c Victory (537). Matched Set of Plate No. 9419 Blocks of 6, all four positions. Fine	36.00
20.50	368	★	3c Victory (537). Matched Set of Plate No. 9412 Blocks of 6, all four positions. Fine-Very Fine	36.00
16 =	369	★	3c Victory (537). Four diff. side Plate No. Blocks of 6. Fine	36.00
35 =	370	★	3c Victory (537). Ten different Plate No. Blocks of 6. Very Good-V. F.	90.00
55 =	371	★	3c Victory (537). Sheet of 100, minus sheet margin at B. Fine-Very Fine centering	120.00
17.50	372	★	1c-2c (538-539). Top Plate No. "S30". Blocks of 6, off center	13.00

373	★田	1c-2c Imperforate Between (538a, 539b). Blocks. Fine-V. F.	16.00
374	★田	3c Violet (541). Top Plate No. Block of 6. Fine-V. F.	33.00
375	★田	1c Green, Rotary (545). Block. Fine (Photo)	50.00
376	★田	2c Carmine Rose, Rotary (546). Block. Very Fine	22.50
377	★田	\$2.00 Carmine & Black (547). Center line block. Very Fine (Photo)	75.00
378	★田	\$2.00 Carmine & Black (547). Top block of 8 with two plate Nos. and Arrow. Very Fine (Photo)	130.00
379	★	1c-5c Pilgrims (548-550). Complete set of sheets, 70 each, average centering, some hinge re-enforcing. Good set	348.00
380	★田	1c-2c Pilgrim (548-49). Plate No. blocks of 6. V. G.-Fine	7.25
381	★田	5c Pilgrim (550). Top plate No. block of 6. Fine	25.00
382	★田	½c-5c, 1922 Issue (551-557). Blocks. Fine-Very Fine	18.62
383	★田	6c Red Orange (558). Block. Very Fine	9.00
384	★田	7c, 9c-15c, 1922 Issue (559, 561-566). Blocks. Fine-Very Fine	17.80
385	★田	8c Olive Green (560). Block. Very Fine	9.00
386	★田	20c-30c, 1922 Issue (567-569). Blocks. Very Fine	15.00
387	★田	50c Lilac (570). Block. Very Fine	9.00
388	★田	\$1.00 Violet Black (571). Block. Very Fine	11.00
389	★田	\$2.00 Deep Blue (572). Block. Very Fine	22.50
390	★田	\$5.00 Carmine Lake & Blue (573). Center line block. Very Fine (Photo)	60.00
391	★田	\$5.00 Carmine & Blue (573). Top block of 8 with two plate Nos. and Arrow. Fine-V. F. (Photo)	100.00
392	★田	1c-2c Imperforates (575-577). Blocks of 6 with plate Nos. Very Fine	10.65
393	★田	1c Green, Imperf. (575). Center line block. Very Fine <u>OK O</u>	25.00
394	★田	2c Carmine, Imperf. (577). Center line block. Very Fine <u>OK O</u>	6.50
395	★田	1c Green, Rotary (578). Block. Fine centering, perfs. partly short at R.	27.50
396	★田	2c Carmine, Rotary (579). Star plate No. block of 4, perfs. touch at B.	20.00
397	★田	1c-10c Rotaries (581-591). Complete set of blocks. Fine-Very Fine	36.05
398	★田	2c Carmine, Rotary (595). Block. Very Fine <u>OK O</u> (Photo)	60.00
399	★田	2c Harding Imperf. (612). Center line block of 16. Very Fine <u>OK O</u>	74.00
400	★田	2c Harding Imperf. (612). Set of four diff. Arrow blocks. Very Fine <u>OK O</u>	54.00
401	★田	2c Harding Imperf. (612). Set of four diff. corner blocks. Very Fine	48.00

26.00	402	★	2c Harding Imperf. (612). Top, right and left plate No. blocks of 6, all same No. 15025. Very Fine	42.00
9.00	403	★	2c Harding (613). Upper right plate No. block of 4. Very Fine	11.00
11.00	404	★	1c-5c Hug.-Walloon (614-616). Set of blocks. Very Fine	18.85
7.75	405	★	1c-5c Lex.-Concord (617-619). Set of blocks. Fine-V. F.	14.00
14.50	406	★	2c-5c Norse-Americans (620-621). Set of center line blocks. Fine-V. F.	31.00
5.00	407	★	2c-5c Norse-Americans (620-621). Blocks of 25 of each. Very Fine	97.85
14.25	408	★	2c White Plains Exhibition sheet of 25 (630). Fine	25.00
2.00	409	★	1½c Imperforate (631). Center line block of 64. Very Fine	65.00
12.00	410	★	1c-10c Kans. (658-668). Complete set. Fine-V. F. <i>940 F</i>	18.92
12.00	411	★	1c-10c Nebr. (669-679). Complete set. Fine-V. F. <i>1050 F</i>	19.67
12.50	412	★	11c-50c Rotaries (692-701). Complete set of blocks. Very Fine	26.00
17.00	413	★	½c-50c Presidentials (803-831). Blocks, early shades. Very Fine	23.72
13.00	414	★	\$1.00-\$2.00 Presidentials (832-833). Center line blocks. Very Fine	28.00
20.75	415	★	\$5.00 Presidential (834). Center line block. Very Fine	45.00

FARLEYS

(A Very Fine offering of this issue. To assist in bidding prices in () at end of description gives present net selling prices.)

10.00	416	★	3c Newburgh (752). Center line block of 16. Very Fine (\$13.60)	15.60
11.00	417	★	3c Newburgh (752). Center line block and four diff. positions of gutter arrow blocks. Very Fine (\$16.00)	19.00
11.25	418	★	Same as above. Very Fine	19.00
11.25	419	★	Same as above. Fine-Very Fine	19.00
12.50	420	★	3c Newburgh (752). Center line block of 16 and set of 4 diff. arrow gutter blocks of 8. Very Fine (\$17.40)	21.48
7.00	421	★	3c Newburgh (752). Thirteen gutter blocks, includes large pieces and two with arrows. Fine-V. F. (\$9.05)	10.25
✓	422	★	3c Newburgh (752). Plate No. blocks of 4, all 4 diff. positions each #21118, 21119. Fine-V. F. (\$6.00)	8.00
6.50	423	★	1c-16c Farleys (752-771). Complete 20 diff. in pairs. Very Fine (\$8.00)	11.62
14.00	424	★	1c-10c Parks, 3c Commems., 16c Spec. Air (752-765, 771). Fifteen bottom arrow blocks of 4. Very Fine (\$15.25)	24.55
21.25	425	★	1c-10c Parks, 3c Commems., 16c Spec. Air (752-765, 771). Bottom plate No. blocks of 6 except Newburgh is a 4. Very Fine (\$25.25)	35.50

26	★田	3c Byrd (753). Center line block of 16. V. F. (\$6.17)	7.40
27	★田	3c Byrd (753). Center line and set of 4 diff. arrow blocks. Very Fine (\$8.25)	10.00
28	★田	Same as above. Fine	10.00
29	★田	3c Byrd (753). Five center line blocks. Very Fine (\$21.25)	25.00
30	★田	3c Byrd (753). 21 short line blocks and 7 long line blocks. Very Fine (\$30.20)	25.20
31	★	3c Byrd (753, 768). 32 of first including 3 plate blocks of 6, and three gutter blocks of latter. Fine-V. F. (\$8.90)	11.15
32	★田	3c Mother's Day (754). Two center line blocks, one has tiny paper flaw in margin (\$7.50)	9.50
33	★	3c Mothers Day (754). Eighty copies mostly Blocks includes few positions. Very Fine (\$12.80)	18.40
34	★田	3c Mothers Day, Wisconsin (754-55). Center Line Block of each, V. F. (\$7.75)	9.50
35	★田	3c Mothers Day, Wisconsin (754-55). Center Line and Set of 4 diff. Arrow Blocks of each V. F. (\$11.85)	18.30
36	★田	Same as above. Very Fine	18.30
37	★田	Same as above. Very Fine	18.30
38	★田	3c Mothers Day, Wisconsin (754-55). Plate No. Blocks of 6. Seven of first Eleven of Latter. Tops and Bot. Very Fine (\$19.80)	27.00
39	★田	3c Mothers Day, Wisconsin (754-55). Set of Four Corner Plate No. Blocks of 8 of each. Very Fine (\$11.00)	13.60
40	★田	1c-10c Parks, 3c Mothers Day, Wisconsin, 16c Spec. Air (754-765, 771). Set of Line Blocks of 4 and set of Plate Blocks of 4. Very Fine (\$28.05)	35.50
41	★田	3c Wisconsin (755). Center Line and Four diff. Arrow Blocks. V. F. (\$6.00)	9.15
42	★田	Same as above. Very Fine	9.15
43	★	3c Wisconsin (755). Seventy-nine copies, mostly Blocks, includes few positions. Very Fine (\$11.85)	17.80
44	★田	1c-10c Parks (756-765). Set of Blocks and Singles. V. F. (\$8.50)	12.60
45	★田	1c-10c Parks (756-765). Set of short line Blocks. V. F. (\$7.75)	10.20
46	★田	1c-10c Parks (756-765). Set of Blocks, all have lines but 8c. Very Fine	10.20
47	★田	1c-10c Parks (756-765). Set of Blocks, each has Arrow. Very Fine	12.60
48	★田	1c-10c Parks (756-765). Set of Plate No. Blocks of 4. Very Fine (\$6.80)	10.20
49	★田	1c-10c Parks (756-58, 760-65). Plate No. Blocks of 6. Very Fine (\$11.35)	17.75
50	田	1c-10c Parks (756-765). Set of used Blocks. Very Fine (\$5.20)	7.45

32	451	★田	1c-10c Parks (756-765). Set of Center Line Blocks. Very Fine (\$48.00)	77.7
31	452	★田	1c-10c Parks (756-765). Set of Center Line Blocks. Very Fine (\$48.00)	77.7
51	453	★田	1c-10c Parks (756-765). Set of Center Line Blocks and Set of Four diff. Arrow Blocks of each. Very Fine (\$78.50)	128.1
2150	454	★田	1c-10c Parks (756-765). Complete set of Four diff. Arrow Blocks of each. Very Fine (\$32.00)	50.4
21	455	★田	Same as above. Very Fine	50.4
53	456	★	1c-10c Parks #756(72), 757(40), 758(90), 759(24), 760(84), 761(22), 762(80), 763(44), 764(14), 765(28), mostly in blocks, includes few position pieces. Very Fine	129.6
72	457	★田	1c Park (756). Four sets of Center Line and Four diff. Arrow Blocks. V. F. (\$12.60)	18.0
5	458	★田	1c-2c Parks (756-57). Four Corner Plate No. Blocks of 12 on first and Six Corner Plate No. Blocks of 8 on latter. V. F. (\$7.64)	12.1
725	459	★田	1c-3c Parks (756-758). Center Line and Four diff. Arrow Blocks. Very Fine (\$13.55)	19.8
7	460	★田	1c-5c Parks (756-760). Four diff. Arrow Blocks of each. Very Fine (\$12.25)	18.0
11	461	★田	1c-3c, 6c, 8c, 9c Parks (756-58, 761, 763-64). Eighteen Plate No. Blocks of 6. Very Fine (\$17.20)	26.0
18	462	★田	5c-9c Parks (760-764). Center Line Block of each. Very Fine (\$34.75)	48.0
1050	463	★田	6c-7c Parks (761-62). Set of four diff. Corner Plate No. Blocks of 8 of each. Very Fine (\$16.02)	22.6
975	464	★田	8c, 10c Parks (763, 765). Two Top and Two Bottom Plate No. Blocks of 6, V. F. (\$15.10)	21.0
375	465	★田	9c Park (764). Center Line Block. Very Fine (\$8.00)	11.0
6	466	★田	9c Park (764). Center Line and Set of 4 diff. Arrow Blocks. Very Fine (\$12.00)	18.0
550	467	★田	Same as above. Very Fine	18.0
1450	468	★田	9c Park (764). Four Center Line Blocks. V. F. (\$32.00)	44.0
5	469	★田	10c Park (765). Center Line and Four diff. Arrow Blocks. V. F. (\$12.50)	18.0
6	470	★田	10c Park (765). Two Top and Two Bottom Plate No. Blocks of 6. V. F. (\$8.10)	11.0
1350	471	★田	1c Chicago (766). Thirteen Horiz. gutter Blocks. 7 Vert. Gutter Blocks, 2 Cross Gutter Blocks. Very Fine (\$17.75)	22.0
7	472	★	1c-3c Chicago (766-67). Cross Gutter Blocks of each. V. F. (\$10.00)	12.5
1150	473	★田	1c-3c Chicago (766-67). Cross Gutter Blocks of 26 of each. Very Fine (\$19.16)	22.4

74	★	1c-3c Souvenir Sheets (766-770). Cross Gutter Blocks. Very Fine (\$12.50)	16.95
75	★	Same as above. Very Fine	16.95
76	★	Same as above. Very Fine	16.95
77	★	Same as above. Very Fine	16.95
78	★	Same as above. Very Fine	16.95
79	★	Same as above. Very Fine	16.95
80	★	Same as above. Very Fine	16.95
81	★	3c Chicago (767). Thirteen Horiz. Gutter Blocks and 12 Vertical Gutter Blocks. Very Fine (\$32.40)	31.25
82	★	3c Byrd Souvenir (768). Fourteen Cross Gutter Blocks. V.F. (\$17.50)	22.40
83	★	1c Park Souvenir (769). Fifteen Cross Gutter Blocks and 4 Gutter Blocks. V.F. (\$12.20)	18.60
84	★	1c-3c Park Souvenir (769-770). Cross Gutter Blocks of 12 of each. Very Fine (\$6.95)	8.15
85	★	1c-3c Park Souvenirs (769-770). Block of Four Panes of each. Very Fine (\$12.00)	16.00
86	★	3c Park Souvenir (770). Twelve Cross Gutter Blocks. Very Fine (\$19.20)	22.20
87	★	16c Airmail Special (771). Set of four diff. Corner Pairs. Very Fine	11.20
88	★	16c Airmail Special (771). Seventeen Horiz. Pairs. Very Fine (\$32.30)	47.60
89	★	16c Airmail Special (771). Twenty Vertical Pairs. Very Fine (\$38.00)	56.00
90	★	16c Airmail Special (771). Fourteen Horiz. Line Pairs. Very Fine (\$26.60)	39.20
91	★	16c Airmail Special (771). Long and Short Line Blocks. Very Fine (\$9.75)	11.50
92	★	16c Airmail Special (771). Two Blocks, Shades, one has plate no. Very Fine	11.50
93	★	16c Airmail Special (771). Center Line Block. Very Fine (\$22.50)	30.00
94	★	Same as above. Very Fine	30.00
95	★	16c Airmail Special (771). Center Line and four diff. Arrow Blocks. Very Fine (\$38.50)	60.00
96	★	Same as above. Very Fine	60.00
97	★	Same as above. Very Fine	60.00
98	★	16c Airmail Special (771). Ten Arrow Blocks of 4. Very Fine (\$45.00)	75.00
99		Used Farleys #754(61), 755(44), 757(5), 758(102), 759(8), includes few blocks. Fine-V.F. (\$18.89)	26.54

AIRMAILS

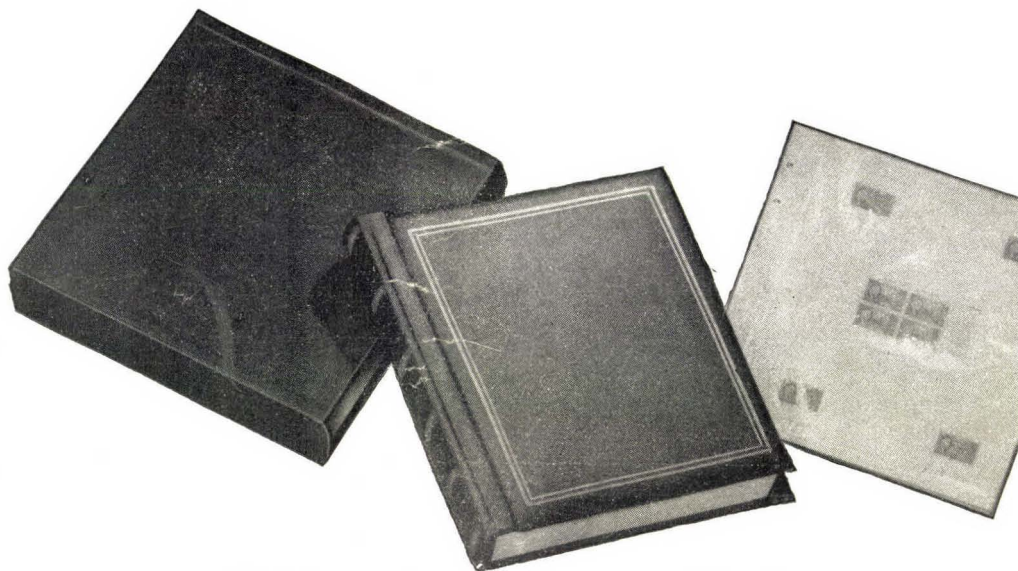
00	★	6c Orange (C1). Block. Very Fine	12.50
----	---	----------------------------------	-------

550	501	★	6c Orange (C1). Block. Fine	12.5
675	502	★	6c Orange (C1). Top Arrow Block of 4. Very Fine	16.0
625	503	★	6c Orange (C1). Left Arrow Block of 4. Very Fine	16.0
105	504	★	6c Orange (C1). Center Line Block. Very Fine	20.0
1825	505	★	6c Orange (C1). Top Arrow Plate No. Block of 12. Very Fine	40.5
1500	506	★	6c-24c Airs (C1-C3). Set in Horiz. Pairs. Fine	32.5
825	507		6c-24c, 8c-24c Airs (C1-C6). Complete sets. Fine-V.F.	18.0
775	508		6c, 24c Airs (C1, C3). Three of each. Fine	17.2
85	509		6c Orange, 8c Green (C1, C4). Used Blocks. Fine	15.0
75	510	★	16c Green (C2). Vertical Pair. Fine	17.0
675	511	★	16c Green (C2). Pair. Fine centered, gum crease	17.0
2050	512	★	16c Green (C2). Blocks. Very Fine	40.0
2250	513	★	16c Green (C2). Center Line Block. Fine	60.0
425	514	★	16c Green (C2). Top Arrow Plate No. Block of 8. Very Fine 42.5A	87.0
135	515	★	24c Carmine Rose & Blue (C3). Block. Very Fine	25.0
415	516	★	24c Carmine Rose & Blue (C3). Block of 12 (2x6), containing Left Arrow and Center Line Block. Very Fine	95.0
12500	517	★	24c Carmine Rose & Blue (C3). Block of 36 (6x6), containing Center Line Block and Top Arrow and Double Plate No. Very Fine	260.0
950	518		24c Carmine Rose & Blue (C3). Used Block. Very Fine	20.0
105	519		24c Carmine Rose & Blue (C3). Used Block with Top and Plate No. in blue. Very Fine	22.5
105	520		Same as above. Very Fine	22.5
950	521		24c Carmine Rose & Blue (C3). Used Top Arrow Block of 4. Very Fine	22.5
205	522		24c Carmine Rose & Blue (C3). Two used Blocks of 4 with Top and Plate in both blue and red. Very Fine	45.0
1550	523		Same as above. Fine-Very Fine	45.0
205	524		24c Carmine Rose & Blue (C3). Three Top Margin Blocks of 4. Red Top and Plate, Blue Top and Plate, and Arrow Block, V.G.-Fine	65.0
45	525	★	8c Green, Air (C4). Block. Fine	7.5
850	526		8c-24c Airs (C4-C6). Three complete sets. Fine-V.F.	23.2
1550	527	★	16c Dark Blue (C5). Block. Very Fine	27.5
1025	528		16c Dark Blue (C5). Used Block. Very Fine	22.5

29	★	24c Carmine (C6). Block. Fine	40.00
30	★	5c Beacon (C11). Two Top Double Plate No. Blocks of 10. Blue and Red "Top". Fine-Very Fine	9.40
31	☐	5c Beacon Air (C11). Fifteen diff. Top Double Plate No. Blocks of 6, all attractively cancelled with colored flight cachets. Fine lot	—
32	✉	65c-\$2.60 Graf Zeppelin (C13-C15). Complete set on 3 cachet flight cards and cover. Very Fine	120.00
33	★	50c Zeppelin (C17). Plate Block of 4. Very Fine	47.50
34	★	20c-50c Clipper (C20-C22). Blocks. Very Fine	8.75
35	★	6c Ultramarine & Carmine, Error of Color (C23c). Arrow Block of 4. Plain blocks sold for \$400.00 when discovered, Bruechig guarantee on back. Very Fine	(Photo) —

END OF SALE — THANK YOU

(AIRMAIL BIDS FROM THE WEST)



"Alden"

\$17.50

Sheet Size 10 $\frac{3}{8}$ " x 9 $\frac{3}{4}$ "

Mounting Space 8 $\frac{5}{8}$ " x 7"

"Ambassador"

\$25.00

Sheet Size 11 $\frac{1}{2}$ " x 11"

Mounting Space 10" x 8"

A GREAT ALBUM IN TWO POPULAR SIZES

FINE HIGH QUALITY — TRULY LUXURIOUS

Made of best materials, artistically finished and very durable. Covering of sumptuous Morocco-grained "Arthyde", soft and rich in feel and appearance. Padded top and bottom cover. Sturdily constructed case covered with Kid-grain Simulated Leather in color to match binder. Lining and Fly-leaves are fine Kid-grain Simulated Leather, color match binder. Leaves are high-quality white Bristol, quadrilled in soft gray, Gold-edge double Linen-hinged and Cellulose-acetate faced. Backbone embossed with hubs.

CHOICE OF RED, GREEN OR BLUE

(Upon request, will ship on approval)

"A Fine Collection Deserves a Fine Album"

ROBERT A. SIEGEL

124 MAMARONECK AVENUE
WHITE PLAINS, N. Y.