

134th SALE

# UNITED STATES and FOREIGN STAMPS

Including BRITISH & GERMAN COLONIES

AT PUBLIC AUCTION

THURSDAY

JANUARY 27th, 7:30 P.M.

AT OUR OFFICES

GREGORY MOZIAN, Auctioneer

*Robert A. Siegel*  
**AUCTIONS**

124 MAMARONECK AVE., WHITE PLAINS, N. Y.



## CONDITIONS OF SALE

---

1. The terms of sale are strictly cash to the highest bidder. All buyers are expected to pay for lots within three days of receipt, unless special arrangements have been made prior to the sale.
2. All bids are per lot as numbered in the catalogue and not per piece, unless otherwise announced by the auctioneer at the time of sale.
3. Any lot the description of which is incorrect is returnable only within three days of receipt. All disputed lots must be returned intact as received. Lots containing five or more stamps are not returnable at any time. No lots may be returned by purchasers who have had the opportunity to examine them before the sale.
4. Successful mail bidders, unless they are known to us or supply acceptable references, will be notified of the amount of the lots secured for them, and are expected to send payment in full before the lots are forwarded.
5. If the purchase price has not been paid within the time limit, or lots taken up within seven days from date of sale, they may be resold and any losses arising from such sale charged to the defaulter.
6. All stamps are sold as genuine, except where sold "As Is". Claims for any lot proving otherwise, must be made within two weeks from date of sale.
7. The right is reserved to group two or more lots, also withdraw any lot or lots from the sale, or to act on behalf of the seller.
8. Until paid for in full all lots remain the property of Robert A. Siegel.
9. No commission is charged for buying at our sales, but all forwarding charges will be added to the purchase price.
10. Lots will be sent for inspection, provided such lots are returned to us the same day as received. Postage and registration both ways will be charged. Approximate values of lots will be given on request.
11. The placing of a bid shall constitute acceptance of the foregoing conditions of sale.

---

In sending bids, always state the highest price you are prepared to pay for the lot. Your limit will not be used as a starting bid unless absolutely necessary.

## DESCRIPTIONS

Superb—the finest condition for noteworthy, outstanding copies.

Very Fine (VF)—means that there is a slight deviation from the above.

Fine (F)—means that the perforations do not touch the design on issues after 1890, but in some cases may just touch in earlier issues; if used, fairly lightly cancelled.

Very Good (VG)—means that the appearance is generally fine but that the perforations cut the design slightly.

Good (G)—means average off-centering; or fairly attractive with slight defects. Original gum is not to be expected on 19th Century stamps up to 1888 unless so stated.

Scott's 1948 Specialized United States Catalogue is used for cataloging our lots of United States and Scott's Standard Catalogue, 1949 for others.

WE SOLICIT FINE MATERIAL FOR FUTURE SALES
---

# BID SHEET

[illegible]



[illegible]



### PLEASE NOTE — IF ATTENDING SALE

This sale will be held at my office, 124 Mamaroneck Ave., White Plains, New York.

My office is easily reached from New York City, Express trains leave frequently from Grand Central Station. There are over a dozen different trains leaving between 5 P. M. and 7 P. M. Traveling time approx. 35 minutes.

For the convenience of our clients we are serving coffee and sandwiches from six o'clock until sale time. Sale starts at 7:30 P. M.

Lots may be inspected in my office until sale time. **New York City showing** — Mon. Jan. 24th at the offices of **Sylvester Colby, 505 Fifth Ave.**

# CATALOGUE

## UNITED STATES STAMPS

### 1847 ISSUE

1	<b>5c Red Brown (1).</b> Red grid cancel, margins all around. Very Fine <b>(Photo)</b>	30.00
2	<b>5c Red Brown (1).</b> Red grid cancel, margins all around, trivial tear in margin. V. F. appearance .....	30.00
3	<b>5c Red Brown (1).</b> Blue grid, margins three sides, close at left. Fine .....	37.50
4	<b>5c Red Brown (1).</b> Excellent strike of unusual blue grid, close at top. Fine	37.50
5	<b>5c Brown (1).</b> Neat "5cts." in blue, margins all around. Very Fine <b>(Photo)</b>	50.00
6	<b>5c Brown (1).</b> Green "Paid" cancel, margins all around, lightly creased ....	110.00
7	<input checked="" type="checkbox"/> <b>5c Red Brown (1).</b> Tied with red grid from Boston, margins all around. Very Fine .....	<b>(Photo)</b> 40.00
8	<input checked="" type="checkbox"/> <b>5c Red Brown (1).</b> Tied with red grid from New York, margins all around. Very Fine .....	40.00
9	<input checked="" type="checkbox"/> <b>5c Red Brown (1).</b> Tied with red grid from New York, margins all around. Very Fine .....	<b>(Photo)</b> 40.00
10	<input checked="" type="checkbox"/> <b>5c Red Brown (1).</b> Tied with red cancel from Hanover, N. H., margins all around. Very Fine .....	40.00

- 11 ☒ **5c Red Brown (1).** Tied with red grid, Red "**Steam**" and New Orleans pmkd. to Texas. Fine cover, stamp touches at upper right ..... **(Photo)** 70.00
- 12 **10c Black (2).** Black cancel, margins all around, though small at top. Fine **(Photo)** 110.00
- 13 ☒ **10c Black (2).** Tied with **black** Louisville 10, margins three sides, close at B. Fine ..... **(Photo)** 110.00
- 14 ☒ **10c Black (2).** Bright red grid cancel from Boston, margins all around. Very Fine ..... **(Photo)** 100.00

#### 1851 ISSUE

- 15 **1c Dark Blue Type II (7).** Horiz. **Pair**, large margins all around, one stamp superb other has light crease ..... **(Photo)** 30.00
- 16 ★ **1c Dark Blue, Type IIIa (9).** Bright, cut in slightly at top. Fine **(Photo)** 150.00
- 17 **1c Blue, Type IV (10).** Fine ..... 8.00
- 18 **1c Blue, Type IV (10).** Large margins. Very Fine ..... 8.00
- 19 **1c Blue, Type IV (10).** Margins all around, recut once at top. Very Fine 10.00
- 20 ☒ **1c Blue, Type IV (10).** Tied from Auburn, N. Y. recut top only. Very Fine 12.00
- 21 ☒ **3c Red (11).** Town tied, attractive illustrated **campaign** cover in red of **Buchanan and Breckinridge**. Fine ..... **(Photo)** —
- 22 ☒ **3c Red (11).** Two covers each tied neatly in **Green** with town cancel and date. Fine ..... —
- 23 ☒ **3c Imperf. (11, a, b).** 148 covers, various shades. Fair-Fine ..... —
- 24 ☒ **10c Green, Type II (14).** Poor stamp tied from San Francisco on **San Francisco News Letter** of 1857, contains one illustration, mailed per Steamer Golden Age. Fine condition ..... —
- 25 ☒ **10c Green, Type III (15).** Horiz. **strip of 3** used on cover from Hartford to Rome, various transit markings, left pair of strip has margins all around, end stamp close one side ..... **(Photo)** 57.50
- 26 **10c Green, 12c Black (15, 17).** Both lightly creased. Fine appearing ..... 40.00
- 27 **12c Black (17).** Margins all around. Very Fine ..... **(Photo)** 25.00

#### 1857 ISSUE

- 28 **1c Blue, Type II (20).** "Paid 3" cancel, Double Transfer. Fine ..... 17.50+
- 29 **1c Blue, Type IIIa (22).** Horiz. **Pair**, few perfs. short at top. Fine appearance ..... 50.00
- 30 ☒ **3c Rose, Type I (25).** 21 copies on 20 covers also one #26 tied with Green town cancel. Good-Very Fine ..... 105.75



31	✉	3c Red (26). Attractive <b>Lincoln Campaign</b> cover, tied from Wataga, Ill. Very Fine .....	(Photo)	—
32		5c Brown, Type I (29). Fine .....		18.50
33	★	5c Brown, Type I (29). Very Fine .....	(Photo)	75.00
34	✉	10c Green, Type V (35). Tied in blue from <b>Marysville, Cal., "Overland Via Los Angeles"</b> and illustrated <b>Stagecoach</b> . Very Fine .....	(Photo)	—
35		24c Gray Lilac (37). Fine .....		20.00
36		30c Orange (38). Pretty red grid cancel. Very Fine .....	(Photo)	32.50
37		30c Orange (38). Boston "Paid" cancel, thin .....		35.00
38		30c Orange (38). <b>Cracked Plate</b> , perfs. in at top. V. G. ....		50.00
39	★	30c Black Imperf. (38 var.). Fine, sells for \$75.00 .....	(Photo)	—

#### 1861-1867 ISSUES

40		1c Blue (63). Very Fine strike of fancy spoke cancel .....	(Photo)	—
41	✉	1c Dark Blue (63b). Tied with pretty red double circle Towanda, Pa. pmkd. Fine .....		—
42	✉	1c Blue, tied with 2c Bankcheck Revenue (63, R5c). "Due 4" ms. marking, odd usage .....		—
43		3c Pink (64). Perfs. in at left. Very Good .....		32.50
44		3c Rose (65, 94). Large "W" from Waterbury also fancy geometric, excellent strikes .....	(Photo)	—
45	✉	3c Rose (65). Beautiful <b>Lincoln Mourning</b> cover, illustrated "We Cherish His Memory". Tied from Boston. Very Fine .....	(Photo)	—
46	✉	3c Rose (65). Tied with neat " <b>Banks Division</b> " in blue .....		—
47	✉	3c Rose (65). Tied, blue oval North Attlebro, Mass. pmkd. Fine .....		—
48	✉	3c Rose (65). Tied with neat " <b>Free</b> " from Bryant's Pond, Me. Fine .....		—
49	✉	3c Rose (65). <b>Virginia City, Montano</b> pmkd., stamp has damaged corner .....		—
50	✉	3c Rose (65). Two covers, both tied, corner cards of U. S. Christian Commission and N. Y. S. Military Agency. Fine .....		—
51		5c Buff (67). Fine .....		40.00
52		5c Buff (67). Fine .....	(Photo)	40.00
53		5c Buff (67). Red "Paid" cancel, four perfs. short, perfs in at R. ....		60.00
54		5c Brown Yellow (67a). Centered to left. Fine .....		45.00
55		2c-30c, 1861-66 Issues (68-71, 73, 77). Very Good-Fine .....		38.50
56		12c Black, 30c Orange (69, 71). Fine-V. F. ....		14.00

57 ★	24c Brown Lilac (70a). Fine .....	(Photo)	75.00
58	30c Orange (71). Negative "U. S." cancel, pin hole .....		9.00+
59 ★	90c Blue (72). Centered to left. Fine O. G. ....	(Photo)	60.00
60	90c Blue (72). Horiz. Pair, centered to top and right. Fine .....		85.00
61	5c Red Brown (75). San Francisco Cog Wheel cancel. Fine .....		17.50
62 E	3c Rose, Grilled All Over Essay (79 essay), centered to right. Fine O. G. ....		—
63	2c Black, D. Grill (84). Perfs. cut in top and left. Very Good .....		67.50
64	2c Black, Z. Grill (85B). Rather heavy cancel. V. G. ....		20.00
65	5c Brown, Grill (95). Horiz. Pair, perfs in at right. Very Good .....		85.00
66 ★	12c-15c Black, Grill (97-98). Perfs. in one side. Very Good, O. G. ....		40.00
67 ★	24c Gray Lilac, Grill (99). Centered to B. Fine, O. G. ....	(Photo)	100.00
68	30c Orange, Grill (100). Fine .....		25.00
69 ★	30c Orange, Grill (100). Centered to right. Fine, O. G. ....	(Photo)	100.00
70	90c Blue, Grill (101). Centered to Bottom. Very Good .....		85.00
71 ★	90c Blue, Grill (101). Fine, Fresh O. G. ....	(Photo)	200.00

#### 1869 PICTORIAL ISSUE

72	1c-6c Pictorials (112-115). First three Blue cancels latter in Red. V. G.-F. ....		20.35
73	1c-10c Pictorials (112-116). All with various Blue cancels. V. G.-Fine .....		28.85
74	1c, 12c, 15c Pictorials (112, 117, 119). V. G.-Fine .....		25.50
75 ☒	2c Brown (113). Tied, Black Carrier cancel. Fine .....		—
76	3c Ultramarine (114). Five fancy cancels includes Shield, Star, Rosette, two have str. edges .....		—
77 ☒	3c Ultramarine (114). Seven covers, includes Forwarded, Key West, Fla., "Hold Postage", Star etc., nice lot .....		—
78 ☒	3c Ultramarine (114). Three diff. attractive illustrated advertising covers .....		—
79	6c, 12c, 15c Pictorials (115, 117, 119). Very Good-Fine .....		27.00
80	10c Yellow (116). Very Fine .....		8.50
81	10c Yellow (116). Steamship cancel, lightly creased .....		10.00
82	10c Yellow (116). Three fancy cancels, Star, Cross and X. Fine .....		25.50+
83 ☒	10c Yellow (116). Tied on cover, New York and Washington, D. C. pmkds. also str. line "Forwarded", addressed to U. S. Steamer Seminole. Very Fine (Photo)		25.00
84 ☒	10c Yellow (116). Fat stamp, str. edge at R. tied on small neat cover, addressed to U. S. Steamer Seminole, "New York Received" marking (Photo)		25.00



85	☒	10c Yellow (116). Tied with neat strike of Dedham, Mass. fancy "Paid" in Shield cancel to Germany, various transit markings. Fine .....	(Photo) 25.00+
86	☒	10c Yellow (116). Same as above with fancy "Paid" in Shield, stamp has str. edge .....	(Photo) 25.00+
87		15c Brown & Blue (118). Lightly cancelled, centered to left. Fine .....	35.00
88		15c Brown & Blue, Type I (118). One perf. short. Very Fine appearance .....	(Photo) 37.50
89	★	15c Brown & Blue (119). Perfs in at top. V. G. part O. G. ....	26.50
90		15c Brown & Blue (119). Centered to right. Fine .....	10.00
91		24c Green & Violet (120). Very Fine .....	(Photo) 37.50
92		24c Green & Violet (120). Perfs. in at left. Very Good .....	37.50
93		24c Green & Violet (120). Red cancel, centered to left. Fine .....	(Photo) 42.50
94		30c Blue & Carmine (121). Lightly cancelled, centered to top right .....	26.50
95		30c Blue & Carmine (121). Fine .....	26.50
96	★	90c Carmine Rose & Black (122). Perfs. just touch at left. Bright and Fresh .....	(Photo) 200.00
97		1c-2c Re-issue (123-124). Latter unused. Fine appearance, both thin .....	30.00
98	★	24c Green & Violet, Re-issue (130). Well centered, two perfs. short at B. ....	(Photo) 42.50
99		30c Blue & Carmine, Re-issue (131). Well centered, one perf. short. Very Fine appearance .....	(Photo) 70.00
100	★	90c Carmine & Black, Re-issue (132). Centered to top. Fine, part O. G. ....	(Photo) 115.00

#### BANKNOTE ISSUES

101	★	1c Ultramarine, Grill (134). Fine, O. G. ....	23.50
102		1c Ultramarine, Grill (134). Horiz. pair. Fine-V. F. ....	10.00
103		1c Ultramarine, Grill (134). Horiz. strip of 3, centered to right .....	14.50
104		7c Vermilion, Grill (138). Fine .....	17.50
105		7c Vermilion, Split Grill (138). Fine .....	20.00
106		7c Vermilion, Grill (138). Well centered, thick paper, appears to be Double Paper variety, unlisted .....	—
107		90c Carmine, Grill (144). Perfs. in at B. Very Good .....	55.00
108	★田	2c Red Brown (146). Block, part O. G. Fine .....	30.00
109		3c Green. 406 stamps, includes fancy cancels, plate and paper varieties. Good lot for specialist .....	—

110	<b>7c Vermilion (149).</b> Four <b>fancy cancels</b> . Attractive lot .....	21.50+
111	<b>12c Violet (151).</b> Horiz. & vertical strips of 3. Fine .....	20.50
112	✉ <b>24c Purple (153).</b> Tied on large cover from New York. Fine .....	75.00
113	<b>90c Carmine (155).</b> Fine .....	3.50
114	★田 <b>2c Brown, 3c Green (157-158).</b> Blocks. V. G.-Fine, O. G. ....	37.50
115	<b>6c Dull Pink (159).</b> 17 copies includes strip of 4, <b>fancy cancels</b> includes geo- metrics, N. Y. Foreign Mails, colored etc. Fine lot .....	—
116	<b>6c-30c Banknotes (159-163, 165).</b> All horiz. <b>Pairs</b> except 15c strip of 3. V. G.-V. F. ....	54.25
117	<b>7c Vermilion (160).</b> Blue target cancel. Very Fine .....	5.50
118	<b>7c Vermilion (160).</b> Three diff. <b>New York Foreign Mail</b> cancels, one in red, nice strikes .....	16.00+
119	<b>7c Vermilion (160).</b> Four copies, blue geometric, two diff. "M" one boxed and an imprint copy. Attractive lot .....	20.00+
120	<b>90c Rose Carmine (166).</b> Supplementary Mail cancel, Type F, one perf. short. Fine appearance .....	25.00
121	✉ <b>2c Vermilion (178).</b> Tied, Twin Bridges, Montano pmkd. V. G. Territorial .....	—
122	✉ <b>5c Blue (179).</b> Angel's Camp, Cal. pmkd., not tied. Fine .....	—
123	★田 <b>15c Red Orange (189).</b> Block, centered slightly to R. Fine O. G. ....	25.00
124	★田 <b>15c Red Orange (189).</b> Block re-enforced and single, O. G. V. G.-Fine .....	29.50
125	★ <b>90c Carmine (191).</b> Perfs. in at right. V. F., O. G. ....	57.50
126	<b>90c Banknotes (191, 218).</b> Both lightly creased. Very Fine appearance .....	30.00
127	<b>6c Rose (208).</b> Ten copies, each with diff. <b>Numeral</b> cancel. V. G.-Fine .....	35.00
128	<b>10c Brown (209).</b> Horiz. strip of 5 with Supplementary Mail cancel, two stamps creased. Fine appearance .....	10.00
129	<b>2c Red Brown (210).</b> Five <b>fancy cancels</b> , year date in Cross, large "S", monogram, etc. Fine lot .....	—
130	★田 <b>2c Banknotes (210, 212).</b> Blocks. Fine-V. F., O. G. ....	6.50
131	<b>30c Orange Brown, 90c Purple (217-218).</b> Very Good .....	20.00
132	★ <b>90c Orange (229).</b> Small thin. Fine appearance .....	14.00

#### COLUMBIAN ISSUE

133	<b>2c Columbians (231).</b> 120 copies selected for interesting and fancy cancels .....	—
134	★田 <b>3c Columbian (232).</b> Imprint block of 8. V. G.-Fine .....	15.00
135	★田 <b>3c Columbian (232).</b> Block of 20. V. G.-Fine .....	36.00



136 ★	4c-30c Columbian (233-239). Three have str. edges, part no gum .....	33.25
137	15c-50c Columbians (238-240). V.G.-Fine .....	24.00
138 ★	\$1.00 Columbian (241). Fine .....	45.00
139	\$2.00 Columbian (242). Perfs. cut in at top, light crease .....	30.00
140	\$4.00 Columbian (244). Fine ..... (Photo)	70.00
141 ★	\$5.00 Columbian (245). Fine ..... (Photo)	90.00

#### 1894-1898 ISSUES

142 ★	\$1.00 Black (261). Trivial tear at top. Fine appearance .....	45.00
143 ★	\$1.00 Black (261). Thin spot, no gum. Fine appearing .....	45.00
144 ★	50c Orange (275). Fine .....	14.00
145	\$1.00 Black (276-276A). First Very Fine, latter perfs. touch at top .....	18.50
146 ★	\$2.00 Dark Blue (277). Very Fine centering, one perf. short ..... (Photo)	45.00
147 ★	\$5.00 Dark Green (278). Very Fine ..... (Photo)	85.00
148 ★	10c Brown, 15c Olive Green (282c, 284). Fine .....	16.50
149 ★田	2c Trans-Miss. (286). Top Imprint Plate No. Block of 10. V.G.-Fine	10.20
150 ★田	5c Trans-Miss. (288). Arrow Block. Fine, no gum .....	40.00
151 ★	\$1.00 Trans-Miss. (292). Very Fine, no gum ..... (Photo)	65.00
152 ★	\$2.00 Trans-Miss. (293). Fine ..... (Photo)	85.00
153	4c-10c Commems. 1898-1912 (287-90, 296-99, 326-27, 399-400). V.G.-V.F. ....	27.85

#### TWENTIETH CENTURY

154 ★田	1c Pan-American (294). Block of 45, contains 5 str. edges. Fine .....	24.50
155	50c-\$5.00, 1902-16 Issues (310-11, 479-80). V.G.-Fine .....	14.40
156 ★田	1c Green Imperf. (314). Top Arrow Block. Very Fine .....	22.50
157 ★田	1c Louisiana-Purchase (323). Block of 8. Very Fine .....	12.00
158 ★田	1c Louisiana-Purchase (323). Half Sheet of 25 with Imprint and Plate No., perfs. touch mostly at top .....	38.15
159 ★田	1c-2c Louisiana-Purchase (323-324). Block of 8 of each. Fine-V.F. ....	22.00
160 ★田	5c Louisiana-Purchase (326). Bottom Imprint Plate No. 2099 Block of Ten. V.G.-Fine .....	92.50
161 ★田	\$1.00 Violet Brown (342). Plate No. Block of 4. Fine .....	100.00
162 ★	1c-5c Imperforates (343-347). Blocks of first two, singles of latter. Fine-V.F. ....	18.25

163	★田	1c-2c Imperforates (343-344). Center Line Blocks. Fine-V. F. ....	24.50
164	★田	4c Brown, Imperf. (346). Right Imprint Plate #4934 Block of 6. Fine .....	20.00
165	★田	5c Blue, Imperforate (347). Block of 6 with plate no. in middle. Very Fine .....	39.50
166	★	4c Orange Brown, Coil (350). Very Fine .....	8.50

#### 1909-1918 ISSUES

167	★田	2c Lincoln Bluish (369). Top Imprint Plate No. 4976 Block of 6. Fine .....	125.00
168	★田	2c Alaska-Yukon Imperf. (371). Bottom Imprint Plate #5251 Block of 6, one stamp has small thin spot .....	37.50
169	★田	2c Hudson-Fulton Imperf. (373). Block, slight thinning .....	18.50
170	★田	1c-5c Commems. 1909-26 Issues. Seven diff. Blocks, three have thins .....	19.30
171	★	1c-2c Coils (385-87, 391, 442-43). Pairs, two have guide lines. Fine-V. F. ....	25.50
172	★	1c-5c Coils (390-396). Fine-Very Fine .....	11.37
173	★田	1c Pan-Pacific (397, 401). Plate No. Blocks of 6. V. G.-Fine .....	17.00
174	★	5c Pan-Pacific (403). Very Fine .....	13.50
174A	★	50c Violet (421). Superb, never hinged .....	30.00
174B	★田	50c Violet (421). Block with plate no. Very fine, never hinged .....	135.00
175	★	2c Carmine, Coil (444). Line Pair. Very Fine .....	9.00
176	★	2c Carmine Imperforate (459). Pair. Fine .....	(Photo) 100.00
177		1c-\$5.00 1916 Issue (462-480). Good-Fine .....	28.84
178	★田	1c-1½c Imperforates (481, 576). Blocks of 32 of each. Very Fine .....	15.60
178A	★	1c Green, Complete A. E. F. Booklet of ten panes of thirty each (498f). Very Fine-Superb. Rare in complete booklets .....	375.00+
178B	★田	5c Rose ERROR (499h). Double Error in block of nine. Very Fine .....	80.00
179		\$2.00 Orange & Black (523). Perfs. cut in at B. Good .....	23.50
180	★	\$2.00 Orange Red & Black (523). Fine .....	(Photo) 47.50
181	★田	2c Offset Imperf. Type V (532a). Block. Very Fine .....	25.00
182	★	1c-3c Rotaries (536, 538-541, 545-46), also pairs of #538a, 539b Imperf. Between. V. G.-Fine .....	32.10

#### PILGRIMS TO DATE

183	★田	5c Pilgrim (550). Block. Very Fine .....	16.00
184	★田	1c Green Imperf. (575). Arrow Block of 24. Very Fine .....	28.25



185	★	1c-10c Rotaries (578-79, 581-591). Complete. V. G.-Fine .....	18.08
186	★田	2c Carmine (595). Blocks of 4 with Star and Plate No. 14914. Perfs. cut in at top .....	100.00
187	★田	2c Harding Imperf. (612). Block of 6 with plate No. on end stamp. V. F. ....	13.00
188	★田	1c-5c Hug.-Walloon (614-616). Set of blocks. Well centered, each has slight thin .....	18.85
189	★田	2c-5c Lex.-Concord, 2c-5c Hawaii (618-19, 647-48). Blocks. Fine-V. F. ....	19.00
190	★田	5c Norse-American (621). Block. Fine .....	13.50
191	★田	1½c Imperforate (631). Center Line Block of 64. Very Fine .....	65.00
192	★	1c-10c Kans. & Nebr. (658-679). Complete sets. V. G.-Fine .....	39.64
193	★田	1c-10c Kansas (658-668). Complete set of Blocks. Fine-Very Fine .....	84.50
194	★田	1c-10c Nebraska (669-679). Complete set of Blocks. Perfs. touch on 6c and 8c, balance Fine-Very Fine .....	85.40
195	★	2c Yorktown (703). Five Sheets of 50. Perf. all around. V. G.-V. F. ....	37.00
196	★	16c Farley Airmail Special (771). Sheet of 200, sheet had been creased, pressed out but many varying creases remain .....	325.00
197	★田	Flags (909-921). Cpl. set in Name blocks of ten. Very Fine .....	27.38

#### AIRMAILS, ENVELOPES, LOCALS, ETC.

198	★	6c. 24c Airs (C1-C5). Two have slight thins, balance Fine .....	23.75
199	★田	6c, 24c Airs (C1, C3). Blocks, latter has slight thinnings .....	37.50
200		5c-50c Airmails (C1-C12, C16-C38). Fine .....	29.70
201	★	16c Green Air (C2). Very Fine .....	8.50
202	★	65c-\$2.60 Graf Zeppelin (C13-C15). Complete set. Fine-Very Fine .....	131.00
203	★田	65c-\$2.60 Graf Zeppelins (C13-C15). Complete set of blocks. Very Fine (Photo) .....	580.00
204	★	50c Zeppelin (C18). Very Fine .....	11.00
205	★	50c Zeppelin (C18). Fine .....	11.00
206	★	30c Transatlantic Air (C24). Block of 30. Very Fine .....	38.00
207	★	30c Transatlantic Air (C24). Sheet of 50. V. G.-Fine .....	65.00
208	★	2c-60c Shanghai (K1-K14). 4c defective, balance Fine-V. F. ....	25.25
209	★田	20c Shanghai (K10). Set of four diff. corner blocks. V. G.-Fine .....	30.00
210		5c-25c Large Newspapers (PR2-5). V. G.-V. F. ....	22.00
211	✉	3c Pink Entire (U58). Wells Fargo imprint on advertising cover of San Francisco firm. Fine .....	—

212	✉	<b>3c, 6c, 10c Entires.</b> All with <b>Western Franks</b> , Wells Fargo, Langtons, Bamber, 14 envelopes, all used but all cancelled. Fair-Fine .....	—
213		<b>7c Vermilion, Cut Square (U88).</b> Attractive <b>N. Y. Foreign Mail</b> cancel ....	—
214	✉	<b>3c Blue, Carrier, U. S. City Despatch Post (6LB3).</b> Red "U. S." in octagon, City Despatch pmkd. on small cover, large margins all around. Very Fine (Photo)	85.00
215	✉	<b>Local, 2c Green Boyds (20L4).</b> Tied on attractive large embellished <b>Valentine</b> cover, Boyds red oval on back dated Feb. 14th. Very Fine .....	—

## REVENUES

216		<b>2c-\$1.00 Imperf. &amp; Part Perf.</b> (R13b, 42a, 52a, 58b, 66a, 72a). V. G.-V. F. ....	18.20
217		<b>3c Playing Card (R17c).</b> One perf. short otherwise Fine .....	12.50
218		<b>\$20.00 Probate of Will (R99c).</b> Centered to B. Fine .....	85.00
219		<b>2c Orange &amp; Black, Inverted Center (R135b).</b> Well centered, uncanceled, thin spot .....	15.00
220		<b>\$100.00 Documentary, Series of 1941 (R333).</b> Very Fine. Sells for \$20.00 ....	—
221		<b>10c Stock Transfer, Inverted Overprint (RD27a).</b> Well centered, str. edge at R. ....	—
222		<b>1c-\$20.00 Stock Transfers, Old Series of 1940 (RD42-60).</b> Two perf. initialed #RD53, 60, balance Fine-V. F. ....	31.72
223		<b>\$20.00 Stock Transfer, Series of 1940 (RD85).</b> Fine .....	10.00
224	田	<b>\$20 Stock Transfer, Series of 1940 (RD85).</b> Block, perf. initialed, centered to left .....	40.00
225		<b>1c-\$20.00 Stock Transfers, Series of 1941 (RD92-110).</b> Two perf. initialed #RD103, 110, balance Fine-V. F. ....	15.18
226	田	<b>1c-\$10.00 Stock Transfers, Series of 1941 (RD92-109).</b> All blocks, all perf. initialed .....	40.78
227		<b>1c-\$20.00 Stock Transfers, Series of 1942 (RD117-133).</b> Two perf. initialed RD 126, 133, balance Fine-V. F. ....	19.46
228	田	<b>1c-\$10.00 Stock Transfers, Series of 1942 (RD117-18, 120-25, 127-28, 131-32).</b> Blocks, all perf. initialed .....	21.24
229	★	<b>\$2, 5, 10 Stock Transfer, Series of 1942 (RD128, 131-32).</b> Fine, part O. G. ....	—
230		<b>\$20.00 Stock Transfers, Series of 1942, 1944 (RD133, 179).</b> Fine .....	—
231		<b>1c-\$20.00 Stock Transfers, Series of 1943 (RD140-156).</b> Two perf. initialed #RD149, 156, balance Fine-V. F. ....	20.09
232	★	<b>1c-\$10.00 Stock Transfers, Series of 1943 (RD140-148, 150-51, 154-55).</b> Fine, part O. G. ....	—



233	▣	<b>1c-\$20.00 Stock Transfers, Series of 1943</b> (RD140-146, 148, 150-156). All blocks, all perf. ....	69.40
234		<b>\$30.00 Stock Transfer, Series of 1943</b> (RD157). Perf. initialed .....	—
235		<b>\$50.00 Stock Transfer, Series of 1943</b> (RD158). Perf. initialed .....	—
236		<b>\$50.00 Stock Transfer, Series of 1944</b> (RD181). Cut cancel. Fine .....	—
237		<b>\$100.00 Stock Transfer, Series of 1944</b> (RD183). Perf. initialed .....	—
238	★	<b>1c-80c Silver Tax (RG1-RG12)</b> . Very Fine .....	—
239		<b>\$100 Silver Tax (RG21)</b> . Handstamp cancel. Very Fine .....	—
240	★	<b>\$1.00 Hunting Permit (RW1-2)</b> . Well centered, perf. short on first, str. edge on latter .....	32.00
241	★	<b>\$1.00 Hunting Permit (RW2-3, 5-7, 9)</b> . Three O.G. all uncanceled, two have str. edges, one creased .....	42.50
242	★	<b>\$1.00 Hunting Permit (RW3-4)</b> . Fine .....	12.50
243	★	<b>\$1.00 Hunting Permit (RW5-7, 9-14)</b> . First has thin, RW9 has str. edge, balance Fine-V.F. ....	25.25
244		<b>Xmas Seal, 1908, Pair</b> from Booklet Pane of 3 (WX3). Very Fine, no gum .....	—

#### CONFEDERATE STATES

245	☒	1861, 5c Green (200). Tied from Sumter, S. C. on <b>Wall-paper cover</b> , stamp cut in two sides, small nick in cover at top .....	—
246		1862, 10c Rose (204). Large margins all around, town cancel, thin .....	35.00
247	☒	1863, 10c Blue (210). Tied on <b>Wall Paper</b> cover, slightly torn .....	10.00
248	☒	1863, 10c Blue (210). <b>Turned cover</b> , both town tied. Very Fine .....	—
249		1863-64, 10c Blue, <b>Perforated</b> (210d). Town cancel. Fine .....	12.50

#### U. S. LARGE & MISCELLANEOUS LOTS

250		<b>United States Collection</b> , 804 stamps mostly diff. in National Album, from 1847 to date, used and unused, condition Fair-Very Fine, includes some defects, nice lot .....	572.83
251		<b>Nineteenth</b> , 14 different (18 stamps). 1851-98 Issues. Fair-Fine .....	73.75
252		<b>3c Greens</b> , approx. 1500 on paper, some interesting cancels noted .....	—
253	★	<b>1c-10c 1870-1939 Issues</b> (157 stamps). Mostly 20th Century, includes Imperfs. and Coils. Fair-Fine .....	72.09
254		<b>Misc. U. S. Postage &amp; Revenues</b> . 574 stamps, on stock sheets, many com-mems. Est. Net \$15.00 .....	—

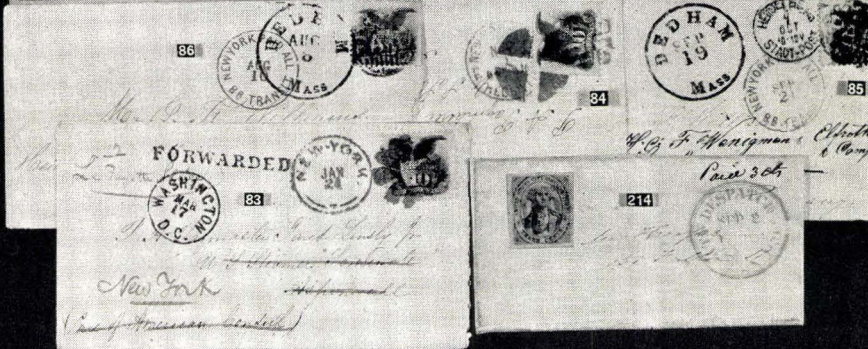
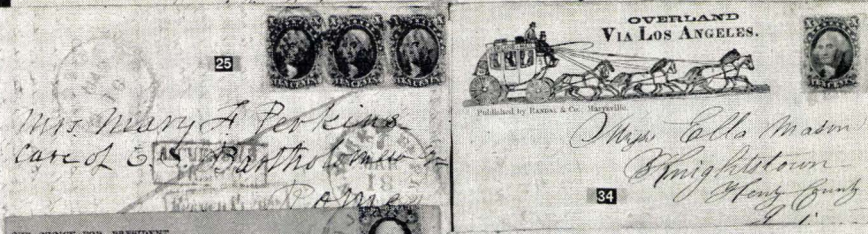
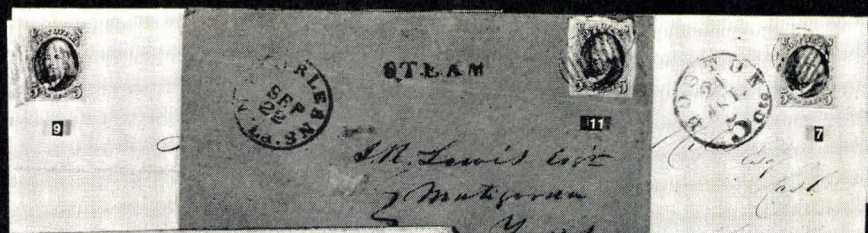
255	<b>Plate No.</b> singles (75), Plate No. Blocks (59), singles contain 19th, blocks all commems. from 1934, all used .....	_____
256	<b>Used Blocks.</b> 759 misc. blocks, includes mostly last 20 years .....	_____
257	<b>Commemoratives</b> , about 1500 mixed, about 1,000 mixed <b>precancels</b> and about 100 Consular Fee stamps .....	_____
258	<b>Alaska Dog Team Post.</b> 204 covers of which 160 are used from various points in Alaska, balance in Canada on printed cachet covers, interesting collection .....	_____
259	<b>First Flight Covers</b> mostly F. A. M., 144 cachet covers, some used abroad. Very Fine lot .....	_____
260	<b>First Flight to Fiji and return.</b> 17 covers from different points, all cacheted, George VI stamps used from Fiji on covers cat. \$23.00. Very Fine .....	_____
261	<b>19th &amp; 20th. All have str. edges</b> , many commems. (197 stamps) .....	96.48
262	<b>19th &amp; 20th. All defective</b> (260 stamps) .....	349.30
263	<b>Postage, Parcel Post and Revenues.</b> Mounted on approval sheets, several hundred. Est. Net \$10.00 .....	_____
264	<b>Precancels.</b> 717 stamps, includes items from 1908 to date .....	_____

## U. S. WHOLESALE

(LOTS CONTAIN NO STRAIGHT EDGES UNLESS MENTIONED)

265	<b>3c Red (11).</b> Seventy-seven stamps each with dated cancel. Fair-Fine .....	26.95
266	<b>10c, 12c, 24c, 1861 Issue</b> #68(6), 69(2), 70(4), some slight flaws .....	67.00
267	<b>5c Brown #76 (4).</b> V. G.-Fine .....	20.00
268	<b>5c Brown #76 (10).</b> All have ms. cancels. V. G.-V. F. ....	50.00
269	<b>15c Black, 24c Gray Lilac</b> #77(3), 78(5). Good-Fine .....	57.00
270	<b>1c, 2c, 10c, 1867 Issue.</b> #86(1), 87(2), 89(3), slight faults, nice appearing .....	54.00
271	<b>1c Buff #112 (5).</b> Slight faults, nice appearing .....	35.00
272	<b>2c Brown #113 (20).</b> V. G.-Fine .....	45.00
273	<b>2c Brown #113 (25).</b> Good-Fine .....	56.25
274	<b>1c-10c Banknotes</b> #134(3), 159(21), 161(50), 185(5), 187-188(16). V. G.-F. ....	81.15
275	<b>3c Green #147(1100), 207(800).</b> V. G.-V. F. ....	95.00
276	<b>7c Vermilion #149 (8).</b> Mostly have minor flaws, nice appearing .....	40.00
277	<b>7c Vermilion, 24c Purple</b> #149(2), 153(3). V. G.-Fine .....	40.00
278	<b>24c Purple #153 (7).</b> Two have str. edges, several minor faults .....	70.00









1



5



12



15



16



27



33



36



39



40



EX 44



52



57



59



67



69



71



88



91



93



96



98



99



100



140



141



146



147



151



152



176



180



359



360



362



364



365



366



367



368



373



380



382



385



389



401



410



412





413



417



418



419



422



431



434



437



449



452



453



467



479



EX 487



493



498



EX 508



EX 516



520



522



539



547



566



569



573



583



587



591



593



597



602



606



610



634



640



649



279	3c Greens #158, 184 (4,200 mixed). V. G.-V. F. ....	126.00
280	7c Vermilion #160 (8). Mostly with minor faults .....	40.00
281	4c-5c Banknotes #179(28), 205(14), 211(10), 215(10), 216(20). V. G.-V. F. ....	44.90
282	15c Indigo, 30c Black #227-228 (10 each). V. G.-Fine .....	35.00
283	90c Orange #229 (10). Good-Fine .....	80.00
284	50c Columbian #240 (5). V. G.-V. F. ....	55.00
285	15c Olive Green #284 (50). V. G.-Fine .....	27.50
286 ★	5c Trans-Miss. #288 (10). Fine .....	40.00
287	50c Trans-Miss. #291 (5). Very Good .....	50.00
288	50c Trans-Miss. #291 (5). Very Good .....	50.00
289	1c-10c Louisiana-Purchase #323-327 (5 sets). V. G.-V. F. ....	61.60
290	1c-2c Louisiana, Jamestown #323(10), 324(60), 328(11), 329(17). V. G.-V. F. ....	18.95
291	3c Louisiana-Purchase #325 (15). V. G.-V. F. ....	67.50
292	5c Louisiana-Purchase #326 (20). V. G.-V. F. ....	55.00
293	10c Louisiana-Purchase #327 (20). V. G.-V. F. ....	90.00
294	5c Jamestown #330 (20). V. G.-V. F. ....	70.00
295 ★	1c Pan-Pacific #397 (8 Blocks). Good-Fine .....	22.00
296	10c Orange, Pan-Pacific #400a (30). V. G.-V. F. ....	37.50
297 ★	1c Pan-Pacific #401 (27). Mostly blocks. V. G.-Fine .....	53.25
298	5c Pan-Pacific #403 (25). Fine .....	37.50
299 ★	5c Blue, Coil #447 (50). Mostly pairs. V. G.-Fine .....	67.50
300 ★	1c Green, Booklet Panes #462a (55 Panes). V. G. ....	27.50
301 田	\$5.00 Deep Green & Black #524 (4 blocks). Very Good .....	44.00
302	5c Pilgrim #550 (20). Fine .....	50.00
303	11c-\$1.00, 1922 Issue, #563, 565, 568-571, 622-23 (100 each). V. G.-V. F. ....	47.00
304	\$1.00-\$5.00, 1922 Issue #571-573 (25 of each). V. G.-Fine .....	55.00
305 ★	2c Carmine, Booklet Panes #583b (20 Panes). Very Good .....	60.00
306 ★	2c Carmine, Booklet Panes #583b (20 Panes). V. G.-Fine .....	60.00
307	2c-50c, 1923-31 Issues #611(100), 636(100), 639(300), 694-95, 699(100 each), 700(200), 701(100). V. G.-V. F. ....	35.00
308	5c Hug.-Walloon #616 (20). V. G.-V. F. ....	55.00
309 田	5c Lex.-Concord #619 (10 Blocks). Fine-V. F. ....	80.00
310	2c Norse-American #620 (75). Fine-V. F. ....	45.00

311	<b>5c Ericsson #628</b> (75). Fine-V. F. ....	45.00
312	<b>2c Commemoratives #643</b> (30), 649(40), 657(50), 681(40), 682(75), 689(60), 690(60), 702(100), 703(50), 716(80). V. G.-V. F. ....	42.05
313	<b>4c-10c Parks #743-44</b> (100 each), 745-46 (50 each), 747(20), 748(100), 749(75). V. G.-V. F. ....	40.90
314 ★	<b>3c Newburgh Farley #752</b> (154), large blocks. Fine-V. F. ....	12.32
315 ★	<b>S.P.A. Sheets #797</b> (100). Very Fine ....	25.00
316	<b>10c S.P.A. #797</b> (200 sheets). Fine used ....	30.00
317	<b>½c-50c Presidentials #803-831</b> (9,000 stamps). All values in various quantities, assorted in envelopes ....	—
318	<b>1c-10c Famous-Americans</b> , 1c(1041), 2c(787), 3c(882), 5c(265), 10c(70), mixed. V. G.-V. F. ....	—
319	<b>3c Pony Express, 5c China #894</b> (100), 906(50). V. G.-V. F. ....	16.00
320 ★	<b>3c Kentucky #904</b> (500), in large blocks. Fine-V. F. ....	40.00
321 ★	<b>3c Railroad #922</b> (500), in large blocks. Fine-V. F. ....	40.00
322 ★	<b>3c Corregidor #925 (182)</b> , mostly blocks. Fine-V. F. ....	18.20
323	<b>8c-20c Airmails #C7</b> (100), C9(175), C26(200), CE1(20), CE2(100). V. G.-V. F. ....	45.00
324	<b>10c-15c Special Delivery #E5</b> (75), E12(200), E13(100), E16(200), E17(100). V. G.-V. F. ....	34.00
325	<b>1c-20c Parcel Post #Q1</b> (90), Q2(180), Q3(12), Q5(65), Q6(13), Q7(2), Q8(5). V. G.-V. F. ....	45.35
326	<b>15c Parcel Post #Q7</b> (50). V. G.-Fine ....	60.00
327	<b>20c Parcel Post #Q8</b> (35). V. G.-Fine ....	52.50
328	<b>10c-25c Special Handling #QE1-3</b> (26 mixed), QE4(50). V. G.-V. F. ....	21.88
329	<b>2c Blue Revenue, Roulette #R152c</b> (21). Very good ....	26.25
330 ★	<b>2c Wine, Perf. 11 #RE31</b> (12), includes 7 str. edges ....	—
331	<b>Revenue Stamped Paper, 25c Orange #RN-T4</b> (50), all on attractive illustrated Boston & Worcester Railroad stock certificates ....	150.00
332 ★	<b>A.M.G. Occupation in Italy, 1943, 15c-10L #1N1-1N9</b> (100 sets), in sheets. V. G.-V. F. ....	101.00
333 ★	<b>CANAL ZONE, 1925-28, 3c, 5c, 12c, 15c #85, 86, 88, 90</b> (6 Blocks of each). Fine-V. F. ....	88.50
334 ★	—1925, 10c Orange <b>#87</b> (6 Blocks). Fine-V. F. ....	102.50
335 ★	—1925, 1c-2c Dues <b>#J15-16</b> (7 Blocks each). V. G.-V. F. ....	57.75
336 ★	<b>PHILIPPINES, 1935, 1P-5P #393-96</b> (4 each). Fine-V. F. ....	50.00

337 ★	—1937, 5P Commonwealth #424 (Sheet of 25). Very Fine .....	81.00
338 ★	—1941, 8c-1P Airpost #C9-12 (Block of 20 of each). Cpl. set. Fine-V. F. ....	63.80

## UNITED STATES POSSESSIONS

### CANAL ZONE

339 ★	1904, 5c Blue, 10c Yellow (2-3). Two copies of #2, one used, perf. short on latter .....	23.00
340 ☒	1904, 5c Blue, 10c Yellow (2-3). Tied on covers. Fine .....	21.00
341 ☒	1904, 8c Violet Black (7). Pair tied on cover. Very Fine .....	20.00
342 ★	1906, 1c-2c <b>Double Overprints</b> (32e, 33c). Fine .....	40.00
343 ★	1909-11, 2c <b>Inverted Center</b> , 13c Gray, <b>"10cts." omitted</b> (42a, 46b), str. edge on first, latter Very Fine .....	35.00
344 ★田	1925-28, 3c-30c (85-93). <b>Blocks</b> . Fine-V. F. ....	50.25
345 ★田	1926, \$1.00 Violet Brown (95). <b>Blocks</b> . Fine .....	37.50
346 ★	1939, 1c-50c Anniversary Issue (120-135). Cpl. set. Very Fine .....	29.90
347 ★	1939, 1c-50c Anniversary Issue (120-135). Cpl. set. Very Fine .....	29.90
348 ★田	1929-46, 15c-25c, 5c-\$1.00 <b>Airpost</b> (C1-2, C5-10). <b>Blocks</b> . Cpl. sets. F.-V. F. ....	29.25
349 ★	1939, 5c-\$1.00 <b>Airpost</b> (C11-C16). Cpl. set. Very Fine .....	19.05
350 ★田	1915, 10c Due (J9). Two Blocks showing both spacings. Fine .....	22.00
351 ★	1907, Blue <b>Post Office Seal</b> (OX2). Sheet of 8. Very Fine, no gum .....	40.00
352 ★	1921, 0.02c Red Cut Square (U4). Very Fine .....	32.50
353 ★	<b>GUAM</b> , 1899, 6c-50c (6-11), V. G.-V. F. ....	36.50
354 ★田	—8c Violet Brown (8). Block. Fine .....	30.00
355 ★田	—15c Olive Green (10). <b>Block</b> , Fine .....	40.00
356 ★田	—1930, 1c-2c Guard Mail (MR3-4). Cpl. set of Blocks. Very Fine .....	50.00
357	<b>HAWAII</b> , 1864-99, 28 different, used and unused (Bet. 30-81). Fine lot .....	24.58

### PHILIPPINES

358 ★	1901, \$5.00 Dark Green (225). Very Fine .....	<b>(Photo)</b> 65.00
359 ★	1903-04, \$1.00 Black (237). Fine .....	<b>(Photo)</b> 30.00
360 ★	1903-04, \$2.00 Dark Blue (238). Very Fine .....	<b>(Photo)</b> 60.00
361 ★	1906-1925, 2c-2P (241-249, 251, 301). Very Fine .....	22.35
362 ★	1906, 10P Dark Green (254). Fine .....	<b>(Photo)</b> 25.00



363 ★	1926, 2c-30c <b>Madrid-Manila Flight</b> (305-314). No "A" or "B". Fine-V. F.	49.75
364 ★	1926, <b>2P Madrid-Manila</b> (316). Centered to right. Fine for this <b>(Photo)</b>	100.00
365 ★	1926, <b>4P Madrid-Manila</b> (317). Perfs. in at left. Very Good	<b>(Photo)</b> 150.00
366 ★	1926, <b>4P Madrid-Manila Flight</b> (317). Very Fine	<b>(Photo)</b> 150.00
367 ★	1926, <b>1P Madrid-Manila Flight</b> (318B). Very Fine	<b>(Photo)</b> 45.00
368	1926, <b>1P Madrid-Manila Flight</b> (318B). Fine	<b>(Photo)</b> 30.00
369 ★田	1925-31, 1P Violet <b>Imperf.</b> (350). Block. Very Fine	28.00
370 ★	1932, 2c-32c Pictorial Issue (354-360). Cpl. set. Very Fine	13.40
371 ★田	1937, 10P-20P (431-432). Blocks. V. G.-Fine	29.00
372 ★	1945, 10P Victory (495). Fine	10.00
373 ★	1945, 20P Victory (496). Very Fine	<b>(Photo)</b> 20.00
374 ★田	1933-41, 2c-1P <b>Airpost</b> (C1-C12). Cpl. sets of blocks. Fine-V. F.	24.80
375 ★	<b>PORTO RICO</b> , 1938, 5c-\$1.00 Semi-Officials Airs (San. 301-307). Complete set in full sheets of 10 each. Very Fine	95.00
376 ★	—1940, 1c-\$1.00 Semi-Official Airs (San. 308-315). Complete set in full sheets of 6 each. Very Fine	27.00

## BRITISH COLONIES

377 ★	<b>ANTIGUA</b> , 1913, 5/ George V (41). Very Fine	10.00
-------	--	-------

## AUSTRALIA

378 ★	1913, 5/ Yellow & Gray (12). Fine	10.00
379 ★	1916, <b>£1 Ultramarine &amp; Brown</b> (56). Very Fine	25.00
380 ★	1925, <b>£2 Rose &amp; Violet Brown</b> (59). Very Fine	<b>(Photo)</b> 50.00
381 ★	1931-36, 5/-10/ (100-101). Very Fine	17.50
382 ★	1934, <b>£2 Dull Rose &amp; Black (102)</b> . Centered slightly to B Fine	<b>(Photo)</b> 35.00
383 ★	1931-36, 10/ Pink & Gray (127). Very Fine	7.50
384 ★	1935, <b>£1 Gray</b> (128). Fine	17.50
385	1934, <b>£2 Dull Rose &amp; Black</b> (129). Very Fine	<b>(Photo)</b> 17.50
386 ★	1932, 2p-5/ Sidney Bridge (130-133). Complete set. Very Fine	16.15
387 ★	1937-38, 5/-£1 George VI (178-180). Very Fine	13.25
388 ★	<b>BAHAMAS</b> , 1912-20, ½p-5/ (55, 62, 65-69, E1). Fine-V. F.	24.30
389 ★	<b>BARBADOS</b> , 1912, 1/-3/ George VI (124-126). Very Fine	<b>(Photo)</b> 33.50

390 ★	—1916-18, 1/-3/ (136-138). Very Fine .....	23.25
391 ★	—1920, ¼p-3/ Victory Issue (140-150). Cpl. set. Fine-V. F. ....	19.98
392 ★	<b>BECHUANALAND PROT.</b> , 1918-24, 2/6-5/ (92-93). Very Fine .....	10.00
393 ★	<b>BERMUDA</b> , 1917-36, ½p-5/ (49, 51-2, 82-3, 85-6, 88, 90-1, 92, 94). V. F. ....	18.51
394 ★	—1917-20, 2/, 4/ George V (49, 51). Very Fine .....	6.75
395 ★	<b>BRITISH SILVER JUBILEES</b> , 1935, 31 different complete mint sets, plus a few odd singles used and unused. Very Fine .....	119.80
396 ★	<b>BRITISH CORONATIONS</b> , 1937, Complete set including long Newfoundland, mounted, also complete Edward VIII. Very Fine .....	29.37
397 ☒	—1937, Complete set including long Newfoundland on <b>First Day Covers</b> , 59 covers. Very Fine .....	—
398 ☒	—1937, Complete set of Crown Colonies on <b>First Day Covers</b> , all in <b>Blocks</b> , 45 covers. Very Fine .....	—
399 ☒	—1937, Ten diff. sets of Dominions on First Day Covers, all in <b>Blocks</b> , 14 covers. Very Fine .....	—
400 ☒	—1937, Crown Colonies, 38 diff. sets on First Day Covers. Very Fine ....	—

## CANADA

401 ★	1852, 3p Red (4). Margins except at part of left. Fine ..... (Photo)	35.00
402	1852, 3p Red, <b>Ribbed Paper</b> (4c). Fine .....	35.00
403	1857, ½p Rose (8). Red cancel. Fine appearance but thin .....	25.00
404	1858-59, ½p Rose (11). Two perfs. added. Fine appearance .....	50.00
405 ★	1864, 2c Rose (20). Fine, part gum .....	22.50
406	1868-97, ½c-15c (21-30). Fair-Fine .....	28.75
407 ★	1868-97, 1c Brown Red (22). <b>Thick Paper</b> . Fine .....	13.50+
408	1868-97, 1c Brown Red, <b>Watermarked</b> (22a). Fine .....	15.00
409	1868-97, 15c Gray, <b>Very Thick Paper</b> (30c). Very Fine .....	25.00
410	1868, 1c Brown Red, <b>Laid Paper</b> (31). Centered to right. Fine (Photo)	100.00
411	1868, 3c Bright Red, Laid Paper (33). Barely cancelled. Fine .....	20.00
412 ★	1897, <b>\$2.00 Jubilee (62)</b> . Very Fine except no gum ..... (Photo)	45.00
413 ★	1897, <b>\$2.00 Jubilee (62)</b> . Very Fine ..... (Photo)	45.00
414	1897, \$2.00, \$4.00 Jubilee (62, 64). Heavy smudge cancels, latter has small thin .....	40.00
415 ★	1897, <b>3.00 Jubilee (63)</b> . Perfs. just touch at top. Very Good .....	50.00

416	1897, \$4.00 Jubilee (64). Town cancel, perf. just touch at right .....	25.00
417 ★	1897, \$4.00 Jubilee (64). Fine ..... (Photo)	55.00
418 ★	1897, \$5.00 Jubilee (65). Very Fine ..... (Photo)	55.00
419 ★	1897, \$5.00 Jubilee (65). Trivial light stain on one perf. Fine appearance (Photo)	55.00
420 ★田	1900, 20c Olive Green (84). <b>Corner Block</b> , centered to left. Very Good ....	40.00+
421 ★田	1903-08, 10c Brown Lilac (93). <b>Blocks</b> , top pair Very Fine, bottom pair close at top .....	18.00+
422 ★	1908, 50c Edward (95). Fine ..... (Photo)	30.00
423 ★	1908, ½c-20c Quebec Issue (96-103). Heavily hinged set, some part gum. V. G.-Fine .....	19.43
424 ★田	1908, 10c, 15c, 20c Quebec (101-103). <b>Blocks</b> . Very Good .....	60.00+
425 ★	1914, 1c-2c Coils (123-124). Ten of each in pairs. V. G.-Fine .....	52.50
426 ★	1914, 1c Dark Green, Coil (123). Twenty copies in strips, mostly Fine .....	50.00
427 ★	1914, 2c Carmine, Coil (124). Twenty copies in strips. V. G.-Fine .....	55.00
428 ★	1929, \$1.00 Parliament Bldg. (159). Very Fine .....	12.50
429 ★田	1930, 5c <b>Airpost</b> (C2). Block. Very Fine .....	8.00
430 ★田	1875-79, 2c Scarlet, Registration (F1b). <b>Block</b> centered to right. Fine .....	30.00+
431 ★	1916, 2c+1c War Tax, <b>Imperforate</b> (MR4b). Hoizr. pair. Very Fine, no gum ..... (Photo)	30.00
432	<b>CAPE GOOD HOPE</b> , 1855-64, 1p-6p Triangle (3, 5, 13). One thin, others V. G. ....	27.00
433	—1855-64, 1p, 4p, 1/ Triangles (4, 6, 12). Very Good .....	45.00
434	<b>CYPRUS</b> , 1924-28, £1 George V (110). Very Fine used ..... (Photo)	17.50
435 ★	<b>DOMINICA</b> , 1920-22, 2/6 Red & Black (48, 63). Very Fine .....	13.00
436	<b>FALKLAND ISLANDS</b> , 1912, 10/ George V (39). Very Fine used .....	11.00
437	—1912, £1 George V (40). Very Fine used ..... (Photo)	25.00
438 ★	<b>GERMAN EAST AFRICA</b> , 1917, 10r-20r (N120-121). Very Fine .....	22.00
439	<b>GREAT BRITAIN</b> , 1891, £1 Green (124). Very Fine .....	15.00
440 ★	<b>IRELAND</b> , 1922, 2/6-10/ (12-14). Very Fine set .....	19.00
441	<b>JAMAICA</b> , 1875, 5/ Violet (15). Very Fine .....	9.00
442 ★	—1897, 5/ Violet (30). Very Fine .....	7.00
443 ★	—1905-11, 5p-5/ (41-45). Fine-Very Fine .....	15.25
444 ★	—1908, 2/ Red Brown (56). Very Fine .....	13.50



445	—1919-21, 5/-10/ (86-87). Very Fine used .....	20.50
446 ★	—1921-23, 1/-10/ (96-100). Fine-Very Fine .....	21.00
447 ★	—1921-23, 2/-10/ (97-100). Very Fine except perfs. touch on left of 5/ .....	20.00
448 ★	—1923, ½p-2½p Semi-Postal (B1-B3). Cpl. set. Very Fine .....	9.50
449 ★	<b>MONTSERRAT</b> , 1913, 5/ George V (42). Very Fine ..... <b>(Photo)</b>	22.50
450 ★	<b>MAURU</b> , 1916, 2/6-5/ (13-14). Very Fine .....	11.00

## NEWFOUNDLAND

451 ☒	Three diff. <b>stampless covers</b> , one used to Harbour Buffet, Newf., one to U. S., other <b>Crown and Oval Ship Letter</b> from St. John. Scarce lot. Fine .....	—
452	1860, 6p Orange (13). Margins three sides, close at top .....	<b>(Photo)</b> 80.00
453 ★	1862-63, 2p Rose (17). Large margins all around. Very Fine .....	<b>(Photo)</b> 30.00
454 ★田	1865-94, 12c Pale Red Brown (28). <b>Block</b> , centered to top. Fine .....	54.00+
455 ★	1911, 3c-15c <b>Royal Family</b> (106-109, 111-114). Fine-V. F. ....	35.75
456 ★	1911, 15c Magenta, <b>Imperforate</b> (114)a. Wide Sheet Margin at left. V. F. ....	15.00
457 ★田	1919, 1c-36c <b>Caribou</b> (115-126). Complete set of <b>Blocks</b> . Very Fine .....	98.40+
458 ★田	1919, 1c-4c, 6c Caribou (115-118, 120). Five Blocks of each. Fine-V. F. ....	81.00
459 ★	1923-31, Three Issues (131-160, 163-170). Fine-Very Fine .....	57.10
460 ★田	1923-24, 1c-20c Pictorial (131-143). <b>Blocks</b> . Fine-V. F. ....	58.60
461 ★田	1928, 1c-30c Publicity (145-159). Complete set of <b>Blocks</b> . Fine-Very Fine .....	77.00
462 ★田	1929-31, 1c-15c Re-engraved (163-170). <b>Blocks</b> . Fine .....	36.80
463 ★	1933, 1c-32c <b>Gilbert</b> (212-225). Cpl. set. Very Fine .....	38.15
464 ★	1935, 4c-24c Jubilees (226-229). Forty sets in large blocks. Very Fine .....	74.00
465 ★	1921, 35c Red <b>Airpost</b> (C3a). Very Fine .....	15.00
466 ★	1921, 35c Airpost (C3a). Very Fine .....	15.00
467 ★	1932, <b>\$1.50 DO-X Air (C12)</b> . Very Fine ..... <b>(Photo)</b>	55.00
468 ★	1933, 5c-75c <b>Labrador Airs</b> (C13-C17). Cpl. set. Very Fine .....	34.75
469 ★	<b>NORTH BORNEO</b> , 1916, Semi-Postals (B1-3, B5-8). Very Fine .....	14.50
470 ★	<b>NYASALAND &amp; SWAZILAND</b> , 1933-4, George V Pictorial Issues (38-46, 10-17). Respectively. Very Fine .....	11.91
471 ★	<b>ST. KITTS-NEVIS</b> , 1920-22, 2/-5/ George V (32-34). Very Fine .....	9.00
472 ★	<b>ST. VINCENT</b> , 1938, ½p-£1 George VII issues (141-151, no A #). 11 values, cpl. as originally issued. Very Fine .....	11.90

473	<b>SAMOA</b> , 1914-25, 10/-£1 (124-125). Very Fine used .....	21.00
474 ★	<b>SEYCHELLES</b> , 1920, 5r George V (89). Fine .....	10.00
475 ★	<b>SO. WEST AFRICA</b> , 1923, 10/ George V (27-28). Pair, centered to right. Fine .....	40.00
476 ★	<b>TRANSVAAL</b> , 1902-03, 5/-10/ Edwards (264-65). Very Fine .....	7.50
477 ★	<b>TRINIDAD &amp; TOBAGO</b> , 1914, 5/-£1 (10-11). Very Fine .....	25.00
478 ★	—1921-22, 5/ (19). Very Fine .....	12.50
479 ★	—1921-22, £1 Green & Carmine (20). Fine ..... <b>(Photo)</b>	22.50
480 ★	<b>TURKS &amp; CAICOS IS.</b> , 1921, 6p-1/ (42-43). Very Fine .....	7.50
481 ★	<b>UNION SO. AFRICA</b> , 1913-22, £1 George V (16). Centered to top and left. Fine .....	20.00
482 ★	—1927, 5/-10/ (37-40). In Bi-Lingual pairs, first V.F. latter perfs. touch at top .....	18.00
483 ★	—1925, 1p-9p, 4p-1/ Airpost (C1-C6). Complete Airs. Very Fine .....	14.00
484 ★	<b>ZANZIBAR</b> , 1913, 4r-5r (132-133). Very Fine .....	14.00
485 ★	—1913, 5r-10r (133-134). Very Fine .....	25.50

## GENERAL FOREIGN

486	<b>AUSTRIA</b> , 1850-1859, Thirteen diff. (1-11, 9a, 11a). Fine-Very Fine used ....	35.05
487 ★	—1908-1913, 1h-10k Commem. Issue (110-127). 72h used, cpl. set. V.F. <b>(Photo)</b> .....	31.18
488	—1908-13, 10k Commem. (127). Very Fine .....	10.00
489 ★	—1929-36, Two Pictorial Issues (326-331, 333-35, 337-339, 378-379). #327 used. Very Fine .....	17.40
490 ★	—1922-1924, Three Semi-Postal Issues (B50-B70). Cpl. sets, Very Fine .....	22.35
491 ★	—1928-1931, Three Semi-Postal Issues (B77-B86, B93-B98). Cpl. sets. Very Fine .....	24.50
492 ★	—1933, 12g-50g <b>Ski Issue</b> (B106-B109). Cpl. set. Very Fine .....	40.00
493 ★	—1933, 50g Wipa (B110). Very Fine ..... <b>(Photo)</b>	25.00
494 ★	—1934-1935, Two Semi-Postal Issues (B122-B127, B132-B137). Cpl. sets, Very Fine .....	27.00
495 ★	—1936-1937, Three Semi-Postal Issues (B138-B141, B146-B151, B156- B164). Cpl. sets. Very Fine .....	26.00
496 ★	—Twenty Commem. & Semi-Postal Issues (374-377, 381-9, 455-82, B71- 6, B142-45, B152-55, B166, B171-83, B189-217, B225-34). Cpl. sets. V.F. ....	20.96

497 ★	—1915, 1h-10k Military Stamps (M1-M21). Cpl. set, last value without gum. Very Fine .....	43.96
498	<b>BAVARIA</b> , 1849, 1kr Gray Black (1). Margins all around. V.F. <b>(Photo)</b>	70.00
499	—1850-68, 12kr, 18kr, 18kr (11, 13, 22). V.G.-Fine .....	47.50
500	—1854, 18kr Yellow (13). Margins all around. Very Fine .....	17.50
501 ★	<b>BELGIAN EAST AFRICA</b> , 1941, 5c-3.25Fr (56-59). Cpl. set. Very Fine....	24.00
502 ★	—1942, 10Fr Semi-Postal Issue (B15-B16). Two cpl. sets. Very Fine .....	12.00
503	<b>BELGIUM</b> , 1850-83, 1c-1Fr (4, 6, 11, 21-2, 24, 36, 48). V.G.-V.F. ....	18.00
504	—1915, 5FR.-10FR. Albert Issue (121-122). Fine used .....	11.50
505 ★	—1925-39, Commem. & Semi-Postal Issues (172-184, B241-B248). Cpl. sets. Very Fine .....	16.85
506	—1918, 5Fr+5Fr Semi-Postal (B46). Very Fine .....	25.00
507 ★	—1937-1945, Nine Semi-Postal Issues (B200-7, 225-32, 256-72, 281-92, 319-27, 376-84, 399-416). Cpl. sets. Very Fine .....	21.07
508 ★	—1930, 50c-5FR. Air Post Issue (C1-C5). Cpl. set. Very Fine <b>(Photo)</b>	23.80
509 ★	—1930, 5Fr. Airpost (C5). Very Fine .....	20.00
510 ★	<b>BOLIVIA</b> , 1924-37, Four Air Post Issues (C1-C7, C27-C34, C52-C62). Cpl. sets. Very Fine .....	21.96
511 ★	—1932-41, Two Air Post Issues (C35-C41, C82-C85). Cpl. sets. Very Fine	22.31
512	<b>BOSNIA &amp; HERZEGOVINA</b> , 1916-17, 3h-10k (86-122). Two cpl. sets. Very Fine .....	12.82
513 ★	<b>BRAZIL</b> , 1929-1945, Commem. and Four Air Post Issues (640a, C17-C25, C29-C30). Cpl. sets. Very Fine .....	19.10
514 ★	<b>CONGO</b> , 1894, 10c, 1FR., 5FR. (17, 24, 26). Very Fine .....	14.00
515 ★	—1908-30, Collection of 36 Diff. (Bet. #32-B16). 2 used. Fine Lot .....	23.75
516 ★	—1918, Semi-Postals (B1-B9). Cpl. set, #B2 has pulled perf. balance Very Fine .....	<b>(Photo)</b> 34.95
517 ★	<b>CZECHOSLOVAKIA</b> , 1926, 50h-300h Sokol Issue (B140-B143). Cpl. set. Very Fine .....	18.50

#### DANZIG

518 ★	1920, 2pf. Gray (31). Very Fine .....	20.00
519 ★	1920, 2pf., Gray (31). Tiny paper speck, otherwise Very Fine .....	20.00
520 ★	1920, 2½pf Gray (32). Very Fine .....	<b>(Photo)</b> 40.00
521 ★	1920, 7½pf., 30pf. (35, 40). Very Fine .....	22.50



522 ★	1920, 50pf. Purple & Black (43). Fine .....	(Photo)	40.00
523 ★	1923, 1gld.-5gld. Provisional Issue (164-167). Cpl. set. Very Fine .....		18.50
524 ★	1923, 1gld-5gld (164-167). Complete set. Very Fine .....		18.50
525 ★	1924, 2g Red Violet & Black (195). Very Fine .....		17.50
526 ★	1929-38, Three Semi-Postal Issues (B6-B8, B23-B32). Cpl. sets. Very Fine .....		15.85
527 ★	1934, 5pf-15pf. Winterhelp Issues (B9-B11). Cpl. set. Very Fine .....		19.00
528 ★	1934, Winterhelp Issue (B9-B11). Complete set. Very Fine.....		19.00
529 ★	1936-38, Three Semi-Postal Issues (B15-19, B23-27, B28-32). Complete sets. V. F. ....		16.25
530 ★	1932, 10pf-30pf. Airpost (C31-C35). Complete set. Very Fine .....		15.00
531 ★	1924-25, 20pf-75pf Officials (O46-48, O50-52). Fine-V. F. ....		20.75
532	1920-39, Forty-eight different (Bet. #16-J38). Very Fine lot of Postage & Semi-Postals .....		42.60
533	<b>DUTCH INDIES</b> , 1864, 10c Lake (1). Town cancel. Fine .....		7.50
534 ★	—1941-42, 10c-2g (233-246)). Very Fine .....		35.70
535 ★	<b>ESTONIA</b> , 1923, 10m-45m Airpost (C4-C6). First has tear, balance V. F.		21.00
536	<b>FINLAND</b> , 1891-92, 7r Black & Yellow (58). Very Fine used .....		10.00
537	<b>FRANCE</b> , 1849-50, 10c Bistre (1). Very Fine appearance small thin .....		10.00
538	—1858-60, 1c-80c (12-20). Fine-Very Fine .....		15.77
539	—1853-60, 1Fr Lake (21). Three large margins close partly at B. Fine	(Photo)	80.00
540 ★	—1926-34, 1.50Fr-20Fr (132, 251, 263, 294). Very Fine .....		22.50
541 ★田	—1925, 5Fr Philatelic Ex. Issue (226b). Block of 4. Very Fine .....		15.00
542 ★	—1927, 5Fr-10Fr Philatelic Ex. Souvenir Sheet (241). Very Fine .....		20.00
543 ★	—1931-46, Collection of 162 Diff., mostly cpl. sets (bet. #250-574). Very Fine .....		38.73
544 ★	—1914-46, Collection of 155 diff. Semi-Postals, mostly cpl. sets (bet. B1-B203). Very Fine .....		38.28
545 ★	—1917-27, Semi-Postals (B3-B13). Fine .....		40.41
546 ★	—1917, Semi-Postals (B8, 10, 12). Very Fine .....		28.50
547 ★	—1917, 5Fr+5Fr Semi-Postal (B14). Fine .....	(Photo)	60.00
548 ★	—1922-29, Semi-Postals (B16-B33). Complete sets. Fine-V. F. ....		20.35
549 ★	—1930-31, Two Semi-Postal Issues (B34, B38). Very Fine except latter has part gum .....		14.50

550 ★	—1930-31, Semi-Postals (B34-B38). Cpl. sets. Very Fine .....	20.00
551 ★	—1930-31, 2Fr-5Fr Airpost (C1-C2). Cpl. set, centered to one side. Fine .....	9.00
552	—1936, 50Fr Emerald, Airpost (C14). Very Fine used .....	15.00

#### GERMANY

553 ★	1900-02, 1m-3m (62, 76-77). Very Fine .....	24.50
554 ★	1902, 2m Gray Blue (79). Fine .....	15.00
555 ★	1900-20, Four Issues (52-61, 65c-74, 96-101, 118-132). Very Fine sets .....	18.45
556 ★	1911-47, 103 different (Bet. 89-573). Many sets. Very Fine .....	31.14
557 ★	1924-42, Ten Issues (Bet. 330-527). Cpl. sets. Very Fine .....	37.83
558 ★	1925-29, Four Semi-Postal Issues (B12-18, B23-32). Cpl. sets. Very Fine ....	25.85
559 ★	1931-32, Two Semi-Postal Issues (B38-B43). Cpl. sets. Very Fine .....	10.25
560 ★	1933, <b>Wagner Operas</b> (B49-B57). Cpl. sets. Very Fine .....	21.65
561 ★	1938-44, Semi-Postals (B119, 144-5, 172-3, 192, 204-5, 243, 283). One used. Very Fine .....	18.05
562	<b>Belgian Occupation</b> , 1919-21, 1c-10Fr (N1-N17). Complete set. Fine-V. F.	15.53
563 ★	—1920-21, Three Issues (N18-24, N42-58, NJ6-10). Cpl. sets. Fine-V. F.	26.52
564 ★	—1920-21, 1c-10Fr, 5c-50c Eupen Issue (N25-41, NJ1-5). Cpl. sets. V. F.	20.50

#### GERMAN OFFICES ABROAD

565	<b>Offices in China</b> , 1900, 1m-3m (33-34, 36). Latter unused. Very Fine .....	16.00
566	—1900, 5m Slate & Carmine, Type II (35A). Shanghai postmark. Very Fine .....	(Photo) 60.00
567	—1905, 2c-\$1½ (38-42, 44, 46). All used but \$1. Very Fine .....	12.60
568	<b>Offices in Morocco</b> , 1900, 2p50c, 3p75c (17, 19). Very Fine, town cancels	25.00
569	—1900, 6p25c on 5m (18). Very Fine .....	(Photo) 30.00
570 ★	—1911, 3c-6p25c (45-57). Cpl. set. Fine .....	9.35
571	<b>Offices in Turkish Empire</b> , 1884, 10pa-1pi (1-3). 20pa is unused. Fine .....	11.60
572	—1900, 10pa-15pi (13-20, 22, 24). All used but 10pi. Very Fine .....	27.80
573	—1900, 25pi on 5m (23). Constantinople town cancel. Very Fine (Photo)	40.00
574 ★	—1903-05, 5pi-10pi (28-29). First Very Fine, latter has heavy hinge mark	24.50
575	—1906-12, 10pa-5pi (43-45, 47-51). Four are unused. Very Fine .....	15.06
576 ★	—1906-12, 5pi on 1m (51). Very Fine .....	8.50



577	—1906-12, 25pi on 5m (53). Town cancel. Very Fine .....	15.00
578	—1906-12, 15, 25pi (53-54). Latter unused. Fine-V. F. ....	22.50
579 ★	—1908, 5c, 10c, 100c (55-56, 59). Very Fine .....	10.50

## GERMAN COLONIES

580 ★	<b>CAMEROONS</b> , 1897-1900, 3pf-50pf, 3pf-3m (1-6, 10-18). Very Fine .....	24.40
581 ★	—1897-1915, 3pf-5m (2-3, 6-7, 17-18, 21-22, 29, 32, 50-61). Fine-V. F. ....	19.60
582	<b>CAROLINE ISLANDS</b> , 1899, 3pf-50pf (1-6). Cpl. set, 20pf unused, others have town cancels. Very Fine .....	22.25
583 ★	—1900-05, 3pf-5m Ships (7-19). Cpl. set. Very Fine ..... (Photo)	31.16
584	<b>GER. EAST AFRICA</b> , 1893, 2pes-25pes (1-5). First unused. Very Fine .....	16.50
585 ★	—1896-1920, 2½h-3r (7-9, 19-20, 31-37, 41). Fine-Very Fine .....	13.05
586 ★	—1900-15, 15p-40p, 2½h-3r Ships (15-18, 31-36, 38-39, 41). Very Fine .....	18.40
587	—1900, 3r Carmine & Slate (21). Town cancel. Very Fine ..... (Photo)	20.00
588 ★	<b>GER. NEW GUINEA</b> , 1897-1919, 3pf-5m (1-4, 6, 7-18, 23). First five used. Very Fine .....	21.05
589	<b>GER. SO. WEST AFRICA</b> , 1897-1900, 3pf-3m (1, 3, 7-8, 10, 12, 14-16, 22-24). All used. Fine-V. F. ....	24.35
590 ★	—1897-1913, 3pf-5m (2, 4, 7-10, 12, 17-24, 26-32, 34). Fine-V. F. ....	31.28
591	—1899, 25pf Orange (11). Town tied on small piece. Very Fine (Photo)	35.00
592 ★	—1900-15, 3pf-5m Ships (13-22, 38). Very Fine .....	20.75
593	—1900, 5m Slate & Carmine (25). Town cancel. Very Fine (Photo)	22.50
594	<b>KIAUCHAU</b> , 1900, 3pf-80pf (1-9). Each has town cancel. Very Fine .....	21.55
595 ★	—1900-1910, 20pf-1m, 1c-\$2½ Ships (4, 6-7, 10, 24-29, 31-33). Very Fine .....	17.75
596	—1900, 1m-2m (10-11). "K. D. Feld Post Station" cancel on first, town cancel on latter. Very Fine .....	27.00
597	—1900, 3m Black Violet (12). Town cancel. Very Fine ..... (Photo)	30.00
598 ★	—1906-10, 1c-\$2½ (24-33). Cpl. set. Very Fine .....	10.00
599 ★	—1906-10, \$½-\$2½ Ships (30-33). Very Fine .....	8.25
600 ★	<b>MARIANAS IS.</b> , 1899, 3pf Type I (11a). Very Fine .....	75.00
601	—1899, 5pf Type I (12a). Fine .....	75.00
602	—1899, 20pf Ultramarine (14). Tied on piece. Very Fine ..... (Photo)	25.00
603	—1899, 25pf Orange (15). Town tied on small piece. Fine .....	25.00

604	—1899, 50pf Red Brown (16). Town tied on small piece of cover. V.F.	30.00
605 ★	—1900, 3pf-5m Ships (17-29). Cpl. set. Very Fine	26.55
606 ★	—1900, 5m Slate & Carmine (29). Very Fine (Photo)	20.00
607 ★	<b>MARSHALL ISLANDS</b> , 1897, 10pf-20pf (3-4). Very Fine	10.00
608	—1899, 3pf-50pf (7-12). Cpl. set used. Very Fine	17.60
609 ★	—1900, 3pf-5m Ships (13-25). Cpl. set. Very Fine	27.10
610 ★	—1900, 5m Slate & Carmine (25). Fine (Photo)	20.00
611 ★	<b>SAMOA</b> , 1900, 3pf-50pf (52-56). Cpl. set. Fine-V.F.	16.50
612 ★	—1900-15, 3pf-5m Ships (57-68, 73). Very Fine	12.40
613	<b>TOGO</b> , 1897, 3pf-50pf (1-6). Three are unused, 10, 25, 50pf are used. V.F.	24.50
614 ★	—1900, 10pf-5m Ships (9-19). Very Fine	22.15
615 ★	—1900, 25pf-5m Ships (11-19). Very Fine	21.10
616	—1914, 5pf-30pf (52, 56-58, 166). Two unused. Very Fine	17.00
617	<b>GREECE</b> , 1933, 25d-50d Airpost (C20-C21). Fine used	9.00
618	<b>HANOVER</b> , 1850-63, Five diff. (1, 4-6, 16). Fine	35.50
619 ★	<b>HUNGARY</b> , 1934-42, Five Souvenir Sheets (486, B108-B109, B148a, B149a). Very Fine	20.00
620 ★	<b>ICELAND</b> , 1939-40, World's Fair (213-16, 232-35). Cpl. sets. Very Fine	12.80
621 ★	<b>JAPAN</b> , 1934, Air Post Souvenir Sheet (C8). Very Fine	7.00
622 ★	<b>LIECHTENSTEIN</b> , 1928, 1.20FR-5FR. Prince John Issue (86-89). Cpl. set. Very Fine	30.50
623 ★	—1930, 3rp-2FR. Pictorial Issue (94-107). Cpl. set. Very Fine	24.30
624 ★	—1933, 3FR. Prince Francis I Issue (114). Cpl. Very Fine	17.50
625 ★	—1934-35, 3rp-2FR. Pictorial Issue (116-130). Very Fine	21.15
626 ★	—1946, St. Lucius Souvenir Issue (218). Very Fine	20.00
627	<b>LUXEMBOURG</b> , 1852, 10c-1sg (1-2). Fine used	21.00
628 ★	<b>MEMEL</b> , 1920-1921, 10pf-20m (2, 4, 6, 11-12, 27, 30, 32-33). Very Fine	19.35
629 ★	—1920-1933, 1m-2.50m, 40m-3,000m (13-17, N31-N43). Very Fine	19.30
630	—1923, Collection of 69 diff. Occupation Stamps (bet. #N1-N53). Used and unused. Very Fine	60.75
631	<b>MEXICO</b> , 1868, 12c Green, Period after "12" (47a). Very Fine	10.00
632 ★	—1940, 5c-5p Penny Black Commem. (754-758). Cpl. set. Very Fine	8.26
633	<b>NETHERLANDS</b> , 1852-64, 5c-15c (1-6). Complete sets. V.G.-Fine	24.10
634	—1905, 10g Orange (86). Very Fine used (Photo)	35.00



635 ★	<b>NORWAY</b> , 1930, 20o-30o (B2-B3). Very Fine .....	10.25
636	<b>PERU</b> , 1857, 1r-2r Pacific Steam Navigation Co. Fine .....	30.00
637 ★	<b>ROMANIA</b> , 1926, 6L, 10L Error of Color (298b, 301b). Very Fine .....	10.00
638 ★	<b>RUSSIA</b> , 1935, 1K-40K Sports Issue (559-568). Cpl. set. Very Fine .....	18.50
639 ★	<b>SAAR</b> , 1920, 1M-3M (35-37). Fine .....	27.50
640 ★	—1920, 5M Deep Blue (38). Very Fine ..... <b>(Photo)</b>	75.00
641 ★	—1920, 5M Deep Blue (38). Very Fine .....	75.00
642 ★	—1920, 10M Yellow Green (39). Very Fine .....	20.00
643 ★	—1920, 10M Yellow Green (39). Hinge thin, well centered .....	20.00
644 ★	<b>ST. PIERRE &amp; MIQUELON</b> , 1942, 2FR. Rose Violet Free French Issue (244). Very Fine .....	15.00
645	<b>SAXONY</b> , 1856, 5n.g. Brown Red (13b). Very Fine .....	15.00
646	—1856, 10n.g. Blue (14). Fine .....	20.00
647 ★	<b>SERBIA</b> , 1916, 1h-10k (1N1-1N21). Cpl. set; <b>Austria</b> , 1915-17, 1h-1k (M22-M43). Very Fine .....	12.14
648	<b>SURINAM</b> , 1941, 10gld Airpost (C19). Very Fine .....	12.00
649	<b>SWEDEN</b> , 1924, 15o Violet, Coil Stamp (189). Very Fine ..... <b>(Photo)</b>	40.00
650 ★	—1916, Semi-Postals (B11-B21). Cpl. sets. Fine-V. F. ....	24.20
651	<b>SWITZERLAND</b> , 1846, 5c Yellow Green, <b>Geneva</b> (4). Thin. Fine appearance .....	65.00
652 ★	—1846, 6r Black, <b>Zurich</b> (11). Repaired, nice appearing .....	110.00
653	—1850-52, 5r-15r (23, 24, 24a, 26). Very Good .....	21.00
654	—1852-62, 5r-1fr (35-40a). Very Good-Fine .....	26.50
655 ★	—1914, 3, 5, 10Fr. (181, 183-84). Very Fine .....	26.00
656 ★	—1914-32, Four Issues (183-185, 206, 209, 215). Very Fine .....	27.00
657 ★	—1919-1948, Collection of 144 diff. mostly cpl. sets, bet. #190-B157. Very Fine, Mainly Semi-Postals .....	25.79

## LOTS BY COUNTRY

658	<b>AUSTRALIA</b> , 213 different, used and used, many sets. Fine lot .....	82.25
659	<b>AUSTRIA, BAVARIA, DANZIG &amp; GERMANY</b> , 481 stamps, mostly diff., used & unused, 19th & 20th. Fine lot .....	—
660	<b>BELGIAN EAST AFRICA</b> , 101 different, mostly unused, many sets. Fine lot .....	24.21

661	<b>BELGIUM</b> , 893 different, used and unused, 19th & 20th, many sets. Fine lot .....	318.00
662 ★	<b>BRITISH COLONIES</b> , 57 different, all unused, all 20th Century. Fine lot .....	54.29
663	<b>CANADA</b> , 285 mostly different, used and unused, many sets, 19th & 20th. V. G.-V. F. ....	109.00
664	<b>CANAL ZONE</b> , 84 different, used and unused. Fine lot .....	71.47
665	<b>CONGO</b> , 306 different, mostly unused, 19th & 20th, many sets. Fine lot .....	273.53
666	<b>CURACAO</b> , 62 different, used and unused, 19th & 20th. Fine lot .....	17.41
667	<b>DANZIG</b> , 312 different, used and unused. Fine lot .....	198.79
668	<b>DUTCH INDIES</b> , 312 different, used and unused, 19th & 20th, many sets. V. G.-V. F. ....	80.25
669	<b>FRANCE</b> , 510 different, used and unused, 19th & 20th. Many sets. V. G.- V. F. ....	266.00
670	<b>FRENCH COLONIES</b> , 563 stamps, mostly diff., used and unused, 19th & 20th. Fine lot .....	—
671	<b>GERMAN COLONIES &amp; German Offices Abroad</b> , 74 diff. mostly un- used, mainly Ship types. Fine lot .....	48.56
672	<b>GERMAN COLONIES and German Offices Abroad</b> , 109 mostly diff., used and unused, about half are Ship stamps. Fine lot .....	143.01
673	<b>GERMAN STATES</b> , 84 mostly different, used and unused. Good-Fine ....	88.39
674	—13 different. V. G.-Fine .....	32.05
675	<b>ICELAND, GREENLAND &amp; PHILIPPINES</b> , 138 different, mostly un- used. Fine lot .....	18.00
676	<b>ITALY &amp; COLONIES</b> , 453 stamps, mostly diff., used & unused, mostly 20th. Fine lot .....	—
677	<b>JAMAICA</b> , 125 different, used and unused, 19th & 20th. Fine lot .....	87.90
678	<b>MINIATURE SHEETS</b> , 22 different, mostly unused, all Foreign. V. F. ....	47.45
679	<b>NETHERLANDS</b> , 526 different, used and unused, 19th & 20th, many sets, complete Semi-Postals. Fine lot .....	246.00
680	<b>PORTUGAL &amp; COLONIES</b> , 485 stamps, mostly diff., mainly 20th Cen- tury unused. Fine lot .....	—
681	<b>SOUTH &amp; CENTRAL AMERICA</b> , 1,023 stamps, mostly different, used and unused, mainly 20th Century. Fine lot .....	—
682	<b>SPAIN &amp; COLONIES</b> . 465 stamps, mostly diff., 19th & 20th, used and unused. V. G.-V. F. ....	—
683	<b>SURINAM</b> , 119 different, used and unused, 19th & 20th. Fine lot .....	65.50
684	<b>UNION SO. AFRICA</b> , 205 different, mostly unused, mainly sets. Fine lot .....	78.60



685	<b>ROMANIA</b> , Stock of 10,464 stamps in quantities, mostly unused, on cards, Fine lot for approval dealer, of total 1537 stamps not catalogued	391.61
686	<b>FOREIGN</b> , 92 stamps, mostly sets, all 20th Century, few used. Fine lot	42.41
687	<b>FOREIGN</b> , 2,449 stamps mostly diff., used and unused, many sets, mainly 20th. Fine lot .....	—
688	<b>Stockbook of Foreign</b> , includes few U. S. mostly used 20th Century, many pictorials, airs etc. Est. net \$20.00 .....	—
689	<b>Box of Foreign Stamps</b> , several thousand, includes foreign revenues, covers, pictorials in quantities, Est. \$12.00 net .....	—
690	<b>Binders</b> , 15 misc. including Scott Specialty British Africa, Scandinavia, National. Good average condition .....	—

**END OF SALE**

**THANK YOU**



## SELLING YOUR COLLECTION?

REALIZE IMMEDIATE CASH  
AND HAVE ADVANTAGE OF SELLING AT AUCTION.

I will advance on your collection immediate cash up to 75% of my appraisal value of what it should realize at auction.

It will then be sold at one of my coming auction sales. Commission is 20% of the gross and final settlement within thirty days after the sale.

Send collection direct (valued \$500 upwards) for appraisal. Auction advance will be sent within 48 hours after receipt. If not entirely pleased, collection will be returned at my expense.

I have been conducting stamp auctions for 17 years.



ROBERT A. SIEGEL

(Licensed and Bonded Auctioneer)

124 MAMARONECK AVE.

WHITE PLAINS, N. Y.

(TEL. W. P. 9-5837)