

138th SALE

UNITED STATES STAMPS CANADA, NEWFOUNDLAND and GENERAL FOREIGN

To be held at AMERICAN PHILATELIC SOCIETY CONVENTION



AT PUBLIC AUCTION

THURSDAY, AUGUST 18th

FIRST SESSION 3 P. M., SECOND SESSION 8 P. M.

at HOTEL STATLER (Georgian Room)
BOSTON, MASS.

GREGORY MOZIAN, Licensed Auctioneer

Robert A. Siegel
AUCTIONS

124 MAMARONECK AVE., WHITE PLAINS, N. Y.

CONDITIONS OF SALE

1. The terms of sale are strictly cash to the highest bidder. All buyers are expected to pay for lots within three days of receipt, unless special arrangements have been made prior to the sale.
 2. All bids are per lot as numbered in the catalogue and not per piece, unless otherwise announced by the auctioneer at the time of sale.
 3. Any lot the description of which is incorrect is returnable only within three days of receipt. All disputed lots must be returned intact as received. Lots containing five or more stamps are not returnable at any time. No lots may be returned by purchasers who have had the opportunity to examine them before the sale.
 4. Successful mail bidders, unless they are known to us or supply acceptable references, will be notified of the amount of the lots secured for them, and are expected to send payment in full before the lots are forwarded.
 5. If the purchase price has not been paid within the time limit, or lots taken up within seven days from date of sale, they may be resold and any losses arising from such sale charged to the defaulter.
 6. All stamps are sold as genuine, except where sold "As Is". Claims for any lot proving otherwise, must be made within two weeks from date of sale.
 7. The right is reserved to group two or more lots, also withdraw any lot or lots from the sale, or to act on behalf of the seller.
 8. Until paid for in full all lots remain the property of Robert A. Siegel.
 9. No commission is charged for buying at our sales, but all forwarding charges will be added to the purchase price.
 10. Lots will be sent for inspection, provided such lots are returned to us the same day as received. Postage and registration both ways will be charged. Approximate values of lots will be given on request.
 11. The placing of a bid shall constitute acceptance of the foregoing conditions of sale.
-

In sending bids, always state the highest price you are prepared to pay for the lot. Your limit will not be used as a starting bid unless absolutely necessary.

DESCRIPTIONS

Superb—the finest condition for noteworthy, outstanding copies.

Very Fine (VF)—means that there is a slight deviation from the above.

Fine (F)—means that the perforations do not touch the design on issues after 1890, but in some cases may just touch in earlier issues; if used, fairly lightly cancelled.

Very Good (VG)—means that the appearance is generally fine but that the perforations cut the design slightly.

Good (G)—means average off-centering; or fairly attractive with slight defects. Original gum is not to be expected on 19th Century stamps up to 1888 unless so stated.

Scott's 1949 Specialized United States Catalogue is used for cataloging our lots of United States and Scott's Standard Catalogue, 1949 for others.

WE SOLICIT FINE MATERIAL FOR FUTURE SALES

PLEASE NOTE — SPECIAL BOSTON AUCTION

This sale will be held in conjunction with the A. P. S. Convention at the Hotel Statler, Georgian Room, Boston, Mass., on Thursday, August 18th.

First Session — 3 P. M.	Second Session — 8 P. M.
-------------------------	--------------------------

Lots may be inspected at my booth at Horticultural Hall in Boston, where the exhibition and bourse will be held, from August 16th-18th until sale time.

Lots will be on display at my office in White Plains from August 1st-13th.

NEW YORK CITY SHOWING

Thursday, August 11th at the Offices of Sylvester Colby, 505 Fifth Avenue.

MAIL BIDDERS — Please mail all bids to my offices in White Plains, N. Y., until August 15th. Last minute bids send to Robert A. Siegel, c/o Hotel Statler, Boston, Mass.

CATALOGUE

UNITED STATES STAMPS

STAMPLESS AND EXPRESS COVERS

- 1 ☒ **Alexander Hamilton, Free Frank**, from Treasury Dept. (1791). Very Fine
- 2 ☒ **Augusta, Maine**. Horn of Plenty str. line. Fine
- 3 ☒ **East Granville, Mass.**, Straight line and Double circle with "Free" on same cover. Very Fine
- 4 ☒ **Eastern R. R.** "5", Blue circle, attractive illustrated corner card of Boston firm. Fine
- 5 ☒ **Eastern R. R.** "5" in green circle. Very Fine
- 6 ☒ **"F. A. Dentzel, Paid, Agt P. O. N. O."**, in red oval. Fine
- 7 ☒ **Fall River, Ms.** and boxed **"Steamboat"** both in magenta. Fine
- 8 ☒ **Fort Leavenworth, Mo.**, in black circle (1848). Fine
- 9 ☒ **"Freeman & Co's Express, Panama, Cova & Co. Agents"** in red oval, from Panama to San Francisco. Very Fine **(Photo)**
- 10 ☒ **Harrison Square, Ms.** in fancy red double circle. Very Fine

11	✉	Mail Route , Red str. line. Very Fine	—
12	✉	Morristown, N. Y. boxed straight line. Very Fine	—
13	✉	Newport, Rhode Island. Two in large green and Red ovals. Very Fine	—
14	✉	New York "Ship" , also str. line "2nd Delivery" all in red. Fine	—
15	✉	San Francisco. Illustrated "Overland Mail Stage Via Los Angeles! Hurrah! But we must have the" (Railroad) Fine (Photo)	—
16	✉	"Steamer Hecla" in oval, also red "Way 11" and New Orleans markings. Fine	—
17	✉	Steamship 20 , in circle, from Peru to Conn. Very Fine	—
18	✉	Tallahassee, Flor. "10", Green circle. Fine	—
19	✉	Treasury Department , 1792, "Free", contains letter signed by Alexander Hamilton . Very Fine	—
20	✉	Vera Cruz "10", boxed straight line in black, Mexican War Letter. Fine	—
21	✉	Willington, Ct, Paid III. Red straight line (two lines). Very Fine	—
22	✉	Wilmington & Raleigh Railroad "10" in blue circle. Fine	—
23	✉	Worcester , May 1, (1800). Straight Line, double strike, Free Frank of Isaiah Thomas, famous printer of Revolution period & founder of Amer. Antiquarian Soc. Very Fine	—
24	✉	Boyd's Boston & Saco Express label on cover. Fine	—
25	✉	Express Co. Label. Gay & Co's New York, Boston & Eastern Express, showing early Railroad and Ships, attractive to Boston	—
26	✉	Grays Lowell Express , red boxed straight line handstamp. Fine	—
27	✉	Express Co. Label. Pullens & Copp's Express, showing Steamship on label, attractive to Troy	—
28	✉	"Forwarded by Sargents Lowell & Boston Express" . Very Fine	—
28A		Gregory's Express Pocket Letter Book , contains pages to write on, 1851 Calender and interesting information about Gregory's Express with envelope. Very Fine unused condition	—
28A		Same as above , only second edition. Very Fine unused	—

POSTMASTER PROVISIONALS & LOCALS

29		5c New York Postmaster (9X1). Blue pen cancel. Fine	52.50
30		5c New York Postmaster (9X1). Margins all around, blue pen and part of red town cancel. Very Fine (Photo)	70.00
31	★	5c New York, Without Signature (9X1c). Margins three sides, partly close at R. Fine (Photo)	175.00

32	★	5c Providence Postmaster (10X1). Very Fine	(Photo)	32.50
33	★	10c Providence Postmaster (10X2). Fine	(Photo)	120.00
34	✉	Swart's City Dispatch, 2c Red (136L4). Very Fine copy tied on cover		25.00
35	✉	Swart's City Dispatch, 1c Pink (136L10). Tied on cover. Very Fine		15.00
36		5c Black, American Letter Mail, Local (5L1). Sheet of 20. Very Fine		10.00+
37		Bloods Local, 3c Black (15L8). Fine		25.00

1847 ISSUE

38		5c Red Brown (1). Red grid cancel, Large margins. Very Fine	(Photo)	30.00
39		5c Red Brown (1). Red grid cancel. Sheet margin at left. Very Fine	(Photo)	30.00
40		5c Red Brown (1). Margins all around, Red grid cancel. Very Fine	(Photo)	30.00
41		5c Red Brown (1). Red grid cancel, three large margins. Fine		30.00
42		5c Red Brown (1). Bright red grid, margins all around. Very Fine	(Photo)	30.00
43		5c Red Brown (1). Bright red grid cancel, Margins all around. Very Fine		30.00
44		5c Red Brown (1). Red town cancel, frame line touch partly at right. Fine		35.00
45		5c Red Brown (1). Red grid cancel, Margins all around, small thin. Very Fine appearance		30.00
46		5c Brown (1). Blue town cancel, margins all around. Very Fine	(Photo)	35.00
47		5c Red Brown (1). Tied on small piece with red town "Burlington, Vt.", Very Fine	(Photo)	35.00
48		5c Red Brown (1). Black grid cancel, Margins all around. Very Fine	(Photo)	45.00
49		5c Red Brown (1). Tied on small piece with Blue Northern R. R. cancel. Very Fine stamp.		70.00
50		5c Red Brown (1). Tied with red grid on small piece with Boyds Local 2c green #20L7, margins all around.		30.00+
51		5c Orange Brown (1b). Blue town cancel, cut in at B.		40.00
52	✉	5c Red Brown (1). Tied on cover with New York square grid, Margins all around. Very Fine	(Photo)	40.00
53	✉	5c Red Brown (1). Tied with Boston postmark, margins all around. Very Fine		40.00
54	✉	5c Red Brown (1). Tied with square grid from New York, margins three sides, just cutting at B.		40.00

55	✉	5c Red Brown (1). Tied on cover from Boston margins three sides, cut in slightly at bottom.	40.00
56	✉	5c Red Brown (1). Tied on cover from Waterbury, Ct., margins all around, slight crease.....	40.00
57	✉	5c Red Brown (1). Horiz. Pair tied on cover with red and Boston U.S. Express Mail cancel, one stamp has crease, cut in at top, nice strikes (Photo) 100.00+	
58		10c Black (2). Red grid cancel, Beautiful sheet margin copy, large margins. Superb (Photo)	80.00
59		10c Black (2). Red grid, Margins all around. Very Fine (Photo)	80.00
60		10c Black (2). Red grid, Margins all around. Very Fine (Photo)	80.00
61		10c Black (2). Red grid, Margins all around. Very Fine (Photo)	80.00
62		10c Black (2). Red grid cancel, margins all around, light ironed out crease. Very Fine appearance (Photo)	80.00
63		10c Black (2). Red grid cancel, large margins three sides, frame line barely touched at lower right. Fine (Photo)	80.00
64		10c Gray Black (2). Horiz. Pair, red cancel, Stitch Watermark clearly shown on both, Large margins three sides, close but doesn't touch design at top. Fine (Photo) 300.00+	
65	✉	10c Black (2). Tied on cover, red St. Louis postmark to Boston. Fine	100.00
65A	✉	10c Black (2). Very Fine four marginal copy tied to cover with red grid, red Pittsburgh postmark	100.00
66	★	5c Red Brown, Reproduction (3). Superb (Photo)	30.00
67	★	10c Black, Reproduction (4). Margins all around. Very Fine (Photo)	40.00

1851 ISSUE

68		1c Type Ic (6 var.). Margins three sides, barely touched partly at B. Fine (Photo)	225.00
69		1c Blue, Type II (7). Very Fine	11.00
70		1c Blue, Type II (7). Red cancel. Fine	14.00
71		1c Blue, Type II (7). Maltese Cross in Circle cancel on printed circular from Chicago. Fine	15.00+
72	✉	1c Blue, Type III (8). Tied on circular from Mobile, Margins all around. Very Fine (Photo)	250.00
73		1c Blue, Type IV (10). Margins all around. Very Fine	7.50
74		1c Blue, Type IV (10). "Paid" cancel. Fine	10.00
75		1c Blue, Double Transfer, one Inverted (10). Position 71L1L, Light crease. Very Fine appearance (Photo)	40.00

76	1c Blue, Type IV (10). Horiz. Pair, light crease. Fine appearance	22.50
77	☒ 1c Blue, Type IV (10). Tied on cover, Recut twice top, once at B., Interesting notice of Bank Robbery circular. Fine	25.00
78	3c Red (11). Horiz. Strip of Six, margins all around except end stamp, one stamp has tear, blue Phila. cancels. Attractive	—
79	☐ 3c Red (11). Used block of Eight, two stamps have thins. Fine appearance	(Photo) 80.00
80	☐ 3c Red (11), Used Block of Ten, bottom row has crease, still attractive and scarce piece	80.00+
81	3c Imperforate (11). Thirteen copies, margins all around, shades. Very Fine	—
82	3c Imperforate (11). Twenty copies, nice range of shades. Fine-Very Fine	—
83	3c Imperforate (11). Thirty-eight copies, all having Date cancels.	—
84	☒ 3c Red (11). Corner sheet margin copy tied from Jacksonville, Flor. on small embossed envelope. Margins all around. Very Fine	—
85	☒ 3c Red (11). Upper Right Sheet Corner copy tied with blue Independence, Mo. cancel on cover. Fine	—
86	☒ 3c Red (11). Tied on cover with nice strike of fancy blue boxed "Paid" from Bucksport, Me., stamp cut in slightly two sides. Scarce	—
87	☒ 3c Red (11). Tied with excellent strike New York "July 25, 1853" cancel on cover, complete year date on stamp. Fine	30.00
88	☒ 3c Red (11). Small illustrated cover of Dr. Montgomery's Medical Agency, tied from Haverhill, Mass.	—
89	☒ 3c Orange Brown (11b). Red, Amenia, N. Y. July 1 cancel, letter dated July 3, 1851 enclosed, obviously postmaster failed to change date and then in Ms. added bars to make "4", a "First Day" cover which isn't.	—
90	☒ 3c Orange Brown (11b). Tied on cover, red New Orleans and black "Way 1", Ms. "Reindeer". Fine	—
91	☒ 3c Red (11). Two covers, both tied, "U. S. Express Mail", Bennington, Vt. "Missent", Very Fine markings	—
92	☒ 3c Red used with 2c Red, Swarts City Dispatch (11, 136L4). Both tied with New York postmark. Very Fine	(Photo) 30.00
93	☒ 3c Orange Brown on Calif. Penny Post Local Cover (11b, 34LU8), addressed but no markings to indicate having been used, cat. unused	110.00
94	5c Red Brown (12). Margins all around. Very Fine	(Photo) 72.50
95	5c Red Brown (12). Close at B. and R. but design intact. Fine (Photo)	72.50
96	5c Red Brown (12). Horiz. Pair, Margins three sides, cut in slightly at top	(Photo) 250.00

97	✉	10c Green, Type I (13). Poor copy tied from San Francisco, contains San Francisco News Letter No. 16 of 1857, one illustration, interesting Calif. item	90.00
98		10c Green, Type II (14). Tied on piece with New York Clipper cancel. Very Fine	16.00+
99		10c Green, Type III (15). Town cancel, Large margins all around, sheet margin at right. Superb (Photo)	16.00
100		10c Green, Type III (15). Margins all around. Very Fine	16.00
101		10c green, Type III (15). Horiz. Pair. Large Margins all around. Very Fine	37.50
102		12c Black (17). Margins all around. Very Fine	25.00
103		12c Black (17). Large margins all around, Black Phila. and red numeral "19" cancel. Very Fine ,Photo)	25.00+
104		12c Black (17). Horiz. Pair, Margins three sides, in slightly at B.	60.00
105		12c Black (17). Horiz. Pair, scissor cut in margin, margins three sides, cut in at top	60.00
106	✉	1c-3c, 1851-83 Issues, 21 covers, all with Boston corner cards, some illustrated, nice lot.	—

1857 ISSUE

107		1c Blue, Type I (18). Centered to right. Fine	37.50
108	✉	1c Blue, Type Ia (19). Tied on cover from Boston, perfs. partly clipped at B. (Position 98R4)	250.00
109		1c Blue, Type IIIa (22). Tied on small piece with "Paid" cancel centered to left. Fine	27.50
110		1c Blue, Type IIIa (22). Boxed "Paid" cancel, well centered, tiny tear	27.50
111	✉	1c Blue, Type IIIa (22). Tied on cover with New York cancel. Very Fine	27.50
112		1c Blue, Type IV (23). Fine	27.50
113	✉	1c Blue, Type IV (23). Tied on cover from Providence. Fine	35.00
114	☐	1c Blue, Type V (24). Used Block , New Orleans town cancel, guide line str. edge at left. Fine	50.00
115	✉	3c Red, Type I (25). Tied on cover with Leavenworth City, K. T. postmark. Fine Territorial	—
116	★	3c Dull Red (26). Double Line at Left variety. Very Fine, O. G., Cat. \$25.00 used, not priced unused (Photo)	—
117	✉	3c Red (26). Tied with large "24" in circle on cover. Scarce and Fine (Photo)	—

118	✉	3c Red (26). Tied with fine large Green Glen Rock, Pa. Postmark, stamp has str. edge	—
119	✉	3c Red (26). Nicely tied with " Nebraska City, N. T. " pmkd. Very Good Territorial	—
120	✉	3c Red (26). Tied from Leavenworth City, " Central Overland California & Pikes Peak Express Co. " oval. Fine. Scarce. (Photo)	—
121	✉	3c Red (26). Tied on cover from Buffalo, N. Y. Lincoln Campaign Cover . Very Fine	(Photo) —
122	✉	3c Red (26). Tied with blue "Paid 3" from Sharon Centre, Ohio on Caricature Patriotic cover. Fine	(Photo) —
123	✉	3c Red (26). Tied on Patriotic cover from Wash. D. C., attractive view of Capitol at Washington. Fine	—
124	✉	3c Red (26, 65). Five Yale College covers, two in gold, three embossed, three varieties. V. G.—V. F.	—
125		5c Brick Red (27). Centered to left. Fine	(Photo) 67.50
126		5c Red Brown (28). Fine	35.00
127		5c Brown, Type I (29). Lightly cancelled. Fine	18.50
128		5c Brown, 5c Dark Brown (30a). Horiz. Pair of each. V. G.—Fine	70.00
129		10c green, Type I (31), Lightly cancelled, small corner crease. Very Fine appearance	(Photo) 60.00
130	✉	10c Green, Type I (31). Tied on small embossed cover to Canada, centered to right. Fine	75.00
131		10c Green, Type III (33). Bright red grid cancel. Fine	12.00
132		10c Green, Type III and IV (33–34). Horiz. Strip of four, all cancelled with red grids, middle two stamps recut one top and bottom, other top only, centered to left. Fine and rare piece. (Photo)	279.00+
133		10c Green, Type V (35). Red town cancel, Imprint copy. Fine—Very Fine	7.75
134	田	10c Green, Type V (35). Block of Nine , several San Francisco town postmarks. Fine except upper right stamp defective. Handsome piece (Photo)	146.75+
135	✉	10c Green, Type V (35). Tied from Sacramento, Cal., Illustrated "Mining Scene" , Fine Western cover	(Photo) —
136	★	12c Black (36). Centered to left. Fine, O. G.	15.00
137	★田	12c Black (36). Block , centered to top. Fine, O. G. (Photo)	100.00
138		24c Lilac (37). Pretty strike in red " Boston Br. Pkt. Paid ". Very Fine (Photo)	—
139	✉	24c Gray Lilac (37). Tied on cover from Boston to England, " Boston Br. Pkh. " in red circle, one perf short on stamp. Fine cover	(Photo) 85.00

140	30c Orange (38). Red grid cancel. Fine (Photo)	35.00
141	30c Orange (38). Cracked Plate variety , centered to top	50.00
142 ★	90c Blue (39). Very Fine (Photo)	80.00
143 P	1c-90c Card Proofs (40P-47P). Complete set. Very Fine	38.50

1861 AUGUST ISSUE

144 ★	1c Indigo, August (55). Some perfs. clipped at right. Very Rare (Photo) Formerly Cat. 2500.00	
-------	--	--

145 ★	3c Brown Red, August (56). Very Fine, O. G. Formerly Cat.	27.50
146 ★	10c Dark Green, August (58). Perfs. in at right. Fresh O. G. (Photo)	200.00
147	24c Violet, August (60). Red grid cancel, centered to B. Fine.	70.00

148 ★	90c Dull Blue, Imperforate August (62a), Fine (Photo) Formerly Cat.	400.00
-------	---	--------

149 P	1c-90c AUGUST Issue, India Proofs (55P-62P), Complete set, two minor thins, all Fine appearing, Excellent space fillers for extremely rare August Issue	202.00
-------	--	--------

1861 ISSUE

150	1c Blue (63). Five copies, includes Star, bright red, carrier cancels. V. G.-V. F.	—
151 ☒	1c Blue (63). Tied with Large W from Waterbury, Conn., Fine strike, few perfs. short. Scarce cover.	—
152 ☒	1c Blue, two, 2c Black, 24c Lilac (63, 73, 78). Tied in blue on cover from Cincinnati to Germany, pretty cover	—
153 ☒	1c Blue, 2c Black (63, 73). Two covers each tied with same combination, both have Nursery corner cards, one in green. Fine	—
154 E	1c Blue, Essay with Coupon attached at top. Very Fine	—
155	3c Pink (64). Two perfs. trifle short. Fine appearance	32.50
156 ☒	3c Pink (64). Tied on cover with Syracuse, N. Y. postmark, Fine except stamp has str. edge at right	40.00
157 ★田	3c Rose (65). Block of nine. Very Fine, O. G.	14.25
158 ★田	3c Rose (65). Block of eight. Fine, O. G.	14.00
159 ★田	3c Rose (65). Three Blocks, all diff. shades. Fine, O. G.	21.00

160	★	3c Rose, Imperforate (65c). Horiz. Pair. Very Fine, O. G.	(Photo)	40.00
161	★	3c Rose Imperforate (65c). Horiz. Pair on Greenish Experimental Paper		—
162		3c Rose (65). Very Fine strike of West Meridian, Conn. Devil and Pitchfork	(Photo)	—
163		3c Rose (65). Clear strike of "U. S. P." in Padlock, centered to left	(Photo)	—
164		3c Rose (65). Cambridge, Mass. Cats Head cancel. Fine	(Photo)	—
165		3c Rose (65). Fine strike of Boston Heart cancel, centered top left		—
166		3c Rose (65). Hockawn, Ct. Running Fox cancel. Very Fine strike, stamp defective	(Photo)	—
167		3c Rose (65). Blue "Steamer Katahdin" cancel, stamp centered to right. Fine strike		—
168		3c Rose (65). Boston Man in Moon and Star cancel. Fine and scarce cancel, stamp centered top left	(Photo)	—
169		3c Rose (65). Very Fine Wheel cancel	(Photo)	—
170		3c Rose (65). Very Fine strike of Horses Head from Knoxville, Tenn., perfs. in at B.	(Photo)	—
171		3c Red (94). Horiz. Pair, each stamp with fine strike of Pointing Hand, perfs cut in at R., from Lansing, Mich.		—
172		3c Rose (65). Very Fine strike of Boston Anchor in circle, corner repaired		—
173		3c Rose (65). Boston. Three Leaf Clover cancel, corner crease. Fine strike		—
174		3c Rose (65). Horiz. Pair, each with Shield cancel. Fine		—
175		3c Rose (65). Horiz. Strip of three each with Brooklyn Heart within a Heart cancel. Very Fine	(Photo)	—
176		3c Rose (65). Three fancy cancels, Hingham, Mass. Bat, Greenfield, Mass. Trowel, Putnam, Ct. Double Anchor. Fine strikes		—
177		3c Rose (65). Fancy "R" from Rockford, Mass., Monogram from Macedon, N. Y. and large "W" from Weston, Ct. Nice strikes		—
178		3c Rose (65). Twenty-two Fancy Cancels, includes "5", "10", "X", "V", "T", "L", "D" etc. Attractive lot.		—
179	☒	3c Rose (65). Tied on cover with West Meriden, Conn. Devil and Pitchfork cancel, Fine strike, stamp centered bottom right	(Photo)	—
180	☒	3c Rose (65). Tied on cover with "V. A. Sprague, P. M." postmark from Corinna, Me. Very Fine strike, stamp centered top left	(Photo)	—
181	☒	3c Rose (65). Tied on cover with fancy "C" in circle from Bloomingburgh, N. Y. Fine		—

- 182 ☒ **3c Rose (65).** Tied from Phila. with straight line "**U. S. Ship**". Fine —
- 183 ☒ **3c Rose (65).** Tied on cover from Boston, Lincoln Mourning cover. Very Fine (Photo) —
- 184 ☒ **3c Rose (65).** Tied on cover from Wash. D. C., **Lincoln & Rail Fence**, cover attractive but slightly repaired —
- 185 ☒ **3c Rose (65).** Tied on Patriotic cover from Phila. "Jeff Davis Going To War" and "Jeff Returning From War"), if turned upside down picture of a Jackass, in colors. Very Fine (Photo) —
- 186 ☒ **3c Rose (65).** Tied on **Magnus Patriotic** cover in colors, (New York Seal, Flag & Sailors). Fine (Photo) —
- 187 ☒ **3c Rose (65).** Tied on cover from Boston, Patriotic Caricature cover. Fine (Photo) —
- 188 ☒ **3c Rose with Bloods Local (65).** Tied from Philadelphia on Patriotic cover **Lincoln & his cabinet**. Fine (Photo) —
- 189 ☒ **3c Rose (65).** Tied on **Magnus Patriotic** cover in colors, (View of Fortifications around Washington). Fine —
- 190 ☒ **3c Rose (65).** Tied on **Magnus Patriotic** cover in blue, (U. S General Post Office & Liberty), Fine cover, stamps defective (Photo) —
- 191 ☒ **3c Rose (65).** Tied on Patriotic cover from Joliet, Ill. (Skull & Crossbones, "Jeff Davis Marque" Fine (Photo) —
- 192 ☒ **3c Rose (65).** Tied on Patriotic Cover from Louisville, (Mass. Seal, Soldier and Tents). Very Fine —
- 193 ☒ **3c Rose (65).** Tied from Leavenworth City, Kans. on Patriotic cover. Fine (Photo) —
- 194 ☒ **3c Rose (65).** Tied from Phila. on **Caricature Patriotic** cover, ("Jeff Chewing the Secession Flag Root"). Very Good —
- 195 ☒ **3c Rose (65).** Tied on illustr. advert. cover with blue "**Brownville, N. T.**" postmark. Very Good territorial —
- 196 ☒ **3c Rose (65).** Tied on cover from Reading, Pa., illustrated corner card of **Howard & Co's Express**. Fine and attractive (Photo) —
- 197 ☒ **3c Rose (65).** Tied with fine strike of Taunton, Mass. **Shield** on cover —
- 198 ☒ **3c Rose (65).** Tied with Very Fine strike of Cambridge, Mass. **Shield** on cover, perfs cut in at right —
- 199 ☒ **3c Rose (65).** On cover, "Steamer Illinois Jul. 19, 1863, C. Harrot" in circle, from Copper Harbor, Mich. to Buffalo, stamp Ms. cancel. Fine —
- 200 ☒ **3c Rose (65).** Tied on front of **Lattice Window (Leeds Patent Envelope)** Cover, also another cover without stamp of same patent. Scarce (Photo) —
- 201 ☒ **3c Rose with 1c Blue Gray Boyds Local (65, 20L18).** Both Tied on cover. Fine 6.00

202	✉	3c Rose (65). Two covers each tied with "Chicago Supplementary Mail" cancel, each has corner card, one has str. edge. Very Good.....	—
203	✉	3c Rose (65). Two covers both from Pinhole City, Pa., one straight line postmark, corner card on one, early oil town. Fine	—
204	✉	3c Rose (65). Five covers, "U.S. Ship", "B & O. R.R.", Fancy "C", "Banks Division", odd Floral, attractive lot	—
205	✉	3c Rose (65). Ten different illustrated advertising covers, attractive lot	—
206	★	3c Lake, Imperforate (66a), Horiz. Pair, Very Fine O.G. (Photo) Formerly Cat.	200.00
207		5c Buff (67). Blue grid, one perf. short. Fine appearance	45.00
208	★	5c Brown Yellow (67a). Centered to left, part O.G. Fine	(Photo) 350.00
209	✉	10c Green, 5c Black Brown, two pairs, each has str. edge (68, 76), Tied on cover to Germany, various transit markings. Fine cover	25.50+
210	✉	1c, 12c, 15c, 15c, 1861-69 Issues (69, 77, 98, 112), Four covers. V.G.-Fine	49.50
211	★	24c Brown Lilac (70a). Fine, O.G.	(Photo) 75.00
212		30c Orange (71). Fine	9.00
213		30c Orange (71). Ten copies, all with odd or fancy cancels, few flaws. Fair-Fine	90.00
214		90c Blue (72). Very Fine	20.00
215		90c Blue (72). Vertical Strip of three. Well centered, middle stamp has two small closed tears, others Very Fine	105.00+
216	★	2c Black (73). Block. Very Fine, O.G. Scarce in this condition (Photo)	30.00
217	✉	2c Black (73). Tied from Augusta on illustrated cover of "State of Maine". Fine	—
218	✉	2c Black (73). Tied on illustrated Great Central Fair for Sanitary Commission, Front only. Very Fine otherwise	(Photo) —
219	★	3c Scarlet (74). Fine, O.G.	(Photo) Formerly Cat. 250.00
220	✉	5c Red Brown (75). Pair and Single tied on cover with red cancel to France, transit markings. Fine cover, centered to left	70.00
221	✉	5c Black Brown, 10c Green (76a, 96). Tied on cover from Fredericksburg, Texas to Boston with registered marking, 10c defective, nice markings	18.00
222	✉	15c Black (77). Tied on cover to Paris, transit markings, Revere House, Boston corner card. Fine	15.00
223	☐	24c Gray Lilac (78). Used Block, perfs in at top. Very Good	60.00
224	✉	24c Lilac (78). Tied on Magnus Patriotic cover in colors (Minnesota seal Indians & Flag), Cover Very Fine, stamp has defective corner (Photo)	—

1867 GRILL ISSUES

225		3c Rose, Grilled All Over (79). Two perfs. short. Fine for this	72.50
226	✉	3c Rose, Grilled All Over (79). Tied on cover from New Orleans, upper right corner defective, neat cover	100.00
227		3c Rose, C Grill (83). Centered to top. Fine	25.00
228		1c Blue, Grill (86). Lightly cancelled. Fine	18.00
229		10c Green, Grill (89). Horiz. Pair. Very Fine	25.00
230		12c Black, Grill (90). Very Fine	9.00
231	★	15c Black, Grill (91). Very Fine, O. G. (Photo)	150.00
232		15c Black, Grill (91). Centered to bottom. Fine	20.00
233	★	1c Blue, Grill (92). Very Fine, part O. G. (Photo)	20.00
234	★	1c Blue, Grill (92). Centered to right. Fine, O. G.	20.00
235	✉	1c Blue, Grill (92). Strip of three, str. edge on one, Aurora, Ill. pmkd. Illustrated corner card of Merchants Union Express Co.	35.00
236	★	2c Black, Grill (93). Centered to left, Fine, mostly O. G.	8.50
237		5c Brown, Grill (95). Lightly cancelled, one perf. short, centered to B.	35.00
238	✉	10c Green, Grill (96). Tied on cover with Dedham, Mass. Paid in Shield. Fine	9.00
239		24c Gray Lilac, Grill (99). Crease. Fine appearance	50.00
240	✉	30c Orange, Grill (100). Tied on small neat cover to France. Transit markings. Fine	60.00
241		90c Blue, Grill (101). Lightly cancelled, centered to right. (Photo)	85.00

1869 PICTORIAL ISSUE

242	✉	1c Buff (112). Tied on cover from Baraboo, Wis. Fine	10.00
243		1c-12c Pictorials (112-117). Very Good-Fine	35.30
244		1c-15c Pictorials (112-115, 117, 119). Fine-Very Fine, 1c is unused	38.80
245	★田	2c Dark Brown (113). Block, centered to left. Fine, O. G.	40.00
246	★田	2c Brown (113). Block of 8, centered to right, mostly O. G., straight edge at left	80.00
247	★田	3c Ultramarine (114). Arrow Block, centered to top. Fine, part O. G.	30.00
248		6c Ultramarine (115). Very Fine	8.75
249		6c, 10c, 12c Pictorial (115-117). 10c has thin, others Fine-Very Fine	25.75

250	✉	6c Ultramarine (115). Tied with rosette cancel from Lansing, Mich., Fine stamp, envelope reduced	15.00
251	★	10c Yellowish Orange (116). Very Fine (Photo)	25.00
252		10c Yellow (116). Odd double cross-roads cancel. Very Fine	8.50
253		10c Yellow (116). So off center Eagle is at bottom of stamp	8.50
254	✉	10c Yellow (116). On cover, San Buenaventura, Calif. postmark to Germany, transit markings. Fine	25.00
255	✉	10c Yellowish Orange (116). Pair tied on cover "China and Japan Steam Service" in magenta oval, San Francisco postmark, one stamp damaged	33.50+
256	✉	10c Yellow (116). Two, one tied on cover from Madison, Wis. to Prussia, other a front of 3c Entire used with 10c Banknote, Ms. cancel	52.00+
257	★	15c Brown & Blue, Type I (118). Centered to bottom right. Very Good	100.00
258		15c Brown & Blue (118). Fine	35.00
259		15c Brown & Blue (118). Tiny corner crease. Fine appearance	35.00
260		15c Brown & Blue (119). Lightly cancelled. Very Fine	9.00
261		15c Brown & Blue (119). Very Fine	9.00

262		15c Brown & Blue, Inverted Center (119b). Lower left corner perf. short, lightly cancelled. Fine appearance (Photo)	1750.00
-----	--	---	---------

263		15c, 24c, 30c Pictorials (119-121). Slight flaws. Very Good appearance	71.50
264		24c Green & Violet (120). Fine (Photo)	37.50
265	★	30c Blue & Carmine (121). Centered to top. Fine (Photo)	85.00
266	★	30c Blue & Carmine (121). Centered to top. Fine	85.00
267		30c Blue & Carmine (121). Light ironed out creases. Very Fine appearance (Photo)	25.00
268		30c Blue & Carmine (121). Well centered. Fine	25.00
269		90c Carmine & Black (122). Lightly cancelled light ironed out creases. Fine appearance (Photo)	100.00
270		90c Carmine & Black (122). Perfs in at right. Very Good (Photo)	100.00
271	★	90c Carmine & Black (122). Centered to right. Fine (Photo)	200.00
272	P	1c-90c, 1869 Issue, India Proofs (112P-122P). Complete set. Fine-V. Fine	66.75
273	P	1c-15c Pictorials, India Proofs (112P-117P, 119P). Very Fine	20.75
274	E	1c, 1869 Essays. Five diff. colors (112E De). Fine lot, O. G.	—
275	E	12c, 1869 Essays. Four diff. colors (117E Ce). Fine, O. G.	—

BANKNOTE ISSUES

276	★	3c Green, Grill (136). Horiz. Pair with clear Split Grill. Fine O. G. Normal Pair Cats. \$25.00	—
277		6c Carmine, 7c Vermilion, Grills (137-138). Fine	35.00
278		7c Vermilion, Grill (138). New York Foreign Mail cancel. Very Fine (Photo)	17.50+
279		10c Brown, Grill (139). Very Fine	37.50
280	★	15c Orange, Grill (141). Fine centering, regummed	80.00
281	⊠	2c Red Brown (146). Three copies all tied with N. Y. Foreign Mail cancels, type 4, to Ireland. Fine	—
282	⊠	3c Green (147). Tied on cover with large "U. S." in circle from Lincoln, Mass. Very Fine	—
283	⊠	3c Green (147). Tied with small Man cancel from Harrisburg, Pa. Fine, Scarce cancel	—
284	⊠	3c Green. Tied with Negative Masonic cancel from Louisville, Ky. Fine	—
285		3c Greens. Twelve diff. fancy cancels, includes two Skull & Crossbones, Heart in circle, etc. Fine lot	—
286	⊠	7c Vermilion (149). Tied on cover from Springfield, Mass. to Germany, Fine stamp, cover bit ragged at one end where opened	35.00
287		7c-90c Banknotes (149-151, 153, 155). Very Good-Fine	33.75
288	★	24c Bright Purple (153). Fine	(Photo) 50.00
289		24c Purple (153). N. Y. Foreign Mail cancel. Very Fine	10.00+
290		24c Purple, 90c Carmine (153, 155). Very Fine	23.50
291	★	30c Black (154). Centered to right. Fine O. G.	(Photo) 75.00
292		90c Carmine (155). Fine	13.50
293	★田	1c Blue (156). Imprint Block of 21. Fresh, O. G., perfs. cut in at R.	96.00
294	★田	3c Green (158). Very Fine Block of 14, O. G.	42.00
295	★	3c Dark Yellow Green (158a). Horiz. Strip of 3. Fine, O. G.	18.00
296	⊠	3c Green (158). Tied on cover with pretty Monogram in purple from Rogers, Ga. Very Fine	—
297	⊠	3c Green (158). Pair on cover cancelled each with neat "U. S.", perfs. in at top	—
298	⊠	3c Green (158). Tied from Los Angeles, Cal. on attractive illustrated United States Hotel cover. Very Fine	—
299	★田	6c Dull Pink (159). Block of 6. Centered to top. Fresh, O. G.	110.00

300		6c-7c Banknotes (159-160). Each has N. Y. Foreign Mail cancel. Fine-Very Fine	5.55+
301	☒	6c Dull Pink, 12c Blackish Violet (159, 162). Tied on cover from New Orleans to Porto Rico. Very Good	14.00
302		7c Vermilion (160). Paper with silk fibers. Fine	15.00
303	★	10c Brown (161). Very Fine	15.00
304	★	15c Yellow Orange (163). Centered to top. Fine, O. G.	45.00
305		15c Yellow Orange (163). Socked on the nose "Rocky Bar, Idaho" post-mark in purple. Very Fine	8.00
306	☒	15c Yellow Orange on 3c Green Entire (163). Tied on registered cover from Boise City, Idaho. Fine Territorial	15.00+
307		30c Gray Black, 90c Rose Carmine (165-166). Fine-Very Fine	18.75
<hr/>			
308	★	2c Dark Brown, Special Printing (168). Centered to right. Fine (Photo)....	200.00
309	★	7c Reddish Vermilion, Special Printing (171). Fine, Philatelic Foundation Certificate accompanies	(Photo) 200.00
310	★	15c Bright Orange, Special Printing (174). Fine, signed "D. F. K." (Daniel Kelleher)	(Photo) 375.00
311	★	24c Dull Purple, Special Printing (175). Fine	(Photo) 200.00
<hr/>			
312	★田	5c Blue (179). Block. Centered to right. Fine O. G.	(Photo) 100.00
313	☒	5c Blue (179). Tied from New York, originated in New Orleans "Forwarded by De Rham & Co. New York" in blue oval, to London. Very Fine	—
314		1c-90c Banknotes (182-191). Good-Fine	21.60
315	★田	6c Pink (186) Block, centered to left. Fresh, O. G.	(Photo) 125.00
316	☒	10c Brown (188). Tied on with neat "N. Y. Supplementary" cancel. Very Fine	—
317	★田	15c Red Orange (189). Block. Very Fine, O. G.	25.00
318	★田	30c Full Black (190). Block. Centered to B., Fine, O. G.	(Photo) 120.00
319		90c Carmine (191). Fine	15.00
320		90c Carmine (191). Very Fine	15.00
321		5c-15c Banknotes. Twenty-one stamps, Fancy Cancells includes N. Y. Foreign Mails, Leaf Colored Stars etc. Fine lot	—
322	★	1c-90c Banknotes, overprint "Sample A" (189SL-214SL), Complete set, 1c slight defects balance Fine-Very Fine	50.00

323	★	2c Black Brown, Special Printing (193). Centered to bottom, signed "D. F. K."	(Photo)	500.00
324	★	6c Dull Rose, Special Printing (195). Fine, Philatelic Foundation Certificate accompanies	(Photo)	500.00
325	★	7c Scarlet Vermilion, Special Printing (196). Very Fine	(Photo)	275.00
326	★	12c Blackish Purple, Special Printing (198). Fine	(Photo)	375.00
327	★	30c Greenish Black, Special Printing (201). Fine, Philatelic Foundation Certificate accompanies	(Photo)	500.00
328	★	90c Dull Carmine, Special Printing (202). Fine despite trivial light stain Philatelic Foundation Certificate Accompanies	(Photo)	450.00
329	★	1c-10c Banknotes (205-211). 6c in Brown Red shade. Good-Fine, O. G.		29.50
330		1c blue (206). Very Fine strike of "I am H. N." (Harry New, Pm. Ann Arbor, Mich.)	(Photo)	—
331	★	1c Gray Blue, 3c Green (206b, 207b). Each punched with eight small holes in a circle. Good-Fine, O. G.		52.50
332	★田	3c Green (207). Block with Steel Patent Paper. Scarce		—
333	★	3c Green (207b). Punched with 8 small holes in circle. Fine O. G.		35.00
334	★	6c Brown Red (208a). Fine O. G.		13.50
335	★田	2c Red Brown (210). Block, Watermarked Wavy Vertical Lines, perfs. in at top and left		—
336	☒	2c Red Brown (210). Tied on cover from Fort Grant, Ariz. V. F. Territorial		—
337	★田	4c Blue Green (211). Block, hinge re-enforced. Fine, O. G.		35.00
338	★	2c Pale Red Brown, Special Printing (211B). Centered to top. Fine, O. G., Coleman guarantee on back	(Photo)	80.00
339	☒	3c Vermilion (213). Tied on cover on 2c Green entire to Germany, shows "86" year date which is error, should be "89". Fine, Ex Knapp		15.00
340	★	1c-30c Banknotes (213-217). Fine-Very Fine, O. G.		20.00
341	★田	5c Indigo (216). Block. Fine, O. G.		20.00
342	★	90c Purple (218). Centered to right. Fine, O. G.	(Photo)	35.00
343	★田	90c Purple (218). Block. Very Fine, O. G.	(Photo)	215.00
344		90c Purple (218). Very Fine		15.00
345	★	90c Purple (218). Used and Unused copies, both have thins		50.00
346	★	1c-15c, 1890 Issue (219-227). Very Good-Fine		27.95

347	★	2c Lake Imperforate (219d). Corner Block. Very Fine, no gum as usual	16.00
348	★	4c Brown, Imperf. (222). Horiz. Pair. Very Fine	25.00
349	★	5c Dark Brown, Imperf. (223). Horiz. Pair. Very Fine	25.00
350	★	30c Black, 90c Orange (228-229). Very Fine	22.00
351	★	90c Orange (229). Very Fine (Photo)	14.00
352	▣	90c Orange (229). Used Block. Very Fine	35.00

COLUMBIAN ISSUE

353	★	1c-10c Columbians (230-237). Extra shades of 5c and 10c values. Fine-Very Fine	24.50
354	★	1c-30c Columbian (230-239). Two str. edges and some thinnings. Fair	26.25
355	★	1c-4c Columbians (230-33). Blocks. Fine-Very Fine	26.00
356	★	5c Columbian (234). Block. Fine	15.00
357	★	6c Columbian (235). Block. Fine	12.50
358	★	8c-10c Columbians (236-37). Blocks, each thin. Fine appearing	40.00
359	★	15c Columbian (238). Block. Fine	40.00
360	★	15c Columbian (238). Block. Very Fine except one corner perf. creased	40.00
361	★	30c Columbian (239). Block, centered to bottom. Fine	60.00
362	★	30c Columbian (238). Bottom Imprint Plate No. Block of 6, centered to left. Very Good, Cat. \$175.00 in block of 8	—
363	★	30c-50c Columbian (239-40). Well centered, latter without gum	25.00
364	★	50c Columbian (240). Very Fine	15.00
365	★	50c Columbian (240). Fine	15.00
366	★	50c Columbian (240). Double Transfer. Very Fine	15.00+
367	★	\$1.00 Columbian (241). Very Fine, without gum (Photo)	45.00
368	★	\$1.00 Columbian (241). Centered slightly to top. Fine (Photo)	45.00
369	★	\$1.00 Columbian (241). Centered to right. Fine no gum (Photo)	45.00
370	★	\$1.00 Columbian (241). Tiny thin. Fine appearance (Photo)	45.00
371	★	\$2.00 Columbian (242). Very Fine, no gum (Photo)	45.00
372	★	\$2.00 Columbian (242). Well centered, thin at top. Very Fine appearance (Photo)	45.00
373	★	\$3.00 Columbian (243). Very Fine (Photo)	70.00
374	★	\$3.00 Columbian (243). Very Fine (Photo)	70.00

375 ★	\$3.00 Columbian (243) . Well centered(no gum, slight faults	70.00
376	\$3.00 Columbian (243a) . Close at top. Fine (Photo)	60.00
377 ★	\$4.00 Columbian (244) . Very Fine, part gum (Photo)	80.00
378 ★	\$4.00 Columbian (244) . Well centered, small thin, no gum. Very Fine appearing (Photo)	80.00
379 ★	\$4.00 Columbian (244) . Slight thinning. Fine appearance (Photo)	80.00
380 ★	\$5.00 Columbian (245) . Fine, no gum (Photo)	90.00
381 ★	\$5.00 Columbian (245) . Well centered, thinnings. Very Fine appearance (Photo)	90.00

1894-1898 ISSUES

382 ★	1c-50c, 1894 Issue (246-260). Good-Very Fine	51.65
383 ★	10c Green, Imperforate (258a) . Horiz. Pair, one Very Fine, other has tiny thin spot	30.00
384 ★	\$1.00 Black (261) . Slight thin. Very Fine appearance (Photo)	45.00
385 ★	\$1.00 Black, Type II (261A) . Centered to bottom. Fine (Photo)	70.00
386 ★	\$2.00 Dark Blue (262) . Perfs. in at right. Very Good	70.00
387 ★	\$5.00 Dark Green (263) . Fine (Photo)	110.00
388 ★	1c-50c, 1895 Issue (264-275). Good-Fine	38.51
389 ★	5c Chocolate (270) . Three Shades in top Imprint Plate No. Strips of 3. Fine	15.00
390 ★	\$1.00 Black (276) . Small thin spot. Very Fine appearance	25.00
391 ★	\$1.00 Black, Type II (276A) . Centered to right. Fine (Photo)	70.00
392 ★	\$2.00 Bright Blue (277) . Centered to left. Very Good	45.00
393 ★	\$2.00 Dark Blue (277) . Well centered, part gum (Photo)	45.00
394 ★	\$5.00 Dark Green (278) . Very Fine (Photo)	85.00
395 ★	2c Red, Orange Red (279B, 279d) . 26 different Imprint Plate No. Strips of 3, V.G.-Fine	78.00
396 ★田	2c Orange Red Booklet Pane of 6 (279e) . Very Fine	15.00
397 ★田	10c Orange Brown (283) . Block. Very Fine	40.00
398 ★	10c Orange Brown, 15c Olive Green (283-284) . Fine	16.00

TRANS-MISSISSIPPI ISSUE

399 ★	1c-10c Trans-Miss. (285-290) . Very Fine, 5c without gum	26.00
400 ★田	1c, 4c Trans-Miss. (285, 287) . Blocks. Fine	30.00

401	★	4c, 8c, 10c Trans-Miss. (287, 289-290). Very Fine	20.50
402	★田	5c Trans-Miss. (288). Block. Fine	30.00
403	★	5c-10c Trans-Miss. (288-290). Fine	20.50
404	★	50c Trans-Miss. (291). Very Fine (Photo)	37.50
405	★	50c Trans-Miss. (291). Fine (Photo)	37.50
406	★	50c Trans-Miss. (291). Fine (Photo)	37.50
407	★田	50c Trans-Miss. (291). Block, perfs. barely touch at left on two (Photo)	300.00
408	✉	50c Trans-Miss. (291). Very Fine stamp tied on large registry cover from Omaha, 1900	35.00
409	★	\$1.00 Trans-Miss. (292). Very Fine (Photo)	65.00
410	★	\$1.00 Trans-Miss. (292). Very Fine (Photo)	65.00
411	★	\$1.00 Trans-Miss. (292). Perfs. barely touch at left (Photo)	65.00
412	★	\$1.00 Trans-Miss. (292). Tiny thin spot. Very Fine appearance (Photo)	65.00
413	★	\$1.00 Trans-Miss. (292). Well centered, thin spot, without gum. Very Fine appearance (Photo)	65.00
414	★	\$1.00 Trans-Miss. (292). Bottom Imprint Plate No. Pair, centered to B. Fine (Photo)	175.00
<hr/>			
415	★田	\$1.00 Trans-Miss. (292). Block. Very Fine, hinged once (Photo on Cover)	450.00
<hr/>			
416		\$1.00-\$2.00 Trans-Miss. (292-293). Slight faults. Very Good appearance	105.00
417	★	\$2.00 Trans-Miss. (293). Fine..... (Photo)	85.00
418	★	\$2.00 Trans-Miss. (293). Fine, no gum (Photo)	85.00
419	★	\$2.00 Trans-Miss. (293). Well centered, thin spot. Very Fine appearance, without gum (Photo)	85.00

END OF FIRST SESSION

SECOND SESSION

THURSDAY, AUGUST 18th, 1949 — 8:00 P. M.

U. S. TWENTIETH CENTURY

420 ★	1c-10c Pan-American (294-299). Complete set. Fine-Very Fine	21.45
421 ★	1c-10c Pan-American (294-299). Complete set. Fine-Very Fine	21.45
422 ★	1c-10c Pan-Americans (294-299). Unused and Used Sets. Good-Fine	31.19
423 ★	8c-10c Pan-American (298-299). Blocks, each has thin spot. Fine appearance	60.00

1902 ISSUES

424 ★	1c-50c, 1902-03 Issue (300-310). Fine-Very Fine	39.85
425 ★	2c Carmine (301). Thirty-two different Imprint Plate No. Strips of 3. V. G., V. F.	48.00
426 ★	\$1.00 Black (311). Fine	(Photo) 42.50
427 ★	\$1.00 Black (311). Well centered, no gum	(Photo) 42.50
428	\$2.00 Dark Blue (312). Lightly cancelled. Fine	22.50
429	\$2.00 Dark Blue (312). Centered to left. Fine	22.50
430 ★	\$2.00 Dark Blue (312). Small hinge thin. Fine appearance	(Photo) 50.00
431 ★	\$5.00 Dark Green (313). Very Fine	(Photo) 95.00
432 ★	1c Blue Green, Imperforate Coil (314s). Horiz. Pair showing part of paste up. Scarce. Very Fine	—
433 ★	5c Blue, Imperforate (315). Horiz. Pair. Superb	(Photo) 140.00
434 ★	5c Blue Imperforate (315. Horiz. Pair, Superb	(Photo) 140.00
435 ★	5c Blue, Imperforate (315). Horiz. Pair, tiny thin one stamp, other Very Fine	(Photo) 140.00
436 ★	5c Blue Imperforate (315). Block. Superb	(Photo) 300.00





30



31



32



33



38



39



40



42



46



47



48



58



59



60



61



62



63



64



66



67



68



75



94



95



96



99



103



116



125



129



138



140



142



144



146



148



160



162



163



164



166



168



169



170



175



206



208



211



219



231



233



241



251



262



264



265



267



269



270



271



278



288



291



308



309



310



311



323



324



325



326



327



328



330



338



342



351



367



368



369



370



371



372



373



374



376



377



378



379



380



381



384



385



387



391



393



394



79



134



137



132



216



312



315



318



343



407



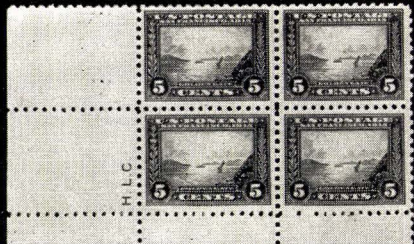
483



436



476



497



404



405



406



409



410



411



412



413



606

414



417



418



419



426



427



430



431



433



434



435



452



469



471



473



474



475



499



500



504



512



515



516



523



524



532



592



596



607



615



622



704



711



722



723



498



523



535



547



587



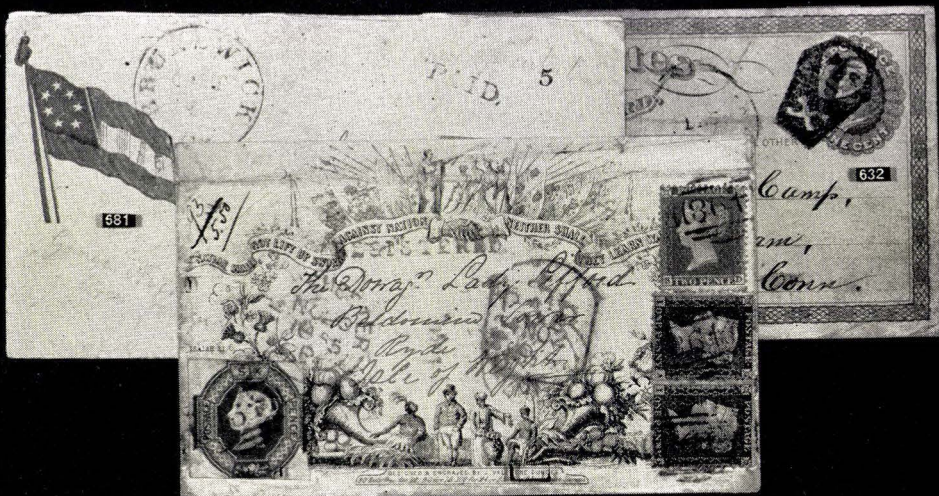
540



798



597



872



727



728



729



732



733



734



742



743



745



746



748



749



768



770



773



776



781



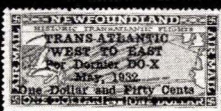
785



790



811



818



820



822



847



EX 858



875



882



883



912



916



920



921



898



EX 901



935



936



939



EX 949



951



954

437	★	2c Lake Imperf. (320a). Block, one stamp small thin. Very Fine appearance	30.00
438	★	2c Lake Imperf. (320a) Left Imprint Plate No. Block of 6. Very Fine	85.00
439	★	1c-2c Imperforates (320, 531, 532b, 575-77). Four pairs and two blocks. Very Fine	21.25

LOUISIANA-PURCHASE, JAMESTOWN ISSUES

440	★	1c-10c Louisiana-Purchase (323-327). Complete set. Fine-Very Fine	28.35
441	★	1c-10c Louisiana-Purchase (323-327). Very Good-Very Fine	28.35
442	★	1c-3c Louisiana-Purchase (323-325). Blocks. Fine	34.50
443	★	5c Louisiana-Purchase (326). Block, Very Fine	32.50
444	★	10c Louisiana-Purchase (327). Block. Fine	70.00
445	★	10c Louisiana-Purchase (327). Corner Block, perfs. barely touch at left	70.00
446	★	1c-10c Louisiana, 1c-5c Jamestown (323-330). Cpl. sets, #325 has thin, latter set has Plate Nos. V. G.-V. F.	37.00
447	★	1c-5c Jamestown (328-330). Set of Blocks. Very Good-Very Fine	42.50
448	★	5c Jamestown (330). Superb	6.75
449	★	5c Jamestown (330). Very Fine	6.75

1908 ISSUE

450	★	1c-15c, 1908 Issue (331-340). Very Good-Very Fine	16.48
451	★	50c Violet (341). Fine	15.00
452	★	\$1.00 Violet Brown (342). Very Fine (Photo)	22.50
453	★	\$1.00 Violet Brown (342). Plate No. Block of 4. Fine	100.00
454	★	1c-5c Imperforate (343-347). Set of Horiz. Pairs. Fine	28.30
455	★	2c Carmine, Imperf. (344). Left and Bottom Imprint Plate No. Blocks of 6. Very Fine	16.00
456	★	3c Violet, Imperf. (345). Block. Very Fine	13.50
457	✉	3c Violet Imperf. (345). Arrow Block, Pair and Single tied on registered cover. Very Fine	22.75
458	★	4c Orange Brown, Imperf. (346). Plate No. Block of 4. Very Fine	17.50
459	★	4c Brown, Imperf. (346). Top Arrow Block. Fine	20.00
460	★	4c Brown, Imperf. (346). Center Line Block, slight thin. Very Fine appearance	50.00
461	□	5c Blue, Imperf. (347). Used Block, lightly cancelled. Very Fine	20.00

462	★田	5c Blue, Imperf. (347). Block. Very Fine	28.50
463	★	5c Blue Imperf. Coil (347E). Pair. Very Fine	18.00
464	★	5c Blue Imperf. Coil (347E). Strip of four. Fine	36.00
465	★	4c Orange Brown. Coil (350). Pair. Fine	16.00
466		4c Orange Brown. Coil (350). Used Pair. Fine	16.00
467	★	5c Blue, Coil (351). Guide Line Strip of 4. Very Fine	47.00
468	★	4c Orange Brown, Coil (354). Strip of four. Fine	34.00
469	★	10c Yellow, Coil (356). Paste-up pair. Fine (Photo)	180.00
470	★	1c-2c Bluish Papers (357-358). Very Fine	10.00

471	★	4c Orange Brown, Bluish (360). Sheet margin at left. Very Fine (Photo)	750.00
472	★	6c Red Orange, Bluish (362). Fine, though close at R.	60.00
473	★	8c Olive Green, Bluish (363). Centered to B. Fine	(Photo) 750.00
474	★	10c Yellow, Bluish (364). Very Fine	(Photo) 60.00
475	★	13c Blue Green, Bluish (365). Fine	(Photo) 160.00
476	★田	15c Pale Ultramarine, Bluish (366). Block. Very Fine	(Photo) 275.00

1909 COMMEMORATIVES

477	★田	2c Commems., 30c 1917 Issue (367, 370, 516). Blocks, both spacings on Lincoln. Fine-Very Fine	15.75
478	★	2c Commem. Imperfs. (368) 371, 373). Horiz. pairs, latter has thin on one stamp, others Very Fine	27.00
479	★	2c Commem. Imperforates (368, 371, 373). Pairs. Fine-Very Fine	27.00
480	田	2c Lincoln, 1c Offset Imperfs. (368, 531). Used blocks. Very Fine	24.00
481	★田	2c Lincoln Bluish (369). Block. Fine	65.00
482	★田	2c Lincoln Bluish (369). Corner str. edge block, light crease on two, nicely centered	65.00
483	★田	2c Lincoln Bluish (369). Top Imprint Plate No. block of 6. Very Fine (Photo)	125.00
484	★	2c Alaska-Yukon (370). Eight diff. Imprint Plate No. strips of three. Fine-V. F.	20.40+
485	★田	2c Alaska-Yukon Imperf. (371). Center line block. Very Fine	45.00
486	★	1c-15c, 1910 Issue (374-382). Fine-Very Fine	23.35
487	★	1c-15c, 1910 Issue (374-384). Complete, 4c and 15c thin, balance Fine	23.73

488	★田	15c Pale Ultramarine (382). Block, perfs. barely touch at left	32.50
489	★田	1c Green Imperf. (383). Bottom Imprint Plate #A5709 block of 6. Very Fine	30.00
490	★田	2c Carmine Imperforate (384). Two blocks, both spacings, one has slight hinge thin, other Very Fine	26.00
491	★田	2c Carmine, Imperf. (384). Bottom Imprint Star Plate #5618 block of 6. Fine	25.00

PANAMA-PACIFIC ISSUE

492	★	1c-10c Pan-Pacific (397-402). All well centered, several thinnings	24.35
493	★田	10c Pan-Pacific, Orange (400a). Block. Fine	50.00
494	★田	1c-2c Pan-Pacific (401-402). Blocks, first Very Fine, latter Fine centering but str. edge at left	38.00
495	★	2c Pan-Pacific (402). Strip of five, one has str. edge. Fine	32.50
496	★	5c Pan-Pacific (403). Superb	13.50
497	★田	5c Pan-Pacific (403). Block. Very Fine (Photo)	57.50
498	★田	5c Pan-Pacific (403). Block. Fine (Photo)	57.50
499	★	10c Pan-Pacific (404). Very Fine (Photo)	55.00
500	★	10c Pan-Pacific (404). Centered to right. Fine (Photo)	55.00

1912-1916 ISSUES

501	★	7c, 8c-30c, 1912 Issue (407, 414-420). Fine-Very Fine	28.60
502	★田	20c Ultramarine (419). Block. Very Fine	37.50
503	★	50c Violet (422). Fine	15.00
504	★	\$1.00 Violet Brown (423). Very Fine (Photo)	25.00
505	★	\$1.00 Violet Brown (423). Well centered, thin. Very Fine appearance	25.00
506	★田	3c, 9c, 11c, 1914 Issue (426, 432, 434). Blocks. Fine	18.00
507	★	4c, 11c, 12c, 1914 Issue (427, 434-35). Blocks. Fine	21.75
508	★	5c-12c, 1914 Issue (428-435). Fine-Very Fine	15.60
509	★田	6c Red Orange, 8c Olive Green (429, 431). Blocks. Very Fine	18.00
510	★	15c, 20c, 30c, 1914 Issue (437-439). Fine-Very Fine	27.50
511	★田	15c Gray (437). Bottom Imprint Plate No. "A" 5775 block of 6. Fine	50.00
512	★	50c Violet (440). Fine (Photo)	45.00
513	★	4c Brown, Coil (446). Guide line pair. Fine	20.00

514	★	3c Violet, Coil (456). Line pair. Very Good	27.50
515	★	2c Carmine Imperforate (459). Horiz. pair. Very Fine (Photo)	100.00
516	★	\$1.00 Violet Black (460). Fine (Photo)	40.00
517	★田	2c Carmine (461). Block. Very Fine	32.50
518	★田	2c Carmine (461). Top Plate No. block of 6, perfs. touch on top 3 stamps, bottom 3 are Fine	60.00
519	★	1c-20c, 1916 Issue (462-63, 465-476). Very Good-Very Fine	48.55
520	★	5c Carmine Error (463b). In strip of three, perfs. barely touch at left. Very Good	62.50
521	★田	5c Blue (466). Block. Very Fine	13.50
522	★田	15c Gray (475). Block. Fine	45.00
523	★	50c Light Violet (477). Very Fine (Photo)	75.00
524	★	\$1.00 Violet Black (478). Fine (Photo)	55.00
525	★	\$2 Dark Blue, \$5 Light Green (479-480). First fine, latter perfs. in at B.	32.00

1917-1920 ISSUES

526	★田	1c Green, A.E.F. Booklet Pane of 30 (498d). Very Fine	35.00
527	★	5c Rose, Error (499h). Perfs. in at right	32.50
528	★	5c Rose Error (499h). In strip of three, hinge thin, centered to right	32.50
529		2c Rose, Strong Double Print (499g). Tied on front of cover. Fine	—
530	★	10c-\$1.00, 1917 Issue (510-518). Fine-Very Fine	15.80
531	★田	\$1.00 Violet Brown (518). Block. Very Fine	17.50
532	★	\$2.00 Orange Red & Black (523). Well centered, small hinge thin. Very Fine appearance (Photo)	47.50
533	★田	\$2.00 Orange Red & Black (523). Block. Very Fine (Photo)	225.00
534	★田	\$5.00 Deep Green & Black (524). Center Line Block. Fine	85.00
535	★田	\$5.00 Deep Green & Black (524). Center Line Block. Fine (Photo)	85.00
536	★	\$2.00-\$5.00, 1918 Issue (524, 547). First has corner perf. short, latter Fine	28.50
537	★田	1c Offset Imperf. (531). Center Line Block. Fine	35.00
538	★田	2c Offset Imperf. Type V (532a). Block of 6. Very Fine	40.50
539	★田	2c Offset Imperf. Type V (532a). Block of 8. Very Fine	55.00
540	★田	2c Offset Imperf. Type VII (532d). Top Plate No. Block of 4. Very Fine. Rare (Photo)	275.00

541 ★	2c-3c Offset Imperf. Shermack Perf. Type III, (532b, 532c, 535). Line Strips of four. Very Fine	40.50
542 ★	1c-5c, 1918-25 Issues (536-41, 545-46, 548-50, 614-20). Few thins. Good-Very Fine	35.85
543	3c Victory, Red Violet Shade (537a). Pair used on piece of cover. Fine centering each has str. edge	13.00
544 ★	1c-3c Rotaries (638-546, 578) Very Good-Very Fine	28.80
545 ★	1c-2c Rotaries (545-546). Superb	16.50
546 ★田	\$2.00 Carmine & Black (547). Block. Fine	60.00
547 ★田	\$2.00 Carmine & Black (547). Center Line Block. Very Fine (Photo)	75.00

1922 TO DATE

548 ★	½c-\$5.00, 1922 Issues (551-573). Complete, a few low values have hinge thins, mostly Very Fine	35.03
549 ★	\$2.00-\$5.00, 1922 Issue (572-573). Very Fine. early shades	15.00
550 ★田	\$5.00 Carmine & Blue (573). Center Line Block. Superb	60.00
551 ★田	1c Green, 2c Carmine (578-579). Blocks. Very Good-Fine	42.50
552 ★	1c-10c Rotaries (578-79, 581-91). Very Good- Very Fine	18.58
553 ★田	1c-10c Rotaries (581-591). Set of Blocks, all Very Fine except 4c value close	38.15
554 ★田	2c Hardings (611-613). Block of 9 of the Imperf. blocks of 4 of others. Very Fine	28.65
555 ★田	2c Harding (612-613). Blocks. Very Fine	18.00
556 ★田	2c Harding Imperf. (612). Two Plate No. Blocks of 4. Very Fine	18.00
557 ★田	2c Black Imperf. (612). Right and left plate No. Blocks of 6. Very Fine	28.00
558 ★田	2c Harding Imperf. (612). Set of four diff. positions Matched Plate No. 15019 Blocks of 6. Very Fine	56.00
559 ★田	1c-5c Huguenot-Walloon (614-616). Set of Blocks. Very Fine	18.50
560 ★田	1c-5c Hug.-Walloon (614-616). Blocks, first is Plate No. Blocks of 6 others are fours, Fine except 5c has tiny thin on one stamp	19.25
561 ★田	5c Huguenot-Walloon (616). Right Plate No. Block of 6. Fine	25.00
562 ★田	1c-5c Lex-Concord (617-619). Set of Blocks. Fine-Very Fine	14.00
563 ★田	1c-5c Lex-Concord (617-619). Set of Blocks. Very Fine	14.00
564 ★田	5c Norse-American (621), Center Line Block. Fine	25.00
565 ★田	1½c Imperforate (631). Center Line Block. Superb	20.00

566	★田	2c Carmine, Type II (634b). Upper Left Plate No. 19746 Block of 4. Fine-Very Fine	60.00
567	★田	1c-7c, 9c-10c Kans. (658-65, 667-68). Blocks. Fine-Very Fine, 3c without gum	54.00
568	★田	½c-10c Bicentennials (704-715). Set of Blocks. Fine, Very Fine	10.92
569	★田	Complete Booklet, two panes of six, printed in deep violet, no design, less than 20 of these found about 1937. Est. Value \$50.00	—
570	★田	1c Chicago (728). Upper Left Plate No. #21141-42 Blocks. Scarce numbers, perfs. in at top	—
571	★	1c-3c Souvenir Sheets (730-31, 735, 750-51). Very Fine	11.10
572	★田	3c N. R. A. (732). Block of ten showing interesting Dry Plate, graduates from normal to barely discernible	—
573	★田	1c-16c Farley Parks, Mothers Day, Wisc. and Air Special (754-765, 771). Complete Center Line Blocks and four diff. Arrow Blocks of each. Very Fine	203.60
574	★田	3c Newburgh Farley (752). Center Line Block and four diff. Arrow Blocks. Very Fine	20.50
575	★田	16c Farley Air Special (771). Center Line Block and Set of four diff. Arrow Blocks. Very Fine	58.00
576	★田	Same as above. Very Fine	58.00
577	★田	Same as above. Very Fine	58.00
578	★田	16c Farley Air Special (771). Bottom Plate No. Block of 6, and Bottom Arrow Block of 4. Very Fine	18.00
579	★田	16c Farley Air Special (771). Plate No. Blocks of 6 and two line blocks of 4. Very Fine	22.00
579A	★	1c-10c Famous Americans (859-893). Complete set of sheets of 70 each. Very Fine	835.00
580	★	1c-3c Defense, Imperforate Between (899b, 900a, 901a). Horiz. Pairs. Very Fine	40.00
581		Balance of COLLECTION, 19th Century, 96 stamps mostly different, used and unused. Fair-Very Fine	494.13
582		Balance of COLLECTION, 20th Century, 471 stamps including some blocks, mostly unused. Good-Very Fine	385.13
583		BUREAU PRINT PRECANCEL Collection, 1,191 different mounted, all prior to 1938, about 65% complete for these issues. Fine lot	510.53

AIRPOSTS

584	★田	6c Orange, Air (C1). Block. Very Fine	11.00
-----	----	---	-------

585	★	6c Orange, Air (C1). Center Line Block. Fine	20.00
586	★	6c-24c, 8c-24c Airs (C1-C6). Complete sets. Very Fine except 16c has thin spot	33.00
587	★	16c Green, Air (C2). Center Line Block. Superb (Photo)	60.00
588	★	24c Carmine Rose & Blue. Air (C3). Center Line Block. Very Fine	40.00
589	★	8c Dark Green, 16c Dark Blue, Airs (C4-C5). Blocks. Very Fine	34.50
590	☐	24c Carmine, Air (C6). Used Block of 16 and a pair on piece of cover, includes six str. edges. Fine	44.00
591	★	5c-50c Airmails (Between C10-CE2). 85 stamps in blocks of 4 or larger some with plate Nos. includes cpl. Lindbergh Booklet. Fine-Very Fine	42.04
592	★	65c-\$2.60 Graf Zeppelin (C13-C15). Complete set. Very Fine (Photo)	128.50

593	★	65c-\$2.60 Graf Zeppelin (C13-C15). Complete set of Blocks. Very Fine (Photo)	565.00
-----	---	---	--------

594	★	50c Zeppelin (C18). Block. Very Fine	45.00
595	★	50c Zeppelin (C18). Top Plate No. Block of 6. Very Fine	70.00
596	★	6c Ultramarine & Carmine, ERROR of Color (C23c). Very Fine, Bruechig guarantee on back, sold for \$100 when found (Photo)	—

SPECIAL DELIVERY, OFFICIALS

597	★	10c Special Deliveries (E1-E11). All have thinnings, nicely centered	57.00
598	★	10c Special Delivery (E5). Block. Fine	8.50
599	★	10c Green, Special Delivery (E7). Block. Fine	15.00
600	★	10c Ultramarine, Special Delivery (E10). Plate No. Block of 4, one stamp has slight hinge thin others Very Fine	75.00
601	★	10c Ultramarine, Registry (F1). Block. Fine	16.00
602	★	10c Registry, 1c-25c Parcel Post Dues. (F1, JQ1-JQ5). Fine	8.75
603	★	2c-\$2.00 Shanghai (K1-K16). Mostly have thins, \$1.00 has str. edge. Fine appearing set	51.60
604	★	2c-4c Shanghai (K17-K18). Fine	15.00
605	★	6c Executive (O13). Centered to left. Fine	32.50
606	★	2c Navy, Green Error (O36b). Centered to top. V. Good Formerly Priced	75.00
607	★	\$2.00 State (O68). Very Fine, part O. G. (Photo)	50.00
608	★	1c-90c Treasury (O72-O82). Complete set. Fine	45.35

609 ★	15c Interior (O102). Very Fine	12.00
610 ★	24c Interior (O103). Centered to bottom and left. Very Good	75.00
611 ★	50c Dark Green, Postal Savings (O122). Superb	9.00

PARCEL POSTS, NEWSPAPERS

612 ★	1c-\$1.00 Parcel Post (Q1-Q12). Complete set. Fine	55.42
613 ★	50c Parcel Post (Q10). Very Fine	14.00
614 ★	75c Parcel Post (Q11). Block. Very Fine	12.50
615 ★	\$1.00 Parcel Post (Q12). Very Fine (Photo)	25.00
616 P	2c-\$60 Newspaper, Card Proofs (PR9P-32P). Complete set. Very Fine	31.50
617 P	2c-\$60.00 Newspapers, Card Proofs (PR9P-PR32P). Complete set. Fine	31.50
618	1c-\$60 Newspaper, overprint Specimen (PR14S-PR81S except #69). Several str. edge. V. G.-V. F.	120.00
619 ★	\$12.00 Yellow Green, Newspaper (PR75). Very Fine	12.50
620 ★	\$24.00 Dark Violet, Newspaper (PR76). Fine	17.50
621 ★	\$36.00 Indian Red, Newspaper (PR77). Fine	22.50
622 ★	\$60.00 Purple, Newspaper (PR79). Very Fine (Photo)	28.50

ENVELOPES

623	✉ 3c Red Entire (U9). Two covers, large balloon strike, Boston, Mich. and odd little double circle from Appleton, Wisc. Very Fine	—
624	✉ 6c, 10c Entires (U13-U16, U18a, U40a). All with California postmarks. V. G.-V. F.	54.75
625	✉ 10c Green on White (U15). Entire, Astoria, Ogn. postmark. Fine	12.00
626	3c+1c Red and Blue on Buff (U29). New York postmark. Fine	28.50
627 ★	3c+1c Red & Blue on Buff (U29). Cut close. Good	27.50
628	✉ 3c Green Entire (U163). Tied with Star and "Altamonte, Orange Co. Fla." cancel in purple. Very Fine	—
629 ★	2c Brown Red on oriental buff, Die 2 (U408a). Very Fine	50.00
630 ★	2c on 3c Dark Violet, Entire (U479). Very Fine	37.50
631 ★	3c Black on White, Post Office (U08). Fine	75.00
632	✉ 1c Postal Card (UX3). Tied with excellent strike of Pittsburgh Skull in Coffin. Very Fine (Photo)	—

REVENUES

633	田	5c Inland Exchange (R27c). One hundred copies on a deed, mostly in blocks, Ms. cancel, interesting revenue piece	—
634		6 cProprietary (R31c). Repaired, blue herringbone cancel, centered to B., attractive space filler	300.00
635		15c Inland Exch. Imperf. (R40a). Horiz. pair. Very Fine	20.00
636		\$15 Mortgage Imperf. (R97a). Margins all around, small thin. Very Fine appearance	100.00
637		\$20.00 Probate of Will (R99c). Fine	85.00
638		10c Blue & Black, Inverted Center (R109a). Centered to left. Fine	200.00
639		\$1.60 Blue & black (R121). Herringbone cancel. Fine	32.50
640		\$100 Yellow Brown & Black (R179). Handstamp cancel. Very Fine	10.00
641		\$500 Blue, Documentary (R249). Very Fine	11.00
642		\$100 Documentary, Series of 1941 (R333). Perf. initialed otherwise V. F.	—
643		\$30.00 Documentary, Series of 1943 (R380). Perf. initialed otherwise Fine	—
644		\$100 Documentary, Series of 1943 (R383). Perf. initialed otherwise Fine	—
645		6c Violet Blue, Proprietary, Rouletted (RB17c). Thin spot. Very Good appearance	25.00

646	★田	4 ³ / ₈ c Black, Proprietary (RB42). Block, outstanding rarity in a block, centered slightly to bottom right, not listed in block	600.00+
-----	----	---	---------

647		\$100 Future Delivery (RC19). Very Fine	10.00
648		\$500 Future Delivery (RC20a). Numerals in orange. Very Fine	—
649		1c-\$20.00 Stock Transfer, Old Series of 1940 (RD42-RD60). Fine set	53.89
650		1c Stock Transfer, "Series of 1940" Inverted (RD42a). Probably only exists with str. edge at left, only a few found. Rare	—
651		\$20 Stock Transfer, Series of 1940 (RD85). Handstamp cancel, centered to top	17.50
652	田	\$20.00 Stock Transfer, Series of 1940 (RD85). Block, cut cancel	70.00
653		1c-\$20.00 Stock Transfer, Series of 1941 (RD92-RD110). Fine set	24.61
654		\$50 Stock Transfer, Series of 1941 (RD112). Perf. initialed otherwise V. F.	—
655		1c-\$20.00 Stock Transfer, Series of 1942 (RD117-RD133). Fine set	28.11
656		\$30, \$50 Stock Transfer, Series of 1942 (RD134-RD135). Perf. initialed otherwise Very Fine	—

657	1c-\$20.00 Stock Transfer, Series of 1943 (RD140-RD156). Fine set	19.78
658	\$30 Stock Transfer, Series of 1943 (RD157). Perf. initialed otherwise V. F.	—
659	\$30 Stock Transfer, Series of 1943 (RD157). Perf. initialed otherwise V. F.	—
660	\$100 Stock Transfer, Series of 1943 (RD160). Perf. initialed otherwise V. F.	—
661	1c-\$20.00 Stock Transfer, Series of 1944 (RD163-RD179). Fine set except 80c is perf. initialed	—
662	\$20 Stock Transfer, Series of 1944 (RD177). Fine	—
663	\$30, \$50 Stock Transfer, Series of 1944 (RD180-RD181). Perf. initialed otherwise Very Fine	—
664	\$50 Stock Transfer, Series of 1944 (RD181). Perf. initialed otherwise V. F.	—
665	\$50 Stock Transfer, Series of 1944 (RD181). Strip of four, perf. initialed otherwise Very Fine	—
666	\$100 Stock Transfer, Series of 1944 (RD183). Cut cancel otherwise V. F.	—
667	\$100 Stock Transfer, Series of 1945 (RD206). Cut cancel otherwise V. F.	—
668 ★	1c-\$10.00 Silver Tax (RG1-RG18). Very Fine O. G. Retail Value \$52.50	—
669	\$20.00 Tobacco Sales Tax (RJ11). Perfs. in at left. Very Good. Retail for \$70.00	—
670	\$1.00 Consular Fee (RK10). Fine	10.00
671 ★	\$1.00 Blue, Hunting (RW1). Bottom Plate No. single. Very Fine	12.50
672 ★	\$1.00 Blue, Hunting (RW1). Top Plate No. single. Very Fine	12.50
673 ★	\$1.00 Blue, Duck (RW1). Plate No. at bottom. Fine	12.50
674 ★	\$1.00 Rose Lake, Duck (RW2). Top Plate No. Very Fine	20.00
675 ★	\$1.00 Rose Lake (RW2). Top Plate No. single. Very Fine	20.00
676 ★	\$1.00 Hunting Permit Stamps (RW1-8, 10-12). All O. G. but first. Fine-Very Fine centering, two have thins	69.25
677	MATCH & MEDICINES. Collection of 123 different mounted, above average condition for these. Attractive lot	202.80

CONFEDERATE STATES

678	✉ Georgetown, S. C. 5c Black on amber (28XU1). Control mark on back. Very Fine Postmaster Provisional	25.00
679 ★	New Orleans, 2c Blue, 5c Brown (62X1, 62X5). Very Fine	30.00
680	Petersburg, Va., 5c Red (65X1). Tied with blue town cancel on small piece. Fine	100.00
681	✉ Patriotic Cover, Flag (7 stars), "Brunswick Ga. Paid 5". Very Fine (Photo)	—

682	10c Rose (5). Town cancel, margins all around. Very Fine	35.00
683	✉ Flag of Truce Covers, two covers, one from Old Point Comfort, Va. from prisoner to his wife, and other from Westport, Conn. from wife to prisoner Fine	—

U. S. POSSESSIONS

CANAL ZONE

684	1904, 2c Rose (1). Fine	15.00
685	★ 1904, 10c Pale Red Brown (8). Fine	13.50
686	★ 1920, 1b Dark Violet & Black (56). Very Fine	15.00
687	★ 1925-28, 2c-\$1.00 (84-95). Cpl set, 4 are used. V. G.-Fine	25.15
688	★田 1928, 50c Lilac (94). Block. Very Fine	75.00
689	★ 1939, 1c-50c Anniversary Issue (120-135). Cpl. set. Very Fine	29.90
690	★ 1939, 5c-\$1.00 Commem. Airpost (C11-C16). Cpl. set. Very Fine	19.05
691	★ 1914, 10c Rose Carmine, Due (J3). Fine, no gum	25.00
692	★ 1921, 0.02c Red Cut Square (U4). Very Fine	32.50
693	★田 CUBA , 1899, 10c Special Delivery (E1). Left Arrow Block. Very Fine	35.00
694	★ —1899, 1c green on blue and buff. Cut Squares (U11-U12). Very Fine	14.50
695	★ GUAM. 1899 50c Orange, # \$1.00 Black (11-12). Very Good-Fine	29.50
696	★ —1899, 10c Special Delivery (E1). Very Fine	8.00
697	★ —1930, 2c Guam Guard (M1), Perfs in at R., initialed on back by Bradley who inaugurated Guard Mail	20.00

HAWAII

698	1855, 5c blue (8), Target cancel. Fine	25.00
699	★ 1864, 2c Black (24). Very Fine	10.00
700	✉ 1864-99, 1c-6c, Thirteen covers, all tied. Fine lot	—
701	✉ 1864-99, 1c-25c, 44 stamps on 21 covers. Fine lot	—
702	✉ 1893, 1c, 2c, 5c, 10c (53, 56, 59, 68) Six stamps tied on attractive registered cover to Germany	—

PHILIPPINES

703	★ 1899-1901, 1c-50c (213-222). Very Good-Very Fine	20.80
704	★ 1901, \$5.00 Dark Green (225). Fine, part O. G. (Photo)	65.00

705 ★	1903-04, 2c-10c (227, 229, 231-33, 240). Very Good-Very Fine	17.25
706 ★	1903-04, 50c Orange (236). Very Fine	10.00
707 ★	1903-04, 2c Carmine, Booklet Pane of 6 without tab (240a), one stamp slight thin	50.00
708 ★	1906, 10p Dark Green (254). Fine	27.50
709 ★	1909-13, 2p Violet Brown (260A). Very Fine	16.00
710 ★	1914-23, 1p Pale Violet (284). Very Fine	17.50
711 ★	1926, 1p Madrid-Manila Flight (318B). Fine (Photo)	45.00
712 ★	1926, 2c-1P Legislative Palace (319-325). All in blocks except 1 Peso in two pairs, 4 cpl. sets. V.G.-V.F.	48.95
713 ☒	1928, 2c-1P London-Orient Flight (328-338). Complete set on cachet flight cover to Hong Kong. Fine	33.90
714 ★	1925-31, 2c-30c Imperforate (340-349). Set of blocks with exception of 12c is two horiz. pairs. Very Fine	62.00
715 ★	1925-31, 1P Violet Imperf (350). Horiz. Pair with Imprint. Very Fine	14.00
716 ★	1931, 1P Light Violet, Imperf. (350a). Horiz. Pair. Very Fine	14.00
717	1925-31, 10P Deep Green Imperf. (353). Tied on piece of cover with fourteen copies of 4c Imperf. #341. Very Fine	57.10
718 ★	1932, 2c-32c Pictorials, Von Gronau Issues (354-367). Cpl. sets. F-V.F.	23.05
719 ★田	1933, 2c-30c Rein Issue (370-379). Cpl. set of Blocks. V.G.-V.F.	34.50
720 ★	1940, 4p Small Commonwealth (445). Plate No. single. Very Fine	10.00+
721 ★	1899-1900, 1c-5c Envelopes (U1-2, 4, 6, 9-10, 13, 15). Very Fine Cut Squares	10.50
722 ★	PORTO RICO , 1898, 5c Black, Coamo Issue (201). Margins all around, thin spot. Very Fine appearance (Photo)	60.00
723 ★	—1898, 5c Black, Coamo Issue (201). Horiz. Pair. Fine (Photo)	125.00
724	—10c Brown "Forto Rico" variety (214a), in a pair, one normal, post-marked "San German, Porto, Rico". Fine. Scarce	—
725 ★	—1899-1900, 1c Black, Postal Card (4X1). Five cards. Very Fine	30.00

CANADA

726 ☒	Stampless Covers , Nine diff. covers, includes Registereds, Legislative Assembly in Crown & Shield, "Money Letter," "More to Pay" etc. Very Fine lot	—
727	1851, 3p Red (1). Margins all around. Very Fine (Photo)	27.50
728	1851, 6p Grayish Purple (2). Margins all around, tiny thin. Very Fine appearance (Photo)	55.00

729 ★	1851, 12p Black (3) . Margins all around, Lower left corner repaired. Very Fine appearing copy of this great Rarity (Photo)	3500.00
730 ☒	1851-55, 3p Red (4). On small mourning cover. Toronto postmark. Fine	8.50+
731	1853, 3p Red, 3p Brown Red (4, 4a). Fine-Very Fine	18.50
732	1855, 10p Blue (7). Margins all around, light corner crease. Very Fine appearance (Photo)	75.00
733	1857, ½p Rose (8). Margins all around. Very Fine (Photo)	25.00
734	1858-59, 6p Brown Violet (13) . Centered to top left. Very Good (Photo)	150.00
735	1859-64, 17c Blue, 2c Rose (19-20). Very Fine, lightly cancelled	20.00
736 ★	1868-97, 1c Yellow Orange (23). Fine, part O. G.	17.50
737	1875, 5c Olive Green (26). Two Very Fine copies	10.00
738 ★田	1868-97, 15c Gray Violet (29). Block. Very Fine	10.00+
739 ★	1893-1908, 6c, 15c, 20c (46, 55, 102). Very Fine	14.00
740 ★	1897, ½c-50c Jubilee (50-60). Very Good-Very Fine	23.65
741	1897, \$1.00 Jubilee (61). Fine	15.00
742 ★	1897, \$2.00 Jubilee (62) . Very Fine (Photo)	45.00
743 ★	1897, \$2.00 Jubilee (62) . Very Fine (Photo)	45.00
744	1897, \$2.00 Jubilee (62). Well centered, rather heavy cancel	15.00
745	1897, \$3.00 Jubilee (63) . Purple town cancel. Very Fine (Photo)	30.00
746 ★	1897, \$4.00 Jubilee (64) . Fine (Photo)	55.00
747 ★	1897, \$4.00 Jubilee (64) . Tiny thin spot. Fine appearance	55.00
748	1897, \$5.00 Jubilee (65) . Purple town cancel. Very Fine (Photo)	25.00
749 ★	1897, \$5.00 Jubilee (65) . Very Fine (Photo)	55.00
750 ★田	1897, 6c Brown, 8c Orange (71-72). Blocks. Very Fine	12.00+
751 ★田	1897-1902, 6c Brown (71, 80). Block of 6 of each. Very Fine	24.00+
752 田	1897, 10c Brown Violet (73). Used Block, lightly cancelled. Very Fine ...	18.00+
753 ★田	1897, 10c Brown Violet (73). Block, slight thin on one stamp others Very Fine	20.00+
754 ★	1898-1902, 6c-8c, 20c Victoria (80-82, 84). Fine	17.00
755 ★	1900, 20c Olive Green (84). Fine	10.00
756 ★田	1903-08, 5c Blue, 7c Olive Bistre (91-92). Blocks. Fine-Very Fine	12.00+
757 ★	1908, 50c Purple (95). Fine	30.00

758 ★	½c-20c Quebec Tercentenary (96-103). Cpl. set. Fine-Very Fine	19.43
759 ★田	1912-26, 10c Plum, 2c on 3c Carmine (116, 139). Blocks, latter six. V.F.	19.00
760 ★	1929, 50c Dark Blue, \$1.00 Olive Green (158-159). Very Fine	17.50
761 ★	1929, \$1.00 Parliament Bldg. (159). Very Fine	12.50
762 ★	1930, *50c Dull Blue, \$1.00 Dark Olive Green (176-177). Very Fine	15.00
763 ★田	1928-32, 5c-6c Airpost (C1-C4). Blocks. Fine-Very Fine	13.60
764 ★	1875-89, 8c Blue, Registration (F3). Fine, no gum	17.50

NEWFOUNDLAND

765 ★	1857, 1p Brown Violet (1). Margins all around. Very Fine	10.00
766 ★	1857, 3p Green (3). Margins all around. Very Fine	30.00
767	1857, 3p Green (3). Lightly cancelled. Fine	50.00
768 ★	1857, 5p Brown Violet (5). Margins all around. Very Fine (Photo)	30.00
769 ★	1857, 5p Brown Violet (5). Margins all around. Very Fine	30.00
770 ★	1860, 2p Orange (11). Large margins all around. Very Fine (Photo)	50.00
771	1860, 3p Green (11A). Margins all around, shows Watermark . Very Fine	25.00+
772 ★田	1860, 3p Green, Triangular Shape Block of 4 (11A). Light crease on two. Very Fine appearance	30.00+
773	1860, 4p Orange (12). Large margins all around, thin. Very Fine appearance	(Photo) 150.00
774 ★	1860, 5p Violet Brown (12A). Margins all around. Very Fine	10.00
775 ★	1862-63, 1p Violet Brown (15A). Margins all around. Very Fine	17.50
776 ★	1862-63, 2p Rose (17). Margins all around. Very Fine (Photo)	30.00
777	1862-63, 4p Rose (18). Margins all around. Very Fine	12.50
778 ★	1862-96, 4p, 5p 1/, 10c, 12c (18-19, 23, 29, 59). Very Fine	23.50
779 ★	1862-63, 5p Reddish Brown (19). Margins all around. Very Fine	7.50
780 ★田	1862-63, 6p Rose (20). Block of ten. Very Fine	25.00+
781	1862-63, 1/ Rose (23). Fine	(Photo) 25.00
782 ★田	1862-63, 1/ Rose (23). Sheet corner Block. Very Fine	20.00+
783 ★田	1862-63, 1/ Rose (23). Corner Block. Very Fine	20.00+
784	1865-94, 5c Brown (25). Imprint at right. Fine	27.50
785 ★	1868, 5c Black (26). Very Fine, no gum	(Photo) 25.00
786 ★	1868-94, 1c, 6c (32-32A, 35-36). Fine-Very Fine, first two without gum	13.25

787 ★	1876-79, 5c Blue, Rouletted (40). Centered to top. Fine	12.00
788 ★田	1880-96, 2c Yellow Green (46). Corner Block of 9, well centered for this, part gum. Very Fine	22.50+
789 ★	1897, 1c-60c Cabot Issue (61-74). cpl. set. Fine-Very Fine	31.15
790	1897, 1c Provisional Issue (77). Fine used (Photo)	55.00
791 ★	1910, 3c-15c Guy Issue (89-93, 97). Very Fine	32.25
792 ★田	1910, 6c Claret, Guy Issue (92A). Block. Very Fine	18.00
793 田	1910-11, 6c Guy (92A, 98). Used Blocks. Very Fine	32.00
794 ★	1911, 6c-15c Engraved Guy Issue (98-103) cpl. set. Very Fine	55.00
795 ★	1911, 1c-15c Royal Family Issue (104-114). cpl. set. Very Fine	56.15
796 ★	1911, 8c Paper colored through (110a). Very Fine	13.00
797 ★	1911, 9c-15c Royal Family (111-114). Very Fine	21.50
798 ★田	1911, 15c Magenta, Imperforate (114a), Block . Very Fine, no gum (Photo)	60.00
799 ★	1919, 1c-36c Caribou Issue (115-126). cpl. set. Very Fine	24.60
800 ★	1919, 1c-36c Caribou (115-126). Cpl. set. Fine	24.60
801 ★	1920, 3c Provisional Issue (128). Very Fine	12.00
802 ★	1923-24, 1c-24c Pictorial Issue (131-144). Cpl. set. Very Fine	28.85
803 ★	1923-24, 1c-24c Pictorial (131-144). Cpl. set. Fine	28.85
804 ★	1928, 1c-30c Pictorial Issue (145-149). Cpl. set. Very Fine	19.25
805 ★	1929-1931, 1c-20c Re-engraved Pictorial Issue (163-171). Cpl. set. V.F.	13.70
806 ★	1931, 1c-30c W'mkd. Pictorial Issue (172-182). Cpl. set. Very Fine	34.65
807 ★	1931-1937, 1c-48c Pictorial Issue (183-199). Cpl. set. Very Fine	15.05
808 ★	1933, 1c-32c Humphrey Gilbert Issue (212-225). Cpl. set. Very Fine	38.15
809 ★	1933, 1c-32c Gilbert Issue (212-225). Cpl. set. Very Fine	38.15
810 ★	1933, 1c-32c Gilbert Issue (212-225). complete set. Very Fine	38.15
811 ★	1919, \$1.00 Trans-Atlantic Air Post Issue (C2). Very Fine (Photo)	30.00
812 ★	1921, 35c Halifax Flight Issue (C3, C3a). Pair one with period and one without. Very Fine	31.00+
813 ★	1921, 35c Halifax Flight Issue (C3a), without period. Very Fine	15.00
814 ★	1921, 35c Red Air, Without Period after "1921" (C3a). Fine	15.00
815 ★	1931, 15c-\$1.00 Unwm'kd Air Post Issue (C6-C8). cpl. set. Very Fine	15.50
816 ★	1931, 15c-\$1.00 AirPost (C6-C8). Cpl. set. Very Fine	15.50
817 ★	1931, 15c-\$1.00 W'mkd. Air Post Issue (C9-C11). cpl. set. Very Fine	24.00

818 ★	1932, \$1.50 DO-X Airpost (C12) . Very Fine (Photo)	55.00
819 ★	1933, 5c-75c Labrador Air Post Issue (C13-C17). Cpl. set. Very Fine	34.75
820 ★	1933, \$4.50 Balbo Flight Issues (C18). Very Fine (Photo)	50.00
821 ☒	1933, \$4.50 Balbo (C18). Tied on Special Cachet Flight Cover. Very Fine	60.00+

GENERAL FOREIGN

822 ★	ADEN , 1937, 10R Olive Green (12). Very Fine (Photo)	45.00
823 ★	ANTIGUA , 1882-86, 2½p, 4p, 6p (13, 15, 19). Fine	22.00
824 ★	—1903-13, 5/ Edward, George V (30, 41), first has slight rust stain, other Very Fine	22.50
825 ★	ARGENTINE , 1945-46, 20c-20P (495-504). Cpl. set. Very Fine	19.83
826 ★	—1946, 2P-20P Officials (O47-O50), High Values. Very Fine	18.50
827 ★	ASCENSION , 1924-27, ½p-3/ George V (10-21). Cpl. set. Fine-Very Fine	37.60
828 ★	—1934, ½p-5/ George V Pictorial (23-32). Cpl. set. Very Fine	13.15
829 ★	AUSTRALIA , 1932, 2p-5/ Sydney Bridge (130-132). Cpl. set. Very Fine	15.90
830 ★	—1937-43, ½p-£1 George VI (166-180). Complete set. Very Fine	17.04
831	BARBADOS , 1852, 4p Brown Red, 1p Blue (4, 6). Margins all around. Very Fine	18.50
832 ★	—1873, 3p Claret (38). Fine	20.00
833 ★	—1873-78, 1/, 6p/ 1/ (42, 55-56). Fine-Very Fine	31.00
834 ★	—1897, 10p-2/6p Victoria Jubilee (88-89). Fine-Very Fine	16.50
835 ★	—1912, ¼p-1/ George V (116-124). Very Fine	12.50
836	BAVARIA , 1850-68, 18kr, 6kr, 9kr (13, 18, 20). Margins all around. Fine	26.00
837	—1874, 1M Violet (31). Large margins all around. Very Fine	15.00
838 ★	BECHUANALAND , 1886-87, 1/, 2/, 5/ (9, 17, 19). Fine-Very Fine	31.50
839	BELGIUM , 1850, 10c Brown (3). Horiz. Pair , Margins all around except close at tip of one corner	10.00+
840 ★	BERMUDA , 1865-82, 1p, 2p, 3p (1, 2, 5). First without gum. Fine	18.50
841 ★	—1920, ¼p-1/ Commem. (55-69). Cpl. set. Fine-Very Fine	19.10
842	BRAZIL , 1854-79, 20r-1000r (38, 43, 52, 77). V.G.-V.F.	38.75
843	—1866, 430r Yellow (51), light corner crease. Fine appearance	45.00
844 ★	BRIT. HONDURAS , 1865-73, 1p, 1p, 3p (1, 4-5). Fine, no gum	21.00
845 ★	—1899-1901, \$2.00 Green & Ultramarine (56). Fine	13.00

846 ★	BRITISH SILVER JUBILEES , 1935, Complete set with exception of Gambia, Offices Brit. Mor., Niue, & So. West Africa missing, 232 diff., all unused but New Zealand and Mauritius are used, latter on cover. Very Fine (Est. Cash Val. \$87.50)	
847 ★	BRIT. SOLOMON IS. , 1925, 10/ George V (56). Very Fine (Photo)	18.50
848 ★	CAPE OF GOOD HOPE , 1887-96, 1/-5/ (52-54). Fine-Very Fine	14.25
849 ★	CAYMAN IS. , 1932, ¼p-1/ Centenary (69-77). Very Fine	15.40
850 ★	—1935, ¼p-5/ Pictorials (85-95). Very Fine	17.61
851 ★	CEYLON , 1899-1900, 1r50c-2r25c (160-163). Fine-Very Fine	22.00
852 ★	CUBA , 1855, ¼rp on 2rp Carmine (7). Fine	25.00
853 ★	DOMINICA , 1877, 6p-1/ (8-9). Fine-Very Fine	24.00
854 ★	—1882, ½p on half of 1p Violet (11). Pair. Fine	18.00
855 ★	ESTONIA , 1923, Airpost (C4-C8) Complete. Very Fine	32.50
856 ★	FALKLAND IS. , 1878-86, 1p Claret, 4p Olive Gray (1, 8). Fine, no gum	22.50
857 ★	—1933, ½p-1/ Centenary (65-72). Very Fine	24.15
858 ★	—1933, 1/-2/6 Centenary (72-73). Very Fine (Photo)	27.00
859 ☒	FRANCE , 1870-71, Nine different Balloon Post covers, used by the French during the siege of Paris in 1870-71, interesting data included. Fine lot	—
860 ★	—1917, Semi-Postals (B8, 10, 12). Very Fine	28.50
861 ★	GAMBIA , 1880, ½p-6p (5-10). Fine	40.50
862 ★	GERMANY , 1872-74, ¼gr-9kr (14-18, 20-21, 24, 27-28). Good-Fine	19.00
863 ☒	—1913, 10pf Semi-Official Airpost Sanabria #319 on flight card with 5pf. Green #67 tied from Duesseldorf, April 20, 1913	50.00
864 ★	GIBRALTAR , 1886, ½p-4p (1-5). Fine	31.25
865 ★	GOLD COAST , 1876-83, 6p Orange, ½p Bistre (8, 10). Very Fine	25.50
866 ★	—1894, 20/ Violet & Black (25). Fine	13.50
867 ★	—1913-25, 5/, 10/ George V (79, 93). Very Fine	17.00

GREAT BRITAIN

868 ☒	1835, " Dungannon Penny Post " straight line stampless cover to Dublin. Fine	—
869 ☒	1838, " Liverpool Ship Letter " in red straight line, on stampless cover from Brazil to London. Fine	—
870	1840, 1p Black (1). Nine copies. Fair-Fine	72.00

871	✉	1840-74, 1p Mulready Letter Sheet, 1/ Green (5, U3). Two covers, both tied. Fine	9.50
872	✉	1845-55, 1p Pair, 2p, 6p (7, 8, 10). Tied on registered Propaganda cover for Peace . Very Fine and attractive (Photo) —	
873	★	1857, 4p Rose (26). Fine	25.00
874	★	1867, 10p Red Brown (53). Fine, without gum	20.00
875		1882, £5 Orange (93). Belfast cancel, probably revenue cancel removed. Very Fine appearance (Photo)	50.00
876	★	1883-1902, 2/6, 2/6-5/ (96, 139-140). First without gum. Fine	18.00
877	★	1883-84, 4p, 6p, 9p Green (103, 105-106), latter without gum. Fine	18.25
878		1884, £1 Brown Violet (110). Well centered one perf. short	25.00
879		1888, £1 Brown Violet (123). Small closed tear. Very Fine appearance	60.00
880		1891, £1 Green (124). Very Fine	15.00
881		1902, £1 Green, Edward (142). Very Fine	15.00
882	★	1929, £1 Black, Postal Congress (209). Very Fine (Photo)	27.50
883	★	1929, £1 Black, Postal Union (209). Centered trifle to left. Very Fine (Photo)	27.50
884	✉	1840, 1p-2p Mulready Envelopes & Letter Sheet (U1-U3). Very Fine unused	23.50
885	★	GRENADA , 1883, ½p-1/ (20-26). Cpl. set. Fine-Very Fine	20.47
886	★	—1883, ½p-8p Tete Beche Pairs (20a-21a, 23a-25a). Fine-Very Fine	15.90
887	★	HONG KONG , 1912-37, \$1-\$3, \$3 George V (120-122, 145). Very Fine	18.00
888	★	GUATEMALA , 1922, 25c on 60c, 25c on 90c, 25c on 5 peso, Blocks of nine each with only two copies in sheet of type IV and one of the three type VIII, (196-97, 200 vars.). Fine-Very Fine	64.60
889	★	HAMBURG , 1859, ½s-9s (1-3, 6, 7). Margins all around. Fine-Very Fine	41.50
890	★	—1859-65, 1¼s-3s (3, 9b, 10a, 12, 17b). Margins all around. Fine-V.F.	45.50
891	★	HANOVER , 1851-57, 1gg, 1-30th (2, 11, 12). Margins all around. F.-V.F.	27.50
892	★	—1851-63, 1-30th-3pf (3, 4, 6, 10 two, 13, 16). Margins all around. G.-V.F.	121.00
893	★	—1859-64, ½g-3g (18-20, 22-23, 25-29). Very Good-Very Fine	90.15
894	✉	ITALY , 1849, Stampless cover, superb oval strike of Italian Steamer in green	—
895	★	LAGOS , 1874-75, 1p-6p (1, 3, 9, 11). Fine-Very Fine	40.00
896	★	—1875, 1p-3p (7-9). without gum. Fine-Very Fine	23.00
897	★	LIBERIA , 1941, \$1 Blue Airpost (C26a). Without Bars variety. Very Fine	—

898 ★	—1945, \$1.00 on 3c Bistre, Airpost Sanabria #66. Very Fine (Photo)	75.00
899 ★	LIECHTENSTEIN , 1913, 1Fr-2Fr Zeppelins (C7-C8). Cpl. set. Very Fine	24.00
900 ★	LUBECK 1859-65, ½s-4s (3-14). Very Good-Very Fine	54.00
901 ★	LUXEMBOURG , 1935, Intellectuals, Complete set of 15 different. Very Fine. Retail \$45.00 (Photo)	—
902 ★	MAURITIUS , 1878, 4c-2r50c (51-58). Cpl. set. Fine	21.75

MEXICO

903	1856, 8r Red Lilac, Quarter used as 2r (5d). Nicely tied on cover with boxed str. line cancel Very Fine	20.00
904	1886-95, Specialized Collection of the Numeral Issue, 237 stamps, includes used and unused, some multiples and blocks, cancels, Average-V.F.	103.84+
905	1913, 5c Black, Red and Green (338), old worn Hormosillo cancel. Fine	50.00
906 ★	1914, 1c Deep Blue (362). Very Fine	20.00
907 ★	1914, 1c Deep Blue (362). Horiz. Pair. Very Fine	40.00
908	1914, 2c Yellow Green (363). Tied on piece. Very Fine	25.00
909 ★	1914, 4c Blue Violet (364). Centered to top	25.00
910 ★田	1914, 5c Gray Green (365). Block, Very Fine	20.00
911	1914, 5c Gray Green (365). Tied on piece, dated April 3, early usage. Very Fine	—
912	1914, 50c Claret (368). Tied on piece, dated April 4, early usage. Fine and one of rarest of Mexican stamps, only 50 issued, cat. \$125.00 unused (Photo)	—
913 ★	1915, 5c Orange, Normal & Inverted Overprints (452, 452a, 482, 482 var.). Fine, latter not listed	—
914 ★	1916, 5c Orange (539, 550). Very Fine	22.00
915 ★	1945, 25c-20P Commem. Airpost (C143-C147) Cpl. set. Very Fine	23.12
916	MODENA , 1859, 10c Black, Newspaper Tax Stamp (PR5), Blue cancel, margins three sides, barely touches at B. (Photo)	125.00
917 ★	MONTSERRAT , 1876-85, 1p-6p (1-2, 4, 6-8). Fine-Very Fine	36.25
918 ★	NATAL , 1874-78, 5/ Claret, 5/ Rose (55, 57). Fine-Very Fine	21.50
919 ★	NEVIS , 1882-90, 1p, 4p, 6p, 1/ (22, 26, 29-30). Fine-Very Fine	35.00
920 ★	—1883, 6p Green (28). Very Fine (Photo)	60.00
921 ★	NEW SO. WALES , 1850, 1p Sidney View (2), Small thins, margins all around. Fine appearance (Photo)	500.00

922 ★	NICARAGUA , 1937, 10c-\$1.00 Constitution of U. S. (C203-C214). Cpl. set. Very Fine	13.45
923 ★	NIGER COAST PROT. , 1893, ½p on 2p, ½p on 2½p (20-21). Fine	35.00
924 ★	NORTH RHODESIA , 1925-29, ½p-5/ George V (1-14). Very Fine	17.98
925 ★	NO. WEST PACIFIC IS. , 1915-16, 10/ Pink & Gray (9). Strip of three each showing diff. types of the letter "S". Very Fine	18.00
926	NORWAY , 1930, Semi-Postals (B1-B3). Cpl. set, first unused. Very Fine	10.75
927 ★	PAPUA , 1901-05, 2/6 Brown & Black (8). Light gum crease. Very Fine appearance	40.00
928 ★	RHODESIA , 1913-19, 2/6-7/6 George V (133-136). Very Fine	17.00
929 ★	SAINT CHRISTOPHER , 1882-88, ½p-1/ (15-17, 19-22). Fine-Very Fine	56.00
930 ★	SAINT HELENA , 1863-82, 1p, 2p, 6p, 5/ (5, 8, 24, 26). Fine	43.00
931 ★	SAINT LUCIA , 1864-84, 1p, 6p, 4p (7, 13, 21). Fine	50.50
932 ★	—1886-92, ½p-10/ (35, 37-42). Fine-Very Fine	35.50
933 ★	—1892, ½p on half of 6p (41). Block. Very Fine	24.00

ST. PIERRE & MIQUELON — FREE FRENCH

934 ★	1942, 4c-20Fr (208-09, 211-12, 214-15, 217-21). Fine-Very Fine	21.85
935 ★	1942, 5c Violet & Dark Brown (208A) Very Fine (Photo)	125.00
936 ★	1942, 5Fr Brown Red & Dark Brown (216). Very Fine (Photo)	45.00
937 ★	1942, 20c Black & Red Orange (216A). Centered to right. Fine	50.00
938 ★	1942, 1.50Fr Deep Blue & Blue (218A), perfs. in at right. Very Good	40.00
939 ★	1942, 3c Brown Violet (223). Very Fine (Photo)	35.00
940 ★	1942, 4c Dark Red Violet (224). Very Fine	15.00
941 ★	1942, 10c-2.50Fr, thirteen diff. (Between 226-246). Very Fine	14.65
942 ★	1942, 20c Blue Violet (228). Very Fine	25.00
943 ★	1942, Three Issues (249-259). Complete. Very Fine	23.25
944 ★	1942, Semi-Postage Dues (B9-B10, J58-J66). Very Fine	18.00
945 ★	1942, 25c Red Violet & Black, Due (J42). Fine	30.00
946 ★	1942, 30c Orange & Black, Due (J43), centered to top. Fine	30.00
947 ★	1942, 2Fr-3Fr, 5c-50c Dues (J45-J53), also J46a. Very Fine	29.75
948 ★	SAXONY , 1851-56, 3pf, ½n.g.-5n.g. (2, 6-13a). Very Good-Very Fine	62.25
949 ★	SIERRA LEONE , 1933, ½p-10/ Wilberforce Issue (153-164). Very Fine (Photo)	112.20

950	✉	SWITZERLAND , 1850, 10r Black & Red (23). Two covers, both tied. Fine	8.00+
951	★	TOBAGO , 1879, 1/ Green (4). Fine (Photo)	30.00
952	★	—1880, ½p-4p (8-10). Fine	29.00
953	★	TRINIDAD , 1886-1902, 5/ (87-88). Very Fine	17.00
954	★	TURKEY , 1935, 12th Congress Women's International Alliance (B54-B68). Complete set. Very Fine (Photo)	63.20
955	★	URUGUAY , 1910, 5c on 50c Rose, Double Surcharge (186a). Very Fine	35.00
956	★	VENEZUELA , 1930, 40c, 1.20B Imperf. Airpost. San. 21, 24. Very Fine	20.00
957	★	—1930, 5c-10B Official Airposts San. 501-515. Fine	37.00
958		VICTORIA , 1897, Semi-Postals (B1-B3), 2½p is unused. Very Fine	16.00
959	★	VIRGIN IS. , 1880-84, ½p-2½p (10, 12-15). Fine-Very Fine	17.00
960	★	WESTERN AUSTRALIA , 1885-89, ½p-4p (57-61). Fine-Very Fine	15.60
961		WURTEMBERG , 1851-52, 1kr-18kr (1-6). Complete margins all around. Good-Very Fine	69.35
962	★	ZULULAND , 1894-96, ½p-4/ (15-22). Fine-Very Fine	15.80

FOREIGN PRESENTATION BOOKLETS, ETC.

963	★	CURACAO , 36 stamps (127-143, C4, 6, 9-11, 13-16, J21-30). SURINAM , 44 stamps (142-163, C1-C7, J27-28, 30-32). in envelope, presented Postal Congress. Very Fine	49.90
964	★	DUTCH INDIES , 1912-37, 54 different including Semi-Postals & Airmails in attractive presentation folder for 1938 Cairo Telecommunications Conference. Very Fine	63.29
965	★	GREAT BRITAIN , 1937-42, ½p-10/ George VI (235-248, 249A-50, 251A) in special folder for Int'l. Telecommunication Union Atlantic City. 1947. Very Fine	9.99
966	★	INDIA , 1937-40, 3p-1r George VI, 14 diff. mounted on Souvenir card for Int'l Telecommunications Conference, 1947, also 11 diff. Columbia for same conference. Very Fine	—
967	★	IRAQ , 1941-42, Twenty-six different in booklet. Very Fine	20.71
968	★	LEBANON , 1947, Airpost Issues (C119-C134). Cpl. sets in special presentation booklet for 1947 Postal Congress	9.80
969	★	MEXICO , Thirty-one diff. in attractive presentation booklet for 1947 Postal Congress. Very Fine	—
970	★	NEWFOUNDLAND , 1897, 1c-60c Cabot Issue (61-74). Cpl. set on card, "Presented to Editor New York Tribune" from Newfoundland Govt. signed by Colonial Sec'y. Very early presentation item	31.15+

138th SALE, THURSDAY, AUGUST 18th, 3 P. M., 8 P. M.

ROBERT A. SIEGEL

124 Mamaroneck Ave.

White Plains, N. Y.

Please purchase for me at your Auction to be held in Boston, Mass., August 18th, 1949, the lots named below, the prices annexed being my limit on each lot. I agree to remit for purchases in accordance with the **Conditions of Sale** and to return no lots later than three days after receipt.

REFERENCES PLEASE
(if unknown to us)

SIGNED

[illegible]

MAIL BIDDERS — Please mail all bids after August 15th, to Robert A. Siegel, c/o Hotel Statler, Boston, Mass.

[illegible]

971 ★	—1931-37, 1c-48c, 16 diff. in attractive leather book for 1947 Postal Congress. Very Fine	—
972 ★	POLAND , 1945-46, 69 diff. Postage, Semi-Postals, Airs, Dues in special Presentation Booklet from Minister of Post. Very Fine	18.42
973	POSTAL CONGRESS , 1947, Various Booklets and Envelopes containing stamps from Bermuda (14), Bulgaria (17), Columbia (21), New Hebrides (12), Korea (12), Iran (10), Philippines (19), Venezuela (24). Very Fine	—
974 ★	RUSSIA , 1921-32, Special Presentation Booklet containing 106 diff. stamps including many better items and airpost sets. Very Fine, from the Commissar of Posts and Telegraphs.	112.00
975 ★	SOUTHERN RHODESIA , 1932-37, ½p-5/ George VI, 15 diff. in attractive book for 1947 Postal Congress. Very Fine	—
976 ★	SWITZERLAND, VATICAN CITY , 1932-37, Two Special Govt. Presentation Booklets, 13 diff. in first, 15 diff. in latter. Very Fine	—

END OF SALE

THANK YOU

MAIL BIDDERS — Please mail all bids to my office at White Plains until **August 15th**. Last minute bids send to Robert A. Siegel, % Hotel Statler, Boston, Mass.

BOSTON AUCTION

This special sale will be held Thursday (two sessions) August 18th at 3 P.M. and 8 P.M. in Boston at the Hotel Statler in conjunction with the A. P. S. Convention.

All collectors and dealers are welcome to attend this auction, as well as the exhibition and bourse to be held at Horticultural Hall, August 16th-20th.

LOTS ON VIEW

White Plains—August 1st-13th
Our office

New York City—Thursday, August 11th
Offices of Sylvester Colby, 505 Fifth Ave.

Boston—August 16th-18th
Our booth at Horticultural Hall

WANTED COLLECTIONS, RARITIES, LOTS

For out right purchase or for our auctions. I will be pleased to examine any offerings during my stay in Boston.

ROBERT A. SIEGEL

124 MAMARONECK AVE.

WHITE PLAINS, N. Y.