

143rd SALE

FIRST SESSION

# U. S. PROOFS & ESSAYS

SECOND SESSION

## UNITED STATES HAWAII, ZEPPELIN COVERS & GENERAL FOREIGN STAMPS

AT PUBLIC AUCTION

First Session — Tuesday, April 18th, 3:30 P. M.

Second Session — Tuesday, April 18th, 7:30 P. M.

AT OUR OFFICES

GREGORY MOZIAN, Licensed Auctioneer

*Robert A. Siegel*  
**AUCTIONS**

124 MAMARONECK AVE., WHITE PLAINS, N. Y.



## CONDITIONS OF SALE

---

1. The terms of sale are strictly cash to the highest bidder. All buyers are expected to pay for lots within three days of receipt, unless special arrangements have been made prior to the sale.
  2. All bids are per lot as numbered in the catalogue and not per piece, unless otherwise announced by the auctioneer at the time of sale.
  3. Any lot the description of which is incorrect is returnable only within three days of receipt. All disputed lots must be returned intact as received. Lots containing five or more stamps are not returnable at any time. No lots may be returned by purchasers who have had the opportunity to examine them before the sale.
  4. Successful mail bidders, unless they are known to us or supply acceptable references, will be notified of the amount of the lots secured for them, and are expected to send payment in full before the lots are forwarded.
  5. If the purchase price has not been paid within the time limit, or lots taken up within seven days from date of sale, they may be resold and any losses arising from such sale charged to the defaulter.
  6. All stamps are sold as genuine, except where sold "As Is". Claims for any lot proving otherwise, must be made within two weeks from date of sale.
  7. The right is reserved to group two or more lots, also withdraw any lot or lots from the sale, or to act on behalf of the seller.
  8. Until paid for in full all lots remain the property of Robert A. Siegel.
  9. No commission is charged for buying at our sales, but all forwarding charges will be added to the purchase price.
  10. Lots will be sent for inspection, provided such lots are returned to us the same day as received. Postage and registration both ways will be charged. Approximate values of lots will be given on request.
  11. The placing of a bid shall constitute acceptance of the foregoing conditions of sale.
- 

In sending bids, always state the highest price you are prepared to pay for the lot. Your limit will not be used as a starting bid unless absolutely necessary.

## DESCRIPTIONS

Superb—the finest condition for noteworthy, outstanding copies.

Very Fine (VF)—means that there is a slight deviation from the above.

Fine (F)—means that the perforations do not touch the design on issues after 1890, but in some cases may just touch in earlier issues; if used, fairly lightly cancelled.

Very Good (VG)—means that the appearance is generally fine but that the perforations cut the design slightly.

Good (G)—means average off-centering; or fairly attractive with slight defects. Original gum is not to be expected on 19th Century stamps up to 1888 unless so stated.

Scott's 1950 Specialized United States Catalogue is used for cataloging our lots of United States and Scott's Standard Catalogue, 1950 for others.

<b>WE SOLICIT FINE MATERIAL FOR FUTURE SALES</b>
--



### PLEASE NOTE — IF ATTENDING SALE

This sale will be held at my office, 124 Mamaroneck Ave., White Plains, New York.

My office is easily reached from New York City, Express trains leave frequently from Grand Central Station. There are over a dozen different trains leaving between 5 P. M. and 7 P. M. Traveling time approx. 35 minutes. First Session — 3:30 P. M.

For the convenience of our clients we are serving coffee and sandwiches from six o'clock until sale time. Sale starts at 7:30 P. M. (Second Session).

Lots may be inspected in my office until sale time. **New York City Showing—Mon., Apr. 17th** at the offices of **Sylvester Colby, Inc., 505 Fifth Ave.**

## FIRST SESSION — 3:30 P. M.

# CATALOGUE

## UNITED STATES PROOFS

### 1847-1857 ISSUES

1	<b>10c Black. Small Die Proof on White Bond (2P).</b> Very Fine ..... <b>(Photo)</b>	50.00
2	<b>5c-10c, 1847 Reproductions, Card Proofs (3P-4P).</b> Cpl. set. Very Fine .....	22.50
3	<b>Same as above.</b> Darker Shades. Very Fine .....	22.50
4	<b>10c Black, Reproduction, India Proof (4P).</b> Very Fine. .... <b>(Photo)</b>	22.50
5	<b>10c Black Reproduction, India Proof (4P).</b> Thin .....	22.50
6	<b>10c Black, Reproduction, Horiz. Pair, India Proof (4P).</b> Very Fine <b>(Photo)</b>	45.00+
7	<b>5c Dark Olive Bistre, Trial Color Proof (12TC).</b> Very Fine .....	12.50
8	<b>1c-90c, 1857 Issue Card Proofs (40P-47P).</b> Cpl. set. Very Fine .....	39.00
9	<b>10c Blue Green, Small Die Proof (43P).</b> Very Fine .....	12.50
10	<b>24c Blackish Violet. Proof on Bond, (45P).</b> Very Fine .....	—

### 1861 ISSUE

11	<b>1c Indigo, August, India Proof (55P).</b> Light stain in top margin otherwise Very Fine .....	25.00
----	--	-------

12	<b>3c Red. August. Small Die Proof (56P).</b> Very Fine .....	12.50
13	<b>3c Red. August, India Proof (56P).</b> Horiz. Pair. Fine .....	24.00
14	田 <b>3c Scarlet. August, India Proof (56P). Block.</b> Very Fine .....	70.00
15	田 <b>3c Red. August, India Proof (56P), Block.</b> Very Fine except tiny thin spot in margin .....	70.00
16	<b>5c Brown. August, India Proof (57P).</b> Very Fine .....	15.00
17	<b>5c Brown. August, India Proof (57P).</b> Very Fine .....	15.00
18	<b>10c Green. August, India Proof (58P).</b> Fine .....	15.00
19	<b>90c Blue, August, India Proof (62P). Thin spot.</b> Very Fine appearance	50.00
20	<b>1c Blue. India and Card Proofs (63P).</b> Shades, Seven proofs. Very Fine	13.75
21	<b>1c-90c, 1861 Issue.</b> Complete Card Proofs (63P-78P). Very Fine .....	48.75
22	<b>1c-90c, 1861 Issue, India Proofs (63P-78P, except #74P).</b> Fine-Very Fine	56.50
23	<b>1c Franklin, Trial Color Impression on patent starch paper, Black,</b> (63TC).Very Fine ..... <b>(Photo)</b>	—
24	<b>Same, Blue.</b> Very Fine .....	—
25	<b>Same, Orange.</b> Very Fine .....	—
26	<b>Same, Scarlet.</b> Very Fine .....	—
27	<b>Same, Green.</b> Very Fine .....	—
28	<b>Same, Brown.</b> Very Fine .....	—
29	<b>Same, Tan, Yellow.</b> Very Fine .....	—
30	<b>Same, Black in Horiz. Pair.</b> Very Fine .....	—
31	<b>Same, Orange in Horiz. Pair.</b> Very Fine .....	—
32	田 <b>Same, Black, Brown.</b> Very Fine .....	—
33	<b>3c Rose, Card Proof (65P).</b> Very Fine .....	12.00
34	<b>3c Rose on Yellow Laid Paper.</b> Trial printing. Scarce. V. F. ....	—
35	<b>3c Lake, India Proofs, Two Shades (66P).</b> Very Fine .....	14.00
36	<b>10c Green, Die Proof 36x46mm (68P).</b> Very Fine ..... <b>(Photo)</b>	50.00
37	<b>24c 1861 Issue.</b> Four Proofs, all diff. shades (70P, 78P). Three on India, one card .....	27.50
38	<b>30c Orange. Three Shades, India Proofs (71P).</b> Fine .....	13.50
39	<b>24c Lilac, 30c Orange, India Proofs (71P, 78P).</b> Horiz. Pairs. Very Fine ....	23.00
40	<b>2c Black. Jackson, India and Card Proofs (73P).</b> Very Fine .....	9.00
41	<b>Same as above</b> .....	9.00



42	<b>1c-90c, 1861-66 Designs, Atlanta Trial Colors in Green (102TC-111TC),</b> Complete set. Very Fine .....	60.00
43	<b>Same, in Blue.</b> Very Fine .....	60.00
44	<b>Same in Brown.</b> Very Fine .....	60.00
45	<b>25c Brown U. S. Postage Currency Proof on Card.</b> Very Fine. Scarce .....	—

#### 1869 ISSUE

46	<b>1c-90c, 1869 Pictorial Issue, Card Proofs (112P-122P).</b> Cpl. set. Very Fine	43.75
47	<b>1c-90c, 1869 Pictorial Issue, India Proofs (112P-122P).</b> Lacks type II on 15c, mostly Fine .....	62.75
48	▣ <b>2c Brown. India Paper (113P).</b> Block. Very Fine .....	10.00
49	<b>6c Ultramarine. Card Proof (115P).</b> Horiz. Pair. Very Fine .....	4.00
50	▣ <b>30c Blue and Carmine Imprint Block of eight, India Proof (121P).</b> Slight stains in top margin. Fine Piece ..... (Photo)	70.00+

#### BANKNOTE ISSUES

51	<b>1c-90c Banknotes, India Paper (145P-155P).</b> Cpl. set, mostly Fine .....	38.25
52	<b>3c Green on Bright Red Toned Paper.</b> Very Fine .....	—
53	<b>12c Banknote, Blue Trial Color Die Proof (151TC).</b> Scarce. Very Fine (Photo) .....	—
54	<b>Same, Dark Rose Red.</b> Very Fine .....	—
55	<b>1c-2c, 6c-7c Banknotes in Black, Trial Colors (156TC-157, 159TC-160).</b> Fine	22.50
56	<b>24c Banknote, Deep Green, Trial Color Die Proof (164TC).</b> Very Fine	20.00
57	<b>1c-90c Banknotes, Card Proofs (178P-218P).</b> Very Fine .....	28.25
58	<b>5c Blue, Taylor, Two Shades, India Paper (179P).</b> Very Fine .....	13.00
59	<b>5c Taylor, Black Atlanta Trial Color Proof (179P).</b> Very Fine .....	7.50
60	<b>1c-90c, 1890 Issue, Card Proofs (Bet. 219P-229, lacks 2c Lake, 8c Lilac).</b> Very Fine .....	19.60

#### COLUMBIANS — LOUISIANA-PURCHASE PROOFS

61	<b>1c-\$5.00 Columbians, Card Proofs (230P-245).</b> Cpl. set. Very Fine .....	86.50
62	<b>1c-\$5.00 Columbian, Thinned Card Proofs (230P-245P).</b> Cpl. set. Very Fine	86.50
63	<b>5c Columbian, Orange Brown, Trial Color Large Die Card Proof (234TC).</b> Thin spot. Very Fine appearance .....	50.00



64	<b>2c SHIELD, Large Die Proof (319P).</b> Die Proof is Very Fine, the sunken card slightly soiled. Rare <b>(Photo of Die Proof Only)</b> 250.00
65	<b>1c-10c Louisiana-Purchase, Complete set of Large Die Proofs (323P-327P).</b> Very Fine except 1c slightly soiled. Rare set ..... 1000.00

66	<b>10c Special Delivery, Card Proofs (E1P-E3P).</b> Very Fine ..... 6.35
----	--

#### POSTAGE DUE, CARRIERS

67	<b>1c-50c Postage Dues, India Proofs (J1P-J7P).</b> Fine set ..... 12.25
68	<b>1c-50c Postage Dues, Card Proofs (J1P-J7P, J22P-J28P).</b> Cpl. sets. Very Fine ..... 11.50
69	<b>1c Postage Due, Trial Color Atlanta Proof in Black (J1TC)</b> ..... <b>5.00</b>
70	<b>1c-50c Postage Dues, Set of Blocks India Paper (J22P-J28P).</b> Each with slight thin. Very Fine appearance ..... 62.50
71	<b>1c Blue Carrier, Card and India Proof of each (LO1P-LO2P).</b> Very Fine 10.75
72	<b>1c Franklin Carrier, Trial Color, Green (LO1TC)</b> ..... <b>10.00</b>
73	<b>1c Franklin Carrier, Trial Color Proof, Deep Orange (LO1TC).</b> Very Fine —
74	<b>1c Eagle Carrier, Trial Color Proof, Deep Orange (LO2TC).</b> Very Fine —

#### OFFICIALS

75	<b>1c-30c Agriculture, Set of Blocks, India Paper (O1P-O9P).</b> Fine looking all but 2c, 12c, 15c have minor flaws ..... 117.00
76	<b>1c-10c Executive, Set of Large Die Proofs (O10P-O14P).</b> Very Fine ..... 62.50
77	<b>1c-10c Executive, India Proofs (O10P-O14P).</b> Cpl. set, 3c small thin, others V.F. .... 15.00
78	<b>1c-10c Executive, Card Proofs (O10P-O14P).</b> Cpl. set. Very Fine ..... 5.75
79	<b>1c-90c Interior, Set of Small Die Proofs (O15P-O24P).</b> Very Fine ..... 50.00
80	<b>1c-90c Interior, Blocks, India Paper (O15P-O24P except O23P).</b> 10c and 90c lightly creased, others Very Fine ..... 87.00
81	<b>1c-90c Interior, Set of India Proofs in Blocks of Six (O15P-O24P).</b> F.-V.F. 144.00
82	<b>1c-90c Interior, Set of Card Proofs in Blocks of Six (O15P-O24P).</b> F.-V.F. 153.00
83	<b>90c Justice, Large Die Proof (O34P).</b> Slight discoloration at top of card 12.50
84	<b>2c Navy, Trial Color Proof, Horiz. Pair, Black (O36TC).</b> Very Fine ..... —
85	<b>6c Navy, India Proof, Imprint Block of 8 (O38P).</b> Very Fine ..... 30.00
86	<b>10c, 24c Navy, India Proofs in Blocks (O40, O43).</b> Very Fine ..... 18.00



87	<b>1c-90c Post Office, India Proofs (O47P-O56P).</b> Fine set .....	11.25
88	<b>1c-90c Post Office, Card Proofs (47P-O56P).</b> Cpl. set. Very Fine .....	5.25
89	<b>1c-\$20.00 State, Card Proofs (O57P-O71P).</b> Cpl. set. Very Fine .....	24.55
90	<b>\$5.00-\$20.00 State, India Proofs (O69P-O71P).</b> First has small thin, others Very Fine .....	43.00
91	<b>1c-90c Treasury, Set of India Proofs (O72P-O82P).</b> Very Fine .....	13.50
92	<b>2c Treasury, Large Die Proof (O73P).</b> Very Fine .....	12.50
93	<b>1c-90c War, Atlanta Trial Color Proofs in Brown.</b> Cpl. set (O83TC-O93TC). Very Fine .....	33.00
94	<b>1c War, Large Die Proof (O83P).</b> Very Fine .....	12.50
95	<b>2c War, Large Die Proof (O84P).</b> Very Fine .....	12.50
96	<b>3c War, Large Die Proof (O85P).</b> Very Fine .....	12.50
97	<b>7c War, Large Die Proof (O87P).</b> Very Fine .....	12.50
98	<b>10c War, Large Die Proof (O88P).</b> Very Fine .....	12.50
99	<b>12c War, Large Die Proof (O89P).</b> Very Fine .....	12.50
100	<b>15c War, Large Die Proof (O90P).</b> Very Fine .....	12.50
101	<b>24c War, Large Die Proof (O91P).</b> Very Fine .....	12.50
102	<b>90c War, Large Die Proof (O93P).</b> Very Fine .....	12.50
103	<b>5c-25c Newspapers, Card Proofs (PR5P-PR7P).</b> Cpl. set. Very Fine .....	7.25
104	<b>2c-\$60.00 Newspapers, Card Proofs (PR9P-PR32P).</b> Cpl. set. Very Fine ....	25.50
105	<b>Bloods Local, Trial Color Proofs, Red, Blue.</b> Very Fine .....	—
106	<b>Metropolitan Errand &amp; Carrier Express Co. Local, 5c and 10c Red Orange in horiz. Pair on Bond.</b> Very Fine .....	—
107	<b>Same, Four Diff. Trial Colors in horiz. Pairs.</b> Very Fine .....	—
108	<b>Same, 10c Blue, Trial Color on Bond in strip of five</b> .....	—
109	<b>Nineteenth Century Proofs, 116 mostly on card, nearly all different, nice lot though some flaws</b> .....	343.00
110	<b>Proofs, 24 Misc. some have thins. Fair-Fine</b> .....	59.85

#### REVENUE PROOFS

111	<b>1c-5c First Issue Revenues, Card Proofs (R1P, R4P, R7P, R17P, R19P-R21P, R25P, R27P).</b> Fine-V. F. ....	25.40
112	<b>1c-3c First Issue Revenues, India Paper (R1P, R3P, R10P, R18P).</b> F.-V. F. ....	23.50
113	<b>1c-\$1.00 First Issue Revenues, Card Proofs in Vertical Pairs, Nine Different (Between R4P-R68P).</b> Fine-Very Fine .....	35.00+



114	<b>5c-50c First Issue Revenues, Trial Colors, India</b> (R24TC, R51-52TC, R58TC). Fine-Very Fine .....	29.50
115	<b>5c-20c First Issue Revenues, India Paper Proofs</b> (R28P, R33P, R38-39P, R41P). Fine-Very Fine except one has thin spot .....	45.50
116	<b>10c-\$1.00 First Issue Revenues, Card Proofs</b> (R34-36P, R40P, R71P). Fine-V. F. ....	11.00
117	<b>1c-30c First Issue Revenues, Trial Color in Black</b> (R3TC, R13TC, R22TC, R51TC). Fine-Very Fine .....	28.00
118	<b>25c-70c First Issue Revenues India Paper</b> (R46P, R53P, R55P-57P, R60P, R64P-65P). Fine-Very Fine .....	46.00
119	<b>\$1.00 First Issue Revenues, Carmine Trial Color Proofs on India</b> (R67TC-R74TC, R76TC). Fine-Very Fine .....	39.50
120	<b>\$1.-\$5. First Issue Revenues, Carmine Trial Color Proofs on India</b> (R69TC, R74TC, R88TC). Very Fine .....	15.00
121	<b>\$1.00 Life Insurance, Passage Ticket, Carmine Trial Color Proofs on India</b> (R71TC, R74TC). Horiz. Pairs .....	23.00
122	<b>\$1.00-\$25.00 First Issue Revenues, India Paper</b> (R72P, R78P-R80P, R93P, R100P). No margins .....	86.00
123	<b>\$1.30, \$2, \$3 First Issue Revenues, India Paper</b> (R77P, R82P, R85P). Each has small nick in margins, nice appearance .....	34.00
124	<b>\$1.90 Foreign Exchange, Card Proof (R80P)</b> . Horiz. Pair. Very Fine .....	18.00+
125	<b>\$2.00 Mortgage, India Paper (R82P)</b> . Very Fine .....	10.00
126	<b>\$25.00 Mortgage, India Proof (R100P)</b> . No margins .....	27.50
127	☐ <b>2c Pale Blue &amp; Black, Block, Trial Color, Plate on Bond (R104TC)</b> . Very Fine .....	12.00
128	<b>\$5.00 Second Issue Revenue, Four diff. Trial Colors</b> , Violet, Blue, Black Brown, Orange (R127TC) two have light stains. Very fine appearing .....	62.50
129	<b>\$10.00 Ultramarine, \$10.00 Blue, Second Issue Trial Color (R128TC)</b> , first Very Fine, latter light creases .....	35.00
130	<b>\$25.00 Violet &amp; Black, Second Issue, Trial Color (R130TC)</b> not priced, attractive though light stain .....	—
131	<b>\$50.00 Brown &amp; Black, Second Issue, Trial Color (R131TC)</b> , not priced. Very Fine .....	—
132	☐ <b>1c Green &amp; Black, Proprietary, Block on heavy Bond paper (RP1P)</b> . Very Fine .....	7.50
133	<b>Revenue Proofs, Second, Third &amp; Proprietary Issues</b> , 104 Proofs, part in pairs, mostly Fine-Very Fine .....	212.95



## SPECIMENS, SAMPLES

134	1c Blue, overprint Specimen (63SB), Block. Very Fine .....	20.00+
135	10c Green, overprint Specimen (68S B), Imprint Block. Very Fine .....	20.00+
136	30c Orange, overprint Specimen (71S B), Block. Fine .....	20.00+
137	15c Gray, overprint Specimen (77S B), Imprint Block. Fine .....	40.00+
138	24c Lilac, overprint Specimen (78SB), Block. Fine .....	20.00+
139	1c-90c, 1861 Issue, Nine diff. values handstamped in red "Specimen", several flaws .....	—
140	1c-90c Banknotes "Sample" overprint Nine diff. (Between 189SK-214SK), several minor flaws, three have str. edges .....	45.00
141	1c-90c Banknotes overprint "Sample A" in red or blue (Between 189SL-214SL), Nine diff. mostly Fine .....	45.00
142	4c-5c Banknotes overprint "Sample A" (205SL, 211SL). Fine .....	10.00
143	1c-10c Executive, overprint Specimen (010S-014S). Cpl. set. Fine-V.F. ....	8.00
144	Specimens, Officials and Banknotes, 25 stamps mostly different, V.G.-V.F. ....	107.75

## U. S. ESSAYS

(Numbered according to "Essays for U.S. Adhesive Postage Stamps" by Clarence W. Brazer. Estimated net retail prices have been placed on the essays to aid in bidding.)

### 1851 ESSAYS

145	3c Washington Essay, Blue (33E-Dc). Very Fine ..... (Photo)	15.00
146	3c Washington Essay, Dark Carmine (33E-Ha). Very Fine ..... (Photo)	17.50
147	Same, Three diff. colors, Green, Scarlet, Brown (33E-Ha) each has small thin. V.F. appearance .....	52.50
148	3c Washington Essay, Black, Scarlet, Brown, Blue (33E-Ia), several small thins .....	30.00
149	3c Washington Essay, Brown (33E-Jb). Very Fine ..... (Photo)	10.00
150	Same Design, Scarlet. Very Fine .....	10.00
151	Same Design, Green. Very Fine .....	10.00
152	Same Design, Two, Black, Blue, each has thin spot .....	20.00
153	3c Washington Essay, Dull Rose, Brown (33E-Je) .....	15.00
154	3c Washington Essay, Brown (33E-Lb) .....	15.00
155	3c Essay, Brown (33E-Mb). Very Fine ..... (Photo)	12.50



156	<b>3c Essay</b> , Yellow Green, Brown (33E-Na). Fine .....	25.00
157	<b>3c Essay</b> , two diff. types in horiz. Pair, Black (33E-Ne). V. F. <b>(Photo)</b> .....	27.50
158	<b>3c Essay</b> Washington, Dull Brown-Olive (33E-Ob). Very Fine <b>(Photo)</b> .....	20.00
159	<b>Same Design</b> , Dark Blue. Very Fine .....	20.00
160	<b>Same Design</b> , Deep Yellow. Very Fine .....	20.00
161	<b>Same Design</b> , Deep Green. Very Fine .....	20.00
162	<b>Same Design</b> , Bright Carmine. Very Fine .....	20.00
163	<b>Two Heads of Washington and No. 14</b> , Three Essays, Gray-Olive, Black-Blue, Dark Green (33E-Oe) .....	30.00
164	<b>Same Design</b> , Gray Olive. Very Fine .....	10.00
165	▣ <b>3c Washington Essay on Green Bond Paper</b> , Green, Carmine, Scarlet (33E-Uf), Blocks. Very Fine ..... <b>(Photo)</b>	24.00
166	▣ <b>Same</b> , Three Blocks, Diff. Colors, Yellow, Dull Carmine, Violet. Very Fine .....	24.00
167	▣ <b>Same</b> , Three Blocks, Diff. Colors, Orange, Brown, Black. Very Fine .....	24.00
168	▣ <b>Same</b> , Three Blocks, Diff. Colors, Brown-Red, Yellow-Green, Dark-Green. Very Fine .....	24.00
169	<b>3c Washington Essay</b> , Seventeen Different Colors (33E-Ud, formerly 184E-Bd). Very Fine ..... <b>(Photo)</b>	25.50
170	<b>Same Design</b> , Sixteen Different Colors each in Horiz. Pair. Very Fine .....	48.00
171	▣ <b>Same Design</b> , Three Blocks, Yellow, Orange, Brown. Very Fine .....	18.00
172	▣ <b>Same Design</b> , Three Diff. Blocks, Light Carmine, Dark Carmine, Scarlet. Very Fine .....	18.00
173	▣ <b>Same Design</b> , Three diff. Blocks, Dull Violet, Dull Red Violet, Violet Brown, Very Fine .....	18.00
174	▣ <b>Same Design</b> , Three Diff. Blocks, Dark Green, Light Green, Olive Green. Very Fine .....	18.00
175	▣ <b>Same Design</b> , Three Diff. Blocks, Deep Ultramarine, Blue Black, Black. Very Fine .....	18.00
176	▣ <b>Same Design</b> , Two Blocks, Blue Black, Dull Red Violet. Very Fine .....	12.00

#### ESSAYS FOR 1861 CONTRACT

177	<b>1c Franklin Vignette</b> , Carmine, Blue (55E-Aa). Very Fine .....	10.00
178	<b>1c Franklin</b> , Violet (55E-Ad). Very Fine .....	6.00
179	<b>1c Franklin</b> , Violet, Red Violet (55E-Ah). Very Fine .....	14.00
180	<b>1c Franklin</b> , Black, Red Specimen on card. Very Fine .....	5.00
181	Same as above .....	5.00



182	<b>3c Washington Vignette</b> , Green, Red-Violet (56E-Aa). Very Fine .....	10.00
183	<b>3c Washington Essay</b> , Green, Red Violet (56E-Ad). Very Fine .....	14.00
184	<b>Same Design, Carmine</b> . Very Fine .....	7.00
185	<b>3c Washington Essay</b> , Carmine (56E-Af). Very Fine .....	10.00
186	<b>3c Deep Red, 3c Dusky Red, Premier Gravure (56E-H)</b> . Very Fine .....	15.00
187	<b>12c Washington Vignette</b> , Dark Carmine on Light Blue card, Dark Blue on Pale Green card (59E-Ac). Very Fine .....	10.00
188	<b>90c Blue, Die on India, Mounted on Card (60E-Ai). Very Fine. Rare</b> .....	<b>50.00</b>
189	<b>90c Essay, Scarlet, Orange (60E-Ak)</b> , one slightly soiled other V. F. ....	20.00
190	<b>90c Vignette, Carmine, Violet-Brown (62E-Aa)</b> .Very Fine .....	10.00
191	<b>90c Vignette, Scarlet, Carmine (62E-Ac)</b> , one has small light stain other V. F. ....	12.00
192	<b>90c Essay, Carmine, Green (62E-Ae)</b> . Very Fine .....	14.00
193	<b>1c Franklin, Coupon at Top, Red (63E-Be)</b> . Very Fine ..... <b>(Photo)</b>	10.00
194	<b>Same as above</b> . Very Fine .....	10.00
195	<b>1c Franklin, Coupon at Top, Red, Grilled (63E-Bg)</b> . Very Fine .....	20.00
196	<b>Same as above</b> .....	20.00
197	<b>1c Franklin, Coupon at Top, Red, Perforated</b> , also larger size Perforation between coupon and stamps, (63E-Bh). Very Fine .....	10.00
198	<b>1c Franklin, Coupon at Top, Blue, Perforated (63E-Bi)</b> . Very Fine <b>(Photo)</b>	10.00
199	<b>Same on above</b> . Very Fine .....	10.00
200	<b>1c Franklin, Coupon at Top, Red, Perforated (63E-Bi)</b> . Fine .....	10.00
201	<b>Same as above</b> . Fine .....	10.00
202	<b>1c Franklin, Perforated, Gummed</b> , Three diff. colors, (63TC). Fine .....	18.00
203	<b>3c Dark Brown on Straw Paper, Perforated (65TC-Cd)</b> . Very Fine .....	7.50

#### 1867 ESSAYS

204	田 <b>3c Black, Grilled All Over (79E) Black</b> , perfs short on one stamp others Fine .....	40.00
205	<b>Wove Paper, Size of Stamp, Perforated, C. Grill (79E-Ck)</b> . Very Fine .....	10.00
206	<b>Laid Paper, Size of Stamp, Perforated and Z. Grill (79E-Cm)</b> . Very Fine	10.00
207	<b>Embossed Shield in center of stamp paper, Perforated (82E-B)</b> . Very Fine. Rare .....	10.00
208	<b>3c, 1861 Design, Olive Gray overprint on Dull Violet (83E-Cc)</b> , Perforated three sides, cut in at R .....	15.00



209	<b>3c Washington, Design Reversed</b> , Horiz Pair in Brown (85E-Eb). Very Fine .....	15.00
210	田 <b>3c Washington Essay</b> , Blocks, Gray Black, Dark Green (83E-Bi). Fine ....	16.00
211	田 <b>Same Design</b> , Blocks, Orange Red, Dull Blue, str. edge on first, some perfs short on one stamp of latter .....	16.00
212	<b>3c Washington Essay, Grilled</b> , Five different colors (83E-Bj) .....	12.50
213	田 <b>3c Washington Essay, Grilled</b> , Three Blocks, Deep Red, Orange Red, Dull Pale Red (83E-Bj). Fine .....	30.00
214	田 <b>Same Design, Three Diff. Blocks</b> , Light Green, Deep Yellow, Gray Black, Fine .....	30.00
215	田 <b>Same Design, Two Diff. Blocks</b> , Dull Blue, Light Blue. Fine .....	20.00
216	田 <b>Same Design, Two Blocks</b> , Blue, Brown, latter has str. edge .....	20.00
217	<b>3c Essay, Dull Olive Green (85E-Gk)</b> . Very Fine ..... (Photo)	7.50
218	<b>Same Design, Yellow-Brown</b> . Very Fine .....	7.50
219	<b>Same Design, Blue-Green</b> . Very Fine .....	7.50
220	<b>Same Design, Orange</b> . Very Fine .....	7.50
221	<b>Same Design, Pale Dull-Yellow</b> . Very Fine .....	7.50
222	<b>Same Design, Dull Red-Violet</b> . Very Fine .....	7.50
223	<b>Same Design, Dim Orange Red</b> . Very Fine .....	7.50
224	<b>Same Design</b> , Two, Light Yellow-Green, Dull Gray, each has margin thin spot. Very Fine appearance .....	15.00
225	<b>3c Essay, Red with X (85E-Gt8)</b> . Very Fine. Rare ..... (Photo)	30.00
226	<b>12c Washington, Perforated and Z. Grill</b> on Salmon Paper, Green (85eTC6). Fine .....	15.00

#### 1869 ESSAYS

227	<b>1c Franklin, Perforated &amp; Grilled, Dull Red, Green (112E-Dd)</b> centered to one side .....	10.00
228	田 <b>5c Deep Yellow-Brown, Washington (115aE-Fc)</b> , Block. Very Fine .....	20.00
229	<b>5c Washington, 10c Lincoln (115aE-Fc, 116E-Db)</b> . Very Fine .....	10.00
230	田 <b>10c Blue, Lincoln (116E-Db)</b> , Block. Very Fine .....	20.00
231	<b>12c Steamship, Perforated &amp; Grilled, Blue, Yellow Brown (117E-Ce)</b> , centered to R .....	8.00
232	<b>90c Frame</b> , Vignette is lined horiz. in same color, Yellow, Dark Navy Blue (122E-Cd). Very Fine .....	15.00
233	<b>Same Design, Blue, Orange-Brown</b> . Very Fine .....	15.00



## 1870 ESSAYS

234	<b>1c Franklin, Essay, Brown, Rare</b> ..... <b>(Photo)</b>	35.00
235	<b>Same, Dull Lilac. Rare</b> .....	35.00
236	<b>3c Brown, Trial Color Essay, Perforated (147TC).</b> Very Fine .....	7.50
237	<b>6c Lincoln, Dark Rose, Rare Essay (148E-Bd).</b> Very Fine, Rare <b>(Photo)</b>	35.00
238	<b>15c Banknote, Blue Trial Color, Perforated and Gummed (163TC).</b> Very Fine .....	7.50
239	<b>5c Blue Taylor, Rare Essay (179E-A)</b> ..... <b>(Photo)</b>	<b>50.00</b>

## 1877 ESSAYS

240	<b>1c, 3c, 7c, 24c, 90c Complete Sheet of twenty,</b> Four of each value in perforated sheet, Red-Brown. Very Fine (Plate I) .....	200.00
241	<b>2c, 6c, 12c, 30c Complete Sheet of Sixteen,</b> Four of each value in perforated sheet, <b>Bright Ultramarine,</b> Plate 2. Very Fine .....	100.00
242	<b>Another Sheet, Red Violet.</b> Very Fine .....	100.00
243	<b>Another Sheet, Yellow Brown.</b> Very Fine .....	100.00
244	<b>Another Sheet, Violet.</b> Very Fine .....	100.00
245	<b>Another Sheet, Dark Red Orange.</b> Very Fine .....	100.00
246	<b>Another Sheet, Dull Red Orange,</b> centered to top .....	100.00
247	<b>Die Frames of 1c and 2c side by side,</b> Five different colors (183E-Ac). Very Fine .....	15.00
248	<b>2c, 6c, 12c, 30c Perforated, Gummed, Brown-Orange</b> (183E-Ae, 186E-Ae, 188E-Ae, 190E-Ae). Very Fine ..... <b>(Photo)</b>	25.00
249	<b>Same as above, Violet.</b> Very Fine .....	25.00
250	<b>Same as above, Bright Ultramarine,</b> Fine .....	25.00
251	<b>Same as above, Dull Yellow Green.</b> Fine .....	25.00
252	<b>3c Washington Essay, Fourteen Different Colors (184E-A).</b> Very Fine <b>(Photo)</b>	42.00
253	<b>Same Design, Red, Orange.</b> Very Fine .....	6.00
254	<b>3c Die Frame,</b> Five different colors (184E-Ab). Very Fine .....	20.00
255	<b>3c Washington Essay,</b> Deep Scarlet, Brown (184E-Ic). Scarce .....	15.00
256	<b>Die Frames of 6c and 7c side by side,</b> Five different colors (186E-Ac). Very Fine .....	15.00
257	<b>Die Frames of 24c and 12c Side by Side,</b> Five different colors (189aE-Ac). Very Fine .....	15.00



258	<b>Die Frames of 30c and 90c Side by Side</b> , Five different colors (190E-Ac). Very Fine .....	15.00
259	<b>1c Postage Due Essay in Dull Brown (J1E-b)</b> . Very Fine ..... <b>(Photo)</b>	12.50
260	<b>Same in Dull Blue</b> , tiny thin. V. F. appearance .....	12.50
261	<b>Carrier, Franklin Vignette</b> , Orange, Dark Blue (LO1E-Aa). Very Fine ....	7.00
262	<b>Carrier, Franklin, Orange (LO1E-Ab)</b> . Very Fine .....	7.50

#### ENVELOPE ESSAYS

263	<b>12c Carmine and Gold, Envelope Essay</b> ..... <b>(Photo)</b>	—
264	<b>3c Carmine, Envelope Essay</b> . Very Fine ..... <b>(Photo)</b>	—
265	<b>3c Washington, Red, Envelope Essay</b> ..... <b>(Photo)</b>	—
266	<b>3c Washington, Black, Envelope Essay</b> . Very Fine ..... <b>(Photo)</b>	—
267	<b>3c Washington, Brown, Envelope Essay</b> ..... <b>(Photo)</b>	—
268	<b>3c Washington, Green, Envelope Essay</b> , Hub Die Impression .....	—
269	<b>30c Red Brown, Hub Die Impression</b> . Very Fine .....	—
270	<b>12c, 20c, 24c, 40c Envelope Essays</b> ..... <b>(Photo)</b>	—
271	<b>20c Green, Envelope Essay</b> .....	—
271A	<b>6c Black, Post Office Envelope on heavy card</b> . Very Fine .....	—
272	<b>1c Black, Essay</b> . Very Fine .....	—

#### WASHINGTON VIGNETTES, REVENUE ESSAYS

273	<b>Washington Vignettes</b> , Twelve different colors, size of vignette 23x30mm. Very Fine ..... <b>(Photo)</b>	36.00
274	<b>Washington Vignettes</b> , Four different colors, size of vignette 23x30mm. Very Fine ..... <b>(Photo)</b>	16.00
275	<b>Same</b> , Four diff. colors than above vignettes. Very Fine .....	16.00
276	<b>Same</b> , Four diff. colors than in above two lots. Very Fine .....	16.00
277	<b>Washington Vignettes</b> , Five diff. colors size of vignette 24x30mm. Very Fine ..... <b>(Photo)</b>	20.00
278	<b>Same</b> , Five different colors than above vignettes. Very Fine .....	20.00
279	<b>Same</b> , Five diff. colors than above two lots of vignettes. Very Fine .....	20.00
280	<b>Washington Vignettes</b> , Three diff. colors, No. 6 at top, size of vignette 30x37mm. Very Fine ..... <b>(Photo)</b>	12.00
281	<b>Same</b> , Three diff. colors than above vignettes. Very Fine .....	12.00
282	<b>Same</b> , Four diff. colors than above two lots. Very Fine .....	12.00



283	<b>Washington Vignettes</b> , Four diff. colors, size of vignette 30x37mm. Very Fine ..... <b>(Photo)</b>	16.00
284	<b>Same</b> , Four diff. colors than above vignettes. Very Fine .....	16.00
285	<b>Same</b> , Four diff. colors than above two lots. Very Fine .....	16.00
286	<b>Washington Vignettes</b> , Four different colors, size of vignettes 36x43mm. Very Fine ..... <b>(Photo)</b>	16.00
287	<b>Same</b> , Three diff. colors than above. Very Fine .....	12.00

### REVENUE ESSAYS

288	<b>2c Washington, U. S. Inter. Revenue</b> , Indigo colored embossed Essay on card. Rare ..... <b>(Photo)</b>	25.00
289	<b>Same in Blue</b> . Very Fine .....	25.00
290	<b>Same in Green</b> . Very Fine .....	25.00
291	<b>Same in Brown</b> . Very Fine .....	25.00
292 田	<b>2c Bank Check Essay, Block</b> on onion skin paper. Fine .....	8.00
293	<b>\$1.00 Revenue Essay, Violet and Brown</b> . Very Fine. Scarce ..... <b>(Photo)</b>	20.00
294	<b>Same Design, Yellow and Blue</b> .....	20.00
295	<b>Same Design, Orange and Blue</b> , thin spot .....	20.00
296	<b>Same Design, Green and Brown</b> , thinning .....	20.00
297	<b>Same Design, Violet and Yellow</b> , thinning .....	20.00
298	<b>Same Design, Violet and Red</b> , thinning .....	20.00
299	<b>Same Design, Violet and Blue</b> , thin spot .....	20.00
300	<b>Same Design, Green and Red</b> , thinning .....	20.00
301	<b>Same Design, Blue and Red</b> , thin spot .....	20.00
302	<b>Same Design, Pink and Red</b> , thin spot .....	20.00
303	<b>\$200.00 Green &amp; Black Revenue Essay</b> . Very Fine ..... <b>(Photo)</b>	25.00
304	<b>\$200.00 Reddish Brown &amp; Black Revenue Essay</b> , Same design as above only Perforated. Very Fine .....	25.00
305	<b>\$3.50 Second Issue Revenue, Black Essay</b> on Card. Very Fine .....	20.00
306	<b>2c Dark Blue, Revenue Essay</b> , this essay contained explosive cap, intention was to cancel with a hammer and thus exploding cap and destroying center of stamp, Pair of this interesting oddity .....	25.00
307	<b>Same in Strip of Three</b> with cap exploded .....	37.50
308	<b>Sanitary Fair, Philadelphia, Black</b> . Very Fine .....	7.50
309	<b>Same in Green</b> .....	7.50
310	<b>American Bank Note Essay, Washington, Violet</b> .....	—

END OF FIRST SESSION



## SECOND SESSION — 7:30 P.M.

### UNITED STATES

#### STAMPLESS COVERS

311	☒	<b>Chicago, Ill.</b> , two attractive corner cards, Stock Brokers and U. S. Telegraph Co. Fine .....	—
312	☒	<b>Georgetown, D. C.</b> "Paid 10" in bright <b>Green</b> . Very Fine .....	—
313	☒	<b>Pensacola, Flor.</b> , black circle (1829). Very Fine .....	—
314	☒	<b>ST. AUGUSTINE, E. FLOR.</b> in oval, clear strike, cover slightly stained .....	—
315	☒	<b>"Staits Despatch Post at Adams Express Paid"</b> in red circle on front of complete pamphlet <b>"Prohibition of Sunday Travelling on the Penn. Railroad"</b> , from Phil. in 1850. Very Fine .....	—
316	☒	<b>Steamboat</b> in fancy scroll from Detroit to Buffalo. V. G. ....	—
317	☒	<b>Washington House, Philadelphia</b> , corner card on back. Fine .....	—
318	☒	<b>Watsonville, Oakland, Contra Castro Calif.</b> , three stampless covers, all Ms cancels. Fine .....	—
319	☒	<b>Stampless</b> , 12 covers all originated in Foreign countries, mostly to U. S., Many markings including ms. Ship markings on some. Fine lot .....	—
320	☒	<b>Stampless</b> , 22 covers includes Housatonic R. R. two Adams Express Co. Soldiers Packages, two diff. National Express Co. corner cards etc, Fair-Fine .....	—

#### POSTMASTER PROVISIONALS

321	★	<b>5c New Haven Postmaster, Unsigned Reprint (8XU1)</b> . Very Fine .....	—
322		<b>5c New York Postmaster (9X1)</b> , Margins two sides cut in L. & B. Very Good .....	52.50
323		<b>5c New York Postmaster (9X1, 9X1c)</b> , two, one without signature, both repaired. Fine appearing .....	142.50
324		<b>Post Office, New York, Box Rent Due 1846</b> , Printed Notice signed by <b>"A. C. Monson"</b> who signed 5c New York Postmaster Provisionals. Very Fine .....	—

#### 1847 ISSUE

325		<b>5c Red Brown (1)</b> , Red Grid, Three margins, close at R. Fine .....	27.50
326		<b>5c Red Brown (1)</b> , Three large margins close at B., Red grid cancel. Fine .....	27.50



327	<b>5c Brown (1).</b> Red town cancel, margins three sides. Fine .....	35.00
328	<b>5c Red Brown (1).</b> Blue cancel, light crease, close at top and upper left .....	35.00
329	<b>5c Red Brown (1).</b> Red Numeral "5" cancel, margins all around. Very Fine (Photo) .....	50.00
330 ★	<b>5c Red Brown (1).</b> Margins all around though small at bottom. Fine (Photo) .....	62.50
331	<b>5c Brown (1). Vertical Pair,</b> red grid cancel, Margins all around except at one small point on right side of bottom stamp. Fine .....	(Photo) 82.50
332	<b>5c Red Brown (1).</b> Horiz. Pair, Ms. cancel, small thin. Fine appearance .....	30.00+
333	<b>10c Black (2).</b> Margins three sides, close but clear at R., cleaned Ms. can- cel, closed tear. Fine appearance .....	50.00
334 ★	<b>5c Red Brown, Reproduction (3).</b> Nice margins all around. Very Fine (Photo) .....	32.50
335 ★	<b>10c Black, Reproduction (4).</b> Nice margins all around. Very Fine (Photo) .....	45.00
336 ★	<b>10c Black, Reproduction (4).</b> Margins all around, tiny thin. Very fine appearance .....	(Photo) 42.50

#### 1851 ISSUE

337	<b>1c Blue, Type II (7).</b> Vertical Strip of three. Very Good .....	45.00
338	<b>1c Blue, Type IV (10).</b> Recut once at top, twice at B. Very Fine .....	13.50
339	<b>1c Blue, Type IV (10).</b> Recut twice at Bottom, large margins. Very Fine .....	17.50
340	<b>1c Blue, Type IV (10).</b> Horiz. Pair, Margins three sides, in slightly at top .....	22.50
341	<b>1c Blue, Type IV (10).</b> Horiz. Strip of 3, Recut twice at B. on center stamp, Recut once at B. on other two, small nick at top of center stamp, others Fine .....	55.00
342	<b>3c Red (11).</b> Clear <b>Stitch Watermark</b> , corner crease. Fine appearance ....	—
343	<b>3c Imperf. (11).</b> Eighty-one copies includes few orange browns, pair, many dates. Good-Fine .....	—
344 ☒	<b>3c Red (11).</b> Tied from Worcester, Mass. with attractive corner card of Bay State House. Very Fine .....	—
345 ☒	<b>3c Red (11).</b> Eleven covers, includes pair, six small ladies covers. V.G.- V.F. ....	—
346	<b>10c Green, Type III (15).</b> Light blue cancel, Margins all around. Very Fine (Photo) .....	16.00
347	<b>10c Green, Type III (15).</b> Margins all around. Very Fine .....	16.00
348	<b>10c Green, Type III (15).</b> Margins all around. Very Fine .....	16.00
349	<b>12c Black (17).</b> Small but complete margins. Fine .....	(Photo) 25.00

350	<b>12c Black (17).</b> Light blue cancel. Fine .....	25.00
351	<b>12c Black (17). Horiz. Pair,</b> three large margins, close at B. .... <b>(Photo)</b>	60.00
352	☒ <b>12c Black (17). Horiz. Pair</b> tied from Bristol R. I. to England, Right stamp Fine others cut in slightly at two sides, attractive cover with various transit markings .....	60.00
353	☒ <b>12c Black (17). Horiz. Pair</b> with red cancel from New Bedford to London, Left stamp Fine, right cut in design slightly, Attractive cover with transit markings .....	60.00
354	☒ <b>12c Black (17). Horiz. Pair</b> tied on cover from Bristol, R. I. to England, stamps cut in partly on two sides, attractive cover with transit markings	60.00
355	<b>Vignette of 1c Franklin and 3c Washington</b> as used on 1851-57 Issues on \$10.00 Banknote of Georgetown, So. Car., Printed by Toppan, Carpenter & Co. Fine .....	—
356	☒ <b>1c-10c, 1851-69 Issues,</b> 20 Covers includes #7, 73, 93, 112 etc. Fair-Fine	40.50
357	☒ 1c-12c, 1853-61 Issues, Seven covers all with <b>California</b> postmarks, Chico, Stockton, Brooklyn, Spanish Ranch Marysville Paid by Stamps, Lisbon, Bear Valley, last two ms. cancels, only Fair with defects .....	—

#### 1857 ISSUE

358	<b>1c Blue, Type I (18).</b> One perf. short. Fine appearance .....	37.50
359	☒ <b>1c Blue (24).</b> Tied with neat <b>Leavenworth City, K. T.</b> on cover. Fine .....	—
360	☒ <b>1c Blue (24).</b> Tied with boxed <b>"1ct"</b> from St. Louis. Fine .....	—
361	☒ <b>3c Red (26).</b> Imprint copy tied on attractive illustr. adv. cover showing man dressed in Revolutionary War period .....	—
362	☒ <b>3c Red (26).</b> Imprint Copy tied from Fox Lake, Wis. Fine cover .....	—
363	<b>5c Red Brown (28).</b> Centered to bottom. Fine .....	33.50
364	<b>10c Green. Type II (32).</b> Red grid cancel. Fine .....	12.00
365	<b>10c Green, Type III (33).</b> Double <b>"Paid"</b> cancel. Very Fine .... <b>(Photo)</b>	15.00
366	☒ <b>10c Green (35, U16, U18a).</b> Three covers Nevada City, San Francisco, Weaverville Calif. cancels. Very Good .....	15.50
367	★ <b>12c Black (36).</b> Centered top right. Fine .....	15.00
368	★ <b>30c Orange (38).</b> Fine .....	37.50

#### 1861-1867 ISSUES

369	<b>5c Brown, August, Perforated Proof (57P)</b> .....	—
370	<b>1c Blue (63).</b> Tied on piece with superb strike of <b>Fancy Star</b> , centered to top .....	—



371	<b>3c Rose, Imperforate Grayish Paper (65c).</b> Horiz. Pair. Very Fine <b>(Photo)</b>	40.00
372	★田 <b>3c Rose (65). Block on Greenish Experimental Paper.</b> Very Fine O. G. ....	—
373	匣 <b>3c Rose (65).</b> Tied on cover with <b>"O. K."</b> cancel, nice strike, stamp short two perfs .....	—
374	匣 <b>3c Rose (65).</b> On small neat cover with Very Fine <b>"Miamiville P. O. Camp Dennison, O."</b> postmark .....	—
375	匣 <b>3c Rose (65).</b> Tied on cover from Delaware City, Del., with <b>Prisoner's Letter</b> in oval, clear markings, cover bit ragged .....	—
376	匣 <b>3c Rose (65). Tied on Leeds Patent Lattice Cover</b> from Dover, N.H. Very Fine. Scarce .....	<b>(Photo)</b> —
377	<b>3c Rose (65).</b> Three stamps on small pieces showing <b>Leeds Patent</b> .....	—
378	匣 <b>3c Rose (65).</b> Eight different attractive illustrated adv. covers. Fine-V. F. ....	—
379	匣 <b>3c Rose (65).</b> Sixty-one covers includes corner cards, Shields, Arrows, "W" and other fancy cancels. V. G.-V. F. ....	—
380	匣 <b>3c Rose (65).</b> 340 Covers, various town markings, few corner cards, some defective .....	—
381	<b>5c Buff (67).</b> Red grid cancel, centered to B. Fine .....	45.00
382	<b>5c-90c, 1861-66 Issues (68-69, 71-72, 75, 78).</b> Good-Fine, 90c has str. edge	58.50
383	<b>Civil War Patriotic Magnus Song Sheets,</b> Eight different. Very Fine ....	—
384	<b>2c Black, D. Grill (84).</b> Perfs. cut in B. & R. Good .....	77.50
385	★ <b>2c Black, Grill (87).</b> Perfs. in at B. Very Good .....	20.00
386	★田 <b>3c Rose, Grill (88).</b> Block, centered top right. Very Good O. G. ....	70.00
387	★ <b>1c Blue, Grill (92).</b> Centered to left, O. G. ....	20.00
388	★ <b>2c Black, Grill (93).</b> Centered to B. Fine, O. G. ....	8.00
389	匣 <b>2c Black, Grill (93).</b> Tied on small neat cover, <b>Carrier cancel.</b> Very Fine	—
390	匣 <b>2c Black, Bisect (93a).</b> Diagonal half used with another making 3c rate, Just tied from Marysville, Pa. ....	<b>(Photo)</b> —
391	★田 <b>3c Red, Grill (94). Block,</b> centered to R. Fine, O. G. ....	17.50
392	匣 <b>3c Red, Grilled (94).</b> Five Covers each with Philadelphia Spiral or Snake cancel. Fine lot .....	—
393	匣 <b>3c Red Grill (94).</b> 28 covers all with <b>corner cards.</b> Fair-Fine .....	—
394	<b>90c Blue, Grill (101).</b> Small thin spot Grill. Very Fine appearing <b>(Photo)</b>	85.00

#### 1869 PICTORIAL ISSUE

395	★ <b>1c Buff (112).</b> Very Fine .....	<b>(Photo)</b> 10.00
-----	---	----------------------



396	✉	2c Brown (113). Two covers both from Phila. one has Carrier cancel. V. G.—Fine .....	—
397	✉	3c Ultramarine (114). Five on cover tied from Charleston, Mass. to St. Domingo, West Indies, red "N. York, Steamship" and other transit markings. Fine .....	—
398		10c Yellowish Orange (116). Town cancel. Very Fine .....	8.50
399	★	12c Green (117). Light crease. Fine appearance .....	22.50
400	★	24c Green & Violet (120). Centered to B. two creases. O. G. ....	77.50
401	★	30c Blue and Carmine (121). Perfs. cut in at top. Good .....	87.50
402		90c Carmine & Black (122). Centered to right. Fine ..... (Photo)	95.00
403	★	1c Buff, Re-issue (123). Very Fine .....	16.00
404	★	2c Brown, Re-issue (124). Fine .....	16.00
405	★	3c Blue, Re-issue (125). Well centered, regummed ..... (Photo)	87.50
406	★	1c, 6c, 15c (133, 208, 259). Each has str. edge otherwise Fine O. G. ....	35.00

#### BANKNOTE ISSUES

407		1c-30c Banknotes (134, 148-49, 151, 163, 165, 208, 213). Very Good—Fine ....	28.75
408		1c-15c Banknotes, 12 diff. Fancy Cancells includes N. Y. Foreign Mails, red "Paid", two diff. "M. B." (Mystic Bridge) etc. Fine lot .....	—
409	✉	1c-6c Banknotes, Nine covers, includes "Ship" cancel, illustr. corner cards, Grant campaign cover, interesting cancels. V. G.—V. F. ....	—
410	✉	1c, 2c, 10c Banknotes, 36 covers, includes R. P. O., County, Illustrated etc. V. G.—V. F. ....	—
411	★田	3c Green (147). Block of 12, centered to top. Very Good, O. G. ....	45.00
412	★	3c Green (147). Vertical Pair each with Perforated Initials "P. H.," probably earliest usage of perf. initials .....	—
413	✉	3c Green. Twelve Covers all with Waterbury Conn. cancels includes Leafs, Rosettes, Geometrics. Fair—Fine .....	—
414	✉	3c Greens, 106 Covers includes Railroad, R. P. O., Shields, Counties, other fancy cancels, Illustrated covers etc. V. G.—V. F. ....	—
415		3c Greens. 177 selected for interesting and fancy cancels .....	—
416		3c Greens. 311 mounted, selected for interesting and fancy cancels. Good—Very Fine .....	—
417	✉	3c Green. 231 covers all with corner cards, about third Hotels, some illustrated, includes duplication. Nice lot .....	—
418		6c-90c Banknotes (148-153, 162-166). Very Good .....	56.25





1



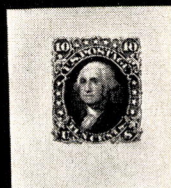
4



6



23



36



53



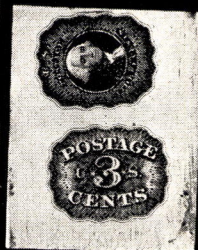
146



50



155



157



EX 169



193



198



225



234



259



263



237



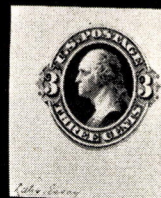
239



252



264



265



266



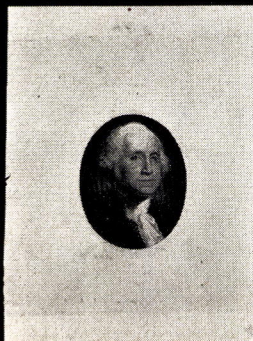
267



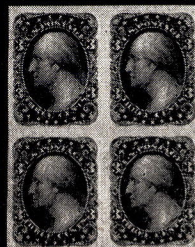
EX 270



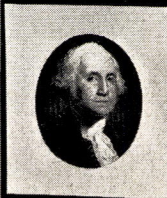
145



EX 274



EX 165



EX 273





158



EX 277



217



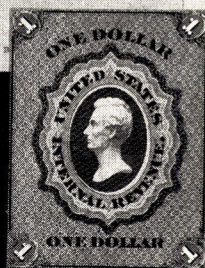
EX 280



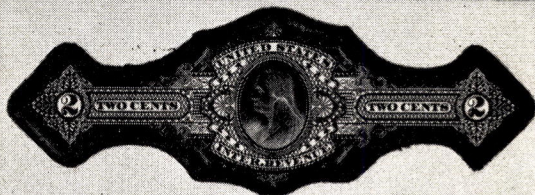
EX 283



EX 286



293



64



149



EX 248

288



303



Mr. Geo. P. Overhart.  
Ithaca, N.Y.  
York Co.  
Pa.

390



376

field  
Conn.





419	✉	<b>10c Banknotes.</b> Fifteen registered covers used with other Banknotes, two illustrated. V. G.-V. F. ....	—
420		<b>15c Bright Orange (152).</b> Very Fine .....	5.50
421	✉	<b>3c Green, 10c Brown Banknotes (158, 161, 188).</b> Four registered covers from <b>Butte City, Mont.</b> , three diff. type cancels. Fine-V. F. ....	—
422	★	<b>10c Brown (161).</b> Fine, O. G. ....	15.00
423		<b>90c Rose Carmine (166), New York Foreign Mail</b> cancel. Very Fine (Photo) .....	15.00+
424	★	<b>90c Rose Carmine (166).</b> Fine, O. G. .... (Photo) .....	50.00
425	★	<b>2c Vermilion (178).</b> Fresh Block, centered to right, perfs. just clear, O. G. ....	45.00
426	★	<b>10c Brown (188).</b> Very Fine .....	25.00
427	★	<b>30c Full Black (190).</b> Well centered, part gum, part of album imprint on back .....	20.00
428	✉	<b>5c Garfield (205, 216).</b> Twenty-seven covers containing 36 stamps. V. G.-V. F. ....	—
429	✉	<b>1c Gray Blue, 4c Blue Green (206, 211).</b> Three covers all to England. V. G.-Fine .....	12.00
430		<b>2c Red Brown (210). Kicking Mule</b> cancel, Fine strike, stamp defective .....	—
431		<b>2c Red Brown (210).</b> Selected for <b>interesting and fancy cancels</b> , 243 stamps .....	—
432	✉	<b>2c Banknotes (210, 212, U311).</b> Three <b>Territorial Covers</b> , Las Vegas, East Las Vegas, N. Mex., Bathgate, Dak. all with corner cards one illustr. Good-Fine .....	—
433	★	<b>2c Green (212).</b> Block of 12. Fine, O. G. ....	9.00
434	✉	<b>2c Green (212).</b> Tied on cover, stamp surrounded by boxed advert. of <b>Minneapolis Exposition of 1888</b> , in green, bit ragged at one end .....	—
435	★	<b>4c-5c Banknotes (215-216), Blocks.</b> Fresh O. G., perfs in one side .....	40.00
436		<b>4c Dark Brown Imperforate (222).</b> Horiz. Pair. Very Fine ..... (Photo) .....	25.00
437	✉	<b>5c Chocolate (223).</b> Tied on cover with " <b>U. S. Postal Agency, Shanghai</b> ". Fine .....	—
438	★	<b>6c Brown Red, 8c Lilac (224-225).</b> Blocks. Fine .....	21.00
439	★	<b>8c-30c, 1890 Issue (225-228),</b> latter without gum. Very Good-Fine .....	—
440	★	<b>10c Green (226).</b> Block, centered to B. just clear .....	25.00

#### COLUMBIAN ISSUE

441	★	<b>5c-50c Columbian (234-240),</b> each has small heavy hinge, latter part gum. Finely centered .....	45.75
-----	---	---	-------



442	★田	5c Columbian (234). Block, Well centered, one perf. short .....	14.00
443	★田	5c Columbian (234). Block, centered to B. Fine .....	14.00
444	★田	15c Columbian (238). Block, one stamp badly creased others V. G. ....	40.00
445		50c Columbian (240). Very Fine used .....	11.00
446		\$1.00 Columbian (241). Town cancel, "93" year date, small thin. Very Fine appearance ..... (Photo)	37.50
447		\$2.00 Columbian (242). Fine ..... (Photo)	32.00
448		\$2.00 Columbian (242). Very light cancel, trivial margin tear. Fine appearance .....	32.00
449		\$3.00 Columbian (243). Small thin. Very Fine appearance ..... (Photo)	62.50
450		\$4.00 Columbian (244). Two tiny pinholes. Fine appearance ..... (Photo)	72.50
451		\$5.00 Columbian (245). Fine ..... (Photo)	72.50
452		4c Dark Brown Imperforate (254a). Horiz. Pair. Very Fine, without gum	30.00
453	★田	2c Carmine, Type II (266). Left Imprint Plate No. Block of 6. Fine .....	25.00
454	★田	2c Carmine, Block containing pair each Type II and III (266-67). Very Fine .....	15.00
455		\$2.00 Dark Blue (277). Very light cancel, Reperfed at R. Fine appearance	32.50
456		\$5.00 Dark Green (278). Fine ..... (Photo)	32.50
457	★	2c Red, Orange Red (279B). Seventeen diff. Imprint Plate No. Strips of three. Good-Fine .....	34.00
458	★	4c-15c, 1898 Issue (280-82, 283-84). Very Good-Fine .....	21.75
459	★田	6c Lake (282). Block, reperfed at R. otherwise Fine .....	17.50
460	☒	1c Green, 2c Red. Nine Spanish American War Patriotic Covers, all diff. Flag designs. Fair-Fine .....	—

### TRANS-MISSISSIPPI ISSUE

461	★	1c-10c Trans-Miss. (285-290). Two have small thins, all Fine centering	25.45
462	★田	4c Trans-Miss. (287). Block. Fine .....	25.00
463	★田	4c Trans-Miss. (287). Block of 12. Fine except no gum .....	66.00
464	★田	5c Trans-Miss. (288). Block. Fine .....	30.00
465	★	50c Trans-Miss. (291). Perf. barely touch at left. Very Good .....	37.50
466		\$1.00 Trans-Miss. (292). Barely cancelled, thin. Very Fine appearing ..... (Photo)	47.50
467		\$1.00 Trans-Miss. (292). Very Light cancel. Fine ..... (Photo)	47.50
468	★	\$1.00 Trans-Miss. (292). Thin spot. Fine appearance, no gum ..... (Photo)	65.00





494	★	2c Pan-Pacific (402). Block. Very Fine .....	27.50
495	★	2c Carmine Imperforate (459). Pair. Very Fine ..... (Photo)	100.00
496	★	5c Carmine Error (463b). Nicely centered, three perfs short .....	62.50
497	★	5c Carmine Error in Block of 6 (463b), centered to top. Fine .....	62.50
498	★	\$5.00 Light Green (480). Very Fine .....	16.00
499	★	1c-50c, 1917 Issue (498-99, 503-12, 514-17). Plate No. Strips of 3. Very Good .....	49.23
500	★	\$2.00 Orange Red and Black (523), Slight hinge thin. Very Fine appearance ..... (Photo)	47.50
501	★	3c Victory, Pale Red Violet (537b). Plate No. Block of 4. Fine .....	7.50
502		3c Victory, Shades (537, a, b) Red Violet shade precancelled as usual. Fine .....	7.85
503	★	1½c Brown Imperf. (576). Center Line Block of 100. Very Fine .....	37.50
504	☒	Collection of "Lets Go Citizens Military Training Camp" slogans on 307 covers, 1923-1929, some Commems. ....	—
505	★	5c Hug.-Walloon (616). Broken Circle variety. Very Fine .....	8.00
506	★	5c Norse-American (620). Top Arrow and Double Plate No. Block of 8. Fine .....	32.50
507	★	2c White Plains Exhibition Sheet of 25 (630). Fine .....	25.00
508	★	2c Carmine (634). Very Fine Block all Double Paper variety .....	—
509	★	1c-10c Kans. (658-668). Complete set. Fine-Very Fine .....	19.44
510	★	5c Flags (909-921). Sheets of 50, Complete set. Very Fine .....	89.50

#### AIRMAILS

511	☒	16c-24c Air (C2-C3). Tied on two flight covers, used in 1918. V. F. ....	12.50
512	☒	16c Dark Blue (C5). Tied on cover from Chicago, cachet "First Trip Night Flying on Trans-Continental Air Mail Route", str. edge. Fine ....	6.50+
513	★	5c Beacon Air (C11). Specialized Collection, contains 22 diff. Plate No. Blocks of 6, including Double "Top" variety, various plate strips, odd placements of blue center etc. Fine lot .....	89.30+
514	★	65c Graf Zeppelin (C13). Very Fine .....	18.50
515	★	\$2.60 Graf Zeppelin (C15). Slight gum crease. Very Fine appearance ..... (Photo)	65.00
516	★	50c Zeppelin (C18). Very Fine .....	10.00
517	★	50c Zeppelin (C18). Block. Very Fine .....	40.00
518	★	15c U. P. U. Airmail. 10 Plate No. Blocks. Fine-Very Fine .....	—
519	★	Same as above. 20 Plate No. Blocks. Fine-Very Fine .....	—

520	<b>2c-\$2.00 Shanghai (K1-K18).</b> Complete including both shades on 16c and 24c. Fine-Very Fine .....	67.30
521	<b>War Savings \$5.00 Deep Blue, 1919 (WS4).</b> Very Fine .....	27.50
522	<b>Treasury Savings Stamp \$1.00 Red (TS1).</b> Very Fine though light gum crease. Very Scarce .....	75.00

### OFFICIALS

523	<b>1c-90c Officials,</b> 99 stamps, includes duplication, used and unused. Good-Fine .....	116.51
524	★田 <b>2c Post Office (O48).</b> Imprint Block of 60. Fine-Very Fine .....	60.00
525	★ <b>2c Post Office (O48).</b> Sheet of 100. V. G.-Fine .....	100.00
526	★田 <b>6c Post Office (O50).</b> Imprint Block of 48. V. G.-V. F. ....	48.00
527	★ <b>30c Treasury (O81).</b> Very Fine .....	7.00
528	★田 <b>3c Post Office (O108).</b> Block of 34. Very Good .....	35.50
529	<b>6c War (O117).</b> Perfect strike of <b>Kicking Mule</b> , stamp centered to right (Photo) .....	—
530	<b>50c-\$1.00 Postal Savings (O122-O123).</b> Fine-Very Fine .....	14.50
531	★ <b>1c-\$1.00 Parcel Post (Q1-Q12).</b> Complete set. Very Good-Very Fine .....	56.27
532	★ <b>Post Office Seal "Post Obitum" (OX3).</b> Fine .....	7.50
533	★ <b>5c, 10c Newspaper Stamps (PR4, PR6).</b> V. G.-Fine .....	9.00

### CARRIERS & LOCALS

534	<b>1c Franklin Carrier (LO1).</b> Red Star cancel, slight flaws. Fine appearance (Photo) .....	250.00
535	<b>1c Eagle Carrier (LO2).</b> Two, Red Star cancel, other Black town F.-V. F. ....	10.00
536	★ <b>1c Carriers (LO2-LO4).</b> Fine-Very Fine .....	7.50
537	★田 <b>1c Franklin Carrier (LO3).</b> Block of 16 with part of Imprint, two small thins, pretty piece .....	64.00+
538	★ <b>\$2 Red, \$4 Green Pony Express (143L1-2).</b> Very Fine .....	17.00
539	★ <b>\$1-\$4 Pony Express (143L1, 143L3-5).</b> All Very Fine except latter has thin .....	29.00
540	<b>\$1.00 Red Pony Express (143L3).</b> Blue Express cancel, light crease. Very Fine appearance .....	(Photo) 30.00
541	<b>\$1.00 Red Pony Express (143L3).</b> Blue Express cancel, small thin .....	30.00
542	★ <b>\$1 Red, \$2 Green, Pony Express (143L3-4).</b> Fine-Very Fine .....	12.00
543	★ <b>\$2 Green, \$4 Black, Pony Express (143L4-5).</b> Very Fine .....	18.00



544	<b>10c Brown Pony Express (143L7).</b> Light blue cancel. Fine .....	15.00
545	<b>10c-25c Pony Express (143L7-L9).</b> Both shades on 10c. V.G.-V.F. ....	16.00
546	<b>25c Blue Pony Express (143L8).</b> Blue Express cancel. Fine .....	20.00
547 ★	<b>\$1.00 Blue, Wells Fargo (143L6).</b> Very Fine .....	17.50
548	<b>\$1.00 Blue, Wells Fargo (143L6).</b> Ms. cancel. Very Fine. Cat. \$100.00 used	—
549	<b>Black, Wells Fargo Newspaper Stamp (143LP1).</b> Hinge thin. Very Fine appearance ..... <b>(Photo)</b>	75.00
550	<b>LOCALS,</b> Collection of 138, includes 8 covers, used Wells Fargo 25c Blue Pony Express, Sheet of Pomeroy reprints etc. Worthwhile lot .....	—
551	<b>Encased Postage Stamp.</b> 5c Drake's Plantation Bitters. V.F. ....	6.00
552 ☒	<b>3c Entires (U10, U59, U82).</b> Five covers, three are fronts all with various N. O. & Vicksburg River Mail cancels. Fair-Fine. Scarce lot .....	—
553 ☒	<b>2c, 3c, 6c Envelopes.</b> 23 Entires plus 23 Postal Cards, many interesting and fancy cancels .....	—
554 ★	<b>1c-10c Cut Squares.</b> Commems. and Airs 32 diff. including diff. dies on airs. Very Fine .....	15.63

#### REVENUES

555	<b>2c-25c Civil War Revenues</b> on 25 Documents, Checks, Stock Certificate. Fine lot .....	—
556	<b>70c Foreign Exch. Imperf. (R65a).</b> Large margins, Herringbone cancel .....	30.00
557	<b>\$60.00 Brown Handstamp "Series 1940",</b> perf. initialed, L. L. corner perfs. missing scarce .....	—
558	<b>\$30.00 Documentary, Series of 1940 (R306).</b> Fine .....	—
559	<b>\$100.00 Documentary, Series of 1940 (R308).</b> Fine except cut cancel .....	—
560	<b>\$30.00 Documentary Series of 1941 (R330).</b> Four small holes and pen cancel .....	—
561	<b>\$1000.00 Documentary, Series of 1943 (R385).</b> Very Fine except cut cancel. Scarce .....	—
562	<b>1c-\$100.00 Stock Transfer (RD1-10, RD12-22).</b> Last four cut cancel or perf. initialed balance. Fine-V.F. ....	20.05
563 ☐	<b>1c-\$20.00 Stock Transfer (RD1-10, 12-14, 16-18).</b> All in blocks, last cut cancel, balance V.G.-V.F. ....	—
564	<b>1c-\$10.00 Stock Transfer, Series of 1940, Old (RD42-RD59).</b> V.G.-V.F. ....	19.19
565 ☐	<b>1c-80c Stock Transfer, Series of 1940, Old (RD42-53) Blocks.</b> Very Fine	40.05
566	<b>\$20.00 Stock Transfer, Series of 1940, Old (RD60).</b> Corner crease. Fine appearance .....	35.00

567	<b>\$50.00 Stock Transfer (RD135).</b> Fine except Perf. Initialed .....	—
568	<b>\$30.00, \$50.00 Stock Transfer, Series of 1943 (RD157-158).</b> Fine except Perf. Initialed .....	—
569	<b>1c-\$20.00 Stock Transfer, Series of 1944 (RD163-RD179).</b> Very Good-V. F. ....	—
570	<b>\$30.00, \$50.00 Stock Transfer, Series of 1944 (RD180-81).</b> Fine except perf. initialed .....	—
571	<b>\$20.00 Stock Transfer, Series of 1945 (RD202).</b> Pin hole. Very Fine appearing .....	—
572	<b>\$20.00 Stock Transfer, Series of 1945 (RD204).</b> Perf. Initialed .....	—
573	<b>\$100.00 Stock Transfer, Series of 1945, (RD206).</b> Heavy cut cancel. Fine appearance .....	—
574	<b>1c-\$2.00 Tobacco Sale Tax (RJ1-RJ8).</b> Fine-Very Fine .....	17.90
575	<b>\$5.00 Tobacco Sale Tax (RJ9).</b> Very Fine .....	16.50
576	<b>\$10.00 Tobacco Sale Tax (RJ10).</b> Uncancelled. Fine .....	40.00
577	<b>\$20.00 Tobacco Sale Tax (RJ11).</b> Uncancelled. Very Fine. Scarce .....	—
578	<b>1c-\$20.00 Tobacco Sales Tax (RJ1-RJ11).</b> Complete set, all light hand-stamp cancels. Very Fine. Net retail value \$75.00 .....	—
579 ★	<b>\$1.00 Hunting Permit (RW2-RW4).</b> First two str. edge, all well centered, uncancelled .....	—
580 ★	<b>\$1-\$2 Hunting Stamps (RW7, 12-14, 16).</b> Two are used. V. G.-V. F. ....	—
581	<b>Match &amp; Medicine.</b> 79 mostly different. Fair-Fine .....	33.45
582	<b>Beer Stamps, Revenues on Tin Foil &amp; Stamped Paper etc.,</b> 75 items, interesting lot .....	—

#### U. S. LARGE & MISC. LOTS

583	☒ <b>Covers, 1851 to date,</b> includes illustrated, early commems., 24c 1918 Air, registers, also 21 cards containing <b>2c Bisects</b> tied on Postal Cards, total 224 Covers. Fine lot .....	—
584	<b>Cancellations. 19th &amp; 20th,</b> stockbook and envelopes containing considerably over 1000 stamps. Est. Cash Value \$15.00 .....	—
585	☐ <b>1c-\$1.00, 1870-1949 Issues.</b> 139 <b>Used Blocks,</b> nice variety. Est. Cash Val. \$9.00 .....	—
586	☒ <b>Misc. lot of 35 Covers,</b> includes U. S. used in Foreign countries, U. S. Possessions etc. Nearly all 20th Century, nice lot .....	—
587	☐ <b>Used Blocks.</b> 1890-1940 Issues, 190 Blocks. Fair-Fine. Est. Cash Value \$9.00 .....	—
588 ★	<b>1c-30c. Mostly Twentieth Century,</b> 272 stamps, many commems., some blocks & souvenir sheets. Good-Fine .....	255.47



589	<b>1c-3c Imperforates.</b> 1903-1922 Issues all with <b>Private Perfs.</b> (241 stamps). V. G.-V. F. ....	122.35
590 田	<b>3c Commems. 1945-49 Issues</b> (100 Used Blocks), also \$2.00 Presidential used block of 6. V. G.-V. F. ....	—
591	<b>Straight Edges.</b> 19th & 20th Century Postage, some commems., V. G.- V. F. except str. edges, approx. 800 stamps. Est. Cash Value \$35.00 .....	—
592	<b>Defectives</b> .19th and 20th Century, approx. 1500 stamps, all have flaws	1182.00
592A	<b>Cut Squares, Revenues, Telegraphs, U. S. Possessions,</b> Est. 600 stamps, mostly used. Est. Cash Val. \$12.50 .....	—

## UNITED STATES WHOLESALE

(LOTS CONTAIN NO STR. EDGES UNLESS MENTIONED)

593	<b>3c 1851-61 Issues,</b> #11(35), 25(45), 65(100). V. G.-V. F. ....	26.00
594	<b>2c Black #73(51).</b> Good-Fine .....	102.00
595	<b>2c Black #73(12).</b> Three are unused, all have str. edges .....	31.50
596 ★	<b>2c Black #73(9).</b> Very Good, some with gum .....	40.50
597 ★	<b>2c Black #73(15).</b> Very Good, some with gum .....	67.50
598	<b>2c Black #73(45), 87(5), 93(12),</b> all defective .....	163.00
599	<b>2c Black, Grill #87(4).</b> Very Good .....	20.00
600	<b>3c Rose #88(25).</b> V. G.-Fine .....	25.00
601	<b>2c Black, Grill #93(12).</b> Good-Fine .....	48.00
602 ★	<b>2c Black, Grill #93(4).</b> Very Good .....	32.00
603	<b>3c Red #94 (170).</b> V. G.-Fine .....	42.50
604	<b>3c Green, Grill #136(125).</b> V. G.-V. F. ....	43.75
605	<b>1c-15c Banknotes,</b> #145(20), 146, 157 (35 mixed). 189(6), 205(37), 211(27). Good-Fine .....	45.00
606	<b>1c-4c Banknotes.</b> #158(100), 182(80), 184(100), 206(100), 207(100), 210(100), 211(20), 212(100), 214(200) .....	45.60
607	<b>6c, 10c Banknotes</b> #159(31), 161(5), 186(10), 187(10). Good-Fine .....	37.55
608	<b>2c Vermilion</b> #178(70), 183(100). V. G.-V. F. ....	22.00
609	<b>4c-5c Banknotes.</b> #179(3), 185(11), 205(26), 211(8), 215(28), 216(9). V. G.- V. F. ....	33.35
610	<b>10c Brown #209(108).</b> V. G.-V. F. ....	19.44
611	<b>1c-10c, 1890 Issue,</b> #219(200), 219D(400), 221(30), 222(50), 223(60), 225(25), 226(50). Good-Fine .....	59.30

612	<b>1c, 1890-98 Issues #219(800), 264(1500), 279(200). V. G.-V. F. ....</b>	<b>73.00</b>
613	<b>2c Carmine, "Cap" varieties #220a(155), 220c(60). V. G.-V. F. ....</b>	<b>30.40</b>
614	<b>3c-10c 1890 Issue #221(12), 222(70), 223(60), 225(20), 226(65). V. G.-V. F. ....</b>	<b>23.80</b>
615	<b>1c-2c Commems. #230(100), 231(1100), 285(20), 286(100), 295(100), 329(23), 548(24), 610(100), 627(100). V. G.-V. F. ....</b>	<b>62.60</b>
616	<b>1c-15c Columbians, Trans-Miss. #232-238, 285-289 (26 stamps), from 1 to 5 of each. V. G.-V. F. ....</b>	<b>24.05</b>
617	<b>1c-2c Columbians, 1902 Issue, #230(100), 231(1400), 300(1600), 301(800). V. G.-V. F. ....</b>	<b>79.00</b>
618	<b>1c-50c Commems, 1893-1925 Issues (52 stamps). V. G.-V. F. ....</b>	<b>50.25</b>
619	<b>1c Ultramarine, 1c Blue #246(100), 247(200). V. G.-V. F. ....</b>	<b>46.00</b>
620	<b>1c-2c, 1894 Issue, #246-249, 251 (100 each). V. G.-V. F. ....</b>	<b>99.00</b>
621	<b>2c Triangles #248, 249, 265, 266 (100 each). V. G.-V. F. ....</b>	<b>78.00</b>
622	<b>2c Carmine Lake #249(1200). V. G.-V. F. ....</b>	<b>72.00</b>
623	<b>2c-10c, 1894 Issue, #251(100), 253(20), 256(8), 257(6), 258(4) ....</b>	<b>50.30</b>
624	<b>3c-8c, 1894-95 Issue, #253(17), 254(35), 258(29), 272(100). V. G.-V. F. ....</b>	<b>27.80</b>
625	<b>2c Carmine. Type I #265(400). V. G.-V. F. ....</b>	<b>32.00</b>
626	<b>2c Carmine. Type II #266(200). V. G.-V. F. ....</b>	<b>70.00</b>
627	<b>3c Purple #268(500). Very Good-Very Fine ....</b>	<b>30.00</b>
628	<b>3c Purple #268(660), about half have str. edges ....</b>	<b>39.60</b>
629	<b>3c-15c 1895 Issue #268-269 (100 each), 270(95), 271(34), 273(70), 274(5). V. G.-Fine ....</b>	<b>39.55</b>
630	<b>3c-50c, 1895-1916 Issues, (1543 stamps), all defective ....</b>	<b>422.00</b>
631	<b>3c Violet #302(200). V. G.-V. F. ....</b>	<b>60.00</b>
632	<b>3c-10c, 1902 Issue, #302(30), 303(75), 304(100), 306(50), 307(90). V. G.-V. F. ....</b>	<b>29.15</b>
633	<b>6c-50c, 1902-08 Issues, #305(30), 308(1), 309(4), 310(2), 339(1), 341(4). V. G.-V. F. ....</b>	<b>25.65</b>
634	<b>1c-4c Imperforates 1903-1923 Issues, (215 stamps). V. G.-V. F. ....</b>	<b>112.01</b>
635	<b>1c Louisiana-Purchase #323(100). V. G.-V. G. ....</b>	<b>45.00</b>
636	<b>1c Louisiana-Purchase #323(100). V. G.-V. F. ....</b>	<b>45.00</b>
637	<b>3c-8c, 1908 Issue, #333(100), 334(65), 335(100), 336(100), 337(60). V. G.-V. F. ....</b>	<b>113.90</b>
638	<b>4c-10c, 1908 Issue. #334(60), 335(135), 336(30), 337(30), 338(100). V. G.-V. F. ....</b>	<b>58.60</b>
639	<b>50c Violet #341(30). V. G.-V. F. ....</b>	<b>52.50</b>
640	<b>50c Violet #341(31). Very Good-Very Fine ....</b>	<b>54.25</b>



641	<b>2c Imperforate, #344, 384 (168 mixed), 409, 482 (267 mixed), all Shermack perfs.</b> .....	—
642	<b>2c, 1909 Commems. #367(23), 370(40), 372(45). V. G.-V. F.</b> .....	25.20
643	<b>3c-8c, 1910 Issue, #376(95), 377(100), 378(100), 379(90), 380(15). V. G.-V. F.</b> .....	42.35
644	<b>4c-11c, 1910-1917 Issues, #377(75), 378(150), 380(11), 381(14) 416(100), 441(100), 503(100), 504(100), 510(100), 511(30). V. G.-V. F.</b> .....	48.40
645	<b>7c-12c, 1912 Issue, #407(27), 414(50), 415(12), 416(90), 417(26). V. G.-V. F.</b> .....	56.70
646	<b>15c Gray #418(130). V. G.-V. F.</b> .....	32.50
647	<b>15c-30c, 1912 Issue, #418(59), 419(11), 420(11). V. G.-V. F.</b> .....	45.00
648	<b>20c Ultramarine #419(22). Very Good</b> .....	33.00
649	<b>30c Orange Red #420(100). Good-Fine</b> .....	100.00
650	<b>3c-10c, 1914 Issue, #426(65), 427(100), 428(100), 429(90), 430(55), 431(24), 432(17), 433(75). V. G.-V. F.</b> .....	80.82
651	<b>7c-\$5.00, 1914-16 Issues #430(9), 431(7), 432(4), 434(3), 438(6), 440(3), 479(2), 480(1). V. G.-V. F.</b> .....	23.76
652	<b>11c-12c, 30c-50c, 1914 Issue, #434(10), 435(43), 439(13), 440(5). V. G.-V. F.</b> .....	48.30
653	<b>15c Gray, 20c Ultramarine #437(59) 438(200). V. G.-V. F.</b> .....	82.45
654	<b>3c-20c, 1916 Issue, #464(5), 465(7), 466(5), 468(2), 469(11), 470(3), 472-74 (2 each), 475(3), 476(6). V. G.-V. F.</b> .....	46.80
655	<b>6c-50c, 1917 Issue, #506(60), 507(140), 508(50), 509(30), 513(9), 515(100), 516(70), 517(80). V. G.-V. F.</b> .....	45.25
656 ★	<b>3c Victory #537(18), includes blocks. V. G.-Fine</b> .....	20.85
657	<b>2c-5c Commems. #537(3), 628(5), 649(33), 650(8). V. G.-V. F.</b> .....	12.76
658	<b>3c, 7c-8c, 1922 Issue #555(60), 559(75), 560(90). V. G.-V. F.</b> .....	15.00
659	<b>9c Rose #561(100). V. G.-V. F.</b> .....	18.00
660	<b>1c, 3c, 7c-8c Rotaries #581(100), 584(50), 587(50), 588(14)</b> .....	22.90
661	<b>4c, 8c-9c, Rotary #585(175), 589(45), 590(60). V. G.-V. F.</b> .....	26.80
662	<b>2c-5c Commems., #703(50), #796(45), #906(10). V. G.-V. F.</b> .....	11.30
663	<b>1c-10c Imperforate Commems. (200 stamps), 1933-47 Issues. V. F.-V. F.</b> .....	24.45
663A ★	<b>3c Newburgh, Farley #752 (300), in large blocks, mostly Fine</b> .....	24.00
664	<b>5c Roosevelt #933, (200), in blocks. Fine-V. F.</b> .....	10.00
665	<b>5c Roosevelt #933(400), in blocks. Fine-V. F.</b> .....	20.00
666	<b>5c-50c Airmails, 1918-1946 Issues (217 stamps). V. G.-V. F.</b> .....	36.29
666A	<b>6c Alexandria (238), 6c Wright (90), 10c U. P. U. (93), 15c U. P. U. (35), 25c U. P. U. (14), blocks of 4 or larger, mostly Fine-V. F.</b> .....	—

667 ★	2c Post Office #048(94). V. F.-V. F. in large blocks .....	70.50+
668 ★	1c War #0114(100), in large blocks. V. G.-V. F. ....	18.00+
669 ☒	5c on 6c Airpost Envelope #UC12 (70 entires). Very Fine .....	12.60
670	\$3.00 Documentary, Series of 1940, Old #R278(15). V. F.-V. F. ....	150.00
671	\$3.00, \$10.00 Documentary, Series of 1940, Old #R278(7), R281(7), each has str. edge otherwise V. G.-V. F. ....	112.00

## HAWAII

(The following lots are from an old accumulation and include many blocks and wholesale quantities)

### 1853-1868 ISSUES

672 ★	13c Dark Red (6). Small corner thin. Fine appearance .....	25.00
673 ★	5c Blue (9). Small thin. Fine appearing .....	17.50
674 ★	5c Blue (9A). Two copies. Fine-Very Fine .....	10.00
675 ★	1868, 5c Blue (9A), Complete Sheet of 20. Very Fine piece except for few light creases, includes line through Honolulu variety .....	120.00+
676 ★	5c Blue (9A). Complete Sheet of 20 overprinted Specimen, attractive piece though few slight flaws. Retail Value \$35.00 .....	—
677 ★	5c Blue, Reprint. Very Fine .....	—
678 ★	5c-13c Specimen overprints (9A-9B), Pair and single of first, two diff. size overprints on latter .....	—
679 ★	13c Dull Rose (9B). Fine .....	(Photo) 30.00
680 ★	13c Dull Rose (9B). Complete Sheet of 20 overprinted Specimen, one stamp has small thin otherwise Very Fine. Retail Val. #32.50 .....	—

### 1859-1865 NUMERAL ISSUES

681 ★	1c Black (15). Fine .....	20.00
682 ★	1c Black (15), light creases. Very Fine appearance .....	20.00
683 ★	1c Black (15). Light crease. Very Fine appearance .....	20.00
684 ★	1c Black (19). Fine .....	(Photo) 40.00
685 ★	2c Black (20). Very Fine .....	(Photo) 50.00
686 ★	5c Blue (21). Small thin. Fine appearance .....	25.00
687 ★	5c Blue (21). Very Fine .....	(Photo) 40.00
688 ★	5c Blue (21). Thin spot at top. Very Fine appearance .....	40.00



689 ★	5c Blue (22). Very Fine .....	12.00
690 ★	1c Black (23). Very Fine .....	10.00
691 ★	2c Black (24). Very Fine .....	10.00
692 ★	2c Black (24). Very Fine .....	10.00
693 ★	2c Black (24). Very Fine .....	10.00
694 ★	2c Black (24). Slight stain. Fine .....	10.00
695 ★	2c Black (24). Fine .....	10.00
696 ★	1c Dark Blue (25). Small thin. Fine appearance .....	15.00
697	2c Pale Rose, 2c Rose (27-28). Fine-Very Fine .....	27.50
698 ★	2c Red, 2c Carmine (29, 51). Fine-Very Fine .....	8.00

#### 1864-1875 ISSUES

699 ★田	1c Purple (30). Sheet of 50 and two blocks of 25 each. V. G.-V. F. ....	58.00
700 ★	1c Purple (30). 132 copies includes blocks. V. G.-V. F. ....	77.00
701	1c-\$1.00, 1864-86 Issues (30-49). Complete used. Good-Very Fine .....	33.07
702 ★	1c-\$1.00, 1864-1886 Issues (30-49). Complete sets. Fine-Very Fine .....	47.35
703 ★田	2c Rosy Vermilion (31). Block of 15. Very Fine .....	15.25
704	2c Rosy Vermilion (31). Forty-seven copies. V. G.-V. F. ....	35.25
705 P	2c Rosy Vermilion, India Proof (31P). Horiz. Pair. Very Fine (Photo) .....	30.00
706	2c Rosy Vermilion, 5c Ultramarine #31(18), 39(42). V. G.-V. F. ....	28.20
707 ★田	6c Green (33). Block of four and nine. Fine-V. F. ....	19.25
708 ★	18c Dull Rose (34). 25 copies, some with part gum. V. G.-V. F. ....	15.00
709 ★田	18c Dull Rose (34). Five blocks of 4. V. G.-Fine .....	15.00
710 ★田	1c-25c, 1864-1899 Issues, Twenty different Blocks. Good-Very Fine .....	118.35
711	2c Brown (35). 208 used copies, V. G.-V. F. ....	62.40
712	2c Brown (35). 208 used copies. V. G.-V. F. ....	62.40
713 ★田	1c-10c Blocks (35, 37, 42-3, 45, 52). Fine-Very Fine .....	16.60
714 ★田	12c Black (36). Block; Fine, no gum .....	17.50
715 ★	12c Black, 12c Red Lilac (36, 46). Six copies each. Very Good-Very Fine .....	33.00
716 ★田	1c-2c 1875-99 Issues, 140 stamps in blocks of 4 or larger. Good-Very Fine .....	43.75

#### 1882-1886 ISSUES

717 ★	1c-50c, 1882-86 Issues (37-48). Very Good-Very Fine .....	23.25
-------	---	-------

718	★田	5c Ultramarine, 10c Black, 15c Red Brown (39-41). Blocks. Fine-Very Fine	30.00
719	★田	5c Ultramarine, 10c Red Brown (39, 44). Blocks of 10 of each. Fine, part gum	30.50
720	★田	10c Black (40). Imprint Block of 10. Fine	18.00
721	★田	15c Red Brown (41). Block. Fine	12.50
722	★田	15c Red Brown (41). Imprint Block of 8. Fine	25.00
723		1c Green (42). 297 used copies. V. G.-V. F.	44.55
724	★	1c-\$1.00, 1883-1886 Issue (42-49). Very Good-Very Fine	28.95
725		2c Rose (43). 582 used copies. V. G.-V. F.	69.84
726		1c-2c, 1883-94 Issues (43, 52, 57, 74-75). 100 of each. V. G.-V. F.	49.00
727	★田	10c Vermilion (45). Imprint Block of 6. Very Fine	10.50
728	★田	12c Red Lilac (46). Block. Very Fine	13.50
729	★	12c-\$1.00, 1883-86 Issue (46-49). Fine-Very Fine	25.50
730	★田	25c Dark Violet (47). Block. Fine	18.50
731		2c Orange Vermilion, 2c Carmine (50-51). Each with Target cancel. V. F.	—
732	★	2c Carmine (51). Pane of Fifteen. Very Fine	32.00
733	★	2c Carmine (51). Pane of Fifteen Very Fine	32.00
734	★	2c Carmine (51). Pane of Fifteen, two small thins otherwise Very Fine	32.00
735	★	2c Carmine (51). Pane of 15 overprinted <b>Reprint</b> . Very Fine, Retail Value \$15.00	—
736	☒	1c Purple, Bisect tied from Spreckelsville, Naui (52 var.). Very Fine, used locally	—
737		2c Dull Violet (52). 425 used copies. V. G.-V. F.	51.00
738	★田	5c Deep Indigo (52C). Block of 8. Fine	35.00
739	★	5c Deep Indigo (52C). Five copies. Fine-Very Fine	15.00

#### 1893 PROVISIONAL GOVT. ISSUE

740	★	1c-\$1.00 Provisional Govt. (53-73). Fine-Very Fine set	37.36
741	★	1c-\$1.00 Provisional Govt. (53-73). Fine-Very Fine set	37.36
742	★	Same as above. Fine-Very Fine	37.36
743	★	Same as above. Fine-Very Fine	37.36
744	★	Same as above. Very Good-Very Fine	37.36
745	★	Same as above. Very Good-Very Fine	37.36



746	★	1c-25c Provisional Govt. # 53(14), 54(14), 55(17), 56(7), 57(2), 58(10), 59(13), 60(13), 61(16), 62(9), 63(5), 64(9). Very Good-Very Fine .....	98.13
747		1c Green (55). 230 used copies. V. G.-V. F. ....	34.50
748	★	2c Brown, No Period after "Govt" (56a). Fine .....	17.50
749	★	2c Dull Violet (57). 200 copies, some blocks and part sheets. V. G.-V. F. ....	24.00
750		2c Dull Violet (57). 610 used copies. V. G.-V. F. ....	61.00
751		2c Dull Violet (57). 615 used copies. V. G.-V. F. ....	61.50
752	★田	5c Ultramarine (59). 70 copies in three large blocks. Fine-V. F. ....	49.20
753	★田	6c Green (60). Imprint Block of 44. V. G.-V. F. ....	39.00
754	★田	2c Rosy Vermilion (65). Block. Fine .....	25.00
755	★	2c Rosy Vermilion (65). Five copies V. G.-Fine .....	25.00
756	★田	10c Vermilion (67). Imprint Block of 35. Fine .....	30.50
757	★	10c-18c Provisional Govt. # 67(20), 68(18), 70(9), 71(13). Good-Fine .....	55.55
758	★田	10c Black (68). Imprint Block of 39. Fine .....	27.60
759	★	50c Red, \$1.00 Rose Red (72-73). Five of first, six of latter. V. G.-Fine .....	42.50
760		1c-50c Provisional Govt. overprint varieties, 58 stamps, mostly unused, no period, "18 3" variety, odd placings of overprint etc. Interesting lot .....	—

#### 1894-1899 ISSUES

761		1c Yellow (74). 500 used copies. V. G.-V. F. ....	50.00
762		1c Yellow (74). 796 used copies. V. G.-V. F. ....	79.60
763	★	1c Yellow, 1c Dark Green, 2c Rose (74, 80-81). Sheet of 50 each. Fine-V. F. ....	34.00
764		2c Brown (75). 1,000 used copies. V. G.-V. F. ....	50.00
765		2c Brown (75). 1225 used copies. V. G.-V. F. ....	61.25
766		5c Rose Lake (76). 204 used copies. V. G.-V. F. ....	30.60
767	★田	10c Yellow Green (77). Imprint Block of 30. Fine-V. F. ....	25.50
768	★	10c Yellow Green (77). Sheet of 50. Fine-Very Fine .....	42.50
769	★	10c Yellow Green (77). Sheet of 50. Fine-Very Fine .....	42.50
770	★	10c Yellow Green (77). Sheet of 50. Fine .....	42.50
771	★田	12c Blue (78). Imprint Block of 30. Very Fine .....	16.50
772	★田	12c Blue (78). Imprint Block of 48. Very Fine .....	26.50
773	★田	25c Deep Blue (79). Blocks of 12, 8 and 4. Fine-Very Fine .....	42.00
774	★田	25c Deep Blue (79). Imprint Block of 30. Fine piece .....	50.00

775 ★	25c Deep Blue (79). Sheet of 50. Very Fine .....	85.00
776 ★	25c Deep Blue (79). Sheet of 50. V. G.-V. F. ....	85.00
777 ★	1c Dark Green (80). 150 copies in three large panes. Fine .....	33.00
778	2c Rose (81). 640 used copies. V. G.-V. F. ....	32.00
779	5c Blue (82). One hundred used copies. V. G.-V. F. ....	40.00
780	5c Blue (82). One hundred used copies. V. G.-V. F. ....	40.00
781 ★	5c Blue (82). Sheet of 50. Fine .....	30.00
782 ☒	1c-10c, 1894 Issue, 8 covers includes Envelopes and Cards. Fine lot .....	—
783	Balance of Hawaii used, 300 stamps 1864-1899 Issues. Good-Very Fine ....	115.59
784 ★	Balance of Hawaiian unused, 297 stamps. 1864-1899 Issues. Good-V. F. ....	153.57

### OFFICIALS, ENVELOPES, REVENUES

785 ★	2c-25c Officials (01-06). Cpl. set. Fine-V. F. ....	19.50
786 ★	2c-25c Officials (01-06). Cpl. set, two have slight flaws, others Fine	19.50
787 ★	6c Official (03). Twenty-five copies. V. G.-V. F. ....	87.50
788 ☒	5c Brown Envelope with Wells Fargo & Co. Frank in brown. Very Fine Entire. Unused .....	—
789 ☒	1c-10c Entire Envelopes (U1-U5, U10-U13, UE1), 43 unused entires, from one to nine each. Fine-V. F. ....	54.30
790 ☒	2c Provisional Envelope, Triple Overprint (U11 var.), unlisted. Fine un- used .....	—
791 ☒	1c-2c Postal Cards, Unsevered Pair (UY6a, UY8a). Very Fine unused	10.00
792 ☒	1c-2c Postal Cards, 1882-93 Issues, 13 varieties 61 unused cards. Fine- V. F. ....	96.95
793	Hawaii Revenues, 20c-\$10.00, 7 varieties 1887-97 Issues, 96 stamps, mostly used. Retail value \$47.25 .....	—

### PHILIPPINES

794 ★	1926, 2c-1p Legislative Palace (319-325). Cpl. set. Very Fine .....	11.85
795 ★	1925-31, 2c-1p Imperforates (340-350). Horiz. Pairs. Very Fine .....	45.00
796 ★	1925-31, 2c-10P Imperforates (340-353, E6). Complete set. Very Fine (Photo)	117.50
797 ☒	1928-45, Flight Covers and First Days, 21 covers, mostly with cachets. Fine lot .....	—
798 ★	1911, Post Office Seals (OX3-OX5). Fine-Very Fine .....	18.50



799 ★	1911, Yellow, Post Office Seal (OX5A). Very Fine, not priced .....	—
800	1944, 2c <b>Carmine Entire, Victory (U43)</b> . Very Fine. Scarce .....	—
801 ★	1944, 17c Deep Orange, Jap Occup. Strip of seven with pair <b>Imperforate Between</b> (N34 var.) only one sheet found containing ten pairs. Very Fine. Rare .....	—

### PHILIPPINE WHOLESALE

802	1926-32, 2c-1p (85 stamps), Between #319-360, used and unused, includes 2 sets of Legislative Palace. V.G.-V.F. ....	74.35
803 ★	1935, 4c Light Yellow Green (384a). Fifteen Sheets of 50. V.G.-V.F. ....	75.00
804 ★	1928-41, Ten different #384a, 438, 461, J10, O37, N13, N15, N19, NB5, NB7) from 100 to 200 of each, mostly no gum. V.G.-V.F. ....	87.00
805 ★	Same as above .....	87.00
806 ★	1941, 2c Apple Green (461). Five Sheets of 100. Fine-V.F. ....	15.00
807 ★	1928, 8c Brown Red Due #J10 (559). In blocks and sheets. no gum. V.G.-V.F. ....	55.90
808 ★	1941, 2c Apple Green, Official (O37). Fourteen sheets of 100 plus half sheet. V.G.-V.F. ....	43.50
809 ★	1943-44, Jap Occup. #N12 (1100), N15 (690). Fine, no gum .....	35.80
810 ★	1943, Semi-Postals #NB5-7 (100 sets), Fine, no gum .....	36.00
811 ★	1943, Semi-Postal #NB5 (400), no gum, slightly faded .....	48.00
812 ★	1943, Semi-Postal #NB7 (500). Fine, no gum .....	60.00

### U.S. & FOREIGN ZEPPELIN COVERS

813 ☒	<b>UNITED STATES, 1930, 65c-\$1.30 Graf Zeppelins (C13-C14)</b> . Two of first on cachet flight cover. Very Fine .....	68.50+
814 ☒	—1930, <b>\$1.30-\$2.60 Graf Zeppelin (C14-C15)</b> . Tied on cachet flight cover. Very Fine .....	90.00+
815 ☒	—Nine Covers and Cards, all cachet flights of Zeppelin. Fine-V.F. ....	—
816 ☒	<b>AUSTRIA</b> , Six cachet Zeppelin flight covers, includes four #C29 on covers. Very Fine .....	37.00+
817 ☒	<b>BRAZIL, ICELAND, URUGUAY</b> , Five cachet Zepp. flight covers and cards. Very Fine .....	—
818 ☒	<b>DANZIG</b> , Six cachet Zepp. flight covers and cards. Very Fine .....	12.20+
819 ☒	<b>GERMANY, 1928-31, Forty Cachet Zeppelin Flight Covers and Cards</b> all contain one or more of #C35-C37 Zeppelin stamps. Very Fine .....	50.25+

820	✉	—1931, 2m-4m Zeppelins (C37-C38). Two of latter on cachet DO-X Flight cover. Very Fine .....	21.25+
821	✉	—1931, Same as above .....	21.25+
822	✉	—1931, 2m-4m So. American Flight (C38-C39). Cpl. set on cachet flight cover of DO-X. Very Fine .....	20.00+
823	✉	—1931, 2m So. American Flight (C38). Three cachet flight covers each with this stamp plus others. Very Fine .....	30.00+
824	✉	—1931, 1m-4m <b>North Pole Flight</b> (C40-C42). Cpl. set on three cachet Zepp. Flight covers. Very Fine .....	65.00+
825	✉	—1931, Same as above. Very Fine .....	65.00+
826	✉	—1931, 2m-4m North Pole Flight (C41-42). Each on cachet Zepp. flight cover. Very Fine .....	52.50+
827	✉	—1931, Same as above. Very Fine .....	52.50+
828	✉	—1933, 2m-4m Chicago Zepp. Flight (C44-C45). Four covers each containing one and other stamps on Zepp. cachet flights. Very Fine .....	20.00+
829	✉	—45 Zeppelin Flight Covers and Cards, mostly with cachets, 1929-1936. Very Fine .....	—
830	✉	<b>HUNGARY</b> , Eight cachet Zeppelin flight cards and covers, includes C24-C25. Very Fine .....	14.60+
831	✉	<b>LIECHTENSTEIN</b> , Four cachet Zepp. flight covers. Fine-V.F. ....	24.05+
832	✉	<b>LUXEMBOURG</b> , Eight cachet Zepp. flight covers and cards, contains both German and Luxembourg stamps on each. Very Fine .....	—
833	✉	<b>NETHERLANDS</b> , Eight cachet Zepp. flight covers. Very Fine .....	—
834	✉	<b>PALESTINE</b> , 1929, Cachet Zepp. flight card. Very Fine .....	—
835	✉	<b>RUSSIA</b> , 1930, 40k-80k Zeppelin (C12-C13). On flight card and cover. Very Fine .....	—
836	✉	<b>SAAR</b> , Three cachet Zepp. flight covers. Very Fine .....	12.40+
837	✉	<b>SWITZERLAND</b> , Seven cachet Zepp. flight covers and cards. Very Fine .....	12.45+

## GENERAL FOREIGN

838	★田	<b>BRITISH CORONATIONS</b> , 1937, Complete set in <b>Blocks</b> including long Newfoundland. Very Fine .....	—
839	★田	<b>CANADA</b> , 1903-08, 2c <b>Carmine</b> , <b>Edward Booklet Pane of 6 (90b)</b> . Fine-Very Fine .....	125.00
		(Photo)	
840	★田	—Another Fine Pane from same booklet .....	125.00
841	✉	— <b>Envelopes and Postal Cards</b> , used and unused, 69 items, 19th & early 20th. Very Fine .....	—



842	<b>CAMEROONS</b> , 1900-15, 3p-80p, 3p-5m (7-15, 20-32). Latter set unused. Very Fine .....	12.90
843 ★	<b>CANAL ZONE</b> , 1904, 10c Pale Red Brown (8). Fine .....	13.50
844	<b>CHILE</b> , 1942, 100p Commem. Airpost (C89). Very Fine used .....	8.00
845	—Same as above. Very Fine .....	8.00
846	—Same as above. Very Fine .....	8.00
847	<b>COLOMBIA</b> , 250 different including 60 different Airmails. Fine lot .....	—
848	—250 different including 59 different Airmails. Fine lot .....	—
849 ★	<b>FIJI</b> , 1938, ½p-2/6 George VI (117-126), no "A" numbers. Very Fine ....	16.27
850 ☒	—1938-40, ½p-5p George VI (117-122). Tied on registered cover. V.F.	6.37
851 ★	<b>FRANCE</b> , 1936, 50fr Ultramarine, <b>Airpost</b> (C15). Very Fine .....	22.50
852 ☒	—Interesting stampless cover with two diff. markings " <b>Cabinet Du General De Gaulle</b> , Oct. 30, 1945". Very Fine .....	—
853 ★	<b>GERMAN COLONIES</b> , 1900-1915, 5p-5m Nine different .Fine-Very Fine	24.85
854	<b>GERMAN SO.-WEST AFRICA</b> , 1900 5M (25). Very Fine used ( <b>Photo</b> )	20.00
855 ★	<b>GERMANY</b> , 1930-38, Four Semi-Postal Issues (B35-B40, B68, B119), Part used. Fine-Very Fine .....	19.30
856 ★	—1928-31, 1m-4m Zeppelins (C35-C37). Cpl. set. Very Fine .....	6.25
857 ★	—1930, 2m-4m <b>South America Flight</b> (C38-C39). Cpl. set. Very Fine ....	32.50
858 ☒	—1931, 2m, Zepp. <b>North Pole Flight</b> (C41), tied on cachet flight card. Very Fine .....	17.50
859 ☒	—Same as above. Very Fine .....	17.50
860 ☒	—1931, 4m Zepp. <b>North Pole Flight</b> (C42), tied on cachet flight cover. Very Fine .....	35.00
861	— <b>Off. in China</b> , 1898, 3pf-50pf (1-6), cpl. set. Fine-Very Fine used ....	8.20
862	— <b>Off. in China</b> , 1898 Some as above. Fine-Very Fine used .....	8.20
863 ★	— <b>Off. in China</b> , 1900-1905, 1M-3M, ½d-1d (33-34, 36, 43-44). Very Fine	22.00
864 ★	— <b>Off. in China</b> , 1906-1913, 1c-1½d (47-56). Cpl. set. Very Fine .....	10.25
865	— <b>Off. in Morocco</b> , 1899-1905, Two Issues (1-6, 20-22, 24-26) used & un- used. Fine-Very Fine .....	18.20
866 ★	— <b>Off. in Turkey</b> , 1900, 10p-10Pi (13-22). Fine-Very Fine .....	14.30
867 ★	<b>GREAT BRITAIN</b> , 1937-39, Complete 5/ Booklet, contains 5 panes (235b, 238b, 239b). Very Fine .....	6.50
868	<b>KIAUCHAU</b> , 1906-1910, 1c-40c (24-29). Very Fine used .....	9.00
869 ★	<b>LIECHTENSTEIN</b> , 1931, 1fr-2fr <b>Zeppelin</b> (C7-C8). Cpl. set. Very Fine	22.50



870 ★	<b>MEXICO</b> , 1940, 5c-5p Penny Black (754-758). Cpl. set. Very Fine .....	8.30
871 ★	—1940, 5p Penny Black Airpost (C107). Very Fine ..... <b>(Photo)</b>	30.00
872	<b>NEWFOUNDLAND</b> , 1860, <b>6p Orange (13)</b> . Small margins. Fine <b>(Photo)</b>	90.00
873	—1865-94, 5c Brown, Seal (25). Fine .....	27.50
874 ★田	—1910, 6c Guy (92A), Block. Very Fine .....	18.00
875 ★	—1933, 5c-75c Labrador Issue (C13-C17). Complete set. Very Fine .....	34.75
876 ★	<b>NIUE</b> , 1945, 2/6-£1 (86-89). Very Fine .....	15.00
877 ★	<b>NYASALAND</b> , 1945, 20/ George VI Issue (81). Very Fine .....	8.00
878 ★	<b>PANAMA</b> , 1947, ½c on 8c Gray Black, Sheet of 100 containing four transposed surcharges also missing "A" on three stamps (353, a). V.F.	25.92+
879 ★	<b>PORTO RICO</b> , 1899, 1c-10c Dues (J1-J3). Cpl. set. Fine-Very Fine .....	14.60
880	<b>SAAR</b> , 1927, 20c-1.50Fr. Semi-Postal Issue (B5-B8), cpl. set. Very Fine used .....	5.00
881 ★	<b>SPAIN</b> , 1938, U. S. Constitution Airpost (C97) .Very Fine .....	7.00
882 ★	<b>ST. SETTLEMENTS</b> , 1c-\$1.00 Edward Issue (93-99, 101-102), \$1.00 used. Fine-Very Fine .....	8.25
883 ☒	<b>Censored Covers, World War II</b> , 62 covers all addressed to War Dept. Washington, from wide variety of countries. Fine lot .....	—

END OF SALE — THANK YOU



# SCOTT CATALOGUES

## 1950 Editions

### Volume I:

#### SCOTT STANDARD POSTAGE STAMP CATALOG

1950 Edition

United States, British Colonies and American Nations ..... \$3.50

### Volume II:

BALANCE OF THE WORLD ..... \$3.50

### Volume I and II:

COMBINED EDITION in 1 volume ..... \$7.00

UNITED STATES SPECIALIZED EDITION ..... \$3.50

Sent Post Free

ALL READY FOR DELIVERY

---

**ROBERT A. SIEGEL**

**124 MAMARONECK AVENUE**

**WHITE PLAINS, N. Y.**



## SELLING YOUR COLLECTION?

**REALIZE IMMEDIATE CASH  
AND HAVE ADVANTAGE OF SELLING AT AUCTION.**

**I will advance on your collection immediate cash up to  
75% of my appraisal value of what it should realize at auction.**

**It will then be sold at one of my coming auction sales.  
Commission is 20% of the gross and final settlement within  
thirty days after the sale.**

**Send collection direct (valued \$500 upwards) for appraisal.  
Auction advance will be sent within 48 hours after receipt. If  
not entirely pleased, collection will be returned at my expense.**

**I have been conducting stamp auctions for 19 years.**



**ROBERT A. SIEGEL**

**(Licensed and Bonded Auctioneer)**

**124 MAMARONECK AVE.**

**WHITE PLAINS, N. Y.**

**(TEL. W. P. 9-5837)**