

145th SALE

## UNITED STATES STAMPS

Including Proofs and Essays  
U. S. Wholesale and U. S. Possessions



AT PUBLIC AUCTION  
THURSDAY, SEPTEMBER 28th, 1950  
AT 2:30 P. M.

Sale to be held in New York City at the offices of  
Sylvester Colby, Inc., 505 Fifth Avenue

(Please mail all bids to our White Plains, N. Y. address)

GREGORY MOZIAN, Licensed Auctioneer

*Robert A. Siegel*  
**AUCTIONS**

124 MAMARONECK AVE., WHITE PLAINS, N. Y.

## CONDITIONS OF SALE

---

1. The terms of sale are strictly cash to the highest bidder. All buyers are expected to pay for lots within three days of receipt, unless special arrangements have been made prior to the sale.
  2. All bids are per lot as numbered in the catalogue and not per piece, unless otherwise announced by the auctioneer at the time of sale.
  3. Any lot the description of which is incorrect is returnable only within three days of receipt. All disputed lots must be returned intact as received. Lots containing five or more stamps are not returnable at any time. No lots may be returned by purchasers who have had the opportunity to examine them before the sale.
  4. Successful mail bidders, unless they are known to us or supply acceptable references, will be notified of the amount of the lots secured for them, and are expected to send payment in full before the lots are forwarded.
  5. If the purchase price has not been paid within the time limit, or lots taken up within seven days from date of sale, they may be resold and any losses arising from such sale charged to the defaulter.
  6. All stamps are sold as genuine, except where sold "As Is". Claims for any lot proving otherwise, must be made within two weeks from date of sale.
  7. The right is reserved to group two or more lots, also withdraw any lot or lots from the sale, or to act on behalf of the seller.
  8. Until paid for in full all lots remain the property of Robert A. Siegel.
  9. No commission is charged for buying at our sales, but all forwarding charges will be added to the purchase price.
  10. Lots will be sent for inspection, provided such lots are returned to us the same day as received. Postage and registration both ways will be charged. Approximate values of lots will be given on request.
  11. The placing of a bid shall constitute acceptance of the foregoing conditions of sale.
- 

In sending bids, always state the highest price you are prepared to pay for the lot. Your limit will not be used as a starting bid unless absolutely necessary.

## DESCRIPTIONS

Superb—the finest condition for noteworthy, outstanding copies.

Very Fine (VF)—means that there is a slight deviation from the above.

Fine (F)—means that the perforations do not touch the design on issues after 1890, but in some cases may just touch in earlier issues; if used, fairly lightly cancelled.

Very Good (VG)—means that the appearance is generally fine but that the perforations cut the design slightly.

Good (G)—means average off-centering; or fairly attractive with slight defects. Original gum is not to be expected on 19th Century stamps up to 1888 unless so stated.

Scott's 1950 Specialized United States Catalogue is used for cataloging our lots of United States and Scott's Standard Catalogue, 1950 for others.

<b>WE SOLICIT FINE MATERIAL FOR FUTURE SALES</b>
--

# BID SHEET

**White Plains, N. Y.**

**SIGNED**

[illegible]

➤ PLEASE NOTE THIS SALE WILL BE HELD AT OFFICES OF  
SYLVESTER COLBY Inc., 505 FIFTH AVE., NEW YORK CITY

[illegible]



**PLEASE NOTE — IF ATTENDING SALE**

**This Sale will be held in New York City**

**At 2:30 P.M.**

**At the offices of Sylvester Colby, Inc.**

**505 Fifth Avenue**

Lots will be shown in New York City on the day of sale.

Mail bids should be sent to our White Plains, N. Y. office.

# **CATALOGUE**

## **UNITED STATES STAMPS**

### **PROOFS & ESSAYS**

1 P	<b>5c New York Postmaster. Trial Color Proof in Orange Vermilion (9X1 TC). Very fine</b> ..... <b>(Photo)</b>	50.00
2 P	<b>5c New York Postmaster. Trial Color Proof in Deep Blue. (9X1TC). Thin, Fine appearance</b> ..... <b>(Photo)</b>	50.00
3 P	<b>5c New York Postmaster. Trial Color in Deep Rose Violet. (9X1TC). Crease, nice appearance</b> .....	50.00
4 P	<b>5c 1847 Issue. Deep Blue. Trial Color Proof (1TC). Slight thin. Very Fine appearance</b> ..... <b>(Photo)</b>	60.00
5 P	<b>10c Black, 1847 Issue. Proof on India (2P). Defective</b> .....	60.00
6 P	<b>10c 1847 Issue. Scarlet Vermilion. Trial Color Proof (2TC). Thin. Fine appearance</b> ..... <b>(Photo)</b>	60.00
7 P	<b>10c Scarlet Vermilion. Oxidized, on card (2TC). Slight flaws</b> .....	75.00
8 E	<b>3c Yellow Green. Washington Essay of 1851 (33E-Db), tiny thin in margin. V.F. appearance</b> ..... <b>(Photo)</b>	15.00
9 E	<b>3c Green, 1851 Essay (33E-Ha). Slightly stained. Fine appearance</b> <b>(Photo)</b>	17.50
10 E	<b>3c Dull Rose, 1851 Essay (33E-Je). Fine</b> .....	7.50
11 P	<b>3c-90c, 1851-60 Reprints. Card Proofs (41P-47P). Very Fine</b> .....	33.00


12 P	1c-90c August Issue, India Proofs (55P-62P). Cpl. set, several minor thins. Very Fine appearance .....	202.00
13 P	90c Green, Trial Color "August" (62E-Bg). Corner defective. ....	25.00
14 P	1c-90c, 1861 Issue, Card Proofs, Ten diff. (Between 63P-78P). Very Fine .....	32.25
15 P	1c Deep Orange Red, 1c Dark Brown, Trial Color Proofs (63TC). Very Fine .....	8.00
16 P	1c Dark Orange, 1c Orange Brown. Trial Color Proofs (63TC). Very Fine .....	8.00
17 P	1c Slate Black. Trial Color Proof (63TC). Horiz. Pair. Very Fine .....	8.00
18 P	1c Dark Brown. Trial Color Proof (63TC). Horiz. Pair. Very Fine .....	8.00
19 E	1c Franklin. Coupon at Top, Red, Perforated (63E-Bh) Fine ..... (Photo)	10.00
20 P	1c-90c, 1861-79 Issues. 28 Card Proofs mostly diff. Fine lot .....	63.00
21 E	2c Indian, Essays in Red and Blue (73E-Ca), latter has small thin .....	6.00
22 E	3c Shield & Liberty Essay. Black and Violet (74E-c). Fine .....	5.00
23 E	10c Indian Essays, Red, Blue, Violet (76a-Eb). Fine .....	15.00
24 E	3c Washington Essays. Prussian-Blue, Orange (85E-Ed). Fine .....	5.00
25 P	12c Black Perforated and Z Grill on Lilac Paper (85eTC6g). Experimental Proof, centered to left. Fine .....	20.00
26 P	12c Green, same as above. Fine centering, two perfs short .....	20.00
27 P	12c Brown, Perforated and Z Grill on yellow Paper (85eTC6d). Experimental Proof. Fine .....	20.00
28 P	12c Blue, Perforated and Z Grill on Salmon Paper (85eTC6). Experimental Proof, not listed on this paper, well centered, slight stain .....	25.00
29 P	1c-90c 1869 Issue, Card Proofs (112P-122P). Cpl. set. Very Fine .....	43.75
30 P	1c Buff, Proof on India (112P). Block, thin at top .....	13.50
31 P	15c, 24c, 30c 90c Pictorials, 1869 Issue, CENTERS INVERTED, Card Proofs (120aP, 121aP, 122aP, 129aP). Very Fine set (Photo on Cover)	600.00
32 E	3c Locomotive, Orange, Grilled, Essay (114E-Cgh). Very Fine .....	3.00
33 E	5c Washington, Deep Yellow Brown, Essay of 1869 Issue. (115aE-Fc). Block. Very Fine .....	20.00
34 P	1c-90c, 1870 Banknotes, India except last three on card (145P-155P). Cpl. set. Fine-V. F. ....	31.75
35 P	7c Stanton, Vermilion, Large Die Proof (149P). Very Fine .....	45.00
36 P	7c Stanton, Vermilion. Block of 20 on India (149P). Very Fine .....	125.00
37 P	7c Stanton, Vermilion. Bot. imprint Plate No. Block of thirty (149P). Very Fine. Showpiece .....	215.00

38 P	<b>7c Stanton, Vermilion. Top Imprint Plate No. Pane of Fifty (149P).</b> Very Fine. Showpiece .....	340.00
39 P	<b>7c Stanton, Black. Large Die Proof (149TC).</b> Very Fine .....	50.00
40 P	<b>7c Stanton, Brown. Trial Color Die Proof on India (149TC).</b> Not listed. Very Fine ..... <b>(Photo)</b> .....	—
41 P	<b>7c Stanton, as above in Blue.</b> Fine .....	—
42 P	<b>7c Stanton, as above in Red.</b> Fine .....	—
43 E	<b>7c Stanton, Black. Vignette on India Paper on Card (149E-Da).</b> Very Fine. Scarce ..... <b>(Photo)</b> .....	—
44 P	<b>7c Stanton, Vermilion, India Proof (160P).</b> Block. Very Fine .....	25.00
45 P	<b>7c Stanton, India Proofs (160P).</b> Two horiz. pairs, diff. shades. Very Fine .....	20.00
46 P	<b>7c Stanton, Vermilion, India Proof (160P).</b> Horiz. Strip of six. Very Fine .....	30.00
47 P	<b>7c Stanton, Vermilion, India Proof (160P).</b> Imprint Plate No. Strip of six, two small thins. V. F. appearance .....	30.00
48 P	<b>7c Stanton, Vermilion, Imprint Plate No. Block of 14 on India (160P).</b> Very Fine ..... <b>(Photo)</b> .....	150.00
49 P	<b>Same as above only Plate No. at top.</b> Very Fine except two stamps have small thins .....	150.00
50 P	<b>7c Stanton, Vermilion, Imprint Plate No. Block of 20 on India (160P).</b> Very Fine. Pretty showpiece .....	185.00
51 P	<b>7c Stanton, Black Trial Color Proofs on India (160TC).</b> Block. Very Fine .....	30.00
52 P	<b>7c Stanton, Black Trial Color Proof on India (160TC).</b> Block of twelve. Very Fine except one stamp has slight thin spot .....	90.00
53 P	<b>7c Stanton, Black, Atlanta Card Proof (160TC).</b> Block of six. Very Fine .....	42.00
54 P	<b>1c-90c Banknotes. Card Proofs (178-179P, 205-209P, 211-213P, 215-218P).</b> Very Fine .....	26.25
55 P	<b>1c-90c, 1890 Issue, Card Proofs (219P-229P).</b> Cpl. except 2c Lake. Very Fine .....	25.60
56 P	<b>1c-50c Columbians, Card Proofs (230P-240P).</b> Very Fine .....	27.50
57 P	<b>10c Special Delivery, Carriers, Card Proofs (E1P-E3P, LO1P-LO2P).</b> Very Fine .....	9.10
58 P	<b>1c-50c Postage Dues, Card Proofs (J1P-J7P, J22P-J28P).</b> Two cpl. sets. Very Fine .....	11.50
59 P	<b>1c-90c Officials, Complete set of Card Proofs (O1P-O93P).</b> Very Fine ....	75.80
60 P	<b>1c-90c Officials, Agriculture, Executive, Interior, Post Office, Treasury, War, Six complete sets of card proofs .....</b>	36.50
61 P	<b>1c-90c Post Office, Card Proofs (O47P-O56P).</b> Very Fine set .....	5.25



62 P	<b>1c-90c State, Card Proofs (O57P-O67P).</b> Very Fine .....	7.05
63 P	<b>2c-\$60.00 Newspapers, Card Proofs (PR9P-PR32P).</b> Cpl. set, few of lower values have slight stains, mostly Fine .....	25.50
64 E	<b>1c Franklin, Black, Red Specimen on Card.</b> Very Fine .....	5.00
65 E	<b>Washington Vignettes,</b> Six different colors size of vignette 23x30mm. Very Fine ..... <b>(Photo)</b>	24.00
66 E	<b>Same as above,</b> only six different colors. Very Fine .....	24.00
67 E	<b>Washington Vignettes.</b> Four diff colors. Very Fine, 23x30mm. ....	16.00
68 E	<b>Washington Vignettes.</b> Four diff. colors, vignette 30x37mm. Very Fine	16.00
69 P	<b>5c-50c First Issue Revenues. Trial Colors, India</b> (R24TC, R51-52TC, R58TC). Fine-Very Fine .....	29.50
70 P	<b>\$1.00 First Issue Revenues, Carmine Trial Color Proofs</b> on India (R67TC-74TC, R76TC). Fine-Very Fine .....	39.50
71 E	<b>2c Red, Bank Check Essay,</b> Block on onion skin paper. Fine .....	—

#### N. Y. POSTMASTER, 1847 ISSUE

72	<b>5c New York Postmaster (9X1).</b> Margins three sides, touches at right.	55.00
73	<b>5c Red Brown (1).</b> Red Grid cancel, light crease. Fine appearance .....	27.50
74	<b>5c Red Brown (1).</b> Red grid cancel. Fine ..... <b>(Photo)</b>	27.50
75	<b>5c Red Brown (1).</b> Neat blue grid cancel. Margins three sides, touches at R. ....	35.00
76	<b>5c Red Brown (1).</b> Blue cancel. Fine .....	32.50
77	<b>5c Red Brown (1).</b> Blue cancel, just touches at one corner. Fine .....	32.50
78	<b>5c Brown (1).</b> Red town cancel, marginal three sides, just touches partly at left .....	32.50
79	<b>5c Red Brown (1).</b> Blue grid cancel. Fine ..... <b>(Photo)</b>	35.00
80	<b>5c Red Brown (1).</b> Blue grid cancel. Margins three sides, touches at B.	35.00
81	<b>5c Brown (1).</b> Black grid cancel. Margins all around, light crease. Very Fine appearance .....	42.50
82	<b>5c Red Brown (1).</b> Black grid cancel. Margins three sides, in at top ....	42.50
83	<b>5c Brown (1).</b> Red Numeral cancel, margins three sides, touches at left	50.00
84	<b>5c Brown (1).</b> Margins all around, cleaned, appears unused .....	15.00
85	<b>5c Red Brown (1).</b> Two, Blue grid, Red grid cancels, each has small closed tear, nice appearing .....	62.50
86	 <b>5c Red Brown (1).</b> Four margin copy tied with red grid from Boston. Very Fine .....	37.50



87	✉	<b>5c Red Brown (1).</b> Four margin copy tied with red grid from <b>Albany, N. Y.</b> Very Fine .....	37.50
88	✉	<b>5c Brown (1).</b> Four margin copy though small at left, tied with attractive blue <b>Troy, N. Y.</b> town cancel on neat cover .....	37.50
89	✉	<b>5c Red Brown (1).</b> Four margin copy tied with red N. Y. square grid cancel. Very Fine .....	37.50
90	✉	<b>5c Red Brown (1).</b> Tied with blue grids from Philadelphia. Fine .....	37.50
91	✉	<b>5c Red Brown (1).</b> Four margin copy tied with red grid on blue envelope .....	37.50
92	✉	<b>5c Red Brown (1).</b> Very Fine four margin copy tied with blue Philadelphia cancel on cover .....	37.50
93	✉	<b>5c Brown (1).</b> Tied with New York red square grid, three large margins, just touches at B. Fine cover .....	37.50
94	✉	<b>5c Brown (1).</b> Tied with red grid on cover from Boston, touches partly at top. Fine .....	37.50
95	✉	<b>5c Red Brown (1).</b> Red grid cancel. Fine margins, light crease, on cover with red Calais, Me. postmark on cover .....	37.50
96	✉	<b>5c Red Brown (1).</b> On cover with Ms. cancel, Blue " <b>Phila. &amp; Cola. R. R.</b> " postmark on cover. Fine .....	37.50+
97	✉	<b>5c Brown (1).</b> Tied with black grid from <b>New Albany, Ind.</b> Margins all around, closed tear. Fine appearance .....	42.50
98		<b>10c Black (2).</b> Red grid cancel. Margins all around though small at upper left. Fine .....	(Photo) 80.00
99		<b>10c Black (2).</b> Red grid cancel. Large margins all around. Very Fine .....	(Photo) 80.00
100	✉	<b>10c Black (2).</b> Cancelled with four blue small triangles, not tied, " <b>Wil. &amp; Ral. R. R.</b> " cancel on cover Margins three sides touches at B. Attractive cover and markings .....	100.00+

#### 1851 ISSUE

101		<b>1c Blue, Type IV (10).</b> Horiz. Strip of 3, Blue town cancel, right stamp thin, margins all around except one side of left stamp, attractive piece .....	35.00
102		<b>1c Blue, Type IV (10).</b> Pair and three singles. Very Good-Fine .....	45.00
103	✉	<b>3c Red (11).</b> Two covers both tied "socked on the nose" town cancels of "Taunton, Ms. 3cts" one in Blue, other Olive Green. Fine .....	—
104		<b>3c Imperf. (11).</b> Collection of 147 stamps, includes 14 Pairs, mostly on pieces, includes shades cancellations, varieties. Fair-V.F. Est. Net Val. \$55.00 .....	—
105		<b>10c Green, Type II (14).</b> Margins all around. Very Fine .....	16.00
106		<b>10c Green, Type III (15).</b> Margins all around. Very Fine .....	16.00

107	<b>10c Green, 12c Black (15, 17).</b> Latter has red cancel. V. G.—Fine .....	43.50
108	☒ <b>10c Green, Type IV, Recut at top (16).</b> Tied on cover from Norristown, Pa. to Calif., large margin three sides cut in at left. Very Good .....	150.00
109	<b>12c Black (17).</b> Close but not touched. Fine .....	25.00

#### 1857 ISSUE

110	<b>1c Blue, Type I (18).</b> Tiny thin spot. Fine appearance .....	37.50
111	<b>1c Blue, Type I, IIIa (18, 22).</b> Flaws. Fine appearing, latter unused .....	67.50
112	<b>1c Blue, Type II (20).</b> Fine .....	12.50
113	☒ <b>1c Blue, Type II (20).</b> Three tied on cover with Wash. D. C. postmark. Fine .....	37.50
114	<b>1c Blue, Type IIIa (22).</b> Fine .....	22.50
115	<b>1c Blue, Type IV (23).</b> Fine .....	27.50
116	<b>1c Blue, Type V (24).</b> Beautiful strike of fancy Star cancel from Freehold, N. J. Very Fine .....	(Photo) —
117	☒ <b>3c Red (26).</b> Tied on Patriotic Cover (Soldier & Flag) from Hanover, N. H., Dartmouth College seal embossed on back. Fine .....	—
118	☒ <b>3c Red (26).</b> Four covers all with blue adv. corner cards, three are from Phila. Fine .....	—
119	<b>3c Red (26).</b> Cracked plate variety, closed tear, nice appearance .....	37.50
120	<b>5c Red Brown (28).</b> Very Good .....	33.50
121	★ <b>5c Brown (29).</b> Straight edge at right. O. G. ....	60.00
122	★ <b>90c Deep Blue, Reprint (47).</b> Fine .....	(Photo) 110.00

#### 1861-1867 ISSUES

123	<b>1c Blue, 5c Red Brown (63, 75).</b> Tied on small piece with <b>Paid</b> cancel, attractive .....	26.50
124	☒ <b>3c Rose (65).</b> Tied on cover with excellent strike of Brattleboro, Vt. <b>MASONIC</b> , attractive though stamp defective at B. ....	—
125	☒ <b>3c Rose (65).</b> Tied on illustrated cover of Upsilanti Union Seminary, Upsilanti, Mich. postmark and Paid cancel, attractive cover .....	—
126	☒ <b>3c Rose (65).</b> Eight different attractive advertising covers .....	—
127	<b>3c Rose (65).</b> Twelve diff. <b>Fancy Cancels</b> , nice lot .....	—
128	★田 <b>3c Lake (66).</b> <b>BLOCK.</b> Fresh O. G., centered to top. Fine <b>(Photo) Formerly Cat.</b> .....	300.00
129	★ <b>5c Buff (67).</b> Well centered, tear at top, nice appearance .....	(Photo) 200.00

130	5c Brown Yellow (67a). Fine .....	(Photo)	47.50
131 ★	24c Red Lilac (70). Fine O. G. ....	(Photo)	70.00
132	30c Orange (71). Boxed blue transit cancel and black New Orleans cancel. Very Fine .....		8.50+
133	90c Blue (72). Tiny closed tear. Very Fine appearance .....		20.00
134	2c Black (73). Excellent strike of <b>Fancy Star</b> cancel, centered to R. ....		—
135 ★	3c Scarlet (74). Very Fine O. G. ....	(Photo) Formerly Cat.	250.00
136	5c Dark Red Brown (75). Red Grid cancel. Very Fine .....	(Photo)	22.50
137	5c Black Brown (76a). Fine .....		9.00
138 ★	5c Black Brown (76a). Centered to R. Very Good .....		32.50
139 ★	15c Black (77). Very Good, part O. G. ....		30.00
140 ★	15c Black, Red Specimen overprint (77SB) .Fine O. G. ....		10.00
141	24c Lilac (78). Red town cancel. Very Fine .....		8.00
142	12c Black, Z Grill (85E). Well centered, corner crease, small thin (Photo)		50.00
143	12c Black, Z Grill (85E). Slight crease. Very Good appearance .....		50.00
144 ★田	3c Rose, Grill (88). Block, centered to right, bottom pair has crease, O. G.		70.00
145	10c Green, Grill (89). Fine .....		8.00
146	6c, 10c, 90c, 1867-70 Issues (89, 115, 155). Very Good-Fine .....		30.75
147	2c Black, Grill (93). Blue cancel. Superb .....		4.00
148 ★	5c Brown, Grill (95). Centered to Bot. & Right. Very Good O. G. ....		95.00
149	24c Gray Lilac, Grill (99). One perf short. Very Fine appearance .....		50.00
150 ★	1c Blue, Re-issue (102). Very Fine .....	(Photo)	18.50

#### 1869 PICTORIAL ISSUE

151	1c-12c Pictorials (112-113, 115-117). Good-Fine .....		35.00
152	2c Brown (113). Horiz. Strip of four on piece. Very Fine .....		10.00
153	3c Ultramarine (114). Clear <b>Double Grill</b> . Fine .....		10.00
154 ☒	3c Ultramarine (114). Tied on cover with illustrated corner card of North Granville, N. Y. Ladies Seminary, stamp has str. edge, attractive .....		—
155 ☒	6c Ultramarine (115). Tied on cover from Oak Park, Ill. Very Good .....		15.00
156 ☒	12c Green (117). Tied on cover to London with transit markings. Very Good .....		30.00
157 ★	15c Brown & Blue (119). Perfs. touch at B. Very Good .....		27.50



158	★	15c Brown & Blue (119). Centered to top. Very Good O. G. ....	27.50
159	☒	24c Green & Violet (120). Fine <b>Vertical Pair</b> barely tied with 3c Green Banknote on legal cover that contained depositions, mailed to Alpena, Mich. Scarce on cover .....	400.00+
160		30c Blue & Carmine (121). Well centered. Fine .....	25.00
161		90c Carmine & Black (122). Centered to right. Fine ..... <b>(Photo)</b>	95.00
162		90c Carmine & Black (122). Small ironed out crease. Fine appearance <b>(Photo)</b> .....	95.00
163		90c Carmine & Black (122). Thin spot. Fine appearance .....	95.00
164	★☐	1c Buff, Re-issue (133). <b>Block</b> , centered to R. Fine O. G. .... <b>(Photo)</b>	50.00

### BANKNOTE ISSUES

165	☒	3c Green, Grill (136). Nineteen covers, includes cancels, split grills. V. G.-V. F. ....	—
166		7c Vermilion, Grill (138). Fine .....	17.50
167		7c Vermilion, Grill (138). Light corner crease. Very Fine appearance ....	17.50
168		90c Carmine, Grill (144). Fine .....	52.50
169		1c Banknotes, mounted collection of 960 stamps, shades, some cancellations .....	—
170		3c Greens. Seventeen diff. <b>Fancy Cancels</b> , nice lot .....	—
171		2c-12c Banknotes, <b>Officials</b> (150-151, O97, O116). Cancels, N. Y. Foreign Mail, U. S., fancy Star, nice strikes .....	—
172		15c Bright Orange (152). Very Fine .....	5.50
173		24c Purple (153). Fine .....	10.00
174	★	24c Purple (153). Light crease, centered to left, O. G. ....	50.00
175		7c, 10c, 24c Banknotes (153, 160-161). Three diff. <b>N. Y. Foreign Mail</b> cancels, nice strikes .....	18.50+
176	★	90c Carmine (155). Fine .....	75.00
177		90c Carmine (155). Fine .....	14.00
178		90c Carmine (155). Fine .....	14.00
179		90c Carmine, Banknotes (155, 191). Fine .....	29.00
180		6c Dull Pink (159). Shield cancel. Fine ..... <b>(Photo)</b>	—
181		6c Dull Pink (159). Very Fine strike of <b>N. Y. Foreign Mail</b> cancel <b>(Photo)</b>	—
182		6c Dull Pink (159). Attractive strike of <b>N. Y. Foreign Mail</b> cancel <b>(Photo)</b>	—
183		6c Dull Pink (159). Pair with <b>N. Y. Foreign Mail</b> cancel. Fine <b>(Photo)</b>	—



184	<b>6c-Dull Pink (159).</b> Seven different <b>New York Foreign Mail cancels.</b> Fine-Very Fine .....	—
185 ★	<b>10c Brown (161).</b> Centered to B. Fine .....	15.00
186	<b>90c Banknotes (166, 218).</b> Slight flaws. Very Fine appearance .....	30.00
187 ★	<b>1c-30c Banknotes.</b> Eleven stamps, 8 with <b>experimental Laid Paper</b> , three with dark experimental paper. V. G.-V. F. ....	—
188 ★田	<b>2c Vermilion (178).</b> Block, tiny scratch on one stamp. Very Good O. G. ....	45.00
189	<b>1c Blue (206).</b> Fine strike of <b>Kicking Mule</b> , stamp has thin spot .....	—
190	<b>2c Red Brown (210).</b> Two diff. <b>Skull &amp; Crossbone</b> cancels, one has str. edge, nice strikes .....	—
191 ★	<b>90c Purple (218).</b> Centered slightly left. Fine O. G. .... <b>(Photo)</b>	35.00
192 ★田	<b>2c Lake, Imperforate (219D)</b> Block. Very Fine, no gum as usual .....	16.00
193 田	<b>15c Indigo (227).</b> Block, Finely centered, no gum .....	30.00

#### COLUMBIAN ISSUE

194 ★田	<b>1c Columbian (230).</b> Block of 16 and two blocks of 12, four stamps have str. edges. V. G.-V. F. ....	23.40
195 ★	<b>1c-15c Columbian (230-238).</b> 4c no gum. Very Good-Very Fine .....	25.95
196	<b>1c-\$1.00 Columbian (230-241).</b> Good-Fine except latter heavily cancelled .....	65.70
197 ★	<b>1c-30c Columbian (230-239).</b> Last two used, some without gum. Good-Fine .....	29.45
198 ★	<b>30c-50c Columbian (239-240).</b> First well centered, light gum crease, latter Fine .....	25.00
199 ★	<b>50c Columbian (240).</b> Perfs in one side. Very Good .....	15.00
200 ★	<b>\$1.00 Columbian (241).</b> Fine, part gum .... <b>(Photo)</b>	45.00
201 ★	<b>\$1.00 Columbian (241).</b> Well centered, regummed .... <b>(Photo)</b>	45.00
202 ★	<b>\$1.00 Columbian (241).</b> Fine .... <b>(Photo)</b>	45.00
203 ★	<b>\$1.00 Columbian (241).</b> Centered to B. no gum .... <b>(Photo)</b>	45.00
204	<b>\$1.00 Columbian (241).</b> Lightly cancelled, slight flaws. Very Fine appearance .....	37.50
205	<b>\$2.00 Columbian (242).</b> Very Fine .... <b>(Photo)</b>	32.50
206	<b>\$2.00 Columbian (242).</b> Very Fine .... <b>(Photo)</b>	32.50
207	<b>\$2.00 Columbia (242).</b> Tiny pin hole. Fine appearance .....	32.50
208 ★	<b>\$2.00 Columbian (242).</b> Centered to right. Fine regummed .... <b>(Photo)</b>	47.50

209 ★	\$2.00 <b>Columbian (242)</b> . Trivial crease of one perf. Very Fine appearance, no gum ..... (Photo)	47.50
210 ★	\$2.00 <b>Columbian (242)</b> . Centered to left, no gum. Very Good .....	47.50
211 ★	\$2.00 <b>Columbian (242)</b> . Centered to left, thin spot, no gum .....	47.50
212 ★	\$3.00 <b>Columbian (243)</b> . Fine, part gum ..... (Photo)	70.00
213 ★	\$3.00 <b>Columbian (243)</b> . Well centered, trivial dark spot in paper, barely visible on front, no gum ..... (Photo)	70.00
214 ★	\$3.00 <b>Columbian (243)</b> . Well centered, reperfed one side, regummed ..... (Photo)	70.00
215 ★	\$4.00 <b>Columbian (244)</b> . Fine centered, part of impression from album on back ..... (Photo)	80.00
216 ★	\$5.00 <b>Columbian (245)</b> . Centered slightly to right. Fine ..... (Photo)	90.00

#### 1894-1898 ISSUES

217 ★田	50c <b>Orange (260)</b> . Block, tiny black speck on one stamp. Very Good .....	50.00
218 ★田	2c <b>Carmine, Type I, II (265-266)</b> . Blocks. Fine-V. F. ....	15.00
219 ★田	2c <b>Carmine, Type II (266)</b> . Left Imprint Plate No. Block of 6. Fine .....	25.00
220	8c <b>Violet Brown, Revenue Watermark U. S. I. R. (272a)</b> . Very Fine .....	15.00
221 ★田	\$1.00 <b>Black (276)</b> , Block. Very Fine ..... (Photo)	125.00
222	\$1.00, \$2.00-5.00 (276, 479-480). Fine .....	14.00
223 ★	\$2.00 <b>Dark Blue (277)</b> . Well centered, one corner perf. added .....	45.00
224	\$5.00 <b>Dark Green (278)</b> . Fine .....	32.50
225	\$5.00 <b>Dark Green (278)</b> . Flaws, well centered .....	32.50
226 ★	2c <b>Red (279B)</b> . Thirty diff. Imprint Plate No. Strips of 3. V. G.-V. F. ....	52.50
227 ★	10c <b>Brown (282C)</b> . Superb .....	8.50
228 ★	15c <b>Olive Green (284)</b> . Very Fine .....	8.00

#### TRANS-MISSISSIPPI ISSUE

229 ★	1c-10c <b>Trans-Miss. (285-290)</b> . Fine-Very Fine .....	25.45
230 ★	1c-10c <b>Trans-Miss. (285-290)</b> . Very Good-Very Fine .....	25.45
231 ★	1c-10c <b>Trans-Miss. (285-290)</b> . Very Good-Fine .....	25.45
232	1c-50c <b>Trans-Miss. (285-291)</b> . Latter has str. edge. Good-Fine .....	18.65
233	1c, 4c <b>Trans-Miss. (285, 287)</b> . Each with <b>Kicking Mule</b> cancel. Fine .....	—
234 ★田	4c <b>Trans-Miss. (287)</b> Block. Fine .....	25.00



1



2



4



6



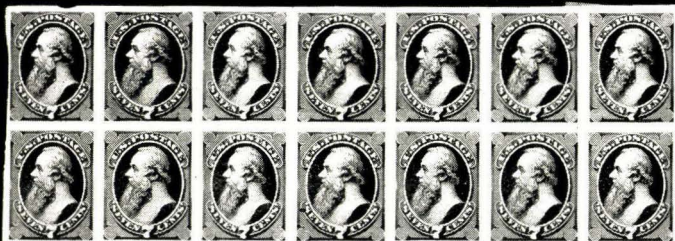
8



9



19

U.S. POSTAGE  
FIVE CENTS  
WASHINGTON, D.C. NEW YORK

22



48



43



65 EX



128



10

164



318



221



410



294



350



362



363



372



409



394



395



396





74



79



98



99



116



122



129



130



131



135



136



142



150



161



162



180



181



182



183



191



200



201



202



203



205



206



208



209



212



213



214



215



216



239



240



241



243



244



248



249



265

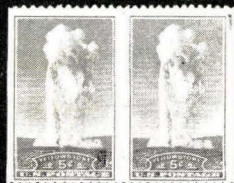


267



12809

272



302



333





343



344



345



355



357



359



360



373



375



376



378



380



381



382



401



405

235	★田	5c Trans-Miss. (288). Block. Fine .....	30.00
236		50c Trans-Miss. (291). Very Fine .....	10.00
237		50c Trans-Miss. (291). Very Fine .....	10.00
238		50c Trans-Miss (291). Horiz. Pair, lightly cancelled. Very Fine .....	20.00
239		\$1.00 Trans-Miss. (292). Very Fine ..... (Photo)	47.50
240		\$1.00 Trans-Miss. (292). Very Fine ..... (Photo)	47.50
241		\$1.00 Trans-Miss. (292). Fine ..... (Photo)	47.50
242		\$1.00 Trans-Miss. (292). Lightly cancelled, slight defects. Fine appearance	47.50
243	★	\$1.00 Trans-Miss. (292). Perfs. touch at right. Very Good ..... (Photo)	65.00
244	★	\$2.00 Trans-Miss. (293). Perfs. just touch at right ..... (Photo)	85.00

#### 1901-1908 ISSUES

245	★	8c-10c Pan-American (298-299). Two of latter. Very Good-Fine .....	20.25
246	★	\$1.00 Black (311). Perfs. touch at B. Very Good .....	40.00
247		\$2.00 Dark Blue (312). Str. edge at B. nicely centered .....	22.50
248	★	\$5.00 Dark Green (313). Very Fine ..... (Photo)	95.00
249		\$5.00 Dark Green (313). Very Fine ..... (Photo)	60.00
250	★	1c-10c Louisiana-Purchase (323-327). All well centered, corner perf. short on 10c .....	28.25
251	田	3c Louisiana-Purchase (325). Used Imprint Plate No. Block of 4. Fine	20.00+
252	★	1c-5c Jamestown (328-330). Two sets, one 5c has str. edge, several thins	17.50
253	田	1c-5c Jamestown (328-330). Set of used blocks, centered to one side .....	20.50
254		\$1.00 Violet Brown (342). Very Fine .....	8.00
255	★田	\$1.00 Violet Brown (342). Block. Fine .....	100.00
256	★田	2c Carmine, Bluish (358). Block, 3mm spacing. Fine .....	100.00
257	★	10c Yellow, Bluish Paper (364). Str. edge at top, perfs. just clear at R.	60.00

#### 1912-1919 ISSUES

258	★	1c-10c Pan-Pacific (397-400a). Includes both shades of 10c. Fine-V. F. ....	27.60
259	★	2c Pan-Pacific, Deep Lake Shade (398). Fine .....	—
260	田	1c-5c Pan-Pacific (401-403). Used Blocks. V. G.-Fine .....	27.00
261	★	2c Pan-Pacific (402). Very Fine .....	6.50
262	★田	2c Pan-Pacific (402). Block. Fine .....	27.50



263	★	2c-5c Pan-Pacific (402-403). Fine .....	20.00
264	★	30c Orange Red (439). Very Fine .....	13.50
265	★	50c Violet (440). Fine ..... (Photo).....	45.00
266	★	4c Brown, Coil (446). Paste-up Pair. Fine .....	17.50
267	★	2c Carmine Imperforate (459). Pair. Centered to top. Fine ..... (Photo)	100.00
268	★	20c Light Ultramarine (476). Fine .....	12.00
269	★	\$5.00 Light Green (480). Fine .....	16.00
270	★	Freaks and Varieties. 29 stamps, 1917-29 Issues, Double Papers, Stretched Overprints, Double Transfer etc. Interesting lot .....	—
271		\$2.00 Orange Red & Black (523). Very Fine .....	23.50
272	★	2c Offset Imperf. Type VII (532d), Plate No. Single. Very Fine. Scarce (Photo)	67.50
273		3c Offset Imperf. (535a). Horiz. Pair with light Double Print. V.F. ....	—
274	★田	1c Green (538). Block of six, two with Double Paper variety, str. edge on two .....	—
275	★田	1c-2c Rotary (538a, 539b). Block of 12 each Imperforate Between, perfs. in one side .....	48.00

#### 1922 ISSUE TO DATE

276	★田	\$5.00 Carmine & Blue (573). Plate No. Block of 4. Very Fine .....	42.50
277	★	1½c, 2c, 5c 10c Rotary (582-83, 586, 591). Pairs all with Double Paper Variety .....	—
278	★田	5c Blue (586). Block of six containing Pair with Double Paper variety, no gum, centered to top .....	—
279	★	2c Harding Rotary (612). Sheet of 100, perfs touch at bottom on most. Very Good .....	225.00
280	★	2c Harding (612). Pair with Double Paper variety .....	—
281	田	5c Lex-Concord (619). Used Block, lightly cancelled. Fine .....	8.50
282	★田	5c Norse-American (621). Top Block of 8 with Plate Nos. and Arrow, centered to R but clear .....	32.50
283	★	2c White Plains Exhibition Sheet of 25 (630). Fine .....	23.50
284	★	2c White Plains Exhibition Sheet of 25 (630). Dot variety. Fine .....	27.50
285	★	1c-6c Pairs all with Double Paper variety (632, 634, 636, 638, 684, 804, 857). Fine lot .....	—
286	★田	2c Carmine (634). Block of nine with Vertical Gutter between second and third row. Scarce piece. Fine .....	—

287	★田	3c Violet (635). Block of six all with <b>Double Paper variety</b> .....	—
288	★	2c Molly Pitcher (646). Strip of five containing Pair with <b>Wide Spacing</b> variety. Very Fine .....	15.00
289	★	1c-10c Kans. & Nebr. (658-679). Cpl. set. Fine-Very Fine .....	41.57
290	★	1c Kans. (658). Strip of four containing Pair with <b>Wide Spacing</b> variety, centered to R. ....	20.00
291	★	2c Kans. (660). Strip of four containing Pair with <b>Wide Spacing</b> variety. Fine. ....	20.90
292	★田	1c, 3c Nebr. (669, 672). Block of each, no period variety in each block .....	—
293	★	1½c Nebr. (670). Strip of four containing Pair with <b>Wide Spacing</b> , centered to left. Fine .....	—
294	★	3c Nebr. (672a). Strip of Five containing <b>one without Overprint</b> . Fine-Very Fine. Scarce .....	100.00 (Photo)
295	★	7c Nebr. (676). Pair one with very faint overprint, other clear. V. F. ....	—
296	★	8c Nebr. (677). Strip of four containing Pair with <b>Wide Spacing</b> variety. Very Good .....	27.20
297	★	9c Nebr. (678). Strip of four containing Pair with <b>Wide Spacing</b> variety, centered to B. Fine .....	30.00
298	★田	9c Nebr. (678). Block of twelve, centered to B. & R. ....	48.00
299	★田	½c-10c Bicentennials (704-715). Set of Plate No. Blocks. Fine-Very Fine .....	16.45
300	★	3c Mothers Day (737). Five sheets of 50 each. Fine-V. F. ....	21.50
301	★	2c Park Pair Imperforate Between (741a). Signed Ward, centered to top .....	35.00
302	★	5c Park, Pair Imperforate Between (744a). Very Fine. Ex Sinkler (Photo) .....	35.00
303	★田	3c Newburgh Farley (752). Center Line Gutter Block of 16. Very Fine ....	18.50
304	★田	1c-16c Farleys (752-765, 771). Set of four different <b>Arrow Blocks</b> of each. Very Fine .....	95.20
305	★田	1c-16c Farleys (753-765, 771). Top Plate No. Blocks of 6. Very Fine ....	34.50
306	★	3c Oregon (783). Eight sheets of 50 each. Fine-V. F. ....	34.50
307	★	5c Virginia Dare (796). Three sheets of 48 each. Fine .....	36.00
308	★田	½c-\$5.00 Presidentials (803-834). Complete set of Blocks, Early shades, last three are Center Line Blocks. Very Fine .....	91.24
309	田	½c-\$5.00 Presidentials (803-834). Cpl. set of used blocks. Fine-V. F. ....	—
310	★	3c Small Northwest (837). Sheet of 100. Fine .....	15.75
311	★	3c Golden Gate, 3c N. Y. Worlds Fair (852-53). Sheets of 50 each. Very Fine .....	10.00
312	★田	5c Flags (909-921). Cpl. set of Name Blocks. Very Fine .....	14.95



313 ★田 3c Palomar (966). Plate No. Blocks #23888-89. Very Fine ..... —

# AIRMAILS

314 ★	6c-24c Airs (C1-C3). Fine-Very Fine Set .....	15.50
315 ★	8c-24c Airs (C2-C6). Fine-Very Fine except latter has slight thin .....	29.00
316 ★	8c-24c Airs (C4-C6). Very Fine Set .....	16.00
317 ★	65c-\$2.60 Graf Zeppelin (C13-C15). Cpl. set, \$1.30 slightly thin, tiny paper speck in each of others. Fine appearance .....	123.50
318	65c-\$2.60 Graf Zeppelin (C13-C15). Very Fine lot ..... (Photo)	105.00
319 ★	65c Graf Zeppelin (C13). Plate No. Single. Very Fine .....	18.50
320	65c Graf Zeppelin (C13). Barely cancelled. Fine .....	17.50
321	65c Graf Zeppelin (C13). Fine .....	17.50
322 ☒	\$1.30 Graf Zeppelin (C14). Tied on cachet flight cover. Fine .....	37.50
323 ☒	\$2.60 Graf Zeppelin (C15). Tied on cachet flight cover. Very Fine .....	62.50
324 ★	50c Zeppelin (C18). Very Fine .....	9.50
325 ★	50c Zeppelin (C18). Very Fine .....	9.50
326 ★田	50c Zeppelin (C18). Block. Very Fine .....	40.00
327 ★田	50c Zeppelin (C18). Bottom Plate No. Block of 6. Very Fine .....	67.50
328 ☒	50c Zeppelin (C18). Tied on cachet flight cover, also Round-The-World cachet flight cover. Very Fine .....	10.00+
329 ★田	6c-50c Airmails (C25-C31). Set of Plate No. Blocks. Very Fine .....	11.55
330 ★	5c New York Jubilee Air (C38). Sheet of 100. Very Fine .....	16.00
331 ★田	10c, 15c, 25c U. P. U. Airmails. Complete set of Matched Plate No. Blocks all Nos. and Positions. Selling for \$50.00. Fine-V. F. ....	—
332 ★田	15c U. P. U. Airmail. 10 Plate No. Blocks. Fine-Very Fine .....	—
333 ★	1c Postage Due Imperf. (J31a). Horiz. Pair. Very Fine, without gum (Photo) .....	20.00
334 ★	1c-2c Rose, Dues (J59-J60). Perfs. just touch at top on first, latter. Fine .....	34.00
335 ★	\$1.00-\$5.00 Postage Dues (J77-J78). Very Fine .....	6.00
336 ★	2c-\$2.00 Shanghai (K1-K18). Cpl. set including Locals. Fine .....	66.30
337 ☒	2c-\$2.00 Shanghai (K1-K16). Complete set tied on cover, with Shanghai cancel. Fine-Very Fine .....	60.75

## OFFICIALS

338	★田	1c Agriculture (01). Block. Fine. O. G. ....	40.00
339	★田	3c Agriculture (03). Block. Fine O. G. ....	25.00
340	★田	6c Agriculture (04). Block. Fine O. G. ....	30.00
341	★田	10c Agriculture (05). Block. Very Good O. G. ....	100.00
342		10c, 24c Agriculture (05, 08). Fine-Very Fine .....	17.50
343	★田	12c Agriculture (06). Block of 6. Fine O. G. .... (Photo)	225.00
344	★田	15c Agriculture (07). Block. Very Fine except one stamp has light crease, O. G. .... (Photo)	85.00
345	★田	24c Agriculture (08). Block, centered to B. Fine O. G. .... (Photo)	75.00
346	★田	30c Agriculture (09). Block, perfs in at B. Very Good, O. G. ....	100.00
347	★	2c Executive (011). Fine O. G. ....	15.00
348		3c Executive (012). Very Good, O. G. ....	17.50
349	★田	3c Executive (012). Block, creases. Very Good appearance, O. G. ....	150.00
350	★	6c Executive (013). Very Fine, part O. G. .... (Photo)	28.50
351	★田	1c-90c Interior (015-024). Blocks. Very Good-Fine Set. Complete, O. G. ....	287.00
352	★田	2c Interior (016). Block of 20. V. G.-Fine, O. G. ....	12.50
353	★田	3c Interior (017). Block. Fine O. G. ....	25.00
354	★田	10c Interior (019). Block. Fine O. G. ....	12.00
355	★田	90c Interior (024). Block. Very Fine O. G. .... (Photo)	100.00
356	★田	1c Justice (025). Block. Fine O. G. ....	15.00
357	★田	2c Justice (026). Block. Fine O. G. .... (Photo)	60.00
358	★田	3c Justice (027). Block. Centered to right. Fine .....	50.00
359	★田	10c Justice (029). Block. Fine O. G. .... (Photo)	100.00
360	★田	12c Justice (030). Block. Centered to B. Fine O. G. .... (Photo)	60.00
361		24c Justice (032). Ms. cancel. Very Good .....	20.00
362	★	30c Justice (032). Stitch Watermark. Fine .... (Photo)	30.00
363	★	90c Justice (034). Fine, part O. G. .... (Photo)	50.00
364		90c Justice (034). Small Ms. cancel. Very Good .....	35.00
365	★田	1c Navy (035). Block. Fine O. G. ....	20.00
366	★	1c-6c, 10c-12c, 30c-90c Navy (035-038, 040-41, 044-45). Very Good-Fine	50.25
367	★田	2c Navy (036). Two shades in Blocks. Fine O. G. ....	24.00

368	★田	2c-6c Navy (O36-O38). Blocks. V. G.-Fine, O. G. ....	44.00
369	★田	3c Navy (O37). Block. Fine O. G. ....	20.00
370	★田	6c Navy (O38). Imprint Block. Very Fine O. G. ....	12.00
371	★田	6c Navy (O38). Block. One stamp with Vertical Line through "N" of "Navy" ....	16.50
372	★	7c Navy (O39). Fine ..... (Photo)	22.50
373	★田	7c Navy (O39). Block of six. Very Good, O. G. .... (Photo)	300.00
374	★	10c Navy (O40). Cricket Plate. Very Good O. G. ....	50.00
375	★田	10c Navy (O40). Block. Fine ..... (Photo)	75.00
376	★田	10c Navy (O40). Imprint Block of eight, one stamp with cracked plate variety. Fine piece. O. G. .... (Photo)	180.00+
377	★田	12c Navy (O41). Block. Very Fine O. G. ....	30.00
378	★田	15c Navy (O42). Block. Fine O. G. .... (Photo)	75.00
379	★	24c Navy (O43). Very Fine O. G. ....	9.00
380	★田	24c Navy (O43). Block. Fine ..... (Photo)	150.00
381	★田	30c Navy (O44). Block. Fine O. G. .... (Photo)	100.00
382	★田	90c Navy (O45). Block. Centered to R. Very Good, O. G. Scarce (Photo)	300.00
383	★田	1c Post Office (O47). Imprint Plate No. Block of 21. Fine-V. F. ....	20.00
384	★田	1c-90c Post Office (O47-O56). Complete set of Blocks. Very Good-Fine, O. G. ....	143.00
385	★田	10c Post Office (O51). Block. Fine O. G. ....	25.00
386	★田	30c Post Office (O55). Block. Very Fine O. G. ....	20.00
387	★田	90 cPost Office (O56). Block. Very Fine ....	35.00
388	★田	1c State (O57). Block. Creases. Fine appearance O. G. ....	75.00
389	★	1c-90c State (O57-O67). Very Good-Fine ....	67.75
390	★田	3c State (O59). Block of six. Fine O. G. ....	45.00
391	★田	6c State (O60). Block. Fine O. G. ....	20.00
392		24c State, 24c Treasury (O65, O80). Fine-Very Fine ....	18.50
393		\$2.00 State (O68). Fine ....	40.00
394		\$5.00 Green & Black (O69). Centered to bottom. Fine ..... (Photo)	250.00
395		\$10.00 Green & Black (O70). Light red wavy line cancel. Very Fine (Photo)	175.00
396	★	\$20.00 Green & Black, State (O71). Centered to top. Fine O. G. (Photo)	150.00
397	★	1c-90c Treasury (O72-O82). Cpl. set. Very Good-Very Fine ....	45.00



398	★田	1c-2c, 6c Treasury (072-073, 075). Blocks. Fine-Very Fine O. G. ....	40.00
399	★田	1c, 2c, 6c Treasury (072-73, 075). Blocks. Very Good .....	40.00
400	★田	1c-6c, 10c Treasury (072-075, 077). Blocks. V. G.-Fine .....	50.00
401	★田	7c Treasury (076). Block. Very Fine O. G. .... (Photo)	30.00
402	★田	10c-15c Treasury (077-079). Blocks. Very Good O. G. ....	43.50
403	★田	12c Treasury (078). Imprint Block of 8. Fine except few perfs short on one stamp, O. G. ....	27.00+
404	★田	15c Treasury (079). Block of 10. Very Good .....	37.50
405	★田	24c Treasury (080). Block. Centered to top left. O. G. Scarce (Photo)	200.00
406	★田	30c Treasury (081). Block of 12. Fine-Very Fine O. G. ....	120.00
407	★田	30c Treasury (081). Block. Fine O. G. ....	40.00
408	★田	3c War (085). Block of 8 with plate no. and part of imprint, centered to top .....	250.00
409		3c War (0116). Very Fine strike of <b>Womans Head</b> in blue from Headtide, Maine, centered to R. .... (Photo)	—
410	★	2c War, Imperforate Pair (0116a). Very Fine O. G. Rare ..... (Photo)	250.00
411	★	50c-\$1.00 Postal Savings (0122-0123). Fine-Very Fine .....	14.50
412	★	1c-\$100 Newspaper Stamps (PR114-120, PR126-130). Very Fine .....	9.95
413	★	Carrier, 1c Yellow, U. S. Mail (6LB10). Very Fine .....	25.00
414		Locals, Blood's, City Dispatch, Teese & Co. (15L11, 41L1, 137L1). V. G.-Fine .....	33.50
415	☒	3c Entires (U1, 2, 4, 10). Five entires all tied with diff. <b>Railroad</b> cancels, Norwich & Worcester, Phila. & Pottsville, West & Atlantic, Baltimore, South Carolina R. R. V. G.-V. F. ....	—
416	☒	3c Entires (U58, U82). With <b>Wells Fargo</b> franks, Petaluma and San Andreas, Cal. company markings tie. Fine .....	—
417	☒	3c Pink Entire (U59). Wells Fargo frank, <b>Austin, N. T.</b> ties. Fine .....	—
418	★	Sanitary Fair, Philadelphia, 1864, 10c-30c (WV-G1-G3). Fine-Very Fine ....	—
419	★	Sanitary Fair, Philadelphia, 1864, 20c-30c (WV-G2-G3). Very Fine .....	—

## REVENUES

420		4c Playing Card (R21c). Uncancelled, centered to top and left. V. Good	26.50
421		40c Inland Exch. Imperf. (R53a). Neat handstamp cancel, small thin, in slightly at one corner .....	100.00
422		\$10.00-\$20.00 Revenues (R93c-R96c, R98c). Fine .....	17.10

423	<b>\$200.00 Green &amp; Red (R102c).</b> Light Ms. cancel. Fine .....	72.50
424	<b>Collection Civil War Revenues all oddities and freaks,</b> paper folds, freak perforations etc. 199 stamps, interesting lot for the specialist. Est. Cash Val. \$35.00 .....	—
425	<b>\$5.00 Surcharge on Newspaper Stamp (R160).</b> Thin spot. Fine appearance .....	10.00
426	<b>\$500.00 Documentary (R249a).</b> Error, Numeral in Orange. Very Fine .....	—
427	<b>\$1,000.00 Documentary (R250).</b> Vertical Strip of 4, light cut cancel, small tear in one others. Fine .....	10.00
428	<b>\$1,000.00 Documentary, Series of 1942 (R360).</b> Light cut cancel and hand-stamp cancel. Very Fine. Scarce .....	—
429	<b>\$100.00 Documentary, Series of 1941 (R333).</b> Very Fine .....	30.00
430	<b>\$1,000.00 Documentary, Series of 1941 (R335),</b> four staple holes. Fine. Sells for \$50.00 .....	—
431	<b>\$1,000.00 Documentary, Series of 1942 (R360).</b> Light cut cancel and hand-stamp cancel. Very Fine. Scarce. Sells for \$55.00 .....	—
432	<b>\$50.00, \$100.00 Documentary (R406, R408),</b> each has cut cancel. Fine. Sells for \$9.25 .....	—
433 ★	<b>3c Future Delivery (RC2).</b> Very Fine. Est. Net Val. \$7.00 .....	—
434	<b>\$1.00-\$60.00 Future Delivery (RC10-RC18), RC16a).</b> All uncanceled. Fine-V. F. ....	—
435	<b>\$50.00 Stock Transfer, Series of 1942 (RD135).</b> Perf. Initialed. Fine. Sells for \$5.00 .....	—
436	<b>1c-\$5.00 Stock Transfer, Series of 1943 (RD140-155).</b> Uncanceled. Fine ....	—
437	<b>\$30.00 Stock Transfer, Series of 1943 (RD157).</b> Perf. Initialed. Very Fine. Sells for \$11.00 .....	—
438	<b>\$50.00 Stock Transfer, Series of 1943 (RD158).</b> Perf. initialed, sells for \$12.50. Fine .....	—
439	<b>\$20.00-\$30.00 Stock Transfer, Series of 1944 (RD179-180).</b> Perf. initialed. Fine. Sells for \$10.00 .....	—
440	<b>\$50.00, \$100.00 Stock Transfer, Series of 1944 (RD181, RD183).</b> Perf. Initialed or cut cancel. Fine. Sells for \$21.00 .....	—
441	<b>\$50.00 Stock Transfer, Series of 1945 (RD204).</b> Perf. initialed. Fine. Sells for \$7.50 .....	—
442 ★	<b>1c-\$10.00 Silver Tax, Series of 1944 (RG97-RG114).</b> Very Fine. Face value \$27.48 .....	41.85
443	<b>1c-\$10.00 Tobacco Sale Tax (RJ1-RJ10).</b> Very Fine .....	74.40
444	<b>\$20.00 Tobacco Sale Tax (RJ11).</b> Very Fine .....	—

445	<b>1c-\$20.00 Tobacco Sale Tax (RJ1-RJ11).</b> Complete set, all handstamp cancels. Very Fine. 1c-\$10.00 Cats. \$74.40, scarce top value not priced .....	—
446 ★	<b>\$1.00 Hunting Permit Stamps (RW1-RW9).</b> Fine-Very Fine .....	67.50
447 ★田	<b>\$1.00 Hunting Permit (RW13).</b> Block of six with plate no. in black on back. Fine .....	—
448	<b>MEDICINE STAMPS.</b> Collection of 319 mostly different, above average condition, nice collection .....	600.05
449	<b>MEDICINE STAMPS.</b> Collection of 289 mostly different, some defective as usual. Fair-Fine .....	369.60

### CONFEDERATE STATES

450 ☒	1861, 5c Green (1). Four margin copy neatly tied on slightly soiled cover .....	8.00
451 ☒	1861, 5c Green (1). Tied on face of cover "Mobile, Ala. Feb. 6, 1862" under Stamp is unused copy of Mobile Provisional, 5c Blue #58X2, Interesting item .....	31.00+
452 ☒	1861-62, 10c Blue (2). Tied on cover, Chattanooga, Ten. postmark, Mal-formed letters in "Ten" reading "TTV". Fine .....	—
453 ☒	1862, <b>2c Green (3).</b> Tied on legal size envelope with "Richmond, Va. Oct. 11, 1862" postmark. Margins all around, stamp lightly creased. Scarce ....	200.00
454 ☒	1862, <b>5c Light Milkey Blue, Stone 3 (4b).</b> Vertical Pair tied on neat cover, Richmond, Va. postmark, one stamp close at left other V.F. ....	40.00
455 ☒	1862, <b>10c Rose (5).</b> Black grid cancel on V.F. four margin copy on cover, not tied, Athens, Ga. postmark on envelope .....	50.00
456 ☒	1862, 5c Blue (7). Horiz. Pair tied from Dublin, Va. on small green home-made cover made from pamphlet. Very Fine .....	—
457 ☒	1863, <b>2c Brown Red (8).</b> Tied with Richmond, Va. postmark on printed circular from <b>Executive Dept.</b> call for slave labor etc. Fine historical cover .....	75.00

### U. S. POSSISSIONS

458 ★	<b>CANAL ZONE, 1939, 1c-50c Anniversary Issue (120-135).</b> Cpl. set. Fine-V.F. ....	30.25
459 ★	—Same as above. Fine-V.F. set .....	30.25
460 ★	<b>GUAM, 1899, 1c-10c (1-5, 7-8, E1).</b> Very Good-Very Fine .....	35.75
461 ★	<b>HAWAII, 1894-99, 10c Yellow Green (77).</b> <b>Cpl. sheet of 50.</b> Fine-V.F. ....	42.50
462 ★	—1894-99, 25c Deep Blue (79). <b>Cpl. sheet of 50.</b> V.G.-Fine .....	85.00
463 ☒	—5c Blue (U4). Entire with <b>Wells Fargo frank.</b> Very Fine unused ....	—
464 ☒	—5c Brown (U222). U. S. entire with Hawaii <b>Wells Fargo frank.</b> Very Fine unused .....	—



## PHILIPPINES

465 ★	1899, 50c Orange (212). Centered to B. Fine .....	25.00
466 ★	1901, <b>\$5.00 Dark Green (225)</b> . Very Fine ..... <b>(Photo)</b>	67.50
467 ★	1903-04, 1c-15c (226-235). Fine-Very Fine .....	26.53
468 ★	1903-04, 50c Orange (236). Very Fine .....	9.00
469 ★	1914-23, 4c Carmine. Booklet Pane of 6 (277a). Fine centering, tropical gum .....	17.50
470 ★	1914-23, 6c-10c (278-280). Very Fine .....	16.50
471 ★	1914-23, 16c Olive Green (281). Very Fine .....	11.00
472 ★	1914-23, 20c Orange, 30c Gray (282-283). Fine-Very Fine .....	13.00
473 ★	1914-23, 1p Pale Violet (284). Fine .....	16.50
474 ★	1917-25, 1p-4p (300-302). Very Fine .....	25.00
475 ★	1926, 10p Deep Green (304). Fine .....	15.00
476 ★	1926, 2c-30c <b>Madrid-Manila Flight</b> (305-314). Fine-Very Fine .....	53.00
477 ★	1926, 1p Pale Violet, Madrid-Manila (318B). Very Fine ..... <b>(Photo)</b>	45.00
478 ★	1926, 2c-1p Legislative Palace Issue (319-325). Cpl. set. Fine-V. F. ....	11.35
479 ★	1925-31, 2c-1p <b>Imperforates</b> (340-350). Horiz. Pair of each. Very Fine except 20c has light crease on one .....	45.00
480 ★	1925-31, 1p-2p imperforate (350-351). Very Fine .....	23.00
481 ★	1925-31, 4P Deep Blue Imperforate (352). Very Fine .....	26.50
482 ★	1925-31, 10P Green, Imperforate (353). Very Fine ..... <b>(Photo)</b>	52.50
483 ★	1932, 2c-32c Pictorials (354-360). Cpl. set. Very Fine .....	14.55
484 ★	1932-33, Von Gronau, Rein Issues (361-367, 370-379). Cpl. sets. Fine-V. F.	15.90
485 ★	1935, 2c-5p Pictorials (383-396). Cpl. set. Very Fine .....	14.83
486 ★	1936-37, 2c-5p Commonwealth (411-424). Cpl. set. Very Fine .....	15.32
487	<b>Collection of O. B. Overprints.</b> (Official Business), 852 stamps mounted in Oriel Album, used and unused, 1899-1925 Issues, few multiples and blocks, arranged by types, Priced to retail over \$700.00, interesting and Fine collection .....	—

## U. S. MISC. & LARGE LOTS

488 ☒	<b>Covers, 19th Century,</b> 1851 Issue to Banknotes, 102 Covers, includes cancels corner cards etc. Est. Cash Val. \$15.00 .....	—
489 ☒	<b>Covers,</b> mostly Entires, over 300, nearly all 19th Century, many illustrated corner cards, registered usage, County cancels etc. V. G.-V. F. ....	—

490	<b>Cancellations</b> , over 1750 stamps mostly 19th Century, many interesting & fancy cancels. Est.*Cash Val. \$20.00 .....	—
491	<b>Cancellations</b> , stockbook with over 1200 stamps both 19th & 20th, many interesting and fancy cancels .....	—
492	<b>Plate No. Singles</b> , 100 stamps some with Imprints,, also 24 plate blocks all used, includes few 19th .....	—
493	<b>Guide Line Collection</b> , 852 diff. mounted from 1883 to date, includes few Canal Zone and Philippines, also 1000 duplicates, total 1852 stamps, nice lo t.....	—
494	<b>U. S. Postage, 19th &amp; 20th</b> , approx. 1000 stamps. Est. Cash Val. \$12.50 ....	—
495	<b>Freaks and Oddities</b> , paper folds, fold overs, etc. 7 diff. ....	—
496	<b>U. S. Straight Edges</b> , 345 stamps includes many commems, each has str. edge otherwise V. G.—V. F. ....	117.00
497	<b>Precancells</b> , mounted in two loose leaf binders by states, 1898–1926 Issues, 1852 different .....	—
498	<b>Revenues</b> , several hundred, misc. 19th & 20th. Est. Cash Val. \$7.50 .....	—

## UNITED STATES WHOLESALE

(Lots contain no straight edges unless mentioned)

499	<b>1c–12c, 1857 Issue</b> # 24(6), 25(12), 26(16), 36(1). V. G.—V. F. ....	50.50
500	<b>1c, 2c, 3c, 1861–62 Issue</b> , # 63(7), 65(100), 73(11). V. G.—Fine .....	38.50
501	<b>10c Green</b> # 68(48). V. G.—V. F. ....	72.00
502	<b>10c Green, Grills</b> , # 89(2), 96(7). Good–Fine .....	58.00
503	<b>2c–3c, 1869 Pictorials</b> , # 113(13), 114(80). V. G.—V. F. ....	53.25
504	<b>1c–3c Banknote Grills</b> # 134(1), 135(8), 136(25). V. G.—V. F. ....	31.25
505	<b>1c–2c Banknotes</b> , # 145(20), 146, 157 (100 mixed). V. G.—V. F. ....	33.00
506	<b>3c Greens</b> , # 147(400), 158(500), 184(300), 207(500). V. G.—V. F. ....	67.00
507	<b>6c–15c Banknotes</b> , # 148(4), 149(4), 150(11), 151(2), 152(1). V. G.—V. F. ....	69.50
508	<b>1c–5c, 1870–98 Issues</b> , # 158, 184, 206–07, 210, 212, 214, 219d, 247, 249, 251, 264–65, 279–281 (100 of each). V. G.—V. F. ....	79.00
509	<b>5c, 6c, 10c, 30c Banknotes</b> , # 159(14), 161(5), 165(1), 179(7). V. G.—V. F. ....	21.05
510	<b>7c Vermilion</b> # 160(4). V. G.—Fine .....	20.00
511	<b>15c Yellow Orange</b> # 163(7). Good–Fine .....	29.75
512	<b>2c Vermilion</b> # 178(250). V. G.—V. F. ....	50.00
513	<b>1c–5c Banknotes</b> , # 182(100), 183(400), 205(21), 206(100), 211(16). V. G.—V. F. ....	59.65

514	<b>5c, 6c, 10c, 15c Banknotes, # 185(15), 186(12), 188(14), 189(8). V. G.-V. F.</b>	38.35
515	<b>6c Rose. # 208(10). V. G.-Fine</b>	35.00
516	<b>3c-90c, 1890-94 Issues, # 224(6), 227(5), 228(2), 229(1), 253(11), 255(30), 256(2), 257(2), 258(10), 259(2). Good-Fine</b>	53.20
517	<b>1c-2c Columbians, # 230(491), 231(800). V. G.-V. F.</b>	30.73
518 ★	<b>1c-2c Columbian # 230(24), 231(64), all without gum</b>	36.45
519	<b>1c-10c Columbian, # 230(100), 231(500), 231 Broken Hat (220), 233-237 (14 mixed). V. G.-V. F.</b>	34.75
520	<b>3c-30c Columbians, # 232(6), 233(7), 234(18), 235(1), 236(10), 237(12), 238 (2), 239(1). V. G.-V. F.</b>	46.10
521	<b>1c Blue, 2c Carmine Lake, # 247(400), 249(800). V. G.-V. F.</b>	80.00
522	<b>2c Pink, 2c Carmine, # 248(100), 251(100). V. G.-V. F.</b>	55.00
523	<b>2c Triangles, 1894-95 Issues, # 248(140), 251(110), 265(385), 266(360), each has str. edge</b>	218.00
524	<b>2c Carmine, Type II, # 251, 266 (100 each). V. G.-V. F.</b>	60.00
525	<b>2c-4c 1895 Issues, # 265(100), 266 (100), 268(100), 269(300). V. G.-V. F.</b>	63.00
526	<b>2c, 10c, 1895-98 Issues, # 265(300), 266(100), 273(50), 282c-283 (40 mixed). V. G.-V. F.</b>	70.00
527	<b>5c-50c, 1895 Issue, # 270(60), 271(35), 272(100), 273(60), 274(11), 275(5), V. G.-V. F.</b>	52.15
528	<b>4c, 6c-15c, 1898 Issue, # 280(100), 282(120) 282c-283 (40 mixed), 284(12). V. G.-V. F.</b>	44.00
529	<b>1c-10c Trans-Miss., # 285(15), 286(70), 287-288 (5 each), 289-290 (4 each). V. G.-V. F.</b>	45.50
530	<b>50c Trans-Miss. # 291(3). Fine</b>	30.00
531	<b>1c-2c Pan-American, # 294(60), 295(300). V. G.-V. F.</b>	24.00
532	<b>4c-8c Pan-American, # 296(9), 297(7), 298(1). V. G.-V. F.</b>	27.90
533	<b>3c-\$1.00, 1902 Issue, # 302(60), 303(80), 304(65), 305(25), 306(50), 308(4), 309(12), 310(2), 311(1). Good-Fine</b>	55.45
534	<b>3c, 4c, 8c, 10c, 1902 Issue, # 302(80), 303(100), 306(100), 307(90). V. G.-V. F.</b>	46.40
535	<b>1c Louisiana-Purchase # 323(90). V. G.-V. F.</b>	40.50
536	<b>1c-10c Louisiana-Purchase # 323-327 (5 sets). Fine-V. F.</b>	62.85
537	<b>1c-10c Commems., # 323(5), 325(1), 367(17), 370(26), 373(12), 397(45), 399 (3), 400(10), 403(1). V. G.-V. F.</b>	41.10
538	<b>3c Louisiana-Purchase # 325(10), one has str. edge. V. G.-V. F.</b>	47.50
539	<b>1c-5c Jamestown, # 328(12), 329(15), 330(9). V. G.-V. F.</b>	38.70



540	<b>5c-15c, 1908 Issue</b> # 335(55), 336(25), 337(30), 338(85), 340(18). V. G.-V. F.	48.50
541	<b>3c-13c, 1910-17 Issues</b> , # 376(30), 377(90), 379(70), 407(11), 416(100), 417(20), 507(35), 509(25), 511(25), 513(6). V. G.-V. F.	52.75
542 ★	<b>1c Pan-Pacific</b> # 401(26), includes two blocks. V. G.-V. F. except without gum	33.60
543	<b>3c-30c, 1914 Issue</b> , # 426(45), 427(60), 428(65), 429(30), 430(20), 431(40), 432(11), 433(100), 434(9), 435(24), 437(11), 438(14), 439(13). V. G.-V. F.	89.35
544	<b>6c Red Orange</b> # 429(100). Good-Fine	15.00
545 ★	<b>5c Blue, Coil</b> # 447(20), Fine-V. F. in pairs	30.00
546	<b>1c-3c, 1918-20 Issues</b> , # 525(200), 526(200), 536(1), 537(15), 539(8), 542(100). V. G.-V. F.	49.95
547	<b>1c-\$2.00 1918-20 Issues</b> , # 536(2), 537(7), 539(2), 541(3), 547(1). V. G.-V. F.	23.00
548	<b>1c-5c Commems.</b> # 548(18), 549(31), 550(1), 614(17), 615(22), 616(2), 617(9), 618(7), 619(3), 620(6), 621(1), 627(24), 628(5), 629(23). V. G.-V. F.	52.84
549	<b>\$5.00 Carmine &amp; Blue</b> # 573(20), in blocks. Fine	25.00
550 ★	<b>2c Carmine, Booklet Panes #583a</b> (10 Panes). V. G.-Fine	35.00
551	<b>5c Huguenot-Walloon</b> # 616(15). V. G.-V. F.	41.25
552	<b>5c Lexington-Concord</b> # 619(20). in blocks. V. G.-V. F.	42.50
553	<b>2c-5c Commems</b> , # 643(19), 644(15), 645(33), 651(14), 655(75), 656(45), 680(15), 682(35), 683(16), 688(23), 702(100), 716(60), 719(100), 733(17), 734(50), 736(75). V. G.-V. F.	54.62
554 ☐	<b>2c Edison, 2c Sullivan #655, 657</b> (25 used blocks each). Lightly cancelled. Fine-V. F.	20.00
555 ★	<b>2c Edison Coil</b> # 656(33). in strips. V. G.-Fine	18.15
556 ☐	<b>2c Mass. Bay #682</b> (50 Used Blocks). Lightly cancelled. Fine-V. F.	15.00
557 ☐	<b>2c Pulaski #690</b> (50 Used Blocks). Lightly cancelled. V. G.-V. F.	12.50
558 ☐	<b>2c Red Cross #702</b> (50 Used Blocks). Lightly cancelled. Fine-V. F.	9.00
559 ★	<b>2c Red Cross, Yorktown #702-703</b> (100 each), mostly blocks. Fine-V. F.	20.00
560 ★	<b>2c Lake Placid #716(400)</b> , mostly blocks. Fine-V. F.	32.00
561 ☐	<b>3c Webster #725</b> (50 Used Blocks). Lightly cancelled. V. G.-V. F.	17.50
562 ☐	<b>3c Oglethorpe #726</b> (50 Used Blocks). Lightly cancelled. Fine-V. F.	15.00
563 ★	<b>3c Oglethorpe, Newburgh #726-727</b> (100 each) mostly blocks. Fine-V. F.	20.00
564 ☐	<b>3c Newburgh #727</b> (50 Used Blocks). Lightly cancelled. Fine-V. F.	12.50
565 ☐	<b>1c Chicago #728</b> (100 Used Blocks). Lightly cancelled. V. G.-V. F.	20.00
566 ☐	<b>3c Chicago Imperf. #731</b> (50 Used Blocks). Lightly cancelled. Very Fine	20.00

567	田	3c N. R. A. #732 (100 Used Blocks). Lightly cancelled. Fine-V. F. ....	8.00
568	田	5c Kosciuszko #734 (50 Used Blocks). Lightly cancelled. V. G.-V. F. ....	20.00
569	田	3c Mothers Day #737 (100 Used Blocks). Lightly cancelled. Fine-V. F. ....	12.00
570	★田	5c Korea #921(200), in blocks. Very Fine .....	37.50
571		16c Green, Air #C2(5). Fine .....	22.50
572	★	8c Dark Green, Air #C4(20), in blocks. V. G.-Fine .....	32.50
573		24c Carmine, Air #C6(10), Fine .....	20.00
574	★	25c Clipper Air #C20(30). Includes Blocks. Very Fine .....	13.50
575	★	30c Transatlantic Air #C24(15). Includes blocks. Fine-V. F. ....	18.75
576	★	30c Transatlantic Air #C24(15). Includes blocks. Fine-V. F. ....	18.75
577		25c Blue, Air #C36(100). Fine .....	15.00
578		25c U. P. U. Airmail (100). Fine-V. F. ....	—
579		25c U. P. U. Airmail (112). Some blocks. Fine-V. F. ....	—
580		25c U. P. U. Air (130). Mostly blocks, part on pieces of covers. Fine-V. F. ....	—
581		25c U. P. U. Airmail (160). All in blocks. Fine-V. F. ....	—
582		1c-25c, \$1.00 Parcel Post #Q1-Q9, Q12 (134 stamps). V. G.-V. F. ....	30.99
583	★	10c-25c Special Handling #QE1-3, 4a (10 each), includes blocks. Fine-V. F. ....	16.06
584		\$10.00 Green, Revenues #R95c-R96c (4 each). V. G.-Fine .....	21.00
585		\$20.00 Conveyance #R98c (5). V. G.-Fine .....	20.00

END OF SALE — THANK YOU

## SELLING YOUR COLLECTION?

**REALIZE IMMEDIATE CASH  
AND HAVE ADVANTAGE OF SELLING AT AUCTION.**

**I will advance on your collection immediate cash up to  
75% of my appraisal value of what it should realize at auction.**

**It will then be sold at one of my coming auction sales.  
Commission is 20% of the gross and final settlement within  
thirty days after the sale.**

**Send collection direct (valued \$500 upwards) for appraisal.  
Auction advance will be sent within 48 hours after receipt. If  
not entirely pleased, collection will be returned at my expense.**

**I have been conducting stamp auctions for 20 years.**



**ROBERT A. SIEGEL**

**(Licensed and Bonded Auctioneer)**

**124 MAMARONECK AVE.**

**WHITE PLAINS, N. Y.**

**(TEL. W. P. 9-5837)**