

148th SALE

UNITED STATES

MOSTLY 19th CENTURY ISSUES

With a very fine listing of Fancy Cancels,
including an excellent collection of New York
Foreign Mail Cancellations



AT PUBLIC AUCTION

WEDNESDAY, FEBRUARY 14th, 2 P.M.

GREGORY MOZIAN, Licensed Auctioneer

Robert A. Siegel
AUCTIONS

505 FIFTH AVENUE

NEW YORK CITY

CONDITIONS OF SALE

1. The terms of sale are strictly cash to the highest bidder. All buyers are expected to pay for lots within three days of receipt, unless special arrangements have been made prior to the sale.
2. All bids are per lot as numbered in the catalogue and not per piece, unless otherwise announced by the auctioneer at the time of sale.
3. Any lot the description of which is incorrect is returnable only within three days of receipt. All disputed lots must be returned intact as received. Lots containing five or more stamps are not returnable at any time. No lots may be returned by purchasers who have had the opportunity to examine them before the sale.
4. Successful mail bidders, unless they are known to us or supply acceptable references, will be notified of the amount of the lots secured for them, and are expected to send payment in full before the lots are forwarded.
5. If the purchase price has not been paid within the time limit, or lots taken up within seven days from date of sale, they may be resold and any losses arising from such sale charged to the defaulter.
6. All stamps are sold as genuine, except where sold "As Is". Claims for any lot proving otherwise, must be made within two weeks from date of sale.
7. The right is reserved to group two or more lots, also withdraw any lot or lots from the sale, or to act on behalf of the seller.
8. Until paid for in full all lots remain the property of Robert A. Siegel.
9. No commission is charged for buying at our sales, but all forwarding charges will be added to the purchase price.
10. Lots will be sent for inspection, provided such lots are returned to us the same day as received. Postage and registration both ways will be charged. Approximate values of lots will be given on request.
11. The placing of a bid shall constitute acceptance of the foregoing conditions of sale.

In sending bids, always state the highest price you are prepared to pay for the lot. Your limit will not be used as a starting bid unless absolutely necessary.

DESCRIPTIONS

Superb—the finest condition for noteworthy, outstanding copies.

Very Fine (VF)—means that there is a slight deviation from the above.

Fine (F)—means that the perforations do not touch the design on issues after 1890, but in some cases may just touch in earlier issues; if used, fairly lightly cancelled.

Very Good (VG)—means that the appearance is generally fine but that the perforations cut the design slightly.

Good (G)—means average off-centering; or fairly attractive with slight defects. Original gum is not to be expected on 19th Century stamps up to 1888 unless so stated.

Scott's 1950 Specialized United States Catalogue is used for cataloging our lots of United States and Scott's Standard Catalogue, 1950 for others.

<p>WE SOLICIT FINE MATERIAL FOR FUTURE SALES</p>

148th SALE, FEBRUARY 14th, 2 P. M.

BID SHEET

ROBERT A. SIEGEL

505 Fifth Avenue

New York City

Tel.: MUrray Hill 2-4309

Please purchase for me at your Auction to be held **Wednesday, February 14th, 1951**, the lots named below the prices annexed being my limit on each lot. I agree to remit for purchases in accordance with the **Conditions of Sale** and to return no lots later than three days after receipt.

REFERENCES PLEASE
(if unknown to us)

SIGNED

.....

.....

.....

Lot	Bid	Lot	Bid	Lot	Bid	Lot	Bid

➤ PLEASE NOTE THIS SALE WILL BE HELD AT OUR NEW OFFICES
AT 505 FIFTH AVENUE, NEW YORK CITY

PLEASE NOTE

This Sale will be held in New York City

At 2 P. M. Feb. 14th

At our new offices at

505 Fifth Avenue

Lots will be shown prior to the sale at our offices in New York except on the two Saturdays preceding the auction at which time lots will be shown at our BRANCH OFFICE at 124 Mamaroneck Ave., White Plains, N. Y.

CATALOGUE

UNITED STATES STAMPS

STAMPLESS COVERS

- | | | | |
|---|---|---|-----------|
| 1 | ☒ | ALEX. July 19, (Alexandria). Straight Line. 1793. Very Fine | — |
| 2 | ☒ | Ballston, N. Y. In fancy oval, curved "Paid". Very Fine | — |
| 3 | ☒ | B. ROUGE, April 10. Straight Line in broken line Box. Very Fine (Baton Rouge, La.) | (Photo) — |
| 4 | ☒ | "Blood's Despatch 2Cts." In double circle. Very Fine | — |
| 5 | ☒ | Boston, Ms. Red circle and large red circle "Forwarded by Hardens Express From Boston." Very Fine | — |
| 6 | ☒ | Boyd's City Express Post. In black oval. Fine | — |
| 7 | ☒ | Boxed "Collect 6 Cents for Boston Office". Illustrated Clipper Ship on enclosure. Very Fine | — |

- 8 **City Despatch Post.** In red circle, and blue oval "Forwarded From Howards Hotel, New York." Fine
- 9 **Dunhams Union Square Post Office** in red oval, enclosure of N. Y. Academy of Medicines. Very Fine
- 10 **Fincastle, Va.** Paid and large Fancy "5", all in blue. Very Fine
- 11 **"Forwarded by American Mail Co."** Red str. line, boxed "Collect 6cts. Boston Office." Very Fine
- 12 **"Forwarded By Bates & Co. from New York."** In red oval, boxed "Collect 6 Cents." Very Fine
- 13 **"Forwarded by Hayes & Treadwell, Franklin House, New York."** In blue oval. Very Fine
- 14 **"Forwarded by Hale & Co. from New Bedford."** In red oval, boxed "Collect 6 Cents, N. Bedford." Very Fine
- 15 **"Forwarded By Hale & Co. from Salem."** In black oval, boxed "Collect 6 Cents." Very Fine
- 16 **"Forwarded By Overton & Co. 29½ State St., Boston."** In black oval, "5". Very Fine
- 17 **"Forwarded By Thompson & Cos. Express from Springfield."** In large red circle. Very Fine
- 18 **"Forwarded By Davis, Brooks & Co., New York."** In red oval. From Rio de Janeiro to Boston. Very Fine
- 19 **"Forwarded by Geo. & John Laurie, New York."** In red oval. Fine
- 20 **Georn. Ca.** In fancy red circle. Very Fine. (Georgetown, Dist. of Col.)
- 21 **Gilpins Exchange Reading Room & Foreign Letter Office** in red oval, from N. Y. to London, with str. line. "Liverpool Ship Letter." Very Fine
- 22 **Hale & Co.** Red str. line. **"Mailed Late For The 11th."** Very Fine
- 23 **Hardens.** Forwarded in red oval, from Boston to Paris through London, transit markings. Fine
- 24 **"Hussey's Post Paid, 50 Williams St."** In fancy blue oval. Very Fine **(Photo)**
- 25 **"Hussey's Special Message Post, 54 Pine St."** In large octagon, "Paid." Very Fine
- 26 **"Hussey's Post, Instant Special Message, 50 Wm. St. Free."** In black str. line. Very Fine
- 27 **Ithaca, N.Y.** In circle, with "One Ounce, Unpaid 25, Paid 25" markings. Very Fine
- 28 **Jerome & Co's Express, Boston.** In red box and red oval "Hale & Co. Great Eastern Mail. Fine

29	⊠	New York to Canton, China. Boxed "Postage Paid to Destination By Harden & Co. of Liverpool." Red Circle "Aden B. P. P. Paid" and Red Circle "Paid H & Co." Very Fine	—
30	⊠	"Overton & Co's., City Mail Office, Broad Street" in red oval. Very Fine	—
31	⊠	"Posted Since 8:30 Last Night. And other transit markings, from Liverpool to Boston; U. S. Express Mail cover from New York in red, both V. F.	—
32	⊠	Red 6¼. Very Fine. Scarce rate	—
33	⊠	"San Francisco 40." In black circle. Very Fine	—
34	⊠	Staits Despatch. In red circle, large red "Paid." Fine	—
35	⊠	"Swarts B. Post Office, N. Y. Chatham Square." In red oval. Very Fine	—
36	⊠	Way 6. In fancy blue circle. Very Fine. Ex. Knapp	—

POSTMASTER STAMPS

37		5c New York Postmaster (9X1). Margins all around. Red Paid cancel. Very Fine	(Photo) 75.00
38	★	5c Black, Providence (10X1). Superb	(Photo) 32.50

1847 ISSUE

39		5c Red Brown (1). Red grid cancel. Large margins all around. Superb (Photo)	27.50
40		5c Red Brown (1). Sheet Margin at left. Red grid cancel. Margins all around. Very Fine	(Photo) 27.50
41		5c Red Brown (1). Red grid cancel. Margins all around. Very Fine (Photo)	27.50
42		5c Red Brown (1). Red grid cancel. Fine	27.50
43		5c Red Brown (1). Tied on piece with pretty "socked on the nose" red Northfield, Vt. postmark. Very Fine	(Photo) 32.50
44		5c Red Brown (1). Red grid cancel. Margins all around, light crease	27.50
45		5c Brown (1). Red town cancel. Large margins all around. Superb (Photo)	32.50
46		5c Red Brown (1). Blue grid cancel. Margins all around. Very Fine (Photo)	35.00
47		5c Red Brown (1). Neat Numeral "5" cancel in blue. Margins all around. Very Fine	(Photo) 50.00
48		5c Brown (1). Left sheet margin, Blue Numeral "5" in circle cancel Margins all around. Very Fine	(Photo) 50.00

49	5c Orange Brown (1b). Neat Blue Grid cancel. Margins all around. Superb (Photo)	40.00
50	5c Red Brown (1). Excellent Blue Numeral 5 cancel. Fine (Photo)	50.00
51	☒ 5c Red Brown (1). Tied with red grid from Boston. Very Fine Cover	37.50
52	☒ 5c Red Brown (1). Tied on cover with red grid from New York, Blue oval "Advertised 4cts." marking. Rare marking. Very Fine (Photo)	—
53	☒ 5c Red Brown (1). Tied with Olive Green grid and postmark from New Bedford, Ms., Very Fine (Photo)	100.00
54	10c Black (2). Red grid cancel. Large margins all around. Superb (Photo)	80.00
55	10c Black (2). Red grid cancel. Margins all around. Very Fine (Photo)	80.00
56	10c Black (2). Red grid cancel. Sheet margin at left. Margins all around. Superb (Photo)	80.00
57	10c Black (2). Red grid cancel. Margins all around. Very Fine (Photo)	80.00
58	10c Black (2). Red grid cancel. Margins all around. Very Fine (Photo)	80.00
59	10c Black (2). Red grid cancel. Margins all around. Very Fine (Photo)	80.00
60	☒ 10c Black (2). Tied on cover with Blue grids, from Geneva, N. Y. Stamp has large margins all around. Very Fine (Photo)	100.00
61	5c Red Brown. Reproduction (3). Superb (Photo)	32.50

1851 ISSUE

62	1c Blue, Type II (7). Horiz. Pair with Sheet Corner. Large margins except in at top (Photo)	30.00
63	1c Blue, Type II (7). Shows portion of Waterbury, Pumpkin cancel, small thin. Fine appearance (Photo)	—
64	1c Blue, Type IV (10). Blue grid cancel. Margins all around. Very Fine	8.50
65	1c Blue, Type IV (10). Margins all around. Paper Fold variety. Very Fine	7.50+
66	3c Orange Red (11). Margins all around, with clear Stitch Watermark	—
67	3c Red (11). " Im Done " in Circle . Cancel. Very Fine strike of this scarce cancel, touches partly on two sides (Photo)	—
68	3c Red (11). Tied on piece with fancy " Due 5cts " in blue, scarce marking (Photo)	—
69	3c Dull Red (11). Red Diamond within a Diamond cancel. Fine	—
70	☒ 3c Red (11). Tied on cover from New Orleans, with red " Way 1 " cancel. V. F.	—
70A	☒ 3c Red (11). Tied with red FLAG in circle cancel on cover from Newark Valley, N. Y. Scarce and Fine	—

71	✉	3c Red (11). Tied from Brooklyn on attractive illustrated advertising cover, V.F.	—
72	✉	3c Dull Red Pair and Single on 3c Entire (11, U10). On Wells Fargo. Franked Envelope, each tied with Napa City, Cal. postmark. Fine	—
73		5c Red Brown (12). Large margins all around, sheet margin at left. Superb	(Photo) 72.50
74		5c Red Brown (12). Nice Margins all around. Very Fine (Photo)	72.50
75		5c Red Brown (12). Nice margins all around. Very Fine	(Photo) 72.50
76		10c Green. Type II (14). Large Margins all around. Superb (Photo)	16.00
77		10c Green, Type II (14). Sheet margin at left. Very Fine	16.00
78		12c Black (17). Large Margins all around. Superb	(Photo) 25.00
79		12c Black (17). Large Margins all around. Superb	(Photo) 25.00
80		12c Black (17). Large margins all around. Blue town cancel, light crease. Very Fine appearance	27.50

1857 ISSUE

81		1c Blue. Type II (20). Perf. short. Fine centering	12.50
82		1c Blue. Type III (21). Superb (Philatelic Foundation Certificate accompanies)	(Photo) 70.00
83		1c Blue, Type V (24). Large Blue "1" in Circle, Pretty strike, one perf. short	—
84	✉	1c Blue, Type V (24). Pair tied with Blue grid from Middlebury, Vt. on attractive illustrated cover of Delta Kappa Epsilon Fraternity (Photo)	—
85	✉	3c Red (25). Two strikes one tying stamp of fancy Red Intertwining Star with Paid on small neat cover from Bond's Village, Mass. Very Fine	(Photo) —
85A	✉	3c Rose (65). Tied with large Year Date "1867" cancel on illustrated advertising cover from Statford Springs, Conn. Fine and Rare cover	(Photo) —
86		3c Red (26). "Paid 10" in Circle cancel. Very Fine (Photo on Cover)	—
87		3c Red (26). "Paid 12" in Circle. Very Fine strike two perfs. short (Photo)	—
88		3c Red (26). "24" in Circle cancel. Fine	—
89		3c Red (26). Tied with pretty Pin Wheel cancel on small piece. Very Fine	(Photo) —
90		3c Red (26), Red U. S. P. Monogram cancel. Very Fine strike (Photo)	—
91		3c Red (26). Large "B" cancel. Fine	—
92	✉	3c Red (26). Tied on cover with blue "Paid 3" in circle from Canaan, N. H. Very Fine	—

93	✉	3c Red (26). Cancelled with " J " in grid from Bergen, N. Y. Fine cover	—
94	✉	3c Red (26). Tied on cover from New York, Boxed "U. S. Mail 4 P. M. Delivery" marking. Very Fine	—
95	✉	3c Red (26). Tied from Indianapolis showing illustr. corner card of early Drug Co. V. F.	—
96		3c Red (26). Three tied on piece with " N. Y. & Boston Stmb. & R. R. R. " cancel. Fine	18.00
97	★	5c Orange Brown (30). Perfs. touch at B	17.50
98	✉	10c Green, Type I (31). Tied on cover from New York to Canada West, red str. line "United States Paid 6d" marking. Fine	75.00
99		10c Green, Type IV (34). Recut at top and bottom. Fine	(Photo) 150.00
100		24c Lilac (37). Bright Red Grid cancel. Superb	(Photo) 22.50
101	★	24c Lilac, Imperforate (37c). Sheet Margin at left with part of Imprint. Very Fine (Philatelic Foundation Certificate accompanies)	(Photo) 300.00
102		30c Orange (38). Neat Blue Grid cancel, thin spot. Fine appearance	35.00

1861 ISSUE

103		10c Dark Green, August (58). Bright red "Paid", tied on small piece. Superb	(Photo) 65.00
104		1c Blue, 10c Green (63, 68). Well centered. Very Fine	3.00
105		1c, 3c, 10c 1861-67 Issues (63, 68, 94). Fancy cancels on last two. Very Fine	—
106		3c Rose (65). Excellent strike of Putnam boxed " U.S. " Light corner crease	(Photo On Cover) —
107		3c Rose (65). U. S. in Circle of Stars cancel from Albany, small thin spot. Very Fine strike	(Photo) —
108		3c Rose (65). Excellent strike of Albany " U. S. " tiny closed tear	(Photo) —
109		3c Rose (65). Fancy " R " in Circle cancel. Very Fine strike, centered slightly to L.	—
110		3c Rose (65). Large " W " cancel from Waterbury, few perfs. short	(Photo) —
111		3c Rose (65). " I " in Circle. Very Fine	(Photo) —
112		3c Rose (65). " 3 " in Large " C " cancel. Very Fine strike, perfs. touch at top	(Photo) —
113		3c Rose (65). Fancy " C " in Circle. Very Fine	(Photo) —
114		3c Rose (65). Very Fine strike of " 31 ", perfs. in at L.	—
115		3c Rose (65). " X " cancel. Very Fine	—
116		3c Rose (65). Two diff. " P " cancels, one in Circle Fine	—

117	3c Rose (65). Large negative "L", small "W" in Target cancel. Fine	—
118	3c Rose (65). Two diff. type "M" cancels. Fine	—
119	3c Rose (65). Very Fine strikes, Blue "L" and Black "L" in Circle, latter has crease	—
120	3c Rose (65). Three cancels. Large "H", "C", "S", latter in Circle. Fine	—
121	☒ 3c Rose (65). Tied with excellent strike of Three Leaf Clover on nice cover (Photo)	—
122	☒ 3c Rose (65). Tied with large Windmill cancel on cover. Very Fine	—
123	☒ 3c Rose (65). Tied with large Blue "P" in circle from Piqua, O. Fine cover	—
124	☒ 3c Rose (65). Tied with very fine Negative "U. S." from Lafayette, Ind. Hotel Corner Card ,stamp centered to left	—
125	☒ 3c Rose (65). Tied with excellent strike of Blue "T" in fancy circle. Nice cover	—
126	☒ 3c Rose (65). Tied with Fancy "G" from Guilford, Conn. on cover. Fine	—
127	☒ 3c Rose (65). Tied with large "L" from Lockport, N. Y. on cover. V. F.	—
128	☒ 3c Rose (65). Tied with "F. V." in Fancy Circle from Franklinsville, N. C. on neat cover. Pretty strike	—
129	5c Buff (67). Well centered, town cancel. Very Fine (Photo)	40.00
130	5c Buff (67). Pretty Blue Cincinnati town cancel. Well centered. Superb (Photo)	45.00
131	5c Buff (67c). Imperforate Horiz. Ample margins top and bottom,, closed tear. Rare (Photo)	—
132	10c Green, 24c Brown Lilac (68, 70a). Fine-Very Fine	13.50
133	☒ 5c, 10c, 30c, 1861 Issue (68, 71, 76). Tied on cover from Tampico to China, various transit marking. Fine	—
134	24c Red Lilac (70). Very Fine	12.00
135	30c Orange (71). Neat black town cancel. Very Fine	8.50
136	90c Blue (72). Well centered, small crease. Very Fine appearance	20.00
137	2c Black (73). Odd Arrowhead cancel, light corner crease. Fine appearance	—
138	2c Black (73, 93). Well centered, lightly cancelled, slight creases	5.75
139	5c Brown (76). Pretty Blue town cancel. Superb	6.00
140	☒ 15c Black (77). Superb stamp tied on small "New York Registered" cover, addressed to Hon. Wm. Seward, Secr. of State. Most unusual and Very Fine cover bearing Lincoln stamp and addressed to a member of his cabinet (Photo)	—

141	15c Black, 24c Lilac (77-78). Fine	15.00
142	24c Lilac (78). Attractive Blue Grid. Very Fine	7.00

1867 GRILL ISSUES

143	1c Blue, Grill (86). Well centered, lightly cancelled, closed tear	17.50
144	2c Black, Grill (87). Red cancel. Superb (Photo)	6.00
145	3c Rose, Grill (88). Beautiful strike of Leaf cancel, well centered, two perfs. short (Photo)	—
146	10c Green, 12c Black, Grills (89-90). Fine	17.00
147	1c Blue, Grill (92). Fancy Monogram cancel in Circle. Fine (Photo)	9.00+
148	3c Red, Grill (94). Very Fine strike " 24 " in Circle (Photo on Cover)	—
149	3c Red, Grill (94). Excellent strike of Monogram , tiny thin in grill (Photo)	—
150	☒ 3c Red (94). Cancelled with Very Fine large " L. V. " from Lockport and Albany Carrier marking, perfs. in at R. on stamp. Attractive	—
151	30c Orange, Double Grill (100a) Fine	50.00

1869 PICTORIAL ISSUE

152	1c Buff (112). Well centered. Very Fine	7.00
153	1c Buff (112). Pretty Red Target cancel. Very Fine	10.00
154	1c Buff (112). Two, one with Blue target cancel, other odd circle cancel. Fine-Very Fine	14.50
155	★ 1c Buff (112). Very Fine, O. G.	10.00
156	★ 1c Buff (112). Very Fine, O. G.	10.00
157	★田 1c Buff (112). Block of 6. Well centered, nearly full O. G. Very Fine (Photo)	145.00+
158	2c Brown (113). Three shades. Very Fine	6.75
159	3c Ultramarine (114). Well centered " Fat Stamp " with Beautiful Red "Due 3" in Circle cancel. Ex-Emerson. Superb (Photo)	—
160	3c Ultramarine (114). Very Fine strike " U. S. " centered to B. (Photo)	—
161	3c Ultramarine (114). Numeral " 30 " in Circle cancel, nice strike, two corner perfs. off. Scarce	—
162	3c Ultramarine (114). Pretty Red Star in Circle cancel, tiny thin spot	—
163	3c Ultramarine (114). Neat " 1870 " Year Date cancel in Circle. Very Fine	—
164	3c Ultramarine (114). Geometric design tied on small piece. Very Fine strike	—

165	3c Ultramarine (114). Large Negative "J" cancel. Very Fine strike	—
166	3c Ultramarine (114). Two nice strikes "S" and "P" in Circle. Fine	—
167	3c Ultramarine (114). Three fancy cancels, Heart, Masonic, Square of Dots. Nice strikes, perfs. in one side on each	—
168	10c Yellowish Orange (116). Black Target cancel, light corner crease. V. F. appearance	8.50
169	10c Yellowish Orange (116). Attractive Red "New York" cancel. Very Fine	(Photo) 10.00
170	10c-12c Pictorials (116-117). Fine	17.00
171	12c Green (117). Very Fine	8.50
172	12c Green (117). N. Y. Foreign Mail type of cancel. Well centered, light crease	—
173	12c Green, 7c Vermilion (117, 149). Tied on small piece with Crossroads cancels. Very Fine	—
174	15c Brown & Blue, Type I (118). Fine	32.50
175	15c Brown & Blue, Type I (118). Well centered, one trivial corner perf. crease. Very Fine appearance	(Photo) 32.50
176	15c Brown & Blue (119). Well centered. Superb	(Photo) 9.00
177	15c Brown & Blue (119). Light cancel, tiny grill thin. Well centered	9.00
178	☒ 15c Brown & Blue (119). Tied on very fine Mourning Cover to France, transit markings, stamp centered to bottom right	70.00
179	24c Green & Violet (120). Superb	(Photo) 37.50
180	90c Carmine & Black (122). Very Fine	(Photo) 95.00
181	90c Carmine & Black (122). Very Fine	(Photo) 95.00
182	90c Carmine & Black (122). Well centered, trivial grill thin. Very Fine appearance	(Photo) 95.00
183	90c Carmine & Black (122). Small thin. Very Fine appearance ...	(Photo) 95.00
184	90c Carmine & Black (122). Well centered, light corner crease. Very Fine appearance	(Photo) 95.00
185	90c Carmine Rose & Black (122). Lightly cancelled. Very Fine	(Photo) 95.00
186	★ 1c Buff, Re-issue (123). Superb, O. G.	(Photo) 15.00

1870 BANKNOTE GRILLS

187	2c Red Brown, Grill (135). Red N. Y. Foreign Mail cancel. Very Fine appearance, tiny closed tear	—
-----	---	---

188	1c-30c Banknotes (135-36, 145-47, 149, 151, 156-165, 184-186, 188-89). Mostly "Fat" large margin copies, some fancy cancels. Mostly Very Fine	35.16
189	6c Carmine, Grill (137) . N. Y. Foreign Mail cancel, Type 4. Very Fine (Photo)	17.50+
190	7c Vermilion, Grill (138) . Very Fine	17.50
191	7c Vermilion, Grill (138) . Black New York Transit cancel, light corner crease. Very Fine appearance	17.50
192	7c Vermilion, Grill (138) . Small thin. Very Fine appearance	17.50
193	7c Vermilion, Grill (138) . Guide Line Str. edge copy, Fat margins. Well centered, light crease	17.50
194	7c Vermilion, Grill (138) . Red Paid cancel and part of black cancel, light corner crease. Fine appearance	30.00
195	7c Vermilion, Grill (138) . Blue R. R. cancel with 1873 Year Date. Nice strike, perfs. in at top. Scarce	—
196	7c Vermilion, Grill (138) . Pretty strike of N. Y. Foreign Mail cancel. Well centered, str. edge at L	17.50+
197	7c Vermilion, Grill (138) . Blue town cancel with 1874 Year Date. Very Fine	(Photo) 20.00
198	7c Vermilion, Grill (138) . Purple cancel. Fine	20.00
199	7c Vermilion, Grill (138) . Large Negative "H" cancel, small thin. Fine appearance	17.50
200	7c Vermilion, Grill (138) . Blue Cross cancel. Fine	(Photo) 20.00
201	7c Vermilion, Split Grill (138) . Very Fine	20.00
202	7c Vermilion Split Grill (138) . Blue cancel. Fine	20.00
203	7c Vermilion, Grill (138) . Horiz. Pair tied on small piece from Batavia. Fine-V. F.	45.00
204	7c Vermilion, Grill (138) . Horiz. Pair with Quadruple Split Grill , not listed. Very Fine	(Photo) —
205	7c Vermilion, Grill (138) . Horiz. Pair tied on piece, str. edge on left stamp. Nicely centered	45.00
206	7c Vermilion (138, 149) . Each with part of New York Steamship cancel. Fine	22.50+
207	☒ 7c Vermilion Grill, 10c Brown. Used in Combination with Cuba #64 (138, 150) . Latter tied with Havana oval cancel, others with pretty N. Y. Foreign Mail cancel to Germany, 7c has str. edge. Very Fine cover, rare usage	(Photo) —
208	☒ 7c Vermilion, Grill, 2c Brown on 3c Entire (138, 157, U83) . Tied on registered cover from Fair Play, Colo. , stamps centered to top. Very Good	50.50
209	15c Orange, Grill (141) . Blue Star cancel, perfs. in at R., light crease	42.50

1870 BANKNOTE ISSUE

210	1c, 6c, 10c Banknotes (145, 148, 150). Very Fine Crossroad cancels, latter in red	—
211	1c Blue, 7c Vermilion (145, 149). Nice strikes N. Y. Foreign Mail cancels, centered to one side	—
212	1c Ultramarine, 10c Brown (145, 161). Fine strikes N. Y. Foreign Mail cancels, Type 65	—
213	1c Ultramarine, 6c Carmine (145, 148). Red N. Y. Foreign Mail cancels, Type 25. Fine	—
214	2c Red Brown (146). N. Y. Foreign Mail cancel, Type 89. Rare type. Fine	—
215	3c Green (147). Large Pittsburgh Shield cancel. Fine	—
216	3c Green (147). Nice strike of N. Y. Foreign Mail cancel, Type 27, light corner crease	—
217	3c Greens (147, 184). Two, "O.K." and Large Shield cancels. Very Fine strikes, latter has crease	—
218	3c Green, two; 10c Brown, three (147, 150). On piece, each cancelled with bright red Crossroad cancel. Attractive piece	11.50+
219	3c Green, 6c Carmine (147, 148). N. Y. Foreign Mail cancels, Type 95. Very Fine	—
220	3c Green. Three diff. Year date cancels, "75", "77" and "79". Fine	—
221	☒ 3c Green, 7c Vermilion (147, 149). Tied on small neat cover from Katonah, N. Y. to France, various transit markings. Fine	35.00
222	6c Carmine (148). N. Y. Foreign Mail cancel, Type 4. Very Fine (Photo)	—
223	6c Carmine (148). Very Fine strike of N. Y. Foreign Mail cancel. Type 59 (Photo)	—
224	6c Carmine (148). Very Fine strike of N. Y. Foreign Mail cancel, Type 61. Rare type, light crease	—
225	6c Carmine (148). N. Y. Foreign Mail cancel, Type 75, one corner perf. creased. Very Fine appearance	(Photo) —
226	6c Carmine (148). Very Fine strike of N. Y. Foreign Mail cancel. Type 73 (Photo)	—
227	6c Carmine (148). Nice strike of N. Y. Foreign Mail cancel, small thin spot, Type 59	—
228	6c Carmine (148). Three diff N.Y. Foreign Mail cancels, Types 77N, 90, 95. Fine	—
229	6c Carmine, 10c Brown (148, 150). Tied on piece with N. Y. Foreign Mail cancel, Type 28, nice strike perf. touch one side	—
230	7c Vermilion (149). Nice strike of Negative Shield. Fine	(Photo) —

231	7c Vermilion (149). Large Pittsburgh Shield cancel, perfs touch at B. (Photo) —	—
232	7c Vermilion (149). Nice strike of Shield cancel, perfs in at top, thin spot —	—
233	7c Vermilion (149). Nice strike of Star in Shield cancel, perfs. in at top —	—
234	7c Vermilion (149). Shield cancel. Fine	—
235	7c Vermilion (149). Very Fine strike of Crescent and Star cancel, well centered, str. edge at R. (Photo) —	—
236	7c Vermilion (149). Odd Geometric cancel. Very Fine	—
237	7c Orange Vermilion (160). Odd cancel. Very Fine (Photo) —	—
238	7c Vermilion (149). Blue cancel of heavy lines and triangles, Excellent strike, stamps centered to R	—
239	7c Vermilion (149). Blue Masonic cancel, small tear	—
240	7c Vermilion (149). Nice strike of blue geometric ,one perf. short, well centered	—
241	7c Vermilion (149). Nice strike of Blue Geometric. Fine	—
242	7c Vermilion (149). Blue Leaf cancel. Well centered, tiny perf. crease —	—
243	7c Vermilion (149). Nice strike of Savannah Negative "5" cancel, well centered, few perfs short	—
244	7c Vermilion (149). Very Fine strike of Key Hole cancel, str. edge at R. (Photo) —	—
245	7c Vermilion (149). Cross Cancel with head of Stanton showing in center. Fine	—
246	7c Vermilion (149). Pretty Blue Grid cancel. Very Fine	5.50
247	7c Vermilion (149). Ultramarine cancel. Very Fine	6.00
248	7c Vermilion (149). Green cancel, light crease. Fine appearance	—
249	7c Vermilion (149). Neat Bremen town cancel. Very Fine	—
250	7c Vermilion (149). Pretty strike of Heart in Circle cancel. Small thin spot in one corner. Scarce	(Photo) —
251	7c Vermilion (149). Scarce Face cancel. Fine	(Photo) —
252	7c Vermilion (149). St. Louis Smiling Sunface cancel. Very Fine strike, str. edge at R. (Photo) —	—
253	7c Vermilion (149). Three colored cancels, Blue Red and Brown. Very Fine	—
254	7c Vermilion (149). Three colored cancels, Red, Ultramarine and Blue. Fine-V. F.	18.50
255	7c Vermilion (149). Three interesting cancels. Very Fine	15.00+

B ROUGE
APRIL 10

FR

Andreas G. Giese
Breslau



Gen. C. Watson
Remondel & Co. Whitehall
Jog
N.Y.



Mrs. Caroline Hammond,
D. POMROY,
Manufactures and Proprietor
ORANGE, MASS.



Deine Kassa Zuzien.



W. Re
Am. E.

Mr. F. Walker
Geneville



Huban
Mass.



12/26
12/26
You Wm. H. Ward
Secy of State
New York



W. Hermann Adolphi
M. Friedrich Siegel
Neue Mainpostoff. No. 11.



Banking Association
Hamburg



via Havanna
Car. G. ...
S. J. ...
L. ...
L. ...



Herbert Booth King & Co.
New York

German closed mail
Emily ...
14-16 Schafstrasse
Hamburg
Germany



Govt. House
Captain ...
Madras



United States
Postal
S. ...
Lesum in Bremen
Germany



Richard ...

306

307

308

309

310

311

312

313

314



37



38



39



40



41



43



45



46



47



48



49



50



54



55



56



57



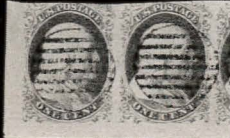
58



59



61



62



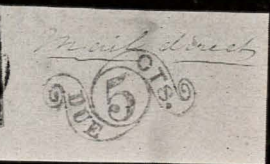
63



67



68



73



74



75



76



78



79



82



87



89



90



99



100



101



103



107



108



110



111



112



113



129



130



131



144



145



147



149



159



160



169



175



176



179



180



181



182



183



184



185



186



189



197



200



204



222



223



225



226



230



231



235



237



244



250



251



252



265



266



267



268



269



270



271



282



285



286



287



298



310



312



315



316



319



321



324



325



328



329



331



333



334



335



336



337



339



342



343



344



345



347



348



349



351



352



353



354



361



374



375



378



379



380



382



383



384



385



386



389



390



391



392



393



394



395



398



399



414



417



418



419



424



426



428



430



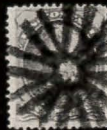
440



441



443



446



447



448



450



456



457



458



476



478



479



480



482



483



484



485



486



488



492



489



490



491



501



502



503



504



505



506



508



509



510



511



512



533



537

8179



540



545



546



553



555



558



157



513



538

256	7c Vermilion (149). Two different black grid cancels. Very Fine	10.00
257	7c Vermilion (149). Two cancels, Dot in Square and Square within Squares. Fine	10.00+
258	7c Vermilion (149). Two diff. Registered cancels. Fine-V. F.	—
259	7c Vermilion (149). Reconstructed Pair each with same odd cancels. V. F.	10.00
260	7c Vermilion (149). Two Negative cancels. Large "K" and "P". Fine	—
261	7c Vermilion (149). Two cancels, "F" in Circle and Large "S". Fine	—
262	7c Vermilion (149). Three diff. Target cancels, one in purple. Fine-V. F.	16.00
263	7c Vermilion (149). Three interesting cancels. Very Fine	15.00+
264	7c Vermilion (149). Seven different Star cancels two are in blue, nice strikes. V. G.-V. F.	35.00+
265	7c Vermilion (149). N. Y. Foreign Mail cancel, light crease. Very Fine appearance	(Photo) —
266	7c Vermilion (149). Excellent strike N. Y. Foreign Mail cancel, Type 28. Fine	(Photo) —
267	7c Vermilion (149). Beautiful strike of N. Y. Foreign Mail cancel, three short perfs. Very Fine appearance	(Photo) —
268	7c Vermilion (149). Excellent N. Y. Foreign Mail cancel, Type 20, Perfs. just touch at top	(Photo) —
269	7c Vermilion (149). N. Y. Foreign Mail cancel. Very Fine	(Photo) —
270	7c Vermilion (149). N. Y. Foreign Mail cancel, Type 65. Very Fine (Photo)	—
271	7c Vermilion (149). Very Fine strike of N. Y. Foreign Mail cancel, centered to R.	(Photo) —
272	7c Vermilion (149). Horiz. Pair. N. Y. Foreign Mail cancel, Type 73, closed tear in one other V. F.	—
273	7c Vermilion (149). Nice strikes of N. Y. Foreign Mail, Types 21, 79, latter in red, slight flaws	—
274	7c Vermilion, 3c Green (149, 207). Tied on small piece Red New York Transit Marking, Pretty piece	—
275	☒ 7c Vermilion (149). Tied on cover to Germany with attractive New York Foreign Mail cancel. Very Fine	(Photo) 35.00+
276	☒ 7c Vermilion (149). Tied on cover from Giddings, Texas to Germany. Fine	35.00
277	☒ 7c Vermilion (149). Tied with New York Foreign Mail cancel, to France with Transit Markings. Very Fine	(Photo) 35.00+
278	☒ 7c Vermilion (149). Tied with St. Louis Smiling Sunface cancel, Excellent strike on cover to Germany. Scarce and attractive	(Photo) —

279	⊠	2c Brown, 7c Vermilion (149, 157). Tied on small cover with N. Y. Foreign Mail cancel & red "Paid All" cancel to Denmark. Very Fine (Photo)	35.50+
280	⊠	7c Vermilion (149). Tied with large Eagle cancel from St. Louis to Germany, various transit markings. Fine and Rare cancel	(Photo) —
281	P	7c Vermilion, India Proof (149P). Block. Very Fine	25.00+
282		10c Brown (150). N. Y. Foreign Mail cancel, Type 60. Very Fine (Photo)	—
283		10c Brown (150, 161, 187). Three N. Y. Foreign Mail cancels, Types 92, 93, 94. Fine	—
284		12c Violet (151). N. Y. Foreign Mail cancel, type 76, centered to R. Fine	—
285		15c Bright Orange (152). Very Fine strike N. Y. Foreign Mail cancel, Type 6, centered slightly to L.	(Photo) —
286		15c Bright Orange (152). N. Y. Foreign Mail cancel, Type 95. Very Fine (Photo)	—
287		15c Bright Orange (152). Very Fine strike N. Y. Foreign Mail cancel, Type 52, tiny crease	(Photo) —
288		24c Purple (153). Nice strike of N. Y. Foreign Mail cancel, Type 88, centered to B. & R.	—
289		24c Purple (153). Pretty Red N. Y. Foreign Mail cancel, well centered, one perf. short	12.00+
290		24c Purple (153). N. Y. Foreign Mail cancel, type 81. Rare type. Fine	—
291		24c Purple (153). Red N. Y. Foreign Mail cancel, type 62. Very Fine	—
292		24c Purple (153). Nice strike of N. Y. Foreign Mail cancel, Type 55. Fine	—
293		24c Purple (153). Very Fine strike of N. Y. Foreign Mail cancel, perfs. in at top	—
294		24c Purple (153). Red N. Y. Foreign Mail cancel, Type 10, nice strike, two short perfs.	—
295	⊠	24c Purple, 7c Orange Vermilion (153, 160). Tied on small cover to Zanzibar from Salem, Mass., Red "Boston Br. Pkt. 40" marking. Fine (Photo)	112.50
296		30c Black (154). Reddish Brown N. Y. Foreign Mail cancel, Type 22. Fine	—
297		30c Full Black (154). Horiz. Pair with Red N. Y. Foreign Mail cancel, Type 62, centered to R. Fine	45.00+
298		90c Carmine (155). Red N. Y. Foreign Mail cancel, Type 19. Very Fine (Photo)	—
299		90c Carmine (155). Red N. Y. Foreign Mail cancel, Type 74. Fine	—
300		90c Carmine (155). N. Y. Foreign Mail cancel, Type 85. Fine	—

1873 BANKNOTE ISSUE

301	1c Dark Ultramarine (156). N. Y. Foreign Mail cancel, Type 63. Rare type. Fine	—
302	1c Ultramarine (156). N. Y. Foreign Mail cancel, Type 38. Very Fine	—
303	1c Ultramarine, 3c Green (156, 158). Struck with pretty Red N. Y. Foreign Mail cancel, Type 43, 1c overlaps on 3c	—
304	1c Ultramarine, 2c Brown (156-157). N. Y. Foreign Mail cancel, Type 84. Fine	—
305	1c Blue, 3c Green (156, 158). Pair of first, each with N. Y. Foreign Mail cancel, Type 39, few perfs. short on one of 1c, one of rarest types	—
306	1c Blue, 7c Vermilion, 10c Brown (156, 160-161). Tied on piece with Red N. Y. Foreign Mail cancels. Very Fine (Photo)	—
307	☒ 1c Blue on 1c Brown Postal Card (156, UX1). Both tied with excellent New York Foreign Mail cancel, various transit markings, stamp has str. edge. Scarce usage, attractive cover (Photo)	—
308	☒ 1c Blue, 3c Green, 7c Vermilion (156, 158, 160). Tied with fancy geometric cancel on cover "Wash'n D. C. Registered" in circle, 3c has str. edge. Attractive cover	37.90
309	☒ 1c Blue, 7c Vermilion on 3c Entire (156, 160, U83). All on Registered cover from Washington, D. C. Very Fine	37.75
310	2c Brown (157). Excellent strike of N. Y. Foreign Mail cancel, tiny corner thin	(Photo) —
311	2c Brown (157). N. Y. Foreign Mail cancel, Type 14. Fine	—
312	2c Brown (157). Very Fine strike of N. Y. Foreign Mail cancel, Type 15 (Photo)	—
313	2c, 6c, 10c Banknotes (157, 159, 161). Tied on piece with red N. Y. Foreign Mail cancels, Type 22, 2c has str. edge. Very Fine piece	—
314	☒ 2c Brown, 7c Orange Vermilion, Two (157, 160). Tied on cover to France with New York Foreign Mail cancels. Very Fine except 2c Brown is defective	70.50
315	3c Green (158). Odd U. S. cancel. Very Fine (Photo)	—
316	3c Green (158). Excellent strike of negative O.K. in box. Very Fine (Photo)	—
317	3c Green (158). Very Fine strike N. Y. Foreign Mail cancel, Type 31, well centered, one perf. short	—
318	3c Green (158). N. Y. Foreign Mail cancel, Type 66N, tiny crease. V.F. appearance	—
319	3c Green (158). N. Y. Foreign Mail cancel, Type 81. Rare type. Very Fine strike (Photo)	—

- 320 **3c Green (158). Red N. Y. Foreign Mail** cancel, Type 20. Very Fine —
- 321 **3c Green (158).** Two with pretty strike of **N. Y. Foreign Mail** cancel, Type 35. Very Fine **(Photo)** —
- 322 **3c Green (158).** Horiz. Pair with Very Fine strike **N. Y. Foreign Mail** cancel, Type 37, small thin spot on one stamp —
- 323 **3c Greens (158, 184).** Two different “**U. S.**” cancels, one in purple. V. F. —
- 324 **3c Green, 6c Dull Pink (158-159).** Tied on small piece with **N. Y. Foreign Mail** cancel, Type 8. Pretty piece **(Photo)** —
- 325 **3c Green, 6c Dull Pink (158-159).** Tied on small piece with **N. Y. Foreign Mail** cancel, Type 41, pretty strike **(Photo)** —
- 326 ☒ **3c Green (158).** Tied on Illustrated Advert. Cover showing, 5 Dwarfs holding or smoking cigar. Attractive —
- 327 ☒ **3c Green (158).** Tied on from Chicago on interesting Illustrated Rebus Cover. V. F. —
- 328 **6c Dull Pink (159).** Excellent strike of **Leaf** cancel, centered to B. **(Photo)** —
- 329 **6c Dull Pink (159).** Very Fine strike of **Shield**, centered to B. **(Photo)** —
- 330 **6c Dull Pink (159).** Very Fine **N. Y. Foreign Mail** cancel **(Photo on Cover)** —
- 331 **6c Dull Pink (159).** **N. Y. Foreign Mail** cancel. Very Fine **(Photo)** —
- 332 **6c Dull Pink (159).** Red **N. Y. Foreign Mail** cancel, Type 6. Very Fine —
- 333 **6c Dull Pink (159).** Very Fine strike **N. Y. Foreign Mail** cancel, Type 27 **(Photo)** —
- 334 **6c Dull Pink (159).** **N. Y. Foreign Mail** cancel, Type 88. Very Fine **(Photo)** —
- 335 **6c Dull Pink (159).** **N. Y. Foreign Mail** cancel, Type 22. V. F. **(Photo)** —
- 336 **6c Dull Pink (159).** **N. Y. Foreign Mail** cancel, Type 36. V. F. **(Photo)** —
- 337 **6c Dull Pink (159).** **N. Y. Foreign Mail** cancel, **Anchor**, Type 91, centered to left, nice strike **(Photo)** —
- 338 **6c Dull Pink (159).** Very Fine strike of **N. Y. Foreign Mail** cancel, Type 54. Rare type, tiny crease **(Photo on Cover)** —
- 339 **6c Dull Pink (159).** Very Fine strike **N. Y. Foreign Mail** cancel, Type 55, centered slightly to R. **(Photo)** —
- 340 **6c Dull Pink (159).** **N. Y. Foreign Mail** cancel, Type 74. Very Fine —
- 341 **6c Dull Pink (159).** Red **N. Y. Foreign Mail** cancel, Type 71, Rare type. Very Fine —
- 342 **6c Dull Pink (159).** Very Fine strike of **N. Y. Foreign Mail** cancel, Type 37 **(Photo)** —
- 343 **6c Dull Pink (159).** **N. Y. Foreign Mail** cancel, type 62. V. F. **(Photo)** —

344	6c Dull Pink (159). Very Fine strike of N. Y. Foreign Mail cancel, Type 38 (Photo)	—
345	6c Dull Pink (159). N. Y. Foreign Mail cancel, Type 1. Very Fine strike, light crease (Photo)	—
346	6c Dull Pink (159). Horiz. Pair with N. Y. Foreign Mail cancel, Type 13. Fine	—
347	6c Dull Pink (159). N. Y. Foreign Mail cancel, Type 13. V. F. (Photo)	—
348	6c Dull Pink (159). N. Y. Foreign Mail cancel, Type 12. Very Fine (Photo)	—
349	6c Dull Pink (159). N. Y. Foreign Mail cancel, Type 10. Very Fine (Photo)	—
350	6c Dull Pink (159). Red N. Y. Foreign Mail cancel, Type 17. Fine	—
351	6c Dull Pink (159). N. Y. Foreign Mail cancel, Type 16. Very Fine (Photo)	—
352	6c Dull Pink (159). N. Y. Foreign Mail cancel, Type 83. Very Fine strike, centered to B (Photo)	—
353	6c Dull Pink (159). Tied on piece with pretty N. Y. Foreign Mail cancel, Type 44, stamp centered to R. (Photo)	—
354	6c Dull Pink (159). N. Y. Foreign Mail cancel, Type 41. Very Fine (Photo)	—
355	6c Dull Pink (159). Two N. Y. Foreign Mail cancels, Types 83, 85. First in red. Nice strikes	—
356	6c Dull Pink, 7c Or. Vermilion, Two (159-160). Tied on piece with Red N. Y. Foreign Mail cancel. Fine	—
357	6c Dull Pink, 10c Brown (159, 161). N. Y. Foreign Mail cancels, both tied on pieces, Type 92. Fine	—
358	7c Orange Vermilion (160). Pretty Blue Target cancel. Very Fine	—
359	7c Orange Vermilion (160). Odd Blue Star cancel. Very Fine	—
360	7c Orange Vermilion (160). Nice strike of Crossroad cancel. Fine	—
361	7c Orange Vermilion (160). Excellent strike of Shield cancel, small closed tear (Photo)	—
362	7c Vermilion (149). Two different "E" cancels. Fine	—
363	7c Orange Vermilion (160). Two Blue cancels, "C" and "W" in Circle. F.	—
364	7c Orange Vermilion (160). Two diff. Windmill cancels, one in blue, nice strikes	10.00+
365	7c Orange Vermilion (160). Two diff. Leaf cancels, nice strikes, one has thin spot	—
366	7c Orange Vermilion (160). Three interesting cancels. Very Fine	15.00+
367	7c Orange Vermilion (160). Three colored cancels, Red, Blue and Brown. Fine-V. F.	—

368	7c Orange Vermilion (160). Horiz. Pair with odd diagonal grid cancel. Very Fine	12.00
369	7c Orange Vermilion (160). Horiz. Pair. Very Fine	12.00
370	7c Orange Vermilion (160). Horiz. Pair. Very Fine	12.00
371	7c Vermilion (149). Horiz. Pair. Very Fine	12.00
372	7c Orange Vermilion (160). Horiz. Pair with Red New York Transit cancel. Fine	12.00+
373	7c Vermilion (160). Very Fine Horiz. Pair tied on small piece with light N. Y. Foreign Mail cancel	—
374	7c Orange Vermilion (160). N. Y. Foreign Mail cancel. Very Fine (Photo)	—
375	7c Orange Vermilion (160). N. Y. Foreign Mail, type 83. Very Fine (Photo)	—
376	7c Orange Vermilion (160). N. Y. Foreign Mail cancel, Type 8, tiny thin. Very Fine appearance	—
377	7c Orange Vermilion (160). Red N. Y. Foreign Mail cancel. Very Fine strike, centered to B.	—
378	7c Orange Vermilion (160). Fine strike of scarce Anchor, Type 91, N. Y. Foreign Mail cancel, perfs touch at top	(Photo) —
379	7c Orange Vermilion (160). Very Fine strike N. Y. Foreign Mail cancel, Type 17, centered slightly to R.	(Photo) —
380	7c Orange Vermilion (160). N. Y. Foreign Mail cancel, Type 20. Very Fine (Photo)	—
381	7c Orange Vermilion (160). Red N. Y. Foreign Mail cancel, Type 20. Very Fine	—
382	7c Orange Vermilion (160). Very Fine strike of N. Y. Foreign Mail cancel, Type 42	(Photo) —
383	7c Orange Vermilion (160). Very Fine strike N. Y. Foreign Mail cancel (Photo)	—
384	7c Orange Vermilion (160). N. Y. Foreign Mail cancel. Very Fine (Photo)	—
385	7c Orange Vermilion (160). N. Y. Foreign Mail cancel. Very Fine (Photo)	—
386	7c Orange Vermilion (160). N. Y. Foreign Mail cancel, Type 81. Very Fine (Photo)	—
387	7c Orange Vermilion (160). Beautiful strike of N. Y. Foreign Mail, tiny thin spot. Very Fine appearance	(Photo on Cover) —
388	7c Orange Vermilion (160). Red N. Y. Foreign Mail cancel, Type 79. Fine	—
389	7c Orange Vermilion (160). Horiz. Pair with N. Y. Foreign Mail cancel, Left stamp Very Fine other two perfs short	(Photo) —
390	7c Orange Vermilion (160). Horiz. Pair with pretty N. Y. Foreign Mail cancel. Very Fine	(Photo) —

391	7c Orange Vermilion (160). Two tied on small piece with N. Y. Foreign Mail cancel. Fine (Photo) —	
392	7c Orange Vermilion (160). Horiz. Pair with N. Y. Foreign Mail cancel. Very Fine (Photo) —	
393	7c Orange Vermilion (160). Horiz. Pair with pretty strike of N. Y. Foreign Mail , centered slightly to B. (Photo) —	
394	7c Orange Vermilion (160). Horiz. Pair with Red N. Y. Foreign Mail cancel, Type 33. Very Fine (Photo) —	
395	7c Orange Vermilion (160). Horiz. Pair with N. Y. Foreign Mail cancel, R. stamp has tear (Photo) —	
396	7c Orange Vermilion (160). Horiz. Pair with Red N. Y. Foreign Mail cancel. Very Fine —	
397	7c Orange Vermilion (160). Horiz. Pair with Red N. Y. Foreign Mail cancel, Type 20. Fine —	
398	7c Orange Vermilion (160). Horiz. Strip of 3 with New York Foreign Mail cancel, str. edge on R. stamp, perf. touch at R. (Photo) —	
399	7c Orange Vermilion (160). Horiz. Strip of four with Red N. Y. Foreign Mail cancel, Type 79. Very Fine though one stamp has light crease (Photo) —	
400	7c Orange Vermilion (160). Three diff. New York Foreign Mail cancels. Fine-V. F. —	
401	7c Orange Vermilion (160). Three, each has Blue Transit Markings plus regular black cancels two also have N. Y. Foreign Mail cancels, one has str. edge. Fine —	
402	7c Orange Vermilion (160). Four diff. N. Y. Foreign Mail cancels. Very Fine strikes, slight flaws —	
403	7c Orange Vermilion (160). Four Red Transit Markings . Fine-Very Fine 28.00	
404	7c Orange Vermilion (160). Four different Star cancels. V. G.-Fine 20.00+	
405	7c Orange Vermilion (160). Five different Target cancels, in purple, black and blue. Fine-Very Fine 22.50	
406	7c Orange Vermilion (160). Five different N. Y. Foreign Mail cancels. Very Fine strikes, slight flaws —	
407	☒ 7c Orange Vermilion (160). Tied with New York Foreign Mail and red Transit marking to Wurtemberg. Very Fine 37.50+	
408	☒ 7c Orange Vermilion (160). Tied on cover from Salinas City, Cal. to France, various transit markings. Fine 37.50	
409	☒ 7c Orange Vermilion (160). Tied on cover from New Orleans to France, Transit markings. Very Fine 37.50	

410	✉	7c Orange Vermilion (160). Tied on cover from St. Louis to Germany, Transit and Forwarding Marks. Very Fine	37.50
411	✉	7c Vermilion, 15c Yellow Orange (160, 163). Tied on large cover from Eagle Pass, Texas on registered cover to St. Louis. Very Good	52.50
412	✉	7c Orange Vermilion, 15c Yellow Orange (160, 163). Tied on Mourning cover with N. Y. Foreign Mail to India Forwarded to Madras, interesting markings including Sea Post Office. Very Fine and Scarce Cover (Photo)	52.50+
413	P	7c Black, Trial Color Proof (160TC). Block on India. Very Fine	30.00
414		10c Brown (161). N. Y. Foreign Mail cancel, Type 19. V. F. (Photo)	—
415		10c Brown (161). N. Y. Foreign Mail cancel, Type 43. Fine	—
416		10c Brown (161). Very Fine strike of N. Y. Foreign Mail cancel, Type 33, two perfs. short	—
417		10c Brown (161). Two tied on piece with N. Y. Foreign Mail cancel, Type 33, plus transit marking. Very Fine	(Photo) —
418		10c Brown (161). Two tied on piece with N. Y. Foreign Mail cancel, Type 22. Very Fine	(Photo) —
419		10c Brown (161). Excellent strike of N. Y. Foreign Mail cancel, centered to B., on small piece	(Photo) —
420		10c Brown (161). N. Y. Foreign Mail cancel, Type 53. Fine, Rare type	—
421		10c Brown (161). N. Y. Foreign Mail , Type 87. Rare type. Very Fine	—
422		10c Brown (161). N. Y. Foreign Mail cancels, Types 67, 74, latter in red. Fine	—
423		10c Brown (161). Very Fine strike N. Y. Foreign Mail cancel on small piece, type 64, centered to top	—
424		10c Brown (161). Two tied on piece with N. Y. Foreign Mail cancels, Type 6a. Very Fine piece	(Photo) —
425		10c Brown (161). Tied on small piece with N. Y. Foreign Mail cancel, Type 13. Very Fine	—
426		10c Brown (161). Two tied on piece with N. Y. Foreign Mail cancel, Type 19. Very Fine	(Photo) —
427		10c Brown (161). Red N. Y. Foreign Mail cancel, Type 21. Very Fine	—
428		10c Brown (161). Horiz. Pair with N. Y. Foreign Mail cancel, Type 38. Very Fine	(Photo) —
429		10c Brown (161). Fine strike of N. Y. Foreign Mail Type 40, one perf. short, well centered	—
430		10c Brown (161). Excellent strike of N. Y. Foreign Mail cancel, Type 25, centered to left	(Photo) —
431		10c Brown (161). Three diff. N. Y. Foreign Mail cancels. Very Fine strikes	—

432	★	12c Blackish Violet (162). Well centered, one perf. short. Very Fine appearance	40.00
433		12c Blackish Violet (162). Horiz. Pair with N. Y. Foreign Mail cancel, Type 43. Fine	—
434		12c Blackish Violet (162). Red N. Y. Foreign Mail cancel, Type 36. Fine	—
435		12c Blackish Violet (162). Horiz. Pair with N. Y. Foreign Mail cancel, Type 22. Very Fine appearance, light creases	—
436	☒	12c Blackish Violet (162). Tied on cover with pretty N. Y. Foreign Mail cancel, various transit markings, stamp has str. edge (Photo)	—
437		15c Yellow Orange (163). N. Y. Foreign Mail cancel, Type 1. Fine	—
438		30c Greenish Black (165). Very Fine strike of N. Y. Foreign Mail, Type 23. Perfs. touch at R.	—
439		30c Greenish Black (165). N. Y. Foreign Mail cancel. Nice strike type 65, centered to B. & L.	—
440		30c Gray Black (165). Red N. Y. Foreign Mail cancel, Type 79. Fine (Photo)	—
441		30c Greenish Black (165). N. Y. Foreign Mail cancel, Type 51, light crease. Very Fine appearance (Photo)	—
442		30c Banknotes (165, 190). Well centered, Supplementary Mail cancels. Superb	10.00
443		90c Rose Carmine (166). N. Y. Foreign Mail cancel, Type 52. V. F. (Photo)	—

1875-1888 BANKNOTES

444		2c Vermilion (178). Two N. Y. Foreign Mail cancels, Type 70, 86. Fine-V. F.	—
445		2c Vermilions (178, 183). Ten diff. fancy cancels, includes 7 in Shield, "Held For Postage", Numeral "5", "10", "Paid 3", etc. Very Fine strikes, nice lot	—
446		5c Blue (179). Very Fine strike of N. Y. Foreign Mail cancel, Type 70, centered slightly to top (Photo)	—
447		5c Blue (179). N. Y. Foreign Mail cancel, Type 2. Very Fine (Photo)	—
448		2c Vermilion (183). Very Fine strike of Heart cancel, str. edge at R. (Photo)	—
449	☒	2c Vermilion, 6c Pink on 7c Vermilion Entire (183, 186, U88). Tied on Registered cover to Russia, with Registered Label. Scarce combination. Fine	27.65
450		3c Green (184). Excellent strike of Skull & Crossbones cancel on Fine stamp (Photo)	—

451	3c Green (184) . Very Fine strike N. Y. Foreign Mail cancel, Type 5, well centered, two short perfs.	—
452	6c Pink (186) . Leaf cancel . Very Fine	—
453	☒ 6c Pink (186) . Tied with Very Fine " U. S. " cancel from Lockport, N. Y.	—
454	☒ 30c Full Black on 2c Brown Entire (190, U279) . Tied on registered cover from Caspar, Cal. to Tuscany. Very Fine	—
455	90c Carmine (191) . Very Fine	15.00
456	★ 7c Scarlet Vermilion Special Printing (196) . Small thin spot. Fine appearance	(Photo) 275.00
457	3c Green (207) . Excellent strike of Skull & Crossbones	(Photo) —
458	10c Brown (209) . N. Y. Foreign Mail cancel, Anchor , Type 91. Very Fine	(Photo) —
459	2c Red Brown (210) . Three diff. initials "M. B.", "A. C." and "N. H." Fine-V. F.	—
460	☒ 2c Green (212) . Tied on cover with advertising around stamp in green. Very Fine	(Photo) —
461	☒ 2c Green (212) . Tied on cover with advertising around stamp in green, similar type as above but diff. Co. from Hartford. Very Fine	—
462	☒ 2c Green (212) . Tied on cover with Advertising around stamp in green, similar type as above but diff. Co. from Philadelphia. Very Fine	—
463	☒ 2c Green (212) . Tied on cover from Cleveland with advertising around stamp in orange. Very Fine	—
464	☒ 2c Green (212) . Illustrated Cover tied from Phila. shows large illustr. of Gun. V. F.	—
465	P 1c-90c, 1890 Issue, Complete Set India Paper Proofs (219P-229P) . F.-V. F.	39.00
466	☒ 2c Carmine (220) . Tied on cover from Boston with advertising around stamp. Very Fine	—
467	☒ 2c Carmine (220) . Tied on cover from Detroit, Advert. around stamp, and large illustration of a Train. Very Fine	—
468	☒ 5c Chocolate on 2c Entire (223, U311) . Tied with purple Stars from Stephan, S. Dak. to Switzerland with three Swiss Due stamps. V. F.	—

COLUMBIAN ISSUE

469	★ 2c-15c Columbian (231-238) . Very Fine-Superb	25.35
470	★ 15c-30c Columbian (238-239) . Very Fine	19.00
471	★ 30c Columbian (239) . Superb	10.00
472	★ 30c-50c Columbian (239-240) . Fine	25.00

473	50c Columbian (240) . Very Fine	11.00
474 ★	50c Columbian (240) . Very Fine	15.00
475	\$1.00 Columbian (241) . Fine	37.50
476 ★	\$1.00 Columbian (241) . Very Fine (Photo)	45.00
477 ★	\$1.00 Columbian (241) . Well centered, without gum	45.00
478	\$2.00 Columbian (242) . Very Fine (Photo)	32.00
479	\$2.00 Columbian (242) . Attractive "U. S. German Sea P. O. '93" cancel. Very Fine	(Photo) 32.00
480 ★	\$2.00 Columbian (242) . Very Fine (Photo)	47.50
481 ★	\$2.00 Columbian (242) . Fine except regummed	47.50
482	\$3.00 Columbian (243) . Very Fine (Photo)	62.50
483	\$3.00 Columbian (243) . Very light corner crease. Very Fine appearance (Photo)	62.50
484 ★	\$3.00 Columbian (243) . Very Fine (Photo)	70.00
485 ★	\$3.00 Columbian (243) . Small thin. Fine appearance (Photo)	70.00
486 ★	\$4.00 Columbian (244) . Very Fine (Photo)	80.00
487 ★	\$4.00 Columbian (244) . Perf. just touch at right	80.00
488	\$5.00 Columbian (245) . Very Fine (Photo)	80.00
489 ★	\$5.00 Columbian (245) . Very Fine (Photo)	90.00
490 ★	\$5.00 Columbian (245) . Well centered, V. F. except without gum (Photo)	90.00
491 ★	\$5.00 Columbian (245) . Well centered, regummed. Very Fine appearance (Photo)	90.00
492 ★	\$5.00 Columbian (245) . Imprint Pair . Very Fine (Photo)	180.00+
493 ★	50c Orange (260) . Superb	10.00
494 ☒	2c Carmine (267) . Tied on Spanish American War Patriotic Cover. Entire front is a Flag , postmarked Coney Island. Very Fine	—
495 ☒	2c Carmine (267) . Tied from Forsyth, Mont. on attractive illustr. adver- tising cover, showing Cat chasing Mice. Very Fine	—
496 ☒	2c Carmine (267) . Tied on cover with advertising around stamp, also illustration of Horse. Very Fine	—
497 ★	50c Orange (275) . Superb	14.50
498 ★	\$1.00 Black (276) . Well centered, trivial thin. V. F. appearance	25.00

TRANS-MISSISSIPPI ISSUE

499 ★	5c Trans-Miss. (288) . Superb	4.00
-------	--	------

500	50c Trans-Miss. (291). Two copies. Fine-V. F.	20.00
501	\$1.00 Trans-Miss. (292). Very Fine (Photo)	47.50
502	\$1.00 Trans-Miss. (292). Very Fine (Photo)	47.50
503 ★	\$1.00 Trans-Miss. (292). Very Fine (Photo)	65.00
504 ★	\$1.00 Trans-Miss. (292). Centered trifle to B. Still Very Fine (Photo)	65.00
505 ★	\$1.00 Trans-Miss. (292). Small thinning. Very Fine appearance (Photo)	65.00
506 ★	\$2.00 Trans-Miss. (293). Perfs. just touch at top (Photo)	85.00

TWENTIETH CENTURY

507 ★	1c-10c Pan-American (294-299). Fine set	20.95
508 ★	50c Orange (310). Superb (Photo)	18.00
509 ★	\$1.00 Black (311). Very Fine (Photo)	40.00
510 ★	\$1.00 Black (311). Very Fine (Photo)	40.00
511 ★	\$1.00 Black (311). Very Fine (Photo)	40.00
512 ★	\$5.00 Dark Green (313). Very Fine (Photo)	95.00
513 ★田	5c Blue, Imperforate (315). Block. Very Fine (Photo)	300.00
514 ★	3c Louisiana-Purchase (325). Superb	4.75
515 ★	10c Louisiana-Purchase (327). Very Fine	14.00
516 田	2c Lincoln (367). Tied on cover from Duarte, Cal. with advertising around stamp in red, Orange and Blossom in colors at left. Attractive. V. F.	—
517	2c Lincoln Bluish (369). Very Fine used	13.50
518 ★	10c Pan-Pacific (400). Very Fine	10.00
519 田	10c Pan-Pacific (404). Used Block. Fine	40.00

1912-1922 ISSUES

520 ★	50c Violet (422). Superb	15.00
521 ★	1c-30c, 1914 Issue (424-435, 438-439). Four have thins. Good-V. F.	39.45
522 ★田	7c Black (430). Top Plate No. blocks of 6. Fine	27.50
523 ★田	9c Salmon Red, 10c Orange Yellow (432-433). Top Plate No. blocks of 6. Fine-V. F.	32.50
524 ★田	11c Dark Green, 12c Claret Brown (434-435). Right Plate No. blocks of 6. Very Fine	20.50
525 ★田	11c Dark Green, 12c Claret Brown (434-435). Blocks, latter Plate No. block of 6. Fine	17.50

526	★	田	12c Claret Brown, Copper Red (435, a). Three blocks, shades, one has Double Transfers, one stamp thin, balance Fine-Very Fine	33.50
527	★		12c Copper Red (435a). Superb	4.00
528	★	田	15c Gray (437). Block. Fine	32.50
529	★	田	20c Ultramarine (438). Top Plate No. block of 6, well centered, tropical gum. Very Fine	55.00
530	★	田	30c Orange Red (439). Top Plate No. blocks of 6. Fine	95.00
531		田	1c, 2c, 7c, 9c, 50c, 1914-16 Issues (440, 462-63, 469, 471). Used blocks, V. G.-V. F.	27.60
532	★		50c Violet (440). Fine, part gum	45.00
533	★		2c Carmine Imperforate (459). Guide Line strip of 4. Very Fine except usual gum crease on guide line (Photo)	225.00
534	★		\$1.00 Violet Black (460). Well centered, thin spot	40.00
535	★	田	2c Carmine (461). Block, gum disturbed, re-enforced. Fine appearance ...	32.50
536	★	田	2c Carmine (461). Top Plate No. block of 6. Fine	60.00
537	★		5c Carmine Error (463b). Very Fine (Photo)	62.50
538	★	田	5c Carmine, Error (463b). Error in block of 6. Very Fine (Photo)	75.00
539		田	50c Light Violet, \$1.00 Violet Black (477-478) Used blocks. Fine	43.00
540	★		\$1.00 Violet Black (478). Superb (Photo)	57.50
541	★		\$5.00 Light Green (480). Superb	16.00
542	★		\$5.00 Light Green (480). Superb	16.00
543	★	田	5c Rose Error (499h). Error in block of 6. Fine	45.00
544	★	田	5c Rose Error (499h). Error in middle of block of 9. Superb	52.50
545	★		\$2.00 Orange Red & Black (523). Plate No. single. Very Fine (Photo)	47.50
546	★		\$2.00 Orange Red & Black (523). Superb (Photo)	47.50
547	★		2c Offset Imperf. (532c). Large margin Plate No. single. Superb	3.00
548		田	1c-5c Pilgrim (548-550). Used blocks. Fine set	15.00
549	★	田	\$5.00 Carmine & Blue (573). Right Arrow block. Very Fine	52.50
550	★		2c Carmine, Type II (599a). Joint Line Pair. Superb	5.00

AIRS, DUES, SHANGHAI

551	★		50c Zeppelin (C18). Superb	9.50
552	★		50c Zeppelin (C18). Superb Plate No. single	9.50
553	★		50c Postage Due (J58). Very Fine, scarce in this condition (Photo)	50.00

554	★	2c-\$2.00 Shanghai (K1-K16). Complete set including shades of 16c and 24c. Very Fine, choice set	60.30
555	★	\$2.00 on \$1.00 Shanghai (K16a). Double Sucharge. Very Fine (Photo)	150.00
556	★	2c-4c Locals, Shanghai (K17-K18). Superb	15.00
557		1c Navy (O35). N. Y. Foreign Mail cancel, Type 10. Fine	—
559	P	25c Parcel Post (Q9P). Small Die Proof on India	(Photo) 50.00
559	★	50c Parcel Post (Q10). Superb	14.00

ENVELOPES & CUT SQUARES

560	☒	3c Pink Entire (U58). Tied with U. S. from Union Springs, Ala. Very Fine	—
561	☒	3c Pink Entire (U58). Tied with "A L" from Greenville, Ala. Fine	—
562		9c Orange Yellow on Buff (U67a). Wells Fargo cancel. Very Fine	—
563		7c Vermilion on Amber (U88). N. Y. Foreign Mail cancel. Very Fine	5.00+
564	☒	2c Brown Entire (U277). Tied with Star within a Star and Townsend, Mass. cancel in Green. Very Fine	—
565	☒	2c Brown Entire (U277). Tied with Star and Dwight, Dak. cancels. Very Fine Territorials	—
566		2c Brown, Cut Square (U278). Excellent strike of Skull & Crossbones cancel. Very Fine	—
567	☒	2c Green Entire (U311). "Atlanta, Alturas Co. Idaho" and "Boise City Idaho" postmarks former caused by missent. Fine Territorial	—
568	☒	2c Green Entire (U312). Tied with Star cancel boxed "Fort Assinaboine, Jan. 4, 1888, Montana". Nice Territorial.....	—
569	★	2c Green on Amber (U319). Very Fine	11.00

REVENUES

570		1c Playing Card (R2c). Printed cancel "L. C. & Co. Mar. 1864". Very Fine	12.50
571		2c-60c Civil War Revenues (R7a, R13b, R46a, R48a, R64b, c). All with attractive handstamp cancels, one in red. Very Fine	9.90
572		4c Playing Card (R21c). Deep rich color, "P. & W. R. R. Co." handstamp cancel, small thin. Very Fine appearance, Ex-Chambers	26.50
573		30c Foreign Exch. Imperf. (R51a). Pretty handstamp cancel. Superb	5.00
574		\$20.00 Conveyance Imperf. (R98a). Pretty handstamp cancel. Superb	4.50
575		\$25.00 Mortgage (R100c). Beautiful oval handstamp cancel. Superb	12.00
576	★	\$5.00 Dark Blue, Documentary on Newspaper (R160). Superb	12.50

577 ★	\$1.00 Rose Lake (RW2). Fine	20.00
578	MATCH & MEDICINES. Mounted collection of 297 stamps. Nice lot, few defects as usual but above average condition	551.20
579	MATCH & MEDICINES. 143 stamps, mostly different. Nice lot	123.75
580	Snuff Stamps, 17 mostly different, Narcotic Stamps, 13 different	—

END OF SALE

THANK YOU

MEMORANDUM

FINALLY
A BOOK ON
UNITED STATES
19th CENTURY
FANCY CANCELS

"HERST-ZARESKI, UNITED STATES
NINETEENTH CENTURY FANCY CANCELS"

This American edition is the French edition, greatly expanded. The French edition has sold in the past for as high as \$30.00. It will contain over 2000 illustrations which is more than twice the amount in the original edition. Cancellations will be priced according to auction realizations. Book will contain 300 pages.

Ready in February

Price \$5.00

Postpaid

Place your order now.

ROBERT A. SIEGEL

505 FIFTH AVENUE

NEW YORK CITY

Announcing

Our New Offices in

505 FIFTH AVENUE

NEW YORK CITY

All auctions in the future will be held at our New York City office.

Office hours — 9:30 A. M. to 5:30 P. M. Monday - Friday.

Please send all orders and correspondence to this address.

Tel.: MUrray Hill 2-4309

Our WHITE PLAINS, New York Office at 124 Mamaroneck Ave. will remain open as a branch to serve our customers in this area. This office will be under the management of John Cabot III. Auction lots can be examined at this office the two Saturdays preceding a sale date.

Office hours — 9:30 A. M. to 5:30 P. M. Tuesday - Saturday.

Tel.: WHite Plains 9-5837