

157th SALE

PRESIDENTIAL & HISTORICAL  
AUTOGRAPHS & FREE FRANKS

UNITED STATES

STAMPS & COVERS

INCLUDING SHEETS OF \$1.00 COLUMBIANS

CANADA, NEWFOUNDLAND

and GENERAL FOREIGN

U. S. & FOREIGN WHOLESALE



THURSDAY, AUGUST 14th, 1952

1:30 P.M.

*Robert A. Siegel*  
**AUCTIONS**

505 FIFTH AVENUE

NEW YORK CITY

## CONDITIONS OF SALE

---

1. The terms of sale are strictly cash to the highest bidder. All buyers are expected to pay for lots within three days of receipt, unless special arrangements have been made prior to the sale.
2. All bids are per lot as numbered in the catalogue and not per piece, unless otherwise announced by the auctioneer at the time of sale.
3. Any lot the description of which is incorrect is returnable only within three days of receipt. All disputed lots must be returned intact as received. Lots containing five or more stamps are not returnable at any time. No lots may be returned by purchasers who have had the opportunity to examine them before the sale.
4. Successful mail bidders, unless they are known to us or supply acceptable references, will be notified of the amount of the lots secured for them, and are expected to send payment in full before the lots are forwarded.
5. If the purchase price has not been paid within the time limit, or lots taken up within seven days from date of sale, they may be resold and any losses arising from such sale charged to the defaulter.
6. All stamps are sold as genuine, except where sold "As Is". Claims for any lot proving otherwise, must be made within two weeks from date of sale.
7. The right is reserved to group two or more lots, also withdraw any lot or lots from the sale, or to act on behalf of the seller.
8. Until paid for in full all lots remain the property of Robert A. Siegel.
9. No commission is charged for buying at our sales, but all forwarding charges will be added to the purchase price.
10. Lots will be sent for inspection, provided such lots are returned to us the same day as received. Postage and registration both ways will be charged. Approximate values of lots will be given on request.
11. The placing of a bid shall constitute acceptance of the forgoing conditions of sale.

ROBERT A. SIEGEL

GREGORY MOZIAN, Licensed Auctioneers

---

In sending bids, always state the highest price you are prepared to pay for the lot. Your limit will not be used as a starting bid unless absolutely necessary.

## DESCRIPTIONS

Superb—the finest condition for noteworthy, outstanding copies.

Very Fine (VF)—means that there is a slight deviation from the above.

Fine (F)—means that the perforations do not touch the design on issues after 1890, but in some cases may just touch in earlier issues; if used, fairly lightly cancelled.

Very Good (VG)—means that the appearance is generally fine but that the perforations cut the design slightly.

Good (G)—means average off-centering; or fairly attractive with slight defects. Original gum is not to be expected on 19th Century stamps up to 1888 unless so stated.

Scott's 1952 Specialized United States Catalogue is used for cataloging our lots of United States and Scott's Standard Catalogue, 1952 for others.

WE SOLICIT FINE MATERIAL FOR FUTURE SALES
-------------------------------------------



# CATALOGUE

## UNITED STATES

### PRESIDENTIAL & HISTORICAL AUTOGRAPHS & FREE FRANKS

1 ☒ **G. WASHINGTON** (1st President) Free Frank on folded cover, black straight line "**Phila. Aug. 5**" on back. Fine & Scarce Cover (1777) **(Photo)** —

2 ☒ **JAMES MONROE** (5th President) Free Frank on folded cover, black Washn. City in circle, addressed to Richard H. Johnson who was Vice President later ..... —

3 ☒ **J. Q. ADAMS** (6th President) Free Frank on folded cover addressed to Daniel Adams, Medfield, Mass. Fine ..... —

4 ☒ **Franklin Pierce** (14th President) **Free Frank**, red Washington D. C. circle, A. L. S. (1838). V. F. .... —

5 ☒ **Franklin Pierce** (14th President), **Free Frank** red Concord, N. H. circle, A. L. S. (1840). Very Fine..... —

6 ☒ **James BUCHANAN** (15th President), Free Frank on folded cover addressed to George Dickin son, Mass. Legislature, Boston. Very Fine ..... —

7 ☒ **A. LINCOLN, Presidential Free Frank Cover**, Washington, D. C. Free 1861 in Black Circle. Neat attractive cover. Rare ..... **(Photo)** —

8 **A. LINCOLN** (16th President) signed memorandum to the War Dept. (Sept. 16, 1861). V. F. .... —

SALE STARTS AT 1:30 P.M.

OUR OFFICES ARE AIR CONDITIONED



- 125- 9 **A. LINCOLN & MRS. LINCOLN**, a letter written on Executive Mansion stationery dated Dec. 14, 1863 and signed by **Mrs. Lincoln** recommending a man who had done work at the Executive Mansion to Hon. E. Mc Pherson, House of Rep., on the back of letter is a note signed by **A. Lincoln** also recommending same John Alexander, a rare and valuable item signed by both in Very Fine condition, also Presidential envelope in which it was delivered .....

16- 10 ☒ **Robert T. LINCOLN** (Lincolns' Son), Signed Letter on Mourning Stationery and mailed in small Mourning Cover with 3c Rose #65 tied from Chicago, Aug. 2, 1865 to Hon. Edw. Mc Pherson, Gettysburg, Pa. V. F. ....

3- 11 ☒ **J. A. GARFIELD** (20th President), Free Frank as M. C., "Wash. D. C. Congress Free" postmark .....

250- 12 **Theodore Roosevelt**, signed letter regarding request for speech, 1917. V. F. ....

120- 13 **PRESIDENTIAL AUTOGRAPHS**, Thirty different, complete except Washington, Lincoln & Truman, some on documents & memorandums, mounted with collateral material & few autographs of wives of Presidents. Very Fine lot, Est. Cash Val. \$175.00 .....

2750- 14 **NAPOLEON BONAPARTE** on attractive illustrated document, dated 1793. Very Fine .....

10- 15 **A. HAMILTON** (First Sec. of Treasury) signed on printed Treasury Dept. circular dated Apr. 12, 1793. Very Fine .....

8- 16 ☒ **D. P. MADISON** (Dolly), Free Frank on cover front, Orange C.H. Va. postmark. Fine .....

850- 17 **Civil War Union Generals and Officers**, 22 different autographs and letters, also 3 photos interesting lot .....

1250- 18 **Winfield SCOTT**, signed letter of Gen. Scott to Gen. Thomas complaining about reduction in pay "Would starve me outright. Why should Congress take this trouble when if they will wait but a little while I shall die a natural death". V. F. ....

225- 19 **Generals Banks, Logan, Burnside, Porter**, four autographs of Civil War generals. V. F. ....

21- 20 **JEFF. DAVIS** (President of Confederacy) signed letter, dated July 2, 1853 .....

3- 21 ☒ Cover addressed to "Ex President Jefferson Davis, Beauvoir, Miss." in 1889 with memorandum in his writing on envelope, cover stained .....

1250- 22 **R. E. LEE** the Generals autograph when he was Capt. of Engineers. V. F. ....

750- 23 **Confederate Generals and Statesmen**, 10 diff. autographs includes Beau-regard, Longstreet, Cobb, Hampton. V. F. lot .....

16- 24 **Confederate Officers**, 16 diff. letters and documents, interesting contents. V. F. ....



4- 25	W. J. SAMPSON (Admiral), autograph. Very Fine .....	—
300 26	Phillips BROOKS (Great Pulpit Orator & Writer) signed letter. V. F. ....	—
300 27	J. Lathrop MOTLEY (American Historian & Diplomat) interesting signed letter from Vienna Jan. 24, 1866 on mourning stationery. V. F. ....	—
1850 28	E. A. MITCHELL (Postmaster of New Haven, issued and signed Postmaster Provisionals of N. H.) signed receipt for postage in 1847. V. F. ....	—
750 29	☒ John Greenleaf Whittier, signed note on back of 3c 1861 cover, dated by Quaker Date, Amesbury, 8, 9 mo 1868. V. F. ....	—
11- 30	☒ Post Office Notice, New York, Jan. 29, 1846 Robert H. Morris P. M., printed notice on Stampless Cover Printed "Free-Post Office Business". Very Fine .....	—
5- 31	Confederate States Printed Pass, Aug. 28, 1863 to visit Stony Creek .....	—

### U. S. PROOFS & ESSAYS

22- 32 E	Essay, Albany Postmaster Stamp in Black (Brazers 1Xc). Fine (Photo) .....	—
425 33 E	3c 1851 Essays (Brazers 33E-D, 33E-G, 33E-H), one has faults. Fine appearance .....	—
15- 34 P	1c, 5c-30c Perforated Proofs (40P, 42P-46P) .....	—
34 35 E	1c Franklin, Orange on Green Bond Essay (55Ee), 22mm by 26mm. Fine .....	—
15- 36 P	1c-90c, 1861 Issue. Ten diff. Card Proofs (Between 63P-77P). Very Fine .....	30.25
12- 37 E	3c Dim Orange Red. Perforated & Grilled Essay (83E-Bj). V. F. ....	—
3- 38 E	12c Green, Perforated & Grilled Essay (85eTC6). Fine .....	—
1350 39 E	2c Horseman, 1869 Issue. Five diff. colors perforated grilled essays (113E-D). Very Fine .....	—
600 40 E	5c Washington Essay, 1869 Issue. Horiz. Pair Dull Yellow (115aE-E) V. F. ....	—
150 41 P	☐ 6c Carmine, India Proof (148P). Block. Very Fine .....	15.00
26- 42 P	☐ 6c Pink, India Proof (159P). Block. Very Fine .....	40.00
400 43 P	6c Lincoln, Black Trial Color Proof (159TC). Horiz. Pair. V. F. ....	10.00
37- 44 P	6c Rose, Large Die Proof (208P). Very Fine .....	50.00
425 45	6c Lincoln, Proof, Sample, Sample A. Two Essays in diff. colors, one has tear others Fine .....	—

### U. S. POSTAGE

#### POSTMASTERS & 1847 ISSUE

725 46 ★	New Haven, 5c Red. Unsigned Reprint (8XU1 rep.). Very Fine .....	—
----------	------------------------------------------------------------------	---



90-	47	☒	New York Postmaster, 5c Bluish (9X1). Superb four margin copy tied on cover with square red grid cancel ..... (Photo)	75.00
15-	48	★	5c Black Providence Postmaster (10X1). Margins all around. Very Fine (Photo)	32.50
1050	49		5c Red Brown (1). Red grid, margins all around, light crease. V. F. appearance .....	27.50
7-	50		5c Red Brown (1). Blue cancel, margins three sides, cut in partly at L ....	32.50
33-	51	☒	5c Red Brown (1). Margins all around, tied on small slightly reduced cover with N. Y. City red square grid. Red str. line Phila. Railroad pmkd. (Photo)	—
32-	52		10c Black (2). Margins all around, slight thin. V. F. appearance, Blue cancel ..... (Photo)	90.00
38-	53		10c Black (2). Blue Numeral 10 in circle cancel, margins all around, light corner crease. Very Fine appearance ..... (Photo)	100.00
6750	54		10c Black (2). Attractive Red "10" Numeral cancel, small but complete margins. Fine ..... (Photo)	100.00
34-	55		10c Black (2). Struck with two Blue Numeral 5 cancels, margins all around, tiny closed tear. Very Fine appearance ..... (Photo)	100.00
31-	56		10c Black (2). Large margins all around, Manuscript cancel .....	50.00

#### 1851 ISSUE

6-	57		1c Blue, Type II (7). Sheet margin at bottom. Very Fine .....	10.00
7-	58		1c Blue, Type IV (9). Margins all around. Very Fine .....	7.50
825	59		1c Blue, Type IV (9). Large margins. Very Fine .....	7.50
1050	60	☒	1c Blue, Type IV (9). Tied with Paid cancel on printed invitation to Holly Springs, Miss. Barbecue. Fine .....	12.00
725	61	☒	1c Blue, Type IV (9). Tied with red Carrier on cover. Fine .....	12.00
16-	62	☒	1c Blue, 3c Red, Pair and Single (9, 11). Tied from Portsmouth, N. H. to Calif. 1c has margins all around. Fine .....	13.20
65-	63	☒	1c Blue, Type IV, 3c Red (9, 11). Strip of three of 1c each cancelled with triple strike of Numeral "3" tied with 3c to Calif. Fine (Photo) .....	45.00+
550	64	☒	1c Blue, 3c Red (9, 11, 24, 26). Three 10c Calif. rate covers. V. G.-Fine ....	19.15
1850	65		3c Orange Brown (10). Margins all around, Blue Paid 3 in circle. Very Fine ..... (Photo)	—
18-	66		3c Orange Brown (10). Clear portion Cincinnati Mail Line cancel. Fine (Photo) .....	—
15-	67		3c Orange Brown (10). Three, Red, Blue and Black grid cancels. Fine .....	13.00



3850	68	3c Orange Browns, Reds (10-11). Ninety-four copies includes shades, Green Paid, other interesting cancels, Pairs. Good-Fine .....	—
8-	69 ★	3c Red (11). Five copies, shades. V. G.-Fine .....	25.00
7-	70	3c Red (11). Neat Numeral "10" in Blue. Fine ..... (Photo)	—
16-	71	3c Red (11). Neat "Jul 22, 1853" Year Date cancel. Fine .....	30.00
11-	72	3c Red (11), Horiz. Pair. Margins all around, pretty Blue town cancel. V. F. ....	—
31-	73	3c Orange Red (11), Block of 6. Small Ms. cancel on each stamp. Fine piece	40.00+
950	74	3c Red (11). Pair with 1855 Year Date, also Express Mail, Small Boston Paid and Steamboat cancels. Fine lot .....	—
22-	75	3c Red (11). Fourteen copies. Very Fine .....	—
21-	76	3c Red (11). Fifteen copies, margins all around. Very Fine .....	—
29-	77	3c Red (11). Sixteen copies, margins all around. Very Fine .....	—
17-	78	3c Red (11). Twenty-eight copies mostly Plate varieties, includes two pairs. V. G.-Fine .....	—
2350	79	3c Red (11). Ninety-six copies, nice range shades. Fine lot .....	38.40
38-	80 ☒	3c Red (11). Tied by Blue "Paid" in Flag cancel, Bucksport, (Me. pmkd., attractive strike and cover ..... (Photo)	—
77-	81 ☒	3c Red (11). Tied on cover from New Haven, line thru "Three Cents" and Rosettes Double (92L1L). Fine .....	20.00
2250	82	5c Red Brown (12). Clear all around but close at bottom. Fine .... (Photo)	70.00
6250	83	5c Red Brown (12). Margins all around. Superb ..... (Photo)	70.00
34-	84	5c Red Brown (12). Margins all around, light ironed out crease. Very Fine appearance. Red grid & black pmkds. .... (Photo)	70.00
26-	85	5c Red Brown (12). Margins all around, trivial crease in corner of margin. Very Fine appearance ..... (Photo)	70.00
27-	86	10c Green, Type I (13). Margins three sides, close at B. Fine .... (Photo)	65.00
28-	87	10c Green, Type I (13). Large margins all around, light ironed out crease. Very Fine appearance ..... (Photo)	65.00
10-	88	10c Green, Type II (14). Margins all around. Very Fine .....	16.00
21-	89	10c Green, Type II (14). Horiz. Strip of Four, large margins three sides, in slightly at top, town cancels. Fine plating piece .....	70.00
1850	90	10c Green, Type II & III in Horiz. Pair (14-15). Light town cancel. Fine piece ..... (Photo)	—
1550	91	10c Green, Type III (15). Margins all around, light Blue cancel. V. F. .... (Photo)	16.00
1650	92	10c Green, Type III (15). Margins all around. Very Fine .....	16.00



1250- 93	10c Green, Type III (15). Bright Red Grid cancel. Very Fine ..... (Photo)	17.50
39- 94	10c Green, Type III (15). Horiz. Strip of three, margins all around on left two making Very Fine Pair, right stamp barely clear at B. Pretty Piece ..... (Photo)	53.50
55- 95	10c Green, Type IV (16). Margins all around, recut at B. Light Ms. and Blue town cancel. Fine ..... (Photo)	150.00
575- 96	12c Black (17). Margins all around, tiny thin. V. F. appearance .....	22.50
425- 97	12c Black (17). Margins all around, tiny thinnings .....	22.50
925- 98	12c Black (17). Neat Red grid cancel. Fine .....	25.00
15- 99	12c Black (17). Sheet marginat right, Blue town cancel, light ironed out crease. V. F. appearance .....	25.00
1650 100	12c Black (17). "Steam Ship" cancel in black. Fine, Scarce .....	60.00

#### 1857 ISSUE

3750 101	1c Blue, Type I (18). Lightly cancelled. Very Fine ..... (Photo)	37.50
1550 102	1c Blue, Type II (20). Light town cancel. Very Fine .....	12.50
725 103	1c Blue, Type II (20). Pretty Red Town cancel, few slightly nibbed perfs. Well centered .....	16.00
57- 104	1c Blue, Type III (21). Very Fine ..... (Photo)	67.50
28- 105	1c Blue, Type IIIa (22). Very Fine ..... (Photo)	20.00
22- 106	1c Blue, Type IV (23). Light town cancel. Very Fine ..... (Photo)	27.50
825 107	1c Blue, Type V (24). Plate Flaw (71R7) at top. Fine .....	—
6- 108	✉ 1c Blue, 3c Red (24-25). Three covers of first, two of latter all tied. Fine .....	—
14- 109	3c Red (26). Very Fine strike of Canton LYRE ..... (Photo)	—
13- 110	3c Red (26). Twenty-seven copies selected for Cancellations. Fine lot ....	—
725 111	3c Red (26). Sixty copies, mostly town cancels, mainly Very Fine .....	—
850 112	✉ 3c Red (26). Tied on cover with red grid, Red Boston & Fall River R. R. postmark. Fine .....	—
30- 113	5c Brick Red (27). One perf. short. Very Fine appearance ..... (Photo)	65.00
31- 114	5c Brick Red (27). "1859" Year Date cancel. Fine ..... (Photo)	65.00
19- 115	5c Red Brown (28). Fine ..... (Photo)	32.50
1550 116	5c Brown (29). Light town cancel. Very Fine ..... (Photo)	18.50
11- 117	★ 5c Orange Brown, Type II (30). Fine .....	17.50
8- 118	5c Brown, Type II (30a). Black grid cancel. Very Fine .....	15.00



1400-119	✉	5c Brown, 10c Green (30a, 35). Tied by Red grids, from New Orleans to France, also red "Paid 4" pmkd. Fine, attractive	(Photo)	24.50
33-120		10c Green, Type I (31). Fine	(Photo)	60.00
1050-121	✉	10c Green, Type I (31). Tied on cover to Calif., centered to top		75.00
12-122		10c Green, Type II (32). Red grid cancel. Very Fine	(Photo)	13.50
850-123		10c Green, Type II (32). Horiz. Pair with Red Town cancel, short perf. on left stamp, other Fine		27.50
7-124		10c Green, Type III (33). Very Fine		9.00
9-125		10c Green, Type III (33). Horiz. Pair. Fine-Very Fine		22.50
9-126	★	10c Green (35). Very Fine		9.00
1550-127		10c Green, Type I (35). Seven copies includes Imprint, Year Date, Red cancels. Fine-Very Fine		26.25+
17-128	✉	10c Green on 10c Entire (35, U16). Tied on cover with Benecia, Cal. pmkd. Fine		—
100-129	✉	10c Green (35). Tied on cover with Benecia, Cal. pmkd., stamp partly on back of cover, Illustrated Stagecoach. Fine and Scarce cover	(Photo)	—
1050-130		12c Black (36). Unusual odd small grid cancel. Very Fine		10.00
325-131		12c Black (36). Bright Red grid cancel, tiny closed tear		11.00
850-132		12c Black (36). Horiz. Pair with town cancel. Fine		25.00
16-133		24c Lilac (37). Very Fine	(Photo)	20.00
525-134		24c Lilac (37). Pretty Red grid cancel, centered to B. Fine		22.50
1050-135		24c Gray Lilac (37). Blue town cancel. Fine		25.00
122-136	✉	24c Lilac (37). Tied on cover from Charleston, S. C. Jan. 23, 1861 postmark, used after Secession. Very Fine	(Photo)	85.00+
11-137		30c Orange (38). Year Date cancel "1860". Fine	(Photo)	37.50
8-138		30c Orange (38). Blue grid cancel, one perf. short at R. Very Fine appearance		35.00
285-139		90c Blue (39). Black Town cancel. Very Fine, Scarce	(Photo)	350.00
3750-140	★	30c Yellow Orange, Reprint (46). Fine	(Photo)	72.50

#### 1861 ISSUE

705-141	★	3c Brown Red, August (56). BLOCK. Very Fine O. G.	(Photo)	175.00
2150-142		10c Dark Green, August (58). Fine	(Photo)	62.50
45-143	✉	10c August, 5c Buff (58, 67). Tied with red grid cancels on cover to France, various transit markings. Fine		155.00



1250.	144	✉ 1c Blue (63). Six covers, includes three San Francisco drop rate, and two 10c Calif. rate with 3c stamps. V. G.-V. F. ....	21.00
550.	145	✉ 1c Blue, 2c Black (63, 73). Tied on cover with Waterbury, Conn. pmkd. Fine .....	—
4-	146	1c, 2c, 10c (63, 68, 73). First two have colored cancels. Very Fine .....	5.75
12-	147	3c Pink (64). Fine .....	37.50
1500	148	3c Rose (65). Clear <b>Masonic</b> cancel. Fine <i>Ibid 8</i> (Photo) .....	—
1750	149	3c Rose (65). Greenfield <b>Masonic Trowel</b> . Fine <i>Ibid 8-10 + 8-17.50</i> (Photo) .....	—
12	150	3c Rose (65). Bright <b>Green Star</b> cancel from Sharon, Pa. Fine .....	—
750 ✓	151	3c Rose (65). Neat strike of <b>P. O.</b> in Circle. Fine <i>Ibid 6</i> .....	—
10-	152	3c Rose (65). Bold clear strike of Cooperstown <b>Anchor</b> .....	(Photo) —
625 ✓	153	3c Rose (65). Clear <b>Blue Shield</b> cancel, one short perf. <i>Ibid 5-7 + 6-8</i> .....	—
10-	154	3c Rose (65). Four Small <b>Veined Leafs</b> cancel. Fine <i>Ibid 8-8</i> .....	—
550.	155	3c Rose (65). Very Fine <b>Intertwining Star</b> cancel <i>Ibid 5-7 + 6-8</i> .....	—
1000 ✓	156	3c Rose (65). Fancy " <b>B</b> " in Circle cancel. Very Fine <i>Ibid 6-8 + 8-10.50</i> .....	—
7-	157	3c Rose (65). Pair on piece each struck with clear <b>U. S.</b> from Cleveland .....	—
16-	158	3c Red, <b>Grill</b> (94). Two " <b>JUL</b> " and " <b>AUG</b> " cancels. Fine and Scarce .....	—
1500	159	3c Rose (65). Three copies on piece each with <b>MR</b> cancel from Paw Paw, Mich. Fine-V. F. ....	—
8-	160	3c Rose (65). Two bold <b>Cross</b> cancels, one in Blue. Fine .....	—
8-	161	3c Rose (65). Three cancels <b>Free, Day, Steamboat</b> . V. G.-Fine .....	—
625.	162	3c Rose (65). Three diff. <b>Green</b> cancels. Fine .....	—
7-	163	3c Rose (65). Five diff. <b>Numeral</b> cancels, 1, 3, 5, 10, 24. V. G.-Fine .....	—
450	164	3c Rose (65). Five diff. <b>Red</b> and <b>Magenta</b> cancels. Fine lot .....	—
425.	165	3c Rose (65). Seven copies includes odd perforation varieties, paper fold, "Threb" Cents, interesting lot .....	—
525	166	3c Rose (65). Nine diff. <b>Fanacy Cancels</b> includes Paid, Letters, U. S., R. R. Fine lot .....	—
450	167	3c Rose (65). Ten diff. <b>Fancy Cancels</b> . Fine lot .....	—
300	168	3c Rose (65). Ten diff. <b>Fancy Cancels</b> . Fine lot .....	—
2-	169	3c Rose (65). Fine lot of ten copies with diff. <b>Fancy Cancels</b> .....	—
350	170	3c Rose (65). Fine lot of 10 copies with diff. <b>Fancy Cancels</b> .....	—
475	171	3c Rose (65). Fine lot of 11 copies with diff. <b>Fancy Cancels</b> .....	—



*28- 425- 1700 1025 21- 28 13- 1050 725 10 11- 45 35- 9- 18- 275 850 8 75 11- 6- 725 105 1500 11- 195*

172	3c Rose (65). Seventeen diff. <b>Letters</b> of the alphabet. Scarce and unusual offering .....	—
173	3c Rose (65). Seventeen diff. <b>Blue</b> cancels, Attractive lot .....	—
174	3c Rose (65). Fine lot of 120 copies selected for <b>Cancellations</b> .....	—
175	☒ 3c Rose (65). Tied on cover with <b>odd Cross in grid</b> from Williamsport, Pa. V. F. ....	—
176	☒ 3c Rose (65). Tied with large "65" Year cancel, Norfolk, Va. pmkd. on small cover, frayed slightly at R. Bold clear strike ..... <b>(Photo)</b>	—
177	☒ 3c Rose (65). Tied with Fancy Circle from Amherst on cover. Fine .....	—
178	☒ 3c Rose (65). Tied on cover with <b>Carson City Nev. T.</b> postmark. V. F. <b>(Photo)</b> .....	—
179	☒ 3c Rose (65). Tied from Washington on <b>Patriotic</b> , Eagle and Flag, <b>Cooper Shop Volunteer Refreshment Saloon</b> . Fine ..... <b>(Photo)</b>	—
180	☒ 3c Rose (65). Tied from Washington on Very Fine <b>Magnus Patriotic Cover</b> in Green (Signing of Declaration of Independence and U. S. Senate). Scarce design ..... <b>(Photo)</b>	—
181	☒ 3c Rose (65). Tied on <b>Patriotic</b> cover, Scarce caricature, American Eagle Catches Jeff Davis Attempting to Rob Her Nest. Fine .....	—
182	<b>Magnus Lettersheets</b> , views of San Francisco, Cincinnati, Phila., Milwaukee, Rochester, Wash., Cleveland, Louisville, Portsmouth, President's, 10 diff. all in black .....	—
183	5c Buff (67). Black town cancel. Very Fine ..... <b>(Photo)</b>	40.00
184	5c Buff (67). Magenta grid cancel. Very Fine ..... <b>(Photo)</b>	50.00
185	5c Buff (67). Cog Wheel cancel, light corner crease, Fine appearance .....	40.00
186	5c Buff (67). Red grid cancel, well centered, light crease. V. F. appearance .....	45.00
187	5c Buff (67). Red grid and Black cancels. Fine ..... <b>(Photo)</b>	45.00
188	☒ 10c Green (68). Tied with Salem, Mass. <b>Witch</b> on cover. Fine .....	—
189	☒ 10c Green (68). Six covers, all tied to Calif. V. G.-V. F. ....	15.00
190	10c, 12c, 24c, 90c (68-69, 72, 78). V. G.-Fine .....	33.50
191	12c Black (69). Pretty San Francisco <b>Cog Wheel</b> cancel. Very Fine .....	5.50+
192	12c Black (69). Pretty <b>Blue Target</b> cancel. Very Fine .....	—
193	12c, 15c, 30c, 1861-66 <b>Issues</b> (69, 71, 77). V. G.-Fine .....	23.50
194	24c Red Lilac (70). Black town cancel. Very Fine .....	12.00
195	24c Red Lilac (70). Boxed Red <b>Supplementary Mail</b> cancel, type A. Fine .....	45.00
196	24c Red Lilac (70). Horiz. Pair, centered to B. Fine .....	55.00
197	24c Steel Blue (70b). Black grid cancel. Fine .....	35.00



1050 625	198	24c Steel Blue (70b). Tiny tear. Very Fine appearing .....	35.00
825	199	30c Orange (71). Blue cancel. Very Fine .....	9.00
625	200	30c Orange (71). Bold clear Leaf cancel on small piece. Very Fine .....	—
575	201	30c Orange (71). Odd grid cancel. Fine .....	8.00
16-	202	30c Orange (71). Horiz. Pair. Fine .....	27.50
825	203	30c Orange, 90c Blue (71-72). Fine .....	28.00
19-	204	✉ 24c Lilac, 30c Orange (71, 78). Tied on cover to China, each has str. edge, attractive cover, interesting letter .....	25.00
9-	205	✉ 2c, 24c, 30c, 1861-67 Issues (71, 78, 93). Tied on cover to India with black cork and Red "Paid" cancels. Fine .....	29.50+
1650	206	90c Blue (72). Neat Blue Cincinnati Town cancel. Fine .....	22.50
37-	207	90c Blue on August Paper (72). Red & Black cancels, light ironed out crease, well centered. Very Fine appearance .....	20.00+
10-	208	田 2c Black (73). Used Block of 7, each has target cancel, guide line str. edge on two left stamps. Fine and Scarce piece (Block of four Cats. \$75.00 used) .....	—
5-	209	2c Black (7). Black Paid and pretty Red Star cancels, centered to one side .....	—
725	210	✉ 2c Black (73). Tied from San Francisco, local usage. V.F. ....	—
13-	211	✉ 2c Black (73). Two not tied on territorial cover, Salt Lake City, Utah pmkd., one has str edge. V.G. ....	—
7250	212	✉ 2c Black (73). Tied on attractive illustrated Advertising Cover from Rutland, Vt. Fine .....	(Photo) —
2750	213	✉ 2c Blackjack Bisect, Vertical Half Used as 1c (73b). Neatly tied with target cancel from Manchester, Md. back of cover restored, attractive .....	(Photo) 200.00
1225	214	✉ 2c Black (73). Two copies, one has str. edge, tied on Patriotic cover from N.Y. City to Staten Island, Scarce usage .....	(Photo) —
4-	215	2c Black (73). Seven used as revenues on checks, also #94, 113 used same manner .....	—
850	216	5c Red Brown (75). Red grid cancel, tiny thin. Very Fine appearance ....	22.50
10-	217	5c Fire Brick Red (75). Scarce shade slight faults, attractive appearance .....	—
625	218	5c Brown (76). Four diff. Cancels, Red Crossroads, Blue Grid, Black Town, Star. V.G.-Fine .....	21.50
125	219	5c, 15c, 24c (76-78). Fine-Very Fine .....	20.25
12-	220	15c Black (77). Pretty Blue Target cancel on "Fat" well centered stamp, small thin .....	(Photo) 10.00
	221	24c Lilac (78). Blue Registered cancel. Very Fine .....	—



1050 850	222 ★	24c Lilac, Gray, Gray Lilac (78, a, b). Shades. Fine O. G. ....	32.00
	223	24c Lilac (78). Horiz. Pair, Well centered, light crease. V.F. appearance	17.50

### 1867 GRILL ISSUES

4- 425	224	3c Rose, C. Grill (83). Tiny tear. Fine appearance .....	25.00
750	225	3c Rose, D. Grill (85). Fine .....	15.00
950	226	1c Blue, Grill (86). Fine .....	17.50
5-25 625	227	1c Blue, Grill (86). Fine .....	17.50
9- 650	228 ★	2c Black, Grill (87). Centered to bottom. Fine, O.G. ....	18.50
7- 7- 10- 325	229	2c, 10c, 12c Grills (87, 89-90). Fine .....	21.25
	230	2c, 10c-15c Grills (87, 91, 93, 96-98). V.G.-Fine .....	48.75
	231	15c Black, Grill (91). Red and Ms. cancel. Fine .....	25.00
	232	1c-2c, 10c-15c Grills (92-93, 96-98). Very Good-Fine .....	33.00
	233	3c Red, Grill (94). Pretty bold <b>Fancy Geometric</b> cancel (Photo) <i>bot. 7-10</i>	—
	234	3c Red, Grill (94). N.Y. City <b>Heart in Shield</b> cancel. Fine (Photo) <i>bot. 10</i>	—
	235	3c Red, Grill (94). Bold clear strike of "L.V." Leonard Vail, Lockport, N.Y. (Photo)	—
1450	236	3c Red, Grill (94). Skull & Crossbones and A. J. in <b>Tombstone</b> cancel, stamp defective. Scarce cancel <i>bot. 5-8</i>	—
10- 650	237	3c Red, Grill (94). Six diff. <b>Fancy Cancels</b> includes Fez, Paid 1, False Teeth, L.V., Fine-V.F. ....	—
550	238	3c Red, Grilled (94). Fine lot of 10 diff. <b>Fancy cancels</b> , includes Shield, "A", Blue "H" etc. ....	—
1050 1500	239	5c Brown, Grill (95). Centered to B. Fine .....	35.00
55- 19-	240	24c Gray Lilac, Grill (99). Very Fine .....	(Photo) 50.00
	241	30c Orange, Grill (100). Well centered, guide line str. edge at L. ....	25.00
	242 ★	90c Blue, Grill (101). Fine, Bright copy .....	(Photo) 200.00
	243	90c Blue, Grill (101). Well centered, tiny closed tear. Very Fine appearance (Photo)	82.50
11-	244	90c Blue, Grill (101). Repaired corner. Fine appearing .....	82.50
61-	245 ★	15c Black, Re-issue (108). Well centered, two short perfs. Very Fine appearance, O.G. ....	(Photo) 90.00

### 1869 ISSUE

525	246 ★	1c Buff (112). Well centered, one grill point thin	11.00
11-	247	1c Buff (112). Clear <b>Blue "B"</b> cancel. Fine <i>bot. 15</i> (Photo) <i>bot. 11-</i>	—



13-	248 ★	1c-6c Pictorials (112-115). V. G.-Fine .....	42.50
11-	249 ★	1c-6c Pictorials (112-115). V. G.-Fine .....	42.50
825	250	1c-15c Pictorials (112-113, 115, 117-118). Extra shades on 2c and 6c. Good-Fine .....	69.50
350.	251	1c, 10c, 15c Pictorials (112, 116, 119). Very Good .....	24.50
27	252 ★	2c Brown (113). Block of Eight, Fresh O. G. Perfs. touch at top .....	80.00
925	253	2c, 6c, 15c Pictorials (113, 115, 119). Fine-Very Fine .....	19.75
13-	254	3c Ultramarine (114). Pretty Fancy Geometric cancel (Photo) .....	—
150.	255	3c Ultramarine (114). Pretty bold Triangle cancel (Photo) .....	—
25-	256	3c Ultramarine (114). Six Fancy Cancels includes Free, Cross, Triangle, Rosette. Fine lot .....	—
750	257	3c Ultramarine (114). Twenty Very Fine copies, includes shades .....	—
625	258	3c Ultramarine (114). 229 copies contains Stars, Leafs, Geometrics and some other interesting cancels. Generally Fine lot .....	68.70+
650	259 ★	6c Ultramarine (115). Centered to right, part O. G. ....	22.00
8-	260	6c, 12c, 15c Pictorials (115, 117, 119). Very Good-Fine .....	26.00
750	261 ★	10c Yellow (116). Centered to top, Bright O. G. ....	25.00
7-	262	10c Yellow (116). Very Fine .....	8.50
12-	263	10c Yellow (116). "Hiogo", Japan cancel. Fine .....	15.00
14-	264 ☒	10c Orange (116). Tied by attractive black Cross cancel and blue Transit marking on cover to France. Fine .....	22.50
550	265	12c Green (117). Very Fine .....	8.50
12-	266	15c Brown & Blue, Type I (118). Well centered, trivial corner perf. crease. Very Fine appearance .....	32.50
15-	267	15c, 24c Pictorials (118, 120). One perf. short on each, nice appearance .....	70.00
1150	268	15c Brown & Blue (119). Lightly cancelled. Very Fine (Photo) .....	9.00
1050	269	15c Dark Brown & Blue (119). Very Fine .....	9.00
1450	270 ★	24c Green & Violet (120). Centered to top right. V. G. ....	77.50
27-	271	24c Green & Violet (120). Very Fine (Photo) .....	37.50
13-	272	24c Green & Violet (120). One short perf. Well centered .....	37.50
650	273	30c Blue & Carmine (121). Fine .....	25.00
4-	274	30c Blue & Carmine (121). Tiny thin. Fine appearing .....	25.00
33-	275	30c Blue & Carmine (121). Horiz. Pair. Very Fine (Photo) .....	75.00
26-	276	90c Carmine & Black (122). Fine (Photo) .....	92.50
92	277	90c Carmine & Black (122). Well centered. Very Fine (Photo) .....	92.50



10-278	1c Buff Re-issue (123). Light purple cancel. Very Fine .....	14.00
900-279 ★	1c Buff, Re-issue (123). Very Fine ..... (Photo)	15.00
8-280 ★	1c Buff, Re-issue (123). Very Fine .....	15.00
750-281 ★	1c Buff Re-issue (123). Fine .....	15.00
750-282 ★	2c Brown, Re-issue (124). Well centered, str. edge at left .....	16.00
3700-283 ★	3c Blue, Re-issue (125). Fine ..... (Photo)	90.00
31-284 ★	10c Yellow, Re-issue (127). Very Fine ..... (Photo)	40.00
100-285	12c Green, Re-issue (128). Fine used .....	40.00
650-286 ★	1c Buff, Re-issue (133). Very Fine O. G. ....	8.00

### BANKNOTE ISSUES

500-287	1c-3c Banknote Grills (134-136). Very Fine .....	7.10
36-288 ★	6c Carmine Grill (137). Very Fine ..... (Photo)	60.00
1500-289	6c Carmine, Grill (137). Very Fine .....	17.50
800-290	6c Carmine Grill (137). Fine .....	17.50
62-291	6c Carmine, Grill (136). Star cancel. Fine .....	17.50
15-292	7c Vermilion Grill (138). Very Fine .....	17.50
1700-293	7c Vermilion, Grill (138). Very Fine ..... (Photo)	17.50
3700-294 ★	10c Brown, Grill (139). Close at right, Plain grill, Fresh, O. G. (Photo)	115.00
24-295	10c Brown Grill (139). Very Fine ..... (Photo)	37.50
725-296	10c Brown, Grill (139). Light crease. Very Good .....	37.50
40-297	15c Orange, Grill (141). Odd Geometric cancel. Very Fine ..... (Photo)	40.00
15-298	1c-15c Banknotes. Fifteen diff. <b>Fancy Cancells</b> includes W. F., Blue O. K., Due 3 Cts., N. Y. Foreign Mails, etc. Attractive lot .....	—
4700-299 ☒	1c-3c Banknotes. 295 covers all with <b>Advertising Corner Cards</b> , many illustrated wide variety, contains few Territorials and Fancy Cancells .....	—
825-300	3c Green. Danbury HAT cancel. Fine ..... <i>I bid 7.50. bot. 8.25.</i>	—
200-301	3c Greens. Four copies, two with Imprints, two with Paper Folds. V. F. ....	—
200-302	3c Greens. Eight "Fat" well centered copies. V. F. ....	—
9-303	3c Greens. Twelve diff. <b>Fancy Cancells</b> includes Shields, N. Y. Foreign Mail, U. S., Leaf, Geometrics, etc. Attractive lot .....	—
100-304 ☒	3c Green. Tied on cover with <b>Danbury HAT</b> cancel. Fine ..... <i>I bid 7.50. bot. 10.50.</i>	—
11-305 ☒	3c Green. Tied on cover with "U.S.G." in circle from Lynchburg, Va. Fine .....	—



5- 550	306	✉	3c Green. Two covers, <b>Saratoga Spa</b> illustr. in gold, <b>University of Notre Dame</b> corner card. Fine	—
	307	✉	3c Greens. Very Fine lot of 10 diff. <b>Boston</b> Letter and Number cancels, several scarce and fancy	—
36-	308		6c Carmine (148). Collection of 49 stamps includes Shades, Pairs, Fancy Cancels, Shield, Paid All, Colored Foreign Mail. Fine-Very Fine	61.25
4- 450	309	✉	6c Carmine (148). Tied with star on cover with <b>Rogers City, P. O. Mich.</b> pmkd. V. F.	—
	310	✉	6c Banknotes (148, 159, 186, 208). Thirteen covers, includes corner cards, fancy cancels, registered combinations, Foreign rates. Fine lot	—
1250 6-	311	★	6c Carmine, 6c Dull Pink (148, 159). Fine-Very Fine	25.50
	312		7c-12c, 24c-30c Banknotes (149-151, 153-154). Well centered, last two have tiny tears	33.00
650 1850	313		7c, 12c-90c Banknotes (149, 151-153, 155). Very Good-Fine	38.00
5-	314	★	90c Carmine (155). Fresh O. G., perfs. just touch at B	72.50
	315		90c Carmine (155). Blue cancel. Fine	15.00
16-	316		1c-90c Banknotes (156-166). Complete set. Fine-Very Fine	36.62
32-	317		6c Dull Pink (159). Collection of 103 stamps with Shades, Multiples, Fancy Cancels including Foreign Mails, Stars, Paid 3, Colored Letters, etc. Fine-Very Fine	56.65
525	318		5c, 7c, 15c Banknotes (160, 179, 189). Very Fine	7.70
17- 425	319	★	12c Blackish Violet (162). Fine O. G. (Photo)	40.00
	320		90c Rose Carmine, 90c Purple (166, 218). Each has thin, nice appearing	30.00
13-	321	田	6c Pink (186). Block of 6, lightly creased. Fine appearance	50.00
35-	322		6c Pink (186). Collection of 93 stamps with Shades, Multiples, Fancy Cancels includes Leaf, Letters, Colored Stars, Geometrics etc. Fine-V. F.	83.70
725	323		10c-90c Banknotes (188-191). Extra shade of 15c. Fine-Very Fine	21.50
8-	324		90c, 1879-90 Issues (191, 218, 229). Each has thin spot. Nice appearance	38.75
1650 16	325	✉	1c Ultramarine (206). Two tied on cover with Fancy Cross cancels. V. F. (Photo)	—
9-	326	★	3c Green (207b). Punched with 8 small holes in a circle, centered to left, O. G.	35.00
12- 1050	327	✉	6c Rose (208). Two Pairs on cover to Australia, corner card of <b>St. Paul, Minn. Insurance Co.</b> Fine	20.75
	328	✉	6c Rose (208). Two covers, one tied with Hartford Geometric, other from Chicago to Canada with corner card. Very Fine	20.00



54- 329	6c Rose (208). Collection of 33 stamps includes Shades, Pairs. Interesting and Fancy Cancells. Fine-Very Fine .....	107.25
425 330 ★	6c Rose, 6c Brown Red (208, 208a). Each thin. Well centered .....	31.00
8- 331 ☒	2c Red Brown (210). Tied with neat Shield cancel, <b>Campus, Livingston Co.</b> , Ill. pmkd. on fine cover .....	—
400 332 ☒	2c Red Brown (210). On cover with attractive fancy purple <b>New Hartford, Butler Co. Ia.</b> oval pmkd. ....	—
1150 333 ☒	2c Red Brown (210). Tied on cover with over all illustration of St. Paul Ice Palace in blue, St. Paul, Minn. pmkd. Very attractive .....	—
18- 334 ☒	2c Green (213). Tied from New London, Conn. and Purple Oval "U.S. Practice Ship Constellation, Jun. 29, 1888". Very Fine ..... (Photo)	—
1050 335 ☒	3c Vermilion on 2c Green Entire (214, U311). Tied from N. Y. in 1889 to Italy. Fine .....	15.00+
550 336 ☒	3c Vermilion on 2c Green Entire (214, U312). Tied from Columbus, Ind. to Germany, stamp well centered with str. edge at L., used in 1889 .....	15.00+
8- 337 ☒	3c Vermilion, 5c Indigo on 2c Green Entire (214, 216, U312). Tied from San Francisco in 1889 to Germany. Fine .....	15.00+
9- 338 ☒	5c Indigo on 5c Blue Entire (216, U330). Both tied with clear N. Y. Supplementary cancel and transit markings to France. Very Fine cover .....	—
5- 339	30c Orange Brown (217). Very Fine .....	5.00
11- 340	90c Purple (218). Very Fine .....	15.00
7- 341 ★	4c-10c, 1890-98 Issues (224, 280-282C). V. G.-V. F. ....	16.25
7- 342	15c-90c, 1890 Issues (227-229). Very Fine .....	11.85
45- 343 ☒	1c-10c, 1890-1903 Issues. 25 diff. covers all with <b>Advertising Around Stamps</b> . Scarce & Attractive lot ..... (Ex. Photo)	—
850 343A ☒	Seapost Cancellation. Collection of 49 covers mostly different 1891-1939 Issues. Fine collection .....	—

#### COLUMBIAN ISSUE

10- 344 ★	1c-15c Columbian (230-238). 3c and 6c without gum. Fine-Very Fine .....	25.15
10- 345 ★	1c-10c Columbians, 4c-10c Pan-Americans (230-237, 296-299). Latter set without gum, otherwise V. G.-V. F. ....	36.40
9- 346	3c-50c Columbian (232-240). V. G.-V. F. ....	28.30
8- 347 ★	15c-30c Columbian (238-239). Fine .....	18.50
7- 347A ★	30c Columbian (239) Fine .....	10.00
525 347B	50c Columbian (240). Very Fine .....	10.00



1700-  
2600-  
348 ★ \$1.00 COLUMBIAN (241), SHEET OF FIFTY, Beautiful fresh  
mint condition, having remained in bank vault since issued, a  
Very Fine Showpiece and Rarity ..... (Photo) —

349 ★ \$1.00 COLUMBIAN (241), SHEET OF FIFTY, Bright fresh mint  
sheet as above, a light gum fold on eight stamps barely visible  
on face, another beautiful showpiece ..... (Photo) —

36- 350 ★ \$1.00 Columbian (241). Very Fine ..... (Photo) 45.00  
525- 351 \$2.00 Columbian (242). Thin spot. Well centered ..... 35.00  
1650- 352 ★ \$2.00 Columbian (242). Fine, part gum ..... (Photo) 47.50  
25- 353 ★ \$2.00 Columbian (242). Fine ..... (Photo) 47.50  
50- 354 ★ \$3.00 Columbian (243). Well centered, regummed. V. F. appearance (Photo) 70.00  
33- 355 ★ \$4.00 Columbian (244). Centered to top. Bright fresh color ..... (Photo) 80.00  
37- 356 \$4.00 Columbian (244). Fine ..... (Photo) 77.50  
51- 357 ★ \$5.00 Columbian (245). Fine ..... (Photo) 90.00

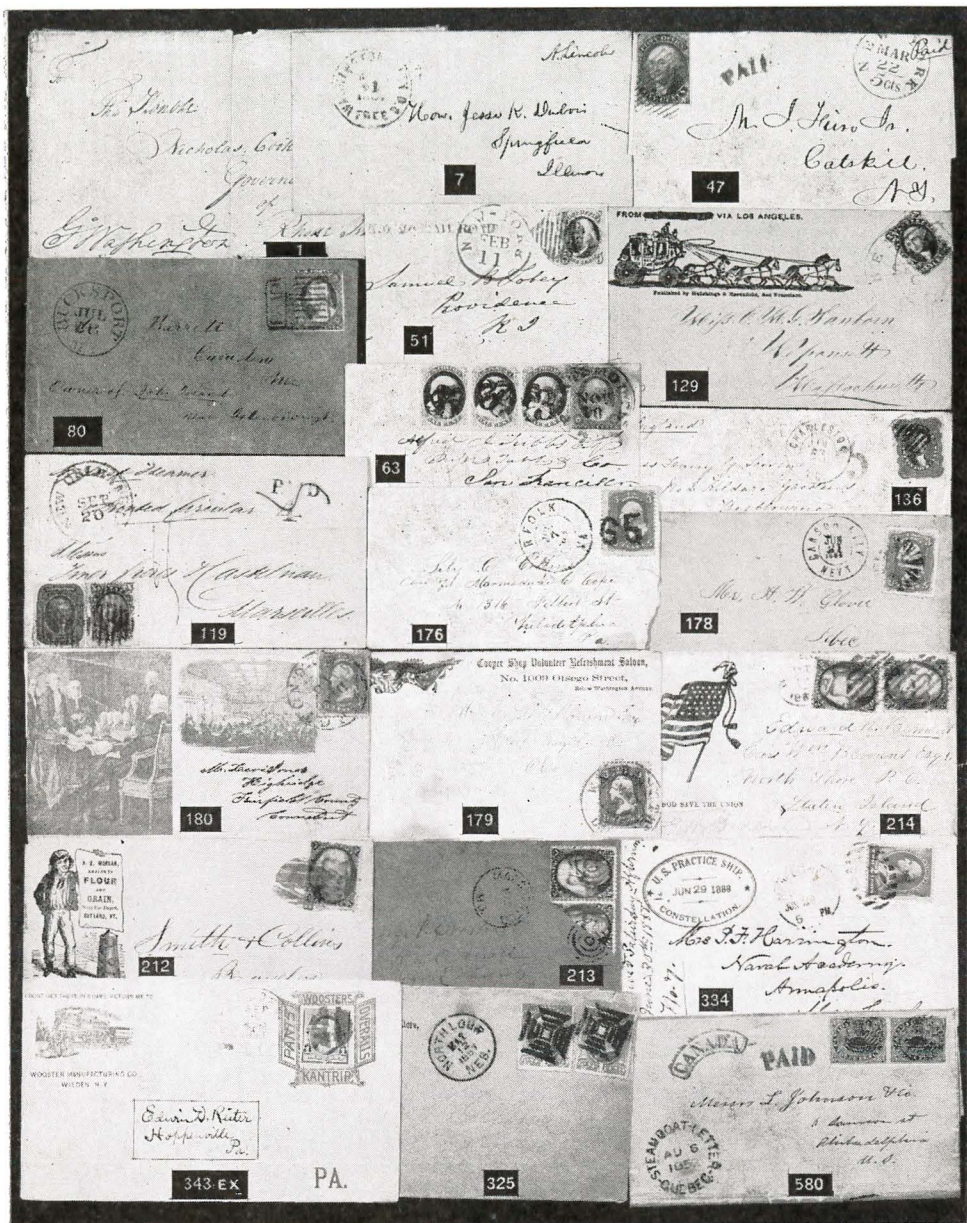
#### 1894-1895 ISSU4S

850- 358 \$1.00 Black (261). Light crease. Very Fine appearance ..... 20.00  
515- 359 \$1.00 Black, Type II (261A). Perfs. in at right. V. G. .... 37.50  
21- 360 \$2.00 Dark Blue (262). Fine ..... (Photo) 50.00  
12- 361 ★ \$1.00 Black (276). Well centered, trivial stain in two perfs. .... 25.00  
1350- 362 \$1.00 Black, Type II (276A). Very Fine ..... 13.50  
25- 363 \$2.00 Dark Blue (277). Very Fine ..... (Photo) 35.00  
8- 364 \$2.00 Dark Blue (277). Thin spot. Very Fine appearing ..... 35.00  
825- 365 \$5.00 Dark Green (278). Thin spot, well centered ..... 32.50  
715- 366 \$5.00 Dark Green (278). Corner repaired. Nice appearing ..... 32.50

#### TRANS-MISSISSIPPI ISSUE

13- 367 ★ 1c-5c, 10c Trans-Miss. (285-288, 290). Very Fine ..... 17.80  
15- 368 ★ 1c-5c Trans-Miss. 4c-10c Pan-Americans (285-288, 296-299). Fine-V. F. .... 28.55  
15- 369 ★ 4c-10c Trans-Miss., 4c-10c Pan-Americans (287-290, 296-299). Two have  
thins, others V. G.-Fine ..... 43.50  
11- 370 ★ 8c, 50c Trans-Miss. (289, 291). First well centered, latter has thin spot  
but Fine appearing ..... 42.50









32



48



52



53



54



55



65



66



70



82



83



84



85



86



87



90



91



93



94



95



101



104



105



106



109



113



114



115



116



120



122



133



137



139



140



141



142



148



149



152



183



184



187



220



233



234



235



240



242



243



245



247



254



255



268



271





275 276 277 279 283 284 288



293 294 295 297 319 350 352



353 354 355 356 357



360 363 372 374 375 376



400 425 426 434



581 582 585 596 598 600

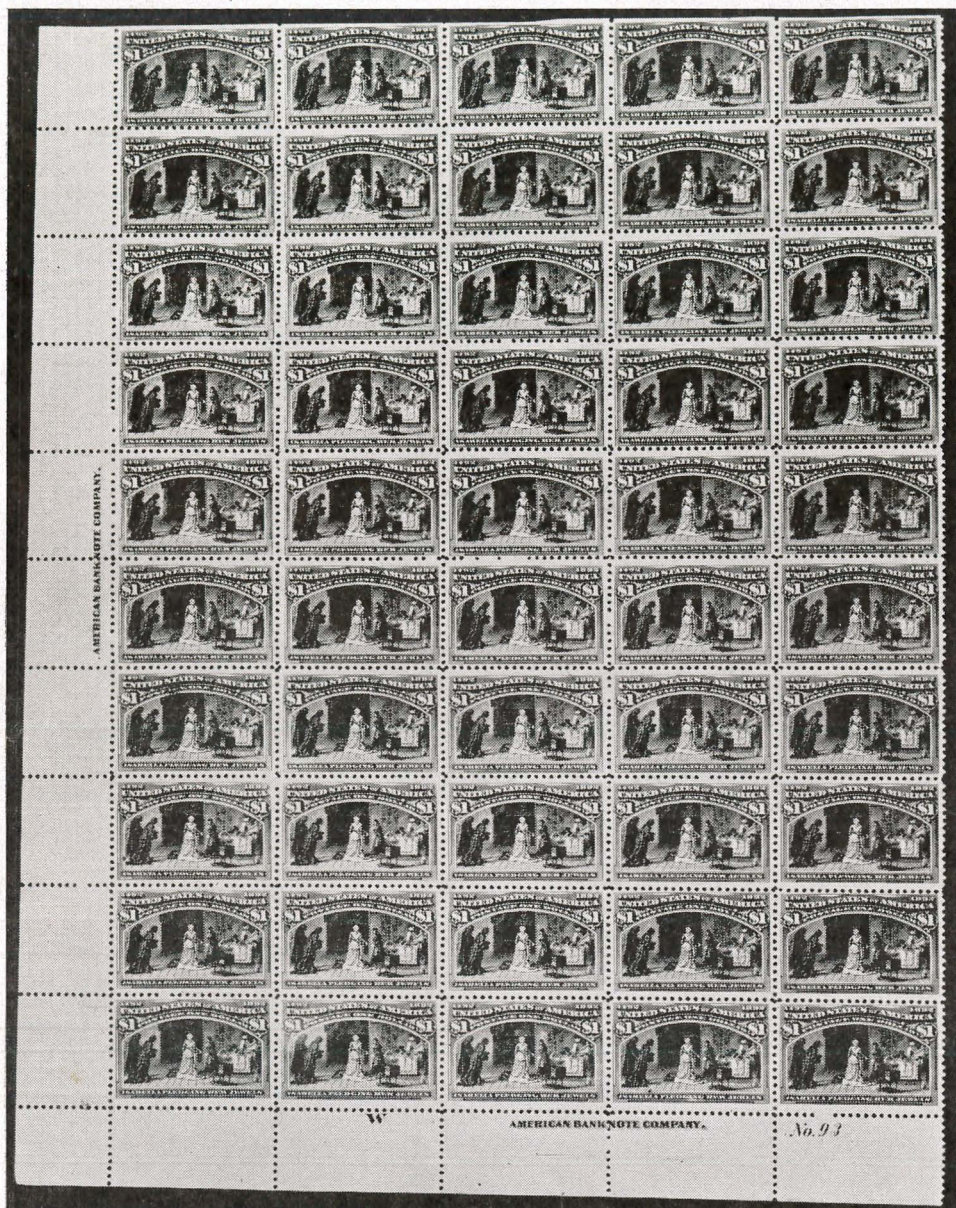


601 602 605 643 644 647



628 651 660 EX 677 695





Lot No. 348



AMERICAN BANK NOTE COMPANY.



AMERICAN BANK NOTE COMPANY.

No. 93

Lot No. 349



7-	371	50c Trans-Miss. (291). Fine .....	10.00
27-	372	\$1.00 Trans-Miss. (292). Very Fine ..... (Photo)	47.50
16 <sup>50</sup>	373	\$1.00 Trans-Miss. (292). Well centered, faults. V. F. appearing .....	47.50
36-	374 ★	\$1.00 Trans-Miss. (292). Well centered, without gum ..... (Photo)	65.00
27 <sup>50</sup>	375 ★	\$1.00 Trans-Miss. (292). Well centered, thin spots ..... (Photo)	65.00
41-	376	\$2.00 Trans-Miss. (293). One short perf. Very Fine appearance .... (Photo)	60.00
19-	377 ☒	U. S. Combination Covers used with Foreign stamps. 23 covers, all 20th Century, includes two Canada 10c Green Spec. Del., Liberia etc. Interesting lot .....	—

#### 1901-1909 ISSUES

10-	378 ★	1c-10c Pan-American (294-299). 8c has thin others Fine-V. F. ....	20.70
420-	379 ★	4c Pan-American, INVERTED CENTER (296a). Centered to bottom, re-gummed, still a very presentable copy of this Rarity, with Philatelic Foundation Certificate ..... IP 16360 (Photo on Cover)	1000.00
6 <sup>75</sup>	380	\$1.00 Black, \$2.00 Dark Blue (311-312). Fine .....	26.50
8-	381	1c-5c Imperforates (314, 320, 343-47, 368, 71, 73). Two unused. Fine-V. F. ....	23.20
8 <sup>50</sup>	382 ★	1c-5c Louisiana-Purchase (323-326). Fine-Very Fine .....	13.75
15 <sup>00</sup>	383 ★	1c-10c Louisiana-Purchase (323-327). Fine-Very Fine set .....	27.25
7-	384 ★	10c Louisiana-Purchase (327). Fine .....	13.50
575	385 ★田	1c Jamestown (328). Bot. Imprint Plate block of 8, centered slightly to top .....	8.80
675	386 ★	1c-5c Jamestown (328-330). Very Fine, well centered .....	8.55
10-	387	1c-5c Coils (348-355). Three are unused. Fine .....	32.75
625	388 ★	1c-2c Bluish, 2c Carmine (357-358, 461). #358 reperfed, others V. G.-Fine .....	17.00
525	389 ★	2c, 1909 Commemoratives (367-68, 370-73). Fine .....	13.60
950	390 ★	2c Lincoln Bluish (369). Fine .....	13.50
1050	391	1c-5c Coils (385-388, 390-396). Five are unused. Fine .....	24.65
450	392 ★	1c Green Coil (392). Pair and Line Pair. V. F. ....	5.95
3-	393 ★	1c Green Coil (392). Strip of four. Superb .....	5.40

#### 1912 TO DATE

12 <sup>25</sup>	394 ★	5c Pan-Pacific (399, 403). Fine-Very Fine .....	18.50
650	395 ★	1c-2c Pan-Pacific (401-402). Very Fine .....	7.50



425 7- 6- 1650 2010 1150	396	8c-\$1.00, 1912 Issue (414-423). Fine set .....	15.89
	397	50c, \$1.00, \$5.00 (423, 460, 477, 524). V. G.-V. F. ....	25.25
	398	3c Deep Violet Coil (445). Fine .....	12.00
	399	\$1.00, 1c-\$5.00, 1915-16 Issues (460, 462-480). V. G.-V. F. ....	36.22
	400 ★	5c Rose Error (499h). Fine ..... (Photo)	35.00
	401 ★	2c Carmine (519). Very Fine .....	20.00
13- 425 850	402	\$2.00-\$5.00 (523-524, 547). Fine .....	28.50
	403 ★	1c-3c, 1919 Issue (536, 541, 546). Very Fine .....	10.00
	404 ★	\$2.00-\$5.00, 1922 Issue (572-573). Very Fine .....	15.00
7- 250 825	405 ★	1c-10c Rotaries (581-591). Very Fine .....	8.93
	406 ★	2c Carmine (595). Very Fine .....	12.50
	407	1c-5c Commemoratives (614-621). Used sets plus extra block of #621. V. G.-Fine .....	21.60
7- 13- 1050	408 ★田	2c-5c Norse-American (620-621). Arrow block of each. Fine-Very Fine...	19.50
	409 ★	2c White Plains Exhibition Sheet (630). Fine .....	23.50
	410 ★	2c White Plains Exhibition Sheet (630). One stamp has thin. Well centered	23.50
22- 2300	411 ★	1c-10c Kans. & Nebr. (658-679). Cpl. set. V. G.-V. F. ....	42.24
	412 ★	1c-10c Kans. & Nebr. (658-679). Complete. Fine-Very Fine .....	42.24
46- 925	413 ★田	1c-10c Kans. (658-668). Set of Blocks. Very Fine .....	86.50
	414 ★	1c-10c Kans. (658-668). Good-Fine .....	20.47
44- 11- 19-	415 ★田	1c-10c Nebr. (669-679). Set of Blocks. Fine-Very Fine .....	93.05
	416 ★田	1½c-5c, 8c, 10c Nebr. (670-74, 677, 679). Blocks. Very Good .....	56.70
525 525	417 匣	½c-10c Bicentennials (704-715). Set of singles, pairs, blocks on 36First Day Covers also cpl. set on one cover. Fine-V. F. ....	46.05
	418 ★田	1c-10c Park Farleys (756-765). Set of blocks. V. F. ....	10.00
	419	1½c Presidential (805b). Two sheets of 100 precancelled with diff. plate nos. each with pair Imperforate between. Very Fine .....	—

### AIRMAILS, ETC.

350 825 73- 15- 215	420 ★	6c-24c, 8c-24c Airs (C1-C6). Fine-Very Fine .....	29.60
	421	6c-24c, 8c-24c Airpost (C1-C6). Complete sets. Fine-V. F. ....	17.75
	422 ★田	16c Green Air (C2). Center line block. Very Fine .....	52.50
	423 ★田	16c Green, Air (C2). Center line block, one stamp has thin, others V. F. ....	52.50
	424 ★田	24c Carmine Rose & Blue (C3). Center line block. Very Fine .....	37.50



7750	425 ★	65c-\$2.60 Graf Zeppelin (C13-C15). Very Fine set .....	(Photo)	123.50
6750	426 ★	65c-\$2.60 Graf Zeppelin (C13-C15). Fine-Very Fine set .....	(Photo)	123.50
54	427	65c-\$2.60 Graf Zeppelin (C13-C15). Complete used set. Fine .....		105.00
11-	428 ★	65c Graf Zeppelin (C13). Centered to right. Fine .....		18.50
5-	429 ★	50c Zeppelin (C18). Very Fine .....		9.00
5-	430 ★	50c Zeppelin (C18). Very Fine .....		9.00
5-	431 ★	50c Zeppelin (C18). Very Fine .....		9.00
950.	432 ★	50c Zeppelin (C18). Two Very Fine copies .....		18.00
1850.	433 ★	2c-\$1.00 Shanghai (K1-K15). V. G.-V. F. ....		42.80
11-	434	3c War, Official (O116). Fine strike of Kicking Mule cancel, centered to left .....	(Photo)	—
450.	435 ☒	1c Brown Postal Card (UX3). Tied with Oswego Pumpkin Head cancel. Fine .....		—

#### REVENUES

625	436	1c Playing Card, \$1.00 Passage Ticket (R2c, R74c). V. G.-Fine .....		26.00
28-	437	\$2.50 Inland Exch. Imperforate (R84a). Three tiny staple holes. Fine appearing copy of this scarce stamp .....		300.00
325	438	\$1.00-\$3.00 Civil War Revenues on Deeds, 7 diff. also 3 early documents dated 1712-1802. Interesting lot .....		—
1550	439	Battleship Revenues, 101 printed or handstamp cancels, attractive lot, mainly different .....		—
325	440	\$100.00 Documentary, Series 1940 (R308). Lightly cut. V. F. ....		12.50
625	441	\$5.00-\$20.00 Stock Transfer (RD155-56, RD223-24). \$20 is used, others uncanceled. Fine .....		30.25
575	442	1/5c-\$20.00 Wines, 1941-44 Issue, 36 varieties, 11 are unused, (Between RE108-169). Mostly Fine-V. F. ....		—
950.	443	\$4.00, 20.00, 100.00 Wines, 1941-44 Issue (RE159, 167, 169). Last two have light staples as usual .....		—
850.	444	\$1.60½ Wine, Error miss-spelling "Dolllar", perf. initial cancel. V. F. ....		—
450	445	7c on 2c Blue, Playing Card (RF10). Fine .....		—
450.	446	\$1.25-\$5.00 Motor Vehicle (RV1, 3, 6, 7, 18, 20, 30, 42). V. G.-V. F. ....		26.20
84-	447	MATCH & MEDICINES, 579 stamps includes duplication. Fair average condition .....		486.35
125-	448	TELEGRAPHS, Collection of 229 different, containing many scarce items. V. G.-V. F. ....		900.00



# LARGE & MISC. U.S. LOTS

6250	449	U. S. Collection in National Album, Postage Issues only, 19th & 20th, 573 diff. used and unused. Fine lot, Est. Cash Val. \$67.50	—
1750	450	U. S. Collection, 733 diff. plus few hundred duplicates, Est. Cash Val. \$20.00	—
1350	451	Stampless, 65 covers, some duplication, Fair-Fine	—
1850	452	Covers, 112 mostly 19th including Stampless	—
875	453	Covers, 1851-88 Issues, 49 covers includes cancels, corner cards. V.G.-V.F.	—
1050	454	19th Century, 46 covers, includes stampless, Railroads, interesting cancels. Est. Cash Val. \$10.00	—
37	455	19th Century Covers, 295 Covers, 1861 and Banknotes mostly. Fair-V.F.	—
425	456	Covers 3c Rose, 3c Green, 2c Red Browns, 34 covers with Corner Cards, Cancels, Mourning Covers etc., V.G.-V.F.	—
8-	457	Covers, 1890-1916 Issues, 41 covers includes Commems. Imperforates, Coils, Registered etc. V.G.-V.F.	—
1650	458	Covers & Postal Stationery, 534 items, 19th & 20th Century. Est. Cash Val. \$12.50	—
15-	459	★ Nineteenth Century, 34 stamps, without gum. Good-Fine	98.55
17-	460	19th Century, approx. 2400 stamps, mostly 3c greens, selected for interesting and fancy cancels, nothing scarce noted. Est. Cash Val. \$25.00	—
1750	461	1c-2c, 1870-93 Issues, 1170 stamps selected for interesting and fancy Cancels. Nice lot	—
18-	462	Fat Stamps, Imprints, Gutters, Guide Lines, Plates, Imprints, several hundred, 19th & 20th. Interesting lot	—
2350	463	★ Postage, Commems. & Airs, 19th & 20th, 174 stamps, some without gum. Good-V.F. Est. Cash Val. \$27.50	—
23-	464	★ Postage & Commems. 19th & 20th, few blocks over 250 stamps. Est. Cash Val. \$27.50	—
10-	465	Used Blocks, 1895 Issue to date, 123 blocks, includes duplication. Fair-Fine	—
28-	466	Used Blocks, 790 Blocks includes 93 with Plate Nos. strong in commems. Fair-V.F.	—
13-	467	Imperforates & Coils, approx. 400 stamps, some pairs and blocks. Est. Cash Val. \$12.50, V.G.-V.F.	—
1850	468	1c-5c Coils, 1908-16 Issues, 259 stamps, includes pairs, wholesale quantities on many. Good-V.F.	112.45



12-	469	★	<b>Commemoratives</b> , 1925-38 Issues, 85 diff. includes cpl. Bicent., Farleys, Famous Amer., Fine-V. F. Est. Cash Val. \$12.50	—
18-	470		<b>PRECANCELS</b> , several hundred including many early 1887-1903 Issues, also commems., high values, thirteen printed in Red. Est. Cash Val. \$15.00	—
375	471	☒	<b>First Day Covers</b> , 1929-48, 69 covers includes Blocks and Airs. Fine lot	—
2-	472	☒	<b>Bicentennial Covers</b> , 225 covers, all with cachets of events in N. Y. & Mt. Vernon, mostly on legal size covers of U. S. Bicent. Commission. V. F.	—
1550	473		<b>Straight Edges</b> , approx. 220 stamps, 19th & 20th	122.00
26-	474		<b>Straight Edges</b> , otherwise V. G.-V. F. 231 stamps, 19th & 20th	182.77
1650	475		<b>Defective &amp; Heavy Cancelled</b> , 139 stamps 19th & 20th	275.00
8200	476		<b>Defective U. S.</b> 19th & 20th, 736 stamps	1132.00
60-	477		<b>Defective U. S.</b> approx. 750 stamps, 19th & 20th	806.00
14-	478		<b>Very Badly Damaged</b> about 70 stamps including 10c Providence	550.00
650	479	☒	<b>Air Flight &amp; Event Covers</b> , 76 covers including Zeppelin Round World cover. Fine-V. F.	—
3-	480		<b>Proofs</b> , ten diff. also 1 Essay and 2 Specimens. Fair-Fine	—
10-	481		<b>Newspapers</b> , 33 stamps, some duplication, V. G.-V. F.	45.00
925	482		<b>Envelopes &amp; Cut Squares</b> , used and unused, 19th & 20th, includes some Possessions. Est. Cash Val. \$9.00	—
7-	483	☒	<b>Envelopes</b> , 87 Entire, used and unused, 19th & 20th	—
575	484		<b>Locals</b> , mainly reprints, 190 stamps, wide variety	—
29-	485		<b>Officials</b> , 315 stamps, nearly all used. V. G.-V. F.	141.00
38-	486		<b>Telegraphs, Official Seals, Locals</b> , mainly reprints, Revenues, Xmas Seals, State Revs., Match & Medicines, Labels of Expositions etc. Large Envelopes, Many Hundreds. Est. Cash Val. \$30.00	—
1650	487		<b>Revenues</b> , 215 stamps, mainly diff. strong in 2nd & 3rd Issues	85.00
21-	488		<b>Revenues &amp; Cut Squares</b> , wide variety, approx. 1500 stamps. Est. Cash Val. \$22.50	—
650	489		<b>Revenues</b> on checks and a few documents plus Revenue Stamp Paper on checks, about 175 pieces	—
875	490		<b>Fractional Currency</b> , 26 pieces includes Postage Currency	—
1450	491		<b>CONFEDERATE STATES</b> , 30 stamps mostly unused, also unused Salem, N. C. reprint envelope. Est. Cash Val. \$11.00	—
1025	492		<b>Confederate States</b> , 35 stamps, used and unused, some faults. Est. Cash Val. \$9.00	—



# UNITED STATES WHOLESALE

(LOTS ARE WITHOUT STRAIGHT EDGES UNLESS MENTIONED)

13- 493	3c Imperforate #11 (51), contains some Orange Browns including a pair, mostly Ms. cancels. Good-Fine	—
15- 494	3c, 1851-67 Issues, #11(19), 65(150), 88(17), 94(100). V. G.-V. F.	58.60
250 495	3c Red, 3c Ultramarine #11(25), 114(40), V. G.-V. F.	22.00
8- 496	1c Blue, 3c Red #24(12), 25(10), 26(65). V. G.-V. F.	53.25
4- 497	3c Red #26 (85), includes 18 str. edges, mostly Fine	12.75
11- 498	1c Blue #63 (21), V. G.-V. F.	31.50
17- 499	3c Rose #65 (1100). V. G.-V. F.	66.00
650 500	3c Rose #65(100), 88(12), 94(50). V. G.-V. F.	31.00
21- 501	10c-30c, 1861-67 Issues, #68(5), 69, 71 (1 each), 76(3), 77(2), 78(5), 98(3). Good-Fine	105.25
9- 502	2c Black #73(13), 93(7). Good-Fine	50.50
1050 503	2c-3c, 1869 Issue, #113(15), 114(40). V. G.-V. F.	45.75
1750 504	2c-3c Pictorials #113(7), 114(80). V. G.-V. F.	39.75
1650 505	3c Ultramarine #114 (100). V. G.-V. F.	30.00
650 506	3c Ultramarine #114 (100). V. G.-V. F.	30.00
507	1c-15c Banknotes #134(2), 135(2), 136(19), 148(6), 152(4), 160(1), 208(1). Good-Fine	58.10
750 508	1c Banknotes #145(25), 156(100), 182(70), 206(100). V. G.-V. F.	34.25
19- 509	2c Banknotes #146(70), 178(230), 183(250). V. G.-V. F.	83.50
12- 510	3c, 5c, 6c Banknotes #148(5), 159(15), 179(30), 214(6). V. G.-V. F.	53.50
10- 511	10c-90c Banknotes, between #151-218 (26 stamps, ten varieties), Good-Fine	104.75
1150 512	6c, 10c Banknotes #159(18), 161(34). V. G.-V. F.	37.10
7- 513	5c, 6c, 10c Banknotes #179(12), 185(7), 186(8), 187-188 (25 mixed), V. G.-V. F.	40.90
9- 514	4c-10c Banknotes #206(19), 209(50), 211(10), 215(20), 216(25). V. G.-V. F.	31.75
8- 515	1c-2c Banknotes #210(1100), 212(400), 213(1100). V. G.-V. F.	70.00
21- 516	1c Ultramarine #212 (2300). V. G.-V. F.	138.00
4- 517	2c 1890 Issue, #219D(148), 220a(163), 220c(56). V. G.-V. F.	41.46
450 518	1c-2c, 1890-1918 Issues #219(200), 230(200), 231(600), 279(100), 300(200), 301(200), 526(300). V. G.-V. F.	48.00



5- 650	519	6c, 15c-90c, 1890 Issue, # 224(5), 227(5), 228(3), 229(2). V. G.-Fine .....	35.00
1000	520	15c-90c, 1890-95 Issues # 228(4), 229(1), 260(1), 274(9), 275(7). V. G.-V. F. ....	41.10
14- 1000	521	3c-50c Columbian, # 232-240 (44 stamps). V. G.-V. F. ....	50.60
2- 750	522	3c-10c Commems, 1893-1928 Issues (91 stamps). V. G.-V. F. ....	83.25
	523	1c-2c, 1894-95 Issues # 246(95), 248(87), 251(100), 266(100). V. G.-V. F. ....	100.25
	524	2c Carmine Lake #249 (1,000). V. G.-V. F. ....	60.00
	525	3c-\$1.00, 1895 Issue, # 268(100), 269(50), 270(39), 271(20), 272(35), 273(25), 274(4), 275(2), 276(1). V. G.-V. F. ....	43.25
450	526	4c-15c, 1898 Issue, # 280(80), 281(100), 282(20), 283(30), 284(12). V. G.-V. F. ....	26.80
4- 850	527	10c Orange Brown #283 (100). V. G.-V. F. ....	20.00
	528	1c-10c Trans-Miss. # 285(40), 286(70), 287(2), 288(3), 289-90 (1 each). V. G.-V. F. ....	31.40
450	529	4c-10c Trans-Miss. # 287-288 (2 each), 289-290 (3 each). V. G.-V. F. ....	21.45
7- 950	530	4c-10c Pan-American, # 296-97 (3 each), 298-99 (2 each). V. G.-V. F. ....	22.15
	531	3c-10c, 1902 Issue, # 302(39), 303(30), 304(50), 305(39), 306(55), 307(90). V. G.-V. F. ....	39.40
13-	532	3c-13c, 1902 Issue, # 302(94), 303(67), 304(43), 305(25), 306(44), 307(32), 308(11). V. G.-V. F. ....	57.75
7-	533	13c-\$1.00, 1902 Issue # 308(8), 309(15), 310(7), 311(1). V. G.-V. F. ....	32.20
12-	534	3c-10c Louisiana-Purchase, 5c Jamestown, # 325(2), 326(4), 327(4), 330(3). V. G.-V. F. ....	47.50
850	535	1c-5c Jamestown, 2c 1909 Commems, # 328(19), 329(16), 330(4), 367(29), 370(20), 372(9). V. G.-V. F. ....	34.35
6-	536	3c-15c, 1908-10 Issues # 333(20), 334(60), 335(29), 339(1), 340(5), 376(40), 377-378 (100 each). V. G.-V. F. ....	38.65
5-	537	7c-15c, 1908-1912, # 337(30), 338(80), 382(4), 407(12), 414(20). V. G.-V. F. ....	34.00
6-	538	2c Imperf. Commems, # 368(1), 371(3), 373(2). Fine.....	16.00
1050	539	1c-5c Commemoratives # 397(45), 537(10), 549(32), 610(93), 627(90), 702 (50), 733(41), 906(22). V. G.-V. F. ....	44.15
1050	540	9c-\$1.00, 1912-16 Issues, # 415(5), 419(3), 420(2), 422(2), 434(7), 435(6), 436 (8), 437(4), 468(11), 475(3), 478(2). V. G.-V. F. ....	47.85
850	541	3c-12c, 1914 Issue # 426(45), 427(100), 428(100), 429(45), 430(13), 431(12), 433(90), 435(11). V. G.-V. F. ....	41.25
775	542	4c-50c, 1917-31 Issues # 508(60), 511(25), 512(150), 514(35), 515(80), 517(35), 525(100), 636(100), 694-95, 699-701 (650 mixed). V. G.-V. F. ....	49.20
410.	543	3c-9c, 1922-26 Issues # 557(70), 558(50), 559(24), 560(30), 561(15), 584(18), 587(80), 588(16), 589(30). V. G.-V. F. ....	27.52



544	<b>\$2.00-\$5.00, 1922 Issue, #572(8), 573(7). Fine</b> .....	15.95
545	<b>1c-5c Commemoratives, #614(10), 615(9), 616(3), 620(4), 621(3), 650(6), 651(15). V. G.-V. F.</b> .....	28.00
546	<b>2c Red Commems, #629(13), 643(14), 644(8), 645(45), 655(75), 656(50), 717 (140). V. G.-V. F.</b> .....	22.87
547	<b>13c, \$1.00, \$5.00 Presidentials, #818(100), 832(400), 834(10). V. G.-V. F.</b> .....	35.50
548	<b>\$2.00 Presidential #833(57), includes two blocks. V. G.-V. F.</b> .....	37.00
549	<b>1c-10c Famous Americans #859-93 (3 to 40 of each). V. G.-V. F.</b> .....	36.65
550	<b>Famous Americans, 5c(64), 10c(19), 5c Flags (100). V. G.-V. F.</b> .....	—
551	<b>10c-25c Airmails #C35(40), C36(100), C42(85), C43(65), C44(50), includes some blocks. Fine-V. F.</b> .....	50.55
552	<b>Special Delivery, 10c Registry #E2(35), E3(5), E7(1), E9(15), E17(200), F1(29). V. G.-V. F.</b> .....	37.15
553	<b>1c-\$1.00 Parcel Post #Q1-Q12 (97 stamps) includes 2 cpl. sets. V. G.-V. F.</b> .....	54.24
554	<b>Parcel Post Dues, Special Handling, (66 stamps). V. G.-V. F.</b> .....	21.07
555	<b>\$3.00 Stock Transfer, Series 1947 #RD247(9), uncanceled, without gum. Fine-V. F.</b> .....	40.50
556	<b>TELEGRAPHS, stock in file box, many thousands, used and unused, all assorted. Fine stock</b> .....	over 1500.00

## U.S. POSSESSIONS

557 ★	<b>HAWAII, 1864-1899, 1c-\$1.00 (30-82, O1-O6). Lacks only two #61B, 66C of being complete, few are used. Fine lot</b> .....	131.00
558 ☒	<b>—"Honolulu, H.I. Paid All" purple handstamp on stampless cover, used in 1880, San Francisco backstamp. Fine</b> .....	—
559 ☒	<b>—1893-99, Five covers (Contains 55, 57, 75-76, 82, UX1) also Soldiers Letter tied with Cuban stamps from Santa Clara</b> .....	—
560 ☒	<b>—1c-10c Envelopes, Entirets (U1-U5, U10-U13). Fine-V. F.</b> .....	10.75+
561	<b>Hawaiian Precancels, 28 stamps, 2c-\$1.00, 1917-26 Issues, some dups</b> .....	—

## PHILIPPINES

562 ★	<b>1926, 2c-30c Madrid-Manila Flight Issue (305-314). V. G.-V. F.</b> .....	52.50
563	<b>1926, 1p Madrid-Manila Flight Issue (318B). Very Good</b> .....	30.00
564 ★	<b>1926, 2c-1p Legislative Palace Issue (319-325). Very Fine Set</b> .....	12.95
565 ★	<b>1928, 2c-1p London-Orient Flight Issue (328-338). Fine Set</b> .....	29.70
566 ★	<b>1925-31, 2c-2p Imperforates (340-351). Set of Horiz. Pairs. Very Fine</b> ....	70.50



567 ★	1932, 2c-32c Pictorials (354-360). Very Fine Set .....	14.60
568 ★	1932, 2c-32c Von Gronau Issue (361-367). Fine-V. F. Set .....	9.30
569 ★	1933, 2c-30c Rein Issue (370-379). Very Fine set .....	8.35
570 ★	1933-37, Three Issues (370-82, 425-30). Cpl. sets, Blocks of last two issues, includes "a" variety on #380. V. G.-V. F. ....	17.25
571 ★	1936-37, 1p-5p Commonwealth (421-424). Horiz. Pair of each. V. F. ....	28.30
572 ★	1937, 20p Henna Brown (432). <b>Sheet of 100.</b> Fine-Very Fine .....	225.00
573 ★	1916, 20c Special Delivery (E4). Slight hinge thin, centered to B. ....	17.50
574 ★	1925-31, 20c Imperf. Special Delivery (E6). Horiz. Pair. V. F. ....	10.00
575 ★	1926, 2c-20c Officials (O1-O4). Fine-V. F. Set .....	7.55
576	<b>PHILIPPINES</b> , 246 stamps, mostly different, 19th & 20th Century, V. G.-V. F. ....	144.51
577 ★	<b>PORTORICO</b> , 1901, \$3, \$5, \$10 Gray, Revenues (R6-R8). Fine. Formerly Cat. ....	210.00
578 ★	—1901, \$50 on \$50 Gray, Revenue (R9). Fine .... Formerly Cat. ....	250.00
579	—Sixteen diff. Wine stamps. Fine lot .....	—

## CANADA

580 ☒	1851, 3p Red (1). <b>Horiz. Pair</b> tied on cover. Margins all around on one other cut in at R side, to U. S. with Red " <b>Steamboat Letter Quebec</b> " pmkd. Fine .....	(Photo) 60.00+
581	1851, <b>6p Grayish Purple (2)</b> . Margins all around, light crease. Very Fine appearance .....	(Photo) 65.00
582	1851, 3p Red (4). Large margins. Very Fine .....	(Photo) 12.00
583	1851, 3p Red (4). Two copies on small piece. Fine .....	24.00
584 P	1855-57, 10p Blue, 7½p Green, Proofs (7P, 18P). Nice appearing but thin (Holmes \$45.00) .....	—
585	1857, ½p Rose (8). Margins all around. Very Fine .....	(Photo) 30.00
586 P	1859, 1c Orange, Trial Color Proof (14TCP). Tiny thin (Holmes \$17.50) .....	—
587 ☒	1859, 10c Violet (17a). Tied on neat cover, Phillipsburg, C. E. pmkd. Very Fine .....	7.50+
588	<b>1859-97</b> , ½c-15c (17-18, 20-21, 25, 27-29). Fair-Fine .....	36.85
589	1859, 12½c Yellow Green, 17c Blue (18-19). Fine .....	17.50
590	1868-97, ½c-15c (21-30). Complete set. Fine-Very Fine .....	30.60
591 ★	1868-89, ½c-3c (21, 24, 35a, 37). V. G.-Fine .....	29.00
592	1897, ½c-50c Jubilee (50-60). Six are unused. V. G.-Fine .....	23.76



593	1897, 50c-\$1.00 Jubilee (60-61). Very Good .....	21.75
594 ★	1897, \$1.00 Jubilee (61). Small thin spot. Fine appearance .....	20.00
595	1897, \$2.00 Jubilee (62). Very Fine .....	15.00
596 ★	1897, <b>\$3.00 Jubilee (63)</b> . Centered to top left, perfs. clear. Fine, part gum (Photo) .....	50.00
597	1897, \$3.00 Jubilee (63). Fine .....	35.00
598 ★	1897, <b>\$4.00 Jubilee (64)</b> . Fine .....	(Photo) 55.00
599	1897, \$4.00 Jubilee (64). Fine .....	35.00
600	1897, <b>\$5.00 Jubilee (65)</b> . Blue cancel. Very Fine .....	(Photo) 35.00
601 ★	1897, <b>\$5.00 Jubilee (65)</b> . Very Fine .....	(Photo) 55.00
602 ★	1897, 2c Purple <b>Imperforate</b> (68). Horiz. Pair. Very Fine (S. Gibbons £15 or \$42 .....	(Photo) —
603 ★	1897, 5c Dark Blue <b>Imperforate</b> (70). Horiz. Pair, (S. Gibbons £15 or \$42). Very Fine .....	—
604 ★	1897, 8c Orange <b>Imperforate</b> (72). Horiz. Pair. Very Fine (Gibbons \$44) .....	—
605 ★	1898, ½c Black <b>Imperforate</b> (74). Horiz. Pair. V. F. (Gibbons \$44) (Photo) .....	—
606 ★	1900, 20c Olive Green (84). Fine .....	12.50
607	1908, ½c-20c Quebec Tercentenary (96-103). Cpl. set. Fine-V. F. ....	17.80
608 ★	1914-24, 2c-3c Coils (128, 130, 134). Strip of four each. Very Fine .....	7.20
609 ★	1924, 3c Carmine Coil (130). Strip of eight. Very Fine .....	10.00
610 ★	1924, 2c Yellow Green Coil (133). Pair. Very Fine .....	12.00
611 ★	1924, 2c Yellow Green Coil (133). Strip of Eight. Very Fine .....	48.00
612 ★	1917, 3c Confederation (135). <b>Sheet of 50</b> . Fine-Very Fine .....	25.00
613 ★	1927, 1c, 5c Confederation, Pairs <b>Imperforate Vertically</b> (141, 144). Very Fine (Holmes \$80) .....	—
614 ★	1927, 1c, 5c Confederation, Pairs <b>Imperforate Horizontally</b> (141, 144). Very Fine (Holmes \$80) .....	—
615 ★	1927, 1c, 5c, 12c Confederation <b>Imperforate</b> (141, 144-45). Horiz. Pairs. Very Fine (Holmes \$120) .....	—
616 ★	1927, 5c Violet Historical Issue (146). 3 Pairs Imperforate, Imperf. Vertically, Imperf. Horiz. Very Fine (Holmes \$120) .....	—
617 ★	1928-29, 1c-\$1.00 (149-159). Fine-Very Fine .....	19.95
618 ★	1928-29, 1c-8c George V <b>Imperforates</b> (149-154). Horiz. Pair of each. Very Fine (Holmes \$200) .....	—
619 ★	1928-29, 1c-8c George V, Pair of each <b>Imperforate Horizontally</b> (149- 154). Very Fine (Holmes (\$200) .....	—



620 ★	1928-29, 1c-8c George V, Pair of each <b>Imperforate Vertically</b> (149-154). Very Fine (Holmes \$200)	—
621 ★田	1928, 50c Bluenose (158). Block. Fine	20.00
622 ★田	1929, \$1.00 Parliament Bldg. (159). Block. Perfs. touch at left	50.00
623 ★	1930, 50c-\$1.00 (176-177). Very Fine	15.00
624 ★	1931, 10c Cartier <b>Imperforate</b> (190). Horiz. Pair. Very Fine (Holmes \$60)	—
625 ★	1932, 1c-8c Green V <b>Imperforate</b> (195-200). Horiz. Pair of each. Very Fine (Holmes \$240)	—
626 ★	1934, 3c Cartier Imperforate (208). Horiz. Pair. Very Fine (Holmes \$60)	—
627 ★田	1935, 1c-13c Silver Jubilee (211-216). Set of Blocks. Very Fine	9.20
628 ★	1935, 13c Silver Jubilee Imperforate (216). Horiz. Pair. Very Fine (Holmes \$80) <b>(Photo)</b>	—
629 ★	1935, 5c Blue, Pair <b>Imperforate Vertically</b> (221a). Very Fine	80.00
630 ★	1935, 1c, 4c, 5c, 10c George V <b>Imperforate</b> (217, 220-21, 223). Horiz. Pair of each. Very Fine (Holmes \$200)	—
631 ★	1935, 13c-\$1.00 Imperforates (324-327). Vertical Pair of each. Very Fine (Holmes \$320)	—
632 ★	1928, 5c Brown Olive <b>Airpost Imperforate</b> (C1). Vertical Pair (S. Gibbons \$160). Very Fine	—
633 ★	1932, 6c on 5c Airpost (C3). <b>Sheet of 100</b> . Fine-Very Fine	40.00
634 ★	1927, 20c Orange Special Delivery, Pairs <b>Imperforate Vertically and Horizontally</b> (E3). Very Fine (Holmes \$80)	—
635 ★	1875-89, 8c Blue Registration (F3). Two short perfs. Fine appearance	17.50
636 ★	1916, 2c+1c Brown, War Tax, Die I, Pair <b>Imperforate Vertically</b> (MR4a). Fine (Holmes \$75)	—
637 ★	1916, 2c+1c Brown War Tax <b>Imperforate</b> (MR4b). Horiz. pair. Very Fine	30.00

#### NEWFOUNDLAND

638 ★	1857, 1p Brown Violet (1). Fine	10.00
639 P	1857, 1p Black, Trial Color Card Proof (1TCP). Very Fine	—
640 ★	1857-60, 1p Brown Violet, 3p Green (1, 11A). Fine	18.50
641	1857, 4p Scarlet Vermilion (4). Margins all around, heavy crease	300.00
642	1857, 5p Brown Violet (5). Fine	50.00
643 ★	1857, 8p Scarlet Vermilion (8). Superb <b>(Photo)</b>	35.00
644	1857, 1/ Scarlet Vermilion (9). Small margins, cut in slightly at top. V. G. <b>(Photo)</b>	400.00



645	1860, 2p Orange (11), in slightly at B. Very Good .....	75.00
646 ★	1860, 5p Violet Brown (12A). Very Fine .....	10.00
647 ★	1862-63, 2p Rose (17). Fine ..... (Photo)	30.00
648 ★	1862-63, 2p Rose (17). Fine .....	30.00
649	1862-63, 4p Rose (18). Fine .....	12.50
650	1862-63, 6p Rose (20). Very Fine .....	10.00
651	1862-63, 6½p Rose (21). Fine ..... (Photo)	50.00
652	1865-94, 2c, 5c, 10c, 13c (24-25, 27, 30). VG.-Fine .....	45.00
653 ★	1864-73, 1c Violet, 1c Brown Lilac, 3c Blue (32, 32A, 34). Fine .....	26.00
654 ★	1870, 3c Vermilion (33). Fine .....	20.00
655 ★	1910, 3c-15c Guy Issue (89-97). 6c and 8c without gum. Fine-Very Fine .....	54.70
656 ★	1911, 6c-8c Guy Issue (98-99). Very Fine .....	12.50
657 ★	1911, 9c, 12c Guy Issue (100, 102). Very Fine .....	17.50
658 ★	1911, 10c Violet Black, Guy Issue (101). Very Fine .....	15.00
659 ★	1911, 15c Slate Green, Guy Issue (103). Well centered, without gum .....	10.00
660 ★	1911, 1c-15c <b>Royal Family</b> (104-114). Cpl. set. Fine-Very Fine (Photo)	56.15
661 ★	1911, 8c Peacock Blue (110a). Very Fine .....	13.00
662 ★	1919, 12c-36c Caribou Issue (123-126), Very Fine .....	16.00
663	1920, 3c on 15c Scarlet (128). Light town cancel. Fine .....	12.00
664 ★	1931-37, 1c-30c (183-198). Fine-V. F. ....	14.35
665 ★	1933, 1c-32c Sir Humphrey Gilbert Issue (212-225). Very Fine set .....	38.15
666 ★	1933, 1c-32c Sir Humphrey Gilbert Issue (212-225). Fine set .....	38.15
667 ★	1919, \$1.00 on 15c Scarlet Airpost (C2). Well centered, without gum ....	30.00
668	1921, 35c Red Airpost (C3). Tied on piece from St. Johns. V. F. ....	16.50
669 ★	1921, 35c Red Airpost (C3a). Fine, part gum .....	16.00
670 ★	1931, 15c-\$1.00 Airpost (C6-C8). Very Fine set .....	15.50
671 ★	1931, 15c-\$1.00 Airpost (C6-C8). Very Fine set .....	15.50
672 ★田	1931, 15c-\$1.00 Airpost (C6-C8). Very Fine set of <b>blocks</b> .....	62.00
673 ★	1931, 15c-\$1.00 Airpost (C9-C11). Very Fine set .....	24.25
674 ★	1932, \$1.50 DO-X Airpost (C12). Very Fine .....	55.00
675 ★	1933, 5c-75c Labrador Airpost (C13-C17). Very Fine set .....	34.75
676 ★	1933, <b>\$4.50 Balbo Flight (C18)</b> . Very Fine .....	50.00



677 ★	<b>NEW BRUNSWICK</b> , 1851, 3p Red (1). Touches slightly at two points. Fine ..... (Photo)	85.00
678	<b>NOVA SCOTIA</b> , 1851-53, 3p Blue (2). Tied on small piece. V. F. ....	12.50
679 P	—1860-63, 1c Black, small Die Proof (8P). Fine .....	—
680 ★	<b>PRINCE EDWARD IS.</b> , 1862-65, 1p, 6p (4, 7). Fine-Very Fine .....	20.00
681 ★	—1862-65, 2p Rose (5, 5g). Pair with one variety "TWC". V. F. ....	10.35

## GENERAL FOREIGN

682 ★	<b>AITUTAKI, NIUE, PENRHYN, SAMOA</b> , 1902-17 Issues( 27 diff. Fine-V. F. ....	21.70
683 ☒	<b>ARGENTINE REP.</b> , 1858-60, 5c Red (1). Three covers each tied with fancy "Franca", on in red. Very Fine .....	7.50+
684 ☒	—Eight covers of 19th Century including Corrientes #3. Fine lot .....	—
685 ☒	<b>Argentine Rep., Uruguay, Venezuela</b> , 279 covers, few 19th, many early 20th, strong in <b>Airposts</b> . Fine lot .....	—
686 ★	<b>BADEN</b> , 1862-65, 1kr-30kr (19-20, 24-25). Fine, without gum .....	45.50
687	<b>CAPE GOOD HOPE</b> , 1863-64, 1p Brown Red (12). Fine .....	17.50
688	—1863-64, 6p Violet (14). Fine .....	25.00
689 ★田	<b>GERMANY</b> , 1880, 10pf (39). Three blocks of 10, shades. Fine .....	30.00+
690 ★	—1939-45, 70 Issues Semi-Postals (B134-B293). Compl. sets. V. F. ....	40.84
691 ★	<b>GERMAN OCCUPATION, Czech.</b> (Boh. & Mor.) #1-90, B1-B28, EX1-2, J1-J14, O1-O24, P1-P9, <b>Danzig</b> #241-254, <b>Luxembourg</b> #N1-N32, NB1-NB9, <b>Poland</b> #N17-N103, NB1-NB40, NL1-NL4, NO1-NO36. Very Fine .....	56.44
692	<b>GREAT BRITAIN</b> , 1882-83, 5/ Rose (90). Well centered, one short perf. ....	30.00
693	<b>INDIA, Native States</b> , 9 stamps on pieces or covers, interesting lot .....	—
694 ☒	<b>JAPAN</b> , 1883-99, 5s, 10s (68, 103). Two interesting covers, one with advertising around stamp, latter with American Flag on Y.M.C.A. Patriotic latter bit frayed, first V. F. ....	—
695 ★	<b>NETHERLANDS</b> , 1913, 10g Red (101). Fine ..... (Photo)	40.00
696 ★	—1923-40, Ten Semi-Postal Issues (betw. #B4-B133). Cpl. sets. V. F. ....	26.97
697 ★	—1929-31, 1½g-7½g, 36c Airpost (C6-C9). Complete. V. F. ....	9.50
698 ★	<b>SOUVENIR SHEETS</b> , 11 diff. includes Guatemala Roosevelt. V. F. ....	15.90
699	<b>SWITZERLAND</b> , 1850, 10r Black & Red (8, a, b). Very Fine .....	16.50
700	—1850-62, 5r-20r (8, 8a, 10, 10a, 11, 12, 35). V. G.-V. F. ....	62.50
701 ★	<b>VENEZUELA</b> , 1859-60, ½r-2r (1-4, 6). Fine .....	16.75



702 ★	<b>WESTERN AUSTRALIA</b> , 1889, 1p-4p (59-61). Very Fine .....	14.00
703	<b>WURTTEMBERG</b> , 1851-64, 1kr-18kr (1, 4-6, 10, 34, 37, 39), #6 has small thin balance Fine .....	76.25
704	<b>ZANZIBAR</b> , 1896, ½a-7½a (32-37). First three unused. Fine set .....	22.50

## LOTS BY COUNTRIES

705	<b>FOREIGN COLLECTION</b> , mounted in Nine Red Oriel Albums, 19th & 20th, many thousand stamps, used and unused. Fine lot. Est. Cash Val. \$150.00 .....	—
706	<b>FOREIGN COLLECTION</b> , Mostly 19th Century in early Senf album, appears over 2000 stamps. Est. Cash Val. \$40.00 .....	—
707	<b>FOREIGN COLLECTION</b> in 1895 album, all 19th. Est. Cash Val. \$10.00 .....	—
708	<b>FOREIGN COLLECTION</b> , approx. 2500 diff. Est. Cash Val. \$15.00 .....	—
709	<b>AIRPOSTS</b> , 69 foreign covers plus 85 stamps off cover. Fine lot .....	—
710	<b>BELGIUM</b> , 338 stamps includes dups. Good-V.F. ....	228.45
711 ★	<b>BELGIUM</b> , 188 Different Stamps All 20th Century, mostly sets. F-V.F. ....	49.68
712	<b>BRITISH COLONIES</b> , 422 mainly diff. mostly 19th, used and unused .....	317.00
713	<b>BRITISH COLONIES</b> , 670 stamps on stock pages, 19th & 20th. Est. Cash Val. \$25.00 .....	—
714	<b>BRITISH COLONIES</b> , 1084 stamps includes duplicates, all 19th. Cat. up to \$7.00 each. Est. Cash Val. \$50.00 .....	—
715	<b>CANADA</b> , 33 stamps includes shades, manly 19th. Good-Fine .....	84.00
716	<b>CANADA &amp; B. N. A.</b> , 19th & 20th, 277 mostly diff. mainly used. G.-V.F. ....	153.00
717	<b>CANAL ZONE, CUBA, LIBERIA, SWISS, etc.</b> about 250 stamps. Est. Cash Val. \$14.00 .....	—
718	<b>CHINA &amp; JAPAN</b> , 414 mostly diff. Mainly 19th, used and unused, inc. some high cat. value. Good-Very Fine .....	—
719	<b>CUBA</b> , 213 stamps, mostly diff. 19th & 20th Century. V.G.-V.F. ....	49.12
720	<b>DANISH WEST INDIES &amp; ICELAND</b> , 63 mostly diff. used and unused. Very Good-Very Fine .....	41.50
721	<b>DENMARK</b> , 74 mostly diff. Mainly 19th used. Very Good-Very Fine ....	72.15
722 ★	<b>EUROPE</b> , 1061 stamps mostly diff. all unused 20th Century, many sets. Fine-Very Fine .....	229.19
723	<b>FRANCE</b> , 291 stamps includes dups. all 19th. Good-Fine .....	80.00
724	<b>GREAT BRITAIN</b> , 211 stamps includes dups. Mainly 19th. Fair-Fine ....	120.00
725	<b>GUATEMALA</b> , 100 stamps includes dups. Mainly 19th. V.G.-V.F. ....	52.61



726	<b>GUATEMALA</b> , 86 diff. 19th Century, used & unused. V. G.-V. F. ....	103.95
727	<b>GUATEMALA</b> , 19th & 20th, 240 different, used and unused .....	161.63
728	<b>GUATEMALA</b> , 408 stamps, used and unused, considerable duplication, 19th & 20th. Est. Cash Val. \$15.00 .....	—
729	<b>HAITI</b> , 76 stamps, <b>Russia</b> , 72 stamps includes dups. Good-V. F. ....	49.92
780	<b>HAWAII</b> , 59 stamps, includes dups. V. G.-V. F. ....	29.03
731	<b>LUXEMBOURG</b> , 84 stamps mostly diff., all 19th, used and unused. Good-Fine .....	143.78
732 ★	<b>NETHERLANDS</b> , 252 nearly all diff. all unused 20th Century, mostly in sets. Fine lot .....	70.15
733	<b>NETHERLANDS &amp; COLONIES</b> , 232 mostly diff. Mainly 19th. V. G.-V. F. ....	100.84
734	<b>NICARAGUA</b> , 216 diff. ulps 50 dups. mainly unused including many Seebecks. Very Good-Very Fine .....	—
735	<b>NORWAY</b> , 71 mostly diff. all 19th used. Very Good-Very Fine .....	75.56
736	<b>PORTUGAL &amp; COLONIES</b> , 654 mostly diff. Mainly 19th. Est. Cash Val. \$15.00 .....	—
737	<b>ROMAN &amp; ITALIAN STATES</b> , 180 stamps includes dups. used & unused. Good-Fine .....	—
738	<b>SO. &amp; CENTRAL AMERICA</b> , Collection of approx. 4,000 stamps, mostly diff. used and unused, 19th & 20th, Est. Cash Val. \$50.00 .....	—
739	<b>SO. &amp; CENTRAL AMERICA</b> , 1420 stamps including dups. used and unused. Est. Cash Val. \$25.00 .....	—
740	<b>SO. &amp; CENTRAL AMERICA</b> , 1047 diff. in Schaubek Album. Est. Cash Val. \$15.00 .....	—
741	<b>SO. &amp; CENTRAL AMERICA</b> , over 1,000 stamps on stock pages, wide variety, used and unused. Est. Cash Val. \$20.00. Fine lot .....	—
742	<b>SWEDEN</b> , 90 stamps includes dups. all 19th. V. G.-V. F. ....	69.19
743	<b>SWITZERLAND</b> , 140 stamps includes duplicates, 19th Century. G.-F. ....	250.35
744	<b>FOREIGN</b> , over 500 stamps in stockbook, 19th & 20th. Est. Cash Val. \$17.50 .....	—
745 ☐	<b>Foreign Used Blocks</b> , 220 different mounted. Fine lot .....	—
746 ☐	<b>Foreign Used Blocks</b> , 300 Blocks in stockbook, includes duplicates. Fine lot .....	—
747 ☒	<b>Foreign Covers &amp; Postal Stationery</b> , 387 covers, 19th & 20th, wide variety. Nice lot .....	—
748	<b>Foreign Essays, Proofs, Cut Squares, Revenues, Telegraphs</b> , many hundred, most interesting misc. lot .....	—



# FOREIGN WHOLESALE

749	<b>ARGENTINE</b> , 1910, 1c-30c #161-170 (259 stamps). Fine-V. F. ....	23.96
750	<b>BAHRAIN</b> , 1948, 1r on 1/ #58 (80). Fine-V. F. ....	32.00
751	—1951-52, George VI, 5R(50), 10R(20). Fine-V. F. ....	—
752	<b>BELGIUM</b> , 1936-49, 20F-100F #292(50), C11(2), C12(4). Fine-V. F. ....	23.00
753	<b>BRITISH COLONIES</b> , Stockbook, 19th & 20th, all used. V. G.-V. F. ....	501.00
754	<b>CHILE</b> , 1910, 1c-30c #83(55), 84(65), 85(6), 86(70), 87(50), 90(4), 92(7). Fine-V. F. ....	30.30
755 ★	<b>CHINA</b> , 1928, 1c-\$1.00 Commem. #276(211), 277(72), 278(22), 279(3), in large blocks. Fine ....	59.75
756 ★	—1929, 1c-\$1.00 Commem. #284(215), 285(74), 286(21), 287(2). Fine, in large blocks ....	62.10
757 ★	—1929, 15c-90c Airpost #C6-C10 (13 stamps), 1c to 6 of each. V. F. ....	9.55
758	<b>DOMINICAN REP.</b> , 1924, 1c-2c #233(280), 234(723). Fine-V. F. ....	62.98
759	<b>FRANCE</b> , 1949-50, 100Fr-1000Fr #C23(29), C24(15), C25(2), C26(6), C27(2). Fine-V. F. ....	26.40
760	<b>FR. WEST AFRICA</b> , 1947, 50fr-200fr Airpost #C12(29), C13(29), C14 (85), all have minor faults ....	132.25
761	<b>GUATEMALA</b> , 1887-1902, 1c-10c #43(100), 44(100), 45(100), 46(35), 47 (90), 99(100), 100(35). Fine-V. F. ....	123.25
762	—1887-1902, 1c-5c #43(500), 44(100), 45(30), 99(35). Fine-V. F. ....	137.00
763	—1895-99, 1c-10c #55(250), 56(46), 61(60), 97(28). V. G.-V. F. ....	91.60
764	—1902, 1c-2p #114-123(100 Sets). Fine-V. F. ....	99.00
765	—1092, 1c-1p #114-122 (100 of each). Fine-V. F. ....	74.00
766	—1902, 1c-2p #114-122 (100 each), 123(60). Fine-V. F. ....	89.00
767	—1902, 1c-1p #114(200), 115(400), 117(300), 118(100), 119(200), 120(600), 121(400), 122(100). Fine-V. F. ....	189.00
768	—1907-22, 12½c-1.50p #132, 141, 161-62, 172, 202-03 (100 each), 158(75). Fine-Very Fine ....	110.75
769	—1907-22, 12½c-1.50p #132(400), 141(400), 172(80), 202(100), 203(200). Fine-Very Fine ....	114.00
770	—1911, 1c on 6c #143(50). V. G.-V. F. ....	50.00
771 ★	—1911-19, 1c, 30c #143(19), 162(25), unused without gum ....	132.50
772	—1913-22, 1c-25c #151(65), 153(26), 155(27), 157(100), 168(70), 175(150), 185(24), 188(40), 198(50), 199(19). V. G.-V. F. ....	101.35



773	—1902-35, Wholesale lot of many hundreds, including many blocks. Est. Cash Val. \$20.00 .....	—
774	<b>HONDURAS</b> , 1898-1907, 5c-10c #107(100), 113(300), 115(70), 121(270). Fine-V. F. ....	60.60
775	—1915-29, 1c-15c #177(150), 184(350), 185(250), 186(175), 187(300), 189(175), 190(100), 211(150), 214(75). V. G.-V. F. ....	159.00
776	—1915-16, 10c Dull Blue #178(450). V. G.-V. F. ....	67.50
777	—1918-35, Wholesale #183(90), 202(70), 240(7), 242(20), 328(85), 331(100). V. G.-V. F. ....	85.45
778	<b>ITALY</b> , 1948, 100L-1000L Airpost #C123(49), C124(7), C125(24), C126(23). Fine-V. F. ....	56.53
779	<b>LEBANON</b> , 1944-7, 100P-300P #C99(1), C100(2), C118(1), C125(30), C126(3), C127(7). Fine-V. F. ....	41.50
780	<b>MOZAMBIQUE</b> , 1938-48, 4.50e-20e #287(30), 302(60), 321(25), 322(50), C27(35). Fine-V. F. ....	86.50
781	—1951, 50e Fish, high value (30). Fine-V. F. ....	—
782	<b>NEJD</b> , 1934-42, 1½g-200g #164(30), 165(30), 166(15), 168(30), 169(30), 170(30), 172(15). Fine used .....	43.50
783	—1934-42, 20g #170(300). Fine-V. F. ....	75.00
784	—1949, Airpost #C1(100), C2(20), C3(20), C4(40), C5(70). Fine-V. F. ....	65.40
785	—1949, 20g Air Mail #C5(100). Fine-V. F. ....	60.00
786	<b>PANAMA</b> , 1906-07, ½c-1c #185(150), 186(170). Fine-V. F. ....	48.00
787	—1909-24, Wholesale #198(200), 199(200), 200(40), 204(30), 205(25), 206(270), 222(25), 233(25), 236(50), F30(35). Fine-V. F. ....	119.80
788	<b>PERSIA</b> , 19th Century approx. 800 stamps used in quantities. Fine lot ....	100.00+
789 ★	<b>PHILIPPINES</b> , 1932, 2c Pictorial #354(100). Two sheets. Very Fine .....	20.00
790 ★	—1935-40, 2c, 12c #384, 438 (300 each), in sheets. V. G.-V. F. ....	33.00
791 ★	—1936-37, 30c Commonwealth #420(100), in blocks. V. G.-V. F. ....	25.00
792 ★	—1938-40, 2c-26c #433, 435-441 (50 each) in large blocks or sheets. Fine .....	38.50
793	—1945-47, 1p-20p #494(50), 496(1), 510(230). V. G.-V. F. ....	77.50
794	—1947, 12c, 16c, 1p #506(77), 507(130), 510(400). Fine-V. F. ....	108.91
795	—1950, 30c-50c Airpost #C18(17), C19(145), C21(39), C22(90). Fine-V. F. ....	80.70
796 ★	—1942-43, 2c, 12c, 16c, 50c Jap Occup. #N1(200), N2(200), N5(197), N6(50), mostly in sheets. Fine .....	84.05
797 ★	—1943-44, 1c-1p Jap Occup. #N12-N23 (100 sets) in sheets. Fine-V. F. ..	103.00



798 ★	—1943-44, 1c-25c Jap. Occup. # N12-N16 (600 each), N17(1600), N18(200), N19(600), N20-21 (200 each), N22(600) in sheets. Fine-V. F. ....	296.00
799 ★	—1945, 5c-20c Jap. Occup # N37-N39 (100 sets). Very Fine .....	17.00
800	<b>So. &amp; Central America, British Col.</b> , 1900-10 Period, over 2000 stamps, mostly bundled stock .....	—
801	<b>SWEDEN</b> , 1916, Semi-Postals # B12-B20 (2 each). V. G. ....	15.40
802	<b>TURKEY</b> , 1949, 40k-1L Airpost # C15(50), C16(50), C17(15). Fine-V. F. ....	43.00
803	<b>WURTTEMBERG</b> , 1852, 18kr # 6(6), slight flaws or thins. Nice appearing	300.00

## END OF SALE

THANK YOU

AIRMAIL BIDS FROM THE WEST

OUR OFFICES ARE AIR CONDITIONED

PLAN ON ATTENDING OUR AUCTION

**AUGUST 14th**

AND VISITING THE

**Society of Philatelic Americans  
Exhibition and Convention**

AT HOTEL ASTOR, N. Y. CITY

ON

**AUGUST 14th — 17th**



## SELLING YOUR COLLECTION ?

REALIZE IMMEDIATE CASH  
AND HAVE ADVANTAGE OF SELLING AT AUCTION.

I will advance on your collection immediate cash up to 75% of my appraisal value of what it should realize at auction.

It will then be sold at one of my coming auction sales. Commission is 20% of the gross and final settlement within thirty days after the sale.

Send collection direct (valued \$500 upwards) for appraisal. Auction advance will be sent within 48 hours after receipt. If not entirely pleased, collection will be returned at my expense.

I have been conducting stamp auctions for 21 years.



**ROBERT A. SIEGEL**

(Licensed and Bonded Auctioneer)

505 FIFTH AVENUE

NEW YORK CITY

(Tel. MU. 2-4309)