

158th SALE

UNITED STATES
COVERS & FANCY CANCELS,
TWENTIETH CENTURY MINT

Large offering of Blocks, Plate No. Blocks,
Sheets & Wholesale of 1919-1939 Issues,
REVENUES & CONFEDERATES



At Public Auction

THURSDAY, SEPTEMBER 25th — 2 P.M.

FRIDAY, SEPTEMBER 26th — 2 P.M.

Robert A. Siegel
AUCTIONS

505 FIFTH AVENUE

NEW YORK CITY

CONDITIONS OF SALE

1. The terms of sale are strictly cash to the highest bidder. All buyers are expected to pay for lots within three days of receipt, unless special arrangements have been made prior to the sale.
2. All bids are per lot as numbered in the catalogue and not per piece, unless otherwise announced by the auctioneer at the time of sale.
3. Any lot the description of which is incorrect is returnable only within three days of receipt. All disputed lots must be returned intact as received. Lots containing five or more stamps are not returnable at any time. No lots may be returned by purchasers who have had the opportunity to examine them before the sale.
4. Successful mail bidders, unless they are known to us or supply acceptable references, will be notified of the amount of the lots secured for them, and are expected to send payment in full before the lots are forwarded.
5. If the purchase price has not been paid within the time limit, or lots taken up within seven days from date of sale, they may be resold and any losses arising from such sale charged to the defaulter.
6. All stamps are sold as genuine, except where sold "As Is". Claims for any lot proving otherwise, must be made within two weeks from date of sale.
7. The right is reserved to group two or more lots, also withdraw any lot or lots from the sale, or to act on behalf of the seller.
8. Until paid for in full all lots remain the property of Robert A. Siegel.
9. No commission is charged for buying at our sales, but all forwarding charges will be added to the purchase price.
10. Lots will be sent for inspection, provided such lots are returned to us the same day as received. Postage and registration both ways will be charged. Approximate values of lots will be given on request.
11. The placing of a bid shall constitute acceptance of the forgoing conditions of sale.

ROBERT A. SIEGEL

GREGORY MOZIAN, Licensed Auctioneers

In sending bids, always state the highest price you are prepared to pay for the lot. Your limit will not be used as a starting bid unless absolutely necessary.

DESCRIPTIONS

Superb—the finest condition for noteworthy, outstanding copies.

Very Fine (VF)—means that there is a slight deviation from the above.

Fine (F)—means that the perforations do not touch the design on issues after 1890, but in some cases may just touch in earlier issues; if used, fairly lightly cancelled.

Very Good (VG)—means that the appearance is generally fine but that the perforations cut the design slightly.

Good (G)—means average off-centering; or fairly attractive with slight defects. Original gum is not to be expected on 19th Century stamps up to 1888 unless so stated.

Scott's 1952 Specialized United States Catalogue is used for cataloging our lots of United States and Scott's Standard Catalogue, 1952 for others.

WE SOLICIT FINE MATERIAL FOR FUTURE SALES
--

BID SHEET

SIGNED

[illegible]

CATALOGUE

FIRST SESSION

THURSDAY, SEPTEMBER 25th, 1952 — 2 P. M.

UNITED STATES

STAMPLESS COVERS

- 5-6 1 ☒ **Baltimore Railroad** in red circle (1845). Very Fine —
- 2-15 2 ☒ **Bennington, Vt.** in black circle to Canada with Red **U. States** in ribbon.
Superb item (Photo) —
- 10 3 ☒ **Boyd's City Express Post** in red oval on tiny ladies envelope embellished
in blue inside and out. V.F. —
- 10 4 ☒ **Dunham's Union Square Post Office**, in red oval "Paid". Superb —
- 6 5 ☒ **El Dorado, Ark.** Paid 10, black circle, interesting letter. Fine —
- 10 6 ☒ **Enfield, Mass.** Fancy blue str. line in ribbons. Very Fine —
- 7 ☒ **Hardens Letter Office, Boston**, red forwarders oval to London. Very Fine —
- 13 8 ☒ **Johnson, Vt.**, red circle, "Paid" within large red 3 on small embossed
ladies envelope. Very Fine (Photo) —
- 9 ☒ **JULY 16**, large red handstamp, Railroad Business Letter to Lamberts-
ville, N. J. (1853). Very Fine —
- 10 ☒ **Lake Court House, Indiana**, Cancel forms irregular square (1842). Very
Fine. Scarce —
- 12 11 ☒ **Lawrenceville, N. J.**, black straight line (1840). Fine —
- 12 11A ☒ **Salem (Mass.)**. Black str. line **SHIP** and "26" in ms. Very Fine —
- 8 12 ☒ **Ship 6** in arched red ribbon, from Canton to Boston (1836). Superb —
- 6 13 ☒ **Steamboat, Carrier, Forwarded**. Four diff. stampless. V.F. —

- 25-35 14 ☒ **Steamer 5 Oregon** in red oval, (1846). Very Fine —
- 15 ☒ **"U. S. SHIP HARTFORD"** in blue circle with illustr. of Ship in center also transit markings "U. S. Charge to Collect", "64 Cents." V. F. (Photo) —
- 16 ☒ **West Point, Ga.** blue circle, large blue 5 in circle, approx. size of 50c piece. Superb —
- 10-12 17 ☒ **Stampless, Ship Markings** with handstamp rates 1, 2, 7, 12, 19, 20, 48, Ship 6, Steamboat, Steamship 10 etc. Fine lot of 10 covers —
- 12-15 18 ☒ **Stampless**, 16 diff. covers includes Railroad, Steamboat, Ovals. U. S. City Despatch etc. Fine-Very Fine —

1847 ISSUE

- 25-35 19 ☒ **5c Brown (1).** Large margins all around. Tied by Black grid and Red Boston pmkd. Very Fine 37.50
- 80-150 20 ☒ **5c Red Brown (1).** Tied with large blue 5 also another strike on cover from Hartford. Four margin copy (Photo) —

1851 ISSUE

- 8-10 21 **1c Blue, Type II (7).** Margins all around, creased, N. Y. Ocean Clipper cancel —
- 22 **1c Blue, Type IV (9). Horiz. Strip of 3,** left pair has large margins all around. Fine-Very Fine 35.00
- 23 ☒ **1c Blue, Type IV (9).** Tied with Blue **Balt.** Paid in small circle. Fine —
- 24 **3c Orange Brown (10).** Blue "Way 6" in Circle cancel on small piece. Fine. Scarce —
- 25 **3c Orange Brown (10).** Four, Small Boston Paid, Blue, Black, Ms. Grids. Fine lot —
- 5-20 26 ☒ **3c Orange Brown (10).** Pretty strike **Mic. Central R.R.** cancel tied to neat cover. Margins all around on stamp. Very Fine (Photo) —
- 27 ☒ **3c Orange Brown (10).** Fine pair tied on frayed cover from San Francisco —
- 28 ☒ **3c Orange Brown (10).** Two covers each tied with **U. S. Express Mail** canc. one in Red. Fine 20.00
- 29 ☒ **3c Imperforate (10-11).** Eleven diff. covers includes Illustrated, Bloods Local, Ms. Way 1, Shades, etc., all tied. Fine-Very Fine —
- 30 **3c Red (11).** Pretty Blue **Intertwinning Star.** V. F. (Photo) —
- 10-12 31 **3c Red (11).** Very Fine strike of Chicopee **Intertwinning Star** (Photo) —
- 32 **3c Red (11).** Large fancy **Star** cancel. Fine (Photo) —
- 33 **3c Red (11).** Pretty Blue Circle of Dashes. V. F. (Photo) —
- 10-12 34 **3c Red (11).** Neat blue **Paid 3** in circle. Very Fine (Photo) —

- 35 **3c Red (11).** Very Fine strike of Canton, Miss. **Odd Fellow Links.** Scarce cancel (Photo) —
- 36 **3c Red (11).** Numeral "10" cancel. Fine —
- 37 **3c Red (11).** Clear **Way** cancel. Very Fine (Photo) —
- 38 **3c Red (11).** Tied on small piece pretty strike **Utica, N. Y. Oval.** V. F. —
- 39 **3c Red (11).** Tied on small piece with **U. S. Express Mail** canc from Boston, V. F. —
- 40 **3c Claret (11a).** Numeral **3** cancel. Very Fine (Photo) —
- 41 **3c Red (11).** Horiz. Pair with clear **N. Y. Clipper Ship** cancel. Fine (Photo) —
- 42 **3c Red (11).** Two, Dot grid and 12 Circle Target cancels. Fine —
- 43 **3c Red (11).** Thirteen copies includes Boston U. S. Express Mail, Green town. Vert. Pair. Fine lot —
- 44 **3c Imperforates (11).** Attractive lot of 14 diff. interesting cancels, includes Railroad, Green town, Orange Grid, Year Dates, Oval & Square Grids, Paid 3. Fine-Very Fine —
- 45 **3c Red (11).** Twenty-four **Horiz. Pairs,** each tied on small piece with town cancel. Mostly Fine 60.00
- 46 ☒ **3c Red (11).** Tied on small neat cover **Pointing Hand "Way Letter - 1 Cent"**, Stapelton N. Y. postmark. Very Fine and Rare Marking. (Photo) ✓✓✓✓
- 47 ☒ **3c Red (11).** Tied with Canton, Miss. **Masonic** cancel. Fine cover, Scarce —
- 47A ☒ **3c Red (11).** Tied on cover with **Woodville, Pa. in Double Oval.** Fine —
- 48 ☒ **3c Deep Claret (11a).** Four margin copy tied with Balloon strike Steuben, Ohio. V. F. —
- 49 ☒ **3c Red Imperf. & Perforated (11, 25).** Both tied on cover, Chatham 4 Corners, N. Y. & Albany pmkds. latter applied when forwarded. V. F. Scarce usage —
- 50 ☒ **5c Red Brown (12).** Margins all around, Rich color, Tied on part of folded letter, from New Orleans to France. Very Fine stamp (Photo) 150.00
- 51 ☒ **12c Black (17).** Tied on cover with San Francisco pmkd., Mailed from Hawaii with Red **"Honolulu U. S. Postage Paid"** postmark. Fine. Scarce (Photo) —

1857 ISSUE

- 52 ☒ **1c Blue, Type 1a (19).** Tied on cover, centered to B. still attractive. Fine copy 250.00
- 53 ☒ **1c Blue, Type IV (23).** Tied on **Savannah, Ga.** price current circular. Fine 35.00
- 54 **3c Rose, Type I (25).** Tied on small piece with Very Fine **Ship** cancel —

12-15
55

3c Claret, Type I (25). Fancy **Intertwining Star** from The Glen, N. Y. similar to Chicopee but interlaced opposite way and much rarer. V. F. **(Photo)**

30-40
56 ☒ **3c Rose, Type I (25).** Tied with beautiful strike of fancy **Brookline, Mass.** Very Scarce in this excellent condition **(Photo)**8-10
57 ☒ **3c Red (25-26).** Seven covers includes Wash. D. C. Free, Illustr. School, R. R. Hotel corner card. Missent. Fine lot15-20
58 **3c Red (26).** Pretty bold strike of **Shield with Stars** **(Photo on Cover)**10-12
59 **3c Red (26).** Clear strike Small **Shield in Circle.** Very Fine **(Photo)**25-30
60 **3c Red (26).** Handsome strike of **FLAG** in Circle, few short perfs. **(Photo)**10-12
61 **3c Red (26).** Small **Veined Leaf cancel.** Very Fine **(Photo)**62 **3c Red (26).** Canton, Miss. **LYRE.** Very Fine **(Photo)**10-12
63 **3c Red (26).** Very Fine strike of **Fancy Star** cancel **(Photo)**64 **3c Red (26).** Clear **Y. S.** cancel from Yellow Spring, Ark. Fine, Scarce **(Photo)**20-25
65 **3c Red (26).** "I. Field P. M." in circle. Very Fine **(Photo)**66 **3c Red (26).** Large bold **5** cancel. Very Fine **(Photo)**10-12
67 **3c Red (26).** Five diff. pretty cancels includes 3 diff. Stars8-10
68 **3c Red (26).** Seven diff. cancels includes Numeral 5 in Circle, Paid 3, Paid. Attractive lot10-12
69 **3c Red (26).** Twelve diff. **Fancy Cancels** includes 3, Free, Paid, Paid 3. Fine lot2-15
70 **3c Red (26).** Fifty copies with various cancels includes Canton Lyre, Steamboat, various Paid, few Type I. Good-Fine75-100
71 ☒ **3c Red (26).** Tied with clear **West Haven, Conn. FLAG.** Very Fine **(Photo)**50-60
72 ☒ **3c Red (26).** Tied with **Collinsville, Conn. AX** on small cover. Very Fine **(Photo)**73 ☒ **3c Red (26).** Tied with straight line **Baltimore R. R.** cancel on **Patriotic** Cover. Very Fine **(Photo)**74 ☒ **3c Red (26).** Just tied with town canc. on **Patriotic** cover, Rare design (Eagle's Claw coming down on C. S. A. Pirates). Fine **(Photo)**20-40
75 ☒ **3c Red (26).** Tied with "**Steamer Peerless** Feb. 13, 1860" Beautiful strike. Very Fine Miss. Packet cover **(Photo)**8-10
76 ☒ **3c Red (26).** Tied with Very Fine large **Steam** on small cover77 ☒ **3c Red (26).** Tied with unusual **Octagon Grid** from Montgomery, Ala. Very Fine cover **(Photo)**78 ☒ **3c Red (26).** Tied with **Octagon** Shamokin, Pa. postmark. Very Fine

- 79 ☒ **3c Red (26).** Tied from **Philadelphia** on pretty illustr. cover showing flowers. Very Fine —
- 80 ☒ **3c Red (26).** Tied with **Steamboat** cancel on illustr. cover of **Troy, N. Y.** Iron Foundry. Very Fine —
- 81 ☒ **3c Red (26).** Tied with blue grid, Red Bridgewater, Mass. pmkd. on illustr. cover of **Normal School.** Attractive cover —
- 82 ☒ **5c Brick Red (27).** Vertical strip of 3 tied on cover from New Orleans to France, stamps have str. edge at R. Attractive cover 250.00
- 83 ☒ **5c Brown, 10c Green (29, 35).** Two of each tied from New Orleans to France, 5c have str. edge at top. Attractive cover 74.00
- 84 **10c Green, Type V (35).** Tied on small piece with clear "U. States" across stamp. Very Fine /
- 85 **12c Black (36).** Neat **Green** grid and town cancel. Fine. Scarce 25.00
- 85A ☒ **12c Black (36).** Horiz Pair tied on cover with **Newport, R. I.** pmkd. also neat **Red "19"**, other transit markings including large **Red "Paid 24"** in circle. Very Fine —
- 86 ☒ **30c Orange (38).** Tied on cover with **Red "PD"** and black grid to Paris, various transit markings. Fine (Photo) 100.00
- 87 ★ **1c Blue Reprint (40).** Very Fine (Photo) 20.00

1861 ISSUE

- 88 ☒ **10c August, two 5c Buff (58, 67).** Tied on cover to London. Fine though cover slightly frayed at top 235.00
- 89 **1c Blue (63).** Pretty **Fancy Star** in Circle. Fine (Photo) —
- 90 **1c Blue (63).** **Crossroads Patent Punch.** Fine, Scarce —
- 91 ☒ **1c Blue, 3c Rose (63, 65).** Tied from **Phila.** on **Patriotic** Cover, George Wash. in Shield Paid 3 and Forwarded markings. Fine —
- 92 **3c Rose (65).** Very Fine strike **Cooperstown, N. Y. ANCHOR** cancel (Photo) —
- 93 **3c Rose (65).** Clear strike of **Bird in Nest** cancel, centered to bot. left. Rare cancel (Photo) —
- 94 **3c Rose (65).** Scarce **Union Soldier** cancel, about two thirds of cancel on stamp —
- 95 **3c Rose (65).** Very Fine **Alexandria, Va. SHIELD** (Photo) —
- 96 **3c Rose (65).** Scarce **Waterbury Hearts and Diamonds** cancel. Very Fine (Photo) —
- 97 **3c Rose (65).** **Boston "Pawnbroker"** cancel. Very Fine (Photo) —
- 98 **3c Rose (65).** **Fancy U.S in circle of Stars.** Very Fine (Photo on Cover) —
- 99 **3c Rose (65).** Small **U.S. in Circle** from **Keeseville, N. Y.** Very Fine (Photo) —

10-12	100	3c Rose (65). Clear strike of Albany U. S. in Circle of Stars . Fine (Photo)	—
12-15	101	3c Rose (65). Scarce Circle of Stars tied on small piece from Albany, V. F. (Photo)	—
8-10	102	3c Rose (65). Very Fine strike of Boston WHEEL cancel (Photo)	—
	103	3c Rose (65). Small W in Center of Target cancel. Very Fine (Photo)	—
8-10	104	3c Rose (65). Four Small Veined Leafs cancel. Fine (Photo)	—
10-12	105	3c Rose (65). Large Veined Leaf in blue. Beautiful strike (Photo)	—
	106	3c Rose (65). Handsome strike of large Leaf . Very Fine (Photo)	—
	107	3c Rose (65). Very Fine Floral cancel (Photo)	—
	108	3c Rose (65). Scarce Monogram C. S. from Kutztown, Pa. V. F. (Photo)	—
10-12	109	3c Rose (65). Unusual Star cancel (Photo)	—
10-12	110	3c Rose (65). Handsome strike of blue Jersey Shore Star (Photo)	—
8-10	111	3c Rose (65). Pretty Boston Star in Fancy Circle. V. F. (Photo)	—
8-16	112	3c Rose (65). Odd Interlacing Stars . Very Fine (Photo)	—
7-9	113	3c Rose (65). Fancy Star from Union Springs. Very Fine (Photo)	—
7-9	114	3c Rose (65). Handsome large Intertwining Star . V. F. (Photo)	—
8-10	115	3c Rose (65). Clear Pinwheel in fancy Circle. Fine (Photo)	—
8-10	116	3c Rose (65). Pretty Floral cancel. Fine (Photo)	—
8-10	117	3c Rose (65). Very Fine strike Fancy Geometric (Photo)	—
8-10	118	3c Rose (65). Bold Fancy Geometric . Very Fine (Photo)	—
	119	3c Rose (65). Bright Green Odd Grid. Very Fine —	
	120	3c Rose (65). Pretty Floral cancel. Very Fine —	
	121	3c Rose (65). Odd small Maltese Cross cancel. Very Fine —	
	122	3c Rose (65). Roman Numeral III in Circle. Fine —	
	123	3c Rose (65). Albany "U. S." in Wreath of Stars . Fine —	
	124	3c Rose (65). Fancy Blue Putnam, Conn. Geometric . Fine —	
	125	3c Rose (65). Cooperstown, N. Y. Anchor cancel, one short perf. Attractive strike —	
	126	3c Rose (65). Scarce Putnam, Conn. "OCT." October in script. Fine —	
12-15	127	3c Rose (65). Scarce Leeds Patent showing Lattice Work on back —	
	128	3c Rose (65). Two fancy Square Geometrics , one in blue. Very Fine —	
6-7	129	3c Rose (65). Two, Green & Red Bar cancels. Nice strikes —	
	130	3c Rose (65). Two, U. S. in Shield, U. S. in Circle, few short perfs. Attractive strikes —	

131	3c Rose (65). Two cancels, Shield, French Anchor markings. Fine	—
132	3c Rose (65). Three diff. bold Fancy Cancels, Octagon, Cog Wheel, Clover Leaf. Fine	—
133	3c Rose (65). Clear strikes Anchor, Eagle, Shield . V. G.	—
6 134	3c Rose (65). Patent Cancels four on piece from Buffalo, single on cover from Albany, each with Patent Punch cancels	—
135	3c Rose (65). Four diff. Fancy Geometrics . Pretty strikes each on small piece	—
8 136	3c Rose (65). Five diff. attractive cancels, Diamond, Box, Pinwheels, Cog Wheel. Very Fine	—
137	3c Rose (65). Five diff. large clear Letters A, B, C, F, W one in blue. Fine	—
138	3c Rose (65). MASONIC cancels. Five diff. includes Square & Compass, Trowels, G in Stars, nice strikes, two have grills, one repaired, one str. edge	—
139	3c Rose (65). Seven diff. Cross cancels, one in blue, three in circles. Fine-Very Fine	—
140	3c Rose (65). Seven diff. Paid's and Paid 3 . Fine lot	—
141	3c Rose (65). Seven diff. Fancy Cancels includes Leaf, Green Grid, Grid of Small Squares, Butterfly etc. Fine-Very Fine	—
6 142	3c Rose (65). Eight diff. Fancy Star cancels. Very Fine	—
143	3c Rose (65). Eight diff. Fancy Cancels includes Shield, Masonic, Leaf, Anchor. V. G.-Fine	—
144	3c Rose (65). Ten diff. cancels, Forwarded, Paid's, Paid 3, Frees, 3, Wells Fargo. V. G.-V. F.	—
145	3c Rose (65). Very Fine lot of ten blocks clear Anchor, Leaf, Fancy Cross, Geometrics. Handsome lot	—
146	3c Rose (65). Eight diff. Fancy Cancels includes Numeral 5, 10, L, P, Paid's. Fine-V. F.	—
10 147	3c Rose (65). Twelve diff. attractive Geometric Designs . Very Fine	—
9 148	3c Rose (65). Twelve copies with diff. Fancy Cancels . V. F. lot	—
149	3c Rose (65) Twelve diff. Fancy Cancels . Fine-V. F.	—
150	3c Rose (65). Seventeen Very Fine Target cancels, five are in Blue. Pretty lot	—
151	3c Rose (65). Balance of collection, 77 Interesting and Fancy Cancels includes Stars, Paid's, Colored, Steamship, Geometric etc. Fair-V. F.	—
152	3c Rose (65). Hundred copies selected for shades and cancels. V. F.	—
153	3c Rose (65). Fine lot of 210 copies with attractive assortment of cancellations	—

- 25-35
10-12 1/2
10-12 1/2
5-6
10-12 1/2
8-10
10-12 1/2
12 1/2-15
- 154 3c Rose (65). Very Good lot of 235 Cancellations including some scarce and desirable strikes -----
- 155 ☒ 3c Rose (65). Tied from Newberne, N. C. on attractive illustrated **Adams Express Co.** cover showing Wagon and 4 Horses. Fine (Photo) -----
- 156 ☒ 3c Rose (65). Tied on small cover with clear fancy "R" in Circle from Rockville, Conn. Fine -----
- 157 ☒ 3c Rose (65). "Paid" around points of Intertwining Star cancel on cover from Bonds Village, Mass. Fine -----
- 158 ☒ 3c Rose (65). Tied on cover with large **Diamond Grid** from Waverly, Md., addressed to Hon. A. H. Stephens (Confederate Vice President). V. F.
- 159 ☒ 3c Rose (65). Tied with circle, composed of small negative circles from **Leominster, Mass.** Very Fine -----
- 160 ☒ 3c Rose (65). Tied with "A. Sprague, P. M." also Corinna, Me. pmkd. on cover. Very Fine. Scarce -----
- 161 ☒ 3c Rose (65). Tied with "L" in Circle from **Brooklyn** on neat cover. Very Fine (Photo) -----
- 162 ☒ 3c Rose (65). Tied with excellent strike N. Y. City fancy **Geometric**. Very Fine (Photo) -----
- 163 ☒ 3c Rose (65). Tied with handsome strike N. Y. **Fancy Geometric**. V. F.
- 164 ☒ 3c Rose (65). Tied on small cover handsome "socked on the nose" **Baraboo, Wis. Jun 3, 1862** town cancel in blue. Very Fine -----
- 165 ☒ 3c Rose (65). Tied on **Patriotic** cover **Magnus** (Panoramic View of Fortifications around Washington) in full colors. Fine. Scarce -----
- 166 ☒ 3c Rose (65). Tied with fancy circle cancel from Sandy Spring with Quaker Date. Very Fine -----
- 167 3c Rose (65). Excellent strike of **BIRD** in blue from **Rockford, Ill.** on legal size cover with corner card -----
- 168 ☒ 3c Rose (65). Fourteen covers with diff. **corner cards** including Poetry, Illustr. Hotel & School etc. Good-Fine -----
- 169 ☒ 3c Rose (65). Eighteen covers with **fancy cancels** includes Leaf, positive and neg. U. S. Shield, Boxed Grid, Dispatched etc. Wide assortment. Very Good lot -----
- 170 ☒ 3c Rose (65). Twenty diff. Covers all in interesting cancels, includes fancy Geometrics, large Trowel, Stars, Dispatched etc. Fine lot -----
- 171 ☒ 5c Buff (67). **Horiz. Pair** tied on cover with Blue grid, **Newport, Ky.** postmark sent to **Calif.** with Ms. Iowa City, Cal. pmkd. when forwarded to Placerville and "Due 3 cts." Fine & scarce cover though one perf. short on pair (Photo) 225.00
- 172 10c Green (68). Horiz. Pair with odd grid of small squares. Fine -----
- 173 10c Green (68). Five diff. attractive cancels. Very Fine -----

174	10c Green (68). Six diff. Fancy Cancels includes Steamship, Cog Wheel, Star of David etc. Fine lot	—
175	10c Green (68). Seven diff. Fancy Cancels includes French Anchor cancel, latter has short perfs. Fair-Fine	—
176	12c Black (69). Five diff. Fancy Cancels Red Spokes, Cog Wheel, Cross-roads, Blue town, Circle of V's. V.G.-Fine	27.50
177	24c Brown Lilac (70a). Neat Town cancel with Year Date. Fine	12.00
178	24c Blackish Violet (70c). Neat Fancy Star cancel. Fine	—
179	24c Red Lilac (70). Two diff. fancy Star cancels, one has two short perfs	24.00
180	30c Orange (71). Fat well centered copy with str. edge guide line at left. Very Fine Leaf cancel	(Photo) —
181	30c Orange (71). Neat San Francisco Cog Wheel cancel. Fine	—
182	30c Orange (71). Two, Red Star, Red Paid cancels, each has also portion of black cancel. Nice strikes one has str. edge	—
183	30c Orange (71). Four diff. Fancy Cancels Star, Leaf, Geometrics. V.G.	32.00
184	<input checked="" type="checkbox"/> 30c Orange (71). Tied with Bloomington, Ill. pmkd. on cover to Germany. Tobacconist corner card. Fine	15.00
185	90c Blue (72). Two shades. Fancy Star & Odd Geometric cancels. slight faults. Attractive appearance	40.00
186	★ 2c Black (73). Very Fine O.G.	(Photo) 4.50
187	2c Black (73). Pretty Red Town cancel. Very Fine	(Photo) —
188	2c Black (73). Grid of Blue Dots. Very Fine	—
189	2c Black (73). Well centered Horiz. Pair with Petal Cancel (Photo)	—
190	2c Black (73). Black Target and Blue Segments. Both Very Fine	—
191	2c Black (73). Two copies on two small pieces, both used to England, one has large "1" and neatly struck London town cancel on stamp, other large "12" and town canc. Fine. Scarce	—
192	2c Black (73). Four copies. Very Fine	—
193	2c Black (73). Six diff. Fancy Cancels , includes Cog Wheel, Bright Red town cancel. Fine lot except latter has str. edge	—
194	2c Black (73). Six includes one Grill and one on cover, Rosette, Star of David, Star etc. Fine lot	—
195	<input checked="" type="checkbox"/> 2c Black (73). Most unusual fancy design, Two Triangles and Bar in Diamond neatly struck on stamp, West Poultney, Vt. pmkd. on cover. Very Fine	(Photo) —
196	<input checked="" type="checkbox"/> 2c Black (73). Tied from Bridgeport, Conn. on attractive illustr. adv. cover showing Basket in purple. Very Fine	—

- 8-10
197 2c Black, 3c Ultramarine (73, 114). Both on small pieces, each tied with portion of London cancel —
- 198 5c Red Brown (75). San Francisco Cog Wheel cancel. Very Fine (Photo) 17.50
- 199 15c Black (77). Shield cancel, stamp centered top left —
- 200 ☒ 15c Black (77). Tied with odd Cross cancel on cover to Paris. Fine —
- 15-20
201 24c Gray Lilac (78). Clear strike of large Red Heart. Fine. Scarce —
- 202 24c Lilac (78). Horiz. Pair with odd cancel, light crease, Fine appearance 17.50
- 203 24c Lilac, Gray, Gray Lilac (78, a, b). Eight diff. Fancy Cancells includes Paid, Cog Wheels, Star, Red. V.G.-Fine 52.00
- 204 ☒ Lincoln with Eagle and Flags, scarce patriotic used from Canada to U.S., various transit markings, attractive though slightly frayed (Photo) —
- 205 ☒ Patriotics, Two diff. Wash. on Horse, Liberty & Flag, both with 3c Rose (65) tied from Louisville and Chambersburg, Pa. Fine —
- 30-40
206 ☒ Patriotic Covers, 37 different covers, mostly with 3c Rose #65, many of the stamps defective, good representative lot, contains many scarce designs including Magnus, Caricature —

WESTERN AND TERRITORIAL COVERS

- 8-10
207 ☒ Free Frank, Senator Wm. Gwin, first U.S. Senator from Calif. and father of Pony Express, Wash., D.C. Free postmark. V.F. cover —
- 8-10
208 ☒ Gibsonville, Cal. black circle, contains letter sent home by Miner (1857), V.F. —
- 10-12
209 ☒ San Francisco 40, in red circle (1850), contains interesting slavery and political letter. Fine —
- 12-15
210 ☒ San Francisco, Cal. to Paris, "30" in circle, San Fran., N. Y. City, French transit markings, also Ms. "Per Str. Sacramento". Very Fine —
- 55-65
211 ☒ Todd & Co. Express. Marking in blue oval, Stockton to San Francisco, V.F. —
- 25-35
212 ☒ 3c Red, Two (11). Tied with blue boxed Wells Fargo & Co. Express Steamboat, last word very faint, also "Pacific Express Co. Nevada" in blue oval on legal size cover —
- 25-35
213 ☒ 10c Green, Type III (15). Two copies tied with San Francisco pmkd. Very Fine 40.00
- 15-20
214 ☒ 10c Green, Type III (33). Tied with blue square grid and clear Marysville Cal. Paid By Stamps pmkd. Fine —
- 45-55
215 ☒ 10c Green, Type IV (34). Tied by Grass Valley, Cal. pmkd. on cover. Fine 135.00
- 50-60
216 ☒ 1c Blue two, 5c Red Brown on 3c Entire (63, 75, U35). Neat Gold Hill, N.T. pmkd in blue circle. Fine and scarce Terr. cover (Photo) —

- 25-35
- 217 ☒ 1c Blue, 3c Rose, three each on 3c Entire with **Wells Fargo Frank** (63, 65, U35). All tied with **Wells Fargo Clifton, N. T.** pmkds. on large paste up with W. F. marking. Fine Terr. cover
- 217A ☒ 2c Black, 3c Rose, 10c Green (65, 68, 73). Tied on cover from **San Francisco to France** each tied with **Cog Wheel** cancel. Very Fine
- 218 ☒ 3c Rose on 3c Entire (65, U59). **Well Farge Frank**, Portland and San Francisco cancels, stamp tied with large blue **Collect.** Very Good
- 218A ☒ 2c, 12c Black Grills on 10c Green Entire (90, 93, U41). Tied on Wells Fargo Frank entire, **Wells Fargo Victoria** canc., to England, one stamp missing
- 219 ☒ **California**, 50 covers, 47 diff. towns and 3 R. P. O., Attractive lot includes Fancy, colored, Wells Fargo, Mostly 1861-1879 period, many Corner Cards, Contents, etc. Fine group of covers
- 220 ☒ **California**, 20 diff. town postmarks some Wells Fargo, mostly banknote period, interesting lot
- 221 ☒ **San Francisco**, 30 diff. covers with various cancels and corner cards, mostly banknote period a few earlier. Nice lot
- 222 ☒ **San Francisco**, 20 covers with diff. **Corner Cards**, Banknote period includes Hotels, College, R. R., etc. Fine lot
- 223 ☒ **Western Covers**, 32 mostly Banknote period includes some Terr. Wells Fargo, Corner Cards. Nice lot
- 224 ☒ 2c-3c **Banknotes**, 7 diff. interesting **Calif.** corner cards, Police, State, Hotel, Society Calif. **Pioneers**, Newspaper
- 225 ☒ **Territorials**, 16 diff. covers includes Mohave City, Tombstone, Apache Pass Ariz., Denver City C. T., Indian Terr., Crow Agency, Mont., etc. Fair-Fine
- 226 ☒ 3c Red Entire (U10). Tied with **Leavenworth City, K. T.** pmkd. V. F.
- 227 ☒ 10c Green Entire (U16). **Langton's Pioneer Express**, Frank, blue **Marysville "Paid By Stamps"** pmkd. Cover slightly soiled
- 228 ☒ 10c Green Entires (U16-17). **Diamond Springs, Mokelumne Hill, Cal.** pmkds. Fair
- 229 ☒ 3c Pink Entire (U34). **Langton's Pioneer Express** frank, tied with Langton's Downieville and Wells Fargo Marysville cancels. Fine
- 230 ☒ 10c Yellow Green, Entire (U40). Neat **Los Angeles, Cal.** pmkd. Fine
- 230A ☒ 3c Pink Entire (U59). **Seven Wells Fargo** Frank covers with Co. markings Petaluma, Marysville, Los Angeles, Rio Vista, Bloomfield. V. G.-F.
- 231 ☒ 3c Green Entire (U82). Tied **Soccoro, New Mex.** on advertising **Wells Fargo** Frank envelope. Fine territorial
- 232 ☒ **Pacific Stage & Express Co.** frank with Coach & 4 Horses in blue oval, unused. Very Fine

6-7
233 ☒ **Pacific Stage & Express Co. frank** with Coach & 6 Horses in black, unused, Very Fine

1867 GRILL ISSUE

- 234 ☒ **3c Rose, Grilled all over (79).** Tied on cover from New York, irregular perfs. at right. Fine. Attractive 100.00
- 235 **2c Black Grills (87, 93).** Four, Red Shield, Red Cross in Circle, Blue Star, Blue Geometric, Pretty strikes and nicely centered but all repaired —
- 236 **2c Black, 12c Black, Grills (87, 90).** Crossroads, and Leaf cancels. Fine 13.25
- 15-20 237 **3c Rose, Grill (88).** N. Y. City **Shield in Heart** cancel. Very Fine ✓
(Photo on Cover) —
- 238 **3c Rose, Grill (88).** Handsome **Leaf** cancel from Cambridge, Mass. (Photo) —
- 12 1/2 - 17 1/2 239 **3c Rose (88).** Cambridge, Mass. **PADLOCK.** Very Fine (Photo) —
- 240 **3c Red, Grills (88, 94).** Nine diff. **Fancy Cancels.** Attractive lot of bold strikes includes Phila. Fez, Leaf, Rosettes, Small Crossroads. Fine-V.F. —
- 241 **3c Red Grills (88, 94).** 75 cancels contains some scarce items, mostly Very Good-Fine —
- 241A ☒ **10c Green, Grill (89).** Two tied on cover with **Red** cancel from **Baltimore** to Bremen, various transit markings. Very Fine —
- 242 **15c Black, Grill (90).** Fat well centered stamp. Very Fine (Photo) 20.00
- 243 **2c Black Grill (93).** Red Cancel. Very Fine —
- 244 **2c Black, Grill (93).** **Petal** cancel. Very Fine —
- 22-27 245 **3c Red, Grill (94).** Large bold strike of **£.** Very Fine, Scarce ✓
(Photo on Cover) —
- 10-12 246 **3c Red, Grill (94).** Fine strike of **Masonic Open Book** cancel, few short perfs. Scarce —
- 7 1/2 - 9 247 **3c Red, Grill (94).** Bold unusual **Cog Wheel in Circle.** Very Fine (Photo) —
- 7-9 248 **3c Red, Grill (94).** Neat **Free** cancel. Very Fine (Photo) —
- 249 **3c Red Grill (94).** Phila. **FEZ** cancel. Very Fine (Photo) —
- 250 **3c Red, Grill (94).** Leaf and Phila. **Fez** cancels. Fine-Very Fine —
- 8-10 251 ☒ **3c Red, Grill (94).** Nicely tied with "**Chi. to Davenport R. P. O.**" pmkd. on cover. Fine —
- 252 **10c Green, Grill (96).** Neat **Leaf** cancel. Very Fine —
- 253 **10c Green, Grill (96).** Two, Blue Star, Black Leaf cancels. Fine 13.00
- 254 **30c Orange Grill (100).** Handsome **Leaf** cancel. Very Fine (Photo) 25.00
- 255 **30c Orange, Grill (100).** **Petal** cancel. Fine 25.00
- 256 **30c Orange, Grill (100).** Fine 25.00

1869 PICTORIAL ISSUE

257	1c Buff (112). Very Fine	7.00
258	1c Buff (112). Pretty Red Grid cancel. Fine	10.00
258A	1c Buff (112). Scarce initials F H. (Fort Howard, Wis.). Fine clear bold strike	—
259	1c Buff (112). Neat Boxed "Paid", tiny thin. Fine appearance	15.00
260	1c Buff (112, 133). Star, Negative "3" cancels, both clear strikes, few short perfs. Nicely centered	15.00
261	1c-2c, 6c, 12c Pictorials (112-13, 115, 117). Stars, Paid All, Red town cancel, attractive strikes, two have slight thins	29.50
262	2c Brown (113). Seven copies includes Pair, Shades, Interesting Cancels. Fine-Very Fine	17.00
263	2c Brown, 10c Yellow (113, 116). First has Red cancel. Very Fine	11.50
264	3c Ultramarine (114). Bold clear Heart cancel, centered to top (Photo)	—
265	3c Ultramarine (114). Scarce French Anchor cancel, Excellent strike, centered slightly to top left	(Photo) —
266	3c Ultramarine (114). Six diff. Fancy Cancels. Very Fine	—
267	3c Ultramarine (114). Seven diff. Fancy Cancels includes Hearts, Cross, Leaf, Geometrics. Fine-Very Fine	—
268	3c Ultramarine (114). Nine attractive cancels including 5 diff. Reds. Very Fine lot	—
269	3c Ultramarine (114). Nine diff. Fancy Cancels includes Red, Magenta, Shield with Stars, Cross. Very Good-Very Fine	—
270	3c Ultramarine (114). Nine diff. Fancy Cancels. Fine-Very Fine	—
271	3c Ultramarine (114). Ten diff. Fancy Cancels includes Red Targets, Stars, Shield in Circle, etc. Fine-V. F.	—
272	3c Ultramarine (114). Fifteen copies includes 2 covers, Cross in Circle, Blue Spokes, Stars, "S" in Circle, and other interesting cancels. Nice lot	—
273	3c Ultramarine (114). Forty copies with nice variety of Fancy Cancels. Fine lot	—
274	3c Ultramarine (114). Nicely tied with U. S. in Shield from Watkins, N. Y. Very Fine	(Photo) —
275	3c Ultramarine (114). Tied by clear Pumpkin Head cancel from Ludlow, Vt. Very Fine cover	(Photo) — ✓
276	3c Ultramarine (114). Tied by large Pumpkin Head cancel from Corry, Pa. Very Fine	(Photo) —
277	3c Ultramarine (114) Tied by neat Shield cancel on cover. Fine	—

15-20 278	10c Yellow (116). Exceptionally clear Hiogo, Japan cancel. Very Fine (Photo)	15.00
9-12 279	10c Yellow (116). Very Fine Star in Circle cancel (Photo)	—
280	10c Yellow (116). Bold Odd Quartered Circle cancel, light corner crease	—
281	10c Yellow (116). Circle of "V" cancels. Fine	—
282	10c Yellow (116). Checkerboard cancel. Fine	—
12-15 283	12c Green (117). Pretty bold fancy cancel. Very Fine (Photo)	—
10-12 284	12c Green (117). Cancel of four small Red Hearts , light corner crease. Very Fine appearance	—
285	15c Brown & Blue (119). Light French Anchor cancel. V. G.	—
286	<input checked="" type="checkbox"/> 15c Brown & Blue (119). Tied on small cover to Italy, various transit markings. Fine (Photo)	70.00
287	24c Green & Violet (120). Large Star cancel, well centered, two short perfs	37.50

NEW YORK FOREIGN MAIL CANCELS

This section contains many wonderful examples including the scarce types

b-12 288	<input checked="" type="checkbox"/> 1c Blue, 3c Green Pair tied with N. Y. Foreign Mail ty. 83 on illustr. Hotel cover. Fine cover	—
288A	<input checked="" type="checkbox"/> 1c Blue, 2c Brown Pair on 1c Brown Postal Card (145-146, UX3). Each tied with N. Y. For. Mail, type 83 cancel, 1c has short perfs. Attractive	—
289	2c Brown (157). N. Y. Foreign Mail , ty. 15. Very Fine (Photo)	—
290	3c Green. Scarce N. Y. Foreign Mail , ty. 91, Anchor & Stars. Beautiful strike, centered to right (Photo)	—
15-20 291	3c Green. Horiz. pair with handsome strike N. Y. Foreign Mail ty. 19. Very Fine (Photo)	—
15-20 292	3c Green. Horiz. pair with handsome strike N. Y. Foreign Mail ty. 6. Very Fine (Photo)	—
293	3c Green. Horiz. pair with pretty strike Red N. Y. Foreign Mail ty. 62. Very Fine	—
294	3c Green. Horiz. pair with neat strike N. Y. Foreign Mail ty. 20. Fine	—
295	3c Green. Horiz. pair with Red N. Y. Foreign Mail , ty. 22. Fine	—
296	3c Green. Horiz. pair with pretty Red N. Y. Foreign Mail ty. 56 cancel, centered to top	—
12-15 297	3c Green. Horiz. pair with Handsome strike N. Y. Foreign Mail ty. 52, tiny tear in one stamp. Very Fine appearance (Photo)	—
298	3c Green. Horiz. pair with attractive strike N. Y. Foreign Mail , ty. 6, lightly creased	—

299	3c Green. Horiz. pair with neat strike N. Y. Foreign Mail, ty. 92. Fine	—
300	3c Green. Strip of four str. edge on R. stamp, two handsome strikes in red N. Y. Foreign Mail ty. 17, centered top left	—
301	3c Greens. Three diff. N. Y. Foreign Mail, types 35, 55, 95. Fine-V. F.	—
302	3c Greens. Four horiz. pairs with N. Y. Foreign Mail cancels, types 6, 10, 38, 41. Fair-Fine	—
303	3c Greens. Nine diff. N. Y. Foreign Mails three in Red. Good-Fine	—
304	3c Green, 10c Brown. Two of each tied on piece. N. Y. Foreign Mail, ty. 61, scarce type. Fine	—
304A	3c Green, 6c Dull Rose. Very Finely struck with N. Y. For. Mail ty. 33 on cover	—
304B	3c Green, 6c Dull Pink. Nicely struck with N. Y. For. Mail ty. 13, cover slightly frayed	—
305	6c Carmine (148). Attractive N. Y. Foreign Mail, ty. 4. Very Fine (Photo)	—
306	6c Carmine (148). N. Y. Foreign Mail, ty. 95. Very Fine (Photo)	—
307	6c Dull Red (159). Beautiful strike N. Y. For. Mail ty. 51. V. F. (Photo on Cover)	—
308	6c Dull Pink (159). Neat N. Y. Foreign Mail ty. 62. Very Fine (Photo)	—
309	6c Dull Pink (159). Very Fine strike N. Y. Foreign Mail ty. 16 (Photo)	—
310	6c Carmine (148). Bold strike N. Y. Foreign Mail type 102. V. F. (Photo)	—
311	6c Dull Pink (159). N. Y. Foreign Mail, ty. 13. Very Fine (Photo)	—
312	6c Dull Pink (159). Handsome N. Y. Foreign Mail, ty. 37. V. F. (Photo)	—
313	6c Dull Pink (159). Attractive strike N. Y. For. Mail ty. 35. V. F. (Photo)	—
314	6c Dull Pink (159). Neat N. Y. Foreign Mail, ty. 38. Very Fine (Photo)	—
315	6c Dull Pink (159). Handsome strike N. Y. Foreign Mail, ty. 41 tied on small piece. Very Fine (Photo)	—
316	6c Dull Pink (159). Handsome strike N. Y. Foreign Mail, ty. 6, few nibbed perfs.	—
317	6c Dull Pink (159). Attractive strike N. Y. For. Mail, ty. 64. Fine (Photo)	—
318	6c Dull Pink (159). Horiz. pair with N. Y. For. Mail, ty. 33. V. F. (Photo)	—
319	6c Dull Pink (159). Horiz. pair with N. Y. For. Mail ty. 44, few short perfs. on left stamp, pretty strike (Photo)	—
320	6c Dull Pink. Horiz. pair with pretty Red N. Y. Foreign Mail ty. 20. Fine	—
321	6c Dull Pink. Horiz. pair with neat strike N. Y. Foreign Mail, ty. 35. Fine	—
322	6c Banknotes. Five pretty N. Y. Foreign Mails, ty. 1, 4, 8, 13, 20. Fine-V. F.	—

- 12-15
8-10
8-10
15-17^{1/2}
15-17^{1/2}
16-12^{1/2}
12-15
- 323 **6c Banknotes.** Six diff. **N. Y. Foreign Mails**, types 35, 36, 55, 62, 83, 96, one in Red. Fine-Very Fine
- 324 **6c Banknotes.** Ten diff. **N. Y. Foreign Mails** mostly Fine strikes
- 325 **7c Vermilion (149).** Attractive strike **N. Y. For. Mail.** Scarce ty. 58. Fine (Photo)
- 326 **7c Orange Vermilion (160).** Very Fine strike **N. Y. Foreign Mail**, ty. 8 (Photo)
- 327 **7c Orange Vermilion (160).** Handsome strike **N. Y. For. Mail** ty. 17. Very Fine (Photo on Cover)
- 328 **7c Orange Vermilion (160).** Handsome strike **N. Y. For. Mail** ty. 42. Very Fine (Photo)
- 329 **7c Orange Vermilion (160).** Beautiful strike **N. Y. For. Mail**, ty. 19 (Photo)
- 330 **7c Orange Vermilion (160).** **N. Y. Foreign Mail** cancel, ty. 83. V. F. (Photo)
- 331 **7c Orange Vermilion (160).** Very Fine **N. Y. Foreign Mail** cancel ty. 20 (Photo)
- 332 **7c Orange Vermilion (160).** Horiz. Pair with **N. Y. For. Mail** ty. 19. V. F. (Photo)
- 333 **7c Orange Vermilion (160).** Horiz. Pair with **N. Y. For. Mail** ty. 13. V. F. (Photo)
- 334 **7c Orange Vermilion (160).** Four **N. Y. Foreign Mails** types 1, 6, 10a, 35, latter in Red. Fine
- 335 **7c Banknotes (149, 160).** Five diff. **N. Y. Foreign Mails** ty. 1, 4, 10, 36, 90. Fair-Fine
- 336 **10c Brown (161).** Pretty strike on small piece **N. Y. For. Mail** ty. 20. V. F.
- 337 **10c Banknotes.** Eight diff. **N. Y. Foreign Mails** types 1, 19, 20, 27, 36, 41, 52, 95, one in red has str. edge. Fine lot
- 337A ☒ **10c Brown.** Nicely tied on cover with **N. Y. For. Mail** ty. 8, to Amsterdam. Fine
- 337B ☒ **10c Brown.** Tied on cover with **N. Y. For. Mail**, unlisted type, somewhat similar to type 67. V. F.
- 337C ☒ **10c Brown.** Nicely tied on cover to Italy with **N. Y. For. Mail**, ty. 4. Fine
- 338 **12c Blackish Violet (162).** Two **N. Y. Foreign Mail** ty. 20, one in Red. Very Fine
- 339 **12c Blackish Violet (162).** Four diff. **Red N. Y. Foreign Mail**, types 6, 20, 41, 74, one has small tear. Attractive lot
- 340 **15c Banknotes.** Five diff. **N. Y. Foreign Mails**, ty. 1, 13, 20, 51, 70. Fine lot, one in red

- 341 **15c Banknotes.** Five diff. **N. Y. Foreign Mails**, types 1, 8, 20, 51a, 65. V. G.-Fine
- 342 **24c Purple (153).** Very Fine strike **Red N. Y. Foreign Mail** cancel, ty. 20 (Photo)
- 343 **24c Purple (153).** Beautiful strike of **N. Y. For. Mail**, ty. 55, two nibbed perfs (Photo)
- 344 **24c Purple (153).** Three **N. Y. Foreign Mail** types 16, 20, 95. Fine strikes
- 345 **30c Black (154).** **N. Y. Foreign Mail**, type 25 ,centered to top
- 346 **30c Gray Black (165).** New York **Foreign Mail** type 81. Fine
- 347 **30c Greenish Black (165a).** Excellent strike **N. Y. For. Mail** scarce ty. 39. Fine (Photo)
- 348 **30c Gray Black (165).** Neat **Red N. Y. Foreign Mail**, ty. 95 and **Red** transit marking. Very Fine
- 349 **30c Gray Black (165).** Three **N. Y. Foreign Mails**, ty. 8, 98n, 103. F.-V. F.
- 350 **90c Carmine (155).** **N. Y. Foreign Mail**, ty. 13, tiny closed tear. Fine appearance
- 351 **90c Rose Carmine (166).** Very Fine strike **N. Y. Foreign Mail**, Rare ty. 42, centered to left (Photo)
- 352 **90c Rose Carmine (166).** **N. Y. Foreign Mail**, ty. 20. Fine
- 353 **2c Vermilion (178).** Handsome strike **N. Y. For. Mail** scarce ty. 23. V. F. (Photo)
- 354 **2c Vermilion (178).** Neat **N. Y. For. Mail** ty. 70. Very Fine
- 355 **2c Vermilion (178).** Attractive strike **N. Y. For. Mail**, scarce ty. 14. Fine (Photo)
- 356 **2c Vermilion (178).** Neat strike **N. Y. For. Mail** scarce ty. 87. Fine (Photo)
- 357 **2c Vermilion, 3c Green,** tied on small piece with pretty **N. Y. Foreign Mail** ty. 52. Fine
- 358 **5c Blue (179, 185).** Five **N. Y. Foreign Mail** cancel. V. G.-Fine

BANKNOTE ISSUES

- 359 **1c Ultramarine, Grill (134).** **Red Crossroad** cancel. Fine
- 360 **1c Blue Banknote.** Fine Large **G.** printed, **Glastonbury, Conn. precancel.** (Photo)
- 361 **1c Banknote,** Glen Allen **Star Precancel**, two short perfs
- 362 **1c Banknote.** Pretty **Floral** design in Circle. V. F. (Photo)
- 363 **1c Banknote.** W. Berkely **Ladies SHOE** cancel. Very Fine. Rare (Photo)
- 364 **1c Banknote "1885"** Year Date within Cross Very Fine (Photo)

15-20
6-8

15-20
8-40

20-25
0-25
35-45
15-20

- 365 1c Banknote. Scarce **Railroad Engine** cancel. Fine (Photo) —
- 366 1c Banknotes. Eight diff. Fancy Cancels including 4 diff. unusual Box
cancels. Very Fine —
- 367 1c Banknotes. Eight attractive clear strikes. Fancy Letters —
- 368 1c Banknotes. Attractive lot of 11 diff. **Fancy cancels in Blue** —
- 369 1c Banknotes. 33 Fancy Cancels, mostly diff. includes pairs and cover.
Nice lot —
- 370 1c Banknotes. Fine lot of 42 **Fancy Cancels** includes many nice strikes
of scarce cancels —
- 371 ☒ 1c Banknote. Tied with **Glen Allen, Va. Star Precancel**. Scarce on cover.
Very Fine (Photo) —
- 372 ☒ 1c-2c Banknotes (145, 210). Two covers from **Woodbury and Westville,**
Conn. each cancelled with "W" in grid cancels. Fine —
- 373 ☒ 1c-2c Banknotes & Entires. Five diff. each with fancy saw tooth oval
Deodate, Dauphin Co. Pa. cancels. Fine-V.F. —
- 373A ☒ 1c-15c Banknotes 35 Covers includes Supplementary Mail, N.Y. For.
Mails, Territorials, Foreign usages. V.G.-V.F. —
- 374 2c Red Brown (146). Clear **Phila. EAGLE** cancel tied on small piece. V.F. —
- 375 2c Banknotes (135, 146, 157). Attractive lot of 13 diff. **Fancy Cancels.**
Fine-V.F. —
- 376 2c Brown, Red Brown (146, 157). Ten diff. Fancy Cancels, nice lot —
- 377 2c Banknotes. Twelve **Fancy Cancels**, includes N.Y. Foreign Mails, fancy
Geometrics. Fine lot —
- 377A ☒ 2c Red Brown (146). Two, one has str. edge tied on cover to France. G. B.
40c in oval "Insufficient Paid" in str. line, plus other transit markings.
V.F. —
- 378 ☒ 2c Red Brown Pair, 3c Green (146-147). Tied by New York Foreign Mail
cancels Fine —
- 379 2c Red Brown, 3c Green (146-147). Each with **French Anchor** cancels,
latter has two short perms. Very Fine strikes —
- 380 ☒ 2c Brown (157). Tied with large **Star in Circle** from N.Y. on cover, V.F. —
- 381 ☒ 2c-3c Banknotes. Five diff. attractive illustr. covers of **Guns, Cupid, Lin-**
coln, Map Terr. includes R.P.O. markings on 3 of the covers —
- 382 3c Green. Scarce **Pointing Hand** cancel. Very Fine (Photo) —
- 383 3c Green. Very Fine **FLAG** cancel (Photo) —
- 384 3c Green. Very Fine strike of Cory, Pa. **PIG.** Rare (Photo) —
- 385 3c Green. Handsome strike of **Hammer Head.** Very Fine. Rare (Photo) —
- 386 3c Green. Clear negative **Anchor** cancel. Fine —

387	3c Green. Scarce type Masonic TROWEL in Circle. Very Fine (Photo)	—
388	3c Green. Blue Three Leaf Clover . Very Fine	—
1-15 389	3c Green. Unusual FACE cancel. Very Fine (Photo)	—
1-12 390	3c Green. Scarce type Pumpkin Face . Very Fine (Photo)	—
1-15 391	3c Green. Odd FACE cancel. Very Fine (Photo)	—
20 392	3c Green. Unusually large FACE cancel. Fine (Photo)	—
393 2-15	3c Green. Small HEAD in Circle. Very Fine strike, centered slightly to left. Scarce (Photo)	—
394	3c Green. St. Louis Sun Face cancel. Fine	—
395	3c Green. Scarce " H " in Heart cancel. Very Fine strike (Photo)	—
396	3c Green. Clear Negative Anchor . Fine	—
397	3c Green. Handsome strike large U. S. in Circle, slight thinning	—
10 398	3c Green. On small piece with " The Fast Mail, N. Y. & Chic. R. P. O. " cancel. V. F.	—
399	3c Green. Two, Small B in Broken Circle, Cross in Circle, nice strikes	—
400	3c Green. Two diff. clear O. K. cancels, perms. in at R. on one	—
401	3c Greens. Three diff. Triangle cancels, also St. Louis Checkerboard cancel. Fine-V. F.	—
402	3c Greens. Six diff. Floral designs includes one from Waterbury on cover. Fine-V. F.	—
403	3c Greens. Nine diff. Fancy Cancels includes SEP., fancy W, Masonic, fancy Geometrics. Fine-V. F.	—
7-9 404	3c Greens. Nine different Leaf cancels. Very Fine lot	—
7-9 405	3c Greens. Attractive lot ten Fancy Geometric cancels. Very Fine	—
406	3c Greens. 11 diff. Fancy Cancels includes U. S. Mail, Monogram, Geometrics, all handsome strikes	—
8-10 407	3c Greens. Eleven diff. attractive Fancy Geometric cancels. Very Fine	—
408	3c Green. Twelve diff. Cross cancels. Very Fine	—
409 -12	3c Greens. 14 diff. Fancy Cancels includes 4 Leaf Clover, 10 in Circle, Shield, Red Gird. Very Fine	—
7-8 410	3c Greens. Fourteen diff. Fancy Star cancels. Very Fine	—
11 411	3c Greens. 16 diff. Fancy Cancels in Blue . Very Fine	—
412	3c Greens. Five Pairs and Strip of 4, latter with grill and 8 singles, includes N. Y. Foreign Mails, Reds, some flaws	—
413	3c Greens. Balance of collection , 221 Interesting & Fancy Cancels, nearly all different. Nice lot	—

- 414 **3c Greens.** 1500 copies including many interesting cancels, minor varieties, shades and pairs, quality generally fair only
- 415 ☒ **3c Green (147).** Tied on cover with town cancel New Hampton, N. J. and date **May 1, 1870.** Very early usage. V. F.
- 20-30
8-10 416 ☒ **3c Green.** Tied with "**Morrison, Tr. 34**" and large "**N**" in center, Morrison is Mail Clerk on Train 34 going North. Very Fine & Scarce marking, also light Salem, Ct. pmkd. **(Photo)**
- 417 ☒ **3c Green.** Tied with **N. York Steamship** cancel in Circle, also large "Due 7" marking on cover. Very Fine
- 418 ☒ **3c Green.** Tied on cover with perfect strike of Blairstown, N. J. Monogram J. V. D. Very Fine
- 419 ☒ **3c Green.** As above, nice strike
- 420 ☒ **3c Green.** Tied with saw toothed oval **Lebanon, Conn.** pmkd. in purple. Very Fine
- 420A ☒ **3c Green.** Two on cover to England from **Chicago, Inter State Industrial Exposition** corner card and illustr. on back. Fine
- 7-2-9 421 ☒ **3c Green.** Tied with purple straight line "**CANCELLED**" from Stockbridge, Mass. V. F.
- 422 ☒ **3c Green.** Tied with **Waterbury, Conn.** 8 Petal Floral design. Very Fine
- 423 ☒ **3c Green.** Tied on ladies cover neat **Herrick** in Circle (train clerk). V. F.
- 0-12 ✓ 424 ☒ **3c Green.** Tied on illustr. cover of Land Dept. Northern Pacific R. R., Excellent "**Lakes & Miss. R. R. R.**" postmark. Scarce R. R. cancel
- 425 ☒ **3c Green.** Tied with large clear negative P. O. from **Brattleboro, Vt.** V. F.
- 426 ☒ **3c Green.** Lightly tied on attractive Illustrated **Peace** cover, Illinois town pmkd.
- 4-2-5 ✓ 427 ☒ **3c Green.** Handsome purple **Florence, Hampshire Co., Mass.** canc. tying on small cover. V. F.
- 428 ☒ **3c Green.** Tied on cover with large "**T**" from **Saint Paul.** V. F.
- 429 ☒ **3c Green.** Two covers tied with Blairstown, N. J. **Monogram J. V. D.,** one in purple, other black. Fine
- 430 ☒ **3c Green.** Two covers "Held For Postage " also Forwarding Label of stamp donor from Newark, N. J. on one, other cover "Thank You" letter repaying donor in similar case
- 431 ☒ **3c Greens.** 10 diff. covers all with **Fancy Cancels.** Fine-V. F.
- 432 ☒ **3c Greens.** 14 diff. covers includes interesting cancels, Twin Mountain House, N. H., Wash. D. C. Congress, Local Agt. L. I. City, "B" from Brooklyn, etc. V. G. lot
- 433 **6c Banknotes.** 7 diff. Fancy Cancels includes three diff. Reds. Fine-V. F.

434	6c Banknotes. Nine copies includes pairs and strip with Fancy Cancells. V. G.-Fine	—
435	6c Banknotes. 18 diff. Interesting and Fancy Cancells includes N. Y. For- eign Mails, Letters, Geometrics, etc. Fine lot	—
436	6c Banknotes. 22 Fancy Cancells includes Shield, N. Y. Foreign Mails, Geo- metrics, Reds, some faults. Nice appearance	—
437	7c Vermilion (149). Fine Shield cancel	—
438	7c Vermilion (149). German " Bremen " town cancel. V. F.	—
439	7c Vermilion (149). Three copies, Cog Wheel, red Paid All, Bars. V. G.- Fine	17.00
440	10c Banknotes. Ten diff. Fancy Cancells includes Geometrics, Foreign Mails, Reds. Good-Fine	—
441	10c Banknotes. Attractive lot of 15 diff. Fancy Cancells includes N. Y. For- eign Mails, Stars, Cross, Geometrics. Fine lot	—
442	12c, 15c, 30c Banknotes. Nine Fancy Cancells , includes N. Y. Foreign Mails, Supplementary, Reds, three have str. edges	—
443	15c Bright Orange (152). Exceptionally Handsome strike of Pittsburgh SHIELD. Very Fine (Photo on Cover)	—
444	30c Full Black (154). Neat Crossroad cancel. Fine	12.50
445	90c Carmine (155). Attractive Star cancel, one short perf. well centered (Photo)	—
446	6c Dull Pink (159). Excellent strike of Waterbury Shield , str. edge at L., thin spot	—
447	6c Banknotes (159). Five diff. N. Y. Foreign Mail cancells. Very Fine lot (Photo)	—
448	7c Orange Vermilion (160). Scarce Hong Kong usage, " B62 " cancel, few short perfs.	—
449	7c Orange Vermilion (160). Three Fancy Cancells Crossroads, K, N. Y. Foreign Mail. V. G.-V. F.	15.00
450	12c Blackish Violet, 15c Orange (162, 189a). Blue grid Cross cancells. V. F.	—
451	30c Gray Black (165). Four diff. Fancy Cancells three are Red. Fine-V. F.	19.00
452	90c Rose Carmine (166). Crossroads cancel. Fine	—
453	☒ 2c Vermilion. Tied with pretty purple "Washington, D. C. Local" canc. Very Fine cover	—
454	2c Vermilion (183). Handsome strike of Skull & Crossbones in large circle, cost mark in ink on back. Fine (Photo)	—
455	2c Vermilion (178, 183). Fine lot of 20 Fancy Cancells includes Pumpkin Face, Patent, Supplementary, colored, etc.	—

- 12 to 1500
- 456 2c Vermilion (178, 183). Twenty-four **Fancy Cancell** includes Patent, Letters, Numerals, New York Foreign Mails, Geometrics. Attractive lot of Very Fine strikes
- 6-7 457 5c Blue (179, 185). Seven diff. **Fancy Cancell** including one on cover, V.F.
- 458 5c Blue (179, 185). Fifteen **Fancy Cancell** includes N. Y. Foreign Mails, Paid, Supplementary, Red, V.G.-Fine
- 458A ☒ 5c Blue (179, 185). Six diff. covers includes Carrier, interesting transit markings. V.G.-V.F.
- 459 ☒ 5c Blue, 6c Carmine Banknotes, Four covers all tied with N.Y. Foreign Mail cancells, 3 diff. types, all to England, nice strikes but stamp creased on each
- 7-9 5-6 460 30c Full Black (190). Horiz. Pair with Supplementary Mail cancel, V.F.
- 461 ☒ 5c, 10c Brown (205, 209). Tied on registered cover to Turkey. Very Fine
- 462 ☒ 1c Banknote (206). Block of 4, each struck with Blue Star. Fine piece
- 462A ☒ 1c Blue, 4c Green (206, 211). Tied from New Orleans on illustr. cover of Industrial & Cotton Centennial Exposition. Fine
- 25-35 463 2c Red Brown (210). Bold "U. S. Mail in PADLOCK. Very Fine
(Photo on Cover)
- 10-12 464 2c Red Brown (210). Negative Skull & Crossbones cancel. Fine
- 10-12 465 2c Red Brown (210). Greenfield, Mass. Skull & Crossbones cancel. Fine
- 466 2c Red Brown (210). Initials E. T. in Square in Circle. Very Fine
- 7-9 467 2c Red Brown (210). Eleven diff. pretty fancy cancells includes M.B. (Mystic Bridge) U.S. Mail, W in Circle etc. Very Fine
- 8-10 468 2c Red Brown (210). Sixteen diff. **Fancy Cancell** includes Catskill Mountains, Clover, Leaf, Terr., Fancy Stars. Fine-V.F.
- 469 2c Red Brown (210). Fifty-six diff. **Fancy Cancell** includes Crosses, Stars, County, U.S. Mail, Geometrics. Nice lot
- 470 ☒ 2c Red Brown (210). Tied with clear negative ANCHOR cancel on cover. Fine
- 5-6 471 ☒ 2c Red Brown (210). Tied with Barre, Mass. Boxed "S" on illustr. Farming Scene, V.F. cover
- 472 ☒ 2c Red Brown (210). Tied with purple Monogram from Mount Wachusett, Mass. on illustr. cover of Mountain House. Very Fine
- 473 ☒ 2c Red Brown (210). Tied with blue oval "Providence Forge, New Kent Co. Va." V.F.
- 474 ☒ 2c Red Brown (210). Beautiful Blue Star canc. and Linwood, Liv. Co. N.Y. pmkd. on cover, V.F.
- 475 1c Ultramarine (212). Printed straight line Burlington, Vt. Precancel



SHIP
15
6 Cents
Mrs. J. F. Harrington
1126 Connecticut Ave.
Washington



26
JUL 1
N.Y.
J.B. Longfellow
Ct.
20
Mrs. London



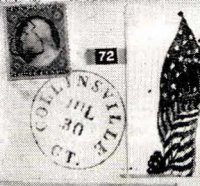
50
JUL 12
VT.
3
J. F. Harrington
Washington

46
JUL 1
N.Y.
Way Letter
J. F. Harrington
J. F. Harrington



51
JUL 12
VT.
56
J. F. Harrington
Washington

71
JUL 1
N.Y.
J. F. Harrington
Washington



72
JUL 1
N.Y.
J. F. Harrington
Washington



74
JUL 1
N.Y.
J. F. Harrington
Washington

75
JUL 1
N.Y.
J. F. Harrington
Washington



155
JUL 1
N.Y.
J. F. Harrington
Washington

161
JUL 1
N.Y.
J. F. Harrington
Washington

286
JUL 1
N.Y.
J. F. Harrington
Washington

275
JUL 1
N.Y.
J. F. Harrington
Washington

276
JUL 1
N.Y.
J. F. Harrington
Washington



491EX
JUL 1
N.Y.
J. F. Harrington
Washington

477
JUL 1
N.Y.
J. F. Harrington
Washington





254 264 265 278 279 283 289 290



291 292 297 305 306



308 309 310 311 312 313 314 317



318 319 325 326 328 329



330 331 332 333 342 343



347 351 353 355 356 360 362 363



364 365 382 383 384 385 387 389



390 391 392 393 395 445 447 EX 454

- 476 ☒ **1c Ultramarine (212).** Four tied on cover from **Columbus** with about half of cover plus all of back advertising **Ohio Centennial 1788-1888**, Fine
- 477 **2c Green (213).** Handsome strike of Large **ANCHOR** from Magnolia, Wis. on small piece **(Photo)**
- 478 **2c Green (213).** Ten diff. **Fancy Cancels** includes Territorials, Counties, U. S. in Star, etc. Fine lot
- 479 ☒ **2c Green (213).** Tied from Rochester, N. Y. on very attractive illustr. cover showing **Rialroad, Ship**, etc.
- 480 ☒ **2c Green (213).** Neat strike **U. S. in Star** canc. on cover from Stoneham, Mass. Fine
- 481 ☒ **2c Green (213).** Tied with pretty strike, four purple bars from **Union Deposit, Pa.** Very Fine
- 5-6 482 ☒ **2c Green (213).** Tied on illustr. Farm Equipment cover with large **"R"** in **Grid** from **Barre, Mass.** Very Fine
- 10-12 483 ☒ **Railroad Markings**, 15 diff. covers one 3c 1861 balance Banknote period, mostly **R. P. O.**, several attractive items. Very Good-Very Fine
- 484 **Early Precancels**, 1870-1902 Issues, 15 diff. includes Scarce Bar types and Fancies. Attractive lot
- 485 **Cancellation Collection**, 19th Century, over 2000 stamps, includes Stars, Shields, Geometrics, Fancy Letters, Crosses Colored, etc. Est. Cash Val. \$75.00

1890-1902 ISSUES

- 6-7 486 ☒ **2c Lake (219d).** Tied with bold unusual **Three Squares in Circle of Dashes** cancel from Fort Meade, Fla. Very Fine cover
- 487 **2c Carmine (220).** Pretty **Wheel** cancel **(Photo)**
- 50-60 488 **2c 1890-1898 Issues**, Collection of 116 different **Fancy Cancels**, Includes many scarce and hard to find items of this period, contains 5 Pumpkin Heads, Gingerbread Man, Skull & Crossbones, U. S., Four Leaf Clover, Uncle Sam, China usage, fancy Geometrics & Stars, etc. Most attractive and representative lot of these issues
- 489 **1c-8c Columbians, Trans-Miss.**, 24 **Fancy Cancels** includes Star & Crescent, fancy Stars, large R, etc. Attractive lot
- 490 ☒ **30c Columbian (239).** Tied on cover with clear **N. Y. Supplementary** pmkd., stamp has str. edge at top. Attractive cover 12.00+
- 491 ☒ **Spanish American War Patriotics**, Complete set of ten different designs in colors of Army & Navy Heroes includes Hobson, Watson, Evans, Roosevelt, Sampson, Lee, Dewey, Schley, Shafter, all ten covers pmkd. Jamestown, R. I. 1898. Very Scarce complete. Very Fine lot **(Photo)**

- 491A ☒ **5c Pan-American (297).** Tied on cover from Buffalo with attractive illustration. Exposition scene in colors. Very Fine —
- 492 **8c Black, 15c Olive Green (306, 309).** Each on piece, first has Panama cancel, latter Purple Panama **Flag.** Very Fine, Unusual —
- 492A ☒ **\$1.00 Black (311).** Used on large registered cover to England. Fine 15.00
- 492B ☒ **1c-10c Louisiana-Purchase (323-327).** Set on World's Fair Souvenir card, all but 1c cancelled with **St. Louis Exposition Sta.** cancel. Scarce 95.50

FANCY REGISTRY COVERS

- 6-7 493 ☒ **Lincoln Standing** (Lincoln, Iowa), **George Washington** (Ed, Ky.), two Very Fine registered covers —
- 5-7 494 ☒ **\$ (Money, Miss.), 5 (Figure Five, Ark.), 5 Cents Coin (Money, Miss.).** Three Very Fine Reg. covers —
- 10-10 495 ☒ **Rose** (Roselawn, Ind.), **Rose in Keystone & Masonic** (Sharon, Pa.), **Green Clover** (Bondville, Ill.), **Lillies** (Lilly, Ill.). 4 Very Fine covers —
- 7-9 496 ☒ **Covers, Horse Heads, Stag, Bear** on four covers last isn't registered. Very Fine —
- 8-10 497 ☒ **Cat, Elk, Horses Head, Cow, Reindeer, 5 diff. Reg. Covers.** Very Fine —
- 0-1 498 ☒ **Tomahawks, Anchors, Wings, Airplane, Stars, Odd Fellow Links 6 diff. Reg. Covers.** Very Fine —
- 0-1 499 ☒ **Harp, Santa Claus, Airplane, Wings, Jester, Stars & Shield, 6 diff. Reg. Covers.** Very Fine —
- 10-13 500 ☒ **Fancy Letters & Monograms, 6 diff. Reg. covers.** Very Fine —
- 12-15 501 ☒ Eight diff. **Fancy Registered Covers** includes Stars, Boats, Shield, Anchor, Bird, Moon, Flags, Geometrics. Very Fine lot —
- 15-20 502 ☒ **Boats, Bags of Flour, Pumpkin Heads, Wine Glasses, Shield, etc. 9 diff. Reg. Covers.** Very Fine —
- 20-30 503 ☒ **Fancy Registered Covers, 15 diff. mostly fancy and unusual Geometric designs.** Attractive lot —

OFFICIALS, ENVELOPES, LOCALS

- 504 **Officials, 1c-90c, Seventeen Fancy Cancells** includes Stars, U.S., Cross, Geometrics. Fair-Fine —
- 8-10 505 ☒ **3c Justice (O27).** Tied on cover from Washington, corner card **Metro-politan Police, D. C.** Fine 22.50
- 506 **1c War (O83).** Kicking Mule cancel, about two thirds of Mule shows —
- 8-10 507 **1c-6c Cut Square Envelopes, 21 diff. Fancy Cancells includes** Monogram, 3, Paid 3, U. S. Mail, Hearts etc. Very Fine lot —

- 8-10
8-10
78 1/2
- 508 ☒ **1c-5c Entires**, 1853-87 Issues, Fourteen diff. covers with **Fancy Cancells** includes Leaf, Geometrics, Three Leaf Clover, Ship, etc. Fine-V.F. —
- 509 ☒ **3c Red Entire** (U10). Neatly tied "**Greenville & Columbia R.R.**" pmkd. Very Fine —
- 510 ☒ **3c Pink, Entire** (U58). Tied with Guilford, Conn. Cross in Heart cancel. Very Fine —
- 511 ☒ **3c Pink Entires** (U58). Three covers with fany cancels, **Leaf, Blue Shield, Floral Design**. Very Fine —
- 512 ☒ **2c Green Entire** (U311). Tied with large arched "**Morrison**" (train clerk), **Rutalnd & Troy R. P. O.** pmk. Very Fine cover —
- 513 ☒ **1c Columbian** (U348). Entire tied with **Universal Postal Congress** in Flag cancel, Wash., D. C. May 22, 1897. Superb —
- 514 ☒ **Boyd's Dispatch, Pink** (20L44). Tied on cover with purple oval Boyd's and Maltese Cross. Very Fine —
- 515 ☒ **Hussey Local, 1c Brown Red** (87L26). Beautifully tied on piece with Co. marking. Very Fine —

LARGE & MISC. CANCEL & COVER LOTS

- \$ 12-15
15-20
20-25
25-35
12-15
75-105
6-7
- 516 ☒ **Stampless Covers**. 77 misc. covers some duplicates V.G. lot —
- 517 ☒ **Covers**. 19th Century including Stampless, Illustr., Terr. etc. 76 covers Fair — Fine —
- 518 ☒ **Covers**, several hundred in shoebox, mostly 19th Century, includes Illustr. Corner Cards, R. P. O. Registers, Early Commems. —
- 518A ☒ **New York City**. Collection of 123 diff cancellations from 1857 thru Bank-notes all on cover. **Many Fancies**. Nice lot —
- 518B ☒ **New York City**. 1861-93 Issues, 106 covers, wide variety of markings but duplicates from above lot —
- 519 **Cancellations**, approx. 275 in booklet, nearly all 19th Century, Est. Cash Val. \$15.00 —
- 520 ☒ **First Day Covers**, 150 covers 1931 to date values to 10c inc. duplicates and blocks mostly with cachets V.F. lot —
- 521 ☒ **Naval & Special Events** Covers, 127 covers mostly diff. V.F. lot —
- 522 ☒ **First Flight Airmail Covers**, 111 cachet 1934 Hawaii covers and 36 F. A. M. cachet covers V.F. lot —
- 523 **ENVELOPES, Cut Squares & Entires**, 19th & 20th, used and unused, partly mounted in National album, also over 200 entires, Est. Cash Val. \$22.50 —

CONFEDERATES

9	524	✉	Florida, Cedar Tree, Suwannee Shoals, Middleburg, Three Ms. Stampless with Paid 5 or 10 used July 1861-1863, Very Fine	—
10-12	525	✉	1861, 5c Green (1), Horiz. Pair, Ms. " Little River, Fla. May. 29, 1862" on cover, " Forwarded 10 " and Montgomery, Ala. pmkd. Fine interesting markings	18.00
	526	✉	1861-62, 5c-10c (1-2, 4, 6), Four all tied on covers addressed to Florida, one is forwarded with Ms. Little River, Florida. pmkd V.G.-Fine	28.50
	527	✉	1861, 10c Blue (2), Tied on cover with Mobile cancel, Very Fine	9.00
	528	✉	1861, 10c Blue (2), Tied on cover with Richmond cancel, Fine	9.00
	529	★田	1862, 2c Green (3), Block , creases, Very Fine appearing, O.G.	70.00
	530	★	1862, 5c Blue (4), Horiz. Strip of 4, creases, though nice appearance	22.00
	531	✉	1862, 5c Blue (4), Horiz. Pair tied on cover with Miss. Town cancel, Fine	15.00
	532	✉	1862, 5c Blue (4), Horiz. Pair tied on Turned cover inside has Ms. " Florence, Ga. Paid 5", Fine	—
	533	✉	1862, 5c Blue (4), Vertical Pair on legal size cover with Austin, Texas pmkd. from adjutant General's Office. Fine	30.00
	534		1862, 10c Rose (5), Mobile town cancel, thin spot, Fine appearing	35.00
	535		1862, 10c Rose (5), Upper Right Corner Sheet copy, Ms. cancel	35.00
	536	✉	1862, 10c Rose (5), On cover with large Ms. cancel, no pmkd. addressed to Fla. V.G.	35.00
	537	✉	1862, 5c Blue (6) Pair tied on U. S. 3c Entire with Confederate P. O. Dept overprint, V.F.	—
	538	田	1862, 5c Blue, (7), Used block with town cancel	35.00
	539		1862, 5c Blue (7) Horiz. Strip of Ten used on piece of cover, each with Ms. cancel from Madison, Fla. to Tallahassee, Fla. Unusual Piece	—
	540		1863, 10c TEN Blue (9), Town cancel, Fine	(Photo) 45.00
25-30	541		1863, 10c Blue (10), Frame Line shows partly on three sides, Ms. cancel	65.00
	542		Balance of Collection , 29 stamps, used and unused, includes pairs, two covers, #9 defective, 6 pieces of \$50-\$500 Currency etc. Est. Cash Val. \$17.50	—
7-8	543		Confederate & Southern State Currency , 26 pieces, mostly diff. plus 15 pieces of U. S. fractional currency	—

LITERATURE

544	Story of Our Post Office by Marshall Cushing, 1893, 1034 pages, many illustr. Fine	—
-----	---	---

545	Brookman, 19th Century Postage Stamps of the U. S. 2 Vols. like new	
546	George Walcott Collection Patriotic Covers, Bound with prices realized, V. F.	—
547	Romance of Stamp Collection by Kehr, also American Philatelic Dictionary by Konwiser, Fine	—
548	National Philatelic Museum, 14 diff. special Exhibition Issues, V. F.	—
549	Collectors Club Philatelist, 18 diff. 1949-52, The Stamp Specialist, Emerald Book, V. F.	—

END OF FIRST SESSION

SECOND SESSION

FRIDAY, SEPTEMBER 26th, 1952 — 2 P. M.

MINT TWENTIETH CENTURY

An unusual offering of a large mint investment holding of 1919-1939 Issues in blocks, plate number blocks, sheets and wholesale quantities. All stamps are mint never hinged. When sheets are mentioned containing 36 or 81 stamps it refers to sheets with the straight edges removed. An excellent opportunity for investor or dealer due to large quantities being offered.

1908-1919 ISSUES

550 ★	1c Green #331a Complete Booklet of 4 Panes, Fine-V. F.	18.00
551 ★	1c Green, Coil #390, Roll of 1,000	100.00
552 ★	1c Green Coil #390, Roll of 1,000	100.00
553 ★	1c Green Coil #390, Roll of 1,000	100.00
554 ★	1c Green Coil #390, Roll of 1,000	100.00
555 ★	1c Green Coil #390, Roll of 1,000	100.00
556 ★	1c Green Coil #390, Roll of 1,000	100.00
557 ★	1c Green Coil #390, Roll of 1,000	100.00
558 ★	1c Green, Coil #390 (8750 copies), in rolls and part rolls	875.00
559 ★	1c Green Coil #490, (1500 copies) in rolls	60.00
560 ★	3c Victory #537, Sheet of 100, Fine-V. F.	128.50

561 ★	3c Victory #537, Sheet of 100, Mostly Fine-V. F.	128.50
562 ★	3c Victory #537 Sheet of 100, V. G.-Fine	128.50
563 ★	3c Victory #537 Sheet of 100, V. G.-Fine	128.50
564 ★	3c Victory #537 Sheet of 100, V. G.-V. F.	128.50
565 ★	3c Victory #537 Sheet of 100 V. G.-V. F.	128.50
566 ★	3c Victory #537, Sheet of 100, Very Good	128.50
567 ★	3c Victory #537, Sheet of 100, V. G.-Fine	128.50

PILGRIM ISSUE

568 ★田	1c Pilgrim #548 (10 Plate No. Blocks of 6), Very Fine	27.50
569 ★田	1c Pilgrim #548 (12 Plate No. Blocks of 6) V. G.-V. F.	33.00
570 ★田	1c Pilgrim #548 (16 Plate No. Blocks of 6), V. G.-V. F.	44.00
571 ★	1c Pilgrim #548, Sheet of 70, Fine-V. F.	22.50
572 ★	1c Pilgrim #548, Sheet of 70, Fine-V. F.	22.50
573 ★	1c Pilgrim, #548, Sheet of 70, Fine-V. F.	22.50
574 ★	1c Pilgrim #548, Sheet of 70, Fine-Very Fine	22.50
575 ★	1c Pilgrim #548, Sheet of 70, Fine-Very Fine	22.50
576 ★	1c Pilgrim #548, Sheet of 70, Fine-Very Fine	22.50
577 ★	1c Pilgrim #548, Sheet of 70, Fine-Very Fine	22.50
578 ★	1c Pilgrim #548, Four Sheets of 70, V. G.-Fine	90.00
579 ★	1c-2c Pilgrims #548-49, Plate No. Singles 5 of first, 16 of latter, F.-V. F.	10.05
580 ★田	2c Pilgrim #549 (Ten Plate No. Blocks of 6), V. G.-V. F.	50.00
581 ★田	2c Pilgrim #549 (Ten Plate No. Blocks of 6), V. G.-V. F.	50.00
582 ★田	2c Pilgrim #549 (Ten Plate No. Blocks of 6), V. G.-V. F.	50.00
583 ★田	2c Pilgrim #549 (20 Plate No. Blocks of 6), V. G.-V. F.	100.00
584 ★田	2c Pilgrim #549 (23 Plate No. Blocks) of 6). V. G.-V. F.	115.00
585 ★	2c Pilgrim #549. Sheet of 70. Fine	48.25
586 ★	2c Pilgrim #549. Sheet of 70. V. G.-Fine	48.25
587 ★	2c Pilgrim #549. Sheet of 70. Fine	48.25
588 ★	2c Pilgrim #549. Sheet of 70. Fine-Very Fine	48.25
589 ★	2c Pilgrim #549. Sheet of 70. Fine-Very Fine	48.25
590 ★	2c Pilgrim #549. Sheet of 70. V. G.-Fine	48.25
591 ★	2c Pilgrim #549. Sheet of 70. V. G.-V. F.	48.25

592 ★	2c Pilgrim #549.	Sheet of 70. V. G.-V. F.	48.25
593 ★	5c Pilgrim #550	(5 Plate No. Singles). Fine-Very Fine	20.00
594 ★田	5c Pilgrim #550.	Right Plate No. Block of 6. Very Fine	30.00
595 ★田	5c Pilgrim #550.	Top Plate No. Block of 6. Fine	30.00
596 ★田	5c Pilgrim #550.	Top Plate No. Block of 6. V. G.-Fine	30.00
597 ★田	5c Pilgrim #550.	Top Plate No. Block of 6. Centered top left. V. G.	30.00
598 ★田	5c Pilgrim #550.	Right Plate No. Block of 6. V. G.	30.00
599 ★田	5c Pilgrim #550.	Block of 8.*Fine	35.00
600 ★田	5c Pilgrim #550.	Block of 8. Fine	35.00
601 ★田	5c Pilgrim #550.	Block of 8. V. G.-Fine	35.00
602 ★田	5c Pilgrim #550.	Block of 8, centered to top. V. G.	35.00
603 ★田	5c Pilgrim #550.	Block of 4 and 5 singles. V. G.-V. F.	37.50

1922-1923 ISSUES

604 ★	1/2c Olive Brown #551.	Three Sheets of 100. Fine-V. F.	9.00
605 ★	1c Green, Imperforate #575.	Sheet of 400. Very Fine	514.00
606 ★	2c Carmine Imperf. #577.	Sheet of 400. V. F.	154.00
607 ★	1 1/2c Brown Coil #598.	Complete coil of 500	30.00
608 ★	3c Violet Coil #600.	Complete roll of 500	50.00
609 ★	4c Brown, Coil #601	(375 copies) in roll	56.25
610 ★	1 1/2c-2c Endwise Coils #605-606.	Roll of 500 of each	60.00
611 ★	1 1/2c Coils #605(300), 686(480)	in part rolls	46.80
612 ★田	2c Harding #610	(26 Plate No. Blocks of 6). Fine-V. F.	65.00

HUGUENOT-WALLOON ISSUE

613 ★田	1c Hug.-Walloon #614	(15 Plate No. Blocks of 6). Fine-V. F.	30.00
614 ★田	1c Hug.-Walloon #614	(20 Plate No. Blocks of 6). Fine-V. F.	40.00
615 ★田	1c Hug.-Walloon #614	(25 Plate No. Blocks of 6). Fine-V. F.	50.00
616 ★田	1c Hug.-Walloon #614	(25 Plate No. Blocks of 6). Fine-V. F.	50.00
617 ★田	1c Hug.-Walloon #614	(38 Plate No. Blocks of 6). Fine-V. F.	76.00
618 ★田	2c Hug.-Walloon #615,	(Ten Plate No. Blocks of 6). V. F.	35.00
619 ★田	2c Hug.-Walloon #615.	(Ten Plate No. Blocks of 6). V. F.	35.00
620 ★田	2c Hug.-Walloon #615.	(Ten Plate No. Blocks of 6). V. F.	35.00

621	★田	2c Hug.-Walloon #615. (Twelve Plate No. Blocks of 6). V.F.	42.00
622	★田	2c Hug.-Walloon #615. (26 Plate No. Blocks of 6). Fine-V. F.	91.00
623	★田	2c Hug.-Walloon #615. (Thirty Plate No. Blocks of 6). Fine-V. F.	105.00
624	★田	5c Hug.-Walloon #616. (7 Blocks of 4). Fine	112.00
625	★	5c Hug.-Walloon #616. (10 copies). V. G.-Fine	37.50
626	★	5c Hug.-Walloon #616. (17 singles). Fine-V. F.	60.95
627	★	5c Hug.-Walloon #616. Sheet of 36. Fine	143.00
628	★	5c Hug.-Walloon #616. Sheet of 36. V. G.-Fine	143.00
629	★	5c Hug.-Walloon #616. Sheet of 36, perfs close one side on most	143.00

LEXINGTON-CONCORD ISSUE

630	★田	1c Lexington Concord, #617. Six V. F. Pl. # Blks 6	13.50
631	★田	1c Lexington Concord, #617. Ten Fine-V. F. Pl. # Blks 6	22.50
632	★田	1c Lexington Concord, #617. Twenty Very Good-Fine Pl. # Blks 6	45.00
633	★	1c Lexington Concord, #617. (72 singles). Very Good-V. F.	21.60
634	★田	1c Lexington Concord, #617. (Sixty-eight Blocks 4). Very Good to V. F.	91.80
635	★	1c Lexington Concord, #617. 3 sheets of 36. Fine-V. F.	36.90
636	★	1c Lexington Concord, #617. 3 sheets of 36. Fine-Very Fine	36.90
637	★	1c Lexington Concord, #617. 3 sheets of 36. Fine-Very Fine	36.90
638	★	1c Lexington Concord, #617. 3 sheets of 36. Fine-Very Fine	36.90
639	★	1c Lexington Concord, #617. 3 sheets of 36. Fine-Very Fine	36.90
640	★	1c Lexington Concord, #617. Six sheets 36. Very Good-V. F.	73.80
641	★	1c Lexington Concord, #617. Seven sheets of 36. Very Good-V. F.	86.10
642	★	1c Lexington Concord, #617. 10 sheets of 36. Fine-V. F.	123.00
643	★	1c Lexington Concord, #617. 10 sheets of 36. Very Good-V. F.	123.00
644	★	1c Lexington Concord, #617. Ten sheets of 36. Very Good-V. F.	123.00
645	★	1c, 2c Lexington Concord, #617-18. Sheets of 36. Fine-V. F.	32.90
646	★	1c & 2c Lexington Concord, #617-18. Sheets of 36. Fine-V. F.	32.90
647	★	1c-2c Lexington Concord, #617-618. Sheets of 36. Fine-Very Fine	32.90
648	★	1c-2c Lexington Concord, #617-618. Sheets of 36. Fine-Very Fine	32.90
649	★	1c-2c Lexington Concord #617-618, Sheets of 36, Fine-Very Fine	32.90
650	★	1c-2c Lexington Concord #617-618, Sheets of 36, Fine-Very Fine	32.90
651	★田	2c Lexington Concord #618, (Ten Blks 4), Fine-V. F.	22.50

652	★田	2c Lexington Concord, #618 (4 Pl. # Blks 6), Very Fine	16.00
653	★田	2c Lexington Concord, #618 (Eight Pl. No. Blks 6) F.-V.F.	32.00
654	★田	2c Lexington Concord #618, (Ten Plate Blocks 6) Very good-V.F.	40.00
655	★田	2c Lexington Concord #618, (Ten Plate Blocks 6), Fine-V.F.	40.00
656	★	2c Lexington Concord #618, Two Sheets 36, Fine-V.F.	42.00
657	★	2c Lexington Concord #618, 5 Sheets of 36, Fine-Very Fine	105.00
658	★	2c Lexington Concord, #618, 5 Sheets of 36, Fine-V.F.	105.00
659	★	2c Lexington Concord, #618, 5 Sheets of 36, Fine-Very Fine	105.00
660	★	2c Lexington Concord #618, 5 Sheets of 36, Fine-Very Fine	105.00
661	★	2c Lexington Concord #618, 5 Sheets of 36, Fine-Very Fine	105.00
662	★田	5c Lexington Concord #619, Top Plate No. Block of 6, #16805, V.F.	15.00
663	★田	5c Lexington Concord #619, Top Plate No. Block of 6, #16805, V.F.	15.00
664	★田	5c Lexington Concord #619, Top Plate No. Block of 6, #16807, V.F.	15.00
665	★田	5c Lexington Concord #619, Top Plate No. Block of 6, #16806, V.F.	15.00
666	★田	5c Lexington Concord, #619, Top Plate # Blk 6 #16808, V.F.	15.00
667	★田	5c Lexington Concord #619, Left Plate No. Block of 6 #16805, V.F.	15.00
668	★田	5c Lexington Concord #619, Left Plate No. Block of 6, #16806, V.F.	15.00
669	★田	5c Lexington Concord #619, Top Plate # Blk 6, #16805, Fine	15.00
670	★田	5c Lexington Concord, #619, Top Pl# Blk 6, #16807 V.F.	15.00
671	★田	5c Lexington Concord, Top Pl# Blk 6, #16808, Fine	15.00
672	★田	5c Lexington Concord #619, Left Plate # Block of 6, #16805, Fine	15.00
673	★田	5c Lexington Concord, #619, Left Pl# Blk 6, #16805, Fine	15.00
674	★田	5c Lexington Concord #619, Left Plate No. Block of 6, #16806, V.F.	15.00
675	★田	5c Lexington Concord #619, Left Plate # Block of 6 #16807, V.F.	15.00
676	★田	5c Lexington Concord #619, Left Plate No. Block of 6, #16807, V.F.	15.00
677	★田	5c Lexington Concord #619, Left Plate No. Block of 6, #16807, V.F.	15.00
678	★田	5c Lexington Concord #619, Left Plate No. Block of 6, #16808, V.F.	15.00
679	★田	5c Lexington Concord #619, Left Plate No. Block of 6, #16808, V.F.	15.00
680	★田	5c Lexington Concord #619, (Two left Pl# Blks 6 #16805, 16806) Fine-V.F.	30.00
681	★田	5c Lexington Concord #619, (Two left Plate # Blks 6, #16805, & #16808) F.-V.F.	30.00
682	★田	5c Lexington Concord, #619, Four Top Plate # Blks 6, #'s 16805, 16806, 16807, 16808, F.-V.F.	60.00

683	★田	5c Lexington Concord #619, Block of 12, V. F.	30.00
684	★田	5c Lexington Concord #619, Block of 12, V. F.	30.00
685	★田	5c Lexington Concord #619, Block if 12, V. F.	30.00
686	★田	5c Lexington Concord #619, Block of 12, V. F.	30.00
687	★田	5c Lexington Concord #619, Block of 12, V. F.	30.00
688	★田	5c Lexington Concord #619, (4 Blocks 4) Fine-V. F.	40.00
689	★田	5c Lexington Concord, #619, (Nine Blocks 4) Fine-V. F.	90.00
690	★田	5c Lexington Concord #619. (Nine Blocks 4). Fine-V. F.	90.00

NORSE-AMERICAN, LIBERTY BELL ISSUES

691	★	2c Norse-American #620. Sheet of 100. Fine-Very Fine	72.50
692	★	2c Norse-American #620. Sheet of 100. Fine-Very Fine	72.50
693	★	2c Norse-American #620. Sheet of 100. Fine-Very Fine	72.50
694	★	2c Norse-American #620. Sheet of 100. Fine-Very Fine	72.50
695	★	5c Norse-American #621. Sheet of 100. Fine-Very Fine	375.00
696	★田	2c Liberty Bell #627. (10 Plate No. Blocks of 6). Fine-Very Fine	37.50
697	★田	2c Liberty Bell #627. (10 Plate No. Blocks of 6). Fine-V. F.	37.50
698	★田	2c Liberty Bell #627. (Ten Plate No. Blocks of 6). Fine-V. F.	37.50
699	★田	2c Liberty Bell #627. (10 Plate No. Blocks of 6). Fine-V. F.	37.50
700	★田	2c Liberty Bell #627. (15 Plate No. Blocks of 6). Fine-V. F.	56.75
701	★田	2c Liberty Bell #627. (17 Plate No. Blocks of 6). V. G.-V. F.	63.75
702	★田	2c Liberty Bell #627. (20 Plate No. Blocks of 6). Fine-V. F.	75.00
703	★田	2c Liberty Bell #627. (64 copies) in blocks of six. Fine-V. F.	26.25
704	★田	2c Liberty Bell #627. (20 Blocks). Fine-Very Fine	35.00
705	★田	2c Liberty Bell #627. (154 copies) all in large blocks. Fine-V. F.	60.90
706	★田	2c Liberty Bell #627. (138 copies) in large blocks. Fine-V. F.	58.20
707	★田	2c Liberty Bell #627. (142 copies), in large blocks. Fine-V. F.	59.75
708	★田	2c Liberty Bell #627. (Five Plate No. Blocks of 24 each). Fine-V. F.	62.50
709	★	2c Liberty Bell #627. Two sheets of 36. Fine-V. F.	35.00
710	★	2c Liberty Bell #627. Two sheets of 36. Fine-V. F.	35.00
711	★	2c Liberty Bell #627. 3 sheets of 36. Fine-Very Fine	52.50
712	★	2c Liberty Bell #627. Four sheets of 36. Fine-V. F.	70.00
713	★	2c Liberty Bell #627. Four sheets of 36. Fine-Very Fine	70.00

ERICSSON, WHITE PLAINS ISSUES

714	★田 5c Ericsson #628. (3 Plate No. Blocks of 6). Very Fine	36.00
715	★田 5c Ericsson #628. (Four Top Plate No. Blocks of 6), diff. Nos. V. G.-F.	48.00
716	★田 5c Ericsson #628. (Four Top Plate No. Blocks of 6), diff. Nos. V. G.-F.	48.00
717	★田 5c Ericsson #628. (5 Plate No. Blocks of 6). Fine	60.00
718	★田 5c Ericsson #628. (5 Plate No. Blocks of 6). Fine	60.00
719	★田 5c Ericsson #628. (5 Plate No. Blocks of 6). V. G.-Fine	60.00
720	★田 5c Ericsson #628. (6 Plate No. Blocks of 6). V. G.-Fine	72.00
721	★田 5c Ericsson #628. (11 Blocks). Fine-V. F.	60.50
722	★田 5c Ericsson #628. (12 Blocks). Fine-V. F.	66.00
723	★田 5c Ericsson #628. (15 Blocks). Fine-V. F.	82.50
724	★田 5c Ericsson #628. (15 Blocks). Fine-V. F.	82.50
725	★田 2c White Plains #629. (13 Blocks). Fine-V. F.	21.55
726	★田 2c White Plains #629. (12 Plate No. Blocks of 6). Fine-V. F.	36.00
727	★田 2c White Plains #629. (15 Plate No. Blocks of 6). Fine-V. F.	45.00
728	★田 2c White Plains #629. (15 Plate No. Blocks of 6). Fine-V. F.	45.00
729	★田 2c White Plains #629. (20 Plate No. Blocks of 6). Fine-V. F.	60.00
730	★田 2c White Plains #629. (20 Plate No. Blocks of 6). Fine-V. F.	60.00
731	★田 2c White Plains #629. (25 Plate No. Blocks of 6). Fine-V. F.	75.00
732	★田 2c White Plains #629. (49 Plate No. Blocks of 6). V. G.-Fine	147.00
733	★田 3c Lincoln #635. (462 copies), in big blocks includes 10 Pl. Bks. F.-V. F.	69.30
734	★ 3c Lincoln #635. Three sheets of 100. Fine-V. F.	45.00

BENNINGTON, BURGOWNE ISSUES

735	★田 2c Vermont #643. (Ten Plate No. Blocks of 6). Fine-Very Fine	15.00
736	★田 2c Vermont #643. (Ten Plate No. Blocks of 6). Fine-Very Fine	15.00
737	★田 2c Vermont #643. (Ten Plate No. Blocks of 6). Fine-V. F.	15.00
738	★田 2c Vermont #643. (Ten Plate No. Blocks of 6). V. G.-V. F.	15.00
739	★田 2c Vermont #643. (Ten Plate No. Blocks of 6). V. G.-V. F.	15.00
740	★田 2c Vermont #643. (Ten Plate No. Blocks of 6). V. G.-V. F.	15.00
741	★田 2c Vermont, #643. (Ten Plate No. Blocks of 6). V. G.-V. F.	15.00
742	★田 2c Vermont #643. (Ten Pl. # Blks 6). Very Good-V. F.	15.00

743 ★田 2c Vermont #643. (Twenty-four Pl. # Blks 6). V.F.	36.00
744 ★田 2c Burgoyne #644. (Ten Top Plate # Blocks of 6). F.-V.F.	37.50
745 ★田 2c Burgoyne #644. (Ten Top Plate # Blocks of 6). F.-V.F.	37.50
746 ★田 2c Burgoyne #644. (Ten Top Plate # Blocks of 6). F.-V.F.	37.50
747 ★田 2c Burgoyne #644. (Ten Top Plate # blocks of 6). F.-V.F.	37.50
748 ★田 2c Burgoyne #644. (Ten Top Plate # Blocks of 6). F.-V.F.	37.50
749 ★田 2c Burgoyne #644. (Ten Top Plate # Blocks 6). F.-V.F.	37.50
750 ★田 2c Burgoyne, #644. (Ten Left Pl. # Blks 6). F.-V.F.	37.50
751 ★田 2c Burgoyne #644. (Ten Left Pl. # Blocks of 6). F.-V.F.	37.50
752 ★田 2c Burgoyne #644. (Ten Plate No. Blocks of 6). F.-V.F.	37.50
753 ★田 2c Burgoyne #644. (Thirteen Left Pl. # Blks 6). F.-V.F.	48.75
754 ★田 2c Burgoyne, #644. (Fifteen Top Pl. # Blks 6). V.F.	56.25
755 ★田 2c Burgoyne #644, (Forty Two Blks 4), F.-V.F.	94.50

VALLEY FORGE — AERONAUTICS ISSUES

756 ★田 2c Valley Forge #645, (40 Plate # Blocks of 6), F.-V.F.	50.00
757 ★田 2c Valley Forge #645, (45 Plate # Blocks of 6), V.G. to V.F.	56.25
758 ★田 2c Molly Pitcher #646, (7 U. L. Pl# Blks 4), V.F.	17.50
759 ★田 2c Molly Pitcher #646, (20 U. L. Pl# Blks 4) F.-V.F.	50.00
760 ★田 2c Molly Pitcher #646, (100 Blks 4) F.-V.F.	75.00
761 ★田 2c Molly Pitcher, #646, (108 Blks 4) F.-V.F.	81.00
762 ★田 2c Aeronautics, #649, (40 Plate # Blocks of 6), F.-V.F.	54.00
763 ★田 2c Aeronautics, #649, (159 copies) mostly in blocks, fine	31.58
764 ★ 2c Aeronautics, #649, 12 Sheets of 36, V.G. to V.F.	88.08
765 ★田 2c, 5c Aeronautics, #649-650, (68 copies of each) Mostly in blocks, V.G. F.	68.35
766 ★田 2c, 5c Aeronautics, #649-650 (25 Blocks of 4 of each) V.G. to fine	101.25
767 ★田 2c, 5c Aeronautics, #649-650, (7 Plate # Blocks of 6 of each), F.-V.F.	44.45
768 ★田 2c, 5c Aeronautics, #649-650, (9 Plate # Blocks of 6 of each), V.G.- V.F.	56.15
769 ★田 2c, 5c Aeronautics, #649-650, (10 Plate # Blocks of 6 of each) V.G.- V.F.	63.50
770 ★ 2c, 5c Aeronautics, #649-650, 4 Sheets of 36 of each, V.G. to V.F.	145.36

CLARK-SULLIVAN ISSUES

771 ★田	2c Clark #651 (25 Plate No. Blocks of 6), Fine-V. F.	35.00
772 ★田	2c Clark #651 (25 Plate No. Blocks of 6), Fine-V. F.	35.00
773 ★田	2c Clark #651 (84 Blocks), Fine-V. F.	67.20
774 ★	2c Clark #651, Five Sheets of 50, Fine-V. F.	50.00
775 ★	2c Clark #651, Nine Sheets of 50, V. G.-V. F.	90.00
776 ★	2c Clark #651, Ten Sheets of 50, V. G.-Fine	100.00
777 ★田	2c Edison #654, (24 Plate # Blocks of 6) F.-V. F.	32.40
778 ★田	2c Edison #654, (177 copies) All in Blocks F.-V. F.	26.55
779 ★	2c Edison #654, 5 Sheets of 100, F.-V. F.	84.75
780 ★	2c Edison #654, 6 Sheets of 100, V. G. to V. F.	101.70
781 ★	2c Edison #655, 5 Sheets of 100, V. G. to V. F.	89.25
782 ★	2c Edison Coil #656 (35 copies) in strips, V. G.-V. F.	31.50
783 ★	2c Edison Coil #656, Roll of 500	450.00
784 ★田	2c Sullivan #657 (21 Plate No. Blocks of 6), Fine-V. F.	31.50
785 ★田	2c Sullivan #657 (210 copies) in large Blocks, Fine-V. F.	25.20
786 ★田	2c Sullivan #657 (410 copies), in large blocks, Fine-V. F.	49.08
787 ★	2c Sullivan #657, Four Sheets of 100, V. G.-V. F.	50.00

KANSAS OVERPRINTS

788 ★田	1c-10c Kansas #658-668, cpl. set of Plate No. Blocks , Fine-V. F.	113.70
789 ★田	1c-10c Kansas #658-668, cpl. set of Plate No. Blocks, Fine-V. F.	113.70
790 ★田	1c-10c Kansas #658-668, Cpl. set of Plate No. Blocks. V. G.-V. F.	113.70
791 ★田	1c-10c Kansas #658-668, Cpl. set of Plate No. Blocks , Fine V. F.	113.70
792 ★田	1c-10c Kans. #658-668, Cpl. Set of Blocks, All with Plates except 2c and 7c, Fine-V. F.	110.70
793 ★田	1c-10c Kansas #658-668, Cpl. set of Blocks, all with Plate # except 2c and 7c, V. G.-V. F.	110.70
794 ★田	1c-10c Kansas #658-668, Cpl. set of Blocks, all with Pl.# except 2c, 5c and 7c, Fine-V. F.	109.70
795 ★田	1c-10c Kansas #658-668, cpl. set of Blocks, Some with Plates including 8c, Fine-V. F.	104.20

796 ★	1c-10c Kans. #658-668, Complete Set of Sheets, Fine-Very Fine	2189.50
797 ★	1c-10c Kans, #658-668, Complete Set of Sheets, Fine-Very Fine	2189.50
798 ★	1c-10c Kans. #658-668, Complete Set of Sheets, Fine-Very Fine	2189.50
799 ★	1c-10c Kans. 658-668, Complete Set of Sheets except 7c value is block of 80 and 20, Fine-Very Fine	2189.50
800 ★	1c-10c Kans. #658-668 (100 Sets), Mostly in big blocks, Nearly all Fine-Very Fine	2162.50
801 ★	1c-10c Kans. #658-668 (100 Sets), Mostly in big blocks, Nearly all Fine-Very Fine	2162.50
802 ★	1c-10c Kans. #658-668 (100 Sets), Mostly in big blocks, Nearly all Fine-Very Fine	2162.50
803 ★	1c-10c Kans. #658-668 (100 Sets), Mostly in big blocks, Nearly all Fine-Very Fine	2162.50
804 ★	1c-10c Kans. #658-668 (100 Sets), Mostly in big blocks, Nearly all Fine-Very Fine	2162.50
805 ★	1c-10c Kans. #658-668, (100 Sets) Mostly in big blocks, Nearly all Fine-Very Fine	2162.50
806 ★	1c Kans. #658, Three Sheets of 100, Fine-V.F.	37.50
807 ★	1c Kans. #658, Five Sheets of 100, Fine-V.F.	62.50
808 ★	1c Kansas #658, Five Sheets of 100, Fine-Very Fine	62.50
809 ★	1c Kans. #658, Ten Sheets of 100, Fine-V.F.	125.00
810 ★	1c Kansas #658, Ten Sheets of 100, Fine-Very Fine	125.00
811 ★	1c Kansas #658, Ten Sheets of 100, Fine-Very Fine	125.00
812 ★	1c Kansas #658, 10 Sheets of 100, V.G.-V.F.	125.00
813 ★	1½c Kans. #659, Five Sheets of 100, V.G.-V.F.	125.00
814 ★	1½c Kansas #659, Five Sheets of 100, V.G.-V.F.	125.00
815 ★	1½c Kans. #659, Ten Sheets of 100, V.G.-V.F.	250.00

816	★	2c Kans. #660	Sheet of 100, Very Fine	50.00
817	★	2c Kans. #660,	Sheet of 100, Very Fine	50.00
818	★	2c Kans. #660,	Two Sheets of 100, Very Fine	100.00
819	★	2c Kans. #660,	Three Sheets of 100, Fine-Very Fine	150.00
820	★	2c Kans. #660,	Five Sheets of 100, Fine-V.F.	250.00
821	★	2c Kans. #660,	Five Sheets of 100, Fine-V.F.	250.00
822	★	2c Kans. #660,	Six Sheets of 100, Fine-Very Fine	300.00
823	★	2c Kans. #660	Ten Sheets of 100, Fine-Very Fine	500.00
824	★	2c Kans. #660,	Ten Sheets of 100, Fine-Very Fine	500.00
825	★	2c Kans. #660,	Ten Sheets of 100, Fine-V.F.	500.00
826	★	5c Kans. #663,	Sheet of 100, Very Fine	72.25
827	★	5c Kans. #663,	Sheet of 100, V.G.-V.F.	72.25
828	★	6c Kans. #664 (100 copies),	mostly in blocks, V.G.-V.F.	335.00
829	★	7c Kans. #665 (100 copies),	partly in blocks, Very Fine	135.00
830	★	7c Kans. #665 (100 copies)	partly in blocks, Fine-V.F.	135.00
831	★	7c Kans. #665 (100 copies),	partly in blocks, Fine-V.F.	135.00
832	★田	8c Kansas #666	Upper Right Plate No. Block of 4, #18192, V.F.	40.00
833	★田	8c Kansas #666,	Upper Right Plate No. Block of 4, #18192, V.F.	40.00
834	★	8c Kansas #666,	Upper Right Plate No. Block of 4, #18192, Fine	40.00
835	★田	8c Kansas #666,	Upper Right Plate No. Block of 4, #18192, Fine	40.00
836	★田	9c Kans. #667,	(100 copies), in large blocks, Fine-V.F.	85.00
837	★	10c Kans. (668),	Sheet of 100, Fine-Very Fine	228.00
838	★	10c Kans. (668),	Sheet of 100, Fine-Very Fine	228.00

FALLEN TIMBERS — PULASKI ISSUES

839	★田	2c Fallen Timbers #680.	(26 Plate # Blocks of 6). V.G. to Fine	58.50
840	★田	2c Fallen Timbers #680.	(35 Plate # Blocks of 6). F.-V.F.	78.75
841	★田	2c Fallen Timbers #680.	(50 Blocks of 4). F.-V.F.	42.50
842	★田	2c Fallen Timbers #680.	(63 Blocks of 4). Fine to Very Fine	53.55
843	★田	2c Ohio #681.	(35 Pl. # Blocks of 6). F.-V.F.	57.00
844	★田	2c Ohio #681.	(387 Copies). Nearly all in blocks, incl. plate Nos. V.G.-V.F.	48.36
845	★田	2c Mass. Bay #682.	(452 copies). Mostly in large blocks. V.G. to V.F.	50.15

846	★	2c Mass. Bay #682. 8 sheets of 81, some pre-printing creases. V. G. to V. F.	78.00
847	★	2c Mass. Bay #682. 7 sheets of 100, 5 sheets with pre-printing crease affecting several stamps in each, few marginal perfs separated	81.55
848	★	2c Mass. Bay. #682. 10 sheets of 81. F.-V. F.	97.50
849	★田	2c Carolina-Charleston #683. (15 Plate No. Blocks of 6). F.-V. F.	52.50
850	★田	2c Carolina-Charleston #683. (300 copies). Nearly all in blocks. Fine-V. F.	60.00
851	★田	2c Carolina-Charleston #683. (315 copies), incl. some blocks. F.-V. F.	63.00
852	★田	2c Carolina-Charleston, #683. (400 copies). All in Blocks. F.-V. F.	80.00
853	★	2c Carolina-Charleston #683. 5 sheets of 81. F.-V. F.	92.50
854	★	2c Carolina-Charleston #683. 7 sheets of 81. V. G. to F.	129.50
855	★	2c Braddock #688. 6 sheets of 100. F.-V. F.	98.10
856	★	2c Braddock #688. 6 sheets of 100. V. G. to Fine	98.10
857	★田	2c Von Steuben #689. (300 copies). Mostly in large blocks, incl. Pl. Nos. F.-V. F.	57.15
858	★田	2c Von Steuben #689. (378 copies). Majority in large blocks. V. G.-V. F.	59.37
859	★田	2c Von Steuben #689. Six Pl. Blocks of 72 each, several stamps pre-printing creases. F.-V. F.	78.60
860	★	2c Von Steuben #689. 7 sheets of 81. F.-V. F.	101.15
861	★田	2c Pulaski #690. (300 copies). All in blocks inc. 12 Pl. Nos. F.-V. F.	39.00
862	★田	2c Pulaski #690. (680 copes). Majority in Blocks. F.-V. F.	68.00
863	★	2c Pulaski #690. 3 sheets of 81. F.-V. F.	26.55

RED CROSS — BI-CENTENNIAL ISSUES

864	★田	2c Red Cross #702. (48 Plate # Blocks of 8). V. G.-V. F.	31.68
865	★	2c Red Cross #702. 6 sheets of 100. V. G. to Fine	54.90
866	★	2c Red Cross #702. 8 sheets of 100. F.-V. F.	73.20
867	★	2c Red Cross #702. 10 sheets of 100. F.-V. F.	91.50
868	★	2c Red Cross #702. 10 sheets of 100. F.-V. F.	91.50
869	★田	2c Yorktown #703. (16 Plate No. Blocks of 8 and 10). Fine-V. F.	17.10
870	★	2c Yorktown #703. 9 sheets of 50, Agency Stock. F.-V. F.	63.00
871	★	2c Yorktown #703. 10 sheets of 50, Agency Stock. F.-V. F.	70.00
872	★	2c Yorktown #703. 14 sheets of 50. F.-V. F.	91.70
873	★	2c Bicentennial #707. (964 copies), in sheets and part sheets. F.-V. F.	57.84

874	★田	3c Bicentennial #708. (220 copies). Mostly Blocks. F.-V.F.	39.60
875	★	3c Bicentennial #708. 2 sheets of 100. F.-V.F.	38.50
876	★	3c Bicentennial #708. 5 sheets of 100. V.G.-V.F.	96.25
877	★田	4c Bicent. #709. Sixteen Plate No. Blocks of 9. V.G.-V.F.	18.60
878	★	5c Bicentennial #710. (462 copies). Many in Blocks. V.G.-V.F.	115.50
879	★田	7c-8c Bicentennials #712(282), 713(37) in blocks of 4 or larger. V.G.-V.F.	61.86

LAKE PLACID — KOSCIUSZKO ISSUES

880	★	2c Winter Olympics #716. 7 sheets of 100. V.G.-F.	69.72
881	★	2c Winter Olympics #716. 8 sheets of 100. F.-V.F.	79.68
882	★	2c Winter Olympics #716. 3 sheets of 100, each shows variety. Red "Snowball". Plate 20815 U.R. 64. F.-V.F.	34.38
883	★	2c Arbor Day #717. 9 sheets of 100. V.G.-V.F.	70.20
884	★	2c Arbor Day #717. 9 sheets of 100. V.G.-V.F.	70.20
885	★	3c Olympic #718. Two sheets of 100. Fine-V.F.	30.00
886	★田	3c Olympics #718. (300 copies) in large blocks. Fine-V.F.	45.00
887	★田	3c Olympics #718. (313 copies) in blocks of 4 or larger, includes ten plate blocks. Fine-V.F.	54.45
888	★	3c-5c Olympic #718-19. Set of sheets of 100 each. Fine-V.F.	34.00
889	★	3c-5c Olympics #718-19. Set of sheets of 100 each. Fine-V.F.	34.00
890	★	3c-5c Olympic #718-19. Set of sheets of 100 each. Fine-V.F.	34.00
891	★	3c-5c Olympics #718-19. Set of sheets of 100 each, one 5c stamp defective, balance Fine-V.F.	34.00
892	★	3c Wm. Penn #724. 6 sheets of 81. F.-V.F.	53.10
893	★田	3c Penn, Webster #724(243), 725(120), in large blocks. Fine-V.F.	42.30
894	★田	3c Webster #725. (600 copies). Mostly blocks. F.-V.F.	90.00
895	★田	3c Webster #725. (600 copies). Mostly Blocks. F.-V.F.	90.00
896	★	3c Oglethorpe #726. 9 sheets of 81. F.-V.F.	81.00
897	★	3c Newburgh #727. Six sheets of 100, few perfs. separated on some. Fine-V.F.	60.00
898	★	3c Commems. #727(140), 739(168), 837(91), in large blocks. F.-V.F.	47.81
899	★	1c Chicago #728. Seven sheets of 100. Fine-V.F.	42.00
900	★	3c Chicago #729. (1200 copies) in large blocks. Fine-V.F.	120.00
901	★	3c Chicago #729. Seven sheets of 100. Fine-V.F.	70.00

902 ★	1c-3c Chicago Souvenir #730-31. Ten sets of sheets. V. F.	57.50
903 ★	1c-3c Chicago Souvenir #730-31. Ten sets of sheets. V. F.	57.50
904 ★	1c-3c Chicago Souvenir #730-31. Twenty sets of sheets. V. F.	115.00
905 ★	3c Byrd #733. 5 sheets of 50. F.-V. F.	75.25
906 ★	3c Byrd #733. 5 sheets of 50. F.-V. F.	75.25
907 ★	5c Kesciuszko #734. Two sheets of 100. some creased in perforations, mostly Fine	60.00

BYRD SOUVENIR — PARK SOUVENIR SHEETS

908 ★	3c Byrd Souvenir Sheet #735. (25 sheets). V. F.	33.75
909 ★	3c Byrd Souvenir sheet #735. (26 sheets). V. F.	35.10
910 ★	3c Maryland #736. 3 sheets of 100. V. G.-V. F.	36.00
911 ★	3c Maryland #736. 5 sheets of 100, one sheet with Plate # selvedge missing. F.-V. F.	60.00
912 ★田	3c Mothers Day #737. (78 Plate No. Blocks). Fine-V. F.	31.30
913 ★	3c Mother's Day Flat #738. 24 sheets of 36. F.-V. F.	93.60
914 ★田	3c Wisconsin #739. (Thirty Plate No. Blocks of 6). Fine-V. F.	24.00
915 ★	3c Wisconsin #739. Ten sheets of 36. Fine-V. F.	44.00
916 ★	3c Wisconsin #739. Twenty sheets of 36. Fine-V. F.	88.00
917 ★	1c to 10c Parks, #740-749 cpl. Sheets of 36. F.-V. F.	72.72
918 ★	1c to 10c Parks, #740-749 cpl. Sheets of 36. F.-V. F.	72.72
919 ★	1c to 10c Parks, #740-749 cpl. Sheets of 36. F.-V. F.	72.72
920 ★	1c to 10c Parks, #740-749 cpl. Sheets of 36. F.-V. F.	72.72
921 ★田	1c to 10c Parks, #740-749 cpl. (36 sets). Mostly Blocks, incl. Plate Nos. F.-V. F.	72.72
922 ★田	1c to 10c Parks, #740-749. (50 sets). Mostly large Blocks, incl. Plate Nos. F.-V. F.	101.00
923 ★田	1c to 10c Parks, #740-749. (50 sets). Mostly large Blocks incl. Plate Nos. F.-V. F.	101.00
924 ★田	1c to 10c Parks, #740-749 cpl. (50 sets). Mostly large Blocks incl. Plate Nos. F.-V. F.	101.00
925 ★田	1c to 9c Parks #740-748. (40 each). Mostly Blocks incl. Plate Nos. F.-V. F.	80.80
926 ★田	1c Parks #740. (86 Plate Blocks of 6). F.-V. F.	25.80
927 ★田	1c, 2c Parks, #740. (575 copies), #741 (240 copies). Majority in Blocks. F.-V. F.	45.55

928	★田	2c Parks #741. (60 Plate Blocks of 6). F.-V. F.	27.50
929	★田	3c Parks #742. (25 Plate Blocks of 6). F.-V. F.	17.50
930	★	3c Park Souvenir Sheet #750 (20 sheets). V. F.	60.00
931	★	3c Park Souvenir Sheet #750. (20 sheets). V. F.	60.00
932	★	3c Park Souvenir Sheet #750. (20 sheets). V. F.	60.00
933	★	3c Park Souvenir Sheet #750. (24 sheets). V. F.	72.00
934	★	1c Park Souvenir Sheet #751. (45 sheets) V. F.	40.50
935	★	1c Park Souvenir Sheet #751. (45 sheets). V. F.	40.50
936	★	1c Park Souvenir Sheet #751. (45 sheets). V. F.	40.50

FARLEY — TIPEX ISSUES

937	★田	3c Newburgh, Farley #752. Center Line Block of 16. V. F.	20.00
938	★田	3c Newburgh, Farley #752. (16 Gutter Blocks). Eight each way, also set of 4 Plate Blocks. Fine-V. F.	17.60
939	★田	3c Byrd Farley #753. Set of 4 diff. arrows and center line Block of 16. V. F.	15.14
940	★田	3c Byrd Farley #753. (4 Plate No. Blocks of 6, two Line Blocks of 12, 2 Line Pairs). V. F.	—
941	★田	1c to 10c Farley Parks, #755-765 cpl. (36 sets). Mostly Blocks. V. F.	89.28
942	★田	16c Farley, #771. (44 copies) ,all in blocks includes set of Arrow Blocks. V. F.	66.40
943	★田	Park, M. Day, Wisconsin Farleys. (263 stamps), in large blocks. V. F.	67.66
944	★田	3c Conn, #772. (423 copies) in large plate No. blocks. Fine-V. F.	36.14
945	★	3c Conn. #772. Nine sheets of 50. Fine-V. F.	36.00
946	★	3c Conn. #772. Ten sheets of 50. Fine-V. F.	40.00
947	★	3c Conn., #772. Ten sheets of 50. Fine-V. F.	40.00
948	★	3c California-Pacific Exposition #773. Twenty sheets of 50. Fine-V. F.	80.00
949	★	3c Boulder Dam #774. Nine sheets of 50. Fine-V. F.	36.00
950	★	3c Boulder Dam #774. Ten sheets of 50. Fine-V. F.	40.00
951	★	3c Michigan #775. Ten sheets of 50. Fine-V. F.	40.00
952	★	3c Michigan #775. Eleven sheets of 50. Fine-V. F.	44.00
953	★	3c Texas #776. Sixteen sheets of 50. Fine-V. F.	64.00
954	★田	3c Rhode Island #777. (705 copies). All in Blocks. Many Pl. Nos. F.-V. F.	56.40
955	★	3c Rhode Island #777. 17 sheets of 50. F.-V. F.	73.95

956 ★	3c Rhode Island #777. 20 sheets of 50. F.-V. F.	87.00
957 ★	3c Tipex #778 (100 sheets). V. F.	45.00
958 ★	3c Tipex #778. (205 sheets). V. F.	92.25

ARKANSAS — ARMY AND NAVY ISSUES

959 ★田	3c Arkansas #782. (368 copies). Mostly in Blocks. Many Pl. Nos. F.-V. F.	29.44
960 ★	3c Arkansas #782. 22 sheets of 50. F.-V. F.	94.00
961 ★田	3c Oregon #783. (740 copies). All in Blocks, many Plate Nos. F.-V. F.	59.20
962 ★	3c Oregon #783. 25 sheets of 50. F.-V. F.	108.75
963 ★	3c Susan Anthony #784. (705 copies), large blocks, includes 20 Plate Blocks. Fine-V. F.	42.30
964 ★	3c Susan Anthony #784. Forty-seven sheets of 100. Fine-V. F.	279.00
965 ★	1c to 5c Army #785-89. Thirty full sets of sheets. Average to V. F., some broken selvage. Face Val. \$225.00	679.20
966 ★	2c Army #786. One hundred and forty-seven full sheets, average to V. F.	463.00
967 ★	3c Army #787. Fifty full sheets of 50. Average to V. F.	217.50
968 ★	3c Army #787. Eighty-five full sheets of 50. Average to V. F.	369.75
969 ★	1c-5c Navy #790-794. Six sets of sheets. Fine-V. F.	129.00
970 ★	1c-5c Navy #790-794. Six sets of sheets. Fine-V. F.	129.00
971 ★	1c-2c Navy #790-791. Ten sheets of each. Fine-V. F.	50.00
972 ★	1c-2c Navy #790-791. Ten sheets of each. Fine-V. F.	50.00
973 ★	1c-2c Navy #790-791. Ten sheets of each. Fine-V. F.	50.00
974 ★	1c-2c Navy #790-791. Twenty sheets of each. Fine-V. F.	100.00
975 ★	1c-2c Navy #790-791. Thirty sheets each. Fine-V. F.	150.00
976 ★	2c Navy #791. Forty-three sheets of 50. Fine-V. F.	129.00
977 ★	2c Navy #791. Fifty sheets of 50. Fine-V. F.	150.00
978 ★田	3c Navy #792. (737 copies), all in plate no. blocks of 6 or larger. F.-V. F.	58.96
979 ★田	4c Navy #793. (795 copies), in large blocks, many with plate nos. F.-V. F.	79.50
980 ★	5c Navy #794. Eight sheets of 50. Fine-V. F.	60.00
981 ★	5c Navy #794. Ten sheets of 50. Fine-V. F.	75.00
982 ★	5c Navy #794. Ten sheets of 50. Fine-V. F.	75.00
983 ★	Army & Navy misc. lot in blocks of 4 or larger, many plate nos., mostly Fine-V. F. Face Value \$59.46	—

ORDINANCE — VIRGIN ISLAND ISSUES

984	★	3c Ordinance #795. Twelve sheets of 50. Fine-V. F.	48.00
985	★	3c Ordinance #795. Twenty sheets of 50. Fine-V. F.	80.00
986	★	5c Dares #796. Two sheets of 48. Fine-V. F.	24.00
987	★	5c Dares #796. Three sheets of 48. Fine-V. F.	36.00
988	★	5c Dares #796. Three sheets of 48. Fine-V. F.	36.00
989	★	5c Dares #796. Three sheets of 48. Fine-V. F.	36.00
990	★	5c Dares #796. Five sheets of 48. Fine-V. F.	60.00
991	★	5c Dares #796. Five sheets of 48. Fine-V. F.	60.00
992	★	10c S. P. A. #797. (500 sheets). Very Fine	125.00
993	★	10c S. P. A. #797. (650 sheets). Very Fine	137.50
994	★	3c Constitution Sesqui #798. (504 copies), includes a number of plate blocks. Fine-V. F.	40.32
995	★	3c Constitution Sesbui #798. Ten sheets of 50. Fine-V. F.	40.00
996	★	3c Constitution Sesgui #798. Ten sheets of 50. Fine-V. F.	40.00
997	★	3c Constitution Sesqui #798. Twenty sheets of 50. Fine-V. F.	80.00
998	★	3c Hawaii #799. (474 copies), in blocks of 4 or larger, each with plate no. Fine-V. F.	47.40
999	★	3c Hawaii #799. Ten sheets of 50. Fine-V. F.	50.00
1000	★	3c Hawaii #799. Twelve sheets of 50. Fine-V. F.	60.00
1001	★	3c Alaska #800. (302 copies). Many blocks includes 19 Plate No. Blocks. Fine-V. F.	31.15
1002	★	3c Alaska, #800. 24 sheets of 50. F.-V. F.	60.60
1003	★田	3c Puerto Rico #801. (420 copies). Majority in Blocks, incl Plate Nos. F.-V. F.	42.00
1004	★	3c Puerto Rico #801. 15 sheets of 50. F.-V. F.	75.00
1005	★	3c Puerto Rico #801. 17 sheets of 50. F.-V. F.	85.00
1006	★田	3c Virgin Island #802. (478 copies), in large blocks mostly with plate nos. Fine-V. F.	47.80
1007	★	3c Virgin Islands #802. Ten sheets of 50. Fine-V. F.	50.00
1008	★	3c Virgin Islands #802. Ten sheets of 50. Fine-V. F.	50.00
1009	★	3c Virgin Islands #802. Fifteen sheets of 50. Fine-V. F.	75.00

RATIFICATION — STATE HOOD ISSUES

1010	★	3c Ratification #835. (557 copies), in large blocks, many with plate nos. Fine-V. F.	66.84
1011	★	3c Ratification #835. Ten sheets of 50. Fine-V. F.	60.00
1012	★	3c Ratification #835. Seventeen sheets of 50. Fine-V. F.	96.00
1013	★田	3c Delaware #836. (27 Plate # Blocks of 12). F.-V. F.	54.00
1014	★	3c Delaware #836. 21 Plate Blocks of 24. F.-V. F.	64.80
1015	★	3c Delaware #836. 10 sheets of 48. F.-V. F.	74.00
1016	★	3c Delaware #836. 10 sheets of 48. F.-V. F.	74.00
1017	★田	3c Small Northwest #837. (11 Plate No. Blocks of 4). Fine-V. F.	16.50
1018	★	3c Small Northwest #837. Sheet of 100. V. F.	15.90
1019	★	3c Small Northwest #837. Sheet of 100. V. F.	15.90
1020	★	3c Small Northwest #837. Three sheets of 100. Fine-V. F.	47.70
1021	★	3c Small Northwest #837. Three sheets of 100. Fine-V. F.	47.70
1022	★	3c Small Northwest #837. Three sheets of 100. Fine-V. F.	47.70
1023	★	3c Small Northwest #837. Five sheets of 100. Fine-V. F.	79.50
1024	★田	3c Iowa #838. (39 Plate No. Blocks of 6). Fine-V. F.	42.90
1025	★	3c Iowa #838. (382 copies), in larger plate blocks. Fine-V. F.	57.30
1026	★	3c Iowa #838. Seventeen sheets of 50. Fine-V. F.	127.50
1027	★	3c San Francisco #852. (702 copies), in large blocks many with plate nos. Fine-V. F.	56.08
1028	★	3c San Francisco #852. Sixteen sheets of 50. Fine-V. F.	64.00
1029	★	3c N. Y. World's Fair #853. Three sheets of 50. Fine-V. F.	15.00
1030	★	N. Y. World's Fair #853. Ten sheets of 50. Fine-V. F.	50.00
1031	★	N. Y. World's Fair #853. Ten sheets of 50. Fine-V. F.	50.00
1032	★田	3c Wash. Inauguration #854. (18 Plate No. Blocks of 6). Fine-V. F.	18.00
1033	★田	3c Wash. Inauguration #854. (448 copies), in plate no. blocks of 32. Fine-V. F.	67.20
1034	★田	3c Wash. Inauguration #854. (504 copies), in plate no. blocks of 24. F.-V. F.	75.60
1035	★	3c Wash. Inauguration #854. Six sheets of 50. Fine-V. F.	45.00
1036	★	3c Wash. Inauguration #854. Eight sheets of 36. Fine-V. F.	43.20
1037	★	3c Baseball #855. (434 stamps) mostly in blocks of 4 or larger, includes 23 Plate No. Blocks. Fine-V. F.	55.58

1038	★	3c Baseball #855. Ten sheets of 50. Fine-V. F.	62.50
1039	★	3c Baseball #855. Ten sheets of 50. Fine-V. F.	62.50
1040	★	3c Baseball #855. Twenty-five sheets of 50. Fine-V. F.	166.25
1041	★	3c Baseball #855: Twenty-eight sheets of 50. Fine-V. F.	185.00
1042	★	3c Panama Canal #856. Four sheets of 50. Fine-V. F.	30.00
1043	★	3c Panama Canal #856. Five sheets of 50. Fine-V. F.	37.50
1044	★	3c Panama Canal #856. Five sheets of 50. Fine-V. F.	37.50
1045	★	3c Panama Canal #856. Five sheets of 50. Fine-V. F.	37.50
1046	★	3c Panama Canal #856. Ten sheets of 50. Fine-V. F.	75.00
1047	★	3c Panama Canal #856. Ten sheets of 50. Fine-V. F.	75.00
1048	★	3c Panama Canal #856. Ten sheets of 50. Fine-V. F.	75.00
1049	★	3c Panama Canal #856. Twenty sheets of 50. Fine-V. F.	150.00
1050	★	3c Printing Press #857. Thirty sheets of 50. Fine-V. F.	120.00
1051	★	3c Statehood #858. Thirty sheets of 50. Fine-V. F.	120.00
1052	★	Balance of Accumulation. Many thousand mint stamps from 1890 to 1939 in single,s blocks and larger pieces. Mostly Commemoratives. Est. Cash Wholesale Val. \$115.00	—

AIR MAILS

1053	★	10c-15c Map Air #C7(46), C8(53), in large blocks. Fine-V. F.	28.75
1054	★	10c Lindbergh #C10. (123 copies), mostly blocks of 4 or larger including 5 Plates of 6. Fine-V. F.	65.25
1055	★田	5c Carmine & Blue Air #C11. Sixteen Plate No. Blocks of ten with Double "Top" varieties. V. G.-V. F.	98.80
1056	★田	5c Violet Air #C12. (32 Blocks), in four plate blocks of 32 each. Fine- V. F.	72.00
1057	★田	5c Violet Air #C12. (135 copies), in large blocks includes 5 Plate Blocks. Fine-V. F.	69.55
1058	★	5c Violet Air #C16. Two sheets of 50. Fine-V. F.	30.00
1059	★	5c Violet, 25c Blue Air #C16(38), C20(44) in blocks of 4 or larger. Fine- V. F.	31.20
1060	★	50c Zeppelin #C18. Very Fine	9.00
1061	★田	50c Zeppelin #C18. Plate No. Block of 20. Very Fine	194.00
1062	★田	20c, 25c, 50c Trans Pacific #C20-C22. Plate No. Blocks of 6. Very Fine	13.00
1063	★	16c Air Special #CE1. Five sheets of 36. Fine-V. F.	63.00

1064 ★	16c Air Special #CE1(54), CE2(60), mostly in blocks, includes plates. Fine-V. F.	36.90
1065 ★	15c Special Delivery #E13. (101 copies), in large plate blocks. Fine	30.30

DUES, PARCEL POST, SHANGHAI ISSUES

1066 ★	30c Postage Due #J27(25). Fine-V. F.	125.00
1067 ★	50c Postage Due #J28(20). Fine-Very Fine	90.00
1068 ★	50c Postage Due #J28(32). Fine-V. F. except 4 have str. edges	144.00
1069 ★	½c-50c Postage Dues #J61(391), J62(240), J63(39), J64(106), J67(4), J68(396). Mostly in blocks or sheets. V. G.-V. F.	78.71
1070 ★	½c Postage Due #J69. Eleven sheets of 100. Fine-V. F.	33.00
1071 ★	1c, 5c Green, Parcel Post Due #JQ1(184), JQ3(177). Many str. edges. V. G.-V. F.	44.95
1072 ★田	5c Green, Parcel Post Due #JQ3. (250 copies), in large blocks, without gum. V. G.-V. F.	37.50
1073 ★田	75c Parcel Post #Q11, Top Plate No. Block of 6, Fine	22.00
1074 ★田	75c Parcel Post #Q11, Top Plate No. Block of 6. Very Fine	22.00
1075 ★田	75c Parcel Post #Q11. Block of 18. Fine	54.00
1076 ★田	75c Parcel Post #Q11. Plate No. Block of 28. Fine-V. F.	87.50
1077 ★田	75c Parcel Post #Q11. Plate No. Block of 36. Fine-V. F.	111.00
1078 ★田	75c Parcel Post #Q11, Plate No. Block of 36, mostly Fine	111.00
1079 ★田	75c Parcel Post #Q11. Two Blocks of 4. V. F.	25.00
1080 ★	75c Parcel Post #Q11. Eleven copies includes block, perfs. in at top	31.75
1081 ★	75c Parcel Post #Q11. (12 copies), each has str. edge	33.00
1082 ★	75c Parcel Post #Q11. (20 copies). Fine-V. F.	55.00
1083 ★	25c Special Handling #QE4a. (76 copies), includes some str. edges otherwise F.-V. F.	57.00
1084 ★	2c-\$2.00 Shanghai (K1-K18). Cpl. set, mostly no gum, 9 have str. edges	70.85
1085 ★	16c on 8c Olive Bistre, Shanghai (K8). Sheet of 100, perfs. touch at bottom. Very Good	187.50
1086 ★	16c on 8c Olive Green, Shanghai (K8a). Sheet of 100. Mostly F.-V. F.	325.00

REVENUES

1087	10c Certificate, \$3.00 Charter Party Imperf. (R33a, R85a). Fine-V. F.	16.00
1088	10c Power of Atty. Imperf. (R37a). Small margins all around, light handstamp canc. Fine	45.00

1089	田	25c Insurance, Part Perf. (R46b). Block. Fine	50.00
1090		25c Life Insurance, Imperf. (R47a). Horiz. Pair. V. F.	30.00
1091	田	25c Power of Atty. Imperf. (R48a). Block, tiny cut in one stamp. V. F. appearance	75.00
1092		25c Protest, Part Perf. (R49b). Horiz. Pair. Very Fine	35.00
1093		\$20.00 Probate of Will Imperf. (R99a). Cut in two sides. Fair	90.00
1094		\$200.00 Green & Red (R102c). Ms. Railroad cancel "P. & R.R.R. Co.". F.	75.00
1095		\$200.00 Green & Red (R102c). Neat blue Railroad oval handstamp, appears reperfed one side possibly due to freak perforating	75.00
1096		\$1,000.00 Green & Black (R181). Cut cancellation	37.50
1097		\$100.00 Documentary, Series 1948 (R508). Uncut, slight thin	—
1098		\$500.00 Documentary, Series 1948 (R509). Uncut. Very Fine. Scarce	—
1099	★	1/8c Black Proprietary #RB44. (1153 copies), in large blocks. V. G.-V. F.	46.12
1100	★	1/4c Black Proprietary #RB45. (1373 copies), in large blocks. V. G.-V. F.	54.92
1101	★	3/8c-4c Black Proprietary #RB46(149), RB48(387), RB50(94), RB58(49), in large blocks. V. G.-V. F.	43.66
1102	★	Wines RE81 (Block of 4), RE88 (Block of 50), RE106 (Pair), RE111 (Block of 50), RE117 (Block of 4), RE121 (Block of 16), RE163 (Pair), all unused. Fine-V. F. Retail Val. over \$70.00	—
1103		\$20.00 Wine (RE167). Handstamp cancel. Very Fine	—
1104		\$20.00 Wine (RE167). Vert. Pair. Handstamp cancel. V. F.	—
1105		\$50.00 Wine (RE168). Handstamp cancel. Very Fine. Ret. Val. \$17.00	—
1106		\$50.00 Wine (RE168). Handstamp cancel. Very Fine	—
1107	田	\$50.00 Wine (RE168). Block of 6. Handstamp cancel. Very Fine. Retail Val. as singles \$102.00	—
1108		\$100-\$200 Wines (RE169-RE170). Very Fine. Handstamp cancels. Retail Value \$25.50	—
1109		\$100-\$200 Wines (RE169-RE170). Handstamp cancels. Fine	—
1110		\$100.00 Wine (RE169). Strip of 4. Handstamp cancel, two are lightly creased others V. F. Retail Val. \$54.00	—
1111		\$200.00 Wine (RE170). Vertical Pair. Handstamp cancel. V. F. Retail Val. \$24.00	—
1112	田	\$200.00 Wine (RE170). Block of 6, top stamp has tear, handstamp cancel, others Fine. Retail Value as singles \$72.00	—
1113		\$1.60 4/5 Wine "Dolllar" error in miss-spelling. Handstamp cancel. V. F.	—
1114		\$1.60 4/5 Wine, "Dolllar" error, three copies, two are perf. initialed	—

1115 ★	\$10.00 Silver Tax (RG18). Centered to left. V. G. O. G.	—
1116 ★	¾c-75c Potato Stamps #R11-10. Set of sheets of 50 each. Fine-V. F. Face Value \$71.50	—
1117	Revenue Stamped Paper. 33 pieces, nice variety. Est. Cash Val. \$10.00	—
1118	BEER Stamps. 27 stamps, mostly different	—

HUNTING PERMIT STAMPS

1119 ★田	\$1.00 Blue (RW1). Block. Very Fine	70.00
1120 ★田	\$1.00 Blue (RW1). Top Plate #F129201 Block of 6. Very Fine	110.00
1121 ★	\$1.00 Blue. Rose Lake (RW1-2). Very Fine	37.50
1122 ★	\$1.00 Blue. Rose Lake (RW1-2). Very Fine	37.50
1123 ★	\$1.00 Blue, Light Green (RW1, 4). Very Fine	22.50
1124 ★田	\$1.00 Rose Lake (RW2). Bottom Plate #131982. Block of 6. Very Fine	160.00
1125 ★田	\$1.00 Rose Lake (RW2). Top Plate #131981 Block of 6. Fine	160.00
1126 ★田	\$1.00 Brown Black (RW3). Bot. Plate #134318 Block of 6. Very Fine	60.00
1127 ★田	\$1.00 Brown Black (RW3). Bot. Plate #134317 Block of 6. Very Fine	60.00
1128 ★田	\$1.00 Light Green (RW4). Plate Block of 4. Very Fine	32.50
1129 ★田	\$1.00 Light Green (RW4). Bot. Plate #136267 Block of 6. Very Fine	60.00
1130 ★田	\$1.00 Light Violet (RW5). Bot. Plate #138602 Block of 6. Very Fine	62.50
1131 ★田	\$1.00 Light Violet (RW5). Bot. Plate #138602 Block of 6. Very Fine	62.50

CALIFORNIA STATE REVENUES

(All in Very Fine strips of four, Bill of Lading without control over-prints). Cabot Types #1-11.

1132 ★	30c Tax on \$100. Strip of Four on thin white paper. V. F.	—
1133 ★	30c Tax on \$100.00. Strip of 4 on thin blue paper. V. F.	—
1134 ★	40c Tax on \$200. Strip of four on thin white paper. V. F.	—
1135 ★	\$1.00 Tax on \$500. Strip of four on thin white paper. V. F.	—
1136 ★	\$1.00 Tax on \$500.00. Strip of 4 on thin blue paper. V. F.	—
1137 ★	\$2.00 Tax on \$1,000. Strip of four on thin white paper. V. F.	—
1138 ★	\$2.00 Tax on \$1,000.00. Strip of 4 on thin blue paper. V. F.	—
1139 ★	\$4.00 Tax on \$2,000. Strip of 4 on thin white paper. V. F.	—
1140 ★	\$10.00 Tax on \$5,000. Strip of 4 on thin white paper. V. F.	—
1141 ★	\$20.00 on \$10,000. Strip of 4 on thin white paper. V. F.	—
1142 ★	\$40.00 Tax on \$20,000. Strip of 4 on thin white paper. V. F.	—
1143 ★	\$100.00 Tax on \$50,000.00 Strip of 4 on thin blue paper. V. F.	—
1144 ★	\$200.00 Tax on \$100,000.00. Strip of 4 on thin blue paper. V. F.	—
1145 ★	\$40.00 Tax on \$200,000.00. Strip of 4 on thin blue paper. V. F.	—

END OF SALE — THANK YOU

AIRMAIL BIDS FROM THE WEST

SELLING YOUR COLLECTION?

REALIZE IMMEDIATE CASH
AND HAVE ADVANTAGE OF SELLING AT AUCTION.

I will advance on your collection immediate cash up to 75% of my appraisal value of what it should realize at auction.

It will then be sold at one of my coming auction sales. Commission is 20% of the gross and final settlement within thirty days after the sale.

Send collection direct (valued \$500 upwards) for appraisal. Auction advance will be sent within 48 hours after receipt. If not entirely pleased, collection will be returned at my expense.

I have been conducting stamp auctions for 21 years.



ROBERT A. SIEGEL

(Licensed and Bonded Auctioneer)

505 FIFTH AVENUE

NEW YORK CITY

(Tel. MU. 2-4309)