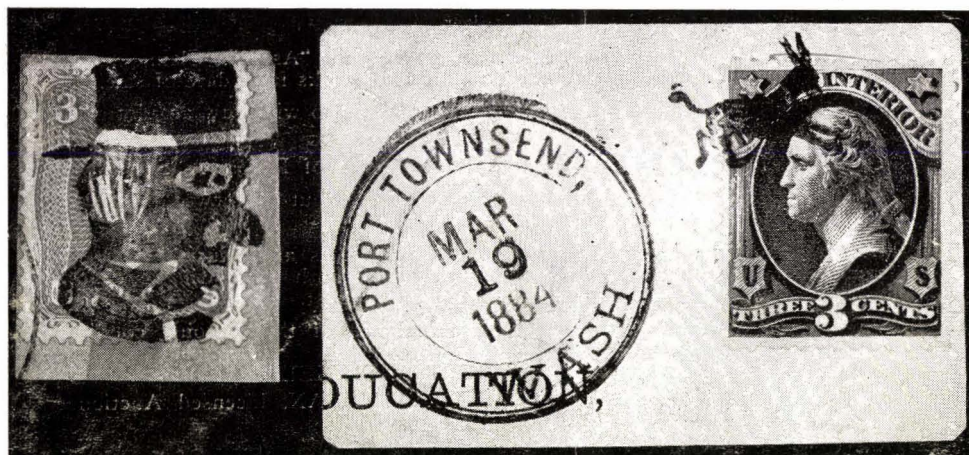


162nd SALE

Gregory M. M. M.

UNITED STATES
COVERS, FANCY CANCELS
& STAMPS OFF COVER
CANADA, NEWFOUNDLAND
& GENERAL FOREIGN



At Public Auction

WEDNESDAY, APRIL 1st — 2 P.M.

THURSDAY, APRIL 2nd — 2 P.M.

Robert A. Siegel
SAUCTIONS

505 FIFTH AVENUE

NEW YORK CITY

CONDITIONS OF SALE

1. The terms of sale are strictly cash to the highest bidder. All buyers are expected to pay for lots within three days of receipt, unless special arrangements have been made prior to the sale.
2. All bids are per lot as numbered in the catalogue and not per piece, unless otherwise announced by the auctioneer at the time of sale.
3. Any lot the description of which is incorrect is returnable only within three days of receipt. All disputed lots must be returned intact as received. Lots containing five or more stamps are not returnable at any time. No lots may be returned by purchasers who have had the opportunity to examine them before the sale.
4. Successful mail bidders, unless they are known to us or supply acceptable references, will be notified of the amount of the lots secured for them, and are expected to send payment in full before the lots are forwarded.
5. If the purchase price has not been paid within the time limit, or lots taken up within seven days from date of sale, they may be resold and any losses arising from such sale charged to the defaulter.
6. All stamps are sold as genuine, except where sold "As Is". Claims for any lot proving otherwise, must be made within two weeks from date of sale.
7. The right is reserved to group two or more lots, also withdraw any lot or lots from the sale, or to act on behalf of the seller.
8. Until paid for in full all lots remain the property of Robert A. Siegel.
9. No commission is charged for buying at our sales, but all forwarding charges will be added to the purchase price.
10. Lots will be sent for inspection, provided such lots are returned to us the same day as received. Postage and registration both ways will be charged. Approximate values of lots will be given on request.
11. The placing of a bid shall constitute acceptance of the forgoing conditions of sale.

ROBERT A. SIEGEL

GREGORY MOZIAN, Licensed Auctioneers

In sending bids, always state the highest price you are prepared to pay for the lot. Your limit will not be used as a starting bid unless absolutely necessary.

DESCRIPTIONS

Superb—the finest condition for noteworthy, outstanding copies.

Very Fine (VF)—means that there is a slight deviation from the above.

Fine (F)—means that the perforations do not touch the design on issues after 1890, but in some cases may just touch in earlier issues; if used, fairly lightly cancelled.

Very Good (VG)—means that the appearance is generally fine but that the perforations cut the design slightly.

Good(G)—means average off-centering; or fairly attractive with slight defects. Original gum is not to be expected on 19th Century stamps up to 1888 unless so stated.

Scott's 1953 Specialized United States Catalogue is used for cataloging our lots of United States and Scott's Standard Catalogue, 1953 for others.

WE SOLICIT FINE MATERIAL FOR FUTURE SALES
--

FIRST SESSION

WEDNESDAY, APRIL 1st, 1953 — 2 P. M.

UNITED STATES

AUTOGRAPHS

- 15 1 **Andrew Jackson**, signed Land Grant, 1834. V.F. —
- 50 2 **James Buchanan**, Free Frank, red Washn. City circle (1827). V.F. cover —
- 3 3 **A. Lincoln**, autograph pasted on envelope with President of the U.S. imprint and signed by Nicolay Lincoln's Private Sec. V.F. —
- 7 4 **William Henry Harrison**, signed on pay voucher as Maj. General, 1853. Very Fine —
- 5 5 **R. B. Hays**, autograph in envelope from Tremont, Ohio —
- 6 6 **Benjamin Harrison**, autograph, also with letter from his secy. contained in 2c Carmine 1890 cover with his corner card. Fine —
- 50 7 7 **James A. Garfield**, on signed letter from Mentor, Ohio with cover —
- 8 8 **Grover Cleveland**, signed card in cover tied with 2c #210 from Wash., Executive Mansion imprint on both —
- 1 9 **Franklin D. Roosevelt**, on illustr. Navy acknowledgment as Assist. Sec. of Navy. Attractive —
- 50 10 **Jefferson Davis**, signed card in cover tied with 2c #210 from Beauvoir, Miss. —
- 50 11 **Thomas A. Edison**, signed card in cover tied with #210 and Edison's corner card —
- 50 12 **Gen. Phil. Sheridan, W. T. Sherman, Nathaniel Lyons, Adm. Wm. Sims.** Autographs —
- 50 13 **Wm. H. Seward, Cyrus W. Fields, John G. Whittier, Wm. Evarts, James Blaine**, autographs —
- 50 14 **Congressional Franks**, collection of 169 diff. covers used in 1947. Fine lot —
- 13 15 **Pres. McKinley, Pres. Taft**, Inauguration Ball of first, Inauguration Ceremonies on latter, attractive illustrated booklets. V.F. —

COVERS & FANCY CANCELS

STAMPLESS COVERS

- 175 16 ☒ Butternuts, N. Y. in Orange circle "Paid". Fine —
- 85 17 ☒ C. Aug. 28 (Charleston, S. C.) black Str. line (1797). Fine. Scarce —
- 25 18 ☒ Cherry Valley, N. Y., in large red double circle, "Paid 12" (1831). V. F. —
- 275 19 ☒ Cleveland, O., red circle, "Paid, X", black oval "Money Letter", Rare marking. Fine (Photo) —
- 135 20 ☒ Columbia (S. C.) May 8, Free, Straight line, (1798). Very Fine. Scarce —
- 13 21 ☒ Eastern Pony Express pmk. blue Mobile, Ala. to N. Y. Ms. \$2.25, triple rate, Ms "Express Mail", 1838. V. F. —
- 12 22 ☒ Eastern Pony Express pmk. blue Mobile, Ala. to N. Y., Ms. \$2.25, triple rate, Ms. "Express Mail", 1837. V. F. —
- 13 23 ☒ Eastern Pony Express pmk. blue Mobile, Ala. to N. Y., Ms. \$3.00, quadruple rate Ms. "Express Mail", 1836. Fine —
- 105 24 ☒ Eastern, R. R. in blue circle, "5", on illustr. Boston cover. Attractive —
- 9 25 ☒ Enfield, Mass., blue str. line in wreath. Very Fine —
- 36 26 ☒ Fredericksburg, "Fredbg. 38" in Ms. dated July 1, 1777 addressed to United States Lottery Office, Phila., contains letter by Fielding Lewis (brother-in-law Washington) about lottery tickets. V. F. —
- 92 27 ☒ Harrisburg, Pa. in black circle "Paid 3" in oval, on attractive illustr. Jones House cover. V. F. —
- 15 28 ☒ Mobile, Ala. Paid 3, in red circle, boxed "Registered No. 292", Rare early registry marking. Very Fine (Photo) —
- 7 29 ☒ Mobile, Way 11, Steamship 10, Steamship 20, Br. Pkt. Boston 24, four V. F. covers —
- 55 30 ☒ New England, 9 diff. includes 3 fancy New Haven. F.-V. F. —
- 42 31 ☒ Newport R. I., two ovals diff. sizes, smaller in Red, larger Olive Green, one franked by A. Robbins. Fine —
- 155 32 ☒ New York straight line on cover front with Frank of JEFF AMHERST, Chief of British Troops 1760-63, this item illustr. on front of U. S. Stampless Cover Catalog, Extremely Rare Colonial item addressed to Governor of Maryland (Photo) —
- 85 33 ☒ New York State Stampless, 15 attractive covers. F.-V. F. —
- 7 34 ☒ Penna., nine covers includes Phila. 1799, Lebanon oval, Harrisburg with "R". Fine lot —
- 7 35 ☒ Potomac Steamboat, red circle, "10". V. G. —

36	✉	Philadelphia , large red straight line, "Post Paid" in red circle, letter by John Cox, June 3, 1769 . Fine and scarce early cover	—
37	✉	Schoharie, N. Y. , black str. line, "Paid". Fine	—
38	✉	Ship 6 Cents in black circle, light red New Orleans on pretty illustr. cover of China & Glass Co. in N. Y.	—
39	✉	Southern Stampless , attractive lot of 22 including interesting Wash. D. C. imprints, Mobile Way 11. Fine-V. F.	—
40	✉	Steamship 30 Cts. , in black circle. Fine	—
41	✉	U. S. Express Mail , "5", blue circle, from Utica, N. Y. , Oddfellow lodge circular (1847). Fine	—
42	✉	U. S. Express Mail (Boston, Batavia, N. Y.) , U. S. Mail City Delivery, U. S. City Despatch, Boyds, Hale, 6 diff. neat stampless. V. G.-V. F.	—
43	✉	U. S. Naval Lyceum with Ship in oval, also red Brunswick, Me. circle "Paid 10". Fine. Scarce (Photo)	—
44	✉	U. S. Notes 36, 27, Boxed Paid All, Br. Packet, French, New York Br. Pkt. , on 1867 cover from France to U. S. Attractive Markings. V. F.	—
45	✉	Westchester, Pa. , in blue circle, illustrated Boarding School circular inside. V. F.	—
46	✉	Whitehall, N. Y. , red straight line (1832). Fine	—

NEW YORK POSTMASTER PROVISIONAL

47	✉	5c New York Postmaster (9X1), Horiz. Pair. Margins except at R., left stamp creased. Tied with red Paid and black Newbern, N. C. pmk. when forwarded (Photo)	250.00
----	---	---	--------

1847 ISSUE

48		5c Red Brown (1). Red Numeral "6" in Circle. Fine. Scarce (Photo)	—
49		5c Red Brown (1). Attractive blue Paid cancel, light crease.	42.50
50	✉	5c Red Brown (1). Four margin copy tied with New York red grid on cover. V. F.	37.50
51	✉	5c Red Brown (1). Four margins, tied attractive blue Troy, N. Y. pmk. on small embossed ladies envelope . Very Fine (Photo)	—
52	✉	5c Brown (1). Four margin copy tied with New York red grid on neat cover	37.50
53	✉	5c Red Brown (1). Four margin copy tied on cover with blue Phila. pmk.	37.50
54	✉	5c Brown (1). Tied with blue grid, Norwich, Conn. pmk. on cover, stamp touches at top. V. G.	37.50

1650	55	5c Red Brown (1). Margins three sides, in at B., tied blue grid, Detroit, Mich. pmk., neat cover	37.50
11	56	5c Brown (1). Fine copy not tied on cover with light Shawneetown, Ill. , red pmk.	—
13	57	5c Brown (1). Margins 3 sides, touches at B, tied with attractive blue Troy, N. Y. pmk. Fine cover	—
1450	58	5c Red Brown (1). Margins except tip of one corner, tied blue "Phila. Pa. 5 cts." Fine cover	37.50
1000	59	5c Red Brown (1). Four margin copy corner defective, tied blue Troy, N. Y. pmk. to Canada with red Canadian markings, attractive	37.50
43	60	10c Black (2). Margins al around though small at top tied with red grid on cover with red Charleston, S. C. pmk. Fine and attractive (Photo)	100.00
40	61	10c Black (2). Fine copy cancelled with red grid, not tied, red Jackson, Miss. pmk. on cover	80.00
75	62	10c Black (2). Margins all around, small at B, tied with red Shawneetown, Ill. pmk. Fine cover, scarce town usage (Photo)	100.00
5250	63	10c Black (2). Tied with red grid margins three sides, close but clear at top, from N. Y. to Rochester, light red Steamboat marking. Scarce	150.00

1851 ISSUE

25	64	1c Blue, Type II (7). Tied on cover. V. G.	15.00
1550	65	1c Blue, Ty. II ^{IV} (7). L strip of three tied with blue Gardiner, Me. pmk. on small mourning cover. Fine	45.00
31	66	1c Blue, 3c Red, three (7, 11). Tied on cover from Buffalo to Quebec, red str. line "Money Letter", used in 1852. Scarce marking (Photo)	—
5750	67	1c Blue, Type III (8). Tied with blue grid, Margins three sides, barely touches at left. Fine	225.00
150	68	3c Orange Brown (10). Fine copy tied with bold handsome strike New York Jan. 1. (1852)	—
850	69	3c Imperforate (10-11). Eight covers includes Green, R. R., fancy circle, Express Mail. Fine-V. F.	—
75	70	3c Red (11). Handsome bold strike fancy Geometric , small thin. Very Fine appearance	(Photo) —
625	71	3c Claret (11a). Neat Cross cancel. Fine	(Photo) —
850	72	3c Red (11). Margins all around, clear 1853 Year Date cancel	30.00
1250	73	3c Red (11). Eleven diff. Grid cancels, includes O. B. Fine lot	—
18	74	3c Red (11). Twenty-one diff. Dated Town cancels includes two Orange Browns. Fine-V. F.	—

75	3c Imperforate (11). Thirty copies includes O. B. shades, dates. V. G.-V.F.	—
76	3c Red (11). Tied with New York Jul. 14, 1853 pmk. Fine	—
77	3c Red (11). Tied from Indianapolis to Phila. with red "R", registry marking. Fine	—
78	3c Red (11). Tied with blue "Eastern R. R." on cover. Fine	—
79	3c Red (11). Tied with black "Eastern R. R.", on embossed envelope. Fine	—
80	3c Red (11). Fine Imprint copy tied on cover with balloon strike West Rush, N. Y., attractive 9-RR	—
81	3c Red (11). Tied with portion of Wenona, Ill., str. line pmk on illustr. cover	—
82	3c Red (11). Tied from Wilkes Barre, Pa., black "Registered" marking, letter dated Mar. 14, 1853, early usage. Scarce	—
83	3c Red (11). Pair tied from Tuscaloosa, Ala., str. line "Registered" marking, used 1854. Fine	—
84	3c Red (11). Sixteen covers includes one used with Blood's local, Railroads, two are fronts. Fair-Fine	—
85	3c Red, 3c Rose (11, 65). Two covers first blue arched "Paid 3" latter Columbus blue Square Grid pmk. V. G.	—
86	10c Green, Ty. II (14). Tied by New Orleans pmk. to France. Extremely rare usage various transit markings. Very Fine (Photo)	—

1857 ISSUE

87	1c Blue Type I (18). Single and Pair, latter has str. edge on left stamp, Barrytown, N. Y. pmk. on small cover. Fine	130.00
88	1c Blue Ty. II (20). Pair tied Boston, Mass. on cover. Fine	27.50
89	1c Blue, Ty. IIIa (22). Tied with Boston Paid. Fine	25.00
90	1c Blue, Ty. V (24). Horiz. Pair with odd Target cancel tiny thin at L, other V. F. (Photo)	—
91	3c Red (26). Clear Masonic cancel. Fine (Photo)	—
92	3c Red (26). Handsome strike of O. K. in small Octagon, tiny thin, Rare cancel. Very Fine appearance (Photo)	—
93	3c Red (26). Handsome Boat cancel. V. F. (Photo)	—
94	3c Red (26). Block of six, str. edge on two stamps at R, Blue Louisville, Ky., town cancel. Fine	20.00+
95	3c Red (26). Three diff "Paid 3" cancels, one in blue. Fine	—
96	3c Red (26). Seven Fancy Cancels includes Paid 3, Pairs, Steamboat, unusual Star. Fine	—

- 525 97 3c Red (26). Nine diff. **Grid** cancels, including scarce types. Fine-V. F.
- 825 98 3c Red (26). Fourteen diff. attractive **Town** cancels, some in color, year dates, balloon strikes. Fine-V. F.
- 1050 99 3c Rose (26). 41 copies includes Star cancel and 14 covers, unused Block and Pair. Good-Fine
- 315 100 ☒ 3c Red (26) cancelled with Paid, Mt. Lebanon, Me. pmk. on cover showing **Freemont and Battle scene**. Fine. Scarce design (Photo)
- 325 101 ☒ 3c Red (26). Handsome bold strike of unusual **Diamond Grid within Oval Grid** from Bergen, N. Y. Very Fine. Scarce (Photo)
- 145 102 ☒ 3c Red (26). Tied with unusual **Square Grid** from **Bleeker**, N. Y. V. F.
- 295 103 ☒ 3c Red (26). Tied with **Fancy Star from Jersey Shore, Pa.**, on illustrated **Hotel** cover. Very Fine (Photo)
- 850 104 ☒ 3c Red (26). Tied on small neat cover with **Profile House, N. H.** in double circle pmk. Very Fine
- 255 105 ☒ 3c Red (26). Tied with **Hilton, Mass.**, pmkd. on small cover showing **Sailing Ship** and Poem. Very Fine (Photo)
- 245 106 ☒ 3c Red (26). Str. edge copy tied "**I. Field, P. M.**" in circle, also **Harrison Square, Mass.** pmkd. on Valentine cover. Fine. Scarce (Photo)
- 1650 107 ☒ 3c Red (26). Tied with unusual **Square Grid of Dashes** from **Farmersville, N. Y.** Very Fine
- 75 108 ☒ 3c Red (26). Tied from **Columbus, Ohio**, on illustr. cover showing **Ohio State Capitol**. Fine
- 125 109 ☒ 3c Red (26). Cancelled with **Chicopee Intertwining Star**. Fine
- 85 110 ☒ 10c Green, Ty. II (32). Pair tied **Salem, Ill.**, on cover. Fine 27.50
- 205 111 ☒ 12c Black (36). Pair tied with blue **Charlotttsville, Va.**, pmk. to London with transit marks. Very Fine
- 45 112 ☒ 12c Black (36). Two tied on cover from **Philadelphia** to England, various transit markings, one stamp slight fault, attractive cover
- 375 113 ☒ 12c Black (36). Horiz. Pair tied to cover to England. V. G. 25.00
- 455 114 30c Orange (38). New York **Clipper Ship** cancel. Very Fine. Scarce (Photo)
- 755 115 ☒ **REGISTRY Collection** of 71 covers mounted, includes 1854-55 registry notices, stampless covers 1851-98 Issues with various Registry markings. Fine and valuable collection
- 1155 116 ☒ **POSTAGE DUE Collection**, 276 covers in 6 volumes, from Stampless, 1847 issue to date, wide variety of early due markings, includes forwarders, steamboat, ship, steamship Wells Fargo, Patriotics, in combination with foreign etc. Interesting and valuable lot

1861 ISSUE

117	1c Blue (63). Pretty large Hallow Star cancel, centered to B	—
118	1c Blue (63). Clear Rutland, Vt. Masonic Open Book cancel, centered to L. Scarce	—
119	1c Blue, 10c Green two (63, 68). First has str. edge, tied with red and black cancels to Italy. Fine	—
120	3c Pink (64). On small cover patriotic border on back, str edge copy. Ms. cancel	45.00
121	3c Rose (65). Block of 6. St. Paul, Minn. , cancels. Fine, attractive	—
122	3c Rose (65). Beautiful strike of Waterbury MANS HEAD on small piece. Rare. Very Fine (Photo on Cover)	—
123	3c Rose (65). Tied on small piece FLAG and " Union " cancel. Fine. Rare (Photo)	—
124	3c Rose (65). Large " Collect " in blue tied on piece, centered to Bot. left. Scarce (Photo)	—
125	3c Rose (65). Tied on small piece Wreath of Stars from Albany . Very Fine. Scarce	—
126	3c Rose (65). Handsome Ship cancel. V. F. (Photo)	—
127	3c Rose (65). Pretty strike of Four Small Veined Leafs . V. F. (Photo)	—
128	3c Rose (65). Attractive strike of Boston, WHEEL cancel. Fine (Photo)	—
129	3c Rose (65). Very Fine strike of Putnam, Conn. Double Anchor , tiny thin (Photo)	—
130	3c Rose (65). Clear strike of " NIX " centered top R. Scarce (Photo)	—
131	3c Rose (65). Columbus, Ohio. Green Boxed Grid . Very Fine/ scarce in Green (Photo)	—
132	3c Rose (65). Large blue Masonic cancel, tiny thin. Very Fine strike (Photo)	—
133	3c Rose (65). Clear Masonic cancel, stamp centered to bot. left. Pretty strike (Photo)	—
134	3c Rose (65). Negative Masonic in circle, centered to top. Fine	—
135	3c Rose (65). Two Masonic cancels, Trowel and Square & Compass. V. G.-Fine	—
136	3c Rose (65). Two diff. type San Francisco Cog Wheel cancels. V. F.	—
137	3c Rose (65). Four diff. Fancy Geometrics each tied on small piece, one in blue. Fine-V. F.	—
138	3c Rose (65). Four diff. Leaf cancels, one has freak perfs. Fine	—
139	3c Rose (65). Five diff. clear Cross cancels. Fine	—

12. 140	3c Rose (65). Seven diff. Fancy Cancels includes Anchor, Shield, Green Grid, 5, 10, LV, Masonic Trowel. Fine lot	—
8.50 141	3c Rose (65). Eight diff. Rosette type cancels. Fine-V. F.	—
4.25 142	3c Rose (65), Attractive lot of 9 diff Geometric designs. Very Fine	—
9.50 143	3c Rose (65). Handsome bold strikes of ten pretty cancels. V. F.	—
4.25 144	3c Rose (65). Ten diff. unusual Grid cancels. Fine-V. F.	—
5. 145	3c Rose (65). Eleven diff Fancy Geometric cancels, attractive lot. F.-V. F.	—
8. 146	3c Rose (65). Eleven diff. Fancy Blue cancels. Fine-V. F.	—
12. 147	3c Rose (65). Twelve diff. Star cancels including scarce types. Fine-V. F.	—
7.50 148	3c Rose (65). Thirteen attractive diff. Paid cancels includes Paid 3 in blue. Fine-V. F.	—
22.50 149	3c Rose (65). Thirteen diff. Scarce cancels includes Lincoln & Stars, Skull, A. J., U. S., Masonic, Steamship, U. S. in Shield, Clover, U. S. in Wreath, Nice strikes but all stamps have defects	—
12.50 150	3c Rose (65). Sixteen diff. attractive Star cancels, includes scarce types, Fine-Very Fine	—
5. 151	3c Rose (65). Seventeen various target cancels, Very Fine strikes	—
8.50 152	3c Rose (65). 21 Fancy Cancels, nice strikes. Fine-Very Fine	—
11.50 153	3c Rose (65). Scarce Fancy Cancellation group of 21 diff. Nice strikes on stamps with defects or s.e. Interesting lot	—
10. 154	3c Rose (65). Hundred copies selected for shades and cancels, V. F.	—
23. 155	3c Rose (65). Collection of 107 Fancy and Interesting cancels includes Shield, Cog Wheel, Green, Stars, geometrics, grids, Pairs, Paid 3. Fine attractive lot	—
19. 156	3c Rose (65). Misc. lot of fancy and interesting cancels, 115 stamps includes Pairs, Stars, geometrics, Paid 3, U. S., Cog Wheel etc. Good-Fine	—
7. 157	3c Rose (65). 120 copies selected for cancellations , Fine-V. F.	—
8.50 158	3c Rose (65). 160 copies, all with Date cancels, mostly diff. Good-Fine	—
18.50 159	3c Rose (65). Five Hundred copies with attractive cancellations , unusually nice assortment, Fine, clean worthwhile lot	—
28. 160	3c Rose (65). 1600 copies, fair to V. G. with various cancellations including some fairly scarce and pretty strikes, interesting lot	—
12. 161	3c Rose (65). Tied with attractive strike of N. Y. City LEAF on neat cover	—
24. 162	3c Rose (65). Tied with handsome strike of unusual Paid 3 in Oval from Westborough, Mass. Very Fine	—

- 163 ☒ 3c Rose (65). Tied with pretty **SHIELD** in Circle from **Alexandria, Va.**
Very Fine (Photo) —
- 164 ☒ 3c Rose (65). Tied with "**H. P. 68**" in **Fancy Circle** from **High Point,**
N. C. Scarce and Fine pmk. (Photo) —
- 165 ☒ 3c Rose (65). Tied with clear **Shield** from **Cambridge, Mass.** on small
cover, Fine —
- 166 ☒ 3c Rose (65). Tied with fancy **Pin Wheel** cancel from **Unadilla, N. Y.**
Fine —
- 167 ☒ 3c Rose (65), Tied with pretty **Star in Circle** from **N. Y. City, V. F.** —
- 168 ☒ 3c Rose (65). Tied with fine blue **Leaf** from **Frederick, Md.,** cover
slightly stained at B., Scarce —
- 169 ☒ 3c Rose (65). Tied with straight line **Iconium, Ioa.,** stamp centered
to left, excellent strike on neat cover, Scarce (Photo) —
- 170 ☒ 3c Rose (65). Tied with **odd Pin wheel** from **Unadilla, N. Y.** on cover,
patriotic border on back, Very Fine (Photo) —
- 171 ☒ 3c Rose (65). Tied from **Petersburg, Va.** on unusual hand drawn **illus-**
trated cover, apparently tells a story, attractive —
- 172 ☒ 3c Rose (65). From **Toledo, O.,** cancel doesn't tie on attractive **Masonic**
American Hotel cover in green (Photo) —
- 173 ☒ 3c Rose (65). Tied with very fine "**L**" in **Circle** from **Brooklyn** —
- 174 ☒ 3c Rose (65). Tied on cover, with imprint **Adams Express Co. Old Point**
Comfort, Va., Fine —
- 175 ☒ 3c Rose (65). Attractive **U. S.** cancel from **Keeseville, N. Y.,** cover in one
corner torn —
- 176 ☒ 3c Rose (65). Two tied on cover with blue "**Registered**" cancel from
Cincinnati. Fine scarce —
- 177 ☒ 3c Rose (65). Two tied with Very Fine **LEAF** cancels, also **Paid All** on
printed circular to Germany, one stamp has str. edge, most attractive
(Photo) —
- 178 ☒ 3c Rose (65). Cancelled with **Pitchfork,** **Unadilla Forks, N. Y.** pmk. on
cover, Fine —
- 179 ☒ 3c Rose (65). Clear cancel "**Postage**" not tied, faults, scarce marking —
- 180 ☒ 3c Rose (65). Tied, **The Forks, Me.** pmk. corner card **Forks Hotel,** Fine —
- 181 ☒ 3c Rose (65). Tied on cover with "**Chicago to Dunlieth**" railroad pmk.
Fine 35. 88 —
- 182 ☒ 3c Rose (65). Block of Six and Single tied from **Wash. D. C.** on legal
size cover, "**Legation Haitienne**" corner card, Fine —
- 183 ☒ 3c Rose (65). Tied with clear **Masonic Square & Compass** with **Trowell**
in center from **Baltimore.** Fine, Scarce —

7-2	184	✉	3c Rose (65). Three covers, Steamboat, Held For Postage, Camp Den- nison markings, Fine	—
1150	185	✉	3c Rose (65). Five diff. corner cards includes University, Illustrated, Fine lot	—
7.	186	✉	3c Rose (65). Twelve diff. covers with Corner Cards includes Hotels, Academy etc. Fine lot	—
155	187	✉	3c Rose (65). Twenty-two covers includes Patriotic, Leaf, Dead Letter Oval, Patent, Triangle etc. Nice lot	—
125	188	✉	3c Rose (65). Covers, 125 includes wide variety of town cancels, some fancy. V.G.-V.F.	—
165	189	✉	3c Rose, 10c Green, 2c Black (65, 68, 73). Each cancelled with neat blue Masonic , Lonsdale, R.I. pmk. to France and used in combination with France #35 when forwarded to Italy. Handsome cover (Photo)	—
155	190	✉	3c Rose three, 2c Black, 10c Green (65, 68, 73). Tie each other on legal size cover with fancy "R.H." cancels, Rising Sun, Wis. pmk. Scarce marking	—
215	191	✉	5c Buff, 10c Green (67-68). Tied with grids on cover from Philadelphia to Hanover, Dec. 13, 1861 date in Phila. pmkd. Fine	82.50
155	192	✉	5c Buff, 10c Green (67-68). Cancelled with grids on legal size cover, Carlyle, Ill. , pmk. stamps are Very Fine	76.50
1050	193	✉	10c Green (68). Tied from N.Y. City on attractive illustr. cover of Adams Express Co. in blue. Fine	—
1750	194	✉	10c Green (68). Tied on cover dated Nagasaki, 1870 mailed to Shanghai , with oval "Fignatel & Co., Nagasaki, Japan" and Ms. "Per Costa Rica". Fine. Scarce usage	—
105	195	✉	3c Rose strip of 3, 10c Green pair, 12c Black (68, 94, 97). On cover with Cincinnati pmk., part tied, neat "Registered" marking	—
185	196		24c Red Lilac (70). Blue Star Within Star . Very Fine	—
185	197	✉	24c Steel Blue (70b). Tied on cover to England, transit markings. V.F.	—
155	198		30c Orange (71). Attractive Red grid cancel. Very Fine	10.00
350	199		30c Orange (71). Portion of blue Railroad cancel, faults	—
155	200	✉	90c Blue (72). Tied on neat cover from Boston to Hong Kong, various transit markings, addressed to Warren Delano from Roosevelt collection. Fine and Rare cover	350.00
75	201		2c Black (73). Neat strike of W in center of target. Fine	—
325	202		2c Black (73). Two copies, one has Star cancel. Fine-V.F.	—
155	203	✉	2c Black (73). Used Block cancelled with series of dashes, centered bot. left, scarce	75.00

- 204 ☒ 5c Red Brown, 10c Green, 30c Orange (68, 71, 75). Tied on cover from Shieffield, Mass., to Singapore, various transit markings. Fine (Photo) —
- 205 ☒ 5c Brown, 10c Green, 30c Orange (68, 71, 76). Tied on cover to Canton, China, various transit markings, attractive. Fine —
- 206 ☒ 15c black (77). Well centered copy tied on small cover to France 15.00
- 207 ☒ 24c Gray (78). Tied Cross cancel, Petersburg, Va., pmk. on cover to London. Fine —
- 208 ☒ 24c Lilac (78). Tied on cover in combination use with Great Britain 1p (20) went to London and forwarded to Liverpool. Very Fine (Photo) —
- 209 ☒ 3c Rose, Grill (88). Clear strike of Eagle with Shield, from Corey, Pa. Fine (Photo) —
- 210 ☒ 3c Red Grills (88, 94). Eighty-eight copies few unused, shades, some interesting cancels. Fair-Fine —
- 211 ☒ 3c Red Grill (94). Bold strike of Phila. False Teeth cancel. Fine (Photo) —
- 212 ☒ 3c Red, Grill (94). Tied with "Chi. to Davenport R. P. O." pmk. Fine —
- 213 ☒ 10c Green Grill (96). Neat negative Cross cancel. Very Fine (Photo) —

PATRIOTIC COVERS

- 214 ☒ Soldier's Letter on Patriotic cover Col. Curtenius, Eagle and Camp Scenes. Scarce design (Photo) —
- 215 ☒ Soldiers Letter, "Due 3", Winchester pmk. on Patriotic Col. L. B. Pierce in black. Fine. Scarce design —
- 216 ☒ Soldiers Letter, "Due 3", Port Royal, S. C. pmk. on homemade Patriotic. V. F. —
- 217 ☒ 3c Red (26). Tied from N. Y. City on neat Caricature Patriotic, stamped clipped slightly at R. Scarce (Photo) —
- 218 ☒ 3c Red (26). Cancelled with small broken circle from Luzerne, N. Y. on Patriotic, "New Quaker Bonnet" design. V. F. —
- 219 ☒ 3c Rose (65). Tied from Montague, Mass., on Caricature Patriotic, scarce design. V. F. (Photo) —
- 220 ☒ 3c Rose (65). Pair tied from Philadelphia, str. line "Registered" on Caricature Patriotic (Jeff Davis). Very Fine (Photo) —
- 221 ☒ 3c Rose (65). Tied on back of Patriotic showing Col. Birney, Baxter, Gosline. Fine (Photo) —
- 222 ☒ 3c Rose (65). Tied from Still Pond, Mass., on Patriotic cover Columbia's Brave Sons, Poem, Soldier, Liberty Heads etc. Fine —
- 223 ☒ 3c Rose (65). Tied from Ogdensburgh, N. Y., on embossed Gen. Scott Patriotic. V. G. —


- 224 ☒ **3c Rose (65). Civil War Soldiers letters** to wife and some of her replies, interesting lot of 28

1869 PICTORIAL ISSUE

- 225 ☐ **1c Buff (112). Very Fine FLAG cancel. Rare** (Photo)
- 226 ☐ **2c Brown (113). Neat Hiogo, Japan cancel, center top right**
- 227 ☒ **2c Brown (113). On cover with Detroit pmk., not tied, oval "Returned to Writers" marking, corner card of agent of Detroit & Cleveland Steamboat Line. Fine**
- 228 ☐ **3c Ultramarine (114). Very Fine PADLOCK cancel. Rare** (Photo)
- 229 ☐ **3c Ultramarine (114). Re-enforced Pair with Corry, Pa. EAGLE with Shield cancel, nice strike on one, other shows portion of cancel. Scarce** (Photo)
- 230 ☐ **3c Ultramarine (114). Four Fancy Cancels, includes 10 in Circle, circle of Diamonds, Stars. V.G.-Fine**
- 231 ☒ **3c Ultramarine (114). Tied with pretty red grid and Pendelton Hill, Conn., pmk. Very Fine**
- 232 ☒ **3c Ultramarine (114). Tied with Star in Circle on School imprint cover from Norridgewock, Me. V.F.**
- 233 ☒ **3c Ultramarine (114). Tied from New Orleans, also blue oval Steamer Carrie S marking on cover. Scarce packet**
- 234 ☒ **3c Ultramarine (114). Nine covers includes corner cards and interesting cancels. V.G. lot**
- 235 ☐ **3c-6c Ultramarine (114-115). Each tied on piece first with red cancels. V.G.**
- 236 ☐ **6c Ultramarine, 10c Yellow (115-116), neat Star cancels first in blue, latter has short perf**
- 237 ☒ **6c Ultramarine (115). Tied on cover from Boston to Nova Scotia. Fine** 15.00
- 238 ☒ **10c Yellowish Orange (116). Well centered copy tied with odd cancel on cover to France, various transit markings. Very Fine** (Photo) 22.50
- 239 ☒ **3c Ultramarine, 15c Brown & Blue (114, 119). Tied on registered cover. V.G.** 70.30
- 240 ☒ **3c Ultramarine, 3c Pink Entire (114, U34). Two attractive covers with corner cards. Fine**

BANKNOTE ISSUES

- 241 ☐ **1c Blue, Banknote. Attractive Glen Allen Star Precancel. Fine** (Photo)
- 242 ☐ **1c Blue Banknote, neat Skull & Crossbones cancel. Fine**

- 243 **1c Blue Banknote (182).** Scarce **North & South Handclasp** cancel from Worcester, Mass. Fine (Photo) —
- 244 **1c Banknotes,** 15 diff. with **fancy cancels.** Very Fine —
- 245 **1c Banknotes,** 17 diff. handsome fancy and scarce cancels. Fine-V. F. —
- 246 **1c Banknotes,** 28 mostly diff. **Fancy Cancels.** Good-Very Fine —
- 247  **1c Blue, 2c Brown.** Tied with Blue **Three Leaf Clover** cancel from **Chi-**
cago. Very Fine —
- 248 **1c-6c Banknotes.** Eight diff. each with clear **Stitch Watermark.** V.G.-V.F. —
- 249 **1c-6c Banknotes.** Eighteen diff. **Fancy Cancels.** V. G.-V. F. —
- 250 **1c-24c Banknotes.** Eight **N. Y. Foreign Mail** types 1, 4, 20, 35, 36, 41, 51,
few faults, Good lot —
- 251 **2c Brown (146, 157).** 15 copies selected for cancels. Fine-V. Fine —
- 252 **3c Green.** Scarce "**Morrison, N. Tr. 34**" railroad cancel, centered to
right (Photo) —
- 253 **3c Green,** neat **Skull & Crossbones** cancel. Fine (Photo) —
- 254 **3c Green.** Beautiful fancy **Intertwining Star.** V. F. (Photo) —
- 255 **3c Green,** another pretty strike of same (Photo) —
- 256 **3c Green.** Clear Worcester, Mass. **North & South Handclasp** cancel. Un-
usual type, stamps has thin. Rare (Photo) —
- 257 **3c Green.** Tied on small piece with scarce **Pointing Hand** cancel. Fine
(Photo) —
- 258 **3c Green.** Excellent strike of **PIG** from **Corry, Pa.** Scarce (Photo) —
- 259 **3c Green.** Attractive large **shield** cancel from **Pittsburg.** V. F. (Photo) —
- 260 **3c Green.** Neat **Horseshoe** cancel. V. F. (Photo) —
- 261 **3c Green.** Neat strike of **Four Legged Animal.** Fine —
- 262 **3c Green.** Danbury, Conn. **Top Hat** cancel. Very Fine (Photo) —
- 263 **3c Green.** N. Y. Foreign Mail Ty. 91. **Anchor & Stars,** exceptionally clear
strike of this scarce type, two short perfs. (Photo) —
- 264 **3c Green.** Two diff. blue **Boxed Anchors.** Fine-V. F. —
- 265 **3c Greens.** Two diff. **Masonic** cancels, one has few short perfs, nice
strikes —
- 266 **3c Green.** Strip of 3 each cancelled with large neat "**K**" from **Kenosha,**
Wis., on piece (Photo) —
- 267 **3c Greens.** Three different **O. K.** cancels one in a pair. V. G.-Fine —
- 268 **3c Greens.** Four diff. **Year Date** cancels, "76, 77, 80", includes "**76**" in blue
Shield. Clear strikes, perfs. touch on two —

✓ 5 -	269	3c Greens. Five diff. U. S. cancels in blue, purple and black. V. F.	—
3 -	270	3c Green. Five diff. Fancy Cancels , Devils Mask, "H. Brukk" in circle, three leaf clover, Year Dates. V. G.-Fine	—
42 -	271	3c Greens. Six diff. Shield cancels, two have str. edge. Fine strikes	—
12 -	272	3c Green. 7 scarce cancels, Don't U. S. M., Waterbury, Leafs, 76, U. S., Devils Mask, Pumpkin Head, all have faults or str. edges. Nice strikes	—
32 -	273	3c Greens. Ten diff. Fancy Cancels includes scarce designs, red Foreign Mail. Fine-V. F.	—
45 -	274	3c Greens. Nine Railroad and R. P. O. cancels. V. G.-Fine	—
65 -	275	3c Green. Ten diff. Postmasters' Monograms , etc., mostly rather nice strikes. Unusual and interesting lot; stamps Fair to Fine	—
✓ 75 -	276	3c Greens. Ten diff. Fancy Cancels includes Masonic, 76, 77, Don't U. S. M., Devils Mask, Leaf, U. S. Good-Fine	—
37 -	277	3c Greens. Eleven Red and Orange color cancels. Fine lot	—
15 -	278	3c Green. Eleven diff. Letters includes scarce types. V. G.-Fine	—
12 -	279	3c Greens. Twelve diff. bold Fancy Geometrics . Very Fine	—
47 -	280	3c Greens. Twelve diff. pretty Star cancels. Very Fine	—
65 -	281	3c Greens. Twelve diff. Fancy Cancels includes U. S., O. K. Star and Crescent. Very Fine	—
9 -	282	3c Greens. Fourteen diff. Fancy Cancels mostly Geometrics. Very Fine	—
✓ 55 -	283	3c Greens. Fourteen different Letters includes fancy types. Fine-V. F.	—
3 -	284	3c Greens. Fifteen diff. nicely struck town cancels, some in colors, part with year dates. Fine lot	—
1 -	285	3c Greens. Fifteen including strip of three with diff. Monogram and Initials. Scarce lot. V. G.-V. F.	—
✓ 50 -	286	3c Greens. Sixteen diff. Fancy Geometrics . Fine lot	—
4 -	287	3c Greens. Sixteen diff. Fancy Cancels includes Face, Skull & Crossbones, U. S. Checkerboard, Leaf etc., mostly with str. edges, nice strikes	—
35 -	288	3c Greens. Sixteen diff. mostly Fancy Geometrics , many in colors. Very Fine lot	—
✓ 5 -	289	3c Greens. Sixteen pairs and strips with Fancy Cancels . V. G.-V. F.	—
4 -	290	3c Green. Seventeen diff. Fancy Cancels includes Geometrics, fancy Letters, Stars. V. G.-V. F.	—
11 -	291	3c Greens. Eighteen diff. Fancy Cancels includes Devils Mask, Clover, Skull & Crossbones, Star & Crescent, U. S., O. G., etc. V. G.-Fine	—
7 -	292	3c Greens. Eighteen diff. Fancy Geometrics . Fine lot	—

293	3c Greens. Eighteen diff. Fancy Cancels includes Skull & Crossbones, Star & Crescent, 5, U. S., Leaf, etc. V. G.-V. F.	—
294	3c Greens. 19 diff. Fancy cancels . Good-Fine	—
295	3c Greens. Nineteen LEAF cancels mostly diff.. diff. includes Water-burys. Fine lot	—
296	3c Greens. Nineteen diff. Fancy Cancels including scarce designs. Fine lot	—
297	3c Greens. Nineteen various Blue cancels. Fine lot	—
298	3c Greens. Nineteen various Paid, Paid 3, 3, 5, 10, Free . V. G.-V. F.	—
299	3c Greens. Twenty diff. Fancy Cancels mostly Geometrics .Fine lot	—
300	3c Green. 21 copies selected for unusually handsome and striking examples of Fancy Cancellations . Very Fine	—
301	3c Greens. Twenty-one Poinsetta type cancels, mostly diff. V. G.-V. F.	—
302	3c Greens. Twenty-three Purple cancels. Attractive lot	—
303	3c Greens. Twenty-four diff. Cross cancels. Fine lot	—
304	3c Green. Twenty-five all tied on small pieces, includes Pumpkin Head, Shield, 1881, Leaf, Stars etc. Good-Fine	—
305	3c Greens. Twenty-six diff. CROSS cancels. Fine lot	—
306	3c Greens. 31 diff. Fancy Cancels . Fine lot	—
307	3c Greens. 206 all STAR cancels, many in color, wide variety. V. G.-V. F.	—
308	3c Greens. Balance of collection, 774 stamps, not mounted. Fancy Colored and interesting Cancels. Fair-Fine	—
309	3c Green Collection over 800 mounted includes Double Paper, Block, Multiples, mostly Fancy and Interesting cancels including U. S., R. R. Checkerboards, Monograms, Geometrics, Stars, Colored, Crossed, Leafs, etc., few covers. Fine lot	—
310	3c Greens. Over 800 copies, many interesting and fancy cancels	—
311	✉ 3c Green. Attractive clear strike of Eagle with Shield ties on cover with corner card from Corry, Pa. Fine (Photo)	—
312	✉ 3c Green. Tied with handsome strike "76" from So. Orange, N. J. Very Fine (Photo)	—
313	✉ 3c Green. Tied with bright purple Monogram from Oakes Corners, N. Y. Very Fine	—
314	✉ 3c Green. Tied with clear "DONT U. S. M." from Bridgeport, Conn. Fine, attractive (Photo)	—
315	✉ 3c Green. Tied with purple U. S. in Circle , Putnam, Conn. pmk. V. F.	—
316	✉ 3c Green. Tied with large Skull & Crossbones in Coffin from Pittsburgh. V. G.	—

125	317	3c Green. Tied on cover with indistinct cancel of Harrisburgh, Pa. Man in Coffin cancel, a second clear cancel on the cover	—
95	318	3c Green. Pair on cover with rare Jarrett & Palmer's Fast Trans Continental (Circus) train pmk., dated June 1, 1876, N. Y. to Frisco in 3½ days, cover torn in half and pasted together by addressee	—
275	319	3c Green. Pair on cover to Scotland. Tied with N. Y. Foreign Mail in black also red transit markings. V. F.	—
525	320	6c Carmine Banknote (148). Tied with red New York pmk. on neat cover, red oval B. F. Stevens U. S. Despatch Agent marking. Fine	—
75	321	6c Banknotes (148, 159). Four diff. N. Y. Foreign Mails , ty. 1, 20, 25, 102. Fine	—
850	322	6c Banknotes (148, 159). 10 copies with striking cancellations. Fine-V. F.	—
55	323	7c Banknotes (149, 160). Three copies, Cross, N. Y. Foreign Mail, Shield cancels, latter has str. edge others Fine-V. F.	—
45	324	7c Banknotes (149, 160) Three N. Y. Foreign Mail types 4, 20, 41. Very Good	—
135	325	7c Vermilion (149, 160). Five copies selected for cancellations V. F.	—
75	326	12c Dull Violet (151). Centered to B. Tied with red transit mark, also red Baltimore pmk. to Bavaria. Fine cover	25.00
45	327	15c Banknotes (152). Two, large # sign and N. Y. Foreign Mail. Fine	—
65	328	24c Purple (153). Odd cancel which frames Scott's portrait. Fine	—
650	329	1c Ultramarine (156). Tied with neat O. K. in circle from Beloit, Wis. F.	—
65	330	1c, 3c, 7c Banknotes (156, 158, 160). Tied with blue " Buffalo, N. Y. Registered " pmks. Fine	32.50
15	331	2c Banknotes (157, 178). N. Y. Foreign Mails, types 35, 52. V. G.	—
1250	332	3c Green, 15c Yellow Orange (158, 163). Each canceled with Shield , from Orono, Me. Fine	—
150	333	6c Dull Pink Banknote. Fine Shield cancel.	—
425	334	6c Banknotes. Four diff. N. Y. Foreign Mail cancels. Fine	—
350	335	6c Dull Pink (159). Four diff. N. Y. Foreign Mails ty. 1, 33, 51, 62, one has str. edge, nice strikes	—
1600	336	7c Vermilion (160). Horiz. Pair str. edge on left stamp tied from San Francisco to Germany, various transit marks. Fine	65.00
95	337	10c Brown on 3c Green Entire (161, U84). Each cancelled with large " L " with fancy boxed Le Grand, Nebr. pmk. on registered cover. V. F. (Photo)	—
135	338	30c Gray Black (165). Red transit and Red N. Y. Foreign Mail ty. 95. Very Fine	—

339	2c Vermilion (178, 183). Eleven handsome fancy cancellations. V. F.	—
340	2c Vermilion (178, 183). 21 copies selected for pretty cancels. V. F.	—
341	5c Blue (179). Tied on small, piece with N. Y. Foreign Mail ty. 70. Very Fine (Photo)	—
342	5c Blue (179). Tied on Newspaper Wrapper specially printed for Jarrett & Palmers Trans-Continental Circus train to San Francisco, dated Baltimore, June 1, 1876. Rare Railroad item (Photo)	—
343	5c, 10c Banknotes, 12 copies selected for cancellations. V. F.	—
344	1c Blue (182). Glen Allen, Precancel Star , str. edge at R	—
345	5c Brown (205). Beautiful bold strike of Masonic in circle. (Photo)	—
346	1c Gray Blue (206). Tied with Glen Allen, Va. Star Precancel on illustr. cover stamp centered to B. Very Fine cover (Photo)	—
347	6c Rose (208). Pair tied on Boston Registered cover V. F.	20.00
348	10c Brown (209). Tied with N. Y. Supplementary pmk. on attractive advert. cover. V. F.	—
349	2c Red Brown (210). Attractive Skull & Crossbones cancel V. F. (Photo)	—
350	2c Red Brown (210). Greenfield, Mass. Skull & Crossbones cancel. Fine (Photo)	—
351	2c Red Brown (210). Pretty strike purple Shield , centered to R.	—
352	2c Red Brown (210). Four cancels, Shield , Indian Head , 10 in Circle, "F. T." Fort Thomas, two have faults, nice strikes	—
353	2c Red Brown (210). Ten copies cancelled with attractive strikes of letters, monograms, etc. Scarce and Very Fine	—
354	2c Red Brown (210). 16 copies selected for unusually nice Fancy Cancellations . Very Fine	—
355	2c Red Brown (210). Attractive blue Campaign Cover of Blaine & Logan from Grand View, Iowa. Scarce (Photo)	—
356	2c Red Brown (210). Tied with purple Monogram on cover from Mount Wachusett, Mass. V. F.	—
357	2c Red Brown (210). Two covers, Straight Line Corning, N. Y. and Newington, N. H. in oval, both in script type. Fine, unusual	—
358	2c Red Brown (210). Eleven covers with Fancy Cancels . V. F.	—
359	2c Green (213). Large Pumpkin Head cancel. V. F. (Photo)	—
360	2c Green (213). 15 with striking cancels, several scarce. V. F.	—
361	2c Green (213). 21 copies with nice cancellations. F.-V. F.	—
362	2c Carmine (220). Pair each tied with Tree cancel from Marked Tree, Ark. , on large piece of cover. Fine, very rare cancel (Photo)	—

- 3- 363 2c Carmine (220). Attractive lot of 7 diff. **Fancy Cancells** includes Triangle, Arrowhead 8.00
- 12- 364 2c Carmine (220). 21 outstanding **Fancy Cancells**. Very Fine 13.50
- 12- 365 2c Carmine 1890-98. Eighteen unusually handsome strikes of **Fancy Cancellations**, many scarce. Fine to Very Fine 8.00
- 1050 366 ☒ 2c Carmine (220). Tied from **Wilmington, Del.** to illustr. cover **Stage-coach with Horses "Omnibus Line"**, stamp has few short perfs. Attractive (Photo)
- 19- 367 2c 1890-98 **Issues**. 255 copies selected for interesting and fancy cancels 8.00
- 30- 368 2c **Columbians (231)**. Collection of 889 stamps selected for fancy and interesting cancels, interesting lot 13.50
- 85 369 2c Carmine 1894-98. Seventeen striking **Fancy Cancellations**. Very Fine
- 35 370 ☒ 1c Green (279). Tied from **Phila.** on multi-colored illustr. cover Philadelphia Exposition of 1899. V.F.
- 13- 371 ☒ 1c, 2c, 4c Trans-Miss. (285-287). Tied on Span. American Patriotic, U.S. & Cuba Flags and Shield in full colors on cover to Germany, attractive. V.G.
- 14- 372 ☒ 4c-5c Trans-Miss. (287-288). Two **Span.-Amer. War Patriotic** Postal cards both to Hamburg, one has only 5c Trans-Miss. other both stamps, one has **U.S. German Seapost** pmk.
- 250 373 ☒ 1c Green with 1908 Christmas Seal (300, WX3). Tied on postal. Fine 8.00
- 8- 374 ☒ 2c Harding Imperf Plate Block of 6, 5c Hug.-Walloon (611, 616). Cancelled with **Bucking Broncho** on registered cover from **Prescott, Ariz.** in 1928. V.F. 13.50
- 350 375 ☒ **TRAIN CRASH** on **St. Paul, Minn.**, metered letter, Feb. 26, 1952, burnt at edges, handstamped "**Damaged by Fire in U.P. Tr. 5, Feb. 28, 1952**". Scarce cover 8.00
- 3- 376 ☒ Same as above 8.00

TERRITORIAL COVERS

- 1150 377 ☒ **Denver City, K. T.** "Paid light pmk. on fancy addressed cover, used in 1860. V.G.
- 1050 378 ☒ **Pensacola, (Florida)** March 7th, str. line on folded army letter (1823). Fine. Scarce 8.00
- 21- 379 ☒ **Saint Paul, Min. Ter.** in red circle "20" in red, also red Newark, N.J. circle. Fine 8.00
- 9- 380 ☒ **South Hanover, Ia.**, two territorials used 1843, 1846, Ms. "10", "25", blue "R" Phila. receiving mark on one. Fine 8.00

- 381 ☒ 3c Red (11). Tied with clear **Winono, M. T.** pmkd, stamp cut in at top. V. G. 1500 RB
- 382 ☒ 3c Fed (11). Tied with **Stillwater, M. T.** pmkd. Fine
- 383 ☒ 3c Red (11). Tied with **St. Anthonys Falls, M. T.** pmkd. Fine
- 384 ☒ 3c Rer (26). Tied with **Plattsmouth, N. T.** pmkd. Fine
- 385 ☒ 3c Red (26). Tied with "**Quindaro, K. T.**" pmk. V. G.
- 386 ☒ 3c Red (26). Tied with **Leavenworth City, K. T.** pmkd, also Wilmington, Del, pmkd. when forwarded to Phila. Fine
- 387 ☒ 3c Rose (65). Tied on cover with **Fort Abercrombie, D. T.** pmkd., also "Due 3 cts", and Cincinnati pmkd. when forwarded to Munsonville, N. H. Fine
- 388 ☒ 3c Rose (65). Scarce Nebr. Terr., **Mohart, Nebr.**, pmk., also Indian Bureau receiving mark. Fine
- 389 ☒ 3c Rose (65). **Neat Salem, N. T.** pmk. on cover, tied with Indian Bureau marking and Ms. cancel. Fine
- 390 ☒ 5c Brown (76). Two tied on cover to Canada, light **Fort Randall, Neb.**, pmk., fair
- 391 ☒ 2c Red Brown (210). Six diff. Territorial covers from Ariz., Dak. and N. Mex. Fine lot
- 392 ☒ 2c Green (213). Tied, **Crow Agency, Mont.** pmk. Very Fine Terr.
- 393 ☒ 3c Red Entire (U2). Tied with **Emporia, Kan.** pmkd. Fine Territorial
- 394 ☒ 3c Red Entire (U10). Tied with **Wyandott, K. T.** pmk. Very Fine (Photo)
- 395 ☒ 2c Grant Letter Sheet (U293). Tied with purple **Loring, Alaska 1888** pmk. V. F. Terr. Scarce

CALIFORNIA COVERS

- 396 ☒ **Michigan Bluff, Cal.**, in large thick circle, 10 and Paid. V. F.
- 397 ☒ **Mormon Island, Cala. Jan. 15.** in oval, boxed "10". Fine
- 398 ☒ **Sonora, California, Apr. 27, 1852**, blue straight line, "Paid" and large "6", cover torn at edge at left, clear markings (Photo)
- 399 ☒ **Sonora, California, Nov. 26, 1851**, blue straight line two Pairs and Ms. 6. Very Good 25-RK
- 400 ☒ 3c Red (11). Two on legal size covers tied with blue **Wells Fargo Express** cancel. V. G.
- 401 ☒ 10c Green, Ty. II (14). Margins all around, slight stain, tied **Columbia, Cal.** Fine

- 170- 402 ☒ 10c Green, Type III (15). Tied with San Francisco pmk. Blue **Noisy Carrier's Mail** in box. Very Fine. Scarce (Photo) —
- 60- 403 ☒ 1c Blue, 3c Red strip of 3 (22, 25), on cover from N. Y. to San Francisco each tied with "Ocean Mail" pmk. Aug. 5, 1857, early usage of 1c, attractive, scarce cover, few short perfs —
- 135- 404 ☒ 3c Red (26). Tied from San Francisco on cover to La Grange, Tenn., with illustrated **Stagecoach with 4 Horses**. Fine. Scarce (Photo) —
- 8- 405 ☒ 10c Green, Ty. V (35). Tied with red grid and N. Y. **Clipper Ship** cancel to San Francisco, Ms. "Steamer". Fine —
- 16- 406 ☒ 10c Green (35). Grid cancel, not tied, **San Jose, Cal.**, pmk. on illustr. **Stagecoach & 6 Horses** on extensively repaired cover, nice appearance (Photo) —
- 20- 407 ☒ 3c Rose (65), used in combination with **Hawaii**, 5c Blue (32) on small neat cover, red "**Honolulu, U. S. Postage Paid**" pmk, black San Francisco Pmk., also **Lahaina P. O.** pmk. on back. Fine (Photo) —
- 1650- 408 ☒ 1c-3c, 1861-83 Issues. Nine diff. **Calif.** covers includes Wells Fargo franks, corner cards, nice lot —
- 2- 409 ☒ 3c Green (158). Tied on cover, Octagon **Weaverville, Calif.** pmk. V. G. —
- 11- 410 ☒ 2c Red (279). Tied from San Francisco, 1900, multi colored illustr. cover of **50th Anniversary of Calif. Statehood**. Handsome. Scarce (Photo) —
- 7- 411 ☒ 3c Red Entire (U2). Blue Wells Fargo **Marysville** oval and Paid in oval. Fine —
- 13- 412 ☒ 6c Green Entire (U14). Blue **Columbia, Cal.** pmk. Fine —
- 19- 413 ☒ 10c Green Entire (U16). Tied with grid of blue square "**Marysville, Cal. Paid By Stamps**" pmk., contains interesting 4 page miners letter, describes in detail placer mining, costs, conditions. Fine —
- 14- 414 ☒ 10c Green Entire (U16). Tied with blue square grid, **Marysville Paid by Stamps** pmk. V. F. —
- 550- 415 ☒ 10c Green Entire (U16). Tied with San Francisco pmk. Ms. "By Overland Mail, Via Los Angeles" to New York —
- 11- 416 ☒ 10c Green Entire (U17). Tied **Yankee Jims, Cal.** cancel. V. F. (Photo) —
- 10- 417 ☒ 10c Green Entire (U18). Neat **Mokelumne Hill, Cal.** pmk. tied. V. F. —
- 12- 418 ☒ 10c Green Entire (U18). Neat red **Yreka, Cal.** pmk. cover has crease —
- 45- 419 ☒ 10c Green Entire (U18). Tied from **Stockton, Cal.** Fine —
- 21- 420 ☒ **Letters Written From California & West**, 24 includes Rough & Ready, Fort Laramie, Randolph Flats, Oroville etc. Mostly 1847-54 period. Interesting lot, no postal markings —

PONY EXPRESS COVERS

- 421 ☒ **Running Pony**, San Francisco in large **red** oval ties 10c Green Entire (U15), Green **St. Joseph, Mo.** pmk. plus Ms. "**Pony Express**", extremely fine. A great rarity (Photo) —
- 422 ☒ **Running Pony**, San Francisco in large blue oval tied \$2.00 Red Pony (143L1) on 10c Green Star Die Entire (U33), stamp also tied green **St. Joseph, Mo.** and cover cancelled additional blue Paid in small oval. A Beauty (Photo) —
- 423 ☒ **Running Pony** blue oval San Francisco, magnificent strike tied \$2.00 Red Pony stamp (143L1), to 10c Green Star Die Entire (U33), Stamp tiny closed tear immaculate cover. A Gem (Photo) —
- 424 ☒ **Running Pony** in blue oval San Francisco tied **\$1.00 Red and \$2.00 Green** (143L3-L4), in **combination** with vertical pair 10c Green (35), cover has closed tear, one 10c Green defective, **Ex Seybold Collection**. Extremely rare usage, no other record of similar usage. A great rarity (Photo) —
- 425 ☒ **Pony Express, 10c Brown (143L7)**, defective copy tied with blue oval **Sac. Messenger** on 3c Pink Entire (U34), blue oval Virginia City Co. cancel on cover bearing Wells Fargo Frank. Attractive (Photo) —
- 426 ☒ **Pony Express, 25c Blue (143L8)**. Tied **Wells Fargo Virginia City, N. T.** in blue oval to 3c Pink Entire (U35), bearing black Wells Fargo Frank in rectangle. Very Fine (Photo) —
- 427 ☒ **Pony Express, 25c Blue (143L8)**. Tied **Wells Fargo** cancel in blue stamp damaged on 3c Pink Entire (U34), bearing black Wells Fargo Frank —
- 428 ☒ **Pony Express, 25c Red (143L9)**. Tied stencil type oval **Wells Fargo Michigan Bar** on 3c Pink (U59), tied with additional strikes on extremely fine cover bearing black Wells Fargo. Rare and finest possible condition (Photo) —
- 429 ☒ **Pony Express, 25c Red (143LU3)**, printed on 3c Pink Entire (U35), printed address Gould & Curry, Silver Mining Co. Very Fine, unused. Rare (Photo) —

WESTERN EXPRESS COVERS

- 430 ☒ **Alta Express Co.**, fancy illustr. frank on 3c Red Entire (U10) addressed, no cancel, imprint on back of provision dealer from **Georgia Slide, Cal.** Ms. "With \$2013.00 Gold Dust". V.F. —
- 431 ☒ **Alta Express Co.**, illustrated Frank on 3c Red Entire (U10), tied faint red Co. cancel V.G. —
- 432 ☒ **J. Bamber & Co's Contra Costa Express**. Frank in black oval on 3c Red Entire (U10), Ms. "Redwood City, July." Fine —

26. 433 ☒ **J. Bamber & Co. Contra Costa Express** in black oval on 3c Star Die Entire (U27), tied with **answer by Bamber & Co's Express** in rectangle. Fine
16. 434 ☒ **J. Bamber & Co's Contra Costa Express** frank in black oval on 3c Pink Entire (U34). V.F.
75. 435 ☒ **Bamber & Co's Express, W.B. Hardy's Office, Oakland,** Frank on 3c Pink Entire (U34), faint red Co. marking also blue Wells Fargo marking, soiled slightly V.G.
165. 436 ☒ **Bamber & Co's Express.** Frank in black scroll on 3c Pink Entire (U35). tied with Co. cancel in red. V.F.
18. 437 ☒ **Bamber & Co's Express.** Franks on 3c Entires (U35, U59, U82), all with Co. cancels. Fine
9. 438 ☒ **Bamber & Co's Express** Frank on 3c Pink Entire (U59), tied Co. blue cancel, imprint General Store, **Mission San Jose.** Fine
75. 439 ☒ **Bamber & Co's Express** Franks on 3c Entires (U59, U82). three. V.G.
12. 440 ☒ **Bamber & Co's Express, W. B. Hardys Office Oakland** Frank on 3c Pink Entire (U59), tied Wells Fargo San Francisco in blue plus red Bamber Co. cancel. Fine
19. 441 ☒ **Central Overland & Pikes Peak Express Co. Oct. 4 Denver City, K. T.** and same marking **St. Joseph, Mo. Oct. 10** on repaired cover, bearing 10c Green (14) not tied. Scarce
33. 442 ☒ **Central Overland & Pikes Peak Express Co. Jul. 3 Denver City, K. T.** on cover, with 3c Red (26), tied from St. Joseph, Mo., cover torn at top. Scarce
6. 443 ☒ **Eureka Express Co.** Frank on 3c Green (U82) front only tied Wells Fargo cancel, unaddressed
105. 444 ☒ **Everts, Davis & Co. Daily Express.** Frank on 10c Green Entire (U17), tied, blue **Marysville Paid by Stamps** faint strike, cover worn. Rare (Photo)
725. 445 ☒ **Everts, Wilson & Co's Express.** Frank on 3c Red Entire (U27), tied with **Marysville Co.** cancel to Port Win. Fine. Scarce (Photo)
75. 446 ☒ **Everts Wilson & Co., Daily Express.** Frank on 10c Green Entire (U16), red **Strawberry Valley, Cal.** pmk. V.F. Scarce (Photo)
15. 447 ☒ **Freeman & Co's** red Frank in scroll on 3c Red Entire (U10), tied with **San Francisco Co.** cancel. V.F.
13. 448 ☒ **Freeman & Co's** red Frank in scroll on 3c Red Entire (U10), light **Shasta** Co. cancel. Fine
11. 449 ☒ **Freeman & Co's Express** red Frank on 3c Red Entire (U10), four San Francisco Co. cancels, part of paste up, attractive
675. 450 ☒ **Freeman & Co's Express** Frank in red on 3c Red Entire (U10), no cancel, imprint General Store, Coulterville. V.F.



NEW YORK

19

In His Majesty's Service
To His Excellency Horatio Sharpe Esq
Gov^r of His Majesty's Province of Maryland
or to the Commanding Chief of the Province for the
Time being
1/8
J. Ashurst

32

REGISTERED
No 292

28

MOBILE ALA
JUN 23
PAID

51

Ms. Sarah J. Hall
Ed. Sadler Book

47

10
17 JUN
PAID
H. Bryan Bay
109
Pine
Money 20



66

62

Mr. Wm. M. M. M.

60
Repfield



67

103
Wm. M.



100

18
105



"The spirit of our Fathers
shall start from every wave!
For the South is now a field of life!"

Rev. J. B. Morrison
Pittsburg

164
JAN 4
N.D.



106
HARRISON
INDIANA
JUN 23



Mr. Robert S. Morrison
Care of Rev. John B. Morrison & Co
Indian



101

163
Mr. John B. Morrison
Care of Rev. John B. Morrison & Co
Indian

169
Capt
36

170
UNADILL
JUL 1

172
AMERICAN HOTEL
HUBBARD & LEAVITT
CROFTINGTON
ALBANY, O.H.



Mrs. J. Prosser
Ratt Street
New York



162

Est. Germania.
PAID ALL

177

*French Mail
Via Montreal*

200

War in Selous 1-1897

*LONG ISLAND
1897*

189

St. Louis

St. Louis

St. Louis

St. Louis

St. Louis

204



219



193

Albert, Dabbs



217



214



208

*Hand Esq
Brothers & Co*

*1638
REGISTERED*

220

*Francis Loper Esq
St. Louis*



221



238

*Thos & Co.,
Paix,*

*LE GRAND, NER
AUG 15,
1897.*



314



311



312



313

*Field Letter No.
Chicago.*

337

4594



*How to the man who
We're going to have him stay
And a little more often and I mean
Both brave men, and and true!*

355



355



346



362

The Great Wheel in the Baltimore Weekly Sun

JARRETT & PALMER'S



*Mrs. R. B. Scott
Palace Hotel
San Francisco*

Special Fast Trans-Continental Train,

BALTIMORE, THURSDAY, JUNE 1, 1896.

342

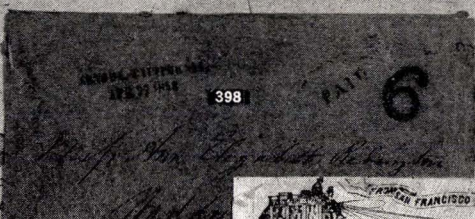


362

Ark



366



398



394

ma & Black
640 N. Duane St.

402

Miss Susan Clark



406

Published by HITCHCOCK & HOSKINS, San Francisco.



407

Miss Lucy Tellman
San Francisco

410



404



416

Cory Express
A. W. Campbell Esq
San Francisco

421

Dr. M. J. Pimentel

422



423

Mr John Foley
Gale Building

Wells Fargo & Co.

428

Antonio Lameri

Wells Fargo & Co.

425

George O Whitney Esq
Virginia

429

GOULD & CURRY

Wells Fargo & Co.

426

SOL. WANGENHEIM.

SAN FRANCISCO.

S. Parsons Esq
92 Bradman St
New York

424



48



70



71



90



91



92



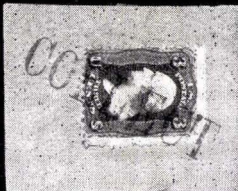
93



114



123



124



126



127



128



129



130



131



132



133



209



211



213



225



228



229



241



243



252



253



254



255



256



257



258



259



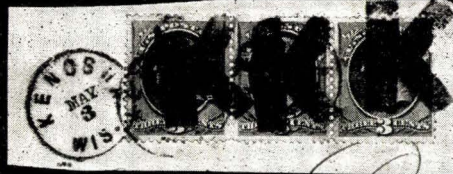
260



262



263



266



338



341



345



349



350



359



572



574



575 A



577



579



580



582



588



589



597

Wells Fargo & Co.



Wells Fargo & Co.

W.L. PRITCHARD'S
FAST FREIGHT LINE



Wells Fargo & Co.

516

John Scanlan Esq
Roxbury
Boston

W.L. PRITCHARD'S
FAST FREIGHT LINE

Wells Fargo & Co.

517

Wells Fargo & Co.

518

Wells Fargo & Co.

519



Edwin Holmes Esq
Secretary of the New England
County Agricultural Society
Norwich
Conn

521



522



523

Print Change Esq
Albion
Tenn

531



533



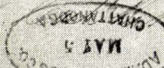
563

Saml M. W. Davidson
12 11 14

Mrs. Mary Brown



565



Print Change Esq
Albion
Tenn

Anti-Tobacco Book Depository.
REV. A. SIMS, PUBLISHER.

555

566



959

H. Petersburg



Guide to Adeline
113. Bible Ave.
New York.

858



599

602

603

604

605

607

608



609

619

622

624

627

630



645

647

650

657

723



728

730

731

715



716



871 EX



835

841

842

843

846

848

849



865

866

903

904

905

908

910

921

- 412 451 ☒ **Freeman & Co. Calif. & Atlantic Express** in Green ribbon under superimposed red **Wells Fargo** double frank one vert., one horiz on 10c Green Entire (U18) pmk. **Placerville, Cal.** on paste up, rare. Fine (Photo)
- 12 452 ☒ **Greenhood & Newbauer.** Frank on 3c Pink Entire (U59), **Weaverville, Cal.** pmk. V.F.
- 12 453 ☒ **Greenhood & Newbauer.** Frank on 3c Pink Entire (U59), **Weaverville, Cal.** pmk. partly faint. Fine
- 200 454 ☒ **Hall & Allens Express Dutch Flat** in small oval, extremely fine strike on 3c Red Entire (U10) with **Wells Fargo Frank**, cover age stained. Rare (Photo)
- 95 455 ☒ **J. W. Hoag & Co's Contra Costa Express Oakland** in red oval on 3c Red Entire (U10), boxed red "Paid" to San Francisco. V.F. Rare (Photo)
- 120 456 ☒ **Holladay Overland Mail & Express Co.** Frank on 3c Pink Entire (U58), tied **Pioneer City I. T. Co.** cancel to Idaho City. Very Fine Idaho Territorial (Photo)
- 125 457 ☒ **'Hunter & Co's Express to & from all parts Eldorado & Placer Counties American Rivers & Sacramento Connecting with Adams & Co'** in blue Scroll, pmk. **Placerville, Cal.** in black circle "10". Fine. Rare (Photo)
- 62 458 ☒ **Lamping & Co's Express.** Frank on 3c Pink Entire (U58), tied with **Downieville Co.** cancel and **Wells Fargo Marysville** cancel. Very Fine. Scarce (Photo)
- 100 459 ☒ **Langtons Pioneer Express**, fancy frank, 10c Green (35) tied from San Francisco, few short perfs, red oval **"Eureka, Sierra Co."** pmk. to Gonzales, Texas. Attractive (Photo)
- 460 ☒ **Langton's Pioneer Express** fancy black Frank on 3c Red Entire (U10), large oval **Marysville Co.** cancel, torn at top
- 461 ☒ **Langton's Pioneer Express** fancy blue Frank on 3c Red Entire (U10), tied blue **Wells Fargo Marysville** cancel, not addressed. V.F. (Photo)
- 462 ☒ **Langton's Pioneer Express** fancy black Frank on 3c Pink Entire (U34), tied **San Juan Co.** cancel and **Well Fargo Nevada** cancel. Fine
- 34 463 ☒ **Langton's Pioneer Express.** Frank in ornate scroll on 3c Pink (U58), front only tied with large oval **Downieville Co.** cancel, also **Wells Fargo Marysville** canc. Fine
- 464 ☒ **Morley, Coulkins & Co's Daily Express.** Frank on 10c Green Entire (U18). Tied, with **Marysville** Paid by Stamps cancel. Rare. Very Fine (Photo)
- 465 ☒ **Pacific Express Co. Sacramento** in large blue oval on 3c Red Entire (U2), cover has closed tear. Scarce
- 22 466 ☒ **Pacific Express Co.** Frank, Horseman on 3c Red Entire (U10) with blue San Francisco Co. cancel. Fine (Photo)
- 32 467 ☒ **Pacific Stage & Express Co.** Frank, **Stagecoach with 6 Horses** on 3c Pink Entire (U35), tied with **Nevada City, Cal.** pmk. Very Fine. Rare (Photo)

- 468 ☒ **Pacific Union** Frank in red under black **Wells Fargo Frank** on 3c Pink (U58) tied on front only **Union Pacific R. R.** pmk. Fine
- 469 ☒ **Pacific Union Express Co.** Franks in red ribbons on 3c Pink Entires (U58-59). Six diff. including advert, Santa Clara, Virginia City, Vaca Station. V. G. lot
- 470 ☒ **Pacific Union Express Co.** Red frank under black Wells Fargo Frank superimposed on 6c Pink Entire (U63), tied **Nevada Co.** cancel. Fine
- 471 ☒ **River Express Stockton & San Francisco** Green Frank on 2c Green (U312) front tied with red **Stockton Co.** cancel. Attractive **(Photo)**
- 472 ☒ **Singer & Marrow Feather River Express.** Frank on 10c Green Entire (U17), tied with blue grid, **Marysville Paid by Stamps pmk.,** Fine. Rare **(Photo)**
- 473 ☒ **J. A. Stones Express** in red Frank on 3c Pink Entire (U35), tied **Dutch Flat Wells Fargo** cancel, cover has slight defect, Fine markings. Rare **(Photo)**
- 474 ☒ **Todd's Express San Francisco,** in blue oval, boxed "Not Paid" addressed to "Tuttletown near Sonora". Very Fine **(Photo)**
- 475 ☒ **Truman & Co's Express.** Frank on 3c Pink Entire (U59), Ms. "S.J. 27/1/68" pmk. fram San Jose. Fine
- 476 ☒ **Truman & Co's Express.** Frank with Train on 3c Pink (U59) addressed, no cancel. V. G.
- 477 ☒ **Wheeler, Rutherford & Co's Express.** Frank in fancy scroll on 3c Pink Entire (U59) tied with light **La Porte** cancel also Wells Fargo **Marysville** cancel, small repair at top. Scarce **(Photo)**
- 478 ☒ **L. H. Wells Moor's Flat & Eureka Express** in fancy Frank on 3c Pink Entire (U58). Tied **Nevada Wells Fargo Co.** cancel, blue **Graniteville, Cal.** pmk. Very Fine. Scarce **(Photo)**
- 479 ☒ **Whiting & Co's Feather River Express.** Frank on 3c Pink Entire (U59) tied with Wells Fargo **Oroville Co.** cancel. V. F. **(Photo)**

WELLS FARGO & CO.

- 480 ☒ **Wells Fargo & Co.** Franks on 3c Red Entires (U9), **Stockton** and **Sonora Co.** cancel. Fine
- 481 ☒ **Wells Fargo & Co.** Frank in blue, on 3c Red Entire (U10), tied **Sac. City Co.,** cancel. Fine
- 482 ☒ **Wells Fargo & Co. Frank** on 3c Red Entire (U10). Tied with Wells Fargo **Steamboat** cancel. Very Fine **(Photo)**
- 483 ☒ **Wells Fargo** Frank on 3c Red Entire (U10), blue **San Francisco Co.** cancel V. F.
- 484 ☒ **Wells Fargo & Co.** Frank on 3c Star Die Entire (U26). Tied **Georgetown Co.** cancel. Fine

- 11- 485 ☒ **Wells Fargo & Co.** Frank on 3c Star Die Entire (U27), tied **Coulterville** Co. cancel. V.F.
- 55- 486 ☒ **Wells Fargo** Frank on 3c Star Die Entire (U27), tied blue San Francisco Co. cancel. V.F.
- 125- 487 ☒ **Wells Fargo & Co. Columbia** in blue oval tied 3c Red Entire (U10). Bank corner card, interesting bank enclosure. Fine
- 13- 488 ☒ **Wells Fargo & Co.** Red Frank on 10c Green Entire (U16), tied with N.Y. pmk. to Maine. Fine
- 10- 489 ☒ **Wells Fargo & Co.** Frank in red scroll on 10c Green Entire (U18), tied N.Y. pmk, slightly foxed
- 21- 490 ☒ **Wells Fargo & Co.** Frank on 3c Star Die Entire (U27), tied **San Bernardino** Co. cancel. V.F.
- 21- 491 ☒ **Wells Fargo & Co.** Frank on 3c Star Die Entire (U27), tied **El Dorado** Co. cancel. Fine
- 18- 492 ☒ **Wells Fargo & Co. Boise Mines - Paid 50c.** Frank in red on 3c Pink Entire (U34), tied with N.Y. Geometric pmk. slightly age stained. V.G.
- 11- 493 ☒ **Wells Fargo & Co.** Frank which is **square at one end** on 3c Pink Entire (U35), tied Co. cancel. Fine
- 4- 494 ☒ **Wells Fargo & Co., Paid over our Mexican Coast & Calif. Express - 35 cts.** Frank on 10c Yellow Green Entire (U40), tied **Mexican Route** Co. cancel, not addressed. V.F.
- 12- 495 ☒ **Wells Fargo & Co.** Franks on 10c Yellow Green Entires (U40-41), tied with New York pmks. Fine
- 6- 496 ☒ **Wells Fargo & Co.** Frank in red on 10c Yellow Green Entire (U41), tied San Francisco Co. cancel. V.G.
- 20- 497 ☒ **Wells Fargo & Co.** Frank on 3c Pink Entire (U59), tied with **Oreanama** Co. cancel. Fine, scarce town
- 9- 498 ☒ **Wells Fargo** Frank on 3c Pink Entire (U59), tied with Co. cancel on Sacramento & San Francisco advert. cover. Fine
- 9- 499 ☒ **Wells Fargo & Co.** Frank on 6c Purple (U64), **Union Pacific R.R.** pmk. Fine
- 19- 500 ☒ **Wells Fargo** Frank on 9c **Orange Yellow** Entire (U67a), tied with **Gold Hill**, Nev. Co. cancel. Fine. Scarce
- 27- 501 ☒ **Wells Fargo** Frank on 12c **Brown** Entire (U68), tied red **Los Angeles** Co. cancel, not addressed. Fine. Scarce
- 27- 502 ☒ **Wells Fargo** Frank on 12c **Red Brown** Entire (U69), four blue "**Pacific Union Express Co. New York**" cancels, attractive though slightly frayed at top. Scarce
- 23- 503 ☒ **Wells Fargo** Frank on 18c **Red** Entire (U70), tied with **New York Co.** cancel to San Francisco, rare usage East to West. Fine

- 504 ☒ **Wells Fargo** Frank on **18c Red** Entire (U70), tied blue **Virginia Nev. Co.** cancel. Fine. Scarce
- 505 ☒ **Wells Fargo** Frank on **24c Blue** Entire (U71), tied faint magenta **Virginia, Nev. Co.** cancel. Fine. Scarce
- 506 ☒ **Wells Fargo** Frank on **24c Blue** Entire (U71), tied with magenta **Virginia Nev. Co.** cancel, attractive though cover torn. Scarce
- 507 ☒ **Wells Fargo** Frank on **30c Green** Entire (U72), three **San Francisco Co.** cancels, not addressed. V. F. Scarce
- 508 ☒ **Wells Fargo & Co.** Frank on 3c Green Entire (U82), tied **New Albuquerque, N. M.** pmk. Fine Terr.
- 509 ☒ **Wells Fargo & Co.** Frank on 3c Green Entire (U159). Tied **Palisade Co.** cancel, printed on cover "**W. L. Pritchard's Fast Freight Line** from Palisade to Pioche vial Mineral Hill, Eureka & Hamilton". V. F. Scarce (Photo)
- 510 ☒ **Wells Fargo & Co.** Frank on 3c Green Entire (U159), tied with **San Jose Co.** cancel on **advert.** cover of Music Co. with illustration of **Piano**. V. F.
- 511 ☒ **Wells Fargo** Franks on 6c Red Entires (U181-82), tied with **Napa and Santa Clara Co.** cancels. Fine
- 512 ☒ **Wells Fargo & Co.** Frank on 2c Red Entire (U231), tied "**Ogden & San F. R. P. O.**". V. F.
- 513 ☒ **Wells Fargo & Co.** Franks on 3c, 4c, 6c Entires, 23 different includes Sonora, Virginia City, Advert., Sebastopol, Austin, N. T., Eureka, Nev. Soloma, Stockton, Mineral Hill, interesting lot
- 514 ☒ **Wells Fargo Express Orange Labels**, on large covers from Santa Cruz and San Francisco, also Wells Fargo Newspaper stamp #143LP11 unused with period missing after "Co's"
- 515 ☒ **Mexican Wells Fargo Covers**, 24 covers all with franks, eight are used. V. G.-V. F.

CANADIAN WELLS FARGO

- 516 ☒ **Wells Fargo & Co.** Frank in black on 6c Purple Entire (U64) pmk. New York and bearing defective 5c Brit. Columbia (9), tied numeral in grid and str. line "For Great Britain and Ireland" plus blue co. oval **Victoria**. Fine cover. Scarce (Photo)
- 517 ☒ **Barnards British Columbia Express** in fancy vert. scroll at left plus black Wells Fargo Frank **Victoria, Vancouver Island**, 3c Vermilion Canada (41) tied blue Wells Fargo **Victoria** oval. Rare (Photo)
- 518 ☒ **Wells Fargo & Co. Victoria, Vancouver Island.** Frank in black rectangle, 3c Vermilion Canada (41), tied Wells Fargo **Victoria** in blue. Scarce (Photo)

- ✓ 50. 519 ☒ **Wells Fargo & Co. Victoria, Vancouver Island.** Frank in black rectangle two 6c Brown Canada (39), tied blue oval Wells Fargo **Victoria**. Scarce (Photo) —
- 2750 520 ☒ **Dietz & Nelsons Brit. Col. & Victoria Express.** Frank on 3c Pink Entire (U59), tied with Victoria Wells Fargo canc. also W. F. Frank on paste up, stamps missing, scarce —

BALLOON COVERS

- 100 521 ☒ **3c Red (26).** Tied with **Paterson, N. J.** pmk. on illustrated **Balloon** cover. Very Fine and a handsome cover (Photo) —
- 100 522 ☒ **3c Red (26).** Tied with **Adrian, Mich.** pmk. on illustr. **Balloon** cover of "Wm. D. Banister, Aeronaut". Very fine, interesting cover (Photo) —
- 25 523 ☒ **3c Green (207).** From **Mohawk, N. Y.** on illustr. **Balloon** cover in red. Attractive. V. F. (Photo) —
- 10 524 ☒ **2c Red (220).** Tied from **Oswego, N. Y.**, on illustr. **Balloon** cover. V. F. —
- 10 525 ☒ **2c Red (267).** From East Palestine, Ohio on illustr. **Balloon** cover, interesting enclosure. Fine —
- 11 526 ☒ **2c Trans-Miss. (286).** Tied from **Newark, Del.** on illustr. **Balloon** cover with colorful illustr. letterhead enclosure, attractive —

OFFICIALS, ENTIRES

- 9 527 **Officials, 2c-12c, Fifteen Fancy Cancellations.** Nice lot. Very Fine —
- 3 528 **15c War (O90). Indian Head** cancel. V. G. —
- 529 **3c Interior (O98).** Handsome strike **Kicking Mule** on piece with Port Townsend, Wash. pmk. Very Fine (Photo on Cover) —
- 15 530 ☒ **3c Red Entire (U10).** Tied with New Orleans pmk., also "Steam" and large oval **Golden Age** Packet marking. V. G. —
- 70 531 ☒ **3c Red Entire (U26).** Tied with New York, Mar. 7, 1861 addressed to Athens, Tenn., large green oval **Adams Express Co. Great Eastern, Western & Southern Express Forwarders.** Very Fine. Rare (Photo) —
- 6 532 ☒ **3c Pink (U34).** Two entires with diff. **Union Springs, N. Y.** fancy Star cancels. Fine —
- 75 533 ☒ **3c Green Entire (U82).** Tied with **Waterbury, Conn. SHIELD.** Very Fine (Photo) —
- 3 534 **3c Green Cut Sq. Env. (U163, etc.).** Five unusually handsome fancy canc. and town markings. Very Fine —
- 3 535 **2c Brown Cut Sq. Env. (U277 etc.).** Five nice cancellations including str. line **STEAMBOAT, oval Post Office Cheltenham, Pa.,** etc. Very Fine —

536	✉	2c Brown Entires. Five diff. Fancy Cancels includes Skull & Crossbones . Enfield Flag V. G.-V. F.	—
537	✉	1c Blue Entire (U300). Tied with JUG labelled " Gin " from Madison, N. Y. Fine. Scarce	—
538	✉	2c Green Entire (U311). Tied with Thomaston, Me. Puhpkin Head cancel. Fine	—
539		2c-3c Cut Square Env. 19th Cent. 7 scarce & striking Cancellations. V. F.	—
540		19th Cent. Cut Sq. Env. 27 selected for cancellations . Fine-V. Fine	—
541	✉	Entires, 19th Century. 14 diff. with attractive cancels includes 4 diff. U. S., Steam, Blue Leaf, 81, Univ. of Va. V. G.-V. F.	—

LOCALS

542	✉	Boston Carrier, 1c Blue (3LB1). On cover, not tied, red Boston pmk. Very Good	50.00
543	✉	Glen Haven Daily Mail, 1c Green (71L3), on ladies envelope, no markings. V. F.	125.00
544	✉	Hale & Co. Springfield in red oval, boxed "Collect Six Cents for Hale & Co." V. F. stampless	—
545	✉	Pomeroy's Letter Express, 5c Yellow (117L1), cancelled (not tied) with red Paid, red boxed Boyd's City Express Post on cover. V. F.	25.00
546	✉	Swart's City Dispatch Post, 2c Dark Green (136L2), not tied red New York pmk., oval Company cancel, on back red oval "Letters For N. York City Direct to Chatham Square Post Office". Fine	75.00
547	✉	Swarts, 2c Red (136L4), cancelled black Star, red N. Y. pmk. V. G.	25.00
548	✉	Swarts, 1c Red (136L9). Four margin copy tied with comp. marking. Very Fine cover	15.00
549	✉	Swarts, 1c Red (136L9). Tied on small cover with comp. marking. Fine	15.00
550	✉	Swarts, 1c Pink (136L10). Tied with 3c Claret (11a) on cover. Fine	25.00
551		Wells Fargo, \$2.00 Green Pony Express (143L4). Vert. Pair. V. F.	16.00
552	✉	Locals 8 stampless with diff. markings, Amer. Mail Co., Boyds, Hales. Fine and interesting lot	—
553	✉	Adams Express Co. Evansville, Ind. Yellow label on cover, used in 1860. Fine	—

CONFEDERATES

554	✉	Hazel Hurst, Miss. Boxed Paid, Ms. 5, handstamp cover. V. G.	—
555	✉	Hillsboro, N. C. Paid 5. Handstamp in blue, illustr. corner card Military Academy . Fine	(Photo) —

75- 250 31- 10- 825 650 5- 20- 625 195- 34- 150 120 NF	556	5c Green (1). Tied on cover, blue Columbia, S. C pmk. Fine	—
	557	5c Green (1). Tied from Savannah, Ga., red oval " Due 5 ". Fine	—
	558	5c Green (1). Tied with Camp Shenandoah, Va. pmk. on cover. Fine	—
	559	10c Blue (2). Large margins, tied Charleston, S. C. on cover. V. F.	—
	560	5c Blue (4). Margins all around, tied Yorkville, S. C. V. F.	—
	561	5c Blue, Light Blue (4). V. G.—Fine	14.00
	562	10c Blue (11). Tied from Richmond, Ms. " Q. M. G. Office, O. B. ", cover torn	—
	563	10c Blue (12). Tied from Lexington, Va., illustr. corner card Executive Dept. and Va. Seal. Fine	(Photo) —
	564	Confederate Soldiers Covers, 8 diff. wtih various due markings and pmks. Fine lot	—
	565	Through the Lines - North to South, 3c Star Die Entire (U26). Tied blue "socked on the nose cancel" Adams Express Co. N. Y. on immaculate cover, large black oval Adams Express Co. May 5, Chattanooga plus small blue oval Paid. A Gem	(Photo) —
	566	3c Rose (65). Tied on neat cover to Condeferate Prisoner of War at Point Lookout Prison, Md. with blue " Registered " marking, Letter of Stanley Ashbrook states first he has ever seen showing evidence of Registration, stamp has slight faults, excellent markings	(Photo) —
	567	3c Red Entire (U9). Tied, Shreveport, La. May 11, 1861 pmk. Fine use of U. S. in Confederacy	—

END OF FIRST SESSION

SECOND SESSION

THURSDAY, APRIL 2nd, 1953 — 2 P. M.

UNITED STATES

1847 ISSUE

✓ 568	5c Red Brown (1). Tied on small piece with red grid. Margins three sides, barely touches at R. Fine	27.50
✓ 569	5c Grayish Brown (1). Red grid cancel, Margins three sides, in at top	35.00
✓ 570	5c Red Brown (1). Three red "5" numeral cancels on stamp cut in partly at top	45.00
✓ 571	5c Brown (1). Ms. and red cancels, margins three sides, close at B	15.00
✓ 572	10c Black (2). Red grid, close partly on two sides. Fine (Photo)	80.00
✓ 573	10c Black (2). Red cancel, light crease. Fine appearance	80.00
✓ 574 ★	5c Red Brown Reproduction (3). Very Fine (Photo)	37.50
✓ 575 ★	5c Red Brown, Reproduction (3). Tiny corner crease. Very Fine appearance	37.50
✓ 575A ★	10c Black, Reproduction (4). Very Fine (Photo)	55.00
✓ 576 P	5c-10c, 1847 Reproductions (3P-4P). Set of Card Proofs, latter has tiny scrape other V.F.	22.50

1851 ISSUE

✓ 577	1c Blue, Type Ia (6). Margins three sides, cut in slightly at bot. right. Fine (Photo)	250.00
✓ 578	1c Blue, Ty. II (7). Vert. strip of 3, bottom pair Very Fine, top stamp has fault, attractive	45.00
✓ 579	1c Blue, Ty. III (8). Margins 3 sides, close R., shows type clearly. Fine (Photo)	150.00
✓ 580	1c Blue, Type IIIa (8A). Margins three sides, close at B. Fine (Photo)	50.00

4-581	1c Blue, Ty. IV (9). Fine wide sheet margin copy.	—
1550-582	1c Blue, Ty. IV (9). Strip of 3, Margins all around, slight crease. V. F. appearance (Photo)	35.00
73-583	1c Blue, Type IV (9). L shape strip of six, blue cancel, one stamp has faults. Fine piece	70.00+
7-584	3c Orange Brown (10). Horiz. Pair tied on small piece. Fine-V. F.	10.00
625-585	3c Red (11). Large margins, shows portions of 4 adjoining stamps. V. F.	—
475-586	3c Red (11). Strip of four, blue Cincinnati cancel. Fine-V. F.	—
1450-587	5c Red Brown (12). Margins three sides, close at R., slight crease. Fine appearance	70.00
26-588	10c Green, Type I (13). Margins all around, light Ms. cancel. Very Fine (Photo)	65.00
365-589	10c Green, Ty. II & IV in Horiz. Pair (14, 16). Right stamp Recut at B., Margins three sides cut in at top (Photo)	166.00+
18-590	10c Green, Ty. III (15). Pair, margins all around, light marginal crease. V. F. appearance	37.50
9-591	12c Black (17). Fine	22.50
12-592	12c Black (17). Vertical Pair, margins three sides, partly touches at left	60.00
11-593	12c Black (17). Vertical Pair, red cancel, touches two sides. V. G.	60.00
125-594	12c Black (17). Pair, blue town cancel, left stamp has thin. Fine appearance	60.00

1857 ISSUE

1059-595	1c Blue, Ty. I (18). Red City Delivery cancel. Fine	42.50
1650-596 ★	1c Blue, Type V (24). "Earring" variety. (10L IX). Fine, O. G.	50.00
175-597	5c Brick Red (27). Fine (Photo)	65.00
40-598	5c Brick Red (27). Vertical Pair, with 1859 year date. Fine (Photo)	175.00
775-599	5c Red Brown (28). Fine (Photo)	35.00
3-600	10c Green, 12c Black (35-36). Latter has blue town cancel. Fine	14.75
11-601	30c Orange (38). Black grid cancel. V. G.	32.50
40-602 ★	24c Blackish Violet Reprint (45). Fine (Photo)	72.50
65-603 ★	90c Deep Blue, Reprint (47). Very Fine (Photo)	120.00

1861-1867 ISSUES

1650-604	10c Dark Yellow Green, August (58). Light town cancel. Fine (Photo)	62.50
605 ★	5c Buff (67). Well centered, few trivial perf. age stains. O. G. (Photo)	200.00

606 ★	24c Brown Lilac (70a). Fresh, centered to left	75.00
607 ★	90c Blue (72). Fine (Photo)	60.00
608 ★	90c Blue (72). Fine, O. G. (Photo)	60.00
609 ★	2c Black (73). Very Fine, O. G. (Photo)	4.50
610 ★	5c Red Brown (75). Few nibbed perfs. Finely centered, O. G.	55.00
611	5c Red Brown, 24c Lilac (75, 78). Latter has Cross cancel. V. G.	23.50
612 ★	5c Black Brown (76a). Centered to right. V. G.	30.00
613 ★	24c Gray (78b). Fine, O. G.	13.50
614	2c Black, Z grill (85B). Few short perfs. Good	22.50
615	5c Brown, Grill (95). Perfs. in at B. Very Good	35.00
616	24c Gray Lilac, Grill (99). Centered to right. Fine	50.00
617	30c Orange, Grill (100). Fine	25.00
618	30c Orange Grill (100). Centered to left. Fine	25.00
619 ★	1c Blue, Re-issue (102). Very Fine (Photo)	27.50

1869 PICTORIAL ISSUE

620	6c Ultramarine (115). Very Fine	8.50
621	24c, 30c, 90c Pictorials (120-122). Each has faults	155.00
622 ★	30c Blue & Carmine (121). Very Fine (Photo)	87.50
623	30c Blue & Carmine (121). Fine	25.00
624	30c Blue & Carmine (121). Red cancel. Very Fine (Photo)	30.00
625	90c Carmine & Black (122). Crease. Good	92.50
626 ★	1c Buff, 2c Brown Re-issues (123-124). Well centered, each has thin spot	31.00
627 ★	90c Carmine & Black, Re-issue (132). Reperfed one side. Fine appearance (Photo)	150.00

BANK NOTE ISSUES

628	12c Dull Violet, Grill (140). Str. edge at left, well centered, slight faults	110.00
629 ★	15c Orange, Grill (141). Only a few grill points visible, centered to top and left. V. G.	75.00
630	15c Orange Grill (141). Barely cancelled. Split Grill. Fine (Photo)	45.00
631	30c Black, Grill (143). Straight edge at left	77.50
632 ★田	6c Dull Pink (159). Block of 15. Fresh mint piece, centered to top. Fine	262.50
633	30c, 90c Banknotes (165a, 166, 217). V. G.-Fine	23.00

✓ 50	634	10c Black Brown (188b). Purple cancel, well centered, slight thin	12.00
10	635 ★	4c Carmine (215). Block. Very Fine, O. G.	20.00
10	636 ★	5c Indigo (216). Block. Fine, O. G.	22.50
34	637 P	1c, 3c-6c, 1890 India Proofs (219P, 221P-224P). Blocks of 8 of each. V. F.	180.00
7	638	90c Orange (229). Very Fine	8.75
450	639	Stitch Watermarks. Sixteen different all 19th Century	—

COLUMBIAN ISSUE

175	640	1c-50c Columbian (230-240). Fine-Very Fine	28.26
14	641 ★	1c-50c Columbian (230-240). Few thin spots. 30c has str. edge	52.65
2	642	1c, 2c, 5c Commems. (230, 234, 285, 295). Each with Stitch Watermark	—
75	643 ★	5c-10c Columbian, 10c Trans-Miss. (234-237, 290). V. G.-Fine	20.75
62	644	15c-50c Columbian (238-240). V. G.-V. F.	23.50
11	645	\$1.00 Columbian (241). Slight thinning. Fine appearance (Photo)	37.50
12	646 ★	\$1.00 Columbian (241). Thin spot, no gum. Fine appearance	45.00
36	647	\$2.00 Columbian (242). Very Fine (Photo)	35.00
10	648	\$2.00 Columbian (242). Thin spot. Fine appearance	35.00
10	649	\$2.00 Columbian (242). Thin spot. Fine appearance	35.00
520	650 ★	\$4.00 Columbian (244). Well centered, slight thin, without gum. V. F. appearance (Photo)	80.00

1894-1898 ISSUES

92	651	\$1.00 Black, Type II (261A). Short perf. Fine appearance	37.50
100	652 ★	\$2.00 Dark Blue (262). Left ARROW Block Perfs in at left, Listed but unpriced with arrow, Normal Block Cat. \$700.00). Rare	—
22	653	\$1.00 Black (276). Well centered lightly cancelled Block, small closed tear, on small piece. V. F. appearance	82.50
105	654 ★	50c Trans-Miss. (291). Well centered, without gum, str. edge at R.	35.00
90	655 ★	50c Trans-Miss. (291). Perfs. in at L. Very Good	35.00
165	656	50c-\$1.00 Trans-Miss. (291-292). Both thin. Fine appearing, well centered	60.00
23	657	\$1.00 Trans-Miss. (292). reperfed at right. Very Fine appearance (Photo)	50.00
16	658	\$1.00 Trans-Miss. (292). Slight thin. Fine appearance	50.00

1900-1908 ISSUES

659 ★	1c-10c Pan-American (294-299). 4c and 8c thin balance Fine	21.75
660 ★	1c-50c, 1902 Issue (300-04, 306-310). 15c has thin others Fine-V. F.	35.85
661 ★田	2c Carmine Booklet Pane (301c). Fine	15.00
662 ★田	2c Carmine Booklet Pane (301c). Fine, with covers	15.00
663 ★田	6c Claret (305). Set of 4 diff. Corner Blocks . Fine	48.00
664 ★田	8c Black (306). Set of 4 diff. Corner Blocks , one defective	28.00
665 ★	5c Blue Imperforate (315). Large margins, creased, mostly in one margin, nice appearing	75.00
666	1c-10c Louisiana-Purchase (323-327). V. G.-Fine	12.30
667 ★	5c Jamestown, 2c, 10c Pan-Pacific (330, 400, 402). V. G.-Fine	24.25
668 ★田	5c Blue (335). Block, 3mm spacing. Very Fine	35.00
669 ★田	4c Brown Imperf. (346). Block, 3mm. spacing. V. F.	17.50
670 ★田	5c Blue Imperf (347). Block. Very Fine	30.00
671 ★	1c-5c Coils (352-355). Pairs. Fine	41.50

1912-1919 ISSUES

672 ★田	5c Pan-Pacific (403). Right Plate No. Block of 6, centered to Bot. V. G.	95.00
673 ★田	1c Green Imperf. (408). Top Imprint "A" Plate No. Block of 6, V. F.	20.00
674 ★田	9c Salmon Red (415). Block. Very Fine	10.00
675 ★	3c Violet Coil (445). Pair, perfs just touch at left	40.00
676 ★	4c Brown Coil (446). Pair. Fine	17.50
677 ★	4c Brown Coil (446). Guide Line Pair. Fine	20.00
678 ★	3c Violet Coil (456). Pair. Very Fine	22.00
679 ★	2c Carmine (461). Very Fine	7.00
680 ★田	4c Brown, 8c Olive Green (465, 470). Fine-Very Fine	20.00
681 ★田	4c Brown (465). Left Plate No. Block of 6. Fine	13.50
682 ★田	6c Red Orange (468). Block. Very Fine	17.50
683 ★田	10c Orange Yellow (472). Block. Fine	32.50
684	\$2.00-\$5.00 (523-524). Each has light creases.	26.25
685 ★田	3c Violet (541). Star Block, close at R. Very Good	15.00

1929 TO DATE

750	686	★	2c Molly Pitcher (646). Block of 20 containing Wide Spacing variety. Fine	18.00
11	687	★	1c-10c Kans. (658-668). Very Fine set	19.47
6	688	★	1c-2c Nebr. (669-671). Matched Plate No. Blocks of 4 of each. V. G.-Fine	12.60
825	689	★	11c-20c Rotaries (692-94, 696-98). Plate No. Blocks. Fine-V. F.	17.75
1550	690	★	14c Dark Blue (695). Sheet of 100. V. F.	30.00
1550	691	★	14c Dark Blue (695). Sheet of 100. V. F.	30.00
14	692	★	7c Bicentennial, 5c Dare (712, 796). Complete Sheet of each. Very Fine	30.00
650	693	★	Souvenir Sheets (735, 768-70). Double pane #768, V. F.	10.95
850	694	★	1c-10c Parks (740-749). Set of Plate No. Blocks of 6. Fine-V. F.	15.95
14	695	★	3c Newburgh Farley (752). Set of 4 diff Plate No. Blocks, Arrows, Center Line. Fine	28.00
11	696	★	3c Byrd Farley (753). Center Line 4 dif. Arrow Blocks and 4 Pl. No. Blocks of 6. F.-V. F.	17.90
61	697	★	1c-16c Farleys (754-765, 771). Thirteen Imperf. Varieties all four diff. Arrows, Center Line Blocks. Very Fine	196.15
23	698	★	1c-16c Farleys (754-765, 771). Set of Top Plate No. Blocks of 6. V. F.	33.10
23	699	★	1c-16c Farleys (754-765, 771). Set of Top F. Plate No. Blocks of 6. V. F.	33.10
22	700	★	1c-16c Farleys (754-765, 771). Set of Bottom Plate No. Blocks of 6. V. F.	33.10
22	701	★	1c-16c Farleys (754-765, 771). Set of Bottom Plate No. Blocks of 6. V. F.	33.10
550	702	★	3c Byrd Farley (768). Three Cross Gutter Blocks of 8. V. F.	9.60
1950	703	★	1/2c-\$1.00 Presidentials (803-832). Plate No. Blocks, mostly Fine-V. F.	43.54
39	704	★	1/2c-50c Presidentials (Between 803-831). 108 Plate No. Blocks, face value \$35.00. Fine-V. F.	76.20
17	705	★	1c-10c Famous Americans (859-893). Set of Blocks. Fine-V. F.	—
41	706	★	5c Flags (909-921). Complete set of Sheets. V. F.	92.00
41	707	★	5c Flags (909-921). Set of Sheets. V. F.	92.00
125	708	★	3c G. A. R. Commem. (985). Block of 10 with odd red ink smear.	—
20	709	★	5c-50c Postage, Airs, Spec. Del. Spec. Handling, 28 Blocks, mostly Plate No. Blocks, face value \$19.74. V. G.-V. F.	48.20

AIR MAILS

775	710	★	24c Carmine Rose & Blue (C3). Block, reperfed at R. Fine appearance	22.50
26	711	★	8c-24c Airs (C4-C6). Set of Blocks. Fine-Very Fine	61.00

712 ★	10c-15c Map Air (C7-C8). Sheet of 50 each. Fine	29.50
713 ★	10c-20c Map Airs (C7-C9). Set of Sheets. V. F.	54.00
714 ★	5c Violet Air (C12). Sheet of 50. Fine	28.00
715 ★	65c-\$2.60 Graf Zeppelin (C13-C15). Very Fine Set (Photo)	127.50
716 ★田	\$1.30 Graf Zeppelin (C14). Block. Fine	(Photo) 175.00
717 ★	20c, 25c, 50c Trans Pacific Airs (C20-C22). Sheet of each. V. F.	102.50
718 ★田	6c-30c Airmails (Between C25-C45). 110 Plate No. Blocks, face value \$45.36. Fine-Very Fine	102.10
719 ★	5c New York Air (C38). Sheet of 100. V. F.	16.75
720 ★	5c New York Air (C38). Sheet of 100 and a half sheet of 50. V. F.	24.20
721 ★田	80c Hawaii Air (C46). Cpl set of 8 Matched Plate No. Blocks. V. F.	48.00
722 ★田	80c Hawaii Air (C46). Cpl. set of 8 Matched Plate No. Blocks. V. F.	48.00
723 ★	1c Postage Due Imperforate (J31a). Pair(without gum V. F. (Photo)	20.00
724 ★田	16c Olive Green Shanghai (K8a). R. Plate No. Blocks of 6. V. G.	19.50
725 ★田	16c Shanghai (K8, K8a). Plate No. Block of 6 each shade. Fine	32.00
726 ★田	2c Shanghai (K17). Left Plate No. Block of 6, "S" of "Shanghai" in perforations. V. G.	55.00

OFFICIALS, ENVELOPES

727 ★	2c-6c, 10c, 12c, 24c, 90c Navy (O36-38, 40-41, 43, 45). Good	48.75
728	2c Navy Green Error (O36b). Fine	(Photo) —
729	\$2.00 Green & Black State (O68). Faults. V. G. appearance	40.00
730 ★	\$5.00 Green & Black (O69). Fine	(Photo) 300.00
731 ★	\$10.00 Green & Black State (O70). Tiny thin. Very Fine appearance	(Photo) 175.00
732 ★	\$20.00 Green & Black State (O71). Slight crease. Fine appearance	150.00
733	Newspaper Stamps, 14 different (Between PR2-PR96). V. G.-Fine	56.75
734 ★	Post Office Seal "Post Obitum" (OX3). Very Fine	7.00
735 ★田	10c Postal Savings, Deep Blue (PS6). Top Star Imprint Plate No. Block of 6. Fine	20.00
736	3c Red, Die 4 (U7). Very fine used	12.00
737 ★	2c Brown Red, Die 2 (U408a). Very Fine Cut Square	45.00
738 匣	5c on 6c Revalued Air Envelope (UC10a). Double Surcharge, one at extreme left, used. Very Fine. Scarce	—

REVENUES

550 739	1c Telegraph Imperf. (R4a). Fine	25.00
150 740	2c, 25c Revenues (R6, 15, 44c). Each with Stitch Watermark , all handstamp cancels	—
6 741 田	10c Foreign Exchange (R35c). Block , perfs at right. V.G.	20.00
475 742 ★田	25c Power of Atty. (R48c). Two blocks of 4 and block of 8, fresh O.G.	16.00+
325 743	50c, \$1.00 Imperforate (R57a, R66a). Vertical Pairs. Fine	22.50
450 744	\$1.90 For. Exch. 6c, \$1.90 Blue & Black (R80c, R108, R122). Fine	21.00
250 745	\$50.00 Green Imperf. (R101a). Margins all around, faults	13.50
7 746	\$50.00 Green Imperf. (R101a). Vertical Pair, light creases. V.F. appearance	32.50
525 747	1c-\$1.00 Blue & Black (R103-R118). V.G.-Fine	25.65
975 748	10c Blue & Black, Inverted Center (R109a). Uncancelled. Very Fine	200.00
13 749	2c Orange & Black, Inverted Center (R135b). Light handstamp cancel, centered to left. Fine	22.50
525 750 田	\$3.00, \$10.00 Documentary Old, Series 1940 (R278, R281). Blocks, latter six. V.G.	57.00
17 751	1c-\$100.00 Documentary, 32 diff. between (R278-R400). V.G.-V.F.	35.50
6 752	\$2.50, \$4.00, \$5.00 Wines (RE81, 106-07). Last two in pairs, light red handstamp cancels. Very Fine	—
7 753 田	\$2.50 Wine (RE106). Unused Block. Very Fine	—
350 754	\$20.00 Wine (RE167). Handstamp cancel. V.F.	—
550 755	\$50.00 Wine (RE168). Very Fine, Retail Val. \$16.50	—
6 756	\$50.00, \$100.00 Wines (RE168-169). Lightly creased V.F. appearance, Retail Val. \$27.50	—
450 757	\$100.00, \$200.00 Wines (RE169-170). Light creases. V.F. appearance, Retail Val. \$21.00	—
650 758	\$200.00 Wine (RE170). Very Fine, Retail Val. \$10.00	—
8 759	\$200.00 Wine (RE170). Pair, Very Fine, Retail Val. \$20.00	—
12 760 田	\$200.00 Wines (RE170). Block, two creased others V.F. Retail Val. \$40.00	—
825 761	\$1.60½ Wine "DOLLAR" Error (RE199a). Two copies. Fine	—
12 762 ★田	\$1.00 Brown Black, Duck (RW3). Plate No. Block of 4. Fine	32.50
1050 763 ★田	\$1.00 Light Green, Duck (RW4). Block . Fine	32.50
1050 763A ★田	\$1.00 Light Green, Duck (RW4). Block . Fine	32.50
50 764 ★田	\$1.00 Light Green, Duck (RW4). Top Plate No. Block of 6 . Very Fine	60.00

765	\$1.00, \$2.00 Hunting Stamps (RW6, RW18). Very Fine	10.00
766 ★	\$1.00-\$2.00 Hunting Stamps (RW12-13, 15-18). Each with Plate No. V. G.-V. F.	15.25
767 ★田	\$1.00 Black, Duck (RW14). Bot. Plate No. Block of 6. Very Fine	14.00
768 ★	Atlantic Telegraph, 1c-25c (2T1-2T4). Pane of 6 each. V. F.	13.75
769 ★	Atlantic Telegraph, 10c Purple Brown (2T3). Strip of three containing Pair Imperforate Between. Very Fine, unlisted	—
770 ★	Same as above	—
771 ★田	Postal Telegraph, Lilac (15T41). Block. V. F.	24.00
772 ★	Christmas Seal, 1908, Booklet Pane of 3, (WX3g). Scarce. V. F.	75.00
773 ★田	Christmas Seal, 1911 (WX7). Block. Fine	12.00

U. S. LARGE & MISC. LOTS

774	U. S. Collection, 628 diff. in National album, 19th & 20th. Good-Fine	374.46
775	U. S. Collection, 144 diff. nearly all 19th Century, almost all better stamps have faults	381.00
776	Fancy Cancellations, approx. 2000, mostly Banknote Issues, Est. Cash Val. \$25.00	—
777 ★	Postage, 19th & 20th, 112 stamps, part without gum, all appear unused, considerable cat. value. Fair-Fine	—
778 ★	Postage, mostly 20th, some without gum, Est. Cash Val. \$10.00	—
779	Precancels 1888-1903 Issues, 172 stamps includes duplicates	—
780	Precancels over 3500 mixed includes some early issues, some on paper	—
781	Imperforates, 1903-47, 210 stamps includes Souvenir Sheets, V. G.-V. F. Est. Cash Val. \$15.00	—
782	1c-2c Imperforates all with private vending co. perfs. mostly Schermack over 850. V. G.-V. F.	120.00
783	Imperforates with Private Perforations, 150 stamps used, includes few pairs. V. G.-V. F.	—
784 田	Used Blocks, 83 misc. 20th Century also 61 plate no. singles	—
785 田	First Day Covers, 58 Commems. & Airs, some blocks, all have cachets. V. F.	—
786 田	"Essential Military Mail" Envelopes, 51 covers all bordered in bright red, all addressed to Adjutant General in 1947-48. V. F.	—
787 田	5c Revalued Air Envelopes, 51 with A. P. O. cancels, 25 Essential Military Mail covers, over 150 covers with 1947 Centenary pmks.	—

135	788	Special Del., Dues, Parcel Post, Officials, 119 diff. mounted. V. G.-V. F.	60.79
115	789	Officials, 91 stamps, 14 var., used and unused. Good-Fine	48.87
215	790	Dues, Officials, Match & Medicines, Telegraphs, Locals, 467 misc. stamps, Est. Cash Val. \$20.00	—
55	791	Post Office Seals, 158 stamps includes "Post Obitum". V. G.-V. F.	—
135	792	Cut Square Envelopes and Revenues, several hundred, Est. Cash Val. \$12.50	—
85	793	Envelopes, 374 misc. includes few entires, used and unused	—
155	794	Revenues, 980 misc. 19th & 20th, considerable duplication	—
395	795	LOCALS, stockbook over 500 stamps, wide variety includes some large pieces, many reprints, interesting lot	—
150	796	Christmas Seals, about 100 sheets, eaarliest 1934, also misc. seals	—
125	797	Confederate States, 36 used and unused. Fair-V. F. Est. Cash Val. \$9.00	—

U. S. WHOLESALE

115	798	1c-24c, 1851-69 Issues (25 stamps). V. G.-Fine	69.00
95	799	2c-10c (1857-61 Issues, # 25(8), 26(35), 68(4), 73(3). V. G.-Fine	35.25
125	800	3c Rose # 65(80), 88(24), 94(65). V. G.-Fine	45.05
155	801	10c-30c, 1861-62 Issues # 68(5), 69(1), 71(1), 76(3), 77(5), 78(5), V. G.-F.	105.25
195	802	3c Ultramarine # 114 (115). Fine lot	34.50
255	803	1c-10c Banknotes # 136(25), 145(25), 159(15), 208(9), 209(25), 211(18), 212(90), 215(9). V. G.-V. F.	77.15
155	804	3c-50c 1890-95 Issues # 221(20), 222(50), 223(90), 224(12), 226(45), 275(3). V. G.-V. F.	38.60
145	805	2c Pink, 2c Carmine # 248, 251 (200 each). V. G.-V. F.	90.00
105	806	2c, 1894 Issue, # 248(170), 249(300), 251(80). V. G.-V. F.	86.50
115	807	2c Carmine Lake # 249 (1,000). V. G.-V. F.	60.00
125	808	2c Triangles, 1894-95 Issues, # 249(240), 251(49), 265(760), 266(87). V. G.-V. F.	95.90
85	809	2c Carmine # 266(200). V. G.-V. F.	60.00
105	810	2c Carmine # 266 (300), V. G.-V. F.	90.00
25	811 ★	2c Red # 279B (38), includes 7 Blocks two have str. edges, no gum	19.75
125	812	\$2.00 Dark Blue # 312 (3), one has str. edge, V. G.-Fine	67.50
165	813	\$1.00 Violet Black # 460 (7), two have short perfs. others Fine	52.50
814	814	3c Imperforate all with Shermack Perf. # 483 (150), V. G.-V. F.	112.50

815 ★	1c-5c Army & Navy #785-794 (25 sets), in large blocks, Fine-V.F.	21.50
816 ★	10c S. P. A. Souvenir Sheet #797 (100), V.F.	25.00
817	4½c, 11, 13, 14, 17, 22, 24, \$1.00 Presidentials (585 stamps) V.G.-V.F.	36-29
818	\$1.00 Presidential #832 (344) includes 36 blocks, mostly Fine-V.F.	21.00
819	\$2.00-\$5.00 Presidentials #833(55), 834(20), Fine-V.F.	45.75
820 ★	3c Commems, #836(30), 837(38), 857(25), 896(25) in blocks includes plates, Fine-V.F.	16.76
821	5c Flags #909-21 (426 stamps), from 22 to 70 copies of each, V.F.	—
822 ★	Cipex Sheet #948 (115), Very Fine	28.75
823 ★田	3c Commems. #986 (25 Plate Blocks) 989 (50 Plate Blocks), 995 (25 Plate Blocks), Fine-V.F.	24.25
824 ★田	5c Airm #C32 (30 Plate Blocks), C33 (25 Plate Blocks), Fine-V.F.	26.00
825	15c Airmail #C35 (1,000), V.G.-V.F.	100.00
826	25c Airmail #C36(60), C44(38), Fine-V.F.	16.70
827 ★田	6c Wright Air #C45 (32 Plate No. Blocks), V.F.	19.20
828	80c Airmail #C46 (35), Fine-V.F.	—
829 ★	16c Shanghai #K8a (11). Each has str. edge	35.75
830 ★	16c Shanghai #K8a (12). Mostly Fine-V.F.	39.00
831 ★田	16c Shanghai #K8a (3 Blocks). Fine-V.F.	39.00
832	\$1.00 Parcel Post #Q12 (18). Includes 8 str. edges. V.G.-V.F.	31.50

U. S. POSSESSIONS

833 ☒	CANAL ZONE, 1904, 1c-2c (4-5). Six postal cards, all tied, each has str. edge otherwise Fine	15.00
834 ★	—1921-27, 1c-50c, Eighteen diff. two used, #67d with tiny scrape (cat. 22.50) not included in count. Fine-V.F.	22.00
835 ★	—1925-26, 2c Carmine, "Zone Canal" Error (84b). Fine (Photo)	22.50
836 ☒	—1923, 2c Carmine Entire (U5). Very Fine unused	35.00
837 ☒	—1923, 2c Carmine Entire (U5). Very Fine unused	35.00
838 ★	GUAM, 1899, 1c-15c (1-3, 5, 7-8, 10, E1). Three are used. V.G.-Fine	33.75
839	—1930, Guard Mail (M1-M2), without gum, first well centered, latter centered to L	50.00
840	—1930, Guard Mail, (M1-M2). Without gum, latter has str. edge	50.00

38- 841 ★	PHILIPPINES, 1926, 2p Madrid-Manila (316). Sanabria guarantee on back. Fine (Photo)	100.00
60- 842 ★	—1926, 4p Madrid-Manila (317). With Friedl certificate. Fine (Photo)	150.00
115- 843 ★	—1926, 10p Madrid-Manila (318). Friedl certificate. Fine, Rare (Photo)	325.00
275- 844 田	—1926, 20c Official (O4). Three used blocks. Fine-V. F.	15.00
550- 845	—1913, Yellow Post Office Seal (OX9). Fine	12.50

CANADA

16- 846	1851, 3p Red (1), Small margins, Fine (Photo)	35.00
165- 847	1851, 6p Grayish Purple (2), Margins except at one small point, target cancel	65.00
32- 848	1851, 12p Black (3) overprinted Specimen in red, slight thin, V. F. appearance (Photo)	—
23- 849	1852, 3p Red (4), Horiz. Pair , margins all around, Very Fine (Photo)	24.00+
7- 850	1855, 6p Brownish Gray (5a), Small corner crease, Fine appearance	80.00
825- 851	1858-59, ½p Rose (11), Ms. cancel, margins 3 sides, close R.	50.00
10- 852 田	1859, 5c Vermilion (15), Tied on cover "Unpaid 7," "Registered" and "Owen Sound" markins, V. F.	—
5- 853	1859, 10c Red Lilac (17), part of imprint at L. Fine	—
450- 854	1859, 17c Blue (19), Fine	12.50
875- 855	1864, 2c Rose (20), Very Fine	12.50
1050- 856	1868-97, 1c Brown Red, Wmkd. (22a), Very Fine	15.00
250- 857 ★田	1870-93, 2c Green, 5c Gray (36, 42), Blocks , short perfs at B. on 2c other V. G.	10.00+
10- 858 田	1872, 3c Dull Red (37), Tied from Kelvin, Ont. on Anti-Tobacco cover, illustrated showing smokers annoyance to woman, V. F. (Photo)	—
450- 859 ★田	1888-93, 6c Red Brown (43), Block , Fine	10.00+
8- 860 ★田	1893, 8c Violet Black (44c), Block , Very Fine	12.00+
725- 861 ★田	1888-93, 10c Brown Red (45), Block , centered to right, Fine	20.00+
265- 862 ★田	1897, ½c-10c Jubilee (50-57), Blocks , Fine-Very Fine	51.40+
575- 863 ★	1897, \$1.00 Jubilee (61), tiny thin, V. F. appearance	20.00
875- 864	1897, \$2.00 Jubilee (62), Fine	17.50
29- 865 ★	1897, \$3.00 Jubilee (63), Fine (Photo)	55.00
34- 866 ★	1897, \$4.00 Jubilee (64), Fine (Photo)	57.50

867	1897, \$4.00 Jubilee (64), smudge cancel	35.00
868	1897, \$5.00 Jubilee (65), well centered, fairly light smudge cancel	37.50
869 ★田	1897, ½c-10c Queen Victoria (66-73), cpl. Set of Blocks , V.G.-V.F.	47.80+
870	1908, 50c Purple (95). Horiz. Pair with attractive "R" in circle cancel, V.F.	15.00
871 ★田	1908, ½c-20c Quebec (96-103), Cpl. Set of Blocks , Very Fine (Photo)	78.72+
872 ★田	1924, 1c-3c Imperforates (136-138), Set of Blocks , Very Fine	19.00
873 ★田	1926, 2c Surcharges (139-140), Blocks , Fine-Very Fine	13.60
874 ★田	1929, 50c "Bluenose" (158), Block , Very Fine	20.00
875 ★田	1930, 50c Dull Blue (176), Block , Very Fine	40.00
876 ★田	1930, \$1.00 Dark Olive Green (177), Block , Very Fine	20.00
877 ★	1935, 1c Green (211), Sheet of 100 with Weeping Princess variety, V.F.	—
878 ★	1942-43, 1c, 3c-5c George VI (249, 252, 254-55), Sheets of 100 each, V.F.	31.00
879 ★	1947-48, 4c Commems. (274-277), Cpl. Sheet of each, V.F.	25.00
880 ★	1946, 17c Bright Ultramarine (CE4), Sheet of 50, V.F.	17.50
881	Collection of 87 diff. Canada mainly 19th, used and unused, Good-Fine	146.50

NEWFOUNDLAND

901	1857, 1p Brown Violet (1), Very Fine	10.00
902	1860, 2p Orange (11), Very Good	75.00
903	1860, 4p Orange (12) , Fine	(Photo) 150.00
904 ★	1862-63, 2p Rose (17), Very Fine	(Photo) 30.00
905	1862-63, 2p Rose (17), Fine	(Photo) 50.00
906	1862-63, 4p Rose (18), Very Fine	12.50
907 ★田	1862-63, 4p Rose (18), Corner Block of 6, wide margins, V.F.	15.00+
908	1862-63, 6½p Rose (21), Shows Wmkd., Very Fine	(Photo) 50.00
909 ★	1865-94, 2c-24c (24a, 26, 27a, 28a, 29-31), V.G.-Fine	61.00
910 ★	1865-94, 5c Brown (25), centered to B.	(Photo) 45.00
911 ★	1870-73, 3c Vermilion, 3c Blue (33-34), Fine	35.00
912 ★	1876-79, 1c-5c Roulettes (37-40), V.G.-Fine	51.00
913 ★	1897, 1c-60c Cabot (61-74), Fine-Very Fine Set	31.30
914 ★	1919, 1c-36c Caribou (115-126), Fine-Very Fine Set	25.60
915 ★	1920, 3c on 15c Scarlet (128), Very Fine	12.00

1150	916 ★	1923-24, 1c-24c Pictorials (131-144). V.G.-V.F. Set	28.65
225	917 ★	1928, 1c-30c Pictorials (145-159), Fine-Very Fine Set	19.25
550	918 ★	1921, 35c Red Airpost (C3), Fine	15.00
550	919 ★	1931, 15c-\$1.00 Airpost (C6-C8), Very Fine Set	15.50
250	920 ★	PRINCE EDWARD IS. , 1862-65, 2p Rose (5). Sheet of 60 includes "TWC" error, Fine	31.15

GENERAL FOREIGN

1750	921	BRAZIL, 1891, 100r Ultramarine & Red, Head Inverted (110a), Fine (Photo)	30.00
265	922	BRITISH AFRICA , 565 mostly diff. 19th & 20th, used and unused, Est. Cash Val. \$25.00	—
1750	923	BRITISH ASIA , 455 mostly diff., mainly used, 19th & early 20th, Est. Cash Val. \$15.00	—
3550	924 ★	BRITISH COLONIES , Twentieth Century, 24 diff. Sets, mostly Geo. V, V.F. <u>14-50</u>	89.70
215	925	BRITISH COLONIES , 700 diff. used and unused, 19th Century, Est. Cash Val. \$20.00	—
1150	926	BRITISH COLONIES , 189 diff., 20th mainly, used & unused, V.G.-V.F.	88.00
1050	927	BRITISH OCEANIA , 122 diff. used and unused. all 20th, V.G.-V.F.	64.46
215	928	—480 mostly diff. 19th & early 20th, mainly used, Est. Cash Val. \$22.50	—
105	929	Central & South America in two vols., 1250 diff. used and unused, 19th & 20th	—
15	930	CHILE , 292 different, 19th & 20th, used and unused, V.G.-V.F.	79.39
165	931	COLUMBIA , 1868-70, 5c, 10c, 20c (54-55, 62a), Tied with Bogota and used in combination with Great Britain 4p #43, tied with "F69" pmk. to U. S. various transit markings including N. Y. Steamship, V.F.	—
275	932	COLUMBIA REP. & STATES , about 450 diff. used and unused, 19th & 20th, V.G.-V.F.	257.00
115	933	CONGO , 115 diff. used and unused, 19th & 20th, few slight stains, good-Fine	84.28
165	934	COSTA RICA , 212 different, mostly 19th, used and unused, V.G.-V.F.	123.70
750	935	—195 different, 19th & 20th strong in Airpost, used & unused V.G.-V.F.	58.90
45	936 ★	CYPRUS , 1934, ¼pi-45pi Geo V (125-135), V.F. set.	15.02

937	DOMINICAN REP. 1865-71, ½r-1r (1, 16, 28-30), three have thins, Fine appearance	42.50
938	—1883, 5c-3fr75c (63-68, 71-72, 76), two are used, Fine-V. F.	21.00
939	—222 diff. 19th & 20th, used and unused, V. G.-V. F.	104.00
940 ★	EGYPT , 1926-38, Fifteen Commem. Issues, one used, V. F.	30.92
941 ★	—1927-38, Six Commem. Issues, one used, V. F.	14.72
942 ★	—1933, 5m-20m Railway (167-171), Very Fine set	15.00
943	FRANCE & COL., GERMANY, PORTUGAL & COL. , over 1,000 diff., mostly 19th, Est. Cash Val. \$25.00	—
944	GERMAN STATES , about 200 stamps, mixed condition, high cat. value	—
945 ★	GERMANY , 1905, 5pf-10pf Booklet Pane (82g). Two panes, V. F.	15.00
946 ☒	GREAT BRITAIN , 1840, 1p Black (1), Tied on cover, red pmk. Fine	9.00+
947 ☒	—1841, 2p Blue (4). Attractive cover with strip of 5, one stamp creased, contains letter signed by James Buchanan , latter U. S. President, Fine	—
948 ★	—1934, 2/6-10/- Geo. V (222-224), Very Fine	19.00
949 ☒	—1840, 1p Mulready (U3), Letter Sheet, Fine	—
950	GREECE , 138 stamps wide variety, over half Hermes heads	—
951 ★	HONDURAS 1877, ½r-2r (11, 12, 16, 18, 20, 23-25, 28), Fine-V. F.	49.00
952 ★	JAMAICA 1870-72, ½p-4p (7-10, 13) without gum, V. G.-Fine	38.50
953	LABUAN & NORTH BORNEO , 207 diff. used and unused, some with tropical stains, Good-Fine	74.49
954	NETHERLANDS & COLONIES , 19th & 20th used and unused, over 150 diff. Est. Cash Val. \$10.00	—
955 ☒	NICARAGUA , 1895, 1c Yellow Brown (71), Pair tied on cover to U. S. in 1895, V. F.	—
956 ☒	—1896, 2c Blue Green (82) Five copies tied on cover to New York, Blue-fields 1896 pmk. V. F.	—
956A	—311 different, all 19th, used and unused. V. G.-V. F.	114.00
956B	NICARAGUA, SALVADOR , 798 stamps about 500 diff., mainly 19th, used and unused	—
957	PANAMA , 145 diff. 19th & 20th, used and unused, V. G.-V. F.	103.00
958	PHILIPPINES , 1859-1898 Issues, 147 diff. used and unused, V. G.-Fine	138.67
959 ☒	POLAND , 1860, 10k (1), Tied with "1" in Target on attractive cover, V. F.	15.00+
960 ☒	SALVADOR , 1892, 10c-11c on 1c Entire (64-65) on cover to U. S. with Santa Ana pmk. 1892, Fine	—

425	961	—1894, 5c Orange Brown on 10c Entire (94), tied to U. S. on cover Santa Ana, 1894 pmk. V. F.	—
425	962	—1895, 3c Brown, 12c Claret (119, 122) tied to U. S. on cover Santa Ana, 1895 pmk. Fine	—
450	963	—1896, 10c Yellow on 5c Entire (138) tied to U. S. on cover, 1896 pmk. V. F.	—
65	964	—1896, 15c Blue violet on 15c Entire (140), tied to U. S. on cover, Santa Ana, 1896 pmk. V. F.	—
525	965	—1896, 5c Deep Blue (149) three tied to U. S. on cover Santa Ana, 1896 pmk. V. F.	—
725	965A	★ —109 stamps in pairs and blocks, all Imperforate or Part Perf. varieties. Fine-V. F.	—
2150	965B	—400 diff., all 19th, used and unused. V. G.-V. F.	150.00
45	966	★田 SAMOA, 1939, 1p-7p Commem. (181-184), Cpl. set of Blocks, V. F.	18.60
1675	967	SO. & CENT. AMERICA, 107 used covers including postal stationary, all 19th, wide variety, Fine lot	—
315	968	SPAIN & COLONIES, 590 diff. in Scott Specialty Album, 19th & early 20th, some faults majority V. G.-Fine	500.00
575	969	TRANSVAAL, Six BOER WAR, censored covers, three with censor, one Cape of Good Hope stamps, V. F. lot	—
65	970	★ TURKS ISLANDS, 1881, 4p on 6p Gray (34), Fine	25.00
84.50	971	VENEZUELA, 370 nearly all diff. 19th & 20th, used and unused, V. G.-V. F. Est. Cash Val. \$25.00	—
125	972	—307 diff. 19th & 20th, used and unused, V. G.-V. F.	111.00
650	973	—234 diff. mainly 20th, used and unused, V. G.-V. F.	54.14
225	974	★ —1930, 5c-20b Airpost (C1-C16) Cpl. set, Fine-V. F.	14.91
85	975	WESTERN AUSTRALIA, 38 diff. mostly used, V. G.-V. F.	77.85
105	976	Foreign Covers, 25 covers mostly Central America early 20th, Fine lot	—
265	977	Foreign Covers, 368, wide variety mostly 20th, including 1st Days, also over 150 used blocks of 20th, Fine lot	—

FOREIGN WHOLESALE

75	978	★ ADEN, 1937, ½a-1r #1-8 (3 each), #9(2), V. F.	1890
65	979	★ AUSTRALIA, 1936, Five Issues #159-61 (5 sets), 163-65, 167, 69, 170, 73, 75, 184-87 (1 each), 193(4), V. F.	21.08
350	980	BERMUDA, 1924, 10/ Geo. V. #97(10), all appear cleaned	(120.00)
350	981	—1924, 10/ Geo. V #97(10), all appear cleaned	(120.00)

982	BRITISH COLONIES about 500 stamps, 19th & 20th, mostly used, many Geo. VI, Brit. Guiana and Trinidad & Tobago, Fine lot	—
983	CANADA , 1868-97, 3c Red, 12½c Blue #25(22), 28(9), most of latter ms. cancel, V. G.-Fine	59.20
984	—1875-89, 2c-5c Registration #F1(140), F2(70), V. G.-V. F.	22.40
985	—Misc. lot of 19th & 20th, includes some other B. N. A. over 1400 stamps, Est. Cash Val. \$20.00	—
986	—over 200 stamps, mainly used 19th, all have faults	373.50
987	CANAL ZONE , 1914, 10c Gray #47(10), Fine-V. F.	20.00
988	—1931, \$1.00 Air #C13(50), includes 19 str. edges, V. G.-V. F.	32.50
989	CHINA , Two mounted collections, each of 1500 different	—
990 ★	GERMANY 1941-46, Wholesale quantities includes #506-511B(40), 514-23(40), 3N2-9, 13 (74 each), MQ1-3 (180) Fine	114.15
991 ★	GERMANY , 1946, 1pf-1m #530-556 (80 Sets)	68.00
992 ★	GREAT BRITAIN , 1936, Cpl. Booklet Panes, Ed. VIII #230a, 31a, 32a, b (8 Booklets), V. F.	22.00
993	GUATEMALA , 1886, 1c-25c #31(40), 33(35), 34(60), 35(55), 36(30), V. G.-V. F.	134.75
994	—1887-95, 1c-25c #43(200), 49 (35), 53(25), 55a(23), 55b(14), V. G.-V. F.	123.00
995	—1902, 1c-6c #114(210), 115(940), 116(170), 117(425), V. G.-V. F.	113.65
996	PHILIPPINES , 1935, 4c, 8c, 16c #384(350), 384a(350), 386(40), 389(100) V. G.-V. F.	56.00
997 ★	—1935, 4c Light Yellow Green #384a (5,000) in sheets, Fine-V. F.	500.00
998 ★	—1928-35, 6c, 8c #384a (3600), J10 (3500), in sheets, latter stuck to tissue	640.00
999 ★	—1928-44, 6 Issues #384a(750), 461(1500), J10(600), O37(300) N13(500), N15(500), all in full sheets, V. G.-V. F.	197.00
1000	—1936, 2c-6c #402(150), 405(250), 406(100), 408(550), 409(100), Fine	66.50
1001	—1936-37, 2c-20c #414(85), 425(400), 426(225), 428(300). Fine	64.25
1002	—1936-37, 12c, 16c #416(317), 417(100) first unused without gum, few str. edges, Fair-Fine	62.55
1003	—1933-39, 2c-30c #436(100), 439(125), 440(75), 442(15), 456(75), 457(75), 461(300), C2(150), C3(50), Fine	70.50
1004	—1947-49, 2c-50c #504(500), 505(500), 508(350), 509(100), 527(200), 529(512), 533(136), Fine	98.62
1005 ★	—1941, 2c Official #O37 (20,000) in full sheets, Fine-V. F.	600.00

✓ 1006 ★	——1943-44, 2c, 5c Jap Occup. # N13(3500), N15(5,000), in sheets, stuck to tissue	170.00
✓ 1007 ★	——1943-44, 2c Jap Occup. # N13 (10,000), pad of sheets, mostly stuck	200.00
✓ 1008 ★	——1943-44, 5c Jap. Occup. # N15(10,000) pad of sheets, mostly stuck	200.00
1009 ★	——1943, Semi-Postals # NB5, NB7(1011 each) in big pieces, without gum	242.64
750 1010 ★	RUSSIA , 1937-39, Seven varieties # 616-17 (100 each), 635(25), 734-37 (100 each), Fine	58.25
8 1011	SO. & CENTRAL AMERICA , about 1200 stamps wide variety in stock-book	—
550 1012	SO. & CENTRAL AMERICA , approx. 2,000 mixed 19th & 20th	—

END OF SALE

THANK YOU



SELLING YOUR COLLECTION?

REALIZE IMMEDIATE CASH
AND HAVE ADVANTAGE OF SELLING AT AUCTION.

I will advance on your collection immediate cash up to 75% of my appraisal value of what it should realize at auction.

It will then be sold at one of my coming auction sales. Commission is 20% of the gross and final settlement within thirty days after the sale.

Send collection direct (valued \$500 upwards) for appraisal. Auction advance will be sent within 48 hours after receipt. If not entirely pleased, collection will be returned at my expense.

I have been conducting stamp auctions for 22 years.



ROBERT A. SIEGEL

(Licensed and Bonded Auctioneer)

505 FIFTH AVENUE

NEW YORK CITY

(Tel. MU. 2-4309)