

170th SALE

**UNITED STATES**

**STAMPS and COVERS**

**U. S. WHOLESALE**

**and FOREIGN**



At Public Auction

**THURSDAY**

**MARCH 25th, 1954**

2 p. m.

*Robert A. Siegel*  
**AUCTIONS**

505 FIFTH AVENUE

NEW YORK CITY



## CONDITIONS OF SALE

---

1. The terms of sale are strictly cash to the highest bidder. All buyers are expected to pay for lots within three days of receipt, unless special arrangements have been made prior to the sale.
2. All bids are per lot as numbered in the catalogue and not per piece, unless otherwise announced by the auctioneer at the time of sale.
3. Any lot the description of which is incorrect is returnable only within three days of receipt. All disputed lots must be returned intact as received. Lots containing five or more stamps are not returnable at any time. No lots may be returned by purchasers who have had the opportunity to examine them before the sale.
4. Successful mail bidders, unless they are known to us or supply acceptable references, will be notified of the amount of the lots secured for them, and are expected to send payment in full before the lots are forwarded.
5. If the purchase price has not been paid within the time limit, or lots taken up within seven days from date of sale, they may be resold and any losses arising from such sale charged to the defaulter.
6. All stamps are sold as genuine, except where sold "As Is". Claims for any lot proving otherwise, must be made within two weeks from date of sale.
7. The right is reserved to group two or more lots, also withdraw any lot or lots from the sale, or to act on behalf of the seller.
8. Until paid for in full all lots remain the property of Robert A. Siegel.
9. No commission is charged for buying at our sales, but all forwarding charges will be added to the purchase price.
10. Lots will be sent for inspection, provided such lots are returned to us the same day as received. Postage and registration both ways will be charged. Approximate values of lots will be given on request.
11. The placing of a bid shall constitute acceptance of the forgoing conditions of sale.

ROBERT A. SIEGEL

GREGORY MOZIAN, Licensed Auctioneers

---

In sending bids, always state the highest price you are prepared to pay for the lot. Your limit will not be used as a starting bid unless absolutely necessary.

## DESCRIPTIONS

Superb—the finest condition for noteworthy, outstanding copies.

Very Fine (VF)—means that there is a slight deviation from the above.

Fine (F)—means that the perforations do not touch the design on issues after 1890, but in some cases may just touch in earlier issues; if used, fairly lightly cancelled.

Very Good (VG)—means that the appearance is generally fine but that the perforations cut the design slightly.

Good (G)—means average off-centering; or fairly attractive with slight defects. Original gum is not to be expected on 19th Century stamps up to 1888 unless so stated.

Scott's 1954 Specialized United States Catalogue is used for cataloging our lots of United States and Scott's Standard Catalogue, 1954 for others.

<b>WE SOLICIT FINE MATERIAL FOR FUTURE SALES</b>
--------------------------------------------------

170th SALE, MARCH 25th, 2 P. M.

# BID SHEET

ROBERT A. SIEGEL

505 Fifth Avenue

**New York City**

**Tel.: MUrray Hill 2-4309**

Please purchase for me at your Auction to be held **Thursday, March 25th, 1954**, the lots named below, the prices annexed being my limit on each lot. I agree to remit for purchases in accordance with the **Conditions of Sale** and to return no lots later than three days after receipt.

REFERENCES PLEASE  
(if unknown to us)

SIGNED

[illegible]

## VALUATIONS

Upon request, estimate of value furnished on any lots in this auction.



[illegible]



# UNITED STATES

## STAMPLESS COVERS

- 1 ☒ **Broadway City Express P.O. 2 Cts., Paid Swarts**, Paid markings, fine cover ..... —
- 2 ☒ **Brownsville, Ark.** in black circle Paid 5, Fine ..... —
- 3 ☒ **Cheseak Bay Route**, in blue circle, 5, poor strike, from Old Point Comfort to Wash. D. C., scarce ..... —
- 4 ☒ **Collinsville, Conn.** in **AXE**, light clear strike, fine ..... **(Photo)** —
- 5 ☒ **"Dunhams Union Square Post-Office"** in large red oval, V. F. .... —
- 6 ☒ **East Granville, Mass.** red str. line and double circle pmks., P. M. frank with Free ..... —
- 7 ☒ **Elizabeth City N. C.**, Ship 27, all in **green**, cover originates in **St. Thomas**, 1837, fine ..... —
- 8 ☒ **Grass Valley, Cal.** in black circle, Paid 10, Fine ..... —
- 9 ☒ **Huntsville, Ala.** in circle, Paid, **Fancy 10 in Circle of Stars**, V. F. .... —
- 9A ☒ **Lexington, Va.** black circle contains beautiful illustrated letterhead of **Washington College** (now Washington & Lee) V. F. .... —
- 9B ☒ **Morgantown, Va.** black circle contains **Flag with Harrison & Tyler** on letterhead, 1840, Rare early Campaign cover, V. F. .... —
- 10 ☒ **Naugatuck R. R.** in red circle, 5, from Milford to Waterbury, Conn. .... —
- 11 ☒ **N. Haven & Greenfield R. R.** in red circle, 1847 ..... —
- 12 ☒ **Schenectady, N. Y.** three diff. types, all 18¾ rates, Fine ..... —
- 13 ☒ **Southport, Wis. T.** in red circle, "25," (1838), Fine territorial ..... —
- 14 ☒ **Tecumseh, Mic. T.** in red circle (1836), Fine territorial ..... —
- 15 ☒ **U. S. Mail City Delivery** strike in black over strike in red, fine and scarce ..... —
- 16 ☒ **Stampless** 10 diff. ladies size covers, one in green, Fine-V. F. .... —
- 16A ☒ **Stampless, Illustrated Contents** a most interesting and attractive lot of 18 different includes College Lodges, Railroads, Factory, Ships, City, Horseman Engravers, V. F. .... —
- 17 ☒ **Stampless**, 49 diff. covers includes Ship U. S. Express Mail, Boyds Locals, Corner Card, Fine lot ..... —
- 17A **Bills of Lading**, 15 diff. **illustrated** includes 6 diff. **Railroads** including one in multi-colors, 6 diff. Steamship, most attractive lot ..... —

## NEW YORK POSTMASTER PROVISIONALS

18	✉	<b>5c New York Postmaster (9X1).</b> Margins 3 sides, touches left, Ms. cancel ties on cover to <b>France</b> , various transit markings, fine ..... <b>(Photo)</b>	75.00
19	✉	<b>5c New York Postmaster (9X1).</b> Margins all around blue ms. cancel ties, stamp has light crease .....	75.00
20	★	<b>5c New York Postmaster Reprint (9X1).</b> Very Fine ..... <b>(Photo)</b>	27.50
21	★	<b>5c New York Postmaster, Reprint (9X1).</b> Light creases, V. F. appearance .....	27.50

## 1847 ISSUE

22		<b>5c Brown (1).</b> Margins all around through small T. and L., Red New York Square Grid cancel, Fine .....	27.50
23		<b>5c Brown (1).</b> Top Sheet margin, square N. Y. Grid, margins 3 sides just in at B .....	27.50
24		<b>5c Orange Brown (1b).</b> Margins all around, tiny corner crease, V. F. appearing .....	40.00
25	✉	<b>5c Red Brown (1).</b> Margins all around, tied red square Feb. 11, New York pmk. and str. line <b>Phila. Railroad</b> on small envelope cut a bit short at left, Attractive ..... <b>(Photo)</b>	70.00
26	✉	<b>5c Red Brown (1).</b> Margins all around, tied red grid, light <b>U. S. Express Mail N. Y.</b> pmk. on cover .....	70.00
27		<b>10c Black (2).</b> Margins 3 sides, slightly in L. L. Tied by Red Grid to small piece of cover .....	80.00
28		<b>10c Black (2) Horiz. Pair,</b> margins 3 sides, in slightly one side, Red cancel, Fine ..... <b>(Photo)</b>	300.00
29	✉	<b>10c Black (2).</b> Margins all around through small at B. Tied with Blue cancel from Phila., Fine .....	100.00
30	✉	<b>10c Black (2).</b> Margins all around, tiny marginal nick, tied with red <b>St. Louis</b> pmk. also ms. cancel, to Fayette, Mo. ....	100.00

## 1851 ISSUE

31		<b>1c Blue, Type II, IV (7, 9).</b> Two copies, one has very large margins, thin .....	17.50
32		<b>1c Blue Type II, IV (7, 9).</b> Ten copies, all have minor faults, Fine appearing .....	85.00
33	✉	<b>1c Blue Ty. II, IV (7, 9).</b> Twenty-four copies on 22 covers, Good-Fine .....	—
34		<b>1c Blue, Type IV (9).</b> Large Margins all around, Sheet margin at L., small scissors cut in sheet margin not affecting stamp, V. F. <b>(Photo)</b>	7.50
35		<b>1c Blue Ty. IV (9).</b> Recut once at top, Very Fine ..... <b>(Photo)</b>	10.00



36	<b>1c Blue, Type IV (9).</b> Horiz. Pair, light crease one stamp, V. F. appearing	22.50
37	<b>1c Blue, Type IV (9).</b> Horiz. strip of 3, creases, Fine appearing	35.00
38	<b>1c Blue, Type IV (9).</b> Fine copies including <b>Corner Copy</b> , Fine- Very Fine	37.50
39	<b>1c Blue, Type IV (9).</b> Six copies, one Red cancel, Fine	47.50
40	<b>1c Blue, Type IV (9).</b> Six copies one unused, Fine	49.50
41	☒ <b>1c Blue Ty. IV (9).</b> Tied with Red Carrier on circular, Fine	12.00
41A	☒ <b>3c Orange Brown (10).</b> Margins 3 sides, just in upper L. Position <b>57LO</b> 2 lines recut lower right triangle, Tied by New York cancel to advertising cover, Fine, Rare position	60.00
42	☒ <b>3c Orange Brown (10),</b> Eight covers, 4 have ms. cancels, V.G.-V.F.	32.00
43	☒ <b>3c Imperf. (10-11).</b> Seven covers includes Waukesha, Wis., Seneca Falls, N. Y., Forwarded, West Brattleboro, Vt. V.G.-Fine	—
44	<b>1c-12c 1851-57 Issue (10-11, 24-26, 35-36).</b> Two of #24, Fine- Very Fine	20.45
45	<b>3c Red (11).</b> Two strips of 4, Four strips of 3, Vert. & Horiz. some faults	28.00
46	☒ <b>3c Red (11).</b> Tied with blue <b>Paid 3</b> in circle, <b>Clappville, Mass.</b> pmk. on cover, V. F.	—
47	☒ <b>3c Red (11).</b> Tied on cover, forwarded twice with "Advertised, 5 in circle, Cherrystone, Richmond Va., Georgetown D. C. pmks. V. F.	—
48	☒ <b>3c Red (11).</b> Tied with blue <b>Holland Patent, N.Y.</b> pmk. on mourning cover, V. F.	—
49	☒ <b>3c Red (11),</b> Tied with ms. and red oval <b>Packet Mary Clifton</b> on cover, Fine	—
50	☒ <b>3c Red (11).</b> Two R.R. covers, Eastern R.R. and New York & Phila. R.R. pmks. both tied, Fine	—
51	<b>3c 1851 (11, a).</b> Specialized collection of 74 stamps, shades, cancels, plate Varieties, Fine lot for the Specialist. Est. cash Value \$40.00	—
52	☒ <b>3c Red (11).</b> Seven diff. Adv. <b>Corner Cards</b> includes Illustr., Hotel G. W. Merchants Gargling Oil, Fine lot	—
53	☒ <b>3c Red (11).</b> Ten covers all tied each with <b>margins all around</b> , includes R.R. and red 1855 year date, V. F. lot	—
54	☒ <b>3c Red (11).</b> Eighty covers includes railroads, steam, green, pair, oval, octagon, fair-fine	—
55	☒ <b>3c Red, 12c Black (11, 17).</b> Tied on fine cover with <b>Adrian, Mich.</b> pmk. and <b>Paid</b> , stamps cut in slightly	35.50
56	<b>5c Red Brown (12).</b> Margins all around, tiny thin, Very Fine appearing <b>(Photo)</b>	70.00
57	<b>10c Green, Type I (13).</b> Margins all around, V. F. <b>(Photo)</b>	65.00

58	<b>10c Green, Type II (14).</b> Margins all around, V. F. ....	<b>(Photo)</b>	16.00
59	✉ <b>10c Green Ty. II (14).</b> Margins all around, tied with <b>New York Clipper Ship</b> cancel, from Bordeaux to San Francisco, Very Fine ....	<b>(Photo)</b>	20.00+
60	<b>10c Green, Type II, III (14-15).</b> Fine .....		32.00
61	<b>10c Green, Type II, III (14-15).</b> Two of latter, one ms. cancel, V. G. ....		48.00
62	<b>10c Green, 12c Black (15, 17).</b> Margins three sides, touch one side .....		38.50
63	<b>12c Black (17).</b> Tied on small piece of cover, Fine .....		22.50
64	<b>12c Black (17).</b> Margins all around, tiny closed tear, V. F. appearing .....		22.50
65	<b>12c Black (17).</b> Two shades, light creases, Fine appearing .....		45.00
66	✉ <b>12c Black (17).</b> Vertical Pair, tip of one corner added, tied <b>Towsontown, Md.</b> to Geneva, numerous transit markings, attractive appearance .....		60.00
67	✉ <b>12c Black (17).</b> Horiz. Pair tied on legal size cover <b>Fonda, N. Y.</b> pmk. Insurance Co. corner card, V. G. ....		60.00
68	✉ <b>Adv. Corner Cards, 1851-61 Issues, 5 diff. nice lot</b> .....		—
69	✉ <b>Adv. Corner Cards, 1857-93 Issues, 5 diff. fine lot</b> .....		—

#### 1857 ISSUE

70	<b>1c Blue, Type I (18).</b> Small tear, Fine appearing .....		40.00
71	<b>1c Blue, Type I, II, IIIa (18, 20, 22).</b> All have slight faults, Fine appearing .....		73.50
72	✉ <b>1c Blue Ty. II Pair, 3c Red (20, 25).</b> Fine pair of 1c, 3c creased, tied with red grids from <b>Providence</b> to France <b>City Hotel</b> in circle, numerous transit markings attractive .....		32.25
73	<b>1c Blue, Type III (21).</b> Fine .....	<b>(Photo)</b>	67.50
74	<b>1c Blue Ty. IIIa (22).</b> Fine .....		20.00
75	<b>1c Blue, Type IIIa (22).</b> Fine .....		20.00
76	<b>1c Blue, Type IIIa (22).</b> Centered to T., Fine .....		20.00
77	<b>1c Blue, Type IV (23).</b> Lightly cancelled, Fine .....		27.50
78	✉ <b>1c Blue Ty. IV, 12c Black (23, 36).</b> Horiz. Pair of each tied with <b>Towson-town, Md.</b> pmks. on cover to France, first pair fine, latter has some short perfs. ....		90.00
79	▣ <b>1c Blue Ty. V (24).</b> Used <b>Block</b> with neat <b>Le Claire Iowa</b> pmks., slightly reinforced, fine .....	<b>(Photo)</b>	50.00
80	<b>1c Blue, Type V (24).</b> Eleven copies, 4 Red cancels, 2 Paid cancels, V. G.-V. F. ....		28.00
81	✉ <b>1c Blue, Ty. V (24).</b> Tied, small grid cancel, Pension Office 1860 receiving mark, Fine .....		—



81A	<b>3c Red (26).</b> Four cancels, Jersey Shore fancy star, 10, blue Paid, odd red grid, fine lot .....	—
82	<b>3c Dull Red (26).</b> Collection of 96 Copies, includes cancels, shades, Patriotic Cover, few type I, V.G.-V.F. ....	—
83	★田 <b>3c Dull Red (26).</b> Imprint and <b>Plate No.</b> Block of 4, o.g. Fine .....	7.50+
84	☒ <b>3c Red (26).</b> Tied from <b>Collinsville, Conn.</b> with <b>AXE</b> cancel, V.F. <b>(Photo)</b> .....	—
85	☒ <b>3c Red (26).</b> Ms. "14" cancel, printed <b>Map of Kelley's Island</b> (in Lake Erie), attractive and interesting V.F. .... <b>(Photo)</b> .....	—
86	☒ <b>3c Red (26).</b> Tied from <b>Buffalo, N.Y.</b> on <b>Lincoln Campaign</b> cover, the word "Candidate" under the portrait has been earased, because the envelope was used Nov. 19th, after Lincoln was elected President, Fine <b>(Photo)</b> .....	—
87	☒ <b>3c Red (26).</b> Tied on attractive illustr. adv. cover of <b>Horse Rail Co., New London, Conn.,</b> Patriotic type design .....	—
88	☒ <b>3c Red (26).</b> Six covers, July 4, Imprint, Bloods, Madison and Monticello Flor. pmks. V.G.-V.F. ....	—
89	☒ <b>3c Red (26).</b> Nine diff. <b>illustr. advert. covers,</b> Fair-Fine .....	—
90	☒ <b>3c Red (26).</b> Ten diff. <b>Adv. Corner Cards</b> some illustr. Fine lot .....	—
91	☒ <b>3c Red, 3c Rose (26, 65).</b> Three diff. attractive <b>illustr. adv. covers,</b> fine .....	—
92	<b>5c Brick Red, 90c Blue (27, 39).</b> Latter unused, both damaged .....	155.00
93	<b>5c Red Brown (28).</b> Fine .....	35.00
94	<b>5c, 10c, 12c 1857 Issue (29, 32, 35, 36).</b> Two types of 10c, V.G.-V.F. ....	45.00
95	★ <b>5c Orange Brown, Type II (30).</b> Perfs. in at T, o.g. Fine .....	18.50
96	<b>5c Brown, Type II (30a).</b> Red Grid cancel, Fine .....	17.50
97	<b>5c Brown (30a).</b> Two copies, one <b>Blue Town,</b> slight thins .....	35.00
98	<b>10c Green, Type II (32).</b> Horiz. Pair, Red Town cancel, one stamp small thin, Fine appearing .....	27.50
99	<b>10c Green, Type V (35).</b> Eleven copies, includes 3 Reds, V.G.-Fine .....	51.00
99A	<b>10c Green, 12c Black (35, 68-69).</b> Each with <b>Fancy cancel,</b> Fine- Very Fine .....	12.00+
100	★ <b>12c Black (36).</b> Fine .....	16.00
101	★ <b>12c Black (36).</b> Perfs. in at T, o.g. Fine .....	16.00
102	★ <b>12c Black (36).</b> Horiz. Pair, o.g. Fine .....	37.50
103	<b>12c Black (36).</b> Two copies with <b>Red</b> cancels, Fine .....	22.00
104	<b>12c Black, 24c Lilac (36, 37)</b> Very Good .....	30.00
105	<b>24c Lilac (37).</b> Blue town cancel, tiny thin, Fine appearing .....	25.00
106 P	<b>1c-90c 1851 Issue, Card Proofs (40P-47P).</b> Complete set of 8, Very Fine .....	39.00

# 1861 ISSUE

107 ★	3c August Brown Red (56). Fine o. g. ....	(Photo)	37.50
108	10c Dark Green, August (58). Slight corner crease, Fine appearing	(Photo)	62.50
109	24c Violet, August (60). Ironed creases, Very Fine appearing	(Photo)	62.50
110 P	1c-90c 1861 Issue, Card Proofs (63P-69P, 71P-73P, 76P-78P). Fine Set		39.25
111	1c Blue (63). Eleven copies includes Reds, Blues, Carrier, Heart, Covers, V. G.-V. F. ....		—
112 ☒	1c Blue (63). Four covers, Strip of 6, 3 tied from Three Rivers, Mic., Paid, Corner Card, V. G.-Fine ....		—
113 ☒	1c Blue, 10c Green (63, 68). Tied from N. Y. to Canada on small mourning cover, V. F. ....		—
114 ☒	1c Blue, 2c Black on 1c Entire (63, 73, U19). All tied from N. Y., 1c is tied only on perforations as it is under 2c, odd combination, V. F. cover	(Photo)	—
115 ★	1c, 10c, 30c 1861 Issue (63, 68, 71). Very Good .....		37.50
116	3c Pink (64). Corner perf. creased, fine appearance .....		40.00
117 ☒	3c Pink (64). Short perfs. at B., ms. cancel, str. line Walham, Mass. pmk		—
117A	3c Rose (64a, 65 94). Thirteen diff. Fancy Cancels includes Shield, Champlain S.S., Fort Ancient, Red Grid, 3, X, Paid 3, U. S. Green Cross, few minor faults, attractive strikes .....		—
118 ☒	3c Rose (65). Tied with pretty Star cancel, Jersey Shore, Pa. pmk. one short perf. most attractive .....		—
119 ☒	3c Rose (65). Tied from Buffalo on illustr. cover showing Railroad, Very attractive .....	(Photo)	—
120 ☒	3c Rose (65). Tied from Toledo, O. on pretty Hotel cover showing Masonic emblem, V. F. ....	(Photo)	—
121 ☒	3c Rose (65). On cover "Miamiville P.O. April 16, 1863, Camp Dennison, O." pmk. fine .....		—
122 ☒	3c Rose (65). Three covers, large P, Green, odd Pinwheel fine .....		—
123 ☒	3c Rose (65). Thirteen diff. covers with Adv. Corner Cards, nice lot .....		—
124	3c Rose (65). Collection of 136 copies mounted contains mostly interesting and fancy cancels including Masonic, Steamer Katahdin, 1, 5, 10, 24, Colored Checkerboard, O.K., R.R. Leaf, interesting lot Est. Cash Val. \$30.00 .....		—
125	3c Rose #65 (410). Mounted, contains a few interesting cancels, some with faults .....		24.60



126	✉	3c Rose, 24c Brown Lilac, 30c Orange (65, 70-71). All tied with red grids on cover to <b>China</b> , 24c has str. edge, <b>Forwarders</b> oval on back fine cover .....	41.00
127		5c Buff (67). Red Magenta cancel, Fine ..... <b>(Photo)</b>	50.00
128		5c Buff (67). Red Grid cancel, corner perf. creased, Fine appearing <b>(Photo)</b> .....	45.00
129		10c Green (68). <b>Encased Postage Stamp</b> , Lord & Taylor Fine, Scarce .....	25.00
130		10c Green (68). Seven copies, includes Reds, Cog wheel, Double Transfer, Fine-V. F. ....	—
131	✉	10c Green (68). Tied with <b>New York Steamship</b> cancel, V. G. ....	—
132	✉	10c Green, 24c Lilac (68, 78). Tied on cover to Mexico, Fine .....	—
133		10c-90c 1861 Issue (68-72). Very Good-Very Fine .....	47.00
134		2c-90c 1861-1866 Issue (68-69, 71-73, 75-78). 13 copies, includes shades, Fair-Fine .....	113.50
135		12c, 15c, 24c 1861-66 Issue (69, 77, 78). 2 of first, 4 of last, V. G.-V. F. ....	46.00
136		24c Steel Blue (70b). Red Grid, small closed tear, Very Fine appearing .....	35.00
137		30c Orange (71). Attractive Blue Cancel, Very Fine .....	9.00
138		30c Orange (71). Black and red cancels, Very Fine .....	10.00
139		30c Orange (71). Two copies, Blue Star, Cog Wheel cancels, attractive strikes .....	16.00
140	★	90c Blue (72). Perfs. in at L, o. g. Very Good .....	60.00
141		90c Blue (72). Two diff. Shades, Both centered to R. ....	40.00
142		90c Blue (72). Leaf cancel, odd Geometric, Both have slight faults .....	40.00
143	✉	Adv. Corner Cards, 1861-95 Issues, 19 diff. mostly illustr. Fine lot .....	—
144		2c Black (73). Fourteen copies, includes cancels, one cover V. G.-Fine .....	28.50
145	✉	2c Black (73). Tied from <b>Philadelphia</b> on <b>illustr.</b> Great Central Fair <b>Sanitary Commission</b> on cover in violet, slight stains, Fine and attractive <b>(Photo)</b> .....	—
146		5c Red Brown (75). Very Fine .....	17.50
147		5c Brown (76). Seven copies includes two red, two blue cancels, shades, V. G.-Fine .....	37.75
148	★	15c Black (77). Fine .....	30.00
149	✉	15c Black (77). Tied on cover, <b>St. Augustine Fla.</b> pmk. to France, <b>Insufficiently Paid</b> and other transit markings, fine .....	15.00
150	★	24c Lilac, 24c Grey (78, 78b). First o. g. Fine .....	25.50
151	✉	24c Dark Lilac (78). Tied with crossroads cancel, <b>Lawrance, Mass.</b> pmk. to England, Fine .....	—

## PATRIOTIC COVERS

- |     |   |                                                                                                                                                                   |         |   |
|-----|---|-------------------------------------------------------------------------------------------------------------------------------------------------------------------|---------|---|
| 152 | ✉ | 3c Rose (26). Tied from <b>Brooklyn</b> on <b>Caricature Patriotic</b> , "The Lock and Key," Scarce, Fine .....                                                   | (Photo) | — |
| 153 | ✉ | 3c Red (26). Tied from New York on <b>Patriotic</b> cover, hand colored, Soldier and Family including Dog fine .....                                              |         | — |
| 154 | ✉ | 3c Red (26). Several short perfs. tied with unusual grid on <b>Patriotic</b> Flag standing with Confed. Flag cut down, <b>Somers, N. Y.</b> pmk. fine cover ..... |         | — |
| 155 | ✉ | 3c Red (26). Tied with blue Paid 3, <b>Sharon Centre, Ohio</b> pmk. on scarce <b>Caricature Patriotic, Lincoln</b> kicking Jeff Davis, Fine .....                 | (Photo) | — |
| 156 | ✉ | 3c Red (26). Tied with <b>Washington D. C.</b> pmk. on <b>Caricature Patriotic</b> , "Dis chile's Contraban", Fine, Scarce .....                                  | (Photo) | — |
| 157 | ✉ | 3c Red, 3c Rose (26, 65). Three diff. <b>Patriotic</b> covers, Fine .....                                                                                         |         | — |
| 158 | ✉ | 3c Rose (65). Tied from <b>Philadelphia Caricature Patriotic</b> , Very Fine .....                                                                                | (Photo) | — |
| 159 | ✉ | 3c Rose (65). Tied from Wash. D. C. on <b>Patriotic, Battleship Monitor</b> , fine .....                                                                          |         | — |
| 160 | ✉ | 3c Rose (65). Tied <b>Centre Hall, Va.</b> on <b>Caricature Patriotic</b> , scarce design Fine .....                                                              | (Photo) | — |
| 161 | ✉ | 3c Rose (65). Tied from <b>St. Louis</b> on magnus type <b>Patriotic, V. F.</b> .....                                                                             | (Photo) | — |
| 162 | ✉ | 3c Rose (65). Tied on <b>Patriotic</b> , Soldier, Wife, Home, V. F. ....                                                                                          |         | — |
| 163 | ✉ | 3c Rose (65). Tied from <b>Blairsville, Pa.</b> on <b>Patriotic</b> , "Gen McCellan," V. F. ....                                                                  |         | — |
| 164 | ✉ | 3c Rose (65). Tied from <b>Wash. D. C.</b> with Eagle & Flag, <b>Cooper Shop Volunteer Refreshment Saloon, V. G.</b> scarce .....                                 |         | — |
| 165 | ✉ | 3c Rose (65). Tied <b>Phila.</b> pmk. on illustr. <b>Citizens Volunteer Hospital of Phila.</b> Scarce .....                                                       |         | — |
| 166 | ✉ | 3c Rose (65). Two diff. <b>Patriotic</b> covers, both tied, Fine .....                                                                                            |         | — |
| 167 | ✉ | Patriotics, 44 different unused includes Magnus, Caricatures, scarce designs .....                                                                                |         | — |
| 168 |   | Civil War Affidavit of Exemption from the Draft, story has revenue stamps attached, interesting .....                                                             |         | — |

## 1867 GRILL ISSUES

- |        |            |                                                                                |       |
|--------|------------|--------------------------------------------------------------------------------|-------|
| 168A   | 3c Rose    | Grilled All Over (79). Several pulled perfs. as usual, lightly cancelled ..... | 82.50 |
| 169    | 3c Rose, C | Grill (83). Blue cancel, centered to L. Fine .....                             | 27.50 |
| 169A ★ | 1c Blue    | Grill (86). Centered to R. Fine .....                                          | 35.00 |
| 170    | 2c Black,  | Grill (87). Three diff. Black cancels, and one unused, V. G.—Fine .....        | 31.00 |



171	<b>2c-12c Grills (87-90).</b> 3c unused, o.g. others lightly cancelled, V. G.-Fine	29.00
172	<b>10c Green, Yellow Green, Grills (89, 96).</b> Each lightly creased, V. F. appearing .....	14.00
173	<b>1c, 2c, 5c, 10c Grills (89, 92, 93, 95).</b> Very Good .....	56.50
174	<b>1c Blue, Grill (92).</b> 3 diff. shades, Fine .....	27.00
174A	<b>3c Red (94).</b> Scarce <b>Horses Head</b> cancel, V. G. ....	—
175	<b>10c Green, Grill (96).</b> One Red and 2 Black Fancy cancels, V. G.-Fine	20.00
176	<b>10c-24c Grills (96-99).</b> V. G.-Fine .....	70.50
177	<b>10c, 15c, 24c, 30c Grills (96, 98-100).</b> Very Good .....	88.50
178 ★	<b>12c Black, Grill (97).</b> Two shades, Fine.....	45.00
179	<b>24c Grey Lilac, Grill (99).</b> One short perf., Fine appearing .....	50.00
180	<b>30c Orange, Grill (100).</b> Fine .....	25.00
181	<b>30c Orange, Grill (100).</b> Fine .....	25.00
182	<b>30c Orange, Grill (100).</b> Red cancel, creases, Fine appearing .....	30.00
183	<b>COLORADO, Stage &amp; Express Co.</b> Collateral material, 32 items centering around David Wood Stage, Mail & Express Co. operating in the mining districts includes Map of San Juan Co., letters from R.R. & Mining Co's., Post office of Placerville, Great Western Stage & Express Co. San Juan Stage waybill, Many illustrated including pictures of horse drawn stages, V. F. historical lot .....	—

#### 1869 PICTORIAL ISSUE

184 P	<b>1c-90c 1869 Pictorial Issue, Card Proofs (112P-122P).</b> Very Fine Set	44.75
185 ★	<b>1c Buff (112).</b> Very Fine .....	12.50
186	<b>1c Buff (112).</b> Very Fine .....	7.50
187	<b>1c Buff (112).</b> Two diff. interesting cancels, Fine-V. F. ....	15.00
188 ★	<b>1c-3c 1869 Pictorials (112-114).</b> Fine .....	23.25
189	<b>1c Buff, 10c Yellow (112-116).</b> First has Paid cancel, last attractive Red Square cancel .....	—
190	<b>1c-15c 1869 Pictorial Issue (112-118).</b> Fair-Fine .....	70.60
191	<b>2c 1869 Issues, Essays,</b> Gummed and Grilled, 5 Diff. Colors, V. F. ....	—
192 ★	<b>2c Brown (113).</b> Horiz. Pairs, 2 diff. shades, o.g. V. G. ....	32.00
193 ☒	<b>2c Brown (113).</b> Eight covers includes two Carrier cancels, most have corner cards, V. G.-Fine .....	55.00

194	<b>2c, 3c 1869 Issue (113, 114).</b> Three of first, 12 of latter, includes Red, Blue, Fancy cancels, one cover, Fine-Very Fine .....	—
194A	<b>3c Ultramarine (114).</b> Four fancy cancels Leaf, Star, R.R. Pumpkin Head (Photo) .....	—
195	✉ <b>3c Ultramarine (114).</b> Tied with <b>Mohave City, Ariz.</b> pmk. V. G. Terr. ....	—
196	✉ <b>3c Ultramarine (114).</b> Defective copy tied from <b>Lewiston, Me.</b> on late usage of <b>Magnus Patriotic</b> cover .....	—
197	✉ <b>3c Ultramarine (114).</b> Four covers, strip of 3, Floral, Cross, fine .....	—
198	<b>6c-12c 1869 Pictorials (115-117)</b> Fine .....	25.50
199	✉ <b>10c Yellow (116).</b> Strip of three tied on cover from <b>Buffalo N. Y.</b> to France, various transit markings, Fine .....	47.50+
200	<b>10c-15c 1869 Pictorials (116-117, 119).</b> Fine .....	26.00
201	<b>10c-15c, Pictorials 116-117, 119).</b> Minor faults, Very Fine appearing .....	26.00
202	<b>10c 12c, 30c 1869 Pictorials (116-117, 121).</b> Horiz. Pairs, 12c is repaired, others V. G. ....	115.00
203	✉ <b>12c Green (117).</b> Tied on cover, <b>Boston</b> to England with <b>B. F. Stevens,</b> Dispatch Agent marking in red, stamp centered to top, Fine cover .....	27.50
204	✉ <b>12c Green, 15c Brown &amp; Blue (117, 119).</b> Two covers, both just tied, latter to Switzerland .....	97.50
205	<b>12c-24c 1869 Pictorials (117, 119-120).</b> V. G.-Fine .....	55.00
206	<b>15c Brown and Blue Type I (118).</b> Very Fine ..... (Photo)	35.00
207	<b>15c Brown &amp; Blue, Type I (118).</b> Fine .....	35.00
208	<b>15c Brown &amp; Blue, Type I (118).</b> Very Good .....	35.00
209	<b>10c Brown &amp; Blue, Type I (118).</b> Paid cancel, tiny thin, V. F. appearing .....	45.00
210	★ <b>15c Brown &amp; Blue, Type II (119).</b> Corner perf. creased, Fine appearing .....	27.50
211	★ <b>15c Brown &amp; Blue (119).</b> Blue center misplaced so that it touches perfs., centered to B. ....	27.50
212	★ <b>24c Green &amp; Violet (120).</b> Fine ..... (Photo)	77.50
213	<b>24c Green &amp; Violet (120).</b> Well centered, tiny closed tear, V. F. appearing .....	37.50
214	<b>24c Green &amp; Violet (120).</b> Well centered, tiny repair, V. F. appearing .....	37.50
215	<b>24c Green &amp; Violet (120).</b> Horiz. Pair, centered to R. ....	100.00
216	★ <b>30c Blue &amp; Carmine (121).</b> Fine ..... (Photo)	87.50
217	<b>30c Blue and Carmine (121).</b> Fine .....	25.00
218	<b>90c Carmine and Black (122).</b> Well centered, few short perfs. (Photo)	92.50

219	<b>90c Carmine &amp; Black (122).</b> Small corner crease & tiny closed tear, Fine appearing .....	92.50
220	<b>1c Buff, Re-issue (123).</b> Lightly cancelled, Very Fine .....	14.00
221 ★	<b>3c Blue, Re-issue (125).</b> Very Fine ..... <b>(Photo)</b>	100.00
222 ★	<b>90c Carmine &amp; Black, Re-issue (132).</b> Fresh, perms. in at B. .... <b>(Photo)</b>	160.00

### BANKNOTE ISSUES

223 ☒	<b>1c Ultramarine, Grill (134).</b> Three tied on cover pmk. <b>Wheeling, W. Va.,</b> Fine .....	—
224	<b>1c-2c, 90c Banknotes (134, 135, 155).</b> Fine-Very Fine .....	20.75
225 ★	<b>2c Red Brown, Grill (135).</b> o. g. Fine .....	17.50
226 ★	<b>2c Red Brown, Grill (135).</b> Fine .....	17.50
227 ★	<b>2c Red Brown, Grill (135).</b> o. g. barely touches at B. ....	17.50
227A	<b>2c Red Brown, Grill (135).</b> Two, Red and Red Paid cancels, V. F. ....	—
228	<b>6c Carmine, Grill (137).</b> Fine .....	17.50
229	<b>7c Vermillion, Grill (138).</b> Black <b>Star</b> cancel, tiny corner crease, Very Fine appearing .....	17.50+
230	<b>10c Brown Grill (139).</b> Centered to R, Very Good .....	37.50
231	<b>15c Orange, Grill (141).</b> Light ms. cancel, well centered .....	40.00
232	<b>15c Orange, Grill (141).</b> Ironed corner crease, Fine appearing .....	40.00
233	<b>1c-30c Banknote Collection,</b> 538 stamps mounted, mostly interesting and fancy cancels, includes Hearts, Reds, Pairs, Shields, U. S., Face, Geometrics, 79, Horseshoe, Clover, Leafs, Masonic etc. Est. Cash Val. \$75.00	—
234 ☒	<b>1c-3c Banknotes</b> 10 diff. attractive <b>illustr. adv.</b> covers includes <b>Confederate Flag</b> in colors, V. F. lot .....	—
235	<b>1c-15c Banknotes,</b> 23 stamps all with <b>Paper Varieties,</b> Ribbed, Double Paper, Silk, Stitch Wmk. interesting lot .....	—
236	<b>1c, 6c, 10c Banknotes,</b> ten diff. New York <b>Foreign Mail</b> cancels, V. G.-Fine	—
237 ★	<b>1c, 6c, 7c Banknotes (145, 148-149).</b> Last has o. g., V. G.-Fine .....	38.50
238	<b>2c-24c Banknotes,</b> Thirteen N. Y. <b>Foreign Mail</b> cancels, two in red, V. G.-Fine .....	37.40
238A	<b>1c-12c Banknotes,</b> Eleven diff. <b>Fancy Cancels</b> includes blue Shield, U. S. Mail, Paid All, Stars, Geometrics, Fine-V. F. ....	—
238B	<b>2c, 6c, 10c, 12c Banknotes,</b> 5 diff. N. Y. <b>Foreign Mail</b> cancels, one in red, Fine-V. F. ....	—
239	<b>3c Green (147).</b> Bold DONT U.S.M. cancel, Very Fine ..... <b>(Photo)</b>	—



240	<b>3c Green</b> , ten diff. <b>New Orleans fancy geometric</b> cancels, includes one official, attractive strikes .....	—
241	<b>6c Banknotes (148, 159)</b> . Ten diff. <b>N. Y. Foreign Mail</b> cancels, Fine-V. F. ....	—
242 ★	<b>7c Vermillion (149)</b> . Fine .....	18.50
242A	<b>7c Vermillion (149)</b> . Neat <b>Registered</b> cancel, V. F. ....	—
243	<b>7c Banknotes (149, 160)</b> . 3 diff. <b>N. Y. Foreign Mails</b> , one in red, Fine .....	15.50
244	<b>7c Vermillion (149)</b> . Seven copies, includes Pair, Star, Foreign Mail, V. G.—Fine .....	37.00
245	<b>10c Brown (150)</b> . Seven diff. interesting cancels, includes "Costa Rica," Rosettes, Fine-V. F. ....	—
246 ★	<b>10c, 24c, 30c Banknotes (150, 153, 154)</b> . Centered to one side, V. G. ....	130.00
247	<b>12c Banknotes (151, 162)</b> . Three diff. <b>N. Y. Foreign Mails</b> one in red, Fine .....	—
248	<b>12c Dull Violet (151)</b> . Four diff. <b>N. Y. Foreign Mail</b> cancels, includes 2 in Red, V. G.—Fine .....	15.00
249 ★	<b>15c Bright Orange (152)</b> . Centered to top, fine .....	25.00
250	<b>15c Banknotes (152, 163)</b> . Fine diff. <b>N. Y. Foreign Mails</b> , V. G.—Fine .....	27.50
251	<b>24c Deep Purple (153)</b> . Very Fine .....	10.00
252	<b>24c Purple (153)</b> . Four diff. <b>N. Y. Foreign Mail</b> cancels, all in Red, all have minor faults, Fine appearing .....	48.00
253	<b>30c, 90c Banknotes (154-155)</b> . First has Red <b>N. Y. Foreign Mail</b> cancel, Fine .....	26.50
254	<b>2c Vermillion, 3c Green (158, 178)</b> . Tied with attractive <b>N. Y. Foreign Mail</b> , type on piece .....	—
255	<b>7c, 10c-90c Banknotes (160, 162-166)</b> . Fine-Very Fine .....	34.75
256	<b>7c, 10c-90c Banknotes (160, 162-166)</b> . Very Good .....	34.75
257	<b>30c Gray Black (165)</b> . Single, Horiz. Pair & Strip of 3, all have <b>Supplementary Mail</b> , Type F cancel, one straight edge, V. G. ....	36.00
258 ★田	<b>5c Blue (179)</b> . Block, centered to B. Fine o. g. ....	100.00
258A	<b>5c Blue (179, 185)</b> . Magenta Crossroads and <b>N. Y. Foreign Mail</b> ty. 65 cancels, Fine .....	—
259	<b>2c Vermillion (183)</b> . Centered to L., bold strike <b>New Orleans Shield</b> .....	—
260 ★	<b>5c Blue (185)</b> . Two shades, Fine-V. F. ....	27.00
261	<b>15c Red Orange (189)</b> . Bright <b>Green Target</b> cancel tiny thin, V. F. appearance .....	—
262 ★	<b>1c-30c Banknotes (189, 205, 209, 210, 212-214, 217, 227)</b> . o. g. V. G.—Fine .....	33.65
263 ★	<b>90c Carmine (191)</b> . Thin spot, part o. g. Fine appearing .....	60.00

264	★	4c-6c Banknotes (205, 208a, 211, 216). Three o. g. V. G. ....	27.00
265	☒	2c, 4c, 5c Banknotes on 2c Entire (205, 210-11, U278). Tied on registered cover from Deer Lodge, Mont. 1885 .....	—
266	☒	6c Rose (208). Two tied on registered cover, 1884, fine .....	20.00
267		2c Red Brown, 2c Carmine (210, 267). Clear <b>Shield</b> and <b>Pumpkin Head</b> cancels .....	—
268		1c Ultramarine (212). Precancelled <b>Burlington, Vt.</b> , Fine .....	—
269	☒	1c Blue, 2c Green (212-13, 219). Fine <b>County</b> pmks. from 4 diff. Pa. counties, Fine .....	—
270	☒	2c Green (213). Pair <b>used in combination with Samoa</b> 6p #15, Fine <b>(Photo)</b> .....	—
271	☒	2c Green (213). Tied from Baltimore on <b>Campaign</b> cover <b>Benj. Harrison &amp; Morton</b> , illustr. of candidates in badge, V. F. .... <b>(Photo)</b> .....	—
272	☒	2c Green (213). Tied from <b>Phila.</b> on Washington Hotel illustr. cover showing Wash. crossing the Delaware very attractive .....	—
273	☒	2c Green, 2c Carmine (213, 267). Each tied, with <b>advert. around stamps</b> , fine .....	—
274	★	90c Purple (218). Centered to B., Fine .....	35.00
275		90c Purple, 90c Orange (218, 229). First tiny thin latter V. F. ....	23.75

#### 1890-1898 ISSUES

276		1c-90c, 1890 Issue (219-229). 81 stamps includes some fancy and colored cancels, few multiples, V. G.-V. F. ....	62.56
277	★田	2c Carmine (220c). Block Variety "Cap on Both "2's," centered to T. Fine .....	34.00
278		2c Carmine (220). Over 1100 stamps in booklets, selected for interesting and fancy cancels .....	—
279	☒	2c Carmine, Four on 5c Entire (220, U223). Tied on registered cover <b>Sitka, Alaska</b> , Fine .....	—
280	P	1c-\$5.00 <b>Columbian Issue, Card Proofs (230P-245P)</b> . Very Fine set .....	86.50
281	★	1c-10c <b>Columbians (230-237)</b> . Fine .....	19.20
282		1c <b>Columbians (230)</b> . Collection of 162 copies selected for interesting and fancy cancels .....	—
283		2c <b>Columbian (231)</b> . Collection of 360 mounted <b>fancy and interesting cancels</b> , includes, U. S. Mail, Horseshoe, Diamond Stars, Crosses, Fancy Letters, Pumpkin Face, Colored, Geometrics, unusually fine lot .....	—
284	★田	4c <b>Columbian (233)</b> . Bot. <b>Plate No.</b> Block of 6, centered to R. Fine .....	30.00
285		\$1.00 <b>Columbian (241)</b> . Tiny thin, V. F. appearance .....	37.50









20



28



34



35



56



57



58



73



107



108



109



127



128



194 EX



206



212



216



218



221



222



239



297



323



404



410



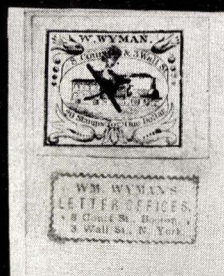
591



606 EX



607



79



287



303



329



336



339



416



405

415

286	★田	\$2.00 Bright Blue (262). Block, perfs. in at T., no gum, thin spot, re-enforced .....	700.00
287	★田	\$5.00 Dark Green (263). Block, perfs. in at top, hinge re-enforced, Rare (Photo) .....	1000.00
287A	★	1c-\$1.00 Postage Issues (Between 264-751a). Forty-six mostly diff., few used, Fine-Very Fine .....	41.85
288	田	\$1.00 Black, Type I (276). Str. edge Block, faults, attractive appearance .....	82.50
289	✉	2c Carmine (267). Tied on Patriotic, Soldiers embarking on ship to Cuba, scarce design, fine .....	—
290		\$1.00 Black, Type I, II (276-276A). Fine .....	20.50
290A	★	1c-10c 1898 Issue (279-282C). Fine-Very Fine .....	13.70
291	★田	2c Carmine (279Be). Booklet Pane of 6, V. G. ....	20.00
292	★田	2c Orange Red (279Be). Booklet Pane of 6, V. G. ....	25.00
293	★	1c-10c Trans-Miss. (285-290). Fine-Very Fine .....	26.55
294	★	10c Trans-Miss. (290). Top Imprint Plate No. Pair, one slight crease other V. F. ....	22.50
295	★	50c Trans-Miss. (291). Split arrow str. edge copy, Fine .....	35.00
296		\$1.00 Black (292). Well centered, creased, V. F. appearing .....	52.50
297		\$2.00 Orange Brown (293). Perfs. just touch T., Very Good ..... (Photo)	65.00

## TWENTIETH CENTURY

298	★	1c-10c Pan Americans (294-299). Fine-Very Fine Set .....	22.85
299		1c-10c Pan-American (294-299). Very Fine set .....	10.03
300	✉	1c Green (300). Tied with Lewis & Clark Expos. Seal with Portland, Ore. Worlds Fair cancel on cover bearing illustr. of Lewis & Clark Gold Dollars, Fine .....	—
301	★田	1c Blue Green (300b). Booklet Pane of 6, Fine .....	18.50
302	田	1c, 2c 1902 Issue (300b-301c). Booklet Panes of 6, V. G.-Fine .....	—
303	★	5c Blue Imperf. (315). Vertical Pair, Very Fine ..... (Photo)	150.00
304	★田	2c Lake, Die II (319g). Booklet Pane of 6, V. F. ....	—
305	★	1c-10c Postage and Commemoratives (Between 319-715). Thirty-six diff. including Huguenot-Walloon & Lexington Concord Set, V. F. lot .....	20.43
306	★	1c-3c Imperforates (320, 383, 408-409, 481-483, 531-532, 535, 575-577, 631). Horiz. Pairs, V. F. ....	26.22
307	★	1c-10c Louisiana Purchase (323-327). Fine-Very Fine Set .....	31.50



308	田	10c Louisiana Purchase (327). Used Block of 6, slightly re-inforced, Fine	44.00
309	★田	5c Jamestown (330). Block, touches at T., V. G.	32.50

### 1908-1916 ISSUES

310	★	1c-15c, 1908-1911 Issue (331-340, 374-378, 380-382). Latter missing 6c, Fine Very Fine	29.40
311	田	2c Carmine (332). Tied from New York, Oct. 2, 1909 on accordian type card showing in color U. S. Battleships in N. Y. Harbor during Hudson Fulton Celebration, V. F.	—
312	★田	\$1.00 Violet Brown (342). Top Plate No. Block of 6, fine	175.00
313	★田	2c Carmine Imperf. (344). Center Line Block, V. F.	15.00
314	★	1c-10c Coils (348-349, 390-391, 413, 458, 486-497). Pairs including Line Pairs, mostly V. F.	34.19
315	★	5c Blue, Coil (351). Guide Line Pair, Very Fine	27.50
316	★	5c Blue, Coil (351). Vert. Strip of 6, contains paste up with Plate No. V. F.	75.00
317	★	2c Carmine, Coil (353). Strip of 5, Star & Pl. No. few perf. separations, Fine-Very Fine	13.75
318	★	2c Lincoln, 2c Alaska, 2c Hudson-Fulton Imperforates (368, 371, 373). Pairs, last 2 vertical, V. F.	28.00
319	田	2c Lincoln Bluish (369). Tied on registered cover in 1916, fine	35.00
320	★田	8c Olive Green (380). Side Pl. No., Imprint, Star Block of 6, V. G. Fine	200.00
321	★	1c-10c Panama Pacific (397-399, 400a). Fine-Very Fine	18.20
322	★田	1c Panama-Pacific, Perf. 10 (401). Top Plate No. Block of 6, two stamps slightly creased, others Very Fine	12.00
323	★	10c Pan-Pacific (404). Fine (Photo)	60.00
324	★	1c-12c, 1914-1915 Issue (424-435, 435a). Includes 2 shades of 12c, Fine-Very Fine Set	20.03
325		3c Violet, Coil (445). Horiz. Strip of 4, Very Fine	55.00
326	★	4c Brown, Coil (446). Guide Line Pair, one stamp lightly creased, other V. F.	22.50
327	★	4c Brown, Coil (446). Paste-up Strip of 4, Fine-Very Fine	40.00
328	★	4c Light Ultramarine, 30c Orange Red (439, 476). Very Fine	24.50
329	★	2c Carmine, Type I, Coil (449a). Pair, Very Fine (Photo)	70.00
330	★田	3c Violet Imperf. (483). Center Line Block, V. F.	25.00
331	★田	3c Violet Imperf. (483). Set of 4 diff. Arrow Blocks, V. F.	28.00



332	★	3c Violet Imperf. Type II (483a). Center Line Block, V. F. ....	32.50
333	★	3c Violet Imperf. Type II (483). Set of 4 diff. Arrow Blocks, V. F. ....	30.00

#### 1917 ISSUE TO DATE

334	★	1c-\$1.00, 1917-1919 Issue (498-518). Fine-Very Fine Set .....	20.39
335	★	2c Carmine (519). Block, Fine .....	100.00
336	★	\$5.00 Deep Green & Black (524). Center Line Block, Very Fine (Photo) .....	85.00
337	★	2c Carmine Offset (526). Sheet of 100, centered to T, V. G.-Fine .....	37.50
338	★	2c Offset Imperf. Type IV (532). Set of 4 diff. Arrow Blocks, V. F. ....	64.00
339	★	2c Offset Imperf. Type V (532a). Center Line Block, V. F. .... (Photo)	150.00
340	★	2c Offset Imperf. Type V (532a). Top and Bot. Arrow Blocks, V. F. ....	70.00
341	★	2c Offset Imperf. Type Va (532b). Set of 4 diff. Arrow Blocks, V. F. ....	36.00
342	★	2c Offset Imperf. Type VI (532c). Set of 4 diff. Arrow Blocks, V. F. ....	90.00
343	★	1c Offset, Rossbach (536). B. Plate No. Block of 6, F.-V. F. ....	16.00
344	★	1c Green, Compound Perf. (542). Sheet of 100, Fine .....	81.25
345	★	½c-30c 1922-1925 Issue (551-569, 622-623). Fine- Very Fine .....	16.60
346	★	1c Green Imperforate (575). Set of 4 diff. Arrow Blocks, V. F. ....	32.00
347	★	1½c Imperforate (576). Center Line & Set of 4 diff. Arrow Blocks, V. F. ....	21.00
348	★	1c Green (578). Block, Very Fine .....	27.50
349	★	1c, 2c, Rotary Press, 1c-10c, 1923-1926 Issue (578, 581-591, 595). Fine-Very Fine .....	27.68
350	✉	1c-5c Hug.-Walloon (614-616). First Day, Mayport Fla. V. F. ....	6.50
351	★	1½c Imperforate (631). Cross Gutter Block, V. F. ....	17.50
352	✉	2c-5c Aeronautics (649-50). 13 cachet flight cover commem. 25th Anniv. of Aviation, set on each from diff. cities, Fine .....	—
353	★	1c-10c Kans.-Nebr. (658-679). 6c Kans., 5c Nebr. no gum, others Fine-V. F. ....	43.09
354	✉	½c-10c Washington Bicentennial (704-715). Cpl. Set on cachet First Day Cover from Washington, D. C. V. F. ....	8.00
355	★	1c-10c Parks (740-749). Cpl. set of Sheets, 50 each, V. F. ....	110.00
355A	★	1c-16c Farleys, Souvenir Sheets Farleys cpl., 20 vars. in pairs, Souvenir sheets cpl. from Chicago to date, V. F. ....	30.10
356	★	3c Newburgh (752). Farley Cross Gutter Block of 16, V. F. ....	25.00+
357	★	3c Presidential Coil (842). 51 Strips of 4, each shows part of Pl. No. ....	—

## AIRMAILS

358	★田	6c Orange, Airpost (C1). Vert. Guide Line Block, V. F. ....	12.50
359	★田	6c Orange (C1). Square Block of 16, S. E. at R, Very Fine .....	50.00
360	★田	16c Green, Air Post (C2). Centered to R, Fine .....	32.50
361	田	24c Airmail (C6). Square Block of 9, Fine .....	20.00
362		65c-\$2.60 Graf Zeppelin (C13-C15). Last 2 lightly creased, V. F. appearing	115.00
363	✉	\$1.30 Graf Zeppelin (C14). Tied on cacheted Flight cover, V. F. ....	40.00
364	★田	50c Zeppelin (C18). Bot. Plate No. Block of 4, V. F. ....	37.50
365	★田	50c Zeppelin (C18). Block, Very Fine .....	37.50
366	★田	50c Zeppelin (C18). B. Plate No. Block of 4, Fine-Very Fine .....	37.00
367	★田	50c Zeppelin (C18). Top Plate No. Block of 6, Very Fine .....	70.00
368	✉	50c Zeppelin (C18). Block tied on cachet flight cover, very slight stain, Fine appearance .....	37.50
369	✉	First Day Airmail Covers Blocks & singles, diff. issues, Face on cover \$14.50, V. F. ....	—
370	★田	15c U.P.U. Air (C43). Twenty-five plate no. blocks, Fine-V. F. ....	37.50
371	★田	3c Postage Due (J47). B. Plate No. Block of 6, trivial perf. separation in salvage, Fine .....	55.00
372		50c Postage Due, Perf. 10 (J58). One corner perf. short, V. F. appearing	15.00
373	★	\$1.00 Shanghai (K15). Very Fine .....	16.00

## OFFICIALS, ENVELOPES, TELEGRAPHS

374	★	2c Executive (O11). Part o. g. Fine .....	13.50
375	★	10c Executive (O14). Very Fine .....	22.50
376		1c-90c Post Office Dept., 1c-12c Navy (O35, O37, O38, O41, O47-O51, O53, O55-O56, O108). Navy Depts. all have Town cancels, 2 unused, Fine-V. F. ....	20.90
377		1c-15c Dept. of State (O57-O59, O61-O64). All have Town cancels, Fine-Very Fine .....	44.00
378	★田	2c War (O84). Block, mostly o. g. slightly re-enforced, fine .....	100.00
379	★	1c Dept. of Agriculture, Soft Paper (O94). Tiny hinge thin, V. F. appearing	125.00
379A		1c-90c Departments (Between O2-O95) Twenty-six mostly diff., few unused, V. G.-V. F. ....	30.54
380	★	1c-\$1.00 Parcel Post (Q1-Q12). Very Fine Set .....	58.25
381	★田	1c-4c Parcel Post (Q1-Q4). B. or Side Pl. No. Blocks of 6, V. G.-Fine	15.00

382	★	15c Parcel Post (Q7). Side Pl. No. Block of 6, V. G.—Fine .....	27.50
383	★	50c Parcel Post (Q10). Very Fine .....	15.00
384	★	50c, \$1.00 Parcel Post (Q10, Q12). Fine .....	40.00
385	★	5c–25c Newspaper (PR1–PR7). Seven diff. V. G.—V. F. ....	60.50
386	✉	3c Pink Entire (U58). Tied with Fort Bridger pmk. addressed to. Construction Office, U. P. R. R. Omaha, Fine .....	—
387	✉	24c Blue Entire (U71). With Eureka Express Co. frank, V. F. unused, Scarce .....	—
388	✉	2c–3c Entire, 1874–87 Issues, four scarce covers, Puyallup, Pierce Co. Wash. Terr.: Community, Madison Co. N. Y.: Bulger, Pa. A. J. Russell P. M.: Tin Cup, Colo., Fine lot .....	—
389	✉	1c Brown Postal Card (UX3). Tied with blue Anchor in box from Chicago, Very Fine .....	(Photo) —
390		City & Suburban Telegraph, 3c Black (6T3), cut irregular, V. G. ....	90.00
391		Colusa, Lake & Mendocino Telegraph Co., 5c Black (7T1), small tear, nice appearance .....	55.00
392	★	Postal Telegraph, 1901, Horiz. Pair Imperforate Between (15T21), not priced, V. F. ....	—
393	★	Telegraphs, Western Union, 1886–1908, (Between 16T16–16T39). Twenty diff. partially used Booklets containing Panes and singles .....	39.11

#### CARRIERS & LOCALS

394		Carriers, Seven diff. (1LB7–8, 3LB1, 5LB1, 6LB9–10, 7LB12). Three unused, Fair–Fine .....	148.50
395	✉	Baltimore Carrier, 1c Black used with 3c Red #26 (1LB8). Both tied with Baltimore pmk. #26 defective, carrier, fine .....	15.00
396	✉	Charleston S. C. 2c Honour's City Express (4LB8). Tied with pen cancel, blue Charleston pmk. on cover, Fine .....	60.00
397	✉	U. S. Mail Carrier, 1c Buff (6LB11). Fine copy on cover, not tied, N. Y. pmk. ....	25.00
398	✉	Philadelphia Carrier, 1c Gold (7LB11). V. F. copy on cover, no markings .....	40.00
399	✉	LOCALS Stampless, 59 covers includes Hale & Co., Boyds, American Letter Co., Dunhams, Husseys, U. S. City Dispatch, interesting and valuable lot .....	—
400	★	Allens City Dispatch, Black, Strip of 3 with one pair imperforate between (3L2a). Fine .....	—
401	✉	Blood's Locals (15L13–15). Three covers each used with 3c 1851 Issue, Fine .....	—



402	✉	<b>D. O. Blood &amp; Co. 1c Bronze (15L13).</b> On cover containing attractive illustr. Ship of Phila. & N. Y. Steam Transportation Co. V. F. ....	—
403	✉	<b>G. Carter's Despatch, 2c Black (36L2).</b> Tied black pen on cover, Phila. pmk. fine .....	60.00
404		<b>Davis Penny Post, 1c Lavender (57L1).</b> Fine scarce .....	(Photo) 250.00
405	★	<b>Grafflin's Baltimore Despatch, 1c Black (73L1).</b> Block of eight, Very Fine o.g., probably largest known block from a new find .....	(Photo) 1500.00
406	✉	<b>Hanford's Pony Express 2c Orange (78L2).</b> Black pen cancel not tying, N. Y. City pmk. on cover, fine .....	30.00
407	✉	<b>Hussey's Post, 2c Blue, 2c Black (87L40, 87L51).</b> each tied on cover, fine .....	—
408	✉	<b>Hussey's Post, 2c Black (87L51),</b> Tied on cover, V. F. ....	—
409	★	<b>Husseys Post, 25c Gold on Blue, 87LE5).</b> Complete sheet of 10, V. F. ....	60.00+
410		<b>Mercantile Library Association, 6c Black on Red,</b> not listed in this demonstration, Fine .....	(Photo) —
411	✉	<b>One Cent Despatch, 1c Violet (112L1).</b> Tied with company cancel contains illustr. notice of Wash. Knights Templars, V. F. ....	(Photo) 75.00
412	★	<b>Princes Letter Dispatch 1861, 2c Black, (122L1).</b> margin block of 12, V. F., O. G. ....	47.00+
413	✉	<b>Swarts City Dispatch, 2c Red (136L6).</b> On cover, margins all around, Star cancel, tied by ms. date, New York pmk., cover slightly stained .....	50.00
414	★	<b>Wells Fargo &amp; Co.,</b> red printed Frank similar to printed envelope design, block of 4, unlisted, V. F. ....	—
415		<b>W. Wyman, 5c Black (149L1).</b> Large margins ms. cancel on piece with Wyman's company marking on red, V. F. ....	(Photo) 25.00+
416	✉	<b>"Pacific Express Co. from Clarksville, Tex."</b> pink label on legal size cover .....	—
416A		<b>Sanitary Fair Springfield, Mass. 10c Lilac (WV-HI),</b> Fine .....	(Photo) —

## REVENUES

417		<b>10c Power of Attorney, Imperf. (R37a).</b> Vert. Pair, margins 3 sides, just touches at R, V. G. ....	250.00
418		<b>Revenues mostly 1898 Battleship</b> with some Civil War all with <b>Printed or Handstamp</b> cancels, 310 stamps, wide variety, nice lot .....	—
419		<b>\$5.00 Documentary (R159, R160).</b> First tiny tears, latter small thins, V. F. appearing .....	34.50
420		<b>\$100.00 Documentary, Series of 1946 (R458).</b> Very Fine Uncut .....	15.00
421		<b>\$500.00 Documentary, Series of 1948 (R509).</b> Uncut, Very Fine, Retail for \$75.00 .....	—

422	\$500.00 Documentary, Series of 1948 (R509). Uncut, Very Fine .....	—
423	\$1000.00 Documentary, Series of 1948 (R510). Very Fine Uncut .....	65.00
424	\$1000.00 Documentary, Series of 1948 (R510). Uncut, Very Fine .....	65.00
425 ★	\$1.00 Rose Lake, Duck (RW2). Plate No. single well centered, small thin	22.50
426 ★	\$1.00-\$2.00 Ducks (RW11-12, 14, 16-17). Each with plate no. V.F. ....	12.75
427	Match & Medicine Collection, 136 nearly all different, above average condition .....	150.74
428 ☒	Xmas Seals, 1908 both types each tied on cover with stamps of the period, Fine .....	13.00+

## CONFEDERATE STATES

429 ☒	Atlanta, Geo. 10c Black (6XU11). Atlanta pmk. on reverse, Fine (Photo)	40.00
430 ☒	Marietta, Ga. 5c Black on Buff (54XU1). Fine cover .....	25.00
431	Memphis 2c Blue (56X1). Repaired, Fine appearing .....	200.00
432 ☒	New Orleans, La., 5c Brown (62X3). Vertical Pair tied on cover with New Orleans pmk. Very fine stamps, cover cut on slight slant at R. (Photo)	65.00
433 ☒	Danville, Va., Mt. Lebanon La., Georgia town, three handstamps, V.G.	—
434 ☒	Goodson, Va. Paid 5 handstamp on illustr. cover, Lancaster House with Masonic emblem, slightly frayed at top, attractive .....	—
435 ☒	Monroe, La. Paid 10 handstamp, Fine .....	—
436 ☒	Trevilian's Depot, Va. Paid 5 handstamp, Fine .....	—
437 ☒	5c Green (1). Shades, four margins copies tied on covers with Macon, Ga. and Port Gibson, Miss. pmks. ....	—
438	5c, 10c Nine Covers (1-2, 6-7, 11-12). Three ms. cancels, Fair-Fine .....	52.00
439 ☒	5c, 10c, 1861-64 Issue (1, 2, 6, 11-12). 8 covers one torn, mostly fine .....	34.50
440 ☒	5c Green, 5c Blue, 10c Blue (1, 6-7, 11-2). Fifteen covers includes home-made, turned, corner card, two diff. Union Patriotics used with Confed. stamps, poor to good condition .....	—
441 ☒	10c Blue (2). Large margins tied on small cover Charleston, S. C. pmk. V.F. ....	—
442 ☒	10c Blue (2). Large margins, tied blue Petersburg, Va. pmk. on cover	—
443 ☒	10c Blue, 10c Greenish Blue (2, 11). First tied Charleston pmk. latter turned cover tied Gainesville, Ala. and Talladega, Ga., Fine .....	—
444 ☒	5c Blue (4). Tied with blue Raleigh, N. C. on cover, stone 3, Fine .....	—

445	✉	<b>5c Blue (4).</b> Shades, margins all around tied on covers with Churchville, Va. and Petersburg, Va. pmks. V. F. ....	—
446	✉	<b>10c Rose (5).</b> Margins all around tied blue <b>Emary, Va., V.F. (Photo)</b> .....	50.00
447	✉	<b>10c Rose (5).</b> Margins all around, tied <b>Selma, Ala.</b> on small cover, Fine .....	50.00
448	✉	<b>10c Rose (5).</b> Margins all around, tied <b>Savannah, Ga. Paid</b> pmk., cover slightly torn still attractive .....	50.00
449	✉	<b>5c Blue (6-7).</b> Five pairs tied on 5 covers includes corner card, Fine lot .....	—
450	★	<b>5c Blue (6).</b> Reprint Sheet of 100, V. F. ....	—
451	★	<b>5c Blue (6).</b> Reprint Sheet of 100, V. F. ....	—
452	✉	<b>10c TEN Blue (9).</b> Tied with target cancel on small cover, Fine .....	75.00
453	✉	<b>10c Blue (11).</b> Tied with <b>Red</b> Petersburg, Va. pmk fine .....	—
454		<b>BROADSIDE Public Sale of Negroes</b> , Charleston, S.C. 1833, 8"x12", V. F. ....	—
455		<b>Letter with Confed. States Navy Dept. Imprint</b> , signed by Secy. of Navy, frayed .....	—

#### LARGE & MISC. LOTS

456		<b>United States mostly 19th Century, Large Carton</b> includes wholesale quantities, worth over \$150.00 net .....	—
457	★	<b>Nineteenth Century</b> , 1c-30c, 1951-88 Issues, 21 stamps, mostly diff., nearly all have faults .....	415.00
458		<b>Nineteenth Century</b> , 1c-90c, 1857-88 Issues, 22 mostly diff. all have faults .....	327.00
459	✉	<b>Large Carton of Covers</b> 19th & 20th century, worth over \$100.00 net .....	—
460	✉	<b>Large Carton of Covers</b> 19th & 20th century worth over \$100.00 net .....	—
461	✉	<b>Covers</b> , 19th & 20th, 57 covers includes Wells Fargo franks, Calif. towns, Exposition cards, Registered and Flight covers, interesting lot .....	—
462	✉	<b>Carton of Covers</b> , mostly U. S. World War I Censored covers also misc. U. S. and Foreign Est. Cash Val. \$15.00 .....	—
462A		<b>Postage, Cut Squares, Revenues, Airs</b> , 19th & 20th, many hundreds, Est. Cash Val. \$35.00 .....	—
462B		<b>Dues, Envelopes, Revenues, Telegraphs</b> mounted collection of 499 diff., Fine lot, Est. Cash Value \$30.00 .....	—
463	★	<b>Postage Dues</b> , 1c-50c, 1879-1917 Issues, 612 stamps, 41 varieties, Fair-Fine .....	313.00
464		<b>Postage Dues</b> , 1c-50c, 1879-1917 Issues 1179 stamps, Good-V. F. ....	563.00
465		<b>Officials</b> 1c-90c (677 Stamps) used and unused, about 90 varieties, Fair-Very Fine .....	858.00



## U. S. WHOLESALE

466	12c Black #17 (3). V. G.-Fine .....	67.50
467	10c Green, Type III #33 (5). Good to Fine .....	45.00
468	12c Black #36 (9). 3 have thins, Fair to Fine .....	90.00
469 ★	1c Blue #63 (12). Good-Fine .....	54.00
470	12c Black #69 (10). V. G.-Fine .....	55.00
471	24c Red Lilac #70 (5). Good-Fine .....	60.00
472	30c Orange #71 (6). Good-Fine .....	48.00
473	30c Orange #71 (5). V. G.-Fine .....	40.00
474	30c Orange #71 (6). V. G.-Fine .....	48.00
475	5c Brown #76 (8). V. G.-V. F. ....	38.00
476	15c Black (77). Five copies includes Blue, Geometric, Cross, Cancels, V. G.-Fine .....	45.00
477	15c Black #77 (6). Good-Fine .....	48.00
478	24c Lilac #78 (12). Good-Fine .....	78.00
479	3c Rose, Grilled #88 (110). V. G.-Fine .....	110.00
480	10c Green, Grill #89 (6). V. G.-Fine .....	48.00
481	12c Black, Grill #90 (8). One has S. E. V. G. ....	68.00
482	15c Black #91 (2). Both centered to T .....	40.00
483	1c Blue #92 (3). V. G. ....	27.00
484 ★	2c Black, Grill #93 (3). V. G. ....	24.00
485	3c Red, Grilled, #94 (150). V. G.-V. F. ....	37.50
486	3c Green, Banknote (2000 mixed) V. G.-Very Fine .....	—
487	12c Black Grill #97 (8). Good-Fine .....	56.00
488	15c Black, Grill #98 (5). V. G. ....	37.50
489 ★	1c Buff #112 (8). V. G.-Fine .....	100.00
490	1c Buff #112 (4). F.-V. F. ....	30.00
491	1c Buff #112 (5). V. G.-F. ....	37.50
492 ★	2c Brown #113 (5). V. G.-Fine .....	35.00
493 ★	3c Ultramarine #114 (7). V. G.-Fine .....	26.25
494	6c Ultramarine #115 (6). Good-V. F. ....	51.00
495	10c Yellow #116 (5). V. G.-F. ....	42.50

496	<b>10c Yellow #116 (5). V. G.-F.</b> .....	42.50
497	<b>10c Yellow #116 (6). Good-Fine</b> .....	51.00
498	<b>12c Green #117 (7). Good-Fine</b> .....	59.50
499	<b>15c Brown &amp; Blue, Type I #118 (2). Slight faults, Fine appearing</b> .....	70.00
500	<b>15c Brown &amp; Blue #119 (4). Good-Fine</b> .....	36.00
501	<b>24c Green &amp; Violet #120 (3). One stained others V. G.</b> .....	112.50
502	<b>30c Blue &amp; Carmine #121 (3). V. G.</b> .....	75.00
503	<b>30c Blue &amp; Carmine #121 (4). Fair-Fine</b> .....	100.00
504	<b>1c Ultramarine, Grill #134 (8). V. G.-V. F.</b> .....	36.00
505	<b>7c Vermillion, Grill #138 (3). One S. E., V. G</b> .....	52.50
506	<b>15c Orange, Grill #141 (3). All pen cancelled, V. G.-Fine</b> .....	120.00
507	<b>15c Orange, Grill #141 (5). 2 S. E., others faults</b> .....	200.00
508	<b>15c Orange, Grill, #141 (5). All with faults</b> .....	200.00
509	<b>90c Carmine, Grill #144 (2). Slight Faults</b> .....	105.00
510 ★	<b>1c Ultramarine #145 (3), #156 (8). V. G.-Fine</b> .....	39.00
511	<b>2c Brown #146, 157 (237 mixed) V. G.-V. F.</b> .....	59.25
512	<b>12c Dull Violet #151 (7) 15c Bright Orange #152 (5). One has S. E., V. G.-V. F.</b> .....	52.00
513	<b>15c Bright Orange #152 (20). V. G.-Fine</b> .....	110.00
514	<b>15c Bright Orange #152 (20). V. G.-Fine</b> .....	110.00
515	<b>15c Bright Orange #152 (20). V. G.-Fine</b> .....	110.00
516	<b>15c Bright Orange #152 (20). V. G.-Fine</b> .....	110.00
517	<b>15c Bright Orange #152 (21). V. G.-Fine</b> .....	116.00
518	<b>15c Bright Orange #152 (62). All have faults</b> .....	341.00
519	<b>24c Purple #153 (5). V. G.-Fine</b> .....	50.00
520	<b>24c Purple #153 (5). V. G.-Fine</b> .....	50.00
521	<b>24c Purple #153 (6). Good-Fine</b> .....	60.00
522	<b>30c Full Black #154 (6). V. G.-F.</b> .....	75.00
523	<b>30c Full Black #154 (7). One S. E., V. G.-F.</b> .....	87.50
524	<b>90c Carmine #155 (3). V. G.-F.</b> .....	42.00
525	<b>90c Carmine #155 (6). One S. E., others have slight faults</b> .....	84.00
526 ★	<b>6c Dull Pink #159 (4). V. G.-Fine</b> .....	48.00
527	<b>6c Dull Pink #159 (287). Includes few interesting cancels, V. G.-V. F.</b> .....	157.85

528	<b>6c Dull Pink #159</b> (300). Includes few interesting cancels, V. G.-V. F.	165.00
529	<b>7c Orange Vermillion #160</b> (6). Good-Fine	33.00
530	<b>12c Blackish Violet #162</b> (9). One S. E., includes Horiz. Pair, Fair-Fine	39.75
531	<b>15c Yellow Orange #163</b> (8). V. G.	48.00
532	<b>15c Yellow Orange #163</b> (20). V. G.-Fine	120.00
533	<b>15c Yellow Orange #163</b> (20). V. G.-Fine	120.00
534	<b>15c Yellow Orange #163</b> (20). V. G.-Fine	120.00
535	<b>15c Yellow Orange #163</b> (20). V. G.-Fine	120.00
536	<b>15c Yellow Orange #163</b> (32). V. G.-Fine	192.00
537	<b>30c Gray Black #165</b> (10). Good-Fine	40.00
538	<b>90c Rose Carmine #166</b> (7). Good	105.00
539	<b>10c Brown, Banknote #187, 188</b> (89 mixed). many pen cancelled, V. G.-Fine	80.10
540 ★	<b>15c Red Orange #189</b> (5). Good-Fine	25.00
541	<b>15c Red Orange #189</b> (40). V. G.-Fine	54.00
542	<b>30c Full Block #190</b> (17). V. G.-V. F.	38.25
543 ★	<b>90c Carmine #191</b> (4). Minor faults	240.00
544	<b>90c Carmine #191</b> (7). Fair-Very-Good	105.00
545 ★	<b>5c Yellow Brown #205</b> (7). <b>5c Blue #216</b> (5). V. G.-F.	55.00
546 ★	<b>6c Brown Red #208a</b> (3) <b>4c Blue Green #211</b> (7). Four have minor faults	72.00
547 ★	<b>90c Purple #218</b> (2). Each has small thin	70.00
548	<b>5c Chocolate #223</b> (236). V. G.-V. F.	23.60
549	<b>8c Lilac #225</b> (417). V. G.-V. F.	166.80
550	<b>10c Green #226</b> (740). V. G.-V. F.	74.00
551	<b>1c Ultramarine #246</b> (142). V. G.-V. F.	42.60
552	<b>5c Chocolate #255</b> (23) <b>8c Violet Brown #257</b> (46). V. G.-V. F.	28.75
553	<b>8c Violet Brown #257</b> (30) <b>10c Brown #282c</b> (60). V. G.-V. F.	27.00
554	<b>3c Purple #268</b> (306). V. G.-V. F.	24.48
555	<b>6c Dull Brown #271</b> (110). includes some Str. Edges, V. G.-V. F.	38.50
556	<b>\$1.00 Black, Type I #276</b> (3) <b>\$1.00 Black, Type II #276A</b> (3). V. G.-F.	61.50
557	<b>4c Rose Brown #280</b> (655). V. G.-V. F.	52.40
558	<b>5c Dark Blue #281</b> (736). V. G.-V. F.	58.88
558A	<b>4c Trans-Miss. #287 (25)</b> . Each has str. edge, otherwise Fine	43.75



558B	4c Trans-Miss. #287 (50), V. G.-V. F. ....	87.50
559	2c Pan-American #295 (1,000). Includes some str. edges V. G.-V. F. ....	80.00
560	3c Bright Violet #302 (56) 6c Claret #305 (53). V. G.-V. F. ....	32.70
561	4c Brown #303 (693). V. G.-V. F. ....	34.65
562	2c Louisiana Purchase #324 (155). V. G.-V. F. ....	27.90
563	11c Light Blue #563 (287) 50c Lilac #570 (294) V. G.-V. F. ....	31.92
564	\$2.00 Deep Blue #572 (68). V. G.-V. F. ....	61.20
565	\$5.00 Carmine & Blue #573 (57). V. G.-V. F. ....	71.25
566 ★田	20c Carmine Rose #698 (10). Blocks, includes Pl. No's. F.-V. F. ....	56.50
567 ★	1c-10c Bicentennial Issue #704-#715 Misc. lot of singles, Blocks, Pl. No. Blocks, F.-V. F. ....	112.00
568	10c Special Delivery #E1(17), E2(46), E3(2), E5(316), E6(60). Includes some Str. Edges, V. G.-V. F. ....	114.26
569	3c Postage Dues #J3 (140). Fair-Fine ....	25.30
570	2c Dept. of Interior #O16 (132). V. G.-V. F. ....	66.00
571	3c, 10c, \$1.00 Parcel Post #Q3 (16) Q6 (19) Q12 (15). Fine-V. F. ....	20.05
572 ㊟	1c-5c Envelopes, 71 Entirets, #U76, U348, U458, U512-3, U521, UC13, V. F. ....	26.54
573 ★	4c Brown, Cut Square #374 (208). V. F. ....	62.40
574	Civil War Revenues Imperforates between #R5a-R98a, 340 stamps, Good-V. F. ....	489.00
575	2c-60c Part Perf. Revenues Between #R9b-R44b, 62 stamps Good-V. F. ....	122.00
576	\$2.50 Inland Exchange #R84 (77). Good-V. F. ....	42.35
577	\$1.00 Blue & Black #R118 (68). Good-V. F. ....	34.00
578	\$3.00 Lake #R183 (7). Fine ....	70.00
579	\$100.00 Documentary, #R248 (100). Good-V. F. ....	55.00
580	Match, 1c Lake # RO135b (100). Defective-fine ....	85.00
581	Match, 1c Black #RO184 (220). Defective-fine ....	110.00
582	Match, 1c Black #RO184 (280). G.-V. F. ....	140.00

### U. S. POSSESSIONS

583 ★田	CANAL ZONE, 1905-1906, 8c on 50c Overprint (29) Sheet of 100, includes several varieties, few separations, V. G.,-V. F. ....	250.00
584 ★田	— 1904-1906, 1c-10c (9, 11-12, 14, 22, 25, 29-33, 36, 49). Sheets & large Blocks, 2700 stamps, 12 diff. V. G.-V. F. ....	1175.00

585	★田	— 1924-1925, \$1.00 Violet Brown (80) Block, V. F. ....	65.00
586	☒	<b>GUAM</b> , 1c-10c Overprints (1-2, 5, 8) 26 stamps tied on 9 covers, fine lot	60.00
587	★	— 1899, 50c Orange (11), Very Fine .....	11.00
588	★	<b>PHILIPPINES</b> , 1911-1936, 2c-2p Postage, 2c-5p Commonwealth (261-272, 411-424). Very Fine Sets .....	42.10

## GENERAL FOREIGN

589		<b>BRAZIL</b> 1891-1897, 100r-1000r Liberty Heads (108-109, 111, 116-118, 120-122). 187 stamps in multiples pairs, multiples Blocks, V. G.-V. F. ....	36.59+
590	★	<b>BRITISH JUBILEES</b> , 1935, George V Complete 262 values, V. F. ....	274.73
591		<b>CANADA</b> , 1851, 6p Greyish Purple (2). Margins all around though small at T, Fine .....	(Photo) 65.00
592	☒	— 1901, 2c Carmine (77), tied on cover " <b>Canada's Exposition Toronto Aug. 26-Sept. 7</b> " in oval within Flag cancel on cover, V. F. ....	—
593		<b>CHINA</b> , 1878-94, 1c-5c mostly between #1-9, few multiples, 97 stamps Fine lot. Est. Cash Val. \$50.00 .....	—
594	P	<b>CURACAO</b> , 1873, 3c, 5c, 10c (2-4). <b>Proofs</b> in gray black .....	—
595	★	— 1941, Airpost Semipostal (CB1-CB8). Very Fine Set .....	38.00
596		<b>DANZIG</b> , 1932, 10pf-30pf Airpost Exhibition (C31-C35) each tied on small piece, V. F. ....	15.00
597	★田	<b>DANISH WEST INDIES</b> , 1902, 2c Overprint (24) Half sheet of 50, includes variety "Normal Frame", Fine .....	44.60
598	★田	— 1902, 2c Overprint (24) Sheet of 100, includes variety "Normal Frame," Fine .....	64.60
599	★田	— 1902, 8c Overprint (25) Sheet of 100, includes <b>Inverted Frame</b> , Fine-Very Fine .....	64.60
600	★	<b>EGYPT</b> , 1933, 5m-20m Railroad, 5m-20m Aviation Congress (168-176), Fine-V. F. ....	32.50
600A	☒	<b>GREAT BRITAIN</b> , 1847, 10p Red Brown (6). Tied on cover to Genoa, Fine .....	20.00
601	☒	<b>GREAT BRITAIN</b> 1840, 1p Black Mulready (U1, U3) fine .....	10.50
602		<b>HAITI</b> , 1933, 60c on 20c Blue (324) tied on small piece of cover, V. F. ....	17.50
603		<b>LIECHTENSTEIN</b> , 1930 1fr-2fr Zeppelin (C7-C8) V. F. used set .....	21.00
604	★	<b>MEXICO</b> 1915, Villa monogram on stamps already overprinted Gob. Constit. 4c, 50c (S. G. # R226, 31) n. h., v. f. S. G. £6.15 .....	—
605	☒	— <b>Wells Fargo Franks</b> , 16 diff. unused envelopes, V. F. ....	—
606	★	<b>MONTSERRAT</b> , 1932, ½p-5/ Tercentenary Issue (75-84), V. F. set .....	(Photo) 81.20

607	<b>NEWFOUNDLAND</b> , 1860, 4p Orange (12). Just touches three sides, V. G. (Photo)	150.00
608	— 1868, 5c Black (26). Centered to top	15.00
609 ★	— 1931, 15c-\$1.00 Airpost (C6-C11). Cpl. sets, each 50c has thin others V. F.	39.75
609A	☒ <b>NOVA SCOTIA</b> , 1853, 1p Red Brown (1). Horiz. Strip of 3 tied on cover, in slightly 3 sides, Very Good, Scarce cover	150.00+
610 ★	☐ <b>PANAMA</b> , 1903-1906, 1c-10c Overprints (Between 51-182) Sheets, part sheets, 3,100 stamps, includes numerous varieties, some stuck down, Fair-Very Fine	1,252.40
611 ★	<b>RHODESIA</b> , 1890-94, ½p-10sh (1-15). Fine-V. F.	36.75
612	☒ <b>Shanghai, China</b> , 1912, Registered cover bearing 66 diff. stamps with U. S., Hong Kong, Japan, China, French, Russia and German Offices all tied with various <b>Shanghai</b> cancellations, V. F. cover	—
613 ★	<b>SOUTH-WEST AFRICA</b> , 1930-31, 3p-1sh Airpost (C1-C8) V. F. Sets	16.50
614 ★	<b>STRAITS SETTLEMENTS, Kelantan</b> , 1937-40, 1c-\$5.00 (29-40, 42-43). lacks \$1.00, V. F.	25.18
615 P	<b>SURINAM</b> , 1873-88, 3c, 5c, 10c (4-6). <b>Proofs</b> in gray black	—
616 ★	☐ — 1890, 1c-3c Numerals (17-20). Sheets & large blocks, 353 stamps, between 21 & 220 of a kind, V. F.	101.40
617 ★	<b>TRANSJORDAN</b> , 1948, 1m-£1 Palestine Occupation (N1-N17). Very Fine Set	22.42
618 ★	☐ <b>TURKS &amp; CAICOS</b> , 1918-1919, 1p War Tax (MR5a). Irregular Block of 12, <b>Double Overprint</b> , F.-V. F.	60.00
619 ★	<b>VICTORIA</b> , 1901, £1 Deep Rose (206). One perf. thin, well centered	22.50
620	☒ <b>U. S. and Foreign Mixed Frankings</b> , 13 diff. covers, interesting lot	—
621	☒ <b>ZEPPELIN Covers</b> , 23 covers from Germany, Spain and U. S., V. F. lot	—

## FOREIGN COLLECTIONS

### AND LARGE LOTS

622	☒ <b>Foreign, Large Carton</b> mostly 19th Century, worth several hundred dollars net	—
623	<b>FOREIGN Collection</b> , in International Junior album, many thousands, Est. Cash Val. \$40.00	—
624	☒ <b>Large Carton Foreign Covers</b> 19th and 20th wide variety, worth well over \$100.00 net	—



624A ★	<b>Collection Foreign Sets Commemorating U.S. Constitution</b> , 65 diff. stamps in sets including Nicaragua # C203-C214, Panama # C49-C53, Spain # C97, V.F. lot .....	50.67
625	<b>British Empire &amp; Foreign</b> few hundred, 19th & 20th used and unused, V. G.-V. F. .... over	200.00
626	<b>Eastern &amp; Southern Europe</b> in Scott Specialty album, many hundreds, Est. Cash Val. \$30.00 .....	—
627	<b>France &amp; Colonies</b> in Scott Specialty album, many hundreds, Est. Cash Val. \$25.00 .....	—
628	<b>GREECE</b> , 1861-82, 46 diff. large Hermes Heads (Bet. 8-58) V. G.-V. F.	133.95
629	<b>Italy &amp; Colonies</b> in Scott Specialty album, few hundred, Est. Cash Val. \$15.00 .....	—
630	<b>PHILIPPINES</b> Collection of 236, 19th & 20th, Est. Cash Val. \$10.00 .....	—
631	— Collection of 158 mostly diff. Includes Postage, Airs, Postage Dues, Officials, about half are unused, Very Fine lot, Est. Cash Value \$20.00 .....	—
632	— 1945 Victory Overprints, Shoebox full of <b>First Day Covers</b> various combinations of stamps most have 7 diff. on each, V. F. lot .....	—

#### FOREIGN WHOLESALE

633 ★	<b>BRITISH COLONIES</b> , over 10,500 stamps many varieties, mostly War Tax issues, mainly in sheets, valuable lot, fine-very fine .....	—
634 ★	<b>CHINA</b> , 1932-1937, 15c-\$5.00 Airpost # C11-# C20 (50 Sets) without gum, Fine-Very Fine .....	70.00
635 ★	<b>NEW HEBRIDES</b> , 1908-1909, ½p-1/ Overprints #2-5, 7-9 (4to 70 of a kind), F.-V. F. ....	140.95
636 ★	— <b>1911</b> , ½p-1/ <b>Native Idols</b> , #17-23 (24 to 47 of a kind) sheets & part sheets, Fine-V. F. ....	118.70
637 ★	<b>PHILIPPINES</b> , 1899, 1c-10c Overprints #213 (163), #214 (157) #215 (41), #216 (29), #217 (37). Includes Blocks, without gum, F.-V. F. ....	211.40
638	— 1911-1913, 26c Blue Green #269 (1000). Mostly Blocks, V. G.-V. F.	180.00
639	— 1911-1913, 26c Blue Green #269 (1280) mostly Blocks, V. G.-V. F.	230.40

END OF SALE

THANK YOU





## SELLING YOUR COLLECTION?

REALIZE IMMEDIATE CASH  
AND HAVE ADVANTAGE OF SELLING AT AUCTION.

I will advance on your collection immediate cash up to 75% of my appraisal value of what it should realize at auction.

It will then be sold at one of my coming auction sales. Commission is 20% of the gross and final settlement within thirty days after the sale.

Send collection direct (valued \$500 upwards) for appraisal. Auction advance will be sent within 48 hours after receipt. If not entirely pleased, collection will be returned at my expense.

I have been conducting stamp auctions for 24 years.



**ROBERT A. SIEGEL**

(Licensed and Bonded Auctioneer)

505 FIFTH AVENUE

NEW YORK CITY

(Tel. MU. 2-4309)