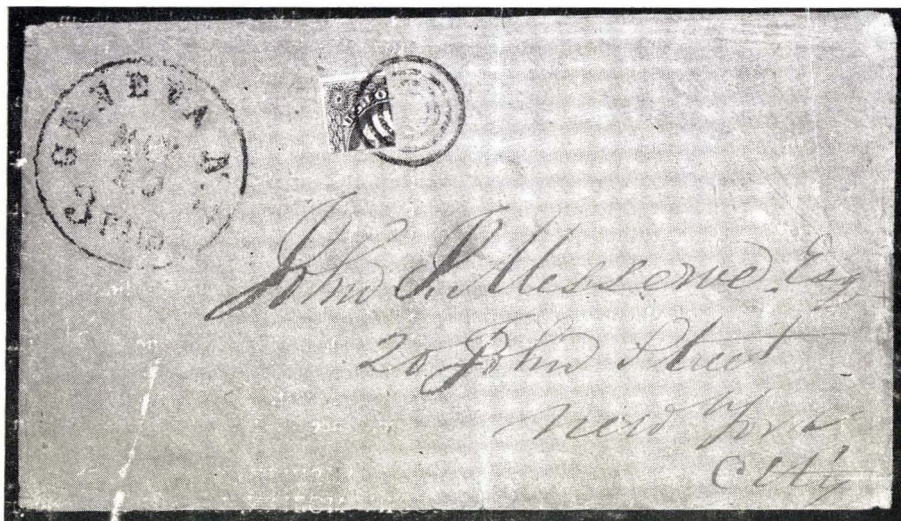


172nd SALE

*Price Realized*

**UNITED STATES**  
**and FOREIGN**  
**STAMPS and COVERS**



At Public Auction

WEDNESDAY, JUNE 16th, 2 p.m.

THURSDAY, JUNE 17th, 2 p.m.

*Robert A. Siegel*  
**AUCTIONS**

505 FIFTH AVENUE

NEW YORK CITY

## CONDITIONS OF SALE

---

1. The terms of sale are strictly cash to the highest bidder. All buyers are expected to pay for lots within three days of receipt, unless special arrangements have been made prior to the sale.
2. All bids are per lot as numbered in the catalogue and not per piece, unless otherwise announced by the auctioneer at the time of sale.
3. Any lot the description of which is incorrect is returnable only within three days of receipt. All disputed lots must be returned intact as received. Lots containing five or more stamps are not returnable at any time. No lots may be returned by purchasers who have had the opportunity to examine them before the sale.
4. Successful mail bidders, unless they are known to us or supply acceptable references, will be notified of the amount of the lots secured for them, and are expected to send payment in full before the lots are forwarded.
5. If the purchase price has not been paid within the time limit, or lots taken up within seven days from date of sale, they may be resold and any losses arising from such sale charged to the defaulter.
6. All stamps are sold as genuine, except where sold "As Is". Claims for any lot proving otherwise, must be made within two weeks from date of sale.
7. The right is reserved to group two or more lots, also withdraw any lot or lots from the sale, or to act on behalf of the seller.
8. Until paid for in full all lots remain the property of Robert A. Siegel.
9. No commission is charged for buying at our sales, but all forwarding charges will be added to the purchase price.
10. Lots will be sent for inspection, provided such lots are returned to us the same day as received. Postage and registration both ways will be charged. Approximate values of lots will be given on request.
11. The placing of a bid shall constitute acceptance of the forgoing conditions of sale.

ROBERT A. SIEGEL

GREGORY MOZIAN, Licensed Auctioneers

---

In sending bids, always state the highest price you are prepared to pay for the lot. Your limit will not be used as a starting bid unless absolutely necessary.

## DESCRIPTIONS

Superb—the finest condition for noteworthy, outstanding copies.

Very Fine (VF)—means that there is a slight deviation from the above.

Fine (F)—means that the perforations do not touch the design on issues after 1890, but in some cases may just touch in earlier issues; if used, fairly lightly cancelled.

Very Good (VG)—means that the appearance is generally fine but that the perforations cut the design slightly.

Good (G)—means average off-centering; or fairly attractive with slight defects. Original gum is not to be expected on 19th Century stamps up to 1888 unless so stated.

Scott's 1954 Specialized United States Catalogue is used for cataloging our lots of United States and Scott's Standard Catalogue, 1954 for others.

<b>WE SOLICIT FINE MATERIAL FOR FUTURE SALES</b>
--

# FIRST SESSION

WEDNESDAY, JUNE 16th, 1954 — 2 P. M.

## UNITED STATES

### STAMPLESS COVERS

- 950 1 ☒ Alex(andia) July 19, straight line (1793), Very Fine ..... —
- 250 2 ☒ American District Tel. Co. 62 Broadway, N. Y. Paid in double oval, V. F. .... —
- 050 3 ☒ Bennington, Vt. black circle, Paid, X, U. States in red, Superb (Photo) ..... —
- 50 4 ☒ Cleaveland, O. July 29 in red boxed str. line (1832), Very Fine ..... —
- 75 5 ☒ Collect straight line, interesting illustr. lettersheet of America Protestant Society (1844), V. F. .... —
- 050 6 ☒ Eastern Pony Express three diff. Mobile, Ala. covers, two in blue one red, 75c and \$1.50 rates to New York and Hartford (1836-39) all with Ms. Express Mail, Fine ..... —
- 150 6A ☒ Forwarded by Cary & Co New York in red oval on stampless to China, V.F. .... —
- 850 7 ☒ "Frederick Town" ms. to Philadelphia (1765), Very Fine Colonial cover ..... —
- 650 8 ☒ Grand Rapids Mich., Williamsport Pa. two stampless to Philadelphia each with diff. blue R, Fine ..... —
- 50 9 ☒ Greensboro, N. C. red circle, large script style 10 in dotted red circle V. F. .... —
- 80 10 ☒ Jefferson Barracks, Mo. in blue circle, Paid, 1843, V. F. .... —
- 0 11 ☒ JULY 16 large red handstamp, Railroad business letter to Lambertsville, N. J. in Ms. "Afternoon Line, July 16, 1853" Very Fine ..... (Photo) —
- 80 12 ☒ Little Falls, Herk. Co. N. Y. straight line (1830), Fine ..... —
- 25 13 ☒ New Orleans, La., Steam on cover from Port Lavacca, Texas to Adj. General, Wash. D. C., Fine ..... —
- 75 14 ☒ Newport April 7th (1794) 20 cents in Ms. Very Fine ..... —
- 25 15 ☒ New York City three stampless covers covering receipts for banknotes from Rawdon, Wright & Hatch (1844-46) each signed by a diff. owner of above famous engraving co. Very Fine ..... —
- 250 16 ☒ New York, Boston, straight lines, four covers (1793-95), V. G.-Fine ..... —



- 115-17 ☒ **"Paid 2/6" Baltimore** to Philadelphia (1788), V. F. colonial cover ..... —
- 8-18 ☒ **Philadelphia** no town marking on cover, **"No. 4"** in circle (1786) contains letter signed by **John Ross distinguish patriot of revolution**, V. F. .... —
- 650-19 ☒ **Providence (R. I.)** Straight line (1795), Fine ..... —
- 425-20 ☒ **Ship** cover to Melbourne, **Australia**, Ms. **Adams & Co. Express**, letter gives instructions for collection through Adams in Melbourne, another similar cover with out "Ship" marking, Fine ..... —
- 625-21 ☒ **Ship 7, Boston** markings in red, cover mailed at Chile by man enroute to San Francisco, Ms. "Ship Independence" 1849, Very Fine ..... —
- 850-22 ☒ **Ship** in red from **Galveston, Texas** to Baltimore (1829) interesting letter from an early Texas booster, Fine ..... —
- 1850-23 ☒ **Stony Brook, N. Y.** in blue fancy stencil, Superb ..... (Photo) —
- 18-24 **"Way 10"** in Ms. from Albany in 1796 to Stockbridge, normal rate 8c and 2c for way collect, **Earliest know "Way"** marking, Fine, Rare ..... —
- 325-25 ☒ **West Point, Ga.** blue circle, **large 5** in circle about size of pmk.; also other extreme of **tiny 5** in red and black on cover from Brunswick, Me. V. F. .... —
- 675-26 ☒ **Wilmington & Raleigh Railroad** in blue circle "5", V. F. .... (Photo) —

#### AUTOGRAPHS, AMERICANA AND COLLATERAL MATERIAL

- 32-27 ☒ **Buffalo Bill and Pawnee Bills Wild West Shows** two **illustr.** covers and one card, one from Europe with mixed franking Italian and German stamps, one contains signed letter of W. S. Cody, "Buffalo Bill", Colorful and V. F. lot ..... —
- 25-28 **Civil War Scenes, of Union Army** etchings in black and white from copper-plate of famous series "Life Studies of the Great Army" drawn in the field by Edwin Forbes on commission of Frank Leslie's Illustrated Newspaper 1862-65, the mounted proofs each 18x24 inches and extra signed by the artist in extremely fine condition, group of four "The Supply Train," "A Night March," "Through the Wilderness," "A Cavalry Charge" ..... —
- 16-29 **As above**, another beautiful set of three "The Outer Picket Line," "A Halt in Line of Battle," "Going into Action" ..... —
- 25-31 **Diary** written on fronts and backs of envelopes of 1851-88 period and stitched together, many with stamps, hundreds of pages most unusual ..... —
- 1450-32 ☒ **Henry Clay** signed folded letter, 1848, blue **Lexington, Ky.** pmk., V. F. .... —
- 1450-33 ☒ **James Madison** Free Frank as Secy. of State, red **Washington City** pmk. and Free, paper in cover watermarked **1805**, Very Fine ..... —
- 45-34 **Lincoln Portrait** with Eagle & Shield by Charles Magnus, V. F. .... —
- 35 **Letter to Pres. Lincoln from Gov. Curtin of Pa.** A.Ls., Mar. 11, 1861 recommending man for Indian Agency in Oregon, V. F. .... —



- 36 ☒ **Lotteries**, 5 covers, 1857-66 period with printed matter and literature on lotteries, Fine and interesting lot ..... —
- 37 **P.O. & Stage Notice** May 18, 1836 advising Milburn P.O. changing name to **Skowhegan P.O.** and **Spaulding & Co.** to carry mail to Canada line semi-weekly, Very Fine ..... —
- 38 **Postal Notes** two diff. early ones 1883-85, from Pawnee City, Nebr. and St. Louis each for 1c, Very Fine ..... —
- 39 **Postmaster General Graham** in signed letter advising newspaper they can't reproduce photo of stamps in 1883, V. F. .... —
- 40 **Post Office Dept. Drafts**, 2 diff. 1854, 61, attractive illustr. V. F. .... —
- 41 **Post Office Danbury Conn.** report in 1830, interesting ..... —
- 42 **Printed Petition, New York 1829, against Sunday Mailing** signed by ten notables of the day including Mayor of N. Y., V. F. .... —
- 43 **Slave Broadside**, public sale in 1833 in Charleston, V. F. .... —
- 44 ☒ **Vance Correspondence**, 11 letters and war papers 1799-1846, includes Muster Rolls Fort Washington 1802, includes several **Kentucky** postmarks on stampless covers interesting lot ..... —
- 45 ☒ **John Greenleaf Whittier** signed letter on American Anti-Slavery Society Stationery red New York pmk. on stampless cover (1837) ..... —
- 46 ☒ **H. Wilson** franked envelope, Natick Mass. pmk. **Vice Pres. under Grant** ..... —

### POSTMASTER STAMPS

- 47 **5c New York Postmaster (9X1)**. Margins all around, **Magenta** pen cancel, Very Fine ..... (Photo) 60.00+
- 48 ★ **5c Providence Postmaster (10X1)**. Large Margins all around, V. F. (Photo) 32.50
- 49 ★ **5c Providence Postmaster (10X1)**. Large Margins all around, slight gum stains, V. F. appearing ..... 32.50

### 1847 ISSUE

- 50 **5c Red Brown (1)**. Margins all around red grid, Very Fine ..... (Photo) 27.50
- 51 **5c Brown (1)**. Margins all around, Blue cancel, Very Fine ..... (Photo) 32.50
- 52 **5c Red Brown (1)**. Dot in "S" variety, Margins all around though small at T., blue boxed **Paid** cancel ..... (Photo) 42.50
- 53 **5c Red Brown (1)**. Blue **Paid** cancel, **Double Transfer** top frame line, light crease, in slightly at R. .... (Photo) 75.00
- 54 **5c Red Brown (1)**. Blue **WAY 6** in Circle, lightly creased, Attractive and rare cancel ..... (Photo) —

12.55	55	5c Brown (1). Margins all around, light corner crease, Blue Town cancel, V.F. appearing .....	32.50
7.56	56	5c Brown (1). Margins all around, tied Ms. cancel on piece, blue Phila. Railroad pmk. on piece .....	—
24.57	57	5c Red Brown (1). Margins all around, tied red grid from N. Y. Extremely Fine .....	37.50
27.58	58	5c Red Brown (1). Sheet margin copy with margins all around tied with red grid on cover, Columbus, Ohio pmk. ....	37.50
25.59	59	5c Red Brown (1). Margins all around, tied with red grid on cover, Boston pmk. Very Fine .....	37.50
22.60	60	5c Red Brown (1). Margins all around, tied with blue Norwich, N. Y., cover slightly soiled at left still V.F. 13 F. ....	37.50
20.61	61	5c Red Brown (1). Margins 3 sides in slightly at R. tied red grid, New York and red oval Swarts Chatham Square Post Office, N.Y. markings on neat cover .....	—
23.52	62	5c Red Brown (1). Margins all around, tied blue Phila. town cancel and 5 in Circle, Very Fine .....	45.00 (Photo)
37.53	63	5c Red Brown (1). Margins 3 sides, touches at B, tied blue grid on neat cover with clear blue Eastern R. R. pmk. Fine .....	70.00 (Photo)
36.54	64	5c Brown (1). Margins three sides, touches top, tied red grid, large 5 and Boston U.S. Express Mail cancel on small attractive cover .....	70.00 (Photo)
27.55	65	5c Red Brown (1). Margins all around, tied, light red U. S. Express Mail cancel on neat cover .....	70.00
11.56	66	5c Brown (1). Horiz. Pair, margins all around, tied by ms. cancel to slightly stained cover, light Lockport, N. Y. pmk. ....	—
67.57	67	10c Black (2). Large margins, Red grid, Very Fine .....	80.00 (Photo)
92.58	68	10c Black (2). Margins all around, tied red grid, Saint Louis Mo. 10 pmk. on cover, Extremely Fine .....	100.00 (Photo)
51.59	69	10c Black (2). Margins 3 sides, just in at B. tied red New York pmk. to Canada with Queenston U. C. and Hamilton Canada markings, Fine .....	100.00 (Photo)
57.70	70	10c Black (2). Margins all around, barely visible crease tied with red grid on cover to Toronto Canada, Queenstown, June 10, 1848 U. C. Toronto and New York pmks. Very Fine appearance .....	100.00 (Photo)
24.71	71	5c Red Brown, Reproduction (3). Margins all around, Extremely Fine .....	40.00 (Photo)
24.72	72	5c Red Brown, Reproduction (3). Margins all around, Extremely Fine .....	40.00 (Photo)
6.73	73 P	10c Black Reproduction (4P). Vert. Pair of Card Proof, top stamp has faults other V.F. ....	—

# 1851 ISSUE

74	1c Blue, Type II (7). Large margins all around, Superb ..... (Photo)	—
75	1c Blue, Type II (7). Margins all around, blue grid, Extremely Fine (Photo)	12.00
76	1c Blue, Type II (7). Margins 3 sides, just in at T. shows Cracked Plate in early stage, Attractive .....	60.00
77	1c Blue, Type II (7). Margins 3 sides, in at T., Cracked Plate, V. G. ....	60.00
78	1c Blue, Type II (7). Horiz. Pair, one just in T, other Fine .....	27.50
79	1c Blue, Ty. II (7). Horiz. Strip of 3 tied on piece blue Cincinnati pmk. margins 3 sides just cuts at B., Fine .....	45.00
80	1c Blue Ty. II (7). Six copies, Fine lot .....	70.00
81	1c Blue, Type II, IV (7, 9). Three Horiz. Pairs, design touched at points, V. G. ....	77.50
82	1c Blue, Type II (7). Margins all around, tied on cover .....	15.00
83	1c Blue, Ty. II (7). Tied from St. Joseph, Mo., circular of J. & G. W. Car-gill agents for St. Joseph and Council Bluffs Packet Line, 1857, Fine .....	—
84	1c Blue, Type II (7). Horiz. Pair tied on cover to England, margins 3 sides, in at top .....	27.50
85	1c Blue, Type II (7). Tied with red cancel on cover Cracked Plate (12L2) cuts in top, V. G. ....	60.00
86	1c Blue, Type II (7). Cracked Plate (23L2) tied on cover, cut design 3 sides .....	60.00
87	1c Blue, Type II (7). Cracked Plate (23L2) on cover, Ms. cancel, V. G. ....	60.00
88	1c Blue, 3c Claret (7, 11a strip). 10c rate to Calif. on adv. cover of Hollo-way's Pills & Ointment, faults .....	—
89	1c Blue Type II, IV (7, 9). Five covers all tied, V. G.-V. F. ....	69.00
90	1c Blue, Type IIIa (8A). Faults, Fine appearing .....	52.50
91	1c Blue, Type IIIa (8A). Chicopee Star cancel, in at T. and R. small thin .....	52.50
92	1c Blue, Type IV (9). Triple Transfer position 81L1L, tiny thin, nice ap-pearing .....	100.00
93	1c Blue, Type IV (9). Horiz. Pair, design cut on one, other V. F. ....	32.50
94	1c Pale Blue, Ty. IV (9). Margins all around, Very Fine ..... (Photo)	7.50
95	1c Blue, Type IV (9). Margins all around, Very Fine .....	7.50
96	1c Blue, Type IV (9). Large Margins all around, Red Carrier cancel, Ex-tremely Fine ..... (Photo)	12.00
97	1c Blue Ty. IV (9). Recut twice at top and bot. Fine .....	35.00



575	98 ★	1c Blue, Ty. IV (9). Recut once at top twice at bottom, Fine ..... (Photo)	25.00
17-	99	1c Blue, Type IV (9). Bold Red "5" cancel, just in at R. attractive (Photo)	—
1650	100	1c Blue, Type IV (9). Horiz. Pair, margins all around, Very Fine (Photo)	22.50
6-	101	1c Blue, Type IV (9). Horiz. Strip of 3, just touches at T. ....	35.00
37-	102	1c Blue, Type IV (9). Six copies includes red and blue cancels, Fine lot	48.50
1150	103 ☒	1c Blue, Type IV (9). Tied on small cover, large margins all around, Very Fine .....	12.00
7-	104 ☒	1c Blue, Type IV (9). Margins all around, tied on cover, V. F. ....	12.00
17-	105 ☒	1c Blue, Ty. IV (9). Tied on two page circular of <b>Old Oswego Line</b> , interesting information about transportation on <b>Great Lakes</b> to Canada and West, Fine .....	—
✓	106 ☒	1c Blue, Type IV (9). Tied on cover Wilmington pmk. Double Transfer one inverted (71L1L), margins 3 sides, touches at R. ....	40.00
350	107 ☒	1c Blue, Type IV (9). Tied from <b>Yellow Springs, O.</b> on small booklet of <b>Antioch College</b> , Fine .....	—
320	108 ☒	1c Blue, Type IV (9). Tied on cover, recut twice top once at bot., Fine	25.00
12-	109 ☒	1c Blue, Ty. IV (9). Grid cancel, not tied, on <b>Valentine</b> , cover, attractive enclosure, Fine .....	—
1050	110 ☒	1c Blue, Ty. IV (9). Tied on <b>Valentine</b> cover Holliston, Mass. pmk., Fine	—
9-	111 ☒	1c Blue, Type IV (9). Pair and Strip of 3 each tied on a cover, both have crease still attractive .....	57.50
1050	112	3c Orange Brown (10). Two with Red cancels, one small Boston Paid cancel, Fine-Very Fine .....	—
550	113 ☒	3c Orange Brown (10). Margins all around, with double transfer, tied on cover with <b>York Pa. July 11</b> red pmk. Extremely Fine .....	—
250	114 ☒	3c Orange Brown (10). Four covers, includes <b>July 21</b> pmk. and <b>Paid 3</b> in red Bethlehem, Conn. pmk. V. G.-Fine .....	—
1450	115	3c Red (10-11). Thirty-nine copies, includes 5 O. B., steamboat, pair, V. G.-V. F. ....	—
350	116	3c Red (11), Horiz. Pair, Margins all around, V. F. ....	—
650	117	3c Red (11). Strip of 4 and two pairs tied on piece to England one pair has <b>red 19</b> cancel, all have Oberlin, O. Feb. 27 pmks. in blue, cut in partly, attractive .....	—
1275	118	3c Dull Red (11). Nine copies, each has margins all around, Very Fine	—
475	119	3c Claret, Plum (11a). Horiz. Pair, Strip of 3, first has margins all around, latter in slightly at T. Fine-V. F. ....	—

120	3c Red (11). Three large margins, touches at B. large <b>Crack</b> (84L5L), ms. cancel	35.00
121	3c Imperforates (11). Twenty includes Wells Fargo, O. B., Plate varieties, Numeral 4, Strip, Good-Fine	—
122	3c Red (11). Thirty-six copies includes shades, pair, sheet margins V. G.-V. F.	—
123	3c Red (11). Large margins showing parts of adjoining stamps on all sides tied from New York on cover, Superb	—
124	3c Red (11). Tied with large <b>Steam</b> , margins all around, V. F.	—
125	3c Red (11). Tied from <b>Athens, Ohio</b> on Very Fine cover illustrating <b>Train of Marietta &amp; Cincinnati Railroad Co.</b> (Photo)	—
126	3c Red (11). Tied clear " <b>Virginia Central R. R.</b> " pmk. Fine (Photo)	—
127	3c Red (11). Six covers Sardinia N. Y., Ann Arbor, Mich. Advertised, Bedford Station N. Y. etc. Fine lot	—
128	3c Red (11). Three covers used with Carrier and Locals #1LB8, 15L13, 15L18, Fine	25.00
129	3c Dull Red (11). Eight-four covers includes green boxed str. line, Advertised 1ct, Railroad, Good-Fine	—
130	5c Red Brown (12). Margins all around, Very Fine (Photo)	70.00
131	5c Dark Red Brown (12). Margins all around, Very Fine (Photo)	70.00
132	5c Red Brown (12). Thin, Fine appearing	70.00
133	10c Green, Ty. II (14). Margins all around, V. F. (Photo)	16.00
134	10c Green, Type II (14). Large margins all around, Very Fine (Photo)	16.00
135	10c Green, Ty. III (15). Margins all around, V. F. (Photo)	16.00
136	10c Green, Type III (15). Large margins all around, Very Fine (Photo)	16.00
137	10c Green, Type III (15). Margins all around, Very Fine (Photo)	16.00
138	10c Green, Type III (15). Margins all around though small at R., Red Grid cancel, Fine	17.50
139	10c Green, Type III (15). Horiz. Pair, Margins all around, ironed out crease	37.50
140	10c Green, Type IV (16). Margins 3 sides, in at B, thin, Lightly cancelled, recut at top	120.00
141	12c Black, Quarter used as 3c (17c). Tied with target cancel, Geneva, N. Y. Paid 3 postmark on cover to New York with Philatelic Foundation Certificate Extremely Rare, Very Fine (Photo on Cover)	—
142	12c Black (17). Margins all around, Red Grid cancel, Very Fine (Photo)	25.00
143	12c Black (17). Margins all around, Very Fine (Photo)	22.50

- 11- 144 12c Black (17). Large margins all around, lightly creased, V. F. appearing 22.50  
 50- 145 12c Black (17). Horiz. Pair, Margins all around, Very Fine ..... (Photo) 60.00

## WESTERN COVERS

- 15- 146 ☒ Adams & Co. San Francisco in blue oval to Sacramento, (1853), V. F. —  
 15- 147 ☒ Adams & Co. Sacramento in black double circle to Mormon Island. Fine —  
 12- 148 ☒ Campo Seco, Cal. in blue double circle, "Paid 10," Fine ..... —  
 8- 149 ☒ Downieville, Cal. in black circle Paid 10, Fine ..... —  
 250- 150 ☒ Georgetown, Cal. black circle, Paid 15 on legal size cover, Fine ..... —  
 220- 151 ☒ Grays Cal. Express in Shield, red Oswego, N. Y. pmk. & Paid, Ms. "40" and "1.10", Very Fine, Scarce ..... (Photo) —  
 12- 152 ☒ Gregorys Express red str. line, in oval "Not Paid" to San Francisco, V. G. —  
 5- 153 ☒ Marysville, Cal. two blue circles Paid 6, 10, contain letters 1851-52, Fine ..... —  
 650- 154 ☒ Mokelumne Hill, Cal. black circle "Paid 6," Fine ..... —  
 9- 155 ☒ Oroville, San Jose, Santa Clara, three covers each in Wells Fargo oval cancel, Fine ..... —  
 13- 156 ☒ Placerville, Cal. in blue circle, "Paid 6," contains letter written Coon Hollow, 1852 ..... —  
 13- 157 ☒ Sacramento 10, 20, San Jose, San Francisco 5, 10, Weaverville, Cal. seven stampless covers, V. G.-V. F. ..... —  
 750- 158 ☒ San Francisco, Cal. black circle, boxed 40, V. G. ..... —  
 725- 159 ☒ San Francisco, Cal. in circle "I" printed letter used locally, Aug. 21, 1852, V. F. ..... —  
 10- 160 ☒ Santa Rosa Cal. black circle, Due 10 marking, Ms. Paid 10, Fine ..... —  
 1050- 161 ☒ Wells Fargo & Co. Express San Francisco in blue oval on stampless cover, V. F. ..... —  
 22- 162 ☒ 1c Blue (9). Tied from San Francisco on Dec. 20, 1856 on San Francisco News Letter stamp has faults, Newspaper in excellent condition ..... —  
 750- 163 ☒ 1c Blue, 3c Claret (9, 11a Strip of 3). Neatly tied on cover, San Francisco pmk. Fine ..... —  
 650- 164 ☒ 3c Red (11). Tied with Columbia, Cal. pmk. to Yuba City, V. F. ..... —  
 625- 165 ☒ 3c Red (11). Tied with clear Murphy's, Cal. pmk. stamp cut in top ..... —  
 225- 166 ☒ 3c Red (11). Pair on cover Ms. pmk. Jamestown, Cal. ..... —  
 20- 167 ☒ 3c Red (11). Fine strip of 3 tied with clear light strike Oregon City, Orgn. pmk. contains fascinating letter about Indian Wars and early Oregon history ..... —



- 168 ☒ **California Covers** 1851-83 Issues, 13 covers includes corner cards, Bartlett Springs, Red Dog, Pacific Express Co. cancels, Keeler Cal. Wells Fargo red label also few collateral items, Fair-Fine
- 169 ☒ **3c Red (26). Central Overland & Pikes Peak Express Denver City K. T.** in oval, Green **St. Joseph, Mo.** pmk. cover authentic but stamp tied with doubtful cancel
- 170 ☒ **3c Rose (65).** Tied to illustrated **California State Telegraph** cover, pmk. **Santa Clara, Cal.** cover slightly repaired, attractive
- 171 ☒ **3c Rose (65).** Tied from San Francisco, Ms. "By Steamer" in oval "**Too Late**" handstamp, Fine (Photo)
- 172 ☒ **3c Rose (65), Ms. "Little York, Aug. 21, 1865 Per Steamer" on Hutchins "The Expressman"** Fine attractive illustrated cover (Photo)
- 173 ☒ **10c Green (68).** Tied with **Nevada City, Cal.** pmk., cancelled with unusual squares in circle, letter mentions miners have gone to Wash. and Nevada Terr. to new mines, V. F.
- 174 ☒ **10c Green (68).** On cover San Francisco pmk., **Tremont House** corner card, Fine
- 175 ☒ **5c, 6c, 7c Banknotes (148, 160, 179).** Each tied on separate covers from **San Francisco** to Europe, 5c is used with Great Britain 1p when forwarded, Fine lot
- 176 ☒ **2c Red Brown (210).** Tied with Sacramento, Cal. large **Checkerboard** cancel, V. F.
- 177 ☒ **2c Carmine, 25c Bicycle Mail Route (220, 12L1).** Both tied from **Fresno Cal. July 13, 1894** on cover illustration of Victor Bicycle Service on reverse, Very Fine (Photo)
- 178 ☒ **2c Carmine (267).** Tied on cover from Stockton, front and back advertising of **River Express Co.** Fine
- 179 ☒ **2c Carmine (267).** Three diff. illustrated Hotel covers, 2 from **Denver, Colo.,** 1 from **Portland, Ore.,** Fine
- 180 ☒ **3c Red Entire (U9-10).** Four Wells Fargo Franks, **Columbia, Stockton, Healdsburg, Nevada** company cancels, Fine
- 181 ☒ **3c Red Entire (U10).** **Greenhood & Newbaner** (error in spelling) Frank tied with oval **Weaverville, Cal.** co. cancel, Very Fine, Scarce (Photo)
- 182 ☒ **3c Red Entire (U10).** Wells Fargo Frank, **Bear Valley** co. marking, Fine
- 183 ☒ **3c Red Entire (U10).** In red oval **Pacific Express Co. Sonora, V. G.**
- 184 ☒ **3c Red Entire (U10).** Tied with **Wyandott, K. T.** pmk. Very Fine (Photo)
- 185 ☒ **3c Red Entire (U10).** Two diff. **Pacific Express Co.** cancels **Benecia** and **San Francisco,** each cover repaired, nice markings
- 186 ☒ **3c Red Entire (U10).** Wells Fargo Franks, four, **San Quentin, Jamestown, San Rafael, Cloverdale** co. cancels, V. G.

- 8- 187 ☒ 10c Pale Green Entire (U18). Pmk. **Culloma, Cal.**, Fine ..... —
- 10- 188 ☒ 3c Entires (U26-27, U35). Wells Fargo Franks Sonoma, Sacramento, San Francisco latter with advert. V.G.-V.F. .... —
- 9- 189 ☒ 3c Entires (U35, U82). Three Wells Fargo Franks, Napa, No. San Juan, Gilroy co. cancels, V.G.-Fine ..... —
- 5- 190 ☒ 10c Yellow Green Entire (U41). Tied **Placerville, Cal.** Fine ..... —
- 5- 191 ☒ 3c Pink Entire (U58). Wells Fargo Frank, blue **J. Bamber & Co. Express S.F.** cancel to Alviso, Cal. Fine ..... —
- 8- 192 ☒ 3c Pink Entire (U58). Tied **Star City, Nev.** pmk. corner card Humbolt Mining Agency, Fine ..... —
- 13- 193 ☒ 3c Pink Entire (U58-59). Three **Pacific Union Express Co.** Franks, **San Jose, Vaca Station, Carson City** latter advert. cover, Fine ..... —
- 17- 194 ☒ 3c Pink Entires (U58-59). Five Wells Fargo Franks Benicia, Los Angeles, San Andreas, Petaluma Route, San Luis Obispo, last two have advertisements, Fine ..... —
- 23- 195 ☒ 3c Pink Entires (U58-59). Five Wells Fargo Frank, **Suisun, Benicia, Latrobe, Dutch Flat, Southn. Coast Route**, co. cancels, Fine ..... —
- 12- 196 ☒ 3c Pink Entire (U59). **Bamber & Co's. Express W. B. Hardy's Office** Oakland Frank tied with light co. cancel ..... —
- 8- 197 ☒ 3c Pink Entire (U59). **Truman & Co's. Express** Frank, shows Railroad, Fine ..... —
- 6- 198 ☒ 3c Pink Entire (U59). **Pacific Union Express** Frank, **Marysville** co. cancel, Fine ..... —
- 14- 199 ☒ 3c Pink Entires (U59). Five Wells Fargo Franks **Vallejo Marysville, Stockton, Chico, Suisun** co. cancels, Fine ..... —
- 14- 200 ☒ 3c Green Entires (U82, U163). Wells Fargo Franks, **Sprucemont and Tuscarora, Nev.** co. cancels, Fine ..... —
- 16- 201 ☒ 3c Green Entires (U83, U163). Wells Fargo Franks, 5 diff. **Seattle, Suisun, Napa, San Leandro, San Francisco** with Mourning cover paste up, Fine ..... —
- 5- 202 ☒ 3c Green Entire (U164). Wells Fargo Frank, blue **Elko** company marking, Fine ..... —
- 6- 203 ☒ 5c Brown, 2c **Columbian** Entires (U223, U349). Each with Wells Fargo Franks, first from **El Paso** to Mexico, each with Co. markings, V.F. .... —
- 15- 204 ☒ **Bambers, Langtons, Truman, Wells Fargo Franks** 6 diff. covers, nice markings but covers are defective or repaired ..... —
- 7- 205 ☒ **Territorials**, 7 covers Tajique, Catskill, Las Cruces, N. Mex., Ripon, Howard, Dak. Terral, Ind. T., Fair-Fine ..... —
- 7- 206 ☒ **Express Franks**, Northern Pacific, Pacific Union, Wells Fargo, 5 diff. unused entires, V.G.-V.F. .... —



- 50 207 **Wells Fargo Label** "½ ounce Paid from St. Joseph to Placerville per Pony Express," Vert. Pair in red, V.F. ....
- 208 **Gregory's Express Pocket Letter Book** contains long letter dated April 25, 1853, San Francisco, interesting, V.F. ....

# 1857 ISSUE

- 209 **1c Blue, Type I (18).** Clipped at L. Good ..... 40.00
- 210 **1c Blue Ty. II (20).** Town cancel, fine example of **cracked plate (13L)** ..... 85.00
- 211 ☒ **1c Blue, Type II (20).** Two shades on two covers both tied, V.G. .... 27.00
- 212 **1c Blue, Type IIIa (22).** Red cancel, Fine ..... 22.50
- 213 ☒ **1c Blue, Type IIIa (22).** Tied on cover, Fine ..... 25.00
- 214 ☒ **1c Blue Ty. IIIa (22).** Tied from Cleveland on large map of **Franklin, Iowa** shows illustr. of proposed Railroad, also illustr. of Steamers on Iowa River, Very interesting and Fine ..... —
- 215 **1c Blue, Type IV (23).** Very Fine ..... (Photo) 27.50
- 216 **1c Dark Blue, Type IV (23).** Blue town cancel, Very Fine ..... (Photo) 30.00
- 217 ☒ **1c Blue Ty. IV (23).** Tied from Pittsburgh on circular, V.F. .... 35.00
- 218 ★ **1c Blue, Type V (24).** Position 97R7, **Curl on Shoulder** lightly creased, Fine appearing ..... 35.00
- 219 **1c Blue, Type V (24).** Fifteen copies including 2 pairs, centerline copies, red cancels, V.G.-V.F. ..... 28.25
- 220 ☒ **1c Blue, Ty. V (24).** Tied on cover with **West Dedham Mass.** and unusual **Circle of Dots with grid inside** pmks. Fine ..... —
- 221 ☒ **1c Blue Ty. V (24).** Tied from Phila. on red and blue circular of R.R. Baggage Check Manufacturer, highly illustrated **Railroad** item, most attractive ..... —
- 222 **1c Blue, Ty. V, 10c Green, Ty. V (24, 35).** Two of each, 2 red cancels including N. Y. City Carrier, 1859 year date, one blue, Very Fine lot ..... 16.00
- 223 ☒ **1c Blue, 10c Green Vertical Pair (24, 32).** Tied on cover with **San Antonio, Tex. Paid** and **New York Am. Pkt.** pmks. to Belgium, Very Fine ..... 31.75
- 224 ★田 **3c Dull Red, Ty. II (26).** Square Block of 25, Top sheet margin, str. edge at L, hinge re-enforced, Fine o.g. .... 41.25
- 225 **3c Red (26).** 16 stamps includes two diff. **Wells Fargo, Steamboat, Imprint, Fort Bridger U. T.** cancels, V.G.-V.F. .... —
- 226 ☒ **3c Red (26).** Tied from **Philadelphia**, entire back has illustration of **Trolley Car** drawn by horses, mentions Girard College on trolley, Very attractive V.F. .... —



4. 227	3c Red (26). Tied from Pittsburgh on illustr. cover <b>Hostetter &amp; Smith large Medicine Bottle</b> , Fine	—
3. 228	3c Red (26). Tied Greenfield Mass. to Wash. D. C. and "Forwarded" markings to N. Y. City, scarce partly indistinct red <b>Broadway Post Office</b> pmk.	—
3. 229	3c Red (26). Tied with large <b>Steam</b> on small cover, V. F.	—
11.50 230	3c Red (26). Tied two line <b>Steam Boat</b> cancel, embossed " <b>Glens Falls Line, Cool's Six Day Line, Canal Boats</b> ," Very Fine	—
42.50 231	3c Red (26). Four covers tied Iowa City, Iowa, Wyandotte, Kan. Colon, Mich., Waterville, Conn. Fine lot	—
87.50 232	3c Red (26, U27). Nine covers all tied with " <b>College of St. James, Md.</b> " pmks. two on entires, V. G.—Fine	—
42.50 233	5c Henna Brown (28). Very Fine	(Photo) 65.00
6. 234	5c Red Brown (28). Light creases, Fine appearing	35.00
14. 235	5c Deep Brown (29). Very Fine	18.50
23. 236	★ 5c Orange Brown (30). Horiz. Pair, o. g. Very Fine	(Photo) 42.50
10. 237	5c Brown, Ty. II (30a). San Francisco town pmk. Fine	15.00
11. 238	5c Brown, Ty. II (30a). Red cancel, Very Fine	(Photo) 20.00
17. 239	10c Green, Type I (31). Centered to left, Fine	(Photo) 60.00
11.25 240	10c Green, Ty. III (33). Red Grid and black N. Y. Clipper Ship cancel, Very Fine	(Photo) 12.00+
37.50 241	10c Green, Type III (33). Tied on cover to Calif. Fine	13.50
13.50 242	10c Green, Type IV (34). Recut at B. faults, Fine appearing	110.00
20. 243	★ 10c Green, Type IV (34). Single pen stroke and tied by San Francisco pmk. on cover centered to top, Fine	135.00
11. 244	★ 12c Black (36). Very Fine	16.00
9.50 245	12c Black (36). Red cancel, Very Fine	11.00
14. 246	12c Black (36) Red "19" cancel, also black Town, V. F.	(Photo) 20.00
13. 247	★ 24c Gray Lilac (37). o. g. Very Fine	22.50
7. 248	★ 24c Lilac (37). Well centered, creased, V. F. appearing	22.50
27.50 249	★ 30c Orange (38). Very Fine	(Photo) 37.50
11. 250	30c Orange (38). Blue cancel, Fine	32.50

1861 ISSUE

22. 251	1c Blue (63). Tied with " <b>New York 10</b> " pmk. also " <b>New York Free</b> " pmk. on cover with Ms. Free on cover to a Postmaster, <b>unusual Carrier usage</b> , V. F.	(Photo) —
---------	--	-----------

252	1c Blue (63). Strip of 3 tied from Wash. D. C. on adv. cover of American Telegraph Co., Fine	—
253	1c Blue (63). Three copies each with neat New Haven fancy Star cancel on cover Fine except short perfs. on one stamp	—
254	1c Blue, 5c Brown Three, 24c Lilac (63, 76, 78). Tied on cover to Shanghai, numerous markings including "Insuffly Stamped Via Marseilles," attractive though two stamps creased	—
255	1c Blue (63). Two copies, each tied to cover with diff. U. S. Sanitary Commission corner card, Fine	—
256	1c, 10c, 12c 1861 Issue (63, 68, 69). Three shades of first, 2 of second, includes red carrier cancel, Very Fine	15.00
257	1c, 3c-30c 1861-1866 Issue (63, 65, 68-69, 71, 76-78). V. G.-V. F.	36.81
258	3c Pink (64). Lightly cancelled, short perfs. at right	40.00
259	3c Rose (65). Three fancy cancels, floral, mans face, odd patent, Fine	—
260	3c Rose (65). Tied with very fine Devil & Pitchfork from West Meriden, Conn. on neat cover	(Photo) —
261	3c Rose (65). Two tied from Memphis with blue Leaf cancel, blue Registered marking on cover, Fine	(Photo) —
262	3c Rose (65). Tied on cover, the name and address within three Eagles and Arrows similar to fancy cancel, unusual, slightly soiled	(Photo) —
263	3c Rose (65). Tied with cross in circle of wedges cancel on cover, Stockholm Depot, N. Y. pmk. Fine	—
264	3c Rose (65). Tied on cover, Cambridge, Mass. Skull cancel, V. G.	—
265	3c Rose (65). Tied on cover from Rochester and Buffalo each with Patent cancel, Fine	—
266	3c Rose (65). Two covers, 4 tied on cover with N.Y. Steamship pmks. other tied from New Bedford and ship cancel	—
267	5c Buff (67). Red grid cancel, Fine	40.00
268	5c Buff (67). Red Grid cancel, repaired, V. F. appearing	45.00
269	12c Black (69). Black town cancel, V. F.	5.50
270	12c Black (69). Neat Target cancel, Very Fine	—
271	12c Black (69). Red Grid cancel, Superb	(Photo) —
272	12c Black, two shades, 24c Gray (69, 78b). Fine-V. F.	17.50
273	24c Blackish Violet (70c). Blue grid, Very Fine	20.00
274	24c Steel Blue (70b). Very Fine	(Photo) 35.00
275	30c Orange (71). Str. edge showing part of next stamp at left, fine centering o. g.	(Photo) 25.00

1025	276	30c Orange (71). Neat <b>Paid</b> cancel, Very Fine .....	12.50
235	277	30c Orange, Grill (100). Horiz Pair, Very Fine ..... (Photo)	60.00
215	278	90c Blue (72). Odd fancy cancel, Very Fine ..... (Photo)	20.00
825	278A	1c-6c, 1861-83 Issues, 58 mostly diff. fancy New York City cancels includes scarce items, V. G.-V. F. ....	—
55	279	2c Black (73). Very Fine ..... (Photo)	—
1250	280	2c Black (73). Odd blue <b>boxed Cross</b> , Very Fine .....	—
825	281	2c Black (73). Four copies, Very Fine .....	—
1350	282	2c Black (73). Six copies, Very Fine lot .....	—
1650	283	2c Black (73). Twelve copies, includes Paid, Imprint Pair, Fine-Very Fine	27.00
775	284	2c Black (73, 93). One on <b>illustr.</b> adv. cover with angels, other tied from Brooklyn with large negative L, Very Good .....	—
650	285	15c Black (77). Very Fine .....	9.00
1200	286	15c Black (77). Extremely Fine ..... (Photo)	9.00
6	287	15c Black (77). Boxed Red cancel, Very Fine .....	10.00
11	288	15c Black (77). Exceptionally large margins, guide line str. edge at R. light corner crease, V. F. appearing ..... (Photo)	—
275	289	15c Black (77). Giant margins, tiny closed tear, V. F. appearing .....	9.00
13	290	15c Black (77). Two shades, Very Fine .....	18.00
17	291	24c Lilac (78). <b>Magenta Cross in Box</b> cancel, Very Fine .....	—

#### PATRIOTIC COVERS

350	292	3c Red (26). Tied from New York on Berlin & Jones scarce caricature, North trying to rescue South, Very Fine ..... (Photo)	—
525	293	3c Red (26). Tied <b>Sunbury, Pa.</b> pmk., <b>Soldier in Battle</b> design, V. F. ....	—
315	294	3c Red (26). Tied from Washington on <b>Confederate Patriotic</b> over all design of Confed. Flag with Ms. "The Pirate Flag," Very Fine (Photo)	—
1650	295	3c Rose (65). Tied from <b>Harrisburgh</b> on caricature <b>Uncle Sam, Scott and snake</b> , scarce Fine ..... (Photo)	—
55	296	3c Rose (65). Tied from <b>Easton, Pa.</b> , <b>Eagle and young in nest</b> with poem, Fine .....	—
44	297	3c Rose (65). Two tied from Washington on <b>Magnus Patriotic</b> , U. S. Treasury Bldg. and Woman in full colors, Very Fine ..... (Photo)	—
2750	298	3c Rose (65). Tied from Galesburgh, Ill. on Caricature Patriotic "The Emblem of the South," Very Fine ..... (Photo)	—
625	299	3c Rose (65). Tied with fancy New York cancel, <b>Soldier with gun</b> , Fine .....	—



- 300 ☒ **3c Rose (65).** And "Due 3," two diff. **homemade Patriotic** covers both with **Miamiville, Ohio** pmks. V. F. \_\_\_\_\_
- 301 ☒ **3c Rose (65).** Three diff. designs, all tied, Very Fine *3.12* \_\_\_\_\_
- 302 ☒ **3c Rose (65).** Three diff. designs all tied from Kentucky towns, Fine- V. F. *3.12* \_\_\_\_\_
- 303 ☒ **3c Rose (65).** Three diff. designs, Fine \_\_\_\_\_
- 304 ☒ **Patriotic Covers,** 7 diff. designs includes Wash. Franklin and McCellan on one, Railroad marking, V. G.-V. F. \_\_\_\_\_
- 305 ☒ **Patriotic Covers,** 101 diff. unused, includes Caricatures, Magnus, Scarce designs, attractive lot \_\_\_\_\_

### 1867 GRILL ISSUES

- 306 E **3c Washington Essays** 1861 design in 5 diff. colors, perforated, gummed and grilled, Fine-V. F. \_\_\_\_\_
- 307 **10c Green, Grill (89).** Horiz. Pair, V. G. \_\_\_\_\_ 25.00
- 308 **5c Brown, 10c Green, Grills (89, 95).** First tiny thin, latter Very Fine 43.00
- 309 **10c-15c Grills (89-91).** Three diff., Very Good \_\_\_\_\_ 36.50
- 310 **1c Blue Grill (92).** Circle of 4 small **Hearts** cancels, V. F. **(Photo)** \_\_\_\_\_
- 311 *4.50* **1c Blue, Grill (92).** Very Fine \_\_\_\_\_ 9.00
- 312 *6.00* **1c Blue, Grill (92).** Horiz. Pair, well centered, few short perfs on one 22.50
- 313 **2c Black Grill (93).** Attractive **Red Leaf** cancel, small thin \_\_\_\_\_
- 314 **2c Black, Grill (93).** Three copies, includes **Paid** cancel, Very Fine \_\_\_\_\_ 13.00
- 315 **5c-30c Grills (95-96, 98, 100).** Four diff., Very Good \_\_\_\_\_ 73.50
- 316 ★ **90c Blue, Grill (101).** Centered to R. Very Good \_\_\_\_\_ 200.00

### 1869 PICTORIAL ISSUE

- 317 **1c-3c Pictorial Issue (112-114).** Two shades of first, latter horiz. pair one stamp double transfer, 2 have tiny tears, all well centered \_\_\_\_\_ 20.10
- 318 **3c Ultramarine (114).** Three, bold H, O. K. in circle, blue **Cross in Circle,** Fine \_\_\_\_\_
- 319 ☒ **3c Ultramarine (114).** Tied with **Shield** cancel from Wooster, Ohio, V. F. **(Photo)** \_\_\_\_\_
- 320 ☒ **3c Ultramarine (114).** Seven diff. **fancy cancels** on cover includes two diff. **Red Stars,** attractive and fine lot \_\_\_\_\_
- 321 ☒ **3c Ultramarine (114).** Forty-six covers includes advert. covers, Masonic, W. (Weston, Conn.), Paid Missent, Canyon City, Oreg. pmk., Good-Fine \_\_\_\_\_
- 322 **6c-10c Pictorial Issue (115-116).** Very Fine \_\_\_\_\_ 17.00

95	323	10c Yellow, Yellowish Orange (116). Two shades Very Fine .....	17.00
650	324	10c-12c Pictorial Issue (116-117). Well centered, latter trivial perf thin, other V. F. ....	17.00
1050	325	15c Brown & Blue Type I (118). Tiny corner crease, Very Fine appearance .....	35.00
1050	326	15c Brown & Blue, Type I (118). Pinpoint thinning at T., well centered, V. F. appearing .....	35.00 (Photo)
775	327	15c Dark Brown & Blue (119). Exceptionally Fine .....	9.00
675	328	15c Brown & Blue (119). Black negative <b>star</b> cancel, Very Fine .....	9.00
5250	329 ★	24c Green & Violet (120). Very Fine .....	77.50 (Photo)
475	330	24c Green & Violet (120). Centered B. R., small thin .....	37.50
950	331	30c Blue and Carmine (121). Very Fine .....	25.00 (Photo)
65	332	30c Blue and Carmine (121). Fine .....	25.00
20	333	90c Carmine & Black (122). Lightly cancelled, perfs in T. and R., Very Good .....	92.50
375	334 ★	1c Buff, Re-Issue (133). Fine, o.g. ....	8.50

#### NEW YORK FOREIGN MAIL CANCELS

125	335	✉ 1c Ultramarine, 3c Green two, 7c rate to Germany tied with type 10 cancels, Fine .....	— (Photo)
65	336	3c Green two, 10c Brown (147, 150). Tied on piece <b>type 109</b> and red transit markings, Fine .....	—
550	337	6c Carmine (148). Bold strike <b>type 103</b> on pair, Fine .....	—
145	338	6c Banknotes (148, 159). Five diff. <b>types 1, 4, 14, 36, 51</b> one in red, Fine-V. F. ....	—
55	339	7c Vermilion (149). Horiz. Pair, <b>type 73</b> , tiny tear one stamp other V. F. ....	—
1450	340	7c Banknotes (149, 160). Four diff. <b>types 19, 21, 41, 83</b> , Fine strikes .....	—
65	341	10c Banknotes (150, 161). Five diff. <b>types 19, 41, 76, 94, 103</b> , V. G.-Fine .....	—
75	342	15c Banknotes (152, 163). Three <b>types 20, 62, 65</b> first two <b>red</b> , Fine .....	—
45	343	2c Brown, 24c Purple (153, 157 pair). Tied on piece two strikes <b>type 44</b> , Fine .....	—
625	344	1c Blue (156). Horiz. Pair, fine strike <b>type 39</b> , few short perfs. on one .....	—
55	345	3c Green (158). Two tied with full very fine strike <b>type 35</b> .....	— (Photo)
75	346	3c Green (158). Pair and single <b>type 19, 39</b> centered to one side, nice strikes .....	—
750	347	2c Vermilion, 5c Blue (178-179). Each <b>type 52</b> , Fine-V. F. ....	—

- 348 **5c Blue (179).** Bold type **70**, Very Fine ..... (Photo) —
- 349 **1c-24c Banknotes**, Twelve diff. N. Y. Foreign Mails types 6a, 10, 14, 16, 19, 22, 33, 36, 41, 46, 63, 100, few faults, nice strikes ..... —

### 3c GREENS FANCY CANCELLATIONS

- 350 **3c Green**, clear strike large Pittsburgh **Shield** Very Fine ..... (Photo) —
- 351 **3c Green Grill**, excellent strike negative **Pointing Hand**, centered to top, scarce ..... (Photo) —
- 352 **3c Green**, Danbury, Conn. **High Hat**, Very Fine ..... (Photo) —
- 353 **3c Green (184)**. Excellent strike of **Mans Arm Holding Gavel** scarce cancel made by maker of Kicking Mule cancels ..... (Photo) —
- 354 **3c Green**, good strike of Corry, Pa. **Eagle**, faults, nice appearing ..... —
- 355 **3c Green** tied on piece with large **7 in Shield**, V. F. .... —
- 356 **3c Green (207)**. Str. edge copy with fine strike **Kicking Mule**, tiny tear ..... —
- 357 **3c Greens** two diff. **3 leaf clover** cancels one in blue, V. F. .... —
- 358 **3c Greens**, two diff. **Anchor** cancels, Fine ..... —
- 359 **3c Green**, Horiz. strip of 3 with strikes of **O. K.** in circle, Fine ..... —
- 360 **3c Green**, **Block** each stamp cancelled with **U. S. in circle** cancels, Fine .... —
- 361 **3c Greens**, two Year dates **1876**, one in blue, Fine ..... —
- 362 **3c Greens**, 3 Danbury, Conn. **High Hat** cancels, Fine ..... —
- 363 **3c Greens**, 3 diff. Year dates **76, 77**, Fine ..... —
- 364 **3c Greens**, three **Weston, Conn. "W"** cancels, Fine ..... —
- 365 **3c Greens** three diff. **Hat** cancels Derby and High Hat, V. G.-Fine ..... —
- 366 **3c Greens**, 4 diff. **O. K.** cancels, V. G.-Fine ..... —
- 367 **3c Greens**, 5 diff. Year dates **71, 76, 77, 78, 80**, Fine-V. F. .... —
- 368 **3c Greens**, 5 diff. **Sunface, Calif. county in Octagon, 4 in Stars, W, Checkerboard**, Fine-V. F. .... —
- 369 **3c Greens** Seven diff. includes two diff. **O. K.** and **red geometric**, V. G.-Fine ..... —
- 370 **3c Greens**, 8 diff. **Shield** cancels, Fine lot ..... —
- 371 **3c Greens**, 8 diff. Boxes, Oval, Triangle, Blocks, Very Fine ..... —
- 372 **3c Greens**, 8 diff. **U. S.** cancels, few faults, nice strikes ..... —
- 373 **3c Greens**, 8 diff. **Shield, Checkerboard, 76, Face, Hat, Hammer, Leaf, Star & Crescent**, few faults, clear strikes ..... —



1350	374	3c Greens, 9 diff. bold <b>Geometrics</b> , Very Fine .....	—
115	375	3c Greens, 10 diff. includes <b>Monograms, E in Wreath, KKK, Advertised</b> , scarce and fine lot .....	—
55	376	3c Greens, 11 diff. <b>Monograms and Initials</b> , Fine lot .....	—
25	377	3c Greens, 11 diff. <b>Numerals 3, 5, 10</b> cancels, V. G.-V. F. ....	—
75	378	3c Greens, 12 diff. <b>Diamonds, Ovals, Squares</b> Fine-V. F. ....	—
85	379	3c Greens, 14 diff. <b>fancy Letters</b> Very Fine lot .....	—
95	380	3c Greens, 15 different <b>Cross</b> cancels includes unusual types, Fine .....	—
95	381	3c Greens, Fifteen diff. <b>fancy Stars</b> V. F. lot .....	—
45	382	3c Greens, 15 diff. attractive <b>Star</b> cancels, Fine-V. F. ....	—
35	383	3c Greens, 15 diff. attractive <b>Purple and Magenta</b> cancels, Fine-V. F. ....	—
425	384	3c Greens, 16 diff. <b>Purple</b> fancy cancels, Fine-V. F. ....	—
225	385	3c Greens, 16 diff. <b>Circular Wedge</b> cancels, Fine-V. F. ....	—
55	386	3c Greens, 18 diff. <b>Blue</b> fancy cancels, Very Fine .....	—
550	387	3c Greens, 18 diff. <b>Floral and Rosette</b> cancels, Fine-V. F. ....	—
325	388	3c Greens, 18 diff. <b>fancy cancels</b> , Fine lot .....	—
85	389	3c Greens, 19 diff. <b>Leaf</b> cancels, Very Fine .....	—
750	390	3c Greens, 19 Red Cancels includes blocks, Fine-V. F. ....	—
45	391	3c Greens, 19 diff. <b>fancy Blue</b> cancels, Fine lot .....	—
325	392	3c Greens, 20 diff. <b>Cross</b> cancels, Fine-V. F. ....	—
105	393	3c Greens, 21 diff. <b>Star</b> cancels includes blues and purples, Fine-V. F. ....	—
825	394	3c Greens, 23 diff. <b>interesting and fancy</b> cancels, V. G.-V. F. ....	—
35	395	3c Greens, 23 diff. <b>Geometrics and Fancy</b> cancels, V. G.-V. F. ....	—
950	396	3c Greens, 25 diff. <b>fancy Geometrics and Designs</b> , clear strikes, V. G.-V. F. ....	—
750	397	3c Greens, Collection of 51 <b>Leaf</b> cancels, mostly diff. includes Water-burys, V. G.-V. F. ....	—
155	398	3c Greens, 76 stamps, all <b>colored cancels</b> , red, magenta, blue, purple many fancy some multiples, V. G.-V. F. ....	—
425	399	3c Green, tied with star cancel, in Octagon " <b>D. &amp; N. W. R. R. O. C. COLE</b> Rt. Agt., Aug. 4" on cover, Fine .....	—
85	400	3c Green, tied with neat <b>O. K.</b> in circle, Beloit, Wis. pmk. on cover, Fine .....	—
195	401	3c Green (207). Cancelled on cover with bold <b>Star</b> , neat str. line West Gardner, Mass. Feb. 27, 1883, in <b>Shield</b> pmk. V. F. ....	—
225	402	3c Green (147). Tied with <b>Lynchburg, Va.</b> Top cancel, Fine .....	—

403	3c Green tied from Indianapolis, entire reverse shows illustration <b>Indiana State Fair &amp; Exposition 1875</b> , Very Fine cover	—
404	3c Green, two covers, each has large boxed <b>Pittsburgh and Shield</b> , one ties stamp, Fine	—
405	3c Greens, 5 diff. <b>Waterbury, Conn.</b> cancels on cover, V.G.-Fine	—
406	3c Greens, 5 covers includes Lar. & Green Riv. R. P. O., Tower City, Dak. pmks. Fine	—
407	3c Greens, 7 diff. <b>illustr. advert.</b> covers, very attractive lot	—
408	3c Greens, 27 covers with diff. <b>fancy cancels</b> includes ovals, straight line, leafs, railroad, hat, red target etc. Fine lot	—

### BANK NOTE ISSUES

409 ★	3c Yellow Green, Grill (136). Very Fine, o.g.	12.00
410	7c Vermilion (138, 149). Both have blue cancels, first creased, latter Fine	25.50
411	10c Brown Grill (139). Fine	37.50
412	10c Brown, Grill (139). Light grill Fine	37.50
413	1c Banknotes, Nine fancy cancels includes <b>Red Geometric, Shield and Rays, Purple U. S. Mail</b> , attractive lot	—
413A	1c-3c Banknotes, 22 diff. <b>Worcester, Mass.</b> cancels, fancy letters, numerals, geometrics, V.G.-V.F.	—
414	1c-30c Banknotes (Between 145-218). Thirty three stamps including range of shades, contains some "fat" margined copies, V.F. lot	38.50
415	3c, 6c Banknotes, 3c War Four covers Waterbury <b>Leaf</b> , Cedar Keys, Fla. San Francisco Crossroads, <b>str. line</b> Newton Upper Falls, Mass. Fine lot	—
417 P	7c Vermilion India Proof (P149). Block of 8, Very Fine	50.00
418 P	7c Vermilion India Proof (P149). Block of 12, Very Fine	66.00
419 P	7c Vermilion India Proof (P149). Bot. Plate No. Imprint Block of 12, Very Fine	125.00
420 P	7c Vermilion India Proof (P149). Bot. Plate No. Imprint Block of 12, Very Fine	125.00
421 P	7c Vermilion India Proof (P149). Top Plate No. Imprint Block of 12, one stamp has pin hole otherwise V.F.	125.00
422 P	7c Vermilion India Proof (P149). Six horiz. pairs, some shades, V.F.	48.00
423	12c Banknotes (151, 162). Seven copies includes Star, Reds, Blues, N. Y. Foreign Mail, V.G.-V.F.	27.00
424	90c Carmine (155). Two N. Y. Foreign Mail and <b>Steamship</b> cancels, latter small tear	—

1250	425	2c Vermilion (178, 183). Three excellent strikes <b>fancy geometrics (Photo)</b>	—
1050	425A	2c Vermilions (178, 183). Eight <b>fancy cancels</b> , attractive, F.-V. F.	—
1850	426	2c Vermilion (178, 183). Twelve diff. <b>Fancy cancels</b> includes geometrics, Wells Fargo, Fine lot	—
450	427	5c Blue (179). <b>Experimental Laid Paper</b> , Fine o.g.	—
550	428	15c Red Orange (189). Fine strike <b>Kicking Mule</b> cancel, stamp has str. edge and thin, scarce	—
1350	429 ★	4c-30c 1882-1888 Issue (205, 211, 217). Fine-Very Fine, o.g.	18.50
650	430 ★	1c-5c Banknotes (205, 210, 212). Blocks, first is Block of 6, 2 stamps str. edge, Very Good	52.75
750	431	2c Red Brown (210). Twenty-one <b>fancy cancels</b> several str. edges, nice strikes	—
550	432 ☒	4c Blue Green (211). Two covers each with <b>Bisected</b> copy tied from Baltimore in 1889, local usage, one has defective corner	—
5650	433 ★	2c Pale Red Brown (211B). Superb o.g. <b>(Photo)</b>	75.00
2150	434	1c Ultramarine (212). Very fine strike of <b>Kicking Mule</b> cancel, some short perfs. at R. <b>(Photo)</b>	—
1750	435 ☒	2c Green (213). Tied to illustrated advertising cover showing <b>Train</b> , Very Fine <b>(Photo)</b>	—
1350	436 ☒	2c Green (213). Tied from <b>Trinidad, Colo.</b> on illustr. cover showing <b>Rail-road Car of Pacific Express Co.</b> Fine	—
9250	437	90c Purple (218). Very Fine	15.00
2150	438	1c-10c, 1861-83, Ninety-five <b>fancy cancels</b> includes Shields, Paid Alls, Ship, U. S., U. S. Mail, County, Good-Very Fine	—
950	439	4c-30c Banknotes 1870-88 Issues, 27 stamps with <b>interesting and fancy cancels</b> , Good-V. F.	—
2450	440	<b>Fancy Cancellations</b> 1870-98 Issues, 103 stamps includes some scarce cancels, Fine lot	—
1350	441 ★	1c-90c 1890 Issue (219-229). Few small thins, Good-Very Fine	50.45
1350	442 ★	1c-30c 1890 Issue (219, 220a, 222-23, 225, 228). First is Top Pl. No. strip of 6, Very Fine	23.50
4450	443	1c-2c 1890-98 Issues. Over 2000 copies selected for fancy and interesting cancellations including <b>Jack O Lantern, Stars, Colored, Geometrics, Initials</b> , Fine cancellation lot	—
1150	444 ★	2c Carmine (220), Imprint Plate No. Block of 12, Fine-V. F.	12.50
3750	445 ☒	2c Carmine (220). Tied on cover, Saxtons River Vt. pmk. illustrated cover showing in red <b>Stagecoach drawn by 4 horses, "Saxton's River Stage &amp; Express Route,"</b> Very Fine <b>(Photo)</b>	—



- 18-446 ☒ **2c Carmine (220).** Str. edge copy tied on cover with clear **Kicking Mule** cancel struck twice from Port Townsend, Wash. Fine ..... (Photo) —

### LARGE U. S. COVER LOTS

- 6-447 ☒ **Stampless** 27 diff. covers includes Steam, Marshall, Texas, Swarts, Hale, Paid 1c, Ladies, Naval Letter, San Francisco 6, Fine lot ..... —
- 3-448 ☒ **Stampless**, 63 covers includes two 1786, 1790 no markings, Fair-Fine ..... —
- 21-449 ☒ **Stampless Covers** 214 mostly New York State and Vermont, Good to Fine ..... —
- 52-450 ☒ **Nineteen Century Covers** 19 diff. covers includes Way, Steam, Carrier, Calif. towns, etc. Good-Fine ..... —
- 87-451 ☒ **Nineteenth Century Covers**, 23 includes Stampless, Registered, N. Y. Foreign Mail, R. R., U. S. Mail, Adams Express Burnside Expedition envelopes, Fair-Fine ..... —
- 150-452 ☒ **Nineteenth Century Covers** 14 diff. covers includes Patriotics, R. R., odd comic Postal Card, V. F. lot ..... —
- 6-453 ☒ **Nineteenth Century Covers**, 92 includes Masonic, green, Fez, Patriotic, Local mostly 1851-67 issues, Fair-Very Fine ..... —
- 63-454 ☒ **Advertising Covers** mostly illustrated many Hotels, 1851-88 issues, 20 diff. attractive lot ..... —
- 50-455 ☒ **Covers mostly 19th**, 3 shoeboxes containing approx. 1100 covers, many envelopes ..... —
- 50-456 ☒ **3c Imperforates (11).** Twenty-seven covers, Fair-Very Fine ..... —
- 1-457 ☒ **3c, 1851-61 Issues**, 7 diff. covers with **Corner Cards** includes 3 **Schools** Fair-V. F. ..... —
- 0-458 ☒ **3c Rose (65).** 132 covers includes some fancy cancels, Fair-Very Fine ..... —
- 0-459 ☒ **2c Brown, 3c Ultramarine (113-114).** 35 covers includes four 2c, Good-Fine ..... —
- 1-460 ☒ **Advertising Corner Cards**, 71 covers many illustrated, nearly all 19th, Fair-Very Fine ..... —
- 350-461 ☒ **1c-2c Banknotes**, 112 covers includes some fancy cancels, contains Face, Special Delivery, corner cards, V. G.-V. F. ..... —
- 150-462 ☒ **3c Green**, box of approx. 1100 covers ..... —
- 050-463 ☒ **Banknotes** 119 covers with various **Letter and Number** pmks. V. G.-V. F. ..... —
- 050-464 ☒ **4c-10c Banknotes**, 26 covers includes various registered combinations, Fine lot ..... —
- 2-465 ☒ **Horses** collection of 81 covers all with corner cards pertaining to horses, mainly 19th mostly illustrated, attractive and fine lot ..... —
- 350-466 ☒ **Counties** 6 diff. and two Postmaster cancels on Banknote issues, Good-Fine ..... —

155	467	✉	<b>Schools &amp; Colleges</b> , 20 covers, all diff. Banknote period, V. G.-V. F. ....	—
125	468	✉	<b>Hotels</b> , 94 covers of the Banknote period, mostly different .....	—
205	469	✉	<b>Advertising Corner Cards</b> 511 covers wide variety, all Banknote issues, V. G.-V. F. ....	—
275	470	✉	<b>Fraternal &amp; Temperance</b> covers, 14 diff. 1870-98 issues, V. G.-V. F. ....	—
550	471	✉	<b>R. P. O. Cancels</b> , 15 diff. covers, all 19th, V. G.-V. F. ....	—
125	472	✉	<b>R. P. O. &amp; R. R.</b> markings, 62 covers 1870-98 period, Fair-Fine .....	—
250	473	✉	<b>2c Red Brown, 2c Green (210, 213)</b> . Approx. 1,000 covers .....	—
45	474	✉	<b>Mystic, Conn.</b> 2c 1890-93 Issues 21 covers with large "C" or fancy "M" cancels, V. G.-V. F. ....	—
285	475	✉	<b>1c-10c 1890-98 Issue</b> , 98 covers, mostly registered covers includes Stevens Dispatch, Hawaii, Porto Rico, Special Delivery usages, Fine lot .....	—
325	476	✉	<b>Advert. Corner Cards</b> many illustr. 1890-98 period, 248 covers, V. G.-V. F. ....	—
105	477	✉	<b>Shanghai, China usage</b> 8 covers 1875-1910 period, V. G.-V. F. ....	—
65	478	✉	<b>Foreign Usage</b> , 1c-5c, 1890-98 Issues, 4 covers Porto Rico, Shanghai, Alaska, U. S., German Seapost pmks. Good-Fine .....	—
75	479	✉	<b>Postal Cards</b> 1873-85 issues, 21 cards with interesting cancels, V. F. ....	—

#### COLUMBIAN ISSUE

155	480	★	<b>1c-10c Columbians (230-237)</b> . Includes extra shade on 1c, V. F. ....	19.90
125	481		<b>1c-2c 1890-1895 Issues</b> 21 copies including 2c Columbians with <b>interesting cancels</b> including "3" in Rays, Pumpkin Heads, Stars, Pipe, V. G.-V. F. ....	—
75	481A		<b>2c Columbians (231)</b> . 88 interesting & fancy cancels, V. G.-V. F. ....	—
95	482	★	<b>3c Columbian, 5c Panama Pacific (232, 399)</b> . Blocks First Fine, latter perfs. cut at L .....	36.00
145	483	✉	<b>3c-10c Columbians (232-37)</b> . Twelve covers mostly registered, Fine lot .....	37.00
550	484	★	<b>8c Columbian (236)</b> . Block of 6, just touches at B. ....	17.00
750	485	★	<b>30c Columbian (239)</b> . Plate No. single, Fine .....	10.00
285	486	★	<b>\$1.00 Columbian (241)</b> . Lightly creased, Fine appearing .....	45.00
60	487	★	<b>\$2.00 Columbian (242)</b> . Superb, never hinged .....	47.50
45	488	★	<b>3.00 Columbian (243)</b> . Fine ..... <b>(Photo)</b> .....	70.00
38	489	★	<b>\$4.00 Columbian (244)</b> . Glossy gum due to container, Fine ..... <b>(Photo)</b> .....	80.00

#### 1894-1898 ISSUE

125	490	★	<b>1c-15c 1894 Issue (246-248, 250; 253-259)</b> . Fine-Very Fine .....	28.85
-----	-----	---	---	-------

750 490A	2c Carmine, 1894-98 Issues. Collection of 1020 stamps <b>fancy and interesting cancels</b> includes Skull & Crossbones, Pumpkin Heads, Gingerbread Man, Shanghai, and wide variety of other cancels, V.G.-V. F. ....	—
491 ★	\$1.00 Black, Type I (261). Very Fine ..... (Photo)	45.00
492 ★	1c-50c 1895 Issue (264-267, 269-270, 272-275). Glossy gum, Fine .....	31.90
750 493 ★	1c-15c 1895-1898 Issue (264-266, 268-274, 279-281). Includes extra shades, Very Fine .....	30.06
494 ☒	1c Blue, 2c Carmine (264, 267). Each tied on cover with <b>Universal Postal Congress</b> special pmk. in flag Wash. D. C. 1897, Very Fine .....	—
495 ★	50c Orange (275). Superb ..... (Photo)	14.50
496 ★	50c Red Orange (275a). Very Fine ..... (Photo)	16.00
497 ★	\$1.00 Black, Type I (276). Very Fine ..... (Photo)	25.00
498 ★	\$2.00 Dark Blue (277). Very Good .....	45.00
499	\$2.00 Dark Blue (277) Fine ..... (Photo)	35.00
500 ★	\$5.00 Dark Green (278). Very Fine ..... (Photo)	87.50
501	\$5.00 Dark Green (278). Very Fine ..... (Photo)	32.50
502 ★	2c-10c Trans-Miss Issue (286-290). Very Fine .....	25.55
503 ★田	5c Trans-Miss. (288). Imprint Plate No. Block of 4, centered to B. ....	37.50
504 ☒	5c, 8c Trans-Miss. (288-89). Three registered covers one has Harp illust., Fine .....	—
505 ★	50c Trans-Miss. (291). Very Fine ..... (Photo)	35.00
506 ★田	50c Trans-Miss. (291). Block Superb, Mint ..... (Photo)	325.00
507 ★田	\$1.00 Trans-Miss. (292). BLOCK well centered, tiny gum thinning on one stamp barely noticeable, a fresh brilliant block ..... (Photo)	550.00
508 ★	\$1.00 Trans-Miss. (292). Centered to top, Fine ..... (Photo)	65.00
509 ★	\$1.00 Trans-Miss. (292). Small thin, Fine appearing ..... (Photo)	65.00
510 ★	\$2.00 Trans-Miss. (293). Tiny thinning, centered to top ..... (Photo)	87.50
511 ☒	Spanish-Amer. War Patriotics, Over all Flag design, two diff. one going to Europe, Fine .....	—
512 ☒	Flag Designs 1898-1917, 6 diff. covers, attractive lot .....	—

END OF FIRST SESSION



## SECOND SESSION

THURSDAY, JUNE 17th, 1954 — 2 P. M.

### TWENTIETH CENTURY

15-	513 ★	1c-10c Pan American Issue (294-299). Very Fine .....	22.85
38-	514 ★田	1c-10c Pan American (294-299). Blocks, 2c, 5c Str. edge and thin, others re-enforced, Fine appearing .....	133.00
28-	515 田	1c-10c Pan-Americans (294-299). Fifteen covers many registered, Fine-V. F. ....	51.50
1750	516 ★	1c-15c 1902 Issue (300-309). Includes extra shades, Very Fine .....	24.70
14-	517 ★	50c Orange (310). Very Fine .....	(Photo) 18.50
875	518 ★	50c Orange (310). Well centered, without gum .....	18.50
1750	519 ★	\$1.00 Black (311). Well centered, regummed .....	40.00
35-	520 ★	\$2.00 Dark Blue (312). Very Fine .....	(Photo) 50.00
9-	521	\$2.00 Dark Blue (312). Fine .....	22.50
68-	522 ★	\$5.00 Dark Green (313). Very Fine .....	(Photo) 100.00
24-	523	\$5.00 Dark Green (313). Fine .....	(Photo) 60.00
16-	524 ★	1c, 2c Imperforates (314, 320, a, b). Horiz. Pairs, 2 shades of first, 3 of latter V. F. ....	32.40
80-	525 ★	5c Blue Imperf. (315). Horiz. Pair, Very Fine .....	(Photo) 150.00
75-	526 ★	5c Blue, Imperforate (315). Horiz. Pair, Very Fine .....	(Photo) 150.00
71-	527 ★	5c Blue Imperforate (315). Vert. Pair, Very Fine .....	150.00
1550	528 ★	1c-7c Postage, Commems, Imperforates (Between 319-483). 43 mostly diff., V. F. ....	30.23
1750	529 田	1c-13c 1902-17 Issues, 61 covers mostly registered, numerous combinations Fine lot .....	—
7-	530 田	1c-10c, 1902-29 Issues, 103 covers all Advertising Corner Cards many illustrated, Fine lot .....	—

### LOUISIANA-PURCHASE, JAMESTOWN

1250	531 ★	1c-5c Louisiana Purchase (323-326). Very Fine .....	15.50
------	-------	---	-------





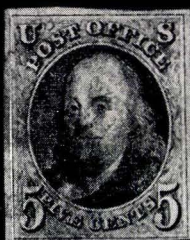




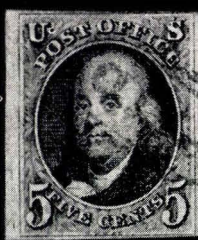
47



50



51



52



67



74



75



96



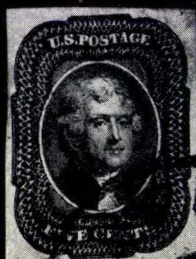
99



100



130



131



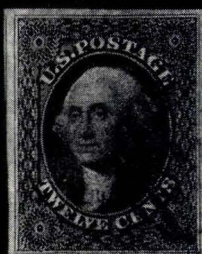
133



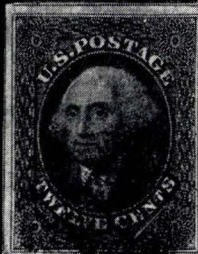
134



136



142



143



145





48



53



54



71



72



94



98



135



137



215



216



233



236



238



239



240



246



249



271



274



275



277



278



279



286



288



310



326



329



331



345



348



350



351



352



353



EX 425



433



434



491



495



496



497



499



500



501



517



520



522



523



488



489



505



508



509



510



525



526



544



554







506



507





295

297

319

298

335

446

445

435

772

702

706

733

779

794

776

787

883

888

904

938

919

1040

1045

899





555



569



576



585



595



624



681



683



684



685



695



696



716



735



737



790



805



806



812



898



892



909



916



950



951



952



941



1001



1002



1003



1007



1024



966



EX 967



EX 1012



EX 1013



EX 1016



EX 1022



1059



1043



1052



1004



EX 1063



1064



1066



EX 1097



1087

532	★	3c Louisiana-Purchase (325). Well centered strip of 4, str. edge at R.	22.00
533	★田	3c Louisiana-Purchase (325). Block, Very Fine	23.50
534	★田	3c Louisiana-Purchase (325). Block, centered to B.	23.50
535	★田	3c Louisiana-Purchase (325). Block of 8, perfs. touch at L.	47.00
536	★	3c-5c Louisiana, 10c Pan-Pacific (325-26, 400). Fine	22.50
537	★	10c Louisiana Purchase (327). Very Fine	16.00
538	★	10c Louisiana Purchase (327). Top Imprint Plate No. Pair, Very Fine	37.50
539	✉	10c Louisiana-Purchase (327). Str. edge copies tied on 2 fine covers	25.00
540	✉	1c-5c Commemorative 1904-1924 Issues, 34 covers, Fine lot	—
541	✉	Exposition Covers 25 diff. illustr. cards and covers of Lewis & Clark, St. Louis Worlds Fair, Panama-Pacific, Hudson-Fulton, Jamestown, Fine lot	—
542	★	1c-5c Jamestown (328-330). Very Fine Set	8.55
543	★	2c Jamestown (329). Block of 16, V.G.-Fine	20.00
544	★	5c Jamestown (330). Superb (Photo)	6.75
545	★	5c Jamestown (330). Very Fine	6.75
546	★田	5c Jamestown (330). Block, Very Good	32.50
547	✉	1c-2c Commemoratives (328, 372, 399). Four covers each on fair or special event cover attractively illustrated, V.F.	—

#### 1908-1910 ISSUES

548	★	1c-15c 1908 Issue (331-340). Very Fine	16.50
549	田	1c-3c Imperforates (344, 383, 408-409, 483, 483a). Used Blocks, V.F.	15.25
550	★	1c-3c Imperforates (Between 345-631). Three horiz. Pairs, 2 Blocks also 2 coil pairs, V.F.	35.40
551	★田	5c Blue Imperforate (347). R. Imprint Plate No. Block of 6, V.F.	50.00
552	★	1c-2c Bluish Paper (357-358). Very Good-Fine	12.00
553	★	6c Red Orange, Bluish (362). Perfs in at R., Very Good	60.00
554	★	13c Blue Green, Bluish (365). Very Fine (Photo)	175.00
555	★	15c Pale Ultramarine, Bluish (366). Fine (Photo)	57.50
556	★田	2c Lincoln, Imperforate (368). Block, Very Fine	17.50
557	★田	2c Lincoln Imperf. (368). Block of 9, without gum otherwise V.F.	37.50
558	★	2c Lincoln Imperf. (368). Strip of 5 with U. S. Automatic Vend. perfs., Fine	12.50



9- 559	✉	2c Lincoln, Hudson-Fulton (368, 373). Pair of first used on 2 covers in 1909, V. F. ....	17.50
10- 560	★	2c Hudson-Fulton, Imperforate (373). Block, Very Fine .....	18.50
2-50 561	★	2c Hudson-Fulton Imperf. (373). Left corner Imprint Plate No. Block of 12, Very Fine .....	64.00
1-75 562	★	1c Green Imperf. (383). Center Line Block of 24, Very Fine .....	12.75
10- 563	★	1c, 2c Coils (385-386, 390, 393, 410-413). Pairs, eight diff. Very Fine .....	19.00

#### 1912-1920 ISSUES

13- 564	★	1c-10c Panama Pacific (397-400). Very Fine .....	17.20
1-15 565	✉	1c-10c Pan-Pacific (397-404). Fifteen stamps on 13 covers, V. G.-V. F. ....	68.50
2-25 566	★	2c Panama-Pacific (402). Block, Superb, Mint .....	28.50
4-35 567	★	5c Panama-Pacific (403). Block, Fine .....	62.50
568	★	2c-30c 1912-1915 Issue (414-415, 417-418, 420, 461). Six diff. Very Fine .....	22.00
569	★	\$1.00 Violet Brown (423). Very Fine ..... (Photo)	27.50
2-25 570	★	1c-20c 1914 Issue (424-438). 26 stamps, includes extra shades, V. F. ....	40.56
1-15 571	★	1c-10c Coils (441-444, 447, 452-453, 453a, 458, 486-497). Pairs, 18 diff., V. F. ....	31.63
572	★	2c Carmine (461). Very Fine .....	7.00
17- 573	★	2c Carmine (461). Block, Very Fine .....	30.00
9-15 574	★	1c-12c 1916 Issue (462-468, 470, 472-474). Very Fine .....	28.95
3-6- 575	★	5c Carmine Error (463b). Horiz. Block of 10, middle stamp top row is Error, part gum, 2 stamps next to error thin, Fine appearing .....	62.50
576	★	\$1.00 Violet Black (478). Superb ..... (Photo)	62.50
10-50 577	★	\$2.00 Dark Blue (479). Well centered, tiny thin, Very Fine appearing .....	18.50
15- 578	★	\$5.00 Light Green (480). Very Fine .....	17.50
10- 579	★	1c-\$1.00 1917 Issue (498-518). Complete set including extra shades, V. F. ....	28.14
7-13 580	✉	2c Carmine (499). Tied on cover with Cuero, Texas Running Turkey cancel, V. F. ....	—
4-7- 581	★	5c Rose Error (499h). Error in center of Block of 9, Very Fine .....	62.50
4-2- 582	★	5c Rose Error (499h). Single Error in center of Block of 9, Very Fine ....	62.50
5-3- 583	★	20c Ultramarine (515). Block, appears Imperforate between due to blind perfs., V. F. ....	—
1-5- 584	★	2c Carmine, Perf. 11 (519). Very Fine .....	20.00
2-3- 585	★	\$2.00 Orange Red and Black (523). Fine ..... (Photo)	50.00



50	586	★	\$5.00 Deep Green & Black (524). Superb .....	17.50
1	587	★田	1c Offset Imperfs. (531). Center Line and 4 diff. Arrow Blocks, V.F. ....	92.50
50	588	★	1c-3c Imperforate (531-535, 575-577). Seven horiz. pairs and 5 blocks including one Centerline Block, V.F. ....	33.40
3	589	★田	3c Offset Imperfs. (535). Center Line and 4 diff. Arrow blocks, V.F. ....	77.50
50	590	★田	3c Offset Imperf. (535). Block of 10, Very Fine .....	19.50
	591	★田	1c Rossback (536). Block, Superb .....	8.50
50	592	★	1c-5c Commemoratives (537, 548-550, 610-621). Includes extra stades, 24 stamps, Very Fine .....	36.09
25	593	★田	2c Carmine Rose, 3c Violet (539, 541). Star Blocks with guide line down center, centered to one side, scarce .....	—
	594	★	1/2c-50c Postage & Commemorative Issues (Between 538-715). 38 stamps, mostly diff., includes Lexington-Concord, Norse-American, V.F. ....	24.08
5	595	★	1c Green, Rotary (544). Small corner crease, Very Fine appearance, scarce .....	(Photo) 135.00
3	596	★田	5c Pilgrim (550). Block of 8, centered left, just clear .....	35.00
1	597	★田	5c Pilgrim (550). Top Plate No. Block of 6, centered to B, V.G.-Fine .....	32.50
5	598	★田	5c Pilgrim (550). Right Plate No. Block of 6, centered to L, V.G. ....	32.50

#### 1922-1933 ISSUES

50	599	★	1/2c-\$5.00 1922-1925 Issue (551-573). Complete set with extra shades including extra \$5.00, V.F. ....	56.55
50	600	★	1c-10c Rotarys (578-591). Very Fine Set .....	18.18
5	601	★田	2c Carmine (579). Block with guide line down center, Fine .....	—
5	602	★田	2c Carmine (579). Star Pl. No. Block, V.G.-Fine .....	17.50
7	603	★田	1c-10c, 1923-26 Issue (581-591). Plate No. Blocks, Fine .....	48.75
50	604	★田	1 1/2c-9c, 1923-1926 Issue (582, 585-590). Blocks with autographs P. M. General H. S. New partly in margin or stamps .....	—
f.	605	★	2c Carmine Coil, Combination Joint Line Pair (599, a). Types I and II, Very Fine .....	100.00
50	606	★	2c Carmine Coil, Combination Joint Line Pair (599, a). Types I and II V.G. ....	100.00
8	607	★田	2c Harding Imperf. (611). Center Line and 4 diff. Arrow Blocks, V.F. ....	106.50
5	608	★田	2c-5c Commems. (611-612, 620-621). Blocks, Fine-Very Fine .....	32.00
6	609	★田	2c Harding Rotary (612). Three Plate No. Blocks of 4, V.G. ....	60.00
50	610	★田	5c Huguenot-Walloon (616). Top Plate No. Block of 6, contains broken circle variety, Fine .....	27.50

16	611	★	5c Huguenot-Walloon (616). Top Plate No. Block of 6, centered to T., Fine .....	27.50
1750	612	★	5c Huguenot-Walloon (616). Bot. Plate No. Block of 6, Fine .....	27.50
1550	613	★	5c Huguenot-Walloon (616). Side Plate No. Block of 6, V.G.-Fine .....	27.50
1950	614	★	1c-5c Lexington-Concord (617-619). Top Plate No. Blocks of 6, Very Fine .....	24.00
95	615	★	5c Lexington-Concord (619). Side Plate No. Block of 6, Fine .....	17.50
1950	616	★	2c White Plains Souvenir Sheet (630). Very Fine .....	25.00
19	617	★	2c White Plains Souvenir Sheet (630). Very Fine .....	25.00
18	618	★	2c Carmine Type II (634b). Plate No. Block of 4, Fine .....	60.00
525	619	★	2c Molly Pitcher (646). Vert. pair with <b>Wide Spacing</b> between overprints, V.G. ....	15.00
850	620	★	2c Molly Pitcher (646). Block, <b>Wide Spacing</b> between overprints, perfs. in L. & B. ....	30.00
1050	621	☒	2c Molly Pitcher (646). Tied from Chicago Nov. 5, 1928 with pictures of Smith and Robinson, V.F. campaign cover .....	—
275	622	★	2c-5c Aeronautics (649-650). Sheets of 50 each, Fine-Very Fine .....	53.00
265	623	★	2c-5c Aeronautics (649-650). Sheets of 50 each V.G.-V.F. ....	53.00
250	624	★	1c Kans. (658). Freak overprint showing portion in margins top and bottom .....	(Photo) —
1450	625	★	1c-10c Nebraska (669-679). Very Good-Very Fine Set .....	22.37
85	626	★	1½c Nebr. (670). Block of 8 with <b>Wide Spacing</b> between overprints of 2 pairs, V.G. ....	30.00
875	627	★	3c Nebr. (672). Block, <b>Wide Spacing</b> between overprints, perfs. in L. & B. ....	40.00
75	628	★	3c, 7c Nebr. (672, 676). Plate No. Blocks, first Very Fine, latter centered to L. ....	15.00
225	629	★	10c Nebr. (679). Plate No. Block, perfs. barely touch at T. ....	47.50
650	630	★	2c Von Steuben (689). Sheet of 100, Fine-Very Fine .....	18.85
1050	631	★	3c Byrd (733). Sheet of 50, Fine .....	18.45

#### FARLEY ISSUE

725	632	★	3c Mothers Day, 3c Wisconsin (754-755). Centerline Block and 4 diff. Arrow Blocks of each, V.F. ....	17.75
675	633	★	3c Mothers Day, 3c Wisconsin (754-755). Centerline Block and 4 diff. Arrow Blocks of each, V.F. ....	17.75
675	634	★	3c Mothers Day, 3c Wisconsin (754-755). Centerline Block and 4 diff. Arrow Blocks of each, V.F. ....	17.75

635 ★	3c Mothers Day, 3c Wisconsin (754-755). Plate No. Blocks of Six, 5 of first, 7 of last, V. F. ....	24.00
635A ★	3c Mothers Day, Wisconsin (754-755). Full Sheets of 200 each, V. F. ....	96.00
636 ★	1c-16c Farley Imperforates (754-765, 771). Thirteen diff. Bot. Plate No. Blocks of 6, Very Fine .....	44.25
637 ★	1c-10c Farley Parks (756-765). Centerline Blocks, Very Fine .....	63.25
638 ★	1c-10c Farley Parks (756-765). Set of Matched Arrow Blocks, Very Fine .....	51.00
639 ★	1c-10c Farley Parks (756-765). Set of Centerline Blocks and 4 diff. Arrow Blocks of each, V. F. ....	114.25
640 ★	1c-2c Farley Parks (756-757). Sheet of 200 of each, Very Fine .....	47.75
640A ★	1c-3c Souvenir Sheets (766-770) in full sheets of 9, 20 or 25 panes each, Very Fine .....	275.00
641 ★	16c Airpost Special Delivery (771). Centerline Block & 4 diff. Arrow Blocks, V. F. ....	60.50
642 ★	16c Airpost Special Delivery (771). Set of 4 diff. Arrow Blocks, V. F. ....	28.00
643 ★	16c Air Post Special Delivery (771). Four diff. Arrow Blocks, V. F. ....	28.00
643A ★	16c Airpost Special Delivery (771). Sheet of 200, Very Fine .....	325.00
644 ★	16c Farley (771). Two diff. Bot. Plate No. Blocks of 6, V. F. ....	25.00

#### FANCY REGISTERED COVERS, 1930-32

645	✉ Fancy Registered Cover, stamps tied with Chickens from Chicken, Alaska, V. F. ....	—
646	✉ Fancy Registered Cover, 3 diff., heads of Lincoln, Washington, Wilson, V. F. ....	—
647	✉ Fancy Registered Covers, 4 diff. Coins, Nickles, Bags of Money, V. F. ....	—
649	✉ Fancy Registered Covers, 5 diff. Star and Crescents, 3 Leaf Clovers, Horses, Squirrels, Bells, V. F. ....	—
650	✉ Fancy Registered Covers, 5 diff. Jaybird, Chicken, Eagle, Bug, Wasp, V. F. ....	—
651	✉ Fancy Registered Covers, 5 diff. Castle, Santa Claus, Mexicans, Airplane, Wings, V. F. ....	—
652	✉ Fancy Registered Covers, 5 diff. Airplanes, \$, Bugs, Ships, Church, V. F. ....	—
653	✉ Fancy Registered Covers, 6 diff. Boats, Wings, Peons, 1930, Santa Claus, V. F. ....	—

#### AIR-MAILS

654 ★	6c Air Post (C1). Top Plate No. Block of 4, Fine .....	12.50
-------	--	-------



1850	655 ★	6c-50c Airpost (C1-C6, C18). Fine-Very Fine .....	38.85
1050	656	6c-50c Airpost (C1-C6, C18). Very Good-Very Fine .....	25.25
1650	657 ★	5c-50c Airmails (Between C1-C24). Sixteen diff. including 50c Zeppelin, V.F. lot .....	33.15
175	658 ☒	6c-24c Airposts (C1-2, 4-6). Fourteen stamps on ten covers some with cachets, V. G.-V. F. ....	55.50
445	659 ★田	24c Airpost (C3). Top Plate No. and Arrow Block of 12, Fine .....	92.50
75	660 ★	10c Lindbergh Airpost (C10a). Cpl. Booklet of 2 panes, Fine .....	9.00
80	661 ★	65c-\$2.60 Zeppelins (C13-C15). Very Fine Set .....	135.00
1050	662 ★	65c Graf Zeppelin (C13). Centered to R., no gum, Fine centering .....	22.50
165	663 ☒	\$1.30 Graf Zeppelin (C14). Tied on cacheted Flight Cover, Very Fine .....	40.00
20	664 ★田	50c Zeppelin (C18). Top Plate No. Block of 4, Very Fine .....	37.50
115	665 ☒	Airmail Flights, Events, Zeppelins, 158 covers includes wreck cover, Fine lot .....	—

#### SPECIAL DELIVERIES, DUES

85	666 ★田	10c Special Delivery (E3). Bot. Plate No. Block of 6, Fine .....	11.30+
45	667 ★田	10c Special Delivery (E4). Top Plate No. Block of 6, V. G.-V. F. ....	100.00
725	668 ★田	10c Special Delivery (E6). Top Plate No. Block of 6, centered to T. ....	12.50
35	669 ★	10c Special Delivery (E6). Special Printing Imprint Plate #5240-09 strip of 3, Fine .....	—
95	670 ★田	10c Special Delivery (E6). Special Printing Top-Imprint Plate #5245-09 Block of 6, Fine .....	22.50+
1050	671 ★田	10c Special Delivery (E7). Top Plate No. Block of 6, 1 stamp small thin, otherwise Fine .....	25.00
1250	672 ★田	10c Special Delivery (E7). Block and Imprint Plate No. Block of 6, each has thin, one stamp damaged on latter .....	40.00
925	673 ★田	10c Special Delivery (E8). Bot. Plate No. Block of 6, V. G. ....	20.00
950	674 ★	10c Special Delivery (E10). Fine .....	18.50
575	675 ★田	10c Special Delivery Imperforate Between (E15c), Block, Very Fine .....	200.00
925	676 ★	10c-20c Special Deliverys, 10c Registry (Between E3-E19, F1). Eleven diff., V. F. lot .....	21.55
75	677 ★田	10c Registration (F1). Block. Fine .....	16.00
75	678 ★田	10c Registration (F1). Top Plate No. Block of 6, 1 stamp tiny thin, others Fine .....	25.00
545	679 P	1c-50c Postage Dues, Large Die Proofs (J31P-J37P). Very Fine .....	70.00

680 ★田	2c Postage Due (J30). Bot. Imprint Plate No. Block of 6, Fine .....	34.00+
681	2c Postage Due (J32). Pair with clear <b>Skull &amp; Crossbones</b> cancel, small tear one stamp, unusual <i>210 mf</i> ..... (Photo) —	
682 ★田	2c Postage Due (J60). Bot. Plate No. Block of 6, 3mm. spacing, centered to T. ....	16.20+

### OFFICIALS, PARCEL POSTS

683 ★	6c Executive (O13). Very Fine ..... (Photo)	27.50
684 ★	24c Justice (O32). Fine, O. G. .... (Photo)	30.00
685 ★	24c Justice (O32). Fine, O. G. .... (Photo)	30.00
686 ★	24c Justice Dept. (O32). Well centered, tiny guarantee shows on face. Fine .....	30.00
687 ★	3c Post Office (O49). Full sheet of 100. Fine-V. F. ....	25.00
688 ★	\$2.00 State (O68). Centered to left .....	50.00
689 ★	2c-6c, 12c War (O84-O86, O89). V. G.-Fine, O. G. ....	36.50
690 ★	3c Agriculture (O95). Very Fine, O. G. ....	15.00
691 ★	1c-75c Parcel Post (Q1-Q7, Q9-Q11). Includes extra shades, lacks 20c, V. F. ....	32.40
692 ☒	1c-75c Parcel Post (Q1-Q6, Q9, Q11). Twenty-four covers all used as first class mail many on registered covers, V. G.-V. F. ....	104.00
693 ★田	10c, 15c, 75c Parcel Post (Q6-Q7, Q11). Top Plate No. Blocks of 4, Fine-Very Fine .....	37.50
694 ★	50c Parcel Post (Q10). Very Fine .....	15.00
695 ★	\$1.00 Parcel Post (Q12). Very Fine ..... (Photo)	25.00
696 ★	\$1.00 Parcel Post (Q12). Very Fine ..... (Photo)	25.00

### ENVELOPES

697 ☒	3c Red Entires (U3, U4, U7). Fine .....	18.85
698 ☒	3c Red Entire (U10). Tied red <b>Alexandria, Pa.</b> on illustr. <b>Foundry</b> , cover, V. F. ....	—
699 ★	6c-10c Cut Square Reprints (U30-U33). Very Fine .....	—
700 ★	10c Green Cut Square Reprints (U32-U33). Three of first. 2 of latter. V. F. ....	—
701 ☒	3c Pink Entires (U58). Eleven covers all from <b>Wooster, Ohio</b> with <b>Shields, Leaf</b> and other fancy cancels, V. G.-V. F. ....	—
702 ☒	3c Pink Entire (U59). Tied from <b>Charleston, S. C.</b> on illustrated <b>Train</b> cover of <b>So. Carolina R. R.</b> agent, Very Fine ..... (Photo)	—



- 5600 703 ☒ 2c Carmine Entires (U362, U385). Unusual lot of 11 diff. **Packet** covers Str. Parlor City two types, Str. Columbia two types, Str. Bob Blanks, Steamer America three types, Str. Ouachita, Str. Fred A. Blanks, Str. J. A. Menge, all str. line markings, all addressed to New Orleans, clear markings, Fine ..... —
- 5- 704 ☒ 1c Postal Card (UX2). Used with illustr. of **Balloon** on reverse, adv. S. A. King, Aeronaut, V.F. *660 Thatch* ..... —
- 350 705 ★ **Post Office Seal, Type set (OX30)**. Very Fine, Unpriced ..... —  
*110 mf.*

### CARRIERS AND LOCALS

- 325 706 ☒ U. S. City Despatch Post, Carrier, 3c Blue (6LB5), large margins, all around, tied by U. S. double strike, Extremely Fine ..... (Photo) 45.00
- 420 707 ☒ U. S. City Despatch Post, Carrier, 3c Green, Double Impression (6LB6b), Margins 3 sides, cut in at top, U. S. cancel and company markings, V. G. 250.00
- 150 708 ★ U. S. Mail Carrier, 1c Rose (6LB9). Very Fine ..... 18.00
- 225 709 Carriers, twelve different, LO2-5, 1LB7, B8, B8b, B9, B9b, 5LB1, 6LB10-11, used and unused, Fair-Fine ..... 156.00
- 250 710 ★ Adams & Co. Calif 25c Black (1L2). Light crease V. F. appearance ..... 10.00
- 150 711 ☒ Adams & Co. Calif. 25c Pink (1L3) block of so called Poker chip stamps, Very Fine ..... 22.50
- 250 712 D. O. Blood & Co. 1c Local (15L14). Ten on small pieces, Fine lot ..... 10.00
- 85 713 ☒ D. O. Blood & Co. 1c Black (15L18). On cover with attractive Phila. advert. corner card, V. F. .... —
- 150 714 ☒ Boyds City Express Post, 2c Green (20L10). Tied "Paid J. T. B.", Fine 15.00
- 750 715 ☒ Boyd's City Express, 1c lilac (20L17), lightly tied with Co. cancel on attractive illustr. cover, Fine ..... —
- 265 716 ★ Jabez Fearey & Co's Mustang Express, 1c red (66L1). Light crease, V. F. appearance ..... (Photo) 100.00
- 450 717 Gahagan & Howe City Express, 5c Black (70L3), Vert. Pair, large margins, light gum stain ..... 20.00
- 75 718 Husseys Post, 20c Black (87LE4). Horiz. Pair with company cancel, V. F. 15.00+
- 105 719 ★ ☒ Husseys Post, 20c Black (87LE4). V. F. full sheet of 10 ..... 75.00+
- 95 720 ★ ☒ Husseys Post, 1863, 25c gold on blue (87LE5) V. F. full sheet of 10 ..... 60.00+
- 150 721 Husseys Special Message Post, Civil War Copper Token with horseman, V. F. .... —
- 305 722 ☒ Letter Express 5c Black (96L1), Pair with Ms. cancel, red Boyds, cancel on cover, one stamp creased other Fine, from Erie to New York, Sept. 24, 1844, Scarce ..... (Photo) 350.00

723 ★	Metropolitan Post Office, 1852-3, 2c red (108L3) Fine .....	75.00
724 ★	Penny Express Co. 5c Blue (114L2). Block, Extremely Fine .....	40.00
725 ★	Penny Express Co. 5c Red (114L3). Block, Extremely Fine .....	40.00
726	Swarts' City Dispatch Post, 2c Red (136L4). Large margins all around, black star cancel doesn't tie, red New York pmk. V.F. cover .....	25.00
727	Swarts' City Dispatch Post, 1c Red used with 3c Red (11, 136L9). Both tied on neat cover, Fine .....	20.00
728 ★	Wells Fargo, 10c-\$4.00 Pony Express (143L3-143L9). Fine-Very Fine ....	55.00
729	Wells Fargo, 25c Pony Express (143L8-L9). Blue Virginia City Express cancels, Fine .....	35.00
730 ★	Wells Fargo, 10c, 25c, \$1.00, \$2.00 Black, Pony Express Reprints in block of 16, four are creased, others V.F. ....	—
731	Wells Fargo Newspaper Stamp (143LP1). Defective corner .....	75.00
732	Wells Fargo 17 stamps mostly Newspaper stamp also 4 other Western locals and interesting W. F. Steamer label .....	—
733	Westtown, 2c Gold, Tete beche Pair (145L1a). Just tied with indistinct town cancel on cover with 3c 1869 issue, listed but not priced (Photo) .....	—
734	Locals, 37 different used and unused, few faults, Fair-Fine .....	100.80

#### SANITARY FAIR STAMPS

735	Albany, New York, 10c Rose (WV-A1), Fine .....	(Photo) —
736	Albany N. Y. 10c Rose, 10c Black (WVA1-2). Minor faults .....	—
737	New York 10c Blue (WV-F1). Very Fine .....	(Photo) —
738	New York, 10c Blue (WV-F1). Fine .....	—
739	Philadelphia, 10c-30c (WV-G1-3). Cpl. set, Very Fine .....	—
740 P	Philadelphia, 20c Trial Color Proofs (WV-G2). Six diff. colors in blocks, Very Fine .....	—
741 P	Philadelphia, 20c Trial Color Proofs (WV-G2). Five diff. colors in blocks, Very Fine .....	—
742 P	Philadelphia, Proofs and Essays of Great Central Fair, 49 stamps includes some pairs and blocks also 6 of the stamps interesting lot .....	—
743	Springfield, Mass. 10c Lilac (WV-H1). Large margins, small fault .....	—

#### REVENUES

744	2c, 5c, 50c Revenues (R6c, R27c, R59c). Four with Cracked Plate and 1 with unusual double paper fold, V.G.-Fine .....	23.00
-----	---	-------



8-745	10 mf.	20c-\$1.00 Imperfs., Part-Perf. (R42b, R60a, R67a). Strip of 3 and 2 strips of 4, second is vertical, Fine-Very Fine	30.85+
5-746		2c-\$1.50 Civil War Revenues, 11 diff. all with Red handstamp cancels, Fine-V. F.	400 mf
4-747		70c Green, Part Perf. (R65b). Very Fine	10.00
46-748		70c Green, Part Perf. (R65b). Vertical Pair, Fine	33.00 mf 125.00
21-749		70c Green, Part Perf. (R65b). Vertical Pair, centered to left, Very Good	20 mf 125.00
92-750	田	70c Green Part Perf. (R65b). BLOCK, centered to left, Rare	9400 mf 700.00
61-751	田	70c Green, Part Perf. (R65b). BLOCK, centered to left, two small thins, Rare	71 mf 700.00
65-752		\$2.50 Inland Exchange, Imperf. (R84a). Margins all around, thin spot at Bot. V. F. appearance	30 mf 300.00
77-753		\$3.00 Manifest Imperf. (R86a). Large margins, pretty handstamp, Extremely Fine	7.50+
92-754	P	2c Pale Blue & Black Revenue Trial Color Proof (R104TC). Complete sheet of 210, few small faults nearly all Very Fine	40 mf 430.00+
28-755	P	1c Orange & Ultramarine Prop. Revenue, Trial Color Proof (RB1TC). Block of 52 some lightly creased	182.00
36-756	P	3c Blue & Black Prop. Revenue, Trial Color Proof (RB3TC). Block of 70, Very Fine	175.00
52-757	★	1c Green Proprietary Vertical Pair Imperforate Between (RB11d). Rare, Very Fine O. G.	25 mf
52-758		1c Green Proprietary Vertical Pair Imperforate Between (RB11d). Handstamp cancel, Very Fine, Rare	41 mf
52-759		1c Green Proprietary, Vertical Pair Imperforate Between (RB11d). Handstamp cancel, Very Fine	33.50 mf
105-760	田	1c Green Proprietary, Block, Imperforate Between (RB11d). Rare, Very Fine	25 mf
10-761		1c Green Proprietary (RB11b). 230 copies in singles, pairs, blocks of 4 to 16 many unused, a number appear imperforate between due to blind perforations, this is from the lot which the imperforate between variety was discovered	
26-762		1c-\$1.00 19th Century Revenues, 96 copies selected for cancellations, includes Railroads, Wells Fargo & Co., V. G.-V. F.	26 mf
52-763		\$1000.00 Stock Transfer (RD24). Small thinning, Fine appearing	35.00
75-764		\$100.00 Stock Transfer Series 1945 (RD206). Uncut, Very Fine	8 mf 20.00
32-765		\$500.00 Stock Transfer Series 1945 (RD207). Uncut, Very Fine	41 mf 125.00
766	E	Revenue Essay 5c Red Washington, most unusual type	

# CONFEDERATE STATES

## U. S. STAMPS USED AFTER SECESSION

- 767 ☒ 3c Red Entire (U10). Ms. "Calhoun, Ala. May 3, 61" on cover, V. F. -----
- 768 ☒ 3c Red Entire (U27). Tied "Mobile Ala. May 5, 1861" pmk., cover torn at top -----
- 769 ☒ 3c Red Entire (U27). Tied "Montgomery, Ala. Apr. 2, 1861" pmk. Fine -----
- 770 ☒ 3c Red Entire (U26). Ms. "Red Level, Ala. Feb. 22, 61" on cover, Fine -----
- 771 ☒ 3c Red Entire (U27). Ms. "Little River, Fla. Apr. 1," Fine -----
- 772 ☒ 3c Red Entire (U26). Tied blue Cratsville, Ga. Jan. 24 (1861) Very Fine -----
- 773 ☒ 3c Red Entire (U27). Ms. Houston, Ga. Feb. 2, 1861, V. F. -----
- 774 ☒ 3c Red Entire (U27). Tied Grenada, Miss. Mar. 6 pmk., V. F. -----
- 775 ☒ 3c Dull Red (26). Tied with "Natchez, Miss. Feb. 26, 1861" pmk., stamp has closed tear, neat cover -----
- 776 ☒ 3c Dull Red (26). Tied on cover "Natchez, Miss. Apr. 18, 1861" pmk. V. F. (Photo) -----
- 777 ☒ 3c Dull Red (26). Tied on cover Natchez, Miss. May 30, 1861 pmk. light strike on neat cover -----
- 778 ☒ 3c Red Entire (U27). Postmarked Vicksburg, Miss. Mar. 25, Very Fine -----
- 779 ☒ 3c Red on 3c Entire (26, U26). Tied on cover "Charleston S. C. Dec. 20, 1860" pmk. used First Day of Secession, Fine (Photo) -----
- 780 ☒ 3c Dull Red (26). Tied on cover "Charleston, S. C. Feb. 11, 1861" pmk. V. F. -----
- 781 ☒ 3c Red Entire (U27). Tied, "Charleston S. C. Apr. 8, 1861" pmk. V. F. -----
- 782 ☒ 3c Red Entire (U27). Ms. "Four Mile Branch Nov. 23, 1861" Tenn. Very Fine -----
- 783 ☒ 3c Red Entire (U27). Ms. "Woodville, Ten. June 13, 1861," closed tear -----
- 784 ☒ 3c Red Entire (U27). Ms. "Dinwiddie C. H. Va. May 13," torn at top, V. G. -----
- 785 ☒ 3c Red Entire (U27). Ms. "Dinwiddie, C. H. Va. May 29, 1861," V. F. -----
- 786 ☒ 3c Red Entire (U27). Tied Lexington, Va. in blue April 26, (1861) Very Fine -----
- 787 ☒ 3c Red Entire (U10). Tied "Harpers Ferry, Va. May 31, 1861" pmk. Fine (Photo) -----
- 788 ☒ 3c Red (26). Twenty covers includes 2 entires all seemingly used after Secession according to Ms. notations on covers, all one correspondence addressed to Col. John Duncan, Jackson, Miss. from New Orleans, Enterprise, Miss., Vicksburg, Okolona, Miss., Natchez, Early Grove Miss. Pickens Station, Livingston, Pass Christian, Miss., Scarce lot -----



E

RV

13. 789 ☒ **Montgomery Ala., 5c Red (59XU1).** Montgomery pmk. clear markings, cover ragged at R. .... 40.00

GENERAL ISSUES

14. 790 **10c Rose (5).** Margins all around, tied on small piece, V. F. .... (Photo) 35.00  
15. 791 ☒ **10c Rose (5).** Cut in two sides, Ms. cancel on cover made from **Railroad Report**, no pmk. addressed to Shelby Springs, Ala. ....  
17. 792 ☒ **5c, 10c Blue (6-7, 11-12).** Twenty covers, Fair-Fine ....  
23. 793 **10c TEN Blue (9).** Ms. cancel, Fine .... 45.00  
50. 794 ☒ **10c Blue (10).** Shows frame line at left, tied on cover (front only) with large scarce **Jackson** straight line cancel .... (Photo) 200.00  
26. 795 ☒ **10c Blue (10).** Tied Mobile Ala. June 23, 1863 to cover torn at top, frame line shows complete two sides and partly on third, in at top and crease 125.00  
7. 796 ☒ **10c Blue (11).** Tied with Ala. town pmk. to Mobile, in Ms. "**Per Southern Republic**," Fine ....  
9. 797 **Slave Broadside**, public sale in 1833 in Charleston, V. F. ....

U. S. POSSESSIONS

6. 798 **CANAL ZONE, 1904, (1-3).** V. G.-V. F. .... 30.00  
52. 799 ★ —1904-1915, 1c-10c Overprints (9-14, 16-27, 29-51). Fine-Very Fine .... 24.54  
3. 800 ★ —1920, 50c Orange & Black (55) small thin, Fine appearing .... 17.50  
4. 801 ★ ☒ —2c Carmine (84c) Booklet Pane of 6, Fine .... 15.00  
12. 802 ★ —1939, 1c-50c Postage (120-135). V. F. Set .... 31.25  
85. 803 ★ —1939, 5c-\$1.00 Air Post (C13-C18). V. F. Set .... 20.60  
32. 804 ☒ —1939, \$1.00 Clipper Ship Air (C18). Block, Fine .... 24.00  
85. 805 ★ **HAWAII, 1853, 13c Dark Red (6),** Fine, small margins all around (Photo) 35.00  
120. 806 —1863-64, 1c Black (15). Ms. cancel, wide margins, large guarantee mark on reverse .... (Photo) 60.00  
13. 807 —1864-65, 2c Black (20). Red Honolulu cancel, closed tear, V. F. appearing .... 60.00  
52. 808 —1864-65, 5c Blue (21). Tiny thin, Fine appearing .... 27.50  
10. 809 ★ —1864-1865, 5c Blue (22). Large margins all around, V. F. .... 17.50  
85. 810 ★ —1864-65, 2c-5c Numerals (22, 24, 26). Small thin on one, others Fine 39.00  
115. 811 ★ —1864, 2c Black (24). Four copies, Fine-Very Fine .... 36.00  
30. 812 ★ **PHILIPPINES, 1911-1913, 4p Deep Blue (273).** Fine .... (Photo) 77.50

813 ★	—1932, 2c-32c Postage (354-360). V. F. Set .....	13.60
814 ★	—1935, 2c-5p Postage (383-396). V. F. Set .....	15.19
815 ★	—1935, 2c-5p Postage (383-396). V. F. Set .....	15.19
816 ★✉	—4c, Brown on Amber, Die 3 (U14). Unused Entire, Fine .....	25.00
817 ★✉	—1c-2c Postal Reply Cards, (UY1-UY2). Two unsevered cards, also Porto Rico UX1, V. F. ....	20.00

#### U. S. LARGE AND MISC. LOTS

818	2c-30c, 1847-71 Issues. 15 stamps, many with fancy cancels, includes #1, 85, 116, Good-Fine .....	—
819	19th Century Postage 240 stamps in stockbook, many faults ..... over	300.00
819A	19th Century Cancellations, over 400 stamps includes Face, Shields, Geometrics etc. Fair-Fine .....	—
820	1c-10c, 19th Century 245 stamps mostly Banknotes selected for fancy & interesting cancels, including NYFM, Stars, Geometrics, Fair-Very Fine .....	—
821 ★	1c-24c, 1861-88 Issues. 15 different, Fair-Fine .....	79.00
822	Postage Mostly 19th many hundreds, mostly stamps catalogue 50c upwards, wholesale quantities, mainly used, mixed condition. Est. Cash Value \$225.00 .....	—
823	1c-20c Postage & Commemoratives. About 400 mixed stamps, 19th and 20th Century, all being plate positions, mainly Corner, Guide Lines and Arrows, Fine lot .....	—
824 ✉	Covers 19th & 20th, lot of 180 covers includes stampless, illustr. advert., interesting cancels, airs and fancy 20th, used blocks, etc. interesting lot .....	—
825	19th & 20th Postage Issues, wholesale quantities wide variety, Est. Cash Val. \$25.00 .....	—
826 ★	19th & 20th Postage & Commems. Remainder of a collection, 249 diff. V. G.-V. F. ....	289.00
827 ★	1c-30c Postage, Commems, Airs (Between 146-Q2). Forty-four stamps, 17 diff., some no gum, V. G.-V. F. ....	33.60
828	Precancels over 600 in stockbook, nearly all 1898-1908 Issues, nice variety on these early precancels .....	—
829	Precancels, Mounted collection of several thousands, includes early issues, some commems and high values .....	—
830	Precancels, Many thousands, includes early and scarce values, Fine lot .....	—
831	Precancels, approx. 8000-10,000 stamps, mostly 1926-30 Issues lower values .....	—
831A ✉	First Day Covers, 96 covers, 1934 to date .....	—



21- 832 **Misc. lot U. S.** on album pages also several hundred defectives, high cat. value .....

70- 833 **U. S. Revenue**, Box containing many thousands revenues, includes First, Second, Third Issues, Wine stamps, Stock Transfer, Documentaries, Est. Cash Value \$75.00 .....

115- 834 **Revenues**, mostly first three issues, many hundreds, wide variety, many in wholesale quantity, Est. Cash Value over \$150.00 .....

105- 835 **Locals**, 100 mostly diff. includes originals and reprints, Interesting lot .....

48- 836 **Proofs, Essays, Oddities, Seals, Telegraphs, Confederates** etc. Very Misc. lot of several hundred 10- .....

62- 837 **Proofs, Telegraphs** misc. 67 stamps V. G.-V. F. ....

## U. S. WHOLESALE

145- 838 **1c Blue Type IV #9** (16). Fair-Fine ..... 120.00

24- 839 **3c Dull Red #11** (100). All plated, V. G.-Fine ..... 40.00+

5- 840 **10c Green, Ty. II #14** (5). Minor faults, attractive ..... 80.00

6- 841 **10c Green, type III #15** (3). Minor faults, Fine appearing ..... 48.00

6- 842 **12c Black #17(2)**. V. G.-Fine ..... 45.00

75- 843 **12c Black #17(4)**. Faults, Good to V. F. appearing ..... 90.00

135- 844 **1c, 10c, 24c #20(3), 32(3), 37(2)**. All have faults, nice appearing ..... 127.50

8- 845 **10c Green, Type III #33(5)**. Good-Fine ..... 45.00

8- 846 **10c Green, Type V #35(6)**. Good-Fine ..... 27.00

10- 847 **12c Black #36(7)**. Four with Red cancels, some have minor faults, Fine appearing ..... 96.00

175- 848 **3c Rose #65** (504). Mounted in booklet, includes few fancy cancels V. G.-V. F. ....

55- 849 **5c Red Brown #75(2). 5c Brown #76(6)**. All have faults ..... 63.50

55- 850 **5c Brown #76(5)**. Very Good-Fine ..... 23.75

85- 851 **24c Grey #78(9)**. Includes pair, 2 are S. E., Good-Fine ..... 63.00

325- 852 **1c, 3c 1867 Grills #88(3), 92(2), 94(14)**. Good-Fine ..... 24.50

115- 853 **12c Green #117(6)**. Very Good ..... 51.00

13- 854 **3c Greens** (1000). 2c Red Brown #210(1100), 2c 1894-98 Issues (4650), mixed condition .....

15- 855 **6c-90c Banknotes #148(11), #155(2), 163(2), 165(4), 189(4), 190(4)**, V. G.-V. F. .... 84.15

65- 856 **12c Banknotes #151(3), 162(5)**. V. G.-Fine ..... 31.75

857	15c Banknotes #152(5), #189(12) includes some interesting cancels, one S. E., V. G.-V. F. ....	43.75
858	24c Purple #153(5). V. G.-V. F. ....	50.00
859	3c-5c Banknotes #205(25), #211(14), #214(9), #215(13), #216(17). V. G.-V. F. ....	46.15
860 ★	6c Rose #208(3), two have faults ....	52.50
861	50c Orange #260(36). V. G.-V. F. ....	216.00
862	50c Orange #275(26). V. G.-Fine ....	52.00
863 ★	1c-2c Pan-Pacific #401(11), # ;402(3). Well centered each with str. edge ....	39.00
864 ★田	1c-10c Farleys #754-#765 (4 Sets of Blocks) many have sheet margins, V. F. ....	49.80
865 ★田	1c-16c Farleys #752-#765, #771 (6 Sets of Blocks) V. F. ....	84.00
866 ★田	1c-10c Farley Parks #756-765 (5 Sets of Blocks) V. F. ....	54.25
867 ★田	16c Farley Air Post Special Del. #771 (7 Line Blocks), V. F. ....	38.50
868 ★田	1c-10c Farley, #752-62, 764-65, various quantities of each mostly blocks, includes some Plate No., Arrows and Center lines, Very Fine ....	119.86
869	30c Transatlantic Air #C24 (60). Includes some Blocks, V. G.-V. F. ....	30.60
870 ★	10c Special Delivery #E1 (9). Very Good ....	54.00
871	10c Special Delivery E1(27), E3(1), E4(36), E5(24), E6(34). Two unused, includes str. edges, Fair-V. F. ....	149.73
872	50c Civil War Revenues 7 varieties Between #R54c-R63c (525 stamps), V. G.-V. F. ....	72.00

## GENERAL FOREIGN

873	ARGENTINE REPUBLIC, 1867, 5c Orange Red (8a) Very Fine ....	15.00
874 ☒	—Buenos Aires, 1860, 1p Blue (10). Tied on cover, Extremely Fine ....	—
875	AUSTRIA, 1858-1859, 2kr Orange (6b). Very Good ....	35.00
876 田	BAHAMAS, 1875, 1sh Green (19). Large Block of 60, several have thins, others V. F., attractive piece ....	60.00+
877	BAVARIA 1911, 3pf-20m Luitpold (77-91). Five are unused, Fine-V. F. ....	15.61
878 ☒	BELGIUM, 1861, 20c Blue (11). Two vertical pairs tied on cover to Paris, Very Fine ....	—
879	BRAZIL, 1843, 30r-60r Black (1-2). Large Margins all around, first tear, later thin, V. F. appearing ....	77.50
880	—1844-1846, 30r, 180r, Black (8, 26). Very Fine ....	10.00
881	—1844-1846, 300r Black (12). Faults, Fine appearing ....	250.00



575	882	✕	—1850, 300r Black (27). Tied on cover to U. S., Fine stamp cover has tears .....	10.00+
385	883	✕	—1861, 430r Yellow (40). Tied on cover to Vienna, various transit markings, Very Fine <i>3000 Wmk</i> <b>(Photo)</b> .....	30.00+
215	884	✕	—1891, 100r Ultramarine & Red (110, a). Two tied on cover to Italy one <b>Head Inverted</b> , Very Fine, Scarce. Ex Meroni .....	30.20+
325	885	★	—1942, 5.40cr Airpost (C47a) .Very Fine .....	25.00
75	886	★	—1942-43, 5.40c, 20c, 1.20c Airs (Sanabria 70, 78a, 82a). Sanabria guarantee on backs, Fine .....	65.00
525	887		—Essay of American Banknote Co. containing 7 Violet stamps on sheet, V. F. ....	—
155	888	✕	<b>BRITISH GUIANA</b> , 1853-59, 4c Blue (11). Fine copy tied on cover, part of reverse of envelope missing <b>(Photo)</b> .....	65.00
55	889	✕	—1882, 2p Yellow, ty. II (106). Tied by Georgetown pmk. on cover, Fine .....	—
1150	890	✕	<b>BRUNSWICK</b> , 1853-1863, 1sgr Yellow (8). Strip of 3 margins all around tied on small cover Extremely Fine .....	—
55	891	✕	<b>CANADA</b> , 1852, 3p Red (4). Horiz. Pair cancelled with target on cover to N. Y. one stamp defective, other Fine .....	24.00
1150	892		—1868, 1c Brown Red, Laid Paper (31). Thin, Fine appearing <b>(Photo)</b> .....	100.00
225	893		—1870-189, 1c Yellow (35). Six copies, all have <b>Crown</b> cancel, V. G.-Fine .....	—
450	894	✕	—1870, 1c Yellow (35). Three copies tied by " <b>Mont. &amp; Is'd. Pond Night, No. 2</b> " on cover, <b>Fine</b> .....	—
105	895	★	—1912-1924, 1c-3c Coils & Imperforates (123, 133, 136-138. Pairs, Fine-V. F. ....	28.70
750	896	★	—1927-1947, 1c-\$1.00 Postage, Airpost, Special Delivery (Between 141-E10). 60 stamps, 48 diff. Fine-V. F. ....	19.63
550	897	★	—1875-1879, 8c Registration (F3). Well centered, trivial thinning, V. F. appearing .....	17.50
355	898	★	<b>CAPE OF GOOD HOPE</b> , 1853, 1p Rose (3). Pair, V. F. .... <b>(Photo)</b> .....	60.00
185	899	✕	—1893-1902, ½p, 1p two (59, 62). Tied on <b>illustr. Propaganda</b> cover, censor marking, Very Fine .... <b>(Photo)</b> .....	—
245	900	✕	<b>CHILE</b> , 4 different Stampless covers two with <b>ships</b> in handstamp, Antofagasta to Valparaiso, Fine lot <i>140 300 L</i> .....	—
155	901	★田	<b>CHINA</b> , 1888, 1c Green (13). Two Sheets of 40, diff. shades, V. F. ....	40.00
225	902	★田	—1888, 1c Green (13). Three sheets of 40, V. F. ....	60.00
1650	903	★田	—1894, 1c Orange Red (16). Two Sheets of 40, diff. shades, V. F. ....	60.00

904	✉	<b>Chinese Treaty Port, Chefoo</b> , 1893, 1c Deep Rose Red tied on cover with <b>Chefoo</b> pmk. in combination with <b>Germany</b> 5pf. Strip of 4 tied with <b>Shanghai</b> pmks. to Hamburg, Very Fine ..... (Photo) —
905	✉	— <b>Kewkiang</b> , 1894-96, 1c Black tied with purple oval cancel on cover, V. F. .... —
906	✉	— <b>Kewkiang</b> , 1894-96, 1c Black tied with purple oval cancel on cover, Fine ..... —
907	★田	<b>COLUMBIA</b> , 1900, 2c-10c Overprints (167-168, 171-173) Blocks, Fine-Very Fine ..... 27.00+
908	★	<b>CUBA</b> , 1902-1918, 1c-\$1.00 Postage (Between 232-273) Thirty-three diff. Fine-V. F. .... 24.62
909	★	—1910, 10c Orange & Blue Special Delivery <b>Inverted Center</b> (E4a) Very Fine ..... (Photo) 125.00
910	★	<b>DANZIG</b> , 1920, 30pf Orange & Black (40). Very Fine ..... 15.00
911	E	<b>DOMINICA</b> , compound Victoria Essay in Purple and Yellow, V. F. .... —
912	★	—1914, 5sh Green & Scarlet (54). Very Fine ..... 12.50
913		<b>DOMINICAN REP.</b> , 1933-1946, ½c-1p Postage, Airmails (266-276, C57-C61). Two sets, Fine-Very Fine ..... 12.75
914		<b>FALKLAND IS.</b> , 1891, ½p on half of 1p Claret (19E). Very Fine ..... 35.00
915	✉	<b>FIJI</b> , 1950, £1 George VI (144). Tied on reg. cover, V. F. .... —
916		<b>FRANCE</b> , 1853-1860, 1fr Lake (21). Fine ..... (Photo) 80.00
917	★	—1870, 2c Red Brown (39). Very Fine, O. G. .... 10.00
918	✉	—1870, 20c Blue (58). Tied on Paris <b>Balloon Post</b> cover, V. F. .... —
919	✉	—1900, 15c Blue (92). Tied on handdrawn cover <b>Boer War</b> , addressed to "Committee for Independence of the Boers", very attractive, V. F. (Photo) —
920	★	—1929, 10fr Light Ultramarine (251). Very Fine ..... 12.50
921	★	—1930-1936, 1.50fr-10fr Semipostal & Airmail (B34, B38, C16-C17). V. F. .... 21.85
922	★	<b>GERMANY</b> , 1872-1877, 50pf-2kr (19, 22, 35). All have thins, Fine-Very Fine appearing ..... 110.00
923	✉	—1873, 2gr Ultramarine, 3gr Orange Brown (18-19) tied on cover with <b>Constantinople</b> pmks. to France, V. F. <i>7470 KD</i> ..... —
924	★田	—1874, 9kr Brown Surcharge (28). Block, Fine, O. G. .... 24.00
925		—1900, 5m Slate & Carmine, type II (65A). V. F. .... 25.00
926		—1922-1923, 1¼m Vermilion & Magenta (210). Very Fine ..... 12.50
927		—1930-1933, 1m-4m Airpost (C35-C37, C43-C45). Very Fine Sets ..... 21.25
928	★	—1930, 2m-4m So. Amer. Flight (C38-C39). Fine-V. F. .... 25.50



105	929	—1930, 1m-4m So. Amer.; Chicago Flights (C38-C39, C43-C45). V. F. ....	35.50
105	930 <input checked="" type="checkbox"/>	—1930-1931, 2m No. Pole, 4m So. Amer. (C39, C41). Three cacheted covers, Fine-V. F. ....	39.00
105	931 <input checked="" type="checkbox"/>	—1931, 2m-4m, North Pole (C41-C42). Two cacheted covers, V. F. ....	45.00
425	932 <input checked="" type="checkbox"/>	— <b>Offices in China</b> , 1898, 10pf Carmine (3) used in <b>combination with China 2c #100</b> both tied on cover, Fine .....	—
65	933 <input checked="" type="checkbox"/>	<b>GERMAN SOUTHWEST AFRICA</b> , 1900, 3pf-20pf (13-16). Tied on registered cover, str. line "Owikororero" cancel, Fine .....	—
525	934	<b>GREAT BRITAIN</b> , 1841, 2p Blue (4). Ten strips of 3, Fair-Fine .....	45.00+
95	935 <input checked="" type="checkbox"/>	—1854-55, 1p Red Brown (12). Strip of 6 and pair tied on cover to Switzerland, V. F. ....	16.00+
150	936	—1864, 1p Rose Red (33). Thirty-two stamps all with <b>advertising on backs</b> , V. G.-V. F. ....	—
225	937 <input checked="" type="checkbox"/>	—1887-92, 2½p Violet (114). Three covers forwarded from England to <b>Philippines</b> , purple oval <b>B. F. Stevens U. S. Despatch Agent</b> , markings on each Fine .....	—
125	938 <input checked="" type="checkbox"/>	— <b>Offices in Turkey</b> , 1887-88, 40pa on 2½p (4) used in combination with Dull Salmon <b>Express D'Orient Local</b> stamp, both tied on registered cover from Constantinople, Very Fine, Scarce ..... <b>(Photo)</b> .....	—
60	939 <input checked="" type="checkbox"/>	— <b>Envelopes all compounds</b> 101 entires used and unused, wide variety Victoria-George V, Very Fine lot .....	—
425	940	<b>GUATEMALA</b> , 1872, 4r Violet (5). Very Fine .....	25.00
85	941 ★	—1872, 1p Orange (6). Very Fine ..... <b>(Photo)</b> .....	30.00
115	942	—1871-1945, Collection of 290 diff. used and unused, V. G.-V. F. ....	103.89
145	943	—1871-1945, Collection of 156 diff., used and unused, V. G.-V. F. ....	109.34
25	944 ★	<b>HONDURAS</b> , 1865, 2r Green (1). Full <b>Sheet</b> of 120, bad creases across 13 stamps .....	12.00+
450	945 <input checked="" type="checkbox"/>	<b>INDIA</b> , 1854, 4a Red & Blue (6). Vert. Pair cut to shape tied on neat cover to England, Very Fine .....	—
725	946	<b>JAPAN</b> , 1871-1915, 105 stamps nearly all 19th, used and unused, includes shades and duplication, V. G.-V. F. .... over	400.00
225	947 <input checked="" type="checkbox"/>	—1875-92, 5s, 10s Fifteen covers mostly to U. S., numerous markings, Fine lot ..... <b>2250 140</b> .....	—
850	948 ★	<b>KENYA &amp; UGANDA</b> , 1921, 1c-5r George V (1-14). Fine .....	24.68
55	949 ★	—1922-27, 1/-7/50c George V (29-31, 33-35), Very Fine .....	17.00
295	950 ★	—1925, £2 Brown Violet & Green (38). Very Fine ..... <b>20 mf</b> <b>(Photo)</b> .....	60.00
365	951 ★	—1925, £3 Yellow & Dull Violet (39). Very Fine ..... <b>(Photo)</b> .....	70.00

952 ★	—1925, £4 Rose Lilac & Black (40). Very Fine .....	(Photo)	80.00
953 ☒	—1938-42, 30c 3/, £1 George VI (68, 72, 75). Tied on reg. cover, V. F. ....		—
954 ★	<b>KUWAIT</b> , 1923-24, ½a-10r George V (1-3, 5-16), Fine-V. F. ....		27.92
955 ★	—½a-15r Officials (O1-O11, O13-O14). Very Fine .....		34.90
956 ★田	<b>LATVIA</b> , 1918, 5k Imperf (1). Cpl. Sheet of 228, showing <b>Map</b> on reverse, V. F. ....		27.36
957 ★田	—1918, 5k Carmine (2) Cpl. sheet of 228, showing <b>Map</b> on reverse, V. G.-V. F. ....		27.36
958 ★	<b>LEBANON</b> , 1936, 0p50-25pi Tourist Airpost (C49-C56) V. F. Set .....		19.60
959 ★	<b>LEEWARD IS.</b> 1912-32, 1/-5/ George V (54-57, 77, 79-80). Fine-V. F. ....		18.65
960 ★	—1928, £1 George V (83). Very Fine .....		22.50
961 ★	<b>LIECHTENSTEIN</b> , 1939-1949, 10rp-10fr Postage & Airpost (Between 153-C33). Thirteen diff. complete sets, Very Fine .....		30.48
962 ★	<b>LITHUANIA</b> , 1922, 1c, 10c, 15c Inverted Surcharges, 1c-5L Diamonds (140a, 152a-153a, 176-188). Very Fine .....		23.90
963 ☒	—1922-24, 10c on 2auk Pair with <b>Inverted Surcharge</b> , 1L Airpost (152a, C35). Tied on registered cover to N. Y. City, Fine .....		16.00+
964 ☒	—1922, 10c, 15c 25c <b>Inverted Surcharges</b> (152a, 153a, C27a). Tied on 3 registered covers to N. Y. City used in combination with other stamps, Very Fine .....		20.00+
965	<b>LUBECK</b> , 1859, 2½s Rose (4). Thin, Fine appearing .....		70.00

#### MALTA

966 ★	1921-22, 10/ Black (76). Very Fine .....	(Photo)	70.00
967 ★	1922, 2/6-10/ Self-Government (83-85). Fine-Very Fine .....	(Photo)	55.00
968 ★	1922, 2/-10/ Self-Government (94-96). Very Fine .....		26.00
969 ★	1922-26, 5/-£1 (111-113). Fine .....		26.00
970 ★	1925, £1 Rose Carmine & Black (114a). Very Fine .....		20.00
971 ★	1926, 2/-10/Postage (126-129). Very Fine .....		30.50
972 ★	1926-27, ¼p-10/ George V (131-147). Cpl. set, Fine-V. F. ....		23.09
973	<b>MECKLENBURG-SCHWERIN</b> , 1864-1867, 2s Grey Lilac (6). Margins all around, small thin, V. F. appearing .....		85.00
974	<b>MECKLENBURG-STRELITZ</b> , 1864, ¼sg Orange (1). Few roulettes clipped at T. R. ....		150.00
975	— 1864, ⅓sg Green (2). Fine .....		125.00
976 ★	<b>MEMEL</b> , 1921, 60pf-4m Airpost (C1-C7). Cpl. set, V. F. ....		11.05



625	977 ★	—1921, 4m on 2fr Airpost Type II (C5a). Centered to right, Fine .....	50.00
375	978 ★	—1922, 3m on 60c Airpost (C18). Fine .....	15.00
115	979 ★	— <b>Lithuanian Occupation</b> , 1924, 15c-60c (N83-N86). Cpl. set, Fine-V. F. ....	72.50
55	980 ★	—1924, Three Complete Sets (N87-N114). Very Fine .....	57.00
650	981 ★	—1920-24, 118 different, all unused, Fine-Very Fine .....	45.65
215	982 ★田	<b>MEXICO</b> , 1895, 1c-4c Postage (242-246). Panes of 99 each, Cpl. sheets with exception of one stamp missing in each, V. G.-V. F. ....	173.25
45	983 ★	—1938, 20c-1p Airpost (C85-C90). Very Fine Set .....	15.15
155	984 田	<b>MODENA</b> , 1852, 15c Yellow, 40c Blue (3, 5). Pair of first and single and strip of 3 of latter tied on cover to Philadelphia, two stamps lightly creased, V. F. cover .....	25.00+
225	985 ★	<b>MONACO</b> , 1920, Semi-Postals (B9-B17). Fine .....	14.20
250	986	<b>NETHERLANDS</b> , 1852, 5c-15c Imperfs. (1-3). Very Fine .....	13.50
45	987	<b>NEVIS</b> , 1867, 1sh Yellow Green (11). Centered to right .....	45.00
40	988 田	<b>NEW BRUNSWICK</b> , 1860-1863, 10c Vermilion (9a). <b>Diagonal half used as 5c</b> , tied by oval grid on cover, tiny corner crease, V. F. appearing .....	75.00

#### NEWFOUNDLAND

315	989 ★	1911, 1c-15c Royal Family (104-114). 8c is paper colored through variety, Fine cpl. Set .....	49.15
105	990 ★	1911, 8c Royal Family (110). Very Fine .....	20.00
1675	991 ★	1919, 1c-36c Caribou (115-126). Cpl. set, Fine-V. F. ....	25.60
115	992 ★	1920, 2c-3c Surcharges (127-130). Fine-Very Fine .....	15.00
1675	993 ★	1923-24, 1c-24c Pictorial (131-144). Cpl. set, Fine-V. F. ....	28.65
155	994 ★	1923-1924, 1c-24c Postage (131-144). Fine-V. F. Set .....	28.65
275	995 ★田	1923-24, 1c-24c Pictorial (131-137, 139-144). Set of <b>Blocks</b> lacking the 9c, Fine .....	98.60
95	996 ★	1928, 1c-30c Postage (145-159). Fine-V. F. Set .....	19.25
205	997 ★	1c-30c Re-Engraved (173-182). Fine-V. F. Set .....	34.15
185	998 ★	1933, 1c-32c Sir Humphrey Gilbert (212-225). V. F. Set .....	38.20
175	999 ★	1933, 1c-32c Sir Humphrey Gilbert (212-225). Fine-Very Fine Set .....	38.20
775	1000 ★	1919, \$1.00 Scarlet Airpost (C2). Well centered, slight gum staining on few perfs., V. F. appearing .....	30.00
115	1001 ★	1919, \$1.00 Scarlet Airpost (C2a). Without "comma after Post," Very Fine .....	32.50

1002 ★	1919, \$1.00 Scarlet Airpost (C2a). Without "comma after Post," Very Fine	(Photo)	32.50
1003 ★	1919, \$1.00 Scarlet Airpost (C2b). Without period after 1919, tiny hinge thin, V. F. appearing	(Photo)	60.00
1004 ★	1921, 35c Red Airpost (C3, C3a). Pair one with period after "1921," V. F.	(Photo)	31.00
1005 ★	1921, 35c Red Airpost (C3, C3a). One with period after "1921" variety, Very Fine		31.00
1006 ★	<b>NEW HEBRIDES</b> , 1908-09, 1/ Green & Carmine Rose (6). Very Fine		16.00
1007 ★	—1920-1921, 2p on 40c Red (31). Fine	(Photo)	35.00
1008	<b>NEW ZEALAND</b> , 1862-1867, 3p Lilac Imperf. (25c). Horiz. Pair, lightly creased, Fine appearing		30.00
1009	—1862-67, 4p, 6p (26, 28). Tied on cover to England, Fine		—
1010 ★	<b>NIUE</b> , 1902, 1p Carmine (1). Very Fine		27.50
1011 ★	—1917, 3p Violet Brown (20). Fine		11.00
1012 ★	<b>NORTH BORNEO</b> , 1c-25c Semi-Postal (B1-B13). Cpl. set, Fine-Very Fine	(Photo)	62.00
1013 ★	—1918, 1c+4c-\$10.00+4c Semi-Postals (B31-B47). Cpl. set, Fine-Very Fine	(Photo)	93.10
1014	—1918, 1c+4c+\$10.00+4c Semi-Postal (B31-B47). Cpl. set each tied on small piece, Fine-Very Fine		93.10
1015 ★	—1918, \$5.00+4c Semi-Postal (B46). Hinge thin spot, well centered		40.00
1016	—1918, \$5.00+4c-\$10.00+4c Semi-Postal (B46-B47). Tied on piece, Very Fine	(Photo)	80.00
1017 ★	—1918, \$10.00+4c Semi-Postal (B47). Very Fine		40.00
1018	—1901-1918, Collection of 41 diff. mostly used, includes Charity stamps, V. F. lot		35.61
1019 ★	<b>NO. NIGERIA</b> , 1902-12, 2/6-10/ (17-18, 26, 37-38, 51), Fine-Very Fine		42.00
1020 ★	<b>NO. WEST PACIFIC IS.</b> , 1918, 1p on 5p Orange Brown (40), Very Fine		13.50
1021 ★	<b>NOVA SCOTIA</b> , 1860-63, 8½c Green, White Paper (11a), <b>Block</b> , Fine, O. G.		28.00+
1022 ★	<b>NYASALAND PROT.</b> , 1908, ½p-£1 Edwards (1-10), Fine-Very Fine	(Photo)	53.70
1023 ★	<b>OLDENBURG</b> , 1859, 3g yellow (8). Fine		75.00
1024	—1861, ¼g Orange (9) Margins all around, tiny thin, V. F. appearing	(Photo)	225.00
1025	—1861, ¼g Orange (9) Margins all around, tiny thin, V. F. appearing		225.00



1050	1026	—1861, 1/8g Green (10). Margins all around, tiny thin, V.F. appearing	75.00
750	1027	—1861, 1/8g Green (10). Margins all around, small thin, V.F. appearing	75.00
6-	1028	—1861, 2g Red, (14). Fine	50.00
6-	1029	—1861, 3g Yellow (15). Large margins 3 sides, close at T, Fine	55.00
9-	1030 ★田	—1867, 1/8g, 1q-2q Coats of Arms (21, 23-24). First and last Blocks of 6, second Block of 4, Very Fine mint	30.50+
1050	1031 ★田	—1867, 3g bistre (25). Mint <b>block of 8</b> , Very Fine	52.00+
13-	1032 ★田	<b>PALESTINE</b> , 1918, 5m on 1pi (3, a). Block of each, V.F.	52.00
825	1033 ★	—1921, 1m-20pi (37-47). Cpl. set, Fine-V.F.	28.27
2-	1034	<b>PANAMA</b> , 1904-05 5c #78, 43 copies, 10c #79, 10 copies; some on piece, include <b>Flag</b> cancels, F.-V.F.	10.60+
350	1035 ★	—1926-1936, 1/2c-1b Postage (244-255, 278-287). Latter is used, V.G.-V.F. Sets	13.90
425	1036 ★	—1938, 1c-1b Constitution (317-321, C49-C53). Very Fine Set	14.80
1-	1037	—1910, 2 1/2c Red Orange (14). Used, Scott Stamp Co. guarantee on back, Fine	50.00
825	1038 ★	<b>PAPUA</b> , 1907, 4p Black Brown (15). Very Fine	25.00
16-	1039 ★	—1901-1917, Collection of 50 diff., mostly unused, Very Fine	63.15
28-	1040	<b>PARMA</b> , 1852, 5c, 10c (2, 6). Tied on small cover, Very Fine	32.50+ (Photo)
950	1041 P	<b>PERU</b> , 1895, 1c, 20c, 50c Large Die Proofs (134, 138, 139). Very Fine	—
1250	1042	<b>PHILIPPINES</b> , 1854, 5c Orange (1). Tied on piece, Fine	50.00
13-	1043	—1855, 5c Vermilion (7). Margins all around, tiny thin, V.F. appearing	100.00 (Photo)
11-	1044	—52 diff., used and unused, all 20th Century V.G.-V.F.	108.70
1850	1045 田	<b>POLAND</b> , 1860, 10k Blue & Rose (1). Tied with #1 and Warsaw pmks. Fine	15.00+ (Photo)
550	1046 ★	<b>RHODESIA</b> , 1901-05, 1p-5p, 5/, £1 (72, 76-78, 81). Very Fine	19.50
1550	1047 ★	—1910, 1/2p-5/ Queen Mary & George V (101-115). Very Fine	36.90
10-	1048 ★	—1913-19, 1/2p-10/ George V (119-120, 122-134, 136-137). Fine-Very Fine	36.75
950	1049 ★	—1913-19, £1 Violet & Black George V (138). Very Fine	30.00
450	1050 田	<b>ROMAN STATES</b> , 1852-68, Seven covers, Fine lot	—
850	1051 田	—1852, 5b-6b Postage (6-7) pair of first and two strips of 3 of latter partly tied on cover to U.S.A., Fine	—
21-	1052	<b>RUSSIA</b> , 1857, 10k Brown & Blue (1). Margins all around, Sheet margin at B, tied to piece, V.F.	35.00 (Photo)

1053	—1857, 10k Brown & Blue (1). Margins all around, tied to small piece, V. F. ....	35.00
1054	<b>RUSSIA, WENDEN</b> , Offices in Turkey, 1866, 20k Deep Blue and Rose (5) 2 shades, one has tiny thin, other V. F. ....	30.00
1055	<b>SAAR</b> , 1920, 2pf-1m (1-17) .Very Fine set .....	23.23
1056 ★	—1920-1929, 80pf overprint, 1.50fr-10fr Volkshilfe (16, B19-B22) V. F. ....	21.35
1057 ★	—1920, 5pf-3m, 10m (21-37, 39). Fine-V. F. ....	53.95
1058	—1920, 2m, 10m overprints (36, 39). Each lightly creased, V. F. appearing .....	30.00
1059 ★	—1920, 5m Deep Blue (38). Very Fine ..... (Photo)	75.00
1060 ★	—1920, 10m Yellow Green (39). Very Fine .....	20.00
1061 ★	—1921, 3m <b>Center Inverted</b> (80a). Fine .....	30.00
1062 ★	<b>ST. HELENA</b> , 1922-27, 1/6-7/6 George V (92, 96-98). Very Fine .....	23.00
1063 ★	<b>ST. KITTS-NEVIS</b> , 1923, ½p-10/ <b>Tercentenary</b> (52-62). Very Fine (Photo) .....	94.90
1064 ★	—1923, 10/ <b>Tercentenary</b> (62). Very Fine ..... (Photo)	60.00
1065 ★	—1923, 5/ <b>Tercentenary</b> (63). Very Fine .....	22.50
1066 ★	—1923, £1 <b>Tercentenary</b> (64). Very Fine <i>48.27</i> (Photo) .....	120.00
1067	<b>St. Thomas, La Guaira Locals</b> 93 stamps, used and unused, includes 2 covers each tied, Fine and scarce lot .....	—
1068 <input checked="" type="checkbox"/>	<b>SALVADOR</b> , 1897-1898, 13c-15c Postage (165, 183). Two covers tied, both to San Francisco, one has Paquebot marking other registered, Fine .....	—
1069 ★	—1946-1948, 5c-4col Roosevelt Postage & Airpost, San Salvador Souvenir (606-612, C104-C105, C111-C117). V. F. Sets .....	19.36
1070 ★	<b>SAMOA</b> , 1877-1882, 1p-5sh Postage (1-8) No. 6-7 are used, 2 have faults, others Fine .....	71.75
1071 <input checked="" type="checkbox"/>	<b>SAN MARINO</b> , 1877-1899, 2c-65c Postage (3, 6, 9, 14, 16, 18-20) ten stamps on large illustrated cover of San Marino in colors registered to Boston, V. F. ....	—
1072 ★	—1931, 50c-10L <b>Air Post</b> (C1-C10). Very Fine Set .....	30.25
1073	<b>SARDINIA</b> , 1861, 1c Newspaper (Pla) Numeral "2" in embossing, small thin, cancelled <b>PARMA</b> , V. F. appearing .....6.....	60.00
1074 <input checked="" type="checkbox"/>	<b>SAXONY</b> , 1851-1856, 3pf-2ng Postage (2, 9, 11) pair of 2ng all tied on small cover, V. F. ....	—
1075 ★	<b>SHANGHAI</b> , 1865-66, 6ca, 13ca, 16ca (21, 24-25). Very Fine .....	32.50
1076 ★ <input checked="" type="checkbox"/>	<b>SIAM</b> , 1920, Semi Postals (B12-B23). Cpl. set plus 4 blocks, Fine-V. F. ....	20.10
1077 ★	<b>SIBERIA</b> , 1918-20, 25k, 2k-1r (34-45). Complete, Very Fine, not priced .....	—



250	1078	✉	SPAIN, 1873, 1r Carlist (X2). on cover, V.F. copy not tied	—
375	1079	✉	SUDAN, 1938, 5m-5pi Airpost Overprints (C31-C34). Tied on Registered Cover to Egypt, Fine	8.00
450	1080	★	SWEDEN, 1916, 10ö+90ö Semipostal (B21). V.F.	10.00
1650	1081	★	SYRIA, 1920, 25c-100pi (64-72). Complete set, Fine	98.55
155	1082	★	—1920, 25c-100pi (73-81). Cpl. set, Fine	97.75

### SWITZERLAND

1250	1083		Zurich, 1846, 6r Black (1L4). Margins 3 sides, touched at T, signed Friedl Expert Com.	75.00
95	1084		—1846, 6r Black (1L4). Margins 3 sides, in at R, thin, signed Friedl Expert Com.	75.00
105	1085		—1850, 2½r Black & Red (1L5). Small tear, Fine appearing	150.00
750	1086		Geneva, 1845-1848, 5c Yellow Green (2L2). Margins 3 sides, in at T, tied to small piece, signed Friedl Expert Com.	75.00
125	1087		—1849-50, 5c Black & Red (2L6). With black grid postmark, large margins with dividing lines 3 sides, tiny thin, V.F. appearing, signed Friedl Expert Comm. (Photo)	60.00
out	1088	★	—1850, 5c Black & Red (2L7). Margins all around, cleaned, signed Friedl Expert Com.	325.00
425	1089		Federal Administration, 1850, 2½r Black & Red (1). Margins all around, slightly rubbed and discolored	75.00
65	1090		—1850, 2½r Black & Red (3). Faults, V.F. appearing	125.00
65	1091	★	—1852, 15r Vermilion (12). Tiny tear, Fine appearing	75.00
250	1092	★	—1929-1935, 10c-3fr Airpost (209, C13-C15, C19). V.F.	8.50
275	1093	★田	—1936, Pro Patria Souvenir Sheet (B80a). Block of 4 sheets, V.F.	10.00
525	1094	★	—1919-1920, 30c Airpost (C1). Very Fine	15.00
75	1095	★田	—1949, 1.50fr Airpost (C45). Complete Sheet of 25, V.F.	25.00
250	1096	★田	—1949, 1.50fr Airpost (C45). Imprint Block of 9, Very Fine	9.00
1250	1097	★	TANGANYIKA, 1922-25, 1/-£1 Giraffe (23-28). Very Fine (Photo)	43.50
135	1098	★	TRINIDAD & TOBAGO, 1921-22, 5/, £1 (19-20). Fine-Very Fine	35.00
155	1099	★	—1922-28, 6p-£1 George V (27-31). Latter has tiny thin others V.F.	41.50
425	1100	★	TUNISIA, 1923, Oc-25c Semi-Postals (B20-B36). Fine-Very Fine Set	16.77
550	1101	✉	TURKEY, 1871, 20pa, 1pi Bistre Brown (J31-J32). Latter in pair, tied on cover, Fine	—

1102 ★	<b>TURKS &amp; CAICOS IS.</b> , 1921-26, ½p-2/ George V (37-43, 55-56). Fine-Very Fine .....	25.55
1103	<b>VENEZUELA</b> , 1871-1880, 5c-1v Postage (Between 26-68). Six Pairs and four Blocks, V. G.-V. F. ....	15.40+
1104	—1871-1887, Fancy and Revenue cancels, 118 stamps selected for interesting cancels, V. G.-V. F. <i>125 H0</i> .....	—
1105 P	—1893, 25c Large Die Proof (136). Very Fine <i>55 H0</i> .....	—
1106	<b>VENEZUELA, Guayana</b> 25c, 1b (3, 5). Horiz. Pair of first, single of latter tied on piece by magenta cancel, V. F. ....	—
1107	<b>VICTORIA</b> , 1850, 1p Dull Red (1). 3 shades, Fine-Very Fine .....	45.00
1108 ★	—1864, 2sh Green (26). perfs. in at T. Very Good .....	35.00
1109 ★	<b>VIRGIN ISLANDS</b> , 1922, 3p-5/ George V (49-52, 62), Very Fine .....	17.25
1110	<b>WURTEMBERG</b> , 1851-1852, 1kr (1). Tied to piece by Stuttgart pmk. and "Packet Boat" cancel, Fine .....	—
1111 ★	—1861, 18kr Dark Blue (29). Fine .....	90.00
1112	—1875-1900, 5m Blue & Black (72). Very Fine, O. G. ....	15.00
1113 ☒	<b>Foreign Covers</b> , 35 mostly 19th, Fine interesting lot .....	—

## WORLD COLLECTION

### In Scott Specialty Albums.

(The following lots are all one collection containing 68,454 different stamps which catalogue over \$37,500.— The collections are all intact with no stamps removed. The specialty albums are exceptionally clean and the stamps are in generally fine condition.)

1114	<b>ABYSSINIA</b> 198 different, used & unused, on Scott Specialty pages, Fine collection .....	110.00
1115	<b>BELEGIUM &amp; COLONIES, NETHERLANDS &amp; COLONIES, LUXEMBOURG</b> 3750 diff. used & unused, Fine collection .....	2192.00
1116	<b>BRITISH AFRICA</b> 3615 different, used & unused, Fine collection .....	2761.00
1117	<b>BRITISH AMERICA</b> , 2783 different, used & unused, Fine collection .....	2864.00
1118	<b>BRITISH ASIA</b> , 2946 different, used & unused, Fine collection .....	1352.00
1119	<b>GREAT BRITAIN, BRITISH EUROPE, BRITISH OCEANIA</b> , 3676 diff., used & unused, Fine collection .....	2931.00
1120	<b>CENTRAL AMERICA</b> , 3515 different, used and unused, Fine collection .....	1449.00
1121	<b>CENTRAL EUROPE, Austria to Eastern Silesia</b> , 2428 different, used and unused, V. G.-V. F. ....	840.00



105/-	1122	<b>CENTRAL EUROPE, Hungary to Switzerland</b> , 2578 different, used and unused, V. G.-V. F. ....	905.00
1025/-	1123	<b>EASTERN &amp; SOUTHERN EUROPE, Albania to Jugoslavia</b> , 2571 different, used and unused, Fine collection .....	879.00
70/-	1124	<b>EASTERN AND SOUTHERN EUROPE, Montenegro to Turkey</b> , 2386 diff. used & unused, Fine collection .....	609.00
135/-	1125	<b>FRANCE and COLONIES, France to Indo China</b> , 2735 different used and unused, Fine collection .....	1181.00
925/-	1126	<b>FRANCE &amp; COLONIES, Inini to Wallis and Futuna</b> , 1930 different, used and unused, Fine Collection .....	816.00
60/-	1127	<b>FRENCH AFRICA, Algeria to Ivory Coast</b> , 1874 different, used and unused, Fine collection .....	513.00
55/-	1128	<b>FRENCH AFRICA, Libia to Upper Volta</b> , 1761 diff. used and unused, Fine collection .....	409.00
480/-	1129	<b>GERMANY &amp; COLONIES</b> , 3269 different, used and unused, V. G.-V. F. ....	3521.00
575/-	1130	<b>HAWAII &amp; PHILIPPINES</b> , 516 diff. used & unused on Scott Specialty pages, V. G.-V. F. ....	304.00
875/-	1131	<b>INDEPENDENT COUNTRIES OF ASIA</b> , 2704 diff. used & unused, Fine collection .....	770.00
50/-	1132	<b>ITALY &amp; COLONIES, Italy to Eritrea</b> , 1471 different, used & unused, Fine collection .....	364.00
180/-	1133	<b>ITALY &amp; COLONIES, Fiume to Vatican City</b> , 1334 diff. used & unused, Fine collection .....	1290.00
95/-	1134	<b>LATIN WEST INDIES</b> , 1527 different, used and unused, Fine collection .....	793.00
23/-	1135	<b>LIBERIA</b> , 43 diff. used and unused, on Scott Specialty pages, Fine collection .....	156.00
875/-	1136	<b>MEXICO</b> , 658 different, used & unused, Fine collection .....	731.00
675/-	1137	<b>NORTHERN EUROPE</b> , 1750 diff. used and unused, Fine collection .....	566.00
290/-	1138	<b>PORTUGAL &amp; COLONIES</b> , 4506 diff. used and unused, Fine collection .....	2107.00
520/-	1139	<b>SCANDINAVIA &amp; FINLAND</b> , 2149 diff. used and unused, Fine collection .....	1438.00
195/-	1140	<b>SOUTH AMERICA, Argentine to Colombian Rep.</b> , 2866 diff. used and unused, Fine collection .....	1636.00
135/-	1141	<b>SOUTH AMERICA, Ecuador to Venezuela</b> 2751 diff. used and unused, Fine collection .....	1176.00
225/-	1142	<b>SOVIET REPUBLICS</b> , 2218 diff. mostly unused, Fine collection .....	1986.00
95/-	1143	<b>SPAIN and Colonies</b> , 1200 different, used and unused, V. G.-V. F. ....	794.00

## COLLECTIONS

1144	<b>AIRPOST, Collection in 3 Scott Volumes</b> 4,494 diff. mostly unused, Very Fine collection .....	3107.00
1145	<b>BELGIUM &amp; COLONIES, NETHERLANDS &amp; COLONIES, LUXEMBOURG</b> in Scott Specialty Album, 2082 different, used & unused, Fine collection .....	1025.00
1146	<b>BRITISH AFRICA</b> 2290 diff. used & unused in Scott Specialty Album, Fine collection .....	1474.00
1147	<b>BRITISH AMERICA</b> , 1611 diff. used & unused in Scott Specialty Album, Fine collection .....	1862.00
1148	<b>BRITISH ASIA</b> , 1397 diff. used & unused in Scott Specialty Album, Fine collection .....	684.00
1149	<b>GREAT BRITAIN, BRITISH EUROPE, BRITISH OCEANIA</b> , 2411 diff. used & unused in Scott Specialty Album, Fine collection .....	1735.00
1150 ★	<b>BRIT. COLONIES</b> , mostly George V issues, 440 diff., all 20th values to 10/ nearly all unused, on album pages, Fine-Very Fine .....	374.00
1151	<b>DANZIG, GERMANY, MONACO, SWITZERLAND</b> , mostly 20th, 1419 in loose leaf album, used & unused, Fine lot .....	394.00
1152	<b>EGYPT</b> , Collection of 159 diff. used and unused in Scott Bruce album, Fine lot .....	—
1153	<b>GENERAL COLLECTION OF WORLD</b> , 20,700 different in 12 volumes, old Scott International Albums, made into loose leaf, used and unused, 19th & 20th, Est. Cash Value over \$200.00 .....	—
1154	<b>LATIN AMERICA</b> collection of several thousand in two loose leaf albums used and unused, Est. Cash Val. \$50.00 .....	—
1155	<b>NETHERLANDS &amp; COLONIES, DENMARK</b> , 603 diff. used & unused in loose leaf Bruce Scott Album, Fine collection .....	232.00
1156	<b>PORTUGAL &amp; COLONIES</b> , 3425 diff. used & unused in Scott Specialty Album, V. G.-V. F. ....	1033.00
1157	<b>SCANDINAVIA &amp; FINLAND</b> , 1343 diff. used and unused, in Scott Specialty Album, V. G.-V. F. ....	627.00
1158 ★	<b>20th Century Foreign</b> , over 1300 different nearly all unused, many sets, includes errors. Fine-Very Fine .....	—
1159	<b>WORLD COLLECTION</b> in 3 Vols. Scott International 19th Century to 1922, approx. 8000 stamps, Est. Cash Val. \$125.00 .....	—
1160	<b>WORLD COLLECTION</b> in 3 Vols Scott Internationals up to 1922, about 10,000 stamps, Est. Cash Value \$60.00 .....	—
1161	<b>WORLD COLLECTION</b> several thousand in bound International Junior Album, Est. Cash Val. \$35.00 .....	—



# FOREIGN WHOLESALE

2150	1162	BAHAMAS, 1921-1937, 6p George V #79(95). V. G.-V. F. ....	23.75
4.	1163 ★田	BERMUDA, 1901, Provisional 1r on 1sh Gray #25 (180) in panes of 60, some separations, Fine .....	27.00
2250	1164	BOLIVIA, 1871-1910, 1c-100c Postage (Between 15-94) 1415 stamps, 56 diff., V. G.-V. F. ....	246.00
20.	1165	CANADA, 1868-97, 3c Red #25(85). Some defects, Fair-Fine .....	85.00
2600	1166	CANADA, NEWFOUNDLAND dealers stock in stockbook 19th & 20th, used and unused, well diversified, considerable face value, Est. Cash Val. \$350.00 to \$400.00 .....	—
✓	1167 ★	GUATEMALA, 1881-1897, 1c-20c Postage (Between 21-96) Ninety nine copies, 24 diff. V. G.-V. F. ....	40.25
3.	1168 ★田	HAITI, 1890, 2c Overprint #25 (100) in large blocks, V. F. ....	15.00
47.	1169	JAMAICA, 1883-1890, 1p Carmine #18(260). V. G.-V. F. ....	65.00
950	1170	—1883-1890, 2p Slate #20 (560). Good-Very Fine .....	140.00
4.	1171 ★田	NEW ZEALAND, 1945, 1p-2p Semi Postals #B28-B29 (80 sets). In large blocks, V. F. ....	28.00
✓	1172 ★	PALESTINE, 1918, 1m-5pi #4-11, Between 20-31 copies of each in large Blocks, Fine-Very Fine .....	52.47
32.	1173	UNION SO. AFRICA Stock on cards, used and unused, values to 5/, Fine lot of many hundreds .....	—
20.	1174	BRITISH COLONIES, 19th & 20th used and unused in 12 booklets, Est. Cash Val. \$20.00 .....	—
130.	1175	FOREIGN SETS long drawer containing sets mostly on cards, mainly unused retailing up to \$5.00 each, wide variety, excellent dealer lot .....	—
45.	1176	FOREIGN MISC. Stockbooks and misc. mounted on sheets, used and unused, 19th & 20th, Est. Cash Val. \$60.00 .....	—
9.	1177	Oriel Binders & Cases three blue, nice condition .....	—
20.	1178	Scott International Albums, Loose Leaf Linen Hinged, 9 Books in fine condition .....	—
✓	1179	International Scott Bound Albums, 4 diff. two appear new, also 10 older catalogues including foreign .....	—

END OF SALE — THANK YOU

**LIST OF PRICES REALIZED \$1.00**

**OR FULL YEARS SUBSCRIPTION \$2.50**



## SELLING YOUR COLLECTION ?

**REALIZE IMMEDIATE CASH  
AND HAVE ADVANTAGE OF SELLING AT AUCTION.**

I will advance on your collection immediate cash up to 75% of my appraisal value of what it should realize at auction.

It will then be sold at one of my coming auction sales. Commission is 20% of the gross and final settlement within thirty days after the sale.

Send collection direct (valued \$500 upwards) for appraisal. Auction advance will be sent within 48 hours after receipt. If not entirely pleased, collection will be returned at my expense.

I have been conducting stamp auctions for 24 years.



**ROBERT A. SIEGEL**

**(Licensed and Bonded Auctioneer)**

**505 FIFTH AVENUE**

**NEW YORK CITY**

**(Tel. MU. 2-4309)**

ROBERT A. SIEGEL  
505 Fifth Avenue - New York City

# United States and Foreign Stamps and Covers

[illegible]



588 13.50	645 4.00	705 3.50	765 32.00	824 13.00	883 38.00	943 14.50	1003 14.50	1063 33.00	1123 102.50
589 33.00	646 9.00	706 32.00	766 18.00	825 36.00	884 21.00	944 2.00	1004 11.50	1064 25.00	1124 70.00
590 10.50	647 10.50	707 42.50	767 5.50	826 52.50	885 3.25	945 4.50	1005 11.50	1065 8.25	1125 135.00
591 7.00	649 17.50	708 5.50	768 8.00	827 7.50	886 7.00	946 72.50	1006 5.00	1066 56.00	1126 92.50
592 20.50	650 17.75	709 22.00	769 15.00	828 36.00	887 5.25	947 22.00	1007 11.50	1067 32.50	1127 60.00
593 4.75	651 13.50	710 2.50	770 5.50	829 39.00	888 15.00	948 8.50	1008 9.00	1068 18.50	1128 55.00
594 12.00	652 13.00	711 5.00	771 27.50	830 59.00	889 5.00	949 5.00	1009 4.00	1069 5.75	1129 480.00
595 75.00	653 12.50	712 2.00	772 23.00	831 26.00	890 11.50	950 29.00	1010 12.00	1070 8.50	1130 57.50
596 13.00	654 7.00	713 8.00	773 10.50	831A 7.50	891 5.00	951 36.00	1011 2.50	1071 17.00	1131 87.50
597 21.00	655 18.50	714 5.00	774 11.00	832 21.00	892 11.50	952 40.00	1012 24.00	1072 9.25	1132 50.00
598 16.00	656 10.50	715 7.50	775 9.00	833 70.00	893 22.50	953 2.00	1013 30.00	1073 3.75	1133 180.00
599 29.50	657 16.50	716 26.00	776 19.00	834 15.00	894 4.50	954 10.00	1014 28.00	1074 11.50	1134 95.00
600 9.50	658 17.00	717 4.50	777 14.00	835 10.50	895 10.00	955 10.50	1015 5.00	1075 5.00	1135 23.00
601 4.00	659 44.00	718 7.00	778 11.00	836 48.00	896 7.50	956 5.00	1016 25.50	1076 11.50	1136 87.50
602 4.00	660 7.00	719 10.50	779 136.00	837 6.25	897 5.50	957 2.75	1017 12.00	1077 6.50	1137 67.50
603 17.00	661 80.00	720 9.25	780 8.50	838 14.50	898 35.00	958 5.00	1018 8.00	1078 2.50	1138 290.00
604 6.50	662 10.50	721 1.00	781 9.00	839 24.00	899 18.00	959 6.50	1019 10.50	1079 3.75	1139 220.00
605 34.00	663 16.00	722 30.00	782 11.50	840 5.00	900 29.00	960 9.00	1020 4.50	1080 4.50	1140 195.00
606 15.50	664 20.00	723 7.50	783 8.00	841 6.00	901 15.00	961 9.50	1021 10.00	1081 16.50	1141 135.00
607 43.00	665 11.00	724 7.00	784 5.00	842 6.00	902 22.00	962 4.25	1022 13.50	1082 15.00	1142 225.00
608 15.00	666 8.00	725 7.00	785 5.50	843 7.50	903 16.50	963 4.75	1023 8.00	1083 12.50	1143 95.00
609 26.00	667 45.00	726 12.00	786 26.00	844 13.50	904 20.00	964 7.00	1024 20.00	1084 9.00	1144 50.00
610 17.50	668 7.25	727 11.00	787 50.00	845 8.00	905 12.50	965 5.00	1025 17.50	1085 10.00	1145 180.00
611 16.00	669 3.00	728 11.00	788 37.50	846 8.00	906 10.00	966 29.00	1026 10.50	1086 7.50	1146 205.00
612 17.50	670 9.00	729 16.00	789 13.00	847 10.00	907 3.75	967 16.50	1027 7.50	1087 12.25	1147 320.00
613 15.50	671 10.50	730 10.00	790 19.00	848 17.50	908 6.00	968 7.25	1028 6.00	1088 out	1148 90.00
614 19.50	672 12.50	731 3.75	791 15.00	849 5.50	909 39.00	969 8.50	1029 6.00	1089 4.25	1149 255.00
615 9.00	673 9.25	732 10.50	792 27.50	850 5.50	910 2.50	970 7.00	1030 9.00	1090 6.00	1150 125.00
616 19.50	674 9.50	733 44.00	793 23.00	851 8.50	911 11.50	971 8.75	1031 10.50	1091 6.00	1151 47.30
617 19.00	675 57.00	734 11.00	794 50.00	852 3.25	912 5.00	972 7.00	1032 13.00	1092 2.50	1152 8.00
618 18.00	676 9.25	735 6.00	795 26.00	853 11.50	913 3.25	973 5.50	1033 8.25	1093 2.75	1153 260.00
619 5.25	677 7.00	736 10.50	796 7.50	854 13.00	914 13.00	974 10.00	1034 2.00	1094 5.75	1154 60.00
620 8.50	678 7.00	737 6.00	797 9.50	855 15.00	915 3.50	975 11.00	1035 3.50	1095 7.00	1155 35.00
621 10.50	679 24.00	738 5.50	798 6.00	856 6.50	916 26.00	976 2.75	1036 4.25	1096 2.50	1156 127.50
622 27.00	680 8.00	739 14.00	799 5.25	857 8.00	917 6.00	977 6.25	1037 9.00	1097 12.50	1157 75.00
623 26.00	681 8.50	740 8.25	800 3.00	858 9.75	918 5.00	978 3.75	1038 8.25	1098 13.00	1158 38.00
624 2.50	682 2.50	741 7.25	801 4.00	859 8.50	919 16.00	979 11.00	1039 16.00	1099 15.00	1159 285.00
625 14.50	683 11.50	742 14.50	802 12.00	860 5.00	920 3.00	980 5.00	1040 28.00	1100 4.25	1160 107.50
626 8.00	684 8.50	743 5.50	803 8.50	861 67.50	921 5.00	981 6.50	1041 9.50	1101 5.00	1161 32.00
627 8.75	685 6.50	744 4.50	804 3.75	862 22.50	922 5.00	982 21.00	1042 12.50	1102 9.25	1162 2.25
628 7.00	686 6.50	745 8.00	805 8.50	863 16.50	923 8.50	983 4.00	1043 13.00	1103 3.75	1163 4.00
629 22.00	687 5.75	746 5.00	806 12.50	864 21.50	924 10.00	984 15.00	1044 11.00	1104 35.00	1164 22.50
630 6.50	688 11.00	747 4.00	807 13.00	865 42.00	925 8.00	985 2.75	1045 18.50	1105 8.75	1165 20.00
631 10.50	689 4.25	748 46.00	808 5.25	866 24.50	926 7.50	986 2.50	1046 5.50	1106 4.25	1166 260.00
632 7.25	690 10.00	749 21.00	809 10.00	867 13.00	927 5.50	987 4.00	1047 15.50	1107 8.50	1167 5.00
633 6.75	691 19.50	750 32.50	810 8.50	868 39.00	928 6.00	988 40.00	1048 10.00	1108 4.00	1168 3.00
634 6.75	692 38.00	751 65.00	811 11.50	869 9.50	929 10.00	989 32.50	1049 9.50	1109 7.00	1169 4.75
635 13.00	693 22.00	752 65.00	812 30.00	870 22.50	930 10.50	990 10.00	1050 4.50	1110 2.75	1170 9.50
635A 34.00	694 11.50	753 7.75	813 3.00	871 15.00	931 10.50	991 16.75	1051 8.50	1111 8.50	1171 4.00
636 24.00	695 17.50	754 32.50	814 5.50	872 13.00	932 4.25	992 11.00	1052 21.00	1112 2.75	1172 5.00
637 22.00	696 17.50	755 28.00	815 4.50	873 8.00	933 6.00	993 16.75	1053 16.00	1113 26.00	1173 32.00
638 18.50	697 10.00	756 36.00	816 3.75	874 4.25	934 5.25	994 15.00	1054 4.50	1114 21.00	1174 20.00
639 56.00	698 6.50	757 52.50	817 5.50	875 3.00	935 9.00	995 27.50	1055 4.25	1115 310.00	1175 130.00
640 16.00	699 5.25	758 52.50	818 19.00	876 10.00	936 15.50	996 9.00	1056 4.75	1116 370.00	1176 45.00
640A 122.00	700 4.50	759 52.50	819 45.00	877 2.50	937 2.25	997 20.00	1057 10.75	1117 530.00	1177 9.00
641 22.00	701 7.50	760 105.00	819A 20.00	878 3.50	938 12.50	998 18.00	1058 2.25	1118 180.00	1178 25.00
642 9.50	702 15.50	761 10.00	820 20.00	879 5.50	939 60.00	999 17.00	1059 15.75	1119 480.00	1179 5.50
643 9.25	703 56.00	762 26.00	821 9.25	880 2.50	940 4.75	1000 7.75	1060 4.25	1120 190.00	
643A 122.50	704 5.00	763 5.50	822 180.00	881 6.75	941 8.00	1001 11.00	1061 12.00	1121 97.50	
644 13.50	705 3.50	764 7.50	823 7.00	882 5.75	942 11.00	1002 11.50	1062 6.00	1122 105.00	