

173rd SALE

UNITED STATES

19th & 20th Century Singles & Blocks

COLLECTION OF SHEETS

U.S. WHOLESALE

& GENERAL FOREIGN

Including the Collection of

J. BRINTON YOUNG of OCEAN CITY, N.J.



At Public Auction

THURSDAY, SEPTEMBER 23rd, 1954

TWO SESSIONS — 2 P. M. & 7:15 P. M.

Robert A. Siegel
AUCTIONS

505 FIFTH AVENUE

NEW YORK CITY

CONDITIONS OF SALE

1. The terms of sale are strictly cash to the highest bidder. All buyers are expected to pay for lots within three days of receipt, unless special arrangements have been made prior to the sale.
2. All bids are per lot as numbered in the catalogue and not per piece, unless otherwise announced by the auctioneer at the time of sale.
3. Any lot the description of which is incorrect is returnable only within three days of receipt. All disputed lots must be returned intact as received. Lots containing five or more stamps are not returnable at any time. No lots may be returned by purchasers who have had the opportunity to examine them before the sale.
4. Successful mail bidders, unless they are known to us or supply acceptable references, will be notified of the amount of the lots secured for them, and are expected to send payment in full before the lots are forwarded.
5. If the purchase price has not been paid within the time limit, or lots taken up within seven days from date of sale, they may be resold and any losses arising from such sale charged to the defaulter.
6. All stamps are sold as genuine, except where sold "As Is". Claims for any lot proving otherwise, must be made within two weeks from date of sale.
7. The right is reserved to group two or more lots, also withdraw any lot or lots from the sale, or to act on behalf of the seller.
8. Until paid for in full all lots remain the property of Robert A. Siegel.
9. No commission is charged for buying at our sales, but all forwarding charges will be added to the purchase price.
10. Lots will be sent for inspection, provided such lots are returned to us the same day as received. Postage and registration both ways will be charged. Approximate values of lots will be given on request.
11. The placing of a bid shall constitute acceptance of the foregoing conditions of sale.

ROBERT A. SIEGEL

GREGORY MOZIAN, Licensed Auctioneers

In sending bids, always state the highest price you are prepared to pay for the lot. Your limit will not be used as a starting bid unless absolutely necessary.

DESCRIPTIONS

Superb—the finest condition for noteworthy, outstanding copies.

Very Fine (VF)—means that there is a slight deviation from the above.

Fine (F)—means that the perforations do not touch the design on issues after 1890, but in some cases may just touch in earlier issues; if used, fairly lightly cancelled.

Very Good (VG)—means that the appearance is generally fine but that the perforations cut the design slightly.

Good (G)—means average off-centering; or fairly attractive with slight defects. Original gum is not to be expected on 19th Century stamps up to 1888 unless so stated.

Scott's 1954 Specialized United States Catalogue is used for cataloging our lots of United States and Scott's Standard Catalogue, 1954 for others.

<p>WE SOLICIT FINE MATERIAL FOR FUTURE SALES</p>

173rd SALE, SEPTEMBER 23rd, 2 P.M. & 7:15 P.M.

BID SHEET

ROBERT A. SIEGEL
505 Fifth Avenue
New York City
Tel.: MUrray Hill 2-4309

Please purchase for me at your Auction to be held **Thursday (two sessions), September 23rd, 1954**, the lots named below, the prices annexed being my limit on each lot. I agree to remit for purchases in accordance with the **Conditions of Sale** and to return no lots later than three days after receipt.

REFERENCES PLEASE
(if unknown to us)

SIGNED

[illegible]

VALUATIONS

Upon request, estimate of value furnished on any lots in this auction.

[illegible]

FIRST SESSION

THURSDAY, SEPTEMBER 23rd — 2 P.M.

UNITED STATES

POSTMASTER PROVISIONALS

- 1 ★ Providence 5c, 10c Black (10X1-10X2). Reprint Sheet of 12, Very Fine 120.00

1847 ISSUE

- 2 5c Red Brown (1). Margins all around, Red Grid, V.F. (Photo) 27.50
- 3 5c Red Brown (1). Margins all around, Red Grid, Very Fine 27.50
- 4 5c Red Brown (1). Blue "5cts" cancel, Fine 32.50
- 5 ★田 Red Brown (1). Block, crease and thins, still nice appearing and a rare block (Photo) 800.00
- 5A 5c Brown (1). Two stamps, blue grid, dotted grid cancels, one thin, other creased, Fine appearing 55.00
- 6 田 5c Red Brown (1). Margins all around though small at L., tied red grid, Richmond, Va. pmk. Fine —
- 7 田 5c Red Brown (1). Tied red grid, from Boston margins partly small, Fine 37.50
- 8 田 5c Brown (1). Margins 3 sides, cuts at T., tied by Blue Town pmk. 37.50
- 9 田 5c Brown (1). Margins 3 sides, just in at B. tied by Blue Philadelphia pmk. 37.50
- 9A 田 5c Red Brown (1). Tied with light blue **Wilmington, Del.** pmk. on most attractive decorated **Valentine** cover, Fine (Photo) —
- 10 10c Black (2). Red cancel, margins 3 sides, in at L.L. on small piece. V. G. 80.00
- 11 10c Black (2). Small margins all around, cleaned, tiny thins —
- 12 田 10c Black (2). Large margins all around tied with red grid, **Charleston, S. C.** pmk. on Commercial Journal, early impression, used Oct., 1847, Very Fine (Photo) 100.00
- 12A 田 10c Black (2). Tied by Red Square New York Grid, stamp cuts at L. 100.00
- 13 ★ 10c Black Reproduction (4). Margins all around. Very Fine (Photo) 57.50

1851 ISSUE

14 ★	1c Blue, Type II (7). Horiz. Strip of 3, faults, O. G.	95.00
15	1c Blue, Ty. IV (9). Recut twice at top and bottom, Fine	35.00
16 ☒	1c Blue, Ty. IV (9). Tied by Baltimore, Md. pmk., Fine	12.00
17 ☒	1c Blue, Ty. IV (9). Tied on cover. recut twice Top once at Bot. Fine	25.00
17A☒	1c Blue Ty IV (9). Tied on back of Valentine cover with three blue Paid s, stamp has crease	—
17B☒	1c Blue, 3c Red three (9, 11). Tied on cover N. Y. to Canada, " U. States Paid 6d " in red, stamps partly cut in, attractive cover	—
18 ★	3c Dull Red (11). Horiz. strip of 4. Left stamp has Center line , one creased, others Fine O. G.	20.00
19	3c Brownish Carmine (11). Fancy Star within Star cancel, Fine (Photo)	—
20	3c Claret (11). Stamp creased tied to piece by excellent strike of str. line " S. B. Grey Eagle-August " Packet marking	—
21 ☒	3c Dull Red (11). Tied on illustr. adv. cover showing Liberty Bell in oval Fine	—
22 ☒	3c Dull Red (11). Pair, Ms. cancel, Texas Hill, Cal. , also companion stamp- less cover from New Philada. O. to Texas Hill, Cal. V. G.	—
23 ☒	3c Red (11) Five covers each tied with V. F. 4 margin copy	—
24 ☒	3c Red (11). Six covers includes Steamboat, Marianna and Apalachicola Florida pmks. V. G.-Fine	—
25 ★	10c Green Ty. I (13). Margins all around, thin, V. F. appearance (Photo)	500.00
26	10c Green, Ty. I (13). Margins all around, small thin, V. F. appearing	65.00
27	10c Green, Ty. III (15). Margins all around, Very Fine	16.00
28 ☒	12c Black Bisect (17a). Defective half tied Sacramento City, Cal. on cover	350.00

1857 ISSUE

29	1c Blue Type Ia (19). Faults. nice appearing	160.00
30 ★田	1c Blue, 3c Dull Red (24, 26). Blocks first re-enforced, latter V. F., O. G.	26.00
31 田	3c Dull Red (26). Block and single tied to piece, Fine	20.20
32 ☒	3c Dull Red (26). Tied by fancy Hardwick, Vt. double circle pmk. with ms. date, V. F.	—
33 ☒	3c Dull Red (26). Big Shift , Rosettes double, tied by Bowling Green, Ky. pmk., Fine	—
34 ☒	3c Dull Red (26). Masonic cancel on stamp, Mittineague, Mass. pmk. on cover, V. G.	—

35	✉	3c Dull Red (26). Tied on cover from N. Y. to Newfoundland. various transit markings, Fine	—
36	✉	3c Dull Red (26). Two covers. Toms River & Somerville, N. J. pmks., "10" and "Paid 3" markings, Fine	—
37		10c Green, Ty. II, V (32. 35). Fine	16.50
38		10c, 12c, 30c 1857-61 Issues (35, 69, 71). Odd blue cross hatching, boxed green, and red town cancels, slight faults, attractive looking	—
39		30c Orange (38). Red Grid cancel, Fine	(Photo) 35.00
40	P	3c Black Atlanta Proof (41TC). V. F.	—
41	E	3c Essays, 6 diff. designs, also India and Card proofs #41P, Fair-Fine	—
42	E	3c Washington Vignette, Essays on Card, 6 diff. colors, V. F.	—

1861 ISSUE

43	P	1c-90c India Proofs (63P-72P). Without 3c Rose, Fine-V. F.	36.50
44	★田	1c Blue (63). Block, hinge re-enforced Fine appearance	40.00
45		1c Blue (63). Pretty strike of Hingham, Mass. Bat , Extremely Fine (Photo)	—
46	✉	1c-12c, 1861 Issue (63, 68-69, 73, 76). Eight stamps on 5 covers, includes Star and Steamship cancels, Good-Fine	—
47	★田	3c Rose (65). Block, part o.g. Fine	8.50
48		3c Rose (65). Pair each with excellent strike of Putnam, Conn. Anchor stamps centered to R. (Photo)	—
49	田	3c Rose (65). Used block of 9. freak perfs. on part	—
50	✉	3c Rose (65). Tied Camp Nelson , Ky. pmk. Fine	—
51	✉	3c Rose (65). Tied on cover Cairo Ill. Feb. 14 pmk. with unusual grid Heart cancel, Fine	—
52	✉	3c Rose (65). Pair tied on cover, New York Registered cancel, Fine	—
53	✉	3c Rose (65). Three covers, U. S. Sanitary Commission and Soldiers Mission imprints V. G.-Fine	—
54	✉	3c Rose (65). Five diff. Patriotic covers, V. G.-Fine	—
55	✉	3c Rose (65, 94). Four covers Hotel, Newspaper, Fraternal corner cards, Fine	—
56	✉	3c Rose, 30c Orange (65, 71). Tied on cover from New Orleans to Switzerland, Fine	—
57		5c Buff (67). Ms. & light black star cancel, Fine	40.00
58		5c Buff (67). Red Grid cancel, Fine	(Photo) 45.00

59	12c Black (69). Pretty Bright Red cancel, Fine	6.00
60	12c-24c 1861-1867 Issue (69, 70a, 77, 78, 97). Five diff. V.G.-Fine	40.00
61	30c Orange (71). Unused geometric cancel, Very Fine (Photo)	—
62	★田 2c Black (73). Block , perfs in at Top, o.g.	32.50
63	2c Black (73). Twelve copies includes 6 on covers, Good-Fine	27.00
63A	⊠ 2c Black (73). Attractive blue geometric cancel from N.Y., stamp centered to B. & R.	—
64	⊠ 2c Black (73, 93). Four covers, blue carrier, freak perfs., College & Newspaper corner cards, V.G.-Fine	—
65	⊠ 2c Black, 24c Lilac (73 two, 78). Tied on cover Peoria, Ill. to Germany via Prussian Closed Mail, V.G.	—
66	⊠ 5c Red Brown (75). Str. edge at R. tied on cover with red New York Br. Pkt. pmk. and grid to Amsterdam, attractive	30.00
67	5c Red Brown (75). Two, Red & Black Grids, one lightly creased	40.00
68	15c Black (77). Two shades, Very Fine	18.00
69	15c Black (77). Five copies, includes Red & Blue cancel, V.G.-Fine	47.00
70	⊠ 24c Gray (78b). Tied with fancy crossroads cancel from Kingston, N. Y. to England, Fine	—
70A	⊠ 15c Black (77). Two tied on covers, one has str. edge, both to France, V.G.	30.00

1867 GRILL ISSUES

71	1c-12c, 1867-69 Issues (86, 96-97, 112-13). Very Good	40.25
72	⊠ 2c Black, Grill (87, 93). Two of first, seven of last, on 9 covers, includes Corner Cards, V.G.-Fine	—
73	15c Black Grills (91, 98). Both Red cancels, first has thin, latter V.G.	34.00
74	★田 1c Blue, Grill (92). Block , perfs. in at right, Fresh o.g.	125.00
75	1c Blue Grill (92). Three blue triangles forming negative and larger triangle, excellent strike, tiny thins, V.F. appearance (Photo)	—
76	★田 2c Black, Grill (93). Block , fresh corner block, Very Fine, o.g. (Photo)	100.00
77	⊠ 2c Black, Grill (93). Two covers, one illustr. adv. other Carrier cancel. V.F.	—
78	★田 3c Red, Grill (94). Block , well centered, Very Fine	17.50
79	★田 3c Red, Imperforate (94b). Block , Superb o.g. (Photo)	120.00
80	★ 5c Brown, Grill (95). Very Fine (Photo)	90.00
81	★ 10c Yellow Green, Grill (96). Very Fine, o.g. (Photo)	22.00

82	15c Black, Grill (98). Two copies with Red cancels, Fine	18.00
83	30c Orange, Grill (100). Odd Red cancel Fine	30.00
84	30c Orange Grill (100). Neat Red Leaf cancel, Fine (Photo)	30.00

1869 PICTORIAL ISSUE

85	1c Buff (112). Horiz. Pair each with Masonic cancel Square & Compass in G. Fine (Photo)	—
85A	1c, 2c, 10c Pictorials (112-13, 116). Two covers, Pair of 1c & 2c with "Due 2" on one, 10c off center tied on cover to France	—
86	1c-10c Pictorials (112-114, 116). Thirteen covers, Good-Fine	42.00
87	2c Brown (113). Block, Very Fine, o. g. (Photo)	45.00
88	2c Pale Brown (113). Block, Very Fine, o. g. (Photo)	45.00
89	2c Brown (113). Block, split grill, touches at top, fresh o. g.	45.00
90	3c Ultramarine (114). Centered to R., tied on cover with Heart in Circle cancel, from Rutland, Vt. Fine	—
91	3c Ultramarine (114). Two covers, one tied neat blue B, other Hotel	—
92	3c Ultramarine (114). Seven diff. fancy cancels. V. G.-Fine	—
93	12c Green (117). Very Fine (Photo)	22.50
94	15c Brown & Blue, Double Grill (118b). Very Fine (Photo)	75.00
95	24c Green & Violet (120). Well centered, Brilliant Red cancel, light corner crease, Very Fine appearing	42.50
96	30c Blue & Carmine (121). Neat Red "Paid" cancel, tiny ironed out corner crease, Very Fine appearance (Photo)	—
97	2c Brown, Re-Issue (124). Block, Very Fine, o. g. (Photo)	100.00
98	90c Carmine & Black, Re-issue (132). Fine (Photo)	160.00
99	1c Buff, Re-Issue (133). Block, Very Fine	37.50
100	1c Buff Re-issue (133). Block, Well centered, very light crease	37.50

BANK NOTE ISSUES

101	2c Red Brown, Grill (135). Horiz. Pair, well centered, light grill	40.00
102	3c Green Grill (136). Block, V. G.-Fine, o. g.	65.00
103	6c Carmine, Grill (137). Slight stain on back, V. F. appearing	60.00
103A	1c Banknotes, 4 diff. N. Y. Foreign Mails ty. 4, 6, 38, 54, two have faults, nice strikes	—

- 103B **1c Banknotes**, 9 diff. fancy cancels includes Diamonds, Leafs, U.S., Checkerboard, Fine-V. F.
- 103C **1c Banknotes**, 10 diff. **Red** cancels, V. G.-Fine
- 103D **1c Banknotes**, 10 diff. **Magenta** fancy cancels, Fine-V. F.
- 103E **1c Banknotes**, Fourteen diff. **Geometric** cancels, V. F.
- 103F **1c Banknotes**, 14 diff. **fancy** cancels includes Free, County, Greens, Returned To Writer, Fine lot
- 103G **1c Banknotes**, Fifteen diff. **Geometric** cancels, V. F.
- 103H **1c Banknotes**, 14 diff. **Letter** cancels, Fine lot
- 104 **1c Banknotes**, Fifteen diff. **fancy and interesting** cancels, V. G.-V. F.
- 104A **1c Banknotes**, 17 diff. **fancy blue** cancels, two with grill, Fine-V. F.
- 104B **1c Banknotes**, 19 **fancy** cancels includes Shield, Stars, Geometrics, Green, Fine lot
- 104C **1c Banknotes**, 185 copies, collection of **interesting and fancy** cancels, V. G.-V. F.
- 105 ☒ **1c Banknotes (145, 182)**. Two covers with corner cards one illustr. of rifle, straight line Herkimer N. Y. and rectangle of dashes cancel, Fine
- 106 ☒ **1c-3c 1870-1887 Issues**, 25 diff. **illustr. advertising** covers, Fine-V. F.
- 107 ☒ **2c-3c Banknotes**, Seven **County and Postmaster** pmks. all tied, V. G.-V. F.
- 108 **2c Banknotes**, 28 interesting and fancy cancels, V. G.-V. F.
- 109 **3c Green**, attractive strike of large **Shield**, V. F. (Photo)
- 110 **3c Green**, Propeller with Star in center cancel, V. F. (Photo)
- 111 **3c Green**, three clear unusual cancels, Shield, 1880 year date, and odd design, V. F. strikes
- 112 **3c Greens**, 72 copies **interesting and fancy** cancels, V. G.-V. F.
- 113 ☒ **3c Green**, tied to illustr. **Temperance** cover, scarce design, Fine
- 114 ☒ **3c Green** tied on illustr. **Map** cover showing **Toledo, O. and her Railroads**, V. F.
- 115 **6c Carmine (148)**. Pretty strike N. Y. **Foreign Mail**, ty 22 in red, V. F.
- 116 **6c-15c Banknotes**, 15 diff. **fancy** cancels, V. G.-V. F.
- 117 ☒ **10c Brown (150)**. Tied with N. Y. **Foreign Mail** type 102 on cover to Italy, oval forwarders marking from N. Y., Fine
- 118 ☒ **10c Brown (150)**. Tied with N. Y. **Foreign Mail** type 59 on cover to France, stamp str. edge at R. Fine markings
- 119 **10c Banknotes** six interesting cancels **Yokahoma, Japan; Callao, Peru; Mexico Steamship**, N. Y. **Supplementaries** cancels, Fine lot

120	12c Dull Violet (151). Nice strike Checkerboard cancel, light crease, Fine appearance	—
121	90c Carmine (155). Centered to T., Red cancel, Fine	20.00
122 ★	1c-10c Banknotes (156-157, 183, 209, 213). Two shades of 1st, 4 have o. g., V. G.-V. F.	16.15
123 ★田	2c Brown (157). Block, Fine o. g.	27.50
124 ★田	6c Dull Pink (159). Block, hinge re-enforced, V. F., o. g. (Photo)	80.00
125	6c Dull Pink (159). Very fine strike N. Y. Foreign Mail, ty. 6 (Photo)	—
126	15c Yellow Orange (163). Neat U.S.M. cancel, Fine	—
127	2c Vermilion (178). Pretty strike N. Y. Foreign Mail ty. 31, VF. (Photo)	—
128 包	5c Blue (179, 185). Three covers tied with diff. New Orleans Geometrics, Fine	—
128A	1c Banknote (182). Indian Head cancel in blue, V. F.	—
129 ★田	2c Vermilion (183). Block, Very Fine, o. g.	13.00
130	2c Vermilion (183). 4 attractive V. F. cancels Carrier, Stars, Geometric	—
131 ★田	3c Green (184). Block, Well centered, few perfs. separated o. g.	9.00
132 ★田	90c Carmine (191). Block, Very Fine, o. g. (Photo)	325.00
133 ★田	1c-10c Banknotes (205-07, 209-10). Blocks, V. G., o. g.	68.75
134 ★田	6c Brown Red (208). Block, 1 stamp thin, others Fine o. g.	75.00
135 ★田	6c Brown Red (208). Block, tiny thin one stamp. Fine appearance o. g.	75.00
136 ★田	4c Blue Green (211). Block. small tear, Fine appearance, o. g.	35.00
137 ★田	1c-4c Banknotes (212-215), Blocks, V. G.-V. F., o. g.	44.50
138 ★	2c Green (212). Thirty copies including some in Plate No. & Imprint Pairs, mostly o. g., V. G.-V. F.	12.00
139 包	2c Green (213). Tied from Chicago on illustr. adv. cover showing Railroad, Fine	—
140 包	2c Green (213). Seven diff. illustr. advertising covers, V. F.	—
141 ★田	5c Indigo (216). Block, one stamp has corner crease others Fine, o. g.	22.50
142 ★田	30c Orange Brown (217). Block, centered to L. Fine o. g.	52.50
143	30c, 50c, 90c 1888-98 Issues (217-18, 229, 240, 291). Two of #229 one unused, 2 with str. edge, Good-Fine	64.25
144	90c Purple (218). Bright purple cancel tiny thin, Fine appearance	15.00

1890 ISSUE

145 ★田	1c Blue, 2c Lake (219, 219D). Blocks, Very Fine	14.00
--------	---	-------

146	★	1c-2c Imperforates (219, 219D, 220). Blocks. two have thin spots, V. F. appearance	48.00
147	★	2c Carmine, one has Cap on left "2" (220, 220a). Blocks, Fine-V. F.	10.50
148	★	2c Carmine, Cap on both "2" (220c). Block, Fine	34.00
148A	✉	2c Carmine (220). Two each tied with Tree cancel on portion of cover, Marked Tree, Ark. pmk. scarce, V. G.	—
149	✉	2c 1890-1898 Issues Three diff. illustr. advert. coners, 2 show Boats, other Railroad Car, V. F.	—
150	✉	2c 1890-1902 Issues, Six diff. attractive multi-colored illustr. advertising covers, V. F.	—
151	✉	2c 1890-1902 Issues, Seven diff. attractive multi-colored illustr. advertising covers, V. F.	—
152	✉	1c-2c 1890-1902 Issues, Twelve diff. illustr. advertising covers all showing animals, V. F.	—
153	✉	1c-2c 1890-1902 Issues, 28 illustr. advertising covers, Fine-V. F.	—
154	★	3c Purple (221). Block, Very Fine	11.00
155	★	4c Dark Brown Imperforate (222). Block, Very Fine (Photo)	60.00
156	★	4c Dark Brown, 5c Chocolate (222-223). Blocks, Fine-V. F.	27.00
157	★	5c Chocolate Imperforate (223). Block slight age stain in margin	60.00
158	✉	5c Chocolate (223). Tied on cover with Shanghai, China pmk. Fine	—
159	★	6c Brown Red (224). Block, Very Fine	11.00
160	★	8c Lilac (225). Block, Very Fine	10.00
161	★	10c Green (226). Block, Fine	25.00
162	★	15c Indigo (227). Block, Very Fine	30.00
163	★	30c Black (228). Block, reperfed at R.	45.00
164	★	90c Orange (229). Block, Very Fine (Photo)	65.00

COLUMBIAN ISSUE

165	★	1c-3c Columbians (230-232). Blocks, includes extra block of 2c with "broken hat" variety, Fine-Very Fine	23.25
165A	✉	1c-\$2.00 Columbians (230-242, E2-E3). All 15 diff. tied on a legal cover with Portland, Oregon Transit 93 pmks., 3c, 6c and 50c str. edges, Very Fine and attractive cover	154.70
166	★	1c-50c Columbian (230-240). All have thins, last two without gum	53.70
167	★	4c Columbian (233). Block, Very Fine	13.50
168	★	5c Columbian (234).. Block, Very Fine	12.50

169	★田 6c-8c Columbians (235-236). Blocks, first has slight stain, latter Fine	27.00
170	★田 10c Columbian (237). Block, Very Fine	32.50
171	★田 15c Columbian (238). Block, Very Fine	42.50
172	15c-50c Columbians (238-240). First two have precancel bar cancels, 30c has closed tear others V. G.	23.50
173	★田 30c Columbian (239). Block, part gum, Well centered (Photo)	62.50
174	★田 50c Columbian (240). Block, Fine (Photo)	100.00
175	\$2.00 Columbian (242). Tied on piece by machine cancel dated Philadelphia Aug. 8. 1893, Fine (Photo)	35.00

1894-1898 ISSUES

176	★田 1c-3c 1894 Issue (246-251, 253). Blocks, Fine-Very Fine	53.00
177	★田 5c, 6c, 8c, 1894 Issue (255-257). Blocks, Fine-Very Fine	40.50
178	★田 5c Chocolate Imperforate Between (255c). Block, light gum crease, V. F. appearance (Photo)	550.00
179	★田 1c-4c 1895 Issue (264-269). Blocks, one 2c has thin spot, another part gum, balance Fine-V. F.	30.35
179A	田 2c Carmine (267). Tied with unusual small cog wheel cancel, Port Orchard, Wash. pmk. Fine	—
180	田 2c Carmine (267). Span.-Amer. War patriotic Flag, "Remember the Maine, To H--l with Spain", Fine	—
181	田 2c Carmine (267). Tied with Boston Flag cancel on Span.-Amer. Patriotic cover with Cuba & U. S. flags, Fine	—
182	田 2c 1895-1903 Issues, Five covers with unusual machine cancels of long rows of dashes, V. F.	—
183	★田 5c Chocolate, 8c Violet Brown (270, 272). Blocks, Fine-V. F.	14.00
184	★田 15c Dark Blue (274). Block, Well centered, part gum	35.00
185	\$1.00 Black, Ty. II (276A). Dark violet box cancel, V. F.	13.50
186	★田 1c-5c, 1898 Issue (279-281). Blocks. V. G.-V. F.	15.50
187	★田 6c Lake (282). Block, Very Fine	16.00
188	★田 10c Brown (282c). Block, Well centered, one stamp tiny thin	42.50
189	★田 10c Orange Brown (283). Block, Very Fine (Photo)	40.00
190	★田 15c Olive Green (284). Block, Well centered, one stamp tiny thin	32.50
191	★田 1c-3c Booklet Panes (Between 279Be-720). Fourteen diff., some gum stains, few without tabs, Fair-V. F.	44.80

191A	☒	Spanish American War Patriotics , 5 diff. American or Cuban Flags, including over all designs, all Mich. pmks. Fine lot	—
191B	☒	Spanish American War Patriotics , 7 diff. designs, Eagles, Flags, Shields, Fine lot	—
191C	☒	Spanish American War Patriotics , Eight diff. Flag designs, Good-Fine	—
192	☒	2c 1898-1902 Issues , Three diff. illustr. advertising covers showing Guns , V. F.	—
193	☒	2c 1898-1902 Issues , Seven diff. attractive multi-colored illustr. advertising covers including Horses, Breweries, V. F.	—

TRANS-MISSISSIPPI ISSUE

194	★	☐	1c Trans-Mississippi (285) . Plate No. Block of 16, Fine	24.00
194A	P		1c-\$2.00 Trans-Miss (285p-293P) . Cpl. Set of Bi-color Hybrid Die Proofs, V. F.	—
195	★	☐	1c-4c Trans-Miss. (285-287) . Blocks, 2c without gum, 4c has some perf. separation	37.00
196	★		1c-10c Trans-Miss. (285-290) . Last has tiny thin, others Fine-Very Fine	26.55
197	★		1c-50c Trans-Miss. (285-291) . All have thins, one no gum	61.55
197A			2c, 10c Trans-Miss (286, 290) . Spanish-American War Patriotics , 6 diff. Flag designs, includes one 10c on registered cover, and one over all design, Fine lot	—
198	★	☐	4c Trans-Miss. (287) . Bot. Imprint Plate No. Block of 10, Very Fine	72.50
199	★	☐	4c Trans-Miss. (287) . Top Imprint Plate No. Block of 10, Bot. 5 stamps lightly creased, V. F. appearing	72.50
200	★	☐	5c Trans-Miss. (288) . Block, tiny thin one stamp, Well centered	27.50
201	★	☐	5c Trans-Miss. (288) . Imprint Plate No. Block, Fine	37.50
202	★	☐	5c Trans-Miss. (288) . Left Arrow Block, Fine	37.50
203	★	☐	5c Trans-Miss. (288) . Imprint Plate No. Block of 20, Very Fine	133.50
204	★	☐	8c Trans-Miss. (289) . Block, Fine	40.00
205	★	☐	8c Trans-Miss. (289) . Block, V. G.-Fine	40.00
206	★	☐	10c Trans-Miss. (290) . Block, Fine (Photo)	52.50
207			50c Trans-Miss. (291) . Pretty purple wavy lines cancel, Very Fine	10.00
208	★		\$1.00 Trans-Miss. (292) . Small thin, Fine appearing	65.00
209	★		\$1.00 Trans-Miss. (292) . Imprint Plate No. Pair, Fine (Photo)	175.00

PAN-AMERICAN ISSUE

210 ★	1c-10c Pan Americans (294-299). Fine set	22.85
211 ★田	1c-2c Pan-American. Pan-Pacific (294-95. 397-98, 401). Blocks, V. G.-V. F.	17.50
212 田	2c Pan-American (295). Tied to illustr. advert. multi-colored Pan-American Exposition cover, V. F.	—
213 ★田	4c Pan-American (296). Block, Very Fine	25.00
214 ★田	5c Pan-American (297). Block, well centered, heavy hinge	22.50
215 ★田	8c Pan-American (298). Block, Very Fine	27.50
216 ★田	10c Pan-American (299). Block, Very Fine	42.50

1902-03 ISSUE

217 ★田	1c Green, Booklet Pane of 6 (300b). Fine-V. F.	18.50
218 ★田	1c-13c 1902-1903 Issue (300-308). Blocks, V. G.-V. F.	65.85
219 ★田	3c-15c 1902-1903 Issue (302-304, 307, 309). Corner str. edge Blocks, 2 have thins	68.00
220 ★田	15c Olive Green (309). Plate No. Block of 4, Fine-V. F.	32.50
221 ★田	50c Orange (310). Block, Very Fine (Photo)	100.00
222	\$5.00 Dark Green (313). Well centered, creased, purple town cancel, V. F. appearance (Photo)	60.00
223 ★田	1c Green Imperforate (314). Center Line Block, Very Fine (Photo)	120.00
224 ★田	1c Green, 3c Violet Imperfs. (314, 345). Line Blocks. V. F.	21.00
225 ★田	1c-2c Imperforate (314, 320, 320b). Blocks, all have faults.	32.20
226 ★田	5c Blue Imperforate (315). Block of 6, two stamps have thin spots, pieces of paper mounting on back, V. F. appearance (Photo)	475.00
227 ★田	2c Carmine Imperf. (320). Top Arrow Block, V. F.	25.00
228 ★田	2c Lake Imperforate (320a). Block of 8, small pieces of paper on 4 stamps, Very Fine appearance	70.00
229 ★田	2c Scarlet Imperf. (320b). Block of 8, without gum	20.00

LOUISIANA PURCHASE, JAMESTOWN

230 ★	1c-10c Louisiana Purchase (323-327). 10c reperfed, others Fine	31.50
231 ★田	1c Louisiana-Purchase, 1c Jamestown (323, 328). Blocks, Fine	14.00
232 ★田	2c Louisiana-Purchase (324). Imprint Plate No. Block of 4, V. F.	11.00
233 ★田	3c Louisiana-Purchase (325). Imprint Plate No. Block of 4, Fine	32.50

234	★田	5c Louisiana-Purchase (326). Imprint Plate No. Block of 4, V.G.-Fine	40.00
235	★	10c Louisiana-Purch. (327). Str. edge pair, Finely centered	32.00
236	★田	10c Louisiana-Purchase (327). Block, dull gum, reperfed one side, Fine appearance	80.00
237	✉	1c-2c Commemoratives (328, 372, 398). Four covers each on Fair or special event cover attractively illustrated, Very Fine	—
238	★田	2c Jamestown (329). Block, Very Fine	5.00
239	★田	5c Jamestown (330). Block, Very Fine (Photo)	32.50

1908 ISSUE

240	★田	1c-4c, 10c 1908 Issue (331-334, 338). Blocks, one stamp on last thin, V.G.-V.F.	36.45
241	★田	5c-8c 1908 Issue (335-337). Blocks, Very Fine	26.00
242	★田	13c Blue Green, 15c Pale Ultramarine (339-340). Blocks, Very Fine	24.50
243	★田	1c Green Imperf. (343). Center Line and 3 diff. Arrow Blocks, Fine	17.00
244	★田	1c-2c Imperforates (343-344). Imprint Plate No. Blocks of 6, three of first, V.F.	20.50
245	★田	2c Carmine Imperf. (344). Center Line Block, V.F.	15.00
246	★田	2c Carmine Imperf. (344). Set of 4 diff. Arrow Blocks, V.F.	28.00
247	★田	3c Violet Imperf. (345). Left Arrow Block, V.F.	20.00
248	★田	3c Violet Imperf. (345). Center Line Block, one stamp thin. V.F. appearance	50.00
249	★田	3c Violet Imperf. (345). R. Imprint Plate No. Block of 6, V.F.	22.00
250	★田	3c Violet Imperf. (345). Left Imprint Plate No. Block of 6, V.F.	22.00
251	★田	3c Violet Imperf. (345). Three diff. Corner Blocks, V.F.	48.00
252	★田	4c Orange Brown Imperf. (346). Center Line Block, V.F. (Photo)	50.00
253	★田	4c Imperforates (346). Set of 4 diff. Arrow Blocks, V.F.	80.00
254	★田	4c Orange Brown Imperf. (346). Top Imprint Plate No. Block of 6, V.F.	23.50
255	★田	4c Orange Brown Imperf. (346). Left and Bot. Imprint Plate No. Blocks of 6, Very Fine	47.00
256	★田	4c-5c Imperfs. (346-47). Blocks, V.F.	45.00
257	★田	5c Blue Imperf. (347). Left Corner Block, V.F.	40.00
258	★田	5c Blue Imperf. (347). Center Line Block. Very Fine (Photo)	120.00
259	★	1c-2c Coils (348-349, 352-353). Pairs, lost has tear, others Fine	20.70
260	★	4c Orange Brown Coil (350). Pair. Very Fine	14.00

261	★	5c Blue Coil (351). Paste up Pair with Pl. No., Fine	25.00
262	★	4c-5c Coils (354-355). Pairs, Fine-V. F.	25.50
263	★田	1c Bluish Paper (357). Block, Very Fine	25.00
264	★田	2c Bluish Paper (358). Block, Very Fine	25.00
265	★	13c Blue Green (365). Fine (Photo)	175.00
266	★田	13c Blue Green Bluish Paper (365). Block, perfs. barely touch at left, fresh (Photo)	800.00
267	★田	1c-2c Imperforates, 1908-23 Issues, 22 Blocks, 8 varieties, Fine-V. F.	41.25

1909 COMMEMORATIVES

268	★田	2c, 1909 Commems. (367, 370, 372-73). Blocks, both spacings on first, Fine	28.50
269	★田	2c Lincoln Imperf. (368). Block of 4 with Plate No., tiny thin	17.50
270	★田	2c Lincoln Imperf. (368). Center Line Block, gum faults	55.00
271	★田	2c Lincoln Bluish (369). Block, Very Fine (Photo)	65.00
272	★田	2c Alaska-Yukon Imperf. (371). Line Block, Very Fine	25.00
273	★田	2c Alaska-Yukon (371). Imprint Block small thin	25.00
274	★田	2c Alaska-Yukon Imperf. (371). Line Block, Part gum	25.00
275	★田	2c Alaska-Yukon (371). Left Corner Block, V. F.	27.50
276	★田	2c Alaska-Yukon (371). Center Line Block, slight gum faults	50.00
277	★田	2c Alaska-Yukon (371). Set of 4 diff. arrow Blocks, V. F.	110.00
278	★田	2c Alaska-Yukon (371). Matched Set of Plate No. Blocks of 6, Fine- Very Fine	150.00
279	★田	2c Hudson-Fulton Imperf. (373). Line Block, V. F.	18.50
280	★田	2c Hudson-Fulton Imperf. (373). Line Block, V. F.	18.50
281	★田	2c Hudson-Fulton Imperf. (373). Center Line Block, gum faults	55.00
282	★田	2c Hudson-Fulton (373). Left Imprint Plate No. Block of 6, V. F.	32.50
283	★田	2c Hudson-Fulton (373). R. Imprint Plate No. Block of 6, slight scrape on one stamp	32.50
284	★田	2c Hudson-Fulton (373). Set of 4 diff. Arrow Blocks, Fine-V. F.	100.00

1910 ISSUE

285	★田	1c-6c 1910 Issue (374-379). Blocks, V. G.-V. F.	24.25
286	★田	3c-5c 1910 Issue (376-378). Blocks, last has 2mm spacing, Fine-Very Fine	13.50
287	★田	8c Olive Green (380). Block, Fine	25.00

288	★田	10c Yellow (381). Block, one stamp tiny thin, others V.F.	22.50
289	★田	15c Pale Ultramarine (382). Block, Fine	32.50
290	★田	1c Green Imperf. (383). Nine blocks includes Arrows, Center Line, Line, Corner & Plate No. Blocks of 6, Fine-V.F.	30.50
291	★田	2c Carmine Imperf. (384). Center Line Block, without gum, V.F. appearance	52.50
292	★田	2c Carmine Imperf. (384). Two diff. Corner Blocks, Fine-V.F.	35.00
292A	★田	2c Carmine Imperf. (384). Matched set Imprint Plate No. "A" Blocks of 6, Very Fine	160.00
293	★	1c-2c Coils (385-387). Pairs, Fine	15.70
294	★	2c Carmine Coil (388). Pair, 3mm spacing, Fine	80.00
295	★	1c-5c Coils (392-396). Pairs, V.G.-V.F.	25.90

PANAMA-PACIFIC ISSUE

296	☒	1c-10c Pan-Pacific (397-404). Fifteen stamps on 13 covers, V.G.-V.F.	68.00
297	★田	5c Pan-Pacific (399).. Block, Fine	27.50
298	★田	10c Pan-Pacific (400). Block, Very Fine	45.00
299	★田	10c Pan-Pacific, Orange (400A). Block, Very Fine (Photo)	47.50
300	★田	2c Red, Pan-Pacific (402a). Plate No. Block of 4, V.F.	28.50
301	★田	2c Red, Pan-Pacific (402) Plate No. Block of 4, V.F.	28.50
302	★田	5c Pan-Pacific (403). Block, Fine (Photo)	62.50
303	★田	10c Pan-Pacific (404). Block, Very Fine (Photo)	275.00

1912 ISSUE

304	★田	7c Black (407). Block, Very Fine	20.00
305	★田	1c Green Imperf. (408). Center Line Set 4 diff. Corners, Arrows and Plate No. Blocks of 6, latter without gum, Fine-V.F.	20.40
306	★田	2c Carmine Imperf. (409). Matched Set of Plate No. Blocks of 6, V.F.	20.00
307	★田	2c Carmine Imperf. (409). Center Line & 4 diff. Arrow Blocks, some gum faults	18.00
308	★	1c-5c Coils (410-413, 441-444, 447). Pairs includes 2 line pairs, V.G.-V.F.	22.20
309	★田	8c Pale Olive Green, 9c Salmon Red (414-415). Blocks, last has small hinge thin, first Very Fine	17.50
310	★田	10c Orange Yellow, 12c Claret Brown (416-417). Blocks, Very Fine	15.00
311	★田	15c Gray (418). Block, Very Fine	17.50

312 ★田	30c Orange Red (420). Block, Very Fine	27.50
313 ★田	50c Violet (421). Block, 1 stamp small hinge thin, others Very Fine, Well centered	(Photo) 137.50

1914 ISSUE

314 ★田	1c-6c 1914 Issue (424-429). Blocks, Very Fine	26.00
315 ★田	7c Black (430). Block, Very Fine	17.50
316 ★田	8c-11c 1914 Issue (431-434). Blocks, one has small thin others Fine	30.75
317 ★田	11c Dark Green, 12c Copper Red (434, 435a). Blocks, Fine-V. F.	19.75
318 ★田	15c Gray (437). Block, one stamp has tiny paper flaw, others Very Fine	32.50
319 ★田	20c Ultramarine (438). Block, Very Fine	35.00
320 ★田	50c Violet (440). Block, Very Fine	(Photo) 200.00
321 ★	3c Violet Coil (445). Guide Line Pair, Very Fine	(Photo) 50.00
322 ★	4c Brown Coil (446). Pair, Fine	17.50
323 ★	1c-10c 1916-1938 Coils (Between 448-C37). 45 diff. Pairs, V. G.-V. F.	17.76
324 ★	3c Violet Coil (456). Pair, irregular perfs at R, Well centered	22.00
325 ★田	\$1.00 Violet Black (460). Block, Fine	(Photo) 185.00
326 ★田	2c Carmine (461). Block, Very Fine	30.00
327 ★田	2c Carmine (461). Block, Very Fine	30.00

1916 ISSUE

328 ★田	1c-2c, 4c, 6c 1916 Issue (462-463, 465, 468). Blocks, last 2 have small thins, others Fine-V. F.	27.15
329 ★田	3c Violet (464). Block, one stamp light gum crease, others Very fine	25.00
330 ★田	8c Olive Green, 9c Salmon Red (470-471). Blocks, V. F.	20.50
331 ★田	10c Orange Yellow (472). Block, paper speck in one stamp, V. F.	32.50
332 ★田	11c Dark Green, 12c Claret Brown (473-474). Blocks, Very Fine	21.00
333 ★田	15c Gray (475). Block, Fine-Very Fine	42.50
334 ★田	50c Light Violet (477). Block, Fine	(Photo) 325.00
335 ★田	1c-2c Imperforates (481-82). Center Line & Set of Arrow Blocks of each, Fine-V. F.	29.00
335A ★田	2c Carmine Imperf. (482). Matched Set of Plate No. #7942 Blocks of 6, from the error sheet, Very Fine	160.00
335B ★田	2c Carmine Imperf. (482). Center Line Block of 77, V. F.	32.10

336	★田	2c-3c Imperforates (482-83). Two diff. corner blocks of each, V.F.	19.50
337	★田	3c Violet Imperf. (483). Center Line Block, V.F.	25.00
338	★田	3c Violet Imperf. (483). Set of 4 diff. Arrow Blocks, Fine-V.F.	28.00
339	★田	3c Violet Imperf. (483). Set of 4 diff. Corner Blocks, V.F.	28.00
340	★田	3c Violet Imperf. (483). Matched Set of Plate No. Blocks of 6, Fine-V.F.	32.00
341	★田	3c Violet Imperf. (483a). Center Line Block, Fine	32.50
342	★田	3c Violet Imperf. (483a). Plate No. Blocks of 6, four diff. positions, V.F.	32.00
343	★田	3c Violet Imperf. (483a). Set of 4 diff. Arrow Blocks, one has thin, others V.F.	30.00
344	★田	3c Violet Imperf (483, a). Two line Blocks of each, V.F.	20.00

1917 ISSUE

345	★田	1c-50c 1917 Issue (498-517). Blocks, many have gum stains, V.G.-V.F.	75.60
346	★	1c-30c, 1917 Issue, 73 stamps mostly in blocks, all freaks and oddities includes paper folds, paper creased before printing, freak perforations, unusual lot	—
347	★田	2c Rose (499). Block of 4 and 10 with freak and blind perms.	—
348	★田	5c Rose Error (499h). Double Error in Block of 12, Fine	100.00
349	★田	5c Rose Error (499h). In middle of block of 9, Fine	62.50
350	★	2c Rose A.E.F. Booklet Pane of 30 (499f). Without tab, one stamp has scrape, Fine centering	350.00
351	★田	2c Rose, 4c Brown (499, 503). Blocks, each wide paper fold	—
352	★田	7c Black (507). Block of 8 with wide paper fold , V.F.	—
353	★田	11c, 12c, 20c 1917 Issue (511-12, 515). Blocks, Fine-V.F.	14.75
354	★田	15c Gray (514). Block with freak wide paper fold	—
355	★田	30c-\$1.00 1917 Issue (516-518). Blocks, V.F.	39.00
356	★田	\$1.00 Violet Brown (518). Plate No. Block of 4, V.F.	17.50
357	★田	2c Carmine (519). Plate No. Block of 4, V.F. (Photo)	100.00

1918-1920 ISSUES

358	★田	\$2.00 Orange Red & Black (523). Block, glossy gum, well centered (Photo)	225.00
359	★田	\$5.00 Deep Green & Black (524). Center Line Block, glossy gum, well centered	85.00
360	★田	1c-3c Offsets (525, 526, a, c, d, 529, c, 536). Blocks, Fine-V.F.	19.10

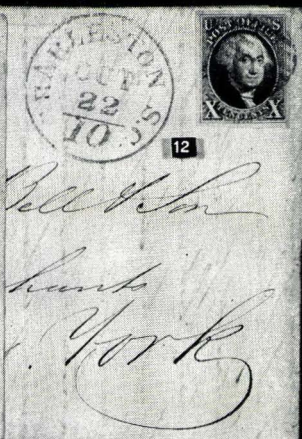
361	★田 1c Offset Imperf. (531). Center Line Block, Fine	42.50
362	★田 1c Offset Imperf. (531). Four blocks, includes Arrow, Corner, Line Blocks, Fine-V. F.	42.00
363	★田 1c-3c Offset Imperfs. (531-535). Blocks, Fine	24.00
364	★田 2c Offset Ty. IV Imperf. (532). Center Line Block, slight crease, V. F. appearance	37.50
365	★田 2c Offset, Ty. IV Imperf. (532). Bot. Plate No. Block of 6, also shows Phantom Plate Nos. V. F.	16.00
366	★田 2c Offset Ty. V Imperf. (532a). Block, V. F.	30.00
367	★田 2c Offset Types IV, Va, VI Imperfs. (532, b, c). Blocks, V. F.	30.50
368	★田 2c Offset Imperf. (532b). Top & Bot. Plate No. Blocks of 6, Fine	22.00
369	★田 2c Offset Ty. VI Imperf. (532c). Block, V. F.	13.00
370	★田 3c Offset Imperf. (535). Two line Blocks, one has slight gum wrinkles other V. F.	16.00
371	★田 3c Offset Imperforate (535). Center Line Block, Very Fine	37.50
372	★田 3c Offset Imperf. (535). Set of 4 diff. Arrow Blocks, V. F.	40.00
373	★田 3c Offset Imperf. (535). Matched Set of Plate No. Blocks of 6, few slight gum wrinkles, Fine-V. F.	48.00
374	★田 3c Offset Imperf. (535). Set of 4 diff. Corner Blocks, V. F.	36.00
375	★田 3c Victory (537). Plate No. Block of 48, four stamps creased before printing, V. G.	63.65
376	★田 3c Victory, 1c-5c Lex-Concord (537, 617-19). Blocks, well centered, gum stains	18.35
377	★田 3c Red Violet Victory (537a). Block, Very Fine	70.00
378	★田 1c-3c Rotarys (538-541). Blocks, Very fine	21.00
379	★田 1c-2c Rotary, Imperf Between (538a, 539b). Blocks, Very Fine	16.00
380	★田 1c-2c Rotary, Imperf Between (538a, 539b). Blocks, V. F.	16.00
381	★田 1c-2c Rotary Press (542-543, 546). Blocks, Fine-V. F.	21.50
382	★田 1c Green (545). Pl. No. Block and "530", one stamp small thin, Fine centering	65.00
383	★田 \$2.00 Carmine & Black (547). Centerline Block, Fine	80.00
384	★田 1c-2c Pilgrim (548-549). Plate No. Blocks of 6, Four of first, seven of last, V. G.-V. F.	46.00
385	★田 1c-5c Pilgrim (548-550). Set of Blocks, V. F. except tiny thin on latter	21.45
386	★田 5c Pilgrim (550). Block of 4 with Bot. Plate No., Fine	17.50
387	★田 5c Pilgrim (550). Block of 6, Fine	25.50

1922-25 ISSUES

388	★田	1½c-\$1.00, 1922-25 Issue (551-571). Blocks, some have gum stains, mostly well centered	87.52
389	★田	\$2.00 Deep Blue (572). Top Arrow Block, V. F.	25.00
390	★田	\$5.00 Carmine & Blue (573). Centerline Block, Very Fine	60.00
391	★田	1c Green, Imperf. (575). Set of 4 diff. Arrow Blocks, V. F.	32.00
392	★田	1c Green Imperf. (575). Top and Right Plate No. Blocks of 6, V. F.	22.00
393	★田	1c Green Imperf. (575). Five blocks all corner or line blocks, V. F.	28.00
394	★田	1c Green Imperf. (575). Center Line & Set of 4 diff. Arrow Blocks, first has thins others Fine	54.50
395	★田	1½c Imperforates (576). Set of 4 diff. Corner and Arrow Blocks, F.-V. F.	17.50
396	★田	1½c-2c Imperfs. (576-77). Center Line Block of each, both have small pieces of black paper on back, V. F. appearance	17.50
397	★田	1½c-2c Imperforates (576-77). Matched Set of Plate No. Blocks of 6 of each, V. F.	27.00
398	★田	2c Imperforates (577). Set of 4 diff. Corner and Arrow Blocks, V. F.	20.00
399	★田	1c-2c Rotary (578-579). Blocks, Fine-V. F.	40.00
400	★田	2c Rotary (579). Two Plate No. Blocks, V. G.	35.00
401	★田	2c Rotary (579). Star & Plate No. Block of 6, one stamp showing Recut Eye, Very Fine	23.50+
402	★田	1c-10c Rotary Press, Perf 10 (581-591). Blocks, some have gum stains, Well centered	39.95
403	★田	1c-10c Rotarys (581-591). Plate No. Blocks, V. G.-V. F. set	54.50
404	★田	2c Carmine (583). Vert. Block of 8, Top 4 stamps Double Paper, V. G.	—
405	★田	2c Rotary Coil Waste (595). Block, 2 stamps lightly creased, V. F. appearing	55.00
406	★田	2c Rotary (595). Star & Plate No. Block, V. G.-V. F.	85.00
407	★	2c Carmine Coil types I & II in joint line pair (599, a). Fine-V. F. (Photo)	100.00

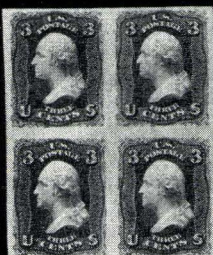
HARDING-BICENTENIAL ISSUES

408	★田	2c Black Hardings (610-612). Blocks, V. F.	16.10
409	★田	2c Harding Imperf. (611). Center Line Block, Fine	52.50
410	★田	2c Harding Imperf. (611). Set of 4 Corner Blocks, V. F.	48.00
411	★田	2c Harding Imperf. (611). Set of 4 diff. Arrow Blocks, tiny paper speck in one stamp, Very Fine	54.00





76



79



124



132



87



88



97



155



164



173



174



178



189



206



221



223



226



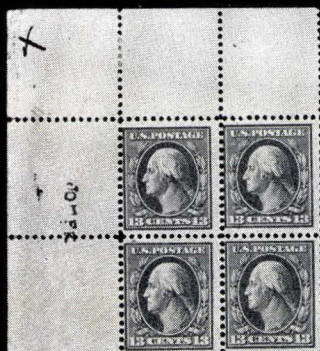
239



252



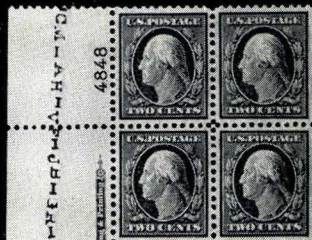
258



266



271



357



299



302



303



313



320



325



334



358



608



640

412	★	2c Harding Imperf. (611). Matched Set of Plate #15019 Blocks of 6, few slight gum stains, mostly Fine	60.00
413	★	2c Harding, Perf 10 (612). Plate No. Block, Fine	20.00
414	★	2c Harding, Perf 10 (612). Plate No. Block, Fine	20.00
415	★	2c Harding, Perf 10 (612). Plate No. Block, V. G.	20.00
416	★	2c Harding, Perf 10 (612). Three Plate No. Blocks, V. G.	60.00
417	★	1c-5c Huguenot-Walloons (614-616). Top or Bot. Plate No. Blocks of 6, Fine	33.50
418	★	1c-10c 1924-1934 Commemoratives (Between 614-739). Fifty-five diff Blocks, well centered, many have black paper adhering to backs	54.72
419	★	5c Hug.-Walloon (616). Block, Very Fine	16.00
420	★	2c Norse-American (620). Plate No. Block of 8, Fine	12.50
421	★	2c Norse-American (620). Four diff. Corner Blocks, V. F.	10.00
422	★	2c-5c Norse-American (620-621). Centerline Blocks, one stamp on last has tiny stain, Fine	27.50
423	★	2c-5c Norse-Americans, 2c-5c Hawaii (620-621, 647-648). Blocks, all have hinge stains, V. F. appearing	24.75
424	★	5c Norse-American (621). Corner Block, Very Fine	14.00
425	★	5c Ericsson (628). Side & Bot. Plate No. Blocks of 6, Fine	27.00
426	★	2c White Plains (629). Two half sheets of 50, Fine	40.90
427	★	2c White Plains Souvenir Sheet (630). Light gum stain on one stamp, V. F. appearance	25.00
428	★	2c White Plains Souvenir Sheet (630). Dot in "S" variety, sheet has gum stains in margins, Fine appearing	30.00
429	★	1½c Yellow Brown Imperf. (631). Center Line Block without normal rotary ridges, scarce, Very Fine	—
430	★	1½c Imperforate (631). Ten blocks includes Center Line, Gutter and Plate Blocks, Fine-V. F.	56.00
431	★	1c-50c Rotary Press (632-642, 692-701). Blocks, few have gum stains, V. G.-V. F.	35.37
432	★	2c Rotary, Ty II (634b). Plate No. single, V. F.	10.00
433	★	2c Rotary, Ty II (634b). Plate No. single, V. F.	10.00
434	★	2c Rotary, Ty. II (634b). Two Plate No. singles, Fine	20.00
435	★	2c Rotary, Ty II (634b). Plate No. Block, one stamp has tiny spot, others Fine	42.50
436		2c Rotary, Ty II (634b). Block of 15, Fine	15.00

437	★	2c Valley Forge (645).	Nineteen Plate No. Blocks of 6, Fine-Very Fine	28.50
438	★	2c Molly Pitcher (646).	Matched set of 4 Plate No. Blocks , V. G.-Fine	15.00+
439	★	2c Molly Pitcher (646).	Block, shows Wide Spacing , perfs just touch at B.	30.00
440	★	2c Molly Pitcher (646).	Block of 9, middle stamp short "M" variety, V. F.	—
441	★	5c Hawaii (648).	Block of 8, V. F.	13.00
442	★	1c-10c Kans. (658-668).	Set of Blocks, few have slight gum stains, Fine-V. F. appearance	87.25
443	★	1c-10c Nebr. (669-679).	Set of Blocks, some have gum stains, Fine-V. F. appearance	95.55
444	★	1½c Nebr. (670).	Vert. Block of 8, two Pairs show Wide Spacing centered to B. & R.	30.00
445	★	2c Nebr. (671).	Freak overprint showing portion in top margin	—
446	★	3c Nebr. (672).	Block, shows Wide Spacing , V. G.	40.00
447	★	7c Nebr. (676).	Vert. Pair with freak placement of Nebr. showing 3 overprints on 2 stamps, V. F.	—
448	★	2c Fallen Timbers (680).	Ten Plate No. Blocks of 6, Fine-V. F.	30.00
449	★	2c Ohio River (681).	Two half sheets of 50, F.-V. F.	12.40
450	★	2c Charleston (683).	Seven Top or Bot. Plate No. Blocks of 6, Fine-V. F.	31.50
451	★	2c Red Cross (702).	Sixteen Plate No. Blocks of 4, Some odd placings of cross, Fine	11.20
452	★	1½c-10c Washington Bicent. (704-715).	Set of Plate No. Blocks , last centered to B, others Fine-V. F.	24.15
453	★	2c Arbor Day (717).	Twenty Plate No. Blocks , V. G.-V. F.	14.00

FARLEY ISSUE

454	★	3c Newburgh Farley (752).	Center Line Block, Fine	25.00
455	★	1c-16c Farleys (752-771).	Cpl. set of 20 values in blocks all with lines or cross gutter blocks, mostly with hinge stains	41.80
456	★	1c-5c Farleys (754, 756-60, 768-70).	Center Line or Cross Gutter Blocks, V. F.	33.50
457	★	1c-10c Farley Imperforates (754-765).	Centerline Blocks, light hinge stains	73.00
458	★	1c-16c Farleys (754-765, 771).	Long line blocks, V. F.	17.95
459	★	1c-16c Farleys (754-765, 771).	Long line blocks, V. F.	17.95
460	★	1c-16c Farley Imperforates (754-765, 771).	Long Line Blocks, all have hinge stains	17.95

461	★田	1c-16c Farleys (754-765, 771). Short line blocks, V.F.	17.95
462	★田	1c-16c Farley Imperforates (754-765, 771). Short Line Blocks, all have hinge stains	17.95
463	★田	1c-10c Park Farley (756-765). Long line blocks, V.F.	10.85
464	★田	1c-3c Farley Souvenir Sheets (766-770). Cross Gutter Blocks, V.F.	19.50
465	★田	1c-3c Farley Souvenir Sheets (776-770). Cross Gutter Blocks, all have hinge stains	21.00
466	★田	16c Airpost Special Delivery (771). Centerline Block, slight hinge stains	32.50
467	★田	1c-5c Commemoratives, 1936-1951 Issues (Between 772-997). 118 mostly diff. Blocks includes extra set of Flag Name Blocks, Fine-V.F.	55.91
468	★田	1/2c-50c Presidentials (803-831). Blocks, V.F.	23.75
469	★田	\$1.00-\$5.00 Presidentials (832-834). Centerline Blocks, V.F.	63.00
470		\$1.00 Presidential, U.S.I.R. Watermark (832b). Fine	—
471		\$1.00 Presidential, U.S.I.R. Watermark (832b). Horiz. strip of 3, V.F.	—
472	★田	3c Canal Zone (856). Twenty six Plate No. Blocks of 6, V.G.-V.F.	39.00
473	★田	1c-10c Famous Americans (859-893). Blocks, Very Fine Set	44.25
474	★田	1c Defense, Imperf. Between (899b). Block, Very Fine	44.00+
475	★田	2c Defense, Imperf. Between (900a). Block, Very Fine	35.00+
476	★田	2c Defense, Imperf. Between (900a). Vert. Block of 6, top pair Imperf. Between, others partly imperf, Very Fine	17.50+
477	★	3c Defense, Imperf. Between (901a). Horiz Pair, V.F.	7.50
478	★田	3c Defense, Imperf. Between (901a). Block, tiny stain one stamp, Well centered	15.00+

FANCY REGISTERED COVERS

479	☒	Fancy Registered Covers 3 diff Fraternal cancels, Crossed Keys, Seeing Eye and 3 Links, Square and Compass, Very Fine	—
480	☒	Fancy Registered Covers 4 diff. Apple, Ear of Corn, Derby Hat, Maple Leaf, Very Fine	—
481	☒	Fancy Registered Covers 6 diff. Cow, Cats, Bucking Bronco, Kicking Mule, Bull Dog, Very Fine	—
482	☒	Fancy Registered Covers 10 diff. Shield, Anchor, Arrows, Stars, Monogram Fine-Very Fine	—

FIRST DAY COVERS

483	✉	3c Victory (537). First Day cover from Washington, V.F.	22.50
484	✉	1c Green (542). Pair on 1st Day cover Washington May 26, 1920, V.F.	—
485	✉	1c-5c Hug-Walloon (614-616). Set on 1st Day from Mayport, Fla. V.F.	6.50
486	✉	2c Edison (654). First Day Covers, 57 covers, F.-V.F.	17.10
487	✉	2c Sullivan (657). Three sets of 15 diff. towns on First Day covers, Fine-V.F.	13.50
488	✉	2c Sullivan (657). Twelve sets of 15 diff. towns on First Day covers, Fine-V.F.	54.00
489	✉	1c-10c Parks (740-749). Set of blocks on 1st Days from the Parks, V.F.	—
490	✉	1c-10c Parks (740-749). Set of blocks on 1st Days from Wash, D. C. V.F.	—
491	✉	1/2c-\$5.00 Presidentials (803-834, 839-851). Cpl. set of First Day covers, Fine-V.F.	—
492	✉	1c-10c Famous-Americans (859-93). Cpl. set First Days, V.F.	—
493	✉	First Day Covers, 149 diff. (778, 797-802, 835-38, 894-1016). #929-1016 are Artcraft, retail value \$37.50, V.F.	—
494	✉	1c-\$1.00 United Nations set on 1st Days on two Artcraft covers, V.F.	—

END OF FIRST SESSION

I am attending the A. P. S. Convention at San Francisco.
I will be stopping at the Sir Francis Drake Hotel from
September 14th - 19th and will be pleased to consider any
stamp property for sale or for auction.

SECOND SESSION

THURSDAY, SEPTEMBER 23rd — 7:15 P. M.

U. S. SHEETS

495 ★	1c Ultramarine (212). Sheet of 100 without gum, centered Fine-V. F., some separation	240.00
496 ★	2c Columbian (231). Sheet of 100, some separation, mostly Fine-V. F.	97.00
497 ★	2c Carmine (266-67). Sheet of 100 containing 30 type II and 70 type III in combination, V. G.-V. F.	138.00
498 ★	2c Trans-Miss. (286). Sheet of 50, V. G.-Fine	49.50
499 ★	2c Pan-American (295). Sheet of 100, Fine	76.50
500 ★	4c Pan-American (296). Sheet of 100, many separations, stamps mostly Fine-V. F.	585.00
501 ★	5c Pan-American (297). Sheet of 100 only top selvage holds sheet together, 2 stamps completely separated, stamps are mostly Fine-V. F.	587.00
502 ★	8c Pan-American (298). Sheet of 100, some separations, nearly all stamps Very Fine	680.00
503 ★	10c Pan-American (299). Sheet of 100, badly separated in center, almost two half panes of 50 each, stamps mostly Very Fine	1000.00
504 ★	1c Jamestown (328). Sheet of 100, V. G.-V. F.	125.00
505 ★	2c Jamestown (329). Sheet of 100, no side selvage, V. G.-Fine	125.00
506 ★	5c Jamestown (330). Half sheet of 50 with Imprint & plate No. V. G.-V. F.	400.00
507 ★	2c Hudson-Fulton (372). Sheet of 50, side selvage off, V. G.-Fine	30.00
508 ★	1c Pan-Pacific (397). Sheet of 70, many separations, mostly Fine-V. F.	47.70
509 ★	5c Rose Error (499h). Sheet of 100 with Single Error , Error Block Fine, some perf separations, 7 stamps gum stains	69.80
510 ★	5c Rose Error (499h). Sheet of 100 with Double Error , errors are fine, 15 stamps in sheet have gum stains	107.00
511 ★	3c Victory (537). Sheet of 100, 2 stamps have thins, Fine-V. F.	134.15
512 ★	1c Green, Rotary (543). Three Sheets of 100, few separations, Fine-V. F.	18.65

513 ★	11c Light Yellow Green (563c). Two sheets of 100 each, some separations, V. G.-V. F.	100.00
514 ★	2c Harding Rotary (612). Sheet of 100, V. F.	212.00
515 ★	2c Huguenot-Walloon (615). Sheet of 50 less side selvage, few separations, F.-V. F.	25.40
516 ★	1c-2c Lex-Concord (617-618). Sheets of 50, Fine-V. F.	46.30
517 ★	5c Lexington-Concord (619). Sheet of 50, many separations, Fine-V. F.	126.50
518 ★	2c Liberty Bell (627). Sheet of 50, V. F.	24.05
519 ★	5c Ericsson (628). Sheet of 50, V. F.	77.50
520 ★	5c Ericsson (628). Sheet of 50, few hinge reenforcements, Well Centered	77.50
521 ★	2c Carmine Type II (634b). Sheet of 100, V. G.-V. F.	1080.00
522 ★	2c Burgoyne (644) Sheet of 50, Fine-V. F.	28.70
523 ★	2c Burgoyne (644). Sheet of 50, many separations, Fine	28.70
524 ★	2c Valley Forge (645). Sheet of 100, one stamp torn, Fine-V. F.	17.25
525 ★	2c Molly Pitcher (646). Sheet of 100, V. F.	22.95
526 ★	2c Hawaii (647). Sheet of 100, Fine-V. F.	48.00
527 ★	5c Hawaii (648). Sheet of 100, Very Fine	171.00
528 ★	5c Aeronautics (650). Sheet of 50, V. F.	42.75
529 ★	2c George Rogers Clark, 2c Yorktown (651, 703). Sheets of 50, two of first, Fine-V. F.	16.90
530 ★	2c Edison, Flat and Rotary (654-655). Sheets of 100, V. F.	39.10
531 ★	2c Sullivan, 2c Mass. Bay Colony (657, 682). Sheets of 100, Fine-V. F.	27.00
532 ★	2c Fallen Timbers (680). Sheet of 100, piece missing in selvage, V. F.	24.75
533 ★	2c Ohio River (681). Sheet of 100, V. F.	16.00
534 ★	2c Mass. Bay Colony (682). Two Sheets of 100, Fine-V. F.	25.30
535 ★	2c Carolina-Charleston (683). Sheet of 100, Fine-V. F.	24.45
536 ★	2c Carolina-Charleston (683). Sheet of 100, Fine-V. F.	24.45
537 ★	2c Von Steuben, 2c Pulaski (689-690). Sheets of 100, V. F.	29.65
538 ★	14c Dark Blue (695). Sheet of 100, Very Fine	35.00
539 ★	14c Dark Blue (695). Sheet of 100, Very Fine	35.00
540 ★	2c Red Cross (702). Three Sheets of 100, Fine-V. F.	28.50
541 ★	2c Red Cross, 2c Arbor Day (702, 717). Sheets of 100, Fine-V. F.	17.20
542 ★	1c-10c Bicentennials (704-715). Sheets of 100, Very fine	370.00

543 ★	1/2c, 3c Bicentennials (704, 708). Sheets of 100, 2 of first, Fine-Very Fine	23.60
544 ★	2c Winter Olympics (716). Two Sheets of 100, Fine-V. F.	22.30
545 ★	3c-5c Olympics (718-719). Sheets of 100, V. F.	36.95
546 ★	5c Olympics (719). Sheet of 100, V. F.	21.20
547 ★	3c Penn, 3c Webster, 3c Ogelthorpe (724-726). Sheets of 100, V. F.	42.85
548 ★	3c Newburgh, 3c N. R. A., 3c Maryland (727, 732, 736). Sheets of 100, V. F.	32.45
549 ★	1c-3c Chicago (728-729). Sheets of 100, V. F.	16.45
550 ★	3c Byrd (733). Sheet of 50, V. F.	18.45
551 ★	5c Kosciuszko (734). Sheet of 100, Fine-V. F.	32.70
552 ★	1c-10c National Parks (740-749). Sheets of 36 without str. edge, V. F.	—
553 ★	3c 1935-1937 Commemoratives (772-775, 798, 802). Sheets of 50, plus 3 extra sheets, V. F.	39.50
554 ★	3c Texas, 3c Rhode Island, 3c Arkansas, 3c Oregon (776-777, 782-783). Sheets of 50, V. F.	17.40
555 ★	3c Texas, 3c Rhode Island, 3c Arkansas, 3c Oregon (776-777, 782-783). Sheets of 50, V. F.	17.40
556 ★	3c Susan B. Anthony (784). Three Sheets of 100, V. F.	18.90
557 ★	1c-3c Army-Navy (785, 787, 791). Sheets of 50, two of first & last, V. F.	16.70
558 ★	1c-5c Army-Navy (785-794). Sheets of 50, V. F.	45.75
559 ★	1c-5c Army-Navy (785-794). Sheets of 50, V. F.	45.75
560 ★	5c Virginia Dare (796). Two sheets of 48, V. F.	25.00
561 ★	5c Virginia Dare (796). Two Sheets of 48, Fine-V. F.	25.00
562 ★	3c Territorials (799-802). Sheets of 50, V. F.	20.20
563 ★	3c Territorials (799-802). Sheets of 50, V. F.	20.20
564 ★	3c Ratification (835). Two Sheets of 50, V. F.	15.80
565 ★	3c Delaware Tercentenary (836). Four Sheets of 48, Very Fine	31.20
566 ★	3c Northwest Territory (837). Sheet of 100, V. F.	17.90
567 ★	3c Northwest Territory (837). 3 Sheets of 100, V. F.	53.70
568 ★	3c Iowa (838). Two Sheets of 50, V. F.	15.80
569 ★	3c Golden Gate, 3c Worlds Fair (852-853). Two Sheets of 50 of each V. F.	19.20
570 ★	3c Inauguration, 3c Baseball, 3c Panama Canal, 3c Printing, 3c Statehood (854-858). Sheets of 50, V. F.	32.40
571 ★	Same as Above, V. F.	32.40
572 ★	1c-10c Famous-Americans (859-893). Sheets of 70, Very Fine	802.00

573 ★	1c-10c Famous-Americans (859-893). Sheets of 70, Very Fine	802.00
574 ★	3c Pony Express (894). Sheet of 50, V.F.	23.25
575 ★	3c Pony Express (894). Sheet of 50, V.F.	23.25
576 ★	3c Pan American (895). Two Sheets of 50, one stamp stained, V.F.	32.00
577 ★	3c Idaho, 3c Wyoming, 3c Coronado (896-898). Sheets of 50, V.F.	23.35
578 ★	3c Idaho, 3c Wyoming, 3c Coronado (896-898). Sheets of 50, V.F.	23.35
579 ★	1c-3c Defense, 3c Win the War, 2c U.N., 1c Four Freedoms (899-901, 905, 907-908). Sheets of 100, V.F.	33.40
580 ★	1c-3c Defense, 3c Win the War, 2c U.N., 1c Four Freedoms, (899-901, 905, 907-908). Sheets of 100, V.F.	33.40
581 ★	3c Emancipation, 3c Vermont, 3c Kentucky (902-904). Sheets of 50, V.F.	19.40
582 ★	3c Emancipation, 3c Vermont, 3c Kentucky (902-904). Sheets of 50, V.F.	19.40
583 ★	5c China (906). Two Sheets of 50, V.F.	36.60
584 ★	5c Flags (909-921). Set of Sheets of 50, V.F.	92.60
585 ★	5c Flags (909-921). Set of Sheets of 50, includes extra Sheet of Korea with Korpa error, V.F.	103.40
586 ★	1c-5c 1945-1948 Commemoratives, 12 Sheets of 50, 6 diff, V.F.	—
587 ★	3c 1946-1949 Commemoratives, 39 diff. Sheets of 50, 70, or 100, V.F.	—
588 ★	3c 1946-1949 Commemoratives, 52 diff. Sheets of 50, 70, or 100, V.F.	—
589 ★	3c Rough Rider (973). Five Sheets of 50, V.F.	19.00
590 ★	3c 1948 Commemoratives 18 diff. Sheets of 50 or 70, V.F.	—
591 ★	10c-20c Map Airpost (C7-C9). Sheets of 50, Fine-V.F.	63.10
592 ★	5c Beacon Airpost (C11). Sheet of 40 with str. edges removed, Fine-V.F.	15.55
593 ★	5c Winged Globe, Flat Plate (C12). Sheet of 50, Fine-V.F.	30.50
594 ★	6c Winged Globe, Airpost (C19). Sheet of 50, Fine	12.85
595 ★	20c Trans-Pacific Airpost (C21). Sheet of 50, V.F.	33.70
596 ★	50c Trans-Pacific Airpost (C22). Sheet of 50, V.F.	50.50
597 ★	5c-25c Airpost (C26, C32-C36, C40, C45). 9 Sheets of 50 or 100, V.F.	107.00
598 ★	10c-25c Airpost (C34-C36). Sheets of 50, V.F.	40.00
599 ★	5c New York Airpost (C38). Sheet of 100, Very Fine	16.90
600 ★	5c New York Airpost (C38). Sheet of 100, Very Fine	16.90
601 ★	5c New York Airpost (C38). Three Sheets of 100, V.F.	50.70
602 ★	10c-25c U.P.U. Airpost (C42-C44). Sheets of 50, V.F.	41.50

603 ★	5c-25c Airs 1941-49 Issues , 12 different Sheets of 50, face value \$78.00 Fine-V. F.	—
604 ★	16c Airpost Special Delivery (CE1-CE2) . Two Sheets of 36 without str edges of first, Sheet of 50 of last, V. F.	36.20
605 ★	10c Green Special Delivery (E7) . Sheet of 70, Fine.....	270.00
606 ★	13c-17c Special Delivery (E17-E18) . Sheets of 50, V. F.	22.50

AIR-MAILS

607 ★田	6c Orange Air (C1) . Center Line Block, V. F.	18.50
608 ★田	16c Green Air (C2) . Center Line Block, V. F. (Photo)	52.50
609 ★田	24c Carmine Rose & Blue (C3) . Center Line Block, V. F.	37.50
610 ★田	24c Airpost (C3) . Plate No. Block of 12, one stamp has short perf. other- wise Very Fine	92.50
611 ★田	8c-24c Airs (C4-C6) . Set of Blocks, Fine	61.00
612 ★田	5c-16c Airpost (771, Between C7-CE2) . 46 Blocks & 3 Booklet Panes, wide variety, V. G.-V. F.	83.44
613 ★田	5c Carmine & Blue Air (C11) . Collection of 168 including 22 Plate No. Blocks of 6, also odd positions of centers, double "Top" variety, mostly F.-V. F.	83.50+
614 ★	65c Graf Zeppelin (C13) . Light gum creases, V. F. appearing	22.50
615 ★	65c-\$2.60 Graf Zeppelin (C13-C15) . Well centered, \$1.30 has small thin, others dull gum, V. F. appearing	135.00
616 ★田	65c-\$2.60 Graf Zeppelins (C13-C15) . Set of Blocks, well centered, two tiny paper specks, Very Fine	(Photo) 560.00
617 ★田	50c Zeppelin (C18) . Block, Very Fine	37.50
618 ★田	20c-50c Trans Atlantic, Pacific Airpost (C20-C22, C24) . Blocks, V. F.	13.80
619 ★田	80c Airpost (C46) . Complete matched Plate No. Blocks, Very Fine	48.00
620 ★田	6c Red Airpost, All with R. F. overprints (San. Between M1-M13). Ten blocks and two Panes, nearly all diff. types	92.00

SPECIAL DELIVERIES

621 ★田	10c Blue, Special Delivery (E1) . Block, slight creases, V. F. appearance	28.50
622 ★田	10c Blue Special Delivery (E2) . Block, hinge re-enforced, Fine centering	25.00
623 ★田	10c Special Deliveries (E3, E5-6, E6a) . Blocks, two have one stamp thin, Fine centering	31.00
624 ★田	10c Blue, Special Delivery (E4) . Plate No. Block of 4, V. F.	65.00

625	★田	10c Green, 10c Blue (E7-E8). Blocks, Fine-V. F.	27.00
626	★田	10c Blue Special Delivery (E9). Block, Fine	35.00
627	★田	10c Special Delivery (E9). Top Plate No. Block of 6, Fine-V. F.	50.00
628	★田	10c Ultramarine Spec. Delivery (E10). Block, Well centered, reperfed, V. F. appearance	80.00
629	★田	10c-20c Spec. Deliveries, 10c-25c Spec. Handling (E11, E13-E19, QE1-4, a). Blocks, Fine-V. F.	18.50
630	★田	10c Registration (F1). Block, Very Fine	16.00
631	★田	1c-50c Postage Dues (Between J1-J86). Twenty-five Blocks, 19 diff, V. G.-V. F.	34.24
632	★田	1c-25c Parcel Post Dues (JQ1-JQ5). Set of Blocks, V. F.	26.95

PARCEL POST ISSUE

633	★田	1c-10c Parcel Post (Q1-Q6). Blocks, Fine-V. F.	23.50
634	★田	15c Parcel Post (Q7). Block, Very Fine	16.00
635	★田	20c Parcel Post (Q8). Block, Fine	20.00
636	★田	25c Parcel Post (Q9). Block, Very Fine	13.50
637	★田	50c Parcel Post (Q10). Block, Fine-V. F.	65.00
638	★田	75c Parcel Post (Q11). Block, Very Fine	13.50
639	★田	75c Parcel Post (Q11). Top Plate No. Block of 6, Fine-V. F.	22.50
640	★田	\$1.00 Parcel Post (Q12). Block, Very Fine	120.00

OFFICIALS

641	✉	3c Executive (O12). On cover, cancel not tying, Wash, D. C. pmk. Ex- ecutive Mansion imprint, Fine	40.00
642	★田	1c-15c Officials (O25, O88, O90, O99). Blocks, Fine-V. F., o. g.	26.75
643	★	24c Justice (O32). Fine, O. G.	30.00
644	★	1c-90c Post Office (O47-O49). Cpl. set, V. G.-V. F.	18.20
645	★	\$2.00 State (O68). Fresh copy, centered to side	50.00
646	★田	1c-6c Treasury (O72-O75). Blocks, Fine, O. G.	47.50
647	P	1c-90c Treasury, 5c-25c Newspaper, Proofs, (O72P-O82P, PR5P-PR7P). First are Indian paper, Fine-V. F.	16.00
648	★	1c-90c War (O84, 87, 89-93, O114, O116-118). All in Horiz. Pairs, O. G., V. G.-V. F.	47.96
649	★田	2c War (O84). Block, centered to B. Fine, O. G.	100.00

650	1c-30c Officials , 29 diff. Fancy Cancels includes Anchor, Leafs, U.S., Rosettes, Forts etc. V.G.-V.F.	—
651 ★	Officials 1c-6c Nine blocks and 18c Shanghai (K9). Block, V. G.-V. F.	28.75
652 ★	5c-25c Newspapers (PR2-7) . Fine	44.50
653 ★	5c-25c Newspapers (PR5-7) . Fine Set	24.50
654 P	2c-\$60.00 Newspaper Card Proofs (PR9P-PR32P) . Fine-V. F. Set	25.50

ENVELOPES

655	✉ 2c-3c Entires, Wells Fargo franks, all tied, 4 diff. (U10, U59, U82, U349). Fine	—
656	✉ 2c Black Entires (W47-U56) . Ten wrappers or entires, 3 are unused, Fine lot	22.30
657	2c Green Cut Square (U164) . Fine Kicking Mule cancel	—
658	✉ 3c Green Entire (U164) . Tied purple O. K. & City of Sherman, Texas pmk., Fine	—
659	2c Green Cut Square (U171) . Clear Kicking Mule cancel, Fine	—
660	✉ Envelopes 19th Century 20 entires, many interesting and fancy cancels includes Crow Agency, Mont. Blacks & Whites, Va., Heart, Shield, Checkerboard cancels, Fine lot	—
661	✉ 1c Postal Card (UX1) . Tied with Oswego, N.Y. Pumpkin Head , Fine	—
662	✉ 1c Green Postal Card (UX27) . Unusual over inked card, giving silhouette effect, V.F. unused	—

CARRIERS AND LOCALS

663 ★	Baltimore Carrier, 1c Red (1LB7) . Trivial thin in margin, O. G., V. F. appearing	35.00
664	Carriers , Thirteen mostly diff. used & unused, Fair-Fine	152.00
665	✉ Baltimore Carrier, 1c Red (1LB7) . Tied with pencil cancel on cover, V. G.	60.00
666	✉ Honours Charleston Carrier used with 3c Orange Brown (10, 4LB8) . Both tied on cover front, carrier with Ms, & is cut in one corner	—
667 ★	American Letter Mail, 5c Black (5L1) . Cpl. Sheet of 20, V. F.	20.00+
668	✉ Browne & Co. 1c Black used with 3c Dull Red (11, 29L1). Latter tied Cincinnati, local not cancelled, V. G.	—
669	✉ Blood's, Boyd's, Hale Locals, 7 covers three have Blood's stamps V. G.-V. F.	—
670	✉ Hopes N. J. & Pa. Express green label on cover 1854, Fine	—

REVENUES

671	1c-\$3.00 Civil War Revenues, Imperforate (Between R1a-R86a). Twenty-nine diff., V. G.-V. F.	68.20
672	1c-70c Civil War Revenues Part Perf. (Between R1b-R65b). Twenty-six diff., V. G.-V. F.	58.10
673	1c Playing Cards (R2c). Small thin, Printed, cancel, Fine appearance	12.50
674	1c, 3c Playing Cards (R2c, R17c). V. G.-Fine	24.50
675	2c Civil War Revenues all with Well Fargo handstamp cancels in red, blue and black, all diff. handstamps or on diff. stamps, Fine-V. F.	—
676	2c Civil War Revenues 10 diff. Wells Fargo cancels as above, F.-V. F.	—
677	2c-\$20.00 Civil War Revenues (Between R14c-R98c). Nine diff., V. G.-V. F.	39.35
678	4c Playing Cards (R21c). V. F.	27.50
679	25c Entry of Goods, 25c Life Insurance, Part Perf. (R45b, R47b). F.-V. F.	15.00
680 P	25c-40c Civil War Revenues, Card Proofs (R49P, R52P-53P). Horiz. Pairs, V. F.	26.50
681	50c Civil War Revenues, Part Perf. (R56b-R58b, R62b). V. G.-V. F.	19.00
682	70c Foreign Exchange, Imperforate (R65a). Fine	30.00
683	\$1.00 Mortgage, \$1.30, \$1.60 Foreign Exchange (R73c, R77c, R79c). Fine	27.50
684	\$1.60 Foreign Exchange, Imperforate (R79a). Crease, Fine appearing	90.00
685	\$2.00-\$3.00 Revenues, Imperforate (R82a, R85a). Very Fine	12.50
686	\$5.00-\$50.00 Revenues, Imperforate (R88a-R90a, R94a, R101a). V. G.-V. F.	42.50
687	\$5.00-\$10.00 Civil War Revenues (R88c-R96c). V. G.-V. F.	28.20
688	\$15.00 Mortgage, \$20.00 Conveyance (R97c-R98c). Fine	19.00
689	\$25.00 Mortgage (R100c). Blue handstamp cancel, Fine	12.00
690	\$25.00 Mortgage, \$50.00 Green Revenue (R100c-R101c). First light crease, other V. F.	24.00
691	\$200.00 Green & Red Revenue (R102c). Fine	75.00
692	2c Orange & Black, Inverted Center (R135b). Centered to T.	22.50
693 ★田	1c-5c 1898 Revenues (R154a, R155a, RB29, RB31). Blocks, includes inverted overprints, Fine	24.50
694	\$1000.00 Documentary, Series 1942 (R360). Cut cancel, V. F.	85.00
695	\$1,000 Stock Transfer (RD34). Fine	35.00
696 ★	10c Tobacco Sale Tax Inverted Overprint (RJ4a). Gum crease, well centered	15.00

697	★	\$1.00 Rose Lake Hunting Stamp (RW2). Very Fine	22.50
698	★田	\$1.00 Rose Lake Hunting Stamp (RW2). Plate No. Block of 4, Fine	110.00
699	★	\$1.00 Brown Black Hunting Stamp (RW3). Two Pairs Fine-V. F.	32.00
700		Revenue Stamped Paper 193 items, used & unused, V. G.-V. F.	53.75
701	★	Revenue Stamped Paper, 80 items, all unused, V. F.	86.10
702		Revenue Stamped Paper, 120 items, all unused, V. F.	113.95
703		Revenue Stamped Paper, 201 items, V. G.-V. F.	42.00
704		MATCH & MEDICINES, collection of 291 nearly all different, condition way above average	349.00
705		Match & Medicine Revenues, Thirty-two mostly diff. Fair-Fine	38.85
706		Beer Stamps, Pairs, Blocks of 4 and larger, 84 stamps, unusual lot	—

SANITARY FAIR

707	★	Albany, N. Y., 10c Rose, 10c Black Sanitary Fair (WV-A1, WV-A2). Two of 1st, Good-Fine	—
708	★	New York, N. Y., 10c Blue Sanitary Fair (WV-F1). Very Fine	—
709	★	New York, N. Y., 10c Blue Sanitary Fair (WV-F1). Small nick in LL sheet margin, V. G.	—
710	★	Philadelphia, Pa., 10c-30c Sanitary Fair (WV-G1-WVG3). 3 diff, V. F.	—
711	P	Philadelphia, Pa., 10c-30c Sanitary Fair Card Proofs (WV-G1P-WV- G3P). V. G.-V. F.	—
712	★	Springfield, Mass., 10c Lilac Sanitary Fair (WV-H1). Tiny scrape on face, V. F. appearing	—

U. S. CHRISTMAS SEALS

713	★田	1907 Seals (WX1-2). Blocks, V. F.	6.00+
714	★田	1908 Seal Perf. 14 (WX3). Block, Very Fine	32.00+
715	★田	1908 Seal, Perf. 12 (WX3a). Block, Very Fine	32.00+
716	★	1908 Seal, Booklet Pane of 6, (WX3f). Grilled gum variety, slight crease, Fine appearance	50.00
717	★	1908 Seal, Booklet Pane of 3 (WX3g). Very fine	75.00
718	★田	1908 Seal, Type II (WX4). Block, V. F.	20.00+
719	★	1908 Seal, Ty II Booklet Pane of 6 (WX4a). V. F.	10.00
720	★	1908 Seal Ty II Booklet Pane of 3 (WX4b). Very Fine	20.00
721	★田	1909 Seals includes New Hampshire Local (WX5, a). Blocks, Fine-V. F.	20.60+

722	★田	1910 Seals, two shades (WX6). Blocks, Fine-V.F.	24.00+
723	★	1911 Seal (WX7). Block, Very Fine	12.00+
724	★田	1911 Seal, Type II (WX8). Block, Very Fine	24.00+
725	★	1911 Seal Type III Coil (WX9). Pair Very fine	70.00
726	★田	1912, 14-15 Seals (WX10, 15-16). Blocks, Fine-V.F.	10.40+
727	★田	1913 Seals, Types II, III (WX12-13). Blocks, V.F.	20.00+
728	★田	1915 Seal, Block of 6 Imperforate Vertically (WX16 unlisted variety). Fine	—
729	★田	1916-17 Seals (WX18, a, b, c, WX19, b). Blocks, Fine-V.F.	11.00+
730	★田	1918 Seals (WX21, a, b, c). Blocks and Booklet Panes of 10, V.F.	12.00
731	★田	1918 Seals, Booklet Panes of 10 (WX22a, d, e, h, m). Two are not priced, V.F.	—
732	★田	1918 Seal, Type III "American Red Cross" 17½mm long, Block, believed to be an essay, V.F.	—
733	★田	1918-1942 Seals, Balance of Collection 52 Blocks and Booklet Panes, many varieties, Very Fine lot	—
734	★	Christmas Seals in Sheets and large pieces 1930-43 about 3300 stamps, also a number of other seals	—
735	★田	DENMARK, 1904, Christmas Seal, Blocks Rouletted & Perforated of Worlds 1st Xmas Seal issued, V.F.	—
736	★田	—as above, Block, perforated, V.F.	—

CONFEDERATE STATES

737		Memphis, Tenn. 2c-5c, New Orleans 5c (56X1-2, 62X3). Each has thin, first unused	40.50
738	✉	5c-10c General Issues (1, 6, 7, 11, 12). Five covers, includes 2 pairs, Good-V.F.	19.00
739	★田	5c Blue (4). Block, faults, nice appearing	30.00
740	★	1c-10c General Issues (4, 7, 11-12, 14). Sixteen stamps, 4 are used, includes shades, V.G.-V.F.	28.00
741	★田	5c, 10c, 20c General Issues (6-7, 11, 11d, 12-13). Twelve Blocks, few stains, Good-Very Fine	54.50
742	★田	2c, 5c, 10c General Issues (7-8, 11). Blocks, two creases, V.F. appearance	15.00
743	★田	2c Brown Red, 2c Pale Red (8, 8a). Blocks, V.F.	17.00
744	★	10c TEN Blue (9). Faults, Fine appearing	35.00
745	★田	1c Orange (14). Corner Block, V.F.	20.00

- 746 ★田 1c Deep Orange (14a). Block, Very Fine 24.00
- 747 **Reference collection** of 100 diff. facsimiles and bogus issues mostly
postmasters

U.S. COVERS IN LARGE LOTS

- 748 ☒ **Stampless Covers**, 42 covers includes straight lines, ovals, green, ladies envelopes, V. G.-V. F.
- 749 ☒ **Nineteenth Century** Stampless to 1869 issue, 62 covers, includes, Rail-roads, Steam, Locals etc. Fair-Fine
- 750 ☒ **Nineteenth Century**, 1851-87 Issues, 274 covers, some fancy cancels and corner cards, Fair-Very Fine
- 751 ☒ **3c Imperforate (11)**. One hundred covers, Good-V. F.
- 752 ☒ **3c 1851-57 Covers** #11(39) #25(7) #26(49). Total 95 covers, Fair-Fine
- 753 ☒ **3c 1851-61 Issues (11, 26, 65)**. Twenty-five covers of each, Good-V. F.
- 754 ☒ **3c Dull Red (26)**. One hundred covers, Good-Fine
- 755 ☒ **Territorials** three, 3c 1857-61 Issues, **Virginia City, N.T., Red Wing, M. T., Leavenworth City, K. T.** also San Francisco, Cal. 10 stampless, Good-Fine
- 756 ☒ **3c Rose (65)**. 243 covers, Fair-Fine
- 757 ☒ **Patriotic Covers**, Eight diff designs including **Cannon, Gen. Mc Clellan**, Fair-Fine
- 758 ☒ **Unused Civil War Patriotic Envelopes**, 40 diff. designs, 9 diff. Magnus, balance Caricatures, **includes** scarce types, V. F. lot
- 759 ☒ **Advertising Covers** 10 diff. 1851-83 Issues illustr. Medicine, Cincinnati Exposition, Schools, Phrenologist, Campaign etc. Fine lot
- 760 ☒ **Advertising Covers** 1857-1903 Issues, 34 covers includes 2 Centennial, Fair-Fine
- 761 ☒ **Registered Covers**, 19th Cent includes Stampless with blue **Phila. "R"**, 8 covers, V. G.-V. F.
- 762 ☒ **Territorials**, 1c-2c Banknotes, 8 diff. includes Spanish Fork & Plain City Utah, Pomeroy & Walla Walla, Wash., Miles City, Mont., Lochiel, Ariz. Good-Fine
- 763 ☒ **Banknotes**, 90 covers includes fancy cancels, registered, territorial, R. P. O. etc. Fair-Fine
- 764 ☒ **Registered Covers**, 24 covers late 19th Century, Fine lot
- 765 ☒ **R. P. O.** Cancels, 23 covers all 19th, Good-Fine
- 766 ☒ **1c-10c, 1890-98 Issues**, 73 covers includes fancy cancels, registered, B. F. Stevens markings and other foreign usages, Fine lot

767	✉ 3c-10c Columbians, 12 covers, mostly registers, V.G.-V.F.	—
768	✉ Commemoratives 1898-1920 Issues, 1c-5c on 24 covers, V.G.-V.F.	—
769	✉ Special Delivery, 15 covers, #E1-E5, V.G.-V.F.	—
770	✉ Twentieth Century, 39 covers, mostly Imperforates and Coils, includes Indian Terr., China, Haiti pmks. V.G.-V.F.	—

U.S. LARGE AND MISC. LOTS

771	U.S. Collection, 1847-1930 Issues in Old National Album, 442 different, many faults, Fair-Fine	533.00
772	Postage Issues 19th & 20th, wholesale lot 225 stamps, Est. Cash Val. \$27.50	—
773	Postage 19th & 20th, all have faults, 190 stamps	300.00
774	★ 1c-50c 1893-1931 Issues (Between 233-C2). Mostly commemoratives, 33 diff., all have str. edge	108.41
775	★田 Blocks, 1893-1917 Issue, 13 diff. includes commems, all have faults, mostly fine appearing	73.40
776	1c-50c Commemoratives, 1893-1928 Issues (38). 21 diff., all have S.E.	55.52
777	★田 Twentieth Century Blocks, wide variety 79 blocks, 1902-39 Issues, Fine lot, Est. Cash Value \$20.00	—
778	★ Twentieth Century misc. lot, many blocks, Est. Cash Value \$15.00	—
779	★田 3c Commemoratives 1932-54 (114 Blocks). Wide variety, Fine-V.F.	—
780	Precancels nearly all 1898-1908 Issues over 475 in stockbook, nice lot of earlies	—
781	★ Special Delivery, Handling, War Savings, 71 stamps, some blocks, face value over \$10.00	—
782	★ 1c-90c Officials (Between O3-O119). 127 stamps, 39 diff., includes few Blocks, 10 are used, V.G.-V.F.	118.08
783	Revenues, mainly first 3 issues, many hundreds in wholesale quantities, wide variety, Est. Cash Val. \$85.00	—

U.S. WHOLESALE

784	3c Red #26(115). Good-V.F.	23.00
785	12c Black #69(5). Good-Fine	27.50
786	30c Orange #71(5). Good-Fine	40.00
787	15c Black #77(5). V.G.-Fine	45.00
788	24c Lilac #78(8). Good-Fine	52.00
789	1c-24c Pictorials #112, 115-117, (2 of each). 120(1), all have faults	103.50

790 ★	2c Banknotes #146(10) #157(8). Includes few S. E. Fair-Fine	57.00
791	3c Greens (1000). Includes few cancels, V. G.-V. F.	—
792	7c, 10c Banknotes #149(4), #150(10) V. G.	40.00
793 ★	1c Ultramarine #156(15). V. G.-V. F.	45.00
794 ★	1c Ultramarine #156(23). V. G.-V. F.	69.00
795	2c Vermilion #178, #183(300). Some interesting cancels, Good-V. F.	—
796 ★	1c Dark Ultramarine #182(9). Two are S. E., V. G.	54.00
797 ★	10c Brown #209(11). 4 are S. E., Good-Fine	33.00
798	2c Red Brown #210(1100). Includes few cancels, V. G.-V. F.	—
799 ★	1c-50c Columbian #230-240 (25 stamps). All without gum	97.70
800	2c Columbian #231(2070). V. G.-V. F.	—
801	3c Columbians #232(30). Good-V. F.	37.50
802	3c Columbians #232(50). All defective	62.50
803 ★	4c-5c Columbian #233(4) #234(4). No gum, Good-Fine	22.00
804	2c Triangles type I, many Carmine Lake #249, 1894-95 Issues (2,000). All str. edge	—
805	2c Triangles type I, many Carmine Lake #249, 1894-95 Issues (5,000). V. G.-V. F.	—
806	50c Orange #275(25). V. G.-Fine	50.00
807	4c-5c Pan Americans #296(10), #297(10). V. G.-V. F.	32.50
808	8c Pan-American #298(10). Mostly with faults or str. edge	40.00
809 ★	10c Louisiana-Purchase #327(4). Two without gum, two thin, nicely centered	64.00
810	5c-10c Panama-Pacific #399(20), #400(20). V. G.-Fine	52.00
811 ★田	2c Imperforate #482(58). In large blocks, V. F.	17.90
812	\$5.00 Green & Black #524(20). All have perf. initials.....	55.00
813	5c Pilgrim #550(15). V. G.-Fine	41.25
814 ★	2c Hug-Walloon, Braddock #615(45), #688(92). Each in large pane, Fine-V. F.	39.50
815 ★田	2c Liberty Bell #627(90). In large pieces, 18 have S. E., F.-V. F.	37.10
816 ★	2c George Rogers Clark #651(100). All in Blocks, V. G.-V. F.	20.00
817 ★	2c Pulaski #690(100). Fine-V. F. in blocks	10.00
818 ★	2c Red Cross #702(250). Many are Blocks, Fine-V. F.	20.00

819	★	2c-3c Commems. 25c Air #703(50), #738(72), #775(108), #C20(39). In large blocks and part sheets, Fine-V.F.	40.63
820		3c Bicent #708(3000). V.G.-V.F.	60.00
821	★	2c Winter Olympics #716(200). All in Blocks, Fine-V.F.	20.00
822	★	3c Penn #724(200). All in Blocks, Fine-V.F.	25.00
823	★	1c Chicago #728(200). All in Blocks, Fine-V.F.	12.50
824	★	1c-3c Chicago Souvenir Sheets #730 (6 Sheets), #731 (5 Sheets), V.F.	38.00
825		1c Chicago Imperfs. #730a(500). Includes pairs, V.F.	35.00
826	★	1c-3c Souvenir Sheets #735(5), #750(2), #751(5). Five sheets have light gum stains	32.25
827	★	1c-10c Parks #740-49 (214 stamps). All in blocks includes 3 cpl. sets, Fine	38.60
828	★田	3c Newburgh, Byrd Farley #752 (6 gutter Blocks), #753 (6 Line Blocks). One of latter Center Line, Fine-V.F.	23.10
829	★	3c Boulder Dam #774(100), 3c Rhode Island #777(100), 3c S.B. Anthony #784(100). Fine-V.F.	22.00
830	★	5c Virginia Dare #796(50), 3c Constitution #798(40). V.G.-V.F.	17.70
831	★	3c Hawaii #799(80), 3c Alaska #800(100), 3c Puerto Rico #801(100). Fine-V.F.	28.00
832		24c Presidential #828(400). V.G.-V.F.	48.00
833		\$2.00-\$5.00 Presidentials #833(25), #834(25). V.G.-V.F.	30.00
834	★	3c Delaware #836(100). Fine-V.F. in blocks	15.00
835		10c Famous Americans #863, #868, #873, #878, #883, #888, #893 (50 of each). V.G.-V.F.	102.50
836		Postage Dues, Between J1-J56 (235 stamps). V.G.-V.F.	40.80
837		5c Proprietary #RB16b(10). Good-Fine	62.50
838	★	\$1.00 Brown Black Hunting Stamp #RW3(4). All str. edge, V.F.	32.00

U.S. POSSESSIONS

839	★	Canal Zone, 1904-1934, 1c-50c Overprints (Between 4-103). Twenty five diff., few tiny thins, V.G.-V.F.	43.90
840	★田	—1924-1946, ½c-30c Issues (Between 91c-J22). 18 diff. Blocks including 3 Booklet Panes, V.G.-V.F.	36.37
841	★	—1928, 50c Lilac (94). Very Fine	16.00
842	★	—1939, 1c-50c Anniversary (120-125). Very Fine Set	31.25
843	★	—1939, 5c-\$1.00 Airpost (C13-C18). Fine-Very Fine Set	20.60

843A	☒	—1923, 2c Carmine Entire (U5). Very Fine unused	35.00
844	★田	PHILIPPINES. 1899-1935 (Between 214-J14). 24 diff Blocks, 13 singles, Good-V. F.	64.45
845	★	—1901, \$2.00 Dark Blue (224). Very Fine (Photo)	37.50
846	★	—1906, 2c-10p Postage (241-254). Cpl. set, V. G.-Fine	56.05
847	★田	—1906, 2c-26c Postage (241-249). Blocks, V. G.-V. F.	25.90
848	★田	—1923-26, 10p Deep Green (304). Block , Very Fine	70.00
849	★	—1926, 1p Madrid-Manila Flight (318B). Fine (Photo)	40.00
850	★	—1926, 2c-1p Legislative Palace (319-325). Fine-Very Fine Set	12.85
851	★田	—1932, 1p-2p Surcharges (368a-369a). Blocks, V. F.	27.00
852	★田	—1925-1931, 20c Special Delivery Imperf. (E6). Block , Very Fine	22.50
853	☒	—1943, 12c, 50c-1p Occupation (N2, N6-N7). Tied on First Day Cover by Manila cancel, V. F.	15.55
853A	☒	PORTO RICO, 1899, 2c Carmine on Oriental Buff Entire (U12). Very Fine unused	75.00

FOREIGN

854		ARGENTINE REPUBLIC, 1882-63, 10c Green (6, 7F). Last has small thin, first V. F.	40.00
855	★	ASCENSION, 1924-1927, ½p-6p George V (10-17). Fine-Very Fine.....	17.85
856	☒	AUSTRIA, 1850, 1kr Yellow (1). Eight covers, Good-Fine	40.00+
857	☒	—1850-80 Issues, 24 covers, Fine lot	—
858	★	BARBADOS, 1906-07, 1f-1/ Commems. (102-112). Four are used, Fine-V. F.	20.65
859	★	—1921-1924, ¼p-1/ George V (152-164). Fine-Very Fine	25.75
860	★	BRAZIL, 1927, 50r-10,000r, Airpost (C1-C16). V. G.-V. F. set	27.80
861		BREMEN, 1856-60, 7gr Yellow (3). Margins all around, tiny thin, V. F. appearing	85.00
862		—1861-63, 5gr Rose (6). Tiny thin, V. F. appearing	25.00
863		BRUNSWICK, 2sgr Blue (2). Margins all around, Very Fine	20.00
864		CANADA, 1859, 10c Red Lilac Brown (17, 17b). Three copies, one light crease, others Fine	22.50
865		—1870-89, 1c Yellow (35). Seven copies each with Crown in Circle cancels, Good-Fine	—

866	★田	—1928, 5c Airpost (C1). Block of 16, V.F.	8.00
867		—1935, 6c Red brown Air (C5). 45 First Flight cachet covers, V.F.	—
868		CAPE OF GOOD HOPE , 1855-58, 6p Lilac (5). Margins all around, tiny thin, V.F. appearing	25.00
869	✉	CHILE , 1927, 40c on 10c Airpost, 10c Postage (131, C1). Tied to flown cover, V.F.	—
870	★	CUBA , 1935, 10c+10c Airposts (C16-C17). Very Fine	8.50
871	★	—1910, 10c Orange & Blue Inverted Center (E4a). Very Fine	125.00
872	★田	DANZIG , 1923, 100,000m Scarlet without surcharge (Sanabria #24a). Block, V.F.	60.00
873	★	DUTCH INDIES , 1864, 10c Lake (1). Margins 3 sides, touches L, F. O. G.	20.00
874	★	—1941-1942, 25c Prussian Green, 35c Purple (238, 240). Very Fine	35.00
875	✉	FRANCE , 1853-60, 10c Bistre strip of 3, 1fr Lake (14, 21). Tied on cover to New York, both creased, attractive looking cover	80.45
876	★	—1950, 25fr U.P.U. Color Error (636 var). Carmine instead of Deep Blue, V.F.	—
877	✉	—1930, 1.50fr "EIPA 30" Airpost (C6b). Tied to flown card by exposition pmk. with 1.50fr Belgium Airpost tied by Bruxelles pmk, V.F.	10.00+
878		GERMANY , 1872, 30gr Blue (13). Very Fine	50.00
879	★田	—1929, 50pf Semipostal (B32, a). Block of 6, one stamp (PE for PF Error , V.F.	42.50+
880	✉	—1930, 2m-4m So. America Zeppelin (C38-C39). 2 of last, tied to cacheted flight cover, V.F.	27.00
881	★	GREAT BRITAIN , 1840, 1p Black (1). Margins 3 sides, in at top, fresh, O. G.	60.00
882		—1840, 1p Black (1). Large margins all around, V.F.	9.00
883		—1840, 1p Black (1). Four copies with Margins all around, 2 on piece, Very Fine	36.00
884	✉	—1840, 1p Black (1). Five tied on 5 covers, Fine-V.F.	45.00+
885		—1840, 2p Blue (2). Margins all around, V.F.	13.00
886	★	—1935-1942, ½p-10/ Postage (235-238, 249A, 250, 251A). Fine-Very Fine	8.41
887	★田	GREECE , 1900, 5d on 40e (138). Block, Very Fine	40.00
888	★	HAITI , 1950, 20c U. P. U. (388 var.). Double Overprint error, V.F.	—
889		HAMBURG , 1859, 4s Yellow Green (5). Small thin, V.F. appearing	75.00
890	★田	HANOVER , 1859-61, 1g-2g (19-20). Blocks, Fine-V.F., O. G.	13.40+

891 ★	HONDURAS , 1951, 16c U.P.U. Airpost Inverted Overprint (San. 264a). Very Fine	100.00
892 ★	—1951, 22c U.P.U. Airpost Inverted Overprint (San. 265a). Very Fine	75.00
893	ICELAND , 1873-76, 3s, 5s, 8s (3, 5, 9). First is used, V.G.-Fine	29.00
894 ★	ISRAEL , 1948, 10m Coin (3). Horiz Pair Imperf Between , V.F.	—
895 ☒	MAURITIUS , 1848, 2p Blue " Penoe " variety (6Be). On cover front, large margins three sides, in at left	125.00
896 ☒	MODENA , 1852, 10c, 40c, 1L (2, 5, 9). Pair of 40c, tied on cover to U.S., Fine	137.00
897 ★	NEWFOUNDLAND , 1860-63, 3c Green, 5c Reddish Brown (11A, 19). V.F.	16.00
898 ★	—1897, 1c-60c Cabot Issue (61-74). Few have gum faults, mostly F.-V.F.	31.55
899 ★	—1928, 1c-30c Postage (145-159). Fine-Very Fine Set	19.25
900 ★	—1931-1937, 1c-48c Postage (183-210). Very Fine sets	18.40
901 ★	—1933, 1c-32c Sir Humphrey Gilbert (212-225). V.F. Set	38.20
902 ★	—1933, 1c-32c Sir Humphrey Gilbert (212-225). V.F. Set	38.20
903 ★	NORWAY , 1854-1878, 1s-8s Postage (3, 9, 11-12, 15, 18, 32). V.G.-Fine	46.50
904	OLDENBURG , 1852-55, 1/30th, 1/10th (1, 3). Three types of 1st, F.-V.F.	21.50
905 ★田	PARAGUAY , 1931, 3p-4p Zeppelin Overprints (C54-C55). Blocks, Fine	16.00
906 ★	PERSIA , 1928-1929, 1c-30k Airpost (C22-C33). Includes C26a, V.F. Set	25.37
907	ROMANIA , 1858, 40pa Blue (6). Large margins, Very Fine, signed Friedel Expert Comm.	40.00
908 ★	SALVADOR , 1933, 15c-1col Columbus Airs (C28-C32). V.F. Set	12.00
909 ★	SPAIN , 1851, 12c Lilac (7). Small margins	45.00
910 ☒	SWITZERLAND , 1867, Six stamps (41, 43, 45, 48, 53). All tied on cover to New York, Fine	—
911 ★	TANGANYIKA , 1922-25, 1/-£1 Giraffe (23-28). Very Fine	43.50
912	TUSCANY , 1852, 60cr Brown Red (9). Repaired, Fine appearing	750.00

COUNTRY AND GROUP LOTS

913	BRITISH COLONIES & GREAT BRITAIN , approx. 2000 diff. 19th & 20th, Est. Cash Value \$60.00	—
914	CUBA , Collection of 260 mostly diff., used and unused, E. Cash Val. \$10.00	—
915	EUROPE & COLONIES , mainly 19th, used and unused, about 300 stamps, mostly diff. Est. Cash. Val. \$45.00	—

916	FOREIGN , several thousand diff. mounted on pages by countries, 19th 20th, Est. Cash Value \$75.00	—
917	General Collection , 6500 stamps in International Jr. Album, Est. Cash Val. \$45.00	—
918	General Collection , over 7000 stamps mounted in International Jr. Album, Est. Cash Val. \$30.00	—
919	GERMAN STATES , Collection of 50 diff. all have faults	190.27
920	GREAT BRITAIN & COLONIES , 108 stamps about half cat. value in B. N. A., all defective	342.00
921	LATIN AMERICA , over 350 mostly diff manly 19th, Est Cash Val. \$30.00	—
922	—about 2,000 diff. 19th & 20th, Est. Cash Value \$35.00	—
923	Portugal & Colonies , Collection of 650 diff., Est. Cash Value \$20.00	—
924	TRANSVAAL , 28 diff. used and unused, few faults, fair-fine	102.50
925	Foreign , several hundred, mostly 19th, some have faults, Fair-Fine	800.00+
926	Youth's Companion Stamp Album , Pioneer Album published in 1879, contains several hundred stamps, very interesting book in nice condition	—
927 ★	Foreign misc. lot of 20th, few used, includes Blocks So. Rhodesia Jubilees, Est. Cash Val. \$8.00	—

FOREIGN WHOLESALE

928 ★	AZERBAIJAN , 1919-23, 22 varieties, in quantities of 40-204 each, V. F.	188.60
929	BELGIUM , 1933-43, Semi-Postals (276 stamps). Mixed quantities, Fine-V. F.	46.78
930 ★	DANISH WEST INDIES , 1900-03, 1c-8c #21, 22, 29, 30 (45 each). V. G.-V. F.	79.65
931	HAWAII , 20 varieties, 67 stamps, mostly used, V. G.-V. F.	30.77
932	PHILIPPINES , 1932, 24c Von Gronau #366(80). All have str. edges	140.00
933	TRINIDAD & TOBAGO , 1938-41, 1c, 3c #50(2000), #52A(1500). V. G.-V. F.	100.00

END OF SALE

THANK YOU

SELLING YOUR COLLECTION ?

REALIZE IMMEDIATE CASH
AND HAVE ADVANTAGE OF SELLING AT AUCTION.

I will advance on your collection immediate cash up to 75% of my appraisal value of what it should realize at auction.

It will then be sold at one of my coming auction sales. Commission is 20% of the gross and final settlement within thirty days after the sale.

Send collection direct (valued \$500 upwards) for appraisal. Auction advance will be sent within 48 hours after receipt. If not entirely pleased, collection will be returned at my expense.

I have been conducting stamp auctions for 24 years.

I am attending the A. P. S. Convention at San Francisco. I will be stopping at the Sir Francis Drake Hotel from September 14th - 19th and will be pleased to consider any stamp property for sale or for auction.

ROBERT A. SIEGEL

(Licensed and Bonded Auctioneer)

505 FIFTH AVENUE

NEW YORK CITY

(Tel. MU. 2-4309)