

177th SALE

J. Mozziari
Permed cat
Sey Colley

UNITED STATES STAMPS & COVERS

Contains Stampless Covers, 19th Century Postage Issues,
Specialized 3c 1851-1857 Issues, including a portion of the
Leo Shaughnessy collection, Patriotics, Valentines, Railroads,
Territorials, Westerns, Express Companies, Carriers, Locals,
20th Century Fancy Cancels and

CONFEDERATE STATES



at Public Auction

THURSDAY, FEBRUARY 24th, 1955

TWO SESSIONS

2 P.M. & 7:30 P.M.

Robert A. Siegel
AUCTIONS

505 FIFTH AVENUE

NEW YORK CITY

CONDITIONS OF SALE

1. The terms of sale are strictly cash to the highest bidder. All buyers are expected to pay for lots within three days of receipt, unless special arrangements have been made prior to the sale.
2. All bids are per lot as numbered in the catalogue and not per piece, unless otherwise announced by the auctioneer at the time of sale.
3. Any lot the description of which is incorrect is returnable only within three days of receipt. All disputed lots must be returned intact as received. Lots containing five or more stamps are not returnable at any time. No lots may be returned by purchasers who have had the opportunity to examine them before the sale.
4. Successful mail bidders, unless they are known to us or supply acceptable references, will be notified of the amount of the lots secured for them, and are expected to send payment in full before the lots are forwarded.
5. If the purchase price has not been paid within the time limit, or lots taken up within seven days from date of sale, they may be resold and any losses arising from such sale charged to the defaulter.
6. All stamps are sold as genuine, except where sold "As Is". Claims for any lot proving otherwise, must be made within two weeks from date of sale.
7. The right is reserved to group two or more lots, also withdraw any lot or lots from the sale, or to act on behalf of the seller.
8. Until paid for in full all lots remain the property of Robert A. Siegel.
9. No commission is charged for buying at our sales, but all forwarding charges will be added to the purchase price.
10. Lots will be sent for inspection, provided such lots are returned to us the same day as received. Postage and registration both ways will be charged. Approximate values of lots will be given on request.
11. The placing of a bid shall constitute acceptance of the foregoing conditions of sale.

ROBERT A. SIEGEL

GREGORY MOZIAN

SYLVESTER COLBY, Licensed Auctioneers

In sending bids, always state the highest price you are prepared to pay for the lot. Your limit will not be used as a starting bid unless absolutely necessary.

DESCRIPTIONS

Superb—the finest condition for noteworthy, outstanding copies.

Very Fine (VF)—means that there is a slight deviation from the above.

Fine (F)—means that the perforations do not touch the design on issues after 1890, but in some cases may just touch in earlier issues; if used, fairly lightly cancelled.

Very Good (VG)—means that the appearance is generally fine but that the perforations cut the design slightly.

Good (G)—means average off-centering; or fairly attractive with slight defects. Original gum is not to be expected on 19th Century stamps up to 1888 unless so stated.

Scott's 1955 Specialized United States Catalogue is used for cataloging our lots of United States and Scott's Standard Catalogue, 1955 for others.

WE SOLICIT FINE MATERIAL FOR FUTURE SALES
--

FIRST SESSION

THURSDAY, FEBRUARY 24th, 1955 — 2 P. M.

UNITED STATES

STAMPLESS COVERS

- 850 1 ☒ **Baltimore, Charleston, Savannah, Troy**, 4 covers all with diff. 2 markings, V. F.
- 2 ☒ **Boston**, 2 Str. lines and 2 circles with Free (1800-02), Fine
- 3 ☒ **Burlington I. T.** in red circle (1843) V. G.
- 50 4 ☒ **Edenton, N. C.**, in circle with corner card **Floyd's Hotel & Stage Office**, V. F.
- 5 5 ☒ **Elkton, Md., Post Office Business Free** each in circle, V. F.
- 6 6 ☒ **Express Mail**, Savannah, Ga. to Providence and Providence to Savannah (1837), Fine
- 7 7 ☒ **Fernandina, Fla.**, blue circle, boxed Free
- 8 8 ☒ **Forwarders**, three diff. covers, Hardens, N. Y., Coates & Co. London, Peele Hubbels Co. Manila, all markings in ovals, Fine
- 50 9 ☒ **Hollidaysburg, Pa.**, Paid and negative 5 all in deep blue, V. F.
- 10 10 ☒ **Hudson News Room Foreign Ship Letter Office N. Y.**, in oval, also Liverpool Ship Letter in box, Fine
- 50 11 ☒ **Indiana**, 6 covers, Ft. Wayne, New Castle, Richmond, Valparaiso, Fine-V. F.
- 12 12 ☒ **Jefferson, Zanesville, Ohio, Hanover, N. H.**, three diff. ovals, Fine
- 50 13 ☒ **Lawrenceburg, Ind.**, in bright purple circle, Ms. "10" (1847) V. F.
- 50 14 ☒ **Little Rock, Ark.**, in blue circle, large 5, **Columbia, Ark.**, in red circle (1846-47), Fine 200 F.
- 75 15 ☒ **Marshall, Tex.**, in double circle, "Paid" on illustrated **Georgetown College** cover, slightly foxed

LOTS MAY BE VIEWED FROM FEBRUARY 14th UNTIL SALE TIME

- 34-16 ☒ **Matagorda, Texas** in fancy oval, New Orleans in blue circle, sent to Lima, Ohio (1840) Fine 110 F (Photo) —
- 20-17 ☒ **Matagorda, Texas**, straight line "10" (1849) Fine —
- 650-18 ☒ **Midway, Ark.** Paid 3, two Ms. cancels, V.F. 1 F —
- 650-19 ☒ **Mississippi**, Clinton, Natchez, Rodney, Woodville, 4 covers, V.F. —
- 375-20 ☒ **New Orleans, La.**, in blue circle, Ms, "75" and "Express Mail", **Mobile** in black circle, Ms. "50", two **Eastern Pony Express** covers, Fine —
- 650-21 ☒ **N. York Dec. 2**, straight line (1785), V. G. —
- 30-22 ☒ **OHIO Stampless**, 175 covers, includes ovals, str. line, fancy, steam, green pmks. wide variety, V. G.-V. F. —
- 11-23 ☒ **OHIO Stampless**, 132 covers, all manuscript pmks, Fine-V. F. —
- 175-24 ☒ **Phila. & N. Y.**, four covers each with illustration of **Sailing Ship** inside, Fine —
- 850-25 ☒ **Portsmouth, Ohio**, 5 covers each has illustration of **River Packet Boat** on way bills, Fine —
- 44-26 ☒ **"Sam Ricker Jr. Agent of the Texian Post Office, New Orleans, Oct. 1838"** in oval on cover to Washington, Texas, cover stained, very clear marking (Photo) —
- 32-27 ☒ **Ship Island, Miss.**, str. line, Paid 3, V. G. —
- 3-28 ☒ **Steam Boat**, "5" on reverse **Kenyons Letter Office New York** in red oval, to New London, Fine —
- 450-29 ☒ **Tallahassee, Flo. Apr. 3, 1840** in oval, V. F. —
- 320-30 ☒ **Tallahassee, Flo. Feb. 23, 1841** in oval, Fine —
- 32-31 ☒ **Texas Republic Ms. La Grange July 31 (1840) pmk.** New Orleans blue circle, Ship, Ms. "Via Galveston", to Lima, Ohio, Fine —
- 1450-32 ☒ **Vera Cruz, Tex.**, straight line "10" (1848) Fine —
- 225-33 ☒ **Wilmington, Del. 5 Cts.**, in large balloon strike, V. F. —

For Free Franks & Autographs see lots #844-846)

VALENTINE COVERS

- 10-34 ☒ **Amesbury, Ms. Feb. 16, 10** in Ms. on large embellished **Valentine** with Valentine enclosure, Fine —
- 52-35 ☒ **Boyd's City Express Post Feb. 14** red oval on attractive Valentine, Fine —
- 8-36 ☒ **Corning, N. Y. Feb. 14** in blue circle, Paid, on large embellished **Valentine** cover with Valentine enclosure, V. F. —
- 16-37 ☒ **Melin C. H. Ohio, Feb. 14** in blue circle on pretty **Valentine** cover decorated in gold, Very Fine (Photo) —

- 38 ☒ **Milford, Mass.** Feb. 14 in circle on pretty decorated **Valentine cover**, V. F. —
- 39 ☒ **Paid** in red on large fancy embellished **Valentine** cover with Valentine enclosure, V. F. —
- 40 ☒ **Paid** in red on fancy animated **Valentine**, V. F. —
- 41 ☒ **Phillips N. J.**, red str. line, Ms. "Collect 4c" on embossed **Valentine** cover, Valentine enclosure, Very Fine —
- 42 ☒ **Westfield, Mass. Paid Feb. 15** in red circle on large fancy embellished **Valentine** cover, with **Valentine** enclosure, V. F. —
- 43 ☒ **2** in blue, on embossed **Valentine** cover, with Valentine enclosure, V. F. —
- 44 ☒ **3c Dull Red (11)**, tied from Dansville, N. Y. on embossed **Valentine** cover, Valentine enclosure, Fine —
- 45 ☒ **1c Blue (24)**. Tied Norwich, Conn. Feb. 14 on embossed **Valentine** cover, Valentine enclosure, Fine —
- 46 ☒ **3c Dull Red (26)**. Tied on embossed **Valentine** cover, Valentine enclosure, Fine —
- 47 ☒ **1c-3c, 1857-1902 Issues**, 12 **Valentine** covers, mostly with Valentine enclosures, Fair-Fine —
- 48 ☒ **1c-3c Banknotes**, 5 diff. **Valentine** covers, all tied and used Feb. 14th, Valentine enclosures, Fine-V. F. —

1847 ISSUE

- 49 ☒ **5c Red Brown (1)**. Margins all around, Red grid cancels, V. F. **(Photo)** —
- 50 ☒ **5c Red Brown (1)**. Margins all around, part of black grid cancel and double strike of **red Way** cancel, V. F. **(Photo)** —
- 51 ☒ **5c Red Brown (1)**. Blue grid and scarce black **21** cancel, Fine **(Photo)** —
- 52 ☒ **5c Brown (1)**. Ms. cancel from Jamestown N. Y. to Ohio with "By Steamboat to Cleveland" in Ms. Fine —
- 53 ☒ **5c Orange Brown (1b)**. Ms. and tied red grid and **New York & N. Haven R. R.** pmks., red oval "**Dunhams Union Square Post Office**", Fine **(Photo)** —
- 54 ☒ **5c Orange Brown (1b)**. Horiz. Pair margins all around, tied with black grid and English receiving mark, New Orleans pmk. **to England** on interesting printed circular Jan. 16, 1848, Ms. "pr Cambria Steamer", Very Fine **(Photo)** —
- 55 ☒ **10c Black (2)**. Margins all around tied black grid, New Orleans pmk. **to England**, English receiving mark, Ms. "pr. Steamer, Via Boston", Very fine **(Photo)** —
- 56 ☒ **10c Black (2)**. Margins all around, Red cancel, Very Fine **(Photo)** —
- 57 ☒ **10c Black (2)**. Margins all around, red grid, Very Fine **(Photo)** —

1c 1851 ISSUE

- 3- 58 ☒ 1c Blue, Ty. II (7). Left Sheet Margin stamp uncanceled on cover, just in at top
- 23- 59 ☒ 1c Blue, Ty. II (7): Two tied by ms. pmk, each shows **Cracked Plate**, 12L2, 31L3, both creased, Fine-V.F. appearing
- 105- 60 ☒ 1c Blue Pair, 10c Green three (7, 33). Tied with Mercellas, N. Y. pmk. to to Germany, one 10c damaged, unusual combination
- 23- 61 ☒ 1c Blue, Ty. II (7). Three diff. tied ms. pmks, each shows diff. **Surface Crack** from Plate 3, one creased, V.G.-Fine
- 29- 62 ☒ 1c Blue, Ty. II (7). Twelve covers, 4 have ms. pmks, Fair-Fine
- 9- 63 ☒ 1c Blue, Ty. II, IV (7, 9). Two diff. tied, Fine-V.F.
- 22- 64 ☒ 1c Blue, Ty. II, IV (7, 9). Two of first, 6 of last, all tied, Fine
- 77- 65 ☒ 1c Blue, Ty. IV (9). Two covers, each tied, Fine-V.F.
- 6- 66 ☒ 1c Blue, Ty. IV (9). Two covers, each tied, Fine
- 13- 67 ☒ 1c Blue, Ty. IV (9). Margins all around, tied, stamp **Double Transfer** variety, V.F.
- 42- 67A ☒ 1c Blue, Ty. IV (9). Horiz. Pair, margins 3 sides, just in at B, tied to cover front addressed to England, Fine
- 87- 68 ☒ 1c Blue, Ty. IV (9). Two **Sheet Margin** Stamps tied on diff. covers, Fine-V.F.
- 25- 69 ☒ 1c Blue, Ty. IV (9). Eleven diff. tied, few creased, Very Good
- 85- 70 ☒ 1c Blue, Ty. IV, 3c Red (9, 11). Two covers, each with strip of 3 of 3c stamp & single 1c stamp, 1 has ms. pmk. V.G.
- 9- 71 ☒ 1c Blue, Ty. IV (9). Red town cancel, V.F.
- 10- 72 ☒ 1c Blue, Ty. IV (9). Margins all around, Very Fine

3c ORANGE BROWN #10

- 10- 73 ☒ 3c Orange Brown (10). Tied large Boston, Paid, Boston, July 1 pmk, probably used in 1852, V.F.
- 35- 74 ☒ 3c Orange Brown (10). Tied Magenta Grid to front, Magenta **Baltimore Jul 2** pmk., **Second Day of Use**, Fine
- 35- 75 ☒ 3c Orange Brown (10). Tied Red grid, **Boston Mass, July 5** pmk, First Week of use, V.F.
- 16- 76 ☒ 3c Orange Brown (10). Tied to embossed envelope by Red **Thetford, Vt. Jul 7** pmk., First week of use, V.F.
- 11- 77 ☒ 3c Orange Brown (10). Margins all around, tied by balloon **Wilmington, Del., July 10** pmk., V.F.

- 78 ☒ 3c Orange Brown (10). Tied scarce type **Philadelphia, Pa., Paid 3 Cts.** blue pmk. stated to have been in use for 3 weeks, V.F. (Photo) —
- 79 ☒ 3c Orange Brown (10). Tied by brilliant **Ultramarine Batavia, N. Y.** pmk., Very Fine —
- 80 ☒ 3c Orange Brown (10). Margins all around, Sheet Margin at Top, tied to Ladies cover by blue town pmk., V.F. —
- 81 ☒ 3c Orange Brown (10). Fine stamp cancelled by **Green Grid**, pmk. **Lancaster, Pa. July 10** on cover —
- 82 ☒ 3c Orange Brown (10). Tied with red **St. Augustine, Fl. T.** pmk. Fine —
- 83 ☒ 3c Orange Brown (10). Margins all around, tied by **Paid 3 in circle** pmk., from **Washington, D. C.**, V.F. —
- 84 ☒ 3c Orange Brown (10). Margins all around, tied by Blue **Lynchburg, Va. Slug** pmk., V.F. —
- 85 ☒ 3c Orange Brown (10). Two diff., tied by clear strikes **Square N. Y. Grid** July 23, **Steam Boat** in two lines, Fine —
- 86 ☒ 3c Orange Brown (10). Two tied, Margins all around, V.F. —
- 87 ☒ 3c Orange Brown (10). Two copies on diff. covers, Very Fine —
- 88 ☒ 3c Orange Brown (10). Two tied, first **Apalachicola, Fla.**, last **Malone, N. Y. Paid 3**, V.F. —
- 89 ☒ 3c Orange Brown (10). Three diff., tied by New York **2 Bar, 3 Bar, and 4 Bar** pmks, Fine-V.F. —
- 90 ☒ 3c Orange Brown (10). Three, Margins all around, tied by **Black, Blue & Red Town** pmks, V.F. —
- 91 ☒ 3c Orange Brown (10). Three diff., all tied, Margins all around, V.F. —
- 92 ☒ 3c Orange Brown (10). Three diff., Margins all around, all have ms. pmks, V.F. —
- 93 ☒ 3c Orange Brown (10). Four diff. tied, Margins all around, includes Red town, N. Y. 4 Bar pmk, V.F. —
- 94 ☒ 3c Orange Brown (10). Four diff. covers, all tied, stamps have margins all around, V.F. —
- 95 ☒ 3c Orange Brown (10). Four tied, includes U. S. Express Mail, V.F. —
- 96 ☒ 3c Orange Brown (10). Four covers, each has **Sheet Margin** stamp tied, Fine —
- 97 ☒ 3c Orange Brown (10). Five diff. used in **July 1851**, includes creased July 3, others Fine —
- 98 ☒ 3c Orange Brown (10). Five covers, includes small Boston Paid, Utica oval, Green town, Fine —
- 99 ☒ 3c Orange Brown (10). Six diff., mostly tied, all plated, Fine —

- 72 100 ☒ 3c Orange Brown (10). Six diff. tied, includes Sheet Margin stamp, all plated, Fine
- 175 101 ☒ 3c Orange Brown (10). Six horiz. **Pairs** tied to diff. covers or fronts, 2 have additional stamp, Fair-Fine
- 155 102 ☒ 3c Orange Brown (10). Seven diff., mostly tied, interesting pmks including Dots, Utica Oval, 20, Ultramarine, V. G.-Fine
- 125 103 ☒ 3c Orange Brown (10). Seven diff. selected for cancels, includes Green, small red Boston Paid, unusual towns, Fair-Fine
- 155 104 ☒ 3c Orange Brown (10). Eight diff. with interesting pmks, includes July 10, 16, Paid, Steam, U. S. Express Mail, Grids, V. G.-V. F.
- 245 105 ☒ 3c Orange Brown (10). Nine diff., all tied, all plated, Fine-V. F.
- 285 106 ☒ 3c Orange Brown (10). Nine covers, each used on diff. day of **July, 1851**, early usage, Fine-V. F.
- 185 107 ☒ 3c Orange Brown (10). Nine diff., mostly tied, all plated, Fine-V. F.
- 65 108 ☒ 3c Orange Brown (10). Ten diff. mostly tied, all plated, Very Good
- 23 109 ☒ 3c Orange Brown (10). Eleven diff., includes pmks, plated stamps, Fine-V. F.
- 24 110 ☒ 3c Orange Brown (10). Twelve covers, each has plated stamp, Fine-V. F.
- 24 111 ☒ 3c Orange Brown (10). Twelve diff. covers, tied, all plated, Fine-V. F.
- 24 112 ☒ 3c Orange Brown (10). Twelve diff., all tied, mostly plated, Fine-V. F.
- 55 113 ☒ 3c Orange Brown (10). Fifteen diff. including plated, all ms. pmks, V. G.-Fine
- 155 114 ☒ 3c Orange Brown (10). Nineteen diff., mostly tied, all are plated, V. G.-Fine
- 13 115 ☒ 3c Orange Brown (10). Nineteen diff., includes plated copies, Fair-Fine
- 13 116 ☒ 3c Orange Brown (10). Twenty diff., mostly tied, all plated, Fair-Fine
- 18 117 ☒ 3c Orange Brown (10). Twenty-one diff., mostly tied, many plated, V. G.-Fine
- 5 118 3c Orange Brown (10). Very Fine (Photo)
- 135 119 3c Orange Brown (10). Margins all around, attractive **Geometric** cancel, Very Fine (Photo)
- 10 120 3c Orange Brown (10). Margins all around, **Paid 3 in Circle** blue pmk. V. F.
- 18 121 3c Orange Brown (10). Margins all around, unusual **Bee Hive** pmk, Very Fine (Photo)
- 6 122 3c Orange Brown (10). Neat **Red Small Boston Paid** cancel, V. F. (Photo)
- 26 123 3c Orange Brown (10). Margins all around, bold **Dotted Grid** pmk socked on the nose, Very Fine (Photo)

- ✓ 124 3c Orange Brown (10). Neat Pin Wheel cancel, V. F. (Photo) —
- ✓ 125 3c Orange Brown (10). Margins all around, Fancy Blue Way 6 within Double Circle pmk, Very Fine (Photo) —
- ✓ 126 3c Orange Brown (10). Red Small Boston Paid pmk., Very Fine —
- ✓ 127 3c Orange Brown (10). Margins all around, Blue "Paid 3 Cts." in Circle pmk, V. F. —
- ✓ 128 3c Orange Brown (10). Black Salem, Mass Dotted Spiral Grid pmk., Fine (Photo) —
- ✓ 129 3c Orange Brown (10). Margins all around, Sheet Margin at R, attractive Green Bars pmk from Mount Sterling, Ala, V. F. —
- ✓ 130 3c Orange Brown (10). Horiz. Pair, Fine —
- ✓ 131 3c Orange Brown, 3c Brownish Carmine (10-11). Margins all around, each has Square New York Grid pmk, V. F. —
- ✓ 132 3c Orange Brown (10). Three with Margins all around, V. F. —
- ✓ 133 3c Orange Brown (10). Three stamps, Margins all round, each has Red Grid pmk, V. F. —
- ✓ 134 3c Orange Brown (10). Four Very Fine copies, includes Green town, fancy Blue Geometric —
- ✓ 135 3c Orange Brown (10). Five diff. cancels, includes Bucksport, Me. Paid, fancy blue cog wheel, Fine-V. F. —
- ✓ 136 3c Orange Brown (10). Six, Blue, Green, Brown, Orange, Black pmks, V. G.-V. F. —
- ✓ 137 3c Orange Brown (10). Seven horiz. or vert. Pairs, few slight creases, Fine appearing —
- ✓ 138 3c Orange Brown (10). Eleven copies including 2 horiz. Pairs, 4 have sheet margins, all ms. pmks, V. F. —
- ✓ 139 3c Orange Brown (10). Sixteen diff. including 6 with Sheet Margins, few have minor defects, Fair-Fine —

3c 1851 ISSUE

- ✓ 140 ☒ 3c Dull Red (11). Right Sheet Margin stamp tied by bold unusual Pin-wheel pmk. from Maquoketa, Iowa, V. F. (Photo) —
- ✓ 141 ☒ 3c Dull Red (11). Cancelled by Fancy Paid 3 on cover curved Orfordville, N. H. pmk. Very Fine (Photo) —
- ✓ 142 ☒ 3c Dull Red (11). Margins all around, on cover with odd Stone Ridge, N. Y. pmk, struck on stamp, V. F. —
- ✓ 143 ☒ 3c Dull Red on 3c Entire (11, U10). Tied with Canton, Miss. double strike Odd Fellows Links, Fine strikes (Photo) —

- 75 144 ☒ 3c Dull Red (11). Fancy Intertwining Star cancel on cover pmkd Chicopee, Mass., V.F. (Photo) —
- 75 145 ☒ 3c Claret (11). Tied by Red Tyre, N.Y. Oval pmk. Fine —
- 21 146 ☒ 3c Brownish Carmine (11). Bot. Sheet Margin stamp tied black grid to cover, pmk. Buffalo, N.Y., Fancy Due 5 cts in Scroll marking on cover, V.F. (Photo) —
- 55 147 ☒ 3c Brownish Carmine (11). Tied grid to cover with str. line blue "Due 5 cts" marking, V.F. —
- 52 148 ☒ 3c Dull Red (11). Tied by faint strike of Mobile, Ala. "Due Way 1c" in fancy enclosure, stamp has scissors cut —
- 115 149 ☒ 3c Dull Red (11). Tied by Red U.S. Express Mail pmk, V.F. —
- 32 150 ☒ 3c Dull Red (11). Tied Washington, D.C., letter from Amos Kendall, Post Master General, also autographed photo —
- 45 151 ☒ 3c Dull Red (11). Tied by ms. "Fort Defiance N.C., 17 March 1853" pmk, Fine —
- 42 152 ☒ 3c Dull Red (11). Tied Marshall Mich, Dec. 28, 1855, V.F. —
- 45 153 ☒ 3c Brownish Carmine (11). Tied by negative blue Paid from Norwich, Conn., Fine —
- 82 154 ☒ 3c Dull Red (11). Cancelled Brown Paid 3 from Jamaica, Vt., Fine —
- 195 155 ☒ 3c Dull Red (11). Ms. cancel, Olive Yellow Athens, Tenn. pmk. on cover, rarest color cancel according to memo on back by Dr. Chase —
- 17 156 ☒ 3c Dull Red (11). Margins all around, tied Utica, N.Y. to attractive Illustrated Insurance Co. cover, V.F. (Photo) —
- 35 157 ☒ 3c Claret (11). Large margins all around, sheet margin at B, tied black grid to neat cover, Very Fine —
- 4 158 ☒ 3c Dull Red (11). Large Margins all around, shows parts of 5 other stamps, V.F. —
- 6 159 ☒ 3c Dull Red (11). Tied, Very Fine example of Recut Button, 10R2L —
- 3 160 ☒ 3c Claret (11). Tied Grid pmk, "Line through 3 cents & Rosettes Double", Fine —
- 35 161 ☒ 3c Dull Red (11). Line through 3c & Rosettes Double, tied Phila., Pa. pmk., Fine —
- 35 162 ☒ 3c Dull Red (11). Line through 3 cts & Rosettes double, tied to embossed ladies envelope, Fine —
- 32 163 ☒ 3c Imperforate (11). Two stamps used on Turned Cover ms notation "Envelopes is scarce", V.F. —
- 45 164 ☒ 3c Dull Red (11). Two tied, "5 lines recut upper left triangle" and Line through 3 cts and rosettes double" V.F. —
- 6 165 ☒ 3c Claret (11). Two diff. tied, Cracked Plates 74L5L and 96L5L, V. Good —

- ✓ 166 ☒ 3c Dull Red (11). Two tied, first **Dot in Diamond Block** variety, 69L5L, last **Crack between panes**, 90L5L, V. F.
- ✓ 167 ☒ 3c Dull Red (11). Two tied, each has large Margins all around, V. F.
- ✓ 168 ☒ 3c Claret (11). Two tied, each has corner sheet margin stamp, 100L5L, 1R7, V. F.
- ✓ 169 ☒ 3c Dull Red (11). Two with interesting contents, one refers to **Slave Purchases**, other to **Crimea War**
- ✓ 170 ☒ 3c Brownish Carmine (11). Two, each tied diff. **Green Town** pmk, V. F.
- ✓ 171 ☒ 3c Dull Red (11). Two, each tied by diff. size **Steam** pmk, Fine
- ✓ 172 ☒ 3c Dull Red (11). Two, one **Way** pmk, other **Steamboat**, Fine
- ✓ 173 ☒ 3c Dull Red (11). Two Embossed Ladies Envelopes showing diff. all over **Landscape Designs**, one has ms. pmk, Fine
- ✓ 174 ☒ 3c Red (11, 26). Each on cover with **Oakland College, Miss.** pmks, latter tied, V. G.-Fine
- ✓ 175 ☒ 3c Imperforate (11). Three, tied, varieties "**Gents instead of Cents, Recut Button, Line through 3 cts & Rosettes Double**", Fine-V. F.
- ✓ 176 ☒ 3c Imperforate (11). Three, tied **Red, Green, Brown Town** pmks, V. F.
- ✓ 177 ☒ 3c Dull Red (11). Three diff. embossed Ladies envelopes, 2 have **Green** pmks, other **Ultramarine** pmk, Fine
- ✓ 178 ☒ 3c Red (11, 26). Three **Florida** covers, **Monticello, Pilatka, Fernandinia** pmks. V. G.-Fine
- ✓ 179 ☒ 3c Imperforate (11). Four diff. tied, each has **Corner Sheet Margin Stamp**, V. G.-Fine
- ✓ 180 ☒ 3c Imperforate (11). Four tied, varieties "**5 lines recut upper left triangle, Recut Button, Triple Transfer, Cracked Plate 96L5L**", Fine
- ✓ 181 ☒ 3c Imperforate (11). Four covers, each shows **offset photo** of stamp on cover, Fine
- ✓ 182 ☒ 3c Imperforate (11). Five, all have Margins all around, V. F.
- ✓ 183 ☒ 3c Imperforate (11). Five cancelled by odd and unusual **Grid** pmks, includes Salem, Mass., Red, Blue, Fine-V. F.
- ✓ 184 ☒ 3c Dull Red (11, 26). Five diff. **illustrated School** covers, Fine-V. F.
- ✓ 185 ☒ 3c Imperforate (11). Six diff., all tied by **double lined Town** pmks, V. G.-V. F.
- ✓ 186 ☒ 3c Imperforate (11). Six diff., all have **Steam** pmk., V. G.-Fine
- ✓ 187 ☒ 3c Imperforate (11). Six diff., all show **Sheet Margin & Imprint**, 3 have ms. pmks, Good-Fine
- ✓ 188 ☒ 3c Brownish Carmine (11). Seven diff. all tied **U. S. Express Mail**, V. F.

- 650 189 ☒ **3c Imperforate (11).** Six diff., all tied, all show **Sheet Margin & Centerline**, V. G.-V. F.
- 4- 190 ☒ **3c Imperforate (11).** Seven diff. tied, Margins all around, all from **Three Rows**, V. F.
- 425 191 ☒ **3c Imperforate (11).** Seven diff. all showing **Sheet Margin & Centerline**, V. G.-V. F.
- 1250 192 ☒ **3c Imperforate (11).** Nine diff. tied, Margins all around, each has **Sheet Margin**, V. F.
- 1350 193 ☒ **3c Imperforate (11).** Nine diff. with interesting pmks, includes **red N. Y. Express Mail, Utica oval, Balloon**, Fine-V. F.
- 550 194 ☒ **3c Imperforate (11).** Ten diff., all tied, each has **Sheet Margin**, V. G.-V. F.
- 7- 195 ☒ **3c Imperforate (11).** Eleven diff. all cancelled by **Red Grid or Red Town** pmks, V. G.-V. F.
- 9- 196 ☒ **3c Imperforate (11).** Eleven diff., all tied by **Green Town or Grid** pmks, V. G.-V. F.
- 150 197 ☒ **3c Brownish Carmine (11).** Eleven diff., Margins all around, all tied, V. F.
- 250 198 ☒ **3c Brownish Carmine (11).** Eleven diff., Margins all around, all tied, V. F.
- 750 199 ☒ **3c Imperforate (11).** Twelve stamps on 11 covers, all show **Sheet Margins**, includes **Corner Copies**, V. G.-V. F.
- 650 200 ☒ **3c Imperforate (11).** Twelve diff., all tied **U.S. Express Mail**, V. G.-V. F.
- 750 201 ☒ **3c Imperforate (11).** Twelve tied, each shows **Sheet Margin** stamp, V. G.-V. F.
- 675 202 ☒ **3c Imperforate (11).** Twelve diff, mostly tied, all show **Sheet Margins**, V. G.-V. F.
- 1050 203 ☒ **3c Imperforate (11).** Thirteen diff., all tied by **Red Grid or Town** pmks, V. G.-V. F.
- 775 204 ☒ **3c Imperforate (11).** Fourteen diff. Embossed **Ladies Envelopes**, mostly tied, V. G.-V. F.
- 725 205 ☒ **3c Imperforate (11).** Fourteen diff., all tied to small **Embossed Ladies Envelopes**, V. G.-V. F.
- 850 206 ☒ **3c Imperforate (11).** Fourteen diff., Margins all around, all tied, V. F.
- 9- 207 ☒ **3c Imperforate (11).** Fifteen diff., Margins all around, all tied, V. F.
- 925 208 ☒ **3c Imperforate (11).** Sixteen diff., Margins all around, all tied, V. F.
- 9- 209 ☒ **3c Imperforate (11).** Sixteen diff., Margins all around, all tied, V. F.
- 9- 210 ☒ **3c Imperforate (11).** Sixteen diff., Margins all around, all tied, V. F.
- 1550 211 ☒ **3c Imperforate (11).** Eighteen diff., Margins all around, all from **pl 5L**, V. F.

- 212 ☒ 3c Imperforate (11). Eighteen diff., margins all around, all have ms. pmks, V. F.
- 213 ☒ 3c Imperforate (11). Twenty diff., Margins all around, all tied, V. F.
- 214 ☒ 3c Imperforate (11). Twenty-one diff., all have Sheet Margins, few ms. pmks., V. G.-V. F.
- 215 ☒ 3c Imperforate (11). Twenty-nine covers selected for pmks, includes Paid, Odd Grids, Express Mail, Reds, Green, V. G.-V. F.
- 216 ☒ 3c Imperforate (11). Thirty Horiz. or Vert. Pairs tied to diff. covers, includes 2 strips of 3, Fair-Fine
- 217 ☒ 3c Imperforate (11). Thirty-one covers selected for pmks, includes **Green, Red, Express Mail, Year Dates, Steam, Sing-Sing**, V. G.-Fine
- 218 ☒ 3c Brownish Carmine (11). Thirty-four diff, mostly tied, Fine-V. F.
- 219 ☒ 3c Imperforate (11). Thirty-six diff., each with stamps from **pl 4-8**, Fine-V. F.
- 220 ☒ 3c Imperforate (11). Forty-one diff. Fine-V. F. Covers, includes scarcer plates
- 221 ☒ 3c Imperforate (11). Forty-eight covers all with **Penna** pmks, V. G.-V. F.
- 222 ☒ 3c Imperforate (11). Fifty-two covers all with **Conn.** town pmks. V. G.-V. F.
- 223 ☒ 3c Imperforate (11). Sixty covers, **Illinois, Ohio, Mich., Wisc.** town pmks. V. G.-V. F.
- 224 ☒ 3c Imperforate (11). Sixty-six covers, each has diff. position stamp from **pl. 5L**, V. G.-Fine
- 225 ☒ 3c Imperforate (11). Seventy-eight covers, **Maine, N. H., Rhode Island, Vermont** town pmks. V. G.-V. F.
- 226 ☒ 3c Imperforate (11). Eighty-one covers all with **Southern State** pmks. V. G.-V. F.
- 227 ☒ 3c Imperforate (11). One hundred-thirty-three covers all with **Mass.** town pmks, V. G.-V. F.
- 228 ☒ 3c Imperforate (11). One hundred thirty-four diff. covers, each has plated stamp from **plates 5-8**, Fair-Fine
- 229 ☒ 3c Imperforate (11). One hundred-forty-four covers all with **Mass.** town pmks, V. G.-V. F.

3c 1851

RECONSTRUCTED PANES OF 100

- 230 ☒ 3c Imperforate (11). Complete **Reconstructed Left Pane of 100 from Plate 1L**, V. G.-V. F.

- 40 231 3c Imperforate (11). Complete Reconstructed Left Pane of 100 from Plate 1L, V. G.-V. F.
- 44 232 3c Imperforate (11). Complete Reconstructed Right Pane of 100 from Plate 1L, V. G.-V. F.
- 45 233 3c Imperforate (11). Complete Reconstructed Right Pane of 100 from Plate 1L, V. G.-V. F.
- 44 234 3c Imperforate (11). Complete Reconstructed Left Pane of 100 from Plate 2L, V. G.-V. F.
- 42 235 3c Imperforate (11). Complete Reconstructed Right Pane of 100 from Plate 2L, V. G.-V. F.
- 40 236 3c Imperforate (11). Complete Reconstructed Left Pane of 100 from Plate 3, V. G.-V. F.
- 40 237 3c Imperforate (11). Complete Reconstructed Left Pane of 100 from Plate 3, V. G.-V. F.
- 30 238 3c Imperforate (11). Ninety-seven diff. plated positions from Left Pane, Plate 3, V. G.-V. F.
- 44 239 3c Imperforate (11). Complete Reconstructed Right Pane of 100 from Plate 3, V. G.-V. F.
- 44 240 3c Imperforate (11). Complete Reconstructed Right Pane of 100 from Plate 3, V. G.-V. F.
- 30 241 3c Imperforate (11). Ninety-nine diff. plated positions from Right Pane, Plate 3, V. G.-V. F.
- 51 242 3c Imperforate (11). Complete Reconstructed Left Pane of 100 from Plate 4, V. G.-V. F.
- 26 243 3c Imperforate (11). Ninety-six diff. plated positions from Left Pane, Plate 4, V. G.-V. F.
- 51 244 3c Imperforate (11). Complete Reconstruction Right Pane of 100 from Plate 4, V. G.-V. F.
- 26 245 3c Imperforate (11). Ninety-seven diff. plated positions from Right Pane, Plate 4, V. G.-V. F.
- 05 246 3c Imperforate (11). Complete Reconstructed Left Pane of 100 from Plate 5L, includes 5 Cracked Plate stamps, V. G.-V. F.
- 75 247 3c Imperforate (11). Complete Reconstructed Right Pane of 100 from Plate 5L, includes Cracked Plate, V. G.-V. F.
- 30 248 3c Imperforate (11). Six diff. Partially Reconstructed Panes of Plates 1L, 2L, 3, includes 420 diff. plate positions, V. G.-V. F.

3c 1851 OFF COVER

- 750 249 ★ 3c Dull Red (11). Horiz. Pair, Very fine, o. g.

230 ★	3c Dull Red (11). Vert. Pair, Margins all around, full o.g. Very Fine	—
231 ★田	3c Dull Red (11). Block of 6, Very Good	—
232 ★	3c Imperforate (11). Four Horiz. or Vert. Pairs, 2 have o.g. Very Good	—
233 ★	3c Imperforate (11). Eleven copies, some have o.g., V.G.-Fine	—
234	3c Dull Red (11). Large Margins all around, Very Fine	(Photo) —
235	3c Dull Red (11). Large Margins all around showing parts of 8 other stamps, V.F.	(Photo) —
236	3c Claret (11). Margins all around, Cracked Plate, 74L5L , ms. pmk, V.F.	—
237	3c Dull Red (11). Cracked Plate, 96L5L , Very Fine	—
238	3c Brownish Carmine (11). Margins all around, "5 Lines Recut Upper Left Triangle", V.F.	—
239	3c Brownish Carmine (11). Line through Three Cents & Rosettes Double, V.F.	—
240	3c Dull Red (11). Black Open Cross in Circle pmk, Very Fine	(Photo) —
241	3c Dull Red (11). Margins all around, Blue Geometric within Hollow Square pmk, Very Fine	(Photo) —
242	3c Dull Red (11). Very Fine strike of Shield within Cog Wheel	(Photo) —
243	3c Dull Red (11). Tiny hinge thin, Negative Paid in Oval Grid pmk V.F. appearing	(Photo) —
244	3c Dull Red (11). Black Floral Design pmk, slight corner crease, V.F. appearing	(Photo) —
245	3c Brownish Carmine (11). Sheet margin at L, Housatonic R.R. pmk, Very Fine	—
246	3c Brownish Carmine (11). Louisville & Cincinnati Mail Line pmk, slight crease, V.F. appearing	—
247	3c Dull Red (11). Blue Wells Fargo & Co. Express pmk, Fine	—
248	3c Brownish Carmine (11). Tied to small piece by unusual Paid pmk from New Ipswich, N.H., Fine	—
249	3c Dull Red (11). Black Negative Monogram "Belsea" pmk, Fine	—
250	3c Dull Red (11). Horiz. Pair with Very Fine strike of Steam Ship pmk.	(Photo) —
251	3c Dull Red (11). Horiz. Pair, Margins all around, slightly stained, New York Ship pmk., Fine appearing	—
252	3c Brownish Carmine (11). Horiz. Pair, Margins all around, V.F.	—
253	3c Dull Red (11). Horiz. Pair, Margins all around, Sheet Margin & Centerline at L, V.F.	—

3-	274	3c Dull Red (11). Horiz. Pair, Margins all around with Top Corner Sheet Margin , V. F.	—
325	275	3c Dull Red (11). Horiz. Pair, Large Top Sheet Margin, ms. pmk, V. F.	—
425	276	3c Brownish Carmine (11). Two singles rejoined to form Corner Sheet Margin Pair , 10R8, 20R8, V. F.	—
325	277	3c Brownish Carmine (11). Horiz. Pair, Corner Sheet Margin 91-92L8, Fine	—
6-	278	3c Dull Red (11). Horiz. Pair, tied to small piece by Waxahachie, Tex. pmk, V. F.	—
250	279	3c Dull Red (11). Horiz. Pair, Sacramento, Cal. pmk, V. F.	—
650	280	3c Dull Red (11). Horiz. Strip of 3, Sheet Margin at R, Very Fine	—
425	281	3c Brownish Carmine (11). Horiz. Strip of 3, Fine	—
650	282	3c Dull Red (11). Horiz. Strip of 3, Margins all around, slightly oxidized	—
325	283	3c Dull Red (11). Horiz. Strip of 5, Bot. Sheet Margin, 96-100R7, partly in at T	—
9-	284	3c Brownish Carmine (11). Horiz. Strip of 6, two end stamps thin, Fine appearing	—
1150	285	3c Brownish Carmine (11). Vert. Strip of 6 , ms. pmk, V. F.	—
7-	286	3c Dull Red (11). Irregular Block of 5, Town plus ms pmks, V. G.	—
950	287	3c Dull Red (11). Block of 6, one stamp tiny tear, Fine appearing	—
675	288	3c Dull Red (11). Two copies, " Gents for Cents ", and " Recut Button " varieties, V. F.	—
350	289	3c Dull Red (11). Two, Paid 3 cancels, one in Blue, V. F.	—
2-	290	3c Dull Red (11). Two, each has 1855 year date pmk, Very Good	—
8-	291	3c Dull Red (11). Two Horiz. pairs, first has Recut Button variety, last has Triple Transfer variety, Fine	—
10-	292	3c Dull Red (11). Two Vert. Strips of 3, Blue town pmks, V.(F.	—
650	293	3c Dull Red (11). Horiz. & Vertical Strip of 4, Fine	—
500	294	3c Imperforate (11). Three diff Star cancels, includes Canton, Miss. star, V. G.-V. F.	—
625	295	3c Imperforate (11). Three with large Margins all around, V. F.	—
1250	296	3c Imperforate (11). Three copies with Right Sheet Margin forming Reconstruction of Printers Imprint , all have ms pmk, Fine-V. F.	—
5-	297	3c Brownish Carmine (11). Three Horiz. Pairs, Fine-V. F.	—
950	298	3c Imperforate (11). Three Horiz. Strips of 3 from Plate 5L, V. G.-Fine	—

25 299	3c Imperforate (11). Horiz. Strip of 3, 4 and 5, each slightly creased, Fine-V. F. appearing	—
300 田	3c Dull Red (11). Three Blocks, each has slight defect	—
25 301	3c Dull Red (11). Four diff, all show Sheet Margin & Imprint , Very Good	—
302	3c Dull Red (11). Four diff. Corner Sheet Margin copies, 2 lightly creased, V. G.—Fine	—
303	3c Imperforate (11). Four copies with interesting pmks, includes New York Clipper Ship, U. S. Mail Packet Natchez, Steam , V. F.	—
304	3c Imperforate (11). Four diff. Double Circle Town pmks, Fine—V. F.	—
305	3c Imperforate (11). Four Horiz. Pairs, all have Sheet Margins, V.G.—V.F.	—
306	3c Imperforate (11). Four Vert. Pairs with Sheet margins, 1 partly ms. pmk, Fine—V. F.	—
307	3c Imperforate (11). Two Horiz & Two Vert. Pairs, includes Way, Nevada City, Cal. pmks, Fine—V. F.	—
308	3c Imperforate (11). Four Horiz. Strips of 3, Fine—V. F.	—
309	3c Imperforate (11). Five Pairs, all from Plate 5L , V. G.—Fine	—
310	3c Imperforate (11). Five Horiz. Strips of 3, V. G.—V. F.	—
311	3c Imperforate (11). Six copies with date cancels including 1855 July 4, Feb. 22 , Fine	—
312	3c Imperforate (11). Six copies with diff. Paid or Paid 3 cancels, Fine—V. F.	—
313	3c Imperforate (11). Six copies, Margins all around, includes 2 diff Brown Towns, Paid , Very Fine	—
314	3c Imperforate (11). Six Horiz. Pairs, includes Recut Button variety, V. F.	—
315	3c Imperforate (11). Six Horiz. Pairs, Fine—V. F.	—
316	3c Imperforate (11). Six Horiz. Pairs, all without Inner Lines, V. G.—V. F.	—
317	3c Dull Red (11). Six Pairs and 4 Strips of 3, all have Calif. Town pmks, Fair—Fine	—
318	3c Imperforate (11). Seven diff. with odd and unusual Grid cancels, Fine—V. F.	—
319	3c Imperforate (11). Seven copies, all diff. Green Town pmks, Fine—V. F.	—
320	3c Imperforate (11). Seven diff. with U. S. Express Mail pmk, 1 in Red, Fine	—
321	3c Imperforate (11). Seven copies, including Recut Button , Gash on Shoulder, Recut Triangles , Folded before Printing, Fine—V. F.	—
322	3c Imperforate (11). Seven plated Strips of 3, V. G.—Fine	—

550	325	3c Imperforate (11). Eight diff., Margins all around, all show Sheet Margins , V. F.	—
850	324	3c Imperforate (11). Eight diff., Margins all around, all show Sheet Margins , includes Corner copy, Fine-V. F.	—
650	323	3c Imperforate (11). Eight Vertical Pairs, Fine-Very Fine	—
650	326	3c Imperforate (11). Eight stamps, all have 3 or Paid pmks, Fine-V. F.	—
13	327	3c Imperforate (11). Nine diff. Corner Sheet Margin copies, V. G.-Fine	—
1325	328	3c Imperforate (11). Nine copies with Red pmks, includes Paid, Towns, Rail Road , Fine-V. F.	—
8	329	3c Brownish Carmine (11). Nine diff. with Margins all around, V. F.	—
750	330	3c Imperforate (11). Ten Sheet Margin copies, Fine-V. F.	—
105	331	3c Imperforate (11). Ten Horiz. Pairs, all plated, Fine	—
22	332	3c Imperforate (11). Eleven Strips of 4 and three Strips of 5, all plated, many have unnoticeable defects, Fair-Fine	—
5	333	3c Imperforate (11). Twelve diff. Sheet Margin copies showing Center-line , 2 have ms. pmks, V. G.-Fine	—
4	334	3c Imperforate (11). Twelve Sheet Margin copies, Fine-V. F.	—
250	335	3c Imperforate (11). Twelve Sheet Margin copies, most lightly creased, Fine-V. F. appearing	—
11	336	3c Imperforate (11). Twelve diff, 4 Blue pmks, 4 Green pmks & 4 Red pmks, Fine	—
950	337	3c Dull Red (11). Twelve Horiz. Pairs, includes 5 from Plate 5L, V. Good	—
1550	338	3c Imperforate (11). Twelve plated Strips of 3, V. G.-Fine	—
16	339	3c Imperforate (11). Twelve plated Strips of 3, V. G.-Fine	—
15	340	3c Imperforate (11). Twelve plated Strips of 3, V. G.-Fine	—
15	341	3c Imperforate (11). Thirteen plated Strips of 3, includes 2 irregular Blocks of 3, V. G.	—
850	342	3c Imperforate (11). Fourteen diff. with Margins all around, V. F.	—
6	343	3c Imperforate (11). Fourteen diff. with Margins all around, V. F.	—
550	344	3c Imperforate (11). Fourteen diff. with Margins all around, V. F.	—
475	345	3c Imperforate (11). Fifteen diff. Sheet Margin & Imprint copies, Fair-Fine	—
2	346	3c Imperforate (11). Seventeen diff. Grid or Bar pmks, Fine-V. F.	—
1150	347	3c Imperforate (11). Twenty plated Pairs, V. G.-Fine	—
13	348	3c Imperforate (11). Twenty plated Pairs, V. G.-Fine	—
13	349	3c Imperforate (11). Twenty plated Pairs, V. G.-Fine	—

350	3c Imperforate (11). Twenty plated Pairs, V. G.-Fine	—
351	3c Imperforate (11). Twenty plated Pairs, V. G.-Fine	—
352	3c Imperforate (11). Twenty plated Pairs, Very Good	—
353	3c Imperforate (11). 21 copies with fancy or interesting cancels, includes, Paid's, Rail Road, Express Mails, Violet, Ultramarine, Geometrics , Fine-V. F.	—
354	3c Imperforate (11). Twenty-two plated Pairs, Very Good	—
355	3c Imperforate (11). Twenty-three Pairs, 14 Strips of 3, and 4 Strips of 4. all plated, all with ms pmks, V. G.-V. F.	—
356	3c Imperforate (11). Twenty-five copies, all have Red pmks, V. G.-Fine	—
357	3c Imperforate (11). Twenty-six diff. plated, all show Double Transfer , V. G.-V. F.	—
358	3c Imperforate (11). Twenty-six selected for pmks, includes Rail Road, Way, Paid, Florida, Brown, Green , V. G.-Fine	—
359	3c Imperforate (11). Twenty-Seven plated Pairs, V. G.-Fine	—
360	3c Imperforate (11). Twenty-eight diff. plated stamps from Left Pane Plate 5L, all show Rust Markings , Fine-Very Fine	—
361	3c Imperforate (11). Twenty-one diff. plated stamps from Right Pane Plate 5L, all show Rust Markings , many have margins all around, 3 have ms pmks, V. F.	—
362	3c Imperforate (11). Thirty copies being a Complete Reconstruction of "3 Rows" from Plate 3 , V. G.-V. F.	—
363	3c Imperforate (11). Thirty-nine diff. plated positions from Plate 6 , includes ms. pmks, V. G.-V. F.	—
364	3c Imperforate (11). Forty copies selected for plate varieties, many ms. pmks, Fair-Fine	—
365	3c Imperforate (11). Fifty-five diff. plated positions from Plate 7 , few ms. pmks, V. G.-V. F.	—
366	3c Imperforate (11). Sixty four diff. plated positions from Plate 8 , few ms. pmks, V. G.-V. F.	—
367	3c Imperforate (11). Seventy-four copies selected for interesting pmks, V. G.-Fine	—
368	3c Imperforate (11). Seventy-six copies, selected for interesting pmks, V. G.-Fine	—
369	3c Imperforate (11). One hundred copies selected for plate varieties, most plated, V. G.-Fine	—
370	3c Imperforate (11). One hundred copies selected for plate varieties, most plated, V. G.-Fine	—

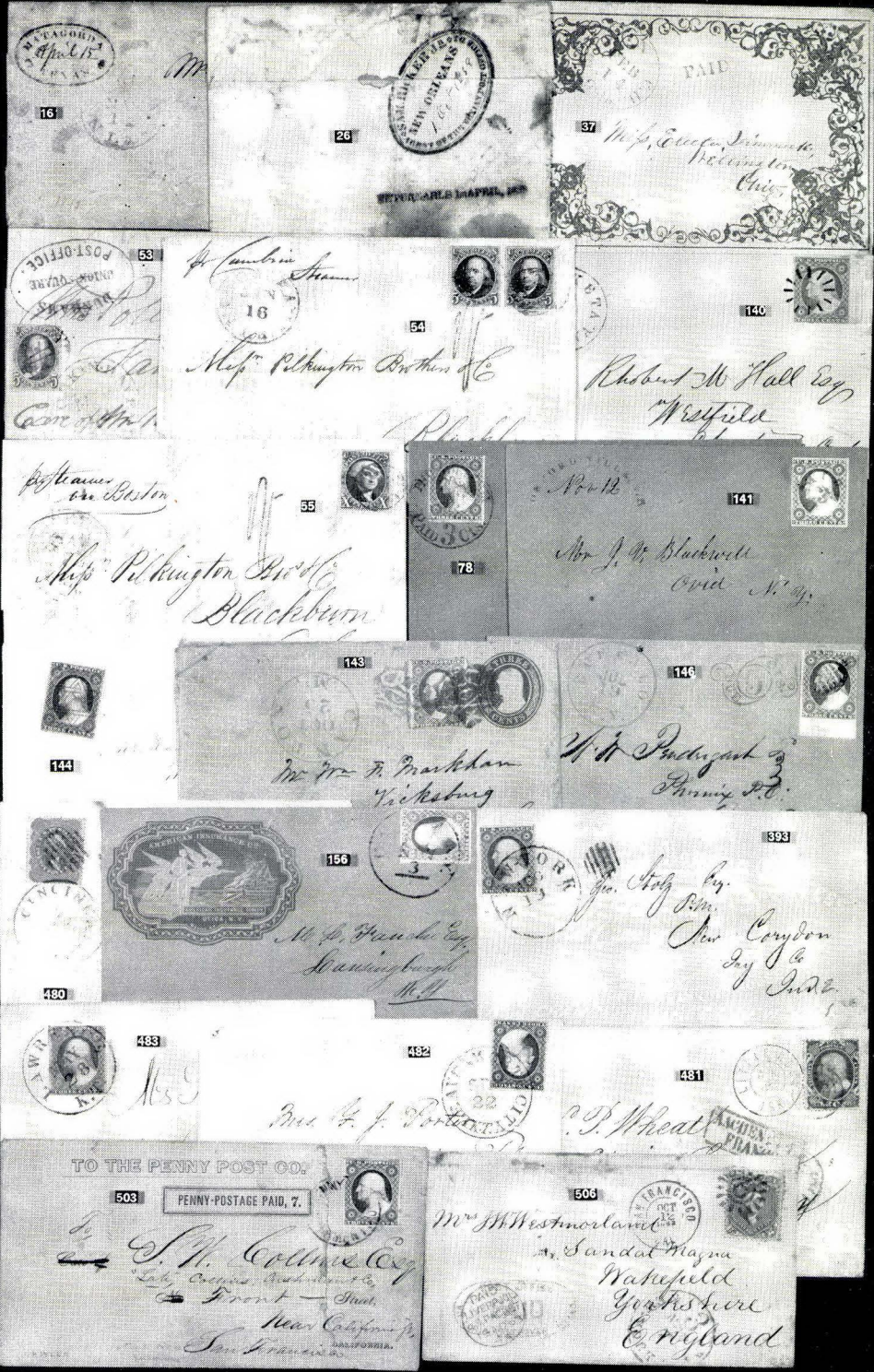
25/-	371	3c Imperforate (11). One hundred copies selected for plate varieties, most plated, V. G.-Fine	—
25/-	372	3c Imperforate (11). One hundred copies selected for plate varieties, most plated, V. G.-Fine	—
15/-	373	3c Imperforate (11). One hundred and five copies from plate 4, V. G.-V. F.	—
18/-	373A	Essays, Washington Heads, 5 diff. colors of 3c 1851 design, V. F.	—
200/-	374	5c Red Brown (12) Margins all around, clear New York " Clipper Ship " cancel, extremely scarce on this stamp, Very Fine (Photo)	—
91/-	375	10c Green Ty. I (13). Margins all around, Red grid , Stitch Watermark, Very Fine (Photo)	85.00
7/-	376	<input checked="" type="checkbox"/> 10c Green, Ty. II (14). Tied from New Orleans to Mexico, margins 3 sides, touches at L	20.00
27/-	377	10c Green Ty. II (14). Margins all around, V. F. (Photo)	16.00
19/-	378	10c Green, Ty. II (14). Margins all around, Very Fine (Photo)	16.00
18/-	379	10c Green, Ty. II (14). Margins all around, blue cancels, V. F. (Photo)	16.00
225/-	380	10c Green, Ty. III (15). Margins all around, V. F. (Photo)	16.00
205/-	381	<input checked="" type="checkbox"/> 12c Black (17). Large margins all around tied on N. Y. registered legal size cover	—
23/-	382	12c Black (17). Margins all around, Very Fine (Photo)	—

1857 ISSUE

9/-	383	<input checked="" type="checkbox"/> 1c Blue, Ty. II (20). Tied, Norwich, Conn. pmk. on cover, Fine	16.00
out	384	<input checked="" type="checkbox"/> 1c Blue, Ty. III (21). Tied Biddeford, Me. Feb. 15, 1861 pmk. on embossed cover containing attractive Valentines , stamp has perforation faults at left	—
1050	385	<input checked="" type="checkbox"/> 1c Blue, Ty. V, 3c Dull Red (24, 26). Single of first, 3 of last tied on illustrated cover from Rowley, Ms. to Oregon City , Fine	—
1/-	386	<input checked="" type="checkbox"/> 3c Red (26). Tied New York & Grid, Aug. 30, 1861 , Late Use, V. F.	—
115/-	387	<input checked="" type="checkbox"/> 3c Red (26). Tied Green Ottawa, Ill., 1859 pmk, V. F.	—
16/-	388	<input checked="" type="checkbox"/> 3c Red (26). Tied New York Clipper Ship pmk, cover addressed to Oregon. Black " Due 7 " marking on cover, V. F.	—
out	389	<input checked="" type="checkbox"/> 3c Red (26). Cancelled by light strike of str. line Union pmk from Chester, Conn. , stamp has corner added	—
215/-	390	<input checked="" type="checkbox"/> 3c Dull Red (26). Odd dotted grid pmk, on cover pmk. Maryland Agri. College, Md. , Fine	—
87/-	391	<input checked="" type="checkbox"/> 3c Red (26). Tied with New York Ship cancel, Due 2 marking on cover, small U. L. corner of cover torn, attractive markings, contains letter mailed from Steamship Atlantic, 1860	—

- 392 ☒ 3c Red (26). Tied, Yellow Springs, O. pmk. & partly light **Chicago Ad-**
vertised in blue Shield, Fine
- 393 ☒ 3c Red (26). Tied from N. Y. on illustr. cover showing **Sailing Ship**, M. L.
Hiller European & Havana Express, attractive (Photo)
- 394 ☒ 3c Red (26). Tied from Westfield, Mass. on attractive blue illustrated
Westfield Academy cover
- 395 ☒ 3c Dull Red, (26). Tied **Lewisburgh, Pa.** to cover with **University at**
Lewisburg Corner card, Fine
- 396 ☒ 3c Red (26). Tied with Andover, Mass. pmk, on illustr. **Phillips Academy**
cover, Very Fine
- 397 ☒ 3c Red (26). Tied, reverse of cover shows all over **Scenic View of Pitts-**
burg Water Cure, includes **Locomotive, Steamboat**, V. F.
- 398 ☒ 3c Red (26). Tied **5 Line, Recut** in upper left triangle, Fine
- 399 ☒ 3c Red (26). Tied, Variety "**5 lines recut upper left triangle**", Fine
- 400 ☒ 3c Red (26). The rare **5 Line Recut** in upper left triangle, Chase Type D,
tied, V. G.
- 401 ☒ 3c Red, 10c Green Strip of 3 (26, 35). Left stamp has str. edge, tied with
red grids on cover to New So. Wales, various transit markings including
Sydney Ship Letter, Fine
- 402 ☒ 3c Red, 3c Rose (26, 65). Both tied on cover front with **North Edgecomb**,
Me. pmks, scarce combination usage, Fine
- 403 ☒ 3c Red, 3c Buff Entire (26, U10). Two covers, each has light **Copper**
Mines, Polk Co. Ten., pmk.
- 404 ☒ 3c Red (26). Two covers, each has example of **Cracked Plate**, 1L24, Fine
- 405 ☒ 3c Red (26). Two diff. tied, each shows diff. **Cracked Plate** Fine-V. F.
- 406 ☒ 3c Red (26). Three diff. Tied, all have **1 line recut upper left triangle**, V. F.
- 407 ☒ 3c Red (26). Two covers, each tied on illustr. **School** cover, Fine
- 408 ☒ 3c Red (26). Four diff. tied, **Advertised, Drop, Jan. 30, Due 1 cent** mark-
ings, all have unnoticeable faults
- 409 ☒ 3c Red, Ty. II, IIa (26, 26a). Four diff, all tied, all have **Recut Inner**
Lines, Fine-V. F.
- 410 ☒ 3c Red (26). Five diff. tied, all have **Way, Steam, or Steamboat** markings,
V. G.-Fine
- 411 ☒ 3c Red (26). Six diff. tied, all show **Double Transfer**, Fine-V. F.
- 412 ☒ 3c Red (26). Six diff., each with **1 line recut upper left triangle**, V. G.-
V. F.
- 413 ☒ 3c Red (26). Six diff., all show **Double Transfer**, one ms. pmk, V. G.-V. F.
- 414 ☒ 3c Red (26). Seven tied by **targets** from diff. **Towns**, Fine-V. F.

- 2 ✓ 415 ☒ 3c Red (26). Seven diff. tied, all show **Double Transfers**, Fine —
- 2 ✓ 416 ☒ 3c Red (26). Seven diff. showing **Multiple Rates of Use**, from 2 to 7 stamps on each, 3 are legal size, V. G.-V. F. —
- 750 417 ☒ 3c Red (26). Eight diff. tied, all show diff. **Engravers Slip**, Fine-V. F. —
- 1 ✓ 418 ☒ 3c Red (26). Eight diff. tied by unusual grid pmks, Fine-V. F. —
- 650 419 ☒ 3c Red (26). Eight diff. attractive **advertising** covers, V. G.-Fine —
- 450 420 ☒ 3c Red (26). Eight diff. mostly tied, all have **Green** pmks, Fine-V. F. —
- 1 ✓ 421 ☒ 3c Red (26). Nine diff. selected for interesting Grid pmks, Fine-V. F. —
- 475 422 ☒ 3c Red (26). Ten diff., all tied by **Red Town or Grid** pmk, Fine-V. F. —
- 3 ✓ 423 ☒ 3c Red (26). Ten diff., all are **Forwarded** covers, V. G.-Fine —
- 2 ✓ 424 ☒ 3c Red (26). Twelve diff. cancelled by small dotted **Grids** or **Pinwheels**, Fine —
- 2 ✓ 425 ☒ 3c Red (26). Thirteen diff. tied, all have **Double Circle Town pmks**, Fine-V. F. —
- 2 ✓ 426 ☒ 3c Red (26). Fourteen diff., mostly tied by **Paid** pmks, V. G.-V. F. —
- 425 427 ☒ 3c Red (26). Fourteen diff. tied, all are **Embossed Ladies** or **Mourning Covers**, Fine-V. F. —
- 1450 428 ☒ 3c Red (26). Fourteen diff. tied, all have diff. plate flaws, includes **Queue, Cheek, Neck Flaws, Double Transfers, etc.**, V. G.-V. F. —
- 425 429 ☒ 3c Red (26). Fifteen mostly diff. **Hotel Covers**, nearly all tied, imprints mostly on reverse, Fair-Fine —
- 625 430 ☒ 3c Red (26). Sixteen diff. tied, all show **Imprints** Fine-V. F. —
- 650 431 ☒ 3c Red (26). Seventeen diff., all have **Imprint copies**, Fine-V. F. —
- 3 ✓ 432 ☒ 3c Red (26). Twenty-one diff. tied by interesting or unusual grid pmks, V. G.-V. F. —
- 875 433 ☒ 3c Red (26). Twenty-three diff. tied, all have **Imprint** copy, V. G.-V. F. —
- 825 434 ☒ 3c Red (26). Twenty-six mostly diff. illustrated advertising covers, few are fronts, Good-Fine —
- 850 435 ☒ 3c Red (26). Thirty-three diff., tied, interesting pmks including **Ud. States, Ultramarine, Canton Star, Paid, Oval**, V. G.-V. F. —
- 7 ✓ 436 ☒ 3c Red (26). Thirty-six diff. selected for pmks, includes **Green, Free, Rail Road, Year dates, Star**, few are Fronts, Fair-Fine —
- 2350 437 ☒ 3c Red (26). Eighty diff. all tied, most have interesting Plate varieties, V. G.-V. F. —
- 425 438 ☒ 3c Red (26). Cancelled by Fancy **Grid Rectangle**, Fine —
- 450 439 ☒ 3c Red (26). Five Lines Recut Upper Left Triangle, V. F. —



RECORDED
APR 15
1854

16

RECORDED
APR 15
1854

26

37

Miss, Eliza, Newark,
Pittsboro,
Ches.

RECORDED
APR 15
1854

53

W. Lambson

16



54

Miss Pilkington Brothers & Co



Cam & Wm

140



Robert M Hall Esq
Westfield

Postman
for Boston

55



Miss Pilkington Bros & Co
Blackburn



78

Mr. B

141



Mr J. M. Blackwell
and Mr. G.



144

143



Mr Wm F. Markham
Yickburg

146

W. H. Pindgash
Perry, D.C.



156

Mr. S. H. Hancher Esq
Hawthorn
H. H.



for. Italy by
P.M.
Mr. Corydon
by
Inde.

593



483

Ms

482



Mr. G. J. Forten

481



W. D. Wheat

TO THE PENNY POST CO.

503

PENNY-POSTAGE PAID, 7.



S. M. Collins Esq
Lake Avenue, Washington, D.C.
Front - Street
Near California
San Francisco, CALIFORNIA.

506



Mr M Westmorland
Sandat Magna
Walsfield
Yorkshire
England



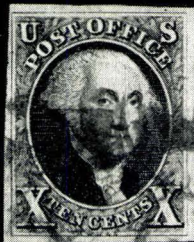
49



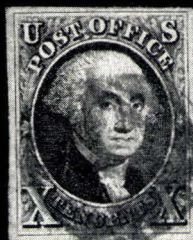
50



51



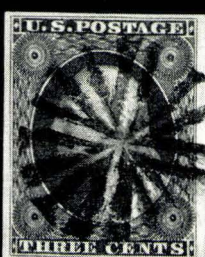
56



57



118



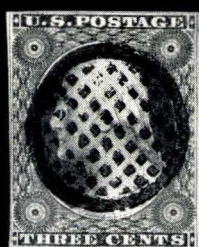
119



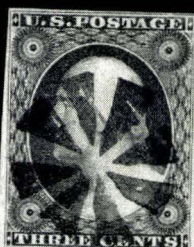
121



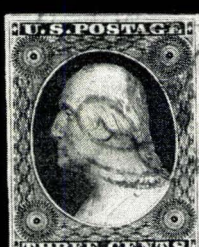
122



123



124



125



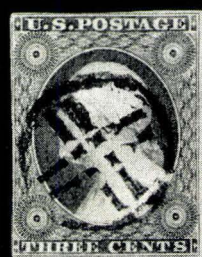
128



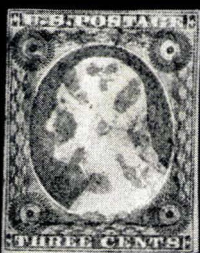
254



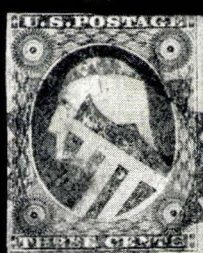
255



260



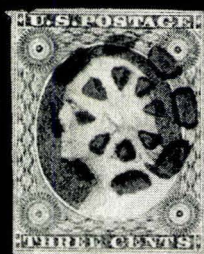
261



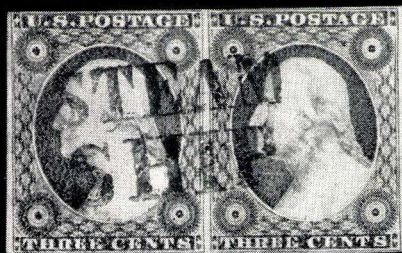
262



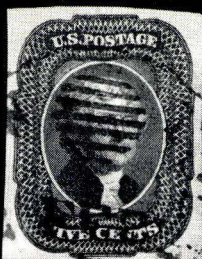
263



264



270



374



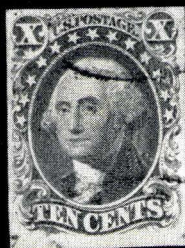
375



377



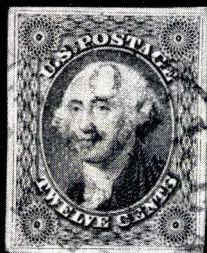
378



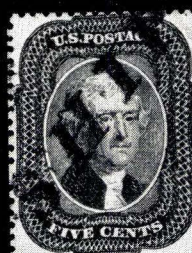
379



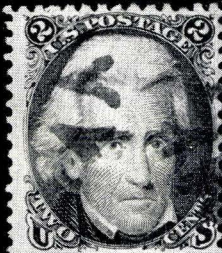
380



382



473



690



692



698



699



700



260



711



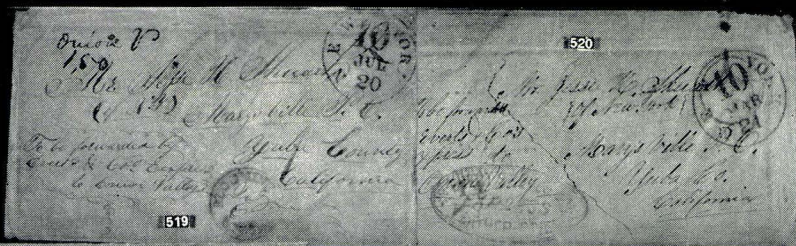
713



731



732



PAID
WHEELER, RUTHERFORD & CO'S
EXPRESS

575



576

PAID
TRUMAN & CO'S
EXPRESS



606

Mr David McKay

John Ward

Carroll

ALASKA PACIFIC EXPRESS CO

588



Don Douglas, Andy Tullon

GEORGETOWN
NEW ORLEANS

604



610



611

PAID

Deft & mny 820 24

605



Mr Wm H. King

Mr Wm H. King

Mrs. Buchanan Carroll

New Orleans



613



632



PAID

633



614



D. C. Clark & Co

640

PAID

PAID

634



Standard Monthly Price List

Month	Price
Jan	1.00
Feb	1.00
Mar	1.00
Apr	1.00
May	1.00
Jun	1.00
Jul	1.00
Aug	1.00
Sep	1.00
Oct	1.00
Nov	1.00
Dec	1.00

PAID

PAID



Mr. Roland Wells



667



Mr. A. W. Cushing

665



666



Mr. Wm. H. C. Cushing

679



G. W. Cushing

Providence



Mr. Wm. H. C. Cushing

Lowell

Mass

Box 1000



Mr. Wm. H. C. Cushing

"ALMS"

Zeal - "Uncle Sam will be glad to see you"



Jeff's March on Washington

His courage kept up to the "sticking point"

674

677



689



712

Mr. Wm. H. C. Cushing



705

Mr. Wm. H. C. Cushing

U. S. Davis

Baltimore

737



Mr. Wm. H. C. Cushing

Cambridge

Northampton

Mass

440		3c Red (26). Cracked Plate, 1L24, Very Fine	—
441		3c Red (26). Two shades, each show Cracked Plate, 1L24, Fine	—
442		3c Red (26). Five diff., 4 have Recut Triangles, 1 has Recut Inner Line V. G.—Fine	—
443		3c Red (26). Six diff. with Recuts in Upper Left Triangle, Recuts A—E, G, Very Good—Fine	—
444		3c Red (26). Six copies, all are Creased before Printing, Fine—V. F.	—
445		3c Red (26). Seven diff. Paid, Paid 3 cancels, Fine	—
446		3c Red (26). Nine diff., 5 have Flaws including Neck, Cheek, Pendants, others Recut varieties, V. G.—Fine	—
447		3c Red (26, 26a). Thirteen diff. showing Double Transfers, V. G.—Fine	—
448		3c Red (26). Thirteen diff, Imprint copies from plates 15, 18, 25, 26, V. G.—V. F.	—
449		3c Red (26). Fifteen diff. Imprint copies from Pl. 9, 16, 27, Fair—V. F.	—
450		3c Red (26). Twenty diff. selected for cancels, includes Free, Steamboat, Green, Clipper Ship, Fine—V. F.	—
451		3c Red (26). Twenty-two diff. Imprint copies, V. G.—V. F.	—
452		3c Red (26). Twenty-two selected pmks, includes Dots Target, Year Dates, Fine—V. F.	—
453		3c Red (26). One hundred twenty-one copies in Pairs and Strips, Fair—V. F.	—
454		3c Red (26). Two hundred ninety-six diff. with Date pmks, lacks only 70 of being complete calender, V. G.—V. F.	—
455	☐	3c Red (26). Three Blocks, one is Block of 6, all are defective, 2 have small pieces missing	—
456	☒	3c Red, Ty. IIa (26a). Two tied, one shows Recut Left Inner Line, other Recut Right Inner Line, both from Pl. 10, Fine	—
457	☒	3c Red, Ty. IIa (26a). Four diff., tied, each shows Recut Inner Line, V. G.—V. F.	—
458	☒	3c Red, Ty. IIa (26a). Four diff. with Recut Inner Lines, all from 10, Fine	—
459	☒	3c Red, Ty. IIa (26a). Five diff. tied, all show Double Transfer from Pl. 10—11, Fine—V. F.	—
460	☒	3c Red, Ty. IIa (26a). Twelve diff. tied, all are Plated from Plates 10—11, Fine—V. F.	—
461	☒	3c Red, Ty. IIa (26a). Fourteen stamps, tied to 13 covers, all are plated stamps from Plates 10—11, Fine—V. F.	—
462	☒	3c Red, Ty. IIa (26a). Fifteen diff. tied, all have plated stamp from Plates 10—11, Fine	—

- 75 463 ☒ 3c Red, Ty. IIa (26a). Twenty diff., mostly tied, all from **Plates 10-11**, Fine-V. F. _____
- 42 464 ☒ 3c Red, Ty. IIa (26a). Twenty diff. tied, all from **Plates 10-11**, Fine-V. F. _____
- 15 465 ☒ 3c Red, Ty. IIa (26a). Twenty-six diff. tied, all from **Plates 10-11**, Fine-V. F. _____
- 13 466 ☒ 3c Red, Ty. IIa (26a). Twenty-five diff. from plates 10-11, Fine-V. F. _____
- 75 467 ☒ 3c Red, Ty. IIa (26a). Twenty-six diff. plated copies, V. G.-Fine _____
- 8 468 ☒ 3c Red, Ty. IIa (26a). Thirty diff. plated copies, V. G.-V. F. _____
- 15 469 ☒ 3c Red, Ty. IIa (26a). Fifty copies from plates 10-11, V. G.-V. F. _____
- 15 470 ☒ 3c Red, Ty. IIa (26a). Fifty copies from plates 10-11, V. G.-V. F. _____
- 16 471 ☒ 3c Red, Ty. IIa (26a). Fifty copies from plates 10-11, V. G.-V. F. _____
- 15 472 ☒ 3c Red, Ty. IIa (26a). Sixty diff. from plates 10-11, V. G.-V. F. _____
- 80 473 ☒ 5c Red Brown (28). Bold **Ship** cancel, Very Fine _____ (Photo)
- 10 474 ☒ 5c Red Brown, 10c Green three (28, 33). Short perfs. on each, ms. cancel, to Italy _____
- 12 475 ☒ 5c Brown, Ty. II (30a). Vert. strip of 3 barely tied on cover to Prussia, slightly stained, V. G. _____ 55.00
- 95 476 ☒ 10c Green, Ty. III (33). Red grid cancel, Very Fine _____
- 60 477 ☒ 10c Green (35). On embossed **Lincoln & Hamlin Campaign** cover Winchester, Ill. pmk on cover to Wash. Terr. V. G. _____
- 30 478 ☒ 10c Green pair & single, 12c Black (35-36). Partly tied on cover to Sweden Fine _____
- 42 479 ☒ 10c Green, Ty. V (35). Vert. Pair, town cancel and red boxed PD, perfs in at R _____
- 35 480 ☒ 24c Lilac (37). Tied with red grid and black **Cincinnati, O.**, pmk. to London, Fine _____ (Photo) 85.00
- 49 481 ☒ 30c Orange (38). Tied on cover with grid and **Little Rock, Ark.** pmk. to Germany, Fine _____ (Photo) 100.00

TERRITORIAL COVERS

- 21 482 ☒ 3c Brownish Carmine (11). Tied **Leavenworth City, K. T.**, V. F. (Photo) _____
- 17 483 ☒ 3c Dull Red (11). Tied **Lawrence, K. T.**, V. F. _____ (Photo)
- 47 484 ☒ 3c Dull Red (11). Neat strike **St. Anthonys Falls, M. T. 1856** pmk. on small cover, Fine _____
- 70 485 ☒ 3c Red (25). Tied with clear **Red Wing, M. T.** pmk., cover bit stained _____

- 2105
- 486 ☒ 1c Blue, 2c Black (63, 73). Grid and Ms. cancels, **Florence City, Idaho** pmk. V. G. _____
- 486A ☒ 3c Rose (65). Ms. Chelma pmk. addressed to Central City C.I. on small **Patriotic** cover, V. G. _____
- 487 ☒ 3c Ultramarine (114). Tied **Bowen's Prairie, Ida.** pmk. Fine territorial _____ 200/-
- 488 ☒ 2c Carmine, 3c Green (208, 267, 301). Three **Arizona** territorials Fairbanks, Fort Defiance, Jerome V. G.-V. F. _____ 350/-
- 489 ☒ 2c Green (213). Tied with **Arland, Wyo.** pmk. V. F. Terr. _____
- 490 ☒ 8c Violet Brown, 2c Carmine Entire (272, U362). Tied to Registered cover by str. line **Nome, Alaska** pmk., V. F. _____
- 491 ☒ 3c Pink Entire (U59). **Diamond City, Mont.** pmk. V. F. _____
- 492 ☒ 3c Green Entire (U82). **American Flag, Ariz.** pmk. V. F. _____
- 493 ☒ Territorial Covers, 4 diff., including **Ponco, Ind. T., Ochelata, Ind. T., Bismark, Dak.** Fine _____

WESTERN COVERS (CALIFORNIA)

- 494 ☒ **Benicia, Cal.,** Paid 3 to San Francisco, Fine _____
- 495 ☒ **Marysville Cal. 10.** In blue circle on small attractive hand colored embossed envelope, Ms. "Rush Creek, June 18, 1853" on back, V. F. _____
- 496 ☒ **Marysville, Cal. 10.** In blue circle, letter dated Rush Creek, May 29, 1853, Fine _____
- 497 ☒ **New York 40.** In red circle with curved Paid underneath to San Francisco, Fine _____
- 498 ☒ **San Francisco, Cal.** pmk. Ship 6 in scroll, from Hong Kong, V. F. _____
- 499 ☒ **San Francisco 40, Apr. 20.** In red circle, Ms. "Steamer Tennessee", Fine _____
- 500 ☒ **San Francisco, Cal. Oct. 26, 1860** in circle, "21" and Swiss cancel, originated from Geneva, V. F. _____
- 501 ☒ **San Jose, Cal.,** "10" both in red, Fine _____
- 502 ☒ 3c Dull Red (11). Bot. Sheet margin stamp tied **Greenwood, Cal.,** local usage, stamp is triple transfer, 92L2L, Fine _____
- 503 ☒ 3c Dull Red (11, 34LU11). **The Penny Post Co. Penny-Postage Paid 7,** tied, **Penny Post Co. Sacramento,** cover restored from two halves (Photo) _____
- 504 ☒ 3c Red (26). Tied **San Jose, Cal.** pmk. to Cache Creek, Cal. Fine _____
- 505 ☒ 10c Green (35). Ms. cancel ties, red Boston pmk. to San Francisco, in shield "Forwarded By **Edward T. Hall Jr.,**" cover repaired _____

- 64 506 ☒ **24c Red Lilac (70).** Tied San Francisco cog wheel, **Victoria Vancouver Is. Post Office Paid** in blue oval, New York & Liverpool transit markings to England, Very Fine **(Photo)**
- 75 507 ☒ **2c-3c, 1870-86 Issues.** 7 covers **Calif.** pmks. Boulder Creek, Los Gatos, Santa Clara, Santa Cruz, Dem. & Los Ang. Agt., V.G.-V.F.
- 52 508 ☒ **2c-3c 1870-87 Period,** Four **Colorado** covers Argo, Del Norte, Leadville, Pueblo pmks. Fine
- 22 509 ☒ **2c Carmine (267).** Tied Star cancel on illustr. Hotel cover from **Talac, Cal.,** also two postal cards of later issues, Fine
- 16 510 ☒ **2c 1898 Issue (279B, 286).** Six diff. scenes covering entire face of covers, all tied from **San Francisco,** Fine and unusual lot
- 12 511 ☒ **10c Green Entire (U16).** Ms. cancel "**Milpitas, Cal.** April 1, 1856", V.G.
- 8 512 ☒ **10c Green Entire (U18).** Tied **red San Jose, Cal.,** pmk. in Ms. "Forward me without delay. Clap on the steam you've got your pay" Fine
- 62 513 ☒ **2c Green Entire (U311).** Unused illustr. cover showing **Railroad and Map** of San Joaquin Valley, V.F.
- 17 514 ☒ **2c-3c Entires.** 15 covers with **California** pmks, all 19th includes 6 Wells Fargo franks, V.G.-V.F.
- 3 515 ☒ **San Jose, Calif.,** 25 diff. unused, illustrated covers, mostly Rose Carnivals, 1896-1910 period, V.F.
- 31 516 ☒ **Illustrated Mining Letter Sheet** from San Andres, 1855, "How the California Mines Are Worked", V.F. with letter

WESTERN EXPRESS COVERS

- 105 517 ☒ **Adams & Co. San Francisco,** in blue circle, Paid in octagon, Fine
- 6 518 ☒ **Adams Express Sacramento,** faint strike, boxed Paid, to Onion Valley, franked "E. T. Peck, Senate"
- 100 519 ☒ **Davis & Brothers Express,** in oval, New York 10 and Blooming Point, N. Y. pmks, in Ms. "To be forwarded by Everts & Co. Express to Onion Valley", also "Onion V. 1.50", cover is addressed to Marysville, Fine, Rare **(Photo)**
- 77 520 ☒ **Evert Snell & Cos. Feather River Express** in black oval, New York 10 and Montgomery, N. Y. pmks, to Marysville, Calif. in Ms. "To be forwarded by Everts & Cos. Express to Onion Valley" and "O. V. 1.50", Fine, Rare **(Photo)**
- 82 521 ☒ **Evert Snell & Cos. Feather River Express** in blue oval red Newburgh, N. Y. pmk and "10" to Marysville, Calif. in Ms. "To be forwarded by Everts & Co. Express to Onion Valley" and "O. V. 1.50", Fine, Rare **(Photo)**

- 522 ☒ **Everts Snell & Cos. Feather River Express**, in blue oval on back of cover, diff. type without rosettes in oval **Marysville, Cal. 10** blue pmk. on front to Plattekill N. Y., Fine, Rare (Photo)
- 523 ☒ **Elmira, Montgomery Newburgh, New York 20** pmks, four covers all addressed to same party at Marysville, Each has Ms. "to be forwarded by Everts & Co. Express to Onion Valley" and "O. V. 1.50"
- 524 ☒ **Gregory's Express**, blue str. line "Not Paid" in oval, Fine (Photo)
- 525 ☒ **Pacific Express Co. Watsonville**, in large oval, V. F. (Photo)
- 526 ☒ **Pacific Express Yankee Jims** in red oval "Paid" in oval, to Sacramento, Fine
- 527 ☒ **Reynolds & Co. Express Stockton & San Francisco with Sonora** in middle of oval, "Not Paid" in oval, Very Fine (Photo)
- 528 ☒ **Wells Fargo & Cos. Marysville Express** in blue oval, V. F. (Photo)
- 529 ☒ **3c Dull Red (11). Wells Fargo** frank, tied **Oroville and Marysville Co.** cancels, cover slightly stained, V. G.
- 530 ☒ **3c Rose (65). J. Bamber & Cos. Contra Costa Express Paid** in oval, tied boxed Paid and Wells Fargo Sac. Messenger cancels to Jackson, V. F. (Photo)
- 531 ☒ **3c Rose Pair on 3c Entire (65, U35)**, Tied with **Wells Fargo Express New York** pmks. to San Francisco, Fine
- 532 ☒ **3c Rose on 3c Pink Entire (65, U59). Pacific Union Express** frank co. ties and **Virginia City, Nev.** pmk., stamp defective, V. F. cover
- 533 ☒ **2c Carmine (220)**. Tied on cover with **River Express Co.** Stockton, Cal. imprint on front and back, listing various Calif. Offices, Fine
- 534 ☒ **3c Red Entire (U9). Alta Express Co.** frank, tied **Sutter Creek** co. cancel V. F. (Photo)
- 535 ☒ **3c Red Entire (U9). Wells Fargo** frank, Sonora Co. cancel ties, V. F.
- 536 ☒ **3c Red Entire (U10). Alta Express Co. frank, Ms. Greenwood** cancel, V. F. (Photo)
- 537 ☒ **3c Red Entire (U10). Alta Express Co. frank, tied Marysville** co. cancel, V. F. (Photo)
- 538 ☒ **3c Red Entire (U10). Alta Express Co. frank, tied by red co. cancel** V. F. (Photo)
- 539 ☒ **3c Red Entire (U10). J. Bamber & Cos. Contra Costa Express Paid** in oval, corner slightly foxed, clear marking
- 540 ☒ **3c Red Entire (U10). J. Bamber & Co's Contra Costa Express Paid** in oval, cover cut in at L
- 541 ☒ **3c Red Entire (U10). J. Bamber & Cos. Contra Costa Express Paid** in oval, also boxed **Answer By Bamber**, Very fine (Photo)

- 14- 542 ☒ 3c Red Entire (U10). Same marking as above, V.F. -----
- 9- 543 ☒ 3c Red Entire (U10). Freeman & Co's Express frank tied by San Francisco Co. cancel, cut in slightly at R. V. G. -----
- 23- 544 ☒ 3c Red Entire (U10) Langton's Pioneer Express frank, tied Wells Fargo Marysville cancel, V.F. ----- (Photo)
- 4250 545 ☒ 3c Red Entire (U10). Pacific Express Co. frank, red Fiddletown co. cancel, V.F. ----- (Photo)
- 1050 546 ☒ 3c Red Entire (U10). Pacific Express frank with Horseman, San Francisco co. cancel, small nick at right, V. G. -----
- 1550 547 ☒ 3c Red Entire (U10). Swift & Co. Express frank, addressed and used, no markings, Fine -----
- 12- 548 ☒ 3c Red Entire (U10). Wells Fargo Over our Calif. & Coast Routes frank, Marysville co. cancel, V.F. -----
- 65- 549 ☒ 3c Red Entire (U10). G. H. Wines & Co. California Express frank, Pacific Express Sacramento cancel to White Sulphur Springs, repaired at B ----- (Photo)
- 950 550 ☒ 3c Red Entire (U27). Wells Fargo frank, freak double strike of frank, tied co. cancel, V.F. -----
- 650 551 ☒ 3c Pink Entire (U34). J. Bamber & Co. Contra Coast Express Paid in red oval, tied red co. cancel, cover repaired, clear markings -----
- 650 552 ☒ 3c Pink Entire (U35). Bamber — Cos. Express frank, red co. cancel ties, Fine -----
- 1250 553 ☒ 3c Pink Entire (U35). Langton's Pioneer Express frank, Dounieville co. cancel, and Wells Fargo Marysville cancel, Fine -----
- 100- 554 ☒ 3c Pink Entire (U35). Wells Fargo Boise Mines—Paid 50Cts. frank, tied "Pl. Ville Boise, I. T." co. cancel. Very Fine ----- (Photo)
- 36- 555 ☒ 3c Pink Entire (U35). Wells Fargo frank, boxed "Salmon River & Nez Perces Express Paid 50 Cents", tied Florence co. cancel, cut in slightly at left ----- (Photo)
- 19- 556 ☒ 3c Pink Entire (U35). Wells Fargo frank, Victoria Co. cancel, in blue oval Post Office, Victoria, V. I., Fine -----
- 13- 557 ☒ 3c Entires (U35, U59, U82-83). Five Wells Fargo franks, Co. cancels includes San Jose, Cordelia, Los Angeles, Virginia City, N. T., V. G.—Fine -----
- 950 558 ☒ 10c Green Entire (U41). Wells Fargo frank, tied New York co. cancel, to San Francisco, V.F. -----
- 550 559 ☒ 3c Pink Entire (U58). Pacific Union Express frank, on advert. cover of Pacific Exchange, Watsonville, faint co. cancel ties -----
- 9- 560 ☒ 3c Pink Entire (U58). Truman & Co's Express frank with illustr. Railroad, Ms. Bloomfield cancel, Fine -----

- 561 ☒ 3c Pink Entire (U58). Whiting & Co's. Feather River Express frank, light Co. cancel. V. G. (Photo)
- 562 ☒ 3c Pink Entire (U58-59). Pacific Union Express franks, two includes Grass Valley adv. imprint, Co. cancels tie, V. G.
- 563 ☒ 3c Pink, Green Entire (U58, U84). Bamber & Co's Express franks, tied co. cancels, V. G.
- 564 ☒ 2c, 3c, 6c Entire (U58-59, U181, U312). All with Wells Fargo franks, includes Advertising, Ms. Brighton, Cal. and Messenger, Fine-V. F.
- 565 ☒ 3c Pink Entire (U59) Bamber & Co's Express frank, tied co. marking, Fine
- 566 ☒ 3c Pink Entire (U59). Bamber & Co's Express frank, Co. cancel ties, V. F.
- 567 ☒ 3c Pink Entire (U59). Bamber & Cos. W.B. Hardys Office Oakland frank, Bammers & Wells Fargo co. cancels, to Virginia City, V. F.
- 568 ☒ 3c Pink Entire (U59). Bamber & Co's Express, W.B. Hardy's Office, Oakland frank, faint Co. cancel, diff. type frank than above
- 569 ☒ 3c Pink Entire (U59). Holladay Overland Mail & Express Co. frank, tied New York pmk. addressed to L.T. Zander, Wells Fargo Office, San Francisco, Fine (Photo)
- 570 ☒ 3c Pink Entire (U59). Langton's Pioneer Express frank, French Corral in black oval, Wells Fargo Marysville cancel to Folsom, Fine (Photo)
- 571 ☒ 3c Pink Entire (U59). Pacific Union Express Co. frank, Co. cancel ties, Fine
- 572 ☒ 3c Pink Entire (U59). Tinnin & Owens Weaverville & Shasta Express frank, V. F. unused
- 573 ☒ 3c Pink Entire (U59). Truman & Co's Express, S. F. & J. R. R. Express frank, Ms. "S. J. 31-1-68" cancel, V. F. (Photo)
- 574 ☒ 3c Pink Entire (U59). L. H. Wells Moore's Flat & Eureka Express frank, V. F. unused
- 575 ☒ 3c Pink Entire (U59) Wheeler, Rutherford & Co's Express frank, La-porte co. cancel, also Wells Fargo Marysville cancel, slightly repaired (Photo)
- 576 ☒ 6c Pink Entire (U62). La Porte Express Co. frank, V. F. unused
- 577 ☒ 6c Pink Entire (U62). Pacific Union Express franks, two unused, diff. shades. Fine-V. F.
- 578 ☒ 6c Pink Entire (U63). Wells Fargo frank over Pacific Union Express frank, V. F. unused
- 579 ☒ 3c, 6c Entire (U63, U83). Bamber & Co. Express franks, Fine-V. F. unused
- 580 ☒ 24c Blue, 30c Green Entire (U71-U72). Wells Fargo franks, V. F. unused

- 17- 581 ☒ 3c Green Entire (U82). Elko & Mountain City Pony Express, M.P. Freeman & Co. Prop's. Paid One Dollar, & Wells Fargo franks, unused, V.F.
- 10- 582 ☒ 3c Green Entire (U82). Raum's Ruby Hill, Schellburn & Rubyville Express frank, Fine unused
- 4- 583 ☒ 3c Green Entire (U82). Wells Fargo frank, Virginia City, co. cancel, Fine
- 6- 584 ☒ 3c Green Entire (U82). Wells Fargo frank, Salt Lake City, U.T. co. cancel, Fine
- 8- 585 ☒ 10c Dark Brown Entire (U92a). Wells Fargo Paid over our Mexican Coast & Calif. Express - 35Cts. frank, co. cancel ties, Pac. Cent .R.R. pmk. V.F.
- 7- 586 ☒ 5c Brown Entire (U222). Wells Fargo Hawaii frank, tied San Francisco Co. cancel to San Jose, repaired at R. side
- 6- 587 ☒ 4c Green Entire (U250-51, U255, U259). Northern Pacific Express Co. franks, Fine-V.F. unused
- 5750 588 ☒ 2c Green Entire (U311). Alaska Pacific Express Co. frank, tied — & Skaway R. P.O. pmk. Fine (Photo)
- 25- 589 ☒ 2c Green Entire (U311) River Express Stockton & San Francisco frank, V.F. unused
- 7- 590 ☒ 2c Columbian Entire (U349). Eureka Express Co. frank, V.F. unused
- 11- 591 ☒ 2c-3c Entire. Five Wells Fargo franks, includes Messenger ,str. line Transferred at Colfax, Cal. Collect 2cts. Fine-V.F.
- 29- 592 ☒ 2c-30c Entire 1861-94 Issues, 26 covers all with Wells Fargo franks, Very Fine unused
- 10- 593 ☒ 4c, 10c Entire, 1870-94 Issues, 16 covers all with Mexican Wells Fargo franks, also 4 without stamps, V.F. unused
- 550 594 ☒ Wells Fargo Hawaii franks on 10c Brown Entire U190 and on Hawaii 10c Black Hawaii Entire U5, Very Fine unused
- 7- 595 ☒ Mexican Wells Fargo franks, 9 covers all diff. all tied by Co. cancels. but one, Fine lot
- 7- 596 ☒ Pacific Stage & Express Co. frank with Stagecoach, V.F. unused
- 425 597 ☒ Thomas & Skadan's Express, Susanville & Reno Connecting with Wells Fargo & Co. frank on two diff color envelopes, unused V.F.
- 850 598 ☒ San Francisco Letter Express with Horseman, unused cover, V.F.
- 7- 599 ☒ British Columbian Express frank, unused V.F.
- 400 600 ☒ Wells Fargo Express Labels on 4 legal size covers, 3 from San Francisco other Mok. Hill.

601 Wells Fargo Seals, 48 mostly diff., nearly all Calif. or Western towns, includes a Levy Bros. and a River Express, interesting lot

602 La Porte Express Co., Wheelers Express handstamps on 2 diff. deeds, Whiting & Cos Express Commission Envelope, also one of Wells Fargo, interesting lot

END OF FIRST SESSION

SECOND SESSION

THURSDAY, FEBRUARY 24th, 1955 — 7:30 P.M.

PACKET BOAT MARKINGS

603 ☒ 3c Imperforate (11). Two, first red oval Steamer Princess, No. 3, last red oval Steamer Mohawk, Packet Markings, covers slightly repaired, V. G.

604 ☒ 3c Red Entire (U10). In red oval "From Geo. D. Hite, New Orleans" V. F. (Photo)

605 ☒ 3c Red Entire (U10). Fancy blue oval Steamer Piota, Very Fine

606 ☒ 3c Red Entire (U10). Tied blue oval Route 7309, in Ms. "Princess' V. F. (Photo)

607 ☒ 3c Pink Entire (U59). In Blue oval Steamer Frank Pargoud, Fine

608 ☒ 3c Pink Entire (U59). In blue oval New Orleans & Grand Ecore Weekly Packet Frolic, Fine

RAILROAD COVERS

609 ☒ 3c Orange Brown (10). Tied by Blue Concord & Montreal R.R. pmk, Very Fine

610 ☒ 3c Dull Red (11). Tied by Very Fine strike of Atlantic & St. Lawrence R.R., additional pmk, dated next day also on cover, unusual (Photo)

611 ☒ 3c Dull Red (11). Tied red grid to cover pmk. red Boston & Maine R.R., Fine (Photo)

612 ☒ 3c Dull Red (11). Tied by Virginia Central R.R. pmk, Fine

32	613	3c Brownish Carmine (11). Tied by superb strike of Buffalo & N. Y. City R. R. (Photo)	—
65	614	3c Dull Red (11). Tied Vermt. & Massts R. R., Fine (Photo)	—
95	615	3c Dull Red (11). Tied by Harlam R. R. pmk, Fine	—
10	616	3c Dull Red (11). Tied N. York & Harlam, R. R., Fine	—
105	617	3c Brownish Carmine (11). Tied New York & Erie R. R. Very Fine	—
75	618	3c Brownish Carmine (11). Tied blue Eastern R. R., V. F.	—
21	619	3c Dull Red (11). Margins all around, tied Toledo, Norwalk, & Cleveland, R. R., V. F.	—
115	620	3c Dull Red (11). Two, tied Augusta & Atlantic R. R. and Concord & Montreal R. R., V. G.	—
375	621	3c Dull Red (11). Two covers(each tied by diff. Eastern R. R. pmk, Fine-V. F.	—
17	622	3c Imperforate (11). Six all tied, each has diff. Rail Road pmk, Fine	—
12	623	3c Red (26). Tied N. Y. & Boston Stmb. & R. R. R., Very Fine	—
11	624	3c Red (26). Five diff., all have diff. Rail Road pmk, includes N. York & Erie R. R., N. O. & Vicksburgh R. R. Very Good	—
25	625	3c Rose (65). Cancelled but not tied on cover with clear "Bost. & Cape Cod R. R." pmk. on cover, New Bedford, backstamp	—
9	626	2c-3c Entires. 19th Century, 8 diff. Railroad cancels, Fine	—

1861 ISSUE

650	627	1c Blue (63). 3 covers all tied, first has 3 singles, Fine-V. F.	—
10	628	1c Blue (63). Twelve copies on 6 covers, includes Carrier usage, Fair-Fine	21.00
1650	629	1c Blue (63). Fourteen copies includes reds, paid, Paid 3, pairs, strip, paper fold, V. G.-V. F.	31.25
14	630	1c Blue, 10c Green (63, 68). From New York to San Francisco, Fine	—
115	631	1c Blue, 10c Green two, 24c Lilac (63, 68, 78). Tied on cover to Brazil, V. G.	—
25	632	3c Rose (65). Tied with neat 5c Coin cancel, Marshall, Mich. pmk. on cover, small closed tear in cover, V. F. strike (Photo)	—
175	633	3c Rose (65). Tied with neat Shield cancel on adv. cover from Paterson, N. J. V. F. (Photo)	—
850	634	3c Rose (65). Tied with large negative 4 from Brooklyn, V. F. (Photo)	—
850	635	3c Rose (65). Tied Alberion, Howard Co. Md. pmk. Fine	—
25	636	3c Rose (65). Tied with Cambridgeport, Mass. fancy Propeller Grid on cover, Fine	—

50 637	✖	3c Rose (65). Tied Aurora, Ill. 3 Leaf Clover cancel on cover, Fine	—
75 638	✖	3c Rose (65). Tied with blue Hour Glass in box in circle, Hobbs Station, Ky. pmk. V. F.	—
75 639	✖	3c Rose (65). Tied with Fort Pickens, Fla. Jun. 23, 1862 pmk. on cover, Fine	—
50 640	✖	3c Rose (65). Tied on adv. cover showing Calendar of 1866, V. F. (Photo)	—
75 641	✖	3c Rose (65). Tied Elmira, N. Y. on cover, oval Prisoners Letter Examined Elmira, N. Y., Fine	—
75 642	✖	3c Rose (65). Grid cancel, Camp Dennison, O. pmk. and Greensburg, O. receiving pmk. Fine	—
75 643	✖	3c Rose (65). Tied on Campaign cover, Lincoln & Johnson, V. G.	—
75 644	✖	3c Rose (65). On attractive illustrated Grant & Colfax Campaign cover, stamp slightly clipped at R	—
75 645	✖	3c Rose (65). Grid cancel not tied on illustr. Grant & Colfax campaign cover, clear "S. & B. T. R. R." pmk.	—
75 646	✖	3c Rose (65). Tied from New Haven, Fraternity illustr. corner card shows Owl, Pair of Dice, 1866, Fine	—
75 647	✖	3c Rose (65). Two tied to forwarded illustrated Phillips "66" cover, Fine	—
75 648	✖	3c Rose (65). Tied, Petroleum Centre, Pa. pmk. on cover with corner card, Fine	—
75 649	✖	3c Rose (65). Seventeen covers interesting and fancy cancels, V. G.-V. F.	—
75 650		3c Rose (65). Negative Anchor cancel, Fine	—
75 651		3c Rose (65). Black Masonic Trowel in circle pmk., Very Good	—
75 652		3c Rose (65). Two, diff. Shield pmks, Fine	—
75 653		3c Rose (65). Three letter cancels L, P, R, Fine-V. F.	—
75 654		3c Rose (65). Eighteen diff. fancy cancels, Very Fine	—
75 655		3c Rose (65). Twenty-nine diff. cancels, includes Pine Tree U. S., Mono-gram, Olive, Stars, Paids, Good-Fine	—
75 656		3c Rose (65). Mounted collection of 325 stamps and 24 covers, includes shades, multiples, fancy cancels, imprints, varieties, interesting lot	—
75 657		10c Green, 5c Brown (68, 76). Eight stamps, interesting and fancy cancels, V. G.-V. F.	23.25
75 658		12c Black (69). Large black French Star of Dots, Fine	—
75 659	✖	12c Black, 15c Black (69, 77). Tied on covers to France, Fine	25.00
75 660	✖	12c Black, 15c Black (69, 98). Tied on covers to Europe, first has B. F. Stevens U. S. Despatch Agent marking, V. G.	22.50
75 661		5c Red Brown (75). Neat Cross cancel, small thin, V. F. appearance	17.50

- 21-662 ☒ 5c Brown, 24c Lilac two (76, 78). Tied on cover to **Shanghai, China**, various transit markings, Fine 27.50
- 8-663 ☒ 15c Black (77, 98). Tied on covers to Europe, various transit markings, Fine 20.00
- 575-664 ☒ 24c Lilac, 24c Gray Lilac (78, a). Tied on two covers, first has str. edge, Fine 20.00

CIVIL WAR PATRIOTIC COVERS

- 21-665 ☒ Washington D.C. pmk. on caricature patriotic "A Polite Invitation", scarce design (Photo)
- 21-666 ☒ 3c Red (26). Tied from Wash. D.C. on caricature patriotic "Jeff Davis Coat of Arms", small tear, scarce design (Photo)
- 18-667 ☒ 3c Dull Red (26). Cancelled with fancy Circle formed of Circles, Stillwater, Minn. pmk. on Patriotic cover, V.F. (Photo)
- 8-668 ☒ 3c Dull Red (26). Tied on cover, Hartford, Conn. pmk. on Advertising Patriotic cover, Very Fine
- 11-669 ☒ 3c Dull Red (26). Tied Peekskill, N. Y. to Patriotic with attractive Eagle, Flags, Drum, V.F.
- Out 670 ☒ 3c Dull Red (26). Blue Paid on stamp, no pmk. on Magnus, Movement of Army From Wash. to Richmond, Scarce design
- 215-670A ☒ 3c Dull Red (26). Damaged stamps tied on neat Caricature Patriotic, "A. L. His Mark" cover
- 6-671 ☒ 3c Dull Red (26). Four diff. Patriotic covers includes, Soldiers Letter and Free Frank M.C., V.G.-Fine
- 10-672 ☒ 3c Red (26). Ten diff. Patriotic Covers, 2 are fronts, Fair-Fine
- 12-673 ☒ 1c Blue, 2c Black (63, 73). Tied with Phila. town pmk. on Patriotic cover front, Arms of Arkansas and State Stars, Attractive
- 25-674 ☒ 3c Rose (65). Tied with clear FLAG cancel on Patriotic cover (Soldiers Dream of Home), Very Fine (Photo)
- 4-675 ☒ 3c Rose (65). Tied on Patriotic cover, Soldier, Camp & N.Y. State Emblem, Fine
- 7-676 ☒ 3c Rose (65). Tied on Patriotic, Battle Scene, Fine
- 16-677 ☒ 3c Rose (65). Tied from Springfield, Mass. on Caricature Patriotic "Jeff's March on Wash." Very Fine (Photo)
- 525-678 ☒ 3c Rose (65). Str. edge copy tied on Patriotic cover, hand drawn design Eagle & Flags, unusual, Fine
- 18-679 ☒ 3c Rose (65). Cancel not tying on Caricature Patriotic, small cover slight stains, Scarce design (Photo)

325	680	3c Rose (65). Tied Wash. D.C. on Patriotic Washington in Shield , Fine	—
5	681	3c Rose (65). Tied on Patriotic, clipped at R. Monitor Ship design	—
325	682	3c Rose (65). Five diff. Patriotic covers all tied, V. G.-V. F.	—
5	683	Patriotic Covers . Ten diff. designs, 8 with stamps, Fair-Fine	—
5	684	Northern Ohio Sanitary Fair , Cleveland, Ohio letter and cover, addressed no stamp or pmk. V. F.	—
25	685	Patriotics , 57 different unused covers, V. F.	—
	686	Patriotic Covers . 115 mostly diff. unused, contains many caricatures, Fine lot	—
50	687	Patriotic Letter Sheets . 8 diff. all with letters from soldiers, attractive lot including Naval and Battle scenes	—
1	688	Patriotic Song & Letter Sheets . 10 diff. of Civil War includes Lincoln, V. F.	—

1867 GRILL ISSUES

3	689	3c Rose Grilled All Over (79). Tied with blue Star and Montgomery, Ala. pmk. well centered and Very Fine for this	(Photo) 100.00
325	690	2c Black, Z Grill (85B). Very Fine	(Photo) 22.50
75	691	3c Rose Grill (88). Cambridge, Mass. Padlock cancel, Fine	—
5	692	3c Red Grill (94). Neat Heart in Shield cancel, V. F.	(Photo) —
	693	3c Rose Grill (94). Pointing Hand cancel, Fine	—
	694	3c Red Grill (94). Tied with Waterbury, Conn. Star , Fine	—
5	695	5c Brown Grill (95). Three copies tied on cover to Holland, V. G.	120.00
25	696	15c Black, 3c Ultramarine (98, 114). Tied on Registered cover, Hanover, Ill. pmk. Fine	—
75	697	15c Black, 3c Ultramarine (98, 114). Cancelled not tied on Registered cover, Hogansburgh, N. Y. pmk. Fine	—
5	698	★ 3c Brown Red Re-issue (104). Very Fine, o. g.	(Photo) 120.00

1869 PICTORIAL ISSUE

75	699	1c Buff (112). Waterbury Leaf cancel, centered to top, Fine strike	(Photo) —
5	700	1c Buff (112). Hollow Star cancel, Fine	(Photo) —
5	701	1c Buff, 2c Brown (112-113). Group of Hearts cancel on first, Red Dot in circle on latter, Fine	—
85	702	1c Buff (112). Strip of 3, str. edge on left stamp, tied Terre Haute, Ind. pmk. Fine-V. F.	25.00

85	703	2c, 3c, 10c Pictorials (113, 114, 116). Two each of 3c and 10c, latter Double Grills all tied on cover to Spain, various transit marks, Fine (Photo)	103.20
485	704	3c Ultramarine (114). Tied with Guilford, Conn. Heart cancel, Fine	—
65	705	3c Ultramarine (114). Tied from Boston on illustr. cover showing Sailing Ship , Fine (Photo)	—
11	706	3c Ultramarine (114). Tied on illustr. cover showing Masonic emblem, Fine	—
12	707	3c Ultramarine (114). Bold Four Hearts cancel, V. F. (Photo)	—
5	708	3c Ultramarine (114). Four Leaf cancels, Fine	—
18	709	3c Ultramarine (114). Thirty-five cancels includes Reds, Stars, Geometrics, Rosettes, Fine lot	—
8	710	10c Yellow (116). Str. edge at L. tied on cover to France, Fine	22.50
10	711	10c Yellow (116). Neat Cog Wheel cancel, Very Fine (Photo)	—
110	712	15c Brown & Blue, 2c Red Brown (119, 146). Strip of 3, L shape of first, each cancelled with large E on legal size cover, Springfield, Ill. pmk. Fine (Photo)	100.30
11	713	30c Blue & Carmine (121). Cog Wheel cancel, Fine (Photo)	—

BANKNOTE ISSUES

525	714	1c-3c Banknotes. 32 covers, interesting and fancy cancels, V. G.-V. F.	—
675	715	2c, 6c, 10c Banknotes, 7 diff. N. Y. Foreign Mails includes Shield, Good-Fine	—
525	716	3c Green. Tied on cover large 76 cancel, Duncannon, Pa. pmk. Fine	—
330	717	3c Green. Tied Waterbury, Conn. Leaf , cancel on cover, Fine	—
425	718	3c Green. Tied on adv. cover with Pumpkin Head cancel, Fine	—
1800	719	3c Green. Unusual scarce cancel Wine Bottle & Glass , clear strike, small tear	—
650	720	3c Green (147). Strip of 3 with N. Y. Foreign Mail Ty. 1 cancels, V. F.	—
16	721	3c Green. Four Kicking Mule cancels, V. G.-Fine	—
13	722	3c Greens. 21 diff. fancy cancels, includes 3 Leaf Clover, Leaf, XIII, Masonic(V. G.-V. F.	—
4	723	3c, 10c, 15c Banknotes (150, 158, 163). Six stamps on 3 covers, V. G.-Fine	—
9	724	6c Banknotes. 20 copies, fancy and interesting cancels, Fine lot	—
5	725	6c, 7c, 15c Banknotes, N. Y. Foreign Mails , 7 diff. types, V. G.-Fine	—
6	726	10c Brown (150). Tied on cover with N. Y. Foreign Mail Ty. 98 , numerous transit markings, Very Fine	—

- 727 ☒ 12c Violet on 3c Entire (151, U82). On registered cover, **Hopewell Academy, Mo.** pmk. Fine 25.00
- 728 2c Brown (157). Pair str. edge at R. Fine strike **N. Y. Foreign Mail Ty.** 41 —
- 729 2c, 10c Brown (157, 161). Tied on piece with bold **N. Y. Foreign Mail Ty.** 6 cancels, Fine —
- 730 6c Banknotes (148, 159). Seven diff. **N. Y. Foreign Mails**, Fine-V. F. —
- 731 24c Bright Purple (153). Remarkable color and well centered, possibly reperfed at L. red **N. Y. Foreign Mail** cancel (Photo) —
- 732 1c Ultramarine (156). Glen Allen **Red Printed Star** precancel, V. F. (Photo) —
- 733 ☒ 3c Green on 2c Centennial Entire (158, U219). Tied on cover to Germany, V. F. —
- 734 6c, 30c Banknotes (159, 165). Six **N. Y. Foreign Mails**, one of latter, Good-Fine —
- 735 ☒ 10c Brown (161). Pair str. edge at R., tied **San Francisco Steamship** and **N. Y. Transit** markings, to Italy, V. F. —
- 736 ☒ 10c Brown (161). Tied from **N. Y.** to London, **Stevens U. S. Despatch Agent** in red oval, V. F. —
- 737 ☒ 12c Blackish Violet (162). Tied with neat **Red N. Y. Foreign Mail Ty.** 62 cancel to Germany, Very Fine (Photo) —
- 738 ☒ 30c Banknotes (165, 190). Six covers all tied on legal size covers, some used with other Banknotes, two have str. edges, V. G.-Fine —
- 739 5c Blue (179, 185). Sixteen copies includes 2 covers, interesting and fancy cancels, Good-Fine —
- 740 ☒ 1c Gray Blue (206). Tied from **Montpelier, Vt.** on attractive purple illustr. **Baby Carriage** cover, V. F. —
- 741 ☒ 3c Green (207). Pretty strikes of large negative "83" year date from Nashville, Tenn., V. F. —
- 742 ☒ 3c Green, 4c Carmine (207, 215). Two covers each with **Fort Davis, Tex.** pmks. V. G. —
- 743 ☒ 10c Brown on 2c Entire (209, U231). Each cancelled with **Heart** cancel on registered cover, from **Providence**, Fine —
- 744 ☒ 2c Red Brown (210). Pair tied on cover from Augusta, Ga. with adv. showing **Globe**, V. F. —
- 745 1c-2c 1887-95 Issues. 9 tied on pieces with advert. around stamps, Fine —

1890-1923 ISSUES

- 746 ☒ 1c-2c, 1890-98 Issues. 15 covers, interesting & fancy cancels, V. G.-V. F. —

747	3c Columbian, 2c Carmine three on 1c Columbian Entire (232, 250, U348). All tied with large JIM cancels on registered cover, V. F. (Photo)	
748	2c Carmine (267). Tied purple Shaded Star, Hotel Champlain, Clinton Co. N. Y. pmk. on illustr. cover of Hotel Champlain, V. F.	
749	2c Carmine (267). Tied with Man with Club cancel, excellent strike Warrensburg, Mo. pmk. on cover, Scarce (Photo)	
750	2c Carmine (267). As above, V. F.	
751	2c Orange Red (279B). Str. edge copy tied on Span-American Patriotic cover, Uncle Sam, Soldiers "Con-Fed., Fed. I'll Match Em Agin The World", Scarce design	
751A	2c Pan-American (295). Tied N. Y. and Buffalo on two diff. illustr. Pan-American Exposition covers in blue, contains colorful exposition letterheads, Fine	
751B	2c Pan-American (295). Three diff. tied Buffalo on attractive illustr. multi-colored Pan-American Exposition covers, contains colorful exposition letterheads, Fine	
752	1c-10c Pan-American (294-299). Tied on registered cover to Germany, May 6, 1901, early usage, Fine	25.50
753	3c-20c 1895-1918 Issues. 15 stamps with Japan, China, Seapost, Phil. Sta. cancels, Fine lot	
754	2c Lincoln, Imperf (368). Tied to illustrated adver. cover of 1909, V. F.	
755	2c Lincoln Bluish (369). Tied on cover, Wash. D. C. Apr. 7, 1909 pmk. V. F.	35.00
756	1c Green (374). Tied on illustr. postcard showing early Curtis plane with "Aeroplane Station No. 1, Garden City Estates, N. Y. Sep. 23, 1911" also "Aerial Special Despatch", Very Fine	
757	2c Harding Imperf. (611). Block tied on First Day Cover, V. F.	12.50
758	1c-5c Commemoratives, 1923-29 Issues, 15 First Day Covers, few blocks, Fine-V. F.	45.75
759	50c Zeppelin (C18). Block tied to cachet Flight cover, Fine-V. F.	37.50

FANCY CANCELS 20th CENTURY

760	Bull Dog, Bucking Bronco. On registered covers, 1929, V. F.	
761	Bug, Star, \$, Bear, Diamond. 5 diff. registered covers, 1929-30, V. F.	
762	Cross, Chicken, Win Circle, Bell, Floral. 5 diff. registered covers, 1929-30, V. F.	
763	Turkey, Ship, Diamonds, Checkerboard, Anchor. 5 diff. registered covers, 1930, V. F.	
764	Blue Jay, Crow, Antelope, Numerals, etc. 10 diff., 1932-1934, V. F.	

- 765 ☒ **Clipper Ship, Steamer, Bell, Leafs, Bottle, Heart etc.** 11 diff. covers, 1933-36, V. F.
- 766 ☒ **Pierced Heart, Anchor, Wing, Bear, Cross, 76, Fish etc.** 11 diff. covers, 1931-36, Very Fine
- 767 ☒ **Banner, Columbus, Cat, Drummer, Star etc.** 11 diff. covers, 1931-36, V. F.
- 768 ☒ **Tree, Fisherman, Flowers, Child, Washington etc.** 12 diff. covers, 1933-35, V. F.
- 769 ☒ **Eagle, Lincoln, Washington, 76, Firecracker, Flags, etc.** 12 diff. covers, 1932-36, V. F.
- 770 ☒ **Flag, Hand, Santa Claus, Rose, Ship, House etc.** 12 diff. covers, 1932-34, V. F.
- 771 ☒ **Cat, Holly, Flag, Anchor, Rabbit, Fish, Tree etc.** 13 diff. covers, 1931-36, V. F.
- 772 ☒ **Pumpkin Head, Leaf, Butterfly, Bottle of Bourbon, Heart etc.** 13 diff. covers, 1930-36, V. F.
- 773 **Twentieth Century Fancy Cancels.** 30 stamps mostly diff. on pieces, mainly fancy registered, V. F. lot

ENTIRE ENVELOPES

- 774 ☒ **3c Entire (U9).** Tied balloon strike **Yorktown, Tex.** pmk. V. F.
- 775 ☒ **3c Red Entires (U9-U10).** Texas covers **Gonzales, Jasper, Larissa, Waco Village** pmks. all tied, Fine-V. F.
- 776 ☒ **3c Red Entire (U10).** Tied **Sabine Pass, Tex.** pmk. Very Fine
- 777 ☒ **3c Red Entire (U10).** Tied **Round Top, Tex.** pmk. Very Fine
- 778 ☒ **1c-3c Entires.** 19th Century, 8 diff. Texas pmks. Fine lot
- 779 ☒ **3c Red, 3c Pink Entires (U10, U34).** Tied diff. **Steamboat** cancels, V. F.
- 780 ☒ **3c Pink Entires (U58-U59).** Seven covers **Shields, Crosses, Missent, Forwarded etc.** Fine
- 781 ☒ **3c Entires (U58, U82-83).** Five diff. **illustr. advert.** covers, one has **Clover** cancel, Fine-V. F.
- 782 ☒ **3c Green Entire (U83).** Tied with **Vicksburg, Miss. Pumpkin Head** cancel, V. F.
- 783 ☒ **1c-3c Entires.** 19th Century 4 diff. **illustr. Carriage** covers, V. F.
- 784 ☒ **1c-3c Entires.** 19th Century, 25 diff. all with **advert. illustr. corner cards,** Fine-V. F.
- 785 **Postage Dues.** 1879-95 Issues, interesting, lot of fancy cancels and early precancels, 88 stamps

CARRIERS

8- 786	✉	1c Eagle Carrier, 3c Dull Red. (11, L02). Tied on cover, Fine	20.00
7- 787		Eagle Carrier, 1c Blue (L02). Used singles Red Star, Blue town, Unused Block, Fine	23.00
5- 788		Baltimore Carrier, 1c Black (1LB8, a). Latter unused "Sent" variety, Fine	30.00
26- 789	✉	Steinmeyer's City Post, 2c Bluish (4LB18). Uncancelled with defective corner on cover with 3c #26 tied	—
7- 790	★	Wharton's Louisville Despatch, Bluish Green (5LB1). Pair and single, each has thin, V. F. appearing	37.50
10- 791	★	Wharton's Louisville Despatch, Bluish Green (5LB1). Block, thin, V. F. appearing	65.00
10- 792	★	Wharton's Louisville Despatch, Bluish Green (5LB1). Block, small thins, V. F. appearing	65.00
11- 793	✉	U. S. City Despatch Post, 3c Blue (6LB3). Tied with red City Despatch pmk. on homemade Valentine of 1843 slightly foxed, stamp has margins all around, slight crease	85.00
3- 794		U. S. City Despatch, 3c Blue (6LB3). Red cancel, cut close V. G.	45.00
2- 795	✉	U. S. City Despatch, 3c Blue (6LB5). Margins all around, U. S. cancel on cover front, red City Despatch cancel, V. F.	45.00
6- 796	✉	U. S. Mail Carrier, 1c Yellow (6LB10). Ms. cancel, light red N. Y. pmk. Fine	30.00
4- 797	✉	Philadelphia Carrier, 1c Rose (7LB4). Damaged copy on cover, red Phila. pmk.	150.00

LOCALS

4- 798		American Letter Mail, 5c Black (5L1-2). Nine stamps, 3 on pieces, 3 unused, V. G.-V. F.	35.00
8- 799		Blood & Co. 3c Black (15L8). Four on pieces and cover fronts, two cut to shape, V. G.-Fine	70.00
9- 800	✉	Blood & Co. 1c Bronze on Red Entire (15L14, 15LU7). Co. cancel, V. F.	16.25
5- 801	✉	Blood & Co. Red Entire (15LU6). Tied Co. cancel, Fine	10.00
10- 802	✉	Blood & Co. Red Entire (15LU7). Company cancel, V. F.	15.00
22- 803	★	Boyd's City Express, 1c Green (20L15). Sheet of 100, 10 lightly creased, balance V. F.	225.00
3- 804	✉	Boyd's City Dispatch, 2c Red Entire (20LU14). Tied Co. cancel, Fine	—
6- 805	✉	Brooklyn City Express, 2c Blue, 3c Dull Red (11, 28L5). On cover front, 3c tied Brooklyn, Fine	35.00

806	✕	Floyd's Penny Post, Chicago, 1c Blue (68L1). Margins all around, Ms. cancel, on cover, V. F.	60.00
807		Gahagan & Howe City Express, 5c Black (70L3). Blue co. cancel, V. F.	15.00
808		Gahagan & Howe City Express, 5c Black (70L3). Pair, blue Co. cancel, V. F.	30.00
809		Hanford's Pony Express, 2c Yellow (78L1). Tied with red N. Y. pmk. Fine	30.00
810	✕	Hussey's Post, 1c Black (87L6). Tied with red co. cancel, Fine	—
811	✕	Messenkopes, 2c Green (106L1). Uncancelled on cover with red N. Y. pmk.	20.00
812	✕	Locals, 15 cover fronts and 3 cut squares, Bloods, Boyds, Hales, Swarts, 3 are stampless, V. G.-V. F.	—
813	✕	Pomeroy & Cos. Express. Orange seal shows R. R. Locomotive on cover, V. G.	—
814	★	Philadelphia Sanitary Fair, 10c-30c Eagles (WV-G1 - WV-G3). Two cpl. sets, V. G.-V. F.	—
815	P	Philadelphia Sanitary Fair, 20c Trial Color Proofs (WV-G2P). Blocks, six diff. colors on bond, V. F.	—
816	P	Philadelphia Sanitary Fair, 20c Proofs (WV-G2P). Green Imperf. Block & perf pair, black pair, also Die Proof Essay, V. G.-V. F.	—

U. S. LARGE & MISC. COVER LOTS

817	✕	Stampless, 32 covers includes 3 Confederate Soldier Letters, 2 Randolph Macon College, Va. in green, Way 11, Ship etc. V. G.-V. F.	—
818	✕	Stampless, 36 diff. includes Ship Letter, Mail Route, 40, Straight Lines, Baltimore R. R. Fancy, V. G.-V. F.	—
819	✕	Stampless Covers, 45 covers, includes ovals, V. G.-V. F.	—
820	✕	Stampless, New York State, 49 diff. includes fancy, locals, embossed, V. G.-V. F.	—
821	✕	Stampless, 64 covers includes Orfordville, N. H. arched str. line, Adv. 4cts, free franks, ovals, Phila. R, etc. V. G.-V. F.	—
822		3c Imperforates (11). Forty-two includes pair, strip, and 22 covers, Good-Fine	—
823	✕	Insurance Cos. 1851-61, Six diff. covers with illustr. corner cards, Fine-V. F.	—
824	✕	Schools & Colleges, 1857-88, 8 diff. mostly illustr. Fine	—
825	✕	Nineteenth Century, Stampless 1869 Issue, 21 covers, V. G.-V. F.	—
826	✕	Nineteenth Century, 120 Covers, 1851-95 Issues, some corner cards, V. G.-V. F.	—

- 32- 827 ☒ **Nineteenth Century**, 30 covers includes #28, 33, 36, 69, 78, 115, 117, Fair-Fine
- 21- 828 ☒ **Nineteenth Century Covers**, 1851-69 Issues, 57 includes few locals, Confederates, Good-Fine
- 10- 829 ☒ **Nineteenth Century**, 42 covers includes stampless, illustr. advert., fancy cancels, Fair-Fine
- 13- 830 ☒ **Illustrated Advert. Covers**, 38 diff. 1861-1903 Issues, Fine lot
- 20- 831 **3c Rose (65)**. About 800 copies, Fair-Fine
- 20- 832 **Nineteenth Century Cancels**, 78 mostly on pieces, includes counties territorials V. G.-V. F.
- 19- 833 **Cancellations**, 19th Century, lot of 368 stamps on album pages, Good-Fine
- 21- 834 **Cancellations** and misc. 19th Century, mainly Banknote period, about 2000 stamps
- 16- 835 **3c Greens**, over 1,000 mounted, interesting & fancy cancels, nothing scarce noted
- 15- 836 ☒ **Registered Covers**, 1870-1924 Issues, 29 covers, V. G.-V. F.
- 5- 837 ☒ **Registered Covers**, 10 diff. all 19th includes Phila. "R" stampless, Fine
- 6- 838 ☒ **Banknote Covers**, 51 covers includes some interesting cancels and corner cards, Good-Fine
- 14- 839 **U. S. Used Abroad**. 65 stamps includes 7 covers, Shanghai, Porto Rico, Hawaii, Samoa, mostly early 20th, interesting lot
- 15- 840 ☒ **Twentieth Century**, 30 covers mostly early commems, and interesting cancels, Fine lot
- 11- 841 ☒ **Imperforates**, 1908-18 Issues, 12 covers includes #346, 368, 373, 531, Fine-V. F.
- 8- 842 ☒ **Airmails**, 28 cachet flights or 1st Days, includes 50c Zeppelin, Fine-V. F.
- 8- 843 ☒ **Xmas Seals**, 1908-09, 11 on seven postal cards used in the period, V. G.-V. F.

AUTOGRAPHS

- 9- 844 **J. Q. Adams**, free frank on cover front, Phila. pmk and "Free", Fine
- 4- 845 **H. Clay**, signature on card, V. F.
- 9- 846 ☒ **John Hay**, signature on cover with Imprint "From the President of the United States, Priv. Sec." Lincolns Secy. addressed to Col. S. H. Mix, V. F.
- 1- 847 **Le Cte de Surveilliers** (Joseph Bonaparte, former King of Spain) signature on card, V. F.
- 7- 848 **Rutherford B. Hays**, signed letter on illustr. letterhead as governor of Ohio, 1868, V. F.

- 849 **Andrew Jackson**, "Free", frank on piece of cover, with Wash. D. C. pmk. —
- 850 ☒ **F. W. Seward**, free frank under imprint of Dept. of State, Ass't Secy. of State, Wash. D. C. pmk. V. F. —
- 851 **Wm. M. Tweed**, "Boss Tweed" signed letter written to Governor Hoffman, (1871), V. F. —
- 852 **George Washington**, free frank on piece, imprint "By the President", addressed to Edw. Randolph, Fine —
- 853 ☒ **Daniel Webster**, U. S. Senate, free frank, Boston, Mass. pmk. V. F. —
- 854 **Daniel Webster**, signed letter and signed check dated 1846, V. F. —
- 855 **Autographs**, 30 diff. many on letters, includes, Pres. Hays and Theodore Roosevelt, 19th & 20th Century, interesting lot —
- 856 **English Autographs**, mounted in album dated 1834, contains 220 autographs includes King George IV, Queen Adelaide, Sir Robt. Peel, Duke of Wellington, Earl Nelson, Dukes, Lords, Admirals and other prominent people of the 18th & early 19th Century —
- 857 **Photographs** of modern Statesmen, Legislators and Prominent Public Figures, all **autographed**, 45 different —

COLLATERAL MATERIAL

- 858 **Civil War Prints**, 4 diff. scenes by Forbes, V. F. —
- 859 **Western Collateral Material**, clippings, maps, pictures of Calif., Oregon, Nebraska, Minn. etc. 30 pieces, V. F. —
- 860 **Railroad Time Tables, Passes, Land Certificates, Political items**, Censored World War I covers Civil War revenues on documents etc. Interesting lot of 199 pieces —
- 861 **Newspapers, Clippings, Pictures**, 18th & 19th Century, includes Civil War & Ships, 29 pieces, interesting lot —
- 862 **Misc. Collateral Material**, 110 pieces includes early parchment documents, early newspapers, Civil War Magnus Song Sheets, early Philatelic Magazines etc., interesting lot —
- 863 **Spanish-American War Collateral Material**, Hundreds of Pictures, Clippings, Folders etc. Interesting lot —
- 864 **McKinley & Roosevelt** Inauguration Ticket, attractive illustr. showing both men, 1901, V. F. —

CONFEDERATE STATES

POSTMASTERS PROVISIONALS

- 865 **Charleston, S. C., 5c Blue (16X1)**. Cut in slightly at top, tied with clear "Charleston, S. C. Sep. 9, 1861" pmk. on piece of cover (Photo) 50.00

9-866	★	Charleston, S. C., 5c Blue Cut Square (16XU4). Slightly stained, signed "Dietz"	50.00
575-867	★	Columbia, S. C. 5c Blue, Cut Square (18XU3). Fine	25.00
1220-868		Memphis Mobile, Nashville (56X1, 58X2, 61X1). Two unused, one has thin, Good-Fine	38.00
85-869	✕	Memphis, Tenn. 5c Red (56X2). Vertical Pair tied with town, cancel on cover bearing Planters Bank imprint, Very Fine (Photo)	125.00
9-870		Mobile, 5c Blue (58X2). Tiny tear, V. F. appearing	25.00
31750-871		Nashville, Tenn. 5c Carmine (61X2). Blue town cancel, margins all around V. F. (Photo)	100.00
14-872	★	New Orleans, 2c Blue, 2c Red (62X1-2). Fine	30.00
10-873		New Orleans, 5c Brown (62X3-4). Last unused, V. G.-Fine	47.50
14-874		New Orleans, 5c Brown (62X3-5). Latter unused, two shades on blue paper, V. G.-V. F.	47.50
32-875		Petersburg, Va. 5c Red (65X1). Blue town cancel, margins all around, Very Fine (Photo)	85.00
5750-876	✕	Canton, Miss. large Paid 10 with Star, attractive though slightly frayed at top (Photo)	—
630-877	✕	Canton, Miss. "10" in circle, in ms. "Via Raymond" to Rocky Springs, Miss. Fine	—
7750-878	✕	Carolina City, N. C. Dec. 9, 5c Paid in circle on Patriotic cover, 7 Star Flag "Southern Rights" in Banner, Very Fine (Photo)	—
24-879	✕	Paid, 10 on Patriotic cover front, 11 Star Flag, town pmk. faint	—
750-880	✕	Petersburgh, Va. blue circle, Paid 5, Fine	—
8-881	✕	Tudor Hall, Va. "10" contains soldiers letter from Camp Conner; Pocotalico, S. C. pmk. and "Due 10" in oval on another Soldiers cover, Fine	—

GENERAL ISSUES

8-882	✕	5c Green (1). Unionville and Spartanburg, S. C. pmks. Ms. "Ford. Due 5", cover has small tear at top	—
7-883	✕	5c Green (1). Tied on cover, Fine	10.00
8-884	✕	5c Green (1). Margins all around, tied on cover	10.00
1750-885	✕	5c Green (1). Tied with Richmond pmk. on green Patriotic cover, 11 Star Flag and Poem, cover has small tear at top, attractive (Photo)	—
15-886	✕	5c Green (1). Horiz. pair tied on cover by Yorktown, Va. pmk. Fine	25.00
7-887	★	5c Green (1). Margins all around, small thins, V. F. appearance	10.00
8-888		5c Green (1). Ten copies, one unused, shades, Good-Fine	77.50

889	5c Green, 5c Blue (1, 4). Margins all around, first lightly creased, other V. F.	15.00
890	2c-20c General Issues (1, 6-8, 11-13). Two used, includes pair & block, V. G.-V. F.	17.35
891	2c-20c General Issues (1-2, 4, 6-8, 11-14). 5 unused, includes 3 extra, Good-V. F.	41.25
892	10c Blue (2). Tied on cover, Vicksburg, Miss. pmk. Fine	12.00
893	10c Blue (2). Two shades tied on covers, one a front, Fine	21.00
894	10c Blue (2). Six copies, 4 unused, shades, V. G.-Fine	74.00
895	★ 5c Blue, 10c Blue (2, 4). Tiny thins, Fine appearance	20.00
896	★ 2c Green (3). Tiny thin, V. F. appearance	20.00
897	★ 2c Green (3). Margins all around, thin, V. F. appearance	20.00
898	2c Green (3). Richmond 1863 town cancel faults, V. F. appearing, signed "Dietz"	45.00
899	2c Green (3). Blue town cancel, small thins, Fine appearance	55.00
900	5c Blue (4). Nine copies, two unused, shades, Good-V. F.	64.50
901	10c Rose (5). Tied with Mobile pmk. on cover, stamp has small scrape on face, margins all around, to Florida	50.00
902	10c Rose (5). Margins all around, tied Richmond, Va. Apr. 22, 186- pmk. to Madison, Fla. on legal size cover with Confederate States War Department imprint, cover bit stained	50.00
903	★ 10c Rose (5). Margins all around, tiny thin, V. F. appearance (Photo)	65.00
904	10c Rose (5). Margins all around, small thin, V. F. appearance	35.00
905	10c Rose (5). Two shades, both have faults, nice appearing	70.00
906	5c Blue (6). Blue double line oval cancel, V. F.	—
907	5c Blue (6-7). Four pairs tied with diff. town pmks. on covers. Fine-V. F.	14.00
908	5c, 10c Blue (6-7, 11-12). Tied on 4 covers, pairs of first two, Fine	—
909	5c-10c Blue (6-7, 11-12). Seven covers, 3 are fronts, 3 pairs, red town pmk. home-made, V. G.-V. F.	—
910	1c-20c General Issues (6-8, 11-14). Collection of 158 stamps, used and unused, includes Pairs, Blocks, Good-Very Fine	231.55
911	2c Brown Red (8). Fine Strip of 3 tied with Charleston pmks. on portion of ragged cover	85.00+
912	2c Brown Red (8). Two shades, town pmks, tiny thins, V. F. appearance	50.00
913	★ 10c (TEN) Blue (9). Very Fine (Photo)	35.00
914	10c (TEN) Blue (9). Ms. cancel, Fine	45.00

850	915	10c (TEN) Gray Blue (9b). Town cancel, thin, cut in at top	60.00
36	916	10c Blue Frame Line (10). Frame line shows complete 3 sides and a bit on 4th, town cancel, slight thins, Very Fine appearance (Photo)	80.00
1650	917	10c Blue (11-12). Seven covers, all tied diff. town pmks. Fine	—
24	918	10c Perforated (12e). Tied on cover Charlottesville, Va. Oct. 29, 1863 pmk. V. F.	17.50
7250	919 E	1c Deep Orange (14a). New discovery, overprinted SPECIMEN, Very Fine (Photo)	—
2750	920	1c Orange (14). Block, small thin, V. F. appearance	40.00
1250	921	1c Orange, 1c Deep Orange (14, 14a) Very Fine	20.00
2350	922	1c Orange (14). Five singles, Fine-V. F.	37.50
45	923	3c Rose (65). Tied with Sandusky, O. grid and Richmond, Va. pmks with Due 10 and 10 markings, from Prisoner of War Johnsons Island to Mobile, Ala. with Ms. "Pr Flag of Truce, Via Fortress Monroe, Va." Very Fine (Photo)	—
18	924	3c Rose (65). Prisoner of War cover, Johnson Island, tied, Sandusky, O. and Richmond, Va. pmks. "10", Via Fortress Monroe" and "Per Flag of Truce" in Ms. Fine	—

CONFEDERATE USAGE OF U.S. STAMPS

15	925	3c Dull Red (26). Tied "Natchez, Miss. Mar. 8, 1861" pmk. Fine	—
1550	926	3c Dull Red (26). Tied "Natchez, Miss. May 2, 1861" pmk. Fine	—
14	927	3c Dull Red (26). Two copies one tied, "Charleston, S. C. Jan. 2, 1861" pmk. after Secession as Independent State, Fine	—
26	928	3c Dull Red (26). Cancelled with grid not tied, str. edge at R. "Charleston, S. C. Feb. 4, 1861" pmk. First Day admitted to Confederacy	—
13	929	3c Dull Red (26). Tied, "Charleston, S. C. Feb. 26, 1861" pmk. V.F. (Photo)	—
22	930	3c Red Entire (U9). Tied "Charleston, S. C. Paid Dec. 27, 1860", pmk. used as Independent State, V. F.	—
1650	931	3c Red Entire (U27). Tied "Montgomery, Feb. 21, 1861, Ala." pmk. V. F. (Photo)	—
1550	932	3c Red Entire (U27). Tied "Charleston, S. C. Apr. 26, 1861" pmk. V. F.	—
4750	933	3c Red Entire (U27). Tied "El Dorado, Ark. May 11", pmk. Fine	—
9	934	3c Red Entire (U27). Tied "New Orleans, La. Apr. 21" pmk. Fine	—
26	935	3c Red Entire (U27), Overprinted Confederate States of America, P. O. Dept., O. B. Chief of the Appointment Bureau Richmond and Free markings, bit frayed at top (Photo)	—

END OF SALE — THANK YOU

PRICES REALIZED

THIS SALE

\$1.00

OR ENTIRE SEASON \$2.50

SELLING YOUR COLLECTION ?

REALIZE IMMEDIATE CASH
AND HAVE ADVANTAGE OF SELLING AT MY AUCTIONS

I will advance on your collection immediate cash up to 75% of my appraisal value of what it should realize at auction.

It will then be sold at one of my coming auction sales. Attractive well illustrated catalogues issued, with stamps expertly and most advantageously lotted. All lotting done under my personal supervision. Commission is 20% of the gross and final settlement within thirty days after the sale. I have been steadily conducting stamp auctions in the United States for the past 25 years.

Valuable collections and stamp holdings especially wanted but will accept properties valued from \$500 upwards. Send stamps direct for my appraisal. Auction advance will be sent within 48 hours after receipt. If not entirely pleased stamps will be returned at my expense. If circumstances warrant due to bulk etc. I will travel to inspect valuable properties.

ROBERT A. SIEGEL

(Licensed and Bonded Auctioneer)

505 FIFTH AVENUE

NEW YORK CITY

(Tel. MU. 2-4309)