

183rd SALE.

Frederick Moysen
Priced
Catalog

UNITED STATES STAMPS & COVERS

Contains Stampless Covers, 19th Century Postage Issues, Specialized 1861 & 1869 Pictorial Issues, New York Foreign Mails, Patriotics, Railroads, Packet Boats, Territorials, Westerns, Express Companies, Carriers, Locals, 20th Century Fancy Cancells and

CONFEDERATE STATES



at Public Auction

WEDNESDAY and THURSDAY

OCTOBER 19th and 20th, 1955

at 2 P.M. each day

Robert A. Siegel
AUCTIONS

489 FIFTH AVENUE

NEW YORK 17, N.Y.

CONDITIONS OF SALE

1. The terms of sale are strictly cash to the highest bidder. All buyers are expected to pay for lots within three days of receipt, unless special arrangements have been made prior to the sale.
2. All bids are per lot as numbered in the catalogue and not per piece, unless otherwise announced by the auctioneer at the time of sale.
3. Any lot the description of which is incorrect is returnable only within three days of receipt. All disputed lots must be returned intact as received. Lots containing five or more stamps are not returnable at any time. No lots may be returned by purchasers who have had the opportunity to examine them before the sale.
4. Successful mail bidders, unless they are known to us or supply acceptable references, will be notified of the amount of the lots secured for them, and are expected to send payment in full before the lots are forwarded.
5. If the purchase price has not been paid within the time limit, or lots taken up within seven days from date of sale, they may be resold and any losses arising from such sale charged to the defaulter.
6. All stamps are sold as genuine, except where sold "As Is". Claims for any lot proving otherwise, must be made within two weeks from date of sale.
7. The right is reserved to group two or more lots, also withdraw any lot or lots from the sale, or to act on behalf of the seller.
8. Until paid for in full all lots remain the property of Robert A. Siegel.
9. No commission is charged for buying at our sales, but all forwarding charges will be added to the purchase price.
10. Lots will be sent for inspection, provided such lots are returned to us the same day as received. Postage and registration both ways will be charged. Approximate values of lots will be given on request.
11. The placing of a bid shall constitute acceptance of the foregoing conditions of sale.

ROBERT A. SIEGEL

GREGORY MOZIAN, Licensed Auctioneers

In sending bids, always state the highest price you are prepared to pay for the lot. Your limit will not be used as a starting bid unless absolutely necessary.

DESCRIPTIONS

Superb—the finest condition for noteworthy, outstanding copies.

Very Fine (VF)—means that there is a slight deviation from the above.

Fine (F)—means that the perforations do not touch the design on issues after 1890, but in some cases may just touch in earlier issues; if used, fairly lightly cancelled.

Very Good (VG)—means that the appearance is generally fine but that the perforations cut the design slightly.

Good (G)—means average off-centering; or fairly attractive with slight defects. Original gum is not to be expected on 19th Century stamps up to 1888 unless so stated.

Scott's 1955 Specialized United States Catalogue is used for cataloging our lots of United States and Scott's Standard Catalogue, 1955 for others.

WE SOLICIT FINE MATERIAL FOR FUTURE SALES

FIRST SESSION

WEDNESDAY, OCTOBER 19th, 1955 — 2 P. M.

UNITED STATES

STAMPLESS COVERS

- 1 ☒ Albany, Dec. 10 (1794) straight line, Free, Very Fine —
2 ☒ Albany, Dec. 21 (1795) straight line, Free, Fine —
3 ☒ Albany, Jan. 21 (1796) straight line, "15", Very Fine —
4 ☒ Albany, Jan. 14, straight line "15" (1799) Fine —
5 ☒ Alby. & Buffalo R.R. in blue circle, "5" (1848) Fine —
6 ☒ ALEX. (Alexandria) straight line (1789) Fine —
7 ☒ Augusta, Maine, Red Horn of Plenty, Fine —
8 ☒ Augusta, Maine, red Horn of Plenty pmk, "12½", Fine —
9 ☒ Austin, Texas, Paid 10, Very Good —
10 ☒ Baltimore straight line (1786) light strike, Very Good —
11 ☒ BALT. JAN 22 (Baltimore) straight line (1797) Free pmk, Fine —
12 ☒ Baltimore RR, Balt. & Ohio RR, Phila, Railroad, Three covers, 2 are
straight line, Fine —
13 ☒ Black Rock, N. Y. May 28 straight line in box "37½" Fine —
14 ☒ Boston & Maine R. R. pmk in Blue, Blue "5", Fine —
15 ☒ Bradford, N. H. straight line, Fine —
16 ☒ Bridgeport, Ct., Mar. 2 (1808) straight line, Very Fine —
17 ☒ Brockport, N. Y. red circle, Paid & 10 within geometric Circle, V. F. —
18 ☒ James Buchanan Free Frank, Red Washington City, D. C. pmk, V. F. —

VALUATIONS

Upon request, estimate of value furnished on any lots in this auction.

- 4550 19 ☒ **Charles Town (S.C.)** large Brown straight line on front to England, (1770) Fine Colonial —
- 40 20 ☒ **Chicago, Illinois**, Collection of 38 covers, many diff cancels, includes Early use, August 28, 1834, Very Good-Very Fine —
- 8250 21 ☒ **Collinsville, Conn. AXE**, "10", Very Fine (Photo) —
- 65 22 ☒ **Conn. Towns**, 6 covers, str line Haddam, West Meriden, Harwinton, 3 Unframed Circular Towns, Fine —
- 625 23 ☒ **Conn. Stampless**, Thirty one mostly diff covers, V.G.-V.F. —
- 475 24 ☒ **Grace Coolidge Free Frank**, on slightly creased cover from Orange, Conn. —
- 350 25 ☒ **Dawson, G. W. R. R. (Ky)** in oval, Paid, Fine —
- 375 26 ☒ **Dedham, Mass.**, July 9 red straight line in Box, V.F. —
- 5 27 ☒ **Eastern R. R., Baltimore R. R.** last is red straight line, V.F. —
- 4 28 ☒ **Embossed Ladies Size Covers**, 7 diff. Fine lot —
- 16 29 ☒ **Enfield, Mass** in fancy Red Scroll, "12½" V.F. (Photo) —
- 575 30 ☒ **Esperance (N.Y.) Jan. 22** straight line "18¾", Very Fine —
- 350 31 ☒ **Exeter, N. H., Dec. 28** straight line in fancy box (1825) Fine —
- 225 32 ☒ **Exeter, N. H. Dec. 10** red straight line, Very Fine —
- 250 33 ☒ **Exeter, N. H. Jan. 31** Red straight line "12½", Very Fine —
- 325 34 ☒ **Exeter, N. H., Oct. 27 (1829)** Red straight line within fancy oval, "18¾", Fine —
- 325 34A ☒ **Foreign Usages**, 5 diff. covers, numerous transit markings, V.F. —
- 3 35 ☒ **Frankfort, Me.** red circle "5", contains attractive **Valentine**, Fine —
- 1250 36 ☒ **Lucretia Garfield Free**, Presidential Widow on Mourning Cover, So. Pasedana, Cal. pmk, V.F. —
- 225 37 ☒ **Hoddam, Ct., Sep. 4** in fancy red Box, paid 3 pmk, Fine —
- 5 38 ☒ **Mary Lord Harrison** free frank of Presidential Widow, Fine —
- 6 39 ☒ **Hillsboro Br, N. H.** green straight line, Fine —
- 550 40 ☒ **Huntsville, Al.** Negative 5 within fancy Star pmk, Fine —
- 1550 41 ☒ **Huntsville, Al.**, 10 within fancy Circle of Stars, V.F. —
- 325 42 ☒ **Importers Package Room, Phila** in red Oval, V.F. —
- 225 43 ☒ **Missent to Woodstock, Ct** in red Box, red Boston, Ms. pmk, Paid 20, F. —
- 2 44 ☒ **Levant, Me.** red straight line on forwarded cover with Exeter, N.H. pmk, Fine —
- 1250 45 ☒ **Manchester, N.H.**, Paid, 19, 24 on illustrated cover showing early Railroad to England, Fine —

- 46 ☒ **Monson, Mass** in fancy Bakers Hat, fancy Paid in scroll, V.F. (Photo) —
- 47 ☒ **Newark, O, July 8** (1830) straight line within Box, V.F. —
- 48 ☒ **Newark, O, Aug. 9** straight line within Box, V.F. —
- 49 ☒ **New England Stampless**, 63 covers, wide variety, V.G.-V.F. —
- 50 ☒ **N. London, Feb. 19**, (1800) straight line, Paid 10, Very Fine —
- 51 ☒ **New York** (1763) Red straight line, Fine —
- 52 ☒ **New York, June 18**, (1790) straight line, Very Fine —
- 53 ☒ **N. York, May 3** (1792) straight line pmk, str. line Paid, V.F. —
- 54 ☒ **N.Y. (New York) Oct. 10 (1794)** straight line, "17", Very Fine —
- 55 ☒ **N. York Aug. 20** (1796) "10", Straight line, V.F. —
- 56 ☒ **New York** within Red Shell, (1804) Very Fine —
- 57 ☒ **New Orleans, La.** blue circle "75" and "**Express Mail**" in ms. V.F. —
- 58 ☒ **New York Ship** in red circle on **fumigated** cover, V.F. —
- 59 ☒ **New York State Stampless** 92 covers, wide variety, Fine-V.F. 950 F- —
- 60 ☒ **Norwich, May 13** (1799) straight line, "12½", Fine —
- 61 ☒ **Norwich, Conn.** Blue Paid 3 within circle pmk on pretty **Embossed Valentine Cover** with Valentine Enclosure, V.F. —
- 62 ☒ **Ohio Towns**, Eleven diff covers including Forwarded cover, Fine-V.F. —
- 63 ☒ **Orfordville, N.H.** blue curved pmk, Paid 5 on printed election report, Very Fine (Photo) —
- 64 ☒ **Orfordville, N.H.** Red Curved pmk, red "5", V.F. —
- 65 ☒ **Patten, Me., Jan. 11**, straight line in red Box, Fine —
- 66 ☒ **Penna, Ohio Stampless**, 48 covers, wide variety, Fine-V.F. 420 F- —
- 67 ☒ **Philadelphia Sailing Ship**, in Red, red Phila, 11 Dec. in Box, Fine (Photo) —
- 68 ☒ **Philadelphia, Pa. 5 cts** in blue circle, **Adams & Co. Express** corner card, V.F. —
- 69 ☒ **Pittsburg, Pa. (1817)** Magenta Paid within ornate Rectangle, Fine —
- 70 ☒ **Port Chester, N.Y.** Paid & Fancy **Paid within Numeral 3** pmks, V.F. —
- 71 ☒ **Portsmouth (Mass) July 1** (1785) red straight line, V.F. —
- 72 ☒ **Portsmouth, N.H. Octr. 5** (1811) straight line, Fine —
- 73 ☒ **Portsmouth, N.H.** straight line, 2 covers, V.G. —
- 74 ☒ **Providence (1796)** straight line, "17" Very Fine —
- 75 ☒ **R'D. (Richmond) Dec. 30, 98 (1798)** straight line pmk on cover from Governor of Virginia, **James Wood** to Governor of N.Y., V.F. —

- 85- 76 ☒ Rutland, Vt., within red Oval of Dots, V.F.
- 245- 77 ☒ Saco, Maine, Feb. 17 straight line in Box (1832) Fine
- 350- 78 ☒ Sandy Springs, Md, Fine example of **Quaker Date** in Red
- 1450- 79 ☒ Salem, (1787) blue straight line, Fine
- 5- 80 ☒ Salem, June 6 (1798) Red straight line Fine
- 9- 81 ☒ SCHEN. (Schenectady) Dec. 28 (1797) straight line, "30", V.F.
- 6- 82 ☒ SCHEN. (Schenectady, N.Y.) Sep. 19, (1798) str. line, "30", Very Fine
- 16- 83 ☒ Skaneateles, N. Y. red circle on folded letter sheet of 1840 showing **Harri-**
son and Log Cabin, eary **Campaign** cover, Very Fine, Attractive
- 3250- 84 ☒ Southern States Stampless, 83 covers, wide variety, V.G.-V.F.
- 1350- 85 ☒ Steamboat, Ship, Steamship, Ten covers with various markings, F.-V.F.
- 3- 86 ☒ Steamer 5 in Red Oval, Very Fine
- 745- 87 ☒ Steamship 10, New York Ship 7, Br. Packet, 7 Stampless with interesting
Ship and transit markings, Fine-V.F.
- 1250- 88 ☒ Supplementary Mail in red box on cover to Scotland, from New York,
Fine
- 650- 89 ☒ Taunton, Ms, June 12 straight line, Very Fine
- 575- 90 ☒ Taunton, Ms, Aug. 18 straight line, Very Fine
- 36- 91 ☒ Troy & New York Steamboat in blue Rectangle, 7 cts in Circle pmk,
Very Fine (Photo)
- 625- 92 ☒ U.S. Express Mail, Way 11, Five diff. covers, Fine
- 1850- 93 ☒ U.S. Naval Lyceum, with Ship in oval, Fine
- 475- 94 ☒ Vermont, Two stampless covers with Corner Cards, V.F.
- 225- 95 ☒ Warren, R. I. Sept. 16 (1836) in Red Rectangle, V.F.
- 450- 96 ☒ Warren, R. I. straight line within Box, 2 covers, one in red, V.F.
- 450- 97 ☒ Warrensburgh, N. Y. red straight line Paid 5 in Ms. (1848), V.F.
- 75- 98 ☒ Daniel Webster free frank, Washington D.C. Free pmk. V.F.
- 350- 99 ☒ Whallonsburg, N. Y. in black circle "Free" on cover with attractive
corner card of **Hotel**, Fine
- 21- 100 ☒ Windsor Locks, Conn. Ship in Canal in red, Fine
- 9- 101 ☒ Stampless, 7 diff. covers with unusual or fancy rate markings, V.F.
- 825- 102 ☒ Stampless, 8 diff. fancy cancels includes oval, pointing hand, add circles,
Fine lot
- 23- 103 ☒ Stampless Covers, 96 covers mostly **New England Towns**, V.G.-V.F.
- 26- 103A ☒ Stampless, 97 covers, mostly Baltimore and Frederick, Md., Fine lot

1847 ISSUE

| | | |
|-----|---|--------|
| 104 | 5c Red Brown (1). Margins all around, sheet margin at L., Bright red grid cancels, Very Fine (Photo) | — |
| 105 | 5c Red Brown (1). Blue grid cancel, Margins all around, V. F. (Photo) | 32.50 |
| 106 | 5c Red Brown (1). Blue 5 cancel, margins all around, V. F. (Photo) | 45.00 |
| 107 | 5c Brown (1). Blue (5) in oval cancel, Fine (Photo) | 45.00 |
| 108 | 5c Orange Brown (1b). Margins all around, Blue cancel, V. F. (Photo) | 40.00 |
| 109 | 5c Red Brown (1). Horiz. Pair, margins all around, red grid cancels, Very Fine (Photo) | 82.50 |
| 110 | 5c Red Brown (1). Horiz Pair, Margins all around, Blue Grid pmk, 1 stamp lightly creased, other V. F. (Photo) | 82.50 |
| 111 | ⊠ 5c Red Brown (1). Large margins all around, tied red grid, New York pmk, Very Fine (Photo) | — |
| 112 | ⊠ 5c Brown (1). Margins all around, tied Blue grid, Westfield, N. Y. pmk, Very Fine (Photo) | — |
| 113 | ⊠ 5c Red Brown (1). Margins all around, tied with fancy Binghamton Herr- ingbone cancel, with another strike of same on the cover, Very Fine (Photo) | — |
| 114 | ⊠ 5c Red Brown (1). Two copies, margins all around, tied with red grids and New York pmk to Detroit, Very Fine (Photo) | — |
| 115 | ⊠ 5c Brown (1). Margins all around, tied Blue Grid to Forwarded cover, Blue Keeseville & Troy, N. Y. pmks, Blue 5 in circle marking, stamp slightly creased by fold in letter, attractive (Photo) | — |
| 116 | ⊠ 5c Red Brown (1). Tied grid, Red U. S. Express Mail pmk, Fine | 70.00 |
| 117 | ⊠ 5c Dark Brown (1). Tied Red Grid, New York pmk, Fine | — |
| 118 | ⊠ 5c Red Brown (1). Fine copy not tied on cover with Red New York pmk | — |
| 119 | ⊠ 5c Brown (1). Tied Blue Waffle Grid & str. line Paid, Lawrence, Ms. pmk on cover, Margins all around, slight stain (Photo) | — |
| 120 | ⊠ 5c Dark Brown (1). Tied Red Grid, Red Pittsburgh, Pa. pmk, V. G. <i>S.F.</i> | — |
| 121 | ⊠ 5c Brown (1). Tied Washington City, D. C. & ms pmk, V. G. | — |
| 122 | ⊠ 5c Dark Brown (1). Defective copy tied by Red Square New York Grid | — |
| 123 | ⊠ 10c Black (2). Margins all around though small at B, tied Red Boston Grid to cover addressed to Detroit, Fine (Photo) | 100.00 |

1851 ISSUE

| | | |
|-----|--|---|
| 124 | 1c Blue, Ty II (7). Margins all around, clear Paid in circle pmk, V. F. (Photo) | — |
|-----|--|---|

| | | | |
|-------|-----|--|--------|
| 9.50 | 125 | 1c Blue, Ty II (7). Two copies, Fine-Very Fine | 20.00 |
| 6.50 | 126 | 1c Blue, Ty II (7). Tied Red Boston pmk, Very Fine | — |
| 7.50 | 127 | 1c Blue, Ty II (7). Margins all around, tied grid, Red Boston pmk, V.F. | — |
| 12.50 | 128 | 1c Blue, Ty II (7). Cracked Plate, 13L2 , tied to small Ladies cover, V.G. | 60.00 |
| 14.50 | 129 | 1c Blue, Ty II (7). Three singles tied blue Cincinnati, O. to cover, Fine | — |
| 5.50 | 130 | 1c Blue, Ty II (7). Strip of 3, left stamp defective has Double Transfer, Ms. cancel and pmk. New Hampton, Iowa | — |
| 15.50 | 131 | 1c Blue, Ty II (7). Five diff. tied, Very Good-Fine | — |
| 18.50 | 132 | 1c Blue, 3c Orange Brown (7, 10). Tied to each other on cover, red New Orleans pmk Fine carrier usage | — |
| 6.50 | 133 | 1c Blue, Ty. IV (9). Red town cancel, Very Fine | — |
| 14.50 | 134 | 1c Blue, Ty IV. (9). Margins all around, pretty Blue Open Circle within wedges pmk, tiny thin, V.F. appearing (Photo) | — |
| 5.25 | 135 | 1c Blue, Ty IV (9). Str. line Way pmk, Fine | — |
| 13.50 | 136 | 1c Blue, Ty IV (9). Four copies, includes Red, Blue pmks, Fine | 33.50 |
| 6.50 | 137 | 1c Blue, Ty IV (9). Margins all around, tied New York to cover | — |
| 5.50 | 138 | 1c Blue, Ty IV (9). Margins all around, tied Washington, D. C. pmk. V.F. | — |
| 12.50 | 139 | 1c Blue, Ty IV (9). Tied Lansingburgh, N. Y. and Diagonal Black Bars , Fine | — |
| 10.50 | 140 | 1c Blue, Ty IV (9). Triple Transfer, 91L1L , tied with Albany pmk. Fine | 40.00 |
| 10.50 | 141 | 1c Blue, Ty IV (9). Three diff. tied, includes two Sheet Margin copies, V.G. | — |
| 11.50 | 142 | 1c Blue, Ty IV (9). Four diff. tied, Fine | — |
| 45.50 | 143 | 1c Blue, 10c Green Ty I (9, 13). Pair of latter tied on cover to France, various transit markings, 10c pair has margins 3 sides, just touches at B. Fine | 232.50 |
| 80.50 | 144 | 1c Blue, ty. IV, 3c Dull Red pair, 12c Black (9, 11, 17). Tied on cover to France, various transit markings, Fine | — |
| 65.50 | 145 | 3c Orange Brown (10). Sheet Corner copy, margins all around, V.F. (Photo) | — |
| 85.50 | 146 | 3c Orange Brown (10). Bold Blue Waffle Grid pmk, V.F. | — |
| 72.50 | 147 | 3c Orange Brown (10). Three copies including Brown Waffle pmk. Fine | — |
| 11.50 | 148 | 3c Imperforates (10-11). Eight copies selected for fancy cancels , Paid 3, Paid, Geometric, Blue 10, V.G.-V.F. | — |
| 8.50 | 149 | 3c Orange Brown (10). Tied, Norwich, Ct. July 10 pmk, early use, Fine | — |
| 27.50 | 150 | 3c Orange Brown (10) Tied by fancy Louisville, Ky. Geometric pmk, stamp creased by letter fold, Fine appearing | — |

- 151 ☒ 3c Orange Brown (10). Margins all around, tied Small Boston **Paid**, V. F. —
- 152 ☒ 3c Orange Brown (10). Tied Blue **Wil. & Col. R.R.** marking, cover slight age stain, Fine —
- 153 ☒ 3c Orange Brown (10). Tied by blue **Utica, N. Y. Oval** pmk, V. F. —
- 154 ☒ 3c Orange Brown (10). Two covers with **U.S. Express Mail** pmks, 1 in Red, 1 creased other Fine —
- 155 3c Dull Red (11). Clear Large Negative Paid pmk, Very Fine (Photo) —
- 156 3c Claret (11). Bold strike of Paid in Grid, Fine (Photo) —
- 157 3c Red (11). Good Strike of Canton, Miss **Odd Fellows Links** —
- 158 3c Claret (11). Tiny **Paid 3 within Star** pmk, light crease, Fine appearing —
- 159 3c Dull Red (11). Horiz Pair, 2 line **Steamship** pmk, Fine —
- 160 3c Dull Red (11). Two diff. **Minneapolis, M. T.** pmks, Fine —
- 161 3c Brownish Carmine (11). Three copies, Brown, Blue & Green pmks, V. F. —
- 162 3c Imperforate (11). Five diff cancels including Chicopee Star, Steam 5, Paid, Fine —
- 163 3c Imperforate (11). Collection of 53 stamps includes U.S. Express Mails, Paid 3 in blue and black, Year Dates, Fair-Fine —
- 164 ☒ 3c Dull Red (11). Cancelled "**Used**", **Gaines Forge, La.** pmk on cover, stamp fine cover torn at B., Scarce marking (Photo) —
- 165 ☒ 3c Dull Red (11). Tied Colebrook, N. H. **Rectangle of Bars** pmk, Fine —
- 166 ☒ 3c Dull Red (11). Chicopee, Mass Interwining Star pmk on small cover, F. —
- 167 ☒ 3c Claret (11). Just tied by **Chicopee, Mass Star** pmk, Fine —
- 168 ☒ 3c Dull Red (11). Tied New York pmk, **N. O. City Post Rectangle** Carrier Marking & **Car 2 within oval** markings, stamp slightly creased —
- 169 ☒ 3c Dull Red (11). Tied Town pmk to Illustrated **Freemont Campaign Cover**, V. G. —
- 170 ☒ 3c Dull Red with **Blood's Local (11, 15L15)**. First tied with clear **Potomac Steamboat** cancel, Blood's Co. cancel on cover, Fine though cover has small repair —
- 171 ☒ 3c Dull Red (11). Tied Troy, N. Y. on illustr. adv. cover showing **Globe**, V. F. —
- 172 ☒ 3c Dull Red (11). Creased stamp tied by Very Fine strike of Blue **Boston & Maine R.R.** pmk —
- 173 ☒ 3c Dull Red (11). Horiz Pair, tied New Orleans, La., Blue oval **Forwarded by R. W. Oliver & Co.** Marking, Fine —
- 174 ☒ 3c Brownish Carmine, 3c Claret (11). Each tied attractive blue **Troy, N. Y.** pmk, Fine —

| | | | | |
|-------|-----|---|--|-------|
| 425 | 175 | ✕ | 3c Imperforate (11). Two covers with Insurance Co Corner Cards, one is American Temperance Life Insurance Co, V.F. | — |
| 15 | 176 | ✕ | 3c Imperforate (11). Two covers each tied with sharp Troy, N. Y. pmk one in blue, attractive | — |
| 15.00 | 177 | ✕ | 3c Imperforate (11). Fourteen covers, includes green, R. R., str Line Paid, U. S. Express Mail, Ladies covers, V. G.-V. F. | — |
| 25 | 178 | ✕ | 3c Red, 3c Rose (11, 26, 65). Three covers tied, Fort Dodge, Iowa, Fort Plain & Fort Schuyler, N. Y. Fine | — |
| 8 | 179 | ✕ | 10c Green, Ty II (14). Tied Town pmk to cover addressed to Nova Scotia, Red Oval U. States, Paid 10 markings, various transit markings, V. G. | — |
| 28 | 180 | ✕ | 10c Green Ty II, III (14-15). Vertical Strip of 3 tied on cover from New Orleans to France, various transit markings, two cut in other V. F. Neat cover 127515 | 55.00 |
| 16 | 181 | | 10c Green, Ty III (15). Margins all around, Numeral 10 pmk, faint corner crease, V. F. appearing (Photo) | — |
| 16 | 182 | | 10c Green, Ty III (15). Right Sheet Margin copy, pretty red Paid 10 pmk, tiny thin, V. F. appearing (Photo) | — |
| 825 | 183 | ✕ | 10c Green, Ty III (15). Tied Town pmk, Fine | — |

1857 ISSUE

| | | | | |
|------|-----|---|--|-------|
| 1150 | 184 | | 1c Blue Ty II (20). Part of Intertwining Star cancel, Fine | — |
| 15 | 185 | | 1c Blue, Ty II (20). Defective Vert Strip of 3, Str. Line Paid pmk | 45.00 |
| 650 | 186 | ✕ | 1c Blue, Ty II (20). Tied on printed circular from Richmond, Fine | — |
| 23 | 187 | ✕ | 1c Blue, Ty II (20). Three one with str. edge tied on cover, Wawkou, Iowa pmk., late use Aug. 26, 1861, Fine | 43.00 |
| 1850 | 188 | ✕ | 1c Blue, Ty II (20). Horiz Strip of 3 on small Ladies Envelope stamps appear unused, Fine | 45.00 |
| 15 | 189 | | 1c Blue, Ty IIIa (22). Tied to small piece, Very Fine | 20.00 |
| 1650 | 190 | | 1c Blue, Ty IV (23). Fine | 27.50 |
| 12 | 191 | | 1c Blue, Ty V (24). Str line Free pmk, V. F. | — |
| 4 | 192 | | 1c Blue, Ty V (24). Ms. cancel "Old Stamp" interesting | — |
| 12 | 193 | | 1c Blue, Ty V (24). Horiz Imprint Pair, Canton, Miss. Triangle pmk, Very Fine | — |
| 850 | 194 | | 1c Blue, Ty V (24). Paid 3 and large 5 cancels, Fine | — |
| 10 | 195 | | 1c Blue, Ty V (24). Seven copies including Strip of 3, Red Carrier, F.-V. F. | — |
| 25 | 196 | ✕ | 1c Blue, ty V (24). Pair tied from New Orleans to France, transit markings, V. F. | — |

| | | | |
|-----|---|--|-----------|
| 197 | ☒ | 1c Blue, Ty V (24). Three on cover tied San Francisco, "Curl" over "E" of "Cent" variety on one, Fine | 18.50 |
| 198 | ☒ | 1c Blue, Ty V (24, 15L14). Pair and single tied from Phila. with Blood's Local , Blood's cancel on cover, Fine | — |
| 199 | ☒ | 1c Blue, Ty V (24). Two covers tied Blue Grids, first has Horiz Strip of 3, V.F. | — |
| 200 | ☒ | 1c Blue, Ty V (24). 16 copies on 6 covers, Fine-V.F. <i>1/1</i> <i>F</i> | 33.50 |
| 201 | ☒ | 1c Blue, 3c Red (24, 26). Carrier rate , tied New York Aug. 30, 1861, Fine | — |
| 202 | ☒ | 3c Red, Ty I (25). Twenty two covers, includes 4 with recut inner lines, V.G.-V.F. | — |
| 203 | | 3c Red (26). Pretty bold strike of small Intertwining Star , slight corner crease | (Photo) — |
| 204 | | 3c Red (26). Clear Plainville, Conn., tiny blue Star pmk, V.F. (Photo) | — |
| 205 | | 3c Red (26). Clear Paid within Fancy Grid pmk, stamp slightly clipped at T. | (Photo) — |
| 206 | | 3c Red (26). Philadelphia Carrier pmk, Very Fine | (Photo) — |
| 207 | | 3c Red (26). Clear Flag pmk, small repair, Very Fine Strike | (Photo) — |
| 208 | | 3c Red (26). Fancy Slanting "10" pmk, Fine | (Photo) — |
| 209 | | 3c Red (26). Fancy Paid 3 cts pmk, tiny thin, V.F. appearing | — |
| 210 | | 3c Red (26). Large Red Brattleboro 3 pmk, Fine | — |
| 211 | | 3c Red (26). Two copies, Chicopee Star & Negative Star pmks, Fine-V.F. | — |
| 212 | | 3c Red (26). Two copies, Free & 3 Paid in Oval pmks, Fine | — |
| 213 | | 3c Red (26). Six diff. cancels, Geometrics, oval, packet, 22 in circle, G.-F. | — |
| 214 | | 3c Red (26). Ten diff unusual type grid cancels, Fine-V.F. | — |
| 215 | | 3c Red (26). Collection of 54 stamps selected for interesting and fancy cancels, includes 3, 5, Way, green, Paid, odd grids, V.G.-V.F. | — |
| 216 | | 3c Red (26). Collection of 60 includes Paid 3, Paid, 3, 10, Year Dates, Stmb. V.G.-V.F. | — |
| 217 | ☒ | 3c Red (26). Tied Benton Centre, N.Y. pmk. on illustrated campaign cover showing Lincoln & Hamlin , Very Fine | (Photo) — |
| 218 | ☒ | 3c Red (26). Tied small Masonic cancel, Mittineague, Mass pmk, Fine | — |
| 219 | ☒ | 3c Red (26). Tied by clear Balloon Hammonton, N.J. pmk, V.F. | — |
| 220 | ☒ | 3c Red (26). Roman III within Circle pmk not tying to Illustrated Ashland Collegiate Institute cover, Very Fine | (Photo) — |
| 221 | ☒ | 3c Red (26). Tied with Andover, Mass. pmk. on illustr. Phillips Academy cover, Fine | — |

- 675 222 ☒ 3c Red (26). Tied Town pmk to Illustrated **Oneida Seminary** cover, V. F. —
- 7 223 ☒ 3c Red (26). Tied from New York on illustr. **Map** cover of N. Y. State, attractive though stamp torn —
- 25 224 ☒ 3c Red (26). Three covers with diff illustrated corner cards, V. G.-Fine —
- 145 225 ☒ 3c Red (26). Three Covers with cancels of **Chicopee Star, Steamboat, Jefferson Barracks, Mo.** Fine —
- 14 226 ☒ 3c Red, Ty II (26). One hundred twelve covers, mostly New England pmks, includes many Conn towns, V. G.-V. F. —
- 600 227 ☒ 3c Red, 3c Rose (26, 65). Two diff. Taylors International Hotel & Saloons covers, both tied New York, attractive —
- 16 228 ☒ 10c Green, Ty I (31). Tied N. Y. **Ocean Mail** pmk. to cover addressed to Calif., Fine (Photo) —
- 525 229 ☒ 10c Green, Ty III (33). Clear N. Y. Ocean Mail pmk, Fine —
- 575 230 ☒ 10c Green, Ty III, 12c Black (33, 36). Each has **Paid in Circle** pmk, Fine —
- 875 231 ☒ 10c Green, Ty III (33). Neat Whitneys Point, N. Y. pmk. ties, centered to top —
- 425 232 ★ 10c Green, Ty V (35). Shows part of Imprint, Fine, o. g. —
- 175 233 ☒ 10c Green, Ty V (35). Blue **Wells Fargo & Co** pmk, Very Fine —
- 650 234 ☒ 10c Green, Ty V (35). Three copies, **Red "19", Star, Grid** pmks, Fine —
- 12 235 ☒ 10c Green Ty V (35). Six copies includes **Red Paid** on pair, **Star, Blue** and **Reds**, Fine 1300 T.V.F. —
- 525 236 ☒ 10c Green (35). Tied on cover to Vera Cruz and forwarded, Philadelphia, New Orleans and **Steamship** pmks. V. G. —
- 4 237 ☒ 10c Green, Ty V (35). Tied to cover addressed to Canada, **Red U. States & Paid 10** Transit Markings, V. G. —
- 575 238 ☒ 10c Green (35). Three covers from Phila. to Home Squadron, Vera Cruz, V. G.-Fine —
- 725 239 ☒ 12c Black (36). Horiz Pair, **Paid** pmk, Fine —
- 325 240 ☒ 24c Gray Lilac (37). Clear strike of **Masonic** cancel in circle, one corner repaired, attractive appearance, Rare cancel on this high value (Photo) —
- 10 241 ☒ 30c Orange (38). Large **Numeral 5** pmk, tiny tear, V. F. appearing —

PACKET BOAT MARKINGS

- 1550 242 ☒ **Steamer Duck River** in red oval on cover (1850) Very Fine —
- 17 243 ☒ **Steamer Osceola** in Red Oval on cover to Blackstone, La., V. F. (Photo) —
- 1850 244 ☒ New Orleans, La. **Steam 10 in Double Circle**, Ms. "**Shamrock**" V. F. —

- 245 ☒ **U. S. Mail Ship Detroit** Blue straight line on cover from New York to Michigan, Fine
- 246 ☒ **2c Red Brown (210)**. Tied to cover with colored illustrated **Steamer City of Nashville** Corner Card, Hartsville, Tenn. pmk. V. G.
- 247 ☒ **3c Red Entire (U9)**. Bold strike in oval **Regular Ouachita Passenger Steamer Dr. Buffington**, Very Fine (Photo)
- 248 ☒ **3c Red Entire (U10)**. In red oval **Bayou Sara Packet Laurel Hill**, black "Way" cancel, Very Fine (Photo)
- 249 ☒ **3c Red Entire (U10)**. In oval **St. Bt. Gassamer Thursday at 2 o'clock**, New Orleans pmk. Very Fine (Photo)
- 250 ☒ **3c Red Entire (U10)**. In red oval **Steamer Judah Touro**, "Steam" and New Orleans pmk. Very Fine (Photo)
- 251 ☒ **3c Red Entire (U10)**. In fancy blue oval **Steamboat Piota**, V. F. (Photo)
- 252 ☒ **3c Red Entires (U10)**. Two covers, first has Blue **Route 7309** Marking, last Str Line **Steamboat**, Fine-V. F.
- 253 ☒ **3c Pink Entire (U58)**. In fancy blue oval **Weekly Packet St. Nicholas**, V. F.
- 254 ☒ **3c Pink Entire (U58)**. In blue oval **Weekly Packet Frolic**, V. F.
- 255 ☒ **3c Pink Entire (U58)**. In blue oval **Steamer Frank Paragould**, partly indistinct, Good
- 256 ☒ **3c Pink Entire (U59)**. In blue oval **Packet Wade Hampton**, V. F.
- 257 ☒ **3c Pink Entire (U59)**. In blue octagon **Stonewall** two clear strikes, V. F.
- 258 ☒ **Shipwreck Cover**, "This piece is a portion of the mail forwarded from Queenstown, Ireland, per steamer Oregon on March 7th, & damaged by the sinking of that vessel off Fire Island on March 14, Recovered from the wreck July 14", label on cover, Interesting

TERRITORIAL COVERS

- 259 ☒ **Delavan, Wis** pmk in Red (1844) Very Fine Territorial
- 260 ☒ **Geneva, Wis.** (1846) large "X" pmk, V. F. Territorial
- 261 ☒ **Green Bay, Wis. T.**, (1839) in red, "12½", Fine Territorial
- 262 ☒ **Green Bay, Wis. T.**, (1841) in red, Very Fine Territorial
- 263 ☒ **Jacksonville, Flo.** (1833), **St. Augustine, Fl. T.** (1840) both red circles, V. G.
- 264 ☒ **Milwaukee, Wisc** pmk in Blue (1847) Blue 10, Fine Territorial
- 265 ☒ **Mineral Point, Wis. T.** (1843) Very Fine Territorial
- 266 ☒ **Omaho, N. T.** Green Express Co. label, also Money Package label on cover to **Denver, Col. T.** Very Good
- 267 ☒ **Platteville, Wisc** pmk in Red (1841) on forwarded cover, Fine

- 65 268 ☒ **Platteville, Wisc** in Red (1846) tiny red "5", letter contains Election Returns of Grant County, V. F. Territorial —
- 850 269 ☒ **Platteville, Wisc.** (1845) in red, "10", Fine Territorial —
- 650 270 ☒ **Prairie Du Chien Wis.** in red (1840) "25" Fine Territorial —
- 6 271 ☒ **Prarieville, Wis** pmk in Red (1845) red "10", Fine Territorial —
- 9 272 ☒ **10c Green, Ty III (15).** Tied **Vancouver, W. T.** pmk. V. G. —
- 650 273 ☒ **1c Blue, Ty II (20).** Tied with Ms. and **Omaha City, N. T.** pmk. cover mended —
- 245 274 ☒ **3c Red (26).** Tied Green grid, **Green St. Joseph, Mo.** pmk. in oval "Central Overland California & Pikes Peak Express Co. April 6, Denver City, K. T." Marking, Fine (Photo) —
- 190 275 ☒ **3c Red (26).** Tied **Leavenworth, K. T.** pmk. in oval "Central Overland California & Pikes Peak Express Co. Jun. 26, Denver City, K. T." marking, Fine (Photo) —
- 950 276 ☒ **3c Red (26).** Tied **Topeka, K. T.** pmk. Fine —
- 26 277 ☒ **3c Red (26).** Str. edge copy tied **Grasshopper Falls, K. T.** pmk. Fine —
- 11 278 ☒ **3c Red (26).** Str. edge copy tied to cover, **Anoka, M. T.** pmk. Fine —
- 13 279 ☒ **3c Red (26).** Tied **Manhattan, K. T.** pmk. V. G. —
- 1050 280 ☒ **1c Blue (63).** Three tied on cover, clear **Brownville, N. T.** pmk. in blue, F. —
- 850 281 ☒ **3c Rose (65).** Str. edge copy tied, **Denver, Col.** pmk. V. F. —
- 1150 282 ☒ **3c Rose (65).** Grid cancel, **Virginia City, Idaho.** pmk. on cover, Fine —
- 775 283 ☒ **3c Rose (65).** Tied on cover, **Salt Lake City, U. T.** pmk. Fine —
- 25 284 ☒ **3c Ultramarine (114).** Tied to cover, **Fort Union, N. Mex** pmk, Fine Territorial —
- 13 285 ☒ **3c Greens, 3c Entire, 7 territorial covers** from **Washington, Coveland, Discovery, Port Townsend, White River, Petersons Point, Port Gamble, Fair-Fine** —
- 15 286 ☒ **3c Green (207).** Tied on cover **Desmet, Kingsbury Co. Dak.** Fine —
- 6 287 ☒ **2c Red Brown (210).** Tied on cover, **Puyallup, Pierce Co. Wash. Ter.** pmk. V. F. —
- 9 288 ☒ **2c Red Brown (210).** Tied on cover, **Fort Macinnis, Mont. Apr. 30, 1884** pmk. V. G. —
- 8 289 ☒ **2c Red Brown (210).** Str. edge copy tied, **East Sound, W. T.** pmk. Fine —
- 875 290 ☒ **2c Red Brown (210).** Cross cancel, **Montesano, Wash. Ter.** Fine —
- 550 291 ☒ **2c Red Brown (210).** on cover, **Tip Top, Ariz.** pmk. V. G. —
- 450 292 ☒ **2c Red Brown, 2c Green (210, 213).** Two covers **Wilcox, Arizona** pmks. on both, Fine —

- 293 ☒ 2c, 10c Banknotes, Four diff. **Dakota** territorials Arlington, Forest City, Dell Rapids pmks, Fine
- 294 ☒ 2c Lake (219D). Tied on cover, **Poplar Creek Agency, Mont.** pmk. Fine
- 295 ☒ 2c Carmine (220). Tied fancy star cancel, **Elizabethtown, Colfax Co. N. M.** pmk. Very Fine
- 296 ☒ 1c Green (300). Tied on scenic card with **Fort Liscum, Alaska** pmk. Fine
- 297 ☒ 3c Red Entire (U26). In oval **Central Overland California & Pikes Peak Express**, St. Joseph, Mo., Way cover picked up at Platte City, Mo. to Denver City, J. T. (Jefferson Territory) cover slightly ragged, Scarce (Photo)
- 298 ☒ 3c Pink Entire (U59). Tied light strike **Idaho City, Ida.** pmk. Carrier cancel, V. G.
- 299 ☒ 2c Red Entire (U227). Tied, purple **Moscow, Idaho**, Apr. 23, 1884, Fine
- 300 ☒ 2c Brown Entire (U261). Tied **Bozeman, Mont. Feb. 4, 1883**, V. F.
- 301 ☒ 2c Brown Entire (U278). Tied **Hailey, Idaho** pmk. Fine

WESTERN COVERS

- 302 ☒ 30 in red box, to Sacramento City (1851) V. G.
- 303 ☒ Adams & Co. **Columbia** in blue oval, to San Francisco (1853) V. G.
- 304 ☒ Benicia, **Cal.** in red circle, "12½" in red, V. F.
- 305 ☒ Culloma, **Cal.** In black circle, **Paid 6 Cts.** In oval, Fine
- 306 ☒ Georgetown, **Cal.** in double blue circle, "5", to Sacramento, V. G.
- 307 ☒ Grass Valley, **Cal.** Red circle, "Paid 3" in red, V. F.
- 308 ☒ Honolulu **Paid All** San Francisco, Hanover, N. H., pmks. all in diff colors, Fine (Photo)
- 309 ☒ Marysville, **Cal.** Two covers, "Paid 3" and "5", V. G.-Fine
- 310 ☒ Reynolds & Todd **Express, Stockton** in blue oval, "Paid" in blue, Fine
- 311 ☒ Sacramento City, **Cal.** two local drop letters, one in red, V. F.
- 312 ☒ San Francisco, **Cal.**, in circle, "10", on cover with illustr. corner card **For President, Winfield Scott, for Vice Pres. William A. Graham**, one of the earliest campaign covers known, Fine (Photo)
- 313 ☒ San Francisco, **Cal.** in circle, Ms. "40", interesting letter from Bark Strafford (1849) Fine
- 314 ☒ San Fracisco, **Cal.** in circle, **Ship 6** in circle, interesting letter from **Elk Hill**, Fine
- 315 ☒ San Francisco, **Cal.** in circle, boxed 40 (1849) interesting letter, Fine
- 316 ☒ San Francisco, **Cal.** two covers, "10" and "12½", latter in red V. G.

- 65 317 ☒ **San Francisco, Cal., 1858**, on cover from Hong Kong, fancy **Ship 6** pmk, ms "p. Osborne Howes", V.F.
- 65 318 ☒ **Sonoma, Cal.** in circle, "5", to Sacramento, Fine
- 10 319 ☒ **Sonoma, Cal. 12½** in manuscript (1851) V.G.
- 350 320 ☒ **Sonoma, Cal. Pd 3** in manuscript, to Sacramento, two covers, Fine
- 7 321 ☒ **Sonoma, Cal.** in circle, two covers "5" and "Paid 3", V.G.
- 3 322 ☒ **Visalia, Cal** in circle, "Paid" in oval, "10", cover reduced, Fine
- 21 323 ☒ **3c Dull Red (11)**. Tied with New York **Ocean Mail** cancel, Ms. "Nic. Route", to San Francisco, Fine (Photo)
- 8 324 ☒ **3c Dull Red (11)**. Tied grid of dashes in blue, **Marysville, Cal.** pmk. Fine
- 75 325 ☒ **3c Dull Red (11)**. Pair tied **New York Ship** cancel, red boxed **Via Nicaragua ahead of the Mails** marking on cover, Fine (Photo)
- 45 326 ☒ **12c Black (17)**. Tied with **San Francisco** pmk. Fine
- 1150 327 ☒ **3c Red, strip of 3, 10c Green, Pair (26, 33)**. Tied light strikes **Foster Bar, Cal.** on cover to Scotland, Very Good
- 750 328 ☒ **5c Buff, 10c Green (67-68)**. Tied to each other by San Francisco Cog Wheel cancels, to France with various transit markings including "Short Paid" and "30" in circle, V.F. (Photo)
- 12 329 ☒ **10c Green (68)**. Manuscript **Indian Springs**, March 3 cancel, Fine
- 3 330 ☒ **10c Green (68)**. Tied with Sacramento, Cal. **Leaf**, Fine
- 650 331 ☒ **10c Green (68)**. San Francisco pmk. to Montreal **Tremont House** corner card, V.G.
- 2650 332 ☒ **10c Green (68)**. Pair tied on cover by **Paid all** str line and red oval **China and Japan Steam Service** as well as fancy grid, **San Francisco** pmk., Ms. **Overland**, Fine (Photo)
- 575 333 ☒ **10c Green, 5c Red Brown (68, 75)**. Tied with **San Francisco cog wheel** cancels to France, 10c has str. edge, transit markings, Fine
- 1250 334 ☒ **12c Black (69)**. Vert. Pair tied by **Eureka, Cal.** pmk. on cover to England, Fine
- 2350 335 ☒ **5c Brown (76)**. Tied cog wheel cancel, **San Francisco** and red **Honolulu** pmks. to Omaha, Nebr. Terr., stamp has faults, clear attractive markings (Photo)
- 5 336 ☒ **3c Ultramarine (114)**. Tied, blue **Elk Grove, Cal.** pmk. stamp off center, neat cover
- 9 337 ☒ **1c, 2c, 3c Banknotes**, 3 covers, **Blocksburgh, North Temescal, Minturn, Cal.** pmks. V.G.-V.F.
- 1850 338 ☒ **5c Brown (205)**. Three covers, **Smiths Ranch, Bodega, Sebastopol, Cal.** pmks. Fine
- 11 339 ☒ **2c Red Brown (210)**. Neat **Elk Grove, Sac. Co. Cal.** pmk. Fine

- 340 ☒ 2c Red Brown (210). Napa City, Cal. pmk. on advert. cover of Napa Newspaper, Fine —
- 341 ☒ 5c Indigo (216). Two tied on covers, Smiths Ranch and Tomales, Cal. pmks. Fine —
- 342 ☒ 2c Red Brown (210). Tied Black Point, Calif. pmk. Fine —
- 343 ☒ 2c Red Brown (210). Two covers Lundy and Minturn, Cal. pmks. Fine —
- 344 ☒ 2c Green (213). on cover, Golden Gate, Alameda Co. Cal. pmk. Fine —
- 345 ☒ 7c Vermilion California Penny Post Co on 3c Red Entire (34LU7). Tied with red Sacramento Wells Fargo Co. cancel, Very Fine (Photo) 200.00
- 346 ☒ 3c Red Entire (U9). Wells Fargo Express frank with adv. corner card, San Fran. Co. cancel, Fine —
- 347 ☒ 3c Red Entire (U9, U10). Well Fargo Express franks, three, Marysville, San Fran., Sacramento co. cancels tie, V.F. —
- 348 ☒ 3c Red Entire (U10). Tied Nevada Wells Fargo Express Co. cancel, V.F. —
- 349 ☒ 3c Red Entire (U10). Tied Sonora Wells Fargo Express Co. cancel, V.F. —
- 350 ☒ 3c Red Entire (U10). Tied Nevada Wells Fargo Express Co. cancel, V.F. —
- 351 ☒ 3c Red Entire (U10). Blue oval "Paid" and Marysville Well Fargo Co. cancel, V.F. —
- 352 ☒ 3c Red Entire (U10). Tied Nevada Wells Fargo Express Co. cancel, V.F. —
- 353 ☒ 3c Red Entire (U10). Tied Nevada Wells Fargo Express Co. cancel, Ms. "With Gold \$49.00" V.F. —
- 354 ☒ 3c Red Entire (U10). Tied Wells Fargo Express Nevada co. cancel, in blue oval Moores Flat, ink stain on cover, nice markings —
- 355 ☒ 3c Red Entire (U10). in blue oval Pacific Express Co. Sacramento, V.G. —
- 356 ☒ 3c Red Entire (U10). Freeman & Co. Express frank, Co. cancels, in Ms. "With Bag & Bar", Fine —
- 357 ☒ 3c Red Entire (U10). Freeman & Co. Express frank, Stockton co. cancel, advertising corner card, V.F. —
- 358 ☒ 3c Red Entire (U10). Freeman & Co. Express frank, Monterey co. cancel, cover has repaired tear —
- 359 ☒ 3c Red Entire (U10). In Oval J. Bamber & Co's Contra Costa Express, Paid, also boxed "answer by Bamber & Co's Express", clear markings on slightly soiled cover —
- 360 ☒ 3c Red Entire (U10). Langton's Pioneer Express frank, Marysville co. cancel, V.F. (Photo) —
- 361 ☒ 3c Red Entire (U10). Wells Fargo franks, Stockton, San Francisco co cancels, V.G.-V.F. —
- 362 ☒ 2c, 3c Entires (U10, U34, U278). Wells Fargo Express 4 franks, Marysville two, San Fran., Reno, Nev. co. cancels, V.G.-V.F. —

- 25- 363 ☒ 10c Green Entire (U15). Tied Yreka, Cal. on cover with **Bison** marking, Fine
- 12- 364 ☒ 10c Green Entire (U15). Red Bluff, Cal. pmk. V.G.
- 6- 365 ☒ 10c Green Entire (U18). Ms. Santa Clara, Cal. pmk. Fine
- 11- 366 ☒ 10c Green Entire (U40). Wells Fargo Express frank in red, San Francisco co. cancel ties, Fine
- 8- 367 ☒ 10c Green Entire (U41). Ms. Meilpitas, Cal. pmk. V.F.
- 750 368 ☒ 3c Pink Entire (U58). Wells Fargo & Co. Frank, tied Austin, N.T. co. cancel, V.F.
- 4- 369 ☒ 3c Pink Entire (U58). Bamber & Co. Express frank, co. cancel, Fine
- 550 370 ☒ 3c Pink Entire (U58). Langton's Pioneer Express frank, Wells Fargo & Langton's co. cancels, cover torn at top, Good
- 450 371 ☒ 3c Pink Entire (U58-59). Pacific Union Express franks, one has adv. imprint, Petaluma and Grass Valley co. cancels, V.G.
- 4- 372 ☒ 3c Pink Entires (U58-U59). Wells Fargo franks, 3 diff. Portland, Virginia City, California co. cancels, 4 diff. V.G.-Fine 3.5-
- 750 373 ☒ 3c Pink Entires (U58-U59). Wells Fargo franks, San Jose, Stockton, Chinese Camp, Santa Barbara co. cancels, 4 diff. V.G.-Fine 4.5-
- 1850 374 ☒ 3c Pink Entire (U59). Pacific Union Express frank, Kernville co. cancel, V.F.
- 1250 375 ☒ 3c Pink Entire (U59). Truman & Co. Express frank in blue, Ms. March 17th, 65 cancel, to San Jose, Fine
- 650 376 ☒ 3c Pink Entire (U59). Truman & Co. Express frank in black, Ms. May 30th, 65 cancel, to San Jose, Fine
- 725 377 ☒ 3c Pink Entire (U59). Truman & Co. Express frank in black, Ms. May 3rd, 65 cancel, to San Jose, V.F.
- 7- 378 ☒ 3c Pink Entire (U59). Truman & Co. Express frank in black, Ms. June 6th, 65, to San Jose, Fine
- 11- 379 ☒ 3c Pink Entire (U59). Truman & Co. Express frank in black, Ms. June 18th, 65, cancel, to San Jose, V.F. (Photo)
- 20- 380 ☒ 3c Green Entire (U82). Wells Fargo frank tied Spokane Falls, W.T. co. cancel, Very Fine
- 1450 381 ☒ 3c Green Entire (U82). Wells Fargo frank, tied Ainsworth, W.T. co. cancel, Fine
- 5- 382 ☒ 3c Green Entire (U82). Tied Fort Jones, Cal. pmk. advert. corner card, V.G.
- 450 383 ☒ 2c-3c Entires (U82, U278). Wells Fargo franks, 3 diff Calif. town cancels, Fine 360-1-

- 384 ☒ 3c Green Entires (U82). Wells Fargo Express franks, Santa Cruz, Gilroy, Virginia, Nev., Austin, Nev. V.G.-V.F. _____
- 385 ☒ 2c Red Entire (U227). Wells Fargo frank, tied Tacoma, W.T. co cancel, Fine _____
- 386 ☒ 2c Red Entire (U228). Wells Fargo frank, tied fancy boxed W.M. Chandler, Agt., Sprague, W.T. co. cancel, Very Fine _____

1861 ISSUE

- 387 10c Dark Green, August (58). Few slightly short perfs, Fine appearing 62.50
- 388 P 12c Black, August India Proof (59P). Small thin, V.F. appearing 25.00
- 389 1c Blue (63). Clear Heart cancel, Very Fine (Photo) _____
- 400 1c Blue (63). Horiz. Pair boxed Star cancel, V.F. (Photo) _____
- 401 1c Blue (63). Horiz. Pair with Paid struck four times, V.F. _____
- 402 1c Blue (63). Eight copies, mostly Paid cancels, V.G.-V.F. _____
- 403 1c Blue (63). Ten copies mostly with fancy cancels, V.G.-V.F. _____
- 404 1c Blue (63). Twelve copies includes Pair, Specimen, Red Grid, Paid, Shades, V.G.-Fine _____
- 405 ☒ 1c Blue (63). Pair & str. edge single tied blue Chicago pmks. Steamboat and Due 2cts. markings, Fine _____
- 406 ☒ 1c Blue (63). Three shades on 3 covers, Very Fine _____
- 407 ☒ 1c Blue, 3c Rose (63, 65). Horiz Pair of first, single of last tied Old Point Comfort, Va. Making 5 cent rate, 1 stamp S.E., Fine _____
- 408 ☒ 1c Blue (63). Seven covers showing Drop Rate, Carrier, Combination usages, V.G.-V.F. _____
- 409 ☒ 1c Blue, 3c Rose (63, 65). Seven covers showing Carrier Usage, F.-V.F. _____
- 410 ☒ 1c Blue, 3c Rose (63, 65). Ten covers showing Carrier Usage, V.G.-Fine _____
- 411 3c Pink (64). Fine 40.00
- 412 ☒ 3c Rose Pink (64a). Straddle Margin copy tied to cover, V.F. _____
- 413 3c Rose (65). Excellent strike of Man Thumbing His Nose cancel, one corner perf. short, Rare cancel (Photo) _____
- 414 3c Rose (65). Clear strike Devil & Pitchfork cancel, V.F. (Photo) _____
- 415 3c Red Grill (94). Bold Eagle with Shield cancel, centered to left (Photo) _____
- 416 3c Rose (65). Clear Heart within Heart cancel, Very Fine (Photo) _____
- 417 3c Rose (65). Star within Shield cancel, Fine (Photo) _____
- 418 3c Rose (65). Clear strike of Cats Head, V.F. (Photo) _____
- 419 3c Rose (65). Bold blue Negative Masonic cancel, Very Fine (Photo) _____

| | | |
|----------|--|-----------|
| 850-420 | 3c Rose (65). Clear negative Masonic Square & Compass , light crease, V.F. strike | — |
| 26-421 | 3c Rose (65). Masonic, G in Square & Compass , V.F. strike (Photo) | — |
| 5-422 | 3c Rose (65). Clear Masonic pmk , Fine | (Photo) — |
| 2-423 | 3c Rose (65). Masonic Trowel pmk , Fine | — |
| 1750-424 | 3c Rose (65). Clear Masonic Triangle within Triangle pmk , V.F. (Photo) | — |
| 475-425 | 3c Rose (65). Pretty blue Negative Masonic pmk , V.F. (Photo) | — |
| 10-426 | 3c Rose (65). Clear Negative Masonic pmk , Fine | — |
| 900-427 | 3c Rose (65). Clear Masonic Seeing Eye cancel , Fine | — |
| 575-428 | 3c Rose (65). Blue Jersey Shore Star pmk , Very Fine | — |
| 1050-429 | 3c Rose (65). Clear Large Anchor pmk , Fine (Photo) | — |
| 2-430 | 3c Rose (65). Anchor pmk , Fine | — |
| 16-431 | 3c Rose (65). Unusual Negative Shield in Circle pmk , light crease, V.F. appearing | — |
| 5-432 | 3c Rose (65). Albany U.S. in Wreath of Stars cancel , Fine | — |
| 37-433 | 3c Rose (65). Bold Negative LIRR pmk , Very Fine (Photo) | — |
| 1050-434 | 3c Rose (65). Clear strike Putnam, Conn. Double Anchor , centered T.R. | — |
| 1350-435 | 3c Rose (65). Scarce cancel of Man's Head in circle , Fine (Photo) | — |
| 550-436 | 3c Rose (65). Clear Blue "O.K." pmk , few short perfs | — |
| 6-437 | 3c Rose (65). Man's Head pmk , Fine (Photo) | — |
| 4-438 | 3c Rose (65). Albany U.S. in Wreath of Stars cancel , Fine | — |
| 2-439 | 3c Rose (65). Albany U.S. in Wreath of Stars cancel , Fine | — |
| 24-440 | 3c Rose (65). Large negative U.S. in Cog , Fine (Photo) | — |
| 875-441 | 3c Rose (65). Very Fine Strike of Heart within Heart pmk , stamp has small thin | — |
| 1050-442 | 3c Rose (65). Tied on piece with tiny Flag cancel from Troy, N.Y. V.F. | — |
| 25-443 | 3c Rose (65). Scarce Skull & Crossbones cancel , Fine (Photo) | — |
| 8-444 | 3c Rose (65). Slightly defective copy with Very Fine strike of Corry Eagle pmk | (Photo) — |
| 2-445 | 3c Rose (65). Brooklyn Encased Shield cancel , Fine | — |
| 725-446 | 3c Rose (65). Clear Pine Tree cancel , Very Fine (Photo) | — |
| 45-447 | 3c Rose (65). Scarce Mans Face cancel , two short perfs. Fine strike (Photo) | — |
| 750-448 | 3c Rose (65). Clear Putnam, Conn. Double Anchor cancel , V.F. (Photo) | — |

| | | |
|-----|---|-----------|
| 449 | 3c Rose (65). Clear Heart cancel, Fine | — |
| 450 | 3c Rose (65). Clear Horse's Head cancel, Very fine (Photo) | — |
| 451 | 3c Rose (65). Waterbury, Conn. W cancel, Fine | — |
| 452 | 3c Rose (65). Clear Union in Star cancel, Fine (Photo) | — |
| 453 | 3c Rose (65). Clear Horse's Head cancel, slight thins, V.F. appearance (Photo) | — |
| 454 | 3c Rose (65). Bold clear Devil & Pitchfork cancel on small piece, few nibbed perfs | (Photo) — |
| 455 | 3c Rose (65). Excellent Pine Tree cancel, light crease (Photo) | — |
| 456 | 3c Rose (65). Union in Star cancel, Fine (Photo) | — |
| 457 | 3c Rose (65). Clear strike of Bow Tie cancel, centered to B. | — |
| 458 | 3c Rose (65). Block of 6, St. Paul, Minn. pmks, V.F. | — |
| 459 | 3c Rose (65, 94). Two copies bold " JHB " and " LV " pmks, Fine | — |
| 460 | 3c Rose (65). Two copies, tiny Heart within Heart and Segmented Heart pmks, V.F. strikes, stamps have unnoticeable defects | — |
| 461 | 3c Rose (65). Two diff. blue Shield cancels, Fine | — |
| 462 | 3c Rose (65). Horiz. strip of 3, str. edge at R., each cancelled Blue Shield , Fine | — |
| 463 | 3c Rose (65). Horiz. Strip of 3, str. edge at R. with 2 negative Anchor cancels, Fine | — |
| 464 | 3c Rose (65). Three pretty cancels, Cog Wheel, and Segmented Circles, V.F. | — |
| 465 | 3c Rose (65). Three pretty fancy grid cancels, Very Fine | — |
| 466 | 3c Rose (65). Three different Heart cancels, Fine | — |
| 467 | 3c Rose (65). Three interesting cancels "Crawford House Aug. 20, 1867", Wells Fargo Express, "Boats Cts.", Fine | — |
| 468 | 3c Rose (65). Three cancels O.K. , fancy R , Negative S.F. Latter str. edge, Fine | — |
| 469 | 3c Rose (65). Three diff. U.S. cancels one in Monogram, Fine | — |
| 470 | 3c Rose (65). Three diff. Railroad cancels two ovals and one shield, Fine | — |
| 471 | 3c Rose (65). Four diff. Numeral cancels 2, 3, 5, 10 , Fine | — |
| 472 | 3c Rose (65). Four diff. Paid 3 cancels, Fine | — |
| 473 | 3c Rose (65). Four diff. fancy cancels Triangles within Triangles, 3 Leaf Clover, False Teeth, C , Clear strikes | — |
| 474 | 3c Rose (65). Four diff. clear Shield cancels, Fine | — |

| | | | |
|------|-----|--|---|
| 225 | 475 | 3c Rose (65). Four copies with diff Star pmks includes Jersey Shore Star, unusual Geometric Star, V.G.-Fine | — |
| 850 | 476 | 3c Rose (65). Four copies, Steam, Steamboat, Steam Ship, U.S. Ship pmks, Fine | — |
| 950 | 477 | 3c Rose (65). Four copies selected for pmks, include Beer Barrel, Open Book, 11AM, Crawford House , V.F. strikes, stamps have defects | — |
| 85 | 478 | 3c Rose (65). Four diff small fancy Shield pmks, Fine-V.F. | — |
| 650 | 479 | 3c Rose (65). Five diff Shield pmks, Fine | — |
| 105 | 480 | 3c Rose (65). Seven diff. clear Shield cancels, V.G.-Fine | — |
| 45 | 481 | 3c Rose (65). Seven diff. fancy cancels Leafs, Anchor, Bat, Diamond, Crosses, Fine | — |
| 85 | 482 | 3c Rose (65). Seven diff. Shield cancels, nice strikes most stamps have faults | — |
| 675 | 483 | 3c Rose (65). Eight diff. fancy cancels Shield, Oval, Crosses, Pumpkin Face, Leaf, Square Grid, Fine | — |
| 65 | 484 | 3c Rose (65). Nine diff. Star cancels including fancy types, V.F. | — |
| 45 | 485 | 3c Rose (65). Nine copies fancy cancels includes Hearts, 20, 3, A, C, French Receiving , Fair-Fine | — |
| 625 | 486 | 3c Rose (65). Nine copies with diff clear blue Paid pmks, Fine-V.F. | — |
| 1050 | 487 | 3c Rose (65). Ten copies selected for pmks, includes Green Paid 3, Forwarded, R.R. 24 , V.G.-V.F. | — |
| 65 | 488 | 3c Rose (65). Ten diff. Star cancels, Fine lot | — |
| 450 | 489 | 3c Rose (65). Ten diff. Geometric cancels, Very Fine | — |
| 725 | 490 | 3c Rose (65). Ten diff. Paid cancels, Fine-V.F. | — |
| 450 | 491 | 3c Rose (65). Eleven diff fancy cancels all in Blue , includes Paid 3, Diamond Grids, D, fancy Stars, V.G.-V.F. | — |
| 45 | 492 | 3c Rose (65). Eleven diff. Geometric cancels, Fine-V.F. | — |
| 45 | 493 | 3c Rose (65). Twelve diff. fancy and geometric cancels, Fine | — |
| 1150 | 494 | 3c Rose (65). Thirteen diff. fancy cancels includes Cog Wheels, Pairs, Geometrics, Very Fine | — |
| 450 | 495 | 3c Rose (65). Thirteen diff. fancy cancels includes Shield, U.S., Wheel, Geometrics, V.G.-V.F. | — |
| 450 | 496 | 3c Rose (65). Fifteen copies with unusual Geometric pmks, V.G.-V.F. | — |
| 650 | 497 | 3c Rose (65). Eighteen stamps selected for cancels includes Paid 3, Paid All, Wagon Wheel, Shield, Geometrics , V.G.-Fine | — |
| 1250 | 498 | 3c Rose (65). Nineteen diff. fancy cancels includes Shield, Rosettes, Geometrics, Stars, Pairs, V.G.-V.F. | — |

- 499 3c Rose (65). Lot of 104 stamps selected for interesting and fancy cancels, includes fancy Stars, Colored, Geometrics, Patents, U. S. 10 -----
- 500 3c Rose (65). Balance of collection mounted in Bruce Post Album, 131 cancels includes Stars Paid, Geometrics, Covers, Patents, Numerals, etc. Nice lot -----
- 501 3c Rose (65). Collection of **cancellations**, 496 stamps, includes Paid, Stars, Geometrics, Numerals, Paid 3, Masonic, Patent, Leafs, Heart, Grills, etc. Fair-Very Fine -----
- 502 ☒ 3c Rose (65). Tied Grid, unframed Clinton Cor., N. Y. pmk, Fine -----
- 503 ☒ 3c Rose (65). Tied with Cambridge, Mass. **Eagle** cancel, Fine (Photo) -----
- 504 ☒ 3c Rose (65). Tied Clear South Yarmouth, Mass. **Masonic Star**, stamp centered to L -----
- 505 ☒ 3c Rose (65). Tied Baltimore Cork, str. line **Steamboat** and **Due 3 in Circle** markings, Carrier marking on reverse, Fine -----
- 506 ☒ 3c Rose (65). Cambridge, Mass. **Eagle** cancel on str. edge stamp, light but clear strike -----
- 507 ☒ 3c Rose (65). Tied by clear strike of fancy **Titusville, Pa., "T"** pmk, cover slightly stained -----
- 508 ☒ 3c Rose (65). Cancelled by Canton, Mass. **Masonic** pmk, Fine -----
- 509 ☒ 3c Rose (65). Tied to unusual Illustrated advertising cover showing **Druggists Store within Morter & Pestle**, stamp centered to R -----
- 510 ☒ 3c Rose (65). Tied Cincinnati, O. to cover showing list of Ohio Counties on front, **Map of Ohio** on reverse, Fine -----
- 511 ☒ 3c Rose (65). Tied on cover with unusual Geometric from New York, V. F. -----
- 512 ☒ 3c Rose (65). Cancelled by Keeseville, N. Y. **"U. S."**, bold strike, centered to L -----
- 513 ☒ 3c Rose (65). Double cancel Blue **Free**, Edgerton, Wis. pmk on neat Mourning cover, Fine -----
- 514 ☒ 3c Rose (65). Bold **Selma, Ala.** Negative **U. S.** cancel, stamp centered to B. L. Excellent strike (Photo) -----
- 515 ☒ 3c Rose (65). Tied by Beverly, Ms "Paid in Grid" pmk, Fine -----
- 516 ☒ 3c Rose (65). Tied by **Ledlow, Vt. Paid 3 in Circle** pmk, Fine -----
- 517 ☒ 3c Rose (65). Tied Wash. D. C. on large embossed Valentine cover, stamp defective, attractive Valentine enclosed -----
- 518 ☒ 3c Rose (65). Tied Burlington, Vt. on illustr. adv. cover with Patriotic design, attractive -----
- 519 ☒ 3c Rose (65). Tied from New Haven, illustr. **Fraternity** corner card shows Owl, Pair of Dice, 1866, Fine -----

- 325 520 ☒ 3c Rose (65). Tied Andover, Mass. illustr. corner card **Phillips Class '62**, V. F.
- out 521 ☒ 3c Rose, 12c Black, France 20c Blue, 30c Brown (65, 69, France 33-34). Tied to cover addressed to Paris & forwarded to Rome, various Transit Markings, V. F. (Photo)
- 4- 522 ☒ 3c Rose (65). Two covers, each tied with **Shield**, Thomaston, Me. and Cambridge, Mass. pmks, V. G.
- 9- 523 ☒ 3c Rose (65). Three diff Illustrated Advertising Covers, Fine-V. F.
- 6W 524 ☒ 3c Rose (65). Three diff. illustr. **Hotel** covers, Fine
- 1250 525 ☒ 3c Rose (65). Four covers selected for cancels, includes **X Way, Free, Paid**, V. G.-V. F.
- 8- 526 ☒ 3c Rose (65). Five diff. **Waterbury, Conn.** cancels on covers, petals, diamond grid, rosettes, V. G.-Fine
- ✓ 527 ☒ 3c Rose (65). Five covers with diff interesting Geometric pmks, V. G.-V. F.
- 47 528 ☒ 1c-3c 1861-1895 Issues, Eight covers with diff. **Insurance Co Corner Cards**, Fine-V. F.
- 12- 529 5c Buff (67). Attractive **Boxed Paid** pmk, light corner crease, V. F. appearing (Photo)
- 8- 530 5c Buff (67). Attractive Blue Circle of Wedges cancel, nibbed perfs. at top
- 23- 531 10c Green (68). Healdsburg, Cal. **Flag** cancel, Very Fine (Photo)
- 11- 532 10c Green (68). Neat two line **Steam Ship** cancel, V. F. (Photo)
- 250 533 10c Green (68). Attractive **Interwining Star** cancel, Fine
- 575 534 10c Green (68). Two shades, each with **Steam Ship** cancel, Fine
- 7- 535 10c Green (68). Three copies, **Reds, Paid**, Very Fine
- 650 536 10c Green (68, 96). Five copies of first, all have interesting pmks including **Rosette, Boxed red Pd, Star in Circle**, Fine
- 1050 537 10c Green (68). Eleven copies **fancy cancels** includes Leaf, Cog Wheels, Star, 61, Red grids, Magenta Wedges, V. G.-V. F.
- 25- 538 ☒ 10c Green (68). Tied large Grid on neat cover addressed to **Shanghai**, Ms. "Per Costa Rica", handstamp imprint of business firm in Nagasaki, Japan, Fine (Photo)
- 7- 539 ☒ 10c Green (68). Tied **Salem, Mass. Witch** pmk. Fine
- 20- 540 ☒ 10c green (68). Tied **New York Steam Ship** pmk, Due 10 marking, V. F. (Photo)
- 350 541 ☒ 10c Green (68). Tied **New York Steam Ship** pmk, Fine
- 2110 542 ☒ 10c Green on 10c Entire (68, U41). Tied with **N. York Steamship** cancel, V. F. (Photo)

| | | | |
|-----|---|---|----------------|
| 543 | ✉ | 10c Green, 12c Black (68-69). Tied on cover to Egypt, "Paid Only To England" and other transit markings, Fine | — |
| 544 | ✉ | 5c Brown, 10c Green (68, 76). Each tied with Negative Star cancel, New Orleans pmk. to Bordeaux, Fine | — |
| 545 | ✉ | 5c Brown, 10c Green Strip of 4 (68, 76). On legal size cover to France, Atlanta Ga. pmk. "Insufficiently Paid" and other transit markings, V. G. | — |
| 546 | | 12c Black (69). Blue grid cancel, Very Fine | — |
| 547 | | 12c Black (69). Pretty Blue Star cancel, Fine | — |
| 548 | | 12c Black (69). Large T in broken circle, tiny thin, V. F. appearance | — |
| 549 | | 12c Black (69). Horiz. Pair with odd green grid cancels, off center | — |
| 550 | | 12c Black (69, 97). Three copies, Red Grid, Leaf, Geometric cancels, Fine | — |
| 551 | ✉ | 12c Black (69). Four copies tied on cover from New Orleans to England, each cancelled with Crescent cancel, Fine | (Photo) — |
| 552 | | 24c Red Lilac, 24c Lilac (70, 78). Three diff. clear Star cancels, first has thin, others V. G.-Fine | — |
| 553 | ★ | 30c Orange (71). Block of 9, centered slightly to right, Fine, fresh o.g. block | (Photo) 320.00 |
| 554 | | 30c Orange (71). Open Star within Circle pmk, Very Fine | — |
| 555 | | 30c Orange (71). Clear strike of Union Soldier cancel, Fine | (Photo) — |
| 556 | | 30c Orange (71). Leaf cancel, Very Fine | — |
| 557 | | 30c Orange (71). Hiogo, Japan cancel, one short perf | — |
| 558 | | 30c Orange (71). Attractive Shield cancel, centered T. R. | (Photo) — |
| 559 | | 30c Orange (71). Masonic triangle within triangle cancel, excellent strike, small thin | (Photo) — |
| 560 | | 30c Orange (71). Horiz. Pair each with 4 Leaf Clover cancel, V. F. | (Photo) — |
| 561 | | 24c Lilac, 30c Orange (71, 78). Each with bold Maltese Cross within Open Circle pmk, Very Good | — |
| 562 | | 30c Orange (71). Two horiz. pairs, Red Spokes, Cog Wheel cancels, defects, nice strikes | — |
| 563 | | 30c Orange (71). Seven diff. fancy cancels, includes Geometrics, fancy Star, Floral, V. G. | — |
| 564 | ✉ | 30c Orange (71). Tied to cover addressed to Paris, stamp slightly stained | 4.15 |
| 565 | | 30c Orange, 90c Blue (71-72). Slight creases, V. F. appearance | 28.00 |
| 566 | | 90c Blue (72). Neat U. S. cancel, tiny tear | (Photo) — |
| 567 | | 90c Blue (72). Black Leaf cancel, Fine | (Photo) 20.00 |
| 568 | | 90c Blue (72). Fancy Geometric cancel, Fine | (Photo) 20.00 |

| | | | |
|-------|-----|--|-------|
| 3.50 | 569 | 90c Blue (72). Straight line cancel, perfs in at R | 20.00 |
| 7.25 | 570 | 90c Blue (72). Blue Wells Fargo Express Co. cancel, short perfs. at B., Scarce | 50.00 |
| 3.50 | 571 | 90c Blue (72). Large U.S. cancel, closed tear | — |
| 7.50 | 572 | 90c Blue (72). Two shades, tiny thins, V.F. appearance | 40.00 |
| 3.50 | 573 | 2c Black (73). Brown dotted grid, Fine | — |
| 3.50 | 574 | 2c Black (73). Bold clear U.S. in Circle cancel, few short perfs at top | — |
| 6.75 | 575 | 2c Black (73). Large Blue Star cancel, Fine | — |
| 17.50 | 576 | 2c Black (73). Very Fine Cog Wheel and Red town cancel (Photo) | — |
| 3.50 | 577 | 2c Black (73). Albany U.S. in Wreath of Stars cancel, centered to B. | — |
| 3.75 | 578 | 2c Black (73). Attractive Floral cancel, str. edge at R., well centered | — |
| 3.25 | 579 | 2c Black (73). Clear U.S. in Circle cancel, closed tear, centered T. R. | — |
| 7.50 | 580 | 2c Black, 2c Brown (73, 113). Very Fine | — |
| 4.50 | 581 | 2c Black (73, 93). Three diff fancy Brilliant Red pmks including Star within circle, V.G.-Fine | — |
| 4.50 | 582 | 2c Black (73, 93). Four copies with diff blue pmks including Maltese Cross, Geometrics, double lined Chicago, V.G.-Fine | — |
| 15.50 | 583 | 2c Black (73). Fifteen copies, includes Carrier, Town, Geometric pmks, V.G.-Fine | — |
| 20.50 | 584 | 2c Black (73). Nineteen stamps includes Red & Blue Geometrics, Cog Wheel, Fort, Negative N.O., V.G.-Fine | — |
| 27.00 | 585 | 2c Black (73, 87, 93). Specialized Collection of 102 copies & 4 covers, includes Proofs, Specimen, 7 unused, 10 Reds, and other cancels, Fine & Valuable Lot | — |
| 2.50 | 586 | 2c Black (73). Tied with Paid 3 cancel to printed circular, centered T. R. | — |
| 3.50 | 587 | 2c Black (73, 93). Five covers with 7 stamps, includes 6 Grilled stamps, V. G. | — |
| 4.50 | 588 | 2c Black pair, 5c Brown (73, 76). Tied on cover Wilkins, Pa. pmk. pair has str. edge, V. G. | — |
| 10.00 | 589 | 2c Black, 3c Ultramarine, three copies (73, 114). Overlapped and tied on cover from Chicago to Bremen, V. G. | — |
| 8.50 | 590 | 5c Red Brown (75). Blue town cancel, Fine | — |
| 11.50 | 591 | 5c Red Brown, 5c Dark Red Brown (75). Each has wide guide line str. edge, V. F. | 35.00 |
| 4.50 | 592 | 5c Red Brown, 5c Brown (75-76). Each attractive boxed Paid cancel, both closed tears | — |
| 3.50 | 593 | 5c Brown (76). Clear U.S. in Circle cancel, Fine | — |

- 594 5c Brown (76). Circle of Triangle Grids cancel, Fine
 595 5c Brown (76). Negative **Masonic** cancel, Fine
 596 ☒ 5c Brown (76). Three copies tied to cover addressed to Paris, various Transit Markings, Fine
 597 15c Black (77). Clear blue Target pmk, Fine
 598 15c Black (77). Attractive **Geometric** cancel, Fine
 599 15c Black (77). Clear **Shield** cancel, centered to left (Photo)
 600 15c Black (77). **Heart within Heart** cancel, clear strike, centered to B. L.
 601 ☒ 15c Black (77). Two covers, one to Baden, other Registered cover with defective 3c 1869, Both 15c stamps, Fine
 602 24c Gray Lilac (78). Scarce **Horse's Head** cancel, Very Fine (Photo)
 603 24c Lilac (78). Very Fine strike of Unusual Grid within Circle pmk
 604 24c Lilac (78). Attractive **Shield** in Circle cancel, closed tear
 605 24c Lilac (78). Four copies selected for pmks, **U. S., 24, P, Magenta, G.-F.**
 606 24c Lilac (78). Six diff. **fancy cancels**, Cog Wheels, Crosses, V.G.-Fine

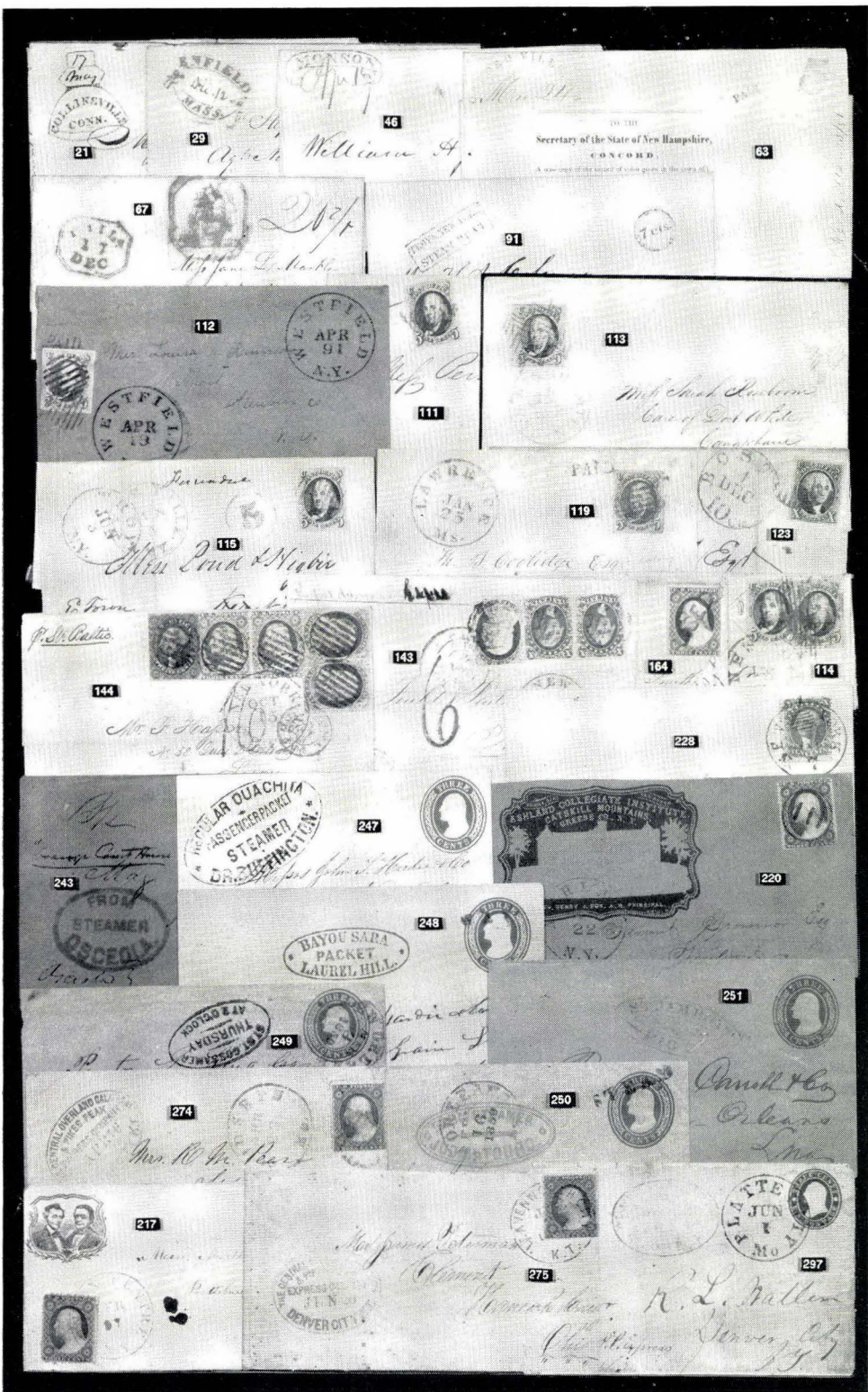
PATRIOTIC COVERS

- 607 ☒ Annapolis, Md., 1862 pmk. on illustrated **Patriotic** showing Buildings and Women, Due 3 marking, Fine 2.50 F
 608 ☒ Soldier Letter, 24th Regr. Mass Vol on Patriotic cover, red Boston, Mass pmk & Due 3 cents, Fine 2.60 F
 609 ☒ 3c Red (26). Three diff. Patriotics, all tied, Fine 6.50 F
 610 ☒ 3c Red (26). Four diff. **Patriotics**, all tied, Fine-V. F. 10 F
 611 ☒ 3c Red (26). All tied, 5 diff. **Patriotics**, V.G.-V. F. 7.50 F
 612 ☒ 3c Rose (65). Tied on scarce type **Lincoln Patriotic** in full colors, partly faint Ship Island, Miss. pmk. Fine 5 F (Photo)
 613 ☒ 3c Rose (65). Tied Hagerstown, Md. on Patriotic, Union & Liberty, Fine 2.25 F
 614 ☒ 3c Rose (65). Cairo, Ill. pmk. on Patriotic cover **Horseman** in gold on pink cover, Fine
 615 ☒ 3c Rose (65). Tied on **Patriotic** cover, **Gen. McCellan**, Fine
 616 ☒ 3c Rose (65). Tied small **Fort Schuyler, N. Y.** on Patriotic cover **Mis-**
ouri Compromise, Soldiers with Cannon, Fine (Photo)
 616A ☒ 3c Rose (65). Tied York, Pa. on Patriotic, Gen. Mc Cellan on Horse, Soldiers, Fine 2.10 F
 617 ☒ 3c Rose (65). Tied to **Patriotic** showing Battle Scenes of Lexington 1775 and Baltimore 1861, attractive though slightly ragged at R 2.50 F

- 1150 618 ☒ 3c Rose (65). Tied to Patriotic cover showing **Tomb of Washington**, Fine (Photo) —
- 45 619 ☒ 3c Rose (65). Str edge copy tied grid to **Patriotic** showing Gen. Washington and "The Constitution & Laws", **Delavan, Wis.** pmk., Fine —
- 875 620 ☒ 3c Rose (65). Tied Paid in circle to **Patriotic** cover showing **Columbia & Union Flag**, Red Chambersburg, Pa. pmk., Fine —
- 115 621 ☒ 3c Rose (65). Tied **Tipton, Mo.** to Patriotic showing **Illinois Coat of Arms**, Fine —
- 475 622 ☒ 3c Rose (65). Tied to **Patriotic** cover, design on back, contains **Magnus Lettersheet** showing **U.S. Treasury** etc. Fine —
- 450 623 ☒ 3c Rose (65). Tied grid to Patriotic cover showing **General Scott and Flags**, Joliet, Ill. pmk, V. F. —
- 325 624 ☒ 3c Rose (65). Defective copy tied Blue **Banks Division** to **Magnus** type Patriotic showing Angel and Shield, Fair 2.10 F —
- 275 625 ☒ 3c Rose (65). Clipped copy tied from Chicago on **Caricature** Patriotic, Dogs, Gen. Scott and Jeff, neat cover —
- 275 626 ☒ 3c Rose (65). Tied from Chicago on Patriotic, **Com. Foot**, V. G. —
- 550 627 ☒ 3c Rose (65). Three diff. **Patriotics**, all tied, Fine 6 F —
- 550 628 ☒ 3c Rose (65). Three covers tied from Washington **Patriotics**, **12th, 13th, 14th New Hampshire Regiments**, Fine —
- 550 629 ☒ 3c Rose (65). Three diff. **Patriotic** covers, all tied, Fine 6 F —
- 550 630 3c Rose (65). Three diff. **Patriotics** tied **Chicago** pmks, Fine 6 F —
- 9 631 ☒ 3c Rose (65). Four diff. **Patriotics**, all tied, Fine 8.25 F —
- 850 632 ☒ 3c Rose (65). Five diff. **Patriotics**, all tied, V. G.-V. F. 11 F —
- 850 633 ☒ 3c Rose (65). Five diff. **Patriotics**, all tied, V. G.-V. F. 11 F —
- 850 634 ☒ 3c Rose (65). Five diff. **Patriotic** covers, Fine 10 F —
- 8 635 ☒ 3c Rose (65). Five diff. **Patriotics**, all tied, V. G.-Fine 7 F —
- 55 636 ☒ **Flags of the World**, 22 diff. unused covers in full colors, V. F. —
- 650 637 ☒ **Soldiers Letters**, three covers, **Soldiers Letter** Douglas Brigade marking on two, other **Soldiers Letter** in oval, V. G.-Fine —

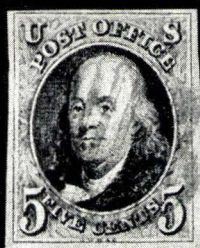
1867 GRILL ISSUES

- 45 638 3c Rose C. Grill (83). Centered to top, small thin 25.00
- 1750 639 3c Rose, D Grill (85). Clear strike **Head in Profile**, two short perfs (Photo) —
- 1650 640 2c Black, E Grill (87). Pretty Blue **Circle of Wedges** pmk, Fine —
- 1550 641 2c Black, Grill (87). Very Fine Strike of **Red Shield in Circle** pmk, few short perfs at T. —

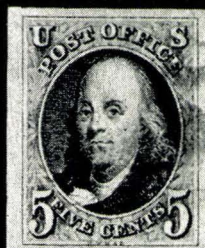




104



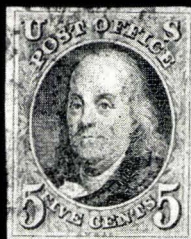
105



106



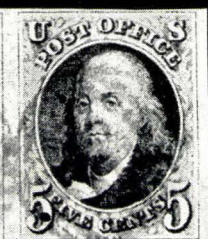
107



108



124



109



134



110



145



181



182



240

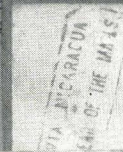


838





312



326



323

328

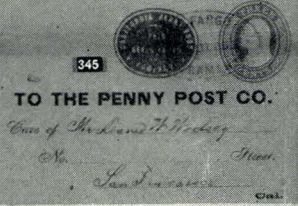
308



335



332



345

TO THE PENNY POST CO.



360



379



514

503



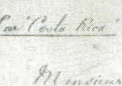
521



540



542



538



612



551



616



618

652



749



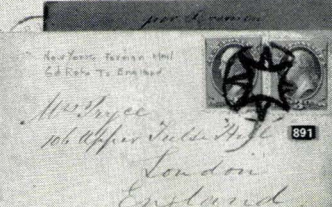
787

814

890



930



891



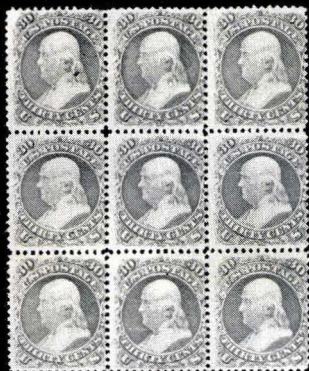
912



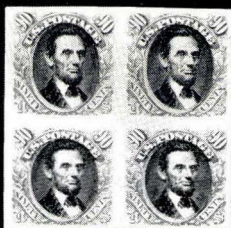
916

888





553



694



696



724



759



789



832



840



813



1119



1121



1145



1146



1148



1149



1150



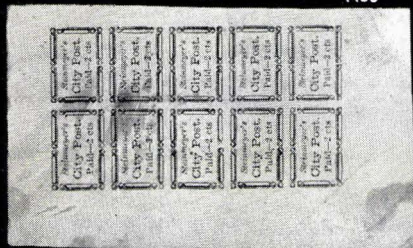
1156



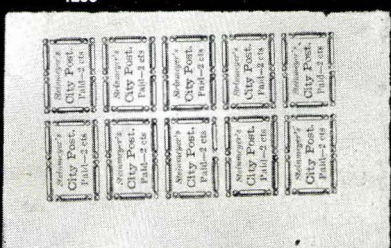
1233



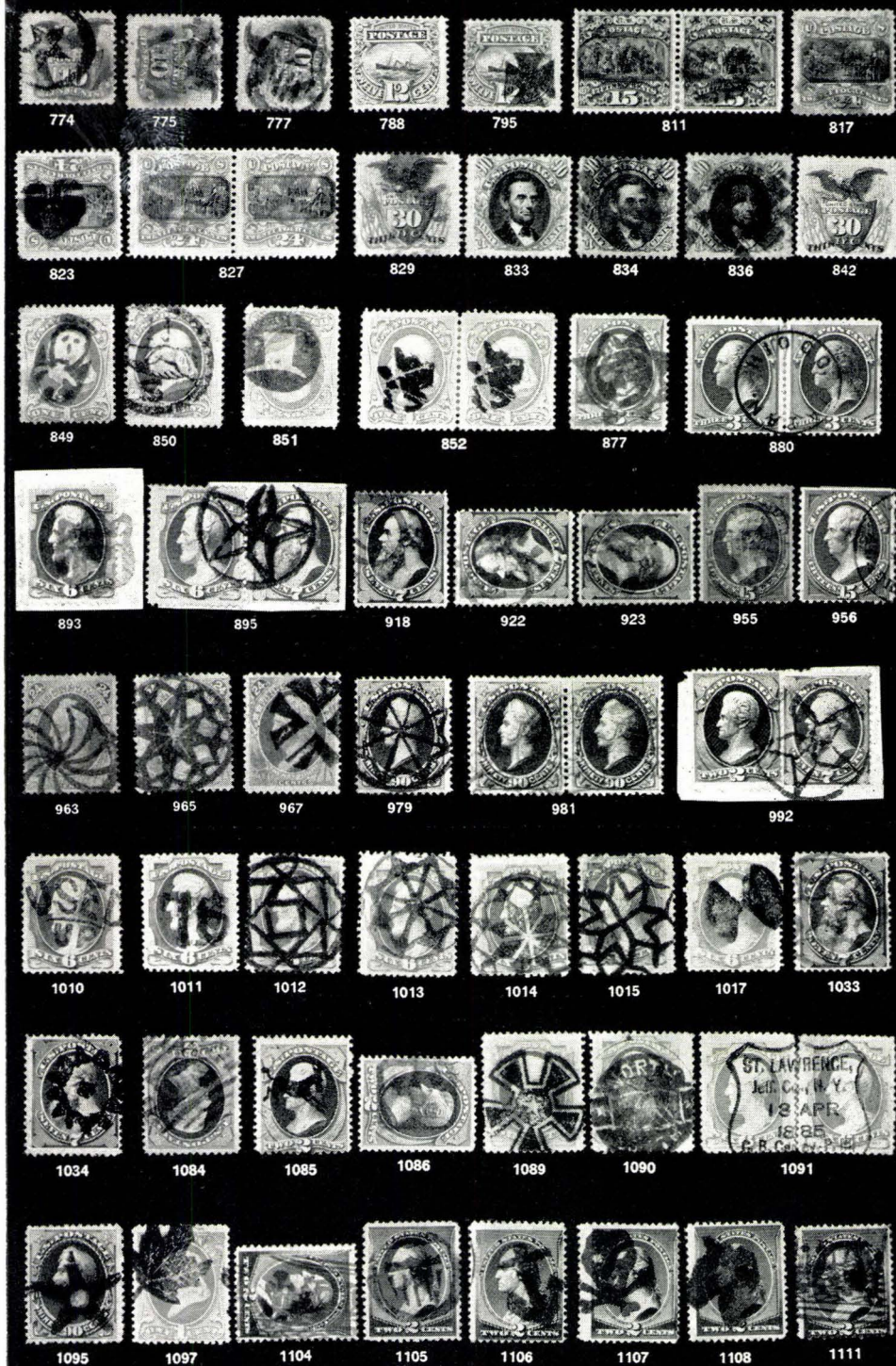
1247

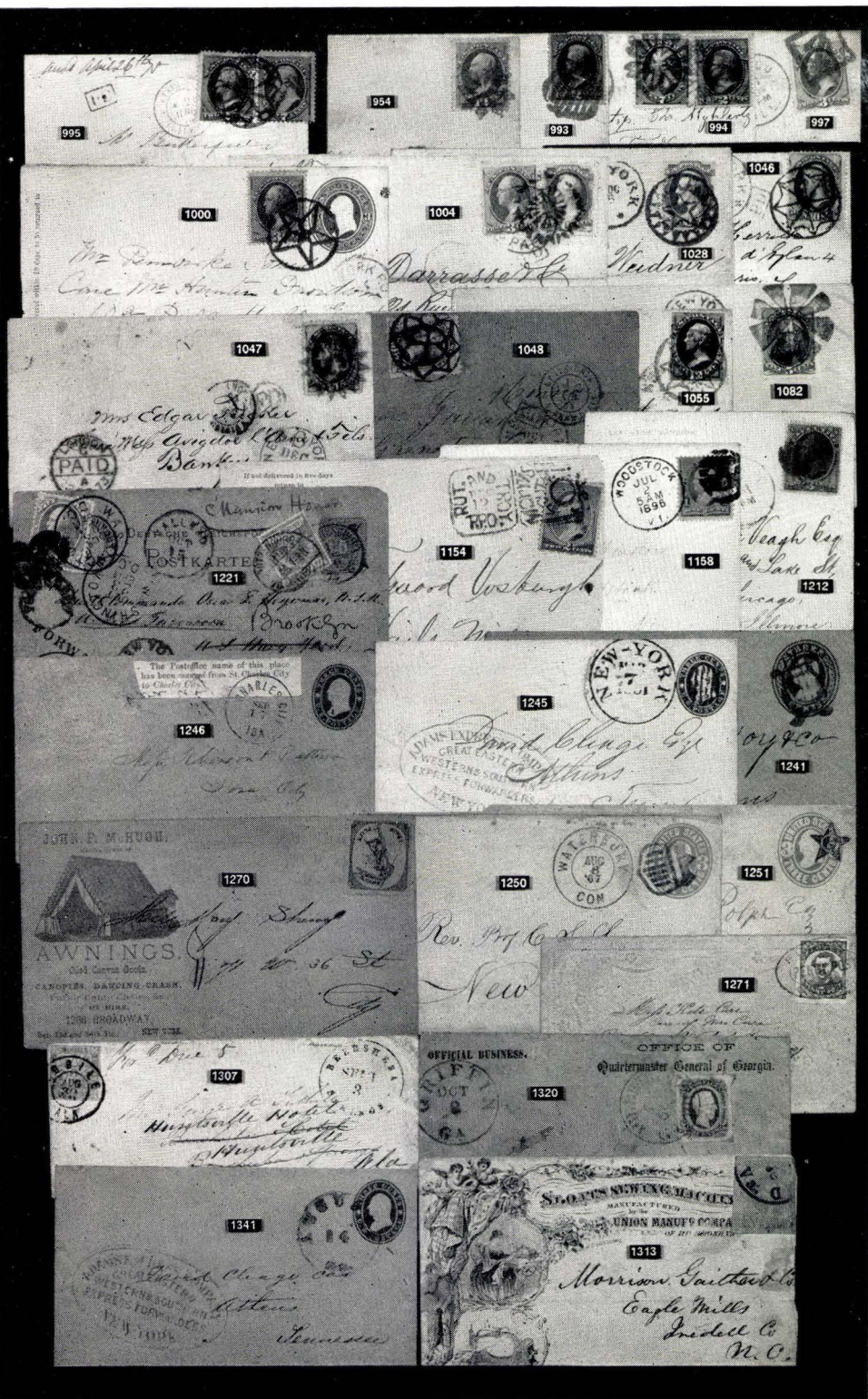


1265



1264





| | | |
|-----|---|-------|
| 642 | 3c Rose Grill (88). Very Fine Padlock cancel (Photo) | — |
| 643 | 3c Rose Grill (88). Unusual Face cancel, creases, Fine appearance | — |
| 644 | 3c Rose Grill (88). Clear Paid around Interwining Star cancel, tiny tear | — |
| 645 | 12c Black, E Grill (90). Two copies with diff Geometric pmks, V. G. | — |
| 646 | 2c Black Grill (93). Large Star cancel, Very Fine (Photo) | — |
| 647 | 3c Red Grill (94). Scarce cancel Right and Left Footprints , Fine strike, light crease (Photo) | — |
| 648 | 3c Red Grill (94). Clear strike Masonic Eeeing Eye cancel, few short perfs | — |
| 649 | 3c Red Grill (94). Horiz. Pair with Negative Masonic cancels, Fine | — |
| 650 | 3c Red Grill (94). Two copes each with clear negative Masonic cancels, centered to one side | — |
| 651 | ☒ 3c Red Grill (94). Tied Wilmington, Del on illustr. adv cover with Pat- riotic design, Very attractive | — |
| 652 | ☒ 3c Red Grill (94). Tied with Very Fine strike Cambridge, Mass. Padlock cancel on small cover, centered slightly left (Photo) | — |
| 653 | ☒ 3c Red four copies, 15c Black, Grills (94, 98). Tied on neat cover, New York Registered pmk. one of 3c torn, 15c is exceptionally well centered | — |
| 654 | 5c Brown Grill (95). Fancy Blue Star , light crease, V.F. appearance (Photo) | 37.50 |
| 655 | 10c Green, Grill (96). Red 5 in Circle cancel, Very Fine | — |
| 656 | 10c Green Grill (96). Hiogo, Japan cancel, Fine | — |
| 657 | 30c Orange Grill (100). Attractive Red Leaf cancel, small thin, V.F. ap pearance | — |

END OF FIRST SESSION

PRICES REALIZED

THIS SALE

\$1.00

OR ENTIRE SEASON \$2.50

SECOND SESSION

THURSDAY, OCTOBER 20th, 1955 — 2 P.M.

ESSAYS & PROOFS OF 1869 ISSUE

- 658 E 1c Franklin Essays (112E). Eight diff colors, Perforated and Grilled, V.G.-V.F., o.g. (Photo) —
 659 E 1c Buff, Perforated Essay (112E). Bot Sheet Margin Block, V.F., o.g. —
 660 E 2c Horseman Essays (113E). Eight diff colors, Perforated and grilled, Fine-V.F., o.g. (Photo) —
 661 E 2c Brown, Essay (113E). Perforated Grill Block, Fine, o.g. —
 662 E 3c Locomotive Essays (114E). Nine diff colors, Perforated and grilled, Fine-V.F., o.g. (Photo) —
 663 E 5c Washington Essays, Imperforate, Four diff colors, V.F., o.g. (Photo) —
 664 E 5c Washington, Bistre Brown, Essay Imperforate Blocks, Very Fine, o.g. —
 665 E 10c Lincoln Essays (116E). Three colors, two are Imperforate, V.F., o.g. (Photo) —
 666 E 10c Lincoln, Blue, Essay Imperforate Block, Very Fine, o.g. —
 667 E 12c Steamship Essays (117E). Eight diff colors, Perforated and Grilled, V.G.-V.F., o.g. (Photo) —
 668 E 12c Green Essay (117E). Perforated Grilled Block, Very Good, o.g. —
 669 E 24c Essays, Black on Salmon & Yellowish Tinted Paper (120E). Imperforates, V.F. (Photo) —
 670 E 30c Essays, Black on Yellowish Tinted Paper (121E). Imperforate, V.F. (Photo) —
 671 E 30c Essay, Black on Salmon-Red Paper (121E). Imperforate, V.F. —
 672 E 30c Essay, Black on Blue Paper (121E). Imperforate, V.F. —
 673 E 30c Essay, Black on Pale Pink Paper (121E). Imperforate, V.F. —
 674 E 30c Violet with Scarlet Bands, Essay (121E). Imperf. Block, V.F. —
 675 E 90c Washington Essay in Red Brown & Black (122E). Very Fine (Photo) —
 676 E 90c Washington, Essay in Dull Violet & Black (122E). V.F. (Photo) —
 677 E 90c Washington, Essay in Pale Orange Red & Black (122E). Tiny thin, V.F. appearing —

| | | | | | |
|------|-------|--|--------|---------|--------|
| 1150 | 678 E | 90c Essay in Red Brown (122E). Very Fine | 10 FF | (Photo) | — |
| 1150 | 679 E | 90c Essay Green, as above (122E). Very Fine | — | — | — |
| 715 | 680 E | 90c Essay in Blue, as above (122E). Very Fine | 10 FF | 3.00 F | — |
| 1150 | 681 E | 90c Essay Dull Violet as above (122E). Very Fine | 310 F | — | — |
| 105 | 682 P | 1c-90c Pictorials, Small Die Proofs (112P-122P). Complete Set, last thin, others Very Fine | 50. F | — | 187.50 |
| 47 | 683 P | 1c-90c Pictorials, India Proofs (112P-122P). Complete Set, Very Fine | — | — | 86.00 |
| 27 | 684 P | 1c-90c Pictorials, Card Proofs (112P-122P). Complete Set, V. F. | — | — | 45.25 |
| 40 | 685 P | 1c-6c Pictorials, India Proofs (112P-115P). Blocks, Very Fine | 24. F | — | 62.50 |
| 87 | 686 P | 12c Green, India Proof (117P). Block, Very Fine | 5 F | — | 12.50 |
| 44 | 687 P | 15c Brown & Blue, Ty III, India Proof (129P). Block, light crease, V. F. appearing | — | — | 150.00 |
| 20 | 688 P | 15c Brown & Green, Atlanta Trial Color Proof (129TC). Fine | — | — | 20.00 |
| 22 | 689 P | 24c Black & Green, Atlanta Trial Color Proof (130TC). Very Fine | 11 F | — | 20.00 |
| 14 | 690 P | 24c Green & Violet, India Proof (120P). Block, Very Fine | 1250 F | — | 30.00 |
| 2250 | 691 P | 30c Blue & Carmine, India Proof (121P). Block, Very Fine | 14 F | — | 35.00 |
| 110 | 692 P | 30c Blue & Carmine, INVERTED CENTER Card Proof (121aP). Very Fine | 4.50 F | (Photo) | 150.00 |
| 85 | 693 P | 30c Atlanta Trial Color Proofs (131TC). Six diff colors, Fine-V. F. | — | — | 120.00 |
| 110 | 694 P | 90c Carmine & Black, India Proof (122P). Block, Very Fine | 85. F | (Photo) | 175.00 |

1869 PICTORIAL ISSUE

| | | | | | |
|------|-------|--|---|---------|--------|
| 8 | 695 ★ | 1c Buff (112). Fine | — | — | 12.50 |
| 31 | 696 ★ | 1c Buff (112). Block, perfs in at right, Very Good | — | (Photo) | 150.00 |
| 21 | 697 | 1c Buff (112). Hiogo, Japan pmk, Very Fine | — | — | 15.00 |
| 6 | 698 | 1c Buff (112). Large Blue B cancel, Fine | — | — | — |
| 1050 | 699 | 1c Buff (112). Profile Mans Face cancel, Fine | — | (Photo) | — |
| 11 | 700 | 1c Buff (112). Clear U. S. cancel, tiny corner fault, attractive | — | — | — |
| 650 | 701 | 1c Buff (112). Large "E" pmk, Fine | — | — | — |
| 650 | 702 | 1c Buff (112). Clear (Paid) All pmk, Fine | — | — | — |
| 9 | 703 | 1c Buff (112). Horiz Strip of 3, one stamp unnoticeable crease, Pair, Fine | — | — | 25.00 |
| 1150 | 704 | 1c Buff (112). Horiz Strip of 3, unusual Segmented Target pmk, few short perfs at B. | — | — | — |
| 650 | 705 | 1c Buff (112). Four copies, tiny Rosette within circle, Paid in circle, Foreign, Geometric pmks, stamps have minor defects | — | — | — |

| | | |
|-----|---|--------|
| 706 | 1c Buff (112). Five diff. cancels, Salt Lake City, Utah, Pig(Floral, V. G.-Fine | — |
| 707 | 1c-2c, 6c Pictorials, Double Grills (112-113, 115). First slight crease, V. G. | 80.00 |
| 708 | 1c-15c Pictorials (112-119). One 15c stamp defective, others Very Good | 80.10 |
| 709 | 1c-15c Pictorials (112, 115-117, 119). Very Good-Fine | 42.00 |
| 710 | 1c Buff (112). Tied with attractive cancel, Steubenville, O. pmk. Fine | — |
| 711 | 1c Buff (112). Two covers showing Drop Rate, Fine | — |
| 712 | 1c Buff, 2c Brown (112-113). Two covers tied, last with Carrier cancel, F. | — |
| 713 | 2c Brown (113). Very Fine, o. g. | 7.00 |
| 714 | 2c Brown (113). Block, Very Good, o. g. | 45.00 |
| 715 | 2c Brown (113). Block of 9, centered to top, o. g. | 84.00 |
| 716 | 2c Brown (113). Block of 16, some creases and one stamp piece missing, Rare in Large Blocks 3.01- | 170.00 |
| 717 | 2c Brown (113). Clear Bumble Bee cancel, small closed tear | — |
| 718 | 2c Brown (113). Three copies, Leaf, C, and Heart cancels, Fine | — |
| 719 | 2c Brown (113). Seven copies selected for pmks, includes green, Paid, Blue Leaf, Geometrics, stamps have unnoticeable defects | — |
| 720 | 2c Brown (113). Eighteen copies includes Leaf on strip of 3, Paid, Red Registered, B, Geometrics, V. G.-Fine | — |
| 721 | 2c Brown (113). Tied on illustrated adv. cover showing Bees, Fine | — |
| 722 | 2c Brown (113). Horiz. Pair tied on piece with Negative Triangle cancels, V. F. | — |
| 723 | 2c Brown, 1c Ultramarine (113, 156). Late use of 2c, tied with New York pmk. V. F. | — |
| 724 | 2c-12c Pictorials (113, 115, 117). Tied to piece by New York Steamship pmk, 6c has huge Imperforate Margins at sides, Very Fine (Photo) | — |
| 725 | 2c-15c Pictorials (113-117, 119). Fine-Very Fine | 37.60 |
| 726 | 2c-30c Pictorials (113-119, 121). Very Good-Fine | 97.60 |
| 727 | 2c, 12c, 24-30c Pictorials (113, 117, 120-121). Very Good-Fine | 73.25 |
| 728 | 3c-10c Pictorials (114-116). Very Good-Fine | 50.75 |
| 729 | 3c Ultramarine (114). Block, Very Good, o. g. | 22.50 |
| 730 | 3c Ultramarine (114). Bright Red Target pmk, Very Fine 4 FF | — |
| 731 | 3c Ultramarine (114). Bright Red New York Steamship pmk, slight corner crease, V. F. appearing | — |
| 732 | 3c Ultramarine (114). Red New York Steamship pmk, small closed tear, V. F. appearing | — |

| | | | |
|------|-----|--|-------|
| 550 | 733 | 3c Ultramarine (114). Clear Heart pmk, Fine | — |
| 950 | 734 | 3c Ultramarine (114). Clear strike of Shield cancel, few short perfs. (Photo) | — |
| 475 | 735 | 3c Ultramarine (114). Blue Bumble Bee pmk, tiny thin, Fine appearing | — |
| 325 | 736 | 3c Ultramarine (114). Clear Jack O Lantern pmk, perfs in at B | — |
| 425 | 737 | 3c Ultramarine (114). Clear Heart pmk, Fine | — |
| 725 | 738 | 3c Ultramarine (114). Negative Masonic cancel, nice strike, corner perf. short | — |
| 1550 | 739 | 3c Ultramarine (114d, e). Pair showing double and triple grill , V. F. | 35.00 |
| 375 | 740 | 3c Ultramarine (114). Block of 7 , one stamp slight tear, V. F. appearing | 21.05 |
| 6 | 741 | 3c Ultramarine (114). Block of 4 and Block of 5, Very Good, used | 40.00 |
| 105 | 742 | 3c Ultramarine (114). Four copies, 3 diff size Paid cancels & Free , V. G.-F. | — |
| 625 | 743 | 3c Ultramarine (114). Four copies, Geometrics , ES , Large Fancy Star , F. | — |
| 125 | 744 | 3c Ultramarine (114). Four copies with clear pmks, " 5 " in circle, " 10 " in Circle, X , 73 , Fine | — |
| 85 | 745 | 3c Ultramarine (114). Twelve copies selected for pmks, includes, Leafs , Rosettes , Cross , Propeller , Red , V. G.-V. F. | — |
| 95 | 746 | 3c Ultramarine (114). Twenty stamps and five covers, includes cancels, Pairs, Strips, Split Grills, V. G.-Fine | — |
| 185 | 747 | 3c Ultramarine (114). 27 copies selected for cancellations, includes Reds, fancy grids, Magenta, Negative Letters, V. G.-V. F. | — |
| 1850 | 748 | 3c Ultramarine (114). Forty-two copies in singles & strips of 4 or 5, in- cludes some cancels, Fair-Fine | — |
| 1550 | 749 | 3c Ultramarine (114). Tied with neat Indianapolis Ind. Leaf cancel, V. F. (Photo) | — |
| 2050 | 750 | 3c Ultramarine (114). Tied with pretty bright green Owego, N. Y. pmk, Very Fine | — |
| 725 | 751 | 3c Ultramarine (114). Tied Target cancel, Fairfield , Iowa pmk, Oval Iowa State Fair , 1869 Handstamp on cover, V. F. | — |
| 750 | 752 | 3c Ultramarine (114). Tied on illustr. Hotel cover, Potomac Postal Cars pmk. V. G. | — |
| 425 | 753 | 3c Ultramarine (114). Tied by clear Guilford, Conn., Open Heart pmk, stamp clipped at R | — |
| 650 | 754 | 3c Ultramarine (114). Cancelled with Green pin wheel , Owego, N. Y. pmk. also in green, V. G. | — |
| 825 | 755 | 3c Ultramarine (114). Tied with £ cancel, from Lockport, N. Y. Fine | — |
| 225 | 756 | 3c Ultramarine (114). Two covers each tied with Leominster, Mass. fancy circle of smaller negative circles, one on illustr. Piano cover, V. G. | — |

| | | | |
|-----|----|---|--------|
| 757 | ✉ | 3c Ultramarine (114). Two covers with Red pmks. Clinton, Mass. Greenfield, Mo. pmks, Fine | — |
| 758 | ✉ | 3c Ultramarine (114). Three diff fancy cancels tied on covers from Bloomington, Ill. V.F. | — |
| 759 | ★田 | 6c Ultramarine (115). Fresh Block of 6, centered slight to left (Photo) | 300.00 |
| 760 | | 6c Ultramarine (115). Bright Red New York Steamship pmk, Fine | 20.00 |
| 761 | | 6c Ultramarine (115). Clear Negative Masonic cancel, small thin, V.F. appearance | — |
| 762 | | 6c Ultramarine (115). Attractive Floral cancel, light crease | — |
| 763 | | 6c Ultramarine (115). Horiz Strip of 3, Fine | 28.50 |
| 764 | | 6c Ultramarine (115). Horiz. Strip of 4, Fine | 40.00+ |
| 765 | | 6c Ultramarine (115). Four copies, Star, Red, Grid, Red Paid, V.G.—Fine | 39.00 |
| 766 | | 6c Ultramarine, 10c Yellow (116-117). Each has Red cancel, Fine | — |
| 767 | | 6c-15c Pictorials (115-117, 119). Very Good-Fine | 34.50 |
| 768 | | 6c, 12c, 30c Pictorials (115, 117, 121). All have Red pmks, V.G.—Fine | 50.00 |
| 769 | | 6c-12c Pictorials (115-117). Horiz. Pairs, Very Good | 65.00 |
| 770 | | 6c-12c Pictorials (115-117). Horiz. or Vert. Pairs, Very Good | 65.00 |
| 771 | ✉ | 6c Ultramarine (115). Tied cork cancel, Waltham, Mass. pmk, addressed to N. Brunswick, V.G. | — |
| 772 | ✉ | 6c Ultramarine (115). Tied by Chicopee, Mass. Grid, stamp slightly ragged at T, Fine appearing | — |
| 773 | | 10c Yellow (116). Cross pmk, Very Fine (Photo) | 8.50 |
| 774 | | 10c Yellow (116). Bold Star within Crescent pmk, centered to R (Photo) | — |
| 775 | | 10c Yellow (116). Jack O Lantern pmk, Fine (Photo) | — |
| 776 | | 10c Yellow (116). Hiogo (Japan) cancel, repaired, V.F. appearing | — |
| 777 | | 10c Yellow (116). Clear bold Blue Shield cancel, stamp has faults, attractive (Photo) | — |
| 778 | | 10c Yellow (116). Hiogo, Japan pmk, Fine | 15.00 |
| 779 | | 10c Yellow (116). Segment of Hearts cancel, Fine | — |
| 780 | | 10c Yellow (116). Two copies, clear Hiogo and N. York Steamship cancels, slight faults, attractive appearance | — |
| 781 | | 10c Yellow (116). Three copies, diff. grid cancels, one in blue, V.F. | — |
| 782 | | 10c Yellow (116). Three copies, Target, Leaf, Blue French pmks, V.G.—F. | — |
| 783 | | 10c Yellow (116). Five copies, slight faults, nice appearing | 42.50 |

| | | | |
|------|-----|--|---------|
| 650 | 784 | 10c Yellow (116). Five copies selected for pmks, Leaf, Target, Steamship, Paid , Good-Fine | — |
| 1150 | 785 | 10c Yellow, 15c Brown & Blue (116, 119). Each has pretty Blue Geometric pmk, Fine | — |
| 75 | 786 | 10c Yellow (116). Tied cork & Red Transit marking to cover addressed to Germany from St. Louis, Fine | 22.50 |
| 20 | 787 | 10c Yellow (116). Two singles tied Red cork to cover addressed to Han-over, Red Paid All & various Transit markings, cover has closed tear, V. F. appearing (Photo) | — |
| 195 | 788 | 12c Green (117). Fine (Photo) | 22.50 |
| 6250 | 789 | 12c Green (117). Block, Very Good, o.g. 45.50 (Photo) | 250.00 |
| 625 | 790 | 12c Green (117). Very Fine | 8.50 |
| 115 | 791 | 12c Green (117). Target cancel, Very Fine | — |
| 625 | 792 | 12c Green (117). Odd grid cancel, Very Fine | — |
| 825 | 793 | 12c Green (117). Red Dot in Circle cancel, V. F. | — |
| 725 | 794 | 12c Green (117). Clear Str. line Insufficiently Paid pmk, Fine | — |
| 23 | 795 | 12c Green (117). Clear small Maltise Cross pmk, Fine (Photo) | — |
| 375 | 796 | 12c Green (117). Bold Star pmk, light crease, Fine appearing | — |
| 55 | 797 | 12c Green (117). Blue Cog Wheel cancel, light corner crease, V. F. appearing | — |
| 65 | 798 | 12c Green (117). Clear Large H within Circle pmk, Fine | — |
| 45 | 799 | 12c Green (117). Vert. Pair, Cog Wheel cancels, Fine | 20.00 |
| 1125 | 800 | 12c Green (117). Three diff. Red cancels, one has wide str. edge, slight faults, attractive appearance | 30.00 |
| 1150 | 801 | 12c Green (117). Five copies includes H, Crossroads, Magenta, V. G.-F. | — |
| 105 | 802 | 12c Green (117). Tied cork to cover from Washington to England, Fine | 27.50 |
| 550 | 803 | 12c Green (117). Tied cork to cover addressed to England, Red Oval B. F. Stevens U. S. Despatch Agent marking, stamp centered L. & B. Neat cover | 27.50 |
| 1850 | 804 | 15c Brown & Blue, Ty I (118). Very Good | 100.00 |
| 135 | 805 | 15c Brown & Blue, Ty I (118). Lightly cancelled, small grill thin, V. F. appearing | 35.00 |
| 175 | 806 | 15c Brown & Blue, Ty I (118). Horiz Pair, Very Good | 100.00 |
| 25 | 807 | 15c Brown & Blue, Ty I (118). Horiz Pair tied cork to reduced cover addressed to Italy, V. G. 26.50 | 125.00+ |
| 650 | 808 | 15c Brown & Blue (119). Very Good | 27.50 |
| 875 | 809 | 15c Brown & Blue (119). Neat Paid 3 cancel, Fine | — |

| | | |
|-----|---|--------|
| 810 | 15c Brown & Blue (119). Very Fine | 9.00 |
| 811 | 15c Brown & Blue (119). Horiz Pair, slight corner crease 1 stamp, other V. F. (Photo) | 30.00 |
| 812 | 15c Brown & Blue (119). Vert Pair, Very Good | 30.00 |
| 813 | 15c Brown & Blue (119). Block, centered to left, Scarce 3.85 (Photo) | 300.00 |
| 814 | 15c Brown & Blue (119). Tied Newark, N. J. to Switzerland, Very Fine (Photo) | 70.00 |
| 818 | 15c Brown & Blue (119). Tied to cover addressed to Prussia, ms "Prussian Closed Mail", "Per Steamer Idaho" various transit markings, stamp centered T. & L., Neat cover | 70.00 |
| 816 | 24c Green & Violet (120). Tiny thin, part o. g. Fine appearing | 77.50 |
| 817 | 24c Green & Violet (120). Very Fine (Photo) | 37.50 |
| 818 | 24c Green & Violet (120). Fine | 37.50 |
| 819 | 24c Green & Violet (120). Red town cancel, Fine | 42.50 |
| 820 | 24c Green & Violet (120). Pretty Red Town cancel, centered to T. L. | 42.50 |
| 821 | 24c Green & Violet (120). Cross Roads pmk, Fine | 37.50 |
| 822 | 24c Green & Violet (120). Well centered, 1 short perf, V. F. appearing | 37.50 |
| 823 | 24c Green & Violet (120). Clear Heart cancel, tiny thin, V. F. appearance (Photo) | — |
| 824 | 24c Green & Violet (120). Red pmk, light crease, V. F. appearing | 37.50 |
| 825 | 24c Green & Violet (120). One short perf. Fine appearance | 37.50 |
| 826 | 24c Green & Violet, Double Grill (120c). Slight corner crease, Fine appearing | 100.00 |
| 827 | 24c Green & Violet (120). Horiz Pair, Fine (Photo) | 100.00 |
| 828 | 30c Blue & Carmine (121). Centered T. & R. | 87.50 |
| 829 | 30c Blue & Carmine (121). Very Fine (Photo) | 25.00 |
| 830 | 30c Blue & Carmine (121). Fine | 25.00 |
| 831 | 30c Blue & Carmine (121). Clear French Anchor Recieving mark, tiny tear, Fine appearing | — |
| 832 | 30c Blue & Carmine (121). Block, 1 stamp small thin, Centered to R. Fine appearance (Photo) | 175.00 |
| 833 | 90c Carmine & Black (122). Fine (Photo) | 200.00 |
| 834 | 90c Carmine & Black (122). Bright Colors, Red pmk., tiny grill thin, V. F. appearing (Photo) | 115.00 |
| 835 | 90c Carmine & Black (122). Centered to R. Very Good | 92.50 |

| | | |
|------------|--|-----------------|
| 29- 836 | 90c Carmine & Black (122). Well centered, tiny closed tear, V.F. appearing | (Photo) 92.50 |
| 2050 837 | 90c Carmine & Black (122). Lightly cancelled, slight corner crease, perfs in T. & R. | 92.50 |
| 330- 838 | 90c Carmine & Black (122). Vertical Strip of 6 top stamp has small closed tear, Fine piece possible largest strip known <i>1/80 - 1/10</i> | (Photo) 900.00+ |
| 55- 839 ★ | 1c Buff, Re-Issue (133). Fine, o.g. | 8.50 |
| 25- 840 ★田 | 1c Buff, Re-Issue (133). Block, Fine, o.g. | (Photo) 50.00 |
| 19- 841 ★田 | 1c Buff, Re-Issue (133). Block, Fine, o.g. | 50.00 |
| 45- 842 ★ | 30c Blue & Carmine, Re-Issue (131). Fine, o.g. | (Photo) 90.00 |

BANKNOTE ISSUES

| | | |
|-----------|--|-----------|
| 2- 843 | 6c Carmine Grill (137). Str. edge at L. N.Y. Foreign Mail, ty 84 cancel | — |
| 875 844 ☒ | 6c Carmine, Grill (137). Just tied English recieving mark, Fine | 25.00 |
| 325 845 | 7c Vermilion Grill (138). N.Y. Foreign Mail ty. 1 cancel, Fine <i>ten</i> | — |
| 675 846 | 7c Vermilion, Grill (138). N.Y. Foreign Mail ty 95 cancel, Fine | — |
| 4- 847 | 7c Vermilion Grill (138). Str. edge at L. N.Y. Foreign Mail Ty 4 | — |
| 350 848 | 1c Banknote (145). St. Louis Sun Face cancel, Fine | — |
| 2650 849 | 1c Banknote (145). Clear strike Ginger Bread Man, centered to B. Scarce | (Photo) — |
| 37- 850 | 1c Banknote, Clear strike of scarce Handclasp with N. & S., centered to left | (Photo) — |
| 1150 851 | 1c Banknote, Very Fine strike of Danbury Hat cancel, tiny corner crease | (Photo) — |
| 28- 852 | 1c Banknote (145). Horiz. pair with Dog's Head cancels, tiny corner crease on one, other Very Fine, Scarce | (Photo) — |
| 450 853 | 1c Banknotes, Six copies with diffCross pmks, V.G.-V.F. | — |
| 425 854 | 1c Banknotes, 6 diff. fancy cancels, 76 in Shield, 77, Monogram, large R. Fine | — |
| 350 855 | 1c Banknotes, 6 diff. fancy Geometrics, V.F. | — |
| 250 856 | 1c Banknotes, Fourteen copies including Strip of 3 with diff. fancy Blue Chicago pmks, V.G.-V.F. | — |
| 2550 857 | 1c Banknotes, Collection of 103 stamps selected for cancels, includes Year dates, Shield, Geometrics, U.S., Skull & Crossbones, Reds, OK, Jack O Lantern, V.G.-V.F. | — |
| 2525 858 | 1c Banknotes, Collection of 159 fancy cancels, includes Reds, Hat, Geometrics, Crosses, Leaf, fancy Stars, Letters, Numerals, Fine lot | — |

- 859 1c Banknotes, 1870-87 Issues, Collection of cancellations, 224 stamps, includes U.S. Mail, Leafs. Patents, Geometrics, Colored, N.Y. Foreign Mail, Precancels, fancy Stars etc. V.G.-V.F. -----
- 860 ☒ 1c Banknote, tied Princeton, Ill. with negative 79 Year Date cancels, F. -----
- 861 ☒ 1c Ultramarine on 1c Post Card (145, UX1). Tied with pretty strike N.Y. Foreign Mail ty 43, V.F. ----- (Photo) -----
- 862 ☒ 1c Ultramarine on 1c Post Card (145, UX1). Tied with pretty N.Y. Foreign Mail ty 10A to Germany, V.F. ----- (Photo) -----
- 863 ☒ 1c Ultramarine on 1c Post Card (145, UX4). Tied by New York Foreign Mail Ty 99 pmk, various Red Transit markings, Fine -----
- 864 ☒ 1c-5c, 1870-98 Issues, 9 diff. attractive illustrated advert. covers -----
- 865 1c-12c Banknotes (Between 145-207). Fourteen stamps including 3c Block selected for pmks, Red New York Br. Transit, N.Y. F.M., Geometrics, V.G.-V.F. -----
- 866 1c-10c Banknotes, Collection of 72 stamps, includes green, Supplementary, Skull & Crossbones, Shield, Colored pmks, Fine Lot -----
- 867 2c Banknotes (146, 157). Five copies with Red pmks including N.Y. Foreign Mail, Paid, Fine -----
- 868 2c Banknotes (146, 157). Five copies with diff N.Y. Foreign Mail pmks, V.G.-Fine -----
- 869 2c Banknotes (146, 157). Five copies with diff N.Y. Foreign Mail pmks, V.G.-V.F. -----
- 870 2c Banknotes (146, 157). Eight copies selected for cancels including Danbury Hat, Blue Triangle, N.Y. Foreign Mail, V.G.-V.F. -----
- 871 2c Banknotes (146, 157). Eight copies including pair with diff. N.Y. Foreign Mail pmks, Fine -----
- 872 2c Banknotes (146, 157). 41 stamps including N.Y. Foreign Mails, Geometrics, Shield, Colored, Fine lot -----
- 873 2c-12c Banknotes, Twelve stamps with New York Foreign Mail pmks, Fair-Fine -----
- 874 ☒ 2c, 3c, 10c Banknotes (146-147, 150). Tied on piece with N.Y. Foreign Mail ty 105 cancels, Fine -----
- 875 ☒ 2c, 3c, 10c Banknotes (146-147, 150). Five stamps tied with N.Y. Foreign Mails ty 97NN on cover to France, Fine -----
- 876 ☒ 2c, 3c, 10c Banknotes (146-147, 150). Five stamps tied N.Y. Foreign Mail ty 97 on piece, Fine -----
- 877 3c Green (147). Mans Face within Star pmk, Fine ----- (Photo) -----
- 878 3c Green (147). St. Louis Sun Face cancel, Fine -----
- 879 3c Green (147). Blue Charleston, N.H. Masonic pmk, Fine -----

| | | | |
|------|-----|--|---|
| 425 | 880 | 3c Green (147). Horiz Pair, clear Hiogo, Japan pmk, Very Fine (Photo) | — |
| 25 | 881 | 3c Green (147). Two copies, N. Y. Foreign Mail Ty 59, 75 pmks, Fine | — |
| 425 | 882 | 3c Greens, Ten copies with diff Foreign Mail pmks, V. G.-Fine | — |
| 525 | 883 | 3c Greens, Twelve copies with diff N. Y. Foreign Mail pmks, V. G.-V. F. | — |
| 105 | 884 | 3c Greens, Thirteen copies with diff N. Y. Foreign Mail pmks, Fine | — |
| 550 | 885 | 3c Greens, Twenty one copies with interesting pmks, includes Stars, Letters, Geometrics , V. G.-V. F. | — |
| 305 | 886 | 3c Greens, Collection of 598 stamps selected for pmks, includes Colored, Geometric, N. Y. Foreign Mails , V. G.-V. F. | — |
| 505 | 887 | 3c Greens Mounted Collection of 906 stamps selected for cancellations, includes Triangles, Shield, Pairs, Stars, Leafs, U. S., Geometrics, Crosses, Masks, N. Y. Foreign Mail , Checkerboards, etc. V. G.-V. F. | — |
| 1750 | 888 | <input checked="" type="checkbox"/> 3c Green (147). Tied by pretty Red Masonic pmk from Charleston, N. H., Very Fine (Photo) | — |
| 225 | 889 | <input checked="" type="checkbox"/> 3c Green (147). Black Masonic Cancel from Bridgeton, N. J., not tying, F. | — |
| 175 | 890 | <input checked="" type="checkbox"/> 3c Green (147). Tied with excellent strike N. Y. Foreign Mail ty 10 on small cover to London, Fine (Photo) | — |
| 155 | 891 | <input checked="" type="checkbox"/> 3c Green (147). Tied N. Y. Foreign Mail ty 13 on small cover, V. F. (Photo) | — |
| 105 | 892 | <input checked="" type="checkbox"/> 2c Brown, 3c Green (147, 157). Four stamps tied on hotel cover to Germany, N. Y. Foreign Mail ty 96 cancels, V. G. | — |
| 55 | 893 | 6c Carmine (148). Tied on piece Shield cancel, V. F. (Photo) | — |
| 225 | 894 | 6c Carmine (148). Unlisted N. Y. Foreign Mail Shield pmks, Fine | — |
| 550 | 895 | 6c Carmine, 7c Or. Vermilion (148, 160). Tied on piece attractive N. Y. Foreign Mail ty. 19, Fine (Photo) | — |
| 350 | 896 | 6c Banknotes, 4 diff. N. Y. Foreign Mails ty 1, 20, 35, 36, Fine-V. F. | — |
| 450 | 897 | 6c Banknotes 5 diff. fancy cancels, Checkerboard, Floral, E in Wreath, Leaf, fancy Star, Fine | — |
| 650 | 898 | 6c Banknotes (148, 159). Five copies with diff Red N. Y. Foreign Mail pmks, Fine | — |
| 550 | 899 | 6c Carmine (148). Five copies with diff N. Y. Foreign Mail pmks, F.-V. F. | — |
| 425 | 900 | 6c Carmine (148). Twelve copies with diff N. Y. Foreign Mails pmks, V. G.-Fine | — |
| 1750 | 901 | 6c Carmine (148). Sixteen copies selected for cancels, includes S. Louis Mask, Shields, Paid all, W, R , V. G.-V. F. | — |
| 450 | 902 | 6c Banknotes (148, 159, 186). Fourteen copies with diff N. Y. Foreign Mail pmks, V. G.-V. F. | — |

- 903 6c Banknotes, Collection of 60 copies including **N.Y. Foreign Mail pmks, Geometrics, Pumpkin Face, Letters, Good-V.F.** —
- 904 6c Banknotes (148, 159, 186). Collection of 69 stamps selected for cancels, includes Geometrics, Numerals, Colored, N.Y. Foreign Mail, Fine lot —
- 905 ☒ 6c Carmine (148). Tied by Unlisted **New York Foreign Mail Shield** pmk on Discovery Cover to London, various transit markings, Fine —
- 906 ☒ 6c Carmine (148). Tied **N.Y. Foreign Mail Ty 76 pmk** on illustrated Anchor Line cover to Scotland, stamp slight stain —
- 907 ☒ 6c Carmine (148). Tied **N.Y. Foreign Mail** ty 113 to London, V.F. —
- 908 ☒ 6c Carmine Tied **N.Y. Foreign Mail** ty 96 to Liverpool, Fine —
- 909 ☒ 6c Carmine (148). Tied **N.Y. Foreign Mail** ty 92 to London, V.F. —
- 910 ☒ 6c Carmine (148). Tied **N.Y. Foreign Mail** ty 95 to Florence, Fine —
- 911 ☒ 6c Carmine (148). Tied **N.Y. Foreign Mail** ty 75, stamp creased, attractive appearing —
- 912 ☒ 6c Carmine (148). Attractive strike **N.Y. Foreign Mail** ty 76 ties, V.F. (Photo) —
- 913 ☒ 6c Carmine (148). Tied on cover to Ireland, attractive **N.Y. Foreign Mail** ty 59 cancel, Fine —
- 914 ☒ 6c Carmine (148). Tied **N.Y. Foreign Mail** ty 61 stamp creased, attractive appearance —
- 915 ☒ 6c Carmine (148). Tied **N.Y. Foreign Mail** ty 26N to London, Fine —
- 916 ☒ 6c Carmine (148). Pair tied **N.Y. Foreign Mail** ty 4 to London, V.F. (Photo) —
- 917 ☒ 6c Carmine, 30c Full Black (148, 154). Tied to legal size cover by Chicago grid of squares cancel, Fine —
- 918 7c Vermilion (149). **St Louis Sun Face** pmk, slight corner crease, V.F. appearing (Photo) —
- 919 7c Vermilion (149). Large Pittsburgh **Shield** cancel, tiny tear, attractive —
- 920 7c Vermilion (149). **Bold Heart within Circle** pmk, centered to R —
- 921 7c Vermilion (149). Negative **Anchor** cancel, Fine —
- 922 7c Vermilion (149). **St. Louis Sun Face** cancel, Fine (Photo) —
- 923 7c Vermilion (149). Unlisted **N.Y. Foreign Mail Shield** pmk. Fine (Photo) —
- 924 7c Vermilion (149). Unlisted **N.Y. Foreign Mail Shield** pmk, Fine —
- 925 7c Vermilion (149). Four copies with **N.Y. Foreign Mail** pmks, Fine —
- 926 7c Vermilion (149). Three copies with **N.Y. Foreign Mail Ty 1, 59, 95** pmks, Fine-V.F. —

- 17- 927 7c Banknotes (149, 160). Twelve copies with N.Y. Foreign Mail pmks, Good-Fine
- 1850 928 7c Banknotes (149, 160). Thirteen copies with N.Y. Foreign Mail pmks, Good-Fine
- ✓ 929 ☒ 7c Vermilion (149). Tied by Very Fine Strike of N.Y. Foreign Mail Ty 74 pmk on cover to Germany, ms "Prussian Closed Mail", stamp has tiny closed tear
- 12- 930 ☒ 7c Vermilion, 10c Brown (149, 161). Tied on cover, San Francisco pmk. and transit markings to France, Very Fine (Photo)
- 8- 931 10c Brown (150). Pretty Red N.Y. Foreign Mail Ty 56 pmk, V.F.
- 2- 932 10c Brown (150, 161). Three copies with Red N.Y. Foreign Mail Ty 19, 56, 104 pmks, V.G.-Fine
- 550 933 10c Brown (150, 161). Four copies with N.Y. Foreign Mail Ty 8, 20, 36, 83 pmks, V.F. Strikes
- 3- 934 10c Banknotes, Five copies & Pair with diff N.Y. Foreign Mail pmks, Fine-V.F.
- 525 935 10c Banknotes, Eight copies selected for pmks, includes Shield, Large Negative Star, Str. lines, Crosses, Fine-V.F.
- 450 936 10c Banknotes, Nine copies with diff N.Y. Foreign Mail pmks, V.G.-F.
- 13- 937 10c Banknotes, Ten copies selected for pmks, includes N.Y. Steamship, U.S., Monogram, Geometric, Fine-V.F.
- 350 938 10c Banknotes, Eleven copies with diff N.Y. Foreign Mail pmks, V.G.-F.
- 5- 939 10c Banknotes, Twelve copies with New York Foreign Mail pmks, V.G.-Fine
- 28- 940 10c Banknotes, Collection of 69 copies including Strip of 4, Foreign Mail pmks, Geometrics, 3 covers, nice lot
- 13- 941 ☒ 10c Brown (150). Tied N.Y. Foreign Mail ty 1 to Switzerland, V.F.
- 1050 942 ☒ 10c Brown (150). Tied N.Y. Foreign Mail ty 98N, Fine
- 1850 943 ☒ 10c Brown (150). Tied N.Y. Foreign Mail ty 89 to Switzerland, V.F.
- 1125 944 ☒ 10c Brown (150). Tied red New York transit and black N.Y. Foreign Mail ty 1 cancels on cover to France, Very Fine
- 1075 945 ☒ 10c Brown (150). Tied N.Y. Foreign Mail Ty 95 pmk. to cover to Italy, stamp centered to B. Pretty strike
- 1025 946 ☒ 10c Brown (150). Tied N.Y. Foreign Mail ty 1 to Paris, V.F.
- 7- 947 ☒ 10c Brown (150). Not tied on cover with Yokahama, Japan pmk, United States Consulate Corner Card, Fine
- 22- 948 ☒ 10c Brown (150). Tied N.Y. Foreign Mail ty 90 on cover to Barbados, U.S.S. California, St. Thomas and Barbados backstamps, Fine

| | | | |
|-----|---|---|---|
| 949 | ⊗ | 10c Brown (150). Tied N. Y. Foreign Mail ty 94 to Puebla, Fine | — |
| 950 | ⊗ | 10c Brown (150). Tied N. Y. Foreign Mail ty 94 to Mexico, Fine | — |
| 951 | ⊗ | 10c Brown (150). Three on cover tied N. Y. Foreign Mail ty 102 to France, V. G. | — |
| 952 | | 12c Banknotes (151, 162). Five copies, Fine-V. F. | — |
| 953 | ⊗ | 12c Dull Violet (151). Tied by N. Y. Foreign Mail Ty 1 pmk, V. G. | — |
| 954 | ⊗ | 12c Dull Violet (151). Tied N. Y. Foreign Mail ty 28 to Liverpool, Fine (Photo) | — |
| 955 | | 15c Bright Orange (152). Fine stamp with clear Shield within Circle pmk (Photo) | — |
| 956 | | 15c Bright Orange (152). Very Fine Alaska pmk, str. edge at T. (Photo) | — |
| 957 | | 15c Banknote (152). Bold Geometric cancel, Very Fine | — |
| 958 | | 15c Banknotes (152, 163). Three copies, N. Y. Foreign Mail Ty 20, 51, 95 pmks, Fine | — |
| 959 | | 15c Bright Orange (152). Four copies, N. Y. Foreign Mail Ty 1, 16, 20, 41 pmks, Fine | — |
| 960 | | 15c Bright Orange (152). Four copies, N. Y. Foreign Mail Ty 8, 34, 85, 98 pmks, V. G. | — |
| 961 | | 15c Banknotes (152, 163). Five copies with diff N. Y. Foreign Mail pmks, V. G.—Fine | — |
| 962 | | 15c Banknotes (152, 163). Six copies with diff N. Y. Foreign Mail pmks, V. G.—Fine | — |
| 963 | | 24c Purple (153). N. Y. Foreign Mail Ty 65 pmk,, Very Fine (Photo) | — |
| 964 | | 24c Bright Purple (153). Brilliant Red N. Y. Foreign Mail Ty 22 pmk, centered to R | — |
| 965 | | 24c Purple (153). Bold N. Y. Foreign Mail Ty 16 pmk, Fine (Photo) | — |
| 966 | | 24c Purple (153). Unlisted N. Y. Foreign Mail Shield cancel, Fine | — |
| 967 | | 24c Bright Purple (153). N. Y. Foreign Mail ty. 103, Very Fine (Photo) | — |
| 968 | | 24c Bright Purple (153). Two copies, Red N. Y. Foreign Mail Ty 72 pmks, Fine | — |
| 969 | | 24c Purple (153). Two copies, N. Y. Foreign Mail Ty 47, 102 pmks, Fine | — |
| 970 | | 24c Purple (153). Two copies with N. Y. Foreign Mail Ty 62, 72 pmks, F. | — |
| 971 | | 24c Purple (153). Two copies, Rosette & Blue Geometric pmks, V. G. | — |
| 972 | | 24c Purple (153). Three copies, N. Y. Foreign Mail Ty 16, 22, 51 pmks, F. | — |
| 973 | | 24c Bright Purple (153). Three copies with N. Y. Foreign Mail Ty 36, 55, 102 pmks, Fine | — |

| | | | |
|------|-----|--|-------|
| 13 | 974 | 24c Purple (153). Three copies with N. Y. Foreign Mail Ty 8, 21, 59 pmks, Fine Strikes | — |
| 650 | 975 | 24c Purple (153). Three copies with Red N. Y. Foreign Mail Ty 20, 62, 125 pmks., Very Good | — |
| 1550 | 976 | 24c Bright Purple (153). Four copies with N. Y. Foreign Mail Ty 17, 24, 42, 59 pmks, Fine-V. F. cancels | — |
| 825 | 977 | 24c Purple (153). str. edge copy tied from New York on reduced cover, V. G. | 75.00 |
| 10 | 978 | 90c Carmine (155). N. in Circle cancel, Very Fine | — |
| 1650 | 979 | 90c Carmine (155). N. Y. Foreign Mail ty 41 cancel, Fine (Photo) | — |
| 550 | 980 | 90c Carmine (155). Red Cancel, Fine | — |
| 21 | 981 | 90c Carmine (155). Horiz. Pair, Very Fine (Photo) | 32.50 |
| 18 | 982 | 90c Carmine (155). Two copies, N. Y. Foreign Mail Ty 88, 102 pmks, Fine | — |
| 7 | 983 | 90c Carmine (155, 191). Two of first, 1 of last, attractive pmks including str line, N. Y. F. M., unnoticeable defects, Fine appearing | — |
| 850 | 984 | 1c Ultramarine (156). Block of 6, two stamps S. E., Fine, o. g. | 32.00 |
| 2 | 985 | 1c Ultramarine (156). Negative 76 Year Date cancel, V. F. | — |
| 6 | 986 | 1c Blue (156). Glen Allen precancel Star few irregular perfs at R. Fine | — |
| 5 | 987 | 1c Ultramarine (156). Pair, Clear Jack O Lantern pmks. V. F. | — |
| 325 | 988 | 1c Ultramarine (156). Two copies, Used up & Held for Postage pmks, first tiny thin, last Fine | — |
| 3 | 989 | 1c Banknotes two N. Y. Foreign Mails, types 4, 83, Fine | — |
| 3 | 990 | 1c, 7c, 10c Banknotes (156, 160-161). Tied on piece with N. Y. Foreign Mail ty 35 cancels, Fine | — |
| 6 | 991 | 1c Ultramarine, 7c Orange Vermilion on 3c Entire (156, 160, U165). Not tied on Registered cover from Washington, DC, Very Fine | — |
| 375 | 992 | 2c Brown, 7c Orange Vermilion (157, 160). Tied to piece by N. Y. Foreign Mail Ty 19 pmk, Fine (Photo) | — |
| 625 | 993 | 2c Brown (157). Tied N. Y. Foreign Mail Shield cancel on circular to England, Fine (Photo) | — |
| 27 | 994 | 2c Brown, 7c Orange Vermilion (157, 160). Tied N. Y. Foreign Mail Ty 84 to Denmark, V. F. (Photo) | — |
| 11 | 995 | 2c Brown, 7c Orange Vermilion (157, 160). Tied pretty strike N. Y. Foreign Mail ty 33 to France, Fine (Photo) | — |
| 825 | 996 | 3c Green (158). Two copies with OK in Box pmks. Fine | — |
| 1050 | 997 | 3c Green (158). Tied to cover by Blue Chicago Anchor within Box pmk, V. F. (Photo) | — |

- 998 ☒ 3c Green (158). Tied Bold Meadow, N.H. **Masonic Interwining Star** cancel, V.F. _____
- 999 ☒ 3c Green (158). Tied South Orange, N.J. pmk & 78 Yeardate cancel, Fine _____
- 1000 ☒ 3c Green on 3c Entire (158, U163). Excellent strike **N.Y. Foreign Mail** ty 19 ties, V.F. _____ (Photo) _____
- 1001 ☒ 3c Green (158). Tied **N.Y. Foreign Mail** ty 17 to London, Fine _____
- 1002 ☒ 3c Green (158). Tied **N.Y. Foreign Mail** ty 51 to London, Fine _____
- 1003 ☒ 3c Green (158). Two Singles tied **N.Y. Foreign Mail Ty 1** pmk to cover to England, Fine _____
- 1004 ☒ 3c Green, 6c Dull Pink (158-159). Tied pretty **N.Y. Foreign Mail** ty 85 to Paris, V.F. _____ (Photo) _____
- 1005 ☒ 3c Green, 7c Orange Vermilion (158, 160). Tied **N.Y. Foreign Mail** ty 62 to Paris, Fine _____
- 1006 ☒ 3c Green, 10c Brown (158, 161). Tied **N.Y. Foreign Mail** ty 35 to Spain, Fine _____
- 1007 ☒ 2c Vermilion, 3c Green (158, 178). Tied **N.Y. Foreign Mail** ty 25 to Paris, V.F. _____
- 1008 ☒ 2c Vermilion, 3c Green (158, 178). Four stamps tied **N.Y. Foreign Mail** ty 99 on cover front to Spain, V.F. _____
- 1009 ☒ 3c Green (158). Two covers tied by diff **Worcester, Mass Shield** pmks, Fine-V.F. _____
- 1010 ☒ 6c Dull Pink (159). Pretty strike of **Used Up**, Very Fine _____ (Photo) _____
- 1011 ☒ 6c Dull Pink (159). Year Date **76** cancel, V.F. _____ (Photo) _____
- 1012 ☒ 6c Dull Pink (159). Pretty strike **N.Y. Foreign Mail** ty 43, V.F. (Photo) _____
- 1013 ☒ 6c Dull Pink (159). Clear strike of **N.Y. Foreign Mail Ty 33** pmk, Fine (Photo) _____
- 1014 ☒ 6c Dull Pink (159). Attractive **N.Y. Foreign Mail** ty 55 cancel, Fine (Photo) _____
- 1015 ☒ 6c Dull Pink (159). Attractive **N.Y. Foreign Mail** ty 37 cancel, Fine (Photo) _____
- 1016 ☒ 6c Dull Pink (159). Clear Danbury **Derby Hat** cancel, Fine _____
- 1017 ☒ 6c Dull Pink (159) Clear **Bow Tie** cancel, V.F. _____ (Photo) _____
- 1018 ☒ 6c Dull Pink (159). Two bold attractive New Orleans **fancy Geometric** cancels _____
- 1019 ☒ 6c Pink (159). Two copies with New York Foreign Mail pmks, Ty 42 & 85, Very Fine _____
- 1020 ☒ 6c Dull Pink (159). Horiz Pair & 2 singles with **Red N.Y. Foreign Mail** Ty 20, 62, 83 pmks, Fine _____

- 72 1021 6c Dull Pink (159). Six copies with diff N. Y. Foreign Mail pmks, Fine-V. F.
- 6- 1022 6c Dull Pink (159). Six copies with diff N. Y. Foreign Mail pmks, Fine-V. F.
- 105 1023 6c Banknotes (159, 186, 208). Ten copies including strip of 3 selected for pmks, includes V, Rosette, U. S., E in Wreath, Oval, Fine-V. F.
- 75 1024 6c Banknotes (159, 186). Fourteen copies with diff. N. Y. Foreign Mail pmks, V. G.-Fine
- 6- 1025 6c Banknotes (159, 186). Fourteen copies with diff. N. Y. Foreign Mail pmks, V. G.-Fine
- 85 1026 ☒ 6c Dull Pink (159). Tied N. Y. Foreign Mail ty 6A to England, Fine
- 8- 1027 ☒ 6c Dull Pink (159). Tied N. Y. Foreign Mail ty 48 address partly inked out, Fine strike
- 33 1028 ☒ 6c Dull Pink (159). Tied Very Fine N. Y. Foreign Mail ty 22 to Nurnberg (Photo)
- 95 1029 ☒ 6c Brown Rose (159). Tied on cover front with N. Y. Foreign Mail ty 6 to Austria, V. F.
- 9- 1030 ☒ 6c Dull Pink (159). Tied on cover front with N. Y. Foreign Mail ty 1, to Austria, Fine
- 175 1031 ☒ 6c Dull Pink, 10c Brown (159, 161). 6c str. edge, tied scarce N. Y. Foreign Mail Anchor ty 91, to Italy, Very Fine strike, cover torn
- 35 1032 ☒ 6c Dull Pink (159). Three covers to Europe, 1 has combination usage with Italian Postage Due, Fine
- 55 1033 7c Orange Vermilion (160). Very Fine N. Y. Foreign Mail ty 20 (Photo)
- 4- 1034 7c Orange Vermilion (160). Bold Dot within Cogwheel pmk, Fine (Photo)
- 4- 1035 7c Orange Vermilion (160). Tied to piece by Bold Blue Chicago C cancel. Very Fine
- 4- 1036 7c Orange Vermilion (160). Horiz. Pair, Bold N. Y. Foreign Mail Ty 35 pmk, centered to T
- 95 1037 7c Orange Vermilion (160). Three copies with N. Y. Foreign Mail Ty 16, 33, 62 pmks. Fine-V. F.
- 105 1038 7c Orange Vermilion (160). Three copies with N. Y. Foreign Mail Ty 17, 35, 85 pmks. Fine-V. F.
- 115 1039 7c Orange Vermilion (160). Six copies with diff N. Y. Foreign Mail pmks, V. G.-V. F.
- 11- 1040 7c Orange Vermilion (160). Six copies with diff N. Y. Foreign Mail pmks, V. G.-V. F.

- 1041 **7c Orange Vermilion (160).** Eight copies with diff **N. Y. Foreign Mail** pmks, V. G.-Fine
- 1042 ☒ **1c Orange Vermilion (160).** Tied to cover from **Bellevue Iowa** to Germany, V. G.
- 1043 **10c Brown (161).** Horiz Strip of 5, **New York Foreign Mail Ty 51A** pmk, 1 stamp closed tear, V. F. appearing
- 1044 ☒ **10c Brown (161).** Tied **N. Y. Foreign Mail** ty 106 to Norway, V. F.
- 1045 ☒ **10c Brown (161).** Tied **N. Y. Foreign Mail** ty 74 to Lyon, Fine
- 1046 ☒ **10c Brown (161).** Tied pretty **N. Y. Foreign Mail** ty 41, V. F. (Photo)
- 1047 ☒ **10c Brown (161).** Tied pretty **N. Y. Foreign Mail** ty 21 to Nice, V. F. (Photo)
- 1048 ☒ **10c Brown (161).** Tied pretty **N. Y. Foreign Mail** ty 38 to France, V. F. (Photo)
- 1049 ☒ **10c Brown (161).** Tied pretty **N. Y. Foreign Mail** ty 20 to Paris, V. F.
- 1050 ☒ **10c Brown (161).** Tied pretty **N. Y. Foreign Mail** ty 27 stamp centered to top
- 1051 ☒ **10c Brown (161).** Tied **N. Y. Foreign Mail** ty. 1 on cover to Italy, Fine
- 1052 ☒ **10c Brown (161).** Tied **N. Y. Foreign Mail** ty 84 to Romania, small tear in cover, Fine
- 1053 **12c Blackish Violet (162).** Two copies, **Bright Red & Brilliant Blue** pmks, Fine
- 1054 **12c Blackish Violet (162).** Six copies with **N. Y. Foreign Mail** pmks, V. G.-V. F.
- 1055 ☒ **12c Blackish Violet (162).** Str. edge tied **N. Y. Foreign Mail** ty. 20 on cover to London, Fine
- 1056 **15c Yellow Orange (163).** Two copies with diff **Cross** pmks, Fine
- 1057 **15c Yellow Orange (163).** Three copies, **Pin Box, Blue H, 5 in circle** pmks, Fine
- 1058 **15c Yellow Orange (163).** Four copies, **Red Leaf, Star Geometric** pmks, Fine
- 1059 ☒ **15c Yellow Orange (163).** Two singles tied **N. Y. Foreign Mail Ty 98N** pmk to cover to France, various Transit markings, Fine
- 1060 **30c Grey Black (165).** Two copies, attractive red & blue pmks, Fine-V. F.
- 1061 **30c Grey Black (165).** Three copies, attractive strikes of **Red N. Y. Foreign Mail ty 45, 53, 64** pmks. V. G.
- 1062 **30c Grey Black (165).** Three copies, **N. Y. Foreign Mail Ty. 12, 19, 51** pmks, Fine Strikes
- 1063 **30c Grey Black (165).** Five copies with **N. Y. Foreign Mail** pmks, V. G.

- ✓ 1064 30c Grey Black (165). Five copies with diff N. Y. Foreign Mail pmks, F. —
- ✓ 1065 30c Banknotes (165, 190). Five stamps includes Reds, Geometric, Pair, V. G.-Fine —
- 3 1066 90c Rose Carmine (166). Purple target cancel, short perf., F. appearance —
- 250 1067 2c Vermilion (178). Louisville S. B. cancel, V. F. —
- 550 1068 2c Vermilion (178, 183). Three N. Y. Foreign Mail types 31, 51, 52, Fine —
- 225 1069 2c Vermilion (178, 183). Three N. Y. Foreign Mails types 31, 51, 86, Fine —
- 425 1070 2c Vermilion (178, 183). Four diff fancy Geometric cancels, V. F. —
- 450 1071 2c Vermilion (178, 183). Five fancy cancels Leaf, Monograms, Heart, Triangle, Fine —
- 475 1072 2c Vermilion (178, 183). Six diff. N. Y. Foreign Mail cancels, types 7, 31, 47, 51-2, 87, V. G.-Fine —
- 1650 1073 2c Vermilion (178, 183). 42 copies, fancy cancels includes N. Y. Foreign Mails, Geometries, Unpaid, Terr., Colored etc. V. G.-V. F. —
- 215 1074 2c Vermilions (178, 183). Collection of fancy cancels, 67 stamps, includes Geometries, Monograms, Shield, Patent, Weston W, Attractive lot —
- 295 1075 2c Vermilion (178, 183). Collection 172 stamps selected for cancellations, includes Patents, Stars, fancy Letters and Numerals, V. G.-V. F. —
- 975 1076 ☒ 2c Vermilion (178). Tied N. Y. Foreign Mail ty 86 on printed circular to Puebla, V. F. —
- 75 1077 ☒ 2c Vermilion (178, 183). Ten covers includes Carrier, Leaf, P. M., Patent, Star, V. G.-V. F. —
- 550 1078 5c Blue (179, 185). Five diff N. Y. Foreign Mails types 2, 23, 51, 65, 70, V. G.-Fine —
- 75 1079 5c Blue (179, 185). Eleven stamps includes N. Y. Foreign Mails, Colored, Geometries, V. G.-V. F. —
- 650 1080 5c Banknotes (179, 185, 205, 216). 27 stamps includes Colored, Steamship, Stars, Crosses, V. G.-V. F. —
- 85 1081 ☒ 5c Blue (179). Tied N. Y. Foreign Mail ty 70 to England, V. F. —
- 1650 1082 ☒ 5c Blue (179). Tied N. Y. Foreign Mail ty 99 to London, V. F. (Photo) —
- 225 1083 ☒ 1c Dark Ultramarine (182). Tied New York, F. D. (Foreign Division) on circular to German, scarce marking, Fine —
- 650 1084 2c Vermilion (183). Unusual blue O. K. in box within grid, V. F. (Photo) —
- 205 1085 2c Vermilion (183). Very Fine Strike of Kicking Mule cancel, centered to B (Photo) —
- 650 1086 2c Vermilion (183). Neat large 78 year date, V. F. (Photo) —
- 4 1087 2c Vermilion (183). Clear Skull & Crossbones cancel, perfs in at R —

- 1088 2c Vermilion (183). Tied on piece with pretty Worcester, Mass. **Shield**, Fine —
- 1089 6c Pink (186). Bold strike of **Star within Propellor**, V.F. (Photo) —
- 1090 6c Pink (186). Clear strike of scarce **Handclasp with North & South**, Very Fine (Photo) —
- 1091 6c Pink (186). Two singles with straight line St. Lawrence, Jeff. Co. N.Y. pmk. within large **Shield** cancel, Very Fine (Photo) —
- 1092 ☒ 10c Brown (187). Tied N.Y. pmk to illustrated advert. cover to Scotland with clear **Str Line Sup. Mail** marking, Scarce, Fine —
- 1093 15c Red Orange (189). Two copies, **Floral Geometric** pmks, Fine —
- 1094 15c Red Orange (189). Five copies, **Star, 77, str line, N.Y.F.M., purple** pmks, V.G.-Fine —
- 1095 90c Carmine (191). Large bold **Star** cancel, Very Fine (Photo) —
- 1096 5c Brown (205). Twelve stamps includes T in Triangle, Red town, P.M., fancy Stars, Fine-V.F. —
- 1097 1c Gray Blue (206). Attractive **Veined Leaf** cancel, one short perf (Photo) —
- 1098 1c Gray (206). Glen Allen **Star Printed Precancel**, Fine —
- 1099 1c Gray Blue (206). Glen Allen **Star, Printed Precancel**, Fine —
- 1100 1c Gray Blue (206). Glen Allen **Star Printed Precancel**, Fine —
- 1101 ☒ 1c Gray Blue (206). Tied large 83 year Date cancel on cover, Nashville, Tenn. pmk. on cover, Fine —
- 1102 ☒ 10c Brown (209). Tied Star pmk on 2c Entire, **Grants Pass Jackson County, Oregon** pmk, V.F. —
- 1103 ☒ 2c Red Brown, 10c Brown (209-210). Tied **Peals, Clearfield Co., Pa.** pmk, Fine —
- 1104 2c Red Brown (210). Unusually clear strike of **Railroad Locomotives** from So. Hanson, Mass. Very Fine (Photo) —
- 1105 2c Red Brown (210). Pretty **Shield** cancel, V.F. (Photo) —
- 1106 2c Red Brown (210). Excellent strike of **Anchor** (Photo) —
- 1107 2c Red Brown (210). Clear bold **Skull & Crossbones** cancel, centered to R (Photo) —
- 1108 2c Red Brown (210). **Horse's Head** cancel, Fine (Photo) —
- 1109 2c Red Brown (210). Large part of **U.S. Mail in Padlock** cancel, Fine —
- 1110 2c Red Brown (210). Scarce **Hebrew Letters on tablet** cancel, V.F. —
- 1111 2c Red Brown (210). Scarce **Railroad Locomotive** cancel, clear strike, Centered to B (Photo) —

| | | | |
|------|------|---|---|
| 50 | 1112 | 2c Red Brown (210). Negative O.K. cancel, Very Fine | — |
| 4 | 1113 | 2c Red Brown (210). Initials in Face cancel, Fine | — |
| 450 | 1114 | 2c Red Brown (210). Unusual Face cancel, nice strike, centered to R | — |
| 775 | 1115 | 2c Red Brown (210). Horse's Head cancel, V.G. | — |
| 115 | 1116 | 2c Red Brown (210). Fine Strike of Kicking Mule cancel | — |
| 475 | 1117 | 2c Red Brown (210). Clear strike of Face in Heart, Fine | — |
| out | 1118 | 2c Red Brown (210). Very Fine Strike of Kicking Mule pmk, stamp has closed tear | — |
| 675 | 1119 | 2c Red Brown (210). Tied on small piece 1885 Year Date within Cross cancel, V.F. (Photo) | — |
| 750 | 1120 | 2c Red Brown (210). Ann Arbor, Mich. I AM H.N. cancel, Fine | — |
| 1700 | 1121 | 2c Red Brown (210) Tied on piece Masonic cancel, Very Fine (Photo) | — |
| 105 | 1122 | 2c Red Brown (210). Two diff Masonic cancels, Fine | — |
| 325 | 1123 | 2c Red Brown (210). Blue "Steamer" and "Correct" in circle cancels, F. | — |
| 425 | 1124 | 2c Red Brown (210). Two diff. Shield cancels, Fine | — |
| 375 | 1125 | 2c Red Brown (210). Two diff. fancy 7 cancels, V.F. | — |
| 450 | 1126 | 2c Red Brown (210). Four Leaf Clover, O.K. Leaf, 1885 within Cross cancels, Fine | — |
| 375 | 1127 | 2c Red Brown (210). Five diff. bold Initial and Monogram cancels | — |
| 625 | 1128 | 2c Red Brown (210). Five diff. Monogram and Initials, Fine | — |
| 350 | 1129 | 2c Red Brown (210). Six diff. fancy Geometric cancels, V.F. | — |
| 1 | 1130 | 2c Red Brown (210). 21 diff fancy cancels, V.G.-V.F. | — |
| 225 | 1131 | 2c Red Brown (210). Collection of 65 fancy cancels, includes Monograms, Heart, Hat, Iron Works, Floral, etc. V.G.-V.F. | — |
| 13 | 1132 | 2c Red Brown (210). Collection of 86 diff. fancy cancels, includes Shields, U.S. Mail, Straight Line, Geometrics, fancy Stars, Crosses, Colored etc. Fine lot | — |
| 1650 | 1133 | 2c Red Brown (210). Mounted Collection of 362 stamps selected for cancellations, includes Diamonds Crosses, Stars, Geometrics, Monograms, fancy Letters etc. V.G.-V.F. | — |
| 625 | 1134 | 2c Red Brown (210). Tied Barre, Mass Boxed S pmk to attractive illustrated cover showing Farmer and Horse, V.F. | — |
| 450 | 1135 | 2c Red Brown (210). Tied El Paso, Texas to Illustrated Southern Pacific Advertising cover showing Map of R.R. Route on Reverse, Fine | — |
| 750 | 1136 | 2c Red Brown (210). Tied Violet, Pawnee Co. Neb. pmk. Very Fine | — |
| 75 | 1137 | 2c Red Brown (210). Clear Skull & Crossbones on stamp, Fruitland, Me. pmk. on cover, V.F. | — |

- 25
1138 ☒ 2c Red Brown (210). Postmark in Old English type Belle Hampton, Va.
Fine —
- 1139 ☒ 2c Red Brown, 2c Green (210, 213). Two diff Seven Sutherland Sisters
Illustrated advertising covers, Fine —
- 1140 ☒ 2c Red Brown (210). Five diff. fancy cancels includes U. S. and Triangle
from Triangle, N. Y., Fine lot —
- 1141 ☒ 1c-2c 1883-1898 Issues, Twelve diff Attractive Illustrated Advertising
Covers, Fine-V. F. —
- 1142 4c Banknotes (211, 215). Fifty-three stamps, mostly Stars, Letters,
Numerals —
- 1143 ★ 1c Ultramarine (212). Horiz Block of 10, two stamps str. edge, Fine 21.00
- 1144 ★ 1c Ultramarine (212). Two blocks, Fine 18.00
- 1145 1c Ultramarine (212). Clear strike of Kicking Mule cancel, V. F. (Photo) —
- 1146 1c Ultramarine (212). Str. edge copy tied on piece with two Kicking
Mule cancels, Fine (Photo) —
- 1147 1c Ultramarine Banknotes (212). Collection of 469 stamps selected for
interesting and fancy cancels, includes Crosses, Stars, Letters, Numerals,
Colored, Heart, Multiples, Towns, Fine lot —
- 1148 2c Green (213). Shield within Rays cancel, V. F. (Photo) —
- 1149 2c Green (213). Bold Shield within Circle pmk, centered to R (Photo) —
- 1150 2c Green (213). Bold strikes of H in Crescent, thin (Photo) —
- 1151 2c Green (213). Two different Heart cancels, Fine —
- 1152 2c Green (213). Thirteen fancy cancels includes Wreath, J in Rays,
Stars V. G.-V. F. —
- 1153 2c Green (213). Collection of fancy cancels, 86 stamps, includes U. S.,
Monograms, AM, Geometrics, Colored, Attractive and Fine lot —
- 1154 ☒ 2c Green (213). Tied with boxed Rut, and Troy R. P. O. cancel, Fine
(Photo) —
- 1155 ☒ 3c Vermilion (214). Tied on cover, Sebree, Ky., 1887 pmk, V. G. 15.00
- 1156 30c Orange Brown (217). Distinct Double Print, unlisted, tiny crease,
V. F. appearance (Photo) —

1890-1898 ISSUES

- 1157 1c Blue (219). 23 fancy cancels includes 8 bar precancels, V. G.-V. F. —
- 1158 ☒ 1c Blue (219). Tied with Woodstock, Vt. Pumpkin Face cancel, V. F.
(Photo) —
- 1159 ☒ 1c Blue, 1c Green (219, 279). Two covers with Advertising Around
Stamps, Fine —

- 115 1160 2c **Carmine (220)**. Collection of 79 **fancy cancels** includes Arrow, Crosses, Stars, Geometrics, U. S. Mail, Monograms, V. G.-V. F.
- 85 1161 2c **1890-1895 Issues**, 450 copies selected for cancels, Interesting lot
- 52w 1162 ☒ 2c **Carmine (220)**. Two Attractive Multi-Colored All-over Advertising Covers, V. F.
- 1050 1163 ☒ 2c **Carmine**, 10c **Green (220, 226)**. On registered cover with P. O. Seals and pink label over stamps stating Request Examination on Delivery etc. V. F.
- 95 1164 ☒ 1c, 2c, 10c **(226, 267, 285)**. On 3 diff. Span.-American War Patriotics, two have both Cuban and American Flags, Fine-V. F.
- 1550 1165 1c-2c, **1890-1898 Issues**, Mounted Collection of Cancellations, includes a few higher values, 463 stamps, includes early Precancels, Crosses, Stars, Colored, Diamonds, Hand, Pumpkin Heads, Geometrics, V. G.-V. F.
- 950 1166 2c, **1890-95 Issues**, Collection of 114 stamps, includes Pumpkin Heads, Face, Shield, Crosses, fancy Letters, Geometrics, Attractive and Fine lot
- 450 1167 5c **Chocolate**, 10c **Green (223, 226)**. Nine stamps with **fancy cancels** includes 2 covers one with U. S. Postal Agency Shanghai cancel, V. G.-V. F.
- 2750 1168 1c-2c **Columbians (230-231)**. Mounted Collection of cancellations, 438 stamps, includes Colored, Stars, fancy Letters, Diamonds, Geometrics, Crosses etc. Fair-Very Fine
- 45 1169 ☒ 15c **Dark Blue (259)**. Tied on cover to France, Fine
- 750 1170 ☒ 2c **Carmine (267)**. Tied on **Span.-American War Patriotic**, Battleship Maine & Flags, V. F.
- 550 1171 ☒ 2c **Carmine (267)**. Two diff Attractive Multicolor all-over Advertising covers, Fine-V. F.
- 550 1172 ☒ 2c **Carmine (267, 279B)**. Three diff Attractive multicolored All-over Advertising covers, Fine-V. F.
- 205 1173 ☒ 1c-10c **Trans-Mississippi (285-290)**. Tied to Registered cover addressed to Germany, **August 19, 1898** backstamp, Early use, V. F.
- 25 1174 ☒ 1c **Pan-American (294)**. Tied Exposition cancel to illustrated advertising cover showing Fair Building, V. F.
- 475 1175 ☒ 2c, 10c **Pan-American (295-299)**. Tied on registered cover in 1901, Fine
- 475 1176 ☒ 5c **Louisiana-Purchase (326)**. Tied to Illustrated St. Louis Fair Exposition cover, Newark, N. J. pmk, Fine
- 475 1177 ☒ 5c **Louisiana-Purchase (326)**. Tied to Illustrated St. Louis Worlds Fair Cover, stamp str. edge at R, Newark pmk, Fine
- 35 1178 ☒ 5c **Jamestown (330)**. Tied **Vera Cruz, Mexico** pmk, stamp has slight scrape, Fine appearing

- 1179 ☒ 5c **Pan-Pacific (399)**. Str. edge copy tied with **Exposition** cancel in 1913, V.F. 15.00
- 1180 ☒ 1c **Green (498)**. Two singles tied to cover with Semi-Official **Amundsen North Polar Expedition Airmail** Labels, Listed in Am. Airmail catalog at \$40.00+, V.F.
- 1181 ☒ 3c **Violet (529)**. Tied **U.S. Postal Agency, Siberia, Am. E.F. Siberia** Censor marking, Fine
- 1182 ☒ 2c **Harding (610)**. 79 covers all with corner cards of **War Dept., White House, Senate and Congress** V.G.-V.F.

FANCY REGISTERED COVERS

- 1183 ☒ **Fancy Registered**, 1930-31, Airplane, Lincoln, 2 covers, V.F.
- 1184 ☒ **Fancy Registered**, 1930-34, Pig, Fish, Buffalo & Heart, Three covers, V.F.
- 1185 ☒ **Fancy Registered**, 1930, Elephant, Deer, Dog, 3 covers, V.F.
- 1186 ☒ **Fancy Registered**, 1931-34, Uncle Sam, Columbus, Woman, 3 covers, V.F.
- 1187 ☒ **Fancy Registered**, 1929-34, Harp, Kissing Couple, Monogram, Geometric, 4 covers, V.F.
- 1188 ☒ **Fancy Registered**, 1929-34, Egg, Santa Claus, Star, Geometric, 4 covers, V.F.
- 1189 ☒ **Fancy Registered**, 1934, Mothers Face, Kissing Couple, Spirit of 1776, Firecrackers, 4 covers, V.F.
- 1190 ☒ **Fancy Registered**, 1929-30, Butterfly, Swastika, Face, Horse, Four covers, V.F.
- 1191 ☒ **Fancy Registered**, 1929-33, Santa Claus, Church, Owl, Frog, Four covers, V.F.
- 1192 ☒ **Fancy Registered**, 1929-30, Owl, Jack O Lantern, Face, Rabbit, Four covers, V.F.
- 1193 ☒ **Fancy Registered**, 1930, Face, Owl, Clown, Butterfly, Four covers, V.F.
- 1194 ☒ **Fancy Registered**, 1929-32, Heart, Anchor, Harp, Cat, Four covers, V.F.
- 1195 ☒ **Fancy Registered**, 1930-34, Hound & Rabbit, Man Fishing, Chicago Worlds Fair, Geometric, 4 covers, V.F.
- 1196 ☒ **Fancy Registered**, 1929-34, Good Will, May Day, 100, 5, Cross, Five covers, V.F.
- 1197 ☒ **Fancy Registered**, 1929-31, Star, Monogram, USA, AP, Five covers, V.F.
- 1198 ☒ **Fancy Registered**, 1929-33, Star, Geometrics, Crossed Registered, Five covers, V.F.
- 1199 ☒ **Fancy Registered**, 1929-33, Star, Geometric, Merry Xmas, \$, Monogram, Five covers, V.F.

| | | | | |
|------|------|-------------------------------------|--|---|
| 1050 | 1200 | <input checked="" type="checkbox"/> | Fancy Registered, 1929-1933, American Eagle, G, Sail Boat, Z, Green Star, Five covers, V.F. | — |
| 135 | 1201 | <input checked="" type="checkbox"/> | Fancy Registered, 1929-1931, Boxed Star, Polar Bear, 4, Axe, Red Apple, Five diff, V.F. | — |
| 1250 | 1202 | <input checked="" type="checkbox"/> | Fancy Registered, 1929-1932, Christmas Bells, George Washington, Maltese Cross, Y, Santa Claus, Five diff, V.F. | — |
| 1050 | 1203 | <input checked="" type="checkbox"/> | Fancy Registered, 1929-1934, Firecracker, Church, Horse, Arrow, Star within fancy circle, Five diff, V.F. | — |
| 1050 | 1204 | <input checked="" type="checkbox"/> | Fancy Registered, 1930-1932, Parrot, Christmas Tree, Lily, Gen. Per-shing, Mexican Peon, Five diff, V.F. | — |
| 105 | 1205 | <input checked="" type="checkbox"/> | Fancy Registered, 1929-1931, Castle, Maltese Cross, Merry Christmas, Swastika, R in diamond, Five diff, V.F. | — |
| 1250 | 1206 | <input checked="" type="checkbox"/> | Fancy Registered, 1930-1934, 5c in Circle, Owl and Moon, Checkerboard, Harp, Rabbit, Five diff, V.F. | — |
| 125 | 1207 | <input checked="" type="checkbox"/> | Fancy Registered, 1930-1931, Owl, open L, fancy Star, Sail Boat, Wagon Wheel, Five diff, V.F. | — |
| 1450 | 1208 | <input checked="" type="checkbox"/> | Fancy Registered, 1930, Dollar, Sail Boat, Santa Claus, American Eagle, Santa's Face, Abe Lincoln, Bell, 7 diff, V.F. | — |

OFFICIALS

| | | | | |
|------|------|-------------------------------------|---|---------------|
| 250 | 1209 | | 3c Agriculture (O3). Three blue cancels, Stars and Triangle, V.F. | — |
| 850 | 1210 | | 3c-6c Agriculture (O3-O4). Fifteen fancy cancels includes Red, 10, boxed E, Crosses, Stars, V.G.-V.F. | — |
| 400 | 1211 | | 3c Executive (O12). Attractive fancy design cancel, few short perfs., well centered | — |
| 175 | 1212 | <input checked="" type="checkbox"/> | 3c Executive (O12). Tied on small Executive Mansion envelope, Wash. D. C. pmk, Fine | (Photo) 40.00 |
| 85 | 1213 | | 2c Interior (O16). Clear Skull & Crossbones cancel, short perfs. at T. | — |
| 1550 | 1214 | | 1c-90c Interior Dept., 25 fancy cancels includes Leaf, Crosses, 78, 80, Stars, Colored, V.G.-V.F. | — |
| 25 | 1215 | <input checked="" type="checkbox"/> | 6c Interior (O18). Tied on legal size cover with imprint, Fine | 10.00 |
| 450 | 1216 | | 3c Justice (O27). Five diff. fancy cancels, V.G.-V.F. | — |
| 1550 | 1217 | <input checked="" type="checkbox"/> | 3c Justice (O27). Tied on legal size cover, Wash. D. C. pmk, V.G. | 22.50 |
| 45 | 1218 | | 12c Justice (O30). Negative M.P.O. cancel, Very Good | — |
| 105 | 1219 | | 30c Justice (O33). Two copies, one has Blue 18 cancel, Fine | — |
| 1250 | 1220 | | 2c-90c Navy Dept. 12 stamps, fancy cancels, V.G.-V.F. | — |
| 1150 | 1221 | <input checked="" type="checkbox"/> | 3c Navy (O37). Used in combination on Germany Postal Card with 20pf. German stamp, tied Wash. D.C. Vallejo, Cal., Brooklyn received, New York Paid All and German pmks. Fine | (Photo) — |

- 1222 ☒ 3c Navy (O37). Tied Phila. with Naval Asylum imprint, Fine —
- 1223 2c-24c Post Office Dept. 37 stamps, **fancy cancels** includes Reds, Stars, Crosses, Shield, V.G.-V.F. —
- 1224 1c, 3c, 6c, 24c State (O57, O59-60, O65). Leaf, PD, Blue, 2 cancels, Fine —
- 1225 ☒ 3c State (O59). Tied on small Dept. of State envelope, Wash. D.C. pmk. contains letter by Everts, V.G. —
- 1226 1c-90c Treasury, 32 stamps, **fancy cancels** includes Heart, O.K., R.R., Leafs, Shield, etc. V.G.-V.F. —
- 1227 ☒ 3c Treasury (O74). Tied with fancy New Orleans cancel, V.G. —
- 1228 90c Treasury, two, large star, rosette cancels, V.F. —
- 1229 ☒ 2c, 3c War (O84-O85). Tied on small cover to France, latter has str. edge, Fine —
- 1230 30c War Dept (O92). Jack O Lantern pmk, str. edge at B —
- 1231 ☒ 1c-2c War Dept (O114-O115). Two covers tied Town pmks, 1 used in combination with UO54 Entire, Fine-V.F. —
- 1232 2c-90c War Dept., 35 **fancy cancels** includes E in Wreath, Anchor, Terr., Monogram, U.S., Geometrics, attractive lot, V.G.-V.F. —
- 1233 3c War (O116). Excellent strike of **Kicking Mule** cancel, small thin (Photo) —
- 1234 2c-6c Officials, Twelve **fancy cancels** includes 3 diff. Forts, V.G.-V.F. —
- 1235 ☒ 3c Parcel Post (Q3). Block tied on registered cover in 1913, Fine —

ENVELOPES

- 1236 ☒ 3c Red Entire (U3). Tied by clear U.S. Express Mail pmk, V.F. —
- 1237 ☒ 3c Red Entire (U9). Red Natchez, Miss. pmk. to England, 24 and 5 transit markings, Very Fine —
- 1238 ☒ 3c Red Entire (U9). Tied Burlington, Vt. on **Patriotic** cover, Flag in full colors, Fine, Scarce on entire —
- 1239 ☒ 1c-3c Entires (U9, U116). Three covers, **Davidson College, N.C., Randolph Macon College, University of Va** pmks, V.F. —
- 1240 ☒ 3c Red Entire (U10). Tied Columbus, Miss. str. line **Registered**, V.F. —
- 1241 ☒ 3c Red Entire (U10). Tied by Very Fine strike of **Canton, Miss. Lyre** cancel (Photo) —
- 1242 ☒ 3c Red Entire (U10). Tied by Very Fine strike of **Canton, Miss. Lyre** cancel —
- 1243 ☒ 3c Red Entires (U10). Three covers tied by diff. Canton Miss. cancels **Triangle, Negative Star, Cross**, Fine-V.F. —

- 450 1244 ☒ 3c Red Entire (U10). Four covers tied by diff. Canton, Miss. cancels, Triangle, Cross, Paid 3, Star, Fine-V.F.
- 9250 1245 ☒ 3c Red Entire (U26). Tied New York to cover with large blue oval Adams Express Co., Western & Southern Express Forwarders New York sent to Athens, Tenn. V.F. (Photo)
- 20 1246 ☒ 3c Red Entire (U27). Neat Charles City, Iowa pmk. partly ties printed label on envelope "The Postoffice name of this place has been changed from St. Charles City to Charles City". Unusual, Very Fine (Photo)
- 24 1247 3c+1c Red & Blue Compound (U29). Cut Square with blue Chicago Supplementary pmk. Fine, Scarce (Photo)
- 32 1248 ☒ 3c Pink Entire (U58). Lynchburg, Va. Horses Head cancel, Fine
- 650 1249 ☒ 3c Pink Entires (U58-U59). Nineteen covers all from Wooster, O. with Shields, Pin wheels, Leaf, Floral cancels, Fine lot
- 9 1250 ☒ 3c Pink Entire (U59). Tied Waterbury, Conn. Shield cancel, F. (Photo)
- 1750 1251 ☒ 3c Pink Entire (U59). Tied clear Huntington, N.Y. Masonic G within Star pmk, V.F. (Photo)
- 3 1252 ☒ 2c-3c Entires (U59, U312). Two covers, each tied by clear Face pmk, V.F.
- 52 1253 ☒ 3c Green Entire (U163). Tied purple Star and Myrtle Point, Coos. Co. Oregon pmk. V.F.
- 175 1254 3c Green Cut Square (U164). Bold unusual Eagle cancel, Fine
- 1350 1255 ☒ 3c Centennial Envelope (U221). Tied with Phila. Centennial pmk. Fine
- 142 1256 ☒ 2c Red Entire (U230). Tied by clear Opelousas, La. Masonic pmk, Fine
- 275 1257 ☒ 2c Green Entires (U312). Two covers, str line United States Post Office, Military Station No. 1, Cuba and Mil. Sta. No. 1, Philippine Isls. pmks, 1 is front, Fine
- 250 1258 ☒ 2c Carmine Entire (U362). Tied from Buffalo on two diff covers with illustr. Pan-American Exposition corner cards, V.F.
- 52 1259 ☒ 1c Black Postal Card (UX5). Tied with Putnam, Conn. large Triangle Grid, V.F.
- 2 1260 ☒ 1c Black Postal Card (UX5). Tied with clear large letters R.R. Fine
- 9450 1261 ☒ 2c Bank Check Revenue (R5c). Vert Pair tied grid, New York pmk, Revenue used as Postage, Fine
- 1550 1262 ☒ 1c Green I.R. Revenue (R154). Two tied on Patriotic cover, over all Flag, design, V.F.
- 1050 1263 ☒ 2c Battleship Revenues (R164, RB27). Four diff covers with Revenues used as Postage, Fine-V.F.

CARRIERS AND LOCALS

- 350 1264 ★ Carrier, 2c Pink, Steinmeyer's City Post (4LB19). Complete Sheet of 10, Very Fine, o.g. (Photo) 600.00
- 1265 ★ Carrier, 2c Yellow, Steinmeyer's City Post (4LB20). Complete Sheet of 10, crease in margin, stamps Very Fine, o.g. (Photo) 800.00
- 9 1266 ☒ D.O. Blood & Co., 1c Locals (15L13, 15L15, 15L18). Four diff covers, 2 used in combination with 3c 1851's, Fine-V.F.
- 32 1267 ☒ D.O. Blood & Co., 1c Bronze on Black (15L17). Used on cover with Red str line Philada Rail Road pmk, Fine
- 52 1268 ☒ 3c Brownish Carmine, 2c Boyd's Local (11, 20L12). First tied New York pmk, latter has writing over it on cover with Hotel corner card, Fine

| | | | |
|-------|---|---|-------|
| 1269 | ✕ | Boyd's Dispatch, Crimson (20L43). Tied by co. marking on cover with corner card, V. F. | — |
| 1270 | ✕ | Boyd's Dispatch, Pink (20L44). Tied by co. marking on illustr. cover showing tent, V. F. (Photo) | — |
| 1270A | | Boyd's City Dispatch 2c Red (20LU17-19). cut squares, co. cancels, V. F. | — |
| 1270B | ✕ | Boyd's City Dispatch 2c Red Entires (20LU12, 18, 23), tied, V. G. | — |
| 1270C | ✕ | Boyd's City Dispatch, 2c Red Entires (20LU35, 37, 44), 4 entires un-cancelled, Fine | — |
| 1270D | ✕ | Boyd's City Dispatch, 2c Red Entires (20LU44) two shades, both tied co. cancels, Fine | — |
| 1270E | ✕ | Boyd's City Dispatch, 2c Bank Notices (20LU45-46, 48), four, Fine | — |
| 1271 | ✕ | Floyds Penny Post, 1c Blue (68L1). Margins all around, tied Co. pmk to pretty Ladies cover, V. F. (Photo) | 60.00 |
| 1272 | | Gahagan & Howe City Express, 5c Black (70L3). Blue co. cancel, V. F. | 15.00 |
| 1273 | ✕ | Hale & Co., Swarts City Dispatch, U. S. City Dispatch Post 3 covers with Co. pmks, Fine-V. F. | — |
| 1274 | ★ | Hussey's Post, 10c Gold Special Delivery (87LE2). Sheet of 10, V. F. | 60.00 |
| 1275 | ★ | Hussey's Post, 25c Gold Special Delivery (87LE5). Sheet of 10, V. F. | 60.00 |
| 1276 | ✕ | Metropolitan Local, 1c Red Brown (107L1). Canceled by Paid in Rectangle pmk, Fine | 40.00 |
| 1277 | ✕ | Metropolitan Local, 2c Red Entire (107LU2). Very Fine, unused | 10.00 |
| 1278 | ✕ | N. O. U. S. City Post in green Shield, green Car 2 Natchez, Mi. pmk, F. | — |
| 1279 | ✕ | Prince's Letter Dispatch, 2c Black (122L1). Tied ms pmk to cover with 3c 1861, cover has tear, Fine appearing | 60.00 |
| 1280 | ✕ | U. S. City Despatch Post, 3c Blue (6LB5). Tied to reduced cover, V. G. | 45.00 |

LARGE AND MISC. LOTS

| | | | |
|------|---|--|---|
| 1281 | | Collection Cancellations, 1851-1883 Issues, over 4,000 stamps, mostly mounted, interesting lot, Est. Cash Val. \$100.00 | — |
| 1282 | ✕ | Hotel Covers 1851-87 issues, 15 diff. New York State with collateral material, Fine-V. F. | — |
| 1283 | | U. S. Cancels, 1857 issue to 1895 issue, 285 stamps selected for cancels, includes Pairs, Paid), Str Line, Geometrics, Interesting lot, Fair-Fine | — |
| 1284 | | Nineteenth Century 64 stamps, 1851-79 Issues, mostly fancy cancels, some faults, Est. Cash Value \$15.00 | — |
| 1285 | | 19th Century Cancellations, 1851-98 Issues, 165 stamps mostly with fancy cancels many with faults, Est. Cash Value \$25.00 | — |
| 1286 | | 19th & 20th Cancellations, many hundreds mounted, interesting lot | — |
| 1287 | ✕ | 19th Century Covers, Thirty three covers including Valentine, Advertising covers, Conn towns, Fair-Fine | — |
| 1288 | ✕ | 3c Rose (65). Carton of 367 covers, includes some grills, many Vermont towns, Good-V. F. | — |
| 1289 | | Cancellations, Nineteenth Century, starting with 1869 Issue, 348 stamps, mostly Banknotes, V. G.-V. F. | — |
| 1290 | ✕ | Collection of 24 diff. Caricature Return Within — Days illustr. corner cards, 1870-98, amusing lot of covers | — |
| 1291 | | 1c Banknotes, approx 500 copies, mounted, some interesting cancels, nothing scarce noted | — |
| 1292 | | 3c Green, approx 2800 copies, includes some pmks | — |

- 175- 1293 2c Red Brown, 2c Green (210, 213). Approx. 2800 copies, includes some fancy cancels
- 9- 1294 ☒ Nineteenth Century Registered, Nineteen covers, 1890-1898 Issues in cluding Columbians, V.G.-V.F.
- 28- 1295 ☒ 19th & 20th Century Covers, 176 covers including fancy cancels, Pat- riotic, Exposition, Illustrated, some Foreign mounted in large cover album, Est. Cash Value \$40.00
- 20- 1296 ☒ Stamp Deaer Corner Cards, 20 diff. covers 19th or early 20th century, V.G.-V.F.
- 25- 1297 Stamps & Covers misc. lot mostly 19th, several hundred, includes can- cellations
- 26- 1298 ☒ 19th & 20th Century Covers, Carton containing hundreds of covers including many Entires, includes over 100 3c 1861 covers
- 375- 1299 ☒ R. P. O. cancels on 1c-3c Entires, 1893-99 issues, includes **Fast Mail**, Fine
- 36- 1300 ☒ 1890-1918 Issues, Large Foot Locker containing thousands of covers, includes Coils, Illustrated, Advertising, Private Perfs, Slogans, etc.
- 235- 1301 ☒ U. S. Covers, Collection of 490 covers mounted, mostly 20th century including many Commemoratives, includes Registered, Interesting Lot, Est. Cash Value \$25.00
- 18- 1302 ☒ Carton of U.S. & Foreign Covers, mostly 20th Century, hundreds of covers including Private Perforations
- 5- 1303 ☒ Pago Pago, Samoa, Guam, Hawaii, United Fruit Co. Steam-Ship Service pmks on four diff covers, 1927-1930 period, Fine
- 15- 1304 ☒ Parcel Post, Registry, Revenues used as Postage, 10 covers, includes 4 Twentieth Century Bisects, Fine-Very Fine
- 16- 1305 ☒ Naval Covers several hundreds along with other misc. 20th century covers, nice lot
- 14- 1306 ☒ Zeppelin, 17 cachet flight covers, Round the World flight, various point to point coverage, V.F.

CONFEDERATE STATES

- 385- 1307 ☒ Mobile, Ala. 5c Blue (58X2). Tied Mobile pmk to forwarded cover, Beershera Springs pmk and ms "for. Due 5" markings, V.F. **(Photo)**
- 925- 1308 ☒ 5c Olive Green (1c). Margins all around, tied Richmond, Va. V.F.
- 145- 1309 ☒ 5c Green (1). Horiz Pair tied Fredericksburg, Va pmk, Fine
- 135- 1310 ☒ 5c Green (1). Horiz. Pair, Margins all around, tied town pmk to slightly ragged cover, V.F.
- 875- 1311 ☒ 5c Green (1). Two diff. tied Town pmks, Fine
- 675- 1312 ☒ 5c Green (1). Two shades, tied on 2 covers, Fine
- 16- 1313 ☒ 10c Blue (2). Richmond, Va. pmk not tying on attractive illustrated Sewing Machine cover showing full view of factory on reverse **(Photo)**
- 8- 1314 ☒ 10c Blue (2). Tied Savannah, Ga. Fine
- 95- 1315 ☒ 5c Blue (4). Tied town pmk, Fine
- 4- 1316 ☒ 5c Blue (4). Tied Blue town pmk to forwarded cover front, George- town, S. C. pmk & Numeral marking, stamp ragged
- 25- 1317 ☒ 10c Rose (5). Tied balloon strike **Lovingstown, Va.** pmk, stamp creased
- 13- 1318 ☒ 5c Blue (6). Four pairs on 4 covers, all tied, Fine-V.F.
- 16- 1319 ☒ 5c, 10c Blue (6, 7, 11, 12). Twelve covers, stamps damaged on most

55.00

- 1320 ☒ 10c Blue (11). Tied Milledgeville, Ga., also Griffin, Ga. pmk when forwarded on **Official Business, Quartermaster Gen. of Georgia**, Fine (Photo) _____
- 1321 ☒ 10c Blue (11). Tied Ashboro, N. C. on cover with corner card, V. F. _____
- 1322 ☒ 10c Greenish Blue (11). Margins all around, tied **Madison, Fla.** pmk, V. F. _____
- 1323 ☒ 10c Blue (11). Margins all around, tied Blue Petersburg, Va to cover with grocers corner card, V. F. _____
- 1324 ☒ 10c Blue (11). Tied **Orange C. H. Va.**, on cover with corner card, V. F. _____
- 1325 ☒ 10c Blue (11). Tied Ashboro, N. C. on cover with corner card, Fine _____
- 1326 ☒ 10c Blue (11). Three covers, Margins all around, each tied town pmk, V. F. _____
- 1327 ☒ 10c Blue (11-12). Four covers, all tied, diff shades, V. F. _____
- 1328 ☒ 10c Blue (12). Tied Danville, Va. corner card **Piedmont Railroad**, Fine _____
- 1329 ☒ 10c Blue (12). Turned cover, tied Rutherford, N. C. outside, inside has Paid 10 handstamp provisional, Fine _____
- 1330 ☒ 10c Blue (12). Two covers both tied **Kingston, N. C.** each marked ms. Examined, one ms. "by flag of truce", Fine _____
- 1331 ☒ 10c Blue (12). Two turned covers, both tied Rutherford, N. C., Fine _____
- 1332 ☒ 10c Blue (12). Tied **Charleston, S. C.** on cover with advert. corner card, V. F. _____

PRISONER OF WAR

FLAG OF TRUCE, ETC.

- 1333 ☒ **Old Point Comfort, Va.**, Due 3, pmks. Ms. "Per Flag of Truce Via Richmond, Va., Care of Genl. Winder, Richmond, Va." also marked "Examined", to Pembroke, Mass. Very Fine _____
- 1334 ☒ **Old Point Comfort, Va.**, Due 3 pmks. "Per Flag of Truce Via Richmond, Va., Care of Genl. Winder, Richmond, Va." also marked Examined, to Pembroke, Mass. Very Fine _____
- 1335 ☒ **Old Point Comfort, Va.**, Due 6, pmks. Ms. "Via Flag of Truce from a Prisoner of War", to Argyle, Wisc. Fine _____
- 1336 ☒ **Prisoner's Letter, Johnson Island, O.** In oval, Due 10, Sandusky, O. and Richmond pmks. Ms. "Flag of Truce", Fine _____
- 1337 ☒ **Soldiers Letters**, 2 covers, Petersburg, Va. 10 and Richmond, Va. Due 10 pmks. Fine _____
- 1338 ☒ 1c Blue (24). Vert Strip of 3, str edge at R, tied Grid, **Charleston, S. C. Feb. 18, 1861** pmk, **U. S. Stamp used in Confederacy**, Fine _____
- 1339 3c Red (26). Confederate usage of U. S. stamps, two "Mobile, Ala. Feb. 16, 1861" and "Charleston, S. C. May 11, 1861", Fine _____
- 1340 ☒ 3c Red (26). Tied Grid, Charleston, S. C., March 22, 1861 pmk, **U. S. Stamp used in Confederacy**, V. F. _____
- 1341 ☒ 3c Red Entire (U27). Tied Augusta to Athens, Tenn., in blue oval "Adams Express Company, Great Eastern, Western & Southern Express Forwarders, New York", Very Fine (Photo) _____

END OF SALE — THANK YOU

SELLING YOUR COLLECTION ?

REALIZE IMMEDIATE CASH
AND HAVE ADVANTAGE OF SELLING AT MY AUCTIONS

I will advance on your collection immediate cash up to 75% of my appraisal value of what it should realize at auction.

It will then be sold at one of my coming auction sales. Attractive well illustrated catalogues issued, with stamps expertly and most advantageously lotted. All lotting done under my personal supervision. Commission is 20% of the gross and final settlement within thirty days after the sale. I have been steadily conducting stamp auctions in the United States for the past 25 years.

Valuable collections and stamp holdings especially wanted but will accept properties valued from \$500 upwards. Send stamps direct for my appraisal. Auction advance will be sent within 48 hours after receipt. If not entirely pleased stamps will be returned at my expense. If circumstances warrant due to bulk etc. I will travel to inspect valuable properties.

ROBERT A. SIEGEL

(Licensed and Bonded Auctioneer)

489 FIFTH AVENUE

NEW YORK CITY

(Tel. MU. 2-0980)

183rd Sale

ROBERT A. SIEGEL
489 Fifth Avenue - New York 17, N. Y.

PRICES REALIZED
Auction Sale - October 19th and 20th, 1955

UNITED STATES
Stamps & Covers

| October 19th | | | | | | | | | | | | | | | | | | | |
|--------------|-------|------|--------|-----|-------|-----|-------|-----|--------|-----|--------|-----|--------|-----|-------|-----|--------|-----|-------|
| 1 | 7.00 | 64 | 5.50 | 128 | 12.50 | 194 | 8.50 | 260 | 9.00 | 326 | 45.00 | 402 | 8.50 | 468 | 4.50 | 534 | 5.75 | 600 | 4.00 |
| 2 | 6.50 | 65 | 2.25 | 129 | 14.00 | 195 | 10.00 | 261 | 8.50 | 327 | 11.50 | 403 | 11.50 | 469 | 4.00 | 535 | 7.00 | 601 | 6.25 |
| 3 | 6.50 | 66 | 11.50 | 130 | 5.50 | 196 | 25.00 | 262 | 7.00 | 328 | 72.50 | 404 | 10.50 | 470 | 5.50 | 536 | 6.50 | 602 | 77.50 |
| 4 | 5.00 | 67 | 62.50 | 131 | 15.00 | 197 | 10.00 | 263 | 11.00 | 329 | 12.00 | 405 | 4.00 | 471 | 2.50 | 537 | 10.50 | 603 | 3.25 |
| 5 | 2.25 | 68 | 4.75 | 132 | 18.50 | 198 | 20.00 | 264 | 6.50 | 330 | 3.00 | 406 | 4.50 | 472 | 2.25 | 538 | 25.00 | 604 | 3.25 |
| 6 | 10.50 | 69 | 8.50 | 133 | 6.00 | 199 | 4.50 | 265 | 9.00 | 331 | 6.50 | 407 | 4.00 | 473 | 5.00 | 539 | 7.00 | 605 | 5.25 |
| 7 | 3.00 | 70 | 10.00 | 134 | 14.00 | 200 | 13.00 | 266 | 10.50 | 332 | 26.50 | 408 | 18.50 | 474 | 7.00 | 540 | 20.00 | 606 | 7.00 |
| 8 | 2.50 | 71 | 8.00 | 135 | 5.25 | 201 | 11.00 | 267 | 6.00 | 333 | 5.75 | 409 | 18.50 | 475 | 2.25 | 541 | 3.50 | 607 | 12.50 |
| 9 | 5.50 | 72 | 2.00 | 136 | 13.00 | 202 | 21.00 | 268 | 6.00 | 334 | 12.50 | 410 | 17.00 | 476 | 8.50 | 542 | 22.50 | 608 | 4.25 |
| 10 | 4.25 | 73 | 2.50 | 137 | 6.00 | 203 | 13.50 | 269 | 5.50 | 335 | 23.50 | 411 | 14.00 | 477 | 9.50 | 543 | 8.00 | 609 | 5.50 |
| 11 | 4.00 | 74 | 16.50 | 138 | 5.00 | 204 | 20.00 | 270 | 6.50 | 336 | 5.00 | 412 | 5.00 | 478 | 8.00 | 544 | 4.00 | 610 | 8.00 |
| 12 | 5.25 | 75 | 6.75 | 139 | 12.50 | 205 | 3.00 | 271 | 6.00 | 337 | 9.00 | 413 | 210.00 | 479 | 6.50 | 545 | 8.00 | 611 | 8.25 |
| 13 | 4.75 | 76 | 8.00 | 140 | 10.50 | 206 | 28.00 | 272 | 9.00 | 338 | 18.50 | 414 | 47.50 | 480 | 10.00 | 546 | 9.00 | 612 | 34.00 |
| 14 | 4.50 | 77 | 2.25 | 141 | 10.50 | 207 | 10.50 | 273 | 6.50 | 339 | 11.00 | 415 | 6.00 | 481 | 4.00 | 547 | 9.50 | 613 | 3.00 |
| 15 | 2.25 | 78 | 3.50 | 142 | 11.00 | 208 | 26.00 | 274 | 245.00 | 340 | 3.00 | 416 | 15.50 | 482 | 8.00 | 548 | 3.00 | 614 | 8.50 |
| 16 | 9.25 | 79 | 14.50 | 143 | 45.00 | 209 | 8.50 | 275 | 190.00 | 341 | 12.50 | 417 | 8.50 | 483 | 6.75 | 549 | 3.00 | 615 | 2.50 |
| 17 | 5.50 | 80 | 5.00 | 144 | 80.00 | 210 | 3.50 | 276 | 9.50 | 342 | 9.00 | 418 | 50.00 | 484 | 6.00 | 550 | 4.50 | 616 | 10.50 |
| 18 | 10.00 | 81 | 9.00 | 145 | 65.00 | 211 | 4.00 | 277 | 26.00 | 343 | 12.00 | 419 | 14.50 | 485 | 4.00 | 551 | 14.50 | 617 | 9.00 |
| 19 | 45.50 | 82 | 6.00 | 146 | 8.50 | 212 | 3.00 | 278 | 11.00 | 344 | 26.00 | 420 | 8.50 | 486 | 6.25 | 552 | 4.00 | 618 | 2.00 |
| 20 | 40.00 | 83 | 16.00 | 147 | 7.25 | 213 | 11.00 | 279 | 13.00 | 345 | 170.00 | 421 | 26.00 | 487 | 10.50 | 553 | 112.50 | 619 | 11.50 |
| 21 | 82.50 | 84 | 32.50 | 148 | 11.50 | 214 | 5.00 | 280 | 10.50 | 346 | 3.50 | 422 | 5.00 | 488 | 6.00 | 554 | 12.50 | 620 | 4.00 |
| 22 | 6.00 | 85 | 13.50 | 149 | 8.00 | 215 | 23.00 | 281 | 8.50 | 347 | 4.50 | 423 | 2.00 | 489 | 4.50 | 555 | 42.00 | 621 | 2.75 |
| 23 | 6.25 | 86 | 3.00 | 150 | 2.75 | 216 | 20.50 | 282 | 11.50 | 348 | 6.00 | 424 | 17.50 | 490 | 7.25 | 556 | 4.00 | 622 | 11.00 |
| 24 | 4.75 | 87 | 7.25 | 151 | 6.50 | 217 | 66.00 | 283 | 7.75 | 349 | 9.00 | 425 | 4.75 | 491 | 4.50 | 557 | 2.25 | 623 | 4.75 |
| 25 | 3.50 | 88 | 12.50 | 152 | 25.00 | 218 | 10.00 | 284 | 25.00 | 350 | 6.00 | 426 | 10.00 | 492 | 4.00 | 558 | 9.50 | 624 | 3.25 |
| 26 | 3.75 | 89 | 6.50 | 153 | 8.00 | 219 | 2.25 | 285 | 13.00 | 351 | 4.75 | 427 | 9.00 | 493 | 4.00 | 559 | 15.50 | 625 | 2.75 |
| 27 | 5.00 | 90 | 5.75 | 154 | 8.00 | 220 | 21.50 | 286 | 15.00 | 352 | 8.00 | 428 | 5.75 | 494 | 11.50 | 560 | 15.00 | 626 | 2.75 |
| 28 | 4.00 | 91 | 36.00 | 155 | 20.00 | 221 | 3.25 | 287 | 6.00 | 353 | 6.00 | 429 | 10.50 | 495 | 4.50 | 561 | 3.75 | 627 | 5.50 |
| 29 | 16.00 | 92 | 6.25 | 156 | 2.25 | 222 | 6.75 | 288 | 9.00 | 354 | 25.00 | 430 | 2.00 | 496 | 4.50 | 562 | 7.00 | 628 | 5.50 |
| 30 | 5.75 | 93 | 18.50 | 157 | 10.00 | 223 | 7.00 | 289 | 8.00 | 355 | 6.50 | 431 | 16.00 | 497 | 6.50 | 563 | 11.50 | 629 | 5.50 |
| 31 | 3.50 | 94 | 4.75 | 158 | 6.25 | 224 | 2.00 | 290 | 8.75 | 356 | 15.50 | 432 | 5.00 | 498 | 12.50 | 564 | 3.25 | 630 | 5.50 |
| 32 | 2.25 | 95 | 2.25 | 159 | 11.50 | 225 | 14.50 | 291 | 5.50 | 357 | 17.50 | 433 | 37.00 | 499 | 23.50 | 565 | 5.75 | 631 | 9.00 |
| 33 | 2.50 | 96 | 4.50 | 160 | 2.75 | 226 | 14.00 | 292 | 4.50 | 358 | 9.00 | 434 | 10.50 | 500 | 41.00 | 566 | 7.25 | 632 | 8.50 |
| 34 | 3.25 | 97 | 4.50 | 161 | 8.00 | 227 | 6.00 | 293 | 8.00 | 359 | 13.50 | 435 | 10.50 | 501 | 77.50 | 567 | 8.50 | 633 | 8.50 |
| 34A | 3.25 | 98 | 7.00 | 162 | 7.00 | 228 | 16.00 | 294 | 11.50 | 360 | 19.00 | 436 | 5.50 | 502 | 2.25 | 568 | 17.50 | 634 | 8.50 |
| 35 | 3.00 | 99 | 3.50 | 163 | 13.50 | 229 | 5.25 | 295 | 14.00 | 361 | 4.50 | 437 | 6.00 | 503 | 16.50 | 569 | 3.00 | 635 | 8.00 |
| 36 | 12.50 | 100 | 21.00 | 164 | 42.50 | 230 | 5.75 | 296 | 3.50 | 362 | 5.75 | 438 | 4.00 | 504 | 5.00 | 570 | 7.25 | 636 | 5.00 |
| 37 | 2.25 | 101 | 9.00 | 165 | 2.50 | 231 | 8.75 | 297 | 167.50 | 363 | 25.00 | 439 | 2.00 | 505 | 2.25 | 571 | 3.00 | 637 | 6.50 |
| 38 | 5.00 | 102 | 8.25 | 166 | 4.50 | 232 | 4.25 | 298 | 3.50 | 364 | 12.00 | 440 | 24.00 | 506 | 3.50 | 572 | 7.50 | 638 | 4.00 |
| 39 | 6.00 | 103 | 23.00 | 167 | 3.00 | 233 | 17.50 | 299 | 9.00 | 365 | 6.00 | 441 | 8.75 | 507 | 3.25 | 573 | 3.00 | 639 | 17.50 |
| 40 | 5.50 | 104 | 26.00 | 168 | 5.00 | 234 | 6.50 | 300 | 5.50 | 366 | 11.00 | 442 | 10.50 | 508 | 2.50 | 574 | 3.50 | 640 | 16.50 |
| 41 | 15.50 | 104A | 38.50 | 169 | 3.50 | 235 | 12.00 | 301 | 3.25 | 367 | 8.00 | 443 | 25.00 | 509 | 5.50 | 575 | 6.75 | 641 | 15.50 |
| 42 | 3.25 | 105 | 32.00 | 170 | 19.00 | 236 | 5.25 | 302 | 4.75 | 368 | 7.50 | 444 | 8.00 | 510 | 3.75 | 576 | 17.50 | 642 | 28.00 |
| 43 | 2.25 | 106 | 43.00 | 171 | 11.50 | 237 | 4.00 | 303 | 12.00 | 369 | 4.00 | 445 | 2.00 | 511 | 3.00 | 577 | 3.00 | 643 | 3.00 |
| 44 | 2.00 | 107 | 18.00 | 172 | 2.50 | 238 | 5.75 | 304 | 24.00 | 370 | 5.50 | 446 | 7.25 | 512 | 4.50 | 578 | 3.75 | 644 | 3.25 |
| 45 | 12.50 | 108 | 27.00 | 173 | 3.50 | 239 | 7.25 | 305 | 9.00 | 371 | 4.50 | 447 | 45.00 | 513 | 7.25 | 579 | 3.25 | 645 | 2.50 |
| 46 | 9.25 | 109 | 95.00 | 174 | 2.50 | 240 | 32.50 | 306 | 13.00 | 372 | 4.00 | 448 | 7.50 | 514 | 4.00 | 580 | 7.50 | 646 | 13.50 |
| 47 | 3.75 | 110 | 46.00 | 175 | 4.25 | 241 | 10.00 | 307 | 11.00 | 373 | 7.50 | 449 | 8.25 | 515 | 3.50 | 581 | 4.00 | 647 | 20.00 |
| 48 | 3.75 | 111 | 21.00 | 176 | 1.00 | 242 | 15.50 | 308 | 7.00 | 374 | 18.50 | 450 | 42.00 | 516 | 3.75 | 582 | 4.00 | 648 | 2.00 |
| 49 | 12.00 | 112 | 55.00 | 177 | 15.00 | 243 | 17.00 | 309 | 6.50 | 375 | 12.50 | 451 | 6.00 | 517 | 2.00 | 583 | 15.50 | 649 | 3.50 |
| 50 | 7.25 | 113 | 440.00 | 178 | 2.00 | 244 | 10.50 | 310 | 32.00 | 376 | 6.50 | 452 | 10.50 | 518 | 2.25 | 584 | 20.00 | 650 | 3.00 |
| 51 | 22.50 | 114 | 40.00 | 179 | 8.00 | 245 | out | 311 | 4.50 | 377 | 7.75 | 453 | 54.00 | 519 | 6.00 | 585 | 270.00 | 651 | 8.50 |
| 52 | 8.25 | 115 | 28.00 | 180 | 28.00 | 246 | 4.00 | 312 | 62.50 | 378 | 7.00 | 454 | 21.00 | 520 | 3.25 | 586 | 2.00 | 652 | 10.00 |
| 53 | 9.00 | 116 | 16.50 | 181 | 16.00 | 247 | 62.50 | 313 | 11.50 | 379 | 11.00 | 455 | 7.50 | 521 | out | 587 | 3.50 | 653 | 6.25 |
| 54 | 10.25 | 117 | 11.00 | 182 | 16.00 | 248 | 34.00 | 314 | 4.00 | 380 | 20.00 | 456 | 1.50 | 522 | 4.00 | 588 | 4.00 | 654 | 16.50 |
| 55 | 2.25 | 118 | 10.00 | 183 | 8.25 | 249 | 26.00 | 315 | 8.00 | 381 | 14.50 | 457 | 2.00 | 523 | 9.00 | 589 | 10.00 | 655 | 20.00 |
| 56 | 8.50 | 119 | 30.00 | 184 | 11.50 | 250 | 22.50 | 316 | 20.00 | 382 | 5.00 | 458 | 6.00 | 524 | 6.25 | 590 | 8.00 | 656 | 2.00 |
| 57 | 13.50 | 120 | 16.00 | 185 | 15.00 | 251 | 16.50 | 317 | 6.00 | 383 | 4.50 | 459 | 5.00 | 525 | 12.50 | 591 | 11.50 | 657 | 6.00 |
| 58 | 4.00 | 121 | 10.00 | 186 | 6.50 | 252 | 6.25 | 318 | 6.00 | 384 | 6.00 | 460 | 10.50 | 526 | 8.00 | 592 | 4.50 | | |
| 59 | 17.50 | 122 | 5.00 | 187 | 23.00 | 253 | 6.00 | 319 | 10.00 | 385 | 16.00 | 461 | 3.00 | 527 | 5.00 | 593 | 3.00 | | |
| 60 | 6.50 | 123 | 66.00 | 188 | 18.50 | 254 | 15.00 | 320 | 3.50 | 386 | 21.50 | 462 | 8.75 | 528 | 4.75 | 594 | 3.00 | | |
| 61 | 4.75 | 124 | 33.00 | 189 | 15.00 | 255 | 2.00 | 321 | 7.00 | 387 | 10.00 | 463 | 3.00 | 529 | 12.00 | 595 | 10.00 | | |
| 62 | 3.50 | 125 | 9.00 | 190 | 16.50 | 256 | 7.50 | 322 | 9.00 | 388 | 7.25 | 464 | 3.50 | 530 | 8.00 | 596 | 10.50 | | |
| 63 | 14.00 | 126 | 6.00 | 191 | 12.00 | 257 | 14.00 | 323 | 21.00 | 389 | 26.00 | 465 | 12.00 | 531 | 23.00 | 597 | 5.00 | | |
| | | 127 | 7.50 | 192 | 4.00 | 258 | 10.00 | 324 | 8.00 | 400 | 29.00 | 466 | 3.00 | 532 | 11.00 | 598 | 3.25 | | |
| | | 128 | 12.50 | 193 | 12.00 | 259 | 19.00 | 325 | 75.00 | 401 | 19.00 | 467 | 26.00 | 533 | 8.50 | 599 | 4.00 | | |

[illegible]