

185th SALE

DE LUXE COLLECTION
OF
UNITED STATES
1847 ISSUE
ESSAYS and PROOFS

AT PUBLIC AUCTION
MONDAY, JANUARY 16th, 1956
AT 7:30 P.M.

Robert A. Siegel
AUCTIONS

489 FIFTH AVENUE
NEW YORK CITY

CONDITIONS OF SALE

1. The terms of sale are strictly cash to the highest bidder. All buyers are expected to pay for lots within three days of receipt, unless special arrangements have been made prior to the sale.
2. All bids are per lot as numbered in the catalogue and not per piece, unless otherwise announced by the auctioneer at the time of sale.
3. Any lot the description of which is incorrect is returnable only within three days of receipt. All disputed lots must be returned intact as received. Lots containing five or more stamps are not returnable at any time. No lots may be returned by purchasers who have had the opportunity to examine them before the sale.
4. Successful mail bidders, unless they are known to us or supply acceptable references, will be notified of the amount of the lots secured for them, and are expected to send payment in full before the lots are forwarded.
5. If the purchase price has not been paid within the time limit, or lots taken up within seven days from date of sale, they may be resold and any losses arising from such sale charged to the defaulter.
6. All stamps are sold as genuine, except where sold "As Is". Claims for any lot proving otherwise, must be made within two weeks from date of sale.
7. The right is reserved to group two or more lots, also withdraw any lot or lots from the sale, or to act on behalf of the seller.
8. Until paid for in full all lots remain the property of Robert A. Siegel.
9. No commission is charged for buying at our sales, but all forwarding charges will be added to the purchase price.
10. Lots will be sent for inspection, provided such lots are returned to us the same day as received. Postage and registration both ways will be charged. Approximate values of lots will be given on request.
11. The placing of a bid shall constitute acceptance of the foregoing conditions of sale.

ROBERT A. SIEGEL

GREGORY MOZIAN, Licensed Auctioneers

In sending bids, always state the highest price you are prepared to pay for the lot. Your limit will not be used as a starting bid unless absolutely necessary.

DESCRIPTIONS

Superb—the finest condition for noteworthy, outstanding copies.

Very Fine (VF)—means that there is a slight deviation from the above.

Fine (F)—means that the perforations do not touch the design on issues after 1890, but in some cases may just touch in earlier issues; if used, fairly lightly cancelled.

Very Good (VG)—means that the appearance is generally fine but that the perforations cut the design slightly.

Good (G)—means average off-centering; or fairly attractive with slight defects. Original gum is not to be expected on 19th Century stamps up to 1888 unless so stated.

Scott's 1956 Specialized United States Catalogue is used for cataloging our lots of United States and Scott's Standard Catalogue, 1956 for others.

<p>WE SOLICIT FINE MATERIAL FOR FUTURE SALES</p>

185th SALE, JANUARY 16th, 7:30 P. M.

BID SHEET

ROBERT A. SIEGEL

489 Fifth Avenue

New York 17, N. Y.

Tel.: MUrray Hill 2-0980

Please purchase for me at your Auction to be held **Monday, January 16th, 1956**, the lots named below, the prices annexed being my limit on each lot. I agree to remit for purchases in accordance with the **Conditions of Sale** and to return no lots later than three days after receipt.

REFERENCES PLEASE
(if unknown to us)

SIGNED

[illegible]

VALUATIONS

Upon request, estimate of value furnished on any lots in this auction.

➤ PLEASE NOTE NEW ADDRESS.

[illegible]

DE LUXE COLLECTION
OF
UNITED STATES
1847 ISSUE
ESSAYS and PROOFS

A MAGNIFICENT COLLECTION, NEARLY COMPLETE OF ESSAYS AND PROOFS OF OUR FIRST ISSUE OF STAMPS. FORMERLY THE COLLECTION OF DR. CLARENCE W. BRAZER.

AT PUBLIC AUCTION
MONDAY, JANUARY 16th, 1956

AT 7:30 P.M.

ROBERT A. SIEGEL

Auctions

489 FIFTH AVENUE, NEW YORK 17, N. Y.

The Brazer Reference Collection of U.S. 1847 ESSAYS and PROOFS



This Brazer Reference Collection of the U.S. 1847 Essays and Proofs contains one of each variety that became available to me from 1925 to 1955. It was formed for study and classification of the various color printings from progressive states of the die as a basis for my complete **Historical Catalog of U.S. Stamp Essays and Proofs—The 1847 Issue** as published in 1947. Nearly all items listed in this Catalog are in this collection, which includes also 16 die proofs and many plate proofs added since 1947 and not listed in my Catalog. Each proof is the finest copy I could get and whenever finer copies or larger size paper was obtainable it was substituted.

Among the unique items of great importance are the only known model essays for the two first United States stamps, which have frames with POST OFFICE and FIVE CENTS engraved, with pencil and wash drawings of the leafwork, and pen and ink U.S. and numerals, on which are mounted vignettes previously engraved by Asher B. Durand. Here also is the only known black large die proof of the 1875 Reproductions, and hybrid proofs giving the names of the vignette and frame engravers. There are also the only known 1879 printing of card reproduction proofs overprinted SPECIMEN in red type and blue handstamp first cataloged by Paul Kohl, Chemnitz, Saxony, Germany, December, 1911, and brought to this country shortly thereafter. There are complete sheets of 50 of the 5c and 10c reproduction plate proofs on India paper. But most spectacular of all are the unique blocks of 8 "Atlanta" Trial Color 1881 Reproduction Proofs on thin card in each of five colors of both the 5c and 10c. These 10 sheets of 50 are the only ones known and were each cut about 1918 into a block of 8, two blocks of 4, and two horizontal pairs from bottom to top of the central four vertical rows, leaving only 30 singles of each, some of which were badly cut into.

The prices in my Catalog published in 1947 were based on the 100 cents value of the dollar of that year. Since then the purchasing value of the dollar has shrunk and most of my Catalog prices should be doubled in 1955. Many of Scott's 1956 U.S. Catalog prices are higher than my 1947 prices, except for 1847-51 original die proofs at stamp size which are not so listed by Scott.

Clarence W. Brazer, D. Sc.

CATALOGUE

MONDAY, JANUARY 16th, 1956

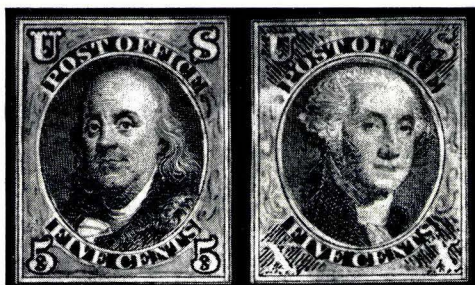
AT 7:30 P. M.

1847 ISSUE OF ESSAYS & PROOFS

"The Historical Catalog of U. S. Stamp Essays and Proofs—The 1847 Issue" by Dr. Clarence W. Brazer was used in cataloguing, numbering and pricing this catalog. This book was published in 1947.

ORIGINAL ESSAYS OF THE 1847 ISSUE

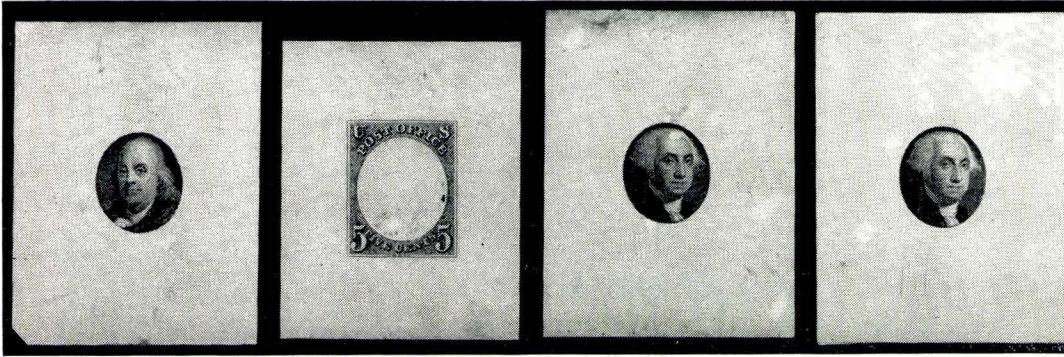
Unique Original Card Essays attributed to James Parsons Major, Head of the Engraving Dept. of Rawdon, Wright, Hatch & Edson from 1836-1858.



- 1 **5c Black (1E-A). Unique Essay**, Vignette mounted, Letter Labels engraved, Corner Letters drawn in ink, Frame Wash and Pencil, a great rarity
- 2 **10c Black (2E-A). Unique Essay**, Vignette replaced, Lettering Labels engraved, Corner Letters drawn in ink, Frame Wash and Pencil, a great rarity

DIE ESSAYS ON INDIA PAPER

These were manufactured from the complete die by use of cut out paper mats placed over the die so as to eliminate portions of the engravings. These were made at a later date, about 1895 or later.



- | | | |
|---|--|---|
| 3 | 5c Brown (1E-B). Die Essay, Vignette only, Very Rare, Very Fine | — |
| 4 | 5c Brown (1E-C). Die Essay, Frame only, pin hole in center, Very Rare | — |
| 5 | 10c Slate Black (2E-B). Die Essay, Vignette only, Very Rare, small thin, V. F. appearance | — |
| 6 | 10c Smoky Dark Orange (2E-B). Die Essay mounted on card, Vignette only, Very Rare, V. F. | — |
| 7 | 10c Slate Black (2E-C). Die Essay, mounted on card, Frame only, Very Rare, V. F. | — |
| 8 | 10c Brown (2E-C). Die Essay, Frame only, slightly thin, Very Rare, V. F. appearance | — |

ORIGINAL DIE PROOFS OF THE 1847 ISSUE

Die Proofs of the 5c value may be distinguished from Plate Proofs by a diagonal dash across the left frame line opposite the lower left of the U. This occurs on all Die Proofs. This dash is also found on the first position of the left pane of plate proofs. It was then removed from the transfer roll before entering the other 199 positions of the plate, with the exception of the left 10 vertical row positions from each pane. Plate Proofs show a position dot in the central leaf of the left trileaf ornament. Die Proofs of the 5c value do not show these dots.

Plate Proofs of the 10c value with the exception of the left 10 vertical position row from each pane show position dots in the left trileaf. In addition many positions show recutting. Die Proofs do not show this. In addition on the original die proofs of the 10c value the line which cuts across the bottom of the neck-stock, just above and inside the bottom of the inner oval line which frames the vignette (over EN) is clearly engraved. In late prints of the die proofs it is partly worn away.



9	5c Green (1TC2a). Trial Color Die proof on India, large margins with cross hatching, small thins, V. F. appearance, only one known from this printing showing cross hatching	300.00+
10	5c Deep Red (1TC2a). Trial Color Die Proof on India, tiny thin, V. F. appearance	300.00
11	5c Dark Brown (1P2a). Die Proof on India, slight thin, V. F. appearance	200.00
12	10c Deep Red (2TC2a). Trial Color Die Proof on India, tiny thin, V. F. appearance	300.00
13	10c Green. (2TC2a). Trial Color Die Proof on India, small tear at B. Fine appearance	300.00
14	10c Blue (2TC2a). Trial Color Die Proof on India, small thins, Fine appearance	300.00
15	10c Black (2P2a). Die Proof on India, Very Fine	200.00

1847 DIE PROOFS (PRINTED IN 1858)

On May 1, 1858 Rawdon, Wright, Hatch & Edson went into the American Bank Note Co. and the latter company inherited all its effects including dies, transfer roll reliefs, etc. Tracy R. Edson was Vice-President & head of the Business Dept. On Sept. 1, 1858, he recommended that rooms be arranged for showing specimens of printing and during this period Die Proofs of the 5c & 10c 1847 Issue were printed. These can be distinguished from the earlier original die proofs since there had been some damage to the dies during the period of storage.

The 5c Die Proof of the 1858 printing shows "a dot on the forehead" over the left eye, which is found on prints made 1847 to 1851.

The 10c Die Proof of the 1858 printing (& later printings) has the line which cuts across the bottom of the neck stock, just above and inside the bottom of the inner oval line, which frames the vignette (over EN) is partly worn away. These usually are thin due to probable removal from hybrids.



16	5c Blue (1TC2b). Trial Color Die Proof on India, Very Fine	150.00
17	5c Blue (1TC2b). Trial Color Die Proof on India, Very Fine	150.00
18	5c Dark Red (1TC2b). Trial Color Die Proof on India, small thins, V. F. appearance	150.00
19	5c Green (1TC2b). Trial Color Die Proof on India, small thin, V. F. appearance	150.00
20	5c Green (1TC2b). Trial Color Die Proof on India, Fine	150.00
21	5c Dark Brown (1P2b). Die Proof on India, hinge thin, V. F. appearance	75.00

22	5c Dark Brown (1P2c). Hybrid Die Proof sunk on card, Very Fine (Photo)	75.00
23	5c Dark Red (1TC2d). Trial Color Die Proof on White Bond Paper, slight thin, V.F. appearance	100.00
24	5c Dark Orange (1P1d). Die Proof on White Bond paper showing Cross Hatching, Very Fine	150.00
25	5c Dark Red (1TC2e). Trial Color Die Proof on faint Blue Wove Paper, Very Fine	100.00
26	10c Deep Red (2TC2b). Trial Color Die Proof on India, Very Fine	150.00
27	10c Dark Red (2TC2b). Trial Color Die Proof on India, small thin in top margins, V.F. appearance	150.00
28	10c Green (2TC2b). Trial Color Die Proof on India, small thins, V.F. appearance	150.00
29	10c Black (2P2b). Die Proof on India thin, V.F. appearance	75.00
30	10c Black (2P2c). Hybrid Die Proof sunk on card, Very Fine (Photo)	75.00
31	10c Dark Red (2TC2d). Trial Color Die Proof on White Bond Paper, tiny thin in top margin not touching stamp, V.F. appearance	100.00
32	10c Blue (2TC2d). Trial Color Die Proof on White Bond Paper, slightly thin, V.F. appearance	100.00
33	10c Black (2P2d). Die Proof on White Bond Paper, Very Fine	100.00
34	10c Black (2P1d). Die Proof on White Bond Paper showing Cross Hatching, Sunk on Card, Very Fine	150.00
35	10c Green (2TC2f). Trial Color Die Proof on coarse horizontal Laid Paper, only one known , Very Fine, Very Rare	150.00
36	10c Green (2TC2g). Trial Color Die Proof on faint blue Pelure Paper, only one known , faint natural paper crease, Very Fine appearance, Very Rare	150.00

1847 DIE PROOFS (PRINTED APPROXIMATELY IN 1879)

In 1879, the American Banknote Company amalgamated with the National & Continental Banknote Companies and printed further Die Proofs of the 5c and 10c 1847 Issues as examples of engravings then in possession of the new company.

The 5c value of the 1879 Die Proofs may be distinguished from earlier examples in that it has an additional dot. This dot is about equal distant from the P, O, and U in the upper left corner. It also has the "dot on the forehead".

The 10c value of the 1879 Die Proofs in many cases shows many of the fine vein lines on the leaves of the frame, particularly those over both X's are partly worn away.

LARGE HYBRID DIE PROOFS



- 37 **5c Brown Hybrid Die Proof with Dot on Forehead & Dot over P,** mounted on India Paper and sunk on $5\frac{3}{4} \times 8\frac{1}{2}$ inch Card, Very Fine, Rare —
- 38 **10c Black Hybrid Die Proof** on India Paper mounted on India Paper and sunk $5\frac{3}{4} \times 8\frac{1}{2}$ inch Card, Very Fine, Rare

5c AND 10c 1847 DIE PROOFS

39	5c Blue (1TC2h). Trial Color Die Proof on India, hinge thin, V.F. appearance	75.00
40	5c Deep Red (1TC2h). Trial Color Die Proof on India, tiny thin, V.F. appearance	75.00
41	5c Brown (1TC2h). Trial Color Die Proof on India, dot on forehead removed, slight thin, V.F. appearance	75.00
42	5c Green (1TC2i). Trial Color Die Proof on White Bond Paper, Very Fine	75.00
43	5c Dark Red (1TC2i). Trial Color Die Proof on White Bond Paper, tiny thin, V.F. appearance	75.00
44	5c Yellow (1TC2i). Trial Color Die Proof on White Bond Paper, tiny thin, V.F. appearance	75.00
45	5c Black (1TC2i). Trial Color Die Proof on White Bond Paper, slight age stain, V.F. appearance	100.00
46	5c Brown (1P2i). Die Proof on White Bond Paper, Very Fine	75.00
47	5c Orange Brown (1P2i). Die Proof on White Bond Paper, Very Fine	75.00
48	5c Dark Brown (1P2i). Die Proof on White Bond Paper, Very Fine	75.00
49	5c Dark Green (1TC2j). Trial Color Die Proof on Cardboard, dot on forehead removed, Very Fine	75.00
50	5c Black (1TC2j). Trial Color Die Proof on Cardboard, dot on forehead removed, Very Fine	85.00
51	5c Brown (1P2j). Die Proof on Cardboard, Very Fine	85.00
52	5c Brown (1P2j). Die Proof on Cardboard, dot on forehead removed, Very Fine	85.00
53	5c Red (1TC1k). Trial Color Die Proof on Crane's faint yellow old cloudy Bank Note Paper, Shows Cross Hatching, Very Fine	100.00
54	5c Gray Black (1TC1i). Trial Color Die Proof on Crane's faint yellow Clear Bank Note Paper, Shows Cross Hatching, Very Fine	100.00
55	5c Dark Red (1TC1i). Trial Color Die Proof on Crane's faint yellow Clear Bank Note Paper, Shows Cross Hatching, Very Fine	100.00
56	5c Orange (1TC1i). Trial Color Die Proof on Crane's faint yellow clear Bank Note Paper, Shows Cross Hatching, Very Fine	100.00
57	5c Deep Red (1TC1i). Trial Color Die Proof on Crane's faint yellow clear Bank Note Paper, Shows Cross Hatching, Very Fine	100.00
58	5c Brown (1P1i). Die Proof on Crane's faint yellow old clear Bank Note Paper, Shows Cross Hatching, Very Fine	100.00

59	5c Brown (1P1n). Die Proof on clear fine grain stiff White Bond Paper, Shows Cross Hatching, Very Fine	75.00
60	5c Slate Black (1TC1o). Trial Color Die Proof on Soft White Proof Paper, Shows Cross Hatching, tiny thin, V.F. appearance	80.00
61	5c Blue (1TC1o). Trial Color Die Proof on Soft White Proof Paper, Shows Cross Hatching, tiny thin, V.F. appearance	75.00
62	5c Green (1TC1o). Trial Color Die Proof on Soft White Proof Paper, Shows Cross Hatching, tiny thin, V.F. appearance	75.00
63	5c Deep Red (1TC1o). Trial Color Die Proof on Soft White Proof Paper, Shows Cross Hatching, Very Fine	75.00
64	5c Dark Brown (1P1o). Die Proof on Soft White Proof Paper, Shows Cross Hatching, Very Fine	80.00
65	5c Slate Black (1TC1p). Trial Color Die Proof on crisp White Bond Paper, Shows Cross Hatching, Very Fine	65.00
66	5c Blue (1TC1p). Trial Color Die Proof on crisp White Bond Paper, Shows Cross Hatching, Very Fine	60.00
67	5c Green (1TC1p). Trial Color Die Proof on crisp White Bond Paper, Shows Cross Hatching, Very Fine	60.00
68	5c Deep Red (1TC1p). Trial Color Die Proof on crisp White Bond Paper, Shows Cross Hatching, Very Fine	60.00
69	5c Dark Brown (1P1p). Die Proof on crisp White Bond Paper, Shows Cross Hatching, Very Fine	65.00
70	10c Deep Red (2TC2h). Trial Color Die Proof on India, tiny thin, V.F. appearance	75.00
71	10c Green (2TC2i). Trial Color Die Proof on White Bond Paper showing Cross Hatching, Very Fine	100.00
72	10c Slate Black (2P2i). Die Proof on White Bond Paper, Very Fine	85.00
73	10c Brown (2TC2j). Die Proof on Cardboard, Very Fine	85.00
74	10c Brown (2TC1j). Trial Color Die Proof on Cardboard Showing Cross Hatching, Very Fine	100.00
75	10c Black (2P1j). Die Proof on Cardboard Showing Cross Hatching, Very Fine	125.00

76	10c Black (2P2j). Die Proof on Cardboard, Very Fine	85.00
77	10c Brown (2TC1k). Trial Color Die Proof on Crane's faint yellow old cloudy Bank Note Paper, Shows Cross Hatching, Very Fine	100.00
78	10c Dark Red (2TC1l). Trial Color Die Proof on Crane's faint yellow clear Bank Note Paper, Shows Cross Hatching, Very Fine	100.00
79	10c Green (2TC1l). Trial Color Die Proof on Crane's faint yellow clear Bank Note Paper, Shows Cross Hatching, Very Fine	100.00
80	10c Deep Red (2TC1l). Trial Color Die Proof on Crane's faint yellow clear Bank Note Paper, Shows Cross Hatching, Very Fine	100.00
81	10c Yellow (2TC1l). Trial Color Die Proof on Crane's faint yellow clear Bank Note Paper, Shows Cross Hatching, Very Fine	—
82	10c Gray Black (2P1l). Die Proof on Crane's faint yellow old clear Bank Note Paper, Shows Cross Hatching, Very Fine	100.00
83	10c Black (2P1n). Die Proof on clear fine grain stiff white Bond Paper, Shows Cross Hatching, Very Fine	75.00
84	10c Dark Brown (2TC1o). Trial Color Die Proof on Soft White Proof Paper, Shows Cross Hatching, tiny thin, V.F. appearance	75.00
85	10c Blue (2TC1o). Trial Color Die Proof on Soft White Proof Paper, Shows Cross Hatching, tiny thin, V.F. appearance	75.00
86	10c Green (2TC1o). Trial Color Die Proof on Soft White Proof Paper, Shows Cross Hatching, tiny thin, V.F. appearance	75.00
87	10c Deep Red (2TC1o). Trial Color Die Proof on Soft White Proof Paper, Shows Cross Hatching, tiny thin, V.F. appearance	75.00
88	10c Slate Black (2P1o). Die Proof on Soft White Proof Paper, Shows Cross Hatching, small thin, V.F. appearance	80.00
89	10c Dark Brown (2TC1p). Trial Color Die Proof on crisp White Bond Paper, Very Fine	60.00
90	10c Blue (2TC1p). Trial Color Die Proof on crisp White Bond Paper, Very Fine	60.00
91	10c Green (2TC1p). Trial Color Die Proof on crisp White Bond Paper, Very Fine	60.00
92	10c Deep Red (2TC1p). Trial Color Die Proof on crisp White Bond Paper, Shows Cross Hatching, Very Fine	60.00
93	10c Slate Black (2P1p). Die Proof on crisp White Bond Paper, Shows Cross Hatching, Very Fine	65.00

1847 DIE PROOFS (PRINTED BETWEEN 1895 AND 1904)

The American Bank Note Company printed further Die Proofs of the 1847 Issue when albums of proof specimens were prepared for each of the directors of the American Bank Note Co.

The Die Proofs of this printing may be distinguished from earlier printings by the papers they are printed on and the 5 cents are all printed with the same dark orange-brown ink (111/o). The 10c value has an additional ink blur at the edge of the die opposite the left "X".

Die Proofs were also printed through a Mat with a cut out about stamp size to eliminate Cross Hatching. These Proofs come from books of Proofs given Directors of the American Bank Note Company. They were printed approximately in 1892.

Apparently the American Bank Note Company used pages from the Sample Books of Crane & Co., and L. L. Brown Paper Company to print Die Proofs in the 1895 period. They also used pages from one other Company which had wove paper. This Company has not yet been identified.

Die Proofs were printed 11 to a sheet on the Crane & Co. Sample Paper & 10 to a sheet on the L. L. Brown Paper Co. Paper. These Sample Books contained sheets of 7 colors of glazed bond paper and a number of unglazed white bond and laid papers. Die Proofs have been matched with all these papers.





94	5c Slate Black (1TC1q). Trial Color Die Proof on white hand made Proof Paper with faint vertical laid texture, Shows Cross Hatching, Very Fine	100.00
95	5c Blue (1TC1q). Trial Color Die Proof on white hand made Proof Paper with faint vertical laid texture, Shows Cross Hatching, Very Fine	90.00
96	5c Deep Red (1TC1q). Trial Color Die Proof on white hand made Proof Paper with faint vertical laid texture, Shows Cross Hatching, Very Fine	90.00
97	5c Albino (1TC1q). Trial Color Die Proof on white hand made Proof Paper with faint vertical laid texture, Shows Cross Hatching, Very Fine	90.00
98	5c Black (1TC1r). Trial Color Die Proof on white hand made Proof Paper with faint wove texture, Shows Cross Hatching, Very Fine	100.00
99	5c Black (1TC1r). Trial Color Die Proof on white hand made Proof Paper with faint wove texture, Shows Cross Hatching, Very Fine	100.00
100	5c Blue (1TC1r). Trial Color Die Proof on white hand made Proof Paper with faint wove texture, Shows Cross Hatching, Very Fine	90.00
101	5c Green (1TC1r). Trial Color Die Proof on white hand made Proof Paper with faint wove texture, Shows Cross Hatching, Very Fine	90.00
102	5c Violet (1TC1r). Trial Color Die Proof on white hand made Proof Paper with faint wove texture, Shows Cross Hatching, Very Fine	90.00
103	5c Yellow (1TC1r). Trial Color Die Proof on white hand made Proof Paper with faint wove texture, Shows Cross Hatching, Very Fine	90.00
104	5c Orange (1TC1r). Trial Color Die Proof on white hand made Proof Paper with faint wove texture, Shows Cross Hatching, tiny thin, V. F. appearance	90.00



22



30



239

246



261

268



253



255



271



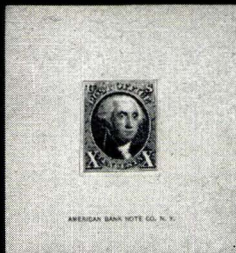
278



279



285



287



288



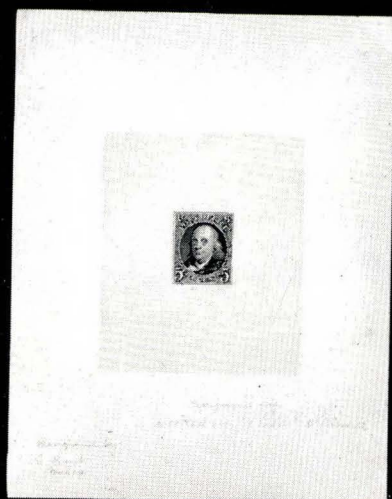
289



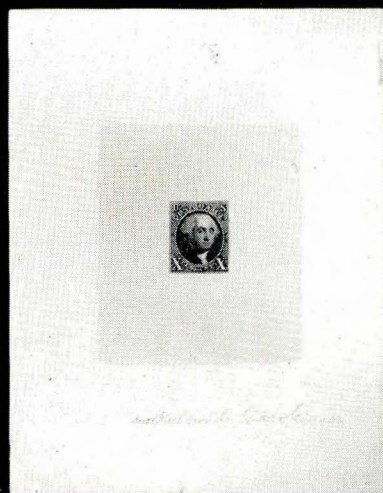
296



274



275



286

105	5c Deep Orange (1TC1r). Trial Color Die Proof on white hand made Proof Paper with faint wove texture, Shows Cross Hatching, slight hinge thin, V.F. appearance	90.00
106	5c Dark Red (1TC1r). Trial Color Die Proof on white hand made Proof Paper with faint wove texture, Shows Cross Hatching, tiny pin hole, V.F. appearance	90.00
107	5c Deep Red (1TC1r). Trial Color Die Proof on white hand made Proof Paper with faint wove texture, Shows Cross Hatching, Very Fine	90.00
108	5c Brown (1P1r). Die Proof on white hand made Proof Paper with faint wove texture, Shows Cross Hatching, Very Fine	100.00
109	5c Orange (1TC1s). Trial Color Die Proof on machine made white wove Proof Paper, Shows Cross Hatching, Very Fine	90.00
110	5c Blue (1TC1s). Trial Color Die Proof on machine made white wove Proof Paper, Shows Cross Hatching, Very Fine	90.00
111	5c Deep Orange (1TC1t). Trial Color Die Proof on white Proof Paper, Shows Cross Hatching, Very Fine	90.00
112	5c Slate Black (1TC1u). Trial Color Die Proof on hand made white Proof Paper with faint wove texture and die sunk on card, without Cross Hatching, Very Fine	100.00
113	5c Green (1TC1u). Trial Color Die Proof on hand made white Proof Paper with faint wove texture and die sunk on Card, Without Cross Hatching, slight age stain	90.00
114	5c Deep Red (1TC1u). Trial Color Die Proof on hand made white Proof Paper with faint wove texture, Without Cross Hatching, tiny thin, V.F. appearance	90.00
115	5c Brown (1P1u). Die Proof on hand made white Proof Paper with faint wove texture & die sunk on Card, Without Cross Hatching, V.F.	100.00
116	5c Dark Orange (1P1u). Die Proof on hand made white Proof Paper with faint wove texture, Without Cross Hatching, tiny thin in top margin, V.F. appearance	100.00
117	5c Brown (1P1u). Die Proof on hand made white Proof Paper with faint wove texture and die sunk on Large Card, Without Cross Hatching, V.F.	100.00
118	5c Slate Black (1TC1v). Trial Color Die Proof on white glazed surface wove Plate Paper, Without Cross Hatching, Very Fine	85.00
119	5c Blue (1TC1v). Trial Color Die Proof on white glazed surface wove Plate Paper, Without Cross Hatching, Very Fine	75.00
120	5c Orange Black (1TC1v). Trial Color Die Proof on white glazed surface wove Plate Paper, Without Cross Hatching, Very Fine	75.00
121	5c Deep Red (1TC1v). Trial Color Die Proof on white glazed surface wove Plate Paper, Without Cross Hatching, Very Fine	75.00

122	10c Green (2TC1q). Trial Color Die Proof on white hand made Proof Paper with faint vertical laid texture, Shows Cross Hatching, Very Fine	90.00
123	10c Brown (2TC1q). Trial Color Die Proof on white hand made Proof Paper with faint vertical laid texture, Shows Cross Hatching, Very Fine	90.00
124	10c Orange (2TC1q). Trial Color Die Proof on white hand made Proof Paper with faint vertical laid texture, Shows Cross Hatching, Very Fine	90.00
125	10c Deep Red (2TC1q). Trial Color Die Proof on white hand made Proof Paper with faint vertical laid texture, Shows Cross Hatching, light crease, V. F. appearance	90.00
126	10c Albino (2TC1q). Trial Color Die Proof on white hand made Proof Paper with faint vertical laid texture, Shows Cross Hatching, Very Fine	90.00
127	10c Violet (2TC1r). Trial Color Die Proof on white hand made Proof Paper with faint wove texture, Shows Cross Hatching, Very Fine	90.00
128	10c Blue (2TC1r). Trial Color Die Proof on white hand made Proof Paper with faint wove texture, Shows Cross Hatching, small thin in margin, V. F. appearance	90.00
129	10c Green (2TC1r). Trial Color Die Proof on white hand made Proof Paper with faint wove texture, Shows Cross Hatching, Very Fine	90.00
130	10c Yellow (2TC1r). Trial Color Die Proof on white hand made Proof Paper with faint wove texture, Shows Cross Hatching, Very Fine	90.00
131	10c Brown (2TC1r). Trial Color Die Proof on white hand made Proof Paper with faint wove texture, Shows Cross Hatching, Very Fine	90.00
132	10c Light Orange (2TC1r). Trial Color Die Proof on white hand made Proof Paper with faint wove texture, Shows Cross Hatching, Very Fine	90.00
133	10c Orange (2TC1r). Trial Color Die Proof on white hand made Proof Paper with faint wove texture, Shows Cross Hatching, Very Fine	90.00
134	10c Dark Orange (2TC1r). Trial Color Die Proof on white hand made Proof Paper with faint wove texture, Shows Cross Hatching, Very Fine	90.00
135	10c Deep Red (2TC1r). Trial Color Die Proof on white hand made Proof Paper with faint wove texture, Shows Cross Hatching, Very Fine	90.00
136	10c Dark Red (2TC1r). Trial Color Die Proof on white hand made Proof Paper with faint wove texture, Shows Cross Hatching, Very Fine	90.00
137	10c Dark Red (2TC1r). Trial Color Die Proof on white hand made Proof Paper with faint wove texture, Shows Cross Hatching, light crease, V. F. appearance	90.00
138	10c Black (2P1r). Die Proof on white hand made Proof Paper with faint wove texture, Shows Cross Hatching, tiny pin hole in margin, V. F. appearance	100.00
139	10c Blue (2TC1s). Trial Color Die Proof on machine made white wove Proof Paper, Shows Cross Hatching, tiny thin in margin, V. F. appearance	90.00

140	10c Dark Brown (2TC1t). Trial Color Die Proof on white Proof Paper, Shows Cross Hatching, Very Fine	90.00
141	10c Slate Black (2P1u). Die Proof on hand made white Proof Paper with faint wove texture and die sunk on Card, Without Cross Hatching, Very Fine	100.00
142	10c Slate Black (2P1u). Trial Color Die Proof on hand made white Proof Paper with faint wove texture & die sunk on Large Card, Without Cross Hatching, Very Fine	100.00
143	10c Blue (2TC1v). Trial Color Die Proof on white glazed surface wove Plate Paper, Without Cross Hatching, Very Fine	75.00
144	10c Orange Black (2TC1v). Trial Color Die Proof on white glazed surface wove Plate Paper, Without Cross Hatching, Very Fine	75.00
145	10c Deep Red (2TC1v). Trial Color Die Proof on white glazed surface wove Plate Paper, Without Cross Hatching, Very Fine	75.00
146	10c Slate Black (2P1v). Die Proof on white glazed surface wove Plate Paper, Without Cross Hatching, Very Fine	85.00

LARGE TRIAL COLOR DIE PROOFS ON PINK PAPER

The paper on which these were printed was $7\frac{3}{4} \times 5$ inches with a printed corner $2\frac{1}{4} \times 2$ inches. Thus not more than 12 prints could be made from the one sheet available and these 5c and 10c each in the same trial colors are probably unique.

147	5c Dark Red (1TC1aa). Trial Color Die Proof on Pink Bond Paper, Shows Cross Hatching, Very Fine	60.00
148	10c Dark Red (2TC1aa). Trial Color Die Proof on Pink Bond Paper, Shows Cross Hatching, Very Fine	60.00
149	5c Deep Red (1TC1aa). Trial Color Die Proof on Pink Bond Paper, Shows Cross Hatching, Very Fine	60.00
150	10c Deep Red (2TC1aa). Trial Color Die Proof on Pink Bond Paper, Shows Cross Hatching, Very Fine	60.00
151	5c Yellow (1TC1aa). Trial Color Die Proof on Pink Bond Paper, Shows Cross Hatching, Very Fine	60.00
152	10c Yellow (2TC1aa). Trial Color Die Proof on Pink Bond Paper, Shows Cross Hatching, Very Fine	60.00
153	5c Orange (1TC1aa). Trial Color Die Proof on Pink Bond Paper, Shows Cross Hatching, Very Fine	60.00
154	10c Orange (2TC1aa). Trial Color Die Proof on Pink Bond Paper, Shows Cross Hatching, Very Fine	60.00
155	5c Green (1TC1aa). Trial Color Die Proof on Pink Bond Paper, Shows Cross Hatching and Watermark "1895", Very Fine	60.00

156	10c Green (2TC1aa). Trial Color Die Proof on Pink Bond Paper, Shows Cross Hatching, Very Fine	60.00
157	5c Blue (1TC1aa). Trial Color Die Proof on Pink Bond Paper, Shows Cross Hatching, Very Fine	60.00
158	10c Blue (2TC1aa). Trial Color Die Proof on Pink Bond Paper, Shows Cross Hatching, Very Fine	60.00
159	5c Brown (1P1aa). Die Proof on Pink Bond Paper, Shows Cross Hatching, Very Fine	70.00
160	10c Black (2P1aa). Die Proof on Pink Bond Paper, Shows Cross Hatching, Very Fine	70.00

DIE PROOFS ON COLORED BOND PAPER

161	5c Brown (1P1bb). Die Proof on faint Orange Bond Paper, Shows Cross Hatching, Very Fine	70.00
162	10c Black (2P1bb). Die Proof on faint Orange Bond Paper, Shows Cross Hatching, Very Fine	70.00
163	5c Brown (1P1cc). Die Proof on Light Orange Bond Paper, Shows Cross Hatching, Very Fine	70.00
164	10c Black (2P1cc). Die Proof on Light Orange Bond Paper, Shows Cross Hatching, Very Fine	70.00
165	5c Brown (1P1dd). Die Proof on Light Yellow Bond Paper, Shows Cross Hatching, Very Fine	70.00
166	10c Black (2P1dd). Die Proof on Light Yellow Bond Paper, Shows Cross Hatching, Very Fine	70.00
167	5c Brown (1P1ee). Die Proof on Light Green Bond Paper, Shows Cross Hatching, Very Fine	70.00
168	10c Black (2P1ee). Die Proof on Light Green Bond Paper, Shows Cross Hatching, Very Fine	70.00
169	5c Brown (1P1ff). Die Proof on faint Blue Bond Paper, Shows Cross Hatching, Very Fine	70.00
170	10c Black (2P1ff). Die Proof on faint Blue Bond Paper, Shows Cross Hatching, Very Fine	70.00

DIE PROOFS ON COLORED WOVE PAPER

171	5c Brown (1P1gg). Die Proof on faint Red Wove Paper, Shows Cross Hatching, Very Fine	70.00
172	10c Black (2P1gg). Die Proof on faint Red Wove Paper, Shows Cross Hatching, Very Fine	70.00

173	5c Brown (1P1hh). Die Proof on faint Orange wove Paper, Shows Cross Hatching, Very Fine	70.00
174	10c Black (2P1hh). Die Proof on Faint Orange Wove Paper, Shows Cross Hatching, Very Fine	70.00
175	10c Black (2P1ii). Die Proof on Pale Yellow Wove Paper, Shows Cross Hatching, Very Fine	70.00
176	5c Brown (1P1jj). Die Proof on Faint Yellow Wove Paper, Shows Cross Hatching, Very Fine	70.00
177	10c Black (2P1jj). Die Proof on Faint Yellow Wove Paper, Shows Cross Hatching, Very Fine	70.00
178	5c Brown (1P1jj). Die Proof on Faint Yellow Wove Paper, Shows Cross Hatching, shows trade mark of paper co. in L. R. corner, Very Fine	70.00
179	10c Black (2P1jj). Die Proof on Faint Yellow Wove Paper, Shows Cross Hatching, Very Fine	70.00
180	5c Brown (1P1kk). Die Proof on Pale Yellow Wove Paper, Shows Cross Hatching, Very Fine	70.00
181	10c Black (2P1kk). Die Proof on Pale Yellow Wove Paper, Shows Cross Hatching, shows trade mark of unknown paper co. in U. R. corner, Very Fine	70.00+
182	5c Brown (1P1ll). Die Proof on Faint Green Wove Paper, Shows Cross Hatching, Very Fine	70.00
183	5c Brown (1P1mm). Die Proof on Pale Green Wove Paper, Shows Cross Hatching, Very Fine	70.00
184	10c Black (2P1mm). Die Proof on Pale Green Wove Paper, Shows Cross Hatching, Very Fine	70.00
185	10c Black (2P1nn). Die Proof on Pale Blue Wove Paper, Shows Cross Hatching, Very Fine	70.00

DIE PROOFS ON LAID PAPER

186	5c Brown (1P1oo). Die Proof on Faint Blue Laid Paper, stamp size without Cross Hatching, Very Fine	70.00
187	10c Black (2P1oo). Die Proof on Faint Blue Laid Paper, stamp size without Cross Hatching, Very Fine	70.00
188	5c Brown (1P1oo). Die Proof on Faint Blue Laid Paper, Shows Cross Hatching, Very Fine	70.00
189	10c Black (2P1oo). Die Proof on Faint Blue Laid Paper, Shows Cross Hatching, Very Fine	70.00
190	5c Brown (1P1pp). Die Proof on Faint Yellow Opaque Laid Paper, stamp size without Cross Hatching, Very Fine, o. g.	75.00

191	10c Black (2P1pp). Die Proof on Faint Yellow Opaque Laid Paper, stamp size without Cross Hatching, Very Fine, o. g.	75.00
192	5c Brown (1P1pp). Die Proof on Faint Yellow Opaque Laid Paper, Shows Cross Hatching, Very Fine	75.00
193	10c Black (2P1pp). Die Proof on Faint Yellow Opaque Laid Paper, Shows Cross Hatching, Very Fine	75.00
194	5c Brown (1P1qq). Die Proof on Faint Yellow Coarse Semi-Opaque Laid Paper, Shows Cross Hatching, Very Fine	75.00
195	10c Black (2P1qq). Die Proof on Faint Yellow Coarse Semi-Opaque Laid Paper, Shows Cross Hatching, Very Fine	75.00
196	5c Brown (1P1rr). Die Proof on Faint Yellow Semi-Opaque Laid Paper, Shows Cross Hatching, Very Fine	75.00
197	10c Black (2P1rr). Die Proof on Faint Yellow Semi-Opaque Laid Paper, Shows Cross Hatching, Very Fine	75.00
198	10c Black (2P1rr). Die Proof on Faint Yellow Semi-Opaque Laid Paper, Shows Cross Hatching, Very Fine	75.00
199	5c Brown (1P1ss). Die Proof on Faint Yellow Semi-Transparent Laid Paper, Shows Cross Hatching, Very Fine	75.00
200	10c Black (2P1ss). Die Proof on Faint Yellow Semi-Transparent Laid Paper, Shows Cross Hatching, Very Fine	75.00
201	5c Brown (1P1tt). Die Proof on Faint Yellow Transparent Laid Paper, Shows Cross Hatching, Very Fine	75.00
202	10c Black (2P1tt). Die Proof on Faint Yellow Transparent Laid Paper, Shows Cross Hatching, Very Fine	75.00

DIE PROOFS ON WHITE BOND PAPER

203	5c Brown (1P1uu). Die Proof on Faint Yellow Semi-Opaque Bond Paper, Shows Cross Hatching, Very Fine	75.00
204	10c Black (2P1uu). Die Proof on Faint Yellow Semi-Opaque Bond Paper, Shows Cross Hatching, Very Fine	75.00
205	5c Brown (1P1vv). Die Proof on Faint Yellow Opaque Woven Paper, stamp size without Cross Hatching, dot on forehead removed, slight thin, V.F. appearance	75.00
206	5c Brown (1P1vv). Die Proof on Faint Yellow Opaque Woven Bond Paper, Shows Cross Hatching, Very Fine	75.00
207	10c Black (2P1vv). Die Proof on Faint Yellow Opaque Woven Bond Paper, Shows Cross Hatching, Very Fine	75.00

DIE PROOFS ON WHITE WOVE PAPER

208	5c Brown (1P1xx). Die Proof on Faint Yellow Thin Wove Semi-transparent Bond Paper, stamp size without Cross Hatching, Very Fine	75.00
209	5c Brown (1P1xx). Die Proof on Faint Yellow Thin Wove Semi-Transparent Bond Paper, Shows Cross Hatching, Very Fine	75.00
210	10c Black (2P1xx). Die Proof on Faint Yellow Thin Wove Semi-transparent Bond Paper, Shows Cross Hatching, Very Fine	75.00
211	10c Black (2P1xx). Die Proof on Faint Yellow Thin Wove Semi-transparent Bond Paper, Shows Cross Hatching, Very Fine	75.00
212	5c Brown (1P1yy). Die Proof on Hand Wove Bond Paper, Shows Cross Hatching, Very Fine	75.00
213	10c Black (2P1yy). Die Proof on Hand Wove Bond Paper, Shows Cross Hatching, Very Fine	75.00
214	5c Brown (1P1zz). Die Proof on Diagonal Wove Paper, Shows Cross Hatching, Very Fine	75.00
215	10c Black (2P1zz). Die Proof on Diagonal Wove Paper, Shows Cross Hatching, Very Fine	75.00
216	10c Black (2P1zb). Die Proof on Dull Faint Yellow Bond Paper, Shows Cross Hatching, Very Fine	75.00
217	10c Black (2P1zb). Die Proof on Dull Faint Yellow Bond Paper, Shows Cross Hatching, Very Fine	75.00

ORIGINAL PLATE PROOFS OF THE 1847 ISSUE

Plate Proofs of the 5c value **DO NOT** have the short diagonal dash across the left frame line opposite the lower left of the U. (Position 1 on the Plate Proof is the only exception).

The 10c Plate Proofs from all but the 10 left vertical row positions of each pane show a "Position Dot" in the central leaf of the left trileaf ornament. In addition, many of the 10c Plate Proofs have recut frame lines.

There was only one sheet of 200 of the 5c and one sheet of the 10c in Orange, Brown, and Black. The 5c Brown and Black Plate Proofs are rare. The 10c Orange color is rare and the Black is extremely rare.

1847 PLATE PROOFS



218	5c Black (1TC3). Trial Color Plate Proof on India mounted on card-board, Very Fine	60.00
219	5c Black (1TC3). Trial Color Plate Proof on India mounted on card-board, Very Fine	60.00
220	5c Black (1TC3). Trial Color Plate Proof on India, Sheet Margin at L, Very Fine	60.00
221	5c Black (1TC3). Trial Color Plate Proof on India mounted on card-board, Double Transfer in left "5", slight scrape on face	60.00+
222	5c Black (1TC3). Trial Color Plate Proof on India, extra line inside right frame line, proof defective, nice appearing	60.00+
223	5c Black (1TC3). Trial Color Plate Proof on India, scratches in S variety, tiny nick at B, V. F. appearance	60.00+
224	5c Black (1TC3). Trial Color Plate Proof on India mounted on card-board, extra line inside left frame line, slight age stain	60.00+
225	5c Black (1TC3). Trial Color Plate Proof on India, Dot over "S" variety, slight thin	60.00+
226	5c Orange (1TC3). Trial Color Plate Proof, 2 tiny nicks at L, V. F. appearance	75.00
227	5c Dark Brown (1P3). Plate Proof on India, Margins 3 sides, ragged at top	75.00
228	10c Brown (2TC3). Trial Color Plate Proof on India mounted on card-board, Very Fine	75.00
229	10c Orange (2TC3). Trial Color Plate Proof on India mounted on card-board, Very Fine	60.00
230	10c Orange (2TC3). Trial Color plate Proof on India mounted on card-board, Very Fine	60.00
231	10c Orange (2TC3). Trial Color Plate Proof on India mounted on card-board, Very Fine	60.00

232	10c Orange (2TC3). Trial Color Plate Proof on India, thin, Very Fine appearance	60.00
233	10c Orange (2TC3). Trial Color Plate Proof on India, tiny thin in top margin, V. F. appearance	60.00
234	10c Orange (2TC3). Horiz Bot Sheet Margin Pair of Trial Color Plate Proof on India mounted on cardboard, Very Fine, Rare	—
235	10c Black (2P3). Plate Proof on India, hing thin, V. F. appearance	100.00

1847 PLATE PROOFS WITH SPECIMEN OVERPRINTS

There was only one sheet of 200 of the Orange, Brown and Black of both the 5c and 10c overprinted Specimen.



236	5c Black, Red Specimen Overprint (1TC3Sd). Trial Color Plate Proof on India mounted on cardboard, Very Fine	40.00
237	5c Black, Red Specimen Overprint (1TC3Sd). Trial Color Plate Proof on India mounted on cardboard, Very Fine	40.00
238	5c Black, Red Specimen Overprint (1TC3Sd). Horiz Pair of Trial Color Plate Proof on India, tiny nick in left margin not touching stamp, V. F. appearance	80.00+
239	5c Black, Red Specimen Overprint (1TC3Sd). Block of Trial Color Plate Proof on India, small thins, V. F. appearance. Rare (Photo)	250.00
240	5c Orange, Black Specimen Overprint (1TC3Sd). Trial Color Plate Proof on India mounted on cardboard, Very Fine, Rare	40.00
241	5c Orange, Black Specimen Overprint (1TC3Sd). Trial Color Plate Proof on India mounted on cardboard, Fine, Rare	40.00
242	5c Orange, Black Specimen Overprint (1TC3Sd). Trial Color Plate Proof on India mounted on cardboard, Very Fine, Rare	40.00
243	5c Orange, Black Specimen Overprint (1TC3Sd). Trial Color Plate Proof on India mounted on cardboard, Fine, Rare	40.00

244	5c Orange, Black Specimen Overprint (1TC3Sd). Trial Color Plate Proof on India mounted on cardboard, margins 3 sides, in at T., Rare	40.00
245	5c Orange, Black Specimen Overprint (1TC3Sd). Horiz Pair of Trial Color Plate Proof on India, Fine, Rare	80.00+
246	5c Orange, Black Specimen Overprint (1TC3Sd). Block of Trial Color Plate Proof on India, one stamp torn, V.F. appearance (Photo)	250.00
247	5c Dark Brown, Black Specimen Overprint (1P3Sd). Plate Proof on India mounted on cardboard, Very Fine	40.00
248	5c Dark Brown, Black Specimen Overprint (1P3Sd). Plate Proof on India mounted on cardboard, Very Fine	40.00
249	5c Dark Brown, Black Specimen Overprint (1P3Sd). Plate Proof on India mounted on cardboard, Very Fine	40.00
250	5c Dark Brown, Black Specimen Overprint (1P3Sd). Plate Proof on India, slight thin, V.F. appearance	40.00
251	5c Dark Brown, Black Specimen Overprint (1P3Sd). Plate Proof on India, torn at T and slightly nicked	40.00
252	5c Dark Brown, Black Specimen Overprint (1P3Sd). Plate Proof on India, large tear, V.F. appearance	40.00
253	5c Dark Brown, Black Specimen Overprint (1P3Sd). Block of Plate Proof on India, nick at T. and one stamp has small hole, Attractive (Photo)	250.00
254	10c Brown, Black Specimen Overprint (2TC3Sd). Trial Color Plate Proof on India mounted on cardboard, Very Fine	50.00
255	10c Brown, Black Specimen Overprint (2TC3Sd). Vert. Pair of Trial Color Plate Proof on India mounted on cardboard, Very Fine (Photo)	100.00+
256	10c Orange, Black Specimen Overprint (2TC3Sd). Trial Color Plate Proof on India mounted on cardboard, Very Fine	40.00
257	10c Orange, Black Specimen Overprint (2TC3Sd). Trial Color Plate Proof on India, Margins 3 sides, in at R	40.00
258	10c Black, Red Specimen Overprint (2P3Sd). Plate Proof on India mounted on cardboard, tiny scrape on face, V.F. appearance	40.00
259	10c Black, Red Specimen Overprint (2P3Sd). Plate Proof on India, margins 3 sides, ragged at T	40.00
260	10c Black, Red Specimen Overprint Partially Removed (2P3Sd). Plate Proof on India, small thin	40.00
261	10c Black, Red Specimen Overprint (2P3Sd). Horiz Pair of Plate Proof on India, small thins, V.F. appearance (Photo)	80.00+

1847 REPRODUCTION DIE PROOFS



- 262 **5c Black, 10c Black Reproduction Die Proof (3TC1a, 4P1a).** Large Die Proof with both values on India Paper sunk on card, only two known, Very Fine, Very Rare

1847 REPRODUCTION PROOFS



- 263 **5c Brown, Reproduction (3P2a).** Small Die Proof on Faint Yellow Stiff Bond Paper, light crease, V.F. appearance, Rare 150.00
- 264 **5c Dark Brown, Reproduction (3P2ab).** Small Die Proof on Faint Yellow Semi-transparent Bond Paper, stamp size, V.F.
- 265 **5c Brown, Reproduction (3P2ab).** Small Die Proof on Faint Yellow Semi-transparent Bond Paper, stamp size, Fine
- 266 **5c Dark Brown, 10c Black, Reproductions (3P2b, 4P2b).** Small Die Proofs on White Bond Paper mounted on cardboard, Clear Printings, Very Fine 50.00

267	5c Brown, 10c Black, Reproductions (3P2b, 4P2b). Small Die Proofs on White Bond Paper mounted on cardboard, Blurred Prints, Very Fine	30.00
268	5c Brown, 10c Black, Reproductions (3P2c, 4P2c). Small Die Proofs on Faint Yellow Soft Open Mesh Wove Paper, Only 4 Sets known, Panama-Pacific, 1915 Printing, Very Fine, Rare (Photo)	300.00
269	5c Brown, Reproduction (3P2c). Small Die Proof on Faint Yellow Soft Open Mesh Wove Paper, Only 4 Sets known, Panama-Pacific, 1915 Printing, tiny thin in top margin, Rare	150.00
270	5c Brown, Reproduction (3P3a). Horiz Pair of Plate Proof on India Paper, tiny thin, V.F. appearance	40.00+
271 田	5c Brown, Reproduction (3P3a). Block of Plate Proof on India, trivial thin, Very Fine appearance	(Photo) 125.00
272	5c Brown, 10c Black, Reproductions (3P3a, 4P3a). Plate Proofs on India, each thin, Fine appearance	40.00
273	5c Brown, 10c Black, Reproductions (3P3a, 4P3a). Plate Proofs on India, first small thin, last Very Fine	40.00
274 田	5c-10c Reproductions (3P3a-4P3a). Complete sheets of 50 of each, Plate Proofs on India paper, three 10c have thins otherwise Very Fine, Attractive exhibition pieces	(Photo) 3000.00
275	5c Brown, Reproduction (3P3b). Large Hybrid Plate Proof on India Paper mounted on India Paper sunk on Card, written by the hand of Charles Skinner "Re-engraved by C. Burt McCoy" and "Re-engraved die worked over by Chas. Skinner", Very Fine, Very Rare	(Photo) —
276	5c Brown, Reproduction (3P3c). Large Hybrid Plate Proof on India Paper mounted on India Paper sunk on Card, Very Fine	50.00
277	5c Deep Red Reproduction (3TC4a). Trial Color Plate Proof on cardboard, Rare, V.F.	100.00
278 田	5c Brown Reproduction (3P4c). Plate Proof on cardboard, Block of 4, V.F.	(Photo) 65.00
279 田	5c Brown Reproduction (3P4d). Plate Proof on cardboard, Block of 4, V.F.	(Photo) 65.00
280	5c-10c Reproductions (3P4a-4P4a). Set of 1879 printing Plate Proofs on cardboard, with original presentation envelope, Fine-V.F.	22.00
281	5c-10c Reproductions (3P4b-4P4b). Set of 1885 printing Plate Proofs on cardboard, with original presentation envelope, V.F.	20.00
282	5c-10c Reproductions (3P4c-4P4c). Set of 1890 printing Plate Proofs on cardboard, with original presentation envelope, V.F.	18.00
283	5c-10c Reproductions (3P4d-4P4d). Set of 1893 printing Plate Proofs on cardboard, V.F.	18.00

284	5c-10c Reproductions (3P4e-4P4e). Set of 1894 printing Plate Proofs on cardboard, V. F.	18.00
285	田 10c Black, Reproduction (4P3a). Block of Plate Proof on India, small hinge thin, Very Fine appearance (Photo)	125.00
286	10c Black, Reproduction (4P3b). Large Hybrid Plate Proof on India Paper mounted on India Paper sunk on card, hand written "worked over by Chas. Skinner", Very Fine, Very Rare (Photo)	—
287	10c Black, Reproduction, Plate Proof on India Paper mounted on card with American Bank Note Co., N.Y. printed below stamp, Very Fine (Photo)	—
288	田 10c Black Reproduction (4P4a). Plate Proof on cardboard, Block of 6, V. F. (Photo)	124.00
289	田 10c Black Reproduction (4P4d). Plate Proof on cardboard, Block of 4, light crease, V. F. appearance (Photo)	65.00

5c AND 10c 1847 REPRODUCTIONS WITH SPECIMEN OVERPRINT

Only one print of each with the blue handstamp, and one print of each with red printed SPECIMEN are known since publishing of the Kohl Catalog over 50 years ago. They are overprinted on 1879 printing of proofs.



290	5c Brown Reproduction, blue Specimen Overprint (3P4aSa). Plate Proof on cardboard, V. F.	—
291	5c Brown Reproduction, red Specimen Overprint (3P4aSb). Plate Proof on cardboard, V. F.	—
292	10c Black, Reproduction, Blue Handstamp Specimen Overprint (4P4aSa). Plate Proof on cardboard, Very Fine	—
293	10c Black, Reproduction, Red Specimen Overprint (4P4aSb). Plate Proof on cardboard, Very Fine	—
294	10c Black, Reproduction, Blue Specimen Overprint (4P4aS). Unique overprint in different size than handstamp specimen on card plate proof. Fine	—

ATLANTA TRIAL COLOR PLATE PROOFS

Only one sheet of 50 5c and one sheet of 50 10c in each of the five colors became available after 1881; these sheets were cut about 1918 into one block of 8, two blocks of 4, two horizontal pairs and 30 singles some of which were badly cut into.

- | | |
|-----|--|
| 295 | 5c-10c Atlanta Trial Color Plate Proofs (3TC4b-4TC4b). Complete set on cardboard, Five different colors of each value, Very Fine 360.00 |
| 296 | 5c-10c Atlanta Trial Color Plate Proofs (3TC4b-4TC4b). Complete set on cardboard in Blocks of 8 , Five different colors of each value, largest blocks in existence, Unique exhibition pieces, Very Fine (Photo) 7700.00 |

COLLATERAL MATERIAL

- | | |
|-----|--|
| 297 | Collateral Material from the collection of 1847 proofs includes various enlarged photos of the proofs, banknotes with vignettes used on 1847 issue, Franklin and Washington. Business card of Rawdon, Wright, Hatch and Edson Engravers, Banknotes and vignettes showing Franklin and Washington engravings as used on 1847 issue, Various sample papers of Crane & Co. and L. L. Brown Paper Co. on which some of the 1847 proofs were printed, literature from sample paper books and illustr, engravings, a very valuable lot of collateral material mounted — |
|-----|--|

END OF SALE — THANK YOU

MAIL BIDS EARLY

PRICES REALIZED

THIS SALE

\$1.00

OR ENTIRE SEASON \$2.50

SELLING YOUR COLLECTION ?

REALIZE IMMEDIATE CASH
AND HAVE ADVANTAGE OF SELLING AT MY AUCTIONS

I will advance on your collection immediate cash up to 75% of my appraisal value of what it should realize at auction.

It will then be sold at one of my coming auction sales. Attractive well illustrated catalogues issued, with stamps expertly and most advantageously lotted. All lotting done under my personal supervision. Commission is 20% of the gross and final settlement within thirty days after the sale. I have been steadily conducting stamp auctions in the United States for the past 25 years.

Valuable collections and stamp holdings especially wanted but will accept properties valued from \$500 upwards. Send stamps direct for my appraisal. Auction advance will be sent within 48 hours after receipt. If not entirely pleased stamps will be returned at my expense. If circumstances warrant due to bulk etc. I will travel to inspect valuable properties.

ROBERT A. SIEGEL

(Licensed and Bonded Auctioneer)

489 FIFTH AVENUE

NEW YORK CITY

(Tel. MU. 2-0980)

185th Sale

ROBERT A. SIEGEL
505 Fifth Avenue - New York City

PRICES REALIZED
January 16, 1956

DeLuxe Collection of
UNITED STATES
1847 ISSUE
ESSAYS and PROOFS

1 550.00	44 27.50	87 47.50	130 55.00	173 45.00	216 60.00	259 21.00
2 550.00	45 37.50	88 50.00	131 60.00	174 45.00	217 57.50	260 13.00
3 67.50	46 40.00	89 47.50	132 50.00	175 42.50	218 62.50	261 115.00
4 62.50	47 40.00	90 45.00	133 52.50	176 40.00	219 45.00	262 320.00
5 52.50	48 40.00	91 50.00	134 60.00	177 47.50	220 45.00	263 30.00
6 50.00	49 35.00	92 55.00	135 62.50	178 42.50	221 14.00	264 35.00
7 52.50	50 37.50	93 70.00	136 60.00	179 45.00	222 14.00	265 27.50
8 42.50	51 40.00	94 57.50	137 52.50	180 37.50	223 17.00	266 42.50
9 120.00	52 35.00	95 57.50	138 72.50	181 50.00	224 17.00	267 22.50
10 50.00	53 55.00	96 52.50	139 57.50	182 40.00	225 16.50	268 290.00
11 105.00	54 52.50	97 40.00	140 52.50	183 45.00	226 18.00	269 57.50
12 70.00	55 52.50	98 57.50	141 72.50	184 47.50	227 11.50	270 18.00
13 40.00	56 50.00	99 62.50	142 65.00	185 47.50	228 52.50	271 67.50
14 52.50	57 52.50	100 57.50	143 55.00	186 30.00	229 55.00	272 14.00
15 270.00	58 57.50	101 62.50	144 52.50	187 37.50	230 45.00	273 14.00
16 75.00	59 72.50	102 60.00	145 52.50	188 45.00	231 42.50	274 3100.00
17 70.00	60 47.50	103 57.50	146 57.50	189 47.50	232 22.50	275 110.00
18 40.00	61 40.00	104 40.00	147 55.00	190 27.50	233 29.00	276 30.00
19 47.50	62 47.50	105 50.00	148 55.00	191 30.00	234 82.50	277 50.00
20 45.00	63 47.50	106 42.50	149 55.00	192 50.00	235 42.50	278 57.50
21 22.50	64 47.50	107 52.50	150 55.00	193 50.00	236 30.00	279 57.50
22 50.00	65 52.50	108 65.00	151 50.00	194 50.00	237 30.00	280 55.00
23 32.50	66 52.50	109 62.50	152 42.50	195 52.50	238 52.50	281 20.00
24 67.50	67 47.50	110 57.50	153 47.50	196 50.00	239 50.00	282 22.00
25 42.50	68 50.00	111 52.50	154 47.50	197 50.00	240 27.50	283 16.00
26 55.00	69 67.50	112 65.00	155 65.00	198 50.00	241 27.50	284 15.00
27 37.50	70 27.50	113 35.00	156 52.50	199 47.50	242 27.50	285 92.50
28 37.50	71 57.50	114 35.00	157 72.50	200 50.00	243 25.00	286 115.00
29 45.00	72 45.00	115 47.50	158 72.50	201 50.00	244 26.00	287 32.50
30 52.50	73 35.00	116 42.50	159 60.00	202 52.50	245 50.00	288 105.00
31 30.00	74 55.00	117 50.00	160 72.50	203 55.00	246 125.00	289 77.50
32 35.00	75 67.50	118 52.50	161 42.50	204 57.50	247 32.50	290 50.00
33 50.00	76 40.00	119 50.00	162 42.50	205 20.00	248 35.00	291 47.50
34 82.50	77 52.50	120 50.00	163 42.50	206 55.00	249 27.50	292 47.50
35 82.50	78 55.00	121 47.50	164 42.50	207 55.00	250 19.00	293 47.50
36 77.50	79 60.00	122 52.50	165 42.50	208 30.00	251 11.00	294 47.50
37 75.00	80 60.00	123 57.50	166 42.50	209 52.50	252 6.00	295 360.00
38 75.00	81 57.50	124 52.50	167 47.50	210 57.50	253 145.00	296 3400.00
39 27.50	82 57.50	125 47.50	168 47.50	211 52.50	254 32.50	297 180.00
40 27.50	83 67.50	126 47.50	169 50.00	212 57.50	255 72.50	
41 25.00	84 45.00	127 60.00	170 52.50	213 57.50	256 30.00	
42 35.00	85 47.50	128 57.50	171 47.50	214 47.50	257 19.00	
43 27.00	86 47.50	129 60.00	172 45.00	215 57.50	258 26.00	