

187th SALE

**UNITED STATES  
BRITISH EMPIRE  
GENERAL FOREIGN  
and LOTS BY COUNTRIES**



**AT PUBLIC AUCTION**

**FRIDAY and SATURDAY  
MARCH 9th and 10th, 1956**

**at 2 P.M. each day**

*Robert A. Siegel*  
**AUCTIONS**

489 FIFTH AVENUE

NEW YORK 17, N. Y.

## CONDITIONS OF SALE

1. The terms of sale are strictly cash to the highest bidder. All buyers are expected to pay for lots within three days of receipt, unless special arrangements have been made prior to the sale.
2. All bids are per lot as numbered in the catalogue and not per piece, unless otherwise announced by the auctioneer at the time of sale.
3. Any lot the description of which is incorrect is returnable only within three days of receipt. All disputed lots must be returned intact as received. Lots containing five or more stamps are not returnable at any time. No lots may be returned by purchasers who have had the opportunity to examine them before the sale.
4. Successful mail bidders, unless they are known to us or supply acceptable references, will be notified of the amount of the lots secured for them, and are expected to send payment in full before the lots are forwarded.
5. If the purchase price has not been paid within the time limit, or lots taken up within seven days from date of sale, they may be resold and any losses arising from such sale charged to the defaulter.
6. All stamps are sold as genuine, except where sold "As Is". Claims for any lot proving otherwise, must be made within two weeks from date of sale.
7. The right is reserved to group two or more lots, also withdraw any lot or lots from the sale, or to act on behalf of the seller.
8. Until paid for in full all lots remain the property of Robert A. Siegel.
9. No commission is charged for buying at our sales, but all forwarding charges will be added to the purchase price.
10. Lots will be sent for inspection, provided such lots are returned to us the same day as received. Postage and registration both ways will be charged. Approximate values of lots will be given on request.
11. The placing of a bid shall constitute acceptance of the foregoing conditions of sale.

ROBERT A. SIEGEL

GREGORY MOZIAN, Licensed Auctioneers

In sending bids, always state the highest price you are prepared to pay for the lot. Your limit will not be used as a starting bid unless absolutely necessary.

### DESCRIPTIONS

Superb—the finest condition for noteworthy, outstanding copies.

Very Fine (VF)—means that there is a slight deviation from the above.

Fine (F)—means that the perforations do not touch the design on issues after 1890, but in some cases may just touch in earlier issues; if used, fairly lightly cancelled.

Very Good (VG)—means that the appearance is generally fine but that the perforations cut the design slightly.

Good (G)—means average off-centering; or fairly attractive with slight defects. Original gum is not to be expected on 19th Century stamps up to 1888 unless so stated.

Scott's 1956 Specialized United States Catalogue is used for cataloging our lots of United States and Scott's Standard Catalogue, 1956 for others.

**WE SOLICIT FINE MATERIAL FOR FUTURE SALES**

## ESTIMATES

Our sales contain many 19th Century covers and fancy cancellations. We have had many requests to give the estimated cash value on these lots. We are trying to place a fair net valuation on each lot as a guide for bidding when no catalogue value portrays the true value. The chart below will be used, for example E. IV means our estimate cash value on this lot is \$30.00 to \$40.00. Lots may actually realize more or less than these estimates.

E. I	\$ 5.00 to \$ 10.00	E. VIII	\$100.00 to \$125.00
E. II	\$ 10.00 to \$ 20.00	E. IX	\$125.00 to \$150.00
E. III	\$ 20.00 to \$ 30.00	E. X	\$150.00 to \$200.00
E. IV	\$ 30.00 to \$ 40.00	E. XI	\$200.00 to \$250.00
E. V	\$ 40.00 to \$ 50.00	E. XII	\$250.00 to \$350.00
E. VI	\$ 50.00 to \$ 75.00	E. XIII	\$350.00 to \$500.00
E. VII	\$ 75.00 to \$100.00		

## FIRST SESSION

FRIDAY, MARCH 9th, 1956 — 2 P. M.

---

## UNITED STATES

### STAMPLESS COVERS

- |   |  |       |
|---|--|-------|
| 1 | ✉ <b>Balt.</b> (1799) <b>Portsmouth, N. H.</b> (1807) two Str. Lines, Fine-V. F. ....  | E. I  |
| 2 | ✉ <b>Black Rock, N. Y.</b> Str. Line in Rectangle, Fine .....  | E. I  |
| 3 | ✉ <b>Black Rock, N. Y.</b> Str. Line in Box (1826) slight age stains Fine .....  | E. I  |
| 4 | ✉ <b>Bradford, N. H.</b> in Str. Line, ms 10, Fine .....   | E. I  |
| 5 | ✉ <b>Culloma, Cal.</b> in circle, unusual "Paid 6 Cts" in Oval cancel, Fine .....  | E. II |
| 6 | ✉ <b>Hardwick, Vt.</b> in fancy blue double circle, Fancy <b>Paid III C</b> cancel, V. F.  | E. I  |
| 7 | ✉ <b>Keeseville, N. Y.</b> in Str. Line, (1832) Very Fine .....  | E. II |
| 8 | ✉ <b>N. O. U. S. City Post</b> in Blue Shield on cover to France, ship 6 cents in circle and various transit marking, Fine ..... | E. II |

9	✉	<b>New Haven, Ct.</b> , Red Ship in Yawl, cover slight tear, V.F. cancel .....	<b>E. I</b>
10	✉	<b>New York</b> , 10 in black circle on cover to Canada, black Canadian 6 marking, V.F. ....	<b>E. I</b>
11	✉	<b>Packet Letter</b> in Red Box, New Orleans pmk, on cover to France, various transit markings, V.F. ....	<b>E. I</b>
12	✉	<b>Richmond, Va.</b> in Circle on Official Envelope, <b>Official Business, A. Sharp, Postmaster</b> in Oval, Very Fine .....	<b>E. I</b>
13	✉	<b>San Francisco, Cal.</b> pmk on cover to France, Red New York Packet marking, ms. via Panama, various transit markings, Paid 26, V.F. ....	<b>E. II</b>
14	✉	<b>Santa Clara, Cal.</b> in ms., Paid 6, V.F. ....	<b>E. I</b>
15	✉	<b>Steamer S. W. Downs</b> in Red Oval, red New Orleans & Way 11 cents pmks, cover slight age stain, Fine .....	<b>E. II</b>
16	✉	<b>Steam Panama</b> in Oval, San Francisco pmk, on slightly frayed cover, Fine .....	<b>(Photo) E. III</b>
17	✉	<b>Swarts Chatham Square Post Office</b> in red Oval on cover with New York, pmk, Red Co. handstamp on reverse, V.F. ....	<b>E. I</b>
18	✉	<b>Warrenton, Va.</b> Str. Line in Red Octagon, V.F. ....	<b>E. II</b>
19	✉	<b>Way 11</b> , Bold Strike in blue double circle, Mobile, Ala. pmk, V.F. ....	<b>E. I</b>
20	✉	<b>Stampless Covers</b> , 117 covers, wide variety of markings includes Express Mails, Ship, Greens, Hotel, Way 11, V.G.-V.F. ....	<b>E. III</b>
21		<b>State of Massachusetts Bay</b> document dated 1777 with embossed seal of colony, interesting historical document concerning fuel supply for General Burgoyne and his army, signed by representative of the town of Cambridge, V.F. ....	<b>E. IV</b>

#### 1847 ISSUE

22	✉	<b>5c Red Brown (1)</b> . Margins all around tied red Albany Grid on piece of cover, V.F. ....	27.50
23		<b>5c Red Brown (1)</b> . Red Grid cancel, Very Good .....	27.50
24		<b>5c Red Brown (1)</b> . Margins all around, light corner crease, red grid cancel .....	27.50
25		<b>5c Red Brown (1)</b> . Horiz Pair, margins all around, 1 stamp tiny thin, other Very Fine .....	<b>(Photo) 82.50</b>
26		<b>5c Brown (1)</b> . Horiz Pair, Blue Baltimore 10cts cancel, margins 3 sides, 1 stamp light crease, other Very Fine .....	<b>(Photo) 82.50</b>
27	✉	<b>5c Dark Brown (1)</b> . Margins all around, tied double strike of blue Baltimore <b>5 in circle</b> cancel, V.F. ....	<b>(Photo) 45.00</b>
28	✉	<b>5c Dark Brown (1)</b> tied Square N. Y. Grid, red Paid on cover, Fine .....	37.50
29	✉	<b>5c Dark Brown (1)</b> . Tied on cover red N. Y. grid, Fine .....	37.50

30	☒	<b>5c Dark Brown (1). Double Transfer B.</b> tied Boston pmk., margins 3 sides, in at R. ....	75.00
31	☒	<b>5c Brown (1).</b> Horiz. Pair tied Blue <b>Philadelphia 10</b> pmk. margins 3 sides, just touches at B. Fine ..... <b>(Photo)</b>	100.00
32		<b>10c Black (2).</b> Margins all around, Red Grid cancel, Very Fine ... <b>(Photo)</b>	80.00
33		<b>10c Black (2).</b> Margins all around, Blue Town cancel, tiny corner crease, V. F. appearing ..... <b>(Photo)</b>	90.00
34	☒	<b>10c Black (2).</b> Margins 3 sides, just touches at R., barely tied, red <b>Roswell, Ga.</b> pmk. on cover ..... <b>(Photo)</b>	100.00
35	☒	<b>10c Black (2).</b> Small margins all around, cancelled blue Baltimore grid not tying on cover addressed to <b>Paris, France</b> , various transit markings, scarce usage ..... <b>(Photo)</b>	100.00
36		<b>10c Black (2).</b> Margins all around though small at L, tied Red <b>St. Louis, Mo.</b> cancel, <b>Double Transfer in X</b> , Fine ..... <b>(Photo)</b>	125.00

#### 1851 ISSUE

37	☒	<b>1c Blue, Ty. II (7).</b> Horiz Pair & Single tied Philadelphia, Fine ..... <b>E. II</b>	
38	☒	<b>1c Blue, Ty. III, IIIa (8-8A).</b> Horiz Strip of 3, left Pair Ty. III with large margins all around, right stamp just in at R., tied ms. cancel ... <b>(Photo)</b>	360.00+
39		<b>1c Blue, Ty. IV (9).</b> Vert. Left Sheet Margin Pair, ms. cancel, Fine .....	22.50
40		<b>1c Blue, Ty. IV (9).</b> Vert. Pair, Bot. Stamp Double Transfer, Good .....	22.50
41	☒	<b>1c Blue, Ty. IV (9).</b> Large margins all around, Recut twice at top at bottom, tied town pmk, V. F. ....	35.00
42	☒	<b>1c Blue, Ty. IV (9).</b> Large Margins 3 sides, just in L. R., tied Lockport, N. Y. on cover with interesting <b>Circular Paid Label</b> , Fine .....	<b>E. II</b>
43	☒	<b>1c Blue, Ty. IV (9).</b> Horiz Strip of 3 tied Baltimore, Md., V. G.-Fine .....	35.00
44	★	<b>3c Brownish Carmine (11).</b> Horiz Pair, Fine .....	15.00
45		<b>3c Claret (11).</b> Line through 3 cents & Rosettes Double, Very fine .....	20.00
46		<b>3c Imperforate (11).</b> Eight copies, one unused, Fine-V. F. ....	<b>E. I</b>
47	☒	<b>3c Dull Red (11).</b> Cancelled Paid on Illustrated Franklin, Fire Insurance Co. cover showing portrait of Franklin, Fine ..... <b>(Photo)</b>	<b>E. II</b>
48		<b>10c Green, Ty. III (15).</b> Margins all around, Paid cancel, toned paper	16.00
49		<b>1c-12c, 1851-57 Issues (7, 17, 20, 29, 30a, 36).</b> All with faults, nice appearing .....	91.00
50		<b>12c Intense Black (17).</b> Large margins all around, V. F. .... <b>(Photo)</b>	22.50

#### 1857 ISSUE

51		<b>1c Blue, Ty. II (20).</b> Horiz Pair with interesting double perfs, V. G. ....	28.50
----	--	---	-------

52	1c Blue, Ty. IIIa, IV (23-24). Each has few short perfs., Fine appearing	47.50
53	✉ 1c Blue, Ty. V (24). Horiz Strip of 3, one stamp shows Curl in Hair, another Dash in Hair, ms. cancel, Fine	E. II
54	✉ 1c Blue, Ty V (24). Vert. Strip of 3 tied ms. cancel to <b>Patriotic</b> Cover, Fine	E. I
55	✉ 1c Blue, Ty. V (24). Vert. Pair & Single tied on cover and 2 Strips of 3 on Piece, Fine	21.00
56	3c Rose, Ty. I (25). <b>Cracked Plate</b> , centered to L.	50.00
57	✉ 3c Rose, Ty. I (25). Tied West Poultney, Vt. to Illustrated <b>Troy Conference Academy</b> cover, Fine	E. I
58	✉ 3c Red (26). Tied Pittsburgh, Pa. to cover with all over Illustrated <b>Pittsburg Water Cure</b> design showing <b>Grounds, Train, Steamboat etc.</b> on reverse, Fine	E. II
59	✉ 3c Red (26). Tied with Andover, Mass. pmk. on illustr. <b>Phillips Academy</b> cover, Very Fine	E. I
60	✉ 3c Red (26). Two covers tied Yorkville, N. Y. and Red North Salem, N. Y. ( <b>Westchester County</b> ) Fine	E. I
61	5c Brown, Ty. I, 10c Green, Ty. III (29, 33). Fine	29.00
62	★ 24c Gray Lilac (37). Fine	22.50
63	★ 30c Orange (38). Centered, to R., Fine	37.50
64	★ 90c Blue (39). Very Good (Photo)	90.00
65	P 1c Bright Blue, Ty. I (40P). Two shades on India Paper, 1 tiny thin, other V. F.	18.00

#### 1861-1867 ISSUES

66	★田 1c Blue (63). Block, pulled perf. one stamp, balance Fine	40.00
67	1c Blue (63). Eight copies including shades, V. G.-V. F.	12.00
68	1c-30c, 1861 Issue (63-64, 68-71, 73-78). All have faults, nice appearing	108.25
69	✉ 3c Rose (65). Tied target cancel, <b>Cottonwood Springs, Neb.</b> pmk., V. G. Territorial	E. II
70	✉ 3c Rose (65). On illustr. cover showing <b>Northern Indiana Prison</b> , Michigan City, Ind. pmk	E. II
71	✉ 3c Rose (65). Three diff Illustrated covers including University of Illinois Fraternity cover, Fair-Fine	E. I
72	田 3c Rose, 3c Red (65, 94). Two used blocks of each, V. G.	35.00
73	3c Rose, 2c Black (65, 73). Two of each used <b>as revenues</b> on 4 checks	E. I
74	5c Brown Yellow (67). Light crease, Very Fine appearing	47.50

75	✉	5c Brown, 10c Yellow Green (68, 76). Tied New Orleans on cover to France, various transit markings, V. G. ....	E. I
76		30c Orange (71). Two shades, Fine .....	16.00
77		90c Blue (72). Crossroads Cancel, Fine .....	20.00
78	✉	2c Black (73). Horiz. Pair tied on cover, <b>Muscatine, loa.</b> pmk. V. F. ....	E. II
79		2c Black (73). Four on 4 checks <b>used as revenues</b> .....	E. I
80	P	3c Scarlet Proof (74P). Very Fine on india .....	12.00
81		24c Gray (78). Three copies, Fine-Very Fine .....	19.50
82		3c Rose, D. Grill (85). Clear Cross cancel, Fine .....	16.50
83		1c-30c Grills (87-94, 96-98, 100). Good-Fine .....	102.80
84	✉	15c Black, Grilled (98). Tied <b>Cheyenne, Wyoming</b> and Cogwheel cancels, V. G. Territorial .....	E. II
85	★田	3c Red, Grill (94). Block of 15, 3 stamps S. E., centered to L., o. g. ....	56.00
86		1c Blue, Re-Issue (102). Small tear, well centered, very light cancel .....	25.00

#### 1869 PICTORIAL ISSUE

87	★	1c Buff (112). Huge Margined Copy, S. E. at R., Very Fine ..... <b>(Photo)</b>	13.50
88		1c-30c, 1869 Issue (112-115, 117, 119, 121). Good-Fine .....	62.15
89	★	2c Brown, 3c Ultramarine (113-114). Two shades of last, V. G.-Fine .....	15.50
90	★田	3c Ultramarine (114) Block, perfs in B. and L., o. g. ....	25.00
91		3c Ultramarine (114). Fifty copies including some cancels, geometrics, Paid, stars, V. G.-V. F. ....	E. II
92	★	6c Ultramarine, 12c Green (115, 117). Each str. edge, first tiny thin, last creased, nice centering .....	45.00
93		10c Yellow (116). Pretty Red Town & Geometric pmk, Very Fine .....	E. II
94		15c Brown & Blue, Ty I (118). Fine .....	35.00
95		24c Green & Violet (120). Fine ..... <b>(Photo)</b>	37.50
96		30c Blue & Carmine (121) Blue town cancel, Fine .....	32.50
97		90c Carmine & Black (122). Light cancel, reperfed .....	92.50

#### BANKNOTE ISSUES

98	★	1c-5c Banknotes (Between 145-214) Thirty-five stamps, 12 diff., Good-V. F. ....	78.75
99		1c-12c Banknotes (Between 145-179). Five diff. <b>New York Foreign Mail</b> cancels, V. G.-Fine .....	E. I

100	1c-6c Banknotes, five diff. bold Worcester, Mass. Geometric Letter cancels .....	E. II
101	✉ 3c Green, Harmonsburgh, Pa. cancel on cover with Steamer Keystone, D. Chidester, Captain, corner card, Fine .....	E. I
102	6c-15c Banknotes (148-149, 151-152). Fine-Very Fine .....	15.75
103	★ 7c Vermilion (149). Very Good .....	18.50
104	12c-24c, 90c Banknotes (151-153, 155). Fine-Very Fine .....	34.50
105	12c-90c Banknotes (151-155). Fine-Very Fine .....	47.00
106	★ 15c Bright Orange (152). Very Fine ..... (Photo)	25.00
107	15c, 30c Banknotes (152, 165). Three copies of each, Fine-V. F. ....	28.50
108	10c Brown (161). Horiz Pair tied to piece by N. Y. Foreign Mail Ty. 42A pmk., Fine .....	E. II
109	10c Banknotes, Two Singles & Horiz Pair with N. Y. Foreign Mail Ty. 41, 70, 83 cancels, V. G.-Fine .....	E. I
110	2c Vermilion (178, 183). Eleven diff. bold Worcester, Mass. geometric cancels. ....	E. II
111	✉ 5c Blue (179). Tied N. Y. Foreign Mail Ty. 99 on cover to London, V. F. ....	E. II
112	✉ 3c Green, 1c Post Card (184, UX5). Two covers tied County pmks, V. F. ....	E. I
113	✉ 15c Red Orange (189). Tied New Haven on cover to Cape Of Good Hope, various transit markings, V. G. ....	E. I
114	90c Carmine, 90c Purple (191, 218). V. G.-Fine .....	30.00
115	2c Red Brown (210). Clear Cross & Skull Bones cancel, stamp slightly clipped at B. and L. ....	E. I
116	✉ 2c Green (213). Tied to Illustrated Advertising cover showing Monkey pulling monkeys tail, V. F. .... (Photo)	E. II
117	★ 1c-10c, 1890-1901 Issues, 33 copies including duplicates, includes commemoratives, some faults, Fair-Fine .....	31.27

#### COLUMBIAN—TRANS—MISSISSIPPI ISSUES

118	★ 1c-15c Columbians (230-238). Very Good-Very Fine .....	30.65
119	★田 15c Columbian (238). Block, perfs. in at L. ....	47.50
120	★ 30c-50c Columbians (239-240). Fine-Very Fine .....	29.50
121	30c-50c Columbians, 50c Trans-Mississippi (239-240, 291). First 2 slight defects, last Fine .....	30.00
122	★ \$1.00 Columbian (241). Tiny thin, Fine appearing .....	45.00
123	★ \$2.00 Columbian (242). Tiny thin, slight guarentee stain, Fine appearing ..... (Photo)	47.50



124	★	\$3.00	<b>Columbian (243)</b> . Tiny thin, part o. g., Fine appearing ..... (Photo)	72.50
125	★	\$4.00	<b>Columbian (244)</b> . Very Good .....	82.50
126	★	\$5.00	<b>Columbian (245)</b> . Piece of album page stuck on back, otherwise Fine ..... (Photo)	95.00
127	★	2c-15c,	<b>1893-1925 Commemoratives (Between 238-621)</b> . Twenty-four stamps, 9 diff., includes Blocks, V. G.-V. F. ....	32.40
128	★	1c-50c,	<b>1894-95 Issues (Between 247-273)</b> . Twelve diff., most have unnoticeable defects, Fine appearing .....	35.32
129	★	4c	<b>Dark Brown (254)</b> . Horiz Strip of 4 with unusual <b>Printing Flaws</b> .....	—
130	☒	1c	<b>Blue (264)</b> . Tied with <b>Orange Heights, Fla.</b> pmks. on <b>Spanish-Amer. Patriotic</b> unusual poem across envelope in red and blue, V. F. ....	E. I
131	☒	2c	<b>Carmine (266)</b> . Tied R. P. O. cancel on Illustrated Advertising cover showing <b>Rail Road Train</b> , V. F. ....	E. I
132		\$1.00	<b>Black, Ty. I, II (261-261A)</b> . First tiny tear, last corner crease .....	60.00
133	★	\$2.00	<b>Dark Blue (262)</b> . Very Good .....	67.50
134		\$2.00	<b>Dark Blue (277)</b> . Tiny thin, Fine appearing .....	37.50
135		\$5.00	<b>Dark Green (278)</b> . Fine .....	32.50
136		\$5.00	<b>Dark Green (278)</b> . Tiny thin, Fine appearing .....	32.50
137	★	1c-10c	<b>Trans-Mississippi (285-290)</b> . Fine .....	29.10
138	★	50c	<b>Trans-Mississippi (291)</b> . Fine ..... (Photo)	35.00
139	★	\$1.00	<b>Trans-Mississippi (292)</b> . Fine ..... (Photo)	70.00
140	★	\$2.00	<b>Trans-Mississippi (293)</b> . Fine ..... (Photo)	92.50

#### 1901-1907 ISSUES

141	★	1c-10c	<b>Pan-American (294-299)</b> . Last slight stain, others Fine-V. F. ....	27.35
142	★	1c-15c,	<b>1902 Issue (300-309)</b> . 4c no gum, others Fine-V. F. ....	21.45
143	★	1c-12c	<b>Postage (Between 300-434)</b> . Fifteen stamps, 11 diff., V. G.-V. F. ....	23.90
144	★	50c	<b>Orange (310)</b> . Very Fine ..... (Photo)	20.00
145	★	\$2.00	<b>Dark Blue (312)</b> . Trivial hinge thin, V. F. appearing ..... (Photo)	55.00
146	★	\$5.00	<b>Dark Green (313)</b> . Fine ..... (Photo)	100.00
147	★	1c-3c	<b>Imperforates (Between 314-631)</b> . Fifty-four stamps in pairs or Blocks, 17 diff., V. F. ....	52.14
148	★	5c	<b>Blue, Imperforate (315)</b> . Horiz Pair, Very Fine ..... (Photo)	150.00
149	☒	2c	<b>Carmine (319)</b> . Tied Buffalo, N. Y. to Multicolored <b>St. Louis Worlds Fair</b> cover showing Uncle Sam & Map, V. F. ....	E. I

150	★	2c Carmine, Lake, Scarlet Imperforates (320, a, b) Horiz Pairs, V. F.	27.00
151	★	1c-10c Louisiana-Purchase (323-327). Fine-Very fine Set	34.25
152	★	10c Louisiana-Purchase (327). Very Fine	17.50
153	★	1c-5c Jamestown (328-330). Very Fine Set	8.90

#### 1908-1910 ISSUES

154	★	2c-8c, 13c, 50c, 1908 Issue (332-337, 339, 341). Fine-V. F.	29.85
155	★	10c Yellow (338). Block of 6, Very Fine	21.00
156	★	3c-5c, 1908 Imperforates (345-347). Horiz Pairs, Very Fine	26.50
157	▣	1c-2c, 4c Imperforates (346, 383-384). Used Blocks, Fine-V. F.	19.25
158	★	1c-4c Coils (348-350). Pairs, V. G.-Fine	22.50
159	★	5c Blue, Coil (351). Pair, Fine	25.00
160	★	1c-5c Coils (352-355). Pairs, Fine-Very Fine	39.50
161	★	1c-2c Bluish Papers, 2c Lincoln Bluish Paper (357-358, 369). Very Good-Fine	30.50
162	★	2c, 1909 Imperforates (368, 371, 373). Horiz Pairs, Very Fine	31.00
163	★	2c Alaska-Yukon, Imperforate (371). Block, Very Fine	25.00
164	★	1c-15c, 1910 Issue (374-382). 10c thin, others V. G.-V. F.	25.30
165	▣	1c-3c, 1910-23 Imperforates (Between 383-611). Eleven diff. used Blocks, Fine-V. F.	29.10
166	★	1c-2c, 1910 Coils (385-387, 390-391). Pairs, Fine-V. F.	21.74
167	★	2c Carmine, Coil (388). Pasteup Pair, V. G.-Fine	70.00
168		3c Deep Violet, Orangeburg Coil (389). Light corner crease, Fine appearance (Photo)	300.00
169	★	1c-5c Coils (392-396). Pairs, Fine-V. F.	28.00

#### 1912-1920 ISSUES

170	★	2c-10c Panama-Pacific (398-400). Very Fine	18.75
171	★	5c Panama-Pacific, Perf. 10 (403). Fine	17.50
172	★	1c-5c, 1912-16 Coils (Between 410-458). Pairs, 14 diff., Fine-V. F.	20.52
173	★	8c-30c, 1912 Issue (414-420). Fine-Very Fine	26.75
174	★	50c Violet (421). Fine (Photo)	35.00
175	★	50c Violet (422). Very Fine	18.50
176	★	50c Violet (422). Two copies, no gum, V. G.	37.00

177	★	<b>\$1.00 Violet Brown (423).</b> Very Good .....	32.50
178	★	<b>3c Violet, Coil (445).</b> Pair, Very Fine ..... <b>(Photo)</b>	40.00
179	★	<b>4c Brown Coil (446).</b> Pair, Very Fine .....	20.00
180	★	<b>3c Violet, Coil (456).</b> Pair, Fine .....	24.00
181	★	<b>2c Carmine, \$1.00 Violet Black (460-461).</b> \$1.00 stamp used, Fine .....	15.00
182	★	<b>\$2.00 Dark Blue (479).</b> Fine .....	22.50
183	★	<b>\$2.00 Dark Blue (479).</b> Block, Very Fine ..... <b>(Photo)</b>	92.50
184		<b>\$5.00 Light Green (480).</b> Block of 20, 4 stamps S. E., Very Good-Very Fine .....	92.00
185	★	<b>1c-\$1.00, 1917 Issue (498-518).</b> Fine-Very Fine Set .....	20.78
186	★	<b>1c Green, Double Print (498d).</b> Perfs in T. and R. ....	35.00
187	★	<b>5c Rose Error (499h).</b> Light crease, Fine appearing .....	37.50
188	★	<b>5c Rose, Single Error in Center of Block of 9 (499h).</b> Very Good .....	62.50
189	★	<b>5c Rose, Double Error in Complete Sheet of 100 (499h).</b> Very Fine .....	107.14
190	★	<b>2c Rose, Double Print (499g).</b> Block, creased before printing, V. G. ....	40.00
191	☐	<b>2c Carmine, A. E. F. Booklet Pane (499f).</b> One half of Pane (15) on piece, few stamps damaged, scarce .....	—
192	★	<b>1½c-3c, 1917-38 Issues (499, 634, 687, 807).</b> Six Blocks, 4 show complete gutters & Parts of next Pane, 1 Smearred Print, 1 double Plate No., Interesting Oddities .....	—
193	★	<b>1c-3c, 1917-20 Issue (501, 525, 529).</b> Blocks showing Freak Perfs, Interesting .....	—
194	★	<b>20c Light Ultramarine (515).</b> Vert Pair with blind perfs in top stamp giving appearance of Imperf. Between, V. G. ....	—
195	★	<b>\$2.00 Orange Red &amp; Black (523).</b> Trivial hinge thin, V. F. appearing .....	52.50
196	★	<b>\$5.00 Deep Green &amp; Black (524).</b> Fine .....	17.50
197	★	<b>2c Carmine, Imperforate Ty. Va, VI (532b, 532c).</b> Blocks, 2 of last, Very Fine .....	34.00
198	★	<b>1c-3c, 1919-25 Rotaries (538-543, 546, 578-579).</b> Fine-V. F. ....	19.20
199	★	<b>\$2.00 Carmine &amp; Black (547).</b> Fine .....	16.00
200	★	<b>\$2.00 Carmine &amp; Black (547).</b> Block, Fine .....	65.00
201	★	<b>1c-5c Pilgrims (548-550).</b> Set of Blocks, Fine-V. F. ....	22.00
202		<b>5c, 1920-26 Commemoratives (550, 616, 619).</b> Seventeen copies including 2 Blocks, V. G.-V. F. ....	50.00

1922 ISSUE TO DATE

203	★	½c-\$5.00, 1922 Issue (551-573). Fine-Very Fine Set .....	40.27
204	★	2c Carmine (554). Small 5 Point Star & Plate No. Block of 6, V. G.-Fine	20.00
205	★	\$2.00 Deep Blue (572). Block, Very Fine .....	25.00
206	★	1c-2c Rotaries (578-579). Blocks, Fine-Very Fine .....	40.00
207	★	2c Rotary (595). Block, Fine-Very Fine .....	55.00
208	★	½c-50c, 1922-1945 Issues, Collection of Blocks including Plate Nos., 123 mostly diff., V. G.-V. F. ....	182.95
209		1c-10c, 1922-1943 Issues, Collection of 145 mostly diff used Blocks, nearly all are Commemoratives, V. G.-V. F. ....	41.10
210	★	2c Hardings (610-612). Blocks, Very Fine .....	16.10
211	★	1c-5c, 1923-28 Commemoratives (Between 610-650). Twenty-two diff., Fine-V. F. ....	25.67
212	★	5c Huguenot-Walloon (616). Plate No. Block of 4, Very Fine .....	18.50
213	★	5c Walloon, 5c Lexington (616, 619). Blocks, Fine-V. F. ....	28.50
214		1c-5c, 1925-28 Commemoratives (617-619, 628, 647-650). Sets of used Blocks, Fine-V. F. ....	28.65
215	★	5c Norse-American (621). Right Arrow Block of 10, 2 stamps gum crease, others V. F. ....	42.50
216	★	5c Ericsson (628). Block of 16, Fine-Very Fine .....	24.00
217	★	2c White Plains Souvenir Sheet (630). One stamp small thin, V. F. appearing .....	32.50
218	★	2c Aeronautics (649). Sheet of 50, Fine-Very Fine .....	12.60
219	★	½c Olive Brown, Vert. Block of 22 with Full Gutter between Panes (653). Unusual piece, Fine .....	—
220	★	1c-10c Kansas-Nebraska (658-679). Very Good-Very Fine Sets .....	45.55
221	★	13c Harrison (694). Block of 8, Autographed Mary Lord Harrison, V. F. ....	—
222		1c-16c Parks, Farleys (740-749, 754-767, 771). Used Blocks, Fine-V. F. ....	22.49
223	★	1c-16c Farleys (756-771). Set of Blocks, Souvenir Sheets are Gutter Blocks, V. F. ....	35.25
224	★	1c-3c Farley Souvenir Sheets (766-770). Set of Cross Gutter Blocks, Very Fine .....	22.35
225	★	½c-\$5.00 Presidentials (803-834). Includes Arrow Pair of \$1.00, V. F. Set	19.34
226	★	1½c Presidential (805). Block of 8 showing Double Paper variety .....	E. II
227	★	\$1.00, \$5.00 Presidentials (832, 834). Plate No. Blocks, Very Fine .....	48.00

228	★	\$1.00 Presidential, U. S. I. R. Watermark (832b). Very Fine (Photo) .....	37.50
229	★田	\$1.00 Presidential U. S. I. R. Watermark (832b). Block, Fine .....	150.00
230	★田	\$2.00 Presidential (833). Block, Fine .....	16.00
231	★田	1c-10c Famous American (859-893). Set of Plate No. Blocks, Fine-V. F. ....	75.70
232	★田	3c Defense, Imperforate Between (901a). Block of 14 with 2 pairs imperf. between, V. F. ....	16.00
233	★田	3c Defense, Imperforate Between (901a) Two Blocks of 8 each. with pair imperf. between and others nearly so, V. F. ....	16.00
234	★田	3c Defense, Imperforate Between (901a). Blocks of 10, 8 and 6 each with Pair Imperf. Between and others nearly so, V. F. ....	24.00

### AIRMAILS

235	★田	6c Orange (C1). Block of 6 with Plate No., Fine .....	20.50
236	★田	6c Orange, 8c Dark Green (C1, C4). Blocks, Fine-V. F. ....	20.50
237	田	6c Orange, 24c Carmine Rose & Blue (C1, C3). Used Blocks of 5, V. G.-Fine .....	33.75
238	★	6c-24c Airmails (C1, C3-C6). Fine-Very Fine .....	25.25
239	✉	6c Orange, 24c Carmine (C1, C6). Three covers tied, 2 of last, Fine-V. F. ....	—
240	★田	16c Green (C2). Plate No. Block of 4, Fine .....	33.50
241	★田	24c Carmine Rose & Blue (C3). Block, Very Fine .....	25.00
242	★田	16c Dark Blue (C5). Block, Fine-Very Fine .....	27.50
243	★田	24c Carmine (C6). Block, Fine .....	32.50
244	★	65c-\$2.60 Graf Zeppelin (C13-C15). 65c has hinge thin, others Fine .....	142.50
245	★	65c-\$2.60 Graf Zeppelins (C13-C15). Last has tiny hinge thin, others, V. F. ....	142.50
246	★	50c, 65c Zeppelins (C13, C18). First light crease, last V. F. ....	34.00
247	✉	\$1.30 Graf Zeppelin (C14). Pair tied to cacheted Flight cover, Fine .....	75.00
248	★田	50c Zeppelin (C18). Bot. Plate No. Block of 6, V. F. ....	75.00
249	✉	50c Zeppelin (C18). Four copies tied on cacheted Flight cover, Fine .....	31.50
250	✉	Air Crash Covers 1929-30, two diff. Fort Crook, Nebr. and Monterey Park, Calif. ....	—
251	✉	5c Airpost Entires (UC1-UC2). Thirty-one of first, 22 of last, all have Bicolored Border, V. F. ....	42.10

### DUES, OFFICIALS, PARCEL POST

252	★田	3c Deep Claret Due (J47). Block, V. G.-Fine .....	35.00
-----	----	---	-------

253	<b>50c Perf. 10 Postage Due (J58).</b> Light crease, V. F. appearance .....	16.00
254	<b>Postage Due Collection, 1879-1932 Issues,</b> 441 stamps, used and unused, singles and blocks, Good-V. F. ....	144.55
255 ★	<b>2c-\$2.00 Shanghai (K1-K18).</b> Fine-Very Fine Set .....	66.45
256 ★	<b>2c-\$2.00 Shanghai (K1-K18).</b> Cpl. set, Fine-Very Fine .....	66.45
257 ★	<b>1c-2c, 6c Agriculture, 2c Executive (O1-O2, O4, O11).</b> V. G.-Fine .....	28.00
258	<b>1c Executive (O10).</b> Fine .....	17.50
259 ★	<b>6c Executive (O13),</b> Fine, o. g. ....	27.50
260 ★	<b>3c-10c Justice (O27-O29).</b> Very Fine, o. g. ....	19.00
261	<b>Officials,</b> Collection of 94 mostly diff. used and unused, Fair-Fine .....	214.75
262	<b>1c-24c Officials</b> 34 mostly diff, nearly all used, Good-V. F. ....	54.00
262A ★	<b>1c-\$100.00 Newspapers (PR114-PR123, PR125).</b> No gum, V. G.-V. F. ....	18.30
263 ★	<b>1c-20c, 75c Parcel Post (Q1-Q8, Q11).</b> Very Fine .....	16.43
264 ★	<b>50c Parcel Post (Q10).</b> Very Fine .....	16.00
265 ★	<b>\$1.00 Parcel Post (Q12).</b> Very Fine ..... <b>(Photo)</b>	25.00
266 ☒	<b>3c Pink Entire (U59).</b> Tied target cancel, <b>Gunthrie Center, Gunthrie Co., Iowa</b> pmk., Fine .....	<b>E. II</b>

## REVENUES

267	<b>1c-\$20.00 Perforated Civil War Revenues,</b> collection of 147 mostly diff. Good-Very Fine .....	156.00
268	<b>1c, 3c, 4c Playing Cards (R2c, R17c, R21c).</b> Slight faults, Fine appearing .....	52.00
268A ☐	<b>2c Bank Check, Imperforate (R5a).</b> Block, 1 stamp pin hole, V. F. appearing .....	35.00
269	<b>2c Proprietary Ultramarine (R13e).</b> Light crease, Fine appearance .....	17.50
270	<b>2c-\$20.00 Civil War Imperforate Revenues,</b> collection of 50 mostly diff. Good-Very Fine .....	178.00
271	<b>6c Proprietary (R31c).</b> Light blue handstamp cancel, repaired, Fine appearance .....	300.00
272	<b>70c Foreign Exchange Imperf. (R65a).</b> Fine .....	30.00
272A	<b>50c-\$5.00 Civil War Revenues, Imperforate (R54a, R59a, R90a).</b> Horiz Pairs of each & strip of 4 of first, all have defects, Fine-V. F. appearing .....	105.00
273	<b>\$15.00 Mortgage Ultramarine (R97e).</b> Fine .....	22.50
274	<b>\$20.00 Probate of Will (R99c).</b> closed tear, Fine appearance .....	90.00
275	<b>\$25.00 Mortgage, \$50 U. S. I. R. (R100c-R101c).</b> Fine .....	24.00

276	<b>\$50.00 Green Imperf. (R101a).</b> Neat handstamp, light crease, V. F. appearance .....	15.00
277	<b>\$200.00 Green &amp; Red (R102c).</b> Attractive handstamp cancel, light crease, V. F. appearance .....	75.00
278	<b>1c-\$10.00 Blue &amp; Black, 22 diff.</b> (Between R103-R128). Good-Very Fine ....	41.60
279	<b>50c Blue &amp; Black Inverted Center (R115c).</b> punched cancel filled in, V. F.	20.00
280	<b>\$1.30 Blue &amp; Black (R19).</b> Very Fine.....	20.00
281	<b>\$1.60 Blue &amp; Black (R121).</b> Herringbone cancel, Fine .....	32.50
282	<b>\$1.90, \$3.50 Blue &amp; Black (R122, R126).</b> Fine .....	19.00
283	<b>\$20.00 Blue &amp; Black (R129).</b> Centered to R. Fine .....	42.50
284	<b>\$25.00 Blue &amp; Black (R130).</b> Centered to R. Fine .....	40.00
285	<b>\$50.00 Blue &amp; Black (R131).</b> Handstamp cancel, centered to L., Fine .....	37.50
286	<b>1c-\$10.00 Third Issue Revenues (R134-R149).</b> Good-Fine .....	31.81
287	<b>2c Orange &amp; Black, Inverted Center (R135b).</b> Fine .....	22.50
288	田 <b>15c Brown &amp; Black Revenue (R139).</b> Block, Very Good .....	40.00
289	<b>\$20.00 Orange &amp; Black (R150).</b> Light crease three short perfs, appears uncancelled .....	42.50
290	<b>Revenue Collection, 1871-1946 Issues, 390 stamps</b> mostly diff. Good-V. F.	330.00
291	<b>\$5.00 Documentaries (R159-R160).</b> First light corner crease, last tiny thin, Fine-V. F. appearing .....	34.50
292	<b>\$500.00 Documentary (R180).</b> Cut cancel, Fine .....	75.00
293	<b>\$1000.00 Documentary (R181).</b> Filled in cut cancel, V. F. appearing .....	37.50
294	<b>19th Century Revenues, 125 stamps</b> all with Handstamp cancels, V. G.-V. F. ....	—
295	<b>\$50.00 Gray Documentary (R189).</b> Uncut, light crease, V. F. appearing	45.00
296	<b>\$50.00 Documentary (R194).</b> Cut cancel, Very Fine .....	55.00
297	<b>\$60.00-\$100.00 Documentary (R224-R225).</b> Cut cancels, Fine .....	26.00
298	<b>\$500.00 Documentary (R226).</b> Cut cancel, Very Fine .....	70.00
299	<b>\$1000.00 Documentary (R227).</b> Cut cancel, Very Fine .....	60.00
300	★ <b>1c-5c Documentary, Series of 1940 (R288-R292).</b> Very Fine .....	21.25
301	<b>1c-\$5.00 Documentaries, Stock Transfers, Series of 1940-1950,</b> Collection of 154 diff, used & unused, V. G.-V. F. ....	92.00
302	★ <b>1c-\$1.00 Documentary, Series of 1942-1943 (R336-R348, R361-R373).</b> Very Fine .....	25.75+
303	<b>\$30.00, \$60.00 Documentaries, Series of 1943 (R380, R382).</b> Very Fine, Uncut	40.00

304	<b>\$1000.00 Documentary, Series of 1943 (R385).</b> Very Fine, Uncut .....	100.00
305	<b>\$60.00 Documentary, Series of 1944 (R407).</b> Very Fine, Uncut .....	25.00
306	<b>\$1000.00 Documentary, Series of 1945 (R435).</b> Very Fine, Uncut .....	60.00
307	<b>\$1000.00 Documentary, Series of 1946 (R460).</b> Very Fine, Uncut .....	60.00
308	<b>\$1000.00 Documentary, Series of 1946 (R460).</b> Very Fine, Uncut .....	60.00
309	<b>\$60.00 Documentary, Series of 1948 (R507).</b> Very Fine, Uncut .....	—
310	<b>\$60.00 Documentary, Series of 1948 (R507).</b> Very Fine, Uncut .....	—
311	<b>\$500.00 Documentary, Series of 1948 (R509).</b> Very Fine, Uncut .....	45.00
312	<b>\$30.00 Documentary, Series of 1949 (R530).</b> Very Fine, Uncut .....	—
313	<b>\$30.00 Documentary, Series of 1949 (R530).</b> Very Fine, Uncut .....	—
314	<b>\$50.00 Documentary, Series of 1949 (R531).</b> Very Fine, Uncut .....	—
315	<b>\$50.00 Documentary, Series of 1949 (R531).</b> Very Fine, Uncut .....	—
316	<b>\$60.00 Documentary, Series of 1949 (R532).</b> Very Fine, Uncut .....	—
317	<b>\$60.00 Documentary, Series of 1949 (R532).</b> Very Fine, Uncut .....	—
318	<b>\$1000.00 Documentary, Series of 1950 (R560).</b> Very Fine, Uncut .....	50.00
319	<b>\$1000.00 Documentary, Series of 1950 (R560).</b> Very Fine, Uncut .....	50.00
320	<b>10c Blue, Proprietary (RB19)</b> Very Good .....	30.00
321 ★	<b>17<sup>8</sup>/<sub>8</sub>c-5c Proprietary (RB37-RB41, RB43).</b> Last 2 used, Good-V. F. ....	32.10
322 ★	<b>3c Future Delivery (RC2).</b> Very Fine, o. g. ....	—
323	<b>\$50.00-\$60.00 Stock Transfers (RD20-RD21).</b> Very Fine, Uncut .....	35.00
324	<b>\$100.00 Stock Transfer, Series of 1950 (RD333).</b> Very Fine, Uncut .....	—
325	<b>1/4c-\$2.00 Cordials &amp; Wine Stamps (RE1-RE18, RE20-RE30).</b> Used & Unused, V. G.-V. F. ....	20.26
326	<b>1c-\$10.00 Silver Tax (RG1-RG18).</b> Very Good-Very Fine .....	52.10
327 ★	<b>1c-\$1.00 Silver Tax (RG72-RG84).</b> Very Fine .....	14.25
328 ★	<b>3/4c-\$2.00 Potato, Tobacco Sales Stamps (RI1-RI13, RJ1-RJ8).</b> V. G.-V. F.	34.90
329 ★	<b>Motor Vehicle Use Stamps (RV1-RV5, RV12, RV17, RV27).</b> Very Fine	36.00
330 ★	<b>\$1.00 Hunting Permit Stamp (RW1).</b> Fine .....	15.00
331	<b>1c-\$1.28 Narcotic Stamps, 130 stamps including Blocks, Fair-V. F., Est.</b> Cash Value \$22.50 .....	—
332 ★	<b>Postal Telegraph, 1910, Orange Brown (15TO20).</b> Pane of 8, V. F. ....	30.00
333 ★	<b>15c-25c Postal Telegraphs (15TO29-15TO30).</b> Blocks, Fine .....	52.00



## CONFEDERATES

334	✉	5c Green (1). Very Fine Horiz. Pair tied with blue Lynchburg, Va. pmk on lightly stained cover .....	30.00
335	★	1c-20c Confederates (Between 2-14). Twelve mostly diff, no. 2, 4b, 5 used, Good-V. F. ....	85.85
336		5c Blue (7). Portion of str. line Jackson cancel, V. F. ....	25.00
337	★	5c Blue, Reprint (7). Cpl. Sheet of 100, Fine-V. F. ....	—
338		3c Red (26). Confederate usage, Mobile Ala. Feb 16, 1861 pmk. and Charleston, S. C. May 11, 1861 pmk. Fine .....	—

## U. S. LARGE & MISC. LOTS

339	✉	Covers, 1851-88 Issues, 304 covers majority Connecticut pmks. includes some fancies including Waterburys, Good-Fine .....	E. IV
340	✉	Covers mostly 19th, over 100 includes interesting and fancy markings, Est. Cash Value \$75.00 .....	—
341		19th Century Fancy Cancels, 70 stamps including Pumpkin Head, Geometrics, N. Y. F. M., colored, V.G.-V. F. ....	E. II
342		United States Collection, 19th and 20th, in National album, mostly postage issues, used and unused, some blocks, nice lot, Est. Cash Value \$200.00 .....	—
343		U. S. Collection 19th & 20th, 1079 different mounted, V. G.-V. F. ....	501.91
344		U. S. Collection, 19th & Early 20th Century Collection of 92 mostly diff., nearly all used, Fair-Fine .....	238.46
345		United States 19th & 20th, mostly early issues, includes fancy cancels, few blocks, Est. Cash Value \$65.00 .....	—
346		U. S. Wholesale Lot 19th and 20th, from 1 to 50 of a kind, wide variety, Est. Cash Value \$50.00 .....	—
347		19th & 20th Century U. S., 125 stamps, 4 unused, all have str. edges, V. G.-Fine .....	94.00
348		1c-\$1.00, 1890-1917 Issues, Accumulation of several hundred postage issues, Good-Fine .....	110.00
349		1c-2c 1890-95 Issues including Columbians several thousand bundled, also several thousand Presidentials up to 50c value .....	—
350		1c-10c. 1890-1930 Issues, Accumulation of several hundred selected for interesting cancels, includes geometrics, Stars, etc, Est. Cash Value \$17.50 .....	—
351		U. S. Commemoratives, 112 stamps from Columbians to 1940, 46 diff, V. G.-Fine, Est. Cash Value \$12.50 .....	—
352		1c-5c, 1908-23 Imperforates, 47 stamps, 15 diff., few defects, Good-V. F. ....	50.00

353	<b>United States</b> , Accumulation of several hundred mostly 20th century, includes Envelopes, Revenues, Possessions, Est. Cash Value \$22.50 .....	—
354	☒ <b>Picture Postal Cards</b> , 15, two from Alaska 1912, balance show Steamers, also 6 unused .....	<b>E. I</b>
354A	<b>Precancels</b> , approx. 5,000 mostly different, no N. Y. City or Chicago, mainly in 1922-30 period .....	—
355	★ <b>Locals, Carriers, Postmasters</b> including Confederates, 161 diff, Reference collection of Reprints, Bogus, Fantasies, etc, Interesting Collection .....	—

### U. S. WHOLESALE

356	<b>15c Brown &amp; Blue #119</b> (4). Very Good .....	36.00
357	<b>15c Brown &amp; Blue #119</b> (10). Good-Fine .....	90.00
358	<b>90c Banknotes #155(5)</b> . All have slight faults .....	75.00
359	<b>2c Vermilion #178(88), #183(143)</b> . V. G.-V. F. ....	45.00
360	<b>5c Blue #179(9), #185(40)</b> . Very Good-Very Fine .....	35.00
361	<b>4c-5c, 1883-88 Issues #205(38), #211(21), #215(17), #216(12)</b> . V. G.-V. F.	43.50
362	<b>15c Indigo #227</b> (23). Includes 5 str. edge, V. G.-Fine .....	34.50
363	★ <b>1c Columbian #230(7) 2c Columbian #231(15)</b> Good-Very Fine .....	14.60
364	<b>15c Columbian #238</b> (5). Two have faults .....	25.00
365	<b>4c Pan-American #296</b> (20). Includes 6 str. edge, V. G.-V. F. ....	30.00
366	<b>7c, 9c, 50c, 1912 Issue #407(5), #415(4), #422(8)</b> . V. G.-V. F. ....	24.50
367	☐ <b>2c Harding Rotary #612</b> (25 Blocks). All precancelled mostly in purple from Hillburn, N. J., V. G.-V. F. ....	50.00
368	<b>5c Ericsson #628</b> (19). In various size Blocks, 4 stamps S. E., V. G.- V. F.	15.60
369	★ <b>1c-10c Famous Americans #859-893</b> (Nine cpl Sets). Fine-V. F. ....	101.52
370	<b>\$100.00 Documentary, Series of 1941 #R333</b> (10). V. G.-Fine .....	100.00
371	<b>Wines</b> stock of 1933-55 Issues, several thousand stamps, 85 varieties, worthwhile stock .....	—

### U. S. POSSESSIONS

#### CANAL ZONE

372	★ <b>CANAL ZONE, 1904, 1c-10c Postage (4-8)</b> . Last thin, others, Very Good-Fine .....	27.00
373	★ — 1904, 2c Rose, Inverted Overprint (10b) Very Fine .....	15.00
374	★☐ — 1904, 2c Rose <b>Inverted Overprint</b> (10b. Block, V. F. ....	60.00

375 ★	— 1924-25, 50c Lilac, \$1.00 Violet Brown (79-80). Fine-Very Fine .....	17.00
376 ★	— 1925-26, 2c-30c, \$1.00 Postage (84-93, 95). Fine-Very Fine .....	17.90
377 ★	— 1939, 1c-50c Anniversary Issue (120-135). Last thin, others Fine-V. F. ....	32.10
378 ★	— 1939, 5c-\$1.00 Anniversary Airpost (C13-C18). Last thin, others Fine-V. F. ....	20.75
379 ☒	— 1923, 2c Carmine Entire (U5). Very Fine, unused .....	35.00
380	<b>CUBA</b> , 1898-99, 3c on 1m Puerto Principe (179D). Centered to top, tied on piece, B. P. A. Certificate, Scarce .....	<b>(Photo)</b> 125.00
381 ★	— 1899, 1c-10c Overprints (221-226). 37 stamps, from 2 to 12 of a kind, few S. E., includes blocks, V. G.-V. F. ....	15.70
382 ★	— 1899, 2c Overprint, <b>CUPA Error</b> (222b). Very Fine, o. g. ....	15.00
383 ★	<b>GUAM</b> , 1899, 1c-8c, 15c Overprints (1-7, 10, E1). Very Good-Very Fine .....	42.50
384 ★	— 1899, 10c Brown, <b>Type II</b> (9). Very Fine .....	400.00
385 ★	— 1899, 15c-\$1.00 Postage (10-12). Fine-V. F. ....	36.50
386 ★	— 1930, Guam Guard Mail, 2c Green, 4c Carmine (M1-M2). Tropical gum, Very Fine .....	65.00
387 ★	— 1930, Guam Guard Mail, 1c-10c Postage (M3-M11). V. G.-V. F. ....	20.70

#### HAWAII

388 ★	1868, 5c Blue (10). Margins all around, "Line through Honolulu" variety, Very Fine, o. g. ....	10.00
389 ★	1863-64, 2c Black Imperforate (16). Margins all around, thin, V. F. appearing .....	75.00
390 ★	1864-65, 5c Blue Imperforate (21). Margins all around, small thin, V. F. appearing .....	35.00
391 ★	1864-82, 1c-18c Postage (29-41, 51-52c, 74-82). Very Good-Very Fine ...	35.90
392 ★	1883-86, 1c-\$1.00 Postage (42-49). V. G.-V. F. Set .....	32.05
393 ★	1886-89, 2c Orange Vermilion (50). Margins all around, V. F., o. g. ....	20.00
394 ★	1893, 1c-\$1.00 Provisionals (53-61, 62-66, 67-73). Very Good-Very Fine ...	43.72

#### PHILIPPINES

395 ★	1899, 50c Orange (212). Fine, o. g. ....	<b>(Photo)</b> 25.00
396 ★	1901, \$5.00 Dark Green (225). Very Fine .....	<b>(Photo)</b> 75.00
397 ★	1903-04, 1c-50c Postage (226-236). No. 235 used, V. G.-V. F. Set .....	33.15
398 ★	1903-04, \$2.00 Dark Blue (238). Fine .....	<b>(Photo)</b> 62.50

399 ★	1903-04, \$2.00 Dark Blue (238). Perfs barely touch at B. ....	<b>(Photo)</b>	62.50
400 ★	1906, 2c-4p Postage (241-253). Very Good-Very Fine Set .....		31.80
401 ★	1906, 10p Dark Green (254). Very Fine .....		25.00
402 ★	1909-13, 2p Violet Brown (260A). Very Fine .....		15.00
403 ★	1911-13, 2c-2p Postage (261-272). Few no gum, V. G.-V. F. ....		23.95
404 ★	1911-13, 10p Deep Green (274). Very Fine .....	<b>(Photo)</b>	30.00
405 ★	1911-13, 10p Deep Green (274). Very Fine .....		30.00
406 ★	1911-13, 10p Deep Green (274). Fine .....		30.00
407 ★	1914-23, 2c-16c Postage (276-281). Fine-V. F. ....		26.75
408 ★	1914-23, 30c Gray, 1p Pale Violet (283-284). Very Fine .....		23.50
409 ★	1918-26, 2c-1p Postage (285-286, 287A-289D). Fine-Very Fine .....		65.95
410 ★	1917-25, 2c-4p Postage (290-302). Fine-V. F. Set .....		34.16
411 ★	1923-26, 16c Olive Bistre, 10p Deep Green (303-304). Very Fine .....		18.00
412 ★	1926, 1p Madrid-Manila (318B). Very Fine .....	<b>(Photo)</b>	40.00
413 ★	1926-32, 2c-1p Pictorials (319-325, 354-360). Fine-Very Fine Sets .....		26.40
414 ★	1928, 2c-1p L. O. F. Overprints (328-338). Fine Set .....		29.75
415 ★	1925-31, 2c-4p Imperforates (340-341, 343-352). No 6c value, Very Fine		48.00
416 ★	1932, 2c-32c Pictorials (354-360) Pairs, one 18c tiny thin, others Fine-V. F.		27.10
417 ★	1932-33, 2c-32c Von Gronau, 2c-30c F. Rein (361-367, 370-379). Fine-V. F. Sets .....		17.35
418 ★	1935-37, 2c-5p Pictorials (383-396, 411-424). No. 393 and 396 hinge thins, others Fine-V. F. ....		34.42
419 ★	1938-40, 1p, 5p Commonwealth (443, 446). Sheets of 25, V. G.-V. F. ....		85.00
420 ★	1945, 2c-20p Victory (485-496, E10). Very Fine Set .....		40.31
421 ★	1901-31, 10c-20c Special Deliveries (E1, E3, E5-E6). Last is Pair, Fine-V. F. ....		22.05
422 ★	1906-16, 20c Special Delivery (E2, E4). Very Fine .....		21.25
423 ★	1916, 20c Special Delivery (E4). Very Fine .....		17.50
424 ★	1899-1937, 2c-50c Postage Dues (J2-J5, J7-J15). Some have tropical gum, V. G.-V. F. ....		29.23
425 ★	1944, 2c-4c Officials, Victory Handstamps (O39-O40). Very Fine .....		17.50
426 ★	1944, 10c Official, Victory Handstamp (O41). Fine .....	<b>(Photo)</b>	50.00
427	<b>DANISH WEST INDIES, 1855-73, 3c-4c Postage (1-4). Very Good .....</b>		43.50

428	<b>CANAL ZONE</b> , 1904-41, Collection of 125 stamps including few duplicates, used & unused, Fine Lot .....	59.86
429	<b>CUBA</b> , 1855-1931, Collection of 482 stamps including Blocks & duplicates, used & unused, V. G.-V. F. ....	106.42
430	<b>PHILIPPINES</b> , 1880-1946, Collection of 216 mostly diff., used & unused, few Spanish Issues, Good-Very Fine .....	160.00
431 ★	<b>PORTO RICO</b> , 1899, 10c Due (J3, a). Imprint Plate No. Strip of 3 showing both angles of overprint, Fine .....	47.50
432 ★	<b>"VIRGIN ISLANDS of the U. S. Internal Revenue"</b> , (5, 6, 12, 50B). Fine .....	—

## BRITISH EMPIRE

### GREAT BRITAIN

501	✉ 1840, 1p Black (1). Four covers, one shows part of imprint at top, V. G.-F. ....	40.00+
502	1840, 2p Blue (2). Very Fine .....	22.50
503	1841, 2p Blue (4). Ten horiz. strips of 3, V. G. ....	52.50
504	1847, 6p Red Violet, 1sh green (5, 7). Fine .....	19.00
505	1848, 10p Red Brown (6). Fine .....	25.00
506	✉ 1857-76, 1p-6p Postage (Between 20-67). Twelve covers with 26 stamps, stamps catalog 27.70, Good-V. F. ....	—
507 ★	1858-92, ½p-2sh6p Postage (Between 31-133). Seventeen diff, V. G.-V. F. ....	40.20
508	✉ 1864, 1p Rose Red (33). Tied 186 in grid, <b>H. &amp; K. Pact.</b> (Holyhead & Kingstown Packet). Very Fine cover .....	—
509	1878, 10sh Slate (74). London and crayon pmks, V. F. ....	60.00
510	1878, £1 Brown Lilac (75). London and blue crayon pmks <b>(Photo)</b> .....	85.00
511	1882-83, 5sh Rose (90). Fine .....	45.00
512	1882-83, 10sh Slate (91). Very Fine .....	<b>(Photo)</b> 85.00
513	1882, £5 Bright Orange (93). Crystal Palace pmk and purple G. P. O. pmk, Fine .....	<b>(Photo)</b> 95.00
514	1883-1951, ½p-£1 Postage (Between 96-289). Twenty eight diff, mostly high values, F.-V. F. ....	52.76
515	1884, £1 Brown Violet (110). Very Fine .....	<b>(Photo)</b> 60.00
516	1884, £1 Brown Violet, £1 Green (110, 124). First tiny closed tear, last few short perms, Fine- V. F. appearing .....	80.00
517	1891, £1 Green (124). Very Fine .....	20.00
518	1891, £1 Green (124). Very Fine .....	20.00

519	★	1902-11, ½p-10sh Edwards (127-141). Last has slight gum crease, F.-V. F.	50.07
520	★	1902-11, £1 Edward (142). Fine	(Photo) 35.00
521	★	1912-19, ½p-10sh George V (159-168, 170-172, 179-181). Fine-V. F.	25.78
522	★	1913-18, £1 George V (176). Fine	(Photo) 75.00
523	★	1919, 2sh6p-10sh George V (179-181). Very Fine	18.00
524	★	1929, £1 Postal Union Congress (209). Very Fine	(Photo) 32.50
525	★	1934-36, ½p-10sh George V (210-224). Very Fine Set	24.73
526	★	1939-42, 2sh6p-10sh George VI (249-251A). Very Fine	31.60
527		1948, 2½p-£1 Silver Weddings (267-268). Two used Sets, F.-V. F.	12.24
528	★	1902, 10p Office of Works Official (O53). Trivial gum stain, V. F. appearing	(Photo) 75.00
529		1902-04, 5p Board of Education (O70). Fine	(Photo) 85.00
530	✉	1840, 1p-2p Mulready Envelopes (U2-U4). Fine-V. F., unused	37.50
531		<b>ANTIGUA</b> , 1863, 1p-6p (2-4). Pairs, Fine-V. F.	23.00+
532	★	— 1863-86, ½p-4p Postage (2-3, 5, 8, 12, 14, 16, 18). Very Good-V. F.	25.30
533	★	— 1873-84, 1p Vermilion, 4p Blue (6, 15). Last o. g., Fine-V. F.	25.50
534	★	— 1903-12, ½p-2sh Pictorials (21-26, 31-38). Fine-V. F.	31.70
535	★	— 1903-13, 2sh6p-5sh Postage (28, 41). Very Fine	17.00
536	★	— 1921-29, ½p-5sh George V (42-54, 56-63). Fine-Very Fine	32.65
537	★	— 1932, ½p-5sh Tercentenary (67-76). Fine-V. F. Set	70.00
538	★	<b>AUSTRALIA</b> , 10sh-£2 Postage, Specimen Overprints (127-129, 179). Fine-Very Fine	—

#### BAHAMAS

539		1859, 1p Pale Lake (1). Fine	(Photo) 65.00
540		1861, 4p Rose (3, 6, 9). Last 2 tiny thins, Good-Fine	80.00
541	★	1871, 4p Rose Red (30). Fine, o. g.	(Photo) 125.00
542		1873, 5sh Dull Rose (43). Fine	(Photo) 65.00
543	★	1902-11, ½p-5sh Edwards (37-42, 44-47). Fine-V. F.	30.85
544	★	1912-18, ½p-£1 George V (49-56). Fine Set	38.22
545	★	1917-20, ½p-3sh George V (58-69). Fine-V. F. Sets	21.10
546	★	1921-37, ½p-£1 George V (70-77, 79-84). Fine-V. F.	34.13
547	★	1938-46, £1 George VI (113, 129). Two shades of first, V. F.	22.00
548	★	1942, ½p-£1 Landfall of Columbus (116-129). V. F. Set	15.25

## BARBADOS

549	1852-59, ½p-1sh Imperforates (1-2, 4-6, 8-9). Good-Fine .....	79.00
550	1852-59, ½p-1sh Imperforates (1-2, 4-6, 8-9). Good-Fine .....	79.00
551	1859, 6p-1sh Imperforates (8-9). Fine .....	30.00
552 ★	1861, ½p-4p Postage (15-18). Very Good-Fine unused .....	59.00
553	1873, 5sh Dull Red (43). Lightly cancelled, centered top and left, V. G. ....	65.00
554 ★	1874-78, ½p-1sh Postage (Between 44-56). Thirteen stamps, 8 diff, Good-F.	89.50
555 ★	1882-85, 6p-5sh Victoria (66-68). Fine-Very Fine .....	31.00
556 ★	1892-1903, 1f-2sh6p Pictorials (70-80). Fine-V. F. Set .....	29.85
557 ★	1904-10, 1f-2sh6p Pictorials (90-101). Fine-V. F. Set .....	30.06
558 ★	1906-07, 1f-1sh Nelson (102-108, 110-112). Fine-V. F. Set .....	25.10
559 ★	1912, 1sh-5sh George V (124-126). Very Fine .....	34.00
560 ★	1920, ¼p-3sh Victory (140-151). Fine-V. F. Set .....	25.15
561 ★	<b>BARBUDA</b> , 1922, ½p-5sh George V (1-11). Fine-V. F. Set .....	30.40

## BERMUDA

562 ★	1865-82, 1p-1sh Victorias (1-2, 3A-7). Very Good-Very Fine .....	36.25
563 ★	1865, 6p Brown Lilac (3). Fine .....	<b>(Photo)</b> 30.00
564 ★	1874, 3p on 1sh Green (8). Light corner crease, V. F. appearing <b>(Photo)</b>	60.00
565 ★	1874, 3p on 1p Rose (9). Centered slightly to left, Fine copy of this scarce stamp .....	<b>(Photo)</b> 250.00
566	1874, 3p on 1sh Green (11). Tiny tear, Fine appearing .....	40.00
567 ★	1875, 1p on 2p Blue (12). Fine .....	<b>(Photo)</b> 45.00
568 ★	1875, 1p on 3p Buff (13). Very Fine .....	<b>(Photo)</b> 25.00
569 ★	1875, 1p on 1sh Green (14). Very Fine .....	17.50
570 ★	1880-1904, ½p-1sh Victorias (15-30). Fine-Very Fine Sets .....	18.40
571 ★	1906-20, ¼p-5sh George V (31-52). Fine-Very Fine .....	32.00
572 ★	1917-20, 10sh-£1 George V (53-54). Fine .....	38.50
573 ★	1920-21, ¼p-1sh Commemoratives (55-79). Fine-V. F. Sets .....	37.65
574 ★	1922-36, ¼p-2sh6p George V (81-95). Very Fine .....	24.99
575 ★	1922-36, 2sh6p, 10sh George V (94, 97). Fine-Very Fine .....	17.00
576 ★	1922-36, 10sh-12sh6p George V (97-98). Very Fine .....	<b>(Photo)</b> 36.50
577 ★	1935-42, ½p-£1 Pictorials (100-130). Fine-Very Fine Sets .....	37.30

578 ★	<b>BRITISH SILVER JUBILEES</b> , 1935, Complete Set mounted on Specialty Album Pages, V. F. ....	275.49
579 ★	<b>BRITISH CORONATIONS</b> , 1937, Complete Set including Long Newfoundland on Specialty Pages, V. F. ....	38.88
580 ★	<b>BRITISH CORONATIONS</b> , 1937, Complete Set including Long Newfoundland mounted in Special Album, V. F. ....	38.88
581 ★	<b>BRITISH CORONATIONS</b> , 1937, Complete Set including Long Newfoundland, Fine-V. F. ....	38.88
582 ★	<b>BRITISH PEACE ISSUES</b> , 1945-47, Complete Sets including Dominions, Very Fine .....	—

### BRITISH GUIANA

583	1852, 1c Magenta (6). Margins all around, thin, V. F. appearance <b>(Photo)</b>	200.00
584	1856, 4p Magenta (14). Margins all around, faults, V. F. appearing <b>(Photo)</b>	600.00
585	1860-62, 2c-12c Postage (20-21, 27, 30-31). Fine-V. F. ....	32.00
586	1862, 2c yellow (38). Very Fine .....	<b>(Photo)</b> 65.00
587	1862, 4c Blue (43). Very Fine .....	<b>(Photo)</b> 85.00
588	1876, 1c-48c Postage (72-79). Four unused, Fine-V. F. ....	20.25
589 ★	1878, 1c on 6c Chocolate (84). Very Fine .....	20.00
590	1898-99, 1c-15c Jubilees (152-159). Very Fine Sets .....	10.95
591 ★	1905-27, 1c-96c Pictorials, George V (160-169, 191-201). Very Fine .....	40.91
592 ★	1931-44, 1c-\$1.00 George V (205-222). Very Fine Sets .....	42.95
593 ★	<b>BRIT. HONDURAS</b> , 1921-33, 1c-\$2.00 George V (91-102). Very Fine Set	17.40
594 ★	— 1921-33, 25c, \$5.00 George V (103-104). Very Fine .....	21.75
595 ★	— 1938, 1c-\$5.00 George VI (115-126). Fine-Very Fine Set .....	16.47
596 ★	<b>BURMA</b> , 1938-40, 10r George VI (33). Fine .....	25.00

### CANADA

597	✉ <b>Stampless</b> , 1857, on illustrated <b>Ocean Penny Postage propaganda cover</b> from Canada to England, various postmarks on front and reverse. Quebec, Montreal, Liverpool Ship Letter, Ipswich, Fine .....	<b>(Photo)</b> E. VIII
598	1851, 3p Red Imperforate (1). Margins all around, tiny thin, V. F. appearing <b>(Photo)</b>	45.00
599	1851, 3p Red Imperforate (1). Margins 3 sides, in at B. ....	45.00
600	1851, 6p Grayish Purple Imperforate (2). Margins all around, Very Fine <b>(Photo)</b>	80.00



601	1851, 6p Grayish Purple (2). Light corner creases, Fine appearing .....	80.00
602	1851-55, 3p Red Imperforate (4). Margins all around, Very Fine .....	15.00
603	1851-55, 3p Red Imperforate (4). Margins all around, Very Fine .....	15.00
604	1851-55, 6p Slate Gray (5). Margins all around, thin, V. F. appearing (Photo) .....	75.00
605	1851-55, 6p Greenish Gray Imperforate (5b). Margins all around, Red cancel, tiny thin, V. F. appearing .....	(Photo) 80.00
606	1851-55, 6p Gray Violet (5d). Margins all around, thin, V. F. appearing (Photo) .....	175.00
607	1855, 10p Blue Imperforate (7). Margins all around, tiny thin, V. F. appear- ing .....	(Photo) 75.00
608	1855, 10p Blue Imperforate (7). Margins all around, <b>Major Re-entry</b> , very light crease, V. F. appearing .....	(Photo) 75.00+
609	1857-59, ½p Rose (8, 11). First unused, each has tear .....	125.00
610	1859-64, 1c-12½c Postage (14-15, 17-18, 20). Very Good-Fine .....	40.50
611	1859-64, 2c-10c Postage (15, 17, 20). Very Good-Fine .....	27.00
612	1859, 10c Red Lilac, 12½c Yellow Green (17-18). Fine .....	16.00
613	1868-97, ½c-15c Victoria (21, 23-29). Good-Fine .....	33.75
614	1868-97, ½c-15c Postage (21-28, 30). Very Good-Very Fine .....	38.75
615 ★	1868-97, 1c Brown Red (22). Light corner crease, Fine appearing .....	17.50
616	1868-97, 1c Yellow Orange (23). Eight within Double Diamond cancel, Fine .....	—
617 ★	1868-97, 6c Yellow Brown (27a). Fine .....	30.00
618	1868-97, 12½c Blue, Watermarked (28a). Light corner crease, V. F. appear- ing .....	30.00
619	1867-97, 15c Gray Violet, Watermarked (29c). Very Good .....	60.00
620 ★	1868-97, 15c-50c Postage (30, 46-47). First o. g., Fine-V. F. ....	17.50
621 ★田	1870-89, 3c Dull Red (37). Two Blocks, re-enforced, 1 stained, other V. G.	40.00
622	1872, 6c Yellow Brown (39). On pieces 23 some with lower values, Good- Fine .....	20.70+
623	1888-93, 3c Bright Vermilion (41). Clear <b>Crown in Circle</b> cancel, Fine (Photo) .....	—
624 ★	1888-93, 8c Gray, Imperforate (44d). Horiz. Pair, small gum stain in margin between stamps, large margins .....	40.00
625 ★	1897, ½c-50c Jubilees (50-60). Very Good-Very Fine .....	33.45
626 ★	1897, 6c-50c Jubilees (55-60). Fine-Very Fine .....	28.25

627 ★	1897 \$1.00 Jubilee (61). Very Fine .....	22.50
628 ★	1897, \$1.00 Jubilee (61). Tiny thin, Fine appearing .....	22.50
629	1897, \$2.00 Jubilee (62). Slightly heavy cancel, Fine .....	20.00
630 ★	1897, \$4.00 Purple (64). Slight rubbing on face, Fine appearing .....	60.00
631	1897, \$2.00, \$4.00 Jubilees (62, 64). Smudge cancels, V. G. ....	60.00
632 ★	1897-1902, ½c-20c Victoria (66-84). Good-Fine Sets .....	52.13
633 ★	1898-1902, 20c Olive Green (84). Fine .....	17.50
634 ★	1903-08, 50c Purple (95). Tiny thin, centered to B. but clear .....	35.00
635 ★	1908, ½c-20c Quebec (96-103). Fine-Very Fine Set .....	23.20
636 ★	1912-15, 1c-\$1.00 George V (104-122). Includes extra 50c Black, nos. 112-113 thin, others V. G.-V. F. ....	32.13
637 ★	1912, 1c-2c Coils (123-124). Pairs, V. F. ....	13.00
638 ★	1915-24, 2c-3c Coils (132-134). Pairs, one 2c Green small thin, others, F.-V. F. ....	17.70
639 ★	1927-29, 1c-\$1.00 Pictorials (141-159). Very Fine Sets .....	27.37
640 ★	1928-29, 1c-\$1.00 Pictorials (149-159). 5c has thin, others Fine-Very Fine .....	24.60
641 ★	1930-31, 1c-\$1.00 Pictorials (162-177). Very Fine Set .....	21.65
642 ★	1930, 50c-\$1.00 Pictorials (176-177). Fine .....	18.00
643 ★	1932-43, 1c-\$1.00 Pictorials (195-204, 208-227, 231-236, 241-262). Fine-V. F. Sets .....	35.13
644 ★	1933-38, 1c-\$1.00 Pictorials (202-204, 208-227, 241-245). Fine-V. F. Sets ....	23.00
645 ★田	1935, 1c-13c Pictorials (211-216). Set of Blocks, Very Fine .....	11.64
646 ★	1935-46, 1c-\$1.00 Pictorials (217-227, 249-262, 268-273). Very Fine Sets ....	21.83
647 ★	1935-43, 1c-\$1.00 Pictorials (217-227, 241-262). Cpl Sets, few have paper on back, Fine-Very Fine .....	22.20
648 ★	1898-1946, 6c-20c Airpost, Special Delivery (C1-CE2, E1-E11). Fine-V. F. ....	26.25
649 ★	1875-89, 8c Registration (F3). Very Fine .....	20.00
650 ★	1875-89, 8c Registry (F3). Some perfs. lightly stained, well centered ....	20.00
651 ★	1949-51, 1c-\$1.00 Officials (Between O1-EO2). Collection of 29 diff, Fine-V. F. ....	26.39
652 ★	1939-48, 1c-\$1.00 Postage. Perforated O.H.M.S., Collection of 37 diff including Airmails, Special Deliveries, V. F. ....	—
653 ★	1929, 10c Semi Official Airpost (Sanabria 542, 548, 550, 551). Fifty-two copies of first, Fine-V. F. .... Sanabria	41.75
654	Canadian Precancels, Queen Victoria period through George VI, accumulation of 3300, wide variety, V. G.-V. F. ....	—

## CAPE OF GOOD HOPE

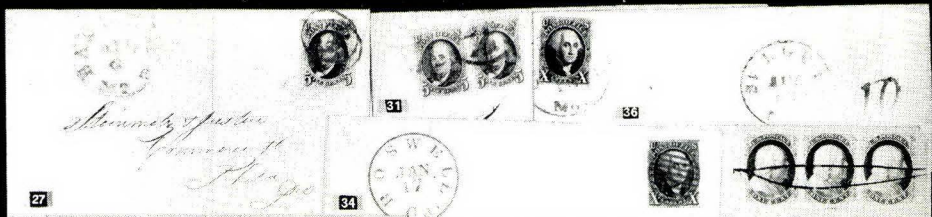
655	★	1853, 1p Red Imperforate (1). Pair, margins all around, very light gum crease, Fine appearance, o. g. ....	<b>(Photo)</b>	270.00
656		1853, 1p Red (1). Block of 4, two stamps thin, Fine appearing	<b>(Photo)</b>	140.00
657		1853-58, 1p, 6p Triangles (1, 5). Each has minor defect, Fine-V. F. appearing		70.00
658		1853-58, 1p-1sh Triangles (1-2, 4-6). All have faults, Fine-V. F. appearing		142.50
659		1853-64, 1p-1sh Triangles (Between 1-15). Twelve copies, 9 diff, Good-Fine		470.00
660		1863-64, 4p Blue (2). Pair, margins 3 sides, just in on other, Fine-V. F.	<b>(Photo)</b>	35.00
661		1853, 4p Blue (2). Pair, Fine-V. F. ....	<b>(Photo)</b>	35.00
662		1855-58, 1p-1sh Triangles (3-4, 6). Fine		67.50
663	✉	1855-58, 4p Blue (4). Margins all around, tied on cover to Port Elizabeth, V. F. ....		—
664		1855-58, 4p-1sh Triangles (4-6). Each has unnoticeable defect, Fine appearing		90.00
665		1853-64, 4p Blue (4, 8). Pairs, last tiny thin, first V. G. ....		40.00
666		1855-64, 4p Triangles (4, 8). Four copies, Fine		40.00
667		1855-64, 4p Triangles (4, 8). Six copies, V. G.-Fine		60.00
668		1855-58, 6p Lilac (5). Pair, light crease, slightly faded, margins all around		70.00
669		1855-58, 6p Gray (5a). In slightly part of one side		35.00
670		1855-58, 1sh Yellow Green, 1sh Dark Green (6, 6a). Very Good		90.00
671		1861, 1p Red, Woodblock (7). Margins 2 sides, just in 3rd, Fine	<b>(Photo)</b>	175.00
672		1861, 1p Carmine, Woodblock (7a). Margins all around, repaired, V. F. appearing		200.00
673	★	1861, 4p Blue, Woodblock (9). Margins 2 sides, just touches 3rd, small thin, Fine appearing	<b>(Photo)</b>	500.00
674		1861, 4p Blue, Woodblock (9). Defective copy, nice appearing		100.00
675		1863-64, 4p Slate Blue (13a). Margins all around, tiny thin, V. F. appearing		75.00
676	★	<b>CAYMAN ISLANDS</b> , 1905, ½p-1sh Edwards (3-7). Fine-V. F. Set		17.50
677	★	— 1905-07, ½p-1sh Edwards (8-15). Fine-Very Fine		35.10
678	★	— 1907, 5sh Edward (16). Very Fine	<b>(Photo)</b>	30.00
679	★	— 1907-09, 3p-5sh Edwards (24-29). Very Fine		28.50
680	★	— 1908, 10sh Edward (30). Very Fine		22.50

681	★	— 1913, 3p-10sh George V (45-47). Very Fine .....	19.75
682	★	— 1921, 2sh-10sh George V (60-63). Fine-Very Fine .....	25.50
683	★	— 1932-35, ¼p-1sh Centenary, Silver Jubilee (69-77, 81-84). Very Fine	19.10
684	★	— 1935, ¼p-10sh George V (85-96). Very Fine Set .....	37.85
685	★	— 1917, 1½p War Stamp (MR3). Very Fine .....	(Photo) 45.00

### CEYLON

686	田	1857-59, 1p Blue (3). <b>Block of 6</b> , slight faults, scarce .....	(Photo) 27.00+
687		1857-59, 4p Dull Rose (5). Margins all around, repaired, Very Fine appearing .....	450.00
688		1857-59, 5p-2sh Imperiorates (5-6, 11-13). All are defective .....	760.00
689	★	1857-59, 10p Vermilion (10). Fine .....	(Photo) 90.00
690		1857-59, 10p Vermilion (10). Very Good .....	60.00
691		1857-58, ½p Lilac (15). Fine .....	(Photo) 45.00
692	★	1861, 1sh9p Green (35). Fine, o. g. ....	(Photo) 125.00
693	★田	1863-67, ½p Lilac Imperforate (45a). <b>Block</b> , slight stains, scarce o. g. not priced in catalog .....	(Photo) —
694	⊠	1863-67, 1p Blue, 3p Rose, three copies (46, 59). Tied on cover to England, Fine .....	32.00+
695	⊠	1863-67, 9p Brown (55). Pair tied on cover to England, Fine .....	24.00+
696	★	1879, 2r50c Claret (82). Slight crease V. F. appearance .....	(Photo) 100.00
697	★田	1882, 16c on 24c Green (83). Block of 8, one stamp slight stain others V. F. o. g. ....	64.00
698	★	1883-99, 16c Violet (93). Fine .....	(Photo) 150.00
699		1885, 5c on 32c Slate Blue, <b>Inverted Surcharge</b> (96a). Royal Phil. Soc. Certificate, Fine .....	(Photo) 150.00
700	★	<b>COOK ISLANDS, NEW ZEALAND, NIUE, WESTERN SAMOA</b> , 1939, Forty-nine diff mounted in 1939 U.P.U. Presentation Album, V. F. ....	17.38
701	★	<b>DOMINICA</b> , 1903, 5sh Edward (34). Very Fine .....	(Photo) 25.00
702	★	— 1914, 5sh George V (54). Very Fine .....	15.00
703	★	— 1923-33, ½p-2sh6p, 4sh-5sh George V (65-79, 81-82). Fine-V. F. ....	16.58
704	★	— 1923-33. £1 George V (85). Fine .....	(Photo) 30.00

END OF FIRST SESSION



27

31

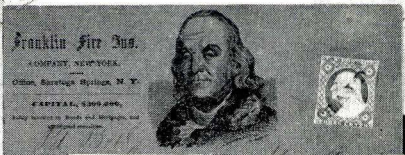
33

34



16

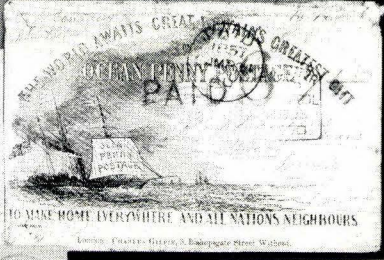
47



38



116



597



964



844



971



1052



183



686



693



510



512



513



524



515



520



522



EX 997



25

26

32

33

50

64

87



95

106

123

124

126

138



139

140

144

145

146

148



168

174

178

228

265

380



395

396

398

399

404

412

426



528

529

539

541

542

563

564

565

567



568

E x 576

583

584

586

587

598

600



604

605

606

607

608

623

655

660

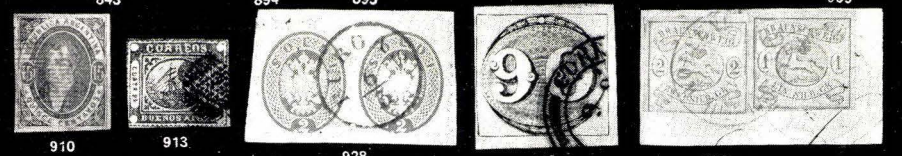
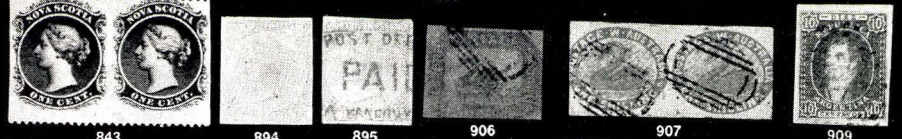


656

661

671

673



## SECOND SESSION

SATURDAY, MARCH 10th, 1956 — 2 P. M.

### FALKLAND ISLAND

705 ★	1878-79, 1p Victoria (1). Fine, o. g. ....	18.00
706 ★	1878-86, 1p-1sh Victoria (3-8). Fine-Very Fine, o. g. ....	30.75
707 ★	1891-96, ½p-1sh Victoria (9-13, 15-18). Fine-Very Fine .....	17.35
708 ★	1898, 2sh6p-5sh Pictorials (20-21). Very Fine Set .....	35.00
709 ★	1904-05, 1p-5sh Edwards (22-29). Fine-Very Fine Set .....	29.80
710 ★	1912-14, ½p-10sh George V (30-39). Very Fine .....	36.98
711 ★	1912-14, £1 George V (40). Very Fine .....	27.50
712 ★	1921-25, ½p-3sh George V (41-48). Fine-Very Fine Set .....	13.95
713 ★	1928, 2½p on 2p Brown Violet (52). Very Fine ..... <b>(Photo)</b>	125.00
714 ★	1929-32, ½p-10sh George V (54-63). Fine-Very Fine .....	22.80
715 ★	1929-32, £1 George V (64). Very Fine ..... <b>(Photo)</b>	27.50
716 ★	1933, ½p-5sh Centenary (65-74). Fine-Very Fine ..... <b>(Photo)</b>	81.25
717 ★	1933, 10sh Centenary (75). Very Fine ..... <b>(Photo)</b>	65.00
718 ★	1933, £1 Centenary (76). Very Fine ..... <b>(Photo)</b>	135.00
719 ★	1938-44, ½p-£1 George VI (84-95, 2L1-5L8). Fine-Very Fine Sets .....	26.55
720 ★	<b>FALKLAND IS., LEEWARD IS., ST. VINCENT</b> , 1938, £1 George VI from each colony, V. F. ....	22.50
721 ★	<b>FIJI</b> , 1876, 2p Green, Double Overprint (34a). Fine .....	—
722	<b>GAMBIA</b> , 1869, 4p Pale Brown (1). Red cancel, Fine ..... <b>(Photo)</b>	40.00
723 ★	<b>GIBRALTAR</b> , 1886, 1sh Bistre Brown (1). Fine, o. g. ....	40.00
724 ★	<b>GRENADA</b> , 1861-81, ½p-1p Postage (1, 3, 8). Fine .....	16.50
725	— 1863-71, 1p Green (3). Horiz. strip of 5, Fine .....	7.50+
726	— 1881, 4p Blue (13). Centered to right .....	50.00
727 ★	— 1886-91, 1p Overprints (28-32, 34, 36). Very Good-Very Fine .....	22.25
728 ★	— 1906-11, 2p-5sh Pictorials (75-76). Very Fine .....	13.50



729	★	— 1934-41, ½p-10sh George V, George VI (114-142). Fine-V. F. Sets	24.07
730		<b>INDIA</b> , 1854, ½a Blue, 1a Red (2, 4). Nine stamps includes 3 pairs, Fine-V. F. ....	39.00
731		— 1854, 4a Red & Blue (6). Small thin, V. F. appearing .....	30.00
732	★	<b>INDIA, Indore</b> , 1890, ¼a (3). Complete sheet of 64, Very Fine .....	80.00
733	☒	<b>JAMAICA</b> , 1860, 1p Blue (1). Pair on one, on two covers, tied, Fine .....	—
734	★	— 1903-11, ½p-5sh Pictorials (33-45). Fine-Very Fine Sets .....	30.15
735	★	— 1905-11, 2½p-1sh Pictorials (46-54). No. 49 slightly discolored, others Fine-Very Fine .....	21.30
736	★	— 1912-19, 3p-5sh George V (65-70). Fine-Very Fine .....	19.75
737	★	— 1919-21, ½p-10sh George V (75-87). Fine-Very Fine Set .....	42.13
738	★	— 1921-23, 1sh-5sh Pictorials (96-99). Very Fine .....	15.50
739	★	— 1923, ½p-2½p Semi-Postals (B1-B3). Very Fine Set .....	11.00
740	★	<b>LEEWARD ISLANDS</b> , 1890, ½p-5sh Victorias (1-8). Fine-Very Fine Set	23.95
741	★	— ½p-6p, 1sh Jubilees (9-13, 15). Very Fine .....	35.25
742	★	— 1905-11, 1sh-5sh Edwards (38-40). Very Fine .....	14.50
743	★	— 1914, 3p-1sh George V (58-59). Very Fine .....	18.00
744	★	— 1921-32, ¼p-5sh George V (61-81). Fine-Very Fine Set .....	29.80
745	★	— 1928, 10sh-£1 George V (82-83). Very Fine .....	37.00
746	★	— 1938-42, ¼p-£1 George VI (103-115). Fine-Very Fine Set .....	14.49
747	★	<b>MALTA</b> , 1922-26, £1 Pictorial (114). Slight gum crease, well centered ...	17.50
748		<b>MAURITIUS</b> , 1848, 1p Orange (5b). Margins all around, Very Fine <b>(Photo)</b>	45.00
749		— 1848, 1p Orange (5b). Horiz. pair, thin, Fine appearing .....	90.00+
750		— 1848, 1p Orange, Brownish Red (5b, 5bc). Margins all around, first light crease, last thin, V. F. appearing .....	90.00
751		— 1848, 2p Blue (6b). Margins 3 sides, just touches at top, Fine .....	75.00
752		— 1859, 2p Blue (14B). Margins all around, Early Impression, small thin, V. F. appearing .....	<b>(Photo)</b> 100.00
753		— 1859, 2p Blue (14Bc). Very Fine .....	40.00
754		— 1859, 2p Blue (15). Margins all around though small in places, defective but V. F. appearing .....	<b>(Photo)</b> 400.00
755		— 1p Deep Red (16a). Margins all around, tiny pin hole, V. F. appearing <b>(Photo)</b>	200.00
756		— 1859, 2p Blue (17). Very Good .....	40.00

757	— 1859, 2p Blue (17). Large margins all around, heavy retouching on neck, thin, V.F. appearing .....	40.00+
758 ★	<b>MONTSERRAT</b> , 1876-85, 1p-4p Postage (1-2, 5, 8, 10). Fine-V.F. ....	15.80
759	— 1876, 1p Red (1b). Diagonal half tied on small piece "AO8" cancel, Cat. \$35.00 on cover .....	—
760 ★	— 1903-08, ½p-2sh Pictorials (14-19, 22-27). Very Fine .....	29.05
761 ★	— 1908-10, ½p-5sh Edwards (31A-40). Fine-Very Fine Set .....	28.65
762 ★	— 1916-22, 2sh-5sh George V (51-53). Very Fine .....	17.00
763 ★	— 1922-29, ¼p-4sh George V (54-73). Fine-Very Fine .....	23.17
764 ★	— 1932, ½p-1sh Tercentenary (75-82). Fine-Very Fine .....	22.70
765 ★	<b>NEVIS</b> , 1861-90, 1p-2½p Postage (5, 14-14A, 19, 21, 25, 31). Last tied to small piece, Fine-V.F. ....	28.75
766 ★	— 1876, 6p Olive Gray (16). Light corner crease, Fine appearance ....	40.00
767 ★	<b>NEW BRUNSWICK</b> , 1851, 3p Red Imperforate (1). Margins all around, Very Fine .....	(Photo) 85.00
768	— 1851, 3p Red, 6p Olive Yellow Imperforates (1-2). Last has closed tear, first Fine .....	80.00
769	— 1851, 6p Olive Yellow Imperforate (2). Margins all around, creased, V.F. appearing .....	60.00
770	— 1851, 1sh Dull Violet (4). Margins all around, very light crease, Very Fine appearing .....	(Photo) 350.00
771 ★	— 1860, 5c Connell (5). Part of perfs. trimmed, Rare .....	(Photo) 600.00

### NEWFOUNDLAND

772	1857, 1p Brown Violet (1). Light crease, Fine appearance .....	25.00
773 ★	1857-63, 1p-5p Imperforates (1, 12A, 15A, 21). Fine-V.F. ....	47.00
774 ★	1860-63, 1p-1sh Imperforates (11A, 15A-16, 18-20, 23). Fine-V.F. ....	43.00
775	1860, 4p Orange Imperforate (12). Margins all around, tiny thin, V.F. appearing .....	(Photo) 150.00
776	1860, 4p Orange (12). Thin, V.G. appearing .....	150.00
777 ★	1862-63, 2p Rose Imperforate (17). Fine, o.g. ....	30.00
778 ★	1862-63, 4p-1/ Imperforates (18, 20, 23). Margins all around, V.F. ....	11.00
779	1862-63, 6p Rose (20). Horiz. Pair, margins all around, grid cancels, Fine	20.00
780	1862-63, 6p-6½p Imperforates (20-21). Margins all around though small on last, last tiny thin, first Fine .....	60.00
781 ★	1865-94, 2c-13c Pictorials (24a, 30, 33). Very Good-Fine .....	36.50

782	★	1865-94, 5c Brown (25). Just touches at R. ....	60.00
783	★	1865-94, 10c-13c Pictorials (28a, 30, 59). Fine-V.F., o.g. ....	17.50
784	★	1897, 1c-60c Cabot (61-74). Fine-V.F. Set .....	31.80
785	★	1910, 1c-15c <b>Guy</b> Issue (87-97). Few have paper on back, Fine-V.F. ....	61.45
786	★	1911, 6c-15c <b>Guy, Engraved</b> (98-103). Very Fine Set .....	61.00
787	★	1911, 1c-15c Royal Family (104-114). Fine-Very Fine Set .....	59.40
788	★	1911, 1c-15c <b>Royal Family</b> (104-109, 110a, 111-114). Fine-V.F. Set .....	50.90
789	★	1919, 1c-36c <b>Caribou</b> (115-126). Fine-V.F. Set .....	28.30
790	★	1920, 3c Overprints (128-129). Fine-V.F. ....	14.00
791	★	1923-24, 1c-24c Pictorials (131-144). Fine-V.F. Set .....	28.70
792	★	1928, 1c-30c Pictorials (145-159). Fine-V.F. Set .....	19.35
793	★	1929-31, 1c-20c Re-Engraved (163-171). Fine-V.F. Set .....	14.70
794	★	1931, 1c-30c Pictorials, Re-Engraved (172-182). Fine-V.F. Set .....	36.75
795	★	1931, 1c-30c Re-Engraved (172-182). Fine-V.F. Set .....	36.75
796	★	1931-37, 1c-48c Pictorials (183-211). Includes No. 191a, Fine-V.F. Sets	25.10
797	★	1933, 1c-32c <b>Gilberts</b> (212-225). Fine-V.F. Set .....	39.45
798	★	1941-44, 1c-48c Pictorials (253-266). Blocks, Fine-V.F. Set .....	21.20
799	★	1919, \$1.00 Airpost (C2a). Without comma, Very Fine ..... <b>(Photo)</b>	32.50
800	★	1921, 35c Airpost (C3). Fine .....	18.00
801	★	1931, 15c-\$1.00 Airpost (C6-C8). Fine-Very Fine Set .....	15.50
802	★	1931, 15c-\$1.00 Airpost (C6-C8). Fine-V.F. Set .....	15.50
803	✉	1931, 15c Airpost (C6). On June 24, 1931, Otto Hillig & Holgar Hoiriis Nonstop Trans-Atlantic Flight cover with flyers autographs, V.F. ....	—
804	★	1932, \$1.50 Dornier Airpost (C12). Fine .....	55.00
805	★	1933, 5c-75c <b>Labrador Airpost</b> (C13-C17). Very Fine Set .....	34.75
806	★	1933, 5c-75c Labrador Airpost (C13-C17). Very Fine Set .....	34.75
807	★	1933, \$4.50 Balbo Airpost (C18). Very Fine ..... <b>(Photo)</b>	50.00

#### NEW SOUTH WALES

808		1850, 1p Red (1). Horiz. Pair, one stamp light crease, V. G. ....	120.00
809		1850, 1p Red (1, 2b, 2c). Very Good-Fine .....	190.00
810		1850, 1p Red (2). Fine .....	50.00
811		1850, 1p Red (2). Margins all around, Very Fine ..... <b>(Photo)</b>	55.00

812	1850, 1p Red (2f). Light crease, V. F. appearing .....	<b>(Photo)</b>	85.00
813	1850, 1p Red (2c). Margins all around, thin, V. F. appearing .....		55.00
814	1850, 1p Red, 2p Blue (2-3). Fine .....		85.00
815	1850, 2p Blue (5h). Margins all around, light crease, V. F. appearing .....		75.00
816	1850-51, 2p Blue (6c). Margins all around, Very Fine .....	<b>(Photo)</b>	50.00
817	1850-51, 2p-3p Imperforates (7-9). Margins all around, each has unnoticeable defect, V. F. appearing .....		95.00
818	1850-51, 2p Blue (8). Margins all around, Very Fine .....		25.00
819	1850-51, 3p Green (9b). Vert. Pair, small scissors cut between stamps, Very Good .....		150.00
820	1850-51, 3p Green (9, 9a). Very Good-Fine .....		75.00
821	1851, 1p Carmine (10). Horiz. Pair, tiny corner crease, Fine appearing .....	<b>(Photo)</b>	80.00
822 ★	1852-55, 2p Blue (15). Margins all around, light crease, V. F. appearing .....	<b>(Photo)</b>	225.00
823 ★	1856, 3p Green (34). Margins all around, light crease, V. F. appearing .....	<b>(Photo)</b>	125.00
824 ★	1888-97, 5sh Red Violet, 20sh Ultramarine (86, 101). Fine, o. g. ....		18.50
825	<b>NEW ZEALAND</b> , 1855, 1p Orange Red (6). Margins all around, Very Fine .....	<b>(Photo)</b>	80.00
826	— 1855, 1sh Green (8). Margins all around though small at B., tiny thin, V. F. appearing .....	<b>(Photo)</b>	125.00
827	— 1855, 1sh Blue Green (12). Two shades, each thin, Fine appearing .....		120.00
828	— 2p Blue, Slate Blue (19, 19a). Four copies of each, includes pair, V. G.-Fine .....		90.00
829	— 1862-67, 1sh Yellow Green, 3p Brown Lilac (22c, 25a). Very Good-Fine .....		95.00
830	— 1862-67, 3p Brown Lilac (25a). Fine .....		60.00
831 P	— 1898, 6p Yellow Green (78P). Horiz. Proof Pair, Imperforate on gummed stamp paper, light crease, V. F. appearing .....		—
832	<b>NIGER COAST PROTECTORATE</b> , 1892, ½p Overprint (7). Unsevered Pair, Very Fine .....		20.00
833	— 1894, ½p on half of 1p (49). V. F. used, B.P.A. Certificate accompanies .....	<b>(Photo)</b>	30.00
834	— 1894, 1p on half of 2p (50). Tied to piece, Very Fine .....	<b>(Photo)</b>	30.00
835	— 1894, ½p on 2½p Blue (54). Tied to piece, Fine .....		25.00

836	★	<b>NORTH BORNEO</b> , 4c Rose and 1c Rose Error in Strip of 3 (28, 28a). Very Fine .....	10.50
837	★	<b>NOVA SCOTIA</b> , 1851-53, 1p Red Brown (1). Fine .....	125.00
838		— 1851-53, 1p Red Brown Imperforate (1). Margins all around, small thin and crease, V.F. appearing .....	50.00
839		— 1851-53, 6p Yellow Green (4). Margins all around, Very Fine <b>(Photo)</b>	45.00
840		— 1851-53, 6p Yellow Green Imperforate (4). Creased, V.F. appearing	45.00
841	✉	— 1851-53, 6p Yellow Green (4). Margins all around, creased, tied on cover, Ms. "Per Creole" .....	45.00
842		— 1851-53, 1sh Reddish Violet Imperforate (6). Thin, Fine appearing <b>(Photo)</b>	275.00
843	★	— 1860-63, 1c Black, Imperf. Vertically (8c). Horiz. Pair, Fine, o.g. <b>(Photo)</b>	60.00
844	✉	— 1860-63, 10c Vermilion, <b>Bisect</b> (12b). Diagonal half tied on cover to Bridgetown, backstamped Halifax, Very Fine <b>(Photo)</b>	125.00
845		<b>PAPUA</b> , 1901-05, 2sh6p Pictorial (8). Creased, V.F. appearing .....	40.00
846	★	<b>PRINCE EDWARD ISLAND</b> , 1862-72, 2p-12c Postage (5, 6, 8, 9, 9a, 16). Blocks, Fair-Fine .....	75.20
847	★	<b>QUEENSLAND</b> , 1860-61, 2p Deep Blue, 1sh Dull Violet (8, 11). Last thin, first Fine .....	95.00
848		<b>RHODESIA</b> , 1890-94, £5-£10 Pictorials (18-19). Fine used .....	30.00
849		— 1896, 1p on 3p Gray & Green (40). Fine .....	45.00
850	★	<b>ST. CHRISTOPHER</b> , 1870-85 ½p-1sh Postage (1-2, 7-9, 12, 14-17). Fine- Very Fine .....	38.60
851		— 1885-86, ½p-4p Overprints (17-22). Two unused, Very Fine .....	41.50
852	★	<b>ST. KITTS-NEVIS</b> , 1903, ½p-5sh Pictorials (1-10). Very Fine Set .....	23.10
853	★	— 1905-18, ½p-5sh Pictorials (11-23). First used, Very Fine Set .....	20.50
854	★	1920-22, ½p-10sh George V (24-35). Fine-Very Fine .....	21.25
855	★	— 1921-29, ½p-5sh George V (37-51). Very Fine Set .....	21.65
856	★	— 1923, ½p-2sh Pictorials (52-60). Fine-Very Fine .....	25.00

#### ST. LUCIA

857	★	1863-81, ½p-2½p Postage (4, 15, 17). Fine .....	23.00
858	★	1883-98, ½p-10sh Victorias (27-33, 35, 37-39). Very Fine .....	29.20
859		1892, ½p-1p Overprints (40-42). Last unused, Very Fine .....	16.75
860	田	1892, ½p Overprint (41). Block of 6 tied to piece, V.F. ....	30.00+

861	★	1907-14, ½p-5sh Edward, George V (57-72). No. 70 used, Fine-V. F. Sets	32.75
862	★	1936, ½p-10sh George V (95-106). Fine-Very Fine Set	22.15
863	★	1936, ½p-1½p George V, Coil Stamps (95a, 96a, 97a). Very Fine	10.60
864		<b>St. Vincent</b> , 1861-69, 1p-1sh Postage (1B-3, 6, 8-10). Includes 2 duplicates, V. G.-Fine	109.00
865		— 1862-81, 1p-1sh Postage (Between 2-28A). Ten diff. V. G.-V. F.	70.50
866		— 1871-78, 1p-1sh Postage (13, 14A, 14B, 15, 17, 21, 23). V. G.-V. F.	63.00
867	★	— 1871-81, 4p Dark Blue, 6p Yellow Green (16, 21). Very Good	125.00
868	★	— 1871-78, 1sh Deep Rose (17). Fine <b>(Photo)</b>	200.00
869		— 1880-97, ½p-1sh Postage (27-28A, 40-49, 52-53, 55, 60). Includes few duplicates, V. G.-V. F.	76.75
870	★田	— 1890-91, 2½p Milky Blue Overprint (56a). Sheet of 60, slightly re-enforced, Fine	180.00
871	★	— 1898, ½p-5sh Victoria (62-70). Very Fine Set	27.85
872	★	— 1921-32, 5sh-£1 Pictorials (130-131). Fine-Very Fine	27.00
873	✉	<b>SAMOA</b> , 1914-25, ½p-5sh Postage, Three registered covers with 20 stamps tied, Fine-V. F.	—
874	★	<b>SOUTH AUSTRALIA</b> , 1859, 1p Yellow Green (10). Very Good, part o. g.	30.00
875	★	— 1859-69, 1p-2p Postage (11, 14, 15). Three copies of first, 2 of last, Fair-Fine	73.50
876		— 1860-65, 1p-9p Postage (14-16, 21). Includes 3 Pairs, 14 stamps, Fair-Fine	74.75
877	★	— 1860-69, 2p Vermilion (16). Nine copies, Fair-Fine	63.00
878	★	— 1860-69, 9p Gray Lilac (21). Four copies, V. G.-Fine	40.00
879		— 1860-69, 10p Overprints (22-23). Six copies of each showing diff. varieties of the Overprint, Good-V. F.	66.00
880	★	<b>SOUTH-WEST AFRICA</b> , 1927, £1 George V (106). Very Fine	10.00
881	★	<b>TOBAGO</b> , 1879-96, 1p-1sh Victoria (Between 1-30). Twenty diff, 4 used, V. G.-V. F.	66.45
882		<b>TRINIDAD</b> , 1859, 1sh Slate Blue (17). Fine	22.50
883	★	— 1896-1904, ½p-5sh Pictorials (74-76, 78-88). Fine-Very Fine	31.35
884	★	— 1904-09, ½p-5sh Pictorials (92-101). Fine-Very Fine	20.65
885	★	<b>TRINIDAD &amp; TOBAGO</b> , 1913, ½p-£1 Pictorials (1-11). Fine-Very Fine Set	37.48
886	★	— 1921-22, £1 Pictorial (20). Very Fine	25.00
887	★	— 1922-28, ½p-5sh George V (21-30, 32-33). Fine-Very Fine	20.64

888	★	— 1c-\$4.80 George V, George VI (34-61). Fine-Very Fine Sets .....	23.75
889	★	<b>TURKS ISLANDS</b> , 1867-95, ½p-1sh Victories (Between 1-57). Thirteen diff, Fine-V. F. ....	22.10
890		— 1881, 4p Overprint (37). Fine .....	50.00
891	★	<b>TURKS &amp; CAICOS ISLANDS</b> , 1909-16, ¼p-3sh Edwards (13-35). Fine-Very Fine Sets .....	28.25
892	★	— 1921-26, ¼p-3sh Edward (37-55, 57). Fine-Very Fine .....	25.67
893	★	— 1928, ½p-10sh Edward (60-70). Fine-Very Fine Set .....	18.10
894	★	<b>VANCOUVER ISLAND</b> , 1865, 10c Blue Imperforate (4) Margins all around, hinge thin, V. F. appearing ..... <b>(Photo)</b>	225.00
895		— 1865, 10c Blue Imperforate (4). Margins all around though small at L., Blue Post Office Paid, Vancouver cancel, V. F. .... <b>(Photo)</b>	135.00
896	★	<b>VICTORIA</b> , 1850, 1p Dull Red, 2p Brown Lilac (1, 7). Very Good .....	130.00
897	✉	— 1850-58, 3p, 6p (3a, 30). On cover to London, in oval "Via Marseilles, Insufficiently Paid," Fine .....	11.00+
898	★	— 1857-61, 1p Blue Green (37). Margins all around, tiny thin, V. F. appearing, o. g. ....	75.00
899	★	— 1857-61, 4p Rose (39). Small closed tear .....	150.00
900	★	— 1901-02, £ Deep Rose (206). Heavy hinge, Fine .....	22.50
901	★	<b>VIRGIN ISLANDS</b> , 1866-68, 1p-4p Postage (1-2, 5). Last used, V. F.	20.00
902	★	— 1880-89, ½p-6p Postage (10, 13-17, 19). Fine-Very Fine .....	23.75
903	★	— 1899, ½p-5sh Pictorials (21-28). Fine-Very Fine Set .....	22.70
904	★	— 1904, ½p-5sh Edwards (29-37). Very Fine Set .....	24.35
905	★	— 1921-28, ½p-5sh George V (47-66). Very Fine Sets .....	30.67
906		<b>WESTERN AUSTRALIA</b> , 1854, 2p Brown (2). Fine ..... <b>(Photo)</b>	60.00
907		— 1854-57, 1sh Pale Red Brown (5c). <b>Horiz Pair</b> , slight creases, Fine appearing ..... <b>(Photo)</b>	250.00

## GENERAL FOREIGN

908	✉	<b>ALBANIA</b> , 1913, 2pa Olive Green (17). Four copies tied on cover, Karaivanoff guarantee, Fine .....	40.00+
909		<b>ARGENTINE REPUBLIC</b> , 1864-67, 10c Green (9). Margins all around, small thin, V. F. appearing ..... <b>(Photo)</b>	150.00
910		— 1864-67, 15c Blue (10). Margins all around, thin, V. F. appearing, signed Friedl Expert Com. .... <b>(Photo)</b>	450.00

911	★	— 1910, 10p Centenary (174). Two copies, one slight corner crease, Fine .....	45.00
912	★	— 1912-13, 10p Violet & Blue (203). Very Fine .....	17.50
913		— BUENOS AIRES, 4p Vermilion (4). tiny closed tear, Fine appearing, signed Friedl Experf Com. .... <b>(Photo)</b>	300.00
914	☒	— <b>Buenos Aires</b> , 1860, 2p Vermilion (11). Margins all around, ms. cancel on cover .....	22.50
915	☒	— <b>Corrientes</b> , 1856-67, 1r, 3c, 2c (1, 3, 5). Two covers, two #1 on one, combination on other, ms. cancels, minor faults .....	34.75
916		<b>AUSTRIA</b> 1850-59, 1kr-3kr (1, 2, 7). Latter has Red town cancel, Fine-V. F. ....	22.00
917	★	— 1850, 2kr Black (2). Margins all around, thin, V. F. appearing .....	65.00
918		— 1858-59, 2kr Orange (6b). Wien town cancel, V. F. ....	35.00
919	★	— 1858-59, 3kr Green (8). Centered to top, small thin, unused .....	60.00
920	★	— 1858-63, 2kr-3kr Postage (8, 13, 17). Each has slight defect, Fine-V. F. appearing .....	110.00
921	★	— 1863, 10kr Blue (20). Heavy hinge, Fine, o. g. ....	65.00
922	★	— 1867, 10kr-15kr Postage (30-31). First tiny thin, last short perfs, Fine appearing .....	50.00
923		— 1851-59, .6kr-1kr Newspapers (P1, P1a, P5-P7). P5 thin, P6 unused, V. G.-Fine .....	80.50
924		— 1858-59, 4kr Newspaper (PR4). Small thin, Fine appearing, used .....	60.00
925		— Lombardy-Venetia, 1850-62, 5c-10c Postage (1, 3, 8). Fine .....	21.00
926	★	— Lombardy-Venetia, 1858-62, 2s Yellow, Ty. I (7a). slightly soiled, V. G. unused .....	125.00
927	★	— 1861-62, Lombardy-Venetia, 5s Red (13). Well centered, thin, V. F. appearing o. g. ....	125.00
928		— Lombardy-Venetia, 1864-65, 2s Yellow (20). Pair on Piece, V. F. .... <b>(Photo)</b>	45.00
929		— Lombardy-Venetia, 1858-65, Group of 61 stamps including much duplication, used & unused, many defects, Fair-Fine .....	152.90
930		<b>AZORES</b> , 1868, 50r-100r Imperforates (4-6). Very Good-Fine .....	110.00
931		— 1868, 100r Lilac (6). Margins all around, V. F. ....	40.00
932	★	<b>BADEN</b> , 1851, 3kr yellow, 6kr yellow Green (2-3). Fine-V. F., o. g. ....	65.00
933	★	— 1853-68, 1kr-9kr Postage (Between 6-28). Thirteen diff., Fair-Fine .....	94.15
934		— 1862-65, 30kr Orange (25). Very Fine used .....	45.00
935	☐	— 1862, 3kr Yellow (LJ2). Block, centered T. & R., Very Good .....	—



936	✉	<b>BAVARIA</b> , 1850-58, 12kr Red Imperforate (7). Margins all around, tied to cover, V. F. ....	15.00+
937		<b>BOLIVIA</b> , 1866-68, 50c Blue, 100c Green (6-7). Margins all around, last unused, each thin, V. F. appearing .....	87,50
938	★田	— 1911-12, 5c on 20c, 10c (96, 99). Block of 10 of first, twenty of latter, Fine .....	70.00
939	★田	— 1911, 5c Inverted Overprint (96a). Block, Fine, o. g. ....	50.00
940		<b>BRAZIL</b> , 1843, 90r Black (3). Fine ..... <b>(Photo)</b>	150.00
941		— 1844-46, Specialized Collection of 10r-180r Imperforates, 53 stamps including defective #13, others Good-V. F. ....	404.00
942		— 1850, 10r-600r Imperforates (21-28). Includes 4 copies of #23, 7 copies of #24, all have margins all around, V. G.-V. F. ....	71.00
943		— 1878-79, 700r Red Brown (76). Very Fine .....	17.50
944	★田	— 1945 1.20cr-5cr Airpost, Unwatermarked (San. 87b-88b). Blocks, no gum, V. F. .... San.	40.00)
945	★	<b>BREMEN</b> , 1855-67, 2gr-10gr (1, 3, 5, 7, 12). All have thin spots, nice appearing .....	142.50
946	★	— 1855, 3gr Blue (1A). Margins all around, Fine, o. g. ....	40.00
947		— 1861-63, 2gr Orange (5). Repaired, V. F. appearing .....	175.00
948		— 1863, 3gr Blue (9). Tiny thin, V. F. appearing .....	45.00
949	★	— 1866-67, 2gr, 5sgr Postage (11, 15, 15a). Last tiny thin, others V. G.-Fine, o. g. ....	55.00
950		<b>BRUNSWICK</b> , 1852, 1sgr Rose, 2sgr Blue (1-2). Last margins all around, first just touches at B. tied piece, Fine ..... <b>(Photo)</b>	55.00
951		— 1852, 2sgr Blue (2). Fine .....	20.00
952		— 1852, 3sgr Vermilion Imperforate (3). Margins all around, V. F. ....	25.00
953	★	— 1853-63, 1/3sgr Black (5). Fine .....	20.00
954		— 1853-63, 1/3sgr-3sgr (5, 7, 8, 10). V. F. except #7 has thin, margins all around .....	41.00
955		— 1853-65, 1/2sgr-3sgr Postage (6-11, 16-18, 26). Very Good .....	105.50
956	★田	<b>BULGARIA</b> 1882, 30s Violet & Green (17). Block of 20, V. F. ....	60.00+
957	★田	— 1940, 1L-100L Airpost (C19-C30). Blocks, Fine-V. F. Set .....	29.32
958		<b>CAROLINE ISLANDS</b> , 1900-05, 1m-3m Yachts (16-18). Fine-V. F. ....	55.00
959		— 1900-05, 5m Slate & Carmine (19). Very Fine ..... <b>(Photo)</b>	55.00
960	✉	<b>CHILE</b> , 1856-62, 10c Deep Blue (10). Horiz. Pair tied on cover, Fine .....	7.00+

961	✉	— 1934, 30c Magenta (185). Two copies tied on <b>Crash Cover, Recovered from Plane N. C. 15065, Aug 3, 1937, Cristobal, C. Z.</b> Handstamp on cover, Interesting .....	—
962	★	<b>CHINA</b> , 1888, 1c Green (13). Complete Sheet of 40, V.F. ....	20.00+
963	★	✉ <b>COLOMBIA</b> , 1881, 1p Vermilion (97). Sheet Margin Block of 10, V.F., o. g. ....	75.00+
964	✉	— 1919, 2c Carmine Rose Airpost (C1). Tied on cover, B. P. A. Expert Certificate, tied on cover, Very Fine ..... <b>(Photo)</b>	175.00+
965	★	✉ <b>CROATIA</b> , 1943, 1kr-32k Semipostals (B42-B51). 87 Blocks of 15 showing Perf, Part Perf, Imperf, Proofs, etc, Interesting .....	—
966	★	<b>CUBA</b> , 1910, 10c Pictorial, <b>Inverted Center</b> (244a). Small thin, V.F. appearing ..... <b>(Photo)</b>	175.00
967	★	✉ <b>DANZIG</b> , 1923, 2 mil m Airpost, Without Overprint (Sanabria 24a). Block, 2 stamps light crease, no gum .....	60.00
968		<b>DENMARK</b> , 1858-62, 8s Green Imperforate (8). Ten copies including 1 unused, two pairs, Fair-Fine .....	78.00
969		— 1870-71, 48s Brown & Lilac (24). Three, one lightly creased, others, Fine .....	45.00
970		— 1875-79, 3ö-100ö Postage (25-34). Specialized collection of 172 stamps, used & unused, Plate varieties, cancels, includes 8 covers, Fine Lot .....	157.00
971	✉	<b>FINLAND</b> , 1856, 10k Rose Imperforate (2). Large Margins all around, tied ms. and town cancel, Very Fine ..... <b>(Photo)</b>	30.00+
972	✉	<b>FRANCE</b> , 1849-50, 10c Pair, 1fr (1, 9). Tied on cover, one of 10c creased, Good .....	45.00
973		— 1849-50, 15c Yellow Green (2). Margins all around, V.F. .... <b>(Photo)</b>	40.00
974		— 1849-50, 15c Yellow Green (2). Vertical Pair, top stamp in at R. other Fine .....	80.00
975		— 1849-71, 15c Yellow Green, 40c Scarlet (2, 47c). Each has thin, V.F. appearance .....	90.00
976	✉	— 1849-50, 1fr Carmine (9). Horiz. strip of 3 tied on cover to New York, Fine .....	60.00+
977	✉	— 1849-50, 1fr Carmine (9). Vert. strip of 3, tied on cover to New York and forwarded, numerous, markings, one stamp creased otherwise Fine .....	60.00+
978	✉	— 1849-50, 1fr Carmine (9). Two horiz. strips of 3 tied on cover to New York, stamps cut in or close, attractive .....	120.00+
979		— 1853-71, 10c-40c (14, 18, 42, 45). Seventy-two stamps, Fair-Fine .....	48.60
980		— 1869, 5fr Gray Lilac (37). Very Fine .....	25.00
981		— 1869, 5fr Gray Lilac (37). Corner crease, well centered .....	25.00

982	— 1870-71, 20c Blue Type I, II, III (43-45). First has thin others V. F.	31.20
983	<b>FRENCH COLONIES</b> , 1872-77, 2c Red Brown (17). Beyrouth, Syria pmk., small thin, V. F. appearing .....	60.00
984	— 1872-77, 4c Gray Imperforate (18). Horiz <b>Pair</b> , margins 3 sides, in at L., light crease, Saigon, Cochin China pmk. Fine appearing .....	(Photo) 200.00+
985	★田 <b>GERMAN SOUTHWEST AFRICA</b> , 1897, 3pf Dark Brown, Light Brown (1, 1a). Block of first, Block of 3 of last, Fine-V. F. ....	31.60
986	★ <b>GERMANY</b> , 1872, 2½gr Orange Brown (19). Small thin, V. F. appearing, o. g. ....	75.00
987	— Offices in Turkish Empire, 1884, 10pa-2½pi Overprints (1-6). Two unused, V. G.-Fine .....	45.60
988	★ <b>HAMBURG</b> , 1859-64, ½s-4s Imperforates (1, 3-4, 9c). Very Good-Fine	39.50
989	— 1859-66, ½s-7s Postage (Between 2-25). Fourteen diff. including 2 shades of #17, Fair-Fine .....	64.50
990	<b>HANOVER</b> , 1850-64, 1g-3g Postage (Between 1-26). Thirteen mostly diff., Fair-Fine .....	125.50
991	★ — 1851-55, 1/30th-1/10th Imperforates (3, 8). Includes 2 shades of first, Fine .....	52.00
992	★ — 1856-61, 1/15th-3g Imperforates (11, 13, 18-19, 22). No. 18 thin, others Fine .....	52.50
993	— 1859-61, 10g Green Imperforate (24). Margins all around, thin, V. F. appearing, signed Friedl Expert Com. ....	80.00
994	P <b>HEJAZ</b> , Proofs and Essays, 17 diff. items, V. F. ....	—
995	★田 <b>HONDURAS</b> , 1930, 5c Airpost, Double Overprint (C26a). Block, Fine	28.00
996	<b>HUNGARY</b> , 1871, 10kr Blue, 25k Bright Violet (4, 6). Four copies of first, 2 of last, Very Good .....	100.00
997	★ <b>IONIAN ISLANDS</b> , 1941, 1d-100d Occupation Airpost (NC1-NC6). Set of Pairs, V. F. ....	(Photo) 227.50
998	★ — 1941, 30d Airpost, Horiz. Overprint on Single Stamp (NC4b). Very Fine .....	37.50
999	☒ <b>Italian Stampless Covers</b> , wide variety of markings, over 500 covers, V. G.-V. F. ....	—
1000	★ <b>ITALY</b> , 1889, 45c Gray Green (54). Very Good, o. g. ....	30.00
1001	★田 <b>LIBERIA</b> , 1892-96, \$5.00 Carmine & Black (49). Cpl. Sheet of 10, V. F.	30.00
1002	☒ <b>LUBECK</b> , 1859, ½s Gray Lilac (1). Two singles margins all around, on cover, blue pen stroke cancel, each lightly creased by letter fold .....	200.00+
1003	☒ — 1859, 1s Orange (2). Two singles, Margins all around, not tied to cover by blue pen stroke, V. F. ....	180.00+

1004	<b>LUXEMBOURG</b> , 1859-63, 4c, 10, 37½c Imperforates (6-7, 11). Last unused, F.-V. F. ....	34.00
1005 ★	<b>MARTINIQUE</b> , 1947, 10c-20fr Postage Dues, Imperforate (J37-J46). Horiz Pairs, V. F. ....	—
1006	<b>MECKLENBURG-STRELITZ</b> , 1864, 1sch Violet (3). Thin, V. F. appearing, used, signed Friedl Expert Com. ....	200.00
1007	— 1864, 3sg Bistre (6). Small hinge thin, Fine appearing, signed Friedl Expert Com. ....	85.00
1008 ☒	<b>MEXICO</b> , 1856, 2r Yellow Green, 4r Red, Pair (3-4). Tied on cover, also three other covers (2-3, 21). Fine-V. F. ....	23.95
1009	— 1868, 50c-100c (49-50). Very Fine .....	35.00
1010	— 1868-72, 6c-100c Postage (53, 55, 58, 59, 62, 64, 93-98). includes 3 pairs, V. G.-V. F. ....	87.55
1011 ★☐	— 1913, 2c-50c Postage Imperforate (348a, 351a, 352a). Blocks, 1 lightly creased, others V. F. ....	—
1012 ★	<b>MONACO</b> , 1885, 5fr Rose (10). Tiny thin, Fine appearing ( <b>Photo</b> ) .....	175.00
1013 ★☐	— 1891-1921, 1c-25c Postage (Between 11-20). Blocks, includes shades, Good-Fine .....	65.00
1014	<b>NETHERLANDS</b> , 1852-67, 5c-50c Postage (Between 1-12). Thirty stamps, 7 varieties, V. G.-V. F. ....	103.00
1015 ★	— 1864, 15c Orange (6). Fine .....	37.50
1016 ☒	— 1864, 15c Orange (6). Strip of 3 and single tied on cover to U. S., stamp removed from cover, Strip is Fine .....	30.00
1017 ★☐	<b>NICARAGUA</b> , 1911-36, 2c-40c Postage & Airpost (289a, 290a, 293b, 293Ca, RA54, San 66). 6 Blocks & 1 Pair with Inverted or Printed on reverse Overprints, includes 1 Airpost San. Cat. \$24.00, Fine-V. F. ....	92.00+
1018	<b>OLDENBURG</b> , 1852-67, 1/30th-3g Postage (1-2, 6, 13-14, 18, 25). Fair-Fine .....	101.50
1019 ☒	— 1852-59, 1/30th, 1g Blue (1, 63. Three covers all tied, Fine-V. F. ....	11.00+
1020	— 1852-61, 1/10th-3gr Imperforates (3, 8, 13-15). All have slight defects, F.-V. F. appearing .....	202.50
1021 ★	— 1852-55, ⅓sgr Green Imperforate (4). Margins 3 sides, just in at L., Fine .....	65.00
1022	— 1859, ⅓g Green Imperforate (5). Margins all around, repaired, V. F. appearing .....	250.00
1023	— 1859, 2gr Rose Imperforate (7). Margins all around, thin, V. F. appearing .....	85.00
1024	— 1859, 3g Yellow Imperforate (8). Margins all around, tiny hinge thin, V. F. appearing .....	60.00

1025	— 1861, ½g Green Imperforate (10). Margins all around, Very Fine used .....	<b>(Photo)</b>	75.00
1026 ★	<b>PANAMA</b> , 1915-16, 20c Pictorial, <b>Inverted Center</b> (212a). No gum, Very Fine .....	<b>(Photo)</b>	55.00
1027 ★	— 1929, 10c Airpost, Red Overprint (San. 7). Fine .....	San.	35.00
1028 ★	<b>PARAGUAY</b> , 1886, 1c-20c Officials (O1-O7). Two used, Fine-V.F. ....		35.00
1029	<b>PERU</b> , 1858, ½p Buff (6). Margins all around, small closed tear, V.F. appearing .....		100.00
1030	— 1860, 1d Blue (9). Fifty-four copies includes 2 pairs, contains some cancellations, Fair-Fine .....		108.00
1031 ★	— 1894, 1s Overprint (128). Very Fine .....		17.50
1032	<b>PHILIPPINES</b> , 1854, 10c Carmine (2). Tiny thin, Fine appearance ...		40.00
1033	— 1854, 1r Slate Blue (4). Small tear, Fine appearing .....		30.00
1034 ★	— 1854, 2r Green (5). Small thin, Fine appearance .....		80.00
1035	— 1855, 5c Vermilion, Redrawn (7). Fine .....	<b>(Photo)</b>	100.00
1036 ★	<b>PRUSSIA</b> , 1850-56, 4 pf-2sg Imperforates (1-4). Very Good-Fine .....		40.00
1037	<b>ROMANIA</b> , 1858-59, 40pa Blue, 80pa Red (6, 10). Margins all around, Very Fine .....		50.00
1038	— 1862, 6pi Carmine Imperforate (16). Tied to small piece, V.G.		30.00
1039	— 1862, 30pa Blue (18). <b>Complete Sheet of 32</b> with 8 Tete Beche pairs, Very Fine .....		400.00+
1040 ★	<b>SAAR</b> , 1922-23, 3c-5fr Pictorials, Imperforate (Between 99-115). Horiz Pairs, 13 diff., V.F. ....		—
1041 ★	<b>SARDINIA</b> , 1851, 40c Rose Imperforate (3). Margins all around, thin, V.F. appearing o.g. ....	<b>(Photo)</b>	150.00
1042	— 1854-55, 5c-40c Imperforates (5-7). Very Good-Very Fine .....		65.00
1043	<b>SAXONY</b> , 1850, 3pf Red Imperforate (1). Margins 3 sides, touches at T, thin, Fine appearing .....	<b>(Photo)</b>	400.00
1044	— 1851-56, ½ng-10ng Imperforates (3, 5-8, 14). Last defective, Fair-Fine .....		58.95
1045 ★田	<b>SIAM</b> , 1942-43, 5s Airpost, Imperforate Vertically (C17). Block, Very Fine .....		—
1046	<b>SPAIN</b> , 1851, 6r Blue (10). Thin spot, V.F. appearance .....		50.00
1047	— 1851, 6r Blue Imperforate (10). Fine .....		50.00
1048 ★田	— 1938, 45c Airpost Souvenir Sheet (San. 223). Very Fine .....	San.	75.00
1049	<b>SWEDEN</b> , 1855, 3s Blue Green (1). Small nick at T., thin, well centered .....	<b>(Photo)</b>	325.00

1049A	<b>SWITZERLAND, Zurich</b> , 1850, 2½r Black & Red (1L5). Margins all around, tied to piece, V.F. ....	<b>(Photo)</b>	175.00
1050	— <b>Geneva</b> , 1846, 5c Yellow Green (2L3). red cancel ,tiny corner crease, V.F. appearing .....	<b>(Photo)</b>	75.00
1051	— <b>Basel</b> , 1845, 2½r Basel Dove (3L1). Small margins all around, red cancel, tiny thin, V.F. appearing .....	<b>(Photo)</b>	400.00
1052	☒ — <b>Geneva</b> , 1850, 5c Black & Red (2L7). Margins all around, tied to small cover, V.F. ....	<b>(Photo)</b>	200.00
1053	— 1850, 2½ Black & Red (3). Margins all around, tiny closed tear, V.F. appearing, signed Friedl Expert Com. ....	<b>(Photo)</b>	125.00
1054	— 1850, 5r Black & Red, Framed Cross (5). Margins all around, Very Fine, signed Friedl Expert Com. ....	<b>(Photo)</b>	75.00
1055	— 1850, 5fr Black & Red (7). Two shades, Fine-V.F. ....		40.00
1056	— 1850, 5r-10r Imperforates (7-8). Two shades of each, Fine-V.F. ....		50.00
1057	— 1855-57, 1fr Lavender (30). Fine .....		20.00
1058	— 1855-57, 1fr Lavender (30). Fine .....		20.00
1059	— 1855-57, 1fr Lavender (30). Two shades, Fine .....		40.00
1060	— 1858-62, 2r Gray Imperforate (35). Large margins all around, Very Fine .....	<b>(Photo)</b>	15.00
1061	— 1858-62, 2r Gray (35). Two copies, Fine .....		30.00
1062	★ — 1858-62, 2r-20r Imperforates (35-40). Two shades of last, several have slight thins, Good-Fine .....		96.00
1063	★ — 1858-62, 2r-40r Imperforates (35, 37-38, 40). First thin, Fair-Fine .....		52.50
1064	★☐ — 1932, 5c-1fr Pictorials, Airpost (210-215, C16-C18). Set of Unused & Used Blocks mounted in <b>1932 Presentation Album</b> , V.F. ....		31.12
1065	★ — 1919-20, 30c-50c Airpost (C1-C2). Fine .....		16.00
1066	★ — 1923-25, 5c-1fr Airpost, Postage Dues (C1-C3, C5-C12, J60-61, J64-65, J67). Mounted in <b>Presentation Booklet</b> , V.F. ....		24.30
1067	★ <b>TURKEY</b> , 1931-33, 10pa-250ku Postage (Between 728-764). Thirty five diff. mounted in presentation Booklet, V.F. ....		21.97
1068	<b>TUSCANY</b> , 1851-52, 1q Black (1). Margins all around, V.F. <b>(Photo)</b> .....		35.00
1069	★ — 1851-52, 1s Orange (2a). Margins all around, tiny thin in top margin, V.F. appearing .....	<b>(Photo)</b>	160.00
1070	★ — 1851-52, 2s Scarlet Imperforate (3). Unused, thin, Fine appearance, o.g., P. F. Certificate accompanies, Rare <b>(Photo)</b> .....		1250.00
1071	— 1859, 9cr Grey Lilac (16). Margins 3 sides, in slightly at B. <b>(Photo)</b> .....		250.00
1072	— 1860, 1c-80c Coat of Arms (17, 19-22). Very Good-Fine .....		51.25

1073	★	— 1860, 5c Green (18). part o.g., Fine .....	<b>(Photo)</b>	60.00
1074		— 1860, 80c Red Brown (22). Very Fine .....		30.00
1075		<b>TWO SICILIES</b> , 1860, ½t Blue Imperforate (9). Margins all around, repaired, V.F. appearing .....		200.00
1076		— 1859, ½g-50g Imperforates (10, 16-18). Two unused, some slight thins, Good-Fine .....		150.00
1077	★	<b>URUGUAY</b> , 60c Lilac, 240c Vermilion (12-13). Margins all around, last has tiny scissors cut, Fine-V.F. ....		32.50
1078	☒	— 1860, 120c Blue (16). Tied on cover, Fine .....		6.00+
1079	★	<b>VENEZUELA</b> , 1938-39, 20b Red Orange Airpost (C113). Thin, V.F. appearing .....		32.50
1080		<b>WURTEMBERG</b> , 1851-63, 1kr-9kr Postage (Between 1-40). Ten diff., Fair-Fine .....		80.00
1081	★	— 1859, 9kr Carmine Rose (17). Margins all around, tiny hinge thin, V.F. appearing o.g. ....	<b>(Photo)</b>	150.00
1082		— 1859, 18kr Dark Blue Imperforate (18). Margins all around, light crease, V.F. appearing .....		85.00
1083		— 1861, 18kr Dark Blue (29). Defective copy, Fine appearing .....		85.00
1084		— 1866-68, 18kr Orange (46). Tiny thin, Fine appearing .....		60.00
1085	★	— 1873, 70kr Red Violet (53). Thin, Fine appearing, o.g. signed Friedl Expert Com. ....		125.00
1086	★	— 1881-1901, 2pf-1m Officials, Imperforate (Between O94-O107). Ten diff Sheet Margin Singles, V.F. ....		—
1087	★	<b>URUGUAY</b> , 1894, 2p Carmine, 3p Violet (106-107). Fine .....		20.00

## LOTS BY COUNTRIES

1088	★	<b>ANDORRA, FRANCE, MONACO</b> , 1933-39, Collection of 150 diff. mounted in 1933 and 1939 <b>U.P.U. Presentation Albums</b> , V.F., Est. Cash Value \$15.00 .....		—
1089		<b>ANTIGUA, BAHAMAS</b> , 1859-1942, Collection of 82 diff, most unused, Fine Lot .....		116.34
1090		<b>ARGENTINE REPUBLIC</b> , 1858-92, Collection of 95 diff., used & unused, Good-V.F. ....		112.00
1091		<b>ARGENTINE REP.</b> , Collection of 700 stamps, 19th & 20th, used and unused, Good-V.F. ....		193.00
1092	★	<b>ARGENTINE REPUBLIC</b> , Twentieth Century stock of Pictorials, 1105 stamps all unused, many in Blocks, Fine Lot .....		53.00

1093	✳	ARGENTINA, COLUMBIA, 140 covers, mostly 20th Century Pictorials, Fine Lot .....	—
1094		AUSTRALIA, 1913-45, Collection of 331 stamps including duplicates, used & unused, V. G.-V. F. ....	45.00+
1095		AUSTRALIA, NEW SOUTH WALES, SOUTH AUSTRALIA, 19th Century Collection of 196 mostly diff., used & unused, Good-Fine .....	215.00
1096		AUSTRIA, Collection partly mounted of 19th Century Many covers and fancy cancels, Est. Cash Value \$90.00 .....	—
1097		AUSTRIA, 19th & 20th, used and unused many hundreds, on cards and booklets, V. G.-V. F., Est. Cash Value \$40.00 .....	—
1098		AUSTRIA, 1850-1910, Collection of 104 used & unused, 71 diff, Fair-Fine .....	117.25
1099	★	AUSTRIA, 1860-1915, Collection of 62 diff unused, Fair-Fine .....	72.39
1100		BADEN, BAVARIA, 1851-1920, Collection of 128 including duplicates, used & unused, Fair-V. F. ....	76.42
1101		BAHAMAS, 1861-75, 1p-1/ Postage (Between 2-19). Stock of 73 used, 10 diff, Good-V. F. ....	296.00
1102	★	BAHAMAS, 1862-98, 1p-1sh Postage (Between 11-23). Thirty-three stamps, 8 diff., Good-Fine unused .....	157.50
1103		BAHAMAS, 1884-1946, Stock of several hundred, used & unused, V. G.-V. F. ....	130.00
1104		BARBADOS, 1852-1942, Collection of 87 diff, most unused mostly 20th, Fine lot .....	124.65
1105		BARBADOS, 1852-78, Collection of 34 mostly diff, nearly all used, Good-Fine .....	157.90
1106		BAVARIA, 1850-1920, Collection of 505 stamps including duplicates, used & unused, Good-Fine .....	220.00+
1107	✳	BAVARIA, 19th Century, Collection of 33 covers, Good-Fine .....	—
1108		BAVARIA, 19th century Collection of 133 stamps including duplicates, used & unused, Fair-Fine .....	272.00
1109		BELGIUM, 1849-1900, Collection of 480 stamps, 86 diff, includes few unused, shades, varieties, Good-Fine .....	829.34
1110		BELGIUM, 1849-1935, Collection of over 1000 stamps mostly diff. includes many Semi Postals & Occupations, Good-Fine Est. Cash Value \$60.00 .....	—
1111		BELGIUM, 1849-1920, Collection of 147 including some duplication, used & unused, Fair-Fine .....	112.00
1112	★	BELGIUM, 1871-99, Collection of Telephone & Telegraph Stamps, 32 stamps includes Tete Beche, Fine-V. F. Yvert Teller Cat. 101,000fr .....	—



1113	<b>BELGIUM</b> , 1929-32, Collection of 357 stamps, shades, multiples, used & unused, V. G.-V. F. ....	67.00
1114	✉ <b>BELGIUM</b> , 220 covers mostly 20th century, includes many pictorials, Good-Fine .....	—
1115	<b>BELGIUM &amp; CONGO</b> , several hundred on album pages, mostly 19th, Est. Cash Value \$25.00 .....	—
1116	<b>BERMUDA</b> , 1910-22, ¼p-1/ Postage (Between 40-86). Twenty-six diff., mostly unused, V. G.-V. F. ....	41.20
1117	<b>BOLIVIA</b> , 19th & 20th Century Collection of 265 diff, used & unused, Fine Lot .....	55.00
1118	<b>BOSNIA &amp; HERZEGOVINA</b> , 1879-1918, Collection of 149 including duplicates, used & unused, V. G.-V. F. ....	116.02
1119	<b>BRAZIL</b> , 1844-88, Collection of 56 mostly diff, nearly all used, Good-Fine .....	141.75
1120	<b>BRAZIL</b> , 1844-97, Collection of 56 diff used, Good-V. F. ....	60.15
1121	<b>BRAZIL</b> , 1843-93, Collection of 113 diff mostly used, some defects, Fair-Fine .....	447.00
1122	<b>BRAZIL</b> , 19th & 20th Century Collection of 335 mostly diff, used & unused, Early Issues attractive with minor defects, Good-V. F. ....	490.00
1123	<b>BRAZIL</b> , Stockbook containing 1388 stamps, mostly from Brazil but including other countries, mainly 20th Century, used & unused, much duplication, V. G.-V. F. ....	186.00+
<del>1124</del>	<del><b>BRITISH AFRICA</b>, 19th Century Collection of 202 mostly diff, used &amp; unused, Good-Fine .....</del>	<del>350.00+</del>
1125	<b>BRITISH AMERICA &amp; GREAT BRITAIN</b> , Stockbook containing hundreds of 19th & 20th century stamps, used & unused, Est. Cash Value \$45.00 .....	—
<del>1126</del>	<del><b>BRITISH COLONIES</b>, Stockbook containing hundreds of stamps, used &amp; unused, Fair-V. F., Est. Cash Value \$20.00 .....</del>	<del>—</del>
<del>1127</del>	<del><b>BRITISH COLONIES</b>, stockbook approx. 8,000 stamps, mostly 20th, all used, V. G.-V. F. ....</del>	<del>900.00+</del>
1128	★田 <b>BRITISH CORNATIONS</b> , 1937, Sets of Blocks from 23 diff Colonies, V. F. ....	47.16
1129	★田 <b>BRITISH CORNATIONS</b> , 1937, Sets of Blocks, from 24 diff colonies, V. F. ....	50.60
1130	★田 <b>BRITISH CORNATIONS</b> , 1937, Sets of Blocks from 21 colonies, 16 diff, V. F. ....	40.32
<del>1131</del>	<del><b>BRITISH GUIANA</b>, 1860-1938, Collection of 74 diff., most unused, Fine-V. F. collection .....</del>	<del>156.88</del>

76

1132 **BRITISH GUIANA**, 19th & 20th Century Collection of 235 including some duplicates, used & unused, V. G.-V. F. .... 92.00

77

1133 **BRITISH GUIANA**, 1862-82, Collection of 27 mostly diff, nearly all used, Good-Fine ..... 100.20

51/2

1134 **BRITISH HONDURAS**, 1872-1935, Collection of 49 diff., used & unused, Fine Collection ..... 49.84

78

1135 **BRIT. NORTH AMERICA**, 37 diff. 19th Century, used and unused, some faults, V. G. lot ..... 87.55

72/2

1136 ★ **BRITISH NORTH AMERICA**, Collection of 50 diff 19th & 20th Century unused, Fine-V. F. .... 41.05

79

1137 **BRITISH NORTH AMERICA**, Forty eight stamps including duplicates, most used, V. G.-V. F. .... 65.85

80

1138 **BRIT. NO. AMERICA** plus other Brit. Col. in stockbook, used and unused, Est. Cash Val. \$40.00 ..... —

81

1139 **BRITISH WEST INDIES**, 19th Century Collection of 75 mostly diff, used & unused, V. G.-Fine ..... 221.00

82

1140 **BRITISH WEST INDIES**, 19th Century Collection of 84 including duplicates, used & unused, V. G.-V. F. .... 280.35

83

1141 **BULGARIA**, 19th & 20th Century Collection of 536 diff, used & unused, Fine Lot ..... 125.00

84

1142 **CANADA**, 1859-1943, Collection of 163 mostly diff, used & unused, V. G.-V. F. .... 125.86

85

1143 **CANADA**, 19th Century Collection of 19 mostly diff. used, Good-Fine 151.75

86

1144 **CANADA**, 1859-1955, Collection of 530 mostly diff, nearly all unused includes blocks, some stuck to album pages, Good-V. F. .... 239.00

87

1145 **CANADA**, 1870-1907, Collection of 56 diff used, V. G.-V. F. .... 89.00

19/2

1146 **CANADA**, 19th & 20th Century collection of 79 mostly diff, used & unused, some defects, Fair-V. F. .... 154.85

88

1147 **CAPE OF GOOD HOPE**, 1864-93, Specialized collection of 620 stamps, used & unused, covers, postmarks, multiples, Fine Lot ..... 580.00

89

1148 ★ **CAYMAN ISLANDS**, 1900-38, Collection of 44 diff unused 20th Century, Very Fine Collection ..... 39.30

90

1149 **CEYLON**, 1857-1938, Collection of 889 stamps mainly used 19th Century, includes shades, multiples, many faults, attractive appearance with considerable catalog value, Est. Cash Value \$550.00 ..... —

91

1150 **CEYLON**, 1857-67, Collection of 49 including duplicates, used & unused, Good-Fine ..... 507.50

92

1151 **CEYLON**, 19th & 20th Century Collection of 78 mostly diff, nearly all used, Fair-Fine ..... 220.00

1152	<b>CHILE</b> , 19th & 20th Century Collection of 215 including duplicates, used & unused, V. G.-V. F. ....	81.00
1153	<b>CHILE, COLUMBIA, GUATAMALA</b> , 19th & 20th Century Collection of several hundred used & unused, Good-V. F. Est. Cash Value \$50.00 ....	—
1154	<b>CHINA</b> , 19th & 20th Century Collection of 1750 stamps including multiples, used & unused, V. G.-V. F. ....	340.00
1155	<b>CHINA, Treaty Ports</b> , Collection of 109 diff. used and unused, Fine Lot	—
1156	<b>COLUMBIA</b> , 19th Century Collection of 157 including some duplicates, nearly all used, V. G.-V. F. ....	150.00
1157	<b>COLUMBIA &amp; STATES</b> , 19th Century Collection of 180 mostly diff, used & unused, Good-V. F. Est. Cash Value \$12.00 ....	—
1158	<b>CRETE</b> , 1898-1910, Collection of 100 diff., used & unused, Fine Lot	113.00
1159	<b>CUBA</b> , 19th & 20th Century Collection of 362 diff. used & unused, V. G.-V. F. ....	130.25
1160 ★	<b>CUBA, HAWAII</b> , Accumulation of 77 unused, 26 diff, Cuba stamps are U. S. Administration, V. G.-V. F. ....	42.89
1161	<b>CZECHOSLOVAKIA</b> , 1918-1947, Collection many hundreds including some blocks used & unused, V. G.-V. F. ....	198.00
1162	<b>DENMARK</b> , 1851-1902, collection of 119 stamps including duplicates, most used, Good-Fine ....	132.00
1163	<b>DENMARK</b> , 1854-1934, Stockbook containing 539 used & unused stamps including multiples, V. G.-V. F. ....	76.00
1164	<b>DOMINICA</b> , 1877-1940, Collection of 46 diff, nearly all unused 20th century, Very Fine Collection ....	56.00
1165	<b>DOMINICAN REPUBLIC</b> , 19th & 20th Century Collection of 176 used including duplicates, many cancels, Good-V. F. ....	97.06
1166	<b>ECUADOR</b> , 1865-99, Collection of 144 mostly diff, used & unused, V. G.-V. F. ....	116.00
1167	<b>ECUADOR, GUATAMALA</b> , Stockbook containing hundreds of stamps, much duplication, used & unused, Est. Cash Value \$15.00 ....	—
1168 ★	<b>EGYPT</b> , 1884-1937, Collection of 49 diff unused, V. G.-V. F. ....	31.60
1169	<b>EGYPT</b> , 19th & 20th Century Collection of 630 stamps including duplicates, used & unused, V. G.-V. F. Est. Cash Value \$20.00 ....	—
1170 ★	<b>FALKLAND ISLANDS</b> , 1891-1946, Collection of 32 diff. unused, Fine Lot ....	16.52
1171	<b>FRANCE</b> , 1876-1944, Collection of 240 mostly diff, used & unused, many Sets, Good-Fine ....	185.00
1172	<b>FRANCE</b> , 19th & 20th, used and unused 1880 stamps includes 28 proofs and 25 covers, V. G.-V. F. Est. Cash Value \$85.00 ....	—

1173	★	<b>FRANCE</b> , 1862-1946, Collection of 191 diff, mostly cpl. sets, Fine-V. F.	61.95
1174		<b>FRANCE</b> , Collection of 728 stamps, 19th & 20th, used and unused, Fair-Fine, Est. Cash Val. \$15.00	—
1175		<b>FRANCE, Offices in Crete, Turkey</b> , Collection of 41 diff, used & unused, many age stains	71.00
1176		<b>FRANCE &amp; COLONIES</b> , 19th & 20th Century Collection of 870 mostly diff, used & unused, Fair-Fine	62.00+
1177		<b>FRENCH COLONIES</b> , 19th Century Collection of 56 diff, used & unused, V. G.-V. F.	103.00
1178	★	<b>FRENCH COLONIES</b> , 1892-1900, Collection of 310 diff. in sets to 1fr value, nearly all unused, V. G.-V. F.	265.00
1179	★	<b>FRENCH COLONIES</b> , mostly 20th, many hundreds includes blocks, Fine Lot	—
1180		<b>FRENCH COLONIES</b> , 19th & 20th century stock of unused & used pictorials including duplicates, 985 stamps, V. G.-V. F.	202.00
1181		<b>FRENCH COLONIES</b> , Collection of 980 mostly diff, used & unused mainly 20th century, V. G.-V. F.	60.00+
1182		<b>GERMAN STATES</b> , Baden to Wurttemberg, collection of 95 diff, 32 unused, many defective, Fair-Fine	294.70
1183		<b>GERMAN STATES</b> , Collection of 65 used & unused including duplicates, Good-Fine	153.85
1184		<b>GERMAN STATES</b> , Collection of 24 mostly diff, used & unused, V. G.-V. F.	181.75
1185		<b>GERMAN STATES</b> , Collection of 57 stamps, used & unused, nearly all have defects, includes many rare stamps	730.45
1186		<b>GERMANY</b> , North German Confederation, 1868-70, Collection of 44, 27 diff, used & unused, Fair-Fine	69.74
1187		<b>GERMANY</b> , 1852-1920, Collection of 110 including States, Occupations, Plebiscites, used & unused, Good-Fine	79.00
1188		<b>GERMANY</b> , 1872-1952, Collection of approx. 3500 stamps including duplicates, used & unused, includes Airls, Occupations, Saar, many cpl Sets, Good-V. F.	approx. 450.00
1189		<b>GERMANY &amp; STATES</b> , 19th & 20th, used and unused, many hundreds, high catalog value, Est. Cash Value \$85.00	—
1190		<b>GERMAN COLONIES &amp; OFFICES</b> , Collection of 164 mostly diff, used & unused, V. G.-V. F.	193.00
1191		<b>GOLD COAST</b> , 19th & 20th Century Collection of 63 mostly diff, used & unused, V. G.-V. F.	102.75
1192		<b>GREAT BRITAIN</b> , 1840-1942, Collection of 215 diff, used & unused, V. G.-V. F.	327.00

1193	<b>GREAT BRITAIN, 1840-1890, Specialized collection of 385 stamps, includes variety of plate nos., used &amp; unused, Fair-Fine</b> .....	355.00
1194	<b>GREAT BRITAIN &amp; OFFICES, 19th &amp; 20th Century Collection of 280 stamps including duplicates, used &amp; unused, Fair-Fine</b> .....	295.00
1195	<b>GREAT BRITAIN &amp; OFFICES, 19th &amp; 20th century collection of 122 mostly diff., used &amp; unused, V.G.-V.F.</b> .....	180.00
1196	<b>GREAT BRITAIN, Offices Abroad, Collection of 284 stamps including duplicates, used unused, V.G.-V.F.</b> .....	173.00
1197	<b>GREAT BRITAIN AND COLONIES, 72 stamps mostly unused, 34 diff, includes value to £, few has slight defects, Fair-V.F.</b> .....	149.30
1198	<b>GREAT BRITAIN &amp; COLONIES, 19th century collection of 740 mostly diff, used &amp; unused, Good-V.F., Est. Cash Value \$15.00</b> .....	—
1199	<b>GREAT BRITAIN, CAPE OF GOOD HOPE, FIJI, HONG KONG, TRANSVAAL, 19th &amp; 20th century collection of 189 mostly diff, used &amp; unused, Good-Fine</b> .....	125.40
1200	<b>GREECE, Stock of 19th &amp; 20th, used and unused, 2860 stamps, V.G.-V.F., considerable cat. value</b> .....	—
1201	<b>GREECE, CRETE, EPIRUS, 19th &amp; 20th Century Collection of 922 including some duplication, many Hermes Heads, used &amp; unused, V.G.-V.F.</b> .....	about 550.00
1202	✉ <b>GREECE &amp; ITALY, over 500 covers, mostly 20th Century Pictorials, Good-V.F.</b> .....	—
1203	<b>GRENADA, 1861-1926, Collection of 55 diff, mostly unused 20th Century, Fine Lot</b> .....	57.71
1204	<b>GRENADA, 1861-41, Collection of 325 used &amp; unused, many duplicates, Good-V.F.</b> .....	700.00+
1205	<b>GUATEMALA, 19th &amp; 20th Century Collection of 203 diff used &amp; unused, V.G.-V.F.</b> .....	82.00
1206	<b>GUATAMALA, 19th &amp; 20th Century Collection of 219 used &amp; unused including duplicates, V.G.-V.F.</b> .....	117.03
1207	<b>GUATEMALA, 1902, Specialized Cancellation Collection of 213 stamps, includes wide variety of Interesting cancels, V.F. Lot, Est. Cash Value \$25.00</b> .....	—
1208	<b>HONDURAS, 19th &amp; 20th Century Collection of 331 diff., used &amp; unused, V.G.-V.F.</b> .....	89.00
1209	<b>HONDURAS Officials specialized collection of 455 stamps, 1890-1929 issues, includes multiples, varieties, used and unused, Fine Lot</b> .....	—
1210	<b>HONG KONG, 1862-1946, Collection of 105 diff, nearly all used, V.G.-V.F.</b> .....	101.49

1211	<b>HUNGARY</b> , 1871-1948, collection of 825 stamps, used & unused, includes many sets, V. G.-V. F. ....	340.00
1212	<b>INDIA &amp; INDIAN STATES</b> , 19th & 20th Century Collection of hundreds including duplicates, used & unused, Good-V. F. ....	400.00
1213	<b>INDIAN NATIVE STATES</b> , 375 stamps on stock pages, mostly, unused, Est. Cash Val. \$25.00 .....	—
1214	<b>INDIAN NATIVE STATES</b> , used and unused, many hundreds wide variety partly on album pages, few covers, interesting lot .....	—
1215	<b>ITALY COLONIES, STATES</b> , 19th & 20th century collection of 969 mostly diff, used & unused, Good-Fine .....	146.00+
1216	<b>JAMAICA</b> , 1870-1938, Collection of 70 diff, mostly unused 20th century, Fine Lot .....	43.08
1217	<b>JUGOSLAVIA</b> , Collection of 750 stamps including duplicates, used & unused, V. G.-V. F. ....	140.00
1218	<b>LAGOS</b> , 19th Century Collection of 34 stamps, 19 diff, used & unused, V. G.-V. F. ....	51.95
1219 ★	<b>LEEWARD ISLANDS</b> , 1902-37, Collection of 41 diff unused, Fine Lot	27.99
1220	<b>LIBERIA</b> , 19th & 20th Century of 124 mostly used including duplicates, many cancels, Fair-Fine .....	—
1221	<b>LUXEMBOURG</b> , 1852-1949, Collection of 360 including some duplicates, used & unused, many Pictorials, Good-Fine .....	310.00
1222	<b>LUXEMBOURG</b> , 1875-1935, Collection of 390 <b>Officials &amp; Postage Dues</b> , used & unused, many cpl sets, Good-Fine .....	550.00
1223 ★	<b>MADAGASCAR, TOGO</b> , 1893-1943, Unused Collection of over 310 diff, mostly in Sets, V. G.-V. F. ....	95.00
1224	<b>MALTA</b> , 1860-1952, Collection of 90 diff, used & unused, includes creased copy of #76, V. G.-V. F. ....	163.00
1225	<b>MAURITIUS</b> , 1847-61, Collection of 58 stamps, used & unused, Good-V. F. ....	850.00
1226	<b>MAURITIUS</b> , 1860-1948, Stock of 358 stamps, used & unused, wide variety, V. G.-V. F. ....	400.00+
1227	<b>MEXICO</b> , 1856-1935, Collection of 371 including duplicates, used & unused, V. G.-V. F. ....	250.00
1228	<b>MEXICO</b> , 1875-1951, Collection of 379 stamps including multiples and duplicates, used & unused, Good-Fine .....	155.00
1229	<b>MEXICO</b> , 19th Century Collection of 165 used including duplicates, many interesting cancels, Fine Lot .....	141.00
1230	<b>MEXICO</b> , 1856-88, Collection of 127 diff, used & unused, Good-V. F.	121.00

1231	<b>MODENA</b> , 1852-59, Collection of 11 mostly diff, used & unused, Good-Fine .....	40.00
1232	<b>MONACO</b> , 1891-1921, Specialized Collection of Prince Albert design, used & unused, Shades, Cancels, 373 stamps, Fair-Fine .....	170.00
1233	<b>MONTSERRAT</b> , 1876-1938, Collection of 26 diff, nearly all unused 20th Century, Fine Collection .....	31.97
1234	<b>NATAL</b> , 19th Century Collection of 125 stamps including duplicates, mostly used, Fair-Fine, Est. Cash Value \$20.00 .....	—
1235	<b>NATAL</b> , 19th & 20th Century Collection of 91 used & unused, includes some duplication, Good-Fine .....	181.00
1236	<b>NETHERLANDS</b> , 19th & 20th Century Collection of 382 diff, most used, V. G.-V. F. ....	215.00
1237 ★	<b>NEW BRUNSWICK, NOVA SCOTIA, PRINCE EDWARD ISLAND</b> , 1851-72, Collection of 26 including duplicates, 1 used, V. G.-V. F. ....	47.85
1238	<b>NEW BRUNSWICK, NOVA SCOTIA, PRINCE EDWARD</b> , 19th Century Collection of 20 mostly diff, nearly all unused, V. G.-V. F. ....	71.15
1239 ★	<b>New Brunswick, Nova Scotia, P. E. Island</b> , Collection 22 diff, 1 used, V. G.-V. F. ....	65.75
1240 ★	<b>NEW BRUNSWICK, PRINCE EDWARD IS.</b> , 24 mostly diff. three are used, V. G.-V. F. ....	46.70
1240A	<b>NEWFOUNDLAND</b> , 1862-1943, Collection of 130 diff, used & unused, Fine Collection .....	118.07
1241	<b>NEWFOUNDLAND</b> , 1866-1947, Collection of 130 mostly diff, nearly all unused, includes few Blocks, some stuck to pages, V. G.-V. F. ....	113.62
1242	<b>NEWFOUNDLAND</b> , 19th Century Collection of 23 diff, used & unused, Good-V. F. ....	157.75
1243	<b>NEWFOUNDLAND</b> , 1880-1910, Collection of 46 diff used, V. G.-V. F. ....	63.00
1244	<b>NEWFOUNDLAND, NOVA SCOTIA, NEW BRUNSWICK, PRINCE EDWARD ISLAND</b> , 19th Century collection of 62 mostly diff, used & unused, Fair-Fine .....	238.00
1245	<b>NEW SOUTH WALES, WESTERN AUSTRALIA</b> , 19th Century Collection of 220 stamps including some duplicates, mostly used, Fair-Fine .....	730.00
1246	<b>NEW ZEALAND</b> , 19th Century Collection of 27 diff. used including shades, Good-Fine .....	94.00
1247	<b>NEW ZEALAND</b> , Collection of 380 stamps, 19th & 20th, used and unused, Est. Cash Val. \$12.50 .....	—
1248	<b>NICARAGUA</b> , 1862-1935, Collection of 340 mostly diff, used & unused, V. G.-V. F. ....	115.00

1249	<b>PARAGUAY</b> , 19th & 20th Century Collection of 430 mostly diff, used & unused, V. G.-V. F. ....	80.00
1250	<b>PERU</b> , 19th Century Collection of 273 used including duplicates, has many interesting cancels, V. G.-V. F. ....	112.44
1251	<b>PERU</b> , 1858-89, Collection of 83 diff, used & unused, Good-Fine .....	76.43
1252	☐ <b>PERU</b> , 1874-95, Collection of 30 Blocks, used & unused, includes duplicates, Fine-V. F. ....	106.20
1253	<b>PERU</b> , 19th & 20th Century Stock of thousands in Stockbook, used unused, Good-V. F. ....	1035.00
1254	<b>PERU</b> , Box of 19th & 20th, many blocks and multiples, hundreds of stamps, used and unused .....	—
1255	<b>PHILIPPINES</b> , Spanish Issues, 1854-97, Collection 271 stamps including duplicates & multiples, used & unused, some age stained & ms. cancels, includes many rare overprints, considerable catalog value, Est. Cash Value \$175.00 .....	—
1256	<b>PHILIPPINES</b> , 1854-97, Collection of 375 Spanish Issues including many rare stamps, 87 diff, used & unused, most yellowed from climate, Poor-Fine .....	2350.00
1257	<b>PHILIPPINES, PORTO RICO</b> , 19th & 20th Century Collection of 137 mostly diff, used & unused, V. G.-V. F., Est. Cash Value \$10.00 .....	—
1258	<b>POLAND</b> , collection of 820 mostly diff. used and unused, Fine Lot .....	—
1259	<b>PORTO RICO</b> , 1879-1900, Collection of 134 stamps including some duplicates, used & unused, V. G.-V. F. ....	60.65
1260	<b>PORTUGAL</b> , 1853-80, collection of 50 diff. used stamps, Fair-Fine .....	300.00
1261	<b>PORTUGAL</b> , 1853-1905, collection of 122 mostly diff, used & unused, Fair-Fine .....	230.00
1262	<b>PORTUGAL &amp; COLONIES</b> , 19th & 20th Century Collection of 2,000 mostly diff, used & unused, Fair-Fine .....	445.00
1263	★ <b>PORTUGAL &amp; COLONIES, SPAIN</b> , 20th Century Collection of 212 diff, mostly in sets, Fine-V. F. ....	72.39
1264	<b>PRUSSIA</b> , 1850-67, Collection of 48 stamps, 33 diff, used & unused, V. G.-V. F. ....	125.00
1265	<b>PRUSSIA</b> , 1850-67, Collection of Thirty-five, some duplication, used & unused, Fair-Fine .....	86.80
1266	<b>QUEENSLAND</b> , 19th Century Collection of 112 used & unused, includes some duplicates, Fair-Fine .....	207.00
1267	<b>QUEENSLAND</b> , 19th Century collection of 169 stamps including duplicates, used & unused, Fair-Fine .....	186.00
1268	<b>QUEENSLAND, TASMANIA, VICTORIA</b> , 19th Century Collection of 365 mostly different, used & unused, Good-Fine .....	324.00



1269	<b>ROMAN &amp; ITALIAN STATES</b> , 19th Century Collection of 32 diff., used & unused, Fair-Fine .....	170.00
1270	<b>ROMANIA</b> , 1866-72, 2pa-50b Imperforates (33-47). Specialized collection of 240 stamps, includes unused, cancels, shades, Fine Lot .....	546.00
1271	<b>ROMANIA</b> , 1866-1918, Specialized Collection of many hundreds including unused, imperforates, cancels, shades, multiples, covers, V. G.-V. F. ....	255.00
1272	<b>ROMANIA</b> , 1863-1940, Collection of 715 diff, used & unused, V. G.-V. F.	188.00
1273	<b>ROMANIA</b> , 20th Century Collection 1455 stamps in 2 volumes includes Postage, Dues, Occupations, 44 covers used and unused, Fine lot .....	—
1274 ★	<b>ST. CHRISTOPHER, ST. KITTS-NEVIS, ST. LUCIA</b> , 1870-1938, Collection of 80 diff, 4 used, mostly 20th Century, V. F. Collection .....	70.99
1275 ★	<b>ST. VINCENT</b> , 1863-1937, Collection of 79 diff unused, most 20th century, V. F. Collection .....	113.15
1276	<b>SCANDINAVIAN</b> , 19th Century Collection of 202 stamps including duplicates, Fair-Fine .....	259.00
1277	<b>SERBIA</b> , 1886-1943, Collection of 229 mostly diff, used & unused, Fair-V. F. ....	100.88
1278	<b>SHANGHAI</b> 1873-88, Collection of 71 unused, multiples & much duplication Good+V. F. ....	170.00
1279	<b>SIAM</b> , 1883-1929, Collection of 205 stamps including duplicates, used & unused, V. G.-V. F. ....	63.00
1280	<b>SIERRA LEONE</b> , 19th & 20th Century Collection of 31 stamps including few duplicates, mostly used, V. G.-V. F. ....	42.75
1281	<b>SOUTH AMERICA</b> , 19th & 20th century collection of several hundred on stock cards, includes duplicates, used & unused, V. G.-V. F. approx.	250.00
1282	<b>SOUTH AMERICA</b> , 19th Century Collection of 118 mostly diff, used & unused, V. G.-V. F. ....	267.00
1283	<b>SOUTH AMERICA</b> , 19th & 20th century collection of hundreds, used & unused, V. G.-V. F. ....	—
1284	<b>SOUTH AUSTRALIA</b> , Collection of 498 stamps including many duplicates, used & unused, contains #24A unused, includes many reprints & officials not counted some faults, Fair-Fine .....	1000.00+
1285	<b>SPAIN</b> , 1850-1936, collection of 469 stamps including duplicates, used & unused, many scarce stamps included, some have unnoticeable defects, Generally Fine Lot .....	1100.00
1286 ★	<b>SPAIN</b> , 1931-37, Collection of 32 Souvenir Sheets, Blocks of 3 Official Airposts, Imperforate Pairs of same, also Spanish Colonies Red Cross Issue, 66 var., Fine-V. F., Est. Cash Val. \$15.00 .....	—

1287	<b>STRAITS SETTLEMENTS and Federated Malay States, 1867-1924,</b> collection of 800 used & unused, some duplicates, V. G.-V. F. ....	325.00
1288	<b>SWEDEN, 1855-1936,</b> Collection of 460 stamps including some duplicates, mostly used, Good-V. F. ....	325.00
1289	<b>SWITZERLAND, 1850-52,</b> Collection of 91 stamps, 15 diff, includes shades, cancels, many have minor defects, Fair-Fine .....	385.00
1290	<b>SWITZERLAND, 1855-78,</b> Collection of 38 including duplicates, Good-Fine .....	92.45
1291	<b>SWITZERLAND, 19th &amp; 20th Century</b> Collection of 416 mostly diff, used & unused, Fine Lot .....	approx. 90.00
1292	<b>SWITZERLAND, 19th &amp; 20th Century</b> Accumulation of several hundred used & unused, many Pictorials & Semi-Postals, Fine Lot, Est. Cash Value \$25.00 .....	—
1293	<b>THURN &amp; TAXIS, North &amp; South Districts, 1852-67,</b> Collection of 38 diff used, Good Lot .....	76.85
1294 ★	<b>TOBAGO, 1880-96,</b> ½p-1sh Postage, Collection of 19 mostly diff unused, Fine .....	44.80
1295	<b>TRANSVAAL, 19th &amp; 20th Century</b> Collection of 64 diff, used & unused, V. G.—V. F. ....	85.42
1296	<b>TRINIDAD, 1851-1910,</b> Collection of 107 mostly diff, used & unused, V. G.-V. F. ....	380.00
1297	<b>TRINIDAD, TRINIDAD &amp; TOBAGO, 1851-1922,</b> Collection of 77 diff., used & unused, Fine-V. F. Collection .....	95.79
1298 ★	<b>TURKS &amp; CAICOS ISLANDS, VIRGIN ISLANDS, 1900-38,</b> Collection of 68 diff unused, Very Fine Collection .....	43.24
1299	<b>TUSCANY, 1851-60,</b> Collection of 20 used, includes shades, Fair-Fine	129.50
1300	<b>URUGUAY, 19th &amp; 20th Century</b> Collection of about 500 diff, used & unused, V. G.-V. F. ....	400.00+
1301	<b>URUGUAY, 1859-1895,</b> Collection 91 diff., used & unused, Good-V. F.	215.00
1302	<b>URUGUAY, 1859-82,</b> Collection of 27 diff, nearly all used, V. G.-Fine	98.15
1303	<b>VENEZUELA, 1859-96,</b> Collection of 94 diff., used & unused, V. G.-V. F. ....	113.31
1304	<b>VENEZUELA, 19th &amp; 20th Century</b> Collection of 312 mostly diff, nearly all used, V. G.-V. F. ....	96.00
1305	<b>VENEZUELA, 19th Century</b> Collection of 242 stamps including many interesting cancels, Fine Collection .....	—
1306	<b>VICTORIA, 1850-88,</b> Collection of 275 stamps including some duplicates, mostly used, Fair-Fine .....	417.00

1307	<b>VICTORIA</b> , 1850-1910, collection of 183 mostly diff, used & unused, Fair-Fine .....	385.00
1308	<b>VICTORY</b> , 19th Century Collection of 144 mostly diff, used & unused, Good-Fine .....	149.00
1309	<b>VICTORIA</b> , 1860-76, Collection of 25 diff., Fine Lot .....	35.60
1310	<b>WESTERN AUSTRALIA</b> , 1854-1912, Collection of 90 mostly diff, used & unused, Fair-V. F. ....	124.66
1311	<b>WURTTENBERG</b> , 1851-1916, Collection of 92, used & unused, 54 diff, Fair-Fine .....	85.00
1312	<b>GENERAL FOREIGN COLLECTION</b> , 19th & 20th century collection mounted in International Jr. Album, hundreds of stamps, used & unused, includes used Foreign Blocks, Est. Cash Value \$25.00 .....	—
1313	<b>FOREIGN COLLECTION</b> over 6400 diff. in Schaubek Album 19th & 20th, used and unused, Est. Cash Value \$100.00 .....	—
1314	<input checked="" type="checkbox"/> <b>FOREIGN COVERS</b> , 19th Century, 42 covers mostly German States, includes 17 stampless, V. G.-V. F. ....	—
1315	<b>FOREIGN</b> , 61 diff. 19th Century, most have faults .....	788.00
1316	<b>GENERAL FOREIGN</b> , 19th & 20th Century, many hundreds, includes duplicates, mostly used, many Guatemala, V. G.-Fine .....	75.00
1317	<b>GENERAL FOREIGN</b> , Stockbook containing misc. used & unused, mostly 20th century, Est. Cash Value \$10.00 .....	—
1318	<b>FOREIGN</b> , 20th Century, about 400 stamps includes airpost, Varieties, U. P. U. Presentation Booklet Fine lot, mostly unused, Est. Cash Value \$40.00 .....	—
1319	<b>FOREIGN, Large Carton</b> , balance of collection and accumulation, Est. Cash Value \$100.00 .....	—
1320	<b>FOREIGN</b> , 380 19th Century Damaged, high catalog value .....	—

#### FOREIGN POSTAL STATIONARY

1321	<input checked="" type="checkbox"/> <b>ARGENTINE REP.</b> , approx 400 covers & Postal Stationary, used & unused, V. G.-V. F. ....	—
1322	<input checked="" type="checkbox"/> <b>Argentine Rep.</b> Collection of Postal Stationery 169 covers plus 144 cut squares, used and unused, Fine lot .....	—
1323	<input checked="" type="checkbox"/> <b>AUSTRALIAN STATES</b> , Postal Stationary, used & unused, approx 500 items, Fine Lot .....	—
1324	<input checked="" type="checkbox"/> <b>BAVARIA</b> , Postal Stationary, most unused, approx 1200 items, Fine Lot .....	—
1325	<input checked="" type="checkbox"/> <b>BRAZIL</b> , Collection of Postal Stationary, used & unused, 116 Envelopes or Post Cards, Good-V. F. ....	—

1326	✉	<b>CEYLON &amp; INDIA, Postal Stationary, used and unused, approx 1000 items, Fine lot</b> .....	—
1327	✉	<b>FRANCE &amp; COLONIES, Postal Stationary, used &amp; unused, approx 750 items, Fine Lot</b> .....	—
1328	✉	<b>GERMANY &amp; GERMAN STATES, Postal Stationary, used &amp; unused, mostly 19th Century, 114 items, includes few stamps, V.G.-Fine</b> .....	—
1329	✉	<b>GREAT BRITAIN, Collection of 92 Compound Envelope Entires, mostly used, includes 19 compounds of Tasmania Fine Lot</b> .....	—
1330	✉	<b>NETHERLANDS &amp; COLONIES, Postal Stationary, mostly unused, approx. 1120 items, Fine lot</b> .....	—
1331	✉	<b>POSTAL STATIONARY, mostly European countries, used and unused, 350 items, Fine lot</b> .....	—
1332	✉	<b>SCANDINAVIAN COUNTRIES, Postal Stationary, used &amp; unused, approx 300 items, Fine Lot</b> .....	—
1333	✉	<b>SOUTH AMERICA, Postal Stationary, most unused, approx 500 items, V.G.-V.F.</b> .....	—

#### FOREIGN WHOLESALE

1334		<b>AUSTRIA, 1850, 3kr Red #3(100), 9kr Blue #5(100) all have margins all around, Fine-V.F.</b> .....	50.00
1335		— 1858-61, 15kr Blue #11, #15(100 of each). V.G.-V.F. ....	50.00
1336		— 1863, 3kr Green (18). Seven copies, all have Triest cancels, V.G.-V.F. ....	45.50
1337		<b>BARBADOS, 1852-1859, ½p-1sh Imperforates #5(6), #6(12), #8(2), #9(4). Good-Fine</b> .....	190.50
1338		— 1861, ½p-1sh Postage #14(2), #15(30), #16(23), #17(6), #18(2), #19(15), #20(13), #21(4). Good-Fine .....	289.00
1339		— 1871-78, Stock of 110 used, 15 diff, Good-V.F. ....	309.00
1340		— 1882-1946, Stock of several hundred stamps, used & unused, Good-Fine .....	170.00
1341	★	<b>BULGARIA, 1940, 1L-10L Pictorials #378-#383(50 Sets). Very Fine</b> .....	101.50
1342		<b>CANADA, 19th &amp; early 20th century Dealers stock of over 400 stamps, 70 diff, many defective, Fair-V.F.</b> .....	381.00
1343		<b>COSTA RICA 1947, 5col Airpost #C143(100). Fine-V.F.</b> .....	125.00
1344		<b>GREAT BRITAIN, 1948, £1 George VI #275(8). Fine-V.F.</b> .....	20.00
1345	★	— Offices in Morocco, 1937, Cornation Issues #82(104), #439(106), #514(106). Part Sheets, V.F. ....	29.48

1346	<b>HONG KONG</b> , 1946-54, \$10.00 George VI, Elizabeth #166A(25), #196 (25). Fine-V. F. ....	62.50
1347	— 1954, \$10.00 Elizabeth #196(35). Fine-V. F. ....	43.75
1348 ★	<b>JUGOSLAVIA</b> 1937, 50p-50d Airpost #C7-#14(12 Sets). V. G.-V. F. ....	34.32
1349 ★	— 1940, 40d-50d Airpost #C15-#C16 (29 Sets). V. G.-V. F. ....	97.00
1350	<b>NICARAGUA</b> , 19th & 20th Century Stock of thousands, used & unused, Fair-V. F. ....	1200.00
1351 ★	<b>PERU</b> , 1859, 50c-1sol Postage #132(19), #133(33). Fine-V. F. ....	94.50
1352	<b>PERU</b> , 19th Century Stock of several hundred, used & unused, V. G.-V. F. ....	250.00

## END OF SALE

THANK YOU

PRICES REALIZED

THIS SALE

\$1.00

OR ENTIRE SEASON \$2.50

## SELLING YOUR COLLECTION ?

REALIZE IMMEDIATE CASH  
AND HAVE ADVANTAGE OF SELLING AT MY AUCTIONS

I will advance on your collection immediate cash up to 75% of my appraisal value of what it should realize at auction.

It will then be sold at one of my coming auction sales. Attractive well illustrated catalogues issued, with stamps expertly and most advantageously lotted. All lotting done under my personal supervision. Commission is 20% of the gross and final settlement within thirty days after the sale. I have been steadily conducting stamp auctions in the United States for the past 25 years.

Valuable collections and stamp holdings especially wanted but will accept properties valued from \$500 upwards. Send stamps direct for my appraisal. Auction advance will be sent within 48 hours after receipt. If not entirely pleased stamps will be returned at my expense. If circumstances warrant due to bulk etc. I will travel to inspect valuable properties.

**ROBERT A. SIEGEL**

(Licensed and Bonded Auctioneer)

489 FIFTH AVENUE

NEW YORK CITY

(Tel. MU. 2-0980)

187th Sale

ROBERT A. SIEGEL  
489 Fifth Avenue New York City

PRICES REALIZED  
Auction Sale - March 9th and 10th, 1956

United States, British Empire,  
General Foreign

March 9th																				March 10th	
1	4.00	70	11.50	141	11.00	212	14.50	280	11.50	351	16.00	421	4.25	560	7.00	691	19.00	702	5.50		
2	8.50	71	2.25	142	9.00	213	15.50	281	13.50	352	12.50	422	10.00	561	12.00	692	16.00	703	5.00		
3	7.25	72	4.75	143	6.50	214	12.25	282	9.25	353	23.00	423	9.00	562	4.50	693	6.50	704	1.50		
4	2.25	73	7.00	144	15.50	215	18.00	283	15.50	354	4.25	424	7.00	563	15.50	694	9.50				
5	9.50	74	11.75	145	24.00	216	10.00	284	17.50	354A	15.50	425	10.00	564	15.00	695	12.00				
6	6.00	75	6.50	146	32.00	217	20.00	285	16.00	355	20.50	426	11.00	565	187.50	696	12.00				
7	10.50	76	7.25	147	19.00	218	6.50	286	7.00	356	9.50	427	11.50	566	5.50	697	6.75				
8	13.50	77	7.50	148	78.00	219	42.50	287	8.75	357	20.00	428	15.00	567	23.50	698	6.00				
9	4.00	78	14.50	149	8.50	220	22.00	288	10.00	358	6.00	429	12.00	568	11.25	699	13.50				
10	3.75	79	7.00	150	14.00	221	5.25	289	12.00	359	11.50	430	18.30	569	8.50	700	10.00				
11	9.00	80	8.50	151	16.50	222	10.00	290	50.00	360	14.00	431	12.50	570	4.50	701	11.00				
12	2.75	81	5.25	152	12.00	223	12.50	291	14.00	361	14.50	432	7.50	571	9.00	702	11.50				
13	8.00	82	5.50	153	10.00	224	9.50	292	41.00	362	10.00	433	10.50	572	10.50	703	13.50				
14	2.25	83	17.00	154	15.00	225	12.50	293	10.00	363	5.25	434	8.50	573	10.50	704	8.75				
15	7.00	84	11.50	155	13.00	226	7.00	294	4.00	364	7.25	435	8.00	574	7.25	705	5.00				
16	17.00	85	13.00	156	13.50	227	26.50	295	16.50	365	12.25	436	4.00	575	5.00	706	11.00				
17	2.25	86	3.25	157	4.75	228	26.00	296	25.00	366	6.00	437	1.00	576	11.25	707	7.75				
18	8.00	87	8.50	158	10.00	229	56.00	297	11.00	367	11.00	438	4.00	577	18.00	708	9.50				
19	2.25	88	13.00	159	13.50	230	9.50	298	50.00	368	5.25	439	5.25	578	70.00	709	10.50				
20	36.00	89	4.75	160	18.50	231	52.00	299	44.00	369	40.00	440	4.25	579	9.75	710	36.00				
21	18.50	90	5.00	161	12.50	232	8.00	300	6.00	370	10.50	441	7.75	580	3.00	711	72.50				
22	17.50	91	26.00	162	15.50	233	10.00	301	11.00	371	52.00	442	24.00	581	9.25	712	9.00				
23	9.00	92	9.00	163	16.00	234	14.00	302	8.00	372	6.25	443	5.75	582	3.75	713	10.50				
24	12.00	93	16.00	164	3.50	235	14.50	303	14.00	373	10.00	444	9.50	583	32.00	714	12.50				
25	37.50	94	15.50	165	7.25	236	12.00	304	31.00	374	27.50	445	23.00	584	57.00	715	8.00				
26	28.00	95	18.50	166	11.00	237	13.00	305	14.00	375	7.00	446	11.50	585	9.00	716	16.50				
27	37.00	96	16.50	167	31.00	238	13.25	306	17.50	376	6.50	447	20.50	586	18.00	717	7.25				
28	13.50	97	33.00	168	50.00	239	5.00	307	16.00	377	5.25	448	8.25	587	21.00	718	2.50				
29	13.00	98	21.00	169	11.00	240	16.00	308	17.00	378	3.75	449	6.75	588	3.25	719	7.50				
30	16.50	99	7.25	170	14.50	241	17.00	309	16.00	379	13.00	450	6.75	589	9.25	720	7.50				
31	27.00	100	10.50	171	9.00	242	14.00	310	13.00	380	39.00	451	6.50	590	3.25	721	4.75				
32	56.00	101	15.00	172	7.25	243	18.50	311	12.00	381	5.50	452	13.00	591	12.50	722	6.00				
33	46.00	102	8.50	173	17.50	244	6.00	312	9.00	382	6.25	453	7.50	592	15.50	723	6.50				
34	48.00	103	6.50	174	19.50	245	75.00	313	7.50	383	9.50	454	26.00	593	5.25	724	2.50				
35	26.00	104	11.00	175	11.50	246	14.50	314	7.25	384	out	455	6.50	594	7.75	725	8.25				
36	160.00	105	16.50	176	7.75	247	30.00	315	8.00	385	10.50	456	14.00	595	5.00	726	6.50				
37	9.50	106	16.00	177	10.00	248	45.00	316	17.00	386	44.00	457	7.75	596	8.50	727	8.50				
38	155.00	107	9.50	178	23.00	249	14.50	317	17.00	387	11.50	458	11.50	597	82.50	728	5.50				
39	6.00	108	3.00	179	15.50	250	2.50	318	15.50	388	4.25	459	4.50	598	22.00	729	3.00				
40	3.50	109	2.25	180	12.00	251	12.00	319	17.50	389	7.25	460	23.00	599	10.50	730	6.00				
41	18.50	110	13.00	181	8.50	252	6.00	320	5.50	390	7.50	461	26.00	600	61.00	731	17.00				
42	10.50	111	9.25	182	12.00	253	11.50	321	6.25	391	10.50	462	14.00	601	15.50	732	4.75				
43	10.00	112	2.00	183	56.00	254	23.00	322	9.00	392	8.75	463	4.50	602	16.50	733	3.25				
44	9.75	113	5.00	184	29.50	255	31.00	323	9.25	393	7.50	464	5.00	603	16.50	734	6.00				
45	11.50	114	9.00	185	10.50	256	30.00	324	1.00	394	12.75	465	8.25	604	31.00	735	11.25				
46	8.00	115	2.75	186	7.00	257	7.50	325	10.50	395	11.50	466	8.50	605	31.00	736	4.25				
47	9.50	116	10.00	187	13.00	258	5.25	326	17.00	396	40.00	467	5.25	606	46.00	737	6.50				
48	7.25	117	19.00	188	23.00	259	9.00	327	7.50	397	10.50	468	8.75	607	54.00	738	7.50				
49	12.50	118	21.00	189	80.00	260	10.00	328	8.50	398	34.00	469	21.00	608	35.00	739	12.50				
50	31.00	119	15.00	190	9.00	261	31.00	329	13.00	399	15.00	470	3.25	609	10.50	740	5.50				
51	3.25	120	19.00	191	22.00	262	8.50	330	4.75	400	10.00	471	3.25	610	9.50	741	3.00				
52	5.75	121	5.25	192	16.50	262A	3.75	331	16.50	401	13.00	472	14.00	611	21.00	742	13.50				
53	8.00	122	18.00	193	4.25	263	11.50	332	3.25	402	7.00	473	9.00	612	5.50	743	4.75				
54	6.75	123	20.00	194	6.25	264	11.00	333	10.50	403	5.50	474	17.00	613	10.50	744	4.00				
55	11.50	124	34.00	195	29.50	265	16.00	334	14.00	404	17.50	475	11.50	614	12.50	745	8.00				
56	18.00	125	27.00	196	9.50	266	3.00	335	28.50	405	15.50	476	8.00	615	5.50	746	8.00				
57	6.25	126	44.00	197	12.00	267	36.00	336	5.25	406	7.50	477	8.75	616	11.25	747	11.50				
58	4.25	127	15.00	198	10.25	268	11.00	337	10.50	407	12.50	478	6.25	617	7.00	748	5.00				
59	4.75	128	5.25	199	8.25	268A	4.50	338	9.50	408	7.00	479	13.00	618	7.50	749	6.50				
60	5.25	129	5.25	200	30.00	269	4.50	339	41.00	409	31.00	480	4.50	619	14.50	750	24.00				
61	10.00	130	7.00	201	13.50	270	24.50	340	92.50	410	9.00	481	11.00	620	5.25	751	4.00				
62	10.00	131	10.50	202	21.50	271	90.00	341	26.00	411	9.00	482	6.50	621	5.25	752	8.00				
63	11.50	132	14.00	203	23.00	272	14.70	342	320.00	412	25.50	483	11.00	622	8.25	753	11.50				
64	28.00	133	16.00	204	3.25	272A	5.00	343	80.00	413	11.00	484	8.50	623	3.25	754	5.00				
65	9.50	134	10.00	205	13.50	273	12.50	344	48.00	414	12.00	485	6.75	624	13.00	755	8.00				
66	4.25	135	15.50	206	18.50	274	18.00	345	64.00	415	11.50	486	6.25	625	12.00	756	11.50				
67	9.00	136	10.00	207	24.00	275	9.50	346	62.00	416	6.00	487	8.50	626	12.50	757	6.50				
68	10.50	137	19.50	208	67.00	276	11.50	347	20.00	417	4.25	488	12.50	627	16.50	758	2.50				
69	9.50	138	27.50	209	12.25	277	41.00	348	18.00	418	4.00	489	11.25	628	8.25	759	7.50				
		139	54.00	210	10.50	278	9.00	349	21.00	419	6.00	490	7.25	629	6.50	760	22.00				
		140	64.00	211	11.50	279	12.00	340	24.00	420	15.00	491	12.75	630	17.50	761	4.50				

769 16.00	835 5.00	901 6.75	967 4.50	1033 3.00	1098 13.00	1164 12.00	1230 14.50	1295 8.50
770 125.00	836 3.50	902 7.00	968 21.00	1034 5.25	1099 7.00	1165 14.00	1231 5.00	1296 52.00
771 75.00	837 20.50	903 6.25	969 8.00	1035 10.50	1100 6.00	1166 15.00	1232 20.50	1297 17.50
772 3.75	838 5.00	904 9.75	970 36.00	1036 out	1101 39.00	1167 7.00	1233 6.00	1298 9.25
773 16.50	839 28.00	905 12.50	971 38.00	1037 6.25	1102 14.00	1168 4.00	1234 34.00	1299 11.00
774 8.00	840 6.50	906 9.25	972 12.50	1038 3.00	1103 22.00	1169 42.00	1235 19.00	1300 60.00
775 22.00	841 10.00	907 35.00	973 18.00	1039 52.50	1104 23.00	1170 2.75	1236 24.00	1301 19.00
776 out	842 28.00	908 6.25	974 16.50	1040 37.00	1105 20.00	1171 22.00	1237 9.00	1302 9.00
777 5.75	843 14.00	909 19.00	975 8.50	1041 14.50	1106 27.00	1172 70.00	1238 14.50	1303 12.00
778 3.25	844 38.00	910 66.00	976 16.00	1042 10.00	1107 5.00	1173 12.50	1239 15.00	1304 11.50
779 2.25	845 11.00	911 9.50	977 10.50	1043 33.00	1108 22.00	1174 18.00	1240 9.00	1305 21.00
780 5.25	846 5.75	912 7.50	978 19.00	1044 3.75	1109 43.00	1175 6.00	1240A 32.50	1306 60.00
781 6.00	847 4.75	913 23.00	979 5.25	1045 3.75	1110 37.50	1176 4.50	1241 24.00	1307 30.00
782 12.00	848 6.75	914 3.25	980 12.50	1046 out	1111 8.00	1177 10.00	1242 25.00	1308 18.50
783 6.50	849 7.50	915 3.00	981 3.75	1047 7.00	1112 22.00	1178 37.50	1243 14.00	1309 4.50
784 9.25	850 8.50	916 3.50	982 3.50	1048 11.00	1113 4.00	1179 5.50	1244 20.00	1310 15.00
785 17.50	851 9.50	917 3.25	983 5.50	1049 20.00	1114 4.50	1180 21.00	1245 85.00	1311 5.00
786 27.00	852 8.50	918 17.00	984 23.00	1049A 100.00	1115 16.00	1181 14.50	1246 8.50	1312 28.00
787 18.00	853 8.25	919 3.50	985 5.50	1050 9.50	1116 8.00	1182 12.50	1247 16.00	1313 180.00
788 16.50	854 8.25	920 5.50	986 5.75	1051 72.50	1117 7.50	1183 11.50	1248 15.00	1314 14.00
789 9.25	855 8.00	921 7.25	987 5.50	1052 140.00	1118 14.00	1184 21.50	1249 11.00	1315 33.00
790 6.00	856 10.50	922 3.75	988 6.00	1043 18.00	1119 14.00	1185 26.00	1250 20.00	1316 6.50
791 7.50	857 8.50	923 7.50	989 5.00	1054 28.00	1120 7.00	1186 6.50	1251 8.00	1317 8.50
792 5.25	858 9.25	924 5.25	990 7.75	1055 out	1121 27.00	1187 5.00	1252 9.00	1318 40.00
793 4.25	859 4.00	925 2.50	991 6.00	1056 out	1122 56.00	1188 72.50	1253 70.00	1319 160.00
794 10.50	860 8.50	926 5.25	992 out	1057 4.00	1123 15.00	1189 97.50	1254 42.00	1320 21.50
795 10.50	861 8.50	927 14.00	993 7.00	1058 1.75	1124 38.00	1190 31.00	1255 82.50	1321 21.00
796 7.00	862 7.00	928 16.00	994 3.75	1059 3.50	1125 26.00	1191 15.00	1256 65.00	1322 6.50
797 11.25	863 2.25	929 14.50	995 4.25	1060 17.50	1126 22.00	1192 32.00	1257 6.50	1323 10.50
798 5.25	864 15.00	930 13.00	996 14.25	1061 5.00	1127 107.50	1193 40.00	1258 22.00	1324 15.50
799 14.50	865 8.50	931 12.00	997 51.00	1062 14.00	1128 8.00	1194 28.00	1259 8.50	1325 4.75
800 5.75	866 8.00	932 18.00	998 4.75	1063 5.50	1129 16.50	1195 17.00	1260 28.00	1326 15.50
801 4.50	867 21.00	933 9.00	999 57.50	1064 5.00	1130 7.00	1196 24.00	1261 16.00	1327 21.00
802 4.50	868 36.00	934 16.00	1000 5.50	1065 5.00	1131 25.00	1197 18.00	1262 57.50	1328 16.00
803 18.50	869 10.50	935 8.00	1001 7.50	1066 7.25	1132 17.00	1198 13.50	1263 10.00	1329 14.50
804 18.00	870 19.00	936 10.00	1002 22.50	1067 5.75	1133 12.50	1199 10.50	1264 13.00	1330 17.50
805 12.50	871 8.25	937 5.00	1003 18.50	1068 12.00	1134 10.00	1200 200.00	1265 6.50	1331 9.00
806 12.00	872 9.25	938 7.50	1004 7.00	1069 12.50	1135 9.00	1201 87.50	1266 16.00	1332 12.00
807 25.50	873 7.50	939 6.00	1005 3.00	1070 115.00	1136 9.00	1202 18.00	1267 21.00	1333 10.50
808 10.50	874 3.25	940 57.50	1006 18.00	1071 23.00	1137 12.00	1203 11.50	1268 32.00	1334 10.00
809 25.00	875 8.00	941 33.00	1007 8.00	1072 5.50	1138 34.00	1204 92.50	1269 15.00	1335 7.50
810 6.00	876 9.00	942 7.75	1008 14.00	1073 6.50	1139 36.00	1205 13.00	1270 54.00	1336 5.50
811 7.00	877 6.75	943 3.75	1009 out	1074 7.00	1140 37.00	1206 13.75	1271 32.00	1337 25.50
812 26.00	878 4.50	944 2.00	1010 11.50	1075 16.00	1141 12.00	1207 16.50	1272 19.00	1338 38.00
813 3.25	879 9.00	945 6.00	1011 3.75	1076 11.50	1142 24.00	1208 14.50	1273 24.00	1339 41.00
814 8.50	880 4.50	946 6.00	1012 18.00	1077 5.50	1143 27.00	1209 14.50	1274 15.50	1340 31.00
815 6.25	881 8.75	947 9.00	1013 7.25	1078 6.00	1144 64.00	1210 11.00	1275 23.00	1341 11.50
816 10.00	882 4.00	948 6.50	1014 13.00	1079 5.00	1145 20.00	1211 37.50	1276 26.00	1342 34.00
817 19.50	883 7.75	949 6.50	1015 9.00	1080 5.00	1146 31.00	1212 25.00	1277 10.50	1343 18.00
818 10.50	884 5.75	950 10.50	1016 7.50	1081 21.00	1147 77.50	1213 22.50	1278 18.00	1344 5.50
819 10.50	885 12.00	951 3.00	1017 10.00	1082 8.00	1148 8.50	1214 26.00	1279 9.00	1345 3.00
820 9.50	886 12.75	952 6.50	1018 6.50	1083 4.00	1149 380.00	1215 20.00	1280 6.50	1346 8.00
821 15.00	887 8.50	953 4.00	1019 10.50	1084 4.00	1150 36.00	1216 11.50	1281 20.00	1347 6.50
822 23.00	888 7.00	954 6.00	1020 12.00	1085 12.00	1151 13.00	1217 15.50	1282 16.00	1348 5.00
823 25.00	889 6.50	955 10.00	1021 7.00	1086 5.00	1152 7.50	1218 9.00	1283 11.00	1349 13.00
824 3.00	890 10.50	956 19.00	1022 16.50	1087 6.00	1153 29.00	1219 5.00	1284 150.00	1350 82.50
825 52.50	891 8.25	957 4.50	1023 7.00	1088 16.50	1154 48.00	1220 16.00	1285 105.00	1351 12.00
826 13.00	892 10.00	958 11.00	1024 6.50	1089 22.50	1155 10.50	1221 34.00	1286 7.50	1352 20.00
827 5.00	893 7.00	959 14.50	1025 22.00	1090 16.00	1156 18.00	1222 52.50	1287 47.50	
828 11.00	894 41.00	960 7.00	1026 24.00	1091 27.00	1157 21.00	1223 16.00	1288 42.00	
829 11.00	895 36.00	961 1.75	1027 4.50	1092 12.50	1158 17.50	1224 24.00	1289 41.00	
830 6.00	896 15.50	962 6.00	1028 3.75	1093 5.75	1159 23.00	1225 56.00	1290 10.00	
831 4.25	897 8.50	963 11.50	1029 18.50	1094 7.50	1160 9.00	1226 42.50	1291 11.00	
832 5.25	898 7.00	964 120.00	1030 20.50	1095 22.00	1161 23.00	1227 33.00	1292 34.00	
833 7.00	899 6.75	965 11.25	1031 8.25	1096 77.50	1162 16.00	1228 15.00	1293 5.00	
834 6.50	900 3.75	966 42.50	1032 5.00	1097 29.00	1163 9.00	1229 17.50	1294 5.00	