

188th SALE

*Gregory Mozian  
Priced Catalog*

DE LUXE COLLECTION

OF

**UNITED STATES COVERS**

**POSTMASTER PROVISIONALS**

**1851-1869 ISSUES**

**WESTERNS & PATRIOTICS**



AT PUBLIC AUCTION

**THURSDAY, MARCH 22nd, 1956**

at 2 P. M.

*Robert A. Siegel*  
**AUCTIONS**

489 FIFTH AVENUE  
NEW YORK CITY

## CONDITIONS OF SALE

1. The terms of sale are strictly cash to the highest bidder. All buyers are expected to pay for lots within three days of receipt, unless special arrangements have been made prior to the sale.
2. All bids are per lot as numbered in the catalogue and not per piece, unless otherwise announced by the auctioneer at the time of sale.
3. Any lot the description of which is incorrect is returnable only within three days of receipt. All disputed lots must be returned intact as received. Lots containing five or more stamps are not returnable at any time. No lots may be returned by purchasers who have had the opportunity to examine them before the sale.
4. Successful mail bidders, unless they are known to us or supply acceptable references, will be notified of the amount of the lots secured for them, and are expected to send payment in full before the lots are forwarded.
5. If the purchase price has not been paid within the time limit, or lots taken up within seven days from date of sale, they may be resold and any losses arising from such sale charged to the defaulter.
6. All stamps are sold as genuine, except where sold "As Is". Claims for any lot proving otherwise, must be made within two weeks from date of sale.
7. The right is reserved to group two or more lots, also withdraw any lot or lots from the sale, or to act on behalf of the seller.
8. Until paid for in full all lots remain the property of Robert A. Siegel.
9. No commission is charged for buying at our sales, but all forwarding charges will be added to the purchase price.
10. Lots will be sent for inspection, provided such lots are returned to us the same day as received. Postage and registration both ways will be charged. Approximate values of lots will be given on request.
11. The placing of a bid shall constitute acceptance of the foregoing conditions of sale.

ROBERT A. SIEGEL

GREGORY MOZIAN, Licensed Auctioneers

---

In sending bids, always state the highest price you are prepared to pay for the lot. Your limit will not be used as a starting bid unless absolutely necessary.

## DESCRIPTIONS

Superb—the finest condition for noteworthy, outstanding copies.

Very Fine (VF)—means that there is a slight deviation from the above.

Fine (F)—means that the perforations do not touch the design on issues after 1890, but in some cases may just touch in earlier issues; if used, fairly lightly cancelled.

Very Good (VG)—means that the appearance is generally fine but that the perforations cut the design slightly.

Good (G)—means average off-centering; or fairly attractive with slight defects. Original gum is not to be expected on 19th Century stamps up to 1888 unless so stated.

Scott's 1956 Specialized United States Catalogue is used for cataloging our lots of United States and Scott's Standard Catalogue, 1956 for others.

<p><b>WE SOLICIT FINE MATERIAL FOR FUTURE SALES</b></p>
---

**Tel.: MUrray Hill 2-0980**

**SIGNED**

[illegible]

**Upon request, estimate of value furnished on any lots in this auction.**

[illegible]



DE LUXE COLLECTION

OF

**UNITED STATES COVERS**

POSTMASTER PROVISIONALS

1851-1869 ISSUES

WESTERNS & PATRIOTICS

AT PUBLIC AUCTION

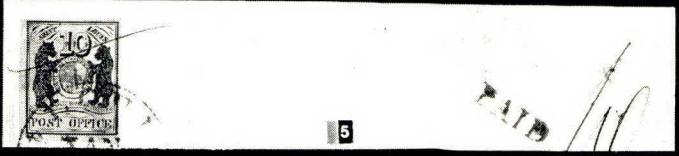
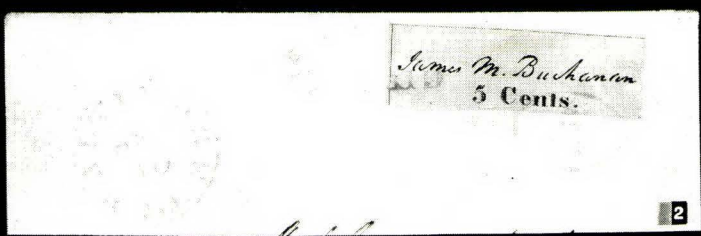
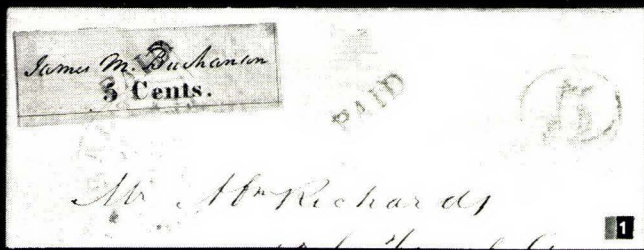
THURSDAY, MARCH 22nd, 1956

at 2 P. M.

ROBERT A. SIEGEL

*Auctions*

489 FIFTH AVENUE, NEW YORK 17, N. Y.



## ESTIMATES

Our sales contain many 19th Century covers and fancy cancellations. We have had many requests to give the estimated cash value on these lots. We are trying to place a fair net valuation on each lot as a guide for bidding when no catalogue value portrays the true value. The chart below will be used, for example E. IV means our estimate cash value on this lot is \$30.00 to \$40.00. Lots may actually realize more or less than these estimates and under no circumstances are these estimates to be considered reserves but merely a guide to bidding.

E. I	up to \$ 10.00	E. VIII	\$100.00 to \$150.00
E. II	\$ 10.00 to \$ 20.00	E. IX	\$150.00 to \$200.00
E. III	\$ 20.00 to \$ 30.00	E. X	\$200.00 to \$250.00
E. IV	\$ 30.00 to \$ 40.00	E. XI	\$250.00 to \$350.00
E. V	\$ 40.00 to \$ 50.00	E. XII	\$350.00 to \$500.00
E. VI	\$ 50.00 to \$ 75.00	E. XIII	\$500.00 to \$750.00
E. VII	\$ 75.00 to \$100.00	E. XIV	\$750.00 to \$1000.00
		E. XV	over \$1000.00

THURSDAY, MARCH 22nd — 2 P.M.

## UNITED STATES COVERS

### POSTMASTER PROVISIONALS

- 35 1 **Baltimore, 5c Black, White (3X1).** Blue Paid on stamp and cover, blue Baltimore pmk. ties to cover, Very Fine ..... (Photo) 1000.00
- 600 2 **Baltimore, 5c Black, Bluish (3X3).** Blue 5 in oval and Paid ties, Paid and Baltimore pmk. on cover, Extremely Fine ..... (Photo) 1200.00
- 25 3 **Baltimore, 5c Blue on Buff Envelope (3XU2).** Extremely Fine (Photo) 1000.00
- 375 4 **Brattleboro, Vt. 5c Buff (5X1).** Margins all around, red Paid on stamp and cover, red Brattleboro, Vt. pmk. on cover, Very Fine ..... (Photo) 2250.00
- 25 5 **St. Louis, 10c Gray Lilac (11X5).** Tied with single pen stroke and red St. Louis pmk. red Paid and ms. 10 on cover, margins all around, Extremely Fine ..... (Photo) 650.00
- 75 6 **St. Louis, 10c Gray Lilac (11X5).** Tied with red St. Louis pmk., red Paid and ms. 10 on cover, frame line barely touches parts of R. & B. Very Fine and attractive cover ..... (Photo) 650.00

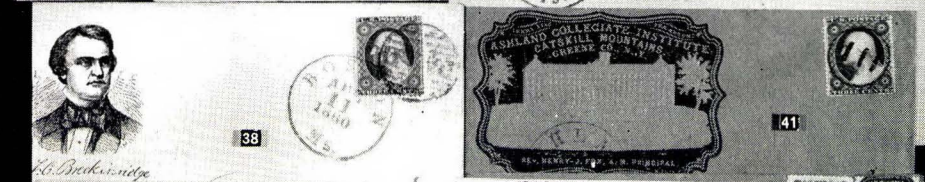
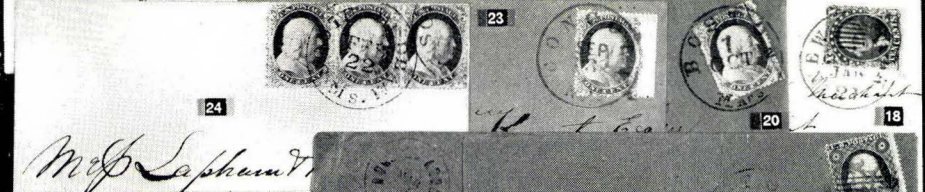
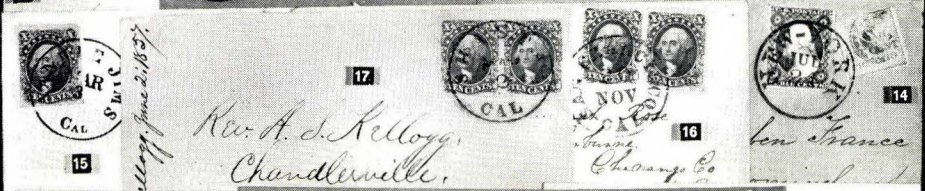
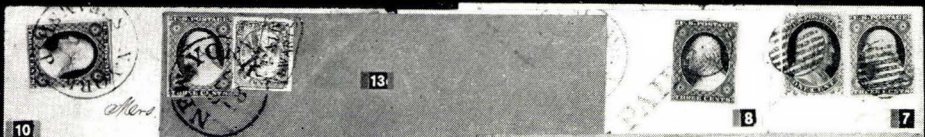
# 1851 ISSUE

- 27- 7 **1c Dark Blue, 3c Dull Red (7, 11).** Tied with black grids, red New Orleans pmk. and ms. Way on cover, Very Fine ..... (Photo) E. III
- 41- 8 **3c Orange Brown (10).** Margins all around, tied with Paid and Circle of Dots in black, red Salem, Mass. pmk. on small cover, Extremely Fine ..... (Photo) E. III
- 14- 9 **3c Brownish Carmine (11).** Tied Lowell, Mass. on small pretty embellished ladies cover, VF ..... E. I
- 28- 10 **3c Brownish Carmine (11).** Margins all around, tied neat N. York Steamship cancel, ms. "Due 17" on cover, Very Fine ..... (Photo) E. III
- 21- 11 **3c Dull Red (11).** Tied clear red Boston & Maine R. R. and grid pmks. touches at R. & B. Fine ..... E. II
- 40- 12 **3c Dull Red (11).** Interesting forwarded cover, stamp cancelled ms. ¢ marking, Paid 3, 5 and Edenton, Elizabeth City and Scuppernong, N. C. pmks. V.F. .... E. II
- 24- 13 **3c Dull Red, Red Swarts Local (11, 136L9).** Tied with New York and Paid Swarts cancels, Very Fine ..... (Photo) E. III
- 47- 14 **3c Dull Red, 1c Blue Swarts Local (11, 13L14).** Both tied with New York pmk. Very Fine ..... (Photo) E. VI
- 120- 15 **10c Green Type I (13).** Large margins all around, tied bold Yankee Jims, Cal. pmk. Very Fine ..... (Photo) E. VIII
- 360- 16 **10c Green Type I (13). Horiz. Pair,** large margins all around, tied San Francisco, Cal. Extremely Fine ..... (Photo) E. XI
- 130- 17 **10c Green Type II (14).** Horiz. Pair, large margins all around, tied Shasta, Cal. Superb ..... (Photo) E. VIII
- 72- 18 **10c Green, Type III (15).** Tied with New York Ocean Mail cancel, to San Francisco, Very Fine ..... (Photo) E. IV

# 1857 ISSUE

- 47- 19 **1c Blue, Type I (18).** Tied with red New York City Carrier cancel, Very Fine ..... E. VI
- 105- 20 **1c Blue Type II (20).** Large Crack (2LII). Tied on cover with Boston pmk., Superb stamp, cover has closed tear ..... (Photo) E. VIII
- 35- 21 **1c Dark Blue Type II (20). Horiz. strip of 3** tied bold East Bethel, Vt. pmk. V.F. .... E. V
- 22- 22 **1c Blue, Type II, 3c Red (20, 26).** Carrier rate, both tied on tiny cover, V.F. .... E. II
- 23- 23 **1c Blue, Type IIIa (22).** Sheet margin copy tied with blue Concord, N. H. pmk. Extremely Fine ..... (Photo) E. VI





70 <sup>-</sup> 24	<b>1c Dark Blue, Type IIIa (22).</b> Horiz. strip of 3 tied South Dedham, Mass., Very Fine ..... <b>(Photo)</b> E. VII
22 <sup>0</sup> 25	<b>1c Blue, Type IV (23).</b> Tied with Philadelphia pmk. Extremely Fine .... E. III
18 <sup>-</sup> 26	<b>1c Blue, Type IV (23).</b> Tied with Boston Paid cancel on printed circular, V.F. .... E. III
17 <sup>-</sup> 27	<b>1c Blue Type V (24).</b> Vertical strip of 3 tied with blue Tonwanda, N. Y. pmks. Extremely Fine ..... E. I
14 <sup>-</sup> 28	<b>1c Blue on 3c Red Entire (24, U27).</b> Tied with red Boston pmk. and Paid, Carrier usage, V.F. .... E. II
16 <sup>50</sup> 29	<b>1c Blue Type V, 10c Green Type V (24, 35).</b> Two of 10c, all tied with Boston Paid cancels on cover to Switzerland, V.F. .... E. III
16 <sup>5</sup> 30	<b>3c Red (26).</b> Cancelled with <b>Axe</b> cancel and tied <b>Collinsville, Ct.</b> pmk. Superb ..... <b>(Photo)</b> E. VIII
42 <sup>50</sup> 31	<b>3c Red (26).</b> Magnificent bold strike of <b>Lyre</b> , Canton, Miss. pmk. Extremely Fine ..... <b>(Photo)</b> E. VI
22 <sup>-</sup> 32	<b>3c Red (26).</b> Tied with small type <b>Lyre</b> cancel, Canton, Miss. pmk. on cover, Fine ..... <b>(Photo)</b> E. III
102 <sup>50</sup> 33	<b>3c Red (26).</b> Most unusual cancel on stamp of negative <b>Railroad Locomotive</b> on mourning cover with large Salt Sulphur Springs, Va. pmk., V.F. and rare cover ..... E. VI
27 <sup>50</sup> 34	<b>3c Red (26).</b> Tied " <b>I. Field, P. M.</b> " in circle, Harrison Square, Mass. pmk. on cover, Very Fine ..... E. III
16 <sup>-</sup> 35	<b>3c Red (26).</b> Tied <b>N. York Ship</b> cancel, Due 2 on cover, V.F. <b>(Photo)</b> E. II
17 <sup>-</sup> 36	<b>3c Red (26).</b> Tied " <b>N. Y. &amp; Boston Stmb. &amp; R. R. R.</b> " cancel, Extremely Fine ..... E. II
57 <sup>50</sup> 37	<b>3c Red (26).</b> Target cancel not tying on cover with <b>Choctaw Agency, Ark.</b> pmk. contains interesting letter, Fine and scarce cover ..... <b>(Photo)</b> E. VI
40 <sup>-</sup> 38	<b>3c Red (26).</b> Tied with Boston pmk. on <b>campaign</b> cover showing <b>Breckinridge</b> , VF ..... <b>(Photo)</b> E. IV
16 <sup>-</sup> 39	<b>3c Red (26).</b> Two diff. <b>Green</b> , town cancels, both tied, <b>Ottawa, Ill.</b> and <b>Osage, Iowa</b> pmks. Very Fine ..... E. II
9 <sup>50</sup> 40	<b>3c Red (26).</b> Tied on pretty illustrated cover showing Dusseldorf Art Gallery, Superb ..... E. II
42 <sup>50</sup> 41	<b>3c Red (26).</b> Cancelled with <b>3 Bars in Circle</b> on attractive illustrated cover showing Ashland Collegiate Institute, Ashland, N. Y. pmk. Very Fine ..... <b>(Photo)</b> E. III
10 <sup>-</sup> 42	<b>3c Red (26).</b> Two diff. pretty illustrated advert. covers of insurance Co. and Boot Dealer, VF ..... E. II
25 <sup>50</sup> 43	<b>3c Red (26).</b> Two diff. attractive illustr. Hotel covers from New Hampshire, V.F. .... E. II



44	<b>3c Red (26).</b> Two diff. illustrated <b>School</b> covers, V. F. ....	E. II
45	<b>3c Red, 10c Green Type V (26, 35).</b> 10c tied San Francisco, 3c tied Blackstone, Mass. when forwarded to Greenwich, R. I. Very Fine .....	E. II
46	<b>3c Red, 12c Black (26, 36).</b> Tied with red targets, red <b>New Haven</b> pmk. to France, various transit markings, Fine .....	E. II
47	<b>3c Red, 12c Black Vertical Pair on 3c Entire (26, 36, U9).</b> Tied on cover to Germany, various transit markings, Fine .....	E. II
48	<b>5c Brick Red (27).</b> Vertical <b>Strip of 3</b> tied black New Orleans and New York Paid 12 in red to Upper Pyrenees, France, strip centered to R. on small neat cover, Fine .....	(Photo) E. VIII
49	<b>5c Red Brown (28).</b> Vertical Strip of 3 tied with New Orleans pmks. to France, various transit markings, Very Fine .....	E. VIII
50	<b>5c Red Brown, 10c Green Type III (28, 33).</b> Tied New Orleans on cover front only, to France various transit marks, Very Fine .....	E. IV
51	<b>5c Brown, 10c Green Type V (29, 35)</b> Tied with red grids, red New York Paid and French transit marking on cover to Paris, 10c has light crease, 5c Very Fine attractive cover .....	E. III
52	<b>5c Brown, 10c Green Type V (29, 35).</b> Two of each to pay double weight postage to France, tied New Orleans pmks. various transit markings, Very Fine .....	(Photo) E. VI
53	<b>5c Brown Type II (30a).</b> Tied New York and grid cancels, large 5 on cover to Nova Scotia, Extremely Fine .....	(Photo) E. IV
54	<b>5c Brown, 10c Green Type V (30a, 35).</b> Tied by red grids, Paid 4 and New Orleans cancels on cover to Marseilles, Very Fine .....	(Photo) E. IV
55	<b>10c Green Type I (31).</b> Tied clear <b>New York Ocean Mail</b> cancel on cover to <b>San Francisco</b> , ms. " <b>Str. Star of the West</b> ," Very Fine cover .....	(Photo) E. VIII
56	<b>10c Green, Type II (32).</b> Tied clear <b>New York Ocean Mail</b> cancel on cover to San Francisco, Very Fine .....	E. II
57	<b>10c Green Type II (32).</b> Horiz. strip of 3 tied New Orleans pmk. to pay double letter weight postage to France, various transit markings, R. stamp few short perfs. pair Very Fine .....	(Photo) E. III
58	<b>10c Green, Type III, II, III in Vert. Strip of 3 (32-33).</b> Tied red grids on cover to Germany, various transit markings, Very Fine and pretty cover .....	(Photo) E. V
59	<b>10c Green Type III (33).</b> Tied <b>San Francisco</b> pmk. Superb stamp .....	E. III
60	<b>10c Green, Type V (35).</b> Tied Buffalo, N. Y. to Canada, " <b>Ud. States Paid 10cts.</b> " in red arc, Very Fine .....	E. I
61	<b>10c Green, Type V (35).</b> Tied <b>Bath, Me. Feb. 13</b> on embossed <b>Valentine</b> cover, with very pretty Valentine enclosure, Very Fine .....	E. III

26-62 **10c Green Type V (35).** Pair and single tied **Skowhegan, Maine** on cover to Austria, transit markings, Very Fine ..... (Photo) E. III

27-63 **12c Black (36).** Vertical pair tied red grids and London, Paid cancel, Very Fine ..... E. III

70-64 **24c Lilac (37).** Tied with red **New York 19** on cover to London, Very Fine (Photo) E. VII

80-65 **24c Lilac (37).** Tied red New York and grid to England, Very Fine (Photo) E. VII

52-66 **24c Lilac (37).** Tied with grid, Washington, D. C. pmk, red 3 on small cover to England, Fine ..... (Photo) E. VII

77-67 **24c Gray Lilac (37a).** Tied Boston Paid cancel, on cover to Scotland, transit markings, Very Fine ..... (Photo) E. VII

131-68 **1c Blue, 10c Green pair, 24c Lilac (24, 35, 37).** Tied by East Dennis, Mass. and grids on cover to Australia, red Boston and London pmks. cover slightly repaired at top otherwise V.F. and unusual combination (Photo) E. VIII

280-69 **30c Orange (38).** Tied with pretty small **Washington, D. C.** pmk. paying double rate to France, various transit markings Very Fine, attractive cover ..... (Photo) E. IX

85-70 **3c Red, 30c Orange (26, 38).** Tied with Boston Paid, 30c has str. edge at L. on cover to **Cape of Good Hope**, various transit markings Very Fine (Photo) E. VIII

300-71 **5c Dark Brown, 10c Green, 30c Orange (30a, 35, 38).** Tied by grids and New York Paid 9 cancels, triple letter rate to France, 5c light crease otherwise Very Fine, attractive cover ..... (Photo) E. VIII

120-72 **5c Brown, 10c Green, 30c Orange (30a, 35, 38).** Each with red grid cancel, 10c just tying 30c by grid on cover to **Shanghai, China**, Fine (Photo) E. VIII

460-73 **30c Orange (38).** Horiz. Pair tied on cover to Austria, via Prussian Closed Mail, double letter rate, various transit markings, Very Fine, Pair scarce on cover ..... (Photo) E. X

#### WESTERN AND TERRITORIAL COVERS

90-74 **3c Dull Red (11).** Sheet margin pair tied with **Steam Ship** cancel, blue **Via Nicaragua Ahead of The Mails** marking on cover, Very Fine (Photo) E. VIII

73-75 **1c Blue strip of 4, 10c Green type II pair (24, 32).** On cover to England, tied **Summer, Kansas T.** pmks and red 19 Very Fine ..... (Photo) E. IX

12-76 **3c Red (26).** Tied **Saint Paul M. T.** pmk. and **Forwarded 3** in arc and **New Haven** pmk. Very Fine ..... E. II

28-77 **3c Red (26).** Tied clear **Quindaro, T.** pmk. (Kansas Terr.), cover slightly soiled, Fine, scarce ..... (Photo) E. IV



St Africa from New York

64

1860

65

James Ramey

St. Louis



66



67



62

via Marshall



Wm. Davis & Sons  
Ship Revenue  
and American Consul

Bo de Guardia  
San de la Cruz

SEP 2

68

69

via England  
to America



28

71

books  
attinger & Co

via Paris

72

70

via New York

73

of Henry Ramey



74



Mrs Downing  
1 Provost Road  
Weststock Hill



PHENIX

Trinity

75



W. H. Spear

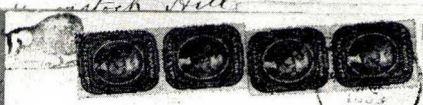
80



79



77



78



86



85



81

Mrs W. H. Downing



88



Lenny Wood, Esq  
Joshua H. Davis New Bedford  
November 15, 1866

89

May 4th

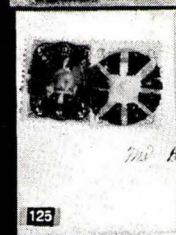
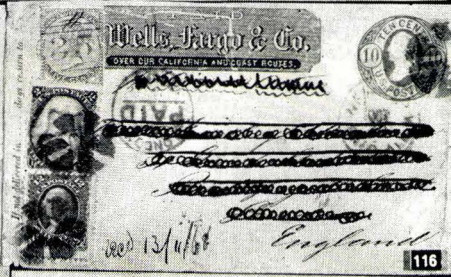
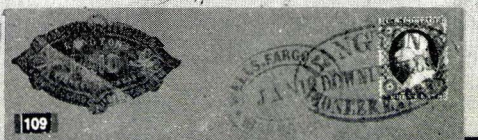


Mary  
Profess of  
Heather House  
St. Louis  
County  
England

90

- 270- 78 **5c Henna Brown (28).** Two vertical pairs tied Yreka, Cal. pmk. and Bison, one pair has crease before printing, Very Fine and rare cover (Photo) E. XI
- 70- 79 **10c Green Type I (31).** Tied St. Anthony's Falls, Min. pmk. centered to B. on illustrated cover Minne-Ha Ha Falls to New Brunswick, U. States in arc, Fine and attractive cover (Photo) E. VII
- 80- 80 **10c Green Type I (31).** Tied Columbia, Cal. on small embossed cover, Very Fine (Photo) E. VII
- 145- 81 **10c Green Type II (32).** Tied with Heart, Diamond, Spade and Club cancel in blue, on cover Marysville, Cal. Paid By Stamp pmk. Fine and very scarce cancel (Photo) E. VIII
- 31- 82 **10c Green Type III (33).** Tied blue Petaluma, Cal. pmk. Extremely Fine E. III
- 203- 83 **10c Green, Type III (33).** Tied Todds Valley, Cal. pmk. Very Fine E. II
- 44- 84 **10c Green, Type V (35).** Tied Columbia, Cal. Extremely Fine E. I
- 155- 85 **1c Blue Pair, 10c Green, 30c Orange (63, 68, 71).** Tied with grids and Los Angeles, Cal. pmk. on cover to Italy, various transit markings, Very Fine (Photo) E. V
- 575- 86 **3c Rose (65).** Tied with pretty red Port Angel, W. T. pmk. addressed to Seattle, W. T. Very Fine (Photo) E. V
- 26- 87 **3c Rose (65).** Str. edge at L. tied on illustrated cover Grand Hotel San Francisco Cal., Fine and attractive cover E. II
- 155- 88 **10c Green (68).** Tied target cancel, San Francisco pmk. mailed from Hawaii with red Honolulu U. S. Postage Paid pmk. addressed to New York, Very Fine (Photo) E. VI
- 90- 89 **5c Brown (76).** Tied Cog Wheel cancel, San Francisco pmk. mailed from Hawaii with red Honolulu U. S. Postage Paid pmk. addressed to New Bedford, Very Fine (Photo) E. VI
- 110- 90 **5c Brown, 24c Lilac (76, 78).** Vancouver Island to England, Victoria, V. I., San Francisco, New York pmks. latter tied with San Francisco Cog Wheels, Fine (Photo) E. VII
- 21- 91 **24c Lilac (78).** Tied target cancel, Gold Hill, Nev. Nov. 22, 67 pmk. on cover to England, various transit markings, Extremely Fine (Photo) E. III
- 130- 92 **10c Green Grill (96).** Used in combination with Hawaii 5c Blue (32). Both tied, Honolulu, Hawaiian Islands, Hawaiian Steam Service and San Francisco pmks. attractive combination, Fine (Photo) E. VII
- 155- 93 **2c Brown, 10c Yellowish Orange (113, 116).** Tied on small cover target, Denver, Colo. and red London Paid cancels, to England, Very Fine Territorial (Photo) E. VI
- 94 **3c Ultramarine (114).** Tied on cover Fort Union, N. Mex. pmk. Scarce territorial, V.F. (Photo) E. III





## CALIFORNIA PICTORIAL COVERS

- 115-95 **3c Red (26).** Str. edge copy tied **San Francisco** pmk. tiny corner nick on **Stagecoach drawn by 4 horses**, imprint inked out because of scarce local usage, addressed to Sacramento City, Attractive ..... (Photo) E. VIII
- 260-96 **10c Green Type V (35).** Tied San Francisco pmk. **Stagecoach drawn by 4 horses** in blue imprint underneath **The Star of the Union-California**, stamp has trivial stain on few perfs. Very Fine ..... (Photo) E. X
- 255-97 **10c Green, Type V (35).** Tied grid and San Francisco pmk. **Stagecoach drawn by 4 horses** imprint "Per Overland Mail Via Los Angeles," Geo. H. Bell, Stationer, 153 Montgomery St. San Francisco, Very Fine (Photo) E. X
- 360-98 **10c Green, Type V (35).** Tied by blue dotted grid, **Marysville, Cal.** pmk. **Stagecoach drawn by 6 horses, imprinted Overland Via Los Angeles**, Published by Randal & Co., Marysville, Extremely Fine ..... (Photo) E. XI
- 940-99 **10c Green Type V (35).** Tied blue dotted grid, **Marysville, Cal.** pmk. **Stagecoach drawn by 6 horses** imprint **Overland Via Los Angeles**, Published by Randal & Co. Marysville, Fine ..... (Photo) E. VIII
- 215-100 **10c Green Type V (35).** Two tied with San Francisco pmk. **Stagecoach drawn by 4 horses** imprint Per Overland Mail Stage, Via Los Angeles, Geo B. Hitchcock, Stationer, Sansome St. San Francisco, Very Fine ..... (Photo) E. XI
- 270-101 **10c Green, Type V (35).** Tied blue dotted grid, **Marysville, Cal.** pmk. **Clipper Ship** imprinted **Via Panama**, Published by Randal & Co. Marysville, Very Fine ..... (Photo) E. X
- 240-102 **10c Green Type V (35).** Tied San Francisco pmk. **Clipper Ship** imprint **Via Panama**, Geo. H. Bell, Stationer, 153 Montgomery St. San Francisco, Very Fine ..... (Photo) E. X
- 515-103 **10c Green Type V (35).** Tied San Francisco pmk. **Railroad Locomotive and Cars** imprint **Overland Mail, Via Los Angeles**, Extremely Fine ..... (Photo) E. XI
- 125-104 **3c Rose (65).** Tied, **Benicia, Cal.** pmk., **Stagecoach in colors drawn by 4 horses**, Very Fine ..... (Photo) E. IX

## WESTERN EXPRESS COVERS

- 85-105 **1c Blue, 3 Dull Red on 6c Green Entire (9, 11, U14),** Tied with scarce blue **Wells Fargo San Francisco Shield** cancel and black New York pmks. on cover to Philadelphia, Very Fine ..... (Photo) E. VIII
- 425-106 **3c Dull Red (11).** Tied blue. **Wells Fargo & Co. Express San Francisco** cancel, blue oval Paid on cover addressed to Yuba City, Very Fine ..... E. V
- 725-107 **3c Dull Red (11).** Tied **Pacific Express, Volcano** in blue oval on cover with Pacific Express Frank with Horseman in black, Extremely Fine ..... (Photo) E. VII

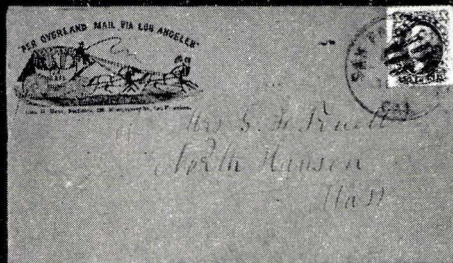




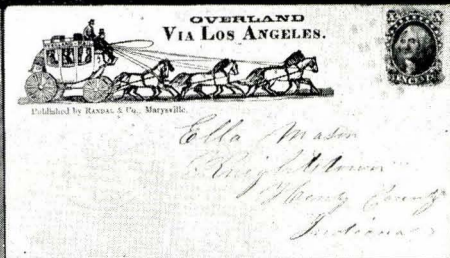
95



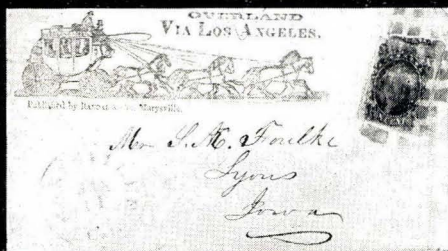
96



97



98



99



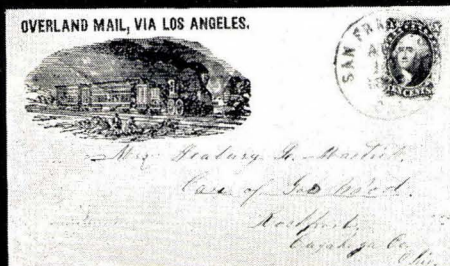
100



101



102



103



104

- 108 **3c Dull Red (11).** Tied San Francisco on cover with **Pacific Express Co. Frank** with Horseman in blue, Very Fine ..... (Photo) **E. VI**
- 109 **3c Red (26).** **Langtons Pioneer Express** frank, stamp tied red oval **Downieville** company cancel, **Wells Fargo Marysville** cancel on cover, Extremely Fine and very attractive cover ..... (Photo) **E. VIII**
- 110 **3c Red (26).** Paid cancel, **Central Overland California & Pikes Peak Express Co. St. Joseph, Mo.** cancel, **Pacific City, Iowa** pmk. addressed to **Mountain City, K. T.**, in ms. "Care C. O. C. & P. P. St Joseph", contains letter, Very Fine ..... (Photo) **E. IX**
- 111 **10c Green, Type V (35).** Brown **Freeman & Co.** corner card, stamp tied large blue grid, **Marysville, Cal.** pmk. blue oval **Freeman & Co. Marysville** cancel on reverse, ms. "Via Los Angeles Overland Mail" ..... **E. VII**
- 112 **1c Blue, 10c Green pair, 3c Pink Entire (63, 68, U34).** **Wells Fargo** frank, cover mailed at **Victoria, Vancouver Island** with blue cancel mostly covered over by U. S. stamps tied by fancy rosette, Red **N. York Br. Pkt. Paid 19** cancel on cover to England, Extremely Fine (Photo) **E. VIII**
- 113 **3c Rose on 6c Pink Entire (16, U39).** **Wells Fargo** Frank tied by San Francisco company cancels on legal size cover to Watsonville, Very Fine **E. II**
- 114 **10c Green, three on 10c Yellow Green Entire (68, U41).** Red **Wells Fargo** Frank, blue company cancel, grid cancels and tied by various red transit markings on cover to Germany, Extremely Fine and pretty cover ..... (Photo) **E. VIII**
- 115 **2c Black pair, 10c Green on 10c Entire (68, 73, U41).** Used in combination with **Great Britain 1p red (33)** tied on **Wells Fargo** frank cover to England, **Victoria Wells Fargo Co.** cancel on back, address partly inked over, unusual ..... (Photo) **E. VIII**
- 116 **2c Black, 12c Black on 10c Entire (69, 93, U41).** Used in combination with **Vancouver Island 5c rose (5).** All tied on **Wells Fargo** frank cover to England, **Victoria Wells Fargo Co.** cancel on back, address inked over, scarce combination ..... (Photo) **E. VIII**
- 117 **24c Lilac on 3c Pink Entire (78, U59).** Tied "Dietz & Nelson Express **B. C. & V.**", **British Columbia, 3p blue** tied by blue oval **Paid** pmk. "New Westminster Post Office, **British Columbia**" cancel, **Wells Fargo and Dietz & Nelson's British Columbia & Victoria Express** franks on cover which is part of a paste up cover. This celebrated cover is an extraordinary combination and a beautiful cover of the greatest rarity ..... (Photo) **E. XIV**

#### 1861 ISSUE

- 118 **10c Dark Green, August (58).** Tied with grid, **West Union, Iowa** pmk. on cover, Very Fine ..... (Photo) **E. VI**
- 119 **10c Dark Green, August (58).** Tied with grid, **New London, Conn.** pmk on cover to **Virginia City, Nevada Terr.** Very Fine ..... **E. VI**



for Analgi



Musium H. B. Desmet, C. Faugere et  
Bordeaux

120

PAID  
Wells Fargo & Co.



117

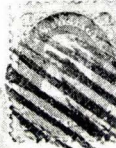
per Steamer "China"

To the

Bank of Liverpool

overland mail.

Mr. Seng M. Nixon Jr  
 Camp 4th New York Heavy Arty  
 Shanghai



6.

*Quercus bicolor.*

Wash. 24th Aug



175

- 455- 120 **10c Dark Green August, 5c Buff (58, 67).** Tied with **New York Sep. 17** and grid pmks. **Earliest known usage of 10c August stamp** (Sept. 17, 1861) on cover to France with various transit markings, Very Fine and rare cover ..... (Photo) E. XI
- 12- 121 **1c Blue (63).** Tied with octagon **U. S. P. O. Dispatch Phila.** cancel, Extremely Fine ..... E. II
- 10- 122 **1c Blue (63).** Pair and single tied with pretty fancy **New York Geometric cancels**, Fine ..... E. II
- 10- 123 **1c Blue two, 3c Rose, 10c Green (63, 65, 68).** Tied on cover to France, 15c rate, Cazenovia, N. Y. and various transit markings, attractive combination ..... E. II
- 220- 124 **1c Blue, 10c Green pair (63, 68).** Tied on cover to Sicily and addressed to Guiseppe Verdi the famous composer, each with scarce **Horse Head** cancel, 1c has crease possibly before printing, Fine and Rare cover ..... (Photo) E. IX
- 26- 125 **1c Blue, 5c Red Brown (63, 75).** Tied with bold Wedge cancels, Wilkins, Pa. pmk. Very Fine ..... (Photo) E. IV
- 85- 126 **1c Blue, 5c Red Brown four (63, 75).** Tied with blue Baltimore Md. pmks. and transit marking on cover to Amsterdam, cover has small hole, stamps are Very Fine, attractive cover ..... (Photo) E. VII
- 3250 127 **3c Pink (64).** Tied Cambridge, Mass. Oct. 28, 1861 pmk. Extremely Fine ..... (Photo) E. V
- 255- 128 **3c Pink (64).** Beautiful shade tied Portland, Me. Oct. 4, 1861, "This is the **Pigeon Blood Pink**" signed Stanley B. Ashbrook, Extremely Fine and rare shade ..... (Photo) E. VIII
- 31- 129 **3c Pink (64).** Grid cancel not tied, octagon "**Philadelphia Aug. 23, 1861**" pmk., very early usage, earliest known Aug. 18th, New York Advertised in oval, Very Fine ..... E. IV
- 85- 130 **3c Rose Pink (64a).** Eight stamps includes two strips tied on cover to England with **blue straight line** Chattanooga, Tenn. December 14, 1863 cancels, Fine and possibly unique usage of this cancel ..... (Photo) E. VIII
- 6250 131 **3c Rose (65).** Tied with White Hall, N. Y. and **Flag** cancel, Extremely Fine ..... (Photo) E. VI
- 86- 132 **3c Rose (65).** Clear New York **Flag** cancel on cover with Hotel corner card. Very Fine and scarce cancel ..... (Photo) E. VII
- 10250 133 **3c Rose (65).** Tied clear New York **Masonic** cancel on cover with Hotel corner card Very Fine and scarce cancel ..... (Photo) E. VII
- 22- 134 **3c Rose (65).** Neat clear small **Shield** cancel, **West Eau Claire, Wis.** pmk. on cover, V. F. .... E. II
- 9- 135 **3c Rose (65).** Tied **Shield** cancel, Taunton, Mass. pmk. V. F. .... E. II
- 136 **3c Rose (65).** Tied with beautiful bold Waterbury, Conn. **Shield**, V. F. .... (Photo) E. IX



- 137 **3c Rose (65).** Tied portion of **Leaf** and **Waterbury, Conn.** pmk. Fine  
(Photo) E. III
- 138 **3c Rose (65).** Tied with clear **Devil & Pitchfork** cancel, West Meriden,  
Conn. pmk. few short perfs. V.F. appearance (Photo) E. VII
- 139 **3c Rose (65).** Tied with bold **Eagle** and **Cory, Pa.** pmk. Very Fine strike  
(Photo) E. VIII
- 140 **3c Rose (65).** Str. edge copy tied beautiful strike "**Union**" in **Star** cancel,  
West Hampton, Mass. pmk. on cover, Extremely Fine (Photo) E. VI
- 141 **3c Rose (65).** Tied with **blue straight line** "**Chattanooga, Tenn.** Dec-  
ember 10, 1863" cancel, Very Fine E. II
- 142 **3c Rose (65).** Tied with **Pointing Hand** cancel, **Lansing, Mich.** pmk. on  
cover, Very Fine and scarce cancel (Photo) E. VI
- 143 **3c Rose (65).** Tied large **VA** in circle, **Norfolk, Va.** pmk. on cover,  
Very Fine (Photo) E. II
- 144 **3c Rose (65).** Tied "**Union**" in **Star** cancel, West Hampton, Mass. pmk  
on cover, Very Fine (Photo) E. III
- 145 **3c Rose (65).** Tied with pretty **blue geometric** design, **Rutland, Vt.** pmk.  
on cover, V.F. E. I
- 146 **3c Rose (65).** Two tied to each other by deep bold blue **Geometric**  
cancel, **Rutland, Vt.** pmk. and ms. "Due 18c" on cover, Extremely  
Fine and pretty (Photo) E. IV
- 147 **3c Rose (65).** Excellent strike of **Bow Tie** cancel, **Feltonville, Mass.**  
pmk. V.F. (Photo) E. III
- 148 **3c Rose (65).** Tied with bold **Maltese Cross** cancel, **Brunswick, Me.** pmk.  
Extremely Fine (Photo) E. II
- 149 **3c Rose (65).** Tied **Baltimore Md.** pmk., **Steamboat** and **Due 2cts** all in  
blue, Very Fine E. II
- 150 **3c Rose (65).** Tied **Gasslets Station R. & S. R. R.** cancel in oval on  
illustrated Hotel cover from **Burlington, Vt.** Very Fine (Photo) E. IV
- 151 **3c Rose (65).** Tied **New York Geometric** cancel on illustr. cover showing  
**N. Y. Consolidated Stage Coach**, interesting, V.F. (Photo) E. II
- 152 **3c Rose (65).** Tied on **campaign** cover of **Grant and Wills** in color,  
Fine, scarce design (Photo) E. II
- 153 **3c Rose (65).** Tied on **Campaign** cover **Gen. Fremont** for President in  
1864 in colors, scarce design E. III
- 154 **3c Rose (65).** On illustr. cover of **City Stable**, **Manchester, N. H.** pmk.  
Most attractive (Photo) E. II
- 155 **3c Rose (65).** Tied **Paid 3**, **Gardner, Mass.** pmk. on illustrated cover  
of **Prof. Harrington, Ventriloquist**, Fine, attractive cover (Photo) E. III

- 42 156 **3c Rose (65).** A group of 6 diff. hand drawn envelopes all addressed to same party, most unusual and attractive lot ..... (Photo) E. VI
- 36 157 **3c Rose, 10c Green seven, 12c Black (65, 68-69).** All on back of cover each tied with **San Francisco Cog Wheel** cancels on cover to Switzerland, Fine and unusual cover ..... (Photo) E. IV
- 18 158 **3c Rose, 10c Green, 12c Black, 5c Brown (65, 68-69, 76).** Tied Newport, R. I. and transit markings, unusual combination to France, Fine cover .... E. II
- 10 159 **3c Rose, 12c Black (65, 69).** Tied together by red grid on cover to Germany, 3c str. edge, transit markings, V.F. .... E. II
- 30 50 160 **3c Rose, 12c Black, 30c Orange (65, 69, 71).** Tied **San Francisco Cog Wheels**, and red **New York 36** cancels on cover to France, Fine, attractive cover ..... (Photo) E. IV
- 40 161 **3c Rose, 24c Brown Lilac, 30c Orange (65, 70a, 71).** Tied with Boston **Paid** cancels on cover to **Shanghai, China**, numerous transit markings Very Fine ..... (Photo) E. VI
- 140 162 **3c Rose, 30c Orange (65, 71).** Each cancelled with **Masonic** and tied by Ogdensburgh, N. Y. pmk. on cover to Portugal, various transit markings, Very Fine and most unusual cover ..... (Photo) E. VIII
- 70 163 **3c Rose, 30c Orange pair (65, 71).** Tied on illustrated advert. cover of **early Stamp & Coin dealer** on cover to Italy paying triple letter weight, Very Fine and unusual cover ..... (Photo) E. VII
- 52 164 **5c Brown Yellow (67a).** Superb Vertical **Pair** lightly tied **N. York Steamship** cancel, Extremely Fine and Rare cover ..... (Photo) E. XII
- 118 165 **5c Brown Yellow (67a).** Two copies tied New York on illustrated Sewing Machine Adv. cover, to Nova Scotia, red "U. States" in arc, one stamp has few short perfs. Very attractive cover ..... (Photo) E. VIII
- 65 166 **5c Buff, 10c Green (67-68).** Tied to each other by **San Francisco Cog Wheel** cancels on cover to France, numerous transit markings, Very Fine ..... (Photo) E. VI
- 30 167 **10c Dark Green (68).** Horiz. **Pair** tied with large **X** and red oval **China and Japan Steam Service**, San Francisco pmk. on cover to New York, Very Fine ..... (Photo) E. III
- 33 168 **24c Red Lilac (70).** Tied Boston **Paid** on cover to England, various transit markings, Extremely Fine ..... (Photo) E. III
- 18 169 **24c Brown Lilac (70a).** Tied with target cancel and red **Paid 19 Am. Pkt.** on cover to England and forwarded to Russia, various transit markings, Very Fine ..... (Photo) E. III
- 34 170 **30c Orange (71).** Odd black grid cancel and tied red London **Paid** pmk., on cover to Australia, various transit markings, Extremely Fine (Photo) E. III
- 10 171 **30c Orange (71).** Tied with circle of wedges to France, various transit markings, Fine ..... E. II



128

This is The  
Green Blood  
PLINK  
Darius Linnert

Mr. George W. White

127

My A. Smith  
over Paris

126



130

Miss. Jane, Eastbird  
H. Linnert

132

W. D. Graves  
Wash. D. C.

131



138



137



136

133



139

140

142



Dec. 18<sup>th</sup>

146



American Hotel.  
By L. S. DREW. Burlington, Vt.

150

147



144

143



will  
S. H. H. H.  
B. H. H.

148



151

Mr. Nathaniel W. Wadsworth  
Bridgeport

Prof. HARRINGTON, the Celebrated New England Ventriloquist and Mimic.



EXHIBITIONS INaugurated 1891

155

Agent for  
B. H. H.

"THE UNANIMOUS NOMINATION"

FOR PRESIDENT  
ULYSSES S. GRANT  
Of Illinois.  
HENRY WILS  
Of Massachusetts.

for George Wadsworth  
Bridgport, N.J.

152



CITY STABLE.



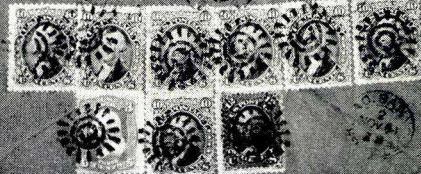
BY H. T. NICHOLS,  
LAWSON STREET,  
MASSACHUSETTS, N. H.

154

EX 156

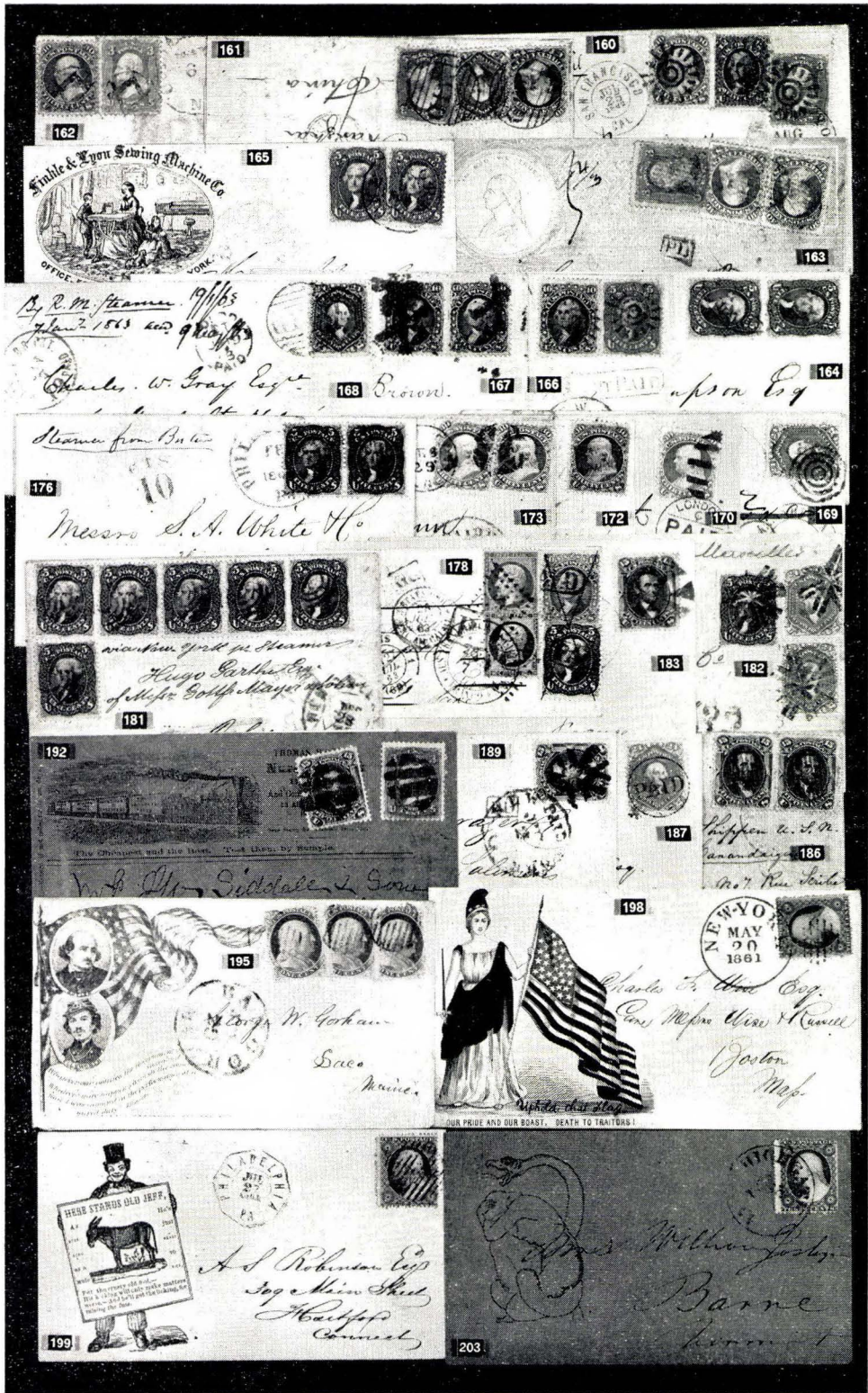


157





- 425- 172 **30c Orange (71).** Lightly tied red New York Paid and cancelled with red **Supplementary Mail** in box on cover to France, Fine and scarce cancel ..... (Photo) E. V
- 30- 173 **30c Orange (71).** Two tied with New Orleans and **Star** cancel on cover to France, numerous transit markings, Fine attractive cover ..... (Photo) E. IV
- 415- 174 **1c Blue, 5c Brown, 90c Blue (63, 72, 76).** Tied with large grids, red "N. York Br. Pkt. Paid" and backstamped Liverpool, Very Fine and rare cover ..... (Photo) E. XIII
- 315- 175 **3c Rose pair, 12c Black, 90c Blue (65, 69, 72).** Tied by grids on cover to Shanghai, China, double letter rate, 3c has str. edge, edges of two high values extend slightly over cover, Hong Kong and Shanghai backstamps, Fine and rare cover ..... (Photo) E. XII
- 230- 176 **5c Red Brown (75).** Superb horiz. **Pair** tied with Philadelphia, Pa. town pmk. to Nova Scotia "10cts," Boston Br. Pkt. and Halifax markings, on reverse, Extremely Fine and Rare cover ..... (Photo) E. X
- 10- 177 **5c Red Brown, 10c Green (68, 75).** Tied by wedge cancels on cover to Paris, Fine ..... E. II
- 120- 178 **5c Red Brown, 10c Green (68, 75).** Tied on cover with boxed Paid and then ms. out when **forwarded with French stamps**, numerous transit markings, very attractive combination cover ..... (Photo) E. VI
- 11- 179 **5c Brown, 10c Green (68, 76).** Tied by red transit and wedge cancels, to Paris, Very Fine ..... E. II
- 21- 180 **5c Brown (76).** Pair and single tied **St. Louis** pmks. on cover with Tobacco corner card to Bavaria, Very Fine ..... E. II
- 85- 181 **5c Brown (76).** **Strip of 5 and single** on cover from New Orleans to Germany, transit markings, V.F. .... (Photo) E. V
- 45- 182 **5c Brown, 24c Gray two (76, 78).** Tied with **Geometric** cancels on cover to **Hong Kong**, various transit markings, Very Fine ..... (Photo) E. V
- 28- 183 **15c Black (77).** Superb stamp tied on neat cover to France (Photo) E. III
- 122- 184 **15c Black (77).** Tied on cover to France, transit markings, Extremely Fine ..... E. III
- 13- 185 **15c Black (77).** Tied with circle of wedges on cover to Prussia, V.F. .... E. II
- 425- 186 **15c Black (77).** Horiz. **Pair** tied on double weight cover to France, Very Fine ..... (Photo) E. IV
- 23- 187 **24c Lilac (78).** Tied **Paid** in circle, Brookline, Mass. pmk. to London, transit markings, Extremely Fine ..... (Photo) E. III
- 9- 188 **24c Lilac (78).** Tied on cover with blue corner card of Paint Co. to London, VF ..... E. II
- 36- 189 **15c Black, Grill (91).** Tied red New York Paid and black wedge cancels to Bordeaux, Extremely Fine ..... (Photo) E. III



161



160



162



165



163

*By R. M. Hamer 7/1/65  
Jan 2, 1863 and 9/10/65*



*Charles W. Gray Esq.*

168 Boston.

167

166

*upon Esq*

164

*Steamer from Boston*

176

10



*Messrs S. A. White & Co.*

173

172

170

169



178



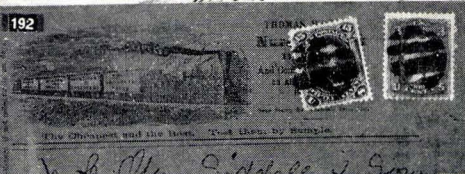
183



182

*Hugo Sachs Esq.  
of Messrs Gottlieb Mayer & Co.*

181



192

189



187

186

*W. B. Siddall & Sons*



195



*W. Yorkham*

*Saco*

*Maine.*



198



*Charles F. Allen Esq.  
Care Messrs Wins & Russell  
Boston  
Mass.*

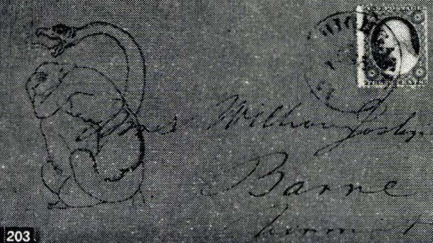
OUR PRIDE AND OUR BOAST. DEATH TO TRAITORS!



199



*A. S. Robinson Esq  
309 & Union Street  
Hartford  
Connecticut*



203

*James Wilbur Foster  
Barre  
Vermont*



550	190	<b>3c Red Grill (94).</b> Tied Wilmington, Del. pmk. on attorneys adv. cover with Eagle and Shield design, Very attractive .....	<b>E. I</b>
1150	191	<b>3c Red Grills (94).</b> Two diff. attractive illustrated adv. covers showing farm scenes, Very Fine .....	<b>E. II</b>
3750	192	<b>3c Red, 15c Black, Grills (94, 98).</b> From Rochester, N. Y. on advert. cover showing <b>Railroad</b> , Very Fine, attractive cover ..... <b>(Photo)</b>	<b>E. IV</b>
3250	193	<b>10c Green Grill (96).</b> Tied <b>magenta San Francisco Paid</b> cancel to Japan, ms. "p. Pacific Mail Str.", Extremely Fine .....	<b>E. III</b>
13	194	<b>15c Black (98).</b> Tied with black, red and blue cancels, to Paris, V. F. ....	<b>E. II</b>

### PATRIOTIC COVERS

8250	195	<b>1c Blue Type V (24).</b> Three copies tied, Bangor, Me. pmk. <b>Heads of Butler and Ellsworth</b> inset in Flag printed in violet, Very Fine <b>(Photo)</b>	<b>E. VI</b>
305	196	<b>1c Blue Type V (24).</b> Strip of 3 tied on cover with Soldier and Flag, Very Fine .....	<b>E. II</b>
205	197	<b>1c Blue, 3c Red (24, 26).</b> Paid cancels from Boston, <b>Carrier rate</b> on small size Patriotic Flag and Eagle, Fine .....	<b>E. II</b>
7250	198	<b>3c Red (26).</b> Tied New York on beautiful design Flag and Liberty, Extremely Fine .....	<b>(Photo) E. VI</b>
9250	199	<b>3c Red (26).</b> Tied from Philadelphia, <b>Caricature</b> in blue Man Holding Sign "Here Stands Old Jeff," Very Fine and rare design .....	<b>(Photo) E. VI</b>
165	200	<b>3c Red (26).</b> Tied, Loudonville, O. pmk. on <b>Caricature</b> , Flag, Uncle Sam holding snake (Secession), Very Fine .....	<b>E. III</b>
5250	201	<b>3c Red (26).</b> Tied tiny blue <b>Shield</b> , Burr Oak, Mich. pmk. Flag and Liberty, V. F. ....	<b>(Photo) E. IV</b>
850	202	<b>3c Red (26).</b> Tied Baltimore, Fort Sumter Bombardment, Fine .....	<b>E. II</b>
215	203	<b>3c Red (26).</b> Tied Highgate, Vt. pmk. <b>Caricature</b> showing Snake around Female Figure "Dixie," V. F., scarce design .....	<b>(Photo) E. IV</b>
115	204	<b>3c Red (26).</b> Tied Paid 3, Newbury, Vt. pmk. on small colored envelope, Flag, V. F. ....	<b>E. I</b>
65	205	<b>3c Red (26).</b> Tied blue Bloomington, Ill. Flag and Poem, V. F. ....	<b>E. I</b>
85	206	<b>3c Red (26).</b> Str. edge tied Hartford, Conn. pmk. on small size Patriotic, Soldier and Flag, V. F. ....	<b>E. II</b>
950	207	<b>3c Red (26).</b> Tied light Peekskill, N. Y. pmk. Eagle, Flag, Drum, Cannon, V. F. ....	<b>E. II</b>
85	208	<b>3c Red (26).</b> Tied Old Point Comfort, Va. pmk. contains <b>illustrated letter sheet of Fortress Monroe</b> with letter from Camp Butler and hand-drawn Map on same, design of Soldier, Flag, Washington, interesting Civil War contents .....	<b>E. II</b>





201

*Caleb Wiener*



209

*Nathan Eastman Esq.*



215

*G. S. Rehder Esq.*  
*H. S. S. S.*



218

*Miss Mary A. Barnard*  
*Richville*



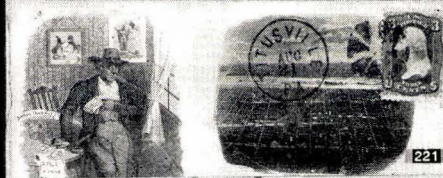
219

*Wm. H. S. S.*



220

*Miss Mary E. Wright*  
*Richville*  
*Richville*



221



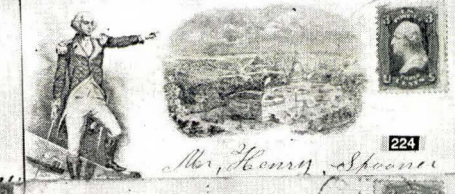
222

*H. D. Macmillan Esq.*



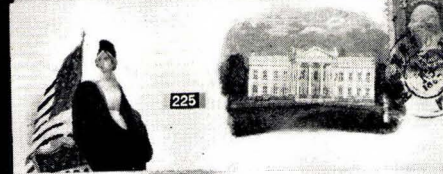
223

*Miss Mary Phila. Brown*



224

*Mr. Henry Spooner*



225



226

*Miss Jane E. French*  
*Cary, A. B. French*



227

*Mr. Henry J. Campbell*



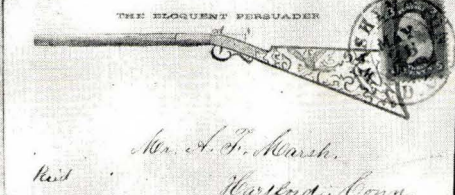
228

*Jonathan Philbrick*  
*Richville*



229

*Miss Anna M. Philbrick*  
*Richville*



235

*Mr. A. F. Marsh*  
*Harford, Conn.*  
*P. O. Main, Harford*

209	20	3c Red (26). Tied blue Paid 3, Sharon Centre, Ohio pmk. <b>Caricature</b> , A. L. Kicking J. D., Fine ..... (Photo)	E. III
210	6	3c Red (26). Tied New York pmk. Woman and Flag, V. F. ....	E. I
211	5	3c Red (26). Tied Old Point Comfort, Va., Due 3, Plymouth, Mass. pmks., Soldier and Flag design, V. F. ....	E. I
212	7	3c Red (26). Tied Wash. D. C. pmk. Soldier, Cannon, Arms, Tents, V. F. ....	E. I
213	16	3c Red, 10c Green pair of each (26, 32). Tied with N. York Steamship cancels on Patriotic with Flag, cover bit soiled, one of 10c slight faults, scarce combination .....	E. III
214	20	1c Blue (63). Tied Foxboro, Mass. pmk. Flag design, V. F. ....	E. I
215	25	1c Blue (63). Tied U. S. Penny Mail Phila. Pa. in octagon on <b>Caricature</b> , Jeff Davis Going and Coming from the War, Very Fine Patriotic (Photo) .....	E. IV
216	10	1c Blue, 3c Rose (63, 65). Tied Philadelphia, <b>Carrier rate</b> on Flag design Patriotic, Fine .....	E. II
217	20	3c Pink (64). Cancelled small segmented circle, West Gloucester, Mass. pmk. on Patriotic, Woman and Flag, Fine .....	E. III
218	20	3c Rose (65). Tied Frederick, Md. pmk. on <b>Magnus</b> in full colors, Camp Scene, V. F. .... (Photo)	E. VI
219	75	3c Rose (65). Tied Wash. D. C. pmk. on <b>Magnus</b> in full colors showing Sailors, N. Y. Seal, Flag, Very Fine ..... (Photo)	E. VI
220	45	3c Rose (65). Tied Wash. D. C. pmk. on <b>Magnus</b> in full colors, showing Woman, Flag, Pennsylvania Seal, V. F. .... (Photo)	E. VI
221	75	3c Rose (65). Tied, Titusville, Pa. pmk. on <b>Gold Magnus</b> , Philadelphia scene and "Good News from my Soldier Boy," Very Fine and scarce design ..... (Photo)	E. VI
222	40	3c Rose (65). Tied Frederick, Md. pmk. on <b>Magnus</b> in pale blue shows War Dept. and Gen. Scott, Very Fine, scarce design ..... (Photo)	E. VI
223	62	3c Rose (65). Tied Alexandria, Va. pmk. on Blue <b>Magnus</b> , Map, Woman, Flag, New York, Very Fine ..... (Photo)	E. VI
224	25	3c Rose (65). Tied on Green <b>Magnus</b> cover Washington and Capitol, Fine and scarce design ..... (Photo)	E. VI
225	40	3c Rose (65). Tied Alexandria, Va. on <b>Magnus</b> in full colors showing Liberty, Shield, White House, Fine ..... (Photo)	E. V
226	55	3c Rose (65). Tied Wash. D. C. pmk. on Gold <b>Magnus</b> Maj. Gen. Mc Cellan, Fine ..... (Photo)	E. VI
227	82	3c Rose (65). Tied Wash. D. C. pmk. on <b>Magnus</b> in full colors showing Georgetown, Eagle and Shield, V. F. .... (Photo)	E. VI
228	45	3c Rose (65). Tied, Wash. D. C. pmk. on Bronze <b>Magnus</b> showing Liberty, Flag, Rhode Island Seal, Fine ..... (Photo)	E. IV

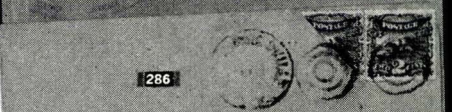
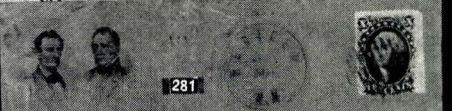


229	3c Rose (65). Tied, Monson, Mass. pmk. on small cover, Hooker in frame, V. F. scarce design ..... (Photo)	E. III
230	3c Rose (65). Tied Cincinnati pmk. Knight on Horse, "Maine to Texas, The Union" V. F. ....	E. II
231	3c Rose (65). Tied Chicago pmk. on Patriotic, Zouaves with Flag and Arms, Fine .....	E. II
232	3c Rose (65). Tied Rockville, Md. pmk. on Patriotic Loyal State, Maine in blue, V. F. ....	E. II
233	3c Rose (65). Tied Alexandria, Va. pmk. on Patriotic, Loyal States New York in blue V. F. ....	E. I
234	3c Rose (65). Tied Wash. D. C. on Patriotic Michigan Seal, Flag, Liberty, V. F. ....	E. II
235	3c Rose (65). Tied Wash. D. C. on Patriotic showing Rifle "The Eloquent Persuader," Extremely Fine, scarce design ..... (Photo)	E. VI
236	3c Rose (65). Tied Alexandria, Va. pmk. on Patriotic showing land naval battle scene. V. F. and scarce design ..... (Photo)	E. III
237	3c Rose (65). Tied Chicago pmk. on Patriotic Sailor and Cannon, Fine ....	E. I
238	3c Rose (65). Tied Wash. D. C. pmk. on Patriotic Gen. Butler and Com. Stringham, V. F. .... (Photo)	E. III
239	3c Rose (65). Tied York, Pa. pmk., Gen. McCellan reviewing troops, V. F. ....	E. II
240	3c Rose (65). Tied Poolsville, Md. pmk., Soldier, Camp background, Fine ....	E. I
241	3c Rose (65). Grid cancel, New Orleans pmk. on Patriotic showing Lt. Col. Clark, Eagle and Battle Scene, all in black, V. F. and scarce design ..... (Photo)	E. IV
242	3c Rose (65). Tied Wash. D. C. pmk. on Patriotic showing Franklin, Fine ....	E. I
243	3c Rose (65). Tied Port Royal, S. C. pmk. on Patriotic, Washington in blue, V. F. ....	E. II
244	3c Rose (65). Tied Nashville, Tenn. pmk. on Patriotic showing Life Scene in Camp in black, Rare design ..... (Photo)	E. IV
245	3c Rose (65). Tied Tipton, Mo. pmk. on cover showing agriculture Products, Farm, Ships in red and green, Fine .....	E. I
246	3c Rose (65). Tied Trenton, N. J. on Patriotic Soldier, Flag & Eagle on Rock in Water, V. F. ....	E. II
247	3c Rose (65). Tied Baltimore pmk. on Patriotic Fort Federal Hill, Baltimore with Poem, V. F. ....	E. II
248	3c Rose (65). Tied Newbern, N. C. pmk. on cover with Adams Express Co. Burnside Expedition, Cart drawn by 4 horses, Very Fine, scarce design ..... (Photo)	E. VII
249	3c Rose (65). Tied Cairo, Ill. pmk. on Patriotic, Flag and Eagle, Fine .....	E. I



1250	250	3c Rose (65). Tied ,Independence, Iowa pmk. on Patriotic, Gen. Grant, F. V. F. ....	E. II
650	251	3c Rose (65). Tied Wash. D. C. shows Capitol, "National Union League", V. F. ....	E. I
6-	252	3c Rose (65). Tied Cambridge, Md., large Shield over State Seal, Fine	E. I
8250	253	3c Rose (65). Str. edge copy tied Boston Paid pmk. on Patriotic Gen. Fremont and Battle Scene, Address written over a piece of paper when re-addressed, Very fine and scarce design ..... (Photo)	E. V
750	254	3c Rose (65). Tied Cornish Flat, N. H. pmk. Soldier, Flag, Capitol, sign to Richmond, V. F. ....	E. I
700	255	3c Rose (65). Tied St. Louis, Mo. on small Patriotic, Female Figures in red, Fine	E. I
10-	256	3c Rose (65). Tied New Orleans on Patriotic Eagle, 38th Reg. Mass. Volunteers, V. F. ....	E. II
550	257	3c Rose (65). Tied Alliance, O. pmk. on Patriotic, numerous figures with Flag, V. F. ....	E. I
24-	258	3c Rose (65). Tied Phila. pmk. <b>Caricature</b> Patriotic, Jeff Davis Going and Returning from War, Very Fine	E. III
5-	259	3c Rose (65). Tied Westminster, Md. pmk. on Patriotic showing Globe N. & S. America, Fine	E. I
13-	260	3c Rose (65). Tied <b>octagon</b> Shamokin, Pa. pmk. on Patriotic, Eagle and Shield, V. F. ....	E. II
850	261	3c Rose (65). Tied Wash. D. C. on Patriotic Lt. Gen. Scott, V. F. ....	E. I
550	262	3c Rose (65). Tied Phila. pmk. on Patriotic in blue, Liberty and Flag Fine	E. I
725	263	3c Rose (65). Tied Wash. D. C. pmk. on Patriotic, Flags, Soldiers 1776 and 1861, Past and Present, Fine	E. I
16-	264	3c Rose (65). Tied Baltimore, Md. pmk. on Patriotic, Maj. John A. Dix, Sailors etc. in blue, V. F. ....	E. III
11-	265	3c Rose (65). Str. edge copy tied Chicago pmk. on Patriotic showing Col. Baker, V. F. ....	E. II
13-	266	3c Rose (65). Tied, Wash. D. C. pmk. on Patriotic, Rhoads Battery V. F.	E. II
18	267	3c Rose (65). Tied South Dennis, Mass. pmk. shows Maj. Gen. McCellan in black, V. F. ....	E. II
9-	268	3c Rose (65). Tied Meuda, O. pmk. on Patriotic <b>Gen. McCellan</b> , Fine	E. I
6-	269	3c Rose (65). Tied Kittanning, Pa. pmk. on Patriotic, Gen. McCellan, V. F. ....	E. I
1250	270	3c Rose (65). Tied Wash. D. C. on <b>Caricature</b> , "John Bull making his speech to King Cotton", Fine, scarce design	E. III
1150	271	3c Rose (65). Tied Old Point Comfort, Va. on Patriotic <b>Caricature</b> Dogs, Scott and Jeff. V. F. ....	E. II







- 55 272 3c Rose (65). Tied on Patriotic, Soldiers Dream of Home, portion of back missing ..... E. I
- 6 273 3c Rose (65). Tied Banks Division cancel on Patriotic, Eagle, Flags, Ships, stamps has str. edge, Fine ..... E. I
- 8 274 3c Rose (65). Tied on Patriotic, Flags and Shields, Star of Destiny, Fine ..... E. I
- 670 275 3c Rose (65). Tied New York pmk. str. edge copy on Patriotic, Eagle, Motto, V.F. .... E. I
- 276 3c Rose (65). Tied Trenton, N. J. on Patriotic, Shield, Eagle, Union, V.F. .... E. I
- 525 277 30c Orange (71). Str. Edge copy tied Saint Joseph, Mo. on Patriotic to Germany, Flag floating on water, various transit markings, V.F. (Photo) E. VII

### LINCOLN COVERS

- 120 278 3c Red (26). Tied Paid cancel, Appleton, Wis. pmk. on Campaign cover Lincoln & Hamilton showing Rail splitter, Log Cabin and Lincoln, Very Fine (Photo) ..... E. VII
- 95 279 3c Red (26). Tied blue Paid 3, Pawlet, Vt. pmk. on Campaign cover Lincoln & Hamlin somewhat diff. design than above, Very Fine (Photo) ..... E. VII
- 70 280 3c Red (26). Tied Benton Centre, N.Y. pmk. on Campaign cover showing Lincoln and Hamlin, Very Fine (Photo) ..... E. VI
- 61 281 10c Green Type V (35). Tied red grid, Meriden, N.H. pmk. on Campaign cover showing Lincoln and Hamlin, to Canada, Fine (Photo) ..... E. VII
- 725 282 1c Blue, 3c Rose (63, 65). Tied Phila. pmk., Carrier rate on cover with Lincoln, Verse and Rail Fence "The Fence that Uncle Abe Built", cover has closed tear still most attractive ..... E. VI
- 525 283 3c Rose (65). Tied Old Point Comfort, Va. pmk. on cover with Lincoln, Verse and Rail Fence "The Fence that Uncle Abe Built" Fine (Photo) ..... E. VI

### 1869 PICTORIAL ISSUE

- 13 284 1c Buff (112). Tied with attractive wedge cancel, Steubenville, O. pmk. on cover, Fine ..... E. II
- 125 285 1c Buff (112). Tied with grid, Augusta, Me. pmk. on cover, Fine ..... E. II
- 100 286 2c Brown Bisect (113c). Single and Diagonal Half used as 1c tied on cover with target pmks. Fine ..... (Photo) E. VIII
- 70 287 2c Brown Bisect (113c). Single and Diagonal Half used as 1c tied on cover with blue target pmks. Granger, O. pmk., cover slightly stained (Photo) E. VII
- 725 288 2c Brown Bisect (113d). Single and Vertical Half used as 1c, single is cut into at R. where envelope was opened, St. Louis, Mo. pmk., attractive small cover ..... (Photo) E. VIII



289	<b>2c Brown, 3c Ultramarine (113-114).</b> Two of each tied on cover to Germany, transit markings, Very Fine .....	E. II
290	<b>3c Ultramarine (114).</b> Tied with pretty bright red <b>Masonic</b> and Charleston, N.H. pmk. Very Fine and attractive cover .....	E. VIII
291	<b>3c Ultramarine (114).</b> Tied bold <b>Bee</b> cancel. light Adrian, Mich. pmk. stamp centered to top, Very fine strike, attractive ..... (Photo)	E. IX
292	<b>3c Ultramarine (114).</b> Tied by attractive encased <b>Shield</b> , Watkins, N.Y. pmk. V.F. .... (Photo)	E. III
293	<b>3c Ultramarine, 15c Black (98, 114).</b> From Boston to Argentine Republic, Fine .....	E. III
294	<b>3c Ultramarine, six copies on 12c Red Brown Entire (114, U69).</b> On registered cover from New Orleans, Fine, scarce combination .....	E. IV
295	<b>3c Ultramarine, 15c Brown &amp; Blue (114, 119).</b> Both tied, boxed "forwarded", Suffield and Moodus Conn. pmks. on registered cover, cover slightly reduced, Fine ..... (Photo)	E. V
296	<b>6c Ultramarine (115).</b> Tied <b>Brooklyn, N. Y.</b> pmk. on cover to England, F.	E. II
297	<b>6c Ultramarine (115).</b> Tied New York grid to Phila. double letter rate, Very Fine .....	E. III
298	<b>10c Yellowish Orange (116).</b> Tied, San Francisco and New York pmk. to St. Thomas with St. Thomas backstamp, V.F. ....	E. III
299	<b>10c Yellow (116).</b> Tied on cover to Germany, red New York Paid Direct and transit markings, Very Fine .....	E. III
300	<b>10c Yellowish Orange (116).</b> Tied New Orleans to Spain, Paid only to England, 4R, New York U.S. Pkt. markings, Extremely Fine (Photo)	E. IV
301	<b>10c Yellowish Orange (116).</b> Horiz. <b>Pair</b> tied crossroads cancels, New Orleans to Italy, transit markings, Very Fine ..... (Photo)	E. VI
302	<b>10c Yellowish Orange (116).</b> Horiz. <b>Pair</b> tied, Shanghai pmk. from Shanghai to New York, Very Fine ..... (Photo)	E. VI
303	<b>12c Green (117).</b> Tied target cancel, Bangor, Ioa. pmk. on cover to England, Very Fine ..... (Photo)	E. III
304	<b>12c Green (117).</b> Tied on cover from Boston to London, red oval <b>Stevens London Despatch Agent</b> marking, Very Fine ..... (Photo)	E. III
305	<b>12c Green (117).</b> Tied on cover to England, Wash. D.C. pmk. and U.S. Pension Agent corner card, Very Fine ..... (Photo)	E. III
306	<b>15c Brown &amp; Blue (119).</b> Tied New Orleans pmk. on small cover to France, transit markings, Very Fine ..... (Photo)	E. VI
307	<b>3c Ultramarine, 24c Green &amp; Violet (114, 120).</b> Tied from New York on legal size cover to Clerk of Law Court at Memphis, pays 9 times single rate, Fine and very scarce on cover ..... (Photo)	E. XI





## CONFEDERATE STATES

- 308 **3c Red (26).** Tied by blue grid, Louisville, Ky. pmk. in blue, cover bears **Adams Express Co. Louisville, Ky. Aug. 7, 1861** cancel. in black, letter originated in New Orleans and was carried by Adams Express to Louisville where it was placed in U. S. Mails and sent to New York, Fine and rare cover ..... (Photo) E. VIII
- 309 **3c Rose (65). in combination with Confederate 10c Blue (12).** Tied by Richmond, Va. and Delaware City, Del. pmks. in ms. **"By Flag of truce, Via Fortress Monroe"** to Virginia, Very Fine ..... (Photo) E. VIII
- 310 **3c Rose (65). In combination with Confederate 10c Blue (12).** Tied Richmond, Va. pmks. Cover has ms. Rowlandville, Md. pmk. to Columbus, Ga., Very Fine ..... (Photo) E. VII
- 311 **3c Rose (65).** Tied N. York Steamship pmk. to Blockade Runner cover from New York to Savannah, Ga. forward via Steamship Corsica to Bahamas, pmk. **"Paid at Bahamas"** in Crown Circle on front and Savannah, Ga. pmk. on back boxed advertised and unclaimed markings, Very Fine, Extremely Rare ..... (Photo) E. VIII

END OF SALE — THANK YOU

PRICES REALIZED

THIS SALE

\$1.00

OR ENTIRE SEASON \$2.50





188th Sale

ROBERT A. SIEGEL  
489 Fifth Avenue New York City

PRICES REALIZED  
Auction Sale March 22nd, 1956

DeLuxe Collection of  
UNITED STATES COVERS

1	825.00	53	33.00	105	85.00	157	36.00	209	20.00	261	8.50
2	1600.00	54	37.00	106	42.50	158	18.00	210	6.00	262	5.50
3	725.00	55	92.50	107	72.50	159	10.00	211	6.00	263	7.25
4	1375.00	56	26.00	108	45.00	160	30.50	212	7.00	264	16.00
5	825.00	57	26.00	109	100.00	161	40.00	213	16.00	265	11.00
6	675.00	58	55.00	110	155.00	162	140.00	214	20.00	266	13.00
7	27.00	59	22.50	111	45.00	163	70.00	215	52.50	267	18.00
8	41.00	60	15.00	112	102.50	164	520.00	216	10.00	268	9.00
9	14.00	61	17.50	113	20.00	165	115.00	217	20.50	269	6.00
10	28.00	62	26.00	114	310.00	166	65.00	218	80.00	270	12.50
11	21.00	63	27.00	115	102.50	167	36.00	219	75.00	271	11.50
12	9.50	64	70.00	116	102.50	168	33.00	220	45.00	272	5.00
13	24.00	65	80.00	117	1200.00	169	18.00	221	75.00	273	6.00
14	47.50	66	52.00	118	72.50	170	34.00	222	40.00	274	8.00
15	120.00	67	77.00	119	42.50	171	10.00	223	62.50	275	6.75
16	360.00	68	155.00	120	455.00	172	42.50	224	52.50	276	8.00
17	130.00	69	280.00	121	12.00	173	30.00	225	40.00	277	52.50
18	72.50	70	85.00	122	10.00	174	415.00	226	55.00	278	120.00
19	47.50	71	300.00	123	10.00	175	355.00	227	82.50	279	90.00
20	105.00	72	120.00	124	220.00	176	230.00	228	45.00	280	70.00
21	35.00	73	460.00	125	26.00	177	10.00	229	26.00	281	61.00
22	12.00	74	90.00	126	85.00	178	120.00	230	12.00	282	72.50
23	52.50	75	235.00	127	32.50	179	11.00	231	16.00	283	52.50
24	70.00	76	12.00	128	255.00	180	21.00	232	10.00	284	13.00
25	22.50	77	28.00	129	31.00	181	85.00	233	5.50	285	12.50
26	18.00	78	270.00	130	85.00	182	45.00	234	13.00	286	100.00
27	17.00	79	70.00	131	62.50	183	28.00	235	70.00	287	70.00
28	14.00	80	50.00	132	86.00	184	15.50	236	22.00	288	72.50
29	16.50	81	145.00	133	102.50	185	13.00	237	5.50	289	30.00
30	165.00	82	31.00	134	22.00	186	42.50	238	18.00	290	105.00
31	42.50	83	20.50	135	9.00	187	23.00	239	8.50	291	160.00
32	22.00	84	9.00	136	165.00	188	9.00	240	5.00	292	41.00
33	102.50	85	55.00	137	14.00	189	26.00	241	28.00	293	27.50
34	27.50	86	57.50	138	75.00	190	5.50	242	10.25	294	35.00
35	16.00	87	26.00	139	112.50	191	11.50	243	10.25	295	60.00
36	19.00	88	85.00	140	42.50	192	37.50	244	28.00	296	12.00
37	67.50	89	90.00	141	13.00	193	32.50	245	7.50	297	20.00
38	40.00	90	110.00	142	72.00	194	13.00	246	13.00	298	30.00
39	16.00	91	21.00	143	16.00	195	82.50	247	12.50	299	21.00
40	9.50	92	130.00	144	24.00	196	30.00	248	80.00	300	45.00
41	42.50	93	55.00	145	7.75	197	25.00	249	4.50	301	67.50
42	10.00	94	32.50	146	31.00	198	72.50	250	12.50	302	82.50
43	8.50	95	110.00	147	24.00	199	92.50	251	6.50	303	31.00
44	9.00	96	260.00	148	13.50	200	16.00	252	6.00	304	30.00
45	24.00	97	255.00	149	10.50	201	52.50	253	82.50	305	27.00
46	21.00	98	360.00	150	30.00	202	8.50	254	7.50	306	60.00
47	13.00	99	92.50	151	10.00	203	21.00	255	7.00	307	260.00
48	95.00	100	255.00	152	30.00	204	5.00	256	10.00	308	150.00
49	140.00	101	270.00	153	12.50	205	6.00	257	5.50	309	165.00
50	25.00	102	240.00	154	17.00	206	8.00	258	24.00	310	85.00
51	16.00	103	575.00	155	23.00	207	9.50	259	5.00	311	200.00
52	41.00	104	125.00	156	42.50	208	8.00	260	13.00		