

217th SALE

A MAGNIFICENT COLLECTION
of
BRITISH NORTH AMERICA
“PENCE” ISSUES

AT PUBLIC AUCTION

WEDNESDAY, MARCH 11th, 1959

at 2 P.M.

Robert A. Siegel
AUCTIONS

489 FIFTH AVENUE

NEW YORK 17, N. Y.

Tel. MURray Hill 2-0980

Fly

We like to fly. In fact, we'll travel-by-air at a moment's notice anytime to inspect, appraise, purchase outright for cash, or contract to sell at auction (making maximum advances), important collections or individual rarities of note. A telephone call—and we are on the way!

The number is MUrray Hill 2-0980.

ROBERT A. SIEGEL

489 FIFTH AVENUE

NEW YORK 17, N. Y.

(our one and only address)

[illegible]

ESTIMATES

Our sales contain many 19th Century covers and fancy cancellations. We have had many requests to give the estimated cash value on these lots. We are trying to place a fair net valuation on each lot as a guide for bidding when no catalogue value portrays the true value. The chart below will be used, for example E. IV means our estimate cash value on this lot is \$30.00 to \$40.00. Lots may actually realize more or less than these estimates and under no circumstances are these estimates to be considered reserves but merely a guide to bidding.

E. I	up to \$ 10.00	E. VIII	\$100.00 to \$150.00
E. II	\$ 10.00 to \$ 20.00	E. IX	\$150.00 to \$200.00
E. III	\$ 20.00 to \$ 30.00	E. X	\$200.00 to \$250.00
E. IV	\$ 30.00 to \$ 40.00	E. XI	\$250.00 to \$350.00
E. V	\$ 40.00 to \$ 50.00	E. XII	\$350.00 to \$500.00
E. VI	\$ 50.00 to \$ 75.00	E. XIII	\$500.00 to \$750.00
E. VII	\$ 75.00 to \$100.00	E. XIV	\$750.00 to \$1000.00
		E. XV	over \$1000.00

A Magnificent Collection of
"PENCE" ISSUES
of BRITISH NORTH AMERICA

I am pleased to be commissioned to auction one of the finest collections of British North America "Pence" issues ever to be offered. This magnificent collection, the property of a very discriminating collector, contains many of the finest existing copies of these issues. Almost without exception the stamps are brilliant in color, fresh, large margin copies. The collection contains gems from the Pack, Hind, Gibson, Caspary and Moody Sales as well as items never previously offered at auction.

I have used estimates throughout to more accurately reflect the values rather than catalog prices. The chart for estimates of cash value is listed on back of bid sheet. Lots may actually realize more or less than these estimates and under no circumstances are these estimates to be considered reserves but merely a guide to bidding. Because of the remarkable quality undoubtedly record prices will be realized at this sale.



1



2



3



4



8



9



10



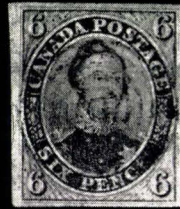
11



12



13



14



15



16



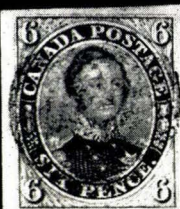
17



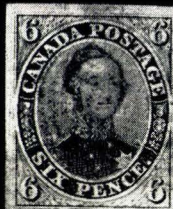
18



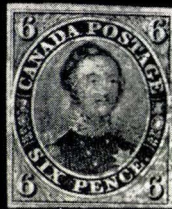
19



20



21



22



23



25




24

CANADA

1851 LAID PAPER

1	3p Red (1). Large Margins, very light cancel, Fresh, Very Fine	E. VI
2	3p Orange Vermilion (1). Brilliant color, large margins, light target cancel, Sharp Laid Lines, Very Fine	E. VI
3	3p Orange Vermilion (1). Very Large Margins, blue target cancel, Sharp Laid Lines, Fresh, Extremely Fine	E. VIII
4	3p Orange Vermilion (1). Horiz. Pair, Large Margins, neat target cancels, faint laid lines, Very Fine	E. VIII
5	3p Red (1). Vertical Strip of four, Full to Very Large Margins, light Target cancels, Fresh Sharp Laid Lines, Extremely Fine, Rare Show Piece	E. XV
6	✉ 3p Orange Vermilion (1). Magnificent Color and Impression, Clear Large Margins, tied to neat cover, Red Woodstock pmk. to Montreal, Very Fine	E. VII
7	✉ 3p Red (1). Full Margins, barely tied on Mourning cover, red St. Johns Nov. 10 (1852) to Smith Falls, Very Fine	E. V
8	6p Slate Violet (2). Huge Margins, neat target cancel, Clear Laid Lines, Extremely Fine	E. VIII
9	6p Brownish Purple (2). Very Large Margins next stamp shows at top, Blue target cancel, faint laid lines, Very Fine	E. VII
10	6p Brownish Purple (2). Deep color, Very Large Margins, Sharp Laid Lines, Extremely Fine	E. VIII
11	6p Brownish Purple (2). Large Margins, very faint crease, Clear Laid Lines, Very Fine appearance	E. VII
12	6p Brownish Purple (2). Clear to Full Margins, Sharp Laid Lines, Very Fine	E. VII
13	6p Brownish Purple (2). Very Large Margins, very faint trace of crease, Extremely Fine appearance	E. VII
14	6p Brownish Purple (2). Very Large Margins, light cancel, Clear Laid Lines, faint crease, Fresh, Extremely Fine appearance	E. VII
15	6p Slate Violet (2). Excellent color, Huge Margins, Clear Laid Lines, Fresh, Extremely Fine	E. IX
16	6p Slate Violet (2). Very Large Margins, Red target cancel, Sharp Laid Lines, Extremely Fine, Rare	E. X
17	6p Brownish Purple (2). Deep Color, Large Margins, light cancel, faint laid lines Very Fine	E. VII

LOTS ON VIEW FROM MARCH 2nd

- 18 **6p Brownish Purple (2).** Large Margins, Target cancel, light laid lines, Very Fine E. VII
- 19 **6p Slate Violet (2).** Brilliant Color, Very Large Margins, light cancel, Sharp Laid Lines, Extremely Fine Gem E. X
- 20 **6p Slate Violet (2).** Excellent Color, Huge Margins, very light cancels, Sharp Laid Lines, Fresh Extremely Fine Gem E. XI
- 21 **6p Slate Violet (2).** Four Enormous Margins, next stamp showing at bottom, very light cancel, Fresh, Extremely Fine E. XII
- 22 **6p Brownish Purple (2). Horiz. Pair,** Full Margins except at R., Blue cancel, faint crease, Clear Laid Lines, Attractive, Rare E. X
- 23 **6p Slate Violet (2). Vertical Pair,** Excellent Color, Clear to Very Large Margins, next stamp at Bot. Sharp Laid Lines, Fresh Extremely Fine E. XIII
- 24 **6p Slate Violet (2). Vertical Pair,** Bright Color, Clear to Very Large Margins, light target cancel, Sharp Laid Lines, Fresh, Extremely Fine E. XIII
- 25 **6p Slate Violet (2). Horiz. Strip of Three,** Magnificent Color and Impression, Full to Very Large Margins, neat target and Red Paid cancels, Sharp Laid Lines, Fresh, Extremely Fine, Showpiece of Greatest Rarity E. XIV
- 26  **6p Brownish Purple (2).** Excellent Color, Very Large Margins and Extremely Fine, tied target cancel to cover front, red Montreal Au. 3, 1852 to Kingston E. VIII



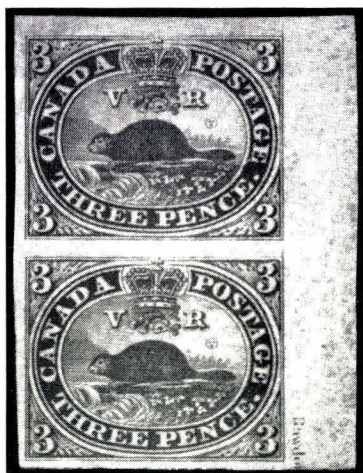
- 27 ★ **12p Brownish Black (3). Vertical Pair,** Magnificent Color and Impression, Full to Large Margins, Sheet Margin at right, Sharp Laid Lines, Brilliant Full Original Gum, Extremely Fine, Outstanding Showpiece of Greatest Rarity Est. \$15,000.00 to \$20,000.00



- 28 **12p Brownish Black (3).** Excellent Color and Impression, Full margins except at top where inner frame line is intact, light target cancel, Sharp Laid Lines, Fresh, Fine, Rare **Est. \$2,500.00 to \$3,000.00**

1851-1855 WOVE PAPER

- 29 ★ **3p Orange Red (4).** Clear to Large Margins, full o. g., Very Fine **E. VIII**



- 30 ★ **3p Red Ribbed Paper (4c). Vertical Pair,** Magnificent Color and Impression, Enormous Margins, Sheet Margins and portion of Imprint at right Fresh o. g Extremely Fine, a Gem of Greatest Rarity **Est. \$1,500.00 to \$2,000.00**
- 31 ★ **3p Red, Thin Paper (4d) Horiz. Pair,** Large Margins, Full Sheet Margin at L. Full o. g. despite crease Handsome and Rare piece **E. XI**
- 32 ★ **3p Rose Thin Paper (4d). Upper Left Corner Sheet Margin Strip of 5,** Large Margins, Excellent Color, light gum wrinkles, Full o. g. Exceptionally Rare Showpiece, Extremely Fine except for left stamp which has tear **E. XV**
- 33 **3p Red (4).** Large Margins, next stamp showing at top, cancelled with Hamilton "16" in Bars, Very Fine **E. IV**
- 34 **3p Red (4).** Bright Color, **Re-entry** in "three pence", oval and left "3", Large Margins, Light cancel, Very Fine **E. V**
- 35 **3p Brown Red (4a).** Large Margins, light target, Fresh, Extremely Fine **E. IV**



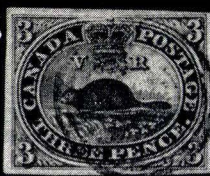
29



31



33



34



35



36



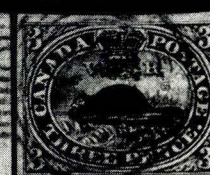
37



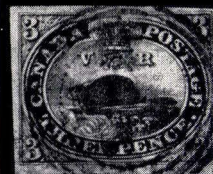
38



39



40



41



42



43



44



45



46



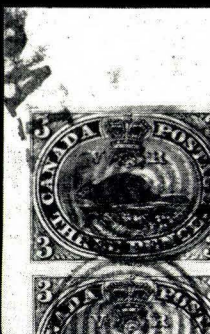
47



48



49



50



51




53



32



52

36	3p Brown Red (4a). Large Margins, light target cancel, Extremely Fine	E. IV
37	3p Brown Red (4a). Rich Color, Very Large Margins, light cancel, Brilliant, Extremely Fine	E. VI
38	3p Brown Red (4a). Very Large Margins, attractive Blue Target cancel, Fresh, Extremely Fine	E. IV
39	3p Brown Red (4a). Deep Color, Huge Margins, Small thin, Very Fine appearance	E. II
40	3p Deep Brown Red (4a). Rich Color, Very Large Margins, Sheet Margin at B. 4 Ring "18" Kingston cancel, Extremely Fine	E. V
41	3p Red Ribbed Paper (4c). Very Large Margins, 4 Ring "21" Montreal cancel, Very Fine	E. IV
42	3p Deep Brown Red (4a). Exceptional Rich Color and Impression, Large Margins, Blue 4 Ring "5" Brantford, cancel, Choice	E. VI
43	3p Red Ribbed Paper (4c). Exceptional Color, Clear to Large Margins, light blue cancel, Very Fine	E. IV
44	3p Red (4d). Bright Color, Huge Margins, next stamp shows at top, cancelled Port Dover No. 9, 1855, Extremely Fine	E. VI
45	3p Orange Thin Paper (4d). Very Large margins, light blue cancel, Extremely Fine	E. IV
46	3p Orange Red, Thin Paper (4d). Huge Margins, next stamp showing at B. light cancel, Extremely Fine	E. V
47	3p Scarlet Vermilion Thin Paper (4d). Brilliant Color, Full to Large Margins, Blue cancel, Very Fine	E. III
48	3p Bright Red, Thin Paper (4d). Major Re-entry Pane A, Pos. #47, Clear to Very Large Margins, light cancel, Very Fine	E. VII
49	3p Deep Red (4). Vertical Pair, Excellent Color, Large Margins, 4 Ring "19" London cancel, Extremely Fine	E. VIII
50	3p Brown Red (4a). Vertical Pair, Large Margins, neat target cancels, tied to piece with Red Paid, Very Fine	E. VII
51	3p Bright Red Thin Paper (4d). Horiz. Pair, Right Stamp Major Re-entry, Brilliant Color and Impression, Large Margins, light Blue cancel, Extremely Fine	E. X
52	3p Orange Red Thin Paper (4d). Vertical Pair, Huge Margins, light cancel, Fresh, Extremely Fine	E. IX
53	3p Orange Red, Thin Paper (4d). Horiz. Pair, Large Margins, light Blue cancel, Extremely Fine	E. VIII
54	3p Red Thin Paper (4d). Horiz. Pair, Full to Large Margins, target cancel, Very Fine	E. VII
55	3p Orange Red (4). Vertical Strip of 3, Sheet Margin at right with portion of Imprint, Brilliant Color, Large Margins, very light cancel, Rare and Extremely Fine Showpiece	E. XI
56	 3p Red (4). Three Large Margins, touching at L. Tied to neat cover with Oct. 13, 1858 Railroad cancel, Fine	E. V



55



54



64



65



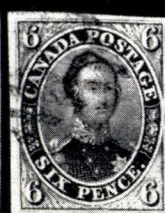
66



67



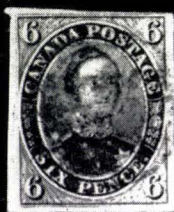
68



69



70



71



72



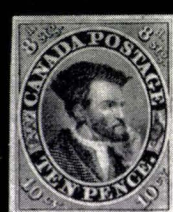
73



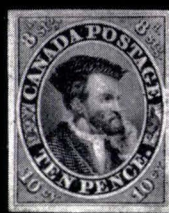
74



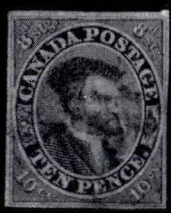
75



77



78



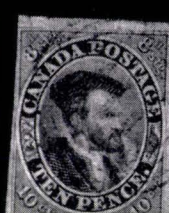
79



80



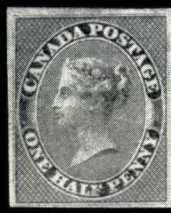
81



82



83



85



86



87



88



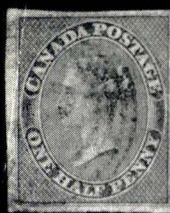
90









91



92



89

- 57  **3p Red (4).** Fine copy target cancel not tied on neat cover with very clear strike "Mont. & Que. Grand Trunk R. Way No. 2 A. Up Jun. 7, 1856" to Toronto E. III
- 58  **3p Red, Thin Paper (4d).** Full to Large Margins tied to choice mourning cover, "Steamboat Letter Quebec Sp. 2, 1854" pmk. to Three Rivers, Scarce Very Fine E. VII
- 59  **3p Orange Red, Thin Paper (4d).** Large Margins tied to cover, "Montreal Oc. 3, 1856" pmk. to Toronto, Very Fine E. IV
- 60  **3p Red (4).** Clear to Full Margins, lightly tied to cover Cobourg Jul. 31, 1858 to Hamilton, Fine E. II
- 61  **3p Red Thin Paper (4d). Horiz. Pair,** Clear to Large Margins, tied to neat cover with Red target, Red Hull, No. 11, 1855 pmk. to Ogdensburg, N. Y. "Canada" in Arc, Very Fine E. VIII
- 62  **3p Brown Red (4d).** Deep Color, **Vertical Pair,** Clear to Large Margins tied with neat target cancels to cover, "Dundas Ju. 14, 1853" pmk. to Southbridge, Mass. Red "Canada Paid 10cts." and blue Suspension Bridge, N. Y. Exchange Markings, Attractive, Extremely Fine Cover with three diff. color pmks. E. VIII



- 63 ★ **6p Greenish Gray (5b).** Magnificent Color and Impression, Huge Margins, Fresh, o. g. Exceedingly Rare, Extremely Fine E. XV
- 64 **6p Slate Gray (5).** Excellent Color, Huge Margins, Extremely Fine E. X
- 65 **6p Slate Gray (5).** Clear to Large Margins, 4 Ring "2" Belleville cancel, Very Fine E. VII
- 66 **6p Slate Gray (5).** Huge Margins, Sheet Margin & portion of Imprint at R. light Toronto 9 Bar cancel, Gem E. XII
- 67 **6p Slate Gray (5).** Excellent Color, Very Large Margins, light cancel, Extremely Fine E. IX
- 68 **6p Slate Gray (5).** Full to Very Large Margins, 4 Ring "21" Montreal cancel, Very Fine E. VIII
- 69 **6p Brownish Gray (5a).** Excellent Color and Impression, Very Large Margins, light cancel, Extremely Fine E. IX
- 70 **6p Brownish Gray (5a).** Excellent Color, Large Margins, Extremely Fine E. VIII
- 71 **6p Greenish Gray (5b).** Clear to Large Margins, Very Fine E. VI
- 72 **6p Greenish Gray (5b).** Huge Margins, Extremely Fine E. X

6



Mrs. Gibb & Co.
Montreal

7



Mrs. A. Thomson
Smith's Falls
C. W.

56



J. C. Chapais, Esq.
M. P. O.
St Denis,
1 en Ba

26



J. Taylor Esq
Manager
P. O. of Ant. Co. America
Kingston

57



Honorable J. G. Gougeon



En messagerie des Trains de
Gougeon ne
Trois
Concord

58



Paye

Rev. M. L. Lottin
Cure de St. Stanislas
Détail des Pairs de

59



P. A. Genereux Esq
Secretary
Crown Lands Dept
Toronto C. W.

61



Post J. H. Prouty
Cyclenburg
N. Y.



76




Maurice Esq
Manager
Bank of Montreal
Belleville




62



Rev. Litchfield Esq
Southbridge
Massachusetts

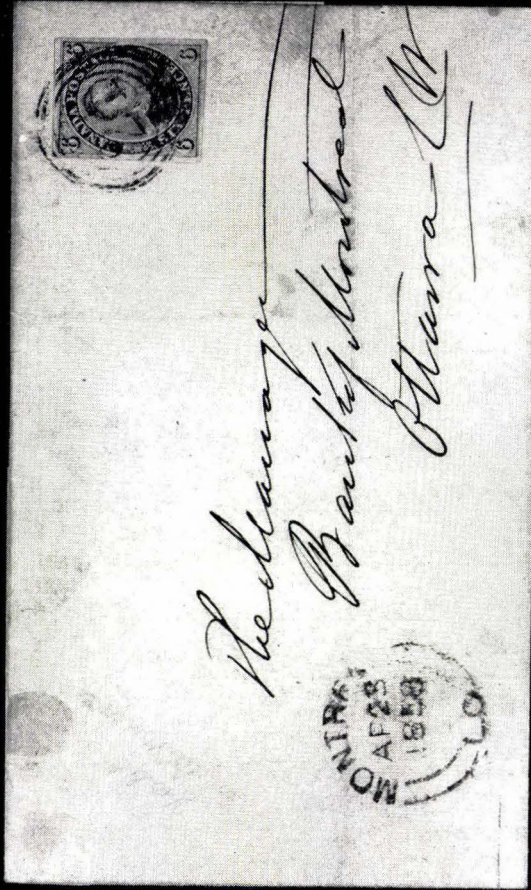
73	6p Greenish Gray (5b). Large Margins, faint thin, Very Fine appearance	E. VI
74	6p Gray Violet on Thick Hard Paper (5d). Very Large Margins, light cancel, Extremely Fine	E. X
75	6p Gray Violet on Thick Hard Paper (5d). Very Large Margins, Hamilton "16" in Bars cancel, Extremely Fine	E. IX
76	 6p Greenish Gray (5). Large Margins, tied to choice cover, Montreal Ap. 8, 1857 to Belleville C. W., Extremely Fine	E. X

1855-1857 PENCE ISSUES

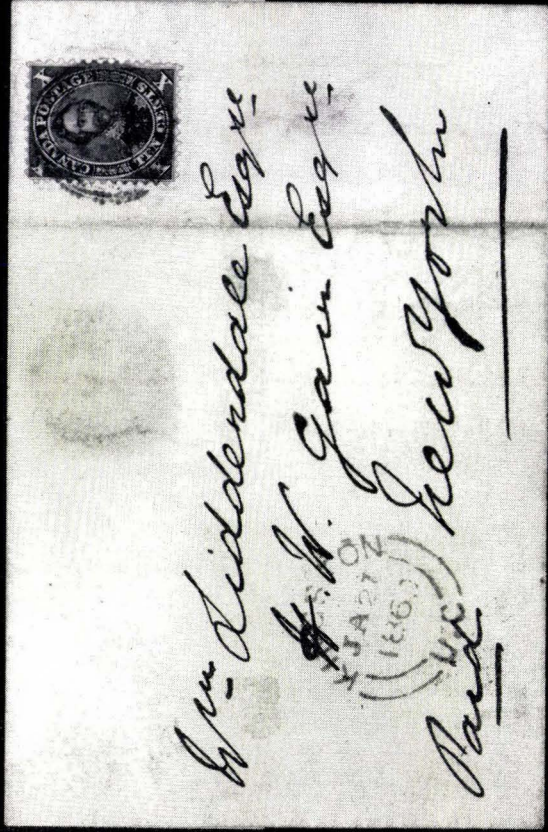
77	★ 10p Bright Blue Thick Paper (7a). Magnificent Color and Impression, Large Margins, Brilliant o. g., Extremely Fine	E. XIV
78	★ 10p Bright Blue, Thick Paper (7a). Large Margins, Very Fine	E. XII
79	10p Blue (7). Full Margins, light cancel, slight crease, Very Fine appearance	E. V
80	10p Blue (7). Very Large Margins, next stamp shows at B. light cancel, Extremely Fine	E. VIII
81	10p Blue Thick Paper (7a). Bright Color, Large Margins, Toronto 9 Bar cancel, Extremely Fine	E. VIII
82	10p Blue, Thick Paper (7a). Clear to Very Large Margins, Very Fine	E. VII
83	10p Blue (7). Excellent Color and Impression, Next stamp showing top and right, tied to small piece, Extremely Fine	E. XI
84	 10p Blue (7). Full to Large Margins, tied with target and red "Paid EL, 16 Jy 16, 1855" to small cover, "Toronto Jun. 30, C. W." pmk. to London, Extremely Fine, Rare	E. XII
85	★ ½p Rose (8). Large Margins, Fresh, o. g., Very Fine	E. VII
86	★ ½p Rose (8). Large Margins, Full o. g., Very Fine	E. VII
87	½p Rose (8). Huge Margins, light cancel, Fresh, Extremely Fine	E. VII
88	½p Rose (8). Large Margins, Fresh Extremely Fine	E. VI
89	½p Rose (8). Margins two sides just cutting top and right, Remarkable full strike of the exceedingly rare fancy 1857 cancel Twentieth anniversary of Queen Victoria's Coronation	E. X
90	½p Rose, Horiz. Ribbed Paper (8a). Huge Margins, next stamp showing at R. light town dated Hamilton, 1858 pmk. Trivial corner crease, Extremely Fine Appearance	E. VIII
91	½p Rose, Horiz. Ribbed Paper (8a). Horiz. Pair, Large Margins, Fresh, Very Fine, Rare	E. XI
92	½p Rose, Vertically Ribbed Paper (8b). Attractive appearance, expertly repaired	E. V



84



105



114



100



- 93 ★ **7½p Deep Green (9).** Remarkable Rich Color, Sharp Impression, Very Large Margins, o.g. Fresh, Extremely Fine, Gem E. XIV
- 94 ★ **7½p Deep Green (9).** Magnificent Color and Impression, Large Margins, Full o.g. Fresh, Extremely Fine E. XIII
- 95 ★ **7½p Green (9).** Excellent Color and Impression, **Vertical Pair**, Huge Margins, part o.g. Fresh, Extremely Fine, Rare Showpiece
Est. \$1,800.00 to \$2,500.00
- 96 **7½p Deep Green (9).** Excellent Color and Impression, Huge Margins, next stamp showing at R. 4 Ring "21" Montreal cancel, Fresh, Extremely Fine E. XII
- 97 **7½p Deep Green (9).** Very Large Margins, light cancel, Extremely Fine E. XI
- 98 **7½p Deep Green (9).** Excellent Color and Impression, Very Large Margins, Extremely Fine E. XI
- 99 **7½p Green (9).** Excellent Color and Impression, Very Large Margins, light cancel, Fresh, Extremely Fine E. XI
- 100 ☒ **7½p Deep Green (9).** Magnificent Color and Impression, Huge Margins, tied 4 Ring "37" to choice cover, "Quebec Ju. 4 1859" pmk. "per S. S. North American" in ms. to Swansea, red paid "Liverpool Colonial Packet," Handsome Extremely Fine E. XV
- 101 **6p Reddish Purple, Very Thick Soft Wove Paper (10).** Large Margins, light cancel, Very Fine E. IX
- 102 **6p Reddish Purple, Very Thick Soft Wove Paper (10).** Excellent Color, Very Large Margins, next stamp at B. light 4 Ring "5" Brantford cancel, Extremely Fine E. XII
- 103 **6p Reddish Purple, Very Thick Soft Wove Paper (10).** Excellent Color, Very Large Margins, light 4 Ring "5" Brantford cancel, Extremely Fine E. XII
- 104 **6p Reddish Purple, Very Thick Soft Wove Paper (10).** Huge Margins, light cancel, Extremely Fine E. XII
- 105 ☒ **6p Reddish Violet, Very Thick Soft Wove Paper (10).** Excellent Color, Large Margins, tied with 4 Ring "21", Montreal Ap. 23, 1858 to Ottawa, Extremely Fine Cover E. XII



96



97



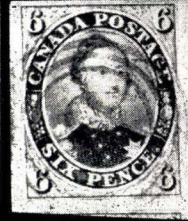
98



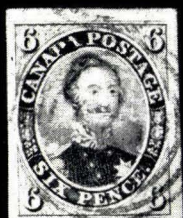
99



101



102



103



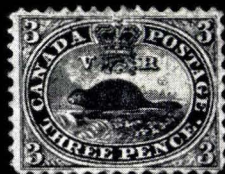
104



106



107



108



109



110



111



112



113



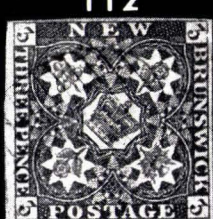
115



116



117



118



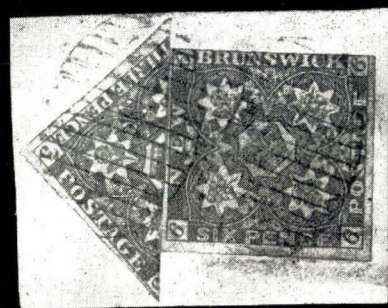
119



120



124



125



126



127



128



129

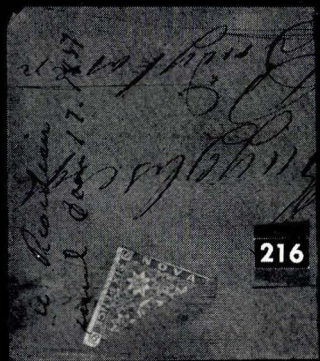
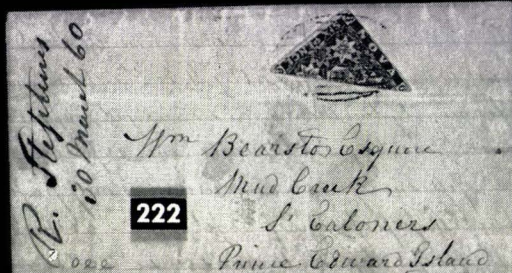
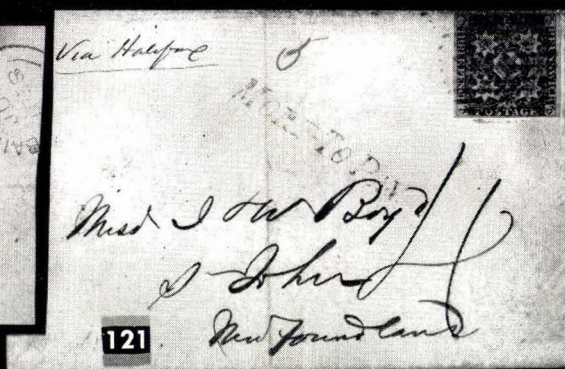
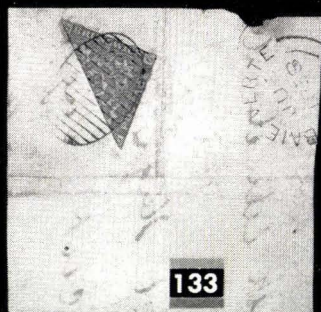
1858-1859 PERFORATED PENCE ISSUE

106 ★	½p Rose (11). Centered to Bot. and Left	E. V
107	½p Rose (11). Unusually well centered, 4 Ring "44" Smith Falls pmk. few nibbed perfs	E. VII
108 ★	3p Red (12). Fresh Color and Impression, Part o.g. Perfectly centered, Remarkable Jumbo Margins, Extremely Fine, a Record Copy	E. XIII
109	3p Red (12). Perfectly Centered, Very Lightly Cancelled, Fresh, Extremely Fine	E. VIII
110	3p Red (12). Well centered, light cancel, a corner perf. short, Very Fine	E. VI
111	3p Red (12). Horiz. Pair, Unusually Well Centered, light cancel, Fresh, Extremely Fine, a Showpiece	E. XI
112 ★	6p Brown Violet (13). Brilliant Color and Impression, Perfectly centered, Fresh Extremely Fine	E. XIV
113	6p Gray Violet (13a). Perfectly Centered, 4 Ring "21" Montreal cancel, Extremely Fine	E. XII
114 ☒	10c Black Brown (16). Centered Copy, tied to cover, Kingston Ja. 27, 1860 to New York, Extremely Fine	E. XI

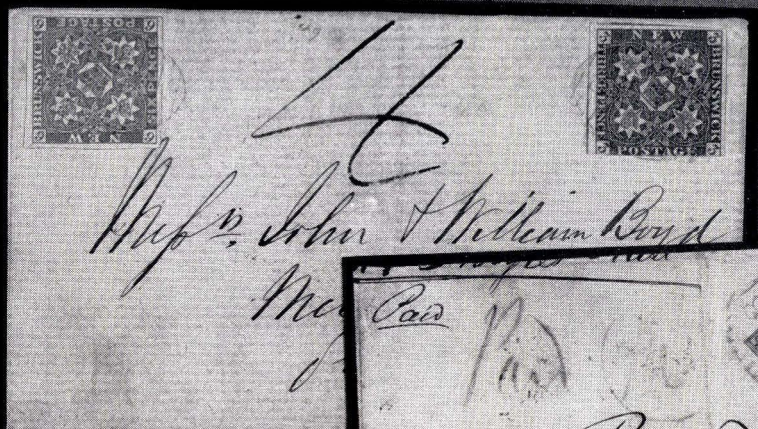
NEW BRUNSWICK

1851 PENCE ISSUE

115 ★	3p Red (1). Margins all around, Fine	E. VII
116	3p Red (1). Large Margins, N. B. Grid "3" cancel, Fresh, Extremely Fine	E. V
117	3p Red (1). Large Margins, faint trace of pen cancel, Very Fine	E. III
118	3p Red (1). Large Margins light cancel, Fresh, Extremely Fine	E. V
119	3p Dark Red (1a). Excellent Color and Impression, Large Margins, Extremely Fine	E. VI
120	3p Red (1). Pair, Large Margins, Excellent Color and Impression, N. B. Grid "17" cancel, Fresh, Extremely Fine	E. IX
121 ☒	3p Red (1). Large Margins, tied to "Boyd" cover, to St. Johns, Newfoundland, ms. "5" and "Via Halifax", "Moore to Pay" and "4" Very Fine	E. VII
122 ☒	3p Red, 6p Orange Yellow (1, 2a). 3p Large Margins except at B. 6p Magnificent Color and Impression, Very Large Margins both tied to large part of "Boyd" cover with neat blue N. B. grid "8", to St. Johns, "4" rate in ms. Extremely Fine and Rare cover	E. XIV
123 ☒	3p Red two overlapping copies with Bisect (1, 1b). Tied to large part of cover with blue N. B. grid "8" to Greenock Scotland, red "Paid Liverpool Br. Packet 9 Jy. 59", Very Fine	E. XI
124	3p Red Bisect in combination 6p Orange Yellow (1b, 2a). Tied to piece with N. B. Grid "8", Fine	E. VIII
125 ★	6p Orange Yellow (2a). Brilliant Color and Impression, Large Margins, part o.g. Fresh, Extremely Fine, Rare	E. XIII



137



122



123



159

196



130



131



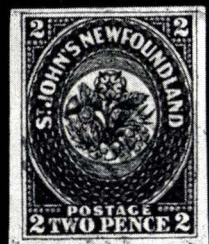
135



136



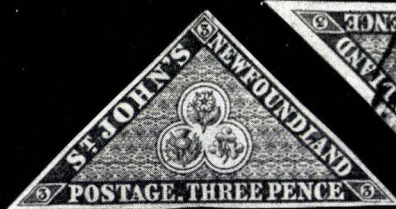
138



141



142



143



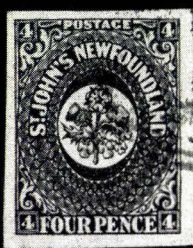
144



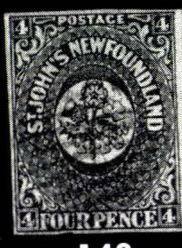
145



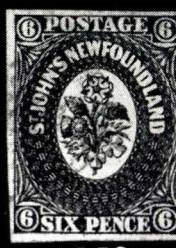
146



147



148



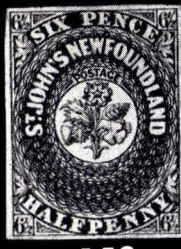
152



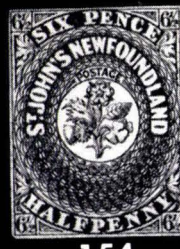
149



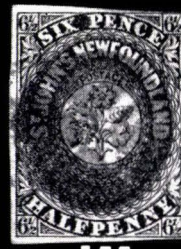
150



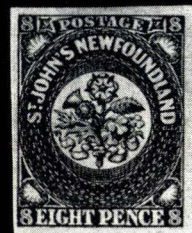
153



154



155



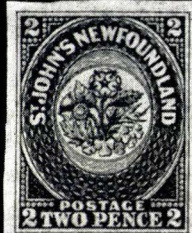
156



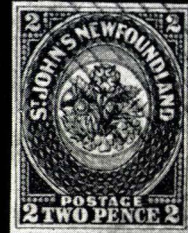
157



161



162



163



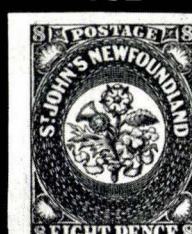
168



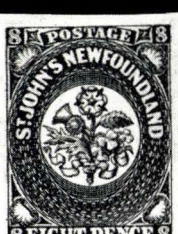
169




170




158




- 126 **6p Olive Yellow (2).** Magnificent Color and Impression, Clear to Large Margins, Fresh, Extremely Fine **E. VIII**
- 127 **6p Olive Green (2).** Excellent Color and Impression, Large Margins, light Blue grid cancel, Fresh, Extremely Fine **E. VIII**
- 128 **6p Olive Yellow (2).** Excellent Color and Impression, Huge Margins, shows next stamp at B. Extremely Fine **E. X**
- 129 **6p Orange Yellow (2a).** Excellent Color and Impression, Very Large Margins, Fresh, Extremely Fine **E. IX**
- 130 **6p Orange Yellow (2a).** Excellent Color and Impression, **Steam "Boat"** cancel, Fresh, Extremely Fine, Rare **E. X**
- 131 **6p Orange Yellow (2a).** Excellent Color and Impression, Clear to Large Margins, **Red Paid** cancel, Fresh, Very Fine **E. VII**
- 132  **6p Olive Yellow (2).** Full Margins, tied to cover with grid, blue New Brunswick, V. R. 1851 pmk. to Maine, address strengthened, Fine **E. VII**
- 133 **6p Orange Yellow Bisect (2c).** Tied to piece with N. B. Grid "3", Baie-vert Ju. 1, 1858 pmk. Fine **E. VIII**

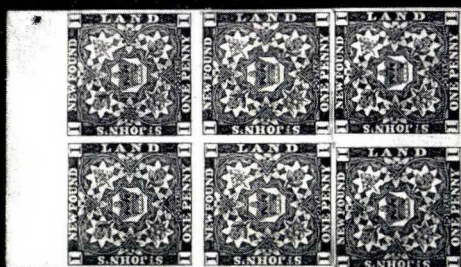


- 134 ★ **1sh Bright Red Violet (3).** Magnificent Rich Color, Sharp Fresh Impression, Very Large Margins, part o.g. Extremely Fine, a Gem
Est. \$1,750.00 to \$2,500.00
- 135 **1sh Bright Red Violet (3).** Excellent Color and Impression, Large Margins, light cancel, Fresh, Extremely Fine **E. XIII**
- 136 **1sh Bright Red Violet (3).** Magnificent Color and Impression, Huge Margins, blue N. B. grid "8" cancel, Extremely Fine **E. XIV**
- 137  **1sh Bright Red Violet, 3p Red (1, 3).** 1sh Excellent Color and Impression, Very Large Margins, 3p has small defect, tied with neat strikes N. B. Grid "16", Registered cover to Sussex Vale, backstamped "Harvey, Au. 21, 1854" and "Salisbury Au. 22, 1854" Extremely Choice and Rare Cover **Est. \$1,500.00 to \$2,000.00**
- 138 **1sh Dull Violet (4).** Excellent Color and Impression, Large Margins, Fresh, Extremely Fine **E. XIII**

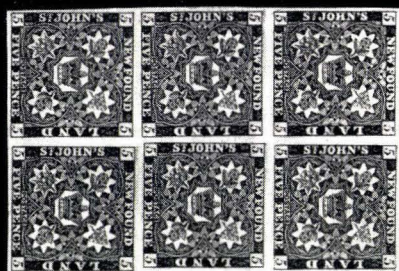
NEWFOUNDLAND

1857 THICK WOVE PAPER

- 139 ★ **1p Brown Violet (1).** Large Margins, o.g. Exceptionally Fine **E. I**
- 140 ★  **1p Brown Violet (1).** Top Sheet Margin Block of 6, o.g. Extremely Fine **E. VI**



140



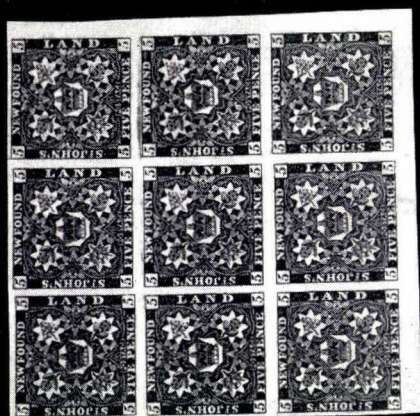
151



166



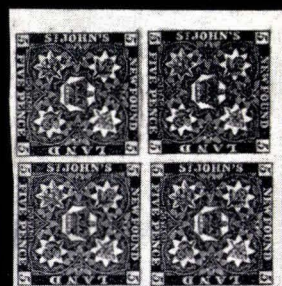
182



172



176



183



181



188



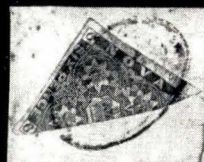
189



190

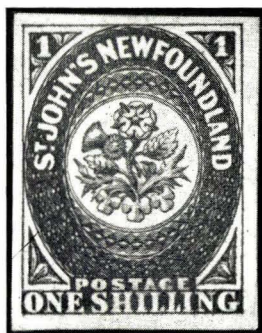


177



215

- 141 **2p Scarlet Vermilion (2).** Remarkable Deep Rich Color and Impression, Huge Margins, light cancel, faint crease, Fresh, Beautiful appearance **E. XIII**
- 142 **2p Scarlet Vermilion (2).** Excellent Color and Impression, small but clear margins, light cancel, Fine **E. X**
- 143 ★ **3p Green (3).** Full Margins, Very Fine **E. II**
- 144 **3p Green (3).** Huge Margins, Extremely Fine **E. IV**
- 145 **3p Green (3).** Pair, Very Large Margins, Extremely Fine **E. VIII**
- 146 ★ **4p Scarlet Vermilion (4).** Excellent Color and Impression, Huge Margins, Extremely Fine **E. XIV**
- 147 **4p Scarlet Vermilion (4).** Excellent Color and Impression, Huge Margins, light cancel, Extremely Fine **E. XIII**
- 148 **4p Scarlet Vermilion (4).** Margins all around, Fine **E. IX**
- 149 ★ **5p Brown Violet (5).** Very Large Margins, Fresh, o.g. Extremely Fine **E. III**
- 150 ★ **5p Brown Violet (5).** Large Margins, Very Fine **E. II**
- 151 ★田 **5p Brown Violet (5).** Block of 6, Very Large Margins, Fresh o.g. Extremely Fine, Scarce **E. X**
- 152 **6p Scarlet Vermilion (6).** Excellent Color and Impression, Clear to Full Margins, light cancel, Very Fine **E. X**
- 153 ★ **6½p Scarlet Vermilion (7).** Excellent Color and Impression, Full Margins, part o.g., Very Fine **E. IX**
- 154 ★ **6½p Scarlet Vermilion (7).** Small but clear margins, tiny thin spot **E. VI**
- 155 **6½p Scarlet Vermilion (7).** Clear to full margins, St. Johns cork cancel, Fine **E. VIII**
- 156 ★ **8p Scarlet Vermilion (8).** Large Margins, Very Fine **E. III**
- 157 ★ **8p Scarlet Vermilion (8).** Full Margins, Very Fine **E. III**
- 158 ★ **8p Scarlet Vermilion (8).** Horiz. Sheet Margin Pair, Huge Margins, Brilliant o.g., Extremely Fine **E. VIII**
- 159 ☒ **8p Scarlet Vermilion, Bisect (8a).** Tied to choice "Tucker" cover, red "St Johns, Newfoundland, Paid, Sp. 26, 1860" to Baltimore, "Boston Br. Pkt. 5, Oct. 5" transit marking **E. XI**



- 160 ★ **1sh Scarlet Vermilion (9).** Magnificent Rich Color, Wonderful Impression, Huge Margins, o.g. Fresh, a Record Copy, Outstanding Gem
Est. \$2,500.00 to \$3,500.00
- 161 **1sh Scarlet Vermilion (9).** Deep Color, small but clear margins, Fine **E. IX**

1860 THIN WOVE PAPER

162	★	2p Orange (11). Very Large Margins, Extremely Fine	E. IV
163		2p Orange (11). Full Margins, Very Fine, cancellation probably not contemporary	E. III
164	★	3p Deep Green, 5p Violet Brown (11A, 12A). Very Large Margins, o.g. Extremely Fine	E. II
165	★	3p Deep Green Watermarked (11A). Large Margins, o.g., Very Fine	E. I
166	★田	3p Deep Green (11A). Upper right Sheet Corner Block of 6, Huge Margins, o.g. Extremely Fine	E. V
167	☒	3p Deep Green (11A). Large Margins, Very Fine stamp, well tied with cork to attractive cover, Red "St. Johns Newfoundland Paid De. 1, 1868" pmk. to Harbour Grace	E. VI
168	★	4p Orange (12). Brilliant Color and Impression, Very Large Margins, faint crease, Fresh, Handsome	E. XII
169		4p Orange, Watermarked "IS" (12). Large Margins, Extremely Fine	E. X
170		4p Orange (12). Margins all around, Fine	E. VI
171	★	5p Violet Brown (12A). Horiz. Pair, Very Large Margins, o.g. Extremely Fine	E. II
172	★田	5p Violet Brown, Watermarked "STA" (12A). Lower right Sheet Margin Block of 9, Very Large Margins, o.g. Extremely Fine	E. VI
173		6p Orange (13). Excellent Color and Impression, Huge Margins, light cancel, Extremely Fine	E. IX

1862-1863 PENCE ISSUES

174	★	1p Violet Brown (15A). Horiz. Pair, Large Margins, Fresh o.g. Extremely Fine	E. IV
175	★	2p Dull Rose (17). First Printing on Thick Paper, Very Large Margins, o.g., Very Fine	E. III
176	★田	2p Rose (17). Lower Left Sheet Margin Block of 6, Huge Margins, Brilliant o.g., Extremely Fine, Rare	E. XIII
177		2p Rose (17). Large Margins, Very Fine, Cancellation probably not contemporary	E. III
178		2p Rose, 4p Rose (17-18). Very Fine copies tied to piece with unidentifiable cork cancel, "St. Johns, Newfoundland Paid Ap. 18, 1864" back-stamp	E. III
179	★	4p-1sh Rose (18-23). Large Margins, o.g., Very Fine	E. III
180	★田	4p, 6p Rose (18, 20). Blocks, Very Large Margins o.g., Extremely Fine	E. II
181	★	5p Reddish Brown (19). Horiz. Pair, Very Large Margins, o.g. Extremely Fine	E. II
182	★田	5p Reddish Brown (19). Block, Large Margins, o.g., Very Fine	E. III
183	★田	5p Orange Brown (19a). Corner Sheet Margin Block, Very Large Margins, Fresh o.g. Extremely Fine	E. III

184	5p Reddish Brown (19, 19a). Three copies, one o.g. two used, cancels probably not contemporary	E. II
185	5p Reddish Brown (19). Horiz. Pair, Large Margins, cancellation probably not contemporary	E. II
186	★田 6p Rose (20). Horiz. Pair and Block, Large Margins o.g., Very Fine	E. II
187	6p, 6½p, 1sh Rose (20–21, 23). Large Margins, 6½p is Pair, Large Margins, Very Fine, cancels probably not contemporary	E. II
188	★田 6½p Rose (21). Corner Sheet Margin Block, Very Large Margins, o.g. Extremely Fine	E. IV
189	★田 8p Rose (22). Corner Sheet Margin Block, Very Large Margins, o.g. Extremely Fine	E. IV
190	★田 1sh Rose (23). Block, Very Large Margins, scissor cuts between stamps, o.g., Very Fine	E. II

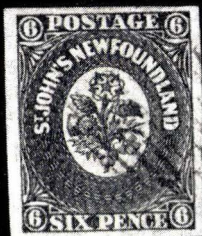
NOVA SCOTIA

1851-1853 PENCE ISSUES

191	★ 1p Red Brown (1). Magnificent Color and Impression, Large Sheet Margin copy, Brilliant o.g. Extremely Fine Gem	E. XI
192	★ 1p Red Brown (1). Magnificent Color and Impression, Very Large Margins o.g. Extremely Fine	E. X
193	1p Red Brown (1). Excellent Color and Impression, Large Margins, Fresh, Extremely Fine	E. VII
194	1p Red Brown (1). Large Margins, Very Fine	E. VII
195	1p Red Brown (1). Vertical Strip of 3, Excellent Color and Impression, Clear to Very Large Margins, Fresh, Extremely Fine	E. XIII
196	✉ 1p Red Brown Horiz. Pair, 3p Dark Blue (1, 3). Tied to cover, ms. "(per Europa", Scarce rate "Boston Br. Pkt. 5, Mar. 29" pmk. to New York, Extremely Fine and Rare Cover	E. XIII
197	3p Blue (2). Very Large Margins, next stamp shows at R. Extremely Fine	E. III
198	3p Deep Blue (2). Excellent Color and Impression, Huge Margins, light cancel, Extremely Fine	E. V
199	3p Blue, 3p Dark Blue (2–3). Five diff. shades, all with very large margins, several with trivial defects, Extremely Fine appearance	E. VI
200	✉ 3p Blue (2). Brilliant Color, Large Margins tied to Mourning cover, Extremely Fine	E. IV
201	3p Blue, two large margin Bisects (2a). Tied to portion of cover "Yarmouth Fe. 15, 1860" and "Harrington N. S. Fe. 16, 1860" pmks.	E. VIII
202	✉ 3p Blue Very Fine Bisect in combination with creased 6p Yellow Green (2a, 4). Tied to cover, "Windsor, N. S. My. 20, 1857" backstamp to Liverpool, Red "Pkt. Letter Paid Liverpool My. 31, 57" Tombstone cancel, Handsome cover	E. IX
203	★ 3p Dark Blue (3). Large Margins, Fresh, Extremely Fine	E. VII



171



173



174



175



191



192



193



194



197



198



203



204



205



210



211



195



212



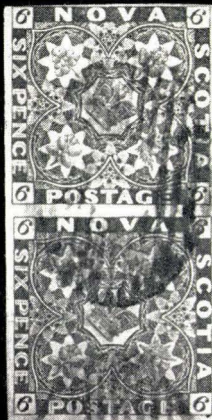
217



218



219



220



223



224



225

221

204 ★	3p Dark Blue (3). Excellent Color and Impression, Large Margins, Fresh, o.g. Extremely Fine	E. VIII
205 ★	3p Dark Blue (3). Full Margins, Very Fine	E. V
206 ☒	3p Dark Blue (3). Unusual deep rich color, Huge Margins, tied to cover to Arichat, Extremely Fine	E. VI
207 ☒	3p Dark Blue (3). Large Margins, tied to cover to Montreal, ms. "Via Portland", Very Fine	E. V
208 ☒	3p Dark Blue (3). Deep shade, Very Large Margins, tied to small neat Mourning cover, Extremely Fine	E. V
209 ☒	3p Dark Blue Bisect in combination with 6p Yellow Green (3a, 4). Tied by red Tombstone "Pkt. Letter Paid, Liverpool Oc. 5, 56" to Hertfordshire, England, cover bit frayed, Scarce	E. VIII
210 ★	6p Yellow Green (4). Full Margins, Fresh Very Fine	E. IX
211	6p Yellow Green (4). Excellent Color, Large Margins, Very Fine	E. V
212	6p Yellow Green (4). Large Margins, Very Fine	E. V
213 ☒	6p Yellow Green (4). Large Margins, tied to cover, "Bridgewater N. S. Ju. 2, 1855" backstamp to Maryland, blue "10" exchange marking, Very Fine	E. VIII
214 ☒	6p Yellow Green (4). Two copies tied to cover, Yarmouth to Liverpool Nova Scotia, Very Fine	E. XI
215	6p Yellow Green, Bisect (4a). Very Large Margins, tied to small piece	E. V
216 ☒	6p Yellow Green Bisect (4a). Large Margins, tied to "Ruggles" cover, Annapolis N. S. to Bridgewater, N. S., Very Fine	E. IX
217 ★	6p Dark Green (5). Excellent Color and Impression, Large Margins, tiny marginal thin, Rare, Extremely Fine appearance	E. XI
218	6p Dark Green (5). Brilliant Color and Impression, partly touches, no visible cancel, Fresh, Fine	E. VII
219	6p Dark Green (5). Excellent Color and Impression, Large Margins, very light cancel, Extremely Fine	E. VIII
220	6p Dark Green (5). Large Margins, very light cancel, Very Fine	E. VII
221	6p Dark Green (5). Horiz. Pair, Rich Deep Color, Exceptional Impression, strongly blued paper, Clear to Very Large Margins, Extremely Fine, Rare	E. XII
222 ☒	6p Dark Green Bisect (5a). Tied to cover, "Digby N. S. Ap. 11, 1860" backstamp to Mud Creek, St. Elanors, P. E. I., Fine, Rare	E. IX
223 ★	1sh Reddish Violet (6). Brilliant Color and Impression, Four Margins, part o.g., Very Fine	E. XIII
224	1sh Reddish Violet (6). Rich Brilliant Color, Sharp Impression, Full Margins, light cancel, Extremely Fine	E. XII
225	1sh Cold Violet (7). Excellent Color and Impression, Margins all around, Fine	E. X

END OF SALE — THANK YOU

*LOTS ON VIEW FROM MARCH 2nd
OFFICE OPEN SATURDAY, MARCH 7th*

IS YOUR COLLECTION FOR SALE?

REALIZE IMMEDIATE CASH
PLUS THE ADDED ADVANTAGE OF
SELLING THROUGH OUR AUCTIONS

We will advance immediate cash up to 75% of our appraisal value, of what your collection should realize at auction.

Your collection will then be sold in one of our coming auction sales. All stamps are expertly and advantageously lotted in attractive, well illustrated catalogs. Lotting is meticulously planned under our personal supervision. Commission is 20% of the gross realization. Final settlement is made within five weeks after the sale. We have been continuously conducting stamp auctions in the United States for nearly thirty years.

Valuable collections and stamp holdings are especially wanted, but we will accept properties valued from \$500 upwards. Send all stamps direct for appraisal. Auction advance will be remitted within 48 hours following receipt. If not entirely pleased, stamps will be returned at our expense. If circumstances warrant due to bulk or value, we will travel anywhere to inspect important estates.

ROBERT A. SIEGEL

(Licensed and Bonded Auctioneer)

489 FIFTH AVENUE

NEW YORK CITY

(Tel. MU. 2-0980)

CONDITIONS OF SALE

1. The terms of sale are strictly cash to the highest bidder. All buyers are expected to pay for lots within three days of receipt, unless special arrangements have been made prior to the sale.
2. All bids are per lot as numbered in the catalogue and not per piece, unless otherwise announced by the auctioneer at the time of sale.
3. Any lot the description of which is incorrect is returnable only within three days of receipt. All disputed lots must be returned intact as received. Lots containing five or more stamps are not returnable at any time. No lots may be returned by purchasers who have had the opportunity to examine them before the sale.
4. Successful mail bidders, unless they are known to us or supply acceptable references, will be notified of the amount of the lots secured for them, and are expected to send payment in full before the lots are forwarded.
5. If the purchase price has not been paid within the time limit, or lots taken up within seven days from date of sale, they may be resold and any losses arising from such sale charged to the defaulter.
6. All stamps are sold as genuine, except where sold "As Is". Claims for any lot proving otherwise, must be made within two weeks from date of sale.
7. The right is reserved to group two or more lots, also withdraw any lot or lots from the sale, or to act on behalf of the seller.
8. Until paid for in full all lots remain the property of Robert A. Siegel.
9. No commission is charged for buying at our sales, but all forwarding charges will be added to the purchase price.
10. Upon written application lots may be sent for examination prior to the auction, conditional upon being mailed back by registered mail, adequately insured, within 24 hours of receipt. The applicant is completely responsible for all lots sent for examination, and for the insurance of same against mishap, from the time of receipt until they are actually received back, and is to pay all expenses of postage and insurance.
11. The placing of a bid shall constitute acceptance of the foregoing conditions of sale.

ROBERT A. SIEGEL

GREGORY MOZIAN, Licensed Auctioneers

In sending bids, always state the highest price you are prepared to pay for the lot. Your limit will not be used as a starting bid unless absolutely necessary.

DESCRIPTIONS

Superb—the finest condition for noteworthy, outstanding copies.

Very Fine (VF)—means that there is a slight deviation from the above.

Fine (F)—means that the perforations do not touch the design on issues after 1890, but in some cases may just touch in earlier issues; if used, fairly lightly cancelled.

Very Good (VG)—means that the appearance is generally fine but that the perforations cut the design slightly.

Good (G)—means average off-centering; or fairly attractive with slight defects. Original gum is not to be expected on 19th Century stamps up to 1888 unless so stated.

Scott's 1959 Specialized United States Catalogue is used for cataloguing our lots of United States and Scott's Standard Catalogue, 1959 for others.

WE SOLICIT FINE MATERIAL FOR FUTURE SALES



ROBERT A. SIEGEL

489 Fifth Avenue
New York 17, N. Y.

217TH SALE

PRICES REALIZED
March 11th, 1959

A Magnificent Collection of BRITISH NORTH AMERICA "PENCE" ISSUES

1	60.00	46	47.50	91	340.00	136	975.00	181	12.50
2	77.50	47	17.00	92	20.00	137	2700.00	182	20.00
3	170.00	48	60.00	93	850.00	138	625.00	183	30.00
4	260.00	49	105.00	94	600.00	139	6.00	185	5.00
5	1300.00	50	80.00	95	4000.00	140	77.50	185	3.00
6	140.00	51	190.00	96	420.00	141	600.00	186	10.00
7	70.00	52	190.00	97	290.00	142	140.00	187	22.00
8	110.00	53	100.00	98	420.00	143	16.00	188	42.50
9	150.00	54	57.50	99	300.00	144	67.50	189	42.50
10	95.00	55	260.00	100	1700.00	145	105.00	190	10.00
11	45.00	56	92.50	101	150.00	146	975.00	191	290.00
12	50.00	57	72.50	102	390.00	147	825.00	192	160.00
13	75.00	58	62.50	103	430.00	148	160.00	193	52.50
14	60.00	59	50.00	104	310.00	149	35.00	194	47.50
15	170.00	60	9.00	105	310.00	150	12.00	195	425.00
16	230.00	61	170.00	106	20.00	151	170.00	196	475.00
17	85.00	62	200.00	107	55.00	152	130.00	197	12.00
18	60.00	63	1850.00	108	750.00	153	110.00	198	42.50
19	280.00	64	310.00	109	130.00	154	32.50	199	17.00
20	330.00	65	95.00	110	32.50	155	100.00	200	17.00
21	330.00	66	475.00	111	450.00	156	18.00	201	180.00
22	180.00	67	140.00	112	700.00	157	20.00	202	130.00
23	475.00	68	80.00	113	380.00	158	120.00	203	50.00
24	450.00	69	320.00	114	300.00	159	330.00	204	180.00
25	1300.00	70	120.00	115	45.00	160	3800.00	205	35.00
26	75.00	71	50.00	116	52.50	161	150.00	206	90.00
27	17000.00	72	310.00	117	16.00	162	25.00	207	42.50
28	1800.00	73	50.00	118	47.50	163	20.00	208	25.00
29	110.00	74	310.00	119	52.50	164	13.00	209	75.00
30	3000.00	75	180.00	120	240.00	165	7.00	210	110.00
31	210.00	76	290.00	121	180.00	166	52.50	211	215.00
32	1600.00	77	900.00	122	1000.00	167	65.00	212	27.50
33	25.00	78	320.00	123	200.00	168	230.00	213	140.00
34	32.50	79	40.00	124	110.00	169	125.00	214	230.00
35	35.00	80	210.00	125	550.00	170	37.50	215	30.00
36	30.00	81	110.00	126	80.00	171	18.00	216	130.00
37	40.00	82	65.00	127	105.00	172	75.00	217	200.00
38	25.00	83	240.00	128	230.00	173	140.00	218	45.00
39	20.00	84	600.00	129	100.00	174	27.50	219	130.00
40	45.00	85	60.00	130	300.00	175	22.50	220	90.00
41	28.00	86	60.00	131	67.50	176	420.00	221	280.00
42	40.00	87	72.50	132	140.00	177	17.50	222	170.00
43	42.50	88	52.50	133	110.00	178	27.00	223	410.00
44	77.50	89	170.00	134	2300.00	179	18.00	224	620.00
45	40.00	90	67.50	135	450.00	180	10.00	225	220.00