

242nd SALE

UNITED STATES

STAMPS and COVERS

GENERAL FOREIGN

INCLUDING LOTS BY COUNTRIES



AT PUBLIC AUCTION

Wednesday and Thursday

AUGUST 23rd and 24th, 1961

AT 1 P. M. EACH DAY

Robert A. Siegel
AUCTIONS

489 FIFTH AVENUE

NEW YORK 17, N. Y.

Tel. MURray Hill 2-0980

CONDITIONS OF SALE

1. The terms of sale are strictly cash to the highest bidder. All buyers are expected to pay for lots within three days of receipt, unless special arrangements have been made prior to the sale.
2. All bids are per lot as numbered in the catalogue and not per piece, unless otherwise announced by the auctioneer at the time of sale.
3. Any lot the description of which is incorrect is returnable only within three days of receipt. All disputed lots must be returned intact as received. Lots containing five or more stamps are not returnable at any time. No lots may be returned by purchasers who have had the opportunity to examine them before the sale.
4. Successful mail bidders, unless they are known to us or supply acceptable references, will be notified of the amount of the lots secured for them, and are expected to send payment in full before the lots are forwarded.
5. If the purchase price has not been paid within the time limit, or lots taken up within seven days from date of sale, they may be resold and any losses arising from such sale charged to the defaulter.
6. All stamps are sold as genuine, except where sold "As Is". Claims for any lot proving otherwise, must be made within two weeks from date of sale.
7. The right is reserved to group two or more lots, also withdraw any lot or lots from the sale, or to act on behalf of the seller.
8. Until paid for in full all lots remain the property of Robert A. Siegel.
9. No commission is charged for buying at our sales, but all forwarding charges will be added to the purchase price.
10. Upon written application lots may be sent for examination prior to the auction, conditional upon being mailed back by registered mail, adequately insured, within 24 hours of receipt. The applicant is completely responsible for all lots sent for examination, and for the insurance of same against mishap, from the time of receipt until they are actually received back, and is to pay all expenses of postage and insurance.
11. The placing of a bid shall constitute acceptance of the foregoing conditions of sale.

ROBERT A. SIEGEL
GREGORY MOZIAN, Licensed Auctioneers

In sending bids, always state the highest price you are prepared to pay for the lot. Your limit will not be used as a starting bid unless absolutely necessary.

DESCRIPTIONS

Superb or Extremely Fine—the finest condition for noteworthy, outstanding copies.

Very Fine (VF)—means that there is a slight deviation from the above.

Fine (F)—means that the perforations do not touch the design on issues after 1890, but in some cases may just touch in earlier issues; if used, fairly lightly cancelled.

Very Good (VG)—means that the appearance is generally fine but that the perforations cut the design slightly.

Good (G)—means average off-centering; or fairly attractive with slight defects. Original gum is not to be expected on 19th Century stamps up to 1888 unless so stated.

Scott's 1960 Specialized United States Catalogue is used for cataloguing our lots of United States and Scott's Standard Catalogue, 1960 for others.

WE SOLICIT FINE MATERIAL FOR FUTURE SALES

FIRST SESSION

WEDNESDAY, AUGUST 23rd, 1961 — 1 P. M.

UNITED STATES

STAMPLESS COVERS

- 1 **Burlington, I. T.** in clear olive circle on 1839 folded letter to Illinois, "12½" in Blue ms., Fine E. I
- 2 **Eastern Stampless**, 108 covers, 1812-1850, wide variety of markings includes Railroads and Transatlantics G.-V. F. E. III
- 3 **"Forwarded by Charles Humberston, Liverpool No. 2293"** in black oval on cover to Boston, V. F. E. I
- 4 **Illinois Stampless**, 6 covers, 1833-1852 uses, all ms. pmks. including **Sugar Grove, Lagrange Bluff, Arinzville, Beardstown**, Good-Fine E. II
- 5 **Independence, Mo.** black circle, ms. "Service" addressed to Brig. Gen. R. Jones, Washington from Dragoon Capt. Thompson in Chihuahua, Mexico, March 7, 1847 on folded illustrated letter sheet, Very Fine Mexican War cover E. IV
- 6 **Independence, Mo.** green circle, contains letter headed **"Camp 490 Miles from Ft. Leavenworth, July 3, 1849"**, letter mentions he will be in Santa Fe by July 24th, addressed to Maj. Gen. R. Jones, Washington with "Official Business", Very Fine E. IV
- 7 **Iowa City, Iowa** in bold Blue circle, Paid in Blue, **J. M. Robertson, Ho. Reps., Iowa** and "18¾" in ms., on 1843 folded letter to Illinois, attractive and Very Fine E. III
- 8 **Jacksonville, Ills., White Hall, Ill.** in clear circle on 3 covers, two of first in red and black, 1834, 1837, 1840 usages, V. F. E. I
- 9 **New York 5cts** in Red circles on two covers, one has str. line **Red Philada R. R.**, both have **handstamped hotel** markings of **Taber & Bagley American Hotel, N. Y.** and **Jones Hotel, Philadelphia**, F.-V. F. E. II
- 10 **New York Stampless**, 85 covers, 1819-1850, a wide variety of markings, including Railroad and Transatlantics, V. G.-V. F. E. III
- 11 **Rockingham, I. T.** in clear circle on 1844 folded letter to Illinois, "18¾" in ms., scarce marking, Fine E. IV
- 12 **St. Louis, Mo.** in red circle, letter dated Nov. 29, 1821, early Statehood, light stains, Fine E. I
- 13 **"Steamer Franklin, New York and Havre Steam Navigation Comp."** in double blue oval, black "New York 20, Mar. 2" pmk. on cover to Waterbury, Conn., Extremely Fine, Scarce (Photo) E. VII
- 14 **Virginia Stampless**, 217 covers, 1840-1850's, a wide variety of towns and markings, few ms. markings, V. G.-V. F. lot E. VI

LOTS ON VIEW FROM AUGUST 10th

OFFICE OPEN SATURDAY, AUGUST 19th

AUTOGRAPHS, FREE FRANKS

- | | | | |
|----|---|---|--------|
| 15 | ✘ | J. Q. Adams , free frank on folded letter to Harperstown, Mass., no pmk., Very Fine | E. II |
| 16 | | C. A. Arthur signature on a one page letter, Oct. 6, 1880 on New York Republican State Committee stationery, listing Arthur as State Chairman, attractive and V. F. | E. I |
| 17 | ✘ | Simon Cameron , Mexican War General, Signed autograph folded letter, Middletown, Pa. pmk., "5" in blue, 1853 use Fine | E. I |
| 18 | | Grover Cleveland , type written note signed, Princeton, N. J. 1903, Fine | E. I |
| 19 | | Schuyler Colfax , Vice President, one page signed autograph personal letter, dated Rutland, Vt. Dec 24, 1866 | E. I |
| 20 | | Coolidge, Calvin and Grace , autographs on separate White House cards, Very Fine | E. II |
| 21 | | Albert Einstein , autograph note in German, dated Princeton, 1935, Fine | E. II |
| 22 | ✘ | A. Hamilton free frank, Bishopmark and "Free" handstamp, Treasury Department in ms., on 1792 cover to Bath, Mass., Very Fine (Photo) | E. VI |
| 23 | | Andrew Johnson , 1854 document signed as Governor of Tennessee, separation at folds, V. G. | E. III |
| 24 | | Leopold the 1st Austria , large document signed, 1763, Fine | E. II |
| 25 | | Thomas Mifflin , Signer of the Constitution, signature on large ornate 1796 Pennsylvania vellum document, V. F. | E. III |
| 26 | | New York Governors , 8 signed documents, 1810-1830, includes Gov. Tompkins, Marcy, Yates, Throop, Morgan, V. F. | E. III |
| 27 | | Franklin Pierce , signature, March 28, 1854 on printed pardon, Fine | E. II |
| 28 | | David D. Porter , One page autograph letter signed as Admiral, dated Washington D. C. January 9, 1885, an answer to an autograph collector looking for autographs of Lincoln, V. F. | E. I |
| 29 | | James Whitcomb Riley signed autograph three verse manuscript poem "Bereaved", Very Fine | E. III |
| 30 | | Winfield Scott , U. S. Army commander, signed personal check, dated Washington, Apr. 21, 1852, Fine | E. I |
| 31 | | Wm. T. Sherman , two page signed autograph letter dated St. Louis, Aug. 14, 1885, Very Fine | E. I |
| 32 | | C. Shurz , Civil War General, Senator, Interior Secretary, one page signed autograph note giving brief biography, V. F. | E. I |
| 33 | | Franz Sigel , Civil War General, one page autograph letter dated New York, May 19, 1884, giving a short resume of his early military career, Very Fine | E. I |
| 34 | | Henry M. Stanley , African explorer, autograph note, signed, dated 1895, Very Fine | E. II |
| 35 | | M. Van Buren, Z. Taylor, Andrew Jackson , signatures on 5 land grants, three of first, probably signed by secretaries, all for land at Shawneetown, Illinois , Very Fine | E. III |
| 36 | | Woodrow Wilson , snapshot taken on shipboard of Pres. & Mrs. Wilson, autographed by both, also two page autograph letter signed Edith Bolling Wilson | E. II |
| 37 | | Autograph Collection , a collection in two large albums of over 250 covers addressed to prominent people of the early 1930's including Presidents & Kings, also included are autograph letters and notes including Vice Pres. Garner, Queen Marie of Romania, Mrs. Woodrow Wilson and many others, there are also a large quantity of newspaper clippings & photographs, a fascinating lot | E. IX |

POSTMASTER PROVISIONALS

38	New York, 5c Black (9X1). Margins all around, Red grid cancel, tiny tear, Fine appearance	90.00
39	New York, 5c Black (9X1). Tiny thin, Very Good appearance	80.00
40	New York 5c Black (9X1). Large margins all around, square Red grid cancel, crease and small thins, V. F. appearance	80.00
41	New York 5c Black (9X1). Margins all around, Blue cancel, No Signature , tears, Very Fine appearance	150.00
42	☒ New York 5c Black (9X1). Large margins all around, Blue ms. cancel, on folded letter to Vermont, Red N. Y. pmk. and "Paid", stamp very slightly creased by letter fold, Very Fine appearance	125.00

43	★ Providence R. I. 5c, 10c Black (10X1-10X2). In complete sheet of 12, V. F. (Photo)	900.00
----	---	--------

44	St. Louis, Mo. 10c Black (11X5). Margins all around except just cutting frame at L. R., light ms. cancel, tiny tear and pinhead thin, Fine appearance	(Photo) 550.00
----	--	-----------------------

1847 ISSUE

45	5c Red Brown (1). Large to huge margins all around, Red grid cancel, Extremely Fine	(Photo) 37.50
46	5c Red Brown (1). Large to huge margins all around, nice color and impression, Red grid cancel, Extremely Fine	(Photo) 37.50
47	5c Red Brown (1). Large margins all around, lovely color and impression, Blue Philadelphia pmk., Extremely Fine	(Photo) 40.00
48	5c Red Brown (1). Large margins all around, nice color and impression, Blue grid cancel, Extremely Fine	(Photo) 40.00
49	5c Red Brown (1). Margins all around, nice color, Red canc., Very Fine	37.50
50	5c Orange Brown (1b). Large margins all around, Blue grid cancel, V. F. (Photo)	50.00
51	5c Red Brown (1). Large margins all around, nice color and impression, Blue town pmk., faint corner crease, Very Fine appearance	40.00
52	5c Red Brown (1). Margins all around, just clear at U. R., sheet margin at left, Red grid and ms. "X" cancels, Fine	37.50
53	5c Red Brown (1). Large margins all around, lovely color, light ms. cancel, Extremely Fine	(Photo) 20.00
54	5c Red Brown (1). Margins all around, ms. cancel, Very Fine	20.00
55	5c Red Brown (1). Large margins all around, light ms. cancel, Very Fine	20.00
56	5c Dark Brown (1a). Large margins all around, ms. cancel Extremely Fine	20.00
57	5c Red Brown (1). Large margins all around, fancy Purple pen cancel, Very Fine	20.00
58	5c Red Brown (1). Margins all around, clear Blue Town cancel, nice color and impression, stitch watermark pinhead marginal thin, Very Fine appearance	40.00+
59	5c Orange Brown (1b). Margins all around, small at top, " 5cts. " in Blue str. line, small corner crease, Fine appearance	85.00
60	5c Red Brown, Dk. Brown (1, 1a). Two copies, margins 3 sides, cutting at bottom, indistinct Red town and Paid cancels, one has vert. crease, Very Good	100.00
61	5c Red Brown, Dark Brown (1, 1a). Two copies one with margins all around, latter cut close, Blue and Black cancels, first is thin	95.00

62	5c Red Brown (1). Horiz. pair, margins all around, light ms. cancel, V. F. (Photo)	100.00
63	5c Red Brown (1). Horiz. pair, margins all around, ms. cancel, Very Fine	100.00
64	⊠ 5c Red Brown (1). Large margins all around, tied to neat folded letter by Blue Philada. Pa. 5cts., Very Fine (Photo)	50.00
65	⊠ 5c Brown (1). Margins all around, lovely early color and impression, tied by Red N. Y. grid, Jan. 1848 usage, cover slightly stained, V. F.	50.00
66	⊠ 5c Red Brown (1). Margins all around, just clear at top, tied by Red grid cancel, Boston pmk., Fine	50.00
67	⊠ 5c Red Brown (1). Uncancelled copy, clear to large margins all around, slightly scuffed in lower margin, on cover with Long Branch, N. J. and 5 in Blue ms., Fine	50.00
68	⊠ 5c Red Brown (1). Margins all around, tied to folded letter by Red grid cancel, light Red Albany, N. Y. pmk., very light crease from letter fold, Very Fine appearance	50.00
69	⊠ 5c Red Brown (1). Horiz. pair, margins 3 sides, frame line touched at bottom, just tied by Red grids, clear Red U. S. Express Mail, Boston, Mass. in circle, light stain, Fine (Photo)	125.00
70	⊠ 5c Red Brown (1). Horiz. pair, large margins all around, tied by 3 strikes of str. line Red Philada Railroad, another strike entirely on cover; Bloods Local (15L17), tied by acid, New York 10cts. in Red circle, one stamp has very light vert. crease, front only, Rare and Very Attractive (Photo) E. VIII	
71	★ 10c Black (2). Large margins except just clear at L. R., small light stains, tiny thin spot, Fine appearance (Photo)	300.00
72	10c Black (2). Large margins all around, lovely color and impression, minute corner crease entirely in margin, Extremely Fine appearance (Photo)	110.00
73	10c Black (2). Margins all around, nice color & impression, small faint thin and trival corner crease, Very Fine appearance (Photo)	110.00
74	⊠ 10c Black (2). Large margins all around, nice color and impression, tied by St. Louis, Mo. 10 in Red on cover to Va., minute tear in bottom margin, Extremely Fine appearance (Photo)	125.00
75	⊠ 10c Black (2). Huge margins all around, nice color & impression, Blue ms. cancel, Green Princeton, N. J. pmk., Green "X", on July 27, 1847 folded letter to Conn. very early usage, Very Fine (Photo)	125.00
76	⊠ 10c Black (2). Tied by Red grid and Red N. Y. Pmk., stamp repaired, Fine appearance	125.00
77	P 5c Red Brown, 10c Black Reproduction Card Proofs (3P-4P). V. F. Set	26.00
78	★ 5c Red Brown Reproduction (3). Margins all around, small at R., hinge thin, Fine appearance	70.00

1851 ISSUE

79	⊠ 1c Dark Blue Ty. II (7a). Large margins all around, lovely deep color, tied by bold Concord, Mass. pmk. to folded bank notice, Extremely Fine	20.00
80	⊠ 1c Dark Blue Ty. II (7a). Large margins all around, lovely deep color, tied by Concord, Mass. pmk. to folded bank notice, Extremely Fine	20.00
81	⊠ 1c Blue Ty. II, IV (7, 9). Two covers, latter showing fraudulent re-use of a previously cancelled stamp, V. G.-F.	35.00
82	★ 1c Blue Ty. IV (9). Large Margins all around except touching tip of scroll at bottom, nice color, o. g., recut once at top and twice at bottom, Very Fine (Photo)	32.50
83	★ 1c Blue Ty. IV (9). Large margins all around, recut twice at top and twice at bottom, Pos. 79L1L, o. g., Very Fine (Photo)	120.00

84	☒	1c Blue Ty. IV (9). Three copies, two with large margins, at left, right and center of cover, ms. cancels, South Wingham, Conn. pmk., sealed tear in one stamp, unusual and attractive	E. II
85	E	3c 1851 Essays on India (Brazer 33E-Jb). Four diff. colors, V. F.	E. III
86	E	3c 1851 Essays on Proof Paper (Brazer 33E-Ua). Seven diff. colors, V. F.	E. II
87	E	3c 1851 Essays on Green Bond, (Brazer 33E-Uf). Five diff. colors, V. F.	E. I
88		3c Orange Brown (10). 78 copies, all plated, several Red cancels, few faults, mostly V. G.-F.	285.00
89	☒	3c Deep Orange Brown (10). Margins all around, tied to neat folded letter by Blue Philadelphia, Pa. pmk., V. F.	E. I
90	☒	3c Orange Brown (10). 34 stamps on 33 covers, a wide variety of cancels, includes small Boston Paid, July Dates (4), centerline & marginal copies, varieties, Good-Fine	E. IV
91	☒	3c Orange Brown, Dull Red (10, 11). 28 covers, including varieties, Valentine & Ladies covers, colored and paid cancels, Steam, Corner Cards, Locals, Express Mail, New Year, V. G.-F.	E. IV
92		3c Dull Red (11). Seventy copies, includes a wide range of shades, some varieties, cancels, imprint copy, V. G.-V. F.	E. III
93	☒	3c Brownish Carmine, Claret (11). Tied to 3 covers, each has diff. str. line "Missent", Fine	E. I
94	☒	3c Dull Red (11). Tied by Florida, N. Y. pmk. on cover to Hartford, Ct. , where another stamp was placed, overlapping the first, and forwarded back to Florida, unusual and attractive, Fine	E. I
95	☒	3c Dull Red (11). 18 copies on 16 covers and a piece, includes sheet corner, Red town, Green grid and towns, Express Mail, 3 diff. Railroad, unused 4 margin claret on piece, varieties, V. G.-V. F.	E. VI
96	☒	3c Dull Red (11). One hundred covers, a variety of shades, cancels, and postal markings, Good-Fine	E. IV
97	☒	3c Dull Red (11). 112 stamps on 105 covers, a variety of shades, cancels, and postal markings, G.-F.	E. IV
98	☒	3c Dull Red (11). One hundred covers, shades, cancels, G.-F.	80.00
99	☒	3c Dull Red (11). 123 stamps on 118 covers, shades, cancels, G.-F.	98.40
100	☒	10c Green Ty. II (14). Large margins all around, lovely color, tied by Red Providence, R. I. pmk. on tiny cover to San Francisco, Extremely Fine (Photo)	E. IV
101	☒	10c Green Ty. II (14). Large margins all around, lovely deep color, tied to neat folded cover to Vera Cruz by New Orleans, La. pmk., Extremely Fine	25.00
102	☒	10c Green Ty. II, III (14, 15). Margins all around, nice color, tied to cover to Calif. by Troy, N. Y. Paid Aug. 18, 1858 pmk. Very Fine (Photo)	E. VI
103		10c Green Ty. III (15). Large margins all around, sheet margin at bottom, Very Fine	22.50
104		10c Green Ty. III (15). Large margins all around, Red grid cancel, tiny corner crease, V. F. appearance	23.50
105	☒	10c Green Ty. III (15). Large margins all around, tied by New Haven, Conn. May 27, 1857 pmk., on cover to Dolores Mission, Cal. , Very Fine	25.00
106	☒	10c Green Ty. III (15). Touches at top, just in at bottom, tied by New York pmk. on cover to Mexico, oval Vera Cruz and large "2" receiving marks, attractive cover	25.00
107	☒	10c Green Ty. III (15). Large margins except just touching at U. L., lovely color, tied by Milwaukee, Wis. Jul 9, 1857 pmk. on cover to Newfoundland , Boston Br. Packet and Newfoundland backstamps, small horiz. scissor cut in lower margin far from design, Fine	25.00
108	☒	10c Green Ty. III (15). Horiz. pair, large margins all around except nick at top of left stamp, lovely color, tied on cover to San Francisco by clear Troy, N. Y. Paid , Very Fine cover	E. VI

109	✉ 10c Green Ty. IV (16). Pos. 74L1, large margins all around, magnificent color, tied to neat folded cover from Bath, N. Y. to California, tiny scissor cut in margin far from design, a gorgeous cover, Extremely Fine (Photo)	185.00
110	12c Black Card Proof, Essay on India (12P, Brazer 59E-Ag). Fine	E. II
111	12c Black (17). Pos. 9R1, margins all around, sheet margin at top, tiny crease only in top margin, Fine	25.00
112	12c Black (17). Margins all around, just clear at top, Red town pmk., Fine	25.00
113	12c Black (17). Margins all around, New York Ocean Mail cancel, tiny corner creases, V. F. appearance	25.00+
114	12c Black (17). Margins all around, scuffed in top margin, tied to piece by Red grid and red New York 19, attractive	25.00
115	12c Black (17). Vert. Pair, Pos. 76-86R1, clear to large margins all around, Red grid cancels, small tear, V. F. appearance	65.00
116	12c Black (17). Horiz. Pair, Pos. 49-50R1, margins all around, town pmk., minute thins, Very Fine appearance	65.00
117	12c Black (17). Horiz. pair, Pos. 87-88R1, margins on 3 sides, just touching at bottom, town pmk. & Red transit, Fine	65.00
118	12c Black (17). Horiz. Pair, Pos. 26-27R1, margins except touching at Bottom and L. L., Philadelphia pmk., Fine	65.00
119	12c Black (17). Horiz. pair, Pos. 73-74L1, margins all around except just in at L. L. and at L. R., town pmk., Fine	65.00
120	12c Black (17). Horiz. Pair, Pos. 99-100L1, clear to large margins all around, New Orleans pmks., tiny wrinkle at bottom, Fine	65.00
121	12c Black (17). Horiz. pair, Pos. 7-8L1, margins all around except just touching at L. L. and at R., light town pmk., Fine	65.00
122	12c Black (17). Horiz. pair, Pos. 42-43R1, Blue Grand Rapids, Mich. pmk., creases, Fine appearance	65.00
123	12c Black (17). Horiz. pair, margins except just touching at L., tiny tear in R. stamp, Red grid cancel, Fine appearance	65.00
124	12c Black (17). Horiz. pair, pos. 43-44L1, margins all around except touching at L., just in at U. R., crease in L. stamp, Fine appearance	65.00
125	12c Black (17). Horiz. pair, Pos. 9-10R1, margins except just in at L., bold Blue Cincinnati and Red "19" cancels, small tears Fine appearance	65.00
126	12c Black (17). Horiz. pair, margins 3 sides, just in at bottom, brilliant Red New York pmk., V. G.-F.	65.00
127	12c Black (17). Horiz. Pair. Huge margins 3 sides, sheet centerline at L., just in at U. R., New Orleans pmk., small stains, V. G.	65.00
128	12c Black (17). Horiz. Pair, Pos. 19-20R1, Margins 3 sides, cuts at top, New Orleans pmk., V. G.	65.00
129	12c Black (17). Horiz. pair, Pos. 76-77R1, scissor cut between stamps, V. G.	65.00
130	12c Black (17). Horiz. pair, Pos. 81-82R1, large margins 3 sides, sheet centerline at L., cuts at R., creases, V. G.-V. F. appearance	65.00
131	12c Black (17). Horiz. pair, Pos. 73, 74R1, margins nearly all around cuts at left, two tiny tears, V. G.-F. appearance	65.00
132	12c Black (17). Horiz. pair, Pos. 85, 86R1, margins nearly all around, Blue pmk., creases, V. G. appearance	65.00
133	12c Black (17). Horiz. Pair, large margins all around except tiny nick at top of one stamp, Blue pmk., small faults, attractive	65.00
134	12c Black (17). Two copies, Pos. 11, 27R1, one with Blue pmk., tiny faint creases, Fine appearance	50.00
135	12c Black (17). Two copies, one Red pmk., other cleaned, slight creases, Fine appearance	50.00
136	12c Black (17). Horiz. strip of 3, small margins all around, Blue Cincinnati pmks., faint thins and tiny repair in one stamp, Fine appearance	90.00+

137	12c Black (17). Horiz. strip of 4 , Pos. 55-58R1, margins in places, grid cancels, creases, mostly between stamps, scarce piece (Photo)	130.00+
138	12c Black (17) . Four copies, margins all around, small defects, one repaired, Fine-Very Fine appearance	100.00
139	★ 12c Black (17). Block , large margins all around, sheet margin at right, creases affecting three stamps, scissor cut between two stamps, Rare, Very Fine appearance (Photo)	1500.00
140	☐ 12c Black (17). Block of 8 , Pos. 52-55, 62-65R1, margins in places, clear grid cancels, horiz. tear thru lower four stamps, still attractive and scarce piece (Photo)	700.00+

1857 ISSUE

141	1c Blue Ty. I (18) . Horiz. pair, beautiful rich color, one stamp has tiny tear, other Very Good	125.00
142	★ 1c Blue Ty. II (20) . Couple slightly short perfs. at bottom, Fine, part o.g.	37.50
143	☒ 1c Blue Ty. II, 10c Green Ty II (20, 32) . First tied by grid to masonic circular, latter tied by Rome, N. Y. pmk. on cover to Nova Scotia, Red U. States in arc., Very Good	E. II
144	☒ 1c Dark Blue Ty IIIa (22, 22b) . Horiz. strip of 3, tied to cover by Dixon, Ills. pmks., left pair Imperf. Between , horiz. perfs. trimmed at top, cutting in slightly at top of left pair, Rare (Photo)	420.00
145	☒ 1c Blue Ty. V (24) . Five covers including Blue Baltimore Carrier, Horiz. pair with str. line Paid cancels tied on ladies cover, vert. pair, 3 singles used together, V. G.-Fine	E. II
146	3c Red Ty. I (25) . Centered, Scarce N. Hav. & Bellows Falls R. R. pmk., minute crease, Very Fine appearance	12.00
147	☒ 3c Red Ty. I (25) . Four covers, three have singles tied by town pmks., the other is a forwarded cover with both Ty. I & Ty. II (25, 26) two of former, one defective, F.-V. F.	E. II
148	3c Red (26) . Sixteen copies selected for Plate Varieties , includes plate cracks, recut triangles, inner line recuts, Cheek Flaw, V. G.-V. F.	E. III
149	3c Red (26) . Seventy-four copies, a wide range of shades, includes cancels, varieties, imprint, Good-Very Fine	37.00
150	5c Brick Red Ty. I (27) . San Francisco pmk., couple slightly short perfs., Fine	67.50
151	5c Orange Brown Ty. II (30) . Small thin, Fine appearance	50.00
152	24c Lilac (37). Supplementary Mail cancel, small repair, V. G. appearance	75.00
153	30c Orange (38) . Very Good	32.50
154	6c-30c 1857-1870 Issues (38, 115, 119, 137) . Minor faults, V. G.-V. F. appearance	83.00
155	★ 90c Blue (39) . Fine (Photo)	135.00
156	1c Bright Blue Re-issue (40) . Trivial stain, Fine	55.00
157	1c-15c 1857-1888 (Bet. 24-212) . 24 stamps, selected for cancels, including Skull & Crossbones, Leafs, Stars, Colored Geometrics, several on better values, Good-Fine	E. III

WESTERN COVERS

158	☒ Adams & Co. Express San Jose in clear double oval, Paid in blue circle on folded cover to San Francisco, containing letter, 1854 usage, V. F.	E. III
159	☒ Alpha, Cal. in clear circle on 10c Green Entire (U16). Fine	E. II
160	☒ Aqua Fria, Cal. in clear circle, 10c Green Ty. V (35). Indistinctly tied, Fine	E. III
161	☒ Bidwells Bar, Cal. in clear circle ties 3c Dull Red (11). On cover to Yuba City, Very Fine cover (Photo)	E. III

- 162 ☒ **Clarksville, Cal.** and "**Paid 3**" in ms., on cover to San Jose, Cal., Fine E. II
- 163 ☒ **Clarksville, Cal.** in bold oval on 3c Pink Entire (U35). Due 6 in ms., V. F. (Photo) E. IV
- 164 ☒ **Diamond Springs, Cal.** in clear double circle, 10c Green Ty. II (14). Large margins all around, ms. cancel, on cover to Conn., Very Fine E. III
- 165 ☒ **Eureka, Cal.** in clear circle ties 3c Red (26). On forwarded cover, light **Weaverville, Cal.** in circle, Fine E. II
- 166 ☒ **Eureka Express Co.** frank on 2c Columbian entire (U349). Addressed to Stockton, no pmks., V. F. E. II
- 167 ☒ **Evert Snell & Co's. Feather River Express** in clear Blue double oval, **Newburgh, N. Y.** and **10** in Red, addressed to Marysville, Yuba Co., Calif. and in ms. "To be forwarded by Everts & Co. Express to Onion Valley," Fine, Scarce (Photo) E. VII
- 168 ☒ **Fiddletown, Cal.** in clear circle tying one of three 3c Rose (65). All have neat **diamond of dots** cancels, others not tied. **Burt & Head, Fiddletown, Am. Co. Mar 25, 1868** in double blue circle, stamps centered to top, V. F. cover (Photo) E. IV
- 169 ☒ **Freeman & Co's California Express**, 84 Washington St., Boston corner card, 3c Rose (26). Tied, Red Boston pmk., Fine E. II
- 170 ☒ **Freeman & Co. California Express** No. 96 Camp St. New Orleans, printed and embossed corner card on 3c Red entire (U10). Unused, Very Fine E. II
- 171 ☒ **Gregory's Express** in two clear Red str. lines, **Paid** in double Red oval on neat 1852 folded letter from Sacramento to San Francisco, Very Fine (Photo) E. V
- 172 ☒ **Hemet, Cal.** in clear circle, 1c Green, 2c Carmine (300, 319). Two of latter, tied by corks on **Illustrated Advertising** cover showing the Great Hemet Dam, Very Fine cover E. I
- 173 ☒ **Michigan Bar, Cal.** in clear blue circle on forwarded cover, **San Francisco, Cal. Sept. 23, 1861** ties 3c Red (26) "Fwd. 3cts." in ms. Forwarded to **Volcano, Cal.**, Very Fine cover E. III
- 174 ☒ **Nevada City, Cal. 10 Paid** ties 10c Green Ty. III (15). Large margins all around, L. L. corner rounded, another strike on cover, V. F. cover (Photo) E. III
- 175 ☒ **Onion Valley, Cal.** in clear circle on "**missent**" cover, **3c Rose (65)**. Tied by target, San Francisco pmk., to Placerville, Very Fine (Photo) E. III
- 176 ☒ "**Oregon St'm. Nav. Co. Feb. 10 CELILO**" in oval, addressed to Chief Engineer of Celilo, Fine, scarce Oregon Packet Boat (Photo) E. VI
- 177 ☒ "**O. S. N. Co. Aug 11 Dalles**" in oval to Portland, Very Fine, Scarce Oregon Packet Boat (Photo) E. VI
- 178 ☒ "**O. S. N. Co. Aug. 19, 1867, Dalles**" in double circle to Portland, Fine, scarce Oregon Packet Boat E. V
- 179 ☒ "**O. S. N. Co. Nov. 24, 1865, Portland O.**" in double circle, light strike to Dalles, Scarce Oregon Packet Boat E. IV
- 180 ☒ "**O. S. N. Co. Noc 2, Dalles**" in oval to Portland, ragged at R., Scarce Oregon Packet Boat E. III
- 181 ☒ **Pacific Union Express Co.** frank on 3c Pink entire (U58). Saco, Me. pmk. Ornate litho corner card of **Golden Eagle Hotel, San Francisco**, Fine E. II
- 182 ☒ **Pacific Union Express** frank on 3c Pink entire (U59). Clear **Kernville** Co. pmk., Very Fine E. II
- 183 ☒ **Park's Bar, Cal.** in clear circle ties 10c Green Ty. II (14). Margins all around, large on 3 sides on cover to Nevada City, Very Fine (Photo) E. VI
- 184 ☒ **St. Louis, Cal.** in clear Blue circle on 3c Red Entire (U10). To Yuba City, Very Fine (Photo) E. III
- 185 ☒ **San Francisco 40**, 20 Apr. in clear Red circle on **folded** pre-statehood cover dated Apr 15, 1850 very long interesting letter, Very Fine E. II
- 186 ☒ **San Francisco, Cal.** ties 10c Green Ty. II (14). Margins all around, nice color, on neat cover to Vermont, Very Fine E. III

187	☒	San Francisco, Cal. ties 10c Green Ty. II (14). Pos. 80RI, large margins all around, nice color, on neat folded letter to Kentucky, Very Fine	E. III
188	☒	San Francisco, Cal. ties 10c Green Ty. II (14). Margins all around on small cover to Mass., Fine	E. II
189	☒	San Francisco, Cal. ties 10c Green Ty. II (14). Margins all around except touching at U. L. on cover with closed tear	E. II
190	☒	San Francisco, Cal. ties 10c Green Ty. II (14). Margins all around, just clear at U. L., on 10c Green Entire (U18). Used to Louisiana, Fine	E. II
191	☒	San Francisco, Cal. ties 10c Green Ty. III (15). Pos. 1LI, huge margins all around, sheet margin at top, beautiful deep color, on cover to Mass., Extremely Fine	E. IV
192	☒	San Francisco, Cal. ties 10c Green Ty. III (15). Large margins all around, on neat cover to Pennsylvania, Very Fine	E. III
193	☒	San Francisco, Cal. ties 10c Green Ty. III (15). Large margins all around, cover bit stained	E. II
194	☒	San Francisco, Cal. in clear circle & target tie 3c Rose (65). To cover with corner card of Franklin House , Very Fine	E. I
195	☒	Shasta, Cal. pmk. ties 10c Green Ty. II (14). Large margins, except just in at U. R., lovely color, on cover to Gen. Denvers, Wash. D. C., Fine	E. II
196	☒	Southern Express Co. & Texas Express Co. frank on 2c Brown entire (U278). 1888 New Orleans pmk., Fine	E. VI
197	☒	Steam Ship in two clear str. lines on horiz. pair of 3c Dull Red (11). On cover to Conn. interesting letter headed Petaluma , Nov. 12, 1854, cover frayed at top, Fair	E. I
198	☒	Texas Hill, Cal. and "10" in clear circles, str. lines. Paid on cover to Maine, back flap missing, Fine	E. V
199	☒	Timbuctoo, Cal. in clear blue circle, 3c Rose (65). Stamp has ms. cancel, s. e. at right, Fine	E. II
200	☒	Wells Fargo & Co. frank on 3c Red Entire (U10). Clear Blue oval Wells Fargo & Co. Express, Stockton , Very Fine	E. I
201	☒	Wells Fargo & Co. Red frank on 10c Green Entire (U18). Tied New York Sep 3, 1857, forwarded from New Haven with 3c Claret (11a). Tied by New Haven pmk., Very Fine	E. III
202	☒	Wells Fargo 25c Red Local Envelope (143LU3) . Top strip of envelope only, slight faults, pasted on another addressed envelope	150.00
203	☒	Wells Fargo & Co. ½ ounce Paid from St. Joseph to Placerville per Pony Express Red frank at side, reading up. "¼ free O. T." in Red ms. on cover addressed to N. H. Stockwell, Co. Secy., Very Fine	—
204	☒	Wells Fargo & Co. Express from Ogden Utah , illustrated label on legal size 1871 cover to San Francisco, also Wells Fargo C. O. D. label, first label slightly defective, Fine cover	E. II
205	☒	Yreka, Cal. Mar. 27, 1857 in bold circle ties 10c Green Ty. II (14). Margins all around, small at top, on neat cover to Kentucky, charge 115 in ms., Very Fine	E. IV
206	☒	Territorials, Arizona 18 diff. Colored postcard views showing Indians , all pmk. 1906-1910, Fine-Very Fine	E. III
207	☒	Territorials, Phoenix Ariz. 18 diff. colored postcard views of Arizona, all cancelled between 1905-1911, Fine-Very Fine	E. III
208	☒	Territorials, Oklahoma 18 diff. postcard views of Oklahoma, used from several towns in 1906-1907, F.-V. F.	E. III

1861 ISSUE

209	E	1c Blue 1861 Essay with coupon at top (Brazer 63E-Bh) . o. g., Fine	E. II
210	E	1c Rose 1861 Imperf. Essay with coupon at top (Brazer 63E-Be) . V. F.	E. II

211	E	1c Rose 1861 Essay with coupon at top (Brazer 63E-Bh) . o.g., Fine	E. II
212	☒	3c Pink (64) . Tied black grid, Red Providence R. I. Nov. 6, 1861 pmk. on cover, Very Fine	65.00
213		3c Rose (65) . Bold Putnam, Ct. Double Anchor cancel, V. F. (Photo)	E. II
214		3c Rose (65) . Clear negative "NO" cancel, Very Fine	E. I
215		3c 1861 (65) . Mounted collection of 2373 copies, selected for cancellations , includes railroads, revenue usage, fancy geometrics, paid, paid 3, free, patent, numerals, O. K., U. S., stars, shields, crosses, forts, grills, letters, supplementary, teritorial, a variety of colored cancels, a wide range of shades including pinks, interesting lot, G.-V. F.	E. XII
216		3c 1861 Issue , 396 copies, selected for Cancellations and Varieties , includes Paid, Stars, Registered, Numerals, U. S., Shields, Masonic, Patent, Colored, Letters, Supplementary, Fancy Geometrics, Perf. & Printing Varieties, Few Covers, Good-Fine	E. VII
217	☒	3c Rose (65) . Scarce Horse & Rider cancel, Glen, N. Y. pmk., Fine	E. IV
218	☒	3c Brown Red (65) . Tied by pretty Blue dotted Globe grid, matching Bethel, Vt. pmk., Very Fine cover	E. I
219	☒	3c Rose (65) . Tied blue Cincinnati, O. pmk. on State Envelope showing Counties in Ohio and on reverse Map of Ohio , Fine	E. II
220		24c Steel Blue (70b) . Centered Red London and pretty circle of square dots cancels, minute margin tear, V. F. appearance	35.00
221	E	2c, 5c 1861 Essays, Brazer (73E-Cc, 75Ea, 75Ec) . Very Fine	E. II
222		2c Black (73) . Clear negative 6 Pointed Star cancel, Very Fine ... Photo	E. II
223		2c Black (73) . Variety Double Vert. Perfs on both sides, enlarged photograph included, attractive & Very Fine	(Photo) E. II
224		2c Black (73) . Negative Star cancel, unusual str. line Printed "Postmaster Plea -" , enlarged photograph included, V. F.	E. III
225		2c Black (73) . Large margins, New Orleans year date cancel, Very Fine	E. II
226		2c Intense Black (73) . Large margins, faded ms. cancel, nice color, V. F.	E. I
227		2c Black (73) . Clear triangle within triangle cancel, Fine	E. II
228		2c Black (73) . Pretty Blue Sunburst cancel, Fine	E. II
229		2c Black (73) . Str. line Paid cancel, Fine	E. I
230		2c Black (73) . Blue town and Red transit cancels, Fine	E. I
231		2c Black (73) . Bold Blue Fancy Star in toothed circle , stamp centered to right	E. II
232		2c Black (73) . Clear Blue Wells Fargo cancel, V. G.	35.00
233		2c Black (73d) . Variety Horiz. Laid Paper , short corner perf., otherwise V. F. unpriced in Scott	E. III
234		2c Black (73) . Horiz. pair, grid cancels, Very Fine	7.50
235		2c Black (73) . Two copies, Very Fine	E. I
236		2c Black (73) . Two straddle copies, V. F.	E. III
237		2c Black (73) . Four town cancels, V. F.	E. II
238		2c Black (73) . Four copies, all with Fancy Cancels , F.-V. F.	E. III
238A		2c Black (73) . Seven copies selected for cancellations, includes Red Carrier, Paid All, Fancy Geometrics, F.-V. F.	E. III
239		2c Black (73) . Seven copies, all with Blue cancels, pretty lot, F.-V. F.	26.25
240		2c Black (73) . Seven copies selected for cancels , mostly fancy geometrics, Very Good-Fine	E. III
241		2c Black (73) . Eight copies, all with Blue cancels, attractive lot, V. G.-F.	30.00
242		2c Black (73, 87, 93) . Two of no. 87, all have fancy cancels, two in Red, Very Good-Fine	E. II
243	☒	2c Intense Black (73) . Tied by cork and Washington, D. C. pmk. to printed & embossed Illustrated Advertising cover showing trotting horse, Very Fine	(Photo) E. V
244	☒	2c Black (73) . Tied by Portland, Me. pmk. to cover enclosing 1864 ad. for army recruits, Very Fine	E. II

245	✉	2c Black (73) . Tied by Newburyport, Mass. Dot in Star cancel, Very Fine	E. II
246	✉	2c Black (73) . Tied by target, Ironton, Mo. pmk. "O. B." in ms. on legal size cover containing 1864 circular from Missouri Adjutant Generals office dealing with medical examination of draftees, General Orders No. 7, Fine	E. II
247		24c Gray Lilac (78) . Very Fine	7.00
248		3c Rose D. Grill (85) . Light ms. cancel, Fine	20.00
249		2c Black Z. Grill (85B) . Centered to bottom, showing lower imprint within perfs, unusual	25.00+
250	✉	2c Black Z. Grill (85B) . Tied to cover by Blue Rosette, Blue New York City pmk., stamp centered to top	35.00
251	★	2c Black E. Grill (87) . Fine	20.00
252		2c Black E. Grill (87) . Very Fine	5.00
253		2c Black E. Grill (87) . Large margins, circle of v's cancel, attractive and Very Fine	E. II
254	★	2c Black F. Grill (93) . Horiz. pair, centered slightly to R., Fine	25.00
255		2c Black F. Grill (93) . Very large margins, huge s. e. at R., Four Hearts cancel, attractive, V. F.	(Photo) E. III
256		2c Black F. Grill (93) . Blue Leominster, Mass. Cogged Circle cancel, stamp centered to right	E. II
257	★	2c Black F. Grill (93) . Marginal horiz. strip of 4, very large margins, wide straddle at right showing 1mm. of next stamp, light creases in margin, attractive showpiece, Very Fine	(Photo) E. VIII
258	★	2c Black F. Grill (93) . Block , o. g., Very Fine	(Photo) 100.00
259	✉	3c Rose E. Grill (94) . Tied by cork & Selma, Ala. pmk. to Seymour & Blair campaign cover, scarce, Very Good	E. II
260	✉	3c Rose E. Grill (94) . Target cancel, not tied, Rensselaer, N. Y. pmk. on Grant & Colfax campaign cover, Very Good	E. II
261	✉	10c Green F. Grill (96) . Tied by geometric cancel, N. Y. pmk. on neat folded letter to Mexico, "pr. Cleopatra" in ms., large "2" struck in Mexico, Very Fine	E. II
262	★	90c Blue F. Grill (101) . Light creases, centered to R., Very Good, o. g.	225.00
263		90c Blue F. Grill (101) . Two slightly creased perfs., otherwise Very Fine	(Photo) 100.00

PATRIOTIC COVERS

264	✉	Stampless Patriotics , four diff, two with free franks, two with due markings one with Banks Division pmk., V. G.-V. F.	E. II
264A	✉	Monticello, Iowa, New York Am. Pkt. pmks. on Patriotic showing Lincoln, Rail Fence, Flat Boat to Oldenburg, various backstamps, Fine	(Photo) E. VI
265	✉	Racoon, Va. in circle, str. line Free on Patriotic caricature showing man labeled Western, Va. holding on to tail of mule labeled Eastern, Va. Racoon is in the portion of Virginia that stayed in the Union, Fine scarce	(Photo) E. III
266	✉	C. H. Van Wyck Free Frank on Patriotic cover showing portrait of Van Wyck as Col. of 10th Legion, 56th Regt., New York State Volunteers, Due 3 in str. line, Fine	(Photo) E. III
267	✉	3c Red (26) . Tied by grid, Urbana, O. pmk. on Magnus-Type Patriotic cover showing Sailor, Girl and Flag, Very Fine	E. II
268	✉	3c Red Ty. I (25) . Grid cancel, just tied, Mc Lain's Mills, Me. pmk. on Patriotic caricature showing Jeff Davis with gallows and grindstone and "Agriculture, Manufactures, Fine Arts", Fine	E. II
269	✉	3c Red (26) . Tied by Washington D. C. pmk. to Multicolor Magnus-Type Patriotic "Remember Ellsworth", V. F.	(Photo) E. IV

- 270 ☒ **3c Red (26)**. Tied to multicolor **Patriotic** cover showing Ellsworth and his last letter to his parents, Fine E. II
- 271 ☒ **3c Red (26)**. Bold str. line **Paid** cancel, not tied, Woburn, Mass. pmk. on **Patriotic** caricature "Wait 'Till The War is Over", Very Fine cover, Scarce (Photo) E. IV
- 272 ☒ **3c Red (26)**. Tied by Blue grid cancel, Elmira N. Y. pmk., on multicolor **Patriotic** cover showing Jeff. Davis, Union Captive, and Rebel Pirates, tiny piece of L. L. corner missing, Fine E. II
- 273 ☒ **3c Red (26)**. Four copies on 4 separate **Patriotic** covers, 3 in multicolors, one stamp has defect, V. G.-F. lot E. II
- 274 ☒ **10c Green Ty. V (35)**. Ms. cancel not tied, **North Monmouth, Me.** pmk. on multicolor **Patriotic** cover showing soldier and flag, used to **Petaluma, Calif.**, tiny nick at top, Fine E. III
- 275 ☒ **1c Blue (63)**. Tied by **Red N. Y. Carrier** cancel to Blue **Magnus-Type Patriotic** cover with Liberty, Eagle & Shield in blue, Very Fine (Photo) E. III
- 276 ☒ **3c Rose Pink (64b)**. Tied by grid cancel, **College Hill, Ohio** pmk. on **Patriotic** cover with flag & motto in colors, V. F. E. II
- 277 ☒ **3c Rose (65)**. Tied by Old Point Comfort pmk. to multicolored **Magnus Patriotic** cover showing Liberty, and U. S. Patent Office, stamp has wide s. e. at top, Fine (Photo) E. VI
- 278 ☒ **3c Rose (65)**. Tied by Washington D. C. pmk. to multicolor **Magnus Patriotic** cover, New Jersey for the Union, stamp has clipped perfs at bottom, Very Fine cover (Photo) E. V
- 279 ☒ **3c Rose (65)**. Tied by Blue **Frederick, Md.** pmk. to multicolor **Magnus Camp Scene Patriotic** cover showing Zouave under tree, small stain affecting corner of stamp otherwise Fine (Photo) E. IV
- 280 ☒ **3c Rose (65)**. Tied by clear **Bellefonte, Pa.** pmk. to **Patriotic** cover showing "The Flag of a New Confederacy" on which Uncle Sam is shown booting Jeff Davis, Very Fine (Photo) E. VII
- 281 ☒ **3c Rose (65)**. Tied by Washington, D. C. pmk. to multicolor **Patriotic** showing ship, eagle, flag & soldier in circle, poem, V. F. E. II
- 282 ☒ **3c Rose (65)**. Ms. cancel, not tied, **Orion, Ill.** in ms., on **Patriotic** caricature, "The Hercules of 1861", showing Hydra labeled Secession and Mc Clellan with "Union" club, V. F. Rare design E. III
- 283 ☒ **3c Rose (65)**. Tied **Bellefonte, Pa.** pmk. on multicolor **Patriotic** cover, Col. Ellsworth, his last letter to his parents, Very Fine E. II
- 284 ☒ **3c Rose (65)**. Tied **Cairo, Ill.** pmk. to **Magnus-Type Patriotic** cover showing Liberty, Flag, Shield & Eagle, V. F. (Photo) E. II
- 285 ☒ **3c Rose (65)**. Tied by grid, **Allentown, Pa.** pmk. on **Patriotic** cover showing Col. Robert Anderson, V. F. cover (Photo) E. III
- 286 ☒ **3c Rose (65)**. Tied by **St Louis, Mo.** pmk. to multicolor **Patriotic** cover showing Liberty riding eagle and holding two flags, small part of stamp missing at top, Fine cover E. II
- 287 ☒ **3c Rose (65)**. Tied by **Paid** in oval and by Red Boston, Mass. to Multicolor **Patriotic** showing Winfield Scott, V. F. cover E. I
- 288 ☒ **3c Rose (65)**. Tied Washington, D. C. pmk. to **Magnus-Type Patriotic** cover showing Liberty with Shield and U. S. Patent Office in purple, stamp has tears, Fine cover E. II
- 289 ☒ **3c Rose (65)**. Tied to overall multicolor **Patriotic** cover "Our Banner in the Sky", Fine E. II
- 290 ☒ **3c Rose (65)**. Tied by grid and by **Brattleboro, Vt.** pmk. to small **Patriotic** cover showing Benjamin Franklin, Fine E. II
- 291 ☒ **3c Rose (65)**. Tied **Springfield, Ill.** pmk. to Berlin & Jones **Patriotic** caricature showing cotton bales, cats and rats, Fine E. III
- 292 ☒ **3c Rose (65)**. Just tied by target, **White Pigeon, Mich.** pmk. on **Patriotic** cover showing woman standing by Union Column, repaired at U. L., V. G. E. I

293	☒	3c Brown Red (65) . Tied by negative cork, Washington, D. C. pmk. to multicolor Patriotic showing flag of the 4th Div. 9th A. C., V. F.	E. I
294	☒	3c Rose (65) . Tied by target, Port Royal S. C. pmk. on multicolor Patriotic , Remember Washington, showing him on rampant horse, tiny corner defects, otherwise V. F.	E. I
295	☒	3c Rose (65) . Dots in circle cancel, not tied, Columbus, Wis. pmk. on Patriotic cover with "The Union Must & Shall Be Preserved", soldier, sailor, names of states on ribbon, scarce, cuts slightly at left, Fine	E. II
296	☒	3c Rose (65) . Two diff. Patriotic covers, one "Saluting the Flag", other tied Cairo, Ill. to multicolor "Star Spangled Banner", one stamp s. e. at R., Fine	E. II
297	☒	3c Rose (65) . Three diff. Patriotic covers, showing Jackson, Lafayette, Brounlow, one stamp slightly clipped at R., Fine	E. II
298	☒	3c Rose (65) . Four copies tied to 4 separate multicolor Patriotic covers, Very Fine lot	E. II
299	☒	3c Rose (65) . Five copies tied to 5 separate Patriotic covers, four in multicolors, two stamps have s. e., F.-V. F. lot	E. II
300	☒	3c Rose (65) . Six copies on 6 separate Patriotic covers, five in multicolor, V. G.-F. lot	E. II
301	☒	Patriotic Covers , collection of 127 different unused, many better designs including Magnus, Magnus-Types, Rose of Washington, caricatures, many in color, F.-V. F.	E. VI
302	☒	Kimmel Patriotics , 10 diff. unused in black, V. G.-V. F.	E. III
303	☒	State Seals; State Arms : 44 unused Patriotics, V. F.	E. II
304	☒	Unused Patriotics , 127 diff., includes Magnus, Magnus-Types, caricatures, portraits, scarce types, many in multicolor, F.-V. F.	E. V
305		Magnus Lincoln Songsheet , Portrait of Lincoln and poem "The Nation Mourns", Very Fine	E. I
306		Magnus Song Sheets , 12 diff., mostly multicolored, V. F.	E. II

1869 PICTORIAL ISSUE

307	★	1c-3c Pictorials (112-114) . Pair of latter, first two have minute faults, Very Fine appearance	42.50
308		1c Buff (112) . Very light cancel, Fine	11.00
309		1c Buff (112) . Shows sheet imprint inside perforations at top, Very Good	E. II
310	☒	1c Buff (112) . Tied by target and by Westfield, Mass. pmk., shows horizontal arrow at top, Fine	E. II
311		3c Ultramarine (114) . Large "Way" cancel, Scarce, Extremely F. (Photo)	E. III
312		3c Ultramarine (114) . Red Shield cancel, Fine	E. III
313		3c Ultramarine (114) . Nine copies with diff. Blue Fancy cancels, F.-V. F.	E. II
314	E	5c Washington Pictorial Essays (Brazer 115aE-F) . Buff and Deep Red-Violet, Very Fine, o. g.	E. II
315		6c-30c Pictorials (115-16, 119, 121) . V. G.-V. F.	57.50
316		6c-30c Pictorials (115, 117, 121) . Trivial faults, Very Fine appearance	46.50
317		10c Yellowish Orange (116) . Light Red cork cancel, lovely color, V. F.	12.50
318		10c Yellowish Orange (116) . Dotted grid and Red Town cancels, attractive, Fine	12.50+
319		10c Yellow, 12c Green (116, 117) . Fine-Very Fine	19.00
320	★	12c Green (117) . Few slightly short perms at top, Fine appearance, o. g.	32.50
321		15c Brown & Blue Ty. I (118) . Nice color, Very Fine	40.00
322		15c Brown & Blue Ty. I (118) . Very Good	40.00
323		15c Brown & Blue Ty. I (118) . Tiny corner crease, V. F. appearance	40.00
324		15c Brown & Blue Ty. I (118) . Tiny corner crease, V. F. appearance	40.00

325	15c Brown & Blue Ty. II (119). Centered, very light geometric cancel, nice color, Extremely Fine	11.00
326 ★	24c Green & Violet (120). Centered, lovely color, Extremely Fine (Photo)	85.00
327	24c Green & Violet (120). Centered, lovely color, Red cancel, faint pin-head thin and trivial corner crease, Extremely Fine appearance	47.50
328	24c, 30c Pictorials (120, 121). Tiny corner creases, V. F. appearance	67.50
329	24c Green & Violet (120). Fine	40.00
330 E	30c Pictorial, Red Violet Essay with Red Bands (Brazer 121E-Co). V. F.	E. II
331	90c Carmine and Black (122). Large margins, lightly cancelled, nice color, three barely short perfs, Very Fine	(Photo) 125.00
332	90c Carmine & Black (122). Creases, Very Good	125.00
333	90c Carmine & Black (122). Light cancel, centered to L. R.	(Photo) 125.00
334 ★	90c Carmine & Black (122). Tiny tear, Fine appearance	(Photo) 250.00
335 ★	2c Brown Reissue (124). Small faint thin, V. F. appearance	27.50
336 ★	12c Green Reissue (128). Fresh, centered to L. Very Good	85.00

BANKNOTE ISSUES

337	1c Ultramarine Grill (134). Three copies, Blue, Red, Fancy Geometric cancels, Fine-Very Fine	20.00+
338	1c Ultramarine Grill (134). Six copies, including double & split grills, fancy cancels, Good-Fine	37.00+
339 ★田	2c Red Brown Grill (135). Block, o. g., fresh, centered to left, V. G.	110.00
340	2c Red Brown Grill (135). Ten copies selected for Cancellations , includes N. Y. F. M.'s, fancy geometrics, leaf, star, V. G.-F.	37.50+
341	2c Red Brown Grill (135). Twelve copies, includes town, colored, fancy cancels, split grill, V. G.-V. F.	45.75
342	3c Green Grill (136). Brilliant Red "New York Paid All" cancel, Fine	E. I
343	3c Green Grill (136). Twelve copies selected for Cancellations , includes shield, letters, numerals, fancy stars, triangle, V. G.-V. F.	E. II
344	6c Carmine Grill (137). Clear N. Y. F. M. Ty. 4 cancel, Fine	27.50
345	6c Carmine Grill (137). Nice deep color, couple slightly short perfs, otherwise Very Fine	27.50
346 ☒	6c Carmine Grill (137). Tied by segmented cork on neat folded letter to Rotterdam clear Insufficiently Paid and boxed Short Paid , stamp has trivial margin crease, attractive cover, Very Fine	35.00
347 ★	7c Vermilion Grill (138). Minute natural paper flow, otherwise Very Fine (Photo)	70.00
348	7c Vermilion Grill (138). Pretty blue cancel, minute wrinkle, tiny guarantee mark shows on face, V. F. appearance	27.50
349	7c Vermilion Grill (138). Two copies, one with N. Y. F. M. Ty. I cancel one has pinhead thin, other tiny creases	52.50
350	10c Yellow Brown Grill (139). Clear N. York Steamship cancel, small thin, Fine appearance	55.00
351	15c Orange Grill (141). Bold circle of wedges cancel, pre-printing paper fold , trivial margin tear, attractive	50.00
352 ★	1c-4c Banknote Issues (Bet. 145-215). Seven diff., V. G.-V. F.	28.45
353 ★	1c-10c 1870-1875 Issues (145, 150, 156, 158, 178). Three no. 156, some tiny faults, Fine appearance	68.00
354	1c Ultramarine (145). Thirteen copies selected for Cancellations , includes Due 2, numerals, fancy cross, chevrons, colored stars, V. G.-V. F.	E. I
355 ☒	1c-6c 1870-1873 Issues (Bet. 145-159). Ten stamps on 6 covers, all covers with one or more 6c value, attractive lot, F.-V. F.	E. II
356 ★	2c Red Brown (146). Horiz. pair, o. g., Very Fine	9.00

357	2c Red Brown (146) . Clear N. Y. F. M. Ty. 71 cancel, centered to bottom, Scarce	E. II
358	2c Red Brown, 3c Green (146, 147) . Clear Red Paid All ties stamps together, attractive, Fine	E. I
359	☒ 2c Red Brown (146) . Forty-seven copies selected for cancellations , includes Shield, Numeral, Steamship, Paid, Red Paid Alls, Letters, N. Y. F. M.'s, Shield, Crosses, Stars, V. G.-V. F.	E. III
360	2c Red Brown (146) . Fifty-four copies, including colored and fancy geometric cancels, multiples, V. G.-V. F.	39.60+
361	3c Green (147) . Clear Skull & Crossbones cancel, pinhole, Very Fine appearance	E. II
362	3c Green (147) . Three diff. Masonic cancels, small faults, attractive	E. II
363	3c Green (147) . Ten copies with diff. Shield cancels, V. G.-F.	E. II
364	3c Green (147) . Twenty-one copies, all with Red cancels , includes towns, New York Br. Transit, geometrics, V. G.-V. F.	31.50+
365	3c Green (147) . 166 copies selected for Fancy cancels , includes Skull & Crossbones, Pumpkin Head, Eagle, Bluebird, Dont USM, Red Paid Alls, Hats, Cross in Rays, Maze, Railroad, Free, U. S., Foreign Mails, Stars, Anchor, Monograms, Leafs, Paid, Geometrics, Letters, Numerals, Crosses, clear strikes, mostly Fine-Very Fine	E. IV
366	6c Carmine (148) . Clear Man in Coffin cancel, tiny faults, Fine appearance	E. II
367	6c Carmine (148) . Clear Red U. S. in Monogram , slight creases, Extremely Fine appearance	E. II
368	6c Carmine (148) . Clear Blue Swastika cancel, centered but small portion of corner missing, scarce	E. I
369	6c Carmine, Dull Pink (148, 159) . Red New York Foreign Mail cancels, Ty. 56 and 21, both have tiny faults, F.-V. F. appearance	E. II
370	6c Carmine, Dull Pink (148, 159) . Two of each, N. Y. F. M. type 1, 6, 20, 95 cancels, nice strikes, F.-V. F. lot	E. II
371	6c Carmine (148) . Twenty-eight copies selected for Cancellations , includes, Purple U. S. in circle, Shields, N. Y. F. M.'s, Paid, Steamship, Yokohamas, Numeral, Letters, V. G.-V. F.	49.00+
372	☒ 6c Carmine (148) . Tied by N. Y. F. M. #96N on small cover to England, N. Y. pmks in Red and in black, Red London Paid, Fine	E. II
373	7c Vermilion (149, 160) . Fine-Very Fine	15.50
374	☒ 10c Brown (150) . Tied N. Y. F. M. Ty. 1 on cover to Bordeau, New York, London and French paid markings, all in Red, stamp has s. e. at right, Very Fine	E. I
375	★ 15c Bright Orange (152) . o. g. Extremely Fine	(Photo) 27.50
376	24c Purple (153) . Clear N. Y. F. M. Ty. 62 cancel, V. F.	E. II
377	★ 90c Carmine (155) . Centered to B., Fine	100.00
378	☐ 90c Carmine (155) . Block, light cancels, lovely color, Fine	(Photo) 300.00
379	★ 1c-6c Banknotes (156-159) . Very Good	26.50
380	★ 3c-10c 1873 Issue (158-159, 161) . O. g., Very Good-Fine	29.50
381	3c Dk. Green, 6c Dull Pink (158, 159) . Horiz. pair of first, tied to small piece by separate strikes of Red N. Y. F. M. Ty. 83 , attractive and V. F.	E. II
382	☒ 2c Vermilion, 3c Green (158, 178) . Tied by New York Foreign Mail Ty. 99 cancels, New York Sup. Paid in Red circle, used to Spain, front only, scarce and very attractive	E. II
383	★ 6c Dull Pink Continental Grill (159b) . Three grill points pierce paper, horiz. crease, o. g., Fine appearance	50.00
384	6c Dull Pink (159) . Block of 12, 3x4, several stamps repaired but unusually large piece	83.40
385	6c Dull Pink (159) . Twenty-three copies, all with Colored Fancy cancels, attractive lot, Very Good-Very Fine	E. II

386	6c Dull Pink (159). Thirty-eight copies, includes fancy geometric cancels, paper fold, mostly Fine-Very Fine	32.30	
387	7c Orange Vermilion (160). Clear N. Y. F. M. Ty. 41 cancel, V. F.	E. I	
388	7c Orange Vermilion (160). Clear N. Y. F. M. Ty. 41 cancels, V. F.	E. I	
389	7c Orange Vermilion (160). Two copies with Red N. Y. F. M. Ty. 1, 22 cancels, Fine-Very Fine	E. II	
390	7c Orange Vermilion (160). Horiz. strip of 3, separate clear strikes of Fancy Cross cancel, Fine	(Photo) 27.00+	
391	7c Orange Vermilion (160). Four copies N. Y. F. M. Ty. 8, 10A, 16, 17 cancels, Fine	34.00+	
392	7c Orange Vermilion (160). Five copies, shades, includes, target, grid, Fancy Geometric cancels, one creased, V. G.-V. F.	42.50	
393	7c Orange Vermilion (160). Eleven copies selected for cancels, includes Colored, Fancy, N. Y. F. M., Star & Crescent, Stars, mostly F.-V. F.	93.50+	
394	7c Orange Vermilion (160). Fourteen copies with clear N. Y. F. M. Can- cels , includes Ty. 1, 13, 19, 20, 22, 33, 37, 38, 52, 103, few small faults, very attractive lot	117.00+	
395	10c Brown (161). Bold N. Y. F. M. Ty. 85 cancel, V. F.	E. I	
396	10c Brown (161). Clear N. Y. F. M. Ty. 79 cancel, Fine, Scarce	E. II	
397	10c Brown (161). Horiz. strip of 4, clear N. Y. F. M. Ty. 97NN separately struck on each, tiny sealed tear in R. stamp otherwise Very Fine	E. II	
398	10c Brown (161). Seven copies, clear N. Y. F. M. Ty. 21, 10, 31, 36, 49, 52, 62 cancels, first in Red, V. G.-V. F.	E. II	
399	10c Brown (161). Forty copies selected for cancels, includes colored, Supplementary, Red N. Y. 6, N. Y. F. M.'s, Steamships, Stars, Fancy Geometrics, mostly V. G.-V. F.	E. III	
400	12c Blackish Violet (162). Six copies with N. Y. F. M. cancels, three in Red, Good-Very Fine	36.00+	
401	12c Blackish Violet (162). Eleven copies, includes Red, Blue, Purple cancels, sheet imprint, freak perfs, V. G.-V. F.	66.00	
402 ★	15c Yellow Orange (163). Part o. g., Fine	47.50	
403 ★	15c Yellow Orange (163). Tiny natural paper spot, one very slightly short perf., o. g., fresh, V. F. appearance	47.50	
404 ★	15c Pale Orange (163). Perfs. in at R., Very Good	47.50	
405	15c Yellow Orange (163). Clear N. Y. F. M. Ty. 20 & 83 cancels, Fine	E. II	
406	15c Yellow Orange (163). Fifteen copies selected for shades and cancels, includes patent, fancy geometrics, Registered Supplementary, colored, town, Blue star within star, mostly V. G.-V. F.	90.00+	
407	30c Gray Black (165). Fifteen copies, shades, includes colored, supple- mentary, N. Y. F. M., fancy geometric cancels, mostly V. G.-V. F.	90.00+	
408	90c Rose Carmine (166). Light cancel, Fine	20.00	
409	90c Rose Carmine (166). Two copies, shades, one has creased corner perf., other one thin perf., V. F. appearance	40.00	
410 ★	2c Dark Brown Special Printing (168). Few perfs scissor trimmed, thin, Fine appearance	(Photo) 300.00	
411	2c Vermilion (178). Clear N. Y. F. M. Ty. 86 cancel, stamp has light corner crease, Fine appearance, scarce	E. I	
412	2c Vermilion (178). 51 copies selected for Cancellations , includes Blue M's, sunburst, N. Y. F. M.'s, cross in shield, carriers, paid, maltese crosses, fancy geometrics, fancy stars, V. G.-V. F.	E. II	
413 ★	5c Blue (179). Experimental Pink Ribbed paper, o. g., Fine	E. II	
414 ★	5c Blue Imperforate (179 var.). Top sheet margin copy, large to huge margins all around, o. g., V. F., not listed	(Photo)	
415	5c Blue (179). Horiz pair, bold N. Y. F. M. Ty. 70 cancel, V. F.	E. II	
416	5c Blue (179). 35 copies selected for Cancellations , includes colored, fancy geometric, N. Y. F. M.'s, few multiples, V. G.-V. F.	E. III	

417	★	2c Carmine Vermilion Special Printing (180). Rare, few perfs. scissor trimmed, Fine	(Photo) 1850.00
418	★	1c-15c Banknotes (182-184, 186, 189). Single & pair of first, couple trivial faults, Good-Fine	64.25
419		1c Dark Ultramarine (182). Clear Eagle cancel, centered, str. edge at R., Very Fine	(Photo) E. II
420		1c Dark Ultramarine (182). Clear Kicking Mule cancel, centered to R., attractive	E. II
421		1c Blue (182). Precancel Glen Allen Star cancel, centered to L., V. G.	22.50
422		1c Dark Ultramarine (182). Precancel Glen Allen Star cancel, V. G.	22.50
423		1c Dark Ultramarine (182). Two bold Forwarded cancels, one in circle, Very Fine	E. I
424		1c Dark Ultramarine (182). Thirty-six copies selected for cancellations, includes "M" in triangle, large "R", fancy unusual numerals, Shield, U. S. Monograms, Railroads, Skull Bones, Negative Letters, V. G.-V. F.	E. II
425	☒	1c-2c 1879-1898 Issues (182, 212, 220, 264, 299, 279b). 20 diff. Precancelled copies on separate covers, includes Illustrated advertising, multicolor Spanish-American war wrapper, V. G.-V. F.	E. III
426	☒	3c Green (184). Skull & Crossbones cancel, not tied, Dixon, Illinois pmk., Dixon corner card, Very Fine	E. III
427		90c Carmine, Purple (191, 218). Very tiny faults, V. F. appearance	39.00
428		6c Rose (208). Four copies, shades, Very Fine	22.00
429		6c Rose (208). Pair and 10 singles, shades & cancels, two have s. e., Fine-Very Fine lot	67.00+
430		6c Rose, Brown Red (208, 208a). Six copies, one of latter, includes unusual Patent cancel, town, Fair-V. G.	38.50
431		6c Brown Red (208a). Lovely color, Very Fine	11.00
432	★	10c Brown (209). Block of 4 and horiz. strip of 4 with Plate no. and part Imprint first has faint thin in two stamps, o. g., V. G.-F.	50.50
433		10c Black Brown (209b). Clear star in circle cancel, V. F.	E. I
434		10c Brown (209, 209b). 85 copies selected for shades, cancels, includes, U. S. Mail, U. S. U. O., P. O., numerals, stars, shields, crosses, colored, supplementary, fancy geometrics, towns, magenta triangle with numeral, wheel of fortune, O. K., several Black Browns, V. G.-V. F.	E. IV
435	★	1c-2c Banknotes (210, 212, 213). Blocks, o. g., fresh, F.-V. F.	24.00
436		2c Red Brown (210). Bold Masonic cancel in circle, Very Fine (Photo)	E. II
437		2c Red Brown (210). Clear Starred Shield cancel, Fine (Photo)	E. II
438		2c Red Brown (210). Bold clear Moon & Crescent cancel, V. G.	E. II
439		2c Red Brown (210). Bold U. S. Mail in circle, Very Fine (Photo)	E. I
440		2c Red Brown (210). Bold Indian Head cancel, Very Fine (Photo)	E. II
441		2c Red Brown (210). Clear Skull & Bones cancel, V. F. (Photo)	E. II
442		2c Red Brown (210). Clear Skull & Bones cancel, V. F. (Photo)	E. III
443		2c Red Brown (210). Clear Mc L. in Mask cancel, minute thin, V. F. appearance, Scarce	E. II
444		2c Red Brown (210), Clear Eagle cancel, V. F. (Photo)	E. III
445		2c Red Brown (210). Bold Blue Anchor cancel, V. F. (Photo)	E. II
446		2c Red Brown (210). Bold Blue Segmented Maltese Cross cancel on small piece, Greenwood, N. Y. pmk., V. F.	E. II
447		2c Red Brown (210). Bold AM and PM cancels, minor faults, Very Fine appearance	E. I
448		2c Red Brown (210). Clear Black & Blue Indian Head cancels, V. G.-V. F.	E. II
449		2c Red Brown (210). Three diff. Heart cancels, one has s. e., Fine	E. II
450		2c Red Brown (210). Clear NHC, JIM, MAR, IAM-HN Monograms, Fair-Fine	E. II

451	2c Red Brown (210) . Four Eagle cancels, one s. e., V. G.-F.	E. IV
452	2c Red Brown (210) . Five diff. skull & bones cancels, nice strikes, V. G.-F.	E. V
453	2c Red Brown (210) . Pair and 5 singles, all with Kicking Mule cancels, pair has partial strike of mule and Forbestown, Cal. pmk., Good-Fine	E. IV
454	2c Red Brown (210) . Twelve clear shield cancels, some in color, V. G.-Very Fine	E. II
455	2c Red Brown (210) . 200 copies selected for cancels, includes EAST, BEERY, clovers, hollow squares, triangles, Square & Compasses, Charter Oak, Monograms, BURNS, ORE, AYLES, M. B., U. S., shaded E, pentagons, colored shields, sunburst, 1885 in cross, Held for Postage, Jester Head, Bishop Head, magenta chain, pinwheels, wheel of fortunes, Railroads, U. S. Mail, U. S. P. O., stars, crosses, letters. Nice strikes thruout, Very Good-Very Fine	E. VI
456 ★	2c Pale Red Brown (211B) . Thins, Very Fine appearance	85.00
456A	1c Ultramarine (212) . Str. edge copy tied on piece with 2 fine Kicking Mule cancels	E. II
457	90c Purple (218) . Very light Red and Black cancels, V. F.	(Photo) 19.00
458	1c-5c 1890-1898 (Bet. 219-267) . 1495 stamps, selected for cancels, including pumpkin heads, stars, U. S. Mail, crosses, geometrics, wheel of fortune, colored, Good-Very Fine	E. IV
459 ★	2c Carmine Imperforate (220) . Block, no gum, Fine	13.00
460 ★	90c Orange (229) . Block, o. g., Fine	100.00
461	90c Orange, \$1.00 Black (229, 311) . Very Fine	18.00

COLUMBIAN ISSUE

462	1c-15c Columbians , specialized collection of over 500 stamps, no 2c values, selected for Fancy cancels, including Colored, Geometrics, Monogram, Initials, Stars, Diamond, Targets, str. line towns, etc. Retail as normal stamps well over \$200 V. G.-V. F.	—
463 ★	2c Columbian (231) Mint Imprint Plate No. block of 6, all show Broken Hat , F.-V. F.	E. III
464 ★	2c Columbian (231) . Bot. Imprint Plate No. Block of 15, (5x3), Very Fine	27.25
465 ★	3c Columbian (232) . L. R. sheet corner block of 6, Very Fine	20.00
466 ★	3c Columbian (232) . U. R. sheet corner block of 8, F.-V. F.	28.00
467 ★	3c Columbian (232) . Bot. Imprint Plate No. Block of 10, V. F.	51.00
468 ★	3c Columbian (232) . Bot. Imprint Plate No. Block of 10, small thin affecting two stamps, F.-V. F. appearance	51.00
469 ★	4c Columbian (233) . Bot. Imprint Plate No. Block of 6, V. F.	50.00
470 ★	4c Columbian (233) . Mint top Imprint Plate No. Block of 6, one perf. short, otherwise Very Fine	50.00
471 ★	4c Columbian (233) . Plate No., Impt., and letter block of 8, mint, centered to left, V. G.-F.	65.00
472 ★	5c Columbian (234) . Bot. Imprint Plate No. Block of 6, F.-V. F.	55.00
473 ★	5c Columbian (234) . Bot. Imprint Plate No. Block of 10, F.-V. F.	84.50
474 ★	6c Columbian (235) . Mint Top Imprint Plate No. Block of 6, V. F.	55.00
475 ★	6c Columbian (235) . Mint U. L. corner block of 6, F.-V. F.	37.00
476 ★	8c Columbian (236) . Mint U. L. corner block, Very Fine	17.50
477 ★	8c Columbian (236) . Bot. Imprint Plate No. Block of 6, tiny thin in one stamp, selvedge reduced, Very Fine appearance	40.00
478 ★	8c Columbian (236) . Bot. Imprint Plate No. Block of 6, slight gum wrinkles, Fine-Very Fine	40.00
479 ★	8c Columbian (236) . Bot. Imprint Plate No. Block of 8, F.-V. F.	60.00
480 ★	10c Columbian (237) . Top Imprint Plate No. Block of 6, Fine	80.00
481 ★	15c Columbian (238) . Top Imprint Plate No. block of 6, F.-V. F. (Photo)	110.00

482	★田	30c Columbian (239) . Bot. Imprint Plate No. Block of 10, two small selvage tears, Fine	253.00
483		30c, 50c Columbian, 50c Trans-Miss. (239-240, 291) . No. 240 has tiny thin, otherwise Fine	41.50
484	★	50c Columbian (240) . Fine	25.00
485	★田	50c Columbian (240) . Block, Very Fine	(Photo) 125.00
486	★	\$1.00 Columbian (241) . Minute black speck in paper, V. F.	(Photo) 60.00
487		\$1.00 Columbian (241) . Very Fine	(Photo) 47.50
488		\$1.00 Columbian (241) . U. S. German Sea P. O. cancel very small faint thin, Fine appearance	(Photo) 47.50+
489	★	\$2.00 Columbian (242) . Perfs barely touch at R., no gum	70.00
490		\$2.00 Brown Red (242) . Repaired, Fine appearance	47.50
491		\$2.00 Columbian (242) . Thin, Fine appearance	47.50
492	★	\$4.00 Columbian (244) . Lovely color, Very Fine	(Photo) 115.00
493	★	\$4.00 Columbian (244a) . Very Fine	(Photo) 115.00
494	★	\$4.00 Pale Aniline Rose Columbian (244) . No gum, Reperfed, V. F. appearance	(Photo) 115.00
495	★	\$5.00 Columbian (245) . Centered, no gum, faint thin in two bottom perfs., Very Fine appearance	(Photo) 130.00
496	★	\$5.00 Columbian (245) . Tiny perf thin, no gum, V. F. appearance	(Photo) 130.00
497	★	\$5.00 Columbian (245) . Tiny faint thin, no gum, V. F. appearance	(Photo) 130.00

1894-1895 ISSUES

498	★	1c-50c 1894 Issue (246-250, 252-260) . Few no gum or small faults, Fair-V. F.	62.75
499	★	1c-50c 1894 Issue (246, 254, 255, 260) . Very Good-Fine	20.75
500	★	\$1.00 Black Ty. II (261A) . Faint pinhead thin, Fine appearance	70.00
501	★	\$2.00 Dark Blue (262) . Clear but centered to B., Very Good	80.00
502	★	\$2.00 Dark Blue (262) . Perfs touch at top, Very Good	80.00
503		\$5.00 Dark Green (263) . Small faults, Very Good appearance	115.00
504	★	1c-15c 1895 Issue (264-274) . 2c Ty. II, III are in se-tenant pair, F.-V. F.	35.35
505	★	1c-50c 1895 Issue (264-275) . Few faults, Fair-Fine	49.30
506	★田	2c Carmine Ty. II, III (266, 267) . Mint vert. block of 6, left stamps Ty. II, Fine	22.50+
507	★田	2c Carmine Ty. II, III (266, 267) . Horiz. block of 6, left pair is Ty. II, centered to B.	15.40
508	★	8c Violet Brown Imperf. (272 var.) . Large margins all around, diagonal half of next stamp attached at R., Very Fine	17.50
509	★	50c Red Orange (275a) . Perfs just touch at top, Very Good	19.50
510	★	\$1.00 Black Ty. I (276) . One perf. thin, otherwise V. F.	40.00
511		\$1.00 Black Ty. I, II (276, 276A) . 2 of former, sm. faults, F.-V. F. appearance	34.00
512	★	\$1.00 Black Ty. II (276A) . Very Fine	(Photo) 95.00
513		\$1.00 Black Ty. II (276A) . Very light cancel, Fine	16.00
514		\$1.00 Black Ty. II (276A) . Fine	16.00
515	★	\$2.00 Bright Blue (277a) . No gum, faint negligible thinning, Very Fine appearance	55.00
516		\$2.00 Dark Blue (277) . Very Good	45.00
517		\$2.00 Dark Blue (277) . Fine	45.00
518		\$5.00 Dark Green (278) . Very Fine	47.50
519		\$5.00 Dark Green (278) . Fine	47.50
520		\$5.00 Dark Green (278) . Small thin, V. F. appearance	47.50
521		\$5.00 Dark Green (278) . Lightly cancelled, slight wrinkle, Fine appearance	47.50
522		\$5.00 Dark Green (278) . Small thin, Fine appearance	47.50

523	★	2c Rose Carmine, 15c Olive Green (279Bc, 284). Fine	17.50
524	★田	2c Rose Carmine (279Bc). Mint sheet corner block of 4, Very Fine	40.00
525	★	2c Red Ty. III (279be). Mint booklet pane of 6, V. G.-V. F.	18.50

TRANS-MISSISSIPPI ISSUE

526	★田	1c Trans-Mississippi (285). Bot. Imprint Plate No. block of 6 with guide line at R., Fine-Very Fine	20.00
527	★田	1c Trans Mississippi (285). Bottom Imprint Plate No. Block of 6 with guide line at R., Fine	20.00
528	★田	1c Trans-Mississippi (285). Mint Top Imprint Plate No. Block of 8, one short perf., otherwise Fine-Very Fine	26.00
529	★田	2c Trans-Mississippi (286). Top Imprint Plate No. Block of 4, Very Fine	12.00
530	★田	2c Trans-Mississippi (286). Bot. Imprint Plate No. Block of 4, V. F.	12.00
531	★田	2c Trans-Mississippi (286). Bot. Imprint Plate No. Block of 6 with guide line at R., Very Fine	15.00
532	★	50c Trans-Mississippi (291). Light diagonal gum bend, otherwise V. F. (Photo)	42.50
533		50c Trans-Mississippi (291). Very light cancel, V. F.	13.00
534	★	\$1.00 Trans-Mississippi (292). Very Fine	(Photo) 95.00
535	★	\$1.00 Trans-Miss. (292). No gum, Fine	(Photo) 95.00
536		\$1.00 Trans-Mississippi (292). Centered, deep color, very light cancel, tiny barely visible wrinkle, Very Fine	(Photo) 80.00
537		20th Century Cancellation Collection, 598 stamps, mostly 1898-1918 issues, strong in railroad, streetcar, paquebot, foreign & territorial cancels, and a wide variety of other scarce and unusual markings, a very interesting lot, Very Good-Very Fine	E. VII

PAN-AMERICAN ISSUE

538	★	1c-10c Pan-American (294-299). Few tiny thins & gum creases, F.-V. F. appearing set	37.05
539	★田	1c Pan-American (294). Bot. Imprint Plate No. Block of 8, F.-V. F.	14.20
540	★田	2c Pan-American (295). Top Imprint Plate No. Block of 6, Fine	11.00
541	★田	2c Pan American (295). Top Imprint Plate No. Block of 8, F.-V. F.	13.20
542	★田	2c Pan-American (295). Bot. Imprint Plate No. Block of 8, F.-V. F.	13.20
543	★田	2c Pan-American (295). Bot. Imprint Plate No. Block of 8, F.-V. F.	13.20
544	★田	2c Pan-American (295). Bot. Imprint Plate No. Block of 8, Fine	13.20
545	★田	4c Pan-American (296). Top Imprint Plate No. Block of 8, V. F.	85.50
546	★田	4c Pan-American (296). Bot. Imprint Plate No. block of 8, F.-V. F.	85.50
547	★田	5c Pan-American (297). Mint Bot. Imprint Plate No. Block of 8, V. F.	85.50
548	★田	8c Pan-American (298). Bot. Imprint Plate No. Block of 6, V. F. (Photo)	80.00
549	★田	8c Pan-American (298). Bot. Imprint Plate No. Block of 8, V. F.	95.50
550	★田	10c Pan-American (299). Bot. Imprint Plate No. Block of 8, minute ink spot on 2 perms., Very Fine	143.00
551	★田	10c Pan-American (299). Mint Top Imprint Plate No. and Arrow Block of 10, Fine	(Photo) 190.00+
552	☒	1c Blue Green (300). Tied on post card with clear "U. S. S. Independence, May 25, 1909" pmk., Fine	E. II
553	★田	50c Orange (310). Lower left sheet corner block of 4, perms just touch at bottom, Fine	115.00
554	★	\$5.00 Dark Green (313). No gum, otherwise Very Fine	(Photo) 140.00
555		\$5.00 Dark Green (313). Str. edge at L. otherwise Very Fine	82.50
556	★田	1c Green Imperforate (314). Block of 20, Very Fine	55.00
557	★	5c Blue Imperf. (315). Horiz. pair, Extremely Fine	(Photo) 200.00

LOUISIANA-PURCHASE, JAMESTOWN

558	★	田	1c Louisiana Purchase (323). Mint Top Imprint Plate No. Block of 6, guide line at R., Very Fine	34.50
559	★	田	1c Louisiana Purchase (323). Mint top Imprint Plate No. Block of 6, guide line at R., Very Fine	34.50
560	★	田	1c Louisiana Purchase (323). Bottom Imprint Plate No. Block of 6, Fine	34.50
561	★	田	1c Louisiana Purchase (323). Top Imprint Plate No. Block of 8, F.-V. F.	41.50
562	★	田	1c Louisiana Purchase (323). Mint Top Imprint Plate No. Block of 8, Fine-Very Fine	41.50
563	★	田	1c Louisiana Purchase (323). Top Imprint Plate No. Block of 8, F.-V. F.	41.50
564	★	田	1c Louisiana Purchase (323). Bot. Imprint Plate No. Block of 8, F.-V. F.	41.50
565	★	田	1c Louisiana Purchase (323). Top Imprint Plate No. Block of 10, V. F.	50.50
566	★	田	1c Louisiana Purchase (323). Mint top Imprint Plate No. Block of 10, Fine-Very Fine	50.50
567	★	田	2c Louisiana Purchase (324). Bot. Imprint Plate No. Block of 6, guide line at R., Very Good-Fine	37.20
568	★	田	2c Louisiana Purchase (324). Bot. Imprint Plate No. Block of 10, V. F.	52.20
569	★	田	2c Louisiana Purchase (324). Mint Top Imprint Plate No. Block of 10, Fine-Very Fine	52.20
570	★	田	2c Louisiana Purchase (324). Mint Top Imprint Plate No. Block of 10, F.	52.20
571	★	田	2c Louisiana Purchase (324). Bot. Imprint Plate No. block of 10, selvedge slightly reduced, Fine-Very Fine	52.20
572	★	田	2c Louisiana Purchase (324). Mint Top Imprint Plate No. Block of 10, Fine-Very Fine	52.20
573	★	田	2c Louisiana Purchase (324). Mint Top Imprint Plate No. Block of 10, Very Good-Fine	52.20
574	★	田	3c Louisiana Purchase (325). Bot. Imprint Plate No. Block of 10, V. F.	118.00
575	★	田	3c Louisiana Purchase (325). Bot. Imprint Plate No. Block of 10, F.-V. F.	118.00
576	★	田	3c Louisiana Purchase (325). Bot. Imprint Plate No. Block of 10, V. G.-F.	118.00
577	★	田	3c Louisiana Purchase (325). Mint Top Imprint Plate No. Block of 10, color slightly faded, V. G.-V. F.	118.00
578	★	田	5c Louisiana Purchase (326). Bot. Imprint Plate No. Block of 10, Fine	135.00
579	★	田	5c Louisiana Purchase (326). Bot. Imprint Plate No. Block of 10, V. G.-F.	135.00
580	★	田	10c Louisiana Purchase (327). Right Arrow Block, Fine	130.00
581	★	田	1c Jamestown (328). Mint Top Imprint Plate No. Block of 6, Very Fine	15.00
582	★	田	1c Jamestown (238). Top Imprint Plate No. Block of 6, F.-V. F.	15.00
583	★	田	1c Jamestown (238). Top Imprint Plate No. Block of 6, F.-V. F.	15.00
584	★	田	1c Jamestown (328). Bot. Imprint Plate No. Block of 6, light gum crease in two stamps, Very Fine appearance	15.00
585	★	田	1c Jamestown (328). Bot. Imprint Plate No. Block of 8, small part of two stamps never gummed, F.-V. F.	17.70
586	★	田	1c Jamestown (328). Bot. Imprint Plate No. Block of 15 (5X3). F.-V. F.	27.15
587	★	田	1c Jamestown (328). 48 copies in blocks, selected to show the plate layout, including Plate No's. corners, and centerlines and arrows, 4 stamps damaged, others V. G.-V. F., partially stuck to backing	75.00+
588	★	田	2c Jamestown (329). Mint U. R. corner block of 6 with Plate No. and part imprint, Very Fine	10.00+
589	★	田	2c Jamestown (329). Bot. Imprint Plate No. Block of 10, F.-V. F.	26.00
590	★	田	2c Jamestown (329). Bot. Imprint Plate No. Block of 15, F.-V. F.	33.50
591	★	田	5c Jamestown (330). Mint U. R. corner block of 4 with Plate No. and portion of imprint, Extremely Fine	(Photo) 52.50

1908-1909 ISSUES

592	★	1c-15c 1908-1910 Issues (Bet. 331-376). 64 stamps, F.-V. F.	65.75
593	★	5c Blue (335). Two blocks of 4, F.-V. F.	28.00
594	★	15c Pale Ultramarine (340). Block, mint, F.-V. F.	18.50
595	★	1c Green Imperf. (343). Centerline block of 4, Very Fine	7.50
596	★	1c-5c Imperforates (343-347). Blocks, Very Fine Set	69.25
597	★	1c-5c Imperfs. (343-344, 346-347). Blocks, Very Fine	54.25
598	★	1c-3c Imperforates (343-345). Centerline blocks, F.-V. F.	85.00
599	★	1c-3c Imperfs. (Bet. 343-483). 102 stamps, mostly in blocks, V. F.	62.20
600		2c-5c 1908 Imperfs. (344-347). Horiz. pairs, F.-V. F.	23.70
601	★	3c-5c Imperforates (345-347). Mint Pairs, Mail-O-Meter Ty. I Private Perf., Very Fine	23.75
602	★	4c Orange Brown Imperf. (346). Two blocks, shades, V. F.	36.00
603	★	4c Brown Imperf. (346). Two blocks of 4, mint, V. F.	36.00
604	★	4c Brown Imperforate (346). Centerline block, Very Fine	60.00
605	★	5c Blue Imperforate (347). Centerline block, one stamp has small sealed tear, Very Fine appearance	135.00
606	★	5c Blue Imperf. (347). Block, Mail-O-Meter Ty. IV private perf., Fine, cat. \$25.00 per pair	50.00+
607	★	1c-5c Imperfs. with Private Perfs., 1906-1910 Issues, 29 stamps, nearly all in diff. horiz. pairs, 2 without gum, F.-V. F.	62.50
608	★	1c-5c Coils (Bet. 348-458). 25 stamps, mostly in pairs, V. G.-V. F.	103.55
609	★	2c Carmine, 5c Blue Coils (349, 444, 447). Vert. pair of first, horiz. line pairs of latter two, Very Fine	25.00
610	★	1c-2c Coils (352, 386, 392). Strips of 4, F.-V. F.	39.00
611		5c Horiz. Coil (355). Used guide line strip of 4, Fine	30.50
612	★	2c Carmine Bluish (358). Very Fine	8.50
613	★	2c Carmine Bluish Paper (358). Mint block, Fine	40.00
614	★	2c Lincoln Imperforate (368). Centerline block, Very Fine	60.00
615	★	2c Lincoln Imperf. (368). Mint block of six with Imprint, V. F.	37.00
616		2c Alaska Yukon, Hudson Fulton Imperfs. (371, 373). Latter has slight scuffs on face, otherwise V. F. used blocks	40.00
617	★	1c Green Coil (392). 7 paste-up pairs, all with Plate No. or Imprint, also single from end of roll, with imprint, V. G.-F.	26.25
618	✉	2c Carmine Coil (393). Tied to blue cover by Orangeburg, N. Y. machine cancel, corner card of Bell & Co., mfg. chemists , this is the Co. that used the entire supply of the 3c Orangeburg Coil, Scott No. 389, Very Fine ...	E. II

1912-1920 ISSUES

619	★	1c Panama Pacific (397). Mint right Plate No. Block of 6, V. F.	13.00
620		5c, 10c Panama Pacific (400, 403). Blocks, V. G.-F. used	30.00
621	★	10c Panama Pacific (400A). Mint U. R. sheet corner pair, freak vertical perfs. (Photo)	37.00+
622	★	5c Panama Pacific Perf. 10 (403). Fine	23.50
623	★	10c Panama Pacific Perf. 10 (404). Fine (Photo)	100.00
624	★	1c-2c Imperforate Kansas City Roulettes (408-409 var.). Blocks of 4 with Plate No., with notarized affidavit, Very Fine	E. III
625	★	1c-2c Imperforate Kansas City Roulettes (408-409 var.) Blocks, guarantee on backs, Very Fine	E. III
626	★	1c-2c Imperforate Kansas City Roulettes (408-409 var.). Blocks, with notarized affidavit, Very Fine	E. III
627	★	8c-30c 1912 Issue (Bet. 414-420). 9 stamps, 4 varieties, all centered, couple tiny faults	31.95

John Thomas Frankling
Mrs Charlotte Adams
Waterbury
20
U.S. State Mail
13

Mr. Meeker
147 St
64

Treasury Department
FRE
William Webb Esq
Collector
15
22
Bath
Massachusetts

100

Mr. Andrew C. Clark
Educator
69

Orrin Thompson Esq.
Thompsonville
Conn.
75

74

70
PHILADELPHIA RAIL ROAD

144

Gov. Alphonso Felch
San Francisco
109

Williams,
SAN FRANCISCO
108

Williams,
SAN FRANCISCO
102

175
UNION VALLEY
CAL. EX.
SAN FRANCISCO
APR 19
CAL.

161

CLARKSVILLE
CAL.
163

167

PAID
Gregory's
EXPRESS
Gregory Gale Esq
San Francisco
171

MIDDLETOWN
MAR 27
CAL.
Sutter Creek
168

174
W. R. Harrison

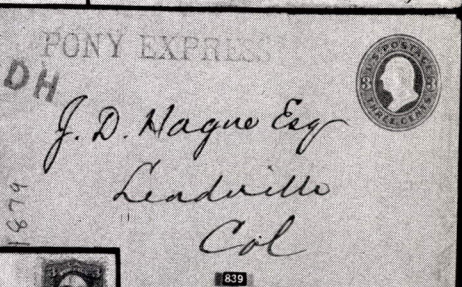
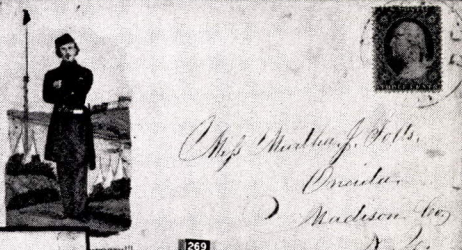
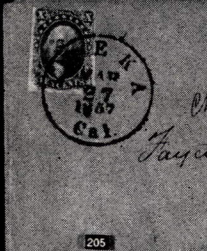
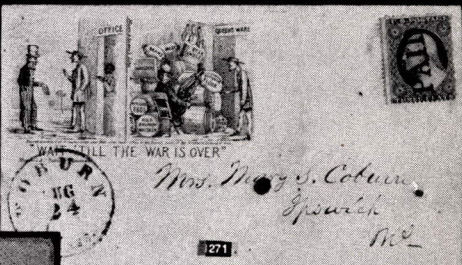
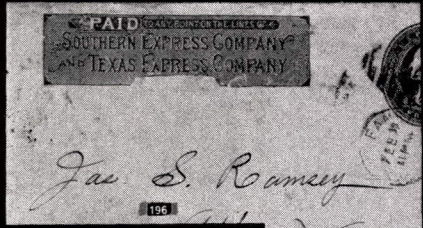
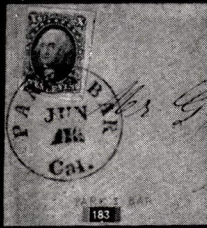
177
John Gates, Esq.
Chf. Eng. O. S. R. Co.

176
Sutter Creek
Cal.

243
W. James Simon
Cory & Co
Washburn
Cal.

201
Wells Fargo & Co
Mass.

184
S. A. Hanson
County
Cal.





44

45

46

47

48

50

53



62

71

72

73

82

83



103

137

223

255



222

155

213

263

311

326

331



333

334

347

375

390



410

414

417

419

436

437

439



440

441

442

444

445

457

512



486

487

488

492



43



139



258



257



140



378



485



481



548



551



621



493



494



495



496



497



532



534



535



536



554



557



623



629



632



647



651



764



745



767



768



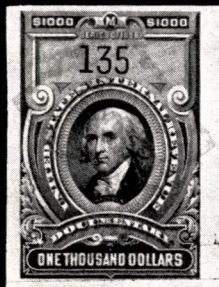
770



799



816



875



880



882



888



817



891



892



897



898



822



591



633



649



772



731



734



1183



741



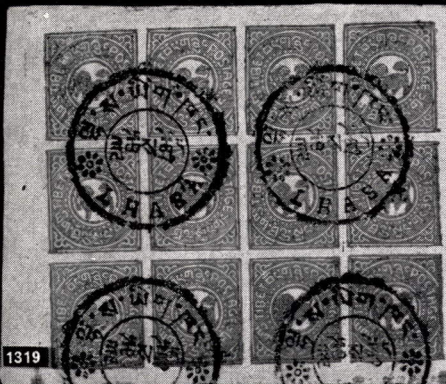
1247



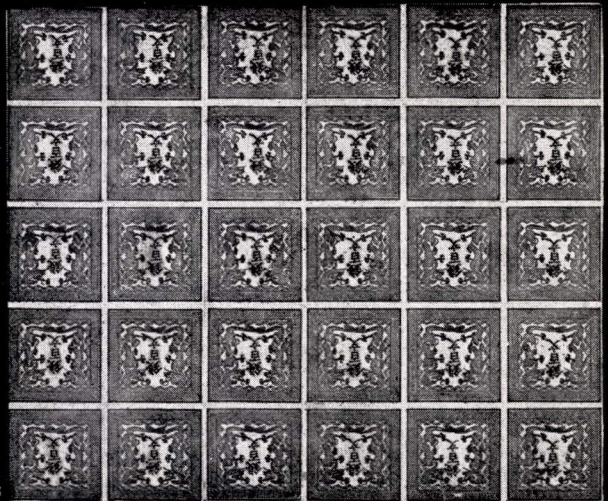
1275



1164



1319



1248



737



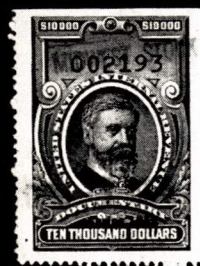
738



739



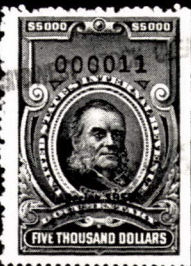
740



899



905



906



907



1113



1075



1079



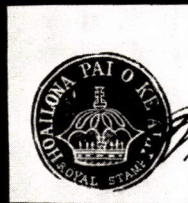
1092



1101



1103



1110



1111



1133



1135



1139



1146



1152



1156



1193



1280



1250



1296



1244



1282



1309



1291



1242



1302



1306



1290



1317

628	★	20c Ultramarine (419). Block, Fine-Very Fine	47.50
629	★	\$1.00 Violet Brown (423). Very Fine (Photo)	42.50
630	★	\$1.00 Violet Brown (423). Perfs. just cutting at R.	42.50
631		50c-\$1.00 1912-16 Issues (423, 460, 477). Fine-Very Fine	31.50
632	★	50c Violet (440). Fine (Photo)	75.00
633	★	50c Violet (440). Block of 4, Fine-Very Fine (Photo)	325.00
634	☐	\$5.00 Light Green (480). Used block, Fine	32.50
635	★	1c-2c Imperforates (481, 482, 526). Blocks, all with private Wilson Roulettes, Fine-Very Fine	E. II
636	★	2c Imperforate (482). Centerline Block of 16, Very Fine	15.40
637	★	3c Violet Imperf. Ty. I (483). Top plate no. block of 6, mint Very Fine	16.00
638	★	3c Violet Imperf. Ty. I (483). Top plate no. block of 6, Mint V. F.	16.00
639	★	3c Violet Imperf. Ty. I (483). Right plate no. block of 6, Mint Very Fine	16.00
640	★	3c Violet Imperf. (483). Plate no. Block of 9, mint, V. F.	23.05
641	★	1c-3c Imperforates (483, 575-577). Blocks, Very Fine	21.10
642	★	1c A. E. F. Booklet Pane of 30 (498f). Very Fine	50.00
643	★	1c Green A. E. F. Booklet Pane of 30 (498F). Centered, several stamps stuck down, and five stamps scuffed on surface	50.00
644	★	1c-20c 1917 Issue (Bet. 498-515). 14 diff. blocks, gum disturbed, other- wise Fine-Very Fine	75.85
645	★	1c-\$1.00 1917 Issue (498-518). 40 stamps, 15 varieties, F.-V. F.	46.07
646	★	5c Error (505). Block of 9, middle stamp the error, centered to right Very Good-Fine	90.00
647		11c Light Green (511 var.). Perf. 10 at bottom, str. edge at R., V. F. (Photo)	85.00
648	★	\$1.00 Violet Brown (518). Block, Very Fine	26.00
649	★	\$1.00 Deep Brown (518b). Block, Very Fine, Scarce (Photo)	200.00
650	★	Freaks and Oddities, 1917-1940, 56 stamps, mostly in unused multiples, includes paper folds, imperf. between, blind perfs., over-ink double paper, double print, freak perfs., Interesting	E. II
651	★	\$2.00 Orange Red & Black (523). Very Fine (Photo)	75.00
652		\$2.00 Orange Red & Black (523). Very Fine	40.00
653	★	\$5.00 Deep Green & Black (524). Very Fine	23.50
654	★	\$5.00 Deep Green & Black (524). Very Fine	23.50
655	✉	3c Violet (529, 537). Two covers with diff. U. S. Postal Agency Siberia pmks. and diff. censor markings, no. 529 has s. e. at L., Very Fine covers	E. II
656	★	3c Deep Purple Offset Ty. IV (530a). Block, clear Double Print, V. F.	14.00+
657	★	1c Offset Imperf. (531). Top plate no. block of 6, Mint Very Fine	18.00
658	★	1c Offset Imperf. (531). Top plate no. block of 6, Mint Very Fine	18.00
659	★	2c Offset Imperf. Ty. IV (532). Block, Mint Very Fine	15.00
660	★	2c Carmine Offset Imperf Ty. V (533). Mint Block, Very Fine	38.50
661	★	2c Offset Imperf. Ty. Va (534). Right plate no. block of 6, Mint, V. F.	16.50
662	★	2c Offset Imperf. Ty. Va (534). Left plate no. block of 6, Mint, V. F.	16.50
663	★	3c Violet Offset Imperf. (535). Three Blocks of 4, V. F.	27.00
664	★	3c Violet Offset Imperf. (535). Centerline block, scissor cut in margin, Very Fine appearance	40.00
665	★	3c Victory, 2c Harding (537, 610-612). Blocks, Fine-Very Fine	36.25
666	★	\$2.00 Carmine & Black (547). Very Fine	21.00
667		5c Commems. (550, 616, 621, 648). 4 copies of no. 616, V. F.	30.50

1922 ISSUE TO DATE

668	★	½c-50c 1922 (551-570, 622-623). 276 stamps, mostly in blocks, F.-V. F.	165.05
669	★	1c-10c 1922 (551-562). Blocks, V. G.-V. F.	73.75
670	★	8c Olive Green (560). Block Fine-Very Fine	20.00
671	★	1c Imperforate (575). Block of 16, Very Fine	28.00

672	★	1c-2c Imperforate (575-577). Two sets of blocks, shades, V. F.	22.20
673	★	1½c Yellow Brown Imperf. (576). Centerline block, V. F.	15.00
674	★	1½c-15c Plate No. Blocks (576, 719, 736, 745, 838, 856, C8). Two each of latter two, Fine-Very Fine	32.76
675	★	1c-10c Perf. 10 (Bet. 581-591). 65 stamps, 10 varieties, V. G.-V. F.	55.70
676	★	6c-10c Perf. 10 (587-591). Blocks, Very Fine	29.80
677	★	2c Harding Imperf. (611). Two blocks each of 4 and 6, Mint, F.-V. F.	36.00
678	★	2c Black Imperf. (611). Six blocks of 4, V. F.	48.00
679	★	2c Harding Imperf. (611). Mint R. Plate No. Block of 6, V. F.	20.00
680	★	2c Harding Imperf. (611). Right Plate No. Block of 6, V. F.	20.00
681	★	2c Harding Imperf. (611). Centerline and four diff. arrow blocks, V. F.	130.00
682	★	2c Harding Perf. 10 (612). Plate No. Block of 4, Mint, Fine	40.00
683	★	1c-5c Huguenot-Walloon (614-616). Blocks, 5c has s.e. at L., otherwise Very Fine set	32.25
684	★	5c Huguenot-Walloon (616). Top plate no. block of 6, minute perf thin in one stamp, otherwise Fine used	35.00
685	★	1c-5c Lexington Concord (617-619). Blocks, V. F. set	22.00
686	★	2c-5c Norse Americans (620-621). Blocks, V. F. set	32.50
687	★	2c, 5c Norse (620, 621). On First Day Cover with 1c Pilgrim to make up the 8c Airmail rate, Very Fine	12.50
688	★	5c Ericsson, 2c, 5c Hawaii (628, 647, 648). Blocks, Fine-Very Fine	23.50
689	★	1c-5c Commems (628, 629, 645, 647-650, 682, 730a, 778, 797). All on First Day Covers, some cacheted, Very Fine	31.15
690	★	2c White Plains Souvenir Sheet (630). Very Fine	62.50
691	★	White Plains Souvenir Sheet (630). Mint, crease affecting 4 stamps, appears Very Fine	62.50
692	★	½c-50c Rotary Press (632-642, 692-701). 149 stamps, mostly in blocks, few plate no. blocks F.-V. F.	82.43
693	★	2c Red Commem. Plate No. blocks of 4 or 6 (643, 645, 649, 651, 655, 681, 688, 690). Two of 690, F.-V. F.	49.00
694	★	2c Molly Pitcher (646). Vert. Pair, 28mm spacing, Wide Spacing variety, centered to B.	15.00
695	★	2c-5c Hawaii (647-648). Two blocks of each, V. G.-V. F.	29.00
696	★	1c-10c Kansas (658-668). Mint blocks, V. F. Set	128.00
697	★	1c-10c Kansas (658-668). Mint blocks, V. G.-V. F. Set	128.00
698	★	1c-10c Kansas-Nebraska (658-679). V. F. sets	66.25
699	★	1c-10c Kansas-Nebraska (658-679). F.-V. F. sets	66.25
700	★	1c-10c Kansas-Nebraska (658-679). V. G.-V. F. Sets	66.25
701	★	6c Kansas, 7c, 9c Nebraska (664, 676, 678). Mint blocks, Fine	51.00
702	★	1c-10c Nebraska (669-679). F.-V. F.	34.85
703	★	1c-10c Nebraska (669-679). Mint blocks, V. F. Set	140.80
704	★	1c-10c Nebraska (669-679). Blocks, Very Fine Set	140.80
705	★	3c, 4c Nebraska (672, 673). Mint L. L. Plate No. blocks of 4, V. F.	25.00
706	★	10c Nebraska (679). Plate No. single, Very Fine	12.00
707	★	10c Nebraska (679). Mint U. R. Plate No. block of 4, Very Fine	75.00
708	★	2c Von Steuben (689). Six Plate No. blocks of 6, Mint F.-V. F.	42.00
709	★	½c-10c Bicentennials (Bet. 704-715). 7 diff. plate no. blocks of 4, F.-V. F.	39.85
710	★	1c-10c Bicentennials (704-715). 265 stamps, mostly in blocks, F.-V. F.	63.94
711	★	1c-10c Parks (740-749). Set of Bot. Plate No. Blocks of 6, F.-V. F.	35.90
712	★	1c-10c Parks (740-749). Set of Bot. Plate No. Blocks of 6, F.-V. F.	35.90
713	★	16c Farley Special Delivery Airpost (771). Two diff. bottom Plate No. blocks of 6, V. F.	40.00
714	★	3c Presidential (807). Scotch tape Double Paper Plate No. Block of 10, double paper covers 8 stamps, Fine	E. II
715	★	\$1.00 Purple & Black (832). Plate No. & 3 diff. Arrow Blocks of 4, mint, F.-V. F.	41.00

716	\$1.00 Presidential Revenue Wmkd. (832b). Very Fine	10.00
717	\$1.00 Presidential Revenue Wmkd. (832b). Horiz. strip of 3, Fine	30.00
718	★田 \$2.00 Yellow Green & Black (833). Plate No. block of 4, mint, V. F.	50.00
719	☒ 3c-80c Postage Issues (Bet. 839-CE2). On 65 First Day Covers, includes 839-851, many multiples, cat. as singles	66.15
720	田 1c-10c Authors (859-863). 8 sets used Plate No. blocks of 4, 8 extra blocks of 2c, F.-V. F.	84.80
721	★田 10c Bell (893). Mint L. L. Plate No. block of 4, Fine	23.50
722	★ 1c-3c Defense (899b, 900a, 901a). Horiz. pairs Imperf. Between, mint, F.-V. F.	67.50
723	☒ First Day Covers, 233 covers (Bet. 906-1029, C33-47, E19). All cacheted, with blocks, plate no. blocks, coil pairs or booklets, Fine-Very Fine	127.95
724	★田 5c Korea (921). Four name blocks of 6 and KORPA error in block of 6, V. F.	17.50+
725	★ 1c Dark Green (1031). Full sheet of 100, freak horiz. perfs, cutting thru lower third of stamps, interesting oddity	E. II
725A	4c Lincoln Coil Imperforate (1058a). Horiz. Pair, Mint, Very Fine	E. VIII
726	★田 4c Commemoratives (Bet. 1110-1151). 1585 Plate No. Blocks, 18 varieties, many positions, mint, F.-V. F.	Face 253.60 —

END OF FIRST SESSION

*LOTS ON VIEW FROM AUGUST 10th
OFFICE OPEN SATURDAY, AUGUST 19th*

PRICES REALIZED

THIS SALE

\$1.00

OR ENTIRE YEAR \$3.50

SECOND SESSION

THURSDAY, AUGUST 24th, 1961 — 1 P. M.

AIRPOSTS

727	★	6c-24c 1918-1923 Airpost (C1-C3, C5). Very Fine	37.50
728	★	6c-24c 1918-1923 Airpost (C1-C6). C1, C2, C5 have small gum thins, otherwise V. F. sets	52.75
729	★	6c-50c Airpost (C1-C6, C18). C3 has no gum, otherwise F.-V. F.	64.75
730	★	6c-24c 1918-1923 Airpost Issues (C1-C2, C4-C6). C2 is used, V. G.-V. F.	39.25
731	★	16c Green Airpost (C2). Mint top Plate No. & Arrow block of 6, V. F. (Photo)	115.00
732	★	8c-24c Airpost (C4-6). F.-V. F.	23.75
733	★	8c-24c 1923 Airpost Issue (C4-C6). F.-V. F.	24.75
734	★	16c Dark Blue Airpost (C5). Mint top Plate No. block of 6, V. F. (Photo)	85.00
735	★	5c-50c Airpost (C7-12, 16-17, 19-23, CE1-2). Blocks, F.-V. F.	44.10
736	★	5c-50c Airpost Issues (bet. C12-CE2). 74 stamps, F.-V. F.	36.54
737	★	65c-\$2.60 Zeppelins (C13-C15). Very Fine Set	225.00 (Photo)
738	★	65c-\$2.60 Zeppelins (C13-C15). Very Fine Set	225.00 (Photo)
739	★	65c-\$2.60 Zeppelins (C13-C15). Mint, Fine-Very Fine Set	225.00 (Photo)
740	★	65c-\$2.60 Zeppelins (C13-C15). F.-V. F. Set	225.00 (Photo)
741	★	65c-\$2.60 Zeppelins (C13-C15). Set of mint Blocks, Fine-Very Fine (Photo)	960.00
742	★	65c Zeppelin (C13). Block, mint V. F.	180.00
743	★	65c Graf Zeppelin (C13). Mint block of 4 with Plate No., Very Fine	180.00
744	✉	65c Graf Zeppelin (C14). Cacheted First Flight cover, Very Fine	50.00
745	★	\$2.60 Zeppelin (C15). Extremely Fine	110.00 (Photo)
746	✉	5c Violet Airpost (C16). Plate No. block of 4 on First Day Cover, selvedge slightly reduced at top, extremely rare, Very Fine, Cat. \$50.00 for single	(Photo) E. VIII
747	★	50c Zeppelin (C18). Mint, Extremely Fine	12.00
748	★	50c Zeppelin (C18). Very Fine	12.00
749	★	50c Zepelin (C18). Very Fine	12.00
750	★	50c Zepelin (C18). Mint, Fine	12.00
751	★	50c Zepelin (C18). Block, Mint V. F.	52.50
752	★	16c Red & Blue Airpost Spec. Del. (CE2). 12 Centerline Blocks F.-V. F.	27.00
753	✉	Airmail First Day Covers, 26 different 5c-80c Values (Bet. C10-CE2). Mostly with cachets, Very Fine lot	25.85
754	✉	Air Crash Cover, charred cover from Air Crash at Columbia, Mo. Dec. 8, 1934, with official circular in Penalty Envelope, Fine	E. I

SPECIAL DELIVERY

755	★	10c-20c Special Deliveries (bet. E1-E17). 31 stamps, F.-V. F.	38.20
756	✉	10c Special Deliverys (E1-E5). Fifty covers, a variety of postal markings, includes several No. E4, Good-Very Fine	E. IV

757	★	田	10c Orange Special Delivery (E3). Bottom Plate No. and part Imprint block of 6, very light gum wrinkles, Fine	21.50+
758	★	田	10c Blue Special Delivery (E4). Top Plate No. Imprint block of 6, mint centered to B, mostly Fine	235.00
759	★	田	10c Ultramarine Special Delivery (E6). Top Plate No. Imprint block of 6, Fine	23.50
760	★	田	10c Ultramarine Special Delivery (E6). Top Plate No. Imprint block of 6, 1909 Re-issue, mint, Fine	35.00
761	★	田	10c Green Special Delivery (E7). Top Plate No. Imprint block of 6, Fine	35.00
762	★	田	10c Green Special Delivery (E7). Plate No. Imprint block of 6 and block of 4, each has thin affecting one stamp, former also has corner of one stamp missing, other stamps V. F.	55.00
763	★	田	10c Ultramarine Special Delivery (E8). Bottom Plate No. block of 6, mint, V. G.	42.50
764	★		10c Red Lilac (E15c). Horiz. pair, Imperf. between, Fine (Photo)	100.00

POSTAGE DUES

765	★	田	1c-30c Postage Dues (J1, J3, J6). Blocks, extra shade of 1c, o. g., F.-V. F.	21.75
766	★	田	2c Postage Due (J2). Block, o. g., Very Fine	25.00
767	★		1c Postage Due Special Printing (J8). Centered to R. Fine, with Phil. Foundation Certificate, Scarce (Photo)	250.00
768	★		10c Postage Due, Special Printing (J12). Str. edge at L. Very Fine, with Phil. Foundation Certificate (Photo)	90.00
769	★		30c Postage Due, Special Printing (J13). Corner crease, short perf. with Phil. Foundation Certificate	85.00
770	★		50c Postage Due, Special Printing (J14). Fine, with Phil. Foundation Certificate (Photo)	80.00
771	★	田	1c-30c Postage Dues (J15, J16, J18, J20). Blocks, minute thin in one 5c, otherwise o. g., F.-V. F.	30.75
772	★	田	3c Postage Due (J17). Imprint block of 4, o. g. Very Fine (Photo)	70.00
773	★	田	1c-10c Postage Dues (J22-J26). Blocks, extra shades of each, two extra of 1c, F.-V. F.	22.80
774	★	田	30c Postage Due (J27). Block, Very Fine	30.00
775	★	田	50c Postage Due (J28). Block, s. e. at R., Fine	30.00
776	★	田	2c Postage Due (J30a). Block, Very Fine	25.00
777	★	田	5c-30c Postage Dues (J34-J36). Blocks, two 10c have thins, 30c has gum wrinkles, otherwise F.-V. F.	46.50
778	★	田	50c Postage Due (J37). Block, Very Fine	75.00
779	★	田	1c-50c Postage Dues (J38-J42, J44). Fourteen blocks, including extra shades, one 1c thin, two 10c gum creases, otherwise F.-V. F.	28.30
780	✉		2c Deep Claret Postage Due Bisect (J39 var.). Well tied by grid on small wrapper forwarded to Riverside, Mass. "Due 1 ct." in ms., V. F.	E. III
781	★	田	1c-10c Postage Dues (J45-J46, J48-J49). Blocks, extra shades of 1c and 5c, F.-V. F.	24.25
782	★	田	3c Postage Due (J47). Marginal block, F.-V. F.	50.00
783	★	田	1c-30c Postage Dues (J52-J53, J55-J57). Blocks, extra shades of 2c, 10c, 30c is block of 8 with combination spacing	47.75
784	★	田	½c-10c Postage Dues (Bet. J61-J68). Thirty blocks, a very wide range of shades, mostly F.-V. F.	17.63+
785	★	田	1c-10c Postage Dues (J61-J65). Plate No. blocks of 6, two of 2c, three each of others, diff. shades, No's. or positions, F.-V. F.	17.21+
786	★	田	½c-50c Postage Dues (Bet. J69-J85). Twenty four blocks, including extra shades, J77 and J78 are used, F.-V. F.	27.35
787	★		2c-60c Offices in China (K1-K14). V. G.-V. F.	40.35

OFFICIALS

788	1c-30c Agriculture (O1-O9). 24c used, tear, 6c has s. e. otherwise V. G.-F. Set	77.50
789	3c Agriculture Department (O3). Six copies selected for cancel s, including Green spiral, Blue Wagon Wheel, star in circle, Negative star in circle, clear strikes, F.-V. F. lot	E. II
790 ★	15c, 24c Agriculture (O7, O8). Very Fine	21.00
791 P	1c-10c Executive Dept. Card Proofs & Specimens (O10P-O14, O14P, O10S-O14S). Extra 1c Specimen with ribbed paper, F.-V. F.	17.75
792 ★	1c Executive (O10). Perfs. touch at top, o. g.	23.50
793	1c Executive Dept. (O10). Clear Blue Executive Mansion pmk. Fine	E. III
794	1c-10c Executive (O10-O14). 2c, 3c used, 1c, 3c have small defects, others Fine	108.50
795 ★	3c Executive (O12). Very Fine, o. g.	17.50
796 ★	10c Executive (O14). Fine	27.50
797 ★	1c-90c Interior (O15-O24). O. g., V. G.-V. F. Set	32.90
798	1c-30c Interior Dept. 46 stamps selected for cancellations , includes Crosses, Stars, Colored, Leaf, Geometrics, V. G.-V. F.	E. III
799	2c Interior Department (O16). Clear unusual large Mans Face cancel, centered to top	(Photo) E. II
800	24c Interior Department (O22). Clear Pumpkin Head cancel, centered to top, Fine	E. II
801	1c-90c Justice (O25-O34). 3c, 24c, 90c used, 10c has defects, otherwise V. G.-Fine set	136.50
802	2c-15c Justice Department (O26, O29-31). V. G.-F.	23.25
803 ★	30c Justice (O33). Centered to left, Fine	27.50
804	30c, 90c Justice (O33, O34). First creased, latter pinhead thin, Fine appearance	52.50
805	1c-90c Navy (O35-O45). Five are used, 15c has tiny thin, 1c, 24c have s. e., otherwise V. G.-F. Set	65.50
806 ★	2c Green Navy Dept. Error (O36b). Very Good	75.00
807 ★	7c Navy (O39). Very Fine, o. g.	25.00
808 ★	90c Navy, 24c State (O45, O65). Fine	27.50
809	3c, 6c Post Office Dept. 24 stamps, fancy cancels includes U. S., Paid, Colored, Leaf, V. G.-V. F.	E. I
810 S	1c State Dept. "Specimen" Error (O57aS). Fine	40.00
811	1c-90c State (O57-O67). 3c, 7c, 90c used, 1c, 6c have tiny defects, otherwise V. G.-F.	81.25
812 ★	24c, 30c State Department (O65, O66). Very Good-Fine	30.00
813	90c State (O67). Fine, used	22.50
814	1c-30c Treasury Dept. 58 stamps selected for fancy and interesting cancels includes Stars, Geometrics, Colored, Crosses, Towns, V. G.-V. F.	E. III
815	1c-30c War Dept. 127 stamps selected for interesting and fancy cancel s, includes Geometrics, Colored, Leafs, U. S., Stars, Crosses, Forts, V. G.	E. III
816	6c War Department (O86). Bold Indian Head cancel, Fine	(Photo) E. II
817	6c War Department (O86). Bold Cross in Rays cancel, Fine	(Photo) E. II
818 ★	2c-90c War Department (O84, O87-O93). V. G.-V. F.	25.30
819 ★	1c Interior (O96). O. g., Very Fine	11.00
820 ★	24c Vermilion (O103). Perfs just in at top, o. g., Very Good	100.00
821	3c War Department (O116). Clear Fort Apache, Arizona , Jan. 7, 1884 in double circle, Fine	E. II
822	3c War (O116). Bold Kicking Mule cancel, centered to R	(Photo) E. II
823 ★田	\$1.00 Postal Savings (O123). Mint block, F.-V. F.	30.00
824	1c-90c Officials, balance of collection, 77 diff. used and unused (bet. O15-O126). Plus 6 diff. blocks. Nearly all V. G.-V. F.	439.40

825	★	2c-75c Parcel Post (bet. Q2-Q11). 10 stamps, F.-V.F.	33.45
826	★	50c Parcel Post (Q10). No gum, Very Fine	23.50
827	★	5c-25c Newspapers (PR5-7). 5c has tiny thin, 25c has very light crease. Fine appearance	29.50
828	★	Newspapers, 9c-60c (PR14, 16-17, 19-20). Few ragged perfs on PR16, otherwise F.-V.F.	30.50
829	★	\$36.00 Newspaper (PR77). V.F., o.g.	27.50
830	★	\$48.00 Newspaper (PR78). Fine, o.g.	30.00
831	★	1c-90c Postal Note Stamps (PN1-PN18). Set of Plate No. blocks, Very Good-Very Fine. Scarce	69.48+

ENVELOPES, LOCALS, XMAS SEALS

832	☒	3c Red Entires (Bet. U1-U10). 68 entires, includes a wide range of cancels, handstamps, printed, and embossed corner cards, exceptionally clean lot, all with clear postal markings, Very Fine	E. II
833		1c-90c Cut Squares between (U4-U211). 83 diff. used & unused 1853- 1886 issued only. Good-Very Fine	281.80
834		1c-10c Cut Squares between (U10/UO16). 19th century lot of 91 used and unused, 51 varieties. Good-Fine	58.05
835	☒	6c Green on Buff Entire (U14). Unused, Extremely Fine	70.00
836	★	1c Blue Die III (U24). Full corner, Very Fine	25.00
837	★	3c+1c Red and Blue on White (U28). Small thins, Fine appearance, cut square	55.00
838	★	3c+1c Red and Blue on Buff (U29). Fine, cut square	50.00
839	☒	3c Green Entire (U165), "D H" and "Pony Express" in clear Magenta str. line, cover addressed to Leadville, Col. Probably a small Express Co. operating in the silver mining district, V.F. (Photo)	—
840	☒	3c Green Die II Centennial entire (U221). Centennial Station pmk., V.F.	E. I
841	☒	1c-4c Entires with Universal Postal Congress Overprint (betw. U294S/ U324S). 18 unused entires, all diff. sizes, diff. colored papers, V.F.	72.00
842	☒	1c-5c Entires, with Universal Postal Congress Overprint (betw. U294S/ U331S). 26 unused entires, all diff. sizes, diff. colored papers, V.F.	104.00
843	☒	1c-5c Entires, with Universal Postal Congress Overprint (betw. U294S/ U331S). 29 unused entires, all diff. colored papers. Includes 2 wrappers V.F.	116.00
844	☒	1c-10c Entires (betw. U348/UC7). 363 mint entires, 25 varieties. Fine- Very Fine	65.79
845	☒	2c Carmine Entire (U360). Used from Mt. Pleasant Iowa in 1905, Green Handstamped Triangular "Richwoods Dispatch, Paid to the Post Office Carrier Stamps", on flap is another dealers Illustrated advertising label tied by backstamp, Fine	E. II
846	☒	2c Carmine on White (U429 Var.). Two unused entires Size 2, first has additional impression of U429 on back flap, other has extra impression of 4c Black # U416a on back flap, V.F.	E. II
847	☒	Penalty Envelopes. 23 diff. mint Entires, 1c-6c oval & circular dies, mostly with Govt. Official corner cards. V.F.	E. I
848	☒	Penalty Envelopes. 63 used entires. All diff. sizes, wmks. and Official corner cards. Thorp numbered betw. #1993-17/6506-17. Period 1915-1944. Fine-Very Fine	E. II
849	☒	Penalty Envelopes. Collection of 162 used entires. All diff. sizes, water- marks and Official corner cards. All properly Thorp numbered. Betw. #1916/14-#6506/18. Period 1916-1944. Includes several Dead Letter Office. Fine-Very Fine	E. V
850	☒	Penalty Envelopes. 242 Used & Unused Entires. 1c-2c oval & 1c-3c circular dies. Many diff. sizes, wmks. & Official Corner Cards. F.-V.F.	E. III

851	☒	1c Black Full Face McKinley Postal Card (UX17). Printed address, V. F.	225.00
852	☒	Unused Postal Cards & Entires. Mostly 1880-1890's, 59 pieces including ten diff. Columbian Postal Cards, 5c, 10c Columbian Entires F.-V. F.	E. II
853		1c Blue Eagle Carrier (LO2). Margins all around, tied to small piece by Square Red Target and by Blue Cincinnati pmk. V. F.	E. II
854		3c Dull Red, 1c Blue Carrier (11, LO2). Tied together on small piece by Blue Philadelphia pmk., carrier has additional Red Star cancel, V. F. cat. on cover	60.00
855	★	U. S. Locals (15L4, 15L6, 143L4). Margins all around, first has defects, second has slt. stains, latter V. F., first two not listed uncanceled, G.-V. F.	90.00+
856	☒	3c Black Bloods Local (15L9). Uncanceled cut to shape copy on cover, Red New York Pmk, 1848 usage, Fine	E. I
857	☒	Bloods, Boyds Locals, 1c Black on Bronze, 2c Black on Green (15L17, 20L4). On covers, Philadelphia, New York pmks, Fine	21.00
858	★	\$5.00 Deep Blue War Savings (WS4). Very Fine	35.00
859	★	\$5.00 Deep Blue War Savings (WS4). Very Fine	35.00
860	★	Christmas Seals, 1907 (Ty. I, II, 1913 Ty. II, III (WX1, 2, 12, 13). Eight copies of WX12, F.-V. F.	57.25
861	★	Christmas Seals, 1908 Ty. I Booklet Pane (WX39). No selvage, no gum, corner crease, Fine appearance	75.00
862	★☐	Christmas Seals, 1913 Ty. II (WX12). Mint block, V. F.	26.00+
863	★☐	Christmas Seals, 1913 Ty. II (WX12). Mint corner block, V. F.	26.00+
864	★☐	Christmas Seals, 1913 Ty. II (WX12). Mint block, F.-V. F.	26.00+

REVENUES

865	☐	1c Proprietary (R3c). Block of 35 with Ruth & Fleming, Baltimore Printed Pre-Cancel, marginal perfs clipped on several stamps, otherwise F.-V. F.	8.20+
866		1c-\$2.00 Civil War Revenues, 33 stamps on original documents, including 2 Postage issues used as revenues, interesting lot, F.-V. F.	E. II
867		2c Civil War Revenues, Nine Wells Fargo & Co. handstamp cancels, diff. stamps, cancels or colors, Fine	E. II
868		50c-\$50.00 Revenues, 1862-1872 Issues (bet. R54c-R148). 55 stamps on 16 original documents, mostly higher values, a few slight creases from folding but mostly F.-V. F., attractive lot	154.52
869		\$3.50 Inland Exchange Imperf. (R87a) Blue handstamp cancel, minute thin, crease, Fine appearance	150.00
870	☐	\$20.00 Orange Conveyance (R98c). Block of 4 on original document with \$10.00 Probate of Will (R96c) and Pair of \$1.00 Inland Exchange (R67c), light wrinkle thru two R98c, otherwise F.-V. F.	78.75+
871		\$20.00 Blue and Black (R129). On original document with \$5.00 Vermilion and Black (R148). Fine	49.15+
872		\$25.00 Blue & Black (R130). On original document, Fine	47.50+
873		\$25.00 Blue & Black (R130). On original document with \$10.00 Blue and Black (R128). Fine-Very Fine	54.00+
874		\$5.00 Documentary Surcharge (R160). Light ms. cancel, Very Fine	13.50
875		\$1000.00 Green & Black Documentary (R181). Very light handstamp cancel, uncut, Very Fine	(Photo) 90.00
876		\$1000.00 Green & Black (R181). Cut cancel, sealed tears, V. F. appearance	50.00
877		\$30.00 Documentary, Series 1952 (R611). Uncut, V. F.	15.00
878		\$500.00 Documentary, Series 1952 (R615). Uncut, Very Fine	85.00
879		\$1000.00 Documentary, Series 1952 (R616). Uncut, Very Fine	45.00
880		\$2500.00 Documentary, Series 1952 (R617). Uncut, Very Fine	(Photo) 100.00
881		\$1000.00 Documentary, Series 1953 (R650). Uncut, uncanceled V. F.	65.00

882	\$2500.00 Documentary, Series 1953 (R651). Uncut, Very Fine (Photo)	125.00
883	\$30.00 Documentary, Series 1954 (R679). Uncut, Very Fine	27.50
884	\$50.00 Documentary, Series 1954 (R680). Uncut, Very Fine	27.50
885	\$100.00 Documentary, Series 1954 (R682). Uncut, Very Fine	15.00
886	\$500.00 Documentary, Series 1954 (R683). Uncut, Very Fine	100.00
887	\$1000.00 Documentary, Series 1954 (R684). Uncut, Very Fine	80.00
888	\$2500.00 Documentary, Series 1954 (R685). Uncut, Very Fine (Photo)	100.00
889	\$100.00 Documentary, Series 1955 (R691). Uncut, Very Fine	25.00
890	\$1000.00 Documentary, Series 1955 (R693). Uncut, Very Fine	60.00
891	\$2500.00 Documentary, Series 1955 (R694). Uncut, Very Fine (Photo)	E. VI
892	\$10,000.00 Documentary, Series 1955 (R696). Uncut, Very Fine (Photo)	E. VIII
893	\$60.00 Documentary, Series 1956 (R699). Uncut, Very Fine	E. II
894	\$100.00 Documentary, Series 1956 (R700). Uncut, V. F.	12.00
895	\$500.00 Documentary, Series 1956 (R701). Uncut, Very Fine	E. IV
896	\$1000.00 Documentary, Series 1956 (R702). Uncut, Very Fine	E. III
897	\$2500.00 Documentary, Series 1956 (R703). Uncut, Very Fine (Photo)	E. VI
898	\$5000.00 Documentary, Series 1956 (R704). Uncut, Very Fine (Photo)	E. VIII
899	\$10,000.00 Documentary, Series 1956 (R705). Uncut, Very Fine (Photo)	E. VIII
900	\$30.00 Documentary, Series 1957 (R706). Uncut, Very Fine	27.50
901	\$60.00 Documentary, Series 1957 (R708). Uncut, Very Fine	E. II
902	\$100.00 Documentary, Series 1957 (R709). Uncut, Very Fine	E. I
903	\$500.00 Documentary, Series 1957 (R710). Uncut, Very Fine	E. IV
904	\$1000.00 Documentary, Series 1957 (R711). Uncut, Very Fine	E. III
905	\$2500.00 Documentary, Series 1957 (R712). Uncut, Very Fine (Photo)	E. VI
906	\$5000.00 Documentary, Series 1957 (R713). Uncut, Very Fine (Photo)	E. VIII
907	\$10,000.00 Documentary, Series 1957 (R714). Uncut, Very Fine (Photo)	E. VIII
908	10c Future Delivery (RC4) Horiz. pair, overprint shifted to right so "URE" and "ERY" are on next stamp	—
909	10c Future Delivery (RC4c). Reversed "Delivery Future" overprint, V. G.	—
910	2c-\$30.00 Proprietaries (bet. R222-R244). 97 stamps, all with Hand- stamped "Future Delivery" markings, including blocks, scarce lot	E. V
911	★田 40c Silver Tax (RG10). Mint Plate No. & Imprint block of 8, Very Fine	28.00+
912	\$30.00 Silver Tax (RG19). Very Fine	30.00
913	1c-\$20.00 Tobacco Sale Tax (RJ1-RJ11) Set, Fine	47.80
914	10c Tobacco Sale Tax Inverted Overprint (RJ4a). Fine	10.00
915	\$10.00-\$20.00 Tobacco Sales Tax (RJ10-11). Fine, uncanceled	30.00

HUNTING PERMIT STAMPS

916	★田 \$1.00 Blue Hunting Permit (RW1). Block of 4 with Plate No., o.g., F.- Very Fine	75.00+
917	★ \$1.00 Rose Lake Hunting Permit (RW2). Plate No. single, V. F., o.g.	25.00+
918	★田 \$1.00 Rose Lake Hunting Permit (RW2). Block of 4 with Plate No., o.g., Fine	120.00+
919	★田 \$1.00 Light Green Hunting Permit (RW4). Block of 4, o.g., V. F.	42.50
920	★田 \$1.00 Light Violet Hunting Permit (RW5). Mint corner block of 4 with plate no.	50.00+
921	★田 \$1.00 Chocolate Hunting Permit (RW6). Mint corner block of 4 with plate no., Very Fine	30.00+
922	★ \$1.00 Hunting Permit (RW7-9). F.-V. F.	15.50
923	★田 \$1.00 Sepia Hunting Permit (RW7). Mint block of 4 with plate no., Very Fine	27.50
924	★田 \$1.00 Brown Carmine Hunting Permit (RW8). Mint corner block of 4 with plate no., Very Fine	27.50
925	★田 \$1.00 Deep Rose Hunting Permit (RW10). Mint plate no. block of 6 V. F.	30.00

926	★	▣	\$1.00 Red Orange Hunting Permit (RW11). Mint plate no. block of 6, F.-V. F.	27.50
927	★	▣	\$1.00 Black Hunting Permit (RW12). Mint plate no. block of 6, V. F.	25.00
928	★	▣	\$1.00 Red Brown Hunting Permit (RW13). Mint marginal block of 6, Very Fine	21.00
929	★	▣	\$1.00 Black Hunting Permit (RW14). Mint plate no. block of 6, V. F.	25.00
930	★	▣	\$1.00 Bright Blue Hunting Permit (RW15). Mint plate no. block of 6, V. F.	25.00
931	★	▣	\$2.00 Bright Green Hunting Permit (RW16). Mint block, Fine	25.00
932	★	▣	\$2.00 Violet Hunting Permit (RW17). Mint plate no. block of 6, V. F.	40.00
933	★	▣	\$2.00 Black Hunting Permit (RW18). Mint corner block of 4 with plate no., Very Fine	25.00+
934	★	▣	\$2.00 Deep Ultramarine Hunting Permit (RW19). Mint block of 4, V. F.	25.00
935	★	▣	\$2.00 Dark Rose Brown Hunting Permit (RW20). Mint Plate No. block of 6, Very Fine	40.00
936	★	▣	\$2.00 Black Hunting Permit (RW21). Mint Plate No. block of 6, V. F.	37.50+
937	★	▣	\$2.00 Dark Blue Hunting Permit (RW22). Mint Plate No. block of 6, Very Fine	30.00
938	★	▣	\$2.00 Black Hunting Permit (RW23). Mint block of 4 with plate no., V. F.	20.00
939	★	▣	\$2.00 Emerald Hunting Permit (RW24). Mint Plate No. block of 6, V. F.	30.00
940	★	▣	\$2.00 Black Hunting Permit (RW25). Mint corner block of 4 with plate no., V. F.	17.50+
941	★		42c-\$5.00 Motor Vehicles (RV6-RV17). V. F. Set	87.00
942			Match & Medicine Collection, 872 stamps, including 248 other 19th century revenues and a few collateral items, in Carter album, few multiples and cancels, some faults as usual, but condition above average for these	2172.62+
943	★		Narcotic Revenues, 38 stamps, all printed or handstamped overprints on 1917 Documentaries, some duplication, o. g., V. G.-V. F.	E. III

U. S. LARGE & MISC. LOTS

944			U. S. Collection, 1851-1940, 376 stamps, used and unused, postage issues only, V. G.-V. F.	E. VI
945			U. S. Collection, 1851-1959, over 1000 diff., used and unused, in National album, includes unused sets of Farley Parks, Presidentials, Famous Americans; Confederate, other better values, Good-Very Fine	350.00
946	★		U. S. Remainder 1857-1955, 476 stamps, many in blocks, mostly F.-V. F.	E. VI
947			U. S. Cancellations, 1857-1912, 238 stamps including a few better items	E. III
948	⊠		Nineteenth Century Covers, 1847-70 Issues, 15 covers includes cancels, foreign usages, two defective no. 1's, Fair-Fine	E. III
949	⊠		U. S. Covers 1840s-1960, 279 covers, including stampless, Military covers, air flights, many cacheted 2c Red First Days, V. G.-V. F.	E. IV
950	⊠		Covers, Stampless, 3c 1857-61 Issues, 148 covers, including shades, cancels, varieties, G.-F.	E. III
951	⊠		Covers in Scrapbook includes Civil War Patriotics also Civil War revenues on Documents, includes 3c Playing Card on Photo, interesting lot of over 100 items	E. III
952	⊠		U. S. Covers, 136 covers, 1861-1895, including many fancy cancels, small New York towns, few Departmental stampless, also eighteen 1880-1895 issues off cover, selected for cancels, Good-Fine	E. III
953	⊠		U. S. Covers, 19th & 20th, 65 covers plus a few unused entires, V. G.-V. F.	E. I
954	⊠		U. S. Covers, 107 covers, 1851-1896, includes fancy cancels, Patriotics, Locals in combination with no's 11, 26, 65, 1c, 2c, 1870 Grills used together, better values; in addition there are over 60 2c U. S. I. R. (R15c) on Vermont bank checks, Fair-Fine	E. VI

955	☒	U. S. Covers , 48 covers, 19th Century, includes better values, foreign uses, Illustrated advertising, cancels, Congressional handstamps and corner cards, also #C18 on flight cover, Fair-Fine	E. IV
956		U. S. Collection , 19th & 20th, several hundred, used & unused, G.-V. F.	E. V
957		19th Century Stuck Down Accumulation , 3c 1861 and 1c-3c Banknote issues, over 2700 stamps, some better cancels including Masonic, Ships, Stars, Paids, patent, Fair-Fine	E. III
958		United States 1861-1935, 150 mostly diff., postage issues only, some better stamps included, G.-V. F.	E. III
959	★	1c-8c 1861-1898 Issues (Betw. 65-281) . 102 stamps, some without gum, Good-Fine	187.15
960		2c-3c Banknote Cancellation , 1792 stamps, includes Numerals, letters, fancy Geometrics, colored, foreign, Postmasters, Held for Postage, Railroads, College, patents, stars, crosses, plate & printing varieties, Good-Fine	E. VI
961		U. S. Remainder , 19th and 20th, several hundred, used and unused, in six A. P. S. Circuit books, priced reasonably to sell at \$146.00	E. VII
962		Damaged U. S. , 19th & 20th, over 600 stamps, includes better items ...	E. III
963	☒	Supplementary Mail , 29 covers, postal cards, and entires mostly with Supplementary Mail markings, mainly 1880-1900 V. G.-V. F.	E. IV
964	☒	U. S. Cover Collection , 79 covers and entires, mostly 1880-1902, all with oval town cancels , mounted in stockbook, Fine	E. III
965	☒	U. S. Covers , large carton containing several hundred covers, 19th and 20th, including, early machine cancels, R. P. O.'s., used abroads, many mourning covers, bisects, unusual town cancels, fancy cancels, military covers, better values, V. G.-V. F.	E. VI
966		U. S. Accumulation , 1890-1960, several thousand used, some better values included, G.-V. F.	E. IX
967		U. S. Accumulation , over 8500 stamps, mostly 20th mainly postage issues, few better items included, G.-F.	550.00+
968	★	1c-30c 1893-1915 Commems (bet. 230-372) . 27 stamps, few without gum, Fine-Very Fine	108.90
969		1c-15c 1893-1915 Commems. (Bet. 234-404) . 38 stamps, F.-V. F.	73.85
970	★	1c-\$1.00 1902-1921 Issues (Bet. 300-543) . 293 stamps, some without gum, Good-Very Fine	E. VI
971	★	Unused U. S. , 1918-1953, in mint sheet book, few better items included mostly in large blocks, Face 72.73	—
972	★	1c-10c Commemoratives (bet. 537-893) . 101 stamps, duplication, F.-V. F.	89.59
973		U. S. Commems , Five packets, each containing 300 diff. V. G.-V. F.	E. III
974	★	U. S. Commemoratives, 1920-1960 (bet. 548-1070) . Several hundred unused Commems, F.-V. F.	E. VIII
975	★	1/2c-50c 1922-1954 Regular Issues (bet. 551-1034) . 256 stamps, some without gum, includes better values. Face over \$11.50	E. II
976	★	Stockbook of Unused U. S. , 1550 stamps, mostly Commems., between No's 679-FA1 over 46.00 face. V. G.-V. F.	150.00+
977	☒	First Day Covers, 22 diff. (bet. 627-797) . Includes Souvenir sheets, Blocks, Plate No. Blocks, F.-V. F. Cat. as singles	33.35
978	☒	20th CENTURY FANCY CANCELS , 1929-35, 98 covers, mostly franked with commems, with a wonderful showing of the fancy colored cancels of this period, mostly different, includes 4 registered, F.-V. F. lot	E. VI
979	☒	U. S. Covers 72 covers, 1930-1950, mostly cacheted airmail covers, includes 50c Chicago Zeppelin, 10c Bell F. D. C., F.-V. F.	E. II
980		1c-10c Farley Parks (756-765) . 77 copies, all perforated 14 for a commercial user in Detroit, F.-V. F.	27.73+

981	PRECANCELS , collection of old-style thru Presidential Buro-Prints , over 4000 diff. including blocks, strips and varieties, includes a few defense and Victory locals, a few clipped copies but condition in general is well above average Gunesch cat.	2873.24
982	PRECANCELLED COMMEMORATIVES , 384 diff., 1893-1935, including many better values, a scarce and interesting lot. V. G.-V. F.	E. VII
983	Precancel Accumulation , 1902-1960, several hundred Local and Buro-Prints including Commems., better values	E. II
984	U. S. Postage Dues , 1879-1932, collection of 111 stamps, used and unused, including Plate No. strips and blocks, F.-V. F.	67.87
985	½c-\$1.00 Postage Dues , 1879-1932, 378 stamps, used and unused, including better values, V. G.-V. F.	E. II
986	1c-\$1.00 Officials, 1873-1911 (O3-O126) . 39 stamps, used and unused, F.-V. F.	90.85
987	2c-25c Parcel Post Dues, Registered, Special Handling , 58 stamps, used and unused, F.-V. F.	31.64
988	U. S. Cut Squares , Homemade Envelope catalog, 1855-1910, illustrated with about 150 cut squares, better items included, interesting lot, G.-V. F.	E. II
989	19th Century Revenues 1862-1875, Several hundred sorted in envelopes, includes some cancels, better values, V. G.-V. F.	E. VII
990	Revenues , 106 stamps, 1875-1935, includes a few blocks, Potato Tax, Newspapers, mostly diff. G.-F.	75.00
991	1c-\$1000.00 Revenues , 1898-1945, Few hundred including some better items, unusual pieces	E. III
992	¼c-\$20.00 Wine Stamps (bet. RE1-RE203) . 345 stamps, some duplication, some faults, perf. cancels, mostly V. G.-V. F.	135.47
993	Match & Medicine , 27 varieties, several better values included G.-V. F.	E. I
994	Private Proprietaries , 118 stamps, duplication, Good-Fine	E. III
995	U. S. Telegraphs , 1884-1935, 129 stamps, duplication, V. G.-V. F.	E. II
996	Covers , and Misc. items. Shoe Box containing 270 covers, postal cards, stamps. Many interesting items, U. S., Canada, Foreign	E. III
997	U. S. & FOREIGN , Misc. large carton including albums and stockbooks	E. V
998	U. S. POSSESSIONS, 76 stamps , used and unused, includes Hawaii, Cuba, Shanghai, and Canal Zone, V. G.-V. F.	61.41
999 ★	United Nations Accumulation , 1951-1955, 93 stamps, including 35 copies of No. 35, some sets included, Very Fine	49.77

U. S. WHOLESALE

1000	3c Red Ty. III #26(120) . V. G.-V. F.	60.00
1001	3c Rose #65(200) . V. G.-V. F.	30.00
1002	3c Rose #65(226) . V. G.-V. F.	33.90
1003	3c Rose #65(1250) . Damaged	187.50
1004	3c Ultramarine Pictorial #114(90) . V. G.-V. F.	63.00
1005	3c Ultramarine Pictorials #114(100) . V. G.-V. F.	70.00
1006	3c Ultramarine Pictorials #114(100) . V. G.-V. F.	70.00
1007	4c Columbian #233(47) . V. G.-V. F.	37.60
1008	5c Columbian #234(22) . V. G.-V. F.	22.00
1009	8c Violet Brown U. S. I. R. wmk. #272a(4) . Very Good	70.00
1010	1c Trans-Mississippi #285(64) . Good-Fine	41.60
1011	2c Pan-American #295(1294) . Bundled, V. G.-V. F.	194.10
1012	13c Purple Black #308(20) , V. G.-V. F.	27.00
1013	50c-\$1.00 1908 Issue #341(6), #342(2) . V. G.-F.	37.00
1014 ★	1c-5c 1909-1913 Commems. #367(4), #370(13), #372(1), #397(19), #398(2), #399(2) . V. G.-V. F.	68.65

1015	2c 1909 Commems. #367(13), #370(136), #372(48). F.-V. F.	84.65
1016	2c 1909 Commem. Imperfs. #368(2), #371(1), #373(6). First two are unused, Very Fine	42.75
1017	1c Panama-Pacific #397(100). V. G.-V. F.	30.00
1018	1c-2c Pan-Pacific #397-398(100 ea.). V. G.-V. F.	45.00
1019	5c Panama-Pacific #399(18). F.-V. F.	36.00
1020	10c Panama-Pacific #400(9), #400A(7). F.-V. F.	34.25
1021 ★	1c-2c Panama-Pacific #401(5), #402(2). F.-V. F.	32.25
1022	1c Pan-Pacific Perf. 10 #401(100). V. G.-V. F.	90.00
1023	1c Pan-Pacific Perf. 10 #401(100). V. G.-V. F.	90.00
1024	2c Pan-Pacific Perf. 10 #402(100). V. G.-V. F.	25.00
1025	2c Pan-Pacific Perf. 10 #402(100). V. G.-V. F.	25.00
1026	5c-10c Pan-Pacific #403(5), #404(2). F.-V. F.	30.75
1027	50c-\$2.00 1912-1918 Issues, #421(2), #460(1), #478(4), #479(3), #547(1). F.-V. F.	46.75
1028	\$1.00 Violet Brown #423(3). Fine	33.00
1029 ★	1c Green Coil #448 (75 pairs). V. G.-V. F.	59.50
1030 ★	2c Offset Ty. IV #526(100). Mint blocks, V. G.	112.50
1031 ★	1920-1927 Commems. #549(7), #614(1), #615(8), #617(8), #618(4), #629(18), #644(19). F.-V. F.	53.40
1032	\$1.00 Violet Black 571(500). V. G.-V. F.	60.00
1033 ★	1c-2c Imperforates #575(18), #576(42), #577(36), #631(12). In blocks, Very Fine	81.45
1034	2c-10c Commemoratives, 1923-1933, #611 (16), #628 (14), 644 (14), 650 (14), 657 (12), 683 (41), 688 (33), 703 (100), 765 (12), 796 (77) F.-VF	130.78
1035 ★	2c Harding Perf 10 #612 (24). Some in blocks, F.-V. F.	62.50
1036 ★	2c Red Commems. (Bet. 627-717) 15 Varieties, 376 stamps, mostly in blocks, F.-V. F.	79.44
1037 ★	5c Ericsson #628 (23). Includes 4 blocks, V. F.	50.00
1038 ★	2c-5c 1928 Commems. #646 (42), #647 (6), #648 (4), #649 (10), #650 (11) F.-V. F.	49.05
1039 ★	2c Edison #654 (13), #655 (21), #656 (10), F.-V. F.	28.35
1040 ★	1c-9c Kans.-Nebr. Overprints (Bet. 658-676) 60 stamps, 14 Varieties, F.-V. F.	53.25
1041	1c-10c Kans.-Nebr. Overprints (Bet. 658-679) 71 stamps, 12 Varieties, V. G.-V. F.	46.37
1042	3c Commemoratives, 1930-1960, over 6000, soaked and sorted, V. G.-V. F.	E.III
1043	1931-1933 Commem. Plate No. Blocks of 4 #702 (12), #703 (9) #709 (3), #717 (4) F.-V. F.	37.45
1044	1c-10c Bicentennials #705 (1830), #706 (240), #707 (2440), #708 (600), #709 (190), #710 (200), #711 (50), #712 (450), #713 (75), #714 (85), #715 (250) V. G.-V. F.	246.95
1045	½c-10c Bicentennials #704 (263), #705 (537), #706 (384), #707 (372), #708 (305), #709 (342), 710 (300), #711 (233), #712 (349), #713 (276), #714 (400), #715 (454) V. G.-F.	278.78
1046	3c Byrd #733 (34). Fine-Very Fine	17.00
1047	3c Byrd #733 (114). F.-V. F.	57.00
1047A	3c Byrd Souvenir Sheets #735 (10). Very Fine used	37.50
1048	2c-3c 1936-1937 Commems. #777 (294), #786 (294), #787 (352), #795 (392), #798 (461), bundled, F.-V. F.	89.65
1049	\$1.00 Presidential #832 (800). Very Good-Very Fine	64.00
1050	\$2.00-\$5.00 Presidentials #833 (25), #834 (11). Mostly in blocks, F.-V. F.	52.50
1051 ★	11c-15c Souvenir Sheets #948 (57), #1075 (12) V. F.	34.65
1052 ★	5c-20c Airpost #C7 (12), #C8 (8), #C9 (4), #C11 (27). F.-V. F.	28.35
1053	10c-20c 1926-1927 Airpost Issues #C7 (71), #C8 (28), C9 (12), #C10 (25). F.-V. F.	51.95

1054	20c-50c Trans-Pacific Airpost Issues #C20 (66), #C21 (21), #C22 (6). F.-V. F.	58.35
1055	5c-30c 1939-1952 Airpost Issues #C24 (21), #C27 (30), #C28 (64), #C29 (40), #C30 (37), #C38 (19), #C46 (17), #CE1 (23). F.-V. F.	48.58
1056	50c Orange Airpost #C31 (88). F.-V. F.	44.00
1057	10c Special Delivery #E1 (26), #E3 (31). G.-V. F.	176.50
1058	10c Special Deliveries, 1885-1911 #E1 (5), #E2 (8), #E4 (1), #E6 (7), #E7 (5), #E8 (3). V. G.-V. F.	61.25
1059	1c-75c Parcel Post Issues #Q1 (40), #Q2 (83), #Q3 (12), #Q4 (30), #Q5 (52), #Q6 (17), #Q7 (4), #Q8 (6), #Q9 (7), #Q10 (1), #Q11 (1). V. G.-V. F.	97.00
1060 ★	1c Green Small I. R. opt. #R153 (500). V. G.-V. F.	150.00
1061	40c Documentary #R214 (38). Fine-Very Fine	76.00
1062	\$3.00-\$4.00 Documentaries #R450 (15), #R451 (11). V. G.-V. F.	126.00
1063	\$10.00 Documentaries #R453 (55), #R503 (50). V. G.-V. F.	105.00
1064	\$30-\$100 Documentaries (R455, R456, R458, R482). Uncut, V. F.	51.00
1065	\$100.00 Documentary #R458 (6). Uncut, Fine	60.00
1066	1c-10c Documentaries (Bet. R461-R492). 1244 stamps, uncut F.-V. F.	188.70
1067	\$1.00 Documentary #R473 (117) \$5.00 Documentary #R477 (45). Un- cut, F.-V. F.	70.20
1068	\$4.00 Documentary #R476 (128) \$20.00 Documentary #R479 (19). Punched, F.-V. F.	116.20
1069	\$10.00 Documentaries #R478 (50). Uncut, F.-V. F.	125.00
1070	\$20.00 Documentary #R504 (17). Uncut, s. e., Fine	80.75
1071	\$30.00-\$100.00 Documentaries #R505 (5), #R506 (5), #R508 (5). Cut cancels, F.-V. F.	110.00
1072	\$50.00 Documentary #R581 (3). Uncut, Fine	37.50

CONFEDERATE STATES

1073	Baton Rouge, La 5c Green & Carmine (11x2). Thin, Very good appear- ance	100.00
1074	Knoxville, Tenn. 5c Brick Red (47x1). Ms. cancel, slightly broken horiz. crease, Fine appearance	175.00
1075	Macon, Ga. 5c on Gray Green (53x2). Margins all around, Ms. cancel, crease and tiny thin, Fine appearance (Photo)	135.00
1076 ★	Mobile, Alabama 5c Blue (58x2). Margins all around, faults	80.00
1077	Mobile, Ala. 5c Blue (58x2). Margins all around, tied to small piece, Fine	25.00
1078	New Orleans, La. 2c Blue, 2c Red, 5c Brown on Blue (62x1, 62x2, 62x3). First two unused, sm faults, Good-Fine	55.00
1079	New Orleans, La. 5c Brown (62x3). Horiz. pair, margins all around, just clear at bottom, June 18, 1861 pmk, Fine (Photo)	30.00
1080	New Orleans 5c Brown (62x3). Horiz. pair, margins except just in at bottom of left stamp, town pmk., Fine	30.00
1081	New Orleans 5c Brown on Blue (62x4). Large margins all around, Paid cancel, Very Fine	20.00
1082 ☒	Augusta, Ga. Paid 5 on cover to Florida, Fine	E. II
1083 ☒	Augusta, Ga. Paid 5, on cover to Florida, Fine	E. II
1084 ☒	Vicksburg, Miss. pmk. "Due 6", ms. "Prisoners Letter", signed on back by examiner, contains letter, V. G.	E. II
1085 ☒	Washington, Ga. Paid 10, on cover to Manassas, Va., Very Fine	E. II
1086 ☒	Washington, Ga. Paid 10 on cover to Va., small piece missing at U. L., otherwise Fine	E. I
1087	1c-20c General Issues (Bet. 1-14). 13 stamps, 9 Varieties, mostly un- used Good-Very Fine	58.50

1088	★	田	5c Light Blue (6). Mint Lower left sheet corner block of 24, fresh and Extremely Fine	45.00+
1089	★	田	5c Light Blue (6). Mint lower right sheet corner block of sixteen, two L. R. stamps show extraordinary printing Varieties caused by foreign matter on back of sheet, one appears to have large ornate necktie, fresh and Extremely Fine	E. V
1090	★	田	5c Light Blue (6). 25 copies, mostly in blocks, most are V. F.	45.5c
1091	☒		5c Blue (6). Vert. Pair, margins all around, just clear in two places, str. line Paid cancels, Columbus, Ga. pmk. on homemade envelope, Very Fine	E. I
1092	★		10c Blue TEN (9). Margins all around, just clear at bottom, Fine (Photo)	55.00
1093	☒		10c Blue (11-12). Two covers tied with diff. type grids contains letters from Army Camps, Fine	E. II
1094	★		1c Orange (14). Margins all around, light gum wrinkles, V. F.	15.00
1095	★		1c Orange (14). 2 copies, shades, Fine	30.00
1096			Confederate States \$100 Bond , Issue of May, 1861 with 14 coupons attached, Very Fine	E. I
1097			Confederate States \$500.00 Bond . Issue of 1863, with six attached coupons, age browned, Fine	E. I
1098			Leaders of the Confederacy , 24 diff. Magnus Cards in Rose & Black including Stephens, Davis, Lee, Beauregard, Generals, F.-V. F.	E. III

U. S. POSSESSIONS

1099	★		CANAL ZONE , 1939, 5c-\$1.00 Airpost (C15-C20). V. F. set	24.10
1100			GUAM , 1899, \$1.00 Black Ty. I (12) Horiz. pair, Blue str. line Agana, Guam cancel, Fine	40.00+
1101			HAWAII , 1857, 5c Blue (8). Margins all around, tied with U. S. No. 17, small margins 3 sides, touched at bottom, on small piece by San Francisco pmk., Fine. Cat. on cover	(Photo) 450.00
1102	☒		— 1857, 5c Blue (8) in combination with U. S. 12c Black (36). Both tied by San Francisco, Cal. pmk. Red Honolulu U. S. Postage Paid Apr. 12, cover has stain at U. R. and sealed tear thru Hawaiian pmk., this combination not listed in Scott Specialized Extremely Scarce with 12c Perforated	(Photo) E. XI
1103	★		— 1868, 13c Dull Rose Reissue (11). Small margins all around, Fine (Photo)	42.50
1104	★		— 1864-66, 2c Black (20). Tiny tear, small thin, V. F. appearance	45.00
1105	P		— 1864, 5c Blue India Proof mounted on card (32P). V. F.	12.50
1106	TC		— 1864, 5c Green Trial Color India Proof mounted on card (32TC) Very Fine	22.50
1107	P		— 1864, 18c Dull Rose India Proof (34P). Very Fine	12.50
1108	★		— 1883, 50c Red, \$1.00 Rose Red (48, 49). O. g., F.-V. F.	27.00
1109			— 1846, Revenue "Hoailona Pai O Ke Alii, Royal Stamp" embossed with Crown, Fine	—
1110			— 1850, as above in black, V. F.	(Photo) —
1111			— 1850, as above in blue, V. F.	(Photo) —
1112			— 1850, as above, V. F.	—
1113			— 1857, Larger size, than above printed, V. F.	(Photo) —
1114			— 1878, \$5.00, \$10.00 two Revenues , Embossed Circular Impressions on piece of document with part triangular cancel, Fine	—
1115			— 1892, "25c Cents, Internal Revenue Stamps, Act of Aug. 4, 1892, Kingdom of Hawaii", Fine	—
1116			— 1877-97, 20c-\$1.00 Revenue, 12 diff. used and unused, Fine lot	—

1117	✉	UNITED NATIONS , 1951-1955, 1c-\$1.00 Regular Issues, Souvenir Sheet (1-11, 38). Unaddressed Artcraft First Day covers, V. F.	66.25
1118	✉	— 1951, 1c-\$1.00 Regular & Airmail Issues (1-11, C1-4). Blocks, Un-addressed Artcraft First Day covers, Very Fine	105.00
1119	✉	— 1954, 10c Royal Blue on Bluish Air Letter Sheet (UC2). Perforated "D. & S. Sample", Very Fine	—

GENERAL FOREIGN

1120	▣	ARGENTINE REP. , 1931, 5p Dark Violet & Green (404). Vert. block of 8, Fine	24.00
1121		— Buenos Aires , 1860, 4R-1P Liberty Head (9-13). Thins, Fine appearance	66.50
1122		AUSTRIA , 1850, 1kr Yellow and Orange (1, 1b). Five different shades, all with margins, F.-V. F. lot	40.00+
1123		— 1850, 1k Yellow (1). 3 different shades, margins all around, V. F.	24.00
1124		— 1850, 1k Yellow, printed on both sides (1a). Margins all around, Very Fine	20.00
1125		— 1850, 1kr Printed on both sides (1a). Margins all around, V. F.	20.00
1126	✉	— 1850, 1kr Yellow Orange (1). Margins all around, tied on folded letter, V. F.	E. I
1127		— 2kr Black (2). Five stamps, margins all around, includes hand made and machine paper, F.-V. F. lot	35.00
1128	✉	— 1850, 2kr Black (2). Margins all around, tied by boxed Prag cancel, Very Fine	E. II
1129		— 1850, 3kr Red (3). Eight horiz. pairs, margins all around, different cancels, V. F. lot	E. II
1130		— 1850-64 (betw. 3-26). 12 different stamps with Red cancels, F.-V. F. colorful lot	E. III
1131		— 1850, 6k Brown (4). Horiz. strip of 3, margins all around, "Pesth" cancel, V. F.	E. I
1132		— 1850, 9kr blue (5). 80 stamps with margins all around, incl. good variety of cancels, F.-V. F.	E. I
1133	★	— 1936, 10s Dollfuss (380). Very Fine (Photo)	120.00
1134	★	— 1933, 50g Wipa (B110). Very Fine	30.00
1135	★	— 1933, 50g Granite Paper (B110a). Very Fine (Photo)	55.00
1136		— Lombardy Venetia 1850, 5c Buff, printed on both sides (1a). Margins all around, Fine	20.00
1137		AZORES , 1868, 50R Green, 80R Orange (4, 5). F.-V. F.	70.00
1138		BARBADOS , 1852, ½p Yellow Green (1a). Margins all around, just clear at L. R., Fine	20.00
1139	★	BECHUANALAND , 1889, ½p Black, Double Overprint, one Inverted (29b). Very Fine	(Photo) 45.00
1140		BELGIUM , 1849-51, 10c-40c Imperforates (1-2, 5-8). 6 different, V. G.-V. F. lot	56.30
1141	★	— 1878, 5Fr. Pale Brown (39). O. g., slightly broken crease, Fine appearance	350.00
1142	★▣	— 1946, Airpost Semi-Postal (CB1-CB2). Set of Blocks, V. F.	12.00
1143		BERMUDA , 1874-1875, 1p-3p Surcharges (8, 13-14). First used, Faults, Fine appearance	113.50
1144		BOLIVIA , 1866-68, 5c-100c Eagles (bet. 1-8). 8 stamps, mostly diff., 6 unused, 2 ms, cancelled Fair-Fine	151.00
1145	★	— 1868, 500c Black (14). Minute faint thin, no gum, Fine appearance	100.00
1146	★	— 1871, 500c Black (19). No gum, Fine	(Photo) 200.00

1147	BRAZIL 1843, 9r Black (3). Small margins all around, faint thinning, Fine appearance	150.00
1148 ★	BRIT. COLONIALS, Geo VI Coronations , 1937, Complete set 202 Values, V. F.	39.79
1149 ★	— Geo VI Coronations , 1937. Complete set of 202 Values in special album V. F.	39.79
1150 ★	— 1937, Geo VI Coronations, Complete set of 202 Values in special album V. F.	39.79
1151 ★	— 1937, Geo VI, Coronation, Cpl. set of 202 Values in special album	39.79
1152 ★	BRITISH COLUMBIA , 1869, \$1.00 on 3p Green (18). No gum, Fine (Photo)	110.00
1153	CANADA , 1851, 6p. Grayish Purple (2). Margins all around, just touches U. R. and L. R., light Blue target cancel, small faint thin, Very Fine appearance	85.00
1154	— 1852, 3p Red (4). Clear to very large margins all around, Fine	20.00
1155 ☒	— 1859-68, 5c Vermilion two, 3c Red (15, 25). Tied on two covers, Fine	E. I
1156 ★	— 1859, 2c Rose (20). No gum, Fine	(Photo) 40.00
1157 ★田	— 1872-93, ½c-3c Victoria (34, 36-37, 41). Blocks, few light gum creases, o. g., V. G.-F.	33.60+
1158 ★田	— 1888-1893, 6c Red Brown (43). L. L. sheet corner block, o. g., V. F.	12.00+
1159 ★田	— 1888-1893, 6c Red Brown, Chocolate (43, 43a). Blocks, o. g., F.-V. F.	46.00+
1160 ★	— 1897, ½c-50c Jubilees (50-60). o. g., F.-V. F.	44.95
1161 ★田	— 1897, 1c-8c Jubilees (51-56). Blocks, four have no gum, F.-V. F.	54.80+
1162 ★田	— 1897-1917, 1c-5c, 30 blocks, nearly all diff. (bet. 52-MR5). F.-V. F.	85.88+
1163 ★田	— 1897, ½c-8c Victoria (66-72). Blocks, F.-V. F.	35.60+
1164 ★田	— 1897, 10c Brown Violet (73). Block, one short perf, otherwise o. g., V. F.	(Photo) 52.00+
1165 ★	— 1898-1902, ½c-10c Victoria (74-83). o. g., F.-V. F.	29.22
1166 ★田	— 1898-1902, 6c Brown (80). Block, o. g., F.-V. F.	18.00
1167 ★	— 1898-1902, 20c Olive Green (84). V. F., o. g.	25.00
1168 ☒	— 1898, 2c Map (85). Tied, Kentville, N. S. pmk. on illustr. adv. cover showing Railroad Attractive	E. I
1169 ★	— 1908, ½c Quebec (96). Sheet of 100 with reentry, V. G.-V. F.	45.00+
1170 ★田	— 1908, 1c-7c Quebec Tercentenary (96-100). Blocks, F.-V. F.	38.00+
1171 ★田	— 1912-1925, 5c Dark Blue (111). Three blocks, distinct shades, F.-V. F.	30.00
1172 ★田	— 1912-1925, 10c Plum (116). Two blocks, distinct shades, F.-V. F.	40.00
1173	CAPE OF GOOD HOPE , 1853-1855, 4p Blue (2, 4). Margins all around, first has light crease, otherwise Very Fine	29.50
1174	— 1853-1858, 4p Blue (2, 4). Large margins all around, tiny creases, V. F. appearance	29.50
1175	— 1855-58, 1p-1sh Triangles (3-6). Good	129.50
1176 ★	CAPE VERDE , 40r Blue in Pair with Mozambique 40r (5a). Perf faults & thin, Rare item	175.00
1177	CEYLON , 1863, 5p Carmine Brown (40). Perf faults, light canc, fine appearing, scarce stamp	42.50
1178 ★	COLOMBIA , 1859, 2½c Yellow Green (1a). o. g., V. F.	11.00
1179	— 1905, 50p Orange Yellow, 100p Dark Blue (323, 324). First has light crease, latter tiny thin, V. F. appearance	52.50
1180 ★	— Antioquia , 1883, 10c Scarlet (39a). Tete-beche pair, Fine o. g.	25.00
1181 ★	CYPRUS , 1880, ½p Rose, Plate 19 (1). No gum, paper toned, Fine appearance	75.00
1182	DANISH WEST INDIES , 1873-96, 14c Lilac & Green (12). Small faults, Fine appearance	60.00
1183 ★田	DENMARK , 1864, 4s Red Imperforate (13a). Block, minute thin spots, otherwise V. F.	(Photo) 80.00
1184	DOMINICA , 1882, ½p on 1p Violet (11a). Two used Pairs, V. F.	32.00

1185	★	DUTCH INDIES , 1874-75, 5c Ochre (J3). No gum, small tear, Fine appearance	60.00
1186		FINLAND , 1856, 5k Blue (1). Town cancel, repaired	175.00
1187	★	— 1891, 3½r Black & Gray (57). o.g., V.F.	25.00
1188	★	— 1930, 10m Airpost (C1). Very Fine	22.50
1189	✉	FRANCE , 1862-71, 10c, 20c (2) 40c, 80c (25-28). 5 stamps on 3 covers, Constantinople, Smyrna & Barcelona cancels, Fine lot	E. II
1190	★	— 1870-1872, 30c Brown (46, 62). First has o.g., F.-V.F.	50.00
1191	★	— 1870-1873, 40c Orange, Yellowish (59). No gum, Fine	22.50
1192		— 1870, 40c Orange (59, 59b). Vertical pair showing both types, light "5118" cancel (Yokohama) V.F. and Rare	E. III
1193	★	— 1877, 75c Carmine Rose, Ty II (83). Tiny bit of paper on back, Fine o.g. (Photo)	55.00
1194	★	— 1923, 1fr Philatelic Congress (197). Very Fine	16.00
1195	★	— 1936, 50fr Banknote Airpost (C15). Very Fine	30.00
1196	★	— 1936, 10fr Airpost (C17). Very Fine	15.00
1197	★	— 1871, 40c Blue, 60c Yellow (J8-J9). V.G.	70.00
1198	✉	GERMANY, Stampless Covers Collection of 85 diff., all with " Postablage " markings, V.F. lot	E. VIII
1199	✉	— Stampless Covers , 1820-1860's, collection of 66 diff., F.-V.F. lot	E. IV
1200		— 1872, 2kr Orange, Large Shield (22). Fine	65.00
1201	✉	1889-1900, 5pf Green (47, 54). 47 diff. pioneer picture post cards, many in color, V.F. lot	E. II
1202	✉	— 1939-1949, 48 covers, wide variety of stamps, including some better values, in cover album, F.-V.F.	E. III
1203	★	— 1929, Semi Postal (B28-B32). Cpl. Set, V.F.	15.45
1204	★	— 1932, Semi Postal (B44-B48). Cpl. Set, V.F.	13.60
1205	★	— 1930, 2m-4m So. American Zeppelin (C38-C39). Cpl. set, Fine	44.00
1206	✉	— Russian Occupation , 20pf Blue (10N27). Variety Overprint Inverted , tied by 1948 cancel on local cover. Very Fine. Unlisted in Scott	—
1207		— Offices in Turkish Empire , 1905, 25 pi on 5m (42). Centered to top, Fine	60.00
1208		GREAT BRITAIN , 1840, 1p Black (1). Five stamps, average margins, two with black canc. V.G. lot	60.00
1209		— 1841, 2p Blue (4). Horiz. strip of 3, margins all around, clear Blue numeral in grid cancels, Very Fine	E. II
1210	✉	— 1847, 1/Green (5). Large margins on 3 sides, just touching at R., tied by Liverpool Spoon cancel and by Red Phila. Br. Pkt. 24 Paid, 5 cents in Red, on neat folded letter, pr. "Canada" in ms. attractive & V.F.	E. II
1211		— 1847-1854, 6p-1/Embossed (5-7). 10p has light horiz. crease, otherwise F.-V.F.	59.00
1212		— 1847-1854, 6p Red Violet, 1/Green (5, 7). Horiz. and Vert. pairs, both with margins except just in at one point, 6p has tiny corner crease, Fine	48.00
1213	★	— 1848, 10p Red Brown (6). Margins all around, light horiz. crease, Very Fine appearance	120.00
1214	✉	— 1854, 4p Rose on Bluish (22). Horiz. strip of 3, Lochgilthead, Scotland cancels on small neat cover to North Carolina, Red British, 5 Cents, and N. York Br. Pkt. pmks. in red, one stamp has tiny tear, attractive and Fine	36.00+
1215		— 1865, 9p Straw (46). Centered T.L., tiny thin, light cancel, nice appearing	60.00
1216		— 1882, £5 Bright Orange Telegraph, V.F.	E. II
1217		— 1882, £5 Bright Orange Telegraph on bluish, Fine	E. II
1218		— 1884, 10/ Ultramarine on Bluish (109b). Light cancel, creased corner perf., Very Fine appearance	110.00

1219	☒	— 1891, £1 Green (124). Tied on small neat Registry entire by "Registered Leicester" in oval, tiny tear, Very Fine appearance	22.50+
1220		— 1891-1902, £1 Green (124, 142). Small faults	42.50
1221	☒	— Mulready Caricatures(7 diff. unused envelopes, five of Fores and two Southgates, one of latter a facsimile, F.-V. F.	E. II
1222	★	GREECE , 1861, 1L Chocolate (1). Trifle cut T. R. corner and minute thin spot, very attractive	65.00
1223		— 1861, 1L Chocolate (1). Very Good	40.00
1224		— 1861, 1L-80L Paris Print (1-7). Faults but nice appearing	107.00
1225	★	— 1861, 40L Violet (5). Margins all around, light vertical crease, V. F. appearing, o. g.	20.00
1226	★	— 1872, 10L Red Orange (40). Horiz. Pair, Frame line partly touched at L, small nick UR corner, o. g., Scarce	60.00+
1227	★	— 1901, 1L to 5d Hermes (165-178). o. g., F.-V. F. Set	11.09
1228		GUATEMALA , 1902-24, Over 220 stamps, majority unused, incl. blocks, strips, types of surcharges, dups, etc., F.-V. F. lot	70.00+
1229	★	HAITI , 1944, 10c on 60c Airpost (C24). Sheet of 50, V. F.	25.00
1230		HANOVER , 1861, 10G Green (24). Repaired, V. F. appearance	90.00
1231		ICELAND , 16sk Yellow (4). Minute thin, Fine appearance	65.00
1232		— 1876-97, 5a Blue, 3a on 5a Green (8, 31). Minor defects, nice appearing	51.00
1233	☒	INDIA , 1855, ½a Blue (11). 10 copies on small native covers, 8 used in Nepal , a variety of transit and arrival makings, Fair-Good	E. II
1234		— Scinde District Post , 1852, ½a White (A1). Large margins, broken crease, Very Fine appearance	80.00
1235	★	IONIAN ISLANDS , 1859, ½p-2p (1-3). V. G.-Fine	21.00
1236	☒	ITALY , 1454, folded letter from Bologna to Venice, manuscript postal markings, Very Fine	E. II
1237	☒	— 1459, folded letter from Florence to Venice, manuscript postal markings, Very Fine	E. II
1238	☒	— 1459, folded letter from Naples to Venice, manuscript postal markings, small portion of one corner gone, otherwise Very Fine	E. II
1239	☒	— 1459, folded letter from Rome to Venice, manuscript postal markings, Very Fine	E. II
1240	★	— 1863, 5c Slate Green, 10c Buff (26-27). No gum, V. G.-F.	55.00
1241	★	— 1875-1879, 2c-10L Portraits & Numerals (45-47, 49, 51, O1-O8). All but one o. g., G.-F.	72.50
1242	★	— 1930, 7.70L Airpost (C27). Very Fine mint	(Photo) 50.00
1243	★	— 1933, Balbo Airpost (C48-C49). Fine set	17.00
1244	★	— 1933, Balbo Airpost Official (CO1). Very Fine	(Photo) 200.00
1245	★	— Rhodes , 1944, Semi-Postals & Airmails (B9-14, CB1-4). F.-V. F. sets	13.30
1246		JAMAICA , 1860-1891, ½p-1/, 81 stamps with clear Numeral Cancels , 31 different Numerals, Good-Very Fine	E. III
1247	★田	JAPAN , 1871, 48m Brown (1). Block of 15, tiny rub on 1 stamp, small nick LL corner, V. G.-V. F. and rare piece	(Photo) 120.00+
1248	★田	— 1871, 100m Blue (2). Block of 30, few slight creases and small margin tears but mostly F.-V. F., Rare and attractive show piece (Photo)	270.00+
1249		— 1872-75, (Betw. 10a-53). 8 stamps, used & unused, incl. #18 unused, Good lot	59.40
1250	★	— 1874, 20S Violet, Syllabic "5" (38). Very Fine	(Photo) 27.50
1251	★	KOREA , 1948, 5wn Orange Brown (87). Complete Sheet of 50 , V. F.	125.00
1252	★S	LIBERIA , 1952, 25c-50c Jehudi Ashmun Airmails, 5 of first, 4 of last overprinted Specimen , various colored frames & centers (San. AS90-91, \$5.00 each)	45.00
1253	★	LIECHTENSTEIN , 1930, 15rp-1fr Airpost (C1-C6). Cpl. set, no gum otherwise V. F.	18.60

1254	★	— 1931, 1fr-2fr Zeppelin (C7-C8). Cpl. set, Very Fine	29.00
1255	☒	LUXEMBOURG , 1852, 10c Black (1). Margins all around, just touched at two corners, tied by dot in concentric rings cancel, Wiltz pmk. and boxed PD, small attractive cover, Fine	E. II 45.00
1256		MADEIRA , 1868, 100R Lilac (5). Very Fine	40.00
1257		MAURITIUS , 1861, 1sh Green (21), Fine margins except frame partly cut at L, Fine	17.70
1258		MONACO , 1885, 1c-75c Portraits (1-8). Two used, V.G.-V.F.	
1259	☒	NEPAL , 1860-1900, Eleven covers to or from Nepal, including 3 stampless & seven with Indian stamps, other with Nepal No. 7, a wide variety of Postal Markings including several Nepal Pmks of the Indian P.O. in Nepal, nice lot, G.-V.F.	E. IV
1260	☒	— 1881-1929, 23 covers with 46 stamps, a wide variety of stamps, cancels and combinations, G.-V.F.	E. III
1261	☒	— 1886-1903 2 covers, one No. 10 tied by ms. cancel, other with No. 11, 7 tied together by double circle, Fine	E. II
1262	☒	— 1907-1929, 10 Registered covers with 30 stamps and a wide variety of cancels, some scarce, Fine lot	E. III
1263	★	NETHERLANDS , 1867, 50c Gold (12). Centered, perfs clipped at top, nice appearance	80.00
1264	☒	NEW BRUNSWICK , Sussex Vale, N.B. in unframed circle, ms. rate mark, used to Fredericton in 1838, Fine	E. II
1265		— 1851, 3p Red (1). Large margins all around, trivial faint corner crease, Very Fine appearance	35.00
1266		— 1860-63, 1c-17c Portraits (Bet. 6-11). 8 diff. used and unused, including shades, V.G.-Fine	17.05
1267	★	— 1860-1863, 1c-17c Portraits & Pictorials (6-11). 32 stamps including shades, blocks, V.G.-V.F.	48.00
1268	☒	— 1860, 1c Brown Violet (6a). Tied "St. John, N.B. Paid" cancel on cover front, V.F.	E. I
1269	★	NEWFOUNDLAND , 1860, 3p Green (11A). Very Fine, o.g.	11.00
1270	★	— 1870, 3c Vermilion (33). Fine	22.50
1271	★田	— 1880-96, ½c-6c (Betw. 35-58). 10 different blocks, few minor faults, V.G.-V.F. lot	57.60+
1272	★田	— 1890-94, 3c, 5c, 6c, (36, 55, 60a). Blocks, V.F., o.g.	19.00+
1273	★	— 1876-79, 1c Rouletted (37). V.F.	14.00
1274	★田	— 1896, 3c Violet Brown (52). Block, V.F., o.g.	24.00+
1275	★田	— 1887-1896, 10c Black (59). Block, F.-V.F. part o.g. (Photo)	28.00+
1276	★	— 1897, 1c-60c Cabot Issue (61-74). Fine o.g. set	35.25
1277	★田	— 1897-1908, 1c-5c Cabot, 2c Map (61-65, 86). Blocks, F.-V.F., o.g.	20.60+
1278	★田	— 1897-1901, ½c-5c Portraits (78-85). Blocks, V.F. Set	19.80+
1279	☒	— 1919, 1c-36c Caribou (115-126). Complete set on neat Registered cover, light cancels, F.-V.F.	25.65+
1280		NEW SOUTH WALES , 1850, 1p Red (1). Large margins all around, Very lightly cancelled, magnificent early impression, Extremely Fine Gibbons £90	(Photo) 70.00
1281		— 1850, 1p Red (1). Clear margins all around, tiny scissor cut and minute nick, Fine appearance	70.00
1282		— 1850, 2p Blue (6). Margins all around, V.F. (Photo) .	30.00
1283		NEW ZEALAND , 1862-71, 1p-1sh (Betw. 23-43). 22 stamps, incl shades & dups, some minor defects, V.G.-V.F.	77.50
1284		NORWAY , 1855, 4s Blue (1). Margins all around, irregular on two sides, touches one spot, just cuts in one corner manuscript "Foldin" cancel, attractive	E. II
1285		NOVA SCOTIA , 1851, 6p Yellow Green (4). Large margins all around, faint crease, Extremely Fine appearance	50.00

1286	☒	— 1860-63, 5c Blue (10). 4 stamps tied on covers, 1 slight crease, G.-V. F.	E. II
1287	★	PHILIPPINES , 1854, 10c Carmine (2). Small thin, V. F. appearance	60.00
1288		— 1854, 1r Slate Blue (4). Two copies, one unused, faults, F.-V. F. appearance	90.00
1289		PORTUGAL , 1870-73, 240r Pale Violet (33, 49). Small defects, Fine appearance	122.50
1290		QUEENSLAND , 1860, 2p Deep Blue Imperforate (2). 3 large margins, frame line partly cut at R, tiny thin, Rare stamp	(Photo) 200.00
1291	★	RYUKYU ISLANDS , 1948, 1y Ultramarine (7a). Tropical gum, V. F. (Photo)	40.00
1292	★	— 1948, 1y Ultramarine (7a). Tropical gum, small natural spot on paper, Fine	40.00
1293	★	SAAR , 1950, 8fr-50fr Abbey (B77-B81). Plate No. singles, V. F. Set	21.00
1294		ST. VINCENT , 1869-77, 4p, 6p (7, 21). Red cancels, Very good	40.50
1295		— 1869, 1sh Indigo (9). Centered to BL, Fine	27.50
1296	★	— 1880, 5/Rose (29). Minute stain on one perf, exceptionally well centered, o. g., Fine	(Photo) 250.00
1297		— 1883, 6p Yellow Green (38). Very good	45.00
1298	★	SAXONY , 1855-56, ½ng Gray-10ng Blue King John I (9-14). No gum, V. G.-F. set	86.25
1299	☒	SIAM , 1925 Airpost, 24 copies on 13 cacheted flight covers, fine lot	E. II
1300		SPAIN , 1850, 6c Black (1). 21 stamps incl. 1 Pair, mostly with minor faults ,very good lot for plating	42.00+
1301	★	— 1850, 12c Lilac (2). Margins all around, small thin, V. F. appearance	125.00
1302		— 1851, 2r Red (8). Margins all around, trivial ½mm interior paper cut, shows only on back, otherwise V. F.	(Photo) 650.00
1303	★	— 1862-70, 19 Cuartos 3 diff. (58, 64, 173). First is used, slight faults but very attractive lot	86.00
1304		SWEDEN , 1862-72, 17o Red Violet, 1rd Bistre & Blue (14, 27). Two shades of each, V. G.-V. F.	40.00
1305	★	— 1872-77, 5o Blue Green (19). V. F., o. g.	17.50
1306		SWITZERLAND , 1850, 2½r Black & Red Imperforate, (1L5). Margins all around, tiny thin, V. F. appearing	(Photo) 225.00
1307		— 1850-51, 5r-10r (8, 10). Three of each incl. shades, few small defects, V. G.-Fine lot	46.50
1308		— 1852, 15r Vermilion (13). Large margins all around, light cancel, slight negligible corner crease, V. F. appearance	50.00
1309		— 1854-55, 5r Pale Yellow Brown (20). Upper left sheet corner copy, margins all around, just clear at u. r. brilliant impression, light cancel, Extremely Fine	(Photo) 4.00
1310	☒	— 1858-62, 5r Dark Brown Horiz. pair, 40r Dark Yellow Green (36, 40). F.-V. F. margins tied on folded letter, V. F.	E. II
1311	★	— 1951, Souvenir Sheet (B206). Two sheets, V. F.	20.00
1312	★	— 1919-20, 30c-50c Airpost (C1-C2). Cpl. Set, Very Fine	25.00
1313	★	— 1923-35, Airpost Issues (C3-C14). Cpl. Sets, F.-V. F.	20.10
1314	☐	TIBET , 1912, 1/6-¾t Lions (1, 2, 4). Complete sheets of 12, second is used, latter has two POTSAGE errors, V. F.	46.00+
1315		— 1912-33, 28 stamps with Tibet cancels, 10 Varieties, F.-V. F.	E. II
1316		— 1912, 1s Sage Green (6). Two used copies, one unused V. F.	165.00
1317	★	— 1912, 1s Sage Green (6). Horiz. strip of 3, V. F.	(Photo) 135.00+
1318	★☐	— 1912, 1s Sage Green (6). Complete unused sheet of 12 , V. F.	540.00+
1319	☐	— 1912, 1s Sage Green (6). Complete sheet of 12 , Bold Lhasa pmks., Very Fine	(Photo) 720.00+
1320	☒	— 1912-1950, 1s-¾t Regular & Officials (6, O2, O3). Tied to native cover by separate Shigatse pmks, Fine	70.00+

1321	— 1914, 4t-8t Lions (7, 8, 8 var). First is used, 8t in perf. and imperf Varieties, Very Fine	140.00+
1322	★田 — 1914, 8t Carmine (8). Block of 4, V. F.	160.00+
1323	★田 — 1914, 8t Carmine (8). Complete sheet of 6, V. F.	240.00+
1324	★田 — 1933, ½tr-4tr Lions (14, 14a-18). Seven complete sheets of 12, including extra sheet of No. 16 with wide paper fold, V. F.	44.40+
1325	☒ — 1933-1950, ½t-4t Regular & Official (Bet. 14-O3). 22 stamps on 15 covers, one in combination with India , a variety of cancels, V. G.-V. F.	E. III
1326	★田 — 1950, ½t Slate Black (O2). Complete sheet of 9, block of 6, Fine-Very Fine	75.00
1327	★田 — Radio-Wireless, ½s-25s, 4 Values in complete sheets of 4, margins close on ½s and one stamp with pinhole, V. F.	E. III
1328	TRINIDAD , 1852, 1p Blue (9). Frame line touched partly at T & B, thin, light cancel, Fine appearing	175.00
1329	★ TURKS ISLANDS , 1881, 2½p on 6p Gray Black (19). V. G.	35.00
1330	★ TURKS & CAICOS IS. , 1919 War Tax 1p (MR5, 5a). Horiz. strip of 4, two stamps double ovpt, V. F., o. g. (S. G. 149c £5 for pair)	E. II
1331	☒ TWO SICILIES , Neopolitan Provinces, 1861, 1g Black, 2g Blue (21, 22). 56 covers, 54 of latter, a wide variety of postal markings, V. G.-V. F.	33.50+

LOTS BY COUNTRIES

1332	ARGENTINA , 19th century, 119 diff., used and unused, G.-F.	E. II
1333	ARGENTINA & AUSTRIA , 19th & 20th, 1310 stamps used and unused, better values included, also a few Brazil and Croatia, Good-Very Fine	E. III
1334	AUSTRIA , 1850-1930, 724 diff., used and unused, mostly V. G.-V. F.	175.00
1335	AUSTRIA , 1850, 1k-9k Imperforates (1-5). Collection of 133 stamps incl 6 each (#1, #2) 63 #3, 28 #4 and 30 #5, good variety of cancels, shades etc, some minor defects, V. G.-V. F. lot	149.95
1336	AUSTRIA, Lombardy Venetia , 1850-64, Collection of 25 diff. used, incl Types, some minor defects, V. G.-V. F. lot	135.00
1337	AUSTRIA & LOMBARDY VENETIA , 1850, Imperforates, 3kr-9kr, 15c-45c, over 100 stamps incl types & cancels, some cut margins & minor defects, V. G.-V. F. lot	75.00
1338	AZORES, CAPE VERDE, ST. THOMAS , 46 diff. used and unused, Fair-Fine	E. III
1339	BADEN , 1851-1868, 272 stamps, selected for town and numeral cancels , includes a few later German issues, V. G.-V. F.	E. V
1340	BADEN , 19th Century, 35 diff., used and unused, G.-F.	E. III
1341	BELGIUM , 19th & early 20th, 134 stamps, used and unused, G.-F.	E. I
1342	BOSNIA & HERZEGOVINA , 19th & early 20th, 156 diff., used and unused, G.-F.	E. II
1343	BRAZIL , 19th Century, 94 diff., used and unused, G.-F.	E. III
1344	BRITISH COLONIES , 1850-1950, about 2000 stamps, mostly used in homemade album, duplication, mostly common	E. II
1345	BRITISH COLONIES , 19th Century, 16 different, some defects, cut margins, Good-Fine	180.00
1346	BRITISH COLONIES , 19th Century, 767 stamps, used and unused, many better values included, G.-V. F.	E. VIII
1347	BRITISH COLONIES , 19th & 20th, 850 used and unused, few dups. G.-F.	E. II
1348	BRITISH COLONIES , 19th & 20th, 1572 stamps, used and unused, V. G.-V. F.	E. VII
1349	BRITISH COLONIES , 19th & 20th, several hundred used in 3 large counter books, many pictorials included, V. G.-V. F.	E. IV
1350	BRITISH COLONIES , 20th, 800 stamps, includes dups, V. G.-V. F.	E. II

1351	☒	BRITISH COLONIAL POSTAL STATIONERY , 1900-1940, 106 diff., unused, includes scarce and high values, V. G.-V. F.	E. II
1352		BRITISH NORTH AMERICA , 31 mostly 19th century used & unused, incl. a few dups, some minor defects, V. G.-V. F. lot	56.00
1353		BRITISH WEST INDIES , Incl. Br. Honduras, mostly 19th century lot of 43 different used & unused, few minor defects, V. G.-V. F. lot	148.70
1354		CANADA , 1852-1898, 67 diff. used and unused, V. G.-V. F.	198.00
1355		— 1859-1908 (Betw. 14-95). 24 mostly different, a few unused, some minor faults, V. G.-V. F. lot	61.45
1356		— 1859-98 (Betw. 14-83). 23 different, mostly used, few minor faults, V. G.-V. F.	125.10
1357		— 19th and early 20th, 72 diff. used and unused, G.-V. F.	215.45
1358	★	— 19th & 20th, 59 unused stamps, some without gum, F.-V. F.	63.00
1359		— 19th & 20th, 85 stamps, includes shades, cancels, some dups, G.-V. F.	50.00+
1360		— Accumulation of several hundred stamps in stock books and envelopes, mostly 20th, used and unused, better values included	E. V
1361	★	— 1898-1949, 89 stamps, 13 varieties, G.-V. F.	30.81
1362	★	CANADIAN COLLECTION , 862 stamps, nearly all unused, 1912-1954, mostly complete sets, with blocks from 1935 and matched plate no. block from 1945 attractively mounted and written up in two albums, Very Fine	E. IX
1363		CANADA REVENUES , 19th, 110 mostly diff., better values included	E. I
1364		CANAL ZONE , 20th, 94 diff., used & unused, V. G.-V. F.	E. II
1365		CHINA & JAPAN , 19th & 20th, 347 stamps, used and unused, G.-F.	E. III
1366		COSTA RICA , 19th 20th, 331 diff., used and unused, G.-F.	E. II
1367		CRETE , 19th century, 20 diff., used & unused, G.-V. F.	E. I
1368		DANISH WEST INDIES, DENMARK, DAHOMEY , 19th century, 82 diff. used, G.-V. F.	E. II
1369	★☒	DENMARK POSTAL STATIONERY , 1880-1930, 125 diff. includes scarce varieties, F.-V. F.	E. II
1370		DOMINICAN REPUBLIC , 19th and 20th, 325 diff., used and unused, V. G.-V. F.	E. III
1371		DUTCH COLONIES , 19th century, 130 stamps, used and unused, G.-F.	E. III
1372		DUTCH COLONIES , 1876-1946, 530 stamps, used and unused, includes many pictorial sets	265.00
1373		EAST & WEST GERMANY , 1945-60, 850 diff., used and unused, F.-V. F.	106.03
1374		EGYPT , 1866-1957, 563 stamps, used and unused, nearly all diff., G.-F.	Cat. about 200.00
1375		EUROPE , 19th & 20th, 1800 stamps, used and unused, few dups., G.-F.	E. V
1376		EUROPE , 19th and 20th, 380 stamps, mostly diff., including sets, F.-V. F. lot	147.36
1377		EUROPE , 19th & 20th, 425 stamps, used and unused, mostly diff. mostly F.-V. F.	192.37
1378	★	EUROPE , 20th, 218 stamps, including sets, F.-V. F.	124.00
1379		EUROPE , 998 stamps and 40 covers, mostly modern, some duplication, F.-V. F. lot	E. IV
1380		FINLAND , 19th century, 37 diff. used, G.-V. F.	E. I
1381		FOREIGN AIRMAILS , 1930-1960, few hundred, mostly used, includes sets, duplicates, F.-V. F.	over 200.00
1382		FOREIGN AIRMAILS & SOUVENIR SHEETS , 1920-60, 351 of former, 29 of latter, used & unused, few dups, F.-V. F.]	104.09
1383		FRANCE & COLONIES , 19th century, 309 stamps, used and unused, G.-F.	E. VI
1384		FRANCE & COLONIES , 19th & 20th, 2930 stamps, used & unused, G.-F.	983.00
1385		GERMAN STATES & COLONIES , mostly 19th, over 100 diff., used and unused, Good-Very Fine	212.00

1386	GERMANY , 19th and 20th, several hundred stamps, used and unused, includes many sets, some duplication, V. G.-V. F.	741.06
1387	GERMANY , 1933-1945, 450 diff., used and unused, F.-V. F.	99.58
1388	GOLD COAST , 1875-1898, 22 diff. used and unused, F.-V. F.	51.63
1389	☒ GREAT BRITAIN covers, 1840's-1880's, 30 covers with 52 stamps, all foreign usages, many to Vera Cruz, others to U. S., Canada, Spain, Italy, Germany, Greece, Australia, a wide variety of postal markings, Fine-Very Fine	100.00+
1390	GREAT BRITAIN , 19th century, 115 diff., used and unused, G.-V. F.	E. III
1391	GREAT BRITAIN , 1847-1939, Collection of 240 stamps, used and unused, includes shades, cancels, varieties, well above average quality, V. G.-V. F.	461.72
1392	GREAT BRITAIN & COLONIES , 1880-1920, 300 stamps, used and unused, mostly diff., Good-Very Fine	100.00+
1393	GREECE , 19th century, 192 diff., used and unused, G.-F.	E. IV
1394	GREECE , 19th and early 20th, 81 stamps, used and unused, few dups, V. G.-V. F.	E. II
1395	GREECE , 19th & 20th, over 500 stamps, used and unused, some dups, V. G.-V. F.	E. V
1396	HAWAII , 1861-1899, 98 stamps, used and unused, mostly diff., G.-V. F.	155.00
1397	HAWAII , 1864-1899, 33 diff. stamps, used and unused, G.-V. F.	E. II
1398	HUNGARY , 19th century, 122 mostly diff., used and unused, G.-F.	E. II
1399	ICELAND , 1876-92 (Betw. 8-08). 17 diff., Good-Fine	E. II
1400	INDIA & STATES , 19th century, 111 diff., used and unused, V. G.-V. F.	E. II
1401	ISRAEL , 1948-1957, 250 stamps, about 50 varieties, V. G.-V. F.	67.37
1402	ITALY , 19th century, 104 diff., used and unused, G.-F.	E. II
1403	★ ITALY , 1863-1949, 37 mostly different, incl a few minor defects or without gum, majority V. G.-V. F., o. g.	88.50
1404	JAPAN , 19th century, 100 diff., used and unused, G.-F.	E. III
1405	JAPAN 19th & 20th century lot of about 50 stamps used & unused incl dups, some minor defects V. G.-V. F.	53.00
1406	LATIN AMERICA , 19th century, 645 stamps, used and unused, G.-F.	E. VI
1407	LATIN AMERICA , 19th & 20th, 2104 mostly diff., used and unused, includes a few covers, G.-F.	E. VII
1408	LATIN AMERICA , 19th & 20th, 5595 stamps, used and unused, many better values included, G.-V. F.	E. X
1409	LIBERIA , 19th century, 19 diff., used and unused, V. G.-V. F.	E. I
1410	MEXICO , 19th century, 143 diff., used and unused, G.-F.	E. III
1411	MOZAMBIQUE & MOZAMBIQUE COMPANY , 19th & early 20th, 295 diff., used and unused, G.-V. F.	E. III
1412	NEPAL , 1959, 5 Nepalese Govt. booklets, published for the U. P. U., each contains 14 current stamps with U. P. U. cancels and printed descriptions in 3 languages, including English, V. F.	E. II
1413	— 5 booklets as above	E. II
1414	NETHERLANDS & COLONIES , 19th & early 20th, 220 diff., G.-V. F.	160.00
1415	NEW BRUNSWICK & NEWFOUNDLAND , 19th and 20th, 161 stamps, used and unused, G.-V. F.	E. VI
1416	★ NEW BRUNSWICK, NOVA SCOTIA ,PRINCE EDW. IS. , 22 stamps, incl 3 blocks, V. G.-Fine, mostly o. g.	35.70
1417	★ NEWFOUNDLAND , 1862-1901 (Betw. 20-85). 15 mostly different unused, few minor faults, V. G.-V. F. lot	42.65
1418	NEW SOUTH WALES , 1850-63, 15 diff., incl. 3 Sydney Views, some defects, cut margins, others V. G.-F.	E. III
1419	NEW SOUTH WALES , 1852-56, 1p-6p Victoria (Bet.13-54). 24 mostly different, several have faults, Fair-Fine	160.30

1420	NICARAGUA & SALVADOR , 19th century, 185 diff., used and unused, V. G.-F.	E. II
1421 ★	PAPUA , 27 different unused, up to 1937, V. G.-V. F.	29.60
1422	PHILIPPINES , 1899-1945, Collection of 320 stamps, used and unused the majority with Unofficial O. B. in a wide assortment of typeset, handstamp, and manuscript varieties, V. G.-V. F. lot	E. IV
1423	POLAND , 1860-1950, used & unused, 406 stamps including a few duplicates, G.-V. F.	125.00
1424	PORTUGAL , 1853-87, 48 mostly diff., Fair-Fine	E. III
1425	PORTUGAL & COLONIES , 19th & 20th, 1677 stamps, used and unused, G.-F.	508.00
1426	PRUSSIA & WURTEMBERG , 19th and 20th, over 200 diff. used and unused, Good-Fine	230.00
1427 ★	ROMAN STATES , 1852-68, 37 diff., V. G.-F.	117.89
1428	ROMANIA , 1862-69, 18 diff. used & unused, Fair-Fine	E. II
1429	RUSSIA , 1858-1931, 465 different used and unused, V. G.-V. F.	108.37
1430	SIERRA LEONE , 1860-1893, ½p-1/Victoria (Bet. 2-31). 14 diff., used and unused, Good-Fine	50.20
1431	SPAIN , 19th century, 165 diff., used and unused, V. G.-F.	E. III
1432	SPAIN & COLONIES , 19th and 20th, 500 diff. used and unused plus a few dups., Very Good-Very Fine	129.00
1433	SWEDEN , 19th century, 109 diff. used and unused, includes No. 1 & 5 , G.-F.	E. V
1434	SWEDEN , 1874-93, Postage Dues & Officials, 43 stamps, used & unused, incl duplicates, some defects, V. G.-V. F.	64.20
1435	SWITZERLAND , 19th century, 110 mostly diff., used and unused G.-F.	E. III
1436	NINETEENTH CENTURY COLLECTION , 1803 diff., used and unused, in Scott 1888 International album, includes many better stamps, Considerable cat. value, Fair-Fine	E. IX
1437	Nineteenth Century Foreign , 54 stamps, mostly unused, many with trivial faults, G.-F.	513.62
1438	19th CENTURY , lot of 24 stamps selected for cancels, includes Colored and Town markings mostly Hong Kong or Europe, interesting lot, F.-V. F.	E. II
1439	FOREIGN COLLECTION 19th and early 20th, 4102 stamps, used and unused, neatly mounted in 3 new Lindner stockbooks, many better items included, well above average condition, V. G.-V. F.	E. IX
1440	FOREIGN , 19th & 20th, several hundred, used and unused, V. G.-V. F.	E. II
1441	Foreign Accumulation , mostly 20th, several thousand, used and unused, includes many sets, better values, V. G.-V. F.	E. V
1442 ☒	FOREIGN COVERS , 136 covers, 19th and 20th, a wide variety of countries including Hawaii and Mongolia, many better values, V. G.-V. F.	E. III
1443 ☒	FOREIGN COVERS about 400, 19th & 20th including some better items, interesting lot	E. III
1444 ☒	FOREIGN POSTAL STATIONERY , 20th century, 117 diff, mostly unused, number of used Swiss military covers, scarce Czechoslovak card sets	E. II
1445	GENERAL FOREIGN , 19th & 20th, several thousand used and unused in two International Junior albums, G.-F.	E. III
1446 ★	GENERAL FOREIGN , incl. British Col, several hundred unused, mostly 20th incl. sets, odd values, some in quantity, V. G.-V. F.	200.00+
1447	GENERAL FOREIGN , 172 stamps, used and unused, 19th and 20th, cat. 50c each and up, mostly V. G.-V. F.	app. 260.00
1448	GENERAL FOREIGN , Four shoeboxes of material sorted and classified in glassines, about 20 diff. countries, V. G.-V. F.	E. VII
1449	MISCELLANEOUS , cardboard carton of album remains, packets catalogs, etc.	E. V

1450	MISCELLANEOUS, cardboard carton containing packets, stamps on album pages, etc.	E. V
1451	DAMAGED FOREIGN, 100 diff, used and unused, mostly small defects	850.00+
1452	DAMAGED FOREIGN, 100 stamps, used and unused, mostly diff. almost no badly damaged	\$1100.00+
1453	DAMAGED FOREIGN, mostly 19th used, over 600 stamps	1160.00

FOREIGN REVENUES

1454	BRITISH AFRICA, 19th & early 20th, 226 stamps, no Capes, some duplication, Good-Very Fine	E. IV
1455	BRITISH AMERICA, 19th & early 20th, 121 stamps, some duplication, Good-Very Fine	E. III
1456	BRITISH ASIA, 19th and early 20th, 624 stamps, some duplication, Good-Very Fine	E. VI
1457	BRITISH OCEANIA, 19th & early 20th, 307 stamps, some duplication, Good-Very Fine	E. III
1458	CAPE OF GOOD HOPE, 19th & early 20th, 250 stamps, some duplication, Good-Very Fine	E. IV
1459	CYPRUS & MALTA, 19th & early 20th, 76 stamps, some duplication, Good-Very Fine	E. II

FOREIGN WHOLESALE

1460	ARGENTINE REP., 1930, 10p Deep Red Brown & Dull Blue #390(11). F.-V. F.	132.00
1461	AUSTRIA, 1850, 3kr Red #3(100). All with margins, F.-V. F. lot	45.00
1462	AUSTRIA, Lombardy Venetia, 15c #4(45), 30c #5(30), 5s #13(12), 10s #23(13), few defects, V. G.-V. F. lot	64.80
1463	★田 BURMA, 1937, 3p-9p overprints (1-3). Complete sheets of 320, some separations, F.-V. F.	80.00+
1464	田 CANADA, 1957, 15c Dark Blue #372 (25 blocks), Very Fine used	50.00
1465	田 — 1957, 15c Dark Blue #372 (25 blocks), Very Fine used	50.00
1466	CUBA, 1905-1911, 3c-10c Regular Issues #229, 237, 250 (150 each) without gum, V. G.-V. F.	60.00
1467	EGYPT STOCK BOOK, 1870-1960, about 500 varieties, up to 5 of each, including many pictorials, neatly arranged in large Elbe stockbook, exceptionally clean lot, F.-V. F.	E. V
1468	FRANCE, 1863, 4c Gray #31(17). Good-Fine	51.00
1469	JAMAICA, 1912-17, 3p #65 or 71(200), 6p #67(50), MR7(100), MR8(100), bundled stock, Fair-V. F.	87.00
1470	JAMAICA, 1917, 3p War Stamp #MR9(900) in 18 bundles, Fair-V. F.	270.00
1471	MEXICO, 1934-45, 10c-50c Airpost #C68(400), C70(50), C71(75), C134(400), V. G.-V. F.	48.75
1472	SWITZERLAND, 1891, 3fr Yellow Brown #97(28), V. G.-V. F.	35.00
1473	★田 VATICAN CITY, 1949, 16 Lire Basilica #127(80) in sheets, F.-V. F.	120.00
1474	Small Dealers Stock, Several hundred recent used Canada, India, Union of South Africa, sorted and classified in glassine, many pictorials, V. G.-V. F.	E. II

PHILATELIC LITERATURE

1475	Ashbrook "United States One Cent Stamp 1851-1857" 2 vols. V. F.	E. V
1476	Brookman, "The 19th Century Postage Stamps of the U. S.", 2 vols V. F.	E. III
1477	Brookman "The 19th Century Postage of the U. S." 2 vols., V. F.	E. III
1478	Brookman "The 1847 Issue of U. S. Stamps". Paper covers, V. F.	E. I

1479	Chase "3c Stamps of the United States 1851-1857 Issue" Revised edition, Very Fine	E. I
1480	Fanning, Gazeteer of the U. S., 1854, 400 pgs. complete list of U. S. Post-offices, city and state maps, V. G.	E. III
1481	Gazeteer of the U. S., Colton, 1853, 960 pgs. leatherbound, includes complete list of U. S. Post Offices, Very Good	E. III
1482	Gazeteer of the U. S., Colton, 1858, 960 pgs., half leather binding, includes complete list of U. S. Post Offices, Very Good	E. III
1483	Gazateer of the U. S., A. Von Steinwehr, 1873, 1016pps, leather bound, includes complete list of U. S. Post Offices, V. G.	E. II
1484	Herst-Zareski, "19th Century U.S. Fancy Cancellations". Fine	E. I
1485	Johl "The U. S. Commemorative Stamps of the 20th Century" 2 vols, V. F.	E. I
1486	Konwiser, "United States Stampless Cover Catalog", 1952 Edition, V. F.	E. I
1487	Luff "The Postage Stamps of the U. S." 1937 Issue, Fine	E. I
1488	Luff "The Postage Stamps of the U. S." 1937 Issue, Fine	E. I
1489	Post Office Department, Laws and Regulations, 1852, V. G.	E. III
1490	John K. Tiffany, History of the Postage Stamps of the U. S. A., 1887, and N. E. Waterhouse, a comprehensive Catalog of the Postage Stamps of the U. S. A., 1916, two clothbound volumes, Fine	E. II
1491	U. S. Mail, Routes & Contracts, 849 pgs., 1852-53, Lists steamboat, railroad, Express Co., routes with route numbers and stations, Leather bound, V. G.	E. III
1492	— 841pgs., 1853-1854, V. G.	E. III
1493	— 543pgs., 1854-1855, V. G.	E. III
1494	— 918pgs., 1857-1858, V. G.	E. III
1495	— 608pgs., 1860-1861, V. G.	E. III
1496	U. S. Official Register, 1001pps, year 1849, complete list of Post Offices, Postmasters and compensation, Leather bound, Fine	E. III
1497	The American Philatelist, Vol. 37-41, 1923-1928, bound in five volumes, tops a little waterstained, contents V. F.	E. I
1498	The Stamp Collectors Monthly Gazette, St. John, New Brunswick, Vol. I to Vol. II No. 16, June 1865 to Sept. 1866, bound together, a number of issues missing, scarce, Very Fine	E. II
1499	Twelve Diff Books on collecting including "Paper Chase", "Story Telling Stamps", "Fabulous Stamps", "Saint Vincent," "Stamps of Great Britain Vol 1." "Le Grands Manual", F-V. F.	—
1500	U. S. Map 24"x30" Multicolor 1854 Map by Colton, showing all states & territories, lovely framing piece, Very Fine	E. I
1501	Misc. Lot Books & Magazines 118 pieces, mostly 1920-1935 includes Hobbies, Avocations, Collectors Club Philatelists, bound volumes of stamp magazines, Konwiser catalogs, Sanabria Airpost Magazine Fine lot	E. II

END OF SALE — THANK YOU

LOTS ON VIEW FROM AUGUST 10th
OFFICE OPEN SATURDAY, AUGUST 19th