

243rd SALE

UNITED STATES
NINETEENTH CENTURY
STAMPS AND COVERS

Including a scarce group of 5c 1856-60 Issues,
By order of Henry W. Hill of Minneapolis

A Specialized Collection of the 1869 Pictorial Issue
By order of Ray Radford of Vancouver, Wash.

COLLECTION OF UNUSED BLOCKS

1890-1925 Issues including Plate No. Blocks



AT PUBLIC AUCTION

Thursday

SEPTEMBER 14th, 1961

AT 1:30 P.M.

Robert A. Siegel
SAUCTIONS

489 FIFTH AVENUE

NEW YORK 17, N.Y.

Tel. MURray Hill 2-0980

CONDITIONS OF SALE

1. The terms of sale are strictly cash to the highest bidder. All buyers are expected to pay for lots within three days of receipt, unless special arrangements have been made prior to the sale.
2. All bids are per lot as numbered in the catalogue and not per piece, unless otherwise announced by the auctioneer at the time of sale.
3. Any lot the description of which is incorrect is returnable only within three days of receipt. All disputed lots must be returned intact as received. Lots containing five or more stamps are not returnable at any time. No lots may be returned by purchasers who have had the opportunity to examine them before the sale.
4. Successful mail bidders, unless they are known to us or supply acceptable references, will be notified of the amount of the lots secured for them, and are expected to send payment in full before the lots are forwarded.
5. If the purchase price has not been paid within the time limit, or lots taken up within seven days from date of sale, they may be resold and any losses arising from such sale charged to the defaulter.
6. All stamps are sold as genuine, except where sold "As Is". Claims for any lot proving otherwise, must be made within two weeks from date of sale.
7. The right is reserved to group two or more lots, also withdraw any lot or lots from the sale, or to act on behalf of the seller.
8. Until paid for in full all lots remain the property of Robert A. Siegel.
9. No commission is charged for buying at our sales, but all forwarding charges will be added to the purchase price.
10. Upon written application lots may be sent for examination prior to the auction, conditional upon being mailed back by registered mail, adequately insured, within 24 hours of receipt. The applicant is completely responsible for all lots sent for examination, and for the insurance of same against mishap, from the time of receipt until they are actually received back, and is to pay all expenses of postage and insurance.
11. The placing of a bid shall constitute acceptance of the foregoing conditions of sale.

ROBERT A. SIEGEL
GREGORY MOZIAN, Licensed Auctioneers

In sending bids, always state the highest price you are prepared to pay for the lot. Your limit will not be used as a starting bid unless absolutely necessary.

DESCRIPTIONS

Superb or Extremely Fine—the finest condition for noteworthy, outstanding copies.

Very Fine (VF)—means that there is a slight deviation from the above.

Fine (F)—means that the perforations do not touch the design on issues after 1890, but in some cases may just touch in earlier issues; if used, fairly lightly cancelled.

Very Good (VG)—means that the appearance is generally fine but that the perforations cut the design slightly.

Good (G)—means average off-centering; or fairly attractive with slight defects. Original gum is not to be expected on 19th Century stamps up to 1888 unless so stated.

Scott's 1960 Specialized United States Catalogue is used for cataloguing our lots of United States and Scott's Standard Catalogue, 1960 for others.

WE SOLICIT FINE MATERIAL FOR FUTURE SALES

SEPTEMBER 14th, 1961 — 1:30 P.M.

ROBERT A. SIEGEL, Inc.

489 Fifth Avenue

New York 17, N. Y.

Tel.: MUrray Hill 2-0980 (Area Code 212)

Please purchase for me at your auction to be held **September 14th, 1961**, the lots named below, the prices annexed being my limit on each lot. I agree to remit for purchases in accordance with the **Conditions of Sale** and to return no lots later than three days after receipt.

REFERENCES PLEASE
(if unknown to us)

SIGNED

[illegible]

Upon request, estimate of value furnished on any lots in this auction.

UNITED STATES





1847 ISSUE






- 1 ☒ **5c Dark Brown (1a).** Large margins all around, attractively tied by clear red **Burlington, Vt.** pmk. on neat folded letter, Very Fine **(Photo) E. VII**
- 2 ☒ **5c Red Brown (1).** Margins all around, just clear at bottom, tied Bold Blue grid, Clear Blue **Baltimore, Md. Aug. 31 (1847)** pmk. on neat folded letter, V.F. cover **(Photo) 50.00**
- 3 ☒ **5c Red Brown (1).** Margins all around, tied by **Red "5"**, struck twice, Blue Baltimore pmk. on small, attractive folded letter, Very Fine **(Photo) 85.00**
- 4 ☒ **5c Red Brown (1).** Margins all around, large to huge on 3 sides, sheet margin at right, **Orange grid** cancel, not tied, Orange **Hillsboro, O.** pmk. on neat folded letter, Very Fine **(Photo) 85.00**
- 5 **10c Black (2).** Margins all around, **Double Transfer** in "X" at right, Pos. R2, light black grid cancel, Very Fine **(Photo) 200.00**
- 6 ☒ **10c Black (2).** Pos. 46LI, Large margins all around, magnificent color and impression, tied by Red **St. Louis, Mo. 10** pmk. on folded letter to Philadelphia, a very pretty cover, Extrmely Fine **(Photo) 125.00**
- 7 ☒ **10c Black (2).** Huge margins all around, beautiful color and impression, tied by Black grid, matching **Louisville, Ky. 10** pmk. on neat folded letter to New York, Scarce and very attractive, Extremely Fine **(Photo) 125.00**
- 8 ☒ **10c Black (2).** Margins all around, small at U. L., tied by Red grid, Clear **Charleston, S. C. 10** in Red circle on neat folded letter, Very Fine **(Photo) 125.00**

1851 ISSUE



- 9 **1c Dark Blue Ty. II (7a).** Margins all around, sheet margin at left, V. F. 13.50
- 10 ☒ **1c Blue Ty. II (7).** Margins 3 sides, just touched at top, tied by Dark Blue str. line **Paid**, matching **Hopkinsville, Ky.** pmk., Fine 20.00
- 11 ☒ **1c Dark Blue Ty. II (7a).** Large margins 3 sides, barely touches at one point on left, tied by Mobile Paid pmk. on folded circular to Boston, Very Fine cover 20.00
- 12 **1c Dark Blue Ty. III (8).** Margins all around, lovely color, exceptional impression, Blue town pmk., Very Fine **(Photo) 175.00**
- 13 **1c Blue Ty. IV (9).** Margins all around, clear Boston Paid cancel, nice color, Very Fine 12.50
- 14 **1c Blue Ty. IV (9).** Large margins all around, Blue grid cancel, Very Fine 13.00
- 15 **1c Blue Ty. IV (9).** Large margins all around, recut once at top twice at bottom, Blue grid cancel, V. F. 15.00
- 16 **1c Blue Ty. IV (9).** Huge margins all around, cut diagonally at L. L. far from design, Pos. 71L1L, **double transfer, one inverted**, V. F. 50.00
- 17 ☒ **1c Dark Blue Ty. IV (9a).** Margins all around, recut once at top, twice at bottom, tied by Blue grid on neat cover to Pittsburgh, Very Fine 15.00

LOTS ON VIEW FROM SEPTEMBER 1st
OFFICE OPEN SATURDAY, SEPTEMBER 9th

- 18  **3c Copper Brown (10).** Margins all around, tied by bold Dark Blue **Richmond, Va.** pmk., lovely cover, Extremely Fine **E. II**
- 19  **3c Orange Brown (10).** Margins all around, tied black square grid, Aug. 15 New York pmk. Extremely Fine **E. II**
- 20  **3c Orange Brown (10).** Margins all around, tied by **Red Paid** in str. line, Bold Red **East Pepperell, Mass.** pmk., cover lightly stained, otherwise Very Fine **E. II**
- 21 **3c Brownish Carmine (11).** Margins all around, light ms. cancel, **straddle** copy showing portion of stamp from right pane, Very Fine **E. II**
- 22 **3c Imperforate (11).** **CALENDAR** of 366 dates complete, selected for clear readable strikes, far above average quality, Very Good-Very Fine **E. IX**
- 23 **3c Imperforate (11).** Collection of 378 copies, includes a wide range of printing varieties, fancy cancels, oddities, shades, few unused and Orange Browns, many plate varieties including "Gents", 5 line recuts, a very interesting lot, G.-V.F. **E. VIII**
- 24  **3c Rose Red (11).** U.L. sheet margin copy, margins all around, tied by **Stockton, Cal.** pmk. on neat folded letter to Mormon Island, Cal. V.F. **E. II**
- 25 **5c Red Brown (12).** Huge margins all around, sheet centerline at R., grid cancels, pretty color, a beautiful copy, Extremely Fine **(Photo)** 85.00
- 26 **5c Red Brown (12).** Large to huge margins all around, sheet margin at top, shows part of next stamp below, Extremely Fine **(Photo)** 85.00
- 27 **5c Red Brown (12).** U.R. sheet corner copy with huge to enormous margins all around, showing sheet centerline at R., magnificent deep color, New Orleans pmk., a lovely stamp, Extrmely Fine in spite of tiny corner crease in margin far from design **(Photo)** 85.00
- 28 **5c Red Brown (12).** Pos. 50LI, margins all around, sheet centerline at R., beautiful color, light town pmk. tiny corner crease in margin, far from design, Extremely Fine appearance **(Photo)** 85.00
- 29 **5c Red Brown (12).** Pos. 41LI, huge margins all around, part of **Sheet Imprint** at L., shows portion of next stamp at R., beautiful color, light town pmk., light corner crease in margin far from design, Magnificent appearance, ex Caspary (\$800.00) **(Photo)** 85.00+
- 30 **5c Red Brown (12).** Pos. 51LI, margins all around, portion of **Sheet Imprint** at L., grid cancel, Very Fine **(Photo)** 85.00+
- 31 **5c Red Brown (12).** Large margins all around except just touching at one point, portion of **Sheet Imprint** at R. grid and French Transit cancels, Thin, Very Fine appearance **(Photo)** 85.00+
- 32 **5c Red Brown (12).** Pos. 61LI, margins three sides, just touching at R., portion of **Sheet Imprint** at L., ms. "5" cancel, light corner creases, Fine appearance 85.00+
- 33 **5c Red Brown (12).** Margins all around, small on 3 sides, town pmk., showing **Worn Plate**, one of two examples known on this stamp, Rare, Fine **(Photo)** 85.00+
- 34 **5c Red Brown (12).** Large margins all around, expertly repaired, Very Fine appearance 85.00
- 35 **5c Red Brown (12).** Horiz. **Strip of 3**, Pos. 8-10LI, margins in places, sheet centerline at R, New Orleans pmks., nice color and impression, a scarce piece, Fine **(Photo)** 400.00
-
- 36 **5c Red Brown (12).** Vertical **Strip of three** and single, large margins all around, beautiful color, tied to piece by clear **Cleveland, O.** pmks. A Rare and attractive showpiece, Extremely Fine. Ex-Consul Klep **(Photo)** **E. XIV**

- 37  **5c Red Brown (12).** Vertical Strip of 3, huge margins all around, showing sheet centerline at left, lovely color, tied by **New Orleans, La.** and **New York 3** pmks. on neat folded letter to France, Red French Transit, authenticated by Stanley Ashbrook in letter (Sold in Consul Klep sale in Belgium for equivalent of \$8740.00). A rare and magnificent cover. One of the finest show pieces in existence of this desirable stamp (Photo) E. XV
- 38  **5c Red Brown (12).** Block of 4, margins at places, cutting at U. R., used with 1c Blue Ty. II (7) on cover to France, grid cancels, the block tied by **Donaldsonville, La.** pmk., Red **New York Am. Pkt.** and French Transit, an extremely rare usage, signed by Stanley Ashbrook. Block catalogs \$1500.00 off cover (Photo) E. XIV
-
- 39 **10c Green Ty. II (14).** Large margins all around, Sheet margin at L. Extremely Fine (Photo) 22.50
- 40 **10c Green Ty. II (14).** Horiz. strip of three, beautiful deep rich color, **New York Ocean Mail** pmks., a gorgeous strip, Extremely Fine (Photo) 77.50+
- 41 **10c Green Ty. III (15).** Blue town cancel, large margins all around, Extremely Fine (Photo) 22.50
- 42 **10c Green Ty. III (15).** Large margins all around, tied by San Francisco pmk. to 1¼ by 4½ inch piece. Clear Green "**From Noisy Carrier's Mail. 77 Long Wharf, S. F., Cal.**" in fancy box, V. F. E. V
- 43 **10c Green Ty. III and IV in Vertical Pair (15-16).** Large margins all around, New Orleans town pmk. Extremely Fine (Photo) E. XII
- 44 **12c Black (17).** Margins all around, small at L. R., tied to small piece by **Holly Springs, Miss.** pmk., Fine 25.00
- 45  **12c Black (17).** Horiz. pair, Pos. 6-7R1, margins all round except just touches frame at bottom of L. stamp, tied by grids on cover to Dublin. Clear Red **New Orleans, La.**, clear str. line **Way, Red 19** and Red **Paid in America, Liverpool**, 6 Au '54, attractive and Very Fine (Photo) 75.00
- 46  **12c Black (17).** Horiz. pair, margins all around except outer frame cut at top center, tied by **Thompson's Station, N. Y.** pmk. on tiny cover, front only, to Manchester, Red **19** and Green **America Paid, Dublin**, No. 8, 1856, attractive and Very Fine 75.00
- 47  **12c Black (17).** Horiz. pair, margins 3 sides, just in at bottom used with 3c Dull Red (11) on 3c Red Entire (U9) to Hanover, stamps tied by grid cancels and by light Red **N. Y. Am. Packet 7**, bold **Dubuque, Iowa**, Jan. 17, 1856, boxed Red Aachen transit, scarce combination, Fine 75.00+

1857 ISSUE

- 48 **1c Dark Blue Ty. I (18a).** New York town cancel with one bar, V. F. (Photo) 55.00
- 49  **1c Blue Ty. II (20).** Tied by **Old Point Comfort, Va.** pmk. to tiny multicolor **Patriotic** cover showing Liberty & Shield, Fine 30.00
- 50 **1c Blue Ty. III (21).** Horiz. Strip of three, town pmks, not listed in strip, Fine piece (Photo) E. XI
- 51 **1c Blue Ty. III, 10c Green Ty. III (21, 33).** Horiz. pair of latter, tied by Blue Cincinnati pmks. to small piece. 1c has two s.e., tiny tear, 10c has top perfs trimmed by scissors, attractive piece 97.50
- 52 **1c Blue Ty. V (24).** Three copies, Red town and grid cancels, attractive lot, F.-V. F. E. II
- 53  **1c Blue Ty. V (24).** Horiz. pair, tied by Mar. 2, 1860 pmk. on neat folded circular to Switzerland, Red French transit and ms. "By Steamer for Europe" attractive and V. F. E. II

- 54 ☒ **1c Blue Ty. V (24).** Tied to two covers by **Red New York Paid City Delivery 1ct**, Fine-Very Fine **E. II**
- 55 **3c Red Ty. I (25).** Horiz. strip of 3, tied to small piece by grids, lovely deep color, Very Fine **12.00**
- 56 **3c Red Ty. I, II, IIa (25, 26, 26A).** Collection of 258 stamps, includes some cancellations, a wide range of shades, many plate and printing varieties, includes 42 copies of Ty. I. V. G.-V. F. **E. VI**
- 57 ☒ **3c Red (26).** Tied by **Topeka, K. T.** pmk. on cover to Iowa, Fine **E. II**
- 58 ☒ **3c Red (26).** Tied by **Chelmsford, Ms.** pmk. on multicolor **Patriotic** cover showing soldier & flag, Very Fine **E. I**
- 59 ☒ **3c Red (26).** Tied by fancy **wedges in circle** cancel, **New Ipswich, N. H.** pmk. on **Patriotic** cover showing unusual Flag and "Long may it Wave", Very Fine **E. I**
- 60 ☒ **3c Red (26).** Horiz. strip of three, tied by clear **Black River, N. Y.** pmks. on multicolor **Patriotic** with Flag and "Union and the Constitution", Attractive, V. F. cover **E. II**
- 61 ☒ **3c Red (26).** Three copies on multicolor **Patriotic** covers, showing Flags one with verse, others with Militiaman and Zouave, two are not tied, V. F. **E. II**
- 62 **5c Indian Red Ty. I (27).** Pos. 50RI, portion of **Sheet Imprint** at R., small faults, Very Fine appearance **67.50+**
- 63 ☒ **5c Brick Red Ty. I (27).** Vert. strip of 3 tied by New Orleans pmks. on small neat cover to France, **Red New York Paid 6**, and boxed **PD**, French transit, lower stamp damaged where folded over edge of cover, two lower stamps have clipped perfs at R., top stamp V. F., scarce, Ex West, signed by Stanley B. Ashbrook **(Photo) 250.00**
- 64 **5c Red Brown Ty. I (28).** Horiz. Pair, Pos. 1-2RI, portion of selvage showing sheet centerline at L., lovely color and Impression, light town pmk., minor short perf at R., Fine **(Photo) 100.00**
- 65 ☒ **5c Red Brown Ty. I (28).** L. L. corner Vert. **strip of 3** showing sheet margins, with sheet centerline at L., tied by New Orleans, La. pmks. on neat folded letter to France, **Red Boston Paid 12**, Red French transit, Blue handstamp corner card, a scarce and lovely cover, ex Caspary. V. F. **(Photo) E. XI**
- 66 ☒ **5c Red Brown Ty. I (28).** Horiz. **strip of 4** tied by **New Orleans**, Sept. 1, 1857 pmk. on cover to Vera Cruz, Mexico "**2**", **4th day of use**, 3rd stamp shows **worn plate** variety, only two examples known on this stamp, left stamp has s. e. at L., attractive and scarce, Fine **(Photo) E. XI**
-
- 67 ☒ **5c Indian Red (28A).** Unusual deep rich color, tied with 10c Green Ty. III (33) by **New Orleans, La.** May 13, 1859 pmk. on neat folded letter to France, **Red Short Paid** in octagon, **New York 24**, Blue French transit, a Rare and attractive cover, signed by Ashbrook, Very Fine **(Photo) E. XII**
- 68 ☒ **5c Indian Red Ty. I (28A).** Vert. **strip of 3**, tied by New Orleans pmks. on neat folded letter to France, **Red New York Paid 6**, Blue handstamp corner card, French transit, a Rare and pretty cover, ex Caspary. V. F. **(Photo) E. XV**
- 69 ☒ **5c Deep Indian Red Ty. I (28A).** Horiz. **BLOCK of 6** and single, tied by clear **Plattville, Wisc.** pmks. on cover to Switzerland. Slight perf. separation on L. L. stamp, exceptional centering and color, exceedingly rare, rare, no block being listed in catalog, a magnificent showpiece, Very Fine **(Photo) E. XV**
-
- 70 **5c Brown Ty. I (29).** Centered, large margins, tiny negligible crease, Very Fine appearance **27.50**

71	5c Brown Ty. I (29). Horiz. strip of 3, pos. 91-93LI, shows selvage at left and bottom, New Orleans pmks, center stamp has light crease, otherwise Very Fine (Photo)	85.00
72	☒ 10c Green Ty. V (35). Tied by New Orleans, La. pmk. on small cover to Navy Yard, Warrington, Florida, clear Steamship in circle on cover, Scarce, Very Fine (Photo)	E. V
73	☒ 10c Green Ty. V (35). Collinsville AXE cancel, not tied as usual, Collinsville, Ct. pmk. on cover to Todds Valley, Calif. Rare cancel on this stamp	E. VII
74	24c Lilac (37). Unusual large Red grid cancel, Very Fine (Photo)	30.00
75	30c Orange (38). Two slightly short perfs, Red grid cancel, Fine	35.00
76	1c-12c 1857-1861 Issues (24, 35, 63, 69, 73). Three of latter, tied to pieces by a variety of cancels including Paid, carrier, fancy, colored, V.G.-V.F.	37.75

1861 ISSUE

77	☒ 1c Blue (63). Horiz. strip of 3, tied by targets, Norwich, Conn. pmk. on neat cover, Very Fine	E. I
77A	☒ 1c Blue (63). Two covers, one over-all Illustrated Advert. of State of Maine, Fine	E. I
77B	☒ 1c Blue, 3c Rose (63, 65). Tied by target and N.Y. pmk, on Patriotic cover with embossed Union & Constitution and Red & Blue lines on flap, Very Fine	E. II
77C	☒ 3c Rose (65). Tied by Bold Blue Hexagon in Star cancel, Bold Blue Jersey Shore, Pa. pmk., Very Fine	E. I
78	☒ 3c Rose (65). Tied by clear Blue Chattanooga, Tenn. in serrated box Army pmk., Fine (Photo)	E. III
78A	☒ 3c Rose (65). Tied by clear Mendocino, Cal. on cover to New Hampshire, 1864 Usage, Fine	E. I
78B	☒ 3c Rose (65). Tied by grid cancel, Worcester, Ms. pmk to multicolor Patriotic cover with Soldier, Capitol, and Flags, Very Fine	E. I
78C	☒ 3c Rose (65). Tied by grid, Cameron, Ill. pmk. on Patriotic cover showing General Buell, Fine	E. II
78D	☒ 3c Rose (65). Tied by Paid in octagon, Red Boston pmk., on multicolor Patriotic cover showing Ellsworth Memorial, Liberty weeping and "The Warren of '61", Fine	E. II
78E	☒ 3c Rose (65). Tied to three multicolor Patriotic covers, one with Flag and "Protect it", others with Liberty & Flag, Very Fine	E. II
79	10c Yellow Green (68). Seven copies selected for cancels , includes 3 "Pays", San Francisco Cog, fancy geometrics, one has s.e., F.-V.F.	19.50+
79A	☒ 10c Green (68). Ms. New Harmony, Mo. pmk. on Patriotic cover Sailor, Flag, Ship on cover to Volcano, Cal. and forwarded to Corvallis, Oregon, Fine	E. III
79B	☒ 10c Green (68). Two covers, shades, tied by grid and segmented, cork cancels, Detroit & Corunna, Mich. pmks, former with over-all Advert., Very Fine	E. II
79C	☒ 2c Black, 10c Green (68, 73). Cork cancels, Silver Mountain, Cal. in double circle, stamps tied by Red "New York Paid All" on cover to London, interesting letter, Fine	E. II
80	☒ 12c Black (69). Two copies, tied by circle of wedges, N. York Am. Pkt. 3 Paid and London Paid in Red circles, on small neat cover to Dublin, Holyhead & Kingston Packet handstamp on back, Very Fine cover	E. III
80A	☒ 24c Brown Lilac (70a). Tied by Paid in oval on cover to England, Boston Am. Pkt. 3 Paid and London Paid in Red circles, 1862 usage, V.F. cover	E. III
80B	☒ 30c Orange (71). Tied by Geometric cancel and by Red Boston Paid 24 on cover to France, Fed French transits, Fine	50.00

81	✉	30c Orange, 3c Rose (65, 71). Strip of three 3c, separately tied by rare Alexander's G.W. R.R. in ovals, 30c also tied by Red N. York Br. Pkt. 7 Paid on cover to Germany, Red boxed Aachen transit, Fine (Photo)	E. VIII
81A		2c Black (73). Large margins, Negative "X" cancel, Extremely Fine	E. I
81B		2c Black (73). Rosette cancel, deep shade, Stitch Watermark, double transfer, Very Fine	E. I
81C		2c Black (73). Two copies, shades, Very Fine	6.50
81D	✉	2c Black (73). Tied by segmented cork, Red Boston pmk., V. F.	E. I
81E	✉	2c Black (73). Horiz. pair, tied by "Boston, Mass. Paid" pmk., corner card, Very Fine	E. II
82	✉	2c Black (73). Horiz. pair, neat target cancels, not tied, clear Chebanse, Ill. pmk., Very Fine	E. II
83	✉	2c Black (73). Four covers, different pmks., F.-V. F.	E. II
84		5c Brown (76). Three copies, Red town, dotted grid, and New York 18 cancels, F.-V. F. lot	23.00+
85	✉	15c Black (77). Tied by Blue circle of wedges cancel, Keene, N. H. pmk. on small neat cover to France, Red N. Y. Paid 24 and Foreign PD, Blue French transit, V. F.	15.00
86	✉	15c Black (77). Tied by Red Philadelphia pmk. on small neat cover to France, Red French transits, 1867 usage, Fine	15.00
87	✉	15c Black (77). Light cork cancel, not tied, New Orleans pmk., Red and Blue New York and French transits, on cover to Paris, Very Fine	15.00
88		2c Black Z Grill (85B). Tied to small piece by Geometric cancel, V. F.	25.00
89		1c Blue E. Grill (86). Exceptionally large margins, Very Fine (Photo)	17.50
90		1c Blue F. Grill (92). Centered, Very large margins top and bottom, Dark Blue grid cancel, Very Fine	11.00
91	✉	1c Blue F. Grill (92). Tied by Woodstock, O. pmk. on cover, Fine	12.50
92		2c Black F. Grill (93). Pair and two singles, selected for cancels, includes "Paid All", Blue Carrier, Blue Geometric, V. G.-F.	34.00+
93	✉	2c Black F. Grill (93). Tied by cork and by Providence, R. I. pmk. on neat local cover, Extremely Fine	E. I
94	✉	2c Black F. Grill (93). Two covers, cork cancels, one not tied, Oak Hill, Me. and Philadelphia "Carrier" cancels, attractive corner cards, very slight stains, Very Fine	E. II
95	✉	2c Black F. Grill (93). Two covers, Blue and Black Carrier pmks., cork cancels, one not tied, Very Fine	E. II

1869 PICTORIAL ISSUE

PROOFS AND ESSAYS

96	P	1c-90c Pictorials, Card Proofs (112P-122P). Fine-Very Fine set	45.00
97	P	1c-90c Pictorials, Card Proofs (112P-122P). Fine-Very Fine set	45.00
98	E	1c, 3c, 5c, 10c Pictorials, Essays (Brazer 112E-Dc, 114E-Cf, 115aE-Fc, 116E-Dj). O. g., Very Fine	E. III
99	E	1c, 2c, 3c, 12c Pictorials, Perforated, Grilled Essays (Brazer 112E-De, 113E-Dc, 114E-Ch, 117E-Ce). O. g., V. G.-V. F.	E. II
100	P	1c-12c Scarlet Pictorial Atlanta Proofs (123TC-128TC). Very Fine	45.00
101	E	3c Ultramarine Pictorial Perforated, Grilled Allover Essay (Brazer 114E-Dc). Ms. line cancel, corner crease, Very Fine appearance	E. III
102	E	3c Deep Violet Pictorial Perforated, Grilled Essay (Brazer 114E-Cg). Block, o. g. Very Fine	E. II
103	E	3c Orange Pictorial Perforated, Grilled Essay (Brazer 114E-Cg). Block, o. g. Very Fine	E. II

104	E	3c Rose Red Pictorial Perforated, Grilled Essay (Brazer 114E-Cg). Block, o. g. Fine	E. II
105	P	3c Pictorial India Proof (114P). Block, Very Fine	10.00
106	E	10c Blue Pictorial Essay (Brazer 116j) Block, Very Fine	E. III
107	P	15c Scarlet & Blue Pictorial Atlanta Proof (129TC). Very Fine	45.00
108	P	15c Blue & Brown Pictorial Atlanta Proof (129TC). Close at B. Fine	45.00
109	E	24c Pictorial Essay on Orange-Buff (Brazer 120E-Cd). Very Fine	E. II
110	P	24c Scarlet & Blue Pictorial Atlanta Proof (130TC). Very Fine	45.00
111	P	24c Brown & Black Pictorial Atlanta Proof (130TC). Very Fine	45.00
112	P	24c Green & Blue Pictorial Atlanta Proof (130TC). Very Fine	45.00
113	E	30c Pictorial Essay on Salmon Red (Brazer 121E-Ck). Very Fine	E. II
114	E	30c Black Pictorial Essay (Brazer 121E-Ck). Faint tiny stains, otherwise Very Fine	E. I
115	P	30c Scarlet & Blue Pictorial Atlanta Proof (131TC). Very Fine	45.00
116	P	30c Brown & Black Pictorial Atlanta Proof (131TC). Very Fine	45.00
117	E	90c Dull Violet & Black Pictorial Essay (Brazer 122E-Cc). V. F. (Photo)	E. III
118	E	90c Dull Violet & Black Pictorial Essay (Brazer 122E-Cc). Very Fine	E. III
119	E	90c Pictorial, Frame Essays (Brazer 122E-Cd). Three diff., Very Fine	E. V
120	P	90c Scarlet & Blue Pictorial Atlanta Proof (132TC). Very Fine (Photo)	55.00
121	P	90c Blue & Green Pictorial Atlanta Proof (132TC). Very Fine (Photo)	55.00
122	★	1c-3c Pictorials (112-114). Centered, each has short perf, otherwise V. F.	36.00
123	★	1c Buff, 3c Ultramarine (112, 114). First has minute crease, otherwise o. g. F.-V. F.	24.00
124		1c Buff (112). Clear O.K. cancel, light corner crease, attractive (Photo)	E. II
125		1c Buff (112). Bold "PD" cancel, short perf, V. F. appearance (Photo)	E. II
126		1c Buff (112). Cork cancel appears to be Indian on Warpath cancel, slight crease, Fine appearance	E. II
127		1c Buff (112). Unusual bold segmented circle cancel, V. G.	E. I
128		1c Buff (112). Clear negative Masonic cancel, tiny tear, centered to bottom	E. II
129		1c Buff (112). Clear crossroads cancel, Fine	11.00
130		1c Buff (112). Bold str. line Ship cancel, minute tear, Fine appearance (Photo)	25.00
131		1c Buff (112). Clear Waterbury, Ct. W cancel, minute tear, Very Fine appearance	E. III
132		1c Buff (112). Clear B cancel, Very Fine	E. II
133		1c Buff (112). Lovely color, Paid cancel, two short perfs, otherwise V. F.	20.00
134		1c Buff (112). Two clear Leominster, Mass. Cog cancels, V. G.	E. II
135		1c Buff (112). Two diff. bold Star cancels, V. G.-F.	E. II
136		1c Buff (112). Two copies, Red crossroads, Purple target cancels, V. G.-F.	32.50
137		1c Buff, 3c Ultramarine (112, 114). Tied to piece by brilliant Red Fancy Flower cancel, 1c centered to L. L., Attractive	E. III
138	⊠	1c Buff (112). Cork cancel, not tied, Triangular shape cover, stamp centered to L. R., Unusual cover	E. II
139	⊠	1c Buff (112). Tied to cover by clear Shield cancel and Zanesville, O. pmk., elaborate Newspaper corner card, stamp has s. e. at L., attractive cover, Fine	E. IV
140	⊠	1c Buff (112). Clear Fairview, Pa. "F" cancel, not tied on local cover, Fine	E. II
141	⊠	1c Buff (112). Tied by fancy cork cancel, Salt Lake City, Utah in unframed circle, on reduced legal size local cover, Fine Territorial	E. II
142	⊠	1c Buff (112). Horiz. pair, tied by light Magenta Corks & Plattsmouth, Nebr. pmk. on cover to Factoryville, Nebr., tiny tear in one stamp otherwise Fine	E. II
143	⊠	1c Buff, 2c Brown (112-113). Horiz. Pair of each tied on cover to Toronto, Canada, V. G.-Fine	E. III

144	☒	1c Buff, two, 1c Ultramarine Grill (112, 134). Tied by bars, Lincoln, Ill. pmk. on neat, tiny cover to Chicago, one No. 112 has tiny nick, scarce combination, Very Fine cover (Photo)	E. III
145	☒	1c Buff, 2c Red Brown (112, 146). Purple ms. Madison, Mich. pmk., Fine	E. II
146	☒	1c Buff, 2c Brown (112, 113). Four covers, two with 1c, others with 1c and 2c, two 1c have s.e., Good-Fine	59.00
147	☒	1c Buff, 2c Red Brown Grill (112, 135). Block of 4 of latter, target cancels, clear Mianus, Conn. pmk. on legal size cover to New York, block s.e. at R., scarce V.G.	46.00+
148		1c, 6c-12c Pictorials (bet. 112-117). Eight stamps, no 2c or 3c, selected for Cancellations, includes Steamship, Monogram, Rosette, H, Green grid, foreign "PD", Fancy Star, Good-Fine	100.00+
149		1c-24c Pictorials (112-117, 119-120). Very Good-Fine	94.70
150		1c-12c Pictorials (112, 115, 117). Five of first, three of last, Very Good-Fine	93.00
151		1c-24c Pictorials (112-121). Twelve stamps, tiny faults, V.G.-V.F. appearance	141.70
152		1c-10c Pictorial Issue (bet. 112-116). Collection of 37 stamps, includes 1c on cover, Steamship and Hiogo, Japan cancels on 10c, a number of fancy, colored, Paid, letter cancels, several on covers, V.G.-V.F.	183.30+
153	★	2c Brown (113). Four copies, shades, Good-Fine	48.00
154		2c Brown (113). Bold C cancel, Very Fine	E. I
155		2c Brown (113). Hiogo, Japan cancel, minute thin, Fine appearance	20.00
156		2c Brown (113). Horiz. pair, rich color, clear small "Paid" cancels, split grills, Fine	E. I
157		2c Brown (113). Pair and fourteen singles, a wide range of shades, Very Good-Very Fine	56.50
158		2c Brown (113). Twenty three different fancy cancels includes Leafs, Paid 3, Red Towns, Star, Crosses, Geometrics, V.G.-V.F.	E. VI
159	☒	2c Brown (113). Horiz. pair, tied by Star cancel, St. Louis, Mo. pmk., on cover to Illinois, Very Fine	E. II
160	☒	2c Brown (113). Two covers, tied by corks, one in Blue, matching Philadelphia Carrier pmks, one cover has tear, otherwise Fine	E. II
161	☒	2c Brown (113). Eleven copies on ten covers and a piece, Includes San Francisco, Boston, Chicago Fancy corner cards, Pair used to France, one used with 1c Ultramarine (145). Nice Lot	68.50+
162	☒	2c Brown, 3c Ultramarine two, 10c Green (68, 113-114). Fancy Geometric cancels, Golden City, Colo. pmk. on repaired legal size cover to Illinois, the 10c has defects, scarce combination territorial cover	E. I
163	★田	3c Ultramarine (114). Mint block of Five, split grills, s.e. at R., two stamps have pinholes, scarce	41.50+
164		3c Ultramarine (114). Centered to left, clear strike of Waterbury three leaf Clover tied on small piece (Photo)	E. III
165		3c Ultramarine (114). Tied to small piece by Fancy Brown Star within Star cancel, centered to bottom, Fine (Photo)	E. II
166		3c Ultramarine (114). Clear reversed U.S. cancel, tiny nick, Very Fine appearance	E. I
167		3c Ultramarine (114). Clear Anchor cancel, tiny tear, V.F. appearance	E. II
168		3c Ultramarine (114). Corry, Pa. Eagle cancel, Fine (Photo)	E. III
169		3c Ultramarine (114). Clear Eagle cancel, Fine	E. III
170		3c Ultramarine (114). Clear Adrian Mich. Bee cancel, reperfed, Good	E. II
171		3c Ultramarine (114). Bold Four Hearts cancel, creases, Fine appearance	E. I
172		3c Ultramarine (114). Clear Blue Negative Masonic cancel, light creases, V.F. appearance	E. I
173		3c Ultramarine (114). Clear Negative Masonic cancel, Very Fine	E. II
174		3c Ultramarine (114). Vertical strip of 3, tied to small piece by unusual clear Masonic cancels in circles, Fine (Photo)	E. IV

175	☐	3c Ultramarine (114). Block, clear Shield cancels, Fine, Scarce	E. III
176		3c Ultramarine (114). Seven diff. Leaf cancels, V. G.-F.	E. I
177		3c Ultramarine (114). Collection of 116 stamps and 57 covers selected for Cancellations , includes territorial, letters, paid, crosses, stars, fancy Geometrics and a wide range of colored cancels, the covers include a number of Illustrated Advertising corner cards, V. G.-V. F.	E. VIII
178	☒	3c Ultramarine (114). Tied by clear Shield cancel, indistinct Waterbury, Ct. pmk. on cover to Georgia, stamp has wide s. e. at left, V. F. (Photo)	E. IV
179	☒	3c Ultramarine (114). Tied Zanesville, O. Shield cancel on cover, Fine	E. II
180	☒	3c Ultramarine (114). Tied to tiny cover by Boston Masonic cancel, F.	E. II
181	☒	3c Ultramarine (114). Bold "3" cancel, not tied, Weatherly, Pa. pmk., on cover to St. Clair, Pa., Fine	E. I
182	☒	3c Ultramarine (114). Four Leaf Clover cancel, not tied, Lansing, Mich. pmk., Fine	E. I
183	☒	3c Ultramarine (114). Tied bright Green cork, matching Emporia, Kansas pmk. on cover, "Advertised" and "May 30" in str. lines, Fine	E. II
184	☒	3c Ultramarine (114). Target cancel, not tied, clear Prescott, Ariz. pmk. on neat tiny cover to Washington, D. C., V. F. Territorial	E. IV
185	☒	3c Ultramarine (114). Tied by target, Denver, Col. pmk. on cover to Trinidad, Colo., Dec. 22, 1869 use, letter enclosed, V. G.	E. I
186	☒	3c Ultramarine (114). Tied by Red Target, matching Pueblo, C. Ty. pmk. on cover with fancy Corner Card, matching enclosure, stamp has tiny tear, V. F. Territorial cover	E. II
187	☒	3c Ultramarine (114). Two copies, tied by targets, Pueblo, C. T. pmk., on cover to Trinidad, Colo., one stamp has s. e., Fine Territorial	E. II
188	☒	3c Ultramarine (114). Tied by target, clear Pueblo C. Ty. pmk., on cover to Trinidad, Colo. V. G.	E. II
189	☒	3c Ultramarine (114). Cork cancel, not tied, clear Boise City, Ida. pmk. on cover to Rhode Island, Beautiful stamp & cover, V. F. Territorial	E. III
190	☒	3c Ultramarine (114). Manhattan, Kans. pmk., stamp not tied, Illustrated Corner Card of Real Estate Agent, Fine	E. II
191	☒	3c Ultramarine (114). Tied by rosette, Helena, Montano pmk. on cover to Virginia City, M. T., Fine Territorial	E. II
192	☒	3c Ultramarine (114). Tied by target, clear Red Mountain City, M. T. on cover to Virginia City, Scarce, Fine Territorial	E. IV
193	☒	3c Ultramarine (114). Tied by cork, Helena, Montano pmk. on cover to Virginia City, Montano, Fine Territorial	E. II
194	☒	3c Ultramarine (114). Tied by target, clear Albuquerque, N. Mex. pmk. on cover to Colorado, Very Fine Territorial	E. IV
195	☒	3c Ultramarine (114). Tied by Salt Lake City, U. pmk. on small neat cover to Virginia City, Montana Territory, Fine Territorial	E. II
196	☒	3c Ultramarine (114). Tied by Blue Laramie Wy. T. pmk., light ms. cancel, V. G. Territorial	E. II
197	☒	3c Ultramarine, 15c Black (98, 114). Target cancels. not tied, clear Hogansburgh, N. Y. pmk., on small cover to N. Y., attractive combination, Fine	E. II
198	☒	3c Ultramarine (114). Seventy Covers, wide variety of town pmks. includes corner cards some illustrated, Fair-Fine	59.50
199	★	6c Ultramarine (115). Beautiful color, o. g., Very Fine	(Photo) 30.00
200	★☐	6c Ultramarine (115). Block, lovely color, creases, o. g., Fine appearance	(Photo) 300.00
201		6c Ultramarine (115). Clear Star cancel, Very Fine	(Photo) E. II
202		6c Ultramarine (115). Clear Heart cancel, Fine	(Photo) E. III
203		6c Ultramarine (115). Hiogo, Japan cancel. Very Good	25.00
204		6c Ultramarine (115). Red crossroads and Red New York Paid All cancels, V. G.-F.	31.00

205	6c Ultramarine (115). Clear Cross and Rosette cancels, V. G.-F.	19.00
206	✉ 6c Ultramarine (115). "Alexandria, Va. Apr. 26" (1869) pmk. Earliest Date Known (catalog lists Apr. 30) cover to Canada, "Toronto Ap. 28, 69" backstamp, Fine, Rare (Photo) E. XII	
207	✉ 6c Ultramarine (115). Tied on cover to Quebec, indistinct Nevada town pmk. stamp well centered	15.00
208	✉ 6c Ultramarine (115). Tied by Fancy Cork & Chicopee, Mass. pmk. on cover to Canada, stamp has small nick at top, V. G.	15.00
209	★ 10c Yellow (116). Lovely color, Very Fine (Photo)	35.00
210	10c Yellow (116). New York Steamship cancel, Very Fine	15.00
211	10c Yellow (116). Clear San Francisco Cogwheel cancel, V. F.	E. II
212	10c Yellowish Orange (116). Clear New York town pmk. Very Fine	12.50
213	10c Yellowish Orange (116). Tied by unusual serpentine cancel to small piece, New York Paid All Br. Transit pmk., Very Fine	9.00+
214	10c Yellow (116). Clear Hiogo, Japan cancel, tiny crease, Fine appearance	25.00
215	10c Yellow (116). Clear Yokohama, Japan cancel, Very Good	25.00
216	10c Yellow (116). Vertical pair, crossroads cancels, one has tiny corner crease, otherwise Very Fine	25.00
217	10c Yellowish Orange (116). Two copies New York Steamship and Red Dot in Circle cancels, F.-V. F.	27.50
218	▣ 10c Yellowish Orange (116). Block , centered, deep rich color, tiny cork cancels, reinforced, Very Fine appearance (Photo)	500.00
219	10c Yellow (116). 26 singles, selected for Cancellations , includes Steamships, Japan, Green town & grid, Stars, colored, Blue Foreign, town, cross, "N", Fancy Geometrics, New York Foreign Mails, interesting and attractive lot, Good-Very Fine	295.50+
220	✉ 10c Yellowish Orange (116). Tied by Geometric cancel on cover to Frankfurt, Prussia, New York Paid All Direct in Red circle, forwarded to Hamburg, stamp additionally tied by new address in Blue ms., boxed Red Hamburg pmk., attractive, Very Fine	22.50
221	✉ 10c Yellowish Orange (116). Centered to L. L., tied by bold rosette cancel and by Red boxed Hamburg transit on cover to Saxony, Red New York Paid All Direct , Fine	22.50+
222	✉ 10c Yellow (116). Tied by circle of wedges, "P. O. D. U. S. Con. Gen. Shanghai" pmk. on cover to Cheyenne, Wyoming, printed United States Consulate at Foochow , latter word in ms., stamp has tear but a scarce cover	E. II
222A	✉ 10c Yellowish Orange (116). Cork cancel not tied, Philadelphia pmk. on cover to France, "Paid Only To England" and other transit markings, Very Good	22.50
223	★ 12c Green (117). Very small thin, o. g., Very Fine appearance	32.50
224	12c Green (117). Barely cancelled, Split Grill , Very Fine	11.00
225	✉ 12c Green (117). Star cancel not tied on small cover to England, New Hamburg, N. Y. pmk. and transit markings, Fine (Photo)	30.00
226	✉ 12c Green (117). Tied by crossroads, Red New York pmk., on neat cover to Isle of Wight, few minor perf. stains, Fine	30.00
227	★ 15c Brown & Blue Ty. I (118). Faint pinhead thin, otherwise V. F. (Photo)	110.00
228	15c Brown & Blue Ty. I (118). Centered, clear Paid cancel, minute thin in grill, Very Fine appearance	50.00
229	15c Brown & Blue Ty. I (118). Brilliant Red Leaf cancel, centered to R., Fine	45.00+
230	15c Brown & Blue Ty. I Double Grill (118b). Red cork cancel, V. G.	85.00+
231	✉ 15c Brown & Blue Ty. I (118). Tier circle of "V" cancels on stained cover to Germany, Washington, D. C. pmk. and various transit markings, V. G.	125.00



5



12



25



28



27



26



29



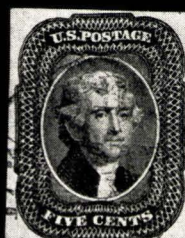
30



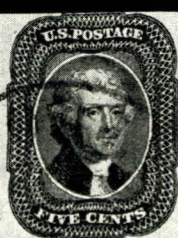
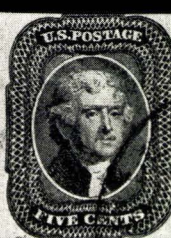
31



33



35



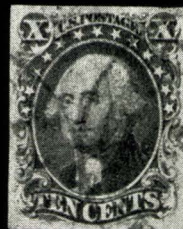
39



36



40



41



43



50



48

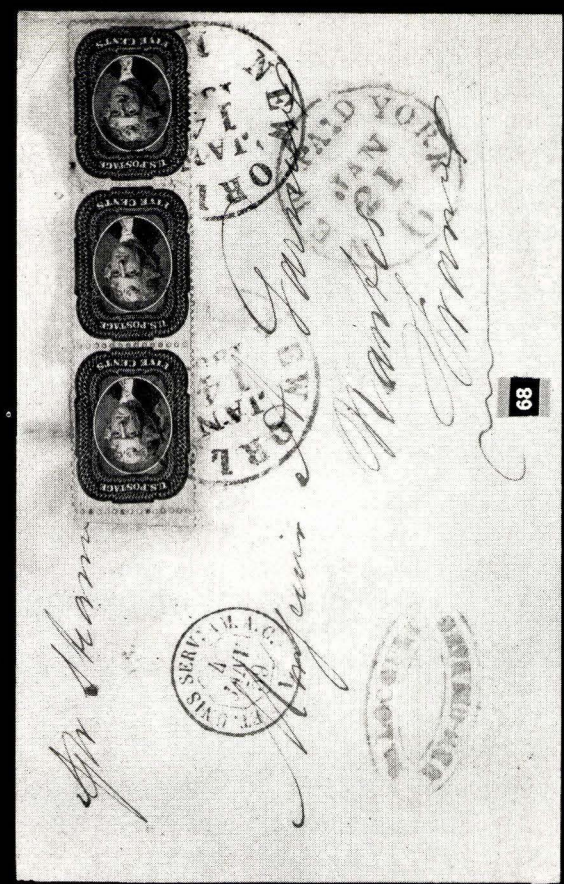


64

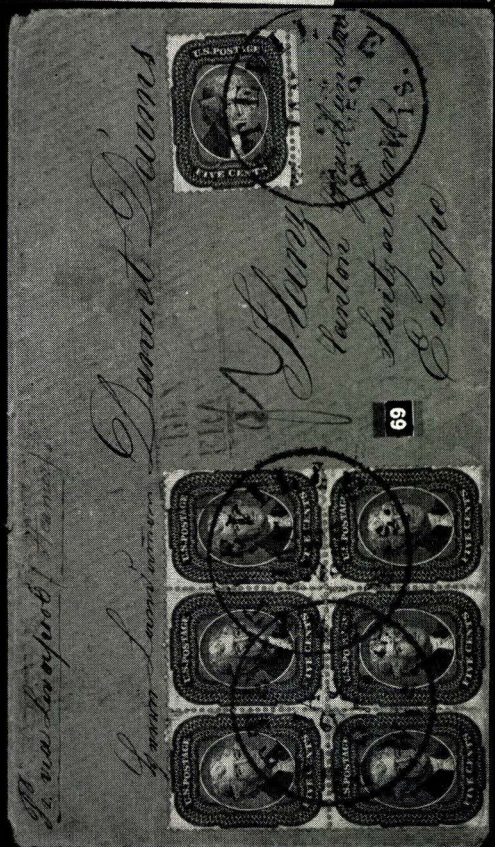


38

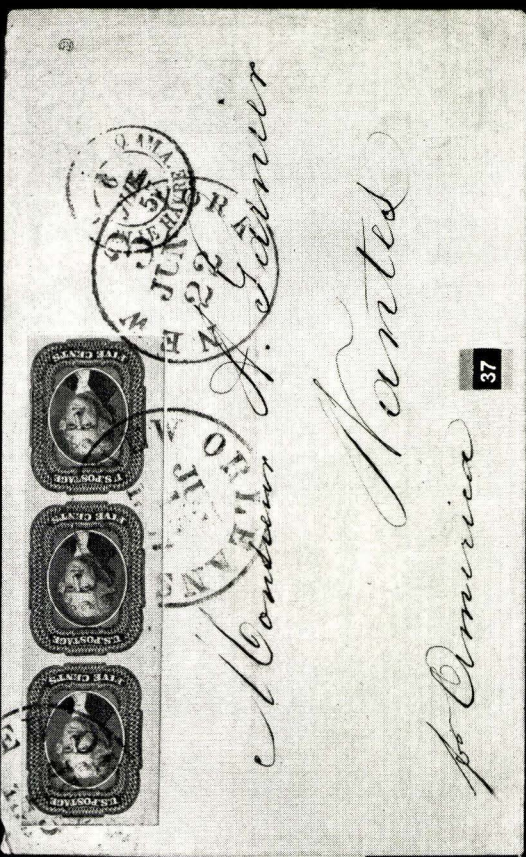
103



68



69



37



71



74



89



165



120



121



124



125



200



117



130



168



199



174



164



218



201



202



209



227



232



236



239



240



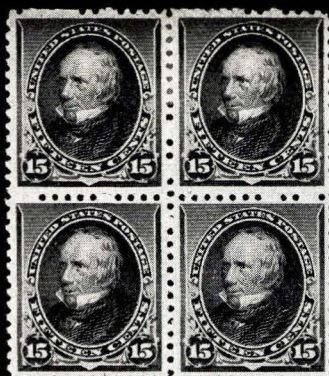
246



244



248



262

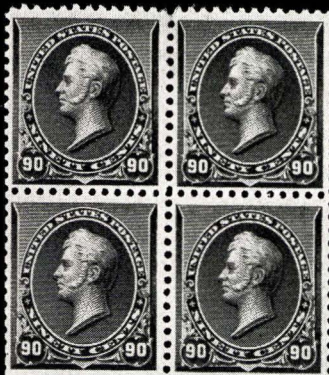


AMERICAN BANK NOTE COMPANY

266



267



AMERICAN BANK NOTE COMPANY

268



284



285



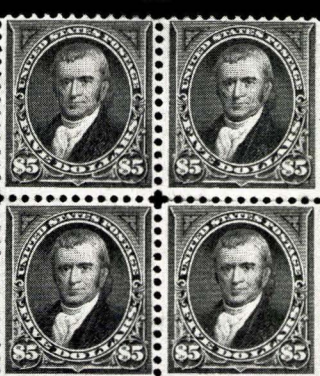
286



287



288



289



299



301



302



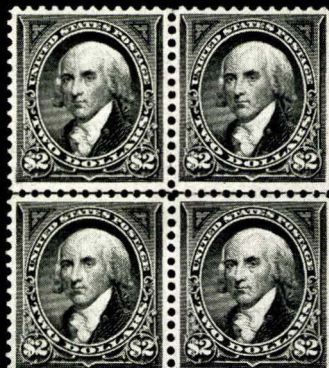
303



304



305



306



307



330



332



333



334



335

1630



378



373



2106

377



375

2106



379



2106

© Harrow, England & Partners



376

380



259



280



311



331



369



370



367



395



397



398



399



416



435



437



232	★	15c Brown & Blue Ty. II (119). Deep color, light corner crease, o.g., Very Fine appearance	(Photo) 35.00
233	✉	15c Brown & Blue Ty. II (119). Centered, tied by cork, light Endora, Pa. pmk. on cover to Switzerland, N.Y. Paid All in Red, French & Swiss transits, Very Fine	(Photo) 75.00
234	✉	15c Brown & Blue (119). Two copies centered to top, each tied with circle cancel and Wisc. pmk. to Switzerland. various transit markings, attractive	(Photo) 86.00+
235	✉	15c Brown & Blue (119). "L" shape Strip of 3 each with letter "E" cancel used with 1c and 2c Banknote on legal size cover, with Philatelic Foundation Certificate stating these stamps were used on this cover but a 1c stamp is missing, Attractive	(Photo) 105.00+
236	★	24c Green & Violet (120). Lovely colors, o.g., Very Fine	(Photo) 85.00
237		24c Green & Violet (120). Deep color, reperfed, Fine appearance	40.00
238	✉	24c Green & Violet (120). Cork cancel, New York Registered pmk. on legal size cover to Georgia, ms. Registry number, certification of N.Y. postmaster that cover was mailed, and Certification of receipt, latter additionally tying stamp, stamp nicked at U.R., a rare cover, with Philatelic Foundation Certificate	(Photo) 500.00
239	★	30c Blue & Carmine (121). Centered, nice color, one slightly short perf., otherwise Very Fine	(Photo) 100.00
240		30c Blue & Carmine (121). Red Geomteric cancel, magnificent colors, centered very slightly to U.L., Very Fine	(Photo) 30.00
241		30c Blue & Carmine (121). Grid of square dots and Blue town cancels, pinhead grill thin, V.F. appearance	27.50
242		30c Blue & Carmine (121). Rich colors, bold Fancy cork cancel, Fine	27.50
243		30c Blue & Carmine (121). Three copies, shades, one with town pmk., two have minute tears, one with small repair, Fine appearance	85.00
244	田	30c Blue & Carmine (121). Block, well centered, cork cancels, minute tear in grill on one stamp, otherwise Fine	(Photo) 175.00
245	✉	30c Blue & Carmine (121). Centered, wonderful color, tied by Fancy cork, New York pmk. on cover front remounted to appear as cover, used to Guatemala, "pr. Alaska" in ms., Red "4" arrival marking, with Foundation Certificate stating "Genuine in all respects", Very Fine appearance	(Photo) 400.00
246	★	90c Carmine & Black (122). Large margins, lovely color, part o.g., centered to R., Fine	(Photo) 250.00
247		90c Carmine & Black (122). Small thins and tiny nick, Nice appearance	125.00
248		90c Carmine & Black (122). Horiz. Strip of three, beautiful deep colors, light bars cancels, two stamps have tiny thins, a Rare and Attractive Strip	(Photo) 475.00+
249	✉	1c Buff Reissue (123). Horiz. pair, tied by heavy corks & Baltimore, Md. pmk. to cover with corner card of Stamp Dealer, June 5, 1884 usage, a scarce and unusual cover, Fine	E. III

COLLECTION OF UNUSED BLOCKS

1890 ISSUE

250	★田	1c-2c 1890 Issue (219, 219D, 220). Blocks, two shades of first, 3 shades of last, Fine-Very Fine	32.50
251	★田	1c-2c, 4c 1890 Issue (219, 220, 222). Imprint blocks, V.G.-Fine	26.25+

252	★	2c Lake (219D). Imprint block of 10, Very Fine	27.00+
253	★	2c Lake (219D). Top Part Imprint and Plate No. block of 12, sheet centerline at R., Fine	33.00+
254	★	3c Purple, 4c Dk. Brown (221-222). Blocks, Fine-Very Fine	30.50
255	★	3c Purple, 5c Chocolate (221, 223). Imprint blocks, F.-V.F.	35.00+
256	★	5c Chocolate, 6c Brown Red (223-224). Blocks, Fine-Very Fine	35.00
257	★	6c Brown Red, 8c Lilac (224-225). Imprint blocks, F.-V.F.	30.00+
258	★	8c Lilac (225). Mint Block, Very Fine	15.00
259	★	10c Green (226). Block, Very Fine	(Photo) 40.00
260	★	10c Green (226). Block, Fine-Very Fine	40.00
261	★	10c Green (226). Imprint Block, centered to left, V.G.	40.00+
262	★	15c Indigo (227). Mint block, Fine-V.F.	(Photo) 47.50
263	★	15c Indigo (227). Block, Fine-Very Fine	47.50
264	★	15c Indigo (227). Imprint Block, Very Good	47.50+
265	★	30c Black (228). Block, Fine	75.00
266	★	30c Black (228). Imprint block, minute gum thin in one stamp, otherwise Very Fine	(Photo) 75.00+
267	★	90c Orange (229). Block, Very Fine	(Photo) 100.00
268	★	90c Orange (229). Imprint block, few slightly shortened perms. on L.L. stamp otherwise Very Fine	(Photo) 100.00+

1894 ISSUE

269	★	1c Ultramarine (246). Block, showing Stitch Watermark , Extremely Fine	5.00+
270	★	1c-2c 1894 Issue (246-250, 252). Blocks, Fine-Very Fine	52.00
271	★	2c Pink Ty. I, Carmine Ty. II (248, 252). Blocks, Fine-Very Fine	21.00
272	★	2c Carmine Ty. II (251). Blocks, Fine-Very Fine	30.00
273	★	2c Carmine Ty. III (252). Imprint Plate No. block of 6, small thin in one stamp, otherwise Fine-Very Fine	35.00
274	★	3c Purple, 4c Dark Brown (253, 254). Mint blocks, Fine-Very Fine	32.50
275	★	3c Purple, 5c Chocolate (253, 255). Blocks, one 3c has minute faint thin, 5c gum disturbed, otherwise F.-V.F.	29.50
276	★	5c Chocolate (255). Block, Very Fine	16.00
277	★	6c Dull Brown (271). Block, Very Fine	22.50
278	★	6c Dull brown (256). Mint block, Fine-Very Fine	22.50
279	★	6c Dull Brown, 8c Violet Brown (256-257). Blocks, Fine-Very Fine	39.50
280	★	10c Dark Green (258). Mint Block, Very Fine	(Photo) 40.00
281	★	15c Dark Blue (259). Block, Fine	65.00
282	★	50c Orange (260). Mint block, Very Fine	(Photo) 60.00
283	★	50c Orange (260). Mint block, Fine-Very Fine	60.00

284	★	\$1.00 Black Ty. I (261). Block, Very Fine	(Photo) 250.00
285	★	\$1.00 Black Ty. I & II (261, 261A). Block, two right stamps Ty. II, Fine-Very Fine	(Photo) 450.00
286	★	\$1.00 Black Ty. II (261A). Block, one stamp has light gum wrinkle, otherwise Very Fine	(Photo) 350.00
287	★	\$1.00 Black Ty. II (261A). Block, Fine	(Photo) 350.00
288	★	\$2.00 Bright Blue (262a). Block, slightly cracked gum, F.-V.F.	(Photo) 700.00
289	★	\$5.00 Dark Green (263). Block, Fine	(Photo) 1000.00

1895 ISSUE

290	★	1c-2c 1895 Issue (264-267). Blocks, 4 shades of first, F.-V.F.	23.00
-----	---	--	-------

291	★	1c-2c 1895 Issues (264, 266, 267). Sixteen Imprint Plate No. Strips of 3, includes ten No. 264, two No. 266, V.G.-V.F.	29.05
292	★田	1c-5c 1895-1898 Issues (Bet. 264-280). 46 stamps in blocks, a few minor faults, mostly F.-V.F.	51.40
293	★	2c Carmine Ty. II (266). Five Imprint Plate No. Strips of 3, F.-V.F.	45.00
294	★田	3c Purple (268). Three blocks, shades, F.-V.F.	30.00
295	★田	3c Purple, 4c Dark Brown (268, 269). Mint Blocks, F.-V.F.	22.00
296	★田	3c Purple, 4c Dark Brown (268, 269). Blocks, F.-V.F.	22.00
297	★田	6c Dull Brown, 8c Violet Brown (271, 272). Blocks, F.-V.F.	27.50
298	★田	8c Violet Brown, 10c Dark Green (272, 273). Blocks, F.-V.F.	29.00
299	★田	15c Indigo (274). Blocks, Fine-Very Fine (Photo)	52.50
300	★田	15c Indigo (274). Block, crease affecting lower two stamps, otherwise Fine-Very Fine	52.50
301	★田	50c Red Orange (275a). Mint block, Very Fine (Photo)	85.00
<hr/>			
302	★田	\$1.00 Black Ty. I (276). Block, Fine (Photo)	190.00
303	★田	\$1.00 Black Ty. I & II (276, 276A). Block, two right stamps Ty. II, Fine-Very Fine (Photo)	500.00
304	★田	\$1.00 Black Ty. I & II (276, 276A). Block, two right stamps Ty. II, light crease affecting two lower stamps, otherwise F.-V.F. (Photo)	500.00
305	★田	\$1.00 Black, Ty. II (276A). Block, part o.g., Fine-Very Fine (Photo)	450.00
306	★田	\$2.00 Dark Blue (277). Block, Very Fine (Photo)	285.00
307	★田	\$5.00 Dark Green (278). Block, Fine-Very Fine (Photo)	750.00

1898 ISSUE

308	★田	4c Rose Brown, 6c Claret (280, 282b). Blocks, Very Fine	27.50
309	★田	4c-6c 1898 Issues (280-282). Blocks, V.G.-V.F.	35.00
310	★田	6c Purplish Lake (282a). Block, Very Fine	40.00
311	★田	10c Dark Brown Ty. I (282c). Block, Very Fine (Photo)	55.00
312	★田	10c Orange Brown Ty. II (283). Block, Fine-Very Fine	40.00
313	★田	15c Olive Green (284). Block, Fine-Very Fine	45.00
314	★田	15c Olive Green (284). Block, minute crease in lower stamps, otherwise Very Fine	45.00

1902 ISSUE

315	★田	1c Blue Green (300). Ten blocks including an Imprint Plate No. block of 6, a wide range of shades, Fine-Very Fine	25.25
316	★田	1c-13c 1902 Issue (300-303, 305-306, 308). Blocks, first 4 have one thin stamp, latter have light gum bends, Good-Fine	68.75
317	★田	2c Carmine (301). Fifty six copies in blocks, a very wide range of shades, Very Good-Very Fine	41.40
318	★田	3c Purple (302). Three blocks, distinct shades, Fine-Very Fine	36.00
319	★田	3c-8c 1902 Issue (302-306). Blocks, Fine-Very Fine	63.50
320	★田	3c-8c 1902 Issue (302-306). Blocks, Fine	63.50
321	★田	3c-13c 1902 Issue (302-306, 308). Blocks, Fine-Very Fine	75.50
322	★田	4c-13c 1902 Issue (303, 306-308). Blocks, Fine-Very Fine	52.50
323	★田	4c-13c 1902 Issue (303, 306-308). Blocks, Fine-Very Fine	52.50
324	★田	6c Claret, 8c Violet Black (305, 306). Blocks, Very Fine	27.50
325	★田	10c Pale Red Brown, 13c Purple Black (307-308). Blocks, Very Fine	30.50
326	★田	13c Purple Black (308). Horiz. block of 8, Very Fine	24.00

327	★	15c Olive Green (309). Block, Fine-Very Fine	45.00
328	★	15c Olive Green (309). Block, light gum bend in one stamp, Fine-Very Fine	45.00
329	★	15c Olive Green (309). Block, Fine	45.00
330	★	50c Orange (310). Block, Very Fine (Photo)	115.00
331	★	50c Orange (310). Horiz. block of 6, minute trivial gum thin in one stamp, otherwise Very Fine (Photo)	163.00

332	★	\$1.00 Black (311). Block, Very Fine (Photo)	250.00
333	★	\$1.00 Black (311). Block, Very Fine (Photo)	250.00
334	★	\$2.00 Dark Blue (312). Part Imprint and Plate No. block of 4, hinged only in selvage, Very Fine (Photo)	350.00
335	★	\$5.00 Dark Green (313). Block, Very Fine (Photo)	850.00

336	★	2c Shield (319, a, b, c). Collection of 69 Imprint Plate No. Strips of 3, a wide variety of numbers and shades, V.G.-V.F.	33.60
337	★	2c Shield (319, a, b, c). Collection of 81 blocks, a magnificent range of shades, V.G.-V.F.	195.25

LOUISIANA-PURCHASE ISSUE

338	★	1c Louisiana Purchase (323). Block, Very Fine	16.00
339	★	1c Louisiana Purchase (323). Block, Fine-Very Fine	16.00
340	★	1c Louisiana Purchase (323). Block, one short perf, otherwise Fine	16.00
341	★	1c Louisiana Purchase (323). R. Arrow block, Fine	18.50
342	★	1c Louisiana Purchase (323). L. Arrow block, V.G.-F.	18.50
343	★	1c Louisiana Purchase (323). Bottom Imprint Plate No. block of 6, margin slightly reduced, Very Fine	34.50
344	★	1c Louisiana Purchase (323). Top Imprint Plate No. block of 6, slight gum wrinkles in bottom stamps margin reduced, otherwise F.-V.F.	34.50
345	★	1c Louisiana Purchase (323). Mint Top Imprint Plate No. block of 10, Very Fine	50.50+
346	★	1c Louisiana Purchase (323). Bottom Imprint Plate No. block of 10, small corner portion of selvage missing, margin reduced, V.G.-F.	50.50+
347	★	2c Louisiana Purchase (324). Block, Fine-Very Fine	15.00
348	★	2c Louisiana Purchase (324). Block, Fine	15.00
349	★	2c Louisiana Purchase (324). L. Arrow block, Very Fine	17.50
350	★	2c Louisiana Purchase (324). R. Arrow block, Fine	17.50
351	★	2c Louisiana Purchase (324). Top Imprint Plate No. block of 6, margin reduced, Very Fine centering	37.20
352	★	2c Louisiana Purchase (324). Bottom Imprint Plate No. block of 6, margin reduced, Very Good	37.20
353	★	2c Louisiana Purchase (324). Mint Top Imprint Plate No. block of 10, Fine	52.20+
354	★	2c Louisiana Purchase (324). Bottom Imprint Plate No. block of 10, V.G.	52.20+
355	★	3c Louisiana Purchase (325). Block, Very Fine	40.00
356	★	3c Louisiana Purchase (325). Block, Fine-Very Fine	40.00
357	★	3c Louisiana Purchase (325). L. Arrow block, Fine	45.00
358	★	3c Louisiana Purchase (325). R. Arrow block, F.-V.F.	45.00
359	★	3c Louisiana Purchase (325). Top Imprint Plate No. block of 6, margin reduced, Very Fine centering	78.00
360	★	3c Louisiana Purchase (325). Bottom Imprint Plate No. block of 6, margin slightly reduced, Fine	78.00
361	★	3c Louisiana Purchase (325). Mint Top Imprint Plate No. block of 10, Fine	118.00

362	★田	3c Louisiana Purchase (325). Bottom Imprint Plate No. block of 10, partial gum skip on two stamps, V.G.-Fine	118.00
363	★田	3c Louisiana Purchase (325). Top Imprint Plate No. block of 10, V.G.-F.	118.00
364	★田	3c Louisiana Purchase (325). Bottom Imprint Plate No. block of 10, V.G.-V.F.	118.00
365	★田	5c Louisiana Purchase (326). Block, light gum wrinkle in one stamp, V.F. centering	45.00
366	★田	5c Louisiana Purchase (326). Block, slight corner creases in one stamp, otherwise Very Fine	45.00
367	★田	5c Louisiana Purchase (326). R. Arrow block, V.F. (Photo)	50.00
368	★田	5c Louisiana Purchase (326). Mint L. Arrow block, F.-V.F.	50.00
369	★田	5c Louisiana Purchase (326). Mint Top Imprint Plate No. block of 6, margin slightly reduced, Very Fine (Photo)	90.00
370	★田	5c Louisiana Purchase (326). Bottom Imprint Plate No. block of 6, margin slightly reduced, Very Fine (Photo)	90.00
371	★田	5c Louisiana Purchase (326). Top Imprint Plate No. block of 10, tiny thinning in one stamp, otherwise V.F.	135.00
372	★田	5c Louisiana Purchase (326). Bottom Imprint Plate No. block of 10, V.G.-Fine	135.00
373	★田	10c Louisiana Purchase (327). Block, Very Fine (Photo)	120.00
374	★田	10c Louisiana Purchase (327). Block, Fine-Very Fine	120.00
375	★田	10c Louisiana Purchase (327). L. Arrow block, Fine (Photo)	130.00
376	★田	10c Louisiana Purchase (327). R. Arrow block, F.-V.F. (Photo)	130.00
377	★田	10c Louisiana Purchase (327). Bottom Imprint Plate No. block of 6, Fine (Photo)	255.00
378	★田	10c Louisiana Purchase (327). Top Imprint Plate No. block of 6, tiny thinning in one stamp, margin reduced, Very Fine centering (Photo)	255.00
379	★田	10c Louisiana Purchase (327). Mint Top Imprint Plate No. block of 10, F.-V.F. (Photo)	375.00
380	★田	10c Louisiana Purchase (327). Bottom Imprint Plate No. block of 10, minute natural paper spot on one stamp, F.-V.F. (Photo)	375.00

JAMESTOWN ISSUE

381	★	1c-5c Jamestown (328-330). Very Fine	15.35
382	★田	1c, 2c Jamestown (328-329). Blocks, Very Fine	13.00
383	★田	1c, 2c Jamestown (328, 329). Line blocks, Fine-Very Fine	13.00
384	★田	1c, 2c Jamestown (328, 329). Mint Arrow blocks, F.-V.F.	15.50
385	★田	1c, 2c Jamestown (328-329). Arrow blocks, first has small gum thin, otherwise V.G.-Fine	15.50
386	★田	1c-5c Jamestown (328-330). Blocks, one 5c has minute gum thin, otherwise V.G.-V.F.	65.50
387	★田	1c, 2c Jamestown (328-329). Top Imprint Plate No. blocks of 6, margins reduced, gum disturbed on 2c, Very Fine centering	35.00
388	★田	1c, 2c Jamestown (328-329). Bottom Imprint Plate No. blocks of 6, margins reduced, Fine	35.00
389	★田	1c, 2c Jamestown (328-329). Top Imprint Plate No. blocks of 6, margins reduced, V.G.-F.	35.00
390	★田	1c, 2c Jamestown (328-329). Bottom Imprint Plate No. blocks of 6, margins reduced, V.G.-F.	35.00
391	★田	1c, 2c Jamestown (328, 329). Two blocks of each, Fine	26.00
392	★田	5c Jamestown (330). Block, Fine-Very Fine	52.50
393	★田	5c Jamestown (330). Block, Fine-Very Fine	52.50
394	★田	5c Jamestown (330). Line Block, Fine-Very Fine	52.50
395	★田	5c Jamestown (330). Mint Top Arrow block, Fine-Very Fine (Photo)	60.00

396	★田	5c Jamestown (330). Mint bottom Arrow block, Fine-Very Fine	60.00
397	★田	5c Jamestown (330). Imprint Plate No. block of 4, Fine (Photo)	52.50+
398	★田	5c Jamestown (330). Bottom Imprint Plate No. block of 6, margin slightly reduced, Very Fine centering (Photo)	135.00
399	★田	5c Jamestown (330). Top Imprint Plate No. block of 6, perfs. close at R. (Photo)	135.00
400	★田	5c Jamestown (330). Bottom Imprint Plate No. block of 6, margin reduced, two stamps thin, otherwise V.G.-F.	135.00
401	★田	5c Jamestown (330). Top Imprint Plate No. block of 6, margin reduced, Very Good	135.00

1908 ISSUE

402	★田	1c Green, 2c Carmine (331-332). Fourteen blocks, nine of latter, F.-V. F.	29.85
403	★田	1c Green, 2c Carmine (331, 332). Imprint, Plate No. & Star blocks of 6, tops and bottoms of each, plus Top Imprint, Plate No. & Star block of 10 of 2c, margins reduced, Fine-Very Fine	22.25
404	★田	3c Deep Violet (333). Blocks, 2mm. & 3mm. spacing, latter has minute faults, otherwise Fine-Very Fine	27.00
405	★田	3c Deep Violet (333). Bottom Imprint Plate No. & Star Block of 6, margin reduced, minute thin in one stamp, otherwise Fine	40.00
406	★田	3c Deep Violet (333). Top Imprint Plate No. & Star block of 6, margin reduced, V.G.-V.F.	40.00
407	★田	3c-5c 1908 Issue (333-335). Blocks, Fine-Very Fine	32.00
408	★田	3c-6c 1908 Issue (333-336). Blocks, Fine-Very Fine	48.00
409	★田	3c-6c 1908 Issue (333-336). Blocks, Fine-Very Fine	48.00
410	★田	3c-6c 1908 Issue (333-336). Blocks, Fine-Very Fine	48.00
411	★田	4c Orange Brown (334). Top Imprint Plate No. & Star block of 6, margin reduced, minute gum thin in one stamp, otherwise Very Fine	22.00
412	★田	4c Orange Brown (334). Blocks 2 and 3mm. spacing, Very Fine	20.00
413	★田	4c-8c 1908 Issue (334, 336, 337). Imprint Plate No. blocks of 6, first with Star, 4c and 8c tops, 6c is Bottom, one stamp in each is thin, margins reduced, otherwise Very Good-Very Fine	77.00
414	★田	5c Blue (335). Block, 3mm spacing, Very Fine	35.00
415	★田	5c Blue (335). Left Imprint Plate No. block of 6, margin reduced, V.F.	27.50
416	★田	5c Blue (335). Bottom Imprint Plate No. & Star block of 6, margin reduced, Very Fine (Photo)	75.00
417	★田	5c Blue (335). R. Imprint, Plate No. & Star block of 6, margin reduced, Fine-Very Fine	75.00
418	★田	5c Blue (335). Bottom Imprint, Plate No. and Star block of 6, margin reduced, tiny thin in margin only, Fine	75.00
419	★田	6c Red Orange (336). Bottom Imprint Plate No. block of 6, margin reduced, minute marginal stains, Fine-Very Fine	32.50
420	★田	8c Olive Green (337). Mint Top Imprint Plate No. block of 6, V.F.	22.50
421	★田	8c Olive Green (337). Top Imprint Plate No. block of 6, margin reduced, Fine	22.50
422	★田	8c Olive Green, 10c Yellow (337-338). Blocks, Fine-Very Fine	30.00
423	★田	8c Olive Green, 10c Yellow (337-338). Blocks, 10c has light gum bends, otherwise Fine-Very Fine	30.00
424	★田	10c Yellow (338). Bottom Imprint Plate No. block of 6, Fine	42.50
425	★田	10c Yellow (338). Top Imprint Plate No. block of 6, margin reduced, light gum bend, Fine	42.50
426	★田	13c Blue Green (339). Top Imprint Plate No. block of 6, margin reduced, Very Fine centering	40.00

427	★	13c Blue Green (339). Bottom Imprint Plate No. block of 6, margin reduced, Fine-Very Fine	40.00
428	★	13c Blue Green (339). L. Imprint Plate No. block of 6, margin reduced, F.	40.00
429	★	13c Blue Green (339). R. Imprint Plate No. Block of 6, margin reduced, Fine	40.00
430	★	13c Blue Green, 15c Pale Ultramarine (339-340). Blocks, Fine-Very Fine	37.00
431	★	13c Blue Green, 15c Pale Ultramarine (339-340). Blocks, latter has slight gum bend in one stamp, Fine-Very Fine	37.00
432	★	13c Blue Green, 15c Pale Ultramarine (339, 340). Blocks, Fine	37.00
433	★	15c Pale Ultramarine (340). Bottom Imprint Plate No. Block of 6, margin reduced, Very Fine centering	37.50
434	★	15c Pale Ultramarine (340). Top Imprint Plate No. block of 6, margin reduced, F.-V. F.	37.50
435	★	50c Violet (341). Block, Fine	(Photo) 100.00
436	★	50c Violet (341). Block, Fine	100.00
437	★	50c Violet (341). Top Imprint Plate No. block of 6, margin reduced, minute gum thin in one stamp, otherwise Fine-Very Fine	(Photo) 200.00
438	★	50c Violet (341). Bottom Imprint Plate No. block of 6, margin reduced, Fine	(Photo) 200.00
439	★	\$1.00 Violet Brown (342). Block, Very Fine	(Photo) 160.00
440	★	\$1.00 Violet Brown (342). Bottom Imprint Plate No. block of 6, perfs in at B. Very Good	(Photo) 325.00

1909 COMMEMORATIVES

441	★	2c Lincoln (367). Mint top Imprint Plate No. block of 18, shows both spacings, margin reduced, Fine	24.50
442	★	2c Lincoln (367). Set Imprint Plate No. blocks of 6, margins reduced, V. G.-V. F.	48.00
443	★	2c 1909 Commems (367, 370, 372). Blocks, Fine-Very Fine	15.25
444	★	2c 1909 Commems (367, 370, 372). 48 copies in blocks, includes Four No. 370, Ten No. 372, Fine-Very Fine	54.50
445	★	2c Lincoln Imperf. (368). Blocks, 2 and 3mm spacing, V. F.	52.50
446	★	2c Lincoln Imperf. (368). Blocks, 2 and 3mm spacing, V. F.	52.50
447	★	2c Lincoln Imperf. (368). Blocks, 2 and 3mm spacing, V. F.	52.50
448	★	2c Lincoln Imperf. (368). Blocks, 2 and 3mm spacing, V. F.	52.50
449	★	2c Lincoln Imperf. (368). Blocks, 2 and 3mm spacing, V. F.	52.50
450	★	2c Lincoln Imperf. (368). Blocks, 2 and 3mm spacing, light gum wrinkles, otherwise V. F.	52.50
451	★	2c Lincoln Imperf. (368). Centerline block, small thin in top margin, otherwise Very Fine	60.00
452	★	2c Lincoln Imperf. (368). Block of 6, Very Fine	37.00
453	★	2c Lincoln Imperf. (368). Top imprint Plate No. block of 6, Very Fine	40.00
454	★	2c Lincoln Imperf. (368). Bottom Imprint Plate No. block of 6, small thin in one stamp, otherwise V. F.	40.00
455	★	2c Lincoln Imperf. (368). R. Imprint Plate No. block of 6, margin reduced, Very Fine	40.00
456	★	2c Lincoln Imperf. (368). R. Imprint Plate No. block of 6, margin reduced, tear in one stamp, otherwise Very Fine	40.00
457	★	2c Lincoln Imperf. (368). Horiz. block of 14 showing both spacings, minute gum thin in one stamp, Very Fine	89.50
458	★	2c Lincoln Imperf. (368). Mint set Arrow blocks, V. F.	120.00
459	★	2c Lincoln Bluish (369). Fine	21.00
460	★	2c Lincoln Bluish (369). Block, Fine-Very Fine	87.50

461	★	2c Lincoln Bluish (369).	Mint top Imprint Plate No. block of 6, V.F.	
			(Photo)	150.00
462	★	2c Lincoln Bluish (369).	L. Imprint Plate No. block of 6, Fine-Very Fine	
			(Photo)	150.00
463	★	2c Lincoln Bluish (369).	L. Imprint Plate No. block of 6, margin reduced, Fine	
			(Photo)	150.00
464	★	2c Alaska Yukon (370).	Set Imprint Plate No. blocks of 6, margins slightly reduced, Fine-Very Fine	68.00
465	★	2c Alaska Yukon Imperf. (371).	Block, Extremely Fine	30.00
466	★	2c Alaska Yukon Imperf. (371).	Centerline block, Very Fine	60.00
467	★	2c Alaska Yukon Imperf. (371).	Bottom Imprint Plate No. block of 6, margin reduced, V. F.	50.00
468	★	2c Alaska Yukon Imperf. (371).	Top Imprint Plate No. block of 6, margin reduced, V. F.	50.00
469	★	2c Alaska Yukon Imperf. (371).	R. Imprint Plate No. block of 6, margin reduced, Very Fine	50.00
470	★	2c Alaska Yukon Imperf. (371).	L. Imprint Plate No. block of 6, margin reduced, Very Fine	50.00
471	★	2c Alaska Yukon Imperf. (371).	Set Arrow blocks, one stamp has tiny scissor cut, otherwise Very Fine	140.00
472	★	2c Hudson Fulton (372).	Set Imprint Plate No. blocks of 6, margins slightly reduced, Fine-Very Fine	56.00
473	★	2c Hudson Fulton Imperf. (373).	Block, minute gum wrinkles, Very Fine	27.50
474	★	2c Hudson Fulton Imperf. (373).	Block, small thin, otherwise V. F.	27.50
475	★	2c Hudson Fulton Imperf. (373).	Centerline block, Very Fine	65.00
476	★	2c Hudson Fulton Imperf. (373).	Mint top Imprint Plate No. block of 6, light gum wrinkles, Very Fine	50.00
477	★	2c Hudson Fulton Imperf. (373).	R. Imprint Plate No. block of 6, Very Fine	50.00
478	★	2c Hudson Fulton Imperf. (373).	L. Imprint Plate No. block of 6, margin reduced, Very Fine	50.00
479	★	2c Hudson Fulton Imperf. (373).	R. Imprint Plate No. block of 6, margin reduced, Very Fine	50.00
480	★	2c Hudson Fulton Imperf. (373).	Bottom Imprint Plate No. block of 6, margin reduced, small margin tear, otherwise Very Fine	50.00
481	★	2c Hudson Fulton Imperf. (373).	Set Arrow blocks, Very Fine	130.00

PANAMA PACIFIC ISSUE

482	★	1c, 2c Panama Pacific (397, 398).	Blocks, Very Fine	11.00
483	★	1c, 2c Panama Pacific (397, 398, 401).	Blocks, latter two each have one stamp with slt. thin, otherwise Fine-Very Fine	24.00
484	★	5c Panama Pacific (399).	Block, Very Fine	42.50
485	★	5c Panama Pacific (399).	Block, light gum bend, Fine-Very Fine	42.50
486	★	10c Panama Pacific (400).	Block, Very Fine (Photo)	62.50
487	★	10c Panama Pacific (400).	Block, Fine	62.50
488	★	10c Panama Pacific (400A).	Block, Fine-Very Fine	80.00
489	★	10c Panama Pacific (400A).	Block, Fine-Very Fine	80.00
490	★	1c Panama Pacific Perf. 10 (401).	Block, Very Fine	13.00
491	★	2c Panama Pacific Perf. 10 (402).	Block, Very Fine	42.50
492	★	2c Panama Pacific Perf. 10 (402).	Block, Fine	42.50
493	★	5c Panama Pacific Perf. 10 (403).	Block, few slightly short perfs., otherwise Fine-Very Fine	100.00
494	★	5c Panama Pacific Perf. 10 (403).	Block of 4 with Plate No. small gum skip on one stamp, Fine	100.00

495	★	10c Panama Pacific, Perf. 10 (404). Block, Very Fine	(Photo) 425.00
496	★	10c Panama Pacific Perf. 10 (404). Block, Very Fine	(Photo) 425.00

VICTORY, PILGRIM ISSUES

497	★	3c Victory (537). Mint top Plate No. block of 6, F.-V. F.	32.50
498	★	3c Victory (537). L. Plate No. Block of 6, margin reduced, Very Fine	32.50
499	★	3c Victory (537). Mint bottom Plate No. block of 6, light diagonal gum bend, Fine-Very Fine	32.50
500	★	3c Victory (537). L. Plate No. block of 6, small paper fold in one stamp, Fine-Very Fine	32.50
501	★	3c Victory (537). Mint R. Plate No. block of 6, marginal gum skip on one stamp, margin reduced, Fine-Very Fine	32.50
502	★	3c Victory (537). Mint R. Plate No. block of 6, margin reduced, F.-V. F.	32.50
503	★	3c Victory (537). Mint Top Plate No. block of 6, light diagonal gum bends, Fine-Very Fine	32.50
504	★	3c Victory (537). Mint Bottom Plate No. block of 6, light diagonal gum bend, tiny scuff on one stamp, otherwise F.-V. F.	32.50
505	★	3c Pale Red Violet Victory (537b). Top Plate No. block of 6, margin reduced, Fine	35.00
506	★	3c Victory (537). Three blocks, shades, Very Fine	22.50
507	★	3c Victory (537). Four blocks, shades, Fine-Very Fine	30.00
508	★	3c Victory (537). Four blocks, shades, Fine-Very Fine	30.00
509	★	3c Victory (537). Mint set of four corner blocks of 4, V. G.-V. F.	30.00
510	★	3c Victory (537). Eighteen copies in blocks, shades, minor thins affect 5 stamps, otherwise mostly Very Fine	33.70
511	★	1c-5c Commemoratives (Betw. 537-612). Thirty-six stamps, V. G.-V. F.	31.49
512	★	1c, 2c Pilgrim (548-549). Top Plate No. blocks of 6, margins reduced, light gum bends affecting one stamp, Very Fine	29.00
513	★	1c, 2c Pilgrim (548-549). L. Plate No. blocks of 6, reduced margins, V. F.	29.00
514	★	1c, 2c Pilgrim (548-549). Bottom Plate No. blocks of 6, margins reduced, 1c has light gum bends, F.-V. F.	29.00
515	★	1c, 2c Pilgrim (548-549). R. Plate No. blocks of 6, margins reduced, F.-V. F.	29.00
516	★	1c-5c Pilgrim (548-550). Set of blocks, Very Fine	38.25
517	★	1c-5c Pilgrim (548-550). Set of blocks, 5c has small gum skip on two stamps, Very Fine	38.25
518	★	1c-5c Pilgrim (548-550). Set of blocks, Fine-Very Fine	38.25
519	★	1c-5c Pilgrim (548-550). Set of blocks, Fine	38.25
520	★	5c Pilgrim (550). Mint R. Plate No. Blocks of 6, Very Fine	(Photo) 80.00
521	★	5c Pilgrim (550). L. Plate No. Block of 6, margin reduced, V. F.	(Photo) 80.00
522	★	5c Pilgrim (550). Bottom Plate No. Block of 6, margin reduced, light diagonal gum bends, Very Fine	80.00
523	★	5c Pilgrim (550). Mint Top Plate No. Block of 6, F.-V. F.	80.00

HARDING, HUGUENOT WALLOON ISSUES

524	★	2c Harding (610). Set of four Plate No. blocks of 6, F.-V. F.	15.00
525	★	2c Harding (610-612). Blocks, Very Fine	20.75
526	★	2c Harding (610-612). Blocks, Very Fine	20.75
527	★	2c Harding Imperf. (611). Set of four margin blocks of 4 with Arrow, one has light marginal wrinkle, Very Fine	60.00
528	★	2c Harding Imperf. (611). Centerline block of 16, Very Fine	94.00
529	★	2c Harding Imperf. (611). Set of four Plate No. blocks of 6, F.-V. F.	80.00
530	★	2c Harding Imperf (611). Set of four corner blocks of 9, Very Fine	72.00

531	★田	2c Harding (612). Block, Extremely Fine	12.00
532	★田	2c Harding (612). Mint U. R. Plate No. block of 4, Extremely F. (Photo)	40.00
533	★田	2c Harding (612). U. L. Plate No. block of 4, Very Fine	40.00 (Photo)
534	★田	2c Harding (612). L. R. Plate No. block of 4, F.-V. F.	40.00
535	★田	2c Harding (612). L. L. Plate. No. block of 4, Perfs. barely touch at L.	40.00
536	★田	2c Harding (612). Three blocks, shades, Very Fine	36.00
537	★	1c-5c Huguenot-Walloon (614-616). Three sets, including Broken Circle var., Fine-Very Fine	27.50
538	★田	1c-5c Huguenot Walloon (614-616). Set of blocks, Very Fine	32.25
539	★田	1c-5c Huguenot-Walloon (614-616). Set of blocks, Very Fine	32.25
540	★田	1c-5c Huguenot Walloon (614-616). Set of blocks, Fine-Very Fine	32.25
541	★田	1c-5c Huguenot-Walloon (614-616). Set of blocks, Fine-Very Fine	32.25
542	★田	1c-5c Huguenot-Walloon (614-616). Set of blocks, light gum bends, Fine-Very Fine	32.25
543	★田	1c-5c Huguenot-Walloon (614-616). Set of blocks, Fine	32.25
544	★田	1c-5c Huguenot-Walloon (614-616). Set of blocks, one stamp in each has small faults, otherwise F.-V. F.	32.25
545	★田	1c-5c Huguenot Walloon (614-616). Set of bottom Plate No. blocks of 6, Fine-Very Fine	72.50
546	★田	1c-5c Huguenot-Walloon (614-616). Set of L. Plate No. blocks of 6, margin reduced on 2c, Fine-Very Fine	72.50
547	★田	1c-5c Huguenot-Walloon (614-616). Set of R. Plate No. blocks of 6, 5c has reduced margin, Very Fine	72.50
548	★田	1c-5c Huguenot Walloon (614-616). Set of mint top Plate No. blocks of 6, margin reduced on 5c, latter shows Broken Circle varieties, F.-V. F.	72.50+
549	★田	1c-5c Huguenot Walloon (614-616). Set of mint top Plate No. blocks of 10, 5c shows Broken Circle varieties, Fine-Very Fine	93.30+
550	★田	1c-5c Huguenot-Walloon (614-616). Set of top, Plate No. blocks of 10, margin reduced on 2c, Fine-Very Fine	93.30
551	★田	1c-5c Huguenot-Walloon (614-616). Set of Plate No. blocks of 10, 2c is top, 1c, 5c bottoms, Fine-Very Fine	93.30
552	★田	5c Huguenot-Walloon (616). Bottom Plate No. block of 10, F.-V. F.	70.50
553	★田	5c Huguenot-Walloon (616). Bottom Plate No. block of 10, margin reduced, Fine-Very Fine	70.50

LEXINGTON-CONCORD, NORSE AMERICAN ISSUES

554	★田	1c Lexington-Concord (617). Mint top and bottom Plate No. blocks of 10, one stamp on former defective, otherwise F.-V. F.	17.80
555	★田	1c-5c Lexington-Concord (617-619). Set of blocks, Very Fine	22.00
556	★田	1c-5c Lexington Concord (617-619). Set of blocks, Very Fine	22.00
557	★田	1c-5c Lexington Concord (617-619). Set of corner blocks, F.-V. F.	22.00
558	★田	1c-5c Lexington Concord (617-619). Set of corner blocks, F.-V. F.	22.00
559	★田	1c-5c Lexington Concord (617-619). Set of R. Plate No. blocks of 6, margin reduced on 1c, Very Fine	53.50
560	★田	1c-5c Lexington Concord (617-619). Set of L. Plate No. blocks of 6, margins reduced on 1 & 2c, Very Fine	53.50
561	★田	1c-5c Lexington-Concord (617-619). Set of Bottom Plate No. blocks of 6, margins reduced on 1c and 5c, Very Fine	53.50
562	★田	1c-5c Lexington-Concord (617-619). Mint set of Top Plate No. blocks of 6, one 5c has small piece missing, otherwise V. F.	53.50
563	★田	5c Lexington Concord (619). Bottom Plate No. block of 6, margin reduced, Very Fine	35.00
564	★	1c-5c Lexington-Concord (617-619). Six sets including two extra 2c, two 5c have s. e., Fine-Very Fine	33.90

565	★	1c-5c Lexington Concord (617-619). Set of top Plate No. blocks of 10, margins reduced, Very Fine	73.60
566	★	1c-5c Lexington-Concord (617-619). Set of bottom Plate No. blocks of 10, margins reduced, Fine-Very Fine	73.60
567	★	5c Lexington-Concord (619). Horiz. block of 10, str. edge at top, Fine	33.50
568	★	2c, 5c Norse American (620-621). Set of mint blocks, Very Fine	32.50
569	★	2c, 5c Norse American (620-621). Set of mint blocks, Very Fine	32.50
570	★	2c, 5c Norse American (620-621). Set of mint blocks, Very Fine	32.50
571	★	2c, 5c Norse American (620-621). Set of mint blocks, Very Fine	32.50
572	★	2c, 5c Norse American (620-621). Set of blocks, Very Fine	32.50
573	★	2c, 5c Norse American (620-621). Set of blocks, Very Fine	32.50
574	★	2c, 5c Norse American (620-621). Set of horiz. blocks of 6, Very Fine	47.90
575	★	2c, 5c Norse American (620, 621). Mint set of top margin blocks of 12, two Plate No.'s and Arrow, Fine-Very Fine (Photo)	178.30
576	★	2c, 5c Norse American (620-621). Set of Centerline and three Arrow blocks of four, Very Fine	149.00
577	★	2c, 5c Norse American (620-621). Mint set of corner blocks of 4, V.F.	130.00+
578	★	2c Sesquicentennial (627). Set of Four Plate No. blocks of 6, two stamps have tiny thins, otherwise Fine-Very Fine	40.00
579	★	2c Sesquicentennial (627). Forty-six copies in blocks, shades, mostly V.F.	25.75

END OF SALE — THANK YOU

ESTIMATES

Our sales contain many 19th Century covers and fancy cancellations. We have had many requests to give the estimated cash value on these lots. We are trying to place a fair net valuation on each lot as a guide for bidding when no catalogue value portrays the true value. The chart below will be used, for example E. IV means our estimate cash value on this lot is \$30.00 to \$40.00. Lots may actually realize more or less than these estimates and under no circumstances are these estimates to be considered reserves but merely a guide to bidding.

E. I	up to \$10.00	E. VIII	\$100.00 to \$150.00
E. II	\$10.00 to \$20.00	E. IX	\$150.00 to \$200.00
E. III	\$20.00 to \$30.00	E. X	\$200.00 to \$250.00
E. IV	\$30.00 to \$40.00	E. XI	\$250.00 to \$350.00
E. V	\$40.00 to \$50.00	E. XII	\$350.00 to \$500.00
E. VI	\$50.00 to \$75.00	E. XIII	\$500.00 to \$750.00
E. VII	\$75.00 to \$100.00	E. XIV	\$750.00 to \$1000.00
		E. XV	over \$1000.00

LOTS ON VIEW FROM SEPTEMBER 1st

OFFICE OPEN SATURDAY, SEPTEMBER 9th

PRICES REALIZED

THIS SALE

\$1.00

OR ENTIRE YEAR \$3.50

IS YOUR COLLECTION FOR SALE?

REALIZE IMMEDIATE CASH
PLUS THE ADDED ADVANTAGE OF
SELLING THROUGH OUR AUCTIONS

We will advance immediate cash up to 75% of our appraisal value, of what your collection should realize at auction.

Your collection will then be sold in one of our coming auction sales. All stamps are expertly and advantageously lotted in attractive, well illustrated catalogs. Lotting is meticulously planned under our personal supervision. Commission is 20% of the gross realization. Final settlement is made within five weeks after the sale. We have been continuously conducting stamp auctions in the United States for nearly thirty years.

Valuable collections and stamp holdings are especially wanted, but we will accept properties valued from \$500 upwards. Send all stamps direct for appraisal. Auction advance will be remitted within 48 hours following receipt. If not entirely pleased, stamps will be returned at our expense. If circumstances warrant due to bulk or value, we will travel anywhere to inspect important estates.

ROBERT A. SIEGEL

(Licensed and Bonded Auctioneer)

489 FIFTH AVENUE

NEW YORK CITY

(Tel. MU. 2-0980)

ROBERT A. SIEGEL
489 Fifth Ave.
New York 17, N. Y.

PRICES REALIZED
September 14th, 1961

United States
Nineteenth Century Stamps and Covers
Collection of Unused Blocks

1	87.50	66	200.00	115	95.00	182	2.50	248	460.00	315	14.00	382	11.50	449	23.00	516	21.00
2	40.00	67	450.00	116	38.00	183	12.00	249	24.00	316	19.00	383	11.00	450	17.50	517	18.50
3	55.00	68	475.00	117	22.00	184	80.00	250	29.00	317	18.00	384	7.50	451	16.00	518	20.00
4	52.50	69	3500.00	118	16.00	185	3.00	251	8.00	318	13.50	385	3.50	452	16.00	519	16.00
5	125.00	70	cut	119	38.00	186	13.00	252	20.00	319	29.00	386	25.00	453	26.00	520	70.00
6	300.00	71	28.00	120	77.50	187	12.50	253	27.50	320	26.00	387	31.00	454	17.00	521	50.00
7	290.00	72	50.00	121	77.50	188	10.00	254	33.00	321	33.00	388	13.00	455	17.00	522	52.00
8	120.00	73	77.50	122	19.50	189	29.00	255	17.50	322	23.00	389	12.50	456	13.00	523	62.00
9	15.00	74	24.00	123	9.50	190	7.50	256	31.00	323	22.50	390	13.50	457	39.00	524	12.50
10	10.50	75	20.00	124	8.50	191	11.00	257	21.50	324	18.50	391	12.00	458	47.00	525	9.50
11	17.50	76	15.00	125	17.50	192	37.50	258	21.50	325	19.50	392	27.00	459	15.50	526	9.50
12	145.00	77	8.00	126	5.50	193	11.00	259	44.00	326	15.50	393	38.00	460	60.00	527	19.00
13	10.00	77A	5.50	127	3.00	194	47.50	260	23.00	327	25.00	394	32.00	461	165.00	528	25.00
14	11.00	77B	11.00	128	10.00	195	11.50	261	19.00	328	21.00	395	40.00	462	167.50	529	32.00
15	11.00	77C	6.00	129	4.50	196	11.00	262	53.00	329	16.50	396	52.50	463	140.00	530	25.00
16	34.00	78	12.50	130	13.00	197	16.50	263	31.00	330	105.00	397	25.00	464	60.00	531	4.50
17	12.00	78A	8.00	131	8.00	198	31.00	264	21.00	331	125.00	398	200.00	465	14.50	532	53.00
18	25.00	78B	7.00	132	10.50	199	25.00	265	42.50	332	180.00	399	115.00	466	20.00	533	40.00
19	19.00	78C	7.50	133	11.00	200	125.00	266	39.00	333	175.00	400	65.00	467	20.50	534	25.00
20	17.50	78D	5.50	134	6.50	201	12.00	267	120.00	334	235.00	401	74.00	468	22.50	535	16.00
21	6.50	78E	10.00	135	10.00	202	10.50	268	72.50	335	500.00	402	10.00	469	20.00	536	19.00
22	135.00	79	10.00	136	7.50	203	11.50	269	5.50	336	36.00	403	8.50	470	20.50	537	10.00
23	106.00	79A	26.00	137	10.50	204	5.50	270	31.00	337	78.00	404	8.00	471	48.00	538	18.50
24	13.00	79B	10.50	138	10.50	205	8.50	271	12.50	338	11.00	405	10.00	472	54.00	539	18.00
25	170.00	79C	16.00	139	9.00	206	140.00	272	15.00	339	7.50	406	10.50	473	13.50	540	13.50
26	185.00	80	15.00	140	3.00	207	9.00	273	24.00	340	7.00	407	13.00	474	11.50	541	16.50
27	145.00	80A	12.50	141	12.50	208	5.00	274	14.00	341	5.00	408	20.00	475	26.00	542	12.50
28	140.00	80B	12.50	142	15.00	209	38.00	275	7.50	342	4.50	409	22.00	476	25.50	543	11.00
29	410.00	81	67.50	143	18.50	210	10.50	276	9.50	343	19.00	410	21.00	477	22.00	544	12.50
30	165.00	81A	9.00	144	28.00	211	6.50	277	15.00	344	18.00	411	16.00	478	19.00	545	48.00
31	100.00	81B	9.00	145	6.50	212	7.50	278	10.00	345	36.00	412	10.50	479	20.00	546	37.00
32	57.50	81C	7.00	146	6.50	213	5.00	279	15.00	346	24.00	413	22.00	480	23.50	547	28.00
33	350.00	81D	7.50	147	5.50	214	5.00	280	35.00	347	8.00	414	10.50	481	47.00	548	35.00
34	cut	81E	7.50	148	15.50	215	13.00	281	26.00	348	7.00	415	22.50	482	8.00	549	50.00
35	190.00	82	8.50	149	38.00	216	6.50	282	48.00	349	6.50	416	46.00	483	9.00	550	46.00
36	900.00	83	10.50	150	20.00	217	6.00	283	30.00	350	5.00	417	32.50	484	27.00	551	46.00
37	5000.00	84	12.00	151	29.00	218	180.00	284	185.00	351	31.00	418	19.00	485	18.50	552	38.00
38	700.00	85	13.00	152	82.50	219	112.50	285	200.00	352	12.50	419	12.00	486	58.00	553	38.50
39	42.50	86	5.50	153	7.50	220	20.00	286	225.00	353	26.00	420	18.00	487	32.00	554	5.50
40	165.00	87	10.00	154	7.00	221	10.00	287	150.00	354	18.50	421	10.50	488	50.00	555	12.00
41	28.00	88	22.50	155	11.00	222	28.00	288	285.00	355	26.00	422	16.50	489	54.00	556	11.50
42	47.50	89	25.00	156	10.50	223	16.50	289	425.00	356	17.00	423	12.50	490	11.00	557	10.50
43	310.00	90	8.50	157	28.50	224	15.50	290	12.00	357	12.50	424	23.00	491	37.50	558	10.00
44	20.00	91	10.00	158	72.50	225	11.50	291	8.00	358	15.50	425	15.00	492	15.00	559	41.00
45	45.00	92	8.00	159	13.00	226	27.50	292	21.00	359	41.00	426	16.50	493	41.00	560	26.00
46	32.00	93	12.50	160	11.00	227	17.50	293	19.00	360	42.00	427	11.50	494	40.00	561	25.00
47	45.00	94	5.50	161	29.00	228	23.00	294	11.00	361	64.00	428	10.50	495	315.00	562	16.00
48	51.00	95	5.50	162	9.50	229	22.00	295	11.50	362	57.50	429	10.00	496	265.00	563	14.50
49	13.00	96	33.00	163	6.00	230	19.00	296	10.00	363	52.50	430	21.00	497	29.00	564	15.00
50	150.00	97	32.00	164	11.00	231	15.00	297	15.50	364	52.50	431	14.50	498	18.50	565	29.00
51	19.00	98	15.50	165	21.00	232	20.00	298	12.50	365	24.00	432	12.50	499	16.00	566	30.00
52	8.00	99	21.00	166	3.00	233	72.50	299	32.50	366	22.50	433	17.00	500	16.00	567	11.00
53	25.00	100	58.00	167	7.00	234	41.00	300	15.50	367	24.00	434	15.00	501	15.50	568	18.00
54	10.00	101	29.00	168	9.00	235	51.00	301	68.00	368	40.00	435	55.00	502	16.50	569	15.50
55	13.50	102	17.00	169	9.00	236	90.00	302	30.00	369	57.50	436	42.00	503	16.00	570	17.00
56	55.00	103	17.00	170	7.50	237	15.00	303	210.00	370	52.00	437	110.00	504	16.00	571	15.50
57	8.00	104	21.00	171	3.50	238	50.00	304	150.00	371	69.00	438	110.00	505	46.00	572	13.00
58	6.00	105	8.00	172	5.00	239	87.50	305	225.00	372	76.00	439	117.50	506	17.00	573	13.00
59	7.00	106	13.50	173	8.00	240	20.00	306	135.00	373	85.00	440	200.00	507	14.50	574	22.50
60	8.00	107	40.00	174	24.00	241	11.50	307	410.00	374	85.00	441	10.00	508	13.00	575	115.00
61	10.00	108	35.00	175	28.50	242	7.00	308	16.00	375	50.00	442	25.00	509	9.00	576	53.00
62	35.00	109	10.50	176	8.50	243	13.00	309	24.00	376	50.00	443	10.00	510	12.00	577	60.00
63	60.00	110	38.00	177	85.00	244	75.00	310	27.50	377	155.00	444	21.00	511	12.50	578	19.00
64	70.00	111	36.00	178	37.50	245	400.00	311	40.00	378	140.00	445	22.50	512	13.50	579	12.00
65	500.00	112	38.00	179	6.00	246	130.00	312	26.00	379	210.00	446	24.00	513	15.50		
		113	10.00	180	12.50	247	23.00	313	34.00	380	185.00	447	23.00	514	9.50		
		114	8.00	181	2.50			314	33.50	381	15.50	448	23.00	515	15.00		