

The
NEWBURY
Collection

Part IV

Robert A. Siegel
AUCTIONS

489 FIFTH AVENUE

NEW YORK 17, N.Y.

Tel.: MUrray Hill 2-0980

THE
NEWBURY COLLECTION

PART IV

UNITED STATES
1c 1851-1857 ISSUE SPECIALIZED
and
UNUSED 1847-1930 ISSUES

Offered by Order of Mr. MICHAEL NEWBURY, of Chicago

At Unreserved Auction Sale on

WEDNESDAY, MAY 16th
THURSDAY, MAY 17th
1962

AT 1:30 P.M.

in Parlor 108 of the HOTEL COMMODORE
42nd Street at Lexington Ave., New York

Robert A. Siegel
AUCTIONS

489 FIFTH AVENUE

NEW YORK 17, N. Y.

Tel.: MUrray Hill 2-0980

CONDITIONS OF SALE

1. The terms of sale are strictly cash to the highest bidder. All buyers are expected to pay for lots within three days of receipt, unless special arrangements have been made prior to the sale.
2. All bids are per lot as numbered in the catalogue and not per piece, unless otherwise announced by the auctioneer at the time of sale.
3. Any lot the description of which is incorrect is returnable only within three days of receipt. All disputed lots must be returned intact as received. Lots containing five or more stamps are not returnable at any time. No lots may be returned by purchasers who have had the opportunity to examine them before the sale.
4. Successful mail bidders, unless they are known to us or supply acceptable references, will be notified of the amount of the lots secured for them, and are expected to send payment in full before the lots are forwarded.
5. If the purchase price has not been paid within the time limit, or lots taken up within seven days from date of sale, they may be resold and any losses arising from such sale charged to the defaulter.
6. All stamps are sold as genuine, except where sold "As Is". Claims for any lot proving otherwise, must be made within two weeks from date of sale.
7. The right is reserved to group two or more lots, also withdraw any lot or lots from the sale, or to act on behalf of the seller.
8. Until paid for in full all lots remain the property of Robert A. Siegel.
9. No commission is charged for buying at our sales, but all forwarding charges will be added to the purchase price.
10. Upon written application lots may be sent for examination prior to the auction, conditional upon being mailed back by registered mail, adequately insured, within 24 hours of receipt. The applicant is completely responsible for all lots sent for examination, and for the insurance of same against mishap, from the time of receipt until they are actually received back, and is to pay all expenses of postage and insurance.
11. The placing of a bid shall constitute acceptance of the foregoing conditions of sale.

ROBERT A. SIEGEL

GREGORY MOZIAN, Licensed Auctioneers

In sending bids, always state the highest price you are prepared to pay for the lot. Your limit will not be used as a starting bid unless absolutely necessary.

DESCRIPTIONS

Superb or Extremely Fine—the finest condition for noteworthy, outstanding copies.

Very Fine (VF)—means that there is a slight deviation from the above.

Fine (F)—means that the perforations do not touch the design on issues after 1890, but in some cases may just touch in earlier issues; if used, fairly lightly cancelled.

Very Good (VG)—means that the appearance is generally fine but that the perforations cut the design slightly.

Good (G)—means average off-centering; or fairly attractive with slight defects. Original gum is not to be expected on 19th Century stamps up to 1888 unless so stated.

Scott 1962 Specialized United States Catalogue is used for cataloguing our lots of United States and Scott's Standard Catalogue, 1962 for others.

WE SOLICIT FINE MATERIAL FOR FUTURE SALES

MAY 16th & 17th, 1962 — 1:30 P. M.

Please purchase for me at your auction to be held **May 16th & 17th, 1962**, the lots named below, the prices annexed being my limit on each lot. I agree to remit for purchases in accordance with the **Conditions of Sale** and to return no lots later than three days after receipt.

SIGNED

.....
.....
.....
.....

[illegible]

Upon request, estimate of value furnished on any lots in this auction.

THE NEWBURY COLLECTION

PART IV

The fourth part of this magnificent collection is a further offering of the remarkable United States material from this noteworthy Philatelic property.

This sale consists of two sections. The first is an astounding range of 1c 1851-1857 plating material. Seldom do collectors have such an opportunity to acquire pieces and plate positions to complete their reconstructions and round out their studies of these beautiful and fascinating stamps. Among the large pieces are some outstanding blocks and complete panes, which are striking showpieces of inestimable value to the student. Among the imperforates is the unused block of 70 from the right pane of Plate II, one of the gems among our early imperforate stamps. The used include combinations of Types II and IV, and numerous pairs and strips showing various varieties from the several plates. The perforated issues include some astounding blocks and complete panes from Plates 7, 8, 9, 10 and 12, in most instances being the largest pieces known, and some are unique.

The second section of this sale is a comprehensive offering of unused singles and blocks from 1847 to 1930. This group is notable for the pristine beauty and freshness of the stamps, which will add lustre to any collection.

Perhaps the most remarkable piece in this group is the unused o. g. lower right corner block of 18 of the 1c 1851, Plate II, which includes Pos. 99R II ! This is a showpiece of great beauty and philatelic interest. Among other stamps worth mentioning are the 24c August of striking brilliance; a superlative range of the charming Bank Note Issues, as well as the Columbians and Trans-Mississippi in singles and blocks.

As before our descriptions are careful and conservative, the material throughout having the same appeal and charm as that in the previous Newbury Sales.

There is no doubt that the bidding will be keen for the stamps described herein. It is equally certain that prices will maintain the high level of previous sales, and that new records surely will be made.



1



4



3



10



6



13



11



16



8



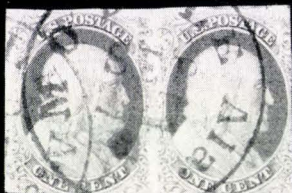
15



17



18



23



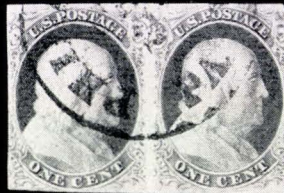
25



26



30



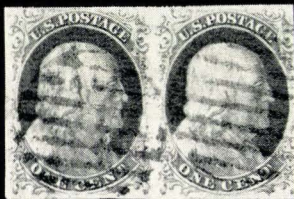
33



35



31



37



41



42



43



45

FIRST SESSION

WEDNESDAY, MAY 16th, 1962 — 1:30 P. M.

HOTEL COMMODORE — PARLOR 108

UNITED STATES

1c 1851 ISSUE ARRANGED BY PLATE POSITIONS

PLATE ONE EARLY (TYPES IB, II, IIIA)

- | | | |
|----|---|--|
| 1 | 1c Blue Ty. II, two, IIIA (7, 8A). Strip of 3, Pos. 1, 11, 21LIE. Large margins, lovely color, grid cancel, a Rare and Beautiful Strip (Photo) 125.00+ | |
| 2 | 1c Blue Ty. II (7). Pos. 2, 42LIE, large margins all around lovely shades, minute crease, Very Fine appearance 30.00 | |
| 3 | 1c Blue Ty. II (7). Horiz. pair, pos. 3-4LIE, clear to huge margins all around, gorgeous colors, Mobile, Ala. pmk., lt. corner creases, Extremely Fine appearance (Photo) 40.00 | |
| 4 | 1c Blue, Ty. II (7). Vertical pair, Pos. 3, 13LIE, large margins all around, sheet margin at top, magnificent color, St. Louis town pmk., a lovely pair, Extremely Fine (Photo) 40.00 | |
| 5 | 1c Blue Ty. II (7). Pos. 3, 100LIE, 2, 69RIE, margins all around, nice shades, one with Red Town, one with Red French Transit Cancels, small thins, Attractive lot E. II | |
| 6 | 1c Blue, Ty. II (7). Horiz. pair, Pos. 4, 5LIE, clear to enormous margins all around, sheet margin at T. & portions of other stamps at sides, wonderful rich color, square grid cancels faint creases, Extremely Fine appearance (Photo) 40.00 | |
| 7 | 1c Blue Ty. II (7). Pos. 5, 41, 68LIE, each touched at one point, pretty shades, town & grid cancels, Fine-Very Fine 45.00 | |
| 8 | 1c Blue Ty. II (7). Pos. 6LIE, Huge Margins all around, nice color, grid and Red Town pmk., Extremely Fine (Photo) 15.00 | |
| 9 | 1c Blue, Ty. II (7). Horiz. pair Pos. 7, 8LIE. Margins all around, Lovely Rich Color, grid cancel, horiz. crease, Very Fine appearance 40.00 | |
| 10 | 1c Blue Ty. II (7). Upper Right Sheet Corner Strip of three, Pos. 8, 9, 10LIE, Huge Margins all around, sheet margin at T. and R., sheet center-line at R., Gorgeous color, grid cancels, minute cr. in T. margin far from design, a Magnificent Strip, Extremely Fine (Photo) 65.00 | |

LOTS ON VIEW FROM MAY 1st

OFFICE OPEN SATURDAY, MAY 12th

11	1c Blue Ty. II (7). Upper Right Sheet Corner Strip of Three, Pos. 8, 9, 10LIE, Huge Margins except just in at U.L. and L.R., sheet margin at T. & R., Gorgeous Color, grid cancels, two tiny stains, a Lovely Strip, Very Fine (Photo)	65.00
12	1c Blue Ty. II (7). Pos. 8, 76, 97LIE, Margins all around, pretty shades, minute corner creases, Very Fine appearance	45.00
13	1c Blue, Ty. II (7). Horiz. strip of 3, Pos. 12, 13, 14LIE, margins except just in at U. L., Brilliant Color, unusual Fancy Blue grid cancels, a Lovely Strip, Very Fine (Photo)	65.00
14	1c Blue, Ty. II, two, IIIA (7, 8A). Reconstructed Horiz. strip of three, Pos. 15-17LIE, margins except just in at U.L., Lovely Color, New York pmks., Fine-Very Fine	115.00
15	1c Blue Ty. II (7). Pos. 17LIE, large margins all around, Pretty Color, Boston "Paid" cancel, Extremely Fine (Photo)	20.00
16	1c Blue, Ty. II (7). Horiz. strip of 3, Pos. 18, 19, 20LIE, Margins except touched at B. R., sheet margin at R., pretty color, Indianapolis, Ind., pmks., Very Fine (Photo)	65.00
17	1c Blue, Ty. II (7). Horiz. strip of 3, Pos. 21, 22, 23LIE. Margins nearly all around, nice color, Grid cancels., Very Fine (Photo)	65.00
18	1c Blue, Ty. II (7). Horiz. pair, Pos. 24, 25LIE. Both show double transfer in "One Cent". Margins except touched at B.L., Gorgeous Color. Blue unframed grid cancels, minute thin in one, otherwise Very Fine (Photo)	60.00+
19	1c Blue, Ty. II (7). Horiz. pair, Pos. 25, 26LIE. Double Transfer in "One Cent" of L. stamps. Margins R. & B., in at U. L. & L. Lovely Rich Color, Bold Louisville, Ky. pmk., Attractive	55.00
20	1c Blue Ty. II (7). Pos. 25LIE, 27LIE, Both with Double Transfers, Margins except barely touched at one point, wonderful shades, grid and town pmk., Very Fine	37.00
21	1c Blue Ty. II (7). Pos. 27LIE, 51LIE, first with double transfer, each barely touched at one point, Gorgeous Colors, grid cancels, Very Fine	30.00
22	1c Blue, Ty. II (7). Horiz. strip of 3, Pos. 28, 29, 30LIE, margins except just in at U.L., Gorgeous Color, unusual Blue grid cancels, two stamps have creases, Fine appearance	65.00
23	1c Blue, Ty. II, IIIa (7, 8A). Horiz. pair Pos. 31, 32LIE. Margins except just in at U.R., Lovely Color, Blue Mobile, Ala. pmks., Attractive, Fine (Photo)	90.00+
24	1c Blue Ty. II (7). Horiz. strip of three, Pos. 33-35LIE, Gorgeous Color, lt. grid cancels, small faults, Attractive	65.00
25	1c Blue Ty. IIIA (8A). Pos. 39LIE, margins all around, unusual Pretty color, Town pmk., handstamp breaks paper at one point, otherwise V.F. (Photo)	85.00
26	1c Blue, Ty. IIIA(8A). Pos. 40LIE. Margins all around, wide at R. Lovely Color & Impression, neat grid cancel, faint horiz. crease, Extremely Fine appearance (Photo)	85.00
27	1c Blue, Ty. II (7). Horiz. strip of 3, Pos. 43, 44, 45LIE, touched in places, nice color. Blue Columbus, O. pmks. Corner crease in one, otherwise, Fine	65.00

28	1c Blue Ty. II (7). Pos. 46LIE, 58LIE, both just in at T., nice shades, ms. and grid cancels.	30.00
29	1c Blue, Ty. II (7). Horiz. strip of 3, Pos. 47, 48, 49LIE. Margins three sides, barely touched at T. Blue Petersburg, Va. Pmks. Magnificent color and impression, minute creases. Very Fine appearance	65.00
30	1c Blue Ty. II (7). Pos. 48LIE, Huge margins all around, unusual Lovely Color, New York pmk., Extremely Fine (Photo)	15.00
31	1c Blue Ty. II (7). Pos. 50LIE, Huge Margins all around, Sheet Center-line at R., Unusual Lovely Color, town pmk., Extremely Fine (Photo)	15.00
32	1c Dk. Blue Ty. II, two, IIIA (7, 8A). Horiz. strip of three, Pos. 52-54LIE, margins except touched at B.R., Lovely Color, Dk. Blue grid cancels, R. stamp has tear, cr. in center stamp. A Rare and Attractive Strip	115.00+
33	1c Blue, Ty. IIIA, II (7, 8A). Horiz. pair, Pos. 55, 56LIE. Margins all around. Lovely color & Impression, Blue Philadelphia pmk., Very Fine (Photo)	90.00+
34	1c Blue, Ty. II (7). Horiz. pair Pos. 59, 60LIE. Huge margins except in at T., Lovely Color, Blue Apalachicola, Florida cancel, scarce and attractive	40.00
35	1c Blue, Ty. II (7). Vertical pair Pos. 61, 71LIE. Double Transfer and Inverted Transfer se-tenant, Enormous Margins at sides, touched U.R. & L.L. Beautiful Color, neat Diamond grid cancels, small faults, Scarce and attractive combination (Photo)	130.00
36	1c Blue, Ty. II (7). Horiz. strip of 3, Pos. 62, 63, 64LIE. Margins except touched at B.R., nice color, grid cancels, light crease, Very Fine appearance	65.00
37	1c Blue Ty. II (7). Horiz. Pair, Pos. 65, 66LIE, margins all around, lovely color, grid cancel, minute faint thin in one, otherwise Very Fine (Photo)	40.00
38	1c Blue, Ty. II (7). Pair and two singles, Pos. 69-70, 92, 94LIE, singles have minute creases, one of pair has tiny faults	E. II
39	1c Blue, Ty. II, two, IIIA (7, 8A). Vertical strip of 3, Pos. 75, 85, 95LIE. Large margins three sides, partly touched at R. Nice Color, Blue Charleston pmks. lt. creases, rare and attractive combination	115.00+
40	1c Dark Blue, Ty. II (7a). Horiz. strip of 3 Pos. 78, 79, 80LIE. Margins except partly in at L. & T., Wonderful Rich Color. Council Bluffs Ia., pmks., Fine	65.00
41	1c Blue, Ty. IIIA, (8A). Pos. 81LIE, Triple Transfer, One Inverted, Huge Margins 3 sides, showing part of stamp below, barely touched at L. Lovely Color, grid cancel, Pretty copy of this scarce stamp, Very Fine (Photo)	120.00
42	1c Dark Blue, Ty. IIIA (8A). Pos. 81LIE. Triple Transfer, One Inverted Margins all around, Rich Color, New York pmk., Very Fine, Scarce (Photo)	120.00
43	1c Blue, Ty. II (7). Horiz. strip of 3 Pos. 82, 83, 84LIE. Large Margins All Around, Magnificent Color & Impression, Light grid cancels, minute marginal creases, Extremely Fine appearance (Photo)	65.00
44	1c Blue Ty. II (7). Pos. 85LIE, Large Margins all around, Lovely Color, unframed grid cancel, Extremely Fine (Photo)	15.00



44



46



47



52



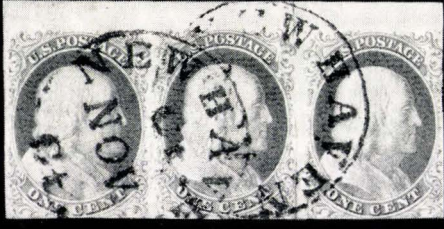
63



48



50



53



54



57



62



58



59



60



56



68



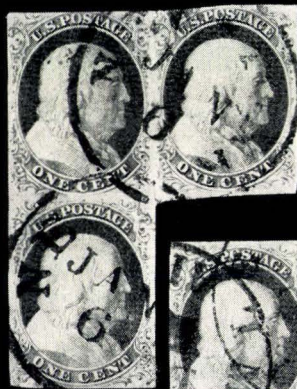
69



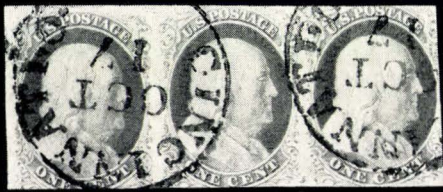
70



72



71



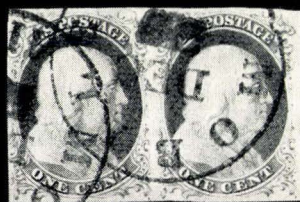
73



83



76



75



77



85

45	1c Blue, Ty. II (7). Horiz. strip of 3, Pos. 85, 86, 87LIE. Touched at places. Blue grid cancel, Beautiful color, Fine (Photo)	65.00
46	1c Blue, Ty. II (7). Horiz. strip of 3, Pos. 88, 89, 90LIE, large margins all around, Sheet Centerline at R., Lovely Color, Blue Charleston pmk., tiny scissor cut between two stamps, faint tiny crease in top margin, otherwise Very Fine (Photo)	65.00
47	1c Dark Blue, Ty. II (7). Pos. 91LIE. Triple Transfer, One Inverted Margins all around. Lovely color and Impression, grid cancels, Very Fine (Photo)	100.00
48	1c Blue Ty. II (7). Pos. 93LIE, Clear to Enormous Margins all around, showing portion of stamp above and sheet margin at B. Gorgeous Color, Red Town & neat grid cancel, Extremely Fine (Photo)	15.00
49	1c Blue Ty. II (7). Horiz. Pair., Pos. 96-97LIE, margins all around, Sheet Margin at B., Brilliant Color, lt. ms. cancels, a lovely pair, Very Fine	40.00
50	1c Blue Ty. II (7). Pos. 1RIE, Sheet corner copy showing centerline, Huge margins other sides, Faint marginal creases, light pen cancel. Lovely color, Extremely Fine appearance (Photo)	15.00+
51	1c Blue Ty. II (7). Pos. 2, 16, 94RIE, margins to just touched, lovely shades, lt. creases, Very Fine appearance	45.00
52	1c Blue, Ty. Ib (6a). Pos. 3RIE. Margins except partly touching at L., wonderful color & impression, Cincinnati pmk. Pinhole, lt. wrinkle, Very Fine appearance (Photo)	75.00
53	1c Blue, Ty. Ib (6a). Horiz. strip of 3, Pos. 4, 5, 6RIE, margins except just touched at B. and R., sheet margin at T., slightly broken crease in margin between last two, Lovely Color, New Haven pmks. A Rare and Wonderful Strip, Very Fine (Photo)	450.00
54	1c Blue, Ty. Ib (6a). Horiz. pair, Pos. 8, 9RIE, Large Margins all around, minute crease in R. stamp, Lovely Color, Bright Green town pmks., a Rare and Lovely Pair (Photo)	325.00
55	1c Blue Ty. II (7). Pos. 10, 56, 57, 74, 78RIE, one with Green pmk., three have creases, Attractive lot	E. II
56	1c Blue Ty. II (7). Pos. 11RIE, huge margins all around, sheet centerline at L., Magnificent Color, town pmk., Extremely Fine (Photo)	15.00
57	1c Blue, Ty. II (7). Vertical pair, Pos. 11, 21RIE, Large Margins all around, sheet margin at L., magnificent color, grid cancels stitch wmk. in lower stamp, lightly creased, Extremely Fine appearance (Photo)	40.00
58	1c Blue Ty. II, IIIA two (7, 8A). Horiz. strip of three, Pos. 12-14RIE, Ty. II shows Double Transfer, clear to large margins except just in at U. R., magnificent color, Blue Philadelphia pmks. A Rare and Beautiful strip despite lt. cuts in two R. stamps, Very Fine appearance (Photo)	200.00
59	1c Blue Ty. IIIA (8A). Pos. 15RIE, Double Transfer, large margins all around, Magnificent Rich Color, lt. ms. cancel, a wonderful stamp, Extremely Fine (Photo)	85.00
60	1c Blue, Ty. IIIa (8A). Pos. 17RIE. Margins all around, showing parts of adjoining stamps T. & B. Rich color, neat Blue grid cancels, Extremely Fine (Photo)	85.00

61	1c Blue Ty. II, two, IIIA (7, 8A). Reconstructed Horiz. Strip of three, Pos. 18, 19, 20RIE, margins except touched at T., just in at U. R., Gorgeous Color, lt. ms. cancel, Scarce	115.00
62	1c Blue Ty. II, IIIA (7, 8A). Vertical Pair, Pos. 19, 29RIE, margins except partly in at U. R. and T., Wonderful Color, Red grid cancels, top stamp has slightly broken crease, a most attractive pair	(Photo) 100.00
63	1c Blue Ty. II (7). Pos. 22RIE, Double Transfer, margins all around, Very Fine	(Photo) 18.50
64	1c Blue Ty. II (7). Pos. 22, 81RIE, margins all around, Beautiful shades, town and grid cancels, Very Fine	30.00
65	1c Blue, Ty. II (7). Horiz. pair, Pos. 23, 24RIE. Margins except just in at L. R., Lovely Color, Blue Grid cancels, stitch wmk., lt. marginal corner crease in one, Fine-Very Fine appearance	40.00
66	1c Blue Ty. II (7). Pos. 26, 76RIE, margins all around, nice shades, town & lt. ms. cancels, Very Fine	30.00
67	1c Blue Ty. II (7). Pos. 27, 68, 70RIE, each touched or just in at one point, two with town pmks., Fine-Very Fine	45.00
68	1c Blue, Ty. II (7). Horiz. Strip of 3, Pos. 28, 29, 30RIE, Large Margins all around, sheet margin at R., wide Pre-printing paper fold thru middle stamp, Rich Color, Blue Nashville, Tenn. pmks. a Spectacular Strip, Extremely Fine	(Photo) 65.00
69	1c Blue, Ty. II, IIIA two (7, 8A). Horiz. strip of 3, Pos. 31, 32, 33RIE, Huge Margins all around, showing parts of 3 adjoining stamps. Rich color, light grid cancel, Rare Combination, a Magnificent Strip, Extremely Fine	(Photo) 185.00+
70	1c Blue, Ty. IIIA (8A). Pos. 33RIE, Large to Huge margins all around, Lovely Color, Blue town pmk., Extremely Fine	(Photo) 85.00
71	1c Blue Ty. II, two, IIIA (7, 8A). "L" strip of three, Pos. 34, 35, 44RIE, margins except just in at U. L., Lovely Color, New York pmks., lt. crease in lower stamp, Ty. IIIA stamp is Very Fine	(Photo) 125.00
72	1c Blue Ty. II, IIIA, two (7, 8A). Horiz. strip of 3, Pos. 35, 36, 37RIE. Large margins except partly in at U. R., magnificent color, Mobile, Ala. pmks., a Lovely Strip	(Photo) 185.00
73	1c Blue Ty. II, two, IIIA (7, 8A). Horiz. strip of 3, Pos. 38, 39, 40RIE, margins to slightly in at places, Lovely Color & Impression, Clear Blue Cincinnati pmks., lt. corner creases in one, Attractive and Scarce Combination	(Photo) 125.00
74	1c Blue Ty. II, two, IIIA (7, 8A). Vertical Strip of three, Pos. 41, 51, 61RIE, touched in places, Lovely Color, Blue Waffle grid, Ty. IIIA stamp has crease, a scarce and Very Attractive Strip	125.00
75	1c Blue, Ty. II (7). Horiz. pair, Pos. 42, 43RIE. Large Margins all around. Brilliant color and impression. Mobile, Ala. pmk., date slightly cracks paper, still Extremely Fine	(Photo) 40.00
76	1c Blue, Ty. II, IIIA (7, 8A). Vertical pair, Pos. 45, 55RIE. Large margins except barely touched at B. R. Magnificent Color and Impression. Scarce San Francisco Large Grid cancel. A Lovely Pair, Very Fine	(Photo) 100.00

- 77 **1c Blue, Ty. II (7).** Horiz. Pair, Pos. 46, 47RIE, Large margins all around, Lovely Color, Princess Anne Md. pmks., minute margin tear in one, otherwise Extremely Fine **(Photo)** 40.00
- 78 **1c Blue, Ty. II (7).** Horiz. pair, Pos. 48, 49RIE. Margins except just in at B.L., lovely color and impression, Mobile, Ala. pmk., Fine-Very Fine 40.00
- 79 **1c Blue Ty. II, two, IIIA (7, 8A).** Horiz. strip of three Pos. 51, 52, 53RIE, large margins except partly in at T.L., unusual Rich Color, Atlanta pmks., Scarce and Attractive 125.00
- 80 **1c Blue Ty. II, IIIA (7, 8A).** Horiz. Pair, Pos. 55-56RIE, margins except just in at T., Gorgeous Color, neat circle of V's cancels, a most Attractive Pair **(Photo)** 100.00
- 81 **1c Blue Ty. II, two, IIIA (7, 8A).** Horiz. Strip of three, Pos. 58-60RIE, margins except in at top center and touched at R., Lovely Color, neat grid cancels, two stamps have faults, Scarce and Attractive Strip 125.00
- 82 **1c Blue Ty. II (7).** Horiz. Strip of Three, Pos. 62-64RIE, touched in places, square Red Grid cancels, sm. faults, a Very Pretty Strip 65.00+
- 83 ★ **1c Blue, Ty. II (7).** Pos. 65RIE. The Big Double Transfer. Margins except barely touched at T., Brilliant Color & Impression A Lovely example of this Scarce Stamp **(Photo)** 60.00
- 84 **1c Blue Ty II (7).** Pos. 65RIE, The Big Double Transfer, margins except barely touched at T., Lovely Rich Color, grid cancels, faint crease, Very Fine appearance 30.00
- 85 **1c Dark Blue, Ty. II (7a).** Pos. 65RIE, The Big Double Transfer, margins except just in at U.L., magnificent Rich Color, Blue Troy, N. Y. pmk., a Rare and Gorgeous Stamp **(Photo)** 30.00
- 86 **1c Blue, Ty. II (7).** Horiz. strip of 3, Pos. 66, 67, 68RIE. Margins except barely touched at B.R., Rich color and impression. Blue Richmond pmks., lt. crease in margin between two stamps, Very Fine **(Photo)** 65.00
- 87 **1c Blue, Ty. II (7).** Vertical strip of 3, Pos. 66, 76, 86RIE, Clear to Large Margins all around, Gorgeous Color, grid cancels, lt. creases, mostly between stamps, Extremely Fine appearance **(Photo)** 65.00
- 88 **1c Blue Ty. II, IIIA, two (7, 8A).** Horizontal strip of 3 Pos. 71, 72, 73RIE margins except barely touched at U.R., Magnificent Color, Brilliant Red Grid cancels, crease in Ty. II stamp, other pair is Very Fine, a choice and Lovely Strip **(Photo)** 185.00
- 89 **1c Blue Ty. II, IIIA (7, 8A).** Pos. 72, 73RIE. Huge margins all around, Magnificent Rich Color & Impression, grid cancels, a wonderful pair, Extremely Fine **(Photo)** 100.00
- 90 **1c Blue Ty. IIIA (8A).** Pos. 75RIE, margins all around, Lovely Color, Town pmk., Very Fine **(Photo)** 85.00
- 91 **1c Blue Ty. IIIA (8A).** Pos. 77RIE, margins except touched at R., Lovely Color, town pmk., faint crease, Very Fine appearance 85.00
- 92 **1c Blue, Ty. II (7).** Vertical strip of 3, Pos. 79, 89, 99RIE. Margins except in at B., Lovely Color & Impression, Pittsburgh, Pa. pmks., a Very Attractive Strip **(Photo)** 65.00
- 93 **1c Dark Blue Ty. II, two, IIIA (7a, 8Ac).** Vertical strip of 3, Pos. 80, 90, 100RIE, margins except barely touched at T. & B. Brilliant Color and Impression, Blue grid cancels. A striking strip, Very Fine **(Photo)** 125.00



87



80



86



88



89



92



90



94



95



98



101



104



103



105



93



106



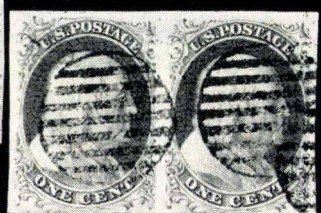
108



109



114



115



116



121



125



124



127



129



130



94	1c Blue, Ty. II (7). Horiz. pair, Pos. 82, 83RIE, Large Margins except barely touched at U.L., Lovely Color, Blue Lynchburg, Va. pmk., V.F. (Photo) 40.00
95	1c Blue Ty. II (7). Pos. 84RIE, large margins all around, Gorgeous Color, grid cancel, Extremely Fine (Photo) 15.00
96	1c Blue Ty. II (7). Horiz. pair, Pos. 85, 86RIE, margins to just touching, Wonderful Rich Color, Brilliant Red grid cancels, a very pretty pair, Fine 40.00
97	1c Blue, Ty. II (7). Horiz. pair, Pos. 87, 88RIE. Large margins all around, Beautiful Color & Impression, Blue grid cancels, small irregular cut in margin between stamps, otherwise Very Fine 40.00
98	1c Blue, Ty. II (7). Pos. 91RIE. Lower Left Sheet Corner Copy , Clear to Huge Margins all around, sheet margin at L. and B., small natural crease at T., Blue Grid Cancel. a Lovely Copy, Very Fine (Photo) 15.00
99	1c Blue Ty. II (7). Horiz. strip of three, Pos. 91-93RIE, touched in places, Lovely Color, St. Louis pmks., small faults in two, Attractive Strip 65.00
100	1c Blue Ty. II (7). Horiz. pair, Pos. 94, 95RIE, Huge margins except barely touched at B.R., Rich Color, Socked on the Nose "Bath, Me." pmk., minute faults, Extremely Fine appearance 40.00
101	1c Blue Ty. II, two, IIIA (7, 8A). Horiz. strip of 3, Pos. 96, 97, 98RIE, margins except partly in at T.R., Sheet Margin at B., Lovely Color, Newark, N. J. pmks., two lt. corner creases, entirely in lower margin, a Very Attractive Strip (Photo) 125.00
102	1c Blue Ty. II (7). Strip of three, two pairs, ten singles, Pos. 2, 6, 36-38, 49, 57, 67, 74, 93, 98-99LIE, 25, 63, 62-63, 64RIE, all with faults, some minor E. IV

PLATE TWO (TYPES II, III, IIIA)

103	1c Blue Ty. II (7). Pos. 1L2, margins all around, Rich Color, lt. cancel, Very Fine (Photo) 15.00
104	1c Blue Ty. I (7). Pos. 1L2, Enormous margins except just in at B., shows "Dropped Relief" and tiny cracks in upper margin, nice color Boston "Paid" pmk., minute corner crease, entirely in margin, Fine (Photo) 20.00+
105	1c Dk. Blue Ty. II (7a). Pos. 2L2, Major Crack , margins all around, Red Carrier Cancel, Very Fine (Photo) 75.00
106	1c Blue Ty. II (7). Horiz. strip of three, Pos. 2-4L2, left stamp showing Major Crack , large margins all around, pretty color, Blue Town and grid cancels, despite trivial margin crease in U.R. corner, a Magnificent Strip (Photo) 115.00+
107	1c Blue Ty. II (7). Vertical strip of three, Pos. 2-12-22L2 upper stamp showing Major Crack , margins except partly in at T. and R., crease between two stamps, Scarce & Attractive 115.00
108	1c Blue Ty. II (7). Pos. 4L2, large margins all around, pretty color, Philadelphia pmk., Extremely Fine (Photo) 15.00
109 ★	1c Blue Ty. II (7). Pos. 5L2, large margins all around, Lovely Color, Extremely Fine (Photo) 35.00

110	1c Blue Ty. II (7). Pos. 6L2, 10L2, 71L2, large margins to just in at one point on each, nice shades, town pmks, one in Blue, each has minute corner cease, Attractive lot	47.50
111	1c Blue Ty. II (7). Pos. 6L2, 47L2, 66L2, touched to just in at places, nice shades, Fine	45.00
112 ★	1c Blue Ty. II (7). Pos. 7L2, 30L2, margins to just touching, pretty shades, small creases, Fine-Very Fine appearance	70.00
113	1c Blue, Ty. II (7). Horiz. Pair and four singles, Pos. 8, 19, 49-50, 94L2, 54R2, small faults, attractive lot	E. II
114	1c Blue Ty. II (7). Pos. 9L2, large margins all around, nice color, Town pmks., Extremely Fine	(Photo) 15.00
115	1c Blue Ty. II (7). Horiz. Pair, Pos. 9-10L2, Huge Margins all around, Wonder Color, Bold Grid cancels, a beautiful pair, Extremely Fine	(Photo) 40.00
116	1c Blue Ty. II (7). Pos. 10L2, Huge Margins all around, Beautiful Color & Impression, New Orleans pmk., Extremely Fine	(Photo) 15.00
117	1c Blue Ty. II (7). Pos. 10L2, 83L2, margins to barely touched, Gorgeous colors, Very Fine	30.00
118	1c Blue Ty. II (7). Pos. 10L2, 21R2, margins except each in at one point, Lovely colors, town pmks.	30.00
119	1c Blue Ty. (7). Pos. 12L2, Major Crack , margins except touching at B., Red Carrier Cancel, lt. corner cr., Very Fine appearance	75.00
120	1c Blue Ty. II (7). Pos. 13L2, showing Major Crack , margins except partially in at T. and L. R., Alexandria, Va. pmk., Scarce	75.00
121	1c Blue Ty. II (7). Pos. 20L2, Huge margins, sheet margin at R., wonderful Deep Color, Town pmk., Extremely Fine	(Photo) 15.00
122	1c Blue Ty. II (7). Vertical Pair, Pos. 21-31L2, margins except partly touching at B., Lovely Deep Rich Color, New York pmk., minute crease in top stamp, Very Fine appearance	40.00
123	1c Blue Ty. II (7). Vertical strip of three, Pos. 21-31-41L2, margins except partly touching at B.L., Lovely Color, Town pmks., lt. creases, Very Fine appearance	65.00
124	1c Blue Ty. II (7). Pos. 23L2, Major Crack , margins all around, Deep Rich Color, grid cancel, trivial minute corner cr., Extremely Fine appearance	(Photo) 75.00
125	1c Blue Ty. II (7). Horiz. pair, Pos. 23-24L2, left stamp showing Major Crack, margins except partly in at L., Beautiful Deep Rich Color, town pmk., right stamp Extremely Fine	(Photo) 90.00+
126	1c Blue Ty. II (7). Pos. 24L2, 51L2, first margins all around, latter just in at T., Lovely colors, Fine-Very Fine	30.00
127	1c Blue Ty. II (7). Pos. 25L2, margins all around, Rich Color, Blue grid cancel, Very Fine	(Photo) 17.50
128	1c Blue Ty. II (7). Reconstructed horiz. pair, Pos. 26, 27L2, margins all around, Lovely Color, Mobile, Ala. pmk., Very Fine	30.00
129	1c Blue Ty. II (7). Horiz. Pair, Pos. 27-28L2, margins all around, nice color, Knoxville, Tenn. pmk., Very Fine	(Photo) 40.00

130	1c Blue Ty. II (7). Horiz. strip of three, Pos. 27-29L2, margins all around, Blue New Years pmk., horiz. stitch wmk., minute corner creases, Extremely Fine appearance (Photo)	65.00+
131 ★	1c Blue Ty. II (7). Horiz. part Imprint strip of three, Pos. 31-33L2, Right stamp shows end of Major Crack , margins except in partly at B., wonderful Color & Impression. Scarce & Attractive (Photo)	340.00
132	1c Blue Ty. II (7). Horiz. Strip of three, Pos. 34-36L2, margins in places, lovely color and Impression, small ms "x" touching R. stamps only, Attractive	65.00
133	1c Blue Ty. II (7). Pos. 38L2, Margins all around, Lovely Color, New York Pmk., Very Fine (Photo)	15.00
134	1c Blue Ty. II (7). Vertical Pair, Pos. 39-49L2, Margins all around, Exceptional Rich Color, Oriskany, N. Y. pmks., Very Fine (Photo)	40.00
135	1c Dark Blue Ty. II (7). Horiz. Pair, pos. 42-43L2, Large margins all around, with large portion of 41L2 attached at L. wonderful color, Blue Hamilton, O. pmks., R. stamp has corner creases, other is Very Fine	40.00
136	1c Blue Ty. II (7). Horiz. strip of three, Pos. 44-46L2, Irregular margins, Beautiful Color, Chicago Pmks, Horiz. Stitch wmk. R. stamp shows, small Plate Crack at B., tiny crease in one, Attractive	65.00
137	1c Blue Ty. II (7). Pos. 45L2, Huge Margins all around, nice color, New York pmk., Extremely Fine (Photo)	15.00
138	1c Blue Ty. II (7). Three copies, Pos. 46L2, 58, 59R2, first shows minor crack, margins to just in, nice shades, town pmks., minute corner creases, Fine-Very Fine appearance	45.00
139	1c Dk. Blue Ty. II (7). Part Imprint Copy, Pos. 51L2, margins except touched at T., ms. cancel, Fine	15.00
140	1c Blue Ty. II (7). Horiz. Strip of three, Pos. 51-53L2, Margins all around, unusual Lovely Color, New York pmks., lt. crease, Extremely Fine appearance (Photo)	65.00
141	1c Blue Ty. II (7). Horiz. Pair, Pos. 53-54L2, margins all around, wonderful color, town pmk., R. stamp has minute scrape at B., other is Extremely Fine (Photo)	40.00
142	1c Blue Ty. II (7). Pos. 56L2, clear to huge margins all around, showing small Plate Crack in upper margin, nice color, town pmk., Very Fine	15.00
143	1c Dk. Blue Ty. II (7a). Horiz. pair, Pos. 61-62L2, margins except just touching at L. L., Pretty Color, New Orleans pmks., L. stamp has tiny scrape, other is Very Fine	40.00
144 ★	1c Blue Ty. II (7). Horiz. Strip of three, Pos. 62-64L2, margins to just touching except partly in at top center, Gorgeous Color, minute stains on back, Fine (Photo)	135.00
145	1c Dk. Blue Ty. II (7). Horiz. pair, Pos. 64-65L2, large margins all around, unusual deep rich color, New Orleans pmks., a Lovely Pair, Extremely Fine (Photo)	40.00
146	1c Blue Ty. II (7). Pos. 67, 69, 88L2, margins all around, nice shades, town & grid cancels, tiny creases, Very Fine appearance	45.00
147	1c Blue Ty. II (7). Horiz. pair, Pos. 69-70L2, margins except touching at T. Blue Town pmk., minute cr. at U. R., otherwise Fine	40.00



131



133



140



134



150



151



137



144



141



145



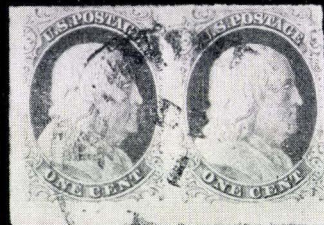
152



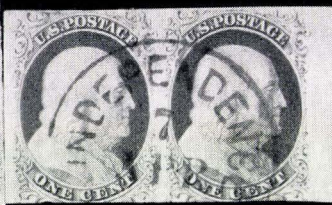
154



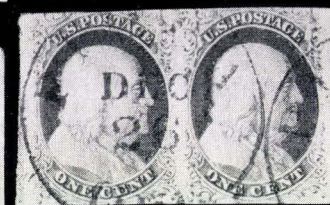
158



156



155



159



160



173



163



172



165



161



169

148	1c Blue Ty. II (7). Two horiz. pairs, Pos. 69-70L2, 92-93R2, first touched in two places, other has margins all around, lt. creases, mostly in margin, F.-V.F. appearance	80.00
149	1c Blue Ty II (7). Horiz. strip of three, Pos. 71-73L2, margins except just touching U.L., Gorgeous color, New Orleans pmks., sealed tears in two, other Extremely Fine	65.00
150	1c Blue Ty. II (7). Vertical Pair, Pos. 74-84L2, Huge Margins all around, Lovely Color, lt. town pmks., tiny scissor cut in margin between stamps, tiny crease in one from edge of handstamp, still Extremely Fine (Photo)	40.00
151 ★	1c Dk. Blue Ty. II (7a). Vertical Pair, Pos. 80-90L2, margins except touching at B., just in at T., Sheet Margin at R., nice color, creases, Fine-Very Fine appearance	90.00 (Photo)
152	1c Dk. Blue Ty. II (7a). Horiz. pair, Pos. 82-83L2, Large to Huge margins all around, Exceptionally Deep color, town pmks., tiny creases from edge of handstamp, otherwise Extremely Fine	40.00 (Photo)
153	1c Blue Ty. II (7). Horiz. strip of three, Pos. 84-86L2, margins all around, pretty color, tiny tears, creases, Very Fine appearance	65.00
154	1c Blue Ty. II (7). Horiz. Pair, Pos. 87-88L2, Clear to Huge Margins all around, Deep Gorgeous Color, New Orleans pmks, a Lovely Pair, V.F. (Photo)	40.00
155	1c Blue Ty. II (7). Horiz. pair, Pos. 89-90L2, large margins except just touching at B., sheet margin at R., Wonderful Color, Independence pmk., Very Fine	40.00 (Photo)
156	1c Blue Ty. II (7). Lower Left Corner Horiz. Pair Pos. 91-92L2, margins all around, Sheet Margin at L. and B., slightly dry plate printing, town pmk., faint trace of thin, Extremely Fine appearance	40.00 (Photo)
157	1c Blue Ty. II (7). Pos. 91L2, 9, 23R2, minute thin and cr. on two, other cut at sides, Attractive	45.00
158	1c Dk. Blue Ty. II (7a). Horiz. strip of three, Pos. 92-94L2, margins all around, Deep Rich Color, New York pmks., two almost invisible marginal pinholes, Very Fine	65.00 (Photo)
159	1c Blue Ty. II (7). Horiz. Pair, Pos. 95-96L2, margins except just touching U.L., Piqua, Ohio pmks., Very Fine	40.00 (Photo)
160	1c Blue Ty. II (7). Pos. 98L2, margins all around, Lovely Color, New Orleans pmk. Extremely Fine	15.00 (Photo)
161	1c Blue Ty. II (7). Pos. 100L2, large margins all around, Beautiful Color, River, N. Y. pmk., Extremely Fine	15.00 (Photo)
162 ★田	1c Blue Ty. II (7). Block of 70, Pos. 1-7R2 to 91-97R2 inclusive, Beautiful Rich color, fresh, part o.g., some creases & thins but an Extremely Attractive Block and one of the most outstanding pieces known among our early imperforate issues	4190.00+ (Photo)
163 ★	1c Blue Ty. II (7). Horiz. U. L. Sheet Corner Strip of 3, Pos. 1-3R2, Huge margins all around, showing sheet margin at T. and L., pretty color, lt. thins and cr., still an Attractive Showpiece	135.00 (Photo)



164	1c Blue Ty. II (7). Pos. 2R2, 41R2, 86R2, Clear to Huge margins all around, nice shades, one has Blue Grid cancel, trivial minute corner creases, Very Fine appearance	47.50
165	1c Blue Ty. II (7). Horiz. strip of 3, Pos. 4-6R2, margins except just touching at B.R., pretty color, lt. town pmk., minute faint corner crease, entirely in margin, Very Fine (Photo)	65.00
166	1c Blue Ty. II (7). Pos. 7R2, clear to Huge Margins all around, Lovely Color, Chicago pmk., tiny corner crease, Very Fine appearance	15.00
167	1c Blue Ty. II (7). Horiz. pair, Pos. 7-8R2, margins except just in at L., Rich Color, New Orleans pmks., Fine-Very fine	40.00
168	1c Dk. Blue Ty. II (7a). Vertical Pair, Pos. 8-18R2 Margins except partly in at L., town pmk., Fine	40.00
169	1c Blue Ty. II (7). Horiz. pair, Pos. 9-10R2, Enormous margins all around, showing sheet margins & portions of surrounding stamps, Gorgeous Color & Impression, "Paid" in grid cancel, lt. creases in L. stamp, other Superb (Photo)	40.00
170	1c Blue Ty. II (7). Pos. 9R2, 61R2, Margins all around, Beautiful shades, town & grid cancels, Very Fine	30.00
171	1c Dk. Blue Ty. II (7a). Pos. 9R2, 70R2, margins except barely touched at one point, Rich Shades, lt. town pmks., Very Fine	30.00
172	1c Blue Ty. II (7). Reconstructed L. Shape Block of 3, Pos. 11-12-21R2, margins all around, nice color town pmks., R. stamp has thin, others Fine-Very Fine (Photo)	45.00
173	1c Blue Ty. II (7). Horiz. pair, Pos. 14-15R2, large margins to just touching, Gorgeous Color & Impression, Red Carrier Cancel, R. stamp has tiny nick, other is Extremely Fine (Photo)	44.00
174	1c Blue Ty. II (7). Pos. 16R2, 20R2, margins to barely touched, nice color, Very Fine	30.00
175	 1c Blue Ty. II (7). Pos. 16-18, 22-28R2, strip of 3 and strip of 7 forming reconstructed irregular block of 10, margins except L.R. stamp badly cut at R., Gorgeous color & Impression, Pretty Dotted Grid cancel, slt. broken crease in one stamp, Attractive and Unusual Piece	210.00
176	1c Blue Ty. II (7). Rejoined Vertical Pair, Pos. 17-27R2 margins except just touched at B., nice color, town pmk., Very Fine (Photo)	30.00
177	1c Blue Ty. II (7). Pos. 20R2, large margins all around, Rich Color, unframed grid cancel, trivial corner crease in margin, Extremely Fine appearance	15.00
178	1c Dk. Blue Ty. II (7). Horiz. Pair, Pos. 21-22R2, Deep Rich Color, New Orleans pmks., tiny tear in one, Very Attractive Pair	40.00
179	1c Blue Ty. II (7). Horiz. pair, Pos. 25-26R2, margins all around, lt. ms. cancel., Very Fine (Photo)	40.00
180	1c Blue Ty. II (7). Pos. 25R2, 52R2, 86R2, margins to just touching, nice shades, Town pmks., minor faults, Fine-Very Fine appearance	45.00
181	1c Blue Ty. II (7). Pos. 27R2, margins all around, Gorgeous Color town pmk., Very Fine (Photo)	15.00



176



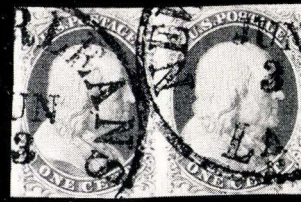
179



181



183



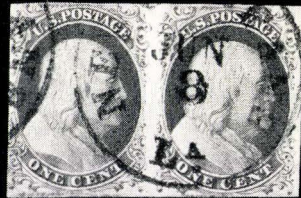
187



186



189



191



192



193



196



198



202



200



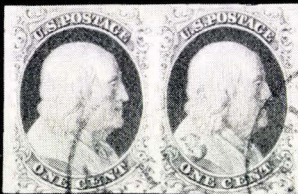
203



204



199



207



205



206



211



210



215



210

182	1c Blue Ty. II (7). Pos. 28R2, 67R2, 98R2, large margins to just touching, nice shades, trivial minute corner creases, Fine-Very Fine appearance	45.00
183	1c Blue Ty. II (7). Pos. 29R2, margins all around, unframed grid cancel Very Fine (Photo)	15.00
184	1c Dark Blue (7a). Horiz. Pair, Pos. 31-32R2, huge margins except in at B., Deep Rich Color, New Orleans pmks., lt. crease in one	40.00
185	1c Dark Blue Ty. II (7). Vertical strip of three, Pos. 32-42-52R2, margins except partly in at T., Gorgeous Color, unframed grid cancel, minute thin in one	65.00
186	1c Blue Ty. II (7). Pos. 33R2, Huge margins all around, gorgeous color, lt. cancel, Extremely Fine (Photo)	15.00
187	1c Blue Ty. II (7). Horiz. Pair, Pos. 33-34R2, margins all around, Un-usual Rich Color, Bold New Orleans, Very Fine (Photo)	40.00
188	1c Blue Ty. II (7). Horiz. Pair, Pos. 37-38R2, margins except in at B. R., Lovely color. lt. pmk., Fine-Very Fine	40.00
189	1c Blue Ty. II (7). Horiz. strip of 3, Pos. 37-39R2, Margins all around, Wonderful Color & Impression, Augusta Ga. pmk. crease in margin between two stamps, Very Fine (Photo)	65.00
190	1c Blue Ty. II (7). Pos. 40R2, 66R2. margins except first barely in at R., Pretty Shades, Town pmks., Fine-Very Fine	30.00
191	1c Blue Ty. II (7). Horiz. Pair, Pos. 41-42R2, margins all around, except partly touching at L., Magnificent Deep Rich Color, New Orleans pmk., a wonderful pair, Very Fine (Photo)	40.00
192	1c Blue Ty. II (7). Horiz. strip of three, Pos. 41-43R2, margins all around, nice color & impression, town pmks., minute wrinkle in one, otherwise Very Fine (Photo)	65.00
193	1c Blue Ty. II (7). Pos. 42R2, large to enormous margins all around, showing portion of stamp below, nice color, lt. town cancel, Extremely Fine (Photo)	15.00
194	1c Blue Ty. II (7). Horiz. strip of three, Pos. 45-47R2, large margins all around. pretty color, town pmk. & ms. cancel, lt. creases, Extremely Fine appearance	65.00
195	1c Blue Ty. II (7). Horiz. pair, Pos. 47-48R2, margins all around lovely color, pre-printing paper crease in R. stamp, otherwise Very Fine	40.00
196	1c Blue Ty. II (7). Pos. 48R2, Large Double Transfer, Large Margins all around, pretty color, Town pmk., Extremely Fine, scarce (Photo)	18.50
197	1c Blue Ty. II (7). Pos. 48R2, Large Double Transfer , margins except just in at R., nice color, town pmk., Fine	18.50
198	1c Blue Ty. II (7). Pos. 49R2, Margins all around, Lovely Color, Town pmk., Very Fine (Photo)	15.00
199	1c Dark Blue Ty. II (7a). Horiz Pair, Pos. 49-50R2, margins all around, Rich Color, New Orleans pmk., Very Fine (Photo)	40.00
200	1c Blue Ty. II (7). Vertical strip of three, Pos. 51-61-71R2. Large margins except partly in at B., Gorgeous Color & Impression, Town pmks., a Lovely Strip, Very Fine (Photo)	65.00

201	1c Dk. Blue Ty. II (7a). Horiz. strip of three, Pos. 57-59R2, clear to large margins all around, Lovely Color, lt. ms. cancel, center stamp shows tiny Plate Crack, Very Fine	65.00
202	1c Blue Ty. II (7). Horiz. Plate No. & Part Imprint strip of three, Pos. 58-60R2, Huge Margins all around, Wonderful Color & Impression, lt. blue ms. cancels, a Gem, Superb	(Photo) 65.00
203	1c Blue Ty. II (7). Vertical Strip of Three, Pos. 61-71-81R2, margins all around, Wonderful Color, Town pmks, crease in top stamp, other pair Extremely Fine	(Photo) 65.00
204	1c Blue Ty. II (7). Vertical Pair, Pos. 64-74R2, Large margins all around, Pretty Color, grid cancel, Extremely Fine	(Photo) 45.00
205	1c Blue Ty. II (7). Pos. 65R2, large margins, Pretty Color, French Transit cancel, Extremely Fine	(Photo) 15.00
206	1c Blue Ty. II (7). Horiz. strip of three, Pos. 68-70R2, margins except partially in at L.R., magnificent Color, San Francisco pmk., minute crease in L.R. corner, other stamps Very Fine	(Photo) 65.00
207	1c Blue Ty. II (7). Horiz. pair, Pos. 69-70R2, margins all around, Deep Gorgeous color, town pmk., horiz. stitch wmk., Extremely Fine	(Photo) 40.00
208	1c Blue Ty. II (7). Vertical strip of three, Pos. 71-81-91R2, margins except touching at U.R. and L.L., sheet margin at L., Gorgeous Color, ms. Quitman, Tex. pmk., a most Attractive Strip, Very Fine	65.00
209	1c Blue Ty. II (7). Horiz. strip of three, Pos. 72-74R2, margins except touching U.R. and L.L., unusual deep color, lt. ms. cancels, Very Fine	40.00
210	1c Blue Ty. II (7). Horiz. Pair, Pos. 75-76R2, large margins all around, Pretty Color, New Orleans pmk., almost invisible creases, Extremely Fine appearance	(Photo) 45.00
211	★田 1c Dk. Blue Ty. II (7). Block, Pos. 77-78, 87-88R2, margins except partly in at L.R., fresh, o.g., exceptionally Deep Rich Color, faint trivial corner cr., a most attractive Block	(Photo) 250.00
212	1c Dk. Blue Ty. II (7a). Vertical strip of three, Pos. 80-90-100R2, an exceptionally early impression before Pos. 100 had worn sufficiently to become a Ty. IIIa, cut close & tear in center stamp but Rare	65.00
213	☒ 1c Blue Ty. II (7). Pos. 84R2, margins all around, tied by grid on Embossed Ladies Cover, lt. stains, Very Fine stamp	20.00
214	1c Blue Ty. II (7). Horiz. pair, Pos. 85-86R2, large margins all around, New Orleans pmk., lt. crease, Extremely Fine appearance	(Photo) 40.00
215	1c Blue Ty II (7). Pos. 87R2, Huge margins all around, Lovely Color, New York pmk., Extremely Fine	(Photo) 15.00
216	1c Blue Ty. II (7). Pos. 89R2, Double Transfer, Ashbrook calls this the largest double on any U. S. Regular Issue, Rare, Fine	18.50+
217	1c Blue Ty. II (7). Horiz. Pair, Pos. 91-92R2, margins all around Wonderful Color, New Orleans pmks., faint trivial corner crease, entirely in margin, Very Fine	(Photo) 40.00
218	1c Dark Blue Ty. II (7a). Horiz. Strip of three, Pos. 93-95R2, margins except partly in at U.L. and in R. stamp, Richmond, Va. pmk., pinhole in one, Attractive	65.00

219	1c Blue Ty. II (7). Pos. 97R2, huge margins all around, Rich Color, Blue pmk., a Gorgeous Stamp, Superb (Photo)	15.00
220	1c Blue Ty. III (8). Pos. 99R2, Huge margins all around, pretty color, Winona, M. T. cancel, faint crease, Extremely Fine, appearance, Rare and Desirable (Photo)	600.00
221	1c Blue Ty. IIIa (8A). Pos. 100R2, the only example of this type on Plate Two, margins all around, nice color, 1858 pmk., Rare, Very Fine Scott lists only the Ty. IIIa from Plates 1E and 4 (Photo)	85.00+
222	1c Blue Ty II (7). Large margins all around, nice color, San Jose, Cal. pmk., Extremely Fine (Photo)	15.00
223	1c Blue Ty. II (7). Large margins all around, Beautiful Color, grid cancel, Extremely Fine (Photo)	15.00
224	1c Blue Ty II (7). Large margins all around, wonderful color, town pmk., Extremely Fine (Photo)	15.00
225	1c Blue Ty. II (7). Large margins all around, Gorgeous Color, unusual unframed grid cancel, Extremely Fine (Photo)	15.00
226	1c Dark Blue Ty. II (7). Clear to large margins all around, Rich Color, Very Fine (Photo)	15.00
227	1c Dk. Blue Ty. II (7a). Margins except just touched at T., Brilliant Red "Mobile Paint" cancel, Very Fine (Photo)	20.00
228	1c Blue Ty. II (7). Horiz. Pair, Huge margins all around, Lovely Deep Color, New Orleans pmk., minute creases in R. stamp, otherwise Extremely Fine (Photo)	40.00
229	1c Blue Ty. II (7). Horiz. pair, huge margins all around, Town pmks., faint creases, Extremely Fine appearance (Photo)	40.00
230	1c Dk. Blue Ty. II (7). Vertical Pair, margins except barely touching T. & B., Beautiful Color, Clear Blue Baltimore Carrier cancels, Very Fine (Photo)	40.00+
231	1c Blue Ty. II (7). Horiz. pair, margins all around, New York pmk., Very Fine (Photo)	40.00
232	1c Dk. Blue Ty. II (7a). Horiz. Pair, margins all around, Lovely Rich Color, Town Pmks in Black & Red, Very Fine (Photo)	40.00
233	1c Blue Ty. II (7). Horiz pair, margins to just touching, grid cancel, one stamp has lt. crease, other is Very Fine (Photo)	40.00
234	1c Blue Ty. II (7). Horiz. pair, margins except barely in at T., Deep Rich Color, town pmk., a Lovely Pair, Fine (Photo)	40.00
235	1c Blue Ty. II (7). Horiz. pair margins except just touching at R., unusual pretty color, Geneva pmk., faint minute creases, Very Fine appearance (Photo)	40.00
236	1c Dk. Blue Ty. II (7a). Horiz. Pair, just in at T. and L., Lovely Rich Color, New Orleans pmk., a pretty pair, Fine (Photo)	40.00
237	1c Blue Ty. II (7). Two copies, margins all around, Lovely Shades, N. Y. and Worcester, Mass. pmks., Very Fine (Photo)	30.00
238	1c Blue Ty. II (7). Two copies, margins except each barely touched at one point, Gorgeous Colors, town pmks., Very Fine (Photo)	30.00



217



219



220



221



222



223



224



225



227



228



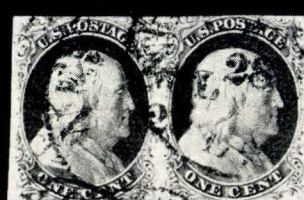
229



230



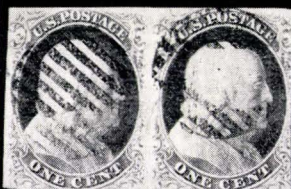
231



232



233



259



264



265



266



267



269



278



289



281



282



291



298



294



292



299



296



300

239	1c Blue Ty. II (7). Two copies, margins all around, lovely shades, Town & Blue grid cancels, Very Fine	35.00
240	1c Blue Ty. II (7). Two copies, margins all around, lovely colors, town and grid cancels, Very Fine	30.00
241	1c Blue Ty. II (7). Two copies, margins to just touching, Nice shades, town & grid pmks Fine-Very Fine	30.00
242	1c Blue Ty. II (7). Two copies, huge margins to just touched, Red Grid and Red Boston "Paid" cancels, Attractive & Colorful, Fine-Very Fine	40.00
243	1c Blue Ty. II (7). Two copies, clear to Large Margins, Gorgeous Colors, Grid and Blue Town pmk., Very Fine	32.50
244	1c Blue Ty. II (7). Two copies, margins all around, Beautiful Rich Colors, Blue pmks, one has crease, other minute thin, Very Fine appearance	35.00
245	1c Blue Ty. II (7). Two copies, gorgeous colors, one has large margins, other just in at T., town pmks., one in Blue, one has minute corner crease	35.00
246	1c Blue Ty. II (7). Horiz. Strip of three, margins all around except just touching at U.L., unusual pretty color, grid cancel, Fine-Very Fine	65.00
247	1c Blue Ty. II (7). Block of 3, margins all around, Wonderful Rich Color, lt. ms. cancels, lower stamp has tiny tear, crease mostly in margin between upper pair, Very Attractive	65.00
248	1c Blue Ty. II (7). Three copies, margins all around, Lovely Shades, town and grid cancels, Very Fine	45.00
249	1c Blue Ty. II (7). Three copies, large margins, Lovely Colors, town pmks., faint creases, Extremely Fine appearance	45.00
250	1c Blue Ty. II (7). Three copies, margins all around, pretty shades, one with Red carrier cancel, each has faint minute corner crease, Attractive Lot, Very Fine appearance	52.00
251	1c Blue Ty. II (7). Three copies, margins all around, Lovely Shades, town and grid cancels, minute corner creases, Very Fine appearance	45.00
252	1c Blue Ty. II (7). Three copies, large margins to just touching, nice shades, town pmks., small creases, Fine-Very Fine appearance	45.00
253	1c Blue Ty. II (7). Three copies, each touched at one point, Lovely Shades, Town pmks., tiny creases, Fine appearance	45.00
254	1c Blue Ty. II (7). Three copies, clear to huge margins, Attractive Shades, one unused, others with town pmks., small thins, Very Fine appearance	65.00
255	1c Blue Ty. II (7). Three copies, clear to Huge margins, Lovely shades, Town pmks., one in Blue, minute thins, Very Fine appearance	47.50
256	1c Blue Ty. II (7). Three copies, just in at one point, Town, grid and "Paid" cancels, Attractive	45.00
257	1c Blue Ty. II (7). Two Horiz. pairs, margins except one partly in at L., prettly contrasting shades, one has faint minute thins, other has tiny tear, F.-V.F. appearance	E. II
258	1c Blue Ty. II (7). Seven copies, most have faults, some very minor, appear Good-Extremely Fine	E. III




- 259 **1c Blue, Ty. II, IIIA (7, 8A).** Horiz. pair, margins all around, Grid cancel, Lovely color, Very Fine (Photo) 90.00+
- 260  **1c Blue Ty. II, 3c Claret (7, 11).** Horiz. pair of first, margins except 3c just in at L., tied by New Orleans pmks. on neat Folded Letter to France, 3c additionally tied by Boxed British Accountancy Mark, New York & French transit, "Per British Steamer" in ms., a Lovely Cover, Very Fine E. VII
- 261  **1c Blue Ty. II, 3c Brown Carmine (7, 11).** Horiz. pair of first, margins except 3c partly in at T. and L., tied by New Orleans pmks. on neat folded letter to France, New York French transits, "Per British Steamer" in ms., a most attractive cover, Very Fine E. VI
- 262 **1c Blue Ty. III (8).** Pos. 70RIV, margins except in at T., Lovely Color, Red & Black pmks., Scarce, Very Good E. IV
- 263 **1c Blue Ty. IIIa (8A).** Pos. 73R4, Margin except in at L. pretty color, ms. cancel, Very Good E. II
- 264 **1c Blue Ty. IIIA (8A).** Horiz. pair, pos. 79-80L4, huge margins all around, lovely color & impression, town pmk., a Magnificent Pair, Extremely Fine (Photo) 185.00

PLATE THREE (ALL TYPE II)

- 265 **1c Blue Ty. II (7).** Pos. 97L3, huge margins all around, Beautiful color and Impression, several **Hairline Cracks**, minute corner crease, Extremely Fine appearance (Photo) E. III
- 266 **1c Dark Blue (7a).** Plate 3, margins except just touched at L., Wonderful Color, Red pmk., Fine (Photo) E. III
- 267 **1c Blue Ty. II (7).** Plate 3, showing tiny Plate Cracks, Margins except touching at T., Lovely Color, Fine (Photo) E. III
- 268 **1c Blue Ty. II (7).** Plate 3, Large margin except just in at R., magnificent Color, town pmk., Fine E. III
- 269 **1c Blue Ty. II (7).** Plate 3, margins except touching at B., Lovely Rich Color, Red "19" cancel, lt. creases, Fine appearance (Photo) E. III
- 270 **1c Blue Ty. II (7).** Plate 3, showing tiny plate cracks, margins except touching at T., Gorgeous Color, Town pmk., lt. crease, Fine appearance E. II
- 271 **1c Blue Ty. II (7).** Plate 3, huge margins except in at R., Rich Color, lt. ms. cancel, Attractive E. II
- 272 **1c Dark Blue (7a).** Plate 3, margins except partly in at B., Lovely Rich Color, lt. pmk., faint corner creases, Attractive E. II
- 273 **1c Blue Ty. II (7).** Plate 3, margins except in at T., Rich Color, town pmk., Scarce E. II
- 274 **1c Blue Ty. II (7).** Plate 3, large margins except in at T., Wonderful color, lt. cancel, Scarce & Attractive E. II
- 275 **1c Blue Ty. II (7).** Vertical strip of three, Plate 3, showing tiny plate cracks, top stamp damaged, bottom pair has margins except touching at one point, faint crease in center stamp, a Rare piece E. VI
- 276  **1c Blue Ty. II (7).** Plate 3, margins except touching at B., tied by Black Carrier cancel on local cover, "U. S. Mail 1 P.M. Delivery" in Red Truncated Box, a Rare & Pretty Cover, Very Fine E. V


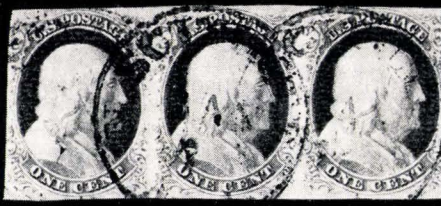
- 277  **1c Blue Ty. II (7).** Possibly Plate 3, margins all around, Rich Color, tied by Boston "Paid" on neat local cover, Red Carrier Backstamp, Very Fine 20.00

PLATE ONE LATE LEFT PANE (TYPE IV)

- 278 **1c Blue, Ty. IV (9).** Horiz. pair, Pos. 1LIL, 2LIL, Recut twice at bottom, latter shows Plate Crack, margins except barely touched at R. and U. L., Wonderful Rich Color, New Orleans pmks., Scarce Combination, Fine-Very Fine **(Photo)** 80.00+
- 279 **1c Blue Ty. IV (9).** Pos. 1, 3, 15, 24LIL, first two Recut once at B., last Recut once at T., twice at B., margins all around, Gorgeous Colors, Town pmks., two in blue, minute creases, Very Fine appearance 79.00
- 280 **1c Blue Ty. IV (9).** Pos. 1, 7, 67, 83LIL, first two recut twice at B., last with Double Transfer, margins all around, town & grid cancels, small thins, Very Fine appearance 63.00
- 281 **1c Blue Ty. IV (9).** Pos. 2LIL, showing **Plate Crack**, clear to large margins all around, nice color, Blue Grid cancel, Very Fine **(Photo)** 60.00
- 282 **1c Blue, Ty. IV (9).** Pos. 3LIL, Recut twice a bottom. Enormous margins, showing parts of three adjoining stamps. Light cancel, Extremely Fine **(Photo)** 20.00
- 283 **1c Blue Ty. IV (9).** Pos. 3, 4LIL, recut twice at B., once at B., margins all around, Lovely Color, town & grid cancels, Very Fine 45.00
- 284 **1c Blue Ty. IV (9).** Horiz. strip of three, Pos. 3-4-5LIL, first recut twice at B., others once at B., margins except touched at L., magnificent color, color, Milwaukee, Wis. pmk., faint cr. in two, scarce combination, Very Fine appearance 70.00+
- 285 ★ **1c Blue Ty. IV (9).** Pos. 3, 7LIL, Recut twice at B., margins to barely touching, tiny creases, Very Fine appearance 110.00
- 286 **1c Blue Ty. IV (9).** Pos. 3, 9, 15LIL, first two Recut twice at B., margins nearly all around, Lovely Shades, two with town pmks., Fine-V.F. 52.50
- 287 **1c Blue Ty. IV (9).** Pos. 4LIL, 5LIL, Recut once at B., twice at B., margins all around, pretty shades, town & grid cancels, Very Fine 45.00
- 288 **1c Blue Ty. IV (9).** Horiz. Pair, Pos. 4-5LIL, each recut one at B., margins except just touched at R., Gorgeous Color, town pmk., corner crease and tiny scissor cut, Very Fine appearance 50.00
- 289 **1c Blue Ty. IV (9).** Horiz. strip of three, Pos. 5, 6, 7LIL, First Recut once at B., others Recut Twice at B., Large margins all around, unusual color, town pmks., lt. creases, mostly between stamps, tiny thin in one, Scarce Combination, Very Fine appearance **(Photo)** 65.00
- 290 **1c Blue Ty. IV (9).** Two Horiz. Pairs 5-6, 43-44LIL first with single and double recuts at B., margins to barely touched, nice colors, town & grid cancels, minute corner creases, very fine appearance 75.00
- 291 **1c Blue, Ty. IV (9).** Pos. 6LIL, Recut twice at bottom, large margins all around, unusual milky blue color, lt. town pmk., a magnificent stamp **(Photo)** 20.00
- 292 **1c Blue Ty. IV (9).** Pos. 6LIL, Recut twice at B., Enormous margins all around, sheet margin at T., Wonderful Color, Paid cancel, faint cr. at B., Extremely Fine appearance **(Photo)** 20.00



301



302



316



313



314



321



310



318



319



323



325



326



329



320



330



333



338



335



350



334



345



339



347

293	1c Blue Ty. IV (9). Pos. 7, 9, 10LIL, Recut twice at B., margins all around, Pretty Shades, Very Fine 60.00
294	1c Blue, Ty. IV (9). Horiz. strip of 3, Pos. 8, 9, 10LIL. First Recut once at B., others Recut Twice at B., Huge margins except barely touched at B.L., Magnificent Deep Rich Color, Town pmk. A Rare and Lovely Combination Strip, Extremely Fine (Photo) 65.00
295	1c Blue Ty. IV (9). Horiz. strip of three, Pos. 8, 9, 10LIL, left stamp recut one at B., others twice at B., clear to huge margins all around, cr. in center stamp, Extremely Fine appearance 65.00
296	1c Blue Ty. IV (9). Pos. 10LIL, recut twice at B., U. R. Sheet Corner copy, clear to huge margins all around, sheet margin at T., Sheet Centerline at R., Lovely Deep Color, N. Y. pmk., faint cr., Extremely Fine appearance (Photo) 20.00
297	1c Blue Ty. IV (9). Five horiz. pairs, Pos. 11-12, 21-22, 86-87, 97-98, two, LIL, nice shades, creases or cut into E. III
298	1c Blue Ty. IV (9). Vertical Pair, Pos. 14, 24LIL, lower stamps recut once at T., twice at B., Double Transfer, large margins all around, magnificent color, town pmk., negligible tiny cr. in bottom margin, still Extremely Fine (Photo) 30.00
299	1c Blue Ty. IV (9). Horiz. Pair, Pos. 13, 14LIL margins except barely touched at U. R., Pretty Color, Blue Town pmk., Very Fine (Photo) 30.00
300	1c Blue Ty. IV (9). Horiz. Pair, Pos. 13, 14LIL, left stamp shows D. T., margins nearly all around, Magnificent Color & Impression, Unusual Fine Lined Blue Grid cancel, a Very Pretty Pair (Photo) 45.00
301	1c Blue, Ty. IV (9). Horiz. pair, Pos. 15, 16LIL. Huge margins except barely touched at T R, Magnificent Deep Rich Color, New York pmk., Very Fine (Photo) 30.00
302	1c Dark Blue, Ty. IV (9a). Horiz. strip of 3, Pos. 17, 18, 19LIL. Margins except just in at R., Deep Rich Color, N. Scituate Ms. pmk., F.-V.F. (Photo) 45.00
303	1c Blue Ty. IV (9). Pos. 17, 28, 98, 100LIL, three showing Double Transfers, margins to in slightly, gorgeous shades, Blue pmks., Fine 58.00
304	1c Blue Ty. IV (9). Horiz. strip of three, Pos. 18, 19, 20LIL, margins except just in at T., sheet centerline at R., nice color, Washington, D. C. pmks., lt. creases, Fine appearance 45.00
305	1c Blue Ty. IV (9). Horiz. strip of three, Pos. 18, 19, 20LIL, margins except just in at T.L. and R., Marvelous Rich Color, Bold Blue Philadelphia pmks., a most Attractive Strip 45.00
306	1c Blue Ty. IV (9). Pos. 20, 21, 23, 24LIL, two Recut once at T., twice at B., margins all around, Gorgeous Shades, three with town pmks., one in Blue, Very Fine 57.00
307	1c Blue Ty. IV (9). Three Horiz. Pairs, Pos. 21-22, 27-28, 77-78LIL, margins all around, Beautiful Shades, small creases, Very Fine appearance 90.00
308	1c Blue Ty. IV (9). Pos. 21, 30, 48, 50LIL, huge margins to slightly in, gorgeous shades, town pmks, including Red and Blue, 3 have sm. creases, other small scissor cut, Fine appearance 54.50

309	1c Dark Blue Ty. IV (9a). Vertical Pair, Pos. 21, 31LIL, both with Double Transfers, margins except in at B., Gorgeous Rich Color, grid cancels, top stamp has crease	30.00
310	1c Blue Ty. IV (9). Vertical Pair, Pos. 22, 32LIL, large margins all around, Wonderful Color, grid cancels, Extremely Fine (Photo)	30.00
311	1c Blue Ty. IV (9). Two horiz. strips of three, Pos. 24-26, 84-86LIL, margins except first in at T., Lovely Shades, town & grid cancels, faults, Fine-Very Fine appearance	90.00
312	1c Blue Ty. IV (9). Pos. 24, 29LIL, First Recut twice at T., once at B. large margins all around, Beautiful Shades, last with Red Carrier cancel, Extremely Fine	33.50
313	1c Blue Ty. IV (9). Horiz. Pair, Pos. 25-26LIL, both with Double Transfers, margins except barely touched at T., Gorgeous Color & Impression, New Orleans pmks., Very Fine (Photo)	30.00
314	1c Blue, Ty. IV (9). Horiz. pair, Pos. 25, 26LIL. R. stamp Double Transfer and recut once at T. and twice at B., margins except barely touched at U.L. and L.R., Lovely Color & Impression, New Orleans pmk., a pretty pair, Very Fine (Photo)	31.00
315	1c Blue Ty. IV (9). Pos. 25, 29, 31LIL, margins all around, two with Double Transfer, one with Blue Town pmk., Very Fine	43.50
316	1c Blue, Ty. IV (9). Pos. 30LIL. Recut once at T. only. Huge margins, Rich Color, very lt. pmk., a wonderful stamp, Extremely Fine (Photo)	13.50
317	1c Blue Ty. IV (9). Pos. 27, 30, 33, 34, 36LIL three with Double Transfers, margins all around, Lovely Shades, minute crease, Very Fine appearance	70.00
318	1c Dk. Blue Ty. IV (9a). Horiz. strip of three, Pos. 31, 32, 33LIL, left stamp shows D.T., margins except just in at L., Beautiful Color, town pmks., lt. cr. between two stamps, otherwise Very Fine (Photo)	45.00
319	1c Blue Ty. IV (9). Pos. 33LIL, large margins all around, Deep Brilliant Color, grid cancel, Extremely Fine (Photo)	12.50
320	1c Blue Ty. IV (9). Vertical Pair, Pos. 34, 44LIL, each D. T., margins all around, Gorgeous Color, town pmks., faint tiny creases, Extremely Fine appearance (Photo)	30.00
321	1c Blue Ty. IV (9). Horiz. Pair, Pos. 35-36LIL, margins nearly all around, Lovely Color, New Orleans pmks., Very Fine (Photo)	30.00
322	1c Blue Ty. II (9). Pos. 35, 43, 48, 49LIL, margins to Barely Touched, Pretty Shades, three with town pmks., one in Red, Very Fine	50.00
323	1c Blue Ty. IV (9). Horiz. pair, Pos. 37, 38LIL, large margins to just touched, Rich Color, grid and Red Town Cancels, Very Fine (Photo)	30.00
324	1c Blue Ty. IV (9). Pos. 38, 44, 48, 57LIL, two have Double Transfers, margins all around, Lovely Shades, one with Blue Carrier Cancel, minute crease, Very Fine appearance	55.50
325	1c Blue Ty. IV (9). Horiz. Pair, Pos. 39, 40LIL, both showing Plate Crack , margins to just touching, Schuylkill Haven, Pa. pmk., faint cr. in one, Rare Combination (Photo)	120.00

326	1c Blue Ty. IV (9). Pos. 40LIL, early impression before the Plate Crack developed, Enormous Margins all around, Rich Color, portion of New York 1ct pmk., minute pinhead thin, Extremely Fine appearance (Photo)	12.50
327 ★	1c Blue Ty. IV (9). Pos. 42, 43LIL, first recut once at T., twice at B., large margins all around gorgeous shades, tiny creases, Extremely Fine appearance	65.00
328	1c Blue Ty. IV (9). Pos. 44, 58, 62, 63LIL, first with Double Transfer margins all around, Rich Color, three with town pmks., one in Blue, minute creases, Very Fine appearance	53.00
329	1c Blue Ty. IV (9). Horiz. strip of three, Pos. 45, 46, 47, Center Stamp showing tiny Plate Crack, margins except just in at L.R., minute scissor cut bet. two stamps, Wonderful Rich Color, Hickman, Ky. pmk., Very Fine (Photo)	85.00
330	1c Blue, Ty. IV (9). Pos. 47LIL. Recut once at T. only. Huge margins, Rich Color, Brilliant Green town pmk. Extremely Fine (Photo)	35.00
331	1c Blue Ty. IV (9). Pos. 47, 57LIL, latter has Double Transfer, margins all around, lovely shades, Extremely Fine	28.50
332	1c Blue Ty. IV (9). Pos. 48, 49, 53LIL, latter Recut once at T., twice at B., margins to just touched, town, blue grid and ms. cancels, Very Fine	41.00
333	1c Blue Ty. IV (9). Horiz. Pair, Pos. 49, 50LIL, the latter position later developed a plate crack which does not show on this copy, margins all around, pretty color, Blue town and Foreign Transit cancels, Very Fine (Photo)	30.00
334	1c Blue Ty. IV (9). Vertical Pair, Pos. 51, 61LIL, showing portion of Imprint at L., in at T. and R., Blue Pmks., lt. creases, Attractive (Photo)	30.00+
335	1c Blue Ty. IV (9). Vertical Pair, Pos. 51, 61LIL showing Imprint at R. , Huge margins all around, pretty color, Philadelphia pmk., faint creases, Extremely Fine appearance (Photo)	30.00+
336	1c Blue Ty. IV (9). Pos. 51, 69LIL, first recut twice at T., once at B., other Recut once at T. twice at B., margins to barely touched, Beautiful Shades, first has Red pmk., latter unused, Very Fine	65.00
337	1c Blue Ty. IV (9). Pos. 51, 93, 96, 99LIL, first Recut twice at T. one at B., others once at T., margins to barely touched, town and grid cancels, two in Blue, minute creases, Very Fine appearance	70.50
338	1c Blue, Ty. IV (9). Horiz. pair, Pos. 52, 53LIL. Left stamp recut twice at T. & B., other recut once at T. and twice at B., large margins all around, marvelous deep rich color, New Orleans pmks., a wonderful pair, Extremely Fine (Photo)	61.00
339	1c Dk. Blue Ty. IV (9a). Horiz. strip of three, Pos. 52, 53, 54LIL, first Recut Twice T. & B., margins except barely touched at B.R., Rich Color, Boston "Paid" cancels, scarce combination, Very Fine (Photo)	45.00
340	1c Blue Ty. IV (9). Horiz. strip of three, Pos. 54, 55, 56LIL, margins except in at T.R., Lovely Color, Malone, N. Y. pmks., lt. creases, Attractive Strip	45.00
341	1c Blue Ty. IV (9). Pos. 57, 61, 64LIL, first two with Double Transfers margins all around, nice shades, Boston "Paid" and town pmks., one in Blue, Very Fine	43.00



349



352



353



355



358



359



362



368



371



372



374



367



382



375



378



380



396



388



394



395



396



397



406



417



407



423



424




426



429



342	1c Blue Ty. IV (9). Vertical Pair, Pos. 57, 67LIL, both with D. T., margins except just in at T. and L. L., Brilliant Color, grid cancels, Fine 30.00+
343	1c Blue Ty. IV (9). Horiz. strip of three and two pairs, Pos. 59-60, 62-63, 82-84LIL, large margins to just in nice shades, town & grid cancels, creases between stamps, otherwise Fine-Very Fine 105.00
344	1c Blue Ty. IV (9). Pos. 61, 65, 68 74LIL, first two with Double Transfers, margins to barely touching nice shades, town & grid cancels, Very Fine 55.00
345	1c Blue Ty. IV (9). Horiz. pair, Pos. 62-63LIL, Enormous margins all around showing large portions of the surrounding stamps, lovely color, "Paid" pmks., minor faults, an Amazing pair (Photo) 30.00
346	1c Blue Ty. IV (9). Pos. 63, 67, 72, 93, 100LIL, three with Double Transfers, margins to in slightly, pretty shades, town and grid cancels, Fine 70.00
347	1c Blue Ty. IV (9). Pos. 64LIL, margins all around, Magnificent Rich color, New York pmk., Stitch Watermark , Very Fine (Photo) 12.50+
348	1c Blue Ty. IV (9). Pos. 65, 72, 73, 76LIL, all showing Double Transfers, margins to just in, Lovely Shades, minute crease, Fine-Very Fine 60.00
349	1c Blue Ty. IV (9). Vertical Pair, Pos. 66, 76LIL, first recut once at T. twice at B., latter with D. T., margins except just in at T., Gorgeous Rich Color, Brilliant Red grid cancels, lt. cr., a Pretty Pair (Photo) 30.00+
350	 1c Dark Blue, Ty. IV (7a). Pos. 67-68, 77-78LIL, horiz. pairs forming Rejoined Block, margins all around, Marvelous Deep Rich Color, Bold Grid Cancels, a Striking Piece, Very Fine (Photo) 60.00
351	1c Blue Ty. II (9). Pos. 68, 75, 84, 85LIL, margins all around, Rich Colors, two with Blue pmks., minute creases, Very Fine appearance 61.00
352	1c Blue Ty. IV (9). Vertical Pair, Pos. 70, 80LIL, both with Double Transfers, top stamp showing Plate Crack, Huge Margins all around, Sheet Centerline at R., Gorgeous Color, ms. cancel, Extremely Fine (Photo) 75.00
353	1c Blue Ty. IV (9). Pos. 71LIL, Double Transfer, One Inverted , large margins all around, sheet margin at L., Lovely Color, Blue Pmk., thin, Extremely Fine appearance (Photo) 50.00
354	1c Blue Ty. IV (9). Horiz. Pair, Pos. 71, 72LIL, L. Stamp has D. T., one Inverted, Right stamp has D. T., margins except touched at U.L. and B. R., Lovely Color, town pmk., L. stamp has tiny faults, Attractive 65.00
355	1c Blue, Ty. IV (9). Horiz. strip of 3, Pos. 71, 72, 73LIL. Left stamp inverted transfer , others double transfers. Margins except touched at T., Rich Color, Philadelphia pmk., Very Fine (Photo) 80.00+
356	1c Blue Ty. IV (9). Pos. 74, 76, 83LIL, last two with Double Transfers, large margins all around, gorgeous shades, Blue and Red grid cancels, lt. creases, Extremely Fine appearance 43.00
357	1c Blue Ty. IV (9). Pos. 75, 80, 84, 86LIL, margins to just touched, two with Double Transfers, nice shades, 3 have town pmks., Very Fine 55.00
358	1c Blue Ty. IV (9). Pos. 79LIL, recut twice T. and B., large margins all around, wonderful color, Blue pmk., Extremely Fine (Photo) 45.00
359	1c Blue Ty. IV (9). Reconstructed Horiz. Pair, Pos. 79, 80LIL, first shows Double Recut T. & B., margins all around, Brilliant Color, Bright Red grid cancel, lt. crease in one, other Very Fine, a Pretty Pair (Photo) 58.50

360	1c Blue Ty. IV (9). Pos. 80, 86, 88LIL, all Double Transfers, margins all around, Wonderful Shades, town pmks in Red, Blue & Black, V.F.	45.00
361	1c Blue Ty. IV (9). Pos. 81LIL, Triple Transfer, One Inverted, margins except barely touched at L., Gorgeous Color, blue pmk., minute corner creases, Very Fine appearance	50.00
362	1c Dark Blue, Ty. IV (9a). Horiz. pair, Pos. 81, 82LIL. Left stamp shows Triple Transfer , one Inverted, margins all around Rich Brilliant Color, Town pmk., Very Fine	(Photo) 62.50+
363	1c Blue Ty. IV (9). Pos. 82, 85LIL, first with Double Transfer, large margins all around, Lovely Shades, Town pmks., Extremely Fine	27.50
364	1c Blue Ty. IV (9). Pos. 82, 85, 88, 90LIL, three with Double Transfers, margins to barely touched, Lovely Shades, town pmks., one in Blue, minute creases, Very Fine appearance	57.50
365	1c Blue Ty. IV (9). Pos. 84, 86, 87, 94, 99LIL, margins all around, small thins, Very Fine appearance	68.00
366	1c Blue Ty. IV (9). Pos. 88, 90, 97, 98LIL, all with Double Transfers, margins all around, Wonderful Shades, minute creases, Very Fine appearance	60.00
367	1c Blue Ty. IV (9). Vertical Pair, Pos. 88, 98LIL, both showing double transfers, clear to large margins all around, sheet margin at B., nice color, New York pmks., Extremely Fine	(Photo) 30.00
368	1c Blue Ty. IV (9). Horiz. Pair, Pos. 89, 90LIL, R. stamp has Double Transfer, margins all around, pretty color, grid cancels, V.F.	(Photo) 30.00
369	1c Blue Ty. IV (9). Pos. 90, 92, 96LIL, first recut once at T., twice at B., others once at T., margins to barely in, one with Red Carrier Cancel, another unused, Fine-Very Fine	64.00
370	1c Blue Ty. IV (9). Pos. 91LIL, Triple Transfer , one inverted, margins to barely touched, Lovely Color, faint crease, Very Fine appearance	50.00
371	1c Blue, Ty. IV (9). Pos. 91LIL, Triple Transfer , one Inverted, Huge Margins all around. Red and Black pmks., minute scrape, Extremely Fine appearance	(Photo) 50.00
372	1c Blue Ty. IV (9). Pos. 91LIL, Triple Transfer , one inverted, lower left sheet corner copy, large to enormous margins all around, sheet margin at B. and L., nice color, town pmk., lt. marginal corner creases, Extremely Fine appearance	(Photo) 50.00
373	1c Blue Ty. IV (9). Pos. 91LIL, Triple Transfer , one inverted, margins all around, Rich Brilliant Color, Red Cincinnati, pmk., minute nick and lt. crease, Extremely Fine appearance	50.00
374	1c Blue , Ty. IV (9). Horiz. pair, Pos. 91, 92LIL. First with Triple Transfer , one inverted, huge margins all around, Lovely Color, Blue Eastern R. R. pmks., a rare and wonderful pair, Extremely Fine	(Photo) 87.50+
375	1c Blue Ty. IV (9). Pos. 92LIL, huge margins all around, Plate Crack , Beautiful Color, faint marginal crease, magnificent appearance	(Photo) 60.00
376	1c Blue Ty. IV (9). Pos. 92, 93, 95LIL, recut once at T., margins all around, latter two with Sheet Margin at B., Lovely Shades, two have town pmks., other has lt. ms. cancel, Very Fine	40.50

377	1c Blue Ty. IV (9). Horiz. Pair, Pos. 94, 95LIL, showing unofficial Saw-tooth Roulette separation, Lovely Color, St. Louis, Mo. pmk., tear, unusual piece	30.00
378 ★	1c Blue Ty. IV (9). Pos. 96LIL, recut once at T., margins all around, Beautiful Color, fresh, o.g., Extremely Fine (Photo)	30.00
379	1c Blue Ty. IV (9). Pos. 7, 23, 24, 34, 41, 42, 51, 62, 69, 72, 73-75, 98(2)LIL cut margins or faults, includes a number of attractive copies	E. III

PLATE ONE LATE RIGHT PANE (TYPE II AND IV)

380	1c Blue, Ty. IV (9). Pos. 1RIL, Double Transfer, recut once at B., Upper Left Sheet Corner Copy margins all around, Sheet Margin at T. and L., Bright Color, Blue pmk., Odd blurred impression at T., Extremely Fine (Photo)	25.00
381	1c Blue Ty. IV (9). Pos. 1, 2, 3RIL, first recut once at B., other twice at B., margins all around, Lovely Colors, town and Boston "Paid" cancels, Very Fine	65.00
382	1c Blue, Ty. IV (9). Vertical pair, Pos. 1, 11RIL, First Recut once at B., margins all around, Sheet Centerline at L., Pretty color, town pmks., very lt. stains, Extremely Fine (Photo)	40.00
383	1c Blue Ty. IV (9). Pos. 1, 5, 19, 40RIL, first two recut once at B., margins to just touching, town pmks., tiny thins, Very Fine appearance	75.00
384	1c Blue Ty. IV (9). Pos. 1, 53, 56, 98RIL, first recut once at B., margins to just in, nice shades, Fine-Very Fine appearance	65.00
385	1c Blue Ty. IV (9). Pos. 1, 4, 8, 9, 45, 47, 51, 54-55, 60, 62, 63, 64, 65, 68, 72-73, 84, 85, 97RIL, margins cut in places, sm. faults, Attractive lot	E. IV
386	1c Blue, Ty. II, IV (7, 9). Horiz. strip of 3, Pos. 2, 3, 4RIL, two recut twice at B., latter only position on Plate IL not recut, margins to barely touching, faint marginal corner cr. in R. stamp, a Rare Combination (Photo)	220.00
387	1c Blue Ty. IV (9). Pos. 2, 3, 5, 6, 7RIL, all with one or two recuts at B., margins all around, lovely shades, four with town pmks., one in Blue, small creases, Very Fine appearance	115.00
388 ★	1c Blue Ty. IV (9). Pos. 3RIL, recut twice at B., huge margins all around, Deep Brilliant Color, tiny faults, Beautiful Appearance (Photo)	55.00
389	1c Blue Ty. (9). Pos. 3, 5, 6, 7RIL, first recut twice at B., others once at B., margins to just in, nice shades, town & Red Carrier pmks., Fine-Very Fine	95.00
390	1c Blue Ty. IV (9). Pos. 3, 5, 6, 7RIL, first recut twice at B., others once at B., margins to barely touching, nice shades, town & grid cancels, one in Blue, Very Fine	95.00
391	1c Blue Ty. IV (9). Pos. 3, 5, 7, 8, 10RIL, all recut once or twice at B., margins to slightly in, nice shades, town pmks, including Red, two in Blue, Very Good-Fine	115.00
392	1c Blue Ty. IV (9). Pos. 3, 7, 9, 10, 12RIL, two with single, two with double recut at B., other has double transfer, margins all around, Gorgeous Shades, town pmks., small creases, Very Fine appearance	105.00

393	1c Blue Ty. IV (9). Pos. 3, 7, 10, 20, 26RIL, margins to barely touched, Pretty Shades, four town pmks., other has target, sm. creases, Very Fine appearance	75.00
394	1c Blue Ty. II (7). Pos. 4RIL, The only position not Recut on Plate II, margins to barely touched, Sheet Margin at T., Lovely Color, Very Fine (Photo)	60.00
395	1c Blue Ty. II (7). Pos. 4RIL, the only position not recut on Plate II, Enormous margins all around, Lovely Color, lt. ms. cancel, tiny faint cr., Extremely Fine appearance	60.00
396	1c Blue Ty. II (7). Pos. 4RIL, the only position not Recut on Plate II, margins to barely touched, pretty color, lt. ms. cancel, Very Fine (Photo)	60.00
397	1c Blue Ty. II (7). Pos. 4RIL, the only position not Recut on Plate II, margins to barely in, Lovely Color, Blue town pmk., Fine	60.00
398	1c Blue Ty. IV (9). Pos. 5, 6, 7, 8RIL, first three Recut once at B. latter twice at B., margins to barely touching, nice shades, one has ms. cancel, Very Fine	95.00
399	1c Dark Blue, Ty. II (7a). Pos. 7RIL, recut once at B., margins except barely touched at B. R., Magnificent Deep Rich Color, tied to piece by bold unframed "New York 1ct." pmk., a Beautiful Stamp	25.00
400	1c Blue Ty. IV (9). Horiz. strip of three, Pos. 7-9RIL, two recut once at B., one twice at B., margins except barely in at U. R. and B. center, Lovely Color, Donaldsonville, La. pmk., lt. crease in one	70.00
401	1c Blue Ty. IV (9). Pos. 8, 9, 10, 11RIL, two recut twice at B., one once at B., margins all around, Gorgeous Shades, town pmks., Extremely Fine	77.50
402	1c Blue Ty. IV (9). Pos. 8, 10, 14, 17RIL, first two recut twice at B., margins to just touching, Lovely Shades, 3 have town pmks., one in Blue, Very Fine	67.50
403	1c Blue Ty. IV (9). Horiz. Pairs 11-12, 21-22RIL, margins to just touched, Lovely Shades, town pmks., Very Fine	60.00
404	1c Blue Ty. IV (9). Horiz. pairs, Pos. 11-12, 25-26RIL, three stamps show Double Transfers, margins to barely touched, Lovely Shades, grid & town pmk., latter with lt. ms. endorsement, Very Fine	60.00
405	1c Blue Ty. IV (9). Horiz. pairs, Pos. 11-12, 25-26RIL, margins all around, town and grid cancels, latter in blue, Lovely Shades, tiny creases, Very Fine appearance	60.00
406	1c Blue Ty. IV (9). Pos. 13RIL, large margins all around, Gorgeous Rich Color, Brilliant Red "Mobile Paint" cancel, Extremely Fine	13.50
407	1c Blue, Ty. IV (9). Horiz. strip of 3, Pos. 14, 15, 16RIL. Margins all around, magnificent color, clear town pmk., despite very lt. crease in center stamp, a Wonderful Strip	45.00
408	1c Blue Ty. IV (9). Horiz. strip of three, Pos. 15, 16, 17RIL, margins except in at T., Lovely color, lt. ms. cancels, Fine	45.00
409	1c Blue Ty. IV (9). Horiz. Pairs, Pos. 18-19, 25-26RIL, margins to barely touched, nice shades, Philadelphia and Great Falls, N. H. pmks., first has crease between stamps, latter has tiny scissor cut in one	60.00

410	1c Blue Ty. IV (9). Horiz. Pairs, Pos. 19-20, 29-30, 62-63RIL, margins to just in, nice colors, town & grid cancels, one in Blue, Fine-Very Fine appearance	90.00
411	1c Blue Ty. IV (9). Pos. 21, 22RIL, Both Positions later developed Plate Crack which do not show here, margins all around, Beautiful shades, town pmks., Very Fine	31.00
412	1c Blue Ty. IV (9). Pos. 22(2), 41, 45, 68RIL, all these positions later developed Plate Cracks, margins all around, lovely shades, town & grid cancels, including Red and Blue, sm. creases, Very Fine appearance	71.00
413	1c Blue Ty. IV (9). Vertical Pair, Pos. 23, 33RIL, top stamp one line recut at T., two at B., margins except just in at U.R., pretty color, town pmk., lt. wrinkle in one, otherwise Fine	30.00
414	1c Blue Ty. IV (9). Horiz. strips of three, Pos. 24-26, 32-34RIL, margins except partly in at B., Pretty Shades, town pmks., Very Good-Very Fine	60.00
415	1c Blue Ty. IV (9). Pos. 26, 31, 35, 37RIL, margins to barely touching, Gorgeous shades, town pmks. and Red Grid cancel, Very Fine	64.50
416	1c Blue Ty. IV (9). Three Horiz. Strips of three, Pos. 26-28, 64-66, 81-83RIL, margins nearly all around, Wonderful Rich Shades, clear town pmks., minute tears, a most attractive lot	E. III
417	1c Blue Ty. IV (9). Vertical Pair, Pos. 27, 37RIL, clear to large margins all around, Rich Color, town pmks., Very Fine (Photo)	30.00
418	1c Blue Ty. IV (9). Pos. 28, 50, 53, 63 65RIL, margins to slightly in, nice shades, town & grid pmks., Fine	68.00
419	1c Blue Ty. IV (9). Pos. 29, 38, 46, 48, 55RIL, margins to barely touched, town pmks., including Red and Blue, sm. creases, Very Fine appearance	67.00
420	1c Blue Ty. IV (9). Vertical Strip of three, Pos. 29, 39, 49RIL, margins cut in places, nice color, town pmk., tiny crease in one	45.00
421	1c Blue Ty. IV (9). Vertical strip of three, Pos. 30, 40, 50RIL, margins except partly in at L., Sheet Margin at R., Pre-Printing Paper Folds, Beautiful Color, New York pmks., faint thin in one, otherwise Fine	45.00
422	1c Blue, Ty. IV (9). Horiz. strip of 3, Pos. 32, 33, 34RIL. Margins except just in at U.L., Beautiful color and impression. New York Pmks, Fine	45.00
423	1c Blue, Ty. IV (9). Horiz. strip of 3, Pos. 34, 35, 36RIL. Large margins all around except center stamp barely touched at T. Tiny marginal crease U.L. and U.R. Bright Pretty Color Lovely impression, faint grid cancels, Extremely Fine appearance (Photo)	45.00
424 ★	1c Blue Ty. IV (9). Pos. 41, this position later developed a plate crack, large margins all around, lovely color, Extremely Fine (Photo)	35.00
425	1c Blue Ty. IV (9). Horiz. Pair, Pos. 41-42RIL, first showing Plate Cracks, margins except barely in at U.L., pretty color, grid cancels, Fine-V.F.	72.50
426	1c Blue, Ty. IV (9). Horiz. strip of 3, Pos. 41, 42, 43RIL. R. stamp recut at T., and twice at B. Margins all around, Wonderful Color, Nicholson, Pa. pmks., two tiny corner creases, Extremely Fine appearance (Photo)	45.00
427	1c Blue Ty. IV (9). Reconstructed vertical Pair, Pos. 41, 51RIL, margins all around, Sheet Centerline at L., creases, one stamp cut into in separating, Attractive	25.00



432



433



435



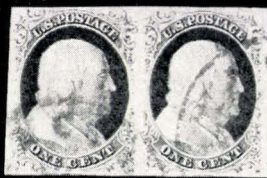
439



437



438



442



448



449



450



451



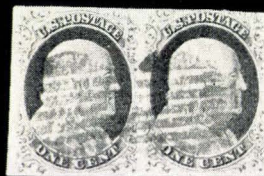
457



464



465



462



454



486



488



489



436



477



490



466



480



452

428	1c Blue Ty. IV (9). Pos. 42, 53, 54, 56RIL, margins all around, Wonderful Shades, town pmks., Extremely Fine	50.00
429	1c Blue Ty. IV (9). Horiz. Pair, Pos. 43, 44RIL, margins all around, nice color, grid cancels, Extremely Fine (Photo)	30.00
430	1c Blue Ty. IV (9). Pos. 45, 55, 57, 65RIL, margins to barely touched pretty shades, town pmks., one in Red, Very Fine	56.00
431	1c Blue Ty. IV (9). Pos. 45, 61RIL, both Positions later developed plate cracks, margins to barely in, Wonderful Color, town pmks., Fine-V.F.	29.00
432	1c Blue Ty. IV (9). Pos. 46RIL, large margins all around, pretty color, Blue grid cancel, lt. creases, Extremely Fine appearance (Photo)	13.00
433	1c Blue Ty. IV (9). Horiz. Imprint Pair, Pos. 49, 50RIL, margins cut in places, full Sheet Margin at R., Lovely Deep Color, Red Town pmks., attractive (Photo)	30.00+
434	1c Blue Ty. IV (9). Pos. 56, 65, 70, 71, 74RIL, margins all around, Lovely Shades, four have town pmks., other unused, small creases, Very Fine appearance	81.00
435	1c Dark Blue Ty. IV (9a). Horiz. Pair, Pos. 58, 59RIL, clear to huge margins all around, Magnificent Rich Color, Blue pmk., a wonderful Pair, Extremely Fine (Photo)	30.00
436	1c Blue Ty. IV (9). Pos. 61RIL, showing Plate Crack , margins all around, sheet margin at L., Gorgeous Color, town pmk., Extremely Fine (Photo)	60.00
437	1c Blue Ty. IV (9). Pos. 61RIL, this position later developed a Plate Crack, Enormous margins all around, sheet centerline at L., Pretty Color, Boston "Paid" cancel, Extremely Fine (Photo)	13.50
438	1c Blue Ty. IV (9). Pos. 61RIL, this position later developed a Plate Crack, large margins all around, Sheet Centerline at L., Gorgeous Color, town pmk., Extremely Fine (Photo)	13.50
439	1c Blue Ty. IV (9). Vertical Pair, Pos. 62, 72RIL, latter Recut once at T., twice at B., large margins all around, pretty color, Geneva, N. Y. pmk., Extremely Fine (Photo)	30.00
440	1c Blue Ty. IV (9). Pos. 64, 69, 71, 72RIL, margins to barely touched, wonderful shades, three with town pmks., Very Fine	54.00
441	1c Blue Ty. IV (9). Pos. 65, 69, 73, 84, 85RIL, two with Double Transfers, first has stitch watermark, margins to slightly in, nice shades, town & grid cancels, Fine-Very Fine	71.50
442	1c Blue Ty. IV (9). Horiz. pair, Pos. 66, 67RIL, Recut at top only, huge margins all around, Lovely Color and Impression, Green , pmks., Extremely Fine (Photo)	70.00
443	1c Blue Ty. IV (9). Horiz. Pairs, Pos. 69-70, 71-72RIL, margins to barely in, Lovely Shades, New Orleans pmks., Very Fine	60.00
444	1c Blue Ty. IV (9). Pos. 69, 84, 86, 96, 98RIL, margins to slightly in, lovely shades, town pmks., including Blue and "Mobile Paint", one has pre-printing paper folds, Fine-Very Fine	75.00
445	1c Blue Ty. IV (9). Horiz. Pairs, Pos. 75-76, 81-82RIL, huge margins to barely in, Gorgeous Shades, town pmks., Very Fine	60.00
446	1c Blue Ty. IV (9). Pos. 45, 81, 90, 98RIL, margins to barely touched, town and grid cancels, two in Blue, Very Fine	53.50



474



447	1c Blue Ty. IV (9). Pos. 75, 87, 91, 94, 96, 98RIL, margins all around, Gorgeous Shades, town & grid cancels, small creases, V.F. appearance	84.00
448	1c Blue, Ty. IV (9). Pos. 76RIL. Large to Enormous margins all around, wonderful color, town pmk., Extremely Fine (Photo)	12.50
449	1c Blue Ty. IV (9). Vertical strip of three, Pos. 77, 87, 97RIL, margins all around, full sheet margin at B., Pretty Color, town pmk., faint cr. in one, otherwise Very Fine (Photo)	45.00
450	1c Dark Blue, Ty. IV (9a). Horiz. strip of 3, Pos. 78, 79, 80RIL margins except touching at B., Gorgeous Rich Color, grid cancels, tiny wrinkles in top margins, Very Fine appearance (Photo)	45.00
451	1c Blue, Ty. IV (9). Horiz. strip of 4, Pos 81, 82, 83, 84RIL. Last stamp recut once at T. and twice at B., touched or slightly in at places, wonderful Color, New Orleans pmks., L. stamp has lt. crease, scarce and Attractive (Photo)	61.00
452	1c Blue, Ty. IV (9). Vertical pair, Pos. 81, 91RIL, margins all around except barely touched at B.R., Sheet Centerline at L., Gorgeous Color, New Orleans pmks., Very Fine (Photo)	30.00
453	1c Blue Ty. IV (9). Horiz. pairs, Pos. 83-84, 96-97RIL, margins to barely touched, nice shades, town pmks., one in Blue, Very Fine	60.00
454	1c Dark Blue, Ty. IV (9). Horiz. pair, Pos. 85, 86RIL. Margins all around, rich color. Boston "Paid" pmk. Extremely Fine (Photo)	30.00
455	1c Blue Ty. IV (9). Pos. 85, 91, 98RIL, two with Double Transfers, large margins all around, Gorgeous Colors, town & grid cancels, Extremely F.	43.50
456	1c Blue Ty. IV (9). Horiz. strip of three, Pos. 86-88RIL, first two with Double Transfers margins to barely in, Horiz. Stitch wmk., minute tear in one, tiny creases, Attractive	45.00
457	1c Blue Ty. IV (9). Vertical Pair, Pos. 86, 96RIL, top stamp shows Double Transfer, margins all around, Lovely Color, New Orleans pmk., cr. between stamps, Very Fine (Photo)	30.00
458	1c Blue, Ty. IV (9). Horiz. strip of 3, Pos. 87, 88, 89RIL. Left stamp recut once at T., twice at B., clear to Large margins all around, Lovely Color town pmks., Horiz. Stitch Watermark, creases, V.F. appearance	46.00+
459	1c Blue Ty. IV (9). Vertical Pair, Pos. 87, 97RIL, Enormous margins all around, sheet margin at B., Magnificent Rich Color, town pmks. with ms. dates, lower stamp has minute cr., other's Extremely Fine	30.00
460	1c Blue Ty. (9). Pos. 91, 92-93RIL, latter are reconstructed pair, margins to barely touched, Beautiful shades, town pmks., Very Fine	40.50
461	1c Blue Ty. IV (9). Pos. 91, 95, 98, 99, 100RIL, clear to huge margins all around, Lovely Shades, town & grid cancels, one in Blue, small creases, Very Fine appearance	69.00
462	1c Dark Blue, Ty. IV (9). Horiz. pair Pos. 94, 95RIL, large margins except barely touched at U.R., Lovely Color, Blue Unframed grid cancels, Very Fine (Photo)	30.00
463	1c Blue Ty. IV (9). Pos. 95, 96, 97RIL, margins to barely touched, Gorgeous shades, town & grid cancels, Very Fine	40.50



481



482

464	1c Dark Blue, Ty. IV (9a). Horiz. pair, Pos. 97, 98RIL, Huge margins all around, sheet margin at B., Brilliant Color, Boston "Paid" cancels, Extremely Fine (Photo)	30.00
465	1c Blue, Ty. IV (9). Horiz. pair, Pos. 99, 100RIL. Clear to huge margins all around, Magnificent Color, lt. grid cancels, Extremely Fine (Photo)	30.00
466	1c Blue, Ty. IV (9). Pos. 99RIL, Clear to Enormous margins, showing large portions of two other stamps, Rich Color, Grid Cancels, Extremely Fine (Photo)	12.50
467	1c Blue Ty. IV (9). Three copies, huge margins to just touching, lovely shades, town and grid cancels, two in Blue, Very Fine	38.50
468	1c Blue Ty. IV (9). Three copies, margins all around, Beautiful Contrast-ing Shades, Town pmks., Very Fine	37.50
469	1c Blue Ty. IV (9). Three copies, margins all around, Lovely Shades, tiny thins, Extremely Fine appearance	37.50
470	1c Blue Ty. IV (9). Three copies, margins to just touching, nice colors, minute crease, Very Fine appearance	37.50
471	1c Blue Ty. IV (9). Three copies, margins all around, Lovely Colors, one with "Paid" cancel, tiny creases, Extremely Fine appearance	40.00
472	1c Blue Ty. IV (9). Four copies, margins to just touching, Pretty colors, town pmks., two in blue, tiny creases, Very Fine appearance	50.50
473	1c Blue Ty. IV (9). Nine copies, few have cut margins, tiny creases, Attractive lot	E. III

1c 1857 ISSUE

474	★田 1c Blue Ty. I, II (18, 20). Block of 78, Plate 12L, lacking only first vertical row Pos. 11L12-91L12 and Pos. 2-3L12, 42-46L12, 52-56L12, this is the largest piece known from the L. pane of Plate 12 and includes 41 copies of Ty. I, wonderful color, fresh, full o.g., a few minor perf. reinforcements, a magnificent Showpiece, Fine-Very Fine (Photo)	5855.00
475	1c Blue Ty. II (20). Vertical Pair, Pos. 16-26L2, Gorgeous color, ms. cancel, lt. pen scrape on face, Very Fine appearance	55.00
476	1c Blue Ty. II (20). Vertical Pair, Pos. 9-19R2, Gorgeous Color and Im-pression Chicago pmk., Centered to B.	55.00
477	1c Dark Blue Ty. II (20a). Vertical pair and adjoining single, Pos. 53, 62, 63R2, Lovely Rich Color, Chicago pmk., minute corner cr., couple slightly short perfs., otherwise Extremely Fine (Photo)	77.50
478	1c Dk. Blue Ty. II (20a). Horiz. strip of three, Pos. 94-96R2, Gorgeous Color & Impression, lt. ms. cancel, Fine	85.00
479	1c Blue Ty. II (20). Horiz. strip of three, Pos. 1-3R4, Beautiful Deep Rich Color, lt. cancel, centered to T., one short perf., otherwise Fine	85.00
480	★ 1c Dark Blue Ty. IIIa (22a). Fresh, o.g., two slightly short perfs., other-wise, Very Fine	(Photo) 35.00

484



483

-
- 481 ★ **1c Blue Ty. V (24). Imprint Plate No. Block of 72** (Plate 7), consisting of the 7 right rows + 83, 93R7, the second largest piece known from this pane, includes 6 copies with shoulder curls (57-58-59, 97, 98, 99R7), fresh nice color, a number of copies creased or thin & a few perfs. reinforced but an Exceptionally Rare and Attractive Showpiece **(Photo)** 1037.50
- 482 ★ **1c Blue Ty. V (24). Imprint Plate No. Block of 99** (Plate 8), lacking only 100R8, the largest known piece from this pane, includes Double Transfers, Curls in E of cent. Double Curl in Hair Varieties, Wonderful Rich Color, fresh, crease and a number of stamps thin and one with nick, still a Very Attractive Rarity **(Photo)** 1234.00
- 483 ★ **1c Blue Ty. V (24). Pane of 100, only known pane from Plate 9L**, includes "Earring" variety Pos. 10L9, wonderful color, fresh Exceptionally Fine centering few stamps have tiny faults, minor reinforcement in margins, a most Attractive and Desirable Rarity **(Photo)** 1293.50
- 484 ★ **1c Blue Ty. V (24). Complete Pane of 100** (10R). Nice color, fresh, o. g., few perfs reinforced and few tiny faults, still a scarce and Attractive Sheet, mostly Fine-Very Fine **(Photo)** 1250.00
-
- 485 **1c Blue Ty. V (24). Single and Pair with Blue Baltimore Carrier cancels**, first tied on small piece, one has short perf., otherwise Very Fine **E. II**
- 486 ★ **1c Blue Ty. V (24). Imprint plate no. block** (Plate 9), fresh, o. g., minute crease in one stamp, otherwise Very Fine **(Photo)** 50.00+
- 487 ★ **1c Blue Ty. V (24). Part Imprint Block**, minute faults, V. F. appearance 50.00
- 488 ★ **1c Blue Ty. V (24). Vertical Imprint Plate No. Strip of Four** (Plate 10) fresh, o. g., faint minute gum crease, otherwise Extremely Fine **(Photo)** 33.00+
- 489 ★ **1c Blue Ty. V (24). Left Imprint Plate No. Block of 8** (Plate 9), fresh, o. g., lt. crease in upper pair, centered slightly to T., Rare & Attractive **(Photo)** 100.00+
- 490 **1c Blue Ty. V (24). Block with imprint inside perfs. at L.**, Pretty color, town pmks, small fault in one, otherwise Very Fine **(Photo)** 65.00
- 491 **1c Blue Ty. V (24). Pos. 40, 50, 60, 70R7**, showing Reconstructed Imprint, one has s. e. at top, Scarce **E. III**
- 492 **1c Blue Ty. V (24). Pos. 31, 41, 51, 61L8**, showing Reconstructed Imprint, Fine-Very Fine **E. III**
- 493 **1c Blue Ty. V (24). Pos. 40, 50, 60, 70R8**, showing Reconstructed Imprint, one has tiny crease, Attractive lot **E. III**
- 494 **1c Blue Ty. V (24). Pos. 31, 41, 51, 61L9**, Reconstructed Imprint, couple small faults, Scarce **E. III**
- 495 **1c Blue Ty. V (24). Pos. 31, 41-42, 51, 61L7**, showing Reconstructed Imprint, Very Attractive lot, Very Fine **E. III**
- 496 **1c Blue Ty. V (24). Pos. 51L9, 50, 60R9**, two of latter, all showing portions of Sheet Imprint, Scarce Lot, mostly Fine-Very Fine **E. III**
- 497 **1c Blue Ty. V (24). Two vertical strips of three**, Beautiful Shades, town pmks., Fine-Very Fine 30.00
- 498 **1c Blue Ty. V (24). Six copies**, includes horiz. strip of three, all showing Imprints, town pmks, Fine-Very Fine **E. IV**

499	1c Blue Ty. Va (24 var.). Horiz. pair and four singles, including Imprint copy, from Plate V , Attractive and valuable lot, Fine-Very Fine	E. IV
500	1c Blue Ty. V (24). Pos. 51, 61(three), L7, 40, 60R7, all showing Imprint, few faults, Scarce lot	E. III
501	1c Blue Ty. V (24). Pos. 31-32, 41-42, 51, 61L8, showing Reconstructed Imprint, first pair has Blue Carrier cancel, a couple of tiny faults, Attractive lot	E. III
502	1c Blue Ty. V (24). Eight copies, all from Plate 8, includes three carriers, one in Blue, two blue grids, Double Transfer (8R8), Very Fine lot	44.00
503	1c Blue Ty. V (24). Eight copies, Beautiful shades, most with town pmks., two in Blue, few small faults, Very Attractive lot	E. II
504	1c Blue Ty. V (24). Horiz. pair and seven singles, Wonderful Range of Shades, Very Fine	33.00
505	1c Blue Ty. V (24). Nine copies, all from Plate 7, includes plate flaw (71R7). Most show sheet centerlines, Attractive lot, Fine-Very Fine	31.50
506	1c Blue Ty. V (24). Nine Imprint copies, few small faults, Very Attractive lot	E. III
507	1c Blue Ty. V (24). Ten copies, all with 1858-1861 Year Date Town pmks., includes horiz. strip of three & two pairs, lovely shades, Very Fine	44.00+
508	1c Blue Ty. V (24). Horiz. strip of three, three pairs, two horiz., nice Shades, Fine-Very Fine	40.50
509	1c Blue Ty. V (24). Ten copies, includes strip of 3 (51-53R9), sheet centerlines from plate 9 & 10 and 5 copies showing minor varieties, very attractive lot, Fine-Very Fine	42.50
510	1c Blue Ty. V (24). Eleven copies, selected for Cancellations , includes Carrier, Numeral, Paid, several diff. pretty Fancy Geometrics, including two pairs, couple tiny faults, most are Very Fine	E. V
511	1c Blue Ty. V (24). Twenty-four copies, includes Straddle, Pair, Red, Blue Grids, Red Carriers, Year Dates, Target, mostly Fine-Very Fine	100.00
512	1c Blue Ty. V (24). Pos. 52R8, Long Double Curl in Hair , tied by Boston "Paid" cancel, Red Boston pmk. on small local cover, short perf., Attractive	E. II
513	1c Blue Ty. V (24). Tied by Blue and Black Baltimore Carriers on separate covers, Very Fine	E. II
514	1c Blue Ty. V (24). Eight covers, includes vertical strip of 3, Blue Chicago pmks., Flaw on Head (59R8), line thru 3c, Fine-Very Fine	E. III

END OF FIRST SESSION

LOTS ON VIEW FROM MAY 1st
OFFICE OPEN SATURDAY, MAY 12th

SECOND SESSION

THURSDAY, MAY 17th, 1962 — 1:30 P. M.

HOTEL COMMODORE — PARLOR 108

UNUSED UNITED STATES COLLECTION

1847 ISSUE



520
523

522

521

- 520 ★ **5c Red Brown (1).** Large margins all around, magnificent Deep Rich Color, Wonderful Impression, a gorgeous stamp, Extremely Fine **(Photo)** 110.00
- 521 ★ **5c Red Brown (1).** L. R. Sheet margin copy, huge margins all around, Wonderful Deep Rich Color, Lovely Impression, fresh, full o.g., despite minute stain and lt. gum wrinkles, A Magnificent stamp **(Photo)** E. XIII
- 522 ★田 **5c Red Brown (1). Block,** huge margins all around, sheet margin at R., small thins barely affecting two stamps, almost invisible horiz. crease at B., Extremely Fine appearance **(Photo)** 1500.00
- 523 ★ **10c Black (2).** Large margins all around, Beautiful Color and Impression, faint, almost invisible tiny thin, Extremely Fine appearance **(Photo)** 325.00
- 524 P **5c Red Brown, 10c Black Reproduction Card Proofs (3P, 4P).** Fine 26.00



525



527



528



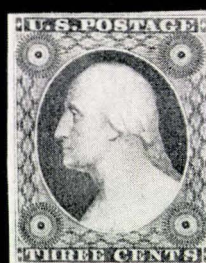
531



530



532



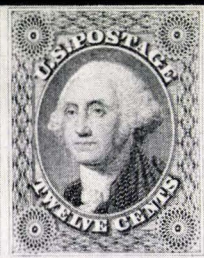
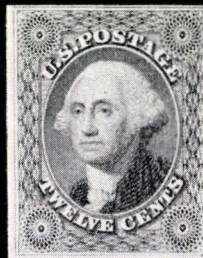
533



535



536



538



537



539



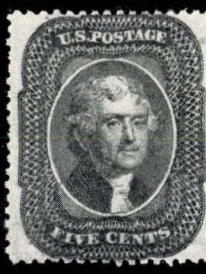
541



544



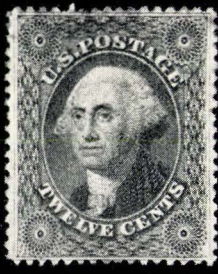
546



547



548



550



553

1851 ISSUE

- 525 ★ **1c Dark Blue Ty. II (7a). Plate III**, showing **Hairline Cracks**, margins all around, Lovely Color, Extremely Fine (Photo) E. VII

-
- 526 ★田 **1c Blue Ty. II, III (7, 8)**. Lower Right Sheet Corner Block of 18, (Pos. 81-90, 91-100RII), Clear to large margins all around, full sheet margins at B. & R., fresh, full o.g., Lovely Color. A Remarkable Block of Very Early Impressions showing the Rare **Ty. III from Plate II (99RII)**, also three Double Transfers (83, 84, 89RII) and Multiple Plate Cracks in B., lightly creased in 3 places but a Superlative Showpiece of Outstanding Rarity (Photo) 3720.00+
-

- 527 ★ **1c Dk. Blue Ty. IV (9a)**. Large margins all around, lovely deep color, fresh, .og., crease in top margin, Extremely Fine appearance (Photo) 28.50

- 528 ★ **1c Blue Ty. IV (9)**. Large margins all around, sheet margin at top, o.g., two ink spots fom incompletely wiped plate, Very Fine (Photo) 28.50

- 529 ★田 **1c Blue Ty. IV (9)**. R. Imprint Plate No. Block of 9 (Pos. 41-43, 51-53, 61-63LIL) margins except partly touching at U.L. and L. R. center stamp shows Double Recut Top & Bottom, Four others show scarce Recut Combinations, crease at top, one stamp has thin, another has minute tear. Rare and Attractive Showpiece (Photo) E. XII

- 530 ★ **3c Brownish Carmine (11)**. Margins all around, Deep Rich Color, Beautiful Impression, fresh, o.g., Large Shift in Bottom Label. Listed but Unpriced in Scott, faint tiny thin, Extremely Fine appearance (Photo) E. III

- 531 ★ **3c Rose (11)**. Horiz. Pair, large margins except just touching at U.L., fresh, o.g., a Beautiful pair, Very Fine (Photo) 20.00

- 532 ★ **3c Brownish Carmine (11)**. Horiz. Pair, margins all around, lovely color and Impression, fresh, o.g., minute stains showing only on back, Extremely Fine (Photo) 20.00+

- 533 ★ **3c Deep Claret (11a)**. Horiz. pair, large margins all around, Deep Rich Color, Lovely Impression, fresh, o.g., lt. gum creases, Extremely Fine appearance (Photo) 40.00+

- 534 ★田 **3c Orange Red (11)**. Imprint Plate No. Block of 15 (5X3) Pos. 41-45, 51-55, 61-65L3, margins all around, Lovely Color & Impression, fresh, part o.g., despite two lt. creases a Rare and Wonderful Showpiece (Photo) 176.50+

- 535 ★ **10c Green Ty. II (14)**. Large margins all around, deep color, Extremely Fine (Photo) 90.00

- 536 ★ **12c Black (17)**. Margins all around, gorgeous color & impression, faint trivial corner creases, Very Fine appearance (Photo) 110.00

- 537 ★ **12c Black (17)**. Lower left sheet margin copy, Large to Huge margins all around, magnificent color & Impression, fresh, o.g., a Rare and desirable stamp despite light crease (Photo) 110.00+

- 538 ★ **12c Black (17)**. Horiz. strip of 3, margins all around, nice color and impression, fresh, full o.g., gum creases, otherwise Extremely Fine (Photo) 460.00+

1857 ISSUE

- 539 ★ **1c Blue Ty. I (18)**. Horiz. Pair, pos. 24-25L12, latter showing **Double Transfer**, fresh, o.g., lovely color & Impression, Extremely Fine (Photo) 175.00+



554



555



556



557



558



559



560



562



561



564



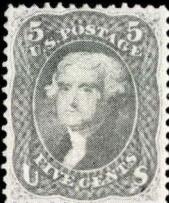
566



569



570



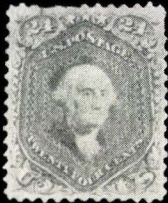
571



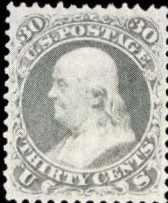
572



573



574



575



578



576



579



580



581



582



583



584



585



586



588



589



591



592



599



600



596



593



594



598

540	★田	1c Blue Ty. I, II (18, 20). Horiz. block of 10 (Pos. 22-26, 32-36L12) Lovely Rich Color, nice Impression, fresh, full o.g., eight Ty. I and two Ty. II positions, two Ty. I show Double Transfer (23, 25L12). A Rare and Truly Magnificent Block, Superb	(Photo) 955.00+
541	★	1c Blue Ty. II (20). Gorgeous color, fresh, o.g., minute corner creases, Extremely Fine appearance	(Photo) 40.00
542	★	1c Blue Ty. V, 3c Claret Ty. II (24, 26). Vert. Pair of latter, Lovely Colors and Impressions, fresh, o.g., Extremely Fine	11.00
543	★田	1c Blue Ty. V (24). Block of 12 (4X3), Fresh & Attractive, Extremely Fine	(Photo) 133.00+
544	★	3c Red Ty. I (25). Pretty color fresh, o.g., Very Fine	(Photo) 35.00
545	★田	3c Brownish Carmine (12). L. R. Sheet Corner Block of 12 (4X3), fresh, o.g., few perfs. reinforced, Extremely Fine	33.00+
546	★	5c Brown Ty. I (29). Nice color & Impression, thin, V.F. appearance	(Photo) 70.00
547	★	5c Orange Brown Ty. II (30). Wonderful Color & Impression, fresh, o.g., Extremely Fine	(Photo) 32.50
548	★	5c Brown Ty. II (30A). Fresh, o.g., Lovely Color and Impression, Extremely Fine	(Photo) 35.00
549	★	10c Green Ty. V (35). Large margins, lovely color, fresh, o.g., minute corner gum crease, otherwise Extremely Fine	13.00
550	★	12c Intense Black (36). Lovely color & Impression, tiny perf thin, Extremely Fine appearance	(Photo) 20.00
551	★	24c Lilac (37). Lovely color, fresh, o.g., minute margin tear, Extremely Fine appearance	42.50
552	★田	24c Lilac (37). Block, fresh, o.g., minute thin in two stamps, V.F. appearance	(Photo) 500.00
553	★	30c Orange (38). Lovely color and Impression, fresh, o.g., a wonderful copy, Extremely Fine	(Photo) 42.50
554	★	90c Deep Blue (39). Pretty color, fresh, o.g., minute thin, Extremely Fine appearance	(Photo) 140.00

1857 REPRINTS

555	★	1c Bright Blue Reprint (40). Centered, Extremely Fine	(Photo) 57.50
556	★	3c Scarlet Reprint (41). A magnificent stamp, Extremely Fine	(Photo) 185.00
557	★	5c Orange Brown Reprint (42). Slightly short corner perf. otherwise Very Fine	(Photo) 65.00
558	★	10c Blue Green Reprint (43). Two slightly short perfs, otherwise V.F.	(Photo) 110.00
559	★	12c Greenish Black Reprint (44). Centered to top, scarce	(Photo) 140.00
560	★	24c Blackish Violet Reprint (45). Two very slightly short perfs., otherwise Extremely Fine	(Photo) 160.00
561	★	30c Yellow Orange Reprint (46). One slightly short perf., otherwise Very Fine	(Photo) 225.00



526



529

534



540

577



552

565

617

635

562 ★	90c Deep Blue Reprint (47). A lovely copy, Very Fine	(Photo)	275.00
563 P	1c-90c 1851 Issue, Reprints, Card Proofs (40P-47P). Fine-Very Fine Set		40.50

1861 ISSUE

564 ★	3c Brown Rose August (56). Unusual pretty shade, fresh, o. g., Extremely Fine	(Photo)	60.00
565 ★田	3c Brown Rose August (56). Block, fresh, o. g., Very Fine	(Photo)	265.00
566 ★	24c Violet August (60). Large margins, magnificent Deep Rich Color, Extremely Fine	(Photo)	550.00
567 P	1c-90c 1861 Issue, Card Proofs (Betw. 63P-78P). Ten diff., Very Fine		32.25
568 ★	1c Blue, 3c Rose, two, 10c Green (63, 65, 68). Fresh, o. g., F.-V. F.		26.00
569 ★	3c Pink (64). Wonderful Deep Rich Color, fresh, full o. g., a magnificent stamp despite lt. gum crease, Very Fine	(Photo)	350.00
570 ★	3c Lake (66). Brilliant color, fresh, o. g., centered slightly to R. (Photo)		145.00
571 ★	5c Buff (67). Wonderful Deep Rich color, fresh, o. g., despite faint pin-point thin a Gorgeous Stamp, Extremely Fine appearance	(Photo)	275.00
572 ★	12c Black (69). Part o. g., Very Fine	(Photo)	20.00
573 ★	24c Brown Lilac (70a). Gorgeous Rich Color and Impression, fresh, part o. g., one short perf., otherwise Extremely Fine	(Photo)	75.00
574 ★	24c Steel Blue (70b). Centered, lovely color, several short perms., Rare & Attractive	(Photo)	550.00
575 ★	30c Orange (71). Brilliant color, fresh, o. g., a marvelous stamp, Extremely Fine	(Photo)	35.00
576 ★	90c Blue (72). Lovely Rich color, fresh, faint minute creases, Very Fine appearance	(Photo)	90.00
577 ★田	2c Black (73). Horiz. Block of 6, fresh, o. g., wide s. e. at R., lt. creases, Very Fine appearance	(Photo)	85.00
578 ★	3c Scarlet (74). Brilliant color, fresh, o. g., centered to B. & R. (Photo)		300.00
579 ★	5c Dark Brown Red (75). Rich Color, two short perms., Extremely Fine appearance	(Photo)	65.00
580 ★	5c Brown (76). Lovely color, fresh, part o. g., faint minute stain, otherwise Extremely Fine	(Photo)	15.00
581 ★	5c Brown (76). Lovely Deep Rich Color, fresh, o. g., faint trivial perf. thin, Extremely Fine appearance	(Photo)	15.00
582 ★	15c Black (77). Fresh, o. g., Very Fine	(Photo)	42.50
583 ★	24c Lilac (78). Lovely color & Impression, fresh, o. g., Extremely Fine	(Photo)	18.50

1867 GRILL ISSUES

584 ★	3c Rose C. Grill (83). Lovely color, fresh, o. g., a marvelous copy of this scarce stamp, Extremely Fine	(Photo)	90.00
585 ★	1c Blue E. Grill (86). Gorgeous color, fresh, Fine	(Photo)	40.00



601



602



603



604



607



608



605



606



609



610



611



612



613



614



615



616



618



619



620



621



622



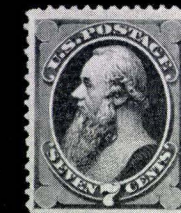
623



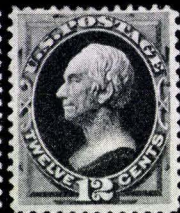
624



627



628



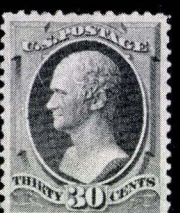
630



631



632



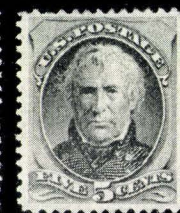
633



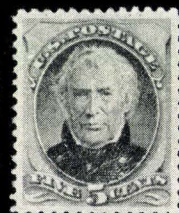
634



636



637



641



642



643



644



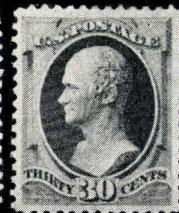
646



648



649



651



652



662

586 ★	2c Black E. Grill (87). Fresh, o.g., Very Sharp Grill, Impressed from wrong Side of Sheet , probably Trial Impress, Very Fine (Photo)	E. V
587 ★	2c Black, 3c Rose E. Grill (87, 88). Fresh, first has o.g., first has few short perfs, otherwise V.F.	30.50
588 ★	12c Black E. Grill (90). Horiz. Pair, lovely color, fresh, o.g., a wonderful pair, Extremely Fine (Photo)	160.00
589 ★	15c Black E. Grill (91). Lovely color & Impression, fresh, o.g., a wonderful stamp, Extremely Fine (Photo)	185.00
590 ★	2c Black, 3c Red F. Grill (93, 94). Lovely color, fresh, o.g., Very Fine	17.00
591 ★	10c Yellow Green F. Grill (96). Gorgeous color, fresh, o.g., Very Fine (Photo)	32.50
592 ★	10c Green F. Grill (96). Horiz. Pair, lovely color, fresh, o.g., Extremely Fine (Photo)	80.00
593 ★	24c Gray Lilac F. Grill (99). Gorgeous color, fresh despite minute faint thin in grill a Very desirable copy of this scarce stamp (Photo)	120.00
594 ★	90c Blue F. Grill (101). Lovely color, fresh, part o.g., lt. creases, Fine appearance (Photo)	235.00

1869 PICTORIAL ISSUE

595 P	1c-90c Pictorial Card Proofs (112P-117P, 120P-122P, 129P). F.-V.F. Set	46.00
596 ★	1c Dark Brown Orange (112). Horiz. Pair, centered, huge margins, magnificent rich color, small lt. crease in one, otherwise Extremely Fine (Photo)	45.00
597 ★	1c Buff, 2c Brown Pictorials (112, 113). Pretty colors, fresh, first has minute thin in grill, otherwise Very Fine	32.50
598 ★	2c Brown (113). Lovely Rich color, fresh, o.g., large portion of all surrounding stamps attached, most unusual (Photo)	12.50
599 ★	6c Ultramarine (115). Gorgeous color, fresh, minute gum wrinkle, Extremely Fine (Photo)	32.50
600 ★	10c Yellowish Orange (116). Large margins, Gorgeous Color, fresh part o.g., very slightly short perf, otherwise Extremely Fine (Photo)	37.50
601 ★	15c Brown & Blue Ty. I (118). Gorgeous colors, fresh, o.g., small crease, centered to R. (Photo)	125.00
602 ★	15c Brown & Blue Ty. II (119). Lovely colors, fresh, o.g., a wonderful copy, Extremely Fine (Photo)	37.50
603 ★	24c Green & Violet (120). Large margins, Gorgeous Colors, fresh, o.g., a lovely stamp, Extremely Fine (Photo)	90.00
604 ★	30c Blue & Carmine (121). Magnificent Deep Rich Color, fresh, o.g., an Absolute Gem, Superb (Photo)	110.00
605 ★	90c Carmine & Black (122). Gorgeous colors, fresh, o.g., one slightly short perf., otherwise Very Fine (Photo)	275.00
606 ★	90c Carmine & Black (122). Centered, lovely color, fresh, partly o.g., pulled perf at top, otherwise Extremely Fine (Photo)	275.00

1869 RE-ISSUES

607 ★	1c Buff Reissue (123). Centered, fresh, o.g., minute gum creases, V.F.	(Photo)	32.50
608 ★	2c Brown Reissue (124). Fresh, o.g., Very Fine	(Photo)	30.00
609 ★	3c Blue Reissue (125). Fresh, o.g., a lovely copy, Extremely Fine	(Photo)	225.00
610 ★	6c Blue Reissue (126). Fresh, o.g., Extremely Fine	(Photo)	80.00
611 ★	10c Yellow Reissue (127). Fresh, o.g., Very Fine	(Photo)	90.00
612 ★	12c Green Reissue (128). Fresh, o.g., Very Fine	(Photo)	90.00
613 ★	15c Brown & Blue Ty. III Reissue (129). Fresh, part o.g., minute insignificant thin, Extremely Fine appearance	(Photo)	125.00
614 ★	24c Green & Violet Reissue (130). Fresh crackly gum, Extremely Fine	(Photo)	85.00
615 ★	30c Blue & Carmine Reissue (131). Fresh large part o.g., Extremely Fine	(Photo)	135.00
616 ★	90c Carmine & Black Reissue (132). Fresh, o.g., despite minute gum crease, Extremely Fine	(Photo)	265.00
617 ★田	1c Buff Reissue (133). Block, few very slightly nibbed perfs on one stamp, otherwise fresh, o.g., Very Fine	(Photo)	80.00

1870 BANKNOTE ISSUE

618 ★	3c Green Grill (136). Lovely color, fresh, o.g., Very Fine	(Photo)	17.50
619 ★	1c Ultramarine (145). Huge margins, Lovely Rich Color, fresh, o.g., Extremely Fine	(Photo)	9.00
620 ★	6c Dark Carmine (148). Exceptional Deep Color, Lovely Impression, shows two grill points but not enough to offer as a grilled stamp, Exceptionally Fine	(Photo)	18.50
621 ★	7c Vermilion (149). Lovely Color, fresh, o.g., Extremely Fine	(Photo)	25.00
622 ★	15c Deep Orange (152). Wonderful Rich Color, fresh, o.g., Extremely Fine	(Photo)	30.00
623 ★	24c Purple (150). Wonderful Deep Rich Color, fresh, o.g., Very Fine	(Photo)	47.50
624 ★	90c Dark Carmine (155). Magnificent Deep Rich Color, Lovely Impression, fresh, o.g., a wonderful stamp, Extremely Fine	(Photo)	110.00

1873 BANKNOTE ISSUE

625 ★	1c-3c Banknote Issues (156-158). Fresh, o.g., first has creased perf., otherwise Very Fine		13.00
626 P	1c-90c 1873-1883 Card Proofs (Betw. 157P-211P). Sixteen diff., Very Fine		34.90
627 ★	6c Brown Rose (159). Lovely color, fresh, o.g., Very fine	(Photo)	15.00
628 ★	7c Orange Vermilion (160). Magnificent Rich Color, fresh, o.g., Extremely Fine	(Photo)	32.50

629	★	15c Brown (161). Lovely Rich Color, fresh, o. g., one slightly short perf., otherwise Extremely Fine	15.00
630	★	12c Blackish Violet (162). Gorgeous Deep Rich Color, fresh, o. g., Very Fine (Photo)	47.50
631	★	15c Yellow Orange (163). Ribbed Paper Variety, gorgeous color, fresh, Extremely Fine (Photo)	50.00
632	★	30c Gray Black (165). Nice color, fresh, o. g., Very Fine (Photo)	47.50
633	★	30c Gray Black (165). Large margins, Lovely Color, trivial faint margin crease, Extremely Fine appearance (Photo)	47.50
634	★	90c Rose Carmine (166). Deep Rich Color, fresh, large part o. g., V. F. (Photo)	80.00
635	★田	90c Rose Carmine (166). Block, Gorgeous Color, fresh, full o. g., A magnificent Block despite trivial minute gum wrinkle in one stamp, Extremely Fine (Photo)	450.00
636	★	2c Vermilion (178). Fresh, o. g., Very Fine (Photo)	13.00
637	★	5c Blue (179). Deep Rich Color, fresh, part o. g., Very Fine (Photo)	12.00

1879 BANKNOTE ISSUE

638	★田	1c Dark Ultramarine (182). Block, Lovely Rich color, fresh, o. g., V. F. (Photo)	50.00
639	★	1c-3c Banknote Issues (182-184). Fresh, o. g., Very Fine	13.75
640	★田	2c Vermilion (183). Horiz. Block of 8, fresh, o. g., Very Fine	35.00
641	★	5c Blue (185). Lovely Color, fresh, o. g., Extremely Fine (Photo)	16.00
642	★	6c Brown Rose (186). Fresh, o. g., faint minute thin, Extremely Fine appearance (Photo)	27.50
643	★	10c Brown (188). Pretty Color, fresh, o. g., trivial minute thin, Very Fine appearance (Photo)	32.50
644	★	15c Orange (189). Large margins, nice color, fresh, o. g., Extremely Fine (Photo)	10.00
645	★田	30c Full Black (190). Block, Rich deep color, fresh, o. g., trivial gum wrinkle in one stamp, otherwise Very Fine (Photo)	250.00
646	★	90c Carmine (191). Wonderful color, fresh, o. g., minute thins, Very Fine appearance (Photo)	85.00

1881-1888 BANKNOTE ISSUES

647	★	2c-10c Banknote Issues (205, 207, 209-210). First two have minute gum thin, otherwise F.-V. F.	17.00
648	★	1c Gray Blue (206). Enormous Margins all around, Lovely Color, fresh, o. g., a Gem (Photo)	E. 1
649	★	6c Brown Red (208a). Gorgeous color, fresh, o. g., Extremely Fine (Photo)	15.00
650	★	1c-5c Banknote Issues (211-216). Fresh, o. g., 3c has minute gum thins, otherwise Very Fine	25.50



543



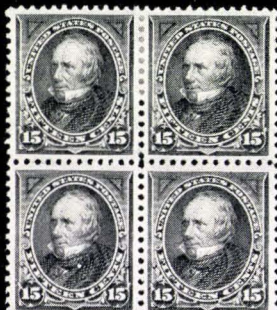
638



645



663



692



676



785



696



705



840



841



795



846



842



843

651 ★	30c Orange Brown (217). Fresh, o. g., Extremely Fine	(Photo) 17.50
652 ★	90c Purple (218). Lovely color, fresh, o. g., faint microscopic thin, otherwise Very Fine	(Photo) 57.50

1890 ISSUE

653 ★田	1c Blue, 2c Lake, Carmine (219, 219D, 220). Blocks, Very Fine	19.75
654 ★	1c-30c 1890 Issue (219-228). Few minor thins, others are Very Fine	54.85
655 ★田	3c Purple (221). Block, Deep Rich Color, fresh, Very Fine	15.00
656 ★田	4c Dark Brown, 5c Chocolate (222, 233). Blocks, one of first has small thin, otherwise Fine	37.50
657 ★田	6c Brown Red (224). Block, fresh, Very Fine	15.00
658 ★田	8c Lilac (225). Block, Lovely Color, fresh, small ungummed area on two stamps, Very Fine	15.00
659 ★田	10c Green (226). Block, fresh, Fine	40.00
660 ★田	15c Indigo (227). Block, fresh, one stamp has minute thin, otherwise Fine	47.50
661 ★田	30c Black (228). Block, Deep Rich Color, one stamp thin, otherwise, V. F.	75.00
662 ★	90c Orange (229). Extremely Fine	(Photo) 23.50
663 ★田	90c Orange (229). Block, Lovely Color, fresh, Very Fine	(Photo) 110.00

COLUMBIAN ISSUE

664 P	1c-\$5.00 Columbian Card Proofs (230P-245P). Complete set, Very Fine	97.00
665 ★	1c-30c Columbian (230-239). Few minor thins, mostly Very Fine	59.95
666 ★田	1c, 2c Columbian (230-231). Imprint Plate No. Blocks of 6, small thins, Fine-Very Fine appearance	33.50
667 ★田	3c Columbian (232). Top Imprint Plate No. Block of 6, small thin in one, lt. gum crease, Very Fine appearance	37.50
668 ★田	4c Columbian (233). Bottom Imprint Plate No. Block of 6, two stamps have thins, Fine appearance	55.00
669 ★田	5c Columbian (234). Bottom Imprint Plate No. Block of 6, minute perf thin on one stamp, otherwise Fine-Very Fine	60.00
670 ★田	6c Columbian (235). Bottom Imprint Plate No. Block of 6, minute thins in two stamps, Very Fine appearance	60.00
671 ★田	8c Columbian (236). Top Imprint Plate No. Block of 6, selvage reduced at top, two stamps thin, Fine appearance	45.00
672 ★田	10c Columbian (237). Imprint Block of 4, thin, Fine appearance	42.50
673 ★田	15c Columbian (238). Block, one stamp thin, otherwise Fine-Very Fine	60.00
674 ★田	30c Columbian (239). Block, fresh, Fine	80.00
675 ★	50c Columbian (240). No gum, Fine	27.50
676 ★田	50c Columbian (240). Block, minute thins in two stamps, otherwise V. F.	(Photo) 130.00
677 ★	\$1.00 Columbian (241). Very Fine	(Photo) 62.50



678



680



682



684



686



723



725



727

678	★	☐	\$1.00 Columbian (241). Block, fresh, three minute paper specks, visible only on back, Very Fine (Photo)	400.00
679	★		\$2.00 Columbian (242). Gorgeous color, Extremely Fine (Photo)	75.00
680	★	☐	\$2.00 Columbian (242). Block, fresh, Very Fine (Photo)	425.00
681	★		\$3.00 Columbian (243). Lovely Deep Color, trivial faint corner gum crease, otherwise Extremely Fine (Photo)	110.00
682	★	☐	\$3.00 Columbian (243). Block, Exceptionally Deep color, fresh, Very Fine (Photo)	1000.00
683	★		\$4.00 Columbian (244). Gorgeous Rich Color, faint tiny thin in two perfs, Extremely Fine appearance (Photo)	120.00
684	★	☐	\$4.00 Columbian (244). Block, Gorgeous color, lt. gum bend at B., barely discernible minute thin in one stamp, otherwise Very Fine (Photo)	1700.00
685	★		\$5.00 Columbian (245). Lovely Deep Color, minute speck of foreign matter in paper, Very Fine (Photo)	135.00
686	★	☐	\$5.00 Columbian (245). Block, fresh, minute gum crease in one stamp, Very Fine (Photo)	1400.00

1894 ISSUE

687	★	☐	1c-3c 1894 Issue (246, 248, 250, 253). Blocks, one no. 248 thin, otherwise Fine-Very Fine 27.75	27.75
688	★		1c-10c 1894 Issue (247, 250, 253-258). 8c & 10c thin, others Very Fine 26.70	26.70
689	★	☐	4c Dark Brown (254). Fresh, Very Fine 19.00	19.00
690	★	☐	5c Chocolate (255). Block, fresh, Very Fine 16.00	16.00
691	★	☐	6c Brown (256). Lovely color, fresh, Very Fine 22.50	22.50
692	★	☐	15c Dark Blue (259). Block, fresh, small ungummed area on one stamp, Very Fine (Photo)	65.00
693	★	☐	15c Dark Blue (259). Block, Part o.g., Fine-Very Fine 65.00	65.00
694	★		15c Dk. Blue, 50c Orange (259-260). Thins, Fine-Very Fine appearance 27.00	27.00
695	★		\$1.00 Black Ty. I (261). Large margins, fresh, Very Fine (Photo)	55.00
696	★	☐	\$1.00 Black Ty. I (261). Block, fresh, pinhead thinning, otherwise F.-V. F. (Photo) 250.00	250.00
697	★		\$2.00 Bright Blue (262a). Fresh, crackly gum, Fine (Photo)	85.00
698	★		\$5.00 Dk. Green (263). Fresh, part o.g., thin, Very Fine appearance (Photo) 150.00	150.00

1895-1898 ISSUES

699	★		1c-50c 1895 Issue (264, 267-275). 4c and 50c thin, others Fine-Very Fine 45.90	45.90
700	★	☐	1c-3c, 8c 1895 Issue (264, 267-68, 272). Blocks, two shades of first, one 2c has minute thins, otherwise Fine-Very Fine 22.00	22.00



677



679



681



683



685



695



697



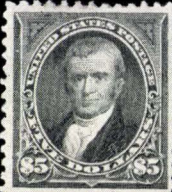
698



706



707



708



722



726



735



737



749



750



751



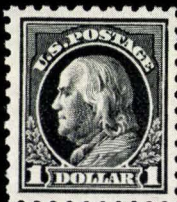
758



759



760



767



771



772



824



825



830



832



834



839



851

701	★田	4c Dk. Brown, 5c Chocolate (269-270). Blocks, fresh, Very Fine	22.00
702	★田	6c Dull Brown, 8c Violet Brown (271, 272). Blocks, fresh, Fine-Very Fine	29.00
703	★田	10c Green (273). Block, fresh, Very Fine	20.00
704	★田	10c Green (273). Block, fresh, Fine-Very Fine	20.00
705	★田	50c Orange (275). Block, fresh, Fine (Photo)	85.00
706	★	\$1.00 Black Ty. II (276a). Fresh, faint minute thin, Very Fine appearance (Photo)	100.00
707	★	\$2.00 Bright Blue (277a). Gorgeous color, one short perf., otherwise Ex- tremely Fine (Photo)	57.50
708	★	\$5.00 Dk. Green (278). Part o. g., Very Fine (Photo)	120.00
709	★	1c-15c 1898 Issue (Betw. 279-284). Seven Diff., heavy hinges, some tiny thins, others F.-V. F.	29.95
710	★田	1c-5c 1898 Issue (279-281). Blocks, Fresh, Fine-Very Fine	23.00
711	★田	2c Rose Carmine (279C). Block, Fine	40.00
712	★田	6c Lake (282). Block, Fine-Very Fine.....	17.50
713	★田	10c Dark Brown Ty. I (282C). Block, Fine-Very Fine	55.00
714	★田	15c Olive Green (284). Block, minute gum creases in one stamp, other- wise Very Fine	45.00

TRANS-MISSISSIPPI ISSUE

715	E	1c-\$2.00 Trans-Mississippi, Bi-Color Die Essays (Brazer 285E-293E). Cpl. set, 1c has light stains others V. F.	E. VI
716	★	1c-10c Trans-Mississippi (285-290). Latter two thin, others are V. F.	43.90
717	★田	1c-2c Trans-Mississippi (286-287). Blocks, one of first has minute thin, otherwise Very Fine	19.00
718	★田	4c Trans-Mississippi (287). Block, Very Fine	38.50
719	★田	5c Trans-Mississippi (288). Block, Extremely Fine	37.50
720	★田	8c Trans Mississippi (289). Block, Rich Color, Very Fine	55.00
721	★田	10c Trans-Mississippi (290). Block, almost invisible minute cut in one stamp, otherwise Very Fine	80.00
722	★	50c Trans-Mississippi (291). Fresh, Fine (Photo)	45.00
723	★田	50c Trans-Mississippi (291). Block, fresh, Very Fine (Photo)	400.00
724	★	\$1.00 Trans-Mississippi (292). Fresh, part o. g., light thin, Perfs in at top	100.00
725	★田	\$1.00 Trans-Mississippi (292). Block, fresh, despite faint minute stains, Very Fine (Photo)	1100.00
726	★	\$2.00 Trans-Mississippi (293). Lovely color, fresh, minute faint thin, otherwise Fine (Photo)	130.00
727	★田	\$2.00 Trans-Mississippi (293). Block, fresh, Fine-Very Fine (Photo)	1400.00

1901-1907 ISSUES

- 728 P **1c-10c Pan-American Large Die Proofs (294P-299P).** Very Fine Set 135.00
- 729 ★ **1c-10c Pan-American (294-299).** Fifteen stamps including extra shades, few tiny thins, mostly Fine-Very Fine 56.65



730

731

-
- 730 ★ **1c Pan-American Inverted Center (294a).** Almost invisible faint minute thin, Very Fine appearance **(Photo)** 1150.00
- 731 ★ **4c Pan-American Inverted Center (296a).** Extremely filled-in thins, Very Fine appearance **(Photo)** 1300.00
-
- 732 ★ **1c-50c 1902 Issue (300-310, 314, 319-320).** Forty-eight stamps including wide range of shades, couple small faults, nearly all Fine-Very Fine 142.30
- 733 ★ **\$1.00 Black (311).** Thin, Very Fine appearance 50.00
- 734 ★ **\$2.00 Dark Blue (312).** Slightly broken crease, Fine appearance 75.00
- 735 ★ **\$5.00 Dark Green (313).** Very Fine **(Photo)** 145.00
- 736 ★ **1c-2c Private Perforations (314, 320).** Seven diff. pairs, few small thins, others Fine-Very Fine 41.50
- 737 ★ **5c Blue Imperf. (315).** Horiz. pair, large margins all around, no gum, Very Fine **(Photo)** 225.00
- 738 ★田 **2c Carmine (319, 320).** Collection of 44 blocks, one of latter, all diff. identified shades, many partially stuck down, a very interesting lot, mostly Fine-Very Fine **E. III**
- 739 ★ **1c-10c Jamestown, Louisiana Purchase (323-330).** Extra No. 323, 325, Fine-Very Fine sets 84.50

1908-1910 ISSUES

- 740 ★ **1c-\$1.00 1908 Issue (Betw. 331-342).** Thirty-one stamps, including extra shades, few small thins, others Fine-Very Fine 143.25
- 741 ★ **1c-5c Imperfs (343-347).** Horiz. pairs, 5c has minute thins, otherwise Very Fine set 33.00
- 742 ★ **1c-2c Coils (348-349, 353).** Pairs, line pair of latter, Very Fine 20.50
- 743 ★ **1c-5c Private Perfs (343-347, 368).** Nine diff. pairs, Very Good-Very Fine 44.65

744 ★	4c Orange Brown Coil (350). Line Pair, Very Fine	20.00
745 ★	5c Blue Coil (351). Pair, Fine	30.00
746 ★	1c, 2c, 5c Coils (352-53, 355). Pairs, Very Fine	29.00
747 ★	4c Orange Brown Coil (354). Pair, Extremely Fine	16.00
748 ★	1c Green, 2c Carmine Bluish (357-358). Fine-Very Fine	18.00
749 ★	6c Red Orange Bluish (362). Fine (Photo)	95.00
750 ★	10c Yellow Bluish (364). Reperf at L. otherwise Fine (Photo)	110.00
751 ★	15c Ultramarine Bluish (366). Very Fine (Photo)	95.00
752 ★	2c Lincoln, Alaska-Yukon, Hudson-Fulton Imperfs (368, 371, 373). Vertical pairs, large margins, fresh, first has pinhole, few lt. gum wrinkles, otherwise Very Fine	41.00
753 ★	2c Lincoln Bluish (369). Very Fine	22.00
754 ★	2c Alaska-Yukon (371). Bottom Imprint Plate No. Block of 6, lt. gum wrinkles, Very Fine	50.00
755 ★	1c-5c Coils (385-386, 390-396). Pairs, couple tiny thins, otherwise Very Fine sets	56.90
756 ★	1c-2c 1910-1915 Coils (387, 442, 444, 453). Pairs, Very Fine	39.50

1912-1916 ISSUES

757 ★	1c-10c Panama Pacific (397-403). Extra 398 few small thins, others V.F.	84.00
758 ★	10c Panama Pacific Perf. 10 (404). Fine (Photo)	100.00
759 ★	50c Violet (421). Very Fine (Photo)	45.00
760 ★	\$1.00 Violet Brown (423). Very Fine (Photo)	45.00
761 ★	1c Green (424). R. Plate No. and "Coil Stamps" block of 10, Fine-V.F.	30.00
762 ★	2c Dark Carmine (425). Plate No. and "Coil" stamps block of 10, Fine	30.00
763 ★	50c Violet (440). Thin, Very Fine appearance	75.00
764 ★	3c Violet Coil (445). Pair, perfs just touch at R.	50.00
765 ★	4c-5c Coils (446-447). Pairs, Fine-Very Fine	28.00
766 ★	3c-5c Coils (456-458). Pairs, Fine-Very Fine	36.50
767 ★	\$1.00 Violet Black (460). Very Fine (Photo)	67.50
768 ★	2c Carmine (461). Vertical pair, Very Fine	20.00
769 ★	2c Carmine (461). Block of 4 with Plate No., Very Fine	40.00
770 ★	5c Carmine Error (467). Lt. Creases, Fine appearance	95.00
771 ★	50c Light Violet (477). Very Fine (Photo)	110.00
772 ★	\$1.00 Violet Black (478). Very Fine (Photo)	87.50
773 ★	\$2.00 Dark Blue, \$5.00 Lt. Green (479-480). Very Fine	57.50

1917-1922 ISSUES

774	★田	50c Red Violet (517). Block of 20, Very Fine	55.00
775	★	2c Carmine (519). Very Fine	22.50
776	★	\$2.00 Orange Red & Black (523). Thin, Very Fine appearance	75.00
777	★田	1c-3c Offset Issues (525-536). Collection of 218 stamps in blocks, with a wide variety of shades, Plate and Printing Varieties, Plate No. and Arrow Blocks, some stuck down or small thins, a very interesting lot	E. VI
778	★田	1c Offset Imperf. (531 var.). Plate No. Blocks of 8 with private roulette, two thin spots	E. II
779	★田	1c, 3c Offset Imperfs (531, 535). Centerline Blocks, Fine-Very Fine	85.00
780	★田	1c, 3c 1918-1920 Issues (531, 535, 538a, 541). Blocks, Very Fine	49.00
781	★田	2c Offset Imperf Ty. VI (534A). Centerline Block, Very Fine	110.00
782	★田	3c Victory (537). Block of Sixteen, minute hinge thin in one, otherwise Fine-Very Fine	32.00
783	★田	1c Green, 2c Carmine Rose (545, 546). Blocks, one of each has small thin, otherwise Very Good-Fine	70.00
784	★田	1c Green, 2c Carmine Rose (545, 546). Blocks, latter thin, other is Very-Good-Fine	70.00
785	★田	\$2.00 Carmine & Black (547). Horiz. Block of 6, mint, Very Fine (Photo)	130.50
786	★	1c-\$5.00 1922 Issue (552-573). Very Fine set	59.65
787	★田	½c-\$5.00 1922-26 Issue (551-573, 622-623). Blocks, Very Fine set	256.10
788	★田	1c-\$5.00 1922 Issue (552, 554-573). Blocks, Fine-Very Fine set	246.19
789	★田	2c Carmine, 6c Red Orange (558, 579). Blocks, Fine-Very Fine	31.00
790	★田	\$1.00 Violet Brown (571a). Mint Plate No. Block of 12, Very Fine	52.50
791	★田	\$2.00 Dark Blue (572). Mint U. R. Sheet Corner Block of 10, Very Fine	100.00
792	★田	\$5.00 Carmine Lake & Dark Blue (573a). Top Arrow Block, Very Fine	80.00

1923-1930 ISSUES

793	★田	1c-6c, 8c-10c 1922 Perf 10 (581-587, 589-591). Mint Plate No. Blocks of 6, Fine-Very Fine	113.45
794	★田	3c-5c 1922 Perf 10 (584-587). Mint Plate No. Blocks of 6, Very Fine	52.20
795	★田	2c Carmine (595). Block, Extremely Fine	(Photo) 60.00
796	★	2c Harding, Valley Forge (610, 645). Complete sheets of 100, Fine-V. F.	55.12
797	★田	2c Lexington-Concord (618). Five Mint Plate No. Blocks of 6, two diff. tops, three diff. lefts, Fine-Very Fine	65.00
798	★田	2c, 5c Norse-American (620-621). Mint Blocks, Very Fine	32.50
799	★田	2c, 5c Norse-American (620, 621). Mint Line Blocks, Very Fine	32.50
800	★田	2c Sesquicentennial (627). Seven Mint Plate No. Blocks of 6, Fine-V. F.	70.00
801	★田	5c Ericsson (628). Mint Top Plate No. Block of 6, lt. gum bends, V. F.	27.50

802	★田	5c Ericsson (628). Mint Top Plate No. Block of 6, short corner perf., otherwise Fine	27.50
803	★田	5c Ericsson (628). L. Plate No. Block of 12, Very Fine	41.00
804	★	2c White Plains Souvenir Sheet (630). Mint, Very Fine	65.00
805	★	2c White Plains Souvenir Sheet (630). Very Fine	65.00
806	★田	2c Vermont (643). Five mint Plate No. Blocks of 6, Fine-Very Fine	32.50
807	★田	2c Burgoyne (644). Four Plate No. Blocks of 6, Fine-Very Fine	40.00
808	★田	2c, 5c Hawaii (647, 648). Block of 25 of first, L. L. Plate No. Block of 25 of latter, Fine-Very Fine	118.60
809	★	2c, 5c Aeronautics, 2c Clark (649-651). Complete sheets of 50, Fine-V. F.	120.55
810	★	2c Edison, Sullivan, Braddock's Field (655, 657, 688). Complete sheets of 100, Very Good-Very Fine	114.30
811	★	Balance of 20th Century Collection, singles and blocks, mostly 1912-1926 issues, many have thins or stuck down, wide variety	E. IX

AIRPOSTS

812	★	6c-24c 1918-1923 Airpost (C1-C6). C2 has tiny thin, otherwise V. F. sets	59.75
813	★田	24c Carmine Airpost (C6). Bottom Mint Plate No. Block of 6, Fine	135.00
814	★	5c Carmine & Blue Airpost (C11). Complete sheet of 50, Fine-Very Fine	29.60
815	★	5c Violet Airpost (C12). Complete sheet of Fifty, Fine-Very Fine	85.60
816	★	8c Olive Bistre, Airpost (C17). Sheet of Fifty, Fine-Very Fine	23.25
817	★田	50c Zeppelin (C18). Block of 38, lt. gum bends, tiny thin in one stamp, Fine-Very Fine	518.00
818	★田	10c Green, Special Delivery (E7). R. Imprint Plate No. Block of 6, one stamp thin, otherwise Fine	37.50
819	★	1c-\$1.00 Parcel Post (Q1-Q12). 75c, \$1.00 thin, otherwise mostly F.-V. F.	93.80

OFFICIALS

820	★	1c-30c Agriculture Dept. (O1-O9). Fresh, all o. g. but one, Very Fine set	77.50
821	★	1c Carmine Executive Dept. (O10). Two slightly short perfs., otherwise Very Fine	25.00
822	★	2c Carmine Executive Dept. (O11). Rich Color, fresh, o. g., Very Fine	17.50
823	★	3c Carmine Executive Dept. (O12). Fresh, o. g., minute stain, otherwise Very Fine	18.50
824	★	6c Carmine Executive Dept. (O13). Fresh, o. g., Very Fine (Photo)	30.00
825	★	10c Carmine Executive Dept. (O14). Lovely Color, fresh, o. g., Very Fine (Photo)	28.50
826	★	1c-90c Interior Dept. (O15, O18-O19, O21-O24, O97-O98, O101). Fresh, o. g., Very Fine set	32.55
827	★	1c-15c Justice Dept. (O25-O31). Fresh, o. g., Very Fine	44.50

828 ★	24c Purple Justice Dept. (O32). Brilliant Color, fresh, o.g., almost invisible cr., Very Fine appearance	30.00
829 ★	30c Purple Justice Dept. (O33). Lovely Color, fresh, o.g., Fine	27.50
830 ★	90c Purple Justice Dept. (O34). Beautiful color, fresh, o.g., V.F. (Photo)	52.50
831 ★	1c-10c Navy Dept. (O35-O40). Fresh, o.g., Very Fine	39.75
832 ★	2c Green Navy Dept. Error (O36b). Rich color, fresh, o.g., V.F. (Photo)	75.00
833 ★	12c-30c Navy Dept. (O41-O44). Fresh, o.g., Very Fine	30.50
834 ★	90c Ultramarine Navy Dept. (O45). Fresh, o.g., Very Fine (Photo)	30.00
835 ★	1c-90c Post Office Dept. (O47-O56). Fresh, o.g., Very Fine set	21.95
836 ★	1c-15c State Dept. (O57-O64). Fresh, o.g., Very Fine	30.00
837 ★	24c Dark Green State Dept. (O65). Fresh, part o.g., Very Fine	15.00
838 ★	30c Dark Green State Dept. (O66). Fresh, part o.g., Very Fine	15.00
839 ★	90c Dark Green State Dept (O67). Rich Color, fresh o.g., V.F. (Photo)	27.50
840 ★	\$2.00 Green & Black State Dept. (O68). Fresh, Very Fine (Photo)	50.00
841 ★	\$5.00 Green & Black State Dept. (O69). Fresh, o.g., Very Fine (Photo)	325.00
842 ★	\$10.00 Green & Black State Dept. (O70). Fresh, o.g., fresh short perfs., Fine appearance	(Photo) 185.00
843 ★	\$20.00 Green & Black State Dept. (O71). Fresh, o.g., lt. crease, Very Fine appearance	(Photo) 150.00
844 ★	1c-90c Treasury Dept. (O72-O82). Fresh, all o.g., but one, V.F. set	45.75
845 ★	1c-90c War Dept. (O83-O88, O90-O93, O119). Fresh, all o.g., but two, Very Fine set	50.00
846 ★	1c Yellow Agriculture Dept. (O95). Lower Left Sheet Corner copy, large margins, fresh, Extremely Fine	(Photo) 150.00
847 ★	3c Yellow Agriculture Dept. (O95). Fresh, o.g., minute thin, Very Fine appearance	17.50
848 ★	1c-15c Interior Dept. (O96-O12). Fresh, o.g., Fine-Very Fine	31.90
849 ★	3c-10c Treasury Dept. (O106-O111). Second has tiny thin, otherwise Fine-Very Fine	36.00
850 ★	30c Brown Treasury Dept. (O112). Thin, Fine appearance	50.00
851 ★	90c Brown Treasury Dept. (O113). Very Fine (Photo)	45.00
852 ★	1c-30c War Dept. (O114-O120). Fresh, o.g., Very Fine set	8.15
853 P	1c-\$20.00 Agriculture to War Dept. Card Proofs (O1P-O93P). Very Fine Sets, mounted on cards	82.50

END OF SALE — THANK YOU

LOTS ON VIEW FROM MAY 1st
OFFICE OPEN SATURDAY, MAY 12th

ESTIMATES

Our sales contain many 19th Century covers and fancy cancellations. We have had many requests to give the estimated cash value on these lots. We are trying to place a fair net valuation on each lot as a guide for bidding when no catalogue value portrays the true value. The chart below will be used, for example E.IV means our estimate cash value on this lot is \$30.00 to \$40.00. Lots may actually realize more or less than these estimates and under no circumstances are these estimates to be considered reserves but merely a guide to bidding.

E. I	up to \$10.00	E. VIII	\$100.00 to \$150.00
E. II	\$10.00 to \$20.00	E. IX	\$150.00 to \$200.00
E. III	\$20.00 to \$30.00	E. X	\$200.00 to \$250.00
E. IV	\$30.00 to \$40.00	E. XI	\$250.00 to \$350.00
E. V	\$40.00 to \$50.00	E. XII	\$350.00 to \$500.00
E. VI	\$50.00 to \$75.00	E. XIII	\$500.00 to \$750.00
E. VII	\$75.00 to \$100.00	E. XIV	\$750.00 to \$1000.00
		E. XV	over \$1000.00

PRICES REALIZED

THIS SALE

\$1.00

OR ENTIRE YEAR \$3.50

IS YOUR COLLECTION FOR SALE?

REALIZE IMMEDIATE CASH
PLUS THE ADDED ADVANTAGE OF
SELLING THROUGH OUR AUCTIONS

We will advance immediate cash up to 75% of our appraisal value, of what your collection should realize at auction.

Your collection will then be sold in one of our coming auction sales. All stamps are expertly and advantageously lotted in attractive, well illustrated catalogs. Lotting is meticulously planned under our personal supervision. Commission is 20% of the gross realization. Final settlement is made within five weeks after the sale. We have been continuously conducting stamp auctions in the United States for over thirty years.

Valuable collections and stamp holdings are especially wanted, but we will accept properties valued from \$500 upwards. Send all stamps direct for appraisal. Auction advance will be remitted within 48 hours following receipt. If not entirely pleased, stamps will be returned at our expense. If circumstances warrant due to bulk or value, we will travel anywhere to inspect important estates.

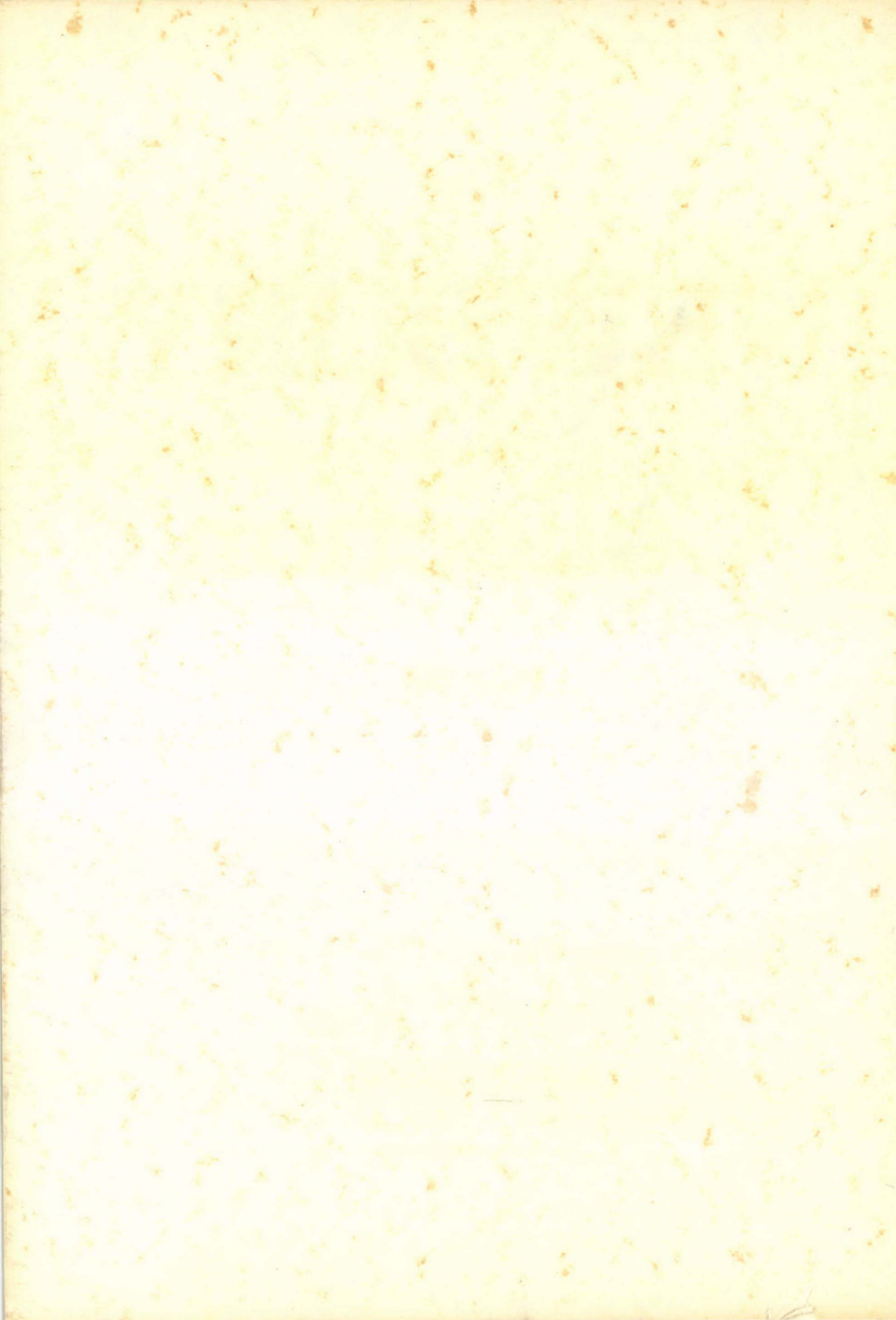
ROBERT A. SIEGEL

(Licensed and Bonded Auctioneer)

489 FIFTH AVENUE

NEW YORK CITY

(Tel. MU. 2-0980)



Lot #	Price	Lot #	Price	Lot #	Price	Lot #	Price	Lot #	Price	Lot #	Price
1	105.00	60	87.50	119	26.00	178	10.50	237	11.50	296	52.50
2	14.00	61	21.00	120	27.00	179	12.50	238	11.50	297	27.00
3	21.00	62	16.00	121	20.00	180	13.50	239	12.00	298	16.00
4	37.00	63	15.00	122	14.50	181	8.00	240	11.50	299	11.00
5	30.00	64	18.00	123	19.00	182	12.00	241	14.00	300	12.00
6	19.00	65	11.50	124	30.00	183	9.00	242	14.00	301	22.50
7	17.00	66	17.00	125	22.00	184	10.50	243	12.00	302	29.00
8	15.50	67	16.00	126	10.50	185	26.00	244	7.50	303	12.00
9	18.00	68	42.50	127	11.50	186	22.00	245	10.00	304	9.00
10	82.50	69	210.00	128	14.00	187	32.50	246	15.50	305	13.00
11	45.00	70	80.00	129	14.00	188	11.00	247	11.00	306	18.00
12	19.90	71	47.50	130	24.00	189	28.00	248	16.00	307	30.00
13	31.00	72	45.00	131	62.50	190	8.00	249	12.50	308	11.00
14	32.50	73	42.50	132	22.00	191	31.00	250	12.50	309	8.00
15	14.00	74	32.00	133	9.00	192	25.00	251	14.00	310	31.00
16	27.00	75	19.00	134	18.00	193	22.50	252	10.00	311	13.00
17	37.50	76	54.00	135	18.00	194	17.00	253	8.50	312	36.00
18	23.00	77	16.00	136	23.00	195	13.00	254	12.00	313	14.00
19	14.00	78	12.00	137	22.00	196	26.00	255	12.00	314	37.50
20	15.00	79	36.00	138	14.00	197	7.50	256	9.50	315	12.00
21	15.50	80	28.00	139	9.50	198	9.00	257	17.00	316	37.50
22	22.00	81	36.00	140	25.00	199	15.00	258	20.00	317	15.00
23	33.00	82	15.00	141	20.00	200	34.00	259	35.00	318	15.00
24	17.00	83	52.50	142	11.50	201	17.00	260	65.00	319	8.50
25	21.00	84	15.00	143	13.50	202	117.50	261	40.00	320	10.00
26	31.00	85	42.50	144	32.00	203	25.00	262	30.00	321	21.00
27	20.00	86	31.00	145	37.00	204	19.00	263	13.00	322	16.00
28	6.50	87	24.00	146	14.00	205	17.00	264	180.00	323	13.50
29	21.00	88	60.00	147	8.50	206	23.00	265	32.00	324	12.00
30	20.00	89	140.00	148	24.00	207	29.00	266	25.00	325	20.00
31	30.00	90	50.00	149	14.00	208	23.00	267	27.00	326	15.00
32	33.00	91	27.00	150	16.00	209	20.00	268	15.50	327	16.00
33	40.00	92	23.00	151	19.00	210	16.00	269	21.00	328	20.00
34	10.50	93	92.50	152	21.00	211	215.00	270	12.00	329	40.00
35	50.00	94	17.00	153	18.00	212	15.00	271	13.00	330	55.00
36	24.00	95	19.00	154	45.00	213	7.00	272	23.00	331	17.00
37	14.50	96	12.50	155	18.00	214	15.00	273	10.50	332	12.00
38	21.00	97	15.50	156	28.00	215	10.00	274	9.50	333	17.00
39	38.00	98	30.00	157	9.00	216	21.00	275	43.00	334	14.00
40	28.00	99	15.00	158	25.00	217	17.00	276	39.00	335	72.50
41	52.50	100	18.00	159	14.00	218	21.00	277	13.50	336	15.00
42	80.00	101	36.00	160	12.00	219	40.00	278	15.50	337	12.50
43	50.00	102	47.50	161	15.00	220	400.00	279	12.00	338	40.00
44	11.50	103	11.50	162	1,900.00	221	27.00	280	10.50	339	17.50
45	18.00	104	21.00	163	115.00	222	12.50	281	16.00	340	10.50
46	35.00	105	85.00	164	13.00	223	10.50	282	39.00	341	19.00
47	85.00	106	55.00	165	25.00	224	12.00	283	16.00	342	8.00
48	17.00	107	25.00	166	12.00	225	10.00	284	13.00	343	22.00
49	17.00	108	18.00	167	11.50	226	8.50	285	17.00	344	15.00
50	19.00	109	38.00	168	9.50	227	13.50	286	11.50	345	72.50
51	12.00	110	14.00	169	60.00	228	21.00	287	14.00	346	15.00
52	62.50	111	11.00	170	11.50	229	25.00	288	15.50	347	7.00
53	155.00	112	17.00	171	18.00	230	18.00	289	11.50	348	11.00
54	310.00	113	17.50	172	17.00	231	16.00	290	16.00	349	15.00
55	27.00	114	19.00	173	18.00	232	14.00	291	26.00	350	24.00
56	20.00	115	34.00	174	9.50	233	10.50	292	10.00	351	11.50
57	25.00	116	11.50	175	90.00	234	10.00	293	16.00	352	18.00
58	52.50	117	8.00	176	10.00	235	9.00	294	22.50	353	20.00
59	90.00	118	13.00	177	7.00	236	9.00	295	20.00	354	7.50

Lot #	Price	Lot #	Price	Lot #	Price	Lot #	Price	Lot #	Price	Lot #	Price
355	21.00	414	12.50	473	14.00	537	135.00	596	46.00	655	14.00
356	11.50	415	14.00	474	2,500.00	538	370.00	597	24.00	656	14.00
357	15.00	416	27.50	475	9.50	539	300.00	598	35.00	657	8.50
358	57.50	417	22.00	476	11.00	540	950.00	599	36.00	658	7.50
359	13.00	418	16.00	477	19.00	541	32.50	600	22.00	659	15.00
360	16.50	419	11.50	478	17.00	542	20.00	601	40.00	660	18.00
361	15.00	420	8.50	479	24.00	543	115.00	602	92.50	661	32.00
362	42.00	421	23.00	480	29.00	544	40.00	603	180.00	662	25.00
363	17.00	422	32.50	481	560.00	545	31.00	604	220.00	663	67.50
364	12.00	423	13.00	482	420.00	546	35.00	605	180.00	664	85.00
365	17.00	424	32.50	483	480.00	547	45.00	606	105.00	665	28.00
366	11.00	425	15.00	484	480.00	548	55.00	607	24.00	666	30.00
367	31.00	426	17.00	485	8.00	549	13.50	608	30.00	667	31.00
368	19.00	427	7.50	486	47.50	550	13.50	609	270.00	668	45.00
369	18.00	428	36.00	487	23.00	551	11.50	610	125.00	669	50.00
370	12.50	429	15.00	488	52.50	552	165.00	611	65.00	670	25.00
371	12.50	430	16.50	489	125.00	553	125.00	612	77.50	671	31.00
372	31.00	431	7.50	490	27.00	554	72.50	613	65.00	672	6.50
373	10.50	432	6.50	491	12.00	555	60.00	614	70.00	673	24.00
374	92.50	433	18.00	492	14.50	556	215.00	615	120.00	674	42.00
375	52.50	434	18.00	493	10.00	557	50.00	616	210.00	675	10.50
376	16.00	435	60.00	494	13.50	558	72.50	617	32.00	676	62.50
377	12.50	436	65.00	495	15.00	559	87.50	618	15.50	677	44.00
378	35.00	437	24.00	496	12.50	560	105.00	619	27.00	678	300.00
379	27.50	438	11.50	497	13.00	561	130.00	620	40.00	679	82.50
380	42.50	439	22.00	498	14.00	562	225.00	621	32.50	680	370.00
381	15.00	440	19.00	499	50.00	563	32.50	622	62.50	681	115.00
382	24.00	441	16.00	500	16.00	564	52.50	623	52.50	682	725.00
383	12.00	442	37.00	501	11.00	565	155.00	624	105.00	683	110.00
384	12.00	443	18.00	502	14.50	566	300.00	625	10.50	684	1,075.00
385	42.50	444	16.00	503	13.50	567	16.00	626	17.00	685	125.00
386	45.00	445	14.00	504	22.00	568	19.00	627	21.00	686	1,450.00
387	17.00	446	15.00	505	10.00	569	170.00	628	65.00	687	12.00
388	10.00	447	24.00	506	13.00	570	100.00	629	21.00	688	14.50
389	15.00	448	52.50	507	17.00	571	210.00	630	70.00	689	13.00
390	14.00	449	46.00	508	10.00	572	19.00	631	60.00	690	9.50
391	16.00	450	14.00	509	17.00	573	67.50	632	35.00	691	18.00
392	17.00	451	21.00	510	52.50	574	77.50	633	38.00	692	47.50
393	16.00	452	10.00	511	40.00	575	90.00	634	57.50	693	32.00
394	22.00	453	16.00	512	13.00	576	38.00	635	280.00	694	9.00
395	12.00	454	57.50	513	13.50	577	70.00	636	19.00	695	50.00
396	16.00	455	40.00	514	21.00	578	170.00	637	13.00	696	85.00
397	16.00	456	9.00	520	220.00	579	18.00	638	50.00	697	47.50
398	17.50	457	14.00	521	800.00	580	13.00	639	14.00	698	45.00
399	9.50	458	12.50	522	875.00	581	24.00	640	29.00	699	28.00
400	10.00	459	21.00	523	280.00	582	47.50	641	27.00	700	10.00
401	26.00	460	10.00	524	20.00	583	43.00	642	13.00	701	19.00
402	20.00	461	16.50	525	77.50	584	120.00	643	19.00	702	15.00
403	27.00	462	14.50	526	3,100.00	585	32.50	644	16.00	703	18.00
404	21.00	463	12.00	527	36.00	586	38.00	645	105.00	704	9.50
405	16.00	464	35.00	528	31.00	587	26.00	646	44.00	705	40.00
406	22.00	465	42.50	529	390.00	588	100.00	647	13.50	706	55.00
407	35.00	466	21.00	530	28.00	589	190.00	648	29.00	707	26.00
408	7.50	467	10.00	531	32.00	590	27.00	649	27.50	708	72.50
409	26.00	468	11.50	532	57.50	591	50.00	650	16.00	709	13.50
410	21.00	469	5.00	533	57.50	592	100.00	651	17.00	710	9.00
411	10.50	470	7.00	534	220.00	593	43.00	652	32.00	711	10.50
412	14.00	471	8.00	535	92.50	594	165.00	653	10.50	712	8.00
413	9.00	472	11.50	536	60.00	595	28.00	654	30.00	713	22.00

Lot #	Price	Lot #	Price	Lot #	Price	Lot #	Price	Lot #	Price	Lot #	Price
714	17.00	738	23.00	762	10.50	786	33.00	810	29.00	834	17.00
715	72.50	739	47.00	763	18.00	787	140.00	811	165.00	835	16.00
716	13.00	740	62.50	764	14.00	788	120.00	812	26.00	836	17.00
717	11.00	741	11.50	765	14.00	789	16.50	813	97.50	837	10.00
718	35.00	742	10.00	766	21.00	790	22.00	814	12.00	838	10.00
719	37.50	743	6.00	767	65.00	791	50.00	815	38.00	839	19.00
720	35.00	744	13.00	768	11.00	792	40.00	816	8.50	840	29.00
721	38.00	745	15.50	769	27.00	793	45.00	817	230.00	841	235.00
722	28.00	746	16.50	770	25.00	794	20.00	818	19.00	842	60.00
723	310.00	747	12.50	771	90.00	795	56.00	819	22.00	843	52.00
724	40.00	748	11.00	772	55.00	796	15.00	820	30.00	844	35.00
725	825.00	749	70.00	773	39.00	797	29.00	821	11.00	845	32.00
726	65.00	750	65.00	774	27.00	798	13.50	822	15.00	846	120.00
727	1,350.00	751	87.50	775	15.00	799	12.00	823	7.50	847	5.00
728	75.00	752	14.00	776	21.00	800	26.00	824	20.00	848	19.00
729	18.00	753	20.00	777	52.50	801	14.00	825	15.00	849	11.00
730	625.00	754	25.00	778	12.00	802	12.50	826	24.00	850	11.00
731	700.00	755	26.00	779	21.00	803	21.00	827	21.00	851	35.00
732	67.50	756	18.00	780	17.50	804	45.00	828	11.50	852	9.00
733	16.00	757	21.00	781	42.50	805	45.00	829	16.00	853	39.00
734	23.00	758	62.50	782	11.00	806	13.00	830	44.00		
735	115.00	759	30.00	783	19.00	807	18.00	831	27.50		
736	18.00	760	35.00	784	17.00	808	60.00	832	60.00		
737	75.00	761	10.50	785	70.00	809	32.00	833	20.00		