

272nd SALE

## UNITED STATES

An outstanding group of  
scarce Postmaster Provisionals,  
Rare 19th and 20th Century  
including Multiples, Errors and Varieties  
and a small select group of Hawaii

The property of two owners.



AT PUBLIC AUCTION

Thursday and Friday

JUNE 18th and 19th, 1964

at 1:30 P.M. Each Day

*Robert A. Siegel*  
**AUCTIONS**

10 EAST 52nd STREET NEW YORK, N. Y. 10022

Tel.: PLaza 3-6422

## CONDITIONS OF SALE

1. The terms of sale are strictly cash to the highest bidder. All buyers are expected to pay for lots within three days of receipt, unless special arrangements have been made prior to the sale.
2. All bids are per lot as numbered in the catalogue and not per piece, unless otherwise announced by the auctioneer at the time of sale.
3. Any lot the description of which is incorrect is returnable only within three days of receipt. All disputed lots must be returned intact as received. Lots containing five or more stamps are not returnable at any time. No lots may be returned by purchasers who have had the opportunity to examine them before the sale.
4. Successful mail bidders, unless they are known to us or supply acceptable references, will be notified of the amount of the lots secured for them, and are expected to send payment in full before the lots are forwarded.
5. If the purchase price has not been paid within the time limit, or lots taken up within seven days from date of sale, they may be resold and any losses arising from such sale charged to the defaulter.
6. All stamps are sold as genuine, except where sold "As Is." Claims for any lot proving otherwise, must be made within two weeks from date of sale.
7. The right is reserved to group two or more lots, also withdraw any lot or lots from the sale, or to act on behalf of the seller.
8. Until paid for in full all lots remain the property of Robert A. Siegel.
9. No commission is charged for buying at our sales, but all forwarding charges will be added to the purchase price.
10. Upon written application lots may be sent for examination prior to the auction, conditional upon being mailed back by registered mail, adequately insured, within 24 hours of receipt. The applicant is completely responsible for all lots sent for examination, and for the insurance of same against mishap, from the time of receipt until they are actually received back, and is to pay all expenses of postage and insurance.
11. The placing of a bid shall constitute acceptance of the foregoing conditions of sale.

ROBERT A. SIEGEL  
GREGORY MOZIAN, Licensed Auctioneers

In sending bids, always state the highest price you are prepared to pay for the lot. Your limit will not be used as a starting bid unless absolutely necessary.

## DESCRIPTIONS

Superb or Extremely Fine—the finest condition for noteworthy, outstanding copies.

Very Fine (VF)—means that there is a slight deviation from the above.

Fine (F)—means that the perforations do not touch the design on issues after 1890, but in some cases may just touch in earlier issues; if used, fairly lightly cancelled.

Very Good (VG)—means that the appearance is generally fine but that the perforations cut the design slightly.

Good (G)—means average off-centering; or fairly attractive with slight defects  
Original gum is not to be expected on 19th Century stamps up to 1888 unless so stated.

Scott 1964 Specialized United States Catalogue is used for cataloging our lots of United States and Scott's Standard Catalogue, 1964 for others.

WE SOLICIT FINE MATERIAL FOR FUTURE SALES



**JUNE 18th and 19th — 1:30 P. M.**

**Tel.: PLaza 3-6422 (Area Code 212)**

**SIGNED**

<div></div>	<div></div>
<div></div>	<div></div>
<div></div>	<div></div>
<div></div>	<div></div>
<div></div>	<div></div>

[illegible]

**Upon request, estimate of value furnished on any lots in this auction.**





# PLEASE NOTE OUR NEW ADDRESS

## FIRST SESSION

THURSDAY, JUNE 18th, 1964 — 1:30 P. M.


## UNITED STATES

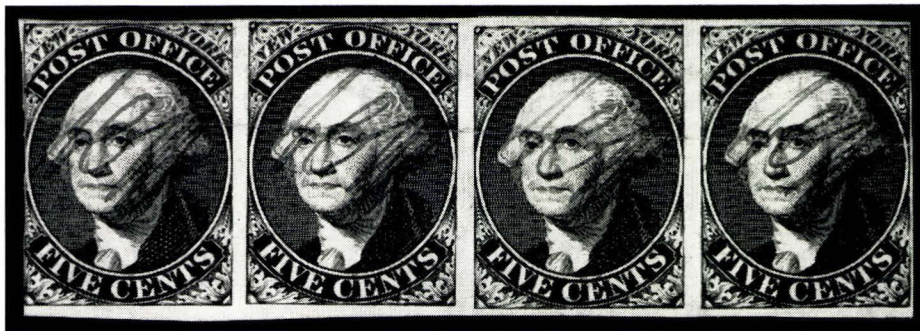
### POSTMASTER PROVISIONALS

- 1 ☒ **Baltimore, Md. 5c Black on White (3X1).** Attractive copy showing full Frame & Sheet margin at T. & L. nearly complete at B., just shaved at R., ms. cancel & tied by Blue Baltimore pmk., another strike, matching "Paid" and "5" in oval, used to Va., portion of back removed, A Handsome Piece, Very Fine ..... (Photo) 1,300.00 975
- 2 ☒ **Baltimore Md. 5c Black on Bluish (3x3).** Large margins showing part or all of frame line on all sides, slight distinct doubling of design to R., Blue "Paid" cancel, not tied, clear matching Baltimore pmk. on neat folded Oct., 1845 cover to Annapolis, A Choice & Desirable Cover, Very Fine (Photo) 2,200.00 1250
- 3 ☒ **Baltimore, Md. 5c Black on Bluish (3X3).** Very Fine copy with large margins, showing portion of frame on all sides, tied by Blue Paid, matching Baltimore pmk. on cover to Washington, stamp has been cut from cover & hinged back, Scarce & Attractive ..... (Photo) 1,250.00+ 925
- 4 ☒ **Baltimore, Md. 5c Black on Bluish (3X3).** Frame line on two sides and part of third, ms. and blue cancels, not tied, Blue Baltimore pmk., matching "Paid", on front only to Washington, stamp has light creases & tiny thin, Attractive Example of this Rarity ..... (Photo) 1,250.00+ 950
- 5 ☒ **Baltimore, Md. 5c Blue Entire on Manila (3XU4).** Signature Handstamped in fluid black ink, resembling ms. signature, Blue Baltimore pmk., used to Richmond, Fresh & Extremely Fine A Gorgeous Cover ..... (Photo) 1,400.00 950
- 6 ☒ **"James M. Buchanan P. M. on P. Office Business"** Frank, Blue Baltimore pmk. & matching "5" in oval on folded 1848 Letter, Signed by P. M. who issued the Baltimore Provisionals, Fine, Scarce ..... (Photo) — 55
- 7 **New Haven Ct. 5c Red 1874 Reprint, Blue Signature (8XU1R).** Marginal pinhole, otherwise V. F. .... (Photo) E. V 62+

**LOTS ON VIEW FROM JUNE 10th**

**OFFICES OPEN SATURDAYS UNTIL 3 P.M.**

- 8  **New Haven Ct. 5c Red on White, Blue Signature (8XU1).** This is the Specimen which, to quote Luff "A badly faded specimen . . . treated with sulphate of iron, which effectually obliterated all of it but the Blue Signature", the design was subsequently crudely redrawn by hand, cover has Red New Haven pmk. & matching "Paid" in Scroll, several edge tears, silked & portion of flap replaced, Unique, Ex Ferrari ..... (Photo) 9,500.00 775
- 9 ★ **New York 5c Black (9X1).** Large margins except just clear at R., Vivid Color & Impression, a most Attractive Copy, Very Fine ..... (Photo) 175.00 205
- 10 ★ **New York 5c Black (9X1).** Clear to Huge Margins all around, Nice Color & Impression, pinpoint thin speck, otherwise V. F. .... (Photo) 175.00 65
- 11 ★ **New York 5c Black (9X1).** Margins all around, Rich Color & Impression, minute thins & Faint crease, Very Fine appearance ..... (Photo) 175.00 324
- 12 ★ **New York 5c Black (9X1).** Large margins except just in at B., Unusually Rich Color & Impression, A Fresh, Attractive Copy ..... (Photo) 175.00 20
- 13 ★ **New York 5c Black (9X1).** Pos. 31, Bottom **Frame Line Double**, clear to huge margins except just touched in L. L. corner, fresh, large part o. g., two pinpoint thin specks, still a Lovely Example of this scarce stamp (Photo) 500.00 90



- 14 ★ **New York 5c Black (9X1).** Horiz. Strip of Four, Pos. 32-35, Clear to Huge margins except slightly in at L., fresh, Lovely Color & Impression, slightly broken horiz. crease, strengthened with tissue on back, a Rare & Handsome strip ..... (Photo) 1,200.00+ 350
- 15 **New York 5c Black (9X1).** Pos. 7, Double Transfer at T., margins all around, Rich Color, Blue ms. cancel, small pre-printing paper crease, Attractive Example of this Scarce Stamp, Fine ..... (Photo) 150.00 40
- 16 **New York 5c Black, Without Signature (9X1c).** Clear to large margins all around, Nice Color, Blue ms. cancel, pre-printing paper crease, fresh, Fine (Photo) 150.00 35
- 17 **New York 5c Black (9X1).** Margins all around, Rich Color, Red grid & town cancels, minute thins & tiny interior cut, a pretty copy, V. F. appearance ..... (Photo) 90.00 27+
- 18 **New York 5c Black on Pelure, Unsigned (9X1c).** Clear margins to just touched, Nice Color, Blue ms cancel, two tiny thin specks, Fine appearance, Scarce ..... (Photo) 150.00+ 25



James M. Buchanan  
5 Cents.

Mrs. A. C. Bartlett  
Richmond  
Va.  
Care of  
Mr. Bartlett

1

James M. Buchanan  
5 Cents.

4

Richmond

James M. Buchanan  
5 Cents.

Benjamin Hagerman  
at the  
Annapolis

It is requested that may be returned with the least  
possible delay.

2

James M. Buchanan  
5 Cents.

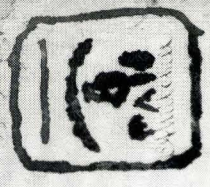
Mark W. Buchanan  
Donald

3

James M. Buchanan

70

5



Horace Clark Esq

Middletown

Connecticut

paid.

8



- 19 **New York 5c Black on Pelure, Unsigned (9X1c).** Horiz. Pair, just clear to large margins all around except barely touched at one point at L. R., Blue ms cancel, light crease in L. stamp, a Very Scarce & Attractive Pair  
(Photo) 300.00+ 20
- 20 **New York 5c Black (9X1).** Horiz. Pair, Pos. 11, 12, just clear to large margins except in at B. R., just in at U. R., Lovely Color & Impression, Blue ms. cancel, tiny cut between stamps at T., V. G.-F. .... (Photo) 250.00 75
- 21 **New York 5c Black (9X1).** Vertical Pair, Pos. 11, 16, just clear to large margins all around, ms. cancels, lower with addl. Red Town pmk., pinhole in lower stamp, other has minute tear, Fine appearance ..... (Photo) 250.00 52+
- 22 ☒ **New York 5c Black (9X1).** Pos. 28, Double Transfer, margins all around, Signature Faint, Blue ms cancel, Red "New York 5cts" pmk., matching "Paid" in arc, on neat folded Nov., 1845 cover to Providence, fresh, V. F.  
(Photo) 125.00 42+
- 23 ☒ **New York 5c Black (9X1).** Pos. 31, **Double Frame Line** at B., margins all around tied by blue ms., Red "New York 5cts" pmk. & matching "Paid" in Arc on neat folded cover to New Haven, Attractive Example of this Scarce Variety, Very Fine ..... (Photo) 150.00+ 75
- 24 ☒ **New York 5c Black (9X1).** Pos. 37 Ample to Huge margins all around except just clear at U. R., Blue ms "X", Red "New York 5cts" pmk. & matching "Paid" in Arc on neat folded letter to Boston, almost invisible filing fold thru stamp, Very Fine appearance ..... (Photo) 125.00 47+
- 25 ☒ **New York 5c Black on Gray Pelure, Unsigned (9X1c).** Margins all around, tied by Blue ms. & by Red "New York 5 Paid" pmk., Red French transit, "Via Hibernia" in ms., on neat folded Oct., 1845 cover to London, Forwarded to Trieste, a Rare & most Attractive Usage, Very Fine (Photo) E. XIII 400
- 26 ☒ **New York 5c Black on Pelure, Unsigned (9X1c).** Pos. 39, margins all around, tied by Blue ms. cancel, Red "New York 5cts" pmk., matching "Paid" in Arc on neat, fresh folded Sept. 1845 letter to **London** "Per Boston Steamer" in ms., minute, almost invisible marginal tears, V. F. appearance, A Scarce & Very Pretty Cover ..... (Photo) E. IX 160
- 27 ☒ **New York 5c Black (9X1).** Pos. 9, margins all around, tied by Blue ms. and by Red "New York 5cts" pmk., matching "Paid" in Arc, Red **"Walsall"** English pmk. portion of back removed on reduced cover, "America Liverpool Jy 31, 1846" on flap, almost invisible filing bend thru stamp, a Scarce & Pretty Piece ..... (Photo) 125.00+ 67+
- 28 ☒ **New York 5c Black on Gray (9X1 var.).** Pos. 18 large margins all around, unusually Brilliant Color & Impression, tied by New York 5cts pmk., matching "Paid" in Arc, on neat folded Apr. 1847 cover to Providence, slightly broken filing fold thru stamp, A Scarce and Attractive Cover despite crease ..... (Photo) 250.00+ 67+
- 29 ☒ **New York 5c Black (9X1).** Horiz. Pair, Pos. 24-25, huge margins to slightly cut at places, Unusually Deep Color, tied by Blue ms & by Red "New York 10cts", struck twice, matching "Paid" in Arc on neat folded cover to Alabama, Fresh, Fine ..... (Photo) 300.00 120
- 30 ☒ **New York 5c Black (9X1).** Vertical Pair Pos. 33, 38 signed unusual small **A. C. M.**, well clear to Enormous Margins all around, sheet margin at B., Magenta ms. cancels & tied by clear Red **Paid** in Arcs, matching N. Y. pmk. on neat folded Sept. 1845 cover to Detroit, Filing fold thru Bottom of B. stamp, other is V. F., a Scarce & Attractive Cover ..... (Photo) 300.00+ 140





16



9



10



11



12



13



15



7



36



17



21



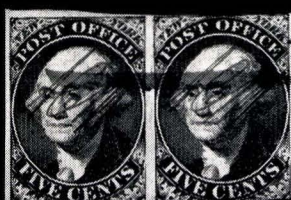
18



39



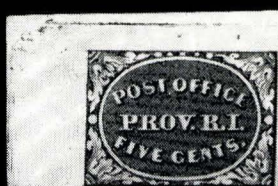
38



19



20



33



34



- 31 ☒ **New York 5c Black on Horiz. Ribbed (9X1).** Horiz. Pair, Pos. 36-37, just Clear to Huge margins all around except barely touched in U. L. corner, shows B. frame of Pos. 31 at U. L., Red "Paid" in Arc cancel, not tied, another strike & matching N. Y. Pmk. on cover to Moriah, N. Y., Forwarded to Fairhaven with clear Red Moriah pmk. and Blue ms. "Forwd. 5", A Lovely Cover, Fresh, Fine ..... (Photo) 300.00+ 130
- 32 ☒ **New York 5c Black (9X1). Horiz. Strip of Three,** Pos. 3-5, clear to large margins except slightly in at R., tied by clear Red "Paid" in Arcs, Another Strike, "15" in ms, Red **Boston, Mass.** pmk. on folded cover to **New York**, address portion of cover is a skillful replacement, Rare & possibly Unique usage, Attractive Appearance ..... (Photo) E. XIII 325
- 33 ★ **Providence, R. I. 5c Black (10X1).** U. R. Sheet Corner Copy, Large to Enormous Margins all around, small thins, mostly in margin, Extremely Fine Appearance ..... (Photo) 50.00 18
- 34 ★ **Providence, R. I. 5c Black (10X1).** Pos. 4, large margins all around, fresh, minute thins, Extremely Fine appearance ..... (Photo) 50.00 37+
- 35 ★ **Providence, R. I. 5c Black (10X1).** Pos. 4, margins all around, toned paper, small thins, Fine appearance ..... 50.00 15
- 36 ★ ☒ **Providence, R. I. 5c Black (10X1).** L. R. Sheet Corner Block of 6, Huge to Enormous Margins all around, fresh, Extremely Fine ..... (Photo) 360.00+ 275
- 37 ☒ **Providence, R. I. 5c Black (10X1).** Pos. 11, large margins except touched to just in at B., ms. cancel, Red "Providence, R. I. pmk., "Paid" and "5" on neat folded cover to Norwich, Rare & Attractive Cover, Fine (Photo) 500.00 305
- 38 ★ **Providence, R. I. 5c, 10c Black (10X1, 10X2).** Vertical Se-tenant Pair, Ample to Enormous Margins, Very Fine ..... (Photo) 300.00 170
- 39 ★ ☒ **Providence, R. I. 5c, 10c Black (10X1, Eleven, 10X2).** Cpl. Sheet of 12, Fresh, full o. g., Extremely Fine, Rare with Gum ..... (Photo) 900.00+ 625
- 40 **St. Louis, Mo. 5c Black on Greenish (11X1).** Pos. 5, Plate 1, Unusually Vivid Color Clear to Large margins except in at U. L., ms. cancel, fresh, Attractive Example of this Scarce stamp ..... (Photo) 650.00 525
- 41 ☒ **St. Louis, Mo. 5c On Greenish (11X1).** Pos. 5, Huge Margins all around, gorgeous color & impression, tied by ms. lines, matching "5", Red St. Louis, Mo. pmk., matching "Paid" on neat folded letter to Palmyra, Mo. An Extraordinary Copy, Extremely Fine ..... (Photo) 850.00 1000
- 42 **St. Louis, Mo. 10c on Greenish (11X2).** Pos. 2, Large Margins all around, Brilliant Color, tied on 2"x3¼" piece by Red St. Louis pmk., small faults, Very Fine Appearance ..... (Photo) 650.00+ 700
- 43 ☒ **St. Louis Mo. 10c on Greenish (11X2).** Pos. 4, Large Margins except partly touched at R., tied by clear Red St. Louis, Mo. pmk., matching "Paid", "10" in ms. on neat folded Dec. 1845 cover to Phila., A Wonderful Cover, Very Fine ..... (Photo) 1,000.00 1200
- 44 ☒ **St. Louis Mo. 10c on Greenish (11X2).** Pos. 2, Large Margins L. & B., Irregular on other sides, touched at one point at T. & R. & just nicked in U. R. Corner, tiny tears at T. & B., tied by Red St. Louis pmk., matching "Paid", "10" in ms. on neat folded 1846 cover to Phila., Attractive appearance ..... (Photo) 1,000.00 725





28

22

*Mr. Bailey & Co*

*on official business  
Horn, on Railroad  
J. H. H.*

06

*Hon. S. Harrow*



24

*Miss Tilton*



23

*Mr. W. Fitch*



PAID

28

*E. P. M...*



PAID

27

*Mr. H. H. H.*



26

*Charles M. Drupp Esq  
Care of Baring Bro. & Co*



29

*Mr. H. H. H.*



31



PAID

30



*Brown Esq*



*Mr. Howard*



32

*New York*

*'Paid'*

4

25

*Mr. J. J. Ireland*



*W. H. H.*

*5500*



- 45 ☒ **St. Louis, Mo. 10c on Greenish (11X2).** Pos. 2 Clear to Large Margins except just in at U.R., tied by ms. "X"s and by clear Red "PAID", matching St. Louis, Mo. pmk. on neat folded cover to Philadelphia, fresh, Fine ..... (Photo) 1,000.00



- 46 <sup>2400</sup> **St. Louis, Mo. 5c on Grayish Lilac (Pos. 11X4).** Pos. 5, Plate 1, Enormous margins all around, unusually fresh, vivid color, ms. cancel, despite almost invisible pinpoint thin speck, a Magnificent Copy ..... (Photo) 1,100.00 925
- 47 <sup>525</sup> **St. Louis, Mo. 10c Black on Gray Lilac (11X5).** Vertical Pair, Lovely Color, Huge margins all around, ms. Line, a magnificent pair, Extremely Fine ..... (Photo) 1,850.00 1550
- 48 <sup>925</sup> **St. Louis, Mo. 10c Black on Gray Lilac (11X5).** Vertical Strip of Three, clear to huge margins all around, Red St. Louis pmk. and light ms. line, minute corner crease in top stamp & center stamp has almost invisible sealed tear, A Gorgeous & Extremely Rare Showpiece ..... (Photo) 4,500.00 2100
- 49 ☒ **St. Louis, Mo. 20c on Gray Lilac (11X6).** Pos. 1, Large Margins except frame line just touched in U.R. corner, ms. cancel and tied by Red St. Louis pmk., matching "Paid" and ms "20" on neat folded 1846 cover to Phila, A Rare & Beautiful Cover, Fine ..... (Photo) 4,750.00 4750
- 50 ★ **St. Louis 5c Black on Pelure (11X7).** Pos. 5, 2nd retouch, margins clear to touched, tiny nick & short tear at R., Attractive copy of a Great Rarity, Probably Unique Unused, Cat. \$2,900.00 used, Unpriced unused (Photo) — 1000





37 375

*Wm. H. Johnson.*



PAID

45 700

*Wm. H. Johnson.*

*Wm. H. Johnson.*

PAID

*Wm. H. Johnson.*

*Wm. H. Johnson.*

43 1400



41 1000

JAN 10 1875

PAID

*Wm. H. Johnson.*



PAID

*Wm. H. Johnson.*

*Wm. H. Johnson.*

*Wm. H. Johnson.*

49 4750



JAN 10 1875



PAID



- 51 **St. Louis, Mo. 10c on Pelure (11X8).** Pos. 4, small margins to barely touched, small tear & U. R. corner replaced, appears unused, A Very Rare stamp ..... (Photo) 2,900.00 625

# 1847 ISSUE

- 52 ★ **5c Red Brown (1).** Clear to huge margins except slightly in at L., sheet margin at R., **Full Original Gum**, paper slightly affected by network of gum cracks, Attractive and Scarce ..... (Photo) 125.00 145
- 53 ★ **5c Red Brown (1).** Margins to barely touched except barely in at lower corners, Brilliant Color, minute thin, Fine appearance ..... (Photo) 125.00 35
- 54 **5c Red Brown (1).** Large margins except barely touched in L. L. corner, Rich Color, Red Grid cancels, Very Fine ..... (Photo) 37.50 20
- 55 **5c Red Brown (1).** Large margins all around, Magnificent Deep Rich Color, Blue Town pmk., A Wonderful Copy, Extremely Fine ..... (Photo) 37.50 110
- 56 **5c Dark Red Brown (1).** Margins all around, Wonderful Rich Color & Impression, Square Red Grid Cancel, A Lovely Stamp, Extremely Fine (Photo) 37.50 95
- 57 **5c Red Brown (1).** Large to Huge margins all around, Gorgeous Color & Impression, neat Red unframed grid cancel, barest trace of tiny corner crease, otherwise Extremely Fine ..... (Photo) 37.50 32
- 58 **5c Red Brown (1).** Ample to large margins all around, Rich Color, Blue Grid cancels, Very Fine ..... (Photo) 45.00 42+
- 59 **5c Red Brown (1).** Large margins all around, Pretty Color, Red Grid cancel, minute natural corner wrinkle, Very Fine ..... (Photo) 37.50 27
- 60 **5c Red Brown (1).** Margins all around, light Red Grid cancel, V. F. (Photo) 37.50 34
- 61 **5c Red Brown (1).** Large to Huge margins all around except just touched in U. R. corner, Rich Color, Very Fine ..... (Photo) 37.50 19
- 62 **5c Orange Brown (1b).** Clear to Large Margins all around, Magnificent Color Blue town pmk., A Gem, Extremely Fine ..... (Photo) 50.00 90
- 63 **5c Orange Brown (1b).** Large margins all around, Beautiful Rich Color, Pretty Blue Grid cancels, A Wonderful Copy, Extremely Fine (Photo) 50.00 165
- 64 **5c Deep Orange Brown (1b).** Margins all around, Magnificent Vivid Color, Brilliant Red Grid cancel, A Gem, Extremely Fine ..... (Photo) 50.00 150
- 65 **5c Orange Brown (1b).** Huge to Enormous margins except outer frame shaved at B., shows next stamp T. & L., Sheet Margin at R., Magnificent Vivid Color, Blue "5" in circle cancel, A Most Desirable Copy of this Scarce Shade ..... (Photo) 85.00 70
- 66 **5c Dark Brown (1).** Large margins all around, Magnificent Rich Color, Blue "Paid" in Octagon cancel, A Wonderful Copy, Extremely Fine (Photo) 60.00 155
- 67 **5c Red Brown (1).** Large to Huge margins all around, showing next stamp at T., unusual pretty color, Blue town pmk., Extremely Fine (Photo) 40.00 150
- 68 **5c Red Brown (1).** Large margins all around, Wonderful Color & Impression, neat Red Square Grid cancel, Very Fine ..... (Photo) 37.50 32



145

35

20

110

95

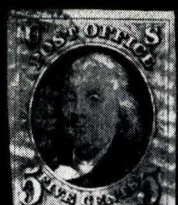
32



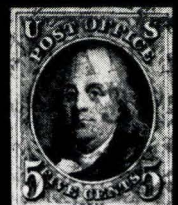
52



53



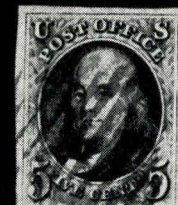
54



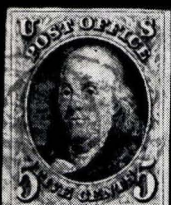
55



56



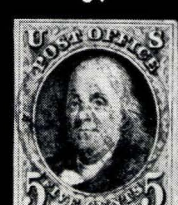
57



58



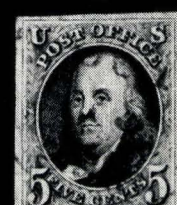
59



60



61

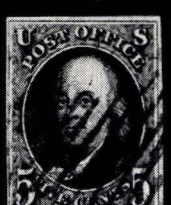


62

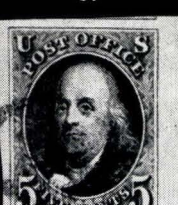


63

165



64



65



66



67



68



69

16



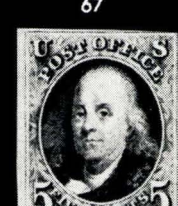
70



71



72



73



74



75

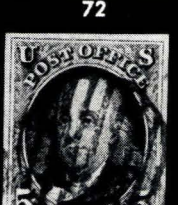
16



76



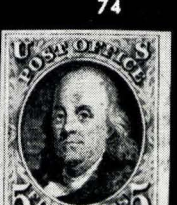
77



78



79



80

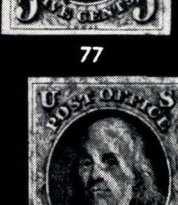


81

50



82



83



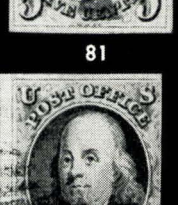
88



89



90

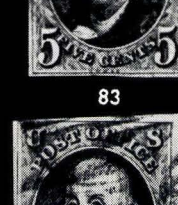


99

30



84



90



99



100



101



101

77



84



90



99



100



101



101

65

90

40

150

77



69	<b>5c Red Brown (1).</b> Margins all around, pretty color, Red Grid cancel, minute thin speck in top margin, otherwise V. F. .... (Photo)	37.50 16
70	<b>5c Red Brown (1).</b> Just clear to large margins all around, Lovely Rich Color, Blue Town pmk., Fine ..... (Photo)	40.00 24
71	<b>5c Dark Brown (1a)</b> Clear to Large margins except Frame Line just shaved at U. L., Wonderful Rich Color, Orange Red Grid cancels, fresh, Fine (Photo)	40.00 17
72	<b>5c Red Brown (1).</b> Just clear to large margins all around, unusual color, Red Grid cancel, Minute tear at B., entirely in margin, Fine ..... (Photo)	37.50 16
73	<b>5c Brown (1).</b> Just clear to large margin all around, nice color, minute faded ms. cancel, appears unused, fresh, Fine ..... (Photo)	20.00 27
74	<b>5c Orange Brown (1b).</b> Margins except barely touched at U. R., Lovely Color, Red Grid cancel, Fine ..... (Photo)	50.00 16
75	<b>5c Red Brown (1).</b> Margins except barely touched at L. L., Rich Color, Neat Red Grid, Fine ..... (Photo)	37.50 16
76	<b>5c Red Brown (1).</b> Margins except barely touched in L. R. corner, Gorgeous Color & Impression, clear Red "5" cancel, tiny natural corner creases, Fine ..... (Photo)	85.00 475
77	<b>5c Dark Brown (1).</b> Clear to large margins all around, unusual Deep Shade, Square Red Grid cancels, Attractive Copy, Fine ..... (Photo)	37.50 18
78	<b>5c Dark Grayish Brown (1).</b> Large margins all around, Beautiful Color & Impression, Orange Red Grid cancel, minute thin, Extremely Fine appearance ..... (Photo)	45.00 37
79	<b>5c Red Brown (1).</b> Large margins all around, Gorgeous Color, neat Orange Red Square Grid cancel, trivial tiny crease at U. R., Extremely Fine appearance ..... (Photo)	37.50 37
80	<b>5c Dark Brown (1).</b> Large margins all around, Gorgeous Color & Impression, Blue Grid cancel, light creases, Extremely Fine appearance (Photo)	45.00 35
81	<b>5c Red Brown (1).</b> Margins all around, pretty color, Beautiful Blue Windmill cancel, minute thin specks, pinhole, Very Fine appearance .... (Photo)	45.00+ 50 -
82	<b>5c Red Brown (1).</b> Large margins all around, nice color, tiny thin, V. F. appearance ..... (Photo)	37.50 17
83	<b>5c Dark Red Brown (1).</b> Large margins all around, Wonderful Color & Impression, minute thin, Very Fine appearance ..... (Photo)	37.50 18
84	<b>5c Red Brown (1).</b> Large margins all around, pretty color, clear Orange Red "Paid" cancel, struck twice, almost invisible corner crease, A Very Pretty Stamp, Very Fine Appearance ..... (Photo)	60.00 65 -
85	<b>5c Red Brown (1).</b> Margins except barely touched at one point at B., nice color, Red Grid cancel, faint trace of crease, Fine appearance ..... (Photo)	37.50 16
86	<b>5c Dark Red Brown (1).</b> Margins except barely in at B., Rich Color, Blue Grid cancel, minute thin speck, Fine appearance ..... (Photo)	45.00 14
87	<b>5c Red Brown (1).</b> Margins all around, Red Grid cancel, faint crease, Fine appearance ..... (Photo)	37.50 15

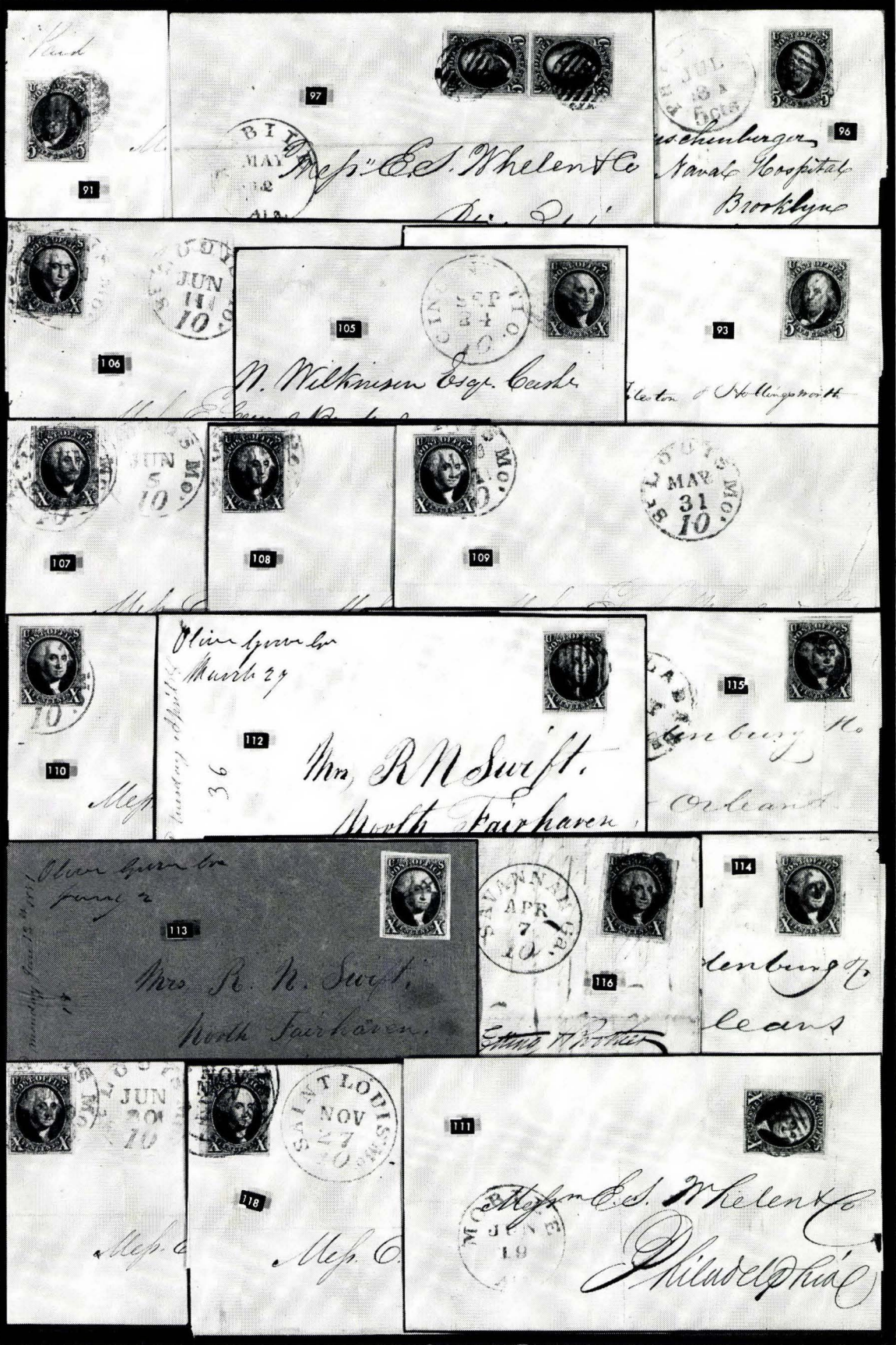


- 88 **5c Brown (1).** Horiz. Pair, Large Margins all around, Wonderful Rich Color, Square Red Grid cancels, trivial tiny corner crease in one, otherwise Extremely Fine ..... (Photo) 110.00 67+
- 89 **5c Red Brown (1).** Horiz. Pair, clear to huge margins all around, except in at R., Red Grid cancels, V.G.-V.F. .... (Photo) 110.00 36
- 90 **5c Dark Brown (1a).** Horiz. Pair, Margins all around, Wonderful Deep Color, Black Grid cancels, light stain in L.L. corner, otherwise Very Fine, A Scarce & Pretty Pair ..... (Photo) 110.00+ 90
- 91 ☒ **5c Red Brown (1).** Clear to Large margins all around, Lovely Color, tied by Orange Red Grid, clear matching New York pmk., on neat folded 1850 cover to Mass., Pretty Cover, Very Fine ..... (Photo) 50.00 67+
- 92 ☒ **5c Red Brown (1).** Clear to Large Margins all around, Magnificent Color & Impression, Red Grid cancel, not tied, matching "Boston 5cts" pmk. on neat folded 1848 cover to Maine, A Gorgeous Cover, Very Fine ..... 50.00 35
- 93 ☒ **5c Orange Brown (1b).** Just Clear to Huge margins all around, Magnificent Color, just tied by neat Blue Grid, clear matching Worcester, Mass. pmk. on neat folded 1850 cover to Boston, A Beauty, Very Fine ..... (Photo) 50.00 125
- 94 ☒ **5c Red Brown (1).** Large to Enormous margins all around except barely touched at tip of U.L. Corner, showing sheet margin at L. & part of next stamp at B., Deep Color, tied by Blue Grids, Light Matching Philada. Pa. 5 pmk. on folded cover to Trenton, V.F. .... 50.00 38
- 95 ☒ **5c Red Brown (1).** Just clear to huge margins all around, pretty color, tied by grid, **Boston 10cts** in matching circle, on neat folded cover to New York, "5 Due" in Red Crayon, Part of Address inked out, otherwise V.F. cover ..... 50.00 30
- 96 ☒ **5c Dark Brown (1).** Clear to Huge margins except in at L.L., Brilliant Color & Impression, tied by Dark Blue Grid, matching "Philada Pa 5cts" on neat folded **July 31, 1847** cover, A Handsome Early Usage, Fine (Photo) 50.00+ 67+
- 97 ☒ **5c Red Brown (1).** Vertical Pair, Huge Margins all around, tied by Vivid Red "Paint" grid cancels, Mobile, Ala. pmk., on cover to Philadelphia, Superb Gem ..... (Photo) 140.00+ 575 =
- 98 ☒ **5c Red Brown (1).** Large margins all around except just touched in B.R. corner, ms. cancels, Red Canandaigua N. Y. pmk., matching "10" on front only, Fine-Very Fine ..... 110.00 47+
- 99 **10c Black (2).** Pos. 13L, margins all around except barely touched at L.L., Brilliant Color, Red cancel, Fine ..... (Photo) 110.00 40
- 100 **10c Black (2).** Clear to Large Margins all around, nice color, clear Blue "Paid" in Octagon cancel, Very Fine ..... (Photo) 135.00 130
- 101 **10c Black (2).** Clear to Large Margins except frame line just shaved at T., fresh, pen cancel faded, appears unused, Fine ..... (Photo) 60.00 77+
- 102 **2c Black (2).** Pos. 11R, large margins except just touched in U.L. corner, L. Frame line partly shaved at L.L., Extraordinary Deep Rich Color, tied to small piece by unframed grid, A Very Pleasing copy, Fine .... (Photo) 110.00 42+

**PLEASE NOTE OUR NEW ADDRESS**

- 103 **10c Black (2).** Pos. 48R, margins all around except just touched in L. R. Corner, Gorgeous Color & Impression, tied to small piece by Red Grid, a trifle rubbed in U. R. Corner, otherwise Fine ..... (Photo) 110.00 77
- 104 **10c Black (2).** Pos. 86R, Large to Huge margins all around, neat Blue "Phila., Pa. 10" pmk., Vertical Pre-Printing Paper Fold, faint creases, Very Fine appearance ..... (Photo) 120.00 50
- 105 **10c Black (2).** Large margins all around, Lovely Color & Impression, tied by Red Grid, matching "Cincinnati, O. 10" on 4½"x2½" portion of front, Attractive, Very Fine ..... (Photo) 110.00 77+
- 106 ☒ **10c Black (2).** Huge margins all around, Magnificent Color & Impression, tied by Red "St. Louis Mo. 10" struck twice, another clear strike on neat folded 1850 cover to Philadelphia, A Gorgeous Cover, Extremely Fine (Photo) 125.00 210
- 107 ☒ **10c Black (2).** Large margins all around, Lovely Color & Impression, tied by Red "St. Louis, Mo. 10", struck twice, another clear strike on neat folded 1850 cover to Philadelphia, A Beauty, Extremely Fine ..... (Photo) 125.00 210
- 108 ☒ **10c Black (2).** Clear to Huge margins all around, sheet margin at R., Magnificent Rich Color & Impression, shows distinct Split Frame Line at R. and Five Pre-Printing Paper Folds, tied by Red "St. Louis Mo. 10", another clear strike on neat folded 1850 cover, A Wonderful Cover, Very Fine ..... (Photo) 125.00 72+
- 109 ☒ **10c Black (2).** Clear to Large margins all around, Lovely Color & Impression, tied by Red "St. Louis, Mo. 10" pmk., another clear strike, on neat 1850 cover to Philadelphia, A Very Pretty Cover, V. F. .... (Photo) 125.00 165
- 110 ☒ **10c Black (2).** Ample to Large margins all around, Wonderful Color & Impression, Short Transfer at Top, tied by light Red "St. Louis, Mo. 10" pmk., another strike, on 1850 cover to Philadelphia, A Beautiful Cover, Very Fine ..... (Photo) 125.00 165
- 111 ☒ **10c Black (2).** Pos. R1, Double Transfer in "X" at L. R., clear to Enormous Irregular Margins all around, except B. Frame Line just touched at places, Sheet margin at L., tied by Vivid Red "Paint" grid, Mobile, Ala. pmk. on neat folded 1850 cover to Philadelphia, a Lovely Cover, Very Fine (Photo) 175.00+ 180
- 112 ☒ **10c Black (2).** Clear to Large margins except outer frame shaved at U. L., Lovely Color, tied by Black Grid, ms. **Olive Grove, Ga.** pmk. on cover to Mass., Scarce & most Attractive ..... (Photo) 125.00+ 90
- 113 ☒ **10c Black (2).** Large margins all around, light ms. cancel, **Olive Grove, Ga.** pmk. on neat 1851 cover to Mass., Scarce, Very Fine ..... (Photo) 125.00 160
- 114 ☒ **10c Black (2).** Large margins all around, tied by light Blue "Phila. Pa. 10" pmk., another light strike, on neat folded 1850 cover with Attractive Illustrated Letterhead, used to New Orleans, V. F. .... (Photo) 125.00 130
- 115 ☒ **10c Black (2).** Ample to Huge margins all around, showing next stamp at T., Blue Grid cancel, not tied, clear matching "Phila. Pa. 10" pmk. on neat folded 1849 cover to New Orleans, most Attractive Illustrated Letter Sheet, Very Fine ..... (Photo) 125.00 100
- 116 ☒ **10c Black (2).** Large Irregular Margins except T. frame partly touched, Brilliant color & Impression, tied by Red Grid, clear "Savannah, Ga. 10" pmk. on slightly worn 1848 Price Current to Phila., Fine ..... (Photo) 125.00 525





91

97

96

106

105

93

107

108

109

110

112

115

113

116

114

111

118



- 117 ☒ **10c Black (2).** Clear to large margins except outer frame partly touched at U.L., Red Color & Impression, tied by Red "St. Louis, Mo. 10" pmk., another strike, on neat folded 1850 cover to Philadelphia, Fine **(Photo)** 125.00 70
- 118 ☒ **10c Black (2).** Just clear to large margins all around, showing next stamp at L., Gorgeous Color & Impression, tied by two partial strikes of Red "Saint Louis, Mo. 10", another clear strike on neat folded 1850 cover to Philadelphia, Fine **(Photo)** 125.00 90
- 119 ☒ **10c Black (2).** Clear to Large Irregular Margins except outer frame line shaved at L.L. and one small point at T., nice color & Impression, tied by Red Grids, matching Mobile, Ala. pmk., on neat folded 1850 cover to Philadelphia **(Photo)** 125.00 57+
- 120 ☒ **10c Black (2).** Large margins all around, Gorgeous Color & Impression, tied by Red Grid, matching "St. Louis Mo. 10" pmk., on Nov. 1847 cover to Philadelpia, stamp has sealed tear at B., still a Handsome Cover, V.F. appearance **(Photo)** 125.00 60
- 121 ★ **5c Red Brown Reproduction (3).** Large margins all around, Gorgeous Color, Extremely Fine **(Photo)** 85.00 67+
- 122 ★ **5c Red Brown Reproduction (3).** Large to Gigantic margins all around, full sheet margin at T., wonderful vivid color, horiz. crease in T. sheet margin only, clear design, Very Fine **(Photo)** 85.00 92+
- 123 ★ **10c Black Reproduction (4).** Clear to Gigantic Margins with full Sheet Margin at B., horiz. crease in B. margin, well clear of Design, V.F. **(Photo)** 115.00 155  
**Flaw on photo plate not on above stamp.**
- 124 ★ **10c Black Reproduction (4).** Large margins except barely clear in U.R. corner, fresh, Fine **(Photo)** 115.00 66

#### 1851 ISSUE

- 125 **1c Blue Ty. Ia, IIIa (6, 8A).** Vertical Pair, margins except touched at U.L., just in at B.R., Brilliant Color, town pmk., Fine Example of this Rare Combination **(Photo)** 350.00+ 230
- 126 **1c Blue Ty. II (7).** Pos. 1R1E, U.L. Sheet Corner Copy, Huge to Enormous Margins all around, Lovely Color, Superb Gem **(Photo)** 15.00 115 =
- 127 **1c Blue Ty. II (7).** Margins all around, gorgeous color, Red town pmk., Extremely Fine **(Photo)** 20.00 60
- 128 **1c Blue Ty. II (7).** Large to enormous margins all around, with sheet margin at B., showing next stamp on other three sides, Magnificent Color, light pmk., A Marvellous Copy, Extremely Fine **(Photo)** 15.00 42+
- 129 **1c Blue Ty. II (7).** Huge to enormous margins all around, Brilliant Color, town pmk., despite light crease, A Magnificent Stamp **(Photo)** 15.00 30
- 130 **1c Blue Ty. II, IIIa (7, two, 8A).** Horiz. strip of 3, clear to huge margins all around, Rich Color, Blue town pmks., two stamps have light creases, one Ty. II stamp has interior cut, a scarce & most attractive strip, Very Fine appearance **(Photo)** 115.00+ 45
- 131 **1c Blue Ty. III (8).** Pos. 99R2, the finest Example of Ty. III, huge margins except just in at top, Deep Rich Color, Fine **(Photo)** 600.00 375

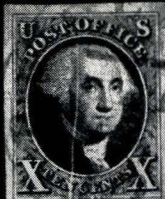




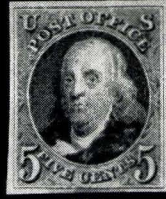
102



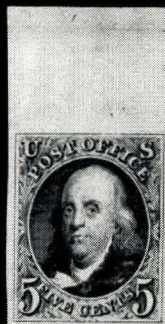
103



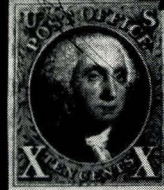
104



121



122



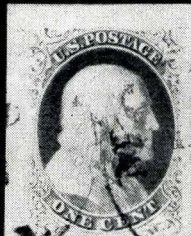
123



124



127



126



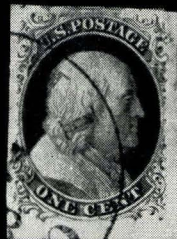
125



130



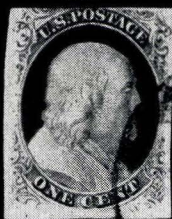
128



129



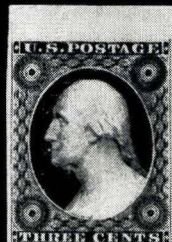
132



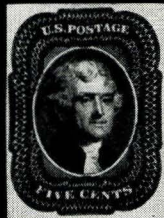
131



135



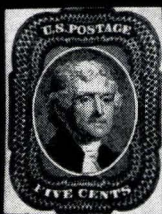
133



139



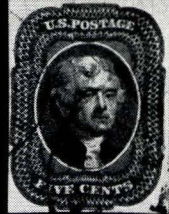
140



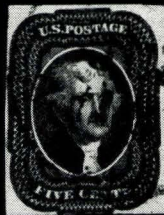
141



142



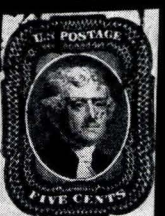
143



144



145



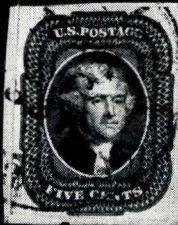
146



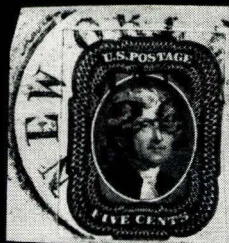
147



148



149



150



151



152



153



154



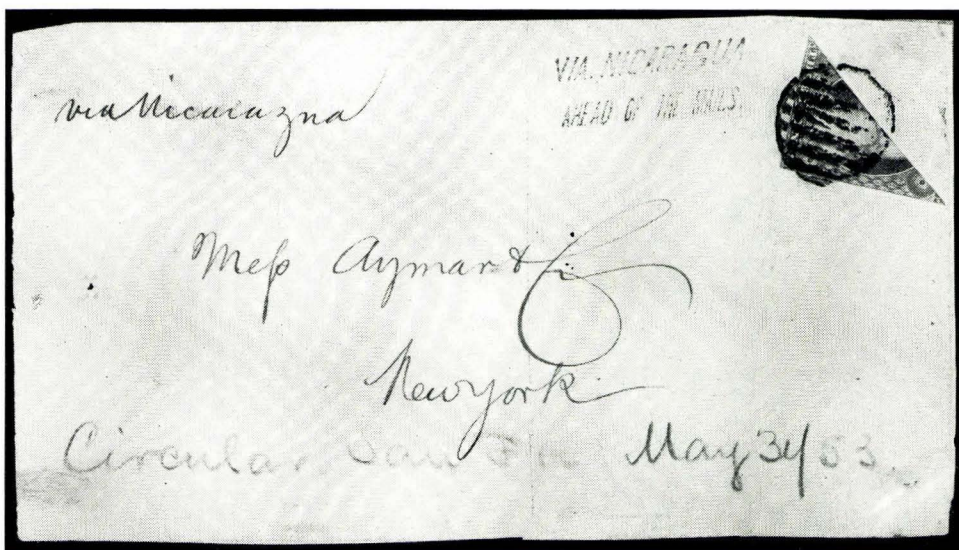
155



157



- 132 **1c Blue Ty. II (7).** Vertical Pair, Pos. 2, 12L2 **Major Cracked Plate**, clear to large margins except touched at B., ms. cancels, Fine ..... **(Photo)** 150.00+ 50
- 133 ★ **3c Deep Brownish Carmine (11).** Clear to huge margins all around sheet margin at T., C transfer gash on shoulder, part o.g., V. F. .... **(Photo)** 15.00 34
- 134 ★ **3c Dull Red (11).** Horiz. Pair, clear to large margins all around except barely touched in L. R. corner, minute paper inclusion, o.g., Fine..... 20.00 19
- 135 ★ **3c Claret (11a).** Horiz. pair, Rich Brilliant Color, Huge Margins to barely touched, fresh, full o.g., a wonderful pair, F.-V. F. .... **(Photo)** 24.00+ 44
- 136 ★ **3c Red (11).** Three Rich Shades, margins to barely touched, o.g. or part o.g., incl. gash on shoulder, 2 line recut, light creases, F.-V. F. appearance 31.00+ 32
- 137 ★ **3c Red (11).** Horiz. strip of four, Clear to large margins except L. stamp touched at two points, Bright Rich Color, fresh, full o.g., R. stamp has lt. crease, scissor cut ending in small tear between two L. stamps, a Scarce & Handsome Strip ..... 38.00+ 72



- 138 ☒ **3c Dull Red Diagonal Bisect (11d).** Well tied by grid, **Via Nicaragua Ahead of the Mails** in two clear Blue str. lines, "Circular San Frco. May 30, 53" in Blue crayon on front only to New York, the finer of the two known copies of this variety, A Great Rarity, with P. F. Certificate **(Photo)** E. XIII 410 =
- 139 ★ **5c Red Brown (12).** Ample to Huge margins all around, Magnificent Rich Color, fresh, full o.g., an outstanding Gem, Extremely Fine .... **(Photo)** 525.00 850
- 140 ★ **5c Red Brown (12).** Large margins except barely touched at B., Brilliant Color, fresh, pinpoint marginal thin speck, otherwise Fine, a most Attractive copy of this scarce stamp ..... **(Photo)** 525.00 300
- 141 ★ **5c Red Brown (12).** Clear margins all around, Rich Color, minute ink speck in T. Margin, faint vertical crease, Fine appearance ..... **(Photo)** 525.00 90
- 142 ★ **5c Red Brown (12).** Large margins except touched at T., Rich Color, Large part o.g., Horiz. crease at T., Fine appearance ..... **(Photo)** 525.00 80



143	<b>5c Red Brown (12).</b> Margins all around, unusual Lovely Color, town pmk., Very Fine ..... (Photo)	90.00	85
144	<b>5c Red Brown (12).</b> Margins except partly touched at B., Rich color, town pmk., fresh, Fine ..... (Photo)	90.00	42
145	<b>5c Red Brown (12).</b> Margins all around, Lovely Color, light cancel, minute crease in T. margin, still Fine ..... (Photo)	90.00	62+
146	<b>5c Red Brown (12).</b> Just clear to ample margins all around, minute marginal thin specks, otherwise Fine ..... (Photo)	90.00	35
147	<b>5c Red Brown (12).</b> Ample to large margins all around, Lovely Color, town pmk., light crease, Very Fine appearance ..... (Photo)	90.00	46
148	<b>5c Red Brown (12).</b> Huge margins except partly touched at B., Nice Color, light cancel, Fine ..... (Photo)	90.00	50
149	<b>5c Red Brown (12).</b> Margins all around except barely touched at L. R., tied to small piece by New Orleans 1857 pmk., Fine ..... (Photo)	90.00	40
150	<b>5c Red Brown (12).</b> Margins to barely touched, tied on small piece by New Orleans pmk., minute marginal age spot, Fine ..... (Photo)	90.00	42
151	<b>5c Red Brown (12).</b> Margins except just touched at T., Rich Color, town pmk., Fine ..... (Photo)	90.00	35
152	<b>5c Red Brown (12).</b> Margins to barely touched except just in at B., Wonderful Color, fresh, Very Good ..... (Photo)	90.00	27+
153	<b>5c Red Brown (12).</b> Large margins all around, nice color, town pmk., minute marginal tear & thin, Very Fine appearance ..... (Photo)	90.00	37
154	<b>5c Red Brown (12).</b> Large margins all around, ms. line and town pmk., faint corner crease ending in tiny tear, Very Fine appearance ..... (Photo)	90.00	32
155	<b>5c Red Brown (12).</b> Clear to Huge margins except touched at one point at L., Brilliant Color, town pmk., light creases, Fine appearance (Photo)	90.00	34
156	<b>5c Red Brown (12).</b> Vertical Pair, Huge Margins all around except just clear at U. L., pinholes in margin between stamps minute creases in U. L. & L. L. corners, Extremely Fine appearance ..... (Photo)	300.00	165
157 ★	<b>10c Green Ty. I (13).</b> Just clear to Enormous margins all around, minute paper inclusion & two tiny marginal scissor cuts, V. F. appearance (Photo)	700.00	170 =
158	<b>10c Green Ty. I (13).</b> Huge margins all around, Vivid Color, Brilliant Red Town pmk., A Magnificent Stamp, Extremely Fine ..... (Photo)	115.00	200
159 ★	<b>10c Green Ty. II (14).</b> Horiz. Pair, Huge Margins all around, Rich Color, Extremely Fine ..... (Photo)	300.00	180
160	<b>10c Green Ty. II (14).</b> Two Rich Shades, Margins except one just touched at T., one has minute corner crease, other pinpoint thin specks, Fine-Very Fine appearance ..... (Photo)	53.00	30
161	<b>10c Green Ty. II (14).</b> Horiz. strip of three Pos. 71-73RI Large to Enormous margins all around, Lovely Color, town pmks., tiny thin in center stamp, otherwise Extremely Fine, A Gorgeous Strip ..... (Photo)	91.50+	115
162	<b>10c Green Ty. II, III (14, 15).</b> Margins all around, Lovely Colors, first has tiny thin specks, latter light corner creases, latter appears unused ..... (Photo)	53.00	65



163	<b>10c Green Ty. III (15).</b> Large margins except partly touched at R., Brilliant Color, Light Cancel, Fine .....	26.50	8
164	<b>10c Green Ty. III (15).</b> Clear to Large margins all around, town pmk., Fine .....	26.50	10
165	<b>10c Green Ty. III (15).</b> Horiz. pair, Clear to Huge Margins except just in at L. L., slightly smudged grid cancels, Fine .....	65.00	40
166 ★	<b>12c Black (17).</b> Large margins all around, lovely color, fresh, small thins, Very Fine appearance .....	(Photo) 120.00	875
167 ★	<b>12c Black (17).</b> Margins except slightly in at T. & U. L., fresh, part o. g., light age spots, barely showing on face, Very Good .....	(Photo) 120.00	13 -
168 ★	<b>12c Black (17).</b> Margins cut at places, creases .....	120.00	15
169 ★	<b>12c Black (17).</b> Horiz. Pair, margins except barely in at L. R., Brilliant Color & Impression, part o. g., light age spots, almost invisible on face, otherwise Fine, A Scarce & Handsome Pair .....	(Photo) 400.00	724 -
170	<b>12c Black (17).</b> Margins all around, Red town pmk., minute crease, entirely in corner, otherwise Extremely Fine .....	(Photo) 27.50	35
171	<b>12c Black (17).</b> Margins to barely touched, Rich Color, Blue cancel, paper a bit toned, otherwise Fine .....	27.50	8
172	<b>12c Black (17).</b> Horiz. Pair, margins except cut in at R., Sheet Centerline at L., Gorgeous Color & Impression, Brilliant Red New York pmk., crease in L. margin, well clear of design, R. stamp has pinhole, L. Stamp Extremely Fine .....	(Photo) 65.00	90
173	<b>12c Black (17).</b> U. L. <b>Sheet Corner</b> Horiz. Pair, sheet margin T. & L., just clear to just touched other sides, town pmk., Pink Guarantee shows thru at L. L., minute thin, mostly in upper margin, Attractive (Photo) .....	65.00+	31
174	<b>12c Black (17).</b> Horiz. pair, margins except touched at T. & L. R., nice color, clear Waterford pmk., minute thins, Fine appearance (Photo) .....	65.00	26
175	<b>12c Black (17).</b> Horiz. Pair, Large margins except just clear to just touched at T., nice color, clear Hillsborough Mi. pmks., minute thin & tiny tears, Fine appearance .....	65.00	13
176	<b>12c Black (17).</b> Two rich shades, one just in at B., other large margins to barely touched, one has tiny thin, town pmks., Attractive .....	50.00	14
177 □	<b>12c Black (17).</b> Horiz. <b>Block of Eight</b> margins except touched at B. L. and L. R.; Bloomington, Ill. pmks., creases, one ending in tiny tear, Rare & Attractive Showpiece .....	(Photo) 700.00+	270
178 ☒	<b>12c Black (17).</b> Two Vertical Pairs, margins cut at places, tied by Red British Transit, Natchez, Mi. pmk., Red "38" on folded 1853 cover to London, one pair has cut in margin between stamps, Attractive Double Rate Cover .....	130.00+	50
179	<b>1c-12c 1851-79 Issues (Betw. 11-134).</b> 12 stamps & 2 covers, most have faults, high catalogue value .....	E. II	50

#### 1857 ISSUE

180 ★	<b>1c Blue Ty. II (20).</b> Fresh, o. g., Lovely Color, minor gum crease, F. (Photo) .....	45.00	35
181 ★	<b>1c Blue Ty. II (20).</b> Pos. 33L2, showing bottom tip of <b>Major Crack</b> at top fresh, o. g., tiny age spots on back only, Fine .....	(Photo) 250.00	60 -



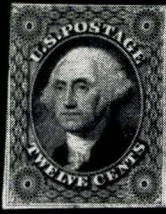
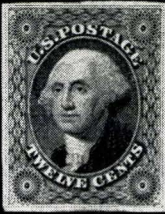
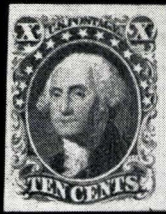
165

200

180

875

13

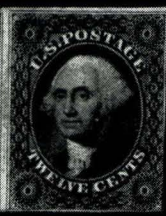
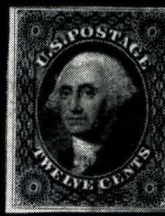
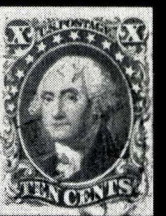
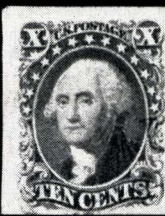


158

159

166

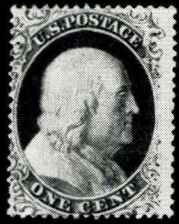
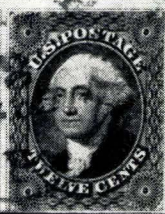
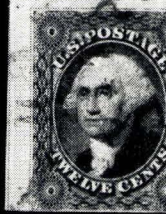
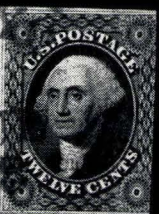
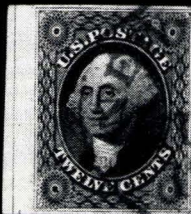
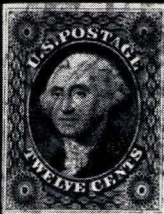
167



156

161

169

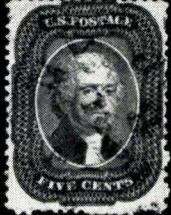
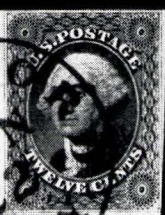
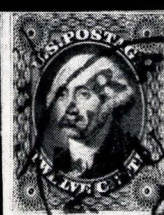


170

172

173

180



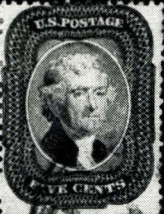
174

181

190

195

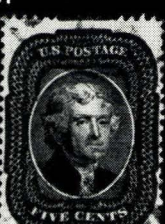
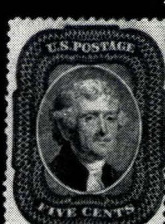
196



197

200

201



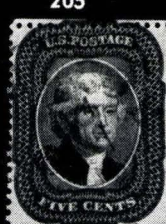
199

204

205

210

211



203

212

213

214

724

35

30

70

65

135



182	★田	1c Blue Ty. II (20). Block, fresh, o. g., Magnificent Color, tiny nick in U. R. stamp, otherwise Extremely Fine .....	(Photo)	200.00	72+
183	★田	1c Blue Ty. II (20). Block, Lovely Color, fresh, o. g., F.-V. F. ....	(Photo)	200.00	90
184	★田	1c Dark Blue Ty. II (20). Block, large part o. g., reinforced, two stamps have tiny thins, others Fine .....	(Photo)	200.00	52+
185		1c Blue Ty. IV (23). Horiz. Pair, one stamp corner nick & small creases, other Fine .....		70.00	50
186		1c Blue Ty. IV (23). Vertical Strip of 3, Pos. 23, 33, 43L1L, Saratoga Springs pmks., tiny age spots in B. stamp, minute tear in center stamp, fresh, Very Fine appearance .....		120.00	28 -
187		1c-5c 1857 Issue (23, 28, 30A). Letter has Red cancel, tiny faults, Fine appearance .....		100.00	29
188	田	1c Blue Ty. V (24). Block, Rich Color, town pmk., faint thin in one, otherwise Very Fine .....	(Photo)	65.00	50
189	田	1c Blue Ty. V (24). Block, New York 1859 pmks., light creases, two pin-point thin specks, Very Fine appearance .....	(Photo)	65.00	21
190	★	3c Red Ty. I (25). Nice color, fresh, Fine .....	(Photo)	37.50	27
191	★	3c Red Ty. I (25). Vertical strip of 3, fresh, o. g. perfs. in at R. ....		135.00	40
192	★田	3c Red Ty. I (25). Block, part o. g., fresh, perfs. just in at L., a Very Scarce Block .....	(Photo)	225.00	47+
193	田	3c Red (26). Block, Rich Color, Sheet Centerline & small part of next stamp at L., New York pmk., Very Fine .....		22.50	10
194	田	3c Red (26). Block, Brilliant Color & Impression, Bedford, Pa. pmk. a Lovely Block, Fine .....		22.50	10
195		5c Brick Red Ty. I (27). Gorgeous color, New Orleans pmk., faint crease, Fine appearance .....	(Photo)	70.00	21
196		5c Brick Red Ty. I (27). Lovely Color, New Orleans pmk. Centered to R., Fine .....	(Photo)	70.00	30
197		5c Brick Red Ty. I (27). Nice color, s. e. at B., light crease, faded pen cancel, appears unused, Fine appearance .....	(Photo)	70.00	35
198		5c Brick Red Ty. I (27). Rich Color, thin, Fine appearance .....		70.00	18
199		5c Brick Red Ty. I (27). Lovely color, town pmk., small corner crease, few perfs. slightly nibbed at L. R., Fine appearance .....	(Photo)	70.00	47+
200		5c Brick Red Ty. I (27). Horiz. Pair, Magnificent Color, 1859 New Orleans pmks., one has tiny tear & corner creases, other Very Fine ....	(Photo)	175.00	42
201		5c Brick Red Ty. I (27). Horiz. Pair, Lovely Color, light town pmks., fresh, perfs slightly in at T., Scarce .....	(Photo)	175.00	40
202		5c Brick Red Ty. I (27). Vertical Pair, top stamp small repair, other tiny thin, Fine appearance .....		175.00	22
203		5c Brick Red Ty. I (27). Vertical strip of 3, tied to small piece by 1859 New Orleans pmks., s. e. at B. & L., fresh, Very Good .....	(Photo)	250.00	40
204		5c Red Brown Ty. I (28). Gorgeous Color, New Orleans pmk., Fine .....	(Photo)	45.00	47+





177



182



183



184



188



189



192



257



236



237



258



256



217



265

320--

65

330

210-

675



205	<b>5c Red Brown Ty. I (28).</b> Brilliant Color, 1859 New Orleans pmk. & Red transit, Fine .....(Photo)	45.00	62
206	<b>5c Red Brown Ty. I (28).</b> Nice color, centered slightly to B., few perfs. slightly blunted at B. L., otherwise Fine .....	45.00	118
207	<b>5c Red Brown Ty. I (28).</b> Nice color, centered, separated by scissors, blunting few perfs at R., otherwise Very Fine .....	45.00	26
208	<b>5c Red Brown Ty. I (28).</b> Rich Color, Very Good .....	45.00	13
209	<b>5c Brown, Indian Red (28A, 29, 30A).</b> Tiny faults, Fine appearance .....	137.50	31
210	★ <b>5c Indian Red Ty. I (28A).</b> Fresh, o. g., couple slightly blunted perfs., otherwise Fine, a Very Rare stamp ..... (Photo)	475.00	440
211	<b>5c Indian Red Ty. I (28A).</b> Magnificent Color, town pmk., fresh, perfs. just in at B., Fine .....	90.00	65
212	<b>5c Indian Red Ty. I (28A).</b> Brilliant Color, perfs. a bit nibbed at L. L., otherwise Fine .....	90.00	55
213	<b>5c Indian Red Ty. I (28A).</b> Centered, Wonderful Color, Blue Dotted Grid cancel, few blunted perfs & slightly toned, otherwise V. F. (Photo)	90.00	100
214	<b>5c Indian Red Ty. I (28A).</b> Horiz. strip of 3, Brilliant Color, town pmks., perfs. just in at T., Scarce & most Attractive ..... (Photo)	300.00	135
215	<b>5c Indian Red Ty. I (28A).</b> Horiz. strip of 3, Magnificent color, town pmks., fresh, centered to R. Attractive ..... (Photo)	300.00	75
216	★ <b>5c Brown Ty. I (29).</b> Nice color, tiny tear, V. F. appearance ..... (Photo)	75.00	528
217	★田 <b>5c Brown Ty. I (29).</b> Block, fresh, full o. g., one stamp light crease, one with two pulled perfs., otherwise Very Good-Fine, A Very Rare Block (Photo)	1,200.00	330
218	<b>5c Brown Ty. I (29).</b> Centered, Gorgeous color, light cancels, one in Red, Very Fine .....	28.50	36
219	<b>5c Brown Ty. I (29).</b> Grid cancel, Fine ..... (Photo)	28.50	10
220	<b>5c Brown Ty. I (29).</b> Deep color, town pmk., Fine .....	28.50	88
221	<b>5c Brown Ty. I (29).</b> Town pmk., centered to U. L. ....	28.50	7
222	<b>5c Brown Ty. I (29).</b> Vertical Pair, Centered, Nice Color, town pmks., Very Fine .....	65.00	48
223	<b>5c Brown Ty. I (29).</b> Vertical pair, nice color, bottom stamp has light crease, other has short perf., Fine appearance .....	65.00	13
224	<b>5c Brown Ty. I (29).</b> Two Rich shades, town & grid cancels, minor perf. faults, F.-V. F. appearance .....	57.00	12
225	<b>5c Brown Ty. I (29).</b> Two Lovely Shades, town pmks., one minute tear, other tiny crease, Fine appearance .....	57.00	10
226	✉ <b>5c Brown Ty. I, 10c Green Ty. V (29, 35).</b> Rich Colors, tied by New Orleans pmk. and by Red "New York Paid 12" on neat folded 1859 cover to France, 5c in at B., 10c has short perf., Colorful & Handsome Cover	48.00	26

**PLEASE NOTE OUR NEW ADDRESS**







227 ★	5c Orange Brown Ty. II (30). Centered, Gorgeous Color, Very Fine, o. g. (Photo)	37.50	18
228 ★	5c Orange Brown Ty. II (30). Fresh, o. g., faintest trace of corner crease, Fine appearance	37.50	14
229 ★	5c Orange Brown Ty. II (30). Two distinct shades, fresh, one o. g., small thins, Fine appearance	75.00	18
230	5c Orange Brown Ty. II (30). Lovely Color, Red Grid cancel, faint crease, Extremely Fine appearance (Photo)	65.00	42+
231	5c Deep Orange Brown (30). Magnificent Color, Red Grid cancel, light creases & short perfs., Very Fine appearance	65.00	11
232	5c Orange Brown Ty. II (30). Vivid color, grid cancel, tiny thin, Fine appearance (Photo)	50.00	18
233	5c Orange Brown Ty. II (30). Gorgeous color, Red grid cancel, tiny thin, Fine appearance	65.00	10
234 ★	5c Brown Ty. II (30A). Fresh, o. g., Very Fine (Photo)	40.00	38
235 ★	5c Brown Ty. II (30A). Vertical Strip of 3, fresh, o. g., Fine (Photo)	125.00	40
236 ★	5c Brown Ty. II (30A). Horiz. Block of Six, Centered, fresh, full o. g., light horiz. crease in B. strip, otherwise Very Fine, A Beautiful Block (Photo)	330.00+	125
237 ★	5c Brown Ty. II (30A). Plate no. & part Imprint Block of Nine, centered, fresh, o. g., despite minute thin in U. L. stamp a Wonderful Block (Photo)	465.00+	675 =
238	5c Brown Ty. II (30A). New York Town pmk., Very Fine (Photo)	19.00	22 =
239	5c Brown Ty. II (30A). Town pmk., Fine	19.00	10
240	5c Brown Ty. II (30A). Horiz. pair, neat Red unframed grid cancels, one has few short perfs., otherwise Fine (Photo)	45.00	21
241	5c Brown Ty. II (30A). Vertical Pair, Rich Red grid cancels, slight separation, Fine (Photo)	45.00+	23
242	5c Brown Ty. II (30a). Horiz. Pair, Rich Color, Red Grid cancels, one has minute corner crease, otherwise Fine (Photo)	45.00+	15
243	5c Brown Ty. II (30A). Two Rich Shades, town & grid cancels, short perfs., otherwise Fine	38.00	10
244	5c-12c 1857 Issue (30A, 32, 33, 36). Red cancels, tiny faults, Fine appearance, Handsome Lot	62.50	16
245	10c Green Ty. I (31). Light creases, Fine appearance (Photo)	70.00	47+
246	10c Green Ty. I (31). Centered to L., creased corner perf., attractive	70.00	21
247	10c Green Ty. II (32). Beautiful N. Y. Ocean Mail cancel, fresh, Fine	E. II	24
248	10c Green Ty. III (33). Town pmk., fresh Lovely Color, V. F.	11.00	20
249	10c Green, Ty. III (33). Two horiz. pairs and three singles, one with "Paid" in circle, mostly small faults, F.-V. F. appearance	89.50	23
250 ★	10c Green Ty. IV (34). Pos. 55L1, Recut at B., Rich Color, tiny thin & short perf. otherwise Very Fine, A Very Scarce stamp (Photo)	800.00	675



251	★	10c Green Ty. V (35). Large margins, Bright Color, o. g., Extremely Fine	15.00	26 =
252	★	10c Green Ty. V (35). Large Margins, Rich Color, o. g., Extremely Fine	15.00	21
253	★	10c Green Ty. V (35). Horiz. pair, clear <b>Stitch Watermark</b> , fresh, o. g., one stamp rounded corner perf., otherwise Very Fine ..... (Photo)	37.50+	52
254	★	10c Green Ty. V (35). Horiz. pair, fresh, part o. g., Fine ..... (Photo)	37.50	20
255	★	10c Green Ty. V (35). Two Rich Shades, fresh, one o. g., Fine-Very Fine	30.00	41
256	★田	10c Green Ty. V (35). Block, fresh, o. g., Fine-Very Fine ..... (Photo)	95.00	65
257	★田	10c Green Ty. V (35). Block, Rich Color, fresh, o. g., Fine ..... (Photo)	95.00	50
258	★田	10c Green Ty. V (35). Block of Nine, fresh, o. g., Extremely Fine (Photo)	185.00+	320 =
259	★	10c-24c 1857 Issue (35-37). Fresh, minute thin specks, F.-V. F. appearance	85.00	32
260	★	12c Black Plate III (36). L. R. Sheet Corner Copy with full selvage, fresh, o. g., Fine ..... (Photo)	22.50	30
261	★	12c Black, Plate One (36). Magnificent Color, Large Double Transfer, fresh, Fine, listed but unpriced in Scott ..... (Photo)	—	31
262	★	12c Black, Plate I (36). Gorgeous color, fresh, o. g., Fine ..... (Photo)	25.00	26
263	★	12c Black, Plate I (36). Fresh, o. g., Fine ..... (Photo)	25.00	16
264	★	12c Intense Black (36). Vertical <b>Straddle</b> pair with centerline and portion of next stamp at L., Rich Color, fresh, perfs. in at B. ....	50.00+	16
265	★田	12c Intense Black, Plate III (36). Block, centered Lovely Color & Impression, fresh, o. g., Extremely Fine ..... (Photo)	250.00	210
266	★田	12c Black, Plate III (36). Block, fresh, o. g., Fine ..... (Photo)	250.00	85 =
267	★田	12c Intense Black, Plate III (36). Block, wonderful color & impression, fresh, o. g., one stamp has minute thin, otherwise Fine ..... (Photo)	250.00	77+
268		12c Black, Plate I (36). Horiz. pair, tied on small piece by New Orleans pmk., Fine ..... (Photo)	25.00	7
269		12c Black, Plate I (36). Two Rich Shades, Grid & 1858 town pmk., Fine	22.00	8
270	田	12c Black Ty. I (36). <b>Block of Fifteen</b> (3X5), unusual grid cancels, two stamps tiny tears, one with crease, minor stains, others V. G.-F., a Rare and Amazing Showpiece ..... (Photo)	462.50+	330
271	田	12c Black, Plate I (36). Horiz. pair, centered, tied by unframed grids, Red "New York 19", 1859 London Paid on cover to London, stamps faintly toned at T., otherwise V. F. ....	40.00	13
272	田	12c Black (36). Vertical pair, Magnificent Color & Impression, perfs. clipped at L. & B., tied by New Orleans pmk. on immaculate cover to England, Red "19" and 1859 Liverpool Packet pmk., a Very Pretty cover	40.00	11+
273	田	12c Intense Black, Plate I (36). Horiz. Pair, gorgeous color, grid cancels, not tied, clear "Whitinsville, Ms." pmk., Red "3" and July 1861 pmk. on cover to London, Fine ..... (Photo)	40.00	17
274	★	12c Black, 24c Gray Lilac (36, 37). Tiny thins, V. G.-V. F. appearance .....	70.00	16
275	★	24c Gray Lilac (37). Fresh, o. g., Fine ..... (Photo)	47.50	25
276	★	24c Gray Lilac (37). Rich Color, Fine ..... (Photo)	47.50	17+



277 ★	<b>24c Lilac (37).</b> Fresh, o. g., perfs just in at B., Fine ..... (Photo)	47.50	31
278 ★	<b>24c Red Lilac (37b).</b> Fresh, o. g., sheet centerline, tiny marginal thin, Fine appearance, Very Scarce ..... (Photo)	275.00	56
279 ★	<b>24c Lilac Imperforate (37c).</b> Large margins all around, barest trace of marginal corner crease, otherwise Very Fine ..... (Photo)	350.00	155
280 ★	<b>24c Lilac Imperforate (37c).</b> Clear to huge margins all around, Sheet margin with part Imprint at R., Light Creases, V. F. appearance (Photo)	350.00	180
281	<b>24c Gray Lilac (37).</b> Red Ty. A <b>Supplementary Mail</b> , two strikes crossing each other, tiny thin, Fine appearance ..... (Photo)	75.00	18
282	<b>24c Gray Lilac (37).</b> Two Rich Shades, diff. Red unframed grids, one has few short perfs., other tiny thins, Fine appearance, Most Attractive	65.00	24
283	<b>24c Gray Lilac, 30c Orange (37, 38).</b> Unusual grid cancels, small thins, Fine appearance	64.00	25
284 P	<b>30c Black Trial Color Proof on Wove (38TC).</b> Margin tear, Very Fine appearance	60.00	14
285 P	<b>30c Black Trial Color Proof on Wove (38TC).</b> Plate No. & part imprint copy, light crease, Very Fine appearance ..... (Photo)	60.00+	50
286 ★	<b>30c Orange (38).</b> Pretty Color, fresh, Very Fine ..... (Photo)	47.50	48
287 ★	<b>30c Orange (38).</b> Fresh, perfs. just in at B., Fine ..... (Photo)	47.50	73
288 ★	<b>30c Orange (38).</b> Fresh, Vivid Color, Fine ..... (Photo)	47.50	40
289	<b>30c Red Orange (38).</b> Rich Color, Bold New Orleans pmk., Fine (Photo)	35.00	45
290	<b>30c Orange (38).</b> Rich Color Bold Outline Star Cancel, Orange Printers Fingerprint on back, few slightly nibbed perfs., most attractive (Photo)	47.50	70
291	<b>30c Orange (38).</b> Boston "Paid" cancel, Very Good	47.50	11
292 ☒	<b>30c Orange (38).</b> Rich Color, tied by Red unframed grid, matching "New York Paid 24", 1860 French Transit on folded cover to France, cover somewhat discolored, stamp Fine	150.00	40
293 ★	<b>90c Blue (39).</b> Fresh, o. g., perfs. barely in at B., Fine ..... (Photo)	160.00	125
294 ★	<b>90c Blue (39).</b> Part o. g., slightly nibbed perfs. at T., otherwise Fine (Photo)	160.00	170
295	<b>90c Blue (39).</b> Nice color, light cork cancel, Fine ..... (Photo)	275.00	50
296	<b>90c Blue (39).</b> Beautiful color, Red grid cancel, s. e. at R., tiny thins, Fine appearance ..... (Photo)	300.00	50
297	<b>90c Blue (39).</b> Tied by Brilliant Red Grid on 1¼"x3½" portion of cover with clear Red "S. L. Calcutta G P O Ja 10, 1861" pmk., Fine, A Beautiful & Very Rare Piece ..... (Photo) E. XIII		425
298	<b>12c Black, 30c Orange, 90c Blue (36, 38, 39).</b> Tied together by Brilliant Red unframed grids on small piece, Fine, a Handsome & Excessively Rare Showpiece ..... (Photo) E. XIII		270
299 ★	<b>1c Bright Blue Reprint (40).</b> Centered slightly to T., Very Fine (Photo)	62.50	40
300 ★	<b>3c Scarlet Reprint (41).</b> Fresh, short perfs. at T., otherwise Fine (Photo)	200.00	182





266



267



307



306



297



270



310



319



343

313

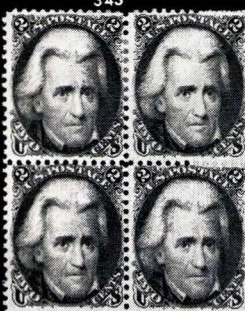
378



314



354

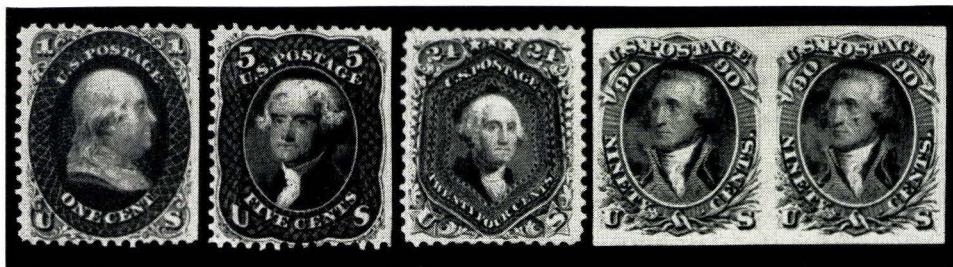


392



- 301 ★ **5c Orange Brown Reprint (42).** Fine ..... (Photo) 75.00 675
- 302 ★ **24c Blackish Violet Reprint (45).** Huge margins, s. e. at L., perfs. at L. R. a trifle nibbed, otherwise Very Fine ..... (Photo) 180.00 110

# AUGUST 1861 ISSUE



- |     |     |     |     |
|-----|-----|-----|-----|
| 303 | 308 | 311 | 312 |
|-----|-----|-----|-----|
- 303 ★ **1c Indigo August (55).** Gorgeous Color, fresh, full o. g., s. e. at R., two slightly short perfs, otherwise Extremely Fine, a Most Desirable Copy of this Great Rarity ..... (Photo) 2600.00 1900
- 304 ★ **3c Brown Rose August (56).** Centered, fresh, o. g., two slightly short perfs, Very Fine appearance ..... (Photo) 65.00 625
- 305 ★ **3c Brown Rose August (56).** Fresh, o. g., tiny corner crease & short perf, Very Fine appearance ..... (Photo) 65.00 425
- 306 ★ **3c Brown Rose August (56).** Block, fresh, o. g., Very Fine (Photo) 300.00 160
- 307 ★ **3c Brown Rose August (56).** Block, Rich Color, fresh, o. g., Fine (Photo) 300.00 160
- 308 ★ **5c Brown August (57).** Lovely Color, fresh, full o. g. s. e. at R., slightly short perf., minor gum creases, still a most attractive Copy of this Rare Stamp ..... (Photo) 1400.00 1200
- 309 ★ **10c Dark Green August (58).** Centered, Wonderful color, sealed tear at T., Very Fine appearance ..... (Photo) 400.00 95 =
- 310 **10c Dark Green August (58).** Block, Magnificent Color, Red grid cancels, light horiz. crease in top pair. A Most Attractive & Extremely Rare Showpiece, Probably Unique, listed but unpriced in Scott ..... (Photo) — 400
- 311 ★ **24c Violet August (60).** Magnificent Vivid Color, fresh, part o. g., two very slightly nibbed perfs, otherwise Extremely Fine, a wonderful copy ..... (Photo) 575.00 525
- 312 ★ **90c August Imperforate (62a).** Horiz. Pair, Large margins all around, gorgeous color, minor wrinkle in one, Extremely Fine ..... (Photo) 750.00 950

# 1861 ISSUE

- 313 ★ **1c Blue (63).** Block of Fifteen, Lovely Color, o. g., Fine-Very Fine, A Most Attractive Block ..... (Photo) 241.50+ 170
- 314 ★ **3c Pink (64).** Block, fresh, full o. g., Centered to U. L., Fine, A Rare & Most Desirable Block ..... (Photo) 1700.00 320 =





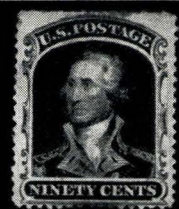
289



290



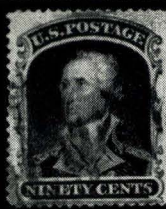
293



294



295



296



298



299



300



301



302



304



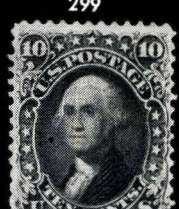
305



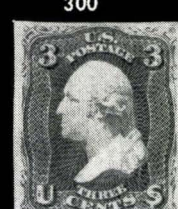
309



318



320



321



322



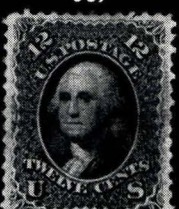
325



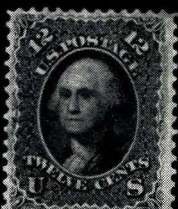
326



328



327



329



330



333



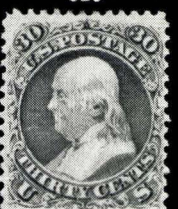
334



335



337



338



339



345



346



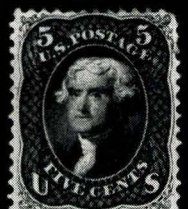
355



356



360



361



363



315	★田	3c Pink (64). Block, fresh, full o.g., light vertical crease in L. pair, otherwise V.G.-Fine A Rare and Attractive Block	(Photo) 1700.00	330
316	★	3c Rose Pink (64b). Horiz. pair, fresh, o.g, one short perf, otherwise Fine	40.00+	20
317	★	2c-12c 1861 Issue (64b, 69, 73). Tiny faults, V.G.-V.F. appearance	54.50	14
318	★	3c Rose Imperforate (65c). Horiz. Pair, Margins all around, Vert crease between stamps, L. stamp creased, R is Extremely Fine	(Photo) 50.00	35
319	★田	3c Lake Imperforate (66a). Block, Huge Margins, Brilliant Color, fresh, part o.g., Extremely Fine, Listed but unpriced in Scott	(Photo) —	305
320	★	5c Brown Yellow (67a). Magnificent color, centered, few perfs a bit blunted at L.L., otherwise Very Fine	(Photo) 375.00	625
321		5c Buff (67). Neat dotted grid and clear Red Hamb. Pkt. Pmk., Very Fine	(Photo) 42.50	525
322		5c Buff (67). Rich Color, Neat grid cancel, Fine	(Photo) 42.50	77
323		5c Buff (67). Two Rich Shades, Red & Blue Grid cancels, tiny faults, Fine appearance	90.00	20
324		5c Buff (67). Three Rich Shades, one with Red cancel, tiny faults, F.-V.F. appearance	130.00	34
325	★	12c Black (69). Large Margins, Rich Color, fresh, part o.g., Extremely Fine	(Photo) 22.50	425 =
326	★	12c Black (69). Rich Color, fresh, o.g., Very Fine	(Photo) 22.50	24
327	★	12c Black (69). Horiz. Pair, fresh, o.g., short perf at L.L. corner otherwise V.F.	(Photo) 50.00	36
328	★	24c Red Lilac (70). Rich Color, fresh, bent corner perf., otherwise Fine	(Photo) 75.00	44
329	★	24c Brown Lilac (70a). Fresh, o.g., Fine	(Photo) 75.00	74-
330	★	24c Brown Lilac (70a). Huge Margins, Pretty color, minute thin & short perfs, Attractive	(Photo) 75.00	28
331	★	24c Brown Lilac (70a). Nice color, tiny margin faults, Fine appearance	75.00	17
332		24c Steel Blue (70b). Two Brilliant Shades, grid and Boston "Paid" in grid cancels, small faults, Very Fine appearance	70.00	18
333	★	30c Orange (71). Brilliant Color, fresh, full o.g., Very Fine	(Photo) 37.50	65 =
334	★	30c Orange (71). Gorgeous Color, fresh, full o.g., Very Fine	(Photo) 37.50	44
335	★	30c Orange (71). Brilliant Color, fresh, Part o.g., Fine	(Photo) 37.50	19
336	★	30c Orange (71). Short perf, faint age spots, otherwise Fine	37.50	10
337	★	90c Blue (72). Gorgeous color, fresh, full o.g., perfs just touched at left	(Photo) 100.00	42
338	★	90c Blue (72). Gorgeous color, fresh, tiny thin, V.F. appearance	(Photo) 100.00	54
339	★	90c Blue (72). Pretty Color, pinpoint thin speck, light creases, centered to T. & L. Fine appearance	(Photo) 100.00	18
340	★	2c Black (73). Vertical Pair, fresh, o.g., Fine-Very Fine	27.50	13



341 ★	2c Black (73). Two Rich Shades, fresh, o. g., Fine .....	24.00	7+
342 ★	2c Black (73). Vertical Strip of 3, centered, fresh, o. g., natural creases, Very Fine appearance .....	39.50+	27
343 ★	2c Black (73). Block, Brilliant Color, fresh, o. g., pinpoint thin speck in one, minor natural creases otherwise Fine-Very Fine, a Beautiful Block .....	65.00	52
344 ★	2c-24c 1862-1863 Issues (73, 76, 78). Tiny faults, Fine appearance .....	49.00	10
345 ★	3c Scarlet (74). Fresh, large part o. g., perfs just in at B., clipped at U. L., Scarce .....	325.00	155
346 ★	5c Dark Red Brown (75). Beautiful Rich Color, o. g., small thins, Fine appearance .....	75.00	47+
347 ★	5c Red Brown (75). Vivid Color, faint crease, perfs just in at L., Attractive .....	75.00	16
348 ★	5c Red Brown (75). Brilliant Color, o. g., s. e. at L., tiny thins, Fine appearance .....	75.00	14
349 ★	5c Brown (76). Lovely Rich Color, fresh, part o. g., Fine .....	17.00	20 -
350 ★	5c Brown (76). Fresh, centered to U. L., Fine .....	17.00	7
351 ★	15c Black Lincoln (77). Fresh, o. g., Very Good .....	43.50	30
352 ★	15c Black Lincoln (77). Fresh, centered to L. L., short perf .....	43.50	105
353 ★	24c Lilac (78). Fresh, o. g., Fine .....	20.00	19
354 ★	24c Lilac (78). Block, Brilliant Color, fresh, o. g., A Magnificent Block, Very Fine .....	100.00	220+

END OF FIRST SESSION

*LOTS ON VIEW FROM JUNE 10th*

*OFFICES OPEN SATURDAYS UNTIL 3 P.M.*

*PLEASE NOTE OUR NEW ADDRESS*



## SECOND SESSION

FRIDAY, JUNE 19th, 1964 — 1:30 P. M.

### 1867 GRILLS

355 ★	3c Rose Grilled All Over (79). Fresh, o. g., pinpoint thin speck, tiny nicks & short perfs as usual, A Very scarce stamp .....	(Photo) 425.00	70
356	3c Rose Grilled all Over (79). Centered, Bold Negative "A" cancel, faint corner creases. Very few short perfs, Very Fine appearance (Photo) .....	120.00	52
357	3c Rose Grilled all Over (79). Blue Cancel, small faults, V. G. appearance .....	125.00	46
358	3c Rose, Grilled all over (79). Small faults, V. G. appearance .....	120.00	24
359	3c Rose Grilled All Over (79). Damaged perf. faults .....	120.00	16
360 ★	3c Rose C. Grill (83). Rich Color, fresh, o. g., Fine .....	(Photo) 95.00	57+
361 ★	3c Rose C. Grill (83). Fresh, o. g., centered to L. L., Fine .....	(Photo) 95.00	57+
362 ★	3c Rose D. Grill (85). Huge Margins, s. e. at R., small thin, Extremely Fine appearance .....	(Photo) 160.00	66
363 ★	3c Rose D. Grill (85). Horiz. pair, Rich Color, Sheet Centerline at R., perfs just touched at T., fresh, Fine .....	(Photo) 350.00	771
364 ★	1c Blue E. Grill (86). Vivid Color, o. g., light crease, Perfs in at R .....	40.00	16
365 ★	2c-15c E., F. Grills (87, 93, 96, 98). Small faults, Fine appearance .....	103.00	37+
366 ★	2c, 15c E., F. Grills (87, 93, 98). Small faults, Fine appearance .....	70.50	30
367 ★	3c Rose E. Grill (88). Block, Vivid Color, fresh, o. g., perfs just in at top, V. G. ....	70.00	12
368 ★	10c Green E. Grill (89). Fresh, minute thin speck in grill, Very Fine appearance .....	(Photo) 62.50	22
369	5c-12c 1861-67 Issues (67, 90, 96). Small faults, F.-V. F. appearance .....	60.50	13
370 ★	15c Lincoln E. Grill (91). Tiny grill faults, perfs in at B., Scarce .....	200.00	21
371 ★	1c Blue F. Grill (92). Brilliant Color, fresh, Fine .....	(Photo) 22.50	13
372 ★	1c Blue F. Grill (92). Fresh, o. g., perfs. touch at right .....	22.50	8
373 ★	3c Red F. Grill, Imperforate (94b). Horiz. Strip of three, Large margins all around, fresh, o. g., light crease in R. stamp, others Extremely Fine .....	(Photo) 150.00+	102+
374 ★	5c Brown F. Grill (95). Rich color, fresh, o. g., Fine .....	(Photo) 140.00	35
375 ★	5c Brown F. Grill (95). Brilliant Color, fresh, Fine .....	(Photo) 140.00	87+
376 ★	5c Brown F. Grill (95). Lovely Color, Centered to L. L., Very Good .....	140.00	26
377 ★	5c Brown F. Grill (95). Rich Color, minute perf tear, Fine appearance ....	140.00	14





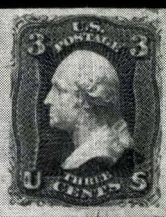
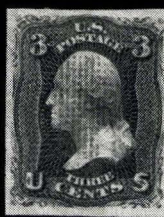
362



368



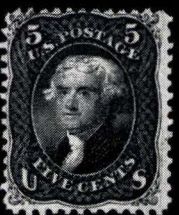
371



373



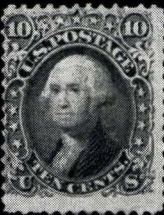
374



375



379



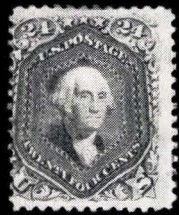
381



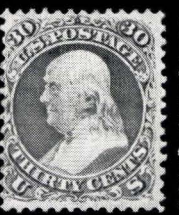
383



387



388



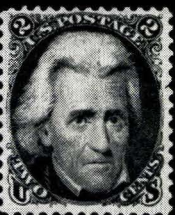
389



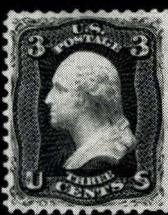
390



393



394



395



396



397



398



399



404



405



411



412



416



417



420



421



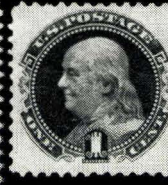
423



424



425



432



426



430



431



433



434



435



378	★	5c Brown F. Grill (95). Horiz. Block of 8, Centered, fresh, full o.g., light gum bends in top stamps and a bit of rubbing on front, a Rare and Magnificent Showpiece	(Photo) 2000.00+	725
379		5c Brown F. Grill (95). Rosette Cancel, Fine	(Photo) 37.50	107
380		5c Brown F. Grill (95). Horiz. Strip of Three, Gorgeous color, ms. cancels, Fine	122.50	379
381	★	10c Green F. Grill (96). Fresh, centered to L. Fine	(Photo) 32.50	11
382	★	10c Green F. Grill (96). Fresh, Rich Color, Very Good	32.50	6
383	★	12c Black F. Grill (97). Fresh, Fine	(Photo) 35.00	36
384	★	12c Black F. Grill (97). Fresh, part o.g., Very Good	35.00	8
385	★	15c Black Lincoln F. Grill (98). Fresh, o.g. Perfs. in at right, V.G.	37.50	67
386	★	15c Black F. Grill (98). Vertical Block of Eight, Centered, fresh, o.g. top pair has light crease, faint aging, showing only on back, otherwise Extremely Fine, A Rare & magnificent Block	(Photo) 700.00+	575
387	★	24c Gray Lilac F. Grill (99). Fresh, Nice color, centered to Right	(Photo) 125.00	76
388	★	24c Gray Lilac F. Grill (99). Brilliant Color, fresh, full o.g., centered to L	(Photo) 125.00	28
389	★	30c Orange F. Grill (100). Fresh, o.g., Fine	(Photo) 115.00	105
390		90c Blue F. Grill (101). Large margins, Gorgeous color, minor natural corner wrinkle, Very Fine	(Photo) 115.00	72+
391		90c Blue F. Grill (101). Rich color, small faults, Fine appearance	115.00	15
392	田	90c Blue F. Grill (101). Horiz. Block of Six, Wonderful Color, Very light cork cancels, minor internal wrinkle, otherwise Very Fine, A Magnificent Showpiece	(Photo) 890.00+	350
393	★	1c Blue Reissue (102). Huge margins, Brilliant Color, one slightly short perf, otherwise Very Fine	(Photo) 55.00	41
394	★	2c Black Reissue (103). Fresh, Brilliant Color, Very Fine	(Photo) 160.00	160
395	★	3c Brown Red Reissue (104). Part o.g., Extremely Fine	(Photo) 225.00	210
396	★	10c Green Reissue (106). Large margins all around, fresh, part o.g., couple short perfs, minute thin, V.F. appearance	(Photo) 180.00	67+

#### 1869 PICTORIAL ISSUE

397	★	1c Buff (112). Horiz Strip of Three, Rich Color, fresh, o.g., Fine	(Photo) 73.50+	34
398	★	1c Buff, without Grill (112b). Fresh, o.g. Partial short perf. at L., otherwise Fine	(Photo) 135.00	50
399	★	2c Brown, without Grill (113b). Fresh, o.g., Fine	(Photo) 90.00	45
400	★	2c Brown (113). Block, Magnificent Color, fresh, o.g., wide s.e. at R., Fine	(Photo) 75.00	45
401	★	2c Brown (113). Horiz. Block of Eight, Rich Color, fresh, o.g., few short perfs, Otherwise Very Good-Fine	150.00	62+



402	★	2c Brown (113). Block of Nine, fresh, o. g., light natural creases, otherwise Very Good-Fine	(Photo)	149.00+	62+
403	★	2c Brown (113). Block of 25, fresh o. g., some short perfs & few pinpoint age spots, otherwise Very Good-Very Fine, a Spectacular Block	(Photo)	434.00+	230
404	★	3c Ultramarine, without Grill (114a). Fresh, o. g., Fine	(Photo)	75.00	77+
405	★	6c Ultramarine (115). Vivid color, fresh, Fine	(Photo)	37.50	32+
406	★	6c Ultramarine (115). Horiz pair, light creases, V.G. appearance		85.00	16
407	★	6c Ultramarine, 10c Yellow (115, 116). 6c has pinhole in grill, other pinpoint thin speck, Fine appearance		80.00	32+
408	★	6c Ultramarine, 10c Yellow (115, 116). Fresh, part o. g., minute thin specks, Fine appearance		80.00	40
409	★	10c Orange (116). Fresh, o. g., Oxidized otherwise Very Fine		42.50	31
410	★	10c Yellow (116). Fresh, o. g., Heavily Oxidized otherwise Fine		42.50	20
411	★	12c Green (117). Fresh, full o. g., Fine	(Photo)	40.00	47 1/2
412	★	12c Green (117). Fresh, part o. g., Fine	(Photo)	40.00	22
413	★	12c Green (117). Block, Vivid color, fresh, o. g., Fine-Very Fine, a Lovely Block	(Photo)	350.00	330
414	★	12c Green, 15c Brown & Blue Ty II (117, 119). Latter o. g., tiny thins, F.-V. F. appearance		85.00	50
415	★	12c Green, 15c Brown & Blue Ty. II (117, 119). First o. g., faint creases, F.-V. F. appearance		85.00	36
416	★	15c Brown & Blue Ty I (118). Brilliant Colors, fresh, perfs touch at R., Fine	(Photo)	145.00	60
417	★	15c Brown & Blue Ty I (118). Rich Color, Center shifted well out of Frame to R., trivial bend in grill, Fine, Most unusual	(Photo)	145.00	42+
418	★	15c Brown & Blue Ty I (118). Perfs. in R. & B. Very Good		145.00	36
419	★	15c Brown & Blue Ty I (118). Rich Colors, part o. g., tiny interior cut, Fine appearance		145.00	20
420	★	15c Brown & Blue Ty I, Without Grill (118a). Centered, fresh, o. g., minute marginal break, otherwise Extremely Fine	(Photo)	200.00	105
421	★	15c Brown & Blue Ty. II (119). Brilliant Colors, Fine	(Photo)	45.00	47+ =
422	★	15c Brown & Blue Ty. II (119). Magnificent Vivid Colors, Centered to U. R.		45.00	13
423		15c Brown & Blue Ty II, Inverted Center (119b). Two tiny sealed marginal tears faint surface rub, Attractive Appearing Copy of this Popular Rarity	(Photo)	2500.00	1000
424	★	24c Green & Violet (120). Gorgeous colors, Very Fine	(Photo)	100.00	110
425	★	24c Green & Violet (120). Rich Vivid Colors, centered slightly to T., Very Fine	(Photo)	100.00	60
426	★	30c Blue & Carmine (121). Pretty Colors, Pinpoint thin speck in Grill, otherwise Fine	(Photo)	125.00	72+



427		<b>30c Blue &amp; Carmine (121).</b> Rich Colors, almost uncanceled, minute thins, V.F. appearance .....	30.00	32
428	田	<b>30c Blue &amp; Carmine (121).</b> Block, Large Margins, Magnificent Color, light cancels, one stamp has minute perf break, otherwise Extremely Fine, a Wonderful Block .....	(Photo) 175.00	235-
429	田	<b>30c Blue &amp; Carmine (121). Block of Twelve(3x4)</b> Lovely Color, Cork cancels, one stamp sealed tear, another has few short perfs, few stamps have surface rubs, Centered, Scarce & Attractive Block ....	(Photo) 490.00+	330
430	★	<b>90c Carmine &amp; Black (122).</b> Rich Colors, Large margins, fresh, o.g., centered slightly to Left, Very Fine .....	(Photo) 300.00	390
431	★	<b>90c Carmine &amp; Black (122).</b> Bright Colors, Centered to U.L., fresh .....	(Photo) 300.00	200
432	★	<b>1c Buff Reissue (123).</b> Centered slightly to Top, Very Fine (Photo) .....	37.50	28
433	★	<b>2c Brown Reissue (124).</b> Centered, fresh, o.g., diagonal crease, V.F. appearance .....	(Photo) 35.00	18
434	★	<b>12c Green Reissue (128).</b> Centered, fresh, o.g., Extremely Fine (Photo) .....	100.00	155-
435	★	<b>15c Brown &amp; Blue Ty III Reissue (129).</b> Vivid Colors, fresh, crackled o.g., Centered slightly to Top, Fine .....	(Photo) 145.00	77+
436	★	<b>24c Green &amp; Violet Reissue (130).</b> Fresh, part o.g., few slightly nibbed perfs at R., otherwise Fine .....	(Photo) 100.00	55
437	★	<b>24c Green &amp; Violet Reissue (130).</b> Gorgeous colors, crease, tiny thin, Fine appearance .....	(Photo) 100.00	37+
438	★	<b>30c Blue &amp; Carmine Reissue (131).</b> Vivid Colors, fresh, o.g., minute thin specks, Very Fine appearance .....	(Photo) 150.00	105-
439	★	<b>90c Carmine &amp; Black Reissue (132).</b> Fresh, o.g., Very Fine (Photo) .....	300.00	310
440	★	<b>90c Carmine &amp; Black Reissue (132).</b> Brilliant Color, fresh, o.g., Fine .....	(Photo) 300.00	240

#### BANKNOTE ISSUES

441	★	<b>3c Green H. Grill Imperforate (136 var).</b> Horiz Pair, Large margins all around, Vert Crease in Sheet margin, far from design, Paper Inclusion in one, fresh, o.g., Extremely Fine, unlisted in Scott .....	(Photo)	150
442	★田	<b>3c Green I. Grill (136).</b> Block, Brilliant color, fresh, o.g., a Scarce & Lovely Block, Fine .....	(Photo) 100.00	67+
443	★	<b>7c Vermilion Grill (138).</b> Horiz. Pair, fresh, o.g., L stamp shows clear Vertical Row of Points, no grill showing in R. Stamp, F.-V.F. (Photo) .....	190.00	62+
444	★	<b>90c Dark Carmine Grill (144).</b> Magnificent Color, fresh, o.g., perfs. just in at R., Very Good copy of this Rare Stamp .....	(Photo) 500.00	135-
445	★田	<b>1c Ultramarine (145).</b> Top Imprint Block, fresh, o.g., Fine .....	45.00	26
446	★	<b>6c Carmine (148).</b> Horiz. pair, fresh, o.g., one stamp two short perfs, otherwise Fine-Very Fine .....	(Photo) 42.50	17
447	★田	<b>7c Vermilion (149).</b> Block, fresh, o.g., Very Fine .....	(Photo) 500.00	425
448	★	<b>24c Bright Purple (153).</b> Rich color, fresh, o.g., Very Fine (Photo) .....	47.50	67+





386



400



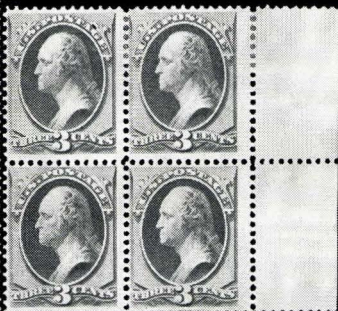
413



403



402



442



429



428



459



447



455



456



458

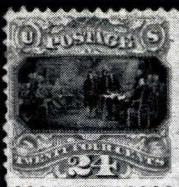


449	★	24c Purple (153).	Centered, Deep Rich Color, o.g., faint age spots, otherwise Very Fine	(Photo)	47.50	34
450	★	24c Bright Purple (153).	Magnificent Brilliant Color, part o.g., faint corner crease, Extremely Fine appearance	(Photo)	47.50	36
451	★	24c Bright Purple (153).	Lovely color, fresh, o.g., Very Good		47.50	12
452	★	90c Carmine (155).	Gorgeous color, fresh, centered to top, Fine	(Photo)	115.00	42
453	★	90c Dark Carmine (155).	Beautiful Color, fresh, o.g., perfs just touch at L	(Photo)	115.00	40
454	★	90c Dark Carmine (155).	Wonderful color, fresh, o.g., faint corner crease & tiny thin, Fine appearance	(Photo)	115.00	67+
455	★	1c Ultramarine (156).	Block, fresh, o.g., Extremely Fine	(Photo)	27.50	26
456	★	6c Brown Rose (159).	Block, Brilliant Color, fresh, o.g., Extremely Fine	(Photo)	100.00	92+
457	★	7c Orange Vermilion (160).	Horiz. Pair, fresh, o.g., tips of few perfs on one stamp faintly toned, otherwise Very Fine	(Photo)	80.00	52
458	★	7c Orange Vermilion (160).	Block, fresh, part o.g., reinforced at center, otherwise Extremely Fine	(Photo)	400.00	300
459	★	7c Vermilion (160).	Block, Horiz. crease in top pair, others are Fine, Mint	(Photo)	400.00	140
460	★	12c Blackish Violet (162).	Fresh, o.g., Very Fine	(Photo)	52.50	60
461	★	12c Blackish Violet (162).	Gorgeous Color, o.g., minute thin spot, Fine	(Photo)	52.50	15
462	★	30c Greenish Black (165a).	Fresh, o.g., Fine	(Photo)	48.50	42+
463	★	90c Rose Carmine (166).	Block, Brilliant Color, fresh, full o.g., Vertical Stitch wmk, a Magnificent Block, Extremely Fine	(Photo)	450.00	575
464	★	90c Rose Carmine (166).	Block, Lovely Color, fresh, o.g., Fine and Attractive Block	(Photo)	450.00	210
465	★	12c Dark Violet Special Printing (173).	Centered, perfs trimmed at L. & B., small surface thin at L.R., Attractive Copy of this Scarce Stamp	(Photo)	350.00	210
466	★	24c Dull Purple Special Printing (175).	Centered, s.e. at B., pressmans fingerprints at L.L. and on Back, a Lovely Example of this Scarce Stamp	(Photo)	250.00	210
467	★	5c Blue (185).	Block, Brilliant Color, fresh, o.g., Fine-Very Fine	(Photo)	85.00	170
468	□	10c Brown (187, 188).	Combination Block showing two of each, Gray Blue cork cancels, light crease in two, one has tiny thin, F.-V.F. appearance, Listed but Unpriced in Scott	(Photo)	—	65
469	★	15c Orange (189a).	Block, fresh, o.g., Very Fine	(Photo)	47.50	37+
470	★	15c Red Orange (189).	Block, fresh, o.g., Very Fine	(Photo)	47.50	37
471	★	15c Orange (189a).	Top Impt. & Plate No. Strip of 7, Centerline & Half Arrow at R., light crease thru one, otherwise fresh, F.-V.F.		77.00+	57+
472	★	90c Carmine (191).	Top Imprint Block of Four, Magnificent Color, full o.g., gum soaks thru paper in two tiny spots, otherwise F.-V.F.	(Photo)	400.00+	160





436



437



438



439



440



444



441



443



448



446



449



450



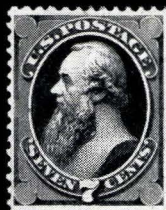
452



453



454



457



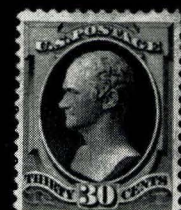
460



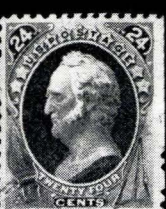
461



462



465



466



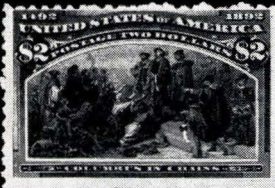
481



484



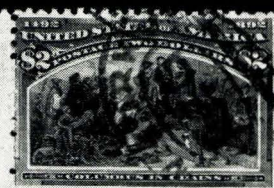
494



485



488



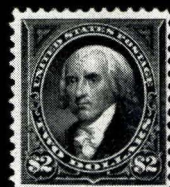
489



490



493



495



- 473 ★ 90c Carmine Imperforate (191b). Block, Large margins all around, fresh, full o.g., Very Fine, a Rare & Handsome Block ..... (Photo) 1000.00 725
- 474 90c Carmine (191). Two Horiz. Pairs, forming Reconstructed Block, Very Fine ..... 100.00+ 36



475

476

477

478

- 475 ★ 7c Scarlet Vermilion Special Printing (196). Thin, Fine appearance (Photo) 500.00 225
- 476 ★ 12c Blackish Purple Special Printing (198). Fresh, Very Fine, Lovely Copy of this Rare Stamp ..... (Photo) 800.00 1600
- 477 ★ 15c Orange Special Printing (199). Guarantee Handstamps on Back, perfs touch at R., Fine ..... (Photo) 675.00 600
- 478 ★ 24c Dark Violet Special Printing (200). Perfs. barely in at T., Attractive Example of this Rarity ..... (Photo) 350.00 250
- 479 90c Purple (218). Block, Light N. Y. Reg. pmks., Very Fine (Photo) 85.00 72+
- 480 90c Purple (218). Horiz. Blocks of 8 & 4, tied on small piece by N. Y. Reg. pmks, fresh, Fine ..... (Photo) 255.00+ 120

## COLUMBIAN ISSUE

- 481 ★ \$1.00 Columbian (241). Pinpoint thin speck, Fine appearance (Photo) 75.00 32
- 482 ★ 90c Columbian (241). Block, natural paper specks, Extremely Fine, a wonderful Block ..... (Photo) 425.00 360
- 483 ★ 90c Columbian (241). Block, Brilliant Color, fresh, s.e. at T., one stamp has natural paper speck, Extremely Fine, a Lovely Block (Photo) 425.00 510
- 484 ★ \$2.00 Columbian (242). Brilliant Color, fresh, Fine ..... (Photo) 85.00 77+
- 485 ★ \$2.00 Columbian (242). Brilliant Color, fresh, Fine ..... (Photo) 85.00 67+
- 486 ★ 90c Columbian (242). Block, Vivid Color, fresh, Fine ..... (Photo) 485.00 365
- 487 ★ 90c Columbian (242). Marginal Block, fresh, s.e. at T., otherwise Extremely Fine ..... (Photo) 485.00 332
- 488 \$2.00 Columbian (242). Horiz. strip of three, New York Registry pmks., Very Good-Fine ..... (Photo) 172.50+ 55+
- 489 ★ \$3.00 Columbian (243). Fresh, Vivid Color, Fine ..... (Photo) 125.00 80
- 490 ★ \$4.00 Columbian (244). Brilliant Color, fresh, Very Good ..... (Photo) 135.00 50





463



464



467



468



469



470



472



473



479



480



482



483



486



487



- 491 ★ **\$5.00 Columbian (245).** L. L. Corner Copy, full selvage, part o. g., Very Fine ..... (Photo) 155.00 130<sup>-</sup>
- 492 ★ **\$5.00 Columbian (245).** Centered, part o. g., minute thin, tips of some perfs have tropical stain ..... (Photo) 155.00 72<sup>+</sup>

#### 1894-1898 ISSUES

- 493 ★ **\$1.00 Black Ty I, II (261, 261a).** Horiz. Combination Pair, perfs touch at L. of Ty I stamp, Ty II is Very Fine ..... (Photo) 190.00 110
- 494 ★ **\$1.00 Black Ty II (261a).** Faint thin, Fine appearance ..... (Photo) 77.50 37<sup>+</sup>
- 495 ★ **\$2.00 Bright Blue (262).** Fresh, Fine ..... (Photo) 90.00 87<sup>+</sup>
- 496 ★ **\$5.00 Dark Green (263).** Fresh, Perfs in at B. Very Good ..... (Photo) 170.00 45
- 497 ★ **\$1.00 Black Ty II (276a).** Thin, Very Fine appearance ..... (Photo) 110.00 57<sup>+</sup>
- 498 ★ **\$1.00 Black Ty I, II (276, 276A, two).** Top Impt. Plate No. Combination Strip of 3, fresh, centered to R. Fine ..... (Photo) 375.00 210
- 499 ★ **\$2.00 Dark Blue (277).** Pinpoint thin speck, Fine appearance (Photo) 62.50 57<sup>+</sup>
- 500 ★ **\$2.00 Bright Blue (277a).** Block, Gorgeous Color, Centered, fresh Extremely Fine, A Wonderful Block ..... (Photo) 300.00 250
- 501 ★ **\$2.00 Dark Blue (277).** Block, Brilliant Color, fresh, slightly reinforced, one stamp with minute thin specks, otherwise Very Fine .... (Photo) 300.00 165
- 502 ★ **\$5.00 Dark Green (278).** Fresh, Extremely Fine ..... (Photo) 140.00 102<sup>+</sup>
- 503 ★ **50c Trans Mississippi (291).** Fresh, Fine ..... (Photo) 50.00 78
- 504 ★ **50c Trans Mississippi (291).** L. Arrow Block, fresh, Very Fine (Photo) 475.00 375<sup>+</sup>
- 505 ★ **\$1.00 Trans Mississippi (292).** Fresh, Extremely Fine ..... (Photo) 115.00 120
- 506 ★ **\$2.00 Trans Mississippi (293).** Fresh, Fine ..... (Photo) 145.00 105<sup>-</sup>

#### PAN AMERICAN ISSUE

- 507 ★ **1c-10c Pan American (294-299).** Cpl. Set, Fine-Very Fine ..... 43.65 30
- 508 ★ **1c-4c Pan American (294-296).** Three Blocks of first, Blocks of 4 & 9 of second, Block of last, last has thins in 3 stamps, otherwise V.G.-V.F. .... 79.50 15<sup>-</sup>



509

510

511

512

- 509 ★ **1c Pan American Inverted Center (294a).** Fresh, Fine Example of this Popular Rarity ..... (Photo) 1350.00 1150<sup>+</sup>







510 ★	2c Pan American Inverted Center (295a). Fresh, well above average centering, Skillfully sealed tear in L. Margin, a Most Attractive Example of this Great Rarity .....	(Photo) 4500.00	2400
511 ★	4c Pan American, Inverted Center, "Specimen" Overprint (296b). Fresh, no gum, Fine Example of this Popular Rarity .....	(Photo) 600.00	450
512 ★	4c Pan American Inverted Center, "Specimen" Overprint (296b). Perfs. barely touched at B., Bent corner perf, a Fresh & Desirable Copy of this Rarity .....	(Photo) 600.00	475
513 ★	4c Pan American (296). Block, Fresh, Very Fine .....	38.50	274
514 ★	4c Pan American (296). Horiz. Block of 6, Tropical Gum, Fine .....	56.00	20
515 ★	5c Pan American (297). Block, fresh, Fine-Very Fine .....	40.00	16
516 ★	5c Pan American (297). Block, fresh, Fine .....	40.00	13
517 ★	8c Pan American (298). Block, light gum crease, F.-V.F. ....	45.00	16
518 ★	8c Pan American (298). Block, Fresh, Fine .....	45.00	16
519 ★	10c Pan American (299). Block, Fresh, Fine .....	67.50	22

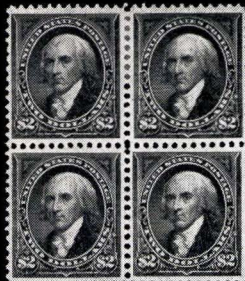
#### 1902-1907 ISSUES

520 ★	1c-\$1.00 1902 Issue (300-311). 10c, 50c minute thins, \$1.00 trivial tiny tear, otherwise F.-V.F. ....	118.15	30
521 ★	1c-7c 1902-1926 Issues (300, two, 499, six, 525, Five, 537, 637, two). All with Printing or Perf Varieties, incl wild perfs, dry plate, blind perfs, choice lot, F.-V.F. ....	E. II	13
522	2c Carmine Double Print (301 var). Slight but distinct doubling of entire design to R., Fine .....	—	5
523 ★	50c Orange (310). L.R. Sheet Corner Block, Fine .....	(Photo) 130.00	524
524 ★	50c Orange (310). Block, Fresh, tips of two perfs a trifle toned at R, otherwise V.F. ....	(Photo) 130.00	624
525 ★	\$1.00 Black (311). Block, fresh, Extremely Fine .....	(Photo) 300.00	200
526 ★	\$2.00 Dark Blue (312). Fresh, centered to B. Fine .....	(Photo) 80.00	574
527 ★	\$2.00 Dark Blue (312). Small thin, fresh, Fine appearance .....	(Photo) 80.00	21
528	\$2.00 Dark Blue (312). Block, Light cancels, one stamp has tiny faults, otherwise F.-V.F., Scarce & Most Attractive .....	(Photo) 130.00	60
529 ★	\$5.00 Dark Green (313). Centered slightly to T., Very Fine .....	(Photo) 160.00	125
530 ★	\$5.00 Dark Green (313). Fresh, Fine .....	(Photo) 160.00	874
531	\$5.00 Dark Green (313). Block, light Manchester, Conn. Registry pmks., Fresh, Extremely Fine, A Magnificent Block .....	(Photo) 475.00	350

**LOTS ON VIEW FROM JUNE 10th**

**OFFICES OPEN SATURDAYS UNTIL 3 P.M.**





500



501



504



523



524



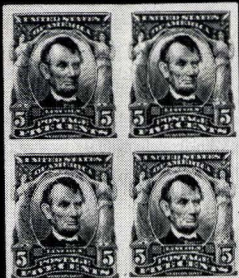
525



528



531



537



566



575



578



602



Vertical text: 13 CENTS 13

4951



587



614

580





532

533

- 532 **4c Brown, Schermack Ty. III Private Perf (314A).** Rich Color, pinpoint thin specks, otherwise Very Fine, Lovely Example of this Popular Rarity ..... **(Photo)** 900.00 725
- 533 **4c Brown, Schermack Ty. III Private Perf (314A).** Large margins, minute corner thin, Very Fine appearance, Attractive Copy of this Popular Stamp, With Vending & Affixing Machine Perforations Society Certificate ..... **(Photo)** 900.00 600
- 534 ★ **1c Green Imperforate Coil (314s).** Horiz. Strip of Four, Extremely Fine, Signed by Geo. B. Sloane, Listed but unpriced by Scott .... **(Photo)** — 85
- 535 ★ **5c Blue Lincoln Imperforate (315).** Ample to Huge Margins all around, fresh, Fine ..... **(Photo)** 100.00 675
- 536 ★ **5c Blue Lincoln, Imperforate (315).** Horiz. Pair, Extremely Fine **(Photo)** 200.00+ 115
- 537 ★田 **5c Blue Lincoln Imperforate (315).** Block, Extremely Fine **(Photo)** 450.00 230
- 538 ★ **2c Carmine Imperforate Horizontally (319d).** Vertical Pair, fresh, one short perf, otherwise V.F. .... **(Photo)** 600.00 450
- 539 ★田 **2c Lake Imperforate (320a).** Mint Horiz. Block of 6, Very Fine ..... 60.00 26
- 540 ★ **2c Carmine, Scarlet, Lake (320, 320a, 320b).** Horiz. Pairs, Very Fine .... 34.50 13
- 541 ★ **2c Carmine Coil (322).** Horiz. Pair, Guide Line & Portion of Paste-Up at R., hinge reinforced, otherwise Very Fine, with P.F. Certificate **(Photo)** 500.00 300
- 542 ★ **1c-10c Louisiana Purchase (323-327).** Cpl. set, top values have minute faults, G.-V.F. .... 59.50 16
- 543 ★ **1c-5c Jamestown (328-330).** Fine-Very Fine Set ..... 18.05 9
- 544 ★ **1c-5c Jamestown (328-330).** Plate No. Singles, Fine Set ..... 18.05+ 10
- 545 ★田 **5c Jamestown (330).** Block of 4 with Plate No. & Part Impt., Mint, Fine ..... 60.00+ 30
- 546 ★田 **5c Jamestown (330).** Block of 4 with Plate No. & Part Impt., Mint, Very Good ..... 60.00+ 19

**PLEASE NOTE OUR NEW ADDRESS**



# 1908 ISSUE

547 ★	1c-\$1.00 1908-09 Issue (331-342). Fine-Very Fine Set .....	96.05	55-
548 ★	1c Green Imperf. Between (331 var). Horiz. Pair, each with "W H C" Handstamp, P.F. Certificate States ".....it is the result of experimental work for booklets by the Govt. & not a regularly issued variety" Fine not Listed in Scott ..... (Photo)	—	52+
549 ★	4c Orange Brown CLAY PAPER (334 var). Plate No. & Part Impt. Block of 4, with similar Block of Normal for Comparison, Johl States That these are scarcer than the Bluish Paper Varieties, Mint, V.G.	—	105-
550 ★	1c-5c 1908-09 Imperforates (343-347). Cpl. Set, Very Fine .....	16.50	8+
551 ★	2c Carmine Imperforate Coil (344E). Vertical Paste up & Line Strip of 20, Incl Pos. 37 U.L.5299 Double Transfer, Design of 1c, one of the most Desirable & Spectacular of Twentieth Century Varieties, Mint, Fine, Listed but unpriced in Scott .....	—	260
552 ★	4c Brown Imperforate Coil (346E). Vertical Line Strip of 4, Very Fine ....	37.50	17
553 ★	5c Blue Imperforate (347). Mint Block of 9, Very Fine .....	65.00	44
554 ★	5c Blue Endwise Imperforate Coil (347E). Vertical Paste-up Strip of 4 with Plate No., F.-V.F. ....	37.00+	26
555 ★	1c Green, 2c Carmine Coil (348, 349). Vertical Paste-Up Strip of 4, 1c with Plate No., V.G.-V.F. ....	23.00+	124
556 ★	1c-5c 1908-10 Coils (348-351). Vertical Pairs, fresh, V.G.-V.F. ....	58.00	17
557 ★	4c Brown Coil (350). Vertical Pair, one with natural paper inclusion, V.F. ....	16.00	74
558 ★	1c Green, 2c Carmine Coil (352, 353). Horiz. Pairs of 2 and 3mm Spacings of Each, F.-V.F. ....	31.00	12
559 ★	4c Brown Coil (354). Horiz Strip of 4, both spacings, Fine .....	35.50	13
560 ★	4c Brown, 5c Blue Coils (354, 355). Pairs, fresh, Fine .....	34.50	16
561 ★	10c Yellow Coil (356). Fresh, Fine ..... (Photo)	140.00	135-
562 ★	10c Yellow Coil (356). Horiz. Line Strip of Four, fresh, just touched at Top, Scarce ..... (Photo)	605.00	240

# 1909 BLUISH PAPER ISSUE

563 ★	1c Green Bluish (357). B. Impt. Plate No. Block of 6, selvage trimmed thru Inscription, Centered bit to B. Fine .....	95.00	33
564 ★	1c Green, 2c Carmine Bluish (357, 358). Very Fine .....	19.50	17+
565 ★	2c Carmine Bluish (358). Block, Very Fine .....	42.50	34
566 ★	2c Carmine Bluish (358). B. Impt. Plate No. Block of Six, fresh, minor gum bends, Very Fine ..... (Photo)	95.00	77+
567 ★	3c Deep Violet Bluish (359). Tiny thin, V.F. Appearance .... (Photo)	125.00	100
568 ★	4c Orange Brown Bluish (360). Fresh, Very Fine , an Exceptionally Choice copy of this Rarity, with P.F. Certificate ..... (Photo)	1600.00	1800
569 ★	6c Red Orange Bluish (362). Very Fine ..... (Photo)	110.00	125-



570 ★	6c Red Orange Bluish (362). Centered to right, Fine	(Photo)	110.00	55
571 ★	8c Olive Green Bluish (363). Fresh, perfs just touch at B., Very Good Example of this Rare Stamp, with P.F. Certificate	(Photo)	1450.00	1250
572 ★	10c Yellow Bluish (364). Fine	(Photo)	120.00	82
573 ★	13c Blue Green Bluish (365). Very Fine	(Photo)	275.00	340
574 ★	13c Blue Green Bluish (365). Small thin, perfs in at left, V.G.	(Photo)	275.00	85
575 □	13c Blue Green Bluish (365). Block, Saginaw Mich pmks., A Rare and Attractive Block, Fine-Very Fine	(Photo)	500.00	325
576 ★	15c Ultramarine Bluish (366). Extremely Fine	(Photo)	110.00	100
577 ★	15c Ultramarine Bluish (366). Very Fine	(Photo)	110.00	75
578 ★□	15c Ultramarine Bluish (366). Block, Extremely Fine	(Photo)	450.00	375
579 ★□	15c Ultramarine Bluish (366). Block, Fine-Very Fine, With P.F. Certificate	(Photo)	450.00	280
580 ★□	15c Ultramarine Bluish (366). R. Impt. Plate No. Block of Ten fresh, perfs partly touched at R., A Rare Showpiece, Fine	(Photo)	1290.00+	700

#### 1909-1912 ISSUES

581 ★	2c 1909 Commems (367, Nine, 368, 370, five, 371, five, 372, five, 373). Few minor faults, mostly F.-V.F.		79.20	26
582 ★□	2c Lincoln Imperforate (368). Horiz Block of Eight, Both Spacings, V.F.		52.50	36
583 ★	2c 1909 Commems Imperforate (368, 371, 373). Horiz Pairs, Very Fine Set		41.00	18+
584 ★	2c Lincoln Imperforate Endwise Coil (368 var.). Vertical Line Strip of Four Signed by Costales & Sloane, Very Fine, Scarce		40.00+	35
585 ★	2c Lincoln Bluish (369). Very Fine	(Photo)	25.00	27
586 ★	2c Lincoln Bluish (369). Fresh, Fine		25.00	17
587 ★□	2c Lincoln Bluish (369). B. Impt. Plate No. Block of Eight, fresh, Fine- Very Fine	(Photo)	250.00	240
588 ★□	2c Alaska Yukon Imperforate (371). Centerline Block, Very Fine		60.00	18
589 ★□	2c Alaska Yukon Imperforate (371). Block, Gigantic Margins, Exthemely Fine		30.00	14
590 ★□	1c-20c 1909-26 Issues (372, 486, 501, 512, 530, 615, 634, 684, 698, 700). 62 stamps, all in multiples, each with One or More stamps showing Plate Cracks, Retouches, Re-Entries, nearly all listed, Choice lot, F.-V.F.		87.75+	32
591 ★□	2c Hudson Fulton Imperforate (373). Centerline Block, Very Fine		65.00	19
592 ★□	2c Hudson Fulton Imperforate (373). Mint Top Plate No Block (#5394) two stamps showing Big Double Transfer, Very Fine		66.00+	475
593 ★□	2c Lake (375). Block, Fine-Very Fine, Very Scarce Shade		40.00+	32
594 ★	1c Green, 2c Carmine Coils (385, 386, two, 387). Pairs, both spacings of second, F.-V.F.		31.00	84



595 ★	2c Carmine Coil (388). Horiz. Pair, Extremely Fine, with A. B. A. Certificate .....	(Photo)	85.00	67+
596	3c Deep Violet Orangeburg Coil (389). Fairly well centered, thin at B., part of original envelope adheres on back, Very Fine Appearance, Rare coil .....	(Photo)	550.00	375
597 ★	1c-5c 1910 Coils (390-396). Cpl. Set Pairs, incl. both spacings on 3c, 4c, fresh, Fine-Very Fine .....		69.15	22
598 ★	1c-10c Pan Pacific (397-400A). Cpl. Set, Fine-Very Fine .....		53.00	28
599 ★	2c, 5c Panama Pacific Perf 10 (402, 403). 2c touched at B., Fine .....		37.50	13
600 ★	5c Panama Pacific Perf 10 (403). Block, Fine .....		120.00	60
601 ★	10c Panama Pacific Perf 10 (404). Rounded Corner Perf, Fine (Photo) .....		100.00	47+
602 ★	10c Panama Pacific Perf 10 (404). Block, Extremely Fine .... (Photo) .....		425.00	350

#### 1912-1915 ISSUES

603 ★	7c-30c 1912-14 Issue (407, 414-420). Fine-Very Fine .....		46.75	35
604 ★	1c Green, 2c Carmine Kansas City Roulettes (408, 409 var.). Blocks, first has slightly broken crease in T. Pair, otherwise V. F., with Affidavit .....	E. II		9
605 ★	1c Green, 2c Carmine Kansas City Roulettes (408 var., 409 var.). Blocks, with Original Printed Brochure, Very Fine .....	E. II		157
606 ★	1c Green, 2c Carmine Kansas City Roulettes (408, 409 var.). Centerline & Four Arrow Blocks of 4 of Each, with original affidavit, two 1c have tiny thins & two are slightly reinforced, one with sealed marginal tear, otherwise F.-V. F. Sets, Scarce & Most Unusual .....		—	210
607 ★	2c Carmine Wilson Roulette (409 var., 532 var.). Block of first, horiz. block of 10 of latter, first s. e. T. & B., latter at B., Scarce, Fine .....		41.35+	23
608 ★	1c-5c 1912-1914 Coils (410-413, 441-442, 444, 446, 447). Pairs, three with line, F.-V. F. ....		59.19	24
609 ★	50c Violet (422). Two copies, tiny thins, F.-V. F. appearance .....		46.00	12
610 ★	\$1.00 Violet Brown (423). Very Fine .....	(Photo)	50.00	40
611 ★	1c Green, 2c Carmine (424, 425). Plate No. & COIL STAMPS Blocks of 10, One 1c has surface Rub, otherwise V. G.-V. F. ....		60.00	17
612 ★	1c-30c 1914-15 Issue (424-439). 30c has tiny thin, others F.-V. F. ....		80.70	30
613 ★	1c Green Perf 12x10 (424a). Fresh, Perfs in at T., Signed Geo. B. Sloane, Scarce, V. G. ....	(Photo)	100.00	47+
614 ★	1c Green Imperforate Horiz. (424C). Block, Perfs. just in at R., V. G. ....	(Photo)	400.00	95
615	1c Green Imperforate Horiz. (424C). Vertical Pair, Light Cancel, Very Fine, Not listed used, Catalogue unused .....	(Photo)	200.00	120
616	2c Carmine Perf. 12x10 (425d). Just clear at B., Fine .....	(Photo)	50.00	60
617	5c Blue Perf 12x10 (425d). Faint crease, V. F. appearance, with P. F. Certificate, Scarce .....	(Photo)	125.00	105



618	1c-7c 1914-19 Issues (430, 498, 499, 501, 504, 525, two, 528A, 528B, 530). All show more or less distinct Doubling, 5 are unused, V. G.-V. F. ....	E. III	34
619	★ 12c Claret Brown (435 var.). Horiz Block of 6, One Perf Between Center Pair, otherwise Completely Imperforate Between, Fine .....	—	150
620	★ 50c Violet (440). Tips of few perfs a trifle toned, otherwise V. F. (Photo)	77.50	45
621	★ 50c Violet (440). Perfs just clear at top, Fine .....	77.50	30
622	★ 50c Violet (440). Block, short corner perf, otherwise F.-V. F. (Photo)	335.00	150
623	★ 3c Violet Coil (445). Horiz. Pair, Fine .....	55.00	45 31
624	★ 2c Red Ty I Coil (449). Line Pair, Fresh, Fine .....	(Photo) 175.00	170 -
625	★ 2c Red Ty I Coil (453). Line Pair, Very Fine .....	18.00	17
626	★ 3c Violet Coil (456). Mint Line pair, one short perf, otherwise Fine .....	37.50	16
627	★ 2c Carmine, Imperforate (459). Horiz. Pair, Mint, Extremely Fine (Photo)	100.00	70
628	★ \$1.00 Violet Black (460). Slightly nibbed perf, otherwise Fine .....	72.50	25
629	★ 1.00 Violet Black (460). R. Arrow Block, Fine .....	(Photo) 325.00	155

#### 1916 ISSUE

630	★ 1c-20c 1916-17 Issue (462-466, 468-476). Fine-Very Fine .....	98.05	78
631	★ 5c Carmine Error (467). Horiz. Strip of Three, Center Stamp The Error, Perfs in at L., tiny thin .....	100.00	52 +
632	★ 50c Light Violet (477). Pinpoint thin speck, otherwise Fine (Photo)	120.00	12 +
633	★ 50c Light Violet (477). Block, Extremely Fine .....	(Photo) 485.00	330
634	★ \$1.00 Violet Black (478). Fresh, Very Fine .....	(Photo) 92.50	67 +
635	★ \$2.00 Dark Blue, \$5.00 Light Green (479, 480). Minute thins, V. F. appearance .....	62.50	17
636	★ 2c Carmine Imperforate (482). Top Plate No. (7942) Block of 6 from the Error Plate, Mint, Extremely Fine .....	40.00	76
637	★ 3c Deep Violet Ty. II Imperforate (484). U. R. Sheet Corner Block, slight but distinct doubling to L., Extremely Fine .....	9.50+	16
638	★ 5c Carmine Error, Imperforate (485). Mint Block of 9, Center stamp the Error, Huge Margins, Superb .....	(Photo) 1500.00	1450
639	★ 2c Carmine Ty III Coil (487). Two Line Strips of four, showing two stages of Plate Crack, with diagram, F.-V. F. ....	14.00+	21

#### 1917-1920 ISSUES

640	★ 1c Green (498). Plate No (10656) Block of 16, Three stamps showing Plate Crack, a Spectacular Variety, V. G.-F. ....	19.72+	17 +
641	★ 1c-\$1.00 1917-19 Issues (498-500, 502-504, 506-518). Fine-Very Fine Set	37.42	26
642	★ 1c Green Imperforate Horiz (498a). Block, Signed by Ward, V. F. (Photo)	60.00	65





579



622



629



633



642



645



664



638



656



666



681



686



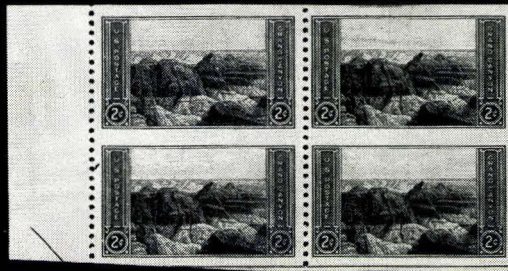
697



700



707



709



710



711



643	★○	1c Green Imperforate Between (498b). Block, fresh, V.G.-F .....	60.00	20
644	★田	1c Green Imperforate Between (498b). Horiz. Block of 12, Center Block, the Error, Signed by Geo B Sloane, Fine .....	60.00+	57+
645	★田	2c Rose Imperforate Horiz. (499a). Block, fresh, Very Fine (Photo) .....	70.00	57+
646	★	2c Carmine Imperforate Vertically (499b). Horiz. Pair, V.F. (Photo) .....	60.00	50
647		2c Carmine Imperforate Vertically (499b). Horiz. Pair, tied by smudges on portion of cover with Mpls. G.E. Co. Imprint, Fine, unlisted used, as unused .....	60.00	36
648	★	2c Rose Imperforate Between (499c). Vertical Pair, light cancellation, s.e. at R., light natural wrinkle, with P.F. Certificate, not listed used, as unused .....	300.00	90
649	★	2c Rose Imperforate Between (499c). Vertical Pair, Very Fine (Photo) .....	300.00	140
650	★田	2c Deep Rose Ty Ia (500). Mint Block, Fine, Scarce .....	27.50	32+
651	★	3c Light Violet Imperforate Horiz (501c). Vertical Pair, light natural diagonal crease in B. stamp, otherwise V.F., "Ward" Handstamp on back .....	125.00	65
652	★田	3c Dark Violet Ty II (502 var.). Block, L. pair shows distinct doubling to R., R. Stamps slightly doubled and pre-printing Paper Fold, fresh, V.G. ....	E. II	5
653	★	3c Violet Imperforate Horiz. (502c). Vertical Pair, margin cut at T., light natural gum bends, V.G.-F. ....	60.00	13
654	★	5c Carmine Error (505). Faint tropical toning, Fine .....	60.00	21
655	★田	5c Rose Error (505). Block of 9, Center Stamp the Error, F.-V.F. ....	100.00	44
656	★田	5c Rose Error (505). Block of Twelve, two center stamps the Errors, fresh, Very Fine .....	135.00	52+
657	★田	5c Rose Error (505). Block of Twelve, two middle stamps the Errors, fresh, Fine .....	135.00	67+
658	★田	5c Rose Error (505). Vertical Block of 12, two center stamps the Errors, Mint, perfs just touch at R .....	135.00	70
659	★	20c Light Ultramarine (515). Vertical Pair, appears Imperforate Between, barest trace of blind perfs in upper stamp, showing only in fluid, Fine .....	—	13
660	★	\$1.00 Deep Brown (518b). Perfs just touch at R., Scarce Shade, Fine ....	50.00	10
661	★	2c Carmine (519). Plate No. Single, Fine .....	22.50+	19
662	★	\$2.00 Orange Red & Black (523). Huge Margins, Extremely Fine (Photo) .....	75.00	50
663	★	\$2.00 Orange Red & Black (523). Centered slightly to U.R., Very Fine (Photo) .....	75.00	54
664	★田	\$2.00 Orange Red & Black (523). Block, Very Fine .....	300.00	170
665	★	\$5.00 Deep Green & Black (524). Very Fine .....	25.00	18
666	★田	\$5.00 Deep Green & Black (524). Block, fresh Extremely Fine (Photo) .....	100.00	77+







667	★田	\$5.00 Deep Green & Black (524). Mint Block, one stamp short corner perf, otherwise Fine-Very Fine .....	100.00	50
668	★	1c Gray Green Imperforate Between (525c). Horiz. Pair, s.e. at R., as always, F.-V.F. ....	20.00	24
669	★	2c Carmine Offset Ty VI Double Print (528Ad). Wide Separation, V.F. Listed but unpriced in Scott ..... (Photo)	—	42
670	★田	3c Violet Ty. III Offset, Double Print (529a). Block, clear separation, light natural gum wrinkles, Fine .....	24.00	6
671	★田	3c Violet Ty. III, Double Print (529a). Block, Impressions well separated & in diff. colors, Sheet Centerline & Half Arrow at L., Most Attractive, Fine .....	24.00+	6
672	★田	3c Purple Ty IV Offset Double Print (530a). R. Plate No. Block, Brilliant Color, Clear Separation, Fresh, V.G. ....	21.00+	6
673	★	1c-3c Offset Imperforates (531, 533, 534, 534A, 535). Horiz Pairs, couple natural creases, otherwise Very Fine .....	46.80	32
674	★田	2c, 3c Offset Imperforates (532, 534, 535). Blocks, minor gum wrinkles, Very Fine .....	37.00	14
675		2c Offset Imperforate Ty VII (534B). L.R. Sheet Corner Copy, Huge margins other sides, tiny brown spot U.R., Extremely Fine (Photo)	95.00	80
676	★	2c Carmine Offset Imperforate Ty VII (534B). Vertical Line Pair, Huge Margins, natural creases, otherwise Very Fine, Very Scarce .... (Photo)	350.00	280
677	★	1c Green Rossback, Imperforate Vertically (536a). Horiz Pair, s.e. at T., light gum bends, otherwise Fine, Scarce ..... (Photo)	100.00	6
678	★田	1c Green, 2c Carmine Rose Ty. III, Imperforate Horiz (538a, 540a). Blocks, F.-V.F. Mint .....	20.00	12
679	★	1c Green, 2c Carmine (545, 546). 2c has natural crease, Fine .....	18.50	8
680	★	\$2.00 Lake & Black (547). Very Fine .....	23.00	14
681	★田	\$2.00 Lake & Black (547). Mint Center Line Block, Very Fine (Photo)	115.00	100

#### 1922 ISSUE TO DATE

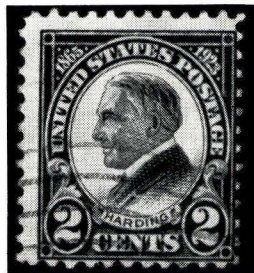
682	★	½c-\$5.00 1922-25 Issue (551-573). Fresh, F.-V.F. Set .....	64.65	34
683	★	2c Carmine Imperforate Vertically (554a). Horiz. Margin pair, V.F. ....	35.00	23
684	★田	2c Carmine Imperforate Vertically (554a). U.R. Sheet Corner Block, diagonal perfs in left stamps, mint, V.F. ....	70.00	60
685	★田	6c Red Orange (558). R. Plate No. (14169) Block of 6, two stamps Recut, Mint, Very Fine .....	53.00	42
686	★田	10c Orange Imperforate Horiz. (562a). Block, perfs. in at R. Scarce (Photo)	300.00	150
687	★	10c Orange Imperforate (562b). Horiz. marginal Pair, no gum, as always, Extremely Fine ..... (Photo)	275.00	210
688	★	12c Brown Violet Imperforate Vertically (564a). Horiz Pair, s.e. at T., minor gum bend, otherwise Very Fine ..... (Photo)	225.00	140



- 689 ★ 1c Green, 2c Carmine (578, 579, 595). Fine, Mint ..... 27.65 15
- 690 ★ 1c-10c 1923-26 Issue (581-591). Cpl Set, Nearly all V.F. .... 15.85 12+



- 691 ★ 1c Green (594). No gum, minute thin speck in Bottom margin, Fresh, Attractive Example of this Great Rarity, with P.F. Certificate (Photo) 3000.00 1600
- 692 ★ 2c Carmine (595). U.L. Plate No. Block, Mint, perfs barely in at T., scarce, V.G. .... 95.00 12+
- 693 ★ 2c Carmine Ty. I, II Coils (599, 599A). Horiz. Combination Line Pair, Fine-Very Fine ..... (Photo) 100.00 80
- 694 ★ 2c Carmine Ty. I, II Coils (599, 599A). Horiz Combination Line Pair, Mint, V.G.-F. .... (Photo) 100.00 45
- 695 ★ 2c Carmine Ty I, II Coil (599, 599A). Combination Line Strip of 4, normal stamp next to line has natural paper flaw & other normal stamp clipped at L., Ty II stamps are V.F. .... 107.50+ 47
- 696 ★ 2c Carmine Ty II Coil (599A). Mint Pair, Vivid Color, Extremely Fine .... 15.00 37
- 697 ★ 2c Harding Imperforate Vertically (610a). Block, Perfs in at B., one stamp thin, with P.F. Certificate, Scarce ..... (Photo) 400.00 100-



- 698 2c Harding Perf 11 Rotary (613). Light cancel, Perfs barely touch at R., a fresh, Attractive Copy of this Great Rarity, with P.F. Certificate (Photo) 1750.00 1650
- 699 ★ 2c Huguenot Walloon (615). L. Plate No. (15745) Block of 6 one stamp with Double Transfer, Gum Bends, Very Fine ..... 12.00+ 14
- 700 ★ 2c Carmine White Plains (629 var.). Vertical Block of Eight, Horiz. Perfs running diagonally thru center of stamps, top pair severed & re-joined by Govt. with Gummed Paper bearing portion of Printed P.M.G. Notice, from the only sheet of Imperf. Between Variety ever found, Spectacular ..... (Photo) — 90-
- 701 ★ 2c White Plains Souvenir Sheet (630). Mint, Fine-Very Fine ..... 72.50 60



702 ★	2c White Plains Souvenir Sheet (630). Dot over S Variety, Fresh, Fine	75.00	67+
703 ★	2c Carmine Ty II (634A). Mint, Just Fine	17.50	22
704 ★	7c Black Imperforate Between (639a). Vertical Pair, Fine .... (Photo)	75.00	45
705 P	2c Sullivan Small Die Proof (657P). Mounted on Original Page from Roosevelt Collection, Very Fine	125.00	60
706 ★	1½c Brown Nebr. Overprint (670 var.). Vertical Block of 10, showing Wide Spacing Variety, Fine	32.20	12
707 ★	3c Wisconsin Imperforate Horiz. (739a). Vertical Marginal Pair, creases and tiny thins, V.F. appearance, with P.F. Certificate ..... (Photo)	75.00	60
708 ★	1c Parks Imperforate Horiz. (740a). Mint Vertical Pair, Very Fine (Photo)	80.00	145
709 ★	2c Parks Imperforate Horiz. (741a). Mint Block, natural diagonal creases, otherwise Very Fine ..... (Photo)	140.00	130
710 ★	2c Parks Imperforate Vertically (741b). Mint Block, wild perf. in U.R. margin, otherwise F.-V.F. .... (Photo)	140.00	120
711 ★	3c Parks Imperforate Horiz. (742a). Mint Block, Vertical crease in R Pair, otherwise Fine, Listed but unpriced in Scott ..... (Photo)	—	130
712 ★	4c Parks Imperforate Horiz. (743a). Vertical Pair, Brown Kraft Paper attached to part of back & perforated with stamp, probably part of a paste-up Bureau repair, Very Fine ..... (Photo)	70.00	210
713 ★	5c Parks Imperforate Vertically (744a). Mint Horiz Pair, V.F. (Photo)	70.00	110
714 ★	5c Parks Imperforate Vertically (744a). Horiz Pair, Very Fine (Photo)	70.00	120
715 ★	5c Parks Imperforate (744 var.). Block, Pos 37-38, 47-48, Signed "Ward", from an Imperforate sheet sold before the Farleys were issued ,o.g., V.F. Unlisted in Scott ..... (Photo)	—	15
716 ★	7c Parks Imperforate Vertically (746a). Mint Block, Very Fine (Photo)	350.00	135
717 ★	3c Deep Violet (1035 var.). Horiz. Block of 22 incl Block with Full Vertical Gutter Between, mint, Very Fine, Listed but unpriced in Scott	—	32+
718 ★	Balance of U. S. Collection, Twentieth Century only, 461 stamps, nearly all unused, many blocks, V.G.-V.F.	557.14	110

## HAWAII

719 ★	1851, 13c Dark Red Kamehameha (6). Clear to Ample margins all around, fresh, o.g., Fine ..... (Photo)	50.00	52+
720 ★	1859, 1c Light Blue Numeral (12). Pos. 10, Huge margins all around, light natural creases, faint trace of age spots, A Gorgeous Copy of this scarce stamp ..... (Photo)	300.00	310
721 ★	1863, 1c Black on Greyish Numeral (15). Block, Pos. 5-8, Huge margins all around, tiny natural paper inclusion in one stamp, Very Fine (Photo)	225.00	210
722 ★	1863, 1c Black on Greyish Numeral (15). Block, Pos. 1-4, Enormous margins all around, fresh, 14mm scissor cut in gutter between stamps at B., Extremely Fine ..... (Photo)	225.00	240

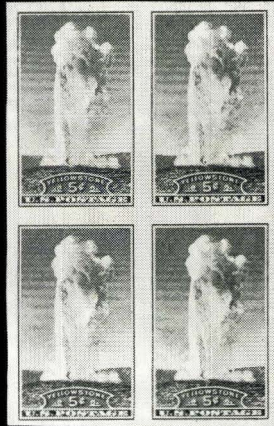




712



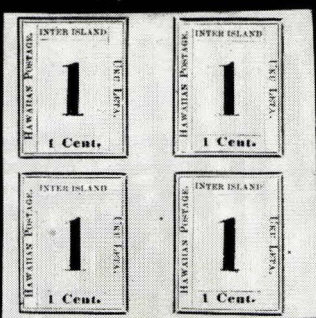
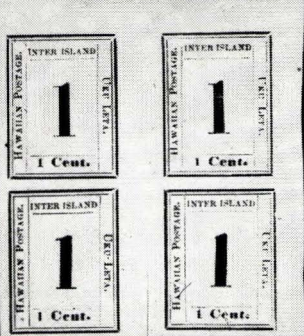
716



715



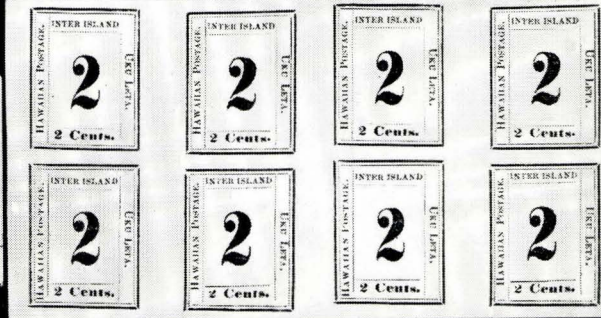
708



721

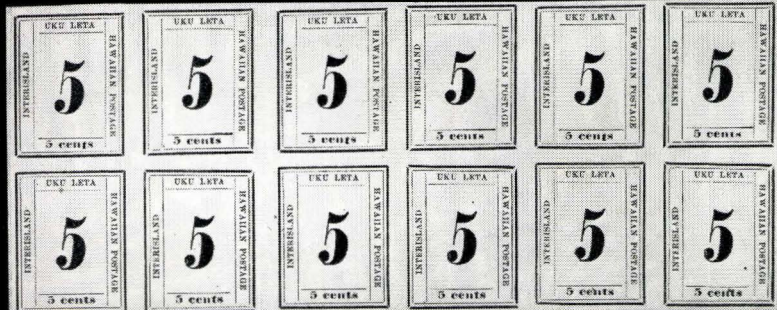


722



713

734

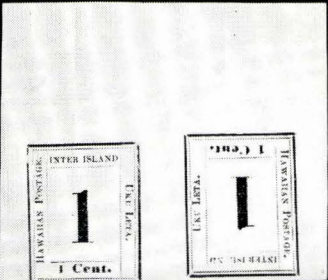


727

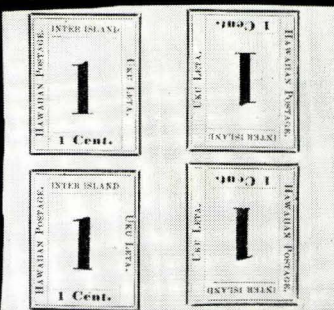
728



714



731



732



- 723     **1863, 1c Black on Greyish Numeral (15).** Pos. 10, Margins except barely touched at B., tied to piece by Greenish **Lahaina, Hawaiian Islands** pmk., Fine ..... **(Photo)** 65.00 47\*
- 724     **1863, 2c Black on Grayish Numeral (16).** Pos. 6, Clear to Huge Margins all around light Red Honolulu pmk., Very Fine ..... **(Photo)** 50.00 56
- 725     **1863, 2c Black on Grayish Numeral (16).** Large margins except just clear at U.R. corner, tied to small piece by clear Blue Lahaina pmk., V.F. .... **(Photo)** 50.00 37\*
- 726 ★   **1864, 5c Blue on Blue Numeral (21).** Pos. 8, Huge margins all around, tiny marginal thin, faint creases, minute bleached spots, V.F. appearance ..... **(Photo)** 42.50 29
- 727 ★田 **1863, 5c Blue on Blue Numeral (22).** Cpl. Pane of Ten, Just clear to Huge margins except barely touched at R., fresh, full o.g., faint vertical crease at R., a Rare & Handsome Showpiece ..... **(Photo)** 455.00+ 560
- 728 ★田 **1863, 5c Blue on Blue Numeral (22).** Horiz **Block of 12**, Pos 7-10, Repeated 3 times Large margins all around, fresh, o.g., faint vertical creases barely affecting 4 stamps & tiny marginal scissor cut, a Rare & Beautiful Block ..... **(Photo)** 600.00+ 680
- 729     **1863, 5c Blue on Blue Numeral (22).** Pos. 2, Huge margins all around, neat target cancel, Extremely Fine ..... **(Photo)** 37.50 47\*
- 730 ★   **1864, 1c Black on Laid Numerals (23).** Vertical Pair, Pos. 1, 3, Ample to Enormous margins all around, fresh, Extremely Fine ..... **(Photo)** 28.00+ 30
- 731 ★   **1864, 1c Black on Laid Numeral (23b).** Horiz. **Tete-Beche Pair**, Pos 2, 10 Large to Enormous margins all around, Extremely Fine .... **(Photo)** 200.00+ 130 7
- 732 ★田 **1864, 1c Black on Laid Numeral (23b).** **Tete Beche Block**, Pos. 4, 8, 6, 6 Large to Enormous margins all around, light crease in one pair, otherwise Extremely Fine ..... **(Photo)** 200.00+ 290
- 733     **1864, 1c Black on Laid Numeral (23).** Pos. 8, Large margins all around, neat square grid cancel, Extremely Fine ..... **(Photo)** 85.00 67\*
- 734 ★田 **1864, 2c Black on Laid Numeral (24).** Horiz. **Block of 8**, Pos. 7-10 in each block, Huge margins all around, one stamp has light age spot, otherwise Extremely Fine ..... **(Photo)** 200.00+ 210

END OF SALE — THANK YOU



**PRICES REALIZED**

**THIS SALE**

**\$1.00**

**OR ENTIRE YEAR \$4.50**

*LOTS ON VIEW FROM JUNE 10th*

*OFFICES OPEN SATURDAYS UNTIL 3 P.M.*

*PLEASE NOTE OUR NEW ADDRESS*



## IS YOUR COLLECTION FOR SALE?

REALIZE IMMEDIATE CASH  
PLUS THE ADDED ADVANTAGE OF  
SELLING THROUGH OUR AUCTIONS

We will advance immediate cash up to 75% of our appraisal value, of what your collection should realize at auction. There is no interest charge.

Your collection will then be sold in one of our coming auction sales. All stamps are expertly and advantageously lotted in attractive, well illustrated catalogs. Lotting is meticulously planned under our personal supervision. Commission is 20% of the gross realization. There is no lotting fee or any other charges. Final settlement is made within five weeks after the sale. We have been continuously conducting stamp auctions in the United States for over thirty-three years.

Valuable collections and stamp holdings are especially wanted, but we will accept properties valued from \$500 upwards. Send all stamps direct for appraisal. Auction advance will be remitted shortly after receipt. If not entirely pleased, stamps will be returned at our expense. If circumstances warrant due to bulk or value, we will travel anywhere to inspect important properties.

**ROBERT A. SIEGEL, Inc.**

(Licensed and Bonded Auctioneer)

10 EAST 52nd STREET

NEW YORK CITY

(Tel. PL. 3-6422)



# Stupendous

The New York World's Fair! Barnum would be thunderstruck. This incredible event will draw more people than all the other fairs held in this country put together.

And New York is ready for you. So are we, by the way. Our considerably expanded retail offerings of stamps and covers of the world await your arrival. Our new headquarters at #10 East 52nd Street — a whole floor devoted to your philatelic needs — is ready to serve you by helping to build your collection, or by buying it from you.

Visit the Fair. And visit us, too.

*Robert A. Siegel*  
Inc.

10 EAST 52nd STREET  
NEW YORK, N. Y. 10022







ROBERT A. SIEGEL  
10 East 52nd Street  
New York, N. Y. 10022

UNITED STATES

June	18th																																																																																																																																																																																																																																																																																																																																																																																																																																																																																																																																																																																																																																																																																																																																																																																																																																																																																																																																																																																																																																																																																																																																																																																																																																																																																																																																																																																																																			</
------	------	--	--	--	--	--	--	--	--	--	--	--	--	--	--	--	--	--	--	--	--	--	--	--	--	--	--	--	--	--	--	--	--	--	--	--	--	--	--	--	--	--	--	--	--	--	--	--	--	--	--	--	--	--	--	--	--	--	--	--	--	--	--	--	--	--	--	--	--	--	--	--	--	--	--	--	--	--	--	--	--	--	--	--	--	--	--	--	--	--	--	--	--	--	--	--	--	--	--	--	--	--	--	--	--	--	--	--	--	--	--	--	--	--	--	--	--	--	--	--	--	--	--	--	--	--	--	--	--	--	--	--	--	--	--	--	--	--	--	--	--	--	--	--	--	--	--	--	--	--	--	--	--	--	--	--	--	--	--	--	--	--	--	--	--	--	--	--	--	--	--	--	--	--	--	--	--	--	--	--	--	--	--	--	--	--	--	--	--	--	--	--	--	--	--	--	--	--	--	--	--	--	--	--	--	--	--	--	--	--	--	--	--	--	--	--	--	--	--	--	--	--	--	--	--	--	--	--	--	--	--	--	--	--	--	--	--	--	--	--	--	--	--	--	--	--	--	--	--	--	--	--	--	--	--	--	--	--	--	--	--	--	--	--	--	--	--	--	--	--	--	--	--	--	--	--	--	--	--	--	--	--	--	--	--	--	--	--	--	--	--	--	--	--	--	--	--	--	--	--	--	--	--	--	--	--	--	--	--	--	--	--	--	--	--	--	--	--	--	--	--	--	--	--	--	--	--	--	--	--	--	--	--	--	--	--	--	--	--	--	--	--	--	--	--	--	--	--	--	--	--	--	--	--	--	--	--	--	--	--	--	--	--	--	--	--	--	--	--	--	--	--	--	--	--	--	--	--	--	--	--	--	--	--	--	--	--	--	--	--	--	--	--	--	--	--	--	--	--	--	--	--	--	--	--	--	--	--	--	--	--	--	--	--	--	--	--	--	--	--	--	--	--	--	--	--	--	--	--	--	--	--	--	--	--	--	--	--	--	--	--	--	--	--	--	--	--	--	--	--	--	--	--	--	--	--	--	--	--	--	--	--	--	--	--	--	--	--	--	--	--	--	--	--	--	--	--	--	--	--	--	--	--	--	--	--	--	--	--	--	--	--	--	--	--	--	--	--	--	--	--	--	--	--	--	--	--	--	--	--	--	--	--	--	--	--	--	--	--	--	--	--	--	--	--	--	--	--	--	--	--	--	--	--	--	--	--	--	--	--	--	--	--	--	--	--	--	--	--	--	--	--	--	--	--	--	--	--	--	--	--	--	--	--	--	--	--	--	--	--	--	--	--	--	--	--	--	--	--	--	--	--	--	--	--	--	--	--	--	--	--	--	--	--	--	--	--	--	--	--	--	--	--	--	--	--	--	--	--	--	--	--	--	--	--	--	--	--	--	--	--	--	--	--	--	--	--	--	--	--	--	--	--	--	--	--	--	--	--	--	--	--	--	--	--	--	--	--	--	--	--	--	--	--	--	--	--	--	--	--	--	--	--	--	--	--	--	--	--	--	--	--	--	--	--	--	--	--	--	--	--	--	--	--	--	--	--	--	--	--	--	--	--	--	--	--	--	--	--	--	--	--	--	--	--	--	--	--	--	--	--	--	--	--	--	--	--	--	--	--	--	--	--	--	--	--	--	--	--	--	--	--	--	--	--	--	--	--	--	--	--	--	--	--	--	--	--	--	--	--	--	--	--	--	--	--	--	--	--	--	--	--	--	--	--	--	--	--	--	--	--	--	--	--	--	--	--	--	--	--	--	--	--	--	--	--	--	--	--	--	--	--	--	--	--	--	--	--	--	--	--	--	--	--	--	--	--	--	--	--	--	--	--	--	--	--	--	--	--	--	--	--	--	--	--	--	--	--	--	--	--	--	--	--	--	--	--	--	--	--	--	--	--	--	--	--	--	--	--	--	--	--	--	--	--	--	--	--	--	--	--	--	--	--	--	--	--	--	--	--	--	--	--	--	--	--	--	--	--	--	--	--	--	--	--	--	--	--	--	--	--	--	--	--	--	--	--	--	--	--	--	--	--	--	--	--	--	--	--	--	--	--	--	--	--	--	--	--	--	--	--	--	--	--	--	--	--	--	--	--	--	--	--	--	--	--	--	--	--	--	--	--	--	--	--	--	--	--	--	--	--	--	--	--	--	--	--	--	--	--	--	--	--	--	--	--	--	--	--	--	--	--	--	--	--	--	--	--	--	--	--	--	--	--	--	--	--	--	--	--	--	--	--	--	--	--	--	--	--	--	--	--	--	--	--	--	--	--	--	--	--	--	--	--	--	--	--	--	--	--	--	--	--	--	--	--	--	--	--	--	--	--	--	--	--	--	--	--	--	--	--	--	--	--	--	--	--	--	--	--	--	--	--	--	--	--	--	--	--	--	--	--	--	--	--	--	--	--	--	--	--	--	--	--	--	--	--	--	--	--	--	--	--	--	--	--	--	--	--	--	--	--	--	--	--	--	--	--	--	--	--	--	--	--	--	--	--	--	--	--	--	--	--	--	--	--	--	--	--	--	--	--	--	--	--	--	--	--	--	--	--	--	--	--	--	--	--	--	--	--	--	--	--	--	--	--	--	--	--	--	--	--	--	--	--	--	--	--	--	--	--	--	--	--	--	--	--	--	--	--	--	--	--	--	--	--	--	--	--	--	--	--	--	--	--	--	--	--	--	--	--	--	--	--	--	--	--	--	--	--	--	--	--	--	--	--	--	--	--	--	--	--	--	--	--	--	--	--	--	--	--	--	--	--	--	--	--	--	--	--	--	--	--	--	--	--	--	--	--	--	--	--	--	--	--	--	--	--	--	--	--	--	--	--	--	--	--	--	--	--	--	--	--	--	--	--	--	--	--	--	--	--	--	--	--	--	--	--	--	--	--	--	--	--	--	--	--	--	--	--	--	--	--	--	--	--	--	--	--	--	--	--	--	--	--	--	--	--	--	--	--	--	--	--	--	--	--	--	--	--	--	--	--	--	--	--	--	--	--	--	--	--	--	--	--	--	--	--	--	--	--	--	--	--	--	--	--	--	--	--	--	--	--	--	--	--	--	--	--	--	--	--	--	----



June 19th

355	70.00	401	62.50	449	34.00	497	57.50	545	30.00	593	32.00	641	26.00	689	15.00
356	52.00	402	62.50	450	36.00	498	210.00	546	19.00	594	8.50	642	65.00	690	12.50
357	40.00	403	230.00	451	12.00	499	37.50	547	55.00	595	67.50	643	20.00	691	1600.00
358	24.00	404	77.50	452	42.00	500	250.00	548	52.50	596	375.00	644	37.50	692	62.50
359	16.00	405	32.50	453	40.00	501	165.00	549	105.00	597	22.00	645	87.50	693	80.00
360	57.50	406	16.00	454	67.50	502	142.50	550	8.50	598	28.00	646	50.00	694	45.00
361	57.50	407	32.50	455	26.00	503	28.00	551	260.00	599	13.00	647	36.00	695	47.00
362	66.00	408	40.00	456	32.50	504	375.00	552	17.00	600	60.00	648	90.00	696	37.00
363	77.50	409	31.00	457	50.00	505	120.00	553	44.00	601	47.50	649	140.00	697	160.00
364	10.00	410	20.00	458	300.00	506	105.00	554	26.00	602	350.00	650	32.50	698	1650.00
365	37.50	411	14.00	459	140.00	507	30.00	555	12.50	603	35.00	651	65.00	699	14.00
366	30.00	412	22.00	460	60.00	508	15.00	556	17.00	604	9.00	652	5.00	700	90.00
367	12.00	413	330.00	461	15.00	509	1150.00	557	7.50	605	15.50	653	13.00	701	60.00
368	22.00	414	50.00	462	42.50	510	2400.00	558	12.00	606	210.00	654	21.00	702	67.50
369	13.00	415	56.00	463	575.00	511	450.00	559	13.00	607	23.00	655	44.00	703	22.00
370	21.00	416	60.00	464	210.00	512	475.00	560	16.00	608	24.00	656	82.50	704	45.00
371	13.00	417	42.50	465	210.00	513	27.50	561	135.00	609	12.00	657	67.50	705	60.00
372	8.00	418	36.00	466	210.00	514	20.00	562	240.00	610	40.00	658	70.00	706	12.00
373	102.50	419	20.00	467	170.00	515	16.00	563	33.00	611	17.00	659	13.00	707	60.00
374	35.00	420	105.00	468	65.00	516	13.00	564	17.50	612	30.00	660	10.00	708	145.00
375	87.50	421	47.50	469	37.50	517	16.00	565	34.00	613	47.50	661	19.00	709	190.00
376	26.00	422	13.00	470	37.00	518	16.00	566	77.50	614	55.00	662	50.00	710	120.00
377	14.00	423	1000.00	471	57.50	519	22.00	567	100.00	615	120.00	663	54.00	711	190.00
378	725.00	424	110.00	472	160.00	520	30.00	568	1800.00	616	60.00	664	170.00	712	210.00
379	10.50	425	60.00	473	725.00	521	13.00	569	125.00	617	105.00	665	18.00	713	110.00
380	37.50	426	72.50	474	36.00	522	5.00	570	55.00	618	34.00	666	77.50	714	120.00
381	11.00	427	32.00	475	225.00	523	52.50	571	1250.00	619	150.00	667	50.00	715	15.00
382	6.00	428	235.00	476	1000.00	524	62.50	572	82.00	620	45.00	668	24.00	716	235.00
383	36.00	429	350.00	477	600.00	525	200.00	573	940.00	621	90.00	669	42.00	717	32.50
384	8.00	430	350.00	478	250.00	526	57.50	574	85.00	622	150.00	670	6.50	718	110.00
385	6.50	431	200.00	479	72.50	527	21.00	575	325.00	623	31.00	671	6.50	719	52.50
386	575.00	432	20.00	480	120.00	528	60.00	576	100.00	624	170.00	672	6.50	720	310.00
387	26.00	433	18.00	481	32.00	529	125.00	577	75.00	625	17.00	673	32.50	721	210.00
388	28.00	434	155.00	482	360.00	530	87.50	578	375.00	626	16.00	674	14.00	722	240.00
389	105.00	435	77.50	483	310.00	531	350.00	579	280.00	627	70.00	675	80.00	723	47.50
390	72.50	436	55.00	484	77.50	532	725.00	580	700.00	628	25.00	676	280.00	724	56.00
391	15.00	437	37.50	485	67.50	533	600.00	581	26.00	629	155.00	677	65.00	725	37.50
392	350.00	438	105.00	486	365.00	534	35.00	582	36.00	630	78.00	678	12.00	726	29.00
393	41.00	439	310.00	487	350.00	535	67.50	583	18.50	631	52.50	679	8.00	727	560.00
394	160.00	440	240.00	488	55.00	536	115.00	584	35.00	632	82.50	680	16.50	728	650.00
395	210.00	441	150.00	489	60.00	537	290.00	585	27.00	633	320.00	681	100.00	729	47.50
396	67.50	442	67.50	490	50.00	538	450.00	586	17.00	634	67.50	682	34.00	730	30.00
397	34.00	443	62.50	491	135.00	539	26.00	587	240.00	635	17.00	683	23.00	731	190.00
398	50.00	444	135.00	492	72.50	540	13.00	588	18.00	636	26.00	684	60.00	732	290.00
399	45.00	445	26.00	493	110.00	541	300.00	589	14.00	637	16.00	685	42.50	733	67.50
400	45.00	446	17.00	494	37.50	542	16.00	590	32.00	638	1450.00	686	150.00	734	210.00
		447	425.00	495	87.50	543	9.00	591	19.00	639	21.00	687	210.00		
		448	67.50	496	45.00	544	10.00	592	47.50	640	17.50	688	140.00		