

276th SALE

*Priced  
Catalogues*

PART I  
OF A VALUABLE STAMP COLLECTION OF  
**UNITED STATES**  
INCLUDING POSTMASTERS' PROVISIONALS  
UNUSED 19th AND 20th CENTURY  
ENVELOPES AND REVENUES

Offered by Order of a  
Texas Collector



AT PUBLIC AUCTION  
Tuesday and Wednesday  
OCTOBER 6th and 7th, 1964  
at 1:30 P.M. Each Day

*Robert A. Siegel*  
**SAUCTIONS**

10 EAST 52nd STREET NEW YORK, N. Y. 10022

Tel: PLaza 3-6422

## CONDITIONS OF SALE

1. The terms of sale are strictly cash to the highest bidder. All buyers are expected to pay for lots within three days of receipt, unless special arrangements have been made prior to the sale.
2. All bids are per lot as numbered in the catalogue and not per piece, unless otherwise announced by the auctioneer at the time of sale.
3. Any lot the description of which is incorrect is returnable only within three days of receipt. All disputed lots must be returned intact as received. Lots containing five or more stamps are not returnable at any time. No lots may be returned by purchasers who have had the opportunity to examine them before the sale.
4. Successful mail bidders, unless they are known to us or supply acceptable references, will be notified of the amount of the lots secured for them, and are expected to send payment in full before the lots are forwarded.
5. If the purchase price has not been paid within the time limit, or lots taken up within seven days from date of sale, they may be resold and any losses arising from such sale charged to the defaulter.
6. All stamps are sold as genuine, except where sold "As Is." Claims for any lot proving otherwise, must be made within two weeks from date of sale.
7. The right is reserved to group two or more lots, also withdraw any lot or lots from the sale, or to act on behalf of the seller.
8. Until paid for in full all lots remain the property of Robert A. Siegel.
9. No commission is charged for buying at our sales, but all forwarding charges will be added to the purchase price.
10. Upon written application lots may be sent for examination prior to the auction, conditional upon being mailed back by registered mail, adequately insured, within 24 hours of receipt. The applicant is completely responsible for all lots sent for examination, and for the insurance of same against mishap, from the time of receipt until they are actually received back, and is to pay all expenses of postage and insurance.
11. The placing of a bid shall constitute acceptance of the foregoing conditions of sale.

ROBERT A. SIEGEL

GREGORY MOZIAN, Licensed Auctioneers

In sending bids, always state the highest price you are prepared to pay for the lot. Your limit will not be used as a starting bid unless absolutely necessary.

## DESCRIPTIONS

Superb or Extremely Fine—the finest condition for noteworthy, outstanding copies.

Very Fine (VF)—means that there is a slight deviation from the above.

Fine (F)—means that the perforations do not touch the design on issues after 1890, but in some cases may just touch in earlier issues; if used, fairly lightly cancelled.

Very Good (VG)—means that the appearance is generally fine but that the perforations cut the design slightly.

Good (G)—means average off-centering; or fairly attractive with slight defects. Original gum is not to be expected on 19th Century stamps up to 1898 unless so stated.

Scott 1964 Specialized United States Catalogue is used for cataloging our lots of United States and Scott's Standard Catalogue, 1965 for others.

**WE SOLICIT FINE MATERIAL FOR FUTURE SALES**

OCTOBER 6th and 7th, 1:30 P. M.



**ROBERT A. SIEGEL, Inc.**  
10 East 52nd Street  
New York, N. Y. 10022  
Tel.: PLaza 3-6422 (Area Cod

Please purchase for me at your auction to be held **October 6th-7th, 1964**, the lots named below, the prices annexed being my limit on each lot. I agree to remit for purchases in accordance with the **Conditions of Sale** and to return no lots later than three days after receipt.

SIGNED

[illegible][illegible]

Upon request, estimate of value furnished on any lots in this auction.



# FIRST SESSION

TUESDAY, OCTOBER 6th, 1964 — 1:30 P. M.

## UNITED STATES

### POSTMASTER PROVISIONALS

- 500<sup>00</sup>
- 300<sup>00</sup>
- 160<sup>00</sup>
- 60<sup>00</sup>
- 180<sup>00</sup>
- 55<sup>00</sup>
- 425<sup>00</sup>
- 235<sup>00</sup>
- 1 ☒ **Baltimore, Md. 5c Black on White (3X1).** Frame line at L. and portions showing on all other sides, ms. cancel and tied by clear Blue Baltimore, Md. pmk., matching "Paid" and "5" in oval on neat folded June 1847 letter to Annapolis, A Very Pretty Cover, Very Fine ..... (Photo) 1,450.00
  - 2 ☒ **Baltimore, Md. 5c Black on Bluish (3X3).** Frame line at L. & partly showing at T. & R., trivial nick at top, tied by ms. "X", matching "Paid" and "5", clear Blue Baltimore pmk., matching "Paid", on neat folded May 1846 cover to Upper Marlboro, Md., Handsome Example of this Rarity ..... (Photo) 2,300.00
  - 3 **New York 5c Black (9X1).** Large margins all around, Red Town & Grid cancels & Black Foreign Transit, Extremely Fine ..... (Photo) 90.00
  - 4 **New York 5c Black (9X1).** Huge margins all around, Brilliant Color and Impression, neat Red Grid cancel, despite almost invisible pinhole a Magnificent stamp ..... (Photo) 90.00
  - 5 **New York 5c Black on Blue (9X1a).** Pos. 12, ample to large margins all around, red grid, matching town pmk. & light blue ms. cancels trivial tiny crease in U. R. corner, otherwise Extremely Fine with P F Certificate ..... (Photo) 450.00
  - 6 ☒ **New York 5c Black (9X1).** Huge margins all around, light Blue ms. cancel, clear red "New York 5cts", matching "Paid" in Arc on neat folded 1846 cover to Albany, stamp has light horiz. crease, Extremely Fine appearance ..... 125.00
  - 7 ☒ **New York 5c Black (9X1).** Clear to Large margins all around tied by partial Red "New York 5 Paid Sept. 30", another clear strike Red Cologne Transit, Boxed "Colonies & c. Art 12" and ms. Rate, "Str. Britannia" in ms. on neat folded 1845 cover to France. A Beauty, Very Fine (Photo) E. XII
  - 8 ☒ **New York 5c Black (9X1).** Horiz. pair, pos. 16, 17, clear to large margins all around, tied by Red Paid in Arcs, another strike and clear matching "New York 10cts" on neat folded Jan. 1847 cover to Ohio, Very Fine ..... (Photo) 300.00

*LOTS ON VIEW FROM SEPTEMBER 24th*

*OFFICES OPEN EVERY SATURDAY*

45<sup>00</sup>  
725<sup>00</sup>

- 9 ★ **Providence, R. I. 5c Black (10X1).** Margins all around, Very Fine (Photo) 50.00
- 10 ☒ **Providence, Rhode Island 5c Black (10X1).** Margins all around, ms. "V" cancel, matching "Paid", Red Providence pmk., matching "Paid" and "5" on neat folded cover to New York, Very Fine ..... (Photo) 500.00



11 12 13 14 16

675<sup>00</sup>

- 11 ★ **St. Louis, Mo. 5c on Greenish (11X1).** Clear to large margins except outer frame barely touched at L. L., unusually Rich Color & impression, tiny thin, Fine appearance ..... (Photo) 1,300.00

800<sup>00</sup>

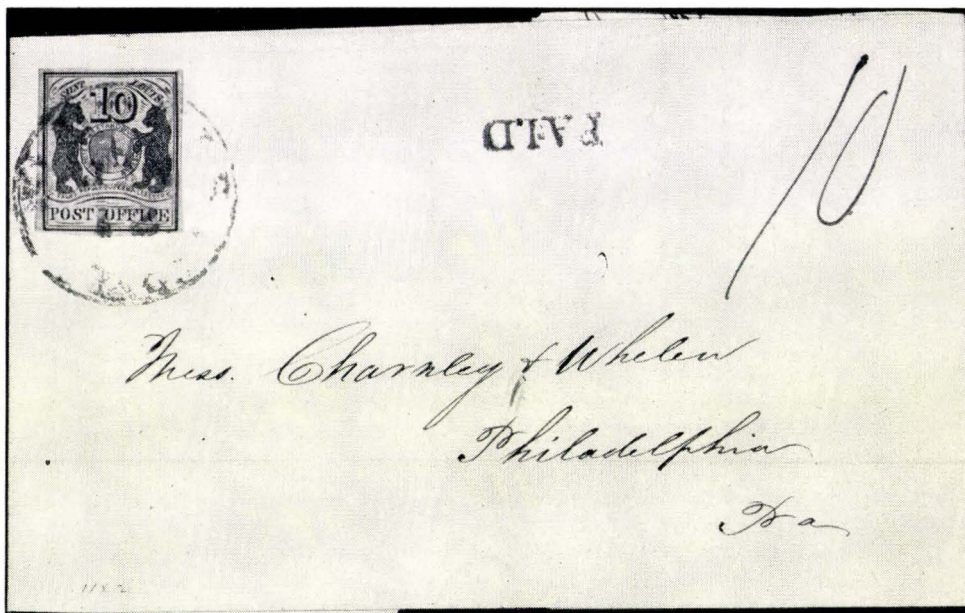
- 12 **St. Louis, Mo. 5c on Greenish (11X1).** Large margins all around, almost invisible ms. cancel, minor faults, Extremely Fine appearance ..... (Photo) 750.00

475<sup>00</sup>

- 13 **St. Louis, Mo. 10c on Greenish (11X2).** Margins all around, Gorgeous Color and Impression, almost invisible ms. cancel, minute trivial thin speck, Very Fine appearance ..... (Photo) 750.00

350<sup>00</sup>

- 14 **St. Louis, Mo. 10c on Greenish (11x2).** Huge margins all around, ms. lines and tiny portion of Red pmk. tiny nicks in R. margin and expertly repaired at L. L., Attractive appearing copy of this Rarity ..... (Photo) 750.00



1800<sup>00</sup>

- 15 ☒ **St. Louis, Mo. 10c on Greenish (11X2).** Margins all around, Wonderful Color & Impression, tied by light Red St. Louis, Mo. pmk., matching "Paid", "10" in ms., on neat folded Jan. 1846 cover to Philadelphia, a Very Pretty Cover, Very Fine ..... (Photo) 1,100.00

*St Antamia*

*Mynews By Mary L Co*

*James M. Buchanan*  
5 Cents

*Louis Saffaury Co*

*Wm Wetmorell Esq*  
*Sandusky City Pa*  
*Sandusky City*  
*Ohio*



*And*



*JD*

*James M. Buchanan*  
5 Cents

*Wm H. Buck Esq*  
*Attas Lane*  
*Upper Marlboro*  
*Md*

PAID

2

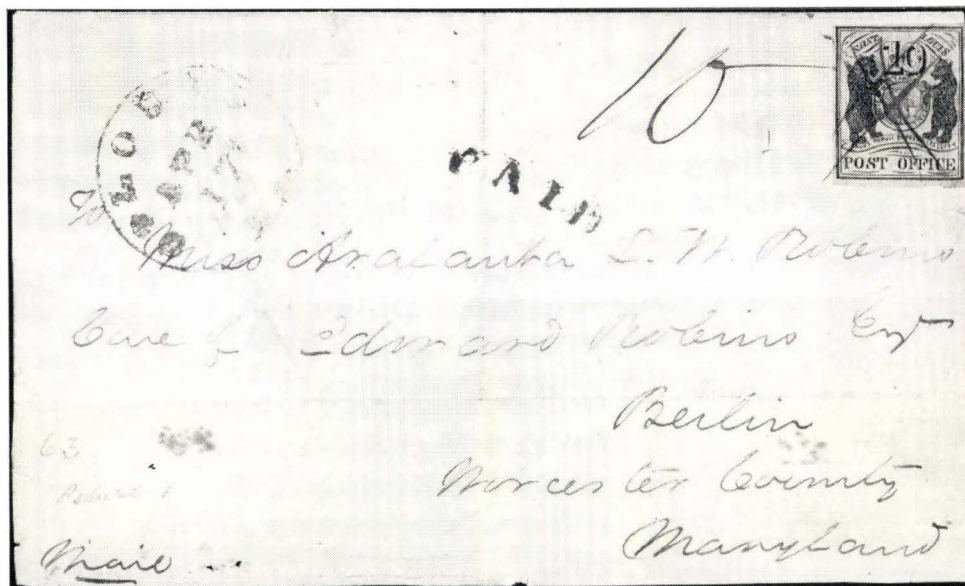
*Lucas*

PAID

8

700<sup>00</sup> 16

**St. Louis, Mo. 10c Black (11X5).** Large margins all around, Lovely Impression, faint pen cancel, appears unused, Extremely Fine ..... **(Photo)** 800.00



675<sup>00</sup>

17 ☒ **St. Louis, Mo. 10c on Gray Lilac (11X5).** Ample to large margins all around, light ms. cancel, matching "10", Red St. Louis, Mo. pmk. on neat folded 1846 cover to New York State, cover a trifle aged, Very Fine **(Photo)** 950.00

1,950<sup>00</sup>

18 ☒ **St. Louis, Mo. 10c on Bluish Pelure (11X8).** Large margins all around, tied by light ms. lines, matching "10", Red St. Louis, Mo. pmk., matching "Paid", on front only to Maryland, only about 15 copies of this rare stamp are known, Very Fine ..... **(Photo)** 3,000.00+

#### 1847 ISSUE

40<sup>00</sup>

19 ★ **5c Red Brown (1).** Large margins all around, color a bit weak, Fine **(Photo)** 135.00

40<sup>00</sup>

20 ★ **5c Red Brown Reproduction (3).** Margins all around, light crease, Very Fine appearance ..... **(Photo)** 95.00

70<sup>00</sup>

21 ★ **10c Black Reproduction (4).** Ample to large margins all around, small thin, Very Fine appearance ..... **(Photo)** 135.00

#### 1851 ISSUE

975<sup>00</sup>

22 ★ **1c Blue Ty. 1a (6).** Margins all around, deep gorgeous color, o. g., a marvellous copy, Extremely Fine ..... **(Photo)** 800.00

155<sup>00</sup>

23 ★ **1c Dark Blue Ty. III (8).** Margins all around, Rich Color, o. g., minute thin and tiny tear, Very Fine appearance ..... **(Photo)** 425.00

185<sup>00</sup>

24 ★ **1c Blue Ty. IIIa (8A).** Huge margins all around, Brilliant Color, light corner crease, Extremely Fine appearance ..... **(Photo)** 160.00



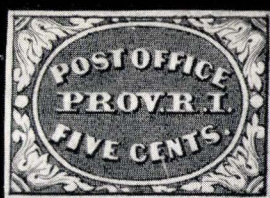
3



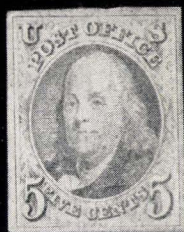
4



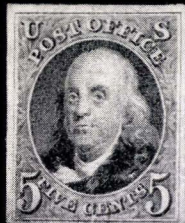
5



9



19



20



21



22



33



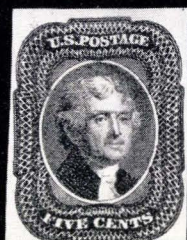
24



25



27



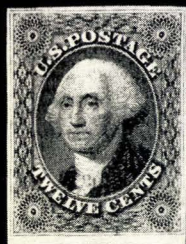
28



29



30



31



32



23



35



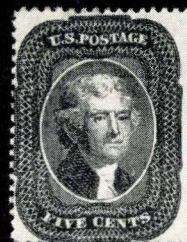
37



39



40



41



42



44



45



46



47



50



51

4250	25 ★	1c Blue Ty. IV (9). Enormous margins except touched at T., Fine (Photo)	35.00
1900	26 ★	1c Blue Ty. IV, 3c Red (9, 11). Just clear to ample margins except 1c touched at U. R., pretty colors, Fine	43.50
6250	27 ★	3c Orange Brown (10). Margins all around, Vivid Color, <b>Stitch Watermark</b> , trivial tiny corner crease, Very Fine appearance (Photo)	60.00+
24000	28 ★	5c Red Brown Imperforate (12). Ample to large margins except barely touching at B., Vivid Color, Fine, with P. F. Certificate (Photo)	550.00
30000	29 ★	10c Green Ty. I (13). Clear to Huge margins except cut in at L. L., Brilliant Color, Attractive example of this Rare stamp (Photo)	800.00
55000	30 ★	10c Green Ty. IV, Imperforate (16). Pos. 74L1, Recut at Top, Large to Huge margins all around, part o. g., P. F. Certificate states "stained", but this is actually the slight overall toning often found on this issue, Very Fine (Photo)	800.00
9250	31 ★	12c Black (17). Clear to Large margins all around, Lovely Color and Impression, small thin, Very Fine appearance (Photo)	130.00

#### 1857 ISSUE

2000	32 ★	1c Blue Ty. I (18). Short corner perf., creases, V. F. appearance (Photo)	85.00
19000	33 ★	1c Blue Ty. Ia (19). Sheet selvage attached at B., Brilliant Color, perfs. just in at R., a fresh, attractive copy of this Rare stamp (Photo)	500.00
2750	34 ★	1c Blue Ty. II (20). Two corner perfs. a bit rounded, otherwise Fine	50.00
17500	35 ★	1c Blue Ty. III (21). Wonderful color, fresh, tips of few perfs. a trifle toned, otherwise Fine, with A. P. S. Certificate (Photo)	190.00
1100	36 ★	1c Blue Ty IIIa (22). Gorgeous color, fresh, o. g., tiny thins, V. F. appearance	40.00
13000	37 ★	1c Blue Ty. IV (23). Recut once at T., twice at B., perfs. slightly in at top, fresh, Fine (Photo)	180.00
2500	38 ★	1c Blue Ty. V (24). Magnificent Color, o. g., Extremely Fine	8.00
7500	39 ★	3c Red Ty. I (25). Rich color, o. g., Extremely Fine (Photo)	40.00
24000	40 ★	5c Brick Red Ty. I (27). Pretty color, large part o. g., Fine (Photo)	325.00
23000	41 ★	5c Red Brown Ty. I (28). Brilliant Color, fresh, o. g., Fine (Photo)	265.00
135000	42 ★	5c Brown Ty. I (29). Gorgeous color, fresh, o. g., centered slightly to top, Very Fine (Photo)	77.50
2100	43 ★	5c Orange Brown Ty. II (30). Vivid Color, minute perf. tear. Fine appearance	40.00
27000	44 ★	10c Green Ty. I (31). Brilliant Color, fresh, Fine, with Photo Print of P. F. Certificate stating genuine unused but regummed (Photo)	700.00
13000	45 ★	10c Green Ty. II (32). Centered slightly to Right, Very Fine (Photo)	95.00
13000	46 ★	10c Green Ty. III (33). Centered, Rich Color, two short perfs., otherwise Extremely Fine (Photo)	95.00
37500	47 ★	10c Green Ty. IV (34). Pos. 54L1, Recut at Bot. pinpoint thin specks, Very Fine appearance (Photo)	800.00

19 <sup>00</sup>	48 ★	10c Green Ty. V (35). Fresh, o. g., Very Fine .....	16.00
21 <sup>00</sup>	49 ★	12c Black, Plate III (36). Wonderful Color & Impression, fresh, Fine .....	27.50
50 <sup>00</sup>	50 ★	24c Lilac (37). Nice color, fresh, Very Fine ..... (Photo)	48.50
30 <sup>00</sup>	51 ★	30c Orange (38). Gorgeous color, fresh, Fine ..... (Photo)	50.00
95 <sup>00</sup>	52 ★	90c Blue (39). Trivial tiny thins, Fine appearance ..... (Photo)	175.00

#### 1857 REPRINTS

37 <sup>50</sup>	53 ★	1c Bright Blue Reprint (40). Short corner perf., otherwise V. F. (Photo)	67.50
160 <sup>00</sup>	54 ★	3c Scarlet Reprint (41). Fine ..... (Photo)	225.00
87 <sup>50</sup>	55 ★	5c Orange Brown Reprint (42). Fine ..... (Photo)	85.00
230 <sup>00</sup>	56 ★	10c Blue Green Reprint (43). Extremely Fine ..... (Photo)	150.00
220 <sup>00</sup>	57 ★	12c Greenish Black Reprint (44). Very Fine ..... (Photo)	185.00
250 <sup>00</sup>	58 ★	24c Blackish Violet Reprint (45). Very Fine ..... (Photo)	200.00
270 <sup>00</sup>	59 ★	30c Yellow Orange Reprint (46). Faint tiny crease, Very Fine appearance (Photo)	285.00
250 <sup>00</sup>	60 ★	90c Deep Blue Reprint (47). One perf. tip faintly toned, otherwise Very Fine ..... (Photo)	350.00

#### AUGUST 1861 ISSUE

45 <sup>00</sup>	61 ★	3c Brown Rose August (56). Gorgeous color, fresh, o. g., minute creases, Very Fine appearance ..... (Photo)	75.00
------------------	------	--	-------



260 <sup>00</sup>	62 ★	10c Dark Green August (58). Centered, gorgeous color, minute corner crease, otherwise Extremely Fine, a wonderful copy of this Rare stamp (Photo)	500.00
13,000 <sup>00</sup>	63 ★	12c Black August (59). Centered, o. g. pinpoint thin speck, otherwise Ex- tremely Fine, a magnificent copy of one of the Rarest of all U. S. stamps, with P. F. Certificate ..... (Photo)	8,500.00
300 <sup>00</sup>	64 ★	24c Violet August (60). Centered, Magnificent Color, short perf. at B. and perfs. slightly blunted at T., A Handsome example of this scarce stamp, with P. F. certificate stating it is "genuine but regummed" ..... (Photo)	600.00

1950<sup>00</sup>

- 65 ★ **30c Red Orange August (61).** Deep Vivid Color, o.g., perfs. just touch at R., fresh, Fine, a very pretty copy of this Rare Stamp, with P. F. Certificate ..... **(Photo)** 2,500.00

## 1861 ISSUE

- 37<sup>50</sup>  
160<sup>00</sup>  
165<sup>00</sup>  
62<sup>50</sup>  
18<sup>00</sup>  
97<sup>50</sup>  
32<sup>50</sup>  
190<sup>00</sup>  
20<sup>00</sup>  
340<sup>00</sup>  
40<sup>00</sup>  
45<sup>00</sup>  
44<sup>00</sup>
- 66 ★ **1c Blue, 3c Rose (63, 65).** Fresh, Lovely Colors, o.g., Extremely Fine ..... 15.75
- 67 ★ **3c Pink (64).** Gorgeous color o.g. almost invisible crease, Very Fine appearance, Photo of letter from Stanley B. Ashbrook regarding this stamp "I doubt if the #64 exists today in **unused o.g.** condition in any finer example of the color" ..... **(Photo)** 400.00
- 68 ★ **3c Lake (66).** Wonderful Color, fresh, centered slightly to T., Very Fine **(Photo)** 175.00
- 69 ★ **5c Buff (67).** Magnificent Brilliant color, small marginal tear, Extremely Fine appearance ..... **(Photo)** 350.00
- 70 ★ **10c Green (68).** Fresh, o.g., one slightly short perf., otherwise Extremely Fine ..... 13.50
- 71 ★ **24c Red Lilac (70).** Wonderful Color, tiny creases, Fine appearance **(Photo)** 80.00
- 72 ★ **30c Orange (71).** Vivid color, fresh, Fine ..... **(Photo)** 40.00
- 73 ★ **90c Dark Blue (72).** Centered, large margins, Wonderful Color, a Gorgeous Gem, Extremely Fine ..... **(Photo)** 110.00
- 74 ★ **2c Black (73).** Fresh, full o.g., centered slightly to B., Very Fine **(Photo)** 13.00
- 75 ★ **3c Scarlet (74).** Fresh, o.g., Brilliant Color, Fine, with P. F. Certificate **(Photo)** 375.00
- 76 ★ **5c Red Brown (75).** Lovely Color, minute thin speck, Fine appearance **(Photo)** 80.00
- 77 ★ **15c Black Lincoln (77).** Centered slightly to B., Very Fine ..... **(Photo)** 47.50
- 78 ★ **24c Lilac (78).** Lovely color, fresh, o.g., Very Fine ..... **(Photo)** 21.00

## 1867 GRILLS

- 340<sup>00</sup>  
240<sup>00</sup>  
210<sup>00</sup>  
170<sup>00</sup>  
425<sup>00</sup>  
160<sup>00</sup>  
24<sup>00</sup>
- 79 ★ **3c Rose, Grilled All Over (79).** Perfs. nearly intact, o.g., horiz. crease, Fine appearance, a Very Rare stamp ..... **(Photo)** 425.00
- 80 ★ **2c Black D. Grill (84).** Lovely Color & Impression, fresh, full o.g., minute creases, Fine appearance, Rare ..... **(Photo)** 275.00
- 81 ★ **3c Black D. Grill (85).** Centered, huge margins, Lovely Color, a gem, Extremely Fine ..... **(Photo)** 175.00
- 82 ★ **2c Black Z. Grill (85B).** Centered, Large Margins, Rich Color, trivial sealed marginal perf. break, otherwise Extremely Fine ..... **(Photo)** 130.00
- 83 ★ **3c Rose Z. Grill (85C).** Centered, Gorgeous color, fresh, one slightly short perf., otherwise Very Fine, a wonderful copy of this Rare stamp **(Photo)** 375.00
- 84 ★ **12c Black Z. Grill (85E).** Creases, Fine appearance. Very Scarce **(Photo)** 215.00
- 85 ★ **1c Blue E. Grill (86).** Vivid color, minute margin break, Fine appearance ..... 42.50



52



53



54



55



56



57



58



59



60



61



67



68



69



71



72



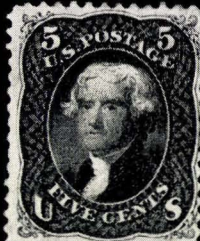
73



74



75



76



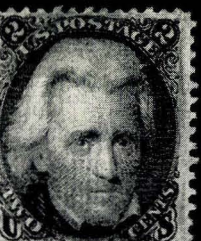
77



78



79



80



81



82



83



84



86



87



88

57 <sup>00</sup>	86 ★	10c Green E. Grill (89). Fresh, o. g., Fine	(Photo)	67.50
110 <sup>00</sup>	87 ★	12c Black E. Grill (90). Magnificent color, o. g., Very Fine	(Photo)	72.50
120 <sup>00</sup>	88 ★	15c Black E. Grill (91). Rich Color, full o. g., fresh, an unusually Fine copy of a very scarce stamp	(Photo)	225.00
30 <sup>00</sup>	89 ★	1c-3c F. Grills (92-94). First short perfs., last minute trivial bend, otherwise fresh, Fine		43.50
100 <sup>00</sup>	90 ★	5c Brown F. Grill (95). Rich Color, Very Fine	(Photo)	150.00
26 <sup>00</sup>	91 ★	10c Green F. Grill (96). Centered, faint horiz. crease, V. F. appearance	(Photo)	35.00
32 <sup>00</sup>	92 ★	15c Black F. Grill (98). Wonderful color, minute thin speck, otherwise Very Fine	(Photo)	40.00
120 <sup>00</sup>	93 ★	24c Gray Lilac F. Grill (99). Rich color, fresh, full o. g., an unusually Fine copy of this scarce stamp	(Photo)	130.0
32 <sup>00</sup>	94 ★	30c Orange F. Grill (100). Centered, Rich Color, minute thin, Very Fine appearance	(Photo)	125.00
300 <sup>00</sup>	95 ★	90c Blue F. Grill (101). Fresh, Brilliant Color, Very Fine	(Photo)	275.00

#### 1861 RE-ISSUES

42 <sup>00</sup>	96 ★	1c Blue Re-issue (102). Centered, huge margins, minute corner perf. crease, Extremely Fine appearance	(Photo)	60.00
170 <sup>00</sup>	97 ★	2c Black Re-issue (103). Centered, huge margins, faint toning, otherwise Extremely Fine	(Photo)	180.00
130 <sup>00</sup>	98 ★	3c Brown Red Re-issue (104). Tiny sealed tear, V. F. appearance	(Photo)	265.00
160 <sup>00</sup>	99 ★	5c Brown Re-issue (105). Small part o. g., Extremely Fine	(Photo)	185.00
155 <sup>00</sup>	100 ★	10c Green Re-issue (106). Large margins, one short perf., otherwise Very Fine	(Photo)	200.00
160 <sup>00</sup>	101 ★	12c Black Re-issue (107). Fresh, large part o. g., minute thin specks, otherwise Very Fine	(Photo)	275.00
175 <sup>00</sup>	102 ★	15c Black Re-issue (108). Fine	(Photo)	225.00
300 <sup>00</sup>	103 ★	24c Deep Violet Re-issue (109). Fresh, o. g., Rich Color, U. L. corner perf. a bit short, otherwise Extremely Fine	(Photo)	250.00
280-	104 ★	30c Brownish Orange Re-issue (110). Centered, Vivid color, part o. g., Extremely Fine	(Photo)	400.00
180-	105 ★	90c Blue Re-issue (111). Small thin, Extremely Fine appearance	(Photo)	425.00

#### 1869 PICTORIAL ISSUE

16-	106 ★	1c Brown Orange (112). Fresh, part o. g., Lovely color, Fine		27.50
27-	107 ★	2c Brown, Split Grill (113). Fresh, o. g., Very Fine		16.50
31-	108 ★	6c Ultramarine (115). Rich color, pinpoint thin speck in grill, otherwise Extremely Fine	(Photo)	42.50
23-	109 ★	10c Yellow (116). Rich color, faint creases, Very Fine appearance	(Photo)	47.50



90



91



92



93



94



95



96



97



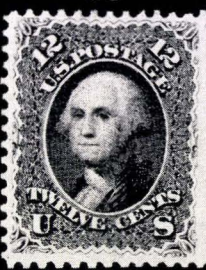
98



99



100



101



102



103



104



105



108



109



111



112



120



114



116



117



118



119



113



121



122



123

110 ★	12c Green (117). Tiny faults, Very Fine appearance .....	45.00
111 ★	15c Brown & Blue Ty. I (118). Centered, Lovely colors, Extremely Fine (Photo) .....	165.00
112 ★	15c Brown & Blue Ty. II (119). Gorgeous colors, Very Fine .....	50.00
113 ★	24c Green & Violet (120). Vivid colors, Extremely Fine .....	115.00
114	24c Green & Violet, Inverted Center (120b). Unusually deep vivid colors, very light cancel, centered to left, few perfs. a trifle blunted at U. R., otherwise Fine. A desirable copy of this scarce & popular stamp (Photo) .....	2,100.00
116 ★	30c Blue & Carmine (121). Lovely colors, o. g., faint vertical crease, Very Fine appearance .....	135.00
117 ★	90c Carmine & Black (122). Centered, Brilliant Colors, a magnificent copy, Extremely Fine .....	325.00

#### 1869 RE-ISSUES

118 ★	1c Buff Re-issue (123). Fresh, o. g., Extremely Fine .....	42.50
119 ★	2c Brown Re-issue (124). Large margins, fresh, o. g., few short perfs., otherwise Extremely Fine .....	40.00
120 ★	3c Blue Re-issue (125). Very Fine .....	285.00
121 ★	6c Blue Re-issue (126). Part o. g., one slightly short perf., otherwise Very Fine .....	110.00
122 ★	10c Yellow Re-issue (127). Regummed, Fine .....	120.00
123 ★	12c Green Re-issue (128). Fresh, o. g., one slightly nibbed perf. otherwise Very Fine .....	120.00
124 ★	15c Brown & Blue Ty. III, Re-issue (129). Pinpoint thin specks, other- wise Extremely Fine .....	160.00
125 ★	24c Green & Violet Re-issue (130). Rich Colors, Very Fine .....	115.00
126 ★	30c Blue & Carmine Re-issue (131). Magnificent Colors, Extremely Fine (Photo) .....	175.00
127 ★	1c Buff Re-issue (133). Fine, o. g. ....	20.00

#### NATIONAL BANKNOTE GRILLS

128 ★	1c Ultramarine Grill (134). Fresh, o. g., one short perf., otherwise Very Fine .....	40.00
129 ★	2c Red Brown Grill (135). Rich Color, Fine .....	30.00
130 ★	3c Green Grill (136). Very Fine .....	22.50
131 ★	6c Carmine Grill (137). Rich Color, Very Fine .....	110.00
132 ★	7c Vermilion Grill (138). Fine .....	95.00
133 ★	10c Brown Grill (139). Lovely color, Fine .....	165.00



124



125



126



128



129



130



131



132



133



134



135



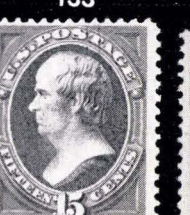
136



138



139



140



141



142



143



147



144



148



149



150



151



165



166



167



168



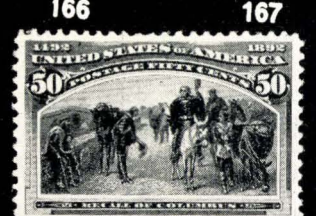
170



171



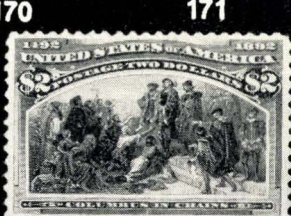
172



178



179



180



173



181



182



183

- 134 ★ **12c Dull Violet Grill (140).** Nice color, two full rows of Grill Points, A. P. S. Certificate states "not o. g. but apparently unused", also authenticating letter from L. G. Brookman, Fine copy of this Rare stamp ..... **(Photo)** 2,000.00

- 135 ★ **15c Orange Grill (141).** Magnificent color, fresh, Very Fine ..... **(Photo)** 110.00

- 136 ★ **90c Carmine Grill (144).** Magnificent Color, large part o. g., faint corner crease, Extremely Fine appearance, with P. F. Certificate ..... **(Photo)** 600.00

### BANKNOTE ISSUES

- 137 ★ **1c-6c 1870 Issue (145-148).** Couple short perfs., 6c has tiny perf. break, otherwise Fine-Very Fine ..... 41.50

- 138 ★ **10c Brown (150).** Pretty color, Very Fine ..... **(Photo)** 26.50

- 139 ★ **12c Violet (151).** Rich color, Very Fine ..... **(Photo)** 40.00

- 140 ★ **15c Bright Orange (152).** Vivid Color, Very Fine ..... **(Photo)** 37.50

- 141 ★ **24c Purple (153).** Very Fine ..... **(Photo)** 52.50

- 142 ★ **30c Black (154).** Lovely Color, Very Fine ..... **(Photo)** 90.00

- 143 ★ **30c Full Black (154).** Fresh, full o. g., minute corner crease, Fine appearance ..... **(Photo)** 90.00

- 144 ★ **90c Carmine (155).** Magnificent Brilliant Color, Very Fine ..... **(Photo)** 125.00

- 145 ★ **1c-3c 1873 Issue (156-158).** Fresh, two are o. g., Fine-Very Fine ..... 16.50

- 146 ★ **6c Pink (159).** Magnificent color, large part o. g., rounded corner perf., otherwise Extremely Fine ..... 20.00

- 147 ★ **7c Orange Vermilion (160).** Very Fine ..... **(Photo)** 38.50

- 148 ★ **12c Blackish Violet (162).** Small thin, Very Fine appearance ..... **(Photo)** 57.50

- 149 ★ **15c Orange Yellow (163).** Nice color, Very Fine ..... **(Photo)** 55.00

- 150 ★ **30c Gray Black (165).** Faint horiz. crease, Very Fine appearance **(Photo)** 52.50

- 151 ★ **90c Rose Carmine (166).** Lovely Color, Very Fine ..... **(Photo)** 95.00

### BANKNOTE SPECIAL PRINTINGS

- 152 ★ **2c Dark Brown Special Printing (168).** Separated by scissors, trimming some perfs. at R., Fine, with P. F. Certificate ..... **(Photo)** 400.00

- 153 ★ **7c Reddish Vermilion Special Printing (171).** Centered, large margins, few slightly short perfs., otherwise Extremely Fine, with P. F. Certificate **(Photo)** 350.00

- 154 ★ **15c Bright Orange Special Printing (174).** Perfs. have only barest trace of scissor blunting, a Wonderful Copy, Very Fine, with P. F. Certificate **(Photo)** 750.00

- 155 ★ **24c Dull Purple Special Printing (175).** Gorgeous Color, only two perfs. slightly blunted by scissors, an unusually Fine copy, with P. F. Certificate ..... **(Photo)** 300.00



155 152 153 154  
156 157 158  
159 160 161

- 1,000<sup>00</sup> 156 ★ 90c Violet Carmine Special Printing (177). Centered, separated by scissors but perfs. completely undamaged, A Superlative Copy, Superb (Photo) 750.00
- 200<sup>00</sup> 157 ★ 1c Dark Ultramarine Special Printing (192). Small thin, Fine appearance, with P. F. Certificate, one of the rarest values of this set ..... (Photo) 1,200.00
- 650<sup>00</sup> 158 ★ 7c Scarlet Vermilion Special Printing (196). Large margins, Extremely Fine ..... (Photo) 600.00
- 900<sup>00</sup> 159 ★ 10c Deep Brown Special Printing (197). Thin, Extremely Fine appearance, with P. F. & A. P. S. Certificates ..... (Photo) 1,100.00
- 800<sup>00</sup> 160 ★ 12c Blackish Purple Special Printing (198). Centered, large margins, minute purple ink speck on bridge of nose, Extremely Fine, with P. F. Certificate ..... (Photo) 950.00
- 900<sup>00</sup> 161 ★ 30c Greenish Black Special Printing (201). Vertical Stitch Watermark, Extremely Fine, with P. F. Certificate ..... (Photo) 725.00

#### BANKNOTES, 1875-1887 ISSUES

- 28<sup>00</sup> 162 ★ 2c Vermilion, 5c Blue (178, 179). Fresh, o. g., latter has two slightly toned perfs., otherwise Very Fine ..... 31.50

33 <sup>00</sup>	163 ★	1c-15c 1879 Issue (182-185, 189). Fresh, three have o. g., V. F. lot .....	49.75
10 <sup>00</sup>	164 ★	4c, 6c, 30c Banknotes (186, 211, 217). First two o. g., faint crease, latter has small paper flaw, F.-V. F. appearance .....	68.50
80 <sup>00</sup>	165 ★	10c Brown (187). Fresh, o. g., Very Fine ..... (Photo)	75.00
27 <sup>00</sup>	166 ★	10c Brown (188). Large margins, faint tiny crease, Very Fine appearance ..... (Photo)	37.50
31 <sup>00</sup>	167 ★	30c Full Black (190). Very Fine ..... (Photo)	40.00
90 <sup>00</sup>	168 ★	90c Carmine (191). Vivid color, pinpoint thin speck, otherwise Very Fine ..... (Photo)	100.00
37 <sup>50</sup>	169 ★	1c-10c 1882-1888 Issues (205-207, 209-210, 212-216). Fresh, o. g., F.-V. F. ....	46.00
42 <sup>50</sup>	170 ★	6c Rose (208). Large margins, Lovely Color, Very Fine ..... (Photo)	25.00
34 <sup>00</sup>	171 ★	6c Brown Red (208a). Gorgeous color, o. g., Very Fine ..... (Photo)	20.00
95 <sup>00</sup>	172 ★	2c Red Brown Special Printing (211B). Extremely Fine, with photo print of P. F. Certificate ..... (Photo)	90.00
45 <sup>00</sup>	173 ★	90c Purple (218). O. g., pinpoint thin speck, otherwise Very Fine (Photo)	67.50
50 <sup>00</sup>	174 ★	1c-90c 1890 Issue (219-229). Cpl. set, Fine-Very Fine .....	101.05

#### COLUMBIAN ISSUE

50 <sup>00</sup>	175 ★	1c-15c Columbians (230-238). 10c thin, 10c, 15c no gum, otherwise Fine-Very Fine set .....	57.85
------------------	-------	--	-------



2000 <sup>00</sup>	176 ★	4c Blue Columbian Error (233a). Fresh, lightly hinged, far above average centering, a Fine copy of this Rare stamp, with P. F. Certificate (Photo)	2,100.00
17 <sup>00</sup>	177 ★	30c Columbian (239). Very Fine .....	20.00
30 <sup>00</sup>	178 ★	50c Columbian (240). Very Fine ..... (Photo)	35.00
47 <sup>50</sup>	179 ★	\$1.00 Columbian (241). Regummed, thin, Very Fine appearance (Photo)	85.00
45 <sup>00</sup>	180 ★	\$2.00 Columbian (242). Regummed, minute thins, V. F. appearance (Photo)	95.00
87 <sup>50</sup>	181 ★	\$3.00 Columbian (243). Vivid color, regummed, minute thin, Very Fine appearance ..... (Photo)	140.00
100 <sup>00</sup>	182 ★	\$4.00 Columbian (244). Magnificent Color, minute thin in corner perf., otherwise Extremely Fine ..... (Photo)	150.00
62 <sup>50</sup>	183 ★	\$5.00 Columbian (245). Regummed, faint thin, Fine appearance (Photo)	170.00

# 1894-98 ISSUES

44 <sup>00</sup>	184 ★	1c-50c 1894 Issue (246-247, 251, 253-258, 260). Fine-Very Fine .....	60.40
23 <sup>00</sup>	185 ★	15c Indigo (259). Extremely Fine .....	18.00
75 <sup>00</sup>	186 ★	\$1.00 Black Ty. I (261). Very Fine .....	(Photo) 62.50
107 <sup>50</sup>	187 ★	\$1.00 Black Ty. II (261a). Very Fine .....	(Photo) 82.50
110 <sup>00</sup>	188 ★	\$2.00 Dark Blue (262). Very Fine .....	(Photo) 100.00
180 <sup>00</sup>	189 ★	\$5.00 Dark Green (263). Very Fine .....	(Photo) 185.00
36 <sup>00</sup>	190 ★	1c-50c 1895 Issue (264-275). Fine-Very Fine .....	59.25
45 <sup>00</sup>	191 ★	\$1.00 Black Ty. I (276). Extremely Fine .....	(Photo) 48.50
75 <sup>00</sup>	192 ★	\$1.00 Black Ty. II (276A). Minor crease, Very Fine appearance .....	(Photo) 115.00
44 <sup>00</sup>	193 ★	\$2.00 Bright Blue (277). Very Fine .....	(Photo) 65.00
80 <sup>00</sup>	194 ★	\$5.00 Dark Green (278). Tiny thins, Very Fine appearance .....	(Photo) 150.00
25 <sup>00</sup>	195 ★	1c-15c 1898 Issues (279-284). Fine-Very Fine set .....	42.50

## TRANS MISSISSIPPI ISSUE

40 <sup>00</sup>	196 ★	1c-10c Trans Mississippi (285-290). 4c minute thin, 10c tiny crease, otherwise Fine-Very Fine .....	58.00
52 <sup>50</sup>	197 ★	50c Trans Mississippi (291). Fine .....	(Photo) 60.00
135 <sup>00</sup>	198 ★	\$1.00 Trans Mississippi (292). Very Fine .....	(Photo) 130.00
170 <sup>00</sup>	199 ★	\$2.00 Trans Mississippi (293). Rich color, Very Fine .....	(Photo) 165.00

## PAN AMERICAN ISSUE



200

201

1,000 <sup>00</sup>	200 ★	1c Pan American Inverted Center (294a). Fresh, Fine .....	(Photo) 1,600.00
225 <sup>00</sup>	201 ★	4c Pan American Inverted Center (296a). Fresh, full o. g., P. F. Certificate states "Genuine but disturbed gum" referring to the slightly glazed appearance from using a patented mount, an Unusually Fine copy of this Rarity .....	(Photo) 2,400.00
30 <sup>00</sup>	202 ★	1c-10c Pan American (294-299). Fine-Very Fine set .....	50.40

# 1902-07 ISSUES

23 <sup>00</sup>	203 ★	1c-15c 1902-1903 Issues (300-309, 314, 319, 320). Fine-Very Fine .....	43.85
33 <sup>00</sup>	204 ★	50c Orange (310). Very Fine ..... (Photo)	32.50
46 <sup>00</sup>	205 ★	\$1.00 Black (311). Mint, Very Fine ..... (Photo)	60.00
50 <sup>00</sup>	206 ★	\$2.00 Dark Blue (312). One slightly short perf., otherwise Very Fine ..... (Photo)	87.50
135 <sup>00</sup>	207 ★	\$5.00 Dark Green (313). Mint, Very Fine ..... (Photo)	170.00
70 <sup>00</sup>	208 ★	5c Blue Imperforate (315). Large Margins, Very Fine ..... (Photo)	110.00
550 <sup>00</sup>	209 ★	5c Blue Lincoln Coil (317). Vertical Pair, showing guide line at T., Magnificent color, fresh, Fine, with P. F. Certificate ..... (Photo)	500.00
625 <sup>00</sup>	210 ★	1c Blue Green Coil (318). Horiz. pair, fresh, Brilliant Color, Very Fine, with P. F. Certificate ..... (Photo)	600.00
90 <sup>00</sup>	211 ★	2c Carmine Coil (322). One short perf., otherwise Very Fine ..... (Photo)	300.00
370 <sup>00</sup>	212 ★	2c Carmine Coil (322). Horiz. Pair, minute thins, Extremely Fine appearance, with P. F. Certificate ..... (Photo)	600.00
31 <sup>00</sup>	213 ★	1c-10c Louisiana Purchase (323-327). Fine-Very Fine set .....	64.50
15 <sup>00</sup>	214 ★	1c-5c Jamestown (328-330). Fine set .....	20.05

# 1908 ISSUE

14 <sup>00</sup>	215 ★	1c-15c 1908-09 Issue (331-340). 6c, 13c small faults, others nearly all V. F. ....	32.50
29 <sup>00</sup>	216 ★	50c Violet (341). Brilliant Color, Very Fine .....	27.50
50 <sup>00</sup>	217 ★	\$1.00 Violet Brown (342). Very Fine ..... (Photo)	45.00
13 <sup>00</sup>	218 ★	1c-5c 1908-09 Imperforates (343-347). Very Fine set .....	17.70
27 <sup>50</sup>	219 ★	1c-5c 1908-10 Coils (348-355). No. 350 has light creases, others V. F. ....	56.60
22 <sup>50</sup>	220 ★	2c Carmine, 4c Brown Coils (349, 350). Pairs, Very Fine .....	25.00
26 <sup>00</sup>	221 ★	5c Blue Coil (351). Pair, Very Fine .....	32.00
23 <sup>50</sup>	222 ★	1c-5c Coils (352, 354, 355). Pairs, Fine-Very Fine .....	47.00
100 <sup>00</sup>	223 ★	10c Yellow Coil (356). Shows Guide Line at L., Fine ..... (Photo)	155.00
230 <sup>00</sup>	224 ★	10c Yellow Coil (356). Horiz. pair, fresh, Fine-Very Fine ..... (Photo)	310.00

# 1909 BLUISH PAPER ISSUE

19 <sup>00</sup>	225 ★	1c Green, 2c Carmine Bluish (357, 358). Very Fine .....	21.00
155 <sup>00</sup>	226 ★	3c Deep Violet Bluish (359). Very Fine ..... (Photo)	135.00
1850 <sup>00</sup>	227 ★	4c Orange Brown Bluish (360). Fresh, Fine ..... (Photo)	1,800.00
475 <sup>00</sup>	228 ★	5c Blue Bluish (361). Fresh, Fine, with P. F. Certificate and signed ..... (Photo)	600.00



186



187



188



189



191



192



193



197



198



199



194



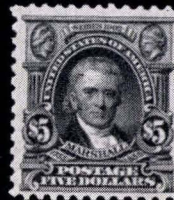
204



205



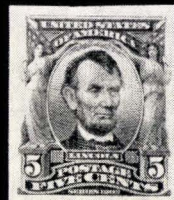
206



207



209



208



210



212



211



217



223



224



242



239



245



247



254



255



256



259



252



226	227	228	229
230	231	232	233

- 77<sup>50</sup>
- 2300<sup>00</sup>
- 155<sup>00</sup>
- 145<sup>00</sup>
- 115<sup>00</sup>
- 229 ★ 6c Red Orange Bluish (362). Fine ..... (Photo) 125.00
- 
- 230 ★ 8c Olive Green Bluish (363). Extremely Fine, with American Board of Experts and P. F. Certificates ..... (Photo) 1,700.00
- 
- 231 ★ 10c Yellow Bluish (364). Very Fine ..... (Photo) 135.00
- 232 ★ 13c Blue Green Bluish (365). Tiny corner crease, V. F. appearance (Photo) 300.00
- 233 ★ 15c Ultramarine Bluish (366). Very Fine ..... (Photo) 125.00

#### 1909-1912 ISSUES

- 19<sup>00</sup>
- 31<sup>00</sup>
- 23<sup>00</sup>
- 16<sup>00</sup>
- 40<sup>00</sup>
- 375<sup>00</sup>
- 37<sup>50</sup>
- 27<sup>00</sup>
- 120<sup>00</sup>
- 234 ★ 2c 1909 Commems. (367-368, 370-373). Very Fine ..... 26.35
- 235 ★ 2c Lincoln Bluish (369). Very Fine ..... 30.00
- 236 ★ 1c-10c 1910-11 Issue (374-377, 379-81). Very Fine ..... 26.75
- 237 ★ 1c-5c 1910-13 Coils (385-387, 390-396). Fine-Very Fine ..... 37.45
- 238 ★ 1c-5c 1910-13 Coils (385-387, 390-396). Pairs, Very Fine Set ..... 74.90
- 239 3c Deep Violet Orangeburg Coil (389). Handstamp guarantee on back, faint corner crease, Fine appearance, with a letter from G. Ustick giving an additional opinion as to its authenticity ..... (Photo) 650.00
- 240 ★ 1c-10c Panama Pacific (397-400A). Cpl. set, Fine-Very Fine ..... 60.00
- 241 ★ 1c-5c Panama Pacific Perf. 10 (401-403). Fine-Very Fine ..... 45.25
- 242 ★ 10c Panama Pacific, Perf. 10 (404). Very Fine ..... (Photo) 110.00

# 1912-1915 ISSUES

57 <sup>50</sup>	243 ★	7c-50c 1912-14 Issues (407, 414-420, 422). Very Fine set .....	75.00
20 <sup>00</sup>	244 ★	50c Violet (422). Very Fine .....	26.50
38 <sup>00</sup>	245 ★	\$1.00 Violet Brown (423). Very Fine ..... (Photo)	55.00
55 <sup>00</sup>	246 ★	1c-30c 1914-15 Issue (424-439). Almost all Very Fine .....	90.25
85 <sup>00</sup>	247 ★	50c Violet (440). Very Fine ..... (Photo)	82.50
36 <sup>00</sup>	248 ★	1c-5c 1914 Coils (441-447). Very Fine set .....	57.00
26 <sup>00</sup>	249 ★	1c-5c 1914-16 Coils (441-443, 450-453, 455, 458). Very Fine pairs .....	32.50
52 <sup>50</sup>	250 ★	3c Violet Coil (445). Pair, Very Fine ..... (Photo)	55.00
26 <sup>00</sup>	251 ★	4c Brown, 5c Blue Coils (446, 447). Horiz. Line Pairs, Fine-Very Fine .....	37.50
87 <sup>50</sup>	252 ★	2c Red Ty. I Coil (449). Vertical Pair, top stamp has sealed tear, lower stamp Fine, with A. P. S. certificate ..... (Photo)	200.00
30 <sup>00</sup>	253 ★	3c Violet Coil (456). Very Fine pair .....	36.00
40 <sup>00</sup>	254 ★	2c Carmine Imperforate (459). Extremely Fine ..... (Photo)	50.00
55 <sup>00</sup>	255 ★	2c Carmine Imperforate (459). Mint Pair, Extremely Fine ..... (Photo)	100.00
87 <sup>50</sup>	256 ★	\$1.00 Violet Black (460). Extremely Fine ..... (Photo)	80.00
12 <sup>50</sup>	257 ★	2c Carmine Ty. I (461). Mint, Extremely Fine .....	11.00

# 1916 ISSUE

32 <sup>00</sup>	258 ★	1c-15c Perf. 10 Unwmk. (462, 466, 469-470, 472-475). F.-V. F. ....	60.25
105 <sup>00</sup>	259 ★	5c Carmine Error (467). Huge margins, Extremely Fine ..... (Photo)	110.00
115 <sup>00</sup>	260 ★	50c Light Violet (477). Extremely Fine ..... (Photo)	125.00
105 <sup>00</sup>	261 ★	\$1.00 Violet Black (478). Extremely Fine ..... (Photo)	97.50
17 <sup>50</sup>	262 ★	\$2.00 Dark Blue (479). Two short perfs., otherwise Extremely Fine .....	35.00
17 <sup>50</sup>	263 ★	\$5.00 Light Green (480). Very Fine .....	32.50
3150 <sup>00</sup>	264 ★田	5c Carmine Error, Imperforate (485). Mint block of 36 with Two Errors, Superb ..... (Photo)	3,000.00
310 <sup>00</sup>	265 ★	2c Carmine Ty. II Coil (491). Horiz. Pair, mint, Superb, with A. P. S. Certificate ..... (Photo)	200.00

# 1917-1920 ISSUES

21 <sup>00</sup>	266 ★	1c-\$1.00 1917-19 Issue (498-499, 501, 503-504, 506-518). F.-V. F. set .....	35.25
50 <sup>00</sup>	267 ★	5c Rose Error (505). Very Fine ..... (Photo)	65.00
21 <sup>00</sup>	268 ★	2c Carmine (519). Mint, Very Fine .....	22.50
60 <sup>00</sup>	269 ★	\$2.00 Orange Red & Black (523). Very Fine ..... (Photo)	77.50
20 <sup>00</sup>	270 ★	\$5.00 Deep Green & Black (524). Very Fine .....	27.50

200<sup>00</sup>

- 271 ★ 2c Carmine Offset Ty. VII, Imperforate (534B). Huge margins, light natural crease, otherwise Extremely Fine, with Photo Copy of P. F. Certificate ..... (Photo) 225.00



1250<sup>00</sup>

- 272 ★ 1c Green Perf. 11, Rotary (544). Fresh, o. g., short perf. & tiny natural crease at T., otherwise Fine Example of this Rare stamp, with Photo Print of P. F. Certificate, listed but unpriced in Scott ..... (Photo) E. XV

18<sup>00</sup>

- 273 ★ 1c Green, 2c Carmine Rose (545, 546). Fine-Very Fine set ..... 20.50

22<sup>50</sup>

- 274 ★ 2c Lake & Black (547). Very Fine ..... 25.00

16<sup>50</sup>

- 275 ★ 1c-5c 1920-1925 Commems. (548-550, 614-621). F.-V. F. sets ..... 36.15

#### 1922 ISSUE TO DATE

42<sup>50</sup>

- 276 ★ 1/2c-\$5.00 1922 Issue (551-573a). Fine-Very Fine set ..... 69.00

27<sup>50</sup>

- 277 ★ 1c Green, 2c Carmine (578, 579, 595). Extremely Fine ..... 30.00

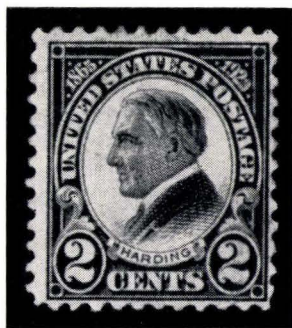


1650<sup>00</sup>

- 278 ★ 1c Green Perf. 11 Rotary (594). No gum, minute thin speck in bottom margin still one of the finest known unused copies of this Rare stamp, with P. F. Certificate ..... (Photo) 3,000.00

29<sup>00</sup>

- 279 ★ 2c Carmine Coil, Ty. II (599A). Mint Pair, Very Fine ..... 20.00



2450 <sup>00</sup>	280	2c Harding Perf. 11 Rotary (613). Exceptionally well centered for this, with P. F. Certificate stating "Genuine & Lightly Cancelled", probably this refers to the overall grayish cast frequently found on Rotary Press printings of this stamp, and is not a cancellation at all, as we are unable to detect any trace of cancel under either normal or ultra violet light, this is probably the only known unused copy of this stamp, cat. as used ..... (Photo) 1,850.00+
65 <sup>00</sup>	281 ★	2c White Plains Souvenir Sheet (630). Very Fine ..... 77.50
42 <sup>00</sup>	282 ★	1c-10c Kans.-Nebr. Overprints (658-679). Cpl. set, F.-V. F. .... 84.00
21 <sup>00</sup>	283 ★	1c-10c Famous Americans (859-893). Mint Blocks, Extremely Fine set 65.30
13 <sup>00</sup>	284 ★	5c Flags (909-921). Top margin inscription blocks of 4, V. F. mint set 20.30
60 <sup>00</sup>	285 ★	4c Red Violet Coil, Imperforate (1058a). Mint Pair, Very Fine (Photo) 100.00

#### AIRPOST ISSUES

14 <sup>00</sup>	286 ★	6c-24c 1918 Airpost (C1-C3). 16c minute thin, otherwise F.-V. F. .... 38.00
------------------	-------	---



10500 <sup>00</sup>	287 ★	24c Carmine & Blue Airpost, Inverted Center (C3a). Lightly hinged once, a fresh, Magnificent copy of this most Popular of all U. S. stamps ..... (Photo) 12,500.00
26 <sup>00</sup>	288 ★	8c-24c 1923 Airpost (C4-C6). Very Fine set ..... 33.00
200 <sup>00</sup>	289 ★	65c-\$2.60 Graf Zeppelins (C13-C15). \$2.60 has small thin, otherwise Fine-Very Fine set ..... (Photo) 355.00
14 <sup>00</sup>	290 ★	50c Chicago Zeppelin (C18). Mint, Extremely Fine ..... 16.00
42 <sup>00</sup>	291 ★	50c Chicago Zeppelin (C18). Block of 4 with Plate No., F.-V. F. .... 60.00

105<sup>00</sup>

610<sup>00</sup>

24<sup>00</sup>

46<sup>00</sup>

20<sup>00</sup>

10<sup>00</sup>

50<sup>00</sup>

190<sup>00</sup>

95<sup>00</sup>

37<sup>50</sup>

34<sup>00</sup>

16<sup>00</sup>

15<sup>00</sup>

410<sup>00</sup>

9<sup>00</sup>

36<sup>00</sup>

75<sup>00</sup>

40<sup>00</sup>

18<sup>00</sup>

26<sup>00</sup>

36<sup>00</sup>

28<sup>00</sup>

26<sup>00</sup>

- 292 ★ 6c Ultramarine & Carmine Airpost (C23c). With Breuchig Handstamp Guarantee and A. P. S. Certificate, lightly hinged once, Fine, listed but unpriced in Scott ..... (Photo) —
- 293 ★ 15c Blue Green Airpost Imperforate Between (C35a). In center of horiz. strip of 4, as Fine as these come, as perfs. touched on most of the 20 pairs found, Very Rare ..... (Photo) 1,000.00

SPECIAL DELIVERY

- 294 ★ 10c Blue Special Delivery (E1). Fresh, o. g., Very Fine ..... 17.50
- 295 ★ 10c Blue Special Delivery (E4). Very Fine ..... (Photo) 40.00
- 296 ★ 10c Ultramarine Special Delivery (E6, 8, 9). Very Fine ..... 25.50
- 297 ★ 10c Ultramarine Special Delivery (E10). Rounded corner perfs., otherwise Fine ..... 35.00

POSTAGE DUE ISSUES

- 298 ★ ½c-50c 1879-1925 Postage Dues (Betw. J1-J68). 36 diff., vivid colors, mostly Very Fine ..... 59.65
- 299 ★ 2c Deep Brown Special Printing (J9). Centered slightly to B., fresh, Fine. Scarce with P. F. Certificate ..... (Photo) 175.00
- 300 ★ 50c Postage Due Special Printing (J14). Fresh, o. g., Fine, with P. F. Certificate ..... (Photo) 135.00
- 301 ★ 50c Red Brown Postage Due (J21). Mint, Very Fine ..... (Photo) 37.50
- 302 ★ 1c-50c 1910-12 Postage Dues (J45-J51). 50c has tiny thin, otherwise Very Fine set ..... 39.40
- 303 ★ 3c Carmine Lake Postage Due (J54). Vivid Color, mint, centered slightly to T., Very Fine ..... 17.50
- 304 ★ ½c-\$5.00 1930-1959 Postage Dues (J69-J74, J76-J101). Nearly all V. F. 29.75
- 305 ★ 3c Carmine Rose Postage Due, Value Missing (J91 var.). Vertical Block of 8, Top Block of 4 entirely without value, mint, Extremely Fine, unlisted in Scott ..... (Photo) E. XII
- 306 ★ 1c-25c Parcel Post Dues (JQ1-JQ5). Very Fine cpl. set ..... 12.25
- 307 ★ 2c-\$2.00 Shanghai Overprints (K1-K18). Cpl. set, Very Good-Fine ..... 104.00

OFFICIALS

- 308 ★ 1c-30c Agriculture Dept. (O1-O9). Cpl. set, fresh, o. g., Very Fine ..... 77.50
- 309 ★ 1c Carmine Executive Dept. (O10). Very Fine ..... (Photo) 27.50
- 310 ★ 2c Deep Carmine Executive Dept. (O11). Very Fine ..... 20.00
- 311 ★ 3c Carmine Executive Dept. (O12a). Very Fine ..... 22.50
- 312 ★ 6c Carmine Executive Dept. (O13). Fresh, o. g., Very Fine ..... (Photo) 35.00
- 313 ★ 10c Deep Carmine Executive Dept. (O14). Fresh, o. g., Very Fine (Photo) 32.50
- 314 ★ 1c-90c Interior Dept. (O15-O24). Fresh, all o. g. but 3, V. F. set ..... 32.90



260

261

265

267

269

271



285

289



293



292



295



299



300



301



309



312



313



316



320



330



324



325



326



327



359



370



345



346



335



333



336

42<sup>50</sup>  
 37<sup>50</sup>  
 20<sup>00</sup>  
 26<sup>00</sup>  
 87<sup>50</sup>  
 72<sup>50</sup>  
 18<sup>00</sup>  
 36<sup>00</sup>  
 32<sup>50</sup>  
 48<sup>00</sup>  
 300<sup>00</sup>  
 205<sup>00</sup>  
 170<sup>00</sup>  
 32<sup>50</sup>  
 47<sup>50</sup>  
 50<sup>00</sup>  
 21<sup>00</sup>  
 36<sup>00</sup>  
 90<sup>00</sup>  
 35<sup>00</sup>  
 44<sup>00</sup>  
 37<sup>50</sup>  
 17<sup>00</sup>

315 ★	1c-15c Justice Dept. (025-031). Fresh, o. g., Very Fine .....	44.50
316 ★	24c Purple Justice Dept. (032). Fresh, o. g., Very Fine ..... (Photo)	30.00
317 ★	30c Purple Justice Dept. (033). One short perf. otherwise Very Fine .....	30.90
318 ★	90c Purple Justice Dept. (034). Fresh, o. g., perfs just touch at T., Fine ....	55.00
319 ★	1c-90c Navy Dept. (035-045). All o. g. but three fresh, F.-V. F. ....	100.25
320 ★	2c Green Navy Dept. Error, on White (036b). Very Fine ..... (Photo)	75.00
321 ★	1c-90c Post Office Dept. (047-056). Fresh, o. g., Very Fine set .....	22.10
322 ★	1c-24c State Dept. (057-063, 065). Fresh, all o. g. but 3c, 7c, Very Fine .....	40.50
323 ★	15c-90c State Dept. (064, 066-067). 30c has almost invisible stain, others tiny thin specks, fresh, o. g., Very Fine appearance .....	47.00
324 ★	\$2.00 Green & Black State Dept. (068). Fresh, o. g., Fine ..... (Photo)	55.00
325 ★	\$5.00 Green & Black State Dept. (069). Fresh, o. g., couple slightly nibbed perfs, otherwise Extremely Fine ..... (Photo)	350.00
326 ★	\$10.00 Green & Black State Dept. (070). Fresh, o. g., Very Fine (Photo)	200.00
327 ★	\$20.00 Green & Black State Dept. (071). Fresh, o. g., Very Fine (Photo)	165.00
328 ★	1c-90c Treasury Dept. (072-082). All o. g. but last, Very Fine set .....	45.75
329 ★	1c-90c War Dept. (083-093). All o. g. but 6c, Very Fine set .....	56.30
330 ★	1c Yellow Agriculture Dept. (094). Thin, Fine appearance ..... (Photo)	150.00
331 ★	3c Yellow Agriculture Dept. (095). Fresh, o. g., Very Fine .....	18.50
332 ★	1c-15c Interior Dept. (096-0102). Fresh, all o. g. but latter, Very Fine .....	32.20
333 ★	24c Vermilion Interior Dept. (0103). Fresh, o. g., Fine, Rare ..... (Photo)	100.00
334 ★	1c-30c Departments, Soft Paper (0106-0111, 0114-0120). Nearly all V. F., most have o. g. ....	44.15
335 ★	30c Brown Treasury Dept. (0112). Faint crease, Extremely Fine appearance ..... (Photo)	55.00
336 ★	90c Brown Treasury Dept. (0113). Fresh, o. g., Fine ..... (Photo)	50.00
337 ★	2c-\$1.00 Postal Savings Officials (0121-0126). Very Fine set .....	25.00

#### NEWSPAPERS

338 ★	5c-25c Newspapers (PR1-PR4). A few tiny thin spots, F.-V. F. appearance .....	46.00
339 ★	5c-25c Newspaper Reprints (PR5-PR8). 10c tiny thin, 5c light crease, others Very Fine .....	46.00
340 ★	2c-48c Newspapers 1875 Issue (PR9-13, PR15-16, PR18-19). V. G.-V. F. ....	34.10
341 ★	72c-\$1.92 Newspapers 1875 Issue (PR21-PR24). A few with nibbed perfs. otherwise Fine-Very Fine .....	59.50
342 ★	\$6.00 Ultramarine Newspaper (PR26). O. g., tiny thin spot otherwise Fine .....	25.00
343 ★	\$9.00 Yellow Newspaper (PR27). O. g., a perf. nibbed, otherwise V. F. ....	35.00
344 ★	\$12.00 Blue Green Newspaper (PR28). O. g., Very Fine .....	27.50

40 <sup>00</sup>	345 ★	\$48.00 Red Brown Newspaper (PR31). O. g., Very Fine ..... (Photo)	85.00
41 <sup>00</sup>	346 ★	\$60.00 Violet Newspaper (PR32). One short perf., otherwise V. F. (Photo)	75.00
12 <sup>50</sup>	347 ★	2c-6c Gray Black Newspaper Re-Issue (PR33-36). Fine .....	24.00
16 <sup>00</sup>	348 ★	10c-36c Newspaper Re-Issue (PR39-PR40, PR42). 36c couple of nibbed perfs., others Fine-Very Fine .....	44.00
18 <sup>00</sup>	349 ★	2c-60c Newspaper 1879 Issue (Betw. PR57-PR67). 8 diff., a few have tiny thin spots, otherwise F.-V. F. ....	42.00
20 <sup>00</sup>	350 ★	\$1.92-\$9.00 Newspaper 1879 Issue (PR71-PR74). O. g., Fine-Very Fine	41.50
15 <sup>00</sup>	351 ★	\$12.00 Yellow Green, \$24.00 Dark Violet Newspaper (PR75-PR76). O. g., Fine-Very Fine .....	32.00
8 <sup>50</sup>	352 ★	\$48.00 Yellow Brown Newspaper (PR78). O. g., couple of shorted perfs., otherwise Very Fine .....	30.00
8 <sup>50</sup>	353 ★	\$60.00 Purple Newspaper (PR79). Tiny thin speck, V. F. appearance .....	30.00
19 <sup>00</sup>	354 ★	2c Intense Black Newspaper Re-Issue (PR80). Small thins, Fine appearance .....	35.00
13 <sup>00</sup>	355 ★	12c-60c Newspaper 1885-1894 Issues (PR83-84, PR86, PR95). The latter thin speck, others Fine-Very Fine .....	28.00
13 <sup>00</sup>	356 ★	\$50.00 Rose Newspaper (PR112). Tiny thin speck, V. F. appearance .....	30.00
21 <sup>00</sup>	357 ★	1c-\$100.00 Newspaper 1895 Issue, 1899 Reprints (PR114-PR130). F.-V. F.	36.95
20 <sup>00</sup>	358 ★	1c-75c Parcel Post (Q1-Q11). 3c, 5c, 50c small faults, others Very Fine	67.85
24 <sup>00</sup>	359 ★	\$1.00 Carmine Rose Parcel Post (Q12). Very Fine ..... (Photo)	42.50

#### SAVINGS STAMPS

50 <sup>00</sup>	360 ★	10c-\$5.00 Savings, Postal Savings, War Savings (Betw. PS1-WS13). 80 stamps incl. 6 diff. booklet panes of 10, F.-V. F. ....	79.40
10 <sup>00</sup>	361 ★	10c Orange Postal Savings Stamps, 10c Orange Postal Savings Card (PS1, nine, PS2). Fine-Very Fine .....	22.00
6 <sup>00</sup>	362 ★	10c Deep Blue Postal Savings Stamp, 10c Deep Blue Postal Savings Card (PS4, nine, PS5). Fine-Very Fine .....	21.00
22 <sup>00</sup>	363 ★田	10c Deep Blue Postal Savings (PS4, PS6). L. Impr. Plate No. Block of 6 of first, Top Impt. Plate No. Block of 10 of latter, Very Fine .....	38.00
18 <sup>00</sup>	364 ★田	10c Deep Ultramarine, 25c Deep Carmine Rose Postal Savings (PS7-PS8). T. & B. Plate No. Blocks of 6, Very Fine .....	35.00
25 <sup>00</sup>	365 ★田	50c Dark Blue Green Postal Savings (PS9). L. Plate No. Block of 6. V. F.	50.00
42 <sup>00</sup>	366 ★田	\$1.00 Gray Black Postal Savings (PS10). B. Plate No. Block of 6, Fine	110.00
8 <sup>00</sup>	367 ★	10c-\$5.00 Postal Savings (PS11-PS15). Very Fine .....	20.15
67 <sup>50</sup>	368 ★	\$5.00 Deep Green Rouletted War Savings (WS3). Closed horiz. tear, Very Fine appearance .....	100.00
10 <sup>00</sup>	369 ★	\$5.00 Deep Blue War Savings (WS4). S. e. at T., no gum, Very Fine .....	35.00
22 <sup>00</sup>	370 ★	\$5.00 Carmine War Savings (WS5). Very Fine ..... (Photo)	45.00

- 110<sup>00</sup>  
37<sup>50</sup>  
40<sup>00</sup>
- 371 ★ \$5.00 Orange on Green War Savings (WS6). Part o. g., V. F. (Photo) 125.00
- 372 ★ POSTAL SAVINGS, WAR SAVINGS, collection of 158 stamps incl. Booklet panes, covers, and collateral material, Very Fine ..... E. VI
- 373 ★ \$1.00 Red & Green Treasury Savings (TS1). S. e. at B. corner crease, Fine appearance ..... (Photo) 150.00

#### CARRIERS & LOCALS

- 24<sup>00</sup>  
90<sup>00</sup>  
7<sup>50</sup>  
28<sup>00</sup>  
22<sup>50</sup>  
20<sup>00</sup>  
22<sup>00</sup>  
29<sup>00</sup>  
70<sup>00</sup>  
25<sup>00</sup>  
19<sup>00</sup>  
40<sup>00</sup>  
14<sup>00</sup>  
24<sup>00</sup>
- 374 Boston Carrier, 1c Blue on Grayish (3LB2). Margins all around, light Red cancel, Very Fine ..... 25.00
- 375 ★ Kingsman's City Post 2c Black on Bluish (4LB15). Margins on 3 sides, cut in at R. part o. g., Fine, Scarce ..... (Photo) 300.00
- 376 ★ Adams & Co., 25c Black on White, Pink Cardboard (1L2-1L3). Large margins all around, the first closed tear, other Very Fine ..... 23.00
- 377 ★ Adams & Co. 25c Black, Red Overprint (1L4). Large margins all around, Very Fine ..... (Photo) 37.50
- 378 ★ Blood & Co. 3c Black on Grayish (15L5). Large margins all around, light creases, Very Fine appearance ..... 30.00
- 379 ★ Cheever & Towle 2c Blue (37L1). Margins, except touched at L., Oily Impression, Very Good ..... 50.00
- 380 City Despatch Post 2c Black on Vermilion (40L6). Large margins all around, grid cancel, two light creases, V. F. appearance ..... 90.00
- 381 ★ Dupuy & Schenck, 1c Black on Grayish (60L2). Clear to large margins, Very Fine ..... (Photo) 60.00
- 382 ★ Jabez Fearey & Co., 1c Black on Red (66L1). Clear to large margins, Fine (Photo) 100.00
- 383 ★ Glen Haven Daily Mail, 1c Black on Green (71L3). Margins all around, light crease, Very Fine appearance ..... (Photo) 100.00
- 384 ★ Metropolitan Errand & Carrier Express Co., 5c Red Orange (107L2). Margins, except barely touched at T. & B., Brilliant Color & Impression, Fine ..... 75.00
- 385 ★ Priest's Despatch, 2c Black on Rose (121L4). Clear to Large Margins except touched at L, light oil spot, Very Good ..... (Photo) 150.00
- 386 ★ Wells Fargo & Co., 10c, 25c, \$2.00, \$4.00 (143L4-5, 143L7, 143L9). Two have thins, Very Good ..... 80.00
- 387 ★ Westervelts Post, 1c Black on Flesh (144L1). Large Margins all around, Very Fine, Scott used \$150.00. .... (Photo) —

END OF FIRST SESSION

*LOTS ON VIEW FROM SEPTEMBER 24th*  
*OFFICES OPEN EVERY SATURDAY*



371



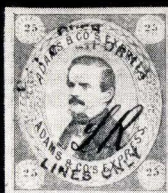
373



381



375



377



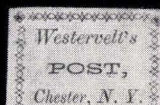
383



385



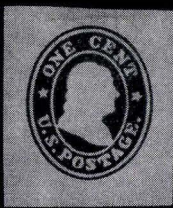
382



387



395



403



405



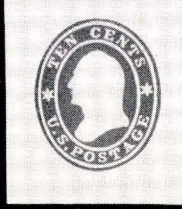
407



410



408



411



412



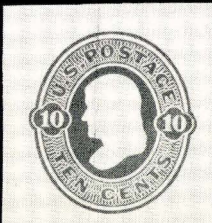
418



420



426



427



436



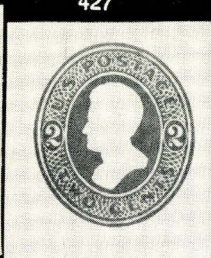
438



440



443



444



448



452



449



456



462



468



478



479

# SECOND SESSION

WEDNESDAY, OCTOBER 7th, 1964 — 1:30 P. M.

## CUT SQUARES AND ENTIRE ENVELOPES

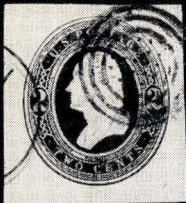
7 <sup>50</sup> 21 <sup>00</sup> 21 <sup>00</sup> 16 <sup>50</sup> 21 <sup>00</sup> 10 <sup>00</sup> 7 <sup>50</sup> 31 <sup>00</sup> 11 <sup>00</sup> 7 <sup>00</sup> 15 <sup>00</sup> 7 <sup>00</sup> 14 <sup>00</sup> 17 <sup>00</sup> 6 <sup>00</sup> 18 <sup>00</sup> 12 <sup>50</sup> 97 <sup>50</sup> 27 <sup>50</sup> 37 <sup>50</sup> 155 <sup>00</sup> 12 <sup>50</sup> 52 <sup>50</sup> 67 <sup>50</sup> 60 <sup>00</sup> 41 <sup>00</sup> 10 <sup>50</sup>	<p>388 <input checked="" type="checkbox"/> 3c Red Die 1 on White Entire (U1). Unused, but with written address, F. E. II</p> <p>389 ★ 1c-10c 1853-55 Issue (U1-2, U9-U10, U18). Fine-Very Fine ..... 29.00</p> <p>390 ★ 3c Red Die 2 on White (U3). Fine ..... 40.00</p> <p>391 ★ 3c Red Die 2 on Buff (U4). Fine ..... 22.50</p> <p>392 3c Red Die 3 on White (U5). Used, pinhole, Very Fine appearance ..... 60.00</p> <p>393 ★ 3c Red Die 3 on Buff (U6). Very Fine ..... 20.00</p> <p>394 3c Red Die 3, 4 on Buff, White (U6-U7). Used, Very Fine ..... 20.00</p> <p>395 ★ 3c Red Die 4 on White (U7). Fine ..... (Photo) 100.00</p> <p>396 3c Red Die 4 on Buff (U8). Used, Fine ..... 22.50</p> <p>397 ★ 6c Red on White, Buff (U11, U12). Very Fine ..... 22.50</p> <p>398 ★ 6c Green on White (U13). Very Fine ..... 30.00</p> <p>399 ★ 6c Green on Buff (U14). Fine ..... 25.00</p> <p>400 ★ 10c Green Die 1 on White (U15). Very Fine ..... 25.00</p> <p>401 ★ 10c Green Die 2 on White (U17). Fine ..... 30.00</p> <p>402 ★ 1c Blue, 3c Red Star Die (U19-W21, U26-U27). Fine-Very Fine ..... 21.60</p> <p>403 ★ 1c Blue Die 2 Star Die on Orange (U23). Very Fine ..... (Photo) 45.00</p> <p>404 ★ 1c Blue Die 3 Star Die on Buff (U24). Very Fine ..... 25.00</p> <p>405 ★ 1c Blue Die 3 Star Die on Manila (W25). Minor thins, V. F. appearance (Photo) 160.00</p> <p>406 ★ 3c+1c Star Die Combination on White (U28). Fine ..... 57.50</p> <p>407 ★ 3c+1c Star Die Combination on Buff (U29). Very Fine ..... (Photo) 52.50</p> <p>408 ★ 6c Red Star Die on White (U30). Very Fine ..... (Photo) 265.00</p> <p>409 ★ 6c-10c Star Die Reprints (U30-U33). Some faulty, G.-F. .... E. II</p> <p>410 ★ 6c Red Star Die on Buff (U31). Fine with P. F. Certificate ..... (Photo) 265.00</p> <p>411 ★ 10c Green Star Die on White (U32). Very Fine ..... (Photo) 77.50</p> <p>412 ★ 10c Green Star Die n Buff (U33). Very Fine ..... (Photo) 65.00</p> <p>413 <input checked="" type="checkbox"/> 10c Green Star Die on Buff Entire (U33). Tied by Star cancel, clear matching Downieville, Cal. pmk., used to Iowa, Fine ..... 60.00</p> <p>414 ★ 3c-12c 1861 Issue (U34-36, U40, U40a, U41, U41a, U42). Very Fine ..... 38.50</p>
--	---

15 <sup>00</sup>	415	✉	6c Pink on White Entire (U38). Size 7, unused, Fine .....	40.00
10 <sup>50</sup>	416	★	6c Pink on White, Buff (U38, U39). Very Fine .....	32.50
10 <sup>00</sup>	417	★	20c Red & Blue on Buff (U43). Very Fine .....	21.00
26 <sup>00</sup>	418	★	40c Black & Red on Buff (U45). Very Fine ..... (Photo)	30.00
9 <sup>50</sup>	419	★	2c Black Die 1, 3 (U46-W47, U50-W51). Very Fine .....	31.25
110 <sup>00</sup>	420	★	2c Black Die 2 (U48). Very Fine ..... (Photo)	150.00
11 <sup>50</sup>	421	★	2c Black Die 3, 4 (U52-W57). Very Fine .....	23.80
6 <sup>00</sup>	422	★	3c-6c Various Colors & Papers (U58-U65). Fine-Very Fine .....	26.35
11 <sup>50</sup>	423	★	12c-40c 1864-65 Issue (U69-U73). Fine-Very Fine .....	46.50
8 <sup>50</sup>	424	★	1c Blue, 2c Brown, 3c Green Reay (U74-U84). Includes #U74a, V.F.	24.20
12 <sup>50</sup>	425	★	6c Red, 7c Vermilion, 10c Brown Reay (U85-U88, U91-U92). Very Fine	26.75
52 <sup>50</sup>	426	★	10c Olive Black Reay on White (U89). Fine ..... (Photo)	75.00
40 <sup>00</sup>	427	★	10c Olive Black Reay on Amber (U90). Very Fine ..... (Photo)	75.00
20 <sup>00</sup>	428	✉	10c Olive Black Reay on Amber, Entire (U90). W. F. & Co. Paid over Our Mexican Coast and California Express 35cts" frank, addressed but uncancelled, Very Fine .....	75.00+
12 <sup>50</sup>	429	★	12c Plum Reay on White, Amber, Cream (U93-U95). Very Fine .....	34.00
11 <sup>50</sup>	430	★	15c Orange Reay on White, Amber, Cream (U96-U98). Fine-Very Fine	34.50
22 <sup>00</sup>	431	★	24c Purple Reay on White, Amber, Cream (U99-U101). F.-V.F. ....	48.50
15 <sup>00</sup>	432	★	30c Black Reay on White, Cream (U102, U104). Very Fine .....	28.50
17 <sup>50</sup>	433	★	90c Carmine Reay on White, Cream (U105, U107). Fine-Very Fine .....	35.50
19 <sup>00</sup>	434	★	90c Carmine Reay on Amber (U106). Very Fine .....	30.00
17 <sup>00</sup>	435	★	1c Dark Blue Die 1 Plimpton on White, Amber (U108-U109). Very Fine	29.50
57 <sup>50</sup>	436	★	1c Dark Blue Die 1 Plimpton on Cream (U110). Very Fine ..... (Photo)	115.00
11 <sup>50</sup>	437	★	1c Blue, 2c Brown Plimpton Various Papers (U111-U123). Very Fine .....	35.25
23 <sup>50</sup>	438	★	2c Brown Die 1 Plimpton on Cream (U124). Fine ..... (Photo)	80.00
6 <sup>00</sup>	439	★	2c Brown Die 1, 2 Plimpton on Manila, White, Amber (W126, U128-U129). Very Fine .....	26.00
145 <sup>00</sup>	440	★	2c Vermilion Die 1 Plimpton on Manila (U127). Very Fine ..... (Photo)	200.00
10 <sup>50</sup>	441	★	2c Brown Die 2, 3, 4 Plimpton on Manila, White, Orange, Manila (W131- U132, U136-W137). Very Fine .....	23.75
23 <sup>00</sup>	442	★	2c Brown Die 3 Plimpton on Amber (U133). Very Fine .....	35.00
87 <sup>50</sup>	443	★	2c Brown Die 4 Plimpton on White (U134). Very Fine ..... (Photo)	100.00
31 <sup>00</sup>	444	★	2c Brown Die 4 Plimpton on Amber (U135). Very Fine ..... (Photo)	75.00
12 <sup>50</sup>	445	★	2c Brown Die 5 Plimpton (U139-W141). Very Fine .....	29.50
13 <sup>00</sup>	446	★	2c Vermilion Plimpton Various Papers, Dies (U142-U144, U147-U153, U155). Very Fine .....	28.00

11 <sup>00</sup>	447 ★	2c Vermilion Die 5 Plimpton on Blue (U146). Very Fine .....	18.50
22 <sup>00</sup>	448 ★	2c Vermilion Die 7 Plimpton on Amber (U154). Very Fine ..... (Photo)	50.00
27 <sup>50</sup>	449 ★	2c Vermilion Die 8 Plimpton on White (U156). Very Fine ..... (Photo)	100.00
13 <sup>50</sup>	450 ★	2c Vermilion Die 8 Plimpton on Manila (W158). Very Fine .....	22.50
11 <sup>50</sup>	451 ★	3c Green, 5c Blue Plimpton Various Papers, Dies (Betw. U159-U179). Fourteen diff. Very Fine .....	22.10
77 <sup>50</sup>	452 ★	3c Green Die 3 Plimpton on White (U168). Very Fine ..... (Photo)	100.00
21 <sup>00</sup>	453 ★	3c Green Die 3 Plimpton on Amber (U169). Very Fine .....	37.50
21 <sup>00</sup>	454 ★	5c Blue Die 1, 2, Plimpton (U174, U176, U180). Fine-Very Fine .....	44.50
10 <sup>50</sup>	455 ★	6c Red, 7c Vermilion Plimpton (U181-U184, U186). Very Fine .....	24.15
36 <sup>00</sup>	456 ★	7c Vermilion Plimpton on White (U185). Very Fine ..... (Photo)	90.00
6 <sup>50</sup>	457 ★	10c Brown Die 1, 2 Plimpton (U187-U194). Very Fine set .....	24.10
12 <sup>00</sup>	458 ★	12c Plum Plimpton on White (U195). Fine .....	25.00
14 <sup>00</sup>	459 ★	12c Plum Plimpton on Amber (U196). Very Fine .....	25.00
15 <sup>00</sup>	460 ★	12c Plum Plimpton on Cream (U197). Fine .....	27.50
16 <sup>00</sup>	461 ★	15c Orange Plimpton on White, Amber (U198, U199). Very Fine .....	31.00
30 <sup>00</sup>	462 ★	15c Orange Plimpton on Cream (U200). Very Fine ..... (Photo)	65.00
22 <sup>50</sup>	463 ★	24c Purple Plimpton on White (U201). Very Fine .....	35.00
15 <sup>00</sup>	464 ★	24c Purple Plimpton on Amber (U202). Very Fine .....	26.50
17 <sup>00</sup>	465 ★	24c Purple Plimpton on Cream (U203). Very Fine .....	30.00
13 <sup>00</sup>	466 ★	30c Black Plimpton (U204-U205, U207, two, U208-U210). Very Fine .....	33.00
13 <sup>50</sup>	467 ★	90c Carmine Plimpton on White, Amber (U211, U212). Very Fine .....	22.50
45 <sup>00</sup>	468 ★	90c Carmine Plimpton on Cream (U213). Very Fine ..... (Photo)	90.00
11 <sup>00</sup>	469 ★	90c Carmine Plimpton on Oriental Buff (U214). Very Fine .....	22.50
25 <sup>00</sup>	470 ★	90c Carmine Plimpton on Blue, Manila, Amber Manila (U215-U217). V. F.	41.50
7 <sup>00</sup>	471 ★	3c Red Die 1, 3c Green Die 1, 2 Centennial (U218-U219, U221). F.-V. F.	16.50
5 <sup>00</sup>	472 ★	5c Brown on Various Papers (U222-U225). Very Fine .....	22.10
26 <sup>00</sup>	473 ★	5c Brown on Fawn (U226). Very Fine .....	40.00
8 <sup>00</sup>	474 ★	2c Red, 4c Green 1883 Issues (U227-U240, U250-U259). Very Fine .....	26.50
11 <sup>00</sup>	475 ★	2c Red "2 links" on White, Amber (U243-U244). Fine-Very Fine .....	22.00
15 <sup>00</sup>	476 ★	2c Red "2 links" on Blue (U245). Very Fine .....	27.50
15 <sup>50</sup>	477 ★	2c "2 links" on Fawn (U246). Very Fine .....	27.50
42 <sup>00</sup>	478	2c Red "Round O" on Amber (U248). Used, Fine ..... (Photo)	125.00
47 <sup>50</sup>	479 ★	2c Red "Round O" on Fawn (U249). Very Fine ..... (Photo)	65.00
16 <sup>00</sup>	480 ★	2c Brown 1884-86 Issues (U260-U270, U277-U284, U289, U291-W292). Very Fine .....	41.58
30 <sup>00</sup>	481 ☒	2c Brown "2 links" on Amber, Entire (U271). Very Fine, unused .....	50.00

15 <sup>00</sup>	482 ★	2c Brown "Round O" on White (U273). Very Fine .....	22.50
21 <sup>00</sup>	483 ★	2c Brown "Round O" on Amber (U274). Very Fine .....	25.00
350 <sup>00</sup>	484	2c Brown "Round O" on Blue (U275). Used, Very Fine ..... (Photo)	650.00
57 <sup>50</sup>	485 ★	2c Red Die 1 on White (U285). Very Fine ..... (Photo)	115.00
15 <sup>00</sup>	486 ★	2c Red Die 1 on Blue (U286). Very Fine .....	40.00
8 <sup>50</sup>	487 ★	2c Red on Manila (W287). Very Fine .....	15.00
15 <sup>00</sup>	488 ★	2c Brown Die 2 on White (U288). Very Fine .....	32.50
42 <sup>00</sup>	489 ★	2c Brown Die 2 on Blue (U290). Very Fine ..... (Photo)	80.00
20 <sup>00</sup>	490 ★	1c-5c 1884-86 Issue (Betw. U294-U335). 31 diff., Very Fine .....	38.03
125 <sup>00</sup>	491 ★	1c Blue on Oriental Buff (U298). Very Fine ..... (Photo)	300.00
17 <sup>50</sup>	492 ★	2c Green Die 3 on White, Amber (U318-U319). Very Fine .....	35.00
12 <sup>00</sup>	493 ★	2c Green Die 3 on Oriental Buff (U320). Very Fine .....	20.00
12 <sup>00</sup>	494 ★	2c Green Die 3 on Blue (U321). Very Fine .....	25.00
18 <sup>00</sup>	495 ★	2c Green Die 3 on Manila (U322). Very Fine .....	27.50
29 <sup>00</sup>	496 ★	2c Green Die 3 on Amber Manila (U323). Very Fine .....	45.00
9 <sup>00</sup>	497 ★	30c Red Brown on Various Papers (U336-U341). Very Fine set .....	28.00
26 <sup>00</sup>	498 ★	90c Purple on Various Papers (U342-U347). Very Fine set .....	45.50
23 <sup>00</sup>	499 ★	1c-10c 1893-1932 Issues (Betw. U348-U531). Collection of 104 diff. V. F.	105.22
45 <sup>00</sup>	500 ★	5c Slate Brown Columbian ERROR (U350a). Very Fine ..... (Photo)	110.00
9 <sup>00</sup>	501 ★	1c-5c 1899 Issue (U352-U372, U374-U378). Very Fine .....	33.21
30 <sup>00</sup>	502	4c Brown Die 2 on White (U373). Used, Very Fine .....	50.00
57 <sup>50</sup>	503 ★	3c Carmine ERROR on Amber (U437g). Very Fine ..... (Photo)	70.00
15 <sup>00</sup>	504 ★	3c Black ERROR on Amber (U437h). Very Fine .....	45.00
92 <sup>50</sup>	505 ★	2c on 2c Carmine Ty. III Surcharge on White (U453a). V. F. (Photo)	150.00
12 <sup>50</sup>	506 ★	2c on 2c Carmine Ty. III Surcharges on Blue, Or. Buff, White (U453B, U453C, U454). Very Fine .....	29.00
39 <sup>00</sup>	507 ★	2c on 2c Carmine Ty. III Surcharge on Amber (U455). V. F. .... (Photo)	75.00
16 <sup>00</sup>	508 ★	2c on 2c Carmine Ty. III Surcharge on Oriental Buff, Blue (U456-U457). Very Fine .....	26.50
21 <sup>00</sup>	509 ★	2c on 4c Chocolate Ty. III Surcharge on White, Amber (U462, U463). V. F.	40.00
30 <sup>00</sup>	510 ★	2c on 5c Blue Ty. III Surcharge on White (U464). Very Fine ..... (Photo)	50.00
45 <sup>00</sup>	511 ★	2c on 1c Green Ty. IV Surcharge on White (U465). Very Fine (Photo)	65.00
10 <sup>00</sup>	512 ★	2c on 3c Green Ty. IV Surcharge on White (U467). Very Fine .....	17.50
19 <sup>00</sup>	513 ★	2c on 1c on 3c Dark Violet Double Surcharge on White, Amber (U474-U475). Very Fine .....	35.00
16 <sup>00</sup>	514 ★	2c on 3c Dark Violet Ty. 5, 6 Surcharges (U476-U478). Very Fine .....	28.00
23 <sup>00</sup>	515 ★	2c on 3c Dark Violet Ty. 7 Black Surcharge (U479). Very Fine .....	50.00

65 <sup>00</sup>	516 ★	2c on 3c Dark Violet Ty. 7 Violet Surcharge (U480). Very Fine (Photo)	75.00
10 <sup>50</sup>	517 ★	1½c Purple ERROR on White (U481b). Very Fine	20.00
20 <sup>00</sup>	518 ★	1½c on 2c Green Ty. 8 Surcharge on White (U486). Very Fine	40.00
20 <sup>00</sup>	519 ★	1½c on 2c Green Ty. 8 Surcharge on Amber (U487) Very Fine	40.00
23 <sup>00</sup>	520 ★	1½c on 1c Green Ty. 8 Surcharge on White (U488). Very Fine (Photo)	50.00
14 <sup>50</sup>	521 ★	1½c on 1c Ty. 8 Surcharges (U489-U491, U493, U495-U501). Very Fine	33.77
16 <sup>00</sup>	522 ★	1½c on 1c Green Ty. 8 Surcharge on Oriental Buff (U492). Very Fine	27.50
21 <sup>00</sup>	523 ★	1½c on 1c Green Ty. 8 Surcharge on Manila (U494). Very Fine	37.50
15 <sup>50</sup>	524 ★	1½c on 2c Carmine Ty. 8 Surcharge on White, Oriental Buff (U502, U503). Very Fine	34.50
8 <sup>00</sup>	525 ★	1½c on 2c Carmine Ty. 8 Surcharge on Blue (U504). Very Fine	20.00
12 <sup>50</sup>	526 ★	1½c on 1½c Brown Ty. 8 Surcharge on White (U505). Very Fine	30.00
10 <sup>00</sup>	527 ★	1½c on 1½c Brown Ty. 8 Surcharge on Blue (U506). Very Fine	25.00
45 <sup>00</sup>	528 ★	1½c on 1c Blue Ty. 9 Surcharge (U507). Very Fine (Photo)	65.00
10 <sup>50</sup>	529 ★	1½c on 1c Green Ty. 9 Surcharge (U508-U509, U509B, U510-U511). V. F.	27.70
12 <sup>00</sup>	530 ★	1½c on 1c Green, 2c Carmine Ty. 9 Surcharges (U512-U521). Very Fine	31.87
7 <sup>50</sup>	531 ★	5c-10c Airpost Cut Squares 1929-56 Issues (Betw. UC2-UC25). 21 diff. Very Fine	25.50
52 <sup>50</sup>	532 ☒	10c Bright Red Airpost on Pale Blue, Entire (UC16). Die Cutting Reversed, slight bends at extreme edges, otherwise Very Fine	100.00
77 <sup>50</sup>	533 ☒	10c Chocolate ERROR on Pale Blue Airpost Letter Sheet (UC16b). Very Fine, P. F. Certificate (Photo)	200.00
240 <sup>00</sup>	534 ☒	10c Red, ERROR, Blue Omitted, Airpost Lettersheet on Blue (UC32a). Listed in Scott, but unpriced, Very Fine (Photo)	E. XI
150 <sup>00</sup>	535 ☒	11c Blue, ERROR, Red Omitted, Airpost Lettersheet on Blue (UC35a). Listed in Scott, but unpriced, Very Fine (Photo)	E. XI
18 <sup>00</sup>	536 ★	1c-6c Officials (Betw. UO1-UO72). Sixteen diff., UO70 used, WO33 thin spot, others Very Fine	38.56
105 <sup>00</sup>	537 ★	3c Black on White P. O. Official (UO8). Very Fine (Photo)	150.00
47 <sup>50</sup>	538 ★	6c Black on White P. O. Official (UO13). Very Fine (Photo)	50.00
17 <sup>00</sup>	539 ★	1c Dark Red Reay War Dept. (UO18). Fine	35.00
27 <sup>50</sup>	540 ★	2c Dark Red Reay War Dept (UO19). Very Fine	35.00
12 <sup>00</sup>	541 ★	2c Dark Red Reay War Dept. on White (UO19). Fine	35.00
20 <sup>00</sup>	542 ★	3c-24c Dark Red Reay War Dept. (UO20, UO23, UO26-28). Very Fine	36.75
14 <sup>00</sup>	543 ★	3c Dark Reay War Dept. on Cream (UO22). Fine	27.50
115 <sup>00</sup>	544 ★	6c Dark Red Reay War Dept. on Cream (UO24). Very Fine (Photo)	175.00
20 <sup>00</sup>	545 ★	30c Dark Red Reay War Dept. (UO29). Very Fine	25.00
10 <sup>00</sup>	546 ★	1c Vermilion Reay War Dept. on White (UO30). Very Fine	20.00



484



485



489



491



500



503



505



507



510



511



516



520



528



537



538



544



553



555



556



557



559



560



561



562



582



583



628



630



632



638



584



585



599



602

9 <sup>00</sup>	547 ★	1c, 2c Vermilion Reay War Dept. on Manila, White (W031-U032). Fine-Very Fine .....	19.00
10 <sup>50</sup>	548 ★	3c-6c Vermilion Reay War Dept. (U034-U037). Very Fine .....	24.30
16 <sup>00</sup>	549 ★	6c Vermilion Reay War Dept. on Cream (U038). Very Fine .....	32.50
14 <sup>50</sup>	550 ★	10c-15c Vermilion Reay War Dept. (U039-U041). Very Fine .....	33.50
14 <sup>50</sup>	551 ★	24c-30c Vermilion Reay War Dept. (U042-U043). Very Fine .....	32.50
12 <sup>50</sup>	552 ★	1c-2c Red Plimpton War Dept. (U044, U047-U050). Very Fine .....	27.10
47 <sup>50</sup>	553 ★	1c Red Plimpton War Dept. on Amber (U045). Very Fine ..... (Photo)	60.00
16 <sup>00</sup>	554 ★	3c-12c Red Plimpton War Dept. on Various Papers (U051-U059, U061). Very Fine .....	31.86
67 <sup>50</sup>	555 ★	10c Red Plimpton War Dept. on Amber (U060). Very Fine ..... (Photo)	100.00
22 <sup>00</sup>	556 ★	12c Red Plimpton War Dept. on Amber (U062). Fine ..... (Photo)	60.00
22 <sup>00</sup>	557 ★	12c Red Plimpton War Dept. on Cream (U063). Very Fine ..... (Photo)	50.00
12 <sup>50</sup>	558 ★	15c, 30c Red Plimpton War Dept. on White (U064, U067). Very Fine .....	27.50
29 <sup>00</sup>	559 ★	15c Red Plimpton War Dept. on Amber (U065). Very Fine ..... (Photo)	55.00
26 <sup>00</sup>	560 ★	15c Red Plimpton War Dept. on Cream (U066). Very Fine ..... (Photo)	55.00
32 <sup>50</sup>	561 ★	30c Red Plimpton War Dept. on Amber (U068). Fine ..... (Photo)	75.00
52 <sup>50</sup>	562 ★	30c Red Plimpton War Dept. on Cream (U069). Very Fine ..... (Photo)	70.00
12 <sup>00</sup>	563 ★	1c Green Postal Savings on Oriental Buff (U071). Very Fine .....	25.00
52 <sup>50</sup>	564	U. S. Cut Squares, 1853-1932, collection of 349 cut squares, used and unused and 10 entires, more specialized in the 1907-32 issues, with offsets, Albinos, Double Opt's., etc, nearly all Fine-Very Fine .....	407.55

#### POSTAL CARDS

165 <sup>00</sup>	565 ☒	1c Black on Buff Full Face Mc Kinley Postal Card (UX17). Printed Address, unused, Very Fine ..... (Photo)	225.00
135 <sup>00</sup>	566 ☒	1c Black on Buff Full Face Mc Kinley Postal Card (UX17). Printed Ad- dress, unused, Very Fine ..... (Photo)	225.00
22 <sup>00</sup>	567 ☒	1c Green on Gray Jefferson Die I Postal Card (UX27C). Printed Ad- dress, unused, crease Very Fine appearance .....	75.00
10 <sup>00</sup>	568 ☒	1c Dark Green on Gray Jefferson Die II Postal Card (UX27D). Printed Address, unused, Very Fine .....	25.00
120 <sup>00</sup>	569 ☒	1c on 2c Red on Cream One Line Surcharge (UX31). Unused, Very Fine (Photo) .....	250.00
12 <sup>50</sup>	570 ☒	1c+1c-3c+3c Paid Reply Postal Cards (Betw. UY1-UY12). 14 cards, unused, Very Fine .....	19.60
17 <sup>00</sup>	571 ☒	1c Black on White Official Postal Card (UZ1). Unused, Very Fine .....	32.50
19 <sup>50</sup>	572 ☒	1c-5c Postal Cards (Betw. UX1-UX46, UXC1-3). 43 diff., unused, V. F.	56.89
11 <sup>50</sup>	573 ★	Christmas Seals, 1907-59, collection of 65, all years represented Very Good- Very Fine .....	36.12



264



305



VIA AIR MAIL.  
PAR AVION

533

AIR MAIL 10¢

534



535

THIS SIDE OF CARD IS FOR ADDRESS



569



ns,

rk City.

566



ns,

rk City.

565

# REVENUES

## REVENUE ESSAYS

10 <sup>00</sup>	574 E	<b>Washington Head Essay with "No. 6" 2"x4½"</b> Dark Blue Die Proof on India, head used for \$500.00 3rd issue revenue, Very Fine .....	E. II
40 <sup>00</sup>	575 E	<b>\$1.00 Lincoln USIR Essay, Red on Yellow</b> Very Fine .....	E. II
22 <sup>50</sup>	576 E	<b>\$200.00 Blue Green &amp; Black USIR Essay with Eagle &amp; Shield on India</b> Very Fine .....	E. III
24 <sup>00</sup>	577 E	<b>\$200.00 Yellow &amp; Black USIR Essay with Eagle &amp; Shield</b> Perforated, Very Fine .....	E. III
31 <sup>00</sup>	578 E	<b>\$200.00 Vermilion &amp; Black USIR Essay with Eagle &amp; Shield</b> , Perforated, o. g., Fine .....	E. III
21 <sup>00</sup>	579 E	<b>\$200.00 Brown Red &amp; Black USIR Essay with Eagle &amp; Shield</b> Perforated, o. g., Very Fine .....	E. III

## CIVIL WAR REVENUES

### FIRST ISSUE 1864-1871

12 <sup>00</sup>	580	<b>1c Express Perf., Part Perf., Imperforate (R1a, b, c).</b> Vertical pairs on matching Bank Checks, a Handsome Trio, Fine-Very Fine .....	15.20+
32 <sup>00</sup>	581	<b>1c-\$2.50 1st-3rd Issue Revenues (Betw. R1c-R146).</b> 37 stamps on 10 documents, incl. three "North Louisiana & Texas Railroad Co."; Combinations of 2nd & 3rd issues; wide variety of diff. stamps on one document; a very choice group .....	15.91+
80 <sup>00</sup>	582	<b>1c Playing Card, Imperforate (R2a).</b> Large margins, Brilliant Color, faint tiny marginal crease, otherwise Very Fine .....	(Photo) 120.00
55 <sup>00</sup>	583	<b>1c Playing Card, Part Perf. (R2b).</b> Very Fine .....	(Photo) 50.00
92 <sup>50</sup>	584	<b>1c Proprietary, Imperforate (R3a).</b> Large margins, Blue Handstamp cancel, Extremely Fine .....	(Photo) 135.00
20 <sup>00</sup>	585	<b>1c Proprietary, Imperforate (R3a).</b> Large margins except touched at R., minute corner crease, far from design, Fine .....	(Photo) 135.00
15 <sup>00</sup>	586	<b>1c Telegraph, Imperforate (R4a).</b> Blue Handstamp Cancel, crease, V. F. appearance .....	25.00
10 <sup>50</sup>	587	<b>2c Blue Bank Check, Imperforate (R5a).</b> Double Transfer T5, tied on check, Extremely Fine .....	E. II
22 <sup>00</sup>	588	<b>2c Blue Bank Check Imperforate (R5a).</b> Horiz. strip of 5, Huge Margins, L. stamp shows Double Transfer T5, crease in margin between 3rd & 4th stamps, Extremely Fine .....	17.00+
17 <sup>00</sup>	589	<b>2c Blue Bank Check Perf., Part Perf., Imperforate (R5a, b, c).</b> Double Transfer T5, Very Fine set .....	16.00
14 <sup>00</sup>	590	<b>2c Orange, Blue Bank Check (R5c, R6c).</b> Double Transfer T5, F.-V. F. .....	13.00
15 <sup>50</sup>	591	<b>2c Certificate Blue (R7a).</b> Double Transfer T7, Circular Printed cancel, Extremely Fine .....	10.00+

11 <sup>00</sup>	592	2c Blue Certificate Perf., Imperforate (R7a, R7c). Double Transfer T7, latter has minute thin, otherwise Extremely Fine .....	17.50
19 <sup>00</sup>	593	2c Orange Certificate (R8c). Double Transfer, T7, Fine .....	30.00
40 <sup>00</sup>	594	2c Orange Certificate (R8c). Handstamp Cancel, Double Transfer T7, Fine .....	30.00
34 <sup>00</sup>	595 ★	2c Proprietary, Imperforate Horiz. (R13b). Vertical Strip of 3, full o.g., T. stamp has short perf., otherwise Fine Unused .....	55.00+
50 <sup>00</sup>	596	2c Orange Proprietary (R14c). Handstamp Cancel, "Proprietary" shows Double Impression, second 1mm below first, Fine, unlisted in Scott .....	—
10 <sup>50</sup>	597 P	2c Black USIR Proof on Very Thin Card (R15TC). Very Fine, not listed in Scott .....	—
8 <sup>50</sup>	598	2c Orange USIR (R15c). Three clear Double Transfers, Fine .....	E. II
60 <sup>00</sup>	599	2c USIR Orange on Greenish (R15e). Fine .....	(Photo) 60.00
21 <sup>00</sup>	600	3c Proprietary, Part Perf. (R18b). Blue Handstamp Cancel, Very Fine .....	25.00
9 <sup>00</sup>	601 ☐	3c Proprietary (R18c). Block of twelve (3x4) light ms cancels short corner perf. one on stamp, 3 lightly creased, otherwise Fine Attractive Block .....	19.00+
36 <sup>00</sup>	602	4c Playing Card (R21c). Brilliant color, appears unused, V.F. (Photo) .....	32.50
5 <sup>00</sup>	603 ☐	5c Agreement, Certificate, Silk Paper (R23d, 24d). Blocks, first unused, V.G.-V.F., first listed but unpriced, second unlisted in Scott .....	—
19 <sup>00</sup>	604 ★	5c Certificate (R24c). Vivid color, Double Transfer Thruout, Fine unused .....	15.00+
82 <sup>00</sup>	605	5c Inland Exchange (R27a, b, c). Specialized collection of 111 stamps, beautifully mounted & written up, includes diff. Double Transfers, some in multiples, plate scratch, plate crack in block of 10 & single, imperf. blocks of 8 & 10, spectacular paper folds incl. several in imperf strip of 7, also shades, proof, perf. varieties, etc, A Very Choice & Handsome Lot .....	139.80+
15 <sup>50</sup>	606	10c Power of Attorney, Imperforate (R37a). Creases, V.F. appearance .....	45.00
175 <sup>00</sup>	607	15c Inland Exchange, Double Impression (R40e). Unusually strong example, perfs. just in at B., Handsome example of this Rarity, with Enlarged Photo, listed but unpriced in Scott .....	—
14 <sup>00</sup>	608	20c Foreign Exchange, Imperforate (R41a). Vertical Pair, Extremely Fine .....	25.00
14 <sup>00</sup>	609	25c-\$5.00 Civil War Revenues, Silk Paper (R45d, R54d, R54e var., R67d, R88d). Pair of \$1.00, 50c ultra listed but unpriced, V.G.-V.F. ....	E. II
4 <sup>50</sup>	610	25c Power of Attorney, Imperforate Horiz. (R48b). Vertical Pair, Handstamp cancels, horiz. margin crease between stamps, tiny tear at B., Extremely Fine appearance .....	25.00
17 <sup>00</sup>	611	25c Protest, Part Perf. (R49b). Extremely Fine .....	18.00
6 <sup>50</sup>	612	25c Warehouse Receipt, Imperforate (R50a). Horiz. Pair, Extremely Fine .....	20.00
18 <sup>00</sup>	613	25c Warehouse Receipt, Part Perf. (R50b). Fine .....	25.00
29 <sup>00</sup>	614 ☐	50c Mortgage, Imperforate (R59a). Block, huge margins all around, vivid color, light ms. cancel, light crease in top pair, others Extremely Fine .....	70.00
10 <sup>00</sup>	615 ☐	50c Mortgage, Imperforate (R59a). Block, clear to huge margins except just touched at U.R., light horiz. creases in B. pair and between pairs, others Fine .....	70.00

78 <sup>00</sup>	616	<b>50c Mortgage (R59a, b, c, e).</b> Highly Specialized Collection of 44 stamps, incl. Essay in Black, Plate Proof, Paper Varieties, part perf. & imperf. multiples, several diff. Plate Scratches, Plate Crack Perf. & Part Perf., Shade Printing & Varieties, Handsome lot, Professionally Mounted & Written Up .....	138.45+
9 <sup>50</sup>	617	<b>60c Inland Exchange, Imperforate (R64a).</b> Horiz. strip of 3, huge margins all around, faint creases, Extremely Fine appearance .....	41.00+
135 <sup>00</sup>	618	<b>60c Inland Exchange, Imperf. Horiz. (R64b). Block of Nine,</b> centered huge margin at B., just in at U.L., horiz. marginal creases between rows, a lovely Showpiece, Fine-Very Fine .....	197.25+
21 <sup>00</sup>	619	<b>70c Foreign Exchange, Imperforate (R65a).</b> Margins all around, Fine .....	35.00
20 <sup>00</sup>	620	<b>\$1.00 Inland Exchange, Part Perf. (R69b).</b> Very Fine .....	20.00
12 <sup>00</sup>	621	<b>\$1.00 Inland Exchange (R69c).</b> Shows <b>Plate Crack</b> in L. R. "1", unlisted in Scott, Fine .....	E. II
16 <sup>50</sup>	622	<b>\$1.00 Life Insurance, Imperforate (R71a).</b> Large margins, Handstamp Cancel, Very Fine .....	14.00
4 <sup>50</sup>	623	<b>\$1.00 Mortgage, Imperforate (R73a).</b> Horiz. pair, huge margins, vivid color, L. stamp uncanceled, cancel just breaks paper at one point, otherwise Extremely Fine .....	15.00
10 <sup>00</sup>	624 ★	<b>\$1.00 Mortgage (R73c).</b> Fine unused .....	15.00+
9 <sup>00</sup>	625	<b>\$1.00 Passage Ticket (R74c).</b> Appears unused, Fine .....	13.50
47 <sup>50</sup>	626	<b>\$1.50-\$50.00 Civil War Revenues, Part Perf. (R78b, 88b, 101b).</b> All with wide margins, Fine lot, none listed in Scott .....	—
27 <sup>00</sup>	627	<b>\$1.60 Foreign Exchange, Imperforate (R79a).</b> Huge margins, faint cancels, minute faults, Extremely Fine appearance .....	100.00
110 <sup>00</sup>	628	<b>\$1.90 Foreign Exchange, Imperforate (R80a).</b> Huge margins, Lovely Color, two pinholes, otherwise Extremely Fine .....	(Photo) 350.00
10 <sup>00</sup>	629	<b>\$2.00 Conveyance, Mortgage, Imperforate (R81a, R82a).</b> Large margins, first has minute marginal thin, otherwise Very Fine .....	14.00
50 <sup>00</sup>	630	<b>\$2.00 Conveyance, Part Perf. (R81b).</b> Very Fine .....	(Photo) 37.50
7 <sup>50</sup>	631	<b>\$2.00 Mortgage Imperforate (R82a).</b> Horiz. pair, margins all around, just clear at U. R., light vertical crease at L., otherwise Fine .....	50.00
135 <sup>00</sup>	632	<b>\$2.00 Probate of Will, Imperforate (R83a).</b> Ample to Huge margins, tiny thin, Extremely Fine appearance .....	(Photo) 175.00
11 <sup>00</sup>	633	<b>\$3.00 Charter Party, Imperforate (R85a).</b> Huge margins, Extremely Fine .....	8.50
57 <sup>50</sup>	634	<b>\$3.00 Charter Party, Part Perf. (R85b).</b> Horiz. Pair, Handstamp cancels, sheet margin at B. & wide margin at T., V. G.-F., unlisted in Scott .....	(Photo) —
82 <sup>50</sup>	635	<b>\$3.50 Inland Exchange, Imperforate (R87a).</b> Clear to large margins all around, Lovely Color, Very Fine .....	(Photo) 150.00
14 <sup>50</sup>	636	<b>\$5.00 Charter Party, Imperforate (R88a).</b> Large margins all around, V. F. .....	16.50
13 <sup>00</sup>	637	<b>\$5.00 Mortgage, Imperforate (R91a).</b> Enormous Margins, Brilliant Color, Extremely Fine .....	10.00
28 <sup>00</sup>	638	<b>\$5.00 Mortgage Imperforate (R91a).</b> Horiz. Pair, huge margins, rich color, Extremely Fine .....	(Photo) 50.00



634



635



649



667



668



669



670



672



654



675



676



678



679



683



655



695



696



700



694



704



660



698



687



688

22 <sup>00</sup>	639	<b>\$5.00 Probate of Will, Imperforate (R92a).</b> Large margins, faint bend in B. margin, otherwise Very Fine .....	35.00
32 <sup>00</sup>	640	<b>\$10.00 Charter Party, Imperforate (R93a).</b> Large margins except barely touched in L.L. corner, Very Fine .....	35.00
13 <sup>00</sup>	641	<b>\$10.00 Conveyance, Imperforate (R94a).</b> Enormous margins all around, on small piece, Extremely Fine .....	10.00
22 <sup>00</sup>	642	<b>\$10.00 Mortgage, Imperforate (R95a).</b> Ample to large margins all around, Very Fine .....	27.50
55 <sup>00</sup>	643	<b>\$10.00 Probate of Will, Imperforate (R96a).</b> Ample to large margins all around, light horiz. creases, V.F. appearance ..... <b>(Photo)</b>	110.00
42 <sup>50</sup>	644	<b>\$15.00 Mortgage, Imperforate (R97a).</b> Large margins except just clear at B., minute sealed tear, entirely in margin, V.F. appearance .....	100.00
16 <sup>00</sup>	645	<b>\$15.00 Blue, Ultramarine Mortgage (R97c, R97e).</b> First faint cancel latter unused, first minute perf. break, latter faint crease, F.-V.F. appearance .....	40.00
105 <sup>00</sup>	646	<b>\$20.00 Probate of Will, Imperforate (R99a).</b> Huge margins all around, Brilliant Color, minute marginal thin speck, otherwise Extremely Fine ..... <b>(Photo)</b>	135.00
170 <sup>00</sup>	647 ★	<b>\$20.00 Probate of Will (R99c).</b> Part o.g., Brilliant Color, faint marginal crease, reperf. at T., Very Fine appearance, unused .....	135.00+
62 <sup>50</sup>	648	<b>\$25.00 Mortgage, Imperforate (R100a).</b> Large margins all around, Very Fine ..... <b>(Photo)</b>	90.00
165 <sup>00</sup>	649	<b>\$25.00 Mortgage, Imperf. Vertically (R100b).</b> Horiz. pair, clear to huge margins except cut into at L., small faults, unlisted in Scott, Horiz. Pair, imperf. between cats. \$500.00 ..... <b>(Photo)</b>	—
12 <sup>50</sup>	650	<b>\$25.00 Mortgage on Experimental Silk (R100d).</b> Very Fine .....	13.50
16 <sup>50</sup>	651	<b>\$50.00 U. S. I. R., Imperforate (R101a).</b> Large margins except barely touched in L.L. corner, Handstamp Cancel, Very Fine .....	18.50
19 <sup>00</sup>	652	<b>\$50.00 U. S. I. R., Imperforate (R101a).</b> Horiz. Pair, just clear to gigantic margins, vivid color, lt. cancel, lt. crease between stamps and faint tiny thin, Extremely Fine appearance .....	40.00
9 <sup>50</sup>	653	<b>\$50.00 U. S. I. R. (R101c).</b> Faint cancel, Very Fine .....	12.50
72 <sup>50</sup>	654	<b>\$200.00 U. S. I. R. Imperforate (R102a).</b> Ample to large margins all around, minute marginal rub at L.R., otherwise Very Fine ..... <b>(Photo)</b>	175.00
65 <sup>00</sup>	655	<b>\$200.00 Green &amp; Red U. S. I. R. (R102c).</b> Gorgeous Colors, Extremely Fine ..... <b>(Photo)</b>	75.00
29 <sup>00</sup>	656	<b>\$200.00 Green &amp; Red U. S. I. R. (R102c).</b> Vivid color, light cancel, almost invisible pinhole, otherwise Extremely Fine .....	75.00
26 <sup>00</sup>	657	<b>\$200.00 Green &amp; Red U. S. I. R. (R102c).</b> Lovely Colors, Purple ms cancel trivial tiny marginal thin, otherwise Very Fine .....	75.00
26 <sup>00</sup>	658	<b>\$200.00 Green &amp; Red U. S. I. R. (R102c).</b> Vivid colors, faint cancel, partial row of <b>Double Perfs.</b> at L.L., Handsome, tiny thin & faint crease, Very Fine appearance .....	75.00
43 <sup>00</sup>	659 ★	<b>\$200.00 U. S. I. R. (R102c).</b> Part o.g., centered to U.R., two pinpoint thin specks, Fine appearance, unused .....	75.00+

85 <sup>00</sup>	660	<b>\$200.00 Green &amp; Red U. S. I. R. (R102c).</b> Vertical Pair, Gorgeous Colors, Blue Handstamp, top stamp has tiny thins, otherwise Fine, a Very Pretty pair ..... <b>(Photo)</b>	200.00
64 <sup>00</sup>	661	<b>1c-\$20.00 Civil War Revenues, Imperforate (Betw. R5a-R98a).</b> 50 diff., nearly all with large margins all around, some with handstamp cancels, few minor faults, the majority Very Fine, an exceptionally nice lot .....	182.32
67 <sup>50</sup>	662	<b>1c-\$1.00 Civil War Revenues, Part Perf. (Betw. R1b-R66b).</b> 38 diff., nearly all with large margins, few minor faults, mostly F.-V.F., an especially nice lot of this difficult group .....	184.53
58 <sup>00</sup>	663 ★	<b>1c-\$20.00 Civil War Revenues, Perforated (Betw. R1c-R98c).</b> 81 diff. unused, few very minor faults, mostly Fine-Very Fine, a very choice lot .....	127.18
30 <sup>00</sup>	664	<b>1c-\$20.00 Civil War Revenues, Silk Paper (Betw. R3d-R98d).</b> Collection of 31 diff., few handstamp cancels & several unused, exceptionally nice lot, Fine-Very Fine .....	54.07
40 <sup>00</sup>	665	<b>Civil War Revenue Freaks &amp; Oddities</b> collection of 51 stamps incl. Stitch Watermarks, Paper Folds, Double Paper, Double Perfs., Offsets, Blind Perfs., Double Transfers, also nine 3c Green Banknote Issues used as Revenues, Attractively written up .....	E. IV
160 <sup>00</sup>	666	<b>Civil War Revenues</b> Balance of Collection, 207 stamps, neatly mounted & written up, incl. part perf. & imperforate multiples, shades, double transfers, a number on Photographs & Lottery Ticket, Handstamp cancels, etc, few minor faults, mostly Fine-Very Fine .....	336.83

#### SECOND ISSUE 1871

120 <sup>00</sup>	667	<b>1c Blue &amp; Black, Inverted Center (R103a).</b> Appears unused, minute tear, Very Fine appearance..... <b>(Photo)</b>	200.00
190 <sup>00</sup>	668	<b>2c Blue &amp; Black, Inverted Center (R104a).</b> Light purple cancel, F. <b>(Photo)</b>	400.00
190 <sup>00</sup>	669	<b>5c Blue &amp; Black, Inverted Center (R107a).</b> Blue Handstamp cancel, almost invisible pinhole, Fine appearance .....	400.00
200 <sup>00</sup>	670	<b>10c Blue &amp; Black Inverted Center (R109a).</b> Blue Handstamp Cancel, Very Fine .....	200.00
6 <sup>00</sup>	671 P	<b>25c Blue &amp; Black Proof on Wilcox Chameleon Paper (R112P).</b> Horiz. marginal imprint strip of 4, one has damaged corner, another tiny tear, otherwise Very Fine, Very Scarce .....	E. III
21 <sup>00</sup>	672	<b>25c Blue &amp; Black Imperforate (R112 var.).</b> Huge margins all around, purple ms cancel, small thin, Extremely Fine appearance, signed Geo. B. Sloane, unlisted in Scott .....	—
36 <sup>00</sup>	673	<b>25c Blue &amp; Black, Imperforate (R112 var.).</b> Huge margins all around, uncanceled, on Illustrated Southwestern Market Co. Stock Certificate with Attractive Pastoral Scenes, Handsome, Very Fine, unlisted in Scott .....	—
34 <sup>00</sup>	674	<b>25c Blue &amp; Black, Sewing Machine Roulette (R112b).</b> Horiz. strip of 3, appears unused, light crease, Extremely Fine appearance .....	80.00+
67 <sup>50</sup>	675	<b>50c Blue &amp; Black, Inverted Center (R115b).</b> Fine .....	75.00
37 <sup>50</sup>	676	<b>50c Blue &amp; Black, Imperforate (R115 var.).</b> Large to enormous margins all around, just tied to small piece by ms cancel, Extremely Fine, signed Geo. B. Sloane, unlisted in Scott .....	—

22 <sup>00</sup>	677	50c Blue & Black, Imperforate (R115 var.). Ample to huge margins all around, blue ms. cancel, Very Fine, signed Geo. B. Sloane, unlisted in Scott .....	—
325 <sup>00</sup>	678	70c Blue & Black, Inverted Center (R117a). Barest trace of Herringbone cancel, Fine .....	(Photo) 750.00
500 <sup>00</sup>	679	<hr/> <b>\$1.00 Blue &amp; Black, Inverted Center (R118a). Centered to R., Fine (Photo)</b> 1,000.00 <hr/>	
16 <sup>00</sup>	680 ★	\$1.30 Blue & Black (R119). Fine unused .....	25.00+
23 <sup>00</sup>	681	\$1.60 Blue & Black (R121). Light cancel, Fine .....	40.00
12 <sup>00</sup>	682	\$1.90 Blue & Black (R122). Light Cancel, Extremely Fine .....	11.00
675 <sup>00</sup>	683	\$5.00 Blue & Black, Inverted Center (R127a). Ironed Out Embossed & filled in punch cancels, thins, Fine appearance .....	(Photo) 90.00
21 <sup>00</sup>	684	\$20.00 Blue & Black (R129). Light ms. cancel, Fine .....	47.50
245 <sup>00</sup>	685	\$25.00 Blue & Black (R130). Faint crease, Fine appearance .....	47.50
38 <sup>00</sup>	686 ★	\$50.00 Blue & Black (R131). Centered, minute marginal thin, unused, Very Fine appearance .....	50.00+
375 <sup>00</sup>	687	\$200.00 Blue, Black & Red (R132). One slightly short perf., otherwise Very Fine, a Beautiful copy of this Rare stamp .....	(Photo) 700.00
1200 <sup>00</sup>	688	<hr/> <b>\$500.00 Black, Green &amp; Red (R133). Centered, light ms. cancel, sealed tear, Extremely Fine appearance, Very Rare</b> .....	
24 <sup>00</sup>	689	<hr/> <b>1c-\$5.00 Blue &amp; Black (Betw. R103-R127). Collection of 20 stamps, most values represented, all with Freak Perfs., some with several rows of extras in various directions, A Very Choice Lot</b> .....	
28 <sup>00</sup>	690	<hr/> <b>1c-\$10.00 Second Issue Revenues (Betw. R103-R128). 23 diff., majority unused, few minor faults, mostly Fine-Very Fine</b> .....	
			42.62+
			56.32

### THIRD ISSUE 1871-72

17 <sup>00</sup>	691	1c-\$10.00 3rd Issue Revenues (R134-R149). Majority unused, V. G.-V. F. ....	35.09
11 <sup>00</sup>	692 ☒	2c Orange & Black (R135). Neat Rosette cancel, not tied, clear matching Shelburn, Ind. pmk. on cover to Michigan, Fine .....	E. III
20 <sup>00</sup>	693 ★	2c Orange & Black, Inverted Center (R135b). Fine unused .....	35.00+
190 <sup>00</sup>	694	5c Orange & Black Inverted Center (R137a). Pinholes, light crease, Fine appearance, Scarce .....	(Photo) 600.00
47 <sup>00</sup>	695 P	60c Orange & Black Plate Proof on Card, Inverted Center (R142aP). Very Fine .....	(Photo) 50.00
900 <sup>00</sup>	696	<hr/> <b>\$1.00 Green &amp; Black, Inverted Center (R144a). Vertical crease, Fine Appearance, Very Rare</b> .....	
22 <sup>00</sup>	697	<hr/> <b>\$20.00 Orange &amp; Black (R150). Faint crease, Very Fine appearance</b> .....	
160 <sup>00</sup>	698 ★	<hr/> <b>\$20.00 Vermilion &amp; Black Error (R150a). Very Fine, unused</b> .....	
43 <sup>00</sup>	699	<hr/> <b>\$20.00 Vermilion &amp; Black Error (R150a). Vivid Color, Fine</b> .....	
			80.00

46 <sup>00</sup>	700 ★	2c Orange & black on Green, Inverted Center (R151a). Part o. g., Very Fine, unused ..... (Photo)	60.00+
60 <sup>00</sup>	701 ★	2c Blue on Blue, Double Impression (R152b var.). With enlarged photo, Very Fine, unlisted in Scott .....	—
105 <sup>00</sup>	702 ☒	2c Blue on Blue (R152a, two, R152b, two). Each pair tied with 2c Red (279B) by Plainfield, N. J. Waving Flag cancels on 1902 local covers, one a bit carelessly opened, otherwise Fine .....	E. II
100 <sup>00</sup>	703 ★	2c Blue on Blue, Imperforate Horiz. (R152d). Vertical Margin Pair with "No", o. g., Very Fine ..... (Photo)	40.00

#### 1898-1902 DOCUMENTARY ISSUES

16 <sup>00</sup>	704 ★	1c Green, Split Red Overprint (R154 var.). Shows "R" at left, "I" at right, unusual, Fine ..... (Photo)	E. II
13 <sup>00</sup>	705	2c Private Provisional Documentaries (R155 var.). 3 copies, overprinted "I. R." in Ty. B. style and Ty. A size, two with "W & A" and date in Purple ms., other "L. Z. M." and date in Black, Fine .....	E. III
15 <sup>00</sup>	706	2c Private Provisional Documentaries (R155 var.). 4 copies, overprinted "I. R." in Ty. B. style and Ty. A size, all with "W & A" and date in Purple ms., Fine .....	E. III
21 <sup>00</sup>	707 ★	\$5.00 Documentary Surcharge, Reading Down (R159). Fresh, o. g., V. F.	35.00
90 <sup>00</sup>	708	\$1.00 Documentary, Series of 1898, Imperforate (R173 var.). Horiz. Pair Large Margins except touched at L. L., Blue Handstamp cancel, light crease between stamps, unlisted in Scott, Rare ..... (Photo)	—
95 <sup>00</sup>	709	\$3.00 Documentary, Series of 1898, Imperforate Vertically (R174a). Horiz. pair, light handstamp cancels, tiny nick at U. R. and neatly sealed tear between stamps, Attractive example of this Rarity ..... (Photo)	300.00
105 <sup>00</sup>	710	\$30.00 Documentary (R177). Huge margins faint crease, Extremely Fine appearance .....	25.00
40 <sup>00</sup>	711	\$100.00 Documentary, Series of 1898 (R179). Strip of 4, faint cancel, small faults, Very Fine appearance .....	70.00
62 <sup>50</sup>	712	\$500.00 Documentary, Series of 1898 (R180). Faint corner thin, Very Fine appearance ..... (Photo)	185.00
18 <sup>00</sup>	713	\$1000.00 Documentary, Series of 1898 (R181). Handstamp & almost invisible cut cancel, faint crease at T., Very Fine appearance .....	50.00
10 <sup>00</sup>	714 ★	\$3.00 Documentary (R183). Fresh, o. g., Fine, listed but unpriced in Scott, used catalogues .....	12.00
9 <sup>00</sup>	715	\$50.00 Documentary, Surcharged (R189). Blue Handstamp & faint cut cancels, Very Fine .....	17.50
17 <sup>50</sup>	716 ★	\$2.00 Green Documentary, Series of 1902, Outline "2" Overprint (R191a). Fine ..... (Photo)	50.00
120 <sup>00</sup>	717 ★	\$2.00 Green Documentary, Series of 1902, Purple Outline "2" Opt. (R191b). Light crease, Very Fine appearance, signed "Geo. B. Sloane", listed but unpriced in Scott ..... (Photo)	—
7 <sup>50</sup>	718 ★	\$5.00 Green Documentary, Series of 1902, No Overprint (R192a). V. F., o. g.	25.00

26 <sup>00</sup>	719 ★	<b>\$10.00 Documentary, Surcharged (R193).</b> Fresh, o. g., Fine, listed but unpriced in Scott, used catalogues .....	25.00
130 <sup>00</sup>	720 ★	<b>\$50.00 Documentary, Surcharged (R194).</b> Fresh, o. g., Fine, listed but unpriced in Scott, used catalogues ..... <b>(Photo)</b>	150.00
85 <sup>00</sup>	721	<b>1/8c-\$100.00 1874-1902 Revenues (Betw. R151-RB31).</b> 48 diff., few very minor faults, mostly Fine-Very Fine .....	47.55
26 <sup>00</sup>	722 ☒	<b>Revenues Used As Postage</b> Six covers, mostly late 19th and early 20th, none with postage due, Fair-Very Fine .....	<b>E. III</b>

#### 1914-1917 DOCUMENTARY ISSUES

14 <sup>00</sup>	723	<b>\$30.00 Vermilion, Series of 1914 (R222 var.).</b> Block of 40 all with "F. D." Handstamp of New Orleans I. R. office for use as Future Deliveries, opts. at left in Black, those at right in Purple, s. e. at L., mostly V. F. ....	91.25+
20 <sup>00</sup>	724	<b>1c-\$30.00 Documentary, Series of 1914, 1917 (R222, R228-R234, R236, R237, R243, R244, R245, two).</b> All with Purple F. D. of New Orleans I. R. office for use as Future Deliveries, one of R245 is handstamped "Future Delivery" in type similar to normal, Scarce lot, F.-V. F. ....	<b>E. III</b>
110 <sup>00</sup>	725	<b>\$50.00 Documentary, Series of 1914 (R223).</b> Fine .....	<b>(Photo)</b> 185.00
40 <sup>00</sup>	726	<b>\$60.00 Documentary Series of 1915 (R224).</b> Purple Handstamp cancel, V. F. ....	50.00
110 <sup>00</sup>	727	<b>\$100.00 Documentary, Series of 1914 (R225).</b> Very Fine .....	20.00
140 <sup>00</sup>	728	<b>\$500.00 Documentary, Series of 1914 (R226).</b> Purple Handstamp Cancel, Very Fine .....	<b>(Photo)</b> 200.00
140 <sup>00</sup>	729	<b>\$1000.00 Documentary, Series of 1914 (R227).</b> Handstamp cancel, Fine .....	<b>(Photo)</b> 150.00
17 <sup>00</sup>	730	<b>1c-20c Documentary, Proprietary Double Prints (R228a, R229a, R235a, RB65a).</b> 3 unused, one has pulled perf., otherwise F.-V. F. lot .....	29.00+
7 <sup>00</sup>	731	<b>\$500.00 Documentary, Series of 1917 (R249).</b> Double Transfer, uncut, V. F. ....	20.00
6 <sup>00</sup>	732	<b>\$500.00 Documentary, Series of 1917 (R249).</b> Double Transfer, uncut, V. F. ....	20.00
20 <sup>00</sup>	733	<b>\$1000.00 Documentary, Series of 1917 (R250).</b> Strip of 4, Uncut, F.-V. F. ....	26.00+
12 <sup>00</sup>	734	<b>1c-\$1000.00 1914-1929 Revenues (Betw. R195-R263).</b> 55 diff., many unused nearly all Fine-Very Fine .....	66.96

#### DATED DOCUMENTARY ISSUES

85 <sup>00</sup>	735 ★	<b>1c-\$5.00 Documentary, Series of 1940 (R264-R268, R270-R278, R280).</b> Very Fine, o. g., \$1, 2, 5 values listed but unpriced, others cat. ....	24.60
16 <sup>00</sup>	736 ★	<b>1c-\$20.00 1940-1942 Revenues (Betw. R279-R354).</b> 23 diff., nearly all uncut, some unused, Fine-Very Fine .....	45.78
75 <sup>00</sup>	737 ★	<b>1c-\$5.00 Documentary, Series of 1940 (R288, R289, R293, R296, R300, R301, R304).</b> Very Fine, o. g., \$1, 2, 5 values listed but unpriced, others cat. ....	21.25
105 <sup>00</sup>	738	<b>1c-\$2.00 Documentaries, Series of 1940, Sensitive Ink Varieties (R288, R290, R300, R301 var.).</b> First two unused, others handstamp cancels, Fine-Very Fine .....	<b>E. III</b>



815

800

873

878

879

794

11 <sup>50</sup>	739	4c-80c Documentary, Series of 1940 (R291, R297, R299). First o. g., others light handstamps, Fine-Very Fine .....	41.00
22 <sup>00</sup>	740	\$3.00 Documentary, Series of 1940 (R302). Uncut, almost uncanceled, V. F. ....	27.50
125 <sup>00</sup>	741 ★	\$20.00 Documentary, Series of 1940 (R305A). O. g., perfs touch at R., Fine, listed but unpriced unused, used uncut cats. .... (Photo)	125.00
235 <sup>00</sup>	742 ★	\$20.00 Documentary, Series of 1940, Imperforate (R305Ab). Horiz. pair, Extremely Fine, no gum, as issued .... (Photo)	300.00
26 <sup>00</sup>	743 ★	\$30.00 Documentary, Series of 1940 (R306). Very Fine, listed but unpriced in Scott unused .....	—
12 <sup>00</sup>	744	\$60.00 Documentary, Series of 1940 (R307). Uncut, Very Fine .....	25.00
12 <sup>00</sup>	745	\$100.00 Documentary, Series of 1940 (R308). Uncut, Very Fine .....	30.00
7 <sup>00</sup>	746 ★	1c-80c Documentary, Series of 1941 (R311-R316, R318, R320, R322). Fine-Very Fine, o. g. ....	38.00
5 <sup>00</sup>	747 ★	50c, \$1.00 Documentary, Series of 1941 (R321, R323 var.). Both with typewritten Bond Transfer overprints, first s. e., Fine .....	E. II
10 <sup>50</sup>	748 ★	\$30.00 Documentary, Series of 1941 (R330). Very Fine, listed but unpriced in Scott unused .....	—
50 <sup>00</sup>	749 ★	\$50.00 Documentary, Series of 1941 (R331). Fine unused, unpriced in Scott lists used uncut at .....	50.00
10 <sup>00</sup>	750	\$60.00 Documentary, Series of 1941 (R332). Uncut, Fine .....	25.00
18 <sup>00</sup>	751	\$100.00 Documentary, Series 1941, 42, 51, 53, 57 (R333, 358, 583, 648, 709). Uncut, Very Fine .....	66.50
38 <sup>00</sup>	752	\$500.00 Documentary, Series of 1941 (R334). Uncut, Very Fine .....	90.00
32 <sup>50</sup>	753	\$1000.00 Documentary, Series of 1941 (R335). Uncut, Very Fine .....	75.00
9 <sup>00</sup>	754	\$30.00-\$1000.00 Documentary, Series of 1942, 45 (R355-R356, R432, R435). First uncut, next perf. initials, others cut, R432 has staple holes, others Fine-Very Fine .....	87.50
28 <sup>00</sup>	755	\$60.00 Documentary, Series of 1942 (R357). Uncut, Fine .....	37.50
35 <sup>00</sup>	756	\$500.00 Documentary, Series of 1942 (R359). Uncut, Fine .....	90.00
37 <sup>50</sup>	757	\$1000.00 Documentary, Series of 1942 (R360). Uncut, Very Fine .....	85.00
22 <sup>00</sup>	758 ★	1c-\$10.00 Documentary, Series of 1943 (R361-R378). Fine-Very Fine, o. g. ....	64.50
18 <sup>00</sup>	759 ★	\$20.00 Documentary, Series of 1943 (R379). Very Fine, o. g. ....	30.00
11 <sup>00</sup>	760	\$30.00-\$100.00 Documentary, Series of 1943 (R380-R383). Uncut, V. F. ....	64.00
16 <sup>00</sup>	761	\$500.00 Documentary, Series of 1943 (R384). Handstamp & light cut cancels, Very Fine .....	50.00
16 <sup>00</sup>	762	\$1000.00 Documentary, Series of 1943 (R385). Handstamp & light cut cancels, Very Fine .....	50.00
21 <sup>00</sup>	763 ★	1c-\$10.00 Documentary, Series of 1944 (R386-R403). Fine-Very Fine, o. g. ....	51.58
25 <sup>00</sup>	764 ★	\$20.00 Documentary, Series of 1944 (R404). Very Fine, o. g. ....	30.00
23 <sup>00</sup>	765 ★	1c-\$10.00 Documentary, Series of 1945 (R411-R428). Fine-Very Fine, o. g. ....	58.65
18 <sup>00</sup>	766 ★	\$20.00 Documentary, Series of 1945 (R429). Very Fine, o. g. ....	30.00

28 <sup>00</sup>	767	<b>\$1000.00 Documentary, Series of 1947 (R485).</b> Uncut, Very Fine .....	60.00
16 <sup>00</sup>	768	<b>\$500.00 Documentary, Series of 1948 (R509).</b> Ms. cancel, few pinholes, otherwise Fine .....	60.00
21 <sup>00</sup>	769	<b>\$1000.00 Documentary, Series of 1948 (R510).</b> Uncut, Fine .....	45.00
21 <sup>00</sup>	770	<b>\$60.00 Documentary, Series of 1950 (R557).</b> Uncut, Very Fine .....	40.00
18 <sup>50</sup>	771	<b>\$1000.00 Documentary, Series of 1950 (R560).</b> Uncut, Very Fine .....	60.00
30 <sup>00</sup>	772	<b>\$1000.00 Documentary, Series of 1951 (R585).</b> Uncut, Very Fine .....	75.00
5 <sup>50</sup>	773	<b>\$30.00-\$100.00 Documentary, Series of 1952 (R611, 612, 614).</b> Uncut, V. F. ....	47.00
7 <sup>00</sup>	774	<b>\$1000.00 Documentary, Series of 1952 (R616).</b> Uncut, Very Fine .....	40.00
44 <sup>00</sup>	775	<b>\$2500.00 Documentary, Series of 1952 (R617).</b> Uncut, Very Fine <b>(Photo)</b> .....	135.00
5 <sup>50</sup>	776	<b>\$500.00, \$1000.00 Documentary, Series of 1953 (R649, R650).</b> Punch cancels, Very Fine .....	50.00
7 <sup>00</sup>	777	<b>\$30.00-\$100.00 Documentary, Series of 1954 (R679, 681, 682).</b> Uncut, V. F. ....	57.00
35 <sup>00</sup>	778	<b>\$500.00 Documentary, Series of 1954 (R683).</b> Uncut, Very Fine .....	90.00
47 <sup>50</sup>	779	<b>\$2500.00 Documentary, Series of 1954 (R685).</b> Uncut, Fine .....	90.00
6 <sup>00</sup>	780	<b>\$30.00-\$100.00 Documentary, Series of 1955 (R688, 689, 691).</b> Uncut, F.-V. F. ....	50.00
18 <sup>00</sup>	781	<b>\$500.00 Documentary, Series of 1955 (R692).</b> Light pinprick cancel, listed but unpriced in Scott, Fine .....	E. III
26 <sup>00</sup>	782	<b>\$1000.00 Documentary Series of 1955 (R693).</b> Uncut, Very Fine .....	60.00
14 <sup>00</sup>	783	<b>\$60.00 Documentary, Series of 1957 (R708).</b> Light pinprick cancel, listed but unpriced in Scott, Very Fine, Scarce .....	—
20 <sup>00</sup>	784	<b>\$500.00 Documentary, Series of 1957 (R710).</b> Light pinprick cancel, listed but unpriced in Scott, Fine .....	E. III
105 <sup>00</sup>	785	<b>\$10,000 Documentary, Series of 1957 (R714).</b> Serial #2, uncut, Very Fine <b>(Photo)</b> .....	250.00
20 <sup>00</sup>	786 ★	<b>\$50.00 Documentary, Series of 1958 (R725).</b> Fine, o. g. listed but unpriced in Scott, Scarce .....	—

#### PROPRIETARY ISSUES

400 <sup>00</sup>	787	<b>1c Green &amp; Black Proprietary, Inverted Center (RB1d).</b> Handstamp cancel, Fine, Rare .....	<b>(Photo)</b> 700.00
20 <sup>00</sup>	788 ★	<b>1c Green &amp; Black Proprietary, Imperforate (RB1c).</b> Horiz. pair, large margins, one thin, other Very Fine .....	125.00
17 <sup>50</sup>	789	<b>10c Green &amp; Black Proprietary, on Violet (RB7a).</b> Handstamp cancel, Fine .....	25.00
67 <sup>50</sup>	790 ★	<b>50c Green &amp; Black Proprietary on Violet (RB8a).</b> Large part o. g., minute marginal thin, Fine appearance, Unused .....	<b>(Photo)</b> 100.00+
110 <sup>00</sup>	791	<b>50c Green &amp; Black Proprietary, on Green (RB8b).</b> Vivid Colors, Blue Handstamp cancel, minute thin, Extremely Fine appearance .....	<b>(Photo)</b> 125.00
220 <sup>00</sup>	792 ★	<b>\$1.00 Green &amp; Black Proprietary, on Violet (RB9a).</b> An unusually fresh copy of this scarce stamp, Fine unused .....	<b>(Photo)</b> 300.00+

235 <sup>00</sup>	793	<b>\$1.00 Green &amp; Black Proprietary on Green (RB9b).</b> Clear Purple oval Norwich, Ct. 1878 cancel, tiny sealed tear, a bit discolored, Fine appearance, a Handsome copy of this Rare stamp ..... <b>(Photo)</b>	575.00
280 <sup>00</sup>	794	<b>\$5.00 Green &amp; Black Proprietary, on Violet (RB10a).</b> Centered, few minor toned spots, an Exceptional Copy, Very Fine ..... <b>(Photo)</b>	500.00
85 <sup>00</sup>	795	<b>1c-10c Green &amp; Black Proprietary (RB1a-RB6a, RB1b-RB7b).</b> All but one unused or Handstamp cancels, few minor faults, others F.-V. F. ....	52.50
WD	796 ★	<b>1c Green Proprietary (RB11 var.).</b> Horiz. pair, imperf. top & bottom, signed J. M. Bartels, Fine-Very Fine, o. g. ....	—
120 <sup>00</sup>	797	<b>5c Black Proprietary, Rouletted (RB16c).</b> Fancy <b>VEM in Heart</b> and "Dec. 18, '78" of Playing Card Mfgr. Victor E. Maugher, faint tiny thin, Extremely Fine appearance ..... <b>(Photo)</b>	225.00
22 <sup>00</sup>	798	<b>6c Violet Blue Proprietary, Rouletted (RB17c).</b> Purple Handstamp cancel, Very Fine .....	30.00
32 <sup>00</sup>	799 ★	<b>6c Violet Proprietary, Rouletted (RB18c).</b> Fine, unused .....	40.00+
28 <sup>00</sup>	800	<b>10c Blue Proprietary, Wmk. (RB19).</b> Very Fine ..... <b>(Photo)</b>	35.00
29 <sup>00</sup>	801	<b>1c-6c 1875-81 Proprietaries (RB11a-17a, 11b-17b, 11c-15c).</b> Nearly all unused, mostly Fine-Very Fine .....	63.07
55 <sup>00</sup>	802	<b>1/8c-5c Battleship Proprietaries (Betw. RB20-RB31).</b> Eight diff., all with Colorful Red Printed Monogram of the J. Ellwood Lee Co., F.-V. F. ....	E. II
290 <sup>00</sup>	803 ★	<b>43/8c Proprietary, Single Line Wmk. (RB42).</b> Block, one of only two known, Just Fine ..... <b>(Photo)</b>	600.00+
13 <sup>00</sup>	804 ★	<b>1/8c-20c Proprietary, Series of 1914 (RB32-RB40, RB44-RB54, RB56-RB62, RB64).</b> Fine-Very Fine, o. g. ....	59.19

#### FUTURE DELIVERY ISSUES

16 <sup>00</sup>	805 ★	<b>3c Red, Future Delivery Overprint (RC2).</b> Fine, Scarce .....	17.50
24 <sup>00</sup>	806 □	<b>10c Future Delivery, Double Overprint (RC4a).</b> Block of 8, clear separation, cut cancels, Fine .....	32.00+
16 <sup>00</sup>	807	<b>10c Carmine "Livery De" Overprint (RC4b var.).</b> Extremely Fine, unpriced in Scott .....	—
12 <sup>00</sup>	808	<b>Future Delivery, Stock Transfer Varieties,</b> incl. RC10 & RC14 with "Future Delivery" overprints, first in pair with normal, RC4a, horiz. & vert. pairs, vertical strip of 4 of same with "Future Delivery" almost invisible on top two and "Future" faint on the third, "Delivery" and last stamp normal, also RD2a Fine-Very Fine .....	E. III
12 <sup>00</sup>	809	<b>\$30.00-\$1000.00 Future Delivery, Series of 1918 (RC16-RC18, RC20).</b> Vertical strips of 4, two distinct shades of last, uncut, one RC20 has crease, otherwise Very Fine .....	49.20+
48 <sup>00</sup>	810	<b>\$50.00 Future Delivery, Series of 1918 (RC17).</b> Vertical strip of 4, Blue Handstamp and cut cancels, <b>Serial Numbers 1-2-3-4,</b> Fine .....	—
21 <sup>00</sup>	811	<b>\$500.00 Future Delivery, Series of 1918 (RC20).</b> Orange Numerals, Large Double Transfer, Uncut, Extremely Fine .....	12.00+
21 <sup>00</sup>	812	<b>\$500.00 Future Delivery, Series of 1918 (RC20).</b> Two copies, Red & Orange numerals, each with large <b>Double Transfer,</b> uncut, Very Fine .....	24.00+

17 <sup>00</sup>	813	<b>\$500.00 Future Delivery, Series of 1918 (RC20).</b> Three cpl. strips of 4, each with Serial No. in a diff. color uncut, strip with orange opt. has 4 pinholes, others Very Fine ..... 75.00+
13 <sup>00</sup>	814	<b>\$500.00 Future Delivery, Orange Numerals (RC20a).</b> Almost invisible Handstamp cancel, Very Fine, listed but unpriced in Scott ..... —
400 <sup>00</sup>	815	<b>\$1000.00 Future Delivery, Series of 1918, Imperforate Between (RC21 var.). Cpl. Strip of Four,</b> light handstamp cancels, unlisted in Scott <b>(Photo)</b> ..... —
22 <sup>00</sup>	816	<b>1c-\$1000.00 Future Delivery (Betw. RC4-RC26).</b> 16 diff., incl. uncut RC19, Fine-Very Fine ..... 34.39

#### STOCK TRANSFER ISSUES

21 <sup>00</sup>	817	<b>1c-\$1000.00 1918-32 Stock Transfer (Betw. RD1-RD41).</b> 39 diff., most values to \$.30 are unused, F.-V.F. .... 48.31+
16 <sup>50</sup>	818	<b>\$50.00 Stock Transfer, Series of 1918 (RD20).</b> Uncut, Very Fine ..... 30.00
15 <sup>00</sup>	819	<b>\$500.00 Stock Transfer, Series of 1918 (RD23).</b> Big Double Transfer, ironed out pinprick cancel, Very Fine appearance ..... 60.00
16 <sup>00</sup>	820	<b>\$500.00 Stock Transfer Series of 1918 Orange Numerals (RD23a).</b> Creases, Very Fine appearance, listed but unpriced in Scott ..... 50.00+
20 <sup>00</sup>	821	<b>10c Carmine, "Transfer Stock" Opt. (RD34 var.)</b> S. e. at R, Very Fine, unlisted in Scott ..... —
10 <sup>00</sup>	822 ★	<b>1c-\$20.00 Stock Transfer, Series of 1940 (RD42-RD43, RD48-RD60).</b> Fine-Very Fine, o. g., \$.100-\$10.00 listed but unpriced in Scott, others cat. .... 48.30
20 <sup>00</sup>	823	<b>\$30.00, \$50.00 Stock Transfer, Series of 1940 (RD61, RD62).</b> Perf. Initials, Fine-Very Fine ..... 70.00
26 <sup>00</sup>	824	<b>\$60.00, \$100.00 Stock Transfer, Series of 1940 (RD63, RD64).</b> Perf. Initials, Very Fine ..... 60.00
10 <sup>00</sup>	825 ★	<b>1c-\$5.00 Stock Transfers Series of 1940-42 (RD79-RD81, RD83, RD103-RD106, RD108, RD117-RD126).</b> Very Fine, o. g., dollar values listed but unpriced in Scott ..... —
95 <sup>00</sup>	826	<b>\$1.00 Stock Transfer, Without Overprint (RD79a).</b> Perf. Initials, as always, Very Good, Scarce ..... 125.00
52 <sup>00</sup>	827	<b>\$4.00 Stock Transfer, Series of 1940 (RD82).</b> Uncut, Very Fine <b>(Photo)</b> ..... 70.00
22 <sup>50</sup>	828	<b>\$30.00, \$50.00 Stock Transfer, Series of 1940 (RD86, RD87).</b> Perf. Initials, Very Fine ..... 52.50
50 <sup>00</sup>	829	<b>\$60.00 Stock Transfer, Series of 1940 (RD88).</b> Uncut, crease, pinholes, Very Fine appearance ..... <b>(Photo)</b> 110.00
35 <sup>00</sup>	830	<b>5c Stock Transfer, Series of 1492, Inverted Opt. (RD120a).</b> Tied by Str. Line Date on Receipt with normal 10c opt., both Perf. Initials, listed but unpriced in Scott ..... —
9 <sup>00</sup>	831 ★	<b>1c-\$10.00 Stock Transfer, Series of 1943 (RD140-RD155).</b> Very Fine, o. g., the \$2, \$3, \$10 values listed but unpriced in Scott, others cat. .... 31.90
18 <sup>00</sup>	832 ★	<b>\$20.00 Stock Transfer, Series of 1943 (RD156).</b> Very Fine, o. g., listed but unpriced in Scott ..... <b>(Photo)</b> —

9 <sup>00</sup>	833 ★	1c-\$10.00 Stock Transfer, Series of 1944 (RD163-RD178). Very Fine, o. g. the \$1.00-\$10.00 values listed but unpriced in Scott	—
17 <sup>00</sup>	834 ★	\$20.00 Stock Transfer, Series of 1944 (RD179). Very Fine, o. g., listed but unpriced in Scott	—
10 <sup>00</sup>	835 ★	1c-\$10.00 Stock Transfer, Series of 1945 (RD186-RD201). Very Fine, o. g., the \$1.00-\$10.00 values listed but unpriced in Scott	—
27 <sup>00</sup>	836 ★	\$20.00 Stock Transfer, Series of 1945 (RD202). Very Fine, o. g. listed but unpriced in Scott (Photo)	—
26 <sup>00</sup>	837	\$500.00 Stock Transfer, Series of 1946 (RD230). Uncut, light wrinkles, otherwise Very Fine (Photo)	110.00
22 <sup>00</sup>	838	\$1000.00 Stock Transfer, Series of 1946 (RD231). Uncut, V. F. (Photo)	90.00
35 <sup>00</sup>	839	\$1000.00 Stock Transfer, Series of 1947 (RD257). Uncut, Very Fine	70.00
35 <sup>00</sup>	840	\$10,000.00 Stock Transfer, Series of 1947 (RD260). Cut cancel, V. F. (Photo)	125.00
16 <sup>00</sup>	841	\$10,000.00 Stock Transfer, Series of 1948 (RD286). Cut cancel, a bit rubbed, otherwise Very Fine	125.00
6 <sup>00</sup>	842	\$100.00 Stock Transfer, Series of 1949 (RD307). Uncut, Fine	35.00
42 <sup>50</sup>	843	\$500.00 Stock Transfer, Series of 1949 (RD308). Uncut, Very Fine (Photo)	90.00
37 <sup>50</sup>	844	\$1000.00 Stock Transfer, Series of 1949 (RD309). Uncut, Very Fine	65.00
20 <sup>00</sup>	845	\$10,000.00 Stock Transfer, Series of 1949 (RD312). Light cut cancel, V. F. (Photo)	175.00
16 <sup>00</sup>	846	\$100.00 Stock Transfer, Series of 1950 (RD333). Uncut, Very Fine	25.00
14 <sup>00</sup>	847	\$1000.00 Stock Transfer, Series of 1950 (RD335). Uncut, Fine	60.00
18 <sup>00</sup>	848	\$10,000.00 Stock Transfer, Series of 1950 (RD338). Very light cut cancel, Very Fine (Photo)	125.00
16 <sup>00</sup>	849	\$10,000 Stock Transfer, Series of 1950 (RD338). Light cut cancel, small thin, Very Fine appearance	125.00
19 <sup>00</sup>	850	\$500.00 Stock Transfer, Series of 1951 (RD360). Uncut, Very Fine	75.00
29 <sup>00</sup>	851	\$10,000.00 Stock Transfer, Series of 1951 (RD364). Cut cancel, Very Good	125.00
30 <sup>00</sup>	852	2c-\$1000.00 Stock Transfer, Series of 1940-1949 (Betw. RD68-RD306). 26 diff., few cut cancels or perf. initials, few minor faults, Good-Very Fine	272.43

#### CORDIALS & WINES

12 <sup>50</sup>	853	1/4c-\$2.00 Cordials, Wines, etc., Series of 1914 (RE1-RE30). 19 are unused, Fine-Very Fine	48.88
8 <sup>00</sup>	854	1 1/2c Cordials & Wines, Series of 1914 (RE19). Printed "MDC 3 5-19-33" Provisional Very Fine	12.50+
9 <sup>00</sup>	855 ★	2c Cordial & Wine Perf. 11 (RE31). Fine, o. g.	15.00
75 <sup>00</sup>	856	\$50.00 Wine, Series of 1916 (RE58). With Six copies of \$2.00 Green (RE30) overlapped on Coupon to Pay \$60.00 tax, Purple Handstamp cancel, most Attractive	E. 11



829



832



836



837



838



840



843



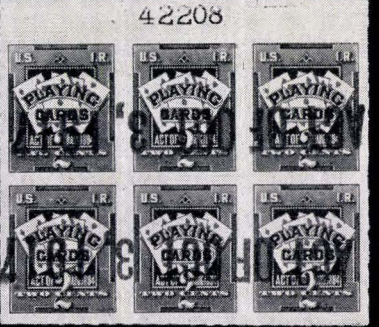
845



848



880



884



888



889



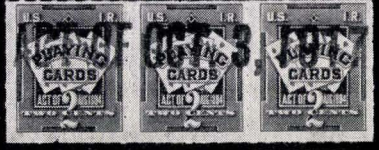
893



894



881



883



897



900



901



902



908



909



910



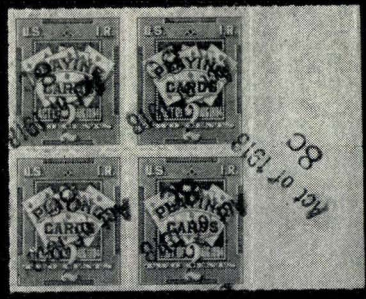
916



903



904



917



918



919



949



950



996



958



960



963



982



1010



1036



1037



1038

9 <sup>00</sup>	857 ★	1c-\$9.60 Wines, Series of 1916 (RE32-RE55). 18c creased, balance of set Very Fine, no gum as issued, listed but unpriced, used cat. ....	58.45
23 <sup>00</sup>	858	\$20.00-\$100.00 Wines, Series of 1916 (RE56-RE59). Handstamp cancels, Very Fine set .....	54.50
22 <sup>00</sup>	859	1/5c-\$5.00 Wines, Series of 1934-40 (RE60-RE82, RE83A-RE107). Very Fine lot, 28 values unused, as used .....	65.36
42 <sup>50</sup>	860	\$9.60 Wine, Series of 1934 (RE83). Minute corner crease, V. F. appearance, Scarce .....	60.00
18 <sup>00</sup>	861	\$100.00 Wine, Series of 1934 (RE107D). Vertical gutter crease, otherwise Very Fine, Scarce .....	37.50
9 <sup>50</sup>	862	1/5c-96c Wines, Series of 1941 (RE108-RE113, RE115-RE131, RE133). Very Fine, mostly unused, as used .....	35.82
8 <sup>50</sup>	863 ★	1/2c Wines, Series of 1941, Imperf. Vertically (RE110a). Horiz. pair, V. F. ....	15.00
9 <sup>00</sup>	864	\$1.00-\$10.00 Wines, Series of 1941 (Betw. RE146-RE196a). Fifteen diff., 8 unused, mostly Fine-Very Fine .....	61.46+
8 <sup>50</sup>	865 ★	\$1.50, \$1.68, \$1.92 Wines, Series of 1941 (RE148, RE150, RE152). Very Fine, as used .....	36.50
9 <sup>00</sup>	866 ★	\$3.00 Wine, Series of 1941 (RE154). Very Fine .....	20.00
10 <sup>50</sup>	867	\$50.00-\$200.00 Wines, Series of 1941 (RE163-165). Usual staple holes & small stains, Very Fine appearance .....	48.50
10 <sup>00</sup>	868	\$500.00 Wines, Series of 1941 (RE166). Perf. Initials, Very Fine .....	50.00
23 <sup>00</sup>	869	\$600.00 Wine, Series of 1941 (RE167). Usual minor faults, V. F. appearance .....	60.00
36 <sup>00</sup>	870	\$1000.00 Wines, Series of 1941 (RE169). Very Fine for these .....	60.00
23 <sup>00</sup>	871	\$3000.00 Wines, Series of 1941 (RE171). Centered, usual minor faults .....	65.00

#### PLAYING CARD REVENUES

15 <sup>00</sup>	872 ★田	2c Ultramarine, Imperforate (RF2). Block, Huge Margins, Very Fine, listed but unpriced in Scott .....	—
12 <sup>00</sup>	873	2c Ultramarine Roulette 12 1/2 (RF2d). Small creases, V. F. appearance (Photo) .....	50.00
24 <sup>00</sup>	874	2c Ultramarine Roulette 12 1/2, Imperf. by Roulette 12 1/2 (RF2d, RF2e). Small faults, Fine-Very Fine appearance .....	50.00+
15 <sup>00</sup>	875 ★	2c Deep Blue, Perforated (RF4). Minor wrinkle, Fine, not listed unused .....	—
13 <sup>00</sup>	876	2c Deep Blue, Perforated (RF4). A. P. C. Co. Jan 16, 1903 cancel, V. F. ....	12.50
10 <sup>00</sup>	877	2c Deep Blue, Perforated (RF4). Light AD 1902 cancel, Fine .....	12.50
80 <sup>00</sup>	878	Act of 1917 Diagonal Purple Provisional Opt. of Indianapolis I. R. Office on 2c Blue (RF5 var.) "Cancelled Feb. 6, 1917 T. T. Co." cancel, faint bend, otherwise Very Fine, unlisted in Scott .....	(Photo) E. VI
40 <sup>00</sup>	879	Act of 1917 Reading Down in Purple Racine, Wis. I. R. Office Provisional Opt. on 2c Blue (RF5 var.) Inverted "L. P. H. 12-13-18" cancel, faint crease, Fine appearance, unlisted in Scott .....	(Photo) E. VI

675 <sup>00</sup>	880 ★	<b>Act of 1917</b> Reading up in Purple, Racine, Wis. I. R. Office Provisional Opt. on 2c Blue (RF5 var.) creases, V.F. appearance, unlisted in Scott (Photo) E. VI
40 <sup>00</sup>	881	<b>Act of 1917</b> Reading Down in Purple, Racine, Wis. I. R. Office Provisional Opt. on 2c Blue (RF5 var.). Inverted "L. P. H. 12-13-18" cancel, faint crease, Fine appearance, unlisted in Scott (Photo) E. VI
60 <sup>00</sup>	882	<b>7c H</b> Provisional Surcharge in Violet of Harris & Co. on 2c Blue (RF5 var.). Feb. 24, 1919 cancel in violet str. line, tiny tear, V.F. appearance, unlisted in Scott (Photo) E. VI
90 <sup>00</sup>	883 ★	<b>Act of Oct. 3, 1917</b> in Purple Str. Line covering 3 stamps, Provisional Opt. of Los Angeles I. R. Office on 2c Blue (RF5 var.), Fine (Photo) E. VII
300 <sup>00</sup>	884 ★	<b>Act of Oct. 3, 1917</b> in Inverted Purple Str. Line Covering 3 stamps, Provisional Opt. of Los Angeles I. R. Office on 2c Blue (RF5 var.). Top Plate No. Block of 6 with Overprint Applied Twice, A Wonderful Showpiece, Very Fine (Photo) E. IX
10 <sup>00</sup>	885	<b>"17" on 2c Overprint (RF6)</b> . "17" inverted 1915 cancel reading up, faint bend, otherwise Very Fine 15.00
32 <sup>00</sup>	886	<b>"17" on 2c Blue, Split Overprint (RF6 var.)</b> . "7" at L., "1" at R., 1915 cancel, Reading Down, faint bend, otherwise Very Fine 15.00+
22 <sup>00</sup>	887	<b>"17" on 2c Overprint (RF6)</b> . 17 normal, 1915 cancel reading down, 17 Inverted, 1915 cancel reading up, faint bends, otherwise F.-V. F. 30.00
75 <sup>00</sup>	888	<b>7c on 2c Blue, Inverted Overprint (RF7a)</b> . Faint trace of bend, V. F. (Photo) 100.00
25 <sup>00</sup>	889	<b>7c on 2c Blue, Inverted Overprint (RF7a)</b> . Small sealed interior tear V. F. appearance (Photo) 100.00
145 <sup>00</sup>	890	<b>(7c) on 2c Blue, Numeral Omitted (RF9d)</b> . Minor faults, V. F. appearance 25.00
190 <sup>00</sup>	891	<b>7c on 2c Blue Surcharges (RF9, two, RF9c, two)</b> . Reading up in Violet & Black, Down in Violet and Red, Fine-Very Fine 23.00
3 <sup>00</sup>	892	<b>7c on 2c Carmine Surcharge (RF10)</b> . Fine 15.00
875 <sup>00</sup>	893	<b>7c on 2c Double Carmine Surcharge (RF10b)</b> . Faint trace of bend, otherwise Very Fine (Photo) 150.00
32 <sup>00</sup>	894	<b>7c on 2c Double Carmine Surcharge, Inverted (RF10c)</b> . Light crease, Very Fine appearance (Photo) 100.00
15 <sup>00</sup>	895 ★	<b>Large Class A, Imperforate (RF11)</b> . Horiz. pair, huge margins, no gum, as issued, Extremely Fine 40.00
17 <sup>00</sup>	896	<b>Large Class A, Imperforate (RF11)</b> . Huge margins "S. S. Adams & Co. 1920" cancel, small faults, Very Fine appearance, Rare cancel 20.00
675 <sup>00</sup>	897	<b>M. N. Co. 1919 8 cents</b> Provisional Surcharge, reading up, of Magic Novelty Co. on Large Class A, Imperforate (RF11 var.). Faint Bend, Fine, unlisted in Scott (Photo) —
16 <sup>00</sup>	898	<b>Large Class A, Imperforate (RF11)</b> . N Y C C Co. cancel, Reading Down, Fine 20.00
50 <sup>00</sup>	899	<b>Large Class A, Imperforate (RF11)</b> . Rejoined Horiz. Pair, "Cancelled 1917 N Y C C Co" cancels, repeated twice on each, small faults, Fine appearance 40.00

25 <sup>00</sup>	900	<b>Large Class A, Roulette 14 (RF12).</b> N. Y. C. C. Co. cancel, reading up, sealed tear, Very Fine appearance ..... <b>(Photo)</b>	125.00
67 <sup>50</sup>	901	<b>Large Class A, Roulette 14 (RF12).</b> NYCC 1919 cancel, reading down, small thin, no roulettes at T., Very Fine appearance ..... <b>(Photo)</b>	125.00
160 <sup>00</sup>	902	<b>Large Class A, Rouletted 13 in Red (RF12a).</b> Centered, Roulettes R. & B., Centerline T. & L., Red R. P. C. Co. 4-28 '19 reading up, Extremely Fine ..... <b>(Photo)</b>	300.00
80 <sup>00</sup>	903	<b>Large Class A, Roulette 6½</b> Red R. P. C. Co. 4-28 '19 reading down, minute thin in margin, otherwise Fine, Rare, listed but unpriced in Scott ..... <b>(Photo)</b>	—
45 <sup>00</sup>	904	<b>Large Class A, Perf. 12 Horiz. (RF12c).</b> "Logan Ptg. Hse. April 24, 1919" reading up, small faults, Very Fine appearance ..... <b>(Photo)</b>	75.00
10 <sup>50</sup>	905	<b>7c on Large Class A, Violet Surcharge, Inverted (RF13a).</b> Faint bend, still Extremely Fine .....	12.50
16 <sup>00</sup>	906	<b>7c On Large Class A, Normal &amp; Inverted Red Surcharges (RF13, 13a).</b> Minor faults, Fine-Very Fine appearance .....	25.00
12 <sup>50</sup>	907	<b>7c on Large Class A, Normal &amp; Inverted Black Surcharges (RF13, RF13a).</b> minor faults, Fine-Very Fine appearance .....	25.00
8 <sup>50</sup>	908	<b>8c on 2c, Handstamp Surcharge (RF14).</b> Very Fine ..... <b>(Photo)</b>	45.00
8 <sup>00</sup>	909	<b>8c on 2c Handstamp Surcharge (RF14).</b> Very Fine ..... <b>(Photo)</b>	45.00
8 <sup>50</sup>	910	<b>8c on 2c, Handstamp Surcharge (RF14).</b> Very Fine — ..... <b>(Photo)</b>	45.00
7 <sup>50</sup>	911	<b>8c on 2c, Handstamp Surcharge (RF14).</b> Fine .....	45.00
7 <sup>00</sup>	912	<b>8c on 2c, Handstamp Surcharge (RF14).</b> Fine .....	45.00
12 <sup>00</sup>	913	<b>8c on 2c, Handstamp Surcharge (RF14).</b> Centered, on Entire Italian Playing Card Box, Very Fine .....	45.00+
20 <sup>00</sup>	914	<b>8c on 2c Handstamp Surcharge (RF14).</b> Horiz. pair, on portion of Austrian Playing Card Wrapper, Very Fine .....	90.00+
20 <sup>50</sup>	915	<b>8c on 2c, Handstamp Surcharge (RF14).</b> Pair on Austrian Playing Card Wrapper, Fine .....	90.00+
62 <sup>50</sup>	916 ★	<b>1917 Normal, 1919 Inverted Purple, Provisional Surcharges of Cleveland I. R. Office on 2c Blue (RF14 var.).</b> Very Fine, unlisted in Scott <b>(Photo)</b> <b>E. VI</b>	
250 <sup>00</sup>	917 ★田	<b>Act of 1918 8c in two str. lines, Diagonally Inverted on 2c Blue (F14 var.).</b> Marginal Block of 4, with another strike in selvage, signed "Geo. B. Sloane", Very Fine, unlisted in Scott ..... <b>(Photo)</b> <b>E. VIII</b>	
53 <sup>00</sup>	918	<b>8c on 2c, Inverted Overprint (RF15).</b> Faint trace of bend, V. F. <b>(Photo)</b>	200.00
42 <sup>50</sup>	919	<b>8c on 2c Inverted Surcharge (RF15).</b> Faint trace of bend & pinpoint thin, Fine appearance, Rare ..... <b>(Photo)</b>	200.00
22 <sup>50</sup>	920 ★田	<b>8c on 2c Blue (RF16).</b> Top Centerline Block, Very Fine, unlisted unused in Scott .....	—
13 <sup>00</sup>	921	<b>8c on Class A, Normal &amp; Inverted Surcharges (RF18).</b> Both in Blue, Fine	20.00
15 <sup>00</sup>	922	<b>8c on Class A, Normal &amp; Inverted Surcharges (RF18).</b> First in Red, latter in Black, Fine .....	20.00
8 <sup>50</sup>	923 ★田	<b>10c Blue, Rouletted (RF19).</b> Block, Very Fine .....	10.00+

924 ★	10c Blue, Perf. 11 (RF21). Block of 4 with Plate No., Very Fine	15.00+
925	10c Blue, Perf. 10 (RF24). Unused and used blocks, latter with s. e. at T. and Red "K. P. Inc. 1930" cancels, Very Fine	10.40+
926 ★	10c Blue Imperf. Vertically (RF24a). Sheet margin Block, Fine-Very Fine	300.00+
927	P. J. W. Co. Aug. 8, 1932 in two Purple Str. Lines, Olympic Games Provisional Playing Card cancel on 10c Documentary (R234). With Front of Card Box and Playing Card, Very Fine	E. III
928	P. J. W. Co. Aug. 8, 1932 in two Purple Str. Lines, Olympic Games Provisional Playing Card cancel on 10c Documentary (R234). With Playing Card and clipping, Very Fine	E. IV
929	Large 1 Pack, Perf. 10x11 (RF29). KPPC cancel, Fine	30.00
930	VIRGIN ISLANDS, 1920, 4c on 2c (RFV1). Usual faint crease, V.F. appearance	25.00
931	— 1926, 4c on Class A (RFV2). Fine	25.00
932	— 1934, 4c on Class A, Perforated (RFV3). Faint bend, Fine	25.00
933	Civil War Playing Card Precancels Collection of 29 diff., mostly on Playing Card issues includes R2c(10), R17c, R21c, variable quality as always but a most attractive group of these scarce stamps	242.40+
934	Private Proprietary Playing Cards Collection of 27 diff., plus 3 dups., neatly mounted & written up, variable quality as always, but many Fine	100.85
935	2c-1 Pack Playing Cards (Betw. RF1-RF28). 20 diff., incl. RF6, 10a, 13, 18, some minor faults as usual but well above ave. with a number of V.F.	72.40
936	Balance of Playing Card Collection, 164 stamps, beautifully mounted & written up, incl. nice variety of multiples, unused, cancels, wrappers, Precancels incl. "Nasco" on RF20, Better Varieties incl. RF2d, RF4(4), RF6, RF9, 9c, RF10, RF11, RF14, RF18, RF21(13). Some small faults, as always, but well above average with many Fine-Very Fine, a Wonderful Collection for Expansion	337.15+

#### SILVER TAX ISSUES

937 ★	1c-\$10.00 Silver Tax (RG1-RG18). Fine-Very Fine, o.g.	89.55
938	\$30.00 Silver Tax, Series of 1934 (RG19). Uncut, just Fine	30.00
939	\$60.00 Silver Tax, Series of 1934 (RG20). Uncut, Very Fine	45.00
940	\$60.00 Silver Tax, Series of 1934 (RG20 var.). Vertical Strip of four, Future Delivery Provisional Handstamp Overprint, cut cancel, F.-V.F.	180.00+
941	\$100.00 Silver Series of 1934 (RG21). Uncut, Very Fine	25.00
942	\$500.00 Silver Tax, Series of 1934 (RG22). Uncut, tiny thins, V.F. appearance	125.00
943	\$1000.00 Silver Tax, Series of 1934 (RG23). Uncut, Fine	75.00
944	\$100.00 Silver Tax, 11mm Spacing (RG26). Handstamp cancel, V.F.	50.00
945 ★	1c-80c Silver Tax, Series of 1940 (RG37-RG48). Fine-Very Fine, o.g. set	123.50
946 ★	\$1.00 Silver Tax, Series of 1940 (RG49). Fine, o.g.	25.00

16<sup>50</sup>  
 13<sup>00</sup>  
 26<sup>00</sup>  
 29<sup>00</sup>  
 77<sup>50</sup>  
 5<sup>00</sup>  
 7<sup>50</sup>  
 5<sup>50</sup>  
 5<sup>50</sup>  
 6<sup>00</sup>  
 17<sup>00</sup>  
 35<sup>00</sup>  
 16<sup>00</sup>  
 87<sup>50</sup>  
 8<sup>50</sup>  
 31<sup>00</sup>  
 44<sup>00</sup>  
 11<sup>00</sup>  
 9<sup>00</sup>  
 35<sup>00</sup>

947 ★	\$2.00 Silver Tax, Series of 1940 (RG50). Very Fine .....	40.00
948 ★	\$3.00 Silver Tax, Series of 1940 (RG51). Very Fine .....	50.00
949 ★	\$4.00 Silver Tax, Series of 1940 (RG52). Fine, o. g. .... (Photo)	75.00
950 ★	\$5.00 Silver Tax, Series of 1940 (RG53). Very Fine, o. g. .... (Photo)	90.00
951 ★	\$10.00 Silver Tax, Series of 1940 (RG54). Very Fine, o. g. ....	125.00
952 ★	1c-\$1.00 Silver Tax, Series of 1941 (RG58-RG70). Fine-Very Fine, o. g.	23.80
953 ★	\$2.00 Silver Tax, Series of 1941 (RG71). Very Fine .....	25.00
954 ★	\$3.00 Silver Tax, Series of 1941 (RG72). Very Fine, o. g. ....	17.50
955 ★	\$4.00 Silver Tax, Series of 1941 (RG73). Very Fine, o. g. ....	20.00
956 ★	\$5.00 Silver Tax, Series of 1941 (RG74). Very Fine, o. g. ....	22.50
957 ★	\$10.00 Silver Tax, Series of 1941 (RG75). Very Fine, o. g. ....	25.00
958 ★	\$20.00 Silver Tax, Series of 1941 (RG76). Very Fine, o. g. .... (Photo)	45.00
959 ★	1c-\$3.00 Silver Tax, Series of 1942 (RG83-RG97). Very Fine, o. g. ....	44.20
960 ★	\$2.00 Silver Tax, Series of 1942 (RG96, RG96a). Horiz. pair, left stamp with "Series 5942" overprint, Very Fine, o. g. .... (Photo)	158.50+
961 ★	\$4.00, \$5.00 Silver Tax, Series of 1942 (RG98-99). Very Fine, o. g. ....	32.50
962 ★	\$10.00 Silver Tax, Series of 1942 (RG100). Very Fine .....	35.00
963 ★	\$20.00 Silver Tax, Series of 1942 (RG101). Very Fine, o. g. .... (Photo)	65.00
964 ★	1c-\$5.00 Silver Tax, Series of 1944 (RG108-RG124). Very Fine, o. g. ....	44.65
965 ★	\$10.00 Silver Tax, Series of 1944 (RG125). Very Fine, o. g. ....	22.50
966 ★	\$20.00 Silver Tax, Series of 1944 (RG126). Very Fine, o. g. ....	45.00

#### MOTOR VEHICLES, HUNTING PERMITS, FIRE ARMS, ETC.

3<sup>00</sup>  
 7<sup>50</sup>  
 21<sup>00</sup>  
 60<sup>00</sup>  
 19<sup>00</sup>  
 82<sup>50</sup>  
 6<sup>00</sup>  
 11<sup>00</sup>  
 20<sup>00</sup>

967 ★	¾c-\$1.50 Potato Tax, Series of 1935 (RI1-RI13). Cpl. set, F.-V. F., o. g.	17.95
968	1c-\$20.00 Tobacco Sale Tax (RJ1-RJ11). Eight unused, includes 10c in- verted overprint, V. G.-V. F. ....	71.55
969 ★	10c Tobacco Sale Tax Inverted Opt. (RJ4a). Block, o. g., Fine .....	40.00
970	Consular Service Fee Stamps Cpl. collection of 40 diff., 5 have s. e. and few minor faults, generally Fine, a very difficult collection to assemble	158.31
971	Colony of Massachussetts 2p Codfish Revenue (RM2). Clearly impressed 7½"x6" writ, issued at Salem in 1755, & signed by Joseph Bowditch, small piece missing from document, not affecting the impression, most attractive	25.00
972	1c-3c Dr. K. & Co. Provisional Proprietaries (RS307-RS315). Collection of 23 diff. of these interesting issues, beautifully mounted & written up, including unlisted Double & Inverted Overprints, V. G.-V. F. ....	142.50+
973 ★	42c-\$2.09 Green Motor Vehicle (RV1-RV5). Very Fine set, first o. g., others have gum removed .....	30.75
974 ★	42c-\$5.00 Rose Red Motor Vehicles (RV6-RV17). V. F. set, gum removed	87.00
975 ★	42c-\$5.00 Yellow Motor Vehicles (RV18-RV29). Very Fine set, gum removed .....	119.50

12 <sup>00</sup>	976 ★	42c-\$5.00 Violet Motor Vehicle (RV30-RV41). Very Fine set, gum removed	91.25
12 <sup>00</sup>	977 ★	42c-\$5.00 Blue & Yellow Green Motor Vehicle (RV42-RV53). Very Fine set, gum removed	85.75
32 <sup>00</sup>	978 ★	\$1.00 1934-1945 Hunting Permits (RW1-RW17). All o. g. but one, 3 with Plate No., nearly all Very Fine	120.75
15 <sup>00</sup>	979 ★	\$1.00-\$3.00 1934-1962 Hunting Permits (RW1-RW29). Fresh, o. g., two have tiny faults, otherwise Very Fine set	184.25
225 <sup>00</sup>	980	1c-\$50,000.00 Distilled Spirits Excise Tax (RX1-RX16, RX18-RX25). Handstamp cancels, staple holes as always, Very Fine	403.50
30 <sup>00</sup>	981 ★	\$1.00 Firearms Transfer, Series of 1934 (RY1). Fine	40.00
250 <sup>00</sup>	982 ★	\$200.00 Firearms Transfer, Series of 1934 (RY2). Very Fine (Photo)	300.00
20 <sup>00</sup>	983	1c-\$500.00 Rectification Tax (RZ1-RZ15). Handstamp cancels, staple holes, as always, Very Fine, listed but unpriced this way, cat. for punched copies	36.10
62 <sup>00</sup>	984	Twentieth Century Revenues Balance of Collection, 1898-1947, 351 stamps used & unused incl. nice range of multiples & varieties, some better Proprietaries & Wines, few dated issues, also 32 diff. Rectified Spirits & 36 diff. Narcotics, mostly Fine-Very Fine	238.00+

#### MATCH & MEDICINES

13 <sup>00</sup>	985	Akron Match Co. 1c Blue (R01a). Minor faults, Fine appearance	25.00
WD	986	Alligator Match Co. 1c Blue Rouletted (R08d). Fine	15.00
15 <sup>00</sup>	987	Bauer & Beudel, 1c Blue on Silk (R022b). Fine	30.00
5 <sup>00</sup>	988	B. Bendel & Co., 12c Brown on Silk (R025b). Fine	16.00
27 <sup>00</sup>	989	H. Bendel 12c Brown on Silk (R027b). Small faults, V. F. appearance	50.00
13 <sup>00</sup>	990 ★	Wm. Bond & Co. 4c Black on Silk (R032b). O. g., Fine	25.00
11 <sup>00</sup>	991	Bowers & Dunham 1c Green on Wmk. (R039d). Thinned, V. F. appearance	40.00
17 <sup>00</sup>	992	Clark, Jas. L. 1c Green Rouletted (R063d). Small thin spot. Fine appearance	40.00
45 <sup>00</sup>	993	Gates, Wm. Sons 3c Black on Pink (R094c). S. e. at R., Very Fine	15.00
15 <sup>00</sup>	994	Gorman, T. & Bro. 1c Black (R097a). Minor faults, F. appearance	50.00
115 <sup>00</sup>	995	N. Y. Match Co. 1c Blue (R0136a). Thin, Fine appearance	45.00
5 <sup>00</sup>	996	Richardson D. M. 1c Red (R0154a). Fine	13.00
130 <sup>00</sup>	997	Richardson D. M. 3c Vermilion (R0156a). Fine (Photo)	40.00
175 <sup>00</sup>	998	Underwood, Alex & C. 1c Green on Silk (R0178b). Fine	35.00
40 <sup>00</sup>	999	Barnes, D. S. 4c Vermilion (RS17a). Small sealed tears, s. e. at T., Fine Appearance	70.00
26 <sup>00</sup>	1000	Burdsall, J. S. & Co. 1c Black on Orange Wmk. Wrapper (RS45d). Fine	40.00
55 <sup>00</sup>	1001	Campion, J. W. & Co. 4c Black Die Cut on Silk (RS48b). Very Fine	12.00
10 <sup>00</sup>	1002	Collins Bros. 1c Black on Silk (RS59b). Fine	30.00

15 <sup>00</sup>	1003	Davis, Perry & Sons 1c Blue on Pink (RS75c). Couple of nibbed perfs., otherwise Very Fine .....	20.00
13 <sup>00</sup>	1004	Davis, Perry & Sons, 2c Brown Red (RS76a). S. e. at T., Fine .....	22.50
12 <sup>00</sup>	1005	Green, C. G. 3c Black Rouletted on Wmk. (RS93d). Faint thin spot, Fine appearance .....	20.00
11 <sup>50</sup>	1006	Hartman, S. B. & Co. 6c Black (RS100a). Fine .....	20.00
6 <sup>00</sup>	1007 ★	Helmbold, A. L. 2c Blue on Pink (RS110c). Fresh, o. g., s. e. at T., Fine .....	15.00
5 <sup>00</sup>	1008	Henry, John F. 1c Black (RS114a). Thin spot, Fine appearance .....	25.00
9 <sup>00</sup>	1009	Herrick's Plasters 1c Red on Pink (RS118c). Printed H. F. M. cancel, F. ....	15.00
23 <sup>00</sup>	1010 ★	Hetherington, J. E. 2c Black on Wmk. (RS120d). Fresh, o. g., Very Fine (Photo) .....	27.50
22 <sup>00</sup>	1011	Hiscox & Co. 4c Black on Silk and Pink (RS123b, c). Latter tiny thin otherwise Fine .....	28.00
8 <sup>00</sup>	1012	Hostetter & Smith 4c Black on Pink (R132c). Very Fine .....	10.00
55 <sup>00</sup>	1013	Lipman, J. & Bro. 4c Blue on Silk (RS163b). Centered to Top, Scarce .....	80.00
3 <sup>50</sup>	1014	Merchant's Gargling Oil 2c Green (RS179a). Tiny tear, Fine appearance .....	20.00
24 <sup>00</sup>	1015	Pieters, Bennett & Co. 4c Black (RS191a). Minute tear, Fine appearance .....	40.00
9 <sup>50</sup>	1016	Swett, G. W. 4c Green on Silk, perf. (RS237b). Minute tear, Fine appearance .....	22.50
8 <sup>50</sup>	1017	West India Mfg. Co. 4c Black on Pink (RS264c). Very Fine .....	17.50
7 <sup>50</sup>	1018	West India Mfg. Co. 4c Black on Wmk. (RS264d). Fine .....	16.50
7 <sup>00</sup>	1019	Wilder, Edward 4c Vermilion Die Cut (RS267a). Fine .....	15.00
8 <sup>00</sup>	1020	Hoyt, E. W. & Co. 4c Black on Pink (RT11c). Very Fine .....	12.00
23 <sup>00</sup>	1021	Laird, Geo. W. 3c Black on Silk (RT15b). Very Fine .....	18.50
11 <sup>00</sup>	1022 ★	Woodworth, C. B. & Son 2c Blue on Silk (RT21b). O. g. rounded corner otherwise Very Fine .....	30.00
4 <sup>00</sup>	1023	Wright, R. & G. A. 4c Green on Silk (RT25b). Fine.... ..	15.00
6 <sup>50</sup>	1024	Goodall, Chas. 5c Black (RU8a). Fine .....	27.50
425 <sup>00</sup>	1025	Match & Medicine, comprehensive collection of 596 diff. neatly mounted on Carter pages, few faults as always, but much above average condition with but very few badly damaged and with a very high percentage of F.-V. F. copies. An exceptional collection .....	1,536.78
36 <sup>00</sup>	1026	Carter Match and Medicine Album Set of Deluxe Carter Pages in new Full Green Leather Binder trimmed in Gold, Silk Lining, 12 Ring Mechanism, Handsome, Very Fine .....	E. IV
27 <sup>00</sup>	1027 ★	5, 10, 25, 100, 500 Bbl. Fermented Malt Liquor, Series of 1947 3¼" square, Very Fine set .....	—
5 <sup>50</sup>	1028 ★	⅛, ¼, ½, 1 Bbl. Fermented Malt Liquor, Series of 1947 5½"x3½", Very Fine set .....	—

## U. S. LARGE & MISC. LOTS

13 <sup>50</sup>	1029	<b>Nineteenth Century</b> , 13 stamps, 1851-1898, mostly cleaned, Good-Fine	E. III
210 <sup>00</sup>	1030 ★	<b>U. S. Collection Balance</b> , 844 stamps, 1912-1963, postage issues only incl. many cpl. sets, Souvenir Sheets, Values to \$5.00, nearly all Very Fine. A Very Choice lot	463.95
270 <sup>00</sup>	1031 ★	<b>U. S. Commems.</b> , 1929-62, 838 unused stamps in 2 stockbooks, mostly multiples, many Plate No. Blocks, Fine-Very Fine	E. III
50 <sup>00</sup>	1032 ★田	<b>U. S. Commems., Airpost</b> , 1933-60, 2750 mint stamps, nearly all in cpl. sheets, incl. 3c Byrd #733, Fine-Very Fine	E. VII
190 <sup>00</sup>	1033	<b>U. S. Miscellany</b> 45 stamps, incl. Carriers, Locals, Newspapers, Postal Notes, Telegraphs, used & unused, mostly Fine-Very Fine	E. III

## CONFEDERATE STATES

35 <sup>00</sup>	1034	<b>Macon, Ga. 5c on Yellow (43X4)</b> . Cut octagonally, margins just clear to just in, minute thin speck, Fine appearance, with P. F. Certificate (Photo)	550.00
50 <sup>00</sup>	1035 ★	<b>1c-20c General Issue (1-2, 4-8, 11-13)</b> . Few small faults, Fair-Very Fine	150.25
26 <sup>00</sup>	1036 ★	<b>2c Green (3)</b> . Margins except touched at L., fresh, Fine	(Photo) 55.00
25 <sup>00</sup>	1037 ★	<b>10c Milky Blue TEN (9)</b> . Large margins all around, faint creases and minute thin, Very Fine appearance	(Photo) 70.00
15 <sup>00</sup>	1038 ★	<b>10c Blue Frame Line (10)</b> . Cpl. Frame Line showing on all sides, part o. g., light crease and very faint toning, an Exceptionally Handsome copy of this Rare stamp	(Photo) 300.00
210 <sup>00</sup>	1039 ★	<b>1c Deep Orange (14a)</b> . Large margins, Rich Color, o. g., Very Fine	20.00

## PHILATELIC LITERATURE AND ALBUMS

22 <sup>00</sup>	1040	<b>"Postmaster's Provisional Stamps"</b> , Luff, Revised Edition, 1937, V. F.	E. II
21 <sup>00</sup>	1041	<b>"The Postage Stamps of the U. S."</b> , Luff, 1937 Edition, V. F.	E. II
50 <sup>00</sup>	1042	<b>"The Nineteenth Century Postage Stamps of the U. S."</b> Brookman, 2 Vols. 1947, Very Fine	E. IV
36 <sup>00</sup>	1043	<b>Five 11½"x12" Elbe Governor Binders with Cases</b> , Fine	E. III

END OF SALE — THANK YOU

PRICES REALIZED

THIS SALE

\$1.00

OR ENTIRE YEAR \$4.50

*LOTS ON VIEW FROM SEPTEMBER 24th*

*OFFICES OPEN EVERY SATURDAY*



## IS YOUR COLLECTION FOR SALE?

**REALIZE IMMEDIATE CASH  
PLUS THE ADDED ADVANTAGE OF  
SELLING THROUGH OUR AUCTIONS**

We will advance immediate cash up to 75% of our appraisal value, of what your collection should realize at auction. There is no interest charge.

Your collection will then be sold in one of our coming auction sales. All stamps are expertly and advantageously lotted in attractive, well illustrated catalogs. Lotting is meticulously planned under our personal supervision. Commission is 20% of the gross realization. There is no lotting fee or any other charges. Final settlement is made within five weeks after the sale. We have been continuously conducting stamp auctions in the United States for over thirty-three years.

Valuable collections and stamp holdings are especially wanted, but we will accept properties valued from \$500 upwards. Send all stamps direct for appraisal. Auction advance will be remitted shortly after receipt. If not entirely pleased, stamps will be returned at our expense. If circumstances warrant due to bulk or value, we will travel anywhere to inspect important properties.

**ROBERT A. SIEGEL, Inc.**

(Licensed and Bonded Auctioneer)

10 EAST 52nd STREET

NEW YORK CITY

(Tel. PL. 3-6422)

10 East 52nd Street  
New York, N. Y. 10022

PRICES REALIZED  
October 6th and 7th, 1964

Part I  
of a Valuable Stamp Collection of  
UNITED STATES

October 6th																																																																																																																																																																																																																																																																																																																																																																																																																																																																																																																																																																																																																																																																																																																																																																																																																																																																																																																																																																																																																																																																																																																																																																																																																																																																																																																																																																																																																				
-------------	--	--	--	--	--	--	--	--	--	--	--	--	--	--	--	--	--	--	--	--	--	--	--	--	--	--	--	--	--	--	--	--	--	--	--	--	--	--	--	--	--	--	--	--	--	--	--	--	--	--	--	--	--	--	--	--	--	--	--	--	--	--	--	--	--	--	--	--	--	--	--	--	--	--	--	--	--	--	--	--	--	--	--	--	--	--	--	--	--	--	--	--	--	--	--	--	--	--	--	--	--	--	--	--	--	--	--	--	--	--	--	--	--	--	--	--	--	--	--	--	--	--	--	--	--	--	--	--	--	--	--	--	--	--	--	--	--	--	--	--	--	--	--	--	--	--	--	--	--	--	--	--	--	--	--	--	--	--	--	--	--	--	--	--	--	--	--	--	--	--	--	--	--	--	--	--	--	--	--	--	--	--	--	--	--	--	--	--	--	--	--	--	--	--	--	--	--	--	--	--	--	--	--	--	--	--	--	--	--	--	--	--	--	--	--	--	--	--	--	--	--	--	--	--	--	--	--	--	--	--	--	--	--	--	--	--	--	--	--	--	--	--	--	--	--	--	--	--	--	--	--	--	--	--	--	--	--	--	--	--	--	--	--	--	--	--	--	--	--	--	--	--	--	--	--	--	--	--	--	--	--	--	--	--	--	--	--	--	--	--	--	--	--	--	--	--	--	--	--	--	--	--	--	--	--	--	--	--	--	--	--	--	--	--	--	--	--	--	--	--	--	--	--	--	--	--	--	--	--	--	--	--	--	--	--	--	--	--	--	--	--	--	--	--	--	--	--	--	--	--	--	--	--	--	--	--	--	--	--	--	--	--	--	--	--	--	--	--	--	--	--	--	--	--	--	--	--	--	--	--	--	--	--	--	--	--	--	--	--	--	--	--	--	--	--	--	--	--	--	--	--	--	--	--	--	--	--	--	--	--	--	--	--	--	--	--	--	--	--	--	--	--	--	--	--	--	--	--	--	--	--	--	--	--	--	--	--	--	--	--	--	--	--	--	--	--	--	--	--	--	--	--	--	--	--	--	--	--	--	--	--	--	--	--	--	--	--	--	--	--	--	--	--	--	--	--	--	--	--	--	--	--	--	--	--	--	--	--	--	--	--	--	--	--	--	--	--	--	--	--	--	--	--	--	--	--	--	--	--	--	--	--	--	--	--	--	--	--	--	--	--	--	--	--	--	--	--	--	--	--	--	--	--	--	--	--	--	--	--	--	--	--	--	--	--	--	--	--	--	--	--	--	--	--	--	--	--	--	--	--	--	--	--	--	--	--	--	--	--	--	--	--	--	--	--	--	--	--	--	--	--	--	--	--	--	--	--	--	--	--	--	--	--	--	--	--	--	--	--	--	--	--	--	--	--	--	--	--	--	--	--	--	--	--	--	--	--	--	--	--	--	--	--	--	--	--	--	--	--	--	--	--	--	--	--	--	--	--	--	--	--	--	--	--	--	--	--	--	--	--	--	--	--	--	--	--	--	--	--	--	--	--	--	--	--	--	--	--	--	--	--	--	--	--	--	--	--	--	--	--	--	--	--	--	--	--	--	--	--	--	--	--	--	--	--	--	--	--	--	--	--	--	--	--	--	--	--	--	--	--	--	--	--	--	--	--	--	--	--	--	--	--	--	--	--	--	--	--	--	--	--	--	--	--	--	--	--	--	--	--	--	--	--	--	--	--	--	--	--	--	--	--	--	--	--	--	--	--	--	--	--	--	--	--	--	--	--	--	--	--	--	--	--	--	--	--	--	--	--	--	--	--	--	--	--	--	--	--	--	--	--	--	--	--	--	--	--	--	--	--	--	--	--	--	--	--	--	--	--	--	--	--	--	--	--	--	--	--	--	--	--	--	--	--	--	--	--	--	--	--	--	--	--	--	--	--	--	--	--	--	--	--	--	--	--	--	--	--	--	--	--	--	--	--	--	--	--	--	--	--	--	--	--	--	--	--	--	--	--	--	--	--	--	--	--	--	--	--	--	--	--	--	--	--	--	--	--	--	--	--	--	--	--	--	--	--	--	--	--	--	--	--	--	--	--	--	--	--	--	--	--	--	--	--	--	--	--	--	--	--	--	--	--	--	--	--	--	--	--	--	--	--	--	--	--	--	--	--	--	--	--	--	--	--	--	--	--	--	--	--	--	--	--	--	--	--	--	--	--	--	--	--	--	--	--	--	--	--	--	--	--	--	--	--	--	--	--	--	--	--	--	--	--	--	--	--	--	--	--	--	--	--	--	--	--	--	--	--	--	--	--	--	--	--	--	--	--	--	--	--	--	--	--	--	--	--	--	--	--	--	--	--	--	--	--	--	--	--	--	--	--	--	--	--	--	--	--	--	--	--	--	--	--	--	--	--	--	--	--	--	--	--	--	--	--	--	--	--	--	--	--	--	--	--	--	--	--	--	--	--	--	--	--	--	--	--	--	--	--	--	--	--	--	--	--	--	--	--	--	--	--	--	--	--	--	--	--	--	--	--	--	--	--	--	--	--	--	--	--	--	--	--	--	--	--	--	--	--	--	--	--	--	--	--	--	--	--	--	--	--	--	--	--	--	--	--	--	--	--	--	--	--	--	--	--	--	--	--	--	--	--	--	--	--	--	--	--	--	--	--	--	--	--	--	--	--	--	--	--	--	--	--	--	--	--	--	--	--	--	--	--	--	--	--	--	--	--	--	--	--	--	--	--	--	--	--	--	--	--	--	--	--	--	--	--	--	--	--	--	--	--	--	--	--	--	--	--	--	--	--	--	--	--	--	--	--	--	--	--	--	--	--	--	--	--	--	--	--	--	--	--	--	--	--	--	--	--	--	--	--	--	--	--	--	--	--	--	--	--	--	--	--	--	--	--	--	--	--	--	--	--	--	--	--	--	--	--	--	--	--	--	--	--	--	--	--	--	--	--	--	--	--	--	--	--	--	--	--	--	--	--	--	--	--	--	--	--	--	--	--	--	--	--	--	--	--	--	--	--	--	--	--	--	--	--	--	--	--	--	--	--	--	--	--	--	--	--	--	--	--	--	--	--	--	--	--	--	--	--	--	--	--	--	--	--	--	--	--	--	--	--	--	--	--

559	29.00	613	18.00	667	120.00	721	8.50	775	44.00	829	50.00	883	90.00	937	19.00	991	11.00
560	26.00	614	29.00	668	190.00	722	26.00	776	5.50	830	135.00	884	300.00	938	10.00	992	17.00
561	32.50	615	10.00	669	190.00	723	14.00	777	7.00	831	9.00	885	10.00	939	26.00	993	4.50
562	52.50	616	78.00	670	200.00	724	20.00	778	35.00	832	18.00	886	32.00	940	130.00	994	15.00
563	12.00	617	9.50	671	6.00	725	110.00	779	47.50	833	9.00	887	22.00	941	16.00	995	11.50
564	52.50	618	135.00	672	21.00	726	40.00	780	6.00	834	17.00	888	75.00	942	25.00	996	5.00
565	165.00	619	21.00	673	36.00	727	11.00	781	18.00	835	10.00	889	25.00	943	15.00	997	13.00
566	135.00	620	20.00	674	34.00	728	140.00	782	26.00	836	27.00	890	14.50	944	11.00	998	17.50
567	22.00	621	12.00	675	67.50	729	140.00	783	14.00	837	26.00	891	19.00	945	32.00	999	40.00
568	10.00	622	16.50	676	37.50	730	17.00	784	20.00	838	22.00	892	3.00	946	8.50	1000	26.00
569	120.00	623	4.50	677	22.00	731	7.00	785	105.00	839	35.00	893	87.50	947	10.50	1001	5.50
570	12.50	624	10.00	678	325.00	732	6.00	786	20.00	840	35.00	894	32.00	948	13.00	1002	10.00
571	17.00	625	9.00	679	500.00	733	20.00	787	400.00	841	16.00	895	15.00	949	26.00	1003	15.00
572	19.50	626	47.50	680	16.00	734	12.00	788	20.00	842	6.00	896	17.00	950	29.00	1004	13.00
573	11.50	627	27.00	681	23.00	735	8.50	789	17.50	843	42.50	897	67.50	951	77.50	1005	12.00
574	10.00	628	110.00	682	12.00	736	16.00	790	67.50	844	37.50	898	16.00	952	5.00	1006	11.50
575	40.00	629	10.00	683	67.50	737	7.50	791	110.00	845	20.00	899	50.00	953	7.50	1007	6.00
576	22.50	630	50.00	684	21.00	738	10.50	792	220.00	846	16.00	900	25.00	954	5.50	1008	5.00
577	24.00	631	7.50	685	24.50	739	11.50	793	235.00	847	14.00	901	67.50	955	5.50	1009	9.00
578	31.00	632	135.00	686	38.00	740	22.00	794	280.00	848	18.00	902	160.00	956	6.00	1010	23.00
579	21.00	633	11.00	687	375.00	741	125.00	795	8.50	849	16.00	903	80.00	957	17.00	1011	22.00
580	12.00	634	57.50	688	1200.00	742	235.00	796	w.d.	850	19.00	904	45.00	958	35.00	1012	8.00
581	32.00	635	82.50	689	24.00	743	26.00	797	120.00	851	29.00	905	10.50	959	16.00	1013	55.00
582	80.00	636	14.50	690	28.00	744	12.00	798	22.00	852	30.00	906	16.00	960	87.50	1014	3.50
583	55.00	637	13.00	691	17.00	745	12.00	799	32.00	853	12.50	907	12.50	961	8.50	1015	24.00
584	92.50	638	28.00	692	11.00	746	7.00	800	28.00	854	8.00	908	8.50	962	31.00	1016	9.50
585	20.00	639	22.00	693	20.00	747	5.00	801	29.00	855	9.00	909	8.00	963	44.00	1017	8.50
586	15.00	640	32.00	694	190.00	748	10.50	802	5.50	856	7.50	910	8.50	964	11.00	1018	7.50
587	10.50	641	13.00	695	47.00	749	50.00	803	250.00	857	9.00	911	7.50	965	9.00	1019	7.00
588	22.00	642	22.00	696	900.00	750	10.00	804	13.00	858	23.00	912	7.00	966	35.00	1020	8.00
589	17.00	643	55.00	697	22.00	751	18.00	805	16.00	859	22.00	913	12.00	967	3.00	1021	23.00
590	14.00	644	42.50	698	160.00	752	38.00	806	24.00	860	42.50	914	20.00	968	7.50	1022	11.00
591	15.50	645	16.00	699	43.00	753	32.50	807	16.00	861	18.00	915	20.00	969	21.00	1023	4.00
592	11.00	646	105.00	700	46.00	754	9.00	808	12.00	862	9.50	916	62.50	970	60.00	1024	6.50
593	19.00	647	170.00	701	60.00	755	28.00	809	12.00	863	8.50	917	250.00	971	19.00	1025	425.00
594	40.00	648	62.50	702	10.50	756	35.00	810	48.00	864	9.00	918	53.00	972	82.50	1026	36.00
595	34.00	649	165.00	703	100.00	757	37.50	811	21.00	865	8.50	919	42.50	973	6.00	1027	27.00
596	50.00	650	12.50	704	16.00	758	22.00	812	21.00	866	9.00	920	22.50	974	11.00	1028	5.50
597	10.50	651	16.50	705	13.00	759	18.00	813	17.00	867	10.50	921	13.00	975	20.00	1029	13.50
598	8.50	652	19.00	706	15.00	760	11.00	814	13.00	868	10.00	922	15.00	976	12.00	1030	210.00
599	60.00	653	9.50	707	21.00	761	16.00	815	400.00	869	23.00	923	8.50	977	12.00	1031	27.00
600	21.00	654	72.50	708	90.00	762	16.00	816	22.00	870	36.00	924	18.00	978	32.00	1032	100.00
601	9.00	655	65.00	709	95.00	763	21.00	817	21.00	871	23.00	925	17.00	979	45.00	1033	19.00
602	36.00	656	29.00	710	10.50	764	25.00	818	16.50	872	15.00	926	52.50	980	225.00	1034	85.00
603	5.00	657	26.00	711	40.00	765	23.00	819	15.00	873	12.00	927	42.00	981	20.00	1035	50.00
604	19.00	658	26.00	712	62.50	766	18.00	820	16.00	874	24.00	928	42.00	982	250.00	1036	26.00
605	82.00	659	43.00	713	18.00	767	28.00	821	20.00	875	15.00	929	19.00	983	20.00	1037	25.00
606	15.50	660	85.00	714	10.00	768	16.00	822	10.00	876	13.00	930	10.00	984	62.50	1038	315.00
607	175.00	661	64.00	715	9.00	769	21.00	823	20.00	877	10.00	931	8.00	985	13.00	1039	21.00
608	14.00	662	67.50	716	17.50	770	21.00	824	26.00	878	80.00	932	9.00	986	w.d.	1040	22.00
609	14.00	663	58.00	717	120.00	771	18.50	825	10.00	879	40.00	933	160.00	987	15.00	1041	21.00
610	4.50	664	30.00	718	7.50	772	30.00	826	95.00	880	67.50	934	17.00	988	5.00	1042	50.00
611	17.00	665	40.00	719	26.00	773	5.50	827	52.00	881	40.00	935	8.00	989	27.00	1043	36.00
612	6.50	666	160.00	720	130.00	774	7.00	828	22.50	882	60.00	936	115.00	990	13.00		