

278th SALE

PART II

UNITED STATES  
POSTMASTERS' PROVISIONALS

Offered by Order of a  
Texas Collector



AT PUBLIC AUCTION

Thursday

NOVEMBER 19th, 1964

at 8 P.M.

*Robert A. Siegel*  
**AUCTIONS**

10 EAST 52nd STREET NEW YORK, N. Y. 10022

Tel.: Plaza 3-6422



## CONDITIONS OF SALE

1. The terms of sale are strictly cash to the highest bidder. All buyers are expected to pay for lots within three days of receipt, unless special arrangements have been made prior to the sale.
2. All bids are per lot as numbered in the catalogue and not per piece, unless otherwise announced by the auctioneer at the time of sale.
3. Any lot the description of which is incorrect is returnable only within three days of receipt. All disputed lots must be returned intact as received. Lots containing five or more stamps are not returnable at any time. No lots may be returned by purchasers who have had the opportunity to examine them before the sale.
4. Successful mail bidders, unless they are known to us or supply acceptable references, will be notified of the amount of the lots secured for them, and are expected to send payment in full before the lots are forwarded.
5. If the purchase price has not been paid within the time limit, or lots taken up within seven days from date of sale, they may be resold and any losses arising from such sale charged to the defaulter.
6. All stamps are sold as genuine, except where sold "As Is." Claims for any lot proving otherwise, must be made within two weeks from date of sale.
7. The right is reserved to group two or more lots, also withdraw any lot or lots from the sale, or to act on behalf of the seller.
8. Until paid for in full all lots remain the property of Robert A. Siegel.
9. No commission is charged for buying at our sales, but all forwarding charges will be added to the purchase price.
10. Upon written application lots may be sent for examination prior to the auction, conditional upon being mailed back by registered mail, adequately insured, within 24 hours of receipt. The applicant is completely responsible for all lots sent for examination, and for the insurance of same against mishap, from the time of receipt until they are actually received back, and is to pay all expenses of postage and insurance.
11. The placing of a bid shall constitute acceptance of the foregoing conditions of sale.

ROBERT A. SIEGEL

GREGORY MOZIAN

ANDREW LEVITT, Licensed Auctioneers

---

In sending bids, always state the highest price you are prepared to pay for the lot. Your limit will not be used as a starting bid unless absolutely necessary.

## DESCRIPTIONS

Superb or Extremely Fine—the finest condition for noteworthy, outstanding copies.

Very Fine (VF)—means that there is a slight deviation from the above.

Fine (F)—means that the perforations do not touch the design on issues after 1890, but in some cases may just touch in earlier issues; if used, fairly lightly cancelled.

Very Good (VG)—means that the appearance is generally fine but that the perforations cut the design slightly.

Good (G)—means average off-centering; or fairly attractive with slight defects. Original gum is not to be expected on 19th Century stamps up to 1888 unless so stated.

Scott 1965 Specialized United States Catalogue is used for cataloging our lots of United States and Scott's Standard Catalogue, 1965 for others.

**WE SOLICIT FINE MATERIAL FOR FUTURE SALES**

NOVEMBER 19th, 8 P. M.

Please purchase for me at your auction to be held **November 19th, 1964**, the lots named below, the prices annexed being my limit on each lot. I agree to remit for purchases in accordance with the **Conditions of Sale** and to return no lots later than three days after receipt.

SIGNED

.....	.....
.....	.....
.....	.....

[illegible]

Upon request, estimate of value furnished on any lots in this auction.







UNITED STATES  
POSTMASTERS' PROVISIONALS




- 1 Alexandria, Va. 5c Black on Buff Ty. I, 40 Rosettes (IX1). Uncancelled, unusually fresh, Brilliant color, cut to shape, as always, trimmed slightly into Rosettes all around, fastened to cover by Star in Octagon Wafer, Vivid Red Alexandria, D. C. pmk., clear matching "Paid" and Boxed "5", on neat folded Aug. 25, 1846 cover to Winchester, Va., only two other Examples known, one of which has ms. cancel, A Handsome and Desirable Example of this Great Rarity, with P. F. Certificate ..... 15,000.00

*LOTS ON VIEW FROM NOVEMBER 10th*

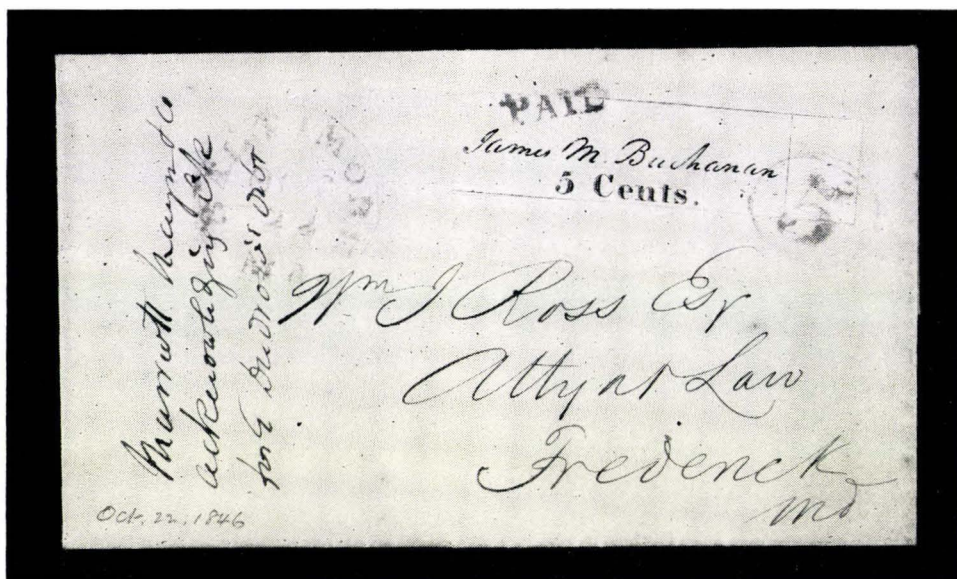
*OFFICES OPEN EVERY SATURDAY*




- 2  **Post Office, Annapolis, Md.** Clear Negative Blue Handstamp with Eagle. Matching "2" on neat Tiny Ladies Cover with "You shall not grieve always for all the shocks of this eve, Your bosom from care my own lips shall relieve", wafer seal on flap, this is the Handstamp used in Red for the Annapolis Postmaster Provisional, A Rare and Pretty Little Cover, with P. F. Certificate .....

850.00

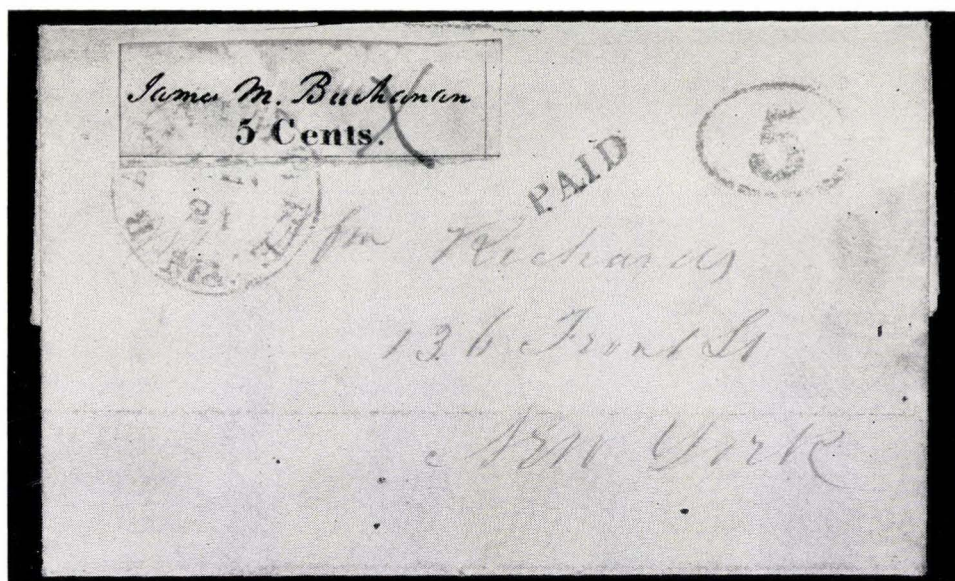
#### BALTIMORE, MD.



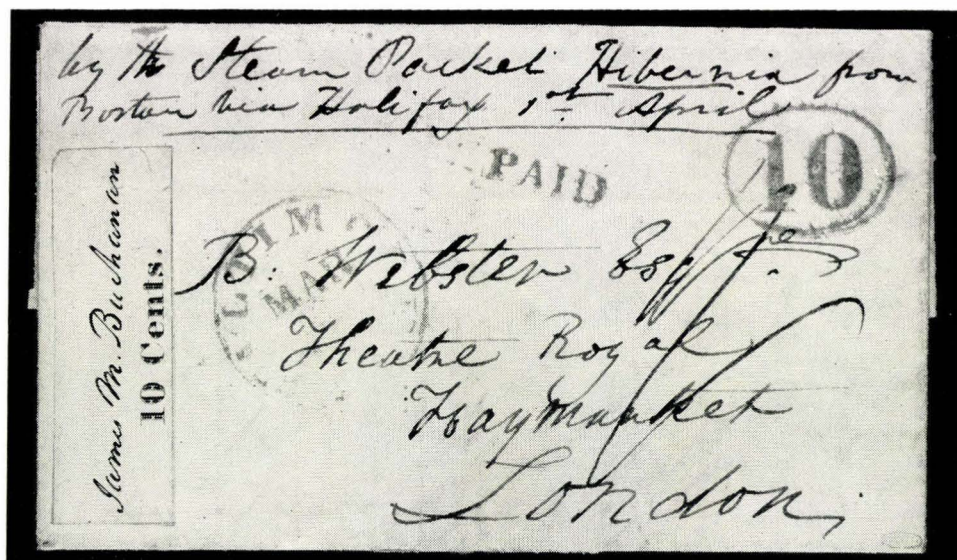
- 3  **Baltimore, Md. 5c Black on White (3X1).** Full margins, showing most of Line at Top and Bottom and Sheet Margin at Right, Unusually fresh Brilliant Impression, tied by clear Blue "Paid" and by "5" in Oval, matching Baltimore pmk. on neat folded Oct. 22, 1846 cover to Frederick, stamp has minute trivial crease in L. L. corner, still an Exceptionally fresh and Magnificent cover, Ex Caspary .....

1,500.00





- 4 ☒ **Baltimore, Md., 5c Black on White (3X1).** Unusually Large Margins, frame showing nearly all around, Choice Impression, tied by ms. "X" and by clear Blue Baltimore, Md. pmk., clear matching "Paid" and "5" in Oval on neat folded Jan. 21, 1846 cover to New York, light ms. wash at top of stamp, a Choice and Very Fine cover ..... 1,500.00

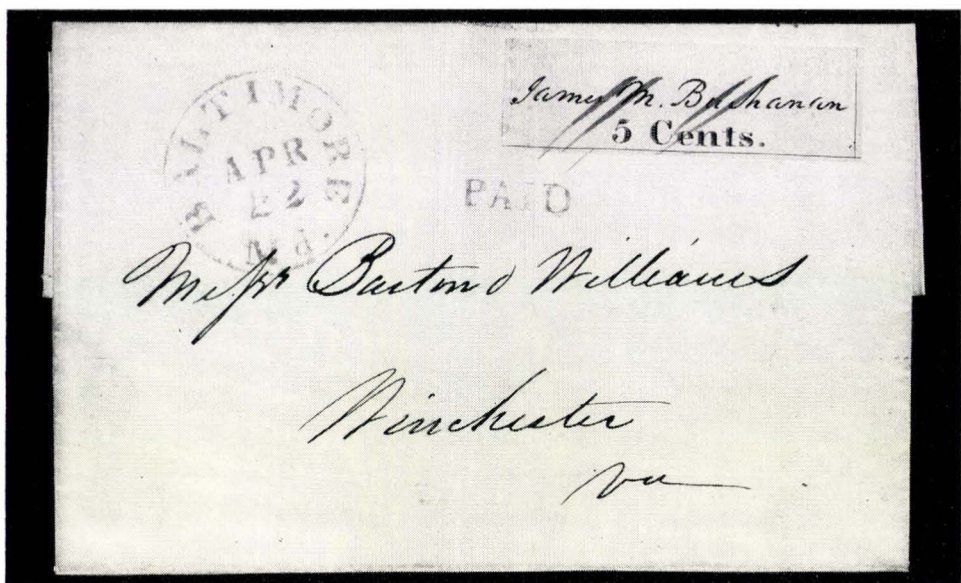


- 5 ☒ **Baltimore, Md. 10c Black on White (3X2).** Uncancelled, nearly full margins, showing complete or large part of frame on 3 sides, slightly rounded at U. R. corner, Blue Baltimore pmk., clear matching "Paid" and "10" in Oval on neat folded March, 1847 cover to London, "by the Steam Packet Hibernia from Boston Via Halifax 1st April" in ms., stamp has light filing crease and small marginal tear. This is the only known uncancelled 10c Baltimore and the only Baltimore Provisional used Abroad, a Handsome and Excessively Rare Cover, only 6 or 7 copies of this stamp, including 3 on covers, are known, not listed Uncancelled in Scott ..... 15,000.00+





- 6 ☒ **Baltimore, Md. 5c Black on Bluish (3X3).** Large Margins, showing full frame lines nearly all around, Rich Color, neat Blue **Paid** cancel, not tied, clear matching Baltimore pmk. on neat folded letter to Washington, A Wonderful and Very Rare Cover, Extremely Fine, Ex Moody ..... 2,350.00

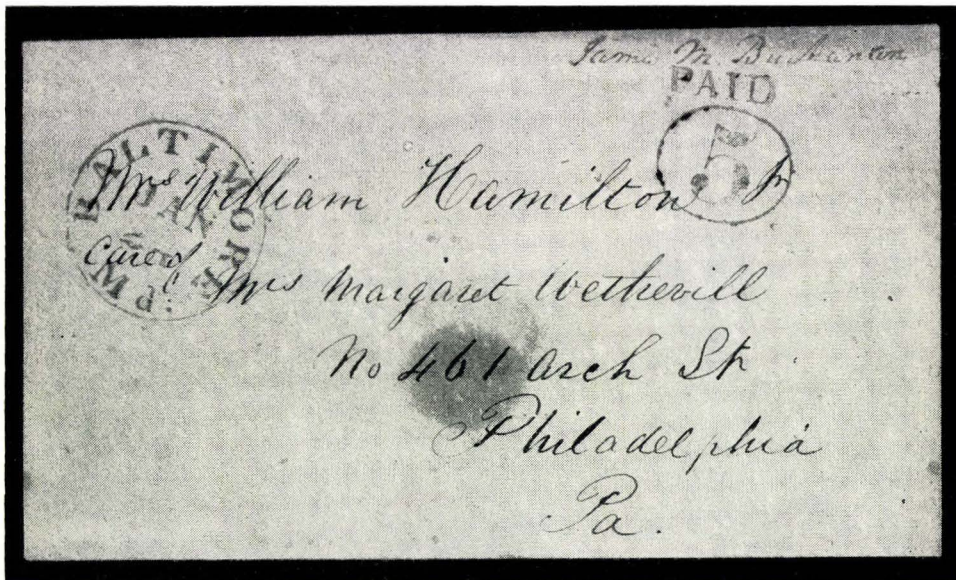



- 7 ☒ **Baltimore, Md. 5c Black on Bluish (3X3).** Nearly full margins, showing all or part frame line on 3 sides, Pretty color, tied by ms. cancel, clear Red Baltimore pmk., matching "Paid", on neat folded April, 1846 letter to Winchester, Va., trivial filing Bend at L. of stamp, A Fresh and Extremely Handsome Cover, far scarcer than the 5c on White Paper ..... 2,350.00





- 8 **Baltimore, Md. 10c Black on Bluish (3X4).** Full margins, with Sheet Margin at left, full frame line at B and traces on other two sides, tied to small piece by clear Blue "10" in oval, another Blue cancel at L., Expertly Repaired at L.L., ONLY TWO COPIES KNOWN, A Most Attractive Example of this Fabulous Rarity ..... 15,000.00

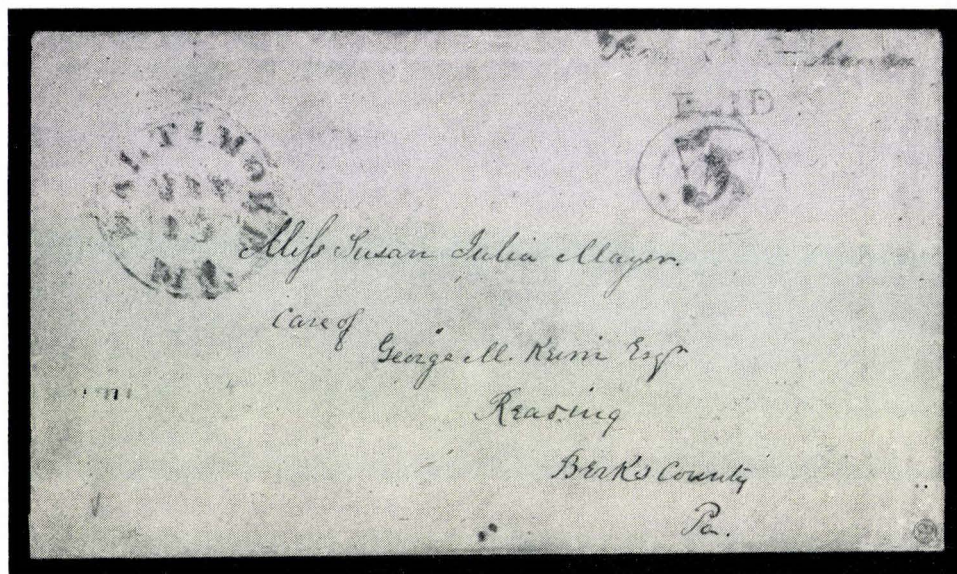


- 9  **Baltimore, Md. 5c Blue on Buff Entire (3XU2).** Exceptionally Clear Impression, Clear Matching Baltimore pmk., faint sealing wax stain, an unusually fresh and Extremely Fine Example of this Rarity ..... 1,250.00



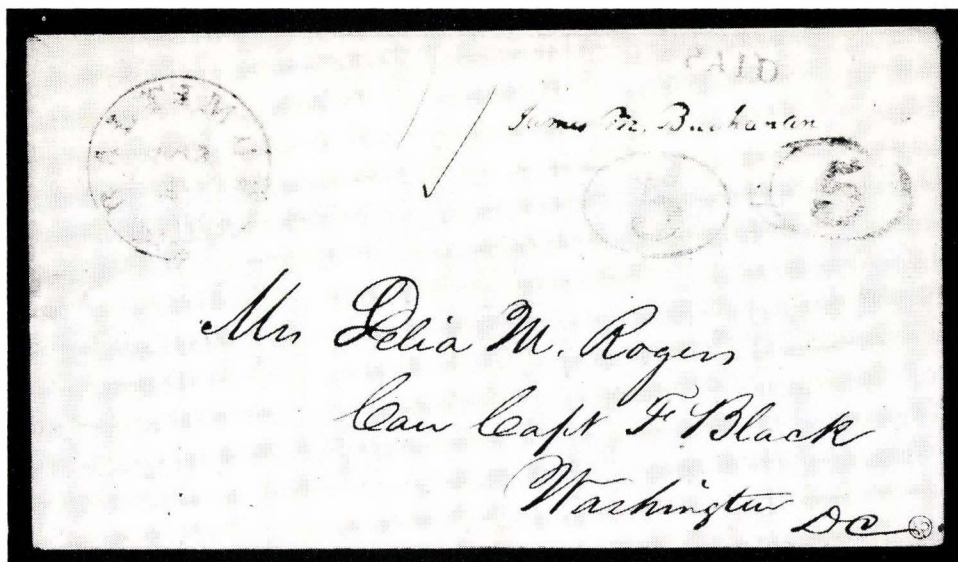


- 10 ☒ **Baltimore, Md. 5c Blue on Manila Entire (3XU4).** Clear Blue Baltimore pmk., from the celebrated "Julia Mayer" find, light sealing wax stain, otherwise fresh, Very Fine ..... 1600.00

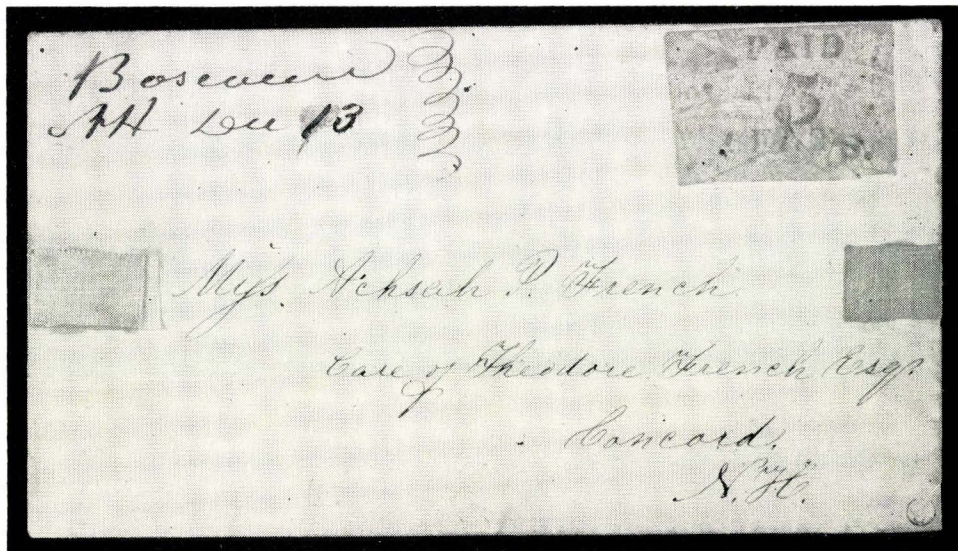


- 11 ☒ **Baltimore, Md. 5c+5c Blue and Red on Manila Entire (3XU6 var.).** Blue Baltimore pmk., from the "Julia Mayer" Find, listed only on Buff, this example is on Manila, A Very Rare & Handsome Cover, Very Fine, Ex Ferrari, Caspary ..... 1800.00+






- 12 ☒ **Baltimore, Md. 5c+5c Blue on Gray Entire (3XU7 var.).** Handstamp Signature in Fluid Black ink, balance of Imprint and Pmk. in Blue, Luff states only one example known with "Paid" above Signature, Although this variety is listed only on White & Buff, this Example is on A Gray Paper, A Beautiful and Probably Unique Cover, Extremely Fine .....1800.00+



- 13 ☒ **Boscawen, N. H. 5c Dull Blue on Yellowish (4X1).** Uncancelled, "Boscawen, N. H. Dec. 13" in two ms. straight lines, addressed to Concord, N. H. There are two small pieces of Adhesive Tape on the cover (placed there by Arthur Hind), otherwise Fresh, Very Fine, A Pencil Note on the flap reads "This is the Boscawen Stamp Described in My Book on U. S. Postage Stamps. So far as I know, it is the only copy in existence -- John N. Luff", The Catalogue value has remained unchanged for over 25 years, although the cover has recently changed hands at several times this figure. One of the Greatest of Philatelic Rarities, a UNIQUE Gem 6,000.00

- 14  **Worcester, Webster P. M. Free Frank**, matching ms. "Boscawen, N. H. March 26" in two str. lines on folded Signed Autograph Letter, Postmaster who issued the Boscawen Provisional, sealed tear, otherwise Fine, with Photo of Webster; also a signed naval document of Lord Boscawen dated May 23, 1755. (Whom Boscawen, N. H. was named after) .....



16

15

- 15 **New Haven, Ct. 5c Red on White (8XU1)**. Cut to shape, showing complete outer frame except at R., unusually clear impression, magenta signature, slight thinning and small closed tear, still quite an Acceptable copy of this Great Rarity, with P.F. Certificate, Catalogues as entire ..... 11,000.00
- 16 **New Haven, Ct. 5c Vermilion Reprint of 1874, Blue Signature (8XUIR)**. Faint thins, Very Fine appearance, only thirty copies made, with P.F. Certificate .....

#### NEW YORK, N. Y.



17

18

19

20

21

22

- 17 ★ **New York 5c Black (9X1)**. Ample to Large Margins all around, Double Transfer, Unusually Rich Color, fresh, Extremely Fine ..... 190.00
- 18 **New York 5c Black (9X1)**. Pos. 36, top Frame Line Double, Large Margins all around, Unusually Rich Brilliant Color & Impression, tiny Red cancel at L. R., A Gem, Superb ..... 150.00
- 19 **New York 5c Black (9X1)**. Pos. 7, Double Transfer at Top, Large Margins all around, wonderful Color & Impression, Blue ms. cancel, a wonderful copy, Extremely Fine ..... 150.00
- 20 **New York 5c Black (9X1)**. Pos. 31, Bottom Frame Line Double, Margins all around, Rich Color & Impression, Circular Red Grid Cancels, unusual on this stamp, Very Fine ..... 150.00

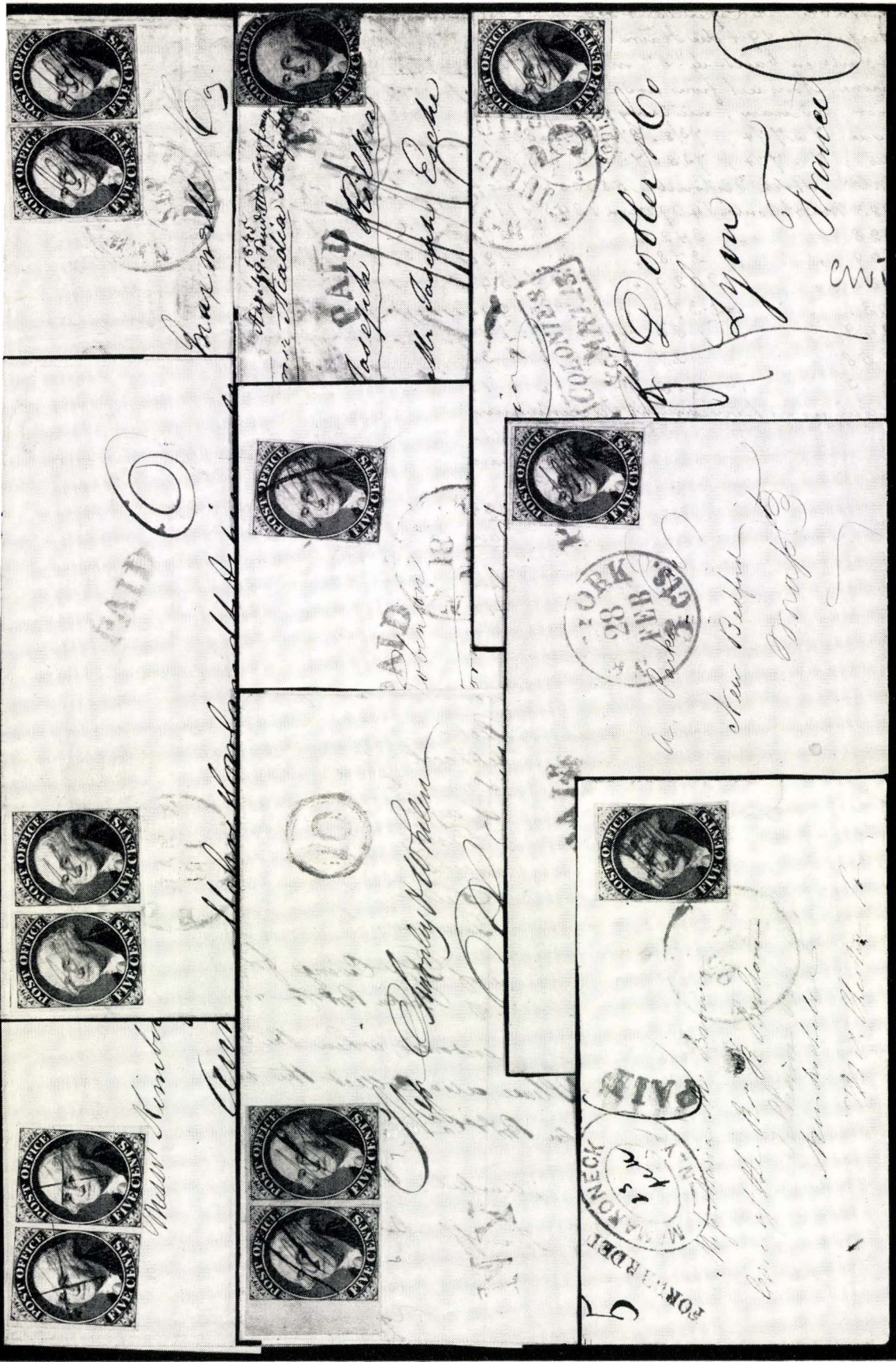






- 21 **New York 5c Black (9X1).** Pos. 2, Double Transfer at Bottom, Margins all around, Brilliant Color & Impression, small thin at B., Very Fine appearance ..... 150.00
- 22 **New York 5c Black on Blue (9X1a).** Ample to Huge Margins all around, Gorgeous Color & Impression, clear Red **Paid** in Arc cancel, Magnificent Example of this Rare stamp, Extremely Fine, with P.F. Certificate ..... 450.00
- 23 **New York 5c Black (9X1). COMPLETE RECONSTRUCTION** of the 40 positions, including Nine Horizontal and one Vertical Pairs, far above average plating quality, consisting almost entirely of 4 margin copies, over half have ms. cancels but Red Towns, Grids, "Paid"s, are present, as well as one unused, there are some small faults, but many are Very Fine, A Very Choice Study ..... 4640.00+
- 24 ☒ **New York 5c Black (9X1).** Clear to Huge Margins all around, Nice Color & Impression, tied by clear Red "Paid" in Arc, another strike and matching "New York 5cts" on neat folded Feb. 28, 1846 cover to New Bedford, A Lovely Cover, Very Fine ..... 125.00
- 25 ☒ **New York 5c Black (9X1).** Huge Margins all around, Wonderful Color and Impression, tied by "New York 5 Paid" in Jumbo Circle and by Red French Transit on neat folded Jul. 15, 1846 Letter to Lyon, Boxed Red "Colonies & c. Art. 13", "Str. Britannia" in ms., A Magnificent Cover, Extremely Fine. Ex Caspary ..... **E. XIII**
- 26 ☒ **New York 5c Black (9X1).** Large margins all around, showing unusual Dry Plate printing at Top, Red "Paid" in Arc Cancel, Another Strike, and tied by indistinct matching N.Y. pmk., used to New Rochelle and forwarded with clear Red **Mamaroneck, N.Y.** in Oval, matching str. line "Forwarded" and ms. "5", A Scarce and Pretty Cover, no flap, otherwise Very Fine ..... **E. XII**
- 27 ☒ **New York 5c Black (9X1).** Pos. 31, Bottom Frame Double, Margins all around except barely touched in U.L. corner, tied by Blue ms. Line, Red "New York 5 cts", matching "Paid" in Arc, "Paid 5" in ms. on neat folded Nov. 18, 1846 cover to Bennington, Vt., Fine ..... 150.00+
- 28 ☒ **New York 5c Black on Pelure, No Signature (9X1c).** Considerably Defective, Tied by Red "New York 5cts" and by matching "Paid" in Arc, another strike, on folded **Jul. 15, 1845** cover to **Bremen**, "pr Steamer Acadia" and Foreign transits in ms., Very Rare used to Germany and only **Second Day of Usage**, A most Desirable and not unattractive cover despite the condition of stamp ..... **E. VIII**
- 29 ☒ **New York 5c Black (9X1).** Horiz. Pair, Pos. 21, 22, Ample to Large Margins all around, Lovely Color & Impression, Blue ms. "X" cancels, clear Red "New York 10cts", matching "Paid" in arc on neat folded Oct. 29, 1845 Cover to Ann Arbor, Extremely Fine ..... 300.00
- 30 ☒ **New York 5c Black (9X1).** Two copies, Margins all around tied by Blue ms. lines, one by additional Red "New York 10cts", matching "Paid" in arc, on neat folded Sept. 18, 1846 letter to New Orleans, minute crease in L.L. corner of Left stamp, well clear of design, Attractive, Very Fine ..... 215.00
- 31 ☒ **New York 5c Black (9X1).** Horiz. Pair, Pos. 22-23, Clear to Huge Margins all around, **Boston Usage**, tied by Red **Boston, Mas.** pmk., matching **Paid**, "6" in magenta ms. on neat folded cover to New York "U. S. Mail Paid" in ms., R. stamp has two almost invisible small tears in R. margin, An Extremely Handsome Cover of Great Rarity, Ex Emerson, Caspary **E. XIII**






29  
32  
26




31  
27  
24

30  
28  
23



- 32  **New York 5c Black (9X1).** Horiz. Pair, Pos. 6-7, latter with Big Double Transfer at Top, Clear to Huge Margins all around, sheet margin at L., small scissor cut between stamps, Blue ms. cancels, Clear Blue "N. Y.", matching "10" in Double Circle of **New York & Philadelphia Railroad**, on neat folded July, 1846 Cover to Phila., Very Fine, Rare ..... E. XII

### PROVIDENCE, R. I.

- 33 ★ **Providence, R. I. 5c Black (10X1).** Pos. 4, Large Margins all around, Brilliant Color, faint trace of pre-printing crease, otherwise Extremely Fine ..... 50.00
- 34 ★ **Providence, R. I. 5c, 10c Black (10X1, Eleven, 10X2).** Complete Sheet, Unusually Nice Color & Impression, fresh, o.g., Extremely Fine ..... 900.00
- 35 ★ **Providence, R. I. 5c, 10c Black Reprint (10X1R, Eleven, 10X2R).** Complete sheet of 12, unusually Fine Color & Impression, Extremely Fine ..... 165.00
- 36  **Providence, R. I. 5c Black (10X1).** Pos. 9, Margins all around, ms. "V" cancel, Red Providence pmk., matching "Paid" and "5", on neat folded Dec. 25, 1846 cover to New Bedford with Embossed Providence Bank seal on Flap, Extremely Fine ..... 500.00
- 37  **Providence, R. I. 5c Black (10X1).** Pos. 2, Margins all around, ms. "V" cancel, Clear Red Providence Pmk., matching "Paid" and "5" on folded Feb. 11, 1847 Letter to N. Y., cover a trifle aged and faded at edges, otherwise Very Fine ..... 500.00
- 38  **Providence, R. I. 5c Black (10X1).** Pos. 8, Large Margins all around, tied by clear Red 5 and by ms. "V", clear Red Providence pmk., and matching "Paid", on neat folded Nov. 17, 1846 cover to New York, light filing fold thru stamp, A Handsome and Very Rare Cover, Ex Caspary ..... 1,350.00
- 39 ★ **Providence, R. I. 10c Black (10X2).** Ample to Large Margins except just touched in L. R. corner, unusually Rich Color, fresh, Very Fine ..... 185.00

### SAINT LOUIS, MO.

(Scott States "Prices quoted for used are for pen cancelled copies. Handstamped cancellations sell for much more.")



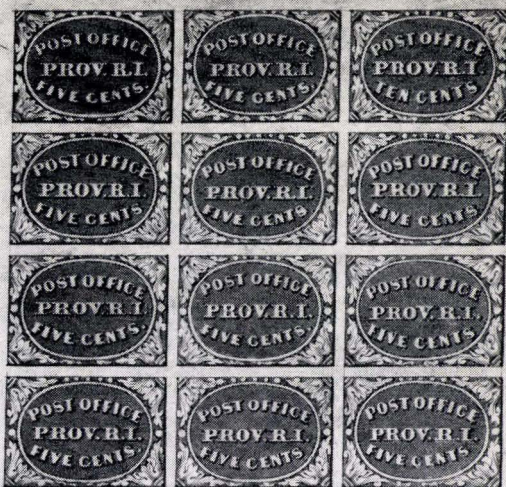
40

41

42

- 40 ★ **St. Louis, Mo. 5c on Greenish (11X1).** Huge to Enormous margins all around, showing part of next stamp at T., Brilliant Color & Impression, two trivial pinpoint thins, one entirely in margin, still A Magnificent and most desirable copy ..... 1300.00





35

34

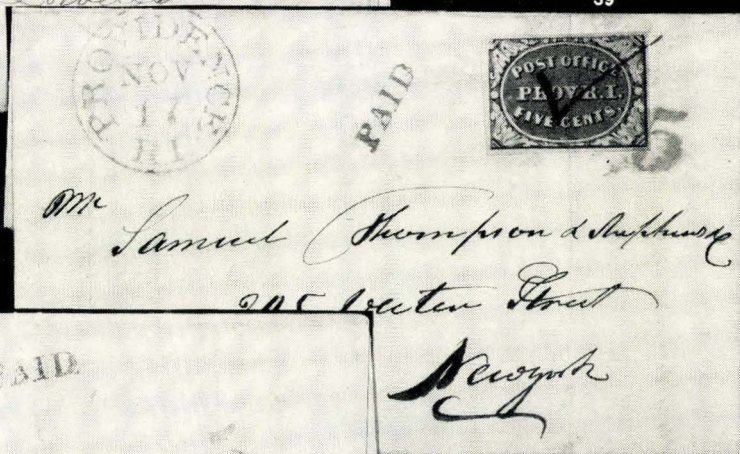


33

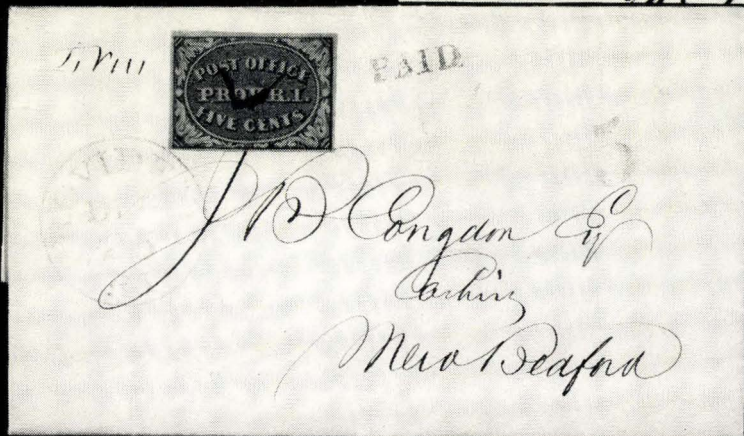


39

37



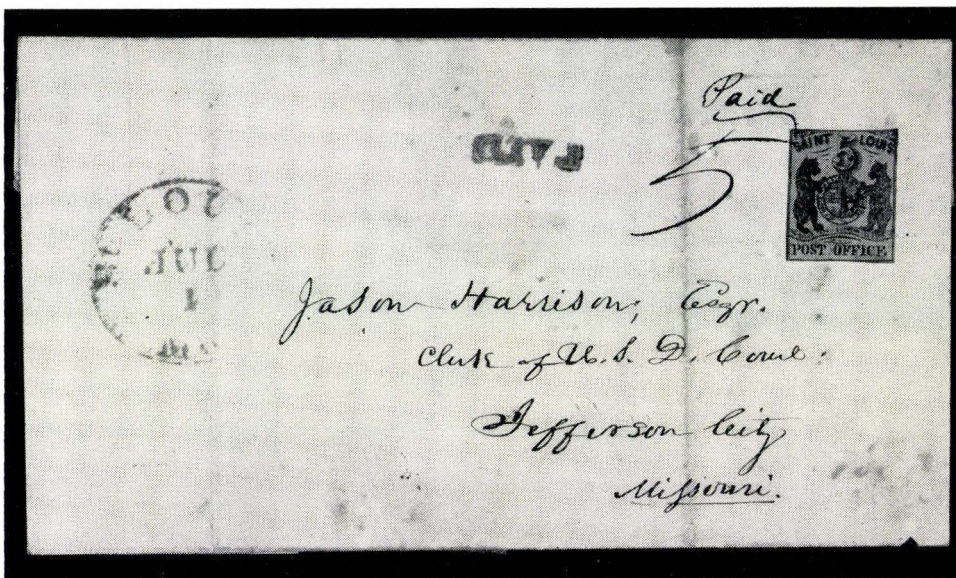
38



36



- 41 **St. Louis, Mo. 5c on Greenish (11X1).** Clear to Large Margins all around, Lovely Rich Color & impression, light ms. lines and part of Red St. Louis pmk., A Choice Copy, Very Fine ..... 750.00
- 42 **St. Louis, Mo. 5c on Greenish (11X1).** Margins all around, nice Color & Impression, light ms., cancel, Wide Pre-Printing Paper Fold and two smaller paper folds, pinhead thin speck, A Spectacular copy ..... 750.00



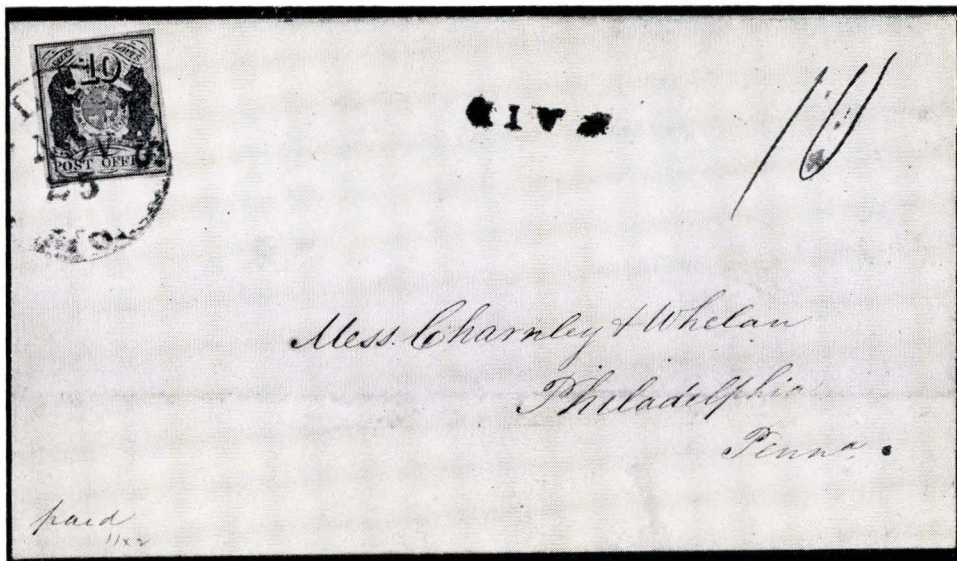
- 43 ☒ **St. Louis, Mo. 5c on Greenish (11X1).** Margins touched or barely in all around, barely touched in U.L. corner by ms. "Paid 5", otherwise uncanceled, Partly Indistinct Red St. Louis pmk., matching "Paid", used to Jefferson City, An Attractive and Unusual Bear Cover, Fine ..... 950.00



- 44 ★ **St. Louis, Mo. 10c on Greenish (11X2).** Ample to Huge Margins all around, sheet margin at T., Rich Color & Impression, two Pre-Printing Paper Folds, one very small, a Lovely Copy of this Rare Stamp, Fresh, Extremely Fine ..... 1200.00



- 45 **St. Louis, Mo., 10c on Greenish (11X2).** Enormous Margins all around, Lovely Color & Impression, tied by ms. lines to small piece with part of St. Louis pmk., faint trace of diagonal bends, otherwise Extremely Fine 750.00
- 46 **St. Louis, Mo. 10c on Greenish (11X2).** Clear to Huge margins all around except just touched in U. R. corner, Red St. Louis pmk., Fine, Very Scarce with Town pmk. only ..... 650.00+



- 47 ☒ **St. Louis, Mo. 10c on Greenish (11X2).** Large Margins all around, Rich Color & Impression, tied by clear, Red St. Louis pmk., matching "Paid", "10" in ms., on neat folded Nov. 25, 1845 Cover to Philadelphia, First Month of Issue, Extremely Fine ..... 1100.00



- 48 ☒ **St. Louis, Mo. 10c on Greenish (11X2).** Enormous Margins all around, Magnificent Color & Impression, ms. cancel & tied by clear Red St. Louis pmk., matching "Paid", "10" in ms. on neat folded Dec. 20, 1845 cover to Philadelphia, A Superb Gem, Ex Caspary ..... 1100.00






- 49 ☒ **St. Louis, Mo. 10c on Greenish (11X2).** Large Margins all around, Lovely Color & Impression, Initials **J. H. W.** of Postmaster John H. Wimer, ms. "X" and tied by Red St. Louis pmk., matching "Paid" and ms. "10" on neat folded Feb. 10, 1846 Cover to Lexington, Ky., Probably Unique with Postmasters Initials, Extremely Fine ..... 1100.00+



- 50 **St. Louis, Mo. 5c on Grayish Lilac (11X4).** Margins except touched at L. L. and partly in at L., light ms. and Red St. Louis pmks, faint crease, Fine appearing copy of this Rare & undercatalogued stamp ..... 1200.00
- 51 ★ **St. Louis, Mo. 10c on Grayish Lilac (11X5).** Large Margins all around, Rich Color & Impression, minute thin specks, Extremely Fine appearance, Unpriced unused in Scott ..... —
- 52 **St. Louis, Mo., 10c on Grayish Lilac (11X5).** Large Margins all around, Rich Color & Impression, Red Town pmk., trivial tiny corner crease, entirely in margin, otherwise Extremely Fine, A Gorgeous Copy ..... 800.00+
- 53 **St. Louis, Mo. 10c on Grayish Lilac (11X5).** Just clear to Large Margins all around, light ms. line cancel, fresh, Fine ..... 800.00

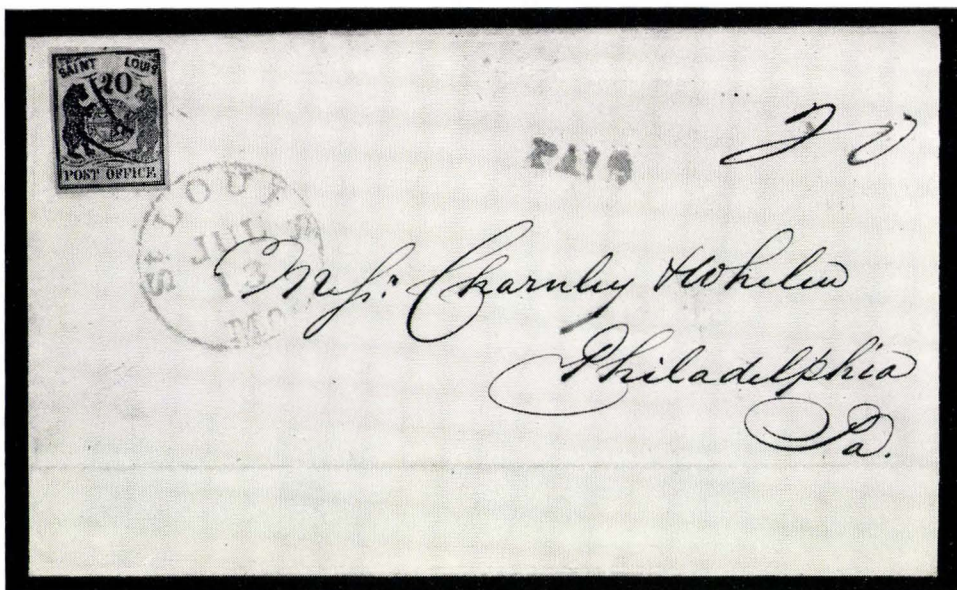




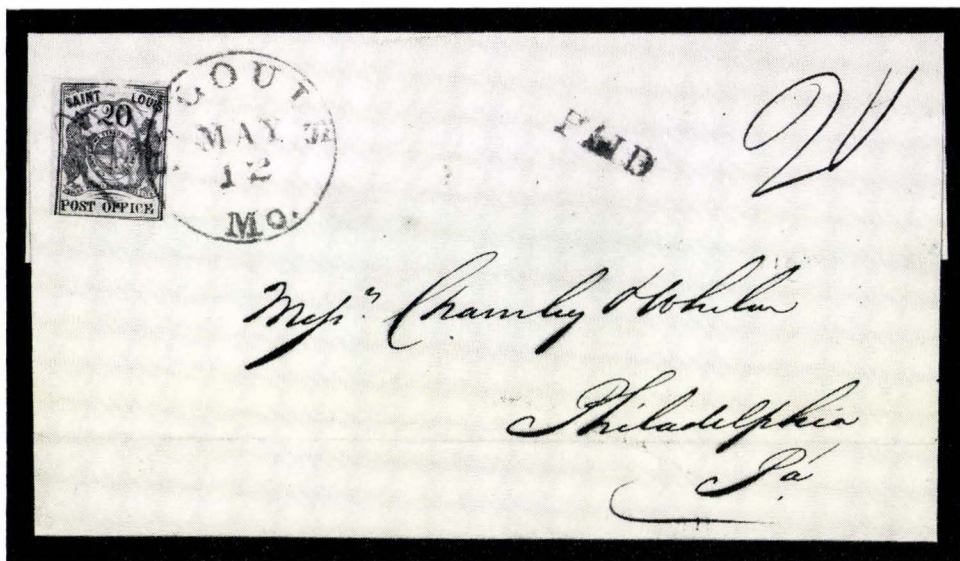
- 54  **St. Louis, Mo. 10c on Grayish Lilac (11X5).** Vertical Strip of 3, Huge margins except touched in U. L. corner, top stamp tied by light ms. lines, lower pair by clear Red St. Louis pmk., matching "Paid", "30" in ms. on neat folded March 7, 1846 cover to Philadelphia, horiz. filing folds, barely affect T. & B. stamps in upper & lower margins, A Rare and Handsome cover and an Extremely Early Usage on Grayish Lilac Paper ..... 6,000.00



- 55 **St. Louis, Mo. 20c on Grayish Lilac (11X6).** Clear to Huge Margins except top frame barely shaved at L., sheet margin at L., Pretty color, light ms. cancel, light crease, Handsome Copy of this Rarity, Fine appearance ..... 4000.00



- 56 ☒ **St. Louis, Mo. 20c Black on Gray Lilac (11X6).** Ample to Large Margins all around, Extraordinary Deep Rich Color, ms. cancel and just tied by Red St. Louis, Mo. pmk., matching "Paid", "20" in ms., on neat folded July 13, 1846 cover to Philadelphia, A Marvelous Cover, Extremely Fine 5,000.00

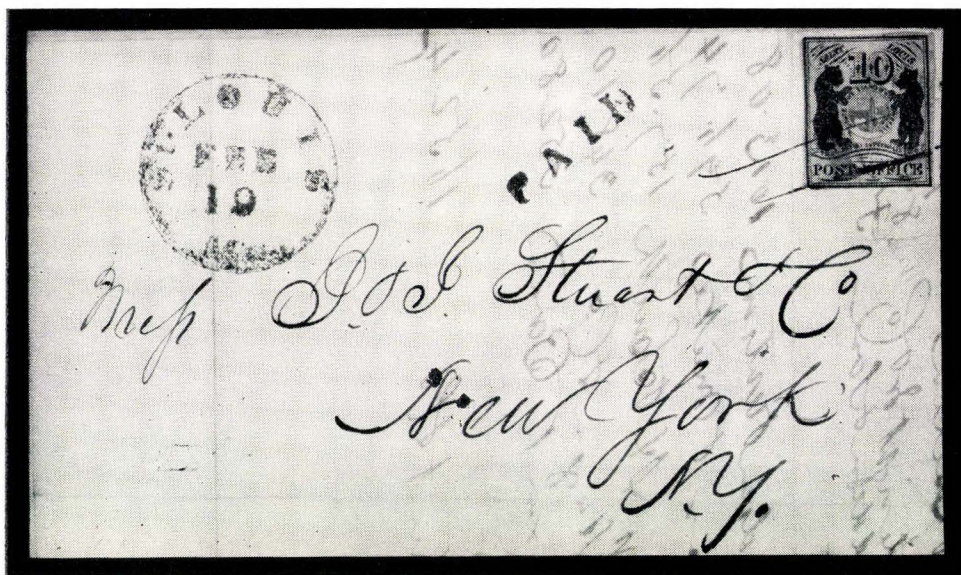



- 57 ☒ **St. Louis, Mo. 20c on Gray Lilac (11X6).** Ample to Large Margins except barely in at L.L., light ms. cancel and tied by clear Red St. Louis pmk., matching "Paid", "20" in ms. on neat folded May 12, 1846 cover to Philadelphia, A Most Attractive Example of this Great Rarity ..... 5,000.00

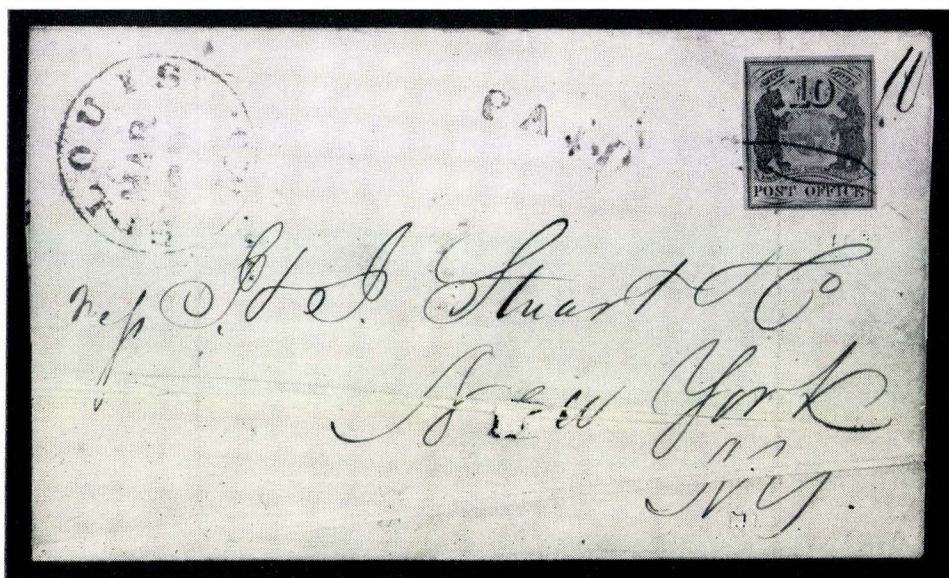









- 60  **St. Louis, Mo. 10c Black on Bluish Pelure (11X8).** Margins nearly all around, Rich color, tied by ms. lines, clear Red St. Louis, Mo., pmk., matching Paid, on folded Feb. 19, 1847 Cover to N. Y., part of back missing, Fine, Ex Caspary, Hind ..... 3,500.00



- 61  **St. Louis, Mo. 10c on Bluish Pelure (11X8).** Margins all around, tied by ms. lines, clear Red St. Louis, Mo., pmk., matching "Paid", "10" in ms. on folded March 29, 1847 cover to New York, almost invisible filing fold thru stamps, Very Fine appearance, Ex Hind ..... 3,500.00





62	65
63	66
64	67

- 62 **St. Louis, Mo. 5c on Bluish Pelure (11X7).** Pos. 1, margins just clear to just touched all around, clear Red **Paid** cancel, Fine ..... 3000.00+
- 63 **St. Louis, Mo. 5c on Bluish Pelure (11X7).** Pos. 3, margins except barely touched at L. R., light ms. cancel, Handstamp guarantee on back, faint tiny bends, otherwise Fine ..... 3000.00
- 64 **St. Louis, Mo. 5c on Bluish Pelure (11X7).** Pos. 5, margins to barely touched except just in at L. L., light ms. line cancel, tiny tear at L. L., Fine appearance ..... 3000.00
- 65 **St. Louis, Mo. 10c on Bluish Pelure (11X8).** Pos. 2. Margins all around, Rich Color & Impression, ms. lines cancel, Vertical crease, barely broken at T., Fine appearance ..... 3000.00
- 66 **St. Louis, Mo. 10c on Bluish Pelure (11X8).** Pos. 4, Margins except just touched in U. L. corner, ms. lines cancel, small hole at T. and minute fault at L. L., Fine appearance ..... 3000.00
- 67 **St. Louis, Mo. 10c on Bluish Pelure, Double Impression (11X8).** Shows Distinct Doubling to left, Pos. 6, Margins to barely touched, tied to small piece by ms. cancel, neatly sealed tear, Fine appearance, Double Impression not listed in Scott ..... 3000.00+



- 68     **St. Louis, Mo. 5c, 10c on Bluish Pelure (11X7, three, 11X8, three).** The Previous Six Lots offered as One, Constituting a **Complete Plating** of the Third State of the St. Louis Bear Plate, an Excessively Rare Study, as only about 15 copies each of the 5c & 10c on Pelure are known to exist 18,000.00+  
**(To be sold as one lot providing bidding exceeds total amount of previous six lots).**
- 69     **Album** Screw Post Mechanism, will hold about 75 10"x11½" Card Leaves, Magnificent Bound in Full Buff Morocco with Spine, Inner Denticles & Borders of Covers fully Floral Ornamented in Gold, Doubledures and Endpapers Moire Silk, in Matching Case of heavy Silk Rep., full Suede Leather Lined, "United States of America I" title in Dark Brown Morocco, An Album Worthy of the Finest Collection, As New ..... —
- 70     **Album** Another, Identical to above except titled "United States of America II" with 28 unused card leaves, As New ..... —

END OF SALE — THANK YOU

**PRICES REALIZED**

**THIS SALE**

**\$1.00**

**OR ENTIRE YEAR \$4.50**

***LOTS ON VIEW FROM NOVEMBER 10th***

***OFFICES OPEN EVERY SATURDAY***



## IS YOUR COLLECTION FOR SALE?

REALIZE IMMEDIATE CASH  
PLUS THE ADDED ADVANTAGE OF  
SELLING THROUGH OUR AUCTIONS

We will advance immediate cash up to 75% of our appraisal value, of what your collection should realize at auction. There is no interest charge.

Your collection will then be sold in one of our coming auction sales. All stamps are expertly and advantageously lotted in attractive, well illustrated catalogs. Lotting is meticulously planned under our personal supervision. Commission is 20% of the gross realization. There is no lotting fee or any other charges. Final settlement is made within five weeks after the sale. We have been continuously conducting stamp auctions in the United States for over thirty-three years.

Valuable collections and stamp holdings are especially wanted, but we will accept properties valued from \$500 upwards. Send all stamps direct for appraisal. Auction advance will be remitted shortly after receipt. If not entirely pleased, stamps will be returned at our expense. If circumstances warrant due to bulk or value, we will travel anywhere to inspect important properties.

**ROBERT A. SIEGEL, Inc.**

(Licensed and Bonded Auctioneer)

10 EAST 52nd STREET

NEW YORK CITY

(Tel. PL. 3-6422)





# ROBERT A. SIEGEL, Inc.

278TH SALE

10 East 52nd Street  
New York, N. Y. 10022

PRICES REALIZED  
November 19th, 1964

PART II  
United States  
Postmasters' Provisionals

---

1 9,000.00	25 900.00	49 1,700.00
2 850.00	26 400.00	50 650.00
3 2,000.00	27 100.00	51 575.00
4 1,500.00	28 120.00	52 800.00
5 9,000.00	29 375.00	53 500.00
6 2,100.00	30 290.00	54 4,750.00
7 1,800.00	31 900.00	55 1,800.00
8 5,750.00	32 425.00	56 4,750.00
9 1,100.00	33 45.00	57 4,250.00
10 850.00	34 600.00	58 3,000.00
11 1,500.00	35 120.00	59 2,700.00
12 1,600.00	36 800.00	60 1,900.00
13 23,000.00	37 600.00	61 1,400.00
14 20.00	38 1,050.00	
15 1,450.00	39 80.00	62)
16 80.00	40 1,000.00	to)10,000.00
17 110.00	41 650.00	68)
18 180.00	42 375.00	
19 160.00	43 450.00	69 55.00
20 100.00	44 650.00	70 3,750.00
21 35.00	45 800.00	
22 550.00	46 450.00	
23 4,000.00	47 2,350.00	
24 180.00	48 2,200.00	