

280th SALE

**CONFEDERATE STATES
OF AMERICA**

STAMPS and COVERS



AT PUBLIC AUCTION

Thursday

JANUARY 7th, 1965

at 1:30 P.M.

Robert A. Siegel
AUCTIONS

10 EAST 52nd STREET NEW YORK, N. Y. 10022

Tel.: Plaza 3-6422

CONDITIONS OF SALE

1. The terms of sale are strictly cash to the highest bidder. All buyers are expected to pay for lots within three days of receipt, unless special arrangements have been made prior to the sale.
2. All bids are per lot as numbered in the catalogue and not per piece, unless otherwise announced by the auctioneer at the time of sale.
3. Any lot the description of which is incorrect is returnable only within three days of receipt. All disputed lots must be returned intact as received. Lots containing five or more stamps are not returnable at any time. No lots may be returned by purchasers who have had the opportunity to examine them before the sale.
4. Successful mail bidders, unless they are known to us or supply acceptable references, will be notified of the amount of the lots secured for them, and are expected to send payment in full before the lots are forwarded.
5. If the purchase price has not been paid within the time limit, or lots taken up within seven days from date of sale, they may be resold and any losses arising from such sale charged to the defaulter.
6. All stamps are sold as genuine, except where sold "As Is." Claims for any lot proving otherwise, must be made within two weeks from date of sale.
7. The right is reserved to group two or more lots, also withdraw any lot or lots from the sale, or to act on behalf of the seller.
8. Until paid for in full all lots remain the property of Robert A. Siegel.
9. No commission is charged for buying at our sales, but all forwarding charges will be added to the purchase price.
10. Upon written application lots may be sent for examination prior to the auction, conditional upon being mailed back by registered mail, adequately insured, within 24 hours of receipt. The applicant is completely responsible for all lots sent for examination, and for the insurance of same against mishap, from the time of receipt until they are actually received back, and is to pay all expenses of postage and insurance.
11. The placing of a bid shall constitute acceptance of the foregoing conditions of sale.

ROBERT A. SIEGEL

ANDREW LEVITT, Licensed Auctioneers

In sending bids, always state the highest price you are prepared to pay for the lot. Your limit will not be used as a starting bid unless absolutely necessary.

DESCRIPTIONS

Superb or Extremely Fine—the finest condition for noteworthy, outstanding copies.

Very Fine (VF)—means that there is a slight deviation from the above.

Fine (F)—means that the perforations do not touch the design on issues after 1890, but in some cases may just touch in earlier issues; if used, fairly lightly cancelled.

Very Good (VG)—means that the appearance is generally fine but that the perforations cut the design slightly.

Good (G)—means average off-centering; or fairly attractive with slight defects. Original gum is not to be expected on 19th Century stamps up to 1888 unless so stated.

Scott 1965 Specialized United States Catalogue is used for cataloging our lots of United States and Scott's Standard Catalogue, 1965 for others.

WE SOLICIT FINE MATERIAL FOR FUTURE SALES
--

CONFEDERATE STATES OF AMERICA

HANDSTAMP PAID COVERS

- 1 ☒ **Atlanta Geo. Paid** in clear circle, Commission Merchant's Corner Card, on Cover to N. C. with 1864 receiving date in Pencil, Fine E. III
- 2 ☒ **Athens, Ga., Paid 10, Lawrenceville, Ga., Paid 5, Decatur, Ga.,** 5 last in Red on 3 covers to Howell Cobb President of C. S. A. Congress, Fine lot E. VI
- 3 ☒ **Bamberg, S. C. Paid 10** on Front only to Blackville, S. C. Paid 10 not listed in Dietz, pmk. not well struck, otherwise Fine E. I
- 4 ☒ **Baton Rouge, La. Paid 5** Aug. 17, 1861, Dietz ty. I, Fine E. II
- 5 ☒ **Camden, Ark. Paid 10** & "Paid" in ms., on cover to N. C., Very Scarce, Very Fine. E. IV
- 6 ☒ **Canton, Mi.** in clear Circle, Bold **Paid 5** (Dietz ty. III) with 5 struck out and equally Bold **Paid 2**, local usage, Spectacular, V. F., unlisted in Dietz (Photo) E. VI
- 7 ☒ **Charleston, S. C. Paid 5** Oct. 15, 1861, Dietz Ty. II, Extremely Fine E. III
- 8 ☒ **Charlotte, N. C. Paid 10** in Blue, Dietz Ty. II, on cover to So. Carolina, clear strikes, a bit age toned, Fine E. II
- 9 ☒ **Charlotte, N. C. Paid 10** in Blue, Dietz Ty. I, "Official Business" in ms. on fresh homemade cover, Fine E. II
- 10 ☒ **Columbia, Ten. Paid 5** on 3c Red Star Die Entire (U26). Scarce, Very Fine (Photo) E. V
- 11 ☒ **Corinth, Miss. Paid 5**, Dietz Ty. I but in Black, Bold Strikes on Pink Entire, Gorgeous Cover, Very Fine (Photo) E. IV
- 12 ☒ **Danville, Va. Paid 5**, Dietz Ty. IV, P. M. Initials in Black ms., used to N. C., "Danville" partly off cover, otherwise Very Fine, Scarce E. III
- 13 ☒ **Darlington, C. H. S. C. Paid 5** on cover to Privateer, S. C., Scarce, V. F. E. III
- 14 ☒ **Emory, Va. Paid 5**, Dietz Ty. III, in Blue on cover to Independence, Va., a bit carelessly opened at T., otherwise Very Fine E. II
- 15 ☒ **Fayetteville, N. C. Paid 5**, Dietz Ty. II, on cover to Waughtown, N. C., Fine, Scarce E. III
- 16 ☒ **Flat Rock, N. C. Paid 10** on cover to S. C., no flap, V. F. (Photo) E. III
- 17 ☒ **Gainsville, Fla. Paid 10** used to S. C., Very Fine, Scarce E. III
- 18 ☒ **Greensborough, Ga. Paid 5** on cover to Ala., Most Attractive, Very Fine (Photo) E. III
- 19 ☒ **Halifax, N. C. Paid 10** on fresh Homemade cover, Very Fine E. II
- 20 ☒ **Lexington, Va. Paid 10** in Blue, Dietz Ty. II on small cover to S. C., turned, portion of address & S. C. pmk. on inside, Fine E. III
- 21 ☒ **Lovingsston, Va. Paid 10** on cover to Stanton, "O. B." in ms. and matching C. S. A. Officer's Return, Very Scarce, V. F. E. III
- 22 ☒ **Lynchburg, Va. Paid 10**, Dietz Ty. I, on cover to Miss., Fine E. II
- 23 ☒ **Mobile, Ala. Paid 5**, Jul 3, 1861, used to Bridgeville, Very Fine E. II
- 24 ☒ **Montgomery, Ala. Nov. 19, 1861** in clear circle, **Due 10** and **Steamboat** in str. lines, latter in Blue on small cover to Montgomery with letter from C. S. A. Soldier at **Columbus, Ky.**, Scarce, Fine (Photo) E. IX

LOTS ON VIEW FROM DECEMBER 28th

OFFICES OPEN EVERY SATURDAY

25	✉	Nashville, Ten. Paid 5 Oct. 5, 1861, Dietz Ty. I, in Blue on Tiny Cover, F.	E. II
26	✉	Norfolk, Va. Paid 10 Jul 15, 1861 in Blue, Dietz Ty. II, Corner Card of Atlantic Hotel, faint age toning, otherwise V.F.	E. III
27	✉	Pensacola, Fla. Paid 5, Dietz Ty. I, on cover to S. C., "Due 5" in ms., V.F. (Photo)	E. IV
28	✉	Pensacola, Fla. Paid 10, Dietz Ty. II, used to S. C., Very Fine	E. IV
29	✉	Petersburg, Va. Paid 5 in Blue, Dietz Ty. I, on cover to N. C., Very Fine	E. II
30	✉	Port Lavaca, Tex. Paid 10 on tiny cover made from Invoice, opened irregularly at T., clear strikes, Very Scarce	E. II
31	✉	Richmond, Va. Paid 5cts., Dietz Ty. III, on Multicolor 7 Star Patriotic, no Flap, Very Fine (Photo)	E. VI
32	✉	Richmond, Va. Paid 5cts., Paid 10, Dietz Ty. III, Ty. I, on separate covers, Very Fine Pair	E. II
33	✉	Ridgeway, N. C. Paid 5, Dietz Ty. II, "Paid 5cts" in ms. on slightly aged cover, Fine, Possibly Provisional Usage because of the additional ms. rate (Photo)	E. III
34	✉	RockHill, S. C. Paid 10, on cover to Charleston, 10c Paid not listed in Dietz, Fine	E. III
35	✉	Rome, Ga. Paid 5, Dietz Ty. I, on tiny cover to S. C., pmk. partly off envelope, otherwise Fine	E. II
36	✉	Selma, Ala., Paid 5, on fresh cover to New Orleans, Fine	E. II
37	✉	Selma, Ala. Paid 5, "Selma" not struck up, Corner Card of Selma Bank, small cover repair at T., otherwise Fine	E. II
38	✉	Somerville, Ten. Paid 10 Nov. 15, 1861, used to S. C., Very Fine	E. II
39	✉	Spartanburg, S. C. Paid 10 Sep 8, 1863, Dietz Ty. I, on neat homemade cover to Unionville, Fine	E. II
40	✉	Tuscaloosa, Ala. Paid 5 on Overall University of Alabama cover, pmk. not well struck up, tiny sealed tear at U.L., fresh, Fine (Photo)	E. V
41	✉	Tuscaloosa, Ala. Paid 10 Oct. 7, 1862 on small neat cover, Extremely Fine	E. III
42	✉	Unionville, S. C. Paid 5 on small neat cover to Laurens C H, S. C., C. S. A., Very Fine, Type not listed in Dietz	E. III
43	✉	Victoria, Tex. Aug. 31 in clear circle, matching "10" on cover to San Marcos, Tex., Return of Soldier in 32nd Texas Cavalry, V.F.	E. IV
44	✉	Warrington, Fla. Paid 10 on tiny cover to S.C., small age stains, Fine, Very Scarce	E. IV
45	✉	Warrington, Fla. Paid 10 on cover to S. C., cut a trifle irregularly at R., otherwise Fine, Very Scarce	E. III
46	✉	Wetumka, Ala. Paid 10 Feb 20, 1863, clear strike on front & portion of back only, Very Fine	E. II
47	✉	Yazoo City, Miss. Oct. 19, 1861 in clear circle, matching "Paid", used to Canton, cover a trifle aged, Fine	E. II

POSTMASTER'S PROVISIONALS

48	Athens, Ga. 5c Dull Purple Ty. I (5X1). Gigantic margins, grid cancel, Extremely Fine (Photo)	100.00
49	Athens, Ga. 5c Dull Purple Ty. II (5X1). Huge margins all around, showing next stamp at sides, light grid cancel, Extremely Fine (Photo)	100.00
50	Athens, Ga. 5c Dull Purple, Tete-Beche Pair (5X1a). Huge margins, except in at B., Grid Cancels, Very Good-Very Fine, only 6 or 7 pairs known (Photo)	550.00
51	Athens, Ga. 5c Dull Purple, Tete-Beche Pair (5X1a). Strongly contrasting colors, light grid cancels, cut into, only 6 or 7 pairs known (Photo)	550.00

- 52 ☒ **Athens, Ga. 5c Purple (5X1).** Enormous margins all around, Rich Color, very light cancel, not tied, Athens pmk., on cover to Macon, a Beauty, Extremely Fine (Photo) 250.00
- 53 ☒ **Athens, Ga. 5c Dull Purple Ty. I (5X1).** Enormous margins all around, Vivid Color, light grid cancel, not tied, "Athens, Ga. Paid" pmk. on cover to North Carolina, Extremely Fine (Photo) 250.00
- 54 ☒ **Athens, Ga. 5c Dull Purple (5X1).** Horiz. Pair, margins touched at places, slightly in at T., indistinct pmks., not tied, light Athens pmk. on homemade cover to Richmond, faint margin crease between stamps, V. G. (Photo) 550.00
- 55 ☒ **Atlanta, Geo. Paid 10, Black on Amber (6XU12).** Clear Atlanta, Ga. Sep. 19, 1861 pmk., to a soldier in Va., letter enclosed, Very Fine (Photo) 90.00
- 56 ☒ **Austin, Tex. Paid 10 on Orange, Provisional Entire (9XU1).** Austin Dec. 2, 1862 pmk., used to San Antonio, Very Fine, Ex Caspary (Photo) 225.00
- 57 ★ **Charleston, S. C. 5c Blue (16X1).** Large margins, dividing line showing nearly all around, faults, Very Fine appearance 100.00
- 58 ★ **Charleston, S. C. 5c Blue (16X1).** Small thin, Fine appearance 100.00
- 59 **Charleston, S. C. 5c Blue (16X1).** Huge to Enormous Margins, town pmk., sealed tear, Very Fine appearance 50.00
- 60 **Charleston, S. C. 5c Blue (16X1).** Margins except just touched at L. R., clear Charleston pmk., tiny tears, Fine appearance 50.00
- 61 **Charleston, S. C. 5c Blue (16X1).** Margins except touched at T., clear Charleston pmk., small faults, Fine appearance 50.00
- 62 ☒ **Columbia, S. C. Paid 5, Blue on Buff Provisional Entire, Seal on Flap (18XU10).** Fine, Ex Caspary (Photo) 100.00
- 63 ☒ **Columbia, S. C. Paid 5 on Yellow Provisional Entire (18XU13).** Seal on Flap, clear markings, stained, scarce 100.00
- 64 ☒ **Columbia, S. C. Paid 10 Blue on Amber Provisional Entire (18XU17).** Seal on Flap, minute hole in B. margin, Very Fine (Photo) 125.00
- 65 ★ **Fredericksburg, Va. 5c Blue on Bluish (26X1).** Large margins all around, fresh, o. g., marginal pinhole, otherwise Extremely Fine, Grossly Under-cataloged 35.00
- 66 ★ **Fredericksburg, Va. 5c Blue on Bluish (26X1).** Faults 35.00
- 67 ☒ **Hamburgh, S. C. 5 Paid Orange Provisional Entire (112XU1 var.).** Impressed at U. L. instead of U. R. as listed variety, Hamburgh Paid pmk., used to Charleston & forwarded with Charleston 5c Blue (76X1). Rare Combination of two Provisionals, Very Fine (Photo) E. XIV
- 68 ☒ **Hempstead, Tex. Paid 5 Red on White Provisional Entire,** clear Blue "Hempstead, Tex. Dec. 9" in unframed circle, used to Douglass, Texas, age stains, otherwise Fine, listed in Deitz in another form, unlisted in Scott (Photo) E. VII
- 69 ☒ **Hayneville, Ala. Paid 10 Cents, Dietz Ty. I,** on cover to N. C., undoubtedly a Provisional as also known unused, but not so listed in Scott, Very Fine (Photo) E. VI
- 70 ☒ **Houston, Txs. Paid 10 over 5, Red on Yellow Provisional Entire "10" in ms. (40XU1 var.).** "Pd. 10" addl. ms. rate, clear Houston, Tex. Jun 10, 1861 pmk., very early usage, not listed in Scott, Very Fine (Photo) E. VIII
- 71 ☒ **Galenville, Ala. Paid 10 on Buff Provisional Entire (33XU2).** Local Usage, no pmk., listed only unused, neatly repaired in T. margin, Very Fine appearance, as unused 40.00
- 72 ☒ **Houston, Tex. Paid 5, Red on Buff Provisional Entire (40XU3).** Size 7½"x3¾", Houston Dec. 13, 1861 pmk., on cover to Independence, Tex., Very Good 50.00
- 73 ☒ **Knoxville, Tenn. 5c Brick Red (47X1).** Clear to Large Margins except partly touching at L., ms. cancel and tied by town pmk., Nov. 1861 usage to Kingston, Tenn., Fine (Photo) 350.00

74	✒	Knoxville, Tenn. 5c Brick Red (47X1). Huge margins, single ms. line, no pmk., on tiny cover to Jonesboro, Tenn., flap replaced, fresh, Very Fine, A Rare & Pretty Little Cover (Photo)	350.00
75		Knoxville, Tenn. 5c Carmine (47X2). Just clear to ample margins all around, Vivid Color, ms. cancel, Fine (Photo)	350.00
76		Knoxville, Tenn. 5c Carmine (47X2). L. L. Sheet Corner copy, Large to Gigantic margins except partly touched at R., very light ms. cancel, a Lovely Copy of this Rare Stamp, Fine (Photo)	350.00
77	✒	Knoxville, Tenn. 5c Carmine (47X2). Margins to barely touched, tied by light ms. "X" on 3c Red Star Die Entire (U27). A Rare Cover, fresh, Fine (Photo)	600.00
78	✒	Lynchburg, Va. 5c Blue (52X1). Ample to large margins all around, tied by Aug. 30, 1861 Lynchburgh pmk. on folded circular, cover frayed at B. and slightly at T., stamp is Very Fine (Photo)	500.00
79		Macon, Georgia 5c on Gray Blue (53X1). Large margins all around, town pmk., 1½ mm. hole at center, small tear, Rare (Photo)	175.00
80		Macon, Georgia 5c on Gray Green (53X2). Margins except cut in at R., faults, Rare (Photo)	165.00
81		Macon, Georgia 5c on Gray Green (53X2). Margins clear to barely touched, L. R. corner added, Rare (Photo)	165.00
82	✒	Madison, Ga. Paid 5 in Red, Undoubtedly a Provisional as known unused, but not so listed in Scott, no flap, Fine (Photo)	E. VI
83	✒	Madison, Ga. Paid 10 in Red on cover to N. C., undoubtedly a Provisional, as known unused although not so listed in Scott, Fine (Photo)	E. VI
84	★	Memphis, Tenn. 2c Blue (56X1). Large margins except touched at L. L., F.	10.00
85	★	Memphis, Tenn. 2c Blue (56X1). Huge margins, crease, Extremely Fine appearance (Photo)	10.00
86	★	Memphis, Tenn. 2c Blue (56X1). Clear to Enormous Margins, Broken Plate Variety, Very Fine (Photo)	10.00+
87	★	Memphis, Tenn. 2c Blue (56X1). U. R. Sheet Corner Vertical Strip of 4, just clear to Enormous margins, Incomplete Transfer at R., tiny tear in one, a Rare and Handsome Showpiece (Photo)	40.00+
88	★田	Memphis, Tenn. 2c Dark Blue (56X1). Square Block of Sixteen, margins to slightly in, horiz. crease thru 4 stamps, others V. G.-V. F., a scarce and Handsome Block (Photo)	160.00+
89		Memphis, Tenn. 2c Blue (56X1). Margins just clear, nick at T., town pmk., faults, Rare used (Photo)	225.00
90		Memphis, Tenn. 2c Dark Blue (56X1a). Large margins except in at R., light town pmk., Very Good, Rare used (Photo)	225.00
91	★	Memphis, Tenn. 5c Red (56X2). Margins all around, tiny scissor cut otherwise Very Fine (Photo)	20.00
92		Memphis, Tenn. 5c Red, Rose (56X2, 56X3). Cut into, small faults (Photo)	50.00
93	✒	Memphis Tenn. 5c Red (56X2). Two copies, margins except one just touched at T. & R., tied by Memphis pmk. on cover to N. C., Fine, Scarce (Photo)	160.00
94	✒	Memphis, Tenn. 5c Red (56X2). Vertical Pair, margins to cut in, bottom stamp nicked at L. & B., tied by clear Memphis pmk. on cover to Richmond, cover nicked at two corners, Scarce (Photo)	185.00
95	✒	Memphis, Tenn. 5c Red (56X2). Two Vertical Pairs, one clear to enormous margins all around, other cut in at sides, both gum stained, tied by Memphis, Dec. 3, 1861 pmks. on large portion of front only to Helena, Ark., Rare, Ex Caspary (Photo)	215.00+
96	★	Mobile, Ala. 2c Black (58X1). Margins to barely clear except cuts in at T., o. g., thin and broken crease, Rare (Photo)	600.00

- 97 **Mobile, Ala. 2c Black (58X1).** Just clear to slightly in, U. R. corner rounded, tied by clear "Mobile, Ala. Apr. 2, 1862" on small piece, Scarce, Very Good **(Photo)** 190.00
- 98 **Mobile, Ala. 2c Black (58X1).** Horiz. pair, clear to large margins except just into top of R. stamp at one point, Rich Color, "Mobile, Ala. Sep. 7, 1861" pmk., fresh, Fine, Very Scarce in multiples, Ex Caspary **(Photo)** 500.00
- 99 ☒ **Mobile, Ala. 2c Black (58X1).** Large margins all around, Gorgeous Color, tied by perfectly struck "Mobile, Ala. Aug. 30, 1861" pmk., on fresh white folded cover to Greensborough, an outstanding Gem, Extremely Fine **(Photo)** 650.00
- 100 **Mobile, Ala. 5c Blue (58X2).** Large margins, tied to small piece, sealed tear, Very Fine appearance 25.00
- 101 **Mobile, Ala. 5c Blue (58X2).** Margins except barely in at B., town pmk., Very Good 25.00
- 102 **Mobile, Ala. 5c Blue (58X2).** Two copies, margins to slightly cutting; clear Mobile pmks., one has faults, other Very Good 50.00
- 103 ☒ **Mobile, Ala. 5c Blue (58X2).** Margins except just touched in U. R. corner & tiny scissor nick at R., tied by Bold "Mobile, Ala. Dec. 21, 1861" pmk. on cover to Marion, Fine 80.00
- 104 ☒ **Mobile, Ala. 5c Blue (58X2).** Large margins, a bit irregular in places, tied by clear Mobile pmk. on cover to Eutaw, sealed cover tear at T., otherwise Fine, Ex Caspary 80.00
- 105 ☒ **Mobile, Ala. 5c Blue (58X2).** Vertical Pair, Clear to Enormous Margins, irregular at R. & B., tied by clear Mobile Oct. 14, 1861 pmks. on cover to Alabama, A Very Handsome Cover, Ex. Stephen Brown **(Photo)** 250.00
- 106 ☒ **Mobile, Ala. 5c Blue (58X2).** Horiz. Pair, Clear to Huge Margins all around, Lovely Rich Color, tied by perfectly struck "Mobile Ala. Sep. 7, 1861 pmk., used to N. C., U. R. corner torn from cover, far from stamps and neatly replaced, otherwise Very Fine **(Photo)** 250.00
- 107 ☒ **Montgomery, Ala. "Paid 5 T. Welsh" Red on White, Provisional Folded Letter (59XU1).** Clear Montgomery Jul 29, 1861 pmk., faint aging, Fine **(Photo)** 60.00
- 108 ☒ **Montgomery, Ala. Oct. 5 1861 Paid 10 T. Welsh Blue on Amber Legal Size Provisional Entire (59XU7 var.).** Couple minor stains & tiny tear, otherwise Fine, not listed on amber in Scott, on white 225.00
- 109 ☒ **Montgomery, Ala. "Paid 10 T. Welsh" Red on Orange Provisional Entire (59XU11).** Clear Sep. 4, 1861 Montgomery pmk., Very Fine **(Photo)** 100.00
- 110 ★ **Nashville, Tenn. 3c Carmine (61X1).** Cpl. Strip of 5 Varieties, Large Margins, fresh, Very Fine, Grossly Undercatalogued 75.00
- 111 ★ **Nashville, Tenn. 5c Carmine (61X2).** Margins touched all around, o. g., tiny thin and interior paper separations, Fine appearance 200.00
- 112 **Nashville, Tenn. 5c Carmine (61X2).** Horiz. Pair, Lovely Rich Color, Huge Margins to barely touched, R. stamp tiny nick in T. margin, tied to small piece by Blue Nashville pmk., listed but unpriced in Pair, a very attractive piece **(Photo)** 200.00+
- 113 ☒ **Nashville, Tenn. 5c Dark Carmine (61X2).** Huge margins, Unusually Deep Rich Color, tied by clear Blue Nov. 26, 1861 Nashville pmk. on cover to Mississippi, small sealed cover tears in top margin, stamp has almost invisible faint crease before using, Very Fine appearance, Ex Caspary **(Photo)** 275.00
- 114 **Nashville, Tenn. 5c Brick Red (61X3).** Margins clear all around, Vivid Color, Blue pmk., a Lovely Copy, Fine **(Photo)** 125.00
- 115 **Nashville, Tenn. 5c Brick Red (61X3).** Clear to Enormous margins except partly touched at R., sheet margin at T., lovely color, clear Blue 5 cancel, minute margin wrinkle, Fine, a Gorgeous Copy, Ex Caspary **(Photo)** 125.00+

- 116 **Nashville, Tenn. 5c Brick Red (61X3).** Large margins to slightly cutting, L. L. corner rounded, Vivid Color, Blue pmk., Very Good 125.00
- 117 ☒ **Nashville, Tenn. 5c Gray (61X4).** Huge margins all around, Wonderful Color, tied by clear Blue 5, matching Nashville, Oct. 29, 1861 pmk. and "Paid", used to Miss., cover has tears and scotch tape stains at T., stamp Extremely Fine (Photo) 250.00
- 118 ☒ **Nashville, Tenn. 5c Violet Brown on Blue (61X5).** Barely clear to large margins all around, tied by Blue Nashville pmk. on Front Only to Memphis., stamp has small rub at B., Fine appearance (Photo) 250.00+
- 119 ☒ **Nashville, Tenn., 5c Violet Brown on Blue (61X5).** Horiz. Pair, Large to Huge Margins except R. stamp touched at U. R., tied by Blue Nashville pmk., matching Paid, on small Sept. 30, 1861 cover to Richmond, sealed cover tear, slightly into L. stamp, R. stamp has minute tear at T., Rare & Attractive (Photo) 1000.00
- 120 ☒ **Nashville, T. Paid 5 (61XU3).** Blue Nashville, Ten. Jul. 2, 1861 pmk. on Multicolor 7 Star Flag Patriotic Cover with "Sold at Green & Co's Book Store, Nashville, Tenn." Impt., Large piece out of cover in U. L. Corner but Very Rare 300.00
- 121 ★ **New Orleans, La. 2c Blue (62X1).** Two distinct shades, V. G.-F. 30.00
- 122 ★ **New Orleans, La. 2c Blue (62X1).** Three shades, margins all around, small thins, Fine-Very Fine appearance 45.00
- 123 **New Orleans, La. 2c Blue (62X1).** Ample to large margins all around, Rich Color, Very Fine (Photo) 60.00
- 124 **New Orleans, La. 2c Blue (62X1).** Margins except barely touched at L. R., Nice Color, New Orleans pmk., Fine (Photo) 60.00
- 125 **New Orleans, La. 2c Blue (62X1).** Magnificent Color, Huge Margins except in at R., clear 29 Jul. New Orleans pmk., V. G. 60.00
- 126 **New Orleans, La. 2c Blue (62X1).** Clear to large margins except barely in at U. R. corner, town pmk. & ms. line, just Fine 60.00
- 127 **New Orleans, La. 2c Blue (62X1).** Town pmk., Very Good 60.00
- 128 **New Orleans, La. 2c Blue (62X1).** Two distinct shades, Large Margins except one close at places, New Orleans pmk. and double "Paid" cancels, small faults, Fine-Very Fine appearance 120.00
- 129 ☒ **New Orleans 2c Blue (62X1).** Large margins except tiny margin nick & tear in U. L. corner, tied by clear New Orleans pmk. on neat folded circular, U. R. corner of cover has been torn off & replaced, Rare & quite Attractive, Ex Moody (Photo) 300.00
- 130 ★ **New Orleans, La. 2c Red (62X2).** Three distinct shades, margins to just touched, tiny thin, Fine appearance 60.00
- 131 ★田 **New Orleans 2c Red (62X2).** Sheet Margin Block of Nine, Pos. 9-11, 17-19, 25-27, **Largest Block Known**, Clear to Huge margins except touched at U. R., vert. crease in R. strip, slightly separated at T., negligible horiz. bend in center, otherwise Extremely Fine, Rare & Handsome, unpriced in multiples larger than pair (Photo) 320.00+
- 132 **New Orleans 2c Red (62X2).** Margins all around, town pmk., V. F. (Photo) 200.00
- 133 **New Orleans 2c Red (62X2).** Large to Huge margins, indistinct New Orleans pmk., minute crease in T. margin, Extremely Fine appearance (Photo) 200.00
- 134 **New Orleans, 2c Red (62X2).** Large margins, very light strike of the New Orleans Double Circle and clear N. Y. Merchant's receiving pmk. of Aug. 11, 1865, probably from a circular held up and delivered after the war, most unusual, Very Fine (Photo) 200.00
- 135 **New Orleans 2c Red (62X2).** Touched or slightly in, clear N. O. pmk., faint creases & tiny tear, very scarce used 200.00
- 136 **New Orleans 2c Red (62X2).** Margins except just in at R. and small nick in T. margin, light New Orleans pmk., minute thin, Scarce (Photo) 200.00

137	New Orleans 5c Brown (62X3). Just clear to ample margins except partly touched at R., short transfer at U. L., tied to piece, Fine	15.00
138	New Orleans 5c Brown (62X3). Horiz. pair, huge margins, part impt. at B., clear "Paid" cancels, Extremely Fine (Photo)	30.00
139	New Orleans 5c Brown (62X3). Horiz. pair, large margins all around, two clear "Paid" cancels, Extremely Fine (Photo)	30.00
140	New Orleans 5c Brown (62X3). Horiz. pair, clear to huge margins except barely touched at one point, Unusual Deep Color, Marginal Watermark at L., clear Jun. 18, 1861 pmk., First Week of Use, Fine	30.00+
141	New Orleans 5c Brown (62X3). Horiz. pair, huge margins, clear New Orleans pmk. & Paid cancels, tiny marginal nick at B. well clear of designs, R. stamp a bit toned on back, otherwise Very Fine	30.00
142	New Orleans 5c Brown (62X3). Two copies, one unused, margins to just touched, small thins, Fine appearance	40.00
143	New Orleans 5c Brown (62X3). Vertical strip of three, huge margins, part impt. at B., clear Paid cancels, & tied to small piece by part of town pmk., minor gum soaks & horiz. crease at center, a Scarce & Handsome strip	45.00+
144	New Orleans 5c Ochre (62X3b). Margins all around, Fine (Photo)	100.00
145	☒ New Orleans 5c Ochre (62X3b). Large margins, tied by Paid, struck twice, on somewhat aged cover to Baton Rouge, "Acadia" in ms., V. F. stamp	300.00
146	☒ New Orleans 5c Brown on White (62X3). Margins except touched or just in at L. & B., tied by Paid , "New Orleans 17 Aug." pmk., used to to Va., carelessly opened at T., Very Good	60.00
147	☒ New Orleans 5c Brown on White (62X3). Two copies, margins all around, Very Large on One, tied by light New Orleans pmk. on cover to Georgia, one line docket ties one stamp, arithmetic at L. L., otherwise Very Fine	120.00
148	New Orleans 5c Brown on White, Blue (62X3, 62X4). Margins to just touched, Paid cancels, Fine	35.00
149	New Orleans 5c Brown (62X3, 62X4, 62X5). Margins to just touched, last unused, Fine	50.00
150	★ New Orleans 5c Brown on Blue (62X4). Large Margins, Vivid Color, Extremely Fine (Photo)	60.00
151	★ New Orleans 5c Brown on Blue (62X4). Large margins, small rub at B., mostly in margin, otherwise Very Fine	60.00
152	New Orleans 5c Brown on Blue (62X4). Large margins, Rich Color, Paid cancel, Very Fine	20.00
153	New Orleans 5c Brown on Blue (62X4). Large margins, town pmk., V. F.	20.00
154	New Orleans 5c Brown on Blue (62X4). Large margins, a trifle toned, Very Fine	20.00
155	New Orleans 5c Brown on Blue (62X4). Margins all around, Extraordinary Black Brown Color, tiny thin, Fine appearance	20.00+
156	New Orleans 5c Brown on Blue (62X4). Large margins all around, clear New Orleans 4 Dec. pmk., Extremely Fine (Photo)	60.00
157	New Orleans 5c Brown on Blue (62X4). Vertical pair, large margins all around, N. O. canc., minute corner crease far from design, still Extremely Fine (Photo)	60.00
158	New Orleans 5c Brown on Blue (62X4). Horiz. pair, margins all around, slightly smudged "Paid" cancels, Very Fine (Photo)	60.00
159	New Orleans 5c Brown on Blue (62X4). Horiz. Pair, Large to Huge margins except barely touched in U. R. corner, clear N. O. pmk., V. F. (Photo)	60.00
160	New Orleans 5c Brown on Blue (62X4). Horiz. Pair, Clear to Huge margins all around N. O. pmk., one stamp faint crease, otherwise Very Fine	60.00

161	New Orleans 5c Brown on Blue (62X4). Vertical pair, enormous margins except barely in at U.R., Marginal Imprint at B., N. O. P. O. Pd. 5ct. cancels, lt. creases & tiny thins, F.-V.F. appearance	60.00
162	New Orleans 5c Brown on Blue (62X4). Vertical Pair, Huge margins except barely in at T., neat town pmk., minute sealed tear between stamps, otherwise Very Good-Very Fine	60.00
163	✉ New Orleans 5c Brown on Blue (62X4). Large margins all around, Grid Cancel, not tied, on neat folded cover to Pass Christian, Miss., Probably Carried by Coastal Steamer & Cancelled on Arrival, V.F.	50.00
164	✉ New Orleans 5c Brown on Blue (62X4). Cut in at T., tied by Pd. 5cts. N. O. P. O. in 2 str. lines, J. L. Riddell P. M. in str. line, New Orleans and Grand Gulf, Miss. pmks. on cover to Port Gibson, Miss., "Lafourche" in ms., marginal cover faults, Rare Packetboat Cover (Photo) E. VIII	
165	✉ New Orleans 5c Brown on Blue (62X4). Clear to Huge margins, Lovely Rich Color, tied by "New Orleans 20 Oct." pmk. on cover to Baton Rouge, Fine	50.00
166	✉ New Orleans 5c Brown on Blue (62X4). Horiz. Pair, clear to Large margins, tied by New Orleans 5 Nov. pmk. on 5"x3" portion of cover to Natchez, minor wrinkle in stamps, Very Fine	60.00+
167	✉ New Orleans 5c Brown on Blue (62X4). Horiz. Pair, Huge Margins all around, tied by Paid cancels, clear New Orleans pmk. on somewhat aged cover to Nashville, one stamp faintly toned, otherwise Very Fine pair	125.00
168	New Orleans 5c Brown on Blue (62X4). Ample to Huge Margins all around, clear Pd. 5c (ts.) N. O. P. (O). in two str. lines, trivial tiny corner crease, Very Fine appearance (Photo) E. VI	
169	New Orleans 5c Brown on Blue (62X4). Clear to Huge margins all around, unusual color, light Southern Express Co. pmk., Scarce, Faint stain, Fine appearance	E. V
170	New Orleans 5c Brown on Blue (62X4). Horiz. Strip of Six , Pos. 26-31, large margins except barely touched at R. & just clear at L., Clear New Orleans pmks., trivial tiny corner creases at L.L. & L.R., otherwise Very Fine, A Handsome Showpiece (Photo)	600.00
171	★ New Orleans 5c Brown on Yellowish (62X5). T. Impt. Copy, Extremely F.	15.00
172	★ New Orleans 5c Brown on Yellowish (62X5). T. Impt. Copy, Extremely F.	15.00
173	★ New Orleans, La. 5c Brown on Yellowish (62X5). Large margins, fresh, o.g., Very Fine	15.00
174	★ New Orleans 5c Brown on Yellowish (62X5). T. Part Impt. Copy, light crease, Extremely Fine appearance	15.00
175	★ New Orleans 5c Brown on Yellowish (62X5). Large margins with Sheet Imprint at B., unusual color, vertical crease at R., far from design, a bit toned, otherwise Very Fine	15.00+
176	★ New Orleans 5c Brown on Yellowish (62X5). Horiz. part B. impt. strip of 3, large margins except barely clear at U.R., fresh, o.g., Fine-Very Fine (Photo)	65.00+
177	New Orleans, La. 5c Brown on Yellowish (62X5). Huge margins all around clear New Orleans, La. 3 Dec. pmk. with "3" Inverted, First Day of Usage , Extremely Fine, Ex Stephen Brown (Photo)	50.00+
178	New Orleans 5c Brown on Yellowish (62X5). Horiz. Pair, Pos. 17-18, Large Margins all around, tied to small piece, Very Fine, Scarce used (Photo)	110.00
179	New Orleans 5c Brown on Yellowish (62X5). Horiz. pair, margins touched at places, New Orleans pmk., one has small thin, other V.G.	110.00
180	New Orleans, La. 5c Brown on Yellowish (62X5). Vertical Pair, Large Margins all around, tied on piece by clear New Orleans 3 Dec. pmk., First Day of Usage , Extremely Fine, Ex Stephen Brown (Photo)	110.00+

- 181 ☒ **New Orleans, La. 5c Brown on Yellowish (62X5).** Large margins except touched at B., tied by New Orleans 7 Dec. pmk. on cover to Vicksburg, stamp light stain and tear, mostly in margin, minor cover tears in R. margin, Scarce used, especially on cover 100.00
- 182 ☒ **Patterson, N. C. Paid 10** on cover to Copenhagen, N. C., Bold Strikes, this handstamp is known on unused covers so is undoubtedly a Provisional although not so listed in Scott, V. F. (Photo) **E. VI**
- 183 **Petersburg, Va. 5c Red (65X1).** Pos. 5, U. R. Sheet Corner Copy, Ample to Enormous margins all around, socked on the nose Blue town pmk., A Gorgeous Copy, Extremely Fine (Photo) 85.00
- 184 **Petersburg, Va. 5c Red (65X1).** Pos. 8, margins all around Blue Town and ms. cancel, Very Fine (Photo) 85.00
- 185 **Petersburg, Va. 5c Red (65X1).** Pos. 5, large margins except just clear at L. L., clear Blue pmk., Very Fine (Photo) 85.00
- 186 **Petersburg, Va. 5c Red (65X1).** Pos. 6, margins barely touched, sheet margin at L., unusually vivid color, Blue town pmk., Fine (Photo) 85.00
- 187 **Petersburg, Va. 5c Red (65X1).** Pos. 10, clear to Huge margins except just in at U. L. corner, Blue town pmk., Fine 85.00
- 188 **Petersburg, Va. 5c Red (65X1).** Pos. 4, margins except barely touched at U. R., sheet margin at T., Fine 85.00
- 189 **Petersburg, Va. 5c Red (65X1).** Pos. 10, large margins at R. & B., slightly in on other sides, clear Blue pmk., thin, fresh and Attractive (Photo) 85.00
- 190 **Petersburg, Va. 5c Red (65X1).** Pos. 2 large margins except barely in at L. L., Blue town pmk., faint creases, Fine appearance (Photo) 85.00
- 191 **Petersburg, Va. 5c Red (65X1).** Pos. 3, margins to slightly in, light Blue pmk., Guarantee handstamp on back, sealed interior tear, Fine appearance 85.00
- 192 ☒ **Petersburg, Va. 5c Red (65X1).** Pos. 8, margins all around, Gorgeous Color, tied by Blue Petersburg pmk. on neat folded letter to Christiansville, Va., faint vertical bend thru stamp, otherwise Extremely F. (Photo) 185.00
- 193 ☒ **Petersburg, Va. 5c Red (65X1).** Pos. 10, Large to Huge Margins on 3 sides, sheet margin R. & B., barely in at L., tied by unusually clear Blue Petersburg 5cts. pmk. on cover to Clarksville, cover a trifle reduced at L., otherwise Fine (Photo) 185.00
- 194 ☒ **Petersburg, Va. 5c Red (65X1).** Pos. 2, Clear to Enormous Margins, showing next stamp on 3 sides, tied by Blue Petersburg pmk. on cover to N. C., cover has minor marginal tears and 5 line docket, stamp has light gum stains, otherwise Fine (Photo) 185.00
- 195 ☒ **Petersburg, Va. 5c Red (65X1).** Pos. 2, irregular margins, slightly in at B. L., tied by clear Blue Petersburg pmk. on cover with Fancy Brown Grocer's Corner Card, cover has small repair at T., Very Good (Photo) 185.00
- 196 ☒ **Petersburg, Va. 5c Red (65X1).** Two copies, Pos. 7, One Large margins all around, showing next stamp on 3 sides, other Huge margins to slightly in at two points, tied by clear Blue Petersburg 5cts. pmks. on cover to New Orleans, Fancy Blue & Embossed Corner Card, used to New Orleans, trivial cover bend thru latter described stamp, a Rare & Handsome Cover (Photo) 370.00
- 197 ☒ **Raleigh, N. C. Paid 5, Red on White Provisional Entire (68XU1).** Partly incomplete impression, clear Blue "Raleigh, N. C. Jul. 1, 1860"! pmk., fresh, Very Fine, most unusual dating 50.00
- 198 ☒ **Raleigh, N. C. Paid 5, Red on White (68XU1).** "RA" not struck up, clear Blue Raleigh pmk., used to Rutherfordton, N. C. "Via Charlotte", Fine 50.00
- 199 ☒ **Raleigh, N. C. Paid 5, Red on White (68XU1).** Clear Raleigh Jun. 11, 1861 cancel, cover has long sealed tear at U. L., otherwise Fine 50.00
- 200 ☒ **Raleigh, N. C. Paid 5, Red on Amber Provisional Entire (68XU2).** Blue Raleigh pmk., double struck, marginal cover faults, V. G. 50.00

201	✉	Raleigh, N. C. Paid 5, Red on Orange (68XU3). Clear Blue Raleigh pmk., used to Graham, N. C., fresh, Very Fine	50.00
202	✉	Raleigh, N. C. Paid 5, Red on Buff (68XU4a). "Paid" not struck up, clear Blue Raleigh pmk., used to Hillsboro, N. C., Fresh, Very Fine	60.00
203	✉	Raleigh, N. C. Paid 5 Red on Buff (68XU4a). "Paid" not struck up, clear Blue Raleigh pmk., on fresh cover to Hillsboro, V.F.	60.00
204		Ringgold, Georgia Five Cents Black on White (71XU1). Cut to Shape, Very Rare, Cover Cats.	450.00
205	✉	Salem, N. C. Paid 5 on Buff, Provisional Entire (73XU2). Clear Salem, N. C. Jan. 31 pmk., matching "Paid 5", used to Clemmons, N. C., Very Fine (Photo)	150.00
206	✉	Savannah, Ga. Paid 5 on White, Provisional Entire (10XU2 var.). Hand-stamp E2, Impressed at U.R., Variety not Listed in Scott on White, Savannah Jun. 18, 1861 pmk., used to Marietta, small stain & tiny tear, Fine, Letter Enclosed	—
207	✉	Savannah, Ga. Paid 5 on Orange Provisional Entire (E1 var.). Hand-stamp E1, Impressed at U.L., Variety not Listed in Scott on Orange, Savannah Paid pmk., used to Milledgeville, cover docketed and light stains, Scarce	—
208	✉	Statesville, N. C. Paid 5 Black on White, Provisional Entire (79XU1). Fine	60.00
209	✉	Statesville, N. C. Paid 5, Black on Straw Provisional Entire (79XU3). Unused, Very Fine	30.00
210	★	Tellico Plains, Tenn. 5c, 10c Red (81X1, two, 81X2). Complete setting of three stamps, Clear to Huge margins all around, fresh, Very Fine, Rare (Photo)	850.00

GENERAL ISSUES

5c GREEN 1861 ISSUE

211	★	5c Green (1). Margins all around, fresh o.g., Lovely Color & Impression, unusual Printing Variety at U.L., Small fault, V.F. appearance (Photo)	16.00+
212	★	5c Green (1). Large margins except partly touched at T., fresh, o.g., unusual worn plate impression, Fine	16.00
213	★	5c Green, Rouletted 18 (1 var.). Fresh, centered to L.L., Fine, unlisted	—
214	★	5c Green (1). Vertical Pair, Clear to Huge margins all around, o.g., almost invisible faint creases, Very Fine appearance	40.00
215	★	5c Green (1). Vertical Pair, Large to Huge margins except one partly touched at R., Sheet Margin at L., o.g., faults, F.-V.F. appearance	40.00
216	★田	5c Green (1). Horiz. Block of 6, margins all around, Rich Color & Nice Impression, minor thins or scuffs affect four stamps, Attractive, Very Fine appearance	140.00+
217		5c Green, Blue (1, 6). Margins except latter touched at T., tied on small piece by clear Chattanooga, Tenn., Oct. 27, 1862 pmk., scarce combination, Fine-Very Fine	E. III
218		5c Olive Green (1). Horiz. pair, clear to huge margins all around, clear Augusta, Ga. pmk., small faults, V.F. appearance	27.00+
219		5c Green (1). Three shades, margins except one barely touched, town pmks., one in Blue, minor faults, Fine-Very Fine appearance	29.50
220		5c Green (1). Horiz. Strip of 5, large margins except barely in at B.R., clear Memphis Dec. 19, 1861 pmk., Gorgeous Color & Impression, scissor cut and small creases, A Scarce and Very Attractive Strip (Photo)	E. VI

PAID 2

PAID 5

1861

5



6



16

PAID 10



18

PAID



40

PAID



27

PAID



PAID 5

W. A. McEwen

31



33



STEAM BOAT

QUE 10



Mrs. Mary L. Cloune

24



52



11

Mrs. Virginia Carleton

Bashi

#132 R.E.D.



55



Mrs. G. G. G. G. G.

54

53



62

PAID

5

robert



56

Sam Smith Esq.



64

PAID

10



68



70

Spencer Spring
Appomattox
Virginia



PAID

Mrs. G. G. G. G. G.
Sally, Oregon
Columbia, S.C.

67





48



49



50



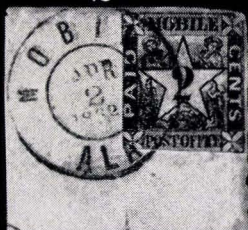
51



75



76



97



90



96



98



114



112



115



123



124



132



133



134



136



138



139



87



144



150



156



158



159



168



176



157



177

Usable exclusively





12146
392
Jm. C. & Russell

Richmond
AIR
FEB 18 63
VA

OFFICIAL BUSINESS.
Printed by
393

STATE OF GEORGIA.
Adjutant and Inspector General's Office.

391

438

441

418
433
Galveston

Confederate States of America,
POST OFFICE DEPARTMENT,
OFFICIAL BUSINESS.
477

486

455

458

David C.
494

Confederate States of America,
POST OFFICE DEPARTMENT,
OFFICIAL BUSINESS.
478
491

500

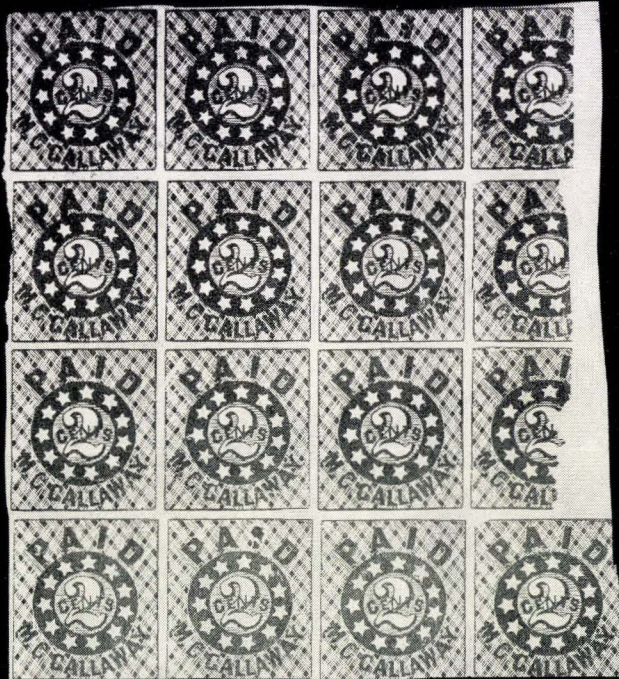
Ship Letter
M. Barnett
Richmond
Virginia
492



462



508



88



254



464



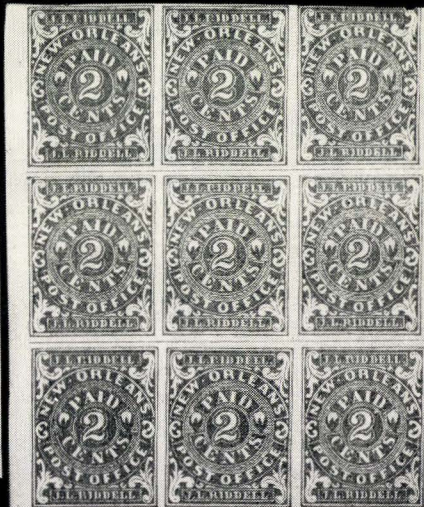
270



244



466



131

221	5c Green (1). Four Horiz. Pairs, one touched at places, others margins all around, Tudor Hall, Va.; Jackson, Miss.; Blue Town, & Blue grid cancels, Nice Shades incl. Olive, several have light creases, Attractive Lot	79.00+
222	5c Green (1). Eight copies, all but one with large margins, Lovely Range of Shades, incl. Red Town, most have minor faults, A Handsome Looking Lot	97.00+
223	☒ 5c Green (1). Margins all around, Rich color, tied by Orange C. H., Va. pmk. on cover to Hampstead, Va., Very Fine	E. II
224	☒ 5c Green (1). Large margins except barely in at B., tied by Richmond pmk. on neat, tiny cover, Fine	13.50
225	☒ 5c Light Green (1). Clear to Huge Margins, ms. "X" and tied by light Red Lexington, Ga. pmk., minor cover tears, otherwise Fine	E. II
226	☒ 5c Green (1). Folded over edge of cover with "Office of Ordnance & H'd'y Virginia Navy" Imprint, Virginia crossed out & C. S. substituted, Virginia State Seal, stamp tied by Richmond, Oct. 22, 1861 pmk. (first week of use), another stamp apparently missing, stamp rubbed where folded, a Fresh & Handsome Cover	E. IV
227	☒ 5c Light Olive Green (1). Two copies, very irregular margins, tied by Blue grids, one by matching Raleigh, N. C. pmk. Forwarding a cover with clear "Paid 5", June 1862, docketing at L., Attractive, Fine	E. II
228	☒ 5c Green (1). Two copies, margins all around, tied by Tudor Hall, Va. Feb. 21, 1862 pmk., stamps have faint gum stains, otherwise Fine	30.00
229	☒ 5c Green (1). Horiz. pair, in slightly at L., tied by Fayetteville, N. C. pmks., Fine	30.00
230	☒ 5c Deep Olive Green (1). Vertical Pair, Large Margins, Gorgeous Color tied by clear Port Gibson, Miss. Jan. 21, 1863 pmk., used to Georgia, B. stamp a bit rubbed in L. L. corner, cover neatly repaired, top stamp Extremely Fine	30.00
231	☒ 5c Green (1). Horiz. pair, not tied, no margins, Blue grid cancels, matching Raleigh, N. C. pmk., Attractive	30.00
232	☒ 5c Deep Olive Green (1). Horiz. Pair, Large Margins except touched at R., tied by Norfolk, Va. Oct. 25, 1861 pmk., struck 3 times, very early usage, Fine	E. III
233	☒ 5c Olive Green (1). Horiz. Pair, Large Margins except touched at T., grid cancels and tied by New Orleans pmk. on large portion of front only to Virginia, Fine	27.00+
234	☒ 5c Green (1). Two Horiz. Pairs, margins to barely in, tied by Augusta, Ga. pmks. on cover to Richmond, Scarce, Fine	(Photo) E. VI
235	☒ 5c Green, 10c Blue (1, four, 2). Tied by Octagonal Grids, Clear Montgomery, Ala. Dec. 14, 1861 pmk., on Legal Size Cover to Va., cover irregularly opened at T., damaging 10c and one 5c, others have minor faults, Very Scarce Combination	E. V
236	☒ 5c Green (1). Single and pair on separate covers, first with ms. "Wide-mans, S. C." pmk., latter tied by Yorktown, Va. pmk., stamps have small faults, V. G.-F. appearance	50.00
237	☒ 1c Green (1). Three pairs, one vertical, distinct shades, margins cut at places, tied on separate fresh covers, one by Blue Grids, V. G.-F.	90.00
238	☒ 5c Green (1). Horiz. pair, not tied may not belong, on Patriotic cover Multicolored Crossed Flags and Va. Seal, also cover with Dragoon on Horseback without stamp	E. II
239	1c-20c General Issues (Betw. 1-14). 22 stamps, used & unused, some faults, Fair-Very Fine	92.00

10c Blue, 1861-62 ISSUE

240	★	10c Dark Blue (2). Hoyer Print, Large Margins, Rich Color, trivial thin speck, entirely in margin, otherwise Extremely Fine (Photo)	40.00
241	★	10c Blue (2). Horiz. Pair, Huge Margins, Vivid Color, fresh o. g., minute thin in one, otherwise Extremely Fine (Photo)	40.00
242	★	10c Blue (2). Horiz. Strip of Four, huge margins all around, Lovely Color, fresh o. g., creases, thin in one, V. F. appearance 80.00+	
243	★	10c Blue (2). Block, margins except barely touched in L. R. corner, Gorgeous Color, fresh, mint, a wonderful block, Extremely Fine (Photo)	100.00
244	★	10c Blue (2). Horiz. Block of Six, Ample to Huge margins all around, one showing "Malformed O." fresh, o. g., light marginal crease, touching only at U. R., otherwise Extremely Fine (Photo)	140.00+
245		10c Blue (2). Large margins all around, clear Blue Charlottesville, Va. pmk., a wonderful copy, Extremely Fine (Photo)	13.50
246		10c Blue (2). U. L. Sheet Corner copy, Gigantic Margins all around, Corinth, Miss. pmk., Wonderful Color, crease, Extremely Fine appearance 13.50	
247		10c Blue (2). Huge margins, sheet margin at B., Wonderful Rich Color, clear Atlanta Dec. 23, 1861 pmk., lt. creases, Extremely Fine appearance 13.50	
248		10c Blue (2). Clear margins except for tiny nick at U. R., clear Red Grantville, Ga. pmk., faint crease, Fine appearance 40.00	
249		10c Blue (2). Horiz. Pair, Huge Margins all around, Gorgeous Color, tied to piece by clear Mobile pmks., A Wonderful Pair, Extremely Fine (Photo)	85.00
250		10c Dark Blue (2). Horiz. Pair, Hoyer Printing, Large Margins except smaller at L. L., Wonderful Rich Color, tied by Blue Norfolk, Va. pmk. on small piece minute rub at U. L., otherwise Very Fine..... (Photo)	200.00
251		10c Dark Blue (2). Horiz. Pair, Hoyer Printing, just clear to Huge Margins, sheet margin at T., clear Mobile pmk., trivial surface rub at L. L., otherwise Fine-Very Fine, a pretty pair (Photo)	200.00
252		10c Blue (2). Four Distinct Shades, Clear to Huge Margins except one touched at T., one unused, three have faults, other has tiny stains, Attractive 80.00	
253		10c Blue (2). Horiz. Strip of 3, Hoyer Printing, Large Margins except in at L. R. Corner, light town pmk., faults, an Attractive and Very Rare Strip 220.00+	
254	▣	10c Milky Blue (2). Horiz. Block of Six, Stone Y, Blue Charlottesville, Va. pmks., faults, A Very Rare Block, possibly largest known, listed but unpriced in Block (Photo)	—
255	⊠	10c Blue (2). Huge margins, Wonderful Color, tied by Blue town pmk. on flap of tiny cover, part of flap missing, stamp is Extremely Fine 20.00	
256	⊠	10c Blue (2). Enormous margins, Gorgeous Color, tied by Savannah, Ga. Paid pmk., used to S. C., Very Fine 20.00	
257	⊠	10c Dark Blue (2). Hoyer Printing, Huge Margins, tied by town pmk. on small cover, sealed cover tear, stamp Extremely Fine 32.50	
258	⊠	10c Dark Blue (2). Ample to Large Margins all around, ms. "X" cancel, ms. town pmk., Fine 20.00	
259	⊠	10c Light Blue (2). Huge margins all around, tied by light ms. cancel, ms. Cady's Tunnel (Va.) pmk., stamp faintly aged, otherwise Very Fine 20.00	
260	⊠	10c Blue (2). Huge margins, ms. "X" cancel, matching ms. Sparta, Va. pmk., stamp lightly creased before using, Very Fine appearance 20.00	
261	⊠	10c Blue (2). Huge margins, pretty color, tied by Madison, Ga. pmk. on cover to Hopewell, cover repaired, stamp Very Fine 20.00	

262	✉	10c Blue (2). Huge margins all around, tied by Richmond pmk. on Legal size cover with "Confederate States of America War Department" Imprint, stamp has stain, mostly in margin, small cover repair at B., Scarce Usage	E. III
263	✉	10c Blue (2). Huge margins all around, tied by Richmond, Va. Feb. 20, 1862 pmk. on Legal Size Coxer with C.S.A. War Department Imprint, letter on matching stationary, signed by J. P. Benjamin , Secy. of War, stamp has slightly broken crease in T. margin from cover fold, letter Very Fine	E. V
264	✉	10c Blue (2). Vertical Pair, margins all around, very worn impression, tied by light town pmk. on cover to Col. G. F. Mosely, Fine	125.00
265	✉	10c Blue (2). Two copies, distinct shades, margins except one partly touched at L., tied by Tudor Hall, Va. and Miss. town pmks. on separate covers, latter cover has large portion of another copy, Fine	40.00

2c GREEN, 1862 ISSUE

266	★	2c Green (3). Huge margins, fresh, o. g., Extremely Fine	(Photo) 55.00
267	★	2c Green (3). Margins all around, faint trace of aging, Fine	(Photo) 55.00
268	★	2c Green (3). Clear to large margins, o. g., vert. crease, V. F. appearance	55.00
269	★	2c Green (3). Horiz. Pair, Margins except in at T., Pos. 4-5, with Colored Dot in margin between stamps, faint bend between stamps and one has tiny tear, o. g., scarce variety	120.00+
270	★	2c Green (3). Block, margins all around, o. g., faint crease in R. pair, tiny thin at U. L., otherwise Very Fine	(Photo) 300.00
271		2c Green (3). Large margins, N. C. town pmk., minute stains, trivial thin speck entirely in margin, V. F. appearance	(Photo) 90.00
272		2c Green (3). Horiz. Pair, Huge margins to barely touched except nick in L. L. corner and large nick in T. margin, mostly between stamps, clear Knoxville pmk., faults, Very Scarce	200.00
273	✉	2c Green (3). Margins to slightly in, tied by Salisbury, N. C. pmk. on folded 8½"x2½" Broadside of the North Carolina Railroad Co., dated Dec. 21, 1863, stamp a bit worn, otherwise Fine, Rare Usage	(Photo) 300.00

5c Blue, 1862 ISSUE

274	★	5c Blue (4). Two shades, margins all around, one o. g., Very Fine	19.50
275	★	5c Blue, Dark Blue (4, 4a). Four copies, margins to barely in, one has pinhole, another pinpoint marginal thin speck, otherwise V. G.-V. F.	39.00
276	★	5c Dark Blue (4). Block, Large Margins, Rich Color, horiz. creases between stamps & in B. margin, stamps are F.-V. F.	45.00
277	★	5c Dark Blue (4). L. L. sheet corner block of nine, margins all around, full o. g., cracked gum & natural creases, V. F. appearance, Scarce & Handsome Block	95.00+
278		5c Blue (4). 2 shades, margins to just touched, town pmks., one in Blue, Fine	18.00
279		5c Blue (4). Horiz. Pair, Huge Margins except barely in at R., clear New Braunfels (Texas) pmk., L. stamp Extremely Fine	60.00+
280		5c Blue (4). Three copies, margins to barely touched, one unused, others Blue town and Army grid, Fine	29.00
281		5c Blue (4). Horiz. strip of 4, Faults, Scarce	40.00+
282		5c Blue (4). Six copies, Enormous margins to barely in, nice range of shades & cancels, few minor faults, Good-Fine	54.00
283		5c Blue (4). Seven 4 margin Copies, one unused, two grid cancels, small faults, Very Fine appearance	63.50+

284	☒	5c Blue (4). Large margins except partly touched at T., Pretty Color, tied by clear Richmond pmk. on tiny cover to S. C., Fine	E. II
285	☒	5c Blue (4). Large margins, tied by clear Richmond pmk. on fresh homemade cover, Very Fine	17.50
286	☒	5c Blue (4). Ample to large margins all around, light ms. cancel, ms. Columbus, Ga. March 1862 pmk., neatly seated tiny cover tears, otherwise Very Fine	17.50
287	☒	5c Blue (4). Margins all around, tied by ms. lines, matching ms. Andersonville, Geo. pmk., Very Fine	17.50
288	☒	5c Blue (4). Cut margins & creases, tied by indistinct Macon, Ga. pmk. on Macon Paid 5 on Manila Provisional Entire (type not listed in Scott), Unusual, Very Scarce	E. IV
289	☒	5c Blue (4). Irregular margins all around, tied by Blue Grid, matching Raleigh, N. C. pmk., stamp has tiny stains, otherwise Fine	17.50
290	☒	5c Milky Blue (4). Large margins, tied by Blue Grid, matching Raleigh, N. C. Jun. 27, 1862 pmk., cover dampstained at L. L., stamp shows trace of aging but is otherwise Very Fine	17.50
291	☒	5c Blue (4). Huge margins except just touched at L. R., tied by clear Columbus, Ga. pmk. on homemade cover, no flap, otherwise Fine	17.50
292	☒	5c Blue (4). Horiz. Pair, Enormous Margins, nice color & Impressions, ms. cancels, ms. Clio, Ala. pmks., Very Fine	E. III
293	☒	5c Blue (4). Horiz. Pair, margins all around, tied by clear Charleston pmk. on cover to Ga., tiny cover nick at U. L., otherwise V. F.	50.00
294	☒	5c Blue (4). Vertical Pair & two singles on separate covers, margins cut, two have faults, Fair-Fine	85.00
295	☒	5c Blue (4). Four Covers, incl. Horiz. & Vertical Pairs, Fair-Fine	130.00
296	☒	5c Blue (4, 7). First margins all around, latter in at T., tied by indistinct town pmk. on cover to Ala., Very Scarce Combination, no flap, Fine	E. IV

10c ROSE, 1862 ISSUE

297	★	10c Rose (5). Large margins, Clear Impression, most unusual Lovely Salmon Rose Color, o. g., almost invisible faint crease, still a most desirable copy, Extremely Fine appearance	(Photo) 90.00
298	★	10c Rose (5). Clear margins all around, faint trace of aging, otherwise Fine	(Photo) 90.00
299	★	10c Brown Rose (5). Clear to huge margins, Lovely Color, Clear Impression, faint thin, Fine appearance	(Photo) 95.00
300	★	10c Deep Rose (5). Nice Color, faults	100.00
301	★	10c Rose (5). Horiz. Pair, L. stamp barely in at T., R. stamp badly cut into, o. g., thin, scarce in unused multiples	250.00
302		10c Rose (5). Large margins, Blue town pmk., small scissor cut and minute thin, Very Fine appearance	60.00
303		10c Deep Brown Rose (5). Large margins, most unusual Deep Color, clear West Point, Va. Apr. 26, 1862 pmk., nice Plate Flaw under "P" of Postage, light crease, Very Fine appearance	60.00
304		10c Rose (5). Enormous margins all around, Vivid Color, Bold Mobile, Ala. pmk., Extraordinary shifted print at L. L., faint rubbing, Extremely Fine appearance	(Photo) 42.50
305		10c Deep Rose (5). Large margins, Gorgeous Deep Color, faults, V. F. appearance	42.50
306		10c Rose (5). Ample to large margins all around, nice color, Jackson, Miss. pmk., crease & tiny thin, Very Fine appearance	42.50
307		10c Rose (5). Just clear to large margins, Rich Color nice Plate Flaw in last "E" of "Confederate", minor faults, Fine appearance	42.50

308		10c Rose (5). Margins all around, Goodson, Va. pmk., tiny tear, V.F. appearance	40.00
309		10c Rose (5). Margins just clear to just touched, Savanna pmk., V.G.	42.50
310	☒	10c Rose (5). Ample to Enormous margins all around, tied by Bold Richmond Jul. 6, 1862 pmk. on fresh cover to Coler Ferry, Va., Very Fine (Photo)	80.00
311	☒	10c Rose (5). Enormous margins except smaller at tip of L.R. corner, tied by clear Atlanta pmk. on cover to Athens, Extremely Fine (Photo)	90.00
312	☒	10c Rose (5). Margins all around, tied by Blue Petersburg, Va. pmk. on slightly reduced cover with one flap replaced, stamp has a bit of faint marginal toning, Fine	90.00
313	☒	10c Rose (5). Huge margins, Vivid Color, tied by clear Hayneville, Ala. pmk. on Paste-Up Wallpaper cover, only such usage known, stamp has broken crease, Rare	165.00
314	★	5c Blue London Prints (6). Fourteen copies, nearly all with margins, incl. Vert. Pair with Blue town pmk., nice Printing Flaw, couple tiny faults, mostly Fine-Very Fine	27.00+

5c LONDON PRINTING, 1862 ISSUE

315	★☐	5c Light Blue (6). Horiz. block of 20 with top sheet margin, V.F.	42.50
316	★☐	5c Light Blue (6). Sheet margin Block of 40, o.g., Very Fine	85.00
317	★	5c Light Blue (6). Sheet of 100, o.g., Very Fine	212.50
318		5c Blue (6). Horiz. Strip of Eight margins cut at places, Richmond pmks., Extraordinary Trans-Miss. Rate Strip, V.G.-V.F.	E. IV
319	☒	5c Blue London Print (6). Margins except touched L.R., tied by clear Columbus, Miss. Jun. 23 pmk. on cover to Ala., Fine	15.00
320	☒	5c Blue London Print (6). Vertical Pair, Large Margins, tied by clear Company Shops, N. C. pmk. on Forwarded cover, docketed at L., Fine	E. II
321	☒	5c Blue (6). Two copies, margins nicked, tied by light Houston, Tex. pmk. on cover to Liberty, Turned and Horiz. Pair of same stamp, margins all around, tied by Liberty, Texas pmk. to Galveston, Rare Cover, Fine	E. VI
322	☒	5c Blue (6). Horiz. pair, margins to just touched, tied by clear Red Petersburg, Va. pmk. to Oakville, Va., Fine	E. II
323	☒	5c Blue London Print (6). Vertical Pair, margins all around, tied by Augusta, Ga. pmk. on cover to Charleston with neat Blue & Embossed corner card, Turned and 10c Blue (2) huge margins, tied by clear Charleston pmk., both sides fresh, Extremely Fine	E. V
324	☒	10c Blue London Print (6). Clear to huge margins, tied by Bold "Charleston S. C. Aug. 25, '86" pmk. on homemade cover with clear Richmond Aug. 27, 1862 pmk. and matching str. line Forwarded , to Brig. Gen. Pettigrew at Petersburg, invisible sealed cover tear, V.F. (Photo)	E. III
325	☒	5c Blue London Print (6). Margins except barely touched at L., tied by Blue Grids, matching Raleigh, N. C. pmk. forwarding homemade cover with clear Weldon, N. C. pmk. and matching "Paid 10" (under stamps), ms. "Due 10", unusual & Attractive, Very Fine	E. III
326	☒	5c Local Print (6). Horiz. pair, huge margins except close at one point, tied by clear Tallahassee, Fla. pmk. on neat small cover to N. C., stamps lightly creased before using, Very Fine appearance, Scarce	E. IV
327	☒	5c Blue London, Local Prints (6, 7). Horiz. pairs, margins all around, tied by town pmks. on separate covers, latter by addi. ms. cancel, F.-V.F.	15.50
328	☒	5c Blue, London Print (6). Four pairs, one vertical, margins to just touched, tied by town pmks. on separate covers, 3 homemade, Fresh, Fine-Very Fine	28.00

- 329 ☒ **5c Blue (6, two, 7, eight).** Five pairs, three horiz., only one stamp touched, tied by town pmks. on separate homemade envelopes, fresh F.-V.F. **E. III**
- 330 ☒ **5c Blue, Local Print (6).** Six pairs, 1 vertical, large margins to slightly in, on separate covers, two tied by Blue pmks., V. G.-V. F. 42.00

5c LOCAL PRINTING, 1862 ISSUE

- 331 ★ **5c Blue Local Print (7, six).** Margins all around incl. Sheet Corner, nice range of shades, couple tiny faults, Good-Very Fine, o.g. 16.45
- 332 **5c Blue (7).** Vertical pair, clear to Enormous Margins, full Sheet Margin at L., Richmond pmk., a Lovely Pair, Very Fine 5.50
- 333 **5c Blue (7). Vertical Strip of Six,** Vivid Color, Enormous margins all around, Ridgeway, N. C. pmks. Gorgeous strip, Extremely Fine 16.50+
- 334 ☒ **5c Blue (7).** Horiz. pair, huge margins, tied by clear **Shelbyville, Texas** pmk., flap replaced, faint crease in one stamp, otherwise V. F. **(Photo)** **E. III**
- 335 ☒ **10c Blue Local Print (7).** Horiz. pair, large margins, tied by clear Blue Dublin, Va. pmk., Very Fine **E. I**
- 336 ☒ **5c Blue Local Print (7).** Horiz. pair, margins except just touched at B. R., tied by Charleston pmk., "Official Business" in ms., "Gen Beauregard" at L., on fresh homemade cover to Brig. Gen. Pettigrew, Fine **E. II**
- 337 ☒ **5c Blue Local Print (7).** Horiz. pair, margins all around except just in at one point, tied by clear **Greenville, C H, S. C.** pmk. over 3c Red Star Die Entire (U26) Unusual, Very Fine **E. III**
- 338 ☒ **5c Blue Local Print (7).** Horiz. pair, margins all around, tied by str. line **Paid**, 3 strikes, clear **Columbus, Tex.** pmk. on cover to Chenango, a trifle aged, otherwise Very Fine, Scarce 40.00+
- 339 ☒ **5c Blue Local Print (7).** Horiz. pair, large margins except just touched in U. L. Corner, Nice Retouched Flaw on one stamp, tied by clear **Port Lavaca, Tex.** pmk. on cover to Lockhart, Very Fine 40.00+
- 340 ☒ **5c Blue (7).** Horiz. Pair, margins all around, tied by undated Blue Richmond pmk. on homemade Soldiers Cover from "Camp Near Fredericksburg", Very Fine **E. III**
- 341 ☒ **5c Blue Local Print (7).** Vertical Pair, Just Clear to Huge margins all around, ms. cancels on tiny homemade turned cover cut down from a larger one with Bold **Charleston S. C. Jul. 10, 1861** and **Paid 5** in matching circles on the inside, Very Fine **E. IV**
- 342 ☒ **5c Blue Local Print (7).** Horiz. pair, large margins all around, tied by clear Blue Franklin Depot, Va. pmk. on yellow **11 Star Flag Patriotic** with 4 Line Poem (Dietz Ty. B65), cover slightly soiled, otherwise V. F. **(Photo)** **E. VI**
- 343 ☒ **5c Blue Local Print (7).** Horiz. pair, large margins, tied by Staunton, Va. pmk., user has drawn rows of dots in margins to simulate perforations, probably a sarcastic comment on lack of same on C. S. A. stamps, V. F. **E. II**
- 344 ☒ **5c Blue (7).** Horiz. pair, large margins except touched at L. L. Corner, tied by Bold Mobile, Ala. pmk. over 3c Red Star Die Entire (U27) Very Fine **(Photo)** **E. III**
- 345 ☒ **5c Blue Local Print (7).** Horiz. **Block of 20**, and two strips of three, margins to barely touched tied together by Eight Jackson, Miss. pmks. & lt. ms. lines on flap of Legal Size Military cover to Richmond, used to forward Quarterly Report an amazing showpiece, probably largest used block on cover, Fine-Very Fine 330.70+
- 346 ☒ **5c Blue Local Print (7).** Three horiz pairs, margins all around, tied to separate covers by clear Atlanta, Thomasville, Ga.; Halifax, N. C. pmks., Very Fine **E. II**

347	✉	5c Blue (7). Three horiz. pairs, margins nearly all around, tied by Tawboro, N. C.; Sumter, S. C, Richmond pmks. on separate covers, one made from Legal Form, fresh, Very Fine	E. II
348	✉	5c Blue, Local Print (7). Four Vertical Pairs, margins all around, tied by diff. town pmks. on separate covers, Fine-Very Fine	22.00
349	✉	5c Blue Local Print (7). Four horiz. pairs, large margins to just touched, tied on separate covers by town pmks., two in Blue, Fine	22.00
350	✉	5c Blue Local Prints (7). Four horiz. pairs, margins all around, tied by Blue pmks. on separate covers, Fine	22.00
351	✉	5c Blue Local Print (7). Six pairs on separate covers, incl. Red, Blue towns, Good-Fine	54.50
352	✉	5c Blue Local Prints (7). Six pairs, margins to slightly in, tied by town pmks., one in Red, to separate covers, Good-Fine	54.50
353	✉	5c Blue (7). Eight covers with pairs, two vertical, margins to barely in, tied by nice variety of town pmks., one in Blue, Fine	52.00

2c BROWN RED, 1863 ISSUE

354	★	2c Brown Red (8). Horiz. pair & strip of 3, Fresh, o.g., Very Fine	32.00+
355	★	2c Red (8, nine). Incl. 3 horiz. pairs, shades, mostly Fine-Very Fine	54.00
356		2c Brown Red (8). Margins all around, Macon, Ga. pmk., Fine	32.50
357		2c Red Brown (8). Large margins except partly touched at B., tied on small piece by "Richmond, Va. Jul. 16, 1863" pmk., Fine	32.50
358		2c Brown Red (8). Margins all around, just clear at L. L., clear Wilmington, N. C. pmk. and light ms. cancel, Fine	32.50
359		2c Red Brown (8). Margins except barely touched at T., Wilmington pmk., Fine	32.50
360		2c Brown Red (8). Large margins, Blue town pmk., creases, V.F. appearance	35.00
361		2c Pale Red (8a). Margins all around, clear Blue Augusta pmk., minute thin speck, Fine appearance	35.00
362		2c Pale Red (8a). Richmond pmk., small thin, Fine appearance	35.00
363		2c Pale Red (8a). Charleston pmk., thin, Fine appearance	35.00
364		2c Red Brown (8). Horiz. pair, large margins except barely touched at L., Charlottesville, Va. pmk., faint crease at U. L., right stamp is Very Fine	(Photo) 65.00
365		2c Brown Red (8). Vertical pair, margins except touched at B., clear Charlottesville, Va. pmk., small tear at T., tiny crease at B., Very Fine appearance	70.00
366		2c Brown Red (8). Horiz. pair, margins all around, L. R. corner rounded, tied to piece by Chattanooga, Mar. 1863 pmk., small faults	65.00
367		2c Red Brown (8). Two copies, margins except in at L., tied to piece by Charleston pmk., Scarce, Very Good	65.00
368	✉	2c Red Brown (8). Margins all around, tied on large portion of front by Richmond pmk., "Via Flag of Truce" in ms., unusual usage, Fine	E. IV
369	✉	2c Brown Red (8). Horiz. Strip of Five large margins to touched or slightly in at places, tied by 3 clear Pittsylvania, C. H. Va. pmks. on flap of cover to Charleston, inside is a portion of a 10c Blue (11) tied by Richmond pmk., used to Pittsylvania, Scarce, Fine	(Photo) 525.00
370	★	1c-20c General Issues (8, 13, 14). Large margins, Very Fine	27.50

10c TEN, 1863 ISSUE

371	★	10c Gray Blue TEN (9). Large Margins all around, o.g. Very Fine	(Photo) 70.00
-----	---	--	----------------------

372 ★	10c Blue TEN (9). Clear to Huge Margins all around, sheet margin at L., fresh, o.g., minute marginal thins, Very Fine appearance (Photo)	70.00
373 ★	10c Blue TEN (9). Large margins all around, thin, V.F. appearance	70.00
374 ★	10c Blue TEN (9). Margins except slightly in at U.R., Pretty Color, small thin, Fine appearance	70.00
375 ★	10c Blue TEN (9). Margins all around a bit discolored, small faults, Fine appearance	70.00
376 ★	10c Blue TEN (9). Margins all around, L. L. corner rounded clear of design, Pretty Color, Faults, Fine appearance	70.00
377 ★	10c Blue TEN (9). Horiz. Pair, Margins all around, sheet margin at R., o.g., Vertical crease in margin between stamps, otherwise Fine (Photo)	150.00
378	10c Blue TEN (9). Margins all around, Gorgeous color, town pmk., small thin, Very Fine appearance	60.00
379	10c Blue TEN (9). Large margins except in at Bot., Richmond pmk., V.G.	60.00
380	10c Gray Blue TEN (9b). Clear to large margins all around, clear ". . . lbyville" pmk., faint corner crease, Fine appearance	65.00
381	10c Gray blue TEN (9b). Clear to Large Margins all around, Town pmk., tiny tear & minute thin, V.F. appearance	65.00
382	10c gray blue TEN (9b). Margins all around, ms. cancel, tiny thin, Fine appearance	65.00
383	10c Milky Blue TEN (9a). Just clear to Huge Margins, Gorgeous Color, town pmk., light crease and faint discoloration at B., Fine appearance	75.00
384 ☒	10c Blue TEN (9). Margins all around, tied by large 9 Bar Army Grid cancel on small neat cover to S.C., Only Known Example of this cancel on this stamp, Extremely Fine (Photo)	E. IX
385 ☒	10c Gray Blue TEN (9). Ample to Huge Margins, Wonderful Color, tied by clear Charleston pmk. on cover to Camden, S.C., stamp faintly toned in margins, Very Fine	110.00
386 ☒	10c Blue TEN (9). Margins except touched at B., Vivid Lovely Color, tied by Summerville, N.C. pmk., Fine	110.00
387 ☒	10c Blue TEN (9). Margins except touched at L., Rich Color, tied by Culpeper, C.H., Va. pmk. on cover to Dahlonga, stamp has tiny tear at T., Fine appearance	110.00
388 ☒	10c Blue TEN (9). Ample to Huge Margins except just touched at B., Gorgeous Color, tied by Red Petersburg, Va. pmk. cover a bit aged, Fine, Very Rare (Photo)	150.00+
389 ☒	10c Blue TEN (9). Irregular Margins, just in at U.L., Lovely Color, tied by Richmond pmk. on somewhat aged cover, Very Good	110.00






10c FRAMELINES, 1863 ISSUE

390	10c Blue Frame Line (10). Huge Margins showing full frame on three sides and part at B., Culpeper, C.H., Va. pmk., minute thin in L. margin, almost entirely beyond frame line, a Wonderful Copy of this scarce & popular stamp (Photo)	150.00
391 ☒	10c Blue Frame Line (10). Full Margins showing complete Frame line T. & R. and partly at L., tied by clear Richmond Apr. 1863 pmk., a Lovely Cover, Very Fine	275.00
392 ☒	10c Blue Frame Line (10). Full Margins showing complete line at L. & B. and traces at R., Magnificent Vivid Color, tied by Bold Mobile Cancel on cover to Miss., expertly sealed cover tears at T., otherwise Very Fine (Photo)	275.00
393 ☒	10c Blue Frame Line (10). Horiz. Pair, full margins, showing complete Frame Line on 3 sides, tied by "Milledgeville, Ga. May 2" pmk. on Legal Size Cover with "State of Georgia, Adjutant and Inspector General's Office" Impt., stamps show faint aging and one at R. has tiny margin tear, Rare Cover	900.00









10c BLUE 1863-64 ISSUE

394 ★	10c Blue (11). Seven Nice Shades, Fine-Very Fine	12.25
395 ★	10c Blue (11, three, 12, Six). Nice Variety of shades, includes two pairs, Very Fine	15.75
396 ★田	10c Blue (11). L. L. Corner Pair with Archer & Daly impt., and Block with Vertical Gutter , mostly marginal creases, V. F. appearance	E. II
397 ★田	10c Blue (11). Three diff. Plate No. & Part Impt. Blocks of 4 (#1, 3, 4), diff. shades, fresh, o. g., Very Fine	22.50+
398 ★田	10c Blue (11, eight, 12, eight). Four blocks, large margins, distinct shades, one stamp has tiny tear, one block has gum creases, otherwise V. F.	31.00
399 ★	10c Greenish Blue (11). Complete Double Pane of 200 with full gutter between, No 2 below pos. 96 on L. pane, 95 on R., full o. g., vert. crease in gutter, as always, and horiz. crease between 5th & 6th rows, unusually fresh with only a couple small faint gum stains, Extremely Fine	375.00+
400 ★	10c Blue (11). Complete Double Pane of 200 with full Gutter between, "No 2" and "Keatinge & Ball Bank Note Engravers, Columbia, S. C." at B. of Each Pane, Usual Gutter crease, strengthened by paper tape, a number of other creases, affecting about 1/2 of stamps, others o. g., V. F.	375.00+
401	10c Milky Blue (11). Huge margins, Wonderful Color, Bold str. line Jack-son , town pmk., barest trace of crease, Extremely F. appearance (Photo)	15.00+
402	10c Blue (11, seven, 12). All but one with full margins, lovely range of shades, one with Target cancel, few thin, Good-Very Fine	24.00+
403	10c Blue (11, five 12, five). Large margins, town pmks., one in Blue, Huge Range of shades, few tiny faults, mostly Very Fine	30.00+
404 田	10c Blue (11). Clear large margins all around, clear Red Taylorville, Va. pmk., on small, slightly stained cover, stamp is V. F., not listed in Red Town list in Dietz, Very Scarce	E. III
405 田	10c Greenish Blue (11). Huge margins, tied by clear Adam's Run S. C. pmk., Very Fine	E. I
406 田	10c Blue (11). Huge margins, cut octagonally far from design, tied by Charleston pmk. on cover made from form for Steamboat Passenger List, unusual, Fine	E. II
407 田	10c Greenish Blue (11). Huge margins, tied by Mt. Carmel, S. C. pmk. forwarding cover with Charleston, S. C. and "Paid 10" in matching circles, Very Fine	E. III
408 田	10c Blue (11). Margins all around, tied by unusual grid on folded letter from Wilcox, Ala. Interesting Contents regarding C. S. A. Military Draft, with Article by E. S. Knapp, Very Fine	E. III
409 田	10c Milky Blue (11). Magnificent Color & Impression, tied by Brilliant Red grid, matching Abingdon, Va. pmk. on neat folded letter, a beautiful copy, Extremely Fine	E. II
410 田	10c Greenish Blue (11). Margins except touched at one point, tied by Richmond pmk. on cover with "Office of the Commissioner of Taxes" Imprint, Very Fine	E. III
411 田	10c Blue (12). Large margins, tied by light Richmond pmk., over 3c Red Star Die Entire (U26). Unusual, Very Fine	E. III
412 田	10c Blue (11). Huge margins, tied by clear Violet Augusta, Ga. pmk. on cover to Athens, Very Fine	20.00+
413 田	10c Blue (11). Huge margins, tied by neat Target , matching Patterson, N. C. pmk., on Homemade cover, fresh, Very Fine	E. II
414 田	10c Blue (11). Margins except touched at R., sheet margin at T., tied by clear Red Yanceyville, N. C. Aug. 28, 1863 pmk., Fine	E. II
415 田	10c Blue (11). Mismatched parts of two copies, apparently recognized as valid and tied by "Savannah, Ga. Paid", Unusual Oddity	E. III

- 416 ☒ **10c Milky Blue (11)**. Huge margins, tied by Marietta, Ga. pmk., used to Savannah & forwarded back to Marietta with another 4 margin 10c Blue (11) tied over original by "Savannah Ga. Paid", Very Fine E. III
- 417 ☒ **10c Blue (11, five, 12, two)**. Six covers incl. Vert. Pair, Diff. Red Towns, Army Grid, mostly Fine-Very Fine E. III
- 418 ☒ **10c Blue, Perforated (11d)**. Well tied by Mobile, Ala. pmk. on cover to Selma, Scarce, Fine (Photo) 50.00
- 419 ☒ **10c Blue (11, two, 12, four)**. Six covers, mostly with margins all around, Incl. Army Target, Grid, diff. Red towns, one made from Legal form, Fine-Very Fine E. III
- 420 ☒ **10c Blue (11, two, 12, two)**. Four covers, huge margins, tied by diff. town pmks., one on cover made from printed Legal Form, Very Fine E. II
- 421 ☒ **10c Blue (11, two, 12, two)**. Four covers, huge margins, shades, tied by diff. town pmks., one on printed legal form, Very Fine E. II
- 422 ★ **10c Blue (12)**. 13 copies, incl. Imprint Plate No. (3) Strip of 6, two Part Imprint Pairs, Used Pair, copy with Army Grid cancel, latter thin, others mostly Very Fine 28.50+
- 423 ★☒ **10c Blue (12)**. Horiz. Block of 8, Magnificent Color, Extremely Fine 14.00
- 424 ★☒ **10c Blue (12)**. Horiz. Block of 12 with **No. 3 Keatinge & Ball Bank Note Engravers, Columbia, S. C.** imprint vertical crease at center, one stamp with surface rubs, otherwise o.g., Extremely Fine E. III
- 425 ★☒ **10c Blue (12)**. Horiz. Block of 14 with Keatinge & Ball Impt. and Plate No. (3), Impt. slightly trimmed at L. R., one stamp creased, otherwise Very Fine E. III
- 426 ★ **10c Dark Blue (12)**. Complete Pane of 100 with "No. 3 Keatinge & Ball Bank Note Engravers, Columbia, S. C." at B., fresh, full o.g., horiz. crease between 5th & 6th rows, light crease in 4 corner stamps, otherwise Extremely Fine 200.00+
- 427 ★ **10c Greenish Blue (12)**. Complete **Double Pane** of 200 with full Gutter between, "No. 4" at B. of each Pane, fresh o.g., usual gutter crease and horiz. crease between 5th & 6th row, otherwise fresh, o.g., Extremely F. 400.00+
- 428 ★ **10c Dark Blue (12)**. Complete **Double Pane** of 200 with full gutter between, "No. 4" and "Keatinge & Ball, Bank Note Engravers, Columbia, S. C." B. of Each Pane, usual gutter crease & horiz. crease between 5th & 6th rows, two other vertical margin creases barely affect a few stamps and few age spots, otherwise fresh, o.g., Extremely Fine 400.00+
- 429 **10c Blue (12)**. Clear to large margins clear **Army of Tenn.** pmk. in 3 str. lines, Very Fine (Photo) 40.00
- 430 ☒ **10c Blue (12)**. Margins all around, tied by Red town pmk., Fine E. II
- 431 ☒ **10c Blue (12)**. Huge margins, tied by Red town pmk. on fresh homemade cover, Very Fine E. II
- 432 ☒ **10c Blue (12)**. Huge margins, tied by clear Atlanta, Ga. pmk. on **Turned Cover** with 3c Red (26) tied by Tennessee pmk., V. F. E. III
- 433 ☒ **10c Blue (12)**. Huge margins, tied by **Anderson, Tex.** pmk. on **turned** 3c Red Entire (U10). Tied by Anderson, Tex. pmk., Scarce, V. F. (Photo) E. V
- 434 ☒ **10c Blue (12)**. Tied to flap of cover, clear strike of same pmk. "**Charlottesville, Va. Sep. 7, 1865**" on face with **Due** in circle & 10, postwar use so stamp not recognized but why 10c Due? Very Fine E. IV
- 435 ☒ **10c Blue (12)**. Large margins, Lovely Color, tied by clear **Ocala, Fla.** pmk. on **Turned** cover, Fla. pmk. but no stamp on inside, no flap, V. F. E. IV
- 436 ☒ **10c Blue (12)**. Margins except barely touched at L. L., tied by **Lincoln C. H., N. C.** pmk. on cover to Richmond with Richmond pmk. and fancy **Advertised 2** on the Flap, Fine E. III
- 437 ☒ **3c Deep Blue (12)**. Touched at R., tied by Charlottesville, Va. pmk. on **Wallpaper** Cover, Fine 30.00

- 438  **10c Blue (12).** Large margins, Gorgeous Color, tied by Blue town pmk. on Wallpaper cover, Fine (Photo) 30.00
- 439  **10c Blue (12).** Large to Huge Irregular Margins, tied by slightly indistinct **Orange** pmk. of Orange C. H., Va., cover a trifle stained, scarce E. III
- 440  **10c Blue (12).** Vertical strip of 3, huge margins to just touched tied by Augusta, Ga. pmk. on Legal Size Cover with **C. S. Navy Agent** Impt., "Official Business, Augusta, Ga." and "Due 20" in ms., one stamp torn across, cover somewhat wrinkled but Fine, Scarce E. III
- 441  **10c Blue (12).** U. L. Sheet Corner Block of 6, clear to huge margins all around, tied by Richmond pmks. on refolded Legal Size Entire, scarce used, Fine (Photo) 81.50+
- 442  **10c Blue (12).** Three copies, margins all around, tied on separate covers, one by Red Petersburg, Va. pmk., one cover made from printed form, one cover a bit discolored at edge, otherwise Fresh, Very Fine E. II
- 443 **10c Blue Perforated (12e).** Horiz. Pair, Mobile, Ala. pmk., minor faults, Fine appearance, Very Scarce used 35.00+

20c GREEN, 1863 ISSUE

- 444 ★ **20c Green (13).** Two Horiz. Pairs & 3 singles, nice variety of shades, V. F. 35.00
- 445 ★  **20c Green (13).** B. Sheet Margin Block of 10 with "Archer & Daly" large margins, o. g., usual minor wrinkles, not visible in fluid, otherwise, Very Fine 50.00+
- 446 ★  **20c Green (13).** U. L. Sheet Corner Block of 10, Ample to Gigantic margins all around, o. g., heavy gum wrinkles, small gum soak and pinholes in margin, stamps Very Fine 50.00+
- 447 ★  **20c Green (13).** U. L. Sheet Corner Horiz. Block of 10, o. g., natural creases and minor marginal gum soak, Attractive 50.00+
- 448 ★  **20c Green (13).** Block of 15 margins all around, heavily crackled gum, otherwise Very Fine 75.00+
- 449 **20c Green (13).** Margins all around, tied to small piece by Richmond pmk., Very Fine 40.00
- 450 **20c Green (13).** Margins all around, clear Richmond pmk., tiny thin, Very Fine appearance 40.00
- 451 **20c Green (13).** Clear to large margins, Chattanooga pmk., minute thins, Fine appearance 40.00
- 452 **20c Dark Green (13).** Margins all around, **Army Grid** pmk., light crease, Fine appearance, unlisted with this cancel 40.00+
- 453 **20c Green (13).** Margins all around, Chattanooga, Tenn. Aug. 6 pmk., thins, Fine appearance 40.00
- 454 **20c Dark Green (13).** Just in at L., **Army Grid** cancel, Very Good, not listed with this cancel 40.00+
- 455  **20c Green (13).** Margins all around, with sizeable part of next stamp at U. L., tied by clear Taylorsville, Va. pmk. on small cover to N. C., stamp slightly discolored at B., cover reduced at T. & L., Scarce (Photo) 175.00
- 456  **20c Green (13).** Huge margins, sheet margin at B., tied by clear Abbeville, S. C. pmk. on Legal Size cover with "Headquarters Conscript Department, Columbia, S. C." impt., stamp & cover a trifle fly spotted, otherwise V. F. 175.00
- 457  **20c Green (13).** Margins all around, **Rouletted at Sides**, tied by clear Oxford, N. C. pmk. on Legal Size cover, cover has creases & small tear, Stamp is Very Fine 175.00+
- 458  **20c Green (13).** Horiz. pair, margins all around except L. stamp in at top, tied by clear Albany, Ga. pmk. on Legal Size Cover with Overall Illustrated Advert. of The Hartford Fire Insurance Co., Hartford, Ct., Fine (Photo) 215.00+

1c ORANGE, 1862 ISSUE

459 ★	1c Orange (14). Margins all around, Fine	16.50
460 ★	1c Orange (14). Two copies, margins all around, one with unofficial Roulette on two sides, other has "6" in ink on back, slightly showing thru, Fine	33.00
461 ★	1c Orange, Deep Orange (14, 14a). Margins to just touched, latter has faint thin, otherwise Fine	36.50
462 ★	1c Orange (14). U. R. Sheet Corner Horiz. Strip of 5, Clear to Enormous Margins all around, Nice Color, o. g., Extremely Fine (Photo)	100.00+
463 ★	1c Deep Orange (14a). U. L. Sheet Corner Horiz. Strip of 5, Large to Enormous Margins all around, Wonderful Rich Color, o. g., Extremely Fine (Photo)	100.00+
464 ★	1c Orange (14). Block, fresh, o. g., Rich Color, Very Fine (Photo)	90.00
465 ★	1c Orange (14). Block, large margins, horiz. creases between stamps and in B. pair, natural wrinkles, Top Pair Fine	90.00
466 ★	1c Orange (14). Mint Horiz. Block of 6, Very Fine (Photo)	130.00
467 ☒	Confederate Covers misc. lot of 19 covers, includes 4 fronts, 3 imprints, few doubtful or without stamps	E. V

OFFICIAL & IMPRINT ENVELOPES

468 ☒	Auditors Office P. O. D. Official Business Free — Auditor Imprint on Legal Size Homemade Envelope, used to Fredericksburg, Va., Fine	E. III
469 ☒	Confederate States of America, Treasury Department Imprint on small fresh cover, unused, Very Fine	E. II
470 ☒	Columbia, S. C. in clean Blue Circle, matching "Paid" and "10" on Legal Size Cover with "State of South Carolina Head Quarters" Impt., Very Fine	E. III
471 ☒	Raleigh, N. C. pmk., matching "Paid" on Legal Size Cover with Conscript Office , Raleigh, N. C. Imprint & partly printed address, scarce, F.	E. III
472 ☒	Raleigh, N. C. in Double Circle, matching "Paid", on Legal Size Cover with "Official Business, Quartermaster's Department, Raleigh, N. C." Imprint, Fine	E. III
473 ☒	Richmond, Va. Oct. 20, 1863 pmk., matching "Free" on Legal Size Cover with C. S. A. P. O. Dept. Impt. and Frank of H. St. Geo. Offut, Chief of the Contract Bureau, Very Fine	E. III
474 ☒	Richmond, Va. Oct. 20, 1863 in clear circle, matching "Free" on Legal Size cover with C. S. A. Post Office Dept. Contract Bureau Imprint & Frank of Bureau Chief H. St. Geo. Offutt, Very Fine	E. III
475 ☒	Richmond, Va. Mar. 26 in clear circle, matching "Free" on Orange Legal Size Cover with C. S. A. Post Office Dept. Contract Bureau Imprint & Frank of Bureau Chief H. St. Geo. Offutt, also ms. note by Offut in L. L. corner of cover, Very Fine	E. III
476 ☒	Richmond, Va. Sep. 30 1862 pmk. on Legal Size homemade cover with Auditors Office P. O. D. Imprint and Frank of B. Baker, Very Fine	E. II
477 ☒	Richmond, Va. May 14, 1863 in clear Blue Circle, matching Free on 3c Red Entire (U10) with Official C. S. A. Imprint of P. O. Dept. and Frank of Chief Clerk B. Fuller, long docket at L., Very Fine (Photo)	E. IV
478 ☒	Richmond, Va. pmk. matching Free on 3c Red Star Die Entire with Official C. S. A. Imprint of P. O. D. Financial Bureau and Frank of Bureau Chief Jno. L. Harrell, tiny tear at R. otherwise, V. F. (Photo)	E. IV
479 ☒	C. S. A. P. O. Dept. Financial Bureau Imprint on 3c Red Star Die Entire (U27). Unused, no flap, small margin faults, a bit soiled, Scarce	E. I

U. S. STAMPS USED IN CONFEDERACY

- 480 ☒ **Canton, Miss., May 5** (1861) in clear circle on 3c Red Star Die Entire (U26). Tied by Star in Rope Circle, Scarce, Fine E. V
- 481 ☒ **Chapel Hill, Tex. Mar. 4** in Clear Circle, 3c Red (26) Unusual Bold Fancy Star Cancel, long 1861 ms. docket at L., stamp has corner nick, Scarce & Attractive Cover E. IV
- 482 ☒ **Charleston, S. C. May 16, 1861**, in circle ties 3c Red (26) on neat small cover to Marion, S. C. Fine E. II
- 483 ☒ **Columbia, S. C., Feb. 20** in Blue Circle ties 1c Blue Ty. I, II (18, 20, two) on cover to "**Tappahannock, Virginia C. S. A.**", stamps have minor perf. nicks, cover a bit aged, Fine appearance E. V
- 484 ☒ **Decatur, Tex. Mar. 4, '61** in ms. on 3c Red Star Die Entire (U26). Independent Republic Usage, Fine, Scarce E. IV
- 485 ☒ **West Point, Ga. 15 Feb.** in Bold, slightly smudged circle on 3c Red Star Die Entire (U26). Homemade Valentine Enclosed with dried flowers, addressed to Vice Pres. of C. S. A. with "May Your Administration be as pure as those Flowers", long sealed cover tears, nick at T., Scarce & most unusual E. V

PRISONER LETTERS

- 486 ☒ **Approved J. N. Patterson, Capt. & Provost Marshal, Point Lookout, Md.** in Large Clear Oval, 3c Rose (65). Clipped at R., tied by target, Point Lookout, Md. pmk., **Due 10** in str. line, barely tying stamp on **Thru the Lines** cover to Prince Edw. C. H., Va., Fine (Photo) E. V
- 487 ☒ **Examined John Cassel** and "Mrs M. M. Sherman Dec. 4th '63" in ms., 5c Blue (6). Margins all around, tied by clear "Richmond Dec. 11" pmk. on neat tiny Flag of Truce cover (North to South) to Prince George C. H., Va., Very Fine (Photo) E. VII
- 488 ☒ **"Gone, Exchange, 50c"** in Blue Crayon on small cover with 3c Rose (65). Clipped at L. R., tied by Nashville, Ten. Duplex pmk. to Prisoner of War at Rock Island, Ill., Fine E. III
- 489 ☒ **Prisoners Letter, Examined** in slightly indistinct Octagon, 3c Rose (65). Tied by grid, Bold 1864 Point Lookout, Md. pmk., **Due 10** in str. line on **Thru the Lines** cover to Calland's Va., couple nibbed perfs., cover a trifle aged on top edge, otherwise Fine E. III
- 490 ☒ **Prisoners Letter, Fort Delaware, Del.** in clear Oval, 3c Rose (65). Grid cancel, not tied, Delaware City, Del. pmk., cover a bit trimmed at U. L., Very Fine markings E. III

BLOCKADE COVERS

- 491 ☒ **Cts 10** in two str. lines, **Halifax, N. S. Au 10, '64** backstamp on neat small cover to New York, Letter headed "Milton July 19" (N. C.) Interesting letter mentioning the Blockade Runner Mail Routes Via Bermuda & Nassau & commenting on the war, this cover probably went via the C. S. A. Mails under cover to Wilmington, then via the Blockade Runner "Owl", which left Wilmington a few days later, escaped the U. S. S. Alabama after a long chase, and sailed to Halifax, Blockade covers from the C. S. A. are great rarities and, Via Halifax are unrecorded, Very Fine (Photo) —

- 492 ☒ **Charleston, S. C. Feb. 2** in clear circle, **Steam Ship** in clear oval, "Ship Letter" and "Pr. S. S. Princess Royal" in ms. on neat folded Dec. 1863 **Blockade** cover from London to Richmond, very long letters from London & Liverpool Enclosed, A Rare and Lovely Cover, Extremely Fine (Photo) E. XI
- 493 ☒ **Wilmington, N. C. 5 Paid**, matching **Ship**, both crossed out and ms. "12" on folded cover to Columbus, Ga. with "Oct 23/63" Docket in Pencil, "Liverpool 1858" paper wmk., scarce **Blockade Runner** cover, Very Good (Photo) E. IX

EXPRESS & STEAMBOAT COVERS

- 494 ☒ **Adams Express Co. Great Eastern, Western & Southern Express Forwarders** in clear Blue Oval on 3c Red Star Die Entire (U27). With grid and indistinct town pmk., used to Athens, Tennessee, small scotch tape stain at U. R., otherwise Fine (Photo) E. VIII
- 495 ☒ **From Steamer Comet** in clear Red oval on 3c Red Star Die Entire (U27). To New Orleans, Fine E. V
- 496 ☒ **From Steamer M. Relf** in clear Red Oval on 3c Red Star Die Entire (U27). To New Orleans, Very Fine E. V
- 497 ☒ **Lizzie Simmons U. S. Mail Packet Steamer, Geo. H. Kirk Capt.** in 4 Partly Incomplete Blue str. lines on 3c Red Star Die Entire (U27). To New Orleans, Fine E. IV
- 498 ☒ **Steamboat** in str. line ties 3c Red Star Die Entire (U27). To Mobile, Ala., Fine E. III

ANTI-SLAVERY, PROPAGANDA COVERS

- 499 ☒ **Boston, Mas.** in clear Red Circle, matching **Free** on folded Printed **Anti-Slavery** society letter, 1838 usage, Fine E. II
- 500 ☒ **Phillips, Me.** and Paid 3 in clear Blue Circles on Overall **Anti-Slavery Propaganda** cover, Thurston & Co., Portland Impt. on flap, Scarce Design, Very Fine (Photo) E. VII

CONFEDERATE AUTOGRAPHS & COLLATERAL MATERIAL

- 501 **Jefferson Davis** Signed Autograph Letter, "Mrs Owners 9 Dec. 1847" return, Very Fine E. III
- 502 **Jefferson Davis** Signature on 2 page 1855 War Dept. Letter, interesting contents, Very Fine E. III
- 503 **Estate Inventory** includes 21 negroes, listed by name and value, Ala. 1860, Fine E. II
- 504 **Slave Receipt**, Receipt for share Miss. 1861 estate, listing 31 slaves, etc. Fine E. II
- 505 **\$1.00-\$100.00 Confederate Currency**, 8 diff. incl. early facsimile \$20.00, \$3.00 Louisiana Note, Good-Fine E. II

CIVIL WAR UNION COVERS

- 506 ☒ **Soldiers Letter, Satterlee U. S. A. Gen. Hospital, West Philadelphia, Pa. A Nevin Chaplain U. S. A.** in Scalloped Box, Phila. pmk., matching **Due 3**, cover reduced at T., otherwise Fine E. III
- 507 ☒ **Washington, D. C.** pmk., matching **Due 3**, clear Handstamp **Seward Infantry, 103rd Regiment, N. Y. S. V.**, Fine E. III
- 508 **3c Red (26)**. Tied to small piece by Blue **Old Stamps Not Recognized** & barely touched by matching **Chicago, Ill.** duplex, stamp has small faults, Fine appearance, Rare (Photo) E. IX

- 509 ☒ **3c Red (26).** Tied by ms. and indistinct Texas pmk. on illustrated Texas Military Institute Cover showing Officer Reviewing Troops, Attractive **E. III**
- 510 ☒ **Bureau Refugees, Freedmen & Abandoned Lands** corner card, 3c Rose (65). S.e. at L., Chattanooga, Tenn. Duplex pmk. with Hollow Star in Circle cancel, Scarce, Fine **E. II**
- 511 ☒ **3c Rose (65).** Badly Defective, tied by clear Washington City pmk. on 7"x5" **Patriotic Valentine** cover with Soldier & Girl, cover tears, no flap, Rare **E. V**
- 512 ☒ **3c Rose (65).** Tied by huge negative "4", matching Brooklyn pmk. on Feb. 1865 cover to "U. S. S. Metacomet in Western Gulf Blockading Squadron", Fine **E. II**
- 513 ☒ **2c Black (73).** Centered, trivial tiny tear, tied by grid on neat Folded Two Page Mobile Oct., 1865 Price Current, Fascinating Survey of Economic Conditions in South 6 months after War ended **E. II**

END OF SALE — THANK YOU

ROBERT A. SIEGEL, Inc.

10 East 52nd Street
New York, N. Y. 10022

280TH SALE

PRICES REALIZED

January 7th, 1965

CONFEDERATE STATES OF AMERICA

Stamps and Covers

1	36.00	58	34.00	115	55.00	172	12.50	229	9.00	286	7.00	343	7.50	400	135.00	457	60.00
2	77.50	59	38.00	116	29.00	173	21.00	230	23.00	287	36.00	344	22.50	401	18.50	458	90.00
3	7.50	60	11.00	117	52.50	174	16.00	231	6.50	288	33.00	345	160.00	402	9.50	459	10.00
4	28.00	61	24.00	118	60.00	175	8.50	232	21.00	289	6.50	346	22.00	403	15.00	460	9.50
5	57.50	62	95.00	119	240.00	176	21.00	233	11.00	290	5.50	347	15.00	404	11.00	461	14.00
6	110.00	63	65.00	120	67.50	177	45.00	234	72.50	291	8.50	348	25.00	405	13.00	462	57.50
7	12.00	64	170.00	121	14.50	178	37.50	235	70.00	292	20.00	349	15.00	406	13.00	463	57.50
8	13.00	65	45.00	122	20.00	179	12.00	236	18.50	293	19.00	350	17.00	407	21.00	464	47.50
9	10.00	66	25.00	123	35.00	180	120.00	237	18.00	294	12.00	351	26.00	408	27.50	465	24.00
10	45.00	67	925.00	124	32.50	181	23.00	238	13.00	295	30.00	352	30.00	409	35.00	466	105.00
11	48.00	68	92.50	125	9.50	182	95.00	239	21.00	296	20.00	353	27.00	410	19.00	467	42.50
12	25.00	69	77.50	126	26.00	183	92.50	240	40.00	297	82.50	354	16.00	411	15.00	468	21.00
13	30.00	70	135.00	127	10.00	184	86.00	241	28.00	298	26.00	355	24.00	412	19.00	469	10.00
14	11.00	71	36.00	128	16.00	185	62.50	242	21.00	299	24.00	356	10.00	413	11.00	470	29.00
15	13.00	72	40.00	129	75.00	186	76.00	243	72.50	300	18.00	357	10.00	414	11.00	471	16.00
16	16.00	73	225.00	130	21.00	187	62.50	244	110.00	301	21.00	358	7.50	415	10.50	472	17.00
17	62.50	74	72.50	131	430.00	188	70.00	245	26.00	302	7.00	359	7.50	416	17.00	473	17.00
18	27.00	75	70.00	132	100.00	189	47.50	246	12.00	303	37.50	360	18.50	417	21.00	474	17.00
19	17.00	76	120.00	133	26.00	190	45.00	247	11.00	304	38.00	361	20.00	418	70.00	475	17.00
20	17.00	77	82.50	134	52.50	191	44.00	248	8.00	305	18.00	362	11.00	419	19.00	476	21.00
21	27.00	78	230.00	135	23.00	192	120.00	249	42.50	306	9.00	363	5.00	420	18.00	477	50.00
22	12.00	79	52.50	136	25.00	193	115.00	250	26.00	307	12.00	364	22.00	421	22.00	478	40.00
23	21.00	80	41.00	137	9.00	194	87.50	251	25.00	308	8.50	365	10.00	422	22.00	479	7.00
24	50.00	81	21.00	138	42.50	195	72.50	252	5.00	309	6.00	366	8.50	423	8.00	480	18.00
25	11.00	82	35.00	139	26.00	196	290.00	253	19.00	310	75.00	367	6.50	424	27.00	481	18.00
26	25.00	83	35.00	140	22.50	197	29.00	254	90.00	311	70.00	368	13.00	425	23.00	482	13.00
27	47.50	84	5.00	141	17.50	198	30.00	255	22.00	312	17.00	369	220.00	426	62.50	483	35.00
28	42.50	85	19.00	142	9.00	199	18.50	256	38.00	313	67.50	370	14.00	427	170.00	484	18.00
29	17.00	86	16.00	143	17.00	200	21.00	257	21.00	314	16.00	371	60.00	428	170.00	485	105.00
30	32.00	87	65.00	144	24.00	201	36.00	258	7.00	315	14.00	372	52.50	429	16.00	486	63.00
31	67.50	88	190.00	145	85.00	202	40.00	259	7.00	316	27.00	373	23.00	430	10.00	487	85.00
32	15.00	89	32.50	146	21.00	203	32.00	260	8.00	317	65.00	374	15.00	431	15.00	488	23.00
33	21.00	90	42.50	147	32.00	204	42.50	261	12.00	318	18.00	375	11.00	432	22.00	489	25.00
34	22.00	91	21.00	148	17.00	205	120.00	262	22.00	319	13.00	376	12.50	433	37.50	490	12.00
35	10.00	92	17.00	149	22.50	206	29.00	263	57.50	320	32.00	377	105.00	434	16.00	491	575.00
36	14.00	93	57.50	150	46.00	207	26.00	264	17.00	321	40.00	378	25.00	435	72.50	492	450.00
37	10.00	94	67.50	151	15.00	208	52.50	265	16.00	322	16.00	379	11.00	436	13.00	493	210.00
38	29.00	95	130.00	152	13.50	209	32.00	266	72.50	323	115.00	380	21.00	437	26.00	494	62.50
39	18.00	96	40.00	153	11.00	210	460.00	267	32.50	324	190.00	381	11.50	438	32.00	495	37.50
40	44.00	97	50.00	154	10.00	211	15.00	268	13.00	325	15.00	382	31.00	439	6.50	496	26.00
41	32.00	98	125.00	155	9.00	212	8.00	269	23.00	326	47.50	383	33.00	440	24.00	497	20.00
42	50.00	99	775.00	156	36.00	213	10.00	270	135.00	327	10.00	384	165.00	441	75.00	498	32.00
43	22.00	100	13.00	157	27.00	214	13.00	271	36.00	328	36.00	385	75.00	442	19.00	499	21.00
44	44.00	101	16.00	158	28.00	215	9.00	272	21.00	329	23.00	386	57.50	443	28.00	500	135.00
45	36.00	102	11.00	159	28.00	216	35.00	273	160.00	330	28.00	387	52.50	444	20.00	501	26.00
46	14.00	103	35.00	160	21.00	217	22.00	274	18.00	331	8.00	388	62.50	445	90.00	502	31.00
47	14.00	104	52.50	161	23.00	218	10.00	275	23.00	332	11.50	389	35.00	446	15.00	503	13.00
48	82.50	105	175.00	162	21.00	219	9.00	276	16.00	333	27.00	390	185.00	447	28.50	504	10.00
49	87.50	106	160.00	163	21.00	220	50.00	277	72.50	334	24.00	391	380.00	448	21.00	505	5.50
50	135.00	107	65.00	164	90.00	221	32.50	278	11.00	335	12.00	392	230.00	449	37.50	506	13.00
51	110.00	108	105.00	165	46.00	222	29.00	279	13.00	336	160.00	393	260.00	450	24.00	507	10.00
52	105.00	109	87.50	166	34.00	223	17.00	280	13.00	337	16.00	394	6.50	451	21.00	508	160.00
53	92.50	110	115.00	167	29.00	224	10.00	281	5.00	338	18.00	395	8.50	452	12.50	509	10.50
54	145.00	111	32.00	168	27.00	225	13.00	282	12.00	339	47.50	396	5.00	453	7.00	510	8.50
55	92.50	112	57.50	169	18.00	226	31.00	283	15.50	340	16.00	397	17.50	454	10.00	511	46.00
56	150.00	113	125.00	170	130.00	227	13.00	284	13.00	341	21.00	398	14.00	455	38.00	512	16.00
57	35.00	114	72.50	171	16.00	228	9.50	285	22.00	342	67.50	399	170.00	456	32.50	513	10.50