

# RARITIES

of the

# World

*Robert A. Siegel*  
**SAUCTIONS**

10 EAST 52nd STREET NEW YORK, N. Y. 10022

283rd SALE

**RARITIES  
OF THE  
WORLD**

AT PUBLIC AUCTION

Wednesday  
FEBRUARY 24th, 1965  
AT 7:30 P.M.

*Hotel Plaza, Crystal Room*

*Robert A. Siegel*  
**AUCTIONS**

10 EAST 52nd STREET NEW YORK, N. Y. 10022

Tel.: Plaza 3-6422

## CONDITIONS OF SALE

1. The terms of sale are strictly cash to the highest bidder. All buyers are expected to pay for lots within three days of receipt, unless special arrangements have been made prior to the sale.
2. All bids are per lot as numbered in the catalogue and not per piece, unless otherwise announced by the auctioneer at the time of sale.
3. Any lot the description of which is incorrect is returnable only within three days of receipt. All disputed lots must be returned intact as received. Lots containing five or more stamps are not returnable at any time. No lots may be returned by purchasers who have had the opportunity to examine them before the sale.
4. Successful mail bidders, unless they are known to us or supply acceptable references, will be notified of the amount of the lots secured for them, and are expected to send payment in full before the lots are forwarded.
5. If the purchase price has not been paid within the time limit, or lots taken up within seven days from date of sale, they may be resold and any losses arising from such sale charged to the defaulter.
6. All stamps are sold as genuine, except where sold "As Is." Claims for any lot proving otherwise, must be made within two weeks from date of sale.
7. The right is reserved to group two or more lots, also withdraw any lot or lots from the sale, or to act on behalf of the seller.
8. Until paid for in full all lots remain the property of Robert A. Siegel.
9. No commission is charged for buying at our sales, but all forwarding charges will be added to the purchase price.
10. Upon written application lots may be sent for examination prior to the auction, conditional upon being mailed back by registered mail, adequately insured, within 24 hours of receipt. The applicant is completely responsible for all lots sent for examination, and for the insurance of same against mishap, from the time of receipt until they are actually received back, and is to pay all expenses of postage and insurance.
11. The placing of a bid shall constitute acceptance of the foregoing conditions of sale.

ROBERT A. SIEGEL

ANDREW LEVITT, Licensed Auctioneers

---

In sending bids, always state the highest price you are prepared to pay for the lot. Your limit will not be used as a starting bid unless absolutely necessary.

## DESCRIPTIONS

Superb or Extremely Fine—the finest condition for noteworthy, outstanding copies.

Very Fine (VF)—means that there is a slight deviation from the above.

Fine (F)—means that the perforations do not touch the design on issues after 1890, but in some cases may just touch in earlier issues; if used, fairly lightly cancelled.

Very Good (VG)—means that the appearance is generally fine but that the perforations cut the design slightly.

Good (G)—means average off-centering; or fairly attractive with slight defects  
Original gum is not to be expected on 19th Century stamps up to 1888 unless so stated.

Scott 1965 Specialized United States Catalogue is used for cataloging our lots of United States and Scott's Standard Catalogue, 1965 for others.

<b>WE SOLICIT FINE MATERIAL FOR FUTURE SALES</b>
--

## FEBRUARY 24th, 1965

10 East 52nd Street

New York, N. Y. 10022

**Tel.: PLaza 3-6422 (Area Code 212)**

Please purchase for me at your auction to be held **February 24th, 1965**, the lots named below, the prices annexed being my limit on each lot. I agree to remit for purchases in accordance with the **Conditions of Sale** and to return no lots later than three days after receipt.

REFERENCES PLEASE  
(if unknown to us)

SIGNED

<p>.....</p> <p>.....</p> <p>.....</p> <p>.....</p>	<p>.....</p> <p>.....</p> <p>.....</p> <p>.....</p>
---	---

[illegible]

## VALUATIONS

Upon request, estimate of value furnished on any lots in this auction.



# UNITED STATES

- 1 ☒ **Steam Packet Columbia** in two Bold Str. Lines, **Sam Ricker, Jr. Agent of the Texian Post Office, New Orleans** in Bold Double Oval, Greenish "Wetumpka, Ala." pmk. & matching "Paid", "1834" in ms. on neat folded 1838 Cover to Nacogdoches, Magnificent Strikes, Extremely Fine **E. X**

## POSTMASTER'S PROVISIONALS

- 2 ☒ **Post Office, Annapolis, Md. and Eagle Seal** in Blue, same handstamp as Annapolis Provisional (2XU1), on Flap, matching **Free** and **Frank** of Postmaster Martin F. Revell, on neat folded cover to P. M. G. in Washington, Very Fine ..... 850.00
- 3 ☒ **Baltimore, Md. 5c Black on White (3X1)**. Full margins, showing entire frame line on 3 sides & partly at T., unusually Rich Color, tied by ms. cancel, Blue Baltimore Pmk., matching "Paid" and "5" in oval on folded Dec. 7, 1846 cover to N. Y., Very Fine ..... 1500.00
- 4 ☒ **Baltimore, Md. 5c Black on Bluish (3X3)**. Nearly full margins showing complete frame line on 3 sides & partly at T., a trifle toned, tied by Blue "Paid", clear matching Baltimore pmk. on fresh envelope to Washington, D. C., An Exceptionally Handsome Cover, Very Fine ..... 2350.00
- 5 ☒ **Baltimore, Md. 5c Black on Bluish (3X3)**. Full margins, showing most of frame line on all sides, tied by clear Blue "Paid" cancel, clear matching Baltimore pmk. on cover to Washington, stamp faintly toned and tiny cover tear, otherwise Very Fine ..... 2350.00
- 6 ☒ **Baltimore, Md. 5c Blue on Manila Entire (3XU4)**. Clear Blue Baltimore pmk., unusually Fine Impression of Buchanans Signature, used to Washington, D. C., trivial faint marginal stains, otherwise Fresh, Very Fine, Ex Caspary ..... 1600.00
- 7 ☒ **Baltimore, Md. 5c+5c Blue on White Entire (3XU7)**. Handstamp Signature in Fluid Black ink, Blue Baltimore pmk., used to Washington, D. C., fresh, Extremely Fine, A Rare and Very Handsome Cover ..... 1800.00



8

10


17

- 8 **Milbury, Mass. 5c on Bluish (7X1)**. Cut to shape & neatly mounted, Red town pmk., Attractive looking copy of this Great Rarity, with P.F. Certificate ..... 7500.00

**LOTS ON VIEW FROM FEBRUARY 17th**  
**OFFICE OPEN EVERY SATURDAY**


 STEAMSHIP  
 COLUMBIA  
 J. P. Rogers & Co.  
 Agents  
 New Orleans, La.  
 1

PAID  
 James M. Buchanan  
 5 Cents.  
 Mr. H. H. Richards  
 136. Street  
 5


 2

James M. Buchanan  
 PAID 5 Cents.  
 Miss Eugenie McDonald  
 Mrs. McDonald Esq.  
 5

James M. Buchanan  
 PAID 5 Cents.  
 Miss Eugenie McDonald  
 Mrs. McDonald Esq.  
 Washington D.C.  
 4

James M. Buchanan  
 PAID  
 Mr. Gilbert Rogers Esq.  
 Coleman Hotel  
 Washington D.C.  
 6



- 9 **New York 5c Black (9X1). COMPLETE RECONSTRUCTION** of the 40 positions, incl. 3 horiz. pairs and extra copy of Pos. 37, well above average plating quality with nearly all 4 margin copies, over half with ms. cancels, also incl. diff. Red Grids, "Pays", Balloon pmk. used on Foreign mail, one unused copy, there are a few small faults but many Very Fine copies are included, A Choice & Handsome Study ..... 4300.00+
- 10 **New York 5c on Gray, Signed R. H. M. (9X1b).** Clear to Huge Margins all around, Gorgeous Color & Impression, Square Red Grid Cancel. faint thin, Extremely Fine appearance, a Beautiful Copy of this Rare stamp 600.00
- 11 ☒ **New York 5c Black (9X1).** Horiz. Strip of 3, Pos. 6-8, Center stamp with Large Double Transfer at T., Tied by Red "Paid" in Arcs and by Red **Boston, Mass.** pmk. on  $5\frac{1}{2}'' \times 2\frac{1}{8}''$  Piece, "15" in ms., despite faint horiz. crease a Gorgeous strip, Probably Unique used from Boston, Ex Caspary ..... **E. XIII**
- 12 ☒ **New York 5c Black (9X1).** Horiz. Pair, Pos. 36-37, Enormous Margins all around, first with small pre-printing paper folds, tied by Blue ms lines, Red "New York 10 cts", matching "Paid" in Arc, on folded Sept. 15, 1845 cover to London, Forwarded to Trieste, Rare & Extremely Fine ..... **E. XII**



13

14

- 13 ★ **Providence, R. I. 5c, 10c Black (10X1, Eleven, 10X2).** Cpl. Sheet, fresh, full o.g., two pre-printing paper folds in Pos. 1, 4, 5 and in 10 & 11, minute tears in T. & B. margin, one at B. just touching Pos. 11, otherwise Very Fine ..... 900.00
- 14 ★ **Providence, R. I. 5c, 10c Black (10X1, Eleven, 10X2).** Cpl. Sheet, o.g., faint creases barely affect few stamps, otherwise Very Fine ..... 900.00
- 15 ☒ **Providence, R. I. 5c Black (10X1).** Pos. 5, Huge Margins all around, unusually choice color & Impression, ms. cancel, clear Red Providence, R. I. pmk., matching "Paid" and "5" on neat folded Jun. 9, 1847 cover to New Bedford, one of the finest Providence Postmaster Covers Known, a Gorgeous Gem ..... 500.00
- 16 ☒ **Providence, R. I. 5c Black (10X1).** Pos. 1, clear margins except partly touched at L., ms "V" cancel, clear Red Providence pmk., matching "Paid" and "5" on neat folded letter to Boston, "Penny Post" in ms., Fine ..... 500.00
- 17 **St. Louis, Mo. 5c on Greenish (11X1).** Ample to large margins all around, unusually Rich Color, light ms. lines, **large part of design clearly doubled to Right**, faint vertical crease, Very Fine appearance, Unlisted Rarity, Probably Unique ..... 750.00+

Sam A. Barber

Mr. John M. Black

7



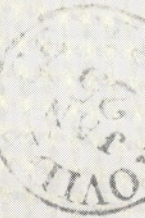
PAID

16



11

5



PAID

17



PAID

Charles W. Morgan Esq. 5

New Bedford

Mass

15

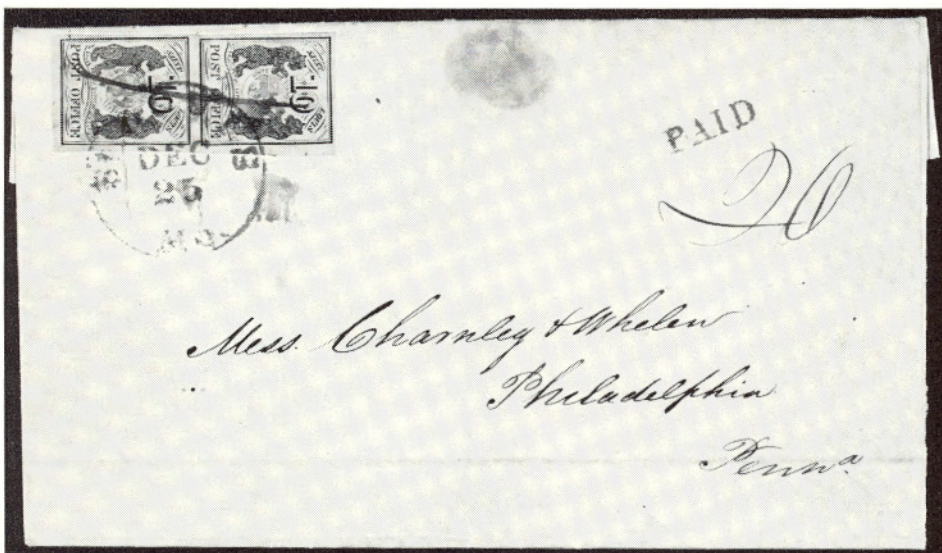


May Ireland 160

Proctor

Mr. John M. Black  
55 St. John St.  
Boston


12



- 18 **St. Louis, Mo. 10c Black on Greenish (11X2).** Vertical Pair, Large to Enormous margins all around, Lovely Color & Impression, ms. line and tied by Red St. Louis pmk., matching "Paid", "20" in ms. on neat folded Dec. 25, 1845 Charnley & Whelan cover, a Gorgeous Cover, Extremely Fine 2350.00

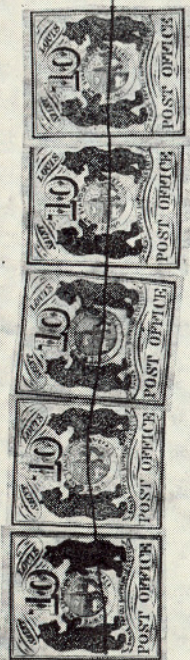


- 19 **St. Louis, Mo. 10c Black on Greenish (11X2).** Vertical Pair, Ample to Huge Margins all around, Brilliant Color & Impression tied by light ms. line on neat folded Dec. 4, 1845 Charnley & Whelan cover with Red St. Louis pmk., matching "Paid", "20" in ms., a Beautiful Cover, Extremely Fine ..... 2350.00

- 20  **St. Louis, Mo. 10c Black on Greenish (11X2, Five).** Huge margins except one touched in L. R. corner, all three types represented, **two showing distinct Doubling of Impression**, Lovely Colors, tied by light ms. line, clear Red St. Louis pmk., matching "Paid", "50" in ms. on neat folded 7¾"x3½" Charnley & Whelan cover, Nov. 16, 1845 usage, first month of usage. A Rare & Beautiful Cover, Extremely Fine ..... 5500.00+



- 21A **St. Louis, Mo. 5c Black on Gray Lilac (11x4).** Pos. 5. Clear to Large Margins except outer frame touched at L., Brilliant Color & Impression, ms. cancel, fresh, Fine copy, of this very scarce stamp ..... 1200.00
- 21B **St. Louis, Mo. 10c on Gray Lilac (11X5).** Vertical **Strip** of three, Pos. 2, 4, 6, large margins except top stamp touched at U. L. and U. R., bottom stamp touched at L. R., light ms. cancel, top stamp has small surface rub & pinpoint thin speck, bottom pair Fine-Very Fine, Choice & Very Rare Strip ..... 4750.00
- 21C **St. Louis, Mo. 20c on Gray Lilac (11X6).** Pos. 1, margins except outer frame touched at T. & L., Rich Color, Red St. Louis town pmk., trivial tiny corner crease, Fine appearance ..... 4000.00
- 21D **St. Louis, Mo. 20c Black on Gray Lilac (11X6).** Pos. 3. Huge margins except inner frame just touched at L. L., lovely color, light ms. cancel, fresh, Fine Example of this Rarity ..... 4000.00
- 21 **St. Louis Mo. 5c-20c Black on Greenish (11X4, 11X5, strip of three, 11X6, two).** The previous four lots offered as one, Constituting a Complete Plating of the Second State of the St. Louis Bear Plate, A Beautiful & Very Rare Study (to be sold one lot providing bidding exceeds total amount of previous four lots) ..... 13,950.00



PAID

50



Mr. Charley Wilson  
Philadelphia



PAID

50

Mr. Charley Wilson  
Philadelphia  
Pa.





22

24

25

26

- 22 ★ **St. Louis, Mo. 10c on Gray Lilac (11X5).** Large margins except just clear at R., nice color & impression, Fine, listed but unpriced unused in Scott .....
- 23 ☒ **St. Louis, Mo. 10c, 20c Black on Gray Lilac (11X5, 11X6, two).** Margins cut at places, ms. cancels and tied by Red St. Louis pmk., matching "Paid", "50" in ms. on neat folded 7½"x3½" Charnley & Whelan Cover, May 28, 1846 usage, A Very Rare & Desirable Cover ..... 11,000.00
- 24 **St. Louis, Mo. 5c on Bluish Pelure (11X7).** Just clear to Large margins except slightly in at L. L., unusually Fine Color & Impression, almost invisible ms. cancel, a much above average example of this Rare stamp, of which only about 15 copies are known, Handstamp Guarantee on Back 3000.00
- 25 **St. Louis, Mo. 5c on Bluish Pelure (11X7).** Margins all around, Vivid Color & Impression, ms. lines cancel, small pre-printing paper fold at B., minute sealed tear and almost invisible pinhole, Unusually Attractive Copy of this Rare Stamp, about 15 known, Extremely Fine appearance 3000.00
- 26 **St. Louis, Mo. 10c Black on Bluish Pelure, Ty. III (11X8).** Margins all around, almost invisible ms. cancel, nice color and impression, slightly broken vertical crease & small crack at center almost invisibly mended, a most Attractive copy of this Great Rarity, of which only about 15 copies are known ..... 3000.00

## 1847 ISSUE

- 27 ☒ **5c Red Brown (1).** Horiz. Pair, margins all around, **Canadian Usage**, Red grid cancels, not tied, matching "10" in circle, with Red "Paid" struck over, clear Red **Montreal, L. C.** Oc 20, 1849 pmk., Red ms. Rate, on neat folded cover to **New York**, R. stamp a trifle rubbed in L. R. corner entirely in margin, otherwise Extremely Fine, a Very Handsome Example of this Rare Usage, with P. F. Certificate ..... E. XIII



28



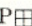
29

30

- 28 ★ **10c Black (2).** Margins all around, unusually Brilliant Color & Impression, fresh, Very Fine ..... 500.00

- 29 **10c Black (2).** Horiz. Pair Pos. 1, 2R1, **Major Double Transfers A & C**, large margins all around, Rich Color, very light ms. cancels and Boxed Red Foreign Transit, Rare & Handsome Pair, Extremely Fine ..... 420.00+
- 30 **10c Black (2).** **Horizontal Strip of Three**, Pos. 81-83R1, Clear to Large Margins, except L. stamp barely touched at T. & frame line barely shaved at L.L., Wonderful Color & Impression, Pretty Bright Red Grid cancels, fresh & most Attractive, Fine-Very Fine ..... 950.00

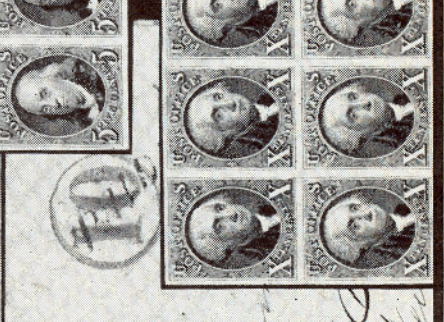
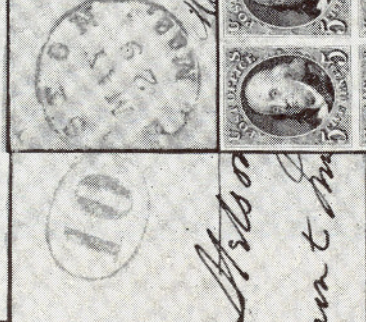
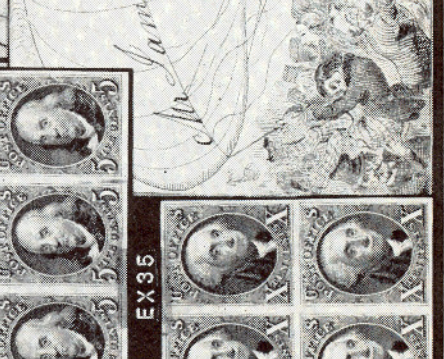
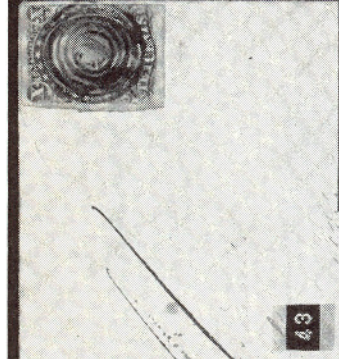
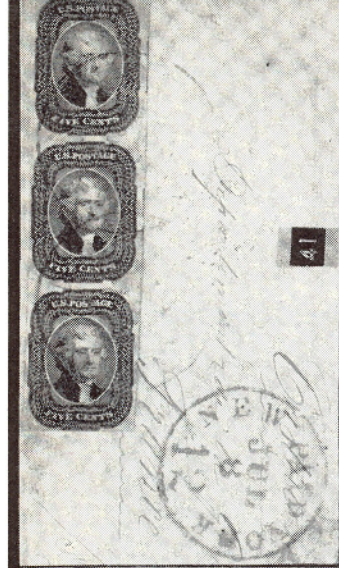
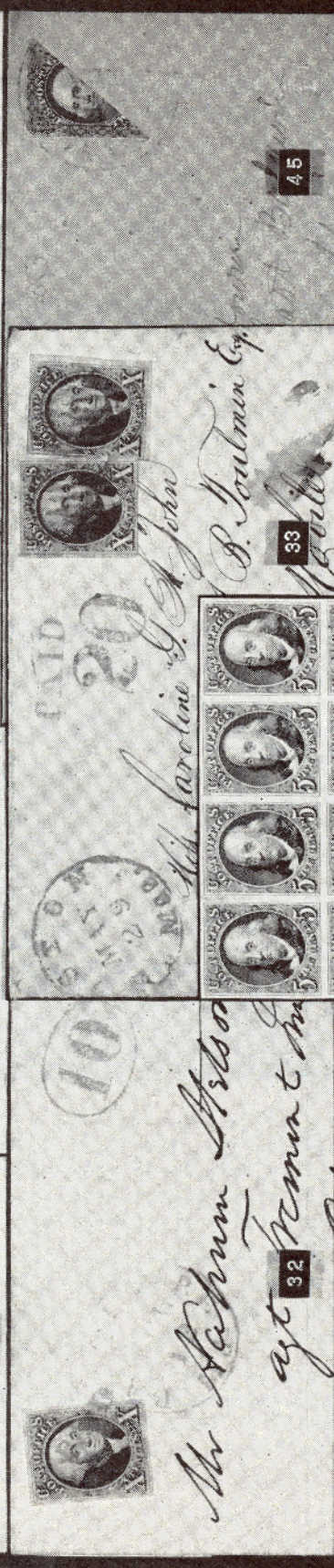
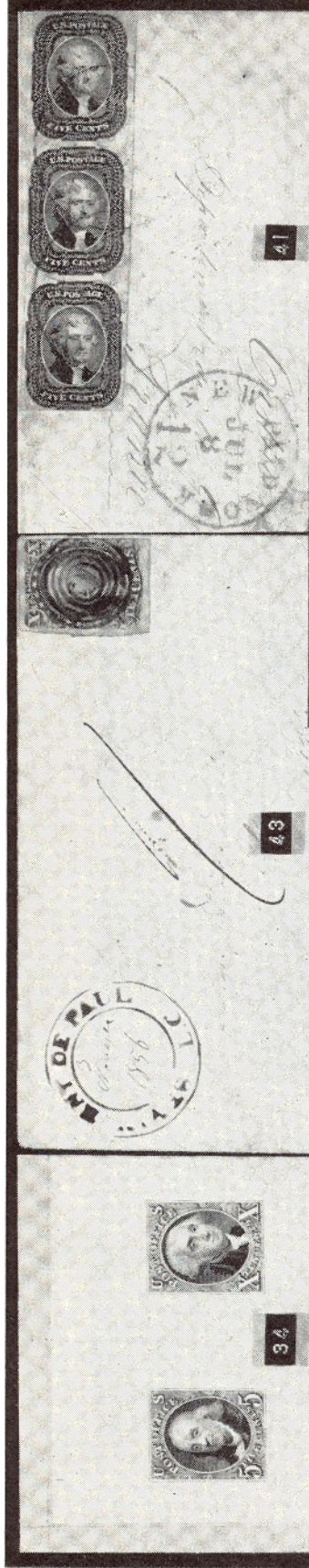




- 31 **10c Black (2).** **Horizontal Strip of Four**. Pos. 37-40L1, Lovely Rich Color & Impression, Ample to Huge Margins all around, sheet margin at R., light ms. cancels, tiny marginal scissor cut between 3rd & 4th stamps, a fresh, Very Fine & Handsome strip ..... E. XIII
- 32  **10c Black (2).** Huge margins all around, Wonderful Brilliant Color & Impression, tied by Blue "Paid" & matching "Baltimore, Md." pmk., matching "10" in Oval on neat folded 1848 Letter to Boston, a Beauty, Extremely Fine ..... E. XI
- 33  **10c Black (2, two).** Margins to barely touched, Lovely Color & Impression, just tied by Black Grids, clear Red Boston, Mass. pmk., matching **Paid 20** on linen lined Envelope to Mobile, light wash of writing ink on face of stamps, Scarce & Handsome Cover, Fine ..... 260.00
- 34 P **5c, 10c Black Reproduction Combination Die Proof on India (3P, 4P).** Mounted on gray card, Probably Unique in Black, unlisted in Scott, Very Fine ..... E. XII
- 35  **5c, 10c Reproduction, Atlanta Trial Color Proofs (3TC, 4TC).** Complete Set of Five diff. Colors of each in Horiz. Blocks of Eight, Extremely Fine, Probably Unique ..... 4080.00+

#### 1851-1857 ISSUES



- 36 37 38 39
- 36 **1c Blue, Ty. I (5).** Pos. 7R1E, large margins except just touched at B., Lovely Rich Color, Blue Grid cancel, tiny toned spots on back, one of the Finest known copies of this Rare stamp ..... 1650.00




- 37 **1c Blue, Ty. IA (6).** Ample to Huge Margins all around, showing sheet margin at B., Gorgeous Rich Color, town pmk., a Lovely Copy, Extremely Fine ..... 300.00
- 38 **1c Blue, Ty. Ia (6).** Horiz. Pair, Pos. 97, 98RIV, L. stamp showing "Curl in "C" of Cent", clear to Huge Margins except partly touched at R., Wonderful Color, light town cancel, light horiz. crease, a Rare and Very Attractive Pair ..... 900.00
- 39 **1c Dark Blue, Ty. III (8).** Pos. 99R2, Large to Enormous Margins all around, Magnificent Color, New Orleans pmk., barest trace of negligible corner crease, far from design, A Wonderful Copy of this Rare & Popular stamp ..... 600.00
- 40  **3c Brownish Carmine (11).** Margins all around, tied by Blue Hanover, N. H. pmk. on Overall Illustrated **Balloon Caricature** Cover Fresh, Extremely Fine, A Rare & Magnificent Cover ..... **E. XII**
- 41  **5c Red Brown (12).** Vertical Strip of Three, Clear to Huge Margins except barely touched at B. and at U.L., tied by New Orleans pmks., clear Red "New York Paid 12" and Red French Transit, on neat folded 1857 coved to France, Rare, Fine ..... 550.00



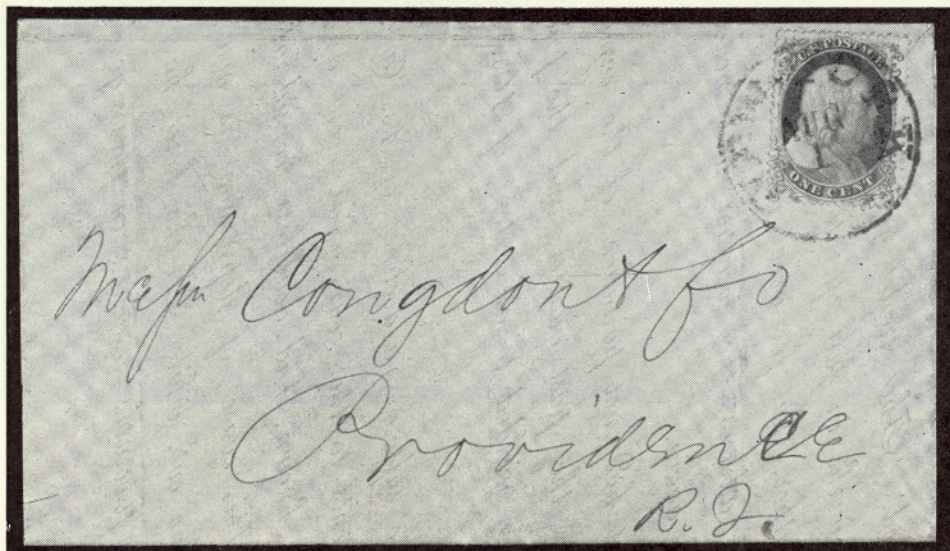
42

44

- 42 **10c Green, Ty. II (14).** Vertical Pair, Pos. 10, 20L1, Huge to Gigantic Margins all around with sheet centerline at R., Magnificent Deep Rich Color, Town pmk., Probably, from a quality standpoint, the finest known piece of the 10c Imperforate, A Superlative Gem ..... —
- 43  **10c Green, Ty. III (15). Canadian Usage,** Large Margins except touched at R., tied by Brownish Target, Clear Matching **St. Vincent De Paul, L. C.** pmk., on 1856 cover to **Albany, N. Y.**, Montreal backstamp, tiny sealed cover tear, a Choice & Attractive Example of this Rare Usage ..... 700.00
- 44 **12c Black (17).** Horiz. Pair, Pos. 3-4R1, L. stamp showing **3 dot shift**, Gigantic Margins, showing next stamps on 3 sides and sheet margin at T., Gorgeous Color, Vivid Red Grid & Town Cancels, tiny scissor cut in margin, Choice Pair, Ex Newbury ..... —

45 ☒ **12c Black, Diagonal Bisect (17a).** Tied by light San Francisco pmk. on fresh cover to Maine, "Letter written 1853" in ms. at top, Fine, with P. F. Certificate ..... 750.00

46 **1c Blue, Ty. 1a (19).** Horiz. strip of 3, Enormous Margins showing Full Design Top & Bottom, Magnificent Color, faint ms. cancels, R. stamp with Blue town pmk., R. stamp has been separated and rejoined, minute crease at U.L. and center stamp has minute margin break, An Extremely Rare and Gorgeous Strip, Ex Caspary ..... 775.00+



47 ☒ **1c Blue, Ty. 1a (19).** Pos. 94R4, Gorgeous Vivid Color, tied by N. Y. pmk. on neat folded circular to Providence, a Wonderful & Very Rare Cover, Extremely Fine, Ex Newbury ..... 300.00








48 ☒ **3c Red (26).** Tied by "Philadelphia, Pa. Dec 17, 1862" pmk., Old Stamps Not Recognized in two clear str. lines, "Due 3" in str. line, stamp has s. e. at R., Very Fine, Rare ..... E. XII



- 50 5c Orange Brown, Ty. II, 10c Green, Ty. V, 30c Orange (30, 35, 38). Tied by Red Grids, matching "New York Paid 9" on neat folded Sept., 1867 cover to France, 30c centered to L. L., Exceedingly Rare & Gorgeous Combination, Very Fine, with P. F. Certificate ..... E. XV



- 51 1c Blue, 5c Brown, Four, 10c Green (20, 30A, 35). Rare 31c Rate, Double Rate to France with Carrier, 1c has str. edge and few nibbed perfs. All tied red grids or red transit markings to each other or cover, A Most Attractive and Unusual Cover ..... E. XIV

- 52  **10c Green, Ty. V (35).** Tied by grids and by "Cleveland, O. Oct 16, 1860" pmk. on **Lincoln Campaign** Cover with  $\frac{3}{4}$  Beardless Portrait and "The Cold Water Candidate", "Temperance & Freedom" on flap, used to California, Fresh, Very Fine, A Very Rare Cover ..... E. XII
- 53  **San Francisco, Cal.** Dec. 19, 1859 in clear circle ties centered 10c Green Ty. V (35). On cover to Mass., with Illustrated **Four Horse Stagecoach** and "Overland Mail Via Los Angeles", minor sealed cover tear at U. L., A Handsome & Colorful Cover ..... E. XI
- 54  **San Andreas, Cal.** in indistinct circle, ms. date & "Paid 10cts" on Illustrated Cover to Illinois showing "Choo Choo", "By the Overland Mail Stage Via Los Angeles", Hutchings & Rosenfeld Imprint, A Rare & Handsome Cover, Fine ..... E. XI
- 55 ★  **12c Black, Plate III (36).** Lower Right Imprint Plate No. **Block of 42** (7X6) Gorgeous Color & Impression, partly reinforced, two stamps creased, one at L. L. defective, others Generally Fine. A Choice & Handsome Showpiece ..... 2415.00+
- 56  **30c Orange (38).** Horiz. Pair, Red Grid cancels, tied by Red "New York Paid 48" and by Red French Paquebot on Payen Correspondence Cover to Lyon, March, 1861 usage, one stamp has expertly sealed tear, a Rare & Beautiful Cover ..... E. XII
- 57 ★ **90c Deep Blue, Imperforate (39a).** Clear to Large Margins all around, Lovely Rich Color, fresh, Fine ..... 850.00
- 58 **90c Blue (39).** Vertical Pair, tied by Washington, D. C. pmk., bottom stamp by additional magenta ms., on  $1\frac{1}{4}$ "x3" piece, top stamp lightly creased before using, otherwise Fine, Genuinely used multiples of this stamp are Extremely Rare, with P. F. Certificate ..... 700.00+





- 59 ★ **1c-90c 1857-60 Reprints, Imperforate (40-47 var.).** Complete set, clear to Gigantic Margins, fresh Brilliant Colors, Extremely Fine, mentioned but unpriced in Scott, A Beautiful and Extremely Rare Set ..... Est. 5000.00

# 1861 ISSUE




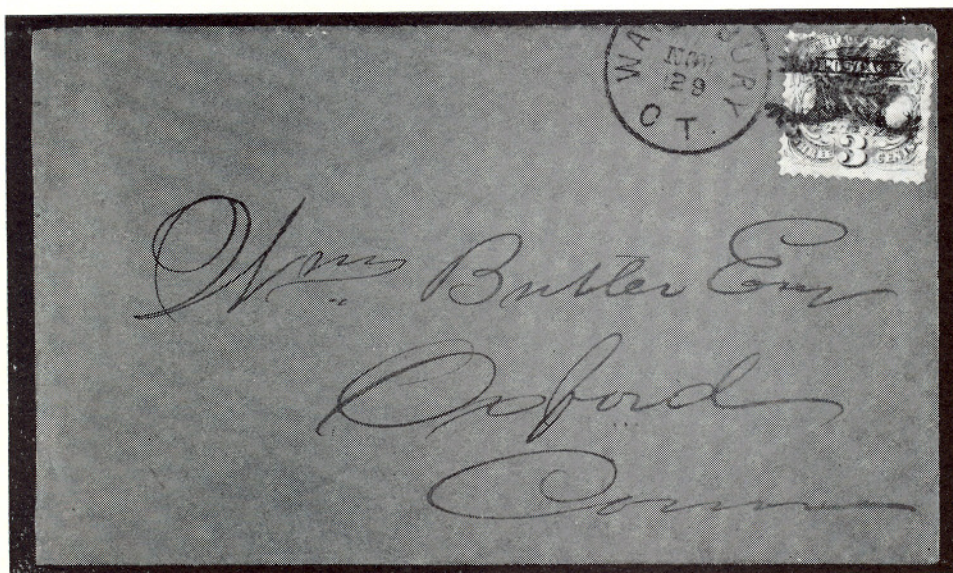
- 60 ★ **1c Indigo August (55).** Absolutely Magnificent Rich Color, Fine, a Wonderful Copy of this Classic Rarity ..... 3000.00
- 61 ★ **5c Brown August (57).** Fresh, o. g., trivial, tiny gum creases, slightly nibbed perf. at T., Attractive Copy of this Rarity, with P. F. Certificate 1800.00
- 62 ☒ **5c Buff, 10c Dark Green, 30c Orange (58, 67, 71).** Vertical pair of latter tied by grids, clear red **New York Sep. 17 Paid**, Red French Transits on neat Folded Payen Correspondence Cover to Lyon, **First Day Usage of 10c August**, 5c touched at T., others Very Fine, A Rare, Handsome, and Very Choice Combination, note by Ashbrook on back mentioning this as the cover from which the listing was made ..... E. XIV
- 63 ★ **90c Blue August, Imperforate (62a).** Gigantic margins, Magnificent Color, faint crease, Extremely Fine Appearance ..... 425.00
- 64 ★ **90c Blue August, Imperforate (62a).** Horiz. Pair, Large to Huge Margins all around, Rich Vivid Color, faint horiz. crease at B., Extremely Fine appearance ..... 850.00
- 65 ☒ **1c Blue (63).** Centered to U. L., tied by Bold Waterbury, Ct. **Dog's Head** cancel on Jan 17, '66 local cover, docketed at L., Gorgeous Example of this Rare Cancel ..... E. XII
- 66 **3c Rose (65).** Beautifully Struck Waterbury, Ct. **Man Wearing Tall Hat** cancel, A Gem, Very Fine ..... E. XI
- 67 ☒ **3c Rose (65).** Clipped at T. and U. R., tied to cover by clear Waterbury, Ct. **Man Smoking Pipe** cancel, Attractive Looking Example of this Very Rare Cancel ..... E. XI
- 68 ☒ **90c Blue (72).** Huge margins & tied by clear **Shield** cancel, clear "N. York Am Pkt. Paid", "London Paid 7 Dec '65", "32", "1d", all in Red, N. Y. Merchants Cachet, "pr City of Washington & Overland Mail" in ms., on neat folded cover to China, light filing folds thru stamp, Very Fine appearance, a Very Rare & Handsome Cover, with P. F. Certificate 1000.00
- 69 ★☐ **2c Black (73).** Irregular Bottom Imprint Plate No. (31) Block of 12, fresh, full o. g., an Extraordinary Blackjack Showpiece, Fine ..... E. XI
- 70 ★ **3c Scarlet (74).** Fresh, o. g., Very Fine ..... 375.00
- 71 ★☐ **12c Black E. Grill (90).** Block of Four, fresh, large part o. g., almost invisible toned spots, Fine-Very Fine, A Very Rare Block ..... 1500.00
- 72 ☒ **1c Blue F. Grill (92).** Tied by clear Waterbury, Ct. **Pumpkin** cancel on fresh local cover, Very Fine ..... E. X




- 73  **1c Blue F. Grill (92).** Tied by clear Waterbury, Ct. **Mortar & Pestle** cancel on local cover, no back flap, Rare and Attractive ..... E. XI
- 74 ★  **5c Brown F. Grill (95). Horizontal Block of Ten,** fresh, full o. g., unhinged, Wonderful Deep Rich Color, two short perfs., otherwise Fine, A Very Rare Block in Exceptionally Choice Condition ..... 2325.00+

# 1869 PICTORIAL ISSUE

- 75 ★  **3c Ultramarine (114).** Top Imprint, Plate No. & Half Arrow Block of twelve with Split Grill, fresh, full o. g., lightly hinged once, Lovely Color, A Marvellous Showpiece, Fine-Very Fine ..... E. IX



- 76  **3c Ultramarine (114).** Centered to T., tied to cover by clear Waterbury Ct. **Running Chicken** cancel, Very Fine Cover. One of the Great Cancellation Rarities ..... E. XV



69



74



91



88



71



95



75



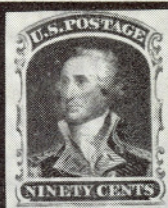
97



46



49



57



66



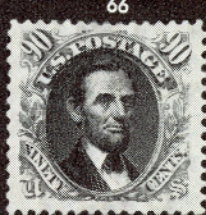
58



89



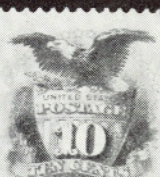
70



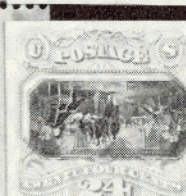
90



78



79



80

84



85

87

83



- 77 6c, 12c, 24c Pictorials (115, 117, 120). Just tied by light corks, clear Port Chester, N. Y. pmk. on cover from the Celebrated Davis Correspondence to Peru, no. 120 perfs in at T., cover a bit irregular at L. R., otherwise Fresh & Fine, an Excessively Rare & Very Handsome Combination ..... E. XIV
- 78 ★ 10c Yellowish Orange (116). Block, fresh, full o.g., perfs. touching to just in at B., Rare ..... 750.00
- 79 ★ 12c Green (117). Block, fresh, full o.g., faint crease in one, barest trace of bend at L., otherwise Fine-Very Fine ..... 350.00
- 80 ★ 15c Brown & Blue Ty. II (119). Block, Deep Brilliant Colors, fresh, full o.g., light horiz. creases, Fine-Very Fine appearance ..... 450.00

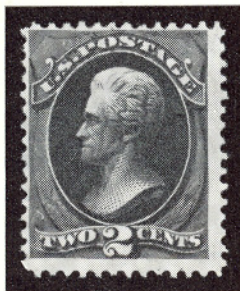


- 81 15c Brown & Blue Ty. II, Inverted Center (119b). Nice colors, light cancel, perfs just touch at T., barest trace of tiny creases, Attractive copy of this Rare & Popular stamp ..... 2750.00
- 82 15c Brown & Blue, Ty. II, Inverted Center (119b). Rich Colors, light cork cancel, perfs. barely touch at B., neatly repaired tear at U. R., A Very Attractive looking copy of this Rarity ..... 2750.00

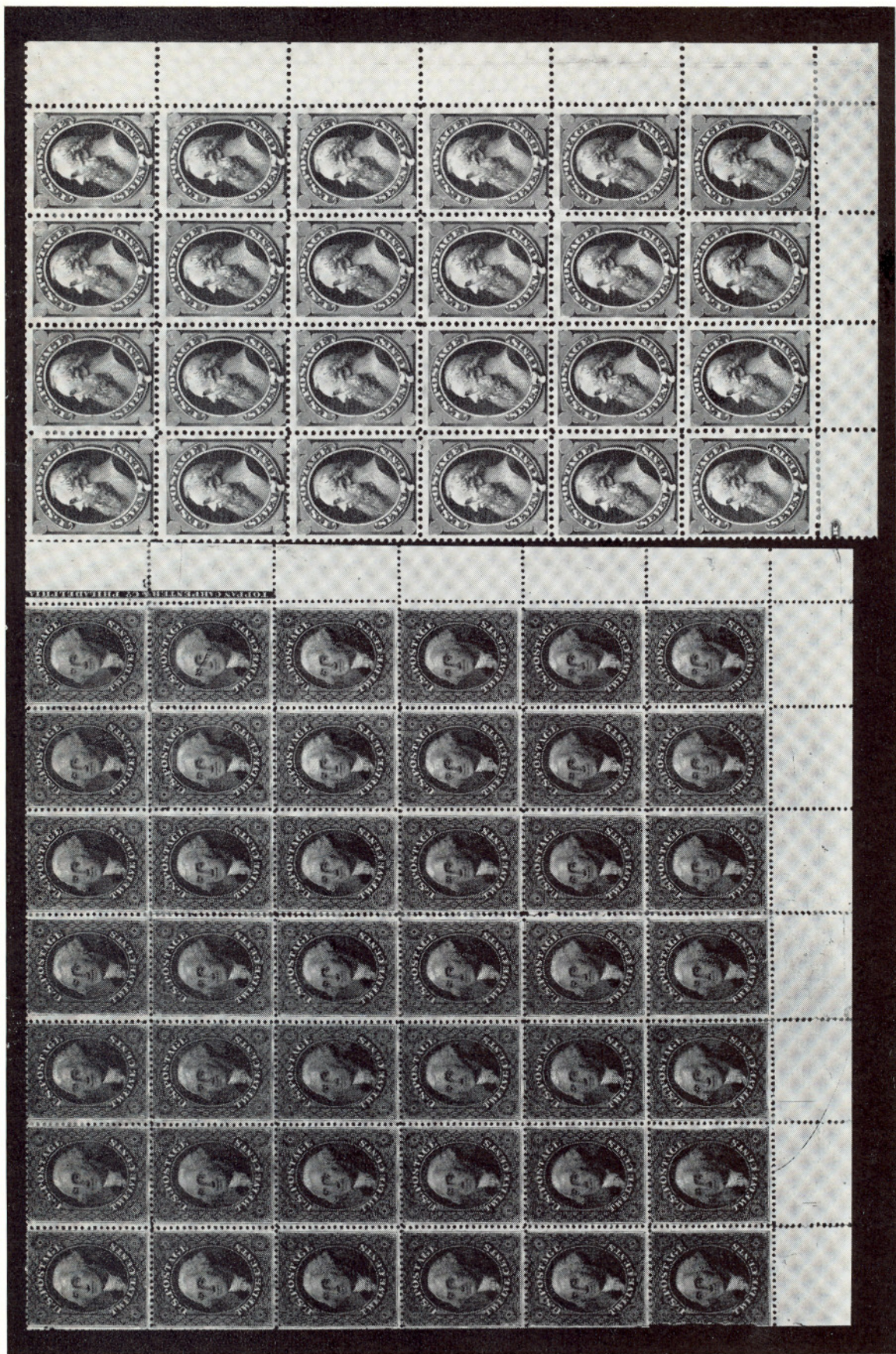
- 83 P **15c-90c 1869 Pictorials, Inverted Centers, Card Proofs (120Pa-122Pa, 129Pa).** Very Fine Set ..... 800.00
- 84 ★田 **24c Green & Violet (120).** R. Sheet Margin Block, Wonderful Rich Colors, fresh, full o.g., centered to top, Fine, A Great Rarity ..... 3000.00
- 85 田 **24c Green & Violet (120). Block of Four,** Wonderful Rich Colors, light cork cancels, perfs. just in at R., minute marginal thin in U. R. corner, A Very Rare Block ..... 1200.00
- 86 **24c Green & Violet, Inverted Center (120b).** Rich Colors, fairly light cancels, small closed tear, Fine appearance. Rare, with P. F. Certificate ..... 2100.00
- 87 ★田 **30c Blue & Carmine (121).** Block, Magnificent Deep Rich Colors, fresh, full o.g., Pre-Printing crease in two stamps, Fine, Extremely Rare ..... 3750.00
- 88 田 **30c Blue & Carmine (121).** Block of 12 (4X3) fairly light cork cancels, few stamps have trivial faults & a bit reinforced at center, otherwise Fine, Scarce & Attractive Showpiece ..... 500.00+
- 89 **90c Carmine & Black (122).** Horiz. Pair, Centered, Huge Margins, Gorgeous Colors, light cork cancels, a wonderful pair, Extremely Fine ..... 400.00
- 90 ★ **90c Carmine & Black Reissue (132).** Centered, Huge Margins, Brilliant Color, fresh, full o.g., Extremely Fine ..... 350.00

#### BANKNOTE ISSUES

- 91 ★田 **3c Green Grill, Imperforate (136b).** Top Plate No. Block of 8, mint, Extremely Fine, listed but unpriced in Scott ..... E. XIII
- 92 **12c Violet Grill (140).** Rich Color, neat quartered cork cancel, grill shows clearly, an Exceptionally Fine Copy of the Rare & Undercatalogued stamp ..... 250.00
- 93 **24c Purple Grill (142).** Nice Color, cork cancel, perfs. just touch at R., one perf. has minute thin, Fine appearance, signed "L. G. Brookman" ..... 2000.00
- 94 ★田 **7c Vermilion (160).** L. R. Sheet Corner **Block of Twenty Four (4X6).** Magnificent Color, fresh, full o.g., horiz. crease thru third horiz. row and in 3 stamps of bottom row, otherwise Fine, An Outstanding Showpiece ..... 2400.00+
- 95 ★田 **90c Rose Carmine (166).** Block of 4, fresh, o.g. Vivid Color, F.-V.F. ..... 450.00



- 96 ★ **2c Carmine Vermilion Special Printing (180).** Fresh and Fine copy of one of the Rarest Special Printings, with Phil. Foundation Certificate ..... 2200.00
- 97 ★田 **2c Pale Red Brown Special Printing (211B).** Block, Fresh, full o.g., minute margin thin in one, otherwise Extremely Fine ..... 450.00



# COLUMBIAN — TRANS-MISSISSIPPI ISSUES

- 98 P 1c-\$5.00 Columbian Large Die Proofs, India Mounted on Cards (230P-245P). Very Fine Set ..... 855.00



99

- 99 ★ 4c Blue Columbian Error (233a). Magnificent Color, fresh Exceptionally Fine Copy of this Rare Stamp ..... 2100.00
- 100 ★ 4c Blue Columbian Error (233a). Vivid Color, above average centering for this, no gum and small thins, Handsome copy of this Rare stamp, with P. F. Certificate ..... 2100.00
- 101 ★ 1.00 Columbian (241). L. Imprint Block, Vivid Color, fresh, Extremely Fine ..... 450.00+
- 102 ★ 1.00 Columbian (241). U.L. Sheet Corner Block of 8 with Imprint and "W", Magnificent Brilliant Color, fresh, natural pinhole in one, A Wonderful Block, Fine-Very Fine ..... 900.00+
- 103 ★ 2.00 Columbian (242). B. Marginal Block of 8 with two Plate numbers and portions of two Imprints, Rich Vivid Color, fresh, full o.g., trivial faint hinge thin on one, otherwise Fine ..... 1050.00+
- 104 ★ 3.00 Columbian (243). Block, Centered, Magnificent Rich Color, fresh, Extremely Fine ..... 1300.00
- 105 ★ 5.00 Columbian (245). Block, Centered, Extraordinary Deep Rich Color, Tiny natural paper speck in one, Extremely Fine ..... 1800.00
- 106 ★ 2c Pink Pair, Imperforate Horiz. (248a). Fine, Unpriced in Catalog, Rare E. XI
- 107 ★ 2.00 Bright Blue (262a). Block, fresh, Very Fine ..... 800.00
- 108 ★ 5.00 Dark Green (263). Block, Fine-Very Fine ..... 1200.00
- 109 ★ 1.00 Trans-Mississippi (292). Block, Unusually Rich Color & Impression, barest trace of hinging, Very Fine ..... 1250.00
- 110 ★ 1.00 Trans-Mississippi (292). Block, a trifle toned, one short corner perf., otherwise Very Fine ..... 1250.00
- 111 ★ 2.00 Trans-Mississippi (293). Block of Twenty (5X4). Rich Color, fresh, perfs just touch in Right Vertical Row, otherwise Very Fine, A Marvelous Showpiece ..... 7460.00+

W

AMERICAN BANK NOTE COMPANY.



102



NOTE COMPANY.

No. 105

No. 105

AMERICAN BANK

103



100

AMERICAN BANK NOTE COMPANY.



101



104

105



# TWENTIETH CENTURY



112

113

- 112 ★ 1c Pan American, Inverted Center (294a). Centered, Extremely Fine, with P.F. Certificate ..... 1600.00
- 113 ★ 2c Pan American Inverted Center (295a). Fresh, Well Centered, barest trace of pinpoint thin speck, One of the prettiest copies of this rarity in existence ..... 6000.00
- 114 ★ 2c Dark Blue (312). Block, Very Fine ..... 400.00



- 115 ✉ 4c Brown, Schermack Ty. III Private Perf. (314A). Huge margins, sheet margin at L., Tied by Sicklerville, N.J. pmk. on 1909 cover to Karl Koslowski, Discoverer of this stamp, One of only two known covers, A Magnificent Example of this 20th Century Rarity ..... 1750.00
- 116 ★ 5c Blue Lincoln, Imperforate (315). Right Imprint Plate No. Block of 6, Mint, usual minor gum wrinkles, Very Fine ..... 900.00
- 117 ★ 2c Lake Imperforate (320a). Center line Block, Large margins, Very Fine ..... 750.00
- 118 P 1c-90c 1908 Issue Small Die Proofs (331P-342P). Complete Set, Mounted on Gray Cards, Very Fine, Rare Set ..... 1200.00
- 119 ★ 10c Panama Pacific, Perf. 10 (404). Block, Extremely Fine ..... 450.00

- 120 ★ 田 2c Carmine Ty. I, Ia (499, two, 500, four). Mint Bottom Plate No. (10208)  
Block of 6 showing both Types, the only such combination on any plate,  
a Very Rare Block, Fine ..... E. XII
- 121 ★ 田 2c Rose A. E. F. Booklet Pane of 30 (499f). Fine ..... 550.00
- 122 ★ 田 2c Carmine Rose Ty. II (539). Block, Very Fine, one of the most Grossly  
Undercatalogued of U. S. Issues, A Rare and Most Desirable Block .... 600.00



- 123 ★ 1c Green Perf. 11 Rotary (544). Fresh, Fine, A Major 20th Century  
Rarity in unused Condition, with P. F. Certificate ..... Est. 3500.00
- 124 1c Green Perf. 11 Rotary (544). Horiz. Marginal pair, fresh and lightly  
cancelled, perfs just in at B., Very Rare in Multiples, with P. F. Cert. 600.00+
- 125 ✉ 1c Green Rotary (544). Tied on card, Newark, N. J. Oct. 15, 1923 pmk.  
Very Fine, with Philatelic Foundation Certificate, Very Rare on cover E. XII
- 126 ★ 1c Green Perf. 11 Rotary (594). Skillfully reperfed at L., P. F. Certificate  
states "Apparently unused . . . a stain has been removed", small thin, Fine  
appearing copy of this Rarity ..... 3000.00



127

128

- 127 ★ 田 2c Von Steuben, Imperforate (689a). Block, Pos. 69-70, 79-80, usual gum  
wrinkles, Extremely Fine, only part of one sheet was found ..... 1400.00+
- 128 ★ 田 2c Von Steuben, Imperforate (689a). UNIQUE Bottom Plate No. Block  
of 6, Huge Margins, two neatly sealed tears in sheet margin, one slightly  
into L. R. Stamp, otherwise Extremely Fine, a great 20th Century Rarity  
Est. 4000.00



92



93



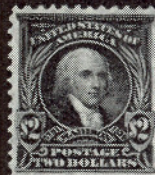
106



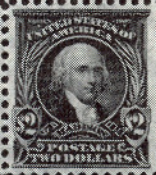
107



108



114



117



2952



10208



116



EX118



119



124



126



132



122

- 129 ★ 2c Yorktown, Imperforate Vertically (703c). Marginal Block, Very Fine,  
only 20 Pairs Exist ..... 1500.00



- 130 ★ 5c Kosciuszko, Imperforate Vertically (734a). Unique Bottom Plate No.  
Block of Eight, Left Vertical Pair severed thru center and neatly re-  
joined, balance Very Fine, only one sheet found of this Rarity .... Est. 2500.00
- 131 ★ 3c Deep Violet Coil, Imperforate (1057a). Horiz. Strip of 6, Left three  
stamps Imperforate, next perforated at R. only and L. pair normal,  
mint, barely touched at B., listed but unpriced in Scott ..... E. XII
- 132 ★ 5c Dark Blue Gray, Imperforate Coil (1229b). Mint Horizontal Pair,  
Very Fine ..... 300.00

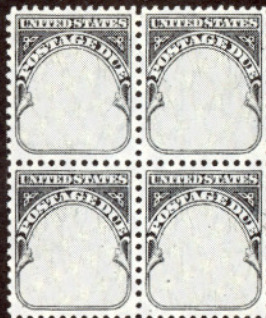
#### AIRPOST ISSUES



- 133 ★ 24c Carmine Rose & Blue Airpost, Inverted Center (C3A). Very Fine .. 12,500.00
- 134 ★ 65c-\$2.60 Graf Zeppelins (C13-C15). Blocks, Very Fine Set ..... 1505.00
- 135 ✉ 65c-\$2.60 Graf Zeppelins (C13-C15). Separately Tied by April 19, 1930  
Washington, D. C. Machine Cancels on Cacheted **First Day Covers &  
Card**, fresh, Very Fine Set, Very Scarce ..... 355.00



129



138



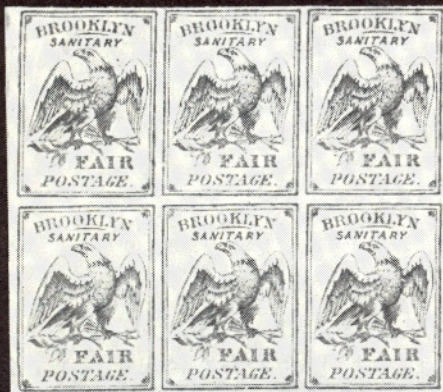
131



143



139



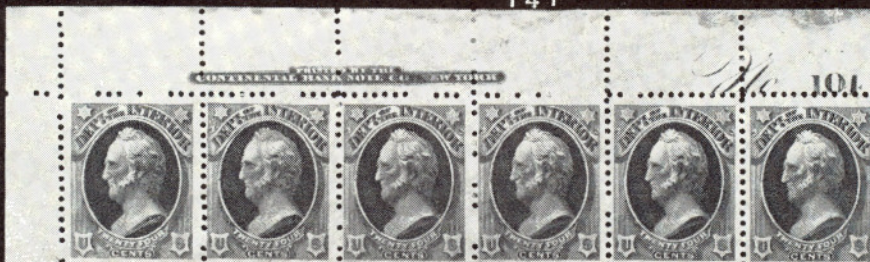
151



141



142



139



136

137

- 136 ★ 6c Carmine Airpost, Imperforate Between (C25b). Horiz. Pair, mint, Extremely Fine, Very Rare ..... 1500.00
- 137 ★ 15c Blue Green Airpost, Imperforate Between (C35a). Horiz. Pair, mint, as Fine as these come, perfs touch on most of the 20 pairs found ..... 1000.00
- 138 ★ □ Postage Due (1c) Carmine Rose & Black, Value Omitted (J89b). Recently discovered rare Error, a portion of two sheets found having this spectacular error, Extremely Fine ..... —
- 139 ★ 24c Vermilion Interior Dept., Soft Paper (O103). Mint Top Impt. Plate No. Strip of Six, trivial gum wrinkles, Fine-Very Fine, Rare Piece .... 600.00+

#### CARRIERS & LOCALS

- 140 ★ 1c Blue Eagle Carrier (L02). Complete Sheet of 100, fresh, full o.g., minute tear in B. margin, barely affecting one stamp, otherwise Extremely Fine, a Marvellous Showpiece ..... 500.00+
- 141 ★ Steinmeyer's City Post Paid 2c on Yellow (4LB21). Complete Sheet of Ten, faint small translucent spot, otherwise Extremely Fine ..... 800.00
- 142 ★ Steinmeyer's City Post 2c on Pink (4LB20). Complete Sheet of Ten, fresh, Full o.g., Extremely Fine ..... 600.00
- 143 3c City Dispatch Post on Grayish (6LB1). Large margins all around, clear Red "U. S. City Dispatch Post" pmk., faint creases, Extremely Fine appearance ..... 400.00
- 144 ☒ 3c U. S. City Dispatch Post Carrier on Grayish (6LB1). Large to Huge Margins all around, clear Red "U. S." in Octagon Cancel, matching Co. pmk on folded letter, Very Fine, A Rare & Beautiful Cover ..... 750.00
- 145 ☒ 25c Blue Wells Fargo & Co. Pony Express (143L8). Margins all around, Lovely Rich Color, tied by Perfectly Struck Blue Oval Virginia City, N. T. Company pmk. on 3c Pink Entire (U35) with W. F. & Co. frank, just trimmed into Embossed design at R., A Fresh and Very Handsome Cover ..... 800.00
- 146 ☒ 25c Red Wells Fargo & Co. Pony Express (143L9). Ample to Huge Margins except barely touched in L. R. corner, tied by Blue Oval Virginia City, N. T. Company pmk. on 3c Pink Entire (U35) with W. F. & Co. Frank, used to San Francisco, Fine ..... 800.00

#### ENVELOPE ENTIRES

- 147 ☒ 3c Pink on Orange Entire (U37). Paper somewhat toned, as always, fresh, Very Fine ..... 600.00
- 148 ☒ 6c on 6c Carmine on White Airpost Entire, Error (UC20). Mint, Very Fine, listed but unpriced in Scott, with P. F. Certificate ..... E. XIV

Monday Oct 15 1923 POST CARD



N. J.



FOR CORRESPONDENCE

FOR ADDRESS ONLY

Dear Aunt & Uncle: I am Mrs. C. Hartley  
May join me in

125



John M. M. M.

144

In, care  
Lakhurst, N. J.



fen and  
Lakhurst



AIR MAIL 10¢

149

VIA AIR MAIL

135



147

148



Lot James Tunny Esq  
105 Appraiser San Francisco

145

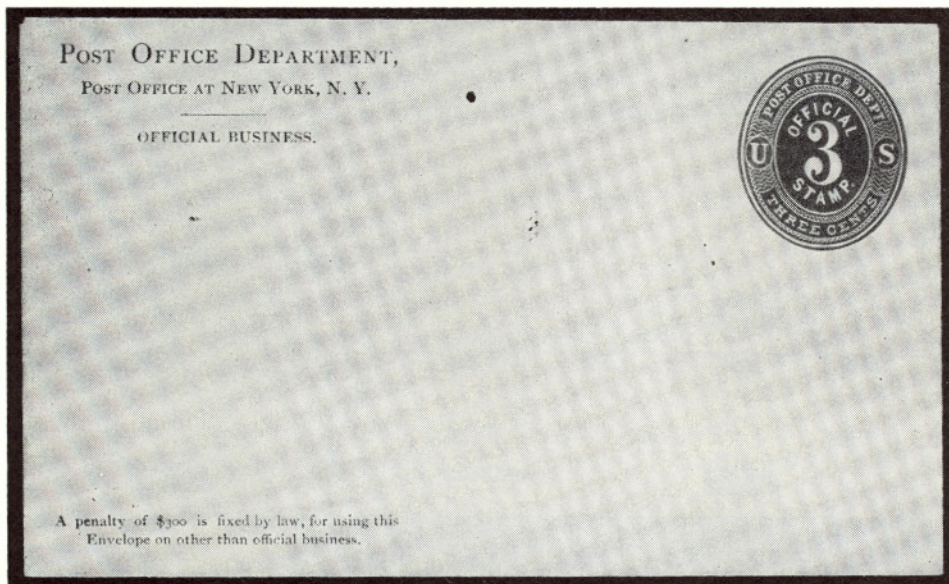
James Tunny Esq  
Appraiser  
Jackson St. Battery



146




121

- 149  **10c Air Letter Sheet Error, Blue Omitted, Entire (UC32c).** Unused, Very Fine, listed but unpriced in Scott, Rare ..... E. XI



- 150  **3c Blue on Blue Post Office Dept. Entire (U011).** N. Y. P. O. Corner Card, Penalty Impt., Fresh, Very Fine, A Great Rarity ..... 2250.00
- 151 ★  **Brooklyn, N. Y. Green Sanitary Fair (WVC1).** Horiz. Block of 6, Large Margins all around, full o. g., light horiz. crease at center and in two L. stamps, Extremely Fine Appearance, stated to be the largest Known Block ..... 600.00+

## REVENUES

- 152  **3c Green Proprietary, Part Perf. (R18b).** Irregular Block of 11, faint horiz. crease in margin between 3rd & 4th rows, slight perf. strengthening unlisted in Scott in multiples larger than a pair, cat. as 5 pairs and single \$900.00+, this is the only block and largest multiple known, Attractive Piece, Rich Color ..... E. XIV
- 153 **\$3.00 Charter Party with Design of 1c Green A. B. & D. Sands Private Proprietary on Back (RS85 var., RS208).** Only known copy, from which catalog listing was made, Light Pre- Printing paper crease, minute thin, Fine appearance, Unpriced in Scott, A Great Revenue Rarity ..... —
- 154 **70c Blue & Black, Inverted Center (R117a).** Light Herringbone and circular cut cancels, Fine ..... 750.00
- 155 **\$5.00 Blue & Black, Inverted Center (R127a).** Rich Color, light ms. cancel, Exceptionally Choice copy of this elusive stamp ..... 500.00
- 156 **\$200.00 Blue, Black & Red (R132).** Centered, light ms. & clear Blue Hand-stamp cancels, a Gem, Extremely Fine ..... 700.00
- 157 **\$500.00 Black, Green, & Red (R133).** Exceptionally Brilliant, Vivid Colors, neat ms. cancel, light horiz. crease, A Gorgeous Example of this Popular Rarity ..... 1850.00



192



193



157



197



194



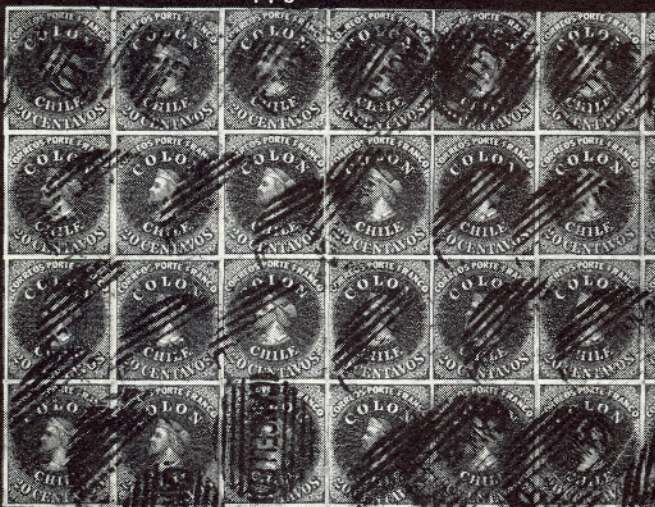
179



152



198



195



156



177

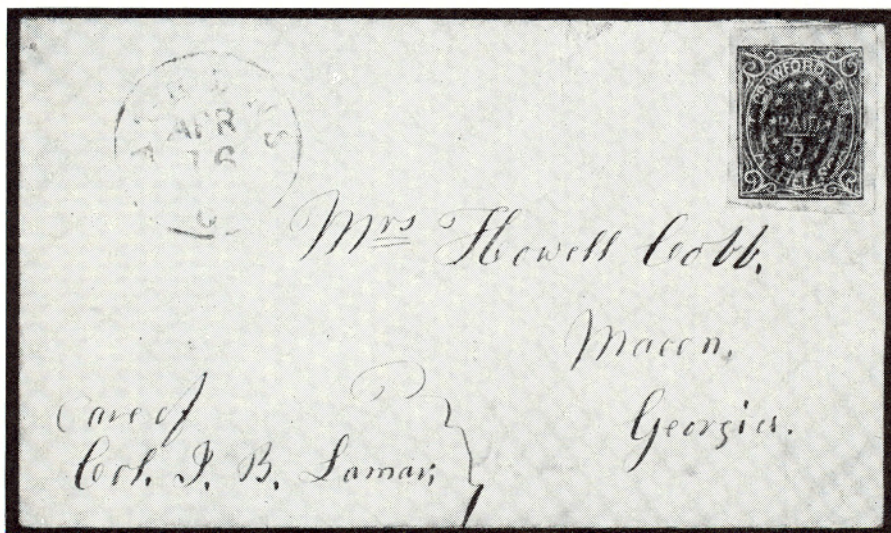


158

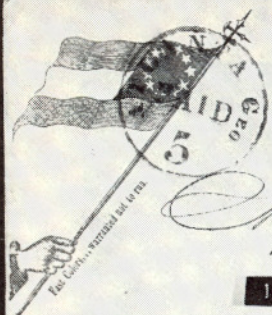
159

- 158 **1c Green & Black Proprietary, Inverted Center (RB1a).** Handstamp cancels, barest trace of light bend, Fine ..... 700.00
- 159 **3c Green & Black Proprietary, Inverted Center (RB3d).** Blue "Apr 15, 1874" cancel, tiny corner creases & couple blunt perfs., Fine appearance, One of the Rarest of all United States Stamps ..... 4250.00

### CONFEDERATE STATES



- 160 ☒ **Athens, Ga. 5c Red, Ty. II (5X2).** Huge margins all around, grid cancel, not tied, Athens pmk., on neat cover to Macon, Wonderful Example of this Rarity, Extremely Fine, Ex Wiltsee, Worthington ..... 1700.00
- 161 ☒ **Atlanta, Geo. Paid 5 Handstamp Provisional (6XU2).** On Multicolor Patriotic with Hand Waving 11 star Flag and "Fast Colors, Warranted Not to Run", clear "Atlanta, Ga. Dec. 17, 1861" pmk., Ex White and Emerson fresh, Very Fine, A Rare & Handsome Cover ..... 500.00
- 162 ☒ **Austin, Texas Paid 10** Adhesive on Orange, same Handstamp as 9XU1 Entire, Cut Square, fastened by Wafer on White Entire to San Antonio with "Austin Tex. Aug. 23, 1862" pmk., Fine, Rare, unlisted in Scott, mentioned in Dietz but not in this color. Ex Caspary ..... —



*Miss M. J. Matthews*

*Mr. E. S. Matthews*  
*San Antonio*

161

162



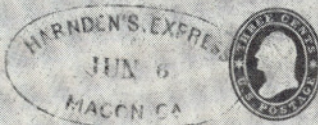
*Miss Jennie Rowell.*  
*Lawrence,*

*Emory*  
*July 22 1861*

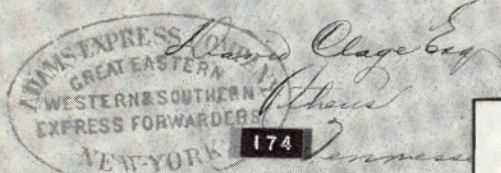
*Wm. H. Hinton*  
*Little-branch*

166

163



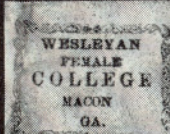
*R. L. L.*  
*Ind*



*R. L. L.*  
*Run A-7-8-*

174

175



*John Chapman*

*Miss Caroline*  
*near Henry W. Allen*


Usable exclus

vely in the New Orleans Post O



167



172

- 163  **Emory, Va. 5c Blue Provisional (24X1).** Four "X" cancels, on cover with matching ms. "Emory Va. July 22, 1861" pmk., these were printed on sheet margins of U. S. 1c stamps of 1857, this copy bears plate no. 8, with Impt. Plate No. Block of Eight 1c Blue Ty. V (24). Bearing matching number, Fine, A Most Interesting Combination, Ex Caspary ..... **E. XV**



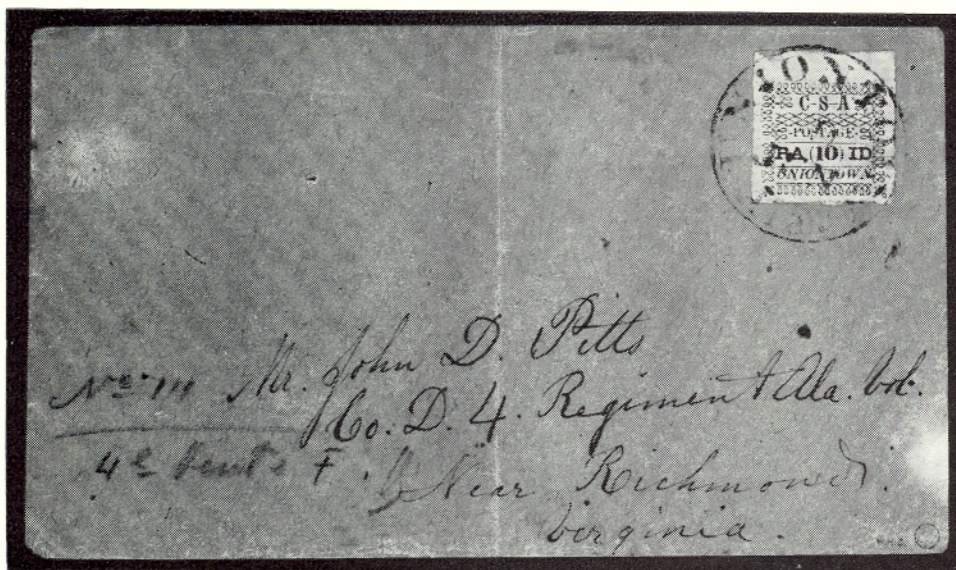
164

165

- 164 ★ **Greenville, Ala. 5c Red & Blue Ty. I Provisional (33X1).** Large margins, creases, Very Fine appearance, listed but unpriced unused in Scott, used cats. \$1500.00, with P. F. Certificate ..... —
- 165 **Livingston, Ala. 5c Blue Provisional (51X1).** Clear to large margins except slightly in at L. R. Corner, clear town pmk., Attractive Example of this Rare & Handsome Provisional, Ex Caspary ..... 1900.00
- 166  **Lynchburg, Va. 5c Blue Provisional (52X1).** Horiz. pair, margins except partly touched at L., tied by Lynchburg pmk. on cover to Ala., minor cover repair at R., otherwise Fine, a Very Scarce Cover ..... 1600.0
- 167  **Macon, Ga. 5c on Gray Green Provisional (53X2).** Ample to Huge Margins all around, tied by clear Macon pmk. on Green Cover with Fancy Corner Card of "Wesleyan Female College, Macon, Ga.", minor cover repair at U. L., otherwise Very Fine, A Scarce and Pretty Cover ..... 350.00



- 168 **New Orleans, La. 5c Brown (62X3).** Horiz. Marginal Pair, Large Margins, creased in margin between stamps before using, tied by New Orleans pmk. on folded letter to Eddyville, Ky., **Southn. Letter Unpaid** in Two Clear Blue Str. Lines of the Louisville P. O. matching str. line **Due 3** ties the Provisionals, and a 3c Red (26) tied by matching grid, then crossed out in pencil, probably not being recognized, due to having originated in the C. S. A., Provisionals have minor gum stains, otherwise Very Fine, A Wonderful Cover, Ex Caspary ..... **E. XV**
- 169 ★ **New Orleans, La. 5c Brown on Yellowish (62X5).** Block of 12 (3x4) with part imprint at T., Huge to Enormous Margins all around, fresh, o. g., couple minute natural gum soaks, Extremely Fine ..... 300.00+
- 170 ★ **New Orleans, La. 5c Brown on Yellowish (62X5).** Block of 12 (3X4) with Part Imprint at T., Huge to Enormous Margins, fresh, o. g., Extremely Fine ..... 300.00+



- 171 ☒ **Uniontown, Ala. 10c Red on Gray Blue (86X5).** Huge margins, sheet margin at T., Gorgeous Color & Impression, tied by clear Uniontown pmk. on cover to Richmond, One of the Choicest of Confederate Covers, A Gorgeous Gem, Extremely Fine, Ex Caspary, Ferrari ..... 4750.00
- 172 ☒ **Galveston, Tex. 20 Paid, Provisional Entire on Blue (similar to 98XU6).** "Galveston, Tex. Aug. 18" pmk., on neat folded Trans-Mississippi Rate Cover to the Governor of Louisiana, unlisted in Scott, from a new find and no doubt a Unique Rarity ..... E. XIV
- 173 ★ ☒ **10c Blue TEN (9).** Horiz. Block of 6, Clear to Enormous Margins with Sheet Margin at R., fresh, o.g., Wonderful Color, faint vertial creases, mostly between stamps, Extremely Fine appearance, A Rare & Handsome Block ..... 500.00+
- 174 ☒ **3c Red on Buff Star Die Entire (U27).** Tied by clear Harndens Express Macon, Ga. Jun 6 in oval, clear green Adams Express Company Great Eastern, Western & Southern Express Forwarders, New York, used to Athens, Tennessee, Rare & Extremely Fine ..... E. X
- 175 ☒ **R. E. Lee, Genl. Frank** on Cover addressed to Mrs. R. E. Lee, at Richmond, fresh, Extremely Fine, A Magnificent Cover ..... E. XIII
- 176 **HAWAII, 1851, 13c Blue Missionary (4).** Clear to Large Margins except outer frame partly cut at L., color faded, tied by Bold grid on small piece, usual faint tiny paper wrinkles, Very Rare ..... 4500.00
- 177 ★ ☒ — 1865, 5c Blue on Blue Numeral (21). Complete Pane of 10, Huge Margins all around, fresh o.g., light crease in U.L. corner and between 2nd & 3rd Horiz. Rows, otherwise Extremely Fine, **Only Complete Setting Known**, Ex Farrari ..... 840.00+



- 178 ★ **PHILIPPINES, 1899, 50c Orange Unwkd. (212).** Complete Sheet of 100 stamps with full Sheet Margins, one row of 10 stamps shows barest trace of wrinkling, a Magnificent Showpiece, probably Unique, V.G.-V.F. 3,300.00+
- 179 ★ **PUERTO RICO, Coamo Issue, 5c Black Provisional (201).** Cpl. Sheet of Ten, Large Margins, Part o.g., couple minor gum soaks, otherwise V.F. 800.00

## GENERAL FOREIGN

- 180 ★ **AUSTRIA**, 1919, 4k Carmine & Black Inverted Center (222). Centered, fresh, no gum, Very Fine ..... 400.00
- 181 ★ **BOLIVIA**, 1924, 10c Vermilion & Black Airpost **Inverted Center** (C1a). Only 50 Issued, Very Fine ..... 500.00
- 182 **BRITISH GUIANA**, 1850, 8c Green Cotton Reel (4). Cut to shape, town pmk., a bit discolored, otherwise Fine ..... 900.00
- 183 ☒ — 1850, 8c Green Cotton Reel (4). Cut to Shape, tied by Nov. 14, 1850 Demerara pmk. on neat folded local letter, slight cover fold barely affects stamp, Rare on Cover ..... 900.00+
- 184 — 1850, 12c Blue Cotton Reel (5). Cut Square, barely touched at R. and barely in at one point at U. L., unusually clear color & Impression, light cancel, light crease & tiny thin, Attractive Copy of this Rare Stamp ..... 1750.00
- 185 — 1850, 12c Pale Blue Cotton Reel (5a). Cut to Shape & mounted, small tear, Fine appearance ..... 800.00+
- 186 — 1850, 12c Indigo (5b). Cut to shape, Demerara pmk., Fine ..... 800.00+
- 187 — 1852, 1c Magenta (6). Sheet Margin Copy, Large to Enormous Margins, trivial flaws, Very Fine appearance ..... 850.00
- 188 — 1852, 4c Blue (7). Clear to Large Margins, Lightly Cancelled, surface faintly rubbed, Fine appearance ..... 1000.00
- 189 ★ — 1856, 4c Magenta Ship (14). Huge margins except cutting in very slightly at T., Lovely Color, horiz. crease, natural wrinkle in B. margin, not listed unused in Scott, listed but unpriced in Gibbons, Catalogues \$1000.00 used, with two German Certificates ..... —
- 190 ☒ — 1856, 4c Magenta Ship (14). Gigantic margins, clear pmk., not tied, another strike, on cover to Mahaicony, small cover faults, stamp repaired and two corners cut, far from design, Rare ..... 1200.00+
- 190A ★ — 1857, 7½p Green (9). Large Margins all around, Brilliant Color & Impression, small crease, Extremely Fine appearance ..... 900.00
- 191 ★ **CANADA**, 1959, 5c Seaway Inverted Center (387a). Large part o. g., V. F. 2500.00
- 192 ★☐ **CAPE OF GOOD HOPE**, 1855-58, 1/ Dark Green (6a). Triangular Block of 4, Large Margins all around, Brilliant Color and Impression, o. g., Superb ..... 380.00+
- 193 ★☐ — 1863-64, 6p Purple (14). Square Block of 4, Large to Enormous Margins all around, Rich Color and Impression, o. g., Extremely Fine 240.00+
- 194 ★☐ — 1863-64, 1/ Emerald (15). Square Block of 4, Large to Enormous Margins, Sheet margin at R. Rich Color & Impression o. g., tiny scissor cut in margin, far from stamps still Extremely Fine ..... 480.00+
- 195 ☐ **CHILE**, 1862, 20c Green (13). Block of 24 (6x4). Large to Huge Margins all around, except two stamps just touched at T., Deep Rich Color, Clear Impression, Light "Cancelled" in oval grid cancels, two corner stamps creased, and vertical crease at center, slightly broken in places, otherwise Extremely Fine, Ex-Ackerman ..... **E. XIV**



153



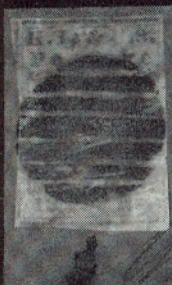
154



155



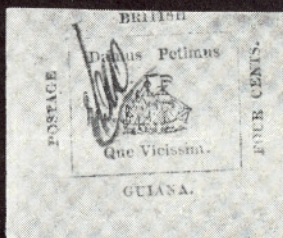
180



181



181



189



182



184



187



188



185



186



190 A



191



203



204



205



206



207



208



209



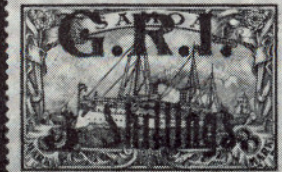
210



212



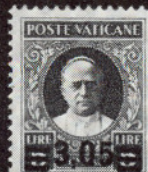
212 B



213



212 A



EX 216

# Ministero delle Colonie

Ord. TO - 20.000 - 6 - 33 P. 12.5 + 17,5

MODASCIPIO  
R00755



# Ministero delle Colonie

Ord. TO - 20.000 - 6 - 33 P. 12.5 + 17,5



# Colonie

Ord. TO - 20.000 - 6 - 33 P. 12.5 + 17,5



# le Colonie

Ord. TO - 20.000 - 6 - 33 P. 12.5 + 17,5



POSTA AEREA  
ROMA-MOGADISCIO  
MA/77A

A Sua Eccellenza  
il Cav. di Gran Croce  
Maurizio Rava,  
Governatore della Somalia,  
MOGADISCIO.

F. il Cav. di Gran Croce  
Maurizio Rava,  
Governatore della Somalia,  
MOGADISCIO.






MASSARA  
2691



*Mr. P. Barlow  
Sophia's Hope  
Mafraicon*



- 196  **CYRENAICA, ERITREA, SOMALIA, TRIPOLITANIA**, 1934, four 25L Copper Red "Servizio di Stato" Airpost (CBO1). The first three tied by Tobruk, Massaua and Mogadiscio special pmks., the last by Tripoli regular pmk. on four covers from the Colonial Department, the first 3 Registered. Covers bear special Rome-Mogadiscio Official Flight Cachets and Special Labels with town name. A Very Rare and Extremely Fine set ..... Bolaffi 3200.00
- 197 ★  **DANZIG**, 1920, 40 on 40pf Airpost, Double Surcharge (C1a). **Block of Nine**, fresh, Very Fine, only one sheet of 100 found ..... 900.00+
- 198 ★  **GREAT BRITAIN**, 1840, 1p Black (1). Marginal Block of 4, showing Imprint at B., Ample to Huge Margins all around, pinpoint thin speck in one, otherwise Extremely Fine, A Lovely Block of Philately's First Stamp ..... **E. XIV**



- 199 ★ — 1910, 2p Tyrian Plum Edw. VII (Gibbons 266a). Fresh Example of this Rare Stamp, Issuance of which was cancelled due to The Kings Death, Very Fine, with Royal Certificate ..... Gibbons £1350



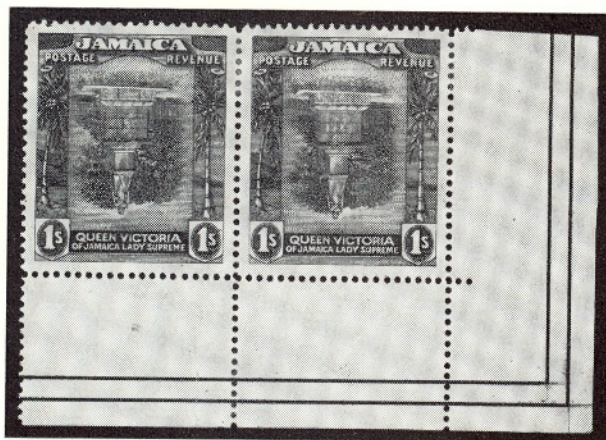
200

201

- 200 ★ — 1902, £1 Green I. R. Official (O26). Well centered, Fresh, one perf. slightly nibbed, otherwise Extremely Fine copy of this Rarity, Ex King Carol ..... 1400.00
- 201 — 1900, 1/ Carmine & Green, Official, Govt. Parcels, **Inverted Overprint** (O38a). Very Fine with R. P. S. Certificate ..... 1,750.00



- 202 田 **GREECE**, 1861, 1L Chocolate (1). **Used Block**, Clear to Large Margins all around, Rich Color "12" in Diamond of Dots Cancel. Exceedingly Rare in Block, faint crease thru two stamps, otherwise Very Fine, A Great Rarity ..... Est. 3000.00
- 203 ★ **GUATEMALA**, 1936, 5q Orange & Indigo Airpost **Error** Quetzal **omitted** (C69a). The rarest Airpost stamp of this country, Very Fine ..... 450.00
- 204 **INDIA**, 1854, ½a Blue, Printed on Both Sides (2b). A recent find, and the finer of the two known copies ..... 1100.00
- 205 ★ **ITALY**, 1930, 7.70L Prussian Blue & Gray Trans-Atlantic Squadron, in Horiz. Pair with **Error** Seven Stars, Mint, Extremely Fine (C27, C27a) 440.00



- 206A ★ **JAMAICA**, 1920, 1/ Bright Orange & Orange, Inverted Center (83a). B. sheet margin copy, Extremely Fine ..... 2250.00
- 206B ★ — 1920, 1/ Bright Orange & Orange, Inverted Center (83a). L. R. Sheet Corner copy, Extremely Fine ..... 2250.00
- 206 ★ — 1920, 1/ Bright Orange & Orange **Inverted Center** (83a). Horiz. L. R. Sheet Corner Pair, Largest Multiple Known, A Magnificent Showpiece of this Great Rarity, Extremely Fine (to be sold as pair if price realized exceeds that of two previous lots) ..... 4500.00

- 207 **MAURITIUS**, 1848, 1p Orange, Early Impression on Bluish (5). Margins all around, Unusually Fine Impression with all Vertical & Diagonal lines sharp & clear, Magnificent Rich Color, clear 2 Ring "3" cancel of Pamplémousses, A fresh and pretty copy of this Rarity ..... 1000.00
- 208 ★ **NEW BRITAIN**, 1914, 2/ G. R. I. on 2m Blue (40). 200 stamps Issued, centered slightly to R., Very Fine (Michel Dm 1200.00) ..... 150.00
- 209 ★ — 1914, 5/ G. R. I. on 5m Slate & Carmine (42). Only 30 stamps issued, Very Fine (Michel Dm 9500.00) ..... 1200.00
- 210 ★ **NEWFOUNDLAND**, 4p Scarlet Vermilion Flowers (4). Large margins, vivid color, A Magnificent Copy, Very Fine ..... 1300.00



- 211 ☒ — 1927, 60c Black De Pinedo Airpost (C4). Tied on cover to London by St John May 20, 1927 Machine Cancel, Rome Backstamp, No Flap, Very Fine, A Rare and Undercatalogued Stamp ..... 950.00+
- 212 ★ **NIGER COAST PROTECTORATE**, 1893, 5/ on 2p Green & Carmine (32). Very Fine, P. F. Certificate ..... 750.00
- 212A ★ **ST. VINCENT**, 1880, 5/ Rose (29). Very Fine ..... 300.00
- 212B ★ — 1881, 4p on 1/ Vermilion (33). Fine, R. P. S. Certificate ..... 500.00
- 213 ★ **SAMOA**, 1914, 3/ G. R. I. on 3m Black Violet (112). Negligible pin point thin speck, V. F. appearance, B. P. A. Certificate (Michel Dm 1900.00) ..... 300.00
- 214 ★田 **TRINIDAD**, 1859, 1/ Slate Blue (17). Block of 72 (12X6). Sheet margins at T. and sides, Large Margin at B., Unusually Rich Color & Impression, o. g., Extremely Fine, Ex T. C. Henry ..... 2700.00+
- 215 ★ **VATICAN CITY**, 1929-64, beautiful collection of 466 unused stamps and 2 Souvenir Sheets; with exception of a few minor values, complete, incl. Provisional overprints, Juridical Congress, Press, Archaeological Congress, Tobias, U. P. U., Gratianus and all other better sets, mostly unhinged, Very Fine ..... 3539.64
- 216 ★ — 1934, 40c-3.70L Provisional overprints (35-40). Very Fine set ..... 1232.50

END OF SALE — THANK YOU

## *RARITIES OF THE WORLD*

Our 1965 annual Rarity Auction Sale has a catalog value of one-third of a million dollars, and offers a unique opportunity to obtain some of the most outstandingly rare stamps and covers of the world.

During the auction colored slides will be shown of all the lots. For your convenience seating reservations for the auction at the Hotel Plaza can be made at our office.

We are proud to announce in our 1964 banner year of auctions we have conducted four different auction sales which grossed over \$100,000.00 each. No other stamp auction firm in this country held this many six figure auctions in the past year. Another record was broken for a single session sale when our Rarity Sale of 1964 grossed \$241,000.00. Many single record prices were established during the year including the highest price ever realized for a United States stamp, the Boscowen Postmaster Provisional at \$23,000.00.

A full calendar of auctions scheduled for the coming season assures 1965 another record year.



Robert A. Siegel Auction Galleries, Inc.

## IS YOUR COLLECTION FOR SALE?

REALIZE IMMEDIATE CASH  
PLUS THE ADDED ADVANTAGE OF  
SELLING THROUGH OUR AUCTIONS

We will advance immediate cash up to 75% of our appraisal value, of what your collection should realize at auction. There is no interest charge.

Your collection will then be sold in one of our coming auction sales. All stamps are expertly and advantageously lotted in attractive, well illustrated catalogs. Lotting is meticulously planned under our personal supervision. Commission is 20% of the gross realization. There is no lotting fee or any other charges. Final settlement is made within five weeks after the sale. We have been continuously conducting stamp auctions in the United States for over thirty-four years.

Valuable collections and stamp holdings are especially wanted, but we will accept properties valued from \$500 upwards. Send all stamps direct for appraisal. Auction advance will be remitted shortly after receipt. If not entirely pleased, stamps will be returned at our expense. If circumstances warrant due to bulk or value, we will travel anywhere to inspect important properties.

ROBERT A. SIEGEL  
AUCTION GALLERIES, Inc.

(Licensed and Bonded Auctioneer)

10 EAST 52nd STREET

NEW YORK CITY

(Tel. PL. 3-6422)

# List of Prices Realized

## RARITIES OF THE WORLD

WEDNESDAY, FEBRUARY 24th, 1965

Robert A. Siegel  
AUCTIONS

10 EAST 52nd STREET NEW YORK, N. Y. 10022

Tel.: PLaza 3-6422

Lot #	Price	Lot #	Price	Lot #	Price	Lot #	Price	Lot #	Price	Lot #	Price
1	425.00	38	450.00	75	300.00	112	2300.00	149	225.00	186	450.00
2	500.00	39	725.00	76	2700.00	113	5600.00	150	1200.00	187	200.00
3	1700.00	40	525.00	77	WD.	114	400.00	151	700.00	188	375.00
4	1750.00	41	575.00	78	525.00	115	3100.00	152	650.00	189	475.00
5	1600.00	42	1200.00	79	350.00	116	600.00	153	1050.00	190	325.00
6	1350.00	43	550.00	80	500.00	117	725.00	154	400.00	190A	250.00
7	1300.00	44	350.00	81	1700.00	118	825.00	155	475.00	191	1175.00
8	2800.00	45	575.00	82	1400.00	119	525.00	156	600.00	192	350.00
9	2900.00	46	1200.00	83	650.00	120	375.00	157	1100.00	193	325.00
10	700.00	47	825.00	84	2000.00	121	425.00	158	375.00	194	450.00
11	900.00	48	475.00	85	725.00	122	675.00	159	2400.00	195	975.00
12	775.00	49	350.00	86	875.00	123	2500.00	160	1250.00	196	2600.00
13	375.00	50	900.00	87	2200.00	124	425.00	161	550.00	197	400.00
14	475.00	51	1000.00	88	275.00	125	400.00	162	300.00	198	1000.00
15	900.00	52	525.00	89	775.00	126	775.00	163	1000.00	199	4200.00
16	575.00	53	300.00	90	425.00	127	1850.00	164	850.00	200	975.00
17	500.00	54	275.00	91	600.00	128	2700.00	165	950.00	201	1200.00
18	2600.00	55	5400.00	92	400.00	129	1300.00	166	875.00	202	2100.00
19	2000.00	56	300.00	93	1250.00	130	1650.00	167	475.00	203	325.00
20	7250.00	57	475.00	94	1300.00	131	350.00	168	2200.00	204	750.00
21	6000.00	58	550.00	95	425.00	132	270.00	169	300.00	205	380.00
22	600.00	59	3100.00	96	3000.00	133	12500.00	170	275.00	206	4000.00
23	4000.00	60	3200.00	97	375.00	134	975.00	171	4750.00	207	250.00
24	1150.00	61	1750.00	98	550.00	135	340.00	172	650.00	208	130.00
25	775.00	62	875.00	99	2700.00	136	700.00	173	325.00	209	925.00
26	700.00	63	425.00	100	1350.00	137	550.00	174	375.00	210	900.00
27	900.00	64	875.00	101	500.00	138	400.00	175	625.00	211	1650.00
28	550.00	65	625.00	102	900.00	139	650.00	176	1550.00	212	550.00
29	500.00	66	400.00	103	1500.00	140	200.00	177	1450.00	212A	155.00
30	475.00	67	250.00	104	2100.00	141	350.00	178	900.00	212B	225.00
31	550.00	68	850.00	105	2800.00	142	300.00	179	475.00	213	230.00
32	450.00	69	475.00	106	325.00	143	110.00	180	340.00	214	1900.00
33	225.00	70	450.00	107	600.00	144	500.00	181	250.00	215	2400.00
34	275.00	71	525.00	108	700.00	145	550.00	182	225.00	216	925.00
35	2800.00	72	325.00	109	1050.00	146	650.00	183	550.00		
36	3800.00	73	400.00	110	925.00	147	160.00	184	525.00		
37	625.00	74	1000.00	111	7250.00	148	425.00	185	425.00		

Robert A. Siegel Auction Galleries, Inc.  
 Prices Realized for  
 Sale 283 February 24, 1965 1965 Rarities of the World

Lot#	Realized	Lot#	Realized	Lot#	Realized	Lot#	Realized	Lot#	Realized
1	425	37	625	73	400	110	925	146	650
2	500	38	450	74	1,000	111	7,250	147	160
3	1,700	39	725	75	3,000	112	2,300	148	425
4	1,750	40	525	76	2,700	113	5,600	149	225
5	1,600	41	575	78	525	114	400	150	1,200
6	1,350	42	1,200	79	350	115	3,100	151	700
7	1,300	43	550	80	500	116	600	152	650
8	2,800	44	350	81	1,700	117	725	153	1,050
9	2,900	45	575	82	1,400	118	825	154	400
10	700	46	1,200	83	650	119	525	155	475
11	900	47	825	84	2,000	120	375	156	600
12	775	48	475	85	725	121	425	157	1,100
13	375	49	350	86	875	122	675	158	375
14	475	50	900	87	2,200	123	2,500	159	2,400
15	900	51	1,000	88	275	124	425	160	1,250
16	575	52	525	89	775	125	400	161	550
17	500	53	300	90	425	126	775	162	300
18	2,600	54	275	91	600	127	1,850	163	1,000
19	2,000	55	5,400	92	400	128	2,700	164	850
20	725	56	300	93	1,250	129	1,300	165	950
21	6,000	57	475	94	1,300	130	1,650	166	875
22	600	58	5,500	95	425	131	350	167	475
23	4,000	59	3,100	96	3,000	132	270	168	2,200
24	1,150	60	3,200	97	375	133	12,500	169	300
25	775	61	1,750	98	550	134	975	170	275
26	700	62	875	99	2,700	135	340	171	4,750
27	900	63	425	100	1,350	136	700	172	650
28	550	64	875	101	500	137	550	173	325
29	500	65	625	102	900	138	400	174	375
30	475	66	400	103	1,500	139	650	175	625
31	55	67	250	104	2,100	140	200	176	1,550
32	450	68	850	105	28,000	141	350	177	1,450
33	225	69	475	106	325	142	300	178	900
34	275	70	450	107	600	143	110	179	475
35	2,800	71	525	108	700	144	500	180	340
36	1,650	72	325	109	1,050	145	550	181	250

Robert A. Siegel Auction Galleries, Inc.  
Prices Realized for  
Sale 283 February 24, 1965 1965 Rarities of the World

Lot#	Realized	Lot#	Realized
182	225	213	230
183	550	214	1,900
184	525	215	2,400
185	425	216	925
186	450		
187	200		
188	375		
189	475		
190	325		
190A	250		
191	1,175		
192	350		
193	325		
194	450		
195	975		
196	2,600		
197	400		
198	1,000		
199	4,200		
200	975		
201	1,200		
202	2,100		
203	325		
204	750		
205	380		
206	4,000		
207	250		
208	130		
209	925		
210	900		
211	1,650		
212	550		
212A	155		
212A	155		
212B	225		
212B	225		