

#296

RARITIES

of the

World

Robert A. Siegel
SAUCTIONS

10 EAST 52nd STREET

NEW YORK, N. Y. 10022

CONDITIONS OF SALE

1. The terms of sale are strictly cash to the highest bidder. All buyers are expected to pay for lots within three days of receipt, unless special arrangements have been made prior to the sale.
2. All bids are per lot as numbered in the catalogue and not per piece, unless otherwise announced by the auctioneer at the time of sale.
3. Any lot the description of which is incorrect is returnable only within three days of receipt. All disputed lots must be returned intact as received. Lots containing five or more stamps are not returnable at any time. No lots may be returned by purchasers who have had the opportunity to examine them before the sale.
4. Successful mail bidders, unless they are known to us or supply acceptable references, will be notified of the amount of the lots secured for them, and are expected to send payment in full before the lots are forwarded.
5. If the purchase price has not been paid within the time limit, or lots taken up within seven days from date of sale, they may be resold and any losses arising from such sale charged to the defaulter.
6. All stamps are sold as genuine, except where sold "As Is". Claims for any lot proving otherwise, must be made within two weeks from date of sale.
7. The right is reserved to group two or more lots, also withdraw any lot or lots from the sale, or to act on behalf of the seller.
8. Until paid for in full all lots remain the property of Robert A. Siegel.
9. No commission is charged for buying at our sales, but all forwarding charges will be added to the purchase price.
10. Upon written application lots may be sent for examination prior to the auction to persons known to us or who supply acceptable references, conditional upon being mailed back by registered mail, adequately insured, within 24 hours of receipt. The applicant is completely responsible for all lots sent for examination, and for the insurance of same against mishap, from the time of receipt until they are actually received back, and is to pay all expenses of postage and insurance.
11. The placing of a bid shall constitute acceptance of the foregoing conditions of sale.

ROBERT A. SIEGEL

ANDREW LEVITT, Licensed Auctioneers

In sending bids, always state the highest price you are prepared to pay for the lot. Your limit will not be used as a starting bid unless absolutely necessary.

DESCRIPTIONS

Superb or Extremely Fine—the finest condition for noteworthy, outstanding copies.

Very Fine (VF)—means that there is a slight deviation from the above.

Fine (F)—means that the perforations do not touch the design on issues after 1890, but in some cases may just touch in earlier issues; if used, fairly lightly cancelled.

Very Good (VG)—means that the appearance is generally fine but that the perforations cut the design slightly.

Good (G)—means average off-centering; or fairly attractive with slight defects.

Original gum (OG) is not to be expected on 19th Century stamps unless so stated.

Mint—have never been hinged.

Scott 1965 Specialized United States Catalogue is used for cataloging our lots of United States and Scott's Standard Catalogue, 1965 for others.

WE SOLICIT FINE MATERIAL FOR FUTURE SALES

FEBRUARY 24th, 1966

ROBERT A. SIEGEL AUCTION GALLERIES, Inc.
10 East 52nd Street
New York, N. Y. 10022
Tel.: PLaza 3-6422 (Area Code 212)

Please purchase for me at your auction to be held **February 24th, 1966** the lots named below, the prices annexed being my limit on each lot. I agree to remit for purchases in accordance with the **Conditions of Sale** and to return no lots later than three days after receipt.

REFERENCES PLEASE
(if unknown to us)

SIGNED

New York State residents kindly include
County in address.

.....
County

[illegible]

Upon request, estimate of value furnished on any lots in this auction.

RARITIES OF THE WORLD

We are pleased to present our third annual Rarities of the World auction. In the three years since its inception, this sale has become the traditional highlight of the auction season. Again this year it offers only the choicest of philatelic rarities, the property of various owners including Williams College, with an aggregate catalog value of over \$300,000.00. Highlights include a complete plating of all ten positions of the Brattleboro Postmaster's Provisional, all United States Postal Inverted Centers, the ex-Newbury copy of the 15c Z. Grill, hard and soft paper Banknote Special Printings, 20th Century United States rarities, Confederates, and Foreign stamps and covers including a Newfoundland Hawker Airmail. Indeed, it is no idle boast to describe this auction as "the sale of the year".

Color slides of each lot will again be shown during the auction which will be held in the Crystal Room of the Hotel Plaza, and refreshments will be served following the auction. As in the past, seating reservations, while not required, are recommended and may be made at our office prior to the sale.

1965 has proved to be another record breaking year with sales well over one and a quarter million dollars. Our sales in 1966 already appear destined to exceed last year's. In the spring session we will offer at public auction in March a United States sale of over 2,000 lots, especially strong in 19th century stamps and covers, followed by a collection of British America, nearly complete with many rarities. At the end of April we will offer a magnificent collection of unused United States in outstanding condition. This collection is valued at over a quarter of a million dollars and includes almost every major rarity. Many additional properties are already on hand for sale throughout the season and potential vendors who wish their material to be included in one of our coming auctions are urged to contact us promptly.



Robert A. Siegel Auction Galleries, Inc.

296th SALE

RARITIES
OF THE
WORLD

AT PUBLIC AUCTION

Thursday

FEBRUARY 24th, 1966

AT 7:45 P.M.

Hotel Plaza, Crystal Room

Robert A. Siegel
AUCTIONS

10 EAST 52nd STREET NEW YORK, N. Y. 10022

Tel: PLaza 3-6422

New Orleans, Feb. 27

M^r. Aug^r. Bousquet

1

James M. Buchanan
5 Cents.

PAID

M^r. Pennington

3

PAID

E. B. Peatly Esq
Hagerstown

FEB. 1846

5

PAID

James M. Buchanan
5 Cents.

M^r. Garton & Williams

2

PAID

10

10

E. B. Peatly Esq

6

Dec. 1, 1846

August Belmont Esq

PAID

New York

4

1846

UNITED STATES

STAMPLESS TERRITORIAL

- 1 ☒ **N* Orleans Feb. 27** in Bold str. line, "25" in ms., on neat folded 1804 cover to Philadelphia. Only three examples of this Rare **Orleans Territory** pmk. known, A Wonderful Cover, Extremely Fine E. XI

POSTMASTER'S PROVISIONALS

- 2 ☒ **Baltimore, Md. 5c Black on White (3X1)**. Rich Impression, shows Full Frame Line on sides & small portion at B., Huge Margin at T., tied by ms. cancel, Blue Baltimore pmk., matching **Paid**, on neat folded letter to Va., a Fresh and Fine Example of this Rarity 2000.00
- 3 ☒ **Baltimore, Md. 5c Black on Bluish (3X3)**. Full Frame Lines all around, Sheet Margin at R., tied by clear Blue Baltimore pmk., another strike, matching **Paid**, "Paid" and "5" in ms. on neat folded March 1846 cover to Phila., faint filing, fold thru stamp, A Rare and Extremely Handsome Cover, Ex Caspary 2650.00
- 4 ☒ **Paid** in Bold Red 47x23mm Box on Blue, Portion of clear Blue Baltimore pmk. on neat folded Dec. 1846 letter to N. Y. with another Whole Pmk. and Matching "5" in Oval, horiz. letter fold barely affects label in U.L. margin, Very Fine, Ex Caspary, One other known E. XIII
- 5 ☒ **Paid** in clear Red 47x23mm Box, tied by Blue Baltimore Pmk., matching "Paid" and "5" in Oval on neat folded Feb., 1846 cover to Hagerstown, Very few examples are known of this Rare marking, Very Fine E. XI
- 6 ☒ **Paid** in 47x23mm clear red Box, tied by clear Blue Baltimore, Md. pmk., matching "Paid," "10" in Oval on neat folded Sep., 1846 Cover to Hagerstown, Very Fine, stated by Geo. Sloane to be the only known example of this Rare marking with 10c Rate. E. XII

ESTIMATES

Our sales contain many 19th Century covers and fancy cancellations. We have had many requests to give the estimated cash value on these lots. We are trying to place a fair net valuation on each lot as a guide for bidding when no catalogue value portrays the true value. The chart below will be used, for example E. IV means our estimate cash value on this lot is \$30.00 to \$40.00. Lots may actually realize more or less than these estimates and under no circumstances are these estimates to be considered reserves but merely a guide to bidding.

E. I	up to \$10.00	E. VIII	\$100.00 to \$150.00
E. II	\$10.00 to \$20.00	E. IX	\$150.00 to \$200.00
E. III	\$20.00 to \$30.00	E. X	\$200.00 to \$250.00
E. IV	\$30.00 to \$40.00	E. XI	\$250.00 to \$350.00
E. V	\$40.00 to \$50.00	E. XII	\$350.00 to \$500.00
E. VI	\$50.00 to \$75.00	E. XIII	\$500.00 to \$750.00
E. VII	\$75.00 to \$100.00	E. XIV	\$750.00 to \$1000.00
		E. XV	over \$1000.00

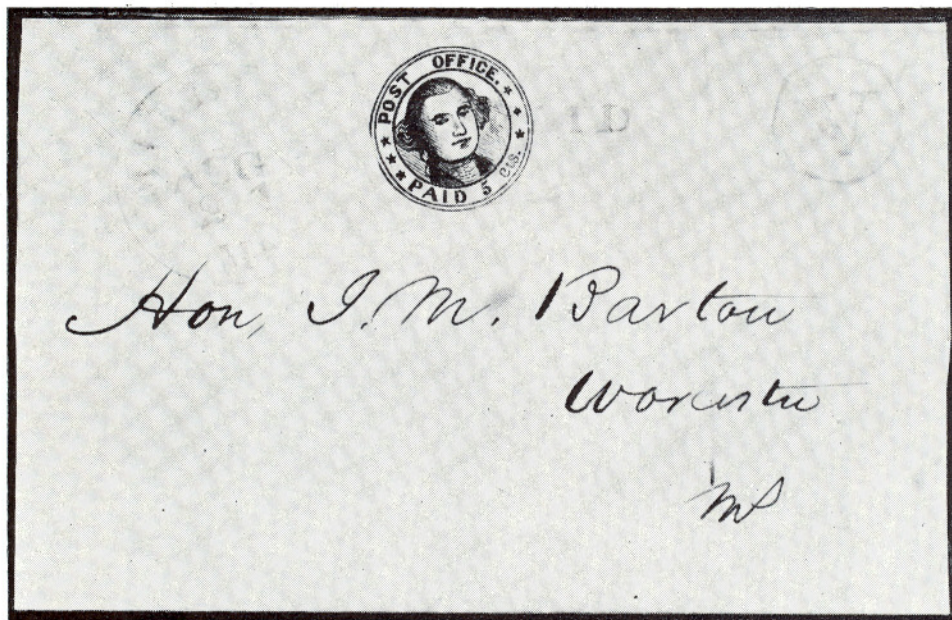
LOTS ON VIEW FROM FEBRUARY 17th
OFFICE OPEN EVERY SATURDAY



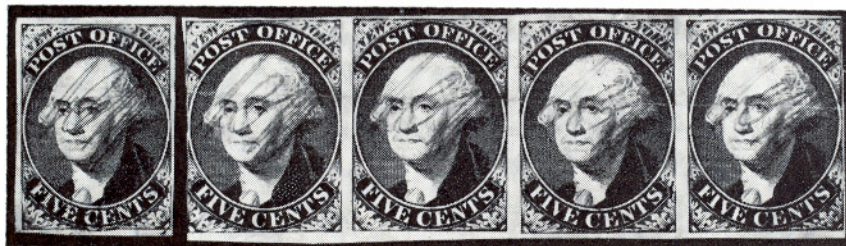
- 7 **Brattleboro, Vt. 5c Buff (5X1). Complete Reconstructed Plate of Ten**
 Position #1; tiny red pen-mark, margins all around except touches bottom right, fine;
 Position #2; margins all around, tiny red penmark, very fine;
 Position #3; margins all around, very large at top, tiny red pen-mark, very fine;
 Position #4; close on all sides, blue numeral 5 cancel;
 Position #5; red pen-mark, two thinnings, very large margins at top and right, large at bottom and close at left;
 Position #6; margins all around, red P (aid) cancel, exceptionally fine;
 Position #7; margins all around, very large at bottom, red pen-mark, exceptionally fine;
 Position #8; margins all around, **full imprint** at bottom, red pen-mark, exceptionally fine;
 Position #9; margins all around, very large at bottom, exceptionally fine;
 Position #10; margins all around, red pen-mark, tiny thinning.
 A Fabulous and Unique Offering 18,000.00+



- 8 ☒ **Brattleboro, Vt. 5c Black on Buff (5X1). Pos. 1, Margins to barely touched, Lovely Color & Impression, tied by Red "Paid," clear matching Brattleboro, Vt. pmk., on neat folded Sept., 1846 Cover to Hartford, Gorgeous example of this Rare & Greatly Undercatalogued Stamp, Ex Caspary** 2850.00



- 9 ☒ **Millbury, Mass. 5c Bluish (7X1).** Margins at Right and Bot., just clear at Top, cutting in slightly at left, tied by Red Paid, Millbury, Ms. Aug. 21 pmk. and red "V" in circle on cover, Ex Green, Harris, Fine and Exceedingly Rare Postmaster 10,000.00



10

11

- 10 ★ **New York 5c Black (9X1).** Pos. 2, **Major Double Transfer** at B., Large Margins, Brilliant Color & Impression, fresh, part o.g., negligible minute corner crease, entirely in margin, still Very Fine, A Rare & Lovely Stamp 750.00
- 11 ★ **New York 5c Black (9X1).** Horiz. Strip of Four, Pos. 32-36. Clear to Huge Margins except partly touched at L., Nice Color & Impression, Horiz. Crease, Rare Strip 1400.00+
- 12 ☒ **New York 5c Black (9X1).** Pos. 36, Double Frame at T., Large Margins, Magnificent Color & Impression, tied by "New York 5 Paid" in Jumbo Circle on neat folded Letter to France, "Str Cambria" in ms., Red Transits, A Gorgeous Cover, Extremely Fine, Ex Newbury E. XIII
- 13 ☒ **New York 5c Black (9X1).** Margins all around tied by large red New York May 15, Paid 5 pmk. on folded cover to Edinburgh, Scotland, various transit marks on back, Very Fine E. XII

- 14 ☒ **New York 5c Black (9X1).** Pos. 21, Margins all around, tied by Red Crayon, **Boston 5 cts pmk.**, on cover to New York, Name of Addressee has been cut out and neatly repaired, An Attractive Example of this Rare Usage from Boston, Fine **E. XI**
- 15 ☒ **New York 5c Black, R.H.M. Signature (9X1b).** Pos. 37, Large Margins except just in at B.L., almost unaffected by trivial cover bend, tied by light Blue ms. lines Red New York 5 cts 26 Jul. Pmk., matching **Paid** in Arc on neat folded cover, Handsome Example of this Rare Variety, which is Particularly Rare on Cover **E. XIV**



16

18

- 16 **Providence, R.I. 5c Black (10X1).** Pos. 4, Ample to Huge Margins, Rich Color & Impression, ms. "V" check mark & tied to piece by Red Providence pmk., Rare & Handsome, Very Fine, Ex Caspary **400.00**



- 17 ☒ **Providence, R.I. 5c Black (10X1).** Several Horiz. Pair, Pos. 7, 8, Large Margins all around, Unusually Brilliant Impression, light horiz. pre-printing paper fold, usual ms. "V" cancels, one just tied by Red "Paid," matching "10" and clear Providence, R.I. pmk. on small fresh cover to New Orleans, A Beautiful and Extremely Rare Cover, possibly one other cover with 10c Rate Exists. Listed but not priced, Ex Caspary **E. XV**



26



paid

George M. Dexter Esq.



12

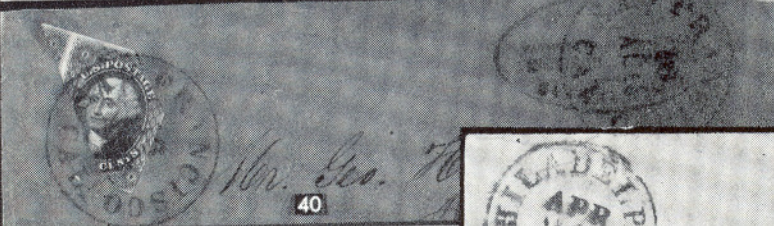


14

11 A. ... the Preston Pass



13



40

Mr. Geo. H.



47

Green ... Rhode Island



24

Chas. H.



50



*Kelsey
Baker St.
N.Y.*

41

- 18 **St. Louis, Mo. 5c Black on Greenish (11X1).** Large to Enormous Margins all around, Brilliant Color & Impression, Tied by clear St. Louis, Mo. pmk on small piece, A Beauty, Extremely Fine, Ex Caspary 850.00
- 19 ☒ **St. Louis, Mo. 10c Black on Greenish Ty I (11X2).** Margins all around, Magnificent Color & Impression, tied by Clear Red St. Louis, Mo. pmk., matching Paid, "10" in ms., on neat folded Charnley & Whelan cover to Philadelphia, Very Fine, A Magnificent Cover, Ex Caspary 1200.00
- 20 ☒ **St. Louis, Mo. 5c Ty III, 20c Ty II on Gray Lilac (11X4, two, 11X6).** Margins to Barely in, wonderful Rich Color & Impression, Tied by one clear Red St. Louis, Mo. pmk., matching "Paid," "30" in ms. on neat folded 7½"x3½" Apr. 1846 Cover from the Celebrated Charnley & Whelan Find, Probably a unique combination, most attractive Showpiece 9500.00
- 21 ☒ **St. Louis, Mo. 10c Ty III on Gray Lilac (11X5).** Huge Margins except just clear in L.R. Corner, Magnificent Color & Impression, tied by ms. cancel, clear Red St. Louis, Mo. pmk., matching **Paid**, on neat folded Oct. 1846 Letter to Galena, Ill. A Rare & Beautiful Cover, Very Fine 1250.00



- 22 ☒ **St. Louis, Mo. 20c Black on Gray Lilac Ty I (11X6).** Huge Margins except outer frameline partly trimmed at B., light ms. cancel and tied by clear Red St. Louis, Mo. pmk., matching "Paid," "20" in ms. on neat folded Charnley & Whelan cover to Phila., One of the most Attractive covers known of this great Rarity 6000.00

1847 ISSUE

- 23 ☒ **5c Red Brown (1).** Two Vertical Strips of three forming **Reconstructed Block of 6**, Pos. 79-80, 89-90, 99-100RI, Pos. 80RI and 90RI showing **Double Transfers A & B**, clear to Huge Margins all around, Magnificent Color & Impression, Brilliant Red Grid cancels, despite faint creases in upper two stamps a Magnificent Showpiece of Great Rarity, Ex Newbury (Photo) E. XIV
- 24 ☒ **5c Orange Brown (1b).** L.L. Sheet Corner Copy, Ample to Gigantic Margins, Vivid Color, Blue grid cancels, not tied, clear matching "Philada., Pa. 5 cts" pmk. on front only to Md., Rare & Beautiful, Extremely Fine E. XIII



PAID

[Signature]

Miss Emily Whelan

Philadelphia

Pa

Dec 31, 1845



PAID



Wm Hampstead Esq

Galena

Ill

mail



PAID

[Signature]

Miss Emily Whelan

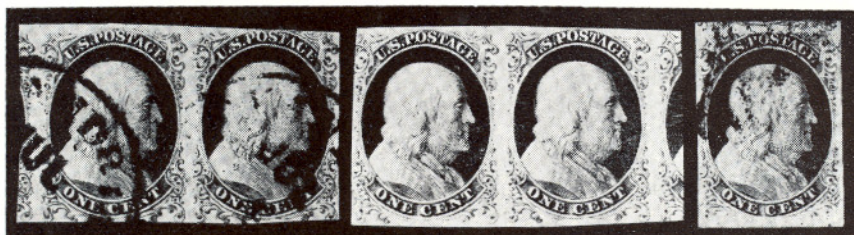
Philadelphia

Pa



- 25 ☒ **10c Black Diagonal Bisect (2a).** Well Tied by Red Square Grid, clear matching "New York Feb. 12" pmk., "Paid" in ms., "5" in Pencil, on neat folded Cover to Albany, Fine Example of this Very Rare Usage, with P. F. Certificate 1500.00
- 26 ☒ **10c Black (2).** Horizontal Strip of Five and Single, Margins except touched to slightly in at B., tied by Red cancels, Red **Little Miami R.R.** pmk. on Legal Size June, 1851 Cover to Baltimore, neatly sealed tears in 3 stamps, otherwise Fine, the Most Spectacular of U.S. Railroad Covers **E. XV**
- 27 ★ **5c Red Brown Reproduction (3).** U.L. Sheet Corner Copy, Huge to Gigantic Margins, Magnificent Color & Impression, **Stitch Wmk.** in Margin, Superb Gem 120.00

1851 ISSUE



- 28 **1c Blue Ty. 1a (6).** Horiz Pair, Pos. 94-95R4, Enormous Margins to just touched, bit irregular at B., wonderful Rich color, clear town pmks., fresh, Fine, Rare & Very Attractive Pair 950.00
- 29 **1c Blue Ty. 1a (6).** Horiz. Pair, Pos 97-98L4, Ample to Enormous Margins except just in at UL Corner, Wonderful Color, almost invisible ms. cancel, two minute thin specks, one in margin, otherwise Extremely Fine, a Rare and Beautiful Pair 950.00



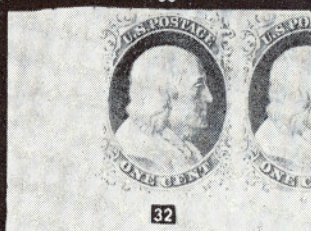
23



33



37



32



43



30



39



48



44



27

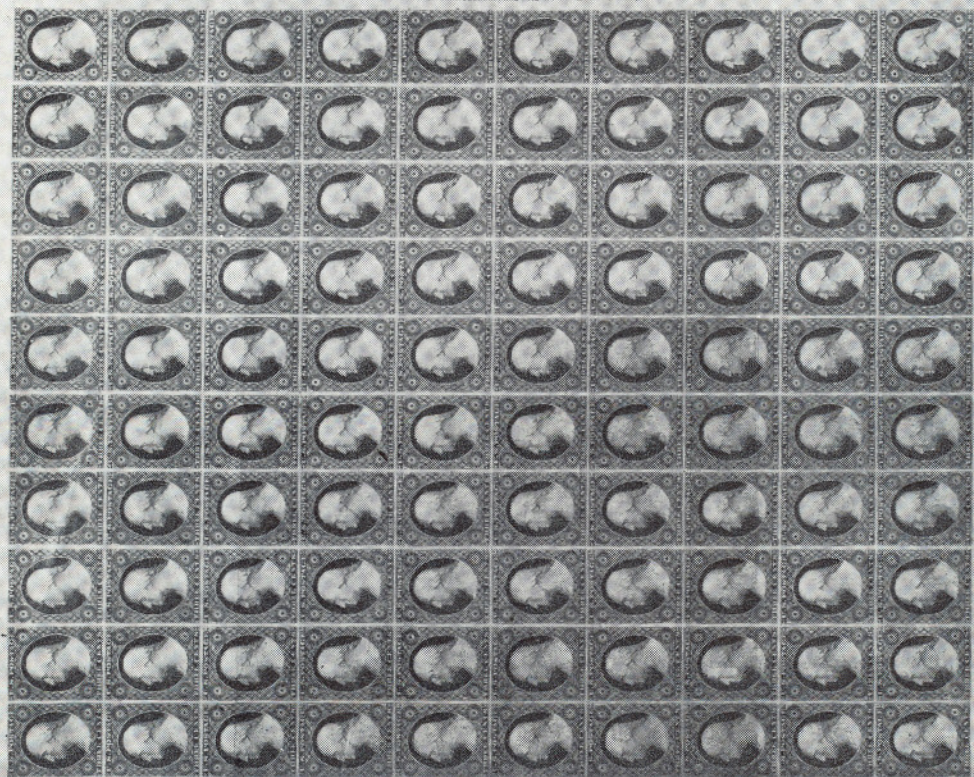
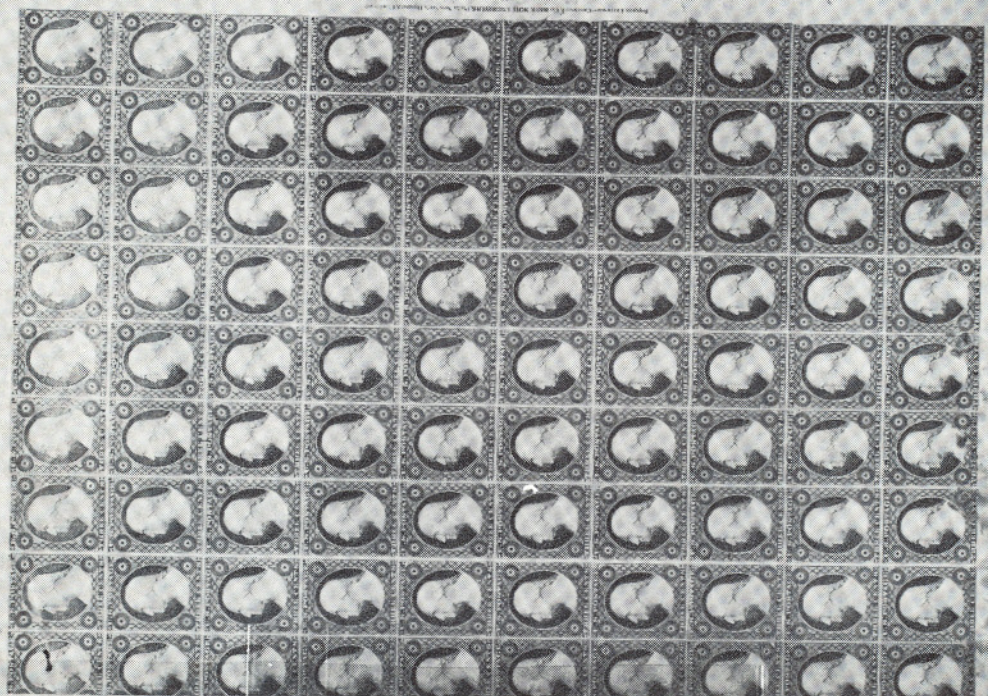


45




- 30 **1c Blue Ty. II (7).** Pos. 1-3, 12, 13, 23, 33L2. Showing Complete **Reconstruction of the Major crack**, the top position (2) in a sheet corner Horiz. Strip of 3, Pos. 33 Unused, Margins to barely touched, two have tiny faults, otherwise Fine-Very Fine, A Rare & Very Handsome Study 584.00+
- 31 **1c Blue Ty. III (8).** Pos. 99R2, Huge Margins, Unusually Deep Rich Color, light grid cancel, A Wonderful Copy, Extremely Fine 600.00
- 32 ★ **1c Blue Ty. IV (9).** Pos. 91L1L, Triple Transfer, One Inverted, Gigantic Margins with full Sheet Margin L. & B., much of next stamp at R., Vivid Color, almost invisible crease, Extremely Fine appearance, a wonderful Showpiece 135.00
- 33 ☐ **1c Blue Ty. IV (9) Block.** Large Margins, Rich Color, clear Waterloo, N. Y. pmks, A Gorgeous Block, Extremely Fine 175.00
- 34 ★ **3c Red (11). Complete Right Pane of 100 from Plate three**, fresh nice color, o. g. couple minor marginal tears and a number of stamps affected by creases, but one of only three complete panes of this Stamp Known, Attractive Showpiece. E. XV
- 35 ★ **3c Red (11). Complete Right Pane of 100 from Plate One Late**, Rich Color fresh, o. g., slightly trimmed into 7 stamps at L., couple tiny margin tears & a number of stamps affected by creases, one has minute stain, Earliest Known Complete Pane of a U.S. Stamp & Only Known Pane from Plate One, Attractive Showpiece E. XV

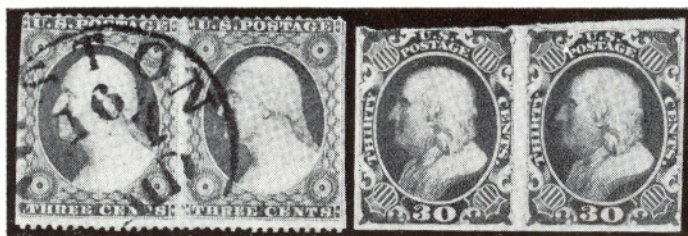


- 36 **5c Red Brown (12)** Horiz. Strip of Three, Gigantic Margins, Brilliant Vivid Color. R. stamp has almost invisible minute corner creases, other pair Superb, A Wonderful Piece, Ex Newbury 400.00
- 37 **10c Green Ty. I (13).** Lower Left Sheet Corner Copy, Huge to Enormous Margins all around, clear San Francisco pmk, fresh, Extremely Fine, A Truly Spectacular Copy 135.00+
- 38 **10c Deep Green, Ty. II, IV (14, 16).** Horiz. Strip of Three, Pos. 54-56LI, first two Recut at B., large margins all around, Magnificent Brilliant Color, Atlanta town pmks., A Rare & Wonderful Strip, Extremely Fine, Ex Newbury 530.00+
- 39 ★☐ **12c Black (17).** Block, Margins all around, Sheet Margin at B., Magnificent Rich Color & Impression, fresh, full o. g., Superb, Ex Hind 1700.00
- 40 ☒ **12c Black Bisect (17a).** Very Irregularly Cut, Tied by Bold San Francisco, Cal. pmk., another clear strike & Bold Blue S.F. Merchants Cachet on Aug., 1853 cover to Boston, No Flap, cover a trifle chipped, Scarce & Most Attractive, Ex Chase 900.00
- 41 ☒ **12c Black Bisect (17a)** Tied by San Francisco, Cal. in light circle on fresh cover to New York, June 10, 1853 letter enclosed, Excellent colorful account of life in San Francisco, Fine 900.00








1857 ISSUE

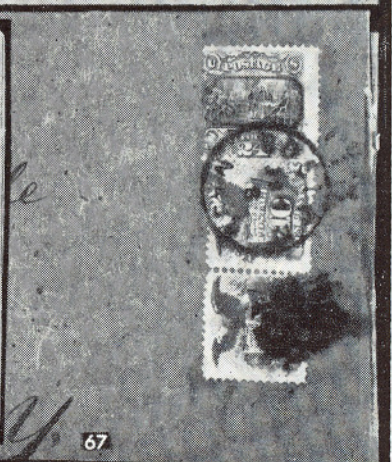
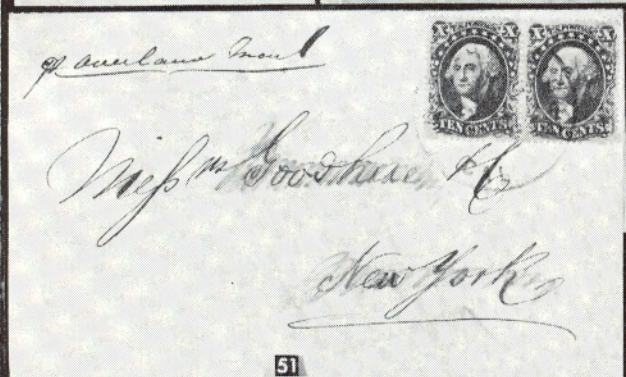
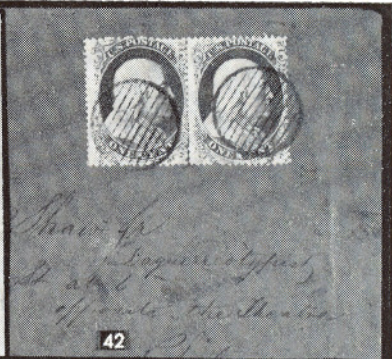
- 42  **1c Blue Ty. Ia (19).** Horiz. Pair, Pos. 92, 93L4, Rich Vivid Color, unusual neat grid cancels, clear Philadelphia, Pa. pmk, on fresh local Dec. 1857 cover Signed by Ashbrook, a Rare & Lovely Cover, Fine 600.00+
- 43  **1c Blue Ty. II (20).** U.L. Sheet Corner Block of 6, Pos. 1-3, 11-13R12, Magnificent Color, Sheet Centerline at L., showing tiny portion of Pos. 10L12, fresh, full o. g., Fine, Rare & Pretty Block 345.00+
- 44 **1c Deep Blue Ty. II (20)** Five Copies, Pos. 2, 12, 13, 23, 33L2, Showing Complete **Reconstruction of the Major Crack**, Selected Examples with Crack clearly shown. A Rare & Handsome Study, Fine 425.00
- 45  **1c Blue Ty. III, IIIa (21, two, 22, four).** Vertical Combination Block of 6, Magnificent Color & Impression, fresh, o. g., two perfs have pinpoint toned specks, minor horiz. wrinkle in center of Type IIIa, A Rare & Wonderful Block, Unpriced E. XIV



46

52

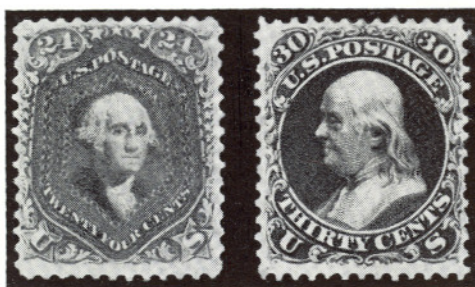
- 46 **3c Red Ty. I, Imperforate Vertically (25a).** Horiz. Pair, clear "Boston Paid" pmk., faint tiny creases, Fine appearance, Attractive Example of this great Rarity 1100.00
- 47  **3c Red Ty. I (25).** Centered bit to U.R., tied by Bold **Old Stamps Not Recognized** in two str. lines, clear matching "Philadelphia, Pa. Apr. 23, 1862" pmk, and "Due 3", on neat tiny cover, One of the Finest Known Examples of this Rare & Popular Marking E. XIII
- 48  **3c Red (26).** Block of Five, Pos. 51-52, 61-62, 71, Plate 18, the Odd Stamp showing the Major **Cracked Plate**, the most Spectacular such variety to appear on U.S. Stamps, this is the Block mentioned in Chase, from which the Position of the Variety was located, fresh, Full o. g., Fine, An Outstanding Showpiece E. XI
- 49  **3c Red, Imperforate Vertically (26b).** Horiz. Strip of 3, tied by "Paid" in grids and by clear Red "Boston, Ms. Apr., 20, 1859" pmk. on cover to St. Louis, one stamp has sealed tear, cover bit worn at ends, an Extremely Rare Variety, largest known Multiple, with P. F. Certificate 1650.00+
- 50  **1c-24c 1857 Issues (24, two, 26, two, 30A, two, 37, three).** One 24c s.e. at R., one 3c tiny faults, Tied by Vivid Red Grids on Flap of Aug. 1860 Cover from N. Y. to China, London & Hong Kong Transits, Red N. Y. Merchants Cachet, A Rare & Spectacular Showpiece, Ex Emerson. E. XV
- 51  **10c Green Ty. IV (34).** Horiz. Pair, Pos. 64-65L, first Recut at T. & B., latter at Top, Centered, Lovely Color, tied by San Francisco pmk, "per overland mail" in ms., on neat folded letter to N. Y., A Very Rare & Beautiful Cover, Very Fine..... 450.00+



- 52 ★ 30c Orange, Imperforate (38a). Horiz. Pair, Ample to Large Margins except L. stamp bit in at T., Rich Color, faint vertical crease in L. stamp, other Very Fine, stated to be unique in pair, Ex Green 2750.00

1861 ISSUE

- 53 ★ 3c Brown Rose August (56). Block, Rich Color, fresh, full o.g., Very Fine 400.00



54

56

- 54 ★ 24c Violet August (60). Wonderful Brilliant Color, o.g., Extremely Fine, A marvellous stamp, with P.F. Certificate 700.00
- 55 ☒ 24c Violet August (60). Wonderful Color, Tied by Neat Dotted Grid, Red New York Am Pkt. 3 Sep. 6 (1861) Transit. Red & Black French & British Transits, on cover to Liverpool, **Forwarded with Great Britain 4p Rose** (26, two), Tied by Liverpool Duplex Cancels, to Paris, Rare & Handsome Cover & Second Earliest usage of the 24c August Known E. XII
- 56 ★ 30c Red Orange August (61). Brilliant Color, fresh, o.g. trivial microscopic perf. break, otherwise Extremely Fine, A Magnificent Copy of this Rarity 3000.00
- 57 3c Pigeon Blood Pink (64a). Perfectly Centered, Glorious Brilliant Color, clear Nashua, N.H. pmk., a Magnificent Gem 175.00
- 58 3c Rose, Printed on Both Sides (65e). Fresh, Fine Example of This Rare Variety 600.00
- 59 ☒ 3c Rose (65). Tied by Perfectly Struck Bold Mittineague, Mass. **All Seeing Eye** Cancel on cover to Wisconsin, A Magnificent Example of This Excessively Rare Cancel & One of The most Remarkable strikes of a fancy cancel known. Superb Gem E. XIII
- 60 ☒ 3c Rose (65). Tied by grid, clear matching **Fort Kearney, N.T.** on back of Multicolor **Magnus Patriotic** with Overall View of Richmond, Va. Rare & Colorful, Fine E. X
- 61 ☒ 2c Black, 10c Green (68, two, 73, two). Both 2c have s.e., Tied by Blue Oval **Wells Fargo & Co Victoria** pmks., 6 strikes, on 3c Pink Entire (U59) tied by another clear strike & with **W.F. & Co** and **Dietz & Nelson's British Columbia & Victoria Express** Franks, Paste-Up with another cover addressed to S.F., Rare & Colorful Combination, Fine E. XIII
- 62 ★ 3c Rose Grilled All Over (79). Block, Rich Color, All perfs present but a few on U.L. stamp, part o.g., negligible tiny gum stains, showing only on back, Fine, An Attractive & Very Rare Block, with P.F. Certificate 2000.00



53



62



63



57



58



71



68



63 A



98



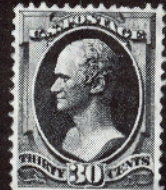
65



74



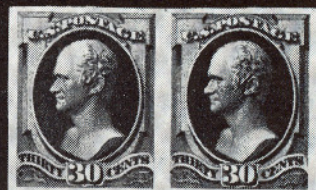
73



75



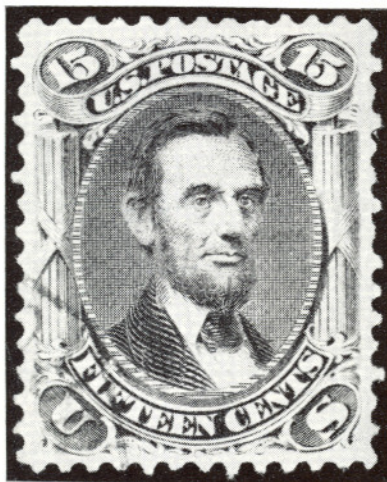
87



405

99

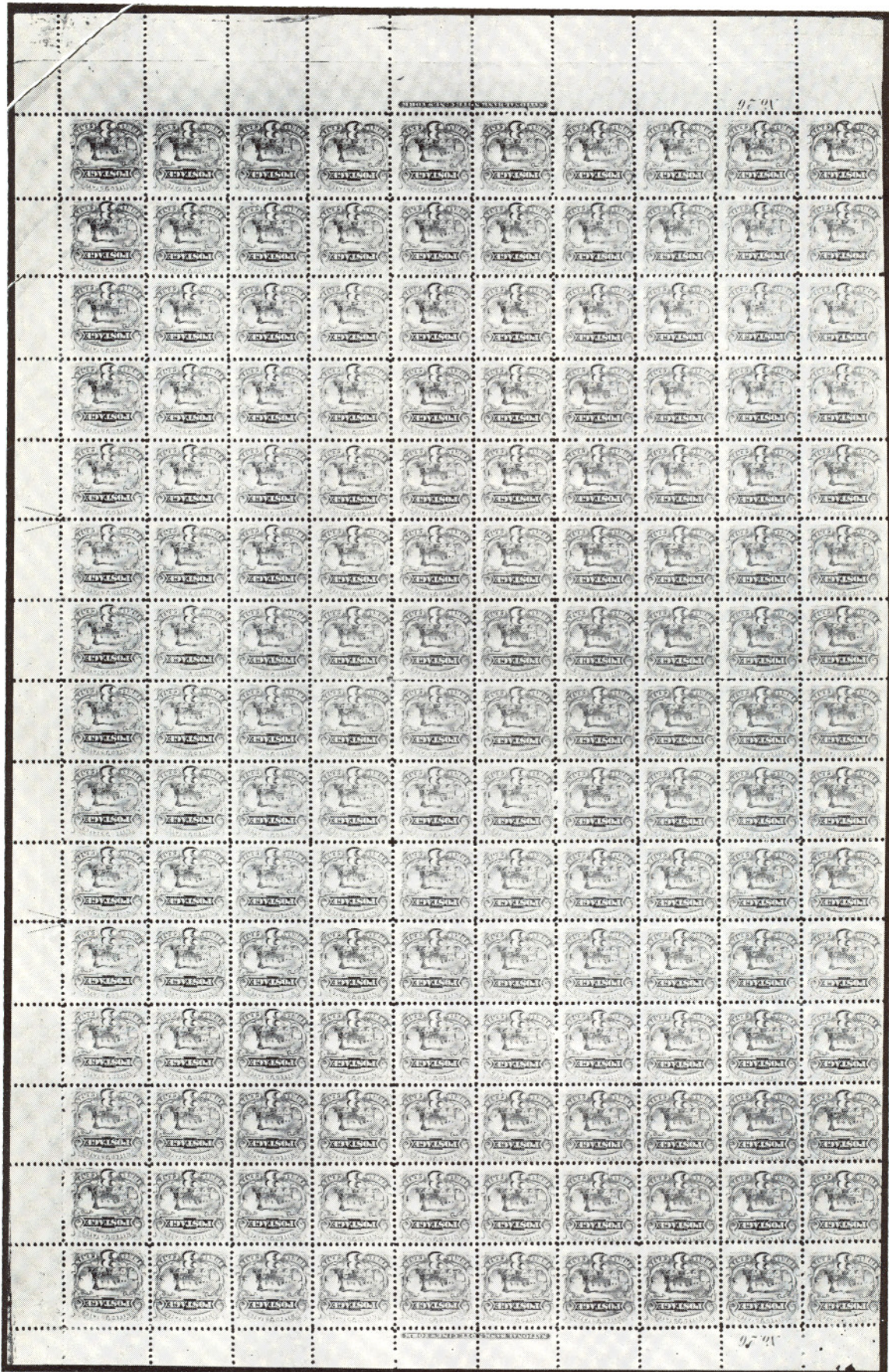
- 63 ★ 3c Rose D. Grill (85). Block, Rich Color, fresh, Fine, Choice & Very Rare Block 1000.00
- 63A ★ 2c Black Z. Grill (85B). Block, o. g., Centered to Bottom Right, tiny age spots, bit reinforced, Very Good, One of only two Known unused blocks, Unlisted in Scott —



- 64 15c Black Z. Grill (85F.). Centered, Brilliant Color, Town pmk. and almost invisible ms. cancel, the Discovery copy and by far the finer of the two known copies, A Magnificent copy of one of the world's choicest Philatelic Gems, Superb Rarity with P.F. Certificate, Realized \$11,500. in the Newbury Sale in 1963 10,000.00
- 65 ★ 24c Gray Lilac F. Grill (99). Block, Unusually Rich Color, fresh, full o. g., Centered to U.L., Fine for This, Ex Caspary 1000.00

1869 PICTORIAL ISSUE

- 66 ★ 3c Ultramarine Pictorial (114). Complete Right Pane of 150 from Plate 26, brilliant mint, trivial tiny cracks in 4 stamps, varied centering, fresh Post Office Condition, Spectacular Showpiece 1800.00+
- 67 ✉ 10c Orange, 24c Green & Violet (116, 120). Horiz. Pair first, latter centered to L., Rich Colors, Tied by Boston Duplex on large wrapper, to Schoharie, N.Y., neatly folded to 7¼"x4", Rare & Unusual Domestic Usage 930.00
- 68 ★ 12c Green Pictorial (117). Block, fresh, o. g., tiny natural crease in one, Fine 400.00
- 69 15c Brown & Blue, Inverted Center (119b). Rich Colors, very light cork cancel, neatly sealed minute margin break, Fine appearance, Very Attractive Copy of this Popular Rarity 3000.00
- 70 24c Green & Violet, Inverted Center (120b). Unusually Rich Colors, Very light cork cancel, negligible tiny creases, Fine appearance 2250.00
- 71 ★ 30c Blue & Carmine, Without Grill (121a). Block, Magnificent Brilliant Colors, full o. g., perfs just in at L., a Rare & Handsome Block 1400.00





69

70

72

- 72 30c Blue & Carmine, Inverted Center (121b). Magnificent Colors, Neat Rosette & Red Transit Cancels, one of the Choicest known copies of this Great Rarity, the scarcest of all Postage Issue Inverted Centers, Very Fine 5750.00
- 73 ★ 90c Carmine & Black Re-Issue (132). Part o.g., Very Fine 400.00

BANKNOTE ISSUES

- 74 ★ 7c Vermilion Grill (138). Block, Vivid Color, fresh o.g., strong grills, full o.g., perfs barely touch at T. Rare Block 750.00
- 75 ★ 30c Black Grill (143). Centered, Brilliant Color, nearly full o.g., stronger than average grill, Extremely Fine, with P.F. Certificate 325.00



76-85

- 76 ★ 2c Dark Brown Special Printing (168) Perfs. trimmed L & B., in at T., Very Good, with P.F. Certificate 550.00
- 77 ★ 3c Blue Green Special Printing (169). s.e. at B., Very Fine, with P.F. Certificate 1250.00
- 78 ★ 6c Dull Rose Special Printing (170). Wide s.e. at L., perfs. touch at B., Fine, with P.F. Certificate 1200.00
- 79 ★ 7c Reddish Vermilion Special Printing (171). Perfs. partly trimmed at R. & B., fresh, Very Fine 450.00

- 80 ★ **10c Pale Brown Special Printing (172).** Perfs partly trimmed on 3 sides, fresh, Fine 800.00
- 81 ★ **12c Dark Violet Special Printing (173).** Wide s.e. at L., tips of few perfs. bit blunt at B., Very Fine 550.00
- 82 ★ **15c Bright Orange Special Printing (174).** Vivid Color, perfs. trimmed, Fine 950.00
- 83 ★ **24c Dull Purple Special Printing (175).** Magnificent Color, perfs trimmed R. & B., just in at L., trivial tiny corner crease, Attractive 425.00
- 84 ★ **30c Greenish Black Special Printing (176).** Perfs. partly trimmed at B., Very Fine, with P.F. Certificate 1000.00
- 85 ★ **90c Violet Carmine Special Printing (177).** Brilliant Color, wide s. e. at L., light vertical crease, Very Fine appearance 1000.00
- 86 ★田 **5c Blue (185).** Mint Block of 25, Rich Color, sheet centerline and Half Arrow at L., few minute toned specks, 3 stamps just touched at R., Attractive Showpiece, Fine-Very Fine 690.00
- 87 ★ **90c Carmine, Imperforate (191b).** Horiz. Pair, Ample to Enormous Margins, o. g., trivial thin speck in margin, otherwise Very Fine 600.00



88-97

- 88 ★ **1c Dark Ultramarine Special Printing (192).** Centered to B., tiny thin, Fine appearance, with P.F. Certificate 1500.00
- 89 ★ **2c Black Brown Special Printing (193).** Couple perfs. bit nibbed, minute nick at L.L., otherwise Fine, Signed by Hugh Barr 1200.00
- 90 ★ **6c Dull Rose Reissue (195).** Rich Color, Fresh, almost invisible pinpoint thin speck, otherwise Fine, with P.F. Certificate 1100.00
- 91 ★ **7c Scarlet Vermilion Special Printing (196).** Perfs. barely in at R., small thin and light corner creases, Fine appearance, with P.F. Certificate 750.00
- 92 ★ **10c Deep Brown Special Printing (197).** Fresh, Very Fine, with P.F. Certificate 1300.00
- 93 ★ **12c Blackish Purple Special Printing (198).** Trivial pinpoint marginal Thin speck, otherwise Fresh, Very Fine, With P.F. Certificate 1150.00

- 94 ★ **15c Orange Special Printing (199).** Fresh, Very Fine, with P.F. Certificate 1100.00
- 95 ★ **24c Dark Violet Special Printing (200).** Small Thin, Very Fine appearance 500.00
- 96 ★ **30c Greenish Black Special Printing (201).** Stitch Watermark, fresh, Very Fine with P.F. Certificate 950.00
- 97 ★ **90c Dull Carmine Special Printing (202).** Rich Color, s.e. at R., fresh, Very Fine, with P.F. Certificate 1100.00
- 98 ★田 **2c Pale Red Brown Special Printing (211B).** Lower right corner Block, o. g., Extremely Fine 500.00
- 99 ★ **30c Orange Brown Imperforate (217a).** Horiz. Marginal Pair with Plate No., fresh, o. g., Extremely Fine 275.00

1893-1898 ISSUES

- 100 ★田 **30c Columbian (239).** Centered Mint Block of 24, fresh, Brilliant Color, A Wonderful Block, Extremely Fine 720.00+
- 101 P **1c-\$5.00 1894 Issue, Panama Pacific Small Die Proofs (247P2a, 253P2a-263P2a)** Bit Toned, as always, otherwise Extremely Fine, only 3-5 sets issued 765.00
- 102 ★ **\$5.00 Dark Green (278).** Top Impt. Plate No. Strip of Three, fresh, o. g. Fine 600.00
- 103 ★田 **\$5.00 Dark Green, Imperforate (278a).** Block, o. g., trivial tiny gum wrinkle at B., Extremely Fine, Rare & Beautiful Block 1000.00+



- 104 ★田 **\$1.00 Trans-Mississippi (292).** Bot. Imprint Plate No. Block of 4, Brilliant Color & Impression, Very Fine 2100.00
- 105 ★田 **\$2.00 Trans-Mississippi (293).** U.L. Sheet Corner Block, Magnificent Color & Impression, one stamp has two negligible pinpoint thin specks, otherwise Extremely Fine, a Wonderful Block 1850.00



86

156



122



179

100

TWENTIETH CENTURY



106

108

109

- 106 ★ 1c Pan American, Inverted Center (294a). Centered, Rich Color, tiny internal wrinkle, still fresh, Very Fine, with APS Certificate 1850.00



- 107 ★ 1c Pan American Inverted Center (294a). Block, Well centered, one stamp lightly creased, otherwise Very Fine, Beautiful and Exceedingly Rare Block 8500.00
- 108 ★ 2c Pan American Inverted Center (295a). Centered, Large Margins, one slightly blunted perf., otherwise Extremely Fine, Rarest U.S. 20th Century Inverted Center 7500.00
- 109 ★ 4c Pan American Inverted Center (296a). Exceptionally Well Centered for this, one slightly nibbed perf., otherwise Very Fine 3000.00



110

111

113

- 110 ★ 4c Pan American, Inverted Center, "Specimen" Overprint (296b). Fresh, no gum, perfs. partly touch at B., Fine, with P.F. Certificate 1000.00

- 111 ★ **1c Green Coil (318)** Horiz. Pair, Centered, Paste-Up at R., one has minute marginal perf. break, otherwise Extremely Fine, with P.F. Certificate 700.00
- 112 ★ **2c Lake Imperforate (320a)**. Centerline Block, Very Fine, Rare 750.00
- 113 ★ **2c Carmine Coil (322)**. Horiz. Pair, centered, one has trivial tiny faults, other Extremely Fine, with P.F. Certificate 700.00



114

115

117

118

- 114 ★ **4c Brown Bluish (360)**. Fresh, P.F. Certificate states "Reperforated" but we are unable to discover any evidence to bear out this statement, Fine 2350.00
- 115 ★ **5c Blue Bluish (361)**. Fresh, Very Fine, with P.F. Certificate 750.00
- 116 ★ **6c Orange Bluish (362)**. Left Impt. Plate No. Block of 6, Fine-Very Fine 1300.00
- 117 ★ **8c Olive Green Bluish (363)**. Fresh, centered trifle to B., Reperfed at B., otherwise Very Fine, with P.F. Certificate 2250.00
- 118 ★ **13c Blue Green Bluish (365)**. Fresh, Very Fine, with P.F. Certificate 400.00



- 119 ★ **10c Panama-Pacific Perf. 10 (404)**. Bot. Plate No. Block of 6, Extremely Fine 1200.00
- 120 ★ **2c Red Ty. I Coil (449)**. Vertical Line Strip of 4, Vivid Color, lightly hinged, Very Fine, A Very Rare Strip with P.F. Certificate 525.00
- 121 ★ **5c Carmine Imperforate Error (485)**. Block of Nine, Middle Stamp the Error, Extremely Fine 2000.00

- 122 ★ 2c Carmine A.E.F. Booklet Pane of 30 (499f). Small thin in one stamp, perfs. touch on one Vertical row, otherwise Fine-Very Fine 700.00
- 123 50c Red Violet, Imperforate Between (517b). Vertical Pair, also Imperforate Sheet margin at B., Perfs. in at R., Akron, Ohio Precancels, Stated to be Unique by Johl, Grossly Undercatalogued 450.00
- 124 ★ 2c Orange Red & Black (523). Mint Block with Vertical line, Extremely Fine 350.00
- 125 ★ 2c Carmine Ty. VII Offset, Imperforate (534B). Block of 4 with Plate No., Enormous Margins, Trivial tiny marginal gum wrinkle, Extremely Fine, with P.F. Certificate 1100.00+
- 126 ★ 2c Carmine Rose Ty. II (539). Fresh, Very Fine, with P.F. Certificate, an Exceptional copy of This Rare & Undercatalogued stamp 185.00
- 127 ★ 2c Carmine Rose Ty. II (539). Block, fresh, perfs just touch to just clear at Top of B. Pair, Top Pair Extremely Fine, Probably the finest known Block of This Rare & Undercatalogued Stamp 900.00
- 128 ★ 2c Carmine, Imperf Horizontally (554b) Bot. Block of Ten with Plate No., Government Kraft Paper Paste-Up Repair, covering part of eight stamps, 3 Pairs are Imperf. Horiz. and portion of another, o. g., V. G.-V. F. Unique Showpiece 975.00+



129

130

- 129 ★ 5c Blue, Imperforate (557a). Unique Bot. Plate No. Block of Eight, Extremely Fine Cat. as pairs 1200.00+
- 130 ★ 10c Orange, Imperforate (562b). Unique Bottom Plate No. Block of Eight, No Gum, as Issued, Extremely Fine Cat. as pairs 1200.00+

LOTS ON VIEW FROM FEBRUARY 17th
OFFICE OPEN EVERY SATURDAY

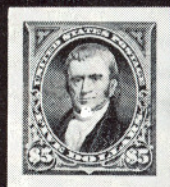


103

112

123

124



101



126



116



121



120



12809

125



138



102



127



131

132

- 131 **1c Green, Perf. 11 Rotary (594).** Horiz. Pair, Unusually Rich Color, centered trifle to T., fresh, Extremely Fine, no larger Multiples Known, with P.F. Certificate 1400.00+
- 132 **2c Harding, Perf. 11 Rotary (613).** Top sheet margin copy, negligible tiny marginal wrinkle, fresh, Very Fine copy of this Popular Rarity 2250.00
- 133 ★ **2c White Plains Souvenir Sheet (630).** Complete Matched Set of Sixteen Sheets, All numbers & All Positions, Including both Dot Varieties, Mint, few perfs. touch and few with natural gum creases but Mostly Fine-Very Fine with a number of Unusually Choice Sheets, An Exceptional Opportunity 1405.00
- 134 ★ 田 **2c Carmine Ty. II (634A)** Horiz. Block of Eight with full **Vertical Gutter Between**, Brilliant Color, Fine, Listed but unpriced in Scott 240.00+
- 135 ★ 田 **2c Carmine Ty. II (634A).** Vertical Block of Eight with full **Horiz. Gutter Between**, Brilliant Color, V.G.-F., Listed but unpriced in Scott 240.00+
- 136 ★ 田 **30c Presidential (830 var.).** Block with **Full Vertical Gutter Between**, mint, s. e. at L., perfs just in at B., only ten blocks known, unlisted in Scott **E. X**
- 137 ★ 田 **\$1.00 Presidential, Imperforate Horiz. (832a).** Mint, Bot. Margin Block, Extremely Fine 500.00
- 138 ★ **5c Dark Blue Gray Imperforate Coil (1229b).** Mint Pair, Extremely Fine 300.00

AIRPOSTS



- 139 ★ **24c Carmine Rose & Blue Inverted Center (C3a).** Well Centered, Fresh, full original gum, Extremely Fine 16,000.00
- 140 ★ 田 **65c-\$2.60 Graf Zeppelins (C13-C15).** Cpl. Set Blocks, Mint, Extremely Fine 1900.00
- 141 田 **65c-\$2.60 Graf Zeppelins (C13-15).** Cpl. Set. Tied by Washington, D. C. pmk. on Cacheted **First Day First Flight** Cover, Extremely Fine, Stated to be 10 known **E. XIV**



128

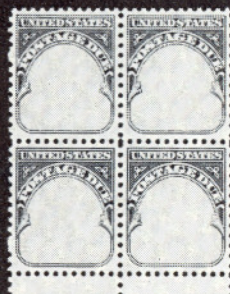
134



136



137



148



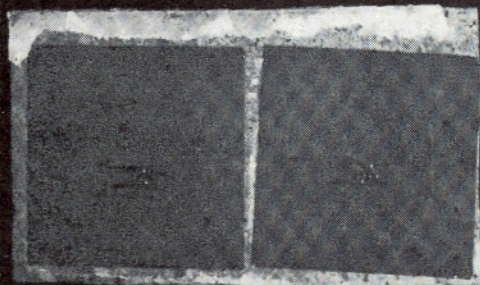
135




140

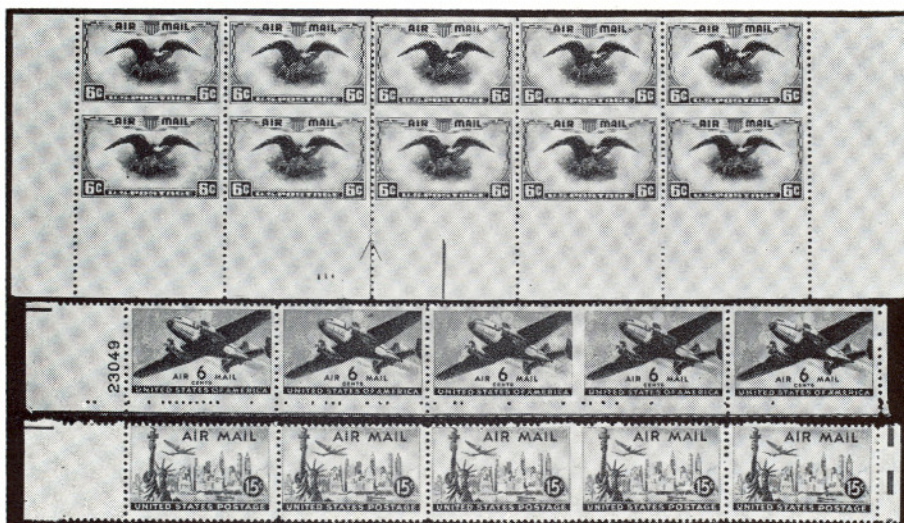


146



159






- 142  \$2.60 Graf Zeppelin (C15). Gigantic 13mm. Pre-Printing Paper Fold, tied by New York Duplex pmk. on Cacheted Flight Cover, A Truly Spectacular Freak

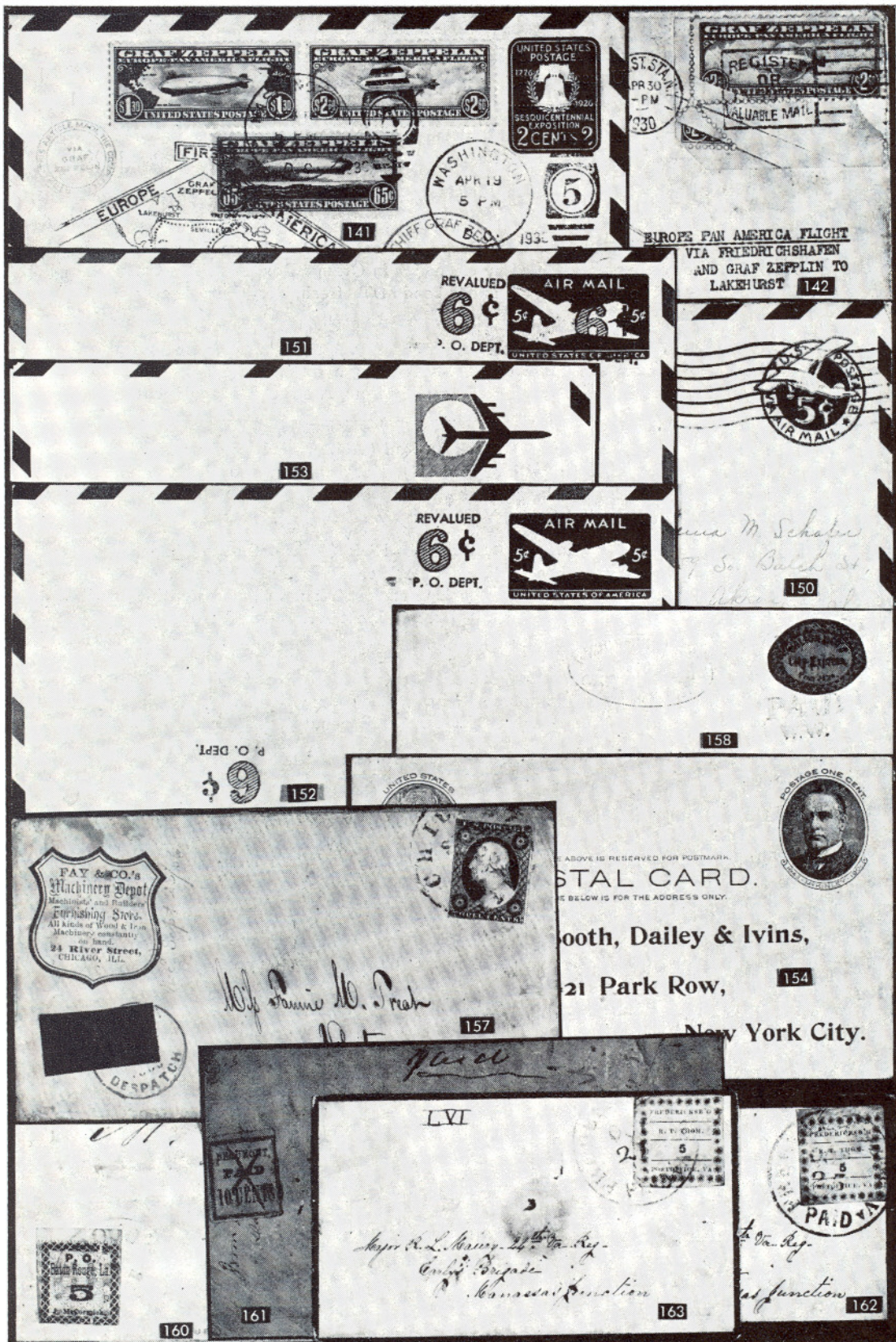


143

144

145

- 143 ★  6c Dark Blue & Carmine Imperforate Horiz. (C23a). Mint B. Arrow Block of Ten, Very Fine 500.00
- 144 ★ 6c Carmine Airpost, Imperforate Between (C25b). Bot. Horiz. Plate No. Strip of Five, Centered, Bluish Crayon discoloration in Error Pair, as always, otherwise Extremely Fine, only 10 pairs found, Unique with Plate No. 1500.00
- 145 ★ 15c Bright Blue Green Airpost, Imperforate Between (C35a). Horiz. Strip of Five, 3rd & 4th Stamps the Error, Mint, perfs. clear at Top, Fine, among the finest copies of this variety, most of the other 19 pairs touch at Top 1000.00
- 146 ★  10c Blue Special Delivery (E4). Top Mint Impt. Plate No. Block of 6, Fine-Very Fine 450.00
- 147 ★ 10c Blue Special Delivery Imperforate (E5a). Vert. Pair, bottom stamp has crease, other V. F. Scarce 325.00
- 148 ★  (1c) Postage Due "1" Omitted (J89a). Block of Errors, Extremely Fine E. XIII
- 149 ★ 1c-\$60 Newspaper Special Printings of 1894. Cpl. Set of 25, from set of half sheets of 50, ordered by Bureau to be used as Paper & Color Guides, one of 45 sets Privately Perfed., all o. g. but one cent, V. G.-V. F. set E. XIII
- 150  5c Blue Die I Airpost Entire, Double Impression (UC1, Var.). East St. Louis, Ill. 1929 pmk., Cacheted, Unlisted in Scott, with P.F. Certificate, Stated to be Unique E. XII
- 151  6c on 5c Carmine Airpost Entire, Double Surcharge (UC20b). Unused, Very Fine, listed but unpriced in Scott, with P.F. Certificate E. XI



- 152 ☒ **6c on 5c Carmine Airpost Entire, Double Surcharge, One Inverted (UC20b, Var.).** Unused, Very Fine, listed but unpriced in Scott, with P.F. Certificate E. XII
- 153 ☒ **11c Airpost Letter Sheet, Blue Omitted (UC35b).** Only two copies stated to exist of this error, unused, Extremely Fine E. XII
- 154 ☒ **1c Black on Buff Full Face McKinley Postal Card (UX17).** Unused, Printed Address, Very Fine 275.00
- 155 **3c Black on Grayish U.S. City Despatch Post (6LB1).** Large Margins, Nice Color & Impression, tied by clear U.S. in Orange Box, Matching Co. pmk. on small piece, nebligible minor bend at T., fresh, Very Fine, Pretty Piece 400.00+
- 156 ★ ☒ **City Despatch Post 3c Black on Grayish (40L1).** Block of 24, the Bottom Four Rows from the Plate of 42, Sheet Margin on Three Sides, Full Margins at T., full o. g., fresh & Extremely Fine, A Rare & Magnificent Block 2100.00+
- 157 ☒ **Moodys Penny Dispatch (1c) Black on Red (110L1).** Tied by clear Blue Co. pmk. on cover to Ct. with 3c Red (11), Margins to just touched, tied by clear 1856 Chicago pmk., Blue Shield Shaped Machinery Depot Corner Card, Rare & Beautiful Cover, Very Fine 225.00
- 158 ☒ **Walton & Co's City Express 2c Black on Pink (142L1).** Cut to Shape, Tied by two clear strikes of "Paid WW", clear Co. Feb. 16 pmk. on neat Valentine Cover with lacy envelope enclosed & matching Valentine with ms. Verse, address faded out, Rare & Most Attractive, Very Fine, with P. F. Certificate 300.00
- 159 **2/6 British Revenue for Use in America (RM31a).** Two Copies, large margins, fastened on small portion of original Vellum Document, Hand-some Examples of the Famous "Tea Party" Revenues 350.00+

CONFEDERATE STATES

- 160 ☒ **Baton Rouge, La. 5c Green & Carmine (11X2).** Ample to Huge Margins except barely touched at B., Sheet Margin at T., tied by light Baton Rouge pmk., another strike, on neat folded Oct. 28, 1861 letter to New Orleans, Fine 350.00
- 161 ☒ **Beaumont Texas 10c Black on Yellow (12X1).** Margins to just touched, ms. "X" cancel on cover to Cypress City, Tex., ms. "Paid", cover patched and portion of back missing, stamp Fine, with P. F. Certificate 2000.00

FREDERICKSBURG, VA., PROVISIONAL

(An unusual find of nine covers all but one are small mourning covers. All addressed to Major R. L. Maury, 24th Va. Regt., Earlys Brigade, Manassus Junction. A most attractive offering despite many creases due to the very thin paper on which this provisional was printed.)

- 162 ☒ **Fredericksburg, Va. 5c Blue on Bluish (26X1).** Large margins all around, trivial light marginal creases, tied Fredericksburg, Va. Paid pmk. on small mourning cover, V. F. appearance 600.00
- 163 ☒ **Fredericksburg, Va. 5c Blue on Bluish (26X1).** Margins all around, tiny marginal creases, tied Fredericksburg, Va. Paid pmk. on small mourning cover, V. F. appearance 600.00



- 164 ☒ **Fredericksburg, Va. 5c Blue on Bluish (26X1).** Margins all around, light corner crease, tied Fredericksburg, Va. Paid pmk. on small mourning cover, Very Fine appearance 600.00
- 165 ☒ **Fredericksburg, Va. 5c Blue on Bluish (26X1).** Margins to barely touched very light corner crease, tied with Fredericksburg, Va. Paid pmks. on small mourning cover, Fine appearance 600.00
- 166 ☒ **Fredericksburg, Va. 5c Blue on Bluish (26X1).** Large margins except in slightly at lower right, tied Fredericksburg, Va. Paid pmk. and "Paid" on small mourning cover, light crease, Fine appearance 600.00
- 167 ☒ **Fredericksburg, Va. 5c Blue on Bluish (26X1).** Nearly full margins, light marginal creases, tied Fredericksburg, Va. pmk. on small mourning cover, Fine appearance 600.00
- 168 ☒ **Fredericksburg, Va. 5c Blue on Bluish (26X1).** Large margins all around, creases, tied Fredericksburg, Va. pmk. on small cover, Attractive 600.00
- 169 ☒ **Fredericksburg, Va. 5c Blue on Bluish (26X1).** Margins all around, light creases, tied Fredericksburg, Va. town pmk. on small mourning cover 600.00
- 170 ☒ **Fredericksburg, Va. 5c Blue on Bluish (26X1).** Large margins all around, creases, tied indistinct Fredericksburg, Va. Paid pmk. on small mourning cover 600.00
- 171 ☒ **5c Green, 10c Blue (1 three, 11 sixteen).** Nineteen covers from above Find of Fredericksburg Provisionals all addressed to Lt. Col. Maury, Kempers Brigade, Picketts Division, all but one on small **Mourning** covers, also one 3c 1857 U. S. cover, Richmond, University of Va. and Fredericksburg pmks., Fair-Very Fine **E. VIII**
- 172 **Gonzales Texas (10c) Gold on Garnet Provisional (30X2).** Large Margins, ms cancel, thins & creases, Fine appearance, with P. F. Certificate, Attractive Example of this Rare Stamp, Ex Ferrari 1500.00
- 173 ★ **Greenville, Ala. 5c Red & Blue Ty. I (33X1).** Margins to barely touched, Rich Colors, nice impression, tiny corner creases, Fine appearance with P. F. Certificate 1500.00
- 174 ☒ **Knoxville, Tenn. 5c Blue on White Entire (47XU1).** Addressed to Speedwell Tennessee, No pmk., faint toning, Fine 275.00
- 175 ☒ **Lenoir, N. C. 5c Blue & Orange (49X1).** Tied by clear Blue Lenoir, N. C. Oct. 24 pmk. on cover from which it has been cut out, close to stamp, and neatly replaced, an Attractive Example of a Great Rarity 2000.00
- 176 ☒ **New Orleans 2c Blue, 5c Brown on Blue (62X1, three, 62X4).** Margins cut at places, tied together by clear "Paid" Cancels, "New Orleans 1 Oct" pmk. on cover to Virginia, sealed cover tear thru pmk., Probably Unique Combination, With 1c Overpayment of 10c Rate, Ex Seybold **E. XIII**
- 177 ☒ **Unionville, S. C. Paid 5 (87X1).** Margins except tiny nick at T., not cancelled, on Patched Cover to Pacolet Mills, S. C., Letter Enclosed, 1947 Holograph Certificate of Aug Dietz, Rare 2750.00
- 178 ☒ **5c Green (1).** Two copies, Large margins except one touched at R, tied by clear "New Orleans 15 Mar." pmk on neat folded cover to Richmond from Rotterdam, "Forwarded by Warneken & Co. New Orleans" in ms on flap, Rare **Blockade** Cover from Europe, Fine **E. XII**

- 179 ★田 **10c Gray Blue TEN (9). Block of Twenty**, Clear to Large Margins except one stamp just in at T., Rich Color, Full o.g., Horiz. & Vertical creases, both between rows, creased areas bit rubbed on surface, 2 center stamps have minor faults, A Showpiece of Great Rarity, One of the Largest Blocks Known 1700.00+
- 180 田 **10c Milky Blue (11)**. Ample to Enormous Margins, Vivid Color, tied by clear Richmond, Va. June 14, 1863 pmk. on cover to Mrs. Margaret Dainerfield, Amelia C. H., Va., with R. E. Lee Genl. Frank. & addressed in his hand, A Gorgeous & Very Rare Cover, Extremely Fine, with Chas. Hamilton Guarantee E. XV
- 181 田 **10c Deep Blue, Keating & Ball (11)**. Two Vertical Pairs, Huge Margins, tied by clear Newman, Ga. pmks. on Trans Mississippi Rate Cover to Johnson County, Tex. "**Per Express Mail Via Meriden, Mississippi**" in ms., Return address of Soldier in 18th Tex. Cavalry, Very Fine with "Newman, Ga. Paid 5" Cover bearing same pmk. 325.00+
- 182 田 **10c Milky Blue (12)**. Margins to barely touched, tied by ms. **Chandler's Springs** (Alabama) pmk. on cover to Prisoner at Rock Island, Ill., Old Point Comfort, Va. transit, 3c Red (26), Uncancelled, as no longer valid, and clear **Due 6** in circle, Rare & Handsome, Very Fine E. X
- 183 ★ **20c Green, "20" on Forehead (13, 13 var.)**. Vertical Pair, top stamp the Error, Huge Margins, cracked gum, Very Fine, catalogued used at \$300, listed but unpriced unused, only Vertical pair known, Ex Ferrari, Caspary E. XI
- 184 田 **Charleston, S.C.** Jan. 31 in clear Circle, **Steam Ship** in clear Oval, "12" in ms. on small neat **Blockade** cover addressed to Charlotte C. H., CSA, faint aging, Very Fine, A Rare & Pretty Little Cover E. XII
- 185 田 **Adams Ex. Co. Louisville, Ky.** Aug. 12, 1861 in Clear Circle, 3c Red (26). Centered, tied by clear Blue Louisville, Ky. Aug. 13, 1861 Duplex on 3c Red Star Die Entire (U27) ms. name and Aug. 1st, 1861 at L., used to N. Y., Rare South to North thru the lines cover, A Beauty Extremely Fine E. X

U. S. POSSESSIONS

- 186 **CANAL ZONE, 1912**, 5c Deep Blue & Black with **Portrait of the 2c** (40a). Lightly Cancelled, only 6 known, Very Fine copy of this Rarity (Photo) 1500.00
- 187 ★田 — 1925-26, 5c Dark Blue Overprint (86, 86e). Block of 35 (4X8+3). Overprint shifted, giving 14 stamps with "**Zone Canal**" overprint and numerous other varieties, including two with **Canal** at center and only bare traces of other opt., Sheet Centerline & B. Half Arrow at L., Rare & Spectacular Block 395.50+



- 188 — 1923, 30c Scadta Handstamped C. Z. (CZ1). Tied on flight cover with red Scadta pmk. along with 5c Canal Zone (28) and 5c Panama (237) to Bogota, Colombia, only four copies known, Very Fine, Sanabria 3000.00
- 189 ★ CUBA, 1899, 1c-10c Special Printings (221-226 var.). Full o. g., Very Good-Fine, only 12-15 sets known, Handstamp Guarantees of Henry Colman E. XI
- 190 ★ GUAM, 1899, 1c-50c Special Printings (1-5, 7, 8, 10-11 var.). Full o. g., Fine-Very Fine, only Six Sets Known, signed by Bartels E. XI
- 191 ★ — 1899, \$1.00 Black, Ty. II (13). Fine, o. g. 300.00
- 192 Honolulu U. S. Postage Paid in Bold Red Circle, 12c Black (17). Pos. 73L1, Recut, Margins to barely touched, Rich Color & Impression, tied by clear S.F. pmk. on cover to Mass., small sealed cover tear, otherwise Fine, Signed by Ashbrook, Ex Knapp (Photo) E. XI



- 193 ★ HAWAII, 1851, 5c Blue Missionary (2). P. F. Certificate States "that it is Genuine, Repaired & Used". It is our opinion, however, that this is an Unused Repaired Copy, as we can find no evidence of a cancellation & feel it would be impossible to remove the usual heavy grid cancel or Red town pmk., without leaving traces on this fragile pelure paper, Very Fine appearance, Cat. Used \$4000.00, Unused \$9000.00 —
- 194 ★ — 1853, 5c on 13c Dark Red Surcharge (7). Small Margins to slightly in, Very Good, with P.F. Certificate 300.00



147



155



183



172



173



186



191



194



205



197



200



208



218



210



212



217



219



220



221



222



223



224



225



226



227



228

GENERAL FOREIGN



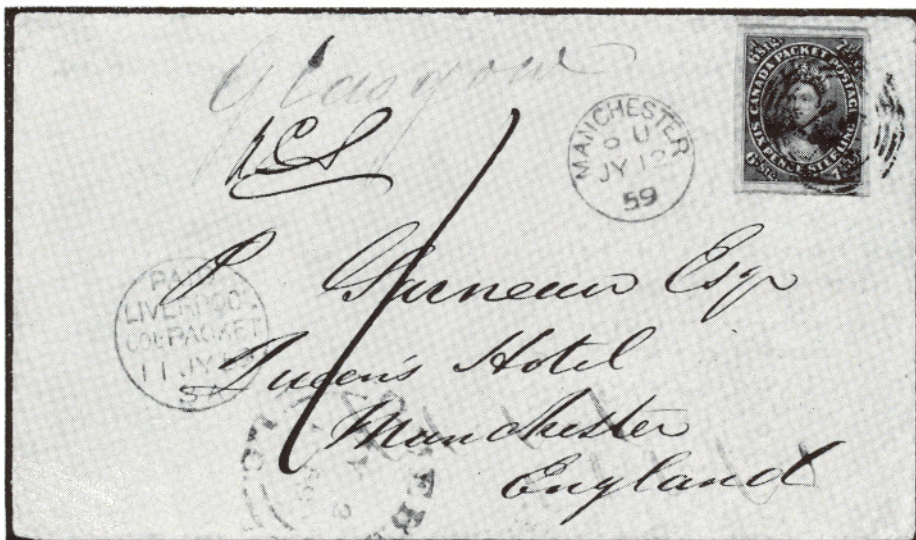
195

196

- 195 ★田 ARGENTINA, 1899, 5p Orange & Black, Inverted Center (140a). Block, fresh, Very Fine 1500.00+
- 196 ★田 — 1899, 10p Green & Black, Inverted Center (141a). Sheet Corner Block, part Impt. & Plate No., fresh, Very Fine 5400.00+
- 197 ★ AUSTRIA, 1936, 10s Dark Blue Dollfuss (380). Mint, Extremely Fine 300.00
- 198 ★田 — 1931, 10g-1s Rotary (B87-B92). Cpl. Set Mint Blocks, Very Fine 560.00+
- 199 田 — Offices in Crete, 1905, 50c on 50h Dull Blue (11). Block, Perfectly Struck Candia Pmk., Extremely Fine, with Swiss Philatelic Society Certificate 400.00+
- 200 ★ BRAZIL, 1843, 90r Black Bull's Eye (3). Margins all around, Rich Color & Impression, Fresh, Very Fine 450.00

LOTS ON VIEW FROM FEBRUARY 17th

OFFICE OPEN EVERY SATURDAY



- 201 ☒ **CANADA**, 7½p Green (9). Gigantic Margins, Brilliant Vivid Color, tied by clear 4 Ring "37", 1859 Quebec Pmk., Red "Liverpool Col. Packet Paid", Forwarded, with Manchester pmk., on fresh Cover to England, no flap, A Magnificent Cover, Extremely Fine, with Royal Philatelic Society Certificate **E. XV**

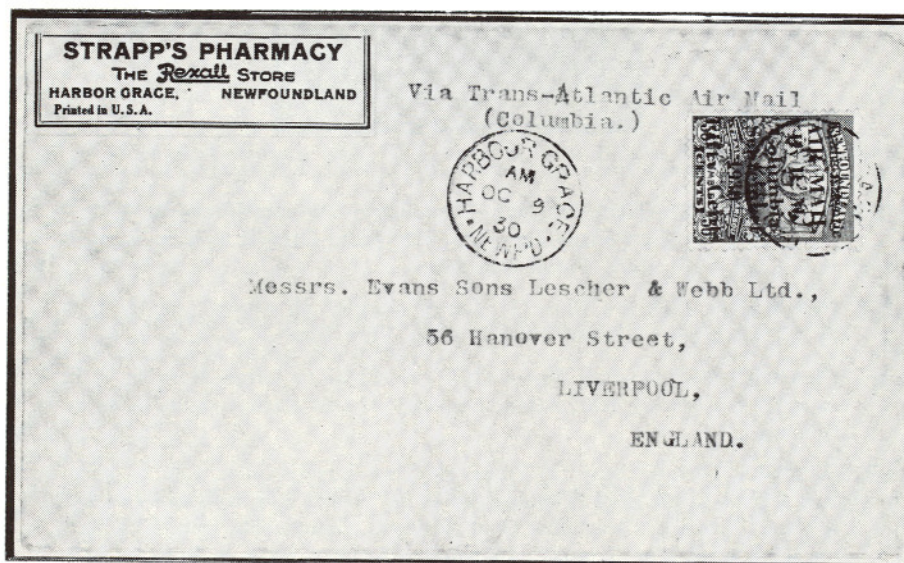


- 202 ★ — 1959 5c Seaway Inverted Center (387a). Mint, Extremely Fine 2500.00
- 203 ☒ **CAROLINE ISLANDS**, 1910, 5pf on 3pf Brown Ponape Provisional Overprint (20). Tied by Ponape July 12th, 1910 pmk., Official Seal on Picture Post Card, V. F., Rare, Freidl Guarantee 800.00
- 204 ☒ **DENMARK**, 1851, 2rs Blue (1). Large margins all around, neatly tied by "1" in target on cover, Hobroe pmk., Very Fine **E. IX**
- 205 ★ **FRANCE**, 1852, 10c Pale Bistre (10). Just Clear to Large Margins, o. g., expertly closed tiny tear, Attractive Copy of this Rarity, signed Stanley Gibbons 1500.00
- 206 ☒ **GAMBIA**, 1869, 6p Blue (2) Huge Margins, Lovely Color, tied by clear Red PD in Circle, Red "Gambia Au 18 '69" pmk., Red & Black London & Calais Transits, Clear Blue Oval Bathurst, Gambia Merchants Cachet, on small cover "pr 'Lagos'", to France, A Very Rare & Pretty Little Cover, with P.F. Certificate **E. XIV**
- 207 ★ ☒ **GREAT BRITAIN**, 1862, 4p Vermilion (34). Block, Centered, Rich Color, Fresh o. g., Very Fine **E. XII**

- 208 ★ **GREECE**, 1933, 50l-50d Airpost, Imperforate (C8-C14 var). Mint Pairs, Very Fine Set Sanabria 500.00
- 209 ★ **GREENLAND**, 1945, 10ö-5kr Liberation **Color Errors** (20a-25a). Blocks, Very Fine set 790.00
- 210 **GUATEMALA**, 1937, 25c Blue Green Airpost with Quetzal Bird Omitted (C61a) light cancel, Very Fine. Sanabria guarantee on back 550.00
- 211 ★ **HANOVER**, 1859, 3pf Carmine Rose Crown & Numeral (16). Block of 9, Clear to Huge Margins, Very Fine 202.50+
- 212 **LABUAN**, 1901, 8c Red & Black, Postage Due Overprint, Inverted Center (J6). Bit oxidized in L. R. Corner making paper in that area transparent, Fine, Only 6 or 7 Copies Known 225.00



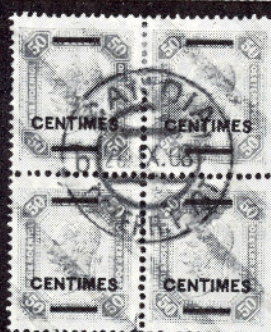
- 213 ★ **NEW FOUNDLAND**, 1919, 3c Red Brown Hawker Airpost (C1). Fresh, Very Fine copy of this Rarity 3000.00



- 214 ✉ 1930, 50c on 36c Columbia Airpost (C5). Centered, tied by Oct. 9, 1939 Harbor Grace pmk., another clear strike on Cover to Liverpool, Rare Very Fine 1000.00+



EX 198



199



207



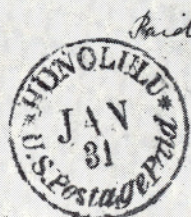
209



211

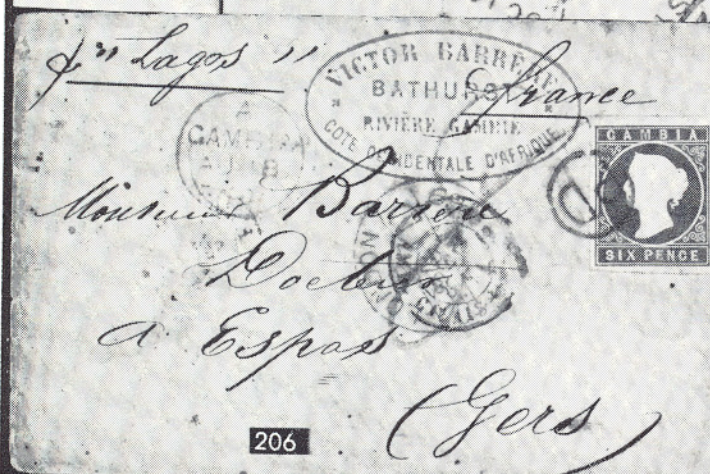


Miss Mary E. Hastings.



204

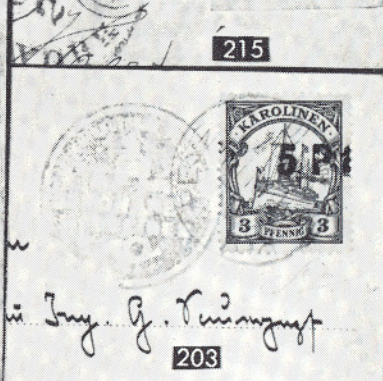
192




206



215



203

- 215  **NEW SOUTH WALES**, 1854, 59, 2p Light Blue Lithograph, 1/ Pale Red (31,34c). Large margins except 2p barely clear at L.L., tied by "N.S.W." in Triple Ovals, by Aug, 1859 Sydney pmk., and by "N. York Br. Pkt. 5" on neat folded letter to Maine, Red London Transit, Very Fine, A Handsome & Extremely Rare Cover 212.50+
- 216 ★ **NOVA SCOTIA**, 1860, 1c-12½c Victoria (Bet. 8-13). Collection of 10 Diff. Cpl. **Sheets of 100**, Includes 1c Black on Yellowish 1c Black, Gray Black on White, 2c Lilac on white in Three Distinct Shades, 8½c Deep Green on White & Yellowish, 10c Vermilion on White, 12½c Black on Yellowish, All are fresh, full o. g., Very Good-Very Fine, an Exceptionally Nice Collection 1550.00
- 217 ★ **ST. PIERRE & MIQUELON**, 1942, 3fr Gray Brown FRANCE LIBRE Overprint (247). A Very Fine Copy of this Great Rarity, Friedl Certificate 1200.00
- 218 ★ **SWITZERLAND**, 1850, 2½rp. First Federal Issue (2). Pos. 13, Margins all around, Choice Color & Impression, fresh, Very Fine, Signed E. Diena 275.00
- 219 ★ **TUSCANY**, 1852, 1q Black (1). Just Clear to Large Margins, showing portion of stamp at Left, o. g., Very Fine 500.00
- 220 ★ — 1859, 1s Yellow (11). Clear to Large Margins on three sides, barely in at left, Full o. g., microscopic thin speck in extreme left margin, still a very Desirable Copy of this Rarity 1100.00
- 221 — 1860, 5c Green (18). Margins all around, Very Fine 375.00
- 222 ★ — 1860, 80c Pale Red Brown (22). Clear to Large Margins, showing portion of stamp at left, Very Fine 650.00
- 223 ★ **UNITED NATIONS**, 1962, 4c Multicolor Housing, Brown Printing Omitted (100 var). Mint, Very Fine with normal Variety for Comparison, Unlisted in Scott **E. XII**
- 224 **URUGUAY**, 1895, 25c Red Brown & Black Inverted Center (120a). Centered, Rich Colors, light town pmk., few slightly blunted perfs & trivial marginal thin, A Very Handsome Copy of this Rarity, with Uruguayan Certificate 800.00
- 225 ★ **VATICAN CITY**, 1934, 40c-3.70 l Provisionals (35-40). V. F. set Certificate A. Diena 2379.00
- 226 ★ — 1934, 2.05 l on 2 l Olive Brown **No Comma** Variety (37a). Very Fine, signed Diena, Rare 700.00
- 227 ★ — 1934, 2.55 l on 2.50 l Red Orange **No Comma** Variety (38a). Very Fine signed Diena, Rare 800.00
- 228 **WURTEMBERG**, 1866, 1kr Yellow Green **Imperforate** and **Printed on Both Sides** (41 var.), Postally Used in Stuttgart, cut in at right, Extremely Rare, possibly Unique, Friedl Certificate **E. XIII**

END OF SALE — THANK YOU

LOTS ON VIEW FROM FEBRUARY 17th
OFFICE OPEN EVERY SATURDAY

IS YOUR COLLECTION FOR SALE?

REALIZE IMMEDIATE CASH
PLUS THE ADDED ADVANTAGE OF
SELLING THROUGH OUR AUCTIONS

We will advance immediate cash up to 75% of our appraisal value, of what your collection should realize at auction. There is no interest charge.

Your collection will then be sold in one of our coming auction sales. All stamps are expertly and advantageously lotted in attractive, well illustrated catalogs. Lotting is meticulously planned under our personal supervision. Commission is 20% of the gross realization. There is no lotting fee or any other charges. Final settlement is made within five weeks after the sale. We have been continuously conducting stamp auctions in the United States for over thirty-four years.

Valuable collections and stamp holdings are especially wanted, but we will accept properties valued from \$500 upwards. Send all stamps direct for appraisal. Auction advance will be remitted shortly after receipt. If not entirely pleased, stamps will be returned at our expense. If circumstances warrant, due to bulk or value, we will travel anywhere to inspect important properties.

ROBERT A. SIEGEL
AUCTION GALLERIES, Inc.

(Licensed and Bonded Auctioneer)

10 EAST 52nd STREET
NEW YORK, N. Y. 10022
(Tel. PL. 3-6422)

List of Prices Realized

RARITIES OF THE WORLD

THURSDAY, FEBRUARY 24th, 1966

Total Realization \$289,820.00

Robert A. Siegel
AUCTIONS

10 EAST 52nd STREET NEW YORK, N. Y. 10022

Tel: PLaza 3-6422

Lot#	Price	Lot#	Price	Lot#	Price	Lot#	Price	Lot#	Price	Lot#	Price
1	400.00	40	525.00	78	1,200.00	117	1,600.00	156	2,000.00	195	
2	1,850.00	41	475.00	79	525.00	118	475.00	157	550.00	196	3,200.00
3	1,700.00	42	575.00	80	1,050.00	119	1,550.00	158	325.00	197	260.00
4	600.00	43	280.00	81	600.00	120	675.00	159	280.00	198	320.00
5	325.00	44	380.00	82	700.00	121	2,100.00	160	190.00	199	130.00
6	600.00	45	750.00	83	260.00	122	550.00	161	750.00	200	150.00
7	32,000.00	46	800.00	84	850.00	123	300.00	162	525.00	201	2,600.00
8	5,250.00	47	750.00	85	750.00	124	220.00	163	300.00	202	1,350.00
9	11,000.00	48	400.00	86	360.00	125	1,100.00	164	400.00	203	600.00
10	275.00	49	900.00	87	425.00	126	440.00	165	375.00	204	250.00
11	375.00	50	1,050.00	88	1,200.00	127	1,250.00	166	340.00	205	200.00
12	900.00	51	450.00	89	750.00	128	260.00	167	350.00	206	1,200.00
13	450.00	52	2,100.00	90	1,200.00	129	1,300.00	168	260.00	207	260.00
14	350.00	53	375.00	91	400.00	130	1,300.00	169	240.00	208	250.00
15	1,250.00	54	1,000.00	92	1,600.00	131	2,400.00	170	200.00	209	360.00
16	550.00	55	425.00	93	1,000.00	132	3,300.00	171	140.00	210	280.00
17	5,000.00	56	2,900.00	94	1,200.00	133	975.00	172	550.00	211	120.00
18	1,100.00	57	575.00	95	350.00	134	300.00	173	700.00	212	190.00
19	2,200.00	58	280.00	96	1,300.00	135	300.00	174	130.00	213	3,900.00
20	6,750.00	59	950.00	97	1,000.00	136	120.00	175	1,000.00	214	1,300.00
21	1,300.00	60	210.00	98	425.00	137	450.00	176	750.00	215	160.00
22	5,500.00	61	650.00	99	320.00	138	320.00	177	750.00	216	600.00
23	1,150.00	62	1,500.00	100	775.00	139	18,000.00	178	450.00	217	850.00
24	650.00	63	500.00	101	350.00	140	1,250.00	179	1,100.00	218	285.00
25	1,250.00	63A	500.00	102	400.00	141	900.00	180	1,200.00	219	170.00
26	3,500.00	64	13,000.00	103	825.00	142	425.00	181	525.00	220	180.00
27	400.00	65	350.00	104	2,300.00	143	550.00	182	210.00	221	120.00
28	750.00	66	1,900.00	105	2,250.00	144	700.00	183	450.00	222	170.00
29	650.00	67	425.00	106	1,650.00	145	750.00	184	400.00	223	280.00
30	575.00	68	300.00	107	7,000.00	146	550.00	185	280.00	224	375.00
31	1,200.00	69	1,900.00	108	8,500.00	147	280.00	186	1,300.00	225	1,000.00
32	220.00	70	1,300.00	109	2,800.00	148	675.00	187	160.00	226	350.00
33	350.00	71	850.00	110	800.00	149	280.00	188	1,000.00	227	400.00
34	1,700.00	72	7,000.00	111	575.00	150	220.00	189	240.00	228	550.00
35	1,550.00	73	380.00	112	375.00	151	110.00	190	360.00		
36	750.00	74	450.00	113	575.00	152	120.00	191	230.00		
37	550.00	75	1,200.00	114	1,400.00	153	180.00	192	700.00		
38	1,200.00	76	360.00	115	775.00	154	150.00	193	3,100.00		
39	1,800.00	77	1,500.00	116	675.00	155	260.00	194	240.00		

Robert A. Siegel Auction Galleries, Inc.
 Prices Realized for
 Sale 296 February 24, 1966 1966 Rarities of the Word

Lot#	Realized	Lot#	Realized	Lot#	Realized	Lot#	Realized	Lot#	Realized
1	400	37	550	72	7,000	108	8,500	144	700
2	1,850	38	1,200	73	380	109	2,800	145	750
3	1,700	39	1,800	74	450	110	800	146	550
4	600	40	525	75	1,200	111	575	147	280
5	325	41	475	76	360	112	375	148	675
6	600	42	575	77	1,500	113	575	149	280
7	32,000	43	280	78	1,200	114	1,400	150	220
8	5,250	44	380	79	525	115	775	151	110
9	11,000	45	750	80	1,050	116	675	152	120
10	275	46	800	81	600	117	1,600	153	180
11	375	47	750	82	700	118	475	154	150
12	900	48	400	83	260	119	1,550	155	260
13	450	49	900	84	850	120	675	156	2,000
14	350	50	1,050	85	750	121	2,100	157	550
15	1,250	51	450	86	360	122	550	158	325
16	550	52	2,100	87	425	123	300	159	280
17	5,000	53	375	88	1,200	124	220	160	190
18	1,100	54	1,000	89	750	125	1,100	161	750
19	2,200	55	425	90	1,200	126	440	162	525
20	6,750	56	2,900	91	400	127	1,250	163	300
21	1,300	57	575	92	1,600	128	260	164	400
22	5,500	58	280	93	1,000	129	1,300	165	375
23	1,150	59	950	94	1,200	130	1,300	166	340
24	650	60	210	95	350	131	2,400	167	350
25	1,250	61	650	96	1,300	132	3,300	168	260
26	3,500	62	1,500	97	1,000	133	975	169	240
27	400	63	500	98	425	134	300	170	200
28	750	63A	500	99	320	135	300	171	140
29	650	64	13,000	100	775	136	120	172	550
30	575	65	350	101	350	137	450	173	700
31	1,200	66	1,900	102	400	138	320	174	130
32	220	67	425	103	825	139	18,000	175	1,000
33	350	68	300	104	2,300	140	1,250	176	750
34	1,700	69	1,900	105	2,250	141	900	177	750
35	1,550	70	1,300	106	1,650	142	425	178	450
36	750	71	850	107	7,000	143	550	179	1,100

Robert A. Siegel Auction Galleries, Inc.
 Prices Realized for
 Sale 296 February 24, 1966 1966 Rarities of the Word

Lot#	Realized	Lot#	Realized
180	1,200	216	600
181	525	217	850
182	210	218	285
183	450	219	170
184	400	220	180
185	280	221	120
186	1,300	222	170
187	160	223	280
188	1,000	224	375
189	240	225	1,000
190	360	226	350
191	230	227	400
192	700	228	550
193	3,100		
194	240		
195	3,200		
196	3,200		
197	260		
198	320		
199	130		
200	150		
201	2,600		
202	1,350		
203	600		
204	250		
205	200		
206	1,200		
207	260		
208	250		
209	360		
210	280		
211	120		
212	190		
213	3,900		
214	1,300		
215	160		