

298th SALE

# UNITED STATES

including Western Covers & 19th and 20th Century General Issues



AT PUBLIC AUCTION

Saturday, APRIL 2nd, 1966

at 2:00 P.M.

at the

Sheraton Motor Inn  
Portland, Oregon

to be held in conjunction with the  
American Philatelic Society  
Annual Spring Meeting and Exhibition

*Robert A. Siegel*  
**AUCTIONS**

10 EAST 52nd STREET NEW YORK, N. Y. 10022

Tel: PLaza 3-6422

## CONDITIONS OF SALE

1. The terms of sale are strictly cash to the highest bidder. All buyers are expected to pay for lots within three days of receipt, unless special arrangements have been made prior to the sale.
2. All bids are per lot as numbered in the catalogue and not per piece, unless otherwise announced by the auctioneer at the time of sale.
3. Any lot the description of which is incorrect is returnable only within three days of receipt. All disputed lots must be returned intact as received. Lots containing five or more stamps are not returnable at any time. No lots may be returned by purchasers who have had the opportunity to examine them before the sale.
4. Successful mail bidders, unless they are known to us or supply acceptable references, will be notified of the amount of the lots secured for them, and are expected to send payment in full before the lots are forwarded.
5. If the purchase price has not been paid within the time limit, or lots taken up within seven days from date of sale, they may be resold and any losses arising from such sale charged to the defaulter.
6. All stamps are sold as genuine, except where sold "As Is". Claims for any lot proving otherwise, must be made within two weeks from date of sale.
7. The right is reserved to group two or more lots, also withdraw any lot or lots from the sale, or to act on behalf of the seller.
8. Until paid for in full all lots remain the property of Robert A. Siegel.
9. No commission is charged for buying at our sales, but all forwarding charges will be added to the purchase price.
10. Upon written application lots may be sent for examination prior to the auction to persons known to us or who supply acceptable references, conditional upon being mailed back by registered mail, adequately insured, within 24 hours of receipt. The applicant is completely responsible for all lots sent for examination, and for the insurance of same against mishap, from the time of receipt until they are actually received back, and is to pay all expenses of postage and insurance.
11. The placing of a bid shall constitute acceptance of the foregoing conditions of sale.

ROBERT A. SIEGEL

ANDREW LEVITT, Licensed Auctioneers

In sending bids, always state the highest price you are prepared to pay for the lot. Your limit will not be used as a starting bid unless absolutely necessary.

### DESCRIPTIONS

Superb or Extremely Fine—the finest condition for noteworthy, outstanding copies.

Very Fine (VF)—means that there is a slight deviation from the above.

Fine (F)—means that the perforations do not touch the design on issues after 1890, but in some cases may just touch in earlier issues; if used, fairly lightly cancelled.

Very Good (VG)—means that the appearance is generally fine but that the perforations cut the design slightly.

Good (G)—means average off-centering; or fairly attractive with slight defects

Original gum (OG) is not to be expected on 19th Century stamps unless so stated.

Mint—have never been hinged.

Scott 1966 Specialized United States Catalogue is used for cataloging our lots of United States and Scott's Standard Catalogue, 1966 for others.

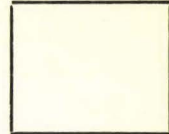
WE SOLICIT FINE MATERIAL FOR FUTURE SALES

**298th SALE**

APRIL 2nd, 1966

**BID SHEET**

**ROBERT A. SIEGEL AUCTION GALLERIES, Inc.**  
**10 East 52nd Street**  
**New York, N. Y. 10022**  
**Tel.: PLaza 3-6422 (Area Code 212)**



Please purchase for me at your auction to be held **April 2nd, 1966**, the lots named below, the prices annexed being my limit on each lot. I agree to remit for purchases in accordance with the **Conditions of Sale** and to return no lots later than three days after receipt.

**REFERENCES PLEASE**  
(if unknown to us)

**SIGNED**

.....  
.....  
.....  
.....

New York State residents kindly include  
County in address.

County

Lot	Bid	Lot	Bid	Lot	Bid

**VALUATIONS**  
Upon request, estimate of value furnished on any lots in this auction.

Lot	Bid	Lot	Bid	Lot	Bid

### ESTIMATES

Our sales contain many 19th Century covers and fancy cancellations. We have had many requests to give the estimated cash value on these lots. We are trying to place a fair net valuation on each lot as a guide for bidding when no catalogue value portrays the true value. The chart below will be used, for example E. IV means our estimate cash value on this lot is \$30.00 to \$40.00. Lots may actually realize more or less than these estimates and under no circumstances are these estimates to be considered reserves but merely a guide to bidding.

E. I	up to \$10.00	E. VIII	\$100.00 to \$150.00
E. II	\$10.00 to \$20.00	E. IX	\$150.00 to \$200.00
E. III	\$20.00 to \$30.00	E. X	\$200.00 to \$250.00
E. IV	\$30.00 to \$40.00	E. XI	\$250.00 to \$350.00
E. V	\$40.00 to \$50.00	E. XII	\$350.00 to \$500.00
E. VI.	\$50.00 to \$75.00	E. XIII	\$500.00 to \$750.00
E. VII	\$75.00 to \$100.00	E. XIV	\$750.00 to \$1000.00
		E. XV	over \$1000.00

# SATURDAY, APRIL 2nd — 2 P.M.

SHERATON MOTOR INN, PORTLAND, OREGON

## UNITED STATES

### WESTERN & TERRITORIAL COVERS

- |    |   |  |                    |
|----|---|--|--------------------|
| 1  | ☒ | <b>Astoria, Ranier, St. Helens, Oregon.</b> Two of first on 3c Pink Entires (U58). Three of Second on 3c Green (184, U163, U164), last tying 3c rose (65). All with letters enclosed, couple light strikes or minor marginal cover faults, Good-Fine ..... | E. II 21           |
| 2  | ☒ | <b>Auburn, Cal.</b> in clear circle ties 10c Green Ty. II Entire (U17), Used to Ct. Fine, Scarce .....   | E. II 8            |
| 3  | ☒ | <b>Bamber &amp; Co's Express, W. B. Hardy's Office, Oakland.</b> Frank on 3c Pink Entire (U58) and <b>Bamber &amp; Co's Express</b> Freak Overlapping Double Frank on 3c Green Entire (U83). Unused, Very Fine .....                                       | E. II 8            |
| 4  | ☒ | <b>Barnard's British Colombia Express, Quesnell</b> Frank, Vertically at L., on 10c Green U. S. Entire (U40) with additional W. F. & Co. Frank, Unused, Very Fine .....  | E. III 27          |
| 5  | ☒ | <b>Bennettville, Mono County, Tioga Mining District, Cal.</b> purple pmk. on 3c green Entire (U82). Very fine .....  | E. II 13+          |
| 6  | ☒ | <b>Benson Ariz.</b> June 3, 1894 in clear circle, 6c, 15c Columbian (235, 238). Cork cancels, first tied, on small Registered Cover to Hamburg. Scarce Territorial, Very Fine .....  | E. II 16           |
| 7  | ☒ | <b>Bridgeport, Ct.</b> and "New York Paid 10" in clear Red Circles on neat folded 1845, 1852 letters <b>to Hawaii</b> , latter with "Via San Francisco" in ms., Very Fine Pair .....   | E. III 32+         |
| 8  | ☒ | <b>California Penny Post 7c Black on Buff Entire (34LU11).</b> Clear Red <b>San Jose, Cal.</b> pmk., 3c Red (11). Bit in at T., ms. cancel, used to S. F., fresh, Very fine Cover, Rare .....  | 150.00+ 125        |
| 9  | ☒ | <b>California Penny Post Co. 7c Black on 3c Entire U10 (34LU11c).</b> Clear Blue Marysville, Cal. pmk., Huge matching grid ties embossed stamp, Fresh, Very Fine .....   | (Photo) 375.00 280 |
| 10 | ☒ | <b>Carlin, Nev.</b> in clear circle, 3c Green (158). Just tied by matching target, on cover to S. F. with Blue 1872 S. F. Merchants Cachet, Fine .....   | E. III 10          |
| 11 | ☒ | <b>Claquato, Chehalis, Wash.</b> in clear circles, two diff. of latter, on 2c Brown, 3c Green Entires (U83, U163, U278). 1874, '78, '85 letters enclosed, Two opened bit irregularly at R., one has Boston D. L. O. pmk., scarce lot, V. G. ....           | E. II 23           |
| 12 | ☒ | <b>Cowlitz W. T.</b> Oct. 6, '56 in ms., 10c Green Ty. II (14). Clear to Huge Margins, matching ms. cancel on cover to Mass., minor sealed cover tears, otherwise Fine, letter enclosed .....  | E. IV 45           |

Lots on view in our office in New York from Friday, March 25 to Wednesday, March 30. Lots on view at the Sheraton Motor Inn, Portland, Oregon, Friday, April 1 and Saturday, April 2 until sale time.

13	✉	<b>Cowlitz W. T.</b> Jan. 20, 1859 in ms., 3c Green Ty. II (32). Matching ms. on fresh yellow cover to Ms., letter enclosed, Fine .....	E. III 37+
14	✉	<b>Cowlitz W. T.</b> Oct. 18, '60 in ms., 10c Green Ty. V (35). Matching ms. cancel, on fresh cover to Boston, letter headed Cowlitz Mills, V.F., Scarce .....	E. III 32
15	✉	<b>Deception, Wash. (Ter.)</b> Jan. 27, 1893 in Bold Cogged Double Circle, 2c green (213) matching cork, not tied, statehood usage with the "Ter." partly obliterated, Very scarce, Fine .....	E. II 9 E. I 10+
16	✉	<b>Delano, Cal. July 4th</b> ms. cancel, 3c green (158) on cover, Fine .....	E. III 25
17	✉	<b>Forbestown, Cal.</b> in mostly clear Double Arc on 10c Green Entire (U18). Tied by matching grid, used to Md., bit aged, Fine, Scarce .....	E. II 12+
18	✉	<b>Forbestown, Marysville, Murphy's, Cal.</b> pmks. on separate covers, first in Red, others in Blue, Murphy's with matching "10" others on 10c Green Ty. I, II Entires (U17), minor marginal faults, Very Good .....	E. IV 24 =
18A	✉	<b>Garden Valley, Cal.</b> July 18 in ms. ties 10c Yellow Green Entire (U18) used to Me., tiny sealed marginal cover faults, otherwise Fine, Very Scarce Town .....	E. VI 105 =
18B	✉	<b>Garden Valley, Cal.</b> in Magnificent Bold Circle ties 10c Yellow Green Ty. II Entire (U18) to Maine, a Beauty, Extremely Fine .....	(Photo)
19	✉	<b>Grand Prairie W. T.</b> Apr. 17, 1872 in ms., ties 3c Green (147) on fresh pink cover to Ms., stamp has minute tear, otherwise Fine, Scarce .....	E. II 21
20	✉	<b>Grand Prairie W. T.</b> Jan. 5 in ms. ties 3c Green Entire (U83) to Mass., Dec. 31, 1873, letter enclosed headed "Cowlitz W. T., Scarce, Fine .....	E. II 22
21	✉	<b>Greenhood &amp; Newbauer Northern Express</b> Frank on 3c Red Entire (U10). Tied by clear Oval Weaverville Co. pmk. & "April 26" in ms., Extremely Fine .....	E. III 32+
22	✉	<b>Hastings, M. T.</b> blue pmk., 3c Red (26), straight edge at R., tied on cover, Fine .....	E. I 10
23	✉	<b>Honolulu, Hawaiian Islands</b> in Bold Red Circle on neat folded Mar. 1852 letter to Lahaina, letter headed <b>Punahou</b> , bit toned, Very Fine (Photo)	E. IV 37+
24	✉	<b>Honolulu U. S. Postage Paid</b> in clear Red Circle, Matching "Paid" in Oval with "12" in Red ms., clear "San Francisco, Cal." pmk. with matching "Paid 12" on fresh cover to Michigan, forwarded to Ohio, Very Fine (Photo)	E. VI 95
25	✉	<b>Honolulu U. S. Postage Paid</b> in bit indistinct Red Circle, "San Francisco, Cal." in clear circle, matching <b>Paid 12</b> , on cover to Miss., Rare, Fine (Photo)	E. VI 85
26	✉	<b>Honolulu, Hawaiian Islands</b> in clear Red circle, "12" in Red Crayon, clear "San Francisco, Cal. 12 Mar. 20, 1858" on cover to N. Y. State, minor sealed cover tear, otherwise V. F. .....	(Photo)
27	✉	<b>Independence, Oregon</b> Aug. 20, '67 in ms., 3c rose (65) matching ms. cancel to cover to Nicolaus, Cal., Very Scarce, Fine .....	E. VI 55
28	✉	<b>Jacksonville, Ogn.</b> in circle ties 10c Green Ty. II (32). Another clear strike, on cover to N. Y., stamp has almost invisible tiny fault, otherwise Fine, Scarce .....	E. II 85
29	✉	<b>Jacksonville, Ogn.</b> in Clear Circle ties 3c Pink Entire (U35) to Rosebud, 1862 ms. return at L., Immaculate, Extremely Fine .....	E. II 12
30	✉	<b>Ketchikan, Wrangell, Nome, Alaska</b> in clear circles ties 1c Green, 2c Red (267B, 374, 405) on Two Picture Post Cards & Cover, 1905-1916, F.-V.F.	E. II 14
31	✉	<b>Kings River, Cal.</b> Jan. 29, 1883 purple pmk. with 3c Green (184) on cover, V. F. ....	E. II 9
32	✉	<b>Lamping &amp; Co's Express</b> Frank on 12c Red & Brown on Buff Entire (U42). Legal Size, Fresh, Unused, Very Fine .....	E. II 14
			45.00+ 13

33	☒	<b>Merrill, Oreg.</b> Nov. 18, 1898 Pmk., 2c Red (279b) tied by matching target on cover with Corner Card of <b>Klamath Falls, Merrill Stage Line</b> , also Contemporary Photo of the 4 Horse Stage, cover cut bit irregularly at R., otherwise Fine .....	E. III	23	
34	☒	<b>Michigan Bluff, Cal.</b> in Bold Double Circle ties "L" Block of three 3c Red (11) margins to just touched, on small Embossed Cover to Mass., 1c Blue Ty. IV (9) margins to just touched, tied by Bold Bars on Flap, Handsome, Fine .....	E. VI	80	
35	☒	<b>Monticello, W. T.</b> Dec. 4 in ms., 10c Green Ty. V (35). Matching ms. cancel, on fresh yellow cover to Mass., 1860 letter enclosed, stamp has short perf, otherwise Fine, Scarce .....	E. III	32+	
36	☒	<b>Monticello, W. T.</b> March 4 in ms., 10c Green Ty. V (35). Matching ms. cancel, on Pink cover to Mass., minor sealed cover tears, otherwise Fine, 1862 letter enclosed headed "Cowlitz" .....	E. II	29	
37	☒	<b>Oakland, Or., Portland, Oreg.</b> in clear circles, first in Blue, on two covers with 3c Rose, Red (65, 94), Latter with "Western Hotel" corner card, Fine .....	E. II	7+	
38	☒	<b>Olegua W. T.</b> 4-21-'85 in ms., centered 2c Red Brown (210). Matching ms. cancel, letter enclosed, fresh, Very Fine, Scarce .....	E. II	23	
39	☒	<b>Pacific Express Paid</b> Running Pony Frank on 3c Red Entire (U10) to to S.F., tied by clear oval <b>Pacific Express Nevada</b> pmk., Very Fine .....	E. III	40	=
40	☒	<b>Pacific Stage &amp; Express Co.</b> Diff. Illustrated Franks, one in Blue, Showing Stages pulled by 4 and 6 horses, Unused, V. F. ....	E. II	8+	
41	☒	<b>Pacific Union Express Co.</b> Franks in Red Ribbon Scrolls on three 3c Pink Entires (U58 U59, two). Two with Blue <b>San Diego</b> and <b>Vacaville</b> Co. pmks., one a bit age spotted, V. G. ....	E. II	11	
42	☒	<b>Petaluma, Cal.</b> in Clear Blue Double Circle ties 10c Green Ty. V (35) on yellow cover to Vt., Very Fine .....	E. I	16	
43	☒	<b>Portland, O. T.</b> in clear circle ties 10c Green Entire (U16) to Mass., trivial tiny corner faults, choice strike .....	E. III	35	
44	☒	<b>Portland, O. T.</b> Two diff. pmks., one dated Feb. 7, 1859, on 10c Green Ty. I, II Entires (U15, U18) to Mass., minor margin faults, Good .....	E. II	14	
45	☒	<b>Portland, Ogn.</b> pmk. on cover with 5c Black Brown (76a) Horiz. Pair s. e. at B. tied, light <b>Victoria B. C.</b> pmk. to Mass., Scarce usage, Fine ...	E. V	37+	
46	☒	<b>Port Townsend, Wash.</b> Dec. 29, 1887 in clear circle, 2c Red Brown (210). Clear <b>Kicking Mule</b> cancel, not tied, on overall Illustrated cover to Neah Bay showing Port Townsend street scene in Pink, Pretty, Very Fine .....	E. V	42+	
47	☒	<b>Sacramento, Cal. 40</b> in clear San Serif Circle on neat folded Aug. 27, 1850 letter, Scarce Pre Statehood Usage, Very Fine .....	E. III	21	
48	☒	<b>Sacramento, Cal. 40</b> in clear Circle on folded Apr. 1850 letter to <b>Texas</b> , regarding mining, bit aged, otherwise Fine, Scarce Pre-Statehood letter .....	E. II	18	
49	☒	<b>Sacramento City, Cal.</b> in circle, Paid 6, franked C. B. Fowler, Assembly, contains interesting letter, Fine .....	E. II	21	
50	☒	<b>St. Anthony's Falls, Min.</b> in Clear Red San-Serif Circle, matching "10" in circle, on neat folded letter to Mass., same Type as Chase-Cabeen #295 with additional "'s" in "Anthony's", Rare, Very Fine .....	E. VII	65 =	
51	☒	<b>Salem, Ogn.</b> in Bold Circle on fresh 10c Green Entire (U18) tied by ms. cancel, Very Fine .....	E. II	16	
52	☒	<b>Salem, Ogn.</b> in circle, couple letters not struck up, on 10c Green Entire (U17) with ms. cancel, used to Mass., Fine Cover .....	E. II	8+	
53	☒	<b>Salt Lake City, Utah</b> in clear circle ties 3c Red (26) on fresh cover, dated 1858 on back, scarce & early, Fine .....	E. IV	42+	
54	☒	<b>San Andreas, Cal.</b> in black circle "10" and "Paid" in box, Fine .....	E. II	16	
55	☒	<b>San Diego, Cal.</b> in ms., Matching "40" on small fresh cover to Washington, "1851" in Pencil, Rare & Early Usage, Very Fine .....	E. VI	135	

56	☒	<b>San Diego, Cal.</b> in Bold Circle, "40" in ms., on small cover to Washington, D.C., "1851" in pencil, Rare & Early, Very Fine .....	E. VI	100
57	☒	<b>San Diego, Cal.</b> in Bit Indistinct Bold Circle ties 10c Green Ty. IV (16). Pos. 76L1, Recut at B., Huge Margins, Brilliant Color, on fresh cover to R. I., neatly sealed tiny cover tears, Very Fine, Rare .....		235.00 (Photo) 140
58	☒	<b>San Francisco, Cal.</b> in Very light Orange Circle, "37½" in ms., on Buff Legal Size Cover to Stockton with "Received 8th Dec. 1850" in ms., Scarce Multiple 12½c Rate, Fine .....	E. V	32+
59	☒	<b>6</b> in Large clear circle, "W. Scott (steamer)" in ms. on Buff cover from Calif. to N. Y., Very Fine .....	E. II	11
60	☒	<b>San Francisco, Cal.</b> in Bold Double Circle, matching str. line <b>Ship 6, 13c</b> in Red Crayon, on neat folded 1865 letter, <b>from Tahiti to Lahainalalo, Hawaii</b> , Papeete Backstamp, Rare, Very Fine .....	E. III	60
61	☒	<b>San Francisco, Cal.</b> Apr 5, 1859 in clear circle ties 10c Green Ty. I (31). Centered well to U. L., on cover to Vt., Cover bit ragged at T., Scarce .....	E. III	18
62	☒	<b>San Francisco, Cal.</b> Partly off cover, ties Centered 10c Green Ty. II (32) on Yellow Cover to Vt. with Bold <b>Due 10</b> , part of flap missing, otherwise V. F. ....	E. II	7
63	☒	<b>San Francisco, Cal.</b> in clear circles Ties 10c Green Ty. II, III, V (32, 33, 35) on separate covers to Me. & Vt., No. 32 has sm. faults, otherwise F.-V. F. ....	E. III	12
64	☒	<b>San Francisco, Cal.</b> Feb. 5, 1859 in clear circle ties 10c Green Ty. III (33) on cover to Vt. with unusual Clear Oval <b>Due 10</b> and <b>Due 3</b> pmks., tiny stamp & cover faults, Very Scarce .....	E. II	7+
65	☒	<b>San Francisco, Cal.</b> in Circle ties 10c Green Ty. V (35) "pr. Uncle Sam" in ms., on Jan., 1860 cover to New York, Fine .....	E. III	22
66	☒	<b>San Francisco, Cal.</b> pmk., 10c Green (68) tied on cover to Sandwich Isles, Fine .....	E. II	15
67	☒	<b>San Francisco, Cal.</b> Jun 23, 1864 in clear circle, 12c Black (69). Horiz. Pair, tied by Bold Cogwheels & by Red N. Y. Transit, Red "London Paid" on cover to London, Scarce & Attractive, Fine .....	E. III	27
68	☒	<b>San Francisco, Cal.</b> Bold Duplex ties 6c ultramarine (115) on tiny cover to N. Y. State, tiny sealed cover tear, otherwise Fine, Scarce Usage ....	E. II	17
69	☒	<b>Shasta &amp; Weaverville Express</b> Franks on 3c Pink Entires (U58, U59). Unused, Very Fine .....	E. III	18
70	☒	<b>Smith River, Cal. Aug 9, 1865 in ms., 3c Rose (65).</b> Matching Cancel, on tiny cover to <b>Sublimity, Oregon</b> , stamp has tiny fault, Fine cover, Rare pmk. ....	E. III	8
71	☒	<b>The Dalles, Or.</b> May 19, '62 in Bold ms., 10c Green Ty. V (35). Matching ms. cancel, on fresh cover to Mass., letter enclosed, Fine .....	E. II	26
72	☒	<b>The Dalles Oregon</b> Jun 26, 1879 in Purple Circle on 3c Green Entire (U163) with 3c Green (158), both with matching negative Star in circle, matching Boxed "Have Your Mail Directed to Street & Number and Avoid Delay" in 3 str. lines, Handsome, Fine .....	E. I	10
73	☒	<b>Tinnin &amp; Owens, Weaverville &amp; Shasta Express</b> Frank on 3c Pink Entires (U58, U59). Unused, Very Fine .....	E. III	14
74	☒	<b>21</b> in Bold str. line, "Per Washington" in ms., <b>San Francisco</b> Merchants Cachet, on folded 1849 letter headed "New York", to London, Fine .....	E. II	22
75	☒	<b>Union, Cal.</b> Feb. 8, 72 in ms., on 3c Green Entire (U84) to S. F., Very Scarce, Very Fine .....	E. II	19
76	☒	<b>Vancouver Barracks, Wash.</b> in clear Circle, 1c Blue, Ultramarine (206, 212). Matching corks, not tied, on 1888 cover to Portland, Scarce, Fine .....	E. II	13
77	☒	<b>Via Nicaragua Ahead of the Mails</b> in two Blue str. lines in Box, some letters at R., not struck up, Horiz. Pair 3c Red (11), Margins to slightly in, tied by Bold <b>New York Ship</b> pmk. on cover to Me., small sealed cover tear, otherwise Fine, Very Scarce .....	E. VIII	80



78	☒	<b>(Via) Nicaragua (Ahe)ad of the Mails</b> in Two Clear Blue str. lines in Octagonal Box, struck slightly off envelope at L., Horiz. Pair 3c Red (11), Margins nearly all around, tied by clear New York pmk. on cover to Boston, "Via Nicaragua" in ms., fresh, Very Fine ..... <b>(Photo)</b> E. VIII	115
79	☒	<b>Via Nicaragua Ahead of the Mails</b> in two Red str. lines in Octagonal Box, few letters not struck up, on 6c Green Entire (U14). Tied by clear <b>New York Ship</b> , used to Me., fresh, Very Fine ..... <b>(Photo)</b> E. VIII	100
80	☒	<b>Virginia City, Montano</b> clear pmk., 3c Rose (65) tied on cover, V. G. .... E. II	14
81	☒	<b>Virginia City, Montano</b> in clear circle ties 3c Rose (65) on tiny cover, perfs trimmed at L. & B., otherwise Fine ..... E. II	13
82	☒	<b>Wadsworth, Nev.</b> in Clear Blue Circle, 3c Green (147). Tied by matching target, stamp has trivial sealed tear, Fine appearance, Scarce & Hand-some ..... E. II	12
83	☒	<b>Wascopum O. T. 4 Oct.</b> in clear ms., 10c Green Ty. IV (34). Pos. 74L1, Recut at T., matching ms. cancel, on fresh cover to N. Y., Fine, Rare 150.00+	80 =
84	☒	<b>Wells Fargo &amp; Co. Downieville</b> in Bold Blue Oval on Immaculate Buff Cover with "Agent of Wells Fargo & Co's Express Printed Address, originally part of a Paste-up, Extremely Fine ..... E. III	28
85	☒	<b>Wells Fargo &amp; Co. Victoria</b> in Clear Blue Circle ties 3c Pink Entire (34) with W. F. & Co. Frank & Clear Blue Illustrated <b>Post Office Victoria, VI</b> pmk., used to S. F., cover trimmed just into design at R., Very Scarce ..... E. IV	475
86	☒	<b>Wells Fargo &amp; Co. 25c Blue Pony (143L8).</b> Tied by clear Blue Oval "Wells Fargo & Co. Virginia Cty N.T." on Rebacked Front of 3c Pink Entire (U34). Tied by another clear strike, W. F. & Co. Frank, soiled, corner nicks, stamp repaired in L. margin, Rare ..... <b>(Photo)</b> 1000.00	300 =
87	☒	<b>Wells Fargo &amp; Co.</b> Franks on 2c-6c Entires (U10, U62, U63, U227). Two are legal size, Fine-Very Fine, unused ..... E. II	9
88	☒	<b>Wells Fargo &amp; Co.</b> Franks on three 3c Pink, Green Entires (U35, 82, 83). Blue <b>Portland</b> Co. pmks., one with Overall Advert. of Portland Hat Dealer, Dockets at L., Fine-Very Fine, Scarce Lot ..... E. III	15
89	☒	<b>Wells Fargo &amp; Co.</b> Franks on Three 3c Pink Entires (U58). With Overall Adverts. of Hatter in Brown, Green, Salmon, Oval Co. pmks., F.-V. F. E. II	13
90	☒	<b>Wells Fargo &amp; Co.</b> Frank on 3c Green Entire (U83) with Clear Blue Oval <b>Salt Lake City Ut.</b> pmk., used to Mont., Scarce, Very Fine ..... E. III	325
91	☒	<b>Wells Fargo &amp; Co</b> Frank on 3c Green Entire (U164) with clear Blue Oval <b>Hamilton, Nev.</b> Co. pmk., Very Fine ..... E. II	14
92	☒	<b>Wells Fargo &amp; Co's Express Victoria, British Columbia</b> Frank, Canada 3c Red (41). Tied by Purple Oval Victoria Co. Cancel, Purple Oval San Francisco Co. cancel, Unaddressed, formerly part of a Paste-up, Scarce, Fine ..... <b>(Photo)</b> E. VI	55
93	☒	<b>Wells Fargo &amp; Co. 25c Red Entire (143LU3).</b> Printed on 3c Pink Entire (U34). With Red W. F. & Co. Frank, Unused, Very Fine ..... <b>(Photo)</b> 175.00	105
94	☒	<b>Oregon &amp; Washington Letters.</b> 17 letters, 14 with Covers, mostly 1856-1875, from Cowlitz, Wailepta, Dalles, Grand Prairie, Chehalis, Astoria, Rainer, Ruby City, Olequa, Carrolton, some very scarce pmks., but all with damaged or missing stamps, Interesting Contents, Nice lot for the Northwest Historian ..... E. III	50

#### POSTMASTER'S PROVISIONALS

95		<b>New York 5c Black Without Signature (9XIC).</b> Margins all around, unused appearance, faults ..... 200.00	325
96	★	<b>Providence, R. I., 5c Black (10X1).</b> Margins all around, thin, Fine appearance ..... 50.00	275

97 ★ **Providence, R. I., 10c Black (10X2).** Margins all around, light creases, otherwise Fine, o. g. .... **(Photo)** 185.00 *25*

**1847 ISSUE**

- 98 **5c Red Brown (1).** Clear to Large Margins all around, pretty color, Bluish Unframed grid cancel, corner crease, Very Fine appearance **(Photo)** 47.50 *38*
- 99 **5c Red Brown (1).** Large Margins all around, Red "Portland, Me. 10" pmk., minute margin crease, Extremely Fine appearance .... **(Photo)** 45.00 *225*
- 100 **5c Red Brown (1).** Large margins except closer at T., Pretty color, clear Red **10** cancel, small thin, Fine appearance .... **(Photo)** 125.00 *26*
- 101 **5c Red Brown (1).** Just clear to Large Margins except barely in L. L. corner, tied to top portion of 1849 Cover by clear Red Str. Line **Philada. Railroad** pmk., Fine .... **(Photo)** 175.00 *474*
- 102 ☒ **5c Red Brown (1).** Just Clear to Gigantic Margins, tied by Red Square grid, No pmk., on local May 17, 1851 N. Y. Letter, Handsome, Fine ..... 60.00 *55*
- 103 ☒ **5c Red Brown (1).** Large margins except barely clear at B., magnificent color & Impression, tied by Red Square Grid and by matching N. Y. pmk. on folded cover to Philadelphia, cover a bit discolored at L., Fine ..... 60.00 *60*
- 104 ☒ **5c Red Brown (1).** Margins except cut in at B., tied by light Red grids, light matching Providence, R.I. pmks., on neat folded cover to Boston, Very Good ..... 60.00 *28*
- 105 **10c Black (2).** Large to Huge Margins all around, Very Light ms. cancel, Very Fine .... **(Photo)** 65.00 *110*
- 106 **10c Black (2).** Clear to Large Margins all around, Unusually Rich Color & Impression, light ms. cancel, minute marginal thin & tiny nick, V. F. appearance ..... 65.00 *65*
- 107 **10c Black (2).** Just clear to Ample Margins, Blue Town pmk., Faults, Fine appearance ..... 145.00 *30*
- 108 ★ **5c Red Brown Reproduction (3).** Margins all around, light crease, Fine appearance .... **(Photo)** 120.00 *70*
- 109 ★ **5c Red Brown Reproduction (3).** Margins all around, tiny corner crease, Fine appearance .... **(Photo)** 120.00 *60*

**1851 ISSUE**

- 110 **1c Dark Blue Ty. II (7a).** Horizontal Pair, Large Margins except just touched at B., Rich Color & Impression, **Paid** in circle cancels, Fine .... 47.00 *177*
- 110A **1c Blue Ty. II (7).** Four Shades, Margins to slightly in, one has Unofficial **Roulette at T.**, Very Good ..... 68.00+ *87+2*
- 111 **1c Blue Ty. II, IV (7, 9).** Margins nearly all around, F.-V. F. .... 32.00 *14*
- 111A ☒ **1c Blue, 3c Red (7, 9, 11, 26).** No. 7 and three No. 26 tied by Genesee, Ill. pmks. and No. 9 & Horiz. Strip of three No. 11 with ms. cancel, matching Fremont, Ill. pmk on Two Covers to **Indian Diggings, Cal.**, one No. 11 has tiny nick, otherwise Fine ..... **E. III** *26*
- 112 **1c Blue Ty. III (8).** Huge Margins, Gorgeous Color, neat town pmk., trivial pinpoint marginal thin speck, otherwise Extremely Fine **(Photo)** 175.00 *150*
- 112A **1c Blue Ty. III (8).** Margins to just in, Rich Color, town pmk., V. G. .... 175.00 *65*

**KINDLY MAIL BIDS EARLY. All bids must be received in our office by Thursday, March 31. Mail last minute bid sheets direct to the Sheraton Motor Inn, Portland, Oregon.**

113	<b>1c Blue Ty. IIIA (8A).</b> Large Margins except just touched at T., Rich Color, creases, Fine appearance ..... (Photo)	80.00	57+
113A	<b>1c Blue Ty. IV (9).</b> Recut once at B., twice at T., Clear to Large Margins, except just touched at T., Light Cancel, Fine .....	30.00	75
114	<b>1c Blue Ty. IV (9).</b> Margins all around, Very Fine .....	15.00	14
114A	<b>1c Blue Ty. IV (9).</b> Two Rich Shades, Margins nearly all around, one with French Decimes cancel, Very Fine .....	30.00	17
115	<b>1c Blue Ty. IV (9).</b> Horiz. Pair, Pos. 71L1L, 72L1L, Both Double Transfer, First Inverted, Margins to Barely in, Light Grid Cancels, Fine .....	66.50	25
116	<b>1c Blue Ty. IV (9).</b> Horiz. Pair & two singles, Margins to just in, creases, Fine appearance .....	65.00	11
117	☒ <b>1c Blue Ty. IV (9).</b> Pos. 70L1L, Recut once at T., twice at B., Margins except just touched at B., tied by Blue Petersburg, Va. pmk. on folded cover, Fine .....	17.50	12
118	☒ <b>1c Blue Ty. IV (9).</b> 5 copies on 3 covers, Margins to in at places, V. G.-Fine .....	82.50	11
119	<b>3c Orange Brown (10).</b> Margins all around, Vivid Color, Pretty Blue Paid cancel, Very Fine .....	12.00	24 =
120	<b>3c Red (11).</b> Three Rich shades, margins nearly all around, clear "Steam", "3", Blue "Steamers" cancel, V. F. lot .....	E. II	17
121	☒ <b>3c Red (11).</b> Pos. 92L1L, <b>Rosettes Double Line Thru 3 cts.</b> , tied by unframed Attica, Ind. pmk., Fine .....	25.00+	17
122	☒ <b>3c Claret (11, two).</b> Margins to just in, tied by <b>Oddfellows Three Links</b> Cancels, Clear <b>Canton, Mi.</b> pmk. on fresh Cover, Rare, Fine .....	E. V	26
123	★ <b>5c Red Brown (12).</b> Margins except barely touched at T., Magnificent Rich Color, Fine Example of this Rarity, with P. F. Certificate (Photo)	600.00	525
124	<b>5c Red Brown (12).</b> Large Margins, New York pmk., Rich Color, Very Fine ..... (Photo)	100.00	85
125	<b>5c Red Brown (12).</b> Binghamton town pmk., in at T., V. G. ....	100.00	30
126	<b>10c Green, Ty. I (13).</b> Town cancel, cut in two sides, Good .....	135.00	15 =
127	☒ <b>10c Green Ty. I (13).</b> Huge Margins except cut in at B., enough of shells remain at sides to identify type, Vivid Color, tied by clear San Francisco pmk. on fresh cover to Mass., Very Good .....	185.00	22
128	☒ <b>10c Green Ty. II (14).</b> Large margins, fastened by wafer & tied by clear Rome, N. Y. pmk., on neat folded 1856 letter to Calif., stamp shows minor rubbing, otherwise Very Fine .....	E. II	14
129	<b>10c Green Ty. II, III (14-15).</b> Very Good .....	60.00	13
130	☒ <b>10c Green Ty. II, III (14, 15).</b> Huge margins to just touched, tied by clear Rome, N. Y. pmks. on folded letters to <b>Placerville, Cal.</b> , Fine Pair .....	E. IV	30
131	<b>10c Green Ty. III (15).</b> Horizontal Pair, large margins top & bottom, close at sides, light town cancel, Attractive, Fine ..... (Photo)	75.00	20
132	☒ <b>10c Green Ty. III (15).</b> Margins to barely touched, tied by <b>San Francisco</b> pmk. on cover to Mass., Fine .....	35.00	15
133	<b>10c Green Ty. IV (16).</b> Pos. 54L1, Recut at B., Black Town cancel, margins touch at T. & U. R., Very Good ..... (Photo)	200.00	40
134	<b>12c Black (17).</b> Margins all around, neat Black Grid cancel, creases, Fine appearance .....	30.00	13

#### 1857 ISSUE

135	<b>1c Blue Ty. I (18).</b> Attractive Fancy <b>Star</b> cancel, faults .....	80.00	84 = 2
136	<b>1c Blue Ty. III (21).</b> Light cancel, tiny surface rub & perfs clipped. T. & B., type characteristics plainly shown .....	80.00	26
137	<b>1c Blue Ty. IIIA (22).</b> Lovely color, ms. cancel, V. G. ....	26.50	5
138	<b>1c Blue Ty. IIIa, Plate 11 (22).</b> Horiz. Pair, unframed Pittsburgh, Pa. pmks., one has corner fault, other Fine, Scarce in multiples .....	75.00	18

139	★	1c Blue Ty. V (24). Block of Fifteen (3x5). Well centered, some small scrapes on front, attractive Piece	190.00+	65
140		1c Blue Ty. V (24). Pair & 3 singles, Pos. 57R7. <b>Curl on Shoulder</b> , Pos. 13R8 Dash in Hair, two, one unused, Pos. 79, 80R8, first with <b>Curl in Hair</b> and with Washington City "Free" pmk., latter light crease, others Fine	35.25+	12
141	☒	1c Blue Ty. V (24). Five Covers, One with Strips of 3, one with 3c Red (26), others tied by Red N. Y. Carrier pmks., Fine lot	41.65	20
142	★	3c Red (26). Block of Nine, s. e. at right, o. g., Fine-V. F.	35.00	25
143	☒	3c Red (26). Tied by grid, Manchester, N. H. Oct. 5, 1860 pmk. on <b>Lincoln Hamlin Campaign Cover</b> with $\frac{3}{4}$ Portraits of Both, stamp centered slightly to L. L., fresh, Very Fine Cover		E. VII 75
144	☒	3c Red, 12c Black (26, 36). Latter str. edge at bot., tied by New Orleans pmk., Red N. Y. Paid 12 on 1859 cover to France, Fine		E. II 17
145		5c Brick Red Ty. I (27). Light Cancel, Very Good	85.00	26
146		5c Brick Red Ty. I (27). Light New Orleans pmk., corner creases, Fine appearance	85.00	34
147		5c Red Brown Ty. I (28). Rich Color, Fine	52.50	22
148		5c Red Brown Ty. I (28). Rich Color, Light Town pmk., Fine	52.50	21
149		5c Indian Red Ty. I (28A). Rich color, town pmk., s. e. at top, Very Fine	125.00	45
150		5c Brown, Ty. I (29). Very Light Cancel, V. G.	35.00	15
151		10c Green Ty. I (31). Light Town pmk., Very Good	85.00	21
152	☒	10c Green Ty. I (31). Perfs in at R., s. e. at L., tied by clear San Francisco Dec. 21, 1857 pmk., on fresh cover to Mass., Fine Cover	100.00	28
153	☒	10c Green Ty. I (31). Centered well to L., tied by clear Rome, N. Y. Oct. 19, 1857 pmk. on neat folded cover to Calif., cover has minor age stains, V. G.	100.00	20
154		10c Green Ty. III (33). N. Y. <b>Ocean Mail</b> cancel, light creases, Fine appearance	14.00+	13
155		10c Green Ty. IV (34). Pos. 64L1 Recut T. & B., Centered to top, light ms. cancel, Fine	225.00	90
156	★	12c Black Plate I, 24c Lilac (36, 37). 24c part o. g., small faults, Fine appearance	87.50	24
157		24c Lilac (37). Bold Unframed Grid cancel, centered to Top, V. G.	40.00	16
158	★	30c Orange (38). Slightly rounded corner perf, otherwise Fine	60.00	325
159	★	90c Blue (39). Tiny thin, o. g., Fine appearance	200.00	75
160	★	1c Bright Blue Reprint (40). Trivial surface rub & light creases, Very Fine appearance	60.00	374

#### 1861 ISSUE

161		10c Dark Green August (58). Light Black Grid Cancel, Centered to top, <b>Stitch Wmk.</b> , faults, Fine appearance	120.00	26
162		24c Grayish Lilac August (60a). Perfectly Centered, Light Town Pmk., light creases, Extremely Fine appearance	85.00	85
163	E	1c Blue Coupon Essay ( <b>Brazer 63E-Dj</b> ). Perforated, roulette between coupon and stamp, Very Fine		E. II 10
164	E	1c Red Coupon Essay ( <b>Brazer 63E-Di</b> ). Perforated, o. g., Fine		E. II 10
165		1c Blue (63). Seven Copies Incl. Green, Purple Grids, Violet Star & Maltese Cross, Magenta Town, two tied on small piece by Orange Sunbursts, two have faint creases, others Fine-Very Fine, Pretty lot		E. III 23
166		1c Blue (63). Horiz. Pair & 7 Singles, all with Blue Cancels, some Gorgeous Shades, Fine	33.75+	12
167	☒	1c Blue (63). Five Covers, two tied by octagonal "U. S. Penny Mail, Phila., Pa.", two others used with 3c Rose (65) from N. Y. & Phila., Fine		E. II 17
168	☒	3c Rose (65). Three diff. <b>Florida</b> covers, Enterprise, Saint Augustine, Palmetto pmks., latter ms., V. G.-F.		E. II 9

169	✉	<b>5c Brown, 10c Green (68, 76).</b> Grid cancels & tied by Red Philadelphia pmk. & Boxed foreign "PD" on fresh cover to Paris, Fine .....	E. II	21
170		<b>24c Red Lilac (70).</b> Nice color, light target cancel, Very Fine .....	13.00	16
171		<b>30c Orange (71, two).</b> Black Dotted Grid and Red <b>Heart within Heart</b> cancels, V. G.-Fine .....	24.00+	10
172		<b>90c Blue (72).</b> Very Good .....	35.00	9+
173		<b>3c Rose Grilled all Over (79).</b> Perfs. nearly all intact, light Blue Cancel, short perf. tear, Fine appearance for this .....	140.00	115
174		<b>2c Black Z. Grill (85B).</b> Light Blue cancel, Very Good .....	37.50	13
175		<b>12c Black Z. Grill (85E).</b> Magenta cancel, creases & few nibbed perfs., Very Good appearance .....	80.00	20 =
176	✉	<b>1c Blue E. Grill (86).</b> Well Centered Copy, Greensborough, N. C. pmk., Drop Rate, V. F. ....	28.50	35
177		<b>2c-15c Grills (87-89, 91, 95).</b> Small faults, V. G.-F. appearance .....	92.75	16
178	★	<b>12c Black E. Grill (90).</b> Perfs. just in at top, V. G. ....	80.00	24
179		<b>24c Gray Lilac F. Grill (99).</b> Very Good .....	60.00	40
180		<b>30c Orange F. Grill (100).</b> Bold cork cancel, centered to U. L., just Fine .....	30.00	11
181		<b>90c Blue F. Grill (101).</b> Very Light Cancel, small faults, Very Good appearance .....	135.00	22
182	★	<b>90c Blue Re-Issue (111).</b> Centered, with large margins, bright color, one short perf., otherwise Very Fine .....	525.00	375 =

#### 1869 PICTORIAL ISSUE

183	E	<b>1c Chocolate, 2c Brown 1869 Perforated Plate Essays on Stamp Paper (Brazer 112E-Dde, 113E-Dd).</b> Latter without grill, Very Fine .....	E. II	13 =
184	★	<b>1c Buff (112).</b> Perfectly Centered, Very Fine .....	32.50	37 =
185	E	<b>3c Blue, Black, Yellow 1869 Perforated, Grilled Plate Essays on Stamp Paper (Brazer 114E-Ggh).</b> Two have trivial thins, o. g., otherwise Fine .....	E. II	<del>11</del> + =
186	E	<b>5c Red Violet, 10c Dark Ultramarine 1869 Plate Essays on Stamp Paper (Brazer 115aE-Fc, 116E-Dj),</b> o. g., Very Fine, Scarce .....	E. III	28
187		<b>6c-15c Pictorials (115, 116, 119).</b> 6c str. edge, minute creases, V. F. appearance .....	44.50	12
188		<b>6c-12c, 30c 1869 Issue (115-117, 121).</b> Small faults, F.-V. F. appearance .....	79.00	26
189		<b>10c Yellowish Orange (116).</b> Vivid Color, target cancel, Very Fine .....	14.00	17
190		<b>12c Green (117).</b> Cork cancel, Extremely Fine .....	14.00	32 + 2 =
191		<b>12c Green (117).</b> Bright red grid cancel, Very Fine .....	20.00	32 + 2 =
192		<b>15c Brown &amp; Blue Ty. I (118).</b> Light cancel, nice color, Fine .....	55.00	18
193		<b>15c Brown &amp; Blue Ty. II (119).</b> Very Fine .....	17.00	16
194		<b>24c Green &amp; Violet (120).</b> Rich Color, light cancel, tiny perf. break, Fine appearance .....	60.00	16
195		<b>24c Green &amp; Violet (120).</b> Light cancel, nice colors, slight creases, V. G. ....	60.00	17
196	★	<b>90c Carmine &amp; Black Lincoln (122).</b> Faults, Fine centering .....	375.00	95 =
197		<b>90c Carmine &amp; Black (122).</b> Well centered, Clear Color, Neat Crossroad Cancel, filled in thin spot, Extremely Fine appearance .....	165.00	150
198		<b>90c Carmine Rose &amp; Black (122).</b> Light cancel, tiny thins, otherwise V. G. ....	165.00	27
199	★	<b>1c Buff Re-issue (123).</b> Thin spot, o. g., Very Fine appearance .....	55.00	30
200		<b>1c Buff Re-issue (123).</b> St. Louis, Mo. <b>Star</b> Cancel, small faults, Very Fine appearance .....	37.50	20
201		<b>6c Blue Re-issue (126).</b> Light cancel, small faults, Extremely Fine appearance .....	90.00	36
202	★	<b>10c Yellow Re-Issue (127).</b> Centered, Rich Color, one nibbed perf., otherwise Very Fine .....	145.00	110
203	★	<b>10c Yellow Re-issue (127).</b> Rich color, perfectly centered, part o. g. faults .....	145.00	32

## BANKNOTE ISSUES

204	<b>7c Vermillion Grill (138).</b> Thin, Fine appearance .....	30.00	65
205	<b>6c Carmine Grill (137).</b> Centered slightly to T., Very Fine .....	32.50	40
206	<b>10c Brown Grill (139).</b> Very Good .....	60.00	60
207	<b>12c Violet Grill (140).</b> Light Rosette cancel, neatly sealed tear, Fine appearance, with P. F. Certificate ..... <b>(Photo)</b>	275.00	75-
208	<b>15c Orange Grill (141).</b> Very Good .....	57.50	17
209	<b>30c Black Grill (143).</b> Fine ..... <b>(Photo)</b>	115.00	60
210	<b>30c Black Grill (143).</b> Light Red Cancel, perfs. just in at B., attractive ...	125.00	50
211	<b>90c Carmine Grill (144).</b> Left 3 to 5 mm of design <b>Not Printed</b> , light cancel, Curious & Attractive Oddity ..... <b>(Photo)</b>	75.00+	20
212	<b>90c Carmine Grill (144).</b> Partly struck up <b>Star cancel</b> , Rich Color, small faults, Fine appearance .....	75.00	21
213	<b>2c Red Brown (146).</b> 24 Copies, Nice Range of shades & cancels, select lot, Very Fine .....	E. III	20
214	<b>6c Carmine, Pink (148, two, 159, four, 186, five).</b> Incl. Shades, Cancels, F.-V. F. ....	20.20	11
215	<b>7c-90c Banknotes (149, 150, 152, 154, 155).</b> Mostly Attractive Cancels, small faults, F.-V. F. appearance .....	64.50	15-
216	★ <b>1c-12c Banknotes (156-158, 162, 179, 183, 184, 206-208, 210-215).</b> 16 Diff., Unused, many o. g., some small faults, otherwise V. G.-V. F. lot .....	160.60	90
217	P <b>1c-90c Banknote Card Proofs (Betw. 157P-218P).</b> 19 Diff., Very Fine ...	47.20	24
218	<b>2c Brown (157).</b> 24 Copies, Nice range of Shades & Cancels, Incl. Fancy Types, some in color, several with secret mark, Fine-Very Fine .....	E. III	18
219	★ <b>6c, 7c Banknotes (159, 160).</b> Unused, creases, V. G.-F. appearance .....	65.00	35
220	<b>7c Vermillion (160).</b> Four diff. N. Y. F. M. Cancels, Fine .....	40.00	27
221	★ <b>10c Dark Brown (161).</b> Rich shade, part o. g., Fine .....	20.00	11
222	★ <b>30c Gray Black (165).</b> o. g., 2 nibbed perfs., otherwise Fine .....	57.50	26
223	<b>90c Rose Carmine (166).</b> Minute corner perf. crease, V. F. appearance ...	30.00	13
224	★ <b>1c-5c Banknotes (182, 183, 185).</b> First o. g., 2 trivial pinpoint thins, otherwise V. G.-F. lot .....	40.00	9
225	★ <b>6c-30c Banknotes (186, 189-190, 216-217).</b> Unused, small faults, V. G.-V. F. appearance .....	136.00	57+
226	★ <b>30c Black (190).</b> o. g., Very Good .....	45.00	26
227	<b>90c Carmine (191).</b> Centered slightly to L. R., V. F. ....	28.50	14
228	★ <b>90c Carmine (191).</b> Nice Color, small faults, Fine Centering .....	115.00	36
229	★ <b>2c Red Brown Special Printing (211B).</b> Neatly sealed corner tear, o. g., Fine appearance, signed G. B. Sloane .....	100.00	42+
230	★ <b>1c Ultramarine (212).</b> T. Impt. Plate No. Strip of 6, two thin, otherwise o. g., V. G.-F. ....	50.00	10
231	★ <b>2c Green(213).</b> Twelve marginal Strips of 4, Very Good-Very Fine .....	54.00	16
232	★ <b>4c Carmine (215).</b> Top Impt. Plate No. Strip of 6, one thin, one light crease, others mint, Fine-Very Fine .....	75.00	20
233	★ <b>5c Indigo (216).</b> T. Impr. Plate No. Strip of 6, left stamp s. e., V. G.-F. ...	75.00	16
234	★ <b>90c Purple (219).</b> Rich color, o. g., thin, V. F. appearance .....	75.00	36

## 1890 ISSUE

235	P <b>1c-90c 1890 Issue Card Proofs (219P, 220P-229P).</b> Very Fine .....	28.10	21
236	★ <b>1c-10c 1890 Issue (219-226).</b> Few trivial faults, o. g., generally F.-V. F. ....	44.00	21
237	★ <b>2c, 4c Imperfs (220d, 222a).</b> Horiz. pairs, o. g., V. F. ....	72.50	45=
238	★ <b>3c Purple Imperf. (221a).</b> Horiz. pair, o. g. trivial crease, otherwise, V. F. ....	60.00	42+
239	★ <b>4c Dark Brown, Imperforate (222a).</b> Mint Horiz. Pair, Extremely Fine <b>(Photo)</b>	65.00	85

TO THE PENNY POST CO.

8

PENNY-POSTAGE PAID, 7.



23

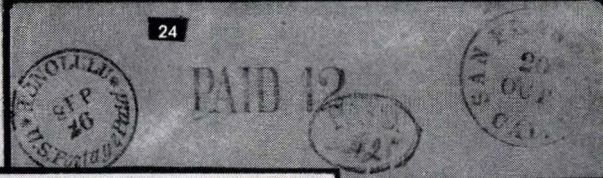


18B

Care of M. H. D. ...

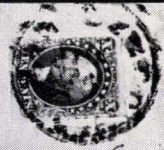


4 o'clock Oct 17th



24

57



At the Post Office, San Francisco, please forward to ...

PAID 12

25



26



RAIL ROAD

101

Cardine H. Hart

TO THE PENNY POST CO.

9

Penny Postage Paid, 7.



Mr. H. L. Goodwin

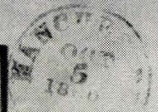
46



143

San. Nicaragua

78



77



93



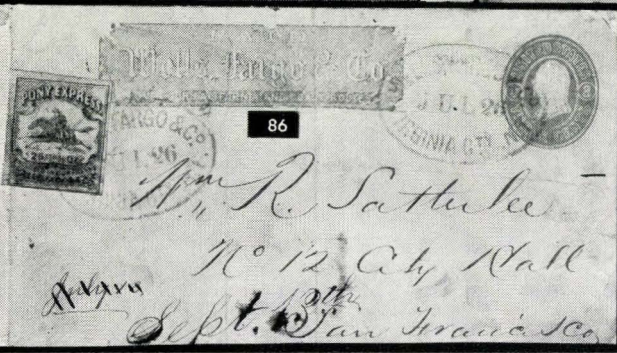
92



VICTORIA, BRITISH COLUMBIA.



79



86





97



98



99



100



105



108



109



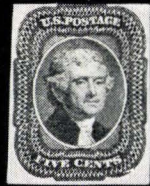
110



112



113



123



131



124



133



155



159



162



173



184



197



207



209



211



259



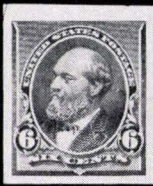
182



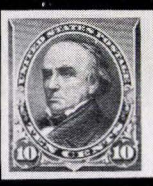
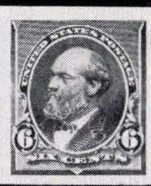
239



241



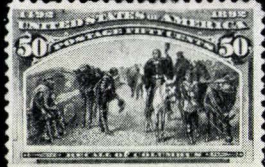
243



243



244



260



262



263



264



265



266



267



268



270



271



272





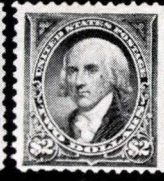
273



275



276



284



286



305



306



307



308



292



309



310



311



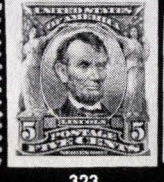
320



313



321



323



324



330



336



336



335



338



339



324



340



341



342



343



363



370



380



387



387



389



393



403



418



426



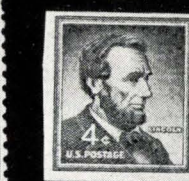
432



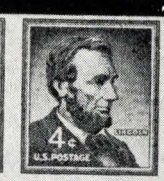
495



393



457



457



476



278

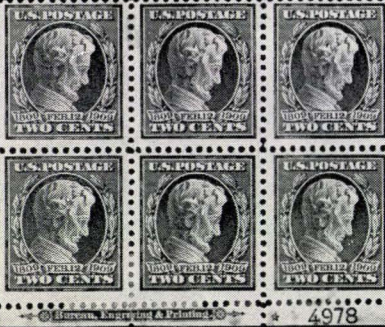


322

325



419



346

4978



358



421



2092

F 20085



460



479

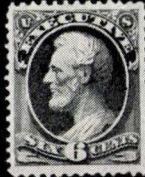
478



517



497



507



533



579



552



544



410



440



488



414



472



405



333



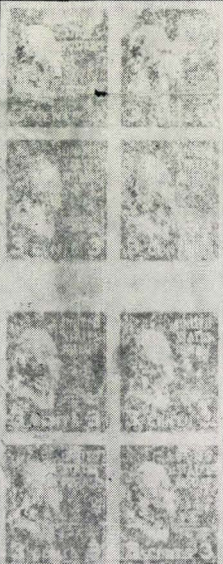
490



545



435



451

240	★	<b>5c Chocolate Imperf. (223a).</b> Horiz. pair, o. g., small thin entirely in margin between stamps, otherwise V. F. ....	60.00	32+
241	★	<b>6c Brown Red, Imperforate (224a).</b> Mint Horiz. Pair, Vivid Color, Extremely Fine ..... <b>(Photo)</b>	60.00	72+
242	★	<b>6c Blackish Olive Imperf. (224a var.).</b> Horiz. pair, Very Fine .....	60.00	47+
243	★	<b>10c Green Imperf. (226a).</b> Horiz. pair, V. F. .... <b>(Photo)</b>	70.00	50
244	★	<b>15c Indigo Imperf. (227a).</b> Horiz. pair, V. F. .... <b>(Photo)</b>	85.00	70
245	★	<b>15c-90c 1890 Issue (227-229).</b> Small thins, o. g., just Fine appearance .....	72.50	47+
246		<b>90c Orange (229).</b> Very Fine .....	18.00	12+

### COLUMBIAN ISSUE

247	★	<b>1c-30c Columbians (230-239).</b> Fresh colors, o. g., small faults, F.-V. F. appearance .....	90.75	27+
248	★	<b>1c-50c Columbians (230-240).</b> Some o. g., mostly small faults, Fair-Fine	130.75	28
249	★	<b>1c-50c Columbian (230-238, 240).</b> Mostly o. g., 3c thin spot, 15c, 50c light corner crease, otherwise V. G.-V. F. ....	107.25	23
250	★	<b>1c, 2c Columbian (230, 231).</b> B. Impt. Plate No. Strips of 4, slightly reinforced, Very Good-Very Fine .....	36.00	14
251	★	<b>2c Columbian (231).</b> Top Impt. Plate No. Block of 10, broken crease in two, otherwise mint, Very Good-Fine .....	54.00	15
252	★	<b>2c-10c Columbian (231-233, 236-237).</b> 3c, 8c trivial thin specks, V. F. appearance, others V. F. ....	33.00	16
253	★	<b>6c Columbian (235).</b> B. Impt. Plate No. Strip of 4, slightly reinforced, short corner perf., otherwise Fine .....	50.00	18
254	★	<b>15c, 30c Columbians (238-239).</b> Centered, Rich Colors, tiny thin speck & faint crease, V. F. appearance .....	42.00	13
255	★	<b>15c Columbian (238).</b> Block, Mint, just Fine .....	90.00	35
256		<b>5c-30c Columbians, Trans-Miss. (238-239, 288-290).</b> Small faults, Fine-Very Fine appearance .....	42.50	11
257	★	<b>30c Columbian (239).</b> Very Fine .....	23.50	22+
258	★	<b>30c Columbian (239).</b> Imprint Block, Very Good .....	120.00	52+
259	★	<b>50c Columbian (240).</b> Very Fine ..... <b>(Photo)</b>	40.00	42+
260	★	<b>50c Columbian (240).</b> Very Fine ..... <b>(Photo)</b>	40.00	30
261	★	<b>50c Columbian (240).</b> Trifle heavy hinge, thin, o. g., Very Fine appearance	40.00	11
262	★	<b>\$1.00 Columbian (241).</b> Fine ..... <b>(Photo)</b>	100.00	52+
263	★	<b>\$1.00 Columbian (241).</b> Rich Color, 1 nibbed perf., otherwise Very Fine <b>(Photo)</b>	100.00	42+
264	★	<b>\$1.00 Columbian (241).</b> Well Centered, Rich Color, minute perf. tear, V. F. appearance ..... <b>(Photo)</b>	100.00	35
265	★	<b>\$1.00 Columbian (241).</b> Small faults, Very Fine appearance ..... <b>(Photo)</b>	100.00	26
266	★	<b>\$2.00 Columbian (242).</b> Very Fine, o. g. .... <b>(Photo)</b>	110.00	90
267	★	<b>\$2.00 Columbian (242).</b> Well Centered, Rich Shade, minute filled in thin speck, Very Fine appearance ..... <b>(Photo)</b>	110.00	57+
268		<b>\$2.00 Columbian (242).</b> Light cancel, centered to L. R., Fine..... <b>(Photo)</b>	67.50	38
269		<b>\$2.00 Columbian (242).</b> Small faults, Fine Centering .....	67.50	23
270	★	<b>\$3.00 Columbian (243).</b> Minute surface scratch, otherwise Fine, o. g. <b>(Photo)</b>	160.00	65
271	★	<b>\$3.00 Columbian (243).</b> Rich color, small faults, o. g., Very Fine appearance ..... <b>(Photo)</b>	160.00	90
272	★	<b>\$4.00 Columbian (244).</b> Well Centered, Nice Color, tiny closed tear, faint corner crease, V. F. appearance ..... <b>(Photo)</b>	175.00	85
273	★	<b>\$4.00 Columbian (244).</b> Rich Color, small thins, one pulled perf., otherwise Fine, o. g. .... <b>(Photo)</b>	175.00	92+
274		<b>\$4.00 Columbian (244).</b> Brilliant Color, small faults, Fine appearance ....	145.00	62+

275	★	\$5.00	Columbian (245). Well Centered, light creases, V. F. appearance		
			(Photo)	200.00	30
276	★	\$5.00	Columbian (245). Rich color, light creases, o. g., Fine appearance		
			(Photo)	200.00	90

#### 1894-1898 ISSUES

277	★	1c-15c	1894 Issue (246-259). Some creases, otherwise Fine-Very Fine, o. g.	83.70	37+
278	P	1c	Blue Card Proof (247P). Block, Very Fine	50.00	23
279	★	10c	Deep Green (258). B. Impt. Plate No. Strip of 3, Fine-Very Fine	37.50	20
280	★	50c	Orange (260). Very Fine, o. g.	20.00	18
281		\$1.00	Black, Ty. I (261). Light cancel, Fine	37.50	10+
282	★	\$1.00	Black, Ty. II (261A). Very Good, o. g.	95.00	20
283		\$1.00	Black Ty. II (261A). Tiny perf. thin, Fine appearance	57.50	16
284	★	\$2.00	Dark Blue (262). Light creases, Fine appearance	110.00	55
285		\$2.00	Dark Blue (262). Faults, Fine appearance	77.50	13
286		\$5.00	Dark Green (263). Very light cancel, V. G.	160.00	40
287	★	1c-15c	1895 Issue (264, 265, 267-274). Generally Fine-Very Fine	41.70	19
288	★	10c	Dark Brown (269). Four diff. Impt. Plate No. Strips of 3, mint, V. G.-V. F.	56.00	18
289	★	5c	Chocolate (270). Three diff. mint Impt. Plate No. Strips of 3, V. G.-V. F.	33.00	11
290	★	50c	Orange (275). Very Fine, o. g.	23.50	15
291	★	\$1.00	Black, Ty. I (276). Tiny perf. break, otherwise Fine, o. g.	57.50	15
292	★	\$1.00	Black, Ty. II (276A). Trivial corner bend, o. g., Very Fine	130.00	70
293	★	\$5.00	Dark Green (278). Faults, o. g., Very Fine appearance	165.00	62+
294	★	1c	Deep Green (279). 19 Impt. Plate No. Strips of 3, diff Nos., Mint, V. G.-V. F.	61.75	23
295	★	1c-15c	1898 Issue (279-284). Fine set, o. g.	47.85	21
296	★	2c	Red, Orange Red (279B). 53 Impt. Plate No. strips of 3, all diff. nos., few no gum, mostly mint, V. G.-V. F.	132.50	35
297	★	2c	Orange Red Booklet Pane (279Be). Very Good, o. g.	25.00	12

#### TRANS-MISSISSIPPI ISSUE

298	★	1c-10c	Trans-Mississippi (285-290). Small faults, F.-V. F. appearance	66.25	31
299	★	1c	Trans-Mississippi (285). 7 Mint Impt. Plate No. Pairs, diff. nos., V. G.-V. F.	70.00	26
300	★	1c-8c	Trans-Mississippi (285, 286, 288, 289). F.-V. F.	33.25	19
301	★	2c	Trans-Mississippi (286). 8 Impt. Plate No. Pairs, Very Good-Fine	64.00	21
302	★	4c	Trans-Mississippi (287). Top Impt. Plate No. Pair, Very Fine	32.50	23
303	□	5c	Trans-Mississippi (288). Block, light cork cancels, Very Fine	20.00	21
304	★	50c	Trans-Mississippi (291). Centered to R., Just Fine	70.00	26
305	★	\$1.00	Trans-Mississippi (292). Centered, Rich Color, no gum, Extremely Fine	145.00	105
306	★	\$1.00	Trans-Mississippi (292). Centered, Vivid Color & Impression, o. g. Extremely Fine	145.00	180 =
307	★	\$1.00	Trans-Mississippi (292). Light crease, Fine appearance	145.00	55 =
308		\$1.00	Trans-Mississippi (292). Perfs just clear at T., Very Good	110.00	37+ 7

Lots on view in our office in New York from Friday, March 25 to Wednesday, March 30. Lots on view at the Sheraton Motor Inn, Portland, Oregon, Friday, April 1 and Saturday, April 2 until sale time.

309	\$1.00 Trans Mississippi (292). Faults, lightly cancelled, Fine appearance (Photo)	110.00	26
310 ★	\$2.00 Trans-Mississippi (293). Trivial creases, o.g., Fine appearance (Photo)	185.00	105
311 ★	\$2.00 Trans-Mississippi (293). Faults, Very Fine centering ..... (Photo)	185.00	72+

## TWENTIETH CENTURY

(All unused twentieth century stamps have original gum unless otherwise noted).

312 ★	1c-10c Pan-American (294-299). Mostly thin or creased, V.G.-V.F. appearance .....	57.90	7
313 ★	1c Pan American, Inverted Center (294a). Centered, large margins, fresh, o.g., two light horiz. creases, Extremely Fine appearance, an unusually attractive example of this popular Rarity .....	(Photo) 1850.00	1100
314 ★	1c Green Booklet Pane (300b). Pos. E., V.F. ....	30.00	15
315 ★	1c-10c 1902 Issue (300-307). Incl. extra shade of #307, F.-V.F. ....	30.55	12
316 ★	2c-15c 1902 Issue (301, 303-307, 309). 8c s.e., Fine-Very Fine .....	35.40	12
317 ★	2c Carmine Booklet Pane (301c). Mint, Fine .....	23.50	11
318 ★	50c Orange (310). Part o.g., Very Fine .....	37.50	15
319 ★	\$1.00 Black (311). Very Good .....	70.00	24
320 ★	\$2.00 Dark Blue (312). Fine .....	95.00	42+
321 ★	\$5.00 Dark Green (313). Centered, part o.g., light crease, Very Fine appearance .....	(Photo) 190.00	100
322 ★	1c Blue Green, Imperforate (314). Centerline Block, Mint, Extremely Fine (Photo)	135.00	65
323 ★	5c Blue Imperf. (315). Large Margins, Very Fine .....	(Photo) 120.00	75
324 ★	5c Blue U.S. Automatic Vending Ty. I (315). Vert. Pair, faint crease in one, otherwise Very Fine .....	(Photo) 120.00	70
325 ★	5c Blue Lincoln, Imperforate (315). Mint Block, Extremely Fine (Photo)	480.00	290 =
326 ★	2c Lake, Imperforate (320a). Block, Mint, Extremely Fine .....	48.00	26
327 ★	1c-10c Louisiana Purchase (323-327). Few small faults, otherwise Fine set .....	73.00	28
328 ★	1c-50c 1908 Issue (331-341). Very Good-Very Fine .....	66.00	27
329 ★	1c-15c 1908 Issue (331-335, 337-340). Fine-Very Fine .....	32.00	18
330 ★	\$1.00 Violet Brown (342). Fine .....	(Photo) 52.50	28
331 ★	1c-5c 1908 Imperforate (343-347). Horiz. Pairs, V.F. ....	38.60	23
332 ★	4c-5c Endwise Imperforate Coils (346E-347E). Pairs, F.-V.F. ....	35.50	20
333 ★	5c Blue, Imperforate (347). Centerline Block, Extremely Fine (Photo)	135.00	50
334 ★	1c-5c Coils (348-351). Fine-Very Fine set .....	31.50	23
335 ★	10c Yellow Coil (356). Fine, Stanley Gibbons guarantee on back (Photo)	170.00	150
336 ★	10c Yellow Coil (356). Pair, Bright and fresh, with P.F. Certificate, F.-V.F. ....	(Photo) 350.00	280

## 1909-1912 ISSUES

337 ★	1c Green, 2c Carmine Bluish (357, 358). Fine .....	23.00	11
338 ★	3c Deep Violet, Bluish (359). Fine, Stanley Gibbons guarantee on back (Photo)	180.00	105
339 ★	5c Blue, Bluish (361). Mint, Fine, a fresh and attractive copy of this Rarity .....	(Photo) 750.00	400
340 ★	6c Red Orange, Bluish (362). Usual natural paper inclusions, Fine (Photo)	165.00	525
341 ★	10c Yellow, Bluish (364). Fine .....	(Photo) 180.00	100
342	13c Blue Green, Bluish (365). Used, tiny faults, Fine appearance (Photo)	145.00	50
343 ★	15c Pale Ultramarine, Bluish (366). Fine .....	(Photo) 165.00	75

344	★	2c Lincoln, Alaska, Hudson Fulton Imperforates (368, 371, 373). Horiz. Line Pairs, one stamp #373 light gum crease, others V. F. ....	46.00	27
345	★	2c Lincoln Bluish (369). Fine .....	35.00	20
346	★	2c Lincoln Bluish (369). B. Impr. Plate No. Block of 6, one stamp filled in thin, others Fine .....	300.00	150 =
347	☐	2c Alaska-Yukon Imperforate (371). Block, Clear China pmks, one stamp tiny internal crease, others V. F. ....	20.00+	17+
348	★	1909-1929 Commems. (371, 372, 621, 649, 656). Includes pairs of #656, V. F. ....	32.70	13
349	★	2c Hudson Fulton Imperforate (373). Block of 4, Very Fine .....	32.00	18
350	★	2c Hudson-Fulton Imperforate (373). B. Impr. Plate No. Block of 6, Mint, small tear in one stamp, gum wrinkle, V. F. appearance .....	50.00	19
351	★	2c Hudson-Fulton Imperforate (373). R. Impt. Plate No. Block of 6, Mint, Very Fine .....	50.00	37+
352	★	1c-15c 1910 Issue (374-382). Generally Fine-Very Fine set .....	48.85	32+
353	★	2c Carmine Imperforate (384). Block of 4, 2 mm spacing, V. F. ....	17.50	10
354	★	2c Carmine Coil (388). Fine .....	47.50	50
355	★	1c-5c Coils (390-396). Fine set .....	30.50	18
356	★	1c-5c Panama-Pacific (397-399, 401, 402). Few minor thins, otherwise Very Fine lot .....	37.00	11
357	★	5c Panama Pacific (399). Block, minor natural crease in two, otherwise Fine .....	65.00	21+
358	★	10c Panama Pacific (400). Block, Very Fine .....	100.00	65
359	★	10c Orange Yellow, Orange Panama-Pacific (400, 400A). Fine .....	62.50	32+
360	★	10c Orange Yellow Panama-Pacific (400A). Block, Very Good-Fine .....	175.00	62+
361	★	2c Panama-Pacific, Perf. 10 (402). Block, Fine .....	62.50	30
362	★	5c Panama-Pacific Perf. 10 (403). Fine .....	35.00	19
363	★	10c Panama-Pacific Perf. 10 (404). Small corner crease, Fine appearance (Photo) .....	135.00	60
364	★	7c Black (407). Very Fine .....	10.00	16
365	★	7c Black (407). Block, Very Fine .....	45.00	24
366	★	8c-30c 1912-14 Issue (414-420). Incl. extra shade of 414, Fine-Very Fine .....	51.60	37+
367	★	8c Olive Green, 9c Salmon Red (414, 415). Blocks, Fine-Very Fine .....	39.50	13
368	★	10c Orange Yellow, 12c Claret Brown (416, 417). Blocks, Very Fine .....	31.00	14
369	★	30c Orange Red (420). Block, Fine .....	115.00	30
370	★	50c Violet (421). Fine .....	60.00	37+
371	★	50c Violet (422). Fine .....	32.50	20
372	★	\$1.00 Violet Brown (423). Centered slightly to left, Fine .....	65.00	27 =
373	★	\$1.00 Violet Brown (423). Minute thin spot, V. F. appearance .....	65.00	40 =

#### 1914-1920 ISSUES

374	★	1c-7c 1914-1915 Issue (424-430). Incl. extra shades of #425 & 426, Fine-Very Fine .....	22.40	14
375	★	3c-5c 1914-15 Issue (426-428). Blocks, Very Fine .....	40.00	25
376	★	6c Red Orange, 7c Black (429, 430). Blocks, Fine-Very Fine .....	45.00	17
377	★	8c Olive Green, 9c Salmon Red (431-432). Blocks, Fine-Very Fine .....	47.00	17
378	★	10c-12c 1914-15 Issue (433-435). Blocks, Fine-Very Fine .....	39.50	14
379	★	9c-15c 1914-1915 Issue (432-437). Including extra shade of #435, Fine .....	30.75	17
380	★	50c Violet (440). Fine .....	90.00	46
381	★	1c-5c 1914 Coils (441-444, 446-447). Fine-Very Fine .....	27.18	12+
382	★	3c Violet Coil (445). Mint Pair, Very Good .....	65.00	28
383	★	4c Brown Coil (446). Mint Pair, Very Fine .....	32.50	23
384	★	4c Brown Coil (446), Guide Line Pair, Very Fine .....	40.00	34
385	★	2c Red Ty. I Coil (453). Mint Pair, centered to T., Fine .....	25.00	12
386	★	1c-5c Coils (452, 454-458). Fine .....	25.80	13
387	★	2c Carmine Imperforate Coil (459). Mint Pair, Very Fine .....	100.00	60

388	★	2c Carmine Imperforate Coil (459). Centered to top, Fine .....	50.00	22
389	★	\$1.00 Violet Black (460). Just touches at top, V.G. .... (Photo)	95.00	38
390	★	2c Carmine (461). Block, thin speck on one, otherwise Fine-Very Fine ...	55.00	12
391	★	1c-7c 1916-1917 Issue (462-466, 468, 469). 7c no gum, Good-Very Fine .....	41.25	26
392	★	3c Violet (464). Block, Very Fine .....	45.00	14
393	★	5c Carmine Error (467). Vertical pair, top stamp the error, Very Good (Photo)	125.00	55
394	★	5c Carmine Error (467). Fine Error in complete Mint sheet of 100, Bal- ance of sheet generally F.-V.F. ....	236.60	80
395	★	5c Carmine Error (467). Fine Mint Error in complete sheet of 100, balance of sheet generally F.-V.F. ....	236.60	85
396	★	5c Carmine Error (467). Double Error in compl. Mint sheet of 100, errors Fine, Plate Blocks & rest of sheet F.-V.F. ....	314.40	125
397	★	5c Carmine Error (467). Double error in compl. Mint sheet of 100, errors V.G., plate blocks Fine .....	314.40	110
398	★	6c Red Orange (468). Block, Very Fine .....	45.00	25
399	★	8c-20c 1916-1917 Issue (470-476). Fine-Very Fine .....	79.25	63
400	★	11c Dark Green, 12c Claret Brown (473, 474). Mint Blocks, F.-V.F. ....	45.50	16
401	★	15c Gray (475). Mint Block, Very Fine .....	77.50	42+
402	★	50c Light Violet (477). Small thin, Fine appearance .....	135.00	42
403	★	\$1.00 Violet Black (478). Fine .....	110.00	50
404	★	\$5.00 Light Green (480). Fine .....	35.00	22
405	★	\$5.00 Light Green (480). U.L. Sheet Corner Block, Very Fine ... (Photo)	145.00	75
406	★	1c A. E. F. Booklet Pane (498F). Natural gum wrinkle affects 4 stamps, otherwise Extremely Fine .....	80.00	28
407	★	1c-\$1.00 1917-1919 Issue (498, 499, 501, 503, 504, 506-518). With few extra shades. No. 518 light thin, otherwise Fine-Very Fine set .....	46.72	16
408	★	1c Green Imperf. Between (498b). Horiz. Pair, Fine .....	30.00	14
409	★	2c Deep Rose Ty. 1a (500). Fine .....	12.00	10
410	★	2c Deep Rose Ty. 1a (500). Sheet Corner Block of 6 with Beautiful big Perf. Freak in One, Just Fine .....	74.00	40
411	★	2c Deep Rose Ty. 1a (500). Very Good .....	12.00	5+
412	★	3c-\$1.00 1917-19 Issue (502-504, 506-518). Very Fine Set .....	164.25	57+
413	★	5c Carmine Error (505). Thin, Fine appearance .....	75.00	28
414	★	5c Rose Error (505). Block of 9, middle stamp the Error, Fine (Photo)	120.00	20
415	★	5c Carmine Error (505). Fine Mint error in F.-V.F. complete sheet of 100, bottom selvedge trimmed slightly into Plate No. ....	149.48	85 50
416	★	5c Carmine Error (505). Just Fine Mint Double Error in compl. sheet of 100, balance of sheet F.-V.F. ....	189.48	85
417	★	2c Carmine (519). Fine .....	22.50	40
418	★	\$2.00 Orange & Black (523). Trivial paper inclusion, Very Fine (Photo)	82.50	40 17
419	★	\$2.00 Red Orange & Black (523). Block, Very Fine .....	350.00	190
420	★	\$5.00 Deep Green & Black (524). Very Fine .....	30.00	18
421	★	\$5.00 Deep Green & Black (524). Mint Block, Very Fine .....	125.00	80
422	★	1c-5c Offsets Imperf. (531, 532, 534A, 535). Large margins, Very Fine ...	17.80	11
423	★	2c Carmine Ty. Va, VI, Imperforate (534, 534A). Blocks, V.F. ....	34.50	67
424	★	2c Carmine Ty. Va, Imperforate (534). Mint B. Plate No. Block of 6, V.F.	19.00	9
425	★	3c Victory (537). B. Plate No. Block of 6, Vivid Color, F.-V.F. ....	47.50	32+
426	★	3c Red Violet Victory (537a). Very Fine .....	35.00	45 =
427	★	1c Green, 2c Carmine Rose Imperforate Horiz. (538a, 540a). Blocks, Fine	22.00	9
428	★	\$2.00 Carmine & Black (547). Very Fine .....	27.50	16
429	★	\$2.00 Lake & Black (547). Mint Block, Very Fine .....	115.00	65



1922 ISSUE TO DATE

430	★	1/2c-\$5.00 1922-25 Issue (551-573). Few small faults, otherwise F.-V. F. set	78.18	21
431	★	1c-10c 1923-1926 Issues (578-591). Generally Fine-Very Fine sets	35.80	18
432		1c Green Perf. 11 Rotary (594). Very Fine copy of this Rarity ... (Photo)	700.00	600 =
433	★	2c Carmine (595). Very Fine	20.00	20
434	★	2c Carmine (595). One nibbed perf., otherwise Fine	20.00	10
435	★	2c Carmine (595). Mint Block, Extremely Fine (Photo)	85.00	50
436	★	2c Carmine Ty. II (599a). Very Fine	12.50	14 =
437	★	2c Harding Imperf. (611). Mint Centerline Block, Extremely Fine	70.00	20
438	★	1c-5c 1924-1925 Commems. (614-621). F.-V. F.	29.60	12
439	✉	2c-5c Norse-American (620-621). On First Day Cover, V. F.	17.50	11+
440	★	5c Norse American (621). Top Double Plate No. & Arrow Block of 8, Mint, Fine (Photo)	175.00	140
441	★	2c White Plains Souvenir Sheet (630). Very Fine	87.50	65
442	★	2c White Plains Souvenir Sheet (630). Mint, two stamps just touched, F.-V. F.	87.50	57+
443	★	1c-10c Kans.-Nebr. Overprints (658-679). Few small thins, otherwise Fine-Very Fine sets	93.85	37+
444	★	1c-10c Kans. Overprints (658-668). Cpl. Set Blocks, Mint, V. F.	187.85	90
445	★	1c-10c Kans.-Nebr. (658-679). V. G.-V. F. set	93.85	40
446	★	1c-3c Souvenir Sheets (730, 731, 735, 750, 751). One stamp trivial thin, Very Fine Lot	30.25	12
447	★	3c Wisconsin Farley (755). Sheet corner strip of 5, Franklin D. Roosevelt autograph "issued today," in another hand, V. F.	E. III	25
448	★	1c-10c Farley Parks (756-765). Compl. set line blocks of 4, Unusually large margins, Very Fine	19.20	9
449	★	1/2c-25c Presidentials (803-829). Blocks, Very Fine	30.85	13
450	★	1/2c-\$5.00 Presidentials (803-834). Includes 832c, Very Fine set	32.79	13+
451	★	3c Presidential, Imperforate (807 var.). Vertical Block of 8 with Horiz. Gutter, Very Dry Impression, no gum, creases, U. L. stamp has small hole, unlisted in Scott (Photo)	—	85 =
452	★	\$2.00 Green & Black Presidential (833). Top Double Plate No. Block of 8, Mint, Very Fine	76.50	39
453	★	1c-10c Famous Americans (859-893). Compl. set Plate No. Blocks, Mint, Very Fine	152.70	85
454	★	1c-10c Famous Americans (859-893). Compl. set Plate No. Blocks, trimmed selvage, otherwise F.-V. F.	152.70	50
455	★	10c Bell (893). Plate No. Block, Mint, Very Fine	35.00	20
456	★	3c Poultry & Moina Michael (968, 977). J. M. Donaldsen (P. M. G.) autographed in margin, each in official framed 1948 U. S. Post Office Dept. Presentation Booklet	E. III	37+
457	★	4c Red Violet Coil, Imperf. (1058a). Horiz pair, Mint, Very Fine (Photo)	100.00	75 =
458	★	8c Bolivar (1111). 7 L. L. Plate No. (26061-26026). Blocks, Mint, V. F. Durland	35.00	13
459	★	8c Bolivar, Kossuth (1111, 1118). 26 Plate No. Blocks, Mint, V. F.	71.50	37
460	★	4c Seato, Imperforate Between (1151a). Mint Vertical Pair, Extremely Fine (Photo)	200.00	110

AIRPOSTS

461	★	6c-24c 1918 Airpost (C1-C3). 6c part o. g., 24c light crease, otherwise Mint F. V. F. set	44.00	18
462	★	6c-24c 1918 Airpost (C1-C3). Cpl. Set, no gum, Very Fine	44.00	18 =
463	★	6c-24c 1918 Airpost (C1-C3). Cpl. set blocks, no gum, Very Fine	190.00	80

464	★	6c-24c 1918-23 Airpost (C1-C6). Few tiny faults, otherwise Very Fine set	83.00	42+
465	★	6c Orange Airpost (C1). Block, light gum crease affects 2 stamps, otherwise Fine	45.00	9
466	✉	16c Green Airpost (C2). Tied by July 15, 1918 Purple Duplex, and by Washington, D.C. Oval, on cover to Philadelphia, Fine	125.00	52+
467	★	16c Airposts (C2, C5). Small thins, V. F. appearance	33.50	10
468	✉	24c Carmine Rose & Blue Airpost (C3). Tied by Special May 15, 1918 Pmk. on fresh cover to Boston, Very Fine	125.00	60
469	★	8c-24c Air Posts (C3, 4, 6). Very Fine	39.50	19
470	★	8c Dark Green Airpost (C4). Corner Margin Block, Mint, F.-V. F.	22.00	13
471	★	8c-24c 1923 Airpost (C4-C6). Blocks, no gum, F.-V. F. Set	167.00	65
472	★	16c Dark Blue Airpost (C5). Block, Fine-Very Fine (Photo)	65.00	25
473	★	5c-50c Air Posts (C7-C12, C16-C17, C19-C33, CE1-CE2). Blocks, Very Fine	96.15	28+
474	★	10c Lindbergh Booklet Pane (C10a). Fine, Mint	17.50	11
475	★	10c Lindbergh Booklet (C10a). Cpl. Booklet of Two Panes, one Very Fine, other F.-V. F.	35.00+	20
476	★	65c Graf Zeppelin (C13). Very Fine (Photo)	90.00	50
477	★	65c-\$2.60 Graf Zeppelins (C13-C15). Very Fine Set (Photo)	475.00	340
478	★	65c-\$2.60 Graf Zeppelins (C13-C15). Cpl. Set, no gum, Very Fine (Photo)	475.00	230
479	★	65c-\$2.60 Graf Zeppelins (C13-C15). Cpl. Set Blocks of 4, latter two with Plate No., no gum, Very Fine (Photo)	1960.00	1000-
480	✉	\$1.30 Graf Zeppelin (C14). Centered, tied by N. Y. Machine Cancel on neat small Cacheted Flight Cover, Very Fine	110.00	60
481	✉	\$2.60 Graf Zeppelin (C15). Tied by N. Y. Machine Cancel on Cacheted Flight Cover, Very Fine	165.00	115
482	★	50c Chicago Zeppelin (C18). Natural gum bend, Very Fine	20.00	12
483	★	50c Graf Zeppelin (C18). B. Plate No. single, trace of thinning, Fine appearance	20.00	10
484	★	50c Chicago Zeppelin (C18). Two copies, one no gum, Very Fine	40.00	19
485	★	50c Chicago Zeppelin (C18). Block, no gum, Fine-Very Fine	85.00	33
486	✉	50c Chicago Zeppelin (C18). Tied by Akron, O. Oct. 4, 1933 Machine Cancel on Cacheted First Day Cover, Very Fine	25.00	26 =
487	✉	50c Chicago Zeppelins (C18). Tied by Akron, Miami pmks. on Cacheted Flight Covers, Centered Bit to L., Very Fine	40.00	16
488	★	6c Dark Blue & Carmine Imperforate Horiz. (C23a). Block, Mint, Very Fine (Photo)	200.00	250 =
489	★	80c Air Post (C46). Three Plate No. Blocks, Mint, Very Fine	36.00	14
490	★	7c Carmine Airpost (C60 var.). Block with Full Horiz. Gutter, Mint, Fine, listed but unpriced in Scott (Photo)	—	90
491	★	10c Blue Special Delivery (E4). Mint U. R. Sheet Corner Copy, Fine	50.00	19
492	★	10c Ultramarine (E9). Extremely Fine	17.00	15 =
493		10c Registration, 10c-20c Parcel Post (F1, Q6, Q8). China pmks., V. G.-Fine		E. II 7
494		50c Carmine Lake Postage Due (J58). Centered to T., small faults, Fine appearance	60.00	23
495	★	1c Carmine Rose Postage Due, Value Omitted (J89b). Mint Single, Very Fine, listed but unpriced in Scott (Photo)	E. VIII	105
496	★	2c-60c Shanghai Overprints (K1-K14). Few small thins, generally F.-V. F.	48.00	26
497	★	\$1.00 on 50c Violet Brown Shanghai (K15). Very Fine (Photo)	28.50	21

#### OFFICIALS

498		1c-\$20.00 Official Proofs on Card (O1P-O93P). Complete, Very Fine	82.00	40
499	★	1c-15c Agriculture (O1, O2, O5, O7). o. g., V. G.-V. F.	31.75	6+
500	★	1c-30c Agriculture (O1, O4, O5, O7, O9). o. g., Fine-Very Fine	58.50	14+
501		1c-30c Agriculture (O1-O9). Good-Fine	74.75	12

502	★田	2c, 3c Agriculture (O2, O3). Blocks, o.g., Fine-Very Fine .....	50.00	10
503	★	1c Executive (O10). Fine .....	30.00	25
504	★	2c Executive (O11). Well centered, Very Fine .....	22.50	12
505	★	2c Executive (O11). Brilliant Color, Fine .....	22.50	12
506	★	2c, 3c Executive (O11-O12). o.g., Fine-Very Fine .....	42.50	20
507	★	6c Executive (O13). o.g., Very Fine .....	37.50	36 =
508	★	6c Executive (O13). Jumbo margins, o.g., small thins, Extremely Fine appearance .....	37.50	9
509	★	10c Executive (O14). Part o.g., Fine .....	35.00	17
510	★	1c-90c Interior (O15-O21, O23-O24). o.g., Fine-Very Fine .....	31.80	13
511	★	1c, 2c Vermilion Interior Dept. (O15, Eighteen, O16, twenty two). All in Impt. Plate No. Strips of 5 & 6, fresh, o.g., Very Good-Very Fine ....	30.50+	14
512		1c-24c Justice (O25-O32). Three unused, others light or fancy cancels, few trivial faults, generally F.-V.F. ....	65.00	24
513		30c Justice (O32-33). Very Fine .....	16.50	12
514	★	1c-90c Navy (O35-O45). 1c, 90c have small thins, otherwise V.G.-V.F. set	100.25	65
515	★	1c-15c Navy Dept. (O35, O36, O42). Impt. Plate No. strips of 6, fresh, o.g., V.G.-F. ....	87.00	22+
516		90c Navy (O45). Unusually Rich Color, light cancel, Fine .....	20.00	10
517	★	\$20.00 State (O71). Margin copy, part Impr., o.g., perfs. touch at T., V.G. ....	175.00	60
518	★	2c-6c Interior Dept. (O97, ten, O98, twenty nine, O99, twenty three). All in Impt. Plate No. strips of 5 & 6, o.g., V.G.-V.F. ....	27.35+	16
519	★	24c Interior (O103). o.g., Very Good .....	100.00	70
520	★	1c-90c Officials (Betw. O10S-O126). 36 diff. incl. Executive Specimen cpl. set, Post Office, Postal Savings Mail, a few have faults, but mostly V.G.-V.F. ....	123.70	30
521		1c-\$60 Newspaper "Specimen" Overprints (PR57S-PR81S). Few thins, mostly Fine to Very Fine, Scarce Set .....	120.00	57+
522	★	10c-25c Postal & War Savings Booklet Panes (PS11b(2), PS12b, WS7b, WS8b) Includes electric eye panes, F.-V.F. ....	25.00	11
523	★	1c-\$1.00 Parcel Post (Q1-Q12). Some light thins, otherwise F.-V.F. set	127.45	40
524	★	1c-75c Parcel Post (Q1, Seven, Q2, Eight, Q4, Eight, Q5, Seven, Q6, Four, Q7, Q9, Q11). Diff. Plate No. Singles, Mostly Fine-Very Fine, Mint .....	94.50+	40
525	★	1c Green on Brown Glazed Wrapper (W427). Entire, V.F. ....	22.50	25 =
526		1c Blue Eagle, Franklin Carriers (LO2, four, LO3, Pair). 3 of first are used with Blue town and Red stars, others unused, sm. faults, Fine appearance .....	44.00	65
527	✉	1c Blue Eagle (LO2). Huge margins except touched at B., Red Star cancel, not tied, 3c Red (11) margins nearly all around, tied by clear Blue Phila. pmk., Fine .....	65.00	19
528		1c Blue, Rose Carrier Dispatch (1LB6, 1LB7). First ms. cancel, latter unused, margins except latter touched, light creases, F.-V.F. appearance	60.00	13
529		1c Black, Red Horseman Carriers (1LB8, 1LB9). Margins except latter touched in places, ms. and Black Town pmks., Fine .....	36.00	8

#### TELEGRAPHS

530	★	"Free", "1871", "1872" Cal. State Telegraph Co. (5T1, 5T4, 5T5). F.-V.F.	41.50	15+
531	★	"1873" Red & Salmon Cal. State Telegraph Co. (5T6). Slight stain, otherwise Fine .....	50.00	18
532	★	1c Black City & Suburban Tel. Co. (6T1). Thin spot, V.F. appearance ....	50.00	11
533		3c Black City & Suburban Tel. Co. (6T3). Used, small thin spot. V.F. appearance .....	100.00	28
534	★	"1901" Green North American Telegraph Co. (10T2). Very Fine .....	40.00	17

535	★	☐	Green North American Telegraph Co. Booklet Pane (10T2). Pane of 4, No Top Selvedge, Very Fine, Rare	160.00+	60
536	★	☐	Violet North American Telegraph Co. (10T5). Cpl. Pane of 4, Natural Crease in two, one has tiny marginal thin speck, minor separation, otherwise V.F.	50.00+	16x
537	★		Red Brown North American Telegraph Co. (10T6). Very Fine	22.50	10
538	★		"1905" Red Brown, "1906" Rose North American Telegraph Co. (10T6, 10T7). First has small tear, other Very Fine	42.50	12
539	★		"1895" Rose, "1897" Orange, "1898" Rose Postal Telegraph Co. (15T12, 15T16, 15T18). Small thin spots, V.F. appearance	80.00	18
540	★		"1908"- "1913" One Telegram, Postal Telegraph Co. (15T40-15T46). V.F.	46.50	10
541	★		C. G. W. "1908", "1911" Carmine, I. C. "1908" Green, Postal Telegraph Co. Officials (15TO2, 15TO5, 15TO10). Very Fine	49.00	14
542	★		I. C. "1909-1911", P. R. "1908"- "1913", "P. R. R." Postal Telegraph Co., Officials (15TO11-13, 15TO18-21, 15T23-24). # 15T24 thin spot, others F.-V.F.	51.75	10
543	★	☐	5c Pink, 25c Blue Postal Telegraph (15TO29, 15TO30). Cpl. Panes of Eight of Each, with Original Booklet, Fine-Very Fine	110.00+	42+
544	★	☐	1c-25c Western Union, Imperforate (16T99a-16T103a). Cpl. Set Blocks with Vertical Gutter Between, Mint, Very Fine, listed but unpriced in Scott		(Photo) E. IX 75
545	★	☐	5c-50c U.S. Telegraph, Cable, Radio Carriers (17T1-17T3). Three Panes of Nine, Incl. Panes of 1st & last, pane of 1st with one 10c Value, Complete with Covers & Interleaf, Rare, only 2 or 3 17T2 Known, V.F.	370.00	120-
			(Photo)		
546			Telegraph Collection. 356 stamps, used & unused, neatly mounted in Elbe Rosevelt Album, also includes 20 Covers 19th & 20th, some illustrated, Telegrams etc., Choice lot, Mostly F.-V.F.	167.92+	80-
547	★		Telegraphs, 66 stamps of various Companies, F.-V.F.	51.34	16

#### REVENUES

548			50c Blue & Black Inverted Center (R115b). Small surface scraping, otherwise V.F.	85.00	60
549			\$30.00 Red Documentary (R177). Wonderful Color, minute break in Top margin, Very Fine appearance, Very Scarce	26.50	10
550			\$500.00 Documentary, Series of 1898 (R180). Cut cancel, light creases, Very Fine appearance	120.00	37+
551			\$1000.00 Documentary, Series of 1898 (R181). Cut Cancel, Very Fine	50.00	21
552			\$50.00 Dark Green Documentary Surcharge (R194). Light handstamp cancel, Fine	160.00	90
			(Photo)		
553			\$30.00-\$100.00 Documentary, Series of 1954 (R679-R682). Uncut, F.-V.F.	77.00	24
554			\$50.00-\$500.00 Documentary, Series of 1954 (R689, R690, R692). Cut Cancels, V.F. (Uncut Cat. \$130.00)	—	5+
555	★		3c Carmine Rose Future Delivery (RC2). Mint, Extremely Fine	17.50	16
556			\$10,000 Stock Transfer, Series of 1949 (RD312). Very light Cut Cancel, V.F.	100.00	27-
557			\$10,000 Stock Transfer, Series of 1950 (RD338). Very lt. cut cancel, V.F.	150.00	28-
558			1c-\$20.00 Tobacco Sale Tax (RJI-RJ11). F.-V.F. set	47.80	32+

KINDLY MAIL BIDS EARLY. All bids must be received in our office by Thursday, March 31. Mail last minute bid sheets direct to the Sheraton Motor Inn, Portland, Oregon.

559	<b>1c-\$50,000 Distilled Spirits Excise Tax (RX1-RX23, RX25).</b> Set cpl. except for one value, Handstamp cancels, Staple Holes, as always, Very Fine Set .....	443.50	88
560	<b>MATCH &amp; MEDICINE</b> Collection, 552 nearly all Diff. in Carter Album with Catalog, incl. many better items, better than average quality with very few unsightly copies and many V.G.-V.F., also 260 Civil War-Battleship Revenues (Cat. 69.83), mostly with Handstamp & Printed Cancels, the Match & Medicine Cat. ....	2193.60	150
561	<b>Calif. &amp; Nevada Revenues</b> 1860s, 28 stamps, mostly diff. values to \$5.00 used and unused, nearly all Fine-Very Fine, nice lot .....	E. II	<del>37</del> 37

### LARGE & MISCELLANEOUS U. S. LOTS

562	<b>U. S. Collection</b> 1847-1965, 1322 stamps, mostly unused from 1882, nice range of singles with many complete sets, includes Airs, Dues, Officials, while earlies have small faults, majority is F.-V.F., a valuable collection well suited to expansion .....	2138.89	350
563 ★	<b>U. S. Collection</b> , 1851-1963, collection of 1132 mostly unused stamps & 9 Souvenir Sheets, mostly 20th, incl. several early Commems, such as Pan-American to 10c, Imperforate, Airposts, some Revenues, some have small faults, balance F.-V.F. ....	783.16	125
564 ★	<b>Booklet Pane Collection (Betw. 301c-C64a).</b> 64 panes incl. few exploded booklets or dups, few better positions, some earlier panes are reinforced or touching but generally F.-V.F. ....	97.55	40
565	<b>Proof &amp; Essay Miscellany</b> , 35 Diff. incl. Special Delivery & Treasury Dept. card proofs, plate & die essays with a few multiples, mostly V.F. ....	E. IV	25
566	<b>U. S. Miscellany</b> , 26 used & unused stamps incl. Grills, Parcel Posts, Locals, Confederates, mostly small faults, some only trivial, balance V.G.-V.F. ....	558.95	70
567 ★	<b>U. S. Miscellany</b> , including Airmail, Singles, Blocks, C10a, Commemorative Blocks, freak perfs, etc., useful lot .....	E. III	20
567A ★	<b>U. S. Miscellany</b> , 1902-34, 70 stamps & 3 Souvenir Sheets, nearly all Commems & Airposts, F.-V.F. ....	64.40	16
568 ☒	<b>U. S. Covers</b> , Nineteenth Century, 9 covers includes three #77, Patriotic, #U16 Michigan Bar, Cal. pmk., Columbians, V.G.-V.F. ....	E. III	26

### CONFEDERATE STATES

569	<b>1c-10c General Issues (1, 2, 6, three, 7, seven, 8, four, 11, six, 12, five, 14).</b> 8 used, some have small faults, Good-Very Fine .....	113.55	52+
570 ★	<b>2c-20c General Issues (Betw. 1c-13).</b> 13 stamps, 3 used, 10 diff. Incl. 5, 9, most have small faults, Good-Fine .....	178.35	14
571 ★	<b>5c Deep Olive Green (1).</b> Horiz. Pair, Huge Margins to just touched, Gorgeous Color, o.g., small faults, F.-V.F. appearance .....	80.00+	16
572 ★	<b>10c Blue (2).</b> Patterson printing, <b>Sheet corner</b> copy, rich color, crease, Extremely Fine appearance .....	18.00	16
573 ★	<b>10c Dark Blue Hoyer Print (2b).</b> Large margins all around, nice color & impression, small faults, V.F. appearance .....	40.00	13
574 ★	<b>2c Green (3).</b> Trivial margin thin, Very Good .....	55.00	24
575	<b>5c Blue (4).</b> Horiz. Pair, Large to Huge Margins, except just in at right, ms. Cancel, V.G.-V.F. ....	22.00	8
576 ★	<b>10c Rose (5).</b> Large margins, Lovely Color creases, V.F. appearance .....	90.00	35
577 ★☐	<b>5c Light Blue (6).</b> Mint L.L. Corner Margin Block of 10, Large Margins all around, V.F. ....	24.50+	16
578 ★☐	<b>5c Light Blue (6).</b> Mint Block of 15, Clear to Large Margins, V.F. ....	35.35+	18

579	<b>10c Blue Frame Line (10).</b> Full Margins, showing Entire Frame on 3 sides & traces at B., tied by Bold Socked on the Nose Mobile, Ala. Aug. 15 pmk. on small piece, fresh, Extremely Fine, A Magnificent copy (Photo) <b>165.00</b>	24.00+	260 =
580	<b>10c Blue (11).</b> Eight Rich Shades, Large Margins, Extremely Fine	24.00+	325
581	<b>10c Blue (12).</b> Eight Rich Shades, Large Margins, Extremely Fine	24.00+	325 -
582 ★	<b>20c Green (13).</b> Ten copies, margins all around, wide range of shades, few have thins, Good-Very Fine, nice lot	55.00	20
583	<b>20c Green (13).</b> Margins all around, Richmond pmk., small faults, V. F. appearance	40.00	16
584 ★	<b>1c Orange (14).</b> Very Fine	17.50	11
585 ★	<b>1c Orange (14).</b> Margins all around, Fine	17.50	10 =

END OF SALE — THANK YOU

**PRICES REALIZED**  
**THIS SALE**  
**\$1.00**  
**OR ENTIRE YEAR \$4.50**

**ESTIMATES**

Our sales contain many 19th Century covers and fancy cancellations. We have had many requests to give the estimated cash value on these lots. We are trying to place a fair net valuation on each lot as a guide for bidding when no catalogue value portrays the true value. The chart below will be used, for example E. IV means our estimate cash value on this lot is \$30.00 to \$40.00. Lots may actually realize more or less than these estimates and under no circumstances are these estimates to be considered reserves but merely a guide to bidding.

E. I	up to \$10.00	E. VIII	\$100.00 to \$150.00
E. II	\$10.00 to \$20.00	E. IX	\$150.00 to \$200.00
E. III	\$20.00 to \$30.00	E. X	\$200.00 to \$250.00
E. IV	\$30.00 to \$40.00	E. XI	\$250.00 to \$350.00
E. V	\$40.00 to \$50.00	E. XII	\$350.00 to \$500.00
E. VI.	\$50.00 to \$75.00	E. XIII	\$500.00 to \$750.00
E. VII	\$75.00 to \$100.00	E. XIV	\$750.00 to \$1000.00
		E. XV	over \$1000.00

## IS YOUR COLLECTION FOR SALE?

### REALIZE IMMEDIATE CASH PLUS THE ADDED ADVANTAGE OF SELLING THROUGH OUR AUCTIONS

We will advance immediate cash up to 75% of our appraisal value, of what your collection should realize at auction. There is no interest charge.

Your collection will then be sold in one of our coming auction sales. All stamps are expertly and advantageously lotted in attractive, well illustrated catalogs. Lotting is meticulously planned under our personal supervision. Commission is 20% of the gross realization. There is no lotting fee or any other charges. Final settlement is made within five weeks after the sale. We have been continuously conducting stamp auctions in the United States for over thirty-four years.

Valuable collections and stamp holdings are especially wanted, but we will accept properties valued from \$500 upwards. Send all stamps direct for appraisal. Auction advance will be remitted shortly after receipt. If not entirely pleased, stamps will be returned at our expense. If circumstances warrant, due to bulk or value, we will travel anywhere to inspect important properties.

### ROBERT A. SIEGEL AUCTION GALLERIES, Inc.

(Licensed and Bonded Auctioneer)

10 EAST 52nd STREET

NEW YORK, N. Y. 10022

(Tel. PL. 3-6422)

## PORTLAND, OREGON

*We will be happy to discuss the outright purchase or sale at auction of any worthwhile philatelic property during our stay in Portland. Contact us at our booth at the Sheraton Motor Inn in Portland or write to us in New York.*



ROBERT A. SIEGEL AUCTION GALLERIES, Inc.

10 East 52nd Street  
New York, N. Y. 10022

298TH SALE

Prices Realized, Public Auction  
April 2nd, 1966

at the Sheraton Motor Inn, Portland, Oregon

1	21.00	65	22.00	126	15.00	192	18.00	258	52.50	324	70.00	390	12.00	456	37.50	522	11.00
2	8.00	66	15.00	127	22.00	193	16.00	259	42.50	325	290.00	391	26.00	457	75.00	523	40.00
3	8.00	67	27.00	128	14.00	194	16.00	260	30.00	326	26.00	392	14.00	458	13.00	524	40.00
4	27.00	68	17.00	129	13.00	195	17.00	261	11.00	327	22.00	393	55.00	459	37.00	525	5.00
5	13.50	69	18.00	130	30.00	196	95.00	262	52.50	328	27.00	394	80.00	460	110.00	526	6.50
6	16.00	70	18.00	131	20.00	197	150.00	263	42.50	329	18.00	395	85.00	461	18.00	527	19.00
7	32.50	71	26.00	132	15.00	198	27.00	264	35.00	330	28.00	396	125.00	462	18.00	528	13.00
8	125.00	72	10.00	133	40.00	199	30.00	265	26.00	331	23.00	397	110.00	463	80.00	529	8.00
9	280.00	73	14.00	134	13.00	200	22.00	266	90.00	332	20.00	398	25.00	464	42.50	530	15.50
10	10.00	74	22.00	135	8.50	201	36.00	267	57.50	333	50.00	399	63.00	465	9.00	531	18.00
11	23.00	75	19.00	136	26.00	202	110.00	268	38.00	334	23.00	400	16.00	466	52.50	532	11.00
12	45.00	76	13.00	137	5.00	203	32.50	269	23.00	335	100.00	401	42.50	467	10.00	533	28.00
13	37.50	77	80.00	138	18.00	204	6.50	270	65.00	336	280.00	402	42.00	468	60.00	534	17.00
14	32.00	78	115.00	139	65.00	205	40.00	271	90.00	337	11.00	403	50.00	469	19.00	535	60.00
15	9.00	79	100.00	140	12.00	206	60.00	272	85.00	338	105.00	404	22.00	470	13.00	536	16.50
16	10.50	80	14.00	141	20.00	207	75.00	273	92.50	339	400.00	405	75.00	471	65.00	537	10.00
17	25.00	81	13.00	142	25.00	208	17.00	274	62.50	340	52.50	406	28.00	472	25.00	538	12.00
18	12.50	82	12.00	143	75.00	209	60.00	275	130.00	341	100.00	407	16.00	473	28.50	539	18.00
18A	24.00	83	80.00	144	17.00	210	50.00	276	90.00	342	50.00	408	14.00	474	11.00	540	10.00
18B	105.00	84	28.00	145	26.00	211	20.00	277	37.50	343	75.00	409	10.00	475	20.00	541	14.00
19	21.00	85	47.50	146	34.00	212	21.00	278	23.00	344	27.00	410	40.00	476	50.00	542	10.00
20	22.00	86	300.00	147	22.00	213	20.00	279	20.00	345	20.00	411	5.50	477	340.00	543	42.50
21	32.50	87	9.00	148	21.00	214	11.00	280	18.00	346	150.00	412	57.50	478	230.00	544	75.00
22	10.00	88	15.00	149	45.00	215	15.00	281	10.50	347	17.50	413	28.00	479	1,000.00	545	120.00
23	57.50	89	13.00	150	15.00	216	90.00	282	20.00	348	13.00	414	70.00	480	60.00	546	80.00
24	95.00	90	32.50	151	21.00	217	24.00	283	16.00	349	18.00	415	50.00	481	115.00	547	16.00
25	85.00	91	14.00	152	28.00	218	18.00	284	55.00	350	19.00	416	85.00	482	12.00	548	60.00
26	55.00	92	55.00	153	20.00	219	35.00	285	13.00	351	37.50	417	17.00	483	10.00	549	10.00
27	8.50	93	105.00	154	13.00	220	27.00	286	40.00	352	32.50	418	40.00	484	19.00	550	37.50
28	12.00	94	50.00	155	90.00	221	11.00	287	19.00	353	10.00	419	190.00	485	33.00	551	21.00
29	14.00	95	32.50	156	24.00	222	26.00	288	18.00	354	30.00	420	18.00	486	26.00	552	90.00
30	9.00	96	27.50	157	16.00	223	13.00	289	11.00	355	18.00	421	80.00	487	16.00	553	24.00
31	14.00	97	75.00	158	32.50	224	9.00	290	15.00	356	11.00	422	11.00	488	250.00	554	5.50
32	13.00	98	38.00	159	75.00	225	57.50	291	15.00	357	21.50	423	17.00	489	14.00	555	16.00
33	23.00	99	22.50	160	37.50	226	26.00	292	70.00	358	65.00	424	9.00	490	90.00	556	27.00
34	80.00	100	26.00	161	26.00	227	14.00	293	62.50	359	32.00	425	32.50	491	19.00	557	28.00
35	32.50	101	47.50	162	85.00	228	36.00	294	23.00	360	62.50	426	45.00	492	15.00	558	32.50
36	29.00	102	55.00	163	10.00	229	42.50	295	21.00	361	30.00	427	9.00	493	7.00	559	85.00
37	7.50	103	60.00	164	10.00	230	10.00	296	35.00	362	19.00	428	16.00	494	23.00	560	550.00
38	23.00	104	28.00	165	23.00	231	16.00	297	12.00	363	60.00	429	65.00	495	105.00	561	3.50
39	40.00	105	110.00	166	12.00	232	20.00	298	31.00	364	10.00	430	21.00	496	26.00	562	350.00
40	8.50	106	65.00	167	17.00	233	16.00	299	26.00	365	24.00	431	18.00	497	21.00	563	125.00
41	11.00	107	36.00	168	9.00	234	36.00	300	19.00	366	37.50	432	600.00	498	40.00	564	40.00
42	16.00	108	70.00	169	21.00	235	21.00	301	21.00	367	13.00	433	20.00	499	6.50	565	25.00
43	35.00	109	60.00	170	16.00	236	21.00	302	23.00	368	14.00	434	10.00	500	14.50	566	70.00
44	14.00	110	17.50	171	10.00	237	45.00	303	21.00	369	30.00	435	50.00	501	12.00	567	20.00
45	37.50	110A	8.50	172	9.50	238	42.50	304	26.00	370	37.50	436	14.00	502	10.00	567A	16.00
46	42.50	111	14.00	173	115.00	239	85.00	305	105.00	371	20.00	437	20.00	503	25.00	568	26.00
47	21.00	111A	26.00	174	13.00	240	32.50	306	180.00	372	27.00	438	12.00	504	12.00	569	52.50
48	18.00	112	150.00	175	20.00	241	72.50	307	55.00	373	40.00	439	11.50	505	12.00	570	44.00
49	21.00	112A	65.00	176	35.00	242	47.50	308	37.50	374	14.00	440	140.00	506	20.00	571	16.00
50	65.00	113	57.50	177	16.00	243	50.00	309	26.00	375	25.00	441	65.00	507	36.00	572	16.00
51	16.00	113A	7.50	178	24.00	244	70.00	310	105.00	376	17.00	442	57.50	508	9.00	573	13.00
52	8.50	114	14.00	179	40.00	245	47.50	311	72.50	377	17.00	443	37.50	509	17.00	574	24.00
53	42.50	114A	17.00	180	11.00	246	12.50	312	7.00	378	14.00	444	90.00	510	13.00	575	8.00
54	16.00	115	25.00	181	22.00	247	27.50	313	1,100.00	379	17.00	445	40.00	511	14.00	576	35.00
55	135.00	116	11.00	182	375.00	248	21.00	314	15.00	380	45.00	446	12.00	512	24.00	577	16.00
56	100.00	117	12.00	183	13.00	249	23.00	315	12.00	381	12.50	447	25.00	513	12.00	578	18.00
57	140.00	118	11.00	184	37.50	250	14.00	316	12.00	382	28.00	448	9.00	514	65.00	579	260.00
58	32.50	119	24.00	185	11.50	251	15.00	317	11.00	383	23.00	449	13.00	515	22.50	580	32.50
59	11.00	120	17.00	186	28.00	252	16.00	318	15.00	384	34.00	450	13.50	516	10.00	581	32.50
60	60.00	121	17.00	187	12.00	253	18.00	319	24.00	385	12.00	451	85.00	517	60.00	582	20.00
61	18.00	122	26.00	188	26.00	254	13.00	320	42.50	386	13.00	452	39.00	518	16.00	583	16.00
62	7.00	123	525.00	189	17.00	255	35.00	321	100.00	387	60.00	453	85.00	519	70.00	584	11.00
63	12.00	124	85.00	190	32.50	256	11.00	322	65.00	388	22.00	454	50.00	520	30.00	585	10.00
64	7.50	125	30.00	191	32.50	257	22.50	323	75.00	389	38.00	455	20.00	521	57.50		