



The
**AMBASSADOR
COLLECTION**

Robert A. Siegel
AUCTIONS



300th SALE

The
**AMBASSADOR
COLLECTION**



AT PUBLIC AUCTION

Wednesday & Thursday Evenings

APRIL 27th & 28th, 1966

at 7:45 P. M.

Robert A. Siegel
AUCTIONS

10 EAST 52nd STREET NEW YORK, N. Y. 10022

Tel: PLaza 3-6422

Robert A. Siegel Auction Galleries, Inc. is proud to have been commissioned to sell the Ambassador Collection of United States stamps at public auction. It is a happy coincidence that this outstanding collection, which is of such a calibre as to be immediately recognized as one of the great collections of our times, is presented as our three hundredth auction. For in addition to the pleasure we take in being able to offer this collection at auction, we feel what we presume to be justifiable pride on the occasion of our third hundred public auction. We are pleased to add the Ambassador Collection to the imposing list of outstanding collections which we have been commissioned to sell in the past 35 years.

Despite the volume of rare and desirable material which we have handled, we confess to a more than usual amount of enthusiasm about the Ambassador Collection — an enthusiasm we feel you will share with us as you examine the following pages, for in them you will find what we consider to be the finest unused one of a kind collection of United States stamps ever to be offered.

While it is customary to preface collections by calling attention to the individual rarities, in this case such a practice seems superfluous, for this fabulous collection abounds in rare items. It is interesting to note that, with only 9 exceptions, the collection contains every major postage stamp of the United States as well as all the inverted centers and the total catalog value exceeds one quarter of a million dollars. Equally as impressive as the rarity present in this collection is the high quality throughout. Even stamps which are frequently considered less scarce are present in such outstanding condition as to render them rare also. These two factors, rarity and quality, merge to create one forceful impression — that this collection, assembled with patience and unerring adherence to the highest philatelic standards, represents collecting at its best.

The following pages offer the collector an unparalleled opportunity to enrich any United States collection with select items from a great collection. This, then, is the Ambassador Collection.

ESTIMATES

Our sales contain many 19th Century covers and fancy cancellations. We have had many requests to give the estimated cash value on these lots. We are trying to place a fair net valuation on each lot as a guide for bidding when no catalogue value portrays the true value. The chart below will be used, for example E. IV means our estimate cash value on this lot is \$30.00 to \$40.00. Lots may actually realize more or less than these estimates and under no circumstances are these estimates to be considered reserves but merely a guide to bidding.

E. I	up to \$10.00	E. VIII	\$100.00 to \$150.00
E. II	\$10.00 to \$20.00	E. IX	\$150.00 to \$200.00
E. III	\$20.00 to \$30.00	E. X	\$200.00 to \$250.00
E. IV	\$30.00 to \$40.00	E. XI	\$250.00 to \$350.00
E. V	\$40.00 to \$50.00	E. XII	\$350.00 to \$500.00
E. VI	\$50.00 to \$75.00	E. XIII	\$500.00 to \$750.00
E. VII	\$75.00 to \$100.00	E. XIV	\$750.00 to \$1000.00
		E. XV	over \$1000.00

CONDITIONS OF SALE

1. The terms of sale are strictly cash to the highest bidder. All buyers are expected to pay for lots within three days of receipt, unless special arrangements have been made prior to the sale.
2. All bids are per lot as numbered in the catalogue and not per piece, unless otherwise announced by the auctioneer at the time of sale.
3. Any lot the description of which is incorrect is returnable only within three days of receipt. All disputed lots must be returned intact as received. Lots containing five or more stamps are not returnable at any time. No lots may be returned by purchasers who have had the opportunity to examine them before the sale.
4. Successful mail bidders, unless they are known to us or supply acceptable references, will be notified of the amount of the lots secured for them, and are expected to send payment in full before the lots are forwarded.
5. If the purchase price has not been paid within the time limit, or lots taken up within seven days from date of sale, they may be resold and any losses arising from such sale charged to the defaulter.
6. All stamps are sold as genuine, except where sold "As Is". Claims for any lot proving otherwise, must be made within two weeks from date of sale.
7. The right is reserved to group two or more lots, also withdraw any lot or lots from the sale, or to act on behalf of the seller.
8. Until paid for in full all lots remain the property of Robert A. Siegel.
9. No commission is charged for buying at our sales, but all forwarding charges will be added to the purchase price.
10. Upon written application lots may be sent for examination prior to the auction to persons known to us or who supply acceptable references, conditional upon being mailed back by registered mail, adequately insured, within 24 hours of receipt. The applicant is completely responsible for all lots sent for examination, and for the insurance of same against mishap, from the time of receipt until they are actually received back, and is to pay all expenses of postage and insurance.
11. The placing of a bid shall constitute acceptance of the foregoing conditions of sale.

ROBERT A. SIEGEL

ANDREW LEVITT, Licensed Auctioneers

In sending bids, always state the highest price you are prepared to pay for the lot. Your limit will not be used as a starting bid unless absolutely necessary.

DESCRIPTIONS

Superb or Extremely Fine—the finest condition for noteworthy, outstanding copies.

Very Fine (VF)—means that there is a slight deviation from the above.

Fine (F)—means that the perforations do not touch the design on issues after 1890, but in some cases may just touch in earlier issues; if used, fairly lightly cancelled.

Very Good (VG)—means that the appearance is generally fine but that the perforations cut the design slightly.

Good (G)—means average off-centering; or fairly attractive with slight defects.

Original gum (OG) is not to be expected on 19th Century stamps unless so stated.

Mint—have never been hinged.

Scott 1966 Specialized United States Catalogue is used for cataloging our lots of United States and Scott's Standard Catalogue, 1966 for others.

WE SOLICIT FINE MATERIAL FOR FUTURE SALES

FIRST SESSION

WEDNESDAY, APRIL 27, 1966 — 7:45 P. M.

UNITED STATES

1847 ISSUE

- | | | |
|-----|-------------------------------------------------------------------------------------------------------------------------------------------------------------------------------------------|--------|
| 1 ★ | 5c Red Brown (1). L. L. Sheet Corner Copy, Ample to Enormous Margins all around, Magnificent Deep Rich Color & Impression, fresh, o. g., Extremely Fine, an outstanding Gem (Photo) | 150.00 |
| 2 ★ | 5c Red Brown (1). Large margins, Rich Pretty Color, a Lovely Copy, Extremely Fine (Photo) | 150.00 |
| 3 | 5c Red Brown (1). Ample to Huge margins, Vivid Carmine grid cancel, A Beauty, Extremely Fine (Photo) | 45.00 |
| 4 ★ | 10c Black (2). Huge margins, Wonderful Deep Vivid Color, Brilliant Impression, negligible horiz. bend, A Rare & Very Choice Stamp, with P. F. Certificate (Photo) | 600.00 |
| 5 | 10c Black (2). Huge margins, Brilliant Rich Color & Impression, Neat Red Square Grid cancel, Extremely Fine (Photo) | 140.00 |
| 6 P | 5c Brown, 10c Black India Proofs (3P, 4P). Very Fine Set | 52.50 |
| 7 P | 10c Black Reproduction Panama Pacific Small Die Proof (4P2a). Rare, V. F. (Photo) | 165.00 |
| 8 ★ | 5c Red Brown Reproduction (3). L. L. Sheet Corner Copy, Unusually Brilliant Color & Impression, A Magnificent Copy, Extremely Fine (Photo) | 120.00 |
| 9 ★ | 10c Black Reproduction (4). Huge margins, Incredible Rich Color & Impression, Extremely Fine (Photo) | 160.00 |
| 10 | \$5.00 Banknote. Canal & Banking Co. New Orleans, Rawdon, Wright Hatch & Edson Impt., Vignette of Franklin as on 5c 1847 Issue, Unsigned, Uncirculated | E. II |

LOTS ON VIEW FROM APRIL 21st

OFFICES OPEN SATURDAY, APRIL 23rd



1



2



3



4



5



7



8



9



12



13



15



16



17



18



19



20



28



29



31

1851 ISSUE



- 11 1c Blue Ty. I, Ib (5, 6b). Horiz. Pair, Pos. 6, 7R1E, Ample to Huge margins all around except bit close at L. R., Wonderful Vivid Color, Rich Crossed **Red Paid** cancels on each, A Magnificent Showpiece of Extreme Rarity, Ex Newbury (Photo) 2775.00+
- 12 ★ 1c Dark Blue Ty. Ia (6). Large margins, Wonderful deep color, fresh, o. g., light vertical crease in L. margin far from design, still Extremely Fine, with P. F. Certificate (Photo) 900.00
- 13 1c Blue Ty. Ia (6). Enormous margins, Sheet margin at B., Gorgeous Rich Color, light ms. cancel, pinpoint toned speck in T. margin, Extremely Fine (Photo) 325.00
- 14 ★ 1c Dark Blue Ty. II (7). Margins to barely touched, Deep Color, Fine 55.00
- 15 ★ 1c Blue Ty. II (7). Horiz. Pair, Clear to Large margins, Exceptionally Rich Color, Extremely Fine (Photo) 120.00
- 16 ★ 1c Dark Blue Ty. III (8). Ample to Huge margins, fresh, o. g., Very Fine, a Rare & Handsome stamp (Photo) 475.00
- 17 1c Dark Blue Ty. III (8). Pos. 99R2. Large to Huge margins all around, deep color, light grid cancel, faint vertical creases, Extremely Fine appearance, Signed by Ashbrook (Photo) 600.00
- 18 ★ 1c Blue Ty. IIIa (8A). Clear to Huge margins, Rich pretty color, fresh, o. g., Very Fine (Photo) 175.00
- 19 ★ 1c Blue Ty. IV (9). Margins all around, exceptionally Rich Color, fresh, o. g., Very Fine (Photo) 40.00
- 20 ★ 3c Orange Brown (10). Margins all around, Magnificent Vivid Color, trivial tiny corner crease, Extremely Fine appearance (Photo) 70.00
- 21 3c Orange Brown (10). Ample to Enormous Margins, Sheet Centerline at R., Brilliant Vivid Color, Clear town pmk., Extremely Fine 5.75
- 22 3c Orange Brown, Red (10, 11). Five Horiz. Pairs, one of first, diff. Rich shades, margins to barely touched, town pmks., one in blue, some interesting plate varieties, two have faint creases & one tiny scissor cut, otherwise F.-V. F. Handsome lot 30.50+
- 23 ★ 3c Brownish Carmine (11). Margins all around, nice color, part o. g., V. F. with P. F. Certificate 11.00
- 24 3c Red (11). Three Vivid Shades, Railroad and clear Red & Blue Town pmks., Beautiful Trio, Extremely Fine 14.75
- 25 3c Red (11). Three Rich Shades, margins all around, Brilliant **Green** town pmks., a Beautiful lot, Extremely Fine 33.00



33



34



35



36



38



39



43



44



45



45 A



39



46



48



49



50



51



52



53



56



58



60



62



63



64



68



69



70



71



72



73



26

27

30

- 26 ★ **5c Red Brown (12).** Clear to Enormous Margins, Lovely Rich Color, Very Fine, with P. F. Certificate **(Photo)** 600.00
- 27 ★ **10c Green Ty. I (13).** Clear to Enormous Margins, Wonderful Rich Color, o. g., Extremely Fine, A Marvellous Copy of this Rarity, with P. F. Certificate **(Photo)** 900.00
- 28 ★ **10c Dark Green Ty. II (14).** Clear to Huge Margins, Lovely Deep Color, faint vertical crease, Very Fine appearance, with P. F. Certificate **(Photo)** 135.00
- 29 ★ **10c Green Ty. III (15).** Pos. 85L1, showing **Curl on Forehead**, clear to Enormous Margins, Glorious Color, faint tiny corner crease, Extremely Fine appearance, with P. F. Certificate **(Photo)** 145.00
- 30 ★ **10c Dark Green Ty. IV (16).** Pos. 74L1, Recut at Top, margins all around, Incredible Deep Rich Color, part o. g., trivial tiny corner wrinkle, well clear of design, Extremely Fine, a Gorgeous Example of this Rarity **(Photo)** 900.00
- 31 ★ **12c Black (17).** Large margins, showing next stamp at sides, Lovely Color & Impression fresh, Extremely Fine **(Photo)** 140.00
- 32 **\$10.00 Banknote,** Canal Bank, New Orleans, Toppan Carpenter & Co. Imprint, Vignettes of Franklin & Washington as on 1c, 3c 1851-57, Unsigned, Uncirculated **E. II**

1857 ISSUE

- 33 ★ **1c Blue Ty. I (18).** Nice color, o. g., faint vertical gum bend, V. F. **(Photo)** 95.00
- 34 **1c Blue Ty. I (18).** Red N. Y. Carrier Cancel, one slightly nibbed perf., otherwise Extremely Fine **(Photo)** 85.00
- 35 ★ **1c Blue Ty. II (20).** Magnificent Color, fresh, Very Fine **(Photo)** 55.00
- 36 ★ **1c Deep Blue Ty. III (21).** Lovely Rich Color, o. g., minute sealed margin break, Extremely Fine appearance **(Photo)** 215.00
- 37 ★田 **1c Blue Ty. III, IIIa (21, 22).** Combination Block of 4, top stamps Ty. III, others Ty. IIIa, Glorious Vivid Color, fresh, o. g., top pair has horiz. crease, others are Extremely Fine, A Rare & Handsome Block **(Photo)** 530.00+
- 38 ★ **1c Dark Blue Ty. IIIa (22).** Deep Rich Color, fresh, part o. g., pinpoint thin speck, otherwise Very Fine **(Photo)** 50.00
- 39 **1c Blue Ty. IV (23).** Vertical Pair, Pos. 5, 15R1L, Centered, Beautiful Color clear Cleveland pmks., top stamp has slightly rounded corner perfs, otherwise Extremely Fine, a Lovely Pair **(Photo)** 95.00+

40 ★	1c Blue Ty. Va (24 var.). Magnificent Color, fresh o. g., Very Fine	10.00+
41 ★	1c Blue Ty. V (24). Block, fresh, o. g., Very Fine	60.00
42	1c-12c 1857 Issue (24, 35, two, 36). Vivid Red Cancels, Handsome Lot, Fine-Very Fine	37.50
43 ★	3c Red Ty. I (25). Vivid Color, fresh, Extremely Fine, A Rare Stamp in Choice Condition (Photo)	50.00
44	3c Red (26). Bold Naperville, Ill. Waving Flag cancel, trivial corner fault, Fine appearance, Rare & Handsome (Photo)	E. III
45 ★	5c Brick Red Ty. I (27). Wonderful Vivid Color, fresh, full o. g., tiny natural gum wrinkle, Very Fine, a Rare & Lovely stamp (Photo)	375.00
45A ★	5c Indian Red (28A). Rich color, part o. g. Centered slightly to top, Very Fine (Photo)	650.00
45B ★	5c Red Brown, Ty. I (28), Vivid Color, o. g., Very Fine	300.00
46 ★	5c Brown Ty. I (29). Rich Color, fresh, o. g., Very Fine (Photo)	87.50
47 ★	5c Orange Brown Ty. II (30). Magnificent Brilliant Color, small sealed margin tear, Extremely Fine appearance	47.50
48 ★	5c Brown Ty. II (30A). Lovely Rich Color, trivial internal wrinkle, otherwise Extremely Fine (Photo)	50.00
49	5c Brown Ty. II (30A). Lovely Color, Red town pmk., Very Fine (Photo)	25.00
50	5c Deep Brown Ty. II (30A). Exceptional Color, Red grid cancel, Extremely Fine (Photo)	25.00
51 ★	10c Dark Green Ty. I (31). Magnificent Color, fresh, small tear in B. margin, Very Fine appearance, Rare & Attractive (Photo)	800.00
52 ★	10c Bluish Green Ty. II (32). Rich Color, fresh, o. g., tiny faults in T. margin, Very Fine appearance (Photo)	110.00
53 ★	10c Dark Green Ty. III (33). Rich Color, almost invisible microscopic margin break, Extremely Fine appearance (Photo)	110.00



54

59

61

65

54 ★	10c Dark Green Ty. IV (34). Pos. 55L1, Recut at B., Magnificent Rich Color, fresh, full o. g., Extremely Fine, a Wonderful Stamp (Photo)	950.00
55 ★	10c Green Ty. V (35). Huge Margins, fresh, o. g., Extremely Fine	18.50
56 ★	12c Intense Black, Plate 3 (36b). Fresh, o. g., Extremely Fine (Photo)	27.50
57	12c Black, 24c Gray (36, 37). Centered, Gorgeous Colors, first has Blue town pmk., latter Red grid, trivial thin speck in each, otherwise V. F.	56.00

- 58 ★ **24c Gray Lilac (37a).** Unusually Choice Color & Impression, V. F. **(Photo)** 57.50
- 59 ★ **24c Lilac, Imperforate (37a).** Ample to Gigantic Margins except barely touched in U. L. Corner, shows next stamp at B., and Sheet Margin with Part Impt. at L., Lovely Color, Very Fine, with P. F. Certificate **(Photo)** 350.00
- 60 ★ **30c Orange (38).** Vivid Color, fresh, o. g., Very Fine **(Photo)** 60.00
- 61 ★ **30c Reddish Orange, Imperforate (38a).** Ample to Large Margins, Marvellous Rich Color, fresh, Very Fine, Choice Example of this Rarity, with P. F. Certificate **(Photo)** 600.00
- 62 **30c Orange (38).** Glorious Color, light grid cancel, Extremely Fine **(Photo)** 45.00
- 63 **30c Orange (38).** Wonderful Rich Color, Magenta grid cancel, one perf. trifle blunt, otherwise Very Fine **(Photo)** 50.00
- 64 ★ **90c Deep Blue (39).** Magnificent Color, fresh, o. g., Very Fine **(Photo)** 200.00
- 65 ★ **90c Deep Blue, Imperforate (39a).** Ample to Huge Margins, Beautiful Deep Color, trivial natural internal crease, otherwise Very Fine, A Rare & Handsome Stamp, with P. F. Certificate **(Photo)** 900.00

1857 REPRINTS



- 66 ★ **1c-90c 1857-60 Reprints, Imperforate (40-47 var.).** Cpl. Set, fresh, Extremely Fine, only three sets stated to exist, listed but unpriced in Scott **(Photo)** E. XV
- 67 P **1c Atlanta Trial Color Proofs on Card (40TC).** Cpl. set of 5, Very Fine 52.50
- 68 ★ **1c Bright Blue Reprint (40).** Extremely Fine **(Photo)** 80.00
- 69 ★ **3c Scarlet Reprint (41).** Tiny natural paper inclusion, Fine **(Photo)** 275.00
- 70 ★ **5c Orange Brown Reprint (42).** Extremely Fine **(Photo)** 100.00
- 71 ★ **10c Blue Green Reprint (43).** Very Fine **(Photo)** 185.00
- 72 ★ **12c Greenish Black Reprint (44).** Fine **(Photo)** 225.00
- 73 ★ **24c Blackish Violet Reprint (45).** Part Imprint at R., Fine **(Photo)** 250.00
- 74 ★ **30c Yellow Orange Reprint (46).** Extremely Fine **(Photo)** 350.00
- 75 ★ **90c Deep Blue Reprint (47).** Very Fine **(Photo)** 425.00



37



92



220



108



113



EX 189



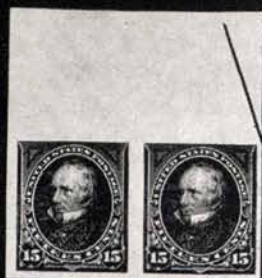
85



269



247



312



321



330

332

1861 AUGUST ISSUE



76-85

- 76 ★ **1c Indigo August (55).** Incredible Rich Color, fresh, o. g., Fine, A Gorgeous copy of this Rare Stamp, with P. F. Certificate (Photo) 4000.00
- 77 ★ **3c Brown Rose August (56).** Huge margins, fresh, o. g., Extremely Fine, with P. F. Certificate (Photo) 90.00
- 78 ★ **5c Brown August (57).** Rich Color, pinpoint marginal thin specks in U. R. & L. R. corners, otherwise Fine, Fresh & Handsome copy of this Rarity with P. F. Certificate (Photo) 2250.00
- 79 ★ **10c Dark Green August (58).** Centered, Large Margins, Gorgeous Color, fresh, o. g., Extremely Fine, An Amazing Copy (Photo) 600.00
- 80 ★ **10c Dark Green August (58).** Gorgeous Rich Color, fresh, o. g., faint horiz. crease in top margin, Very Fine appearance (Photo) 600.00
- 81 ★ **12c Black August (59).** Centered, fresh, o. g., Magnificent Rich Color, few perfs. a trifle blunted, Extremely Fine, a Wonderful copy of one of the Rarest U. S. Stamps (Photo) 15,000.00
- 82 ★ **24c Violet August (60).** Centered, Large Margins, Lovely Color, despite faint horiz. crease a Gorgeous example of this scarce stamp (Photo) 700.00
- 83 ★ **24c Grayish Lilac August (60a).** Gorgeous Rich Color, fresh, o. g., trivial corner perf. bend, otherwise Fine, A Handsome Example of A Very Rare Stamp (Photo) 700.00
- 84 ★ **30c Red Orange August (61).** Wonderful Deep Rich Color, small part o. g., minute crease in T. margin & trivial tiny perf. break, otherwise Fine, Attractive Copy of this Rarity, Ex Crocker, Waterhouse, with P. F. Certificate (Photo) 3000.00
- 85 ★ **90c Dull Blue August (62).** Centered, Magnificent Color, fresh, o. g., slightly rounded corner perf., otherwise Extremely Fine, one of the finest known copies of this Rarity, with P. F. Certificate (Photo) 3250.00
- 86 ★ **90c Dull Blue August, Imperforate (62a).** Horiz. Pair, Huge Margins, Magnificent Color, faint horiz. crease in B. margin, barely touching design, Extremely Fine appearance (Photo) 950.00



74



75



86



89



91



93



94



96



97



98



99



100



101



104



105



106



107



109



110



111



112



114



115



116



117



118



119



126

1861 ISSUE

87 E	1c Carmine, Blue Coupon Essays (Brazier 63E-Bi). Fresh, o. g., Extremely Fine pair	E. III
88 P	1c-90c 1861-63 Issues, Proofs on India (Betw. 63P-77P). Eleven Diff., all the listed varieties but 65P, some small faults, otherwise Very Fine Set	68.50
89 ★	3c Pink (64). Centered, Gorgeous Vivid Color, negligible faint vertical crease, Extremely Fine appearance, a Rare & Very Pretty stamp, with P. F. Certificate	(Photo) 450.00
90 ★	3c Pinkish Rose (65). Block, Gorgeous Color, fresh, o. g., Extremely Fine	25.00
91 ★	3c Lake (66). Brilliant Color & Impression, fresh, o. g., Extremely Fine (Photo)	200.00
92 ★	3c Lake, Imperforate (66a). B. Horiz. Impt. Plate No. (52). Strip of 4, Huge Margins, Rich Color, fresh, o. g., Extremely Fine, Signed "Economist", listed but unpriced in Scott	(Photo) E. XIII
93 ★	5c Brown Yellow (67a). Centered, fresh, part o. g., Glorious Vivid Color, A Magnificent Stamp, Very Fine	(Photo) 425.00
94	5c Buff (67). Gorgeous Vivid Color, Bold S. F. Cog Cancel, one very slightly blunted perf., Very Fine	(Photo) 45.00
95 ★	10c Green (68). Two Rich Shades, fresh, o. g., one has almost invisible pinhole, otherwise Extremely Fine	30.00
96 ★	12c Black (69). Fresh, o. g., Extremely Fine, with P. F. Certificate (Photo)	30.00
97 ★	24c Red Lilac (70). Vivid Color, fresh, Fine	(Photo) 85.00
98 ★	30c Deep Orange (71). Fresh, o. g., trivial tiny perf. break, Extremely Fine appearance	(Photo) 45.00
99	30c Orange (71). Centered, Clear Red Supplementary Mail Ty. A cancel trivial margin break, Very Fine appearance	(Photo) 25.00
100 ★	90c Dark Blue (72). Enormous Margins, Gorgeous Rich Color, couple perms. trifle blunt, Extremely Fine, A Magnificent Gem	(Photo) 125.00
101	90c Blue (72). Gorgeous Color, neat dotted grid cancel, Extremely Fine (Photo)	35.00
102 ★	2c Black (73). Two shades, one o. g., Fine-Very Fine	30.00
103 ★	2c Black (73). Single & Horiz. Pair, Centered, Large Margins, fresh, o. g., small faults, Extremely Fine appearance	47.50
104	2c Black (73). Lovely Bold Blue Masonic Square, Compass & "G" in Circle cancel, trivial perf. break at T., Fine appearance	(Photo) E. III
105 ★	3c Scarlet (74). Centered, Brilliant Color, Extremely Fine	(Photo) 425.00
106 ★	5c Red Brown (75). Fresh, o. g., minute corner crease, Very Fine appearance, with P. F. Certificate	(Photo) 85.00
107 ★	5c Brown (76). Vivid Color, fresh o. g., Extremely Fine, with P. F. Certificate	(Photo) 22.50
108 P	15c Black Lincoln India Plate Proof (77P). B. Impt. Plate No. Block of 8, Extremely Fine	(Photo) 150.00



121



123



124



125



126



129



130



131



132



133



134



135



136



137



138



139



140



141



142



143



144



145



146



147



148



149



150



151



152

109 ★	15c Black (77). Gorgeous Intense Color, Extremely Fine (Photo)	52.50
110 ★	24c Grayish Lilac (78). Rich Color, fresh, Extremely Fine (Photo)	23.50
111 ★	24c Lilac (78). Beautiful Color, fresh, o. g., Extremely Fine (Photo)	23.50

1867 GRILL ISSUES

112 ★	3c Rose Grilled All Over (79). Fairly well centered, Nice Color, perfs. almost completely intact, fresh, o. g., Very Fine, an Exceptional Copy of this difficult stamp (Photo)	450.00
113 ★田	3c Rose Grilled All Over, Imperforate (79a). B. Impt. Plate No. (52) Block of 8, fresh, o. g., Extremely Fine, A Beautiful & Extremely Rare Show-piece, with P. F. Certificate (Photo)	1200.00+
114 ★	3c Rose C Grill (83). Lovely Color, fresh, full o. g., a Marvellous Copy, Extremely Fine (Photo)	115.00
115 ★	3c Rose Inverted C Grill (83 var.). Vivid Color, fresh o. g., short perf. at L., otherwise Fine, unlisted in Scott with Grill Inverted, a Very Rare Stamp (Photo)	115.00+
116 ★	3c Rose C Grill, Imperforate (83a). Horiz. Pair, Huge Margins, Lovely Color, fresh, o. g., Extremely Fine, with P. F. Certificate (Photo)	200.00
117 ★	2c Black Z Grill (85B). Large margins, Rich Color, minute margin break at T., Extremely Fine appearance (Photo)	140.00
118	2c Black Z Grill (85B). Centered, Wonderful Color, Neat Red Target Cancel, one perf. trifle blunt, Extremely Fine, A Beauty (Photo)	40.00
119 ★	3c Red Double Z Grill (85c var.). Centered, Rich Color, o. g., Vertical Pre-Printing Paper fold in L. margin, Extremely Fine, unlisted with Double Grill, A Beautiful & Excessively Rare Stamp, with P. F. Certificate (Photo)	425.00+
120 ★	12c Black Z Grill (85E). Centered, Rich Vivid Color, part o. g., faint trivial natural interior crease, otherwise Extremely Fine, A Handsome Copy of this Rare stamp (Photo)	235.00
121 ★	1c Blue E Grill (86). Vivid Color, fresh, o. g., pinpoint thin speck, few perfs. a trifle Blunt, otherwise Extremely Fine (Photo)	47.50
122 ★	2c Black, 3c Red E Grills (87, 88). Fresh, part o. g., latter with Plate Scratch at U. R., Extremely Fine 37.50+	
123 ★	10c Dark Green E Grill (89). Lovely Rich Color, fresh, o. g., V. F. (Photo)	77.50
124 ★	12c Black E Grill (90). Huge Margins, o. g., Extremely Fine, with P. F. Certificate (Photo)	80.00
125 ★	15c Black E Grill (91). Vivid Color, fresh, o. g., V. F., a Wonderful Copy (Photo)	250.00
126 ★	1c Blue F Grill (92). Huge Margins, Vivid color, one perf. trifle toned, Extremely Fine (Photo)	28.50
127	2c Black F Grill (93). Lovely Bold Bee cancel, tiny sealed tears, Very Fine appearance E. III	
128 ★	2c Black, 3c Red F Grill (93, 94). Vivid Colors, o. g., Extremely Fine 21.50	

129 ★	5c Dark Brown F Grill (95). Lovely Deep Color, fresh, trivial pinpoint thin speck, otherwise Very Fine (Photo)	175.00
130 ★	5c Black Brown F Grill (95a). Magnificent Color, fresh, Extremely Fine, A Rare & Beautiful Stamp (Photo)	200.00
131 ★	5c Brown F Grill (95). Tiny margin fault, V. F. appearance (Photo)	175.00
132 ★	10c Deep Green F Grill (96). Huge Margins, Vivid Color, fresh, o. g., negligible pinpoint thin speck, otherwise Extremely Fine (Photo)	40.00
133 ★	12c Black F Grill (97) Fresh, Very Fine (Photo)	42.50
134 ★	15c Black F Grill (98). Unusually Vivid Color, fresh, o. g., trivial tiny margin break, Very Fine appearance (Photo)	45.00
135 ★	24c Gray Lilac F Grill (99). Horiz. Pair, Centered, Glorious Color & Impression, fresh, o. g., Magnificent Gem, Extremely Fine (Photo)	300.00
136 ★	30c Orange F Grill (100). Unusually Rich Color, couple perfs. a trifle nibbed, still Very Fine, a scarce & handsome stamp (Photo)	135.00
137 ★	90c Blue F Grill (101). Lovely Deep Rich Color, part o. g., Extremely Fine, A Great Rarity in this condition (Photo)	300.00

1861 RE-ISSUES

138 ★	1c Blue Reissue (102). Brilliant Color, fresh, o. g., Extremely Fine (Photo)	70.00
139 ★	2c Black Reissue (103). Brilliant Color, fresh, o. g., tiny light blue speck on face, Extremely Fine (Photo)	225.00
140 ★	3c Brown Red Reissue (104). Centered, fresh, o. g., one perf. trifle blunt, Extremely Fine (Photo)	325.00
141 ★	5c Light Brown Reissue (105). Vivid Color, o. g., Extremely Fine (Photo)	225.00
142 ★	10c Green Reissue (106). Fresh, o. g., Extremely Fine, with P. F. Certificate (Photo)	250.00
143 ★	12c Black Reissue (107). Fresh, part o. g., neatly sealed small tear, Extremely Fine appearance (Photo)	325.00
144 ★	15c Black Reissue (108). Intense Color, fresh, o. g., Extremely Fine (Photo)	275.00
145 ★	24c Deep Violet Reissue (109). Wonderful color, fresh, o. g., Extremely Fine (Photo)	325.00
146 ★	30c Brownish Orange Reissue (110). Extremely Fine (Photo)	500.00
147 ★	90c Blue Reissue (111). Magnificent Color, fresh, o. g., Extremely Fine, A Marvellous Stamp (Photo)	525.00

1869 PICTORIAL ISSUE

148 ★	1c Buff (112). Fresh, Extremely Fine (Photo)	32.50
149 ★	2c Dark Brown (113). Magnificent Color, fresh, o. g., Extremely Fine (Photo)	18.50
150 ★	2c Brown (113). Deep Brilliant Color, fresh, o. g., Extremely Fine (Photo)	18.50

- 151 ★ **6c Ultramarine (115).** Huge Margins, fresh, Extremely Fine, A Great Rarity in this condition (Photo) 50.00
- 152 ★ **10c Yellow (116).** Brilliant Color, fresh, o. g., Extremely Fine (Photo) 55.00
- 153 ★ **10c Yellow (116).** Fresh, Extremely Fine with P. F. Certificate (Photo) 55.00
- 154 ★ **12c Green (117).** Rich Color, fresh, o. g., minute thin specks in grill, Extremely Fine appearance (Photo) 52.50
- 155 ★ **15c Brown & Blue Ty. I (118).** Centered, Lovely Colors, faint corner crease, Extremely Fine appearance (Photo) 185.00
- 156 ★ **15c Brown & Blue Ty. I (118).** Centered, unusually Rich strong Colors, part o. g., small thin, Extremely Fine appearance (Photo) 185.00
- 157 ★ **15c Brown & Blue Ty. II (119).** Huge Margins, Glorious Color, fresh, A Gem, Extremely Fine (Photo) 60.00



158

161

163

- 158 **15c Brown & Blue Ty. II, Inverted Center (119b).** Centered, Wonderful Deep Rich Colors, clear **Star** cancel, Extremely Fine, probably the finest known copy of this Popular Rarity, Ex Moody (Photo) 3000.00
- 159 P **15c-90c Pictorial Card Profs, Inverted Centers (120Pa-122Pa, 129Pa).** Cpl. Set, Extremely Fine (Photo) 900.00
- 160 ★ **24c Green & Violet (120).** Centered, Glorious Colors, fresh, o. g., Extremely Fine, A Magnificent Copy (Photo) 130.00
- 161 **24c Green & Violet, Inverted Center (120b).** Centered, Large Margins, Brilliant Colors, Light Cork Cancels, Extremely Fine, A Magnificent Gem, Ex Moody (Photo) 2250.00
- 162 ★ **30c Blue & Carmine (121).** Huge Margins, Vivid Colors, minute rubbed speck in "s" of Postage, otherwise Extremely Fine (Photo) 150.00
- 163 **30c Blue & Carmine, Inverted Center (121b).** Centered, Enormous Margins, Rich pretty colors, neat cork cancel, two trivial tiny corner bends, a Magnificent Copy of the Rarest of U. S. Regular Issue Inverts, with P. F. Certificate (Photo) 5750.00
- 164 ★ **90c Carmine & Black (122).** Centered, Huge Margins, Brilliant Colors, fresh, o. g., trivial faint corner thin, Extremely Fine appearance (Photo) 375.00

1869 PICTORIAL RE-ISSUES

- 165 ★ **1c Buff Reissue (123).** Extremely Fine (Photo) 55.00
- 166 ★ **2c Brown Reissue (124).** Fresh, o. g., Extremely Fine (Photo) 55.00
- 167 ★ **3c Blue Reissue (125).** Fresh, o. g., Extremely Fine (Photo) 350.00



153



154



155



156



157



159



160



162



164



165



166



167



168



169



170



171



172



173



174



175



176



177



178



180



181

- 168 ★ **6c Blue Reissue (126).** Fresh, o. g., slightly blunt corner perf., Extremely Fine (Photo) 135.00
- 169 ★ **10c Yellow Reissue (127).** Fresh, o. g., Extremely Fine, with P. F. Certificate (Photo) 145.00
- 170 ★ **12c Green Reissue (128).** Fresh, o. g., Extremely Fine (Photo) 145.00
- 171 ★ **15c Brown & Blue Ty. III Reissue (129).** Fresh, o. g., Extremely Fine, with P. F. Certificate (Photo) 190.00
- 172 ★ **24c Green & Violet Reissue (130).** Fresh, o. g., Extremely Fine (Photo) 150.00
- 173 ★ **30c Blue & Carmine Reissue (131).** Fresh, o. g., Extremely Fine, with P. F. Certificate (Photo) 225.00
- 174 ★ **90c Carmine & Black Reissue (132).** Exceptionally Deep Strong Colors minute thin, Extremely Fine appearance (Photo) 400.00
- 175 ★ **1c Buff Reissue (133).** Centered Horiz. Pair, fresh, full o. g., one has tiny natural paper inclusion, Extremely Fine (Photo) 50.00+

NATIONAL BANKNOTE GRILL ISSUE

- 176 ★ **1c Ultramarine, Grill (134).** Large Margins, Extremely Fine (Photo) 45.00
- 177 ★ **2c Red Brown, Grill (135).** Brilliant Color, fresh, o. g., Very Fine (Photo) 35.00
- 178 ★ **3c Green, Grill (136).** Fresh, o. g., vertical **Stitch Wmk.**, Extremely Fine (Photo) 27.50+
- 179 **3c Green, Grill (136).** Beautiful Bold **Dragonfly** cancel, tiny tear, Extremely Fine Appearance E. II
- 180 ★ **6c Carmine, Grill (137).** Fresh, large part o. g., centered trifle to B., Very Fine with P. F. Certificate (Photo) 125.00
- 181 ★ **7c Deep Vermilion, Grill (138).** Brilliant Color, fresh, o. g., V. F. (Photo) 110.00
- 182 ★ **10c Brown, Grill (139).** Vivid Color, fresh, Extremely Fine (Photo) 185.00



183

186

187

188

- 183 ★ **12c Violet, Grill (140).** Lovely Color, bent corner perf., almost invisible faint stain, otherwise Very Fine, with P. F. Certificate (Photo) 2250.00
- 184 ★ **15c Orange, Grill (141).** Brilliant Color, fresh, o. g., Extremely Fine (Photo) 130.00
- 185 **15c Orange Grill (141).** Perfectly Struck Bold Blue Negative **J W H** Monogram cancel, few clipped perfs. at T., perfs. in at B. 60.00
- 186 **24c Purple, Grill (142).** Vivid Color, strong grill, fresh, single line ms. cancel, possible presentation copy from the P. O. Dept., a Rare & Beautiful Stamp, Very Fine, with P. F. Certificate (Photo) 2500.00



182



184



192



193



194



195



196



197



198



199



201



202



203



204



205



206



207



219



222



220



225



230



231



246



249



250



251



- 187 ★ **30c Full Black, Grill (143).** Centered, Magnificent Color, o. g., Extremely Fine, A Glorious Copy, O. K'd by Brookman (Photo) 325.00
- 188 ★ **90c Dark Carmine, Grill (144).** Magnificent Deep Rich Color, Huge Margins, fresh, Extremely Fine, with P. F. Certificate (Photo) 700.00

NATIONAL BANKNOTE ISSUE

- 189 P **1c-90c 1870 Issue India Proofs (145P-155P).** Cpl. Set in Bottom Imprint Plate No. strips of 5, few minor faults, Mostly Very Fine, Scarce & Most Attractive Set (Photo) 193.75+
- 190 ★ **1c-30c 1870-88 Issues (146, 156, 182, 209-211, 215-217).** Centered, all o. g. but 3, trivial minute thins, Very Fine appearance 84.75
- 191 ★ **1c-10c 1870-88 Issues (147, 183-184, 205-207, 209, 212-214).** All o. g. but one, Extremely Fine 46.60
- 192 ★ **6c Carmine (148).** Huge Margins, fresh, o. g., tips of few perfs. trifle toned, a Lovely Copy, Extremely Fine (Photo) 26.50
- 193 ★ **7c Vermilion (149).** Lovely color, fresh, Extremely Fine (Photo) 37.50
- 194 ★ **10c Brown (150).** Brilliant Color, fresh, large part o. g., Extremely Fine (Photo) 28.50
- 195 ★ **12c Violet (151).** Rich Color, fresh, large part o. g., Extremely Fine (Photo) 47.50
- 196 ★ **15c Bright Orange (152).** Huge Margins, Vivid Color, few blunted or faintly toned perf. tips, otherwise Extremely Fine (Photo) 42.50
- 197 ★ **24c Bright Purple (153).** Brilliant Color, fresh, part o. g., Extremely Fine (Photo) 55.00
- 198 ★ **30c Full Black (154).** Enormous Margins, Glorious Color, fresh, Extremely Fine (Photo) 100.00
- 199 ★ **90c Carmine (155).** Plate No. Single, Vivid Color, fresh, o. g., couple perfs. bit nibbed, otherwise Very Fine, with P. F. Certificate (Photo) 140.00+

CONTINENTAL BANKNOTE ISSUE

- 200 ★ **2c Brown, 3c Green (157, 158).** Gigantic Margins, o. g., Extremely Fine 11.75
- 201 ★ **6c Brown Rose (159).** Fresh, o. g., Very Fine (Photo) 22.50
- 202 ★ **7c Orange Vermilion (160).** Glorious Color, fresh, o. g., trivial tiny interior paper break, Extremely Fine appearance (Photo) 42.50
- 203 ★ **10c Brown (161).** Huge Margins, Vivid Color, fresh, full o. g., Extremely Fine (Photo) 20.00
- 204 ★ **12c Blackish Violet (162).** Lovely Color, faint tiny corner creases, Extremely Fine appearance (Photo) 65.00
- 205 ★ **15c Orange (163).** Rich Color, fresh, Extremely Fine (Photo) 60.00
- 206 ★ **30c Gray Black (165).** Unusually Rich Color, fresh, full o. g., V. F. (Photo) 57.50
- 207 ★ **90c Rose Carmine (166).** Vivid Color, fresh, o. g., Fine (Photo) 110.00

1875 SPECIAL PRINTINGS



208-218

- 208 ★ **1c Ultramarine, Special Printing (167).** Magnificent Brilliant Color, Very Fine, Signed by E. Stern, with P. F. Certificate (Photo) 850.00
- 209 ★ **2c Dark Brown, Special Printing (168).** Faint pinpoint thin speck, few short perfs., Very Fine appearance with P. F. Certificate (Photo) 550.00
- 210 ★ **3c Blue Green, Special Printing (169).** Wide s. e. at L., fresh, Fine, Very Rare, with P. F. Certificate (Photo) 1250.00
- 211 ★ **6c Dull Rose, Special Printing (170).** Very Fine, Rare, with P. F. Certificate (Photo) 1200.00
- 212 ★ **7c Reddish Vermilion, Special Printing (171).** Huge Margins, Vivid Color, Very Fine with P. F. Certificate (Photo) 450.00
- 213 ★ **10c Pale Brown, Special Printing (172).** Large Margins, wide s. e. at T., Extremely Fine, with P. F. Certificate (Photo) 800.00
- 214 ★ **12c Dark Violet, Special Printing (173).** Enormous Margins, Brilliant Color, wide s. e. at B., perfs. somewhat nibbed at T., Extremely Fine, with P. F. Certificate (Photo) 550.00
- 215 ★ **15c Bright Orange, Special Printing (174).** Vivid Color, perfs. trimmed at L. L., Very Fine, with P. F. Certificate (Photo) 950.00

- 216 ★ **24c Dull Purple, Special Printing (175).** Magnificent Color, faint crease, Very Fine appearance (Photo) 425.00
- 217 ★ **30c Greenish Black, Special Printing (176).** Extremely Fine, with P. F. Certificate (Photo) 1000.00
- 218 ★ **90c Violet Carmine, Special Printing (177).** Exceptionally well centered, almost imperceptible toning, Extremely Fine, with P. F. Certificate (Photo) 1000.00
- 219 ★ **2c Vermilion (178).** Vivid Color, Extremely Fine (Photo) 18.50
- 220 ★田 **2c Vermilion (178).** Block, Magnificent Color, fresh, o. g., V. F. (Photo) 90.00
- 221 ★ **2c Vermilion, Imperforate (178a).** Horiz. Pair, Ample to Huge Margins, full o. g., Extremely Fine (Photo) 350.00
- 222 ★ **5c Blue (179).** Huge Margins, Vivid Color, fresh, Extremely Fine (Photo) 17.00



223

224

- 223 ★ **2c Carmine Vermilion, Special Printing (180).** Tiny corner thin, Fine appearance, one of the most elusive of all U. S. Stamps, with P. F. Certificate (Photo) 2500.00
- 224 ★ **5c Bright Blue, Special Printing (181).** Very Fine, signed W. H. C. (Photo) 2750.00
- 225 ★ **5c Blue (185).** Fresh, o. g., Extremely Fine 20.00
- 226 ★ **6c Pink (186).** Lovely Color, fresh, pinhead thin speck, Extremely Fine appearance 45.00
- 227 ★ **10c Brown (187).** Lovely Color, large part o. g., tiny thin and rounded corner perf., V. F. appearance, Scarce 87.50
- 228 ★ **10c Brown (188).** Rich Color, bent corner perf. & minute paper inclusion in margin, otherwise Extremely Fine 42.50
- 229 ★ **15c Red Orange (189).** Fresh, o. g., Extremely Fine 14.00
- 230 ★ **30c Full Black (190).** Wonderful Color, fresh, Extremely Fine (Photo) 45.00
- 231 ★ **90c Carmine (191).** Fresh, o. g., minute corner thin, Very Fine appearance (Photo) 115.00

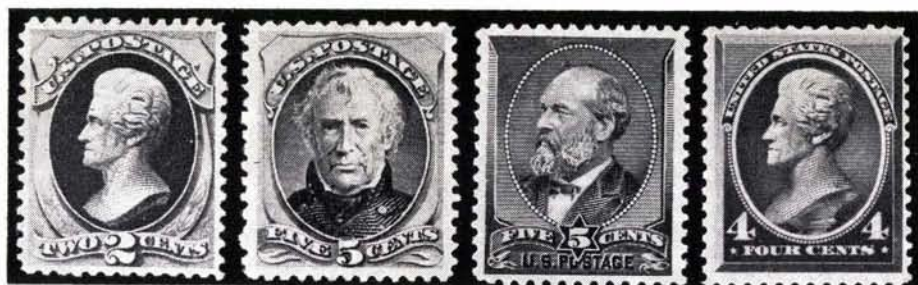
1880 SPECIAL PRINTINGS



232-242

- 232 ★ **1c Dark Ultramarine, Special Printing (192).** Lovely Color, small thins, Extremely Fine appearance, Handsome Copy of this Rarity, with P. F. Certificate (Photo) 1500.00
- 233 ★ **2c Black Brown, Special Printing (193).** Short perf. & minute thin at T., Fine appearance, Very Rare, with P. F. Certificate (Photo) 1200.00
- 234 ★ **3c Blue Green, Special Printing (194).** Centered, Gorgeous Color, minute natural paper inclusion, Extremely Fine, Lovely Example of this Rarity, with P. F. Certificate (Photo) 1650.00
- 235 ★ **6c Dull Rose, Special Printing (195).** Rich Color, one perf. trifle blunt, otherwise Very Fine, Rare & Handsome, with P. F. Certificate (Photo) 1100.00
- 236 ★ **7c Scarlet Vermilion, Special Printing (196).** Minute thins, Fine appearance, signed by Bartels, with P. F. Certificate (Photo) 750.00
- 237 ★ **10c Deep Brown, Special Printing (197).** Fresh, Extremely Fine, Gorgeous copy of this Rarity, with P. F. Certificate (Photo) 1100.00
- 238 ★ **12c Blackish Purple, Special Printing (198).** S. e. at R., tiny black paper inclusion, Very Fine, with P. F. Certificate (Photo) 1150.00
- 239 ★ **15c Orange, Special Printing (199).** Faint trivial thins, Extremely Fine appearance signed by Edw. Stern, with P. F. Certificate (Photo) 1100.00

- 240 ★ **24c Dark Violet, Special Printing (200).** Minute margin break & pinpoint thin speck, Extremely Fine appearance **(Photo)** 500.00
- 241 ★ **30c Greenish Black, Special Printing (201).** Gorgeous color, wide s.e. at R., trivial pinpoint thin, otherwise Extremely Fine, with P. F. Certificate **(Photo)** 950.00
- 242 ★ **90c Dull Carmine, Special Printing (202).** Negligible tiny thin, Extremely Fine appearance, with P. F. Certificate **(Photo)** 1100.00



- 243 ★ **2c Scarlet Vermilion, Special Printing (203).** Fresh, Extremely Fine, a Great Rarity in Immaculate Condition, with P. F. Certificate **(Photo)** 2500.00
- 244 ★ **5c Deep Blue, Special Printing (204).** Fresh, Extremely Fine, A Marvellous Copy of this Very Rare Stamp, with P. F. Certificate **(Photo)** 2750.00
- 245 ★ **5c Gray Brown, Special Printing (250c).** Fresh, Extremely Fine, magnificent copy of this Rarity, with photostat of P. F. Certificate **(Photo)** 2500.00
- 246 ★ **2c Pale Red Brown, Special Printing (211B).** Fresh, o. g., Extremely Fine **(Photo)** 100.00
- 247 ★ **2c Pale Red Brown Special Printing, Imperforate Between (211Bc).** Horiz. Pair, attached sheet margin at B., fresh, o. g., Extremely Fine **(Photo)** 350.00
- 248 ★ **4c Deep Blue Green, Special Printing (211D).** Fresh, Very Fine example of this Very Rare stamp with P. F. Certificate **(Photo)** 2250.00

1881-1888 ISSUES

- 249 ★ **6c Rose (208).** Small purple "X" on back, fresh, Very Fine **(Photo)** 30.00
- 250 ★ **6c Brown Red (208a).** Fresh, o. g., Extremely Fine **(Photo)** 22.50
- 251 ★ **2c Green, Imperforate (213a).** Horiz. Pair, Ample to Huge Margins, Extremely Fine, Rare **(Photo)** 350.00
- 252 ★ **5c Indigo, Imperforate (216).** Horiz. Pair, Huge Margins, two tiny thins in one, other Extremely Fine **(Photo)** 275.00
- 253 ★ **30c Deep Orange Brown (217).** Gorgeous Color, fresh, o. g., Extremely Fine **(Photo)** 25.00
- 254 ★ **30c Orange Brown, Imperforate (217).** Horiz. Pair, Huge Margins, nice color, horiz. crease & tiny thins, Extremely Fine appearance **(Photo)** 275.00
- 255 ★ **90c Purple (218).** Wonderful Color, fresh, Very Fine **(Photo)** 75.00
- 256 ★ **90c Purple (218).** Rich Color, fresh, o. g., small thin, Extremely Fine appearance **(Photo)** 75.00

END OF FIRST SESSION



252



253



254



255



256



261



262



264



265



266



267



268



283



285



287



289



291



293



298



299



296



300



301



302



303



309



313



314



315

SECOND SESSION

THURSDAY, APRIL 28, 1966 — 7:45 P. M.

1890 ISSUE

257 ★	1c-30c 1890 Issue (219-228). Centered, fresh, o. g., Extremely Fine	81.50
258 ★	1c Dull Blue, Imperforate (219c). Horiz. Pair, fresh, o. g., minute marginal thin speck in one, otherwise Extremely Fine	40.00
259 ★	2c Lake, Carmine Imperforate (219De, 220d). Horiz. Pairs, fresh, o. g., Extremely Fine	22.50
260 ★	3c Purple, Imperforate (221a). Horiz. Pair, fresh, o. g., light horiz. marginal crease, Extremely Fine appearance	60.00
261 ★	4c Brown, Imperforate (222a). Horiz. Pair, fresh, o. g., Extremely Fine (Photo)	65.00
262 ★	5c Chocolate, Imperforate (223a). Horiz. Pair, fresh, o. g., Extremely Fine (Photo)	60.00
263 ★	6c Brown Red, Imperforate (224a). Horiz. Pair, fresh, o. g., faint horiz. crease, Extremely Fine appearance	60.00
264 ★	8c Lilac, Imperforate (225a). Horiz. Pair, fresh, o. g., Extremely Fine, Rare & Undercatalogued	(Photo) 150.00
265 ★	10c Green, Imperforate (226a). Horiz. Pair, fresh, o. g., Extremely Fine (Photo)	70.00
266 ★	15c Indigo, Imperforate (227a). Horiz. Pair, fresh, o. g., two trivial pinpoint thin specks in one, otherwise Extremely Fine	(Photo) 85.00
267 ★	30c Black, Imperforate (228a). Horiz. Pair, fresh, o. g., crease in one, other Extremely Fine	(Photo) 165.00
268 ★	90c Orange (229). Huge Margins, Vivid Color, fresh, o. g. minute natural paper inclusion, Extremely Fine	(Photo) 35.00
269 ★	90c Orange, Imperforate (229a). Bot. Marginal Block, fresh, full o. g., Extremely Fine, Rare & Handsome	(Photo) 600.00+

COLUMBIAN ISSUE

270 ★	1c-10c Columbian (230-237). Centered, Vivid Color, o. g., Extremely Fine	48.75
271 ★	1c, 2c Columbian (230, 231). Blocks, latter mint, one of first has trivial thin, otherwise Extremely Fine	21.50
272 ★	3c Columbian (232). Mint Block, Extremely Fine	25.00
273 ★	4c Columbian (233). Block, o. g., minor natural creases in B. pair, otherwise Extremely Fine	30.00



278



280



282



284



286



288



NOTE COMPANY.

No. 106



292

290



- 274 ★ **4c Blue Columbian Error (233a).** Huge Margins, Magnificent Color, fresh, o. g., negligible pinpoint thin speck, still one of the most Desirable Copies of this Popular Rarity **(Photo)** 2750.00
- 275 ★田 **5c Columbian (234).** Block, Vivid Color, Crackled Gum, Extremely Fine 37.50
- 276 ★田 **6c Columbian (235).** Block, o. g., Extremely Fine 40.00
- 277 ★田 **8c Columbian (236).** Block, o. g., Extremely Fine 30.00
- 278 ★田 **10c Columbian (237).** Block, o. g., Extremely Fine **(Photo)** 60.00
- 279 ★ **15c Columbian (238).** Fresh, o. g., Very Fine 18.50
- 280 ★田 **15c Columbian (238).** Block, o. g., Lovely Color, Extremely Fine **(Photo)** 90.00
- 281 ★ **30c Columbian (239).** Fresh, o. g., one perf. trifle blunt, Very Fine 23.50
- 282 ★田 **30c Columbian (239).** Mint Block, Brilliant Color, Extremely Fine **(Photo)** 120.00
- 283 ★ **50c Columbian (240).** Fresh, o. g., Extremely Fine **(Photo)** 40.00
- 284 ★田 **50c Columbian (240).** Block, Unusually Intense Color, fresh, o. g., Extremely Fine **(Photo)** 190.00
- 285 ★ **\$1.00 Columbian (241).** Rich Color, o. g., two tiny thin specks, Extremely Fine appearance **(Photo)** 100.00
- 286 ★田 **\$1.00 Columbian (241).** Block, Outstanding Vivid Color, Mint, Extremely Fine **(Photo)** 500.00
- 287 ★ **\$2.00 Columbian (242).** Rich Color, fresh, o. g., Extremely Fine **(Photo)** 110.00
- 288 ★田 **\$2.00 Columbian (242).** Block, Vivid Color, o. g., Extremely Fine **(Photo)** 600.00
- 289 ★ **\$3.00 Columbian (243).** Huge Margins, Unusual Brilliant Color, fresh, o. g., almost invisible marginal thin speck, otherwise Extremely Fine, a Beautiful Stamp **(Photo)** 160.00
- 290 ★田 **\$3.00 Columbian (243).** Block of Four with B. Plate No. & Part Impt., Wonderful Vivid Color, trivial natural gum wrinkle in one, o. g., Extremely Fine, A Rare & Beautiful Block **(Photo)** 1500.00+
- 291 ★ **\$4.00 Columbian (244).** Brilliant Color, fresh, o. g., two tiny filled in thin specks, Extremely Fine appearance **(Photo)** 175.00
- 292 ★田 **\$4.00 Columbian (244).** Block, Magnificent Brilliant Color, fresh, o. g., trivial gum bend at B., Extremely Fine, a Marvellous Block **(Photo)** 2400.00
- 293 ★ **\$5.00 Columbian (245).** Fresh, o. g., Extremely Fine **(Photo)** 200.00



- 294 ★ 田 \$5.00 Columbian (245). Bottom Imprint Plate No. Block of Six, Perfectly Centered, Gorgeous Vivid Color, fresh, o. g., one has minute tiny tear, another pinpoint thin speck, otherwise Extremely Fine, A Rare & outstanding Showpiece (Photo) 4000.00

1894 ISSUE

- 295 ★ 1c-10c 1894 Issue (246-258). Centered, fresh, o. g., 249 has small tear, others Extremely Fine 60.50
- 296 ★ 5c Chocolate, Imperforate Horiz. (255c). Vertical Pair, fresh, o. g., one has trivial natural gum crease, otherwise Extremely Fine, Handsome pair of this undercatalogued Rarity (Photo) 275.00
- 297 ★ 15c Indigo (259). Fresh, o. g., Extremely Fine 19.00
- 298 ★ 50c Orange (260). Fresh, o. g., Extremely Fine (Photo) 20.00
- 299 ★ \$1.00 Black Ty. I (261). Fresh, o. g., almost invisible marginal gum bend, otherwise Extremely Fine (Photo) 70.00
- 300 ★ \$1.00 Black Ty. II (261A). Fresh, o. g., Extremely Fine (Photo) 95.00
- 301 ★ \$2.00 Dark Blue (262). Centered, Nice Color, part o. g., creased corner perf., otherwise Very Fine (Photo) 110.00
- 302 ★ \$5.00 Dark Green (263). Brilliant Color, fresh, o. g., minute marginal thins, Very Fine appearance (Photo) 210.00

1895 ISSUE

- 303 ★ 1c Blue, Imperforate (264c). Horiz. Pair, fresh, o. g., Extremely Fine (Photo) 40.00
- 304 ★ 1c-15c 1895 Issue (264-274). O. g., 8c has minute thin, otherwise Extremely Fine set 44.95
- 305 ★ 2c Carmine Ty. III, Imperforate (267a). Fresh, o. g., trivial tiny natural creases, otherwise Extremely Fine 40.00

306 ★	3c Purple, Imperforate (268a). Horiz. Pair, fresh, o.g., pinpoint thin speck in one, otherwise Extremely Fine	60.00
307 ★	4c Dark Brown, Imperforate (269a). Horiz. Pair, fresh, o.g., trivial tiny gum wrinkles, otherwise Extremely Fine	60.00
308 ★	5c Chocolate, Imperforate (270b). Horiz. Pair, fresh, o.g., Extremely Fine	60.00
309 ★	6c Dull Brown, Imperforate (271b). Horiz. Pair, fresh, o.g., Extremely Fine (Photo)	65.00
310 ★	8c Violet Brown, Imperforate (272b). Horiz. Pair, fresh, o.g., trivial marginal gum crease in one, otherwise Extremely Fine	75.00
311 ★	10c Dark Green, Imperforate (273a). Horiz. Pair, fresh, o.g., trivial thin speck in one, otherwise Extremely Fine	65.00
312 ★	15c Indigo, Imperforate (274a). Horiz. Pair, sheet margin & Half Arrow at T., fresh, o.g., Extremely Fine (Photo)	200.00
313 ★	50c Red Orange (275a). Vivid Color, fresh, o.g., Extremely Fine (Photo)	25.00
314 ★	50c Red Orange, Imperforate (275b). Horiz. Pair, fresh, o.g., Extremely Fine (Photo)	250.00
315 ★	\$1.00 Black Ty. I (276). Brilliant Color, fresh, o.g., Extremely F. (Photo)	57.50
316 ★	\$1.00 Black Ty. II (276A). Centered, large part o.g., tiny thin in one perf., trifle toned, otherwise Extremely Fine	130.00
317 ★	\$1.00 Black Ty. I, Imperforate (276b). Horiz. Pair, fresh, o.g., trivial natural gum crease in one, otherwise Extremely Fine (Photo)	275.00
318 ★	\$2.00 Dark Blue (277). Magnificent Rich Color, fresh, o.g., pinpoint thin speck, otherwise Extremely Fine	75.00
319 ★	\$2.00 Dark Blue, Imperforate (277b). Horiz. Pair, fresh, o.g., trivial natural gum crease in one, otherwise Extremely Fine (Photo)	375.00
320 ★	\$5.00 Dark Green (278). Glorious Color, fresh, o.g., Extremely F. (Photo)	165.00
321 ★	\$5.00 Dark Green (278). Bottom Imprint Plate No. Strip of Three, fresh, o.g., Extremely Fine, A Glorious Gem (Photo)	600.00
322 ★	\$5.00 Dark Green, Imperforate (278a). Horiz. Pair, fresh, o.g., Extremely fine (Photo)	500.00
323 ★	1c-15c 1898 Issue (279-284). Extra shades of 4c, 6c, centered, fresh, o.g., Extremely Fine Set	56.50

TRANS-MISSISSIPPI ISSUE

324 ★	1c-10c Trans-Mississippi (285-290). Centered, fresh, o.g., Extremely Fine	66.25
325 ★	1c, 2c Trans-Mississippi (285, 286). Blocks, o.g., Extremely Fine	28.00
326 ★	4c Trans-Mississippi (287). Block, o.g., Extremely Fine	57.50
327 ★	5c Trans-Mississippi (288). Block, o.g., Extremely Fine	52.50



328



363



402



329



334



390



444



450



404



418

451



467

- 328 ★ 8c Trans-Mississippi (289). B. Impt. Plate No. Block of 4, fresh, o. g., Extremely Fine (Photo) 185.00
- 329 ★ 8c Trans-Mississippi, Imperforate Horizontally (289a). Vertical Pair with attached sheet margin, fresh, o. g., light natural internal crease in one, as usual, otherwise Extremely Fine, one of the most Rare of U. S. Commemorative Errors (Photo) 1750.00
- 330 ★ 10c Trans-Mississippi (290). Mint Block, Extremely Fine (Photo) 100.00
- 331 ★ 50c Trans-Mississippi (291). Fresh, o. g., Extremely Fine (Photo) 70.00
- 332 ★ 50c Trans-Mississippi (291). Block, o. g., Extremely Fine (Photo) 575.00
- 333 ★ \$1.00 Trans-Mississippi (292). Extraordinary Color, fresh, o. g., Extremely Fine (Photo) 145.00
- 334 ★ \$1.00 Trans-Mississippi (292). Block, Unusually Intense Vivid Color, o. g., Extremely Fine (Photo) 1350.00
- 335 ★ \$2.00 Trans-Mississippi (293). Vivid Color, fresh, o. g., Extremely Fine (Photo) 185.00
- 336 ★ \$2.00 Trans-Mississippi (293). Vivid Color, fresh, o. g., almost invisible natural crease, Extremely Fine appearance (Photo) 185.00



- 337 ★ \$2.00 Trans-Mississippi (293). Top Impt. Plate No. Block of Six, Centered, Fresh, o. g., Glorious Vivid Color, A Wonderful Block, Extremely Fine (Photo) 3620.00+

PAN-AMERICAN ISSUE

- 338 ★ 1c-10c Pan-American (294-299). Very Fine Set 57.90
- 339 ★ 1c, 2c Pan-American (294, 295). Blocks, one 1c has tiny natural wrinkle, Very Fine 17.50



317

319

320

322



331

333

335

336



348

349

350

351

352

356



355

368

369

376

356



378

381

383

385

389

395



405

409

411

415

416



421

423

429

430

426



434

435

436

437

440

426



340

341

342

- 340 ★ **1c Pan-American, Inverted Center (294a).** Centered, Large Margins, fresh Extremely Fine, A Gem (Photo) 1850.00
- 341 ★ **2c Pan-American, Inverted Center (295a).** Centered, Huge Margins, Rich Color, **Stitch Watermark** at T., Extremely Fine. One of the Finest Known copies of this Great Rarity with P. F. Certificate (Photo) 7500.00
- 342 ★ **4c Pan-American, Inverted Center (296a).** Unique copy with Brown Plate No. at B., trifle oxidized, minute thin speck, otherwise Fine, Handsome Example of this Rarity, with P. F. Certificate (Photo) 3000.00
- 343 ★ 4c Pan-American (296). Block, Extremely Fine 50.00
- 344 ★ 5c Pan-American (297). Top Impt. Plate No. Block of 4, Extremely Fine 50.00+
- 345 ★ 8c Pan-American (298). Block, Paper stuck on back of two, otherwise Extremely Fine 60.00
- 346 ★ 10c Pan-American (299). Block, trivial natural wrinkles, Extremely Fine 85.00

1902-1903 ISSUE

- 347 ★ **1c-15c 1902-03 Issues (300-309, 319).** Extra shades of no. 308, 309, 319, Extremely Fine lot 61.95
- 348 ★ **50c Orange (310).** Extremely Fine (Photo) 37.50
- 349 ★ **\$1.00 Black (311).** Unusually Intense Color, Extremely Fine (Photo) 70.00
- 350 ★ **\$1.00 Black (311).** Huge Margins, Very Fine (Photo) 70.00
- 351 ★ **\$2.00 Dark Blue (312).** Extremely Fine (Photo) 95.00
- 352 ★ **\$5.00 Dark Green (313).** Enormous Margins, trivial margin break & minute thin speck, Extremely Fine appearance (Photo) 190.00
- 353 ★ **1c Green, 2c Carmine, Scarlet, Lake, Imperforate (314, 320, a, b).** Horiz. Line Pairs, Extremely Fine 46.50



354

357

358

- 354 ★ **4c Brown, Shermack Ty. III Private Perf, (314A).** Wonderful Vivid Color, Centered, fresh, microscopic tear at L., Extremely Fine appearance, with P. F. Certificate, A Most Desirable copy of this Great Rarity. **(Photo)** 2250.00
- 355 ★ **5c Blue, Imperforate (315).** Horiz. Line Pair, Extremely Fine **(Photo)** 240.00+
- 356 ★ **5c Blue Coil (317).** Vertical Pair, Vertical Line at R., fresh, Very Fine, with A. P. S. & P. F. Certificates **(Photo)** 650.00
- 357 ★ **1c Blue Green Coil (318).** Horiz. Pair, **Paste-up** at R., fresh, Extremely Fine, with P. F. Certificate **(Photo)** 700.00
- 358 ★ **2c Carmine, Coil (322).** Horiz. Strip of Three, fresh, Extremely Fine, Signed by Sloane & with P. F. Certificate **(Photo)** 1050.00+

1904-1908 ISSUES

- 359 ★ **1c-10c Louisiana Purchase (323-327).** Extremely Fine Set 72.00
- 360 ★田 **1c, 2c Louisiana Purchase (323, 324).** Blocks, first with L. Arrow, V. F. 41.00
- 361 ★田 **3c Louisiana Purchase (325).** Mint Block, Extremely Fine 52.50
- 362 ★田 **5c Louisiana Purchase (326).** Mint Block, Extremely Fine 60.00
- 363 ★田 **10c Louisiana Purchase (327).** L. Arrow Block, Very Fine **(Photo)** 165.00
- 364 ★田 **1c, 2c Jamestown (328, 329).** Blocks, Extremely Fine 21.50
- 365 ★ **1c-5c Jamestown (328-330).** Extremely Fine Set 24.75
- 366 ★田 **5c Jamestown (330).** Mint Block, Very Fine 85.00
- 367 ★ **1c-15c 1908-09 Issue (331-340).** Extremely Fine 37.00
- 368 ★ **50c Violet (341).** Extremely Fine **(Photo)** 30.00
- 369 ★ **\$1.00 Violet Brown (342).** Extremely Fine **(Photo)** 52.50
- 370 ★ **1c-5c 1908-1909, Imperforate (343-347).** Cpl. Set Line Pairs, V. F. 38.60+
- 371 ★ **1c-4c 1908-10 Coils (348-350).** Line Pairs, Extremely Fine 40.00
- 372 ★ **5c Blue Coil (351).** Line Pair, Extremely Fine 40.00
- 373 ★ **1c Green, 2c Carmine Coils (352, 353).** Line Pairs, Extremely Fine 27.00
- 374 ★ **4c Brown Coil (354).** Line Pair, Extremely Fine 26.50
- 375 ★ **5c Blue Coil (355).** Line Pair, Extremely Fine 27.50
- 376 ★ **10c Yellow Coil (356).** Line Pair, Gigantic Margins, Extremely Fine, A Wonderful Pair **(Photo)** 400.00

BLUISH PAPERS

- 377 ★ 1c Green, 2c Carmine Bluish (357, 358). Centered, Very Fine 23.00
 378 ★ 3c Deep Violet Bluish (359). Huge Margins, Extremely Fine..... (Photo) 180.00



379

380

382

384

- 379 ★ 4c Orange Brown Bluish (360). Sheet margin at B., Extremely Fine
 (Photo) 2350.00
 380 ★ 5c Blue Bluish (361). Extremely Fine (Photo) 750.00
 381 ★ 6c Red Orange Bluish (362). Extremely Fine (Photo) 165.00
 382 ★ 8c Olive Green Bluish (363). Extremely Fine, with P.F. Certificate
 (Photo) 2250.00
 383 ★ 10c Yellow Bluish (364). Extremely Fine (Photo) 180.00
 384 ★ 13c Blue Green Bluish (365). Extremely Fine (Photo) 400.00
 385 ★ 15c Ultramarine Bluish (366). Very Fine (Photo) 165.00

1909-1910 ISSUES

- 386 ★ 2c 1909 Commems. (367, 370, 372). Blocks, Very Fine 23.50
 387 ★ 2c 1909 Commems. (367-368, 370-373). Lincoln & Alaska Yukon Imperfs.
 in Top Impt. Plate No. Strips of Three, Hudson Fulton Imperf. in Horiz.
 Pair, Very Fine Lot 66.25+
 388 ★ 2c Lincoln, Imperforate (368). Mint Block, Extremely Fine 28.00
 389 ★ 2c Lincoln, Bluish (369). Extremely Fine (Photo) 35.00
 390 ★ 2c Lincoln, Bluish (369). Block, Extremely Fine (Photo) 145.00
 391 ★ 2c Alaska Yukon Imperforate (371). Mint Block, trivial gum wrinkles, Ex-
 tremely Fine 34.00
 392 ★ 2c Hudson Fulton, Imperforate (373). Centerline Block, Extremely Fine 65.00
 393 ★ 1c-15c 1910-11 Issue (374-382). Extremely Fine Set 50.70
 394 ★ 1c Green, 2c Carmine 1910-11 Coils & Imperfs. (383-387). Line Pairs, V. F. 41.40
 395 ★ 2c Carmine Coil (388). Line Pair, Extremely Fine (Photo) 125.00



406



410



412



460



433



439



20092

465



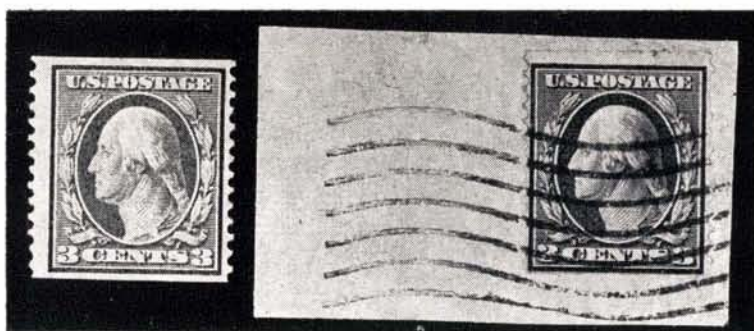
464



20085



20078



396

397

- 396 ★ **3c Orangeburg Coil (389).** Vivid Color, large part o.g., signed "Ward", Extremely Fine (Photo) 2000.00
- 397 **3c Deep Violet, Orangeburg Coil (389).** Tied by Wavy Line Machine Cancel on Blue Piece, Fine, Rare, with A. P. S. Certificate (Photo) 750.00
- 398 ★ **1c-5c 1910-13 Coils (390-396).** Cpl. Set Line Pairs, Extremely Fine 80.55
- 399 ☒ **3c Deep Violet Coil (394).** Centered, tied by Orangeburg, N. Y. Machine Cancel on Blue "Bell & Co." Entire, the same Envelope on which the famous "Orangeburg" Coils were used, Extremely Fine 6.50

PANAMA-PACIFIC ISSUE

- 400 ★ **1c, 2c Panama-Pacific (397-398, 401-402).** Both Shades of Latter, Extremely Fine 36.00
- 401 ★☐ **1c, 2c Panama-Pacific (397, 398).** Blocks, Very Fine 20.00
- 402 ★☐ **5c Panama-Pacific (399).** Block, Extremely Fine (Photo) 65.00
- 403 ★ **5c, 10c Panama-Pacific (399, 400).** Extremely Fine 37.00
- 404 ★☐ **10c Panama-Pacific, Orange Yellow (400).** Block, trivial natural gum bend, Extremely Fine (Photo) 100.00
- 405 ★ **10c Panama-Pacific, Orange (400A).** Extremely Fine (Photo) 40.00
- 406 ★☐ **10c Panama-Pacific, Orange (400A).** Block, Extremely Fine (Photo) 175.00
- 407 ★☐ **1c Panama-Pacific, Perf. 10 (401).** L. Plate No. Block of 6, Extremely F. 60.00
- 408 ★☐ **2c Panama-Pacific, Perf. 10 (402a).** Mint Block, Very Fine 62.50
- 409 ★ **5c Panama-Pacific Perf. 10 (403).** Very Fine (Photo) 35.00
- 410 ★☐ **5c Panama-Pacific, Perf. 10 (403).** Block, Extremely Fine (Photo) 160.00
- 411 ★ **10c Panama-Pacific, Perf. 10 (404).** Extremely Fine (Photo) 135.00
- 412 ★☐ **10c Panama-Pacific, Perf. 10 (404).** Block, Extremely Fine (Photo) 550.00

1912-1915 ISSUES

- 413 ★ **1c-30c 1912-14 Issue (405-407, 414-420).** Extremely Fine 58.85
- 414 ★ **1c Green, 2c Carmine Coils & Imperforates (408-413).** Line Pairs, V. F. Set 21.90
- 415 ★ **50c Violet (421).** Extremely Fine, Rare (Photo) 60.00

416 ★	50c Violet (422). Extremely Fine	(Photo)	32.50
417 ★	\$1.00 Violet Brown (423). Faint thin speck, Extremely Fine appearance		65.00
418 ★	1c-12c 1914-15 Issue (424-435). Incl. 2 shades of latter, Extremely Fine		43.20
419 ★	15c Gray, 20c Ultramarine (437-438). Extremely Fine		36.50
420 ★	30c Orange Red (439). Extremely Fine		26.50
421 ★	50c Violet (440) Extremely Fine	(Photo)	90.00
422 ★	1c-5c 1914 Coils (441-444, 447). Line Pairs, Extremely Fine		31.50
423 ★	3c Violet Coil (445). Line Pair, Extremely Fine	(Photo)	75.00
424 ★	4c Brown Coil (446). Line Pair, Extremely Fine		40.00
425 ★	1c-5c 1914-16 Coils (448, 450-455, 457-458). Line Pairs, Extremely Fine		51.75
426 ★	2c Red Ty. I Coil (449). Line Pair, Extremely Fine, Rare and Under-catalogued	(Photo)	275.00
427 ★	2c Carmine Ty. I Coil (453). Horiz. Pair, Ribbing from Vending Machine shows, Extremely Fine		25.00
428 ★	3c Violet Coil (456). Line pair, minute thin specks, Extremely Fine appearance		47.50
429 ★	2c Carmine, Imperforate Coil (459). Line Pair, creased on line as usual, stamps Extremely Fine	(Photo)	125.00
430 ★	\$1.00 Violet Black (460). Huge margins, Extremely Fine	(Photo)	95.00
431 ★	2c Carmine (461). Extremely Fine		12.00

1916 ISSUE

432 ★	1c-20c 1916-17 Issue (462-466, 468-476). V. G.-V. F. Set		121.00
433 ★	5c Carmine Error (467). Block of Twelve, two middle stamps the Errors, Extremely Fine	(Photo)	250.00
434 ★	50c Light Violet (477). Extremely Fine	(Photo)	135.00
435 ★	\$1.00 Violet Black (478). Huge margins, minor natural gum wrinkle, Extremely Fine	(Photo)	110.00
436 ★	\$2.00 Dark Blue (479). Extremely Fine	(Photo)	38.50
437 ★	\$5.00 Light Green (480). Extremely Fine	(Photo)	35.00
438 ★	1c-10c 1916-19 Coils & Imperfs. (481-482, 483-484, 486-487, 489-490, 492-497). All in Line Pairs, two shades of 487, 492, Very Fine		31.05
439 ★	5c Carmine Error, Imperforate (485). Block of 12, Two Middle Stamps the Errors, Extremely Fine	(Photo)	3500.00
440 ★	2c Carmine Ty. II Coil (491). Pair, one with minute natural paper pore, Extremely Fine, A Very Rare Stamp	(Photo)	250.00

1917-1920 ISSUES

441 ★	1c-\$1.00 1917-19 Issue (498-499, 502-504, 506-518). Extra Shade of 12c, 13c, 20c, 50c, \$1.00, almost entirely Extremely Fine Set		55.67
-------	------------------------------------------------------------------------------------------------------------------------------------------	--	-------

442	★	5c Rose Error (505). Block of Nine, middle stamp the Error, Extremely Fine	120.00
443	★	2c Carmine (519). One perf. trifle blunted, Extremely Fine	22.50
444	★	\$2.00 Red Orange & Black (523). Extremely Fine (Photo)	82.50
445	★	\$5.00 Deep Green & Black (524). Extremely Fine	30.00
446	★	1c-3c 1919-21 Issues (525-530, 536, 538, 540-543). Two shades of 540, V.F.	19.43
447	★	1c-3c Offsets, Imperforate (531-534A, 535). Horiz. Line Pairs, Very Fine	61.40+
448	★	2c Carmine Ty. VII, Imperforate (534B). Horiz. Line Pair, minute thin speck in one, otherwise Extremely Fine (Photo)	530.00
449	★	1c-5c 1919-23 Commems. (537, 548-550, 610-612). Very Fine	22.15
450	★	2c Carmine Rose Ty. II (539). Extremely Fine, Signed by Sloane, Rare & Grossly Undercatalogued (Photo)	185.00
451		1c Green Perf. 11, Rotary (544). Bent corner perf., Extremely Fine, one of the Finest Known Copies of this Rarity with P. F. Certificate (Photo)	350.00
452	★	1c Green, 2c Carmine Rose (545, 546). Extremely Fine Set	23.50
453	★	\$2.00 Lake & Black (547). Extremely Fine	27.50

1922-1923 ISSUES

454	★	1/2c-\$5.00 1922-25 Issue (551-573, 622-623). Cpl. Set, Extra Shades of 11c, 12c, 25c, \$5.00, Very Fine	107.88
455	★	1c-10c 1923-29 Coils & Imperforates (575-577, 597-606). Cpl. Except for 599A, Imperfs. in Blocks, Coils in Line Pairs Except 598 is Regular Pair, Very Fine lot	17.05
456	★	1c Green, 2c Carmine (578-579, 595). Latter centered bit to T., Very Fine	35.50
457	★	1c-10c 1923 Issue (581-591). Very Fine Set	20.30



458

459

458		1c Green Perf. 11, Rotary (594). Machine Cancel, faint natural crease, Extremely Fine appearance, one of the Handsomest known copies of this Rarity, with A. P. S. Certificate (Photo)	700.00
459		2c Harding, Perf. 11 Rotary (613). Fine, Attractive copy of this Rare & Popular Stamp (Photo)	2250.00
460	★	4c Seato, Imperforate Between (1151a). Vertical Block of Eight, Center Block the Errors, Extremely Fine (Photo)	400.00

AIR POSTS

- 461 ★ 6c-24c 1918-23 Airpost (C1-C6). Centered Sets, some small thins, otherwise Very Fine 83.00



- 462 ★ 24c Carmine Rose & Blue Airpost, Center Inverted (C3a). Extremely Fine, Magnificent Copy of the Most Popular U. S. Rarity (Photo) 16,000.00
- 463 ★ 6c-50c 1927-37 Airpost (Betw. C7-C22). 13 diff., C12, 17 have pinpoint thin specks, otherwise Extremely Fine 13.20
- 464 ★ 65c-\$2.60 Graf Zeppelins (C13-C15), Cpl. set, latter two with light natural creases, otherwise Extremely Fine set (Photo) 475.00
- 465 ★ 65c-\$2.60 Graf Zeppelins (C13-C15). Cpl. Set Side Plate No. Blocks of 6, usual minor gum wrinkles, Extremely Fine (Photo) 3650.00
- 466 ★ 50c Chicago Zeppelin (C18). Huge Margins, Extremely Fine 20.00
- 467 ★ 6c Carmine Airpost, Imperforate Between (C25b). Faint crease between stamps, otherwise Extremely Fine, with P. F. Certificate (Photo) 1500.00

END OF SALE — THANK YOU

S I P E X

Washington, D. C., MAY 20th-30th

We will have booths #71-72 at the International Stamp Exhibition and we cordially invite all of our friends and clients to stop by and renew old acquaintances.

Our large stock of stamps and covers will be available for your inspection.

We will be most anxious to discuss either the outright cash purchase or sale at auction of any worthwhile philatelic properties.

ROBERT A. SIEGEL, Inc.

LOTS ON VIEW FROM APRIL 21st

OFFICES OPEN SATURDAY, APRIL 23rd

IS YOUR COLLECTION FOR SALE?

REALIZE IMMEDIATE CASH
PLUS THE ADDED ADVANTAGE OF
SELLING THROUGH OUR AUCTIONS

We will advance immediate cash up to 75% of our appraisal value, of what your collection should realize at auction. There is no interest charge.

Your collection will then be sold in one of our coming auction sales. All stamps are expertly and advantageously lotted in attractive, well illustrated catalogs. Lotting is meticulously planned under our personal supervision. Commission is 20% of the gross realization. There is no lotting fee or any other charges. Final settlement is made within five weeks after the sale. We have been continuously conducting stamp auctions in the United States for over thirty-four years.

Valuable collections and stamp holdings are especially wanted, but we will accept properties valued from \$500 upwards. Send all stamps direct for appraisal. Auction advance will be remitted shortly after receipt. If not entirely pleased, stamps will be returned at our expense. If circumstances warrant, due to bulk or value, we will travel anywhere to inspect important properties.

ROBERT A. SIEGEL
AUCTION GALLERIES, Inc.

(Licensed and Bonded Auctioneer)

10 EAST 52nd STREET
NEW YORK, N. Y. 10022

(Tel. PL. 3-6422)



PRICES REALIZED FOR SALE 300---April 27, 1966

The Ambassador Collection

Robert A. Siegel Auction Galleries, Inc.
60 East 56th Street, 4th Floor, New York, NY 10022
Tel (212) 753-6421 Fax (212) 753-6429

Lot#	Realized	Lot#	Realized	Lot#	Realized	Lot#	Realized	Lot#	Realized	Lot#	Realized	Lot#	Realized	Lot#	Realized
1	750	43	90	83	475	125	425	167	350	209	600	252	160	294	7,500
2	255	44	32	84	3,100	126	38	168	150	210	1,700	253	75	295	90
3	67	45	850	85	2,400	127	16	169	290	211	1,600	254	160	296	280
4	1,000	45A	1,100	86	1,000	128	55	170	220	212	500	255	75	297	31
5	160	45B	280	87	28	129	65	171	450	213	1,150	256	35	298	65
6	42	46	145	88	21	130	280	172	250	214	550	257	127	299	50
7	135	47	32	89	420	131	40	173	400	215	850	258	35	300	145
8	180	48	60	90	85	132	60	174	400	216	375	259	23	301	95
9	170	49	20	91	380	133	35	175	55	217	1,450	260	45	302	140
10	16	50	95	92	675	134	37	176	60	218	1,400	261	85	303	47
11	6,500	51	460	93	850	135	675	177	47	219	29	262	85	304	45
12	1,050	52	90	94	75	136	160	178	80	220	150	263	62	305	32
13	375	53	95	95	32	137	550	179	25	221	320	264	270	306	32
14	50	54	1,700	96	80	138	75	180	130	222	65	265	105	307	52
15	110	55	42	97	95	139	270	181	125	223	4,250	266	92	308	65
16	800	56	80	98	60	140	350	182	260	224	6,000	267	125	309	85
17	450	57	40	99	32	141	310	183	1,800	225	60	268	37	310	65
18	260	58	80	100	220	142	270	184	220	226	39	269	900	311	35
19	70	59	480	101	75	143	155	185	30	227	18	270	70	312	230
20	105	60	75	102	22	144	400	186	2,300	228	19	271	19	313	67
21	70	61	675	103	22	145	525	187	500	229	32	272	38	314	300
22	26	62	95	104	25	146	750	188	1,200	230	85	273	20	315	80
23	35	63	65	105	575	147	800	189	190	231	65	274	2,800	316	100
24	42	64	320	106	95	148	55	190	75	232	1,600	275	30	317	320
25	65	65	950	107	90	149	60	191	65	233	950	276	30	318	45
26	625	66	3,800	108	210	150	60	192	52	234	1,900	277	37	319	425
27	1,550	67	42	109	95	151	220	193	45	235	1,700	278	80	320	260
28	120	68	95	110	42	152	135	194	52	236	550	279	32	321	850
29	145	69	300	111	85	153	95	195	100	237	1,700	280	190	322	650
30	1,100	70	200	112	475	154	55	196	40	238	1,000	281	27	323	90
31	180	71	230	113	1,800	155	210	197	95	240	450	282	280	324	85
32	10	72	200	114	210	156	205	198	240	241	900	283	60	325	50
33	100	73	250	115	170	157	115	199	230	242	1,250	284	290	326	57
34	75	74	450	116	400	158	5,750	200	42	243	3,700	285	105	327	52
35	47	75	425	117	110	159	950	201	35	244	6,000	286	775	328	190
36	100	76	5,250	118	115	160	260	202	32	245	3,400	287	270	329	2,800
37	410	77	160	119	625	161	4,600	203	52	246	160	288	875	330	105
38	55	78	1,700	120	225	162	150	204	60	247	450	289	310	331	80
39	100	79	1,100	121	62	163	8,000	205	110	248	3,700	290	2,400	332	900
40	24	80	380	122	35	164	625	206	90	249	27	291	190	333	310
41	50	81	14,500	123	130	165	65	207	105	250	45	292	3,000	334	2,000
42	21	82	650	124	165	166	95	208	1,200	251	425	293	460	335	480

PRICES REALIZED FOR SALE 300---April 27, 1966

The Ambassador Collection

Robert A. Siegel Auction Galleries, Inc.
60 East 56th Street, 4th Floor, New York, NY 10022
Tel (212) 753-6421 Fax (212) 753-6429

Lot#	Realized	Lot#	Realized	Lot#	Realized	Lot#	Realized
336	290	378	275	420	32	462	18,500
337	6,500	379	3,400	421	75	463	15
338	40	380	775	422	42	464	330
339	10	381	230	423	105	465	3,200
340	3,100	382	3,000	424	42	466	23
341	9,250	383	260	425	75	467	1,050
342	2,600	384	650	426	560		
343	35	385	240	427	25		
344	52	386	12	428	21		
345	40	387	21	429	65		
346	60	388	13	430	125		
347	87	389	50	431	20		
348	40	390	180	432	50		
349	140	391	12	433	290		
350	60	392	37	434	180		
351	120	393	52	435	80		
352	120	394	30	436	37		
353	20	395	210	437	37		
354	3,000	396	2,400	438	35		
355	250	397	700	439	3,400		
356	750	398	67	440	320		
357	650	399	35	441	50		
358	1,100	400	45	442	140		
359	55	401	16	443	25		
360	28	402	60	444	80		
361	50	403	47	445	26		
362	47	404	80	446	24		
363	130	405	50	447	40		
364	21	406	140	448	450		
365	45	407	65	449	10		
366	70	408	45	450	525		
367	40	409	21	451	475		
368	42	410	140	452	42		
369	52	411	230	453	28		
370	20	412	700	454	52		
371	26	413	47	455	16		
372	37	414	20	456	27		
373	40	415	47	457	13		
374	28	416	50	458	1,300		
375	47	417	35	459	3,100		
376	625	418	45	460	280		
377	15	419	40	461	32		