

THE JOSIAH K. LILLY COLLECTION

PART I

Robert A. Siegel
AUCTIONS

312th SALE

The Josiah K. Lilly Collection

PART I

UNITED STATES POSTMASTERS' PROVISIONALS, 19th CENTURY POSTAGE AND OFFICIAL ISSUES

Sold by Order of the Trust Department
of the Merchants National Bank & Trust Company
of Indianapolis, Executors of the Estate

At Unreserved Sale by Public Auction

THURSDAY, FEBRUARY 2nd, 1967

TWO SESSIONS

2 P. M. AND 7:45 P. M.

At the Waldorf Astoria Hotel

Park Avenue and 50th Street

Robert A. Siegel
AUCTIONS

10 EAST 52nd STREET NEW YORK, N. Y. 10022

Tel: 212 PLaza 3-6422

THE JOSIAH K. LILLY COLLECTION

Robert A. Siegel Auction Galleries, Inc. are proud to have been commissioned by the executors of the estate to sell the Josiah K. Lilly collection. Mr. Lilly was Chairman of the Board of Eli Lilly and Company of Indianapolis. He assembled one of the greatest collections of unused stamps in the history of philately.

The collection consists of over two hundred and fifty volumes of the choicest and rarest stamps of the world. His knowledge, taste and keen appreciation are reflected throughout this fabulous collection which will probably realize more than any ever sold in the United States. These stamps will be sold in a series of ten sales during 1967 and 1968.

This, the first sale, begins with a fantastic offering of the exceedingly rare United States Postmaster's Provisionals. Among the unique items included are the 5c blue Alexandria, the 10c black on bluish Baltimore on cover, the unused Brattleboro and Millbury issues; the New Haven 5c red on bluish entire and the 5c Lockport, N. Y. Provisional. These rare, early primitives of philately also include other pieces of which only two or three copies are known to exist.

The Nineteenth Century general postage issues abound with seldom seen, great rarities, including choice pieces, shades and varieties of the 1847, 1851 and 1857 issues. Included is a complete set of the 1c to 90c 1861 "August" Premiere Gravure printing, only ten sets of which are known. A copy in spectacular condition of the 15c 1869 Inverted Center and a unique copy of the 24c Imperforate Inverted Center of the same issue are to be found here. The complete sets of the 1875 and 1880 Special Printings, so much sought after, are also present. Another outstanding group is the collection of singles and blocks of the Official Department issues.

It is seldom, if ever, that such a breath-taking group of United States Rarities have appeared in one day at auction!

ROBERT A. SIEGEL

FEBRUARY 2nd, 1967

ROBERT A. SIEGEL AUCTION GALLERIES, Inc.

10 East 52nd Street

New York, N. Y. 10022

Tel.: PLaza 3-6422 (Area Code 212)

Please purchase for me at your auction to be held **February 2nd, 1967**, the lots named below, the prices annexed being my limit on each lot. I agree to remit for purchases in accordance with the **Conditions of Sale** and to return no lots later than three days after receipt.

REFERENCES PLEASE
(if unknown to us)

SIGNED

New York State residents kindly include
County in address.

County

[illegible]

Upon request, estimate of value furnished on any lots in this auction.

CONDITIONS OF SALE

1. The terms of sale are strictly cash to the highest bidder. All buyers are expected to pay for lots within three days of receipt, unless special arrangements have been made prior to the sale.
2. All bids are per lot as numbered in the catalogue and not per piece, unless otherwise announced by the auctioneer at the time of sale.
3. Any lot the description of which is incorrect is returnable only within three days of receipt. All disputed lots must be returned intact as received. Lots containing five or more stamps are not returnable at any time. No lots may be returned by purchasers who have had the opportunity to examine them before the sale.
4. Successful mail bidders, unless they are known to us or supply acceptable references, will be notified of the amount of the lots secured for them, and are expected to send payment in full before the lots are forwarded.
5. If the purchase price has not been paid within the time limit, or lots taken up within seven days from date of sale, they may be resold and any losses arising from such sale charged to the defaulter.
6. All stamps are sold as genuine, except where sold "As Is". Claims for any lot proving otherwise, must be made within two weeks from date of sale.
7. The right is reserved to group two or more lots, also withdraw any lot or lots from the sale, or to act on behalf of the seller.
8. Until paid for in full all lots remain the property of Robert A. Siegel.
9. No commission is charged for buying at our sales, but all forwarding charges will be added to the purchase price.
10. Upon written application lots may be sent for examination prior to the auction to persons known to us or who supply acceptable references, conditional upon being mailed back by registered mail, adequately insured, within 24 hours of receipt. The applicant is completely responsible for all lots sent for examination, and for the insurance of same against mishap, from the time of receipt until they are actually received back, and is to pay all expenses of postage and insurance.
11. The placing of a bid shall constitute acceptance of the foregoing conditions of sale.

ROBERT A. SIEGEL

ANDREW LEVITT, Licensed Auctioneers

In sending bids, always state the highest price you are prepared to pay for the lot. Your limit will not be used as a starting bid unless absolutely necessary.

DESCRIPTIONS

Superb or Extremely Fine—the finest condition for noteworthy, outstanding copies.

Very Fine (VF)—means that there is a slight deviation from the above.

Fine (F)—means that the perforations do not touch the design on issues after 1890, but in some cases may just touch in earlier issues; if used, fairly lightly cancelled.

Very Good (VG)—means that the appearance is generally fine but that the perforations cut the design slightly.

Good (G)—means average off-centering; or fairly attractive with slight defects Original gum (OG) is not to be expected on 19th Century stamps unless so stated.

Mint—have never been hinged.

Scott 1967 Specialized United States Catalogue is used for cataloging our lots of United States and Scott's Standard Catalogue, 1967 for others.

WE SOLICIT FINE MATERIAL FOR FUTURE SALES
--

FIRST SESSION

THURSDAY, FEBRUARY 2nd, 1967 — 2 P.M.

UNITED STATES

POSTMASTER'S PROVISIONALS



- 1 Alexandria, Va. 5c Black on Buff Ty. I (1X1). Cut to shape, as always, well clear of design, Red pmk., "No. 45" in ms., minor natural paper fold at left, Excellent Color & Impression, by far the Finest of the Three Known Copies & the only copy bearing a Pmk., accompanied by a contemporary Alexandria Stampless Cover with the same Red pmk., Ex Caspary, Worthington (Photo) 9,000.00

LOTS ON VIEW FROM JANUARY 25th

OFFICES OPEN EVERY SATURDAY



- 2 ☒ **Alexandria, Va. 5c Black on Buff Ty. II (1X1a).** Neatly Cut to Shape, as Always, Choice Color & Impression, Uncancelled, on Stampless Cover with Red Alexandria pmk., matching "Paid" and "5", Very Fine, only two other examples known, this being the finer of the two on covers, Ex Caspary (Photo) 16,500.00



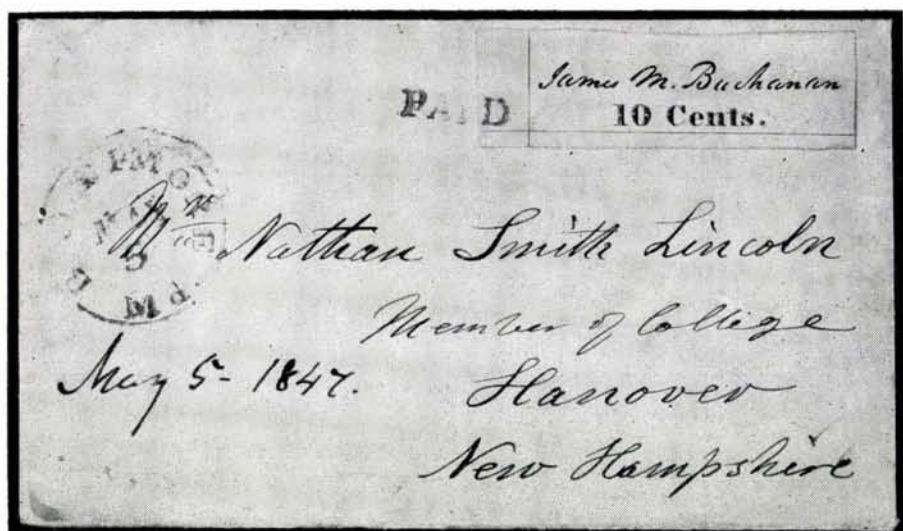
- 3 ☒ **Alexandria, Va. 5c Black on Blue Ty. I (1X2).** Cut to Shape, as always, "Paid" cancel, on cover with Light Alexandria pmk. & matching "Paid", the stamp is fresh & Very Fine, the cover has been neatly restored, the only Known Example of this Classic Rarity, Ex Caspary (Photo) 25,000.00




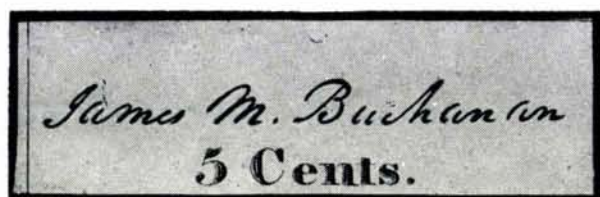
- 4 ☒ **Annapolis, Md. 5c Carmine Red on White Entire (2XU1).** Clear Blue "Annapolis, Md. Apr. 8" cancel, used to Philadelphia, fresh & Extremely Fine example of this Very Handsome Provisional, only one other copy known, Ex Ferrari, Caspary (Photo) 18,500.00



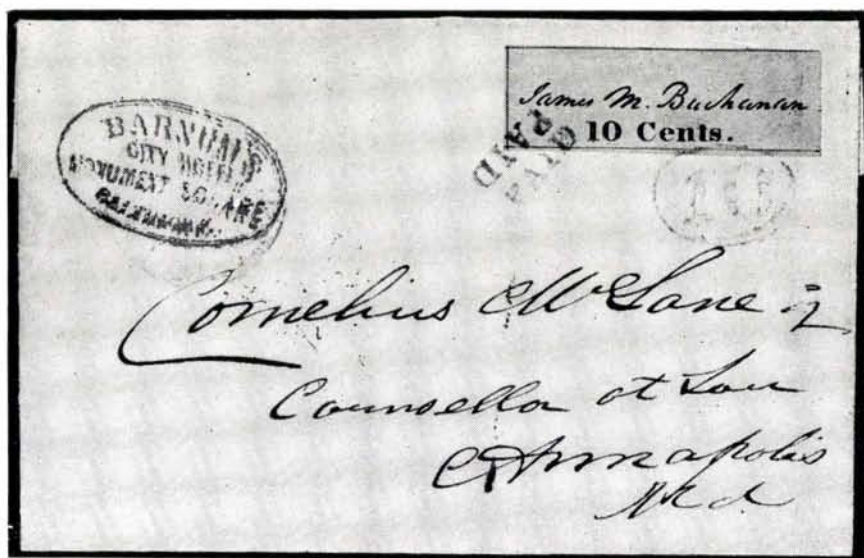
- 5 ☒ **Baltimore, Md. 5c Black on White (3x1).** L. R. Sheet Corner copy, Ample to Gigantic Margins, showing almost complete Frame Lines, Blue "Paid" cancel matching "Paid", "5" in oval & Baltimore pmk. on fresh Folded 1846 Cover to Leesburg, Va., clear strikes, Handsome & Very Fine, probably the finest known cover of this Rarity, Ex Caspary (Photo) 2,250.00



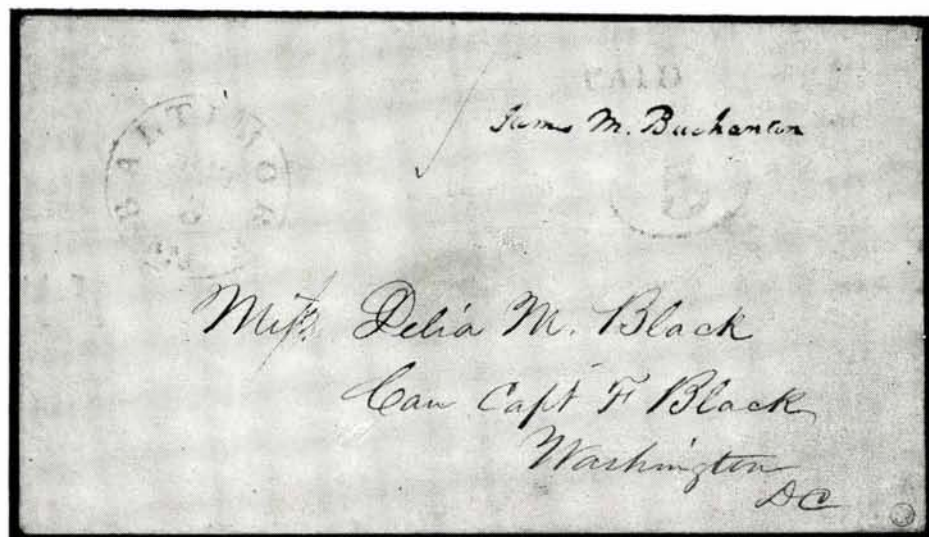
- 6  **Baltimore, Md. 10c Black on White (3X2).** L. L. Sheet Corner Copy, showing line on 3 sides, tied by Blue "Paid", clear matching Baltimore pmk., on 1847 cover to N. H., fresh & by far the Finest of the three examples of this Classic Rarity known on cover, Ex Caspary **(Photo)** 18,000.00



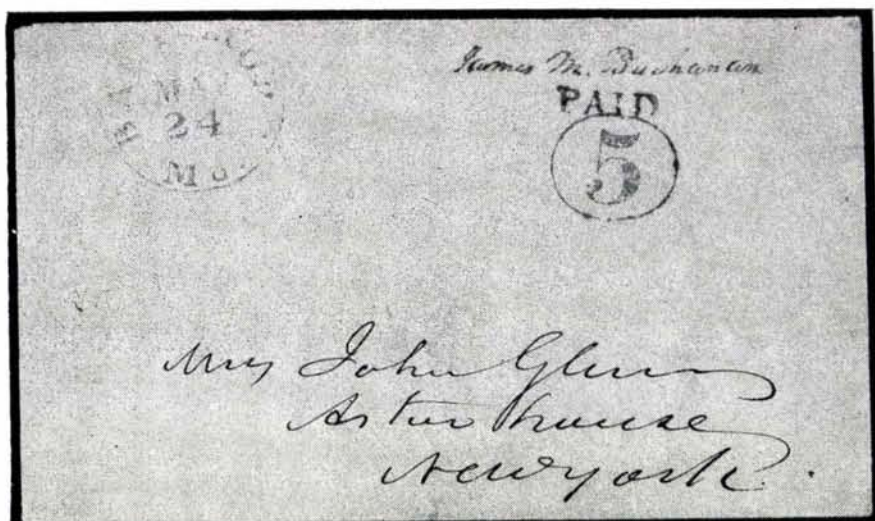
- 7 ★ **Baltimore, Md. 5c Black on Bluish (3X3).** Brilliant fresh, large part o. g. copy, showing all or part of three Frame Lines, Handsome Example of this Great Rarity and only unused copy known **(Photo)** 8,500.00



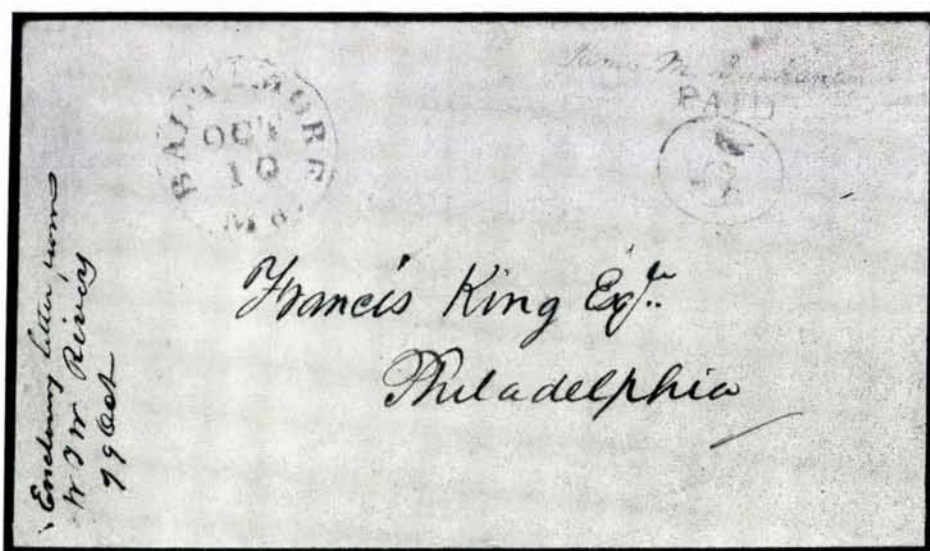
- 8 ☒ **Baltimore, Md. 10c Black on Bluish (3x4).** Full margins, showing Three Complete Frame Lines & traces of other, tied by two Blue "Paid's" and matching "10" in oval, Blue Baltimore Pmk. struck over Red Handstamp Corner Card, on neat folded cover, stamp barely affected by light cover fold. A Gorgeous & Unique Cover, only one other off cover example known, Ex Caspary (Photo) 27,500.00



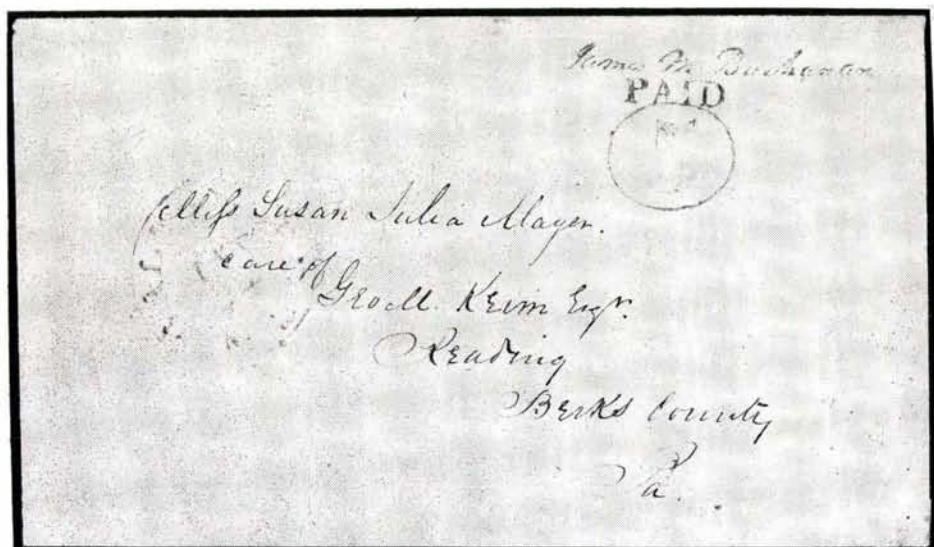
- 9 ☒ **Baltimore, Md. 5c Blue on White Entire (3XU1).** Clear Blue Baltimore pmk., Scarce Black Facsimile Signature, fresh, Extremely Fine, A Wonderful Cover (Photo) 2,000.00



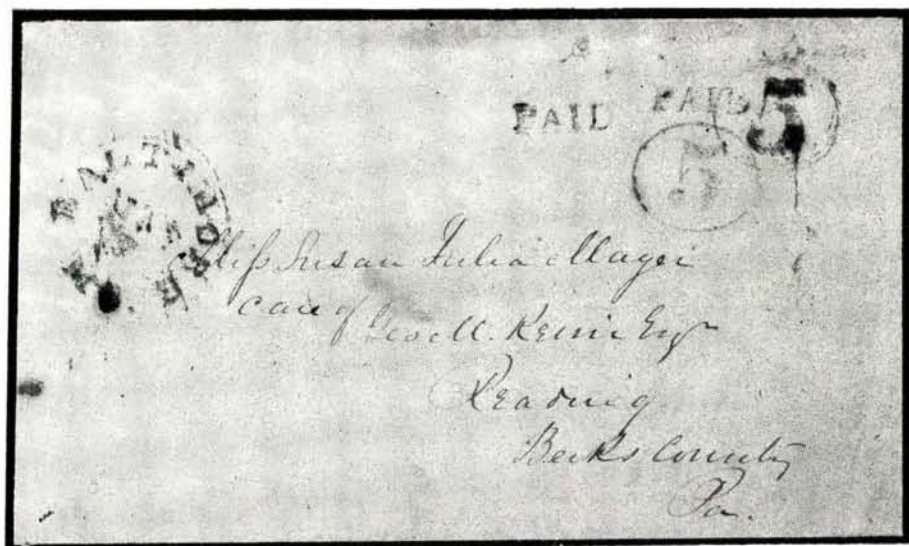
- 10 ☒ **Baltimore, Md. 5c Blue on Buff Entire (3XU2).** Clear Blue Baltimore Pmk. & Blue Facsimile Signature. An Immaculate & Extremely Fine Cover in a deeper than Ordinary Buff, Ex Caspary (Photo) 1,500.00



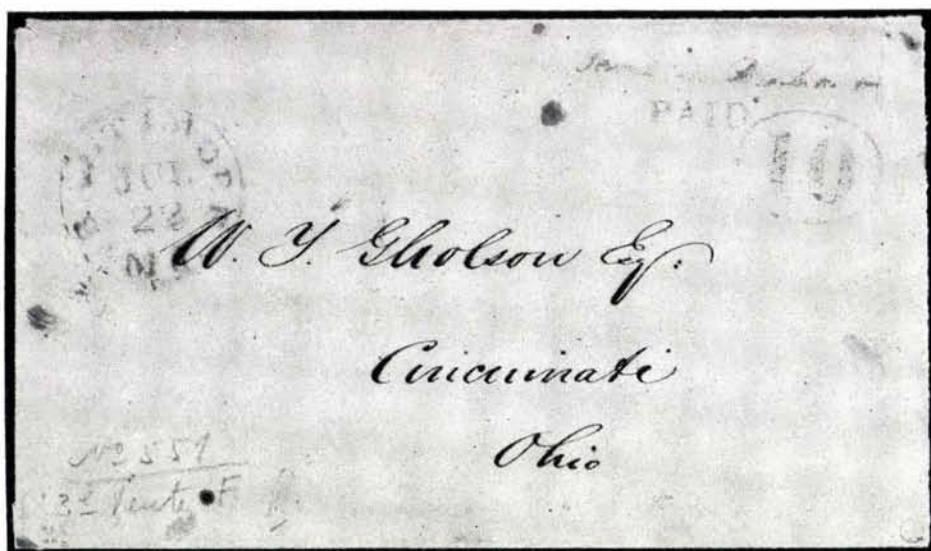
- 11 ☒ **Baltimore, Md. 5c Blue on Salmon Entire (3XU3).** Clear Blue Baltimore, Md. pmk. & Blue Facsimile Signature, despite faint creases, a fresh & Very Fine Example of the Rarest of the 5c Provisional Envelopes, Ex Caspary (Photo) 1,850.00



- 12 ☒ Baltimore, Md. 5c Blue on Manila Entire (3XU4). Blue Baltimore pmk. & Blue Facsimile Signature, Fresh & Very Fine example of this Rare Entire, Ex Caspary (Photo) 1,850.00



- 13 ☒ Baltimore, Md. 5c+5c Blue & Red on Manila Entire (3XU6A). Blue Baltimore pmk. Red Facsimile Signature, Fresh, Very Fine, Ex Caspary (Photo) 2,250.00



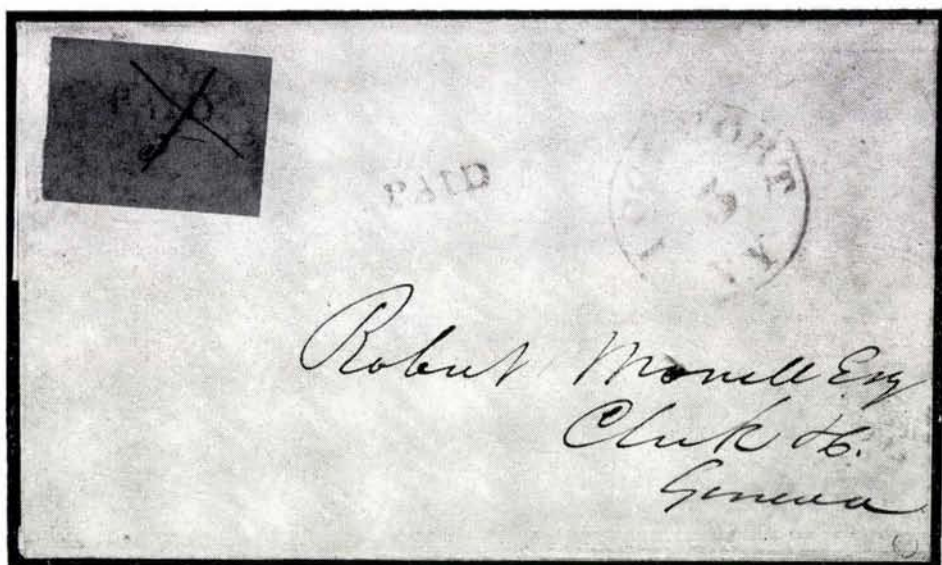
- 14 ☒ Baltimore, Md. 10c Red on Manila Entire (3XU10 var.). Clear Blue Baltimore pmk., Red Facsimile Signature, Fresh, Extremely Fine, not listed on Manila in Scott, Ex Caspary (Photo) 7,000.00+



- 15 ☒ Baltimore, Md. 10c Blue on Buff Entire (3XU13). Clear Blue Baltimore pmk. & Blue Facsimile Signature, Immaculate, Extremely Fine, only one other example of this Rare Entire Known, Ex Caspary (Photo) 7,000.00



- 16 ★ **Brattleboro, Vt. 5c Black on Buff (5X1).** Large Margins, Choice Impression, trivial tiny faults, Extremely Fine appearance, only unused copy known. A Handsome Example of this Rarity (Photo) 5,500.00



- 17 ☒ **Lockport, N. Y. 5c Red & Black on Buff (6X1).** Huge Margins, ms. "X" cancel on Blue Folded Letter with Clear Red "Lockport 5" pmk. & matching "Paid", Extremely Fine, the Only Complete Example of this Provisional Known, Ex Caspary (Photo) 12,500.00
- 18 ☒ **Lockport, N. Y. 5c Red & Black on Buff (6X1).** Fresh 8"x3½" Folded Letter with Red "Lockport 10" pmk. & matching "Paid" bearing about ¼ of a **Lockport 5c Provisional** & shreds of another adhering to a wafer, a major Philatelic Tragedy, also a Lockport Stampless Cover of the Period, Ex Caspary



- 19 ★ **Millbury, Mass. 5c Black on Bluish (7X1).** Margins all around, Brilliant Fresh Color & Impression, fresh, o.g., shows papermakers wmk., Extremely Fine. A Magnificent Copy & the only known unused Example, Ex Ferrari (Photo) 18,500.00



- 20 ☒ **New Haven, Conn. 5c Red on Bluish Entire (8XU2).** Magnificent Impression with clear signature on Fresh Cover with Clear Red New Haven pmk., Black "5" and "Due" in ms., only Known Example, A Splendid Cover, Ex Ferrari, Hind, Caspary (Photo) 15,000.00
- 21 ☒ **New Haven, Ct. 5c Provisional (8XU vars.).** Facsimile Cover with Blue Provisional & Pmk. & Red Paid, 1932 Final Restrike in Red with Blue Facsimile Signature & an unlisted Red on Bluish Reprint, Very Fine lot **E. VI**



27

28

29

30

- 22 ★ **New York 5c Black (9X1).** Large to Enormous Margins, Fresh, Extremely Fine, Ex Caspary (Photo) 200.00
- 23 ★ **New York 5c Black on Ribbed (9X1 var.).** Clear to Huge Margins, Fresh, Very Fine, Very Rare, Ex Caspary (Photo) 200.00+
- 24 ★ **New York 5c Black (9X1).** Pos. 28 margins all around, except barely touched in U. R. corner, negligible marginal corner bend, Very Fine, Ex Caspary (Photo) 200.00
- 25 ★ **New York 5c Black (9X1).** Pos. 2, **Big Double Transfer**, Huge Margins, part o. g., negligible tiny corner creases, otherwise Extremely Fine, A Very Choice Stamp Ex Caspary (Photo) 750.00
- 26 ★ **New York 5c Black, Without Signature (9X1c).** Pos. 32, Large Margins, faint crease & small thin, Extremely Fine appearance, a Very Scarce Stamp, Ex Caspary (Photo) 350.00
- 27 ★ **New York 5c Black (9X1 var.).** Pos. 15, small "ACM" in hand of Marciana Monson, Large Margins, Extremely Fine, Very Scarce, Ex Caspary (Photo) 200.00+
- 28 ★ **New York 5c Black on Blue (9X1 var.).** Clear to Ample Margins, large part o. g., fresh, Fine, only one or two other unused copies known, Ex Caspary (Photo) 1,300.00
- 29 ★ **New York 5c Black on Gray (9X1 var.).** Pos. 11, margins all around, part o. g., negligible corner bends, Very Fine, listed but unpriced in Scott (Photo) —
- 30 ★ **New York 5c Black (9X1).** Pos. 16, 17, Horiz. Pair, Large Margins, part o. g., pinhole in bottom margin, stamps Extremely Fine, Rare in Multiples, Ex Caspary (Photo) 700.00
- 31 R **New York 5c Black on White Reprint (9X1 Rep.).** Pos. 8, Extremely Fine (Photo) 70.00
- 32 R **New York 5c Black on Deep Blue Reprint (9X1 Rep.).** Extremely Fine (Photo) 70.00
- 33 R **New York 5c Black on Deep Blue Reprint (9X1 Rep.).** Extremely Fine (Photo) 70.00
- 34 ★ **Providence, R. I. 5c Black (10X1).** Pos. 2, Large Margins, minor scissor cut and tiny speck, Extremely Fine appearance, with P. F. Certificate (Photo) 50.00
- 35 ★田 **Providence, R. I. 5c Black (10X1).** U.L. Sheet Corner Block, Huge to Enormous Margins, Extremely Fine (Photo) 250.00

- 36 ★ **Providence, R. I. 5c, 10c Black (10X1, 10X2).** Complete Sheet of Twelve, one being a 10c value, Fresh, o. g., usual negligible bends, otherwise Extremely Fine (Photo) 900.00
- 37 ★ **Providence, R. I. 10c Black (10X2).** Huge to Enormous Margins, fresh, o. g., pinpoint thin speck, otherwise Extremely Fine, with P. F. Certificate (Photo) 200.00
- 38 ★ **Providence, R. I. 10c Black (10x2).** Large to Huge Margins, part o. g., trivial thin speck, Very Fine appearance (Photo) 200.00



- 39 ★ **St. Louis, Mo. 5c Black on Greenish (11X1).** Vertical Pair, Ty. I, II, Large Margins, Choice Color & Impression, one has negligible crease, other trivial thin speck, Extremely Fine appearance, only Unused Pair Known (Photo) 3,200.00+



- 40 ☒ **St. Louis, Mo. 5c Black on Greenish (11X1).** Ty. II, uncanceled, Gigantic Margins, on folded letter to St Genevieve with St. Louis pmk., matching "Paid", "5" in ms., An Extremely Fine Copy, Ex Caspary (Photo) 1,600.00



31



32



33



34



37



38



52



53



54



57



58



59



60



66



67



69



35



71



72



61



36



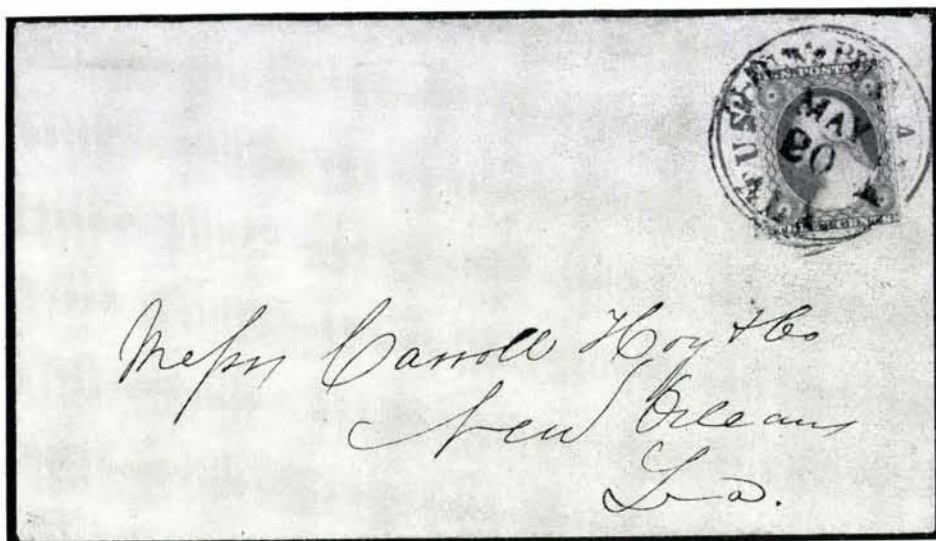
68



75



- 41 ☒ St. Louis, Mo. 10c Black on Greenish (11X2). Vertical strip of three showing all three types, Ample to Huge Margins except B. stamp partly touched at R., **Uncancelled**, on Charnley & Whelan Cover, horiz. cover fold thru B. stamp, minute tear in L. margin of middle stamp, otherwise Very Fine, Only Uncancelled Strip Known (Photo) 5,500.00



- 42 ☒ Tuscumbia, Ala., 3c Dull Red on Buff Entire (12XU1). 3c Red (26) centered, tied over Provisional Handstamp, A Fresh & Extremely Fine Cover, one of Seven Known Examples of this Rare Provisional, Ex Caspary (Photo) 4,000.00

1847 ISSUE



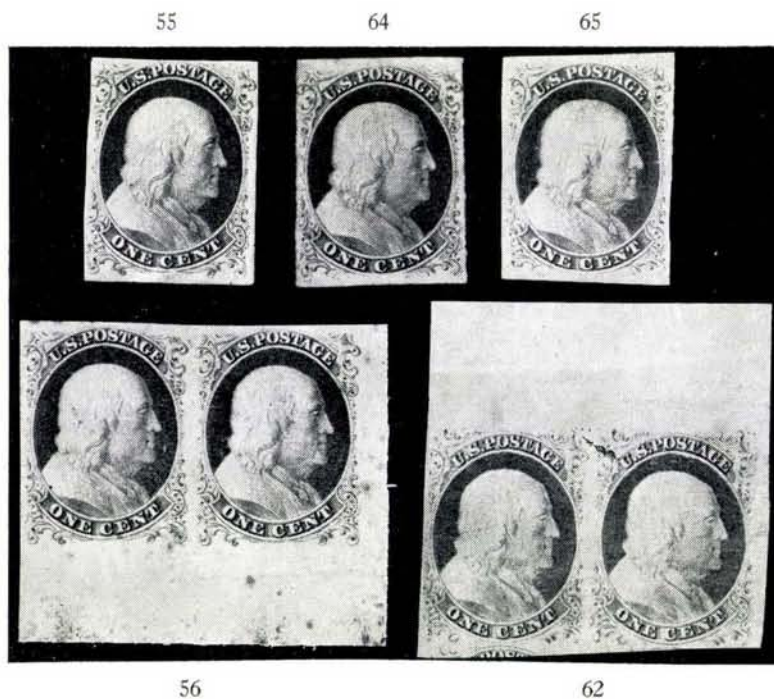
- 43 ★ **5c Blackish Brown (1).** Large to Enormous Margins, full sheet margin at left, Wonderful Rich Color & Impression, fresh, o. g., faint crease in sheet margin far from design, stamp Extremely Fine, Ex Caspary (Photo) 175.00
- 44 ★ **5c Dark Red Brown (1).** Huge Margins, Glorious Color & Impression, fresh, full o. g., Extremely Fine, A Wonderful Copy, Ex Caspary (Photo) 175.00
- 45 ★ **5c Orange Brown (1b).** Huge Margins, Magnificent Brilliant Vivid Color, fresh, part o. g., despite microscopic margin break, A Wonderful Copy (Photo) 185.00
- 46 ★ **5c Red Orange (1c).** Large Margins, Rich, Most Unusual Color, faint horiz. crease & minute black speck on forehead, signed by Ashbrook & Purple Handstamp Guarantee of Schlesinger, only known unused copy of this Rare Shade, Very Fine appearance (Photo) 1,200.00
- 47 ★ **5c Dark Red Brown (1).** Horiz. Pair, Huge Margins, Splended Color & Impression, fresh full crackly gum, tiny blue spot in L. L. margin & almost invisible tiny margin scuff between stamps, otherwise Extremely Fine, A Marvellous Pair, Ex Caspary (Photo) 600.00



- 48 ★ **10c Black (2).** Incredible Margins, Showing Full Sheet Margin at Top and Large Part of next stamps at Right & Left, part o. g., Nice Color & Impression, despite negligible light creases A Breathtaking Showpiece, Ex Caspary (Photo) 700.00

- 49 **10c Black (2).** Pos. 2R1, Double Transfer in L. R. "X", Ample to Huge Huge Margins, Beautiful Color & Impression, almost invisible ms. cancel, A Wonderful Copy, Extremely Fine, with P. F. Certificate, Ex Caspary (Photo) 250.00
- 50 P **5c Red Brown, 10c Black Reproduction India Proofs on Card (3P, 4P).** Complete Sheets of 50 of each, Extremely Fine (Photo) 4,325.00+
- 51 P **5c Red Brown, 10c Black Reproduction Proofs on Card (3P, 4P).** Complete Sheets of 50 of each, minute toned specks, otherwise Extremely Fine 2,800.00
- 52 ★ **5c Red Brown Reproduction (3).** Large Margins, Extremely Fine (Photo) 135.00
- 53 ★ **5c Dark Red Brown Reproduction (3).** Huge Margins, Extremely Fine (Photo) 135.00
- 54 ★ **10c Black Reproduction (4).** Margins all around, Extremely Fine (Photo) 175.00

1851 ISSUE



- 55 **1c Dark Blue Ty. Ia (6).** Clear to Huge Margins Wonderful Color, almost invisible ms. cancel, Extremely Fine, with P. F. Certificate (Photo) 375.00
- 56 ★ **1c Dark Blue Ty. Ia (6).** Horiz. Lower Right Sheet Corner Pair, Huge to Gigantic Margins, fresh, o.g., despite tiny toned specks a Very Rare and Most Desirable Pair, Ex Caspary (Photo) 2,000.00+
- 57 ★ **1c Blue Ty. II (7).** Clear to Huge Margins with Sheet Margin at T., unusual Rich Color, fresh, o.g., Very Fine (Photo) 65.00
- 58 ★ **1c Dark Blue Ty. II (7a).** Ample to Enormous Margins all around, Wonderful Rich Color, fresh, o.g., Very Fine (Photo) 65.00



- 59 ★ **1c Blue Ty. II (7).** Pos. 91L1E, **Triple Transfer**, Large to Gigantic margins, Pretty Color, large part o. g., crease, Extremely Fine appearance **(Photo)** 250.00
- 60 ★ **1c Dark Blue Ty. II (7).** Pos. 23L2, **Major Cracked Plate**, Clear to Large Margins, Glorious Rich Color, Light Blue "Way" pmk., Very Fine, Ex Caspary **(Photo)** 75.00
- 61 ★ **1c Dark Blue Ty. II (7).** U. R. Sheet Corner Vertical Pair, Pos. 10-20R2, Huge to Gigantic Margins, Glorious Deep Color, tiny scissor cut between stamps & faint thinning, Extremely Fine Appearance, A Spectacular Showpiece **(Photo)** 140.00
- 62 ★ **1c Blue Ty. II, IV (7, 9).** Horiz. **Combination** Pair Pos. 4, 5R1L, first is only stamp not recut on plate, Clear to Gigantic Margins, showing other stamps at B. & R. & Full Sheet Margin, minor scissor cut between stamps & trivial bend in sheet margin, Extremely Fine, Signed by Ashbrook, Unlisted Unused in Scott **(Photo)** E. XIV



- 63 ★ **1c Blue Ty. II, III (7-8).** Horiz. Strip of Three, Pos. 97-99R2, Latter the Finest Ty. III on any Plate, Clear to Enormous Margins, Glorious Brilliant Color, fresh, o. g., faint creases in 97 and at right edge of 98, the type III stamp is Extremely Fine. A Unique & Splendid Strip, Ex Caspary **(Photo)** 2,890.00+
- 64 ★ **1c Blue Ty. III (8).** Unusually wide line breaks, clear to Huge Margins, Beautiful Rich Color, fresh, full, o. g., Very Fine, a Lovely Stamp **(Photo)** 500.00
- 65 ★ **1c Deep Blue Ty. IIIa (8A).** Plate IV copy, Enormous Margins, Gorgeous Color fresh, o. g., Extremely Fine **(Photo)** 200.00
- 66 ★ **1c Deep Blue Ty. IV (9).** Huge Margins, Beautiful Deep Color, fresh, o. g., Extremely Fine **(Photo)** 45.00
- 67 ★ **1c Blue Ty. II (9).** Pos. 91L1L, **Triple Transfer, One Inverted**, Clear to Enormous Margins, Rich Color, fresh o. g., Very Fine **(Photo)** 150.00
- 68 ★ **1c Blue Ty. IV (9).** Vertical Pair, Pos. 59-69R1, Clear to Enormous Margins, Glorious Vivid Color, fresh, o. g. A Lovely Pair, Extremely Fine **(Photo)** 95.00
- 69 ★ **3c Red (11).** Horiz. Pair, margins all around, unusually Vivid Color, fresh, o. g., Extremely Fine **(Photo)** 27.50
- 70 ★ **3c Brownish Carmine (11).** Horiz. Pair, Enormous Margins to Barely touched, Lovely Color, fresh, o. g., Fine 30.00+
- 71 ★ **3c Claret (11a).** Horiz. Pair, Large Margins, Gorgeous Color, fresh, o. g., Extremely Fine **(Photo)** 33.00+

- 72 ★ **3c Deep Claret (11a).** Horiz. Pair, Huge Margins, Magnificent Color, fresh, o. g., negligible corner crease in one, otherwise Extremely Fine
(Photo) 45.00+
- 73 P **5c Red Brown Proof on Stamp Paper (12P).** Extremely Fine, with P. F. Certificate 13.50
- 74 ★ **10c Green Ty. I (13).** Pos. 99R1, curl in left "X", Huge Margins, Gorgeous Color, fresh, o. g., despite negligible tiny creases in margin far from design, a choice copy of this Rare Stamp, Ex Caspary (Photo) 1,000.00
- 75 ★ **10c Green Ty. II (14).** Enormous Margins, Glorious Color, o. g., faint horiz. crease, Extremely Fine appearance, Ex Caspary (Photo) 150.00
- 76 ★ **10c Green Ty. III (15).** Horiz. Pair, Large Margins, Vivid Color, o. g., horiz. crease, Very Fine appearance (Photo) 400.00
- 77 **10c Green Ty. III, IV (15, 16).** Horiz. Strip of Three, Pos. 63-65L1, Latter Two Recut Top and Bottom and Top Only, Large Margins, Pretty color, light ms. cancels, minute margin break at U. L., far from design, and tiny toned specks, otherwise Extremely Fine, A Rare & Handsome Strip
(Photo) 332.50+
- 78 ★ **10c Green Ty. IV (16).** Pos. 65L1, Recut at T., Large Margins, Gorgeous Rich Color, tiny faults, Extremely Fine appearance, with P. F. Certificate
(Photo) 1,000.00

1857 ISSUE

- 79 ★ **1c Dark Blue Ty. Ia (19).** Gorgeous Color, fresh, o. g., Fine (Photo) 600.00
- 80 ★ **1c Blue Ty. II (20).** Fresh, o. g., Rich Color, couple perfs, trifle blunt otherwise Fine (Photo) 60.00
- 81 ★ **1c Dark Blue Ty. II (20a).** Fresh, o. g., Rich Color, Fine (Photo) 60.00
- 82 ★ **1c Deep Blue Ty. III (21).** Glorious Vivid Color, fresh, o. g., couple perfs. bit blunt, pinpoint thin speck, otherwise Very Fine (Photo) 225.00
- 83 ★ **1c Blue Ty. III, IIIa (21, 22).** Rejoined Vertical Pair, Pos. 70, 80L4, Rich Color, fresh, o. g., minute perf. tear & faint crease in Ty. III stamp, other Fine (Photo) 270.00
- 84 ★ **1c Blue Ty. IIIa (22).** Centered, Gorgeous Color, fresh, o. g., Very Fine
(Photo) 55.00
- 85 ★ **1c Blue Ty. IIIa (22).** Fresh, o. g., Fine (Photo) 55.00
- 86 ★ **1c Dark Blue Ty. IIIa (22a).** Rich Color, fresh, o. g., Fine (Photo) 55.00
- 87 ★ **1c Blue Ty. IV (23).** Vivid Color, fresh, o. g., Extremely Fine (Photo) 225.00
- 88 ★ **1c-10c 1857 Issues (24, 25, 26, five, 35).** Nice range of shades, fresh, o. g., couple trivial faults, mostly Fine-Very Fine 106.00
- 89 ★ **3c Rose Ty. I (25).** Horiz. Pair, Lovely Color, fresh, o. g., Fine (Photo) 110.00
- 90 **5c Brick Red Ty. I (27).** Rich Color, almost invisible cancel, trivial pinpoint marginal thin specks, otherwise Fine (Photo) 90.00
- 91 ★ **5c Red Brown Ty. I (28).** Deep Rich Color, part o. g., faint creases & small corner thin, Very Fine appearance (Photo) 325.00

92 ★	5c Indian Red Ty. I (28A). Glorious Brilliant Color, full o. g., negligible faint horiz. crease. A Fresh & Handsome copy of a Most Elusive Stamp, Ex Caspary (Photo)	800.00
93 ★	5c Brown Ty. I (29). Lovely Color, full o. g. one nibbed perf., otherwise Fine, Unusually Fresh & Handsome Copy of this Scarce stamp (Photo)	95.00
94 ★	5c Brown Ty. I (29). Rich Color, fresh, large part o. g., Very Fine (Photo)	95.00
95 ★	5c Orange Brown Ty. II (30). Gorgeous Vivid Color, fresh, o. g., Extremely Fine (Photo)	50.00
96 ★	5c Brown Ty. II (30A). Beautiful Color, fresh, o. g., Very Fine (Photo)	55.00
97 ★	10c Green Ty. II (32). Vivid Color, fresh, o. g., couple nibbed perfs., otherwise Fine (Photo)	125.00
98 ★	10c Green Ty. II, III (32, 33). Vertical Combination, Lovely Color, o. g., one perf. bit nibbed, otherwise Fresh, Fine (Photo)	250.00
99 田	10c Green Ty. II, III, IV (32, 33, 34, two). Combination Block, Pos. 55-56, 65-66L1, left two stamps recut, slightly reinforced, faint ms. cancels, Fine. A Very Rare Block (Photo)	E. XII
100 ★	10c Green Ty. III (33). Deep Brilliant Color, Centered, fresh, mostly o. g. A marvelous Copy, Extremely Fine (Photo)	125.00
101 ★	10c Green Ty. III (33). Fresh, part o. g., Rich Color corner perf. crease, Very Fine appearance (Photo)	125.00
102 ★	10c Green Ty. IV (34). Pos. 54L1, Recut at B., Centered, Gorgeous Color, one perf. trifle blunt, trace of corner bend, otherwise Extremely Fine, with P. F. Certificate (Photo)	1,100.00
103 ★	12c Black, Plate I (36). Intense Color, fresh, o. g., Extremely Fine (Photo)	35.00
104 ★	12c Intense Black, Plate III (36b). Incredible Color & Impression, o. g., Extremely Fine, A Miracle Copy (Photo)	30.00
105 ★	12c Intense Black, Plate III (36b). Fresh, o. g., Very Fine (Photo)	30.00
106 ★	24c Lilac (37). Centered, Vivid Color, fresh, o. g., Extremely Fine (Photo)	65.00
107 ★	24c Lilac (37). Fresh, o. g., Gorgeous Color, negligible pinpoint thin speck otherwise Extremely Fine (Photo)	65.00



74



76



77



78



79



80



81



82



83



84



85



86



87



90



89



91



92



93



94



95



96



97



98



99



100



101



102



103



104



105



106



107



108

108 ★	24c Gray Lilac (37a). Rich Pretty Color, trivial thin speck, Extremely Fine appearance (Photo)	65.00
109 ★	24c Red Lilac (37b). Rich Color, fresh, part o. g., Very Fine (Photo)	300.00
110 ★	24c Lilac, Imperforate (37c). Clear to Enormous Margins all around, Deep Rich Color, Very Fine (Photo)	375.00
111 ★	30c Reddish Orange (38). Marvelous Brilliant Color, unusually fresh, o. g., A Lovely Copy, Very Fine (Photo)	67.50
112 ★	30c Orange (38). Tiny thin, o. g., Fine appearance	67.50
113 ★	30c Orange Imperforate (38a). Huge margins to cutting in, deep Rich Color, Very Good, with P. F. certificate (Photo)	700.00
114 ★田	30c Deep Orange (38). Block, Fresh, o. g., Gorgeous Rich Color, tiny tear in one, otherwise Very Fine (Photo)	600.00
115 ★	90c Blue (39). Fresh, o. g., couple perfs bit blunt, otherwise Fine (Photo)	235.00

1857 REPRINTS

116 ★	1c Bright Blue Reprint (40). Fine (Photo)	100.00
117 ★	3c Scarlet Reprint (41). Trivial internal bend, otherwise Very Fine (Photo)	350.00
118 ★	5c Orange Brown Reprint (42). Fine (Photo)	125.00
119 ★	10c Blue Green Reprint (43). Fine (Photo)	235.00
120 ★	12c Greenish Black Reprint (44). Fine (Photo)	275.00
121 ★	24c Blackish Violet Reprint (45). Centered, one perf. pulled & tips of couple others bit blunt, otherwise Very Fine (Photo)	300.00
122 ★	30c Yellow Orange Reprint (46). Separated by scissors but perfs. undamaged, Very Fine (Photo)	425.00
123 ★	90c Deep Blue Reprint (47). Trivial natural interior crease, tips of few perfs, a trifle blunt, otherwise Fine (Photo)	500.00



109



110



111



113



115



116



114



117



118



119



120



121



122



123



138



140



142



143



139



144



145



148



149



150



151



153



154



147



155



158



159



160



1861 FIRST (AUGUST) ISSUE



124

125

126

127

- 124 ★ **1c Indigo August (55).** Magnificent Color, fresh, o.g., separated by scissors at B. but perfs undamaged, A Wonderful Copy of this Rare stamp, Very Fine, with P. F. Certificate (Photo) 4,500.00
- 125 ★ **3c Brown Rose August (56).** Fresh, o.g., tiny fault in one perf. tooth, otherwise Fine (Photo) 110.00
- 126 ★ **5c Brown August (57).** Vivid Color, part o.g., two perfs. trifle blunt at B., otherwise Fine, Handsome copy of this Rarity (Photo) 2,750.00
- 127 ★ **10c Deep Green August (58).** Fresh, o.g., Incredible Rich Color, Very Fine, A Marvelous stamp (Photo) 700.00



- 128 ★ **12c Black August (59).** Centered, Magnificent Color & Impression, fresh, o.g., Extremely Fine, An Outstanding Copy of this Excessively Rare Stamp, with P. F. Certificate (Photo) 16,500.00

129

130

131

132



134

135

136

- 129 ★ **24c Violet August (60).** Incredible Rich Color, fresh, large part o.g., Extremely Fine. A Wonderful Copy, with P. F. Certificate (Photo) 750.00
- 130 ★ **24c Violet August (60).** Rich Color, full o.g., P. F. Certificate states "Gum crease & Reperforated at L.", fresh & Attractive copy of this rarity (Photo) 750.00
- 131 ★ **24c Violet August (60).** Magnificent Color, Centered, tiny area in top margin expertly restored. A Most Attractive-looking Example of this Rare stamp, with P. F. Certificate (Photo) 750.00
- 132 ★ **30c Red Orange August (61).** Large Margins, fresh, o.g., Brilliant Color, Extremely Fine with P. F. Certificate (Photo) 3,500.00



- 133 ★ **30c Red Orange August (61).** Horiz. Pair, Centered, Brilliant Vivid Color, full o.g. except for small area on R. stamp, light crease in each, Extremely Fine appearance, Only Known Pair, A Fresh & Very Handsome Rarity, Ex Caspary (Photo) 8,000.00
- 134 ★ **90c Dull Blue August (62).** Centered, Glorious Color, fresh, o.g., Extremely Fine. A magnificent Copy of this Rarity, with P. F. Certificate (Photo) 3,750.00
- 135 ★ **90c Dull Blue August, Imperforate (62a).** Gigantic Margins, Vivid Color, Gem, Extremely Fine, with P. F. Certificate (Photo) 500.00

- 136 ★ **90c Dull Blue August, Imperforate (62a).** Horiz. Pair, Large Margins, Gorgeous Color, faint Horiz. Crease, Extremely Fine appearance, Ex Caspary (Photo) 1,000.00

1861 ISSUE

- 137 ★ **1c-12c 1861-69 Issues (Betw. 63-133).** 15 stamps, mostly diff., Rich Colors, some o. g., Fair-Fine 266.00
- 138 ★ **3c Pink (64).** Centered, Brilliant Color, fresh, o. g., almost invisible faint natural crease, otherwise Extremely Fine, A Beautiful Stamp, with P. F. Certificate (Photo) 500.00
- 139 ★田 **3c Pink (64).** Block, Fresh, o. g., Brilliant Vivid Color, natural gum crease barely affects left pair, one has negligible thin speck, otherwise Fine-Very Fine, A Rare & Handsome Block (Photo) 2,250.00
- 140 ★ **3c Rose, Imperforate (65c).** Horiz. Pair, Large Margins, Rich Color, part o. g., Extremely Fine (Photo) 70.00



- 141 ★ **3c Rose, Printed on Both Sides (65e).** Horiz. Strip of three, fresh, o. g., Extremely Fine, listed but unpriced unused in Scott, Extreme Rarity (Photo) E. XV
- 142 ★ **3c Lake (66).** Fresh, o. g., Very Fine (Photo) 250.00
- 143 ★ **3c Lake Imperforate (66a).** Huge Margins, fresh, o. g., Extremely Fine, listed but unpriced in Scott (Photo) —
- 144 ★ **5c Buff (67).** Deep Lovely Color, fresh, o. g., Very Fine (Photo) 400.00
- 145 ★ **5c Buff (67).** Lovely deep color, fresh, o. g., faint horiz. crease & two nibbed perfs., Very Fine appearance (Photo) 400.00
- 146 ★ **10c Yellow Green, 12c Black (68, 69).** Centered, fresh, o. g., Vivid Colors, first has bent corner perf., other Extremely Fine 52.50
- 147 ★ **12c Black (69).** Horiz. Plate No. (16) & Part Impt. Pair, fresh, o. g. Vivid Color, one has tiny thin speck, otherwise Fine (Photo) 75.00+
- 148 ★ **24c Red Lilac (70).** Rich Marvelous Color, fresh, o. g., Very Fine (Photo) 90.00
- 149 ★ **24c Red Violet (70 var.).** Brilliant Color, fresh, full o. g., most unusual Gorgeous Shade, Ex Waterhouse (Photo) 90.00+
- 150 ★ **24c Brown Lilac (70a).** Centered, Rich Color, fresh, o. g., rounded corner perf., otherwise Extremely Fine (Photo) 85.00
- 151 **24c Steel Blue (70b).** Rich Color, appears unused, small faults, V. F. appearance 42.50

- 152 ★ **30c Orange, 90c Blue (71, 72).** Rich Colors, first couple perfs. trifle blunt, latter small thins, otherwise Fine-Very Fine 185.00
- 153 ★ **3c Scarlet (74).** Fresh, o. g., two perfs. nibbed and light creases, Very Fine appearance, with P. F. Certificate (Photo) 575.00
- 154 ★ **5c Red Brown (75).** Pretty color, fresh, part o. g., couple perf. tips trifle blunt, otherwise Very Fine (Photo) 95.00
- 155 ★ **5c Dark Red Brown (75).** Lovely Rich Color, fresh, o. g., Fine (Photo) 95.00
- 156 ★ **5c Brown, Dark Brown (76).** Two Rich Shades, fresh, o. g., Very Fine 50.00



- 157 ★田 **15c Black (77).** Horiz. Block of Six, Centered, Magnificent Color & Impression, fresh, full o. g., wide s. e. at L., one short perf., otherwise Extremely Fine, no large blocks of this stamp are known. A Marvelous Showpiece, Ex Caspary (Photo) 885.00+
- 158 ★ **24c Dark Lilac (78).** Gorgeous Color, fresh, o. g., Extremely Fine (Photo) 25.00
- 159 ★ **24c Lilac (78).** Lovely Deep Color, fresh, o. g., Very Fine (Photo) 25.00
- 160 ★ **24c Blackish Violet (78c).** Incredible color, fresh, o. g., trivial internal wrinkle, Extremely Fine. A Wonderful copy of this Rarity, Ex Caspary (Photo) 600.00
- 161 ★ **24c Lilac (78).** Three diff. Rich Shades, fresh, o. g., one perf. bit nibbed, otherwise Very Fine lot 75.00

1867 GRILL ISSUE

- 162 ★ **1c Blue Grilled All Over Essay,** Centered well to R., fresh, o. g., V. G., A Very Rare Variety, Unlisted in Brazer —
- 163 ★ **3c Rose Grilled All Over (79).** Centered, unusually Rich Color, few short perfs., as always, fresh, Very Fine for this, Ex Caspary (Photo) 475.00
- 164 ★ **3c Rose C Grill (83).** Faint negligible corner creases, Fine appearance (Photo) 125.00
- 165 ★ **3c Rose C Grill, Imperforate (83a).** Horiz. Pair, Huge Margins, fresh, o. g., Extremely Fine (Photo) 225.00
- 166 ★ **2c Black D Grill (84).** Fresh, o. g., Very Good (Photo) 350.00

167 ★	3c Rose D Grill (85). Fresh, Fine	(Photo)	225.00
168 ★	2c Black Z Grill (85B). Intense Color, Fresh, o. g., Attached Portion of Sheet Margin with Grill, Fine	(Photo)	150.00
169 ★	2c Black Z Grill (85B). Fresh, o. g., Very Good	(Photo)	150.00
170 ★	3c Rose Z Grill (85C). Rich Color, fresh, o. g., one perf. trifle blunt otherwise Very Fine. An Exceptional Copy of this Difficult Stamp	(Photo)	475.00
171 ★	12c Black Z Grill (85E). Intense Color, Very Good	(Photo)	250.00
172 ★	1c Blue E Grill (86). Wonderful Color, fresh, o. g., centered bit to top, Very Fine	(Photo)	50.00
173 ★	1c-12c E Grills (86-87, 90). Rich Color, fresh, two o. g., two have trivial faults, otherwise Very Good-Fine		168.50
174 ★	2c Black E Grill (87). Fresh, o. g., Vivid Color, Very Fine	(Photo)	28.50
175 ★	15c Black E Grill (91). Fresh, o. g., Extremely Fine	(Photo)	275.00
176 ★	15c Black E Grill (91). Marginal block, fresh, full o. g., one has tiny thin, otherwise Fine, An Attractive & Very Rare Block	(Photo)	1,200.00
177 ★	1c Blue F Grill (92). Vivid Color, fresh, o. g., Gem, Extremely Fine	(Photo)	30.00
178 ★	5c Brown F Grill (95). Rich Color, fresh, o. g., one nibbed perf., otherwise Very Fine	(Photo)	185.00
179 ★	5c Black Brown F Grill (95a). Magnificent Color, fresh, o. g., Extremely Fine	(Photo)	225.00
180 ★	12c Gray Black, F Grill (97). Rich Color, fresh, o. g., trivial thin speck, Extremely Fine appearance	(Photo)	47.50
181 ★	15c Black F Grill (98). Fresh, o. g., small thin, V. F. appearance	(Photo)	50.00
182 ★	24c Gray Lilac F Grill (99). Lovely Color, fresh, o. g., Extremely Fine	(Photo)	150.00
183 ★	24c Gray Lilac F Grill (99). Horiz. Pair, unusually Rich Color, fresh, o. g., Extremely Fine, Ex Caspary	(Photo)	325.00
184 ★	30c Orange F Grill (100). Centered, Vivid Color, two perfs., trifle blunted, otherwise Extremely Fine	(Photo)	185.00
185 ★	30c Orange F Grill (100). Small part o. g., Nice Color, Fine		185.00
186 ★	90c Dark Blue F Grill (101). Gigantic Margins, Gorgeous Color, fresh, o. g., Extremely Fine. A Splendid Copy of this scarce stamp	(Photo)	385.00

1861 REISSUES

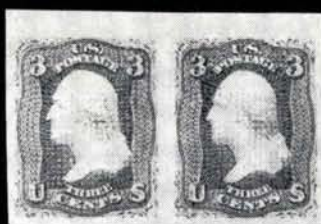
187 ★	1c Blue Reissue (102). Vivid Color, fresh, o. g., small thin, Extremely Fine appearance	(Photo)	85.00
188 ★	2c Black Reissue (103). Huge margins, fresh, o. g., tiny sealed tear, Extremely Fine appearance	(Photo)	275.00
189 ★	3c Brown Red Reissue (104). Part o. g., few blunt perfs at T., Very Good	(Photo)	385.00
190 ★	5c Light Brown Reissue (105). Fresh, o. g., Very Fine	(Photo)	275.00



163



164



165



166



167



168



169



171



172



174



175



170



176



177



178



179



180



181



182



183



184



186



187



188



189



190



191



192



193



194



195



196



197

191 ★	10c Green Reissue (106). Huge margins, fresh, o.g., Extremely Fine (Photo)	300.00
192 ★	10c Green Reissue (106). Rich Color, fresh, one perf. bit blunt, otherwise Very Fine (Photo)	300.00
193 ★	12c Black Reissue (107). Huge Margins, Marvelous Color Impression, faint bend & pinpoint thin speck, Very Fine appearance (Photo)	385.00
194 ★	15c Black Rissue (108). Intense color, fresh, one perf. bit nibbed, other- wise Very Fine (Photo)	325.00
195 ★	24c Deep Violet Reissue (109). Fresh, o.g., two perfs. very slightly blunted, otherwise Extremely Fine (Photo)	385.00
196 ★	30c Brownish Orange Reissue (110). Fresh, o.g., Extremely Fine, Ex Caspary (Photo)	600.00
197 ★	90c Blue Reissue (111). Fresh, part o.g., negligible pinpoint thin speck, otherwise Very Fine (Photo)	625.00

END OF FIRST SESSION

LOTS ON VIEW FROM JANUARY 25th

OFFICES OPEN EVERY SATURDAY

SECOND SESSION

THURSDAY, FEBRUARY 2nd, 1967 — 7:45 P. M.

1869 PICTORIAL ISSUE

198 ★	1c Brown Orange (112a). Vivid Color, fresh, Very Fine (Photo)	37.50
199 ★	1c Buff without Grill, Imperforate (112b var.). Huge Margins, fresh, o. g., Extremely Fine, with P. F. Certificate, unlisted in Scott (Photo)	—
200 ★	1c Brown Orange, 3c Ultramarine (112, 114). Fresh, Rich Colors, part o. g., Fine-Very Fine (Photo)	49.00
201 ★	2c Brown, Without Grill (113b). Rich Color, fresh, o. g., trivial natural gum wrinkle, Very Fine (Photo)	135.00
202 ★	2c Brown (113). Block, Vivid Color, Straddle at R., showing stamps in next pane, fresh, o. g., few short perfs in L. R. stamp, otherwise Fine	95.00
203 ★	3c Dark Blue Without Grill, Imperforate (114a var.). Huge Margins, Gorgeous Color, fresh, o. g., Extremely Fine, with P. F. Certificate, not listed in Scott (Photo)	—
204 ★	6c Ultramarine (115). Centered, Rich Color, fresh, o. g., Extremely Fine (Photo)	57.50
205 ★	6c Ultramarine (115). Centered, fresh, o. g., Lovely Color, couple perfs tips trifle blunt, otherwise Extremely Fine (Photo)	57.50
206 ★	10c Yellowish Orange (116). Huge Margins, Brilliant Color, fresh, o. g., Extremely Fine (Photo)	62.50
207 ★	10c Yellowish Orange (116). Vivid Color, fresh, o. g., one perf. trifle blunt, otherwise Very Fine (Photo)	62.50
208 ★	12c Green (117). Vivid Color, fresh, o. g., faint natural paper crease, otherwise Very Fine (Photo)	57.50
209 ★	12c Green (117). Fresh, o. g., trivial marginal scuff, otherwise Fine (Photo)	57.50
210 ★	12c Green, Without Grill, Imperforate (117 var.). Huge margins, o. g., trivial corner crease, entirely in margin, otherwise Extremely Fine, with P. F. Certificate, unlisted in Scott (Photo)	—
211 ★	15c Brown & Blue Ty. I (118). Brilliant Colors, fresh, o. g., Extremely Fine, A Wonderful Copy (Photo)	200.00
212 ★	15c Brown & Blue Ty. I, Without Grill (118a). Fresh, large part o. g., one nibbed perf., otherwise Extremely Fine (Photo)	275.00
213 ★	15c Brown & Blue Ty. I, Without Grill, Imperforate (118a var.). Huge margins, fresh, o. g., Extremely Fine, with P. F. Certificate, unlisted in Scott (Photo)	—
214 ★	15c Brown & Blue Ty. II (119). Incredible Colors, fresh, part o. g., Extremely Fine (Photo)	70.00

- 215 ★ **15c Brown & Blue Ty. II (119).** Lower Left Sheet Corner Horiz. **Imprint**
Strip of Four, full o. g., Vivid Colors, centered to L. L., A Fresh &
Most Attractive Showpiece **(Photo)** 300.00+



- 216 ★ **15c Brown & Blue Ty. II, Inverted Center (119b).** Well Centered, Splendid
Deep Rich Colors, fresh, full o. g., Extremely Fine, by far the finest of the
three known unused copies of this Great Rarity, with P. F. Certificate
Ex Hind **(Photo)** 21,500.00
- 217 ★ **24c Green & Violet (120).** Wonderful Colors, fresh, o. g., Extremely Fine
(Photo) 150.00
- 218 ★ **24c Green & Violet, Without Grill (120a).** Magnificent Colors, fresh, o. g.,
pinhole & few creased perfs., otherwise Very Fine, Rare **(Photo)** 450.00



- 219 ★ **24c Green & Violet Inverted Center, Without Grill, Imperforate (120b var.).** Huge Margins, Nice Colors, Extremely Fine, with P. F. Certificate, unlisted in Scott, A Great Rarity **(Photo)** —
- 220 ★ **30c Blue & Carmine (121).** Lovely Rich Colors, fresh, o. g., Extremely Fine, A Wonderful Copy **(Photo)** 175.00
- 221 ★ **30c Dark Blue & Dark Carmine, Without Grill, Imperforate (121a var.)**
Huge Margins, Deep Rich Colors, fresh, o. g., Extremely Fine, with P. F. Certificate, unlisted in Scott **(Photo)** —
- 222 ★ **90c Carmine & Black (122).** Perfectly Centered, Brilliant Colors, fresh, o. g., trivial pinpoint thin in grill, otherwise Extremely Fine **(Photo)** 425.00
- 223 ★ **90c Carmine & Black, Without Grill, Imperforate (122a var.).** Huge Margins, Rich Colors, Negligible minute corner crease far from design, otherwise Extremely Fine, with P. F. Certificate, unlisted in Scott **(Photo)** —



198



199



201



203



204



205



206



207



208



210



211



212



213



214



217



218



220



221



222



223



224



225



226



227



228



229



230



231



232



233

1869 REISSUES

224 ★	1c Buff Reissue (123). Part o. g., small thin, Extremely Fine appearance (Photo)	65.00
225 ★	2c Brown Reissue (124). Brilliant fresh, o. g., pinpoint thin speck, otherwise Extremely Fine (Photo)	65.00
226 ★	3c Blue Reissue (125). Very Fine, with P. F. Certificate (Photo)	400.00
227 ★	6c Blue Reissue (126). Fresh, Extremely, Fine (Photo)	150.00
228 ★	10c Yellow Reissue (127). Fresh, o. g., Very Fine (Photo)	165.00
229 ★	12c Green Reissue (128). Fresh, o. g., small thins, reperfed at R., V. F. appearance (Photo)	175.00
230 ★	15c Brown & Blue Ty. III Reissue (129). Fresh, o. g., Extremely Fine (Photo)	225.00
231 ★	15c Brown & Blue Ty. III Reissue, Imperforate Horiz. (129a). Fresh, o. g., minute scissor cut in B. margin, otherwise Extremely Fine (Photo)	300.00
232 ★	24c Green & Violet Reissue (130). Fresh, o. g., Very Fine (Photo)	175.00
233 ★	30c Blue & Carmine Reissue (131). Fresh, o. g., trivial gum soak, Fine (Photo)	265.00
234 ★	90c Carmine & Black Reissue (132). Fresh, o. g., Extremely Fine (Photo)	475.00

1870 GRILLED BANKNOTE ISSUE

235 ★	1c Ultramarine, 2c Red Brown Grills (134, 135). Vivid Colors, fresh, first o. g., first has negligible pinpoint thin speck, otherwise Very Fine (Photo)	87.50
236 ★	6c Carmine Grill (137). Marvelous Color, fresh, o. g., strong grill, Fine (Photo)	135.00
237 ★	7c Vermilion Grill (138). Vivid Color, Strong Grill, fresh, full o. g., Very Fine (Photo)	125.00
238 ★	7c Vermilion Grill (138). Vivid Color, one Row of Grill points, trivial toned speck, Fine (Photo)	125.00
239 ★	10c Brown Grill (139). Fresh, Lovely Color, part o. g., pulled perf. and tiny interior cut, Extremely Fine Appearance (Photo)	200.00
240 ★	15c Bright Orange Grill (141). Wonderful Rich Color, fresh, Very Fine (Photo)	140.00
241 ★	30c Full Black Grill (143). Centered, Magnificent Color, unusually strong grill for this value, Extremely Fine (Photo)	400.00
242 ★	90c Carmine Grill (144). Fresh, o. g., Vivid Color, two pinpoint thin specks, otherwise Fine, singed by Bartels & with P. F. Certificate (Photo)	800.00

1870 NATIONAL BANKNOTE ISSUE

243 ★	1c-10c Banknote Issue (Betw. 145-216). 30 stamps, incl. block of latter, some dups., fresh, o. g., most have trivial faults, F.-V. F. appearance	216.75
244 ★	1c-5c Banknote Issue (Betw. 146-216). Fifteen stamps, mostly diff., Rich Colors, fresh, nearly all o. g., Fine-Very Fine, nice lot	109.00



234

215



236



237



238



239



240



241



242



245



247



249



250



251



252



253



254



256



257



258



255



262



263



264



265



261

245 ★	6c Carmine (148). Vivid Color, fresh, o. g., Extremely Fine	(Photo)	30.00
246 ★	6c Carmine (148). Nice Color, fresh, o. g., Fine		30.00
247 ★	7c Vermilion (149). Vivid Color, fresh o. g., trivial tiny gum soak, otherwise Extremely Fine	(Photo)	40.00
248 ★	6c-30c 1870-73 Issues (149-150, 159, 162, 165). Fresh, part o. g., Rich Colors, unnoticeable tiny flaws, Fine-Very Fine appearance		232.50
249 ★	10c Brown (150). Fresh, Lovely Color, o. g., Extremely Fine	(Photo)	32.50
250 ★	12c Violet (151). Rich Color, fresh, o. g., couple perfs. trifle blunt, otherwise Very Fine	(Photo)	52.50
251 ★	15c Bright Orange (152). Incredible Brilliant Color, fresh, full o. g. A Gem, Extremely Fine	(Photo)	47.50
252 ★	15c Bright Orange (152). Brilliant Vivid Color, o. g., Extremely Fine	(Photo)	47.50
253 ★	15c Bright Orange (152). Fresh, Full o. g., Very Fine	(Photo)	47.50
254 ★	24c Purple (153). Brilliant color, fresh, full o. g., Extremely Fine, a Magnificent Copy	(Photo)	57.50
255 ★	24c Bright Purple (153). Block, Centered, Lovely Color, fresh, o. g., a Wonderful Showpiece, Extremely Fine, Ex Caspary	(Photo)	1,350.00
256 ★	30c Full Black (154). Gorgeous Color, Part o. g., Very Fine	(Photo)	110.00
257 ★	90c Carmine (155). Wonderful Brilliant Color, fresh, o. g., Extremely Fine	(Photo)	165.00
258 ★	90c Dark Carmine (155). Splendid Deep Rich Color, fresh, Extremely Fine	(Photo)	165.00

1873 CONTINENTAL BANKNOTE ISSUE

259 ★	3c Green Double Paper (158c). Fresh, o. g., tiny natural wrinkle, Extremely Fine		20.00
260 ★	6c Brown Rose (159). Rich Pretty Color, fresh, o. g., Fine		25.00
261 ★	6c Brown Rose (159). Block, Gorgeous Color, fresh, Extremely Fine	(Photo)	120.00
262 ★	7c Vermilion (160). Brilliant Color, fresh, o. g., Extremely Fine	(Photo)	47.50
263 ★	7c Vermilion (160). Vivid Color, fresh, o. g., couple perfs trifle blunt, otherwise Extremely Fine	(Photo)	47.50
264 ★	7c Vermilion (160). Magnificent Color, fresh, o. g., one perf. trifle nibbed, otherwise Extremely Fine	(Photo)	47.50
265 ★	10c Brown (161). Huge Margins, Vivid Color, fresh, o. g., couple perfs. bit blunt, otherwise Extremely Fine, A Very Handsome Copy	(Photo)	22.50
266 ★	10c Brown Continental Grill (161c). Wonderful Color, fresh, o. g., almost invisible natural creases, otherwise Extremely Fine, Handsome Copy of a Very Rare stamp, Ex Caspary	(Photo)	500.00
267 ★	10c Brown (161). Block, Lovely Color, fresh, full o. g., few blunt perfs., otherwise Fine-Very Fine	(Photo)	300.00

- 268 ★ **12c Blackish Violet (162).** Centered, Rich Color, fresh, o. g., two perfs. bit blunt, otherwise Extremely Fine (Photo) 72.50
- 269 ★ **15c Reddish Orange (163).** Vivid Color, fresh, o. g., one perf. nibbed, otherwise Extremely Fine (Photo) 67.50
- 270 ★ **15c Yellow Orange (163).** Horiz. Pair, fresh, Pretty Color, o. g., Very Fine (Photo) 140.00
- 271 ★ **30c Gray Black (165).** Unusually Rich Color, fresh, o. g., V. F. (Photo) 62.50
- 272 ★ **30c Gray Black (165).** Wonderful Color & Impression, fresh, o. g., Very Fine (Photo) 62.50
- 273 ★ **90c Rose Carmine (166).** Centered, Marvelous Color, fresh, o. g., two perf., trifle blunt, otherwise Extremely Fine (Photo) 130.00
- 274 ★ **90c Rose Carmine (166).** Centered, Glorious Color, fresh, o. g., trivial corner perf. thin, otherwise Extremely Fine (Photo) 130.00
- 275 ★ **90c Rose Carmine (166).** Beautiful Vivid Color, Part Imprint at B., fresh, full o. g., three perfs. bit blunt, otherwise Very Fine (Photo) 130.00

SPECIAL PRINTINGS OF 1875

276
280

277
281

278
282

279
283



284

285

286

- 276 ★ **1c Ultramarine Special Printing (167).** Brilliant Color, fresh, pinpoint thin speck, otherwise Very Fine, with P. F. Certificate (Photo) 1,000.00

- 277 ★ **2c Dark Brown Special Printing (168).** Rich Color, faint horiz. crease, Fine appearance, with P. F. Certificate (Photo) 650.00
- 278 ★ **3c Blue Green Special Printing (169).** Vivid Color, Very Fine, with P. F. Certificate (Photo) 1,750.00
- 279 ★ **6c Dull Rose Special Printing (170).** Rich Color, Fine, with P. F. Certificate (Photo) 1,500.00
- 280 ★ **7c Reddish Vermilion Special Printing (171).** Brilliant color, fresh, perfs intact, a wonderful copy, Extremely Fine, with P. F. Certificate (Photo) 550.00
- 281 ★ **10c Pale Brown Special Printing (172).** Deep Lovely Color, Very Fine, with P. F. Certificate (Photo) 1,100.00
- 282 ★ **12c Dark Violet Special Printing (173).** Centered, not separated by scissors, so perfs. intact, Rich Color, trivial surface scratch, Extremely Fine appearance with P. F. Certificate (Photo) 700.00
- 283 ★ **15c Bright Orange Special Printing (174).** Vivid Color, Very Fine, with P. F. Certificate (Photo) 1,100.00
- 284 ★ **24c Dull Purple Special Printing (175).** Not separated by scissors so perfs intact, Magnificent Deep Brilliant Color, A Gem, Extremely Fine, with P. F. Certificate (Photo) 500.00
- 285 ★ **30c Greenish Black Special Printing (176).** Deep Lovely Color, Large Margins, Extremely Fine, with P. F. Certificate (Photo) 1,200.00
- 286 ★ **90c Violet Carmine Special Printing (177).** Marvelous Rich Color, Very Fine, with P. F. Certificate (Photo) 1,200.00
- 287 ★ 田 **2c Vermilion (178).** Block, Vivid Color, fresh, o. g., Extremely Fine (Photo) 95.00
- 288 ★ **2c Vermilion, Imperforate (178a).** Large to Enormous Margins, Brilliant Color, fresh, o. g., Extremely Fine (Photo) —
- 289 ★ **2c Vermilion, Continental Grill (178c).** Fresh, o. g., grill penetrates paper as usual, small thin, Fine appearance, Ex Waterhouse (Photo) 65.00



290

291

- 290 ★ **2c Carmine Vermilion Special Printing (180).** Wonderful Vivid Color, fresh, Extremely Fine, with P. F. Certificate (Photo) 3,000.00
- 291 ★ **5c Bright Blue Special Printing (181).** Rich Color, Very Fine, with P. F. Certificate, Handsome Copy of this Great Rarity, Ex Caspary (Photo) 3,500.00



266



268



269



270



271



272



273



274



275



276



277



278



279



280



281



282



283



284



285



288



289



290



294



297



299



300

1879 AMERICAN BANKNOTE ISSUE

292 ★	3c Green Imperforate (184a). Horiz. Pair, Large Margins, bare trace of crease in one, paper faintly aged, pinpoint margin scuff, otherwise Extremely Fine, listed but unpriced in Scott	(Photo)	—
293 ★	10c Brown (188). Fresh, o. g., microscopic natural speck, V. F. (Photo)		45.00
294 ★	15c-30c 1879-88 Issues (189-190, 217). Vivid Colors, fresh, o. g., negligible tiny flaws, Fine-Very Fine appearance		92.50
295 ★	30c Full Black (190). Wonderful Color, fresh, full o. g., Extremely Fine (Photo)		47.50
296 ★	90c Dark Carmine (191). Marvelous Rich Color, fresh, o. g., Extremely Fine	(Photo)	125.00
297 ★	90c Carmine (191). Gorgeous Rich Color, fresh, full o. g., trivial thin speck in one perf., otherwise Extremely Fine	(Photo)	125.00
298 ★	90c Carmine, Imperforate (191b). Horiz. Pair, Lovely Rich Color, Large Margins, o. g., Extremely Fine, Ex Caspary, A Rare & Handsome Pair (Photo)		700.00

SPECIAL PRINTINGS OF 1880

299	300	301	302
303	304	305	306



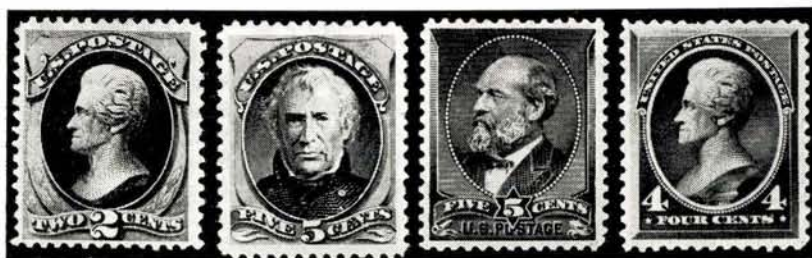
307

308

309

299 ★	1c Dark Ultramarine Special Printing (192). Gorgeous Vivid Color, fresh, Very Fine, with P. F. Certificate	(Photo)	1,800.00
-------	--	---------	----------

- 300 ★ **2c Black Brown Special Printing (193).** Glorious Color, centered, fresh, one perf. bit blunt, otherwise Extremely Fine, with P. F. Certificate (Photo) 1,350.00
- 301 ★ **3c Blue Green Special Printing (194).** Vivid Color, fresh, Very Fine, with P. F. Certificate (Photo) 1,900.00
- 302 ★ **6c Dull Rose Special Printing (195).** Rich Color, centered bit to L. L., Very Fine, with P. F. Certificate (Photo) 1,350.00
- 303 ★ **7c Scarlet Vermilion Special Printing (196).** Vivid Color, Very Fine, with P. F. Certificate (Photo) 850.00
- 304 ★ **10c Deep Brown Special Printing (197).** Wonderful Vivid Color, fresh, one perf. trifle blunt, otherwise Extremely Fine with P. F. Certificate (Photo) 1,600.00
- 305 ★ **12c Blackish Purple Special Printing (198).** Large Margins, Beautiful Rich Color, light bent corner perf., otherwise Extremely Fine, with P. F. Certificate (Photo) 1,350.00
- 306 ★ **15c Orange Special Printing (199).** Vivid Color, centered, fresh, Extremely Fine, with P. F. Certificate (Photo) 1,350.00
- 307 ★ **24c Dark Violet Special Printing (200).** Magnificent Rich Color, Extremely Fine, with P. F. Certificate (Photo) 550.00
- 308 ★ **30c Greenish Black Special Printing (201).** Centered, Rich Color, Extremely Fine, with P. F. Certificate (Photo) 1,200.00
- 309 ★ **90c Dull Carmine Special Printing (202).** Gorgeous Rich Color, Extremely Fine, with P. F. Certificate, Ex Caspary (Photo) 1,350.00



310

311

312

315

- 310 ★ **2c Scarlet Vermilion Special Printing (203).** Brilliant Color, fresh, Very Fine, with P. F. Certificate (Photo) 2,850.00
- 311 ★ **5c Deep Blue Special Printing (204).** Centered, Wonderful Rich Color, fresh, Extremely Fine, with P. F. Certificate (Photo) 3,250.00
- 312 ★ **5c Gray Brown Special Printing (205c).** Centered, Rich Color & Impression, Extremely Fine, with A. P. S. & P. F. Certificates (Photo) 3,000.00
- 313 ★ **2c Red Brown, Special Printing (211B).** Vivid Color, fresh, o. g., tiny marginal thin specks, Very Fine appearance (Photo) 115.00
- 314 ★ **2c Pale Red Brown Special Printing, Imperforate Between (211Bc).** Horiz. Pair, Vivid Color, fresh, full o. g., 2 perfs bit nibbed, tiny thin spots, Very Fine appearance (Photo) 385.00

- 315 ★ **4c Deep Blue Green Special Printing (211D).** Centered, Rich Color, one perf. trifle blunt, otherwise Extremely Fine, with A. P. S. & P. F. Certificates (Photo) 2,750.00
- 316 ★ **2c Green, Imperforate (213a).** Horiz. Strip of Three, Vivid Color, trivial thin specks, Extremely Fine appearance, Rare (Photo) 525.00
- 317 ★ **5c Indigo, Imperforate (216b).** Horiz. Pair, fresh, full o. g., one has pinpoint thin speck, otherwise Extremely Fine, a Handsome & Very Scarce Pair (Photo) 300.00
- 318 ★ **30c Orange Brown (217).** Lovely Deep Rich Color, Very Fine (Photo) 30.00
- 319 ★ **30c Orange Brown, Imperforate (217a).** Horiz. Pair, Large Margins, fresh, o. g., small thin in one, Very Fine appearance (Photo) 300.00

1890 ISSUE

- 320 ★ **1c-90c 1890 Issue (219-229).** Cpl. Set, Extra Shade of 10c & 2c with Cap on Left 2, o. g., some have small faults, Good-Very Fine Set 132.40
- 321 ★ **3c Bright Purple, Imperforate (221a).** Vertical Sheet Margin Pair, fresh, o. g., Extremely Fine (Photo) 70.00
- 322 ★ **4c Brown, 10c Green, Imperforate (222a, 226a).** Horiz. & Vertical Pairs, two stamps have small thins, one has tiny tear, otherwise fresh, o. g., Extremely Fine 155.00
- 323 ★ **6c Brown Red Imperforate (224a).** Vertical Sheet Margin Pair, fresh, o. g., Extremely Fine (Photo) 70.00
- 324 ★ **15c Indigo, Imperforate (227a).** Vertical Sheet Margin Pair, fresh, o. g., small thins, Extremely Fine appearance (Photo) 95.00
- 325 ★ **30c Black, Imperforate (228a).** Horiz. Pair, fresh, o. g., small thin, Extremely Fine appearance (Photo) 185.00
- 326 ★ **90c Orange Imperforate (229a).** Horiz. Pair, fresh, o. g., Very Fine (Photo) 350.00

COLUMBIAN ISSUE

- 327 ★ **1c-10c Columbians (230-237).** Fresh, o. g., Very Fine 55.15
- 328 ★ **1c-10c Columbians (230-237).** Fresh, o. g., 5c, 6c bit off center, others V. F. 55.15
- 329 ★ **1c-10c Columbians (230-237).** Fresh, o. g., two have trivial thins, otherwise Very Fine 55.15
- 330 ★ **1c-10c Columbians (230-237).** 28 stamps o. g. most have small thins, Fine-Very Fine appearance 169.15



- 331 ★ **4c Blue Columbian Error (233a)**. Wonderful Color, unusually well centered, fresh, o. g., trivial pinpoint thin speck, otherwise Extremely Fine, a choice copy of this popular Rarity **(Photo)** 3,000.00
- 332 ★ **15c Columbian (238)**. Magnificent Rich Color, fresh, o. g., Extremely Fine 21.50
- 333 ★ **15c, 30c Columbian (238, 239)**. Rich Pretty Colors, fresh, o. g., first has slightly short perf., other tiny margin crease, otherwise Very Fine 49.00
- 334 ★ **50c Columbian (240)**. Fresh, o. g., Very Fine **(Photo)** 48.50
- 335 ★ **\$1.00 Columbian (241)**. Centered, brilliant color, fresh, o. g., light natural gum bends, Extremely Fine **(Photo)** 125.00
- 336 ★ **\$1.00 Columbian (241)**. Fresh, o. g., small thins, Very Fine appearance **(Photo)** 125.00
- 337 ★ **\$2.00 Columbian (242)**. Centered, Extraordinary Rich Color, minute thin & light natural gum creases, Extremely Fine appearance **(Photo)** 135.00
- 338 ★ **\$3.00 Columbian (243)**. Vivid Color, fresh, o. g., pinpoint thin speck, otherwise Extremely Fine **(Photo)** 190.00
- 339 ★ **\$3.00 Columbian (243)**. Centered, Magnificent Color, fresh, o. g., trivial tiny thins, Extremely Fine appearance **(Photo)** 190.00
- 340 ★ **\$3.00 Columbian (243)**. Fresh, o. g., couple perfs a trifle blunt, otherwise Very Fine **(Photo)** 190.00
- 341 ★ **\$4.00 Columbian (244)**. Centered, Rich Pretty Color, fresh, full o. g., marginal pinpoint thin speck, otherwise Extremely Fine **(Photo)** 225.00
- 342 ★ **\$4.00 Columbian (244)**. Huge Margins, Marvelous Color, fresh, o. g., very trivial surface rub, otherwise Extremely Fine **(Photo)** 225.00
- 343 ★ **\$4.00 Columbian (244)**. Magnificent Color, minute natural paper spot, otherwise Extremely Fine **(Photo)** 225.00
- 344 ★ **\$5.00 Columbian (245)**. Large Margins, Gorgeous Color & Impression, fresh, large part o. g., Extremely Fine **(Photo)** 250.00
- 345 ★ **\$5.00 Columbian (245)**. Centered, Rich Color, fresh, o. g., trivial thin specks, Extremely Fine appearance **(Photo)** 250.00

1894 ISSUE

- 346 ★ **1c-15c 1894-98 Issues (Betw. 246-284)**. 63 stamps, mostly diff., incl. a few multiples, fresh, o. g., few small faults, balance mostly F.-V. F. 219.40
- 347 ★ **50c Orange (260)**. Fresh, o. g., Extremely Fine 23.50

- 348 ★ **\$1.00 Black Ty. I (261A).** Lovely Intense Color, fresh, o. g., tiny thin, Extremely Fine appearance (Photo) 110.00
- 349 ★ **\$5.00 Deep Green (263).** Fresh, o. g., Very Fine (Photo) 240.00

1895 ISSUE

- 350 ★ **6c Claret Brown, USIR wmk. (271a).** Horiz. Pair, Vivid Color, sheet centerline at L., fresh, o. g., Fine, A Great Rarity (Photo) 800.00+
- 351 ★ **8c Violet Brown USIR wmk. (272a).** Top Impt. Plate No. Strip of 3, Glorious Vivid Color, fresh, o. g., Extremely Fine, Unique Gem, Ex Stephen Brown (Photo) 1,000.00
- 352 ★ **8c Violet Brown, Imperforate (272b).** Horiz. Pair, fresh, o. g., Extremely Fine (Photo) 85.00
- 353 ★ **50c Orange, Red Orange (275, 275a).** Latter bit oxidized, fresh, o. g., V. F. 53.50
- 354 ★ **\$1.00 Black Ty. I (276).** Intense Color, faint trivial thins, V. F. appearance 65.00
- 355 ★ **\$1.00 Black Ty. II (276A).** Intense Color, fresh, trivial tiny internal wrinkle, otherwise Very Fine (Photo) 145.00
- 356 ★ **\$2.00 Dark Blue (277).** Magnificent Color, fresh, o. g., Very Fine (Photo) 82.50
- 357 ★ **\$2.00 Bright Blue (277a).** Lovely Color, fresh, o. g., one perf. trifle blunt, otherwise Extremely Fine (Photo) 82.50
- 358 ★ **\$5.00 Deep Green (278).** Fresh, full o. g., trivial natural wrinkle at B., otherwise Very Fine (Photo) 180.00
- 359 ★ **\$5.00 Dark Green (278).** Fresh, o. g., two blunt perfs, minute thin, Fine appearance (Photo) 180.00
- 360 ★ **\$5.00 Dark Green (278).** Fresh, o. g., tiny thin, Fine appearance (Photo) 180.00
- 361 ★ **2c Carmine Booklet Pane (279Be).** Horiz. Line, o. g., Very Good-Very Fine 33.50

TRANS-MISSISSIPPI ISSUE

- 362 ★ **1c-10c Trans-Mississippi (285-290).** Fresh, o. g., Very Fine 77.25
- 363 ★ **50c Trans-Mississippi (291).** Fresh, o. g., Extremely Fine (Photo) 80.00
- 364 ★ **50c Trans-Mississippi (291).** Fresh, o. g., small thin, V. F. appearance (Photo) 80.00
- 365 ★ **\$1.00 Trans-Mississippi (292).** Vivid Color, fresh, o. g., minute thin speck, Extremely Fine appearance (Photo) 165.00
- 366 ★ **\$2.00 Trans-Mississippi (293).** Unusually Rich Color, fresh, o. g., initials & date in ink on reverse, Very Fine (Photo) 225.00
- 367 ★ **\$2.00 Trans-Mississippi (293).** Fresh, o. g., trivial thin speck in one perf., otherwise Fine (Photo) 225.00

OFFICIALS

- 368 ★ **1c-30c Yellow Agriculture Dept. (01-09).** Cpl. Set, all o. g. but 3c, 12c touched at B., 24c tiny crease, otherwise Fine-Very Fine Set 87.00
- 369 ★ 1c-6c Yellow Agriculture Dept. (01-04). Blocks, fresh, o. g., F.-V. F. 120.00



318



334



335



336



337



338



339



340



341



342



343



344



345



348



350



352



349



355



356



357



358



363



359



360



364



365



366



367



393



394



397



398



409



446



453



458



461



463

370	★	10c Yellow Agriculture Dept. (05). Block, Brilliant Color, fresh, o. g., perfs. just touch at L., Scarce Block	100.00
371	★	12c Yellow Agriculture Dept. (06). Block, Brilliant Color, fresh, o. g., Fine, A Very Scarce Block	(Photo) 150.00
372	★	15c Yellow Agriculture Dept. (07). Block, Rich Color, fresh, o. g., V. F. (Photo)	85.00
373	★	24c Yellow Agriculture Dept. (08). Block, Lovely Color, fresh, o. g., Fine	75.00
374	★	30c Yellow Agriculture Dept. (09). Block, Vivid Color, fresh, o. g., Fine-Very Fine. A Very Handsome Block	(Photo) 100.00
375	★	1c Carmine Executive Dept. (010). Horiz. Block of Six, Vivid Color, Centered to L. R., faint horiz. crease in top stamps, Largest Known Block and only one block of 4 known, one of the most Desirable Departmental Pieces Known	(Photo) 2,565.00+
376	★	1c, 2c, 6c Carmine Executive Dept. (010-011, 013). Vivid Colors, fresh, o. g., two have one slightly blunt perf., otherwise Very Fine	96.00
377	★	2c Deep Carmine Executive Dept. (011). Vivid Color, fresh, o. g., V. F.	23.50
378	★	2c Deep Carmine Executive Dept. (011). Block, Brilliant Rich Color, fresh, full o. g., Just Fine. A Rare Block	(Photo) 325.00
379	★	3c Violet Rose Executive Dept. (012). Block, Rich Color, small part o. g., Very Good-Fine. Very Scarce	(Photo) 150.00
380	★	6c Carmine Executive Dept. (013). Block, o. g., faults, Very Good-Fine appearance, Rare	(Photo) 500.00
381	★	10c Carmine Executive Dept. (014). Block, Brilliant Color, fresh, o. g., Just Fine. A Very Rare Block	(Photo) 500.00
382	★	1c-24c Vermilion Interior Dept. (015-022). Blocks, fresh, o. g., Vivid Colors, latter few short perfs., otherwise nearly all Fine-Very Fine	129.75
383	★	1c-90c Departments (Betw. 015-0119). 25 diff., fresh, o. g., almost entirely Very Fine	84.60
384	★	1c-30c Departmentals (Betw. 020-0119). Eighteen stamps, dups., mostly o. g., some small faults, Good-Fine	57.30
385	★	24c, 30c Vermilion Interior Dept. (022-023). Blocks, Vivid Colors, fresh, o. g., Fine-Very Fine	57.50
386	★	90c Bright Vermilion Interior Dept. (024). Block, Vivid Color, fresh, o. g., Very Fine. A Lovely Block	(Photo) 135.00
387	★	1c-24c Purple Justice Dept. (025-032). Fresh, o. g., 6c, 10c, 24c have minor faults, others Fine-Very Fine	84.25
388	★	1c-6c Purple Justice Dept. (025, 027-028). Blocks, fresh, o. g., V. G.-V. F.	117.50
389	★	2c Purple Justice Dept. (026). Horiz. Block of 8, Vivid Color, fresh, o. g., Very Fine. A Lovely Block	120.00
390	★	10c Purple Justice Dept. (029). Block, Lovely Color, fresh, o. g., F.-V. F. (Photo)	100.00
391	★	12c Purple Justice Dept. (030). Block, Lovely Color, fresh, o. g., V. F.	60.00
392	★	12c Purple Justice Dept. (030). Horiz. Block of Six, Vivid Color, fresh, o. g., Very Good-Very Fine	67.00+



351



464



323



321



325



422



424



425



427



428



429



430



371



372



375



374



378



379



380



381



386



390



399

393	★	30c Purple Justice Dept. (033). Fresh, o. g., Very Fine	(Photo)	33.50
394	★	90c Purple Justice Dept. (034). Fresh, o. g., Extremely Fine	(Photo)	60.00
395	★	1c-90c Ultramarine Navy Dept. (035-045). Cpl. Set, Fresh, all o. g. but one, few trivial faults, balance, Fine-Very Fine		105.50
396	★田	1c, 12c Ultramarine Navy Dept. (035, 041). Blocks, fresh, o. g., F.-V. F.		52.50
397	★	2c Green Navy Dept. Error (036b). Fresh, o. g., Very Good	(Photo)	100.00
398	★	2c Deep Green Navy Dept. Error, Imperforate (036b var.). Horiz. Pair, Magnificent Color, large margins, fresh, o. g., negligible tiny creases in R. margin, otherwise Extremely Fine, Handsome Example of this Rarity, listed but unpriced in Scott	(Photo)	—
399	★田	2c Deep Green Navy Dept. Error on Pinkish (036b). Block, unusually Deep Rich Color, Fine, listed but unpriced in Scott	(Photo)	400.00+
400	★田	3c Ultramarine Navy Dept. (037). Block of Fifteen (5X3), fresh, o. g., Very Good-Very Fine, most Attractive		64.50+
401	★	7c Ultramarine Navy Dept. (039). Huge margins, o. g., Very Fine		27.50
402	★田	7c Ultramarine Navy Dept. (039). Block, fresh, o. g., few short perfs, otherwise Very Good-Fine	(Photo)	200.00
403	★田	10c Ultramarine Navy Dept. (040). Block, Vivid Color, fresh, o. g., V. F.		75.00
404	★田	6c-12c Departments (041, 077, 087, 0110). Blocks, Fresh, o. g. except 7c War Dept. only part o. g., Fine-Very Fine		100.00
405	★田	15c Ultramarine Navy Dept. (042). Block, fresh, o. g., Very Fine (Photo)		75.00
406	★田	24c Dark Ultramarine Navy Dept. (043). Block, Vivid Color, fresh, o. g., small natural thin in one, otherwise Fine-Very Fine	(Photo)	150.00
407	★田	30c Ultramarine Navy Dept. (044). Block, Rich Color, fresh, o. g., V. F.	(Photo)	100.00
408	★	1c-90c Black P. O. Dept. (047-056). Two Complete Sets, almost all o. g., fresh, couple trivial faults, mostly Fine-Very Fine		47.70
409	★	2c Black Post Office, Double Impression (048a). Very Fine, listed but unpriced in Scott	(Photo)	—
410	★田	10c-90c Black P. O. Dept. (051, 053-056). Blocks, last is Horiz. Block of 6, faint horiz. crease at T. of 90c, couple trivial gum stains, otherwise Fine-Very Fine		127.00
411	★田	10c-90c Black P. O. Dept. (051, 053-056). Blocks, fresh, o. g., F.-V. F.		120.00
412	★田	1c Dark Green State Dept. (057). Block of Nine, marvellous Color, fresh, o. g., Very Good-Very Fine		91.25+
413	★	1c-90c Green State Dept. (057-067). Cpl. set, fresh, o. g., Fine-Very Fine		98.00
414	★	1c-30c Green State Dept. (057-066). Fresh, all o. g. but three, 1c, 2c have tiny faults, otherwise Fine-Very Fine		68.00
415	★田	3c, 6c Green State Dept. (059, 060a). Blocks of Nine, Rich Colors, fresh, o. g., Very Good-Very Fine		75.00
416	★田	7c Dark Green State Dept. (061). Block of Nine, fresh, o. g., V. G.-F., Very Scarce		222.50+

417	★	10c Dark Green State Dept. (O62). Block of Nine, fresh, o. g., Fine	116.25+
418	★	12c Dark Green State Dept. (O63). Block of nine, Vivid Color, fresh, o. g., Very Fine. A Remarkable Block	(Photo) 160.00+
419	★	12c Dark Green State Dept. (O63). Block, Vivid Color, fresh, o. g., Fine-Very Fine. Scarce & Handsome	(Photo) 125.00
420	★	15c Dark Green State Dept. (O64). Horiz. Block of Eight, Vivid Color, fresh, o. g., Fine. A Marvelous Block	(Photo) 350.00
421	★	24c Dark Green State Dept. (O65). Block, Rich Color, fresh, o. g., V. F. Rare & Handsome	(Photo) 250.00
422	★	\$2.00 Green & Black State Dept. (O68). Fresh, o. g., Extremely Fine	(Photo) 60.00
423	★	\$2.00 Green & Black State Dept. (O68). Fresh, o. g., barely touched at L., Just Fine	60.00
424	★	\$5.00 Dark Green & Black State Dept. (O69). Wonderful Colors, fresh, o. g., Fine	(Photo) 400.00
425	★	\$5.00 Green & Black State Dept. (O69). Fresh, o. g., couple nibbed perfs., otherwise Just Fine	(Photo) 400.00
426	★	\$10.00 Green & Black State Dept. (O70). Centered Block with Black Imprint, Markers & Part Green Impt., fresh, o. g., Very Fine. A Rare & Beautiful Block	(Photo) 1,500.00
427	★	\$10.00 Dark Green & Black State Dept. (O70). Magnificent Rich Colors, fresh, o. g., one perf. a trifle blunt, otherwise Extremely Fine	(Photo) 235.00
428	★	\$10.00 Green & Black State Dept. (O70). Fresh, o. g., perfs barely touched at R., Just Fine	(Photo) 235.00
429	★	\$20.00 Dark Green & Black State Dept. (O71). Wonderful Color, fresh, o. g., Very Fine. A Gorgeous Copy	(Photo) 185.00
430	★	\$20.00 Dark Green & Black State Dept. (O71). Huge margin, Gorgeous Color, fresh, o. g., few short perfs., otherwise Extremely Fine	(Photo) 185.00
431	★	1c-90c Brown Treasury Dept. (O72-O82). Cpl. set, fresh, o. g., couple tiny faults, balance almost entirely Very Fine	47.75
432	★	7c Brown Treasury Dept. (O76). Block, fresh, o. g., Very Fine	30.00
433	★	24c Brown Treasury Dept. (O80). Block, fresh, o. g., F.-V. F.	(Photo) 200.00
434	★	24c Brown Treasury Dept. (O80). Block, fresh, o. g., Fine	(Photo) 200.00
435	★	30c Brown Treasury Dept. (O81). Block, Brilliant color, fresh, o. g., trivial wrinkle at B., Just Fine-Very Fine	40.00
436	★	30c, 90c Brown Treasury Dept. (O81-O82). Blocks, fresh, o. g., F.-V. F.	80.00
437	★	1c Rose War Dept. (O83). Block, Vivid Color, fresh, o. g., one has tiny interior tear, otherwise Very Fine	85.00
438	★	1c-90c War Dept. (O83-O93). Cpl. set, fresh, o. g., few tiny faults, balance Fine-Very Fine	62.05
439	★	2c Rose War Dept. (O84). Margin Block of 4 with part impt., fresh, o. g., Fine	100.00
440	★	2c Rose War Dept. (O84). Block, Vivid Color, fresh, o. g., V. G.-V. F.	100.00



402



405



406



407



419



420



421



418



433



434



441



442



447



455



426



459



462



465

441	★	3c Rose War Dept. (O85). Block, fresh, o. g., Just Fine	(Photo)	125.00
442	★	6c Rose War Dept. (O86). Block, fresh, o. g., one has black specks & trivial rub on bust, otherwise Fine, A Very Scarce Block	(Photo)	150.00
443	★	7c Rose War Dept. (O87). Horiz. Block of Eight, fresh, o. g., F.-V. F.		60.00+
444	★	12c Rose War Dept. (O89). Block, fresh, o. g., Fine-Very Fine		75.00
445	★	30c Rose Red War Dept. (O92). B. Impt. Plate No. Block of Forty, fresh, o. g., Fine-Very Fine		50.00+
446	★	1c Yellow Agriculture (O94). Fresh, centered trifle to R., V. F.	(Photo)	175.00
447	★	1c Yellow Agriculture (O94). Block, Vivid Color, Very Fine, A Rare & Lovely Block	(Photo)	1,000.00
448	★	3c Yellow Agriculture (O95). Block, fresh, o. g., Vivid Color, minor gum wrinkles, one has trivial, one has trivial marginal thin speck, otherwise Fine-Very Fine		100.00
449	★	3c Yellow Agriculture Dept. (O95). Block of Eighteen (6X3) Vivid Color, fresh, o. g., Fine-Very Fine. A Rare & Spectacular Block		420.00+
450	★	1c-30c Soft Paper Depts. (Betw. O95-O120). Nineteen diff., all o. g. but one, few trivial faults, majority Fine-Very Fine		95.00
451	★	1c Vermilion Interior Dept. (O96). Block, fresh, o. g., pinpoint gum soaks, otherwise Very Fine		60.00
452	★	1c, 10c Vermilion (O96, O100). Blocks of 4 & 6, fresh, o. g., slightly reinforced, one 10c has tiny scuff, otherwise Fine-Very Fine		92.50
453	★	24c Vermilion Interior Dept. (O103). Fresh, o. g., trivial margin bend, otherwise Fine	(Photo)	125.00
454	★	24c Vermilion Interior Dept. (O103). Fresh o. g., Very Good		125.00
455	★	24c Vermilion Interior Dept. (O103). Block, fresh, o. g., V. G., Rare	(Photo)	600.00
456	★	3c Justice, Treasury Depts. (O106, O109). Blocks, fresh, o. g., two of first, one of latter have tiny thins, otherwise Very Good-Very Fine		65.00
457	★	6c Bluish Purple Justice Dept. (O107). Block, fresh, o. g., Fine		60.00
458	★	30c Brown Treasury Dept. (O112). Fresh, o. g., Very Fine	(Photo)	75.00
459	★	30c Brown Treasury (O112). Block, fresh, o. g., Fine-Very Fine, A Rare & Beautiful block	(Photo)	400.00
460	★	30c Brown Treasury Dept. (O112). Block, fresh, o. g., small thin at T., few perfs clipped at L. L., otherwise Fine, Rare Block		400.00
461	★	90c Brown Treasury Dept. (O113). Vivid Color, fresh, o. g., two minute natural black paper specks, Fine	(Photo)	70.00
462	★	90c Brown Treasury Dept. (O113). Block, fresh, o. g., two have tiny thins, otherwise Very Good-Fine, Rare	(Photo)	500.00
463	★	3c War Department Double Print (O116 var.). Extremely Fine, unlisted in Scott, Rare	(Photo)	—
464	★	3c Rose Red War Dept., Imperforate (O116a). Vertical Pair, Large Margins, Rich Color, small thins in top stamp, otherwise Extremely Fine and Rare	(Photo)	350.00
465	★	3c Rose Red War Dept. Imperforate (O116a). Block, large margins, o. g., small thins, mostly in margins, otherwise Extremely Fine & Rare	(Photo)	700.00+

END OF SALE — THANK YOU

THE JOSIAH K. LILLY COLLECTION

SCHEDULE

(All sales will be held at the Waldorf-Astoria Hotel)

<i>Sale II</i>	Great Britain & British Commonwealth <i>Wednesday and Thursday, March 15-16, 1967</i>	(4 sessions)
<i>Sale III</i>	Confederate States and U. S. Possessions <i>Thursday, April 27, 1967</i>	(2 sessions)
<i>Sale IV</i>	General Foreign <i>Thursday and Friday, June 8-9, 1967</i>	(4 sessions)
<i>Sale V</i>	U. S. Proofs, Encased Postage, Stamp Currency, Locals and Carriers <i>Wednesday and Thursday, September 13-14, 1967</i>	(3 sessions)
<i>Sale VI</i>	General Foreign <i>Monday and Tuesday, November 20-21, 1967</i>	(4 sessions)
<i>Sale VII</i>	United States 19th & 20th Century <i>Wednesday and Thursday, January 24-25, 1968</i>	(4 sessions)
<i>Sale VIII</i>	British Commonwealth <i>March, 1968</i>	(4 sessions)
<i>Sale IX</i>	U. S. Revenues, Envelopes, Telegraphs <i>May, 1968</i>	(4 sessions)
<i>Sale X</i>	Latin America <i>June, 1968</i>	(3 sessions)

Robert A. Siegel
SAUCTIONS

10 EAST 52nd STREET NEW YORK, N. Y. 10022

PRICES REALIZED FOR SALE 312---February 02, 1967

The Josiah K. Lilly Collection, Part One

Robert A. Siegel Auction Galleries, Inc.
60 East 56th Street, 4th Floor, New York, NY 10022
Tel (212) 753-6421 Fax (212) 753-6429

Lot#	Realized	Lot#	Realized	Lot#	Realized	Lot#	Realized	Lot#	Realized	Lot#	Realized	Lot#	Realized	Lot#	Realized
1	6,000	43	1,350	85	100	127	900	169	80	211	400	253	95	295	210
2	11,500	44	450	86	85	128	16,000	170	650	212	280	254	240	296	300
3	18,500	45	425	87	550	129	1,550	171	130	213	5,250	255	1,300	297	170
4	25,000	46	1,600	88	67	130	340	172	95	214	230	256	200	298	800
5	7,200	47	110	89	75	131	320	173	175	215	250	257	290	299	1,750
6	19,000	48	440	90	60	132	5,250	174	70	216	35,000	258	210	300	1,450
7	6,250	49	450	91	220	133	7,000	175	625	217	400	259	38	301	2,800
8	29,000	50	2,600	92	950	134	5,750	176	900	218	240	260	40	302	1,400
9	2,000	51	1,550	93	110	135	800	177	140	219	4,200	261	160	303	700
10	1,700	52	110	94	200	136	1,050	178	190	220	400	262	105	304	1,900
11	1,500	53	240	95	170	137	135	179	460	221	5,250	263	50	305	1,400
12	1,700	54	220	96	50	138	1,000	180	34	222	625	264	50	306	1,900
13	1,900	55	525	97	85	139	1,400	181	45	223	5,250	265	47	307	650
14	4,200	56	1,800	98	170	140	110	182	300	224	32	266	525	308	160
15	6,500	57	77	99	280	141	1,800	183	575	225	50	267	120	309	1,800
16	5,000	58	105	100	450	142	300	184	230	226	525	268	230	310	4,000
17	14,000	59	160	101	110	143	270	185	85	227	170	269	200	311	6,750
18	425	60	150	102	1,400	144	500	186	800	228	125	270	150	312	6,500
19	34,000	61	230	103	90	145	120	187	32	229	75	271	85	313	70
20	23,000	62	625	104	250	146	62	188	300	230	500	272	90	314	220
21	90	63	2,900	105	52	147	90	189	250	231	200	273	140	315	4,000
22	280	64	1,250	106	90	148	200	190	360	232	190	274	95	316	290
23	200	65	550	107	75	149	240	191	575	233	165	275	80	317	225
24	90	66	115	108	45	150	130	192	210	234	550	276	900	318	26
25	575	67	175	109	210	151	60	193	280	235	105	277	450	319	200
26	180	68	110	110	320	152	105	194	260	236	150	278	1,400	320	70
27	525	69	57	111	150	153	600	195	400	237	240	279	1,050	321	85
28	600	70	37	112	28	154	115	196	1,300	238	70	280	850	322	75
29	150	71	62	113	150	155	95	197	475	239	170	281	950	323	75
30	525	72	110	114	400	156	105	198	52	240	180	282	600	324	95
31	45	73	400	115	110	157	1,200	199	5,250	241	675	283	900	325	160
32	45	74	2,000	116	80	158	130	200	35	242	425	284	2,400	326	270
33	50	75	290	117	300	159	42	201	115	243	105	285	1,050	327	62
34	52	76	350	118	105	160	1,450	202	21	244	70	286	950	328	40
35	220	77	675	119	230	161	105	203	5,250	245	85	287	210	329	32
36	1,200	78	425	120	220	162	250	204	210	246	34	288	40	330	50
37	210	79	700	121	170	163	675	205	105	247	85	289	52	331	2,300
38	160	80	70	122	525	164	145	206	210	248	125	290	6,000	332	28
39	5,000	81	62	123	425	165	380	207	70	249	110	291	7,500	333	42
40	4,400	82	250	124	5,500	166	175	208	75	250	135	292	140	334	55
41	5,000	83	130	125	110	167	150	209	47	251	160	293	105	335	185
42	3,600	84	190	126	2,600	168	170	210	5,250	252	105	294	34	336	62

PRICES REALIZED FOR SALE 312---February 02, 1967

The Josiah K. Lilly Collection, Part One

Robert A. Siegel Auction Galleries, Inc.
60 East 56th Street, 4th Floor, New York, NY 10022
Tel (212) 753-6421 Fax (212) 753-6429

Lot#	Realized	Lot#	Realized	Lot#	Realized	Lot#	Realized
337	105	379	60	421	220	463	125
338	150	380	125	422	60	464	140
339	145	381	270	423	23	465	340
340	140	382	70	424	325		
341	190	383	55	425	260		
342	180	384	12	426	1,000		
343	160	385	13	427	235		
344	375	386	170	428	150		
345	190	387	62	429	190		
346	100	388	40	430	155		
347	47	389	80	431	57		
348	70	390	55	432	21		
349	290	391	36	433	70		
350	360	392	30	434	62		
351	1,700	393	42	435	8		
352	95	394	80	436	37		
353	45	395	87	437	18		
354	36	396	21	438	75		
355	120	397	70	439	22		
356	135	398	280	440	17		
357	95	399	280	441	27		
358	190	400	14	442	50		
359	90	401	38	443	18		
360	67	402	155	444	21		
361	17	403	23	445	26		
362	65	404	34	446	135		
363	95	405	45	447	675		
364	40	406	120	448	45		
365	120	407	34	449	250		
366	260	408	52	450	67		
367	125	409	47	451	21		
368	80	410	36	452	24		
369	70	411	34	453	90		
370	29	412	80	454	80		
371	60	413	85	455	160		
372	50	414	23	456	15		
373	27	415	20	457	42		
374	62	416	125	458	85		
375	850	417	29	459	240		
376	50	418	180	460	70		
377	25	419	60	461	45		
378	125	420	210	462	140		