

# RARITIES

of the

# World

*Robert A. Siegel*  
**AUCTIONS**

10 EAST 52nd STREET NEW YORK, N. Y. 10022



## FEBRUARY 23rd, 1967

**ROBERT A. SIEGEL AUCTION GALLERIES, Inc.**  
10 East 52nd Street  
New York, N. Y. 10022  
Tel.: PLaza 3-6422 (Area Code 212)

Please purchase for me at your auction to be held **February 23rd, 1967** the lots named below, the prices annexed being my limit on each lot. I agree to remit for purchases in accordance with the **Conditions of Sale** and to return no lots later than three days after receipt.

REFERENCES PLEASE  
(if unknown to us)

SIGNED

New York State residents kindly include  
County in address.

County

[illegible]

Upon request, estimate of value furnished on any lots in this auction.

## *RARITIES OF THE WORLD*

We are pleased to present our fourth annual Rarities of the World Auction. A total of 837 lots have been offered in the four Rarity Sales including this one. The gross of the four sales will be approximately One Million Dollars. Surely a record shattering average for any four sessions of stamps ever sold! The total gross certainly attests to the many valuable and quality items offered in these sales.

Again this year the Rarity Auction offers many outstanding items and philatelic showpieces. The property of various owners including another consignment to be sold for Williams College. Highlights in the United States includes scarce Postmasters' Provisionals, a block of ten of the 5c 1847 Issue, a 1c 1851 Type 1 in a strip on cover, the 24c and 30c 1869 Pictorials on covers, various scarce values of the 1861 August Issue and the Banknote Special Printings, blocks of the high values of the 1893-1903 Issues, all the Pan American inverted centers including a block of the 1c value, a remarkable lot of scarce Western covers with several Pony Express covers, rare Confederate States, and four Hawaii Missionaries. The general foreign includes the rare 12p Black Canada, a scarce group of Israel tab blocks and varieties, the Newfoundland De Pinedo Airpost on cover, and desirable early European blocks and covers.

Color slides of each lot will again be shown during the auction to be held at the Louis XVI Suite, Waldorf-Astoria Hotel (Fiftieth Street and Park Avenue). Refreshments will be served following the auction. As in the past, seating reservations, while not required, are recommended and may be made at our office prior to the sale.

1966 has proved to be another record breaking year with our auction sales alone totaling \$1,645,259. Many fine properties are scheduled for sale this year including sections of The Josiah K. Lilly Collection of the world. This fabulous collection will probably realize more than any other collection ever sold in the United States.

We would like to take this opportunity to thank our many friends for making the above records possible.



Robert A. Siegel Auction Galleries, Inc.

313th SALE

**RARITIES  
OF THE  
WORLD**

AT PUBLIC AUCTION

Thursday

FEBRUARY 23rd, 1967

AT 7:45 P.M.

*At the Waldorf-Astoria Hotel*

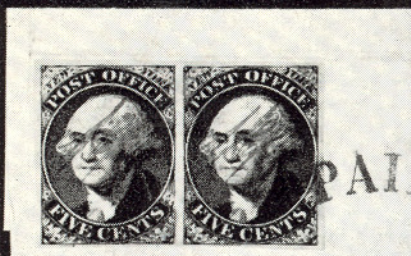
LOUIS XVI SUITE, PARK AVENUE AND 50th STREET

*Robert A. Siegel*  
**SAUCTIONS**

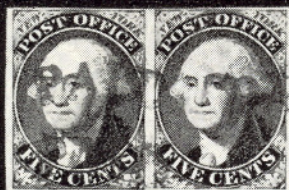
10 EAST 52nd STREET NEW YORK, N.Y. 10022

Tel: 212 PLaza 3-6422

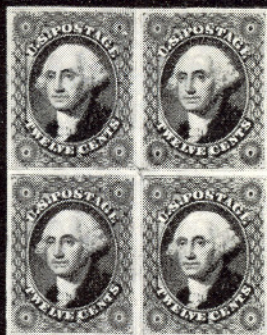




2



3



19



29



10



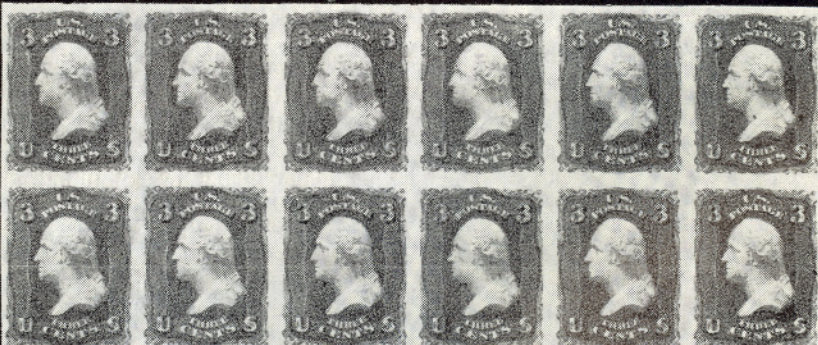
4



37



38



35


ENGRAVED BY THE NATIONAL BANK NOTE COMPANY, CITY OF NEW YORK.

No. 34 Plate.



# UNITED STATES

## POSTMASTERS' PROVISIONALS

- 1  **Paid** in Bold Red 47x23mm Box on Blue Label, Portion of Clear Blue Baltimore pmk. on neat folded Dec. 1846 letter to N. Y. with clear matching Dec. 2 pmk. and matching "5" in Oval, Very Fine, The finer of the two Known Examples of this Rare Cover ..... E. XIII
- 2 **New York 5c Black (9X1)**. Horiz. Pair, margins all around, tied on small piece with Red "Paid" in Arc cancel, Very Fine ..... 275.00
- 3 **New York 5c Black Without Signature (9X1c)**. Horiz. Pair, Pos. 31-32, L. Stamp has B. Frame Line Double, Large to Huge margins, Red "Paid" in Arc Cancels, a Very Rare & Extremely Fine Pair, Ex-Caspary ..... E. XIII
- 4 ★ **Providence 5c-10c Black (10X1-10X2)**. Complete Sheet of 12, slight crease in L. L. corner just touching corner stamp otherwise Very Fine, o. g. with Friedl Certificate ..... 900.00

## ESTIMATES

Our sales contain many 19th Century covers and fancy cancellations. We have had many requests to give the estimated cash value on these lots. We are trying to place a fair net valuation on each lot as a guide for bidding when no catalogue value portrays the true value. The chart below will be used, for example E. IV means our estimate cash value on this lot is \$30.00 to \$40.00. Lots may actually realize more or less than these estimates and under no circumstances are these estimates to be considered reserves but merely a guide to bidding.

E. I	up to \$10.00	E. VIII	\$100.00 to \$150.00
E. II	\$10.00 to \$20.00	E. IX	\$150.00 to \$200.00
E. III	\$20.00 to \$30.00	E. X	\$200.00 to \$250.00
E. IV	\$30.00 to \$40.00	E. XI	\$250.00 to \$350.00
E. V	\$40.00 to \$50.00	E. XII	\$350.00 to \$500.00
E. VI.	\$50.00 to \$75.00	E. XIII	\$500.00 to \$750.00
E. VII	\$75.00 to \$100.00	E. XIV	\$750.00 to \$1000.00
		E. XV	over \$1000.00

*LOTS ON VIEW FROM FEBRUARY 15th*

*OFFICE OPEN EVERY SATURDAY*





- 5 **St. Louis Mo. 5c Black on Gray Lilac (11X4).** Margins all around, Rich Vivid Color, light ms. cancel, an Unusually Choice Copy of this Rare Stamp, Very Fine ..... (Photo) 1500.00
- 6 **St. Louis, Mo. 20c Black on Gray Lilac (11X6).** Margins three sides, in slightly at left, light ms. cancel, Desirable copy of this Rare stamp, with A. P. S. Certificate ..... 4750.00
- 7 **St. Louis, Mo. 10c Black on Bluish Pelure Paper (11X8).** Margins all around, Ms. cancels, light crease, Very Fine appearance, Extremely Rare with P. F. Certificate ..... 3000.00

#### 1847 ISSUE



- 8 ★ 5c Red Brown (1). **Corner Block of Ten**, Second largest unused block known, Pos. 1-5, 11-15, light crease in top row, large margins on eight stamps, close on right two, Exceedingly Rare Showpiece ..... 6100.00+
- 9 ☒ 5c Grayish Brown (1). Large Margins all around, tied by Red "St. Louis Mo. 5, Feb 6" in Circle, another strike, on Beautiful Valentine Cover with Overall Lithographed Floral Designs on Front & Back, stamp has trivial margin break. A Gorgeous & Very Rare Cover, with P. F. Certificate ..... E. XIII

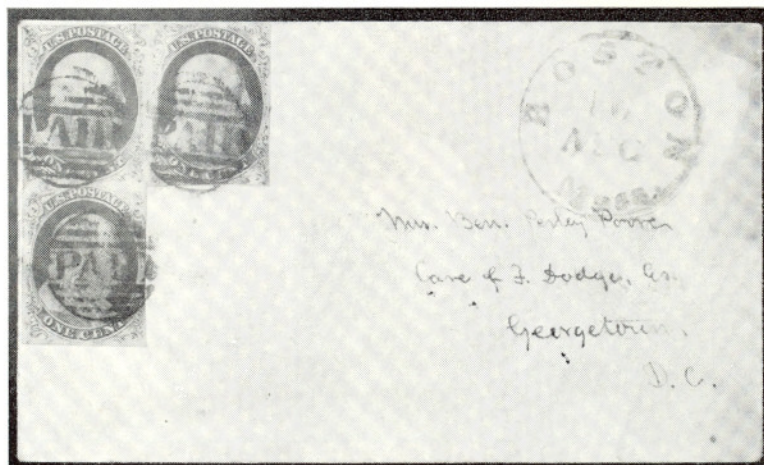








- 10 **10c Black (2).** Two singles rejoined to form a Pair, Huge margins, Magnificent Color & Impression, Beautiful Bold "Mobile Paint" Red Grid Cancels, Gem, Extremely Fine ..... 300.00
- 11 ☒ **10c Black (2).** Margins all around, tied with clear red str. line "Philada. Railroad" cancel on folded Nov. 4, 1847 cover, Very Fine with P.F. Certificate ..... E. XII

# 1851 ISSUE









- 12 ☒ **1c Dark Blue Ty I, Ib, II (5, 6b, 7).** "L" Strip of Three, Pos. 6, 7, 16R1E, Margins to barely in, Unusually deep color, tied by clear Small Boston "Paid" Cancels, clear Red "Boston, Mass", on small cover to Washington cover slightly toned in UR corner but an Attractive & Unique usage of the Rare Ty I ..... 5000.00
- 13 **3c Orange Brown, Red (10, 11).** Complete Reconstruction of the 13 Plates used for printing this issue, 2600 diff. Positions in all, Beautifully mounted & written up in Elbe Jefferson Album, some minor faults, but generally well above average plating quality, and the Red plates especially have many F.-V.F. Copies with some corner copies, Reconstructed Imprints, Centerlines, etc. A Choice & Valuable Collection ..... E. XV
- 14 ☒ **3c Rose (11).** Horiz. Pair, Margins all around, tied by clear New York Ship in Circle, Stmr. Sierra Nevada Via Nicaragua Advance of the Mails in Clear Blue Oval on Sep 15, 1854 cover to N.Y., Very Fine ..... E. XI
- 15 ☒ **3c Brownish Carmine (11).** Horiz. Pair, Margins except bit in at U.L., tied by San Francisco pmk., From Noisy Carrier's Mail, 77 Long Wharf, S.F. Cal. in Bold Blue Box on Fresh Buff Cover to Maine, Handsome, Very Fine Cover ..... E. IX
- 16 **5c Red Brown (12).** Gigantic margins, sheet centerline at R., Rich Color, town pmks., one in Red, paper trifle toned on back, a Magnificent Gem, Extremely Fine ..... 110.00
- 17 ☒ **5c Red Brown (12).** Huge Margins, Magnificent Color & Impression, minute scissor cut in margin, not touching design, Tied by Clear Red "New Bedford Mass Mar 31 Paid" and Matching Grid, Clear Red "New York Br Pkt" 1856 Calais Transit & "19" Decimes, A Gorgeous Cover, 7 days after 1st Day of Usage, Extremely Fine ..... E. XII



- 18  **10c Green Ty III (15).** Clear to Large margins, bit irregular at U. R., tied by San Francisco, Cal pmk. on Illustrated **San Francisco News Letter** of Aug 20, 1857 to New Orleans, Rare & Handsome, Fine ..... E. XI
- 19 ★  **12c Black (17).** Block, Large Margins, Gorgeous Color & Impression, P. F. Certificate States "That it is genuine, cleaned & regummed" ..... 400.00
- 20 **12c Black Printed on Both Sides (17c).** Very Good example of this scarce variety, only about 4 known ..... 900.00

#### 1857 ISSUE

- 21  **5c Brown Ty II, 10c Green Ty V, 30c Orange (30A, 35, 38).** 5c sheet centerline at R, 10c rounded corner perf, tied by clear Red Grids, clear matching "New York Br. Pkt. Aug 29" and "London Paid" on neat folded 1860 cover to **Shanghai**, a fresh, Handsome & Very Fine Cover from the Augustine Heard Correspondence ..... E. XII
- 22 ★ **10c Dark Green Ty I (31).** Gorgeous Rich Color, o. g., minute marginal thin, Very Fine appearance ..... 900.00
- 23  **10c Green Ty III (15).** Tied by Clear "San Francisco Cal. Aug 26, 1859" on fresh Yellow Illustrated cover to Ohio with "Per Overland Mail Stage, Via Los Angeles in Hope of the" and showing **Choo Choo** Unusually Choice Example, Very Fine ..... E. XIII
- 24  **10c Green Ty V (35).** Tied by indistinct Sacramento pmk. on Fresh Buff Illustrated Cover to Mass showing Four Horse Stage "San Francisco Via Los Angeles U. S. Mail, St. Louis, New York, Overland", Choice & Handsome Cover ..... E. XIII
- 25  **10c Green Ty V (35).** Centered bit to B., Tied by Clear Los Angeles, Cal. pmk on fresh cover to Mass. with 4 Horse Stage "San Francisco Via Los Angeles U S Mail, St. Louis, New York Overland", fresh, Very Fine Cover E. XIII
- 26  **10c Green Ty V (35).** Centered, tied by Huge Bold Dotted Grid, Clear matching "Marysville, Cal" pmk. on fresh cover to Iowa showing Six Horse Stage "Overland Via Los Angeles", "Randall & Co. Marysville" Imprint, Very Fine ..... E. XIII
- 27  **10c Green Ty V (35).** Centered, tied by clear "San Francisco Cal. Sep 16, 1859" pmk on fresh Manila cover to N. J. with 4 Horse Stage "Overland Via Los Angeles", Rare Design, Extremely Fine ..... E. XIII



# 1861 ISSUE



28

30

31

33

34

- 28 ★ **1c Indigo August (55).** Incredible Rich Color, fresh, o.g., Fine Copy of this Rarity ..... 4500.00
- 29 ★ **3c Brown Rose August (56).** Block, Centered, Vivid Color, fresh, o.g., Very Fine ..... 450.00
- 30 ★ **5c Brown First Design (57).** Fresh, Very Fine with P.F. Certificate ..... 2750.00
- 31 ★ **10c Dark Green First Design (58).** Fresh, centered slightly to B. Very Fine ..... 700.00
- 32 ✉ **24c Violet August (60).** Centered, Splendid Vivid Color, tied by clear Blue Cincinnati, O. Duplex pmk., clear Red "N. York Br Pkt Paid 19", on fresh 1862 Cover to Scotland, A Rare & Gorgeous Cover, Extremely Fine ..... E. XI
- 33 ★ **30c Red Orange August (61).** Magnificent Brilliant Color, full o.g., Fine, A Fresh & Lovely Example of this Rare & Popular Stamp, with P.F. Certificate ..... 3500.00
- 34 ★ **90c Dull Blue August, Imperforate (62a).** Margins all around, Magnificent Color, faint horiz crease, Very Fine appearance ..... 500.00
- 35 ★ **3c Brown Red Imperforate on Bluish (65c Var).** Imprint Plate No. (34) Block of 12, Huge Margins, fresh o.g., Gorgeous Rich Color, two light horizontal creases, Extremely Fine appearance ..... E. XI
- 36 **3c Rose, Double Impression (65f).** Unusually Strong Impression, target cancel, sealed tear, Fine appearance, Listed but Unpriced in Scott ..... —
- 37 ★ **3c Lake (66).** Block, Vivid Color, fresh, o.g., Fine ..... 1100.00
- 38 ★ **3c Lake (66).** Block, fresh, full o.g., perfs. in at top, normal centering for this ..... 1100.00
- 39 P **90c Blue Plate Proofs, India on Card (72P).** Bottom Imprint Plate No. Block of Fifty, Brilliant Color, Extremely Fine, A Gorgeous Showpiece 594.50+

## 1867 GRILL ISSUES

- 40 ★ **3c Rose Grilled All Over (79).** Fresh Rich Color, full o.g., only three short perfs, faint horiz crease, otherwise Fine, an unusually nice copy of this Rare Stamp ..... 475.00
- 41 ★ **3c Rose Z. Grill (85C).** Nice Color, tiny thin, slight stain mentioned in P.F. Certificate has been removed, Fine appearance ..... 475.00
- 42 ★ **3c Rose Z. Grill (85C).** Block, well Centered, Gorgeous Color, fresh, o.g., horiz. crease at B., slightly penetrating grills, top pair couple short, perfs, otherwise Extremely Fine, A Very Rare & Handsome Block .... 2000.00



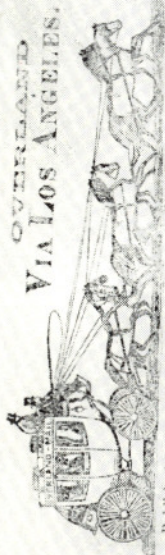
OVERLAND



VIA LOS ANGELES.

*Charles Lundy*

27



Published by BARNES & Co., Marysville.

26

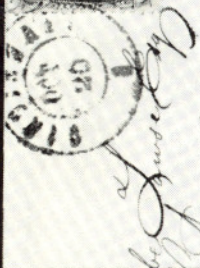
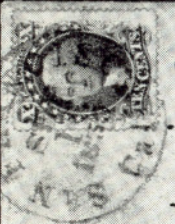
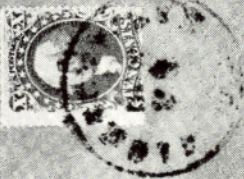
*S. H. Frosche Bay  
Lyons*



24

*Mrs. Lydia C. C. C. C.*

*Lowell  
Wash*

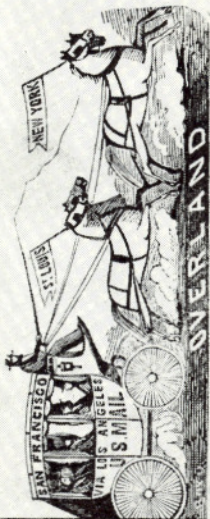


*Wm. J. Lundy  
Wm. J. Lundy  
Wm. J. Lundy*

32

*Mary Huntley*

53



25

*Miss E. S. Manning  
P.O. 100, Gotham St.*



PER OVERLAND MAIL STAGE, VIA LOS ANGELES.  
IN HOPE OF THE



23

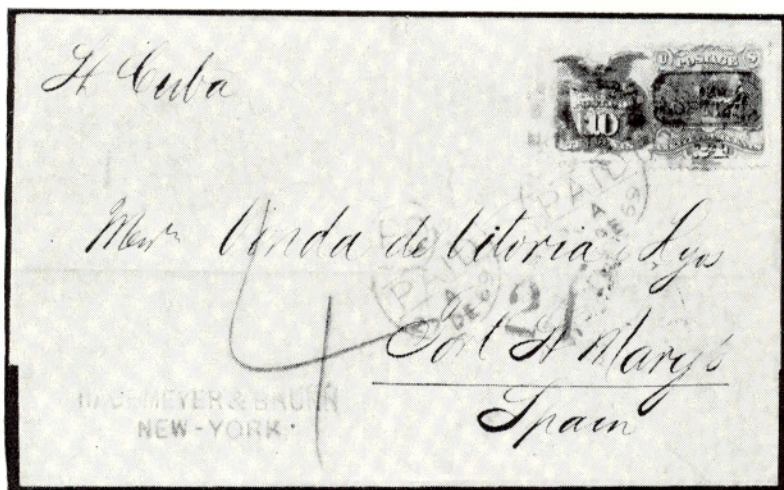
*Mrs. E. S. Gleason  
Defiance,  
Defiance Co.,  
Ohio*






- 43 ★ **5c Brown F. Grill (95).** Horiz. Pair, o. g., Exceptionally Fresh, Very Fine 390.00
- 44 ★ **24c Deep Violet Reissue (109).** Fresh, o. g., one perf. a trifle blunt, otherwise Very Fine ..... 385.00
- 45 ★ **90c Blue Reissue (111).** Magnificent Color, o. g., reperforated at right, faint natural bend, otherwise Very Fine, with P.F. Certificate ..... 625.00

# 1869 PICTORIAL ISSUE

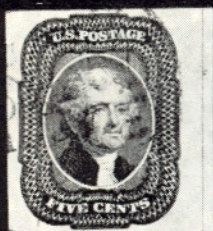


- 46  **10c Yellowish Orange, 24c Green & Violet (116, 120).** Tied by dotted grids & By Red London Paid, other Red Transits Incl. N. Y. on Flap, "St. Cuba" in ms., on Neat Folded Dec 1869 Cover to Spain, Handstamp Merchants Cachet, Rare & Handsome Combination, Fine, Ex Gibson, Signed by Ashbrook ..... E. XV



- 47 **15c Brown & Blue Inverted Center (119b).** Marvelous Rich Colors, Very light cork cancel, minute faults, Fine appearance, A Very Handsome copy of this Rarity ..... 3250.00

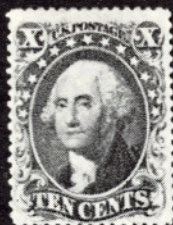




16



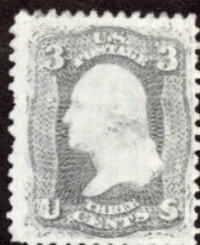
20



22



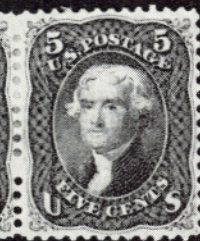
36



40



41



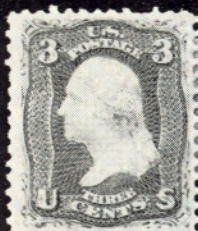
43



44



45



54



61



42



62

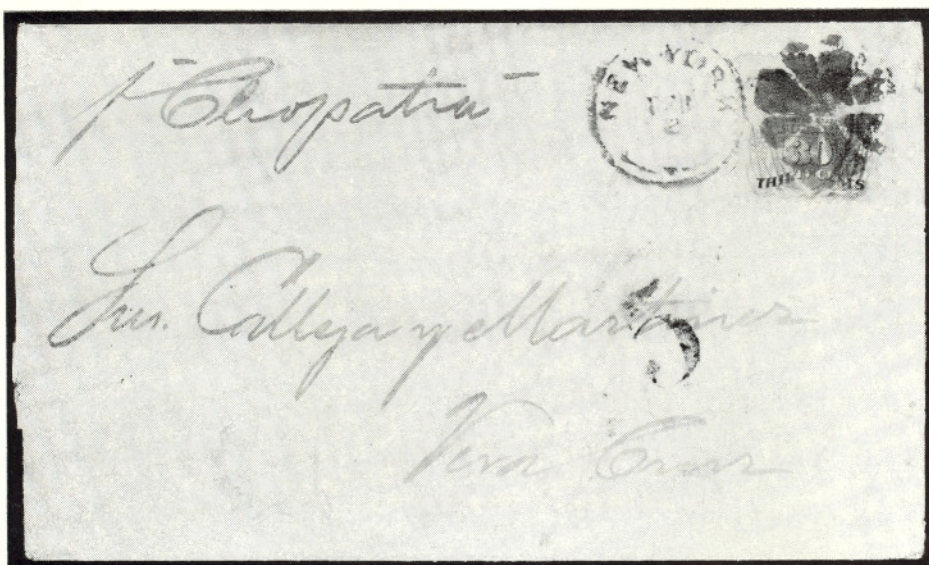


56



50





- 48 **30c Blue & Carmine (121).** Tied by clear New York Duplex, Bold "5", "P. Cleopatra" in ms., on neat folded letter to Vera Cruz, An Unusually Handsome & Desirable example of this Rare Usage, fresh, Very Fine Cover, Signed by Ashbrook ..... 1000.00+



- 49 ★ **1c-90c Pictorial Special Printings (123-132).** Complete Set, Centered, fresh, o.g., couple slightly blunt perfs, otherwise Extremely Fine Set 2160.00



- 50 ★ 2c Brown Reissue (124). Horiz. Block of Six, Vivid Color, fresh, o.g., light crease in L. pair, one has minute tear, otherwise Fine-Very Fine, Very Scarce in Multiples ..... 505.00+

# BANKNOTE ISSUES



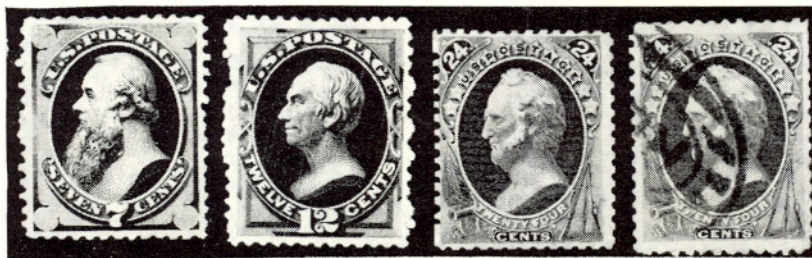
51

52

- 51 24c Purple Grill (142). Lovely Rich Color, Bold New York Foreign Mail Type 13 Cancel, Unusually strong grill, faults, Fine appearance, signed by Brookman & with Accompanying Letter stating it was probably one of the first copies thru the grilling machine ..... 3,000.00
- 52 ★ 90c Dark Carmine Grill (144) Gorgeous Color, fresh, o.g., Very Fine, Beautiful Copy of this Rare Stamp ..... 800.00
- 53 ✉ 6c Carmine Vertical Bisect (148 Var.). Well tied by target, Matching Pine Valley, N.Y. pmk, on cover to Lima, N.Y., Fine, Rare Usage, Unlisted in Scott ..... E. XI
- 54 3c Green, Double Impression (158J). Strong Impressions, Blue Cork Cancel, s.e. at L., centered to top, Very Good, Listed but unpriced in Scott ..... —
- 55 3c Green, Printed on Both Sides (158 Var.). Horiz. Pair, light but unmistakable Impression on back, couple short perfs, otherwise Very Fine, Probably Unique, Unlisted in Scott ..... —
- 56 ★ 90c Deep Rose Carmine (166). Block, Splendid Vivid Color, fresh, o.g. A Gorgeous Block. Fine-Very Fine ..... 600.00



# BANKNOTE SPECIAL PRINTINGS



57

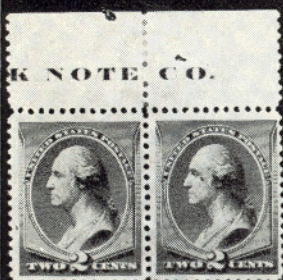
58

59

60

- 57 ★ **7c Reddish Vermilion Special Printing (171).** Extremely Fine, with P. F. Certificate ..... 550.00
- 58 ★ **12c Dark Violet Special Printing (173).** Centered, Magnificent Color, not separated by scissors, as is usually the case, one perf. bit irregular, Extremely Fine, A Gorgeous Copy of this Rarity ..... 700.00
- 59 ★ **24c Dull Purple Special Printing (175).** Centered to left, Fine, with P. F. Certificate ..... 500.00
- 60 **24c Dull Purple Special Printing (175).** Registry cancel, Rare used, few slightly trimmed perfs. Very Fine, with P. F. Certificate, listed but unpriced ..... E. XIII
- 61 ★ **10c Brown Banknote (187-188).** Horiz. Pair showing one with Secret Mark, Very Fine, o.g. Exceedingly Rare unused, Unpriced in catalogue, with P. F. Certificate ..... E. XIV
- 62 ★ **10c Brown (187, 188).** Horiz. Combination Strip of three, Center Stamp without Secret Mark, fresh, o.g., light gum creases, Very Fine appearance. A Very Rare Strip ..... —





70



76



73



80



74



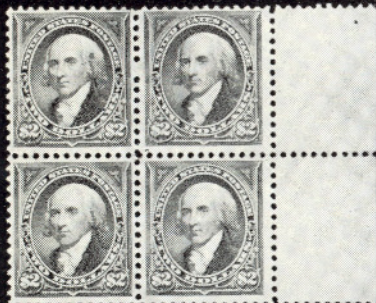
71



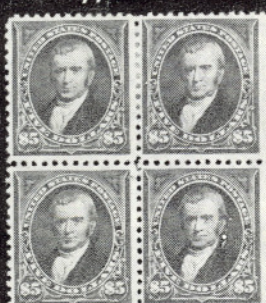
76



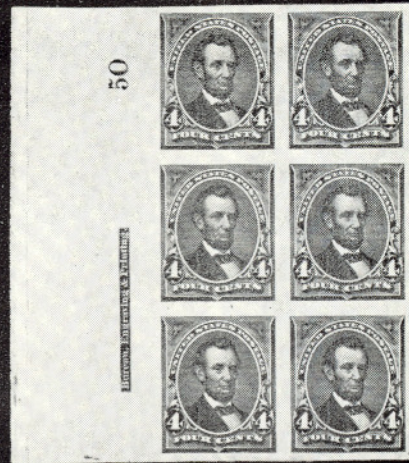
78



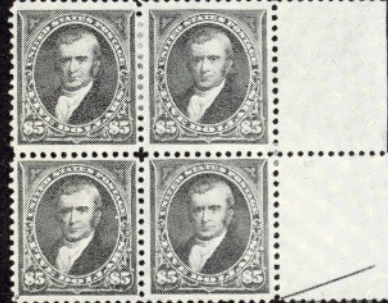
79



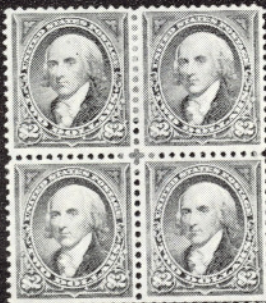
82



75



81



85





67

68

69

72

- 63 ★ 1c Dark Blue Special Printing (192). Fine, with P. F. Certificate ..... 1,800.00
- 64 ★ 7c Scarlet Vermilion Special Printing (196). Centered to right, Fine, with P. F. Certificate ..... 850.00
- 65 ★ 12c Blackish Violet Special Printing (198). Very Fine, with P. F. Certificate ..... 1,350.00
- 66 ★ 24c Dark Violet Special Printing (200). Very Fine, with P. F. Certificate ..... 550.00
- 67 ★ 30c Greenish Black Special Printing (201). Two small thin spots, otherwise Fine, with P. F. Certificate ..... 1,200.00
- 68 ★ 90c Dull Carmine Special Printing (202). Very Fine, with P. F. Certificate ..... 1,350.00
- 69 ★ 5c Deep Blue Special Printing (204). Thin spot near top otherwise Fine, one of the rarest Special Printings, with P. F. Certificate ..... 3,250.00
- 70 ★ 2c Pale Red Brown Special Printing (211B). Horiz. Pair with Part Imprint, Vivid Color, Mint, Extremely Fine, A Marvelous Pair ..... 230.00+
- 71 ★ 2c Pale Red Brown Special Printing (211B). Block of 4 with Bot. Imprint, Well Centered, full o. g., Extremely Fine with P. F. Certificate ..... 600.00+
- 72 ★ 4c Deep Blue Green Special Printing (211D). Extremely Fine ..... 2,750.00

#### 1893-1894 ISSUES

- 73 ★ 1.00 Columbian (241). Block, trivial light stain on one perf. otherwise Very Fine ..... 575.00
- 74 ★ 3.00 Columbian (243). Block, o. g. crackly gum, slightly reinforced otherwise Very Fine ..... 1,700.00
- 75 ★ 4c Dark Brown Imperforate (254a). L. Plate No. (50) Imprint Block of 6, o. g., trivial gum wrinkle largely in margin, Very Fine, an Exceedingly Rare Plate Block ..... E. XI

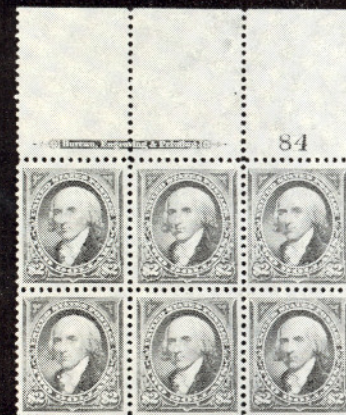




83



84



85



91



101



103



105



109



92

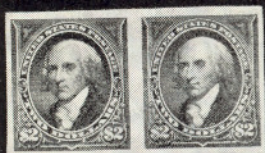


76	★	田	<b>\$1.00 Black Ty. I (261).</b> Block of Four, fresh, o.g., minor gum bend in bottom stamps, otherwise Very Fine, with P.F. Certificate .....	350.00
77	★		<b>\$1.00 Black Ty. I and II (261, 261a).</b> Bottom Imprint Plate No. Strip of Three, showing both types, two of latter, one has tiny thin, otherwise Fresh, o.g., Fine with P.F. Certificate .....	400.00
78	★	田	<b>\$1.00 Black Ty. II (261a).</b> Right Margin Block of Four, fresh, o.g. lightly hinged once, A Magnificent Block, Extremely Fine, with P.F. Certificate .....	500.00
79	★	田	<b>\$2.00 Dark Blue (262).</b> Right Margin Block of 4, fresh, o.g., Very Fine, with P.F. Certificate .....	1,000.00
80	★	田	<b>\$2.00 Bright Blue (262).</b> Block, fresh, large part o.g., Fine-Very Fine, A Very Rare Block .....	1,000.00
81	★	田	<b>\$5.00 Dark Green (263).</b> Right Marginal Block of Four, Lightly Hinged once, o.g. trivial thin speck in one, otherwise Very Fine, Fresh & Handsome, with P.F. Certificate .....	1500.00
82	★	田	<b>\$5.00 Dark Green (263).</b> Block, Vivid Color, fresh, o.g., trivial marginal bend at U. R., Fine-Very Fine, A Very Rare Block .....	1500.00

#### 1895 ISSUE

83	★	田	<b>50c Red Orange (275).</b> Top Mint Imprint Plate No. Block of 6, fresh, Very Fine .....	325.00
84	★	田	<b>\$1.00 Black Ty. I &amp; II (276-276A).</b> Top Imprint Plate No. Block of 6 with both types, o.g. Extremely Fine, with P.F. Certificate .....	1400.00
85	★	田	<b>\$2.00 Dark Blue (277).</b> Block, Very Fine .....	400.00
86	★	田	<b>\$2.00 Bright Blue (277).</b> Top Imprint Plate No. Block of 6, Brilliant Color, trivial gum bend thru top stamps, not showing in fluid, o.g., Very Fine .....	850.00
87	★		<b>\$2.00 Dark Blue Imperforate (277b).</b> Horiz. Pair, Large margins, o.g., Very Fine .....	425.00
88	田		<b>\$5.00 Deep Green (278).</b> Block, Rich Color, light N. Y. Reg pmks., trivial wrinkles in one, Fine, Rare & Attractive .....	475.00
89	★		<b>6c Lake (282).</b> Complete Sheet of 100, Gorgeous Rich Color, fresh, o.g., Unusually Well Centered, majority Very Fine Incl. Both Impt. Plate No. Blocks .....	689.50





87



93



102



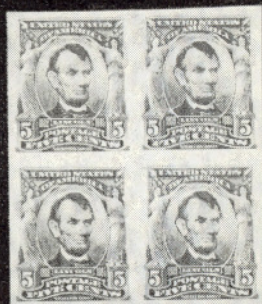
88



104



106



108



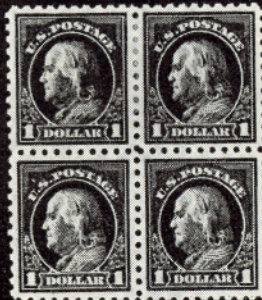
124



116



118



127



123



131



## TRANS-MISSISSIPPI ISSUE



- 90 ★ 8c Trans Mississippi, Imperforate Horiz (289a). Vertical Pair, Sheet Centerline at L., fresh, o. g., light natural crease in B. stamp, otherwise Extremely Fine, Rarity ..... 2000.00
- 91 ★田 \$1.00 Trans Mississippi (292). Block of Ten, Fresh o. g., Fine-Very Fine, Attractive Showpiece ..... 3530.00+
- 92 ★田 \$2.00 Trans Mississippi (293). Block of Twelve, str. edge at left, Centered to top, Fresh, o. g. Fine Showpiece ..... 5100.00
- 93 田 \$2.00 Trans Mississippi (293). Block, New York Reg. Pmks, Fine, Very Rare Block Used ..... 1200.00

## PAN AMERICAN ISSUE

- 94 田 1c-10c Pan American (294-299). Complete set on red illustrated exposition First Day Cover, 10c has str. edge, Buffalo, N. Y. May 1, 1901 pmk. Very Fine and Exceedingly Scarce Cover ..... 600.00+



95

96

98

- 95 ★ 1c Pan-American Inverted Center (294a). Marvelously Centered, Rich Color, o. g., Extremely Fine, with P. F. Certificate ..... 2000.00
- 96 ★ 1c Pan American, Inverted Center (294a). P. F. Certificate States "Small thin, stained and specks in the margin", these, however, are of an extremely Trivial Nature, Fine appearance ..... 2000.00





- 97 ★ 1c Pan American Inverted Center (294a). Block, Fresh, full o. g., Fine-Very Fine, Most attractive Showpiece ..... 10,000.00
- 98 1c Pan American, Inverted Center (294a). Centered, Rich Color, light cancel, A Very Choice Copy, Extremely Fine ..... 1000.00



99

100

- 99 ★ 2c Pan American Inverted Center (295a). Centered, Large Margins, one slightly blunted perf., otherwise Extremely Fine, Rarest U.S. 20th Century Inverted Center ..... 9,000.00
- 100 ★ 4c Pan American Inverted Center (296a). Unusually Well Centered, small faults, Attractive looking copy of this Rarity ..... 3,500.00

#### 1902-03 ISSUE

- 101 ★ 50c Orange (310). Bot. Imprint Plate No. Block of 6, tiny thin speck in one stamp, otherwise V.F. .... 485.00
- 102 ★ \$1.00 Black (311). Block, Extremely Fine ..... 425.00
- 103 ★ \$1.00 Black (311). Bot. Imprint Plate No. Block of 6, Mint, Extremely Fine ..... 875.00
- 104 ★ \$2.00 Dark Blue (312). Block, Extremely Fine ..... 525.00
- 105 ★ \$2.00 Dark Blue (312). Bot. Imprint Plate No. Block of 6, Part o. g., small thin in one, otherwise Fine ..... 1350.00
- 106 ★ \$5.00 Dark Green (313). Block, Extremely Fine ..... 1300.00



107	4c Brown, Schermack Ty III Private Perf. (314A). Centered, Rich Color, trivial margin irregularly at U. R. otherwise Extremely Fine, one of the Finest Known Copies of this Rarity .....	1,500.00
108	★ 5c Blue, Imperforate (315). Block, fresh, Extremely Fine .....	500.00
109	★ 5c Blue Imperforate (315). Mint Bottom Imprint Plate No. Block of Six, Very Fine .....	1,500.00
110	★ 5c Blue Coil (317). Pair with part of Imprint at top, Fine-Very Fine, with P. F. Certificate .....	750.00+
111	★ 5c Blue Coil (317). Vertical Pair, Fine-Very Fine. Choice Example of this Rarity .....	750.00
112	★ 1c Blue Green Coil (318). Pair, Fine, with P. F. Certificate .....	750.00
113	★ 1c Blue Green Coil (318). Horiz. Pair, centered slightly to Right, Fine .....	750.00
114	★ 1c Blue Green Coil (318). Strip of four, centered to right, Fine, with P. F. Certificate .....	1,500.00
115	★ 2c Carmine Coil (322). Horiz. Pair, V. G.-F., with P. F. Certificate .....	750.00
116	★ 2c Louisiana Purchase, Imperforate Horiz. (324a). Vertical Pair, trivial thin in Bottom stamp, otherwise Fine .....	1,750.00

#### 1908-1916 ISSUES

117	★ 10c Yellow Coil (356). Horiz. Line Pair, fresh, Very Fine, with P. F. Certificate .....	500.00
118	★ 3c Deep Violet Bluish Paper (359). Block, Very Fine .....	1,000.00
119	★ 5c Blue Bluish Paper (361). Fresh, Very Fine, with P. F. Certificate .....	850.00
120	✉ 2c Lincoln, U. S. Auto Vending Ty. II Private Perf (368). Centered, tied by Brooklyn, N. Y. Feb. 12, 1909 and Philadelphia, Pa. Feb. 13, 1909 Machine pmks. on small First Day Cover, tiny sealed cover tear, otherwise Very Fine, Probably Unique with Private Perf. ....	250.00+
121	3c Deep Violet Orangeburg Coil (389). Faint creases, trivial thin, Fine appearance .....	800.00
122	✉ 3c Deep Violet Orangeburg Coil (389). Neatly Tied by Orangeburg Machine Cancel on Bell & Co. Entire, Accompanied by 1c Green, 2c Carmine Coils (388, 412). Tied by Orangeburg Pmks on Bell Card & Cover to same Addressee, Very Fine, Rare .....	1,671.00
123	★ 10c Panama Pacific Perf. 10 (404). Left Plate No. Block of 6, Mint, Very Fine .....	1,350.00
124	★ 50c Violet (440). Bottom Marginal Block, Exceptionally Deep Shade, Very Fine .....	450.00
125	★ 2c Red Ty. I Coil (449). Vertical Line Pair, fresh, Fine, Undercatalogued, with P. F. Certificate .....	350.00
126	★ 2c Carmine Rose Ty. I Coil (449 Variety). Vertical Line Pair, fresh, Very Fine, With P. F. Certificate, The Pair from which the Catalogue Listing was made and Probably the first time this rare shade has appeared at auction .....	E. XIII
127	★ \$1.00 Violet Brown (460). Block, lightly hinged once, Extremely Fine .....	500.00





107



112



113



110



114



119



115



121



117



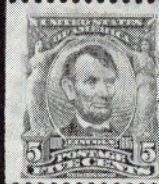
128



126



125



111



129



135



136



137



138



156



157



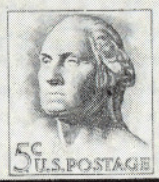
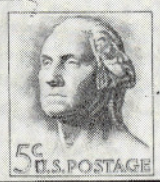
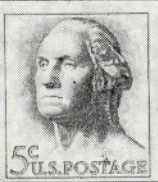
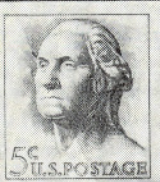
170



181



182



145



- 128     **2c Carmine Ty. Ia, Imperforate (482A).** P.F. Certificate States "Used Single with Schermack private perfs trimmed on Vertical Sides," Unusually Rich Color, Very Rare Stamp ..... 1,500.00
- 129 ★   **2c Carmine Ty. II, Coil (491).** Pair centered, lightly hinged once, one has trivial gum crease, otherwise Extremely Fine, Grossly Undercatalogued ..... 325.00

#### 1917 ISSUE TO DATE

- 130 ★   **2c Carmine A. E. F. Booklet Pane of 30 (499f).** Mint, Extremely Fine .... 750.00
- 131 ★田 **\$2.00 Orange Red & Black (523).** Top two Plate nos. Arrow Block of 8, Very Fine ..... 1,000.00



132

133

134

- 132 ★田 **2c Carmine Rose Ty II (539).** Mint Block, Very Fine Block of this Extremely Rare stamp, with P.F. Certificate ..... 1,600.00
- 133 ★田 **2c Carmine Rose Ty. II (539).** Block, centered to B. & R. Fine for this, with P.F. Certificate and Guarantee Marks on back ..... 1,600.00
- 134 ★   **1c Green (544).** Mint Vertical Pair, Fine, With P.F. Certificate, listed but unpriced in Scott, a great 20th Century Rarity ..... E. XV
- 135     **1c Green (544).** Huge Margins, almost invisible cancel, Probably the finest Known copy of this Rarity ..... 450.00
- 136     **1c Green (544).** Horiz. Pair, Unusually well centered, Rich color, light corner crease & pinpoint thin speck, Exceptionally Fine appearance 900.00+
- 137     **1c Green (594).** Fresh, Nice Color, centered bit to B., Very Fine for this Rare Stamp ..... 800.00
- 138     **17c Black (623).** Showing **partial printing** on back of stamp, Unique Printing Error, with P.F. Certificate ..... —









139

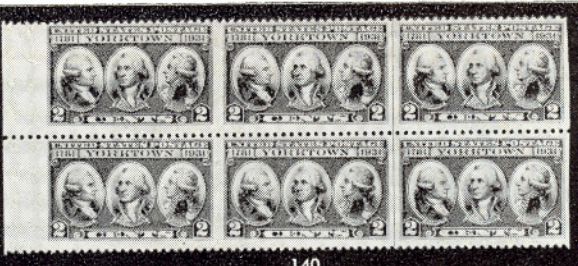
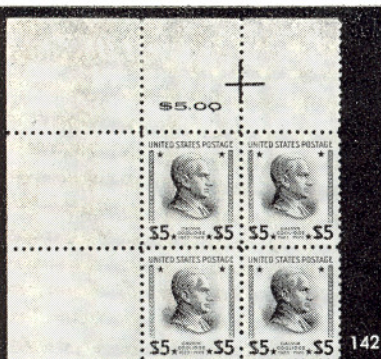
141

- 139 ★ 2c Von Steuben, Imperforate (689a). Block, Pos. 27-28 37-38, minor gum wrinkles as always, Extremely Fine, only one pane of 100 found ..... 2,200.00
- 140 ★ 2c Yorktown, Imperforate Vertically (703c). Horiz. Sheet Margin Block of Six, Mint, Fine-Very Fine, only one pane of 50 found ..... 3,000.00
- 141 ★ 5c Kosciuszko, Imperforate Vertically (734a). Mint Block, Very Fine .... 800.00+
- 142 ★ \$5.00 Red Brown & Black Presidential Color Error (834a). Mint Upper Left Sheet Corner Block, Extremely Fine, With P.F. Certificate 800.00+
- 143 ★ 4c Blue Seato (1151a). Block Imperforate Between in Block of 6, Mint, Extremely Fine ..... 400.00
- 144 ★ 5c Dark Blue Gray Booklet Pane (1213a). Complete Booklet containing extra pane freaky folded containing a pair Imperforate Between, A very rare error, probably unique, Unlisted ..... E. XIII
- 145 ★ 5c Dark Blue Gray Coil, Imperforate (1229a). Horiz Line Strip of Six, Mint, Very Fine, Line Pairs Not listed in Scott ..... 900.00+
- 146 ★ 5c Sipex Souvenir Sheet (1311). Gigantic Sheet Corner Fold Over, showing Red Sheet Registration Marker and Complete Plate Number, A Very Spectacular Sheet, Mint, Extremely Fine ..... —

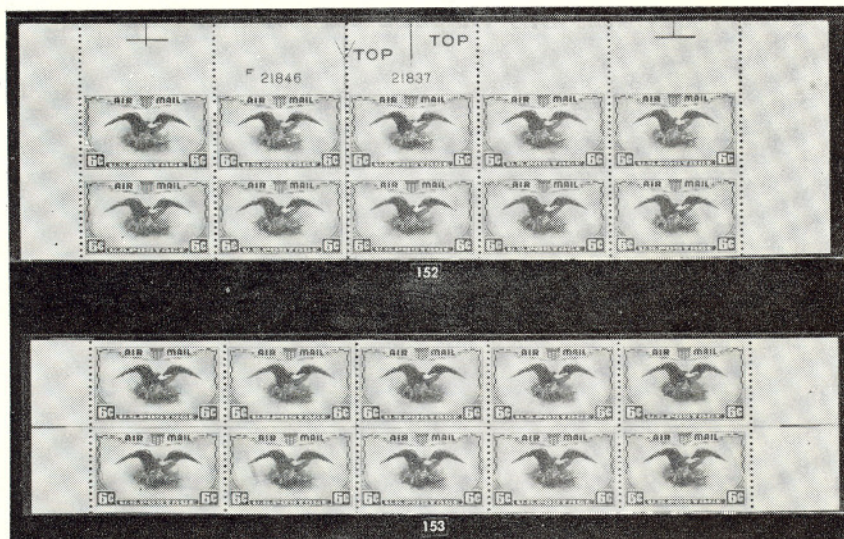
#### AIRPOST ISSUES

- 147 ★ 16c Green Airpost (C2). Arrow Plate No. Block of 8, Mint, Very Fine 393.00
- 148 ★ 65c-\$2.60 Graf Zeppelins (C13-C15). Cpl. Set of Blocks of four with Plate Nos., light gum bends on two lower values otherwise Very Fine 2,425.00
- 149 ✉ 65c-\$2.60 Graf Zeppelin (C13-C15). Complete set in three registered First Day Covers, all backstamped with April 19, 1930 pmks. Very Fine, Scarce ..... 550.00
- 150 ✉ 65c-\$2.60 Graf Zeppelins (C13-C15). Cpl Set on Cacheted First Day Card & Covers \$1.30 Centered trifle to B., otherwise Extremely Fine Set, A Very Rare and Undercatalogued Set with cachets ..... 550.00
- 151 ★ 50c Chicago Zeppelin (C18). Lower Left Sheet Corner Pair, Pre-Perforating foldover thru stamps at left, leaving full Imperforate Margin, A Spectacular & Unique Showpiece & the Most outstanding Variety Known on this Popular Stamp ..... —









- 152 ★ 6c Blue & Carmine Airpost, Imperforate Horiz. (C23a). Top Double Plate No., Double Marker & Double "Top" block of 10, Very Fine 500.00+
- 153 ★ 6c Blue & Carmine Airpost, Imperforate Horiz (C23a). Horiz Centerline Block of 10, mint, minor natural gum wrinkles, Very Fine ..... 500.00+
- 154 ★ 16c Airmail Special Delivery Imperforate Vertically (CE2a). Pair with natural pre printing paper crease, Very Fine appearance, with P.F. Certificate ..... 1,750.00

#### POSTAGE DUES, OFFICIALS



- 155 ★ 1c-50c Postage Due Special Printings (J8-J14). Complete Set( fresh, o. g., 5c has tiny thin speck, 1c, 3c slightly off center, couple blunt perfs, otherwise Very Fine Set ..... 1,705.00



- 156 ★ 2c Deep Brown Postage Due, Special Printing (J9). Centered, o. g., tiny thins in upper corners, with P. F. Certificate ..... 275.00
- 157 ★ 3c Deep Brown Postage Due, Special Printing (J10). Centered, small part o. g., Extremely Fine, with P. F. Certificate ..... 275.00
- 158 ★ 1c Postage Due, Value Omitted (J89a). Block, Mint Extremely Fine, Scarce Error ..... E. XIII



159

160

- 159 ★ 10.00 Green & Black State Dept. (O70). Block, fresh, o. g., Very Fine, A Wonderful Block ..... 1,500.00
- 160 20.00 Green & Black State Dept. (O71). L. Marginal Block with Sheet Margin on 3 sides showing Black Imprint, Registration Markers & Part of Green Impt, almost invisible faint ms line cancels, fresh, full o. g., one has pinhole, otherwise Very Fine, A Rare & Attractive Block .... 900.00




#### CARRIERS & LOCALS

- 161 ★ City Despatch Post 3c Black on Grayish (6LB1). Block, fresh, o. g., Extremely Fine ..... 425.00
- 162 3c Black on Dark Blue U S City Despatch Post Carrier, Double Impression (6LB5b). Large Margins, Red U S in Octagon cancel, not tied, matching " U S City Despatch Post" pmk, on folded 1844 local cover, light corner crease, cover trifle worn, V.F. Appearance, Rare ..... 500.00+

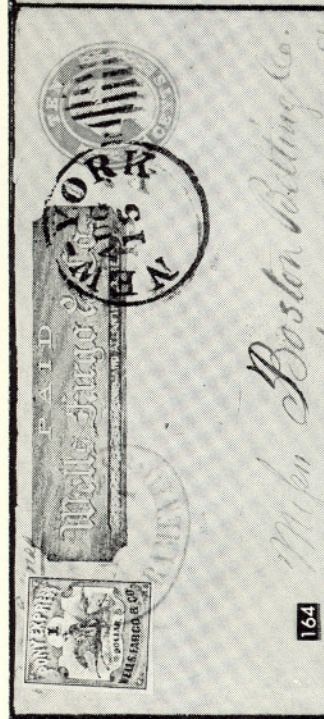


- 163  **Swarts' Dispatch (2c) Blue (136L8).** Two Copies, Margins all around, tied by Clear Red "Paid" Cancels on Beautiful Fancy Gold Lithographed Valentine Cover, 8¼"x5½" with Red "New York 10 cts" pmk and Fancy Lace Enclosure with Red Heart & homemade poetry, Gorgeous Cover, Unique, Very Fine ..... E. XIII
- 164  **Wells Fargo & Co \$1.00 Red Pony (143L3).** Margins al around, tied by clear Blue "Pony Express Sacramento" on 10c Pale Green Entire (U18) Tied by Bold New York Duplex, and with Red W. F. & Co Frank, used to Boston, Sacramento Hardware Advert on flap, cover bit toned, Handsome & Desireable Cover, This Combination Unlisted in Scott and extremely rare from Sacramento ..... E. XV

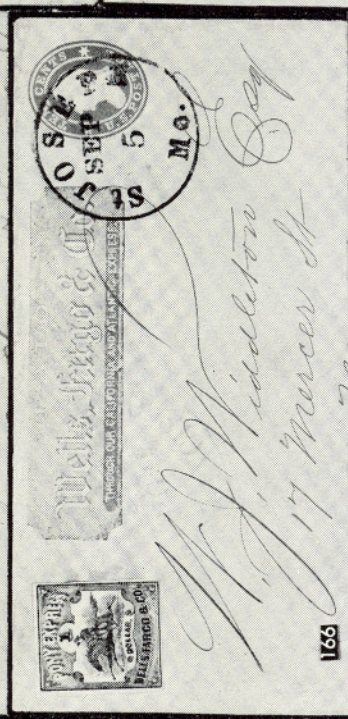


- 165  **Wells Fargo & Co. \$2.00 Red, \$4.00 Green Pony Express (143L1, 143L2).** First just in at T, latter margins all around, tied by clear Blue Oval San Francisco Running Pony Company Handstamp Pmk., Clear Green St. Joseph, Mo. pmk., on 10c Green on Buff Star Die Entire (U33) to New York City, as a triple rate cover, there should be 30c in U. S. Postage, but there is no evidence that any stamps have been removed. The stamps have minor faults & there are tiny cover tears in the top margin but a Most Attractive & Extremely Rare Cover, the only one Known bearing the \$4.00 Green, with P. F. Certificate, Ex Caspary ..... E. XV
- 166  **Wells Fargo & Co \$1.00 Red Pony (143L3).** Margins all around, lightly tied by Blue Oval Running Pony Pmk. on expertly rebacked 10c Green Star Die Entire (U33). with Red W. F. & Co Frank & Bold St Joseph, Mo. pmk., Fresh and Very Handsome Example of this Rare Usage ..... 2,250.00
- 167  **Wells Fargo & Co \$1.00 Blue (143L6).** Gigantic Margins, Tied by clear Blue "Wells Fargo & Cos Express San Francisco" in Double Circle, clear "The Central Overland California & Pikes Peak Express Company St Joseph, Mo. Pony Express Sep 15" in Oval Within Circle, "Pony Express" in ms, used to San Francisco, on 10c Green Entire (U41) from which the original Embossed stamp has been removed and another neatly substituted, a Handsome example of the Very Rare genuine usage of the W. F. & Co. Garter stamp, of which only 4 covers are known ..... 10,000.00





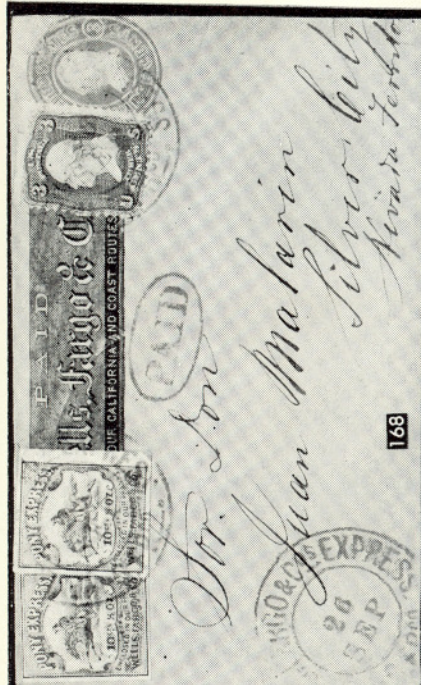
Wm. Boston Betting Co.



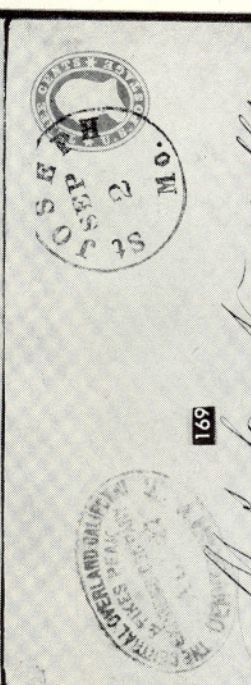
W. J. Widdleton Esq  
17 Mercer St



Mr. J. C. Martin Esq  
425 Montgomery St  
San Francisco Cal





Dr. Don Juan Malerin  
Silver City  
New Mexico



Adams Southern Express Co.  
New York  
New York  
New York









- 168  **Wells Fargo & Co 10c Brown Pony Express (143L7).** Two Copies, Large margins, tied by clear Blue "S. Freo" Company Pmk in Double Circle, on 3c Pink Entire (U35) with W. F. Co. Frank and 3c Rose (65) tied to Embossed stamp by another strike & with another strike & matching "Paid" in Oval, Used to Silver City, Nev Terr. Cover cut just into embossed stamp at R & small sealed cover nick in U.R. Corner, A Handsome Desirable, & Very Scarce Combination, also another 3c Pink Entire (U35) with W. F. & Co. Frank to the same addressee, Ex Barkhausen **E. XV**
- 169  **3c Red Star Die Entire (U27).** Tied by Bold "St Joseph, Mo. Sep 2" pmk. Clear **The Central Overland, California & Pikes Peak Express Company, Denver City, KT Aug 27** in Oval, used to Iowa, Another Clear Strike dated "Jul." on flap, minor sealed nick in L. R. corner, otherwise Very Fine, Ex Barkhausen **E. X**

#### REVENUES

- 170 **2c Blue & Black, Inverted Center (R104a).** Light circular cut cancel, perfs just in at R., fresh, Fine 450.00
- 171 **\$5.00 Blue & Black Inverted Center (R127a).** Small thin in upper left corner, Fine appearance 550.00
- 172 **\$200.00 Blue, Black and Red Revenue (R132).** Well centered, nice color, mere trace of crease otherwise Very Fine 800.00
- 173 ★ **\$30.00 Carmine 1958 Documentary (R724a).** Strip of 3 Imperforate Horiz. one stamp has light crease otherwise Very Fine Mint, Stated to be only known example of this Rarity —

#### CONFEDERATE STATES

- 174  **Atlanta, Geo 5c Black on Orange Provisional Entire (6XU9 var).** Cover with "Adams Southern Express" Imprint, Bold "Adams Ex Co. Louisville, Ky. Aug 2, 1861" pmk, 3c Red (26) Tied by clear Blue Louisville Aug 3, 1861 Duplex Pmk, used to N. H., trivial margin tears, otherwise Very Fine Cover A Rare & Handsome South to North thru the Lines Cover with blue Adams Label on back **E. XV**
- 175  **Beaumont, Tex. 10c Black on Pink (12X2).** Margins touched, tied by ms line, "June 30th" in ms., "June 24, 64" in Pencil on cover to Houston, Expert Cover Repair at U. R., An Attractive & Very Rare Cover 1,650.00
- 176  **La Grange Tex 10c Black on White Provisional (48XU3 Var).** Unlisted on white, immaculate, Extremely Fine **E. XI**
- 177  **Lenoir, N. C. 5c Blue & Orange (49X1).** In slightly at B., light Ms. cancel, Blue Lenoir, N. C. pmk. on small Davenport Female College cover, Very Attractive **E. XIV**
- 178  **Macon, Ga. 5c Black on Yellow (53X3).** Huge margins, uncanceled light "Macon, Geo. 5" in circle on Fresh Orange Cover with Embossed Return, Stamp has minute scissor cut in margin, far from design, Very Fine, not listed uncanceled in Scott 900.00+
- 179  **Macon, Ga. 5c Black on Yellow (53X3).** Vertical Pair, margins all around, tied to small neat cover with barely noticeable U. L. corner of cover repaired, Stamps are Very Fine 1,400.00





194



161



171



173

28501

SIXTH INTERNATIONAL PHILATELIC EXHIBITION, WASHINGTON D.C. 1966



146



172



217

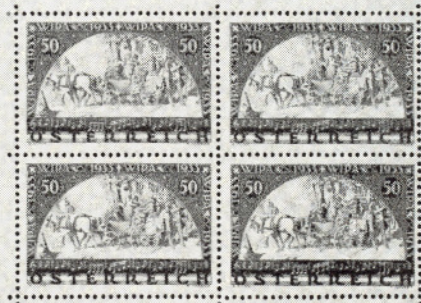


218



LIECHTENSTEINISCHE LANDESAUSSTELLUNG VADUZ 1934




215



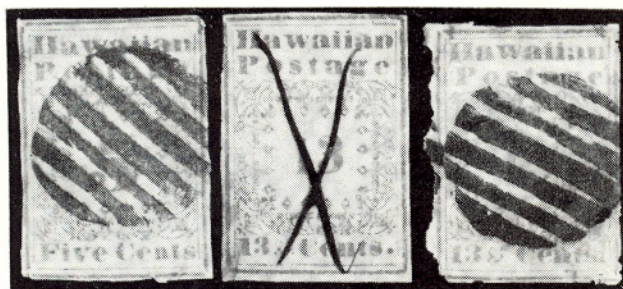
INTERNATIONALE POSTWERTZEICHEN-AUSSTELLUNG WIEN 1933

193



- 180  **Macon, Ga 5c Black on Yellow (53X4).** Gigantic Margins, uncanceled, on fresh Orange **First Day Cover** with **Macon, Ga Jun 1** in Double Circle, matching "Paid" and "5", Stamps not Listed uncanceled in Scott, Extremely Fine, Used the First Day the Confederacy Administered its own Postal Service ..... 1,000.00+
- 181 ★ **Nashville, Tenn 10c Green (61X6).** Just Clear to Huge Margins, Gorgeous Deep Rich Color, creases, not Visible on face, Very Fine appearance, A Rare & Handsome Stamp ..... 1,100.00
- 182 **10c Milky Blue Frame Line (10).** Incredible margins, showing **Full Frame Lines** & Sheet margin at R., Bold Mobile, Ala. Jul 19, 1863 pmk., A Marvelous Gem, Extremely Fine ..... 175.00
- 183  **Adams Express Co. Louisville, Ky. Jul 10, 1861 in Bold Circle, 3c Red (26)** Two, one with Double Horiz. Perfs, Tied by Bold Blue "Louisville, Ky. Jul 11, 1861" Duplex Pmks., on neat folded letter from **New Orleans** to New York, Rare Northbound Thru the Lines Usage, Very Fine Cover .... E. XI
- 184  **3c Red Star Die Entire (U26).** Tied by clear "New York Ship Dec 29", Bold Matching "Due 2", clear Red "Nassau Paid Dec 19 '61", "Steamer Karnak" in ms. **Confederate Blockade** cover used Via The Bahamas to East Otto, New York, bit toned, Fine, an Attractive example of this Rare usage ..... E. XIV

## HAWAII



185

186

187

- 185 1851-52, 5c Blue Missionary (2). Clear to Ample Margins all around, Unusually Rich Vivid Color, Neat Bold Grid cancel, Minute sealed tear at Bottom, otherwise Very Fine, An Exceptionally Handsome Copy of this Popular Rarity ..... 4,500.00
- 186 1851-52, 13c Blue Ty I Missionary (3). Ample to Larg Margins except outer frame barely touched in two places, Wonderful Rich Color & Impression, ms "X" and Orange Trace of Orange Transit cancel, Pinhole & microscopic internal fault, An unusually choice copy of this Rare Stamp 3,000.00
- 187 1851-52, 13c Blue Ty I Missionary (3). Margins to barely touched, Irregular at L, showing bit of next stamp, Nice Color & Impression, Bold Grid Cancel, trivial microscopic faults, Fresh & Attractive copy of this Rarity 3,000.00



Steamer Turdak }  
Due



PAID  
10 CENTS

Miss Emma F. Tuttle

East Otto

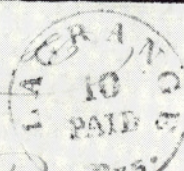
N York



175

184

Amelia



PAID  
FIVE  
CENTS

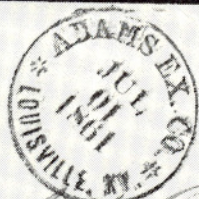
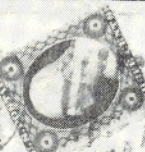
Dr. San Roman Esq. of J. H. Service, Esq.

178

176



FIVE  
CENTS



PAID

Esq.

Ga

183

Esq. C. Greenstadt

180

DAVENPORT  
Female College,  
LENOIR, N.C.



PAID  
FIVE  
CENTS

Mr. William Marshall

By Louisville  
& Co.

See letter

177

Howe Howell Cobb

Richmond

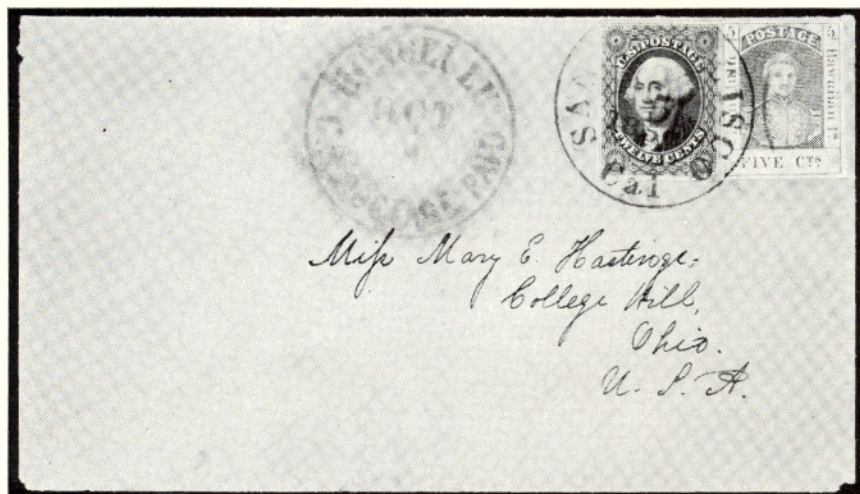
Virginia

179



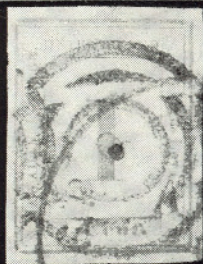


- 188 1851-52, 13c Blue Ty I Missionary (3). Huge Margins Top & Bottom, clear to partly touched at sides, unusually Rich Color & Exceptionally Clear Impression, Clear Blue "Paid Cancel", Not Tied, a Diff "Paid", Faint Orange San Francisco Pmk & "6", "Paid Through" in ms, on Buff Cover to Conn., Trivial Stain in U.R. Corner, barely affecting Sheet Margin, Fine, A Rare Handsome & Very Desirable Cover ..... 5,500.00
- 189 1859-60, 1c Light Blue on Bluish White Numeral (12). Huge margins, Choice Color, Target & Pretty Red GPO Honolulu pmk., trivial internal faults, Extremely Fine appearance, a Handsome copy of this Very Elusive Stamp ..... 475.00



- 190 1857, 5c Blue on White Kamehameha (8). Margins all around, edge of Red Honolulu pmk. & tied in **Combination with US 12c Black (17)** Margins all around, by clear San Francisco 1857 pmk. on Fresh Buff Cover to Ohio with Clear Red "Honolulu U. S. Postage Paid", trivial marginal cover irregularities, Extremely Fine, Ex Caspary ..... 1,350.00





189



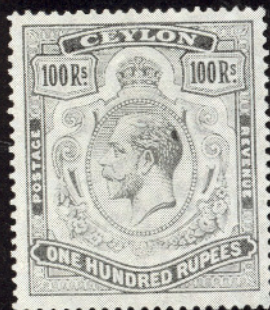
192



195



204



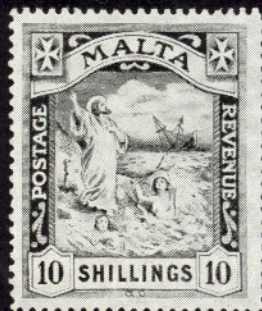
197



203



223



216



226



201




214 EX




227





- 191  1864-66, 2c Rosy Vermillion Bisect, 5c Blue (31a, 32). Tied by Bold Negative "H I" pmks. **in Combination with U S 3c Ultramarine (114)** tied by cork cancels on small cover **to Nova Scotia** with Clear Red Double Circle "G P O Honolulu Paid All" Magenta "San Francisco Paid All" & 1871 Kentville, N.S. pmks on flap, small sealed cover tear, Fine, Rare & Attractive Combination ..... **E. XII**
- 192 ★ **PUERTO RICO**, 1898, 5c Violet on Yellowish Ponce Issue (200). Clear to Ample margins, small thins, V.F. appearance Rarest stamp from Puerto Rico ..... **400.00**

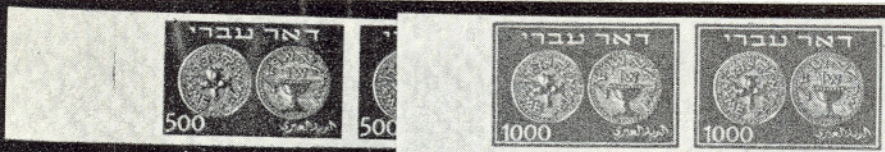
## GENERAL FOREIGN

- 193 ★ **AUSTRIA**, 1933, 50g Deep Ultramarine Wipa Souvenir (B111). With original Exposition Folder in which it was mounted, Very Fine ..... **1,250.00**
- 194 ★  **BASUTOLAND**, 1961, 2c on2p Orange & Blue **Inverted overprint** (63a). Mint Block, Very Fine, Rare ..... **1,000.00**
- 195 **CANADA**, 1851, 6p. Grayish Purple Consort (2). Huge Margins, Unusually Rich Color, neat Target Cancel, Verger Line at Center, A Magnificent Copy, Extremely Fine ..... **125.00**



- 196 ★ — 1851, 12p. Black Victoria (3). Large Margins, Rich Color, Expertly Repaired in R. Margin & L. L. Corner, A Very Handsome Appearing Copy of this Rarity ..... **12,500.00**
- 197 ★ **CEYLON**, 1912, 100r Gray Black Geo. V (216). Perfectly Centered, Extremely Fine ..... **400.00**
- 198  **COLOMBIA**, 1919, 2c Carmine Rose First Airpost (C1). Tied by Barranquilla and Puerto Colombia Jun 18, 1919 pmks. on Cover of the First Experimental Flight, a Very Fine & Rare Cover, Sanabria guarantee Sanabria **450.00**
- 199  **DENMARK**, 1855-58, 2s-16s Royal Emblems (3, 5-7). Clear to Large margins tied by "181" in Targets and by R. R. pmks on folded 1862 letter to Amsterdam, Rare and Handsome Combination, Very Fine ..... **E. XII**





209EX

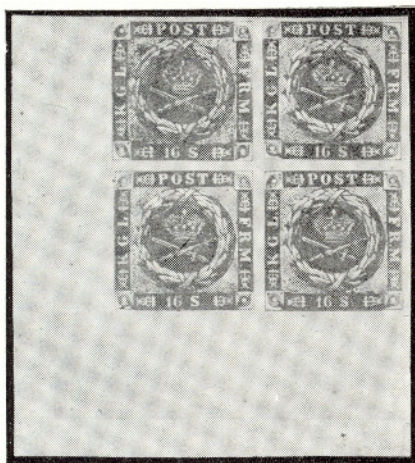


205EX



206EX





- 200 ★田 — 1857, 16s Lilac (6). L. L. Sheet Corner Block of 4, Large to Enormous margins, Fresh, o. g., Extremely Fine, Extremely Rare, Ex-Rothschild E. XV
- 201 ★田 **FRANCE**, 1849, 10c Bistre (1). Block of 4, margins all around, Fresh, o. g., one stamp small light marginal crease, otherwise Very Fine ..... 660.00+
- 202 ☒ — 1868, 40c Orange on Yellowish Napoleon III (35). Two Centered Copies, Diagonally overlapped, tied by Paris Star Cancels, Nov 17, 1870 pmk. on neat folded Cover, Printed "Par Ballon Monte" to **St. Petersburg, Russia**, filing fold thru top stamp, otherwise Extremely Fine, A Very Rare Usage ..... E. X
- 203 ★ — 1869, 5fr Gray Lilac (37). Fresh, o. g., faint natural cloudiness in paper, Very Fine for this difficult stamp ..... 600.00
- 204 ★ — 1873, 10c Bistre on Rose **Tête-Bêche** Pair (55a). Perfs a bit strengthened in places, Fresh and Very Fine, signed ..... 400.00

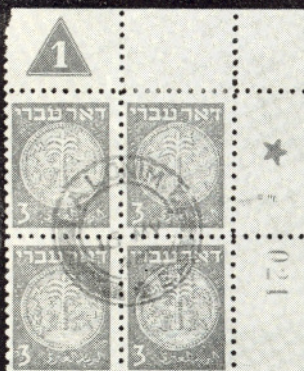
#### ISRAEL

- 205 ★田 1948, 3m-1000m Coins (1-9). L. R. Tab Blocks, Mint, Very Fine set, Very Rare ..... E. XV
- 206 ★田 1948, 3m-1000m Coins (1-9). U. R. Plate No. Blocks of 9, Mint, V. F. set 2,925.00+
- 207 ★ 1948, 3m-1000m Coins (1-9). Cpl. Set with Tabs mounted on Imaba Souvenir Sheet, Very Fine and Rare ..... E. XV
- 208 ★ 1948, 3m-1000m Coins (1-9). Cpl. Set with Tabs, perf. 10, incl. Bottom of Tabs, mounted on Presentation Sheet for President Weizmann and the Ministers, Rare and Very Fine ..... E. XV
- 209 ★ 1948, 3m-1000m Coins **Imperforate** (1 var-9 var). Horiz. Pairs with L. Sheet margin, Extremely Fine set, a Great Rarity ..... E. XV
- 210 田 1948, 3m Orange Perf. 10 (1). U. R. Plate No. Block of 4, Alonim May 16, 1948 First Day Cancel, Perfect Strike, one of the Rarest Israel Items, Very Fine ..... E. XIII





207EX



210



213



212



ורחמי בני  
ישראל  
איש על-מחנהו  
ואיש על-דגלו  
בסיומו 44

ורחמי בני  
ישראל  
איש על-מחנהו  
ואיש על-דגלו  
בסיומו 44

ורחמי בני  
ישראל  
איש על-מחנהו  
ואיש על-דגלו  
בסיומו 44

206



- 211 ★ 1952, 1000p Menorah **Imperforate** (55 var). L.L. Tab Block of 6, Very Fine, Very Rare ..... E. XV
- 212 ★ 1948, 3m-50m Postage Dues (J1-J5). Blocks with B. Sheet margin, Very Fine set ..... E. XIV
- 213 ★ 1948, 5m-50m Postage Dues **Imperforate** (J2 var-J5 var). Horiz. Pairs, Mint, Rare and Very Fine ..... E. XIII
- 214 ★ **KENYA, UGANDA & TANGANYIKA**, 1925-27, 2/50c-£100 Geo V Specimen overprints (Gibbons 101-109). Very Fine ..... Gibbons £310
- 215 ★ **LIECHTENSTEIN**, 1934, 5fr Agriculture Souvenir Sheet (115). Mint, Extremely Fine ..... 1,400.00
- 216 ★ **MALTA**, 1919, 10/ Black St. Paul (65). Very Fine Copy of this Popular Stamp ..... 375.00
- 217 ★ **MECKLENBURG SCHWERIN**, 1856, 5s Blue (3). Block of 4, margins all around, Fresh, o.g., small faint hinge thins in two, otherwise Very Fine, a Rare and Attractive Showpiece, Ex-Green (Michel DM 5300) .... —
- 218 ★ **NETHERLAND**, 1864, 15c Orange (6). Block of 9, Brilliant Color, Wonderfully Centered, Fresh, o.g., an Extremely Fine Block of Great Rarity ..... 1,305.00+



- 219 ✉ **NEWFOUNDLAND**, 1927, 60c Black De Pinedo Airpost (C4). Tied on cover to London by St. John May 20, 1927 Machine Cancel, Rome Backstamp, no flap, Very Fine, a Rare Cover ..... 2,500.00+

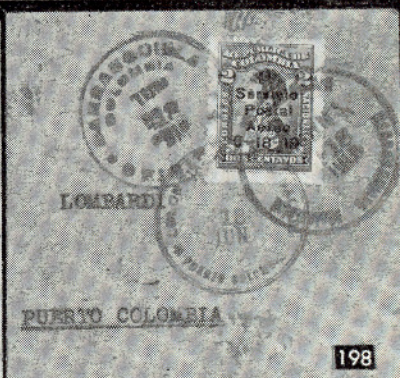


FRANCO



*John Van der Schueren*  
25.7.62  
*Amsterdam*

199



198

*Mr. W. Redding*  
*Kentville*

*Wodekraz*

191

*Via Hamer*  
*from H. L. C.*

PAR BALLON MONTE

*Mr. Austin & Co.*  
*St. Petersburg*  
*dép. (Russie)*

202



532  
AL SIGNORE

Sig. Gennaro Fanelli  
Vicario Generale in  
Lanciano

225

*Wilson Sewell Esq. Mrs.*  
*8 N. 6th St.*  
*Philadelphia Pa*

221

*R.M. Hamer Wien & Leipzig*

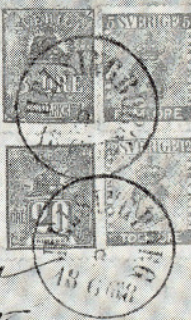
*Wilson Sewell Esq. Mrs.*  
*238 N. 6th St.*  
*Philadelphia*  
*Penn.*

222



*Hallberg*  
*Berlin*  
*St. N. 45*

224







- 220 田 **NORWAY**, 1855, 4sk Blue (1). Block of 4, Huge Margins, Neat Light Ten-Bars Grid Cancels, minute tiny margin tear at bot., otherwise Extremely Fine, a Gorgeous Showpiece of the Greatest Rarity (Facit \$2250.00) ..... E. XIII
- 221 田 **NOVA SCOTIA**, 1851-53, 1p Red Brown Horiz. Pair, 6p Yellow Green (1, 4). Margins all around, tied with oval grids and Boston pmk. to Philadelphia, Wolfville N. S. backstamp. Extremely Fine ..... E. XI
- 222 田 — 1851-53, 3p Blue, 6p Yellow Green (2, 4). Large margins all around, tied oval grids, Boston pmk. to Philadelphia, Wolfville, N. S. backstamp, Extremely Fine ..... E. IX
- 223 ★ **STRAITS SETTLEMENTS**, 1911, \$25.00 Blue & Violet Edw. (145). Brilliant Color, Extremely Fine ..... 375.00
- 224 田 **SWEDEN**, 1858-66, 5ö-12ö Arms, 3ö-20ö Lion (6, 9, 13, 16). Tied by Large Helsingborg 1868 pmks on neat cover to Berlin, Scarce Usage, Pretty & Very Fine ..... E. IX
- 225 田 **TWO SICILIES**, Naples, 1860, ½t Blue Savoy Cross (9). Huge Margins except just touched at one point, tied by clear Boxed "Annulato", Red 27 Dec 1860 pmk on fresh small Printed Wrapper, a Rare & Beautiful Cover, Very Fine, with P.F. Certificate ..... 650.00+
- 226 ★ **UNITED NATIONS**, 1962, 4c Housing Error Black Omitted (100a). Mint, Extremely Fine ..... 300.00
- 227 ★ **VATICAN CITY**, 1934, 40c-3.70l Provisional overprints (35-40). Very Lightly hinged, F.-V.F. set, signed Diena ..... 2,605.00

END OF SALE — THANK YOU

*LOTS ON VIEW FROM FEBRUARY 15th*  
*OFFICE OPEN EVERY SATURDAY*



# Coming

*Josiah K. Lilly Auctions*

<i>Part II</i>	British Commonwealth A-M Countries — <i>March 15th-16th</i>	(4 sessions)
<i>Part III</i>	Confederate States U.S. Possessions including Hawaii <i>April 27th</i>	(2 sessions)



## IS YOUR COLLECTION FOR SALE?

REALIZE IMMEDIATE CASH  
PLUS THE ADDED ADVANTAGE OF  
SELLING THROUGH OUR AUCTIONS

We will advance immediate cash up to 75% of our appraisal value, of what your collection should realize at auction. There is no interest charge.

Your collection will then be sold in one of our coming auction sales. All stamps are expertly and advantageously lotted in attractive, well illustrated catalogs. Lotting is meticulously planned under our personal supervision. Commission is 20% of the gross realization. There is no lotting fee or any other charges. Final settlement is made within five weeks after the sale. We have been continuously conducting stamp auctions in the United States for over thirty-four years.

Valuable collections and stamp holdings are especially wanted, but we will accept properties valued from \$500 upwards. Send all stamps direct for appraisal. Auction advance will be remitted shortly after receipt. If not entirely pleased, stamps will be returned at our expense. If circumstances warrant, due to bulk or value, we will travel anywhere to inspect important properties.

ROBERT A. SIEGEL  
AUCTION GALLERIES, Inc.

(Licensed and Bonded Auctioneer)

10 EAST 52nd STREET  
NEW YORK, N. Y. 10022

(Tel. PL. 3-6422)



## CONDITIONS OF SALE

1. The terms of sale are strictly cash to the highest bidder. All buyers are expected to pay for lots within three days of receipt, unless special arrangements have been made prior to the sale.
2. All bids are per lot as numbered in the catalogue and not per piece, unless otherwise announced by the auctioneer at the time of sale.
3. Any lot the description of which is incorrect is returnable only within three days of receipt. All disputed lots must be returned intact as received. Lots containing five or more stamps are not returnable at any time. No lots may be returned by purchasers who have had the opportunity to examine them before the sale.
4. Successful mail bidders, unless they are known to us or supply acceptable references, will be notified of the amount of the lots secured for them, and are expected to send payment in full before the lots are forwarded.
5. If the purchase price has not been paid within the time limit, or lots taken up within seven days from date of sale, they may be resold and any losses arising from such sale charged to the defaulter.
6. All stamps are sold as genuine, except where sold "As Is". Claims for any lot proving otherwise, must be made within two weeks from date of sale.
7. The right is reserved to group two or more lots, also withdraw any lot or lots from the sale, or to act on behalf of the seller.
8. Until paid for in full all lots remain the property of Robert A. Siegel.
9. No commission is charged for buying at our sales, but all forwarding charges will be added to the purchase price.
10. Upon written application lots may be sent for examination prior to the auction to persons known to us or who supply acceptable references, conditional upon being mailed back by registered mail, adequately insured, within 24 hours of receipt. The applicant is completely responsible for all lots sent for examination, and for the insurance of same against mishap, from the time of receipt until they are actually received back, and is to pay all expenses of postage and insurance.
11. The placing of a bid shall constitute acceptance of the foregoing conditions of sale.

ROBERT A. SIEGEL

ANDREW LEVITT, Licensed Auctioneers

---

In sending bids, always state the highest price you are prepared to pay for the lot. Your limit will not be used as a starting bid unless absolutely necessary.

## DESCRIPTIONS

Superb or Extremely Fine—the finest condition for noteworthy, outstanding copies.

Very Fine (VF)—means that there is a slight deviation from the above.

Fine (F)—means that the perforations do not touch the design on issues after 1890, but in some cases may just touch in earlier issues; if used, fairly lightly cancelled.

Very Good (VG)—means that the appearance is generally fine but that the perforations cut the design slightly.

Good (G)—means average off-centering; or fairly attractive with slight defects

Original gum (OG) is not to be expected on 19th Century stamps unless so stated.

Mint—have never been hinged.

Scott 1967 Specialized United States Catalogue is used for cataloging our lots of United States and Scott's Standard Catalogue, 1967 for others.

WE SOLICIT FINE MATERIAL FOR FUTURE SALES
---



# List of Prices Realized

## RARITIES OF THE WORLD

THURSDAY, FEBRUARY 23rd, 1967

Total Realization \$255,195.00

*Robert A. Siegel*  
**AUCTIONS**

10 EAST 52nd STREET NEW YORK, N. Y. 10022

Tel: PLaza 3-6422

Lot#	Price	Lot#	Price	Lot#	Price	Lot#	Price	Lot#	Price	Lot#	Price
1	400.00	39	190.00	77	325.00	115	480.00	153	400.00	191	575.00
2	240.00	40	290.00	78	700.00	116	1,150.00	154	1,000.00	192	260.00
3	425.00	41	250.00	79	700.00	117	525.00	155	1,700.00	193	650.00
4	1,100.00	42	1,950.00	80	425.00	118	700.00	156	260.00	194	425.00
5	1,550.00	43	425.00	81	950.00	119	675.00	157	320.00	195	325.00
6	1,600.00	44	450.00	82	750.00	120	320.00	158	400.00	196	3,700.00
7	1,450.00	45	525.00	83	425.00	121	525.00	159	950.00	197	500.00
8	5,200.00	46	1,900.00	84	2,150.00	122	1,400.00	160	525.00	198	275.00
9	550.00	47	1,750.00	85	300.00	123	1,650.00	161	300.00	199	600.00
10	360.00	48	1,400.00	86	800.00	124	250.00	162	200.00	200	1,550.00
11	725.00	49	2,800.00	87	575.00	125	525.00	163	650.00	201	1,600.00
12	4,200.00	50	450.00	88	250.00	126	575.00	164	2,800.00	202	200.00
13	4,100.00	51	2,900.00	89	500.00	127	450.00	165	9,000.00	203	425.00
14	300.00	52	1,050.00	90	2,000.00	128	2,100.00	166	1,000.00	204	275.00
15	200.00	53	220.00	91	2,300.00	129	400.00	167	3,400.00	205	2,000.00
16	450.00	54	180.00	92	4,000.00	130	650.00	168	2,100.00	206	1,900.00
17	425.00	55	180.00	93	800.00	131	875.00	169	240.00	207	750.00
18	425.00	56	600.00	94	1,450.00	132	1,200.00	170	220.00	208	725.00
19	475.00	57	500.00	95	3,100.00	133	1,000.00	171	180.00	209	1,150.00
20	500.00	58	675.00	96	1,200.00	134	3,700.00	172	425.00	210	300.00
21	350.00	59	475.00	97	10,500.00	135	625.00	173	525.00	211	1,100.00
22	550.00	60	725.00	98	1,250.00	136	700.00	174	1,100.00	212	625.00
23	575.00	61	575.00	99	8,000.00	137	750.00	175	700.00	213	300.00
24	575.00	62	300.00	100	2,800.00	138	170.00	176	340.00	214	425.00
25	850.00	63	1,450.00	101	575.00	139	1,950.00	177	400.00	215	650.00
26	900.00	64	625.00	102	300.00	140	2,900.00	178	375.00	216	500.00
27	675.00	65	1,350.00	103	950.00	141	775.00	179	1,100.00	217	650.00
28	3,800.00	66	525.00	104	450.00	142	600.00	180	525.00	218	1,500.00
29	500.00	67	725.00	105	975.00	143	210.00	181	450.00	219	4,600.00
30	3,400.00	68	1,250.00	106	1,050.00	144	550.00	182	425.00	220	2,900.00
31	650.00	69	3,200.00	107	1,550.00	145	825.00	183	300.00	221	775.00
32	360.00	70	220.00	108	250.00	146	525.00	184	525.00	222	675.00
33	3,100.00	71	450.00	109	1,000.00	147	380.00	185	4,800.00	223	425.00
34	525.00	72	4,200.00	110	675.00	148	1,400.00	186	2,400.00	224	320.00
35	600.00	73	550.00	111	625.00	149	400.00	187	2,200.00	225	625.00
36	320.00	74	1,550.00	112	675.00	150	600.00	188	4,250.00	226	475.00
37	875.00	75	525.00	113	450.00	151	675.00	189	290.00	227	650.00
38	425.00	76	220.00	114	900.00	152	525.00	190	1,850.00		



Robert A. Siegel Auction Galleries, Inc.  
 Prices Realized for  
 Sale 313 February 23, 1967 1967 Rarities of the World

Lot#	Realized	Lot#	Realized	Lot#	Realized	Lot#	Realized	Lot#	Realized
1	400	37	875	73	550	109	1,000	145	825
2	240	38	425	74	1,550	110	675	146	525
3	425	39	190	75	525	111	625	147	380
4	1,100	40	290	76	220	112	675	148	1,400
5	1,550	41	250	77	325	113	450	149	400
6	1,600	42	1,950	78	700	114	900	150	600
7	1,450	43	425	79	700	115	480	151	675
8	5,200	44	450	80	425	116	1,150	152	525
9	550	45	525	81	950	117	525	153	400
10	360	46	1,900	82	750	118	700	154	1,000
11	725	47	1,750	83	425	119	675	155	1,700
12	4,200	48	1,400	84	2,150	120	320	156	260
13	4,100	49	2,800	85	300	121	525	157	320
14	300	50	450	86	800	122	1,400	158	400
15	200	51	2,900	87	575	123	1,650	159	950
16	450	52	1,050	88	250	124	250	160	525
17	425	53	220	89	500	125	525	161	300
18	425	54	180	90	2,000	126	575	162	200
19	475	55	180	91	2,300	127	450	163	650
20	500	56	600	92	4,000	128	2,100	164	2,800
21	350	57	500	93	800	129	400	165	9,000
22	550	58	675	94	1,450	130	650	166	1,000
23	575	59	475	95	3,100	131	875	167	3,400
24	575	60	725	96	1,200	132	1,200	168	2,100
25	850	61	575	97	10,500	133	1,000	169	240
26	900	62	300	98	1,250	134	3,700	170	220
27	675	63	1,450	99	8,000	135	625	171	180
28	3,800	64	625	100	2,800	136	700	172	425
29	500	65	1,350	101	575	137	750	173	525
30	3,400	66	525	102	300	138	170	174	1,100
31	650	67	725	103	950	139	1,950	175	700
32	360	68	1,250	104	450	140	2,900	176	340
33	3,100	69	3,200	105	975	141	775	177	400
34	525	70	220	106	1,050	142	600	178	375
35	600	71	450	107	1,550	143	210	179	1,100
36	320	72	4,200	108	250	144	550	180	525



Robert A. Siegel Auction Galleries, Inc.  
Prices Realized for  
Sale 313 February 23, 1967 1967 Rarities of the World

Lot#	Realized	Lot#	Realized
181	450	217	650
182	425	218	1,500
183	300	219	4,600
184	525	220	2,900
185	4,800	221	775
186	2,400	222	675
187	2,200	223	425
188	4,250	224	320
189	290	225	625
190	1,850	226	475
191	575	227	650
192	260		
193	650		
194	425		
195	325		
196	3,700		
197	500		
198	275		
199	600		
200	1,550		
201	1,600		
202	200		
203	425		
204	275		
205	2,000		
206	1,900		
207	750		
208	725		
209	1,150		
210	300		
211	1,100		
212	625		
213	300		
214	425		
215	650		
216	500		