

# THE JOSIAH K. LILLY COLLECTION

PART VI

*Robert A. Siegel*  
**AUCTIONS**



323rd SALE

# The Josiah K. Lilly Collection

PART VI

EUROPEAN COUNTRIES  
AND THEIR COLONIES

including  
Austria, Greece,  
Russia, Spain,  
Italy and States

Sold by Order of the Trust Department  
of the Merchants National Bank & Trust Company  
of Indianapolis, Executors of the Estate

At Unreserved Sale by Public Auction

Monday

NOVEMBER 20th, 1967

2 P. M. and 7:45 P. M.

At the Waldorf Astoria Hotel

Park Avenue and 50th Street

*Robert A. Siegel*  
**SAUCTIONS**

10 EAST 52nd STREET NEW YORK, N. Y. 10022

Tel: 212 PLaza 3-6422

# THE JOSIAH K. LILLY COLLECTION

## Part VI

### European Countries and Their Colonies

We are constantly amazed at the great variety of rare and unusual stamps acquired by Mr. Lilly during his stamp collecting career. The section of the Lilly Collection which we now offer is characteristic.

This sale features some of the outstanding classic stamps of Austria, Lombardy-Venetia, Greece, Romania, Russia and Spain, as well as Italy and the Italian States. It will provoke considerable interest among the cognoscenti who appreciate such stamps for their great attractiveness and rarity. In addition, there are many scarce modern stamps, such as those of Czechoslovakia and the Italian Colonies.

Austria offers such showpiece items as a block of 16 of the 1850 2kr, a block of ten of the 3kr and a block of 16 of the 9kr Type II. The Mercury Newspaper Tax stamps are all here, the Yellow, the Rose and most important, the Scarlet, an extremely fine copy. The modern Austrian issues feature such rarities as the inverted centers on the 2k, 4k and 20k Parliament issue. Lombardy-Venetia offers a fine array including the 1850 15c pale red in a block of 20, one of the largest known, and a block of the 30c brown, a rare multiple.

Czechoslovakia's World War I agonies created the rare Semi-Postal issues of 1919 and offered here are a copy of the scarce 2k dark blue, 2h carmine (Sc. B40) and the 2f dark brown plus many of the other varieties.

A very fine lot of Greek Hermes heads in blocks of four, will provide interest among the many collectors of these popular issues.

One of the most unusual lots in this sale is a collection of first issues of Turkey, which is offered as one lot.

Romania, which follows, includes three "Ox-heads," stamps of legendary fame, the 108pa blue, the 81pa blue and the 80pa red.

Seldom seen because of their great rarity are blocks of Russia's second issue of 1858, the 10k, 20k and 30k. Only one other block of each of the two latter values is believed to exist.

Spain provides several remarkable stamps, the 1851 2r red, the 1852 2r pale red and the 3c bronze of 1853. A lovely block of six of the 1854 2c green will appeal to many.

Italy offers in the 1863-1877 issues such desirable stamps as the 10c blue, 40c carmine and the 20c orange. Modern Italian issues include the great airmail rarities: the seven star Trans-Atlantic Flight, two copies of the Balbo Triptych without the overprint, the "Volo Di Ritorno" and a block and a single of each of the two Air Officials.

The Italian States issues will excite many. A 25c 1852 Parma is to be found here as is a 50b 1852 Roman States. Some outstanding Tuscany items include the unique strip of three of the 1851 2s scarlet, a remarkable piece, a very rare strip of three of the 9cr deep violet, and the fabulous and unique strip of three of the 60cr red on blue. A very fine copy of the 1857 1s and the 1859 9cr, a spectacular block of 18 of the 1860 10c gray brown and last but not least, a lovely copy of the 3L ochre round out this State. Two Sicilies, which follows, contains a ½t blue Cross of Savoy in a deep rich color, the only known vertical pair of the ½t blue (the two other known pairs being horizontal) and an extremely fine copy of the 1gr dark brown.

The Italian Colonies include the Servizio Di Stato airs of the four issuing colonies.

A fine group of stamps and sets is found in the San Marino collection, including very fine copies of the 1895 1L light blue and the 1903 2L violet. The scarce set of Vatican 1934 Provisionals together with most of the other issues bring this section of the sale to a close.

As we stated in the earlier sale of European issues, this sale also will again provide collectors with an opportunity to secure items long missing from their collections, stamps which, although not rare, are nevertheless seldom found. In view of the upward trend of the classic market, the opportunities offered in this sale should not be missed.

ROBERT A. SIEGEL

## NOVEMBER 20th, 1967

**ROBERT A. SIEGEL AUCTION GALLERIES, Inc.**  
10 East 52nd Street  
New York, N. Y. 10022  
Tel.: PLaza 3-6422 (Area Code 212)

Please purchase for me at your auction to be held **November 20th, 1967**, the lots named below, the prices annexed being my limit on each lot. I agree to remit for purchases in accordance with the **Conditions of Sale** and to return no lots later than three days after receipt.

REFERENCES PLEASE  
(if unknown to us)

SIGNED

New York State residents kindly include  
County in address.

County

[illegible]

Upon request, estimate of value furnished on any lots in this auction.





## CONDITIONS OF SALE

1. The terms of sale are strictly cash to the highest bidder. All buyers are expected to pay for lots within three days of receipt, unless special arrangements have been made prior to the sale.
2. All bids are per lot as numbered in the catalogue and not per piece, unless otherwise announced by the auctioneer at the time of sale.
3. Any lot the description of which is incorrect is returnable only within three days of receipt. All disputed lots must be returned intact as received. Lots containing five or more stamps are not returnable at any time. No lots may be returned by purchasers who have had the opportunity to examine them before the sale.
4. Successful mail bidders, unless they are known to us or supply acceptable references, will be notified of the amount of the lots secured for them, and are expected to send payment in full before the lots are forwarded.
5. If the purchase price has not been paid within the time limit, or lots taken up within seven days from date of sale, they may be resold and any losses arising from such sale charged to the defaulter.
6. All stamps are sold as genuine, except where sold "As Is". Claims for any lot proving otherwise, must be made within two weeks from date of sale.
7. The right is reserved to group two or more lots, also withdraw and lot or lots from the sale, or to act on behalf of the seller.
8. Until paid for in full all lots remain the property of Robert A. Siegel.
9. No commission is charged for buying at our sales, but all forwarding charges will be added to the purchase price.
10. Upon written application lots may be sent for examination prior to the auction, conditional upon being mailed back by registered mail, adequately insured, within 24 hours of receipt. The applicant is completely responsible for all lots sent for examination, and for the insurance of same against mishap, from the time of receipt until they are actually received back, and is to pay all expenses of postage and insurance.
11. The placing of a bid shall constitute acceptance of the foregoing conditions of sale.

ROBERT A. SIEGEL

ANDREW LEVITT, Licensed Auctioneers

---

In sending bids, always state the highest price you are prepared to pay for the lot. Your limit will not be used as a starting bid unless absolutely necessary.

## DESCRIPTIONS

Superb or Extremely Fine—the finest condition for noteworthy, outstanding copies.

Very Fine (VF)—means that there is a slight deviation from the above.

Fine (F)—means that the perforations do not touch the design on issues after 1890, but in some cases may just touch in earlier issues; if used, fairly lightly cancelled.

Very Good (VG)—means that the appearance is generally fine but that the perforations cut the design slightly.

Good (G)—means average off-centering; or fairly attractive with slight defects

Original gum (OG) is not to be expected on 19th Century stamps unless so stated.

Mint—have never been hinged.

Scott 1967 Specialized United States Catalogue is used for cataloguing our lots of United States and Scott's Standard Catalogue, 1967 for others.

WE SOLICIT FINE MATERIAL FOR FUTURE SALES
---



13.



3.



5



18



19



21



20



24



26



15



28



29



30



31



33



34



38



39EX



45



50



69



70



72



73



54



55



74



75



76



78



79



81



82



83



84



86



# FIRST SESSION

MONDAY, NOVEMBER 20th, 1967 — 2 P. M.

## GENERAL FOREIGN

- 1 ★ **ALBANIA**, 1913-49, collection of 397 unused stamps & 4 Souvenir Sheets, incl. Overprints, Pictorials, Commems., Semipostals, Airposts, Italian Occupation, Inverted, Double Overprints, many cpl. sets, virtually all F.-V. F. 463.39
- 2 ★ — 1920, 1fr-3fr Airpost Overprints (C26-C28). V. F., signed ..... 150.00

### ARMENIA

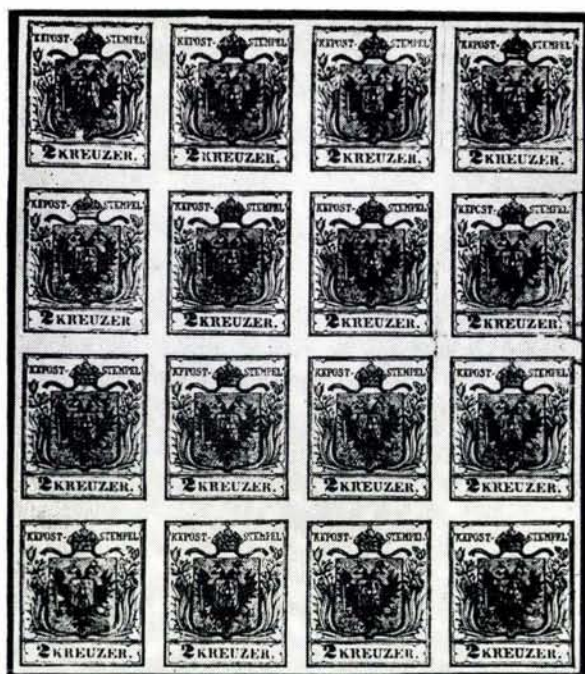
- 3 ★ 1920, 10r on 1k Orange (145). Very Fine, signed ..... **(Photo)** 175.00
- 4 ★ 1920, 10r on 3k Red (146). Very Fine ..... 90.00
- 5 ★ 1920, 10r on 70k Brown & Orange (152A). V. F. with Friedl Certificate **(Photo)** 100.00
- 6 ★ 1920, 100r on 1k Brown Orange (190A). Very Fine, signed ..... 75.00
- 7 ★ 1920, 25r on 50k Brown Violet & Green (206). V. F., with P. F. Certificate 75.00
- 8 ★ 1920, 25r on 50k Brown Violet & Green (206). Very Fine, signed ..... 75.00
- 9 ★ 1920, 50r on 1r Brown & Orange (207). Very Fine, signed Friedl ..... 45.00
- 10 ★ 1920, 50r on 1r Brown & Orange (231). Very Fine signed Friedl ..... 60.00
- 11 ★ 1920, 3r on 4k Red Imperforate, not listed in Scott, Very Fine, signed Friedl, was formerly listed as #235A, cat. value \$50.00 (Scott 1954) ..... —
- 12 ★ 1920, 5r on 2k Green (237). Very Fine, signed ..... 75.00
- 13 ★ 1920, 25r on 1k Red Brown & Dark Green (255). Faint toning spots on back only, V. F. appearance, with P. F. Certificate **(Photo)** ..... 90.00
- 14 ★ 1920, 25r on 3k Maroon & Gray Green (256). Barest trace of faint hinge thin, Very Fine appearance, signed Friedl ..... 75.00
- 15 ★ 1920, 25r on 1k Orange Brown & Gray (261). Very Fine, with P. F. Certificate **(Photo)** ..... 90.00
- 16 ★ 1920, 25r on 3k Carmine & Gray (262). Very Fine, with P. F. Certificate 60.00
- 17 ★ 1919-23, Balance of Collection, 145 unused stamps, incl. Opts., Pictorials, many better items, such as #187, 257, 263, high values, nearly all F.-V. F. 443.04

*LOTS ON VIEW FROM NOVEMBER 13th*

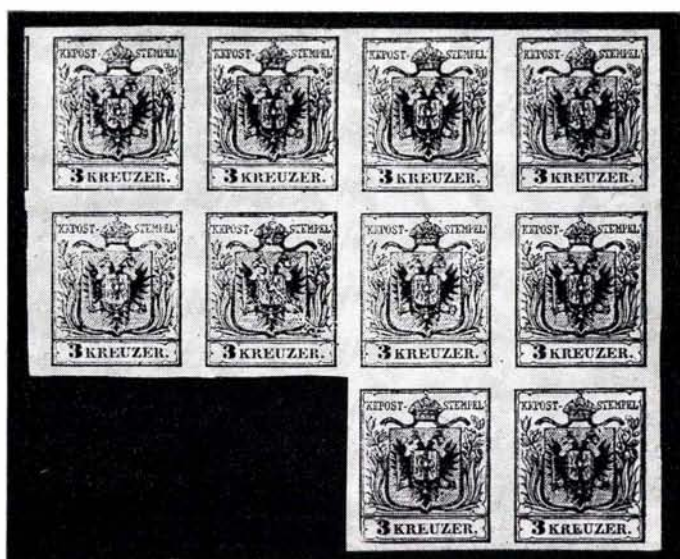
*OFFICES OPEN EVERY SATURDAY*

# AUSTRIA

- 18 ★ 1850, 1kr Yellow (1). Large Margins, Very Fine ..... (Photo) 300.00
- 19 ★ 1850, 1kr Orange (1b). Margins all around, Fresh, o. g., Rich Color, Very Fine, Ex-Caspary ..... (Photo) 325.00
- 20 ★ 1850, 1kr Yellow (1). Horiz. **Strip of 3**, Large to Huge Margins, Fresh, o. g., tiny scissor cut in bot. margin between two stamps, Very Fine, a Gorgeous Strip, Ex-Caspary ..... (Photo) 900.00+
- 21 ★ 1850, 2kr Black (2). Large Margins, Thick Paper, Deep Color, Fresh, o. g., natural gum crackles, still V. F. .... (Photo) 275.00



- 22 ★田 1850, 2kr Black (2). **Block of 16**, margins all around, o. g., gum creases broken through in a few spots, still a Wonderful Showpiece, one of the Largest Blocks known, Ex-Caspary ..... (Photo) 4400.00+



- 23 ★ 1850, 3kr Red (3). L shaped **Block of 10**, Large to Huge Margins, showing showing parts of two adjoining stamps, o. g., Very Fine ..... (Photo) 1350.00+
- 24 ★ 1850, 6kr Brown (4). Large Margins, Fresh and Very Fine ..... (Photo) 150.00
- 25 ★ 1850, 6kr Brown (4). **Block**, two stamps showing large portion of water-mark, Huge Margins, Fresh, o. g., Very Fine, Ex-Caspary ..... (Photo) 600.00+
- 26 ★ 1850, 9kr Blue Ty. II (5). Large Margins, Large part o. g., V. F. (Photo) 175.00
- 27 ★ 1850, 9kr Blue (5). **Block of 16**, margins, except touched at U. L., o. g., vert. crease broken through paper affects 4 stamps, still an Attractive and Very Rare Block, Ex-Caspary ..... (Photo) 2800.00+
- 28 ★ 1858, 2kr Yellow Ty. I (6). Well Centered, Fresh, o. g., negligible corner perf. bend, Very Fine appearance, Ex-Caspary ..... (Photo) 225.00
- 29 ★ 1858, 2kr Orange Ty. II (6b). Perfectly Centered, Gorgeous Color, Clear Embossing, Fresh, o. g., Extremely Fine Gem, Ex-Caspary ..... (Photo) 850.00
- 30 ★ 1858, 3kr Black Ty. I (7a). Minute thin speck and corner perf. creases, Very Fine appearance ..... (Photo) 300.00
- 31 ★ 1863, 2kr Yellow (17). Light corner perf. crease, V. F. appearance (Photo) 125.00
- 32 ★ 1863, 3kr Green (18). Large part o. g., barest traces of perf. tip toning, otherwise Very Fine ..... 100.00
- 33 ★ 1863, 15kr Yellow Brown (21). Fresh and Fine ..... (Photo) 285.00
- 34 ★ 1867, 5kr Rose Perf. 10½ (29b). Fine, o. g. .... (Photo) 70.00
- 35 ★ 1880, 50kr Brown Perf. 10½x12 (40b). Very Fine, o. g. .... 35.00
- 36 ★ 1883, 2k, 5kr Eagle Perf. 12½ (41a, 44a). Fresh, o. g., F.-V. F. .... 45.00
- 37 ★ 1899, 2kr Gray Lilac (84). Very Fine, o. g. .... 40.00
- 38 ★ 1908, 10kr Franz Josef (127). Very Fine ..... (Photo) 100.00



- 39 ★ 1910, 2k-10k Jubilee (142-144). 5k light corner crease, others V.F. (Photo Ex) 355.00
- 40 ★ 1917, 10kr Violet (167). Very Fine ..... 40.00



41

42

43

- 41 ★ 1919, 2k Vermilion & Black **Inverted Center** (219a). Pinpoint thin speck, Very Fine appearance, with P. F. Certificate ..... (Photo) 1200.00
- 42 ★ 1919, 4k Carmine & Black **Inverted Center** (222a). Light corner crease, Very Fine appearance ..... (Photo) 600.00
- 43 ★ 1920, 20k Lilac & Red **Inverted Center** (226a). Very Fine Copy of this Great Rarity, signed Diena ..... (Photo) 3500.00
- 44 ★ 1932, 10g-64g Views (340, 343-353). Very Fine ..... 88.70
- 45 ★ 1936, 10s Dollfuss (380). Very Fine ..... (Photo) 500.00
- 46 ★ 1945, 1m-5m Overprints (424-431). Both Types, V.F. sets ..... 324.50
- 47 ★ 1931, 10g-1s Rotary (B87-B92). Bit heavily hinged otherwise V.F. set 180.00
- 48 ★ 1931-32, 10g-1s Poets, Artists (B93-B98, B100-B105). V.F. sets ..... 189.00
- 49 ★ 1933, 12g-50g Ski Concourse (B106-B109). Very Fine set ..... 199.00
- 50 ★ 1933, 50g Wipa (B110). Very Fine ..... (Photo) 185.00
- 51 ★ 1933, 50g Wipa Souvenir Sheet (B111). Very Fine ..... (Photo) 1250.00
- 52 ★ 1934-35, 12g-64g Architects, Military Leaders (B122-B127, B132-B137). Fine-Very Fine sets ..... 120.00
- 53 ★ 1946, 1s-5s Renner Souvenir Sheets (B185-B188). Very Fine set ..... 1000.00
- 54 ★ 1918, 2.50k on 3k Ochre Airpost **Inverted** Surcharge (C2a). Very Fine, signed Friedl ..... (Photo) 500.00
- 55 ★ 1918, 2.50k on 3k Ochre Airpost Perf. 11½ (C2b). Very Fine, with Friedl Certificate ..... (Photo) 135.00
- 56 ★ 1925, 5g Red Airpost Horiz. Pair **Imperforate Between** (C13a). Block, Very Fine, signed Kessler ..... (Photo) 350.00
- 57 ★ 1935, 10s Slate Blue Airpost (C46). Very Fine ..... 55.00
- 58 ★ 1911, 5k-10k Postage Dues (J45-J46). Very Fine ..... 142.50
- 59 ★ 1915, 1h-10k Military Stamps (M1-M21). F.-V.F. set ..... 138.20
- 60 ★ 1918, 1h-1k Military Stamps (M69-M82). Very Fine set ..... 344.05
- 61 ★ 1851, (0.6kr) Blue Mercury Ty. II (P1). Just Clear to Huge Margins, showing part of next stamp, Fresh, o.g., Fine ..... 45.00





- 62 ★ 田 1851, (0.6kr) Blue Mercury Ty. I (P1a). L. R. Sheet Corner **Block of 12**, Large to Huge Margins, o. g., minute thin speck in margin between two stamps, otherwise a V. F. Block of Great Rarity, Ex Caspary **(Photo)** 780.00+



63

64

- 63 ★ 1851, (6kr) Yellow Mercury (P2). Huge Margins to close at right, showing part of next stamp at L., Large part o. g., tiny thin specks, Fine appearance, Attractive Copy of this Rare Stamp, Ex-Caspary ..... **(Photo)** 5250.00
- 64 ★ 1851, (30kr) Rose Mercury (P3). Margins to barely touched, small thin spot, a Fine appearing copy of this Rarity, signed E. Diena ..... **(Photo)** 7500.00



- 65 ★ 1856, (6kr) Scarlet Mercury (P4). Large to Huge Margins, Fresh, o. g., Deep Rich Color, negligible corner crease in margin outside design, still Extremely Fine for this Great Rarity, Ex-Caspary ..... **(Photo)** 13,500.00
- 66 ★ 1858, (1kr) Blue Newspaper (P5). Margins all around, small thin at bot. margin, Fine appearance ..... 125.00
- 67 ★ 1859, (1kr) Lilac Newspaper (P6). Clear to Large Margins, o. g., small crease at top, Fine appearance ..... 150.00
- 68 ★ 1861, (1kr) Gray Newspaper (P7). Huge Margins, o. g., Extremely Fine 45.00
- 69 ★ 1853, 2kr Green Newspaper Tax (PR1). Margins all around, V. F. **(Photo)** 325.00
- 70 ★ 1858, 4kr Brown Newspaper Tax (PR4). Margins all around, Fresh, o. g., Very Fine ..... **(Photo)** 250.00
- 71 ★ 1850-1949, Balance of Collection, 1,149 unused stamps, incl. nice range of issues with Pictorials, Commems., Semipostals, Airposts, Dues, Newspapers, Occupations, Offices Abroad, many better items, many cpl. sets, virtually all Fine-Very Fine ..... 1915.74

#### LOMBARDY — VENETIA

- 72 ★ 1850, 5c Buff (1). Large Margins, Fresh, o. g., crackly gum as usual, Very Fine, Ex-Caspary ..... **(Photo)** 250.00
- 73 ★ 1850, 10c Black (3). Large to Huge Margins, barest trace of toning, otherwise Very Fine ..... **(Photo)** 325.00
- 74 ★ 1850, 10c Black (3). B. Sheet Margin Copy, Large Margins, V. F. **(Photo)** 325.00
- 75 ★ 1850, 15c Pale Red Ty. II (4). Large Margins, full crackled o. g., Very Fine, with P. F. Certificate ..... **(Photo)** 150.00
- 76 ★ 1850, 15c Pale Red Ty. II (4). Clear to Large Margins, part o. g., F. **(Photo)** 150.00



- 77 ★ 1850, 15c Pale Red (4). U. R. Sheet Corner **Block of 20**, Huge Margins, Fresh, o.g., few stamps affected by light gum creases, normal for this issue, three pinpoint gum stains on back only, otherwise an Extremely Fine Block, one of the largest known, an Outstanding Showpiece, Ex-Caspary ..... (Photo) 3000.00+
- 78 ★ 1850, 30c Brown (5). Huge Margins, light crease, V.F. appearance, with P. F. Certificate ..... (Photo) 450.00
- 79 ★ 1850, 30c Brown **Ribbed Paper** (5a). Margins all around Very Fine, with Friedl Certificate ..... (Photo) 700.00
- 80 ★ 1850, 30c Brown (5). **Block**, Large Margins, o.g., two stamps show part of watermark, small flaws in top pair, otherwise V.F., a Very Rare Block, Ex-Caspary ..... (Photo) 1800.00+
- 81 ★ 1858, 2s Yellow Ty. II (7). Fresh, o.g., V.F., with Friedl Certificate ..... (Photo) 125.00



82 ★	1858, 3s Black Ty. I (8a). Perfectly Centered, Fresh, o.g., light corner creases, Very Fine appearance, with P. F. Certificate .....	(Photo) 250.00
83 ★	1858, 3s Black Ty. I, Perf. 16x15 (8c). Fresh, o.g., pinpoint thin speck in one perf. tip, Very Fine appearance, with P. F. Certificate .....	(Photo) 550.00
84 ★	1862, 3s Green Ty. II (9). Fresh, o.g., centered slightly to left, F. (Photo) .....	100.00
85 ★	1858, 5s Red Ty. II (10). Fresh, o.g., Perfectly Centered, negligible corner perf. bend, Very Fine appearance .....	45.00
86 ★	1858, 10s Brown Ty. I (11a). Fresh, o.g., Very Fine .....	(Photo) 70.00
87 ★	1858, 10s Brown Ty. I (11a). <b>Block</b> , Fresh, o.g., bit reinforced, Stamps Very Fine, Ex Caspary .....	(Photo) 280.00+
88 ★	1861, 5s Red (13). Trivial rounded corner perf., otherwise V.F. (Photo) .....	400.00
89 ★	1862, 10s Brown (14). Small thin spot & corner perf. crease, V.F. appearance, with Friedl Certificate .....	(Photo) 375.00
90 ★	1859, 1kr Black Newspaper Tax (PR1). Margins, Fresh, o.g., Very Fine, signed Dena .....	(Photo) 500.00
91 ★	1859, 2kr Red Newspaper Tax (PR2). Ample to Huge Margins, o.g., Very Fine, signed Friedl .....	(Photo) 70.00
92 ★	1859, 2kr Red Newspaper Tax (PR2). <b>Block of 12</b> with L. Sheet Margin, Fresh, o.g., Large Margins all around, light crease affects 3 stamps, otherwise a Very Fine and Scarce Block, Ex-Caspary .....	(Photo) 840.00+
93 ★	<b>Offices in Crete</b> , 1908, 1fr Brown on Gray, Vert. Pair, <b>Imperforate</b> Between (20a). Light bend in margin between stamps, otherwise V.F. (Photo) .....	100.00
94 ★	<b>AZERBAIJAN</b> , 1919-24, Collection of 45 unused stamps with Pictorials, Opts., incl. #36A, 44, 52, 55, 331, 332, Fine-Very Fine .....	270.31
95 ★	<b>AZORES</b> , 1868, 80r Orange (5). Margins, Fresh and Very Fine (Photo) .....	67.50
96 ★	— 1868, 80r Orange (5). Large Margins, Fresh, Large part o.g., tiny internal paper break as often, otherwise Extremely Fine .....	67.50
97 ★	— 1868, 100r Lilac (6). Large Margins, o.g., tiny light crease, V.F. appearance .....	(Photo) 67.50
98 ★	<b>BOSNIA &amp; HERZEGOVINA</b> , 1879-1918, Collection of 161 unused stamps, mostly in cpl. sets, incl. 1h-10k 1912-14 Issue, virtually all F.-V.F. ....	435.29

#### BULGARIA

99 ★	1909, 10c on 50c Dark Green "1990" Error (81a). <b>Block</b> of 9, Middle Stamp the Error, Fine .....	45.00
100 ★	1931, 1L-50L First Balkan Games (237-243). Fine-Very Fine set .....	72.00
101 ★	1933, 1L-50L Second Balkan Games (244-250). Very Fine set .....	193.25
102 ★	1935, 1L-50L Soccer (267-272). Usual light gum wrinkles, V.F. set .....	99.00
103 ★	1935, 1L-50L Gymnastics (273-278). Very Fine set .....	79.00
104 ★	1935, 1L-14L Patriots (288-292). Cpl. Sheets of 25, stamps Mint, F.-V.F. ....	321.25





88



89



90



91



95



93



97



105



108



113



114



115



116



117



119



118



122



120



121



124



123



123



125



125



126



127



128



129



132



130



133



134



135



136



137



138

105 ★	1927, 1L on 6L Airpost <b>Inverted</b> Overprint (C4a). Nibbed perf., otherwise, Very Fine ..... <b>(Photo)</b>	150.00
106 ★	1879-1949, Balance of Collection, 670 unused stamps & 3 Souvenir Sheets in Godden De Luxe album incl. # 1-5, 22, Pictorials, Commems., Semi-postals, Airposts, Dues, Parcel Posts, many cpl. sets, nearly all F.-V. F.	614.23
107 ★	<b>CASTELLORIZO</b> , 1920, 20pi on 5fr Dark Blue & Buff (13, 28). First minute hinge thin, last Very Fine .....	97.50
108 ★	— 1920, 1fr Claret & Olive Green (38). Very Fine, signed Friedl <b>(Photo)</b>	100.00
109 ★	<b>CRETE</b> , 1900-10, Collection of 87 unused stamps, incl. Pictorials, Opts., Dues, nearly all cpl. sets, Fine-Very Fine .....	424.25
110 ★	<b>CROATIA</b> , 1941-45, Collection of 470 unused stamps & 8 Souvenir Sheets, virtually all in cpl. sets, incl. 50k-100k Storm Division, F.-V. F.	149.72

#### CZECHOSLOVAKIA

111 ★	1919, 30h Red Violet <b>Imperforate</b> (47a). Natural gum wrinkle in margin, still Very Fine .....	50.00
112 ★	1934, 1k-2k Music Souvenir Sheets (200a-201a). Horiz. fold in bot. margins, stamps Very Fine .....	250.00
113 ★	1919, 6h Deep Orange Black Overprint (B4). V. F., with Friedl Certificate <b>(Photo)</b>	400.00
114 ★	1919, 2k Dark Blue (B18A). Rounded corner perfs., otherwise V. F. signed <b>(Photo)</b>	1000.00
115 ★	1919, 3k Claret (B19A). Very Fine, with P. F. Certificate ..... <b>(Photo)</b>	325.00
116 ★	1919, 10k Violet (B21). Very Fine, with Friedl Certificate ..... <b>(Photo)</b>	100.00
117 ★	1919, 10k Violet (B21). Very Fine, signed Friedl ..... <b>(Photo)</b>	100.00
118 ★	1919, 10k Deep Violet (B21a). Perfs, a bit blunted at top, otherwise V. F., with Friedl Certificate ..... <b>(Photo)</b>	125.00
119 ★	1919, 10h Carmine (B26). Very Fine, with Friedl Certificate ..... <b>(Photo)</b>	400.00
120 ★	1919, 10h Carmine (B26). Very Fine, with Friedl Certificate <b>(Photo)</b>	400.00
121 ★	1919, 10h Carmine (B26). Very Fine, with Friedl Certificate ..... <b>(Photo)</b>	400.00
122 ★	1919, 5h Deep Green on Yellow (B33). Very Fine, with Friedl Certificate <b>(Photo)</b>	350.00
123 ★	1919, 1.50k-4k Airposts (B37-B39). Very Fine set, with Friedl Certificate <b>(Photo)</b>	395.00
124 ★	1919, 2h Carmine (B40). Light corner perf. crease, V. F. appearance, with Friedl Certificate ..... <b>(Photo)</b>	1100.00
125 ★	1919, 30h Carmine (B45). Very Fine, with Friedl Certificate ..... <b>(Photo)</b>	120.00
126 ★	1919, 30h Carmine (B45). Negligible corner perf. crease, V. F. appearance, with Friedl Certificate ..... <b>(Photo)</b>	120.00
127 ★	1919, 50h Carmine (B46). Very Fine, with Friedl Certificate ..... <b>(Photo)</b>	300.00
128 ★	1919, 50h Carmine (B46). Light corner perf. crease, V. F. appearance, with Friedl Certificate ..... <b>(Photo)</b>	300.00



129 ★	1919, 50h Rose Red (B54). Tiny hinge stain, otherwise V. F. signed Friedl (Photo)	125.00
130 ★	1919, 10k Ultramarine (B57). Small hinge stain, otherwise V. F., signed Friedl (Photo)	100.00
131 ★	1919, 1h-50h Semipostal Overprints (B58-B63). #B60 tiny corner perf. crease, otherwise Very Fine set, signed Friedl	154.90
132 ★	1919, 1f Slate (B64). Fine, with Friedl Certificate (Photo)	450.00
133 ★	1919, 70f Red Brown on Green (B70). One irregular perf., Very Fine, with Friedl Certificate (Photo)	450.00
134 ★	1919, 70f Red Brown on Green (B70). Centered to R., Fine, signed (Photo)	450.00
135 ★	1919, 10f Rose (B71). Very Fine, with Friedl Certificate (Photo)	100.00
136 ★	1919, 10f Rose (B71). Very Fine, signed Friedl (Photo)	100.00
137 ★	1919, 10k Violet Brown & Violet (B90). V. F. ,with Friedl Certificate (Photo)	300.00
138 ★	1919, 20f Dark Brown (B97). Very Fine, with Friedl Certificate (Photo)	1000.00
139 ★	1919, 1f Green & Black (B104). Minute thin speck in one perf. tip, Fine appearance, with Friedl Certificate (Photo)	175.00
140 ★	1919, 12f Green & Black (B108). Light crease at bot., V. G. appearance, with Friedl Certificate (Photo)	900.00
141 ★	1919, 50f Green & Black (B110). Tiny perf. thin, V. F. appearance, signed Gilbert, Friedl	85.00
142 ★	1919, 1f Green & Black (B111). Fine, with Friedl Certificate (Photo)	150.00
143 ★	1919, 2f Green & Black (B112). Fine, signed Friedl	85.00
144 ★	1919, 5f Green & Black (B113). Light crease, Fine appearance, with Friedl Certificate (Photo)	250.00
145 ★	1919, 50f Green & Black (B114). Very Good, signed Friedl	70.00
146 ★	1919, 1f Green & Red (B115). Fine, signed Friedl	55.00
147 ★	1925-26, 50h-300h Olympics, Sokol (B137-B143). Very Fine sets	137.50
148 ★	1920, 14k-28k First Airposts (C1-C6). Very Fine sets	132.50
149 ★	1918-50, Balance of Collection., 829 unused stamps & 9 Souvenir Sheets, incl. Pictorials, Commems., Semipostals, Airposts, Dues, Bohemia & Moravia, Eastern Silesia Issues, many better values, many cpl. sets, virtually all Fine-Very Fine	1077.02
150 ★	<b>Slovakia</b> , 1939-44, Collection of 208 unused stamps, incl. First Issue to 10k, Pictorials, Commems., Semipostals, Airposts, Dues, mostly cpl. sets, Fine-Very Fine	154.46
151 ★	<b>Eastern Silesia</b> , 1920, 500h-1000h Overprints (31-32). V. F. set, signed	100.00
152 ★	<b>ESTONIA</b> , 1918-40, Collection of 167 unused stamps & 4 Souvenir Sheets, virtually all in cpl. sets, incl. Pictorials, Commems., Semipostals, Airposts, Fine-Very Fine	358.82
153 ★	<b>FAR EASTERN REPUBLIC</b> , 1920, 1r Brown & Orange (18). Very Fine, signed Friedl	60.00

## GREECE

- 154 ★ 1861, 1L Chocolate (1). Margins all around, Large part o.g., Very Fine, with P. F. Certificate ..... **(Photo)** 80.00
- 155 ★田 1861, 2L Olive Bistre on Straw (2). B. Sheet Margin **Block**, o.g., light fold in margin betw. stamps, Very Fine ..... 40.00+
- 156 ★田 1861, 5L Emerald (3). **Block**, o.g., Ample to Large Margins, V.F. **(Photo)** 180.00+
- 157 ★田 1861, 20L Blue (4). B. Sheet Margin **Block**, Large Margins, o.g., Very Fine **(Photo)** 200.00+
- 158 ★ 1861, 40L Violet on Blue (5). Margins, o.g., tiny scissor cut in margin, still Very Fine ..... 35.00
- 159 ★田 1861, 40L Violet on Blue (5). **Block**, Large Margins, o.g., tiny thin spots in two, otherwise Very Fine ..... **(Photo)** 140.00+
- 160 ★田 1861, 80L Rose (6). **Block**, Large Margins, o.g., tiny thin speck in one, light gum wrinkles, otherwise Very Fine ..... **(Photo)** 120.00+
- 161 ★田 1861, 10L Red Orange (7). R. Sheet Margin **Block**, small hinge thins in two, otherwise a Very Fine and Rare Block ..... **(Photo)** 500.00+
- 162 ★田 1862, 1L Dull Chocolate (8). **Block**, Margins all around, o.g., V.F. **(Photo)** 80.00+
- 163 ★田 1861, 5L Green on Greenish (11). **Block of 6**, Large to Huge Margins, o.g., one stamp pinpoint thin, others V.F. .... **(Photo)** 150.00+
- 164 ★田 1861, 10L Orange on Greenish (12). **Block**, Margins, o.g., V.F. **(Photo)** 300.00+
- 165 ★田 1862, 1L-2L Hermes (16-17). **Blocks**, Margins, o.g., one stamp tiny natural paper inclusion, Very Fine ..... 48.00+
- 166 ★田 1862, 5L Yellowish Green on Greenish (18a). **Block of 6**, margins, o.g., one stamp light corner crease, others Very Fine ..... **(Photo)** 135.00+
- 167 ★田 1864, 10L Orange on Blue (19a). **Block**, Margins, Large part o.g., Rich Color, one stamp light corner crease, others Very Fine ..... **(Photo)** 100.00+
- 168 ★田 1862, 80L Carmine (22). R. Sheet Margin **Block**, Margins all around, Fresh, o.g., faint crease in two, otherwise Very Fine, Ex-Green **(Photo)** 48.00+
- 169 ★田 1868, 1L Reddish Brown on Cream (23). **Block**, Margins, o.g., tiny scissor cut in margin between stamps, Very Fine ..... 36.00+
- 170 ★田 1868, 10L Orange on Bluish (26). **Block**, Large Margins, o.g., V.F. **(Photo)** 160.00+
- 171 ★田 1868, 40L Rose Violet on Blue (28). **Block**, Large Margins, o.g., Very Fine **(Photo)** 110.00+
- 172 ★田 1868, 80L Rose Carmine (29). **Block**, Large to Huge Margins, o.g., Extremely Fine ..... **(Photo)** 54.00+
- 173 ★ 1870, 1L Reddish Brown on Cream (30). Margins, Large part o.g., Fresh and Very Fine ..... **(Photo)** 55.00
- 174 ★田 1870, 1L Reddish Brown on Cream (30). **Block**, Large Margins, o.g., Very Fine, Scarce Block ..... **(Photo)** 220.00+
- 175 ★ 1870, 40L Salmon on Greenish (37). Margins, Large part o.g., V.F. .... 40.00
- 176 ★田 1870, 40L Salmon on Greenish (37). **Block**, Large Margins, o.g., Very Fine, signed Friedl ..... **(Photo)** 160.00+





177	★田	1872, 5L Green on Greenish (39). <b>Block</b> , Margins, o.g., negligible tiny crease in one, others Very Fine	(Photo) 80.00+
178	★田	1872, 40L Red Violet on Blue (42). <b>Block</b> with R. Sheet Margin, Margins all around, o.g., Very Fine	(Photo) 80.00+
179	★田	1872, 40L Olive Brown on Blue (42c). <b>Block</b> , Margins, Fresh, o.g., Very Fine	(Photo) 40.00+
180	★田	1875, 2L Bistre (44). <b>Block</b> , Large to Huge Margins, o.g., V. F.	(Photo) 28.00+
181	★田	1875, 5L Pale Yellow Green (45a). <b>Block</b> , Margins all around, o.g., light crease in one, others Very Fine	(Photo) 80.00+
182	★田	1875, 20L Blue (47a). <b>Block</b> , Margins all around, o.g., tiny thins and light creases, Very Fine appearance	(Photo) 140.00+
183	★田	1876, 60L Green (50). <b>Block</b> , Large to Enormous Margins, o.g., minute internal gum wrinkle, otherwise Extremely Fine	36.00+
184	★田	1876, 30L Dark Brown (51). <b>Block</b> , Large Margins, o.g., pinpoint thin speck in one, others Very Fine	30.00+
185	★	1896, 5d-10d Olympics (127-128). First small stain, last tiny thin, Very Good-Very Fine appearance, o.g.	(Photo Ex) 550.00
186	★	1906, 3d-5d Olympics (196-197). Last no gum, other V. F.	(Photo Ex) 250.00
187	★	1917, 1L-25d Provisionals <b>Imperforate</b> (249a-259a). Horiz. Pairs, V. F. set	155.00
188	★	1923, 10d on 10d Carmine (276A). V. F., with Friedl Certificate	(Photo) 300.00
189	★	1933, 50d-100d Pictorials (378-380). Very Fine set	130.00
190	★	1940, 2d-100d Youth Issue (427-436, C38-C47). Very Fine set	164.90
191	★田	1926, 2d First Airpost <b>Imperforate Vertical</b> (C1a). <b>Block</b> of 6, Very Fine	165.00
192	★	1933, 5d Ultramarine Airpost <b>Imperforate</b> (C18a). Horiz. Pair, pinpoint thin speck in one, otherwise Very Fine	100.00
193	★	1933, 50d Dark Brown Airpost <b>Imperforate</b> (C21a). Horiz. Pair, Very Fine	(Photo) 250.00
194	★	1941, 25d Light Red Airpost <b>Inverted Overprint</b> (C52a). Very Fine, with Friedl Certificate, listed but unpriced in Scott	(Photo) —
195	★	1941, 25d Light Red Airpost <b>Inverted Overprint</b> (C52a). Very Fine, listed but unpriced in Scott	(Photo) —
196	★	1942, 50d Gray Black Airpost <b>Double Impression</b> (C60a). Very Fine, with Friedl Certificate	(Photo) 70.00
197	★	1862-1949, Balance of Collection, 676 unused stamps in Godden De Luxe album, incl. Imperforates, Overprints, Pictorials, Commems., Airpost, Dues, Postal Tax, Occupations, many better values, cpl. sets, virtually all Fine-Very Fine	1401.66
198	★	<b>Epirus, Thrace</b> , 1913-20, 98 unused stamps, incl. cpl. sets, values to 5d, nearly all Fine-Very Fine	239.02
199	★	<b>Lemnos</b> , 1912, 1L-25d Overprints (N17-N32). Fine-Very Fine set	130.00
200	★	<b>Samos</b> , 1915, 25d Red (N108). Very Fine	(Photo) 150.00





## HUNGARY

201 ★	1871, 25kr Bright Violet (6). Fresh, o. g., V. F., Ex-Caspary .....	<b>(Photo)</b>	250.00
202 ★	1871, 2kr Yellow (7a). Fresh, o. g., light corner perf. creases, F. appearance		60.00
203 ★	1874, 20k Slate (17). Very Fine, o. g. ....	<b>(Photo)</b>	185.00
204 ★	1888, 1fo Gray Blue & Silver (34). Very Fine, o. g. ....		45.00
205 ★	1923, 5000k Dark Green & Yellow Green <b>Inverted Center</b> (386a). Light crease in bot. margin, V. F. appearance, with P. F. Certificate <b>(Photo)</b>		400.00
206 ★	1898-1949, Collection of 1,085 unused stamps of 24 Souvenir Sheets in Godden De Luxe album, incl. Pictorials, Commems., Semipostals, Airposts, Officials, Dues, mostly in cpl. sets, many better values, Virtually all Fine-Very Fine .....		867.18
207 ★	<b>JUGOSLAVIA</b> , 1918-49, Collection of 677 unused stamps & 8 Souvenir Sheets, incl. Overprints, Pictorials, Commems., Semipostals, Airpost, Dues, Offices Abroad, mostly in cpl. sets, in Godden De Luxe album, Virtually all Fine-Very Fine .....		559.12
208 ★	— 1941, 1.50d-4d Philatelic Exhibition Inverted Colors (B124b-B125b). Cpl. Sheets of 16, stamps Mint and Very Fine .....		192.00
209 ★	<b>LATVIA</b> , 1919-40, Collection of 316 unused stamps & 2 Souvenir Sheets, incl. Pictorials, Commems., Semipostals, Airpost, Occupations, mostly in cpl. sets, virtually all Fine-Very Fine .....		297.03
210 ★	<b>German Occupation, Libau</b> , 1919, 20pf Blue Violet <b>Inverted</b> Overprint (1N4 var.). Fine, Unlisted in Scott (Michel DM 550.00) .....	<b>(Photo)</b>	—
211 ★	— 1919, 25pf Orange & Black on Yellow (1N5). V. F., signed Kosack ....		50.00
212 ★	— 1919, 50pf Purple & Black on Buff (1N6). Very Fine, signed Kosack		50.00
213 ★	— 1919, 5pf-20pf Blue Overprints (1N8, 1N10-1N11). 20pf light crease, others Very Fine, signed Kosack .....		70.00
214 ★	— 1919, 25pf Orange & Black on Yellow (1N12). Tiny corner perf. bend, Very Fine appearance, signed Kosack, Friedl .....		85.00
215 ★	— 1919, 50pf Purple & Black on Buff (1N13). V. F., signed Kosack, Friedl <b>(Photo)</b>		85.00

## LIECHTENSTEIN

216 ★	1915, 25h Dark Blue Unglazed (3a). Microscopic thin speck in one perf. tip, otherwise Very Fine .....	<b>(Photo)</b>	145.00
217 ★	1915, 25h Ultramarine (3b). Very Fine .....	<b>(Photo)</b>	110.00
218 ★	1921, 3rp Orange Perf. 9½ (56a). Very Fine .....	<b>(Photo)</b>	60.00
219 ★	1921, 7½rp Dark Blue Perf. 9½ (58a). Very Fine .....		45.00
220 ★	1921, 7½rp Dark Blue, 13rp Brown Perf. 9½ (58a, 60a). Very Fine .....		70.00
221 ★	1928, 10rp-5fr Jubilee (82-89). Very Fine set .....		288.75
222 ★	1933, 25rp-1.20fr Views (108-110). Very Fine set .....		165.00
223 ★	1933, 3fr Violet Blue (114). Very Fine .....	<b>(Photo)</b>	130.00



224 ★	1934, 5fr Agriculture Souvenir Sheet (115). Very Fine .....	1400.00
225 ★	1935, 2fr Henna Brown (130). Very Fine ..... (Photo)	80.00
226 ★	1935, 5fr Dark Violet (131). Very Fine ..... (Photo)	400.00
227 ★	1939, 2fr-5fr Arms, Franz Joseph Sheets of 4, 12 (157a-159a). Very Fine	192.00
228 ★	1941, 10fr Madonna (171). Very Fine ..... (Photo)	75.00
229 ★	1941, 10fr Madonna Souvenir Sheet (171a). Very Fine ..... (Photo)	300.00
230 ★	1946, 10fr Saint Lucius Souvenir Sheet (218a). Small gum soak in Margin, stamps Mint, Very Fine .....	100.00
231 ★	1947, 5fr Henna Brown on Cream (222). Cpl. Sheet of 8, Very Fine .....	72.00
232 ★	1949, 10rp-40rp Exposition Souvenir Sheet (238). Very Fine .....	50.00
233 ★	1925-28, 5rp-30rp Semipostals (B1-B13). Fine-Very Fine sets .....	125.00
234 ★	1931, 1fr-2fr Zeppelin (C7-C8). Very Fine set .....	125.00
235 ★	1936, 1fr-2fr Zeppelin (C15-C16). Very Fine set .....	55.00
236 ★	1948, 10rp-5fr Airposts (C24-C32). Cpl. Sheets of 9, stamps, Mint and V. F.	209.25
237 ★	1933, 25rp-1.20fr Officials (O9-O10). Very Fine set .....	65.00
238 ★	1912-49, Collection of 429 unused stamps & 3 Souvenir Sheets, incl. Inverted Overprints, Pictorials, Commems., Semipostals, Airposts, Dues, Officials, mostly in cpl. sets, virtually all F.-V. F. ....	1325.11
239 ★	<b>LITHUANIA</b> , 1922, 4a on 75sk <b>Imperforate Horiz.</b> (114B). Vert. Pair, Fine, listed but unpriced, with Friedl Certificate ..... (Photo)	—
240 ★	— 1922, 20c on 2a Brown & Blue <b>"Cent." Omitted</b> (C26a). In pair with normal, Very Fine ..... (Photo)	103.25
241 ★	— 1924, 60c Rose Airpost <b>without</b> watermark (C36). Large part o. g., V. F. .... (Photo)	150.00
242 ★	— 1926, 60c Blue & Black Airpost <b>Inverted</b> Center (C39c). V. F. (Photo)	50.00
243 ★	— 1924, 60c Rose Airpost Semipostal <b>without</b> watermark (CB5). Very Fine ..... (Photo)	150.00
244 ★	— 1919-40, Collection of 313 unused stamps & 3 Souvenir Sheets, incl. Pictorials, Commems., Semipostals, Inverts, Errors, Airposts, many cpl. sets, also 42 stamps Central Lithuania, Virtually all F.-V. F. ....	454.41

#### MADEIRA

245 ★	1868, 20r Bistre (2). Margins, o. g., tiny internal paperbreak as often with this issue, otherwise Very Fine .....	85.00
246 ★	1868, 50r Green (3). Margins all around, o. g., Very Fine, with B. P. A. Certificate ..... (Photo)	85.00
247 ★	1868, 80r Orange (4). Large Margins, o. g., Very Fine ..... (Photo)	90.00
248 ★	1868, 100r Lilac (5). Large Margins, part o. g., light crease, V. F. appearance, signed Diena ..... (Photo)	90.00
249 ★	1868, 50r Green (11). V. F., o. g., with B. P. A. Certificate ..... (Photo)	65.00
250 ★	1876, 150r Blue (29). Fresh, o. g., Very Fine ..... (Photo)	60.00

251 ★	<b>MONGOLIA</b> , 1926, 50c Brown & Olive Green (14). V.F. signed Friedl	40.00
252 ★	— 1926, 50c Brown & Olive Green (21). Very Fine, signed Friedl	50.00
253 ★	— 1926, \$1.00 Brown & Salmon (22). Very Fine, signed	(Photo) 150.00
254 ★	— 1926, \$5.00 Red, Yellow & Gray (23). Very Fine, signed Friedl	(Photo) 75.00
255 ★	— 1926, 50c Brown & Olive Green (29). Very Fine, signed Friedl	60.00
256 ★	— 1926, \$1.00 Brown & Salmon (30). Very Fine, signed Friedl	(Photo) 100.00
257 ★	<b>MONTENEGRO</b> , 1874-1941, Collection of 134 unused stamps, incl. nice range of issues, with Opts., Pictorials, Commems., Dues, Austrian, Italian Occupations, nearly all Fine-Very Fine	131.54
258 ★	<b>POLAND</b> , 1860, 10k Blue & Rose (1). Small thin speck, V.F. appearance	(Photo) 150.00
259 ★	— 1919, 3h-5h Cracow overprints (41-42). Last has tiny corner perf. crease, other Very Fine, signed	100.00
260 ★	— 1919, 10kr Deep Violet Overprint (55). Very Fine, with P. F. Certificate	(Photo) 600.00
261 ★	— 1948, 80zl-120z Roosevelt Issue (Michel 515-517, B11). Cpl. Sheets of 16 of set, and Souvenir Sheet, Very Fine	Michel DM 3480.00
262 ★	— 1918-49 Balance of Collection, 806 unused stamps & 8 Souvenir Sheets in Godden De Luxe Album, incl. Overprints to 4kr, Pictorials, Commems., Semipostals, Airposts, Dues, Occupations, many cpl. sets, better values, 90h #50 creased not counted, balance virtually all Fine-Very Fine	799.13

#### PORTUGAL

263 ★	1853, 25r Blue (2). Large Margins, o.g., Extremely Fine, Ex-Caspary	(Photo) 125.00
264 ★	1855, 100r Lilac (8). Large Margins, Fresh and Very Fine	(Photo) 55.00
265 ★	1866, 20r Bistre (19). Huge Margins, Extremely Fine	(Photo) 37.50
266 ★	1866, 80r Orange (22). Large to Huge Margins, Large part o.g., V.F.	(Photo) 75.00
267 ★	1873, 240r Pale Violet (49). Fresh, o.g., rounded corner perf., otherwise Very Fine Ex-Caspary	(Photo) 325.00
268 ★	1936-41, 1.50e-50e Airposts (C1-C10). Very Fine set	75.95
269 ★	1862-1949, Balance of Collection, 336 unused stamps & 14 Souvenir Sheets, incl. Imperforates, Pictorials, Opts., Commems., many cpl. sets, high values, nearly all Fine-Very Fine	757.24
270 ★	<b>PORTUGUESE INDIA</b> , 1872, 200r Yellow (22). Fresh, o.g., pinpoint thin speck, Very Fine appearance, signed Dena	60.00
271 ★	— 1881, 2t on 50r Blue (145). Minute corner perf. bend, Very Fine appearance, Ex-Caspary	50.00
272 ★	<b>PORTUGUESE COLONIES</b> , 1870-1949, Collection of 942 unused stamps & 2 Souvenir Sheets, wide range of Colonies, with Pictorials, Commems., Overprints, Airposts, Dues, Inverted Centers, many cpl. sets, better values, virtually all Fine-Very Fine	1000.29







# ROMANIA



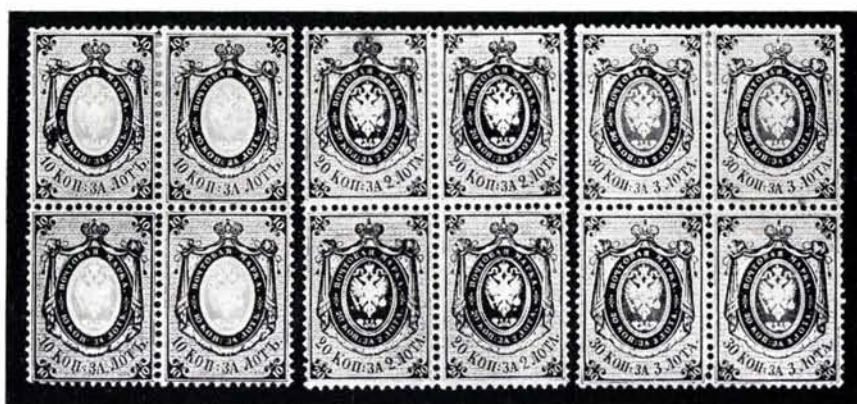
273

274

275

- 273 ★ 1858, 108pa Blue on Rose (3). Large to Huge Margins, Beautiful Color, faint trace of horiz. crease, barely visible, Extremely Fine appearance, Ex-Caspary ..... (Photo) 3000.00
- 274 ★ 1858, 81pa Blue on Blue (4). Large Margins, Fresh, o. g., light corner crease at extreme U. L., far from design, barest traces of toning, still one of the Finest Copies known, Ex-Ferrari, Caspary ..... (Photo) 4500.00
- 275 ★ 1858, 80pa Red on Bluish (7). Large Margins, o. g., Fresh, two tiny natural paperbreaks, otherwise Very Fine, Rare Unused, Ex-Caspary (Photo) 3000.00
- 276 ★ 1859, 5pa Black Broken Frame (8b). Large Margins, o. g., Very Fine ..... 27.50
- 277 ★ 1859, 40pa Blue on White (9). Huge Margins, o. g., V. F. .... (Photo) 40.00
- 278 ★ 1862, 6pa Red on White (10). Large Margins, Fresh and Very Fine, with P. F. Certificate ..... (Photo) 125.00
- 279 ★ 1862, 6pa Red on Laid (13). Margins, o. g., Very Fine ..... (Photo) 80.00
- 280 ★ 1862, 6pa Carmine Tête-Bêche Pair (16a). Ample to Large Margins, o. g., Fine-Very Fine ..... (Photo) 35.00
- 281 ★ 1862, 30pa Blue Tête-Bêche Pair (18a). Large Margins, o. g., V. F. (Photo) 45.00
- 282 ★ 1868, 18b Scarlet, Rose (36, 36a). Margins, o. g., Very Fine ..... 80.00
- 283 ★ 1869, 50b Blue & Red (42). Margins, o. g., Very Fine ..... (Photo) 50.00
- 284 ★ 1869, 50b Indigo & Red (42a). Margins, o. g., Very Fine ..... (Photo) 52.50
- 285 ★ 1871-72, 10b Blue, 15b Red (45-46). Clear to Large Margins, o. g., F.-V. F. 70.00
- 286 ★ 1872, 10b Steel Blue, 50b Blue & Red (48b, 49). Large Margins, o. g., V. F. 70.00
- 287 ★ 1862-1948, Collection of 903 Diff. Unused stamps & 106 Souvenir Sheets, incl. Imperforates, Commems., Pictorials, Semipostals, Airposts, nearly all in cpl. sets, mounted in 2 Godden De Luxe Albums, virtually all F.-V. F. 864.18

# RUSSIA



288

289

290

- 288 ★ 1858, 10k Brown & Blue (2). **Block**, Fresh, o. g., Rich Colors, Very Fine, Rare, Ex-Caspary ..... (Photo) 600.00+
- 289 ★ 1858, 20k Blue & Orange (3). **Block**, Fresh, o. g., Brilliantly Fresh Colors, Very Fine, Excessively Rare, only one other Block believed to be known, Ex-Caspary ..... (Photo) 1800.00+
- 290 ★ 1858, 30k Carmine & Green (4). **Block**, o. g., Brilliant Colors, Fresh, Very Fine, Extremely Rare, only one other Block known, Ex-Caspary (Photo) 1800.00+
- 291 ★ 1875, 2k Black & Red **Laid** Paper (26a). Negligible corner perf. crease, Very Fine appearance, signed Thier ..... (Photo) 125.00
- 292 ★ 1884, 3½r Black & Gray (39). Tiny internal paperbreak, Fine appearance 135.00
- 293 ★ 1884, 7r Black & Orange (40). Fresh, o. g., perfs. just in at right, V. G. 135.00
- 294 ★ 1919, 2k-10r Yudenitch Issue (151-164). Very Fine set ..... 76.75
- 295 ★ 1922, 20r on 15k Red Brown & Blue Imperforate (224). L. Sheet Margin Copy, Margins all around, Very Fine ..... (Photo) 150.00
- 296 ★ 1927, 14k Zamenhof **Imperforate** on Thick Paper (374 var.). Horiz. Pair with L. Sheet Margin, Very Fine, Unlisted in Scott (Michel DM 600.00) —
- 297 ★ 1933, 15k-70k Moscow, Leningrad Philatelic Exhibitions (485-488). Very Fine sets ..... 70.00
- 298 ★ 1935, 1k-40k Spartacist Games (559-560, 562-568). Very Fine ..... 176.00
- 299 ★ 1922, 1k-10k Semipostals (B24-B29). Very Fine set ..... 67.00
- 300 ★ 1923, 1r-4r Semipostals (B38-B42). Very Fine set ..... 90.00
- 301 ★ 1923, 1r on 10r Brown & Black **Inverted** overprint (B38a). V. F., signed Friedl ..... 35.00
- 302 ★ 1923, 4r on 5000r Semipostal **Inverted** overprint (B42a). Very Fine, with P. F. Certificate ..... (Photo) 200.00
- 303 ★ 1924, 10k on 5r Green **"Wide 5"** Variety (C7a). Very Fine, signed Friedl, with P. F. Certificate ..... (Photo) 125.00
- 304 ★ 1924, 10k on 5r Green **"Wide 5"** Variety (C7a). Very Fine ..... (Photo) 125.00

305 ★	1924, 15k on 1r Red Brown <b>Inverted Overprint</b> (C8a). Very Fine .....	50.00
306 ★	1930, 40k-80k Zeppelin <b>Imperforate</b> (C12b-C13b). V.F. set ( <b>Photo Ex</b> ) .....	150.00
307 ★	1930, 40k-80k Zeppelin <b>Imperforate</b> (C12b, C13b). Vert. Pairs, light gum creases as usual, otherwise Very Fine set .....	( <b>Photo Ex</b> ) 300.00
308 ★	1933, 5k-20k Stratosphere (C37-C39). Fine-Very Fine set .....	120.00
309 ★	1933, 5k-80k Airplane (C40-C49). Fine-Very Fine sets .....	95.00
310 ★	1934, 5k-20k Stratosphere Disaster (C50-C52). Usual gum crinkles, Fine-Very Fine set .....	100.00
311 ★	1934, 5k-30k Zeppelin (C53-C57). 5k natural gum wrinkle, V.F. set .....	50.00
312 ★	1935, 1r Moscow-San Francisco Flight (C68). Very Fine .....	75.00
313 ★	1858-1950, Collection of 1,536 unused stamps & 9 Souvenir Sheets, incl. Empire Issues, Pictorials, Commems., Semipostals, Airposts, majority in cpl. sets, many better items, virtually all F.-V.F., a very Attractive Collection mounted in 2 Godden De Luxe Albums .....	2268.67
314 ★	<b>Offices in Turkey</b> , 1863, 6k Dark Blue (1). Large Margins, V.F., signed Friedl .....	40.00
315 P	— 1884, 1k-7k Numerals <b>Imperforate</b> Proofs (23P-26P). <b>Blocks</b> with L. Sheet Margin, o.g., Very Fine, Scarce .....	( <b>Photo Ex</b> ) —
316 ★	<b>Offices Abroad</b> , 1865-1920, Collection of 160 unused stamps, incl. values \$10.00, 100pi, 10r, many cpl. sets, Fine-Very Fine .....	429.06
317 ★	<b>Wrangel Issues</b> , 1921, Collection of 159 unused stamps, almost cpl., incl. #276A, 281A, 284B, 284C, Fine-Very Fine .....	344.96
318 ★	<b>RUSSIAN TERRITORIES</b> , 1862-1945, 237 unused stamps, incl. South Russia, Tanna Tuva, Ukraine, Western Ukraine, Livonia, Mongolia, nearly all Fine-Very Fine .....	452.35
319 ★	<b>SAAR</b> , 1950, 15fr Stamp Day (B76). Cpl. Sheet of 10, sheet folded in places along perfs., Stamps Mint & Very Fine .....	375.00
320 ★	<b>ST. THOMAS &amp; PRINCE IS.</b> , 1948, 5c-20c Fruits (341-350, 350a). Set & Souvenir Sheet, two low values, thin spots, others V.F. ....	149.70
321 ★	— 1938, 10c-10c First Airpost (C1-C9). Very Fine set .....	76.75

## SERBIA

322 ★	1866, 1p Green on Violet Rose, Rose (1-2). Large Margins, o.g., V.F. ....	38.50
323 ★	1866, 1p Green on Violet Rose (1). Cpl. Sheet of 12, o.g., Fresh, horiz. crease in margin between first and second row, Stamps V.F., Ex-Caspary .....	162.00+
324 ★	1866, 1p Olive Green on Rose (2a). Cpl. Sheet of 12, Full Margins, Stamps Mint, Extremely Fine, Ex-Caspary .....	( <b>Photo</b> ) 300.00+
325 ★	1866, 2p Brown on Lilac (3). Cpl. Sheet of 12, Full Sheet Margins, Stamps Mint, Extremely Fine, Ex-Caspary .....	( <b>Photo</b> ) 360.00+
326 ★	1866, 40p Blue Vienna Printing (6). Well Centered, o.g., blunted perf., otherwise Very Fine, signed Friedl .....	( <b>Photo</b> ) 185.00



- 327 ★ 1916, 1h-10kr Occupation (1N22-1N42). Fine-Very Fine set ..... 115.50
- 328 ★ 1866-1943, Collection of 415 unused stamps & 4 Souvenir Sheets, incl. Pictorials, Commems., Dues, Occupations, many cpl. sets, better values, nearly all Fine-Very Fine ..... 351.69

## SPAIN

- 329 ★ 1850, 6c Black (1). Margins, Fresh, o. g., Very Fine, Ex-Caspary **(Photo)** 60.00
- 330 ★ 1850, 6c Black Ty. I (1b). Horiz. **Strip of 5**, Margins all around, L. Stamp Curious Printing Flaw, Very Fine, Ex-Caspary ..... **(Photo)** 325.00+
- 331 ★ 1850, 12c Lilac (2). Horiz. **Pair**, Huge Margins, Large part o. g., faintly toned and barest trace of tiny thin, Attractive Pair, V. F. appearance, Ex-Caspary ..... **(Photo)** 600.00+
- 332 ★ 1850, 10r Green (5). Margins all around, faint thin spot, V. F. appearance **(Photo)** 700.00



- 333 ★ 1851, 2r Red (8). Large to Huge Margins, Brilliant Color, trivial minute corner crease, virtually entirely in margin, otherwise an Extremely Fine Copy of this Great Rarity, Ex-Caspary ..... **(Photo)** 3000.00
- 334 ★ 1851, 6r Blue (10). Large Margins, Fresh, microscopic pinpoint thin specks, Very Fine appearance, Ex-Caspary ..... **(Photo)** 400.00
- 335 ★ 1852, 6c Rose Thin Paper (12a). Large Margins, part o. g., Extremely Fine, Ex-Caspary ..... **(Photo)** 35.00
- 336 ★ 1852, 12c Lilac (13). Large Margins, Fresh, small part o. g., tiny natural paper pores, still Very Fine, Ex-Caspary ..... **(Photo)** 175.00
- 337 ★ 1852, 12c Gray Lilac (13a). Margins all around, fresh, faint trace of crease, barely noticeable, Very Fine appearance, Ex-Caspary ..... **(Photo)** 200.00



338

339

340

- 338 ★ 1852, 2r Pale Red (14). Large Margins, Beautiful Color, Extremely Fine, Ex-Caspary ..... (Photo) 2000.00
- 339 ★ 1853, 1c Bronze Arms of Madrid (17). Margins all around, Fresh, o. g., Rich Color, Very Fine, Ex-Caspary ..... (Photo) 350.00
- 340 ★ 1853, 3c Bronze Arms of Madrid (18). Margins all around, o. g., Gorgeous Color, Extremely Fine, A Great Rarity in this Wonderful Condition, Ex-Caspary ..... (Photo) 2250.00
- 341 ★ 1853, 12c Red Violet (20). Large Margins, Deep Rich Color, Extremely Fine, Ex-Caspary ..... (Photo) 175.00
- 342 ★ 1853, 5r Light Green (22). Margins all around, Fresh, o. g., natural paper inclusion, Very Fine, Ex-Caspary ..... (Photo) 225.00
- 343 ★ 1853, 6r Deep Blue (23). Margins all around, Fresh and Very Fine, Ex-Caspary ..... (Photo) 350.00



- 344 ★ 1854, 2c Green (24). Block of 6, Fresh, o. g., Ample to Large Margins, except L. R. stamp barely touched, small scissor cut in margin between 2 stamps and gum a bit crackly, still a Choice Block, Rare, Ex-Caspary ..... (Photo) 1950.00+
- 345 ★ 1854, 4c Carmine (25). L. L. Sheet Corner Copy, Large Margins, Fresh, o. g., Extremely Fine, signed Brun ..... (Photo) 45.00





348



349



350



351



353



352



361EX



371EX



354



355



356



357



359



404



376



377



378



390



398



407



399



405



346 ★	1854, 2r Scarlet (28). Margins, o. g., Fresh and V. F., Ex-Caspary <b>(Photo)</b>	150.00
347 ★	1854, 5r Green (29). Large Margins, Fresh, Large part o. g., Very Fine, Ex-Caspary <b>(Photo)</b>	140.00
348 ★	1854, 6r Blue (30). Margins all around, Rich Color, Large part o. g., Very Fine, Ex-Caspary <b>(Photo)</b>	200.00
349 ★	1856, 2c Green (40). Margins all around, V. F., Ex-Caspary <b>(Photo)</b>	250.00
350 ★	1859, 12c Orange (48). Large Margins, Fresh, o. g., Extremely F. <b>(Photo)</b>	100.00
351 ★	1861, 19c Brown on Buff (52). Clear to Large Margins, o. g., Fine <b>(Photo)</b>	400.00
352 ★	1862, 19c Carmine on Lilac (58). T. Sheet Margin Copy with part Imprint, Large Margins, Fresh, o. g., Very Fine <b>(Photo)</b>	40.00
353 ★	1864, 19c Violet on Pinkish (64). Huge Margins, o. g., Extremely Fine <b>(Photo)</b>	40.00
354 ★	1865, 12c Blue & Rose (69). Huge Margins, Fresh, o. g., Extremely Fine <b>(Photo)</b>	55.00
355 ★	1865, 19c Brown & Rose (70). Large Margins, faint crease, V. F. appearance <b>(Photo)</b>	300.00
356 ★	1868, 19c Brown (102). Rich Color, Fresh, o. g., barest trace of toning on one perf. tip, still Very Fine <b>(Photo)</b>	500.00
357 ★	1878, 10p Blue (241). Large part o. g., Very Fine <b>(Photo)</b>	70.00
358 ★	1889, 10p Orange Red (270). Fresh, o. g., nibbed perf., otherwise V. F. ....	135.00
359 ★	1905, 1p Rose Red Don Quixote (294). Very Fine <b>(Photo)</b>	125.00
360 ★	1920, 1c-10p U. P. U. Congress (318-330). 50c corner crease, 10p minute perf. thin, otherwise Fine-Very Fine set	190.05
361 ★	1931, 1c-10p Montserrat (501-513). Fine-Very Fine set <b>(Photo Ex)</b>	351.00
362 ★	1936, 10c-15c Philatelic Exhibition (572-573). Very Fine set	50.00
363 ★	1938, 5c-10p Army Issue (606-614). Fine set	230.00
364 ★	1939, 4p-10p Franco (688-689). Very Fine	45.00
365 ★	1926-27, 15c-4p Gallarza, Overprints (B14-B18, B47-B53). #B18 rounded corner perf., otherwise Very Fine sets	107.35
366 ★	1927, 1c-10p Silver Jubilee (B19-B31). Fine-Very Fine set	68.60
367 ★	1927, 20c Jubilee <b>Brown</b> Overprint (B48a). Very Fine	40.00
368 ★	1927, 30c Jubilee <b>Blue</b> Overprint (B50a). Fine	40.00
369 ★	1927, 55c-10p Jubilee (B64-B73). Fine-Very Fine set	136.00
370 ★	1940, 10c-10p Virgin of Pillar (B109-B122). Very Fine set	162.80
371 ★	1920, 5c-1p First Airpost <b>Imperforate</b> (C1a, C2a, C4a, C5a). Horiz. Pairs, Very Fine set	180.00
372 ★	1931, 5c-1p Montserrat Airposts (C68-C72). Fine set	63.00
373 ★	1936, 10c-15c Philatelic Exhibition Airposts (C88-C89). 10c minute pin-point hinge thin, otherwise Very Fine set <b>(Photo Ex)</b>	300.00
374 ★	1938-47, 50c-10p Airposts (C92-C96, C98-C99, C117-C122). F.-V. F. ....	60.30



27



INTERNATIONALE  
POSTWERTZEICHEN-AUSSTELLUNG  
WIEN 1933

51



92



181



182



177



178



179



229



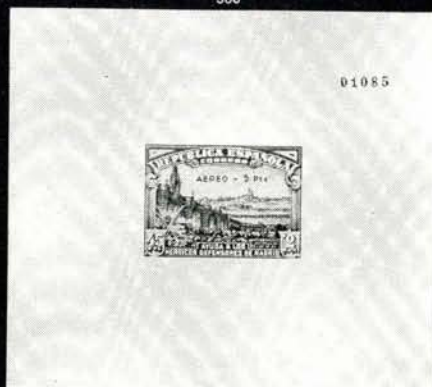
180



585



307EX



01085



315EX



324



325



375 ★	1938, 5p on 1p Constitution Airpost (C97). Very Fine .....	70.00
376 ★	1938, 5p on 1p Constitution Airpost <b>Imperforate (C97a)</b> . Horiz. Pair, V.F. (Photo) .....	160.00
377 ★	1938, 5p on 1p Constitution Airpost <b>Imperforate Vertically</b> (C97 var.). Horiz. Pair, Very Fine, Unlisted .....	(Photo) 140.00+
378 ★	1938, 5p on 1p Constitution Airpost <b>Inverted</b> Overprint (C97b), Very Fine (Photo) .....	80.00
379 ★	1938, 5p on 1p Constitution Airpost Souvenir Sheet (C97c). Small gum skip in margin, Very Fine .....	135.00
380 ★	1938, 5p on 1p Constitution Airpost Souvenir Sheet <b>Imperforate</b> (C97d). Very Fine, Rare .....	(Photo) 500.00
381 ★	1938, 45c Defenders of Madrid Airpost (CB6). Negligible gum bend, otherwise Very Fine .....	60.00
382 ★	1938, 45c Defenders of Madrid Airpost <b>Imperforate</b> (CB6a). Vert. Pair with L. Sheet Margin, one stamp tiny natural gum crackle, other V.F. ....	100.00
383 ★	1938, 45c Defenders of Madrid Airpost Souvenir Sheet (CB6b). Very Fine .....	300.00
384 ★	1938, 45c Defenders of Madrid Airpost Souvenir Sheet <b>Imperforate</b> (CB6c). Tiny wrinkle in extreme Margin, otherwise V.F. ....	(Photo) 400.00
385 ★	1940, 25c-10p Virgin of Pillar Airposts (CB8, CB10-CB13, CB15-CB17). Control No. 000,000, Very Fine .....	131.90
386 ★	1931, 10c-50c Airpost Official <b>Errors</b> (CO2a, CO4a, CO4c). #CO4a couple nibbed perfs., others Very Fine .....	60.00
387 ★	1852-1948, Balance of Collection, 489 unused stamps & 7 Souvenir Sheets in Godden De Luxe Album, incl. Imperforates, Commems., Pictorials, Semipostals, Airposts, Officials, many cpl. sets, a few earlys have faults, #36 margins added is not counted, balance nearly all F.-V.F. ....	1056.77
388 ★	<b>Revolutionary Issues</b> , 1936, 15c-2.40p Overprints (7LC4-7LC5, 7LC8-7LC10). Fine-Very Fine .....	85.00
389 ★	— 1936-37, 50c-2.50p Overprints (9LC4-9LC13, 9LC20-9LC23, 9LC25-9LC39, 9LC44-9LC48). Fine-Very Fine sets .....	126.75
390 ★	— 1937, 80c on 2c Orange Brown (9LC24). Very Fine .....	(Photo) 175.00
391 ★	— 1937, 2.50p-10p Overprints (9LC51-9LC53). Fine set .....	75.00
392 ★	— 1939, 20c-1p Buildings Airpost Souvenir Sheets (Sanabria 74-76). Very Fine set .....	Sanabria 175.00
393 ★	1936-41, 56 unused Souvenir Sheets, mainly unlisted in Scott, incl. the Scarce Submarine Sheet, mostly Revolutionary Issues, F.-V.F. ....	E. VI
394 ★	<b>SPANISH COLONIES</b> , 1899-1950, Collection of 367 unused stamps & 2 Souvenir Sheets, incl. Overprints, Pictorials, Commems., Semipostals, Airposts, many cpl. sets, better values such as Elobey #17, Fernando Po #42-43, virtually all Fine-Very Fine .....	580.59
395 ★	<b>SPANISH GUINEA</b> , 1903-09, 10c on 50c-1.25p Overprints (8B, 98, 99). Very Fine .....	70.00
396 ★	<b>TIMOR</b> , 1898-1950, Collection of 57 unused stamps & 1 Souvenir Sheet, mostly in cpl. 1938-50 sets, Fine-Very Fine .....	157.14



# TURKEY

397 ★	1863, 20pa-5pi First Issue (1-7). Specialized Collection of 150 mostly unused stamps, incl. 20pa #1 <b>Block of 6</b> Without Bands First Plate, <b>Block of 6</b> Tête-Bêche Second Plate, Used <b>Block</b> Tête-Bêche, Singles with Red, Brown, Blue, Green Bands; 1pi #2 Four Tête-Bêche Pairs, and a Tête-Bêche <b>Block</b> , Color Error Yellow, Design Reversed; 2pi #3 Five Tête-Bêche Pairs and a <b>Block</b> , Red, Yellow, Violet Bands; 5pi #5, Blue, Gold, Green, Red, Yellow Bands, Six Tête-Bêche Pairs and a possibly Unique <b>Block</b> ; 20pa #6 Used <b>Block</b> , Strips of 5 and 6, Tête-Bêche Pairs, Reversed Design, Yellow Backs; 1pi #7 Tête-Bêche <b>Blocks of 6, 4</b> , Pairs, Reversed Design, Red, Blue Bands; also of all Values Shades, Without Bands, an Outstanding and Very Fine Collection of Great Rarity, Ex-Ward, cat. value as Singles and Pairs \$3826.00 .....	—
398 ★	1867, 25pi Orange (19). Very Fine, o. g., signed .....	(Photo) 250.00
399 ★	1913, 200pi Sultan Mohammed (270). One slight blunted perf., otherwise Very Fine .....	(Photo) 135.00
400 ★	1915, 10pi on 100pi Deep Blue <b>Inverted</b> Overprint (286a). V. F., signed Diena .....	50.00
401 ★	1935, 20pa-100ku Suffragists (B54-B68). 20ku tiny thin speck, otherwise Very Fine set .....	212.25
402 ★	1863-1950, Collection of 1,028 unused stamps & 5 Souvenir Sheets, incl. Overprints, Pictorials, Commems., Semipostals, Airposts, Dues, Newspapers, Postal Tax, many better values, cpl. sets, such as Izmir, Sivas, mounted in 2 Godden De Luxe Albums, nice showing of Ox heads, nearly all Fine-Very Fine .....	1792.72
403 ★	<b>Turkey in Asia</b> , 1920, 1000pi Brown (5). Negligible tiny corner crease, Very Fine appearance, signed Friedl .....	(Photo) 175.00
404 ★	— 1921, 1pi Ultramarine "337" Variety (60b). Light crease in top perms., V. F. appearance, listed but unpriced in Scott, with Friedl Certificate (Photo) .....	—
405 ★	— 1921, 5pi Deep Green (61). Tiny gum wrinkle, still V. F., signed Friedl .....	60.00

# WESTERN UKRAINE

406 ★	1919, 10gr Deep Violet (27). Very Fine, signed Friedl .....	55.00
407 ★	1919, 1sh Greenish Blue (34). Very Fine, signed Friedl .....	(Photo) 75.00
408 ★	1919, 3sh Olive Gray <b>Double</b> Overprint (36a). Very Fine, with Friedl Certificate .....	40.00
409 ★	1919, 12sh Blue <b>Inverted</b> Overprint (40a). Light crease, V. F. appearance, with Friedl Certificate .....	35.00+
410 ★	1919, 30sh Slate (44). Very Fine, signed Friedl .....	65.00
411 ★	1919, 15sh on 36h Violet (57). Very Fine, signed Körner .....	60.00
412 ★	1919, 15sh on 36h Violet <b>Double</b> Overprint (57 var.), Very Fine .....	60.00+
413 ★	1919, 6sh Black, Red & Yellow <b>Inverted</b> Overprint (66a). Very Fine, with Friedl Certificate .....	50.00+

- 414 ★ 1919, 50sh Black, Red & Yellow **Inverted** Overprint (72 var.), Very Fine, signed Körner ..... 35.00+
- 415 ★ **FOREIGN MISCELLANEOUS**, many hundreds of stamps, incl. cpl. sheets, some better items, Souvenir Sheets, incl. Cpl. Sheet of 15 of Australia #95a, many unlisted items, Turkey Specimens, Greece Essay Sheet of the 1940 Youth Issue, nearly all Fine-Very Fine ..... **E. VIII**

#### END OF FIRST SESSION

### THE JOSIAH K. LILLY COLLECTION

#### SCHEDULE OF SALES

*(All sales will be held at the Waldorf-Astoria Hotel)*

<i>Sale VII</i>	United States 19th and 20th Century <i>Wednesday and Thursday, February 7-8, 1968</i>	(4 sessions)
<i>Sale VIII</i>	British Commonwealth <i>May 15-16, 1968</i>	(4 sessions)
<i>Sale IX</i>	U. S. Revenues, Envelopes, Telegraphs <i>September 11-12, 1968</i>	(4 sessions)
<i>Sale X</i>	Latin America and Asia <i>December 4-5, 1968</i>	(3 sessions)

### LILLY SALES

Complete Bound Volumes

#### UNITED STATES

Volume with the 5 sales including Confederates and U. S.  
Possessions ..... \$15.00

#### FOREIGN

Volume with the 5 sales including British Commonwealth ..... \$15.00

**Both Volumes Complete \$25.00**

Prices are for advance orders  
Delivery at conclusion of Sale X

**LOTS ON VIEW FROM NOVEMBER 13th**

**OFFICES OPEN EVERY SATURDAY**

## SECOND SESSION

MONDAY, NOVEMBER 20th, 1967 — 7:45 P. M.

### ITALIAN STATES

#### MODENA

416 ★	1852, 10c Rose (2). Large Margins, o. g., Very Fine .....	(Photo)	70.00
417 ★	1852, 10c Rose "CENE" Variety (7a). Clear to Huge Margins, o. g., Fine, signed E. Diena .....	(Photo)	175.00
418 ★	1852, 10c Rose "CNET" Variety (7b). Large Margins, o. g., V. F. (Photo)		125.00
419 ★	1852, 10c Rose "CE6T" Variety (7c). Clear to Large Margins, o. g., Fine, signed E. Diena .....	(Photo)	175.00
420 ★	1852, 40c Blue "CNET" Variety (8a). Large to Huge Margins, o. g., V. F. (Photo)		100.00
421 ★	1852, 40c Blue "CE6T" Variety (8c). Margins all around, V. F. (Photo)		100.00
422 ★	1859, 5c Dark Green (10b). Large Margins, o. g., Very Fine .....	(Photo)	70.00
423 ★	1859, 20c Violet (12a). Margins, o. g., minute thin speck, V. F. appearance		50.00
424 ★	1859, 80c Buff "Cent 8" Variety (14b). Large Margins, o. g., V. F. (Photo)		75.00
425 ★	1857, 10c Gray Violet Newspaper Tax, CENI Variety (PR4a). Large Margins, o. g., Very Fine, signed E. Diena .....	(Photo)	90.00
426 ★	1859, 10c Black Newspaper Tax (PR5). U. L. Sheet Corner Copy, Huge Margins, o. g., Extremely Fine .....	(Photo)	90.00
427 ★	1859, 10c Black Newspaper Tax (PR5). Large to Huge Margins, o. g., Very Fine, signed E. Diena .....	(Photo)	90.00

#### PARMA

428 ★	1852, 15c Black on Pink (3). Ample to Large Margins, V. F. ....	(Photo)	500.00
429 ★	1852, 25c Black on Violet (4). Margins all around, small corner stain, otherwise Very Fine .....	(Photo)	900.00
430 ★	1852, 40c Black on Blue (5). Margins all around, Very Fine .....	(Photo)	350.00
431 ★	1854, 5c Orange Yellow (6). Clear to Large Margins, light corner crease Very Fine appearance .....	(Photo)	600.00
432 ★	1859, 5c Blue Green (12a). Large Margins, Fresh and Very Fine (Photo)		85.00
433 ★	1859, 10c Brown, 40c Red (13, 15). Large Margins, small thin spots, V. F. appearance .....		120.00
434 ★	1859, 80c Olive Yellow (16a). Large Margins, Part o. g., pinpoint thin speck, Very Fine appearance .....	(Photo)	400.00



- 435 ★ **ROMAGNA**, 1859, 4b Black on Fawn (5). Clear to Large Margins, part o.g., Very Fine ..... (Photo) 75.00

## ROMAN STATES

- 436 ★ 1852, 3b Buff (5b). Clear to Ample Margins, Fresh, o.g., light corner crease, Fine appearance ..... (Photo) 150.00
- 437 ★ 1852, 6b Grayish Green (7). Ample to Huge Margins, o.g., V.F. .... 45.00
- 438 ★ 1852, 6b Grayish Green (7). Margins all around, part o.g., V.F. .... 45.00
- 439 ★ 1852, 6b Gray (7a). Large Margins, Very Fine ..... 50.00
- 440 ★ 1852, 7b Blue (8). Margins, Fresh and Very Fine ..... (Photo) 70.00
- 441 ★ 1852, 50b Dull Blue (10). Ample to Large Margins, part o.g., microscopic pinpoint thin speck, Very Fine appearance ..... (Photo) 1000.00
- 442 ★ 1867, 10c Vermilion (15). Clear Margins, Sharp Early Print, V.F. (Photo) 90.00
- 443 ★田 1867, 10c Vermilion (15). **Block**, Margins all around, part o.g., tiny surface rubs at top, B. Pair Very Fine (Sassone lit. 400,000.00) ..... (Photo) 360.00+
- 444 ★田 1867, 40c Yellow, "No Period" variety (17a). U.R. Sheet Corner **Block** of 4, L.R. Stamp the Error, V.F., o.g. (Sassone lit. 100,000.00) (Photo) 81.50+
- 445 ★ 1868, 10c Vermilion **Imperforate Horiz.** (22a var.) Vert. Pair, Fresh, crackly o.g., Fine, signed Diena (Sassone lit. 150,000.00) ..... (Photo) —

## SARDINIA

- 446 ★ 1851, 20c Blue (2). Fresh, o.g., Margins all around, light gum cracks, Very Fine appearance ..... (Photo) 350.00
- 447 ★ 1851, 40c Rose (3). Margins to close at top, small thin spots, Fine appearance ..... (Photo) 450.00
- 448 ★ 1853, 5c Blue Green (4). Margins, o.g., small flaws, V.F. appearance 275.00
- 449 ★ 1853, 40c Pale Rose (6). Clear to Large Margins, Fine ..... 250.00
- 450 ★ 1854, 5c Green (7). Large Margins, Fresh, o.g., light gum crackle, Extremely Fine appearance, signed E. Diena ..... 35.00

## TUSCANY

- 451 ★ 1852, 1q Black (1). Margins all around, Fresh, o.g., tiny thin spot, Very Fine appearance, signed ..... (Photo) 550.00
- 452 ★ 1852, 1q Black (1). Margins, except touched at left, o.g., faint hinge thin, Fine appearance ..... (Photo) 550.00
- 453 ★ 1851, 1s Ochre (2). Margins to barely in, Very Good, signed E. Diena (Photo) 750.00







- 454 ★ 1851, 2s Scarlet on Blue (3). The Famous and Unique **Strip of 3**, Margins nearly all around, Large part o. g., Gorgeous Color, one of the Outstanding Rarities of Tuscany, Ex-Ferrari, Caspary ..... (Photo) 9750.00+



- 455 ★ 1851, 2cr Blue on Gray (5). **Block**, Clear to Large Margins, Fresh, o. g., horiz. fold in margin between stamps, and tiny scissor cut in margin between bot. stamps, Very Fine **Block**, Very Rare, Ex-Caspary (Photo) 900.00+
- 456 ★ 1851, 4cr Bluish Green (6a). Horiz. **Pair**, Margins, except touched at bot., Fresh, Large part o. g., faint bend in R. Stamp, Scarce Pair, Ex-Caspary (Photo) 500.00+



- 457 ★ 1851, 9cr Deep Violet on Blue (8a). Horiz. **Strip of 3**, Large Margins to barely touched at top, Large part o. g., Deep Rich Color, barest trace of thin spot in right stamp, still a Very Desirable Strip of Great Rarity, Ex-Ferrari, Harris, Caspary ..... (Photo) 2400.00+





- 458 ★ 1852, 60cr Red on Blue (9). The Fabulous Unique **Strip of 3**, Margins nearly all around, small part o. g., Fresh Beautiful Color, an Outstanding Showpiece, one of the Greatest Rarities of Tuscany, Ex-Ferrari, Caspary ..... (Photo) 14,250.00+
- 459 ★ 1857, 1q Black (10). **Block of 6**, Clear to Large Margins, Fresh, o. g., Very Fine, a Choice **Block** of Great Rarity, Ex-Caspary ..... (Photo) 750.00+
- 460 ★ 1857, 1s Yellow (11). Margins all around, showing part of next stamp at left, Fresh, o. g., Rich Color, minute thin spot & microscopic tiny tear, a Very Fine appearing Copy of this Rare Stamp, Ex-Caspary ..... (Photo) 1500.00
- 461 ★ 1857, 1er Carmine (12). Just Clear to Ample Margins, o. g., Fine, signed E. Diena ..... (Photo) 225.00
- 462 ★ 1857, 6cr Deep Blue (15). Clear to Huge Margins, showing part of next stamp, Fresh, o. g., Very Fine, signed Thier ..... (Photo) 350.00



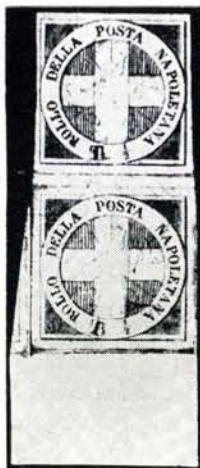
- 463 ★ 1859, 9cr Gray Lilac (16). Margins all around, Fresh, o. g., Rich Color, Very Fine, a Great Rarity in this Condition, Ex-Caspary ..... (Photo) 2250.00
- 464 ★ 1860, 1c Brown Lilac (17). **Block**, Margins all around, Large part o. g., U. L. stamp microscopic margin tear, faint age toning on back only, otherwise Very Fine, Scarce **Block**, Ex-Caspary ..... (Photo) 440.00+
- 465 ★ 1860, 5c Green (18). Margins all around, Large part o. g., V. F. .... (Photo) 400.00
- 466 ★ 1860, 10c Gray Brown (19). **Block of 18**, Margins all around, except touched at U. L. corner stamp, Fresh, o. g., light vert. bend, otherwise Very Fine, a Spectacular **Block** of the Utmost Rarity, Magnificent Showpiece, Ex-Caspary ..... 1170.00+
- 467 ★ 1860, 40c Rose (21). Margins to barely touched, Deep Rich Color, o. g., Fine ..... (Photo) 300.00
- 468 ★ 1860, 80c Red Brown (22). Margins Clear to just in, V. G., signed Thier ..... (Photo) 750.00



- 469 ★ 1860, 3L Ochre (23). Huge Margins to barely touched at right, showing part of next stamps at L. & T., faint thin spot in top margin, a Fine appearing Copy of this Great Rarity, Ex-Caspary ..... (Photo) 12,000.00

## TWO SICILIES

- 470 ★ 1858, ½gr Pale Lake (1). **Block**, Large Margins, o.g., small flaws, Scarce **Block** ..... (Photo) 320.00+
- 471 ★ 1858, 1gr Pale Lake (2). L. Sheet Margin **Block of 8**, Large Margins, Fresh, o.g., few light creases, Very Fine appearance, Scarce **Block**, signed Diena ..... (Photo) 320.00+
- 472 ★ 1858, 5gr Rose Lake (4). Margins all around, Worn Plate, V.F. (Photo) 110.00
- 473 ★ 1858, 50gr Lake (7a). Large Margins, Rich Color & Impression Extremely Fine, Ex-Caspary ..... (Photo) 850.00
- 474 ★ 1860, ½t Deep Blue Cross of Savoy (9a). Deep Rich Color, marginal thin spot filled in, V.F. appearing Copy of this Popular Rarity ..... (Photo) 3250.00

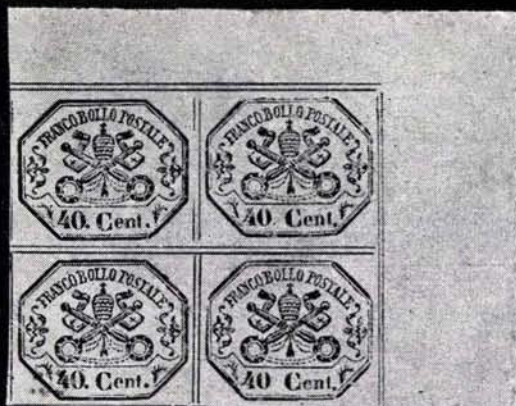


- 475 ★ 1860, ½t Blue Cross of Savoy (9). The Only Known Vertical **Pair**, Large to Huge Margins, showing large part of adjoining stamp, o.g., faintly toned and light creases, otherwise Very Fine, an Outstanding Showpiece of the Utmost Rarity, only 2 other Pairs, both Horiz. are known, Ex-Ferrari, Caspary ..... (Photo) 6000.00+
- 476 ★ 1859, ½gr Orange (10). Large Margins, o.g., negligible pinpoint thin speck, Extremely Fine appearance, signed Diena ..... 60.00
- 477 ★ 1859, ½gr Orange (10). Margins, except close at left, o.g., Fine ..... 60.00





443



444



471



464



470



459



445



486



513



456



500





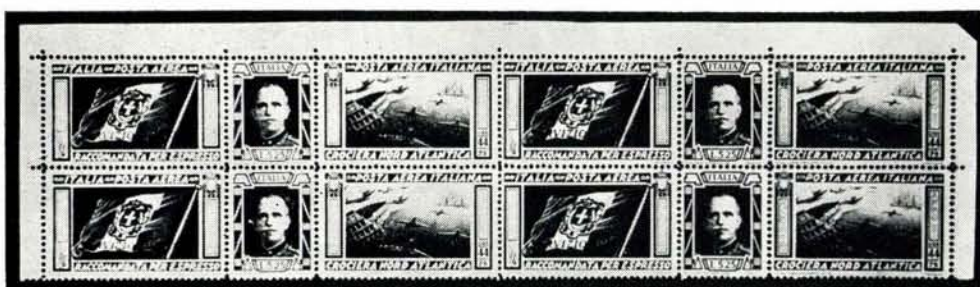
- 478 ★ 1859, 1gr Dark Brown (11). Large Margins, Beautiful Color, Fresh and Extremely Fine, Rare, Ex-Caspary ..... (Photo) 1500.00
- 479 ★ 1859, 2gr Deep Blue (13a). Margins, except close at left, o.g., Fine, signed ..... (Photo) 275.00
- 480 ★ 1859, 5gr Deep Rose (14a). Margins, o.g., microscopic thin speck in bot. margin, otherwise Very Fine, signed Diena ..... (Photo) 135.00
- 481 ★ 1859, 5gr Brick Red (14b). R. Sheet Margin Copy, Margins, except touched at bot., Rich Color, Fresh, o.g., Very Good, Ex-Caspary ..... (Photo) 400.00
- 482 ★ 1859, 5gr Vermilion (15). Just Clear to Large Margins, o.g., Fine ..... 50.00
- 483 ★ 1859, 5gr Orange Vermilion (15a). Ample to Huge Margins, o.g., V.F. .... 50.00
- 484 ★ 1859, 10gr Dark Blue (16). Large Margins, o.g., negligible light crease, Very Fine appearance, signed Thier ..... 60.00
- 485 ★ 1859, 10gr Indigo (16a). Clear to Large Margins, o.g., barest trace of crease, Very Fine appearance, signed Diena ..... 65.00
- 486 ★田 1859, 10gr Indigo (16a). T. Sheet Margin **Block**, Oily Print, Pos. 8-9, 18-19, Top Pair **Retouched** at top, Clear to Large Margins, small thin spots and light horiz. fold in margin between stamps, Very Fine appearance, Scarce **Block**, Ex-Caspary ..... (Photo) 260.00+
- 487 ★ 1859, 20gr Dark Gray Violet (17). Margins, o.g., barest surface rub, otherwise Very Fine ..... 55.00
- 488 ★ 1859, 50gr Dark Brown Red (18). Margins, o.g., tiny corner crease, Very Fine appearance ..... 75.00
- 489 ★ **ITALIAN STATES**, 1851-68, Balance of Collection, 99 unused stamps, incl. Two Sicilies, Modena, Roman States, Sardinia, many with small flaws, balance Fine-Very Fine ..... 2567.90

# ITALY

490 ★	1863, 5c Slate Green (26). Part o. g., perfs. a trifle blunted at right, otherwise Fine .....	(Photo)	200.00
491 ★	1863, 10c Orange Brown (27a). Nibbed perf., otherwise V. G. ....		300.00
492 ★	1877, 10c Blue (28). Part o. g., Fresh and Very Fine .....	(Photo)	800.00
493 ★	1863, 40c Carmine (31). Part o. g., very faint trace of toning around a few perf. tips, otherwise Very Good .....	(Photo)	1000.00
494 ★	1865, 20c on 15c Blue (34). Large part o. g., Fine .....	(Photo)	100.00
495 ★	1867, 20c Blue (35). Fresh, o. g., Fine .....	(Photo)	80.00
496 ★	1877, 20c Orange (36). Fresh and Fine .....	(Photo)	550.00
497 ★	1879, 10c-2L Humbert (46-51). Very Good-Very Fine, o. g. ....		266.50
498 ★	1889, 5c Dark Green (52). Fresh, o. g., tiny toning specks on back only, Very Good .....		75.00
499 ★	1891, 20c on 30c Brown (65). Very Fine, o. g. ....	(Photo)	70.00
500 ★	1917, 60c Carmine <b>Imperforate</b> (107 var.). Horiz. Pair, Very Fine (Sassone lit. 40,000.00). Unlisted in Scott .....	(Photo)	—
501 ★	1909, 15c Slate Black (111). Fine .....		65.00
502 ★	1910, 5c-15c Garibaldi (115-118). Fine-Very Fine sets .....		153.50
503 ★	1911, 15c Slate <b>Printed on Both Sides</b> (123b). Minute thin speck, otherwise Very Fine .....		55.00
504 ★	1923, 5L Manzoni (170). Fine .....	(Photo)	215.00
505 ★	1923, 5L Manzoni <b>Imperforate</b> (170a). R. Sheet Margin Copy, V. F. (Photo)		100.00
506 ★	1946, 100L Carmine Lake (477). Very Fine .....		80.00
507 ★	1949, 100L Brown Roman Republic (518). Very Fine .....		80.00
508 ★	1930, 7.70L Trans-Atlantic Flight (C27). Tiny thin speck, V. F. appearance (Photo)		250.00
509 ★	1930, 7.70L Trans-Atlantic Flight <b>Seven Stars</b> Variety (C27a). In Horiz. Pair with Normal Stamp, Very Fine .....	(Photo)	1050.00



- 510 ★ 1933, 5.25L-19.75L Balbo Triptych **Without** Overprint (C48a). Stamp at right negligible gum crease, otherwise Very Fine ..... (Photo) 4500.00
- 511 ★ 1933, 5.25L-19.75L Balbo Triptych **Without** Overprint (C48a). Tiny thin speck in one and a bit heavily hinged, otherwise Very Fine ..... (Photo) 4500.00
- 512 ★ 1933, 5.25L-44.75L "Volo Di Retorno" Triptych (Sanabria 54). Very Fine, signed Kessler, Bolaffi ..... (Photo) Sanabria 4000.00
- 513 ★ 1919, Violet, Blue & Yellow Vienna-Padua-Prague Flight Semipostal Label (Sanabria S1). Fine, signed Kessler ..... (Photo) Sanabria 150.00
- 514 ★ 1933, 5.25L-44.75L Servizio Di Stato Triptych (CO1). Very Fine (Photo) 1500.00



- 515 ★ 1933, 5.25L-44.75L Servizio Di Stato Triptych (CO1). **Block**, Very Fine ..... (Photo) 6000.00+
- 516 ★ 1934, 10L Servizio di Stato (CO2). Very Fine ..... (Photo) 650.00





- 517 ★ 1934, 10L Servizio di Stato (CO2). **Block**, slight separation between two, Stamps Very Fine ..... (Photo) 2600.00+
- 518 ★ 1894, 20c, 1L Postage Due **Imperforate** (J7a, J14a). Pairs, o. g., 20c tiny scissor cut in margin between stamps, Very Fine ..... 45.00
- 519 ★ 1870, 60c Buff & Magenta Postage Due **Inverted Center** (J11a). Large part o. g., Fine ..... 40.00
- 520 ★ 1874, 10L Blue & Brown Postage Due (J19). Part o. g., tiny internal paper break, Very Good appearance, Rare ..... (Photo) 1250.00
- 521 ★ 1890, 20c on 1c Buff & Magenta Postage Due (J26). Large part o. g., Fine ..... 60.00
- 522 ★ 1890, 30c on 2c Buff & Magenta Postage Due (J27). Large part o. g., light corner creases, Fine appearance ..... (Photo) 300.00
- 523 ★ 1863-1950, Balance of Collection, 999 unused stamps in Godden De Luxe Album, wide range of Issues, incl. Early Issues, with many of the Scarce values, Imperforate Varieties, Printed on Both Sides, Pictorials, Com-mems., Semipostals, Airposts, incl. Zeppelins, Balbo Flight, Postage Dues, Special Delivery, Parcel Posts, Occupations, a few earlies with small faults, Balance Fine-Very Fine ..... 3903.22

#### ITALIAN OFFICES ABROAD

- 524 ★ **Offices Abroad**, 1878, 20c Orange (7). Large part o. g., Fine ..... (Photo) 500.00
- 525 ★ **Offices in Peking**, 1917, 6c on 15c Slate (5). Microscopic thin speck in one perf. tip, otherwise Very Fine ..... 62.50
- 526 ★ — 1917, 8c on 20c on 15c Slate (7). Very Fine, signed ..... (Photo) 225.00
- 527 ★ — 1917, 8c on 20c on 15c Slate (7). Barest trace of hinge thin, Very Fine appearance, signed ..... (Photo) 225.00
- 528 ★ — 1917, 8c on 20c on 15c Slate **Inverted Overprint** (7a). Very Fine, with P. F. Certificate ..... (Photo) 300.00
- 529 ★ **Offices in Tientsin**, 1917, 4c on 10c Claret (2). Fine ..... 50.00
- 530 ★ — 1917, 4c on 10c Claret **Double Overprint**, One Inverted (2b). Minute corner perf. bend, Fine appearance, with P. F. Certificate ..... 55.00
- 531 ★ — 1917, 6c on 15c Slate (4). Tiny thin spot, Very Fine appearance ..... 90.00
- 532 ★ — 1918, \$2.00 on 5L Blue & Rose (23). Fine ..... 55.00

533 ★	<b>Offices in Crete</b> , 1906, 10c Claret (6). Very Fine, signed .....	75.00
534 ★	— 1906, 5L Blue & Rose (13). Very Fine, signed .....	40.00
535 ★	<b>Offices in Tripoli</b> , 1909, 1L–5L Overprints (10–11). Fine set .....	52.50
536 ★	<b>Offices in Turkey</b> , 1922, 45pi–90pi Overprints (42–43). Very Good .....	100.00
537 ★	— 1910, 15pi on 30c Blue & Rose Special Delivery (E4). Very Fine, signed Diena ..... <b>(Photo)</b>	60.00
538 ★	<b>Offices in Jerusalem</b> , 1909, 20pi on 5L Blue & Rose (7). Very Fine <b>(Photo)</b>	70.00
539 ★	<b>Offices Abroad</b> , 1874–1923, Collection of 253 unused stamps, nice range of Issues with General Issues, Offices in China, Turkey with many City Issues well represented, many better items Very Good–Very Fine .....	886.85
540 ★	<b>Aegean Islands</b> , 1935, 10c–4.50L Military Medal (36–46, C32–C38, CE3–CE4). Fine–Very Fine set .....	214.50
541 ★	— 1933, 5.25L–44.75L Balbo Triptych (C26–C27). Fine–Very Fine set .....	70.00
542 ★	— <b>Rhodes</b> , 1930, 50c–10L Hydrological Congress (34–37). Very Fine .....	205.00
543 ★	— 1912–40, Collection of 489 unused stamps, incl. General Issues with Opts., Pictorials, Commems., Airpost, and an excellent representation of the Issues of the individual Islands, virtually all Fine–Very Fine .....	730.78
544 ★	<b>FIUME</b> , 1918–24, Collection of 195 unused stamps, incl. Opts., Pictorials, Commems., Semipostals, Special Delivery, mostly in cpl. sets, with many high values, Fine–Very Fine .....	619.18
545 ★	<b>ITALIAN TERRITORIES, OCCUPATIONS, COLONIES</b> , 1921–41, 209 unused stamps, incl. Ionian Islands, Corfu, Castellorizo, Dalmatia, Oltre Giuba, many cpl. sets, nearly all Fine–Very Fine .....	423.43
546 ★	<b>CYRENAICA</b> , 1924, 10c Manzoni <b>Vertical</b> Overprint (11a). V. F. <b>(Photo)</b>	80.00
547 ★	— 1950, 1m–500m Warrior (65–77). Very Fine set .....	72.25
548 ★	— 1933, 19.75L–44.75L Balbo Flight (C18–C19). Very Fine set .....	90.00
549 ★	— 1934, 25L Servizio Di Stato (CBO1). Very Fine ..... <b>(Photo)</b>	1000.00
550 ★	— 1923–34, Balance of Collection, 116 unused stamps, mostly in cpl. sets, incl. Commems., Pictorials, Semipostals, Airposts, virtually all F.–V. F.	170.25
551 ★	<b>ERITREA</b> , 1892–1908, 5c, 25c, 10L Overprints (5, 24, 46). F.–V. F., o. g.	122.50
552 ★	— 1892, 5L Blue & Rose (11). Fresh, o. g., couple slightly blunted perms., otherwise Very Fine, signed Friedl ..... <b>(Photo)</b>	115.00
553 ★	— 1934, 25L Servizio Di Stato (CBO1). Hardly noticeable toning spot, otherwise Very Fine ..... <b>(Photo)</b>	1000.00
554 ★	— 1920–22, 5c–10L Postage Dues, Overprint at Bottom (J1a–J11a). Fine–Very Fine set .....	418.20
555 ★	— 1903, 50L Yellow Postage Due (J12). Fine for this ..... <b>(Photo)</b>	80.00
556 ★	— 1917–24, 5c–20L Parcel Posts (Q9–Q21). Very Good–Very Fine set .....	103.05
557 ★	— 1892–1934, Balance of Collection, 259 unused stamps, incl. Opts., Pictorials, Commems., Semipostals, Airposts, Dues, Parcel Posts, many cpl. sets, incl. Rome–Mogadiscio Flight, Virtually all Fine–Very Fine .....	504.46





509



516



524



526



514



527



528



538



537



546



549



552



555



565



553



566



568



572 EX



575



579



580



581



583



587 EX



592 EX



600 EX



602 EX



607



614





558 ★	<b>IONIAN ISLANDS</b> , 1941, 25d-100d Italian Occupation Airposts (NC3-NC6). One 100d stamp light gum wrinkle, others Very Fine, signed Kessler	159.00
559 ★	<b>ITALIAN COLONIES</b> , 1932-34, Collection of 84 diff. unused stamps, Virtually all cpl. sets, Fine-Very Fine	364.00
560 ★	<b>ITALIAN EAST AFRICA</b> , 1938-41, Collection of 75 unused stamps, nearly all in cpl. sets, incl. Pictorials, Commems., Airs, Dues, F.-V.F.	94.19
561 ★	<b>LIBIA</b> , 1932, 10c-10L Sixth Fair (B28-B47, C4-C7). Very Fine set	155.90
562 ★	— 1933, 10c-10L Seventh Fair (B48-B54, C8-C13). Very Fine set	123.55
563 ★	— 1936, 10L-20L Parcel Post (Q23-Q24). Fine-Very Fine	90.00
564 ★	— 1912-49, Collection of 270 unused stamps, incl. Overprints, Commems., Pictorials, better items, such as #56, Semipostals, Airposts, Special Delivery, French Occupation, many cpl. sets, incl. Eighth Fair cpl., a few have small flaws, Balance Fine-Very Fine	766.72
565 ★	<b>SOMALIA</b> , 1903, 2a Brown Orange (4). Fine	(Photo) 135.00
566 ★	— 1924, 3rp on 5L Manzoni (66). Very Fine	(Photo) 185.00
567 ★	— 1935, 5c-25L Victor Emmanuel (B38-B51). Fine-Very Fine set	113.00
568 ★	— 1934, 25L Servizio Di Stato (CBO1). Very Fine	(Photo) 1000.00
569 ★	— 1917-19, 5c-4L Parcel Post (Q1-Q9). Fine-Very Fine set	154.85
570 ★	— 1926-31, 5c-20L Parcel Post (Q25-Q37). Very Good-Very Fine set	199.00
571 ★	— 1903-50, Balance of Collection, 216 unused stamps, incl. Pictorials, Opts., Commems., Semipostals, Airposts, Dues, Parcel Posts, many cpl. sets, better items, Virtually all Fine-Very Fine	857.14
572 ★	<b>TRIPOLITANIA</b> , 1924, 1L-5L Manzoni (15-16). Very Fine	(Photo Ex) 200.00
573 ★	— 1933, 19.75L-44.75L Balbo Flight (C27-C28). Very Fine set	90.00
574 ★	— 1934, 50c-25L Circuit of the Oases (C38-C42). Very Fine set	556.00
575 ★	— 1934, 25L Servizio Di Stato (CBO1). Very Fine	(Photo) 1000.00
576 ★	— 1923-34, Collection of 137 unused stamps, incl. Opts., Pictorials, Commems., Semipostals, Airposts, many cpl. sets, such as Rome-Mogadiscio Flight, Fine-Very Fine	246.15

## SAN MARINO

577 ★	1877, 30c Brown (15). Large part o. g., tiny corner perf. crease, Fine appearance	200.00
578 ★	1877, 40c Violet (17). Fresh, o. g., couple blunted perms., otherwise Fine	250.00
579 ★	1895, 1L Light Blue (22). Fresh and Very Fine	(Photo) 1200.00
580 ★	1892, 5c on 30c Brown (26). Fresh, o. g., Very Fine	(Photo) 400.00
581 ★	1892, 10c on 20c Vermilion (28). Fresh, Large part o. g., almost Centered, Very Fine	(Photo) 200.00
582 ★	1903, 20c Brown Orange (50). Very Fine	45.00
583 ★	1903, 2L Violet (72). Barest trace of natural gum crease, Very Fine appearance	(Photo) 900.00

584 ★	1903, 5L Slate (75). Very Fine .....	45.00
585 ★	1927, 1.25L-5L Overprints (104-106). Fine-Very Fine set .....	48.00
586 ★	1927-28, 50c-10L Volunteers, St. Francis (108-114). Very Fine sets .....	76.50
587 ★	1929-35, 5c-20L Views & Statue (115-133). Very Fine set ..... <b>(Photo Ex)</b>	325.25
588 ★	1932, 20c-2.75L Post Office (134-138). Very Fine set .....	150.85
589 ★	1932, 10c-5L Garibaldi (143-150). Very Fine set .....	238.80
590 ★	1933, 25c-1.25L Philatelic Convention (151-154). Very Fine set .....	315.75
591 ★	1934, 25c-1.25L Milan Trade Fair (155-158). Very Fine set .....	64.25
592 ★	1934, 3.70L on 1.25L, 2.75L Post Office (159-160). V. F. set .... <b>(Photo Ex)</b>	300.00
593 ★	1935, 5c-1.75L Delfico (169-180). 50c, 1.25L pinpoint thin specks, otherwise Very Fine set .....	95.10
594 ★	1936, 80c-2.75L Overprints (181-184). Very Fine set .....	76.50
595 ★	1942, 20L on 75c Red & Black (202). Mint, Very Fine .....	50.00
596 ★	1946, 100L UNRRA (257). Cpl. Sheet of 10, Very Fine .....	180.00
597 ★	1948, 100L on 15c Rose Carmine & Black (277). Fine .....	50.00
598 ★	1949-50, 1L-200L Views (278-293). Very Fine set .....	95.94
599 ★	1949, 100L U. P. U. (304). Cpl. Sheet of 6, Very Fine .....	210.00
600 ★	1931, 50c-10L View of San Marino Airposts (C1-C10). V. F. set <b>(Photo Ex)</b>	271.50
601 ★	1933, 3L-20L Zeppelin (C11-C16). Very Fine set .....	301.75
602 ★	1941, 10L on 2.60L, 3L Airpost Overprints (C19-C20). V. F. set <b>(Photo Ex)</b>	275.00
603 ★	1948, 200L on 25L Carmine & Purple Airpost (C56). Very Fine .....	50.00
604 ★	1950, 200L U. P. U. Airpost (C62). Cpl. Sheet of 25, light natural bends, Fine-Very Fine .....	212.50
605 ★	1951, 200L U. P. U. Airpost <b>Imperforate</b> (C62b). Cpl. Sheet of 6, Mint, Very Fine .....	150.00
606 ★	1950, 500L View of San Marino Airpost (C71). Very Fine .....	80.00
607 ★	1924, 10L Green & Brown Postage Due (J18). Very Fine ..... <b>(Photo)</b>	135.00
608 ★	1936-40, 10c-3L Postage Due Overprints (J52-J60). Fine-Very Fine set	258.75
609 ★	1877-1950, Balance of Collection, 444 unused stamps & 5 Souvenir Sheets, incl. #7, 7a, 10, 13, 24, 25a, Pictorials, Commems., Semipostals, Airposts, Dues, many cpl. sets, better values, a few have small faults, but mostly Fine-Very Fine .....	1838.38
610 ★	<b>TRIESTE</b> , Zone A, 1947-50, Collection of 166 diff. unused stamps, incl. #41, 44, 85-87, C16, Q10-Q11, Fine-Very Fine .....	535.70

#### VATICAN CITY

611 ★	1929, 5c-10L First Issue (1-13, E1-E2). Fine-Very Fine set .....	171.75
612 ★	1931, 25c on 30c Indigo & Yellow (14). Very Fine .....	50.00
613 ★	1933, 5c-20L Views, Pius XI (19-34). Very Fine set .....	254.20

614 ★	1934, 40c-3.70L Provisionals (35-40). Fine-Very Fine set ..... (Photo)	2605.00
615 ★	1935, 5c-1.25L Jurists (41-46). Fine-Very Fine set .....	603.00
616 ★	1936, 5c-5L Press (47-54). 25c small thin spot, otherwise F.-V. F. set .....	241.10
617 ★	1938, 5c-1.25L Archaeologists (55-60). Fine-Very Fine set .....	209.30
618 ★	1939, 5c-75c Interregnum (61-67). Fine-Very Fine set .....	120.25
619 ★	1949, 1L-100L Basilicas (122-131, E11-E12). Fine-Very Fine set .....	115.55
620 ★	1933, 25c-1.25L Semipostals (B1-B4). Very Fine set .....	130.00
621 ★	1948, 250L-500L Tobias (C16-C17). Barest trace of internal gum crackle, Very Fine set .....	570.00
622 ★	1949, 300L-1000L U. P. U. (C18-C19). Fine-Very Fine set .....	300.00
623 ★	1931, 5c-1.10L Postage Dues (J1-J6). Very Fine set .....	116.00
624 ★	1945, 5L Black & Gray Postage Due <b>Imperforate</b> (J12a). Horiz. Pair, V. F. ....	60.00
625 ★	1931, 5c-10L Parcel Post (Q1-Q15). Very Fine set .....	114.70
626 ★	1939-49, Balance of Collection, 89 unused, diff. stamps, mostly cpl. sets, incl. Comems., Airposts, Special Delivery Dues, Fine-Very Fine .....	193.95

END OF SALE — THANK YOU

## PORTIONS OF THE LILLY SALE PART VI

### *On tour for viewing*

<i>City</i>	<i>Date</i>	<i>Viewing Place</i>
London	Oct. 3 - 4	Robson Lowe, Ltd. 50 Pall Mall
Rome	Oct. 6 - 7	Hotel Quirinale
Florence	Oct. 8	Hotel Excelsior
Bologna	Oct. 9	Ditta A. Bolaffi Loggia del Pavaglione P. Galvani 1
Milano	Oct. 10 - 11	Associazione Filatelica Ambrosiana, Via G. Negri 10
Turino	Oct. 12	Ditta A. Bolaffi Via Roma 101
Zurich	Oct. 14	Marken-Muller A. G. (U. P. Kaufmann) Zahringerstr. 24
Basle	Oct. 16 - 17	Marken-Muller A. G. Aeschenvorstadt 21

Also portions of this collection will be shown in Berlin, Hamburg, Hanover, Dusseldorf, Frankfurt, Munich, Geneva, Lausanne and Bern from October 6th-13th through the Courtesy of Robson Lowe, Ltd.







# 323rd SALE

List of Prices Realized

## JOSIAH K. LILLY COLLECTION

Part VI

EUROPEAN COUNTRIES

and their COLONIES

including Austria, Greece, Russia, Spain,

Italy and States

NOVEMBER 20th, 1967 (2 Sessions)

TOTAL \$208,352.50

*Robert A. Siegel*  
**AUCTIONS**

10 EAST 52nd STREET NEW YORK, N. Y. 10022

Tel: 212 PLaza 3-6422

Lot#	Price	Lot#	Price	Lot#	Price	Lot#	Price	Lot#	Price	Lot#	Price
1	150.00	34	40.00	67	25.00	100	22.00	133	115.00	166	425.00
2	60.00	35	40.00	68	23.00	101	62.50	134	120.00	167	375.00
3	34.00	36	57.50	69	180.00	102	26.00	135	30.00	168	40.00
4	12.00	37	11.00	70	120.00	103	22.00	136	28.00	169	30.00
5	24.00	38	30.00	71	500.00	104	55.00	137	90.00	170	525.00
6	11.00	39	115.00	72	105.00	105	65.00	138	330.00	171	300.00
7	16.00	40	32.00	73	WD	106	130.00	139	45.00	172	190.00
8	11.00	41	700.00	74	WD	107	27.00	140	200.00	173	45.00
9	8.50	42	230.00	75	52.50	108	45.00	141	22.00	174	425.00
10	16.00	43	2400.00	76	21.00	109	155.00	142	45.00	175	90.00
11	11.00	44	30.00	77	8000.00	110	47.50	143	24.00	176	525.00
12	16.00	45	165.00	78	65.00	111	12.00	144	60.00	177	280.00
13	21.00	46	70.00	79	100.00	112	42.50	145	20.00	178	400.00
14	12.00	47	40.00	80	575.00	113	125.00	146	14.00	179	35.00
15	32.00	48	60.00	81	45.00	114	160.00	147	42.50	180	16.00
16	16.00	49	52.50	82	32.00	115	100.00	148	25.00	181	160.00
17	105.00	50	95.00	83	135.00	116	27.00	149	220.00	182	250.00
18	160.00	51	580.00	84	21.00	117	28.00	150	44.00	183	28.00
19	340.00	52	29.00	85	12.00	118	27.00	151	21.00	184	60.00
20	1350.00	53	525.00	86	24.00	119	160.00	152	75.00	185	180.00
21	200.00	54	280.00	87	240.00	120	140.00	153	19.00	186	95.00
22	5600.00	55	95.00	88	50.00	121	130.00	154	100.00	187	110.00
23	3400.00	56	160.00	89	42.50	122	125.00	155	47.50	188	230.00
24	85.00	57	14.00	90	300.00	123	135.00	156	500.00	189	70.00
25	1700.00	58	45.00	91	14.00	124	250.00	157	900.00	190	75.00
26	190.00	59	42.50	92	950.00	125	35.00	158	25.00	191	320.00
27	2700.00	60	135.00	93	60.00	126	25.00	159	190.00	192	105.00
28	125.00	61	37.50	94	67.50	127	90.00	160	210.00	193	210.00
29	1050.00	62	2500.00	95	32.50	128	75.00	161	575.00	194	27.00
30	37.50	63	1300.00	96	9.00	129	21.00	162	240.00	195	32.00
31	21.00	64	1300.00	97	10.00	130	21.00	163	1100.00	196	42.50
32	32.00	65	15,500.00	98	100.00	131	35.00	164	525.00	197	700.00
33	170.00	66	16.00	99	15.00	132	130.00	165	190.00	198	65.00



Lot#	Price	Lot#	Price	Lot#	Price	Lot#	Price	Lot#	Price	Lot#	Price
199	40.00	271	18.00	343	200.00	415	200.00	487	10.00	559	110.00
200	110.00	272	320.00	344	1250.00	416	80.00	488	16.00	560	28.00
201	210.00	273	5500.00	345	67.50	417	55.00	489	240.00	561	37.50
202	12.00	274	4200.00	346	190.00	418	42.50	490	20.00	562	28.00
203	62.50	275	1800.00	347	120.00	419	46.00	491	10.00	563	32.00
204	20.00	276	30.00	348	210.00	420	65.00	492	85.00	564	255.00
205	325.00	277	42.50	349	150.00	421	27.00	493	70.00	565	26.00
206	260.00	278	90.00	350	62.50	422	23.00	494	21.00	566	65.00
207	150.00	279	18.00	351	180.00	423	28.00	495	11.00	567	27.00
208	60.00	280	25.00	352	45.00	424	55.00	496	60.00	568	750.00
209	80.00	281	25.00	353	50.00	425	32.00	497	31.00	569	50.00
210	25.00	282	21.00	354	65.00	426	95.00	498	8.00	570	65.00
211	50.00	283	14.00	355	110.00	427	45.00	499	21.00	571	285.00
212	52.50	284	15.00	356	260.00	428	90.00	500	15.00	572	75.00
213	62.50	285	21.00	357	45.00	429	75.00	501	10.00	573	25.00
214	75.00	286	21.00	358	85.00	430	75.00	502	23.00	574	260.00
215	72.50	287	320.00	359	90.00	431	75.00	503	8.00	575	1050.00
216	17.00	288		360	60.00	432	15.00	504	52.50	576	80.00
217	27.00	289	11000.00	361	230.00	433	10.00	505	52.50	577	20.00
218	18.00	290		362	40.00	434	300.00	506	11.00	578	21.00
219	16.00	291	27.00	363	95.00	435	16.00	507	26.00	579	400.00
220	25.00	292	65.00	364	24.00	436	38.00	508	52.50	580	125.00
221	70.00	293	26.00	365	26.00	437	20.00	509	675.00	581	23.00
222	35.00	294	13.00	366	26.00	438	20.00	510	4100.00	582	10.00
223	37.50	296	160.00	367	9.50	439	24.00	511	1000.00	583	180.00
224	425.00	296	27.00	368	9.50	440	32.00	512	4200.00	584	16.00
225	20.00	297	45.00	369	75.00	441	625.00	513	75.00	585	10.00
226	100.00	298	52.50	370	80.00	442	WD	514	950.00	586	18.00
227	55.00	299	16.00	371	67.50	443	WD	515	2900.00	587	120.00
228	24.00	300	38.00	372	24.00	444	55.00	516	400.00	588	26.00
229	95.00	301	15.00	373	130.00	445	42.50	517	1800.00	589	60.00
230	27.00	302	120.00	374	20.00	446	525.00	518	9.50	590	120.00
231	37.00	303	85.00	375	21.00	447	32.50	519	26.00	591	13.00
232	11.00	304	60.00	376	100.00	448	16.00	520	105.00	592	70.00
233	35.00	305	45.00	377	95.00	449	42.50	521	1050.00	593	11.00
234	36.00	306	100.00	378	60.00	450	8.00	522	20.00	594	14.00
235	14.00	307	170.00	379	40.00	451	75.00	523	725.00	595	26.00
236	80.00	308	26.00	380	340.00	452	35.00	524	110.00	596	85.00
237	19.00	309	26.00	381	15.00	453	75.00	525	21.00	597	9.50
238	360.00	310	21.00	382	62.50	454	10,000.00	526	125.00	598	17.00
239	18.00	311	13.00	383	220.00	455	2600.00	527	52.50	599	50.00
240	57.50	312	27.00	384	300.00	456	105.00	528	160.00	600	110.00
241	45.00	313	800.00	385	75.00	457	625.00	529	10.00	601	145.00
242	40.00	314	21.00	386	25.00	458	13,000.00	530	30.00	602	62.50
243	85.00	315	45.00	387	425.00	459	1000.00	531	25.00	603	10.00
244	125.00	316	90.00	388	24.00	460	550.00	532	32.00	604	42.50
245	10.00	317	52.50	389	32.00	461	42.50	533	16.00	605	70.00
246	28.00	318	130.00	390	100.00	462	475.00	534	12.00	606	23.00
247	65.00	319	110.00	391	17.00	463	2100.00	535	25.00	607	21.00
248	12.00	320	26.00	392	29.00	464	550.00	536	40.00	608	42.50
249	13.00	321	15.00	393	160.00	465	80.00	537	22.00	609	625.00
250	40.00	322	21.00	394	200.00	466	4100.00	538	16.00	610	55.00
251	17.00	323	120.00	395	11.00	467	55.00	539	300.00	611	40.00
252	18.00	324	425.00	396	47.50	468	50.00	540	50.00	612	8.00
253	42.50	325	380.00	397	4400.00	469	2100.00	541	18.00	613	50.00
254	26.00	326	145.00	398	60.00	470	135.00	542	55.00	614	550.00
255	14.00	327	25.00	399	38.00	471	400.00	543	260.00	614	140.00
256	32.50	328	140.00	400	40.00	472	21.00	544	180.00	616	45.00
257	32.00	329	130.00	401	67.50	473	650.00	545	150.00	617	40.00
258	32.00	330	340.00	402	525.00	474	950.00	546	28.00	618	16.00
259	22.00	331	300.00	403	54.00	475	11,000.00	547	13.00	619	16.00
260	290.00	332	210.00	404	26.00	476	11.00	548	22.00	620	30.00
261	210.00	333	2200.00	405	18.00	477	14.00	549	650.00	621	135.00
262	170.00	334	260.00	406	16.00	478	1100.00	550	57.50	622	60.00
263	120.00	335	60.00	407	38.00	479	37.50	551	20.00	623	27.00
264	35.00	336	105.00	408	15.00	480	80.00	552	21.00	624	14.00
265	18.00	337	90.00	409	16.00	481	150.00	553	425.00	625	16.00
266	45.00	338	2000.00	410	36.00	482	11.00	554	85.00	626	40.00
267	115.00	339	360.00	411	18.00	483	20.00	555	37.50		
268	19.00	340	2100.00	412	15.00	484	14.00	556	35.00		
269	300.00	341	210.00	413	18.00	485	11.00	557	165.00		
270	8.00	342	180.00	414	10.00	486	325.00	558	47.50		