

324th SALE

**The Arthur W. Bingham, Jr.
Collection**

PART I

CANADA

BRITISH NORTH AMERICA

SWITZERLAND

Sold by Order of the Executors

At Unreserved Sale by Public Auction

Tuesday

NOVEMBER 21st, 1967

2 P.M.

At the Waldorf Astoria Hotel

Park Avenue and 50th Street

Robert A. Siegel
AUCTIONS

10 EAST 52nd STREET NEW YORK, N. Y. 10022

Tel: 212 PLaza 3-6422

NOVEMBER 21st, 1967

ROBERT A. SIEGEL AUCTION GALLERIES, Inc.
10 East 52nd Street
New York, N. Y. 10022
Tel.: PLaza 3-6422 (Area Code 212)

REFERENCES PLEASE
(if unknown to us)

SIGNED

County

[illegible]

Upon request, estimate of value furnished on any lots in this auction.

[illegible]

ESTIMATES

Our sales contain many 19th Century covers and fancy cancellations. We have had many requests to give the estimated cash value on these lots. We are trying to place a fair net valuation on each lot as a guide for bidding when no catalogue value portrays the true value. The chart below will be used, for example E. IV means our estimate cash value on this lot is \$30.00 to \$40.00. Lots may actually realize more or less than these estimates and under no circumstances are these estimates to be considered reserves but merely a guide to bidding.

E. I	up to \$10.00	E. VIII	\$100.00 to \$150.00
E. II	\$10.00 to \$20.00	E. IX	\$150.00 to \$200.00
E. III	\$20.00 to \$30.00	E. X	\$200.00 to \$250.00
E. IV	\$30.00 to \$40.00	E. XI	\$250.00 to \$350.00
E. V	\$40.00 to \$50.00	E. XII	\$350.00 to \$500.00
E. VI.	\$50.00 to \$75.00	E. XIII	\$500.00 to \$750.00
E. VII	\$75.00 to \$100.00	E. XIV	\$750.00 to \$1000.00
		E. XV	over \$1000.00

CANADA

STAMPLESS COVERS

- | | | | |
|---|---|--|--------------|
| 1 | ☒ | Montreal in Clear Str. Line on 1783 cover to Quebec, V. F. | E. IV |
| 2 | ☒ | Ship in Str. Line, ms "10", "p. Ariadne" on front, Quebec in Str. Line and Bishopmark on flap of 1796 cover from London, England to Montreal, a Rare and Very Fine Cover | E. VI |
| 3 | ☒ | Three Rivers 5 Apr. 1803 in 2 Str. Lines on flap, ms. "7" on front of folded 1803 letter to Quebec, V. F. | E. IV |
| 4 | ☒ | Cross Border Four diff. covers to U. S., one has Canadian Railroad pmk, Very Fine | E. II |

PROVINCE OF CANADA

1851 ISSUE, LAID PAPER

- | | | | |
|------|---|--|------------------------------|
| 5 | | 1851, 3p Red (1). Large Margins, Beautiful Color, Pretty Socked on the Nose Red Target Cancel, Extremely Fine, Ex-Reford | (Photo) 125.00+ |
| 6 | | 1851, 3p Red (1). Margins all around, Blue Target Cancel, V. F. (Photo) | 125.00+ |
| 7 | | 1851, 3p Red (1). Ample to Large Margins, Very Fine | (Photo) 125.00 |
| 8 | | 1851, 3p Red (1). Large to Huge Margins, Neat Target Cancel, light corner bend, Extremely Fine appearance | (Photo) 125.00 |
| 9 | | 1851, 3p Red (1). Clear to Large Margins, Fine | (Photo) 125.00 |
| 10 | | 1851, 3p Red (1). Clear to Large Margins, Fine Copy | (Photo) 125.00 |
| 11 | | 1851, 3p Red (1). Vert. Pair, Large to Huge Margins, Gorgeous Color, Extremely Fine, Ex-Reford | (Photo) 250.00+ |
| 12 | | 1851, 6p Grayish Purple (2). Huge to Enormous Margins, showing parts of 2 other stamps, Neat Target Cancel, Extremely Fine Gem (Photo) | 150.00 |
| 13 | | 1851, 6p Grayish Purple (2). Large Margins, Beautiful Color, Very Fine, Ex-Reford | (Photo) 150.00 |
| 14 | | 1851, 6p Grayish Purple (2). Ample to Huge Margins, V. F. (Photo) | 150.00 |
| 15 | | 1851, 6p Grayish Purple (2). Margins all around, Neat Target and part of Red pmk, Very Fine | (Photo) 150.00 |
| 16 | | 1851, 6p Grayish Purple (2). Huge to Enormous Margins, Neat Socked on the Nose Target Cancel, light creases, Extremely Fine appearance | (Photo) 150.00 |
| 17 | | 1851, 6p Grayish Purple (2). Margins, except narrow at bot., Fine (Photo) | 150.00 |
| 17A | ☒ | 1851, 6p Grayish Purple (2). Huge margins, just tied by neat target on fresh 1855 Cover to Me. with Clear "Mont. & Isld. Pd. Grand Trix R. Way Down" pmk, Clear Red "By Grand Trunk Railway", and matching Oval "Paid Drawer 14 Y. J. & Co.", faint toning, otherwise Extremely Fine, a Rare & Wonderful Cover | (Photo) 150.00+ |
| 18 | | 1851, 6p Grayish Purple (2). Horiz. Pair, Margins all around, Bright Shade, Clear Target Cancels, Very Fine, Ex-Reford | (Photo) 300.00+ |
| 19 P | | 1851, 12p Black India Proof, Red Specimen Overprint (3P). Clear Double Transfer, Very Fine | (Photo) Holmes 135.00 |

LOTS ON VIEW FROM NOVEMBER 13th

OFFICES OPEN SATURDAY BEFORE SALE

1852-1855 ISSUE, WOVE PAPER

20	1852, 3p Red (4). Margins all around, Blue Target Cancel, V.F. (Photo)	35.00+
21	1852, 3p Red (4). Margins all around, Light Cancel, V.F. (Photo)	35.00
22	1852, 3p Red (4). Margins all around, Very Fine	35.00
23	1852, 3p Red (4). Margins all around, Deep Shade, Very Fine (Photo)	35.00
24	1852, 3p Red (4). Large to Huge Margins, Blue Target Cancel, Very Fine (Photo)	35.00+
25	1852, 3p Red (4). Large to Huge Margins, Blue Target Cancel, light crease, Extremely Fine appearance	(Photo) 35.00+
26	1852, 3p Red (4). Margins all around, Rich Shade, light crease, V.F. appearance	(Photo) 35.00
27	1852, 3p Red (4). Horiz. Pair, Margins all around, Blue Target Cancels, Very Fine	(Photo) 70.00+
28	✠ 1852, 3c Brown Red (4a). Large Margins all around, Rich Deep Color, tied by Target, Presscott pmk. on 1857 Cover to Belleville, V.F. (Photo)	35.00+
29	1852, 3p Brown Red (4a). Clear to Enormous Margins, showing parts of two other stamps, Light Target Cancel, Beautiful Indian Red Shade, Very Fine	(Photo) 35.00
30	1852, 3p Brown Red (4a). Margins all around, Light Target Cancel, Very Fine	(Photo) 35.00
31	1852, 3p Brown Red (4a). Margins all around, Pretty, Centered Target Cancel, Very Fine	(Photo) 35.00
32	1852, 3p Red Ribbed Paper (4c). Margins all around, light hinge stain, otherwise Very Fine	(Photo) 85.00
33	1852, 3p Red Thin Paper (4d). Large Margins, microscopic internal paperbreak, V.F. appearance	35.00
34	1855, 6p Slate Gray (5). Ample to Large Margins, Square Grid Cancel, Very Fine	(Photo) 150.00
35	1855, 6p Slate Gray (5). Thin Paper, Margins all around, Deep Color, Very Fine	(Photo) 150.00
36	1855, 6p Brownish Gray (5a). Gorgeous Deep Shade, Margins all around, Very Fine	(Photo) 250.00
37	1855, 6p Gray Violet Thick Hard Paper (5d). Large Margins all around, Light Cancel, Very Fine	(Photo) 250.00
38	1855, 6p Greenish Gray (5b). Beautiful Color, Large Margins, except close at bot., still a Very Fine stamp	(Photo) 150.00
39	1855, 6p Slate Gray (5). Very Thin Paper, Purplish Gray Shade, Huge Margins 3 sides, Sheet Margin at L., light cloudiness in paper and paperbreak in Sheet margin, Extremely Fine appearance	(Photo) 150.00
40	1855, 6p Greenish Gray (5b). Horiz. Pair, Margins all around, except close at two spots on right stamp, light trace of crease in right stamp, other Very Fine	(Photo) 300.00+
41	✠ 1855, 6p Slate Gray (5). Large Margins, tied by "38" Numeral Cancel, Red St. Catherines pmk, Red 2 Str. Line "Canada Paid 10 Cts" on small cover to N.Y., negligible tiny corner of cover missing, V.F. (Photo)	150.00+
42	1855, 10p Blue (7). Margins all around, Very Fine	(Photo) 175.00
43	1855, 10p Blue (7). Clear to Large Margins, Very Fine	(Photo) 175.00
44	1855, 10p Blue (7). Huge to Enormous Margins on 3 sides, showing Large portion of next stamp, close at bot., Fine	(Photo) 175.00
45	1855, 10p Blue Thick Paper (7a). Clear to Large Margins, light crease, Very Fine appearance	(Photo) 225.00

179	★	1903, 10c Brown Lilac Edw. (93). Block, Very Fine	(Photo) 70.00+
180	★	1903, 10c Brown Lilac Edw. Imperforate (93a). B. Sheet Margin Pair, no gum, Very Fine	(Photo) 75.00
181	★	1903, 20c Olive Green Edw. (94). Block, F.-V. F.	(Photo) 180.00+
182	★	1908, 50c Purple Edw. (95). Slightly blunted perf., otherwise V. F.	(Photo) 60.00
183	★	1908, 50c Purple Edw. (95). Fine	(Photo) 60.00
184	★	1908, 50c Purple Edw. (95). Block, Well centered, minor gum disturbances, still Very Fine	(Photo) 240.00+
185	★	1908, ½c-20c Quebec Tercentenary (96-103). Very Fine set	63.25
186	★	1908, ½c-20c Quebec Tercentenary (96-103). Blocks, F.-V. F. set	(Photo Ex) 253.00+
187	★	1908, ½c-20c Quebec Tercentenary Imperforate (96a-103a). Vert. Pairs, Very Fine set	(Photo Ex) 585.00
188	★	1908, 7c, 20c Quebec Tercentenary (100, 103). Blocks, 4 stamps minor flaws, otherwise Fine-Very Fine	104.00

GEORGE V, 1912-1936 ISSUES

189	★	1912-25, 1c-\$1.00 Geo. V (104-125). Two low values tiny thin specks, otherwise Fine-Very Fine set	46.85
190	★	1912-25, 1c-\$1.00 Geo. V (104-122). Blocks, Fine-Very Fine set	187.40
191	★	1922-25, 4c-\$1.00 Geo. V Imperforate (110a, 112a, 114a, 115a, 118a-120b, 122a). 50c one stamp light corner crease, otherwise V. F. set	(Photo Ex) 1000.00
192	★	1912, 50c Black (120a). Block, one stamp faint tiny hinge thin, others Very Fine	80.00
193	★	1912, 1c Dark Green, 2c Carmine Coils (123-124). Vert. Strips of 4, F.-V. F.	92.00
194	★	1912-24, 1c-3c Coils (125-132, 134). Strips of 4, one stamp thin spot, others F.-V. F.	60.80
195	★	1924, 3c Carmine Coil, Block of 4 (130a). Very Fine	(Photo) 150.00
196	★	1924, 2c Yellow Green Coil (133). Strip of 4, Extremely Fine	44.00
197	★	1917, 3c Brown Confederation Imperforate (135a). Block, no gum, Very Fine	(Photo) 200.00
198	★	1924, 1c-3c Imperforates (136-138). Blocks, Very Fine set	64.00
199	★	1926, 2c on 3c Carmine (139-140). Blocks, Very Fine set	50.00
200	★	1926, 2c on 3c Carmine Double Overprint (139b). Tiny gum soak, Fine	(Photo) 85.00
201	★	1926, 2c on 3c Carmine, Pair, one Without Overprint (139a). Block, incl. 2 Pairs, str. edge at top, Very Fine	(Photo) 100.00
202	★	1926, 2c on 3c Carmine Experimental Proof (139P). Block, showing Two Types Overprints, one stamp light wrinkle, others Fine	E. V
203	★	1926, 2c on 3c Carmine Double Overprint (140a). Fine	(Photo) 60.00
204	★	1926, 2c on 3c Carmine Double Overprint (140a). Block, Fine	(Photo) 240.00
205	★	1926, 2c on 3c Carmine Triple Overprint (140b). Very Fine	(Photo) 60.00
206	★	1926, 2c on 3c Carmine Double Overprint, one Inverted (140a var.). Block, Very Fine	(Photo) 240.00+
207	★	1926, 2c on 3c Carmine Triple Overprint (140b). Block, V. F.	(Photo) 240.00
208	★	1926, 2c on 3c Carmine Quadruple Overprint (140b var.). V. F., with P. F. Certificate	(Photo) 60.00+
209	★	1927, 1c-12c Confederation Imperforate Horiz. (141 var.-145 var.). Vert. Pairs, Very Fine set	Bileski 100.00
210	★	1927, 1c-12c Confederation Imperforate Vert. (141 var.-145 var.). Horiz. Pairs, Very Fine set	Bileski 100.00
211	★	1927, 1c-12c Confederation Imperforate (141a-145a). Pairs, V. F. set	(Photo Ex) 100.00
212	★	1927, 5c-20c Famous Canadians Imperforate (146 var.-148 var.). Horiz. Pairs, Very Fine set	Bileski 60.00

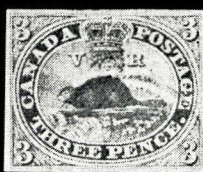
213 ★	1927, 5c-20c Famous Canadians Imperforate Vert. (146 var.-148 var.). Horiz. Pairs, Very Fine set Bileski	60.00
214 ★	1927, 5c-20c Famous Canadians Imperforate Horiz. (146 var.-148 var.). Vert. Pairs, Very Fine set Bileski	60.00
215 ★	1928-29, 1c-\$1.00 Geo. V, Views (149-159). Fine-Very Fine set Bileski	51.00
216 ★	1928-29, 1c-\$1.00 Geo. V, Views (149-159). Blocks, F.-V.F. set Bileski	204.00
217 ★	1928-29, 1c-\$1.00 Geo. V, Views Imperforate (149 var.-159 var.). Pairs, Very Fine set (Photo Ex) Bileski	250.00
218 ★	1928-29, 1c-\$1.00 Geo. V, Views Imperforate Vert. (149 var.-159 var.). Horiz. Pairs, Very Fine set (Photo Ex) Bileski	250.00
219 ★	1928-29, 1c-\$1.00 Geo. V, Views Imperforate Horiz. (149 var.-159 var.). Vert. Pairs, Very Fine set (Photo Ex) Bileski	250.00
220 ★	1928, 1c-5c Geo. V Imperforate Tête-Bêche (149 var., 150 var., 153 var.). Blocks of 12, each having 2 Tête-Bêche Pairs in the Middle, showing lay-out of the Booklet Panes, Extremely Fine (Photo Ex) Bileski	780.00+
221 ★	1930-31, 1c-\$1.00 Geo. V, Views (162-177). Blocks, V.F. set Bileski	143.48
222 ★	1930, 1c Deep Green Imperforate (163d). Horiz. Pair, V.F. (Photo)	200.00
223 ★	1930, 10c Olive Green Imperforate (173 var). Block, V.F. (Photo) Bileski	300.00
224 ★	1930, 12c-\$1.00 Views Imperforate (174 var-177 var). Vert. Pairs, V.F. (Photo Ex) Bileski	140.00
225 ★	1931, 10c Dark Green Imperforate (190 var). Horiz. Pair, V.F. (Photo) Bileski	75.00
226 ★	1932, 1c-13c Geo V Imperforate (195 var-201 var). Pairs, V.F. set (Photo Ex) Bileski	445.00
227 ★	1932, 5c Dark Blue Imperforate Vert. (199a). Horiz. Pair, V.F. (Photo)	160.00
228 ★	1933, 5c Dark Blue Ottawa Imperforate (202a). Vert. Pair, V.F. (Photo)	125.00
229 ★	1933, 20c Grain Exhibition Imperforate (203a). Vert. Pair, V.F. (Photo)	125.00
230 ★	1933, 5c Dark Blue Royal William Imperforate (204 var). Vert. Pair, Mint, Very Fine (Photo) Bileski	120.00
231 ★	1934, 3c Blue Cartier Imperforate (208 var). Horiz. Pairs, V.F. (Photo) Bileski	100.00
232 ★	1934, 10c Olive Green Loyalists Imperforate (209a). Vert. Pair, V.F. (Photo)	250.00
233 ★	1934, 2c Red Brown New Brunswick Imperforate (210 var.) Horiz. Pair, V.F. (Photo) Bileski	120.00
234 ★	1935, 1c-13c Silver Jubilee Imperforate (211 var-216 var). Pairs, V.F. set (Photo Ex) Bileski	510.00
235 ★	1935, 1c-\$1.00 Geo. V & Views Imperforate (217 var-227 var). Pairs, V.F. set (Photo Ex) Bileski	600.00
236 ★	1935, 5c Blue Imperforate Vert. (221a). Horiz. Pair, V.F. (Photo)	80.00

1937 TO DATE

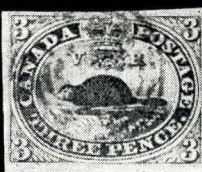
237 ★	1937, 1c-8c Geo. VI Imperforate (231 var-236 var). Horiz. Pairs, V.F. set (Photo Ex) Bileski	450.00
238 ★	1937, 3c Coronation Imperforate (237 var). L. Sheet Margin Block, Very Fine (Photo) Bileski	200.00
239 ★	1938, 10c-\$1.00 Views (241-245). Blocks, V.F. set Bileski	48.80
240 ★	1938, 10c-\$1.00 Views Imperforate (241 var-245 var). Pairs, V.F. set (Photo Ex) Bileski	470.00
241 ★	1938, 10c Carmine Rose Imperforate (241a var). Pair, V.F. (Photo) Bileski	90.00
242 ★	1938, \$1.00 Dull Violet Imperforate Horiz. (245a). Vert. Pair, Very Fine (Photo)	600.00
243 ★	1930, 1c-3c Royal Visit Imperforate (246 var-248 var). Sheet Corner Pairs, V.F. set (Photo) Bileski	300.00



5



6



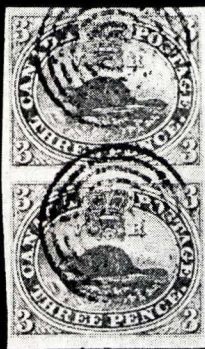
7



8



9



11



10



12



13



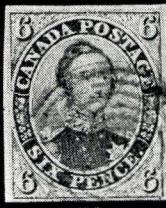
15



14



16



17



18



19



20



21



23



24



25



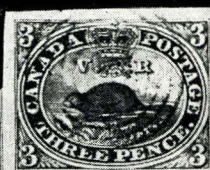
26



27



29



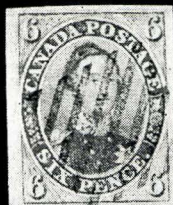
30



31



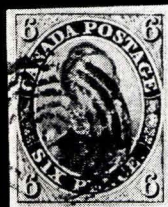
32



34



35



36



37



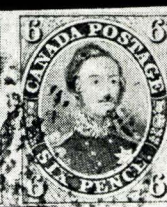
38



39



40







82



83



84



85



87



91



94



95



96



97



98



99



101



102



104



112



113



114



118



120



121



123



125



126



127



129



133



135



136



138



157EX



90



103



108



111



117



119



131



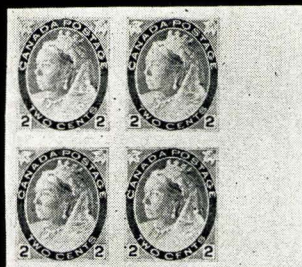
132



134



137



161



168



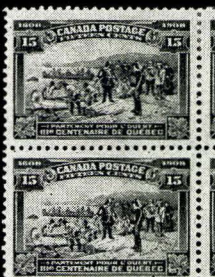
179



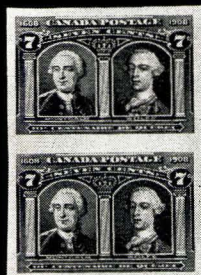
181



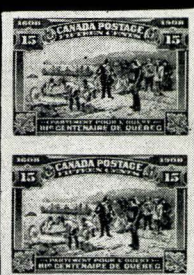
184



186 EX



187 EX



195



145

147

149

151

153



159



160



162



163



164



165



166



169



170



167



171



172



182



183



200



203



205



208



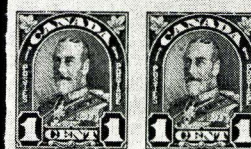
180



225



227



222





144



146



148



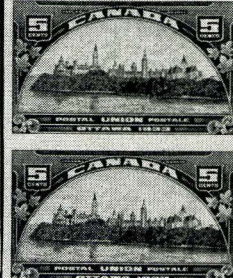
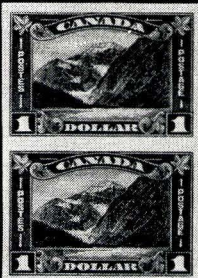
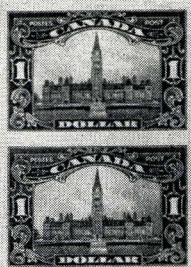
150



152



154





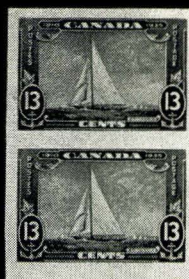
229



230



234 EX



231



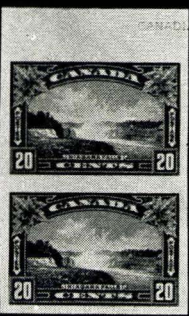
232



238



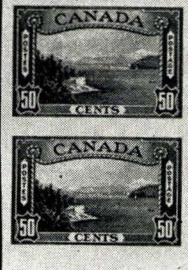
233



235 EX



241



240 EX



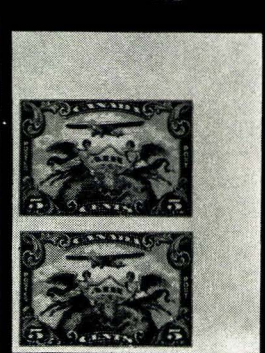
242



252



243



249



245 EX

253



254



256



257



259



265



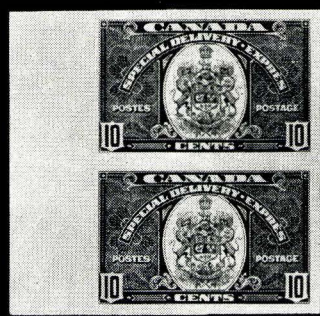
261



260



258



271



262



268



270



272



286



236



248



255



281



298



237EX



251



279EX



276



282



290



283EX



299



301



302



304



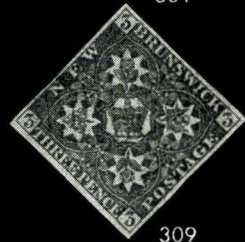
305



306



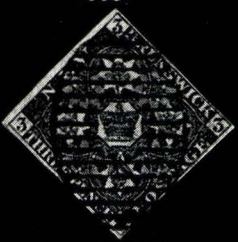
307



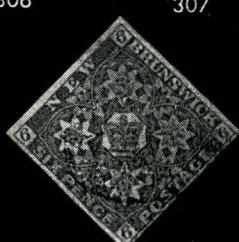
309



311



312



313

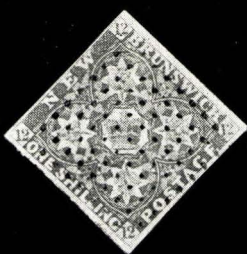


314

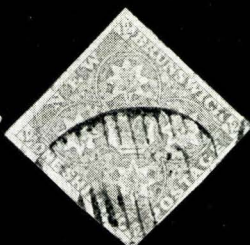




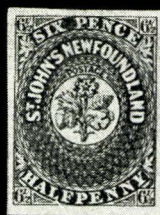
316



317



318



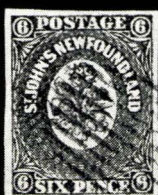
322



323



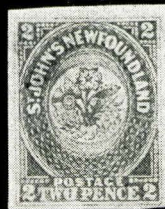
324



326



328



329



331



335



337



339



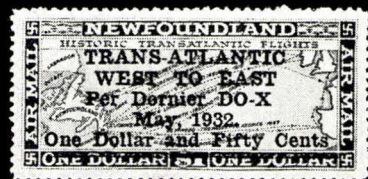
344



347



348



357



359



360



362



364



365



366



367



361



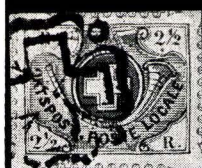
368



375



376



379



380



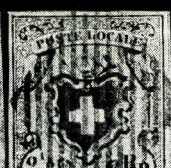
382



383



384



385



386



388



390



391



392



393



399



402



403



408



409



411



443



422 EX



405



412



413



419



448



244	★	1942-43, 1c-\$1.00 War Effort (249-262). Blocks, V.F. set	53.36
245	★	1942-43, 1c-\$1.00 War Effort Imperforate (249 var-262 var.). Pairs, V.F. set	(Photo Ex) Bileski 1,200.00
246	★	1951, \$1.00 Fisheries (302). Mint Block, V.F.	26.00
247	★	1951-58, 1c-\$1.00 Pictorials, Commems. (Bet. 303-380). 465 Mint stamps, nearly all issues in Single & Block, V.F. lot	E. II
248	★	1959, 5c Seaway Inverted Center (387a). Mint, an Extremely Fine Copy of this Great Rarity	(Photo) 2,500.00

AIRPOSTS

249	★	1928, 5c Brown Olive Airpost Imperforate (C1a). U.R. Sheet Corner Pair, V.F.	(Photo) 75.00
250	★	1928-32, 5c-6c Airposts (C1-C4). Blocks, Very Fine	43.20
251	★	1928, 5c Brown Olive Airpost Imperforate Vert. (C1 var.). Horiz. Pair, Very Fine	(Photo) Bileski 75.00
252	★	1928, 5c Brown Olive Airpost Imperforate Horiz. (C1 var.). Vert. Pair, Very Fine	(Photo) Bileski 75.00
253	★	1932, 6c on 5c Brown Olive Airpost Inverted Overprint (C3a). Vert. Pair, V.F.	(Photo) 60.00
254	★	1932, 6c on 5c Brown Olive Airpost Double Overprint (C3b). Block, centered to top, V.G.-Fine	(Photo) 220.00
255	★	1932, 6c on 5c Brown Olive Airpost Triple Overprint (C3c). V.F.	(Photo) 60.00
256	★	1935, 6c Red Brown Airpost Imperforate Vertically (C5a). The Famous and Unique Pair within a Block of 9, showing the foldover during Perforation which made this Variety, Very Fine	(Photo) 1,000.00
257	★	1935, 6c Red Brown Airpost Imperforate (C5b). U.R. Sheet Corner pair, V.F.	(Photo) 200.00
258	★	1938, 6c Blue Airpost Imperforate (C6a). Vert. L. Sheet Margin Pair, Very Fine	(Photo) 200.00
259	★	1942, 6c Deep Blue Airpost Imperforate (C7 var.). Vert. Sheet Margin Pair, Very Fine	(Photo) Bileski 200.00
260	★	1943, 7c Deep Blue Airpost Imperforate (C8 var.). Vert. Pair, V.F.	(Photo) Bileski 200.00
261	★	1942, 16c Bright Ultramarine Airpost Spec. Delivery Imperforate (CE1 var.). Vert. Pair, Very Fine	(Photo) Bileski 200.00
262	★	1943, 17c Bright Ultramarine Airpost Spec. Delivery Imperforate (CE2 var.). Vert. Pair, Very Fine	(Photo) Bileski 200.00

SPECIAL DELIVERY

263	★	1898-1922, 10c Blue Green, Carmine Special Delivery (E1-E2). Blocks, Fine-Very Fine	48.00+
264	★	1898-1922, 10c-20c Special Delivery (E1-E3). Blocks, Very Fine	56.00+
265	★	1927, 20c Orange Spec. Delivery Imperforate (E3 var.). Horiz. Pair, Very Fine	(Photo) Bileski 40.00
266	★	1927, 20c Orange Spec. Delivery Imperforate Horiz., Vertical (E3 var.). Pairs, Very Fine	Bileski 80.00
267	★	1930-33, 20c Henna Brown Special Delivery (E4-E5). Blocks, Very Fine	52.00
268	★	1933, 20c Henna Brown Special Delivery Imperforate (E5 var.). Vert. Pair, Very Fine	(Photo) Bileski 150.00
269	★	1935-46, 10c-20c Special Delivery (E6-E11). Blocks, Very Fine	36.80
270	★	1935, 20c Dark Carmine Spec. Delivery Imperforate (E6 var.). Vert. U.R. Sheet Corner Pair, Very Fine	(Photo) Bileski 150.00

271 ★	1939, 10c Dark Green Spec. Delivery Imperforate (E7 var.). Vert. L. Sheet Margin Pair, Very Fine (Photo) Bileski	200.00
272 ★	1938, 20c Dark Carmine Spec. Delivery Imperforate (E8 var.). Vert. L. Sheet Margin Pair, Very Fine (Photo) Bileski	150.00
273 ★	1942, 10c Green Spec. Delivery Imperforate (E10 var.). Vert. Pair, Very Fine (Photo) Bileski	200.00

REGISTRY, POSTAGE DUES, WAR TAX, OFFICIALS

274 ★	1875-88, 2c Orange, Vermilion, Scarlet, 5c Yellow Green, Blue Green Registry (F1, F1a, F1b, F2, F2a). Fine-Very Fine, o.g.	39.50
275 ★田	1875, 5c Yellow Green Registry Imperforate (F2b). Block with Part Imprint, o.g., Very Fine (Photo)	120.00+
276 ★	1875, 8c Blue Registry (F3). Fine (Photo)	40.00
277 ★	1875, 8c Blue Registry (F3). Light corner crease, Fine appearance	40.00
278 ★田	1906-28, 1c-10c Violet Postage Dues (J1-J5). Blocks, Very Fine set	44.60
279 ★	1906, 1c-5c Violet Postage Due Imperforate (J1b, J2b, J4b). No gum, Very Fine set (Photo Ex)	135.00
280 ★田	1930-32, 1c-10c Dark Violet Postage Dues (J6-J10). Blocks, V.F. set	51.40
281 ★	1932, 10c Dark Violet Postage Due Imperforate Horizontally (J10a). Vert. Pair, Very Fine (Photo)	150.00
282 ★	1934, 1c Dark Violet Postage Due Imperforate (J11a). Horiz. Pair, V.F. (Photo)	40.00
283 ★	1935, 1c-10c Dark Violet Postage Dues Imperforate (J15a, J16a, J17a, J20a). Horiz. Pairs, Very Fine set (Photo Ex)	140.00
284 ★田	1916, 2c Carmine War Tax Ty. II (MR3a). Block, Very Fine	60.00
285 ★	1916, 2c Brown War Tax Ty. I (MR4a). Very Fine	35.00
286 ★田	1916, 2c Brown War Tax Ty. I (MR4a). Block, Very Fine (Photo)	140.00+
287 ★田	1916, 2c Brown War Tax Ty. I Imperforate Horizontally (MR4a var.). Block, no gum, Very Fine (Photo) Holmes	150.00
288 ★田	1916, 2c Brown War Tax Ty. I Imperforate Vertically (MR4a var.). Block, no gum, Fine (Photo) Holmes	150.00
289 ★	1916, 2c Brown War Tax Ty. I Imperforate (MR4b). Horiz. Pair, no gum, Very Fine	27.50
290 ★	1916, 2c Brown War Tax Ty. II Imperforate (MR4c). Horiz. Pair, no gum, Very Fine (Photo)	150.00
291 ★	1916, 2c Carmine War Tax Coil (MR6). Paste Up Strip of 5, Fine	45.00
292 ★	1916, 2c Brown War Tax Coil Ty. I (MR7a). Strip of 4, Very Fine	44.00
293 ★	1949-50, 1c-\$1.00 Officials (O1-O10). V.F. Mint set	81.45
294 ★田	1949-50, 1c-\$1.00 Officials (O1-O10). Mint Blocks, V.F. set (Photo Ex)	325.80
295 ★田	1949-56, 1c-\$1.00 Officials (Bet. O1-O45, CO1-CO2, CE1-CE2). 160 mostly Mint stamps, most values represented by Single and Block, V.F. lot	184.09
296 ★田	1950, 1c-\$1.00 Officials (O16-O25). Mint Blocks, V.F. set	137.56
297 ★田	1951, \$1.00 Fisheries Official (O27). Mint Block, Very Fine	90.00

BRITISH COLUMBIA AND VANCOUVER ISLAND

298 ★	1860, 2½p Dull Rose (2). Fresh, o.g., tiny natural paper wrinkle, still Fine (Photo)	65.00
299 ★	1865, 10c Blue (4). Large Margins, Large part o.g., Fresh and Very Fine (Photo)	300.00
300 ★	1865, 5c Rose (5). Fresh, Large part o.g., minute thin speck, V.F. appearance	55.00
301 ★	1865, 10c Blue (6). Fresh, Large part o.g., Fine (Photo)	55.00
302	1865, 10c Blue (6). Blue Paid Cancel, Very Fine (Photo)	45.00
303 ★	1866-69, 3p Blue, 2c-5c Opts. (7-9). Fine, o.g.	60.00

304 ★	1867, 10c on 3p Lilac Rose (10). Fresh, o. g., Fine	(Photo)	200.00
305 ★	1867, 50c on 3p Violet (12). Fresh, o. g., Fine	(Photo)	75.00
306 ★	1867, \$1.00 on 3p Green (13). Fresh, o. g., almost Centered, V. F. (Photo)		175.00
307 ★	1869, \$1.00 on 3p Green (18). Large part o. g., light crease, Fine appearance	(Photo)	135.00

NEW BRUNSWICK

308 R	1851, 3p-1/ Heraldics Reprints (1R-3R). 3p light corner crease, others Very Fine		75.00
309	1851, 3p Red (1). Margins all round, Light Grid Cancel, V. F.	(Photo)	70.00
310	1851, 3p Red (1). Margins all around, Lightly Cancelled, faint internal crease, Very Fine appearance		70.00
311	1851, 3p Dark Red (1a). Just clear to Huge Margins, showing Large part of next stamp, Beautiful Color, Fine	(Photo)	70.00
312	1851, 3p Dark Red (1a). Clear to Large Margins, Deep Shade, Nicely Centered Grid Cancel, faint trace of crease, V. F. appearance (Photo)		70.00
313	1851, 6p Olive Yellow (2). Ample to Large Margins, Light Grid Cancel, Very Fine	(Photo)	150.00
314	1851, 6p Orange Yellow (2a). Clear to Large Margins, Light "11" in Oval Grid Cancel, Very Fine, Ex-Reford	(Photo)	150.00
315	1851, 6p Orange Yellow (2a). Large to Huge Margins on 3 sides, showing parts of 3 other stamps, just in at left		150.00
316	1851, 1/ Bright Red Violet (3). Clear Margins, Very Lightly Cancelled, tiny corner repair, Very Attractive appearance	(Photo)	750.00
317	1851, 1/ Dull Violet (4). Margins all around, Dot Cancel, V. F. (Photo)		750.00
318	1851, 1/ Dull Violet (4). Just Clear to Large Margins, faults, Fine appearance	(Photo)	750.00
319 P	1860, 5c Brown Connell India Proof (5P). Thin speck, V. F. appearance		E. II
320 ★	1863, 2c Orange Imperforate Horiz. (7a var.). Holmes #8D, Block, Very Fine	(Photo)	Holmes 400.00
321 ★	1860, 5c Olive Green (8b). Rich Shade, Fine		40.00

NEWFOUNDLAND

322 ★	1857, 6½p Scarlet Vermilion (7). Large to Huge Margins Fresh and Very Fine	(Photo)	500.00
323 ★	1857, 8p Scarlet Vermilion (8). Large to Huge Margins, o. g., Deep Rich Color, Extremely Fine	(Photo)	70.00
324 ★	1860, 2p Orange (11). Huge Margins, Extremely Fine	(Photo)	95.00
325 ★	1860, 3p Green (11A). Triangular Block of 4, Ample to Huge Margins, o. g., Very Fine		40.00+
326	1860, 6p Orange (13). Used, Margins all around, Rich Color, Very Fine	(Photo)	225.00
327 ★	1861, 1p Violet Brown (15A). Two Shades, Margins all around, o. g., V. F.		50.00
328 ★	1861, 1p Reddish Brown (16). Margins all around, Gorgeous Color & Impression, Large part o. g., a Very Fine copy of this Great Rarity, Ex-Reford	(Photo)	1250.00
329 ★	1861, 2p Rose (17). Ample to Large Margins, Very Fine	(Photo)	45.00
330 ★	1861, 4p-1/ Heraldics (18-23). Margins all around, nearly all o. g., V. F.		59.25
331 ★	1865, 5c Brown Seal (25). Large part o. g., Fine	(Photo)	85.00
332 ★	1868, 5c Black Seal (26). Unusually Well Centered, o. g., one blunted perf, otherwise Very Fine		40.00
333 ★	1870, 3c Vermilion (33). Perfs just touch at top, o. g., Very Good		42.50

334	★	1870, 3c Vermilion (33). Block, Well Centered, o.g., Very Fine, Very Rare	(Photo) 170.00+
335	★	1873, 3c Blue (34). Fresh and Very Fine	(Photo) 60.00
336	★	1876-77, 3c, 5c Blue Rouletted (39-40). Large part o.g., F.-V.F.	65.00
337	★	1880, 5c Pale Blue (53). Very Fine, o.g.	(Photo) 50.00
338	★	1897, 1c-60c Cabot Issue (61-74). Nearly all o.g., F.-V.F. set	48.00
339	★	1897, 1c on 3c Gray Lilac Ty. C (77). Fresh, o.g., Fine	(Photo) 125.00
340	★	1910, 1c-15c Guy Issue (87-97). Cpl. set, incl. both 6c's, Very Fine	89.75
341	★	1911, 6c-15c Guy Engraved (98-103). Very Fine set	76.00
342	★	1911, 1c-15c Royal Family (104-114, 110a). Cpl. set incl. both 8c's, F.-V.F.	77.50
343	★	1919, 1c-36c Caribou (115-126). 24c light crease, otherwise F.-V.F. set	37.20
344	★	1920, 3c on 35c Red, Lower Bar Omitted (130a). Very Fine	(Photo) 75.00
345	★	1923-24, 1c-24c Views (131-144). 9c crease, otherwise F.-V.F. set	35.05
346	★	1928-29, 1c-30c Views (145-159, 163-171). F.-V.F. sets	46.95
347	★	1929, 3c on 6c Gray Black, Inverted Overprint (160a). Very Fine, with P.F. Certificate	(Photo) 200.00
348	★	1929, 3c on 6c Gray Black, Black Overprint Ty. I (160b). V.F. (Photo)	300.00
349	□	1929, 1c Green Imperforate (163c). Block, Very Lightly Cancelled, light crease in two, otherwise Very Fine	70.00+
350	★	1931, 1c-30c Pictorials Watermark (172-182). V.F. set	39.65
351	★	1933, 1c-32c Gilbert (212-225). Very Fine set	44.10
352	★	1933, 3c, 5c Gilbert Imperforate (214a, 216a). Horiz. Pairs, no gum, lightly wrinkled, otherwise Very Fine	75.00
353	★	1933, 9c-32c Gilbert, Line Perf. 14 (219, 221, 223-235). Very Fine, Scarce, Gibbons £16/10	—
354	★	1919, \$1.00 on 15c Scarlet Trans-Atlantic Airpost (C2, C2a, two, C2b). Block, incl. Regular and Comma, Period Varieties, Very Fine (Photo)	260.00+
355	★	1921, 35c Red Halifax, Period after 1921 (C3a). Very Fine	30.00
356	★	1931, 15c-\$1.00 Views, Map (C6-C11). Very Fine set	47.00
357	★	1932, \$1.50 on \$1.00 Trans-Atlantic Flight (C12). Very Fine	(Photo) 175.00
358	★	1933, 5c-75c Views (C13-C17). Very Fine set	36.25
359	★	1933, \$4.50 on 75c Ballo Flight (C18). Very Fine	(Photo) 300.00

NOVA SCOTIA

360		1853, 1p Red Brown (1). Large Margins, showing part of next stamp, Very Fine	(Photo) 70.00
361		1853, 1p Red Brown (1). Horiz. Pair, Clear to Large Margins, Light Cancel, minute corner crease in one, otherwise V.F. Pair	(Photo) 140.00+
362		1851, 3p Blue (2). Strip of 3, Margins all around, Very Fine	(Photo) 52.50+
363	✉	1851, 3p Blue (2). Large to Huge Margins, tied by Light Grid on 1859 cover to New Brunswick, stamp light crease, otherwise V.F.	17.50+
364		1851, 6p Yellow Green (4). Large Margins, Light Cancel, V.F.	(Photo) 85.00
365		1851, 6p Dark Green (5). Ample to Huge Margins, light crease, V.F. appearance	(Photo) 175.00
366		1851, 1/ Reddish Violet (6). Large Margins, Beautiful Color, Light Cancel, Very Fine, Ex-Reford	(Photo) 700.00
367		1851, 1/ Violet (7). Margins all around, Light Cancel, Deep Color, Very Fine, Ex-Ferrari	(Photo) 700.00
368	★	1860, 1c Black Imperforate Vert. (8c). Horiz. Pair, o.g., V.F. (Photo)	60.00
369	★	1860, 5c Blue (10). Large part o.g., Very Fine	40.00
370	★	1860, 5c Blue on Yellowish (10a). Large part o.g., Fine	40.00
371	★	1860, 5c Blue on Yellowish (10a). Horiz. Pair, o.g., light corner crease in one, other Very Fine	80.00
372	★	1860, 5c Blue (10). Block, Fresh, o.g., centered to R.	(Photo) 160.00+

- 373 ★ 1860, 5c Blue (10). Block with part Imprint, o.g., light crease in top Pair, otherwise V.G. 160.00+
- 374 ★ **PRINCE EDWARD ISLAND**, 1861, 2p Dull Rose (1). Fresh, o.g., minute hinge thin, V.F. appearance 45.00
- 375 ★ — 1861, 3p Blue (2). Fresh, o.g., rounded corner perf., otherwise V.F. **(Photo)** 100.00
- 376 ★ — 1861, 6p Yellow Green (3). Fresh, o.g., centered slightly to left, Very Fine **(Photo)** 125.00
- 377 ☒ — 1862, 6p Yellow green (7). Tied by Grid, Large Summerside, P.E. Island pmk, on flap of 1867 cover to U.S., Fine **(Photo)** **E. III**
- 378 ☒ — 1812, 4c Green (14). Tied by Cork, Charlottetown, P.E.I., pmk on 1872 cover to Nova Scotia, Fine **(Photo)** **E. IV**

SWITZERLAND

- 379 **Zurich**, 1850, 2½r Black & Red Winterthur (1L5). Large Margins, showing Large portions of Arrows all around, Black Cross Cancel, faint trace of tiny hinge thin, V.F. appearance **(Photo)** 850.00
- 380 **Geneva**, 1845, 5c Yellow Green Small Eagle (2L2). Full Margins for this stamp, Fresh Color, Red Geneva Rosette Cancel, Very Fine, with Moser-Räz Certificate **(Photo)** 350.00
- 381 ☒ — 1845, 5c Yellow Green Small Eagle (2L2). Good to Large Margins for this, showing part of next stamp, tied by Red Geneva Rosette, matching Geneva pmk. on local 1846 cover, Very Fine for this **(Photo)** 350.00+
- 382 — 1848, 5c Dark Green Large Eagle (2L4). Large Margins, Red Geneva Rosette Cancel, minute internal paperbreak, hardly visible, V.F. appearance, with R.P.S. Certificate **(Photo)** 500.00
- 383 — 1848, 5c Dark Green Large Eagle (2L4). Margins all around, tied by Diamond Grid on small piece, Very Fine **(Photo)** 500.00
- 384 **Basel**, 2½r Dove of Basel (3L1). Clear Margins, Good Relief, Red pmk., tiny thin specks and minute corner crease, Fine appearance, with Friedl Certificate **(Photo)** 1750.00
- 385 1850, 2½r Black & Red **Without Frame** (4). Large Margins, Neatly Cancelled, tiny faint thin specks, a Very Fine appearing copy of this Great Rarity, with Freidl Certificate **(Photo)** 3500.00
- 386 1850, 5r Black & Red on Greenish Blue (7c). Horiz. Pair, Margins all around, Neat clear PD Cancels, tiny tear in left stamp, other Very Fine **(Photo)** 240.00+
- 387 ★ 1862, 2c Gray, 3c Black, 10c Blue (41, 42, 44). Fresh, o.g., last one blunted perf., otherwise Fine-Very Fine 65.50
- 388 ★ 1862, 30c Vermilion (46). Fresh, tiny perf. thin, o.g., V.F. appearance **(Photo)** 135.00
- 389 ★ 1862, 40c Green (47). Fresh, Large part o.g., Very Fine **(Photo)** 135.00
- 390 ★ 1867, 30c Ultramarine (56). Fresh, o.g., faint gum stain, hardly visible from front, otherwise Very Fine 50.00
- 391 ★ 1907, 40c Gray Helvetia Without Diadem (122a). In Pair with regular stamp, Fine **(Photo)** 54.50
- 392 ★ 1862, 60c Bronze (48). Corner perf. thin, Fine appearance **(Photo)** 135.00
- 393 ★ 1882, 10c Rose (79). Fresh, o.g., small thin spot, Fine appearance **(Photo)** 275.00
- 394 ★ 1882, 15c Yellow (81). Fresh, o.g., perfs touch at top, V.G. 45.00
- 395 ★ 1882-1904, 20c-40c Helvetia Perf. 11½ (82-85). Fresh, o.g., 20c V.G., others Fine-Very Fine 95.00
- 396 ★ 1882-1906, 20c-1fr Helvetia (83, 82b, 83a, 84a, 105-107, 109-110, 112, 108), Very Good-Very Fine, o.g. 94.85

397 ★	1901, 3fr Yellow Brown Perf. 11½x12 (88b). Faintly toned at back, otherwise Fine, o.g.	100.00
398 ★	1888, 25c Yellow Green Perf. 9½ (90). Fresh, o.g., light corner perf. bend, Fine appearance	50.00
399 ★	1888, 40c Gray Perf. 9½ (91). Corner perf. crease, Fine appearance (Photo)	140.00
400	1888, 40c Gray Perf. 9½ (91). Very Good, Used	90.00
401	1888, 50c Blue Perf. 9½ (92). Used, Fine	40.00
402 ★	1888, 1fr Claret Perf. 9½ (93). Large part o.g., Fresh and Fine (Photo)	190.00
403 ★	1903, 1fr Carmine Perf. 11½x12 (97). Very Fine (Photo)	175.00
404 ★	1903, 1fr Carmine Perf. 11½x12 (97). Deep Shade, tiny thin speck, Fine appearance	175.00
405 ★	1900, 25c Blue Re-Engraved (103). Fresh, o.g., Fine (Photo)	300.00
406 ★	1905, 3fr Yellow Brown (111). Block, Fresh and Fine (Photo)	320.00+
407 ★	1907, 3fr Yellow Brown (125). Fine, o.g.	32.50
408 ★	1908, 3fr Bistre & Yellow (145). Very Fine (Photo)	110.00
409 ★	1914, 3fr Dark Green (181). Very Fine (Photo)	350.00
410 ★	1914-18, 3fr Red, 5fr Deep Ultramarine (182-183). Last gum a bit dry, Very Fine	52.50
411 ★	1914, 10fr Dull Violet (184). Very Fine (Photo)	55.00
412 ★	1930, 10fr Gray Green (185). Very Fine (Photo)	130.00
413 ★	1928, 5fr Blue Re-Engraved (206), Very Fine (Photo)	60.00
414 ★	1931, 3fr Orange Brown (209). Very Fine	30.00
415 ★	1934, 5c-20c Naba Souvenir Sheet (226). Mint, Extremely Fine (Photo)	450.00
416 ★	1938, 10c-20c Aarau Souvenir Sheet (242). Mint, Very Fine	30.00
417 ☒	1938, 10c-20c Aarau Souvenir Sheet (242). Four Sheets on separate Covers, 3 with Additional Postage, diff. pmks., or Cachets, Very Fine	100.00+
418 ★	1938, 3fr-10fr High Values (244-246). Very Fine set	66.00
419 ★	1941, 10c Bern Imperforate (280 var.). Wide Margins, Very Fine (Photo) Michel DM	500.00
420 ★	1945, 5c-10fr Pax (293-305). Very Fine Mint set	213.83
421 ★	1955, 10c-20c Exposition Souvenir Sheet (352a). Mint, Very Fine	45.00
422 ★	1912, 10c Brown, Green, Red First Semipostals (Michel I-III). V.F. set (Photo Ex) Michel DM	1324.00
423 ★	1915, 5c-10c Boy & Girl (B2-B3). Last has barest trace of bend, otherwise Very Fine Mint set	78.00
424 ★	1916-17, 3c-10c Semipostals (B4-B9). Very Fine Mint sets	86.00
425 ★	1916-17, 3c-10c Semipostals (B4-B9). Heavily hinged, otherwise V.F. sets	86.00
426 ★	1918-26, 5c-40c Coats of Arms (B10-B40). F.-V.F. sets	63.85
427 ★	1940, 5c-30c National Day Souvenir Sheet (B105). Very Fine	200.00
428 ★	1941, 10c-20c Charity Souvenir Sheet (B116). Mint, Very Fine	60.00
429 ★	1942, 10c-20c National Festival Souvenir Sheet (B119). Mint, Very Fine	50.00
430 ★	1943, 4c-6c Zurich Souvenir Sheets (B130-B131). Very Fine	63.00
431 ★	1943, 5c Geneva Souvenir Sheet (B132). Mint, Very Fine	30.00
432 ★	1945, 3fr War Victims Souvenir Sheet (B143). Mint, Very Fine	75.00
433 ★	1945, 10c Dove Souvenir Sheet (B144). Mint, Very Fine	65.00
434 ★	1945, 10c Dove Souvenir Sheet (B144). Mint, Very Fine	65.00
435 ★	1948, 10c-20c Imaba Souvenir Sheet (B178). Mint, Very Fine	32.50
436 ★	1948, 10c-20c Imaba Souvenir Sheet (B178). Mint, Very Fine	32.50
437 ★	1951, 40c Lunaba Souvenir Sheet (B206). Mint, Very Fine	120.00
438 ★	1953, 20c-30c Pro Juventute Sheet of 24 (B229a). Mint, Very Fine	175.00
439 ★	1919-20, 30c-50c First Airposts (C1-2). 30c pinpoint thin speck, otherwise Very Fine set	127.50
440 ★	1923-38, 10c-1fr Airposts (C3-C5, C7-C14, C19-C25). Fine-Very Fine	92.60
441 ★	1941-48, 30c-5fr Airpost (C27-C44). Fine-Very Fine	110.40
442 ☐	1941, 5fr Deep Blue Airpost (C34). Block of 10, Used, one stamp corner crease, others Very Fine	60.00

GENERAL FOREIGN

443 ★	FRANCE , 1871, 10c on 10c Bistre (49). Fresh, o.g., Fine	(Photo)	250.00
444 ★	ITALY , 1946, 100L Carmine Lake (477). Mint and Fine		80.00
445 ★	SAN MARINO , 1949-50, 1L-200L Views (278-293). F.-V.F. Mint set		105.94
446 ★	— 1950, 2L-500L Views Airposts (C63-C71). F.-V.F. Mint set		140.64
447 ★	VATICAN CITY , 1949-50, 1L-100L Basilicas, Holy Year, Palatine Guard (122-142). Fine-Very Fine Mint sets		206.70
448 ★	— 1949, 300L-1000L U. P. U. Airposts (C18-C19). V.F. Mint set (Photo)		300.00

LOTS BY COUNTRY

449	BRIT. NORTH AMERICA , 1851-72, Balance of Collection, 132 used & unused stamps and 4 Covers, incl. New Brunswick Pictorials, Nova Scotia Imperforates to 6p, Blocks on White, Yellowish, Prince Edw. Island to 6p, 12c, incl. Shades, Varieties, some have faults, balance Very Good-Very Fine		890.35+
450	BRITISH NORTH AMERICA , 1851-1962, Accumulation of 1440 used & unused stamps, mostly Canada and Newfoundland, Incl. Imperforates, Large & Small Queens, few Blocks, better items, some small faults, balance Very Good-Very Fine		796.12
451 ★	BRIT. CORONATION , 1953, 424 stamps, cpl. series in Blocks of 4, neatly mounted in Special Album, Very Fine set		176.24
452 ★	BRIT. PEACE ISSUES , 1946, 176 unused stamps, neatly mounted in special album, Very Fine cpl. set		34.63
453	CANADA , 1898-1950, Collection of 927 unused stamps, incl. Pictorials, Commems, Airposts, Special Delivery, Dues, War Tax, incl. Coils, Blocks, many cpl. sets, also some Unlisted Official Perforations, a most Attractive lot, Fine-Very Fine		1050.12
454	CANADA , 1859-93, Balance of 19th Cent., 280 used & unused stamps, mostly Large & Small Queens, incl. Shades, Papers, Perf. Varieties, a number with small faults, but F.-V.F. appearance, a most interesting lot for the Specialist		1817.46
455	CANADA , 1922-1966, Collection of 204 diff. Slogan and Machine Canceled on 3"x1½" pieces & 4 diff. covers, wide range of issues incl. Commems, Pictorials, Airposts, Very Fine and Interesting lot	E. II	
456 ★	NEWFOUNDLAND , 1860-1947, Collection of 326 mostly unused stamps, incl. Imperforates, Pictorials, Commems, Dues, many cpl. sets, Blocks, almost all Fine-Very Fine, Attractive lot		643.88
457 ★	SWITZERLAND , 1862-1960, 705 mostly unused stamps & 5 Souvenir Sheets, mounted on Stockcards, incl. Helvetia Issues, incl. Perf. Varieties, Pictorials, Semipostals, Tête-Bêches, Airposts, Officials, Booklet Panes, Blocks, a few have small faults, Balance Fine-Very Fine		1552.92
458 ★	SWITZERLAND , 1913-60, Collection of 294 unused Semipostals, mostly in cpl. sets, a few have small faults, but mostly F.-V.F.		379.77
459 ★	SWITZERLAND , 1952-55, 3 Presentation Books, with 95 nearly all unused stamps, also 16 unused, Liechtenstein stamps, mostly cpl. sets, Very Fine		83.45+
460	GENERAL FOREIGN , 1850-1960, Approx. 700 used & unused stamps, incl. Chile, French Colonies, Brit. Colonies, many better items, few cpl. sets, Useful lot	E. VII	
461	WHOLE WORLD , 1845-1912, 5677 used & unused stamps in 2 International Albums, Useful lot	E. VII	
462 ☒	Foreign Covers , Large carton, many hundreds, commercial covers	E. III	

END OF SALE — THANK YOU

IS YOUR COLLECTION FOR SALE?

REALIZE IMMEDIATE CASH
PLUS THE ADDED ADVANTAGE OF
SELLING THROUGH OUR AUCTIONS

We will advance immediate cash up to 75% of our appraisal value, of what your collection should realize at auction. There is no interest charge.

Your collection will then be sold in one of our coming auction sales. All stamps are expertly and advantageously lotted in attractive, well illustrated catalogs. Lotting is meticulously planned under our personal supervision. Commission is 20% of the gross realization. There is no lotting fee or any other charges. Final settlement is made within five weeks after the sale. We have been continuously conducting stamp auctions in the United States for over thirty-four years.

Valuable collections and stamp holdings are especially wanted, but we will accept properties valued from \$500 upwards. Send all stamps direct for appraisal. Auction advance will be remitted shortly after receipt. If not entirely pleased, stamps will be returned at our expense. If circumstances warrant, due to bulk or value, we will travel anywhere to inspect important properties.

ROBERT A. SIEGEL
AUCTION GALLERIES, Inc.

(Licensed and Bonded Auctioneer)

10 EAST 52nd STREET
NEW YORK, N. Y. 10022
(Tel. PL. 3-6422)

CONDITIONS OF SALE

1. The terms of sale are strictly cash to the highest bidder. All buyers are expected to pay for lots within three days of receipt, unless special arrangements have been made prior to the sale.
2. All bids are per lot as numbered in the catalogue and not per piece, unless otherwise announced by the auctioneer at the time of sale.
3. Any lot the description of which is incorrect is returnable only within three days of receipt. All disputed lots must be returned intact as received. Lots containing five or more stamps are not returnable at any time. No lots may be returned by purchasers who have had the opportunity to examine them before the sale.
4. Successful mail bidders, unless they are known to us or supply acceptable references, will be notified of the amount of the lots secured for them, and are expected to send payment in full before the lots are forwarded.
5. If the purchase price has not been paid within the time limit, or lots taken up within seven days from date of sale, they may be resold and any losses arising from such sale charged to the defaulter.
6. All stamps are sold as genuine, except where sold "As Is". Claims for any lot proving otherwise, must be made within two weeks from date of sale.
7. The right is reserved to group two or more lots, also withdraw and lot or lots from the sale, or to act on behalf of the seller.
8. Until paid for in full all lots remain the property of Robert A. Siegel.
9. No commission is charged for buying at our sales, but all forwarding charges will be added to the purchase price.
10. Upon written application lots may be sent for examination prior to the auction, conditional upon being mailed back by registered mail, adequately insured, within 24 hours of receipt. The applicant is completely responsible for all lots sent for examination, and for the insurance of same against mishap, from the time of receipt until they are actually received back, and is to pay all expenses of postage and insurance.
11. The placing of a bid shall constitute acceptance of the foregoing conditions of sale.

ROBERT A. SIEGEL

ANDREW LEVITT, Licensed Auctioneers

In sending bids, always state the highest price you are prepared to pay for the lot. Your limit will not be used as a starting bid unless absolutely necessary.

DESCRIPTIONS

Superb or Extremely Fine—the finest condition for noteworthy, outstanding copies.

Very Fine (VF)—means that there is a slight deviation from the above.

Fine (F)—means that the perforations do not touch the design on issues after 1890, but in some cases may just touch in earlier issues; if used, fairly lightly cancelled.

Very Good (VG)—means that the appearance is generally fine but that the perforations cut the design slightly.

Good (G)—means average off-centering; or fairly attractive with slight defects

Original gum (OG) is not to be expected on 19th Century stamps unless so stated.

Mint—have never been hinged.

Scott 1968 Specialized United States Catalogue is used for cataloging our lots of United States and Scott's Standard Catalogue, 1968 for others.

WE SOLICIT FINE MATERIAL FOR FUTURE SALES

In "Fun City" **

NOVEMBER PHILATELIC EVENTS

NOVEMBER 17th - 19th

A. S. D. A. Stamp Show

NOVEMBER 20th

Josiah K. Lilly Auction, Part VI

European Countries

NOVEMBER 21st

Arthur W. Bingham, Jr. Auction, Part I

Canada, B. N. A., Switzerland

These sales will be held at the

Waldorf-Astoria Hotel

***New York City — courtesy of our Mayor*

ROBERT A. SIEGEL AUCTION GALLERIES, Inc.

10 East 52nd Street
New York, N. Y. 10022

324TH SALE

PRICES REALIZED
November 21st, 1967

THE ARTHUR W. BINGHAM, JR. COLLECTION
PART I
CANADA
BRITISH NORTH AMERICA
SWITZERLAND

1	40.00	52	72.50	104	77.50	156	65.00	208	42.50	260	110.00	313	190.00	365	67.50	417	52.50
2	105.00	53	50.00	105	55.00	157	400.00	209	62.50	261	125.00	314	130.00	366	1150.00	418	25.00
3	32.50	54	425.00	106	15.00	158	80.00	210	57.50	262	135.00	315	20.00	367	1200.00	419	24.00
4	60.00	55	380.00	107	34.00	159	42.50	211	70.00	263	32.00	316	165.00	368	42.50	420	105.00
5	270.00	56	120.00	108	55.00	160	135.00	212	40.00	264	42.50	317	1050.00	369	28.00	421	23.00
6	135.00	57	32.00	109	21.00	161	40.00	213	36.00	265	36.00	318	170.00	370	26.00	422	55.00
7	17.00	58	32.00	110	29.00	162	115.00	214	38.00	266	45.00	319	14.00	371	90.00	423	22.00
8	70.00	59	37.50	111	140.00	163	145.00	215	22.00	267	24.00	320	280.00	372	170.00	424	47.50
9	10.00	60	475.00	112	48.00	164	57.50	216	85.00	268	55.00	321	20.00	373	34.00	425	14.00
10	55.00	61	60.00	113	150.00	165	90.00	217	180.00	269	16.00	322	400.00	374	11.00	426	17.00
11	390.00	62	27.00	114	80.00	166	90.00	218	160.00	270	62.50	323	50.00	375	52.50	427	62.50
12	360.00	63	44.00	115	70.00	167	27.00	219	160.00	271	70.00	324	95.00	376	170.00	428	32.50
13	240.00	64	220.00	116	42.50	168	87.50	220	280.00	272	52.50	325	24.00	377	90.00	429	26.00
14	105.00	65	22.00	117	70.00	169	220.00	221	75.00	273	70.00	326	160.00	378	42.50	430	23.00
15	170.00	66	28.00	118	62.50	170	115.00	222	300.00	274	32.50	327	26.00	379	400.00	431	17.00
16	200.00	67	1400.00	119	90.00	171	75.00	223	340.00	275	140.00	328	1300.00	380	270.00	432	32.00
17	62.50	68	50.00	120	80.00	172	70.00	224	165.00	276	42.50	329	26.00	381	250.00	433	30.00
17A	105.00	69	50.00	121	47.50	173	1800.00	225	38.00	277	18.00	330	21.00	382	230.00	434	33.00
18	500.00	70	15.00	122	16.00	174	55.00	226	150.00	278	32.50	331	70.00	383	450.00	435	17.00
19	130.00	71	45.00	123	110.00	175	32.50	227	260.00	279	75.00	332	50.00	384	575.00	436	17.00
20	60.00	72	110.00	124	105.00	176	26.00	228	67.50	280	36.00	333	11.50	385	1300.00	437	70.00
21	32.50	73	90.00	125	37.50	177	70.00	229	80.00	281	95.00	334	1150.00	386	115.00	438	100.00
22	18.00	74	135.00	126	45.00	178	15.00	230	70.00	282	29.00	335	62.50	387	27.00	439	13.00
23	50.00	75	135.00	127	70.00	179	50.00	231	57.50	283	95.00	336	42.50	388	14.00	440	24.00
24	36.00	76	35.00	128	34.00	180	45.00	232	120.00	284	42.50	337	67.50	389	60.00	441	29.00
25	42.50	77	12.00	129	52.50	181	100.00	233	60.00	285	25.00	338	20.00	390	26.00	442	18.00
26	27.00	78	23.00	130	32.50	182	55.00	234	260.00	286	125.00	339	95.00	391	35.00	443	135.00
27	170.00	79	24.00	131	50.00	183	32.50	235	240.00	287	65.00	340	47.50	392	8.00	444	21.00
28	55.00	80	67.50	132	62.50	184	160.00	236	30.00	288	65.00	341	40.00	393	115.00	445	45.00
29	40.00	81	80.00	133	42.50	185	50.00	237	160.00	289	15.00	342	24.00	394	16.00	446	52.50
30	65.00	82	90.00	134	32.00	186	190.00	238	170.00	290	140.00	343	12.00	395	28.00	447	60.00
31	36.00	83	29.00	135	105.00	187	425.00	239	21.00	291	20.00	344	62.50	396	45.00	448	70.00
32	32.50	84	90.00	136	13.00	188	37.50	240	230.00	292	24.00	345	17.00	397	48.00	449	240.00
33	11.00	85	38.00	137	52.50	189	28.00	241	32.00	293	45.00	346	30.00	398	9.00	450	170.00
34	200.00	86	40.00	138	110.00	190	105.00	242	450.00	294	160.00	347	175.00	399	37.50	451	45.00
35	110.00	87	90.00	139	40.00	191	7.50	243	175.00	295	77.50	348	250.00	400	7.00	452	21.00
36	220.00	88	100.00	140	72.50	192	45.00	244	25.00	296	80.00	349	65.00	401	8.00	453	375.00
37	250.00	89	16.00	141	42.50	193	55.00	245	675.00	297	50.00	350	13.00	402	50.00	454	550.00
38	105.00	90	250.00	142	55.00	194	19.00	246	15.00	298	45.00	351	17.00	403	115.00	455	14.00
39	210.00	91	95.00	143	35.00	195	120.00	247	25.00	299	200.00	352	19.00	404	35.00	456	190.00
40	240.00	92	135.00	144	80.00	196	28.00	248	1450.00	300	26.00	353	16.00	405	180.00	457	350.00
41	150.00	93	28.00	145	65.00	197	150.00	249	67.50	301	40.00	354	190.00	406	90.00	458	65.00
42	150.00	94	420.00	146	350.00	198	37.50	250	26.00	302	30.00	355	25.00	407	13.00	459	20.00
43	125.00	95	320.00	147	175.00	199	26.00	251	42.50	303	24.00	356	20.00	408	32.00	460	75.00
44	85.00	96	360.00	148	1350.00	200	21.00	252	42.50	304	115.00	357	105.00	409	150.00	461	105.00
45	115.00	97	64.00	149	210.00	201	62.50	253	50.00	305	40.00	358	18.00	410	13.00	462	106.00
46	90.00	98	67.50	150	1100.00	202	52.50	254	170.00	306	145.00	359	170.00	411	26.00		
47	90.00	99	32.00	151	150.00	203	27.00	255	70.00	307	85.00	360	90.00	412	60.00		
48	340.00	100	10.00	152	850.00	204	160.00	256	1800.00	308	14.00	361	95.00	413	30.00		
49	35.00	101	55.00	153	180.00	205	40.00	257	110.00	309	55.00	362	190.00	414	13.00		
50	310.00	102	47.50	154	2400.00	206	150.00	258	115.00	310	23.00	363	16.00	415	270.00		
51	150.00	103	105.00	155	42.50	207	140.00	259	115.00	311	42.50	364	57.50	416	16.00		
										312	40.00						