

RARITIES

of the

World

Robert A. Siegel
SAUCTIONS

10 EAST 52nd STREET

NEW YORK, N. Y. 10022

330th SALE

RARITIES
OF THE
WORLD

AT PUBLIC AUCTION

Thursday

MARCH 28th, 1968

AT 7:45 P.M.

At the Waldorf-Astoria Hotel

LOUIS XVI SUITE, PARK AVENUE AND 50th STREET

Robert A. Siegel
AUCTIONS

10 EAST 52nd STREET NEW YORK, N. Y. 10022

Tel: 212 PLaza 3-6422

CONDITIONS OF SALE

1. The terms of sale are strictly cash to the highest bidder. All buyers are expected to pay for lots within three days of receipt, unless special arrangements have been made prior to the sale.
2. All bids are per lot as numbered in the catalogue and not per piece, unless otherwise announced by the auctioneer at the time of sale.
3. Any lot the description of which is incorrect is returnable only within three days of receipt. All disputed lots must be returned intact as received. Lots containing five or more stamps are not returnable at any time. No lots may be returned by purchasers who have had the opportunity to examine them before the sale.
4. Successful mail bidders, unless they are known to us or supply acceptable reference, will be notified of the amount of the lots secured for them, and are expected to send payment in full before the lots are forwarded.
5. If the purchase price has not been paid within the time limit, or lots taken up within seven days from date of sale, they may be resold and any losses arising from such sale charged to the defaulter.
6. All stamps are sold as genuine, except where sold "As Is." Claims for any lot proving otherwise, must be made within two weeks from date of sale.
7. The right is reserved to group two or more lots, also withdraw any lot or lots from the sale, or to act on behalf of the seller.
8. Until paid for in full all lots remain the property of Robert A. Siegel.
9. No commission is charged for buying at our sales, but all forwarding charges will be added to the purchase price.
10. Upon written application lots may be sent for examination prior to the auction, condition upon being mailed back by registered mail, adequately insured, within 24 hours of receipt. The applicant is completely responsible for all lots sent for examination, and for the insurance of same against mishap, from the time of receipt until they are actually received back, and is to pay all expenses of postage and insurance.
11. The placing of a bid shall constitute acceptance of the foregoing conditions of sale.

ROBERT A. SIEGEL

ANDREW LEVITT, Licensed Auctioneers

In sending bids, always state the highest price you are prepared to pay for the lot. Your limit will not be used as a starting bid unless absolutely necessary.

DESCRIPTIONS

Extremely Fine—the finest condition for noteworthy, outstanding copies.

Very Fine (VF)—means that there is a slight deviation from the above.

Fine (F)—means that the perforations do not touch the design on issues after 1890, but in some cases may just touch in earlier issues; if used, fairly lightly cancelled.

Very Good (VG)—means that the appearance is generally fine but that the perforations cut the design slightly.

Good (G)—means average off-centering; or fairly attractive with slight defects. Original gum (OG) is not to be expected on 19th Century stamps unless so stated.

Mint—have never been hinged.

Scott 1968 Specialized United States Catalogue is used for cataloging our lots of United States and Scott's Standard Catalogue, 1968 for others.

WE SOLICIT FINE MATERIAL FOR FUTURE SALES
--

RARITIES OF THE WORLD

We present our Fifth Annual Rarity Sale in which we offer nothing but outstanding philatelic gems of magnificent quality and established rarity. Since we started these Rarity sales we have realized more than One Million Dollars from them and this present sale will unquestionably help us to maintain the high average we have reached thus far. We have been gratified by the fact that many collectors have come to anticipate our Rarity sales with keen interest. The constant inquiries we receive about the sales and their contents is cogent evidence of this interest.

The present sale is no exception to our previous offerings. We are privileged to present a galaxy of many of the most desired pieces in all Philately. Just at random we note, in United States Issues, Postmasters' Provisionals of Annapolis, Baltimore, New Haven and a veritable "Den" of St. Louis "Bears" including three of the excessively rare 20c. The 1847-1851 imperforates offer many choice and unusual gems. There are especially fine Special Printings of the Bank Note Series and the Commemoratives include the largest known block of the \$2.00 Columbian as well as wonderful blocks of the Trans-Mississippi Dollar Values. Among Twentieth Century rarities will be found rare Coils, Bluish Papers, the Imperforate 5c Error in block and Complete Sheet. There is a 24c Airpost with Inverted Center. A section of Western and Territorial covers includes some of the most beautiful items we have ever offered. The Confederate section includes some extraordinary stamps and covers of great beauty and rarity. A small but choice offering of Foreign stamps will show an unused Bavaria 6kr "Broken Circle", the Earliest Valentine on record, the excessively rare Newfoundland "Hawker" and "Columbia" flight stamps, the France "Ile de France" provisionals on cover, Israel rarities in blocks, to say nothing of a host of other choice singles, blocks and covers.

Color slides of each lot will, as usual, be shown as the sale progresses. Refreshments will be served following the sale and it would be wise to make your seating reservation prior to the sale. A word to our office will take care of it.

During 1967 we realized \$3,346,000.00 at our auction sales, a world record for any single auction firm. We have already scheduled some magnificent properties for our sales during the balance of 1968, including the final sections of the fabulous Josiah K. Lilly Collection.

We are grateful to our friends for making these results possible and we look forward eagerly to the opportunity to render further service.




Robert A. Siegel Auction Galleries, Inc.

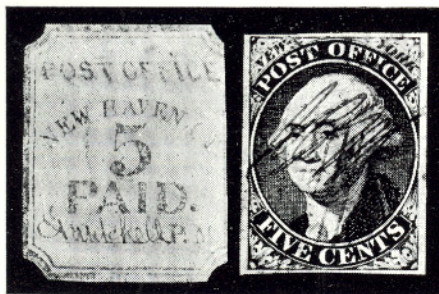
UNITED STATES

"ROOSEVELT" PROOF COLLECTION

- 1 P **Proof Collection.** The Complete Small Die Proof Series of 1904, 302 Different, 1847-1902, in original leather-bound Roosevelt Presentation Album, only 85 albums prepared and very few have been preserved in the original state. Very Fine, A Choice Lot 4247.50

POSTMASTERS' PROVISIONALS

- 2  **Annapolis, Md., 2c Blue (2XU1 var.).** Magnificent strike on neat folded letter sheet, Very Fine, Ex Ferrari 1200.00
- 3  **Baltimore, Md. 5c Black on White (3X1).** Frame line shows on 3 sides, Ms. cancel, Blue Baltimore and matching "Paid" on neat forwarded cover, Fine 2500.00
- 4  **Baltimore, Md. 5c Blue on Buff Entire (3XU2).** "Paid" Above Signature, Blue Baltimore pmk., Fine Impression of Buchanan "Signature" in Black, used to Washington D. C., Fresh, Very Fine and Very Rare, Ex-Caspary 2000.00



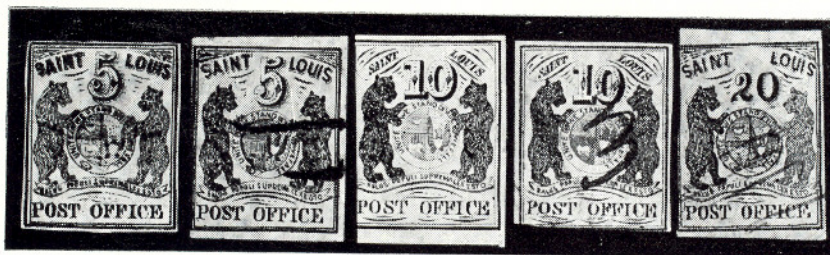
5

6

- 5 **New Haven, Conn., 5c Red on White (8XU1).** Cut to shape, touching R. frame line, Clear impression, slight thinnings, Fine appearance, with P. F. Certificate. Cat. \$20,000.00 as entire —
- 6 **New York, 5c Black on Blue (9X1a).** Pos. 12, Ample to Large Margins, Beautiful Color, Blue ms. & Red Grid Cancels, a Very Fine Copy of this Rare Stamp 500.00
- 7 ★ **Providence, R.I., 5c-10c Black (10X1-10X2).** Cpl. Sheet of 12, Fresh, o.g., few light gum bends, otherwise Very Fine 1200.00

LOTS ON VIEW FROM MARCH 20th

OFFICES OPEN EVERY SATURDAY



8

9

11

14

16

- 8 ★ **St. Louis, Mo., 5c Black on Greenish (11X1).** Ty. I, Clear Margins all around, Fresh and Fine Copy of this Rare Stamp 1850.00
- 9 **St. Louis, Mo., 5c Black on Greenish (11X1).** Ty. III, Large Margins to close at L. neat ms. cancel, tiny pinhole, Fine appearance 1100.00
- 10 ☒ **St. Louis, Mo., 5c Black on Greenish (11X1).** Ample to Large Margins, tied by ms., Red St. Louis pmk., matching "Paid", on folded 1847 cover to Quincy, Ill., light filing crease through stamp, otherwise Very Fine 1400.00
- 11 ★ **St. Louis, Mo., 10c Black on Greenish (11X2).** Plate I, Ty. II, Large to Huge Margins 3 sides, showing part of stamp at B., in at left, Fresh, Marvelous Impression 1500.00
- 12 ☒ **St. Louis, Mo., 10c Black on Green (11X2).** Large Margin at L., Clear other sides except outer frameline partly trimmed at top, tied by ms., Bold Red "Saint Louis, Mo. 10" pmk. on folded cover to N. Y., Fine 1500.00
- 13 ☒ **St. Louis, Mo., 5c Black on Gray Lilac (11X4).** Two Copies, Large Margins to barely in, tied by ms., Clear Red St. Louis, Mo. pmk, matching "Paid", "10" in ms. on Neat 1846 Charnley & Whelan cover, a Rare and Beautiful Cover 3600.00
- 14 **St. Louis, Mo., 10c Black on Gray Lilac (11X5).** Ty. III, Margins 3 sides, trifle cut in at Bot. Neat ms. Cancel, Fine 1000.00

ESTIMATES

Our sales contain many 19th Century covers and fancy cancellations. We have had many requests to give the estimated cash value on these lots. We are trying to place a fair net valuation on each lot as a guide for bidding when no catalogue value portrays the true value. The chart below will be used, for example E. IV means our estimate cash value on this lot is \$30.00 to \$40.00. Lots may actually realize more or less than these estimates and under no circumstances are these estimates to be considered reserves but merely a guide to bidding.

E. I	up to \$10.00
E. II	\$10.00 to \$20.00
E. III	\$20.00 to \$30.00
E. IV	\$30.00 to \$40.00
E. V	\$40.00 to \$50.00
E. VI	\$50.00 to \$75.00
E. VII	\$75.00 to \$100.00

E. VIII	\$100.00 to \$150.00
E. IX	\$150.00 to \$200.00
E. X	\$200.00 to \$250.00
E. XI	\$250.00 to \$350.00
E. XII	\$350.00 to \$500.00
E. XIII	\$500.00 to \$750.00
E. XIV	\$750.00 to \$1000.00
E. XV	over \$1000.00



- 15 **St. Louis, Mo., 10c Black, 20c Black on Gray Lilac (11X5, 11X6).** The 10c Large to Huge Margins, The 20c Large margin except slightly in at Left Frame Line. Tied together by beautiful Red "St. Louis, Mo." pmk, just tying the 20c, matching "Paid" & ms. "30", on neat Charnley & Whelan folded letter, 1846 use. A gorgeous cover of the utmost Rarity 8000.00+
- 16 **St. Louis, Mo., 20c Black on Gray Lilac (11X6).** Large margins three sides, cut into at L., Neat, light ms. cancel. Fine, with A. P. S. Certificate 4750.00



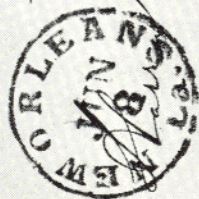
- 17 **St. Louis, Mo., 20c Black on Gray Lilac (11X6).** Ample to Large Margins except frame line barely shaved at bot., Faint ms. cancel. and beautifully tied by Red "St. Louis, Mo." pmk matching "Paid" ms. "20" on 1846 "Charnley & Whelan" cover to Philadelphia. Handsome, one of the most attractive covers known of this great Rarity, with P. F. Cert. 7000.00



Providence, Rhode

20

J. Shaver new Liverpool



Doct. J. A. Pigha



19

W. R. Rastock



D. S. Kennedy

*Wall Street
New York*

21

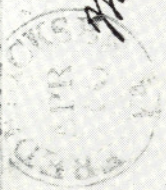


29

Providence

W. B. S. Hall

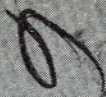
Care Commodore Smith



38

Major General Lamb

"Richmond"



*James H. Sherman Care of
Care George H. Hallam*



*W. B. Westcott
Huntville, Mississippi
Ala.*

26

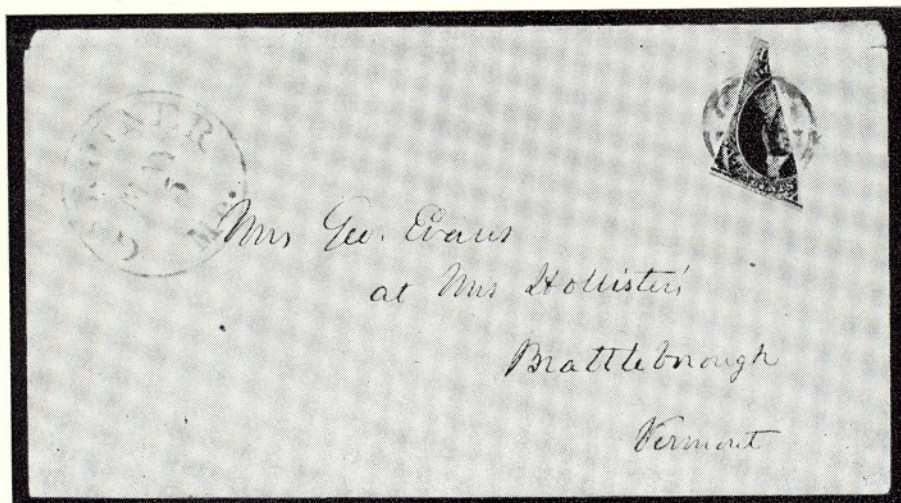
1847 ISSUE



- 18 **5c Brown (1).** Horiz. Pair, Large to huge margins, with portion of adjoining stamp at T.L. Pos. 89-90RI, latter the rare **Double Transfer** at T. & B., Ty. B., Brilliant Red cancel. Very Fine 180.00+
- 19 **5c Red Brown (1).** Large Margins, Gorgeous Color & Impression, signed and identified by Ashbrook as from Plate 2, tied by Red Grids, matching Bold New Orleans, La. pmk., ms. Due Markings (5c pays to Steamer, balance collected at destination) on 1851 Cover **to Mecklenburg**, an Extremely Fine Cover of the Greatest Rarity **E. XIII**
- 20 **5c Orange Brown (1b).** Large to huge margins, Just tied on 1851 folded letter **to France**, with matching Blue Phila., Pa. pmk., Bold "Colonies, Art. 13" in Red Box French 15 Decimes Due marking & other transit pmks., light cover crease, small cover tear mended, A Lovely Cover **E. XI**
- 21 **5c Red Brown (1).** Horiz. Pair, Margins all around, **Used from Canada**, Red Grid Cancels, matching "10" in Circle, Montreal pmk. on 1849 Cover from Montreal to New York, a Very Fine and Very Rare Cover **E. XV**
- 22 **5c Red Brown, 10c Black (1, 2).** Vert. Pair & Single of last, tied in **Combination** on small piece by Orange Grids, one 10c just in at bot., others Extremely Fine, Rare and Most Attractive Combination Usage **E. XIV**
- 23 **10c Black (2).** Gorgeous Rich Color and Impression, Large to Huge Margins, Neat Red Grid Cancel, Extremely Fine Gem 165.00
- 24 **10c Black (2).** Huge Margins, magnificent Color & Impression. Pretty Red Grid Cancel, A Gem, Extremely Fine 165.00
- 25 **10c Black (2).** Large to Gigantic margins showing over 2 mm. of adjoining stamp at T., sharp early impression, neat light Red Grid cancel, and trace of two pen lines, probably from the address on the cover. A Gorgeous Stamp, Extremely Fine 165.00
- 26 **10c Black (2).** Ample to Large Margins, Brilliant Color & Impression, tied by Blue Grid, matching Phila. pmk., Blue Memphis, Tenn. pmk, matching "Paid" on Forwarded 1849 Cover to Huntsville, Ala., Letter enclosed, Very Fine 200.00

LOTS ON VIEW FROM MARCH 20th

OFFICES OPEN EVERY SATURDAY

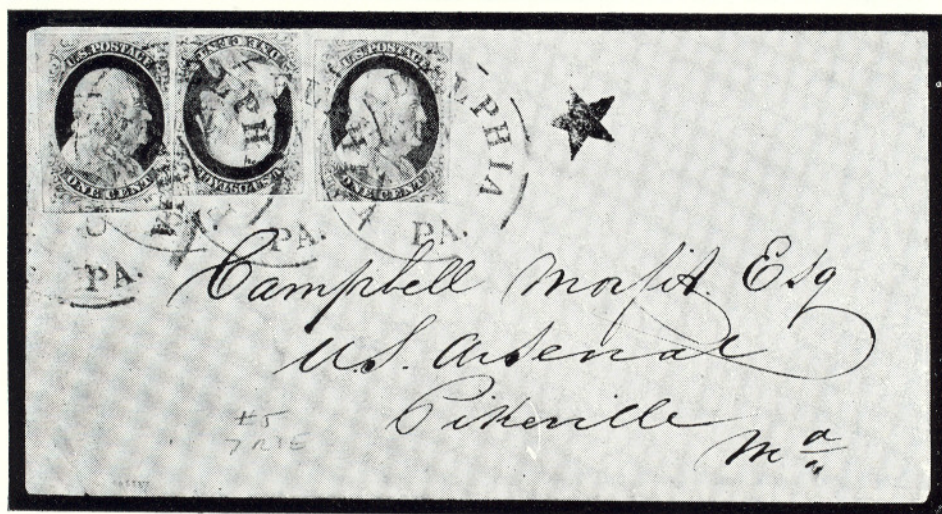


- 27 ☒ **10c Black, Diagonal Half Used as 5c (2a).** Doubly tied by Orange Red grid, matching Gardiner, Me. pmk. on cover to Brattleboro, Vt., light filing crease in upper corner, otherwise Very Fine, Scarce Bisect, with P. F. Certificate 1750.00

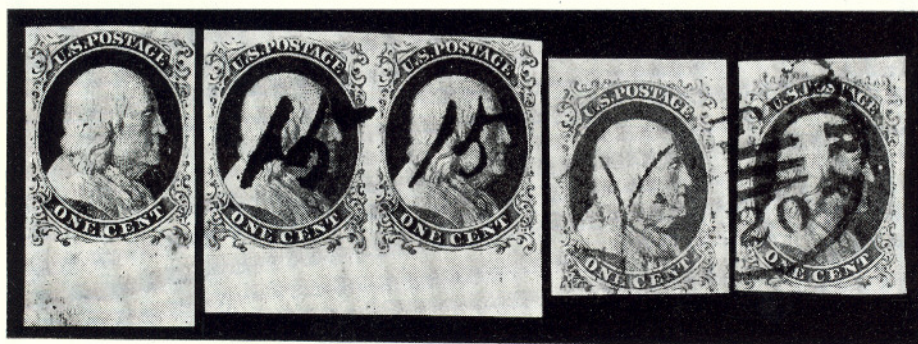


- 28 ☒ **10c Black, Vertical Half Used as 5c (2b).** tied with Red square grid, Red New York pmk. on cover to Carbondale, Pa. light filing crease, otherwise Very Fine, Rare Bisect, with P. F. Certificate 3000.00
- 29 ☒ **10c Gray Black (2). Horiz. Pair,** Ample to Large margins all around, tied by Red Grid, matching "Mobile Ala." pmk. on brown folded letter to N.Y. Very Fine 550.00

1851 ISSUE



- 30 ☒ **1c Blue, Ty. I, Ty. Ib, Ty. II (5, 6b, 7).** Three singles incl. the Rare **7R1E** beautifully tied by blue Philadelphia pmk. Bold Red Star on the cover, showing Carrier use. The Ty. I is bit close T. & B. but can be clearly identified, Stamp to R. is Ty. Ib 6R1E, the other a fine Ty. II. Small, clean cover. Very Handsome, signed "Stanley B. Ashbrook" 4845.00+



31

32

33

34

- 31 ★ **1c Dark Blue, Ty. Ia (6).** Large margins, incl. Sheet margin at Bot., Beautiful color & impression, Fresh, o.g., a couple of slight toned spots, otherwise Extremely Fine 1100.00
- 32 **1c Dark Blue, Ty. Ia (6).** B. Sheet Margin Pair, Large to Huge Margins, incl. 7mm Wide Sheet Margin, Glorious Deep Rich Brilliant Color & Impression, ms. "15" Cancels, Marvelously Fresh and Extremely Fine, Magnificent 1150.00
- 33 **1c Blue, Ty. Ib (6b).** Clear to huge margins all around, with sheet margin at T., and traces of the Famous "Ty. I, 7R1E" at R., Rich color, Light Blue Philadelphia pmk., Extremely Fine, A Gem, Ex Newbury 325.00
- 34 **1c Blue, Ty. Ib (6b).** Pos. 8 R1E, The Finest Example of this Type on the plate. Huge margins, incl. 2mm Sheet Margins at T. & shows parts of the three adjoining stamps. Scarce "New York" pmk. with three bars between month & date. A Gorgeous Stamp, Extremely Fine 325.00

- 35 ★ 1c Blue, Ty. II (7). Block, Pos. 49-50, 59-60L2, T. Pair Double Transfer, Ample to Huge Margins, Beautiful Impression, Deep Rich Color, Fresh, o.g., negligible gum wrinkles, a Very Fine and Rare Block, Ex-Caspary. 350.00+
- 36 ★ 1c Blue, Ty. II (7). Vertical Block of Eight. Pos. 36-37 to 66-67RII, Large margins to barely touched at T., Beautiful color & impression, small part o.g., minor wrinkling & light horiz. crease in bot. pair, Beautiful Appearance, A Handsome Block 700.00+
- 37 1c Blue, Ty. II, Perf. 12½ (7) so-called "Chicago Perf.", light Chicago pmk. cut from sheet with scissors leaving all perfs. intact. Unusually Fine for this, Very Rare E. XI
- 38 1c Blue Ty. II, IIIa (7, 8A). Horiz. Strip of 3, showing the Ty. IIIa stamp in the middle, Neat Grid Cancels, tied by Red Fredericksburg, Va. pmk. on 1852 cover, light filing crease thru left stamp, but remaining Combination Pair has Large Margins and is Extremely Fine, listed but unpriced in Scott E. XI
- 39 1c Blue, Ty. II, Ty. IV (7, 9). Horiz. Pair & Strip of Eight. The pair is Pos. 1 & 2 R1L with full L. pane margin & Center Line. The Strip is Pos. 3-10R1L & completes the Entire Top Row of the R. Pane & includes the rare 4R1L, the only Type II on the plate. Tied by "Goliad, Tex." on cover to Kentucky. Each stamp with a neat "Cross-Roads" cancel. Margins except touched on a few. An outstanding and unique combination of Great Beauty 497.50+
- 40 1c Blue, Ty IIIa (8A). Large margins all around, tied neat Boston Small "Paid" cancel, Extremely Fine E. IX
- 41 ★ 3c Orange Brown (10). Block, Pos. 17-18, 27-28 R5E, Margins to trifle close, o.g., few light creases, and small tear in one, otherwise a Fresh and V.F. Block, Scarce 850.00



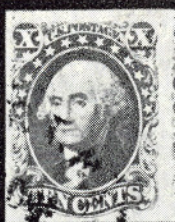
- 42 3c Orange Brown (10). Large margins, Magnificent Color, tied by Red Grids, Clear matching "New Haven, Ct. 1 Jul." pmk. on neat folded First Day Cover, dated letter enclosed, A Magnificent Gem, Extremely Fine. 1,000.00



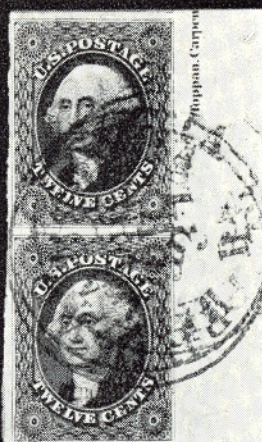
37



47



49

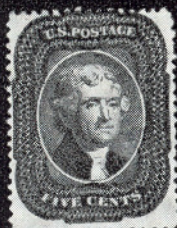


Hopson, Carpen

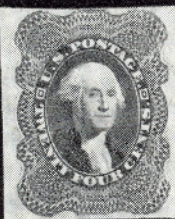
50



60



58



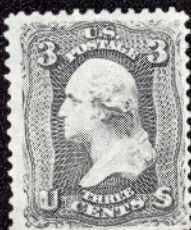
61



62



79



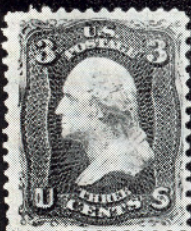
80



87



89



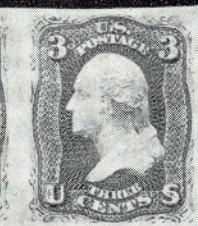
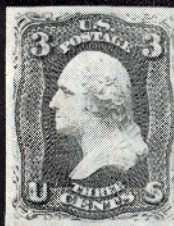
77



81



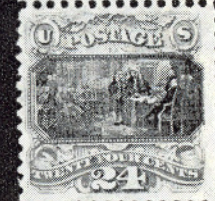
94



82



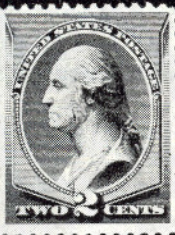
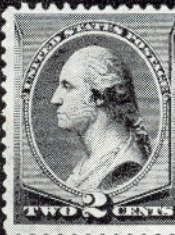
108



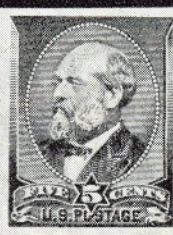
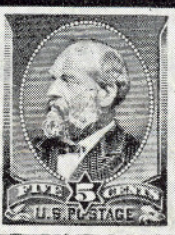
88






91





118




119

- 43  **3c Deep Brownish Carmine, Double Impression (11e).** Rich Color, Margins except bit in at T., Two Impressions Clearly Separated, ms. cancel, ms. Clear Spring, Pa., pmk on bit aged Lady's Cover, Fine, only one other Example known, Listed but unpriced in Scott E. XV
- 44  **5c Red Brown Ty. I (12).** Large Margins, Beautiful Rich Color & Impression, tied by New Orleans pmk. & French transit, with Red "New York Br. Packet" & British transit markings, 5c Internal Rate to France, 1856, Very Fine & Attractive 300.00
- 45  **5c Dark Red Brown, 10c Green (12, 15).** Rich colors, tied with New Orleans and French Transit markings, Red "New York, Paid 12" struck twice on folded cover to France, Very Fine, Scarce & Handsome Cover E. XIII



- 46 ★ **10c Green, Ty. I (13).** Large to Huge Margins, Rich Color, Very Fine Copy of this Rarity 1100.00
- 47 **10c Green, Ty. I (13).** Horiz. L. Sheet Margin Pair, Pos. 91-92R. Large to Huge Margins, Brilliant Deep Color, Neat New Orleans pmks., faint bend in margin between stamps, still Extremely Fine, an outstanding Pair, Rare in this Wonderful Condition 425.00
- 48  **10c Green, Ty III (15).** Three large margins, clear at left, tied two Red "Paid" cancels, "United States" in circle and "Express Mail, Boston Oct. 30" markings, to New Brunswick with St. John and Fredericton, N. B. backstamps, V. F. and Rare Cover E. XIII
- 49  **10c Green, Ty. IV (16).** Pos. 55L1, Recut at B., Large to Huge Margins, showing part of next stamp, Rich Color & Impression, Extremely Fine. 250.00
- 50 **12c Black (17).** Vert. Pair, Pos. 70, 80 R., Large to Huge Margins, incl. Wide Sheet margin at R., with part Imprint, also showing parts of 2 other stamps, Deep Rich Color, tiny scissor cut in bot. margin, otherwise Extremely Fine, a Marvelous Piece E. XI

1857 ISSUE

- 51 ★  **1c Blue Ty. I, II (18, 20).** Block of 9,, from L. Pane of Plate 12, showing 4 Stamps Ty. I and five Ty. II, a Spectacular Example of the Misplaced Reliefs in this Plate, Fresh, o.g., F.-V.F., an Outstanding Block of Great Rarity 870.00

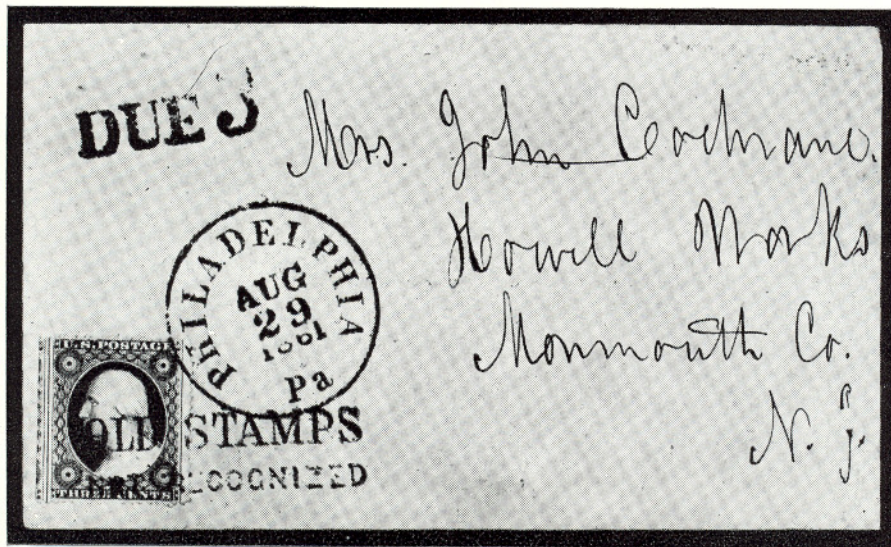




52

54

- 52 **1c Blue Ty. Ia (19).** Horiz. Strip of 3, Pos. 96-98R4, Pos. 96R4 is the true Ty. Ic, Deep Rich Color, left stamp blunt perf., still a Very Fine Strip of Extremely Rarity, an Outstanding Showpiece 975.00+
- 53 ★ **1c Blue Ty. II, IIIa Pl. XI (20, 22).** Block, showing two Vertical Combination Pairs, Fresh, o.g., Rich Color, Beautiful Impression. A Very Fine Block, listed but unpriced in Scott —
- 54 **1c Blue Ty IIIa, Horiz. Pair Imperf. Between (22b).** Nice color, Light town cancel, faint blind perfs, between stamps as always, A few blunted perfs. Fine appearance, Very Rare 1100.00
- 55 ★ **1c Blue Ty. V (24).** L. Imprint Plate No. Block of 16, Plate 10, one stamp tiny corner crease, another small thin spot, others V.F., a Beautiful and Most Attractive Block 440.00



- 56 ☒ **3c Red (26).** Tied by Philadelphia, Pa. Aug. 29, 1861 pmk. and by "Old Stamps Not Recognized" in two clear Str. Lines, "Due 3" in Str. Line, Stamp is L. Straddle Copy, Very Fine, and Very Rare, a Most Remarkable Cover, since stamp was still Valid at this Date, Illustrated in Brookman E. XIV



7



22



36



55



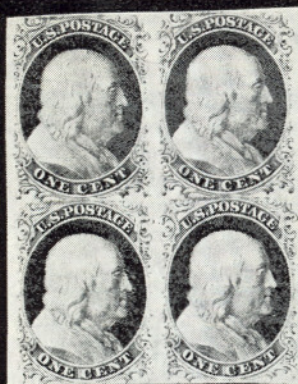
51



93



92



35



41



53



57



78



83



84



85



106



122



133

- 57 田 **5c Brick Red, Ty. I (27).** Block, Rich Color, clear Portsmouth town pmks., centered bit to T., negligible tiny faults with some weak perfs. reenforced, Used block unlisted in Scott, unused Block catalogs \$12,000.00, Probably Unique as used block, Attractive appearance —
- 58 ★ **5c Deep Indian Red (28A).** Incredible Deep Color, fresh, large part o. g., Fine, A Lovely Copy of this Exceedingly Rare Stamp 1000.00



- 59 田 **5c Orange Brown (30).** Three singles, tied together by Red Grids on 1861 folded letter to France, "New-Paid-York, 12" in Red, also French Transit pmks. A Very Fine and Rare Cover with P. F. Certificate E. XV
- 60 ★ **10c Green Ty. II, III (32-33).** Vert. Combination Pair, Well Centered, Fresh, Large part o. g., Very Fine, listed but unpriced unused E. XIII
- 61 ★ **24c Lilac, Imperforate (37c).** Margins all around, large part o. g., V. F. 425.00
- 62 ★ **12c Greenish Black, Reprint (44).** Very Fine, with P. F. Certificate 325.00

WESTERN & TERRITORIAL COVERS

- 63 田 **Banning & Co.** Illustr. Wagon Drawn by Six Horses on **Wells Fargo & Co.** Franked 3c Red on Buff Entire (U10), tied by company cancel "Wells Fargo Sacramento" in Blue Double Line Circle, used to Todds Valley, Very Fine and Very Rare E. XII
- 64 田 **John C. Fremont, Free,** franked as Senator from California, clear San Francisco pmk. of the 1850's on small neat cover to Washington, Beautiful historic cover of the famous "Pathfinder", one of our great Soldier-Statesmen E. XII
- 65 田 **"Independent Line Ahead of the Mails, Yankee Blade and North Star, Via Panama"** in Clear Double Oval, 3c Red (11), Horiz. Pair, tied by New York pmk. on cover to Phila, small closed cover tear, otherwise V. F. E. XI



- 66 ☒ **Las Cruces, N. Mex.** in Bold double circle, 15c 1869 Ty II (119) tied on immaculate 3c Green Entire (U84) by clear, clean Four Leaf Clover cancel. Domestic Registry 1870 use to Boston with "Registered" in small circle & Boston pmk. Neatly docketed at L. A Remarkable Territorial, Extremely Fine E. XIV
- 67 ☒ **Oak Point, W. T.** in ms. Vertical Imprint pair & single 1c Blue, Ty. IV (9), with neat ms. cancel., clear to huge margins, with Letter, Oct. 16, 1855 which notes "Proceeds \$5.16 from this P.O. in 1855", Extremely Scarce Washington Territorial, Very Fine & Most Attractive E. IX
- 68 ☒ **Santa Fe, N. M.** Sept. 1 in Bold Large Circle, 1c Blue Ty IV, 10c Green Ty. II (9, 14, pair), tied by Grids, Red N. Y. Br. Pkt pmk. on 1856 cover to France, several transits, The 1c is Fine, The 10c Pair Very Fine, Beautiful Territorial E. XII
- 69 ☒ **The Central Overland California & Pikes Peak Express, Denver City, K. T.** Dec 1 in Large Black Oval, Similar **St. Joseph, Mo. Dec 10** Co. cancel Beautiful Strikes, on 3c Red on Buff Entire (U10), tied by Grid and St. Joseph, Mo. Dec. 11 pmk., "Denver City" Co. Handstamp on Flap, used to Milwaukee Wis., Rare and Extremely Fine, Handsome cover E. XII

71
Herrn Leichen-Hofmeister
Stall-Hofmeister, Markt

Milwaukee

Care of Mrs. Galveston
Mrs. C. M. Seymour

Mr. David W. Webster

Mr. Isaac Sweetser
Boston
Mass.
U.S.A.

214

Samuel R. Hooper M.D.
Baptist
J. Bantick

95

193

194

Mrs. Hill. E. 6.

Rev. Josephus Anderson
Quincy

His Excellency
Governor Henry W. Allen
Shreveport.
La

206



- 70 ☒ **Wells Fargo & Cos. Express S. Frco.** in Bold Blue Double Circle ties 10c Green Ty. V (35), Str. Line "Mc Intire's Post 2 Maiden Lane" and **Collect** in Oval on Overall **Green Illustr. Wells Fargo Cover**, showing their office Building, used to New York, 1860 letter enclosed, Extremely Fine and one of the most gorgeous Western Covers in Existence E. XIII
- 71 ☒ **Wells Fargo & Co.** Printed Frank on 3c Pink Entire with 30c Orange (71, U59), tied by boxed geometric and boxed "Aachen, Franco", Red New York transit pmks. used to Vienna, Austria, Very Fine & Scarce Cover. E. X

1861 ISSUE

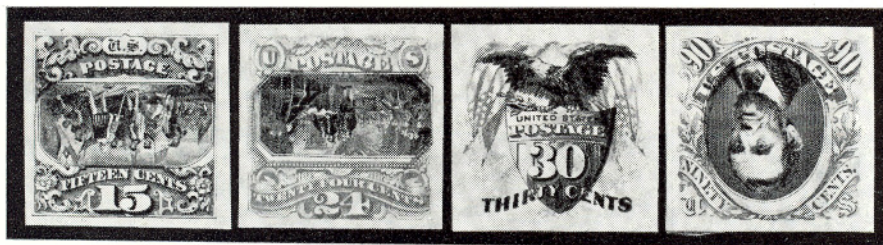


- | | 72 | 73 | 74 | 75 | 76 | |
|------|---|---|--|---|---|---------|
| 72 ★ | 10c Dark Green, August (58). | 24c Violet, August (60). | 24c Violet, August (60). | 30c Red Orange, August (61). | 90c Dull Blue, August Imperforate (62a). | |
| | Fresh, o.g., Rich Deep Color, centered bit to L.B., Very Fine Copy of this Rare stamp, with P.F. Certificate | Rich, Pretty Color, part o.g., Very Fine, A Very Handsome Copy of this Rare Stamp | Wonderful Deep Color, Fresh, Very Fine | Brilliant Color, part o.g., light diagonal crease, Centered a trifle to L. but still one of the better centered of the few known. With copy of P. F. Certificate guaranteeing a pair of which this is the Left hand stamp. Beautiful appearance | Huge Margins, light trace of internal paper wrinkle, otherwise Extremely Fine, with P.F. Certificate. | 900.00 |
| 73 ★ | | | | | | 900.00 |
| 74 ★ | | | | | | 900.00 |
| 75 ★ | | | | | | 5000.00 |
| 76 ★ | | | | | | 550.00 |

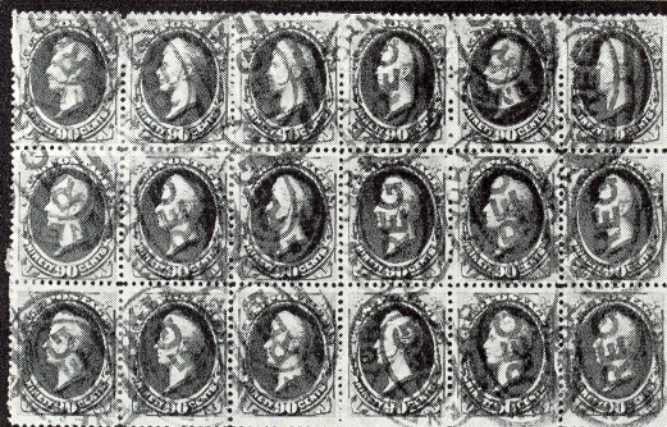
77 ★	3c Lake (66). o.g., Very Fine	300.00
78 ★	12c Black (69). Block, Rich Color, Fresh, o.g., centered bit to right, Fine and Beautiful Block	400.00
79 ★	3c Scarlet (74). Fresh, o.g., Extremely Fine	700.00
80 ★	3c Scarlet (74). Brilliant & Fresh, Centered bit to right, perfs. clear, Fine.	700.00
81 ★	3c Rose, C. Grill, Imperforate (83a). Horiz. Pair, Huge margins, Fresh, o.g., Extremely Fine	450.00
82 ★	3c Rose, F. Grill, Imperforate (94b). Horiz. Pair, Huge margins, Fresh, o.g., Extremely Fine	150.00
83 ★	24c Gray Lilac, F. Grill (99). Block, centered to T. R., Fresh, o.g., strong Grill, Fine, attractive	1000.00
84 ★	1c Blue Re-Issue (102). Block, Fresh, o.g., trifle reinforced, one stamp pulled perf., otherwise Very Fine, a Rare Block	600.00

1869 PICTORIAL ISSUE

85 ★	1c Buff, Without Grill (112b). The Unique Block, Fresh, Large part o.g. bit strengthened, Fine, Ex-Worthington	700.00+
------	--	---------



86 P	15c, 24c, 30c 90c Pictorials, Inverted Centers, Card Proofs (120Pa-122Pa, 129Pa). Extremely Fine Set	1400.00
87	15c Brown & Blue, Inverted Center (119a). Deep Rich Colors, Light Cork Cancel, small faults, Fine appearing Copy of this Rarity	3750.00
88 ★	24c Green & Violet (120). Vert. Pair, Gorgeous Rich Colors, Fresh, o.g., one stamp trifle blunted perf., otherwise Extremely Fine, a Most Desirable Pair	400.00
89	24c Green & Violet, Inverted Center (120b). Repaired, Fine looking copy of this Popular Rarity	2650.00
90 P	1c-90c Pictorials Atlanta Trial Color Proofs (123TC-132TC). Complete Set in all Colors, Very Fine, Scarce Set	4120.00
91 ★	3c Blue, Re-Issue (125). Centered slightly to B. Fine, with P. F. Cert.	475.00
92 ★	1c Buff, Re-Issue (133). Vert. Block of 8, Brilliantly Fresh and Mint, Beautifully Centered, L. R. stamp light creases, still a Magnificent Block.	400.00



120



123



161

BANKNOTE ISSUE

- 93 ★ 2c Red Brown, Grill (135), Block of 24, Exceptionally Well Centered, Rich Color, One Vertical Row of Grill Points shows strongly on 3 stamps in R. Vert. Row balance show few faint points or traces of points, faint horiz bend at T. & B., otherwise Very Fine, A Very Rare & Handsome Showpiece of Unusually Choice Quality 1200.00
- 94 ★ 2c Red Brown, Double Impression (146C). One Impression Distinctly shifted to U.L., Rich Color, trivial tiny creases, Fine appearance, not listed unused & not priced used in Scott, Rare & Remarkably Clear Double Print E. XII
- 95 ✉ 2c Red Brown, 24c Purple (146, two, 153). Beautiful Colors, tied on 1c Blue on Orange, Entire (U76) to Bangkok, Siam, Red "New York 24" pmk, Red London Paid, several transits, V.F., a Gorgeous and Rare Cover E. XII

96

97

98

99

100



101

102

103

104

105

- 96 ★ 1c Ultramarine, Special Printing (167). Brilliant Color, Fresh, Fine 1300.00
- 97 ★ 2c Dark Brown, Special Printing (168). Rich Color, Fresh and Fine 850.00
- 98 ★ 6c Dull Rose, Special Printing (170). Rich Color, Fresh, Well Centered, Microscopic pencil marking, still Extremely Fine 1850.00
- 99 ★ 7c Reddish Vermilion, Special Printing (171). Gorgeous Rich Color, Unusually well centered for this rare stamp, Extremely Fine, with P. F. Certificate 700.00
- 100 ★ 7c Reddish Vermilion, Special Printing (171). Well centered, nearly all perfs intact, Fresh Very Fine, with P. F. Certificate 700.00
- 101 ★ 12c Dark Violet, Special Printing (173). Centered, Rich Deep Color, One short perf. at T., Very Fine, with P. F. Certificate 800.00
- 102 ★ 12c Dark Violet, Special Printing (173). Tiny tear at L., entirely in margin, otherwise Fine 800.00

- 103 ★ **24c Dull Purple, Special Printing (175).** Wonderful color, Exceptional Centering, Extremely Fine, with P. F. Certificate 650.00
- 104 ★ **30c Greenish Black, Special Printing (176).** Centered, Rich Color, Very Fine, with P. F. Certificate 1500.00
- 105 ★ **30c Greenish Black, Special Printing (176).** Most perfs. intact with P. F. Certificate which states "stained" probably referring to two pinpoint ink marks on back not visible on face of stamp. Fine A Rare Stamp 1500.00
- 106 ★ **10c Brown, No Secret Mark (187).** Block, o. g., Fresh Very Fine, Sensibly reinforced with tiny hinge strips. An Extremely Rare Block especially in such magnificent condition. Unpriced as block, with P. F. Certificate E. XIII
- 107 **90c Carmine, 5c Brown (191, 205).** Beautifully tied by New York duplex on medium sized cover to France, Sealing Wax stain, Well centered, Very Fine & Scarce E. XI
- 108 ★ **90c Carmine, Imperforate (191b).** Horiz. Pair, Large Margins, Fresh, o. g., Extremely Fine 800.00



- 109 ★ **6c Dull Rose, Special Printing (195).** Small interior split, centered bit to B., Very Fine appearance, One of the scarcer Special Printings, with P. F. Certificate 1750.00
- 110 ★ **7c Scarlet Vermilion, Special Printing (196).** Centered to right, Fine, with P. F. Certificate 1000.00

111 ★	10c Deep Brown, Special Printing (197). Rich, Deep Color, Extremely Fine, A Magnificent Copy of this Exceedingly Rare Stamp, with P. F. Certificate	2000.00
112 ★	12c Blackish Purple, Special Printing (198). Fine, with P. F. Certificate.	1650.00
113 ★	12c Blackish Purple, Special Printing (198). Well Centered, Corner perf. rounded, Tip of one L. perf thinned, A Handsome & Attractive Copy of This Very Rare Stamp, with P. F. Certificate	1650.00
114 ★	15c Orange, Special Printing (199). Strong Rich Color. Str. edge at R. Very Fine, with P. F. Certificate	1750.00
115 ★	24c Dark Violet, Special Printing (200). Gorgeous Color, Very well centered, Extremely Fine, with P. F. Certificate	700.00
116 ★	24c Dark Violet, Special Printing (200). Fine, with P. F. Certificate	700.00
117 ★	90c Dull Carmine, Special Printing (202). Small thin otherwise Fine, with P. F. Certificate	1800.00
118 ★	2c Pale Red Brown, Special Printing, Horizontal Pair Imperf. Between (211BC). Fresh, o. g. Very Fine	450.00
119 ★	5c Blue, Imperforate (216b). Horiz. Pair with R. sheet margin, Fresh, o. g., Extremely Fine	350.00
120 田	90c Purple (218). Block of Eighteen (6x3). F. to V.F. centering, light N. Y. Registry canc. Two stamps light blue pencil marks, reinforced on back, not visible on face. A Spectacular Block	575.00
121 E	2c Carmine Lake, Combination of 1890 & 1894 designs (219d, 249). Horiz. pair, Left is without Triangles, R with triangle Type I (Brazer 250E-B). Essay on India mounted on card. Very Fine and Rare	E. X

COLUMBIANS — TRANS-MISSISSIPPI ISSUES

122 田	\$1.00 Columbian (241). Used Block, neat Los Angeles, Calif. in small oval Perfectly struck once in center, Well centered, Very Fine. A Magnificent Block	500.00
123 ★田	\$2.00 Columbian (242). Block of Twenty Five, bit reinforced in places and with 3 Singles added to preserve symmetry of Block, Brilliantly Fresh, four stamps have faults, others F.-V. F., a Remarkable Showpiece, The Largest Block in Existence	4885.00
124 ★	\$5.00 Dark Green (263). Fresh, o. g., Very Fine	275.00
125 ★	\$5.00 Dark Green (278). T. Imprint Plate No. Strip of 3, Gorgeous Rich Color, Fresh, part o. g., Well Centered, Extremely Fine	800.00
126 E	1c-\$2.00 Bicolor Trans-Mississippi Die Essays (285E-293E). Complete Set, Die Sunk on 8"x6" Cards, Unusually Fresh Set, Extremely Fine	E. X1
127 ★	\$1.00 Trans-Mississippi (292). B. Imprint Plate No. Pair, Fresh, o. g., V. F.	600.00



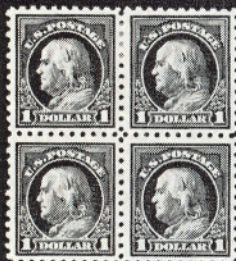
132



150



156



155



173



158



163



170



- 128 ★ 田 \$1.00 Trans-Mississippi (292). Block, Brilliantly Fresh, o.g., Beautifully Centered, Extremely Fine 1750.00
- 129 ★ 田 \$2.00 Trans-Mississippi (293). Block of Twenty (5x4) with R. Sheet Margin, Rich Color, Fresh, Full o.g., perfs just touch in right vertical row, others V.F., a Marvelous Showpiece 10,660.00

TWENTIETH CENTURY



130

131

- 130 ★ 1c Pan American, Inverted Center (294a) Unusually Well Centered, Fresh, Rich Colors, Very Fine, A Most Exceptional Copy 2350.00
- 131 ★ 1c Pan American, Inverted Center (294a) Fresh, Nice color, Trivial tiny creases, Fine appearance 2350.00
- 132 ★ 田 8c Pan-American (298). Block of Six, with T. Imprint & Pl. No. Mint, Very Fine 275.00
- 133 ★ 田 \$2.00 Dark Blue (312). Block, F.-V.F. 625.00
- 134 ★ 田 \$5.00 Dark Green (313). Block, Glorious Color, Brilliantly Fresh, Extremely Fine, a Magnificent Block 1400.00
- 135 ★ 田 5c Blue Imperforate (315). Block, Extremely Fine 550.00
- 136 ★ 5c Blue, Schermack Ty. III (315). Strip of 4 with T. Imprint & Plate No., Very Fine, Most Unusual 370.00+



- 137 ★ **5c Blue, Coil (317).** Vert. **Line Strip** of 4, Rich Color, slight crease affects two, otherwise F.-V. F., a Most Desirable Example of this Rarity 1950.00
- 138 ★ **1c Blue Green, Coil (318).** Horiz Pair, o. g., Fine, with A. P. S. Certificate, A Rare & Handsome Pair 800.00
- 139 ★田 **2c Light Carmine, Shield (319 var.).** **Block, Horizontally Rouletted Between**, as prepared and sold by Postmaster at San Francisco. (See footnote in U. S. Spec. Cat.) Center of block re-inforced with hinge, Very Fine and Very Rare E. XII
- 140 ★ **2c Carmine, Coil (322).** Pair, each signed "S. G. Ltd." (Stanley Gibbons) & other guarantee marks, Well centered, Very Fine 850.00
- 141 ★田 **5c Deep Blue, Jamestown (330).** Block of six, with part imprint & B. Pl. No., Brilliant Mint, Centered, Extremely Fine, A Wonderful Block 160.00+
- 142 ★田 **1c Green, Bluish (357).** Block **3 mm spacing**, Very Fine 500.00



- 143 144 145 147 149
- 143 ★ **3c Deep Violet, Bluish (359).** Mint and Extremely Fine, Signed 275.00
- 144 ★ **4c Orange Brown, Bluish (360).** Fresh, o. g., Centered to R. B., with P. F. Certificate which states that it is reperforated at Right, Rare 3000.00
- 145 ★ **5c Blue, Bluish (361).** Very Fine Copy of this Rare Stamp 950.00
- 146 ★田 **6c Red Orange, Bluish (362).** Block, Extremely Fine 900.00
- 147 ★ **8c Olive Green, Bluish (363).** Fresh, o. g., Perfs. touch at Bot., Attractive copy of this popular rarity, with P. F. Certificate 3000.00
- 148 ★田 **10c Yellow, Bluish (364).** Block, Very Fine 1000.00
- 149 ★ **13c Blue Green, Bluish (365).** Very Fine 550.00
- 150 ★田 **15c Pale Ultramarine, Bluish (366).** T. Margin Block, barest trace of toning in bot. perf., otherwise Extremely Fine 950.00
- 151 **3c Deep Violet, Orangeburg Coil (389).** Centered slightly to bot., Very Fine, Rare 850.00
- 152 ★田 **10c Panama-Pacific, Perf. 10 (404).** Block, Extremely Fine 850.00
- 153 ★田 **10c Panama Pacific, Perf. 10 (404).** Block, faint thins in two, otherwise Extremely Fine 850.00
- 154 ★ **2c Red Coil, Ty I (449).** Line Pair, Very Fine & Rare 500.00
- 155 ★田 **\$1.00 Violet Black (478).** Block, Beautifully Centered, Extremely Fine 550.00
- 156 ★田 **\$1.00 Violet Black (478).** R. Arrow Block of 4, Extremely Fine 560.00



- 157 **2c Carmine Ty Ia, Imperforate (482A).** Clear to Huge margins, showing part of Schermack Ty. III Private Perf at L. only, 1920 cancel, small thin, Fine appearance, Attractive Copy of this Very Rare Stamp 2000.00

- 158 ★ 5c Carmine Error, Imperforate (485). R. Arrow Block of 35, Middle Stamp the Error, Mint, Extremely Fine 2500.00

- 159 ★ **5c Carmine, Imperforate Errors (485).** Single and Double Errors in full sheet of 400, Mint, Very Fine 8150.00



- 160 ★ **2c Carmine, Coil Ty II (491).** Line Strip of 4, Very Fine, a Rare and Handsome Strip 1000.00

- 161 ★ **2c Rose, A. E. F. Booklet Pane of 30 (499f).** Few light gum skips, F.-V. F. 800.00

- 162 ★ **11c Light Green, Perf. 10 at Top (511 var.)** Mint, Very Fine with P. F. Certificate, Rare and Unpriced Unused E. XII

- 163 田 **\$2.00 Orange Red & Black (523).** Used Block of 16 with B. Margin, Neatly Cancelled, slight separation between two stamps, a Scarce and Attractive Block, F.-V. F. 860.00

- 164 ★ **2c Offset Imperforate, Ty VII (534B).** Large margins, Extremely Fine 375.00

- 165 **1c Green (544).** A Wonderful Copy, Extremely Fine 500.00

- 166 **1c Green (544).** Vert. Pair, Lightly Cancelled, perfs just touch at bot., T. stamp has tiny faint thin spot in perfs, otherwise a Fine and Extremely Rare Pair, with P. F. Certificate 1000.00+

- 167 ★ **4c Brown, Perf 10 at Bottom (556 Var.).** Couple Short Perfs, otherwise Very Fine, Listed but unpriced used in Scott, Unpriced unused, Probably the only known unused copy E. XI

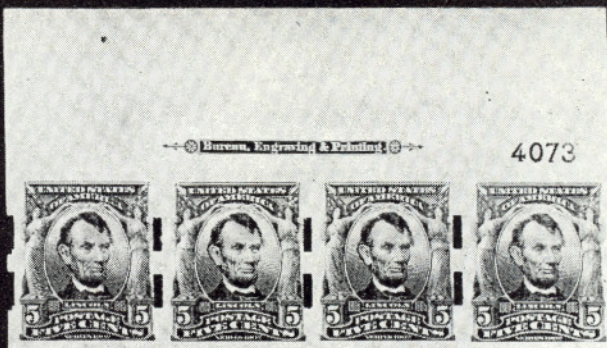
- 168 ★ **10c Orange, Imperforate (562b).** Horiz. Pair, no gum, as usual, Very Fine. 300.00

- 169 ★ **20c Carmine Rose, Imperforate Vertically (567a).** Horiz. Pair, Fine & Rare. 275.00

- 170 ★ 田 **\$5.00 Carmine & Blue (573).** Top Margin Block of 8, with Arrow & Two Pl. Nos., Mint, Extremely Fine 325.00



135



136



134



139



142



146



148



152



Bureau, Engraving & Printing

3560



141

153



- 171 ★ **1c Green, Rotary, Perf. 11 (594).** Centered a bit to T. R., no gum, pinhead thin in one perf., otherwise Fine, with P. F. Certificate, Extremely Rare Unused 3250.00
- 172 P **1c-5c Huguenot-Walloon, Large Die Proofs on Wove (614P-616P).** V. F. 525.00
- 173 ★田 **\$5.00 Red Brown & Black, Presidential (834a).** Brilliant Mint Block with T. Arrow & both Pl. Nos., from the discovery sheet, Light natural gum bend in T. stamps, otherwise Extremely Fine, signed "Sloane" & with P. F. Certificate E. XV
- 174 ★田 **4c Red Violet, Horiz. Pair, Imperf. Between (1036c).** Rare unlisted variety caused by fold over of Booklet Pane, Complete mint pane, with one full and two partial pairs, Unusual variety, Probably Unique E. XIII
- 175 ★ **5c Blue, Imperforate (1283 var.).** Pair, Mint. Extremely Fine E. XIII
- 176 ★ **5c Sipex Souvenir Sheet (1311).** Gigantic Sheet Corner Fold over, showing Red & Green Registration Markers and **Complete Plate Numbers**, A Spectacular Sheet, Mint, Extremely Fine E. XIII

AIRPOSTS

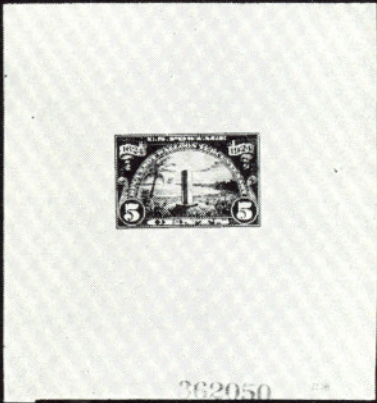
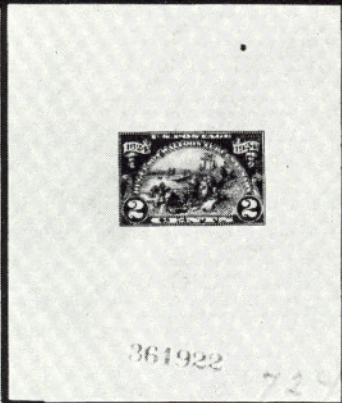
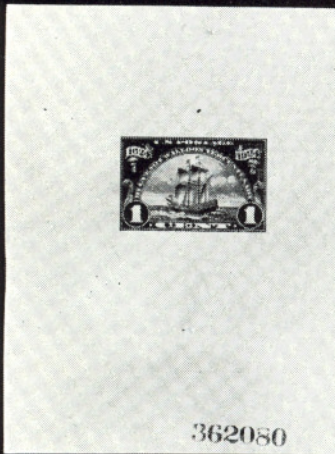
- 177 ★田 **16c Green, Airpost (C2).** Top Plate No. & Arrow Block of Eight, Mint, Very Fine 422.00



- 178 ★ **24c Carmine Rose & Blue, Airpost Inverted Center (C3a).** Str. edge at right, Very Fine Copy of this Famous Rarity 20,000.00



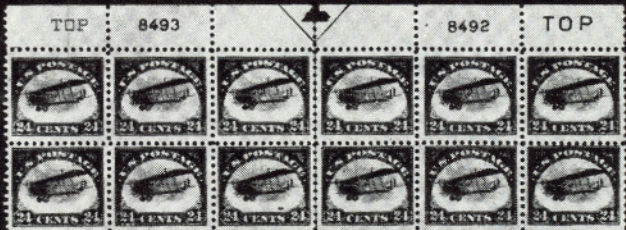
180



172



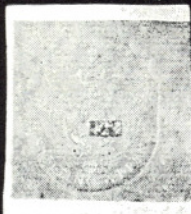
177



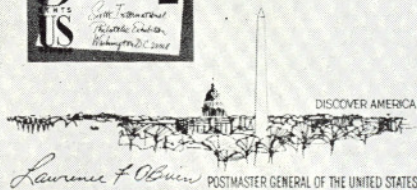
179



174



SIXTH INTERNATIONAL PHILATELIC EXHIBITION, WASHINGTON D.C. 1966



176

28501



20080



20086



20095

182



200



238



IA

249



197



186



6428

192



LIECHTENSTEINISCHE VADUZ LANDESAUSSTELLUNG 1934

250

- 179 ★ 24c Carmine & Blue, Airpost (C3). T. Plate No. Block of 12, two Plate No's, Arrow & Two "Tops", natural gum skip one stamp, Mint, F.-V.F. 375.00
- 180 ★ 50c Chicago Zeppelin (C18). Top Plate No. Block of 10, usual negligible gum skips & gum bends, mint, Very Fine 427.00
- 181 8c-24c 1923 Airposts (C4-C6). On Washington D. C. Aug. 15-21 First Day Covers, V.F. Set 230.00
- 182 ★ 65c-\$2.60 Graf Zeppelin (C13-C15). B. Plate No. Blocks of 6, natural gum wrinkle in two \$1.30 stamps, otherwise V.F. Mint set 4450.00
- 183 65c-\$2.60 Graf Zeppelin (C13-C15). On Cacheted Washington, D. C. April 19, 1930 First Day, First Round Trip Flight Covers, 65c light wrinkle, otherwise V.F. set, Rare Combination 625.00+
- 184 ★ 15c Black & Orange, Airpost (C63). Cpl. Sheet of 50, with one stamp showing Large part of Orange Design Also Printed in Black, another stamp with small part of the same Double Print, a most Unusual and Spectacular Variety, Probably Unique —

POSTAGE DUES, OFFICIALS, ENTIRES

- 185 ★ 3c Deep Brown, Postage Due Special Printing (J10). Extremely Fine, with P. F. Certificate 325.00
- 186 ★ 3c Carmine Rose, Value Omitted (J91a). Vert. Block of 15 (3x5), Top 6 Stamps are the Varieties, B. Stamps the regular, Perfectly Centered, Mint & Extremely Fine, Rare Error E. XIII
- 187 S 1c-90c Justice, "Specimen" ovpt. (O25S-O39S). Cpl. set, all with perfs. intact, except rounded corner perf. on 10c, F. to V.F. 266.75
- 188 S 1c-90c Navy, "Specimen" ovpt. (O35S-O45S). Complete set, separated by scissors as usual but almost all perfs. intact. F.-V.F. set 326.25
- 189 S 1c-90c Post Office, "Specimen" (O47S-O56S). Complete Set, Fresh, Five show some perfs nibbed, as usual, otherwise Fair to Very Fine 387.00
- 190 ★ \$5.00 Green & Black, State Dept. (O69). Centered, fresh, large part o. g., Very Fine, Handsome Copy of this Rare Stamp 425.00
- 191 S War Dep't. 1c-90c "Specimen" Set Complete (O83-93SD). Fine to Very Fine 408.00
- 192 ★ 50c Parcel Post (Q10). B. Imprint Plate No. Block of 6, Perfectly Centered, Extremely Fine 400.00
- 193 3c Red, Die III on White (U5). Unused Entire, A few slight toned spots, a piece about an inch square cut out at L., far from stamp. A great rarity and believed to be the finest entire in Existence 2250.00
- 194 3c Pink on Orange, Entire (U37). usual bit of darkening of paper otherwise V.F. unused, Rare 600.00

CARRIERS & LOCALS

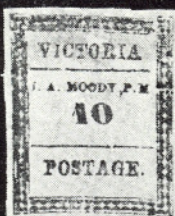
- 195 ★ 3c Rosy Buff, Carrier (6LB2). Margins all around, small thinnings, V.F. appearance, Very Rare 500.00
- 196 1c Blue, Phila. Carrier (7LB14). Fine copy of this Rarity 300.00



199



201



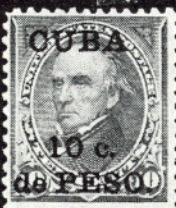
207



196



205



211



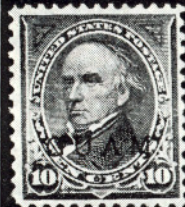
212



218



217



213



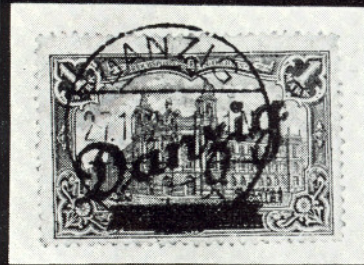
219



220



221



223



234



223



251



224



229



232



240



242



248



254

- 197 ★ 田 **Wells Fargo & Co. 10c Brown, Pony Express (143L7).** Block of 8, Large Margins, Vivid Color, fresh, Extremely Fine 220.00+
- 198 ★ 田 **Wells Fargo & Co. 25c Red, Pony Express (143L9).** Pane of 38 with wide gutters between blocks, several creases, mostly in margins, Rare and Attractive Piece 840.00+

REVENUES

- 199 **70c Blue & Black, Inverted Center (R117a).** Blue Handstamp Cancels, Trivial thins, Very Fine appearance 800.00
- 200 **\$500.00 Black, Green & Red, Second Issue (R133).** ms. R.R. and Oct. 2 '71 date, stated to be First Day of Issue, Well centered, Fresh, Very light crease otherwise Extremely Fine 2150.00
- 201 ★ **15c Brown & Black, Inverted Center (R139a).** Centered slightly to top, uncanceled, light crease. Fine appearing copy of this rarity 2250.00
- 202 **1/2p Red, Embossed, 1765 Pamphlet & Newspaper Revenue Stamp (RM18).** On 1790 Bill for Beef and Cider, Very Fine 300.00
- 203 **2sh6p on Dark Blue, British Revenue Stamp for America (RM31a).** The so-called "Boston Tea Party" stamp. Used on small piece of parchment, with small metal seal. Sharp embossing, Very Fine 300.00

CONFEDERATE STATES

- 204 ☒ **Beaumont, Texas 10c Black on Pink (12X2).** Huge margins, incl. sheet margin at T. Single neat penstroke cancel, "Beaumont Tex." pmk. on the cover, which is a bit frayed & has a tear far from stamp. Attractive & Very Rare 1650.00
- 205 ★ **Mobile, Ala, 2c Black (58X1).** Large Margins except partly touched at T., fresh, o.g., Fine, Handsome Copy of this Rarity 650.00
- 206 ☒ **Galveston, Tex. 20c Black on Blue (98XU8).** Fine, the Only one Known from which the catalogue listing was made E. XV
- 207 ★ **Victoria, Texas, 10c Red Brown on Green Pelure (88X3).** Large Margins, Very Fine, Exceedingly Rare 1250.00
- 208 ☒ **2c Red Brown (8). Horiz. Strip of Five,** Large Margins, except left stamp has two small nicks at top, tied by Clear "Richmond, Va. Oct. 28" pmk, struck 3 times, on fresh Homemade Cover to Dixie, faint toned spots, otherwise Very Fine, Rare & Handsome Cover 525.00
- 209 ☒ **10c Milky Blue, TEN (9).** Gigantic Margins, Brilliant Color, tied by Bold "Richmond, Va. Apr. 24, 1863" pmk on neat folded letter to Florida **Second Day of Usage, A Gorgeous Gem, Extremely Fine** E. XI
- 210 ☒ **10c Milky Blue, Frame Line (10).** Large Margins, showing part or complete Frame Line on all sides, Beautiful Color, Tied by Clear "Mobile July 19, 1863" pmk on neat cover made from Legal document, cover has trivial age specks, Rare & Handsome Cover, Very Fine 375.00

U. S. POSSESSIONS

211 ★	CUBA, 1899, 10c Brown Ty. II (226A). Fresh, o.g., tiny thin, otherwise Fine, with P. F. Certificate	600.00
212	— 1899, 2c Postage Due, Inverted Surcharge (J2a). Very Fine	350.00
213 ★	GUAM, 1899, 10c Brown, Ty. II (9). Fine & Rare	500.00

HAWAII

214 ☒	Yerba Buena, (San Francisco), Calif. April 2, 1842 to Boston, Mass. via Hawaii, ms routing "Forwd. by Von Pfister & Co., Lahaina, Maui, S.(andwich) Islands". Into the mails at New Bedford, Mass. Feb. 15, (1843). Pmk. & matching Red "SHIP" ms. 12, Interesting commercial letter nearly 11 months in transit. Very Fine & Fresh. Extremely scarce early piece	E. XII
215 ☒	Honolulu, Hawaiian Islands in Red Circle, Honolulu, U.S. Postage Paid in Red Circle, struck twice, 3c Red (11), Center Line Pair, tied by San Francisco, Cal. pmk. on slightly toned 1854 cover to New York, Fine, Most Attractive	E. X
216 ☒	1863, 2c Black on Grayish (16). Clear to Gigantic Margins except barely touched in L. L. corner, tied by clear Red Honolulu pmk on small cover to Kau, Hawaii, Handsome, Fine	375.00
217 ★	PHILIPPINES, 1926, 4p Madrid-Manila Flight, Airpost (C14). Very Fine.	240.00
218 ★	PUERTO RICO, 1898, 5c Violet, Ponce (200). Mounted on small piece, margins all around, Very Fine	450.00

GENERAL FOREIGN

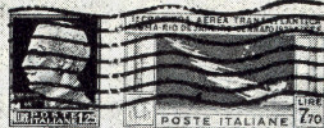
219 ★	BARBADOS, 1861, 1/- Blue, Error (21b). Large part o.g., one perf. clipped, a bit toned, A Great Rarity	3000.00
220 ★	BAVARIA, 1849, 1kr Black (1). Large Margins, Large part o.g., V.F.	225.00
221 ★	— 1849, 6kr Brown, Broken Circle (3). Large margins all around, Fresh, most o.g., trivial soiling, mostly in T. Margin, nevertheless a choice copy of a Very Rare stamp, with P. F. Certificate	1750.00

LOTS ON VIEW FROM MARCH 20th

OFFICES OPEN EVERY SATURDAY



The Class Editor.



PAR
AVION

PER VIA AEREA

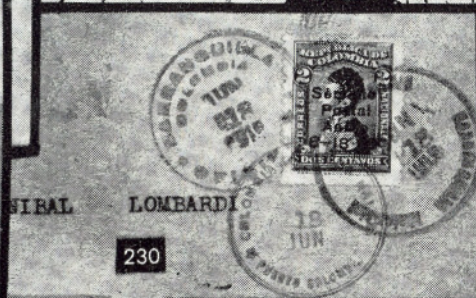
247



F. S. Lyman Esq.

K. 1860

216




230

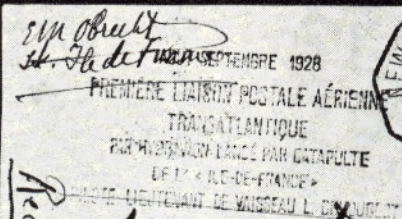


231




 Simon Hametz. Paroisse
 National (Nair Land)
 Wigneres 235 Pas. 5. Colais

235





DE 12 < RD-DE-FRANCE >
MAÎTRE DENTISTE
DENTISTE CHEF DU VAISSEAU L. DUMONT
Denturgest
Fris. Rev. Per. Edmond Bruck
Clinique
me George Bizet 23.
Paris

236





- 222 ★  **BELGIUM, 1849, 10c Brown (1). Block**, Large Margins to barely in at right, Fresh, o.g., Bright Color & Impression, small tear in margin between top stamps, otherwise a F.-V.F. Block of the Utmost Rarity, Ex-Green, signed Friedl 2400.00+
- 223 **BRITISH CENTRAL AFRICA, 1903-04, £10. Ultramarine & Black (69).** Postal cancel. "Port Herald, B.C.A." perfectly struck once in center, Light crease, Very Fine appearance 1100.00
- 224 ★ **BRITISH COLUMBIA, 1865, 10c Blue, Imperforate (4).** Large margins, Unusually fresh, Extremely Fine 300.00
- 225  **CANADA, 1851, 3p Red on Ribbed Paper (4c).** Vertical Pair, Clear to Large margins all around, tied by neat concentrics to 1858 folded letter to N. Y. Faint "London, U. C." pmk. Very Fine 170.00+



226

227

228

- 226 ★ — **1855, 10p Blue Cartier, on Thick Paper (7a).** Huge Margins, Lovely Rich Color, nearly full o.g., bare trace of horiz. crease & trivial thin speck, Very Fine appearance, A Rare & Pretty Stamp 1200.00
- 227 — **1858, 6p Brown Violet, Consort, Perforated (13).** Light 4 Ring "21" cancel, Rich Color, fresh, Very Fine, one of the Choicest Known copies of this Rarity 600.00
- 228 — **1868, 1c Brown Red, Laid Paper (31).** Neat bar cancel, Well centered. Extremely Fine 450.00
- 229 ★ **CEYLON, 1912, 100r Gray Black, Geo. V (216).** Extremely Fine 900.00

- 230 ☒ **COLOMBIA, 1919, 2c Carmine Rose, First Airpost (1).** Tied by Barranquilla June 18 pmks. and by Puerto Colombia Receiving pmk on cover, Very Fine, signed Sanabria 350.00+
- 231 ☒ — **1919, 2c Carmine Rose, First Airpost (C1).** Tied by Puerto Colombia pmk. on Picture Postcard, written and signed by the pilot Knox Martin to his mother in Salem, Va. Very Fine, with P. F. Certificate 350.00+
- 232 ★ **CYRENAICA, 1934, 251 Copper Red, Servizio di Stato (CB01).** Very Fine. 1250.00
- 233 **DANZIG, 1920, 1m Carmine (47).** Tied by Danzig pmk on small piece, Fine, signed Richter 375.00
- 234 — **1920, 2m Gray Blue (48).** Tied by Zoppot pmk on small piece, trivial corner perf. crease, V. F. appearance, signed Holtz 475.00
- 235 ☒ **FRANCE, 1928, 10fr on 90c "Ile de France" (C3).** Fine, nicely tied on Cacheted Cover with all proper pmks. Cover slightly torn in opening, not affecting stamp 525.00+
- 236 ☒ — **1928, 10fr on 1.50fr, Ile de France (C4).** Tied by New York au Havre Aug. 23, 1928 pmk, on Cacheted Registered Catapult Cover to Paris, stamp has negligible corner perf. bend, still a Very Fine Cover of Great Rarity 2200.00+
- 237 ☒ **GREAT BRITAIN, THE EARLIEST KNOWN VALENTINE.** Multi-colored Sentimental picture on 1816 folded Letter, local use in Purford, Surrey, England. Other sheet of letter is a fascinating Valentines Day letter, dated Feb. 14, 1816, a Leap Year, written by an anonymous girl & sent to a man she obviously admired. Cover a bit age worn but is generally remarkably fine particularly the Valentine, for its age. A wonderful old piece, authenticated by N. Y. Public Library Research Dept. **E. XII**
- 238 ☐ — **1840, 1p Black (1).** Plate 6, Block, Large Margins to barely in on one, tied by Red M. C. Cancels on small piece, Brilliantly Fresh, Rare and Attractive —
- 239 ★ — **1882, £5 Bright Orange (93).** Vert Pair, Fresh, o.g., centered slightly to right, top stamp light crease, otherwise V. F. pair 900.00
- 240 **HAMBURG, 1859, 9s Yellow (7).** Margins all around, large at sides, Neat bar cancel., Very Fine, with Friedl certificate 600.00
- 241 ★ **ICELAND. 1938, 15a Deep Rose Lilac, Imperforate (203a).** Horiz. Pair, Large Margins, Very Fine 600.00
- 242 ★ **ISRAEL, 1948, 3m-50m Coins, Imperforate (1 var-6 var).** Horiz. Pairs, Mint, 15m tiny gum wrinkle, other V. F. **E. XII**
- 243 ★ ☐ — **1948, 3m-50m Coins, Imperforate (1 var-6 var.).** Tab Blocks of 4, Mint, Rare and Very Fine **E. XV**
- 244 ★ ☐ — **1948, 3m-1000m Coins, Imperforate (1 var.-9 var.).** Mint Corner Blocks of 4, faint mottling in extreme sheet margin on some, stamps Extremely Fine, Attractive set of the Utmost Rarity **E. XV**
- 245 ★ ☐ — **1948, 250m-1000m Coins (7-9).** Tab Blocks of 4, Rare and Very Fine. **E. XV**
- 246 ★ **ITALY, 1877, 20c Orange (36).** Fresh, o.g., and Very Well Centered for this, negligible tiny corner perf. bend, V. F. appearing Copy of this Difficult stamp 600.00



242 EX



243 EX



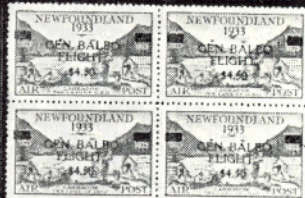
239



253



241



258



245



244 EX



252 EX

- 247 ✉ — 1930, 7.701 Trans-Atlantic Flight (C27). On Cacheted Flight Cover of the Squadron Flight to Rio de Janeiro, addressed to Gen. Balbo and Auto-graphed by all the Pilots, barest trace of toning, still a Very Fine Cover. **E. XII**
- 248 ★ — Offices Abroad, 1878, 20c Orange (7). Fresh and Very Fine 500.00
- 249 ★田 JAMAICA, 1964, 1/- Stadium Error, Brown Omitted (226 var). Vert. Plate No. Block of 10, 4 Bottom Stamps the Errors, another two partially omitted, only one Sheet found, Very Fine and Unique Plate No. Block. **E. XIV**
- 250 ★ LIECHTENSTEIN, 1934, 5fr Agriculture, Souvenir Sheet (115). V.F. 1400.00
- 251 ★ MALAYA, Johore, 1904, \$50.00 Green & Blue, Sultan Ibrahim (74). T. Sheet Margin Copy, Mint, centered bit T. R., Fine copy of this Scarce Stamp 550.00
- 252 P MAURITIUS, 1859, 1p, 2p Black Plate Proofs, India on Die Sunk Card, of Sherwin's Re-Engraving of Barnard's "Post Paid" plates, one of 20 sets of sheets made for the R.P.S. in 1911, after the plates had been cancelled by a Vertical line thru each stamp, the reverse of the plates had been used for a Hotel Advert, in English & French, and proofs of these are also present. A rare & very desirable set **E. XII**
- 253 ★田 MEXICO, 1856, 8r Red Lilac (5). Block of 6, Huge Margins to barely touching at left, Fresh, o.g., "Victoria" District Handstamp, F.-V.F., Rare Block, Ex-Taylor 285.00+
- 254 ★ — 1934, 20p University (C61). Extremely Fine Copy of this Scarce stamp. 425.00



255

256

257

- 255 ★ NEWFOUNDLAND, 1919, 3c Red Brown, Hawker (C1). Extremely Fine copy of this Great Rarity, signed J.A.R., with P. F. Certificate 6000.00
- 256 ★ — 1921, 35c Halifax Airpost, Inverted Overprint (C3c). Very Fine copy of this Rare Stamp, only 100 Issued 500.00
- 257 ★ — 1930, 50c on 36c "Columbia" Airpost (C5). Mint, Extremely Fine, signed L.W.C. (Charlat) 2250.00
- 258 ★田 — 1933, \$4.50 on 75c Balbo Flight (C18). Block, Mint and Very Fine, Handstamp Guarantee on back 1200.00+
- 259 ★ PHILIPPINES, 1966, 6s Peacock Blue, Rizal, Inverted Overprint (946 var). Complete Sheet of 100, folded between some rows, mint, Extremely Fine, Unlisted in Scott **E. XIV**



- 260 ★ **SAMOA, 1914, 1s on 1m "Shilling."** (110). Beautifully centered, Extremely Fine, One of the rarest W. W. I. Provisionals, Signed "Bloch" & with P. F. Certificate 4500.00



- 261 ★ **SPAIN, 1852, 2r Pale Red** (14). Large Margins, faint corner bend, still a Fresh and Very Fine appearing copy of this Rarity, with Diena and Friedl Certificates 2750.00



262

263

- 262 ★ **STRAITS SETTLEMENTS, 1911, \$25.00 Blue & Violet on Blue, Edward** (145). Extremely Fine 500.00
- 263 ★ **— 1915. \$100.00 Red & Black, Geo V** (173). T. Sheet Margin, Extremely Fine & Rare 1350.00

END OF SALE — THANK YOU

List of Prices Realized

RARITIES OF THE WORLD

THURSDAY, MARCH 28th, 1968

Total Realization \$303,235.00

Robert A. Siegel
AUCTIONS

10 EAST 52nd STREET NEW YORK, N. Y. 10022

Tel: PLaza 3-6422

Lot#	Price	Lot#	Price	Lot#	Price	Lot#	Price	Lot#	Price	Lot#	Price
1	3200.00	29	850.00	57	1100.00	85	700.00	113	1250.00	141	525.00
2	1900.00	30	2700.00	58	1600.00	86	2100.00	114	1100.00	142	250.00
3	2300.00	31	1500.00	59	1200.00	87	2000.00	115	1200.00	143	425.00
4	1500.00	32	1250.00	60	800.00	88	850.00	116	550.00	144	1550.00
5	1200.00	33	625.00	61	550.00	89	1600.00	117	1300.00	145	1250.00
6	400.00	34	850.00	62	425.00	90	2900.00	118	600.00	146	1150.00
7	700.00	35	850.00	63	400.00	91	375.00	119	525.00	147	1250.00
8	1900.00	36	1000.00	64	360.00	92	750.00	120	450.00	148	1050.00
9	625.00	37	450.00	65	450.00	93	1700.00	121	360.00	149	500.00
10	675.00	38	320.00	66	750.00	94	2000.00	122	750.00	150	625.00
11	675.00	39	850.00	67	180.00	95	450.00	123	8500.00	151	675.00
12	525.00	40	200.00	68	425.00	96	1150.00	124	375.00	152	750.00
13	2200.00	41	625.00	69	625.00	97	1000.00	125	1000.00	153	550.00
14	500.00	42	1900.00	70	1600.00	98	2800.00	126	375.00	154	575.00
15	10,000.00	43	950.00	71	180.00	99	800.00	127	675.00	155	425.00
16	1350.00	44	380.00	72	1050.00	100	675.00	128	3250.00	156	425.00
17	5750.00	45	650.00	73	900.00	101	750.00	129	20,000.00	157	1500.00
18	280.00	46	2100.00	74	1200.00	102	575.00	130	1900.00	158	2500.00
19	850.00	47	625.00	75	3600.00	103	1100.00	131	1150.00	159	5750.00
20	280.00	48	375.00	76	725.00	104	1650.00	132	350.00	160	1800.00
21	2800.00	49	380.00	77	300.00	105	1200.00	133	400.00	161	750.00
22	800.00	50	425.00	78	450.00	106	800.00	134	1100.00	162	475.00
23	320.00	51	800.00	79	1050.00	107	500.00	135	475.00	163	550.00
24	350.00	52	1900.00	80	675.00	108	1150.00	136	950.00	164	450.00
25	475.00	53	800.00	81	675.00	109	1000.00	137	2200.00	165	675.00
26	320.00	54	1350.00	82	340.00	110	800.00	138	1050.00	166	425.00
27	2200.00	55	850.00	83	525.00	111	2700.00	139	575.00	167	360.00
28	3200.00	56	1550.00	84	1200.00	112	1250.00	140	1400.00	168	350.00

Lot#	Price	Lot#	Price	Lot#	Price	Lot#	Price	Lot#	Price	Lot#	Price
169	360.00	185	475.00	201	1800.00	217	220.00	233	150.00	249	1100.00
170	360.00	186	725.00	202	360.00	218	300.00	234	170.00	250	500.00
171	1500.00	187	210.00	203	250.00	219	800.00	235	260.00	251	200.00
172	475.00	188	280.00	204	2700.00	220	150.00	236	750.00	252	190.00
173	1050.00	189	280.00	205	280.00	221	500.00	237	120.00	253	210.00
174	1150.00	190	400.00	206	4200.00	222	600.00	238	360.00	254	280.00
175	375.00	191	340.00	207	2500.00	223	450.00	239	550.00	255	6000.00
176	500.00	192	500.00	208	325.00	224	260.00	240	550.00	256	800.00
177	425.00	193	420.00	209	400.00	225	140.00	241	450.00	257	1300.00
178	20,000.00	194	260.00	210	300.00	226	W. D.	242	440.00	258	650.00
179	360.00	195	340.00	211	525.00	227	950.00	243	2100.00	259	425.00
180	400.00	196	190.00	212	425.00	228	550.00	244	2300.00	260	2800.00
181	270.00	197	160.00	213	325.00	229	450.00	245	2200.00	261	1050.00
182	4000.00	198	500.00	214	360.00	230	240.00	246	110.00	262	250.00
183	625.00	199	425.00	215	350.00	231	220.00	247	280.00	263	700.00
184	210.00	200	1850.00	216	475.00	232	650.00	248	110.00		

Robert A. Siegel Auction Galleries, Inc.
Prices Realized for
Sale 330 March 28, 1968 1968 Rarities of the World

Lot#	Realized	Lot#	Realized	Lot#	Realized	Lot#	Realized	Lot#	Realized
1	3,200	37	450	73	900	109	1,000	145	1,250
2	1,900	38	320	74	1,200	110	800	146	1,150
3	2,300	39	850	75	3,600	111	2,700	147	1,250
4	1,500	40	200	76	725	112	1,250	148	1,050
5	1,200	41	625	77	300	113	1,250	149	500
6	400	42	1,900	78	450	114	1,100	150	625
7	700	43	950	79	1,050	115	1,200	151	675
8	1,900	44	380	80	675	116	550	152	750
9	625	45	650	81	675	117	1,300	153	550
10	675	46	2,100	82	340	118	600	154	575
11	675	47	625	83	525	119	525	155	425
12	525	48	375	84	1,200	120	450	156	425
13	2,200	49	380	85	700	121	360	157	1,500
14	500	50	425	86	2,100	122	750	158	2,500
15	10,000	51	800	87	2,000	123	8,500	159	5,750
16	1,350	52	1,900	88	850	124	375	160	1,800
17	5,750	53	800	89	1,600	125	1,000	161	750
18	280	54	1,350	90	2,900	126	375	162	475
19	850	55	850	91	375	127	675	163	550
20	280	56	1,550	92	750	128	3,250	164	450
21	2,800	57	1,100	93	1,700	129	20,000	165	675
22	800	58	1,600	94	2,000	130	1,900	166	425
23	320	59	1,200	95	450	131	1,150	167	360
24	350	60	800	96	1,150	132	350	168	350
25	475	61	550	97	1,000	133	400	169	360
26	320	62	425	98	2,800	134	1,100	170	360
27	2,200	63	400	99	800	135	475	171	1,500
28	3,200	64	360	100	675	136	950	172	475
29	850	65	450	101	750	137	2,200	173	1,050
30	2,700	66	750	102	575	138	1,050	174	1,150
31	1,500	67	180	103	1,100	139	575	175	375
32	1,250	68	425	104	1,650	140	1,400	176	500
33	625	69	625	105	1,200	141	525	177	425
34	850	70	1,600	106	800	142	250	178	20,000
35	850	71	180	107	500	143	425	179	360
36	1,000	72	1,050	108	1,150	144	1,550	180	400

Robert A. Siegel Auction Galleries, Inc.
 Prices Realized for
 Sale 330 March 28, 1968 1968 Rarities of the World

Lot#	Realized	Lot#	Realized	Lot#	Realized
182	4,000	218	300	256	800
183	625	219	800	257	1,300
184	210	220	150	258	650
185	475	221	500	259	425
186	725	222	600	260	2,800
187	210	223	450	261	1,050
188	280	224	260	262	250
189	280	225	140	263	700
190	400	227	950		
191	340	228	550		
192	500	229	450		
193	420	230	240		
194	260	231	220		
195	340	232	650		
196	190	233	150		
197	160	234	170		
198	500	235	260		
199	425	236	750		
200	1,850	237	120		
201	1,800	238	360		
202	360	239	550		
203	250	240	550		
204	2,700	241	450		
205	280	242	440		
206	4,200	243	2,100		
207	2,500	245	2,200		
208	325	246	110		
209	400	247	280		
210	300	248	110		
211	525	249	1,100		
212	425	250	500		
213	325	251	200		
214	360	252	190		
215	350	253	210		
216	475	254	280		
217	220	255	6,000		