

345th SALE

THE ERNEST G. JARVIS
COLLECTION

Part I

UNITED STATES
CANAL ZONE, CUBA, GUAM,
HAWAII, PHILIPPINES

Sold by Order of the Owner



AT UNRESERVED PUBLIC AUCTION

Wednesday, January 8th, 1969

at 1:00 P.M.

Robert A. Siegel
AUCTIONS

10 EAST 52nd STREET NEW YORK, N.Y. 10022

Tel.: 212 PLaza 3-6421

THE ERNEST G. JARVIS COLLECTION

We take pleasure in presenting the initial section of one of the most comprehensive collections of postage stamps of the world.

The collection is noteworthy for its high degree of completeness and it abounds in choice and rare stamps. From a nucleus of a small boyhood collection Mr. Jarvis built it into a most significant holding of more than One Hundred and Fifty albums.

This first part is devoted to stamps of the United States and Possessions in unused condition from the earliest issues to date. It is primarily a "one-of-a-kind" collection and many beautiful, desirable stamps are offered.

We might very easily note some of these individually but feel it is better to let the catalogue speak for itself. However, we do think that special mention might be made of the exceptional offering of the rare Puerto Principe Provisional Surcharges of Cuba, issued under U. S. auspices at the time of the Spanish-American War. These have always been among the more elusive issues and the Jarvis collection of them is of exceptional interest.

The second section of the Jarvis collection is devoted to stamps of the British Commonwealth, full of beautiful sets and single stamps and announcement of the sale will be made shortly.

ROBERT A. SIEGEL

CONDITIONS OF SALE

1. The terms of sale are strictly cash to the highest bidder. All buyers are expected to pay for lots within three days of receipt, unless special arrangements have been made prior to the sale.
2. All bids are per lot as numbered in the catalogue and not per piece, unless otherwise announced by the auctioneer at the time of sale.
3. Any lot the description of which is incorrect is returnable only within three days of receipt. All disputed lots must be returned intact as received. Lots containing five or more stamps are not returnable at any time. No lots may be returned by purchasers who have had the opportunity to examine them before the sale.
4. Successful mail bidders, unless they are known to us or supply acceptable references, will be notified of the amount of the lots secured for them, and are expected to send payment in full before the lots are forwarded.
5. If the purchase price has not been paid within the time limit, or lots taken up within seven days from date of sale, they may be resold and any losses arising from such sale charged to the defaulter.
6. All lots are sold as genuine but should any lot be proved otherwise by written opinion of any competent, responsible authority acceptable to us, immediate refund of the full purchase price will be made, provided that any such claim is made within 25 days from date of sale. If claim is not made within this period no lots are returnable for any reason at any time. Naturally, so long as we are notified within the 25 day period that an opinion is being sought the matter will remain open until such opinion is rendered. We will not be responsible for any charges incurred by the buyer for expertization fees and costs.
7. The right is reserved to group two or more lots, also withdraw any lot or lots from the sale, or to act on behalf of the seller.
8. Until paid for in full all lots remain the property of Robert A. Siegel Auction Galleries, Inc.
9. No commission is charged for buying at our sales, but all forwarding charges will be added to the purchase price.
10. Upon written application lots may be sent for examination prior to the auction, condition upon being mailed back by registered mail, adequately insured, within 24 hours of receipt. The applicant is completely responsible for all lots sent for examination, and for the insurance of same against mishap, from the time of receipt until they are actually received back, and is to pay all expenses of postage and insurance. No lots can be sent for inspection within ten days of the date of sale.
11. The placing of a bid shall constitute acceptance of the foregoing conditions of sale.

ROBERT A. SIEGEL

ANDREW LEVITT, Licensed Auctioneers

In sending bids, always state the highest price you are prepared to pay for the lot. Your limit will not be used as a starting bid unless absolutely necessary.

DESCRIPTIONS

Extremely Fine—the finest condition for noteworthy, outstanding copies.

Very VF (VF)—means that there is a slight deviation from the above.

Fine (F)—means that the perforations do not touch the design on issues after 1890, but in some cases may just touch in earlier issues; if used, fairly lightly cancelled.

Very Good (VG)—means that the appearance is generally fine but that the perforations cut the design slightly.

Good (G)—means average off-centering; or fairly attractive with slight defects.

Original gum (OG) is not to be expected on 19th Century stamps unless so stated.

Mint—have never been hinged.

Scott 1969 Specialized United States Catalogue used for cataloguing lots of U. S. and Possessions. Scott Standard Catalogue, 1969 for others.

JANUARY 8th, 1969

ROBERT A. SIEGEL AUCTION GALLERIES, Inc.

10 East 52nd Street

New York, N. Y. 10022

Tel.: PLaza 3-6421 (Area Code 212)

Please purchase for me at your auction to be held **January 8th, 1969**, the lots named below, the prices annexed being my limit on each lot. I agree to remit for purchases in accordance with the **Conditions of Sale** and to return no lots later than three days after receipt.

REFERENCES PLEASE
(if unknown to us)

SIGNED

New York State residents kindly include
County in address.

County

[illegible]

Upon request, estimate of value furnished on any lots in this auction.

UNITED STATES

1847 ISSUE

- 1 ★ **5c Orange Brown (1b).** Margins except barely touched L. L., Lovely Bright Color, light crease, Fine appearance, with P. F. Certificate **(Photo)** 265.00
- 2 ★ **10c Black (2).** Ample to Large Margins, Handstamp on back shows thru faintly, bare trace of creases & tiny thin, Very Fine appearance, with Royal Certificate **(Photo)** 1,100.00
- 3 ★ **5c Red Brown, Reproduction (3).** Large Margins, Unusually Rich Color, Handstamp on back, faint Vertical crease, Extremely Fine appearance **(Photo)** 185.00
- 4 ★ **10c Black, Reproduction (4).** Large Margins, Choice Color & Impression, Handstamp on Back, faint horiz. crease at B., Very Fine appearance **(Photo)** 240.00

1851 ISSUE

- 5 ★ **1c Violet Blue, Ty. II (7).** Just clear to Large Margins, Beautiful Deep Color, Fine **(Photo)** 85.00
- 6 ★ **1c Dark Blue, Ty. IIIa, Plate IE (8A).** Margins to close at T. & B., Wonderful Deep Color, P. F. Certificate states "ink spots removed, B. L. corner creased", Very Fine appearance **(Photo)** 240.00
- 7 ★ **1c Blue, Ty. IV (9).** Recut Twice at B., Ample to Large Margins, minute crease & toned spot in top sheet margin, both far from design, Very Fine **(Photo)** 60.00
- 8 ★ **3c Orange Brown (10).** Clear to Large Margins except barely touched at one point, Brilliant Color, fine, Handsome Copy of this most Elusive Stamp **(Photo)** 120.00
- 9 ★ **5c Red Brown (12).** Just Clear to Large Margins, Handstamp on back, Fine, regummed, with P. F. Certificate **(Photo)** 950.00
- 10 ★ **10c Dark Green, Ty. I (13).** Large Margins, Lovely Rich Color, Very Fine, with P. F. Certificate, a wonderful copy of this Rarity **(Photo)** 1,300.00
- 11 **10c Green, Ty. II (14).** Large to Enormous Margins, Deep Rich Color, nearly invisible cancel, Very Fine 37.50
- 12 **10c Green, Ty. III (15).** Large Margins except touched to barely in at R., almost invisible cancel, Fine 37.50
- 13 ★ **12c Black (17).** Margins on three sides with Sheet Margin at T., just touched at B., fresh, o. g., portion design restored at B. R., otherwise Fine & Handsome, with P. F. Certificate **(Photo)** 185.00

LOTS ON VIEW FROM JANUARY 3rd

OFFICES OPEN SATURDAY BEFORE SALE

1857 ISSUE

14 ★	1c Blue, Ty. I (18). Rich Color, Part o. g., Fine (Photo)	150.00
15 ★	1c Blue, Ty. II(20). Lovely Deep Color, two corner perfs rounded, otherwise Fine (Photo)	80.00
16 ★	1c Deep Blue, Ty. II (20). Plate XII, Full o. g., few toned perf tips & several short perfs, otherwise Fine (Photo)	80.00
17 ★	1c Blue, Ty. III (21). Pos. 21R4, Sheet Margin attached at L., Rich Color, Very Fine copy of this Rarity (Photo)	300.00
18 ★	1c Dark Blue, Ty. IIIa (22). Magnificent Deep Color, few nibbed perfs otherwise Very Fine (Photo)	75.00
19 ★	3c Red, Ty. I (25). Centered, few slightly nibbed perfs & thin speck, otherwise Extremely Fine, Handsome copy of this Elusive Stamp (Photo)	70.00
20 ★	5c Brick Red, Ty. I (27). Vivid Color, perfs barely in at T., With P. F. Certificate calling it #28 in Error, extremely Rare unused (Photo)	575.00
21 ★	5c Red Brown, Ty. I (28). Beautiful Rich Color, handstamp on back, centered to R., fine, with P. F. Certificate (Photo)	425.00
22 ★	5c Brown, Ty. I (29). Lovely Deep Color, part o. g., Handstamp on back, Fine (Photo)	125.00
23 ★	5c Orange Brown, Ty. II (30). Centered, Glorious Color, full o. g., Very Fine (Photo)	67.50
24 ★	5c Brown, Ty. II (30A). Handstamp on back, short perfs, Reperfed at B., Very Good Appearance (Photo)	70.00
25	10c Green, Ty. II, III (32, 33). Nice Colors, appear unused, tiny thins, Fine-Very Fine appearance (Photo)	45.00
26 ★	10c Deep Green, Ty. V (35). Rich Color, Fine (Photo)	27.50
27 ★	12c Black, Plate I (36). Very Good (Photo)	47.50
28 ★	24c Gray Lilac (37). Beautiful Color, fresh, o. g., Very Fine (Photo)	82.50
29 ★	30c Orange (38). Centered, Lovely Color, o. g., Handstamp on back shows thru, otherwise Extremely Fine (Photo)	85.00
30 ★	90c Deep Blue (39). Gorgeous Color, Handstamp on Back, few perfs at T. a bit irregular, Fine (Photo)	285.00

REPRINTS OF THE 1857-60 ISSUE

31 ★	1c Bright Blue, Reprint (40). Centered, few perf tips trifle bent, otherwise Extremely Fine (Photo)	125.00
32 ★	3c Scarlet, Reprint (41). Separated by scissors at sides, blunting some perf tips at R., otherwise Extremely Fine (Photo)	550.00
33 ★	5c Orange Brown, Reprint (42). Centered, few blunt perf tips at R., otherwise Very Fine (Photo)	200.00
34 ★	10c Blue Green, Reprint (43). Separated by scissors at sides, blunting perf tips at R., otherwise Very Fine (Photo)	385.00

- 35 ★ **12c Greenish Black, Reprint (44).** Two perfs trifle blunt, otherwise Very Fine (Photo) 425.00
- 36 ★ **24c Blackish Violet, Reprint (45).** Reperf at T. & L., faint crease, Fine appearance (Photo) 475.00
- 37 ★ **30c Yellow Orange, Reprint (46).** Handstamp on Back, Separated by Scissors at T. & B. blunting perf. tips at B., otherwise Very Fine (Photo) 650.00
- 38 ★ **90c Deep Blue, Reprint (47).** Separated by scissors at sides but perfs Virtually undamaged, Handstamp on Back, Very Fine (Photo) 800.00

1861 "AUGUST" ISSUE

- 39 ★ **3c Brown Rose, August (56).** Fresh, full o. g., Fine (Photo) 150.00
- 40 ★ **10c Deep Green, August (58).** Lovely Rich Color, fresh, o. g., small internal crease, Fine appearing copy of this Rare stamp, with P. F. Certificate (Photo) 1,100.00
- 41 ★ **24c Violet, August (60).** Centered, Wonderful Brilliant Color, few short perfs & tiny tear, Fine appearance, With APS Certificate (Photo) 1,000.00

1861 ISSUE

- 42 ★ **3c Pink (64).** Well Centered, Rich Color, Handstamp on back shows thru, otherwise Very Fine, with P. F. Certificate (Photo) 700.00
- 43 ★ **3c Lake (66).** Brilliant Color, fresh, o. g., centered to right, few nibbed perfs, otherwise Fine (Photo) 375.00
- 44 ★ **5c Buff (67).** Centered, Rich Brilliant Color, Handstamp on back shows thru, otherwise Very Fine, with P. F. Certificate (Photo) 500.00
- 45 ★ **24c Brown Lilac (70a).** Very Good 110.00
- 46 ★ **30c Orange (71).** Part o. g., light creases, Fine appearance 62.50
- 47 ★ **90c Dark Blue (72).** Glorious Color, two toned perf tips, Very Good 175.00
- 48 ★ **5c Red Brown (75).** Reperfed, faint creases, V. F. appearance (Photo) 130.00
- 49 ★ **15c Full Black (77).** Wonderful Color, small part o. g., Handstamp on back, few toned perfs at B., otherwise Fine 80.00

1867 GRILL ISSUES

- 50 ★ **3c Rose, Grilled All Over (79).** Faint crease, light stain, partially cleaned off, centered to B. R. Scarce unused, with P. F. Certificate (Photo) 600.00
- 51 ★ **3c Rose, C. Grill (83).** Rich Color, Fresh, Full o. g., Fine, an unusually nice copy of this difficult stamp (Photo) 165.00
- 52 ★ **3c Rose, D. Grill (85).** Nearly all perfs. intact, light horiz. crease, perfs. barely touch at R., with P. F. Certificate (Photo) 285.00
- 53 ★ **2c Black, Z. Grill (85B).** Intense Color, tiny thin in Top margin, Centered to B. Fine appearance (Photo) 185.00
- 54 ★ **3c Rose, Z. Grill (85C).** Fresh, tiny tear in Bottom Margin, centered U. R., Fine appearance, A Very Rare Stamp unused (Photo) 650.00

55 ★	12c Intense Black, Z. Grill (85E). Beautiful Color, fresh, o. g., 4 perfs. clipped at L. L. corner, otherwise Fine (Photo)	325.00
56 ★	1c Blue, E. Grill (86). Centered, Lovely Color, Pulled perf. & tiny thin speck, Very Fine appearance (Photo)	65.00
57 ★	2c Intense Black, E. Grill (87). Fresh, full o. g., centered trifle to B., one short perf., otherwise Very Fine (Photo)	35.00
58 ★	3c Rose, E. Grill (88). Rich Pretty Color, full o. g., fresh , one perf. trifle blunt, Unusually Fine copy	16.00
59 ★	10c Green, E. Grill (89). Two perfs. bit blunt, otherwise Fine (Photo)	110.00
60 ★	12c Black, E. Grill (90). Wonderful Color, centered to B., Handstamp on back, fresh, Fine (Photo)	120.00
61 ★	15c Black, E. Grill (91). Well Centered, Rich Color, Handstamp on Back, trivial tiny corner crease, otherwise Very Fine, A Handsome Copy of this Rare Stamp (Photo)	365.00
62 ★	1c Blue, F. Grill (92). Vivid Color, fresh, o. g., Three Huge Margins, Re-perfed at R., otherwise Fine	37.50
63 ★	5c Brown, F. Grill (95). Centered to R., Very Good	225.00
64 ★	10c Deep Green, F. Grill (96). Deep Rich Color, fresh, Fine (Photo)	57.50
65	12c Black, F. Grill (97). Almost invisible cancel, Very Fine	13.00
66 ★	15c Black, F. Grill (98). Unusually Rich Color, Fine (Photo)	65.00
67 ★	24c Gray Lilac, F. Grill (99). Lovely Color, o. g., Handstamp on Back, unusually fresh, Fine (Photo)	185.00
68 ★	30c Orange, F. Grill (100). Vivid Color, small part o. g., Handstamp on back shows thru slightly, otherwise Fine, Handsome Copy, a Very Elusive Stamp (Photo)	225.00
69 ★	90c Dark Blue, F. Grill (101). Magnificent Color, Handstamp on back, Centered to L., Fine, a Very pretty copy of this Rare stamp (Photo)	450.00

1861 RE-ISSUES

70 ★	1c Blue, Reissue (102). Fine (Photo)	110.00
71 ★	2c Black, Reissue (103). Part o. g., Pulled perf & thin speck at T., Very Fine appearance (Photo)	450.00
72 ★	5c Light Brown, Reissue (105). Fresh, o. g., Very Fine (Photo)	450.00
73 ★	10c Green, Reissue (106). Huge Margins, fresh, o. g., minor thin speck & corner perf crease, otherwise Extremely Fine (Photo)	500.00
74 ★	12c Black, Reissue (107). Small part o. g., few perfs trifle blunt otherwise Fine (Photo)	625.00
75 ★	15c Black, Reissue (108). Well Centered, Fresh, o. g., Reperf. at T., few perf tips trifle blunt, otherwise Very Fine (Photo)	525.00
76 ★	24c Deep Violet, Reissue (109). Fresh, o. g., Reperfed at L., few short perfs, Handstamp shows thru, still Fine appearing (Photo)	625.00
77 ★	30c Brownish Orange, Reissue (110). Rich Color, Handstamp on back, barely shows thru, otherwise Very Fine (Photo)	1,000.00

- 78 ★ **90c Blue, Reissue (111).** Huge Margins, fresh, o. g., Handstamp on Back, Extremely Fine copy of this Rarity **(Photo)** 1,100.00

1869 PICTORIAL ISSUE

- 79 ★ **1c-3c Pictorials (112-114).** Beautiful colors, almost invisible tiny creases, otherwise Fine-Very Fine appearance 93.50
- 80 ★ **6c Deep Ultramarine (115).** Magnificent Rich Color, fresh, neatly sealed tiny tear, Fine appearance 77.50
- 81 ★ **10c Yellowish Orange (116).** Marvelous Vivid Color, fresh o. g., Reperf. at L., Otherwise Fine **(Photo)** 85.00
- 82 ★ **12c Green (117).** Large Margins, Brilliant Vivid Color, Extremely Fine **(Photo)** 77.50
- 83 ★ **15c Brown & Blue, Ty. I (118).** Rich Colors, Negligible tiny faults, Fine appearance **(Photo)** 285.00
- 84 ★ **15c Brown & Blue, Ty. II (119).** Deep Rich Colors, Handstamp on Back, faint crease & minute thin speck, Fine appearance 97.50
- 85 ★ **24c Green & Violet (120).** Fresh, part o. g., Brilliant Colors & Impression, few perfs nibbed at B., otherwise Extremely Fine **(Photo)** 215.00
- 86 ★ **30c Blue & Carmine (121).** Trivial crease in two perfs, otherwise Fine **(Photo)** 250.00
- 87 ★ **90c Carmine & Black (122).** Deep Brilliant Colors, Handstamp on back shows thru slightly, Fine **(Photo)** 600.00

1869 RE-ISSUES

- 88 ★ **1c Buff, Reissue (123).** Fresh, o. g., Extremely Fine **(Photo)** 90.00
- 89 ★ **1c Buff, 2c Brown, Reissues (123, 124).** O. g., 1c has pulled corner perf, 2c minor faults, Fine appearance 215.00
- 90 ★ **3c Blue, Reissue (125).** Fresh, o. g., bare trace of crease, Pinpoint thin speck, Very Fine appearance **(Photo)** 600.00
- 91 ★ **6c Blue, Reissue (126).** Extremely Fine **(Photo)** 225.00
- 92 ★ **10c Yellow Reissue (127).** Fresh, o. g., Centered bit to T., Very Fine **(Photo)** 250.00
- 93 ★ **12c Green, Reissue (128).** Unusually Vivid Color, one perf. trifle short, otherwise Fine **(Photo)** 300.00
- 94 ★ **15c Brown & Blue, Ty. III, Reissue (129).** Handstamp on back, negligible marginal wrinkle, Fine **(Photo)** 350.00
- 95 ★ **24c Green & Violet, Reissue (130).** Fresh, o. g., Handstamp on back, Very Fine **(Photo)** 285.00
- 96 ★ **30c Blue & Carmine, Reissue (131).** Well Centered, Huge Margins, Handstamp on back, trivial tiny thin, otherwise Extremely Fine **(Photo)** 425.00
- 97 ★ **90c Carmine & Black, Reissue (132).** Fresh, o. g., Reperf at B., one perf at L., Trifle blunt, Very Fine appearance **(Photo)** 700.00

NATIONAL BANK NOTE GRILLS

98 ★	1c Ultramarine, Grill (134). Strong Grill, two perfs blunt, otherwise Fine (Photo)	67.50
99 ★	2c Red Brown, I Grill (135). Strong Grill, Brilliant Color, Very Good	55.00+
100 ★	3c Green, Split Grill (136). Vivid Color, couple trifle blunt perfs, otherwise Very Fine	37.50
101 ★	6c Carmine, Grill (137). Fresh, Lovely Rich Color, Grill shows Clearly, Very Fine	(Photo) 175.00
102 ★	7c Vermilion Grill (138). Brilliant Color, fresh, o. g., Strong Grill, Very Fine, Wonderful Copy of this Scarce Stamp	(Photo) 165.00
103 ★	10c Brown, Grill (139). Brilliant Color, Grill shows clearly, one nibbed perf at B., otherwise Very Fine	(Photo) 275.00
104 ★	15c Bright Orange, Grill (141). Brilliant Color, fresh, o. g., Grill shows clearly, centered bit to B., Handstamp on back shows thru, otherwise Very Fine	(Photo) 190.00
105 ★	30c Full Black, Grill (143). Gorgeous Color, Grill shows clearly, Handstamp on back, Perfs touch at L., Fine, L. G. Brookman Letter accompanies (Photo)	600.00
106	90c Carmine, Grill (144). Handstamp on back shows through, minor corner perf crease, Fine appearance, with P. F. Certificate stating used and cleaned	125.00

NATIONAL BANK NOTE ISSUE

WITHOUT GRILL

107 ★	1c-3c 1870 Issue (145-147). Fresh, o. g. 2c has minor gum soak, V. G.-F.	32.50
108 ★	6c Carmine (148). Brilliant Color, fresh, o. g., minor gum wrinkles, Fine (Photo)	42.50
109 ★	7c Vermilion, 10c Brown (149, 150). Faint tiny creases, otherwise Very Good	100.00
110 ★	12c Dull Violet, 24c Purple (151, 153). 12c o. g., first has 2 short perfs & minute tear, other light crease, otherwise Very Good	142.50
111 ★	15c Bright Orange (152). Fresh, o. g., one perf bit blunt, otherwise Fine (Photo)	60.00
112 ★	30c Black (154). Well Centered, Lovely Color, almost invisible fault, Extremely Fine appearance	(Photo) 140.00
113 ★	90c Carmine (155). Vivid Color, fresh, o. g., Handstamp on back shows through faintly, otherwise Fine	(Photo) 210.00
114 ★	90c Carmine (155). Rich Color, Pulled perf & small thin, Very Good appearance	210.00

CONTINENTAL BANK NOTE CO. ISSUES

115 ★	1c-10c 1873 Issue (156-158, 161). First two o. g., 1c, 10c have trivial thin specks, Fine-Very Fine appearance	59.00
116 ★	6c Dull Pink (159). Fresh, o. g., Fine	(Photo) 35.00

117 ★	6c Pink (159). Fresh, o. g., Fine	35.00
118 ★	7c Vermilion (160). Brilliant color, perfs barely touch at T., Fine (Photo)	65.00
119 ★	12c Blackish Violet (162). Bent corner perf., Fine appearance (Photo)	95.00
120 ★	30c Gray Black (165). Rich Color, Reperfed at L., Fine appearance	85.00
121 ★	2c Vermilion (178, 183). Fresh, o. g., Very Fine	36.00

AMERICAN BANK NOTE CO. ISSUES

122 ★	5c-15c 1879 Issue (185, 188, 189). Tiny faults, V. G.-V. F. appearance	106.00
123 ★	10c Brown (188). Brilliant Color, fresh, o. g., pinpoint thin speck, otherwise Fine	(Photo) 60.00
124 ★	30c Full Black (190). Gorgeous Color, fresh, o. g., reperfed at T., Fine appearance	(Photo) 62.50
125 ★	90c Carmine (191). Fresh, o. g., Handstamp on back shows thru faintly, otherwise Very Fine	(Photo) 170.00
126 ★	2c-6c Banknotes (205, 210, 214-216). Fresh, o. g., Fine-Very Fine	46.00
127 ★	6c Brown Rose (208a). Fresh, o. g., Fine	32.50
128 ★	2c Pale Red Brown, Special Printing (211B). Fresh, o. g., Handstamp on back, one perf trifle nibbed, otherwise Very Fine, With P. F. Certificate	(Photo) 140.00
129 ★	30c Orange Brown, 90c Purple (217, 218). Small faults, Very Fine appearance	147.50
130 ★	1c-90c 1890 Issue (219-229). Complete set, most have o. g., few minor faults, otherwise Fine- Very Fine Set	160.90

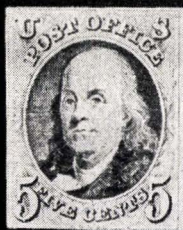
COLUMBIAN ISSUE

131 ★	1c-10c Columbian (230-237). Fresh, o. g., 5c, 10c faint trivial thins, otherwise Very Fine	72.75
132 ★	1c-30c Columbian (230-239). Fresh, o. g., 8c cuts in, others Fine-V. F.	141.25
133 ★田	1c-8c Columbian (230-231, 236). Blocks, fresh o. g., Very Good-Very Fine	78.00
134 ★田	3c, 6c Columbian (232, 235). Blocks, fresh, o. g., Very Fine	94.00
135 ★田	4c, 5c Columbian (233, 234). Blocks, fresh, o. g., Fine-Very Fine	97.50
136 ★田	10c Columbian (237). Block, fresh, o. g., Very Fine	(Photo) 82.50
137 ★	15c Columbian (238). Extremely Fine	(Photo) 28.50
138 ★田	15c Columbian (238). Block, fresh, o. g., Very Good-Fine	150.00
139 ★田	30c Columbian (239). Block, fresh, o. g., one blunt perf, slight separation, otherwise Very Fine	(Photo) 190.00
140 ★	50c Columbian (240). Fresh, o. g., Very Fine	(Photo) 62.50
141 ★	50c Columbian (240). Very Fine	(Photo) 62.50
142 ★田	50c Columbian (240). Block, fresh, o. g., minor re-enforcing, Very Fine	(Photo) 325.00

143 ★	\$1.00 Columbian (241). Brilliant Vivid Color, Fine (Photo)	180.00
144 ★	\$1.00 Columbian (241). Tiny thin, Fine appearance (Photo)	180.00
145 ★	\$1.00 Columbian (241). Block, fresh, o. g., one has tiny paper inclusion, Very Good-Fine (Photo)	775.00
146 ★	\$2.00 Columbian (242). Huge Margins, fresh, o. g., faint corner crease & tiny thins, Extremely Fine appearance (Photo)	200.00
147 ★	\$2.00 Columbian (242). O. g., Reperfed at B. & L., Fine appearance (Photo)	200.00
148 ★	\$3.00 Columbian (243). Brilliant Color, fresh, o. g., Reperfed at B., Fine appearance (Photo)	285.00
149 ★	\$3.00 Columbian (243). Vivid Color, faint crease ending in tear, Fine appearance (Photo)	285.00
150 ★	\$4.00 Columbian (244). Brilliant Color, fresh, large part o. g., tiny paper inclusion, Fine (Photo)	325.00
151 ★	\$4.00 Columbian (244). Small thin at T., Reperf. at B., Fine appearance (Photo)	325.00
152 ★	\$5.00 Columbian (245). Rich Color, fresh, large part o. g., faint pinpoint thin speck, otherwise Extremely Fine (Photo)	375.00
153 ★	\$5.00 Columbian (245). Margins added on two sides, looks gorgeous (Photo)	—

1894-1898 ISSUES

154 ★	1c-50c 1894 Issue (246-260). Fresh, o. g., some heavy hinges, few thins, otherwise Fine-Very Fine (Photo)	147.65
155 ★	\$1.00 Black, Ty. I (261). Fresh, o. g., Reperfed at Right, otherwise Very Fine (Photo)	100.00
156 ★	\$1.00 Black, Ty. II (261A). Fresh, o. g., Handstamp on back, pinhead thin speck, otherwise Fine (Photo)	140.00
157 ★	\$2.00 Bright Blue (262a). Large Margins, fresh, o. g., tiny thins, Very Fine appearance (Photo)	150.00
158 ★	\$5.00 Dark Green (263). Large part o. g., Handstamp on back, small thins, Very Fine appearance (Photo)	315.00
159 ★	1c-50c 1895 Issue (264-275). Fresh, o. g., few heavy hinges, 4c, 5c, 15c have small thins, otherwise Very Good-Very Fine (Photo)	95.85
160 ★	\$1.00 Black, Ty. I (276). Fresh, o. g., Handstamp on back, couple short perfs, otherwise Very Fine (Photo)	80.00
161 ★	\$1.00 Black, Ty. II (276A). Fresh, o. g., Handstamp on back, couple perfs bit blunt, faint toning, Very Fine appearance (Photo)	175.00
162 ★	\$2.00 Dark Blue (277). Fresh, o. g., Handstamp on back, thin, Very Fine appearance (Photo)	100.00
163 ★	\$5.00 Dark Green (278). Fresh, o. g., Handstamp on back, Reperf at L., Very Fine appearance (Photo)	235.00
164 ★	1c-15c 1898 Issues (279-284). Fresh, all o. g. but one, 5c & 15c thin, otherwise Fine-Very Fine (Photo)	63.80



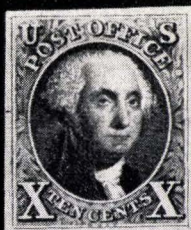
1



2



3



4



5



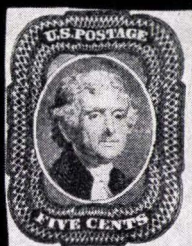
6



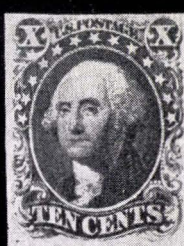
7



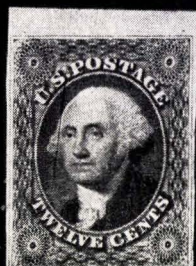
8



9



10



13



14



17



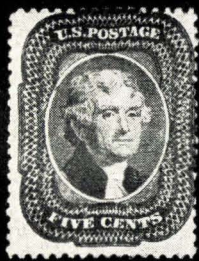
18



19



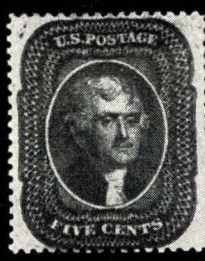
20



21



22



23



28



29



30



31



32



33



34



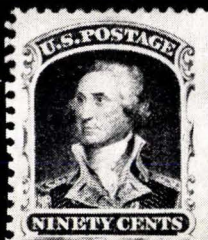
35



36



37



38



39



40



41



42



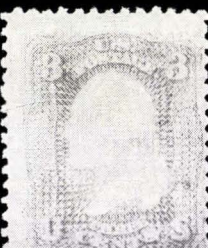
43



44



48



50



51



52



53



54



55



56



57



59



60



61



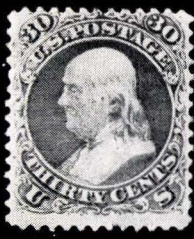
64



66



67



68



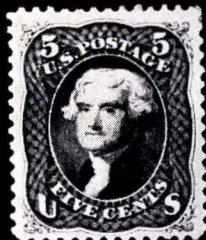
69



70



71



72



73



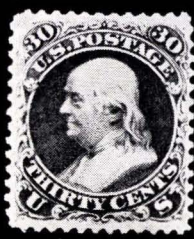
74



75



76



77



78



81



82



83



85



86



87



88



90



91



92



93



94



95



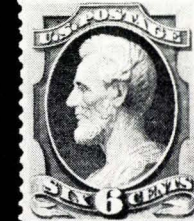
96



97



98



101



102



103



104



105



108



111



112



113



116



118



119



123



124



125



128



137



140



155



141



143



144



146



147



149



150



151



152



153



156



157



158



160



161



162



163



172



185



174



175



176



177



186



187



188



189



190



191



200



201



206



208



209



210



212



211



220



227



229



233



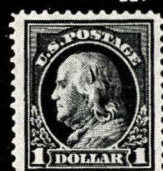
234



239



240



241



243



245



246



247



248



250



251



252



256



257



258



259



260



136



139



142



145



169



170



182



197



280



281



265



283



288



289



290



291



292



294



295



304



307



311



312



313



314



315



319



334



336



337



339



340



342



343



345



346



348



349



351



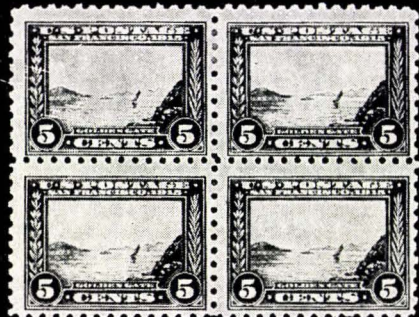
353



216



230



232



6135

235





354



358



360



362



365



369



371



374



383



377



381



385



387



388



389



390



391



392



393



394



395



396



397



398



399



400



401



402



403



404



405



406



407



408





410



411



412



413



415



416



418



419



421



422



428



429



432



433



435



436



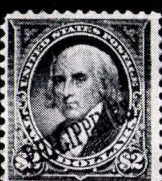
438



441



446



447



448



450



451



452



456



466



463



464



468



467



469



471



472



473



474



477



480

TRANS-MISSISSIPPI ISSUE

165	★	1c-10c Trans-Mississippi (285-290). Fresh, o. g., Fine-Very Fine	99.00
166	★	1c-10c Trans-Mississippi (285-290). Fresh, o. g., Very Good- Very Fine	99.00
167	★	1c, 2c Trans-Mississippi (285, 286). Block, fresh, o. g., Fine-Very Fine	43.00
168	★	4c Trans-Mississippi (287). Block, fresh, o. g., Fine-Very Fine	78.50
169	★	5c Trans-Mississippi (288). Block, fresh, o. g., Handstamp on back Very Fine	(Photo) 75.00
170	★	8c Trans-Mississippi (289). Block, fresh, o. g., Unusually intense color, Handstamp on back, Fine	(Photo) 90.00
171	★	10c Trans-Mississippi (290). Block, fresh, o. g., Handstamp on back, reperfed at R., Fine-Very Fine appearance	125.00
172	★	50c Trans-Mississippi (291). Fresh, o. g., Reperfed at R, Very Fine appearance	(Photo) 110.00
173	★	50c Trans-Mississippi (291). Fresh, o. g., small thin, Fine appearance	110.00
174	★	\$1.00 Trans-Mississippi (292). Fresh, o. g., tiny thins, Fine appearance	(Photo) 225.00
175	★	\$1.00 Trans-Mississippi (292). Fresh, o. g., small thin, Fine appearance	(Photo) 225.00
176	★	\$2.00 Trans-Mississippi (293). Fresh, o. g., Handstamp on back, Fine	(Photo) 300.00
177	★	\$2.00 Trans-Mississippi (293). Fresh, o. g., tiny fault in Top margin, Fine appearance	(Photo) 300.00

PAN-AMERICAN ISSUE

178	★	1c-10c Pan-American (294-299). Cpl. Set, Very Good-Very Fine	82.50
179	★	1c-10c Pan-American (294-299). Cpl. Set, 10c no gum & small stain, 1c V. G., others Fine-Very Fine	82.50
180	★	1c-5c Pan-American (294-295, 297). Blocks, one 2c, 5c thin, otherwise Very Good-Very Fine	93.00
181	★	4c Pan-American (296). Block, Fine-Very Fine	65.00
182	★	8c Pan-American (298). Block, Very Fine	(Photo) 77.50
183	★	10c Pan-American (299). Block, Very Good-Fine	120.00

1902 ISSUE

184	★	4c-15c 1902 Issue (303-304, 306-309). Fine-Very Fine	44.75
185	★	50c Orange (310). Very Fine	(Photo) 50.00
186	★	\$1.00 Black (311). Handstamp on back, Fine	(Photo) 95.00
187	★	\$2.00 Dark Blue (312). Handstamp on back, Centered slightly to top, Very Fine	(Photo) 135.00
188	★	\$5.00 Dark Green (313). Handstamp on back, tiny thin speck, Fine appearance	(Photo) 275.00

189 ★	5c Blue, Imperforate (315). Horiz. Pair, Handstamp on back of each, Very Fine	(Photo) 270.00
190 ★	5c Blue, Coil (317). Handstamp on back, fresh, Very Fine, Initialed by Eugene Klein & with accompanying letter, Ex-Sinkler	(Photo) 475.00
191 ★	1c Blue Green, Coil (318). Horiz. Pair, Handstamps on backs, perfs just touch at L., With P. F. Certificate	(Photo) 900.00

LOUISIANA PURCHASE — JAMESTOWN ISSUES

192 ★	1c-10c Louisiana Purchase (323-327). Cpl. Set, 1c, 10c small thins, otherwise Very Fine Set	103.00
193 ★	1c-10c Louisiana Purchase (323-327). Cpl. Set, Very Good-Very Fine	103.00
194 ★	1c, 2c Louisiana Purchase (323, 324). Blocks, Very Fine	52.00
195 ★	3c Louisiana Purchase (325). Block, faint crease in Bottom pair, Fine appearance	75.00
196 ★	5c Louisiana Purchase (326). Block, faint toned specks on back, Fine	75.00
197 ★	10c Louisiana Purchase (327). Mint Block, Fine	(Photo) 220.00
198 ★	1c-5c Jamestown (328-330). Cpl. Set Blocks, one 2c small thin, two 5c light crease, otherwise Very Good-Fine Set	152.00

1908-1909 ISSUES

199 ★	1c-15c 1908-09 Issue (331-340). 2c, 13c have tiny faults, otherwise Fine-Very Fine	48.90
200 ★	50c Violet (341). Very Fine	(Photo) 42.50
201 ★	\$1.00 Violet Brown (342). Short Corner perfs, otherwise Very Fine	(Photo) 68.50
202 ★	1c-5c 1908-10 Coils & Imperfs (343-350, 352-355). Extra Shade of 355, No's 347, 350, 352 have tiny faults, otherwise Very Good-Very Fine	100.50
203 ★	1c-4c 1908-10 Coils (349-350, 352). Pairs, Last with Line, V. G.-F.	55.50
204 ★	5c Blue, Coil (351). Line Pair, Fine-Very Fine	52.50
205 ★	2c-5c 1908-10 Coils (353-355). Pairs, Very Fine	72.00
206 ★	10c Yellow, Coil (356). Pair, Nicely Centered, negligible corner perf. crease in stamp at R., otherwise Extremely Fine, with P. F. Certificate	(Photo) 500.00

BLUISH PAPERS

207 ★	1c Green, 2c Carmine, Bluish (357, 358). Very Good-Fine	29.00
208 ★	3c Deep Violet, Bluish (359). Pinpoint thin speck, Fine appearance.	(Photo) 325.00
209 ★	5c Blue, Bluish (361). Very Fine, with P. F. Certificate.	(Photo) 1,100.00
210 ★	6c Red Orange, Bluish (362). Fine	(Photo) 250.00
211 ★	10c Yellow, Bluish (364). L.L. Sheet Corner Single, Fine	(Photo) 265.00
212 ★	15c Pale Ultramarine, Bluish (366). Handstamp on back, just Fine, with P. F. Certificate Photostat	(Photo) 250.00

1909 COMMEMORATIVES

213	★	2c 1909 Commems (367-373). Cpl. Set, #369 has tiny tear, otherwise Fine-Very Fine Set	86.75
214	★田	2c 1909 Commems (367, 370, 372). Block, one stamp of latter has minute thin speck, otherwise Fine-Very Fine Set	29.00
215	★田	2c 1909 Commems, Imperforate (368, 371, 373). Blocks, first is 2 mm spacing, Very Fine Set	111.00
216	★田	2c Lincoln, Bluish (369). Block, 2 mm Spacing, Fine (Photo)	190.00

1910-1911 ISSUES

217	★	3c-15c 1910-11 Issue (376, 378-380, 382). Very Good-Very Fine	51.20
218	★	1c Green, 2c Carmine, Coils (385-387, 390-393). Pairs, last with Line, V. F.	65.80
219	★	1c-5c 1910-11 Coils & Imperfs (383-386, 390-92, 395, 396). F.-V. F.	34.95
220	★	2c Carmine, Coil (388), Fine (Photo)	57.50
221	★	2c Carmine, Coil (388). Pair, Minor natural crease in one, otherwise just F.	120.00
222	★	3c-5c 1910-13 Coils (394-396). Pairs, 3c is Paste-up, 5c has one scuffed perf., Very Good-Fine	48.50

PANAMA-PACIFIC ISSUE

223	★	1c-10c Panama-Pacific (397-399, 400A, 401-403). Top Values have trivial thin specks, otherwise Fine-Very Fine	148.75
224	★	1c-10c Panama-Pacific (397-400, 401-403). Two 5c stamps have tiny thins, 10c Reperfed at L., otherwise Fine-Very Fine	123.75
225	★田	1c, 2c Panama-Pacific (397, 398, 401). Blocks, latter two mint, V. G.-F.	55.50
226	★田	5c Panama-Pacific (399). Block, Reperfed, otherwise Very Fine	82.50
227	★	10c Panama-Pacific, Orange Yellow (400). Very Fine (Photo)	30.00
228	★田	10c Panama-Pacific, Orange Yellow (400). Mint Block, Fine	135.00
229	★	10c Panama-Pacific, Orange (400A). One wild perf, otherwise Extremely Fine (Photo)	55.00
230	★田	10c Panama-Pacific, Orange (400A). Block, reinforced at center, otherwise Very Fine (Photo)	250.00
231	★田	2c Panama-Pacific, Perf 10 (402). Block Tiny natural fault in one, otherwise Very Good-Fine	80.00
232	★田	5c Panama-Pacific, Perf 10 (403). Block, Fine (Photo)	210.00
233	★	10c Panama-Pacific, Perf 10 (404). Extremely Fine (Photo)	200.00
234	★	10c Panama-Pacific, Perf 10 (404). Couple perfs trifle blunt, otherwise Fine. (Photo)	200.00
235	★田	10c Panama-Pacific, Perf 10 (404). Block of Four with Plate No., Hand-stamp on back, Very Fine (Photo)	900.00

1912-1921 ISSUES

236 ★	7c-30c 1912-14 Issue (407, 414-420). 15c has pinpoint thin speck, 20c touched at B., otherwise Very Fine	76.50
237 ★	1c-5c 1910-16 Coils (410-13, 441-448, 452-455, 457-458). V. G.-V. F.	113.75
238 ★	1c-5c 1912-16 Coils (410-413, 441-444, 446-448, 450-455, 457-458). Pairs, Fine-Very Fine, Nice Run	149.00
239 ★	50c Violet (421). Fine	(Photo) 80.00
240 ★	50c Violet (422). Very Fine	(Photo) 42.50
241 ★	\$1.00 Violet Brown (423). Very Fine	(Photo) 85.00
242 ★	1c-30c 1914-15 Issue (424-429, 431-439). 20c Tiny faults, 12c off center, otherwise Very Fine	126.65
243 ★	50c Violet (440). Very Fine	(Photo) 125.00
244 ★	3c Violet, Coil (445). Paste-Up Pair, Very Good	90.00
245 ★	3c Violet, Coil (456). Pair, Extremely Fine	(Photo) 52.50
246 ★	2c Carmine, Imperforate Coil (459). Very Fine	(Photo) 65.00
247 ★	2c Carmine, Imperforate Coil (459). Pair, Extremely Fine	(Photo) 130.00
248 ★	\$1.00 Violet Black (460). Reperfed at T., otherwise Very Fine	(Photo) 140.00
249 ★	1c-20c 1916-17 Issue (462-466, 468-476). 15c bit thin, 5c trifle off center, otherwise Very Fine	144.30
250 ★	5c Carmine, Error (467). Slightly blunted perfs Very Fine appearance.	(Photo) 145.00
251 ★	50c Light Violet (477). Couple perfs a trifle blunt, otherwise V. F. (Photo)	165.00
252 ★	\$1.00 Violet Black (478). Neat Marginal repair, Very Fine appearance.	(Photo) 140.00
253 ★	\$2.00 Dark Blue (479). Fine	50.00
254 ★	\$5.00 Light Green (480). Gum skip at L., one perf bit blunt, otherwise Very Fine	47.50
255 ★	1c-\$1.00 1917-19 Issue (498-504, 506-518). Cpl. set except 5c Error, 12c, 50c small thins, No. 500 V. G., otherwise Fine-Very Fine Set	80.15
256 ★	5c Rose, Error (505). Fine	(Photo) 95.00
257 ★	2c Carmine, Offset, Imperf, Ty. VII (534B). Large Margins, Very Fine, with P. F. Certificate	(Photo) 475.00
258 ★	2c Carmine Rose, Ty. II (539). Fine for this, a Very Rare Stamp, with P.F. Certificate	(Photo) 425.00
259 ★	\$2.00 Orange & Black (523). Very Fine	(Photo) 100.00
260 ★	\$5.00 Deep Green & Black (524). Very Fine	(Photo) 40.00
261 ★	1c-3c 1919-21 Issues (538, 540-543, 545-546). Very Fine	40.70
262 ★	\$2.00 Lake & Black (547). Fine	35.00
263 ★	1c-5c Pilgrims (548-550). Blocks, latter has two stamps thin & two creased, other blocks Fine-Very Fine	77.25

1922-1934 ISSUES

264	★	1½c-\$5.00 1922-25 Issue (551-573). Cpl. Set, Very Fine	105.11
265	★	2c Carmine, Coil, Ty. II (599A). Pair, Very Fine (Photo)	45.00
266	★	2c Carmine, Coil, Ty. II (599A). Pair, Fine	45.00
267	★	1c-5c Harding, Walloon (610-612, 614-616). Blocks, Very Good-Very Fine Sets	92.00
268	★	1c-5c Lexington-Concord (617-619). Cpl. Set, Blocks, Fine-Very Fine	49.00
269	★	2c, 5c Norse-American (620, 621). Blocks, Latter is L.L. sheet corner, with light diagonal crease, otherwise Fine-Very Fine Set	50.75
270	★	2c White Plains Souvenir Sheet (630). Mint, Fine-Very Fine	115.00
271	★	2c White Plains Souvenir Sheet (630). Tiny thin speck in selvage, otherwise Very Fine	115.00
272	★	2c Carmine, Ty. II (634A). Plate No. Single, Centered bit to B., Very Fine	65.00+
273	★	2c, 5c Hawaii, Overprint (647, 648). Blocks, one 5c has minor wrinkle and short perf, otherwise Very Fine	33.00
274	★	1c-10c Kans.-Nebr., Overprints (658-679). Cpl. Sets, 1c Nebr. has pinhole, Otherwise Very Good-Very Fine Sets	124.15
275	★	1c-3c 1933-34 Souvenir Sheets (730-731, 735, 750-751). Very Fine	42.50
276	★	1c-3c 1933-34 Souvenir Sheets (730-731, 735, 750-751). One each of last two have trivial thins, otherwise Very Fine	42.50

AIRPOST ISSUES

277	★	6c-24c 1918 Airpost (C1-C3). Fine-Very Fine Set	66.00
278	★	8c-24c 1923 Airpost (C4-C6). Cpl. Set, Fine-Very Fine	58.50
279	★	5c-20c 1926-28 Airpost (C7, C9, C11). Plate Blocks of Eight of first two, Double Plate No. & Blue "Top" block of latter, Fine-Very Fine	47.35
280	★	65c-\$2.60. Graf Zeppelin (C13-C15). Very Fine Set (Photo)	600.00
281	★	65c-\$2.60 Graf Zeppelin (C13-C15). Cpl. Set, Handstamp on back of each, two top values have trivial thins, otherwise Very Fine (Photo)	600.00
282	★	65c-\$2.60 Graf Zeppelin (C13-C15). Cpl. Set Blocks, F.-V. F. (Photo)	2475.00
283	★	50c Chicago Zeppelin (C18). Extremely Fine (Photo)	35.00
284	★	50c Chicago Zeppelin (C18). Handstamp on back, Extremely Fine	35.00
285	★	50c Chicago Zeppelin (C18). Block, one has tiny thin in B. margin, others Very Fine	150.00

SPECIAL DELIVERY — POSTAGE DUES — OFFICES IN CHINA

286	★	10c Blue, Ultramarine, Special Delivery (E4, E10). Full o. g., tiny faults, Very Fine appearance	110.00
287	★	10c Special Delivery (E5, E8, E9). Very Fine	37.50

288 ★	5c Deep Brown, Postage Due, Special Printing (J11). Rounded corner & small thin, Fine appearance, with P. F. Certificate (Photo)	300.00
289 ★	10c Deep Brown, Postage Due, Special Printing (J12). Handstamp on back, Very Fine, with P. F. Certificate (Photo)	300.00
290 ★	30c Deep Brown, Postage Due, Special Printing (J13). Fresh, part o. g., reperfed at L., otherwise Very Fine, with P. F. Certificate (Photo)	225.00
291 ★	50c Deep Brown, Postage Due, Special Printing (J14). Fresh, o. g., reperfed at R., otherwise Fine, with P. F. Certificate (Photo)	225.00
292 ★	50c Red Brown, Postage Due (J21). Fresh, o. g., pinpoint thin speck, otherwise Extremely Fine (Photo)	75.00
293 ★	1c, 2c Vermilion, Postage Dues (J29–J30). Fresh, o. g., Fine–Very Fine	39.00
294 ★	50c Carmine Lake, Postage Due (J58). Fresh, Fine, Rare Stamp. (Photo)	185.00
295 ★	1c Rose, Postage Due (J59). Fresh, Fine (Photo)	80.00
296 ★	1c–\$5.00 Postage Dues (Bet J1–J101). Collection of 87 diff. on Scott Natl. Album Pages, Mostly in Complete sets, some earlier issues have minor faults but fresh, Attractive copies throughout, with the large majority Fine–Very Fine, A Very Desirable Lot with Many Scarce Stamps	330.21
297 ★	2c–\$2.00 Offices in China (K1–K18). Cpl. Set, Very Good–Very Fine	130.45

OFFICIAL STAMPS

298 ★	1c–30c Agriculture Dept. (O1–O9). Cpl. Set, all o. g. but 1c, 15c, Very Fine.	97.00
299 ★	1c Executive Dept. (O10). Fresh, o. g., just touched L., Fine	37.50
300 ★	2c, 10c, Executive Dept (O11, O14). Minute margin breaks, Fine–Very Fine Appearance	66.50
301 ★	3c, 6c Executive Dept. (O12, O13). First o. g., Very Good–Fine	70.00
302 ★	1c–90c Interior Dept. (O15–O17, O19–O24). Four have o. g., few trivial faults, otherwise Very Good–Fine	35.80
303 ★	1c–30c Justice Dept. (O25–O26, O28–O31, O33). Fresh, all o. g., but 10c, 6c has pulled perf, 30c tiny thin, otherwise Fine–Very Fine	86.50
304 ★	24c Justice Dept. (O32). Fresh, o. g., Very Fine (Photo)	38.50
305 ★	90c Justice Dept. (O34). Fresh, o. g., couple blunt perfs, otherwise Fine	67.50
306 ★	1c–90c Navy Dept. (O35–O45). Cpl. Set, several with o. g., few short perfs, 7c, 24c, have tiny faults, otherwise Very Good–Very Fine	111.75
307 ★	2c Green, Navy Dept., Error on Pink (O36b). Faint crease, Fine appearance. (Photo)	110.00
308 ★	1c–90c Post Office Dept. (O47–O56). Cpl. Set, most have o. g., V. G.–V. F.	24.80
309 ★	1c–15c State Dept. (O57–O59, O61–O64). All o. g., but two, some heavy hinges & couple faint creases, otherwise Very Good–Very Fine	36.25
310 ★	24c, 30c State Dept. (O65, O66). Fresh, Very Fine	39.50
311 ★	90c State Dept. (O67). Fresh, Very Fine (Photo)	32.50
312 ★	\$2.00 Green & Black, State Dept. (O68). Fresh, o. g., Centered bit R., Fine. (Photo)	70.00

313 ★	\$5.00 Green & Black, State Dept. (O69). Just Clear at T., Fine, Scarce. (Photo)	450.00
314 ★	\$10.00 Green & Black, State Dept. (O70). Fresh, o. g., Fine (Photo)	265.00
315	\$20.00 Green & Black, State Dept. (O71). Light ms. cancel, pinholes, Very Fine appearance (Photo)	100.00
316 ★	1c–90c Treasury Dept. (O72–O82). Cpl. Set, 2c used, few minor faults, otherwise Very Good–Very Fine	50.40
317 ★	1c–90c War Dept. (O83–O93). Fresh, all o. g. but 6c, 15c, some heavy hinges & few trivial thins, otherwise Very Good–Very Fine Set	64.50
318 ★	1c–30c Departments, Soft Paper (Bet O95–O120). Eighteen diff., nearly all o. g., couple tiny faults, otherwise Very Good–Very Fine	102.00
319 ★	24c Interior Dept., Soft Paper (O103). Fresh, o. g., Fine, Scarce (Photo)	165.00
320 ★	30c Treasury, Soft Paper (O112). Well Centered, Reperf at T. & L., Very Fine appearance	85.00
321 ★	90c Treasury, Soft Paper (O113). Fresh, o. g., tiny crease, Fine appearance.	80.00
322 ★	2c–\$1.00 Postal Savings, Officials (O121–O126). Fresh, o. g., V. G.–V. F.	31.95

NEWSPAPER STAMPS

323 ★	5c Dark Blue (PR1). Very Fine	30.00
324 ★	5c–25c (PR2–4, PR6). Negligible faint thin specks, otherwise V. F. Lot	43.00
325 ★	5c Blue, 25c Dark Carmine Red (PR5, PR7). First has blunt perfs at B., otherwise Fine–Very Fine	29.00
326 ★	5c Dark Blue (PR8). Extremely Fine	22.50
327 ★	2c–12c Newspapers (PR9–PR16). Fine–Very Fine	26.20
328 ★	24c–48c Rose (PR17–PR19). Fresh, o. g., few slightly blunted perfs, otherwise Very Fine	31.00
329 ★	60c, 84c, Rose (PR20, PR22). Fine	30.25
330 ★	72c Rose (PR21). Fresh, Very Fine	21.50
331 ★	96c–\$9.00 (PR23, PR24, PR27). Two with o. g., trivial tiny faults, Fine–Very Fine appearance	72.00
332 ★	\$6.00 Ultramarine (PR26). Fresh, Reperf at B., otherwise Very Fine	35.00
333 ★	\$12.00 Blue Green (PR28). Fresh, o. g., Centered bit to L., Fine	40.00
334 ★	\$24.00 Dark Gray Violet (PR29). Fresh, o. g., Fine (Photo)	45.00
335 ★	\$36.00 Brown Rose (PR30). Fresh, o. g., short corner perf., otherwise Fine.	67.50
336 ★	\$48.00 Red Brown (PR31). Very Fine (Photo)	110.00
337 ★	\$60.00 Violet (PR32). Very Fine (Photo)	100.00
338 ★	2c–10c Gray Black, Special Printings (PR33–PR39). 8c has pulled perf., otherwise Very Fine	59.00
339 ★	12c Pale Rose, Special Printing (PR40). Extremely Fine. (Photo)	20.00
340 ★	24c Pale Rose, Special Printing (PR41). Fine (Photo)	35.00

341 ★	36c Pale Rose, Special Printing (PR42). Perfs touch at L., Fine	40.00
342 ★	48c Pale Rose, Special Printing (PR43). Almost invisible thin speck, otherwise Very Fine	(Photo) 50.00
343 ★	60c Pale Rose, Special Printing (PR44). Very Fine.	(Photo) 65.00
344 ★	72c Pale Rose, Special Printing (PR45). Gum stain at top, otherwise V.F.	80.00
345 ★	84c Pale Rose, Special Printing (PR46). Fine	(Photo) 85.00
346 ★	96c Pale Rose, Special Printing (PR47). Few perfs a trifle nibbed, otherwise Very Fine	(Photo) 110.00
347 ★	2c-\$3.00 1879 (PR57-66, 69-72). Mostly o. g., few tiny thins, otherwise Fine-Very Fine	115.30
348 ★	72c Red (PR68). Fresh, o. g., Very Fine	(Photo) 32.50
349 ★	\$6.00 Blue (PR73). Fresh, o. g., Very Fine	(Photo) 22.50
350 ★	\$3.00 Vermilion, \$9.00 Orange, \$12.00 Yellow Green (PR72, PR74, PR75). Fresh, o. g., Fine-Very Fine	43.50
351 ★	24c Dark Violet (PR76). Very Fine	(Photo) 25.00
352 ★	\$36.00 Indian Red (PR77). Fresh, o. g., Pinpoint thin speck, otherwise V.F.	35.00
353 ★	\$48.00 Yellow Brown (PR78). Fresh, o. g., Very Fine	(Photo) 37.50
354 ★	\$60.00 Purple (PR79). Fresh, o. g., Very Fine	(Photo) 37.50
355 ★	2c Intense Black, Special Printing (PR80). Fine, Very Scarce	35.00
356 ★	1c-96c (PR81-PR89). Cpl. Set, Fresh, o. g., Very Fine	74.00
357 ★	1c-24c Bureau Issues (PR90-92, PR94-96). Three have o. g., 1c, 4c have tiny thin & crease, otherwise Fine-Very Fine	33.75
358 ★	6c Intense Black (PR93). Faint thin specks & few short perfs, Fine appearance, With A. P. S. Certificate	(Photo) 350.00
359 ★	36c Pink (PR97). Fresh o. g., showing Part Imprint at T., tiny tear & gum wrinkles, Fine appearance	120.00
360 ★	60c Pink (PR98). Fresh, o. g., Vertical creases, Fine appearance	(Photo) 120.00
361 ★	\$3.00 Scarlet (PR100). Fresh, o. g., Very Fine	(Photo) 400.00
362 ★	\$6.00 Pale Blue (PR101). Fresh, o. g., faint crease, reperfed at L. & B., Attractive Example of this Rare Stamp, with P. F. Certificate	(Photo) 750.00
363 ★	1c-\$50.00 Unwatermarked (PR102-104, 106-109, 111-112). Fresh, all o. g. but two, few tiny thins, otherwise Fine-Very Fine, Scarce Lot	138.10
364 ★	\$20.00 Slate (PR111) Fresh, o. g., Centered a bit R., Fine	42.50
365 ★	\$100.00 Purple (PR113). Fresh, o. g., negligible tiny gum crease, otherwise Very Fine	(Photo) 50.00
366 ★	1c-\$100.00 (PR114-PR130). Fresh, o. g., couple tiny thin specks, otherwise Very Fine Sets	51.55
367 ★	1c-75c Parcel Post (Q1-Q9, Q11). 20c has tiny crease, otherwise Very Good-Very Fine	56.80
368 ★	50c Parcel Post (Q10). Very Fine	43.50

- 369 ★ **\$1.00 Parcel Post (Q12).** Almost invisible pinpoint thin speck, otherwise Extremely Fine (Photo) 57.50
- 370 ★ **\$1.00-\$3.00 1934-65 Hunting Permits (RW1-RW32).** Cpl. Set, fresh, o. g., RW17 has thin speck, RW5, 9, 12, 16 bit off center, otherwise Very Fine Set, several with Plate No., Choice Lot 211.25

U. S. POSSESSIONS

CANAL ZONE

- 371 ★ **1904, 2c Rose, Overprint (1).** Both "Panama" Reading Up, Very Fine. (Photo) 60.00
- 372 ★ **1904, 5c Blue, 10c Yellow, Overprints (2, 3).** Part o. g., faint toning, Fine. 66.00
- 373 ★ **1904, 1c-10c Overprints (4-8).** Cpl. Set, 10c has small thin, otherwise Very Good-Very Fine 57.75
- 374 ★ **1904, 8c on 50c Bistre Brown, Overprint (15).** Handstamp on back, part o. g., few perf tips trifle toned, otherwise Very Fine (Photo) 325.00
- 375 ★ **1920, 50c, 1B Bicolors (58, 59).** Very Fine 72.50
- 376 ★ **1921, 1c-50c Pictorials (60-66).** 15c Tiny thin, otherwise Fine-Very Fine Set 32.70
- 377 ★ **1924, 1c Green, Ty. III Overprint (67).** Short Corner Perf, otherwise Very Fine (Photo) 60.00
- 378 ★ **1924-25, ½c-50c Overprints (70-80).** Fine-Very Fine 40.53
- 379 ★ **1924, \$1.00 Violet Brown (81).** Very Fine, hdstp on back 32.50
- 380 ★ **1925-28, 3c-\$1.00 Overprints (85-95).** Very Fine Set 67.35
- 381 ★ **1926, 5c Dark Blue, "Canal" Inverted (86, 86b).** Horiz Pair, Left Stamp the Error, Centered to R, Fine (Photo) 40.75
- 382 ★ **1939, 1c-50c Pictorials (120-135).** Tropical gum, bit dried, 18c faint crease, otherwise Very Fine Set 42.00
- 383 ★ **1914, 10c Postage Due (J3).** Extremely Fine (Photo) 50.00
- 384 ★ **1924, 1c-10c Postage Dues (J12-J14).** 2c no gum, Fine-Very Fine Set 51.00
- 385 ★ **1925, 10c Postage Due, Double Overprint (J20c).** Just touched at T., Fine for this scarce error (Photo) 65.00

CUBA

PUERTO PRINCIPE SURCHARGES

NOTE: Tropical gum & toning of perfs. is normal for this issue, especially for unused stamps.

- 386 ★ **1898, 2c-5c Puerto Principe Surcharges (178-180, 188, 198-200).** Mostly o. g., one has tiny thin, otherwise V. G.-V. F., Scarce Lot 44.50
- 387 ★ **1898, 2c on 2m Orange Brown, Inverted Overprint (178a).** O. g. "S. F. Cubana" Guarantee Handstamp on back, minute thin, Fine appearance. (Photo) 100.00

- 388 ★ **1898, 3c on 2m Orange Brown, Overprint (179F).** Part o. g., tiny thin, Very Fine appearance, unpriced unused in Scott (used cat at \$750.00). A Very Rare stamp (Photo) —
- 389 ★ **1898, 5c on 1m Orange Brown, Overprint (183).** Centered, part o. g., perfs bit toned, Very Fine (Photo) 350.00
- 390 ★ **1898, 5c on 2m. Orange Brown, Overprint (184).** O. g., "S. F. Cubana" Guarantee Handstamp on back, Very Good (Photo) 200.00
- 391 ★ **1898, 5c on 2m Orange Brown, Overprint (185).** O. g., "S. F. Cubana" Guarantee Handstamp, tiny thin specks, few perf tips toned, Very Fine appearance (Photo) 475.00
- 392 ★ **1898, 5c on 3m Orange Brown, Overprints (186, 187).** Se tenant Pair, o. g., Fine, not priced unused, (Used list \$130.00+) Rare (Photo) —
- 393 ★ **1898, 5c on 3m Orange Brown, Overprint (186, 187).** Se tenant pair, o. g., toned, latter has tiny thin & trifle rubbed, not priced unused (Used list \$130.00+). Rare (Photo) —
- 394 ★ **1898, 5c on ½m Blue Green, Inverted Overprint (190a, 191a).** Se tenant pair, o. g., toned spots, Fine-Very Fine, #190a priced \$100.00, other unpriced, Rare pair (Photo) —
- 395 ★ **1898, 5c on ½m Blue Green, Overprint (191).** Centered, Signed "J. S.", perfs toned, Very Fine (Photo) 75.00
- 396 ★ **1898, 5c on ½m Blue Green, Overprint (192).** O. g., "S. F. Cubana" Guarantee Handstamp on back, Toned perf tips, Very Fine (Photo) 200.00
- 397 ★ **1898, 5c on ½m Blue Green, Overprint (193).** Centered, o. g., "S. F. Cubana" Guarantee Handstamp on back, toned perf tips, Very Fine (Photo) 150.00
- 398 ★ **1898, 3c on 1m Blue Green, Overprint (201).** O. g., bare trace of toning, Fine (Photo) 50.00
- 399 ★ **1898, 3c on 1m. Blue Green, Overprint, "cents" Error (201b, 202).** Horiz Se-tenant pair, Right Stamp the Error, o. g., "S. F. Cubana" Guarantee Handstamps on backs, Slight toning spots, Fine (Photo) 275.00+
- 400 ★ **1898, 3c on 1m Blue Green, Overprint (202).** Well Centered, o. g., Signed "J. S.", faint toning, tiny natural crease causing faint doubling in "Habilitado", otherwise Very Fine (Photo) 125.00
- 401 ★ **1898, 3c on 2m Blue Green (203).** Well Centered, o. g., "S. F. Cubana" Guarantee Handstamp on back, pinhole, few faintly toned perf tips otherwise Very Fine (Photo) 200.00
- 402 ★ **1898, 3c on 2m Blue Green, "cents" Error (203a).** Signed "J. S.", marginal toning, light crease, otherwise Very Good (Photo) 250.00
- 403 ★ **1898, 3c on 3m Blue Green, Overprint (206).** O. g., faint toning, Centered to B., Fine (Photo) 400.00
- 404 ★ **1898, 5c on 1m Blue, Overprint (211).** O. g., Signed "J. S.", perf tips toned, Very Fine, Not priced unused (Used cat. \$400.00). A Rare stamp. (Photo) —
- 405 ★ **1898, 5c on 1m. Blue Green, Overprint, Broken "C" in "Cents" (211 var).** O. g., "S. F. Cubana" Guarantee Handstamps on back, few perf tips faintly toned, Very Fine, Not priced Unused (Used list \$400.00+). (Photo) —

406 ★	1898, 5c on 1m. Blue Green, Overprint, "cents" Error (211a). "S. F. Cubana" guarantee hadnstamp on back, o. g., few perf tips faintly toned, Very Fine, listed but unpriced in Scott, Very Rare (Photo)	—
407 ★	1898, 5c on 1m. Blue Green, Overprint "cents" Error (211a, 212). Se-tenant Pair, L. stamp the error, Hdstp. on back, mixed centering, Fine-Very Fine, A Great Rarity, Unpriced unused, (normals cat. \$1150.00 for used). (Photo)	—
408 ★	1898, 5c on 3m Blue Green, Overprint (215). Signed "J. S.", bit toned, Fine, unpriced unused in Scott (used cat \$85.00)	—
409 ★	1898, 5c on 3m Blue Green, Overprint, "cents" Error (215a). O. g., "S. F. Cubana" Guarantee handstamp on back, Negligible faint toning on few perf tips, Very Fine, Unpriced unused, (Used cat \$150.00) (Photo)	—
410 ★	1898, 5c on 3m Blue Green, Overprint (216). O. g., "S. F. Cubana" Guarantee Handstamp on back, faint toning, Very Good, Unpriced Unused (Used cat \$300.00) (Photo)	—
411 ★	1898, 5c on 4m Blue Green, Overprint (217), o. g., barest trace of toning, Fine, Rare (Photo)	650.00
412 ★	1898, 5c on 4m Blue Green, Overprint (218). Signed "J. S.", toned, Fine & Rare, Not priced unused (Used cat \$500.00) (Photo)	—
413 ★	1898, 5c on 8m Blue Green, Overprint (219). O. g., Signed "J. S.", light toning, Centered to top, Fine, Rare (Photo)	650.00
414 ★	Regular U. S. Issues, 1899-1907, 1c-10c Overprints & Pictorials (221-226, 227-232, 232c, 233-237). Error bit toned, otherwise Fine-Very Fine Sets.	37.78
415 ★	1899, 10c Overprint on 10c Ty. II (226A). Fresh, o. g., Very Fine, with P. F. Certificate, Choice Copy of this Rarity (Photo)	675.00

DANISH WEST INDIES

416 ★	1855, 3c Dark Carmine, Brown Gum (1). Large margins, fresh, o. g., Very Fine (Photo)	70.00
417 ★	1872-73, 3c Carmine, 4c Dull Blue Perforated (3, 4). Fresh, o. g., F-V. F.	51.50
418 ★	1873, 14c Lilac & Green (12). Fresh, o. g., tiny thins, Purple Handstamp shows thru faintly, Very Fine appearance (Photo)	90.00
419 ★	1902, 2c on 3c, Green Surcharge (26). Fine, Rare (Photo)	275.00

GUAM

420 ★	1899, 1c-\$1.00 Overprints (1-8, 10-12). 2c, 5c no gum, 5c, 50c tiny thins, otherwise fresh, o. g., Very Good-Very Fine Set	120.65
421 ★	1899, 10c Brown, Ty. II, Overprint (9). Fresh, o. g., Handstamp on back, Very Fine, Handsome Copy of this Rarity (Photo)	600.00
422 ★	1899, \$1.00 Black, Ty. II, Overprint (13). Fresh, large part o. g., faint tropical toning, otherwise Very Fine (Photo)	425.00
423 ★	1930, 4c Carmine Guard Mail (M2). Natural Paper Wrinkle, Fine	45.00
424 ★	1899-1930, Special Delivery & Guard Mail (E1, M4-M11). Very Good-Very Fine	41.95

HAWAII

425 ★	1857-61, 5c Blue on White, Bluish Wove (8, 9). Cut margins, tiny faults, Scarce	175.00
426 ★	1868, 5c Blue, 13c Dull Rose, Reissues (10, 11). Latter cut in T. & L. and faint blue stain, first is fresh, o. g., Very Fine	110.00
427 ★	1868, 13c Dull Rose, Reissue (11). Large margins, corner faults, Very scarce	100.00
428 ★	1860, 2c Black on Greenish Blue (14). Pos. 5, Plate 3GX, Huge Margins, light Handstamp on back, Extremely Fine, A Remarkably Choice Copy of this Rare Stamp (Photo)	575.00
429 ★	1863, 2c Black on Blue Gray (18). Large Margins, Handstamp on back, Extremely Fine	200.00 (Photo)
430 ★	1864, 1c Black (19). Pos 4, Plate 6A, Clear to Huge Margins, Handstamp on back shows thru, tiny tear at B., Fine appearance	90.00
431 ★	1865, 5c Blue on Blue (22). Pos 2, Plate 12A, fresh, o. g., Huge margins except touched at T., faint crease & tiny brown speck, Fine appearance	65.00
432 ★	1865, 5c Blue on Blue (22). Pos 10, Plate 12A, Ample to Huge Margins, faint crease & tiny thins, Very Fine appearance	65.00 (Photo)
433 ★	1864, 1c Black on Laid (23). Pos 6, Plate 8A, Large margins, Handstamp on back shows thru faintly, Very Fine	35.00 (Photo)
434 ★	1864, 2c Black on Laid (24). Pos. 10, Plate 7a, Margins except barely touched at one point, Fine	35.00
435 ★	1865, 1c Dark Blue (25). Pos 8, Plate 11a, Large Margins, Very Fine (Photo)	57.50
436 ★	1865, 2c Dark Blue (26). Pos 1, Plate 10a, Large margins, Handstamp on back, minor corner thin, V.F. appearance	47.50 (Photo)
437 ★	1861, 2c Pale Rose on Horiz. Laid (27). Minor faults, Fine appearance	57.50
438 ★	1863, 2c Carmine Rose on Vertical Laid (28a). Large Margins, o. g., showing Papermakers Watermark , Very Fine	45.00+ (Photo)
439 ★	1869-1889 2c Red (29, 31). Handstamps on back, showing thru faintly on first, Large margins except first barely touched at L. L., latter o. g., Fine-Very Fine	29.00
440 ★	1883, 50c Red, \$1.00 Rose Red (48, 49). Latter o. g., Handstamps on back show thru faintly, otherwise Very Good-Fine	61.00
441 ★	1893, 12c Red Lilac, Black Overprint (69). Fresh, o. g., Very Fine. (Photo)	47.50
442 ★	1893, 12c Red Lilac, Black Overprint (69). Fresh, o. g., perfs just touch at L.	47.50
443 ★	1896, 2c-25c Officials (O1-O6). Cpl. set, 5c has tiny thin, otherwise fresh, o. g., Very Good-Very Fine	39.00

PHILIPPINES

444 ★	1898-1901, 1c-50c Overprints (212-222). Few minor thins, otherwise Very Good-Very Fine	98.35
445 ★	1901, \$1.00 Black, Ty. I, (223). Part Gum, minute thins, Fine appearance.	62.50

446 ★	1901, \$1.00 Black, Ty. II (223A). Fine (Photo)	175.00
447 ★	1901, \$2.00 Dark Blue (224). Creases, Fine appearance (Photo)	67.50
448 ★	1901, \$5.00 Dark Green, (225). Barest trace of thin speck, otherwise Very Fine (Photo)	150.00
449 ★	1903-4, 1c-50c Overprints (226-231, 233-36, 240). 10c has tiny thin speck, first 2c V. G., others Fine-Very Fine (Photo)	53.35
450 ★	1903, \$1.00 Black, (237). Very Fine (Photo)	52.50
451 ★	1903, \$2.00 Dark Blue (238). Pinpoint thin speck, otherwise Fine. (Photo)	125.00
452 ★	1903, \$5.00 Dark Green (239). Very Fine (Photo)	165.00
453 ★	1906-10, 2c-10p Portraits (241-254). Few small thins, otherwise F.-V. F.	98.00
454 ★	1909-13, 16c-2p Portraits (256-258, 260A). Fine-Very Fine (Photo)	29.85
455 ★	1911-1913, 1c-10p Portraits (261, 263-272, 274-275). Fine-Very Fine	91.55
456 ★	1911, 4p Deep Blue (273). Reperf at T., otherwise Fine (Photo)	150.00
457 ★	1914-23, 10c-1p Portraits (280-284). 16c has tiny thin speck, otherwise Fine-Very Fine (Photo)	57.25
458 ★	1918-26, 6c-1p Portraits, Watermarked (287-289D). Cpl. Run of Seven diff., couple negligible gum wrinkles, Very Good-Very Fine (Photo)	103.50
459 ★	1917-25, 2c-10p Portraits (290-299, 301-304). 4p tiny thin otherwise almost entirely Very Fine (Photo)	69.71
460 ★	1925-31, 2c-10p Imperforates (340-353). Cpl. Set, Very Fine (Photo)	105.07
461 ★	1938, 2c-5p Pictorials (433-446). Very Fine Set (Photo)	37.68
462 ★	1944, 4c-20c Handstamp "Victory" Overprints (465, 472, 481). 8c has s. e. L. & B., 4c no gum & stained, Fine-Very Fine (Photo)	50.00
463 ★	1944, 6c Yellow Green, Handstamp "Victory" Overprint (467). Negligible corner gum wrinkle, Very Fine (Photo)	75.00
464 ★	1944, 6c Commonwealth, Handstamp "Victory" Overprint (468). Well Centered, No Gum, small faults, Fine appearance, Rare (Photo)	300.00
465 ★	1944, 6c Carmine, Handstamp "Victory" Overprint (469). s. e. at R., fresh, Very Fine (Photo)	60.00
466 ★	1944, 10c Commonwealth, Handstamp "Victory" Overprint (473). Very Fine (Photo)	50.00
467 ★	1944, 10c Commonwealth, Handstamp "Victory" Overprint (474). Very Fine (Photo)	60.00
468 ★	1944, 12c Ultramarine, Handstamp "Victory" overprint (475). "Kessler" Handstamp Guarantee, Fine (Photo)	125.00
469 ★	1944, 30c Commonwealth, Handstamp "Victory" Overprint (482). Centered to L. B., Fine for this (Photo)	100.00
470 ★	1926, 2c-30c Madrid-Manila Airpost (C1-C6, C9-C12). Few with usual tropical gum, Fine-Very Fine Set (Photo)	85.00
471 ★	1926, 16c Sampson, Violet ovpt., Madrid-Manila Airpost (C7). Handstamp Guarantee of Walter Bruggman, Centered L. B., Rare (Photo)	475.00

472 ★	1926, 16c Sampson, Red Ovpt., Madrid-Manila Airpost (C8). Four Guarantees, Incl. Walter Bruggman, barest trace of thin speck, otherwise Fine, Rare (Photo)	475.00
473 ★	1926, 2p Madrid-Manila Airpost (C13). Perfs barely in at R., Fine for this (Photo)	150.00
474 ★	1926, 4p Madrid-Manila Airpost (C14). Fresh, Fine, Handstamp Guarantee of Walter Bruggman (Photo)	275.00
475 ★	1926, 1p Madrid-Manila Airpost (C17). Kessler Handstamp Guarantee, Centered to L. B., Fine	57.50
476 ★	1928, 2c-1p L. O. F. Airpost (C18-C28). Cpl. Set, 8c tiny thin speck, light toning, otherwise Very Good-Very Fine Set	38.65
477 ★	1944, 4c Airpost, Handstamp "Victory" Overprint (C53). Paper adhering to back, Very Fine, Signed by Kessler & Heiman, Rare (Photo)	700.00
478 ★	1944, 20c Special Delivery, Handstamp "Victory" Overprint (E9). Very Fine.	75.00
479 ★	1899-1901, 1c-50c Postage Dues, (J1-J7). 5c ms. line cancel 50c tiny thin, otherwise o. g., Very Good-Very Fine Set	44.50
480 ★	1944, 4c Postage Due, Handstamp "Victory" Overprint (J16). Paper adhering to back, Very Fine (Photo)	40.00
481 ★	1944, 6c Postage Due, Handstamp "Victory" Overprint (J17). Paper adhering to back & light gum soak, otherwise Fine	30.00
482 ★	1944, 8c Postage Due, Handstamp "Victory" Overprint (J18). Negligible light crease, otherwise Very Fine	35.00
483	1944, 10c Postage Due, Handstamp "Victory" Overprint (J19). Sheet center-line at L., light cancel, one short perf., otherwise Fine, listed but unpriced Used in Scott	—
484 ★	1944, 12c Postage Due, Handstamp "Victory" Overprint (J20). Negligible light crease, otherwise Fine	30.00
485 ★	1944, 16c Postage Due (J21). Centered, no gum, s. e. at R., rounded corner perf, otherwise Very Fine	50.00
486 ★	1944, 20c Postage Due, Handstamp "Victory" Overprint (J22). Paper adhering to gum, Very Fine	35.00
487 ★	1944, 2c, 4c Green Officials, Handstamp "Victory" Overprints, (O39, O40). first with tropical gum, Fine-Very Fine	25.00

PUERTO RICO

488 ★	1899, 1c-10c Overprints (210-216, J1-J3). Fresh, o. g., F.-V. F.	35.25
-------	---	-------

COLLECTION BALANCES

489	CANAL ZONE. Collection of 291 stamps on album pages, Postage, Airpost, Officials, many in cpl. sets, incl. a few blocks, almost all unused, virtually all Fine-Very Fine, Choice Lot	451.36
490 ★	DANISH WEST INDIES, 1873-1917 (Bet 2-J8). Balance of Collection, 63 stamps, nearly all in complete sets, Fine-Very Fine	117.75

- 491 ★ **HAWAII, 1868-1899, 1c-\$1.00 Portraits & Pictorials (Bet 10-82).** Balance of Collection, 51 diff. few trivial faults, most are Very Good-Very Fine, Nice Lot 217.95
- 492 ★ **PHILIPPINES, 1903-1946, 1c-20p Portraits & Pictorials (Bet 230-044).** Balance of Collection, 265 diff., U. S. Issues Only, almost all unused, Incl. a few blocks, nearly all in complete Sets, mostly Fine-Very Fine, Nice Lot. 293.29
- 493 ★ **U. S. Collection** Balance of 1107 diff., mostly 20th, in Scott Nat'l. Album, fairly solid 1923-1967, also Airpost, Special Delivery, Special Handling and Parcel Post Dues, Some Early Issues have minor faults, balance mostly Fine-Very Fine, useful collection for Expansion 1,043.64
- 494 ★ **U. S. Commemorative Collection, 2582 Stamps, 1907-1967, in Singles & Blocks,** neatly mounted in Two Scott Commemorative albums, nearly complete in Singles from 1919 and blocks from 1926, few early issues have minor faults, mostly F.-V. F. 703.53

END OF SALE — THANK YOU

LOTS ON VIEW FROM JANUARY 3rd

OFFICES OPEN SATURDAY BEFORE SALE

PRICES REALIZED

*Invaluable and almost indispensable guides
to the current market.*

Price \$1.00 for each individual sale.

Annual subscription \$6.00.

IS YOUR COLLECTION FOR SALE?

REALIZE IMMEDIATE CASH
PLUS THE ADDED ADANTAGE OF
SELLING THROUGH OUR AUCTIONS

If desired, we will advance immediate cash up to 75% of our appraisal value, of what your collection should realize at auction. There is no interest charge.

Your collection will then be sold in one of our coming auction sales. All stamps are expertly and advantageously lotted in attractive, well illustrated catalogs. Lotting is meticulously planned under our personal supervision. Commission is 20% of the gross realization. There is no lotting fee or any other charges. Final settlement is made within five weeks after the sale. We have been continuously conducting stamp auctions in the United States for over thirty-nine years.

Valuable collections and stamp holdings are especially wanted, but we will accept properties valued from \$500 upwards. Send all stamps direct for appraisal. Auction advance will be remitted shortly after receipt. If not entirely pleased, stamps will be returned at our expense. If circumstances warrant due to bulk or value, we will travel anywhere to inspect important properties.

ROBERT A. SIEGEL
AUCTION GALLERIES, Inc.

(Licensed and Bonded Auctioneer)

10 EAST 52nd STREET
NEW YORK, N. Y. 10022
Tel. (PL 3-6421)

ROBERT A. SIEGEL AUCTION GALLERIES, Inc.

10 East 52nd Street
New York, N. Y. 10022

345TH
~~354TH~~ SALE

PRICES REALIZED
January 8th, 1969

THE ERNEST G. JARVIS COLLECTION

Part I

UNITED STATES

Canal Zone, Cuba, Guam,
Hawaii, Philipinnes

1	135.00	56	62.50	111	37.50	166	36.00	221	55.00	276	20.00	331	26.00	386	180.00	
2	450.00	57	44.00	112	125.00	167	19.00	222	26.00	277	40.00	332	19.00	thru wed.	465	32.00
3	120.00	58	26.00	113	145.00	168	36.00	223	75.00	278	36.00	333	35.00	413	466	75.00
4	160.00	59	50.00	114	32.00	169	37.50	224	42.50	279	45.00	334	27.00		467	55.00
5	67.50	60	37.50	115	34.00	170	52.50	225	14.00	280	360.00	335	28.00	414	468	90.00
6	170.00	61	350.00	116	30.00	171	37.50	226	35.00	281	230.00	336	80.00	415	469	50.00
7	45.00	62	25.00	117	25.00	172	85.00	227	40.00	282	1400.00	337	70.00	416	470	57.50
8	135.00	63	45.00	118	34.00	173	23.00	228	85.00	283	42.00	338	60.00	417	471	240.00
9	320.00	64	37.50	119	60.00	174	80.00	229	45.00	284	36.00	339	23.00	418	472	425.00
10	1100.00	65	w.d.	120	57.50	175	85.00	230	135.00	285	115.00	340	30.00	419	473	100.00
11	w.d.	66	52.50	121	45.00	176	170.00	231	18.00	286	50.00	341	26.00	420	474	190.00
12	w.d.	67	80.00	122	28.00	177	100.00	232	95.00	287	32.50	342	45.00	421	475	24.00
13	105.00	68	150.00	123	45.00	178	32.00	233	190.00	288	80.00	343	60.00	422	476	16.00
14	57.50	69	325.00	124	55.00	179	24.00	234	65.00	289	375.00	344	55.00		477	500.00
15	50.00	70	75.00	125	125.00	180	23.00	235	725.00	290	150.00	345	45.00	423	478	45.00
16	50.00	71	300.00	126	23.00	181	45.00	236	35.00	291	120.00	346	115.00	424	479	15.00
17	300.00	72	600.00	127	19.00	182	60.00	237	37.50	292	55.00	347	50.00	425	480	26.00
18	72.50	73	320.00	128	130.00	183	72.50	238	80.00	293	37.50	348	29.00	426	481	19.00
19	55.00	74	370.00	129	55.00	184	26.00	239	50.00	294	200.00	349	22.00	427	482	21.00
20	360.00	75	360.00	130	70.00	185	50.00	240	40.00	295	47.50	350	40.00	428	483	65.00
21	300.00	76	240.00	131	60.00	186	47.50	241	75.00	296	210.00	351	23.00	429	484	50.00
22	100.00	77	750.00	132	90.00	187	90.00	242	62.50	297	90.00	352	30.00	430	485	23.00
23	110.00	78	1450.00	133	47.50	188	100.00	243	115.00	298	65.00	353	32.50	431	486	21.00
24	16.00	79	34.00	134	75.00	189	190.00	244	24.00	299	16.00	354	15.00	432	487	19.00
25	w.d.	80	19.00	135	42.50	190	450.00	245	80.00	300	29.00	355	21.00	433	488	23.00
26	26.00	81	55.00	136	80.00	191	700.00	246	50.00	301	18.00	356	52.50	434	489	240.00
27	29.00	82	110.00	137	32.00	192	85.00	247	115.00	302	14.00	357	24.00	435	490	100.00
28	67.50	83	100.00	138	90.00	193	36.00	248	75.00	303	45.00	358	200.00	436	491	105.00
29	77.50	84	52.50	139	140.00	194	24.00	249	67.50	304	50.00	359	80.00	437	492	160.00
30	100.00	85	200.00	140	60.00	195	27.00	250	72.50	305	50.00	360	67.50	438	493	320.00
31	95.00	86	170.00	141	50.00	196	29.00	251	90.00	306	65.00	361	450.00	439	494	220.00
32	450.00	87	475.00	142	210.00	197	115.00	252	37.50	307	80.00	362	300.00	440		23.00
33	105.00	88	230.00	143	125.00	198	50.00	253	30.00	308	19.00	363	85.00	441		35.00
34	280.00	89	42.50	144	65.00	199	23.00	254	28.00	309	20.00	364	17.00	442		24.00
35	325.00	90	360.00	145	425.00	200	44.00	255	42.50	310	34.00	365	34.00	443		21.00
36	170.00	91	210.00	146	145.00	201	45.00	256	52.50	311	32.00	366	40.00	444		28.00
37	320.00	92	160.00	147	80.00	202	45.00	257	450.00	312	44.00	367	16.00	445		32.50
38	550.00	93	140.00	148	145.00	203	23.00	258	550.00	313	280.00	368	32.00	446		75.00
39	130.00	94	290.00	149	85.00	204	26.00	259	72.50	314	160.00	369	26.00	447		23.00
40	1000.00	95	270.00	150	160.00	205	50.00	260	34.00	315	w.d.	370	160.00	448		55.00
41	400.00	96	250.00	151	140.00	206	475.00	261	28.00	316	32.00	371	50.00	449		22.00
42	400.00	97	425.00	152	425.00	207	15.00	262	21.00	317	40.00	372	48.00	450		42.50
43	145.00	98	37.50	153	130.00	208	120.00	263	30.00	318	42.50	373	19.00	451		55.00
44	400.00	99	50.00	154	70.00	209	850.00	264	72.50	319	160.00	374	300.00	452		150.00
45	55.00	100	40.00	155	65.00	210	150.00	265	45.00	320	27.00	375	60.00	453		26.00
46	38.00	101	400.00	156	80.00	211	145.00	266	42.50	321	35.00	376	22.00	454		12.00
47	70.00	102	400.00	157	110.00	212	115.00	267	28.00	322	28.00	377	62.50	455		55.00
48	37.50	103	425.00	158	180.00	213	17.00	268	17.00	323	26.00	378	24.00	456		46.00
49	37.50	104	500.00	159	25.00	214	16.00	269	15.00	324	30.00	379	26.00	457		30.00
50	95.00	105	600.00	160	50.00	215	62.50	270	70.00	325	35.00	380	52.50	458		23.00
51	200.00	106	w.d.	161	95.00	216	125.00	271	62.50	326	28.00	381	46.00	459		14.00
52	145.00	107	21.00	162	37.50	217	21.00	272	57.50	327	24.00	382	13.00	460		72.50
53	62.50	108	27.00	163	140.00	218	42.50	273	11.00	328	30.00	383	55.00	461		20.00
54	190.00	109	12.00	164	22.00	219	13.00	274	75.00	329	25.00	384	40.00	462		27.00
55	210.00	110	17.00	165	50.00	220	52.50	275	20.00	330	21.00	385	50.00	463		42.50