

RARITIES OF THE WORLD



Robert A. Siegel
AUCTIONS

10 EAST 52nd STREET NEW YORK, N. Y. 10022

Tel.: 212 PLaza 3-6421

350th SALE

**RARITIES
OF THE
WORLD**

AT PUBLIC AUCTION

Tuesday

MARCH 25th, 1969

AT 7:45 P.M.

At the Waldorf-Astoria Hotel

LOUIS XVI SUITE, PARK AVENUE AND 50th STREET

Robert A. Siegel
AUCTIONS

10 EAST 52nd STREET NEW YORK, N. Y. 10022

Tel: 753-6421 (Area Code 212)

It has been our custom in previous Rarity Sales to offer a brief foreword in the catalogue.

However, this sale, our Sixth Annual Rarity Sale, presents such a scintillating galaxy of the greatest treasures known in United States Stamps that we will simply state with pride that never before in the annals of Philately has a more comprehensive or a more valuable offering been made in a single sale.

We cordially invite your participation in this unparalleled presentation. As usual, the auction will be held at the Waldorf-Astoria Hotel and light refreshments will be served following the sale. A call to our office will reserve a place for you.

Robert A. Siegel

MARCH 25th, 1969

ROBERT A. SIEGEL AUCTION GALLERIES, Inc.

10 East 52nd Street

New York, N. Y. 10022

Tel: 753-6421 (Area Code 212)

Please purchase for me at your auction to be held **March 25th, 1969**, the lots named below, the prices annexed being my limit on each lot. I agree to remit for purchases in accordance with the **Conditions of Sale** and to return no lots later than three days after receipt.

REFERENCES PLEASE

(if unknown to us)

SIGNED

New York State residents kindly include
County in address.

County

[illegible]

VALUATIONS

Upon request, estimate of value furnished on any lots in this auction.

UNITED STATES

POSTMASTERS' PROVISIONALS



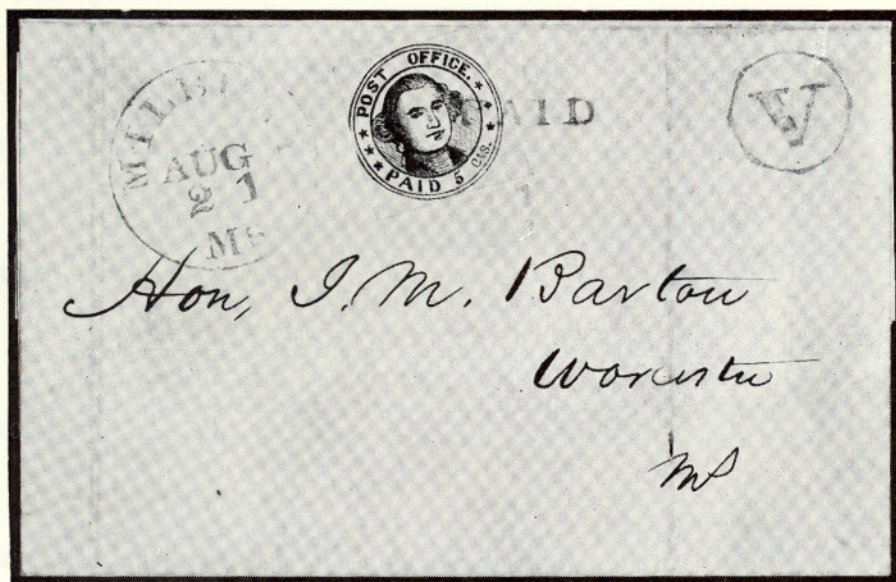
- 1 ☒ **Alexandria, Va., 5c Black on Buff, Ty. II (1X1a).** A magnificent example, with large margins & apparently Die Cut, Splendid impression & fresh color, just tied by Red "Alexandria, Va." town pmk., neat ms. "No. 70", address carefully erased, Very faint filing fold barely visible, The finest "Alexandria" cover known, A Matchless Gem, Ex-Caspary 16,000.00
- 2 **Post Office, Annapolis, Red Negative Double Circle with Eagle, same Handstamp as the Annapolis Provisional (2XU1), Struck on 1845 Postage Bill from Annapolis P. O., Fine, Rare** **E. XIV**
- 3 ☒ **Baltimore, Md., 5c Blue on Buff (3XU2).** Nearly complete impression of signature, neat matching "Baltimore" pmk on 1845 cover to Washington, D. C., light sealing wax discoloration in center, Very Fine, Exceptionally choice example of This Rarity 2,150.00

LOTS ON VIEW: Friday, Monday, Tuesday, March 21st, 24th, 25th from

10:00 A. M. to 3:30 P. M. Also by Appointment at an earlier Date.

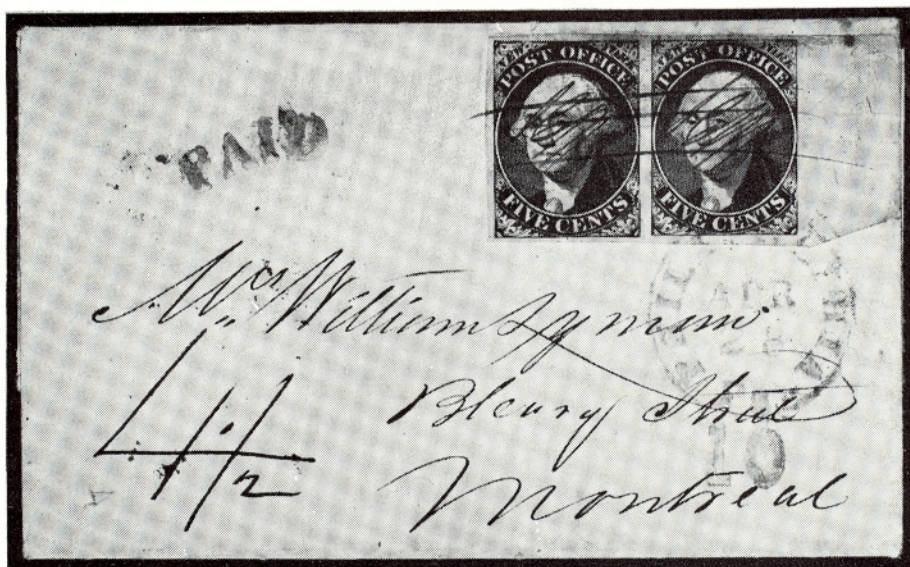


- 4 ☒ **Brattleboro, Vt., 5c Black on Buff (5X1).** Margins nearly all around, just in at L. R., Beautifully tied by Red "Paid" & by Red "Brattleboro" town pmk. on 1847 cover to Boston, one of the very few tied by the town pmk., Very slight aging far from stamp, A choice cover of utmost rarity 4,750.00





- 5 ☒ **Millbury, Mass., 5c Black on Bluish (7X1).** Margins all around, except L. outer line just shaved, Beautifully tied by single Red "Paid" on 1846 cover to Worcester, Ms., matching "Milbury, Ms." pmk. & "V" in circle, Very Fine, a Wonderful cover of Great Beauty, Ex-Green 13,000.00

- 6 ★ **New York, 5c Reprint on Bluish (9X1R).** Sheet of Nine Large margins, incl. L. sheet margin, light bend on one corner stamp. Very Fine, Rare 765.00+
- 7 **New York 5c Black, Signed "R. H. M." (9X1b).** Reconstructed Vert. Pair, each with Large Margins all around, Intense Shade & Impression, neat, light Blue ms. cancels, light crease across top stamp, B. stamp Extremely Fine, A Magnificent Showpiece of Greatest Rarity, believed to be the largest piece known, Ex-Newbury 1,800.00+



- 8 ☒ **New York, 5c Black (9X1).** Used from Philadelphia, Horiz. Pair, Large margins, incl. R. Sheet margin tied by blue "Philadelphia, Pa., 10" pmk. to Montreal, also tied by neat blue ms., Red "Paid" & ms. 4½ Exchange rate mark on the cover. Suggestion of tiny wrinkle in margin of L. Stamp. A Gorgeous cover of greatest rarity, possibly unique, Ex-Waterhouse E. XVI
- 9 ☒ **New York, 5c Black (9X1).** Two Horiz. pairs (originally a block, Pos. 6, 7, 11, 12, #7 Big Double Transfer) tied by Bright Red grids & L. pair by Red "New York" pmk. on 1847 cover to Mobile, Ala. ms. "20" rate, address partly inked out. Both pairs have margins all around, mostly large, one has minor crease & faint soiling, A Magnificent & Very Rare cover, Ex-Caspary E. XV
- 10 ★ **Providence, R.I., 5c & 10c Black (10X1, 2)** in Se-Tenant Pair, Large Margins, crease between stamps, otherwise Very Fine (Photo) 425.00



- 11 **St. Louis, Mo., 5c, 10c Black on Greenish (11X1, 11X2).** Vertical Strip of Three of each comprising a **Complete Reconstruction of The First State of the Plate.** The 5c has large margins except outer frame barely touched in two places at R. The 10c has huge margins except just touched at U. L. The 5c has neat ms. cancel. & bottom stamp has tiny sealed tear. The 10c is tied by **single Bright Red "St. Louis, Mo."** pmk. to a small piece, (leaving B. stamp uncanceled). The bot. stamp has a small sealed tear, but these minor faults are immaterial to such a magnificent & truly incomparable piece. A Wonderful Showpiece 7,500.00+
- 12  **St. Louis, Mo., 5c Black on Greenish, Ty. I, 10c Black on Gray Lilac, Vertical Pair, Ty. II & III (11X1, 11X5)** paying 25c Quintuple letter rate to Louisville, Ky., All the stamps have Large Margins all around & are tied by two clear Red "St. Louis, Mo." pmks, no ms. cancels, Extremely Fine, an unbelievably beautiful cover of the highest order of rarity, Ex-Casparry 5,150.00+
- 13  **St. Louis, Mo., 10c Black on Greenish, 20c Black on Gray Lilac (11X2, 11X6).** The 20c has Large to Enormous margins and is Extremely Fine, the 10c has large margins except just in at U. R., Beautifully tied together by Red "St. Louis, Mo." pmk. & single small ms. line on each, A Marvelous "Charmley & Whelan" cover to Philadelphia, especially so with such an outstanding example of the 20c stamp 8,500.00+



10

12

PAID

20

Mr. J. P. Buchanan

13



PAID

30

Mr. J. Chanley & Co.



Philadelphia
Pa



- 14 **St. Louis, Mo., 20c Black on Gray Lilac (11X6).** Large Margins all around, single light, neat pen stroke cancel, Very Fine, a Gorgeous stamp 5,000.00

1847 ISSUE

- 15 ★ **5c Brown (1).** "Block" of Three, Fresh, o. g., Large margins all around except outer line just shaved in two places at L. Small scissor cut in margin between stamps & light crease in margin only, A Fine and Scarce Piece, with P. F. Certificate 1,050.00+



- 16 ★田 **5c Orange Brown (1b).** Block, Large Margins all around, Brilliant Color & Impression, Remarkably Fresh with full o. g., minor, negligible gum wrinkle in R. pair, Extremely Fine, one of the Best Blocks in Existence 3,250.00
- 17 **5c Orange Brown (1b).** Horizontal Pair, Huge Margins incl. Right Sheet Margin, Wonderful Color & Impression, each with single neat Red "Paid" perfectly struck in center, Left stamp with Dot in "S", trivial ink spot in margin from ms. "paid" on back, Extremely Fine, a Gorgeous Pair **E. XII**



Ms. 65+10

James M. Buchanan

Miss D. M. B.

PAID

NEWARK
SEP 25
PAID

Hon John A. Parker

Steamer Pacific

Edward S. Whelen
Mr Geo. S.

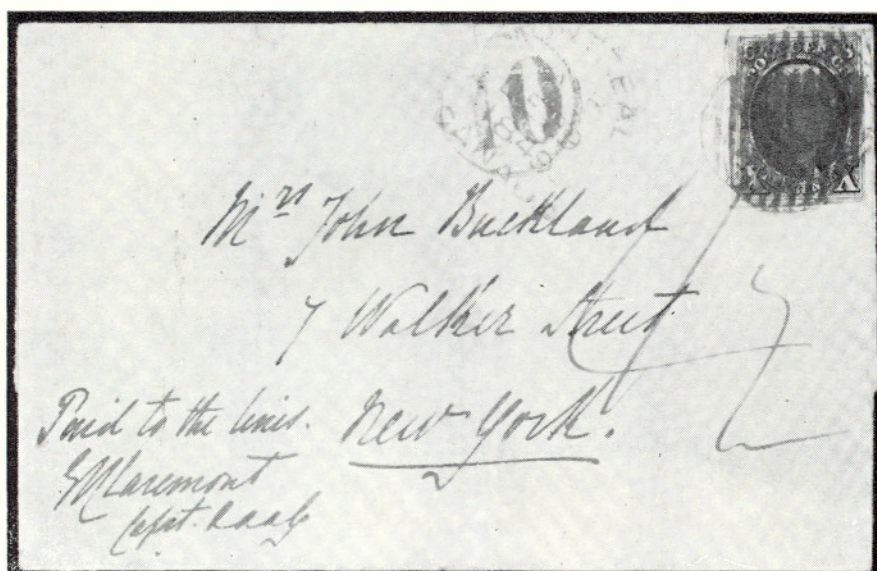
Korllogg

aneateles

N. Y.



- 18 **5c Brown, 10c Black (1, 2).** Each with margins all around, Very Fine, used together and beautifully tied by Orange "Vermt. & Masses R. R." (Remele V2), pmk., repeated on small, neat cover to Boston, also faint ms. cancels, A Gorgeous cover and a Great Rarity, one of the finest known combination covers, Ex-Waterhouse 2,250.00+
- 19 **10c Black (2).** Horizontal Pair, Large Margins, Deep, Intense Color & Sharp Impression, Brilliant Red Grid cancels, light crease in R. stamp, L. stamp Extremely Fine, a Very Handsome Pair 500.00

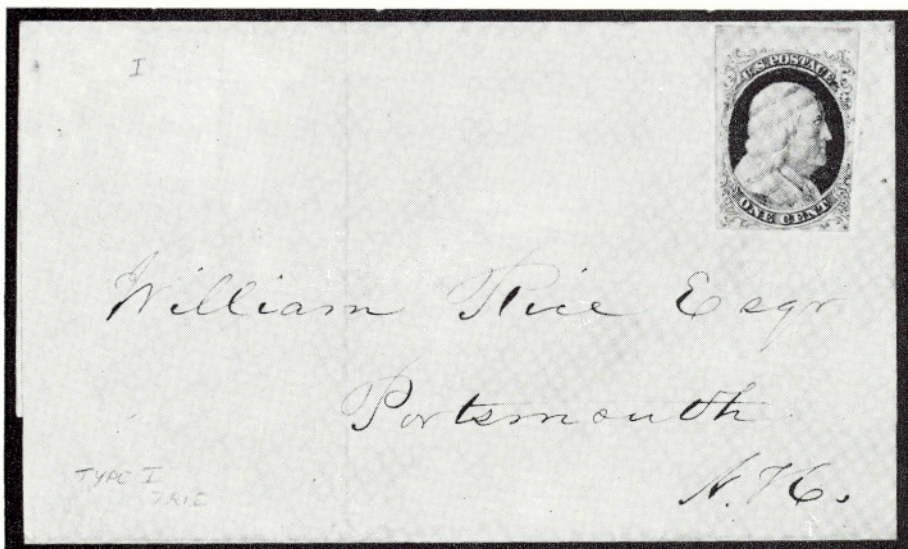


- 20 **10c Black (2)** Used from Canada, Ample to Large margins, tied by Red Grids on 1849 cover to N.Y., Red "Montreal, Canada" pmk. Red "10" in circle, Very Fine, Rare usage E. XVI



- 21 10c Black, Diagonal Half used as 5c (2a). Extremely Fine example with R. sheet margin, tied across the cut by Blue Grid, matching "Concord, N. H." pmk. to Manchester, N. H. on small neat cover, a 5c Brown (1) on separate cover from same correspondence & Very Fine, with same pmks. accompanies for verification, outstanding showpiece. Ex-Maclaren, White E. XVI

1851 ISSUE



- 22 1c Blue, Ty. I Pos. 7R1E(5), Rich color, Large margins, incl. T. sheet margin, except tips of ornaments touched at L. R., Just tied by neat Red Grid, on printed circular dated July 12, 1851, A handsome cover with a Fine example of one of the most desired U. S. Rarities 5,000.00+



- 23 ★ 田 1c Blue, Ty. Ia, Ty. IIIa (6, 8A). Combination Block, Top Pair Ty. IIIa, Bottom Pair the Rare Ty. Ia, Ample to Large Margins incl. part B. Sheet Margin except T. R. stamp least bit close at T., Marvelous Color & Impression, Brilliant & Fresh, full o. g., light crease in margin between stamps, the Ty. Ia Pair Extremely Fine, a Matchless Gem E. XVI
- 24 1c Dark Blue, Ty. Ia (6). Huge Margins, Bright, Rich Shade, light cancel, Extremely Fine 475.00

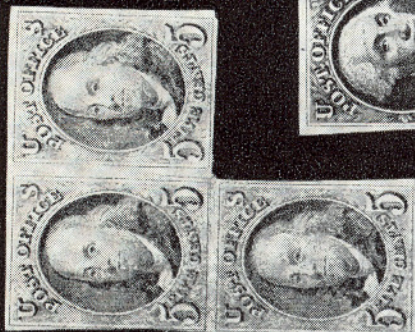
ESTIMATES

Our sales contain many 19th Century covers and fancy cancellations. We have had many requests to give the estimated cash value on these lots. We are trying to place a fair net valuation on each lot as a guide for bidding when no catalogue value portrays the true value. The chart below will be used, for example E. IV means out estimate cash value on this lot is \$30.00 to \$40.00. Lots may actually realize more or less than these estimates and under no circumstances are these estimates to be considered reserves but merely a guide to bidding.

E. I	up to \$10.00	E. IX	\$150.00 to \$200.00
E. II	\$10.00 to \$20.00	E. X	\$200.00 to \$250.00
E. III	\$20.00 to \$30.00	E. XI	\$250.00 to \$350.00
E. IV	\$30.00 to \$40.00	E. XII	\$350.00 to \$500.00
E. V.	\$40.00 to \$50.00	E. XIII	\$500.00 to \$750.00
E. VI	\$50.00 to \$75.00	E. XIV	\$750.00 to \$1000.00
E. VII	\$75.00 to \$100.00	E. XV	\$1000.00 to \$2500.00
E. VIII	\$100.00 to \$150.00	E. XVI	over \$2500.00



7



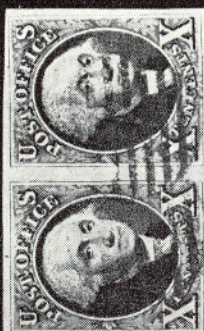
15



17



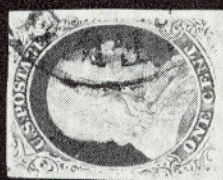
10



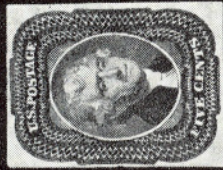
19



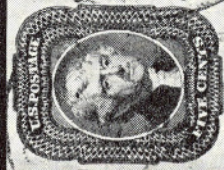
24



26



29



31



34



35



58

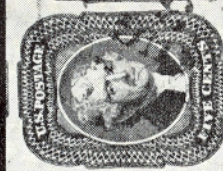
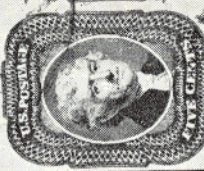
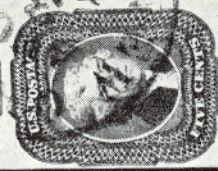


36



36

32



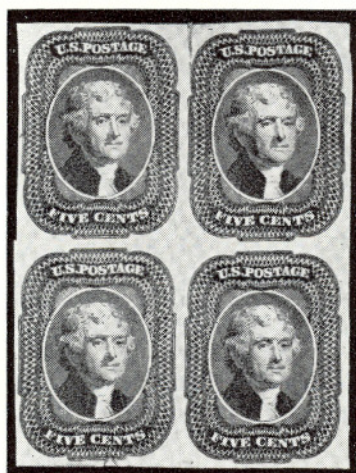


- 25 ★ 1c Blue, Ty. II (7). The Fabulous Sheet Corner Block of Twelve from Plate II with the "Big Crack" through four stamps, Full Sheet Margins at L. & T., balance with large margins except two at B. barely touched, Glorious Brilliant Color, Fresh, Full o. g., small closed tear almost entirely in margin above stamp #3, few slight creases, otherwise Extremely Fine, illustrated in Ashbrook and described as "one of the finest One Cent imperforate items known", An Incomparable Showpiece, Ex Lozier, Green, Moody E. XVI
- 26 1c Dark Blue, Ty. III, Uos. 99R2 (8). Large Margins all around, Beautiful Rich Color, light Town pmk., negligible corner crease in margin, an Exceptionally choice & Handsome Example of the Rarest Type III 950.00

**LOTS ON VIEW: Friday, Monday, Tuesday, March 21st, 24th, 25th from
10:00 A. M. to 3:30 P. M. Also by Appointment at an earlier Date.**

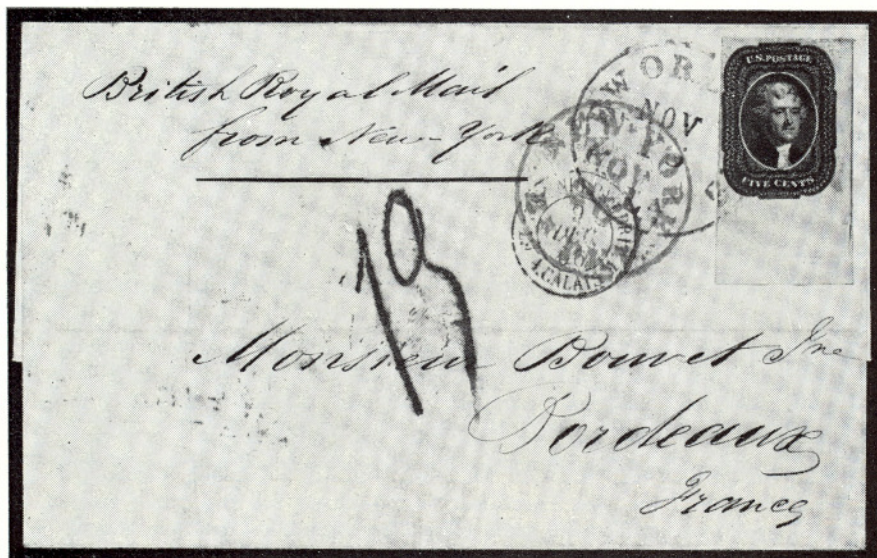


- 27 **1c Dark Blue, Ty. III, Pos. 99R2 (8).** Huge to Enormous margins with full B. sheet margin & traces of adjoining stamps on the other sides, Beautifully tied by Bright Red N. Y. Carrier pmk. on small neat cover, Extremely Fine, A Matchless Gem, illustrated in Ashbrook & stated by him to be the finest Type III ever seen, Ex-Newbury **E. XVI**
- 28 **3c Orange Red (11).** Block of 15, Margins nearly all around, exceptional in a block of this size, Exceedingly Fresh, nearly full o. g., faint crease along B., one stamp with small closed tear, Scarce & Handsome Show-piece, Ex-Caspary **360.00+**
- 29 **5c Red Brown (12).** Margins all around, Rich Deep Color, tiny negligible wrinkle in U. L. margin, a Very Beautiful Stamp **950.00**



- 30 **5c Red Brown (12).** Block, Large Margins all around, Wonderful Rich Color, large part o. g., two creases, one breaks into tear, mostly in margin, Very Fine appearance, A Fabulous Rarity, only two unused blocks known, Ex-Ayer, Duveen, Hind, Sinkler **14,000.00**

- 31 **5c Red Brown (12).** Horizontal Strip of Three, Large to Huge Margins all around, Rich Color, neat light Town pmks, an Immaculate Strip, Extremely Fine 475.00
- 32 **5c Red Brown (12).** Vertical Strip of Three, Large to Enormous Margins, Rich Deep Color, light New Orleans pmk., Wonderfully Fresh & Extremely Fine 475.00



- 33 **5c Red Brown (12).** A Fabulous corner single on cover to Bordeaux, France, with full B. sheet margin & full R. pane margin showing sheet center line, tied by "New Orleans, La.", ms. "British Royal Mail from New York", N. Y. & French transit pmks, A Gem E. XV
- 34 ★ **10c Green, Ty. I (13).** Pos. 99RI, Large Margins, Lovely Bright Color, Fresh, bare suggestion of light horiz. bend, Extremely Fine appearance 1,300.00
- 35 **10c Green, Ty. I (13).** Horiz. Pair, clear to Large margins all around, light town pmks., Very Fine, Scarce in Multiples 475.00
- 36 ★ **10c Green, Ty. II, Ty. IV (14, 16). Horizontal Strip of Eight,** Pos. 71-78L1, which includes Pos. 74 Recut at Top & Pos. 76 Recut at B., Gorgeous Rich Color, Huge Margins incl. Sheet Margin at L. except barely in at B. on stamp Pos. 74, Fresh, large part o. g., scissor cut in L. margin & between 3rd & 4th stamp clear of design, A Marvelous Showpiece, Probably Unique, the combination listed but unpriced, Ex-Casparly E. XVI
- 37 **10c Green, Ty. II, Ty. IV (14, 16).** Horizontal Combination Strip of Six, Pos. 73-78L1, Incl. Recut at T., Pos. 74L & Recut at B., Pos. 76L, tied on small piece by neat New Orleans pmks., Huge Margins, Bright Color, Extremely Fine, a Handsome Piece of Utmost Rarity E. XV
- 38 ★ **12c Black (17).** Block of Eight with Sheet Margin at R., mostly Large Margins except L. L. stamp barely touched at L., large part o. g., faint corner bend & natural gum creases, otherwise Very Fine, an Extremely Rare Piece, Ex-Crocker, Waterhouse 4,000.00+



6



28



37



41



38



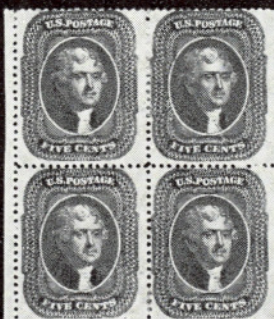
43



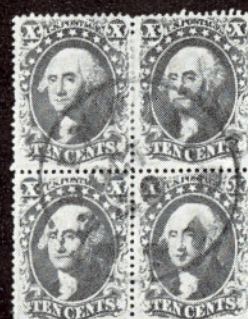
46



49



51



52

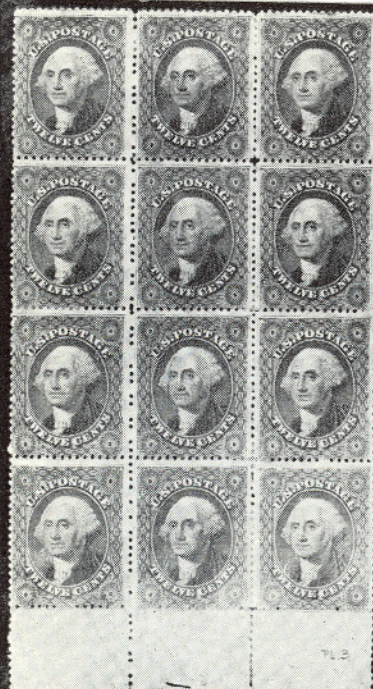
- 39 ☒ **12c Black (17).** Two Horizontal Pairs, one with Large Margins, other with three Large Margins & virtually clear at L., on cover to London, tied by Town pmk. & Red Transit marks, ms. "Steamer Pacific" trivial marginal scuffs on two stamps, Extremely Attractive Cover, Ex-White, Emerson **E. XI**
- 40 ☒ **12c Black, Diagonal Half Used as 6c (17a).** Tied by "New York, 7cts" on 1853 cover to New Bedford, Mass. from San Francisco with "Via Nicaragua Ahead of the Mails" in Red frame A wonderful cover, Exceedingly Rare with the Red "Via Nicaragua" **E. XV**

1857 ISSUE

- 41 **1c Dark Blue, Ty. Ia (19).** Full R. B. Corner Sheet Margins, Pos. 100L4 showing Full Center Line, Splendid Color, Beautifully tied on small piece by clear neat "Sturges, Mich." pmk., Very Fine, a Spectacular Stamp 300.00+
- 42 ☒ **1c Dark Blue, Ty. Ia (19).** Exceptionally Well Centered, tied by "Cambridge, Ms." pmk. on small neat locally used cover, Very Fine, Rare in such Beautiful Condition 400.00
- 43 ★ ☒ **1c Dark Blue, Ty. III, Ty. IIIa (21, 22).** Combination Block, Pos. 53-54, 63-64L IV, comprising three Ty. III & one Ty. IIIa, Beautiful Deep Color, fresh, large part o. g., Very Fine, Ex Lilly, Unpriced in catalogue **E. XV**
- 44 ☒ **1c Blue, Ty. V, 10c Green, Ty. V (24, 35).** Tied by clear "New York Ocean Mail" pmk., the 1c paying Carrier fee on small green envelope to San Francisco, Very Fine, A Remarkable Usage of Extreme Rarity; Certainly one of the finest "Ocean Mail" covers in existence **E. X**



- 45 ☒ **3c Red (26).** Tied by Bold, Sharp "Old Stamps, Not Recognized", clear "Philadelphia, Pa., Sep. 14, 1861" pmk., Bold "Due 3", on Fresh, Bright Cover to Salisbury, Conn., a Magnificent Cover, probably the finest known example **E. XV**



54



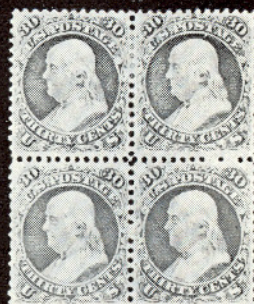
55



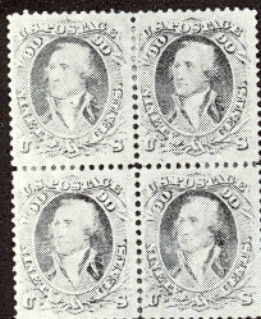
57



56



75



76



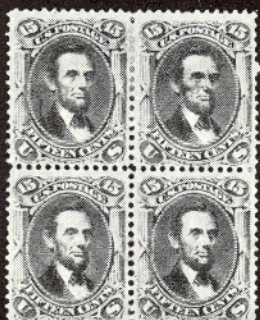
78



81



83



84



85

- 46 ★ 5c Red Brown (28). Block, Wonderful Rich Color, fresh, o. g., a few perfs. clipped at B. of L. R. stamp, otherwise Fine, One of the Rarest of all U. S. Blocks 5,000.00



- 47 ☒ 5c Indian Red (28A). Block of Six & Single, paying 35c rate to Switzerland, via Prussian Closed Mail, Remarkably well centered, Rich color and all beautifully tied by Bold "Platteville, Wis., Jan. 28, 1859" pmk., Cover slightly aged, one stamp has a few blunted perf. tips immaterial in such an outstanding rarity, A wonderful showpiece, probably unique, with part of Ashbrook letter of authenticity E. XVI
- 48 ★ 5c Brown, Ty. I (29). Horizontal Strip of Four, o. g., unusually Fresh, Beautiful Color, Very Well Centered for this, an Immaculate & Very Rare Strip, Ex-Caspary 520.00+
- 49 ★ 5c Orange Brown (30). Horiz. Block of Eight, Beautiful Color, fresh, o. g., Exceptionally Well Centered, Very Fine, Attractive Showpiece 750.00+
- 50 ☒ 5c Deep Orange Brown (30). Rich, Striking color, used with 10c Green, Ty. V (36) paying 15c rate to France the 5c just tied by French transit pmk., neat Red Grid cancels, The 5c is well centered but has some blunted perfs, the 10c is Fine, Signed "Ashbrook" with extensive explanation on back, A choice cover, Exceedingly scarce E. XII
- 51 ★ 5c Brown, Ty. II (30A). Block, part of Sheet Margin at L., Rich Color, fresh, o. g., Fine-Very Fine, a Choice Block 350.00
- 52 ☐ 10c Green, Ty. II, Ty. III, Ty. IV (32, 33, 34). Combination Block, Pos. 53-54, 63-64L, U. R. stamp Recut at B., L. R. stamp Recut at T. & B., Beautiful Deep Rich Color, neat Red Town pmk., closed tear in L. L. stamp not involving the Recuts which are Very Fine, a Rare & Remarkable Block of Great Beauty E. XIV
- 53 ☒ 10c Green, Ty. V (35). Vertical Strip of Three, tied together by bright Red grid with 3c Red (26) paying 33c rate to Bangkok, Siam, Bold Red "Newark, N. J. Paid" pmk., Red "London Paid" & "28". Very Fine, Unusually handsome cover in a scarce usage E. X

- 54 ★ 12c Black, Pl. III (36b). Block of Twelve with B. Sheet Margin, Brilliant, Fresh, nearly full o. g., one vert. row reinforced with bits of hinge, centered slightly to B., a Wonderful Block, Large Multiples of Plate III are Seldom Found 770.00+
- 55 ★ 24c Lilac (37). Block of Six, s. e. at L., Brilliant & Fresh, o. g., Unusually Well Centered, Very Fine, Choice & Handsome 730.00+
- 56 ★ 30c Orange (38). Block with B. Sheet Margin, Brilliant Color, Fresh, o. g., Very Fine, as these come, Handsome & Attractive 700.00
- 57 ★ 30c Orange (38). Block of Six, Pos. 77-79, 87-89L1, the latter with Double Transfer, Magnificent Brilliant Color, fresh, o. g., Very Fine, a Gorgeous Showpiece, Ex Lozier, Sinkler, Gibson 1,060.00
- 58 ★ 90c Deep Blue (39). Horiz. Pair, fresh, nearly full o. g., one has minute thin, otherwise Fine, Scarce in Multiples 700.00



- 59 ★ 90c Deep Blue (39). Block of Nine, Beautiful Rich Color, Wonderfully Well Centered, Brilliant & Fresh, o. g., negligible faint bend in L. row, couple of partly blunted perf. tips at B., a Handsome Showpiece, Very Fine, Ex-Caspary E. XVI
- 60 ★ 90c Deep Blue, Reprint (47). Gorgeous Rich Color, couple of irregular perfs as often, Very Fine, with P. F. Certificate 800.00

1861 "AUGUST" ISSUE



61

62

66

68

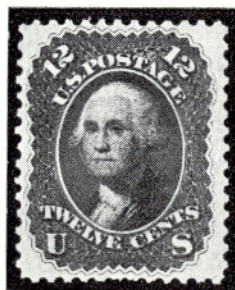
- 61 ★ 1c Indigo, "August" (55). Fresh, o. g., Very Fine for this outstanding Rarity 7,500.00
- 62 ★ 5c Brown, "August" (57). Fresh, o. g., Very Fine 4,250.00
- 63 10c Dark Green, "August" (58). Horiz. Pair, Beautiful Deep Rich Color, neat clear "San Francisco Oct. 30, 1861" pmk., Bold Red "3", (foreign rate mark), centered trifle to R., Very Fine, A Pretty Pair 375.00



64

67

- 64 ★ 10c Dark Green, "August" (58). Block with B. Margin showing part Im-print & Plate No. 4, the L. L. stamp is Pos. 94, the famous Double Transfer showing a Previous Entry of the 90c 1861, nearly full o. g., slight gum stains, reinforced due to separation in places, few minor flaws, Fine appearance, this unique Block is described in Brookman's study of Nineteenth Century Postage Stamps, a Most Remarkable Block E. XVI



- 65 ★ **12c Black, "August" (59).** Wonderfully Well Centered, Gorgeous Color, fresh, o. g., couple perf. tips partly blunted, Very Fine, one of the Best of the few Known Copies of this Great Rarity 20,000.00
- 66 ★ **24c Violet, "August" (60).** Wonderfully Well Centered, Magnificent Rich Color, fresh, o. g., Extremely Fine, a Marvelous Stamp 1,000.00
- 67 ★ 田 **24c Grayish Lilac, "August" (60a).** Block, Magnificent Color & Impression, fresh, full o. g., one has tiny thin speck, one stamp has several clipped perfs, another has couple perfs nibbed at T., an Attractive and Extremely Rare Block, Listed but Unpriced in Scott, with P. F. Certificate —
- 68 ★ **30c Red Orange, "August" (61).** Beautiful Brilliant Color, Fresh, o. g., diagonal gum crease, Very Fine appearance 6,000.00
- 69 ★ **90c Dull Blue, "August" (62).** Well Centered, Wonderful Rich Color, fresh, o. g., some perfs. short at top otherwise Very Fine, A Rare Stamp 6,500.00

1861 ISSUE

- 70 ② **3c Pigeon Blood Pink (64a),** Well Centered, Beautifully tied by "Kalamazoo, Mich., Nov. 6, 1861" pmk. on Fresh, Bright cover to Skaneateles, N. Y., a few perfs. at bot. partly blunted, Very Fine Cover, with P. F. Certificate 500.00
- 71 ② **3c Rose (65).** Twelve tied by Blue "Martinsburg, W. Va.", Four Tied by ms. "Ft. Seneca, O.", and one uncanceled, on an Amazing Collection of Seventeen Different Beautiful **Hand Drawn Patriotic Covers**, All Featuring Overall Designs, Incorporating The Address, done in Blue, Reds, Browns & Blacks with a Considerable Degree of Artistic Skill, The Majority show Eagles & Ornate Scrollwork but a Variety of other Patriotic Motifs & Mottoes are also used, no two being alike, 3 stamps have faults, two have neatly sealed cover tears & one is a bit faulty at R., otherwise fresh & Fine, A Wonderful Collection to which Words cannot adequately do justice **E. XV**



- 72 **5c Buff (67).** Strip of Six, (5 across with one more above R. stamp) each with bold San Francisco "Cog Wheel" cancel. which ties one stamp on back of 1862 cover to Germany, one has small nick, Well centered, Very Fine, Certainly one of the finest & most spectacular 5c Buff covers in existence **E. XV**

- 73 ★ **24c Steel Blue (70b).** Magnificent Rich Color, Wonderfully Fresh, o. g., a Very Fine Example of a Great Rarity **950.00**



- 74 ★ **24c Steel Blue (70b).** Top Sheet Margin Block, Marvelous Rich Color, fresh, o. g., two stamps have tiny thins, another with a light crease, otherwise Very Fine, only two blocks of four & a block of six are known, all of which have some faults, Attractive Block of utmost rarity, Ex-Gibson 3,800.00+



48



60



63



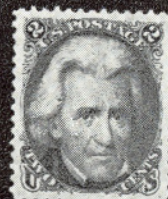
69



73



80



86



87



88



89



97



99



100



101



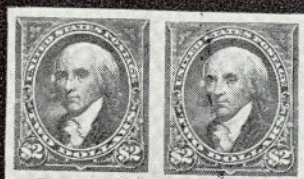
134



136



137



139



175



164



165



179

- 75 ★ 30c Orange (71). Block, Beautiful Bright Color, fresh, o. g., Extremely Fine, a Magnificent Block, Ex-Lilly, with P. F. Certificate 285.00
- 76 ★ 90c Blue (72). Block, Beautiful Bright Color, fresh, o. g., tiny closed tear in one stamp, some minor reinforcement, otherwise Fine-Very Fine, Rare & Attractive 1,100.00



- 77 90c Blue (72). Used with 24c Red Lilac (70) paying \$1.14 rate New York to Shanghai, China, Both tied by neat Grids, Red "N. York, Am. Pkt, Paid" pmk., London & Hong Kong transit pmks, Very Fine, A Gorgeous, Immaculate cover from the Augustine Heard correspondence, Ex-Caspary E. XVI
- 78 ★ 2c Black (73). T. Sheet Margin Block of 18, Brilliant & Fresh, o. g., Very Fine, An Extraordinary Block 516.00+



79

82

- 79 ★ 3c Red, Grilled All Over (79). Block, Unusually Well Centered, nearly all perfs. intact, Fresh, an Exceptional Block, one of the Finest of the few known 2,750.00

- 80 ★ 3c Rose, Imperforate, Grilled All Over (79a). Horiz. Pair, Huge Margins, Rich Color, o. g., Extremely Fine, with P. F. Certificate 500.00
- 81 ★ 3c Rose, Imperforate, Grilled All Over (79a). Block, Huge Margins, Deep Rich Color, fresh, o. g., couple grill points, penetrate margin only between stamps, Extremely Fine 1,000.00
- 82 ★ 15c Black, E. Grill (91). Block, Brilliant & Fresh, o. g., Unusually Well Centered, Very Fine, a Wonderful Block 1,500.00
- 83 ★ 10c Green, F. Grill (96). Block, Beautifully Centered, Fresh, o. g., Very Fine, Seldom Found in such Choice Condition 500.00
- 84 ★ 15c Black, F. Grill (98). Block, Fresh, o. g., Well Centered, B. pair with very faint crease, nevertheless a Handsome & Attractive Block 400.00
- 85 ★ 24c Gray Lilac, F. Grill (99). Block, Rich Color, fresh, o. g., centered trifle to R., Very Fine for this difficult & elusive block 1,000.00
- 86 ★ 2c Black, Re-Issue (103). Wonderfully Well Centered, Fresh, o. g., Extremely Fine, with P. F. Certificate 450.00
- 87 ★ 3c Brown Red, Re-Issue (104). Beautiful Deep Color, fresh, part o. g., Very Fine with P. F. Certificate 625.00
- 88 ★ 15c Black, Re-Issue (108). Intense Color, Very Fine, with P. F. Certificate 525.00
- 89 ★ 24c Deep Violet, Re-Issue (109). Beautifully Centered, one slightly blunted perf., Very Fine, with P. F. Certificate 625.00

1869 PICTORIAL ISSUE

- 90 ★ 15c Brown & Blue, Ty. I (118). Block of Nine, Bright Colors, fresh, o. g., centered U. R., the Largest Known Block, Ex-Worthington, Lozier, Sinkler, Gibson, A Remarkable Showpiece **E. XVI**
- 91 ★ 15c Brown & Blue, Ty. II (119). Block of Nine, Beautifully Centered, Gorgeous Rich Colors, large part o. g., some perfs. strengthened, L. R. stamp repaired, otherwise Very Fine, illustrated in Brookman where it is called "one of the finest known blocks" 1,197.00+



92

94

95

- 92 15c Brown & Blue, Center Inverted (119b). Splendid colors, neat, light cancel., well centered as these come, Very Fine Example of this popular Rarity 4,000.00

- 93 ★ 24c Green & Violet (120). Block of Nine, Beautiful Deep Rich Colors, centered bit to R., fresh, o. g., Fine, the Largest Known Block & the Rarest Multiple of the 1869 Issue, a Fabulous Showpiece, illustrated in Brookman, Ex-Worthington, Lozier, Sinkler, Gibson E. XVI
- 94 24c Green & Violet, Center Inverted (120b). Bright, Fresh Colors, light cancel, light internal crease, better than usual centering, a Choice & Handsome Rarity 3,000.00
- 95 30c Blue & Carmine, Flags Inverted (121b). Excellent Colors, neat geometric cancel, well centered, Extremely Fine, an Outstanding & Handsome Example of this Scarcest of U. S. Inverts, Ex-Moody 9,500.00



- 96 ★ 90c Carmine & Black (122). Block, Beautiful Deep Colors, fresh, large part o. g., few perfs. reinforced, centered to L., an Exceedingly Rare & Desirable Block 11,000.00
- 97 ★ 3c Blue, Re-Issue (125). Well Centered, Bright Color, part o. g., couple blunted perfs., otherwise Very Fine, Scarce 600.00
- 98 ★ 10c Yellow, Re-Issue (127). Block, Centered, fresh o. g., two slightly blunted perfs. and one stamp has almost imperceptible margin tear, otherwise Extremely Fine, A Great Rarity, Ex-Caspary, with P. F. Certificate 2,250.00
- 99 ★ 15c Brown & Blue, Re-Issue (129). Nicely Centered, Gorgeous Rich Colors, fresh, o. g., Extremely Fine, with P. F. Certificate 350.00
- 100 ★ 30c Blue & Carmine, Re-Issue (131). Wonderfully Well Centered, Glorious Brilliant Colors, fresh, o. g., Extremely Fine, with P. F. Certificate 425.00
- 101 ★ 90c Carmine & Black, Re-Issue (132). Fresh, o. g., Brilliant colors, tiny corner crease, otherwise Very Fine 700.00

BANK NOTE ISSUES

- 102 ★ 3c Green, Grill, Imperforate (136b). Block of Sixteen with full Bottom Imprint & Pl. No. 44, Mint, Fresh, Extremely Fine, Exceedingly Rare, probably Unique, (Cat. 2,800.00 as ordinary pairs) E. XVI
- 103 ★ 7c Vermilion, Grill (138). Block, Brilliant Color, Wonderfully Fresh, o. g., strong clear Grill tiny pinhead thin in one otherwise Very Fine, an Exceedingly Scarce Block 825.00



90



91



93



98

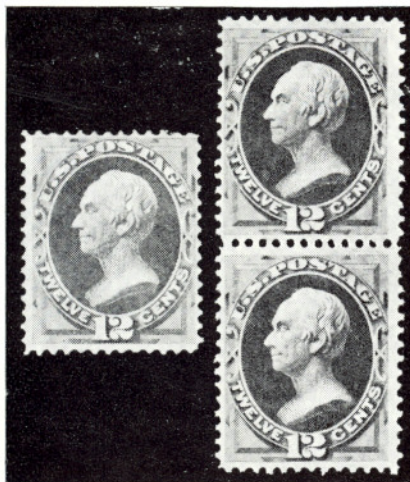


103



104

- 104 ★ 7c Vermilion, Grill (138). Block of Six with L. Sheet Margin, Beautiful Bright Color, fresh, o. g., lightly hinged once, one row of grill points clearly shows on four stamps, other two with faint traces, Very Fine, a Handsome Showpiece 1,165.00+
- 105 ★ 10c Brown, Grill (139). Block of Six with the Split Grill variety, Pretty Color, Wonderfully Fresh, o. g. a clear row of grill points on each of the L. four stamps, other two with traces only, Centered a little to T., Very Fine, Extremely Scarce, Ex-Caspary 1,575.50+



106

107

- 106 ★ 12c Dull Violet, Grill (140). Pretty Color, showing few grill points clearly, Accompanying Letter from Ezra Cole States: "in my opinion this is an unused stamp, in the interest of accuracy, there is a slight soiling which appears on the face of the stamp, but this is not a cancellation." Other Documentation Includes A. P. S. Certificate "unused but not o. g.", Letter from L. G. Brookman "I believe the stamp did go thru the grilling machine", and P. F. Certificate #2976 and 24797, the latter stating that it is a Genuine Grill but used, Our opinion is best reflected by Mr. Cole's statement, quoted above, Fine 3,000.00
- 107 ★ 12c Dull Violet, Grill (140). Vertical Pair, Bottom stamp has a fairly clear grill showing several points and full outline, Top stamp shows only a faint outline of the grill, Fresh, o. g., Brilliant, centered a bit to L., Very Fine 6,000.00+

**LOTS ON VIEW: Friday, Monday, Tuesday, March 21st, 24th, 25th from
10:00 A. M. to 3:30 P. M. Also by Appointment at an earlier Date.**

Robert A. Siegel
Auction Galleries Inc.

ANNUAL
RARITIES OF THE **WORLD**
AUCTION

COLOR PLATES



*Mr. J. M. ...
Henry ...*



PAID



PAID



Hon John A. ...

*British Royal Mail
from New York*



*Bowet Inc
Portland*



DUE 3



OLD STAMPS
NOT RECOGNIZED



"The Union, it must and shall be preserved."



*Thank all,
Salisbury*

*Mr. ...
Answered.*

*Miss ...
San Francisco*









105



110



112



111



116



117



120



130



131



132



- 108 ★ 90c Carmine (155). Block of Six with Sheet Margin at R., Marvelous Rich Color, fresh, o. g., faint corner bend in U. L. stamp, Very Fine, a Gorgeous Showpiece 2,450.00
- 109 ★ 6c Dull Pink (159). Top Imprint Plate No. Block of 14, Nicely Centered, fresh, o. g., closed tear in selvage & U. R. Pair, otherwise Very Fine & Very Rare, Listed but unpriced E. XIII
- 110 ★ 7c Vermilion (160). Block, Lovely Bright Color, Brilliant Fresh, o. g., Very Fine, an Exceptionally Choice Block 450.00
- 111 ★ 10c Brown (161). Block of Ten, (8x2), Lovely Deep Color, fresh, o. g., faint gum bends affect three stamps, Fine-Very Fine, a Beautiful & Rare Multiple 820.00
- 112 ★ 90c Rose Carmine (166). Block, Rich Color, fresh, nearly full o. g., Very Fine 725.00



113

114

115

118

119

- 113 ★ 7c Reddish Vermilion, Special Printing (171). Rich Vivid Color, Beautifully Centered, Very Fine, with P. F. Certificate 900.00
- 114 ★ 24c Dull Purple, Special Printing (175). Magnificent Brilliant Color, Very Fine, with P. F. Certificate 800.00
- 115 ★ 30c Greenish Black, Special Printing (176). Excellent Color, nearly all perfs. intact except at R., Very Fine example of a Great Rarity, with A. P. S. & P. F. Certificate 1,800.00

102



109



121



- 116 ★ 2c Vermilion, Imperforate (178a). Block, light creases, Very Fine appearance, with P. F. Certificate 900.00
- 117 ★ 90c Carmine (191). Vertical Block of Eight with Sheet Margin at R., Lovely Rich Color, Exceptionally Well Centered, fresh, o. g., Very Fine, a Gorgeous Showpiece 1,600.00
- 118 ★ 7c Scarlet Vermilion, Special Printing (196). Beautiful, Brilliant Rich Color, "Jumbo" Margin at T., Very Fine, with P. F. Certificate 1,250.00
- 119 ★ 90c Dull Carmine, Special Printing (202). Rich Color, tiny natural paper inclusion, Very Fine, with P. F. Certificate 2,300.00
- 120 ★ 2c Pale Red Brown, Special Printing (211B). Block, fresh, o. g., tiny closed tear in U. R. stamp, others Very Fine 750.00
- 121 ★ 90c Orange (229). Top Imprint Plate No. Block of 36, Brilliant Rich Color, fresh, o. g., Fine-Very Fine, **believed to be the Largest known Block**, a Remarkable Showpiece 2,200.00+

1893 COLUMBIAN ISSUE



- 122 ★ 4c Columbian, Blue, Error (233a). Block, Fresh, Mint, Perforations barely touch on bottom pair at L., Exceedingly Rare Block 18,500.00
- 123 ★ 50c Columbian (240). Block, Well Centered, Rich Color, fresh, o. g., Very Fine 325.00
- 124 ★ \$1.00 Columbian (241). Block, Wonderfully Well Centered, Brilliant Color, fresh, o. g., Extremely Fine 775.00
- 125 ★ \$2.00 Columbian (242). Block, Bright Color, fresh, o. g., Extremely Fine 950.00
- 126 ★ \$3.00 Columbian (243). Block of Eight, Wonderful Rich Color, fresh, o. g., despite flaws affecting each stamp the block is of uniformly Fine appearance, a Scarce & Desirable Block 4,800.00+



123



124



126



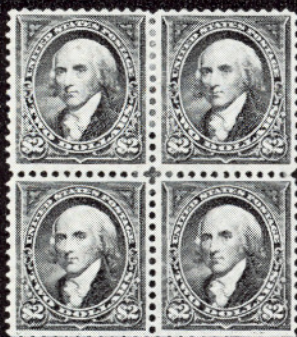
125



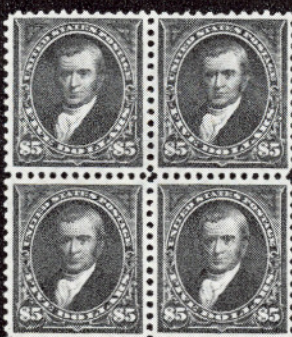
133



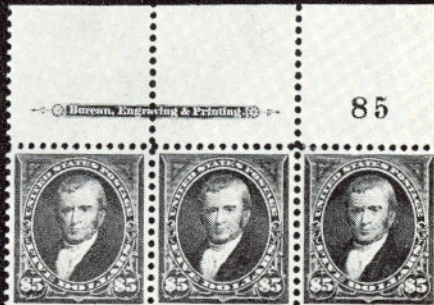
135



138



141



140



- 127 ★ 4-cent **Columbian (244)**. Block, Magnificent Color, Beautifully Centered, Fresh, o. g., gum bend at B., Extremely Fine, a Marvelous Block 3,750.00



- 128 ★ 5-cent **Columbian (245)**. R. Sheet Margin Block, Beautifully Centered, Deep Intense Color, fresh, o. g., Extremely Fine, A Gorgeous Block 3,500.00

1894-1898 ISSUES

- 129 ★ \$1.00 **Black, Ty. I, Ty. II (261, 261A)**. Combination Block of 18, L. Vertical Row Ty. I, balance Ty. II, fresh, o. g., slightly reinforced, gum crease through three stamps in second vert. row from L., others mostly Fine-Very Fine, Rare & Attractive 3,135.00+
- 130 ★ \$1.00 **Black, Ty. II (261A)**. Block, Sheet Margin at R., Well Centered, Intense Color, o. g., few perfs. separated, Extremely Fine, Ex-Bingham, with P. F. Certificate 625.00
- 131 ★ \$2.00 **Dark Blue (262)**. Block, Marvelous Color, fresh, o. g., Extremely Fine, Ex-Lilly with P. F. Certificate 1,150.00
- 132 ★ \$5.00 **Dark Green (263)**. Block with Sheet Margin & Half Arrow at R., Lovely Deep Color, fresh, o. g., Very Fine, Exceedingly Rare in this condition 1,800.00



129



142 EX

PRINTED BY THE
CONTINENTAL BANK NOTE CO., NEW YORK

No. 120

No. 123



PRINTED BY THE
CONTINENTAL BANK NOTE CO., NEW YORK

217EX

133	★	15c Dark Blue, Imperforate (274a). Block, Horiz. Line at Center, fresh, o. g., Very Fine, Ex-Lilly, with P. F. Certificate	700.00
134	★	50c Red Orange, Imperforate (275b). Horiz. Pair, Gorgeous Brilliant Color, fresh, o. g., Extremely Fine	475.00
135	★	\$1.00 Black, Ty. II (276A). Block, Wonderfully Well Centered, fresh, o. g., Extremely Fine, with P. F. Certificate	750.00
136	★	\$1.00 Black, Imperforate (276b). Horiz. Pair, fresh, o. g., Extremely Fine, with P. F. Certificate	475.00
137	★	\$2.00 Dark Blue (277). T. Imprint Plate No. Strip of Three, Beautiful Deep Color, fresh, o. g., Extremely Fine	400.00
138	★	\$2.00 Dark Blue (277). Block, Lovely Rich Color, fresh, o. g., Very Fine	500.00
139	★	\$2.00 Dark Blue, Imperforate (277b). Horiz. Pair, Rich Deep Color, fresh, o. g., Extremely Fine	625.00
140	★	\$5.00 Dark Green (278). T. Imprint Plate No. Strip of Three, Wonderfully Well Centered, Rich Color, fresh, o. g., Extremely Fine	900.00
141	★	\$5.00 Dark Green (278). Mint Block, Beautifully Centered, Gorgeous Color, Brilliantly Fresh, Extremely Fine, with P. F. Certificate	1,250.00

1898 TRANS-MISSISSIPPI ISSUE

142	P	1c-\$2.00 Trans-Mississippi Large Die Proofs (285P-293P). Cpl. Set, Very Fine	920.00
-----	---	---	--------



143	★	8c Trans-Mississippi, Imperforate Horizontally (289a). Top Sheet Margin Pair, fresh, o. g., unusually well centered, crease in margin only, far from stamps, Extremely Fine	3,000.00
144	★	50c Trans-Mississippi (291). Block, Exceptionally Well Centered, Gorgeous Deep Rich Color, fresh, o. g., Extremely Fine	850.00



144



145



146



147



154



155



156



157



159



162

- 145 ★ 田 \$1.00 Trans-Mississippi (292). Block, Fresh, o. g., Very Fine 2,000.00
- 146 ★ 田 \$1.00 Trans-Mississippi (292). Block, Wonderfully Well Centered, fresh, o. g., tiny trivial thin in one, otherwise Extremely Fine, with P. F. Certificate, a Gorgeous Block 2,000.00
- 147 ★ 田 \$2.00 Trans-Mississippi (293). Block, Wonderful Rich Color, fresh, o. g., Very Fine for this, Choice & Handsome 2,700.00

TWENTIETH CENTURY ISSUES

- 148 ★ 1c-10c Pan-American (294-299). Cpl. Set of Sheets, selvedge missing on one side of 1c & 2c Sheets, Fine-Very Fine throughout, Rare Set of Sheets 11,210.00+



149

151

152

- 149 ★ 1c Pan-American, Center Inverted (294a). Exceptionally Well Centered, Very Fine 2,750.00



- 150 ★ 田 1c Pan-American, Center Inverted (294a). Block, Exceptionally Well Centered, three stamps have negligible thins, one of which also has an almost invisible pinhole, Very Fine appearance A Rare, Handsome & Desirable Block, with P. F. Certificate 15,000.00
- 151 ★ 2c Pan-American, Center Inverted (295a). Beautifully Centered, few bits of paper adhere to gum, minor crease across corner, Very Fine appearing example of this Much Sought After Rarity 13,500.00
- 152 ★ 4c Pan-American, Center Inverted (296a). Couple slightly blunted perf. tips, a Fine & Desirable Copy of this Popular Error 4,250.00

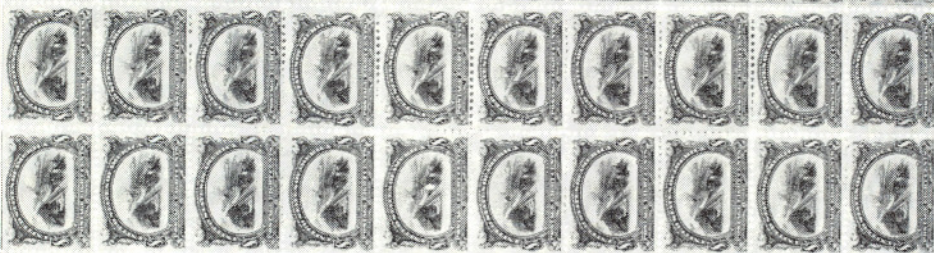
10C
10C

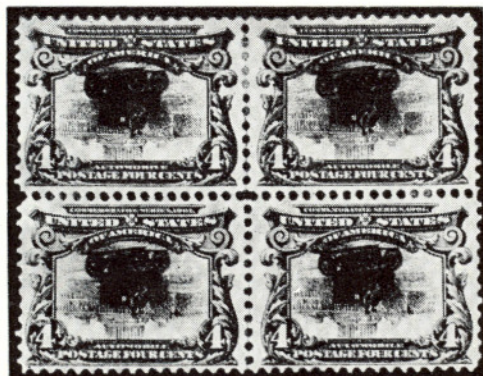
1151

1166

1151

148EX





- 153 ★ 4c Pan-American, Center Inverted (296a). Block, Exceptionally Well Centered, large part o. g., Vertical Perfs. strengthened & Horiz. Perfs Rejoined, L. L. stamp has a neatly closed tear at B., A Magnificent Block of the Utmost Rarity, with P. F. Certificate 25,000.00

1902-1903 ISSUE

- 154 ★ \$1.00 Black (311). Block, Beautifully Centered, Extremely Fine 500.00
 155 ★ \$2.00 Dark Blue (312). Block, Extremely Fine 675.00
 156 ★ \$5.00 Dark Green (313). Block, Wonderfully Well Centered, Extremely Fine 1,600.00
 157 \$5.00 Dark Green (313). Used Block, neat Registry pmks., Very Fine 700.00



158

160

- 158 4c Brown, Imperforate (314A). Machine cancel, Fine, a most Desirable Copy of this Great Rarity, with P. F. Certificate 2,150.00
 159 ★ 5c Blue, Imperforate (315). Block, Very Fine 550.00
 160 ★ 5c Blue, Coil (317). Vertical Pair, Very Fine Example of this Rarity, with A. P. S. & P. F. Certificates 1,250.00
 161 ★ 2c Light Carmine (319 var.). Vert. strip of 3, Top Pair Rouletted Between, with L. sheet margin, Fine & Rare 300.00



166

168

170



173



176



171

174

178

- 162 ★ 2c Carmine, Imperforate Horizontally (319d). Block, Reperforated at L., Very Fine appearance, Handsome Example of this Great Rarity, with P. F. Certificate 1,500.00
- 163 ★ 2c Lake, Imperforate (320a). Center Line Block, Extremely Fine, Rare, Ex-Lilly, with P. F. Certificate 800.00
- 164 ★ 10c Yellow, Coil (356). Mint Pair, Extremely Fine, with P. F. Certificate 500.00
- 165 ★ 10c Yellow, Coil (356). Guide Line Pair, Extremely Fine 700.00

BLUISH PAPERS

- 166 ★ 3c Deep Violet, Bluish (359). Block, well centered, two tiny thin specks, Reperfed at L, Very Fine appearance 1,400.00



167

169

172

- 167 ★ 4c Orange Brown, Bluish (360). Nicely Centered, faint, negligible corner gum wrinkle, still a Very Fine example of this much sought-after Rarity 3,600.00
- 168 ★ 4c Orange Brown, Bluish (360). Block, Unusually Well Centered, a few perfs. separated & neatly reinforced, Very Fine, a Magnificent Block of this Great Rarity, Ex-Green 16,000.00
- 169 ★ 5c Blue, Bluish (361). Well Centered, Extremely Fine 1,100.00
- 170 ★ 5c Blue, Bluish (361). Block, Well Centered, Very Fine, Beautiful & Exceedingly Rare in such Choice Condition 5,000.00
- 171 ★ 6c Red Orange, Bluish (362). Block, Well Centered, reperfed at R., otherwise Very Fine 1,100.00
- 172 ★ 8c Olive Green, Bluish (363). Beautifully Centered, Extremely Fine 3,600.00
- 173 ★ 8c Olive Green, Bluish (363). The Unique U. L. Sheet Corner Block, Fresh, centered to L. R., one of the Greatest U. S. Rarities 16,000.00
- 174 ★ 10c Yellow, Bluish (364). Block, centered bit to U. R., T. L. stamp has tiny inclusion, as often, Fine 1,150.00
- 175 ★ 13c Blue Green, Bluish (365). Nicely Centered, tiny natural paper inclusion, as often, Very Fine 625.00
- 176 ★ 13c Blue Green, Bluish (365). B. Imprint Plate No. Block of Six, Fine, Handsome & Exceedingly Rare 4,350.00
- 177 13c Blue Green, Bluish (365). Block, light Oval "Saginaw, Mich." cancels, one bent corner perf., Fine-Very Fine, A Rare & Handsome Block 1,000.00
- 178 ★ 15c Pale Ultramarine, Bluish (366). Block, few perfs. strengthened, Fine-Very Fine, a Scarce Block 1,100.00



161



163



177



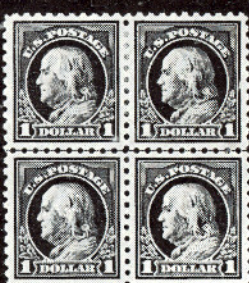
181



183



184



185



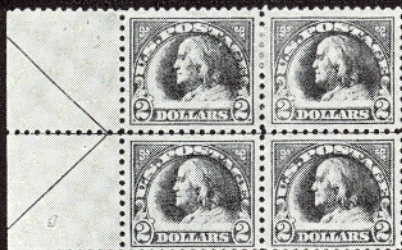
186



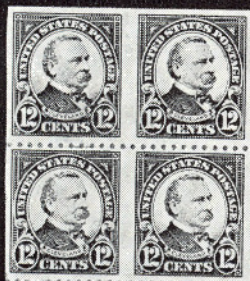
194



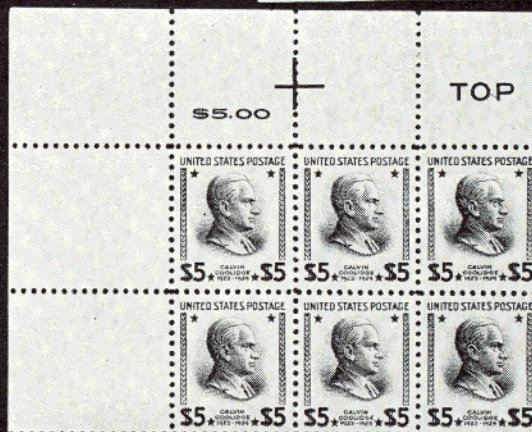
188



192



199



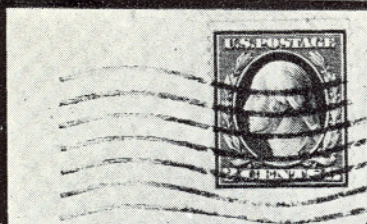
206

1910-1923 ISSUES

179		3c Deep Violet, "Orangeburg" Coil (389). Unusually Large Margins, two perfs. trifle bent, an Exceptionally Fine Copy of this Popular Rarity, signed "J. M. Bartels" & "G. B. Sloane," with A. P. S. Certificate (Photo)	900.00
180		3c Deep Violet, "Orangeburg" Coil (389). Tied on Blue Piece by Wavy Line Machine Cancel, Fine Example of this Rare Coil, with A. P. S. Certificate	900.00
181	★	50c Violet (440). Mint Block, Exceptionally Well Centered, Extremely Fine	525.00
182	★	2c Carmine, U. S. Automatic Vending Co., Ty. III (459). Pair, Very Fine, Ex-Lilly, with P. F. Certificate, Rare pair	1,500.00
183	★	\$1.00 Violet Black (460). Block, Very Fine	575.00
184	★	50c Light Violet (477). Block, Very Fine	675.00
185	★	\$1.00 Violet Black (478). Block, Extremely Fine	575.00
186	★	\$5.00 Light Green (480). T. Plate No. Block of Six, Very Fine	400.00
187	✉	2c Carmine, Imperforate, Ty. Ia (482A). Tied by "Milwaukee" Machine cancel on cover, with return corner card & window, Very Fine, Exceedingly Rare, with P. F. Certificate	3,000.00
188	★	5c Carmine, Error, Imperforate (485). Double Error Block of Twelve, two middle stamps the Errors. There is a tiny black natural speck in the bottom error, characteristic of this issue, Very Fine	5,250.00
189	★	5c Carmine, Error, Imperforate (485). Complete uncut Sheet of 400 containing the Single & Double Errors, the Plate Blocks & other position blocks, Very Fine	9,077.00
190	★	2c Carmine, Coil, Ty. II (491). Pair, Extremely Fine, Very Scarce	625.00
191	★	2c Carmine, Coil, Ty. II (491). Joint Line Strip of Four, Very Fine, a Choice Strip	1,400.00
192	★	\$2.00 Orange Red & Black (523). Left Arrow Block, Very Fine	425.00
193	★	2c Carmine, Offset, Ty. VII, Imperforate (534B). Horiz. Pair, Huge Margins, Extremely Fine, with P. F. Certificate, Very Scarce	950.00+
194	★	1c Gray Green, Offset, Imperforate Vertically (536a). Block, Very Fine, with P. F. Certificate	400.00

LOTS ON VIEW: Friday, Monday, Tuesday, March 21st, 24th, 25th from

10:00 A. M. to 3:30 P. M. Also by Appointment at an earlier Date.



180



182



190



191



193



197



198



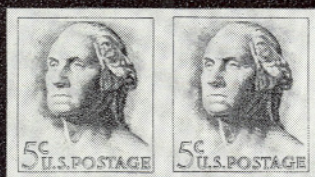
200



201



204



207



208



209



210



220



221EX



195

196

- 195 ★ 2c Carmine Rose, Ty. II (539). Wonderfully Well Centered, Extremely Fine, signed "Geo. B. Sloane" 425.00
- 196 ★ 2c Carmine Rose, Ty. II (539). Block, Very Fine, Exceedingly Scarce & Handsome 2,000.00
- 197 ★ 5c Dark Blue, Imperforate (557a). Horiz. Pair, Very Fine 350.00
- 198 ★ 10c Orange, Imperforate (562b). Horiz. Pair, without gum as always, faint trace of usual blue crayon, Very Fine 350.00
- 199 ★ 12c Brown Violet, Imperforate Horizontally (564a). Block, Pos. 1-2, 11-12, partially patched with Brown Paper on back during manufacture, couple trivial surface scuffs in margin, an Exceedingly Rare Error 700.00
- 200 ★ 20c Carmine Rose, Imperforate Vertically (567a). Pair, faint natural gum crease on one, otherwise Fine & Scarce 350.00
- 201 ★ 25c Yellow Green, Imperforate Horizontally (568b). Vert. Strip of Three, gum creases, perfs. touch L., Rare, only 23 stamps known 525.00



202

203

- 202 1c Green (594). Light machine cancel, a Fine & Most Attractive Example of this Rarity, with P. F. Certificate 1,000.00
- 203 1c Green (596). Kansas City, Mo. Pre-cancel, a Choice & Very Fine Example of the Rarest of all U. S. 20th Century Postage Issues, probably no more than six copies known, with P. F. Certificate, Ex-Bingham 6,000.00
- 204 ★ 2c Carmine, Coil, Ty. I, Ty. II (599A). Combination Joint Line Strip of Four, Mint, the Pair at L. Ty. II, Exceptionally Well Centered, Extremely Fine 220.00+



216



215



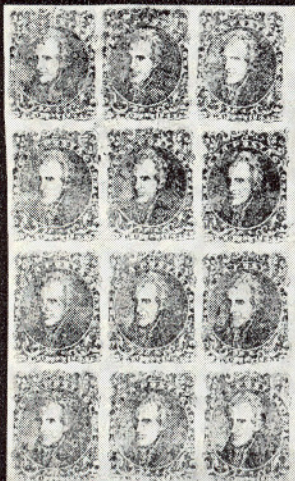
227



218



219



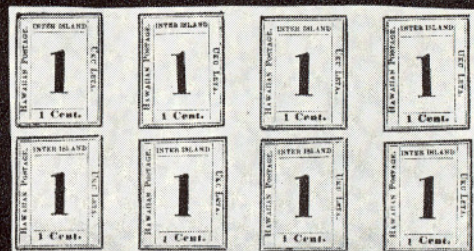
239



241



240



243



- 205 **2c Black, Harding, Perf. 11, Rotary (613).** Horiz. Pair, Beautifully Centered, Extremely Fine, only two pairs known, A Great 20th Century Rarity 8,500.00+

1938 TO DATE

- 206 ★ 田 **\$5.00 Red Brown & Black, Presidential, Error of Color (834a).** Mint U. L. Sheet Corner Block of Six with "\$5.00" and "Top", Extremely Fine, Signed by Geo. B. Sloane, A Rare & Handsome Block 1,350.00+
- 207 ★ **5c Dark Blue Gray, Coil, Imperforate (1229b).** Mint Pair, Extremely Fine 325.00
- 208 ★ **5c Blue, Coil, Imperforate, Error (1304b).** Mint Pair, Extremely Fine 200.00
- 209 ★ **6c Gray Brown, Roosevelt, Imperforate (1305 Var.).** Mint, Extremely Fine **E. XII**
- 210 ★ **6c Hemis Fair, Error with White Map Lines and "6c" Omitted (1340 var.).** Mint, Extremely Fine **E. XII**

AIR POSTS



- 211 ★ **24c Carmine Rose & Blue Airpost, Center Inverted (C3a).** Well Centered, Very Fine, Nearly full o. g., a Beautiful Example of this Most Popular U. S. Rarity 20,000.00



- 212 ★ **24c Carmine & Blue, Airpost, Center Inverted (C3a).** Horizontal pair with Left Sheet Margin and upper Half Arrow, R. stamp has insignificant pin point gum thin. Beautifully centered and with most o. g. A Matchless Rarity 40,000.00+
- 213 ★ **24c Carmine & Blue, Airpost, Center Inverted (C3a).** Horizontal Pair, companion of the preceding lot, with guide line and lower Half Arrow at left. Equally well centered and with most o. g. 40,000.00+
- 214 ★ **24c Carmine & Blue, Airpost, Center Inverted (C3a).** The preceding two lots offered as the reconstructed **Left Arrow Block**. Truly an exhibition piece of the utmost rarity since it is the only one in existence 80,000.00+
- 215 ☐ **65c Graf Zeppelin (C13).** Used block, lightly cancelled, Fine 350.00
- 216 ★☐ **65c-\$2.60 Graf Zeppelin (C13-C15).** Top Plate No. Blocks of Six, Well Centered, one \$1.30 has negligible gum thin, otherwise Very Fine Set 4,450.00

OFFICIALS, ENTIERES, REVENUES


- 217 P **\$2.00-\$20.00 Green & Black, State (O68P-O71P).** Proofs on India, Complete Sheets of Ten with Imprints & Pl. Nos. Card mounted, Very Fine Handsome Lot 1,400.00
- 218 ★ **\$20.00 Green & Black, State (O71).** T. Imprint Double Plate No. Strip of Five, Rich Colors, fresh, o. g., Very Fine, a Beautiful & Rare Show-piece 1,075.00+
- 219 ★☐ **1c Agriculture, Soft Paper (O94).** Block, Gorgeous Brilliant Color, Very Fine, Exceedingly Scarce, Probably the finest of the few blocks known 1,300.00
- 220 ★ **Newspaper, 6c Intense Black (PR93).** O. g., Fine 350.00
- 221 P **Parcel Post, 1c-\$1.00 Small Die Proofs (Q1P-Q12P).** Complete set, all have slight thins, as usual in this series, Very Fine appearance, Rare 1,020.00
- 222 ☐ **3c Red, Die 1 (U1).** Unused Entire, Size 1, Fresh, Very Fine, (Thorp #1 \$600.00) 300.00

- 223 ☒ 10c Air Letter Sheet, Error, Red Omitted (UC32b). Unused, Light vertical crease down center, couple of minor wrinkles in extreme margin, otherwise Very Fine, Rare E. XI
- 224 ☒ 10c Air Letter Sheet, Red Only, Blue Omitted (UC32c). Extremely Fine Error 500.00
- 225 1c Proprietary, Imperforate (R3a). Horiz. Pair, Ample to Large Margins, R. stamp has small tear mostly in top margin, Very Fine appearance, Rare pair 1,000.00
- 226 5c Blue & Black, Center Inverted (R107a). Light ms. & Dotted Patent Cancels, Fine 425.00
- 227 ★ ☒ New York, U. S. City Despatch Post, 3c Black on Grayish (6LB1). Block of 12, comprising the 2 Top Rows of the Sheet, Sheet Margins on 3 sides, Brilliant Fresh, full o. g., an Extremely Fine Block of Great Rarity 1,425.00+

PONY EXPRESS COVERS




- 228 ☒ Pony Express, St. Joseph, "Running Pony", May 6, (1860), Bold clear oval on "Stebbins Line" Telegraph envelope, Franked "Free, W. H. Russell" (Pres. of Pony Express Co.) addressed to Ben Holliday (Pres. of Overland Express Co.) at San Francisco, The earliest West-bound cover on record, B. edge of cover neatly mended, one of the finest "Pony" covers known, Unique E. XVI
- 229 ☒ Pony Express, Central Overland California & Pikes Peak Express Co., St. Joseph, Mo., Bold strike in Green on 10c Green, Entire (U17), A West-bound cover to S. F., negligible nick at T., Very Fine, Ex-Barkhausen E. XV
- 230 ☒ California Pony Express, Fairly clear strike in Red Oval on 3c Star Die Entire (U27). A Westbound cover to San Francisco, with a rare readable strike of the "Pony Express, St. Joseph, Mo." Running Pony in oval, A Magnificent cover, with two of the scarcest Pony Markings E. XV

- 231  Wells, Fargo & Co. Pony Express, Red printed frank at L. of special 10c Green Entire (U40), "Cambridge, Mass." pmk. to Sacramento, Cal. with clear strike of the "Central Overland California & Pikes Peak Express Co. Pony Express" cancel. Fine despite few aging spots & tiny tears, Rare and attractive

E. XV



- 232  Wells, Fargo & Co. Pony Express, \$2.00 Red (143L1). Ample to Large margins, Very Fine, tied by W. F. & Co. Marysville in Blue double oval on W. F. franked envelope, 10c Pale Green (U17a) with Red W. F. frank printed over Green "Freeman & Co." printed frank, also vertically at L. clear blue "Pony Express, Sacramento", in oval, Scarce circular W. F. Sacramento on back. Green "St. Joseph, Mo." pmk. to Maine. Extremely Fine, one of the most spectacular "Pony" covers in existence

E. XVI

PRICES REALIZED

*Invaluable and almost indispensable guides
to the current market.*

Price \$1.00 for each individual sale.

Annual subscription \$6.00.



- 233 Wells, Fargo & Co. Pony Express, \$1.00 Blue "Garter" (143L6). Large to Enormous margins, just tied on the special Wells Fargo "Pony Express" entire 10c Green (U40) with the Red "Pony Express" frank printed vertically at left. The envelope stamp has clear New York pmk., as does a 10c Deep Yellow Green "August Shade" (68) A clear oval "Central Overland California & Pikes Peak Express Co., St. Joseph, Mo." just ties the "Garter" stamp, a clear, sharp special Pony Express handstamp of the company on the cover, westbound to San Francisco. By far the finest of the three "Garter" covers on record and probably the finest and most spectacular Pony Express cover in existence. Signed "Ashbrook", Ex-Caspar 10,000.00
- 234 Wells, Fargo & Co., Pony Express, 25c Blue (143L8). Ample to Large margins, nicely tied by "Virginia City, N. T." blue W. F. oval, repeated on the cover, a 3c Pink Entire (U34) with W. F. frank to Folsom, Cal. cover a bit reduced at R. & restored at R. B. Attractive 1,350.00
- 235 Wells Fargo & Co. Pony Express, 25c Red (143L9). Margins all around, tied by partly indistinct Blue Oval "Virginia City, N. T." W. F. cancel on 3c Pink on Buff Entire (U35) with W. F. & Co. Frank, cover has few ink spots, one on Pony stamp inked lines at L., & trivial marginal chips, Fine, P. F. Certificate States Genuine cover from which stamp has been removed & put back 1,500.00

**LOTS ON VIEW: Friday, Monday, Tuesday, March 21st, 24th, 25th from
10:00 A. M. to 3:30 P. M. Also by Appointment at an earlier Date.**

AIR MAIL 10¢

Hosiery Co.
Free, Wis. U.S.A.

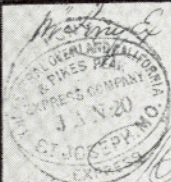


224

187

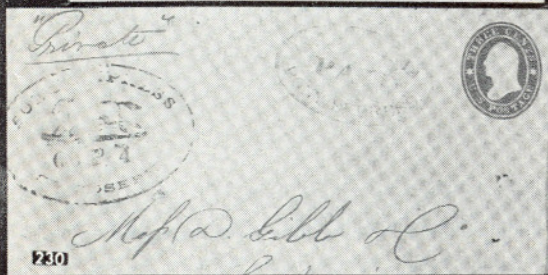


222



Miss Crosby and Dibble
San Francisco
Cal.

229



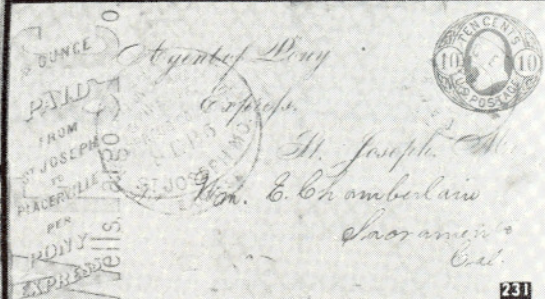
220

Alpha Lill C.



Rev. P. E. Beutone
Holsum Cal.

234



231



235

Wells Fargo & Co.



Elder J. H. Thurmond
San Antonio
Texas

237



W. L. Glass Esq.
Victoria
Texas

238



242

Miss Burne
Rodmell
near Leves
Sussex
England



Wm. H. S. S. S.
San Francisco
Cal.

245

CONFEDERATE STATES



- 236 ☒ **Christiansburg, Va. 5c Green, Provisional Entire (Similar to 99XU1).** Impressed on 3c Red Star Die Entire (U27). A Very Handsome, Previously unknown and Probably Unique Provisional, Very Fine, With P. F. Certificate **E. XV**
- 237 ☒ **Gonzales, Texas, 10c Gold on Garnet (30X2).** Large Margins, tied by ms. lines, clear "Gonzales" pmk., matching "Paid", on neat folded letter to San Antonio, Very Fine, A Rare & Handsome Cover, Ex-Caspary, Letter from P. F. in re this and the following lot states: "while we believe these two covers are genuine, as has been generally accepted over the years, we do not consider that the "stamps" qualify as those listed in Scott Specialized Catalogue, with which present listing we do not agree. Therefore we respectfully decline to issue Certificates for them at this time, as we regret we are not able to express conclusive opinions" **2,500.00**
- 238 ☒ **Gonzales, Texas, 5c Gold on Black (30X3).** Large margins, uncanceled, on fresh folded cover to Victoria, clear "Gonzales" pmk., "Paid 5" in ms., sealed cover tear at L. L., otherwise Very Fine, Very Rare, Ex-Caspary **2,250.00**
- 239 ★ ☒ **2c Green (3).** Block of 12, (3x4), Large Margins incl. R. Sheet Margin, Unusually Fresh, o. g., one stamp with small tear mostly in margin, Very Fine, a Wonderful Block **1,080.00+**
- 240 ★ ☒ **1c Orange (14).** Horiz. Block of 10, Unusually Rich Color, Fresh, o. g., Extremely Fine **265.00**
- 241 ☒ **GUAM, 1930, 2c-4c Guard Mail (M1-M2).** Blocks, with April 8, 1930 First Day Cancellation, F.-V. F. set **360.00+**

HAWAII

- 242 ☒ **12c Black (69).** Tied by Cogwheel, clear "San Francisco, Cal. Feb. 12, 1862" pmk., clear Red "Honolulu, U. S. Postage Paid", on Patriotic cover with Gold & Multicolor Eagle and "The Union, it must and shall be preserved", Magnificent and rare cover, Very Fine **E. XV**

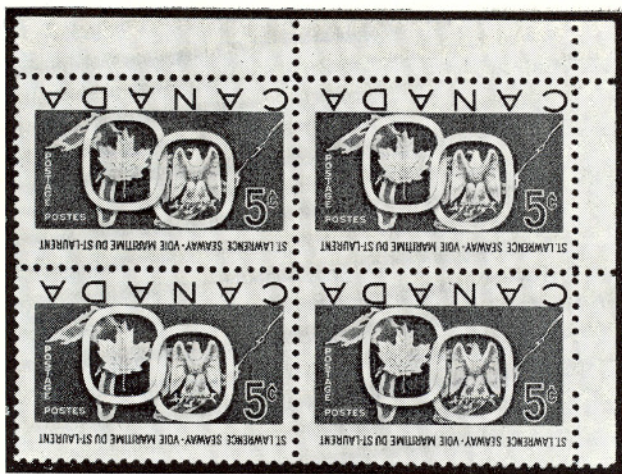
- 243 ★ 1864, 1c Black (19). Horiz. Block of 8, Crocker Plate X, Pos. 1-2, 1-2 at Top, 3-4, 3-4 at Bottom, Large Margins all around, Fresh and Extremely Fine, a Marvelous Block of Great Rarity, with Hunzicker Certificate 1,000.00+
- 244 ★ 1864, 2c Black on Laid, Tete Beche Pair (24 Var.). Pos. 5 and 5, Large margins, Shows Three Verger Lines, Extremely Fine, Tete Beche Unlisted in Scott E. XII
- 245 ✉ 2c Rosy Vermilion, Bisect, 5c Blue (30a, 32). Clear Negative "H. I." cancels, Tying Bisect, In Combination with U. S. 3c Ultramarine (114) Horiz. Pair, tied by Bold Crossroads Cancels, clear Red "G. P. O. Honolulu, Paid All" and Magenta "San Francisco, Cal., Paid" pmks on cover to England with "HMS Scylla" Seal on Flap. Small Neat Cover repair at U. L. with sealed tears in 5c stamp, otherwise Fine, Rare and Attractive Cover, Illustrated in Meyer-Harris Book E. XIII

GENERAL FOREIGN

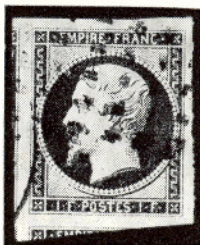
- 246 ★ AUSTRALIA, 1931-36, £2 Rose & Black (129). Extremely Fine 325.00



- 247 ★ CANADA, 1857, 7½p Green (9). Large margins except narrow at tip of U. L. corner, Brilliant color, Fresh, Very Fine 1,300.00
- 248 田 — 1897, \$4.00 Purple, Jubilee (64). Used Block, bit hinge reinforced, Fine, Scarce 600.00+
- 249 田 — 1897, \$5.00 Olive Green, Jubilee (65). Block neat, light "Winnipeg" pmk. in purple, bit hinge reinforced, Very Fine, Scarce 600.00+
- 250 ★ 田 — 1899, 2c Carmine, Booklet pane of Six (77b). In entire booklet, Mint, Fresh, Very Fine & Scarce 200.00+
- 251 ★ 田 — 1903, 20c Olive Green, Edward (94). Block, Fresh, Very Fine 200.00+
- 252 ★ 田 — 1908, 50c Purple, Edward (95). Block of 4, Extremely Fine 260.00+



- 253 ★田 — 1959, 5c Red & Blue, Seaway, Center Inverted (387a). L. L. Sheet Corner Block, Mint, Very Fine, A Magnificent Rarity 10,000.00
- 254 ★ CEYLON, 1859, 2/- Blue (13). Clear Margins all around, Fresh, Very Fine, Ex-Caspary, Lilly, with P. F. Certificate 800.00
- 255 ★田 DENMARK, 1870, 2s Gray & Blue (21). Block, Beautifully Centered, Brilliantly Fresh, Large part o. g., one stamp natural paper pore, horiz. perf. row severed and reinforced, otherwise an Extremely Fine Block of the Utmost Rarity 900.00+



- 256 FRANCE, 1853, 1fr Lake (21). Enormous Margins, showing parts of 4 other stamps, Scarce Roller Grid Cancel, Beautiful Color, Extremely Fine, A Gem, with P. F. Certificate 400.00
- 257 ★田 GREECE, 1861, 80L Rose on Pink, Paris Print (6). Block, Fresh, o. g., margins all around, light crease, small thin and tiny scissor cut, a Very Fine appearing Block of Great Rarity 320.00+
- 258 ★田 — 1861, 1L Dull Chocolate on Cream, Athens Print (8). Block of 15 (5x3), Fresh, o. g., Margins to just in at places, small thin in one, vert. crease through two rows, and a few minor toning spots, nevertheless a Most Attractive Block of the Utmost Rarity, possibly the Largest Block known 750.00+
- 259 ★ LIECHTENSTEIN, 1934, 5fr Agriculture, Souvenir Sheet (115). Very Fine 1,000.00



225



226



244



246



254



260 A



248



249



251



252



255



257




258



LEICHTENSTEINISCHE
VADUZ LANDESAUSSTELLUNG
1934



- 260 ★  **NETHERLANDS, 1864, 10c Lake (5).** Horiz. Block of 8, Fresh, o. g., Good Color, bit reinforced in places, F.-V. F., a Most Attractive Block of Great Rarity 640.00+

- 260A ★ **NEWFOUNDLAND, 1857, 6½p Scarlet Vermilion (7).** Nice margins all around, Brilliant Color, Very Fine, with B. P. A. Certificate 550.00



- 260B ★ — 1919, 3c Red Brown, “Hawker” (C1). Centered a bit to Top, Very Fine for this Rare Stamp, Signed “J. A. R.”, Sanabria 7,000.00



261

262

- 261 ★ **ROMANIA, 1858, 80pa Red on Bluish (7).** Large Margins, o. g., Fresh, two tiny natural paperbreaks, otherwise a Very Fine Copy of this Rarity, Ex-Caspary, Lilly 3,750.00
- 262 ★ **SWITZERLAND, Geneva, 1848, 5c Black on Dark Green, Large Eagle (2L4).** Beautiful Large Margins, Rich Color & Impression, Extremely Fine 800.00



- 263 ★ **TUSCANY, 1860, 3L Ochre (23).** Ample to Enormous Margins except barely touched at L. R., showing part of next stamps at L. & T., faint thin spot entirely in T. margin, color trifle weakened, otherwise Fine copy of this Great Rarity, Ex-Caspary, Diena States "Genuine" 16,000.00



- 264 ★ **ZANZIBAR, 1908, 100r Blue & Black, Palace (118).** Very Fine 1,250.00

END OF SALE — THANK YOU

LOTS ON VIEW: *Friday, Monday, Tuesday, March 21st, 24th, 25th from
10:00 A. M. to 3:30 P. M. Also by Appointment at an earlier Date.*

CONDITIONS OF SALE

1. The terms of sale are strictly cash to the highest bidder. All buyers are expected to pay for lots within three days of receipt, unless special arrangements have been made prior to the sale.
2. All bids are per lot as numbered in the catalogue and not per piece, unless otherwise announced by the auctioneer at the time of sale.
3. Any lot the description of which is incorrect is returnable only within three days of receipt. All disputed lots must be returned intact as received. Lots containing five or more stamps are not returnable at any time. No lots may be returned by purchasers who have had the opportunity to examine them before the sale.
4. Successful mail bidders, unless they are known to us or supply acceptable references, will be notified of the amount of the lots secured for them, and are expected to send payment in full before the lots are forwarded.
5. If the purchase price has not been paid within the time limit, or lots taken up within seven days from date of sale, they may be resold and any losses arising from such sale charged to the defaulter.
6. All lots are sold as genuine but should any lot be proved otherwise by written opinion of any competent, responsible authority acceptable to us, immediate refund of the full purchase price will be made, provided that any such claim is made within 25 days from date of sale. If claim is not made within this period no lots are returnable for any reason at any time. Naturally, so long as we are notified within the 25 day period that an opinion is being sought the matter will remain open until such opinion is rendered. We will not be responsible for any charges incurred by the buyer for expertization fees and costs.
7. The right is reserved to group two or more lots, also withdraw any lot or lots from the sale, or to act on behalf of the seller.
8. Until paid for in full all lots remain the property of Robert A. Siegel Auction Galleries, Inc.
9. No commission is charged for buying at our sales, but all forwarding charges will be added to the purchase price.
10. Upon written application lots may be sent for examination prior to the auction, condition upon being mailed back by registered mail, adequately insured, within 24 hours of receipt. The applicant is completely responsible for all lots sent for examination, and for the insurance of same against mishap, from the time of receipt until they are actually received back, and is to pay all expenses of postage and insurance. No lots can be sent for inspection within ten days of the date of sale.
11. The placing of a bid shall constitute acceptance of the foregoing conditions of sale.

ROBERT A. SIEGEL

ANDREW LEVITT, Licensed Auctioneers

In sending bids, always state the highest price you are prepared to pay for the lot. Your limit will not be used as a starting bid unless absolutely necessary.

DESCRIPTIONS

Extremely Fine—the finest condition for noteworthy, outstanding copies.

Very VF (VF)—means that there is a slight deviation from the above.

Fine (F)—means that the perforations do not touch the design on issues after 1890, but in some cases may just touch in earlier issues; if used, fairly lightly cancelled.

Very Good (VG)—means that the appearance is generally fine but that the perforations cut the design slightly.

Good (G)—means average off-centering; or fairly attractive with slight defects.

Original gum (OG) is not to be expected on 19th Century stamps unless so stated.

Mint—have never been hinged.

Scott 1969 Specialized United States Catalogue used for cataloguing lots of U.S. and Possessions. Scott Standard Catalogue, 1969 for others.

List of Prices Realized

RARITIES OF THE WORLD

TUESDAY, MARCH 25th, 1969

Total Realization \$911,935.00

Robert A. Siegel
AUCTIONS

10 EAST 52nd STREET NEW YORK, N. Y. 10022

Tel: 212 PLaza 3-6421

Lot #	Price	Lot #	Price	Lot #	Price	Lot #	Price	Lot #	Price
1	28,000.00	28	800.00	55	1,050.00	82	2,900.00	109	1,100.00
2	950.00	29	1,200.00	56	1,050.00	83	800.00	110	675.00
3	2,500.00	30	16,500.00	57	1,200.00	84	575.00	111	1,300.00
4	8,750.00	31	1,200.00	58	450.00	85	950.00	112	850.00
5	17,000.00	32	1,300.00	59	7,750.00	86	1,200.00	113	1,050.00
6	1,200.00	33	3,250.00	60	800.00	87	850.00	114	1,000.00
7	2,700.00	34	1,400.00	61	10,500.00	88	800.00	115	1,550.00
8	5,000.00	35	425.00	62	6,000.00	89	800.00	116	700.00
9	1,400.00	36	9,500.00	63	625.00	90	8,000.00	117	2,400.00
10	360.00	37	2,400.00	64	3,200.00	91	2,700.00	118	1,350.00
11	7,000.00	38	6,250.00	65	19,000.00	92	4,800.00	119	2,400.00
12	11,500.00	39	650.00	66	1,500.00	93	6,750.00	120	800.00
13	11,500.00	40	3,750.00	67	1,700.00	94	3,400.00	121	2,900.00
14	4,500.00	41	525.00	68	4,250.00	95	21,000.00	122	10,500.00
15	600.00	42	1,000.00	69	8,000.00	96	8,000.00	123	475.00
16	5,250.00	43	2,100.00	70	625.00	97	800.00	124	950.00
17	700.00	44	380.00	71	850.00	98	1,700.00	125	1,400.00
18	6,250.00	45	3,500.00	72	2,100.00	99	600.00	126	3,600.00
19	700.00	46	4,750.00	73	1,450.00	100	725.00	127	4,750.00
20	3,750.00	47	7,000.00	74	4,750.00	101	625.00	128	6,250.00
21	5,750.00	48	900.00	75	650.00	102	3,750.00	129	3,200.00
22	7,000.00	49	1,550.00	76	1,050.00	103	1,300.00	130	725.00
23	10,500.00	50	650.00	77	4,500.00	104	1,700.00	131	1,200.00
24	900.00	51	575.00	78	1,500.00	105	3,200.00	132	2,100.00
25	10,000.00	52	2,300.00	79	3,800.00	106	1,600.00	133	750.00
26	1,700.00	53	475.00	80	650.00	107	6,750.00	134	600.00
27	10,000.00	54	1,700.00	81	1,800.00	108	3,800.00	135	900.00

Lot #	Price	Lot #	Price	Lot #	Price	Lot #	Price	Lot #	Price
136	525.00	163	500.00	190	1,000.00	217	950.00	244	500.00
137	550.00	164	725.00	191	1,800.00	218	1,300.00	245	525.00
138	500.00	165	800.00	192	290.00	219	1,000.00	246	375.00
139	675.00	166	675.00	193	950.00	220	240.00	247	1,200.00
140	1,050.00	167	4,500.00	194	400.00	221	600.00	248	425.00
141	1,400.00	168	15,500.00	195	950.00	222	600.00	249	600.00
142	1,200.00	169	1,350.00	196	2,200.00	223	400.00	250	170.00
143	4,500.00	170	5,250.00	197	425.00	224	260.00	251	160.00
144	1,200.00	171	700.00	198	400.00	225	260.00	252	320.00
145	1,900.00	172	5,750.00	199	1,100.00	226	230.00	253	6,250.00
146	1,500.00	173	8,000.00	200	400.00	227	1,000.00	254	250.00
147	3,200.00	174	475.00	201	500.00	228	9,000.00	255	1,000.00
148	7,250.00	175	550.00	202	1,150.00	229	1,900.00	256	425.00
149	3,500.00	176	3,750.00	203	8,000.00	230	2,300.00	257	140.00
150	6,500.00	177	550.00	204	360.00	231	1,900.00	258	320.00
151	9,000.00	178	725.00	205	13,750.00	232	5,000.00	259	340.00
152	3,400.00	179	1,400.00	206	850.00	233	17,000.00	260	675.00
153	13,500.00	180	950.00	207	350.00	234	600.00	260A	500.00
154	525.00	181	425.00	208	325.00	235	475.00	260B	3,500.00
155	600.00	182	1,450.00	209	400.00	236	850.00	261	WD
156	1,500.00	183	550.00	210	525.00	237	1,200.00	262	650.00
157	600.00	184	375.00	211	27,000.00	238	850.00	263	1,300.00
158	2,100.00	185	425.00	212	115,000.00	239	950.00	264	600.00
159	400.00	186	525.00	213		240	180.00		
160	1,150.00	187	2,900.00	214		241	340.00		
161	500.00	188	3,800.00	215	210.00	242	2,600.00		
162	1,000.00	189	6,500.00	216	4,750.00	243	1,200.00		



Robert A. Siegel Auction Galleries, Inc.
 Prices Realized for
 Sale 350 March 25, 1969 1969 Rarities of the World

Lot#	Realized	Lot#	Realized	Lot#	Realized	Lot#	Realized	Lot#	Realized
1	28,000	37	2,400	73	1,450	109	1,100	145	1,900
2	950	38	6,250	74	4,750	110	675	146	1,500
3	2,500	39	650	75	650	111	1,300	147	3,200
4	8,750	40	3,750	76	1,050	112	850	148	7,250
5	17,000	41	525	77	4,500	113	1,050	149	3,500
6	1,200	42	1,000	78	1,500	114	1,000	150	6,500
7	2,700	43	2,100	79	3,800	115	1,550	151	9,000
8	5,000	44	380	80	650	116	700	152	3,400
9	1,400	45	3,500	81	1,800	117	2,400	153	13,500
10	360	46	4,750	82	2,900	118	1,350	154	525
11	7,000	47	7,000	83	800	119	2,400	155	600
12	11,500	48	900	84	575	120	800	156	1,500
13	11,500	49	1,550	85	950	121	2,900	157	600
14	4,500	50	650	86	1,200	122	10,500	158	2,100
15	600	51	575	87	850	123	475	159	400
16	5,250	52	2,300	88	800	124	950	160	1,150
17	700	53	475	89	800	125	1,400	161	500
18	6,250	54	1,700	90	8,000	126	3,600	162	1,000
19	700	55	1,050	91	2,700	127	4,750	163	500
20	3,750	56	1,050	92	4,800	128	6,250	164	725
21	5,750	57	1,200	93	6,750	129	3,200	165	800
22	7,000	58	450	94	3,400	130	725	166	675
23	10,500	59	7,750	95	21,000	131	1,200	167	4,500
24	900	60	800	96	8,000	132	2,100	168	15,500
25	10,000	61	10,500	97	800	133	750	169	1,350
26	1,700	62	625	98	1,700	134	600	170	5,250
27	10,000	63	625	99	600	135	900	171	700
28	800	64	3,200	100	725	136	525	172	5,750
29	1,200	65	19,000	101	625	137	550	173	8,000
30	16,500	66	1,500	102	3,750	138	500	174	475
31	1,200	67	1,700	103	1,300	139	675	175	550
32	1,300	68	4,250	104	1,700	140	1,050	176	3,750
33	3,250	69	8,000	105	3,200	141	1,400	177	550
34	1,400	70	625	106	1,600	142	1,200	178	725
35	425	71	850	107	6,750	143	4,500	179	1,400
36	9,500	72	2,100	108	3,800	144	1,200	180	950

Robert A. Siegel Auction Galleries, Inc.
 Prices Realized for
 Sale 350 March 25, 1969 1969 Rarities of the World

Lot#	Realized	Lot#	Realized	Lot#	Realized
181	425	217	950	253	6,250
182	1,450	218	1,300	254	260
183	550	219	1,000	255	1,000
184	375	220	240	256	425
185	425	221	600	257	140
186	525	222	600	258	320
187	2,900	223	400	259	340
188	3,800	224	260	260	675
189	6,500	225	260	260A	500
190	1,000	226	230	260B	3,500
191	1,800	227	1,000	262	650
192	290	228	9,000	263	1,300
193	950	229	1,900	264	600
194	400	230	2,300		
195	950	231	1,900		
196	2,200	232	5,000		
197	425	233	17,000		
198	400	234	600		
199	1,100	235	475		
200	400	236	850		
201	500	237	1,200		
202	1,150	238	850		
203	8,000	239	950		
204	360	240	180		
205	13,750	241	340		
206	850	242	2,600		
207	350	243	1,200		
208	325	244	500		
209	400	245	525		
210	525	246	375		
211	27,000	247	1,200		
212	115,000	248	425		
213	115,000	249	600		
214	115,000	250	170		
215	210	251	160		
216	4,750	252	320		