

364th SALE

UNITED STATES
PROOFS and ESSAYS

Sold by order of various owners



AT PUBLIC AUCTION

Wednesday, January 7th, 1970 at 1:00 P.M.

Robert A. Siegel
AUCTIONS

10 EAST 52nd STREET NEW YORK, N. Y. 10022

Tel.: 212 PLaza 3-6421

CONDITIONS OF SALE

1. The terms of sale are strictly cash to the highest bidder. All buyers are expected to pay for lots within three days of receipt, unless special arrangements have been made prior to the sale.
2. All bids are per lot as numbered in the catalogue and not per piece, unless otherwise announced by the auctioneer at the time of sale.
3. Any lot, the description of which is incorrect is returnable, but only within three days of receipt. All disputed lots must be returned intact as received and lots containing five or more stamps are not returnable at any time. No lots may be returned by purchasers who have had the opportunity to examine them prior to the sale. No illustrated lots may be returned because of centering, margins or other factors shown in the illustration.
4. Successful mail bidders, unless they are known to us or supply acceptable references, will be notified of the amount of the lots secured for them, and are expected to send payment in full before the lots are forwarded.
5. If the purchase price has not been paid within the time limit, or lots taken up within seven days from date of sale, they may be resold and any losses arising from such sale charged to the defaulter.
6. All lots are sold as genuine but should any lot be proved otherwise by written opinion of any competent, responsible authority acceptable to us, immediate refund of the full purchase price will be made, provided that any such claim is made within 25 days from date of sale. If claim is not made within this period no lots are returnable for any reason at any time. Naturally, so long as we are notified within the 25 day period that an opinion is being sought the matter will remain open until such opinion is rendered. We will not be responsible for any charges incurred by the buyer for expertization fees and costs.
7. The right is reserved to group two or more lots, also withdraw any lot or lots from the sale, or to act on behalf of the seller.
8. Until paid for in full all lots remain the property of Robert A. Siegel Auction Galleries, Inc.
9. No commission is charged for buying at our sales, but all forwarding charges will be added to the purchase price. Shipment will be made to a post office box only if the buyer has also furnished a street address. All large lots unsuitable for parcel post will be sent by REA Express collect, or, upon request, REA Air Express collect.
10. Upon written application lots may be sent for examination prior to the auction, condition upon being mailed back by registered mail, adequately insured, within 24 hours of receipt. The applicant is completely responsible for all lots sent for examination, and for the insurance of same against mishap, from the time of receipt until they are actually received back, and is to pay all expenses of postage and insurance. No lots can be sent for inspection within ten days of the date of sale.
11. The placing of a bid shall constitute acceptance of the foregoing conditions of sale.

ROBERT A. SIEGEL

ANDREW LEVITT, Licensed Auctioneers

In sending bids, always state the highest price you are prepared to pay for the lot. Your limit will not be used as a starting bid unless absolutely necessary.

DESCRIPTIONS

Extremely Fine—the finest condition for noteworthy, outstanding copies.

Very Fine (VF)—means that there is a slight deviation from the above.

Fine (F)—means that the perforations do not touch the design on issues after 1890, but in some cases may just touch in earlier issues; if used, fairly lightly cancelled.

Very Good (VG)—means that the appearance is generally fine but that the perforations cut the design slightly.

Good (G)—means average off-centering; or fairly attractive with slight defects.

Original gum (OG) is not to be expected on 19th Century stamps unless so stated.

Mint—have never been hinged.

Scott 1970 Specialized Catalogue used for cataloguing lots of U.S. and Possessions.

Scott 1970 Standard Catalogue for others.

JANUARY 7th, 1970

ROBERT A. SIEGEL AUCTION GALLERIES, Inc.

10 East 52nd Street

New York, N. Y. 10022

Tel.: 753-6421 (Area Code 212)

REFERENCES PLEASE
(if unknown to us)

SIGNED

County

[illegible]

Upon request, estimate of value furnished on any lots in this auction.

WEDNESDAY, JANUARY 7th, 1970 — 1:00 P.M.

UNITED STATES PROOFS & ESSAYS

THE ROOSEVELT PROOF BOOK

- 1 P **Small Die Proofs The Complete 1904 "Roosevelt" Album** of 308 Small Die Proofs covering all issues from 1847-1902, Very Fine & Rare set 6,280.50+

POSTMASTERS' PROVISIONALS

- | | | |
|------|---|----------------|
| 2 P | New York, 5c Black, Small Die Proof on Bond (9X1Pc). Very Fine
(Photo) | 90.00 |
| 3 P | New York, 5c Black, Plate Proof on India (9X1P). Small thins, Very Fine appearance | 85.00 |
| 4 P | New York, 5c Sapphire, Large Die Trial Color Proof on India (9X1TC). With additional impression of portrait medallion, Die Sunk on card, Very Fine | (Photo) 110.00 |
| 5 P | New York, 5c Deep Rose Violet, Small Die, Trial Color Proof on India (9X1TC). Very Fine | (Photo) 95.00 |
| 6 P | New York, 5c Deep Rose Violet, Small Die, Trial Color on India (9X1TC). Small wrinkle, Very Fine apperance | 95.00 |
| 7 P | New York, 5c Deep Blue, Small Die, Trial Color Proof on India, (9X1TC). Very Fine | 95.00 |
| 8 P | New York, 5c Deep Blue, Small Die, Trial Color Proof on Bond (9X1TC). Very Fine | 75.00 |
| 9 P | New York, 5c Orange, Small Die, Trial Color Proof on Bond (9X1TC). Very Fine, unlisted in this color on bond paper | (Photo) — |
| 10 P | New York, 5c Dull Dark Brown, Small Die, Trial Color Proof on Bond (9X1TC). Very Fine | 65.00 |
| 11 P | New York, 5c Deep Green, Small Die, Trial Color Proof on Bond (9X1TC). Very Fine | 75.00 |

1847 ISSUE

- | | | |
|------|--|----------------|
| 12 P | 5c Red Brown, Large Die Proof on India (1P). Very Fine | (Photo) 150.00 |
| 13 P | 10c Black, Large Die Proof on India (2P). Very Fine | (Photo) 150.00 |
| 14 P | 10c Black, Large Die Proof on Yellowish Wove Paper (2Pe). With Cross-hatching, Very Fine | (Photo) 150.00 |
| 15 P | 5c Black, Large Die Trial Color Proof on Bond (1TC) With cross-hatching, Very Fine | (Photo) 100.00 |
| 16 P | 10c Black, Large Die Trial Color Proof on Bond (2TC). With cross-hatching, not the regular 10c shade, identical in color to the 5c Black Lot, Very Fine | (Photo) 100.00 |
| 17 P | 5c Orange Vermilion, Large Die Trial Color Proof on Bond (1TC). With crosshatching, Very Fine | 100.00 |

LOTS ON VIEW FROM JANUARY 5th

OFFICES OPEN SATURDAY BEFORE SALE

18 P	10c Orange Vermilion, Large Die Trial Color Proof on Bond (2TC). With cross hatching, Very Fine	100.00
19 P	5c Dark Brown, Large Die Trial Color Proof on Bond (1TC). With cross-hatching, Very Fine, not the regular 5c shade, identical in color to the 10c Dark Brown Lot, Very Fine	100.00
20 P	10c Dark Brown, Large Die Trial Color Proof on Bond (2TC). With cross-hatching, Very Fine	100.00
21 P	5c Dull Blue Green, Large Die Trial Color Proof on Bond (1TC). With cross-hatching, Very Fine	100.00
22 P	10c Dull Blue Green, Large Die Trial Color Proof on Bond (2TC). With cross-hatching, Very Fine	100.00
23 P	5c Deep Blue, Large Die Trial Color Proof on Bond (1TC). With cross-hatching, Very Fine	100.00
24 P	10c Deep Blue, Large Die Trial Color Proof on Bond (2TC). With cross-hatching, Very Fine	100.00
25 P	5c Black, Trial Color Proof on India (1TC). Extensively repaired & remounted on bond paper, Good appearance	100.00
26 S	5c Red Brown, 10c Black, Plate Proofs on India Overprinted "Specimen (1PS, 2PS). Defective, F.-V. F. appearance	105.00
27 P	5c Red Brown, Reproduction, Plate Proof on India (3P). Very Fine	37.50
28 P	5c Red Brown, Reproduction, Plate Proof on Card (3P). Very Fine	30.00
29 P	5c Red Brown, 10c Black, Reproductions, Plate Proofs on India (3P, 4P). F.-V. F. Set	77.50
30 P	5c Red Brown 10c Black, Reproductions, Plate Proofs on Card (3P, 4P). F.-V. F. Set	60.00
31 P	5c Red Brown, 10c Black, Reproductions, Plate Proofs on Card (3P, 4P). F.-V. F. Set	60.00
32 P	10c Black, Reproduction, Plate Proof on India (4P). Minute pinpoint thin speck, Extremely Fine appearance	40.00
33 P	5c, 10c Black, Reproductions, "Atlanta" Trial Color Plate Proofs on Card (3TC, 4TC). Very Fine Set	140.00
34 P	5c, 10c Scarlet, Reproductions, "Atlanta" Trial Color Plate Proofs on Card (3TC, 4TC). Very Fine Set	130.00
35 P	5c, 10c Brown, Reproductions, "Atlanta" Trial Color Plate Proofs on Card (3TC, 4TC). Very Fine Set	130.00
36 P	5c, 10c Green, Reproductions, "Atlanta" Trial Color Plate Proofs on Card (3TC, 4TC). Very Fine Set	130.00
37 P	5c, 10c Blue, Reproductions, "Atlanta" Trial Color Plate Proofs on Card (3TC, 4TC). Very Fine Set	130.00

1851 ESSAYS

38 E	3c Green, "Gavit", Die Essay on Bond Paper (Brazier 33E. Cb). Very Fine (Photo)	E. V
39 E	3c 1851 Die Essays on Proof Paper, Printed Through Mats (Brazier 33E-Ob). Three Diff. Colors, Very Fine	E. III
40 E	3c Violet, Vignette Only, Master Die on Proof Paper (Brazier 33E-Oe). Very Fine (Photo)	E. IV
41 E	3c Blue, Vignette Only, Master Die on Proof Paper (Brazier 33E-Oe). Very Fine	E. IV

1851-57 ISSUES

42 P	30c Orange, Large Die Proof on India, (38P). 53 x 57mm, Very Fine (Photo)	350.00
43 P	1c-90c 1857 Reprints, Plate Proofs on India (40P-47P). Very Fine Set	127.00

44 P	1c-90c 1857 Reprints, Plate Proofs on India (40P-47P). Minute flaws, V. F. appearing set	127.00
45 P	1c-90c 1857 Reprints, Plate Proofs on Card (40P-47P). Very Fine Set	76.00
46 P	1c-90c 1857 Reprints, Plate Proofs on Card (40P-47P). F.-V. F. Set	76.00
47 P	1c-30c 1857 Reprints, Plate Proofs on Card (40P, 41P, 43P, 44P, 46P). F.-V. F.	45.00
48 P	1c-90c 1851-60 Designs, Black, "Atlanta" Trial Color Plate Proofs on Card (40TC-47TC). Very Fine Set	125.00
49 P	1c-90c 1851-60 Designs, Scarlet, "Atlanta" Trial Color Plate Proof on Card (40TC-47TC). Very Fine Set	105.00
50 P	1c-90c 1851-60 Designs, Brown, "Atlanta" Trial Color Plate Proofs on Card (40TC-47TC). Very Fine Set	105.00
51 P	1c-90c 1851-60 Designs, Green "Atlanta" Trial Color Plate Proofs on Card (40TC-47TC). Very Fine Set	105.00
52 P	1c-90c 1851-60 Designs, Blue, "Atlanta" Trial Color Plate Proofs on Card (40TC-47TC). Very Fine Set	105.00

1861 ESSAYS

SCHERNIKOW PRINTINGS OF 1903

53 E	1c Complete Die Essays on Proofs Paper Printed Through Mats. (Brazers 55E-An). Six Diff. Colors, Very Fine (Photo Ex)	E. VI
54 E	3c Die Essays With Top Label, Numerals Omitted, on Proof Papers (Brazers 56E-Af). Five Diff. Colors, also one without top label, Very Fine (Photo Ex)	E. VI
55 E	5c Die Essays with Frame, Die 1, Numerals Omitted, on Proof Paper (Brazers 57E-Ae). Seven Diff. Colors, Very Fine (Photo Ex)	E. VI
56 E	5c Completed Die Essays, Die 1, on Proof Paper, Printed Through Mats (Brazers 57E-Aj). Six Diff. Colors, Very Fine (Photo Ex)	E. VI
57 E	5c Completed Die Essays, Die 2, on Proof Paper, Printed Through Mats (Brazers 57E-Ar). Six Diff. Colors, Very Fine (Photo Ex)	E. VI
58 E	5c Orange, Completed Die Essay, Die 2, on Greenish Pelure Paper (Brazers 57E-Aw). Very Fine, Rare (Photo)	E. V
59 E	5c Deep Red Orange, Completed Die Essay, Die 2, on Greenish Pelure Paper (Brazers 57E-Aw). Very Fine, Unlisted in this color, Rare	E. V
60 E	5c Red Brown, Completed Die Essay, Die 2, on Bluish Pelure Paper (Brazers 57E-Ax). Faint crease, Very Fine appearance, Rare	E. V
61 E	12c 1851, Orange, Completed Die Essay on Yellow Pelure Paper. Light wrinkling, otherwise Very Fine, unlisted in Brazer (Photo)	E. V
62 E	12c 1851, Blue, Completed Die Essay on Pink Pelure Paper. Light wrinkling, otherwise Very Fine, unlisted in Brazer	E. V
63 E	12c Die Essay of Incomplete Frame, Four Rosettes Blank, on Proof Paper (Brazers 59E-Af). Six Diff. Colors, corner crease in one not affecting design, others Very Fine (Photo Ex)	E. VI
64 E	24c Die Essay with Frame, Numerals Omitted on Proof Paper (Brazers 60E-Af). Four Diff. Colors, Very Fine (Photo Ex)	E. V
65 E	24c Completed Die Essay on Proof Paper, Printed Through Mats (Brazers 60E-Ak). Cpl. Set of 15 Diff. Colors, few with hinge stains in margin, otherwise Very Fine (Photo Ex)	E. VIII
66 E	90c Completed Die Essays on Proof Paper, Printed through Mats (Brazers 62E-Ah). Six Diff. Colors, Very Fine (Photo Ex)	E. VI

1861 "AUGUST" ISSUE

67 P	1c-90c 1861 "August" Issue, Plate Proofs on India (55P-62P). Few small faults, otherwise Very Fine, Scarce Set	462.50
68 P	1c-90c 1861 "August" Issue, Plate Proofs on India (55P-62P). Few have small faults as usual, otherwise mostly Very Fine	462.50
69 P	1c-90c 1861 "August" Issue, Plate Proofs on India (55P-62P). Most have flaws, as usual, F.-V. F. appearing set	462.50
70 P	1c-30c "August" Issue, Plate Proofs on India (55P-61P). 1c defective, others with faults, F.-V. F. appearance	362.50
71 P	5c Brown "August", Plate Proof on India (57P). Very Fine	32.50
72 P	24c Violet "August", Large Die Proof on India (60P). Brazer 60E-Bc, Type II Impression from "Premiere Gravure" design, Die Sunk on small card, Very Fine	(Photo) 300.00
73 P	90c Black, "August", on Cardboard Split Thin (Brazer 62E-Bf). Small thins as always, Fine	(Photo) E. VIII

1861 ISSUE

74 P	1c-90c 1861-66 Issues, Plate Proofs on India (63P, 66P, 68P, 69P, 71P-74P, 77P, 78P). Very Fine	108.00
75 P	1c-90c 1861-66 Issues, Plate Proofs on Card (63P-77P). Very Fine	84.00
76 P	1c-90c 1861-66 Issues, Plate Proofs on Card (63P-73P, 76P, 77P). Very Fine	68.00
77 P	1c-90c 1861-66 Issues, Plate Proofs on Card (63P-73P, 76P, 77P). Very Fine	68.00
78 E	1c Rose, Coupon Essay (Brazer 63E-Bh). Horiz. Strip of Three o. g., Coupons removed, Very Fine	E. III
79 E	1c Blue, Coupon Essay, Rouletted Bet. Stamp & Coupon (Brazer 63E-Bj). Horiz. Pair, Stamps with gum, Fine	E. III
80 E	1c Blue on Special Patent Waxed Surface Experimental Paper (63 var). B. Imprint Plate No. 27 Block of 12, Very Fine	(Photo) E. VIII
81 E	3c Rose on Bluish Experimental Paper (65 var). U. R. Sheet Corner Block, Gummed, Very Fine	(Photo) E. VII
82 P	90c Blue, Plate Proof on Card (72P). Block, Very Fine	57.50
83 P	2c Black, Large Die Proof on India (73P). Die Sunk on Large Card, Very Fine	(Photo) 750.00
84 P	15c Black, Plate Proof on Card (77P). Block, Very Fine	35.00
85 P	1c-90c 1861-66 Designs, Black "Atlanta" Trial Color Proofs on Card (102TC-111TC). Very Fine Set	124.50
86 P	1c-90c 1861-66 Designs, Black, "Atlanta" Trial Color Plate Proofs on Card (102TC-111TC). Most have small thin in top margin, otherwise V. F. set	124.50
87 P	1c-90c 1861-66 Designs Scarlet, "Atlanta" Trial Plate Proofs on Card (102TC-111TC). Very Fine set	105.00
88 P	1c-90c 1861-66 Designs, Scarlet "Atlanta" Trial Color Plate Proofs on Card (102TC-111TC). 90c small stain, otherwise Very Fine Set	105.00
89 P	1c-90c 1861-66 Designs, Brown "Atlanta" Trial Color Plate Proofs on Card (102TC-111TC). Very Fine Set	105.00
90 P	1c-90c 1861-66 Designs Brown, "Atlanta" Trial Plate Proofs on Card (102TC-111TC). 2c, 10c & 30c small thin spots in top margin, otherwise V. F. set	105.00
91 P	1c-90c 1861-66 Designs, Green "Atlanta" Trial Color Plate Proofs on Card (102TC-111TC). Very Fine Set	105.00
92 P	1c-90c 1861-66 Designs Green, "Atlanta" Trial Color Plate Proofs on Card (102TC-111TC). 2c, 30c small thin spots, otherwise V. F. set	105.00

93 P	1c-90c 1861-66 Designs, Blue "Atlanta" Trial Color Plate Proofs on Card (102TC-111TC). Very Fine Set	105.00
94 P	1c-90c 1861-66 Designs Blue, "Atlanta" Trial Color Plate Proofs on Card (102TC-111TC). 24c thin spot, otherwise V. F. set	105.00

1867 ESSAYS

95 E	3c Black on Yellow, Experimental Essay on Perforated, gummed & Grilled Stamp Paper (65TC). Horiz. Block of 6, s. edge at right, one stamp, pulled perf., others V. F.	E. VII
96 E	1867 National Banknote Grill Essay, on bank paper, 13 x 16 mm (Brazier 79E-Ck). Block with Sheet Margin, Perforated & Gummed, one row of perf. clipped, others V. F., Scarce	E. V
97 E	3c Decalcomania Essays on Onion Skin Paper (Brazier 85E-Ea). Blocks, Nine Diff. Colors, few creased, otherwise Very Fine	E. III
98 E	3c Liberty, Essay, Black over Scarlet on Wove (Brazier 85E-Gq). Very Fine, Rare	E. VI
99 E	3c Liberty, Essays (Brazier 85E-Ge, 85E-Gm). Two diff. colors on ivory paper, two "Rainbow" colors on yellowish wove, Very Fine	E. VI
100 E	3c Liberty Essays (Brazier 85E-G). Nine Diff essays, incl. Eight stamps printed in "rainbow colors" on card, Eight stamps printed in four colors on white card, two blocks both perf. & Imperf. five stamps with perforated ovals, Very Fine Lot	E. X

1869 PICTORIAL ISSUE ESSAYS

101 E	1c 1869, Plate Essays on Perforated, Gummed & Grilled Stamp Paper (Brazier 112E-De). Seven Diff. Colors, also Orange Brown without grill, Fine-Very Fine	E. V
102 E	1c 1869 Plate Essays on Imperforate, Gummed Stamp Paper (Brazier 112E-De). Two Blocks, in Buff, Orange Brown, light crease in couple, otherwise V. F.	E. V
103 E	1c 1869 Buff, Plate Essay on Perforated, Gummed Stamp Paper (Brazier 112E-Dd). Block, Very Fine	E. III
104 E	1c 1869 Plate Essays on Perforated, Gummed & Grilled Stamp Paper (Brazier 112E-De). Three Blocks, in Orange Brown, Red Brown, & Black Brown, F.-V. F. (Photo Ex)	E. VII
105 E	2c 1869, Plate Essays on Perforated, Gummed & Grilled Stamp Paper (Brazier 113E-De). Six Diff. Colors, small tear in one, others F.-V. F.	E. IV
106 E	2c-12c 1869, Small Numeral & Portrait Plate Essays (Brazier 113E-De, two, 114E-Ch, 115aE-Fc, 116E-Dj, 117E-Ce, two). Fresh, o. g., F.-V. F.	E. VI
107 E	2c 1869, Plate Essays on Perforated, Gummed & Grilled Stamp Paper (Brazier 113E-De). Seven Blocks, diff. colors, Very Fine	E. VIII
108 E	3c 1869, Red Brown, Pale Rose, Plate Essays on Imperforate Gummed Stamp Paper (Brazier 114E-Cf). Very Fine	E. III
109 E	3c 1869, Plate Essays on Perforated Gummed & Grilled Stamp Paper (Brazier 114E-Ch). Six Diff. Colors, F.-V. F.	E. IV
110 E	3c 1869 Plate Essays on Imperforate, Gummed Stamp Paper (Brazier 114E-Cf). Two Blocks, in Pale Rose & Red Brown, first couple creases, others Very Fine	E. VII
111 E	3c 1869, Plate Essays on Perforated, Gummed & Grilled Stamp Paper (Brazier 114E-Ch). Eight Blocks, diff. colors, F.-V. F. (Photo Ex)	E. IX
112 E	5c 1869, Green, Die Essay on India (Brazier 115aE-Eb). Tiny thin, Very Fine appearance, Scarce	E. VII
113 E	5c 1869, Orange, Die Essay on Cream Wove Paper (Brazier 115aE-Eh). Very Fine, Scarce	E. VIII

114 E	5c 1869, Blue, Die Essay on Cloudy Bond Paper (Brazer 115aE-Ej). Very Fine, Scarce	E. VIII
115 E	5c 1869, Orange Brown, Die Essay on Cloudy Bond Paper (Brazer 115aE-Ej). Very Fine, Scarce	E. VIII
116 E	5c 1869, Plate Essay on Imperforate Gummed Stamp Paper (Brazer 115aE-Fc). Four Diff. Colors, Very Fine	E. V
117 E	5c 1869, Plate Essays on Imperforate, Gummed Stamp Paper (Brazer 115aE-Fc). Five Blocks, diff. colors, Very Fine (Photo Ex)	E. IX
118 E	5c 1869, Orange, Plate Essay on Perforated Gummed Stamp Paper (Brazer 115aE-Fd). Very Fine	E. III
119 E	5c 1869, Deep Ultramarine, Plate Essay on Perforated Gummed Stamp Paper (Brazer 115aE-Fd). One pulled perf., otherwise Very Fine	E. III
120 E	10c 1869 Lincoln, Brown Red, Die Essay on India (Brazer 116E-Da). Very Fine (Photo)	E. IX
121 E	10c 1869 Lincoln, Green, Die Essay on India (Brazer 116E-Da). Very Fine	E. IX
122 E	10c 1869 Lincoln, Deep Blue, Die Essay on India (Brazer 116E-Da). Very Fine	E. IX
123 E	10c 1869 Lincoln, Gray Black, Die Essay on India (Brazer 116E-Da). Very Fine	E. IX
124 E	10c 1869 Lincoln, Orange, Die Essay on India (Brazer 116E-Da). Very Fine	E. IX
125 E	10c 1869 Lincoln, Deep Green, Plate Essay on Imperforate Gummed Stamp Paper (Brazer 116E-Dj). Very Fine (Photo)	E. III
126 E	10c 1869 Lincoln, Blue, Plate Essay on Imperforate Gummed Stamp Paper (Brazer 116E-Dj). Very Fine	E. III
127 E	10c 1869 Lincoln, Ultramarine, Plate Essay on Imperforate Gummed Stamp Paper (Brazer 116E-Dj). Very Fine	E. III
128 E	10c 1869, Lincoln, Plate Essay on Imperforate, Gummed Stamp Paper (Brazer 116E-Dj). Block, in Ultramarine, Very Fine	E. VII
129 E	10c 1869 Lincoln, Orange, Plate Essay on Perforated Gummed Stamp Paper (Brazer 116E-Dk). Couple nibbed perf. tips, otherwise Very Fine	E. III
130 E	12c 1869, Plate Proofs on Perforated Gummed & Grilled Stamp Paper (Brazer 117E-Ce). Six Diff Colors, F.-V. F.	E. IV
131 E	12c 1869, Plate Essays on Perforated, Gummed & Grilled Stamp Paper (Brazer 117E-Ce). Four Blocks, diff. colors, F.-V. F. (Photo Ex)	E. VII
132 E	15c 1869, Orange Brown, Die Essay on Orange Safety Paper (Brazer 129Ef-9). Very Fine, Rare (Photo)	E. X
133 E	15c 1869, Blue Green, Die Essay on Scarlet Safety Paper (Brazer 129Ef-10). Very Fine, Rare (Photo)	E. X
134 E	15c 1869, Dark Blue, Die Essay on Light Scarlet Safety Paper (Brazer 129Ef-11). Very Fine, Rare (Photo)	E. X
135 E	15c 1869, Blue Green, Die Essay on Deep Scarlet Safety Paper (Brazer 129Ef-12). Very Fine, Rare (Photo)	E. X
136 E	24c 1869, Black, Plate Essay on Red Salmon Tinted Paper (Brazer 120E-Cc). Very Fine (Photo)	E. III
137 E	24c 1869, Black, Plate Essay on Orange Buff Tinted Paper (Brazer 120E-Cd). Very Fine	E. III
138 E	24c 1869, Black, Plate Essay on Orange Buff Tinted Paper (Brazer 120E-Cd). Very Fine	E. III
139 E	24c 1869, Black, Plate Essay on India Paper (Brazer 120E-Ch). Very Fine	E. III
140 E	30c 1869 Burgoyne, Orange, Die Essay on India (Brazer 121E-Ca). Very Fine (Photo)	E. IX
141 E	30c 1869 Burgoyne, Dull Dark Violet, Die Essay on India (Brazer 121E-Ca). Very Fine	E. IX
142 E	30c 1869 Burgoyne, Rose Red, Die Essay on India (Brazer 121E-Ca). Very Fine	E. IX

143 E	30c 1869 Burgoyne, Blue, Die Essay on India (Brazer 121E-Ca). Very Fine	E. IX
144 E	30c 1869 Burgoyne, Yellow Brown, Die Essay on India (Brazer 121E-Ca). Very Fine	E. IX
145 E	30c 1869, Burgoyne, Black, Plate Essay on Pale Grayish Surface Tinted Paper (Brazer 121E-Ck). Very Fine (Photo)	E. III
146 E	30c 1869 Burgoyne, Black, Plate Essay on Thin Blue Surface Tinted Paper (Brazer 121E-Ck). Very Fine	E. III
147 E	30c 1869 Burgoyne, Black, Plate Essay on Thin Brown Violet Surface Tinted Paper (Brazer 121E-Ck). Very Fine	E. III
148 E	30c 1869 Burgoyne, Black, Plate Essay on Thin Pink Surface Tinted Paper (Brazer 121E-Ck). Very Fine	E. III
149 E	30c 1869 Burgoyne, Black, Plate Essay on Thin Salmon Red Surface Tinted Paper (Brazer 121E-Ck). Very Fine	E. III
150 E	30c 1869, Burgoyne, Black, Plate Essay on Thin Salmon Red Surface Tinted Paper (Brazer 121E-Ck). Block, Very Fine	E. VII
151 E	30c 1869 Burgoyne, Black, Plate Essay on Thin Yellow Surface Tinted Paper (Brazer 121E-Ck). Very Fine (Photo)	E. III
152 E	30c 1869, Burgoyne, Black, Plate Essay on Thin Yellow Surface Tinted Paper (Brazer 121E-Ck). Block, Very Fine	E. VII
153 E	30c 1869, Burgoyne, Black, Plate Essay on Thin Orange Surface Tinted Paper (Brazer 121E-Ck). Block, Very Fine	E. VII
154 E	30c 1869, Burgoyne, Black, Plate Essay on Thin Pale Pink Surface Tinted Paper (Brazer 121E-Ck). Block with Sheet Margin & Imprint at B., Very Fine (Photo)	E. VII
155 E	30c 1869, Burgoyne, Black, Plate Essay on Thin White Surface Tinted Paper (Brazer 121E-Ck). U.L. Sheet Corner Block of Eight, few faint toned specks, otherwise Very Fine (Photo)	E. IX
156 E	30c 1869, Burgoyne, Dull Red Violet, Plate Essay on Bond Paper with Bands of Red at T. & B. (Brazer 121E-Co). Block, Very Fine (Photo)	E. VII
157 E	90c 1869 Washington, Blue & Black, Plate Essay on Imperforate Stamp Paper (Brazer 122E-Cc). Very Fine (Photo)	E. IV
158 E	90c 1869 Washington, Pale Orange Red & Black, Plate Essay on Imperforate Stamp Paper (Brazer 122E-Cc). Very Fine	E. IV
159 E	90c 1869, Washington, Pale Orange Red & Black, Plate Essay on Imperforate Stamp Paper (Brazer 122E-Cc). Very Fine	E. IV
160 E	90c 1869, Washington, Pale Orange Red & Black, Plate Essay on Imperforate Stamp Paper (Brazer 122E-Cc). Sheet Margin Block, Very Fine (Photo)	E. VIII
161 E	90c 1869 Washington, Red Brown & Black, Plate Essay on Imperforate Stamp Paper (Brazer 122E-Cc). Very Fine	E. IV
162 E	90c 1869, Washington, Red Brown & Black, Plate Essay on Imperforate Stamp Paper (Brazer 122E-Cc). Sheet Margin Block, Very Fine	E. VIII
163 E	90c 1869 Washington, Dull Violet & Black, Plate Essay on Imperforate Stamp Paper (Brazer 122E-Cc). Very Fine	E. IV
164 E	90c 1869, Washington, Dull Violet & Black, Plate Essay on Imperforate Stamp (Brazer 122E-Cc). Sheet Margin Block, Very Fine	E. VIII

1869 PICTORIAL ISSUE PROOFS

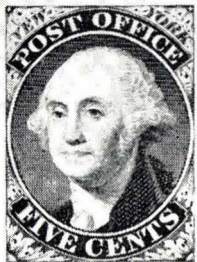
165 P	1c-90c 1869 Issue, Plate Proofs on India (112P-122P, 129P). Very Fine Set	188.25
166 P	1c-90c 1869 Issue, Plate Proof on India (112P-122P, 129P). #129P small thin spot, otherwise V. F. Set	188.25
167 P	1c-12c, 24c, 90c 1869 Issue, Plate Proofs on India (112P-117P, 120P, 122P). 90c defective, couple others small faults, balance Very Fine	94.25
168 P	1c-90c 1869 Issue, Plate Proofs on Card (112P-122P). Very Fine Set	110.75

169 P	1c-90c 1869 Issue, Plate Proofs on Card (112P-122P). Very Fine Set	110.75
170 P	1c-90c 1869 Issue, Plate Proofs on Card (112P-122P). 3c creased, otherwise Very Fine Set	110.75
171 P	1c-90c 1869 Issue, Plate Proofs on Card (112P-122P). Pairs, 1c-12c vert. pairs, 15c-30c horiz. pairs, 90c horiz. strip of three, V. F. Set	261.50
172 P	6c Ultramarine, Plate Proof on India (115P). Block, mounted on card, Very Fine	30.00
173 P	10c Yellow, Plate Proof on Card (116P). Block, Very Fine	30.00
174 P	15c 1869, Blue, Trial Color Proof on India (118TC). Tiny thin in margin, otherwise Very Fine, Rare & Unlisted	(Photo) E. IX
175 P	15c Brown & Blue, Ty. II, Plate Proof on India (119P). Block, mounted on card, Very Fine	(Photo) 125.00
176 P	24c 1869, Dull Violet, Trial Color Proof on India (120TC). Very Fine, Rare & Unlisted	(Photo) E. IX
177 P	24c 1869, Green, Trial Color Proof on India (120TC). Small thin in margin, otherwise Very Fine, Rare & Unlisted	(Photo) E. IX
178 P	30c Blue & Carmine, Plate Proof on India (121P). Block, mounted on card, Very Fine	75.00

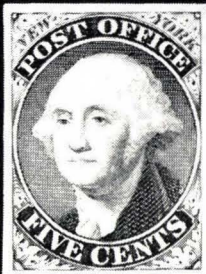
1869 PICTORIAL ISSUE

"Atlanta" Trial Color Plate Proofs on Card

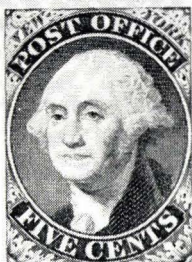
179 P	1c-12c Black (123TC-128TC). Very Fine Set	210.00
180 P	1c-12c Scarlet (123TC-128TC). Fantastic Clear Double Print of entire top label of design on 3c, Very Fine Set	180.00+
181 P	1c-12c Brown (123TC-128TC). Very Fine Set	180.00
182 P	1c-12c Green (123TC-128TC). Very Fine Set	180.00
183 P	1c-12c Blue (123TC-128TC). Very Fine Set	180.00
184 P	15c Black Frame, Scarlet Center (129TC). Very Fine	(Photo) 100.00
185 P	15c Black Frame, Green Center (129TC). Very Fine	100.00
186 P	15c Scarlet Frame, Black Center (129TC). Very Fine	100.00
187 P	15c Scarlet Frame, Blue Center (129TC). Very Fine	100.00
188 P	15c Brown Frame, Black Center (129TC). Very Fine	100.00
189 P	15c Brown Frame, Green Center (129TC). Fine	100.00
190 P	15c Brown Frame, Blue Center (129TC). Very Fine	100.00
191 P	15c Green Frame, Black Center (129TC). Very Fine	100.00
192 P	15c Green Frame, Blue Center (129TC). Very Fine	100.00
193 P	15c Blue Frame, Black Center (129TC). Very Fine	100.00
194 P	15c Blue Frame, Brown Center (129TC). Very Fine	100.00
195 P	15c Blue Frame, Green Center (129TC). Very Fine	100.00
196 P	24c Black Frame, Scarlet Center (130TC). Very Fine	(Photo) 100.00
197 P	24c Black Frame, Green Center (130TC). Very Fine	100.00
198 P	24c Black Frame, Blue Center (130TC). Very Fine	100.00
199 P	24c Scarlet Frame, Black Center (130TC). Very Fine	100.00
200 P	24c Scarlet Frame, Blue Center (130TC). Very Fine	100.00
201 P	24c Brown Frame, Black Center (130TC). Very Fine	100.00
202 P	24c Brown Frame, Blue Center (130TC). Very Fine	100.00
203 P	24c Green Frame, Black Center (130TC). Very Fine	100.00
204 P	24c Green Frame, Brown Center (130TC). Very Fine	100.00
205 P	24c Green Frame, Blue Center (130TC). Very Fine	100.00
206 P	24c Blue Frame, Green Center (130TC). Very Fine	100.00
207 P	24c Blue Frame, Brown Center (130TC). Very Fine	100.00
208 P	30c Black Frame, Scarlet Center (131TC). Very Fine	(Photo) 110.00
209 P	30c Black Frame, Green Center (131TC). Very Fine	110.00
210 P	30c Black Frame, Blue Center (131TC). Very Fine	110.00



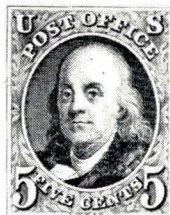
2



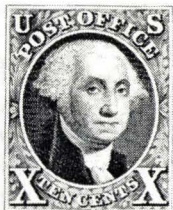
5



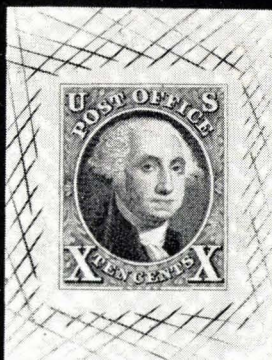
9



12



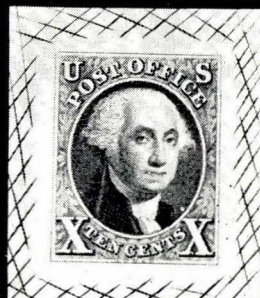
13



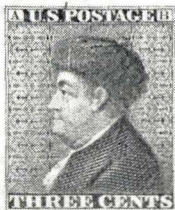
14



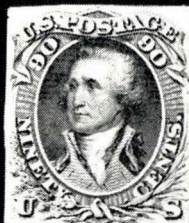
15



16



38



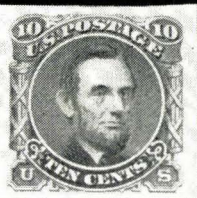
73



98



113



125



132



133



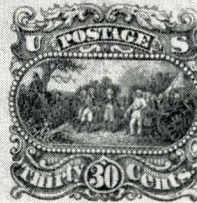
134



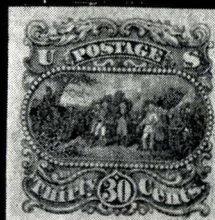
135



136



145



151



42



54EX



No. 4.

40



53EX



55EX



56EX



57EX



58



104EX



61



63EX



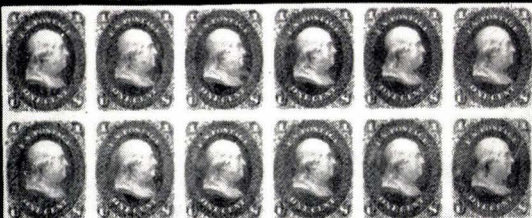
64EX



65EX



66EX



ENGRAVED BY THE POST OFFICE, CITY OF NEW YORK.

No. 27

83

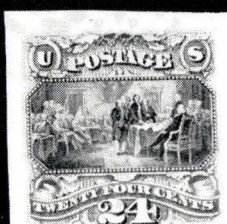
80



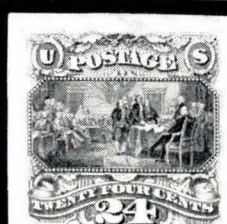
157



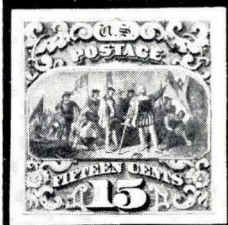
174



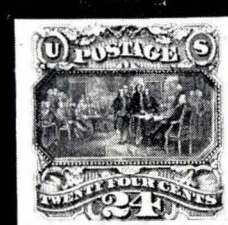
176



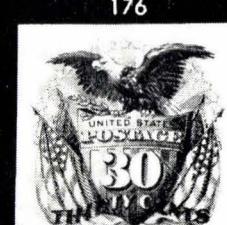
177



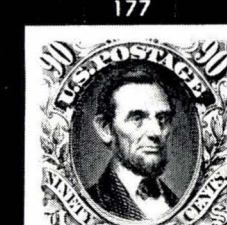
184



196



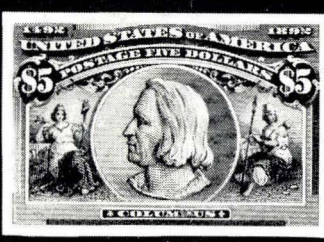
208



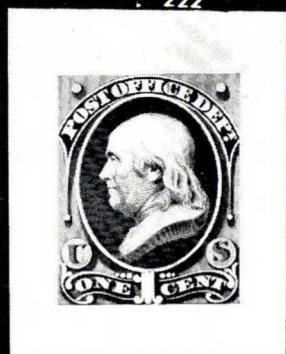
222



329EX



284EX



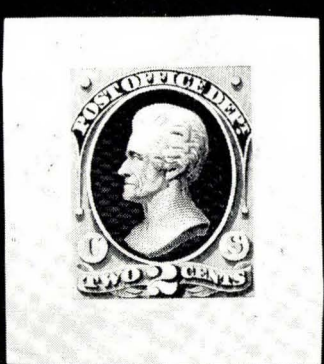
342



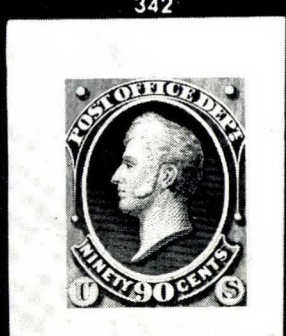
235EX



341EX



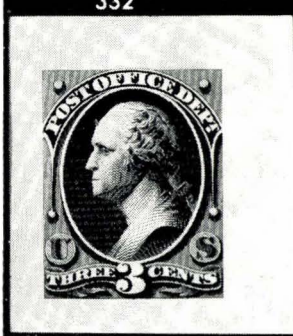
347



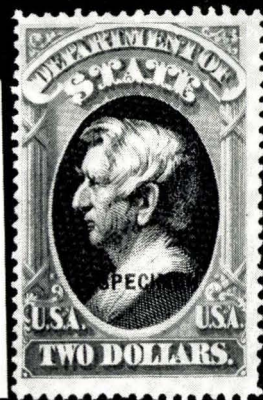
357



332



352



366



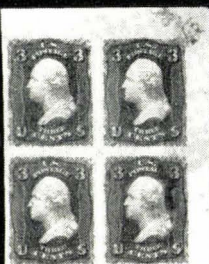
367



368



72



81



107EX



111EX



117EX



120



131EX



140



156



298



NATIONAL BANK NOTE, NEW ISSUE

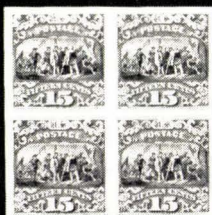
154



155



160



175



292



233



307EX



310



330EX



331EX



REPRODUCED BY THE U.S. GOVERNMENT PRINTING OFFICE

No. 21

410EX

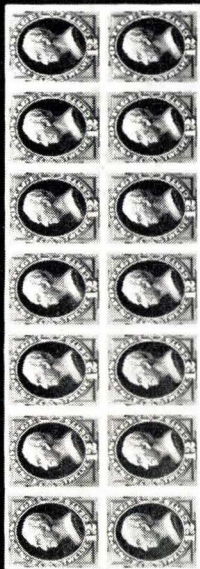


245



No. 135

256EX



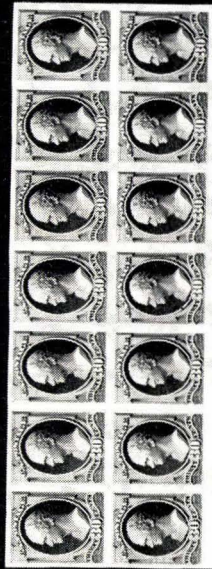
No. 137

267



No. 139

268



No. 143

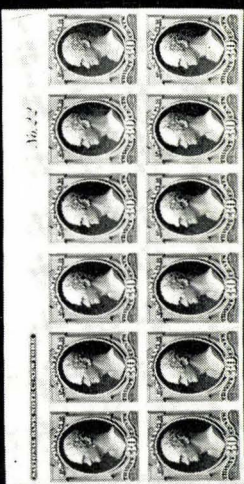
271



249EX

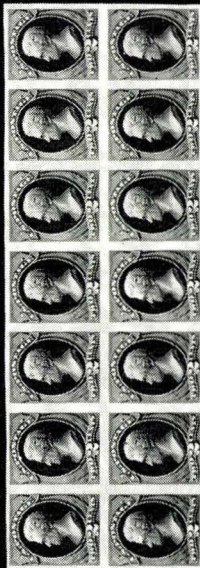


312EX



No. 147

247



ARTIST'S BANK NOTE COMPANY.

No. 142

263



ARTIST'S BANK NOTE COMPANY.

No. 170

264



No. 148

266

211 P	30c Scarlet Frame, Black Center (131TC). Very Fine	110.00
212 P	30c Scarlet Frame, Green Center (131TC). Very Fine	110.00
213 P	30c Scarlet Frame, Blue Center (131TC). Very Fine	110.00
214 P	30c Brown Frame, Black Center (131TC). Very Fine	110.00
215 P	30c Brown Frame, Scarlet Center (131TC). Very Fine	110.00
216 P	30c Brown Frame, Blue Center (131TC). Very Fine	110.00
217 P	30c Green Frame, Black Center (131TC). Very Fine	110.00
218 P	30c Green Frame, Brown Center (131TC). Very Fine	110.00
219 P	30c Blue Frame, Scarlet Center (131TC). Very Fine	110.00
220 P	30c Blue Frame, Brown Center (131TC). Very Fine	110.00
221 P	30c Blue Frame, Green Center (131TC). Very Fine	110.00
222 P	90c Black Frame, Scarlet Center (132TC). Very Fine	(Photo) 120.00
223 P	90c Black Frame, Brown Center (132TC). Very Fine	120.00
224 P	90c Black Frame, Green Center (132TC). Very Fine	120.00
225 P	90c Scarlet Frame, Blue Center (132TC). Very Fine	120.00
226 P	90c Brown Frame, Black Center (132TC). Very Fine	120.00
227 P	90c Brown Frame, Blue Center (132TC). Very Fine	120.00
228 P	90c Green Frame, Brown Center (132TC). Very Fine	120.00
229 P	90c Green Frame, Blue Center (132TC). Very Fine	120.00
230 P	90c Blue Frame, Brown Center (132TC). Very Fine	120.00
231 P	90c Blue Frame, Green Center (132TC). Very Fine	120.00
232 P	Complete Set of 1869 "Atlanta" Trial Color Proofs. The preceding 53 lots offered as a single lot, Very Fine & Rare Set	5,970.00

1870-77 ESSAYS

233 E	10c Orange Brown, Die Essay on India Paper (Brazer 150E-Bb). Very Fine (Photo)	E. VII
234 E	1c-90c 1877 Frame Only, Die Essays on Proof Paper Brazer (182E-Ac— 191E-Ac). Cpl. Set in Red Violet, Very Fine	E. VI
235 E	2c, 6c, 12c, 30c 1877 Washington, Plate Essays, Lithographed on Per- forated & Gummed Stamp Paper (Brazer 184E-Ae, 186E-Ae, 188aE-Ae, 190E-Ae). Eight Diff. Paris from Plate 2, four combination pairs of 2c & 6c, four of 12c & 30c, Very Fine, Scarce	(Photo Ex) E. VIII
236 E	3c 1877 Die Essays on Proof Paper (Brazer 184E-Ba). Three Diff. Colors, Very Fine	E. IV
237 E	3c 1877 Washington, Plate Essays on Proof Paper (Brazer 184E-Bd). Ten Colors, each from Position 11, showing Plate Crack, a few have small thin spots, otherwise V. F. lot	E. III
238 E	3c 1877 Washington, Plate Essays, on Proof Paper (Brazer 184E-Bd). Blocks, Five Diff. Colors, Very Fine	E. IV
239 E	3c 1877 Washington, Plate Essays on Proof Paper (Brazer 184E-Bd). Blocks, Six Diff. Colors, Very Fine	E. IV
240 E	3c Carmine, Brown, Blue, 1877 Plate Essays on Glazed Wove (184E-Bh). U. L. Sheet Corner Blocks, Very Fine	E. III
241 P	3c 1877 Washington, Lithographed Plate Essay in Orange on Wove Paper (Brazer 184E-Bh). Ten Blocks, Very Fine	E. V

BANK NOTES ISSUES

242 P	1c-90c National Bank Notes, Plate Proofs on India (145P-155P). Very Fine Set	55.75
243 P	1c-90c National Bank Notes, Plate Proofs on India (145P-155). V. F. Set	55.75
244 P	24c Purple, Plate Proof on India (153P). Block, mounted on card, Very Fine	38.50

245 P	24c Purple, Plate Proof on India (153P). B. Imprint Plate No. 21 Block of 12, light crease through top row & one bot. stamp, otherwise Very Fine (Photo)	300.00
246 P	24c Purple, Plate Proof on India (153P). Block of 48 (8 x 6), light folds through third row, others Very Fine	420.00+
247 P	30c Black, Plate Proof on India (154P). T. Imprint, Half Arrow, Plate No. 22 Block of 12, Very Fine (Photo)	300.00
248 P	30c Black, Plate Proof, on India (154P). B. Imprint, Half Arrow Plate No. 22 Block of 12, two stamps light crease, thin spot, otherwise Very Fine	300.00
249 P	1c, 3c-90c Continental Bank Notes, Large Die Proofs on India (156P, 158P-166P). Die Sunk n 4½"x5" cards, Very Fine (Photo Ex)	1,590.00
250 P	1c-24c Continental Bank Note Issue, Plate Proofs on India (156P-164P, 178P, 179P). Very Fine	138.50
251 P	1c-15c 1873-82 Bank Notes, Plate Proofs on India (156P-158P, 160P-163P, 208P). 3c defective, others Very Fine	96.50
252 P	1c Black, "Atlanta" Trial Color Plate Proof on Card (156TC). Cpl. Sheet of 100 with Imprint & Plate Nos. at T. & B., few light wrinkles & tiny tear in margin, Very Fine & of Great Rarity	900.00+
253 P	1c-90c 1873-75 Bank Notes, Black, "Atlanta" Trial Color Plate Proofs on Card (156TC-179TC). Very Fine Set	113.00
254 P	1c-90c 1873-75 Bank Notes, Scarlet, "Atlanta" Trial Color Plate Proofs on Card (156TC-179TC). Very Fine Set	100.00
255 P	1c-90c 1873-75 Bank Notes, Brown "Atlanta" Trial Color Plate Proofs on Card (156TC-179TC). Fine-Very Fine Set	100.00
256 P	1c-90c 1873-75 Bank Notes, Green, "Atlanta" Trial Color Plate Proofs on Card (156TC-179TC). Very Fine Set	100.00
257 P	1c-90c 1873-75 Bank Notes, Blue, "Atlanta" Trial Color Plate Proofs on Card (156TC-179TC). Fine-Very Fine Set	100.00
258 P	1c Ultramarine, Plate Proof on India (156P). B. Imprint Plate No. 125 Block of 14, mounted on card, Very Fine (Photo)	325.00
259 P	1c Black, Trial Color Plate Proof on India (156TC). Block, Very Fine	27.50
260 P	1c-90c 1873-88 Bank Notes, Plate Proofs on Card (157P, 158P, 160P, 162P-166P 178P, 179P, 205P-211P, 213P-218P). Very Fine	98.25
261 P	1c-90c 1873-88 Bank Notes, Plate Proofs on Card (157P, 158P, 160P, 162P-166P, 178P, 179P, 205P-211P, 213P-218P). Very Fine	98.25
262 P	1c-90c 1873-81 Bank Notes, Plate Proofs on Card (157P, 160P, 162P-166P, 178P-179P, 206P-209P). Very Fine	47.50
263 P	2c Brown, Plate Proof on India (157P). B. Imprint Plate No. 412 Block of 14, mounted on card, Very Fine (Photo)	300.00
264 P	3c Green, Plate Proof on India (158P). B. Imprint Plate No. 170 Block of 14, mounted on card, Very Fine (Photo)	350.00
265 P	3c Black, Trial Color Plate Proof on India (158TC). Cpl. Sheet of 100 mounted on card, with Full Imprint & portion of Plate No. at B., Very Fine	537.50+
266 P	7c Orange Vermilion, Plate Proof on India (160P). B. Imprint Plate No. 22 Block of 14, mounted on card, Very Fine (Photo)	300.00
267 P	12c Blackish Violet, Plate Proof on India (162P). B. Imprint Plate No. 137 Block of 14, mounted on card, Very Fine (Photo)	300.00
268 P	15c Yellow Orange, Plate Proof on India (163P). B. Imprint Plate No. 31 Block of 14, mounted on card, Very Fine (Photo)	300.00
269 P	24c Brownish Violet, Plate Proof on India (164P). Block of 18 (6 x 3), Very Fine Block	301.50+
270 P	24c Brownish Violet, Plate Proof on India (164P). L. L. Sheet Corner Block of 20 (4 x 5), Very Fine	346.00+
271 P	30c Gray Black, Plate Proof on India (165P). B. Imprint Plate No. 405 Block of 14, mounted on card, Very Fine, unlisted (Photo)	—

272 P	1c-90c 1881-88 Bank Notes, Plate Proofs on India (178P, 179P, 205P-218P). A few with small thin spots, otherwise V. F. lot	181.00
273 S	15c Blue, "Sample A" Overprint (189SL). Block, Fresh, o. g., Very Fine, Scarce	32.00+
274 S	15c Blue, "Sample A" Overprint (189 SL). Imprint Half Arrow Plate No. 31 Strip of 10, Fresh, o. g., bit hinge reinforced, F.-V. F.	80.00+
275 S	1c-90c Bank Notes, "Sample" Overprints (Bet. 189S-214S). 9 Diff. lacking only the 5c value, Fresh o. g., 10c tiny nick, others Fine-Very Fine	72.00
276 S	4c-90c Bank Notes, "Sample" Opts., ms. "A" and ms. "Sample A" (191 SM-216 SM). Minute imperfections as often, otherwise Fine	39.00
277 S	4c-90c Bank Notes "Sample" Opts, ms. "A" and ms. "Sample A" (191 SM-216 SM). V. G.-Fine	39.00
278 P	1c-90c American Bank Note Issue, Plate Proofs on India (205P-211P, 213P-218P). Incl. 2 shades of 210P, Very Fine	143.00
279 S	1c-90c Bank Notes, "Sample A" Overprints (212 SL-191 SL). Cpl. set of 10 Values with additional 10c, 15c Without Overprints, Fresh, o. g., 4c, 10c thin spots, otherwise F.-V. F. set	110.00
280 S	1c-90c Bank Notes, "Sample" Overprint (212 SK-191 SK). 12 Values, Mostly full o. g., 3c, 4c, 5c, 30c small thin spots, others F.-V. F.	96.00
1890 ISSUE		
281 P	1c-90c 1890 Issues, Plate Proof on India (219P-229P). Very Fine Set	72.00
282 P	1c-90c 1890 Issue, Plate Proofs on Card (219P-229P). Cpl. except for 2c Lake, Very Fine	45.00
283 P	1c-90c 1890 Issue, Plate Proofs on Card (219P-229P). Cpl. except for 2c Lake, Very Fine	45.00

COLUMBIAN ISSUE

284 P	1c-\$5.00 Columbian, Plate Proofs on India (230P-245P). Cpl. Set, 10c small thin, others Very Fine (Photo Ex)	337.50
285 P	1c-\$5.00 Columbian, Plate Proofs on India (230P-245P). Vert. Pairs, 2c, 15c, 30c & \$1.00 faults, otherwise V. F. set	675.00
286 P	3c-30c Columbian, Plate Proofs on India (232P, 234P, 237P, 238P, 239P). Blocks, small hinge thins in few stamps, others Very Fine	262.50
287 P	1c-\$5.00 Columbian, Plate Proofs on Card (230P-245P). Very Fine Set	253.50
288 P	1c-\$5.00 Columbian, Plate Proofs on Card (230P-245P). Very Fine Set	253.50
289 P	1c-\$5.00 Columbian, Plate Proofs on Card (230P-245P). Very Fine Set	253.50
290 P	1c-\$5.00 Columbian, Plate Proofs on Card (230P-245P). F.-V. F. Set	253.50
291 P	1c-3c, 5c-30c Columbian, Plate Proofs on Card (230P-232P, 234P-239P). Very Fine	62.50
292 P	1c Columbian, Large Die Proof on India (230P). Mounted on Card, 73 x 60 mm, Very Fine (Photo)	120.00
293 P	3c Columbian, Large Die Proof (232P). Printed Directly on 8¼ x 5½" Thin Card, Very Fine	—
294 P	3c Black, Columbian, Trial Color, Large Die Proof (232TC). India, cut down to 41 x 28 mm, lightly thinned, V. F. appearance, Unlisted	—
295 P	4c Columbian, Large Die Proof on India (233P). Mounted on Card 71 x 58 mm, barest trace of toning, otherwise V. F.	120.00
296 P	5c Columbian, Large Die Proof (234P). Printed Directly on 4¼ x 4" Thin Card, Very Fine	—
297 P	5c Black, Columbian, Large Die Trial Color Proof (234TC). Printed Directly on Card, Very Fine, unlisted in Black on Card	—
298 P	5c Blue Green, Columbian, Large Die, Trial Color Proof on India (234TC). Die Sunk on Card, Very Fine (Photo)	150.00
299 P	5c Blue Green, Columbian, Large Die, Trial Color Proof (234TC). Printed Directly on Card, Very Fine, Unlisted in Green on Card	—

300 P	5c Orange Brown, Columbian, Large Die, Trial Color Proof on India (234TC). Die Sunk on Card, Very Fine	150.00
301 P	6c, 8c \$2.00 Columbian, Large Die Proofs (235P, 236P, 242P). Printed Directly on Thin Card, 73 x 58 mm, last faintly toned, others Very Fine	—
302 P	10c Columbian, Large Die Proof on India (237P). Mounted on Card, 73 x 60 mm, Few negligible toning specks, otherwise Very Fine	120.00
303 P	15c Columbian, Large Die Proof on India (238P). Die Sunk on 90 x 73 mm Card, minute toning specks in margin, V. F.	120.00
304 P	15c Columbian, Plate Proof on India (238P). Bot. Imprint "M" Plate No. Strip of four, Very Fine	40.00+
305 P	30c Columbian, Plate Proof on India (239P). Bot. Imprint "N" Strip of three, Very Fine	34.50+
306 P	50c Columbian, Plate Proof on India (240P). Bot. Imprint "S" Plate No. Strip of four, Very Fine	64.00+
307 P	\$1.00–\$5.00 Columbian, Large Die Proofs (241P–245P). Printed Directly on thin Card, 73 x 54 mm, Very Fine (Photo Ex)	E. XII
308 P	\$5.00 Columbian, Large Die Proof (245P). Printed Directly on 8¼ x 5½" Thin Card, Very Fine	—

1894 & LATER ISSUES

309 P	2c Carmine, Ty. III, Plate Proof on India (252P). Sheet Corner Block, Very Fine	50.00
310 P	\$5.00 Dark Green, Plate Proof on Card (263P). Block, Very Fine (Photo)	200.00
311 E	1c–\$2.00 Trans–Mississippi Bi–Colored Large Die Essays (286E–293E). India Die Sunk on Card, Very Fine Set	E. XII
312 P	1c–\$2.00 Trans–Mississippi, Large Die Proofs (285–293P). Die Sunk on 6 x 6" Cards. Very Fine Set (Photo Ex)	1,155.00
313 P	1c–\$2.00 Trans–Mississippi Large Die Proofs (285–293P). Die Sunk on 7½ x 5" Cards, 4c, 5c & 8c small, light age toning spots, otherwise Very Fine Set	1,155.00
314 P	1c–10c Pan–American, Large Die Proofs on India (294P–299P). Die Sunk on large cards, Very Fine Set	450.00
315 P	1c–10c Pan American, Small Die Proofs (294P–299P). Mounted on small gray cards from the Roosevelt Book, Very Fine Set	240.00
316 P	1c–\$5.00 1902 Issue, Small Die Proofs (300P–313P). Cpl. Set mounted on gray album page from the Roosevelt Book, Very Fine Set	365.00
317 P	2c Harding, Large Die Proof on India (611P). Mounted in special leather bound presentation folder, directly below the proof impression a 2c Harding Perf. 12 has been affixed, inscription on mat framing proof reads "To Mrs. Harry S. New, the First die proof & stamp of the Harding Memorial Issue, (signed) Harry S. New, Postmaster General, Sept. 1, 1923, Very Fine	250.00+

POSTAGE DUE ISSUES

318 P	1c–50c 1879 Brown, Postage Dues, Small Die Proofs (J1P–J7P). Mounted on small gray cards from the Roosevelt Book, Very Fine Set	56.00
319 P	1c–50c 1879 Brown, Postage Dues, Small Die Proofs (J1P–J7P). 50c Small thin spot in margin, otherwise V. F. set	56.00
320 P	1c–50c 1879–87 Postage Dues, Plate Proofs on India (J1P–J21P). Very Fine Sets	38.00
321 P	1c–50c 1879–87 Postage Dues Plate Proofs on Card & on India (J1P–J21P). Very Fine Sets	60.25
322 P	1c–50c Postage Dues, "Atlanta" Trial Color Plate Proofs on Card (J1TC–J7TC). Cpl. Set of the Five Colors, virtually all Very Fine	217.00

323	P	1c-50c 1887 Red Brown, Postage Due, Plate Proofs on India (J15P-J21P). Blocks, Very Fine Set	147.00
324	S	1c-50c 1884-95 Postage Dues, "Specimen" Overprints (J15 SD-J21 SD, J39 SE-J44 SE). Most have small faults, F.-V. F. appearing Sets	189.00
325	P	1c-50c 1891 Bright Claret, Postage Dues, Small Die Proofs (J22P-J28P). 3c tiny thin specks, otherwise V. F. set	56.00
326	P	1c-50c 1891 Bright Claret, Postage Due, Plate on India (J22P-J28P). Blocks, Very Fine Set	62.50
327	P	1c-50c 1894 Claret Postage Dues, Small Die Proofs (J31P-J37P). Mounted on small gray cards from the Roosevelt Book, Very Fine Set	56.00
328	P	1c-50c 1894 Claret, Postage Dues, Small Die Proofs (J31P-J37P). Mounted on small gray Cards from the Roosevelt Book, Very Fine Set	56.00
329	S	1c-50c Postage Dues, "Universal Postal Congress" Opts. (J38 SO-J40 SO), J42 SO-J44 SO). F.-V. F. (Photo Ex)	150.00

CARRIER ISSUES

330	E	1c Franklin Carrier, Completed Die Essays on Green Bond Paper (Brazer LO1E-Ae). Two Diff. Colors, Orange, Dull Violet, Very Fine (Photo Ex)	E. V
331	E	1c Franklin Carrier, Completed Die Essays on Proof Paper. (Brazer LO1E-Ab). Ten Diff. Colors, few with stains, others Very Fine (Photo Ex)	E. VI
332	P	1c Orange, Eagle Carrier, Trial Color Proof on Wove Paper (LO2TCa). Very Fine (Photo)	50.00
333	P	1c Franklin, Eagle, Carriers, "Atlanta" Trial Color Plate Proofs on Card LO1TC, LO2TC). Cpl. Set of Five Colors each, Very Fine	104.00

OFFICIAL ISSUES

334	P	1c-\$20.00 Officials, Plate Proofs on India (O1P-O93P). Very Fine Set	186.00
335	P	1c-90c Officials, Plate Proofs on India (O1P-O67P, O72P-O93P). Cpl. except for State dollar values, few small flaws, otherwise nearly all Very Fine	127.00
336	P	1c-\$20.00 Officials, Plate Proofs on Card (O1P-O93P). Very Fine Set	105.65
337	P	1c-\$20.00 Officials, Plate Proofs on Card (O1P-O93P). Very Fine Set	105.65
338	P	1c-90c Officials, "Atlanta" Trial Color Plate Proofs on Card (O1TC-O67TC), O72TC-O93TC). Cpl. Set except for dollar value State Depts., Very Fine & Scarce	2,353.00
339	P	3c Deep Green, Interior, Large Die, Trial Color Proof on India (O17TC). Mounted on 2¼" x 2½" card, Very Fine	25.00
340	P	1c-90c Justice, Small Die Proofs (O25P-O34P). Mounted on small gray cards from the Roosevelt Book, Very Fine Set	70.00
341	S	1c-90c Justice, "Specimen" Overprints (O25 SD-O34 SD). B. Plate No. Singles, separated by scissors as was customary with the Special Printings, V. G.-V. F. set, Rare (Photo Ex)	338.75+
342	E	1c Gray Black, Post Office, Die Essay on Proof Paper (Brazer O47E-b). Very Fine (Photo)	E. VI
343	E	1c Dull Scarlet, Post Office, Die Essay on Proof Paper (Brazer O47E-b). Very Fine	E. VI
344	E	1c Dull Brown, Post Office, Die Essay on Proof Paper (Brazer O47E-b). Very Fine	E. VI
345	E	1c Dull Green, Post Office, Die Essay on Proof Paper (Brazer O47E-b). Very Fine	E. VI
346	E	1c Dull Blue, Post Office, Die Essay on Proof Paper (Brazer O47E-b). Very Fine	E. VI

347 E	2c Gray Black, Post Office, Die Essay on Proof Paper (Brazer O48E-b). Very Fine (Photo)	E. VI
348 E	2c Dull Scarlet, Post Office, Die Essay on Proof Paper (Brazer O48E-b). Very Fine	E. VI
349 E	2c Dull Brown, Post Office, Die Essay on Proof Paper (Brazer O48E-b). Very Fine	E. VI
350 E	2c Dull Green, Post Office, Die Essay on Proof Paper (Brazer O48E-b). Very Fine	E. VI
351 E	2c Dull Blue, Post Office, Die Essay on Proof Paper (Brazer O48E-b). Very Fine	E. VI
352 E	3c Gray Black, Post Office, Die Essay on Proof Paper (Brazer O49E-Db). Very Fine (Photo)	E. VI
353 E	3c Dull Scarlet, Post Office, Die Essay on Proof Paper (Brazer O49E-Db). Very Fine	E. VI
354 E	3c Dull Brown, Post Office, Die Essay on Proof Paper (Brazer O49E-Db). Very Fine	E. VI
355 E	3c Dull Green, Post Office, Die Essay on Proof Paper (Brazer O49E-Db). Very Fine	E. VI
356 E	3c Dull Blue, Post Office Die Essay on Proof Paper (Brazer O49E-Db). Very Fine	E. VI
357 E	90c Gray Black, Post Office, Die Essay on Proof Paper (Brazer O56E-b). Very Fine (Photo)	E. VI
358 E	90c Dull Scarlet, Post Office, Die Essay on Proof Paper (Brazer O56E-b). Very Fine	E. VI
359 E	90c Dull Brown, Post Office, Die Essay on Proof Paper (Brazer O56E-b). Very Fine	E. VI
360 E	90c Dull Green, Post Office, Die Essay on Proof Paper (Brazer O56E-b). Very Fine	E. VI
361 E	90c Dull Blue, Post Office, Die Essay on Proof Paper (Brazer O56E-b). Very Fine	E. VI
362 S	1c Post Office, "Specimen" Overprint (O47 SDa). Reperfed V. G. appear- ance, Scarce	135.00
363 P	1c-\$20.00 State, Small Die Proofs (O57P-O71P). Mounted on small gray cards from the Roosevelt Book, Very Fine Set	167.00
364 P	1c-90c State, Scarlet, Atlanta Trial Color Proofs on Card O57TC- O67TC). 3c 7c & 15c tiny hinge thins, others Very Fine	56.00
365 S	1c-90c State, "Specimen" Overprints (O57 SD-O67 SD). F.-V. F.	163.75
366 S	\$2.00 State, "Specimen" Overprint (O68 SD). Fresh, Fine (Photo)	500.00
367 S	\$2.00 State, "Specimen" Overprint (O68 SD). Partly Nibbed perf. tip, still Fine (Photo)	500.00
368 S	\$5.00 State, "Specimen" Overprint (O69 SD). Perf touch at left, as Fine as can be expected, Very Rare (Photo)	650.00
369 P	1c-90c Treasury, Scarlet, Atlanta Trial Color Proofs on Card (O72TC- O82TC). Four with thins, others Very Fine	57.00
370 P	1c-90c Treasury, Blue, Atlanta Trial Color Proofs on Card (O72TC- O82TC). Very Fine Set	57.00
371 P	1c-90c War, Plate Proofs on Card (O83P-O85P, O87P-O88P, O90P- O91P, O93P). Blocks, Very Fine	80.00
372 P	1c-90c War, Scarlet, Atlanta Trial Color Proof on Card (O83TC- O93TC). 3c tiny hinge thin, 10c light crease, otherwise V. F. set	57.00
373 P	1c, 2c Postal Savings, Small Die Proofs (O121P, O124P) 1c defective, 2c light corner crease	130.00
374 P	Official Proofs, 127 proofs incl. six diff. sets on card, Blocks of Justice on India privately perforated, Navy Small Die Proofs, few trial colors in black, few small faults, others nearly all F.-V. F.	286.40

NEWSPAPER ISSUES

375 P	5c-25c 1865 Newspapers, Small Die Proofs (PR2P-PR4P). On Gray Cards from the Roosevelt Book, Very Fine set	30.00
376 P	5c-25c 1865-75 Newspaper, Plate Proofs on Card (PR2P-PR7P). Very Fine set	22.25
377 P	5c-25c 1865 Newspapers, Trial Color Plate Proofs on Thick Cream Wove Paper (PR 2TC-PR 4TC). Cpl. Set of Four Diff. Colors of each, few thins, others Very Fine	60.00
378 P	1c-\$60.00 1865-85 Newspapers, Plate Proofs on Card (PR2P-PR81P). First three on wove paper, Very Fine	64.00
379 P	2c-\$60.00 1875 Newspaper, Small Die Proofs (PR 9P-PR 32P). On Gray Cards from the Roosevelt Book, V. F. set	144.00
380 P	2c-\$60.00 1875 Newspapers, Plate Proofs on India (PR 9P-PR 32P). Very Fine Set	43.25
381 P	1c-\$60.00 1875-85 Newspapers, Plate Proofs on Card (PR 9P-PR 32P, PR 57P-PR 79P, PR 81P). Nearly all Very Fine	43.00
382 P	2c Newspaper, Trial Colors, Plate Proofs on India (PR 9TC). Ten Diff. Colors, nearly all Very Fine	40.00
383 P	2c-\$60.00 Newspapers, "Atlanta" Trial Color Plate Proofs on Card (PR 9TC-PR 32TC). Cpl. Set in Five Diff. Colors, Very Fine	444.00
384 P	2c-\$60.00 1875 Newspapers, Trial Color Proofs on India (Bet. PR 9TC-PR 32TC). 41 Diff. in Seven Diff. Colors, nearly all Very Fine	156.00
385 S	1c-\$60.00 1875-85 Newspapers, Red "Specimen" Overprints (PR14SD, PR 57SD-PR 79SD, PR 81SD). Fresh, o. g., a few have tiny thin spots, otherwise V. G.-V. F. Set	175.00
386 P	1c-\$60.00 1879 Newspapers, Plate Proofs on India (PR 57-PR 79, PR 81). A few with small faults, otherwise V. F. set	38.00
387 P	1c-\$100.00 1895 Newspapers, Small Die Proofs (PR 102P-PR 113P). On Gray Cards from the Roosevelt Book, V. F. set	72.00
388 S	1c-\$100.00 1895 Newspapers, "Specimen" Overprints (PR 114 SE-PR 125 SE). Fresh, o. g., 1c, 50c and \$50.00 Values, small thin spots, otherwise F.-V. F. Set	104.00
389	Newspaper Proofs, 66 diff. Plate Proofs on Card & India, a few small flaws, mostly F.-V. F.	97.50

REVENUE ISSUES

390 P	1c-20c First Issue Revenues, Plate Proofs on Card (R1P-R13P, R16P-R42P). Incl. few on India, Very Fine	185.50
391 P	2c-\$1.90 First Issue Revenues, Trial Color Plate Proofs on India (R13TC, R51TC, R69TC, R71TC, R74TC, R75TC). Blocks, incl. 30c in Violet & Violet Gray, few small flaws, others nearly all Very Fine	198.00
392 P	20c Foreign Exchange, Plate Proof on India (R41P). Block, Very Fine	50.00
393 P	25c-70c First Issue Revenues, Plate Proofs on Card (R43P, R44P, R46P-R65P). Very Fine	110.35
394 P	30c Inland Exchange, Deep Red Lilac, Trial Color Plate Proof on India R52TC. Block, Very Fine	40.00+
395 P	\$1.00-\$3.50 First Issue Revenues, Plate Proof on Card (R66P-R69P, R71P-R73P, R75P-R87P). Very Fine	153.50
396 P	\$1.00 Lease, Plate Proof on Card (R70P). Very Fine	60.00
397 P	\$1.00 Passage Ticket, Plate Proof on Card (R74P). Very Fine	60.00
398 P	\$5.00-\$50.00 First Issue Revenues, Plate Proofs on Card (R88P-R101P). Very Fine	133.50
399 P	\$200.00 U. S. I. R., Plate Proof on India (R102P). Mounted on Card, tiny surface rub, otherwise Very Fine	150.00

400 P	First Issue Revenue, Vignette Only, Large Die Proofs on Proof Paper, Four Diff., averaging 45 x 90 mm, few paper irregularities, as usual, clear of design, Very Fine	E. V
401 P	3c-\$50.00 Second Issue Revenues, Plate Proofs on Card (R105P-R131P). Very Fine Set	67.00
402 P	1c-\$20.00 Third Issue Revenues, Plate Proofs on Card (R134P-R150P). Very Fine Set	63.70
403 P	2c Liberty, Black, Large Die Trial Color Proof on India (R152TC). Die Sunk on Card, small stains mostly on card, otherwise Very Fine	75.00
404 P	1c Green, Proprietary, Large Die Proof on India (RB11P). Die Sunk on Card, Very Fine	100.00
405 P	1c Brown, Proprietary, Large Die Trial Color Proof on India (RB11TC). Die Sunk on Card, some toning on card only, Very Fine	70.00
406 P	2c Brown, Proprietary, Large Die Proof on India (RB12P). Die Sunk on Card, Very Fine	100.00
407 P	3c Orange, Proprietary, Large Die Proof on India (RB13P). Die Sunk on Card, faint toned spots on card only, Very Fine	100.00
408 P	5c Black, Proprietary, Large Die Proof on India (RB16P). Die Sunk on Card, Very Fine	100.00
409 P	Revenue Proofs, 81 Plate Proofs on Card & India, nearly all diff., most are First Issue, incl. both normal & trial colors, several pairs & blocks, mostly Very Fine, Attractive Lot	495.50

POSTAGE CURRENCY

410 P	5c, 10c, 25c, 50c Postage Currency, Die Proofs on India Paper. Fronts as engraved by the National Banknote Co., each punched with four small holes, Very Fine & Rare Set (Photo Ex)	E. VIII
411 E	Washington Head Vignette, Engraved, 2" Diameter in Green on 2" x 3" Paper, "20" below, probably intended for Currency, V. F.	E. II

LARGE & MISCELLANEOUS LOTS

412 P	20c Philadelphia Sanitary Fair, Trial Color Die Proofs on Glazed Cards (WV-G2TC). Four diff. colors, Very Fine	E. IV
413 P	Philadelphia Sanitary Fair, Trial Color Die Proofs, Numerals of Value Omitted, on Glazed Cards (WV-GTC). Four diff. colors, Very Fine	E. IV
414 P	Proof Miscellany, 1861-93, 84 mostly different Card & India Plate Proofs, incl. Banknotes, Postage Dues, Special Delivery, Carriers, few trial colors & essays, some small faults, majority F.-V. F.	353.75
415 P	Proofs, Essays, Specimens Sample, Sample A, 74 stamps, incl. Postage Due, Newspaper, India, Card Proofs, Washington Vignettes, Experimental Paper, Mostly F.-V. F.	E. VIII

END OF SALE — THANK YOU

LOTS ON VIEW FROM JANUARY 5th

OFFICES OPEN SATURDAY BEFORE SALE

NOW AVAILABLE

A remarkable and unique collection of United States stamps together with the autographs of people pictured on them.

Included are all of the Presidents, most of their wives, numerous great men of history who have been honored on our stamps. The Famous Americans Series is nearly complete.

There are autographed signed letters of Revolutionary War Generals, both friend and foe. Men of the stature of Alexander Hamilton, Robert E. Lee, Patrick Henry are only a few of the noted historic figures whose autographs or letters are represented.

This is a collection without equal for there are many hundred individual pieces, all relating to the history of our country and of the stamps commemorating important people and events.

A marvelous collection of Exhibition stature.

Price on application.

ROBERT A. SIEGEL
AUCTION GALLERIES, INC.

10 East 52nd Street

New York, N. Y. 10022

SPLIT PERSONALITY?

NO ! BUT THERE ARE TWO OF US

ROBERT A. SIEGEL, INC.

"The House of Classics"

Offering a matchless stock of classic
stamps and covers to collectors.

AND

ROBERT A. SIEGEL
AUCTION GALLERIES, INC.

Providing the finest and most dependable auction service for rare
stamps and collections offered anywhere.

HOW MAY WE SERVE YOU?

Either of us . . . at . . .

10 East 52nd Street

New York, N. Y. 10022

Phone (212) 753-6421

IS YOUR COLLECTION FOR SALE?

REALIZE IMMEDIATE CASH
PLUS THE ADDED ADVANTAGE OF
SELLING THROUGH OUR AUCTIONS

If desired, we will advance immediate cash up to 75% of our appraisal value, of what your collection should realize at auction. There is no interest charge.

Your collection will then be sold in one of our coming auction sales. All stamps are expertly and advantageously lotted in attractive, well illustrated catalogs. Lotting is meticulously planned under our personal supervision. Commission is 20% of the gross realization. There is no lotting fee or any other charges. Final settlement is made within five weeks after the sale. We have been continuously conducting stamp auctions in the United States for over forty years.

Valuable collections and stamp holdings are especially wanted, but we will accept properties valued from \$500 upwards. Send all stamps direct for appraisal. Auction advance will be remitted shortly after receipt. If not entirely pleased, stamps will be returned at our expense. If circumstances warrant due to bulk or value, we will travel anywhere to inspect important properties.

ROBERT A. SIEGEL
AUCTION GALLERIES, Inc.

(Licensed and Bonded Auctioneer)

10 EAST 52nd STREET
NEW YORK, N. Y. 10022

Tel. (212) 753-6421

ROBERT A. SIEGEL AUCTION GALLERIES, Inc.

10 East 52nd Street
New York, N. Y. 10022

364TH SALE

PRICES REALIZED

January 7th, 1970

UNITED STATES
Proofs and Essays

1	4000.00	57	57.50	113	230.00	169	100.00	272	62.50	328	37.50	384	80.00
2	70.00	58	40.00	114	300.00	170	70.00	273	42.50	329	145.00	385	55.00
3	125.00	59	37.50	115	190.00	171	180.00	274	130.00	330	42.50	386	29.00
4	170.00	60	38.00	116	50.00	172	22.00	275	47.50	331	70.00	387	52.50
5	75.00	61	38.00	117	230.00	173	30.00	276	32.00	332	11.00	388	50.00
6	65.00	62	38.00	118	20.00	174	300.00	277	30.00	333	80.00	389	21.00
7	70.00	63	57.50	119	18.00	175	80.00	278	95.00	334	120.00	390	100.00
8	62.50	64	50.00	120		176	300.00	279	75.00	335	62.50	391	62.50
9	67.50	65	145.00	121		177	300.00	280	52.50	336	80.00	392	17.00
10	45.00	66	85.00	122	1000.00	178	70.00	281	50.00	337	85.00	393	70.00
11	55.00	67	375.00	123				282	36.00	338	1450.00	394	29.00
12		68	240.00	124				283	30.00	339	22.00	395	95.00
13	525.00	69	200.00	125	26.00	179		284	260.00	340	67.50	396	45.00
14	150.00	70	95.00	126	26.00	to	4500.00	285	450.00	341	400.00	397	42.00
15	75.00	71	36.00	127	18.00	232		286	115.00	342	50.00	398	85.00
16	80.00	72	270.00	128	62.50			287	190.00	343	50.00	399	70.00
17	75.00	73	72.50	129	20.00			288	190.00	344	50.00	400	45.00
18	65.00	74	72.50	130	35.00	233	100.00	289	200.00	345	50.00	401	35.00
19	75.00	75	65.00	131	80.00	234	45.00	290	200.00	346	50.00	402	50.00
20	65.00	76	42.50	132		235	80.00	291	32.00	347	50.00	403	47.50
21	80.00	77	60.00	133		236	30.00	292	80.00	348	50.00	404	90.00
22	65.00	78	20.00	134	2100.00	237	24.00	293	80.00	349	50.00	405	32.50
23	65.00	79	26.00	135		238	26.00	294	80.00	350	100.00	406	90.00
24	75.00	80	180.00	136	26.00	239	35.00	295	90.00	351	50.00	407	70.00
25	21.00	81	60.00	137	26.00	240	18.00	296	95.00	352	50.00	408	90.00
26	34.00	82	52.50	138	26.00	241	23.00	297	140.00	353	50.00	409	220.00
27	35.00	83	850.00	139	38.00	242	50.00	298	125.00	354	50.00	410	340.00
28	18.00	84	34.00	140	180.00	243	55.00	299	160.00	355	50.00	411	18.00
29	75.00	85	115.00	141	180.00	244	15.00	300	135.00	356	50.00	412	21.00
30	55.00	86	72.50	142	180.00	245	200.00	301	200.00	357	55.00	413	22.00
31	45.00	87	72.50	143	190.00	246	260.00	302	80.00	358	55.00	414	140.00
32	25.00	88	72.50	144	180.00	247	270.00	303	80.00	359	55.00	415	200.00
33		89	75.00	145	19.00	248	180.00	304		360	55.00		
34		90	52.50	146	33.00	249	1000.00	305	160.00	361	55.00		
35	575.00	91	72.50	147	28.00	250	65.00	306		362	70.00		
36		92	60.00	148	35.00	251	21.00	307	400.00	363	70.00		
37		93	75.00	149	21.00	252	210.00	308	70.00	364	21.00		
38	35.00	94	70.00	150	80.00	253	80.00	309	47.50	365	135.00		
39	32.50	96	70.00	151	28.00	254	72.50	310	160.00	366	900.00		
40	30.00	96	30.00	152	100.00	255	70.00	311	460.00	367	525.00		
41	32.00	97	23.00	153	95.00	256	72.50	312	950.00	368	1300.00		
42	340.00	98	45.00	154	130.00	257	80.00	313	700.00	369	20.00		
43	90.00	99	45.00	155	190.00	258	230.00	314	375.00	370	32.00		
44	57.50	100	160.00	156	90.00	259	14.00	315	300.00	371	26.00		
45	60.00	101	52.50	157	37.50	260	85.00	316	240.00	372	20.00		
46	55.00	102	55.00	158	42.50	261	62.50	317	340.00	373	37.50		
47	27.00	103	32.00	159	45.00	262	29.00	318	36.00	374	47.50		
48	90.00	104	72.50	160	190.00	263	210.00	319	18.00	375	32.00		
49	80.00	105	42.50	161	37.50	264	230.00	320	30.00	376	17.00		
50	80.00	106	55.00	162	180.00	265	130.00	321	40.00	377	38.00		
51	80.00	107	130.00	163	35.00	266	180.00	322	180.00	378	42.00		
52	80.00	108	23.00	164	180.00	267	210.00	323	62.50	379	60.00		
53	52.50	109	52.50	165	145.00	268	210.00	324	40.00	380	30.00		
54	65.00	110	70.00	166	105.00	269	280.00	325	55.00	381	21.00		
55	55.00	111	220.00	167	28.00	270	260.00	326	55.00	382	10.00		
56	52.50	112	160.00	168	115.00	271	425.00	327	40.00	383	300.00		