

368th SALE

**UNITED STATES
REVENUE STAMPS**

Offered by order of the Owner



AT PUBLIC AUCTION

Tuesday, March 3rd, 1970 at 1:00 P.M.

Robert A. Siegel
AUCTIONS

10 EAST 52nd STREET NEW YORK, N. Y. 10022

Tel.: 212 PLaza 3-6421

CONDITIONS OF SALE

1. The terms of sale are strictly cash to the highest bidder. All buyers are expected to pay for lots within three days of receipt, unless special arrangements have been made prior to the sale.
2. All bids are per lot as numbered in the catalogue and not per piece, unless otherwise announced by the auctioneer at the time of sale.
3. Any lot, the description of which is incorrect is returnable, but only within three days of receipt. All disputed lots must be returned intact as received and lots containing five or more stamps are not returnable at any time. No lots may be returned by purchasers who have had the opportunity to examine them prior to the sale. No illustrated lots may be returned because of centering, margins or other factors shown in the illustration.
4. Successful mail bidders, unless they are known to us or supply acceptable references, will be notified of the amount of the lots secured for them, and are expected to send payment in full before the lots are forwarded.
5. If the purchase price has not been paid within the time limit, or lots taken up within seven days from date of sale, they may be resold and any losses arising from such sale charged to the defaulter.
6. All lots are sold as genuine but should any lot be proved otherwise by written opinion of any competent, responsible authority acceptable to us, immediate refund of the full purchase price will be made, provided that any such claim is made within 25 days from date of sale. If claim is not made within this period no lots are returnable for any reason at any time. Naturally, so long as we are notified within the 25 day period that an opinion is being sought the matter will remain open until such opinion is rendered. We will not be responsible for any charges incurred by the buyer for expertization fees and costs.
7. The right is reserved to group two or more lots, also withdraw any lot or lots from the sale, or to act on behalf of the seller.
8. Until paid for in full all lots remain the property of Robert A. Siegel Auction Galleries, Inc.
9. No commission is charged for buying at our sales, but all forwarding charges will be added to the purchase price. Shipment will be made to a post office box only if the buyer has also furnished a street address. All large lots unsuitable for parcel post will be sent by REA Express collect, or, upon request, REA Air Express collect.
10. Upon written application lots may be sent for examination prior to the auction, condition upon being mailed back by registered mail, adequately insured, within 24 hours of receipt. The applicant is completely responsible for all lots sent for examination, and for the insurance of same against mishap, from the time of receipt until they are actually received back, and is to pay all expenses of postage and insurance. No lots can be sent for inspection within ten days of the date of sale.
11. The placing of a bid shall constitute acceptance of the foregoing conditions of sale.

ROBERT A. SIEGEL

ANDREW LEVITT, Licensed Auctioneers

In sending bids, always state the highest price you are prepared to pay for the lot. Your limit will not be used as a starting bid unless absolutely necessary.

DESCRIPTIONS

Extremely Fine—the finest condition for noteworthy, outstanding copies.

Very Fine (VF)—means that there is a slight deviation from the above.

Fine (F)—means that the perforations do not touch the design on issues after 1890, but in some cases may just touch in earlier issues; if used, fairly lightly cancelled.

Very Good (VG)—means that the appearance is generally fine but that the perforations cut the design slightly.

Good (G)—means average off-centering; or fairly attractive with slight defects.

Original gum (OG) is not to be expected on 19th Century stamps unless so stated.

Mint—have never been hinged.

Scott 1970 Specialized Catalogue used for cataloguing lots of U. S. and Possessions.

Scott 1970 Standard Catalogue for others.

MARCH 3rd, 1970

ROBERT A. SIEGEL AUCTION GALLERIES, Inc.

New York, N. Y. 10022

Tel.: 753-6421 (Area Code 212)

REFERENCES PLEASE
(if unknown to us)

SIGNED

County

[illegible]

Upon request, estimate of value furnished on any lots in this auction.

UNITED STATES REVENUE STAMPS

PROOFS & ESSAYS

FIRST ISSUE

| | | |
|------|--|---------|
| 1 P | 1c Express, Plate Proof on India (R1P). Block, light crease in two, others Very Fine, unpriced as block | — |
| 2 P | 1c Playing Cards, Proprietary, Telegraph, Plate Proofs on Cards (R2P-R4P). Blocks, Very Fine | 40.50 |
| 3 P | 1c-\$20.00, Plate Proofs on Card, Collection of 92 card proofs, nearly all different, incl. few Pairs, Strips & Blocks, Trial Colors, nearly all Very Fine, Attractive Lot | 408.00 |
| 4 P | 3c Playing Cards, Plate Proof on Card (R17P). Block Very Fine | 40.00 |
| 5 P | 3c Foreign Exchange, Proprietary, Telegraph, Plate Proofs on Card (R16P, R18P, R19P). Blocks, Very Fine | 34.00 |
| 6 P | 4c-\$10.00 First Issue, Plate Proofs on India. Twelve proofs incl. two dups., also one Trial Color with closed tear, others mostly Very Fine | 167.50 |
| 7 P | 4c Proprietary, Plate Proof on India (R22P). Block, Very Fine (Photo) | 87.50 |
| 8 P | 5c, 30c, \$5.00 First Issue, Trial Color Plate Proofs on Wove Paper (R23TC, R52TC, R88TC, R91TC). 5c & \$5.00 in Carmine, 30c Deep Red Lilac, F.-V. F., unlisted on wove | — |
| 9 E | 10c Green & Violet Essay, Without Lettering in Bottom Label, On Heavy Wove Paper, Very Fine | E. II |
| 10 E | 10c Scarlet & Gray Essay, Without Lettering in Bottom Label. Horiz Pair on Heavy Wove Paper, Very Fine | E. III |
| 11 P | 10c First Issue, Plate Proofs on Card (R32P-R36P). Blocks, first two in blocks of six, Very Fine | 57.50 |
| 12 P | 20c Foreign Exchange, Plate Proof on India (R41P). Block, Very Fine | 50.00 |
| 13 P | 25c Insurance, Plate Proofs on India & Card (R46P). Blocks, Very Fine | 42.00 |
| 14 P | 30c Foreign Exchange, Plate Proof on India (R51P). Block, Very Fine | 50.00 |
| 15 P | 50c Entry of Goods, Plate Proof on India (R55P). Very Fine | 25.00 |
| 16 P | 50c Life Insurance, Plate Proof on India (R58P). Very Fine | 25.00 |
| 17 P | 50c Original Process, Plate Proof on India (R60P). Very Fine | 25.00 |
| 18 P | 50c Probate of Will, Plate Proof on India (R62P). Very Fine | 30.00 |
| 19 P | \$1.00 First Issue, Carmine, Trial Color Plate Proofs on India (R69TC, R71TC, R73TC, R74TC, R75TC). Blocks, Very Fine | 110.00+ |
| 20 P | \$3.00 Charter Party, Plate Proof on India (R85P). Block, small hole in one, light stains, Very Fine appearance | 70.00 |
| 21 P | \$15.00 Milky Blue, Mortgage, Plate Proof on India (R97f-P). Very Fine, Unpriced | — |
| 22 P | \$20.00 Probate of Will, Plate Proof on Card (R99P). Very Fine | 30.00 |

LOTS ON VIEW FROM FEBRUARY 26th

OFFICES OPEN SATURDAY BEFORE SALE

| | | |
|------|---|--------------|
| 23 E | Washington Die Proof on India. Vignette as used on Revenue Issues in ornate frame with "No. 27", Very Fine | E. II |
| 24 E | \$200.00 Green & Black, Internal Revenue, Essay. Perforated & Gummed, Very Fine | E. V |

SECOND ISSUE

| | | |
|-------|--|--------------|
| 25 P田 | 2c-\$1.30 Second Issue, Plate Proof on Card (R104P, R105P, R109P, R112P, R115P, R119P). Blocks, incl. two blocks of 2c Pale Blue & Black Trial Color on Bond, Very Fine | 104.50 |
| 26 P | 3c-\$50.00 Second Issue, Plate Proof on Card (R105P-R112P, R130P, R131P). Very Fine | 39.50 |
| 27 P | 10c-\$50.00 Second Issue, Plate Proofs on India (R105P-R131P). \$50.00 light stain, others Very Fine | 80.00 |
| 28 P田 | 10c Blue & Black, Plate Proof on India (R109P). B. Imprint Plate No. 5 Block of Eight, some light staining & small thins, Very Fine appearance, Scarce | — |
| 29 P | \$1.30-\$50.00 Second Issue, Plate Proof on Card (R119P, R121P, R122P, R126P, R131P). Pairs, the \$1.30 in strip of three with closed tear, others Very Fine | 95.50 |
| 30 P | \$1.30, \$1.50, \$25.00 Second Issue, Plate Proofs on India (R119P, R120P, R130P). First in Pair, second a strip of five, single of last, Very Fine | 46.50 |
| 31 P | \$1.30-\$3.50 Second Issue, Trial Color Proofs on India (R119TCg, R123TCh-R126TCh). First in Light Blue & Black, others Dark Blue & Black, all but one with major faults as is usual, F.-V. F. appearance | 87.50 |
| 32 E | \$3.50, \$5.00, \$25.00 Second Issue Revenue Essays, Card Proofs in Blue with State Seal substituted for Portrait Vignettes, Very Fine | E. IV |

THIRD ISSUE

| | | |
|-------|--|---------|
| 33 P | 1c-\$10.00 Third Issue, Plate Proofs on Card (R134P-R138P, R140P, R142P, R145P-R149P). Incl. block 1c, pair 5c, Very Fine | 39.85 |
| 34 P田 | 1c-70c Third Issue, Plate Proofs on Card (R134P-R139P, R143P). Blocks, incl. additional 4c on India, Very Fine | 46.00 |
| 35 P | 4c-\$2.00 Third Issue, Plate Proofs on Card (R136P, R140P, R141P, R143P-R145P). T. Margin Imprint Strips of Three, Very Fine | 53.25 |
| 36 P | 15c-\$20.00 Third Issue, Plate Proofs on India (R139P-R144P, R146P, R147P, R150P). Incl. Pairs 15c, 40c, 70c, \$1.00, \$2.50 & \$3.00, two singles \$20.00, couple slightly toned, otherwise Very Fine | 104.00 |
| 37 P | 60c Orange & Black, Center Inverted (R140Pa). Very Fine (Photo) | 85.00 |
| 38 P | 60c Orange & Black, One with Double Transfer Design of 70c, Plate Proof on Card (R142P var). Horiz. Pair, proof at R. shows a small portion of the design of the previously entered 70c value, Very Fine & Rare (Photo) | 400.00 |
| 39 P田 | 60c Orange & Black, Center Inverted, One with Double Transfer Design of 70c Plate Proof on Card (R142Pa). Block, L. R. stamp with Double Transfer, Very Fine, Exceedingly Rare, Unique in the Inverted Block, signed "Sloane" (Photo) | 655.00+ |
| 40 P田 | \$20.00 Orange & Black, Plate Proof on India (R150P). Block, with R. Margin & Full Imprint, one stamp with closed tear, others Very Fine (Photo) | 100.00+ |

1875 NATIONAL BANK NOTE ISSUE

| | | |
|------|---|-------|
| 41 P | 2c Blue, Large Die Proof on India (R152P). Die Sunk on Card, Very Fine (Photo) | 90.00 |
|------|---|-------|

PROPRIETARY ISSUES

1871-75 FIRST ISSUE

| | | |
|------|--|----------------|
| 42 P | 1c-10c 1871-83 Proprietarys, Plate Proofs on Card, India (RB1P-RB7P, RB11P-RB17P). Incl. 1c-10c 1871 Issue on card & 3c-10c on India; 1c-6c 1875 Issue on India, few small flaws, otherwise Very Fine | 52.50 |
| 43 P | 1c-10c Proprietary, Plate Proofs on Card (RB1P-RB7P). Blocks, incl. additional 6c on India, Very Fine | 37.50 |
| 44 P | 1c-10c Proprietary, Dark Purple, Trial Color Plate Proofs on India (RB1TCa-RB7TCa). Cpl. Set, 10c small hole, couple others tiny thins, others Very Fine Set | 85.00 |
| 45 P | 1c-10c Proprietary, Carmine, Trial Color Plate Proofs on India (RB1TCu-RB7TCu). Cpl. Set, 4c margin nick, couple others tiny thins, otherwise Very Fine Set | 70.00 |
| 46 P | 3c Proprietary, Blue & Black, Plate Proof on Bond with Gum (RB3TC). Two Blocks, diff. shades, Very Fine | 20.00+ |
| 47 P | \$1.00 Green & Black, Proprietary, Die Proof on India (RB9P). Single pinhole, otherwise Very Fine | 165.00 (Photo) |

1875-83 SECOND ISSUE

| | | |
|------|---|----------------|
| 48 P | 1c Green, Proprietary, Large Die Proof on India (RB11P). Die Sunk on Card, Very Fine | 100.00 (Photo) |
| 49 P | 2c Brown, Proprietary, Large Die Proof on India (RB12P). Die Sunk on Card, Very Fine | 100.00 |
| 50 P | 3c Orange, Proprietary, Large Die Proof on India (RB13P). Die Sunk on Card, Very Fine | 100.00 |
| 51 P | 4c Red Brown, Proprietary, Large Die Proof on India (RB14P). Die Sunk on Card, Very Fine | 100.00 |
| 52 P | 5c Black, Proprietary, Large Die Proof on India (RB16P). Die Sunk on Card, Very Fine | 100.00 (Photo) |
| 53 P | 6c Violet Blue, Proprietary, Large Die Proof on India (RB17P). Die Sunk on Card, Very Fine | 100.00 |

REVENUE STAMPS

FIRST ISSUE, IMPERFORATE

| | | |
|------|--|----------------|
| 54 | 1c Express, Imperforate (R1a). Two attractive handstamp cancels, Bright Red & Blue, Large Margins, Very Fine | 12.00+ |
| 55 | 1c Express, Imperforate (R1a). Block of 20, (4x5), most of block rejoined along scissors cuts through 12 stamps, Very Fine appearance, Rare Multiple | 527.00 |
| 56 | 1c Playing Cards, Imperforate (R2a). Large to Huge Margins, faint wrinkle, otherwise Very Fine | 150.00 (Photo) |
| 57 | 1c Proprietary, Imperforate (R3a). Ample to Large Margins, neat ms. cancel, Very Fine | 150.00 (Photo) |
| 58 ★ | 1c-\$20.00 First Issue, Imperforate. Collection of 42 stamps, all appear unused, many with o.g., though some have had pen cancels removed, nearly all Very Fine, Attractive Lot | 174.50+ |
| 59 | 2c Bank Check, Imperforate (R5a). Horiz. & Vert. Pairs, Horiz. Strip of Five, Large Margins, Very Fine | 20.00+ |
| 60 | 2c Bank Check, Imperforate (R5a). R. Sheet Margin Block, Large Margins, light ms. cancel, Very Fine | 35.00 |

| | | |
|----|---|---------------|
| 61 | 2c First Issue, Imperforates (R5a, twelve, R7a, eight, R9a). 21, all with Handstamp cancels, Large Margins, Very Fine Lot | E. III |
| 62 | 3c Playing Cards, Imperforate (R17a). Margins all around, repaired hole, Attractive Space Filler of this Great Rarity (Photo) | 1,200.00 |
| 63 | 5c First Issue, Imperforates (R24a, R25a, R27a). Fifteen, each with Handstamp cancel, incl. two Certificates with Double Transfers, pair Inland Exchange, Very Fine Lot | E. II |
| 64 | ▣ 5c Certificate, Imperforate (R24a). Block of Six, Large Margins, bold ms. cancel, Very Fine (Photo) | 63.75+ |
| 65 | 10c Power of Attorney, Imperforate (R37a). Margins all around, ms. cancel, tiny closed tear, V. F. appearance | 52.50 |
| 66 | 20c Foreign Exchange, Imperforate (R41a). Six, each with Bold Handstamp cancel, incl. three in Red, Very Fine, Pretty Lot | 30.00+ |
| 67 | 20c Foreign Exchange, Imperforate (R41a). Horiz. Pair, Large Margins, ms. cancel, Very Fine | 25.00 |
| 68 | ▣ 20c Inland Exchange, Imperforate (R42a). Block, Ample to Large Margins, bold ms. cancel, light creases in B. pair, otherwise Very Fine (Photo) | 100.00 |
| 69 | 25c Bond, Imperforate (R43a). Horiz. Pair, Large Margins, neat ms. cancel, Very Fine (Photo) | 40.00 |
| 70 | 25c First Issue, Imperforates (R43a-R50a). Eighteen stamps, virtually all with Handstamp cancels, several in Red, Large Margins, no more than four of any value, Very Fine & Attractive | 46.10+ |
| 71 | 25c First Issue, Imperforates (45a-R50a). Horiz. Pairs, Large Margins, Life Insurance & Warehouse Recpt. with Embossed cancels, Very Fine | 74.00 |
| 72 | ▣ 25c Insurance, Imperforate (R46a). Block, Margins all around except just in at B. of L. R. stamp, couple tiny tears & faint crease, F.-V. F. appearance, a Very Rare Block | 500.00 |
| 73 | 30c Foreign Exchange, Inland Exchange, Imperforate (R51a, R52a). Large Margins, incl. three shades of first with Pretty Black, Red, & Blue handstamp cancels, Very Fine Lot | 25.00+ |
| 74 | 40c Inland Exchange, Imperforate (R53a). Large Margins, Handstamp cancel, Very Fine (Photo) | 115.00 |
| 75 | 40c Inland Exchange, Imperforate (R53a). Large Margins on three sides, just touched at L., light ms. cancel, Fine | 115.00 |
| 76 | 50c First Issue, Imperforate (R54a, R56a-R63a). Large Margins, several with handstamp cancels, couple faint creases, otherwise Very Fine Cpl. Set | 44.60 |
| 77 | 50c First Issue, Imperforate (R54a, R57a-R62a). Horiz. Pairs, Large Margins, tear in one Passage Ticket, couple others faint creases, otherwise Very Fine Lot | 156.00 |
| 78 | ▣ 50c Conveyance, Imperforate (R54a). Block, Large Margins, light ms. cancel, pinhole & small tear in one stamp, otherwise Very Fine | 85.00 |
| 79 | 50c Mortgage, Imperforate (R59a). Horiz. Strip of Five, neat ms. cancels, Very Fine | 21.50 |
| 80 | 60c Inland Exchange, Imperforate (R64a). Horiz. Pair, Large Margins, Very Fine | 35.00 |
| 81 | 70c Foreign Exchange, Imperforate (R65a). Large Margins, light ms. cancel, Very Fine (Photo) | 42.50 |
| 82 | \$1.00 First Issue, Imperforates (R66a, three, R68a, R69a, two, R72a, two, R73a). All with Attractive Handstamp cancels, incl. four in Red, Large Margins, Very Fine Lot | 27.30+ |
| 83 | \$1.00 First Issue, Imperforates (R66a, R67a, R70a, R72a, R73a, R75a). Horiz. Pairs, except Manifest in vert. pair, Large Margins, few light creases, tear in \$1.00 Mortgage, Very Fine appearance | 71.00 |
| 84 | \$1.00 First Issue, Imperforates (R66a, R68a, R69a, R72a). Horiz. Strip of Four of Conveyance, Foreign & Inland Exchange Strips of Five, Manifest Strip of Three, Large Margins, creases, Very Fine appearance | 87.80 |



7



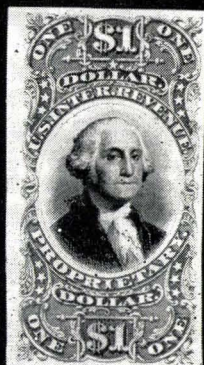
24



36



38



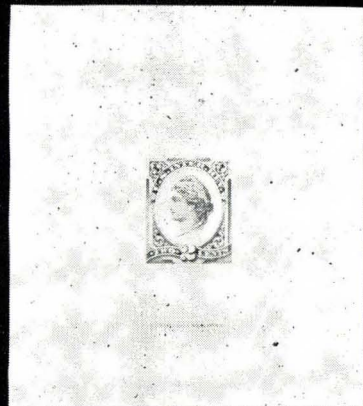
47



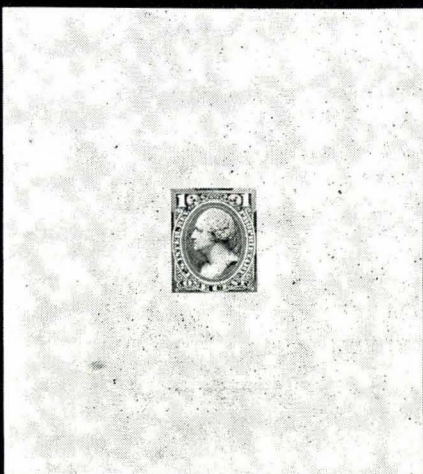
39



40



41



48



72



52



64



68



69



114



56



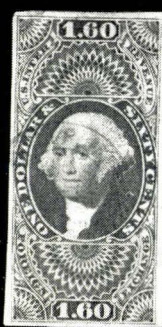
57



62



74



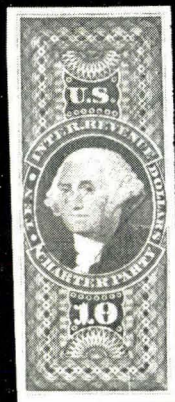
88



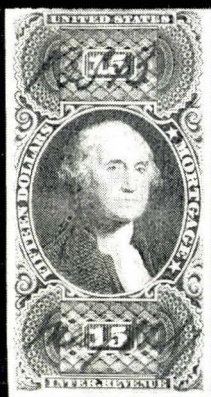
90



81



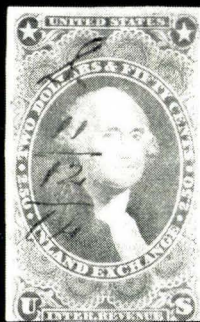
102



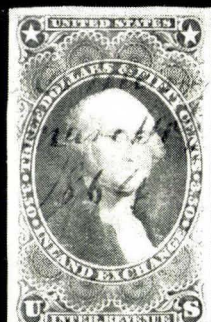
105



94



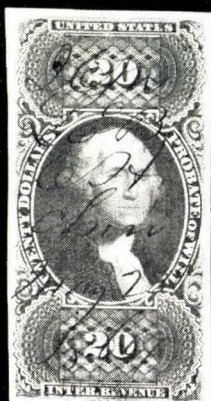
95



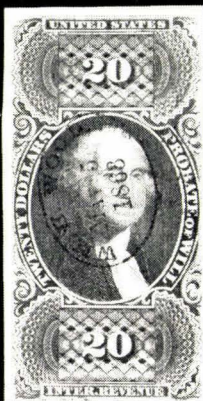
97



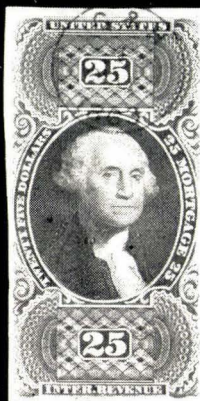
104



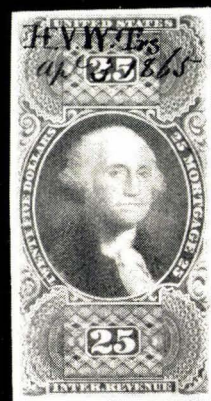
107



108



109



110



116



143



148



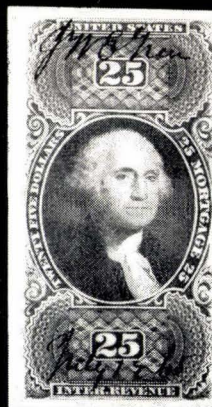
155



181



182



111



176



183



184



156



190



191



192



195



198



199



118



200



201



205



219



220



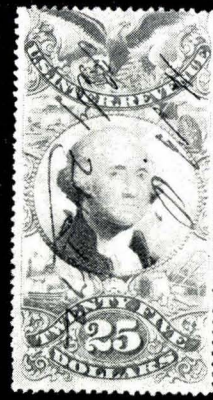
208



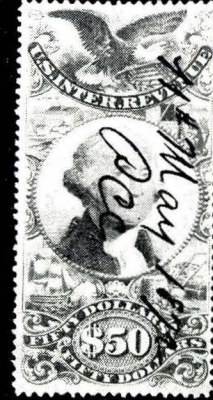
209



210



211



213



221



269



223



224



228



240



238



227



222



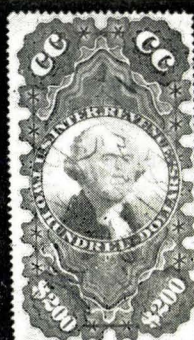
96



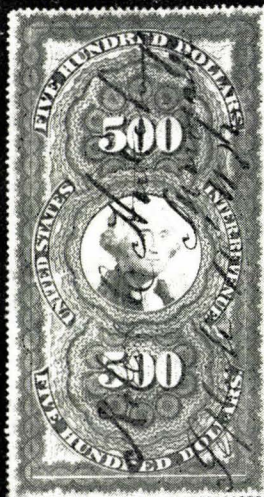
133



214



215



216



232



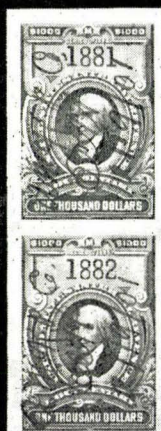
242



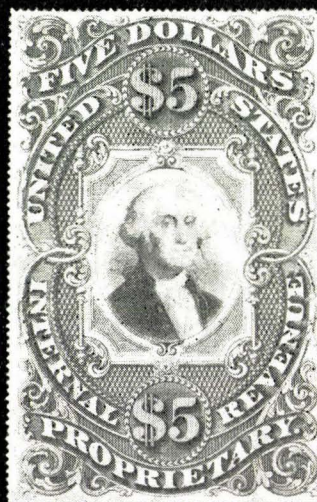
234



243



236



255



248



250



245



251



253



254



256

| | | |
|-----|--|----------------|
| 85 | \$1.00 First Issue, Imperforates (R66a–R76a). Large Margins, most with Handstamp cancels incl. several in Red, nearly all Very Fine, Cpl. Set .. | 78.80 |
| 86 | \$1.50 Inland Exchange, Imperforate (R78a). Two Vert. Pairs, two Horiz. Pairs three singles incl. two with Red Handstamp cancels, Large Margins, few small creases, otherwise Very Fine | 49.00 |
| 87 | \$1.50 Inland Exchange, Imperforate (R78a). Block, Large Margins except touched in couple places, neat Handstamp cancel, creases break through on two stamps, one of which is repaired, F.–V. F. appearance | 100.00 |
| 88 | \$1.60 Foreign Exchange, Imperforate (R79a). Margins all around, Blue Handstamp cancel, Fine | (Photo) 135.00 |
| 89 | \$1.60 Foreign Exchange, Imperforate (R79a). Large Margins, ms. cancel, closed tear, Very Fine appearance | 135.00 |
| 90 | \$1.90 Foreign Exchange, Imperforate (R80a). Large Margins on two sides, just touched on others, neat Blue Handstamp cancel, Fine | (Photo) 375.00 |
| 91 | \$2.00 Conveyance, Imperforate (R81a). Large Margins, neat “Illinois Central, R. R. Land Dept.” Handstamp cancel, Very Fine | 10.00+ |
| 92 | \$2.00 Mortgage, \$3.00 Charter Party (R82a, R85a). Large Margins, neat ms. cancels, Very Fine | 18.50 |
| 93 | \$2.00 Mortgage, Imperforate (R82a). Horiz. Pair, Large Margins, light crease, Very Fine appearance | 50.00 |
| 94 | \$2.00 Probate of Will, Imperforate (R83a). Large Margins except just touched at U. R., ms. cancel, small closed tear, Fine appearance (Photo) | 200.00 |
| 95 | \$2.50 Inland Exchange, Imperforate (R84a). Ample Margins on three sides, just in at B., light ms. cancel, faint creases, Fine appearance, Scarce (Photo) | 325.00 |
| 96 | \$3.00 Charter Party, Imperforate (R85a). Horiz. Strip of Three, Large Margins, neat ms. cancel, Very Fine | (Photo) 60.00+ |
| 97 | \$3.50 Inland Exchange, Imperforate (R87a). Large Margins except just touched at B., neat ms. cancel, light creases, Fine appearance | (Photo) 185.00 |
| 98 | \$5.00 First Issue, Imperforates (R88a–R91a). Large Margins, last with light crease, others Very Fine | 46.50 |
| 99 | \$5.00, \$10.00 Conveyance, Imperforate (R89a, R94a). Horiz. Pairs, Large Margins, faint creases, Very Fine appearance | 50.00 |
| 100 | \$5.00 Mortgage, Imperforate (R91a). Horiz. Pair, Large Margins, vert. crease almost entirely in margin between stamps, otherwise Very Fine .. | 50.00 |
| 101 | \$5.00 Probate of Will, Imperforate (R92a). Large Margins, neat ms. cancel, faint crease, Very Fine appearance | 47.50 |
| 102 | \$10.00 Charter Party, Imperforate (R93a). Large Margins, faint handstamp cancel, Very Fine | (Photo) 47.50 |
| 103 | \$10.00 Conveyance, Mortgage, Imperforate (R94a, R95a). Large Margins, Very Fine | 49.50 |
| 104 | \$10.00 Probate of Will, Imperforate (R96a). Ample to Large Margins, neat ms. cancel, tiny thin, Very Fine appearance | (Photo) 130.00 |
| 105 | \$15.00 Mortgage, Imperforate (R97a). Large Margins except close at T., neat ms. cancel, tiny thin, Fine appearance | (Photo) 125.00 |
| 106 | \$20.00 Conveyance, Imperforate (R98a). Horiz. Pair, Large Margins, neat ms. cancels, Very Fine | 20.00 |
| 107 | \$20.00 Probate of Will, Imperforate (R99a). Large Margins, ms. cancel, Very Fine | (Photo) 195.00 |
| 108 | \$20.00 Probate of Will, Imperforate (R99a). Large Margins, neat Handstamp cancel, nearly invisible crease, Very Fine appearance | (Photo) 195.00 |
| 109 | \$25.00 Mortgage, Imperforate (R100a). Large Margins, Handstamp cancel, crease, Very Fine appearance | (Photo) 110.00 |
| 110 | \$25.00 Mortgage, Imperforate (R100a). Large Margins, neat ms. cancel, Very Fine | (Photo) 110.00 |
| 111 | \$25.00 Mortgage, Imperforate (R100a). Ample to Large Margins, neat ms. cancel, pinhole in extreme corner margin, Very Fine | (Photo) 110.00 |

| | | |
|-----|--|---------|
| 112 | \$50.00 U. S. I. R., Imperforate (R101a). Large Margins, Very Fine | 25.00 |
| 113 | \$50.00 U. S. I. R., Imperforate (R101a). Two shades, one with handstamp cancel, small faults, Very Fine appearance | 50.00 |
| 114 | \$50.00 U. S. I. R., Imperforate (R101a). Horiz. Pair, Large Margins, neat ms. cancel, Very Fine | 55.00 |
| 115 | \$50.00 U. S. I. R., Imperforate (R101a). Horiz. Strip of Four, Ample to Large Margins, ms. cancel, creases, Very Fine appearance | 110.00+ |
| 116 | \$200.00 Green & Red U. S. I. R., Imperforate (R102a). Large Margins Beautiful Deep Colors, light crease, Very Fine appearance | 250.00 |
| 117 | First Issue, Imperforate. Collection of 151 stamps neatly mounted on Godden Album pages, wide range of issues represented with values from 1c-\$50.00, incl. many in Pairs & Larger Multiples, virtually all with Large Margins & neat ms. cancels, some light creases or small flaws, otherwise Very Fine, Most Attractive | 796.15 |

FIRST ISSUE, PART-PERFORATED

| | | |
|-----|--|--------|
| 118 | 1c Proprietary Part Perf. (R3b). Vert. Pair, light crease in one, otherwise Very Fine | 80.00 |
| 119 | 1c-50c First Issue, Part Perf. 13 stamps, each with attractive Handstamp cancel, incl. Blue & Red, mostly F.-V. F. | 43.85+ |
| 120 | ★ 2c Bank Check, Blue, Part Perf. (R5b). Vert. Block of Six, fresh, o. g., Fine-Very Fine | 16.25+ |
| 121 | 2c Proprietary, Part Perf. (R13b). Vert. Strip of Three, tear in B. stamp, T. Pair Fine | 55.00+ |
| 122 | 10c Bill of Lading, Part Perf. (R32b). Vert. Pair, neat ms. cancel, corner of upper stamp replaced, Very Fine appearance | 150.00 |
| 123 | ▣ 25c Certificate, Part Perf. (R44b). Block, neat ms. cancels, Fine | 50.00 |
| 124 | 40c Inland Exchange, Part Perf. (R53b). Horiz. & Vert. Pairs, ms. cancels, Very Fine | 16.00 |
| 125 | First Issue, Part Perf., Collection of 151 stamps with nice range of issues, many in Pairs or larger Multiples, some small flaws, otherwise F.-V. F., Useful & Attractive Lot | 448.51 |

FIRST ISSUE PERFORATED

| | | |
|-----|--|--------|
| 126 | ▣ 1c Express (R1c). Block of Nine, T. Vert. Pair in Middle appears Imperforate Between though three blind perfs show in fluid, Attractive Freak | E. II |
| 127 | 1c First Issue (R1c, R3c, R4c). Specialized Study of 98 stamps, all with handstamped or printed cancels, several pairs, Proprietary in block of 25, nearly all F.-V. F. | 55.30+ |
| 128 | 1c Playing Cards (R2c). Handstamp cancel, Very Fine | 19.00 |
| 129 | 1c Playing Cards (R2c). Printed cancel, Very Fine | 19.00+ |
| 130 | 1c Playing Cards (R2c). Printed cancel, on illustrated Playing Cards wrapper "Great Mogul Cards", Fine, Wonderful Piece | E. III |
| 131 | 1c Playing Cards (R2c). Three Pretty Colored cancels, two Handstamps in Red & Blue, printed cancel in Blue, small flaws, F.-V. F. appearance .. | 57.00+ |
| 132 | 1c Playing Cards (R2c). Horiz. Pair, neat Blue Handstamp cancel, Fine .. | 40.00+ |
| 133 | 1c Playing Cards (R2c). Two pairs joined together in form of a block, bold Handstamp cancels, F.-V. F. | 80.00+ |
| 134 | ⊠ 1c Proprietary (R3c). Tied to 2c Banknote (157) by Target cancels, Maine Town pmk., on cover to Alfred Me., the Revenue stamp with single pencil strike & small tear indicate it was probably used legitimately on a document before being removed for this illegal & unusual usage | E. IV |

| | | | |
|-----|----|---|--------------|
| 135 | ★ | 1c-\$200.00 First Issue , Collection of 148 stamps, all appear unused, many with o. g., few with pen cancels removed, incl. nice showing of shade varieties, the \$20.00 Probate & \$200.00 U. S. I. R. repaired, otherwise nearly all F.-V. F., Most Attractive | 366.75+ |
| 136 | | 2c First Issue (R5c-R15c) . Specialized Study of 131 stamps all with Handstamp or Printed cancels, incl. some Pairs & Blocks, nearly all F.-V. F. | 100.74+ |
| 137 | | 2c Bank Check, Orange on Green Paper (R6e) . Handstamp cancel, centered to T., Fine | 60.00 |
| 138 | | 2c Proprietary, Blue (R13) . Three Double Transfers , one with D. T. at B. (T13), two with D. T. at T. (T13a). handstamp cancel on one of latter breaks paper, otherwise F.-V. F. | 18.00 |
| 139 | | 2c Proprietary, Orange (R14c) . Double Transfer at B., (T13), light handstamp cancel, Very Fine | 20.00 |
| 140 | | 2c U. S. I. R. (R15c) . Used as a Promissory Note, written neatly in ms. across face of stamp, small faults, Very Fine appearance, Most Unusual Usage | E. II |
| 141 | ★田 | 2c U. S. I. R. (R15c) . Unused Block, U. L. stamp with unusually large, clear Double Transfer of an unlisted type, the L. L. stamp Double Transfer T15a, fresh, o. g., Fine | — |
| 142 | | 2c U. S. I. R. (R15) Three Double Transfers , incl. two distinct varieties of T15, & one unlisted type, F.-V. F. | 23.00 |
| 143 | | 2c U. S. I. R. on Green Paper (R15e) . Neat ms. cancel, Very Fine (Photo) | 85.00 |
| 144 | | 2c-\$3.00 First Issue . 35 stamps, each with attractive Handstamp cancels, incl. Red, Blue & Green, mostly F.-V. F. | 97.00+ |
| 145 | | 3c Playing Cards (R17c) . Handstamp cancel, Very Fine | 16.00+ |
| 146 | | 3c Playing Cards (R17c) . Three, two with handstamp cancels, F.-V. F. | 48.00 |
| 147 | | 3c First Issue (R16c-R19c) . Specialized Study of 38 stamps, all with Handstamp cancels, mostly F.-V. F. | 57.45+ |
| 148 | | 4c Playing Cards (R21c) . Neat ms. cancel, Very Fine (Photo) | 40.00 |
| 149 | | 4c Playing Cards (R21c) . Two Handstamp cancels, one in Red, Fine | 80.00+ |
| 150 | | 4c Playing Cards (R21c) . Two, with printed or handstamped cancels, small flaws, F.-V. F. appearance | 80.00+ |
| 151 | | 4c-6c First Issue (R20c, R22c-R30c) . Specialized Study of 166 stamps, all with Handstamp cancels, some in Blue & Red, interesting variety of shades, incl. several pairs & blocks, nearly all F.-V. F. | 56.21+ |
| 152 | | 5c Foreign Exchange (R26c) . Double Transfer at T. showing a "Double Pearl" at U. R., handstamp cancel, Very Fine, unpriced, with clipping from "Mekeels" | — |
| 153 | | 5c Inland Exchange (R27c) . Horiz. Strip of Seven, each with Double Transfers at B., neat ms. cancels, Fine | 21.00+ |
| 154 | | 5c Inland Exchange (R27c) . Six Double Transfers , three with Cracked Plate , nearly all F.-V. F. | 42.00 |
| 155 | | 6c Proprietary (R31c) . Pretty Color, Blue Handstamp cancel, small thins, Fine appearance (Photo) | 450.00 |
| 156 | | 6c Proprietary (R31c) . Nicely Centered, light Blue handstamp cancel, faults, Very Fine appearance (Photo) | 450.00 |
| 157 | | 10c First Issue (R32c-R38c) . Specialized Study of 79 stamps, all with Handstamp cancels, some in Blue & Red, incl. block Foreign Exchange, several pairs, nearly all Fine-Very Fine, Attractive | 43.94 |
| 158 | | 15c-20c First Issue (R39c-R42c) . Specialized Study of 32 stamps all with attractive Handstamp cancels, Fine-Very Fine | 26.80+ |
| 159 | | 25c-30c First Issue (R43c-R53c) . Specialized Study of 89 stamps, all with attractive Handstamp cancels, incl. several in Blue & Red, nearly all Fine-Very Fine | 57.41+ |
| 160 | | 25c Insurance, Double Impression (R46e) . Clear Double Print , bold ms. cancel, centered to B., Fine & Scarce | 85.00 |

| | | |
|-----|--|-----------------------|
| 161 | 30c Foreign Exchange (R51c). Horiz. Pair, Handstamp cancels, faint wrinkling, otherwise Fine | 60.00 |
| 162 | ☐ 30c Inland Exchange (R52c). Block of Six, neat ms. cancels, slightly reinforced, otherwise Very Fine | 32.00 |
| 163 | 50c First Issue (Bet. R54c-R60c). Collection of Plate Cracks & Scratches on 34 stamps, mostly F.-V. F., Interesting Lot | E. VI |
| 164 | 50c-70c First Issue (R54c-R65c). Specialized Study of 84 stamps, all with attractive Handstamp cancels, nearly all Fine-Very Fine | 49.67+ |
| 165 | \$1.00 First Issue (R66c-R76c). 47 stamps, all with Handstamp cancels, from one to ten of each, nearly all F.-V. F., Attractive Lot | 81.02+ |
| 166 | ☐ \$1.00 First Issue (R68c-R71c, R75c). Blocks, Fine-Very Fine | 43.50 |
| 167 | \$1.30 Foreign Exchange (R77c). Ten, all with attractive Handstamp cancels, nice variety of shades, Fine-Very Fine | 55.00+ |
| 168 | \$1.50-\$1.90 First Issue (R78c, seven, R79c, five, R80c, three). Fifteen, all with Handstamp cancels, incl. Red, Purple & Blue, Fine-Very Fine .. | 96.35+ |
| 169 | ☐ \$2.00 Conveyance (R81c, 81d). Blocks, on Old & Silk Papers, the latter faint crease, staple holes, other F.-V. F. | 40.00+ |
| 170 | \$2.00-\$3.50 First Issue (R81c-R87c). Specialized showing of 43 stamps all with attractive Handstamp cancels, incl. some in Blue, & Red, nearly all F.-V. F. | 55.50+ |
| 171 | \$5.00 First Issue (R88c, four, R89c, five, R90c, R91c, two, R92c, three). Fifteen, all with attractive Handstamp cancels, variety of shades, nearly all Very Fine | 38.70+ |
| 172 | \$10.00 Conveyance, Probate of Will (R94c, R96c). Horiz. Strips of Three, ms. cancels, F.-V. F. | 47.00 |
| 173 | \$15.00 Mortgage (R97c). Two Shades, neat ms. cancels, Fine-Very Fine | 43.00 |
| 174 | \$15.00 Mortgage (R97c, R97e). Three, incl. one in Ultramarine, all with Handstamp cancels, small faults, F.-V. F. appearance | 73.00+ |
| 175 | \$20.00 Conveyance, Silk Paper (R98e). Horiz. Pair, neat ms. cancel, Very Fine | 25.00 |
| 176 | \$20.00 Probate of Will (R99c). Handstamp cancel, negligible faint wrinkle, otherwise Fine | (Photo) 185.00 |
| 177 | \$25.00 Mortgage (R100c, R100d). Old & Silk Papers, ms. cancels, Very Fine | 39.50 |
| 178 | \$25.00 Mortgage (R100c, R100d). Both Old & Silk Papers, ms. cancels, Fine-Very Fine | 39.50 |
| 179 | \$50.00 U. S. I. R. (R101 var). On thick soft paper, pretty Blue handstamp cancel, Fine | 18.00+ |
| 180 | \$50.00 U. S. I. R. (R101c). Three Shades, two with handstamp cancels, light wrinkle in one, otherwise Very Fine | 48.00 |
| 181 | \$200.00 Green & Red U. S. I. R. (R102c). Light Blue handstamp cancels, Very Fine | (Photo) 100.00 |
| 182 | \$200.00 Green & Red, U. S. I. R. (R102c). Unusually Deep Rich Colors, neat ms. cancel, Fine | (Photo) 100.00 |
| 183 | \$200.00 Green & Red, U. S. I. R. (R102c). Light ms. cancel, Fine | (Photo) 100.00 |
| 184 | \$200.00 Green & Red, U. S. I. R. (R102c). Blue handstamp cancels, faint wrinkles, otherwise Fine | (Photo) 100.00 |
| 185 | \$200.00 Green & Black, U. S. I. R. (R102c). Separated with scissors blunting several perfs., light crease, Fine appearance | 100.00 |
| 186 | First Issue, Perforated. Collection of 380 stamps mounted in Elbe album, wide range of issues represented with values from 1c-\$25.00, majority are in pairs, blocks & a few larger multiples, also incl. several examples of paper varieties, virtually all well centered with neat ms. cancels, some small flaws, otherwise Fine-Very Fine, Attractive collection | 663.69 |

| | | |
|-----|---|----------------|
| 187 | First Issue Perforated, Handstamp Cancell. Accumulation of few hundred neatly arranged on Stock Sheets, wide range of issues with values from 1c-\$10.00, large variety of cancells incl. Boxed, Ovals, Shields, several colors, Some Railroads, etc., mixed quality, with many Fine-Very Fine, Fascinating Lot for the Specialist | E. IX |
| 188 | First Issue, Plate Varieties. Collection of 42 stamps, nearly all are perforated issues, plate varieties incl. Double Transfer & Plate Cracks, also few freak paper folds, interesting range of issues with values from 1c-\$5.00, mostly F.-V. F., Attractive Lot for the Specialist | E. VIII |
| 189 | First Issue on Silk Paper. Collection of 29 stamps incl. few dups., values from 2c-\$25.00, mostly F.-V. F. | 55.32 |

SECOND ISSUE

| | | |
|-------|--|-----------------------|
| 190 | 1c Blue & Black, Inverted Center (R103a). Herringbone cancel, F. (Photo) | 235.00 |
| 191 | 2c Blue & Black, Inverted Center (R104a). Circular cut cancel, perf. touch at R., Scarce | (Photo) 450.00 |
| 192 | 5c Blue & Black, Inverted Center (R107a). Light embossed cancel, perf. touch at T., Fine for this | (Photo) 325.00 |
| 193 | 10c Blue & Black, Inverted Center (R109a). Repaired, looks Fine | 225.00 |
| 194 | 25c, 50c Blue & Black, Sewing Machine Perforations (R112b, R115a). Handstamp cancel breaks through on 25c, otherwise Very Fine | 60.00 |
| 195 ★ | 50c Blue & Black, Inverted Center (R115b). Unused, Very Fine (Photo) | 110.00+ |
| 196 | 50c Blue & Black, Inverted Center (R115b). Neat ms. cancel, reperfed, Very Fine appearance | 110.00 |
| 197 | 50c Blue & Black, Inverted Center (R115b). Punch cancel, Very Fine | 25.00 |
| 198 | 60c Blue & Black, Double Transfer Design of 70c (R116 var.). Tiny marginal tears, Very Fine appearance, Rare, Unpriced | (Photo) — |
| 199 | 70c Blue & Black, Inverted Center (R117a). Nearly invisible cancel, small tear, centered to R., Fine appearance | (Photo) 800.00 |
| 200 | \$1.00 Blue & Black, Inverted Center (R118a). Ms. cancel, light creases punch cancel closed, Very Fine appearance | (Photo) 165.00 |
| 201 ★ | \$1.30 Blue & Black (R119). Unused, Fine | (Photo) 35.00+ |
| 202 | \$1.30 Blue & Black (R119). Neat ms. cancel, Very Fine | 35.00 |
| 203 | \$1.30 Blue & Black (R119). Blue handstamp cancel embossed paper, V. F. | 35.00 |
| 204 | \$1.30, \$1.60, \$1.90 Blue & Black (R119, R121, R122). Each with extra rows of perforations, first two with handstamp cancells, \$1.90 with herringbone, Very Fine | 106.00 |
| 205 | \$1.60 Blue & Black (R121). Neat ms. cancel, Very Fine | (Photo) 55.00 |
| 206 | \$1.60 Blue & Black (R121). Blue handstamp cancel, small thins, Very Fine appearance | 55.00 |
| 207 | \$3.50 Blue & Black (R126). Blue handstamp cancel, Very Fine .. | 14.00+ |
| 208 | \$5.00 Blue & Black, Inverted Center (R127a). Punch cancel, V. F. (Photo) | 110.00 |
| 209 | \$20.00 Blue & Black (R129). Very Fine | (Photo) 57.50 |
| 210 | \$20.00 Blue & Black (R129). Very Fine | (Photo) 57.50 |
| 211 | \$25.00 Blue & Black (R130). Fine | (Photo) 57.50 |
| 212 | \$25.00, \$50.00 Blue & Black (R130, R131). First small thin, second light crease, Fine-Very Fine appearance | 120.00 |
| 213 | \$50.00 Blue & Black (R131). Fine | (Photo) 62.50 |
| 214 | \$200.00 Blue, Black & Red (R132). Brilliant Colors, neat purple ms. cancel, faint wrinkle, otherwise Very Fine & Scarce | (Photo) 800.00 |
| 215 | \$200.00 Blue, Black & Red (R132). Wonderful Color, light ms. cancel, Fine, Scarce & Handsome | (Photo) 800.00 |
| 216 | \$500.00 Black, Green & Red (R133). Beautiful Colors, ms. & herringbone cancells, Very Fine, a lovely example of the Rare "Persian Rug" (Photo) | 2,350.00 |

- 217 **Second Issue, A Specialized Collection of 187 stamps neatly arranged & mounted on hand lettered pages, incl. values from 1c-\$10.00 with a nice showing of shades, handstamp cancels, pairs, a few blocks, several unused, few small flaws, otherwise nearly all F.-V. F., an Attractive Collection** 573.72

THIRD ISSUE

- 218 **1c-\$20.00 Third Issue (R134-R150).** Cpl. set, \$20.00 tiny thin, couple with herringbone cancels, otherwise F.-V. F. 115.29
- 219 ★ **2c Vermilion & Black, Error (R135 var.).** Unused, fresh, part o. g., Fine, believed to be the only known unused copy of this unlisted error of color (Photo) —
- 220 **2c Orange & Black, Inverted Center (R135b).** Very Fine. (Photo) 55.00
- 221 ★ **2c Orange & Black, Inverted Center (R135b).** Fresh, large part o. g., centered L., Fine (Photo) 55.00+
- 222 **2c Orange & Black, Inverted Center (R135b).** Fine (Photo) 55.00
- 223 **30c Orange & Black, Inverted Center (R140a).** Light herringbone cancel, Very Fine (Photo) 235.00
- 224 **30c Orange & Black, Inverted Center (R140a).** Blue Herringbone cancel, faint crease, Very Fine appearance (Photo) 235.00
- 225 ☐ **\$2.00 Vermilion & Black (R145).** Block, neat ms. cancels, F.-V. F. 60.00
- 226 **\$20.00 Orange & Black (R150).** Bold ms. cancel, Very Fine 67.50
- 227 **\$20.00 Vermilion & Black, Error (R150a).** Light ms. cancel, Fine (Photo) 125.00
- 228 **2c Orange & Black on Green, Inverted Center (R151a).** Couple nibbed perfs., otherwise Very Fine (Photo) 70.00
- 229 **Third Issue, A Specialized Collection of 117 stamps neatly mounted & arranged on hand lettered pages, values from 1c-\$10.00 incl. a wonderful showing of shades, many with handstamped cancels, pairs, a few blocks, some unused, few small faults, Fine-Very Fine** 195.25

1898 & LATER DOCUMENTARY ISSUES

- 230 ★☐ **2c Carmine, "I. R." Overprint Inverted (R155a).** B. Imprint Plate No. 481 Block of Six, fresh, o. g., F.-V. F. **E. II**
- 231 **\$100.00 Yellow Brown & Black (R179).** Vert. Pair, neat ms. cancels, V. F. 28.00+
- 232 **\$500.00 Carmine Lake & Black (R180).** Large Margins, neat cancels, Very Fine (Photo) 185.00
- 233 **\$500.00 Carmine Lake & Black (R180).** Large Margins, Very Fine 185.00
- 234 **\$1,000.00 Green & Black (R181).** Large Margins, Very Fine (Photo) 100.00
- 235 **\$1,000.00 Green & Black (R181).** Large Margins, Purple handstamp & cut cancel, Very Fine 50.00
- 236 **\$1,000.00 Green & Black (R181).** Very Pair, ms. cancel, Very Fine (Photo) 200.00+
- 237 **\$10.00 Green (R193).** Purple handstamp cancel, Very Fine 30.00
- 238 **\$50.00 Green (R194).** Cut cancel, Fine (Photo) 95.00
- 239 **4c Rose, Documentary, Recut U. L. Corner (R199 var).** The Discovery Copy from which the listing in Scott was made, ms. cancel & staple holes, slightly thin, Fine appearance, Rare, perhaps unique, unpriced —
- 240 **50c Violet (R223).** Neat Blue handstamp cancel, Very Fine (Photo) 215.00
- 241 **\$60.00 Brown (R224).** Purple handstamp cancel, Fine 57.50
- 242 **\$500.00 Blue (R226).** Purple handstamp cancel, light crease, Very Fine appearance (Photo) 235.00
- 243 **\$1,000.00 Orange (R227).** Neat handstamp cancel, slight thin, Very Fine appearance (Photo) 185.00
- 244 **\$500.00 Blue, Numerals in Orange (R249a).** Fine 55.00

| | | |
|-------|--|--------|
| 245 ★ | \$20.00 Documentary, Series of 1940, Imperforate (R305Ab). Horiz. Pair, without gum, Very Fine, Scarce (Photo) | 450.00 |
| 246 | \$2,500.00 Documentary, Series of 1952 (R617). Handstamp cancel, Very Fine | 100.00 |

PROPRIETARY STAMPS

1871-73 FIRST ISSUE

| | | |
|-------|---|---------|
| 247 | Proprietary, First Issue, Collection of 94 stamps incl. cpl. sets on both violet & green papers to 10c, majority with handstamp or printed cancels, also few blocks & larger multiples, some small faults, mostly F.-V.F. | 151.60 |
| 248 ★ | 50c Green & Black on Violet Paper (RB8a). Fresh, part o. g., faint corner bend, otherwise Very Fine (Photo) | 145.00+ |
| 249 | 50c Green & Black on Violet Paper (RB8a). Blue handstamp cancels, faults, Very Fine appearance | 145.00 |
| 250 | 50c Green & Black on Violet (RB8a). Bold Blue handstamp cancel just breaks through at one point, faint bend, Very Fine appearance (Photo) | 145.00 |
| 251 | 50c Green & Black on Violet Paper (RB8a). Nearly invisible handstamp cancel just breaks through at one point, faint corner creases, Very Fine appearance (Photo) | 145.00 |
| 252 | 50c Green & Black on Green Paper (RB8b). Neat Blue handstamp cancel, small filled thin, Fine appearance (Photo) | 175.00 |
| 253 | \$1.00 Green & Black on Violet Paper (RB9a). Purple handstamp cancel, light creases, Very Fine appearance (Photo) | 375.00 |
| 254 | \$1.00 Green & Black on Green Paper (RB9b). Neat ms. cancel, small thins, Very Fine appearance Attractive Example of this Rare Stamp (Photo) | 750.00 |
| 255 ★ | \$5.00 Green & Black on Violet Paper (RB10a). Fresh, nearly full o. g., Very Fine Scarce unused (Photo) | 650.00+ |
| 256 | \$5.00 Green & Black on Violet Paper (RB10a). Neat ms. cancel, Very Fine (Photo) | 650.00 |

1875-1919 ISSUES

| | | |
|--------|--|--------|
| 257 | Proprietary, Second Issue, Collection of 99 stamps incl. Cpl. Perforated Sets on both Silk & Watermarked Papers, with several Shades, Pairs, most with Printed or Handstamp cancel, several unused some small faults mostly Fine-Very Fine | 281.70 |
| 258 | 1c-4c 1875-81 Proprietary, Rouletted (RB11c-RB13c, RB15c). Incl. two shades of 3c, one unused, Fine-Very Fine | 42.75 |
| 259 | 5c Black, Rouletted (RB16c). Roulettes trimmed on three sides, small flaws, Fine appearance, Scarce | 225.00 |
| 260 | 5c Violet Blue, Rouletted (RB17c). Minor corner wrinkle, otherwise V. F. | 35.00 |
| 261 | 6c Violet Blue, Rouletted (RB17c). Fine | 35.00 |
| 262 | 6c Violet, Rouletted (RB18c). Very Fine | 45.00 |
| 263 ★ | 1/8c-20c 1914 Proprietary (RB44-RB64). 2c & 10c thin, otherwise Fine-Very Fine Set | 48.18 |
| 264 ★田 | 1/4c Black, Proprietary, Double Impression (RB45a). Block, Fine-Very Fine | 50.00+ |
| 265 ★田 | 1c Dark Blue, Proprietary, Double Impression (RB65a). Block, light but clear Double, Very Fine | 70.00+ |

MISCELLANEOUS ISSUES

| | | |
|-------|---|-------|
| 266 ★ | 3c Carmine Rose, Future Delivery (RC2). Fine | 20.00 |
| 267 ★ | \$50.00 Olive Green, Stock Transfer (RD20). Without gum, Very Fine | 35.00 |
| 268 | \$500.00, \$1,000.00 Stock Transfers (RD23, RD24). Handstamp cancels, thins, Very Fine appearance | 85.00 |

| | | |
|--------|--|----------|
| 269 | 1c Rose Pink, Stock Transfer, "Series 1940" Inverted (RD42a). In pair with normal, the Error with s.e. at L. as always, handstamp cancel, Very Fine, Scarce (Photo) 200.00+ | |
| 270 ★ | \$1.00-\$10.00 Stock Transfer, Series of 1940 (RD54-RD55, RD57-RD59). Unused, last with gum, F.-V.F., unpriced | — |
| 271 ★ | \$20.00, \$50.00 Green, Wine (RE56, RE58). Unused, light wrinkle in corner of first, otherwise Very Fine | 23.00 |
| 272 ★ | \$40.00 Green, Wine (RE57). Unused, single pinhole, otherwise Very Fine, unpriced | — |
| 273 | \$100.00 Yellow Green, Wine (RE107D). Handstamp cancels, fold through label, Very Fine | 50.00 |
| 274 | Wine Stamps, Collection of 105 stamps, virtually all diff. neatly mounted on National Album pages, both used & unused, incl. cpl. sets, nearly cpl. from 1914-40, nearly all F.-V.F. | 187.80 |
| 275 ★田 | 2c Lake, Playing Cards (RF1). T. Imprint Plate No. 5106 Block of 10, fresh, o. g., Very Fine, unlisted | — |
| 276 ★ | Blue, Imperforate, Playing Card (RF11). Horiz. Pair, Very Fine | 40.00 |
| 277 ★田 | Blue, Imperforate, Playing Card (RF11). Block, small stain in one, otherwise Very Fine | 80.00 |
| 278 | Playing Card Stamps, 1894-1940, Collection of 61 stamps, wide variety of issues with several Inverted Surcharges, few blocks, shades, some small faults, otherwise Fine-Very Fine, Attractive | 230.53 |
| 279 ★ | 1c-25c 1940 Silver Tax (RG37-RG45). 2c & 25c light creases, others F.-Very Fine | 78.50 |
| 280 | 2c Bank Check, U. S. I. R., Revenue Stamped Paper (RN-11, RN-12). First on Cpl. Bank Check, second cut square, Very Fine | 28.00 |
| 281 ★ | \$1.00 Rose Lake, Hunting Permit (RW2). Very Fine | 25.00 |
| 282 ★ | \$1.00 1934-48 Hunting Permits (RW1, RW3-RW15). RW1 without gum, RW5 small thin, others F.-V.F. | 89.75 |
| 283 | 1c Blue, Ives Matches (RO115). Horiz. Pair used as bank check revenues on small piece of check, signed "P. T. Ives & Son" in magenta ink, Very Fine & unusual | E. II |
| 284 | Private Die Playing Cards, Nearly Cpl. Collection of 27 stamps, some small flaws as usual, otherwise F.-V.F., also two British Playing Card Wrappers, Issue of 1843. | 133.50+ |
| 285 | Revenue Collection, 1871-1948, Collection of 543 stamps neatly mounted on National Album pages, incl. Documentary Issues with many unused, Proprietary, Future Delivery & Stock Transfer, several cpl. sets, some small faults, otherwise mostly F.-V.F., Attractive Lot | 1,031.50 |
| 286 | Revenue Miscellany, Many hundreds of stamps, virtually all 19th Century incl. several hundred First Issue mounted in approval books, Second Issue on Stock Sheets, misc. in envelopes & stock cards, mixed quality, Useful Lot | E. IX |

END OF SALE — THANK YOU

LOTS ON VIEW FROM FEBRUARY 26th
OFFICES OPEN SATURDAY BEFORE SALE

ROBERT A. SIEGEL AUCTION GALLERIES, Inc.

10 EAST 52ND STREET
NEW YORK, N. Y. 10022

368TH SALE

PRICES REALIZED

MARCH 3RD, 1970

UNITED STATES REVENUE STAMPS

| | | | | | | | | | |
|----|--------|-----|--------|-----|--------|-----|--------|-----|---------|
| 1 | 23.00 | 45 | 90.00 | 87 | 17.00 | 131 | 45.00 | 175 | 18.00 |
| 2 | 32.00 | 46 | 9.00 | 88 | 100.00 | 132 | 29.00 | 176 | 100.00 |
| 3 | 170.00 | 47 | 85.00 | 89 | 20.00 | 133 | 30.00 | 177 | 23.00 |
| 4 | 30.00 | | | 90 | 325.00 | 134 | 27.00 | 178 | 17.00 |
| 5 | 18.00 | 48) | | 91 | 29.00 | 135 | 170.00 | 179 | 13.00 |
| 6 | 30.00 | 49) | | 92 | 19.00 | 136 | 75.00 | 180 | 15.00 |
| 7 | 32.50 | 50) | | 93 | 20.00 | 137 | 21.00 | 181 | 105.00 |
| 8 | 17.00 | 51) | 525.00 | 94 | 110.00 | 138 | 13.00 | 182 | 75.00 |
| 9 | 13.00 | 52) | | 95 | 200.00 | 139 | 18.00 | 183 | 65.00 |
| 10 | 30.00 | 53) | | 96 | 80.00 | 140 | 4.50 | 184 | 55.00 |
| 11 | 21.00 | | | 97 | 130.00 | 141 | 42.50 | 185 | 35.00 |
| 12 | 20.00 | 54 | 16.00 | 98 | 45.00 | 142 | 19.00 | 186 | 200.00 |
| 13 | 36.00 | 55 | 90.00 | 99 | 23.00 | 143 | 50.00 | 187 | 150.00 |
| 14 | 20.00 | 56 | 160.00 | 100 | 21.00 | 144 | 57.50 | 188 | 140.00 |
| 15 | 9.00 | 57 | 160.00 | 101 | 42.50 | 145 | 25.00 | 189 | 57.50 |
| 16 | 9.00 | 58 | 100.00 | 102 | 57.50 | 146 | 35.00 | 190 | 270.00 |
| 17 | 11.00 | 59 | 15.00 | 103 | 40.00 | 147 | 42.50 | 191 | 475.00 |
| 18 | 12.00 | 60 | 26.00 | 104 | 50.00 | 148 | 40.00 | 192 | 320.00 |
| 19 | 44.00 | 61 | 24.00 | 105 | 37.50 | 149 | 55.00 | 193 | 85.00 |
| 20 | 23.00 | 62 | 350.00 | 106 | 21.00 | 150 | 45.00 | 194 | 21.00 |
| 21 | 24.00 | 63 | 8.00 | 107 | 180.00 | 151 | 36.00 | 195 | 125.00 |
| 22 | 18.00 | 64 | 48.00 | 108 | 170.00 | 152 | 17.00 | 196 | 85.00 |
| 23 | 12.00 | 65 | 20.00 | 109 | 50.00 | 153 | 6.00 | 197 | 26.00 |
| 24 | 80.00 | 66 | 19.00 | 110 | 100.00 | 154 | 15.00 | 198 | 45.00 |
| 25 | 34.00 | 67 | 18.00 | 111 | 50.00 | 155 | 190.00 | 199 | 700.00 |
| 26 | 19.00 | 68 | 70.00 | 112 | 24.00 | 156 | 200.00 | 200 | 85.00 |
| 27 | 24.00 | 69 | 47.50 | 113 | 13.00 | 157 | 32.00 | 201 | 26.00 |
| 28 | 34.00 | 70 | 47.50 | 114 | 52.50 | 158 | 19.00 | 202 | 35.00 |
| 29 | 27.00 | 71 | 65.00 | 115 | 20.00 | 159 | 38.00 | 203 | 23.00 |
| 30 | 13.00 | 72 | 75.00 | 116 | 160.00 | 160 | 60.00 | 204 | 45.00 |
| 31 | 14.00 | 73 | 18.00 | 117 | 200.00 | 161 | 15.00 | 205 | 52.50 |
| 32 | 34.00 | 74 | 135.00 | 118 | 67.50 | 162 | 19.00 | 206 | 16.00 |
| 33 | 27.00 | 75 | 40.00 | 119 | 26.00 | 163 | 50.00 | 207 | 21.00 |
| 34 | 16.00 | 76 | 24.00 | 120 | 11.00 | 164 | 35.00 | 208 | 125.00 |
| 35 | 62.50 | 77 | 47.50 | 121 | 13.00 | 165 | 55.00 | 209 | 55.00 |
| 36 | 26.00 | 78 | 17.00 | 122 | 20.00 | 166 | 8.00 | 210 | 37.50 |
| 37 | 65.00 | 79 | 24.00 | 123 | 19.00 | 167 | 28.00 | 211 | 42.50 |
| 38 | w.d. | 80 | 34.00 | 124 | 13.00 | 168 | 42.50 | 212 | 25.00 |
| 39 | 475.00 | 81 | 47.50 | 125 | 125.00 | 169 | 8.00 | 213 | 45.00 |
| 40 | 105.00 | 82 | 17.00 | 126 | 10.00 | 170 | 50.00 | 214 | 800.00 |
| 41 | 90.00 | 83 | 12.00 | 127 | 32.00 | 171 | 35.00 | 215 | 550.00 |
| 42 | 35.00 | 84 | 67.50 | 128 | 19.00 | 172 | 25.00 | 216 | 2500.00 |
| 43 | 26.00 | 85 | 70.00 | 129 | 18.00 | 173 | 27.00 | 217 | 210.00 |
| 44 | 90.00 | 86 | 12.00 | 130 | 45.00 | 174 | 34.00 | 218 | 47.50 |

219 210.00
220 60.00
221 35.00
222 40.00
223 190.00
224 110.00
225 10.00
226 57.50
227 70.00
228 47.50
229 105.00
230 27.00
231 24.00
232 145.00

233 145.00
234 90.00
235 24.00
236 47.50
237 23.00
238 50.00
239 140.00
240 210.00
241 57.50
242 160.00
243 140.00
244 28.00
245 260.00
246 62.50

247 67.50
248 105.00
249 65.00
250 52.50
251 57.50
252 52.50
253 170.00
254 750.00
255 625.00
256 525.00
257 100.00
258 18.00
259 52.50
260 24.00

261 18.00
262 50.00
263 32.00
264 25.00
265 17.00
266 17.00
267 24.00
268 42.50
269 130.00
270 37.50
271 16.00
272 16.00
273 23.00
274 85.00

275 21.00
276 20.00
277 21.00
278 72.50
279 29.00
280 11.00
281 19.00
282 47.50
283 27.00
284 45.00
285 360.00
286 230.00