

370th SALE

UNITED STATES STAMPS
WITH
LINCOLN PORTRAITS

The Magnificent Award Winning Collection
of Mr. Ben Lipset, of New York City



Sold by his Order
AT PUBLIC AUCTION

Wednesday Afternoon, March 4th, 1970 at 1:00 P.M.

Robert A. Siegel
SAUCTIONS

10 EAST 52nd STREET NEW YORK, N. Y. 10022

Tel.: 212 PLaza 3-6421

THE "LINCOLN" COLLECTION OF BEN LIPSET

Ben Lipset has taken more than thirty years to assemble this beautiful collection devoted to Lincoln portraits on United States stamps and we take great pride in presenting it at public auction for it contains a wealth of beautiful and unusual things which rarely make their appearance on the market.

Mr. Lipset is the author of a number of books in which he deals largely with the Masonic Order and with the Morals and Ethics of the World. His books have had the personal acknowledgement of many important world figures, including every American President since Franklin D. Roosevelt, Pope John XXIII, Pope Paul VI, David Ben Gurion, Abba Eban, and, most recently, our Astronauts.

As to the collection itself, there is a wonderful array of Proofs and Essays, including the exceptionally scarce Die Proofs of the 1909 Lincoln Memorial Issue, the Die Proofs of the \$1.00 Lincoln Memorial of 1922 and the 16c "Presidential" Series. There are fine showings of essays, some of the greatest rarity. All of the regular postage issues bearing Lincoln's portrait are present, with many choice blocks. A section of Privately Perforated Coil stamps includes some unusual items in the 1902 and 1909 issues.

Another section of outstanding interest is a broad showing of First Day Covers of the 1909 Lincoln Memorial Issue, all postmarked Feb. 12, 1909, the Centennial of Lincoln's birth. The different towns and cities represented is literally astounding. Included in this First Day group is the First Day usage of the Imperforate stamp, an exceptionally rare cover; also the earliest known use of the Bluish Paper stamp is present.

The collection has won numerous awards at exhibitions, during the past ten years. It was beautifully mounted and written up in a series of albums. It is unquestionably one of the finest collections in its field ever put together and an unusual opportunity is given to our clientele to participate in its dispersal.

Robert A. Siegel

MARCH 4th, 1970

ROBERT A. SIEGEL AUCTION GALLERIES, Inc.

New York, N. Y. 10022

Tel.: 753-6421 (Area Code 212)

REFERENCES PLEASE
(if unknown to us)

SIGNED

County

[illegible]

Upon request, estimate of value furnished on any lots in this auction.

WEDNESDAY, MARCH 4th, 1970 — 1:00 P. M.

UNITED STATES STAMPS

LINCOLN PORTRAITS

PROOFS & ESSAYS

| | | |
|-------|--|---------|
| 501 P | 15c Black, Large Die Proof on India (77P). Mounted on 2½ x 3" card, Fine (Photo) | 275.00 |
| 502 P | 15c Black, Large Die Proof on India (77P). Die Sunk on 5¾ x 9" card, the India paper evenly toned, as often on this proof, otherwise Very Fine | 275.00 |
| 503 P | 15c Black, Plate Proof on India (77P). Block, Very Fine | 37.50 |
| 504 P | 15c Black, Plate Proof on India (77P). Block, two stamps tiny holes, others Very Fine, also singles on both India & Card, Very Fine | 49.00 |
| 505 P | 15c Dusky Blue, Large Die Trial Color Proof on India (77TC). 2½ x 2¾", small stain in margin only, otherwise Very Fine (Photo) | 225.00 |
| 506 P | 15c Dusky Blue, Large Die Trial Color Proof on India (77TC). Die Sunk on 6 x 9" card, evenly toned, otherwise Very Fine | 225.00 |
| 507 P | 15c Deep Blue, Trial Color, Plate Proof on India (77TC). Very Fine | 30.00 |
| 508 P | 15c 1861-66 Designs, "Atlanta" Trial Color Plate Proofs on Card (108TC). Cpl. Set of Blocks in Five Diff. Colors, Very Fine (Photo Ex) | 208.00+ |
| 509 E | 10c 1869 Lincoln, Blue, Die Essay on Clear White Bond Paper (Brazer 116E-Dd). Very Fine (Photo) | E. IX |
| 510 E | 10c 1869 Lincoln Light Red Brown, Die Essay on Cloudy Cream Bond Paper (Brazer 116E-De). Very Fine | E. IX |
| 511 E | 10c 1869 Lincoln, Black, Die Essay on Cloudy Cream Bond Paper (Brazer 116E-De). Very Fine | E. IX |
| 512 E | 10c 1869 Lincoln, Red Orange, Die Essay on Cloudy Cream Bond Paper (Brazer 116E-De). Very Fine | E. IX |
| 513 E | 10c 1869 Lincoln, Deep Green, Plate Essay on Imperforate Gummed Stamp Paper (Brazer 116E-Dj). Very Fine | E. III |
| 514 E | 10c 1869 Lincoln, Blue, Plate Essay on Imperforate Gummed Stamp Paper (Brazer 116E-Dj). Very Fine | E. III |
| 515 E | 10c 1869 Lincoln, Ultramarine Plate Essay on Imperforate Gummed Stamp Paper (Brazer 116E-Dj). Very Fine | E. III |
| 516 E | 10c 1869 Lincoln, Ultramarine, Plate Essay on Imperforate Gummed Stamp Paper (Brazer 116E-Dj). Horiz. Sheet Corner Pair, V. F. (Photo) | E. V |
| 517 E | 10c 1869 Lincoln, Dark Ultramarine, Plate Essay on Imperforate Gummed Stamp Paper (Brazer 116E-Dj). Block, Very Fine (Photo) | E. VII |
| 518 E | 10c 1869 Lincoln, Orange, Plate Essay on Perforated Gummed Stamp Paper (Brazer 116E-Dk). Fine | E. II |
| 519 E | 10c 1869 Lincoln, Orange, Plate Essay on Perforated Gummed Stamp Paper (Brazer 116E-Dk). Block, few nibbed perfs., otherwise F.-V.F. | E. V |
| 520 E | 90c 1869, Dull Violet, Frame Only, Plate Essay on Imperforate Stamp Paper (Brazer 122E-Cd). Very Fine (Photo) | E. IV |
| 521 E | 90c 1869, Red Brown, Frame Only, Plate Essay on Imperforate Stamp Paper (Brazer 122E-Cd). Very Fine | E. IV |

LOTS ON VIEW FROM FEBRUARY 26th
OFFICES OPEN SATURDAY BEFORE SALE

| | | |
|-------|---|----------------|
| 522 E | 90c 1869, Blue, Frame Only, Plate Essay on Imperforate Stamp Paper (Brazer 122E-Cd). Tiny thin, Very Fine appearance | E. IV |
| 523 P | 90c Carmine & Black, Large Die Proof on India (122P). Mounted on 6 x 8" card, hybrid as always, Very Fine | (Photo) 400.00 |
| 524 P | 90c Carmine & Black, Large Die Proof on India (122P). Hybrid as always, mounted on card reduced to 2 x 2¼", Very Fine | (Photo) 400.00 |
| 525 P | 90c Carmine & Black, Plate Proof on India (122P). Very Fine | (Photo) 45.00 |
| 526 P | 90c Carmine & Black, Plate Proof on Card (122P). Very Fine | 40.00 |
| 527 P | 90c Carmine & Black, Center Inverted, Plate Proof on Card (122Pa). Very Fine | (Photo) 600.00 |
| 528 E | 6c Deep Ultramarine, Die Essay on India (Brazer 148E-Bc). Cut to design, Rare | (Photo) E. IV |
| 529 E | 6c Deep Yellow Brown, Die Essay on India (Brazer 148E-Bc). Cut to design, Rare | E. IV |
| 530 E | 6c Dark Green, Die Essay on India (Brazer 148E-Bd). Mounted on 30 x 33 mm card, Very Fine, Rare | (Photo) E. VI |
| 531 E | 6c Gray Olive Green, Die Essay on India (Brazer 148E-Bd). Small clear margins, Rare | (Photo) E. IV |
| 532 E | 6c Dusky Carmine, Die Essay on India (Brazer 148E-Be). Small thin in margin only, otherwise Very Fine, Rare | E. V |
| 533 E | 6c Dark Blue Green, Die Essay on India (Brazer 148E-Be). Cut to design, Rare | (Photo) E. IV |
| 534 P | 6c Carmine, Large Die Proof on India (148P). Die Sunk on 2¾ x 3¼" card, Very Fine | (Photo) 125.00 |
| 535 P | 6c Carmine, Large Die Proof on India (148P). Trimmed to 30 x 40 mm, Very Fine | 125.00 |
| 536 P | 6c Violet, Small Die Trial Color Proof on India (148TC). Mounted on card, Very Fine | (Photo) — |
| 537 P | 6c Carmine, Plate Proof on India (148P). Four Blocks, diff. shades, one mounted on card, also single, Very Fine | 93.75 |
| 538 P | 6c Carmine, Plate Proof on India (148P). T. Imprint Plate No. 26 Block of 12, couple light wrinkles, Very Fine | (Photo) 200.00 |
| 539 P | 6c Carmine, Plate Proof on India (148P). B. Imprint Plate No. 26 Block of 12, Very Fine | (Photo) 200.00 |
| 540 P | 6c Pink, Large Die Proof on India (159P). Die Sunk on 6 x 10" card, Very Fine | 150.00 |
| 541 P | 6c Pink, Large Die Proof on India (159P). Die Sunk on 3¼ x 3¾" card, Very Fine | (Photo) 150.00 |
| 542 P | 6c Pink, Large Die Proof on India (159P). 2¼ x 3", thin in margin just touches design, Very Fine appearance | 150.00 |
| 543 P | 6c Dark Carmine, Small Die Proof (159P). Made from an altered Die for 208P, for the Roosevelt Book, listed properly in Brazer as 208E-b, Very Fine | (Photo) — |
| 544 P | 6c Pink, Plate Proofs on India & Card (159P). Very Fine | 50.00 |
| 545 P | 6c Black, Trial Color Plate Proof on India (159TC). Block, Very Fine | 30.00+ |
| 546 P | 6c Black, Trial Color Plate Proof on India (159TC). Block & single, Very Fine | 37.50+ |
| 547 P | 6c Black, Trial Color Plate Proof on India (159TC). Block & single mounted on card, Very Fine | 37.50+ |
| 548 P | 6c Black, Trial Color Plate Proof on India (159TC). Block of 16, mounted on card, Very Fine | 120.00+ |
| 549 P | 6c Black, Trial Color Plate Proof on India (159TC). T. Imprint Plate No. 18 Block of 12, mounted on card, Very Fine, unpriced | (Photo) — |
| 550 E | 10c 1881 Lincoln, Black, Vignette Only, Typographed Essay (Brazer 206E-Bb). Mounted on 1¾ x 2" Card, Very Fine, unlisted in Black | (Photo) E. VI |

| | | |
|---------|---|-----------------|
| 551 P | 6c Rose, Large Hybrid Proof (208P). Mounted on India & Die Sunk on 6 x 8½" card to resemble a Large Die Proof, Very Fine | — |
| 552 P | 6c Rose, Large Hybrid Proof (208P). Mounted on 2¼" x 2¾" India affixed to card to resemble a Large Die Proof, bit soiled, otherwise Very Fine | — |
| 553 P | 6c Rose, Small Die Proof (208P). Mounted on small gray card from the Roosevelt Book, Very Fine | 25.00 |
| 554 P □ | 6c Rose, Plate Proof on Card (208P). Block, Very Fine | 30.00 |
| 555 P | 6c Rose, Brown Red, Plate Proof on Card (208P, 208Pa). Four Shades, also one on India, Very Fine | 37.50 |
| 556 P | 4c Dark Brown, Large Die Proof on India (222P). Die Sunk on 3 x 3" card, Very Fine | (Photo) 65.00 |
| 557 P | 4c Dark Brown, Large Die Proof (222P). Trimmed to 30 x 45 mm, small thin in margin only, otherwise Very Fine | 65.00 |
| 558 P □ | 4c Dark Brown, Plate Proofs on India & Card (222P). Block of Six on India, Block of Four on Card, singles of each, Very Fine | 61.75 |
| 559 P □ | 4c Dark Brown, Plate Proof on Card (222P). T Imprint "MM" Plate No. 203 Block of 12, Very Fine | (Photo) 200.00 |
| 560 P | 4c Dark Brown, Large Die Proof (254P). Die Sunk on 6 x 8" card, albino die impression of "American Bank Note Co." & "C-226", Very Fine | 25.00 |
| 561 P | 4c Dark Brown, Large Die Proof (254P). Die Sunk on 4½ x 5" card, Very Fine | 25.00 |
| 562 P | 4c Dark Yellow Brown, Large Die Proof (254P). Mounted on 3 x 3" card, a diff. shade from previous lot, Very Fine | 25.00 |
| 563 P | 5c Blue, Small Die Proof (304P). Mounted on small gray card from the Roosevelt Book, Very Fine | 25.00 |
| 564 P | 2c Lincoln, Large Die Proof on India (367P). Die Sunk on 6 x 8" card, Very Fine & Rare | (Photo) 500.00 |
| 565 P | 2c Lincoln, Small Die Proof on White Wove Paper (367P). Very Fine & Rare | (Photo) 400.00 |
| 566 P | 2c Lincoln, Panama-Pacific, Small Die Proof on Soft Yellowish (367P). Very Fine, Extremely Rare, Ex-Southgate | (Photo) 450.00 |
| 567 P | \$1.00 Violet Brown, Large Die Proof on India (571P). Die Sunk on 8 x 6" card, Very Fine | (Photo) 150.00 |
| 568 P | \$1.00 Violet Brown, Large Die Proof on India (571P). Die Sunk on 8 x 6" card, "approved December 19, 1922." & signed "Hubert Work, Postmaster General", Very Fine | (Photo) 150.00+ |
| 569 P | 16c Presidential, Large Die Proof on India (821P). Die Sunk on 6 x 8" card, Very Fine & Rare | (Photo) 350.00 |
| 570 P □ | 6c Agriculture, Scarlet, "Atlanta" Trial Color Plate Proof on Card (O4TC). Block, Very Fine | 20.00+ |
| 571 P | 6c Executive, Black, Hybrid Proof (O13TC). Mounted on India Die Sunk on 3 x 3½" card, Very Fine, Scarce | (Photo) — |
| 572 S | 6c Interior, "Specimen" Overprint (O18S). Separated by scissors blunting perfs. tips as often, filled thin. Fine appearance, only 83 Issued | 70.00 |
| 573 S | 6c Navy, "Specimen" Overprint (O38S). Separated by scissors as often, perfs. intact, Fine | (Photo) 50.00 |
| 574 E | 6c Post Office, Black, Incomplete Die Essay on White Ivory (Brazer O50E). Very Fine, Scarce | (Photo) E. VII |
| 575 P | 6c Treasury, Black, Large Die Trial Color Proof on India (O75TC). Mounted on 2 x 2" card, Very Fine | 25.00 |
| 576 S | 6c Treasury, "Specimen" Overprint (O75S). Separated by scissors as often, perfs. intact, Fine, only 85 Issued | (Photo) 70.00 |
| 577 S | 6c War, "Specimen" Overprint (O86S). Couple nibbed perf. tips, Fine | (Photo) 55.00 |

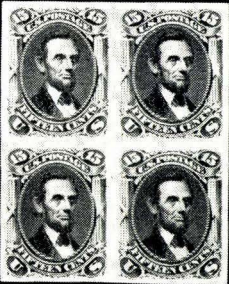
| | | |
|-------|---|--------|
| 578 P | 6c Lincoln, Officials, Plate Proofs on Card & India. Collection of 38 Proofs incl. normal & trial colors with "Atlantas" & "Goodalls", one Large Hybrid Proof, also "Specimen" Overprint, nearly all Very Fine | 231.00 |
| 579 P | 25c Lincoln, Newspaper, Trial Color Proofs on Thick Cream Wove Paper (PR3TC). Four Diff. Colors, one with small thin, others Very Fine | 20.00 |
| 580 E | Dark Green, Lincoln Essay, Vignette Only on Soft Wove Paper. Engraved by Charles Schluht, Die Sunk on 3½ x 4½" card, Very Fine, unlisted (Photo) | E. VI |
| 581 E | Blue, Lincoln Essay, Vignette Only on Soft Wove Paper. Die Sunk on 7½ x 9" card, signed by Charles Schluht, the Engraver, couple toned spots on card only, Very Fine, unlisted | E. VI |
| 582 E | \$1.00 Green & Purple, Lincoln, U.S.I.R. Essay on Ivory Paper. Very Fine (Photo) | E. IV |
| 583 E | \$1.00 Green & Red, Lincoln, U.S.I.R. Essay on Ivory Paper. Very Fine | E. IV |
| 584 E | \$1.00 Red Orange, Lincoln, U.S.I.R. Essay on Ivory Paper. Few tiny ink spots, otherwise Very Fine | E. IV |
| 585 E | Red Brown & Purple, Lincoln, U.S.I.R. Essay on Ivory Paper, Fugitive Purple Ink printing smear touches vignette, Very Fine | E. IV |
| 586 E | Blue & Yellow, Lincoln, U.S.I.R. Essay on Ivory Paper. Cut octagonally, small thins, Very Fine appearance | E. II |
| 587 P | Revenue Stamp Paper, Combination Proof Sheets, Two diff., both in Orange on Wove Paper, first with 5c, 25c, 50c \$1.00 (RN-P5, RN-T4, RN-V4, RN-W2). both 5c & 50c with Lincoln Portraits , second with 2c, 10c, 25c (RN-B1, RN-R3, RN-T4). Lincoln on 10c , bit soiled & minor thins, otherwise Fine & Scarce | E. IV |
| 588 S | 4c-6c Lincoln, "Specimen", "Sample" Overprints Five Diff., mostly o. g., F.-V. F. | 60.50 |
| 589 E | 15c 1863 Lincoln, Blue Envelope Essay on White Vertically Laid Paper, Cut Square (Thorp 18b). Small thin just clear of design, otherwise Very Fine (Photo) Thorp | 75.00 |
| 590 E | Black, Lincoln Essay, Vignette Only on India. Die Sunk on 4 x 4¾" card, Very Fine, unlisted (Photo) | E. V |
| 591 | Lincoln Vignette in floral frame, with Imprint "\$10 Green Back", directly above a numeral "5" in fancy lathe-work lattice with Imprint "\$5 Green Back" on 3½ x 5½" thin card, Very Fine (Photo) | — |

LINCOLN ON U. S. STAMPS

| | | |
|-------|---|--------|
| 592 | 15c Black (77). Well Centered, Bold Blue Target cancel, E. F. (Photo) | 17.00 |
| 593 | 15c Black (77). Eight Copies, Nicely Centered, cancels incl. Blue Target, Blue & Red Towns, few small flaws, otherwise F.-V. F. | 128.00 |
| 594 ★ | 15c Black, E. Grill (91). Centered to L. L., small thin, Fine appearance | 400.00 |
| 595 | 15c Black, E. Grill (91). Horiz. Pair, neat Leaf cancels, part Red & Blue foreign transits, Very Fine (Photo) | 100.00 |
| 596 | 15c Black, F. Grill (98). Nicely Centered, small Blue Petal cancel., Very Fine (Photo) | 15.00 |
| 597 ★ | 15c Black, Re-Issue (108). Deep Intense Color, couple nibbed perfs., otherwise Fine (Photo) | 625.00 |
| 598 ★ | 90c Carmine & Black (122). Rich Colors, nearly invisible toning at top, single pulled perf., otherwise Fine (Photo) | 700.00 |
| 599 ★ | 90c Carmine & Black, Re-Issue (132). Brilliant Deep Colors, couple negligible faint toned spots, otherwise Very Fine (Photo) | 800.00 |
| 600 ★ | 6c Carmine, Grill (137). Clear "H" Grill, centered to B., Fine (Photo) | 190.00 |
| 601 | 6c Carmine, Grill (137). Two Pretty Shades, Town & Geometric cancels, light creases, Very Fine appearance | 85.00 |
| 602 | 6c Carmine, Grill (137). Horiz. Strip of Three, Well Centered, R. stamp minor corner crease, L. Pair Very Fine (Photo) | 130.00 |



523



508 EX



509



516



530



524



536



501



505



534



541

517



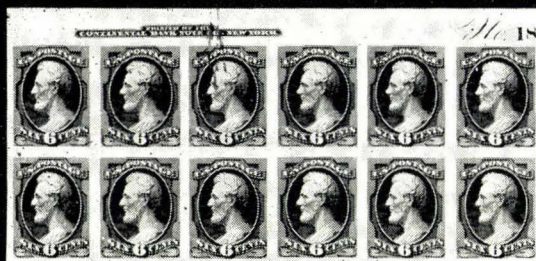


538



No. 26

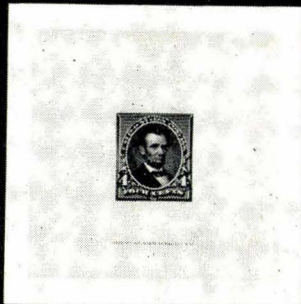
539



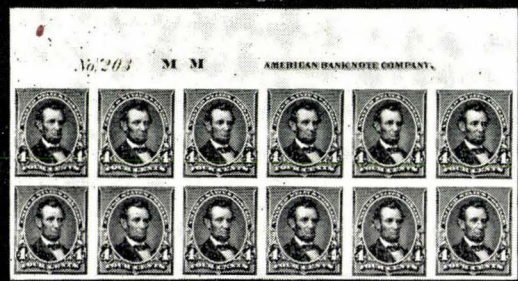
549



550



556



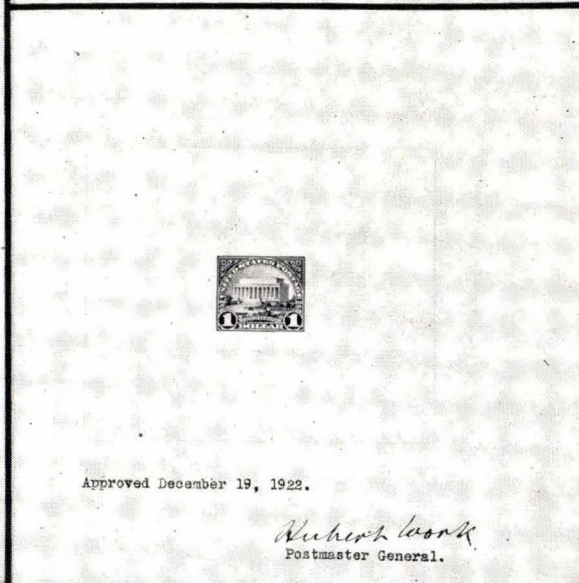
559



564



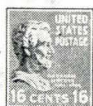
567



Approved December 19, 1922.

Robert Wood
Postmaster General.

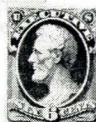
568



569



580

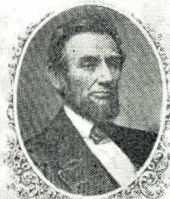


571

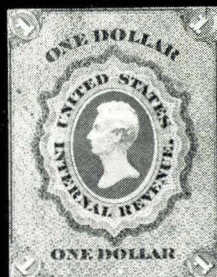
S. J. Greenback.



S. J. Greenback.



574



582



589



590

591



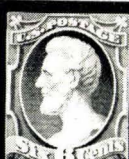
520



525



527



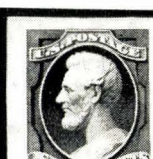
528



531



533



543



565



566



573



576



577



592



598



595



596



597



599



600



604



602



608



609



616



614



623



628



745



746



627



744



747



748



749



751



752



754



755



756



757



760



784



606



615



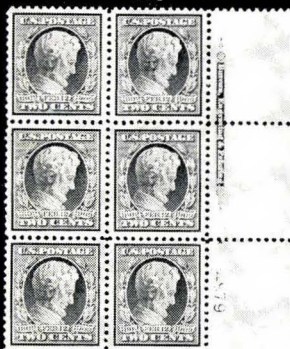
630

4983



104

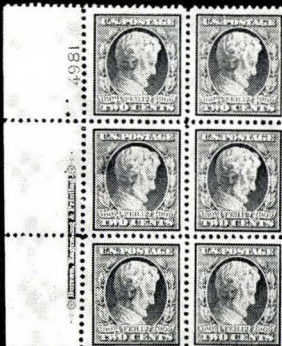
622



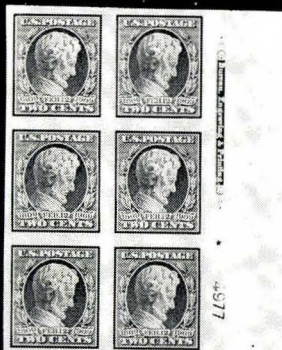
631



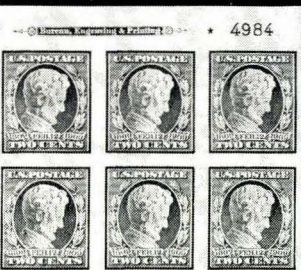
629



633



661



660



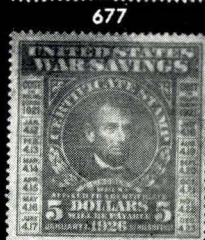
769



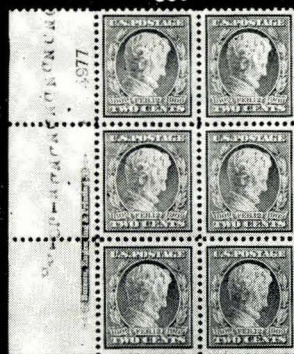
762



668



677



679



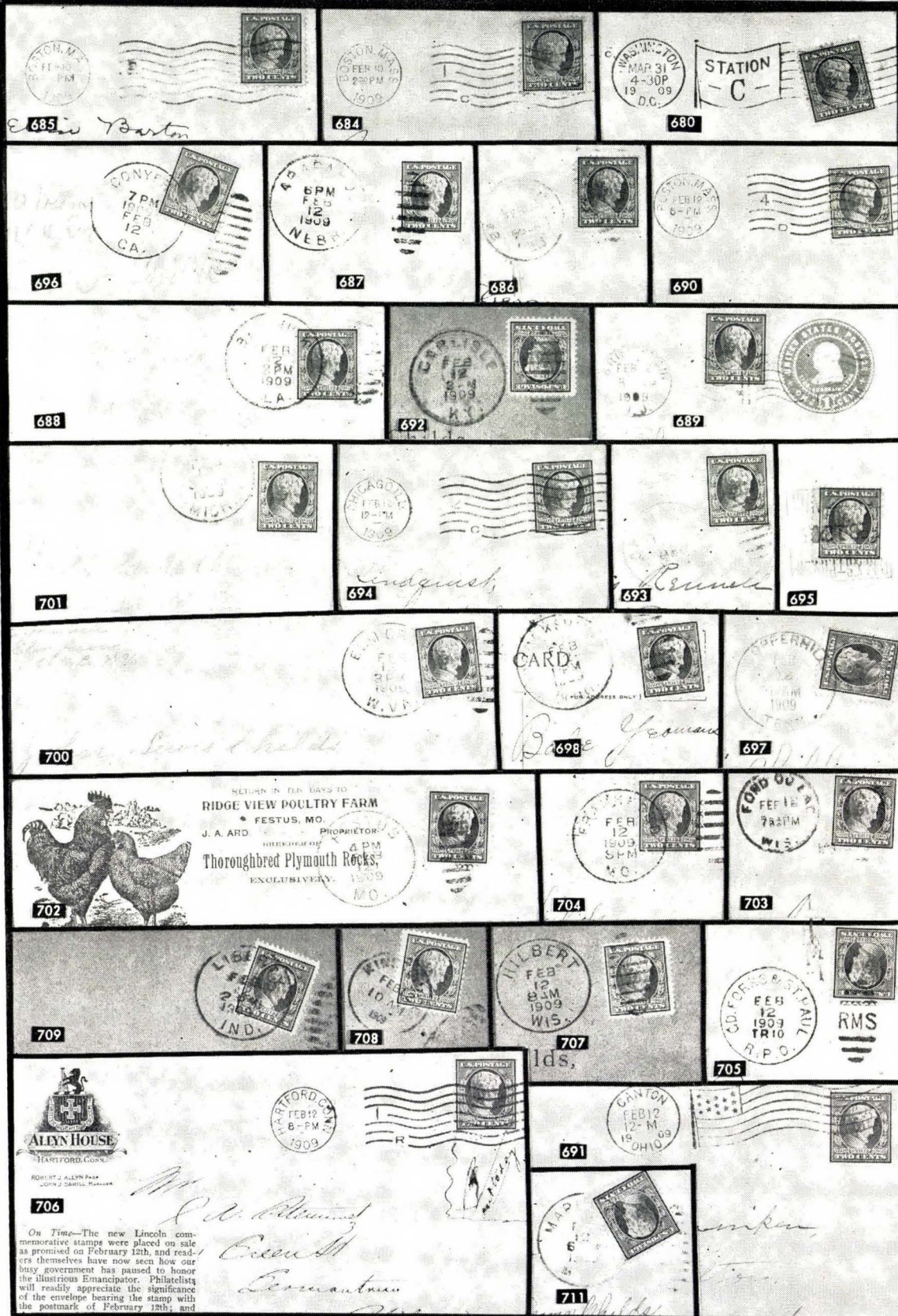
678



774

DEFINITION OF CANCELLATION

1881



On Time—The new Lincoln commemorative stamps were placed on sale as promised on February 12th, and readers themselves have now seen how our busy government has paused to honor the illustrious Emancipator. Philatelists will readily appreciate the significance of the envelope bearing the stamp with the postmark of February 12th; and



| | | | |
|-----------------------------|---|---|----------|
| 603 | ★ | 6c Carmine (148). Horiz. Pair, partly dry print, perfs. bit reinforced, otherwise Fine | 100.00 |
| 604 | ★ | 6c Dull Pink, "Continental Grill" (159b). Fresh, o. g., few points break through as usual, light crease, Fine appearance (Photo) | 100.00 |
| 605 | ★ | 6c Dull Pink (159, 186). Latter o. g., small flaws, F.-V. F. appearance | 115.00 |
| 606 | ★ | 6c Dull Pink (159). Block, o. g., small stain in one, bit reinforced, otherwise V. G.-Fine (Photo) | 175.00 |
| 607 | ★ | 6c Dull Pink (159). Block, one stamp small surface rub, otherwise V. G.-Fine | 175.00 |
| 608 | ★ | 6c Rose (208). Fresh, o. g., Fine (Photo) | 45.00 |
| 609 | ★ | 6c Brown Red (208a). Fresh, o. g., Very Fine (Photo) | 37.50 |
| 610 | | 6c Rose (208). Horiz. Strip of Six, Negative "D" Cancels, one stamp negligible corner creases, others F.-V. F., Beautiful Strip | 69.00+ |
| 611 | | 6c Lincoln, Bank Note Cancellations, A Wonderful Collection of Cancellations, 373 virtually all diff. beautifully mounted & written up in handsome leather-bound album, excellent variety incl. Masks, Stars, Shields, Fancy Geometrics with a Wide Range of N.Y. F. M. fancy designs, nice Letter Sequences, various colors, etc., Choice quality throughout, most are F.-V. F., A Highly Significant & Important Collection | E. XV |
| 612 | ★ | 4c Dark Brown (222). B. Imprint MM Plate No. 201 Strip of Six, small thin in margin, one stamp creased, otherwise Very Fine Strip | 72.50 |
| 613 | ★ | 4c Dark Brown (222). Block, fresh, o. g., Fine | 35.00 |
| 614 | ★ | 4c Dark Brown, Imperforate (222a). B. Sheet Margin Single, fresh, o. g., tiny internal wrinkle, otherwise Very Fine (Photo) | 62.50 |
| 615 | ★ | 4c Dark Brown, Imperforate (222a). Block, fresh, o. g., Very Fine (Photo) | 250.00 |
| 616 | ★ | 4c Dark Brown, Imperforate 254a). Horiz. Pair, small thin in one, couple gum wrinkles, Very Fine appearance (Photo) | 135.00 |
| 617 | ★ | 4c Dark Brown (254). Block, Fresh, o. g., V. G.-Fine | 37.50 |
| 618 | ★ | 4c Dark Brown (269). T. Imprint Plate No. 197 Strip of Three, Mint, F.-V. F. | 23.50 |
| 619 | ★ | 4c Dark Brown (269). Matched Pair of B. & T. Imprint Plate No. 196 Strips of Three Fresh, o. g., F.-V. F. | 47.00 |
| 620 | ★ | 4c Dark Brown 269). T. Imprint Plate No. 104 Strip of Ten, Freak Perforations, showing Double Perfs. Half way down the stamps, Fresh, o. g., slightly reinforced, Very Pretty | 62.00+ |
| 621 | ★ | 4c Dark Brown (269). Block, Fresh, o. g. F.-V. F. | 26.00 |
| 622 | ★ | 4c Dark Brown (269). Horiz. L. R. Sheet Corner Block of Eight, with Plate No. 104, two B. R. Stamps Imperforate at bot., caused by foldover of sheet margin, Fresh, o. g., Very Fine (Photo) | E. VI |
| 623 | ★ | 4c Orange Brown (280b) Fantastic Pre-Printing Paper Fold through L. R., sheet corner copy, entire corner of design printed in margin, Wonderful Freak (Photo) | E. IV |
| 624 | ★ | 4c Rose Brown, Lilac Brown, Orange Brown (280, 280a, 280b). Four Beautiful Shades, Blocks, Fresh, mostly o. g., F.-V. F. | 64.00 |
| 625 | ★ | 5c Blue (304). L. Imprint Plate No. 1540 Strip of Three, Fine | 36.50 |
| 626 | ★ | 5c Blue (304). Blocks, Three Distinct Shades, F.-V. F. | 70.50 |
| 627 | ★ | 5c Blue, Imperforate (315). Horiz. Pair, fresh, o. g., Very Fine (Photo) | 280.00 |
| 628 | ★ | 5c Blue, Coil (317). Pair, Fine-Very Fine, Rare (Photo) | 1,100.00 |
| 1909 LINCOLN MEMORIAL ISSUE | | | |
| 629 | ★ | 2c Lincoln (367). Block with T. Plate No., showing Spectacular Freak Printing, caused by piece of string, forming a large loop over all four stamps, a Beauty (Photo) | E. IV |
| 630 | ★ | 2c Lincoln (367). B. Imprint Plate No. 4983 Block of Six, Very Fine (Photo) | 65.00 |
| 631 | ★ | 2c Lincoln (367). R. Imprint Plate No. 4979 Block of Six, Very Fine (Photo) | 65.00 |
| 632 | ★ | 2c Lincoln (367). R. Imprint Plate No. 4978 Block of Six, sheet margin hinge reinforced, Very Fine | 65.00 |
| 633 | ★ | 2c Lincoln (367). L. Imprint Plate No. 4981 Block of Six, Very Fine (Photo) | 65.00 |

| | | | |
|-----|---|---|---------------|
| 634 | ★ | 2c Lincoln (367). R. Imprint Plate No. 4983 Block of Six , F.-V. F. | 65.00 |
| 635 | ★ | 2c Lincoln (367). L. Imprint Plate No. 4984 Block of Six , V. F. | 65.00 |
| 636 | ★ | 2c Lincoln (367). B. Imprint Plate No. 4978 Block of Six , small blob of printing ink in Imprint, some offset on back, F.-V. F. | 65.00 |
| 637 | ★ | 2c Lincoln (367). T. Imprint Plate No. 4981 Block of Six , Fine | 65.00 |
| 638 | ★ | 2c Lincoln (367). B. Imprint Plate No. 4979 Block of Six sheet margin trimmed into Plate No., Fine | 65.00 |
| 639 | ★ | 2c Lincoln (367). T. Imprint Plate No. 4978 Block of Six , V. G.-V. F. | 65.00 |
| 640 | ★ | 2c Lincoln (367). R. Imprint Plate No. 4981 Block of Six , Big Printing Smear on one, centered to right, V. G-Fine | 65.00 |
| 641 | ★ | 2c Lincoln (367). T. Imprint Plate No. 4977 Block of Six , V. G.-Fine | 65.00 |
| 642 | ★ | 2c Lincoln (367). B. Imprint Plate No. 4981 Block of Ten , Margin trimmed slightly into plate no., bit reinforced, otherwise F.-V. F. | 75.00 |
| 643 | ★ | 2c Lincoln (367). B. Imprint Plate No. 4983 Block of 20 (10 x 2), bit reinforced in places, otherwise Very Fine | 105.00 |
| 644 | ★ | 2c Lincoln (367). Cpl. Sheet of 100, F.-V. F. | 383.00 |
| 645 | ★ | 2c Lincoln (367). Cpl. Sheet of 100, slight separations, far from Plate No. Blocks, F.-V. F. | 383.00 |
| 646 | ★ | 2c Lincoln (367). Cpl. Sheet of 100, Nearly all F.-V. F. | 383.00 |
| 647 | ★ | 2c Lincoln (367). Cpl. Sheet of 100, Very Good-Very Fine | 383.00 |
| 648 | ★ | 2c Lincoln (367). Cpl. Sheet of 100, Very Good-Fine | 383.00 |
| 649 | | 2c Lincoln (367). Collection of 77 Stamps, incl. 34 Pre-Cancels, Some Unusual & Scarce Towns, Types of Ovals, Machines, also 6 Imperforates #368, F.-V. F. lot | 111.30 |
| 650 | ★ | 2c Lincoln (367, thirty four, 368, four). Incl. Blocks, Pairs, Plate No. Block of 6, two Imprint Plate No. Strips of 3, Imperforate Coil Pair, some with small faults or separations, otherwise F.-V. F. | 182.00 |
| 651 | | 2c Lincoln (367). 53 Copies, all with Perforated Initials , incl. 5 on cover, Attractive Variety, V. G.-V. F. | E. III |
| 652 | ★ | 2c Lincoln, Imperforate Coil (368E) . Vert. Pair, Very Fine, signed "Sloane" | 35.00 |
| 653 | ★ | 2c Lincoln, Imperforate Coil (368E) . Vert. Strip of Four, Very Fine, signed "Costales" | 70.00 |
| 654 | ★ | 2c Lincoln, Imperforate (368) . L Sheet Margin Block , 3 mm Spacing, Very Fine | 36.00 |
| 655 | ★ | 2c Lincoln, Imperforate (368) . L. L. Corner Block , Very Fine | 39.00 |
| 656 | ★ | 2c Lincoln (368). Two Blocks, Both Spacings, Horiz. & Vert. Lines, small thin spots in 3 stamps, others V. F. | 74.00 |
| 657 | ★ | 2c Lincoln, Imperforate (368) . Three Blocks, incl. Both Spacings, four stamps have faults, Balance V. F. | 110.00 |
| 658 | | 2c Lincoln Imperforate (368) . Used Block, Very Fine | 30.00 |
| 659 | ★ | 2c Lincoln, Imperforate (368) . T. Imprint Plate No. 4976 Block of Six , crackly gum, Very Fine | 70.00 |
| 660 | ★ | 2c Lincoln, Imperforate (368) . T. Imprint Plate No. 4984 Block of Six , light natural gum crackles, Very Fine (Photo) | 70.00 |
| 661 | ★ | 2c Lincoln, Imperforate (368) . R. Imprint Plate No. 4977 Block of Six , Very Fine (Photo) | 70.00 |
| 662 | ★ | 2c Lincoln, Imperforate (368) . B. Imprint Plate No. 4976 Block of Six , Very Fine | 70.00 |
| 663 | ★ | 2c Lincoln, Imperforate (368) . R. Imprint Plate No. 4981 Block of Six , Very Fine | 70.00 |
| 664 | ★ | 2c Lincoln, Imperforate (368) . T. Imprint Plate No. 4981 Block of Six , Very Fine | 70.00 |
| 665 | ★ | 2c Lincoln, Imperforate (368) . R. Imprint Plate No. 4979 Block of Six , crackly gum, Very Fine | 70.00 |
| 666 | ★ | 2c Lincoln, Imperforate (368) . L. Imprint Plate No. 4976 Block of Six , small thin spot in one, otherwise Very Fine | 70.00 |

| | | | |
|-----|---|--|--------|
| 667 | ★ | 2c Lincoln, Imperforate (368). L. Imprint Plate No. 4984 Block of Six , light crease in one, otherwise V.F. | 70.00 |
| 668 | ★ | 2c Lincoln, Imperforate (368). L. Imprint Plate No. 4981 Block of Twelve (2 x 6), Very Fine (Photo) | 124.00 |
| 669 | ★ | 2c Lincoln, Imperforate (368). Matched set of four Imprint Plate No. 4978 Blocks of Six , natural gum crackles in a few, bot. block small flaws in sheet margin, otherwise V.F. set | 280.00 |
| 670 | ★ | 2c Lincoln, Imperforate (368). Matched set of four Imprint Plate No. 4983 Blocks of Six , slightly dry print on two, V.F. | 280.00 |
| 671 | ★ | 2c Lincoln, Imperforate (368). Center Line Block , small thin in one stamp, otherwise V.F. Block | 70.00 |
| 672 | ★ | 2c Lincoln, Imperforate (368). Matched set of four Arrow Blocks , Very Fine | 168.00 |
| 673 | ★ | 2c Lincoln, Imperforate (368). Matched set of four Arrow Blocks , Two stamps have pinpoint thin specks, others Very Fine | 168.00 |
| 674 | ★ | 2c Lincoln, Imperforate (368). Matched set of the four Corner Blocks Very Fine | 156.00 |
| 675 | ★ | 2c Lincoln, Bluish (369). Extremely Fine (Photo) | 52.50 |
| 676 | ★ | 2c Lincoln, Bluish (369). Very Fine (Photo) | 52.50 |
| 677 | ★ | 2c Lincoln, Bluish (369).. Block , 3 mm Spacing, F.-V.F. (Photo) | 220.00 |
| 678 | ★ | 2c Lincoln Bluish (369). T. Imprint Plate No. 4978 Block of Six , V.F. (Photo) | 600.00 |
| 679 | ★ | 2c Lincoln Bluish (369). L. Imprint Plate No. 4977 Block of Six , pinpoint thin speck in one, otherwise Very Fine Block (Photo) | 600.00 |
| 680 | ✉ | 2c Lincoln, Bluish (369). Tied by "Washington, D.C., March 31, 1909" Waving Flag Cancellation on cover, Earliest Known Use , Very Fine & Rare (Photo) | E. XV |
| 681 | ✉ | 2c Lincoln, Bluish (369). Tied with 10c Special Delivery (E8) on cover, Very Fine | 57.50 |
| 682 | ✉ | 2c Lincoln, Bluish (369). On Cover, Philadelphia, April 9, 1909 Waving Flag Cancel, Fine | 57.50 |
| 683 | ✉ | 2c Lincoln, Bluish (369). On May 27, 1909 Cover, perfs. touch, Fine Cover | 57.50 |

1909 LINCOLN MEMORIAL – FIRST DAY COVERS

An exceptionally important offering with a literally staggering array of different towns and cities. Special attention is directed to the extremely scarce covers which "jumped the gun" and postmarked the stamps prior to February 12, 1909.

Arranged alphabetically by towns, except for those postmarked before the official First Day of use, which are the first three lots of this section.

| | | | |
|-----|---|--|---------|
| 684 | ✉ | 2c Lincoln (367). Tied by Boston, Mass., Febr. 10, 1909 Machine Cancellation on cover to Cambridge, Two Days Before the First Day of Issue, Very Fine (Photo) | E. XIV |
| 685 | ✉ | 2c Lincoln (367). Tied by Boston, Mass., Febr. 10, 1909 Machine Cancellation on cover to Melrose, Mass., Two Days Before the First Day of Issue, small cover corner tear, Fine (Photo) | E. XIII |
| 686 | ✉ | 2c Lincoln (367). Tied by light Brooklyn, N.Y. Febr. 10, 1909 Duplex pmk. on cover to New York, Two Days Before the First Day of Issue, Fine (Photo) | E. XIII |
| 687 | ✉ | 2c Lincoln (367). Tied by Arapahoe, Nebr. Febr. 12, 1909 Duplex on First Day Cover , tiny cover corner nick, V.F. (Photo) | 175.00 |
| 688 | ✉ | 2c Lincoln (367). Tied by partly struck Berwick, La. Febr. 12, 1909 Duplex on First Day Cover , Fine (Photo) | 175.00 |

| | | | |
|-----|---|---|---------|
| 689 | ✉ | 2c Lincoln (367). Tied by Brighton, N. J., Febr. 12, 1909 Waving Flag Cancellations on First Day front only of 1c Green Entire (U379), small commemorative docketing at left, Very Fine (Photo) | 175.00 |
| 690 | ✉ | 2c Lincoln (367). Tied by Boston, Mass., Febr. 12, 1909 Machine Cancellation on First Day Cover, Fine (Photo) | 175.00 |
| 691 | ✉ | 2c Lincoln, Imperforate (368). Tied by Canton, Ohio, Febr. 12, 1909 Waving Flag Cancel on First Day Cover to Canada, no flap, Very Fine (Photo) | 500.00 |
| 692 | ✉ | 2c Lincoln (367). Tied by Carlisle, Ky., Febr. 12, 1909 Duplex on First Day Cover, Printed Address, cover bit worn, otherwise V. F. (Photo) | 175.00 |
| 693 | ✉ | 2c Lincoln (367). Tied by Champlain, N. Y., Febr. 12, 1909 Duplex on First Day Cover, Very Fine Cover (Photo) | 175.00 |
| 694 | ✉ | 2c Lincoln (367). Str. edge at bot., tied by Chicago, Ill. Febr. 12, 1909 Machine Cancellation on First Day Cover, Fine (Photo) | 175.00 |
| 695 | ✉ | 2c Lincoln (367). Tied by Boxed C. M. & St. P. Ry Co., Genesee, Wis., Febr. 12, 1909 pmk on First Day Cover, cover folded in center, Fine (Photo) | 175.00 |
| 696 | ✉ | 2c Lincoln (367). Tied by Conyers, Ga., Febr. 12, 1909 Duplex on First Day Cover, tiny corner perf. crease, otherwise V. F. (Photo) | 175.00 |
| 697 | ✉ | 2c Lincoln (367). Tied by Copperhill, Tenn., Febr. 12, 1909 Duplex on First Day Cover, Fine (Photo) | 175.00 |
| 698 | ✉ | 2c Lincoln (367). Tied by Crooksville, Ohio, Febr. 12, 1909 Duplex on First Day Valentine Post Card, Fine (Photo) | 175.00 |
| 699 | ✉ | 2c Lincoln (367). Four Copies, tied by El Paso, Tex., Febr. 12, 1909 Duplex pmks. on Registered First Day Cover to Mexico, small hole in cover, otherwise Fine, Rare Cover | E. XIII |
| 700 | ✉ | 2c Lincoln (367). Tied by Elm Grove, W. Va., Febr. 12, 1909 Duplex on First Day Cover, cover bit carelessly opened at top left, Fine (Photo) | 175.00 |
| 701 | ✉ | 2c Lincoln (367). Tied by Evart, Mich., Febr. 12, 1909 Duplex, struck partly off cover, on First Day Cover, Very Fine (Photo) | 175.00 |
| 702 | ✉ | 2c Lincoln (367). Tied by Festus, Mo., Febr. 12, 1909 Duplex on First Day Cover, Pretty Poultry Farm Corner Card, Very Fine (Photo) | 175.00 |
| 703 | ✉ | 2c Lincoln (367). Tied by Fond Du Lac, Wis., Febr. 12, 1909 Duplex on First Day Cover, Fine (Photo) | 175.00 |
| 704 | ✉ | 2c Lincoln (367). Tied by Frankford, Mo., Febr. 12, 1909 Duplex on First Day Cover, Very Fine (Photo) | 175.00 |
| 705 | ✉ | 2c Lincoln (367). Tied by Gd. Forks & St. Paul R.P.O., Febr. 12, 1909 Duplex on First Day Cover from Wilmar, Minn. to Janesville, Wis., Very Fine (Photo) | 175.00 |
| 706 | ✉ | 2c Lincoln (367). Tied by Hartford, Conn., Febr. 12, 1909 Machine Cancellation on First Day Cover, Very Fine (Photo) | 175.00 |
| 707 | ✉ | 2c Lincoln (367). Tied by Hilbert, Wis., Febr. 12, 1909 Duplex on First Day Cover, Printed Address, Very Fine (Photo) | 175.00 |
| 708 | ✉ | 2c Lincoln (367). Tied by Kingston, N.C., Febr. 12, 1909 Duplex on First Day Cover, Printed Address, Fine (Photo) | 175.00 |
| 709 | ✉ | 2c Lincoln (367). Tied by Liberty, Ind., Febr. 12, 1909 Duplex on First Day Cover, Printed Address, small cover tears at L., V. F. (Photo) | 175.00 |
| 710 | ✉ | 2c Lincoln (367). Tied by Lynchburg, Va., Febr. 12, 1909, Waving Flag Machine Cancel on First Day Cover, Fine (Photo) | 175.00 |
| 711 | ✉ | 2c Lincoln (367). Tied by partly struck Mapleton, Minn., Febr. 12, 1909 Duplex on First Day Cover, Fine (Photo) | 175.00 |
| 712 | ✉ | 2c Lincoln (367). Str. edge at top, tied by Milwaukee, Wis. Febr. 12, 1909 Machine Cancellation on Immaculate First Day Cover, Very Fine (Photo) | 175.00 |
| 713 | ✉ | 2c Lincoln (367). Tied by Milwaukee, Wis., Febr. 12, 1909 Machine Cancellation on Neat Small First Day Cover, Very Fine (Photo) | 175.00 |
| 714 | ✉ | 2c Lincoln (367). Tied by Modesto, Cal., Febr. 12, 1909 Waving Flag Machine Cancel on First Day Cover, Very Fine (Photo) | 175.00 |

| | | | |
|-----|---|--|---------|
| 715 | ✉ | 2c Lincoln (367). Tied by Territorial Nara Visa, N. Mex. Febr. 12, 1909 Duplex on First Day Cover, Fine, Rare (Photo) | 175.00 |
| 716 | ✉ | 2c Lincoln (367). Tied by Northfield, Vt., Febr. 12, 1909 Duplex on First Day Cover, with "Ladies of the Grand Army of the Republic" Corner Card, Fine (Photo) | 175.00 |
| 717 | ✉ | 2c Lincoln (367). "PPC" Perforated Initials, tied by Omaha, Neb., Febr. 12, 1909 Machine Cancellation on First Day Cover, to the Parker Pen Co. in Janesville, Wis., cover folded in center, otherwise Very Fine, Rare (Photo) | 175.00+ |
| 718 | ✉ | 2c Lincoln (367). Tied by Osceola, Fla., Febr. 12, 1909 Duplex on Neat First Day Cover, Fine (Photo) | 175.00 |
| 719 | ✉ | 2c Lincoln (367). Tied by Peabody, Kans., Febr. 12, 1909 Duplex on First Day Cover, Very Fine (Photo) | 175.00 |
| 720 | ✉ | 2c Lincoln (367). Tied by partial strike of Phila'da & Cape Charles R.P.O. Febr. 12, 1909 Duplex on First Day Cover from Cape Charles, Va. to New York, Fine (Photo) | 175.00 |
| 721 | ✉ | 2c Lincoln (367). Tied by Pioche, Nev., Febr. 12, 1909 Duplex on First Day Cover, Printed Address, Fine (Photo) | 175.00 |
| 722 | ✉ | 2c Lincoln (367). Str. edge at right, tied by Ponce, P.R. Febr. 12, 1909 Duplex on First Day Cover, Very Fine (Photo) | 175.00 |
| 723 | ✉ | 2c Lincoln (367). Str. edge at right, tied by Portsmouth, N. H. Febr. 12, 1909 Waving Flag Machine Cancel on First Day Cover, Very Fine (Photo) | 175.00 |
| 724 | ✉ | 2c Lincoln (367). Tied by Rosedale, Md. Febr. 12, 1909 Duplex on First Day Cover, Fine (Photo) | 175.00 |
| 725 | ✉ | 2c Lincoln (367). Tied by Russellville, Ala., Febr. 12, 1909 Duplex on First Day Cover, Fine (Photo) | 175.00 |
| 726 | ✉ | 2c Lincoln (367). Tied by Saint James, Minn., Febr. 12, 1909 Duplex on First Day Cover, bit worn, Fine (Photo) | 175.00 |
| 727 | ✉ | 2c Lincoln (367). Str. edge at top, tied by Seattle, Wash. Febr. 12, 1909, Machine Cancellation on First Day Picture Post Card, Fine (Photo) | 175.00 |
| 728 | ✉ | 2c Lincoln (367). Tied by Sharon Springs, N. Y., Febr. 12, 1909 Duplex on First Day Cover, Printed Address, stamp str. edge at left, Very Fine (Photo) | 175.00 |
| 729 | ✉ | 2c Lincoln (367). Tied by Spring Hope, N. C., Febr. 12, 1909 Duplex on First Day Cover, tiny cover tear, otherwise Very Fine (Photo) | 175.00 |
| 730 | ✉ | 2c Lincoln (367). Tied by Stonington, Conn., Febr. 12, 1909 Duplex on Red First Day Cover, Pretty Corner Card, Extremely Fine (Photo) | 175.00 |
| 731 | ✉ | 2c Lincoln (367). Tied by Tampa, Fla., Febr. 12, 1909 Waving Flag Cancel on First Day Valentine Post Card, bit age stained, otherwise V. F. (Photo) | 175.00 |
| 732 | ✉ | 2c Lincoln (367). Tied by Walpole, Mass., Febr. 12, 1909 Duplex on First Day Cover, Fine (Photo) | 175.00 |
| 733 | ✉ | 2c Lincoln (367). Tied by Weatherford, Texas, Febr. 12, 1909 Waving Flag Machine Cancel on First Day Cover, tiny ink spot on stamp, otherwise Very Fine (Photo) | 175.00 |
| 734 | ✉ | 2c Lincoln (367). Tied by Westfield, Iowa, Febr. 12, 1909 Duplex, partly struck off cover, on First Day Cover, Fine (Photo) | 175.00 |

OTHER LINCOLN MEMORIAL COVERS

| | | | |
|-----|---|--|--------|
| 735 | ✉ | 2c Lincoln (367). Three Covers, "PPC" Perforated Initials, tied by "Ottumwa, Iowa", "Salt Lake City, Utah" and "Williamsport, Pa." on separate Second Day of Issue Covers, all folded in middle, F.-V. F. | E. VII |
| 736 | ✉ | 2c Lincoln (367). Two Covers, tied by "Honolulu, Febr. 16, 1909" Waving Flag, and "Waimea, Febr. 23, 1909" Duplex pmks. on separate Hawaiian Territorial Covers, least bit soiled, Fine, Scarce | E. V |

| | | | |
|-----|---|--|---------------|
| 737 | ✉ | 2c Lincoln (367). Tied by Danish " St. Thomas " (Virgin Islands), " Apr. 20, 1917 " pmk. on cover to U. S., light cover fold, Printed Address, Very Fine (Photo) | E. VI |
| 738 | ✉ | 2c Lincoln (367). Tied by " Shanghai, China " Duplex 1914 pmk. on cover to U. S., Very Fine (Photo) | E. V |
| 739 | ✉ | 2c Lincoln (367). Tied by Vera Cruz, Mexico 1914 Waving Flag Cancel on cover to U. S., Very Fine (Photo) | E. VI |
| 740 | ✉ | 2c Lincoln (367). Tied by Large Bold Oval " Centennial Parade R.P.O., St. Louis, Mo " Street Car pmk., on local cover, Very Fine (Photo) | E. V |
| 741 | ✉ | 2c Lincoln (367). Eight Copies, tied by Seven Diff. Street Car Cancellations on 8 Covers, F.-V. F. | E. VI |
| 742 | ✉ | 2c Lincoln (367). Tied by " Dedham, Mass., March 1, 1909 " in Combination with French & Italian Dues on repeatedly forwarded Cover showing London, Florence, Algiers, Biskra, Naples & Norwood pmks., Spectacular Cover (Photo) | E. VI |
| 743 | ✉ | 2c Lincoln (367). Eight Covers, in Scarcer Waving Flag, Seattle World's Fair Machine Cancellations, two Flight Covers, F.-V. F. | E. III |

PRIVATE COIL PERFORATIONS

| | | | |
|-----|---|--|--------|
| 744 | ★ | 5c Lincoln, Schermack Ty. III Coil (315). Horiz. Pair, Very Fine (Photo) | 225.00 |
| 745 | ★ | 5c Lincoln, U. S. Automatic Vending, Ty. I, Coil (315). Vert. Pair, slightly reinforced, light gum crackle in top stamp, other Very Fine (Photo) | 175.00 |
| 746 | ★ | 5c Lincoln, U. S. Automatic Vending, Ty. I, Coil (315). Vert. Guide Line Pair, Very Fine (Photo) | 200.00 |
| 747 | ★ | 5c Lincoln, U. S. Automatic Vending, Ty. II, Coil (315). Horiz. Pair, Very Fine (Photo) | 175.00 |
| 748 | ★ | 5c Lincoln, U. S. Automatic Vending, Ty. III, Coil (315). Horiz. Pair, Very Fine (Photo) | 150.00 |
| 749 | ★ | 5c Lincoln, U. S. Automatic Vending, Ty. III, Coil (315). Horiz. Guide Line Pair, Very Fine (Photo) | 175.00 |
| 750 | ★ | 2c Lincoln, Brinkerhoff Ty. I, II, IIa, Coils (368). Vert. Pair & Guide Line Pair of each, two stamps tiny thin specks, one guideline pair re-joined, otherwise F.-V. F. lot | 97.50 |
| 751 | ★ | 2c Lincoln, Farwell Ty. B, Coil (368). Horiz. Pair, Very Fine, Rare, listed in Scott, but Unpriced, with P.F. Certificate (Photo) | — |
| 752 | ★ | 2c Lincoln, Mailometer Ty. II, Coil (368). Horiz. Pair, Very Fine (Photo) | 32.50 |
| 753 | ★ | 2c Lincoln, Mailometer Ty. IV, Coil (368). Two Horiz. Pairs, Both Spacings, F.-V. F. | 67.50 |
| 754 | ★ | 2c Lincoln, Mailometer Ty. IV, Coil (368). Horiz. Guide Line Pair, Very Fine (Photo) | 52.50 |
| 755 | ★ | 2c Lincoln, Schermack Ty. I Coil, Seven Holes (368). Horiz. Pair, Fine (Photo) | 65.00 |
| 756 | ★ | 2c Lincoln, Schermack Ty. I Coil, Six Holes (368). Horiz. Guide Line Pair, tiny thin spots in margin of one, otherwise V. F. (Photo) | 65.00+ |
| 757 | ★ | 2c Lincoln, Schermack Ty. I, Coil, Six Holes (368). Horiz. Pair, Mint, Extremely Fine (Photo) | 65.00 |
| 758 | ★ | 2c Lincoln, Schermack Ty. I, II, III, Coils (368). Two Horiz. Pairs of each, Both Spacings, two stamps minor flaws, others F.-V. F. | 66.50 |
| 759 | ★ | 2c Lincoln, Schermack Ty. I, II, Coils (368). Horiz. Strips of Four, First with Guide Line, bit heavily hinged on some, F.-V. F. | 58.00 |
| 760 | ★ | 2c Lincoln, Schermack Ty. III Coil (368). Horiz. Pair, no gum, Perforated Twice, once in Middle of Stamp, Spectacular (Photo) | — |
| 761 | ★ | 2c Lincoln, Schermack Ty. III Coil (368). Strips of 9, 8, 5 and two of 4, four Strips show incorrect spacing of perforating machine with holes progressively deeper into stamp, also one Single on cover, Very Attractive lot | 109.50 |

| | | | | |
|-----|---|---|---------|--------|
| 762 | ★ | 2c Lincoln, Schermack Ty. III, Coil (368). Block of 4, F.-V. F. mentioned in Scott, but not priced | (Photo) | — |
| 763 | ✉ | 2c Lincoln, Imperforate Coil (368). Schermack Ty. III, tied by Chicago, Ill., Febr. 19, 1909, Machine Cancellation on cover, Very Fine, Very Early Use of this Coil | | E. VI |
| 764 | ✉ | 2c Lincoln, Imperforate Coil (368). Schermack Ty. III, tied by "Chicago, Ill., March 10, 1909" Machine Cancel on cover with return card of the Farwell Company, who did not yet make private Coils at that time, Fine | | E. V |
| 765 | ★ | 2c Lincoln, 1c Green, Imperforate (331, 368, two). In U.S. Automatic Vending Pocket, F.-V. F., Mentioned in Scott, but unpriced | | — |
| 766 | ✉ | 2c Lincoln Imperforate Coil (368). U. S. Automatic Vending Ty. I, Vert. Pair, tied with 2c Carmine U.S. Autom. Vending Coil (344), on Registered Cover, War Department Corner Card, V. F. | | E. II |
| 767 | ★ | 2c Lincoln, Vending & Affixing Machine Perforation (368). Collection of 14 Pairs & Strips, incl. Mailometer, Schermack & U.S. Auto Vending issues,, some duplicates, few small faults, majority F.-V. F. | | 179.00 |

OFFICIALS, REVENUES, ETC.

| | | | | |
|-----|---|---|---------|--------|
| 768 | ★ | 6c Officials, Cpl. Set of 12 stamps on both hard & soft papers with portraits of Lincoln, mostly o. g., nearly all F.-V. F. | | 113.20 |
| 769 | | \$60.00 Brown, Documentary (R224). Very Fine | (Photo) | 57.50 |
| 770 | | \$60.00 Brown, Documentary (R224). Nearly invisible cancel, Fine | | 57.50 |
| 771 | | \$60.00 Brown, Silver Tax (RG20). Purple handstamp cancel, Very Fine | | 30.00 |
| 772 | ★ | \$5.00 Orange on Green, War Savings (WS6). Part o. g., tiny scuff in T. margin, otherwise Very Fine, Scarce | (Photo) | 175.00 |

U. S. POSSESSIONS

| | | | | |
|-----|---|---|---------|--------|
| 773 | ★ | CANAL ZONE, 1924, \$1.00 Lincoln Memorial (81). Very Fine | | 40.00 |
| 774 | ★ | — 1925, 3c Lincoln, Zone-Zone (85a). Block of 9, Middle Stamp the Error, Fine | (Photo) | 122.60 |
| 775 | ★ | GUAM, 1899, 4c Lilac Brown (4, 4S). Both normal & "Specimen" Overprint, fresh, o. g., F.-V. F. | | 32.50 |
| 776 | ✉ | PHILIPPINES, 1899-1903, 4c-5c Lincoln Entire (U12-U14, U27). Unused, Very Fine | | 61.25 |
| 777 | ★ | U. S. Possessions, Lincoln Issues. Collection of 30 unused stamps & one cut square, incl. Canal Zone, Philippines, one each from Guam, Puerto Rico, mostly F.-V. F. | | 112.35 |

LARGE, MISCELLANEOUS & FOREIGN LOTS

| | | | | |
|-----|---|--|--|---------|
| 778 | ★ | Lincoln Freak, 14 unused items, all but two from 1954 Liberty Issue, incl. Miscut Booklet Pane & Coils, Gutter Snipes, Ink Smears, Mis-Perfed, Test Coils, Double Paper, Very Fine Lot | | E. VI |
| 779 | ★ | Lincoln on Postal Stationery, Collection of 32 items, incl. 20 diff. unused cut squares 1870-1903 issues, three unused entires with Wells Fargo & Co. Franks, & nine unused postal cards, Very Fine Lot | | 138.88 |
| 780 | ★ | U. S. Lincoln Collection, The Collection of nearly 200 mostly unused stamps neatly mounted & written up, incl. Lincoln on Postage & Commemorative Issues with shades, blocks, & Plate Blocks, also Officials Revenues, Newspapers, etc., also cpl. sheet 5c China #906, few earlies have small faults, others F.-V. F., also an extensive collateral section with special event covers, photos, biographical data, souvenir items, 1967-69 issues of the "Lincoln Log" etc., A most Attractive Collection ideally suited for further expansion | | E. VIII |

- 781 ★ **FOREIGN LINCOLN ISSUES**, 45 Unused Stamps, Proofs, Essays, Specimen and 4 Souvenir Sheets, incl. San Marino, Ghana, Monaco, Independent Africa, V. F. lot **E. V**
- 782 S **NICARAGUA, 1960, 5c-2cor Lincoln Trial Color Proofs (824S-828S, C437S-C441S)**. Mounted on 4 x 5½" Cards, Thomas De La Rue Imprint, Perforated "Specimen" and ms. order number, Very Fine, Rare —
- 783 S ☐ **SAN MARINO, 1959, 5L-200L Lincoln, "Saggio" Overprints (433S-436S, C108S)**. Imperforate Blocks, V. F. set —

LINCOLN COLLATERAL

- 784 **A. Lincoln**, signature on small piece, Very Fine (Photo) **E. VIII**
- 785 **Lincoln Campaign Song**, "Abe Lincoln's Union Wagon" printed on Multi-color Magnus Letter Sheet with Portrait within frame of star & flags, Figure of Liberty, Very Fine **E. II**
- 786 ☒ **Lincoln, Campaign Cover**, Beardless Portrait, 3c Rose (26). Top Label of stamp partly torn away, tied by light Illinois Town pmk on 1860 Campaign Cover to Chicago, cover mended in R. B. corner, Scarce Design **E. IV**
- 787 **Lincoln Funeral**, Union League Club of N. Y.'s announcement of participation "in the Funeral Ceremonies of our lamented President", on 5 x 7½" printed letter sheet with mourning borders, Very Fine **E. IV**
- 788 **Lincoln Mourning Card**, 3½ x 5" Black Bordered Card with Embossed Tombstone & appropriate inscriptions, Very Fine **E. III**
- 789 **Lincoln Photographs**, Three diff., incl. one with son Tad, carte-de-viste size, Very Fine **E. III**
- 790 **Lincoln Portraits**, Two large portraits, first a simulated oil 16 x 20", second a print of a pen & ink drawing by J. C. Barberis 14 x 18", both mounted on heavy stock suitable for framing, Attractive —

END OF SALE — THANK YOU

LOTS ON VIEW FROM FEBRUARY 26th

OFFICES OPEN SATURDAY BEFORE SALE

CONDITIONS OF SALE

1. The terms of sale are strictly cash to the highest bidder. All buyers are expected to pay for lots within three days of receipt, unless special arrangements have been made prior to the sale.
2. All bids are per lot as numbered in the catalogue and not per piece, unless otherwise announced by the auctioneer at the time of sale.
3. Any lot, the description of which is incorrect is returnable, but only within three days of receipt. All disputed lots must be returned intact as received and lots containing five or more stamps are not returnable at any time. No lots may be returned by purchasers who have had the opportunity to examine them prior to the sale. No illustrated lots may be returned because of centering, margins or other factors shown in the illustration.
4. Successful mail bidders, unless they are known to us or supply acceptable references, will be notified of the amount of the lots secured for them, and are expected to send payment in full before the lots are forwarded.
5. If the purchase price has not been paid within the time limit, or lots taken up within seven days from date of sale, they may be resold and any losses arising from such sale charged to the defaulter.
6. All lots are sold as genuine but should any lot be proved otherwise by written opinion of any competent, responsible authority acceptable to us, immediate refund of the full purchase price will be made, provided that any such claim is made within 25 days from date of sale. If claim is not made within this period no lots are returnable for any reason at any time. Naturally, so long as we are notified within the 25 day period that an opinion is being sought the matter will remain open until such opinion is rendered. We will not be responsible for any charges incurred by the buyer for expertization fees and costs.
7. The right is reserved to group two or more lots, also withdraw any lot or lots from the sale, or to act on behalf of the seller.
8. Until paid for in full all lots remain the property of Robert A. Siegel Auction Galleries, Inc.
9. No commission is charged for buying at our sales, but all forwarding charges will be added to the purchase price. Shipment will be made to a post office box only if the buyer has also furnished a street address. All large lots unsuitable for parcel post will be sent by REA Express collect, or, upon request, REA Air Express collect.
10. Upon written application lots may be sent for examination prior to the auction, condition upon being mailed back by registered mail, adequately insured, within 24 hours of receipt. The applicant is completely responsible for all lots sent for examination, and for the insurance of same against mishap, from the time of receipt until they are actually received back, and is to pay all expenses of postage and insurance. No lots can be sent for inspection within ten days of the date of sale.
11. The placing of a bid shall constitute acceptance of the foregoing conditions of sale.

ROBERT A. SIEGEL

ANDREW LEVITT, Licensed Auctioneers

In sending bids, always state the highest price you are prepared to pay for the lot. Your limit will not be used as a starting bid unless absolutely necessary.

DESCRIPTIONS

Extremely Fine—the finest condition for noteworthy, outstanding copies.

Very Fine (VF)—means that there is a slight deviation from the above.

Fine (F)—means that the perforations do not touch the design on issues after 1890, but in some cases may just touch in earlier issues; if used, fairly lightly cancelled.

Very Good (VG)—means that the appearance is generally fine but that the perforations cut the design slightly.

Good (G)—means average off-centering; or fairly attractive with slight defects. Original gum (OG) is not to be expected on 19th Century stamps unless so stated.

Mint—have never been hinged.

Scott 1970 Specialized Catalogue used for cataloguing lots of U.S. and Possessions.

Scott 1970 Standard Catalogue for others.

ROBERT A. SIEGEL AUCTION GALLERIES, Inc.

10 EAST 52ND STREET
NEW YORK, N. Y. 10022

370TH SALE

PRICES REALIZED

MARCH 4TH, 1970

UNITED STATES STAMPS

WITH

LINCOLN PORTRAITS

| | | | | | | | | | |
|------|--------|-----|--------|-----|---------|-----|--------|-----|--------|
| 501 | 160.00 | 539 | 160.00 | 581 | 45.00 | 623 | 52.50 | 665 | 62.50 |
| 502 | 80.00 | 540 | 57.50 | 582 | 45.00 | 624 | 32.00 | 666 | 32.50 |
| 503 | 34.00 | 541 | 80.00 | 583 | 47.50 | 625 | 21.00 | 667 | 30.00 |
| 504 | 23.00 | 542 | 36.00 | 584 | 25.00 | 626 | 45.00 | 668 | 105.00 |
| 505 | 110.00 | 543 | 40.00 | 585 | 25.00 | 627 | 190.00 | 669 | 160.00 |
| 506 | 80.00 | 544 | 34.00 | 586 | 11.00 | 628 | 800.00 | 670 | 150.00 |
| 507 | 35.00 | 545 | 30.00 | 587 | 40.00 | 629 | 32.00 | 671 | 28.00 |
| 508 | 290.00 | 546 | 25.00 | 588 | 34.00 | 630 | 57.50 | 672 | 105.00 |
| | | 547 | 17.00 | 589 | 32.00 | 631 | 65.00 | 673 | 80.00 |
| 509) | | 548 | 47.50 | 590 | 75.00 | 632 | 30.00 | 674 | 95.00 |
| 510) | 600.00 | 549 | 105.00 | 591 | 40.00 | 633 | 57.50 | 675 | 60.00 |
| 511) | | 550 | 100.00 | 592 | 50.00 | 634 | 42.50 | 676 | 50.00 |
| 512) | | 551 | 20.00 | 593 | 50.00 | 635 | 42.50 | 677 | 125.00 |
| | | 552 | 14.00 | 594 | 130.00 | 636 | 28.00 | 678 | 675.00 |
| 513 | 18.00 | 553 | 23.00 | 595 | 95.00 | 637 | 35.00 | 679 | 450.00 |
| 514 | 20.00 | 554 | 19.00 | 596 | 20.00 | 638 | 20.00 | 680 | 600.00 |
| 515 | 17.00 | 555 | 27.00 | 597 | 320.00 | 639 | 28.00 | 681 | 35.00 |
| 516 | 37.50 | 556 | 50.00 | 598 | 290.00 | 640 | 30.00 | 682 | 35.00 |
| 517 | 60.00 | 557 | 34.00 | 599 | 350.00 | 641 | 28.00 | 683 | 12.00 |
| 518 | 20.00 | 558 | 24.00 | 600 | 100.00 | 642 | 34.00 | 684 | 375.00 |
| 519 | 42.50 | 559 | 210.00 | 601 | 25.00 | 643 | 52.50 | 685 | 325.00 |
| 520 | 29.00 | 560 | 22.00 | 602 | 45.00 | 644 | 150.00 | 686 | 150.00 |
| 521 | 32.50 | 561 | 27.00 | 603 | 19.00 | 645 | 140.00 | 687 | 160.00 |
| 522 | 23.00 | 562 | 24.00 | 604 | 90.00 | 646 | 140.00 | 688 | 150.00 |
| 523 | 240.00 | 563 | 34.00 | 605 | 30.00 | 647 | 105.00 | 689 | 34.00 |
| 524 | 110.00 | 564 | 425.00 | 606 | 28.00 | 648 | 100.00 | 690 | 160.00 |
| 525 | 35.00 | 565 | 700.00 | 607 | 85.00 | 649 | 77.50 | 691 | 700.00 |
| 526 | 29.00 | 566 | 750.00 | 608 | 26.00 | 650 | 60.00 | 692 | 100.00 |
| 527 | 500.00 | 567 | 180.00 | 609 | 50.00 | 651 | 45.00 | 693 | 130.00 |
| | | 568 | 180.00 | 610 | 32.50 | 652 | 28.00 | 694 | 110.00 |
| 528) | | 569 | 280.00 | 611 | 1350.00 | 653 | 57.50 | 695 | 85.00 |
| 529) | 200.00 | 570 | 18.00 | 612 | 34.00 | 654 | 22.00 | 696 | 150.00 |
| 530) | | 571 | 25.00 | 613 | 14.00 | 655 | 22.00 | 697 | 155.00 |
| 531) | | 572 | 80.00 | 614 | 36.00 | 656 | 32.50 | 698 | 125.00 |
| | | 573 | 62.50 | 615 | 150.00 | 657 | 35.00 | 699 | 170.00 |
| 532 | 45.00 | 574 | 110.00 | 616 | 80.00 | 658 | 12.50 | 700 | 150.00 |
| 533 | 52.50 | 575 | 17.00 | 617 | 22.00 | 659 | 55.00 | 701 | 135.00 |
| 534 | 95.00 | 576 | 105.00 | 618 | 13.00 | 660 | 62.50 | 702 | 210.00 |
| 535 | 40.00 | 577 | 67.50 | 619 | 19.00 | 661 | 70.00 | 703 | 130.00 |
| 536 | 26.00 | 578 | 160.00 | 620 | 38.00 | 662 | 70.00 | 704 | 135.00 |
| 537 | 32.50 | 579 | 30.00 | 621 | 19.00 | 663 | 57.50 | 705 | 150.00 |
| 538 | 85.00 | 580 | 52.50 | 622 | 40.00 | 664 | 55.00 | 706 | 200.00 |

707 180.00
708 125.00
709 105.00
710 160.00
711 125.00
712 105.00
713 160.00
714 160.00
715 150.00
716 150.00
717 150.00
718 130.00
719 140.00
720 130.00
721 115.00
722 170.00
723 130.00

724 130.00
725 150.00
726 85.00
727 150.00
728 95.00
729 105.00
730 200.00
731 95.00
732 130.00
733 130.00
734 105.00
735 65.00
736 20.00
737 18.00
738 47.50
739 90.00
740 57.50

741 30.00
742 18.00
743 21.00
744 210.00
745 80.00
746 145.00
747 105.00
748 105.00
749 145.00
750 85.00
751 250.00
752 47.50
753 50.00
754 47.50
755 35.00
756 32.50
757 62.50

758 42.50
759 34.00
760 19.00
761 50.00
762 32.00
763 80.00
764 70.00
765 30.00
766 32.00
767 80.00
768 72.50
769 37.50
770 28.00
771 18.00
772 110.00
773 32.00
774 105.00

775 24.00
776 25.00
777 57.50
778 47.50
779 65.00
780 85.00
781 23.00
782 16.00
783 5.00
784 135.00
785 14.00
786 15.00
787 17.00
788 21.00
789 35.00
790 10.00