

RARITIES
OF THE
WORLD



Robert A. Siegel
AUCTIONS

371st SALE

RARITIES OF THE WORLD

BRITISH GUIANA

1856

"ONE CENT"

WORLD'S MOST VALUABLE
STAMP



AT PUBLIC AUCTION

TUESDAY MARCH 24th, 1970

7:00 P.M.

AT THE W ALDORF-ASTORIA HOTEL

LOUIS XVI SUITE, PARK AVENUE AND 50th STREET

Robert A. Siegel
AUCTIONS

10 EAST 52nd STREET NEW YORK, N. Y. 10022

Tel.: 212 PLaza 3-6421

THE WORLD'S MOST VALUABLE STAMP

The little piece of magenta-coated paper featured in this catalogue is, for its size and weight, the most valuable single object in the world. It is the British Guiana "One Cent" postage stamp issued in 1856 during an emergency shortage of regular stamps and is now estimated to be worth from twenty to fifty million times its original cost. No one has ever been able to suggest any other object in the history of the world which has had this great an increment in value.

British Guiana, now the Independent State of Guyana on the Atlantic Coast of South America, was formerly a small part of the once extensive British Empire and was important for its production of sugar and rum . . . the dark rum of Demerara being a favorite of connoisseurs and contributing to the wealth of colonial planters and distillers. By 1856 the colony had a well-developed postal service with its headquarters in the city of Demerara, now Georgetown, the capital. After an early, locally produced stamp issue in 1852 the colony was supplied with its postage stamps directly from England. Early in 1856 an emergency arose. A supply of stamps ordered from London failed to arrive and the local stock of postage stamps was being rapidly depleted. The Postmaster decided he must order provisional stamps, to be produced locally in order to meet the emergency. The publishers of the "Official Gazette" were ordered to print these provisionals, using a design approximating the Seal of the Colony which consisted of the design of a ship and the Latin motto "Damus Petimus Que Vicissim", which translates "We Give and Seek in Turn". These emergency stamps were rather primitively set in ordinary type. For the design of the ship the printers used the same cut which they ordinarily used to head the local column of shipping news. The words of the motto were placed above and below the ship and surrounded by a frame of ordinary printer's rules. Outside of the rules were the words "British Guiana", "Postage" and "One Cent". There was a similarly designed "Four Cent" stamp printed and issued at the same time. The "Four Cent" was printed on Magenta paper, like the "One Cent" and on a Blue paper. These "Four Cent" provisionals are very rare, but not in any way to be compared with the rarity of the unique "One Cent".

When the stamps were delivered to the Post Office the Postmaster was concerned that, being printed from ordinary type, they might easily be forged, so, to protect the postal revenue, he directed that all of these provisional stamps were to be initialed by one of four designated postal officials before being sold. The "One Cent" bears the initials "E.D.W." hand-written by Mr. E. D. Wight, an assistant postmaster. This was the device employed to protect the colony's first provisional issue, which came out in 1852, six years earlier.

The "One Cent", the only example which has ever been found, has been cut octagonally, the corners trimmed so that it forms an octagon. It bears the postmark of "Demerara, Ap. 4, 1856" in the characteristic rimless type then in use.

This "Rarity of All Rarities" has had the most careful scrutiny of leading students of the stamps of British Guiana, who through the Royal Philatelic Society of London, have pronounced and certified it to be genuine in all respects. The documentation

and certification will, of course, be furnished to the fortunate purchaser of the stamps, whoever he may be.

Tonight, through the facilities of the Robert A. Siegel Auction Galleries, Inc., this celebrated stamp is to find a new owner. For the first time in 48 years it is being offered, without reserve, at public auction, to the highest bidder. Who the new owner will be and what price he must pay for it will be determined at the end of this sale, where it is being offered in company with a sensational galaxy of some of the rarest and most beautiful philatelic gems ever assembled in a single sale. The annual sales of "Rarities of the World" initiated and continued by the Robert A. Siegel Auction Galleries, Inc. are events eagerly awaited by the philatelic world and bring together at one time a great number of serious buyers, both amateur and professional. Thus, it is quite logical for the famous British Guiana "One Cent" to be presented in this sale.

This great stamp is, of course, unique; no other example has ever been found. There are other unique stamps, it is true, some in this present sale, but the British Guiana has a quality of glamour which sets it apart from every other stamp in the world.

One important feature of this rarity is the fact that it has been completely "pedigreed" from its original discovery by L. Vernon Vaughan, of Demerara, British Guiana when he was a school-boy, barely of teen-age. It was approximately in 1873 when he unearthed it in some family correspondence, along with other British Guiana stamps. An avid collector, he was fascinated by some colorful sets sent him by a dealer and lacking funds to purchase them he offered his "One Cent" Black on Magenta to a collector named McKinnon, who first turned it down and then bought it for the sum of six shillings. McKinnon sold his collection in 1878 through Wylie Hill, of Glasgow, Scotland to Thomas Ridpath, a Liverpool dealer for a reputed \$600.00. Ridpath sold the stamp to Count Philippe la Renotiere von Ferrary, an Italo-Austrian nobleman of a family of immense wealth, who, for many years was the world's leading collector. He was born in 1848 and lived in a famous Paris mansion in which three rooms were devoted to his stamps. A small ante-room was reserved for business, and contained a curious contraption of nails or hooks on which French Bank Notes of varying denominations were placed. The money was for the Ferrary stamp purchases and a sum of 50,000 francs, then approximately \$10,000.00 was made available each week and if larger amounts were necessary as for the purchase of a large collection, payment was made by check. Two Philatelic secretaries looked after the collection, the stamps kept in one room while the other room was devoted to an immense collection of Postal Stationery and things of that nature. When World War I broke out, the Count was in The Netherlands. In 1916 he attempted to return to Paris, where his collection was, but the French Government refused to permit him to remain in France because of his Austrian paternity. He had become a Swiss citizen in 1908 so he retired to Lugano where he died in 1916. By his will, the collection had been left to The Imperial Postal Museum in Berlin. But the French Government seized the collection and ordered it sold at public auction with the proceeds being credited to the German War Reparations account. The collection was dispersed in a series of fourteen auction sales between June 1921 and November 1925. The amount realized was in excess of \$1,600,000.00, a huge sum for those days.

However, the greatest interest was evoked by the sixth sale, the one in which the famed British Guiana was offered. It has long been rumored that the late King George V,

of Great Britain, had an agent at the sale and was a bidder for this fabulous rarity, for it is reputedly the only British Commonwealth stamp needed in the Royal Collection. The rumor, as is customary in British Court circles, has never been confirmed nor denied. In any event, the principal competition was between Maurice Burrus, a wealthy Alsatian tobacco magnate and Hugo Griebert, a London dealer who acted as agent for Arthur Hind, a highly successful plush manufacturer of Utica, New York. The bidding between M. Burrus and Mr. Griebert brought the price to 300,000 francs (the franc then being valued at between 8¢ and 9¢). Both claimed the stamp at that price and after a short conference the two competitors reached agreement that Mr. Hind was to have it. The French Government then exacted a tax of 17½% of the purchase price which brought the total cost to Mr. Hind to approximately \$32,500.00 plus whatever he paid Mr. Griebert for his services. The late Charles J. Phillips once wrote that Mr. Hind told him that he had instructed Mr. Griebert to go as high as \$60,000.00 for the stamp if necessary.

Arthur Hind enjoyed his ownership of the stamp and the publicity he derived from its purchase. He was very generous in permitting its display at important philatelic exhibitions and, as a result, many collectors had the opportunity to view it, up to the time of his death in 1933.

It was then learned that the British Guiana "One Cent" had been left to his widow, independently of the rest of his stamps.

The "Hind Collection", minus the "One Cent" British Guiana was sold in a series of important auctions in the mid-1930's.

After Mr. Hind's widow established her ownership of the stamp through court action she arranged for its private sale through Mr. Finnbar Kenny to a new owner for an undisclosed price, rumored to be in the neighborhood of \$50,000.00, then an unheard-of price for a single stamp. Mr. Kenny assisted and advised the present owner in the formation of the greatest collection of the stamps of British Guiana ever put together of which the famed "One Cent" of 1856 is the crowning piece. The other gems of this collection are to be presented at public auction on March 25th by Robson Lowe, Ltd. at the famed Christie Galleries.

But now, the eyes of the philatelic world are focussed on the Louis XVI Room of the Waldorf-Astoria Hotel in New York, where Mr. Andrew Levitt, the auctioneer for the Robert A. Siegel Auction Galleries will announce the lot, say "Gentlemen, What is your pleasure?" and within a few minutes, rap with his gavel, at which time this greatest of all rarities, the most valuable stamp in the world, the famed British Guiana "One Cent" Black on Magenta of 1856 will, after more than thirty years, find a new owner.

RESERVATIONS

The outstanding importance of this sale is such that a reservation to attend is essential.

Only if your place is reserved can we guarantee that you will be seated and a reservation can be made by a phone call or letter to our office. It would appear that early reservation is advisable as seating is limited.

We take this opportunity to express our thanks to Mr. William Kahn of New York for the assistance rendered in the preparation of the color plates in this catalogue.

The Bid Sheet will be found at the end of the Catalogue, Pages 73 & 74.

Charles has
not a

PAID
10

9

James M. Buchanan

10

10

Wm. Garrison Esq.

James M. Buchanan
5 Cents.

PAID

6

W. H. Jackson Esq.
Att at Law

James M. Buchanan
5 Cents.

7

Miss Argemire McDonald

Red note

James M. Buchanan
5 Cents.

5

Benjamin Hagerman
at the Academy

Ann Arbor Mich

It is suggested that may be enclosed with the letter

James M. Buchanan
5 Cents.

8

Wm. G. Bridgely Esq.

Washington city D.C.

UNITED STATES

STAMPLESS COVERS

- 1 ☒ N. L. (Northern Liberties) News Room, Sub Post Office, Fancy Negative imprint, Bold, sharp impression on fresh 1836 folded letter to Clearfield, Pa., ms. "18¾" rate, A Rare early local E.XIII
- 2 ☒ "Paid at Panama" in Red Crowned Circle; Two covers with embossed corner cards of the Presidential Election Campaign of 1852, one for Franklin Pierce & William R. King, picturing the Democratic "Rooster" beating the Whig "Raccoon"; the other for Winfield Scott and William R. Graham, picturing the "Raccoon" beating the "Rooster"; U.S. origin to Santiago, Chile, with "Paid" handstamp and various rate marks in Red.. Very Fine and of utmost historic value & interest; A handsome, matchless pair of covers E.XIV

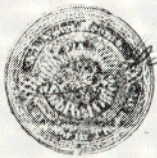
POSTMASTERS' PROVISIONALS

- 3 ☒ Annapolis, Md. Blue Handstamp, matching "2", Beautiful clear strikes on folded drop letter, Very Fine, Listed in Scott in footnote to #2XU1 1300.00
- 4 ☒ Annapolis, Md., 5c Carmine Red (2XU1 var.). Bright handstamp on flap of 1846 folded letter to Washington, Red "Annapolis" pmk. & matching "5", Very Fine, Listed in footnote to #2XU1 in Scott 1750.00
- 5 ☒ Baltimore, Md., 5c Black on Bluish (3X3). Frame lines on all sides incl. full Double Frame line at L., neat Blue "Paid" cancel, not tied, matching Baltimore pmk. on 1845 folded letter to Annapolis, Cover a trifle mended, Very Fine and Attractive 3250.00
- 6 ☒ Baltimore, Md., 5c Black on Bluish (3X3). Parts of Frame Lines on all sides, tiny nick at T., just tied by neat ms. "X", Blue "Paid" matching town pmk. on 1846 folded letter to Upper Marlboro, Md., Fine 3250.00
- 7 Baltimore, Md., 5c Black on Bluish (3X3). Parts of Frame Lines on all sides, neatly tied by Blue "Paid", matching town pmk. on envelope to Washington, D.C., Stamp has been cut from cover and replaced, offered as a Choice off-cover single 2300.00
- 8 ☒ Baltimore, Md., 5c Black on Bluish (3X3). Large side margins, slightly in T. & B., light Blue & ms. cancels affixed to cover front, offered as a Fine off-cover single 2300.00

LOTS ON VIEW:

*Monday, Tuesday, March 23rd, 24th, from 10:00 A.M.
to 3:30 P.M. Also by Appointment at an earlier Date.*

- 9 ☒ Baltimore, Md., 10c Red on Manila (3XU11A). Entire, readable handstamp, Blue pmk., with P.F. Certificate which states "cover restored and stained at left.", nevertheless quite attractive & Rare 8000.00
- 10 ☒ Baltimore, Md., 10c Blue on White (3XU12). Splendid impression, signature in Brown, on reduced cover to Huntsville, Ala., the reduction eliminated bad stains and tears and in its present state is Fine & entirely presentable, with P.F. Certificate, issued before reduction 8000.00
- 11 New Haven, Conn., 5c Red on White (8XU1). Cut to shape, touching right frame line, Clear Impression, slight thinnings, Fine appearance, with P.F. Certificate, Catalogues as Entire, \$22,500.00 —
- 12 New York, N.Y., 5c Black, Signed "R.H.M." (9X1b). Margins all around, Very Fine 900.00
- 13 ☒ New York, N.Y., 5c Black (9X1). Large Margins, Nicely tied by the large Red "New-York, 5 Paid" Foreign Mail pmk. on 1845 folded letter to Liverpool; Bold English Due marking, Very Fine & Scarce, Ex-Newbury E XIII
- 14 ☒ New York, N.Y., 5c Black (9X1). Huge margins showing part of adjoining stamp at L., beautifully tied by the large Red "New-York, 5 Paid" Foreign Mail cancel & by Red French transit; Red "Colonies etc., Art 13" in box, ms. "p Str. Hibernia" on blue 1846 folded letter to Lyon, France, "25 decimes" due mark & various transits and receiving marks, Extremely Fine, A gorgeous and immaculate cover, Ex-Caspary E XIII
- 15 ☒ New York, N.Y., 5c Black (9X1). Huge margins all around, neat Blue ms. cancel, not tied on Aug. 1845 cover to France, Red N.Y. pmk. also Red "Colonies & c, Art. 12" in box; French and British transit pmks and bold "20 decimes" due mark, Very Fine E XIII
- 16 ☒ New York, N.Y. 5c Black (9X1). Horiz. Pair, Large margins all around, Tied by sharp Red Grids & neat Blue ms. cancels on Jan. 1847 folded letter to Pittsburgh, Pa., Extremely Fine 350.00
- 17 ★ Providence, R.I., 5c, 10c Black (10X1, 10X2). Complete sheet of Twelve, Fresh, large part o.g., couple of age spots in margin, otherwise Extremely Fine 1300.00
- 18 ☒ Providence, R.I., 5c Black (10X1). Margins to barely touched at L., Usual neat Quill Pen cancel., Red town pmk., matching "Paid" & "5" on folded letter to Boston; ms "Penny Post" for Boston local delivery, minor scrape at T., otherwise Fine 800.00
- 19 St. Louis, Mo., 5c Black on Gray Lilac (11X4). Margins all around, Rich Vivid Color, light ms. cancel, Very Fine, an Unusually Choice example of this rare stamp, with P.F. Certificate 1850.00



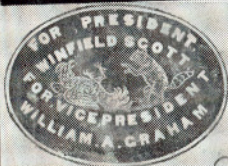
1

Wiah R. Smith
Clarified
Clarified



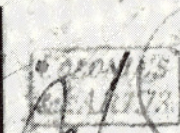
13

W. B. Cropper
Brooklyn
Liverpool



2

For
Dⁿ



14

G. B. Cropper & Co.
Lyon



PAID
150
D. B. Cropper



16

John Snyder Esq
Cashier
Pittsburgh



18

Miss Clara M. Lewis
31 Lowell St.



3



4

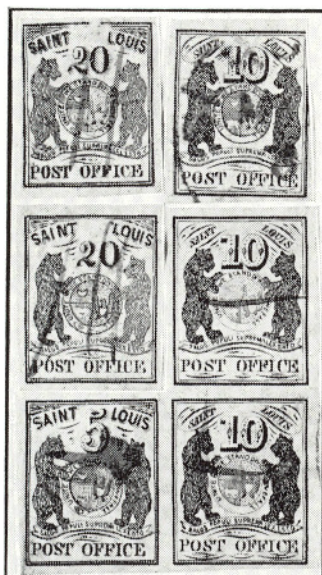
P. Barton & Co.
Washington

5

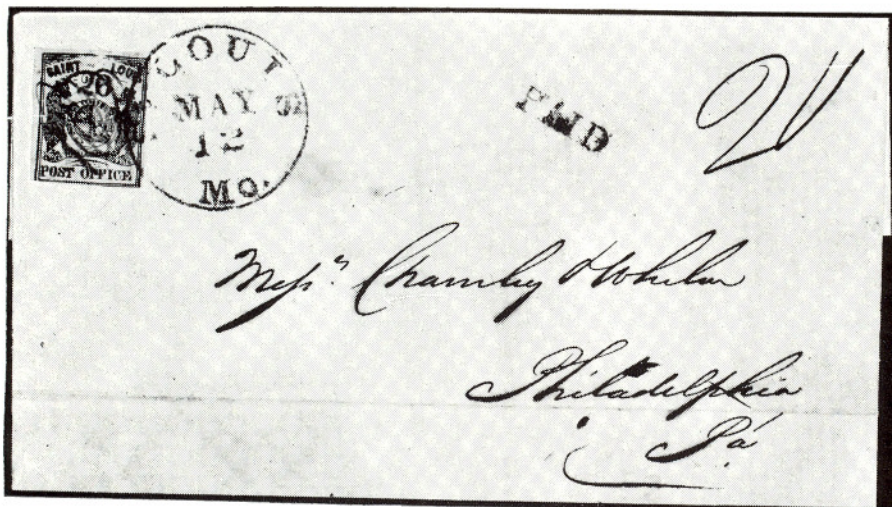


15

R. B. Cropper & Co
Lyon
France



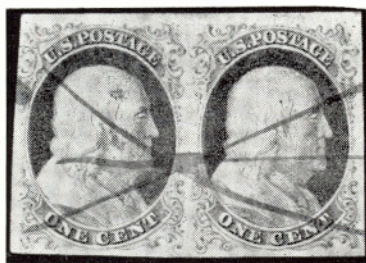
- 20 St. Louis, Mo., 5c, 10c, 20c Black on Gray Lilac (11X4, 11X5, 11X6). The Complete Reconstruction of the First Alteration of the plate, Six stamps, including the famous and unique 5c and 10c Combination, se-tenant in a "L-Shaped" Block of Three with large margins. The 5c is Type III, with a tiny, negligible corner crease almost entirely in margin; the 10c are in all three types, the single being touched at one corner; the 20c are Types I and II, showing clearly the alteration of the plate. Both have large margins, the Ty. II has a faint, negligible crease. A Fabulous, Fantastic unit, without doubt one of the most important "St. Louis Bear" pieces in existence, Ex-Caspary 24,400.00 +



- 21 ☒ St. Louis, Mo., 20c Black on Gray Lilac (11X6). Mostly large margins, Frame line shaved at B., usual neat ms. cancel. & tied by Red "St. Louis, Mo." town pmk., matching "Paid" and ms. "20", a neat Charnley & Whelan cover to Philadelphia, Very Handsome, with P.F. Certificate 8000.00

1847 ISSUE

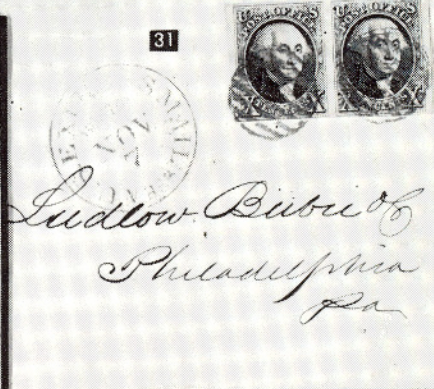
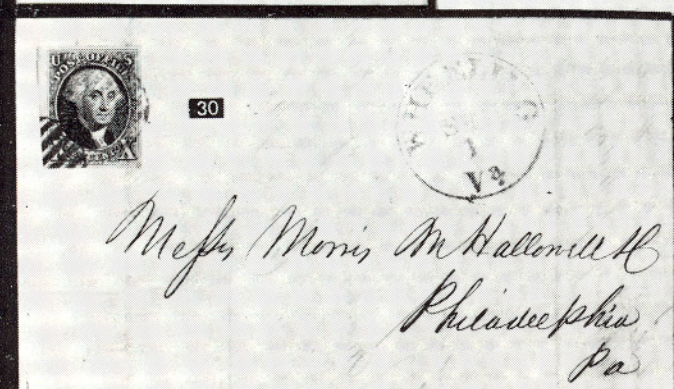
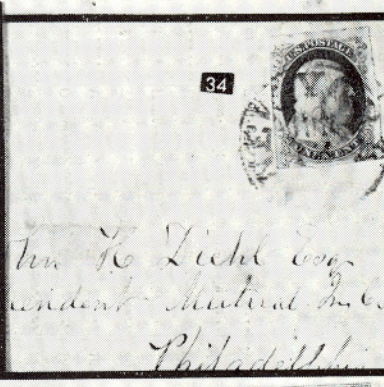
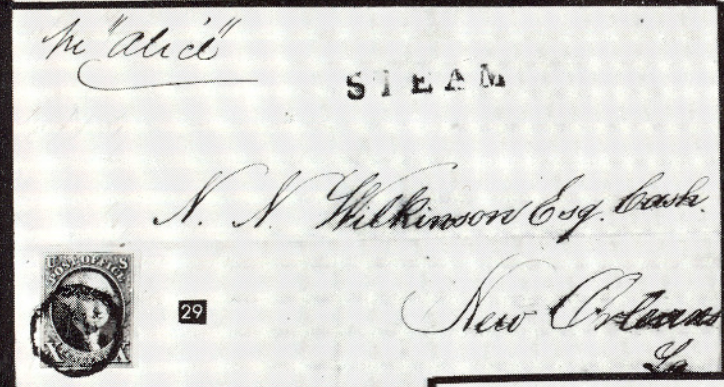
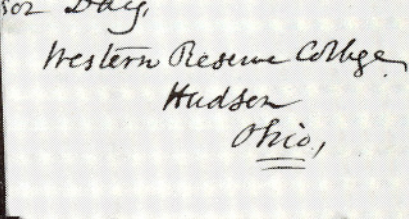
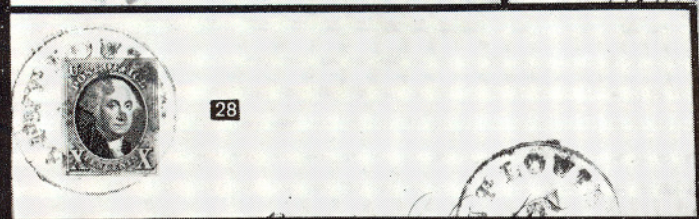
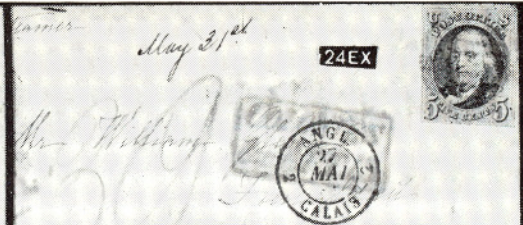
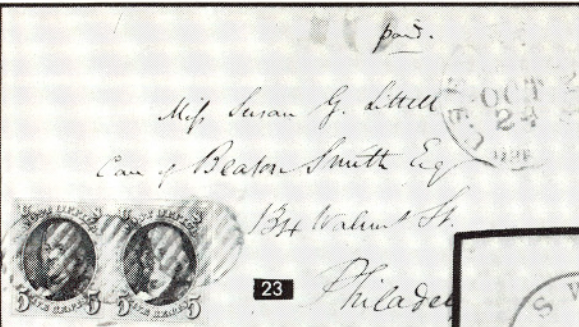
- 22 ★ 5c Orange Brown (1b). Horizontal Strip of Eight, From a new Original Find, Ample to Large Margins all around except B. line of one stamp partly shaved; Brilliant Color, virtually full o.g., some creases, A Magnificent Showpiece of Utmost Beauty & Rarity 3600.00 +
- 23 ☒ 5c Red Brown (1). Horiz. Pair, Large Margins, Rich Color, Tied by neat Red Grids, matching "U.S. Express Mail, Boston" and wide "10" on neat small envelope to Philadelphia, Very Fine 225.00 +
- 24 ☒ 5c Red Brown (1). Four Covers, All from same correspondence & paying 5c internal postage, Baltimore, Md., to **Freiwalden, Silesia**, Dec. 1850 to May 1851; Stamps with Large margins to just touched, two with Red "5" cancels, other tied by Red Grids; A wonderful array of Foreign Rate and Transit markings on both sides of the envelopes, An exceptional lot, Very Scarce E XV
- 25 ☒ 10c Black (2). Huge margins, tied by Orange Red Grid, matching "Roswell, Ga.," pmk. on neat blue envelope to Darien, Very scarce small town pmk., Extremely Fine 235.00 +
- 26 ☒ 10c Black (2). Large Margins, Nicely tied by Red Square Grid, matching N.Y. pmk. on Feb. 1851 folded cover to Bytown Canada, Red "Montreal, L.C." transit pmk., Extremely Fine, Scarce usage 235.00 +
- 27 ☒ 10c Black (2). Deep, Rich color, Proof-like Impression, Large margins, Tied by Red **Diamond Lattice Grid**, matching "Brunswick, Me." pmk. on Sept. 1847 folded letter to Ohio, Very Fine, Extremely scarce cancel 235.00 +
- 28 ☒ 10c Greenish Black (2). Gorgeous color & impression, Large, Even margins, tied by neat Red "Saint Louis, Mo., 10" pmk., repeated on the fresh, bright envelope to So. Boston, Mass., tiny sealed cover tear, Extremely Fine 235.00 +
- 29 ☒ 10c Black (2). Margins three sides, partly close at B., tied by unusual black bold circle pmk., Black "**Steam**" on folded cover with ms. "pr Alice", from St. Louis, to New Orleans, Fine and rare cover E XII
- 30 ☒ 10c Black (2). Fine color & Impression, Large to Huge margins; one of the finest "**Wheeling, (W.) Va. Precancels**" in existence; a Sept. 1, 1847 folded letter to Philadelphia, Interesting contents re transportation on the Ohio River, negligible crease from filing fold, otherwise Extremely Fine, an outstanding Rarity E.XV
- 31 ☒ 10c Black (2). Horiz. Pair, Beautiful shade & impression, Ample to huge margins, showing parts of adjoining stamps at sides, tied by neat Red Grids, matching "U.S. Express Mail, Boston" pmk. on fresh Ludlow, Beebe & Co. cover to Philadelphia, Very Fine 650.00 +



- 32 1c Blue, Ty. I, Ty. Ib (5, 5b) Combination Pair, Pos. 7-8 RIE, Huge margins except tip of U.L. ornament just touched; neat, light ms. cancel, A wonderful pair of the highest order of rarity 5400.00 +



- 33 ☒ 1c Blue, Ty I, II, IIIa (5, 7, 8A) Vertical Strip of Three, Pos. 7-17-27 RIE Margins all around, except just barely in at L. of top stamp; Tied by Red Grids, Red "Louisville & Cincinnati Mail Line, March 8" pmk. on the cover. Fine—Very Fine, Exceedingly rare cover, a wonderful showpiece 7500.00 +
- 34 ☒ 1c Blue, Ty. Ia (6). Pos. 100 L4, Huge margins nearly all around, Gorgeous color, tied by clear N.Y. pmk. on cover front only, Rare and Handsome, Very Fine 500.00 +
- 35 1c Blue, Ty. IV, Perf. 12½ (9 var.). The "Chicago perf." (so-called): Unusually well centered, cut from sheet with scissors, leaving almost all perfs. intact. Pos. 97 LIL with big double transfer, A remarkable rarity 325.00 +
- 36 ★ ☒ 3c Dull Orange Red (11). Block of Eight, R. sheet margin with full Imprint & Pl. No. 3; full margins except tip of R.B. corner, one pair creased, Extremely Fine appearance and a remarkable block, unpriced E.XII



- 37 ☒ 3c Red (11). Fine, Beautifully tied by "New Bloomfield, Pa., pmk. on Handsome, Illustrated "Ocean Penny Postage" Propaganda envelope, Extremely Choice & Attractive cover E.XII



- 38 ☒ 3c Red (11). Used in Combination with Canada 3p "Beaver" (4). Both tied by neat ms. cancel on 1853 folded cover Toronto, to N.Y. City, Str. Line Exchange marking and bold numeral "6", Both stamps with margins all around, the 3p Canada has a small hole in T. sheet margin. A Marvelous and Exceedingly Rare cover, signed "Ashbrook" E.XVI
- 39 ★ 5c Red Brown (12). Ample to large margins except barely touched at B., Deep, Rich color, Fresh & Fine, with P.F. Certificate 1100.00

ESTIMATES

Our sales contain many 19th Century covers and fancy cancellations. We have had many requests to give the estimated cash value on these lots. We are trying to place a fair net valuation on each lot as a guide for bidding when no catalogue value portrays the true value. The chart below will be used, for example E. IV means our estimated cash value on this lot is \$30.00 to \$40.00. Lots may actually realize more or less than these estimates and under no circumstances are these estimates to be considered reserves but merely a guide to bidding.

E. I	up to \$10.00	E. IX	\$150.00 to \$200.00
E. II	\$10.00 to \$20.00	E. X	\$200.00 to \$250.00
E. III	\$20.00 to \$30.00	E. XI	\$250.00 to \$350.00
E. IV	\$30.00 to \$40.00	E. XII	\$350.00 to \$500.00
E. V	\$40.00 to \$50.00	E. XIII	\$500.00 to \$750.00
E. VI	\$50.00 to \$75.00	E. XIV	\$750.00 to \$1000.00
E. VII	\$75.00 to \$100.00	E. XV	\$1000.00 to \$2500.00
E. VIII	\$100.00 to \$150.00	E. XVI	over \$2500.00



- 40 ★田 10c Green, Ty. I, Ty. III (13, 15). Combination Block of Six, with Lower Left sheet corner margins, Three of each type; Large to Enormous margins incl. Center Line Pane Margin; Wonderful color, fresh, full o.g., creased, mostly in margins but touching designs. Extremely Fine appearance and a Remarkable Showpiece. Cat. \$5985.00 as normal pairs and singles, Unlisted in block E.XVI



- 41 ★田 12c Intense Black (17). Top Sheet Margin Block of Nine, Pos. 3-4-5 L1, etc., Enormous margins, Magnificent Brilliant Color, Fresh, full o.g., negligible natural vertical wrinkle at L., Extremely Fine, A glorious block, Ex-Caspary, Lilly E.XVI

- 42 ☒ 12c Black, Diagonal Half used for 6c (17a). U.R. half, perfectly tied by bold "San Francisco, Cal. Jan. 1" on cover to Sag Harbor, L.I., Extremely Fine, ex-Lehman, with P.F. Certificate 1400.00

1857 ISSUE

- 43 ★☐ 1c Blue, Ty. I & II (18, 20). Combination Block, Two of each type, Fine, o.g. 550.00
- 44 ★☐ 1c Blue, Ty. II & IIIa (20, 22). Combination Block, incl. both types, Very Rare, listed but not priced, o.g., Very Fine —
- 45 ★ 1c Blue, Ty. V (24). Complete Sheet of 100, Unusually Well Centered sheet with full Right Imprint & Pl. No. 10., Full o.g., few tiny gum thins and tiny surface abrasions, freak "wild perfs" at R.B. corner, Handsome & Desirable sheet 2420.00 +
- 46 ☒ 3c Dull Red, Imperforate Horizontally (26c). Strip of Three, tied on legal size cover by "Griffin, Ga., pmks., Cover tears far from stamps which are well centered but have a few nibbed perfs., The catalogue listing made from this cover, which is probably a unique piece, with P.F. Certificate 1950.00 +
- 47 ☒ 10c Green, Ty. II (32). Very Fine, tied by perfect, bold "San Francisco, Cal." 1859 pmk. on a particularly handsome "Choo Choo" envelope, "Overland Mail, via Los Angeles", to Ohio, flap missing, Extremely Fine E.XIII
- 48 ★☐ 30c Orange (38). Block, Beautiful, Deep color, fresh, o.g., tiny thin in one stamp, otherwise Very Fine, Handsome Piece 800.00
- 49 ★ 3c Scarlet, Reprint (41). Bright Color, Exceptionally Well Centered, Extremely Fine example of this difficult stamp 650.00
- 50 ★ 90c Deep Blue, Reprint (47). Gorgeous, Rich color, Well Centered, Extremely Fine Copy of this Rarity 1000.00

LOTS ON VIEW:

*Monday, Tuesday, March 23rd, 24th, from 10:00 A.M.
to 3:30 P.M. Also by Appointment at an earlier Date.*



1861 FIRST DESIGNS



51

53

54

55

56

57

- 51 ★ 1c Indigo "August" (55). Gorgeous, Rich color, Fresh, o.g., Fine, Handsome Example of this Great Rarity 9000.00
- 52 ★ 3c Brown Rose, "August" (56). Block, Brilliant, Fresh, o.g., tiny perf. break in one stamp, otherwise Very Fine 750.00
- 53 ★ 5c Brown, "August" (57). Beautiful color, Fresh o.g., tiny corner crease, single nibbed perf., Very Fine appearance, Unusually Choice, Ex-Waterhouse 5250.00
- 54 ★ 10c Dark Green, "August" (58). Wonderful, Deep Color, fresh, o.g. reperfed, Fine appearance & Most Attractive 1250.00
- 55 ★ 24c Violet, "August" (60). Lovely, Deep color, fresh, o.g., reperfed, Fine appearance, signed "W.H.C. (olson)" 1100.00
- 56 ★ 30c Red Orange, "August" (61). Brilliant Color, fresh, o.g., Very Fine, a Gorgeous Example of this Rarity 7000.00
- 57 ★ 90c Dull Blue, "August" Imperforate (62a). Beautiful Rich Color, Huge Margins, faint internal wrinkle, otherwise Extremely Fine, with P.F. Certificate 850.00



22



17



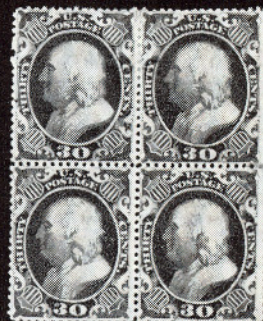
36



43



44



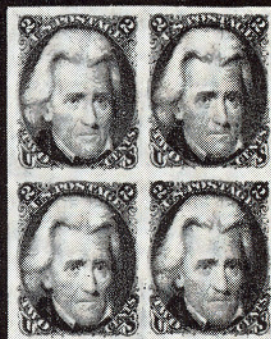
48



52



62



63

1861 ISSUE

- 58 ☒ 3c Pigeon Blood Pink (64a). Wonderful, Rich Color, Exceptional Centering, tied by neat, light grid, "Flushing, N.Y., Feb. 7, 1862" pmk., Signed "Ashbrook" as "No. 64 Pink" but in 1948 prior to the separate listing of the scarce deep "Pigeon Blood", A gorgeous, immaculate cover, Extremely Fine 550.00
- 59 ★ 3c Lake (66). Lovely, Rich Color, fresh, o.g., centered slightly to U.R., Very Fine 425.00



- 60 ☒ 90c Blue (72). Tied on neat blue envelope to Honolulu, Sandwich Islands, by edge of Boston "Paid" in frame, red "Boston" Mass." pmk. paying the 90c rate for a 4½ oz. letter; Negligible tiny white spot over "T" of "Postage", still Very Fine, and so far as is known, the only 90c used to Hawaii on record E.XV
- 61 ☒ 90c Blue (72) Block, used with 30c Orange, Pair (71). all tied on legal size cover, N.Y. to Lyon, France, paying \$4.20 postage, 28 times the regular rate of 15c per quarter ounce. The block has a str. edge at R.; stamps & cover have some age stains, yet an attractive cover of utmost rarity, probably unique. Signed "Ashbrook" who writes "28X15c to France, via French Packet" and he affirms genuineness E.XVI
- 62 2c Black, Laid Paper (73d). Strong Laid lines, centered to R. & tied on small piece, Rare variety, with P.F. Certificate E.XII
- 63 ★ 2c Black, Imperforate (73 unlisted type). Block, fresh, o.g., Extremely Fine, a Great Rarity, with P.F. Certificate which states "that it is not a variety of Scott #73 but is a Genuine Imperf. on experimental paper" E.XV
- 64 ★ 3c Scarlet (74). Nearly full o.g., Fine & Fresh, with P.F. Certificate 900.00

1867 GRILLED ISSUES

- 65 ★田 3c Rose, Grilled All Over (79) Block, with R. Sheet Margin; Well Centered, irregular perfs. as usual, incl. few pulled at B., otherwise Very Fine, Unusually Choice for this exceptionally difficult stamp 2900.00



- 66 ★田 3c Rose, Grilled All Over, Imperforate (79a). Bottom Imprint Plate No. 52 Block of Twelve, Magnificent, Deep Color, Brilliant and Fresh, o.g., Extremely Fine, A Spectacular Showpiece E.XVI



67

68

- 67 ★田 2c Black, "Z" Grill (85B). Block, Fresh, o.g., crease in top pair, others Very Fine, Exceedingly Rare block, with P.F. Certificate, unpriced in cat. E.XVI
- 68 ★田 12c Black, "Z" Grill (85E) Block, Deep Intense Color, Fresh, o.g., only a couple of unused blocks known, as Fine a Block as may be found, Unpriced, ex-Lozier, Sinkler E.XVI

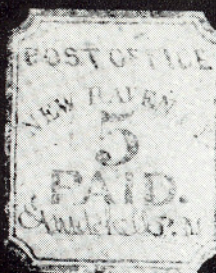
- 69 ★田 15c Black, F. Grill (98). Block, Nicely Centered, nearly full o.g.,
tiny thins, bit reinforced, Very Fine Appearance 500.00
- 70 ★ 30c Brownish Orange, Re-Issue (110). Wonderful Color, Fresh,
Fine example of this rare stamp 1100.00
- 71 ★ 90c Blue, Re-Issue (111). Lovely, Rich color, fresh, o.g., centered
slightly to U.L., Very Fine, Rare 1250.00

1869 PICTORIAL ISSUE

- 72 P 1c—90c 1869 "Atlanta" Trial Color Proofs, The Complete Set of
78, Very Fine 6070.00
- 73 ★田 1c Buff (112) Block, Fresh, o.g., tiny corner perf. crease in one,
otherwise Fine—Very Fine 300.00
- 74 ★田 2c Brown (113) Block of Six, Well Centered, Fresh, o.g., Very
Fine 212.50 +
- 75 ★田 6c Ultramarine (115) Block, Nicely Centered, Bright Color, fresh,
o.g., crease in L. pair, otherwise Very Fine 500.00
- 76 ★田 6c Ultramarine (115) Block of Twelve, Beautiful, Bright Color,
fresh, o.g., crease in one vertical row, otherwise Fine, Handsome
& Rare multiple 1380.00 +
- 77 ★田 10c Yellowish Orange (116) Block of Six, Magnificent Color,
fresh, o.g., light crease in two, otherwise Fine, Scarce and Hand-
some block 1210.00 +
- 78 田 10c Yellow (116) Used Block, Bright Color, Nicely Centered, faint
thin in one, otherwise Very Fine 550.00
- 79 田 15c Brown & Blue, Type I (118). Well Centered, Beautifully tied
by Rosette & edge of Red "New-Paid-York, 3" pmk. on small neat
cover to France, Blue French transit pmk, Extremely Fine, An Out-
standing cover 225.00

LOTS ON VIEW:

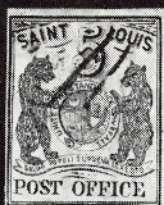
*Monday, Tuesday, March 23rd, 24th, from 10:00 A.M.
to 3:30 P.M. Also by Appointment at an earlier Date.*



11



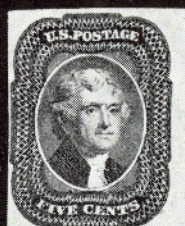
12



19



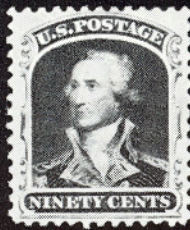
35



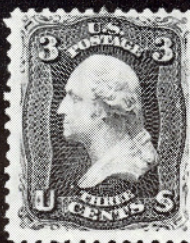
39



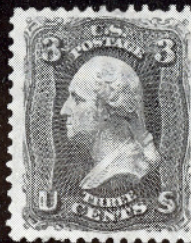
49



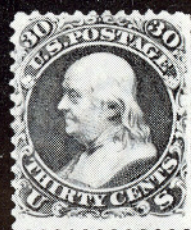
50



59



64



70



71



82



92



93



94



95



96



99



103



104



109



141



148



152



- 80 ★田 15c Brown & Blue, Type II (119) Block of Six, Gorgeous, Deep Rich colors, Brilliant & Fresh, o.g., Fine, a Beautiful piece 980.00 +



81

83

- 81 24c Green & Violet, Center Inverted (120b). Neat cork and part of Red Transit cancel., Rich colors, tiny ink spot on back, Fine and Handsome Example of this popular invert 3500.00
- 82 24c Green & Violet, Center Inverted (120b). Neat cancel., reperfed, tiny closed tear, Still a presentable copy of this rarity 3500.00
- 83 24c Green & Violet, Center Inverted (120b). Horizontal Pair, Wonderful, Rich colors, neat cork cancels, Very Fine, Exceedingly Rare 7000.00 +
- 84 24c Green & Violet (120) Used Block, Exceptional Centering, Rich colors, neat cancels., tiny marginal tear in one, bit reinforced, otherwise Extremely Fine, A Magnificent Block 2100.00
- 85 ☒ 24c Green & Violet (120). Fresh colors, Centered bit to R., tied by neat "Cross Roads" on folded letter to England, a multiple rate, heavy personal letter, Fine, Very Scarce usage, with P.F. Certificate 1500.00



65



69



73



75



78



84



74



77



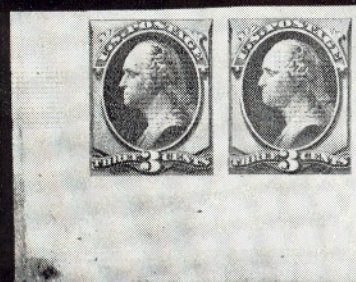
97



90



91



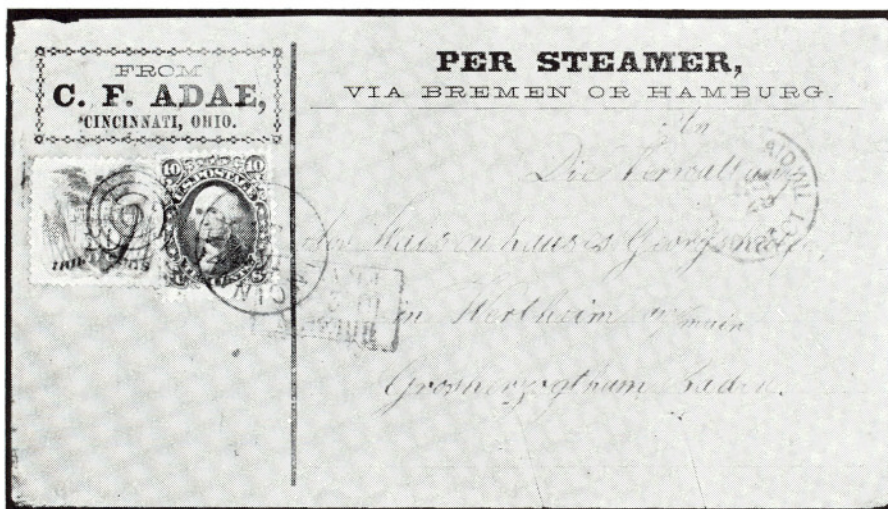
98



16



- 86 ★ 30c Blue & Carmine, Flags Inverted (121b). Wonderfully Well Centered, Beautiful Rich colors, fresh, tiny, negligible wrinkle, A Magnificent, Matchless example of this very great Rarity 21500.00



- 87 ☒ 30c Blue & Carmine (121). Tied together with 10c F. Grill (96) by neat Blue "Cincinnati, O" pmk & target, on cover to Baden; Red "New York Paid All, Direct" pmk., Cover with printed return card and mailing directions "via Bremen or Hamburg", Both stamps Extremely Fine, cover has two closed slits at B. Ashbrook writes: "Everything that could be desired in a 30c 1869 cover", An Extraordinary Rarity 1800.00 +



- 88 ★田 30c Blue & Carmine (121) Block of Six, Wonderful, Bright colors, fresh, o.g., tiny flaws in two, otherwise Fine, Possibly the largest grilled block on record, Ex-Hind, Gibson 7650.00 +



- 89 ★田 90c Carmine Rose & Black (122) Vertical Block of Six, Exceptionally Well Centered, Lovely colors, Fresh, traces of o.g., several perfs. reinforced, one stamp tiny thin, Very Fine, A Fabulous Showpiece, the largest Block on Record (only one other block of six is known) 13500.00 +
- 90 ★田 1c Buff, Re-Issue (123) Block, Fresh, o.g., Fine—Very Fine, Scarce 750.00
- 91 ★田 2c Brown, Re-Issue (124). Block of Six, Deep, Rich Color, Fresh, o.g., Fine—Very Fine, Exceptionally Scarce 1130.00 +
- 92 ★ 3c Blue, Re-Issue (125). Rich Color, Fresh, o.g., Very Fine 700.00
- 93 ★ 12c Green, Re-Issue (128). Wonderfully Well Centered, Fresh, o.g., Extremely Fine 350.00
- 94 ★ 15c Brown & Blue, Re-Issue (129). Lovely Colors, Fresh, o.g., Extremely Fine 400.00

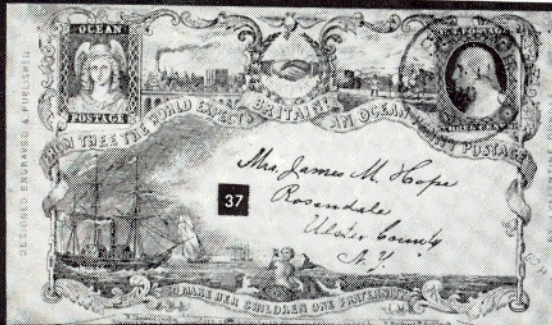
- 95 ★ 30c Blue & Carmine, Re-Issue (131). Brilliant Colors, Fresh, o.g., Extremely Fine 475.00
- 96 ★ 90c Carmine & Black, Re-Issue (132). Wonderful Rich Colors, Fresh, o.g., Very Fine 800.00
- 97 ★田 1c Brown Orange, Re-Issue (133a). Bottom Sheet Margin Block, Well Centered, Fresh, Very Fine 300.00

BANK NOTE ISSUES

- 98 ★ 3c Green, Grill, Imperforate (136b). Mint Sheet Corner Pair, Large margins, Extremely Fine 350.00
- 99 24c Purple, Grill (142). Clear grill, light corner crease, Fine appearance, Attractive example of this Very Rare stamp, with P.F. Certificate 4000.00
- 100 ★田 6c Carmine (148). Block of Six, Beautiful color, Nicely Centered, Fresh, o.g., tiny gum skip in one, Extremely Fine 475.00
- 101 ★田 2c Vermilion, Imperforate (178a). Block, creases, Very Fine appearance, with P.F. Certificate 950.00
- 102 ★田 6c Pink (186). Block, Fresh, o.g., Very Fine 350.00
- 103 ★ 90c Carmine, Imperforate (191b). Horiz. Pair, Fresh, o.g., Extremely Fine 1100.00
- 104 ★ 7c Scarlet Vermilion, Special Printing (196). All perfs, intact, Centered to R., Fine for this Rarity 1400.00
- 105 ★田 2c Pale Red Brown, Special Printing, Imperforate Between Vertically (211Bc) Block, Fresh, o.g., Very Fine signed "H.F.C. (olman)" 1100.00+

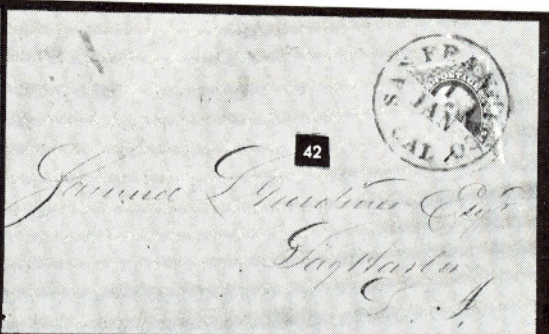
COLUMBIAN ISSUE

- 106 P 1c — \$5.00 Columbian, Large Die Proofs on India (230P—245P). Complete Set on 9X6" cards, age spots, otherwise Very Fine 2060.00
- 107 ★ 2c Columbian, Imperforate (231b). Vertical Pair, Large Margins, faults, as always, incl. closed tear in stamp at Top, Very Fine, as these come 850.00
- 108 ★ 3c Columbian (232). Pane of Fifty, with Imprint & Plate No. Block at bottom, V.G. — V.F. 630.00
- 109 ★ 4c Columbian, Blue, Error of Color (233a). Beautiful, Rich Color, Fresh o.g., tiny hinge thin, Fine appearance, with P.F. Certificate 4000.00
- 110 ★田 50c Columbian (240). Block, Beautiful deep color, Fresh, large part o.g., light gum thin in one, otherwise Very Fine 400.00
- 111 ★田 \$1.00 Columbian (241). L. Sheet Margin Block with Imprint, Brilliant color, Well Centered, Fresh, o.g., Very Fine 875.00+



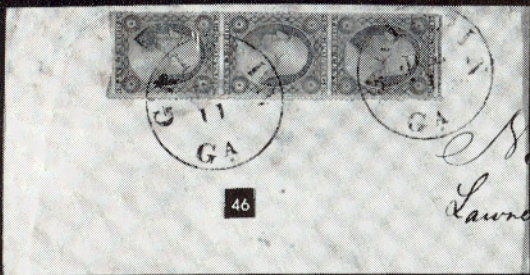
37

Mrs. James M. Hope
Rosendale
Ulster County
N.Y.



42

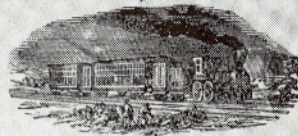
James L. Gunderman Esq
Dayton
O.



46

Lawrence

OVERLAND MAIL, VIA LOS ANGELES.



47

Wm. Beaman Wood.

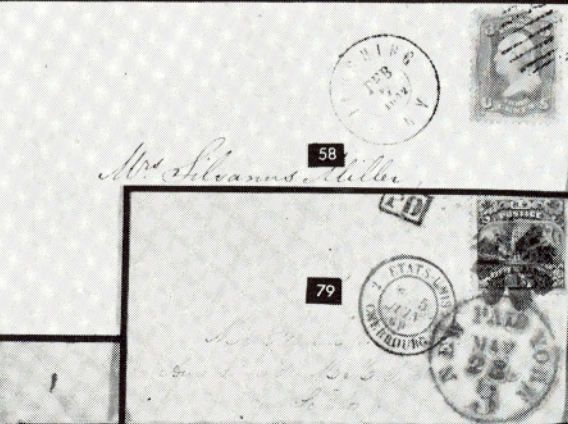


Business Day



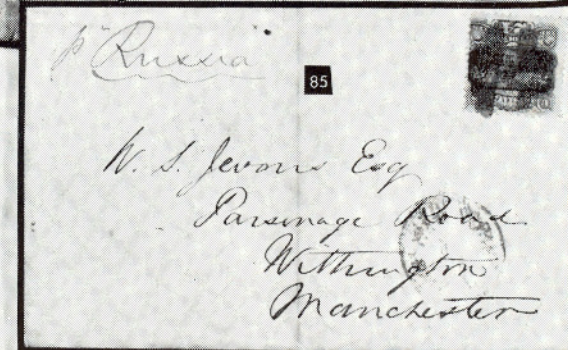
61

Monsieur le Directeur
de la Société
N° 4



58

Mrs. Silvanus. Allen



85

Russia
W. S. Jevons Esq
Parsonage Road
Withington
Manchester

106 EX



129 EX

- 112 ★田 \$2.00 Columbian (242). Block, Rich Color, Fresh, o.g., Fine 1100.00
- 113 田 \$2.00 Columbian (242). Used Block, neat Target cancel., Rich color, Very Fine 575.00
- 114 ★ \$3.00 Columbian (243). Four Gorgeous Shades, from a delicate, light shade to the rich, deep color, Fresh, o.g., Extremely Fine lot, a Choice and Most Unusual Offering 1300.00
- 115 ★田 \$3.00 Columbian (243). Block, Beautifully Centered, Deep, Rich color, Fresh, o.g., light crease in B. pair, small thin in another, Extremely Fine Appearance 2750.00



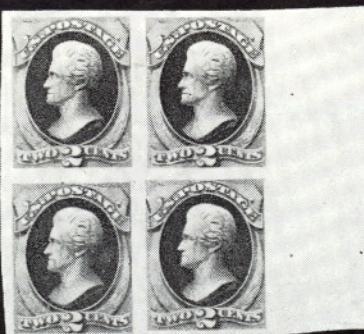
- 116 ★田 \$4.00 Columbian (244). Sheet Margin Block with Imprint, Lovely Rich color, Fresh, o.g., A Very Fine & Beautiful Block 4200.00



- 117 田 \$5.00 Columbian (245). Used Block, Wonderfully Well Centered, Intense color, neat Target cancel., Extremely Fine, An Exceptional & Handsome Showpiece 2500.00



100



101



102



105



107



110



111



112



113



115



114

1894-1895 ISSUES

- 118 ★田 \$1.00 Black, Ty. I, Ty. II (261, 261A). Combination Block, the L. pair Ty. I, R. pair Ty. II, Fresh, o.g., Fine—Very Fine 775.00
- 119 ★田 \$2.00 Blue (262). Block, Fresh, o.g., light, negligible toning in gum, Fine & Scarce 1250.00
- 120 ★田 \$5.00 Dark Green (263). Block, Fresh, o.g., Fine & Scarce 1950.00
- 121 ★ 1c—\$5.00 1895 Issue, Imperforate (Betw. 264-278). Complete Set of Top Sheet Margin Singles, Huge Margins, Brilliant Mint, Extremely Fine 1962.50
- 122 ★田 \$1.00 Black, Ty. I (276). B. Sheet Margin Block, with Pl. No. 76, Well Centered, Fresh, o.g., Extremely Fine 450.00
- 123 ★田 \$1.00 Black, Ty. II (276A). Block, Nicely Centered, Fresh, o.g., Very Fine 825.00

TRANS-MISSISSIPPI ISSUE

- 124 P 1c—\$2.00 Trans-Mississippi, Large Die Proofs (285P-293P). Complete Set, Very Fine 1155.00
- 125 ★田 10c Trans-Mississippi (290). Top Imprint Plate No. 620 Block, Well Centered, Fresh, o.g., Extremely Fine 425.00
- 126 ★ 10c Trans-Mississippi (290). Complete Sheet of Fifty, Very Good—Very Fine 2325.00
- 127 ★田 50c Trans-Mississippi (291). B. Imprint Pl. No. Block, Well Centered, a few perfs. disturbed where selvedge reinforced, tiny gum thin one stamp, otherwise Very Fine 2000.00



- 128 ★田 \$1.00 Trans-Mississippi (292). Block, Gorgeous, Intense Color, Wonderfully Well Centered, Brilliant, Fresh, o.g., Extremely Fine 2250.00

604



604

- 129 ★田 \$1.00 Trans-Mississippi (292). Block of Six, Deep, Intense Color, Fresh, o.g., small thin in U.L. stamp, the others in the block are Extremely Fine, A Beautiful Showpiece 2780.00 +



- 130 ★田 \$2.00 Trans-Mississippi (293). Block, Exceptionally Well Centered, Magnificent Rich Color, Fresh, o.g., Lightly hinged once, Extremely Fine, A Gorgeous Block & one of the Finest Known 3000.00
- 131 ★田 \$2.00 Trans-Mississippi (293). Block, Deep, Rich Color, Fresh, o.g., Fine, Handsome Block 3000.00



132

133

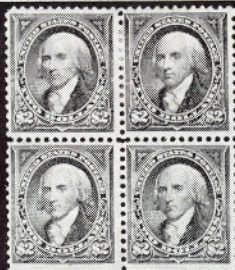
134

PAN-AMERICAN ISSUE

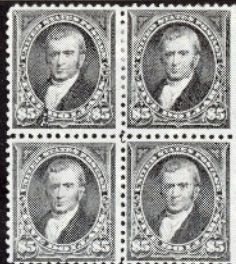
- 132 ★ 1c Pan-American, Center Inverted (294a). Well Centered, Very Fine Example of this Popular Rarity 3000.00
- 133 ★ 1c Pan-American, Center Inverted (294a). Nicely Centered, re-gummed, otherwise a Very Fine & Choice example of this rare stamp 3000.00
- 134 ★ 1c Pan-American, Center Inverted (294a). Nicely Centered, without gum & reperfed at B., Very Fine appearance, with P.F. Certificate 3000.00



118



119



120



123



121EX



76

122



125



603

127



129



131



- 135 ★ 1c Pan-American, Center Inverted (294a). Vertical Pair, gum creases, Very Fine Appearance, Very Scarce and Most Attractive 6000.00



136

137

138

- 136 ★ 2c Pan-American, Center Inverted (295a). Well Centered, Extremely Fine, A Magnificent Example of this much sought-after Rarity, with P.F. Certificate 15000.00
- 137 ★ 4c Pan-American, Center Inverted (296a). Regummed, Centered to B., A Fine and Attractive Example, with P.F. Certificate 4750.00
- 138 ★ 4c Pan-American, Center Inverted, "Specimen" Overprint (296b). Without gum, otherwise Fine, with P.F. Certificate 1900.00

ESTIMATES

Our sales contain many 19th Century covers and fancy cancellations. We have had many requests to give the estimated cash value on these lots. We are trying to place a fair net valuation on each lot as a guide for bidding when no catalogue value portrays the true value. The chart below will be used, for example E.IV means our estimated cash value on this lot is \$30.00 to \$40.00. Lots may actually realize more or less than these estimates and under no circumstances are these estimates to be considered reserves but merely a guide to bidding.

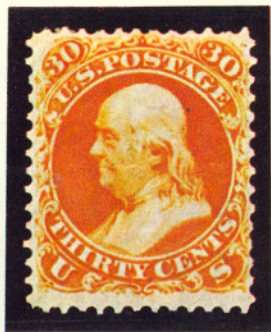
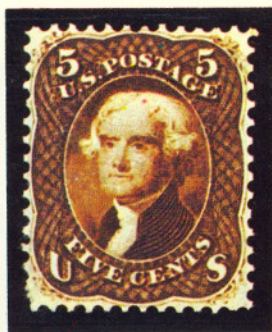
E. I	up to \$10.00	E. IX	\$150.00 to \$200.00
E. II	\$10.00 to \$20.00	E. X	\$200.00 to \$250.00
E. III	\$20.00 to \$30.00	E. XI	\$250.00 to \$350.00
E. IV	\$30.00 to \$40.00	E. XII	\$350.00 to \$500.00
E. V	\$40.00 to \$50.00	E. XIII	\$500.00 to \$750.00
E. VI	\$50.00 to \$75.00	E. XIV	\$750.00 to \$1000.00
E. VII	\$75.00 to \$100.00	E. XV	\$1000.00 to \$2500.00
E. VIII	\$100.00 to \$150.00	E. XVI	over \$2500.00

Robert A. Siegel
Auction Galleries Inc.



ANNUAL
RARITIES OF THE **WORLD**
AUCTION

COLOR PLATES



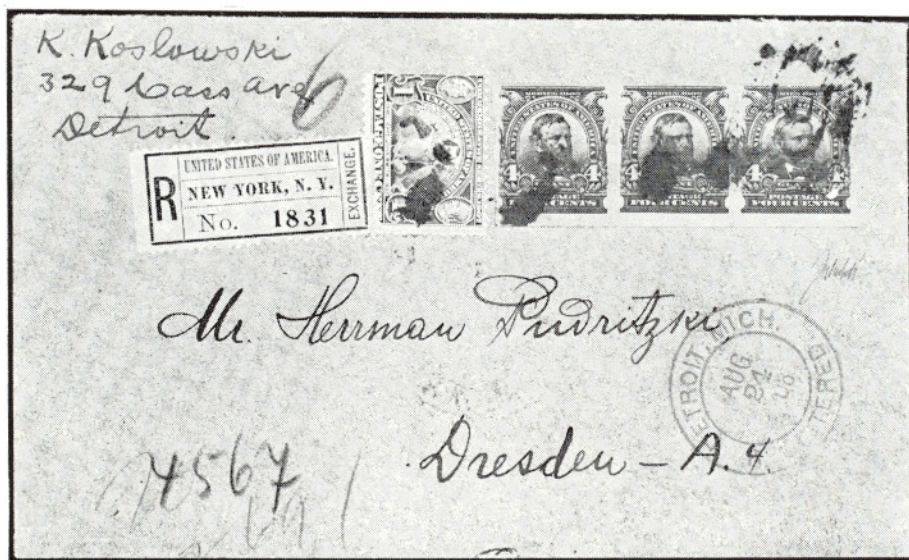




- 139 ★ 4c Pan-American, Center Inverted (296a). Block, Wonderfully Well Centered, part o.g., tiny closed tear in one, reperfed at B. and slightly reinforced, nevertheless one of the most attractive appearing blocks known of this Rarity 30000.00
- 140 ★ 8c Pan-American (298). Spectacular Pre-Printing Sheet Corner Foldover, in Strip of Five, showing "8c" and part of design missing from the corner stamp; the denomination and other missing parts printed on back; couple of stamps opposite end are thin, the freak is Very Fine, A Striking Piece E.XIV

1902-1908 ISSUES

- 141 4c Brown, Imperforate, Schermack Perforation (314A). Tied by Machine cancel. on small piece, with P.F. Certificate which states "genuine, with two scraped spots at the bottom". Unusually well centered and Extremely Fine appearance 2350.00



- 142 ☒ 4c Brown, Imperforate, Schermack Perforation (314A). Strip of Three, tied on 1908 Registered cover with 1c Jamestown to Germany; Sent by K. Koslowski of Detroit, the original finder of these stamps. A Fine and Extremely Rare Cover, probably unique, only the used single is listed in the catalogue 8550.00 +

- 143 ★田 5c Blue, Imperforate (315). Top Arrow Block, with Round Marker, faint natural gum wrinkle, Very Fine 750.00
- 144 ★田 5c Blue, Imperforate (315). Block of Six, with sheet margin, Mint, Very Fine 855.00
- 145 ★田 5c Blue, Imperforate (315). R. Imprint, Plate No. Block of Six, light natural gum wrinkle, Very Fine 1600.00
- 146 ★田 5c Blue, Imperforate (315). Matched Set of the four Imprint, Pl. No. Blocks of Six, Very Fine 6400.00
- 147 ★田 5c Blue, Imperforate (315). Block of Eighty, incl. Plate No. Blocks at right and bottom, few natural gum wrinkles, Very Fine 12985.00
- 148 ★ 1c Blue Green, Coil (318). Pair, Mint, perfs. touch at right, Fine, rare pair 1000.00
- 149 ★ 1c—10c Louisiana-Purchase (323-327). Complete Set of Sheets of Fifty, Mint, Fine—Very Fine 7294.50



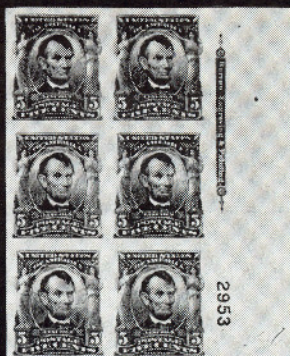
- 150 ★田 2c Louisiana-Purchase, Imperforate Horizontally (324a). Left Pane Margin Block with Horiz. Guide Line, Extremely Fine, a Marvelous Showpiece of the Utmost Rarity 4600.00 +
- 151 ★田 \$1.00 Violet Brown (342). Top Imprint Plate No. 4957 Block of Six, tiny thin in one stamp, otherwise Very Fine with P.F. Certificate 800.00
- 152 ★田 1c Green, Imperforate (343). L. & R. Imprint Plate No. 4980 Blocks of Six, with small Solid Star, Very Fine, Very Scarce 700.00
- 153 ★ 10c Yellow, Coil (356). Guide Line Pair, Very Fine..... 800.00

BLuish PAPERS

- 154 ★ 3c Deep Violet, Bluish (359). With R. Sheet Margin, Very Fine 375.00
- 155 ★田 3c Deep Violet, Bluish (359). Block, Nicely Centered, Very Fine 1500.00



140



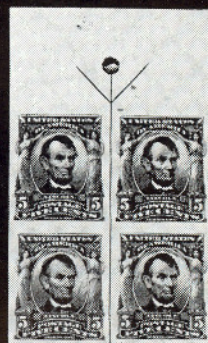
145



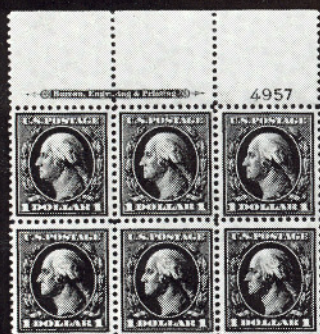
144



146



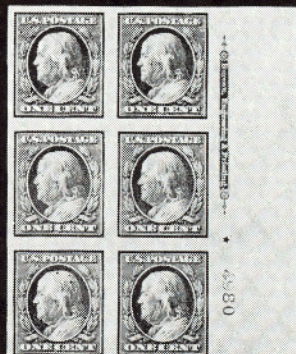
143



151



162



153 EX



156

157

160

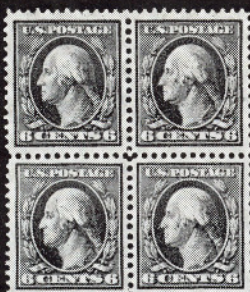
- 156 ★ 4c Orange Brown, Bluish (360). Almost invisible thin speck, centered to R.B., Attractive Example of this Rarity, Ex-Lilly, with P.F. Certificate 4500.00
- 157 ★ 5c Blue, Bluish (361). With L. Sheet Margin, Well Centered, Extremely Fine 1250.00
- 158 ★田 6c Red Orange, Bluish (362). Block, Well Centered, Extremely Fine 1200.00
- 159 ★田 10c Yellow, Bluish (364). Block, Fine—Very Fine 1300.00
- 160 ★ 13c Blue Green, Bluish (365). Unusually Well Centered, Extremely Fine, with P.F. Certificate 675.00
- 161 ★田 15c Pale Ultramarine, Bluish (366). Mint Block, reperfed at L., otherwise Very Fine 1250.00
- 162 ★田 15c Plate Ultramarine, Bluish (366). Top imprint and Pl. No. 4949 Block of Six, Wonderfully Well Centered, Extremely Fine 2300.00

1909-1917 ISSUES

- 163 ★ 2c Hudson-Fulton, Imperforate (373). Complete Uncut Sheet of 240, one corner stamp has tear, Very Fine 2736.00
- 164 3c Deep Violet, "Orangeburg" Coil (389). Very Fine example of this scarce coil 1000.00
- 165 3c Deep Violet, "Orangeburg" Coil (389). Paste-up single, Used, faint corner crease, Fine appearance, with P.F. Certificate 1000.00
- 166 ★田 10c Orange, Panama-Pacific, Perf. 10 (404). Block, gum slightly disturbed, otherwise Very Fine 1000.00
- 167 ★田 \$1.00 Violet Brown (423). Block, with Top Sheet Margin showing part Imprint & Plate No., Very Fine 385.00
- 168 ★田 50c Violet (440). Block, with Top Sheet Margin & Pl. No., Mint, blind wild perf. in one, Extremely Fine 550.00
- 169 ★田 \$1.00 Violet Black (460). Block, one stamp with tiny natural paper inclusion, Very Fine 600.00



155



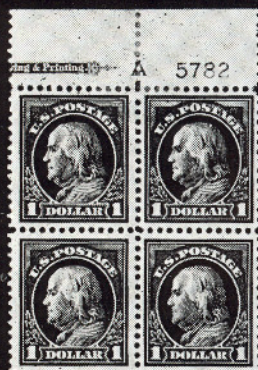
158



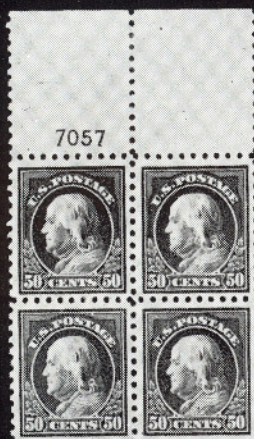
159



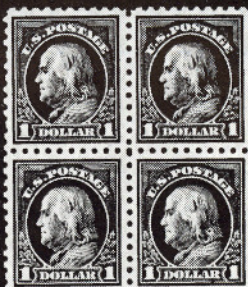
161



167



168



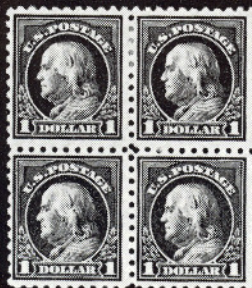
169



170



166



171



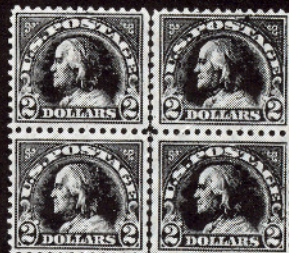
177



175



10208



178

- 170 ★田 50c Light Violet (477). Block, with B. Sheet Margin & Plate No., Extremely Fine, with P.F. Certificate 715.00

- 171 ★田 \$1.00 Violet Black (478). Block, Fine—Very Fine 600.00



172

174

- 172 2c Carmine, Imperforate, Ty. Ia (482A). With Schermack Ty. III perforations mostly clipped; slight thin, Fine appearing example of a Very Rare stamp, with P.F. Certificate 2850.00



- 173 ★田 5c Carmine, Error, Imperforate (485). Single Error in Block of Six, Very Fine 2600.00

- 174 ★ 2c Carmine, Coil, Ty. II (491). Joint Line Pair, Extremely Fine, with P.F. Certificate 1000.00

- 175 ★田 2c Deep Rose, Ty. Ia (500). Plate Number Blocks of Six, from the only two plates assigned to this scarce type. Bottom Pl. No. 10208, Top Pl. No. F10209, Very Fine 650.00

- 176 8c Olive Bistre, Perf. 10 at Bottom (508 var.). Very Fine, Scarce, Listed but unpriced E. X

- 177 ★田 11c Light Green, Perf. 10 at Bottom (511 var.). Top Plate No. 13467 Block of Six, the Bottom Row the varieties; one has short perf., Fine—Very Fine, an outstanding Showpiece of the Utmost Rarity, Probably Unique, with Friedl Certificate, The single listed in Scott but unpriced E.XV

- 178 ★田 \$2.00 Orange Red & Black (523) Block, Very Fine 450.00
- 179 ★ 2c Carmine Rose, Ty. II (539). Perfs. in at R., as it is usually found,
Fine for this scarce stamp 485.00



- 180 ★田 2c Carmine Rose, Ty. II (539) Block, Remarkably Well Centered,
Extremely Fine and of the utmost rarity in this Beautiful Condition 2250.00

1922 ISSUE TO DATE



181

182

- 181 ★田 5c Dark Blue, Imperforate (557a) Block, Extremely Fine, signed
"Ward" 800.00
- 182 ★田 10c Orange, Imperforate (562b) Block, with R. Sheet Margin,
without gum, as always, Extremely Fine 850.00



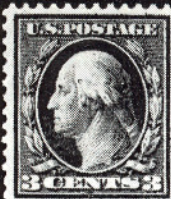
183

187

- 183 ★ 2c Harding, Imperforate Vertically (610a). Sheet Corner Block, Perfs. in as usual; As Fine as these come since only one off center sheet was found, signed "Ward" 800.00
- 184 ★ 2c Carmine, Ty. II (634A). Upper Left Corner Plate No. Block, Very Fine 450.00
- 185 10c Nebraska, (679). Horiz. Strip of Three, Used, Overprint almost completely missing on L. stamp and partially missing on center stamp. A newly recorded variety, possibly Unique, Small defects, Fine appearance, with P.F. Certificate E.XI
- 186 ★ 3c Deep Violet, "Stuart", Imperforate Between (720c). Block, Very Fine 300.00
- 187 ★ 5c Kosciuszko, Imperforate Vertically (734a). Block, Light natural gum crease, Fine—Very Fine 1300.00
- 188 ★ \$1.00 Presidential, Imperforate Between Horizontally (832 var.) Mint Block of Six, the two L. pairs completely Imperforate Between, Extremely Fine, Unlisted Rarity E.XV
- 189 ★ \$5.00 Presidential, Red Brown & Black, Error (834a). Vertical Pair with Sheet Margin and "Top", Mint, Very Fine 500.00
- 190 4c Flag (1094). On First Official Missile Mail flight, tied "U.S.S. Barbero, June 8, 1959", enclosure signed by P.M. General, Extremely Fine & Scarce E.XI

LOTS ON VIEW:

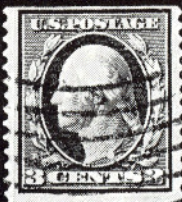
*Monday, Tuesday, March 23rd, 24th, from 10:00 A.M.
to 3:30 P.M. Also by Appointment at an earlier Date.*



154



164



165



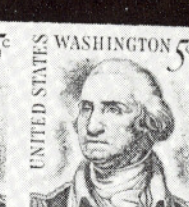
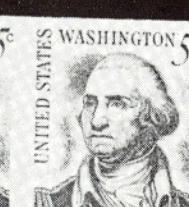
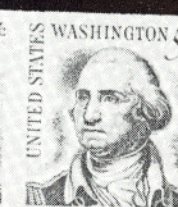
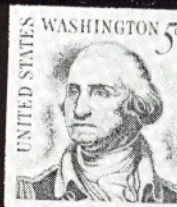
176



188



194

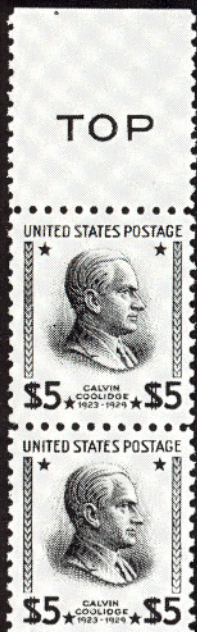


192



215

193



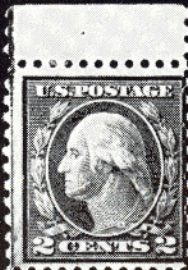
189



208



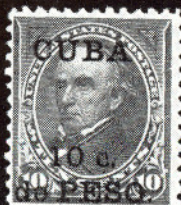
222



179



245



246



221



247



248



- 191 ★ 8c Kossuth, Numeral "8c" and Blue Color Omitted (1118 var.). A Spectacular Error occurring in the U.L. Plate Number Block of a complete sheet, caused by a fold-over of the sheet corner before the final printing in Blue; The gummed side of the fold-over (which runs through the corner of the U.L. stamp) shows the Blue Plate Number and that part of the Blue Ribbon and Olive Branches missing from the stamp; the numeral "8c" is entirely omitted from this stamp; the stamp immediately below has the Blue Ribbon and Olive Branches Entirely Omitted. A Major Error of the same nature and created in the identical manner as the famous 1931 2c Red Cross Issue with Red Cross omitted. Very Fine; This newly discovered error is a major variety of equal stature to the Red Cross Error, and so far as is known, this piece is Unique E.XVI
- 192 ★ 5c Blue, Coil, Imperforate (1304b). Horizontal Strip of Four, Mint, Very Fine 600.00
- 193 ★ 6c Gray Brown, Roosevelt Coil, Imperforate Error (1305a) Line Strip of Four, Mint, Very Fine E. XII
- 194 ★ 6c Waterfowl, Red & Dark Blue Omitted (1362b). Mint, with R. Sheet margin, Extremely Fine. Only four stamps in a Plate Number block were found with the colors missing, this is the L.R. stamp of the discovery block E.XIV
- 195 ★ 6c Waterfowl, Imperforate Between Horizontally (1362a) Error Block, with Sheet Margin and slogan "Mail Early In The Day" in part sheet of twenty, Mint, Extremely Fine E.XV
- 196 ★ 6c Christmas, 1968, Error, Yellow Plate Nos. and Light Yellow Color Omitted (1363 var.). Complete Sheet of Fifty, Very Fine E.XVI



184



186



188



198



199



195



202



207

206

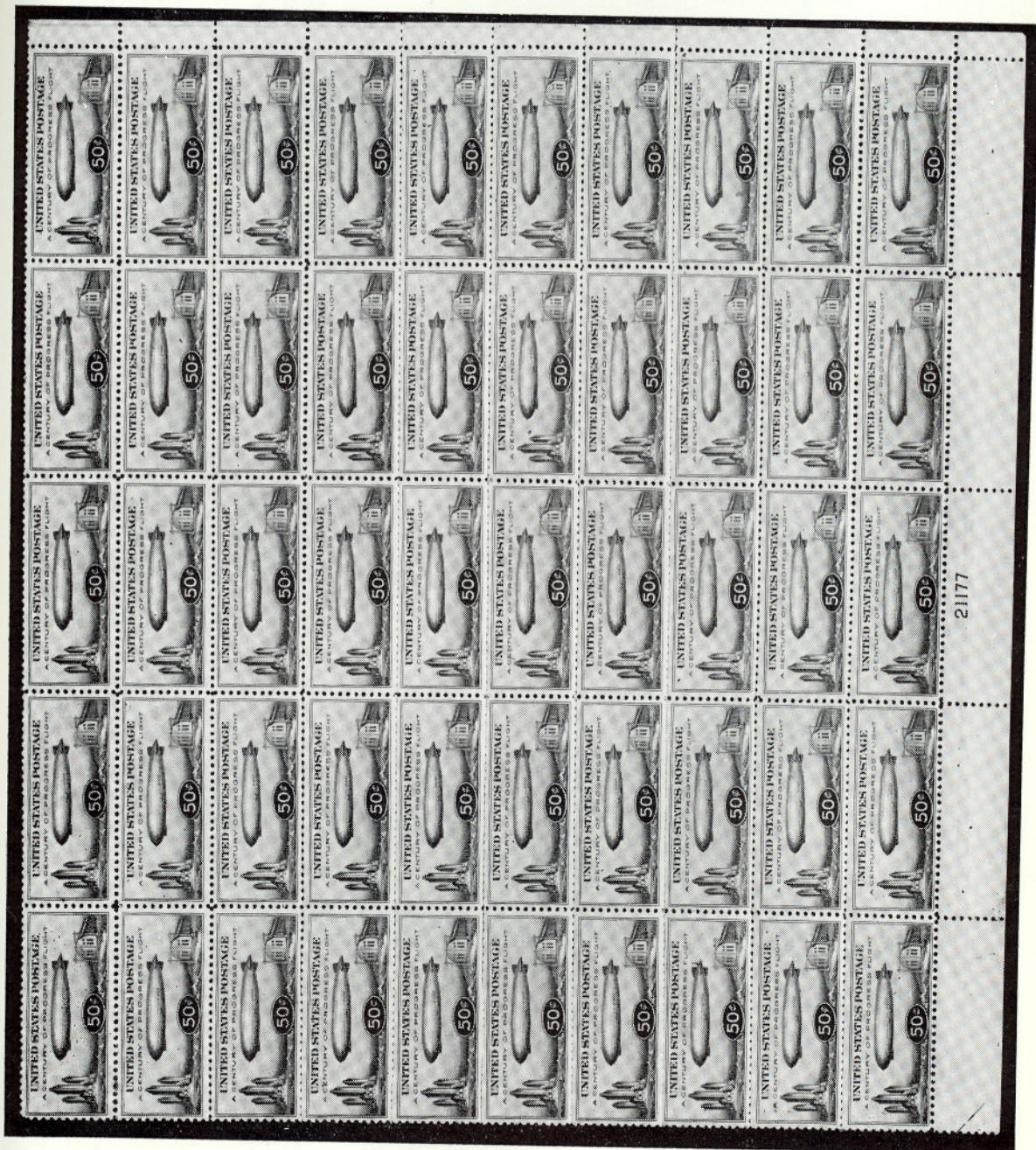
AIRPOST ISSUES



- 197 ★ 24c Carmine Rose & Blue, Airpost, Center Inverted (C3a). Pos. #39, Wonderfully Well Centered, Fresh and Very Fine, a Beautiful Example of this most Famous and Popular U.S. Rarity 25000.00
- 198 ★田 24c Carmine Rose & Blue, Airpost (C3). Top Margin Plate No. Arrow Block of Twelve, Very Fine 550.00
- 199 ★田 65c—\$2.60 Graf Zeppelin (C13-C15). Blocks, Very Fine Set 2475.00
- 200 ★ 50c Chicago Zeppelin (C18). Complete Sheet of Fifty, Fine—Very Fine 2225.00
- 201 ☒ 6c Dull Orange, Airpost (C19). Plate No. Block on First Day Cover, heavy "Baltimore, Md., June 30, 1934" duplex pmks., Very Fine Exceedingly rare E.XIII
- 202 ★田 6c Dark Blue & Carmine, Imperforate Between (C23a). Block, Mint, Very Fine 250.00
- 203 ☒ 10c Moon Landing (C76). "Shifted Earth" Variety, Dark Blue earth color shifted downward and appearing almost entirely on moon's surface, also part of the red color shifted downwards, most noticeably the Flag at the Astronaut's elbow. On unaddressed cacheted First Day Cover, Very Fine, A Fascinating Variety —



- 204 ★ 16c Red & Blue, Airpost Special Delivery, Imperforate Between (CE2a), Mint Strip of Three, Extremely Fine 2775.00



21177

SPECIAL DELIVERY, POSTAGE DUES

- 205 ★ 10c Gray Violet, Special Delivery, Imperforate Between Vertically (E15c). Ten Error Pairs comprising two entire Vertical Rows, incl. the U.L. Plate No. Block, in a complete Sheet of Fifty, Very Fine E.XV
- 206 ★ 1c Postage Due, Error, Without "1 Cent" (J89b). Error Block of Eight in Mint Block of Twenty, Very Fine E.XIV
- 207 ★ 3c Postage Due, Error, Without "3 Cents" (J91a). Error Pair as part of Block of Twenty, comprising 16 normal, 2 errors and two showing only a part of the "3" and "Cents" entirely omitted, Mint, Very Fine E.XII
- 208 ★ Philadelphia, Pa., 1c Black on Yellow, Carrier (7LB9). Complete frameline at T and part at one side, Bright color, part o.g., Fine, with P.F. Certificate, unpriced

POSTAL STATIONERY

- 209 3c Red on White, Die 1, Entire (U1). Unused, Size 3, with Nesbitt seal on flap, Very Fine, Ex-Barkhausen 325.00
- 210 6c Red on Buff, Entire (U31). Unused, Very Fine, Rare 750.00
- 211 3c Pink on Orange, Entire (U37). Unused, Size 3, Fresh, Extremely Fine, A Classic Envelope Rarity 700.00
- 212 2c Black on Orange, Die 2, Entire (U49). Unused, Extremely Fine 325.00
- 213 2c Brown on Orange, Die 1, Entire (U125). Unused, Size 4, Fresh, Extremely Fine, A Great Rarity 2500.00
- 214 2c Vermilion on Manila, Die 1, Wrapper (W127). Unused, Fresh Very Fine, Ex-Barkhausen 350.00
- 215 3c Green on Blue, Die 3, Cut Square (U170). Used, Very Fine, Rare, Ex-Green 400.00

ESTIMATES

Our sales contain many 19th Century covers and fancy cancellations. We have had many requests to give the estimated cash value on these lots. We are trying to place a fair net valuation on each lot as a guide for bidding when no catalogue value portrays the true value. The chart below will be used, for example E.IV means our estimated cash value on this lot is \$30.00 to \$40.00. Lots may actually realize more or less than these estimates and under no circumstances are these estimates to be considered reserves but merely a guide to bidding.

E. I	up to \$10.00	E. IX	\$150.00 to \$200.00
E. II	\$10.00 to \$20.00	E. X	\$200.00 to \$250.00
E. III	\$20.00 to \$30.00	E. XI	\$250.00 to \$350.00
E. IV	\$30.00 to \$40.00	E. XII	\$350.00 to \$500.00
E. V	\$40.00 to \$50.00	E. XIII	\$500.00 to \$750.00
E. VI	\$50.00 to \$75.00	E. XIV	\$750.00 to \$1000.00
E. VII	\$75.00 to \$100.00	E. XV	\$1000.00 to \$2500.00
E. VIII	\$100.00 to \$150.00	E. XVI	over \$2500.00

THE POSTMASTER GENERAL
WASHINGTON

FIRST OFFICIAL
MISSILE
MAIL



190



214



201

21234



FIRST MAN ON THE MOON
FIRST DAY OF ISSUE

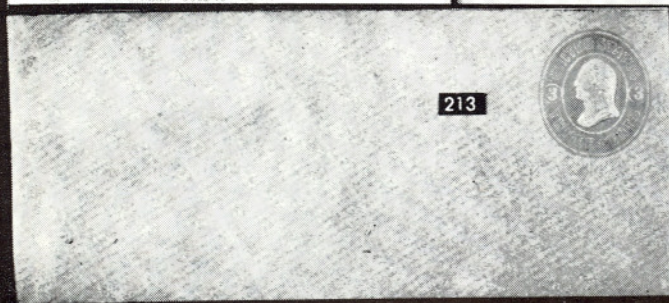


203

wing, Esq.
Brae
Spey



210



213



212



209








251



211

PONY EXPRESS COVERS

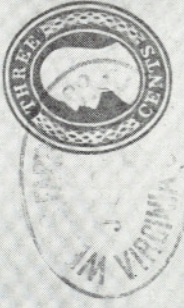
- 216  Wells Fargo & Co., Pony Express, \$2.00 Red, \$4.00 Green (143L1, 143L2). Tied together by Clear, Blue "Running Pony" oval, "San Francisco, June 26" with Green "St. Joseph, Mo., July 8" pmk. on 10c Green on Buff, Star Die Entire (U33) to New York, **THE CELEBRATED AND UNIQUE COVER**, the only \$4.00 Green Pony Cover Known, Ex-Caspary and with P.F. Certificate. The \$2.00 is just in at top, the \$4.00 with excellent margins except tip of U.L. corner. Stamps and cover have minor faults, which are of no consequence since this cover is unique. The stamps, at one time, have been removed from and replaced on the cover, as noted by the late Stanley B. Ashbrook in an exhaustive study of this cover published in the "Ashbrook Special Service" Issue No. 76, July 1, 1957, pages 615-617. Ashbrook, like ourselves, disagrees with the contention in the Caspary catalogue that additional postage stamps were removed from the cover. He states there is no evidence of this whatsoever and offers an explanation that heavier enclosures were intended but not included. We suggest that the Wells, Fargo, & Co. advertisements of the Pony Service may have been followed literally. They stated, and we quote, "Letters must be enclosed in Ten Cent Government Envelopes and Pony Postage Prepaid". Thus the additional postage required for a letter over 1 oz. (20c) was inadvertently or deliberately omitted. Other Pony Express covers are known with such inconsistencies between Pony charge and Government rates. Thus either our analysis or Ashbrook's is most likely the correct solution. A wonderful cover and an incomparable rarity of the first magnitude E.XVI
- 217  Wells Fargo & Co., Pony Express, \$1.00 Red (143L3). Large margins to least bit in at L & T, tied by clear Blue "Running Pony" oval of San Francisco, on 10c Green Entire (U15) with Red W.F. & Co., printed frank, "St. Joseph, Mo.," pmk. to N.Y., Fresh, Extremely Choice, Unlisted and unpriced on the Die 1, #U15 E.XV
- 218  Wells, Fargo & Co., Pony Express, \$2.00 Green (143L4). Large margins to just clear at B., tied by clear Blue "Running Pony" oval of San Francisco on 10c Green on Buff Entire (U41) with Red printed W.F. & Co., frank and a Fine 10c Dark Green "August Shade" to pay the additional 10c postage to Salem, Mass. Stamps also tied by "Atchison, Kan." pmk. negligible cover tears; one of the finest Pony covers known and one of only two \$2.00 Green covers on record, Ex-Barkhausen 4000.00 +
- 219  Wells, Fargo & Co., Pony Express, 25c Blue (143L8). Margins all around, tied by Blue "Virginia City, N.T." oval on 3c Red on Buff Entire (U10) with W.F. & Co., printed frank at L. used to Nevada City, Cal., Very Fine & Rare, Unpriced E.XV
- 220  Putts Overland Envelope, Pacific Railroad Propaganda Cover, with poem on back and Propaganda story on face; Used, stampless, from Sacramento City, Cal., to Scotland, with various rate and transit pmks. A few cover tears, flap gone, yet attractive and Extremely Scarce E.XI

FUTT'S
OVERLAP ENVELOPE.

This little institution is to be forwarded to its place of destination by Wells Fargo & Co. and is expected to arrive at the place of scheduled time—provided the rains don't get stuck in the mud and the locomotive run out of grass!

220

Wells Fargo & Co.
CALIFORNIA AND COAST ROUTES



219

Wells Fargo & Co.
CALIFORNIA AND COAST ROUTES



218

Robert Brookhouse Esq
Salem

Pr Pony Express
Massachusetts
Paid



217

Messrs Laville & Co
No 4 Beekman St
New York

Wells Fargo & Co.
THROUGH OUR CALIFORNIA AND ATLANTIC EXPRESS



216

Messrs Eugene Kelly Esq
No 164 Fulton St
New York

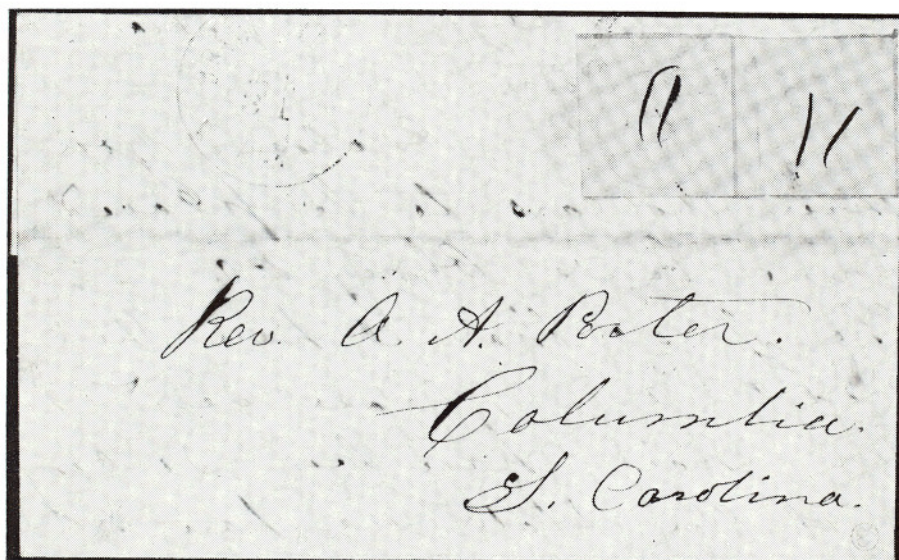
Pony Express June 26, 1891



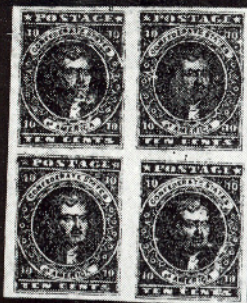
REVENUE STAMPS

- 221 3c Playing Cards, Imperforate (R17a). Large Margins, neat cancel., tiny pinhole, Very Fine Appearance 1200.00
- 222 25c Blue & Black, Center Inverted (R112a). With P.F. Certificate which reads "slightly defective", nevertheless an attractive example of this Rarity 2000.00
- 223 \$200.00 Blue, Black & Red (R132). Sheet Corner Copy with Imprint, Brilliant colors, neat magenta ms. cancel., tiny natural paper inclusion, Very Fine and Handsome 800.00
- 224 \$500.00 Black, Green & Red (R133). Beautiful, Rich colors, neat ms. cancel., couple of closed staple holes as often, otherwise a Very Fine example of the popular "Persian Rug." 2350.00
- 225 ★ \$5.00 Green & Black, Proprietary, Violet Paper (RB10a). Nearly full o.g., Small thin. Very Fine appearance, Rare unused, with P.F. Certificate 650.00 +
- 226 \$5.00 Green & Black, Proprietary, Violet Paper (RB10a). Rich colors, unusually fresh, neat ms. cancel., Extremely Fine 650.00
- 227 ★ \$1000.00 Green & Black, (R181). Uncancelled Strip of Four, small corner crease in margin only on top stamp, Otherwise Very Fine and Scarce E.XIII
- 228 ★ \$1.00 Blue, Hunting Permit, Imperforate (RW1a). Vertical Strip of Three, without gum, as usual, light crease, small thin in two, otherwise Very Fine, Rare 1125.00

CONFEDERATE STATES



- 229 ☒ Bridgeville, Ala., 5c Black & Red (13X1). Horizontal Pair, on July 31, 1862 folded letter, Red Frame lines complete on three sides, neat ms. cancel. as always, R. stamp has vertical crease, The Only Pair on Record, Ex-Ferrary, Caspary, Lilly, with P.F. Certificate 7500.00



239



227



238



225



226



228



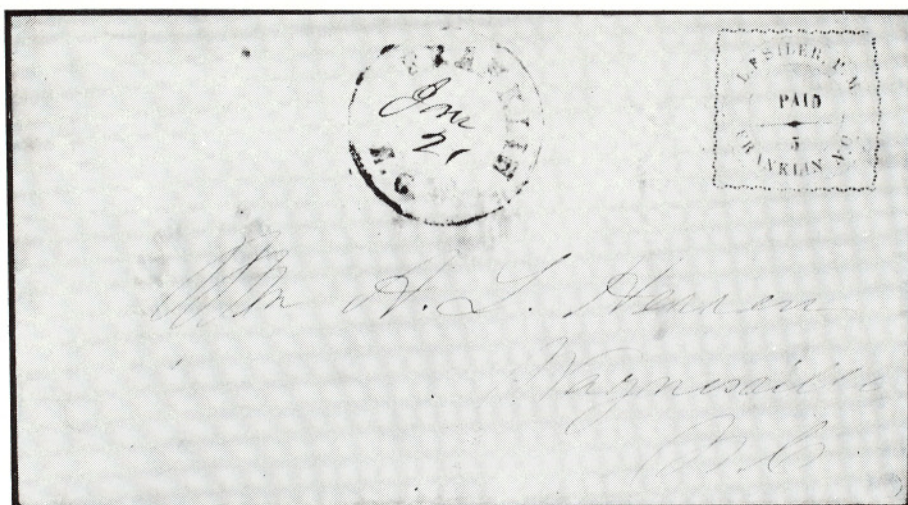
223



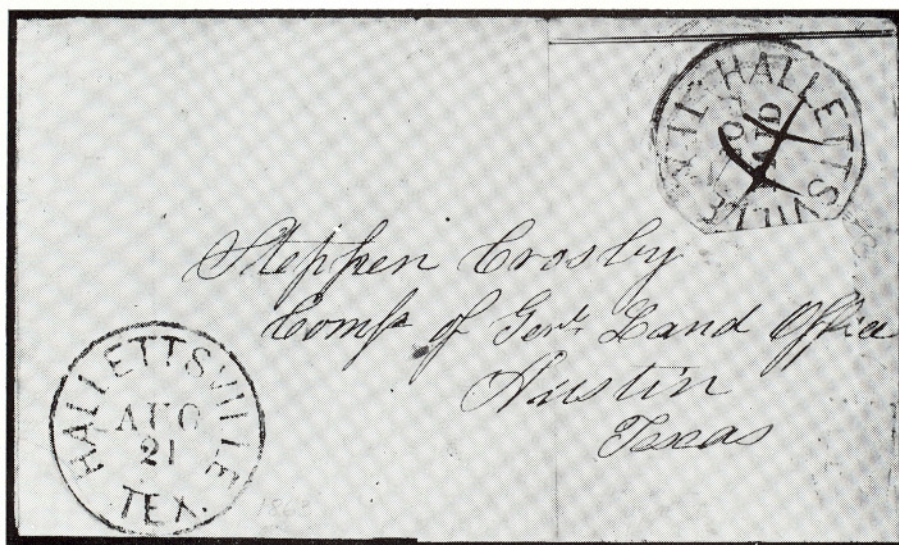
224



240



- 230 ☒ Franklin, N.C., 5c Blue on Buff, Entire (25XU1). Bold, Sharp Impression, neat, clear pmk. Negligible age spots, no flap. An unusually fine provisional of the utmost rarity, Unique, Ex-Ferrary, Caspary, Lilly, with P.F. Certificate 4000.00
- 231 ☒ Greenville, Ala., 10c Red & Blue, Ty. II (33X2). Variety "R" of "Greenville" Inverted, margins all around, uncanceled, minor gum soak, on small cover to Richmond, partly readable town pmk., Cover neatly mended. Fine & Rare, only one other cover believed known, also uncanceled, Ex-Caspary, Lilly, with P.F. Certificate which affirms stamp but declines opinion as to its use on the cover
1500.00 +



- 232 ☒ Hallettsville, Texas, 10c Black on Gray Blue (37X1). Cut circular, partly into at R., neat ms. cancel, Bold "Hallettsville, Tex., Aug. 21, (1863) pmk. on folded letter to Austin, Texas. Unique, the catalogue listing made from this cover, Ex-Caspary, with P.F. Certificate 3750.00

231



20

243

March 18 May 1874



PAID
TEN
3 months
1874

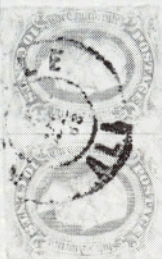
PAID
TEN
3 months
1874

242



March 1874
(Cal. 1874)

241

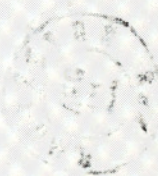


237

March 1874



March 1874
March 1874



March 1874
March 1874

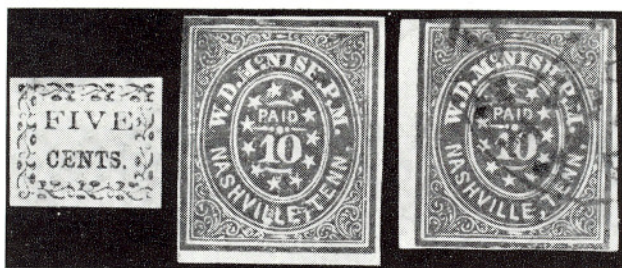
236



March 1874
March 1874

March 1874
March 1874

March 1874
March 1874





233

234

235

- 233 ★ Macon, Ga., 5c Black on Yellow, Laid Paper (53X6). Large margins, Fresh, trifling crease in corner, otherwise Extremely Fine, Ex-Lilly, Believed to be the only example known unused, with P.F. Certificate 2000.00
- 234 ★ Nashville, Tenn. 10c Green (61X6). Large margins to barely shaved at T.L., Fresh, unused, Faint creases, otherwise Fine, A very scarce Provisional 1200.00
- 235 Nashville, Tenn. 10c Green (61X6). Large margins to barely touched at T.L., Fresh color, neat blue town pmk., Fine 800.00
- 236 ☒ New Orleans, 2c Blue (62X1). Three singles, Two with margins all around, the other barely touched, tied on Nov. 30, 1861 "Prices Current" with letter to Woodville, Miss., a 1c overpayment of the 5c rate, Choice & Handsome cover, probably unique, Ex-Emerson, Caspary, with P.F. Certificate E.XV
- 237 ☒ Galveston, Texas, 20c Black on Blue (98UX8). Readable strike, neat Galveston pmk. on fresh folded cover to Shreveport, La., Fine, Unique, the catalogue listing made from this cover, with P.F. Certificate E.XV
- 238 ★田 2c Deep Green (3). Block of Eight, Rich, Bright color, Fine Impression, Large margins to barely clear at R., Fresh, o.g., couple of minor gum creases & small scissors cut in margin between stamps, A Choice & Handsome block 900.00 +
- 239 ★田 10c Rose (5). Block, Large margins, Rich color, Fresh, o.g., trivial thin and couple of gum creases, one breaking through on T.L. stamp, Extremely Fine appearance 950.00
- 240 ★田 10c Blue "T-E-N" (9). Block of Twenty, Large margins nearly all around, only the T.L. corner stamp being trifle in at T., o.g., Fresh color, Creased in margins only, between stamps, couple of negligible gum thins, A Marvelous Block 2080.00 +
- 241 ☒ 10c Blue, Frame Line (10) Horiz. Pair, Margins practically all around, L. stamp barely in at one point, Fine color, nicely tied by "Mobile, Ala., 1863" pmk. on Blue folded letter, Fine, Very Attractive, Plated, Pos. 15, 16, & signed "Ashbrook" 1100.00

- 242  20c Green, Horiz. Half used for 10c (13d). Tied by light "Wytheville, Va." pmk. on small neat cover, Flap missing, Fine, Very scarce and seldom seen 600.00
- 243  Mails Suspended, Blue Oval just ties edge of 3c Rose (65). Centered to R. ms. cancel, matching "Idaville, Ga., May 23rd" pmk to Virginia, Fine example of this extremely scarce Confederate postal marking, with P.F. Certificate E.XII

U.S. POSSESSIONS



- 244 ★ CANAL ZONE, 1962, 4c "Thatcher Ferry Bridge", Error, Silver Bridge Omitted (157a). Mint, with R. Sheet Margin, Extremely Fine, A Rare and Spectacular Error E.XVI
- 245 ★ CUBA, 1898, 3c on 2m Orange Brown, Puerto Principe (179G). Part o.g., Fine, with P.F. Certificate 1000.00
- 246 ★ — 1899, 10c on 10c Brown, Ty. II (226A). Fresh, o.g., Fine and Rare only a few example of the Special Printing exist 700.00
- 247 ★ GUAM, 1899, 10c Brown, Ty. II (9). Fresh, o.g., Fine Example of this rare Special Printing 700.00
- 248 ★ — 1899, \$1.00 Black, Ty. II (13). Fresh, o.g., Centered bit to right, Fine 450.00



249

250

- 249 HAWAII, 1851-52, 5c Blue "Missionary" (2). Margins to just in, Bold Grid and light red cancels, some faults & U.L. corner restored, Looks Fine, A very presentable example of a very great rarity 7000.00
- 250 — 1851-52, 13c Blue "Missionary" (3). Margins to touched, except slightly in at T. Beautiful Bright color & sharp impression, neat Red town pmk. A few tiny tears. The stamp has been mounted on protective tissue paper to preserve it. Fine appearance, an Attractive and Very Desirable example of this Classic Rarity, with North Certificate 4750.00

- 251 ☒ — Gregory's U.S. & California Express, Thompson & Hitchcock, Agts., 149 Pearl Street, N.Y., in Three clear straight lines in Red. "K/T & H" in matching oval on neat folded 1850 letter from the Ministry of Foreign Affairs, Copenhagen to the "Danish Majesty's Consul" Honolulu, Sandwich Islands, minor aging, otherwise Very Fine E.XII

GENERAL FOREIGN

- 252 ★ AUSTRIA, Lombardy-Venetia, 1850, 10c Black (3). B. Sheet Margin copy, Large margins, Fresh & Very Fine, Ex-Lilly 500.00
- 253 ★田 BASUTOLAND, 1961, 2c on 2p Orange, Inverted Surcharge (63a). Mint Block, Extremely Fine 900.00

BRITISH GUIANA

The incomparable 1c Black on Magenta of 1856, Scott #13 will be sold as the last lot in the sale, Lot No. 279.

- 254 1856, 4c Black on Magenta (14). Huge Margins, Cut Square, Deep Color, initialed "E.D.W.", light "Demerara" pmk., Thin spot filled in, Extremely Fine appearance, with P.F. Certificate 2500.00
- 255 ★ BULGARIA, 1884, 5s on 30s Blue & Fawn, Black Overprint (20A). Fresh, o.g., tiny, negligible thin specks, Very Fine appearance, signed "Bloch", One of Europe's rarest stamps 1100.00

CANADA



256

257

258

- 256 ★ 1851, 12p Black (3). Margins all around except LR corner just touched, Wonderful, Intense color, fresh, traces of o.g., strong laid lines, faint crease, Fine appearance, A handsome example of this famous classic rarity, with "Royal" Certificate 15000.00
- 257 ★ 1855, 10p Blue (7). Large Margins, Gorgeous Deep Color, Brilliant and Fresh, o.g., Extremely Fine, with "Royal" Certificate, A Beautiful Stamp 1300.00
- 258 ★ 1857, 7 1/2p Green (9). Large Margins, Lovely Rich color, Very Fine, Handsome and Rare 1300.00



252



254



266



259



255



270



273



263



264



267



272

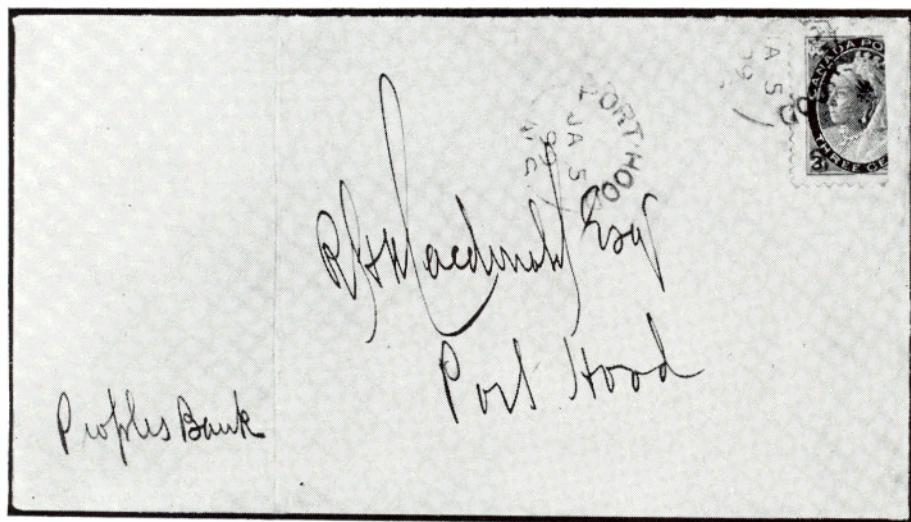


275



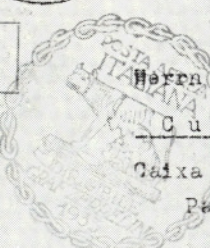
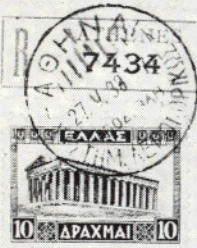
278

- 259 ★ 1888, 6c Red Brown, Major Re-Entry (43 var.). An Extraordinary Double Transfer almost 3mm in extent., Fresh, o.g., Vertical crease, Fine appearance, Extremely Scarce unused E.XII
- 260 S 1897, 20c — \$5.00 Jubilee (59S—65S). Mint Vertical Strips of Five with "Specimen" overprint, Fine—Very Fine, A wonderful lot of great beauty & rarity E.XV



- 261 ☒ 1899, 2c on Two-Thirds of 3c Carmine (88C). The Rare "Port Hood, N.S." Provisional, tied on neat cover by "Port Hood, N.S., Jan. 5, '99" pmk., Very Fine, Ex-Bingham, signed "Stanley Gibbons" on back 1200.00 +
- 262 ★田 1934, 10c Olive Green, Imperforate (209a). Mint Block, Extremely Fine 500.00
- 263 ★ 1959, 5c Red & Blue, "Seaway", Center Inverted (387a). Extremely Fine 2500.00
- 264 1959, 5c Red & Blue, "Seaway", Center Inverted (387a). Tied on small piece, light corner crease, Very Fine appearing copy of this rarity 2500.00
- 265 ★田 1935, 6c Red Brown, Airpost, Imperforate (C5b). Mint Block, Extremely Fine 400.00
- 266 ★ COLOMBIA, 1862, 20c Red (20). Ample to Large Margins, Fresh, Vivid Color, Extremely Fine copy of this Rarity, Ex-Caspary, Lilly 550.00
- 267 ★ FRANCE, German Occupation, 1870, 5c Yellow Green, Alsace, Points Down (N11). Minute, negligible flaws, handstamp on back shows through very slightly, otherwise Fine, Extremely Scarce, signed "Pfenninger" 1250.00
- 268 ☒ GREECE, 1933, 30d-120d Zeppelin (C5-C7). On May 27, 1933 Zepp. Flight cover, Red Greek & Blue Italian Cachets, Used to Brazil, Very Fine and Rare Sieger DM 1250.00

Mit Luftschiff "Graf Zeppelin"
Von- Brasilien



268

ΕΙΔΙΚΗ ΠΤΗΞΙΣ
ΕΣ ΕΛΛΑΔΟΣ
WLD THE
AERO EXPRESSO ITALIANA
OCTOY 1933

Herrn H. Schneider

Cu

Calixa

Pa



253



262



265



271



260
EX





- 269 ★ KENYA, UGANDA, & TANZANIA, 1922-27, £50 George V (41D). Very Fine, Exceedingly Rare 9600.00
- 270 ★ LIBIA, 1921, 5c Black & Red Brown, Error of Color (22a). Fine 800.00
- 271 ★田 — 1921, 5c Black & Red Brown, Error of Color (22a). Block of Fifteen, Mint, Fine, Largest block known, Rare piece, all signed "Diena" 12000.00
- 272 ★ NEW BRUNSWICK, 1860, 5c Brown, Connell (5) Very Fine, Scarce in such choice condition 1000.00
- 273 ★ NEWFOUNDLAND, 1857, 1/- Scarlet Vermilion (9). Clear margins all around, Brilliant color and Impression, Fine copy of this rarity, with B.P.A. Certificate 2650.00



- 274 — 1927, 60c Black, "De Pinedo," Airpost (C4). Well Centered, neat cancel., Extremely Fine, with P.F. Certificate 4000.00
- 275 ★ SPAIN, 1850, 6r Blue (4). Margins all around, Fresh, Large part o.g., Very Fine 700.00
- 276 ★ — 1931, Souvenir Presentation Book for the Third Pan-American Postal Congress, incl. 124 stamps with "C.U.P.P." overprints and the unissued 5p, 10p of the 1931 First Republic series, Fine—Very Fine, Rare Michel DM 12245.00



- 277 SWITZERLAND, 1850, 10r Black and Red on Yellow, Frame around Cross (6). Ample to Huge Margins, Fresh Color, Lightly cancelled, Frame Entirely Complete, Very Fine Copy of this Great Rarity, with P.F. Certificate 8000.00
- 278 TRINIDAD, 1847 (5c). Blue, "Lady McLeod", Usual small margins, barely touching in couple of places, with B.P.A. Certificate which states "Genuine, heavily creased and cannot be passed as unused". Fine appearance and exceedingly scarce in any condition 2500.00



- 279 BRITISH GUIANA, 1856, 1c Black on Magenta (13). Unique, The Rarest and Most Valuable stamp in the World _____

END OF SALE — THANK YOU

ESTIMATES

Our sales contain many 19th Century covers and fancy cancellations. We have had many requests to give the estimated cash value on these lots. We are trying to place a fair net valuation on each lot as a guide for bidding when no catalogue value portrays the true value. The chart below will be used, for example E. IV means our estimated cash value on this lot is \$30.00 to \$40.00. Lots may actually realize more or less than these estimates and under no circumstances are these estimates to be considered reserves but merely a guide to bidding.

E. I	up to \$10.00	E. IX	\$150.00 to \$200.00
E. II	\$10.00 to \$20.00	E. X	\$200.00 to \$250.00
E. III	\$20.00 to \$30.00	E. XI	\$250.00 to \$350.00
E. IV	\$30.00 to \$40.00	E. XII	\$350.00 to \$500.00
E. V	\$40.00 to \$50.00	E. XIII	\$500.00 to \$750.00
E. VI	\$50.00 to \$75.00	E. XIV	\$750.00 to \$1000.00
E. VII	\$75.00 to \$100.00	E. XV	\$1000.00 to \$2500.00
E. VIII	\$100.00 to \$150.00	E. XVI	over \$2500.00

CONDITIONS OF SALE

1. The terms of sale are strictly cash to the highest bidder. All buyers are expected to pay for lots within three days of receipt, unless special arrangements have been made prior to the sale.
2. All bids are per lot as numbered in the catalogue and not per piece, unless otherwise announced by the auctioneer at the time of sale.
3. Any lot, the description of which is incorrect is returnable, but only within three days of receipt. All disputed lots must be returned intact as received and lots containing five or more stamps are not returnable at any time. No lots may be returned by purchasers who have had the opportunity to examine them prior to the sale. No illustrated lots may be returned because of centering, margins or other factors shown in the illustration.
4. Successful mail bidders, unless they are known to us or supply acceptable references, will be notified of the amount of the lots secured for them, and are expected to send payment in full before the lots are forwarded.
5. If the purchase price has not been paid within the time limit, or lots taken up within seven days from date of sale, they may be resold and any losses arising from such sale charged to the defaulter.
6. All lots are sold as genuine but should any lot be proved otherwise by written opinion of any competent, responsible authority acceptable to us, immediate refund of the full purchase price will be made, provided that any such claim is made within 25 days from date of sale. If claim is not made within this period no lots are returnable for any reason at any time. Naturally, so long as we are notified within the 25 day period that an opinion is being sought the matter will remain open until such opinion is rendered. We will not be responsible for any charges incurred by the buyer for expertization fees and costs.
7. The right is reserved to group two or more lots, also withdraw any lot or lots from the sale, or to act on behalf of the seller.
8. Until paid for in full all lots remain the property of Robert A. Siegel Auction Galleries, Inc.
9. No commission is charged for buying at our sales, but all forwarding charges will be added to the purchase price. Shipment will be made to a post office box only if the buyer has also furnished a street address. All large lots unsuitable for parcel post will be sent by REA Express collect, or, upon request, REA Air Express collect.
10. Upon written application lots may be sent for examination prior to the auction, condition upon being mailed back by registered mail, adequately insured, within 24 hours of receipt. The applicant is completely responsible for all lots sent for examination, and for the insurance of same against mishap, from the time of receipt until they are actually received back, and is to pay all expenses of postage and insurance. No lots can be sent for inspection within ten days of the date of sale.
11. The placing of a bid shall constitute acceptance of the foregoing conditions of sale.

ROBERT A. SIEGEL

ANDREW LEVITT, Licensed Auctioneers

In sending bids, always state the highest price you are prepared to pay for the lot. Your limit will not be used as a starting bid unless absolutely necessary.

DESCRIPTIONS

Extremely Fine—the finest condition for noteworthy, outstanding copies.

Very Fine (VF)—means that there is a slight deviation from the above.

Fine (F)—means that the perforations do not touch the design on issues after 1890, but in some cases may just touch in earlier issues; if used, fairly lightly cancelled.

Very Good (VG)—means that the appearance is generally fine but that the perforations cut the design slightly.

Good (G)—means average off-centering; or fairly attractive with slight defects.

Original gum (OG) is not to be expected on 19th Century stamps unless so stated.

Mint—have never been hinged.

Scott 1970 Specialized Catalogue used for cataloguing lots of U.S. and Possessions. Scott 1970 Standard Catalogue for others.

MARCH 24th, 1970

10 East 52nd Street

New York, N. Y. 10022

Tel: 753-6421 (Area Code 212)

Please purchase for me at your auction to be held **March 24th, 1970**, the lots named below, the prices annexed being my limit on each lot. I agree to remit for purchases in accordance with the **Conditions of Sale** and to return no lots later than three days after receipt.

(if unknown to us)

SIGNED

New York State residents kindly include
County in address.

County

[illegible]

Upon request, estimate of value furnished on any lots in this auction.

BLOWING OUR OWN HORN

It has long been said that if you don't blow your own horn no-one will blow it for you, so we take this means to indulge in a bit of self-congratulation.

It should be quite obvious to the philatelic world that a great many of the important, advanced collections of recognized philatelic students to come on the market in the past few years have been placed in our hands for sale. These include such name collections as Bingham, Clifford, Meyer, Lilly, Matthies, Slawson, Makepeace, Jarvis, Baker and Seymour, to mention a few. There's a reason and it's clear the reason is because of the incomparable presentations we make in preparing such collections for the auction market.

We have devoted more than Forty Years to the sale of fine stamps and collections at auction. The last three years' sales alone have reached an unprecedented total of more than Ten Million Dollars. It is because of our experience, plus our accomplished staff and unexcelled facilities to provide the sophisticated knowledge necessary for the proper handling of important, advanced collections.

It's a good thing to keep in mind in contemplating the future of your collection.



10 EAST 52nd STREET NEW YORK, N. Y. 10022

Tel.: 212 PLaza 3-6421

IS YOUR COLLECTION FOR SALE?

REALIZE IMMEDIATE CASH
PLUS THE ADDED ADVANTAGE OF
SELLING THROUGH OUR AUCTIONS

If desired, we will advance immediate cash up to 75% of our appraisal value, of what your collection should realize at auction. There is no interest charge.

Your collection will then be sold in one of our coming auction sales. All stamps are expertly and advantageously lotted in attractive, well illustrated catalogs. Lotting is meticulously planned under our personal supervision. Commission is 20% of the gross realization. There is no lotting fee or any other charges. Final settlement is made within five weeks after the sale. We have been continuously conducting stamp auctions in the United States for over forty years.

Valuable collections and stamp holdings are especially wanted, but we will accept properties valued from \$500 upwards. Send all stamps direct for appraisal. Auction advance will be remitted shortly after receipt. If not entirely pleased, stamps will be returned at our expense. If circumstances warrant due to bulk or value, we will travel anywhere to inspect important properties.

ROBERT A. SIEGEL
AUCTION GALLERIES, Inc.

(Licensed and Bonded Auctioneer)

10 EAST 52nd STREET
NEW YORK, N. Y. 10022
Tel. (212) 753-6421

371st SALE

List of Prices Realized

RARITIES OF THE WORLD

Featuring the World's Most Valuable Stamp !

1c British Guiana



\$280,000.00

TUESDAY, MARCH 24th, 1970

Total Realization \$882,520.00

Robert A. Siegel
AUCTIONS

10 EAST 52nd STREET NEW YORK, N. Y. 10022

Tel.: 212 PLaza 3-6421

Lot #	Price	Lot #	Price	Lot #	Price	Lot #	Price	Lot #	Price
1	725.00	57	1250.00	113	700.00	169	450.00	225	625.00
2	800.00	58	800.00	114	2000.00	170	600.00	226	600.00
3	1600.00	59	475.00	115	2000.00	171	525.00	227	400.00
4	3200.00	60	2100.00	116	5600.00	172	2100.00	228	625.00
5	2100.00	61	1500.00	117	3600.00	173	2800.00	229	6750.00
6	1900.00	62	525.00	118	525.00	174	1400.00	230	4250.00
7	1200.00	63	1500.00	119	525.00	175	850.00	231	1600.00
8	1200.00	64	900.00	120	1100.00	176	425.00	232	3400.00
9	2300.00	65	1600.00	121	1600.00	177	1350.00	233	1700.00
10	4250.00	66	5250.00	122	650.00	178	425.00	234	700.00
11	2200.00	67	3000.00	123	700.00	179	475.00	235	475.00
12	525.00	68	5250.00	124	850.00	180	3200.00	236	2400.00
13	800.00	69	475.00	125	625.00	181	600.00	237	1900.00
14	1500.00	70	1000.00	126	2300.00	182	675.00	238	725.00
15	400.00	71	1200.00	127	2600.00	183	675.00	239	725.00
16	400.00	72	4750.00	128	3600.00	184	600.00	240	1600.00
17	1000.00	73	375.00	129	3800.00	185	170.00	241	850.00
18	500.00	74	450.00	130	6750.00	186	280.00	242	625.00
19	1800.00	75	625.00	131	2800.00	187	850.00	243	625.00
20	19,000.00	76	1200.00	132	2900.00	188	3400.00	244	2800.00
21	6750.00	77	1050.00	133	1900.00	189	380.00	245	600.00
22	3500.00	78	475.00	134	1600.00	190	325.00	246	625.00
23	650.00	79	525.00	135	4000.00	191	2000.00	247	575.00
24	950.00	80	2300.00	136	13,000.00	192	450.00	248	380.00
25	525.00	81	3400.00	137	3200.00	193	300.00	249	2900.00
26	400.00	82	950.00	138	1400.00	194	500.00	250	2900.00
27	525.00	83	7750.00	139	15,500.00	195	1500.00	251	550.00
28	400.00	84	1800.00	140	850.00	196	1050.00	252	320.00
29	400.00	85	1300.00	141	1100.00	197	34,000.00	253	625.00
30	2000.00	86	32000.00	142	8500.00	198	525.00	254	2700.00
31	900.00	87	6500.00	143	450.00	199	1900.00	255	200.00
32	4000.00	88	10,500.00	144	525.00	200	1700.00	256	7250.00
33	2100.00	89	16,000.00	145	1200.00	201	475.00	257	1500.00
34	600.00	90	625.00	146	4500.00	202	400.00	258	1150.00
35	425.00	91	1100.00	147	9100.00	203	200.00	259	320.00
36	725.00	92	950.00	148	750.00	204	2500.00	260	1250.00
37	475.00	93	700.00	149	4400.00	205	1050.00	261	1800.00
38	1800.00	94	725.00	150	6000.00	206	800.00	262	320.00
39	850.00	95	900.00	151	625.00	207	425.00	263	1350.00
40	5250.00	96	1100.00	152	625.00	208	675.00	264	900.00
41	11,000.00	97	450.00	153	725.00	209	250.00	265	300.00
42	1350.00	98	725.00	154	500.00	210	425.00	266	525.00
43	625.00	99	3200.00	155	1400.00	211	425.00	267	320.00
44	1050.00	100	800.00	156	2900.00	212	180.00	268	360.00
45	1900.00	101	525.00	157	1600.00	213	2200.00	269	7500.00
46	2000.00	102	325.00	158	1400.00	214	220.00	270	280.00
47	800.00	103	1000.00	159	1000.00	215	375.00	271	4000.00
48	650.00	104	1250.00	160	800.00	216	4000.00	272	1250.00
49	800.00	105	1400.00	161	750.00	217	2000.00	273	1700.00
50	1250.00	106	1050.00	162	2100.00	218	11,000.00	274	3600.00
51	11,000.00	107	475.00	163	1700.00	219	1300.00	275	340.00
52	575.00	108	400.00	164	850.00	220	250.00	276	600.00
53	5500.00	109	2800.00	165	850.00	221	725.00	277	7000.00
54	1050.00	110	425.00	166	800.00	222	850.00	278	900.00
55	725.00	111	1200.00	167	400.00	223	800.00	279	280,000.00
56	7000.00	112	850.00	168	475.00	224	1900.00		

Robert A. Siegel Auction Galleries, Inc.
 Prices Realized for
 Sale 371 March 24, 1970 1970 Rarities of the World

Lot#	Realized	Lot#	Realized	Lot#	Realized	Lot#	Realized	Lot#	Realized
1	725	37	475	73	375	109	2,800	145	1,200
2	800	38	1,800	74	450	110	425	146	4,500
3	1,600	39	850	75	625	111	1,200	147	9,100
4	3,200	40	5,250	76	1,200	112	850	148	750
5	2,100	41	11,000	77	1,050	113	700	149	4,400
6	1,900	42	1,350	78	475	114	2,000	150	6,000
7	1,200	43	625	79	525	115	2,000	151	625
8	1,200	44	1,050	80	2,300	116	5,600	152	625
9	2,300	45	1,900	81	3,400	117	3,600	153	725
10	4,250	46	2,000	82	950	118	525	154	500
11	2,200	47	800	83	7,750	119	525	155	1,400
12	525	48	650	84	1,800	120	1,100	156	2,900
13	800	49	800	85	1,300	121	1,600	157	1,600
14	1,500	50	1,250	86	32,000	122	650	158	1,400
15	400	51	11,000	87	6,500	123	700	159	1,000
16	400	52	575	88	10,500	124	850	160	800
17	1,000	53	5,500	89	16,000	125	625	161	750
18	500	54	1,050	90	625	126	2,300	162	2,100
19	1,800	55	725	91	1,100	127	2,600	163	1,700
20	19,000	56	7,000	92	950	128	3,600	164	1,000
21	6,750	57	1,250	93	700	129	3,800	165	850
22	3,500	58	800	94	725	130	6,750	166	800
23	650	59	475	95	900	131	2,800	167	400
24	950	60	2,100	96	1,100	132	2,900	168	475
25	525	61	1,500	97	450	133	1,900	169	450
26	400	62	525	98	725	134	1,600	170	600
27	525	63	1,500	99	3,200	135	4,000	171	525
28	400	64	900	100	800	136	13,000	172	2,100
29	400	65	1,600	101	525	137	3,200	173	2,800
30	2,000	66	5,250	102	325	138	1,400	174	1,400
31	900	67	3,000	103	1,000	139	15,500	175	850
32	4,000	68	5,250	104	1,250	140	850	176	425
33	2,100	69	475	105	140	141	2,350	177	1,350
34	600	70	1,000	106	1,050	142	8,500	178	425
35	425	71	1,200	107	475	143	450	179	475
36	725	72	4,750	108	400	144	525	180	3,200

Robert A. Siegel Auction Galleries, Inc.
 Prices Realized for
 Sale 371 March 24, 1970 1970 Rarities of the World

Lot#	Realized	Lot#	Realized	Lot#	Realized
181	600	217	2,000	253	625
182	675	218	11,000	254	2,700
183	675	219	1,300	255	200
184	600	220	250	256	7,250
185	170	221	725	257	1,500
186	280	222	850	258	1,150
187	850	223	800	259	320
188	3,400	224	1,900	260	1,250
189	380	225	625	261	1,800
190	325	226	600	262	320
191	2,000	227	400	263	1,350
192	450	228	625	264	900
193	300	229	6,750	265	300
194	500	230	4,250	266	525
195	1,500	231	1,600	267	320
196	1,050	232	3,400	268	360
197	34,000	233	1,700	269	7,500
198	525	234	700	270	280
199	1,900	235	475	271	4,000
200	1,700	236	2,400	272	1,250
201	475	237	1,900	273	1,700
202	400	238	725	274	3,600
203	200	239	725	275	340
204	2,500	240	1,600	276	600
205	1,050	241	850	277	7,000
206	800	242	625	278	900
207	425	243	625	279	280,000
208	675	244	2,800		
209	250	245	600		
210	425	246	625		
211	425	247	575		
212	180	248	380		
213	2,200	249	2,900		
214	220	250	2,900		
215	375	251	550		
216	4,000	252	320		